

## **18. References**

- [1] FCC 47 CFR Part 2 "Frequency Allocations and Radio Treaty Matters; General Rules and Regulations"
- [2] ANSI/IEEE Std. C95.1-1992, "IEEE Standard for Safety Levels with Respect to Human Exposure to Radio Frequency Electromagnetic Fields, 3 kHz to 300 GHz", September 1992
- [3] IEEE Std. 1528-2013, "IEEE Recommended Practice for Determining the Peak Spatial-Average Specific Absorption Rate (SAR) in the Human Head from Wireless Communications Devices: Measurement Techniques", Sep 2013
- [4] SPEAG DASY System Handbook
- [5] FCC KDB 865664 D01 v01r04, "SAR Measurement Requirements for 100 MHz to 6 GHz", Aug 2015.
- [6] FCC KDB 865664 D02 v01r02, "RF Exposure Compliance Reporting and Documentation Considerations" Oct 2015.
- [7] FCC KDB 447498 D01 v06, "Mobile and Portable Device RF Exposure Procedures and Equipment Authorization Policies", Oct 2015
- [8] FCC KDB 648474 D04 v01r03, "SAR Evaluation Considerations for Wireless Handsets", Oct 2015.
- [9] FCC KDB 248227 D01 v02r02, "SAR Guidance for IEEE 802.11 (WiFi) Transmitters", Oct 2015.
- [10] FCC KDB 941225 D01 v03r01, "3G SAR MEAUREMENT PROCEDURES", Oct 2015
- [11] FCC KDB 941225 D05 v02r05, "SAR Evaluation Considerations for LTE Devices", Dec 2015
- [12] FCC KDB 941225 D05A v01r02, "Rel. 10 LTE SAR Test Guidance and KDB Inquiries", Oct 2015
- [13] FCC KDB 941225 D06 v02r01, "SAR Evaluation Procedures for Portable Devices with Wireless Router Capabilities", Oct 2015.



## **18. References**

- [1] FCC 47 CFR Part 2 "Frequency Allocations and Radio Treaty Matters; General Rules and Regulations"
- [2] ANSI/IEEE Std. C95.1-1992, "IEEE Standard for Safety Levels with Respect to Human Exposure to Radio Frequency Electromagnetic Fields, 3 kHz to 300 GHz", September 1992
- [3] IEEE Std. 1528-2013, "IEEE Recommended Practice for Determining the Peak Spatial-Average Specific Absorption Rate (SAR) in the Human Head from Wireless Communications Devices: Measurement Techniques", Sep 2013
- [4] SPEAG DASY System Handbook
- [5] FCC KDB 865664 D01 v01r04, "SAR Measurement Requirements for 100 MHz to 6 GHz", Aug 2015.
- [6] FCC KDB 865664 D02 v01r02, "RF Exposure Compliance Reporting and Documentation Considerations" Oct 2015.
- [7] FCC KDB 447498 D01 v06, "Mobile and Portable Device RF Exposure Procedures and Equipment Authorization Policies", Oct 2015
- [8] FCC KDB 648474 D04 v01r03, "SAR Evaluation Considerations for Wireless Handsets", Oct 2015.
- [9] FCC KDB 248227 D01 v02r02, "SAR Guidance for IEEE 802.11 (WiFi) Transmitters", Oct 2015.
- [10] FCC KDB 941225 D01 v03r01, "3G SAR MEAUREMENT PROCEDURES", Oct 2015
- [11] FCC KDB 941225 D05 v02r05, "SAR Evaluation Considerations for LTE Devices", Dec 2015
- [12] FCC KDB 941225 D05A v01r02, "Rel. 10 LTE SAR Test Guidance and KDB Inquiries", Oct 2015
- [13] FCC KDB 941225 D06 v02r01, "SAR Evaluation Procedures for Portable Devices with Wireless Router Capabilities", Oct 2015.



## **Appendix A. Plots of System Performance Check**

The plots are shown as follows.

**System Check\_Head\_750MHz\_20180227**

**DUT: D750V3 SN:1087**

Communication System: UID 0, CW; Frequency: 750 MHz; Duty Cycle: 1:1

Medium: HSL\_750\_Medium parameters used:  $f = 750 \text{ MHz}$ ;  $\sigma = 0.893 \text{ S/m}$ ;  $\epsilon_r = 41.983$ ;  $\rho = 1000 \text{ kg/m}^3$

Ambient Temperature :  $23.5 \text{ }^\circ\text{C}$ ; Liquid Temperature :  $22.6 \text{ }^\circ\text{C}$

DASY5 Configuration:

- Probe: EX3DV4 - SN3935; ConvF(10.68, 10.68, 10.68); Calibrated: 2017/12/14;
- Sensor-Surface: 1.4mm (Mechanical Surface Detection)
- Electronics: DAE4 Sn1358; Calibrated: 2017/10/24
- Phantom: SAM1; Type: QD000P40CD; Serial: TP:1753
- Measurement SW: DASY52, Version 52.8 (8); SEMCAD X Version 14.6.10 (7372)

**Pin=250mW/Area Scan (61x61x1):** Interpolated grid:  $dx=1.500 \text{ mm}$ ,  $dy=1.500 \text{ mm}$

Maximum value of SAR (interpolated) =  $2.76 \text{ W/kg}$

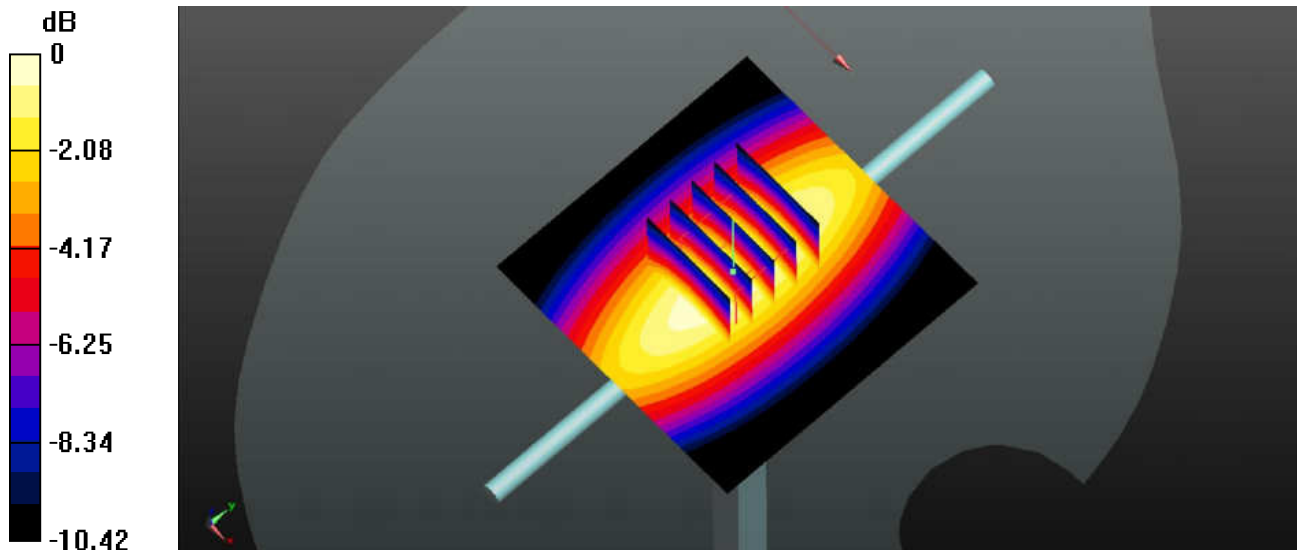
**Pin=250mW/Zoom Scan (5x5x7)/Cube 0:** Measurement grid:  $dx=8\text{mm}$ ,  $dy=8\text{mm}$ ,  $dz=5\text{mm}$

Reference Value =  $55.54 \text{ V/m}$ ; Power Drift =  $0.01 \text{ dB}$

Peak SAR (extrapolated) =  $3.05 \text{ W/kg}$

**SAR(1 g) =  $2.08 \text{ W/kg}$ ; SAR(10 g) =  $1.37 \text{ W/kg}$**

Maximum value of SAR (measured) =  $2.73 \text{ W/kg}$



0 dB =  $2.73 \text{ W/kg}$

**System Check\_Head\_835MHz\_20180217**

**DUT: D835V2 SN:4d151**

Communication System: UID 0, CW; Frequency: 835 MHz; Duty Cycle: 1:1

Medium: HSL\_835\_Medium parameters used:  $f = 835 \text{ MHz}$ ;  $\sigma = 0.907 \text{ S/m}$ ;  $\epsilon_r = 42.336$ ;  $\rho = 1000 \text{ kg/m}^3$

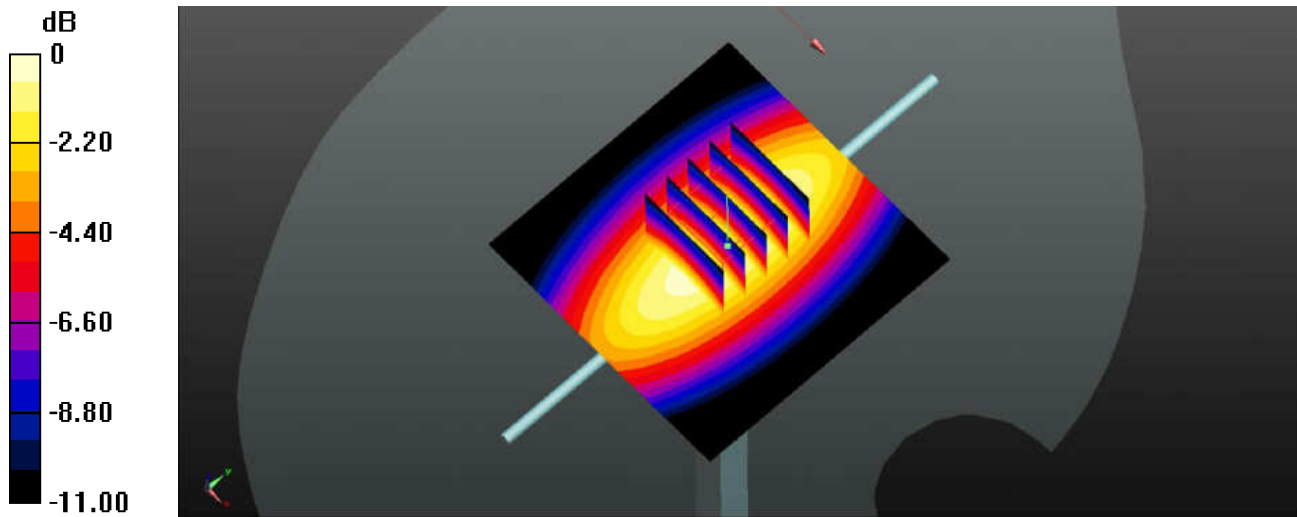
Ambient Temperature :  $23.5 \text{ }^\circ\text{C}$ ; Liquid Temperature :  $22.5 \text{ }^\circ\text{C}$

DASY5 Configuration:

- Probe: EX3DV4 - SN3935; ConvF(10.36, 10.36, 10.36); Calibrated: 2017/12/14;
- Sensor-Surface: 1.4mm (Mechanical Surface Detection)
- Electronics: DAE4 Sn1358; Calibrated: 2017/10/24
- Phantom: SAM2; Type: QD000P40CD; Serial: TP:1754
- Measurement SW: DASY52, Version 52.8 (8); SEMCAD X Version 14.6.10 (7372)

**Pin=250mW/Area Scan (61x61x1):** Interpolated grid:  $dx=1.500 \text{ mm}$ ,  $dy=1.500 \text{ mm}$   
Maximum value of SAR (interpolated) =  $3.36 \text{ W/kg}$

**Pin=250mW/Zoom Scan (5x5x7)/Cube 0:** Measurement grid:  $dx=8\text{mm}$ ,  $dy=8\text{mm}$ ,  $dz=5\text{mm}$   
Reference Value =  $55.63 \text{ V/m}$ ; Power Drift =  $-0.01 \text{ dB}$   
Peak SAR (extrapolated) =  $3.86 \text{ W/kg}$   
**SAR(1 g) =  $2.43 \text{ W/kg}$ ; SAR(10 g) =  $1.58 \text{ W/kg}$**   
Maximum value of SAR (measured) =  $3.34 \text{ W/kg}$



0 dB =  $3.34 \text{ W/kg}$

### System Check\_Head\_1750MHz\_20180221

**DUT: D1750V2 SN:1090**

Communication System: UID 0, CW; Frequency: 1750 MHz; Duty Cycle: 1:1

Medium: HSL\_1750\_Medium parameters used:  $f = 1750$  MHz;  $\sigma = 1.375$  S/m;  $\epsilon_r = 41.37$ ;  $\rho = 1000$  kg/m<sup>3</sup>

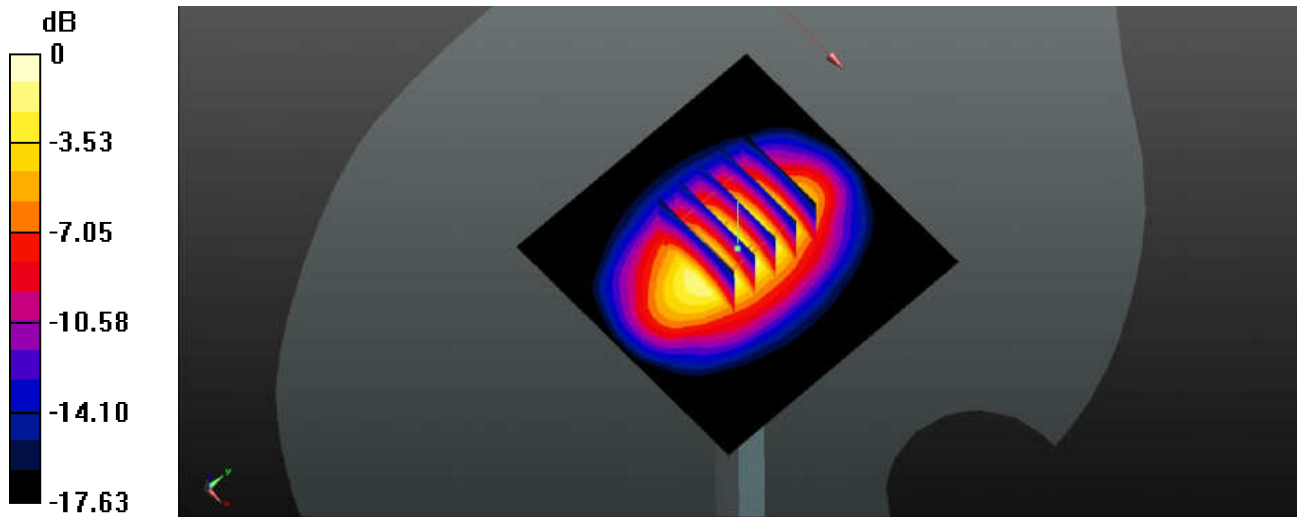
Ambient Temperature : 23.5 °C ; Liquid Temperature : 22.6 °C

DASY5 Configuration:

- Probe: EX3DV4 - SN3935; ConvF(8.85, 8.85, 8.85); Calibrated: 2017/12/14;
- Sensor-Surface: 1.4mm (Mechanical Surface Detection)
- Electronics: DAE4 Sn1358; Calibrated: 2017/10/24
- Phantom: SAM1; Type: QD000P40CD; Serial: TP:1753
- Measurement SW: DASY52, Version 52.8 (8); SEMCAD X Version 14.6.10 (7372)

**Pin=250mW/Area Scan (61x61x1):** Interpolated grid: dx=1.500 mm, dy=1.500 mm  
Maximum value of SAR (interpolated) = 13.5 W/kg

**Pin=250mW/Zoom Scan (5x5x7)/Cube 0:** Measurement grid: dx=8mm, dy=8mm, dz=5mm  
Reference Value = 95.20 V/m; Power Drift = 0.04 dB  
Peak SAR (extrapolated) = 16.2 W/kg  
**SAR(1 g) = 8.7 W/kg; SAR(10 g) = 4.58 W/kg**  
Maximum value of SAR (measured) = 13.5 W/kg



0 dB = 13.5 W/kg

**System Check\_Head\_1900MHz\_20180222**

**DUT: D1900V2 SN:5d170**

Communication System: UID 0, CW; Frequency: 1900 MHz; Duty Cycle: 1:1

Medium: HSL\_1900\_Medium parameters used:  $f = 1900$  MHz;  $\sigma = 1.464$  S/m;  $\epsilon_r = 39.144$ ;  $\rho = 1000$  kg/m<sup>3</sup>

Ambient Temperature : 23.5 °C ; Liquid Temperature : 22.3 °C

DASY5 Configuration:

- Probe: EX3DV4 - SN3935; ConvF(8.41, 8.41, 8.41); Calibrated: 2017/12/14;
- Sensor-Surface: 1.4mm (Mechanical Surface Detection)
- Electronics: DAE4 Sn1358; Calibrated: 2017/10/24
- Phantom: SAM2; Type: QD000P40CD; Serial: TP:1754
- Measurement SW: DASY52, Version 52.8 (8); SEMCAD X Version 14.6.10 (7372)

**Pin=250mW/Area Scan (61x61x1):** Interpolated grid: dx=1.500 mm, dy=1.500 mm

Maximum value of SAR (interpolated) = 16.1 W/kg

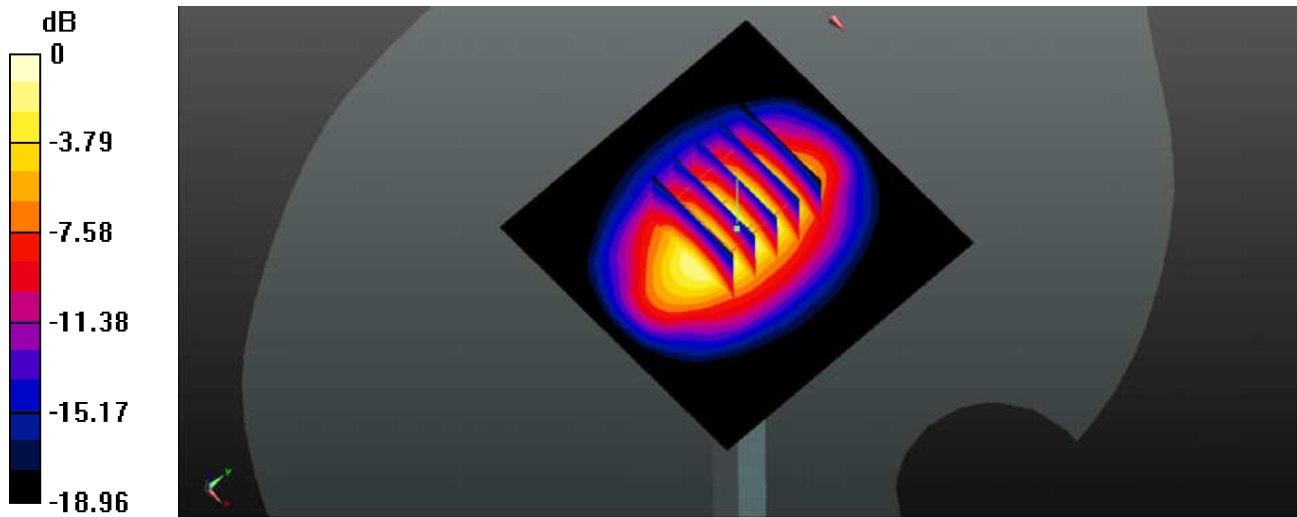
**Pin=250mW/Zoom Scan (5x5x7)/Cube 0:** Measurement grid: dx=8mm, dy=8mm, dz=5mm

Reference Value = 100.6 V/m; Power Drift = 0.05 dB

Peak SAR (extrapolated) = 19.5 W/kg

**SAR(1 g) = 10.3 W/kg; SAR(10 g) = 5.27 W/kg**

Maximum value of SAR (measured) = 16.2 W/kg



0 dB = 16.2 W/kg

**System Check\_Head\_2600MHz\_20180221**

**DUT: D2600V2 SN:1112**

Communication System: UID 0, CW; Frequency: 2600 MHz; Duty Cycle: 1:1

Medium: HSL\_2600\_Medium parameters used:  $f = 2600$  MHz;  $\sigma = 2.038$  S/m;  $\epsilon_r = 39.034$ ;  $\rho = 1000$  kg/m<sup>3</sup>

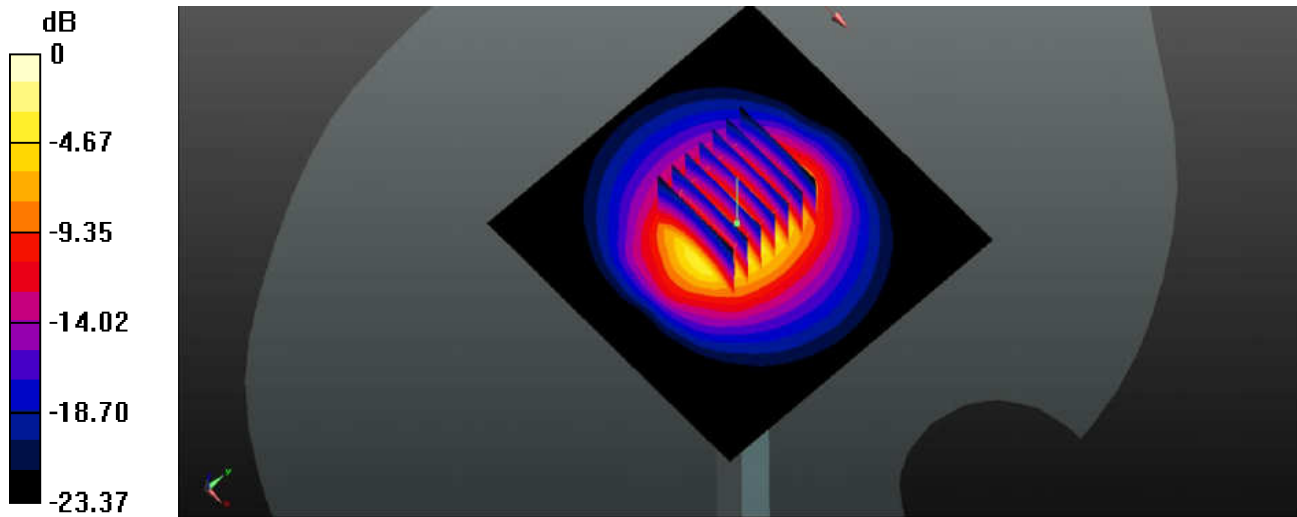
Ambient Temperature : 23.3 °C ; Liquid Temperature : 22.2 °C

DASY5 Configuration:

- Probe: EX3DV4 - SN3935; ConvF(7.67, 7.67, 7.67); Calibrated: 2017/12/14;
- Sensor-Surface: 1.4mm (Mechanical Surface Detection)
- Electronics: DAE4 Sn1358; Calibrated: 2017/10/24
- Phantom: SAM1; Type: QD000P40CD; Serial: TP:1753
- Measurement SW: DASY52, Version 52.8 (8); SEMCAD X Version 14.6.10 (7372)

**Pin=250mW/Area Scan (81x81x1):** Interpolated grid: dx=1.200 mm, dy=1.200 mm  
Maximum value of SAR (interpolated) = 22.3 W/kg

**Pin=250mW/Zoom Scan (7x7x7)/Cube 0:** Measurement grid: dx=5mm, dy=5mm, dz=5mm  
Reference Value = 87.44 V/m; Power Drift = 0.01 dB  
Peak SAR (extrapolated) = 30.8 W/kg  
**SAR(1 g) = 14.2 W/kg; SAR(10 g) = 6.27 W/kg**  
Maximum value of SAR (measured) = 22.3 W/kg



0 dB = 22.3 W/kg



**System Check\_Body\_750MHz\_20180227**

**DUT: D750V3 SN:1087**

Communication System: UID 0, CW; Frequency: 750 MHz; Duty Cycle: 1:1

Medium: MSL\_750\_Medium parameters used:  $f = 750 \text{ MHz}$ ;  $\sigma = 0.959 \text{ S/m}$ ;  $\epsilon_r = 56.966$ ;  $\rho = 1000 \text{ kg/m}^3$

Ambient Temperature :  $23.6 \text{ }^\circ\text{C}$ ; Liquid Temperature :  $22.4 \text{ }^\circ\text{C}$

DASY5 Configuration:

- Probe: EX3DV4 - SN3935; ConvF(10.65, 10.65, 10.65); Calibrated: 2017/12/14;
- Sensor-Surface: 1.4mm (Mechanical Surface Detection)
- Electronics: DAE4 Sn1358; Calibrated: 2017/10/24
- Phantom: SAM1; Type: QD000P40CD; Serial: TP:1753
- Measurement SW: DASY52, Version 52.8 (8); SEMCAD X Version 14.6.10 (7372)

**Pin=250mW/Area Scan (61x61x1):** Interpolated grid:  $dx=1.500 \text{ mm}$ ,  $dy=1.500 \text{ mm}$

Maximum value of SAR (interpolated) =  $2.97 \text{ W/kg}$

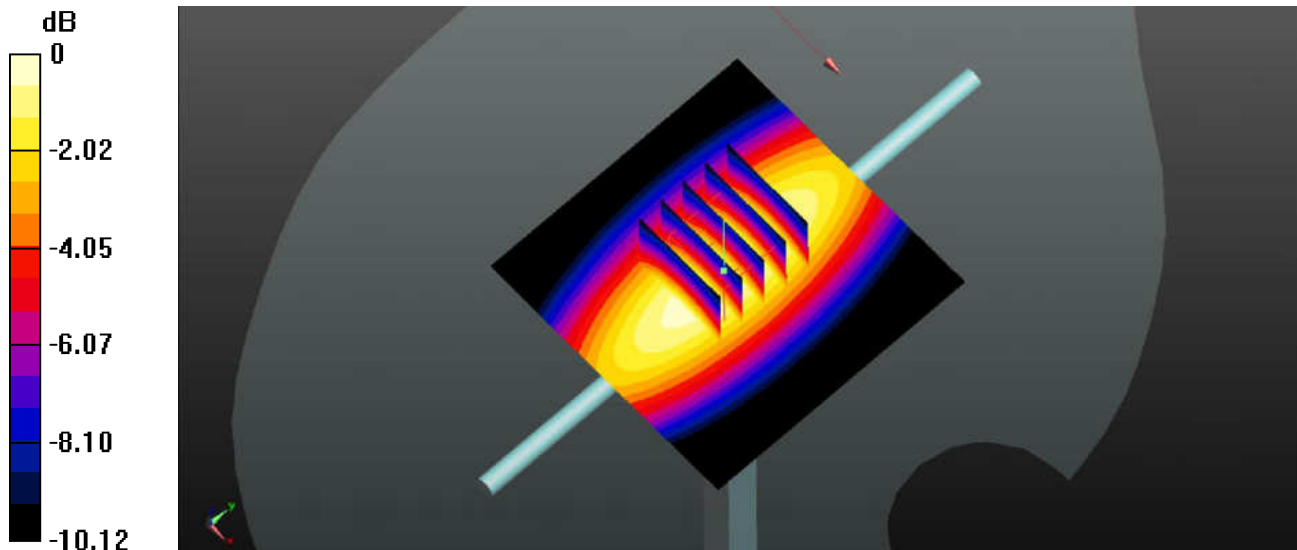
**Pin=250mW/Zoom Scan (5x5x7)/Cube 0:** Measurement grid:  $dx=8\text{mm}$ ,  $dy=8\text{mm}$ ,  $dz=5\text{mm}$

Reference Value =  $49.53 \text{ V/m}$ ; Power Drift =  $0.04 \text{ dB}$

Peak SAR (extrapolated) =  $3.39 \text{ W/kg}$

**SAR(1 g) =  $2.25 \text{ W/kg}$ ; SAR(10 g) =  $1.5 \text{ W/kg}$**

Maximum value of SAR (measured) =  $2.99 \text{ W/kg}$



0 dB =  $2.99 \text{ W/kg}$

### System Check\_Body\_835MHz\_20180225

**DUT: D835V2 SN:4d151**

Communication System: UID 0, CW; Frequency: 835 MHz; Duty Cycle: 1:1

Medium: MSL\_835\_Medium parameters used:  $f = 835 \text{ MHz}$ ;  $\sigma = 0.996 \text{ S/m}$ ;  $\epsilon_r = 55.226$ ;  $\rho = 1000 \text{ kg/m}^3$

Ambient Temperature :  $23.3 \text{ }^\circ\text{C}$ ; Liquid Temperature :  $22.2 \text{ }^\circ\text{C}$

DASY5 Configuration:

- Probe: EX3DV4 - SN3935; ConvF(10.33, 10.33, 10.33); Calibrated: 2017/12/14;
- Sensor-Surface: 1.4mm (Mechanical Surface Detection)
- Electronics: DAE4 Sn1358; Calibrated: 2017/10/24
- Phantom: SAM2; Type: QD000P40CD; Serial: TP:1754
- Measurement SW: DASY52, Version 52.8 (8); SEMCAD X Version 14.6.10 (7372)

**Pin=250mW/Area Scan (61x61x1):** Interpolated grid:  $dx=1.500 \text{ mm}$ ,  $dy=1.500 \text{ mm}$

Maximum value of SAR (interpolated) =  $3.76 \text{ W/kg}$

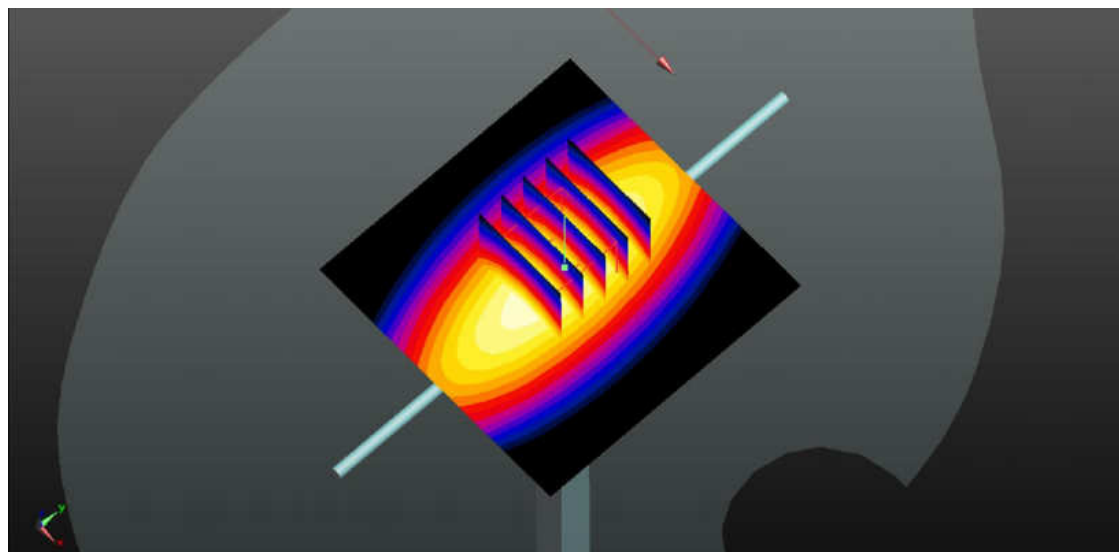
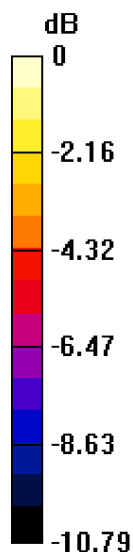
**Pin=250mW/Zoom Scan (5x5x7)/Cube 0:** Measurement grid:  $dx=8\text{mm}$ ,  $dy=8\text{mm}$ ,  $dz=5\text{mm}$

Reference Value =  $54.47 \text{ V/m}$ ; Power Drift =  $-0.02 \text{ dB}$

Peak SAR (extrapolated) =  $4.29 \text{ W/kg}$

**SAR(1 g) =  $2.60 \text{ W/kg}$ ; SAR(10 g) =  $1.74 \text{ W/kg}$**

Maximum value of SAR (measured) =  $3.77 \text{ W/kg}$



0 dB =  $3.77 \text{ W/kg}$

**System Check\_Body\_1750MHz\_20180224**

**DUT: D1750V2 SN:1090**

Communication System: UID 0, CW; Frequency: 1750 MHz; Duty Cycle: 1:1

Medium: MSL\_1750\_Medium parameters used:  $f = 1750$  MHz;  $\sigma = 1.466$  S/m;  $\epsilon_r = 54.713$ ;  $\rho = 1000$  kg/m<sup>3</sup>

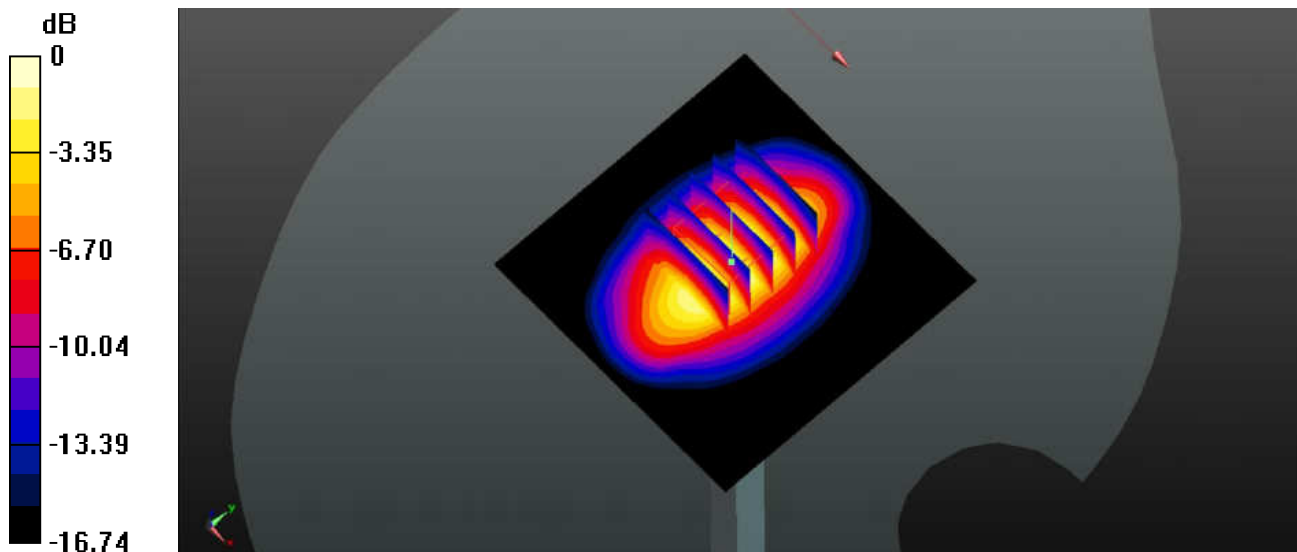
Ambient Temperature : 23.5 °C ; Liquid Temperature : 22.6 °C

DASY5 Configuration:

- Probe: EX3DV4 - SN3935; ConvF(8.71, 8.71, 8.71); Calibrated: 2017/12/14;
- Sensor-Surface: 1.4mm (Mechanical Surface Detection)
- Electronics: DAE4 Sn1358; Calibrated: 2017/10/24
- Phantom: SAM2; Type: QD000P40CD; Serial: TP:1754
- Measurement SW: DASY52, Version 52.8 (8); SEMCAD X Version 14.6.10 (7372)

**Pin=250mW/Area Scan (61x61x1):** Interpolated grid: dx=1.500 mm, dy=1.500 mm  
Maximum value of SAR (interpolated) = 13.6 W/kg

**Pin=250mW/Zoom Scan (5x5x7)/Cube 0:** Measurement grid: dx=8mm, dy=8mm, dz=5mm  
Reference Value = 90.90 V/m; Power Drift = 0.04 dB  
Peak SAR (extrapolated) = 16.0 W/kg  
**SAR(1 g) = 9.04 W/kg; SAR(10 g) = 4.84 W/kg**  
Maximum value of SAR (measured) = 13.5 W/kg



0 dB = 13.5 W/kg

**System Check\_Body\_1900MHz\_20180224**

**DUT: D1900V2 SN:5d170**

Communication System: UID 0, CW; Frequency: 1900 MHz; Duty Cycle: 1:1

Medium: MSL\_1900\_Medium parameters used:  $f = 1900$  MHz;  $\sigma = 1.561$  S/m;  $\epsilon_r = 53.103$ ;  $\rho = 1000$  kg/m<sup>3</sup>

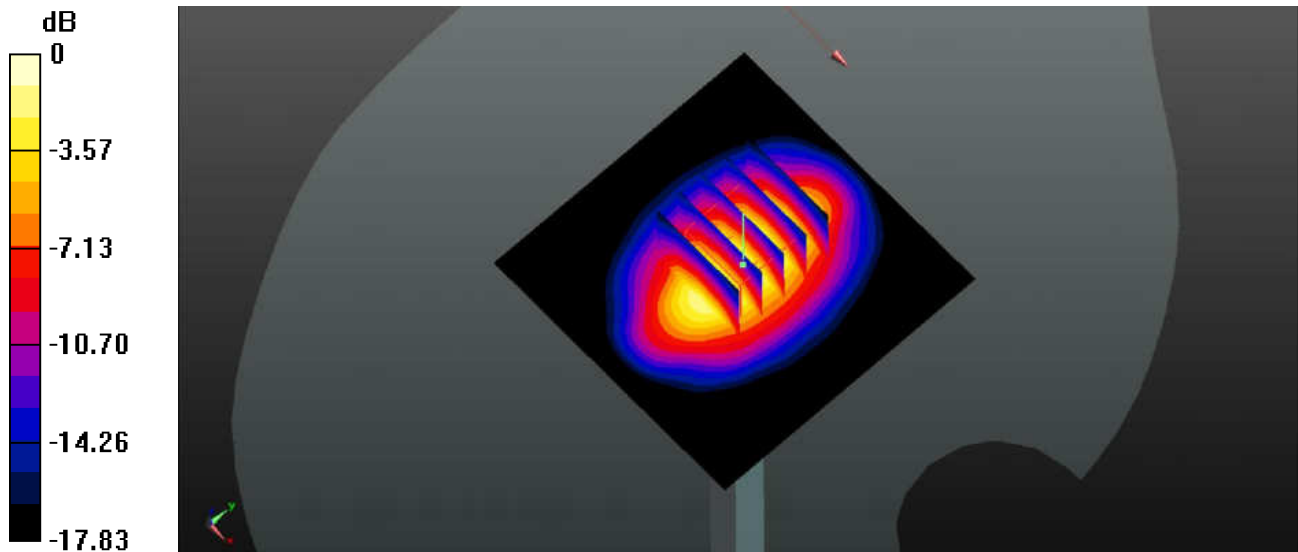
Ambient Temperature : 23.4 °C ; Liquid Temperature : 22.3 °C

DASY5 Configuration:

- Probe: EX3DV4 - SN3935; ConvF(8.3, 8.3, 8.3); Calibrated: 2017/12/14;
- Sensor-Surface: 1.4mm (Mechanical Surface Detection)
- Electronics: DAE4 Sn1358; Calibrated: 2017/10/24
- Phantom: SAM2; Type: QD000P40CD; Serial: TP:1754
- Measurement SW: DASY52, Version 52.8 (8); SEMCAD X Version 14.6.10 (7372)

**Pin=250mW/Area Scan (61x61x1):** Interpolated grid: dx=1.500 mm, dy=1.500 mm  
Maximum value of SAR (interpolated) = 15.9 W/kg

**Pin=250mW/Zoom Scan (5x5x7)/Cube 0:** Measurement grid: dx=8mm, dy=8mm, dz=5mm  
Reference Value = 85.24 V/m; Power Drift = -0.04 dB  
Peak SAR (extrapolated) = 18.9 W/kg  
**SAR(1 g) = 10.4 W/kg; SAR(10 g) = 5.39 W/kg**  
Maximum value of SAR (measured) = 15.9 W/kg



0 dB = 15.9 W/kg

**System Check\_Body\_2600MHz\_20180224**

**DUT: D2600V2 SN:1112**

Communication System: UID 0, CW; Frequency: 2600 MHz; Duty Cycle: 1:1

Medium: MSL\_2600\_Medium parameters used:  $f = 2600$  MHz;  $\sigma = 2.148$  S/m;  $\epsilon_r = 53.076$ ;  $\rho = 1000$  kg/m<sup>3</sup>

Ambient Temperature : 23.6 °C ; Liquid Temperature : 22.6 °C

DASY5 Configuration:

- Probe: EX3DV4 - SN3935; ConvF(7.71, 7.71, 7.71); Calibrated: 2017/12/14;
- Sensor-Surface: 1.4mm (Mechanical Surface Detection)
- Electronics: DAE4 Sn1358; Calibrated: 2017/10/24
- Phantom: SAM2; Type: QD000P40CD; Serial: TP:1754
- Measurement SW: DASY52, Version 52.8 (8); SEMCAD X Version 14.6.10 (7372)

**Pin=250mW/Area Scan (81x81x1):** Interpolated grid: dx=1.200 mm, dy=1.200 mm

Maximum value of SAR (interpolated) = 22.5 W/kg

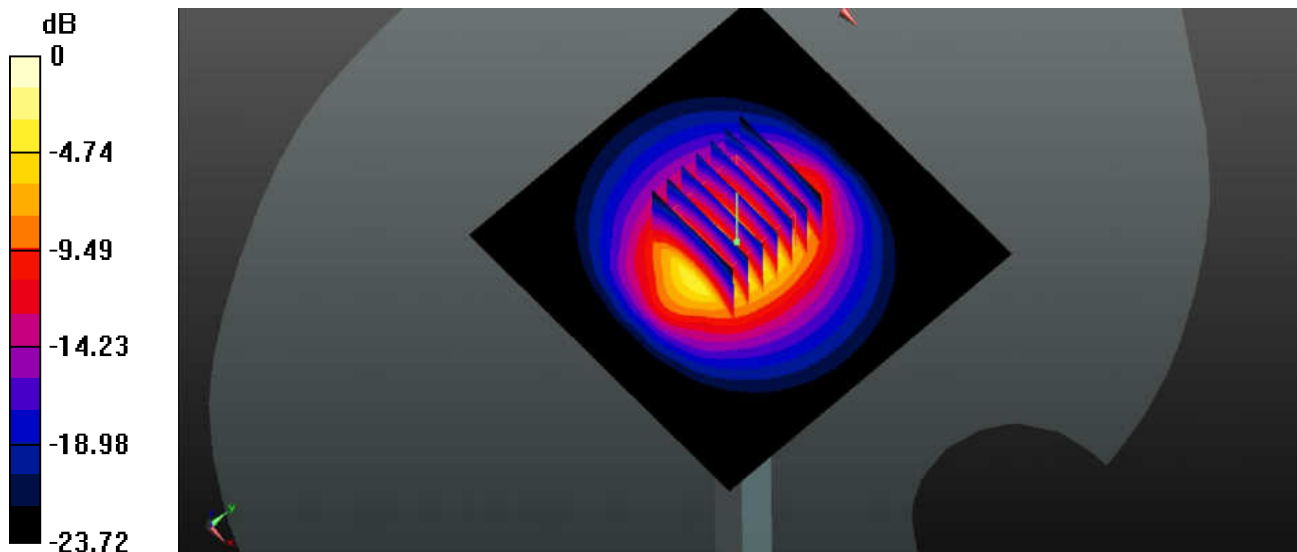
**Pin=250mW/Zoom Scan (7x7x7)/Cube 0:** Measurement grid: dx=5mm, dy=5mm, dz=5mm

Reference Value = 84.47 V/m; Power Drift = 0.02 dB

Peak SAR (extrapolated) = 27.7 W/kg

**SAR(1 g) = 13.1 W/kg; SAR(10 g) = 5.75 W/kg**

Maximum value of SAR (measured) = 22.4 W/kg



0 dB = 22.4 W/kg



## **Appendix B. Plots of High SAR Measurement**

The plots are shown as follows.

### #01\_WCDMA Band V\_RMC 12.2Kbps\_Right Cheek\_0mm\_Ch4132

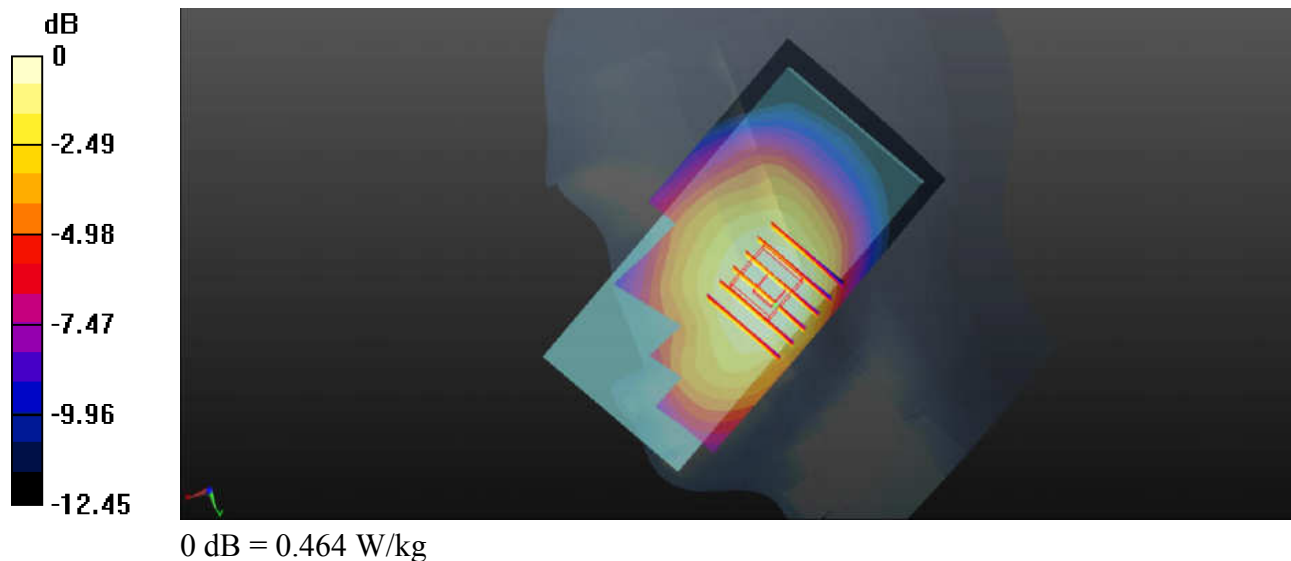
Communication System: UID 0, WCDMA (0); Frequency: 826.4 MHz; Duty Cycle: 1:1  
Medium: HSL\_835\_Medium parameters used:  $f = 826.4$  MHz;  $\sigma = 0.899$  S/m;  $\epsilon_r = 42.446$ ;  
 $\rho = 1000$  kg/m<sup>3</sup>  
Ambient Temperature : 23.5 °C ; Liquid Temperature : 22.5 °C

#### DASY5 Configuration:

- Probe: EX3DV4 - SN3935; ConvF(10.36, 10.36, 10.36); Calibrated: 2017/12/14;
- Sensor-Surface: 1.4mm (Mechanical Surface Detection)
- Electronics: DAE4 Sn1358; Calibrated: 2017/10/24
- Phantom: SAM2; Type: QD000P40CD; Serial: TP:1754
- Measurement SW: DASY52, Version 52.8 (8); SEMCAD X Version 14.6.10 (7372)

**Ch4132/Area Scan (61x121x1):** Interpolated grid: dx=1.500 mm, dy=1.500 mm  
Maximum value of SAR (interpolated) = 0.492 W/kg

**Ch4132/Zoom Scan (6x6x7)/Cube 0:** Measurement grid: dx=8mm, dy=8mm, dz=5mm  
Reference Value = 5.628 V/m; Power Drift = 0.09 dB  
Peak SAR (extrapolated) = 0.530 W/kg  
**SAR(1 g) = 0.387 W/kg; SAR(10 g) = 0.293 W/kg**  
Maximum value of SAR (measured) = 0.464 W/kg



### #02\_WCDMA Band IV\_RMC 12.2Kbps\_Right Cheek\_0mm\_Ch1312

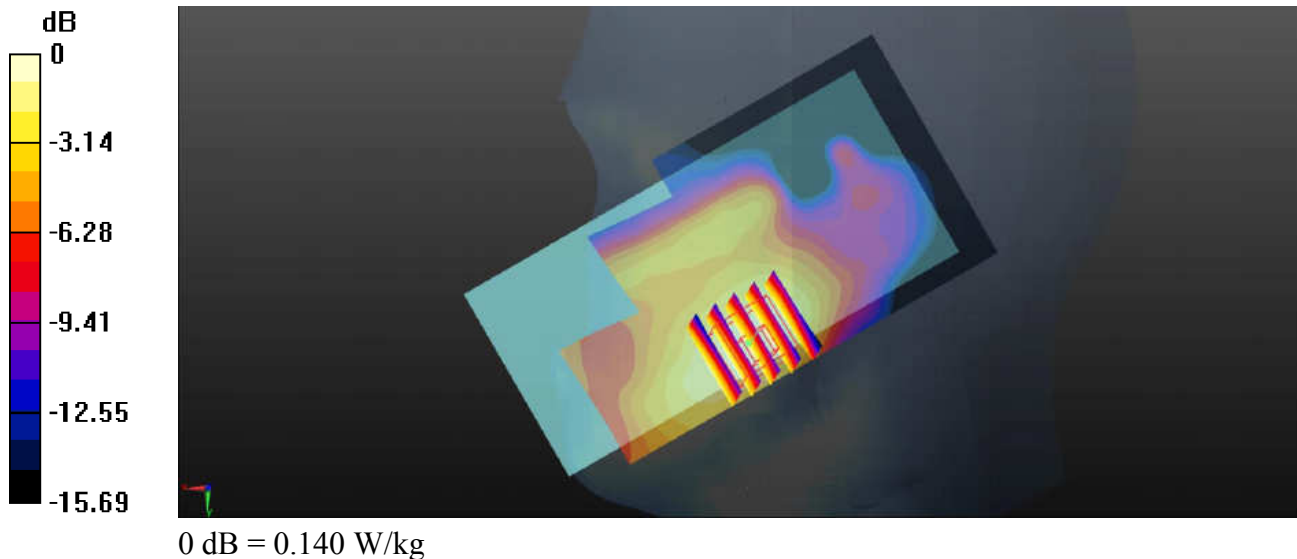
Communication System: UID 0, WCDMA (0); Frequency: 1712.4 MHz; Duty Cycle: 1:1  
Medium: HSL\_1750\_Medium parameters used:  $f = 1712.4$  MHz;  $\sigma = 1.338$  S/m;  $\epsilon_r = 41.526$ ;  
 $\rho = 1000$  kg/m<sup>3</sup>  
Ambient Temperature : 23.5 °C ; Liquid Temperature : 22.6 °C

#### DASY5 Configuration:

- Probe: EX3DV4 - SN3935; ConvF(8.85, 8.85, 8.85); Calibrated: 2017/12/14;
- Sensor-Surface: 1.4mm (Mechanical Surface Detection)
- Electronics: DAE4 Sn1358; Calibrated: 2017/10/24
- Phantom: SAM1; Type: QD000P40CD; Serial: TP:1753
- Measurement SW: DASY52, Version 52.8 (8); SEMCAD X Version 14.6.10 (7372)

**Ch1312/Area Scan (61x121x1):** Interpolated grid: dx=1.500 mm, dy=1.500 mm  
Maximum value of SAR (interpolated) = 0.143 W/kg

**Ch1312/Zoom Scan (5x5x7)/Cube 0:** Measurement grid: dx=8mm, dy=8mm, dz=5mm  
Reference Value = 2.992 V/m; Power Drift = 0.06 dB  
Peak SAR (extrapolated) = 0.173 W/kg  
**SAR(1 g) = 0.105 W/kg; SAR(10 g) = 0.068 W/kg**  
Maximum value of SAR (measured) = 0.140 W/kg





### #03\_WCDMA Band II\_RMC 12.2Kbps\_Right Cheek\_0mm\_Ch9400

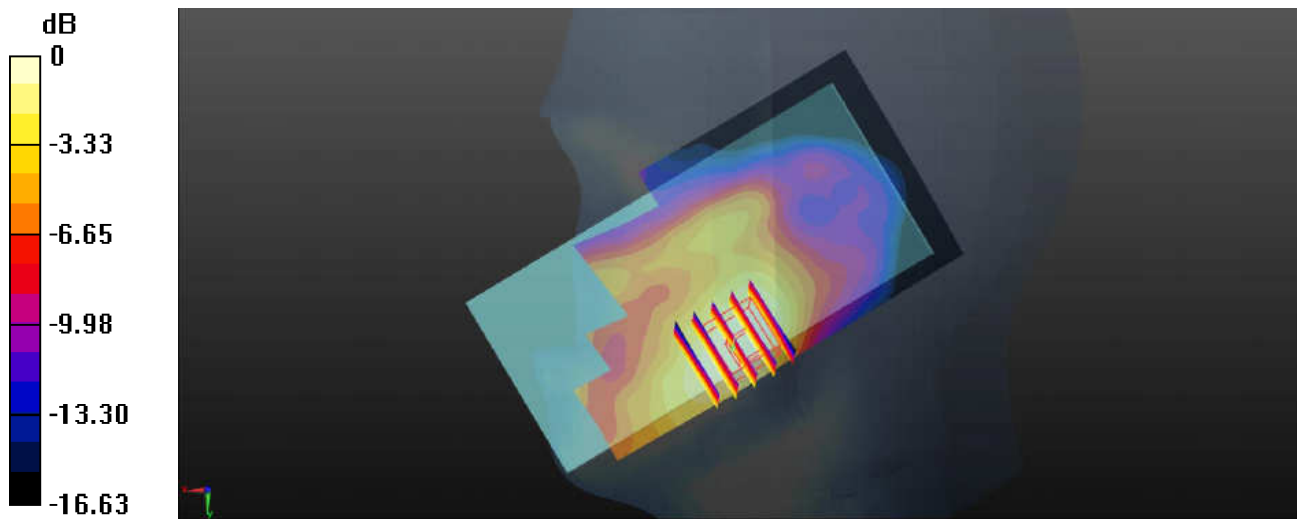
Communication System: UID 0, WCDMA (0); Frequency: 1880 MHz; Duty Cycle: 1:1  
Medium: HSL\_1900\_Medium parameters used:  $f = 1880$  MHz;  $\sigma = 1.443$  S/m;  $\epsilon_r = 39.231$ ;  
 $\rho = 1000$  kg/m<sup>3</sup>  
Ambient Temperature : 23.5 °C ; Liquid Temperature : 22.3 °C

#### DASY5 Configuration:

- Probe: EX3DV4 - SN3935; ConvF(8.41, 8.41, 8.41); Calibrated: 2017/12/14;
- Sensor-Surface: 1.4mm (Mechanical Surface Detection)
- Electronics: DAE4 Sn1358; Calibrated: 2017/10/24
- Phantom: SAM2; Type: QD000P40CD; Serial: TP:1754
- Measurement SW: DASY52, Version 52.8 (8); SEMCAD X Version 14.6.10 (7372)

**Ch9400/Area Scan (61x121x1):** Interpolated grid: dx=1.500 mm, dy=1.500 mm  
Maximum value of SAR (interpolated) = 0.131 W/kg

**Ch9400/Zoom Scan (5x5x7)/Cube 0:** Measurement grid: dx=8mm, dy=8mm, dz=5mm  
Reference Value = 2.442 V/m; Power Drift = 0.05 dB  
Peak SAR (extrapolated) = 0.157 W/kg  
**SAR(1 g) = 0.095 W/kg; SAR(10 g) = 0.059 W/kg**  
Maximum value of SAR (measured) = 0.129 W/kg



0 dB = 0.129 W/kg

**#04\_LTE Band 71\_20M\_QPSK\_1RB\_99offset\_Right Cheek\_0mm\_Ch133322**

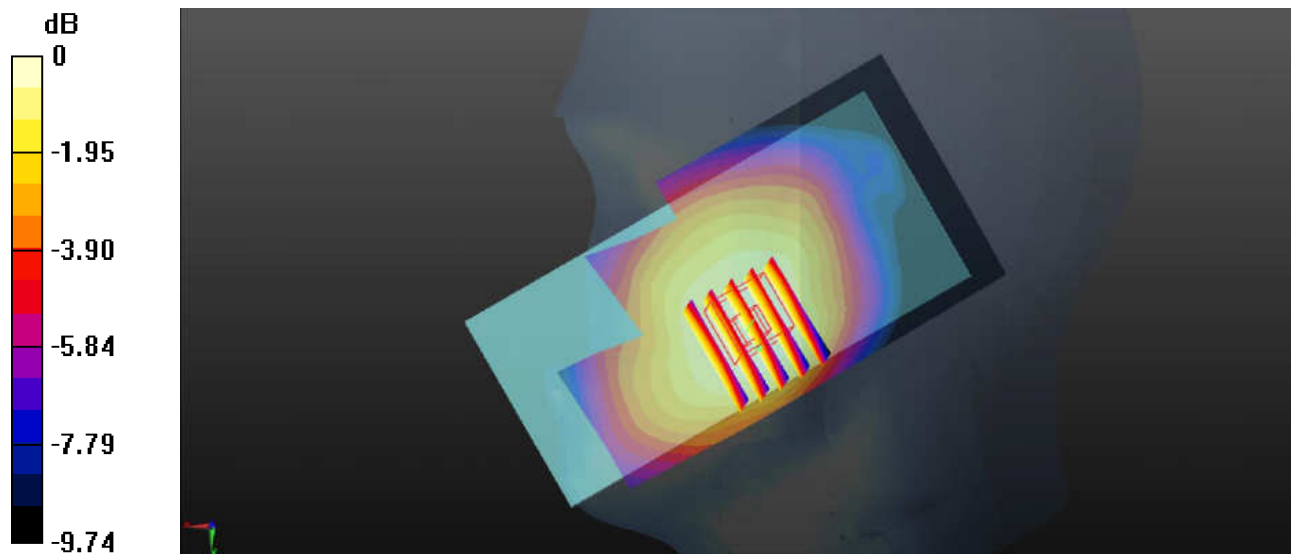
Communication System: UID 0, FDD-LTE (0); Frequency: 683 MHz;Duty Cycle: 1:1  
Medium: HSL\_750\_Medium parameters used:  $f = 683 \text{ MHz}$ ;  $\sigma = 0.832 \text{ S/m}$ ;  $\epsilon_r = 42.921$ ;  
 $\rho = 1000 \text{ kg/m}^3$   
Ambient Temperature :  $23.5 \text{ }^\circ\text{C}$ ; Liquid Temperature :  $22.6 \text{ }^\circ\text{C}$

DASY5 Configuration:

- Probe: EX3DV4 - SN3935; ConvF(10.68, 10.68, 10.68); Calibrated: 2017/12/14;
- Sensor-Surface: 1.4mm (Mechanical Surface Detection)
- Electronics: DAE4 Sn1358; Calibrated: 2017/10/24
- Phantom: SAM1; Type: QD000P40CD; Serial: TP:1753
- Measurement SW: DASY52, Version 52.8 (8); SEMCAD X Version 14.6.10 (7372)

**Ch133322/Area Scan (61x121x1):** Interpolated grid:  $dx=1.500 \text{ mm}$ ,  $dy=1.500 \text{ mm}$   
Maximum value of SAR (interpolated) =  $0.206 \text{ W/kg}$

**Ch133322/Zoom Scan (6x5x7)/Cube 0:** Measurement grid:  $dx=8\text{mm}$ ,  $dy=8\text{mm}$ ,  $dz=5\text{mm}$   
Reference Value =  $4.507 \text{ V/m}$ ; Power Drift =  $0.08 \text{ dB}$   
Peak SAR (extrapolated) =  $0.221 \text{ W/kg}$   
**SAR(1 g) =  $0.175 \text{ W/kg}$ ; SAR(10 g) =  $0.139 \text{ W/kg}$**   
Maximum value of SAR (measured) =  $0.206 \text{ W/kg}$



0 dB =  $0.206 \text{ W/kg}$

**#05\_LTE Band 5\_10M\_QPSK\_1RB\_49offset\_Right Cheek\_0mm\_Ch20525**

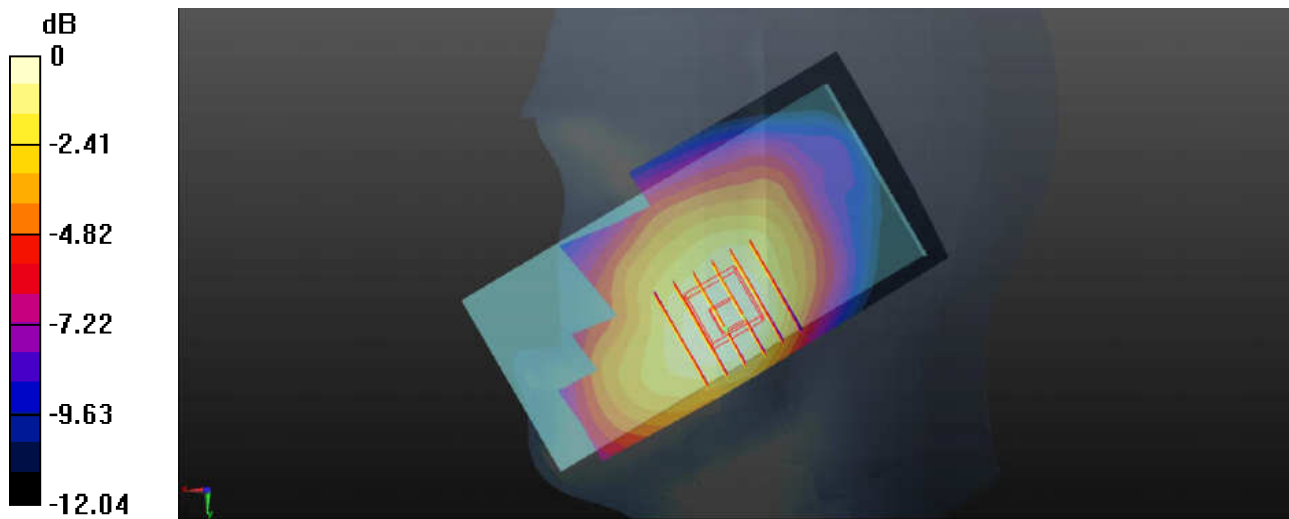
Communication System: UID 0, FDD-LTE (0); Frequency: 836.5 MHz; Duty Cycle: 1:1  
Medium: HSL\_835\_Medium parameters used:  $f = 836.5$  MHz;  $\sigma = 0.908$  S/m;  $\epsilon_r = 42.319$ ;  
 $\rho = 1000$  kg/m<sup>3</sup>  
Ambient Temperature : 23.5 °C ; Liquid Temperature : 22.5 °C

DASY5 Configuration:

- Probe: EX3DV4 - SN3935; ConvF(10.36, 10.36, 10.36); Calibrated: 2017/12/14;
- Sensor-Surface: 1.4mm (Mechanical Surface Detection)
- Electronics: DAE4 Sn1358; Calibrated: 2017/10/24
- Phantom: SAM2; Type: QD000P40CD; Serial: TP:1754
- Measurement SW: DASY52, Version 52.8 (8); SEMCAD X Version 14.6.10 (7372)

**Ch20525/Area Scan (61x121x1):** Interpolated grid: dx=1.500 mm, dy=1.500 mm  
Maximum value of SAR (interpolated) = 0.422 W/kg

**Ch20525/Zoom Scan (6x6x7)/Cube 0:** Measurement grid: dx=8mm, dy=8mm, dz=5mm  
Reference Value = 5.885 V/m; Power Drift = 0.02 dB  
Peak SAR (extrapolated) = 0.448 W/kg  
**SAR(1 g) = 0.325 W/kg; SAR(10 g) = 0.245 W/kg**  
Maximum value of SAR (measured) = 0.398 W/kg



0 dB = 0.398 W/kg

**#06\_LTE Band 66\_20M\_QPSK\_1RB\_99offset\_Left Cheek\_0mm\_Ch132072**

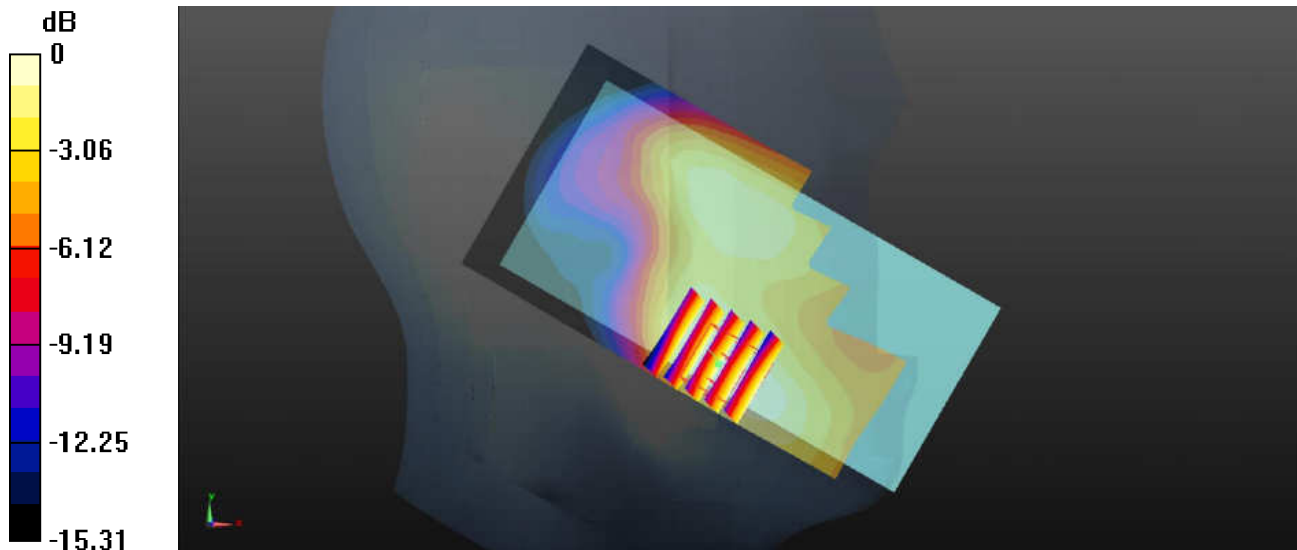
Communication System: UID 0, FDD-LTE (0); Frequency: 1720 MHz; Duty Cycle: 1:1  
Medium: HSL\_1750\_Medium parameters used:  $f = 1720$  MHz;  $\sigma = 1.345$  S/m;  $\epsilon_r = 41.492$ ;  
 $\rho = 1000$  kg/m<sup>3</sup>  
Ambient Temperature : 23.5 °C ; Liquid Temperature : 22.6 °C

DASY5 Configuration:

- Probe: EX3DV4 - SN3935; ConvF(8.85, 8.85, 8.85); Calibrated: 2017/12/14;
- Sensor-Surface: 1.4mm (Mechanical Surface Detection)
- Electronics: DAE4 Sn1358; Calibrated: 2017/10/24
- Phantom: SAM1; Type: QD000P40CD; Serial: TP:1753
- Measurement SW: DASY52, Version 52.8 (8); SEMCAD X Version 14.6.10 (7372)

**Ch132072/Area Scan (61x121x1):** Interpolated grid: dx=1.500 mm, dy=1.500 mm  
Maximum value of SAR (interpolated) = 0.150 W/kg

**Ch132072/Zoom Scan (5x5x7)/Cube 0:** Measurement grid: dx=8mm, dy=8mm, dz=5mm  
Reference Value = 2.898 V/m; Power Drift = 0.05 dB  
Peak SAR (extrapolated) = 0.168 W/kg  
**SAR(1 g) = 0.110 W/kg; SAR(10 g) = 0.072 W/kg**  
Maximum value of SAR (measured) = 0.143 W/kg



0 dB = 0.143 W/kg

**#07\_LTE Band 2\_20M\_QPSK\_1RB\_0offset\_Left Cheek\_0mm\_Ch18900**

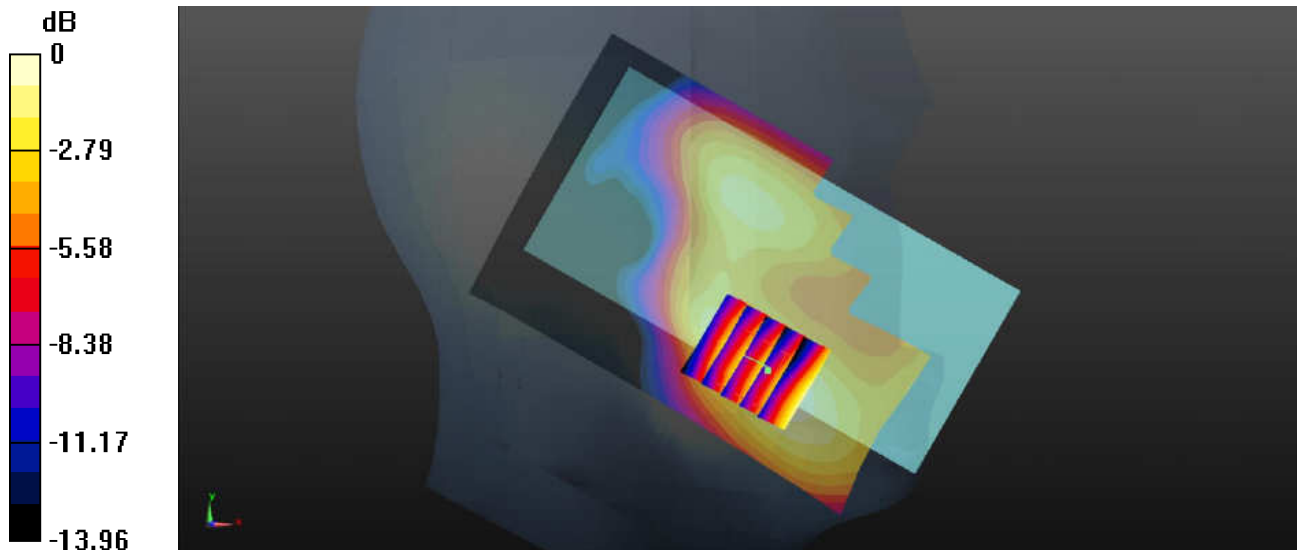
Communication System: UID 0, FDD-LTE (0); Frequency: 1880 MHz; Duty Cycle: 1:1  
Medium: HSL\_1900\_Medium parameters used:  $f = 1880$  MHz;  $\sigma = 1.443$  S/m;  $\epsilon_r = 39.231$ ;  
 $\rho = 1000$  kg/m<sup>3</sup>  
Ambient Temperature : 23.5 °C ; Liquid Temperature : 22.3 °C

DASY5 Configuration:

- Probe: EX3DV4 - SN3935; ConvF(8.41, 8.41, 8.41); Calibrated: 2017/12/14;
- Sensor-Surface: 1.4mm (Mechanical Surface Detection)
- Electronics: DAE4 Sn1358; Calibrated: 2017/10/24
- Phantom: SAM2; Type: QD000P40CD; Serial: TP:1754
- Measurement SW: DASY52, Version 52.8 (8); SEMCAD X Version 14.6.10 (7372)

**Ch18900/Area Scan (71x121x1):** Interpolated grid: dx=1.500 mm, dy=1.500 mm  
Maximum value of SAR (interpolated) = 0.0979 W/kg

**Ch18900/Zoom Scan (5x5x7)/Cube 0:** Measurement grid: dx=8mm, dy=8mm, dz=5mm  
Reference Value = 2.195 V/m; Power Drift = 0.09 dB  
Peak SAR (extrapolated) = 0.121 W/kg  
**SAR(1 g) = 0.076 W/kg; SAR(10 g) = 0.048 W/kg**  
Maximum value of SAR (measured) = 0.100 W/kg



0 dB = 0.100 W/kg

**#08\_LTE Band 41\_20M\_QPSK\_1RB\_99offset\_Left Cheek\_0mm\_Ch40620**

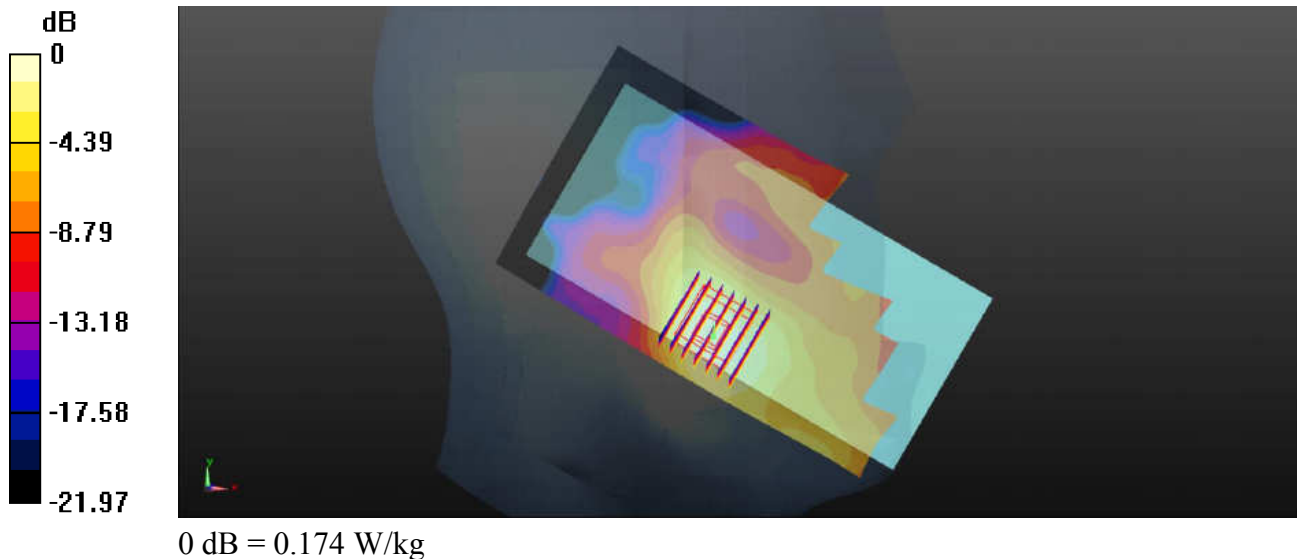
Communication System: UID 0, TDD-LTE (0); Frequency: 2593 MHz; Duty Cycle: 1:1.59  
Medium: HSL\_2600\_Medium parameters used:  $f = 2593$  MHz;  $\sigma = 2.029$  S/m;  $\epsilon_r = 39.063$ ;  
 $\rho = 1000$  kg/m<sup>3</sup>  
Ambient Temperature : 23.3 °C ; Liquid Temperature : 22.2 °C

DASY5 Configuration:

- Probe: EX3DV4 - SN3935; ConvF(7.67, 7.67, 7.67); Calibrated: 2017/12/14;
- Sensor-Surface: 1.4mm (Mechanical Surface Detection)
- Electronics: DAE4 Sn1358; Calibrated: 2017/10/24
- Phantom: SAM1; Type: QD000P40CD; Serial: TP:1753
- Measurement SW: DASY52, Version 52.8 (8); SEMCAD X Version 14.6.10 (7372)

**Ch40620/Area Scan (81x151x1):** Interpolated grid: dx=1.200 mm, dy=1.200 mm  
Maximum value of SAR (interpolated) = 0.160 W/kg

**Ch40620/Zoom Scan (7x7x7)/Cube 0:** Measurement grid: dx=5mm, dy=5mm, dz=5mm  
Reference Value = 1.231 V/m; Power Drift = 0.08 dB  
Peak SAR (extrapolated) = 0.220 W/kg  
**SAR(1 g) = 0.106 W/kg; SAR(10 g) = 0.054 W/kg**  
Maximum value of SAR (measured) = 0.174 W/kg



### #09\_WCDMA Band V\_RMC 12.2Kbps\_Front\_5mm\_Ch4132

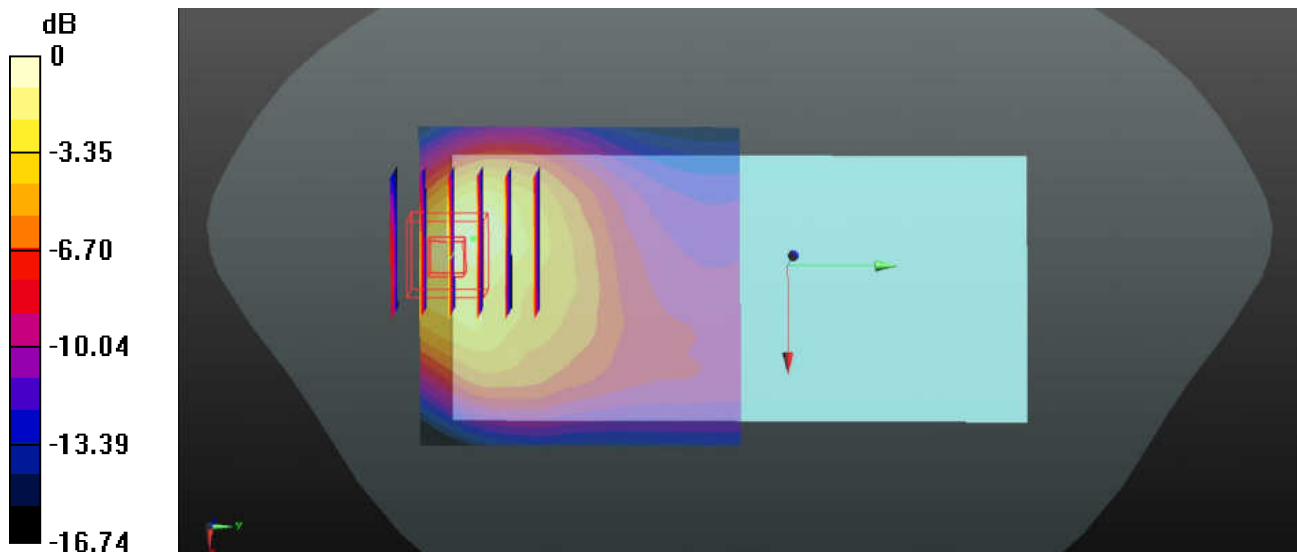
Communication System: UID 0, WCDMA (0); Frequency: 826.4 MHz; Duty Cycle: 1:1  
Medium: MSL\_835\_Medium parameters used:  $f = 826.4$  MHz;  $\sigma = 0.987$  S/m;  $\epsilon_r = 55.309$ ;  
 $\rho = 1000$  kg/m<sup>3</sup>  
Ambient Temperature : 23.3 °C ; Liquid Temperature : 22.2 °C

#### DASY5 Configuration:

- Probe: EX3DV4 - SN3935; ConvF(10.33, 10.33, 10.33); Calibrated: 2017/12/14;
- Sensor-Surface: 1.4mm (Mechanical Surface Detection)
- Electronics: DAE4 Sn1358; Calibrated: 2017/10/24
- Phantom: SAM2; Type: QD000P40CD; Serial: TP:1754
- Measurement SW: DASY52, Version 52.8 (8); SEMCAD X Version 14.6.10 (7372)

**Ch4132/Area Scan (61x61x1):** Interpolated grid: dx=1.500 mm, dy=1.500 mm  
Maximum value of SAR (interpolated) = 1.09 W/kg

**Ch4132/Zoom Scan (6x6x7)/Cube 0:** Measurement grid: dx=8mm, dy=8mm, dz=5mm  
Reference Value = 11.16 V/m; Power Drift = -0.04 dB  
Peak SAR (extrapolated) = 1.69 W/kg  
**SAR(1 g) = 0.769 W/kg; SAR(10 g) = 0.394 W/kg**  
Maximum value of SAR (measured) = 1.35 W/kg



0 dB = 1.35 W/kg

### #10\_WCDMA Band IV\_RMC 12.2Kbps\_Bottom side\_5mm\_Ch1312

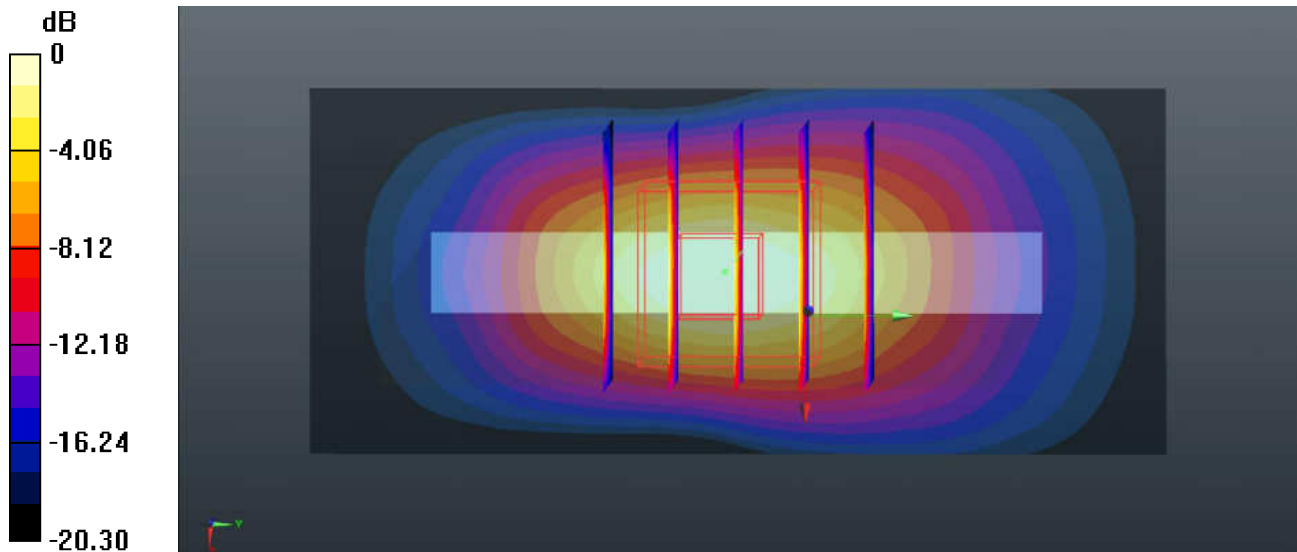
Communication System: UID 0, WCDMA (0); Frequency: 1712.4 MHz; Duty Cycle: 1:1  
Medium: MSL\_1750\_Medium parameters used:  $f = 1712.4$  MHz;  $\sigma = 1.427$  S/m;  $\epsilon_r = 54.832$ ;  
 $\rho = 1000$  kg/m<sup>3</sup>  
Ambient Temperature : 23.5 °C ; Liquid Temperature : 22.6 °C

#### DASY5 Configuration:

- Probe: EX3DV4 - SN3935; ConvF(8.71, 8.71, 8.71); Calibrated: 2017/12/14;
- Sensor-Surface: 1.4mm (Mechanical Surface Detection)
- Electronics: DAE4 Sn1358; Calibrated: 2017/10/24
- Phantom: SAM2; Type: QD000P40CD; Serial: TP:1754
- Measurement SW: DASY52, Version 52.8 (8); SEMCAD X Version 14.6.10 (7372)

**Ch1312/Area Scan (31x71x1):** Interpolated grid: dx=1.500 mm, dy=1.500 mm  
Maximum value of SAR (interpolated) = 1.24 W/kg

**Ch1312/Zoom Scan (5x5x7)/Cube 0:** Measurement grid: dx=8mm, dy=8mm, dz=5mm  
Reference Value = 22.45 V/m; Power Drift = -0.01 dB  
Peak SAR (extrapolated) = 1.35 W/kg  
**SAR(1 g) = 0.653 W/kg; SAR(10 g) = 0.298 W/kg**  
Maximum value of SAR (measured) = 1.02 W/kg



0 dB = 1.02 W/kg



### #11\_WCDMA Band II\_RMC 12.2Kbps\_Bottom side\_5mm\_Ch9262

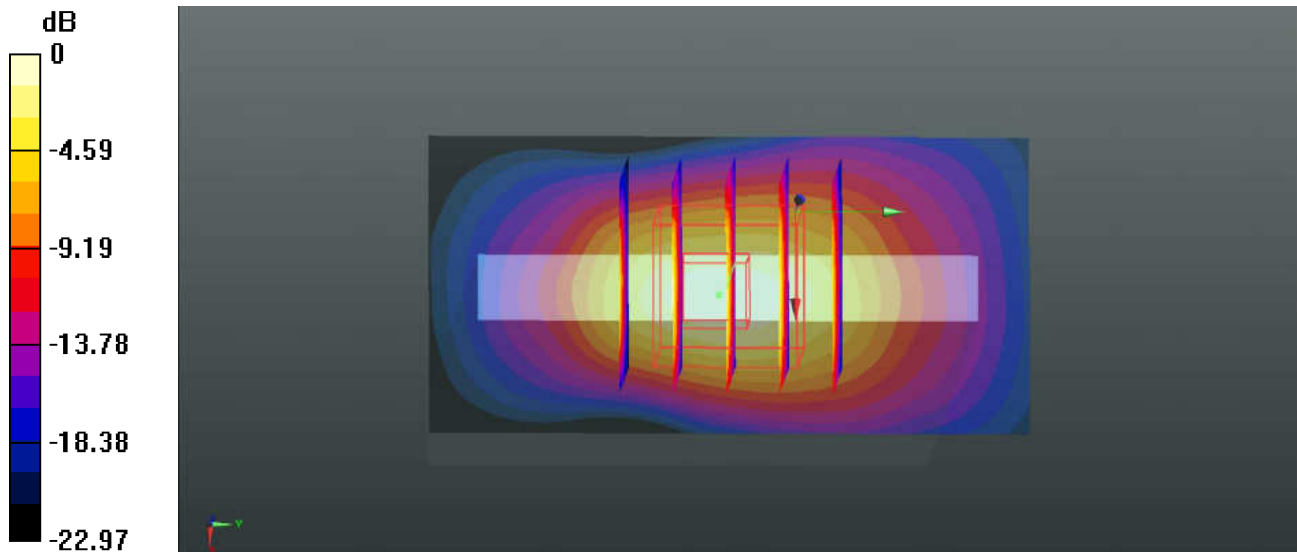
Communication System: UID 0, WCDMA (0); Frequency: 1852.4 MHz; Duty Cycle: 1:1  
Medium: MSL\_1900\_Medium parameters used:  $f = 1852.4$  MHz;  $\sigma = 1.506$  S/m;  $\epsilon_r = 53.229$ ;  
 $\rho = 1000$  kg/m<sup>3</sup>  
Ambient Temperature : 23.4 °C ; Liquid Temperature : 22.3 °C

#### DASY5 Configuration:

- Probe: EX3DV4 - SN3935; ConvF(8.3, 8.3, 8.3); Calibrated: 2017/12/14;
- Sensor-Surface: 1.4mm (Mechanical Surface Detection)
- Electronics: DAE4 Sn1358; Calibrated: 2017/10/24
- Phantom: SAM2; Type: QD000P40CD; Serial: TP:1754
- Measurement SW: DASY52, Version 52.8 (8); SEMCAD X Version 14.6.10 (7372)

**Ch9262/Area Scan (31x61x1):** Interpolated grid: dx=1.500 mm, dy=1.500 mm  
Maximum value of SAR (interpolated) = 1.48 W/kg

**Ch9262/Zoom Scan (5x5x7)/Cube 0:** Measurement grid: dx=8mm, dy=8mm, dz=5mm  
Reference Value = 25.76 V/m; Power Drift = 0.10 dB  
Peak SAR (extrapolated) = 1.92 W/kg  
**SAR(1 g) = 0.911 W/kg; SAR(10 g) = 0.408 W/kg**  
Maximum value of SAR (measured) = 1.50 W/kg



0 dB = 1.50 W/kg

**#12\_LTE Band 71\_20M\_QPSK\_1RB\_99offset\_Front\_5mm\_Ch133322**

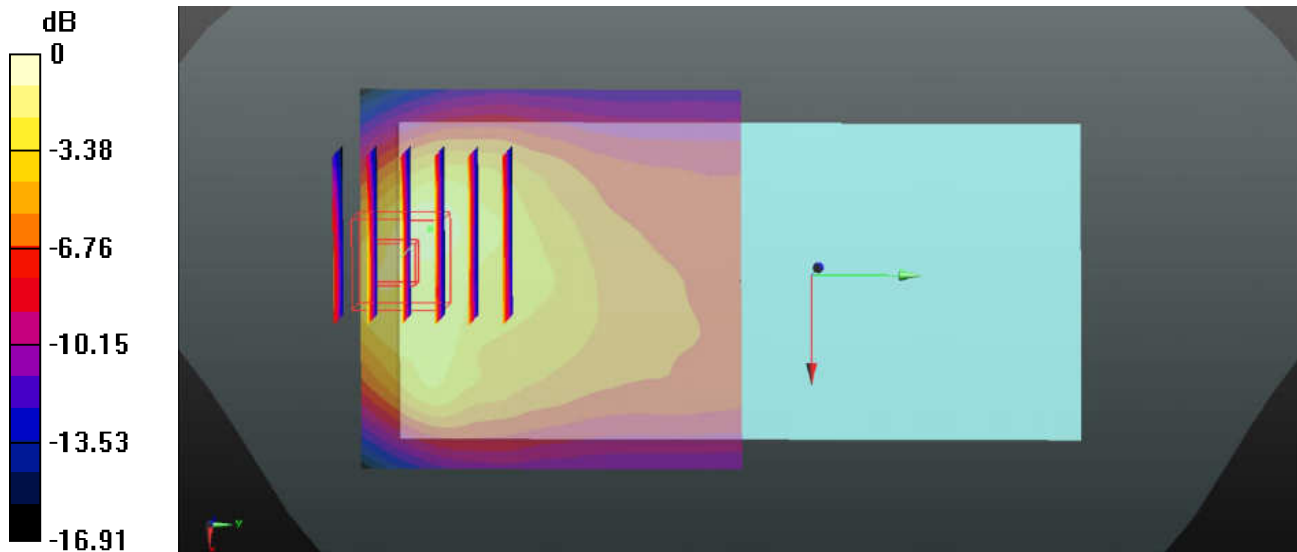
Communication System: UID 0, FDD-LTE (0); Frequency: 683 MHz;Duty Cycle: 1:1  
Medium: MSL\_750\_Medium parameters used:  $f = 683$  MHz;  $\sigma = 0.913$  S/m;  $\epsilon_r = 57.474$ ;  
 $\rho = 1000$ kg/m<sup>3</sup>  
Ambient Temperature : 23.6 °C ; Liquid Temperature : 22.4 °C

DASY5 Configuration:

- Probe: EX3DV4 - SN3935; ConvF(10.65, 10.65, 10.65); Calibrated: 2017/12/14;
- Sensor-Surface: 1.4mm (Mechanical Surface Detection)
- Electronics: DAE4 Sn1358; Calibrated: 2017/10/24
- Phantom: SAM1; Type: QD000P40CD; Serial: TP:1753
- Measurement SW: DASY52, Version 52.8 (8); SEMCAD X Version 14.6.10 (7372)

**Ch133322/Area Scan (61x61x1):** Interpolated grid: dx=1.500 mm, dy=1.500 mm  
Maximum value of SAR (interpolated) = 0.976 W/kg

**Ch133322/Zoom Scan (6x6x7)/Cube 0:** Measurement grid: dx=8mm, dy=8mm, dz=5mm  
Reference Value = 15.39 V/m; Power Drift = -0.02 dB  
Peak SAR (extrapolated) = 1.62 W/kg  
**SAR(1 g) = 0.696 W/kg; SAR(10 g) = 0.356 W/kg**  
Maximum value of SAR (measured) = 1.27 W/kg



0 dB = 1.27 W/kg

### #13\_LTE Band 5\_10M\_QPSK\_1RB\_49offset\_Front\_5mm\_Ch20525

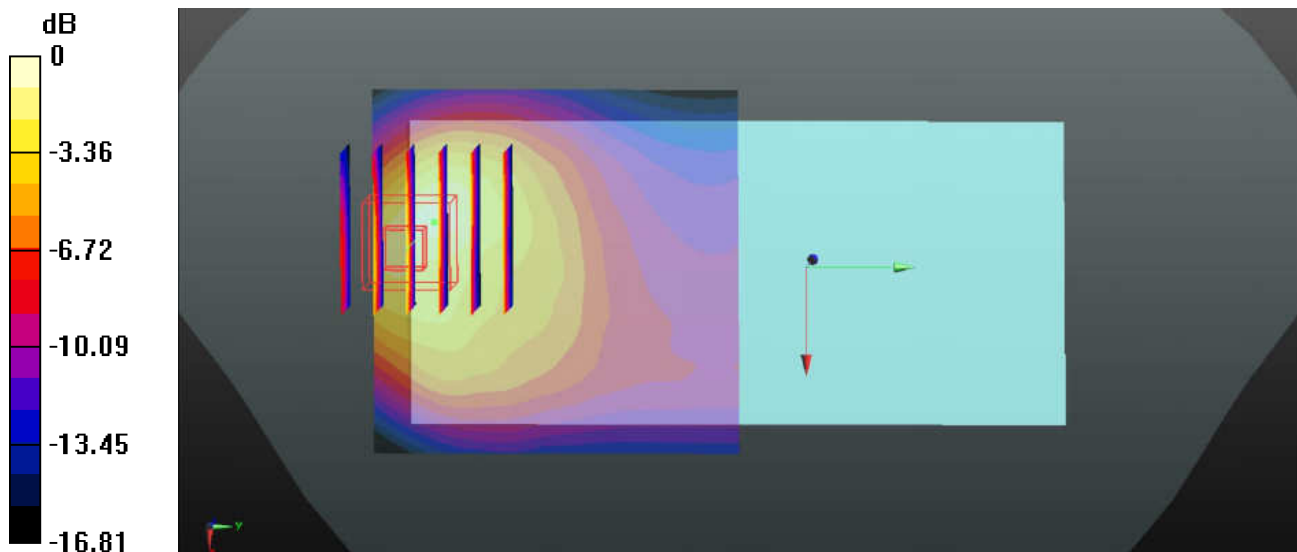
Communication System: UID 0, FDD-LTE (0); Frequency: 836.5 MHz; Duty Cycle: 1:1  
Medium: MSL\_835\_Medium parameters used:  $f = 836.5$  MHz;  $\sigma = 0.997$  S/m;  $\epsilon_r = 55.211$ ;  
 $\rho = 1000$  kg/m<sup>3</sup>  
Ambient Temperature : 23.3 °C ; Liquid Temperature : 22.2 °C

#### DASY5 Configuration:

- Probe: EX3DV4 - SN3935; ConvF(10.33, 10.33, 10.33); Calibrated: 2017/12/14;
- Sensor-Surface: 1.4mm (Mechanical Surface Detection)
- Electronics: DAE4 Sn1358; Calibrated: 2017/10/24
- Phantom: SAM2; Type: QD000P40CD; Serial: TP:1754
- Measurement SW: DASY52, Version 52.8 (8); SEMCAD X Version 14.6.10 (7372)

**Ch20525/Area Scan (61x61x1):** Interpolated grid: dx=1.500 mm, dy=1.500 mm  
Maximum value of SAR (interpolated) = 1.06 W/kg

**Ch20525/Zoom Scan (6x6x7)/Cube 0:** Measurement grid: dx=8mm, dy=8mm, dz=5mm  
Reference Value = 10.13 V/m; Power Drift = -0.04 dB  
Peak SAR (extrapolated) = 1.48 W/kg  
**SAR(1 g) = 0.687 W/kg; SAR(10 g) = 0.358 W/kg**  
Maximum value of SAR (measured) = 1.18 W/kg



0 dB = 1.18 W/kg

**#14\_LTE Band 66\_20M\_QPSK\_1RB\_99offset\_Bottom side\_5mm\_Ch132072**

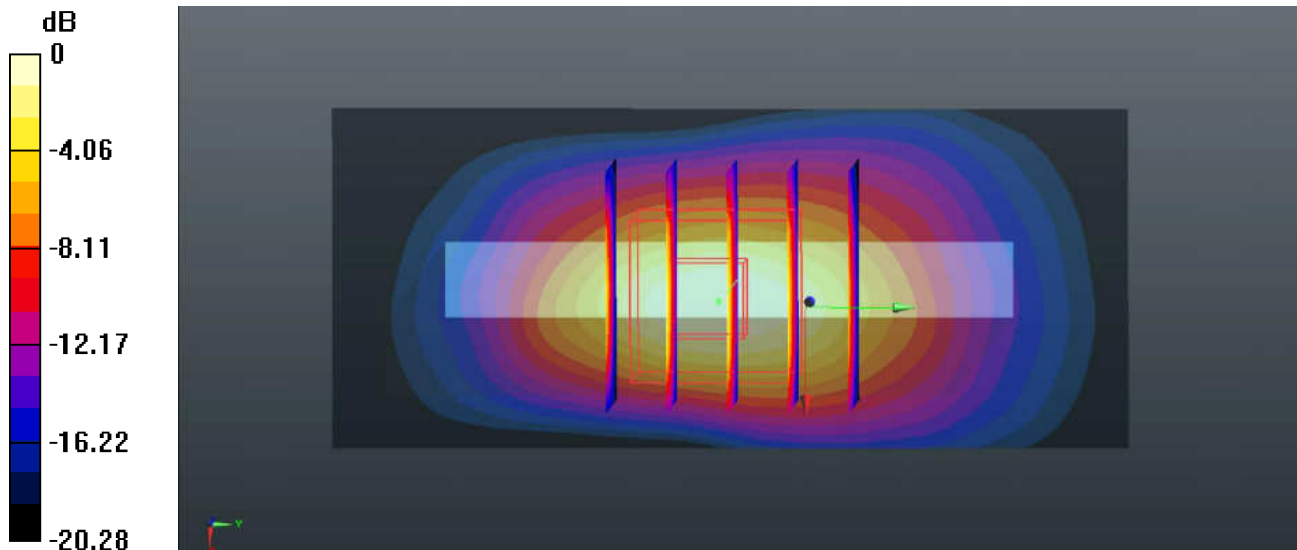
Communication System: UID 0, FDD-LTE (0); Frequency: 1720 MHz; Duty Cycle: 1:1  
Medium: MSL\_1750\_Medium parameters used:  $f = 1720$  MHz;  $\sigma = 1.435$  S/m;  $\epsilon_r = 54.803$ ;  
 $\rho = 1000$  kg/m<sup>3</sup>  
Ambient Temperature : 23.5 °C ; Liquid Temperature : 22.6 °C

DASY5 Configuration:

- Probe: EX3DV4 - SN3935; ConvF(8.71, 8.71, 8.71); Calibrated: 2017/12/14;
- Sensor-Surface: 1.4mm (Mechanical Surface Detection)
- Electronics: DAE4 Sn1358; Calibrated: 2017/10/24
- Phantom: SAM2; Type: QD000P40CD; Serial: TP:1754
- Measurement SW: DASY52, Version 52.8 (8); SEMCAD X Version 14.6.10 (7372)

**Ch132072/Area Scan (31x71x1):** Interpolated grid: dx=1.500 mm, dy=1.500 mm  
Maximum value of SAR (interpolated) = 0.982 W/kg

**Ch132072/Zoom Scan (5x5x7)/Cube 0:** Measurement grid: dx=8mm, dy=8mm, dz=5mm  
Reference Value = 19.97 V/m; Power Drift = -0.07 dB  
Peak SAR (extrapolated) = 1.13 W/kg  
**SAR(1 g) = 0.548 W/kg; SAR(10 g) = 0.250 W/kg**  
Maximum value of SAR (measured) = 0.875 W/kg



0 dB = 0.875 W/kg

**#15\_LTE Band 2\_20M\_QPSK\_1RB\_0offset\_Bottom side\_5mm\_Ch18900**

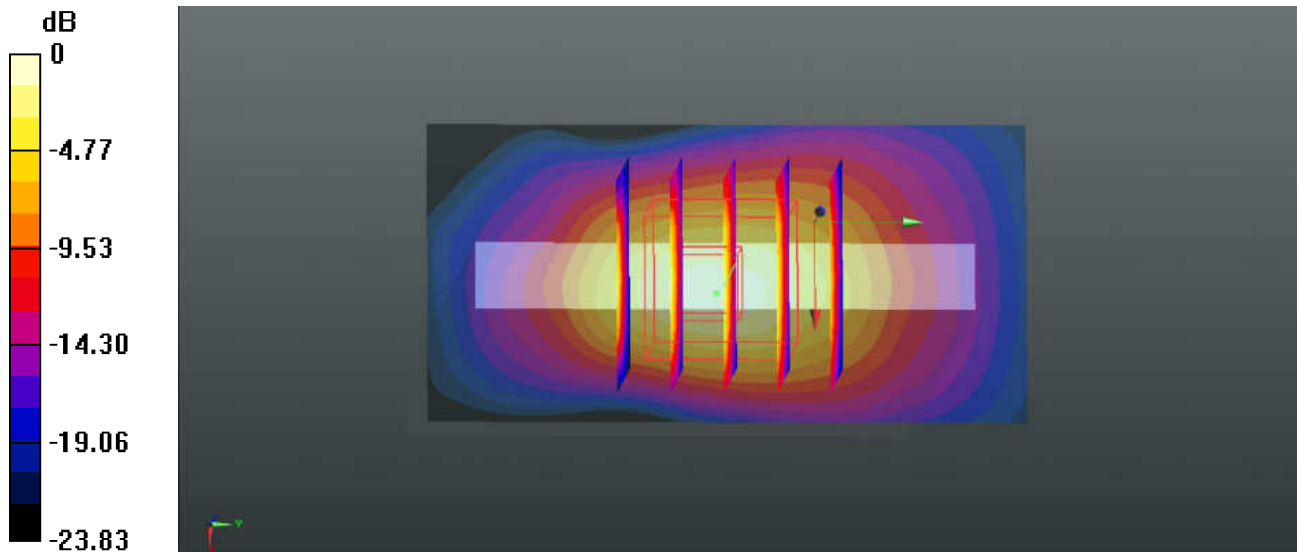
Communication System: UID 0, FDD-LTE (0); Frequency: 1880 MHz; Duty Cycle: 1:1  
Medium: MSL\_1900\_Medium parameters used:  $f = 1880$  MHz;  $\sigma = 1.538$  S/m;  $\epsilon_r = 53.152$ ;  
 $\rho = 1000$  kg/m<sup>3</sup>  
Ambient Temperature : 23.4 °C ; Liquid Temperature : 22.3 °C

DASY5 Configuration:

- Probe: EX3DV4 - SN3935; ConvF(8.3, 8.3, 8.3); Calibrated: 2017/12/14;
- Sensor-Surface: 1.4mm (Mechanical Surface Detection)
- Electronics: DAE4 Sn1358; Calibrated: 2017/10/24
- Phantom: SAM2; Type: QD000P40CD; Serial: TP:1754
- Measurement SW: DASY52, Version 52.8 (8); SEMCAD X Version 14.6.10 (7372)

**Ch18900/Area Scan (31x61x1):** Interpolated grid: dx=1.500 mm, dy=1.500 mm  
Maximum value of SAR (interpolated) = 0.861 W/kg

**Ch18900/Zoom Scan (5x5x7)/Cube 0:** Measurement grid: dx=8mm, dy=8mm, dz=5mm  
Reference Value = 20.06 V/m; Power Drift = 0.02 dB  
Peak SAR (extrapolated) = 1.27 W/kg  
**SAR(1 g) = 0.578 W/kg; SAR(10 g) = 0.254 W/kg**  
Maximum value of SAR (measured) = 0.973 W/kg



0 dB = 0.973 W/kg

**#16\_LTE Band 41\_20M\_QPSK\_1RB\_99offset\_Bottom side\_5mm\_Ch41490**

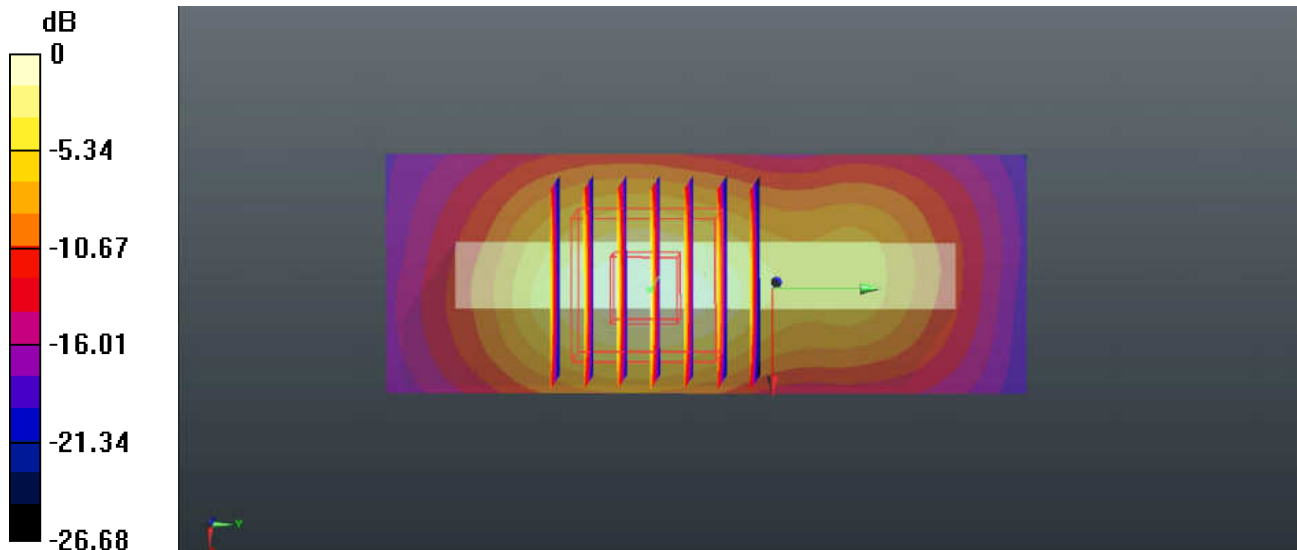
Communication System: UID 0, TDD-LTE (0); Frequency: 2680 MHz; Duty Cycle: 1:1.59  
Medium: MSL\_2600\_Medium parameters used:  $f = 2680$  MHz;  $\sigma = 2.258$  S/m;  $\epsilon_r = 52.777$ ;  
 $\rho = 1000$  kg/m<sup>3</sup>  
Ambient Temperature : 23.6 °C ; Liquid Temperature : 22.6 °C

DASY5 Configuration:

- Probe: EX3DV4 - SN3935; ConvF(7.71, 7.71, 7.71); Calibrated: 2017/12/14;
- Sensor-Surface: 1.4mm (Mechanical Surface Detection)
- Electronics: DAE4 Sn1358; Calibrated: 2017/10/24
- Phantom: SAM2; Type: QD000P40CD; Serial: TP:1754
- Measurement SW: DASY52, Version 52.8 (8); SEMCAD X Version 14.6.10 (7372)

**Ch41490/Area Scan (31x81x1):** Interpolated grid: dx=1.200 mm, dy=1.200 mm  
Maximum value of SAR (interpolated) = 1.38 W/kg

**Ch41490/Zoom Scan (7x7x7)/Cube 0:** Measurement grid: dx=5mm, dy=5mm, dz=5mm  
Reference Value = 17.35 V/m; Power Drift = 0.03 dB  
Peak SAR (extrapolated) = 1.86 W/kg  
**SAR(1 g) = 0.797 W/kg; SAR(10 g) = 0.338 W/kg**  
Maximum value of SAR (measured) = 1.46 W/kg



0 dB = 1.46 W/kg

### #17\_WCDMA Band V\_RMC 12.2Kbps\_Front\_5mm\_Ch4132

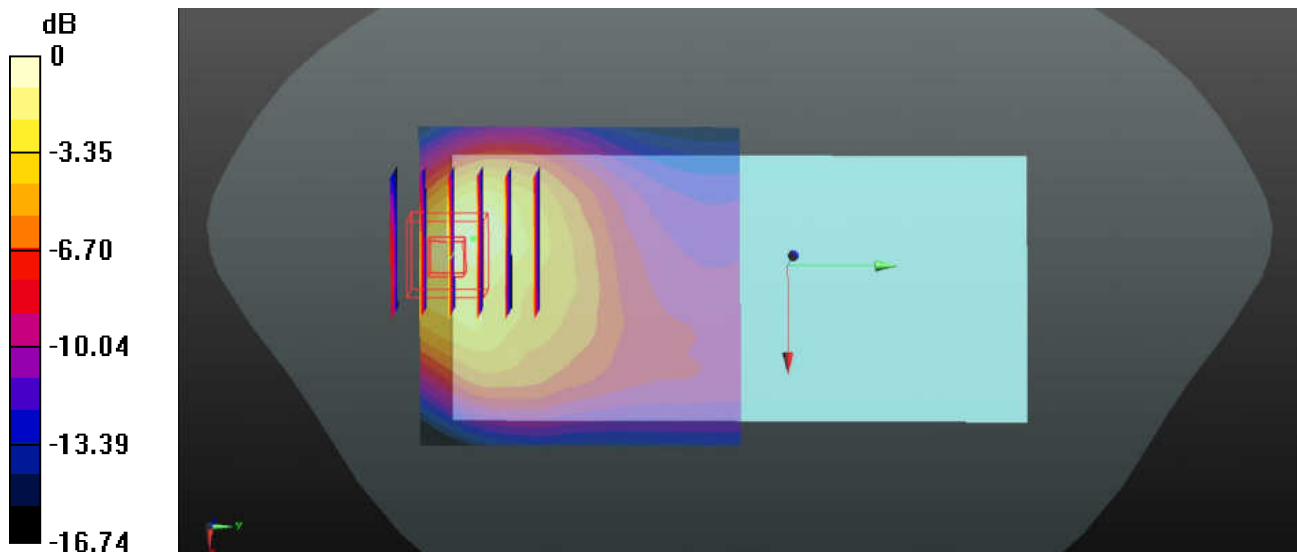
Communication System: UID 0, WCDMA (0); Frequency: 826.4 MHz; Duty Cycle: 1:1  
Medium: MSL\_835\_Medium parameters used:  $f = 826.4$  MHz;  $\sigma = 0.987$  S/m;  $\epsilon_r = 55.309$ ;  
 $\rho = 1000$  kg/m<sup>3</sup>  
Ambient Temperature : 23.3 °C ; Liquid Temperature : 22.2 °C

#### DASY5 Configuration:

- Probe: EX3DV4 - SN3935; ConvF(10.33, 10.33, 10.33); Calibrated: 2017/12/14;
- Sensor-Surface: 1.4mm (Mechanical Surface Detection)
- Electronics: DAE4 Sn1358; Calibrated: 2017/10/24
- Phantom: SAM2; Type: QD000P40CD; Serial: TP:1754
- Measurement SW: DASY52, Version 52.8 (8); SEMCAD X Version 14.6.10 (7372)

**Ch4132/Area Scan (61x61x1):** Interpolated grid: dx=1.500 mm, dy=1.500 mm  
Maximum value of SAR (interpolated) = 1.09 W/kg

**Ch4132/Zoom Scan (6x6x7)/Cube 0:** Measurement grid: dx=8mm, dy=8mm, dz=5mm  
Reference Value = 11.16 V/m; Power Drift = -0.04 dB  
Peak SAR (extrapolated) = 1.69 W/kg  
**SAR(1 g) = 0.769 W/kg; SAR(10 g) = 0.394 W/kg**  
Maximum value of SAR (measured) = 1.35 W/kg



0 dB = 1.35 W/kg

### #18\_WCDMA Band IV\_RMC 12.2Kbps\_Front\_5mm\_Ch1312

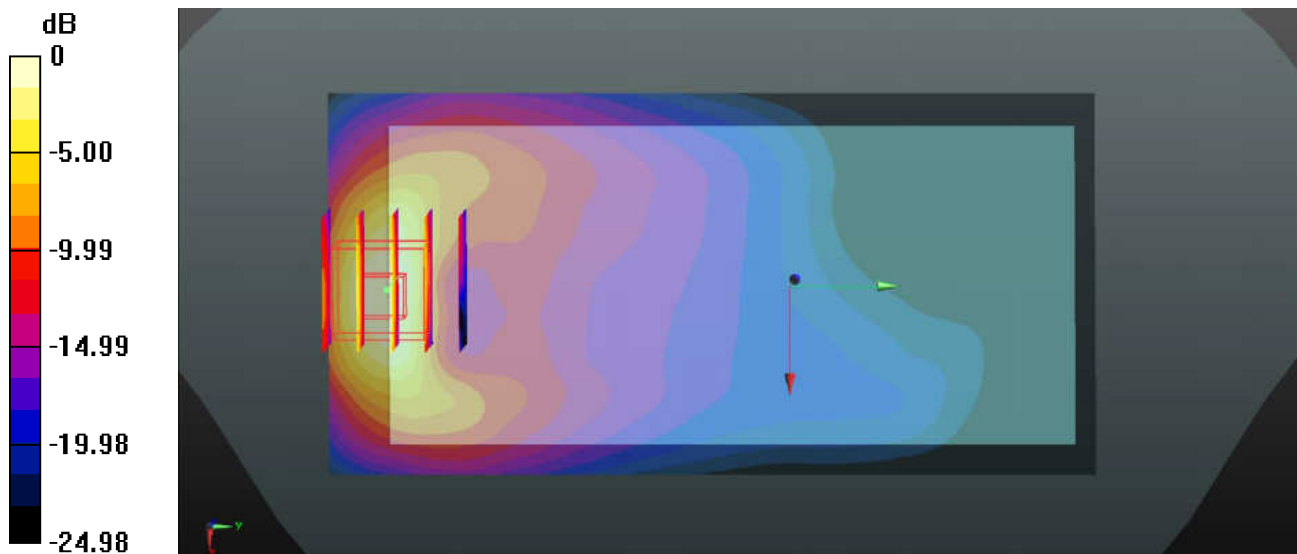
Communication System: UID 0, WCDMA (0); Frequency: 1712.4 MHz; Duty Cycle: 1:1  
Medium: MSL\_1750\_Medium parameters used:  $f = 1712.4$  MHz;  $\sigma = 1.427$  S/m;  $\epsilon_r = 54.832$ ;  
 $\rho = 1000$  kg/m<sup>3</sup>  
Ambient Temperature : 23.5 °C ; Liquid Temperature : 22.6 °C

#### DASY5 Configuration:

- Probe: EX3DV4 - SN3935; ConvF(8.71, 8.71, 8.71); Calibrated: 2017/12/14;
- Sensor-Surface: 1.4mm (Mechanical Surface Detection)
- Electronics: DAE4 Sn1358; Calibrated: 2017/10/24
- Phantom: SAM2; Type: QD000P40CD; Serial: TP:1754
- Measurement SW: DASY52, Version 52.8 (8); SEMCAD X Version 14.6.10 (7372)

**Ch1312/Area Scan (61x121x1):** Interpolated grid: dx=1.500 mm, dy=1.500 mm  
Maximum value of SAR (interpolated) = 0.859 W/kg

**Ch1312/Zoom Scan (5x5x7)/Cube 0:** Measurement grid: dx=8mm, dy=8mm, dz=5mm  
Reference Value = 2.815 V/m; Power Drift = 0.08 dB  
Peak SAR (extrapolated) = 1.04 W/kg  
**SAR(1 g) = 0.527 W/kg; SAR(10 g) = 0.241 W/kg**  
Maximum value of SAR (measured) = 0.852 W/kg



0 dB = 0.852 W/kg



### #19\_WCDMA Band II\_RMC 12.2Kbps\_Front\_5mm\_Ch9538

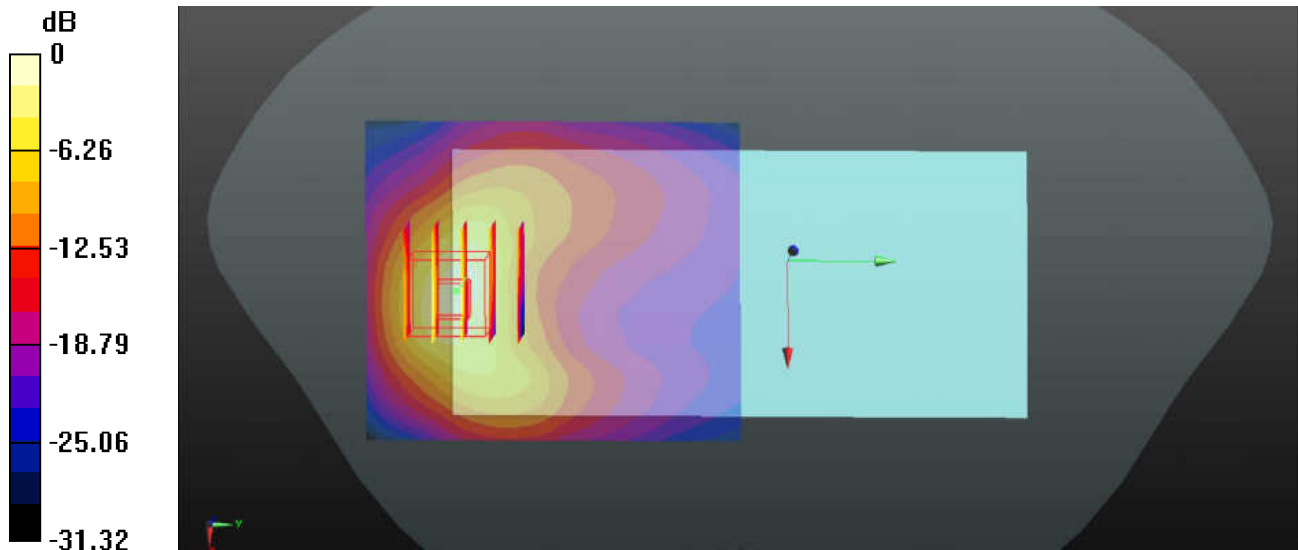
Communication System: UID 0, WCDMA (0); Frequency: 1907.6 MHz; Duty Cycle: 1:1  
Medium: MSL\_1900\_Medium parameters used:  $f = 1907.6$  MHz;  $\sigma = 1.57$  S/m;  $\epsilon_r = 53.081$ ;  
 $\rho = 1000$  kg/m<sup>3</sup>  
Ambient Temperature : 23.4 °C ; Liquid Temperature : 22.3 °C

#### DASY5 Configuration:

- Probe: EX3DV4 - SN3935; ConvF(8.3, 8.3, 8.3); Calibrated: 2017/12/14;
- Sensor-Surface: 1.4mm (Mechanical Surface Detection)
- Electronics: DAE4 Sn1358; Calibrated: 2017/10/24
- Phantom: SAM2; Type: QD000P40CD; Serial: TP:1754
- Measurement SW: DASY52, Version 52.8 (8); SEMCAD X Version 14.6.10 (7372)

**Ch9538/Area Scan (61x71x1):** Interpolated grid: dx=1.500 mm, dy=1.500 mm  
Maximum value of SAR (interpolated) = 0.920 W/kg

**Ch9538/Zoom Scan (5x5x7)/Cube 0:** Measurement grid: dx=8mm, dy=8mm, dz=5mm  
Reference Value = 2.062 V/m; Power Drift = 0.06 dB  
Peak SAR (extrapolated) = 1.53 W/kg  
**SAR(1 g) = 0.704 W/kg; SAR(10 g) = 0.298 W/kg**  
Maximum value of SAR (measured) = 1.14 W/kg



0 dB = 1.14 W/kg

**#20\_LTE Band 71\_20M\_QPSK\_1RB\_99offset\_Front\_5mm\_Ch133322**

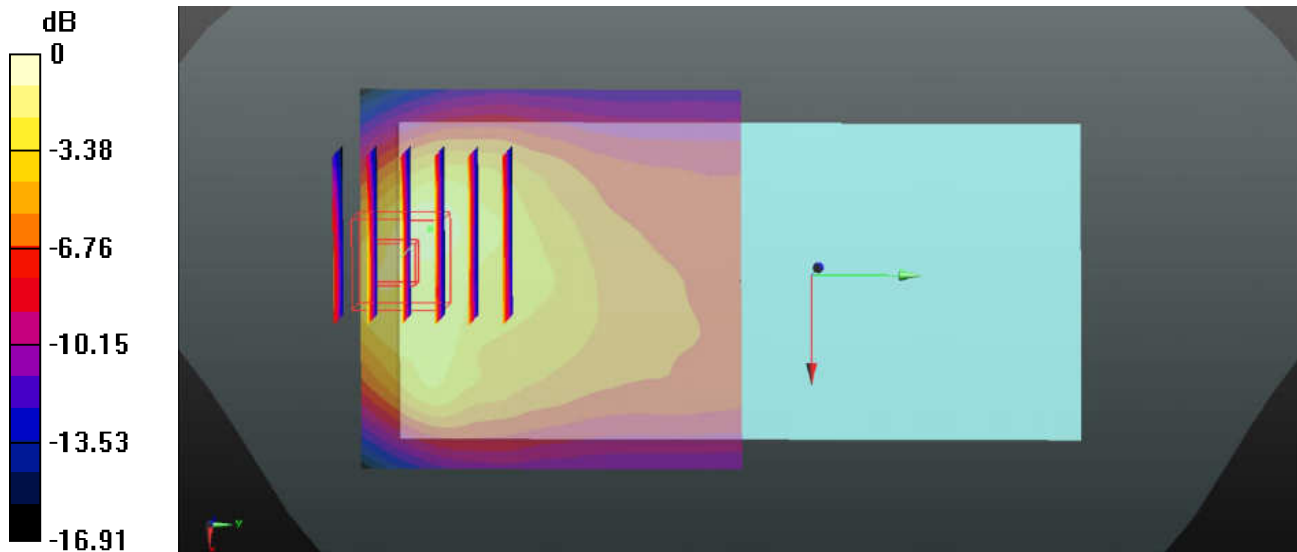
Communication System: UID 0, FDD-LTE (0); Frequency: 683 MHz;Duty Cycle: 1:1  
Medium: MSL\_750\_Medium parameters used:  $f = 683 \text{ MHz}$ ;  $\sigma = 0.913 \text{ S/m}$ ;  $\epsilon_r = 57.474$ ;  
 $\rho = 1000 \text{ kg/m}^3$   
Ambient Temperature :  $23.6 \text{ }^\circ\text{C}$ ; Liquid Temperature :  $22.4 \text{ }^\circ\text{C}$

DASY5 Configuration:

- Probe: EX3DV4 - SN3935; ConvF(10.65, 10.65, 10.65); Calibrated: 2017/12/14;
- Sensor-Surface: 1.4mm (Mechanical Surface Detection)
- Electronics: DAE4 Sn1358; Calibrated: 2017/10/24
- Phantom: SAM1; Type: QD000P40CD; Serial: TP:1753
- Measurement SW: DASY52, Version 52.8 (8); SEMCAD X Version 14.6.10 (7372)

**Ch133322/Area Scan (61x61x1):** Interpolated grid:  $dx=1.500 \text{ mm}$ ,  $dy=1.500 \text{ mm}$   
Maximum value of SAR (interpolated) =  $0.976 \text{ W/kg}$

**Ch133322/Zoom Scan (6x6x7)/Cube 0:** Measurement grid:  $dx=8\text{mm}$ ,  $dy=8\text{mm}$ ,  $dz=5\text{mm}$   
Reference Value =  $15.39 \text{ V/m}$ ; Power Drift =  $-0.02 \text{ dB}$   
Peak SAR (extrapolated) =  $1.62 \text{ W/kg}$   
**SAR(1 g) =  $0.696 \text{ W/kg}$ ; SAR(10 g) =  $0.356 \text{ W/kg}$**   
Maximum value of SAR (measured) =  $1.27 \text{ W/kg}$



0 dB =  $1.27 \text{ W/kg}$

### #21\_LTE Band 5\_10M\_QPSK\_1RB\_49offset\_Front\_5mm\_Ch20525

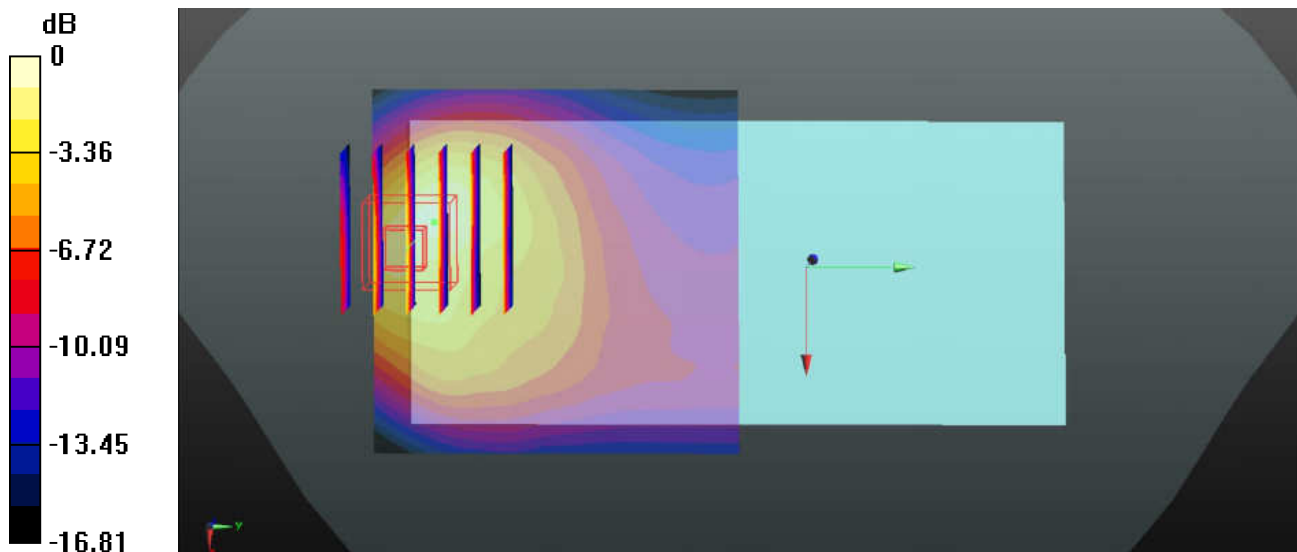
Communication System: UID 0, FDD-LTE (0); Frequency: 836.5 MHz; Duty Cycle: 1:1  
Medium: MSL\_835\_Medium parameters used:  $f = 836.5$  MHz;  $\sigma = 0.997$  S/m;  $\epsilon_r = 55.211$ ;  
 $\rho = 1000$  kg/m<sup>3</sup>  
Ambient Temperature : 23.3 °C ; Liquid Temperature : 22.2 °C

#### DASY5 Configuration:

- Probe: EX3DV4 - SN3935; ConvF(10.33, 10.33, 10.33); Calibrated: 2017/12/14;
- Sensor-Surface: 1.4mm (Mechanical Surface Detection)
- Electronics: DAE4 Sn1358; Calibrated: 2017/10/24
- Phantom: SAM2; Type: QD000P40CD; Serial: TP:1754
- Measurement SW: DASY52, Version 52.8 (8); SEMCAD X Version 14.6.10 (7372)

**Ch20525/Area Scan (61x61x1):** Interpolated grid: dx=1.500 mm, dy=1.500 mm  
Maximum value of SAR (interpolated) = 1.06 W/kg

**Ch20525/Zoom Scan (6x6x7)/Cube 0:** Measurement grid: dx=8mm, dy=8mm, dz=5mm  
Reference Value = 10.13 V/m; Power Drift = -0.04 dB  
Peak SAR (extrapolated) = 1.48 W/kg  
**SAR(1 g) = 0.687 W/kg; SAR(10 g) = 0.358 W/kg**  
Maximum value of SAR (measured) = 1.18 W/kg



0 dB = 1.18 W/kg

**#22\_LTE Band 66\_20M\_QPSK\_1RB\_99offset\_Front\_5mm\_Ch132072**

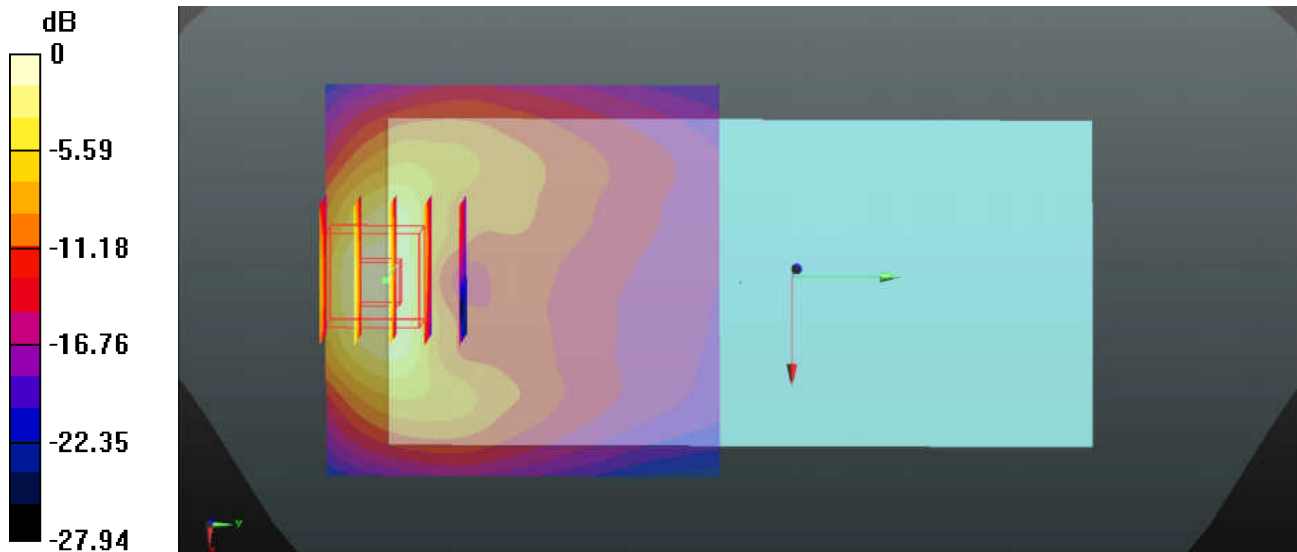
Communication System: UID 0, FDD-LTE (0); Frequency: 1720 MHz; Duty Cycle: 1:1  
Medium: MSL\_1750\_Medium parameters used:  $f = 1720$  MHz;  $\sigma = 1.435$  S/m;  $\epsilon_r = 54.803$ ;  
 $\rho = 1000$  kg/m<sup>3</sup>  
Ambient Temperature : 23.5 °C ; Liquid Temperature : 22.6 °C

DASY5 Configuration:

- Probe: EX3DV4 - SN3935; ConvF(8.71, 8.71, 8.71); Calibrated: 2017/12/14;
- Sensor-Surface: 1.4mm (Mechanical Surface Detection)
- Electronics: DAE4 Sn1358; Calibrated: 2017/10/24
- Phantom: SAM2; Type: QD000P40CD; Serial: TP:1754
- Measurement SW: DASY52, Version 52.8 (8); SEMCAD X Version 14.6.10 (7372)

**Ch132072/Area Scan (61x61x1):** Interpolated grid: dx=1.500 mm, dy=1.500 mm  
Maximum value of SAR (interpolated) = 0.498 W/kg

**Ch132072/Zoom Scan (5x5x7)/Cube 0:** Measurement grid: dx=8mm, dy=8mm, dz=5mm  
Reference Value = 2.366 V/m; Power Drift = 0.09 dB  
Peak SAR (extrapolated) = 0.665 W/kg  
**SAR(1 g) = 0.335 W/kg; SAR(10 g) = 0.154 W/kg**  
Maximum value of SAR (measured) = 0.523 W/kg



0 dB = 0.523 W/kg

**#23\_LTE Band 2\_20M\_QPSK\_1RB\_0offset\_Front\_5mm\_Ch18900**

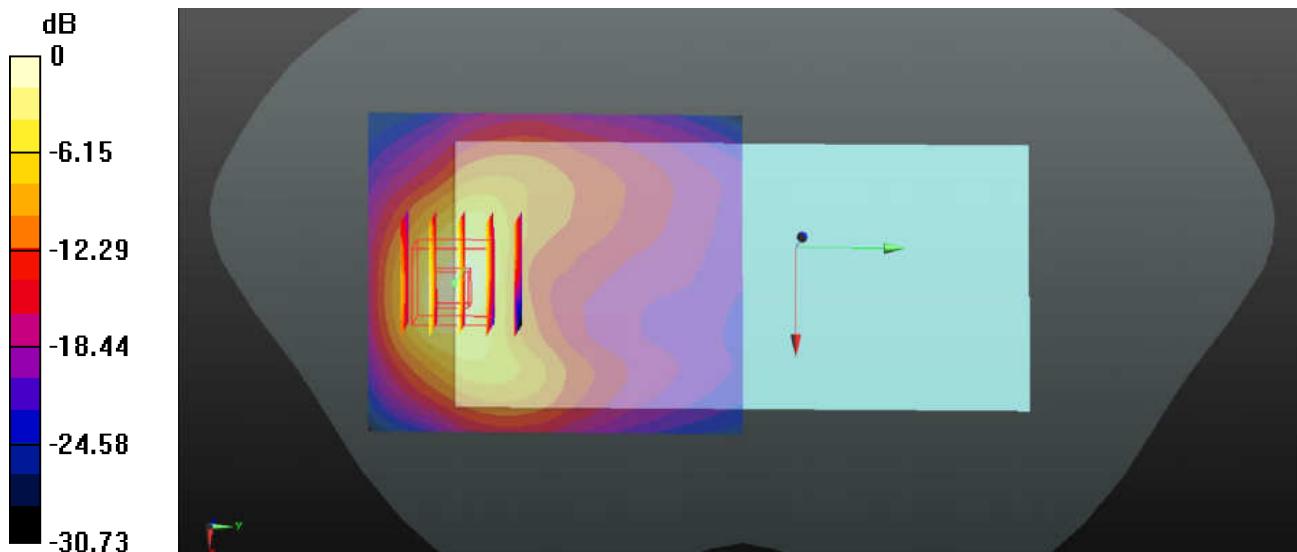
Communication System: UID 0, FDD-LTE (0); Frequency: 1880 MHz; Duty Cycle: 1:1  
Medium: MSL\_1900\_Medium parameters used:  $f = 1880$  MHz;  $\sigma = 1.538$  S/m;  $\epsilon_r = 53.152$ ;  
 $\rho = 1000$  kg/m<sup>3</sup>  
Ambient Temperature : 23.4 °C ; Liquid Temperature : 22.3 °C

DASY5 Configuration:

- Probe: EX3DV4 - SN3935; ConvF(8.3, 8.3, 8.3); Calibrated: 2017/12/14;
- Sensor-Surface: 1.4mm (Mechanical Surface Detection)
- Electronics: DAE4 Sn1358; Calibrated: 2017/10/24
- Phantom: SAM2; Type: QD000P40CD; Serial: TP:1754
- Measurement SW: DASY52, Version 52.8 (8); SEMCAD X Version 14.6.10 (7372)

**Ch18900/Area Scan (61x71x1):** Interpolated grid: dx=1.500 mm, dy=1.500 mm  
Maximum value of SAR (interpolated) = 0.618 W/kg

**Ch18900/Zoom Scan (5x5x7)/Cube 0:** Measurement grid: dx=8mm, dy=8mm, dz=5mm  
Reference Value = 1.963 V/m; Power Drift = 0.01 dB  
Peak SAR (extrapolated) = 1.02 W/kg  
**SAR(1 g) = 0.480 W/kg; SAR(10 g) = 0.209 W/kg**  
Maximum value of SAR (measured) = 0.802 W/kg



0 dB = 0.802 W/kg

### #24\_LTE Band 41\_20M\_QPSK\_1RB\_99offset\_Front\_5mm\_Ch40185

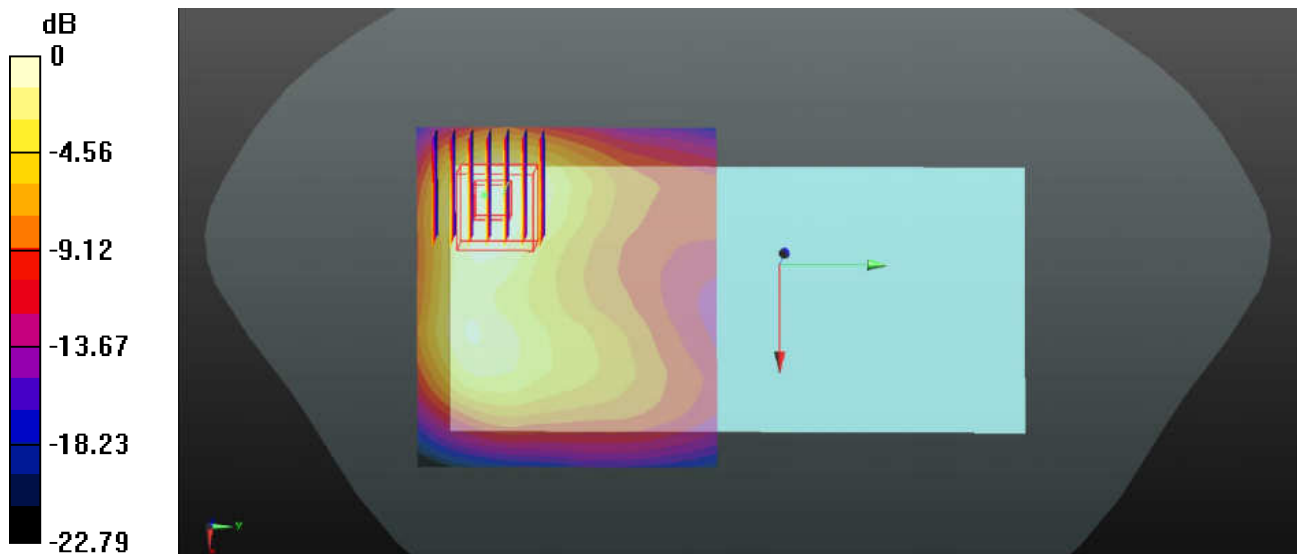
Communication System: UID 0, TDD-LTE (0); Frequency: 2549.5 MHz; Duty Cycle: 1:1.59  
Medium: MSL\_2600\_Medium parameters used:  $f = 2549.5$  MHz;  $\sigma = 2.077$  S/m;  $\epsilon_r = 53.265$ ;  
 $\rho = 1000$  kg/m<sup>3</sup>  
Ambient Temperature : 23.6 °C ; Liquid Temperature : 22.6 °C

#### DASY5 Configuration:

- Probe: EX3DV4 - SN3935; ConvF(7.71, 7.71, 7.71); Calibrated: 2017/12/14;
- Sensor-Surface: 1.4mm (Mechanical Surface Detection)
- Electronics: DAE4 Sn1358; Calibrated: 2017/10/24
- Phantom: SAM $\mp$  Type: QD000P40CD; Serial: TP:1754
- Measurement SW: DASY52, Version 52.8 (8); SEMCAD X Version 14.6.10 (7372)

**Ch40185/Area Scan (81x71x1):** Interpolated grid: dx=1.200 mm, dy=1.200 mm  
Maximum value of SAR (interpolated) = 0.530 W/kg

**Ch40185/Zoom Scan (7x7x7)/Cube 0:** Measurement grid: dx=5mm, dy=5mm, dz=5mm  
Reference Value = 2.918 V/m; Power Drift = 0.04 dB  
Peak SAR (extrapolated) = 0.616 W/kg  
**SAR(1 g) = 0.282 W/kg; SAR(10 g) = 0.148 W/kg**  
Maximum value of SAR (measured) = 0.470 W/kg



0 dB = 0.470 W/kg

### #25\_WCDMA Band V\_RMC 12.2Kbps\_Front\_0mm\_Ch4132

Communication System: UID 0, WCDMA (0); Frequency: 826.4 MHz; Duty Cycle: 1:1  
Medium: MSL\_835\_Medium parameters used:  $f = 826.4$  MHz;  $\sigma = 0.987$  S/m;  $\epsilon_r = 55.309$ ;  
 $\rho = 1000$  kg/m<sup>3</sup>  
Ambient Temperature : 23.3 °C ; Liquid Temperature : 22.2 °C

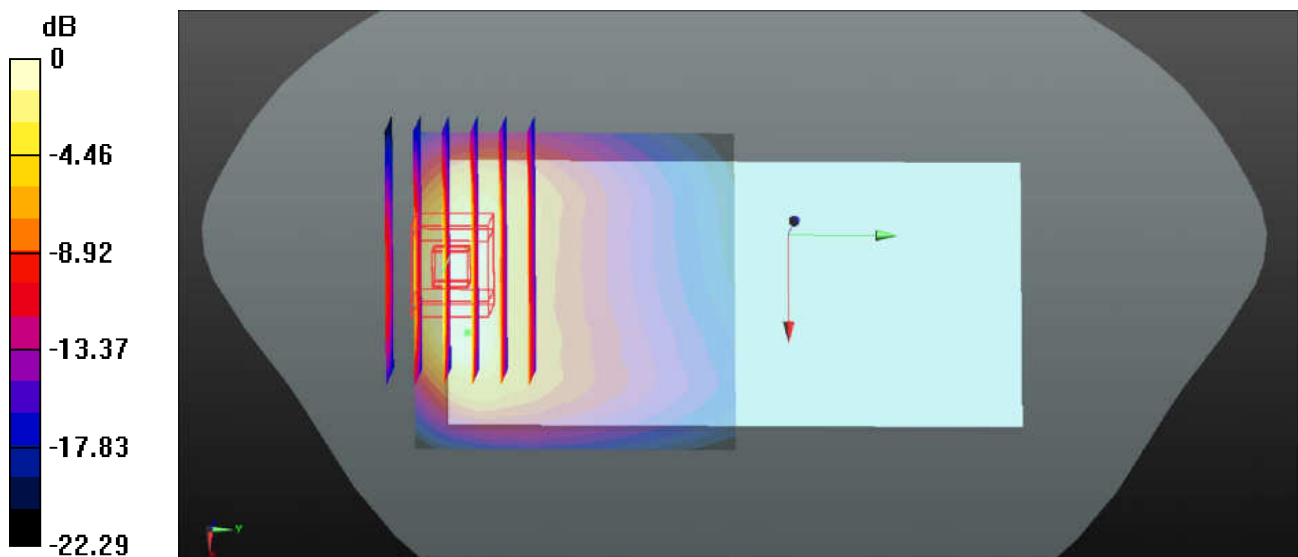
#### DASY5 Configuration:

- Probe: EX3DV4 - SN3935; ConvF(10.33, 10.33, 10.33); Calibrated: 2017/12/14;
- Sensor-Surface: 1.4mm (Mechanical Surface Detection)
- Electronics: DAE4 Sn1358; Calibrated: 2017/10/24
- Phantom: SAM2; Type: QD000P40CD; Serial: TP:1754
- Measurement SW: DASY52, Version 52.8 (8); SEMCAD X Version 14.6.10 (7372)

**Ch4132/Area Scan (61x61x1):** Interpolated grid: dx=1.500 mm, dy=1.500 mm  
Maximum value of SAR (interpolated) = 3.88 W/kg

**Ch4132/Zoom Scan (7x6x7)/Cube 0:** Measurement grid: dx=8mm, dy=8mm, dz=5mm  
Reference Value = 6.109 V/m; Power Drift = 0.15 dB  
Peak SAR (extrapolated) = 5.20 W/kg  
**SAR(1 g) = 2.03 W/kg; SAR(10 g) = 1.01 W/kg**  
Maximum value of SAR (measured) = 3.49 W/kg

**Ch4132/Zoom Scan (7x6x7)/Cube 1:** Measurement grid: dx=8mm, dy=8mm, dz=5mm  
Reference Value = 6.109 V/m; Power Drift = 0.15 dB  
Peak SAR (extrapolated) = 4.77 W/kg  
**SAR(1 g) = 2.03 W/kg; SAR(10 g) = 0.988 W/kg**  
Maximum value of SAR (measured) = 3.50 W/kg



0 dB = 3.50 W/kg

### #26\_WCDMA Band IV\_RMC 12.2Kbps\_Bottom side\_0mm\_Ch1513

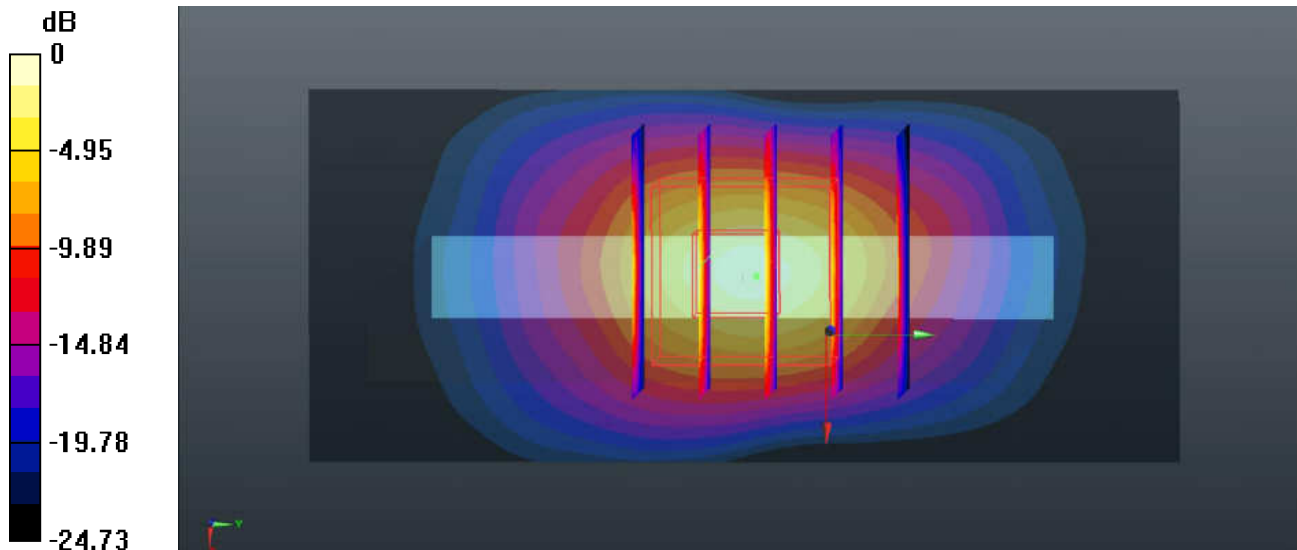
Communication System: UID 0, WCDMA (0); Frequency: 1752.6 MHz; Duty Cycle: 1:1  
Medium: MSL\_1750\_Medium parameters used:  $f = 1752.6$  MHz;  $\sigma = 1.469$  S/m;  $\epsilon_r = 54.704$ ;  
 $\rho = 1000$  kg/m<sup>3</sup>  
Ambient Temperature : 23.5 °C ; Liquid Temperature : 22.6 °C

#### DASY5 Configuration:

- Probe: EX3DV4 - SN3935; ConvF(8.71, 8.71, 8.71); Calibrated: 2017/12/14;
- Sensor-Surface: 1.4mm (Mechanical Surface Detection)
- Electronics: DAE4 Sn1358; Calibrated: 2017/10/24
- Phantom: SAM2; Type: QD000P40CD; Serial: TP:1754
- Measurement SW: DASY52, Version 52.8 (8); SEMCAD X Version 14.6.10 (7372)

**Ch1513/Area Scan (31x71x1):** Interpolated grid: dx=1.500 mm, dy=1.500 mm  
Maximum value of SAR (interpolated) = 12.6 W/kg

**Ch1513/Zoom Scan (5x5x7)/Cube 0:** Measurement grid: dx=8mm, dy=8mm, dz=5mm  
Reference Value = 76.56 V/m; Power Drift = -0.02 dB  
Peak SAR (extrapolated) = 18.2 W/kg  
**SAR(1 g) = 7.32 W/kg; SAR(10 g) = 2.93 W/kg**  
Maximum value of SAR (measured) = 14.6 W/kg



0 dB = 14.6 W/kg