

Argon Mini Antenna spec

Manufacturer: Arima

1. Main Antenna (EU)

Band & Frequency:

BAND TX Frequency RX Frequency

GSM850 824MHZ ~849MHZ 869MHZ ~894MHZ

E-GSM900 880MHZ ~915MHZ 925.2MHZ ~960MHZ

DCS1800 1710MHZ ~1785MHZ 1805MHZ ~1880MHZ

PCS1900 1850MHZ ~1910MHZ 1930MHZ ~1990MHZ

UMTS VIII 880MHZ ~915MHZ 925MHZ ~960MHZ

UMTS I 1922.4MHZ ~1977MHZ 2112.4MHZ ~2167.6MHZ

Passive Gain :

Passive

BAND AVG. Gain(dBi) Peak Gain(dBi)

GSM850 -3.83 0.01

E-GSM900 -3.72 0.05

DCS1800 -4.64 0.01

PCS1900 -4.84 -0.02

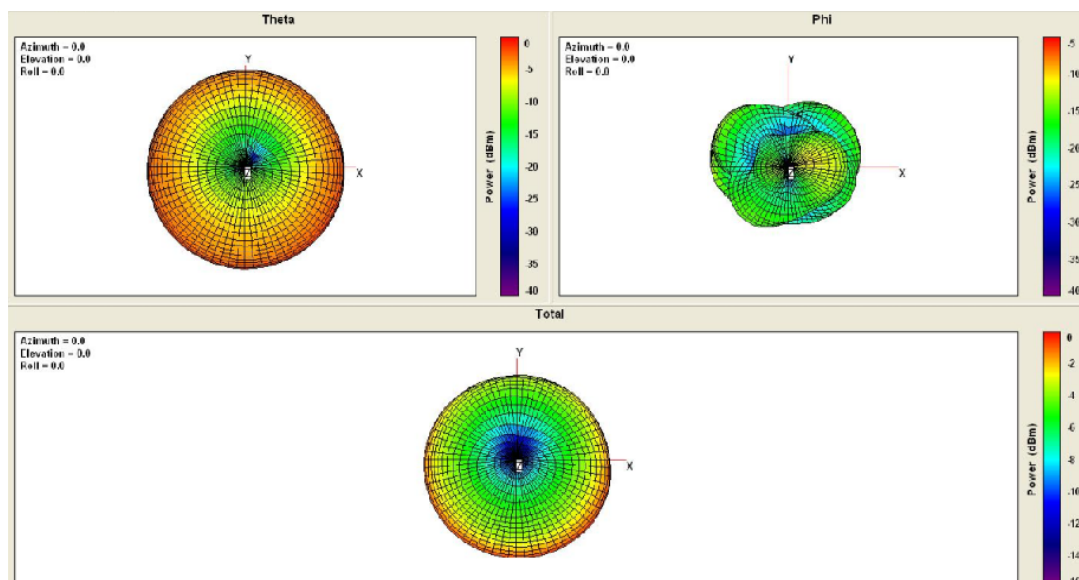
UMTS VIII -3.72 0.05

UMTS I -4.94 -0.90

Antenna Type: Embedded inverted-F Antenna

Antenna Material: Metal

Free Space Radiation Pattern:



2. Bluetooth Antenna

Frequency Band(s) : 2.4-2.4835GHz

Operating Frequency : 2.402-2.480GHz

Number of Channel : 79 Channels

Channel Spacing : 1MHz

Transmit Power : 0 ~ 10dBm

Antenna Type : Embedded inverted-F antenna

Mode of operation : (Simplex/duplex)

Passive Gain:

| BAND | Frequency (MHz) | Passive | | |
|-----------|-----------------|----------------|-----------|----------------|
| | | AVG.Gain (dBi) | Peak Gain | Efficiency (%) |
| Bluetooth | 2402 | -5.81 | -1.92 | 26.22 |
| | 2441 | -4.69 | -0.64 | 33.96 |
| | 2480 | -5.23 | -0.83 | 29.98 |

Frequency Band(s) : 2.4-2.4835GHz

Operating Frequency : 2.402-2.480GHz

Number of Channel : 0, 39, 78 Channels

Channel Spacing : 1MHz

Bandwidth : 2.4GHz

Transmit Power : 0 to 10 (Max) dBm

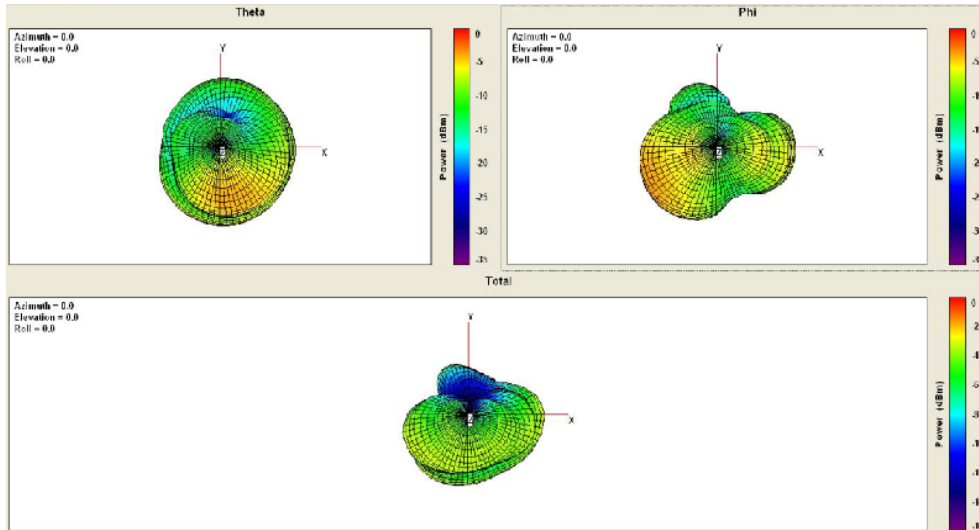
ITU-class of emission : Class 1

Antenna Type : Embedded inverted-F antenna

Mode of operation : Duplex

Duty cycle* : (Access protocol, if applicable)

Free Space Radiation Pattern:



3. Wi-Fi Antenna

Frequency Band(s) : 2.401-2.483GHz

Operating Frequency : 2.412-2.472GHz

Number of Channel : 1,6,11 Channels

Channel Spacing : 22MHz

Transmit Power : 0 ~ 20dBm

Antenna Type : Embedded inverted-F antenna

Mode of operation : (Simplex/duplex)

Passive Gain:

| BAND | Frequency (MHz) | Passive | | |
|-------|-----------------|----------------|-----------|----------------|
| | | AVG.Gain (dBi) | Peak Gain | Efficiency (%) |
| Wi-Fi | 2412 | -5.57 | -1.53 | 27.71 |
| | 2442 | -4.69 | -0.65 | 33.97 |

| | | | | |
|--|------|-------|-------|-------|
| | 2472 | -4.82 | -0.40 | 32.98 |
|--|------|-------|-------|-------|

Frequency Band(s) : 2.401-2.483GHz

Operating Frequency : 2.412-2.472GHz

Number of Channel : 1, 6, 11 Channels

Channel Spacing : 1MHz

Bandwidth : 2.4GHz

Transmit Power : 0 to 20 (Max) dBm

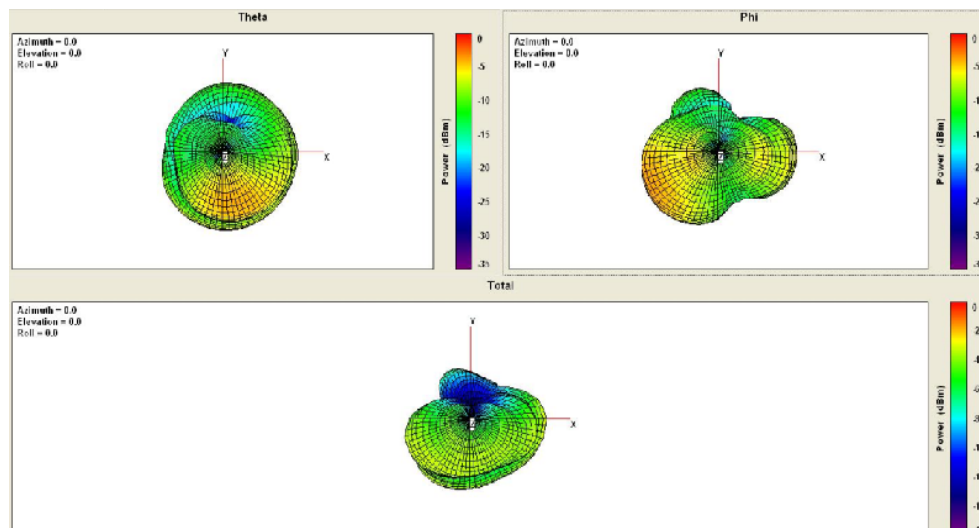
ITU-class of emission : **Class 1**

Antenna Type : Embedded inverted-F antenna

Mode of operation : Duplex

Duty cycle* : (Access protocol, if applicable)

Free Space Radiation Pattern:



4. GPS Antenna

Frequency Band: 1570MHZ-1580MHZ

Operating Frequency: 1575.42MHZ

Mode of operation: Simplex (Receive)

Antenna Type: Embedded Ceramic Chip Antenna

Passive Performance:

| BAND | Frequency (MHz) | Passive | | |
|------|-----------------|----------------|-----------|----------------|
| | | AVG.Gain (dBi) | Peak Gain | Efficiency (%) |
| GPS | 1570 | -5.80 | -0.61 | 26.29 |
| | 1575.42 | -5.83 | -0.66 | 26.10 |
| | 1580 | -5.81 | -0.69 | 26.26 |

Free Space Radiation Pattern:

