



Front Bezel removed



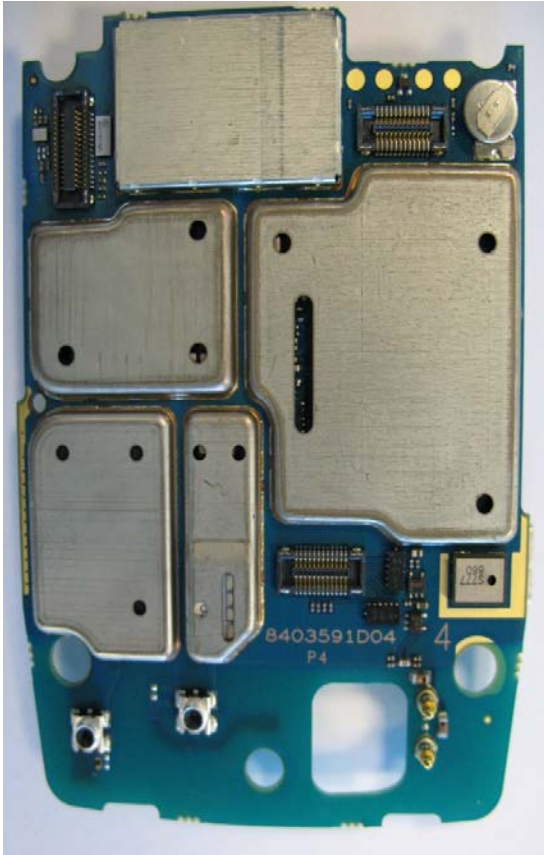
Front Bezel  
(interior)



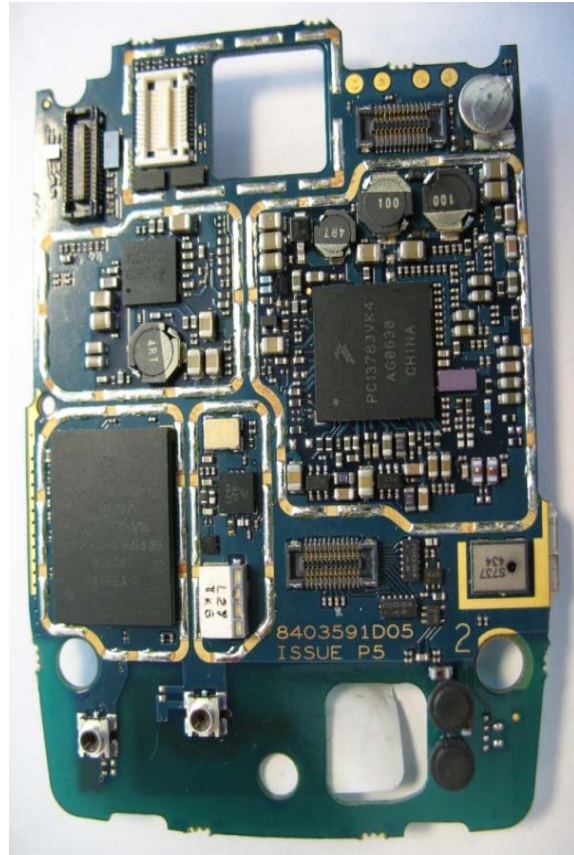
Slider mechanism  
(front)



Slider mechanism  
(rear)



Main Board Side 1  
With Shields



Main Board Side 1  
Without Shields



Main Board Side 2  
(With Shields)



Main Board Side 2  
(Without Shields)



Rear assembly  
(exterior)



Rear assembly  
(interior)



Transeiver rear assembly  
(inc expansion FPC,  
exterior)



Transeiver rear assembly (inc  
expansion FPC ,interior)



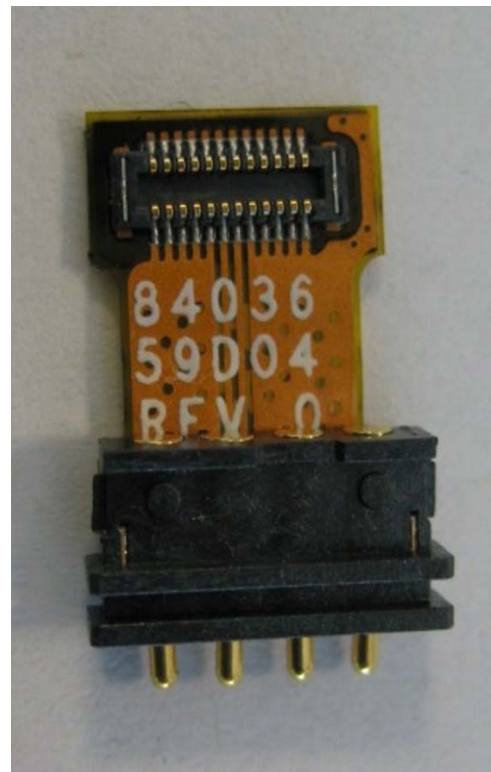
Top Module Flex  
PCB (front)



Top Module Flex  
PCB (rear)



Battery Flex (back)

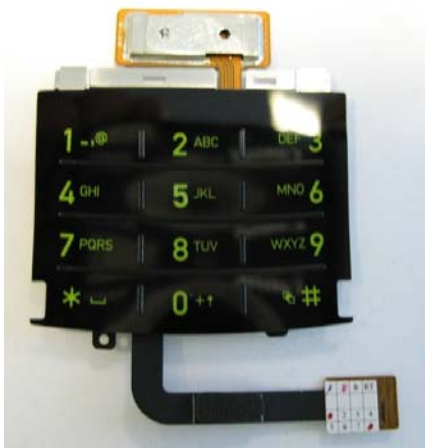


Battery flex (front)

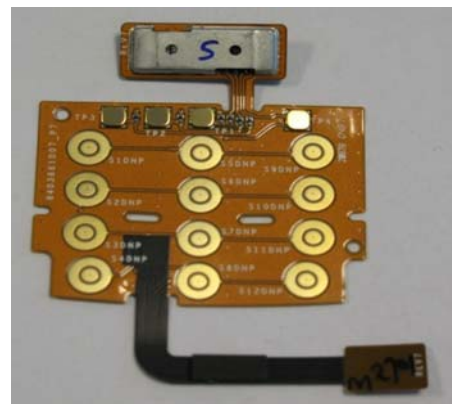




Keypad Flex PCB (rear)



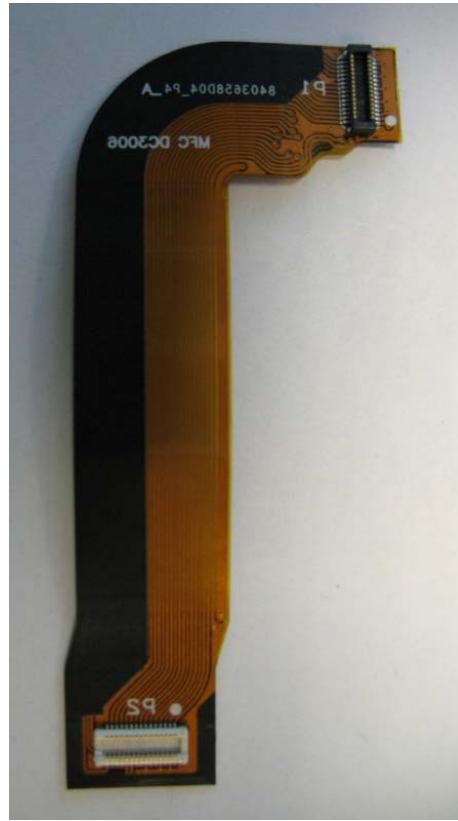
Numeric Keypad  
PCB



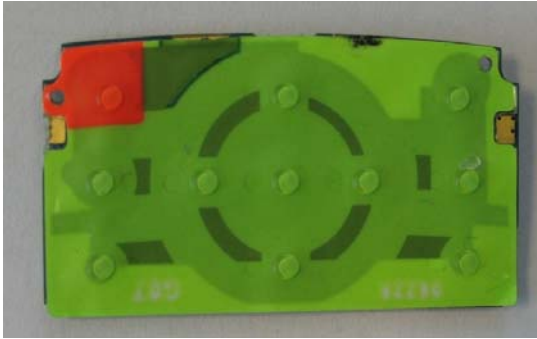
Keypad Flex PCB  
(front)



Dynamic flex PCB  
(front)



Dynamic flex PCB  
(rear)



Navigation PCB (front)



Navigation PCB (rear)



Speaker Grille



Audio Endo Assembly