




**MOTOROLA**

**Portable Cellular Phone SAR Test Report**

**Test Report #:** 20241-3F  
**Date of Report:** April 12, 2007  
**Date of Test:** March 9 – April 6, 2007  
**FCC ID #:** **IHDT56HM1**  
**Generic Name:** **MQ4-4411C12**  
**Laboratory:** Motorola Mobile Devices Business Product Safety & Compliance Laboratory  
 600 N. US Highway 45  
 Libertyville, Illinois 60048

**Report Author:** Katerina Royzen  
 Engineer  


This laboratory is accredited to ISO/IEC 17025-1999 to perform the following tests:

Tests:  
 Electromagnetic Specific Absorption Rate

Procedures:  
 IEC 62209-1  
 RSS-102  
 IEEE 1528 - 2003  
 FCC OET Bulletin 65 (*including Supplement C*)  
 Australian Communications Authority Radio  
 Communications (Electromagnetic Radiation – Human  
 Exposure) Standard 2003  
 CENELEC EN 50360 (2001)  
 CENELEC EN 50361 (2001)  
 ARIB Std. T-56 (2002)

**Accreditation:**



On the following products or types of products:

On the following products or types of products: Wireless Communications Devices (Examples): Two Way Radios; Portable Phones (including Cellular, Licensed Non-Broadcast and PCS); Low Frequency Readers; and Pagers

A2LA certificate #2518-02

**Statement of Compliance:**

Motorola declares under its sole responsibility that the portable cellular telephone model to which this declaration relates, is in conformity with the appropriate General Population/Uncontrolled RF exposure standards, recommendations and guidelines (FCC 47 CFR §2.1093) as well as with CENELEC en50360:2001 and ANSI / IEEE C95.1. It also declares that the product was tested in accordance with CENELEC en50361:2001, IEEE 1528, as well as other appropriate measurement standards, guidelines and recommended practices. Any deviations from these standards, guidelines and recommended practices are noted below:

(none)

©Motorola, Inc. 2007

This test report shall not be reproduced except in full, without written approval of the laboratory.

The results and statements contained herein relate only to the items tested. The names of individuals involved may be mentioned only in connection with the statements or results from this report.

Motorola encourages all feedback, both positive and negative, on this test report.

**Table of Contents**

<b>1. Introduction</b>	<b>2</b>
<b>2. Description of the Device Under Test</b>	<b>2</b>
2.1 Antenna description	2
2.2 Device description	2
<b>3. Test Equipment Used</b>	<b>3</b>
3.1 Dosimetric System	3
3.2 Additional Equipment	3
<b>4. Electrical parameters of the tissue simulating liquid</b>	<b>4</b>
<b>5. System Accuracy Verification</b>	<b>5</b>
<b>6. Test Results</b>	<b>6</b>
6.1 Head Adjacent Test Results	6
6.2 Body Worn Test Results	10
<b>References</b>	<b>13</b>
<b>Appendix 1: SAR distribution comparison for system accuracy verification</b>	<b>14</b>
<b>Appendix 2: SAR distribution plots for Phantom Head Adjacent Use</b>	<b>15</b>
<b>Appendix 3: SAR distribution plots for Body Worn Configuration</b>	<b>16</b>
<b>Appendix 4: Probe Calibration Certificate</b>	<b>17</b>
<b>Appendix 5: Measurement Uncertainty Budget</b>	<b>18</b>
<b>Appendix 6: Photographs of the device under test</b>	<b>20</b>
<b>Appendix 7: Dipole Characterization Certificate</b>	<b>24</b>

**1. Introduction**

The Motorola Mobile Devices Business Product Safety Laboratory has performed measurements of the maximum potential exposure to the user of the portable cellular phone covered by this test report. The Specific Absorption Rate (SAR) of this product was measured. The portable cellular phone was tested in accordance with [1], [4] and [5]. The SAR values measured for the portable cellular phone are below the maximum recommended levels of 1.6 W/kg in a 1g average set in [3] and 2.0W/kg in a 10g average set in [2].

**2. Description of the Device Under Test**

**2.1 Antenna description**

<b>Type</b>	Internal Antenna	
<b>Location</b>	Bottom of Transceiver	
<b>Dimensions</b>	Length	85.0 mm
	Width	1.0 mm
<b>Configuration</b>	FJA	

**2.2 Device description**

<b>Serial Number</b>	LCE0710001											
<b>Mode(s) of Operation</b>	GSM 850	GSM 900	GSM 1800	GSM 1900	GPRS 850	GPRS 900	GPRS 1800	GPRS 1900	EDGE 850	EDGE 900	EDGE 1800	EDGE 1900
<b>Modulation Mode(s)</b>	GSMK	GSMK	GSMK	GSMK	GSMK	GSMK	GSMK	GSMK	8PSK	8PSK	8PSK	8PSK
<b>Maximum Output Power Setting</b>	33.0 dBm	33.0 dBm	30.0 dBm	30.0 dBm	33.0 dBm	33.0 dBm	30.00 dBm	30.00 dBm	29.0 dBm	29.0 dBm	28.0 dBm	28.0 dBm
<b>Duty Cycle</b>	1:8	1:8	1:8	1:8	2:8	2:8	2:8	2:8	2:8	2:8	2:8	2:8
<b>Transmitting Frequency Rang(s)</b>	824-849 MHz	880-915 MHz	1710-1785 MHz	1850-1910 MHz	824-849 MHz	880-915 MHz	1710-1785 MHz	1850-1910 MHz	880-915 MHz	880-915 MHz	1710-1785 MHz	1850-1910 MHz
<b>Production Unit or Identical Prototype (47 CFR §2.908)</b>	Identical Prototype											
<b>Device Category</b>	Portable											
<b>RF Exposure Limits</b>	General Population / Uncontrolled											

### 3. Test Equipment Used

#### 3.1 Dosimetric System

The Motorola Mobile Devices Business Product Safety & Compliance Laboratory utilizes a Dosimetric Assessment System (Dasy4™ v4.6) manufactured by Schmid & Partner Engineering AG (SPEAG™), of Zurich Switzerland. All the SAR measurements are taken within a shielded enclosure. The overall 10g RSS uncertainty of the measurement system is ±10.8% (K=1) with an expanded uncertainty of ±21.6% (K=2). The overall 1g RSS uncertainty of the measurement system is ±11.1% (K=1) with an expanded uncertainty of ±22.2% (K=2). The measurement uncertainty budget is given in Appendix 6. Per IEEE 1528, this uncertainty budget is applicable to the SAR range of 0.4W/kg to 10W/kg.

The list of calibrated equipment used for the measurements is shown in the following table.

Description	Serial Number	Cal Due Date
DASY4™ DAE3 V1	SN 437	7/18/2007
E-Field Probe ET3DV6	SN 1514	7/17/2007
Dipole Validation Kit, DV900V2	96	5/22/2007
S.A.M. Phantom used for 800/900MHz	TP-1131	
Dipole Validation Kit, DV1800V2	272tr	
S.A.M. Phantom used for 1800/1900/2450MHz	TP-1250	

#### 3.2 Additional Equipment

Description	Serial Number	Cal Due Date
Signal Generator HP8648C	3847A04633	7/7/2007
Power Meter E4419B	GB39511087	7/5/2007
Power Sensor #1 – E9301A	MY41495336	6/28/2007
Power Sensor #2 - E9301A	US39210918	8/17/2007
Network Analyzer HP8753ES	US39172529	9/26/2007
Dielectric Probe Kit HP85070C	US99360070	

**4. Electrical parameters of the tissue simulating liquid**

Prior to conducting SAR measurements, the relative permittivity,  $\epsilon_r$ , and the conductivity,  $\sigma$ , of the tissue simulating liquids were measured with a HP85070 Dielectric Probe Kit. These values, along with the temperature of the simulated tissue are shown in the table below. The recommended limits for permittivity and conductivity are also shown. A mass density of  $\rho=1\text{g/cm}^3$  was entered into the system in all the cases. It can be seen that the measured parameters are within tolerance of the recommended limits specified in [1] and [5].

f (MHz)	Tissue type	Limits / Measured	Dielectric Parameters		
			$\epsilon_r$	$\sigma$ (S/m)	Temp (°C)
835	Head	Measured, 3/09/2007	41.8	0.91	19.5
		Measured, 3/10/2007	41.3	0.90	20.5
		Measured, 3/12/2007	40.6	0.90	20.0
		Recommended Limits	41.5 ±5%	0.90 ±5%	18-25
	Body	Measured, 3/26/2007	55.2	0.98	19.3
		Recommended Limits	55.2 ±5%	0.97 ±5%	18-25
900	Head	Measured, 3/10/2007	40.6	0.96	19.2
		Measured, 3/11/2007	40.5	0.96	19.4
		Measured, 3/21/2007	42.2	0.99	20.5
		Recommended Limits	42.3 ±5%	0.99 ±5%	18-25
	Body	Measured, 3/20/2007	54.3	1.04	19.2
		Recommended Limits	55.0 ±5%	1.05 ±5%	18-25
1750	Head	Measured, 4/3/2007	39.2	1.31	18.9
		Measured, 4/4/2007	39.3	1.30	18.3
		Recommended Limits	40.1 ±5%	1.35 ±5%	18-25
	Body	Measured, 4/6/2007	51.2	1.42	18.4
		Recommended Limits	53.4 ±5%	1.49 ±5%	18-25
1880	Head	Measured, 4/4/2007	38.7	1.45	18.9
		Recommended Limits	40.0 ±5%	1.40 ±5%	18-25
	Body	Measured, 4/5/2007	50.8	1.59	19.1
		Recommended Limits	53.3 ±5%	1.52 ±5%	18-25

The list of ingredients and the percent composition used for the tissue simulates are indicated in the table below.

Ingredient	835MHz / 900 MHz	835MHz / 900 MHz	1800MHz / 1900 MHz	1800 MHz / 1900 MHz	2450MHz	2450 MHz
	Head	Body	Head	Body	Head	Body
Sugar	57	44.9	--	--	--	--
DGBE	--	--	47	30.8	--	30
Diacetin	--	--	--	--	51	
Water	40.45	53.06	52.62	68.8	48.75	70
Salt	1.45	0.94	0.38	0.4	0.15	--
HEC	1	1	--	--	--	--
Bact.	0.1	0.1	--	--	0.1	--

**5. System Accuracy Verification**

A system accuracy verification of the DASY4™ was performed using the measurement equipment listed in Section 3.1. The daily system accuracy verification occurs within the flat section of the SAM phantom.

A SAR measurement was performed to verify the measured SAR was within ±10% from the target SAR indicated in Section 8.3.7 Reference SAR Values in [5] or Appendix 7 for the 900MHz. These tests were done at 900MHz, 1800MHz. These frequencies are within ±10% of the compliance test mid-band frequency as required in [1] and [5]. The test was conducted on the same days as the measurement of the DUT. Recommended limits for permittivity and conductivity, specified in [5], are shown in the table below. The obtained results from the system accuracy verification are also displayed in the table below. SAR values are normalized to 1W forward power delivered to the dipole. It is seen that the system is operating within its specification, as the results are within acceptable tolerance of the reference values. The distributions of SAR compare well with those of the reference measurements (see Appendix 1). The tissue stimulant depth was verified to be 15.0cm ±0.5cm. Z-axis scans showing the SAR penetration are also included in Appendix 1.

f (MHz)	Description	SAR (W/kg), 1gram	Dielectric Parameters		Ambient Temp (°C)	Tissue Temp (°C)
			ε <sub>r</sub>	σ (S/m)		
900	Measured, 3/9/2007	11.1	41.1	0.97	21.4	19.1
	Measured, 3/10/2007	11.2	40.6	0.96	21.0	20.5
	Measured, 3/11/2007	11.0	40.5	0.96	21.0	20.5
	Measured, 3/12/2007	11.1	39.8	0.96	21.0	19.8
	Measured, 3/20/2007	11.5	42.2	1.00	20.6	19.2
	Measured, 3/21/2007	11.4	42.2	0.99	21.1	19.4
	Measured, 3/26/2007	11.0	41.4	0.98	21.1	19.3
	Recommended Limits	11.3	41.5 ±5%	0.97 ±5%	18-25	18-25
1800	Measured, 4/3/2007	38.6	38.8	1.37	21.0	19.3
	Measured, 4/4/2007	37.1	39.1	1.36	20.8	18.9
	Measured, 4/5/2007	37.8	38.9	1.37	20.7	19.1
	Measured, 4/6/2007	37.4	38.7	1.35	20.7	19.2
	Recommended Limits	38.1	40.0 ±5%	1.4 ±5%	18-25	18-25

The following probe conversion factors were used on the E-Field probe(s) used for the system accuracy verification measurements:

Description	Serial Number	f (MHz)	Conversion Factor	Cal Cert pg #
E-Field Probe ET3DV6	SN 1514	900	5.99	8 of 9
		1810	5.05	8 of 9

**6. Test Results**

The test sample was operated using an actual transmission through a base station simulator. The base station simulator was setup to the proper channel, transmitter power level and transmit mode of operation. The phone was tested in the configurations stipulated in [1], [4] and [5]. The phone was positioned into these configurations using the device holder supplied with the DASY4™ SAR measurement system. The measured dielectric constant of the material used for the device holder is less than 2.9 and the loss tangent is less than 0.02 (± 30%) at 850MHz. The default settings for the “coarse” and “cube” scans were chosen and used for measurements. The grid spacing of the course scan was set to 15cm as shown in the SAR plots included in Appendix 2 and 3. Please refer to the DASY manual for additional information on SAR scanning procedures and algorithms used.

The Cellular Phone model covered by this report has the following battery options:

SNN5781B - 880 mAH Battery

SNN5779B - 750 mAH Battery

The battery with the highest capacity is the SNN5781B. This battery was used to do most of the SAR testing. The phone was placed in the SAR measurement system with a fully charged battery. The configuration that resulted in the highest SAR values were tested using the other batteries listed above.

**6.1 Head Adjacent Test Results**

The SAR results shown in tables 1 through 7 are maximum SAR values averaged over 1 gram of phantom tissue, to demonstrate compliance to [3] and also over 10 grams of phantom tissue, to demonstrate compliance to the [6]. Also shown are the measured conducted output power levels, the temperature of the simulated tissue after the test, the measured drift and the extrapolated SAR. The exact method of extrapolation is  $New\ SAR = Old\ SAR * 10^{(-drift/10)}$ . The SAR reported at the end of the measurement process by the DASY4™ measurement system can be scaled up by the measured drift to determine the SAR at the beginning of the measurement process. This is the most conservative SAR because it corresponds to the average output power at the beginning of the SAR test. This extrapolation has been done because when the DUT is operating properly it may exhibit a slump in radiated power and SAR over time. This is verified by measuring the SAR drift after the test.

The left head and right head SAR contour distributions are similar. Because of this similarity, the cheek/touch and 15° tilt test conditions with the highest SAR values in each band are indicated as bold numbers in the following tables and are included in Appendix 2. All other test conditions measured lower SAR values than those included in Appendix 2.

The SAR measurements were performed using the SAM phantoms listed in section 3.1. Since the same phantoms and simulated tissue were used for the system accuracy verification and the device SAR measurements, the Z-axis scans included in Appendix 1 are applicable for verification of simulated tissue depth to be 15.0cm ±0.5cm.

The following probe conversion factors were used on the E-Field probe(s) used for the head adjacent measurements:

Description	Serial Number	f (MHz)	Conversion Factor	Cal Cert pg #
E-Field Probe ET3DV6	SN 1514	900	5.99	8 of 9
		1810	5.05	8 of 9

Left Head Cheek Position								
f (MHz)	Description	Conducted Output Power (dBm)	Temp (°C)	Drift (dB)	10g SAR value		1g SAR value	
					Measured (W/kg)	Extrapolated (W/kg)	Measured (W/kg)	Extrapolated (W/kg)
850MHz	Channel 128	32.94	19.6	0.09	0.471	0.47	0.820	0.82
	Channel 190	32.96	19.8	-0.12	0.670	0.69	1.17	1.20
	Channel 251	32.93	18.7	0.01	0.637	0.64	1.15	1.15
1900MHz	Channel 512	29.96						
	Channel 661	29.96	19.1	-0.38	0.242	0.26	0.402	0.44
	Channel 810	30.00						

Table 1: SAR measurement results at the highest possible output power, measured in a head cheek position against the ICNIRP and ANSI SAR Limit.

Right Head Cheek Position								
f (MHz)	Description	Conducted Output Power (dBm)	Temp (°C)	Drift (dB)	10g SAR value		1g SAR value	
					Measured (W/kg)	Extrapolated (W/kg)	Measured (W/kg)	Extrapolated (W/kg)
850MHz	Channel 128	32.94	19.1	-0.00	0.487	0.49	0.829	0.83
	Channel 190	32.96	19.2	-0.02	0.702	0.71	1.18	1.19
	Channel 251	32.93	18.7	0.04	0.651	0.65	1.10	1.10
1900MHz	Channel 512	29.96						
	Channel 661	29.96	18.9	-0.07	0.287	0.29	0.440	0.45
	Channel 810	30.00						

Table 2: SAR measurement results at the highest possible output power, measured in a head cheek position against the ICNIRP and ANSI SAR Limit.

Left Head 15° Tilt Position								
f (MHz)	Description	Conducted Output Power (dBm)	Temp (°C)	Drift (dB)	10g SAR value		1g SAR value	
					Measured (W/kg)	Extrapolated (W/kg)	Measured (W/kg)	Extrapolated (W/kg)
850MHz	Channel 128	32.94						
	Channel 190	32.96	19.5	0.07	0.166	0.17	0.215	0.22
	Channel 251	32.93						
1900MHz	Channel 512	29.96						
	Channel 661	29.96	18.9	0.02	0.182	0.18	0.297	0.30
	Channel 810	30.00						

Table 3: SAR measurement results at the highest possible output power, measured in a head 15° Tilt position against the ICNIRP and ANSI SAR Limit.

Right Head 15° Tilt Position								
f (MHz)	Description	Conducted Output Power (dBm)	Temp (°C)	Drift (dB)	10g SAR value		1g SAR value	
					Measured (W/kg)	Extrapolated (W/kg)	Measured (W/kg)	Extrapolated (W/kg)
850MHz	Channel 128	32.94						
	Channel 190	32.96	19.5	0.06	0.185	0.19	0.238	0.24
	Channel 251	32.93						
1900MHz	Channel 512	29.96						
	Channel 661	29.96	18.9	-0.14	0.163	0.17	0.262	0.27
	Channel 810	30.00						

Table 4: SAR measurement results at the highest possible output power, measured in a head 15° Tilt position against the ICNIRP and ANSI SAR Limit.

Highest Head with SNN5779B battery								
f (MHz)	Description	Conducted Output Power (dBm)	Temp (°C)	Drift (dB)	10g SAR value		1g SAR value	
					Measured (W/kg)	Extrapolated (W/kg)	Measured (W/kg)	Extrapolated (W/kg)
850MHz	Channel 128	32.94	19.8	-0.05	0.454	0.46	0.775	0.78
	Channel 190	32.96	20.5	-0.06	0.796	0.81	1.41	1.43
	Channel 251	32.93	19.8	-0.01	0.622	0.62	1.07	1.07
1900MHz	Channel 512	29.96						
	Channel 661	29.96	18.9	0.07	0.305	0.31	0.469	0.47
	Channel 810	30.00						

Table 5: SAR measurement results at the highest possible output power, measured in a head cheek position against the ICNIRP and ANSI SAR Limit.

PTT with GPRS Class 10 ( 25mm away from flat phantom )								
f (MHz)	Description	Conducted Output Power (dBm)	Temp (°C)	Drift (dB)	10g SAR value		1g SAR value	
					Measured (W/kg)	Extrapolated (W/kg)	Measured (W/kg)	Extrapolated (W/kg)
850MHz	Channel 128	32.94						
	Channel 190	32.96	20.0	0.01	0.295	0.30	0.402	0.40
	Channel 251	32.93						
1900MHz	Channel 512	29.96						
	Channel 661	29.96	18.9	-0.44	0.221	0.24	0.344	0.38
	Channel 810	30.00						

Table 6: SAR measurement results at the highest possible output power, measured in PTT position against the ICNIRP and ANSI SAR Limit.

PTT with EDGE Class 10 ( 25mm away from the flat phantom )								
f (MHz)	Description	Conducted Output Power (dBm)	Temp (°C)	Drift (dB)	10g SAR value		1g SAR value	
					Measured (W/kg)	Extrapolated (W/kg)	Measured (W/kg)	Extrapolated (W/kg)
850MHz	Channel 128	28.82						
	Channel 190	28.90	20.0	-0.02	0.147	0.15	0.201	0.20
	Channel 251	28.90						
1900MHz	Channel 512	27.94						
	Channel 661	27.87	19.1	-0.42	0.079	0.09	0.124	0.14
	Channel 810	27.99						

Table 7: SAR measurement results at the highest possible output power, measured in PTT position against the ICNIRP and ANSI SAR Limit.

**6.2 Body Worn Test Results**

The SAR results shown in tables 8 through 12 are maximum SAR values averaged over 1 gram of phantom tissue, to demonstrate compliance to [3] and also over 10 grams of phantom tissue, to demonstrate compliance to the [6]. Also shown are the measured conducted output power levels, the temperature of the test facility during the test, the temperature of the tissue simulate after the test, the measured drift and the extrapolated SAR. The exact method of extrapolation is  $New\ SAR = Old\ SAR * 10^{(-drift/10)}$ . The SAR reported at the end of the measurement process by the DASY4™ measurement system can be scaled up by the measured drift to determine the SAR at the beginning of the measurement process. This is the most conservative SAR because it corresponds to the average output power at the beginning of the SAR test. This extrapolation has been done because when the DUT is operating properly it may exhibit a slump in radiated power and SAR over time. This is verified by measuring the SAR drift after the test.

The test conditions that produced the highest SAR values in each band are indicated as bold numbers in the following tables and are included in Appendix 3. All other test conditions measured lower SAR values than those included in Appendix 3.

A “flat” phantom was for the body-worn tests. This “flat” phantom is made out of 1” thick natural High Density Polyethylene with a thickness at the bottom equal to 2.0mm. It measures 52.7cm(long) x 26.7cm(wide) x 21.2cm(tall). The measured dielectric constant of the material used is less than 2.3 and the loss tangent is less than 0.0046 all the way up to 2.184GHz.

The tissue stimulant depth was verified to be 15.0cm ±0.5cm. The same device holder described in section 6 was used for positioning the phone. The functional accessories were divided into two categories, the ones with metal components and the ones with non-metal components. For non-metallic component accessories’, testing was performed on the accessory that displayed the closest proximity to the flat phantom. Each metallic component accessory, if any, was checked for uniqueness of metal component so that each is tested with the device. If multiple accessories shared an identical metal component, only the accessory that dictates the closest spacing to the body was tested. In addition to accessory testing, the cellular phone was tested with the front and back of the phone facing the phantom. For voice mode operation, the phone was placed as a distance of 15mm from the phantom. For data mode operation, the phone was placed as a distance of 25mm from the phantom. The cellular phone was tested with a headset connected to the device for all body-worn SAR measurements.

The following probe conversion factors were used on the E-Field probe(s) used for the body worn measurements:

Description	Serial Number	f (MHz)	Conversion Factor	Cal Cert pg #
E-Field Probe ET3DV6	SN 1514	900	5.99	8 of 9
		1810	5.05	8 of 9

Body-Worn; Front of Phone 15mm from Phantom								
f (MHz)	Description	Conducted Output Power (dBm)	Temp (°C)	Drift (dB)	10g SAR value		1g SAR value	
					Measured (W/kg)	Extrapolated (W/kg)	Measured (W/kg)	Extrapolated (W/kg)
850MHz	Channel 128	32.94						
	Channel 190	32.96	20.0	-0.06	0.156	0.16	0.219	0.22
	Channel 251	32.93						
1900MHz	Channel 512	29.96						
	Channel 661	29.96	19.1	-0.00	0.057	0.06	0.090	0.09
	Channel 810	30.00						

Table 8: SAR measurement results at the highest possible output power, measured in a body-worn position against the ICNIRP and ANSI SAR Limit.

Body-Worn; Back of Phone 15mm from Phantom								
f (MHz)	Description	Conducted Output Power (dBm)	Temp (°C)	Drift (dB)	10g SAR value		1g SAR value	
					Measured (W/kg)	Extrapolated (W/kg)	Measured (W/kg)	Extrapolated (W/kg)
850MHz	Channel 128	32.94						
	Channel 190	32.96	19.3	-0.07	0.479	0.49	0.701	0.71
	Channel 251	32.93						
1900MHz	Channel 512	29.96						
	Channel 661	29.96	19.1	-0.18	0.112	0.12	0.190	0.20
	Channel 810	30.00						

Table 9: SAR measurement results at the highest possible output power, measured in a body-worn position against the ICNIRP and ANSI SAR Limit.

Body-Worn GPRS Class 10: Highest Body 25mm away								
f (MHz)	Description	Conducted Output Power (dBm)	Temp (°C)	Drift (dB)	10g SAR value		1g SAR value	
					Measured (W/kg)	Extrapolated (W/kg)	Measured (W/kg)	Extrapolated (W/kg)
850MHz	Channel 128	32.94						
	Channel 190	32.96	19.3	-0.07	0.252	0.26	0.353	0.36
	Channel 251	32.93						
1900MHz	Channel 512	29.96						
	Channel 661	29.96	19.1	-0.01	0.086	0.09	0.143	0.14
	Channel 810	30.00						

Table 10: SAR measurement results at the highest possible output power, measured in a body-worn position against the ICNIRP and ANSI SAR Limit.

Body-Worn EDGE Class 10: Highest Body 25mm away								
<i>f</i> (MHz)	Description	Conducted Output Power (dBm)	Temp (°C)	Drift (dB)	<i>10g SAR value</i>		<i>1g SAR value</i>	
					Measured (W/kg)	Extrapolated (W/kg)	Measured (W/kg)	Extrapolated (W/kg)
850MHz	Channel 128	28.82						
	Channel 190	28.90	19.3	-0.09	0.120	0.12	0.167	0.17
	Channel 251	28.90						
1900MHz	Channel 512	27.94						
	Channel 661	27.87	19.1	0.05	0.073	0.07	0.118	0.12
	Channel 810	27.99						

Table 11: SAR measurement results at the highest possible output power, measured in a body-worn position against the ICNIRP and ANSI SAR Limit.

Highest Body with SNN5779B battery								
<i>f</i> (MHz)	Description	Conducted Output Power (dBm)	Temp (°C)	Drift (dB)	<i>10g SAR value</i>		<i>1g SAR value</i>	
					Measured (W/kg)	Extrapolated (W/kg)	Measured (W/kg)	Extrapolated (W/kg)
850MHz	Channel 128	32.94						
	Channel 190	32.96	19.3	-0.02	0.499	0.50	0.726	0.73
	Channel 251	32.93						
1900MHz	Channel 512	29.96						
	Channel 661	29.96	19.1	-0.32	0.102	0.11	0.173	0.19
	Channel 810	30.00						

Table 12: SAR measurement results at the highest possible output power, measured in a body-worn position against the ICNIRP and ANSI SAR Limit.

## References

- [1] CENELEC, en50361:2001 “Basic standard for the measurement of Specific Absorption Rate related to human exposure to electromagnetic fields from mobile phones (300MHz – 3GHz)”
- [2] CENELEC, en50360:2001 “Product standard to demonstrate the compliance of mobile phones with the basic restrictions related to human exposure to electromagnetic fields (300MHz – 3GHz)”.
- [3] ANSI / IEEE, C95.1 1999 Edition “IEEE Standard for Safety Levels with Respect to Human Exposure to Radio Frequency Electromagnetic Fields, 3kHz to 300GHz”
- [4] FCC OET Bulletin 65 Supplement C 01-01
- [5] IEEE 1528 2003 Edition “IEEE Recommended Practice for Determining the Peak Spatial-Average Specific Absorption Rate (SAR) in the Human Head from Wireless Communications Devices: Measurement Techniques”
- [6] ICNIRP Guidelines “Guidelines for Limiting Exposure to Time-Varying Electric, Magnetic, and Electromagnetic Fields (up to 300 GHz)”

## **Appendix 1**

### **SAR distribution comparison for the system accuracy verification**

Date/Time: 3/9/2007 5:37:19 PM

**DUT: Dipole 900 MHz; Type: D900V2;** Procedure Notes: 900 MHz System Performance Check /  
 Dipole Sn# 96; PM1 Power = 200 mW;  
 Sim.Temp@ meas = 20.7°C; Sim.Temp@ SPC = 19.1°C; Room Temp@ SPC = 21.4°C

Communication System: CW - Dipole; Frequency: 900 MHz; Duty Cycle: 1:1  
 Medium: VALIDATION Only; Medium parameters used:  $f = 900$  MHz;  $\sigma = 0.97$  mho/m;  $\epsilon_r = 41.1$ ;  $\rho = 1000$  kg/m<sup>3</sup>

DASY4 Configuration:

- Probe: ET3DV6 - SN1514; ConvF(5.99, 5.99, 5.99); Calibrated: 7/17/2006
- Sensor-Surface: 4mm (Mechanical Surface Detection)
- Electronics: DAE3 Sn437; Calibrated: 7/18/2006
- Phantom: R4: Sugar Water SAM; Type: SAM; Serial: TP-1131;
- Measurement SW: DASY4, V4.7 Build 44; Postprocessing SW: SEMCAD, V1.8 Build 172

**Daily SPC Check/Dipole Area Scan (4x9x1):**

Measurement grid: dx=15mm, dy=15mm  
 Maximum value of SAR (measured) = 2.38 mW/g

**Daily SPC Check/0-Degree 5x5x7 Cube (5x5x7)/Cube 0:**

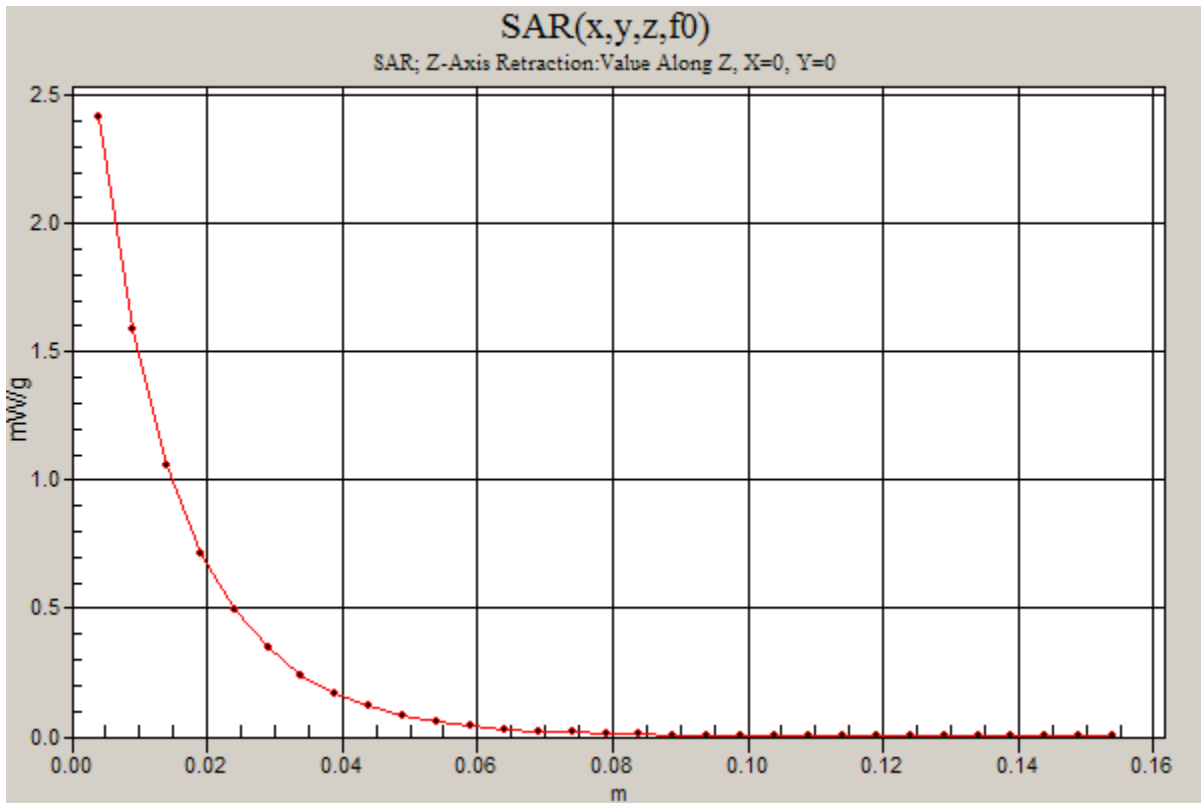
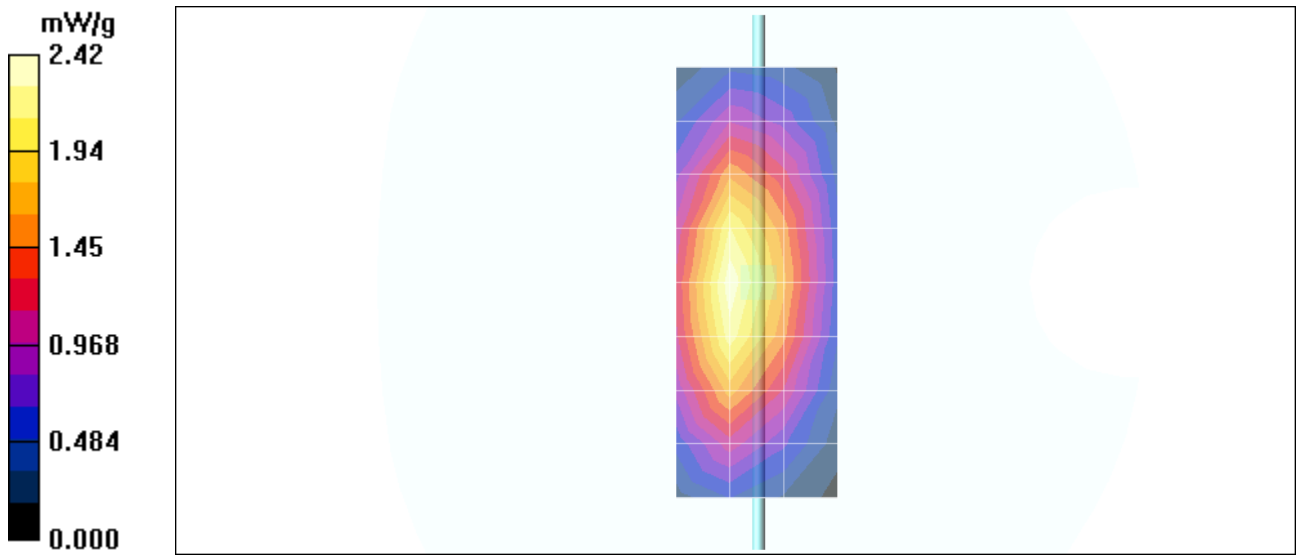
Measurement grid: dx=8mm, dy=8mm, dz=5mm  
 Reference Value = 50.2 V/m; Power Drift = -0.019 dB  
 Peak SAR (extrapolated) = 3.36 W/kg  
**SAR(1 g) = 2.22 mW/g; SAR(10 g) = 1.42 mW/g**  
 Maximum value of SAR (measured) = 2.41 mW/g

**Daily SPC Check/90-Degree 5x5x7 Cube (5x5x7)/Cube 0:**

Measurement grid: dx=8mm, dy=8mm, dz=5mm  
 Reference Value = 50.2 V/m; Power Drift = -0.019 dB  
 Peak SAR (extrapolated) = 3.35 W/kg  
**SAR(1 g) = 2.22 mW/g; SAR(10 g) = 1.42 mW/g**  
 Maximum value of SAR (measured) = 2.40 mW/g

**Daily SPC Check/Z-Axis Retraction (1x1x31):**

Measurement grid: dx=20mm, dy=20mm, dz=5mm  
 Maximum value of SAR (measured) = 2.42 mW/g



Date/Time: 3/10/2007 7:29:54 PM

**DUT: Dipole 900 MHz; Type: D900V2;** Procedure Notes: 900MHz System Performance Check /  
 Dipole Sn# 96; PM1 Power = 200 mW  
 Sim.Temp@ meas = 20.5°C; Sim.Temp@ SPC = 20.5°C; Room Temp@ SPC = 21.0°C

Communication System: CW - Dipole; Frequency: 900 MHz; Duty Cycle: 1:1  
 Medium: VALIDATION Only; Medium parameters used:  $f = 900$  MHz;  $\sigma = 0.96$  mho/m;  $\epsilon_r = 40.6$ ;  $\rho = 1000$  kg/m<sup>3</sup>

DASY4 Configuration:

- Probe: ET3DV6 - SN1514; ConvF(5.99, 5.99, 5.99); Calibrated: 7/17/2006
- Sensor-Surface: 4mm (Mechanical Surface Detection)
- Electronics: DAE3 Sn437; Calibrated: 7/18/2006
- Phantom: R#4 Sugar SAM (extended range), Rev.1 (25-Mar-05); Type: SAM v4.0; Serial: TP-1131;
- Measurement SW: DASY4, V4.7 Build 44; Postprocessing SW: SEMCAD, V1.8 Build 172

**Daily SPC Check/Dipole Area Scan (4x9x1):**

Measurement grid: dx=15mm, dy=15mm  
 Maximum value of SAR (measured) = 2.30 mW/g

**Daily SPC Check/0-Degree 5x5x7 Cube (5x5x7)/Cube 0:**

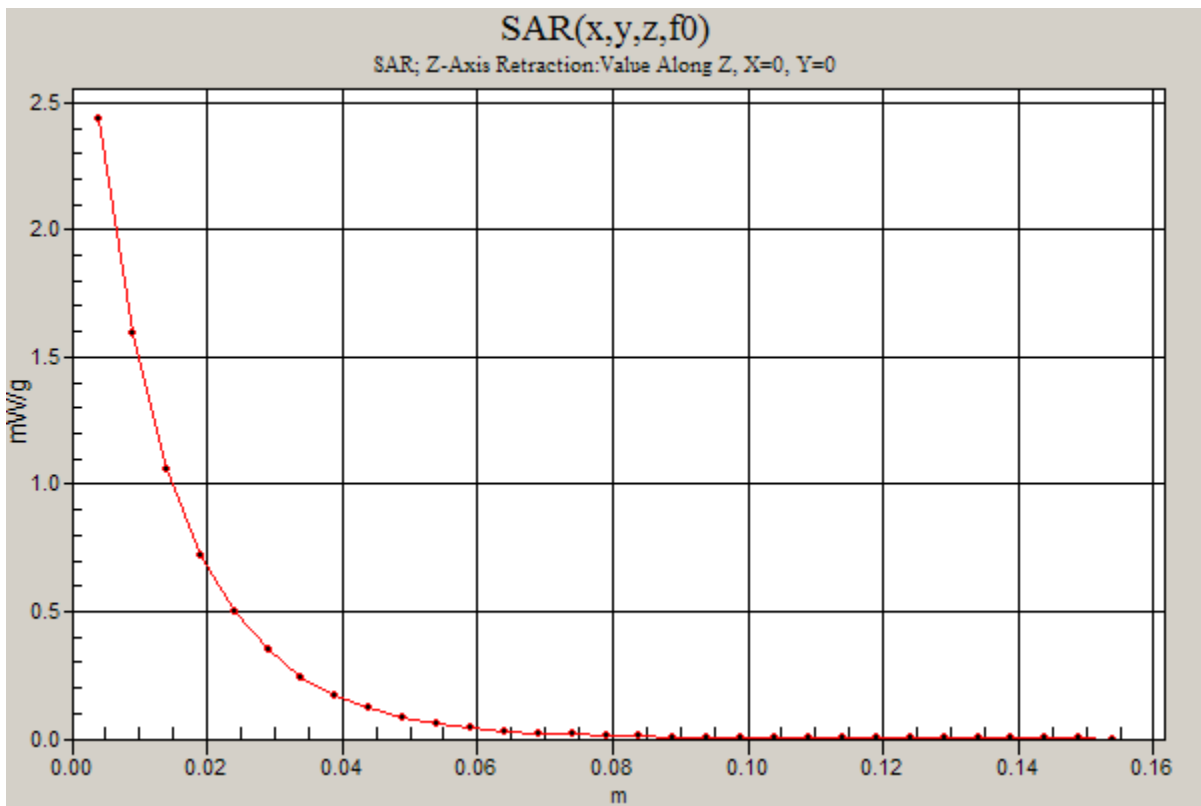
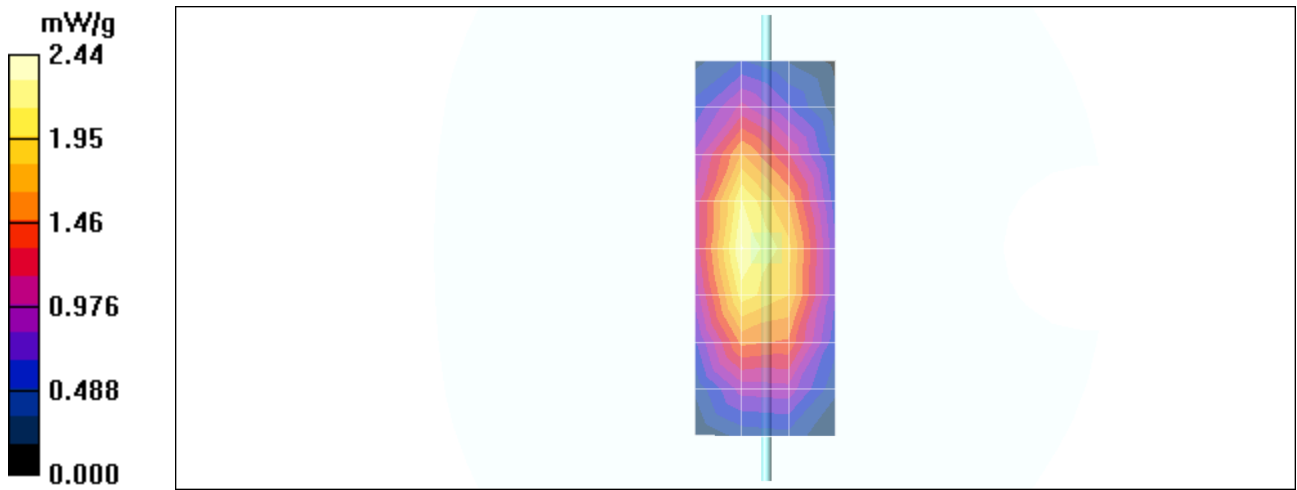
Measurement grid: dx=8mm, dy=8mm, dz=5mm  
 Reference Value = 52.1 V/m; Power Drift = -0.071 dB  
 Peak SAR (extrapolated) = 3.44 W/kg  
**SAR(1 g) = 2.25 mW/g; SAR(10 g) = 1.43 mW/g**  
 Maximum value of SAR (measured) = 2.45 mW/g

**Daily SPC Check/90-Degree 5x5x7 Cube (5x5x7)/Cube 0:**

Measurement grid: dx=8mm, dy=8mm, dz=5mm  
 Reference Value = 52.1 V/m; Power Drift = -0.071 dB  
 Peak SAR (extrapolated) = 3.41 W/kg  
**SAR(1 g) = 2.24 mW/g; SAR(10 g) = 1.43 mW/g**  
 Maximum value of SAR (measured) = 2.41 mW/g

**Daily SPC Check/Z-Axis Retraction (1x1x31):**

Measurement grid: dx=20mm, dy=20mm, dz=5mm  
 Maximum value of SAR (measured) = 2.44 mW/g



Date/Time: 3/11/2007 7:30:30 PM

**DUT: Dipole 900 MHz; Type: D900V2;** Procedure Notes: 900 MHz System Performance Check /  
 Dipole Sn# 96; PM1 Power = 200 mW  
 Sim.Temp@ meas =20.2\*C; Sim.Temp@ SPC =20.5\*C; Room Temp@ SPC =21\*C

Communication System: CW - Dipole; Frequency: 900 MHz; Duty Cycle: 1:1  
 Medium: VALIDATION Only; Medium parameters used:  $f = 900$  MHz;  $\sigma = 0.96$  mho/m;  $\epsilon_r = 40.5$ ;  $\rho = 1000$  kg/m<sup>3</sup>

DASY4 Configuration:

- Probe: ET3DV6 - SN1514; ConvF(5.99, 5.99, 5.99); Calibrated: 7/17/2006
- Sensor-Surface: 4mm (Mechanical Surface Detection)
- Electronics: DAE3 Sn437; Calibrated: 7/18/2006
- Phantom: R#4 Sugar SAM (extended range), Rev.1 (25-Mar-05); Type: SAM v4.0; Serial: TP-1131;
- Measurement SW: DASY4, V4.7 Build 44; Postprocessing SW: SEMCAD, V1.8 Build 172

**Daily SPC Check/Dipole Area Scan (4x9x1):**

Measurement grid: dx=15mm, dy=15mm  
 Maximum value of SAR (measured) = 2.12 mW/g

**Daily SPC Check/0-Degree 5x5x7 Cube (5x5x7)/Cube 0:**

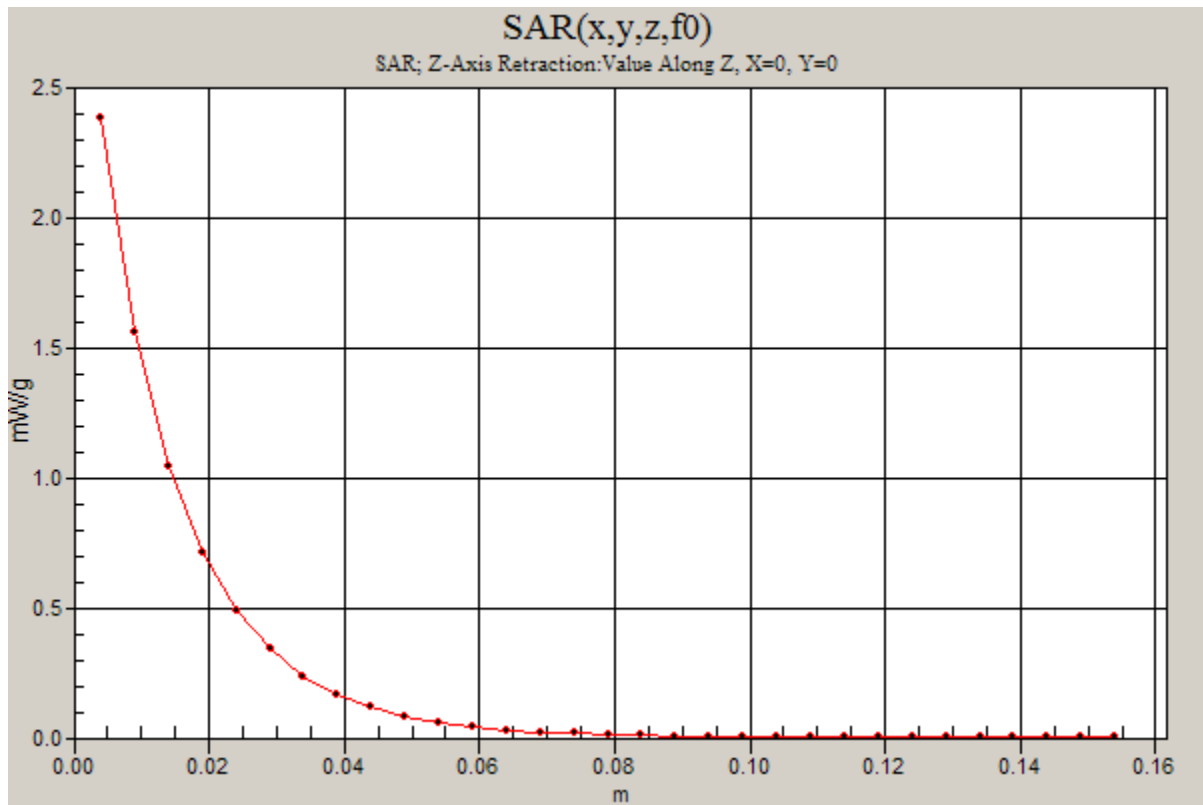
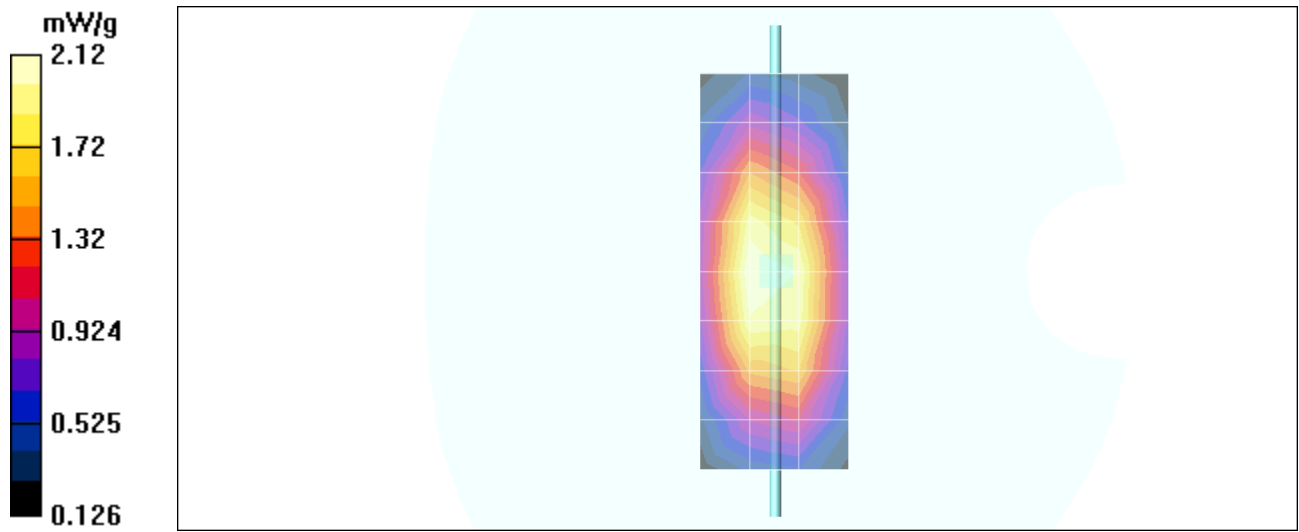
Measurement grid: dx=8mm, dy=8mm, dz=5mm  
 Reference Value = 51.7 V/m; Power Drift = -0.067 dB  
 Peak SAR (extrapolated) = 3.34 W/kg  
**SAR(1 g) = 2.21 mW/g; SAR(10 g) = 1.41 mW/g**  
 Maximum value of SAR (measured) = 2.39 mW/g

**Daily SPC Check/90-Degree 5x5x7 Cube (5x5x7)/Cube 0:**

Measurement grid: dx=8mm, dy=8mm, dz=5mm  
 Reference Value = 51.7 V/m; Power Drift = -0.067 dB  
 Peak SAR (extrapolated) = 3.32 W/kg  
**SAR(1 g) = 2.19 mW/g; SAR(10 g) = 1.4 mW/g**  
 Maximum value of SAR (measured) = 2.36 mW/g

**Daily SPC Check/Z-Axis Retraction (1x1x31):**

Measurement grid: dx=20mm, dy=20mm, dz=5mm



Date/Time: 3/12/2007 8:47:05 AM

**DUT: Dipole 900 MHz; Type: D900V2;** Procedure Notes: 900 MHz System Performance Check /  
 Dipole Sn# 096; PM1 Power =200mW;  
 Sim.Temp@ meas = 19.8\*C; Sim.Temp@ SPC =19.8\*C; Room Temp@ SPC = 21\*C

Communication System: CW - Dipole; Frequency: 900 MHz; Duty Cycle: 1:1  
 Medium: VALIDATION Only; Medium parameters used:  $f = 900$  MHz;  $\sigma = 0.96$  mho/m;  $\epsilon_r = 39.8$ ;  $\rho = 1000$  kg/m<sup>3</sup>

DASY4 Configuration:

- Probe: ET3DV6 - SN1514; ConvF(5.99, 5.99, 5.99); Calibrated: 7/17/2006
- Sensor-Surface: 4mm (Mechanical Surface Detection)
- Electronics: DAE3 Sn437; Calibrated: 7/18/2006
- Phantom: R4: Sugar Water SAM; Type: SAM; Serial: TP-1131;
- Measurement SW: DASY4, V4.7 Build 44; Postprocessing SW: SEMCAD, V1.8 Build 172

**Daily SPC Check/Dipole Area Scan (4x9x1):**

Measurement grid: dx=15mm, dy=15mm  
 Maximum value of SAR (measured) = 2.16 mW/g

**Daily SPC Check/0-Degree 5x5x7 Cube (5x5x7)/Cube 0:**

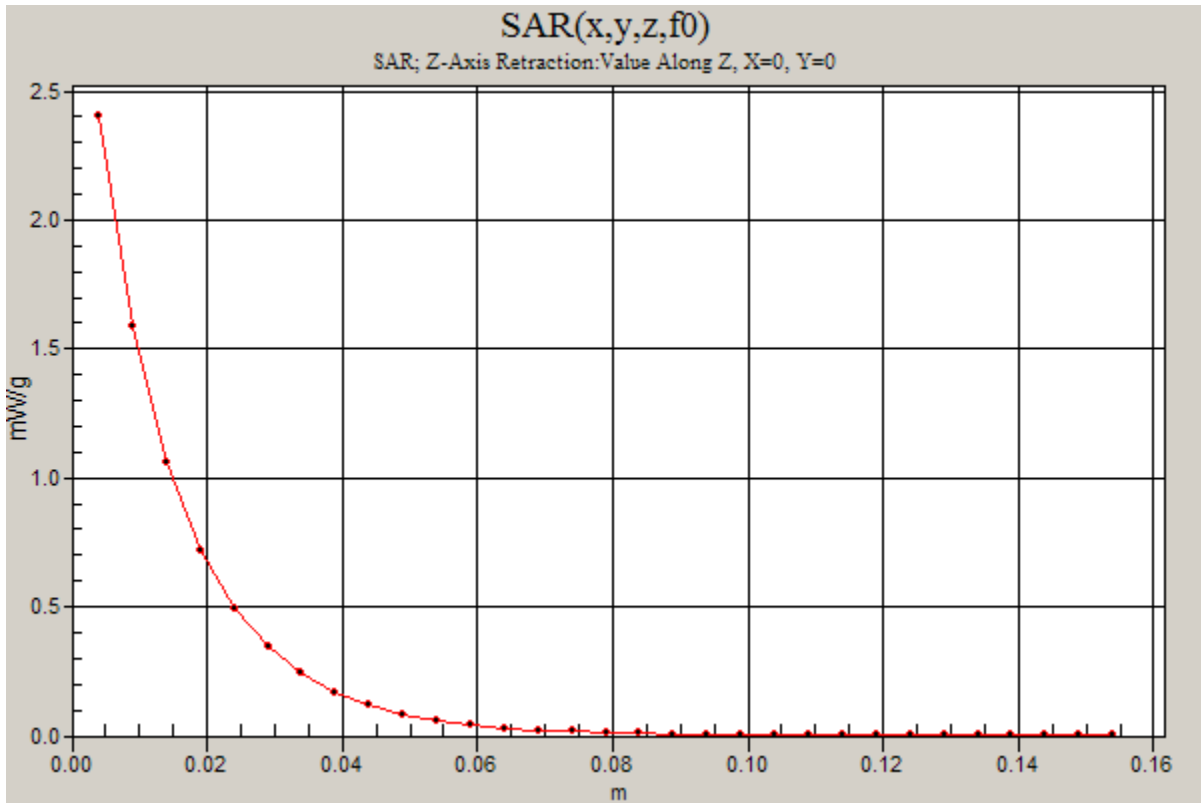
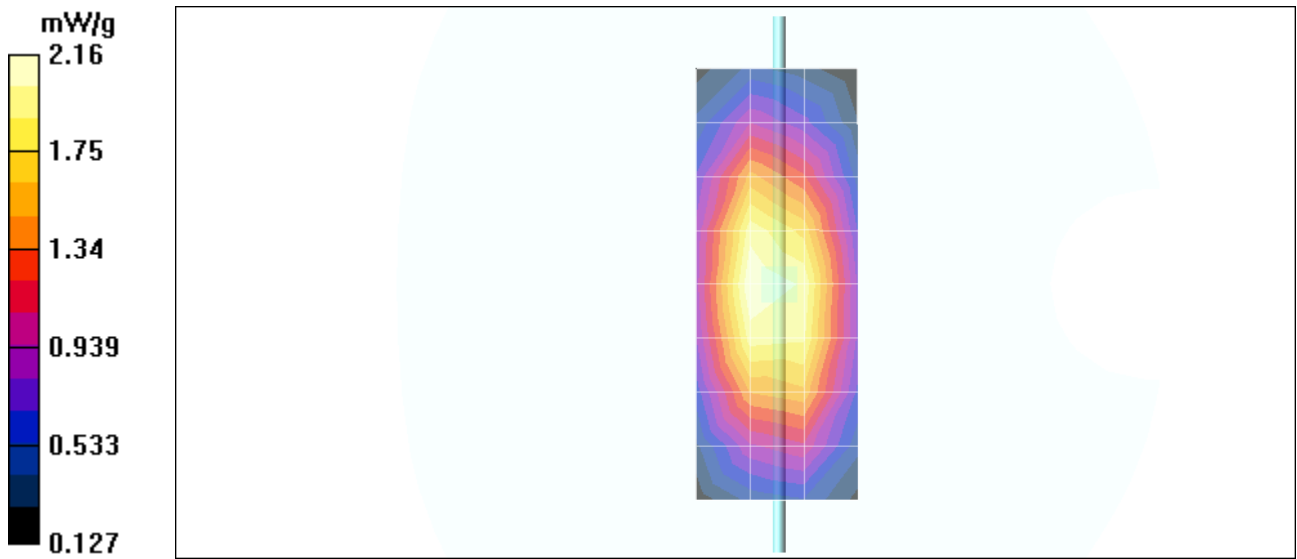
Measurement grid: dx=8mm, dy=8mm, dz=5mm  
 Reference Value = 52.1 V/m; Power Drift = -0.042 dB  
 Peak SAR (extrapolated) = 3.31 W/kg  
**SAR(1 g) = 2.22 mW/g; SAR(10 g) = 1.42 mW/g**  
 Maximum value of SAR (measured) = 2.41 mW/g

**Daily SPC Check/90-Degree 5x5x7 Cube (5x5x7)/Cube 0:**

Measurement grid: dx=8mm, dy=8mm, dz=5mm  
 Reference Value = 52.1 V/m; Power Drift = -0.042 dB  
 Peak SAR (extrapolated) = 3.31 W/kg  
**SAR(1 g) = 2.22 mW/g; SAR(10 g) = 1.43 mW/g**  
 Maximum value of SAR (measured) = 2.33 mW/g

**Daily SPC Check/Z-Axis Retraction (1x1x31):**

Measurement grid: dx=20mm, dy=20mm, dz=5mm  
 Maximum value of SAR (measured) = 2.40 mW/g



Date/Time: 3/20/2007 9:04:15 AM

**DUT: Dipole 900 MHz; Type: D900V2;** Procedure Notes: 900 MHz System Performance Check /  
 Dipole Sn# 096; PM1 Power =200mW;  
 Sim.Temp@ meas = 19.2\*C; Sim.Temp@ SPC =19.2\*C; Room Temp@ SPC = 20.6\*C;

Communication System: CW - Dipole; Frequency: 900 MHz; Duty Cycle: 1:1  
 Medium: VALIDATION Only; Medium parameters used:  $f = 900$  MHz;  $\sigma = 1$  mho/m;  $\epsilon_r = 42.2$ ;  $\rho = 1000$  kg/m<sup>3</sup>

DASY4 Configuration:

- Probe: ET3DV6 - SN1514; ConvF(5.99, 5.99, 5.99); Calibrated: 7/17/2006
- Sensor-Surface: 4mm (Mechanical Surface Detection)
- Electronics: DAE3 Sn437; Calibrated: 7/18/2006
- Phantom: R4: Sugar Water SAM; Type: SAM; Serial: TP-1131;
- Measurement SW: DASY4, V4.7 Build 44; Postprocessing SW: SEMCAD, V1.8 Build 172

#### **Daily SPC Check/Dipole Area Scan (4x9x1):**

Measurement grid: dx=15mm, dy=15mm  
 Maximum value of SAR (measured) = 2.22 mW/g

#### **Daily SPC Check/0-Degree 5x5x7 Cube (5x5x7)/Cube 0:**

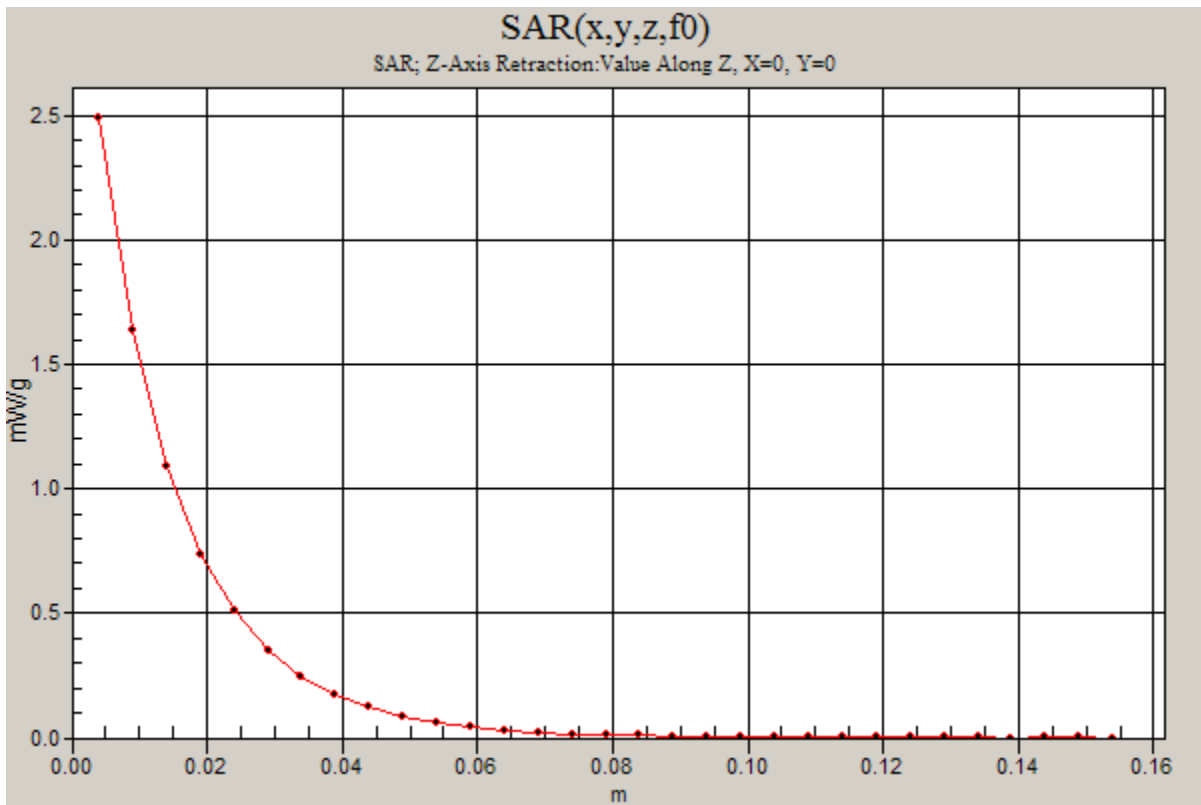
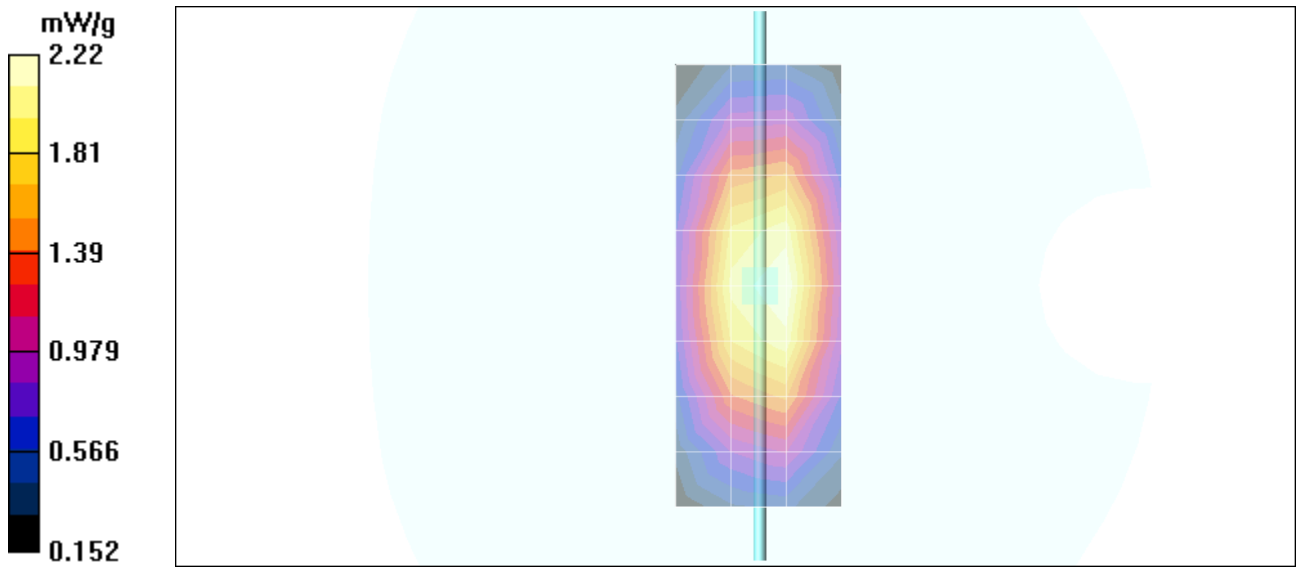
Measurement grid: dx=8mm, dy=8mm, dz=5mm  
 Reference Value = 51.8 V/m; Power Drift = -0.022 dB  
 Peak SAR (extrapolated) = 3.45 W/kg  
**SAR(1 g) = 2.28 mW/g; SAR(10 g) = 1.46 mW/g**  
 Maximum value of SAR (measured) = 2.48 mW/g

#### **Daily SPC Check/90-Degree 5x5x7 Cube (5x5x7)/Cube 0:**

Measurement grid: dx=8mm, dy=8mm, dz=5mm  
 Reference Value = 51.8 V/m; Power Drift = -0.022 dB  
 Peak SAR (extrapolated) = 3.50 W/kg  
**SAR(1 g) = 2.31 mW/g; SAR(10 g) = 1.48 mW/g**  
 Maximum value of SAR (measured) = 2.51 mW/g

#### **Daily SPC Check/Z-Axis Retraction (1x1x31):**

Measurement grid: dx=20mm, dy=20mm, dz=5mm  
 Maximum value of SAR (measured) = 2.49 mW/g



Date/Time: 3/21/2007 8:52:11 AM

**DUT: Dipole 900 MHz; Type: D900V2;** Procedure Notes: 900 MHz System Performance Check /  
 Dipole Sn# 096; PM1 Power =200mW  
 Sim.Temp@ meas = 19.4\*C; Sim.Temp@ SPC =19.4\*C; Room Temp@ SPC = 21.1\*C

Communication System: CW - Dipole; Frequency: 900 MHz; Duty Cycle: 1:1  
 Medium: VALIDATION Only; Medium parameters used:  $f = 900$  MHz;  $\sigma = 0.99$  mho/m;  $\epsilon_r = 42.2$ ;  $\rho = 1000$  kg/m<sup>3</sup>

DASY4 Configuration:

- Probe: ET3DV6 - SN1514; ConvF(5.99, 5.99, 5.99); Calibrated: 7/17/2006
- Sensor-Surface: 4mm (Mechanical Surface Detection)
- Electronics: DAE3 Sn437; Calibrated: 7/18/2006
- Phantom: R4: Sugar Water SAM; Type: SAM; Serial: TP-1131;
- Measurement SW: DASY4, V4.7 Build 44; Postprocessing SW: SEMCAD, V1.8 Build 172

**Daily SPC Check/Dipole Area Scan (4x9x1):**

Measurement grid: dx=15mm, dy=15mm  
 Maximum value of SAR (measured) = 2.21 mW/g

**Daily SPC Check/0-Degree 5x5x7 Cube (5x5x7)/Cube 0:**

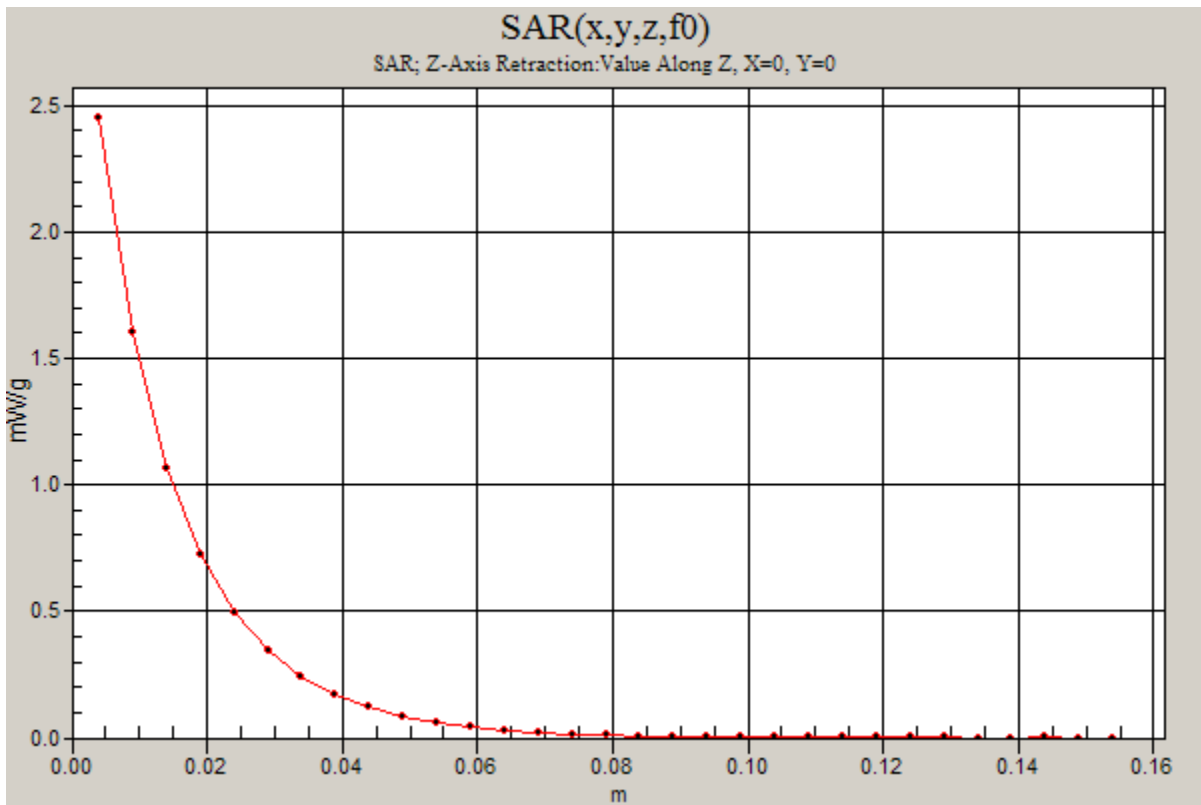
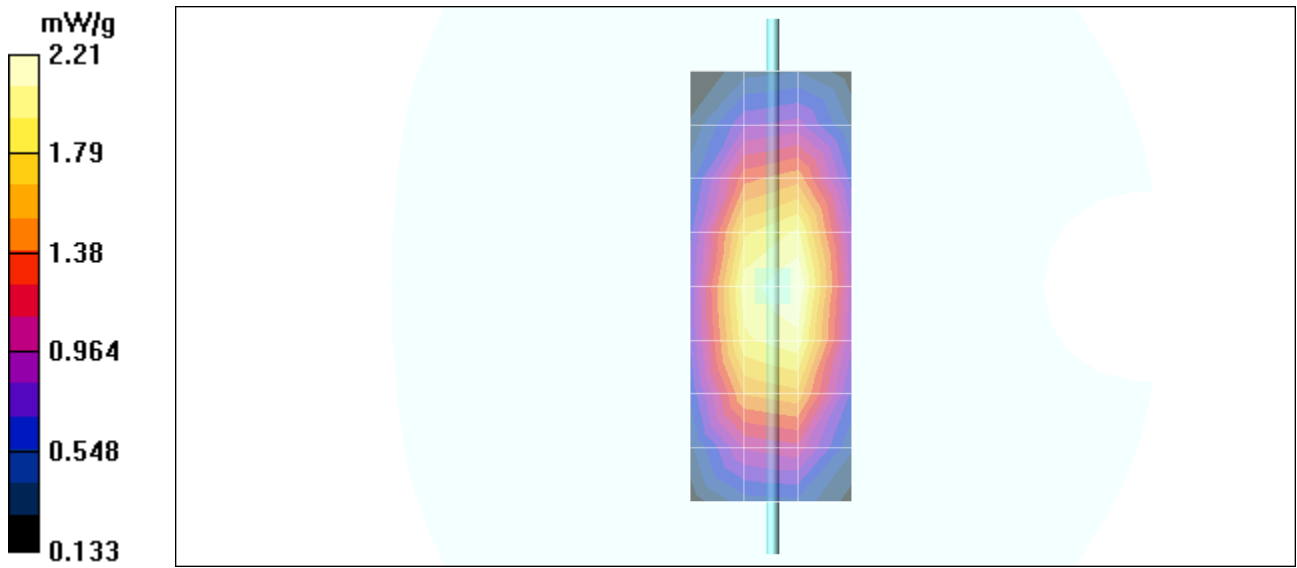
Measurement grid: dx=8mm, dy=8mm, dz=5mm  
 Reference Value = 51.6 V/m; Power Drift = -0.009 dB  
 Peak SAR (extrapolated) = 3.44 W/kg  
**SAR(1 g) = 2.27 mW/g; SAR(10 g) = 1.45 mW/g**  
 Maximum value of SAR (measured) = 2.45 mW/g

**Daily SPC Check/90-Degree 5x5x7 Cube (5x5x7)/Cube 0:**

Measurement grid: dx=8mm, dy=8mm, dz=5mm  
 Reference Value = 51.6 V/m; Power Drift = -0.009 dB  
 Peak SAR (extrapolated) = 3.48 W/kg  
**SAR(1 g) = 2.29 mW/g; SAR(10 g) = 1.46 mW/g**  
 Maximum value of SAR (measured) = 2.46 mW/g

**Daily SPC Check/Z-Axis Retraction (1x1x31):**

Measurement grid: dx=20mm, dy=20mm, dz=5mm



Date/Time: 3/26/2007 8:54:40 AM

**DUT: Dipole 900 MHz; Type: D900V2;** Procedure Notes: 900 MHz System Performance Check /  
 Dipole Sn# 096; PM1 Power =200mW;  
 Sim.Temp@ meas = 19.3°C; Sim.Temp@ SPC =19.3°C; Room Temp@ SPC = 21.1°C

Communication System: CW - Dipole; Frequency: 900 MHz; Duty Cycle: 1:1  
 Medium: VALIDATION Only; Medium parameters used:  $f = 900$  MHz;  $\sigma = 0.98$  mho/m;  $\epsilon_r = 41.4$ ;  $\rho = 1000$  kg/m<sup>3</sup>

DASY4 Configuration:

- Probe: ET3DV6 - SN1514; ConvF(5.99, 5.99, 5.99); Calibrated: 7/17/2006
- Sensor-Surface: 4mm (Mechanical Surface Detection)
- Electronics: DAE3 Sn437; Calibrated: 7/18/2006
- Phantom: R4: Sugar Water SAM; Type: SAM; Serial: TP-1131;
- Measurement SW: DASY4, V4.7 Build 53; Postprocessing SW: SEMCAD, V1.8 Build 172

**Daily SPC Check/Dipole Area Scan (4x9x1):**

Measurement grid: dx=15mm, dy=15mm  
 Maximum value of SAR (measured) = 2.08 mW/g

**Daily SPC Check/0-Degree 5x5x7 Cube (5x5x7)/Cube 0:**

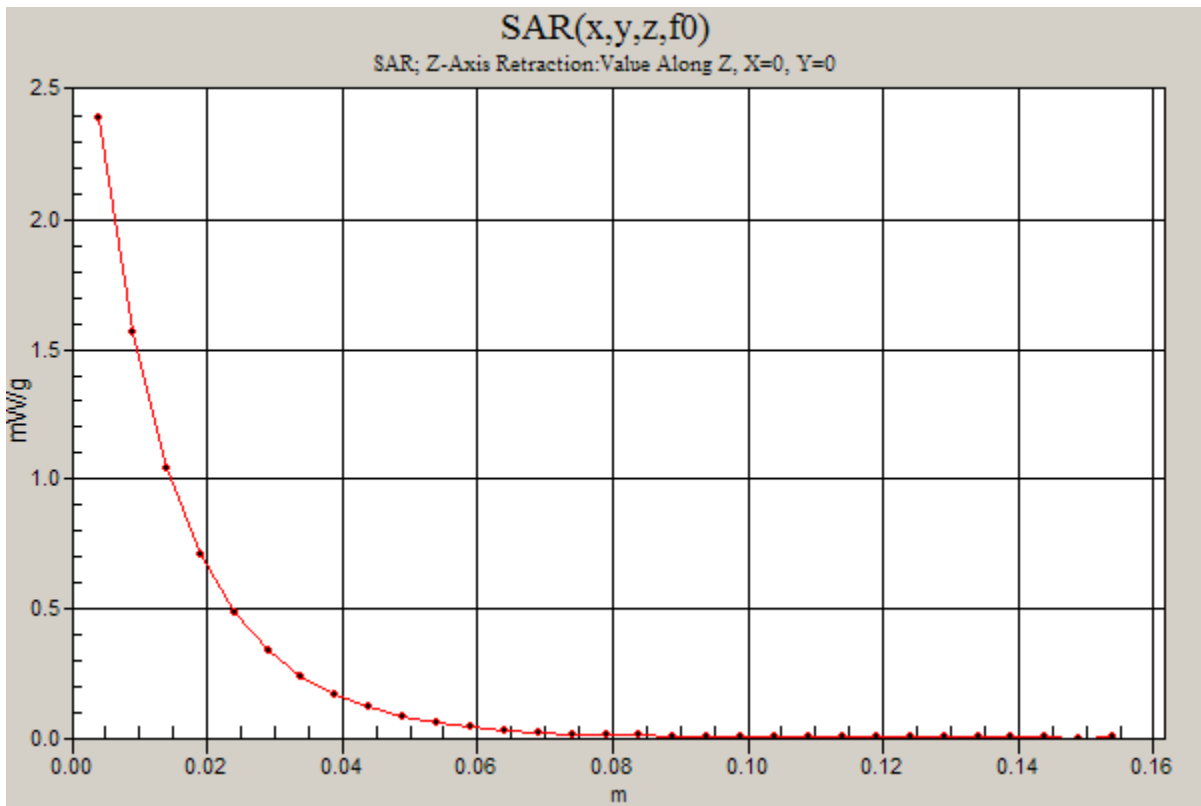
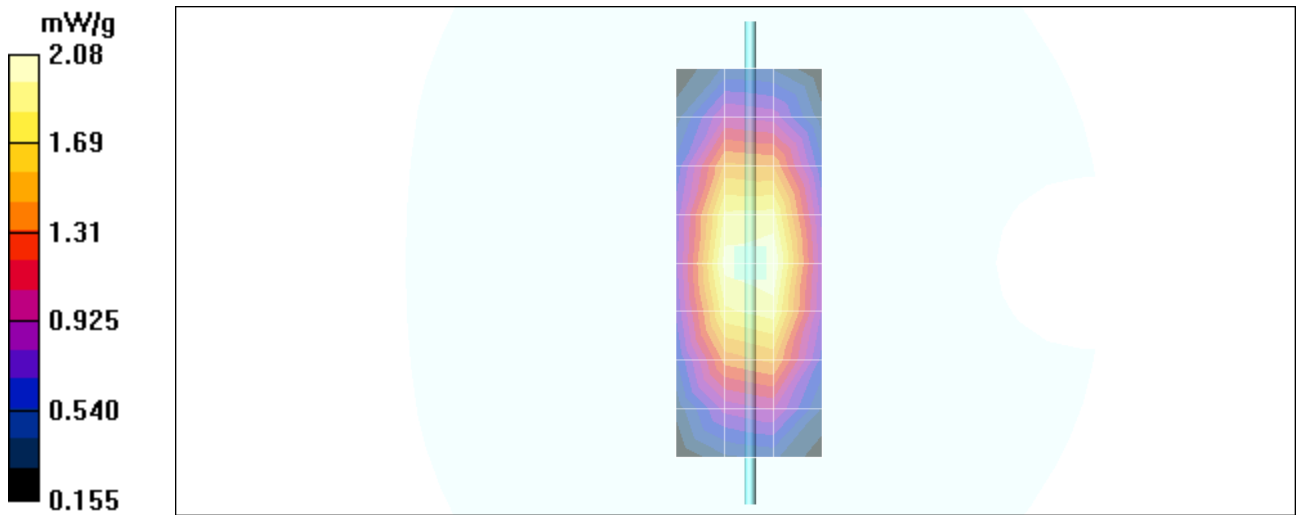
Measurement grid: dx=8mm, dy=8mm, dz=5mm  
 Reference Value = 51.0 V/m; Power Drift = 0.032 dB  
 Peak SAR (extrapolated) = 3.30 W/kg  
**SAR(1 g) = 2.19 mW/g; SAR(10 g) = 1.4 mW/g**  
 Maximum value of SAR (measured) = 2.37 mW/g

**Daily SPC Check/90-Degree 5x5x7 Cube (5x5x7)/Cube 0:**

Measurement grid: dx=8mm, dy=8mm, dz=5mm  
 Reference Value = 51.0 V/m; Power Drift = 0.032 dB  
 Peak SAR (extrapolated) = 3.31 W/kg  
**SAR(1 g) = 2.19 mW/g; SAR(10 g) = 1.4 mW/g**  
 Maximum value of SAR (measured) = 2.36 mW/g

**Daily SPC Check/Z-Axis Retraction (1x1x31):**

Measurement grid: dx=20mm, dy=20mm, dz=5mm  
 Maximum value of SAR (measured) = 2.39 mW/g



Date/Time: 4/3/2007 8:31:29 AM

**DUT: Dipole 1800 MHz; Type: D1800V2;** Procedure Notes: 1800 MHz System Performance Check / Dipole Sn# 272(TR); PM1 Power = 200mW;  
 Sim.Temp@ meas = 19.4\*C; Sim.Temp@ SPC = 19.3\*C; Room Temp@ SPC = 21\*C;

Communication System: CW - Dipole; Frequency: 1800 MHz; Duty Cycle: 1:1;  
 Medium: VALIDATION Only; Medium parameters used:  $f = 1800$  MHz;  $\sigma = 1.37$  mho/m;  $\epsilon_r = 38.8$ ;  $\rho = 1000$  kg/m<sup>3</sup>

DASY4 Configuration:

- Probe: ET3DV6 - SN1514; ConvF(5.05, 5.05, 5.05); Calibrated: 7/17/2006
- Sensor-Surface: 4mm (Mechanical Surface Detection)
- Electronics: DAE3 Sn437; Calibrated: 7/18/2006
- Phantom: R4 : Sect.2, Amy Twin; Type: Amy Twin Flat; Serial: n/a;
- Measurement SW: DASY4, V4.7 Build 53; Postprocessing SW: SEMCAD, V1.8 Build 172

**Daily SPC Check/Dipole Area Scan (9x4x1):**

Measurement grid: dx=15mm, dy=15mm  
 Maximum value of SAR (measured) = 7.62 mW/g

**Daily SPC Check/0-Degree 5x5x7 Cube (5x5x7)/Cube 0:**

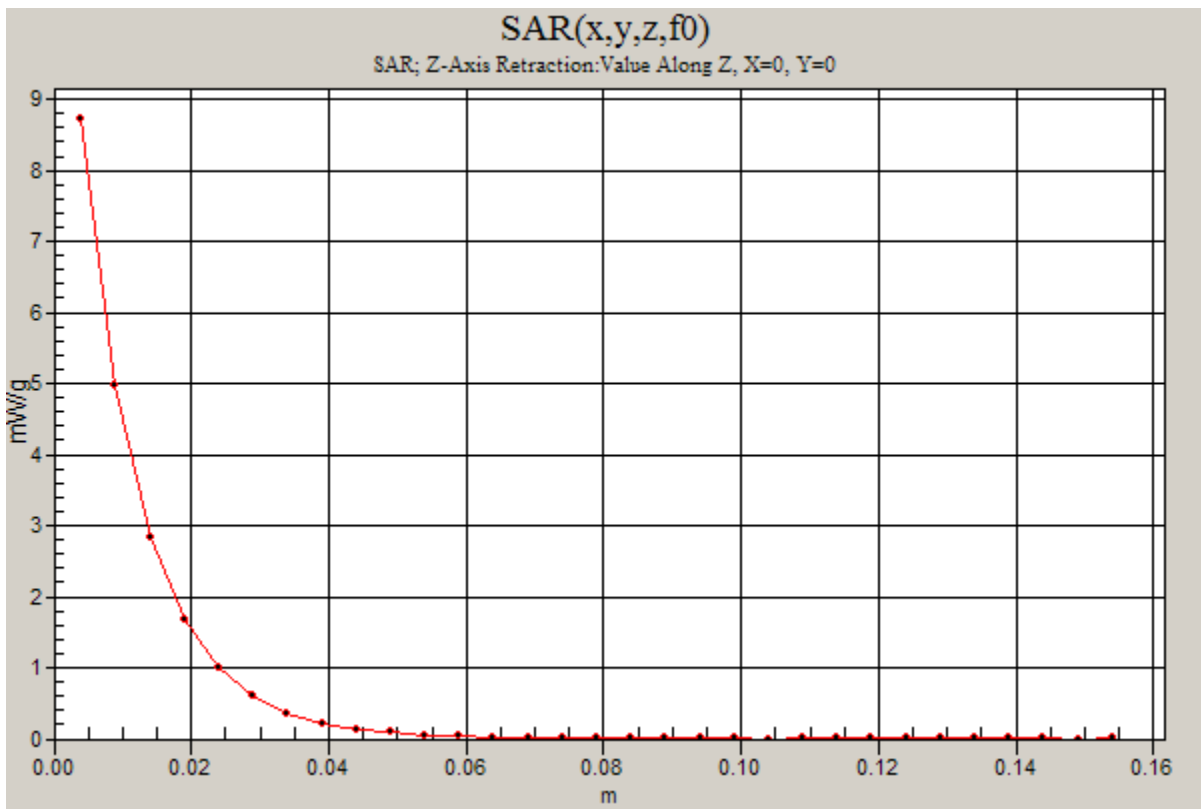
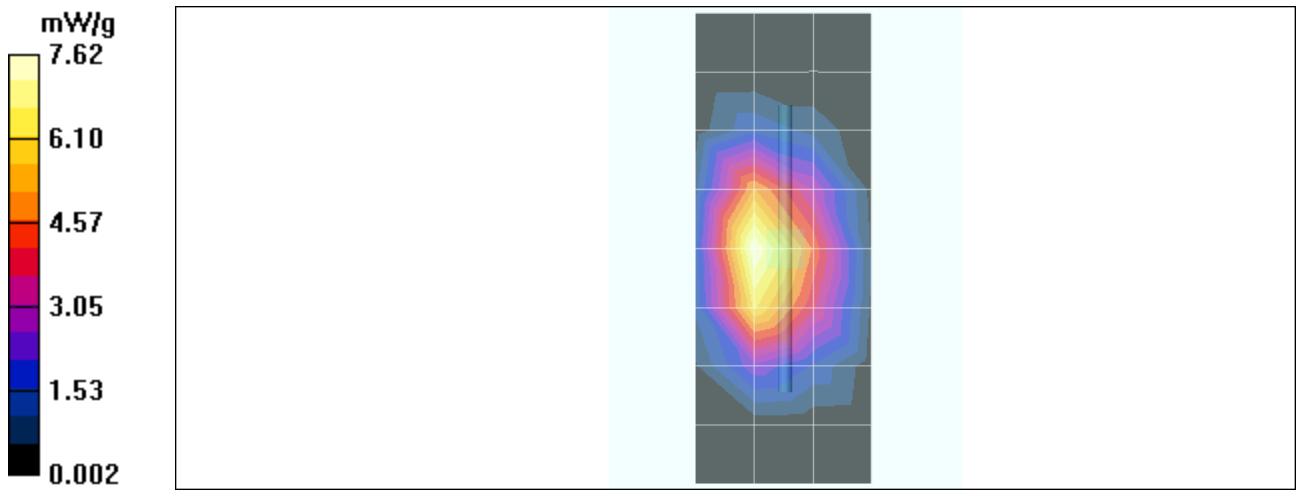
Measurement grid: dx=8mm, dy=8mm, dz=5mm  
 Reference Value = 80.2 V/m; Power Drift = 0.031 dB  
 Peak SAR (extrapolated) = 13.3 W/kg  
**SAR(1 g) = 7.68 mW/g; SAR(10 g) = 4.09 mW/g**  
 Maximum value of SAR (measured) = 8.57 mW/g

**Daily SPC Check/90-Degree 5x5x7 Cube (5x5x7)/Cube 0:**

Measurement grid: dx=8mm, dy=8mm, dz=5mm  
 Reference Value = 80.2 V/m; Power Drift = 0.031 dB  
 Peak SAR (extrapolated) = 13.4 W/kg  
**SAR(1 g) = 7.76 mW/g; SAR(10 g) = 4.12 mW/g**  
 Maximum value of SAR (measured) = 8.71 mW/g

**Daily SPC Check/Z-Axis Retraction (1x1x31):**

Measurement grid: dx=20mm, dy=20mm, dz=5mm  
 Maximum value of SAR (measured) = 8.72 mW/g



Date/Time: 4/4/2007 8:50:49 AM

**DUT: Dipole 1800 MHz; Type: D1800V2;** Procedure Notes: 1800 MHz System Performance Check / Dipole Sn# 272tr; PM1 Power = 200mW;  
 Sim.Temp@ meas = 19.7°C; Sim.Temp@ SPC = 18.9°C; Room Temp@ SPC = 20.8°C

Communication System: CW - Dipole; Frequency: 1800 MHz; Duty Cycle: 1:1  
 Medium: VALIDATION Only; Medium parameters used:  $f = 1800$  MHz;  $\sigma = 1.36$  mho/m;  $\epsilon_r = 39.1$ ;  $\rho = 1000$  kg/m<sup>3</sup>

DASY4 Configuration:

- Probe: ET3DV6 - SN1514; ConvF(5.05, 5.05, 5.05); Calibrated: 7/17/2006
- Sensor-Surface: 4mm (Mechanical Surface Detection)
- Electronics: DAE3 Sn437; Calibrated: 7/18/2006
- Phantom: R4 : Sect.2, Amy Twin; Type: Amy Twin Flat; Serial: n/a;
- Measurement SW: DASY4, V4.7 Build 53; Postprocessing SW: SEMCAD, V1.8 Build 172

**Daily SPC Check/Dipole Area Scan (9x4x1):**

Measurement grid: dx=15mm, dy=15mm  
 Maximum value of SAR (measured) = 7.95 mW/g

**Daily SPC Check/0-Degree 5x5x7 Cube (5x5x7)/Cube 0:**

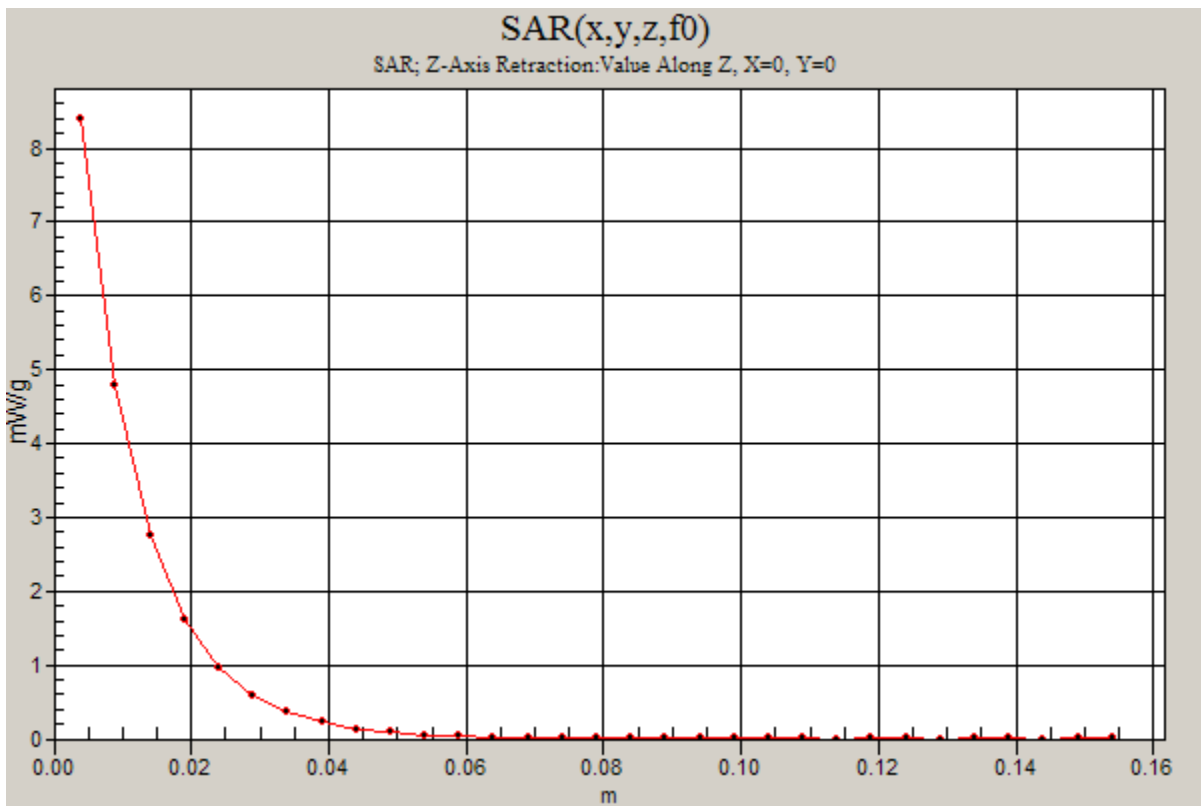
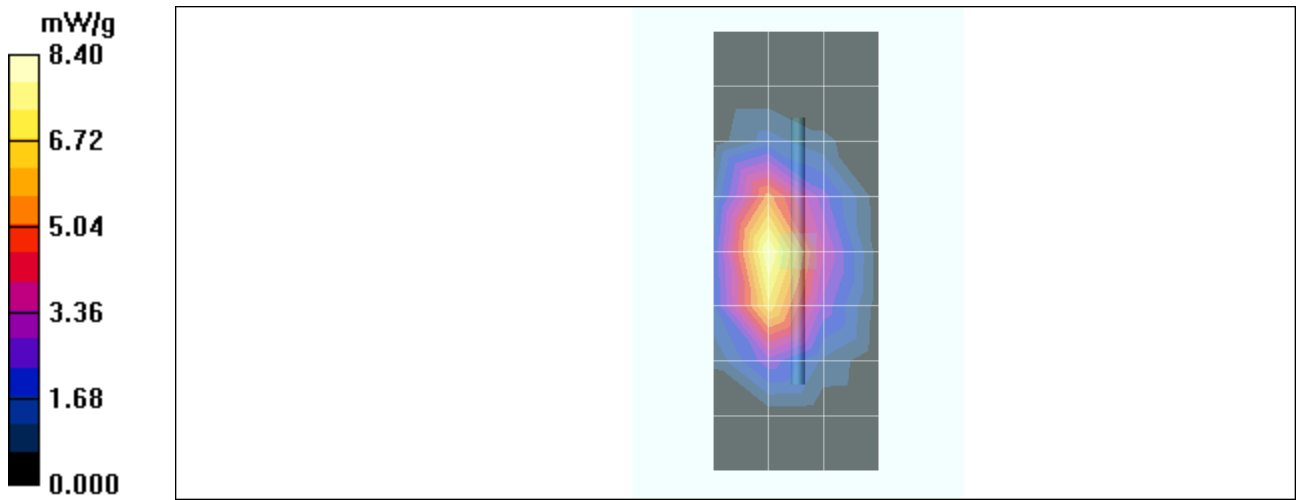
Measurement grid: dx=8mm, dy=8mm, dz=5mm  
 Reference Value = 75.2 V/m; Power Drift = 0.031 dB  
 Peak SAR (extrapolated) = 12.8 W/kg  
**SAR(1 g) = 7.39 mW/g; SAR(10 g) = 3.93 mW/g**  
 Maximum value of SAR (measured) = 8.16 mW/g

**Daily SPC Check/90-Degree 5x5x7 Cube (5x5x7)/Cube 0:**

Measurement grid: dx=8mm, dy=8mm, dz=5mm  
 Reference Value = 75.2 V/m; Power Drift = 0.031 dB  
 Peak SAR (extrapolated) = 13.0 W/kg  
**SAR(1 g) = 7.43 mW/g; SAR(10 g) = 3.95 mW/g**  
 Maximum value of SAR (measured) = 8.11 mW/g

**Daily SPC Check/Z-Axis Retraction (1x1x31):**

Measurement grid: dx=20mm, dy=20mm, dz=5mm  
 Maximum value of SAR (measured) = 8.40 mW/g



Date/Time: 4/5/2007 8:44:59 AM

**DUT: Dipole 1800 MHz; Type: D1800V2;** Procedure Notes: 1800 MHz System Performance Check /  
 Dipole Sn# 272tr; PM1 Power = 200mW;  
 Sim.Temp@ meas = 19.7°C; Sim.Temp@ SPC = 19.1°C; Room Temp@ SPC = 20.7°C

Communication System: CW - Dipole; Frequency: 1800 MHz; Duty Cycle: 1:1  
 Medium: VALIDATION Only; Medium parameters used:  $f = 1800$  MHz;  $\sigma = 1.37$  mho/m;  $\epsilon_r = 38.9$ ;  $\rho = 1000$  kg/m<sup>3</sup>

DASY4 Configuration:

- Probe: ET3DV6 - SN1514; ConvF(5.05, 5.05, 5.05); Calibrated: 7/17/2006
- Sensor-Surface: 4mm (Mechanical Surface Detection)
- Electronics: DAE3 Sn437; Calibrated: 7/18/2006
- Phantom: R4: Glycol SAM; Type: SAM; Serial: TP-1250;
- Measurement SW: DASY4, V4.7 Build 53; Postprocessing SW: SEMCAD, V1.8 Build 172

**Daily SPC Check/Dipole Area Scan (4x9x1):**

Measurement grid: dx=15mm, dy=15mm  
 Maximum value of SAR (measured) = 7.12 mW/g

**Daily SPC Check/0-Degree, 5x5x7 Cube (5x5x7)/Cube 0:**

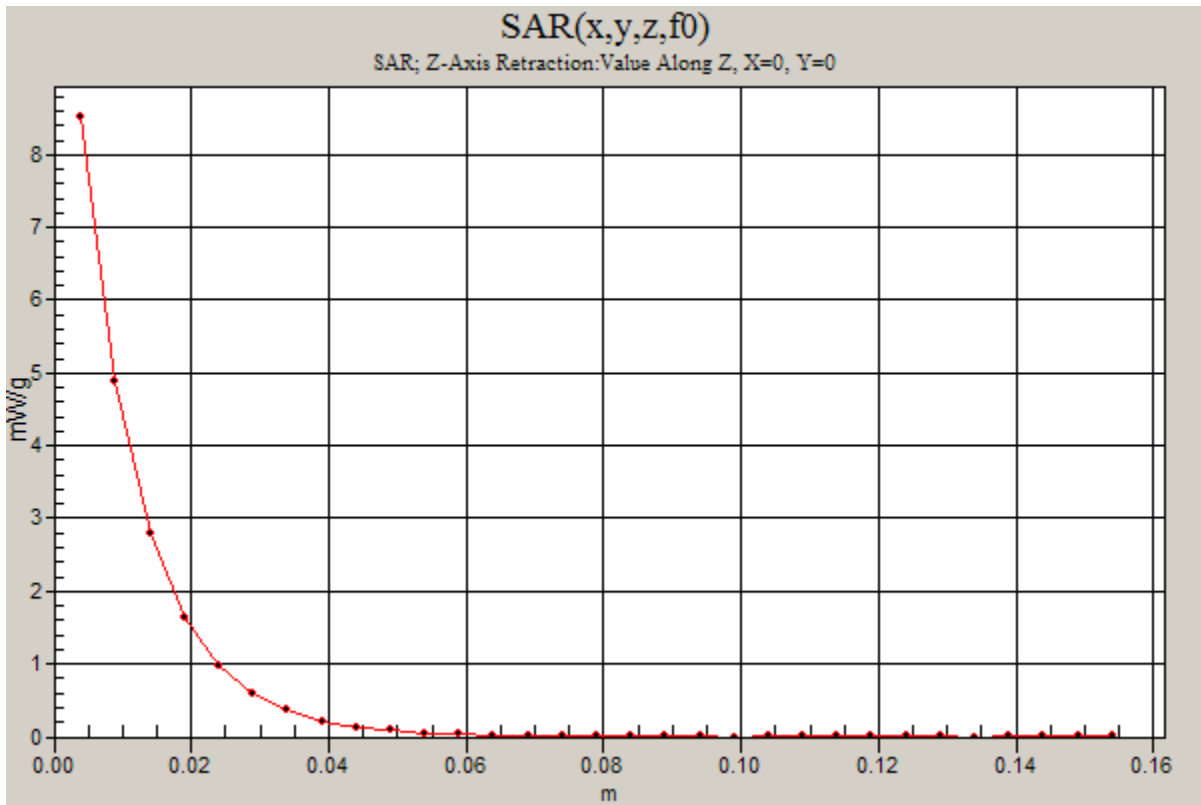
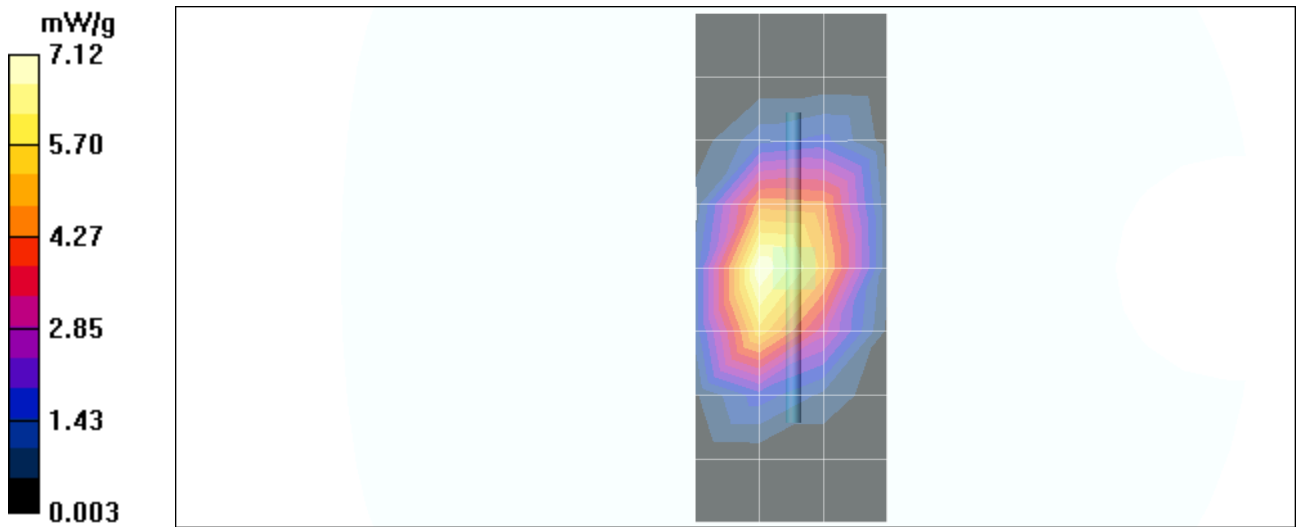
Measurement grid: dx=8mm, dy=8mm, dz=5mm  
 Reference Value = 81.2 V/m; Power Drift = 0.088 dB  
 Peak SAR (extrapolated) = 13.1 W/kg  
**SAR(1 g) = 7.57 mW/g; SAR(10 g) = 4.03 mW/g**  
 Maximum value of SAR (measured) = 8.53 mW/g

**Daily SPC Check/90-Degree 5x5x7 Cube (5x5x7)/Cube 0:**

Measurement grid: dx=8mm, dy=8mm, dz=5mm  
 Reference Value = 81.2 V/m; Power Drift = 0.088 dB  
 Peak SAR (extrapolated) = 13.0 W/kg  
**SAR(1 g) = 7.55 mW/g; SAR(10 g) = 4.04 mW/g**  
 Maximum value of SAR (measured) = 8.41 mW/g

**Daily SPC Check/Z-Axis Retraction (1x1x31):**

Measurement grid: dx=20mm, dy=20mm, dz=5mm  
 Maximum value of SAR (measured) = 8.52 mW/g



Date/Time: 4/6/2007 7:43:16 AM

**DUT: Dipole 1800 MHz; Type: D1800V2;** Procedure Notes: 1800 MHz System Performance Check /  
 Dipole Sn# 272tr; PM1 Power = 200mW  
 Sim.Temp@ meas = 20°C; Sim.Temp@ SPC = 19.2°C; Room Temp@ SPC = 20.7°C

Communication System: CW - Dipole; Frequency: 1800 MHz; Duty Cycle: 1:1  
 Medium: VALIDATION Only; Medium parameters used:  $f = 1800$  MHz;  $\sigma = 1.35$  mho/m;  $\epsilon_r = 38.7$ ;  $\rho = 1000$  kg/m<sup>3</sup>

DASY4 Configuration:

- Probe: ET3DV6 - SN1514; ConvF(5.05, 5.05, 5.05); Calibrated: 7/17/2006
- Sensor-Surface: 4mm (Mechanical Surface Detection)
- Electronics: DAE3 Sn437; Calibrated: 7/18/2006
- Phantom: R4: Glycol SAM; Type: SAM; Serial: TP-1250;
- Measurement SW: DASY4, V4.7 Build 53; Postprocessing SW: SEMCAD, V1.8 Build 172

**Daily SPC Check/Dipole Area Scan (4x9x1):**

Measurement grid: dx=15mm, dy=15mm  
 Maximum value of SAR (measured) = 6.05 mW/g

**Daily SPC Check/0-Degree, 5x5x7 Cube (5x5x7)/Cube 0:**

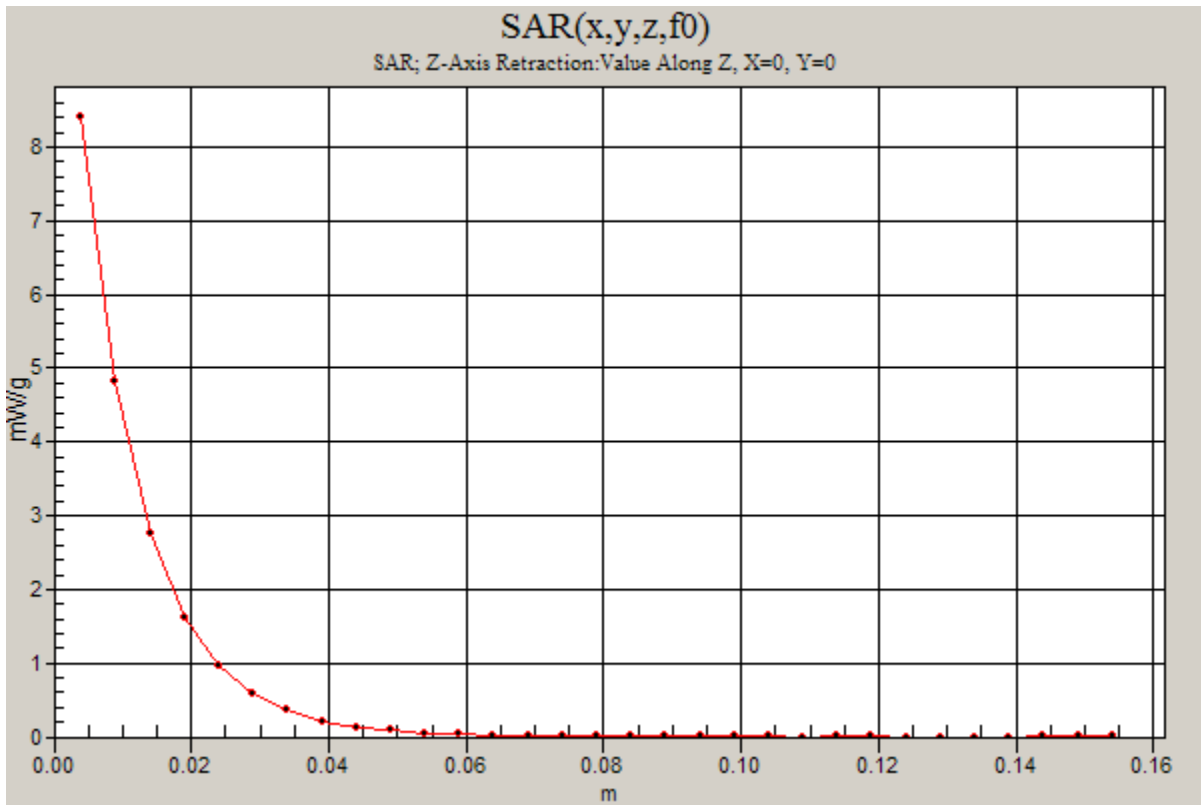
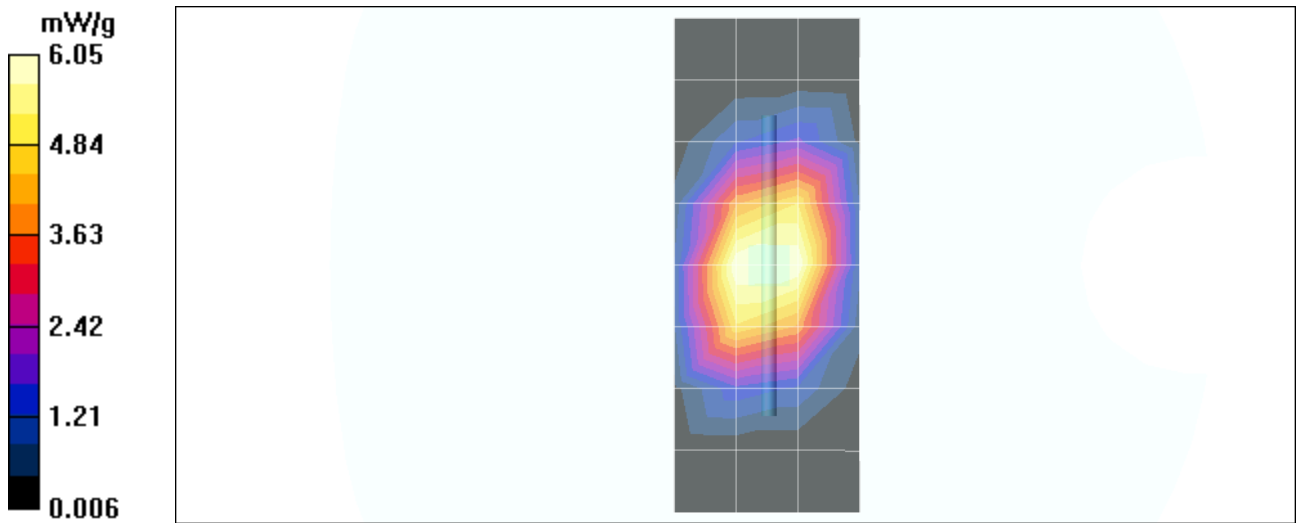
Measurement grid: dx=8mm, dy=8mm, dz=5mm  
 Reference Value = 83.2 V/m; Power Drift = 0.041 dB  
 Peak SAR (extrapolated) = 12.8 W/kg  
**SAR(1 g) = 7.42 mW/g; SAR(10 g) = 3.96 mW/g**  
 Maximum value of SAR (measured) = 8.40 mW/g

**Daily SPC Check/90-Degree 5x5x7 Cube (5x5x7)/Cube 0:**

Measurement grid: dx=8mm, dy=8mm, dz=5mm  
 Reference Value = 83.2 V/m; Power Drift = 0.041 dB  
 Peak SAR (extrapolated) = 13.0 W/kg  
**SAR(1 g) = 7.52 mW/g; SAR(10 g) = 4.01 mW/g**  
 Maximum value of SAR (measured) = 8.18 mW/g

**Daily SPC Check/Z-Axis Retraction (1x1x31):**

Measurement grid: dx=20mm, dy=20mm, dz=5mm  
 Maximum value of SAR (measured) = 8.41 mW/g



## **Appendix 2**

### **SAR distribution plots for Phantom Head Adjacent Use**

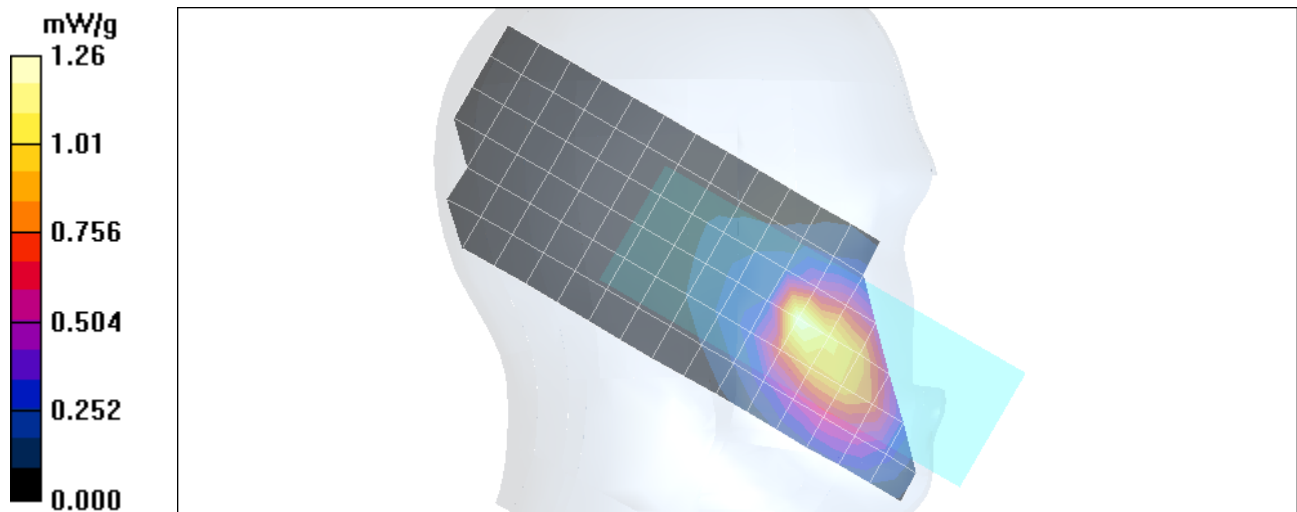
Date/Time: 3/10/2007 8:47:44 PM

**Serial: LCE0710001;** Procedure Notes: Pwr Step: 05; Antenna Position: internal; Battery Model #: SNN5779B; DEVICE POSITION: cheek; Communication System: GSM 850; Frequency: 836.6 MHz; Communication System Channel Number: 190; Duty Cycle: 1:8; Medium: Low Freq Head; Medium parameters used:  $f = 835$  MHz;  $\sigma = 0.9$  mho/m;  $\epsilon_r = 41.3$ ;  $\rho = 1000$  kg/m<sup>3</sup>; DASY4 Configuration:

- Probe: ET3DV6 - SN1514; ConvF(5.99, 5.99, 5.99); Calibrated: 7/17/2006
- Sensor-Surface: 4mm (Mechanical Surface Detection)
- Electronics: DAE3 Sn437; Calibrated: 7/18/2006
- Phantom: R#4 Sugar SAM (extended range), Rev.1 (25-Mar-05); Type: SAM v4.0; Serial: TP-1131;
- Measurement SW: DASY4, V4.7 Build 44; Postprocessing SW: SEMCAD, V1.8 Build 172

**Left Head Template/Area Scan - Normal Extended (15mm) (7x17x1):** Measurement grid: dx=15mm, dy=15mm; Maximum value of SAR (measured) = 1.26 mW/g

**Left Head Template/Zoom Scan (7x7x7)/Cube 0:** Measurement grid: dx=5mm, dy=5mm, dz=5mm; Reference Value = 36.8 V/m; Power Drift = -0.060 dB; Peak SAR (extrapolated) = 3.70 W/kg; **SAR(1 g) = 1.41 mW/g; SAR(10 g) = 0.796 mW/g;** Maximum value of SAR (measured) = 1.63 mW/g



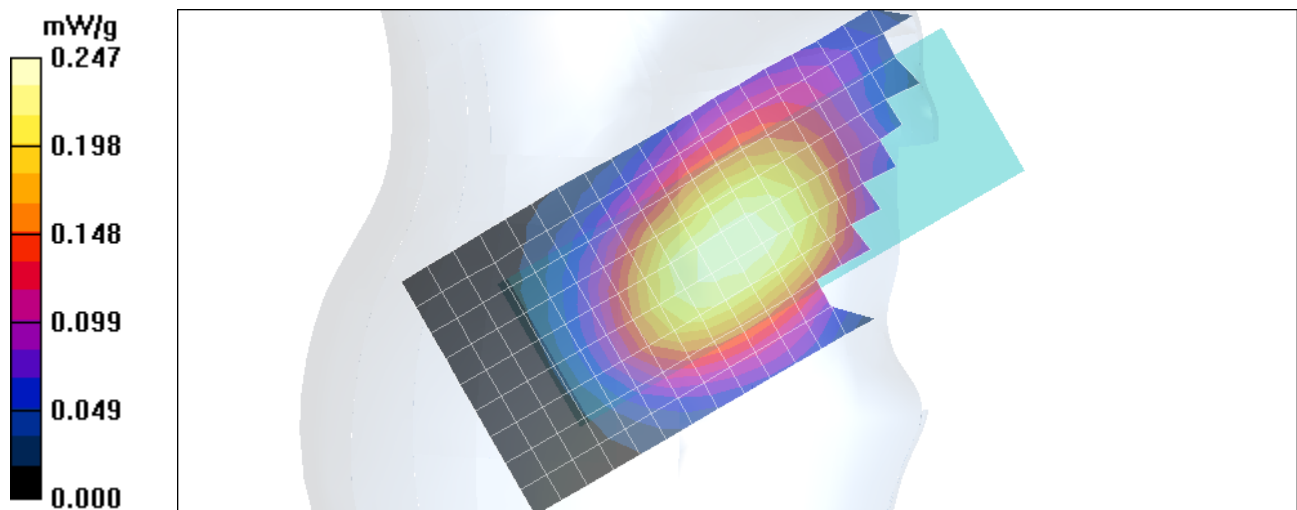
Date/Time: 3/9/2007 10:16:46 PM

**Serial: LCE0710001**; Procedure Notes: Pwr Step: 5; Antenna Position: internal; Battery Model #: SNN5781B; DEVICE POSITION: Tilt; Communication System: GSM 850; Frequency: 836.6 MHz; Communication System Channel Number: 190; Duty Cycle: 1:8; Medium: Low Freq Head; Medium parameters used:  $f = 835$  MHz;  $\sigma = 0.91$  mho/m;  $\epsilon_r = 41.8$ ;  $\rho = 1000$  kg/m<sup>3</sup>; DASY4 Configuration:

- Probe: ET3DV6 - SN1514; ConvF(5.99, 5.99, 5.99); Calibrated: 7/17/2006
- Sensor-Surface: 4mm (Mechanical Surface Detection)
- Electronics: DAE3 Sn437; Calibrated: 7/18/2006
- Phantom: R#4 Sugar SAM (extended range), Rev.1 (25-Mar-05); Type: SAM v4.0; Serial: TP-1131;
- Measurement SW: DASY4, V4.7 Build 44; Postprocessing SW: SEMCAD, V1.8 Build 172

**Right Head Template/Area Scan - Normal (10mm) (10x25x1)**: Measurement grid: dx=10mm, dy=10mm; Maximum value of SAR (measured) = 0.247 mW/g

**Right Head Template/Zoom Scan (7x7x7)/Cube 0**: Measurement grid: dx=5mm, dy=5mm, dz=5mm; Reference Value = 16.4 V/m; Power Drift = 0.057 dB; Peak SAR (extrapolated) = 0.296 W/kg; **SAR(1 g) = 0.238 mW/g**; **SAR(10 g) = 0.185 mW/g**; Maximum value of SAR (measured) = 0.250 mW/g



Date/Time: 3/12/2007 5:17:12 PM

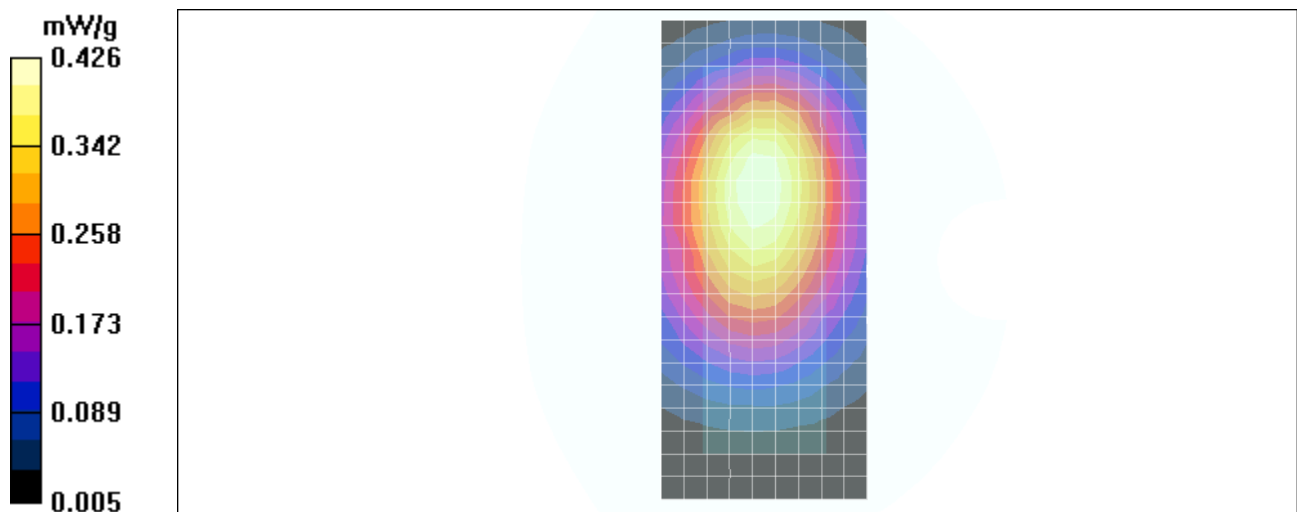
**Serial: LCE0710001**; Procedure Notes: Pwr Step: 5; Antenna Position: internal; Battery Model #: SNN5781B; DEVICE POSITION: PTT (face) 25mm away from the phantom (phone open); Communication System: GPRS 850 - Class 10; Frequency: 836.6 MHz; Communication System Channel Number: 190; Duty Cycle: 1:4; Medium: Low Freq Head; Medium parameters used:  $f = 835$  MHz;  $\sigma = 0.9$  mho/m;  $\epsilon_r = 40.6$ ;  $\rho = 1000$  kg/m<sup>3</sup>; DASY4 Configuration:

- Probe: ET3DV6 - SN1514; ConvF(5.99, 5.99, 5.99); Calibrated: 7/17/2006
- Sensor-Surface: 4mm (Mechanical Surface Detection)
- Electronics: DAE3 Sn437; Calibrated: 7/18/2006
- Phantom: R#4 Sugar SAM (extended range), Rev.1 (25-Mar-05); Type: SAM v4.0; Serial: TP-1131;
- Measurement SW: DASY4, V4.7 Build 53; Postprocessing SW: SEMCAD, V1.8 Build 172

### **SAM Phone Against Flat Section/Area Scan - Normal Extended Body (10mm)**

**(22x10x1)**: Measurement grid: dx=10mm, dy=10mm; Maximum value of SAR (measured) = 0.426 mW/g

**SAM Phone Against Flat Section/Zoom Scan (7x7x7)/Cube 0**: Measurement grid: dx=5mm, dy=5mm, dz=5mm; Reference Value = 22.0 V/m; Power Drift = 0.012 dB; Peak SAR (extrapolated) = 0.522 W/kg; **SAR(1 g) = 0.402 mW/g**; **SAR(10 g) = 0.295 mW/g**; Maximum value of SAR (measured) = 0.425 mW/g



Date/Time: 4/4/2007 1:42:05 PM

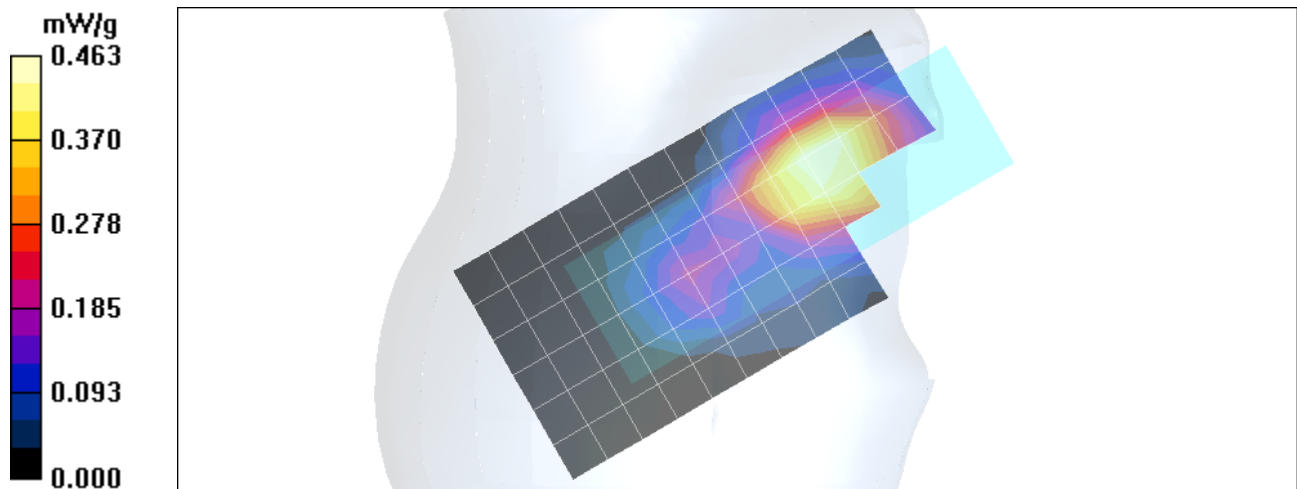
**Serial: LCE0710001;** Procedure Notes: Pwr Step: 0; Antenna Position: INTERNAL; Battery Model #: SNN5779B; DEVICE POSITION: CHEEK; Communication System: GSM 1900; Frequency: 1880 MHz; Communication System Channel Number: 661; Duty Cycle: 1:8; Medium: Backup Glycol Head; Medium parameters used:  $f = 1880$  MHz;  $\sigma = 1.45$  mho/m;  $\epsilon_r = 38.7$ ;  $\rho = 1000$  kg/m<sup>3</sup>; DASY4

Configuration:

- Probe: ET3DV6 - SN1514; ConvF(5.05, 5.05, 5.05); Calibrated: 7/17/2006
- Sensor-Surface: 4mm (Mechanical Surface Detection)
- Electronics: DAE3 Sn437; Calibrated: 7/18/2006
- Phantom: R#4 Glycol SAM (extended range), Rev.1 (25-Mar-05); Type: SAM v4.0; Serial: TP-1250;
- Measurement SW: DASY4, V4.7 Build 53; Postprocessing SW: SEMCAD, V1.8 Build 172

**Right Head Template/Area Scan - Normal (15mm) (7x17x1):** Measurement grid: dx=15mm, dy=15mm; Maximum value of SAR (measured) = 0.463 mW/g

**Right Head Template/5x5x7 Zoom Scan (<=3GHz) (5x5x7)/Cube 0:** Measurement grid: dx=8mm, dy=8mm, dz=5mm; Reference Value = 19.5 V/m; Power Drift = 0.070 dB; Peak SAR (extrapolated) = 0.663 W/kg; **SAR(1 g) = 0.469 mW/g; SAR(10 g) = 0.305 mW/g;** Maximum value of SAR (measured) = 0.502 mW/g



Date/Time: 4/4/2007 12:04:36 PM

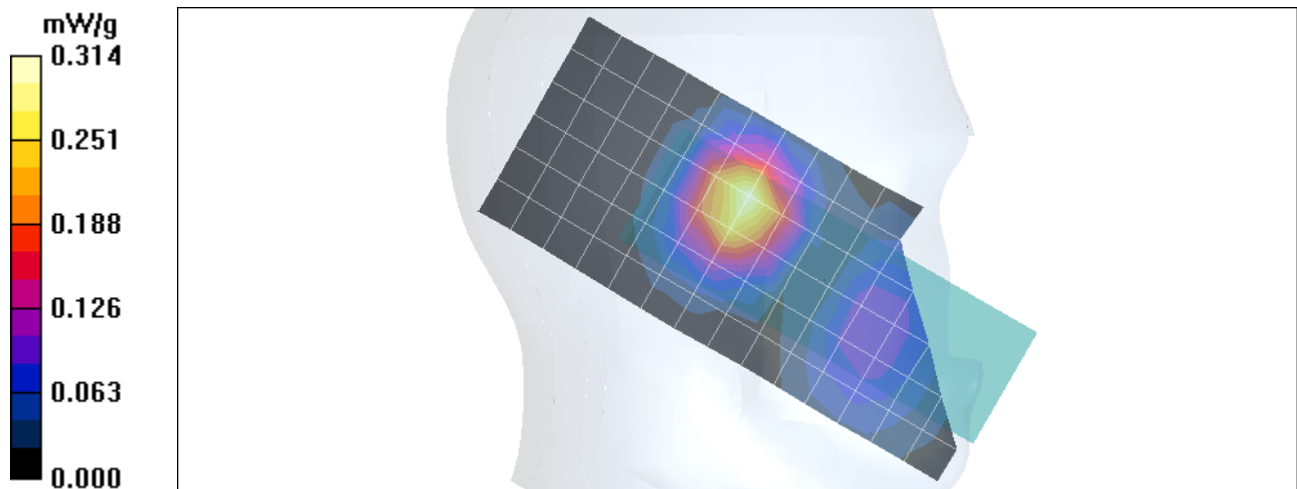
**Serial: LCE0710001;** Procedure Notes: Pwr Step: 0; Antenna Position: INTERNAL; Battery Model #: SNN5781B; DEVICE POSITION: TILT; Communication System: GSM 1900; Frequency: 1880 MHz; Communication System Channel Number: 661; Duty Cycle: 1:8; Medium: Backup Glycol Head; Medium parameters used:  $f = 1880$  MHz;  $\sigma = 1.45$  mho/m;  $\epsilon_r = 38.7$ ;  $\rho = 1000$  kg/m<sup>3</sup>; DASY4

Configuration:

- Probe: ET3DV6 - SN1514; ConvF(5.05, 5.05, 5.05); Calibrated: 7/17/2006
- Sensor-Surface: 4mm (Mechanical Surface Detection)
- Electronics: DAE3 Sn437; Calibrated: 7/18/2006
- Phantom: R#4 Glycol SAM (extended range), Rev.1 (25-Mar-05); Type: SAM v4.0; Serial: TP-1250;
- Measurement SW: DASY4, V4.7 Build 53; Postprocessing SW: SEMCAD, V1.8 Build 172

**Left Head Template/Area Scan - Normal (15mm) (7x17x1):** Measurement grid: dx=15mm, dy=15mm; Maximum value of SAR (measured) = 0.314 mW/g

**Left Head Template/5x5x7 Zoom Scan (<=3GHz) (5x5x7)/Cube 0:** Measurement grid: dx=8mm, dy=8mm, dz=5mm; Reference Value = 15.6 V/m; Power Drift = 0.017 dB; Peak SAR (extrapolated) = 0.441 W/kg; **SAR(1 g) = 0.297 mW/g; SAR(10 g) = 0.182 mW/g;** Maximum value of SAR (measured) = 0.322 mW/g



Date/Time: 4/4/2007 3:08:57 PM

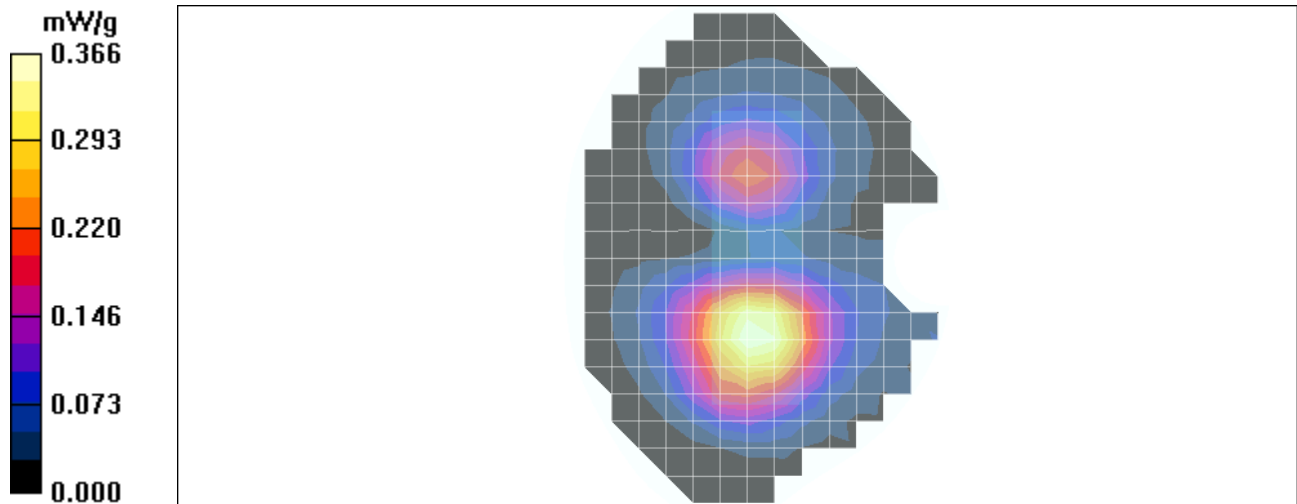
**Serial: LCE0710001;** Procedure Notes: Pwr Step: 0; Antenna Position: INTERNAL; Battery Model #: SNN5781B; DEVICE POSITION: PTT 25 mm away from phantom (front of phone); Communication System: GPRS 1900 - Class 10; Frequency: 1880 MHz; Communication System Channel Number: 661; Duty Cycle: 1:4; Medium: Backup Glycol Head; Medium parameters used:  $f = 1880$  MHz;  $\sigma = 1.45$  mho/m;  $\epsilon_r = 38.7$ ;  $\rho = 1000$  kg/m<sup>3</sup>; DASY4 Configuration:

- Probe: ET3DV6 - SN1514; ConvF(5.05, 5.05, 5.05); Calibrated: 7/17/2006
- Sensor-Surface: 4mm (Mechanical Surface Detection)
- Electronics: DAE3 Sn437; Calibrated: 7/18/2006
- Phantom: R4: Glycol SAM; Type: SAM; Serial: TP-1250;
- Measurement SW: DASY4, V4.7 Build 53; Postprocessing SW: SEMCAD, V1.8 Build 172

**SAM Phone Against Flat Section/Area Scan - Full Body (15mm) (21x15x1):** Measurement grid: dx=15mm, dy=15mm; Maximum value of SAR (measured) = 0.366 mW/g

**SAM Phone Against Flat Section/5x5x7 Zoom Scan (<=3GHz) (5x5x7)/Cube 0:**

Measurement grid: dx=8mm, dy=8mm, dz=5mm; Reference Value = 17.7 V/m; Power Drift = -0.441 dB; Peak SAR (extrapolated) = 0.525 W/kg; **SAR(1 g) = 0.344 mW/g; SAR(10 g) = 0.221 mW/g;** Maximum value of SAR (measured) = 0.370 mW/g



### **Appendix 3**

#### **SAR distribution plots for Body Worn Configuration**

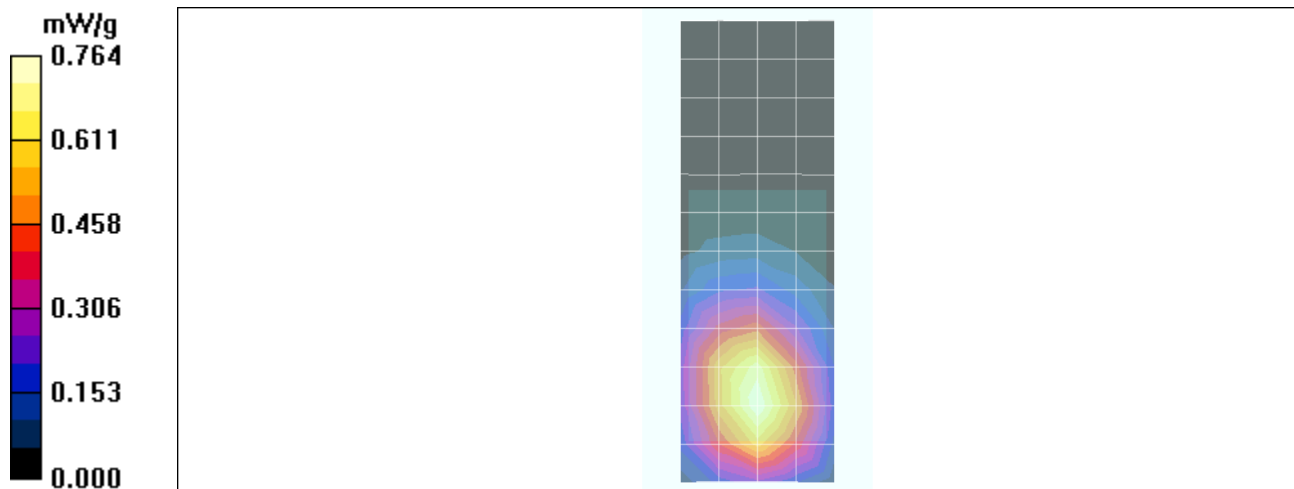
Date/Time: 3/26/2007 12:20:34 PM

**Serial: LCE0710001**; Procedure Notes: Pwr Step: 5; Antenna Position: INTERNAL; Battery Model #: SNN5779B; DEVICE POSITION: Back of Phone 15mm from Phantom; Communication System: GSM 850; Frequency: 836.6 MHz; Communication System Channel Number: 190; Duty Cycle: 1:8; Medium: Low Freq Body; Medium parameters used:  $f = 835$  MHz;  $\sigma = 0.98$  mho/m;  $\epsilon_r = 55.2$ ;  $\rho = 1000$  kg/m<sup>3</sup>; DASY4 Configuration:

- Probe: ET3DV6 - SN1514; ConvF(5.86, 5.86, 5.86); Calibrated: 7/17/2006
- Sensor-Surface: 4mm (Mechanical Surface Detection)
- Electronics: DAE3 Sn437; Calibrated: 7/18/2006
- Phantom: R4 : Sect.1, Amy Twin; Type: Amy Twin Flat; Serial: n/a;
- Measurement SW: DASY4, V4.7 Build 53; Postprocessing SW: SEMCAD, V1.8 Build 172

**Amy Twin Phone Template/Area Scan - Normal Body (15mm) (13x7x1)**: Measurement grid: dx=15mm, dy=15mm; Maximum value of SAR (measured) = 0.764 mW/g

**Amy Twin Phone Template/Zoom Scan (7x7x7)/Cube 0**: Measurement grid: dx=5mm, dy=5mm, dz=5mm; Reference Value = 29.3 V/m; Power Drift = -0.016 dB; Peak SAR (extrapolated) = 0.980 W/kg; **SAR(1 g) = 0.726 mW/g**; **SAR(10 g) = 0.499 mW/g**; Maximum value of SAR (measured) = 0.781 mW/g



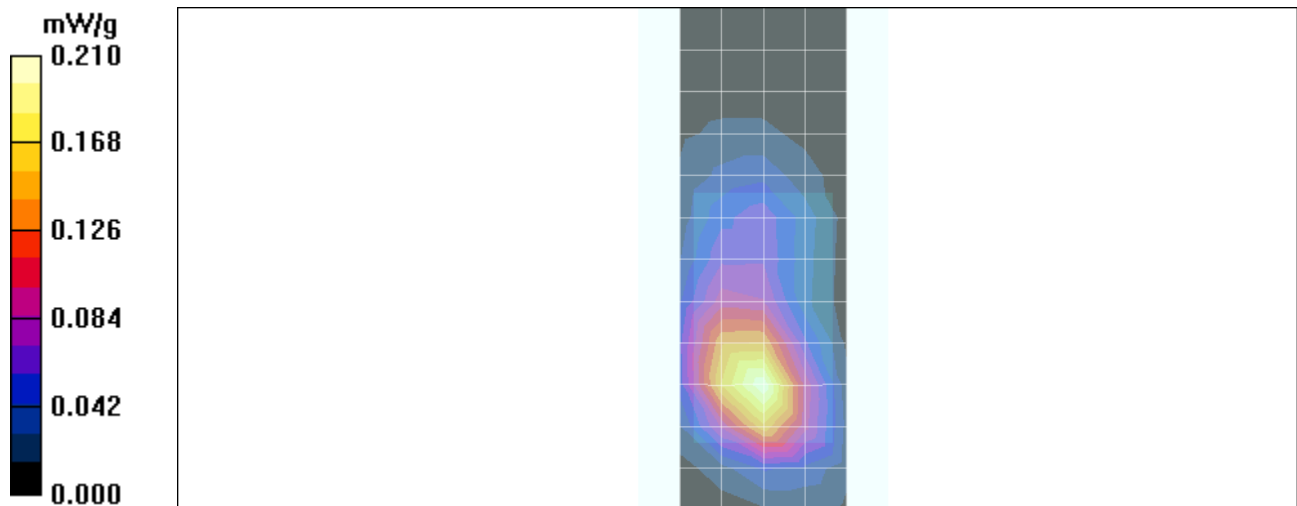
Date/Time: 4/5/2007 12:51:05 PM

**Serial: LCE0710001;** Procedure Notes: Pwr Step: 0; Antenna Position: INTERNAL; Battery Model #: SNN5781B; DEVICE POSITION: Bodyworn Back of Phone 15mm from Phantom; Communication System: GSM 1900; Frequency: 1880 MHz; Communication System Channel Number: 661; Duty Cycle: 1:8; Medium: Regular Glycol Body; Medium parameters used:  $f = 1880$  MHz;  $\sigma = 1.59$  mho/m;  $\epsilon_r = 50.8$ ;  $\rho = 1000$  kg/m<sup>3</sup>; DASY4 Configuration:

- Probe: ET3DV6 - SN1514; ConvF(4.53, 4.53, 4.53); Calibrated: 7/17/2006
- Sensor-Surface: 4mm (Mechanical Surface Detection)
- Electronics: DAE3 Sn437; Calibrated: 7/18/2006
- Phantom: R4 : Sect.2, Amy Twin; Type: Amy Twin Flat; Serial: n/a;
- Measurement SW: DASY4, V4.7 Build 53; Postprocessing SW: SEMCAD, V1.8 Build 172

**Amy Twin Phone Template/Area Scan - Normal Body (15mm) (13x7x1):** Measurement grid: dx=15mm, dy=15mm; Maximum value of SAR (measured) = 0.210 mW/g

**Amy Twin Phone Template/5x5x7 Zoom Scan (<=3GHz) (5x5x7)/Cube 0:** Measurement grid: dx=8mm, dy=8mm, dz=5mm; Reference Value = 11.4 V/m; Power Drift = -0.177 dB; Peak SAR (extrapolated) = 0.317 W/kg; **SAR(1 g) = 0.190 mW/g; SAR(10 g) = 0.112 mW/g;** Maximum value of SAR (measured) = 0.204 mW/g



**Appendix 4**

**Probe Calibration Certificate**



Accredited by the Swiss Federal Office of Metrology and Accreditation  
The Swiss Accreditation Service is one of the signatories to the EA  
Multilateral Agreement for the recognition of calibration certificates

Accreditation No.: **SCS 108**

Client **Motorola MDb**

Certificate No: **ET3-1514\_Jul06**

## CALIBRATION CERTIFICATE

Object **ET3DV6 - SN:1514**

Calibration procedure(s) **QA CAL-01.v5  
Calibration procedure for dosimetric E-field probes**

Calibration date: **July 17, 2006**

Condition of the calibrated item **In Tolerance**

This calibration certificate documents the traceability to national standards, which realize the physical units of measurements (SI).  
The measurements and the uncertainties with confidence probability are given on the following pages and are part of the certificate.

All calibrations have been conducted in the closed laboratory facility: environment temperature (22 ± 3)°C and humidity < 70%.

Calibration Equipment used (M&TE critical for calibration)

Primary Standards	ID #	Cal Date (Calibrated by, Certificate No.)	Scheduled Calibration
Power meter E4419B	GB41293874	5-Apr-06 (METAS, No. 251-00557)	Apr-07
Power sensor E4412A	MY41495277	5-Apr-06 (METAS, No. 251-00557)	Apr-07
Power sensor E4412A	MY41498087	5-Apr-06 (METAS, No. 251-00557)	Apr-07
Reference 3 dB Attenuator	SN: S5054 (3c)	11-Aug-05 (METAS, No. 251-00499)	Aug-06
Reference 20 dB Attenuator	SN: S5086 (20b)	4-Apr-06 (METAS, No. 251-00558)	Apr-07
Reference 30 dB Attenuator	SN: S5129 (30b)	11-Aug-05 (METAS, No. 251-00500)	Aug-06
Reference Probe ES3DV2	SN: 3013	2-Jan-06 (SPEAG, No. ES3-3013_Jan06)	Jan-07
DAE4	SN: 654	21-Jun-06 (SPEAG, No. DAE4-654_Jun06)	Jun-07

Secondary Standards	ID #	Check Date (in house)	Scheduled Check
RF generator HP 8648C	US3642U01700	4-Aug-99 (SPEAG, in house check Nov-05)	In house check: Nov-07
Network Analyzer HP 8753E	US37390585	18-Oct-01 (SPEAG, in house check Nov-05)	In house check: Nov 06

Calibrated by: **Katja Pokovic** **Technical Manager**

Approved by: **Niels Kuster** **Quality Manager**

Issued: July 17, 2006

This calibration certificate shall not be reproduced except in full without written approval of the laboratory.



Accredited by the Swiss Federal Office of Metrology and Accreditation  
The Swiss Accreditation Service is one of the signatories to the EA  
Multilateral Agreement for the recognition of calibration certificates

Accreditation No.: **SCS 108**

### Glossary:

TSL	tissue simulating liquid
NORM <sub>x,y,z</sub>	sensitivity in free space
ConF	sensitivity in TSL / NORM <sub>x,y,z</sub>
DCP	diode compression point
Polarization $\varphi$	$\varphi$ rotation around probe axis
Polarization $\vartheta$	$\vartheta$ rotation around an axis that is in the plane normal to probe axis (at measurement center), i.e., $\vartheta = 0$ is normal to probe axis

### Calibration is Performed According to the Following Standards:

- IEEE Std 1528-2003, "IEEE Recommended Practice for Determining the Peak Spatial-Averaged Specific Absorption Rate (SAR) in the Human Head from Wireless Communications Devices: Measurement Techniques", December 2003
- CENELEC EN 50361, "Basic standard for the measurement of Specific Absorption Rate related to human exposure to electromagnetic fields from mobile phones (300 MHz - 3 GHz), July 2001

### Methods Applied and Interpretation of Parameters:

- NORM<sub>x,y,z</sub>**: Assessed for E-field polarization  $\vartheta = 0$  ( $f \leq 900$  MHz in TEM-cell;  $f > 1800$  MHz: R22 waveguide). NORM<sub>x,y,z</sub> are only intermediate values, i.e., the uncertainties of NORM<sub>x,y,z</sub> does not effect the  $E^2$ -field uncertainty inside TSL (see below *ConvF*).
- NORM(f)<sub>x,y,z</sub>** = NORM<sub>x,y,z</sub> \* *frequency\_response* (see Frequency Response Chart). This linearization is implemented in DASY4 software versions later than 4.2. The uncertainty of the frequency response is included in the stated uncertainty of *ConvF*.
- DCP<sub>x,y,z</sub>**: DCP are numerical linearization parameters assessed based on the data of power sweep (no uncertainty required). DCP does not depend on frequency nor media.
- ConvF and Boundary Effect Parameters**: Assessed in flat phantom using E-field (or Temperature Transfer Standard for  $f \leq 800$  MHz) and inside waveguide using analytical field distributions based on power measurements for  $f > 800$  MHz. The same setups are used for assessment of the parameters applied for boundary compensation (alpha, depth) of which typical uncertainty values are given. These parameters are used in DASY4 software to improve probe accuracy close to the boundary. The sensitivity in TSL corresponds to NORM<sub>x,y,z</sub> \* *ConvF* whereby the uncertainty corresponds to that given for *ConvF*. A frequency dependent *ConvF* is used in DASY version 4.4 and higher which allows extending the validity from  $\pm 50$  MHz to  $\pm 100$  MHz.
- Spherical isotropy (3D deviation from isotropy)**: in a field of low gradients realized using a flat phantom exposed by a patch antenna.
- Sensor Offset**: The sensor offset corresponds to the offset of virtual measurement center from the probe tip (on probe axis). No tolerance required.

# Probe ET3DV6

## SN:1514

Manufactured:	November 24, 1999
Last calibrated:	July 20, 2005
Recalibrated:	July 17, 2006

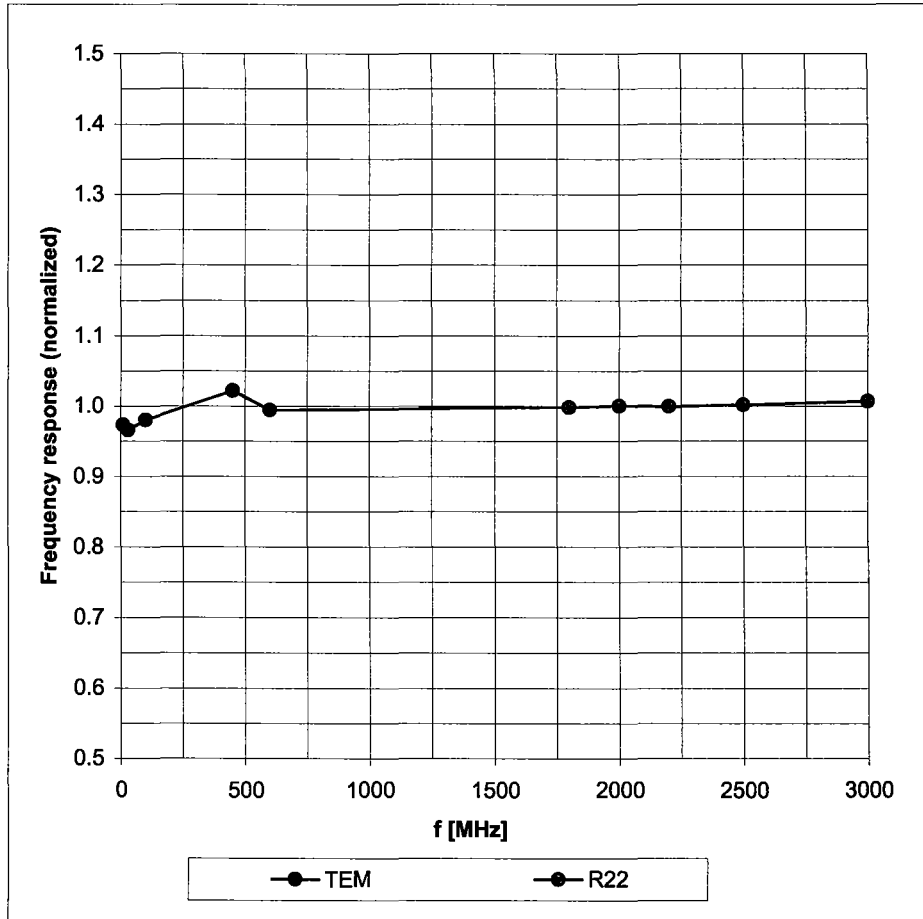
Calibrated for DASYS Systems

(Note: non-compatible with DASYS2 system!)



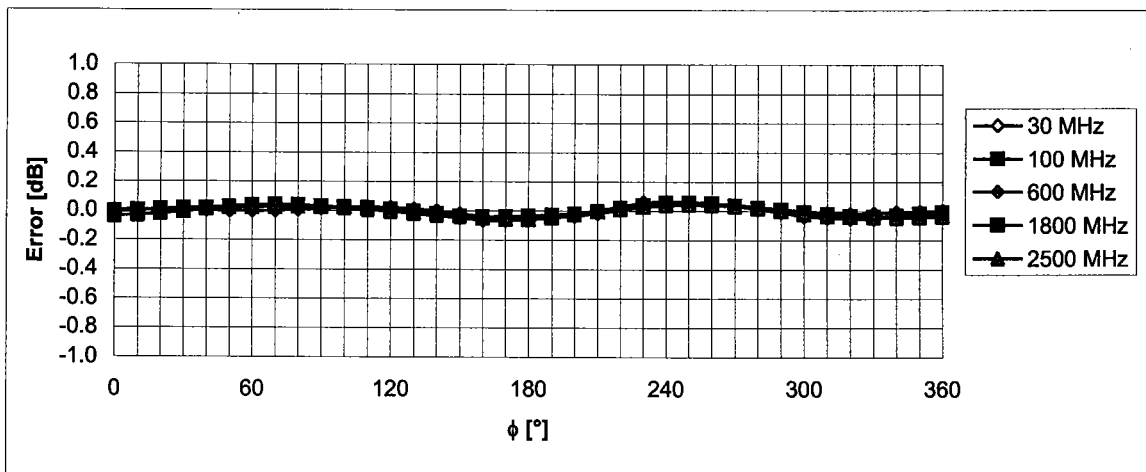
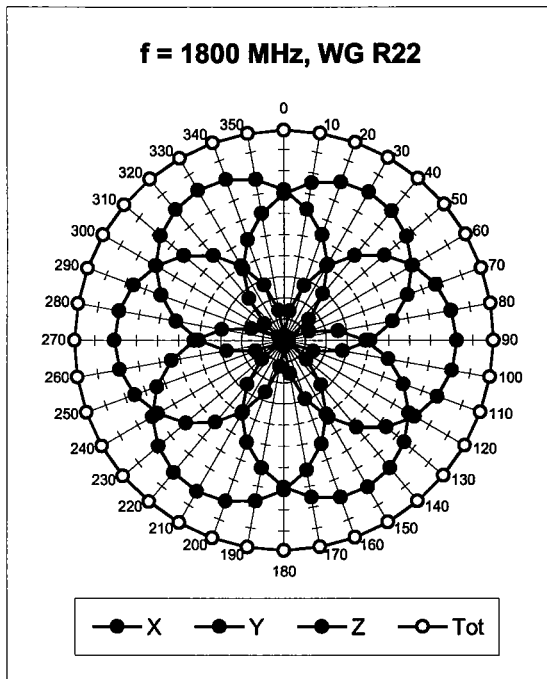
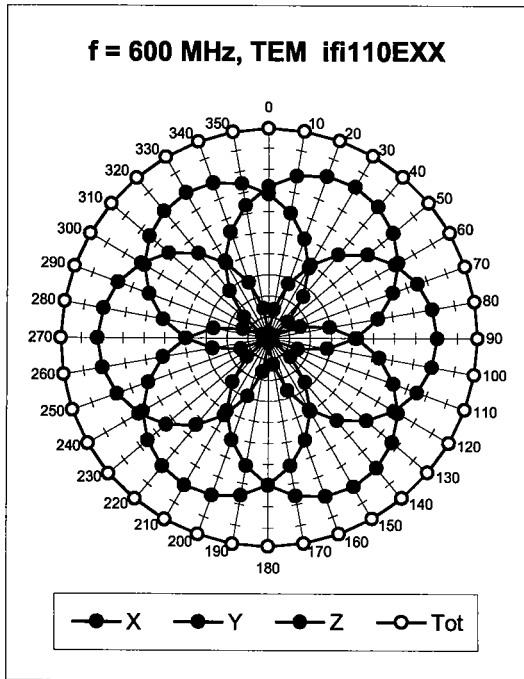
# Frequency Response of E-Field

(TEM-Cell:ifi110 EXX, Waveguide: R22)



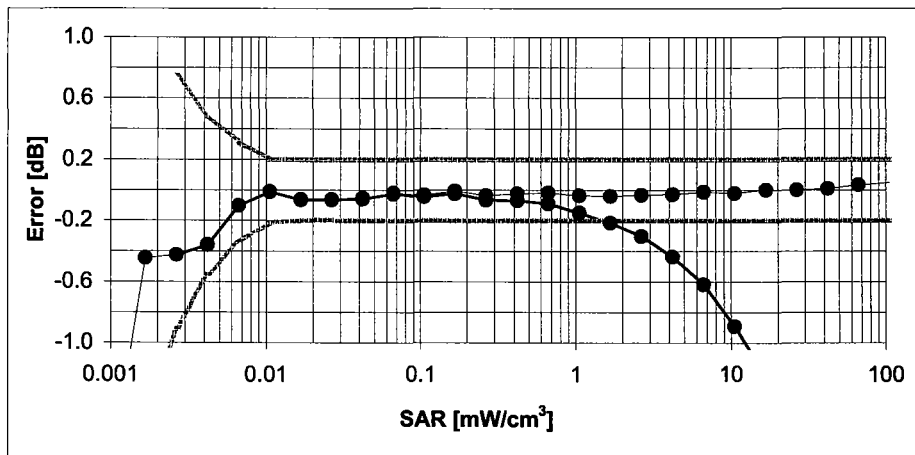
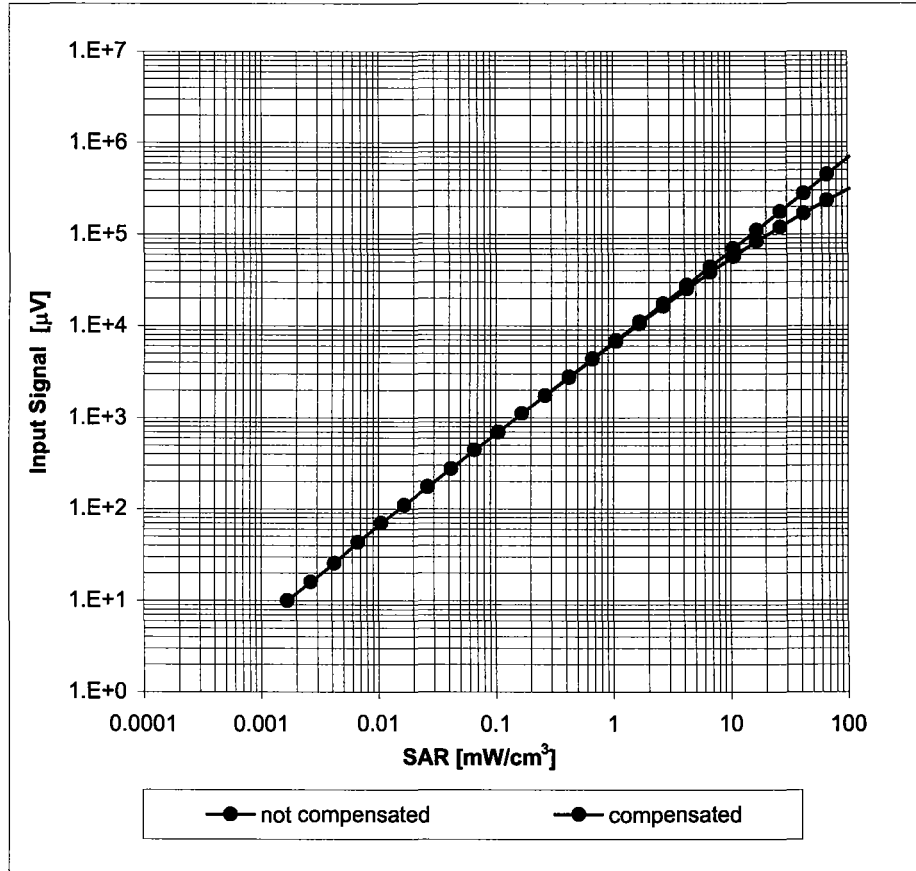
Uncertainty of Frequency Response of E-field:  $\pm 6.3\%$  ( $k=2$ )

### Receiving Pattern ( $\phi$ ), $\vartheta = 0^\circ$



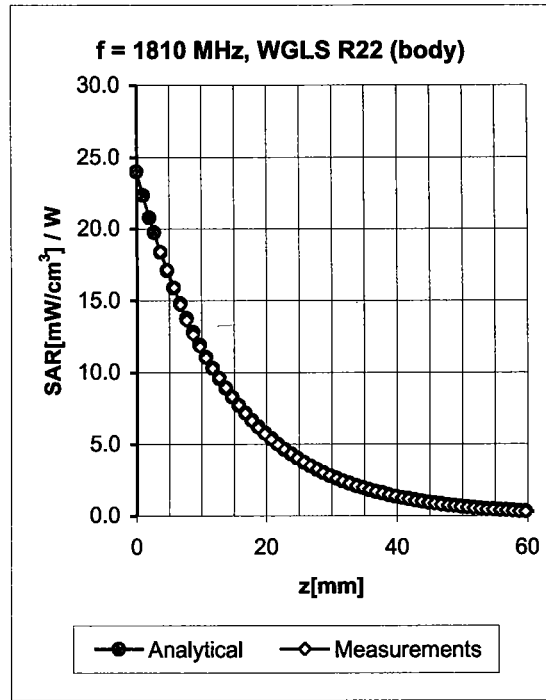
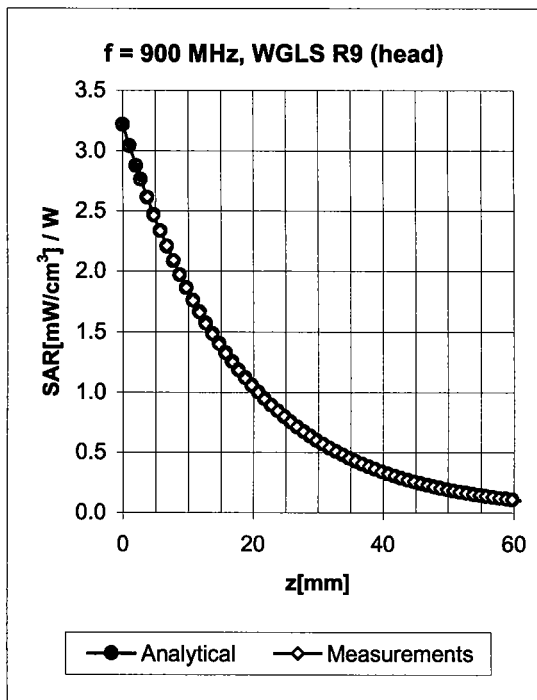
Uncertainty of Axial Isotropy Assessment:  $\pm 0.5\%$  ( $k=2$ )

### Dynamic Range f(SAR<sub>head</sub>) (Waveguide R22, f = 1800 MHz)



Uncertainty of Linearity Assessment: ± 0.6% (k=2)

### Conversion Factor Assessment

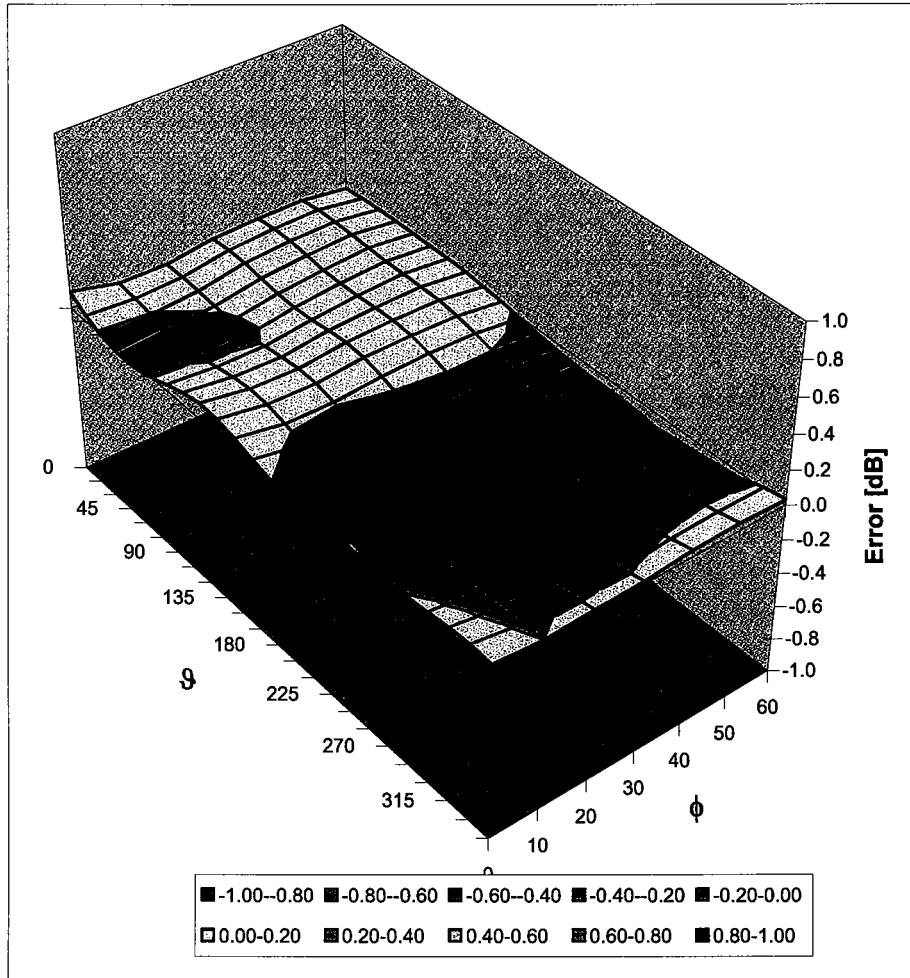


f [MHz]	Validity [MHz] <sup>c</sup>	TSL	Permittivity	Conductivity	Alpha	Depth	ConvF Uncertainty
900	± 50 / ± 100	Head	41.5 ± 5%	0.97 ± 5%	0.67	1.82	5.99 ± 11.0% (k=2)
1810	± 50 / ± 100	Head	40.0 ± 5%	1.40 ± 5%	0.57	2.46	5.05 ± 11.0% (k=2)
1950	± 50 / ± 100	Head	40.0 ± 5%	1.40 ± 5%	0.56	2.49	4.76 ± 11.0% (k=2)
2450	± 50 / ± 100	Head	39.2 ± 5%	1.80 ± 5%	0.65	2.09	4.47 ± 11.8% (k=2)
900	± 50 / ± 100	Body	55.0 ± 5%	1.05 ± 5%	0.64	1.95	5.86 ± 11.0% (k=2)
1810	± 50 / ± 100	Body	53.3 ± 5%	1.52 ± 5%	0.61	2.53	4.53 ± 11.0% (k=2)
1950	± 50 / ± 100	Body	53.3 ± 5%	1.52 ± 5%	0.75	2.16	4.30 ± 11.0% (k=2)
2450	± 50 / ± 100	Body	52.7 ± 5%	1.95 ± 5%	0.62	2.07	4.16 ± 11.8% (k=2)

<sup>c</sup> The validity of ± 100 MHz only applies for DASY v4.4 and higher (see Page 2). The uncertainty is the RSS of the ConvF uncertainty at calibration frequency and the uncertainty for the indicated frequency band.

# Deviation from Isotropy in HSL

Error ( $\phi, \theta$ ),  $f = 900$  MHz



Uncertainty of Spherical Isotropy Assessment:  $\pm 2.6\%$  ( $k=2$ )

## **Appendix 5**

### **Measurement Uncertainty Budget**

MOTOROLA, INC. Portable Cellular Phone SAR Test Report Number: 20241-3F

<i>a</i>	<i>b</i>	<i>c</i>	<i>d</i>	$e = f(d,k)$	<i>f</i>	<i>g</i>	$\frac{h = c \times f}{e}$	$\frac{i = c \times g}{e}$	<i>k</i>
Uncertainty Component	IEEE 1528 section	Tol. ( $\pm \%$ )	Prob Dist	Div.	$c_i$ (1 g)	$c_i$ (10 g)	1 g $u_i$ ( $\pm\%$ )	10 g $u_i$ ( $\pm\%$ )	$v_i$
<b>Measurement System</b>									
Probe Calibration	E.2.1	5.9	N	1.00	1	1	5.9	5.9	$\infty$
Axial Isotropy	E.2.2	4.7	R	1.73	0.707	0.707	1.9	1.9	$\infty$
Hemispherical Isotropy	E.2.2	9.6	R	1.73	0.707	0.707	3.9	3.9	$\infty$
Boundary Effect	E.2.3	1.0	R	1.73	1	1	0.6	0.6	$\infty$
Linearity	E.2.4	4.7	R	1.73	1	1	2.7	2.7	$\infty$
System Detection Limits	E.2.5	1.0	R	1.73	1	1	0.6	0.6	$\infty$
Readout Electronics	E.2.6	0.3	N	1.00	1	1	0.3	0.3	$\infty$
Response Time	E.2.7	1.1	R	1.73	1	1	0.6	0.6	$\infty$
Integration Time	E.2.8	1.1	R	1.73	1	1	0.6	0.6	$\infty$
RF Ambient Conditions - Noise	E.6.1	3.0	R	1.73	1	1	1.7	1.7	$\infty$
RF Ambient Conditions - Reflections	E.6.1	0.0	R	1.73	1	1	0.0	0.0	$\infty$
Probe Positioner Mech. Tolerance	E.6.2	0.4	R	1.73	1	1	0.2	0.2	$\infty$
Probe Positioning w.r.t Phantom	E.6.3	1.4	R	1.73	1	1	0.8	0.8	$\infty$
Max. SAR Evaluation (ext., int., avg.)	E.5	3.4	R	1.73	1	1	2.0	2.0	$\infty$
<b>Test sample Related</b>									
Test Sample Positioning	E.4.2	3.2	N	1.00	1	1	3.2	3.2	29
Device Holder Uncertainty	E.4.1	4.0	N	1.00	1	1	4.0	4.0	8
SAR drift	6.6.2	5.0	R	1.73	1	1	2.9	2.9	$\infty$
<b>Phantom and Tissue Parameters</b>									
Phantom Uncertainty	E.3.1	4.0	R	1.73	1	1	2.3	2.3	$\infty$
Liquid Conductivity (target)	E.3.2	5.0	R	1.73	0.64	0.43	1.8	1.2	$\infty$
Liquid Conductivity (measurement)	E.3.3	3.3	N	1.00	0.64	0.43	2.1	1.4	$\infty$
Liquid Permittivity (target)	E.3.2	5.0	R	1.73	0.6	0.49	1.7	1.4	$\infty$
Liquid Permittivity (measurement)	E.3.3	1.9	N	1.00	0.6	0.49	1.1	0.9	$\infty$
<b>Combined Standard Uncertainty</b>			RSS				11.1	10.8	411
<b>Expanded Uncertainty (95% CONFIDENCE LEVEL)</b>			$k=2$				22.2	21.6	

## **Appendix 6**

### **Photographs of the device under test**



**Figure 1. Front of Phone**



**Figure 2. Back of Phone**



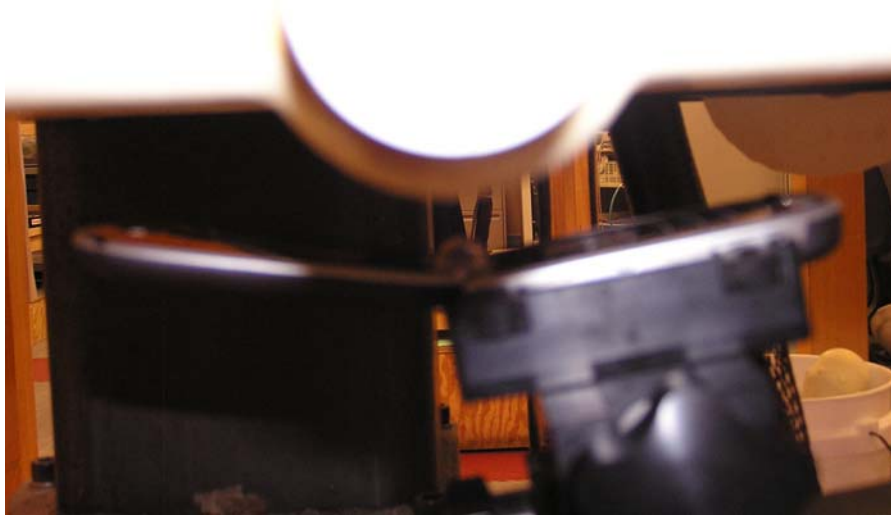
**Figure 3. Phone Open**



**Figure 4. Cheek Position**



**Figure 5. Tilt Position**



**Figure 6. Push-To-Talk Position**



**Figure 7. Body Position**

**Appendix 7**

**Dipole Characterization Certificate**

# Certification of System Performance Check Targets

Based on WI-0396

-Historical Data-

900MHz	
IEEE1528 Target:	10.8 (W/kg)
Measurement Uncertainty (k=1):	9.0%
Measurement Period:	3-June-05 to 10-May-06
# of tests performed:	1571
Grand Average:	11.3 (W/kg)
% Delta (Average - IEEE1528 Target)	4.3%
Is % Delta <= Expanded Measurement Uncertainty (k=2)?	Yes
Accept/Reject <u>Average</u> as new system performance check target?	ACCEPT
<b>Applies to Dipole SN's:</b> 55, 69, 77, 78, 79, 80, 91, 92, 93, 94, 95, 96, 97	

-New System Performance Check Targets- per WI-0396

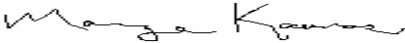
(based on analysis of historical data)

Frequency	SAR Target (W/kg)	Permittivity	Conductivity (S/m)
900MHz	11.3	41.5 ± 5%	0.97 ± 5%

-----

**-Approvals-**

Submitted by:  Date:

Signed: 

Comments:

Approved by:  Date:

Signed: 

Comments:

-----