



FCC SAR Test Report

Report No. : FA482618

FR1 n77 HPUE	100M	QPSK	1	1	DFT-30	Front	5mm	Ant 8	ECI7	656000	3840	1	14.54	16.00	1.400	-	-	-0.08	0.000	0.000
FR1 n77 HPUE	100M	QPSK	1	1	DFT-30	Back	5mm	Ant 8	ECI7	656000	3840	1	14.54	16.00	1.400	-	-	-0.03	0.324	0.453
FR1 n77 HPUE	100M	QPSK	1	1	DFT-30	Right Side	5mm	Ant 8	ECI7	656000	3840	1	14.54	16.00	1.400	-	-	-0.15	0.095	0.133
FR1 n77 HPUE	100M	QPSK	1	1	DFT-30	Top Side	5mm	Ant 8	ECI7	656000	3840	1	14.54	16.00	1.400	-	-	0.01	0.000	0.000
FR1 n77 HPUE	100M	QPSK	135	69	DFT-30	Front	5mm	Ant 8	ECI7	656000	3840	1	14.50	16.00	1.413	-	-	0.11	0.000	0.000
FR1 n77 HPUE	100M	QPSK	135	69	DFT-30	Back	5mm	Ant 8	ECI7	656000	3840	1	14.50	16.00	1.413	-	-	0.16	0.381	0.538
FR1 n77 HPUE	100M	QPSK	135	69	DFT-30	Right Side	5mm	Ant 8	ECI7	656000	3840	1	14.50	16.00	1.413	-	-	-0.06	0.119	0.168
FR1 n77 HPUE	100M	QPSK	135	69	DFT-30	Top Side	5mm	Ant 8	ECI7	656000	3840	1	14.50	16.00	1.413	-	-	0.08	0.000	0.000
FR1 n77 HPUE	100M	QPSK	270	0	DFT-30	Back	5mm	Ant 8	ECI7	656000	3840	1	14.45	16.00	1.429	-	-	-0.02	0.417	0.596

Plot No.	Band	Mode	Test Position	Gap (mm)	Antenna	Power State	Ch.	Freq. (MHz)	Sample	Average Power (dBm)	Tune-Up Limit (dBm)	Tune-up Scaling Factor	Duty Cycle %	Duty Cycle Scaling Factor	Power Drift (dB)	Measured 1g SAR (W/kg)	Reported 1g SAR (W/kg)	
2450MHz																		
	Bluetooth	DH5 1Mbps	Front	5mm	Ant 6	Full Power	78	2480	1	12.30	14.00	1.479	76.89	1.083	-0.08	0.127	0.204	
	Bluetooth	DH5 1Mbps	Back	5mm	Ant 6	Full Power	78	2480	1	12.30	14.00	1.479	76.89	1.083	-0.15	0.197	0.316	
	Bluetooth	DH5 1Mbps	Right Side	5mm	Ant 6	Full Power	78	2480	1	12.30	14.00	1.479	76.89	1.083	0.07	0.152	0.244	
	Bluetooth	DH5 1Mbps	Top Side	5mm	Ant 6	Full Power	78	2480	1	12.30	14.00	1.479	76.89	1.083	0.15	0.103	0.165	
62	Bluetooth	DH5 1Mbps	Back	5mm	Ant 6	Full Power	0	2402	1	12.00	14.00	1.585	76.89	1.083	0.02	0.203	0.348	
	Bluetooth	DH5 1Mbps	Back	5mm	Ant 6	Full Power	39	2441	1	12.10	14.00	1.549	76.89	1.083	-0.12	0.196	0.329	
	WLAN2.4GHz	802.11b 1Mbps	Front	5mm	Ant 6	Hotspot	6	2437	1	16.60	18.00	1.380	100.00	1.000	-0.08	0.411	0.567	
	WLAN2.4GHz	802.11b 1Mbps	Back	5mm	Ant 6	Hotspot	6	2437	1	16.60	18.00	1.380	100.00	1.000	0.18	0.546	0.754	
	WLAN2.4GHz	802.11b 1Mbps	Right Side	5mm	Ant 6	Hotspot	6	2437	1	16.60	18.00	1.380	100.00	1.000	0.01	0.425	0.587	
	WLAN2.4GHz	802.11b 1Mbps	Top Side	5mm	Ant 6	Hotspot	6	2437	1	16.60	18.00	1.380	100.00	1.000	0.02	0.298	0.411	
	WLAN2.4GHz	802.11b 1Mbps	Back	5mm	Ant 6	Hotspot	1	2412	1	16.50	18.00	1.413	100.00	1.000	0.12	0.507	0.716	
63	WLAN2.4GHz	802.11b 1Mbps	Back	5mm	Ant 6	Hotspot	11	2462	1	16.50	18.00	1.413	100.00	1.000	-0.16	0.563	0.795	
5000MHz																		
	WLAN5.2GHz	802.11ac-VHT80 MCS0	Front	5mm	Ant 6	Hotspot	42	5210	1	8.85	10.00	1.303	100.00	1.000	-0.13	0.148	0.193	
64	WLAN5.2GHz	802.11ac-VHT80 MCS0	Back	5mm	Ant 6	Hotspot	42	5210	1	8.85	10.00	1.303	100.00	1.000	0.18	0.469	0.611	
	WLAN5.2GHz	802.11ac-VHT80 MCS0	Right Side	5mm	Ant 6	Hotspot	42	5210	1	8.85	10.00	1.303	100.00	1.000	0.1	0.104	0.136	
	WLAN5.2GHz	802.11ac-VHT80 MCS0	Top Side	5mm	Ant 6	Hotspot	42	5210	1	8.85	10.00	1.303	100.00	1.000	0.17	0.418	0.545	
	WLAN5.8GHz	802.11ac-VHT80 MCS0	Front	5mm	Ant 6	hotspot	155	5775	1	9.28	10.50	1.324	100.00	1.000	0.14	0.211	0.279	
	WLAN5.8GHz	802.11ac-VHT80 MCS0	Back	5mm	Ant 6	hotspot	155	5775	1	9.28	10.50	1.324	100.00	1.000	0.15	0.461	0.611	
	WLAN5.8GHz	802.11ac-VHT80 MCS0	Right Side	5mm	Ant 6	hotspot	155	5775	1	9.28	10.50	1.324	100.00	1.000	0.02	0.103	0.136	
65	WLAN5.8GHz	802.11ac-VHT80 MCS0	Top Side	5mm	Ant 6	hotspot	155	5775	1	9.28	10.50	1.324	100.00	1.000	-0.08	0.504	0.667	
	WLAN5.8GHz	802.11ac-VHT80 MCS0	Top Side	5mm	Ant 6	hotspot	155	5775	2	9.28	10.50	1.324	100.00	1.000	-0.08	0.354	0.469	



16.3 Body Worn Accessory SAR

Table with columns: Plot No., Band, BW (MHz), Modulation, RB Size, RB offset, Mode, Test Position, Gap (mm), Antenna, Headset, Power State, Ch., Freq. (MHz), Sample, Average Power (dBm), Tune-Up Limit (dBm), Tune-up Scaling Factor, Duty Cycle %, Duty Cycle Scaling Factor, Power Drift (dB), Measured 1g SAR (W/kg), Reported 1g SAR (W/kg). Includes a '750MHz' section and rows for LTE Bands 71, 12, 13, 14, and FR1 n71.



FCC SAR Test Report

Report No. : FA482618

Table with columns for LTE Band, Modulation, Power, Frequency, etc. Includes rows for LTE Band 66C, FR1 n70, FR1 n66, GSM1900, and WCDMA II. Some cells are highlighted in yellow (e.g., 0.971, 1.230, 1.272, 1.281).



Table with 22 columns and multiple rows containing SAR test results for various bands and frequencies. Includes sub-sections for 2600MHz and 4100MHz ranges. Specific rows are highlighted in yellow (e.g., 87, 88, 89, 90).



FCC SAR Test Report

Report No. : FA482618

	FR1 n41	100M	QPSK	135	69	DFT-30	Back	5mm	Ant 1	-	ECI3/7	518598	2592.99	1	18.66	19.50	1.213	-	-	-0.19	0.949	1.152
	FR1 n41	100M	QPSK	270	0	DFT-30	Front	5mm	Ant 1	-	ECI3/7	518598	2592.99	1	18.64	19.50	1.219	-	-	0.15	0.589	0.718
	FR1 n41	100M	QPSK	270	0	DFT-30	Back	5mm	Ant 1	-	ECI3/7	518598	2592.99	1	18.64	19.50	1.219	-	-	0.09	0.940	1.146
	FR1 n41	100M	QPSK	1	1	DFT-30	Front	5mm	Ant 4	-	ECI3	518598	2592.99	1	15.75	16.50	1.189	-	-	0.01	0.363	0.431
	FR1 n41	100M	QPSK	1	1	DFT-30	Back	5mm	Ant 4	-	ECI3	518598	2592.99	1	15.75	16.50	1.189	-	-	-0.07	0.728	0.865
	FR1 n41	100M	QPSK	1	1	DFT-30	Front	19mm	Ant 4	-	ECI 4	518598	2592.99	1	26.24	27.00	1.191	-	-	0.02	0.267	0.318
	FR1 n41	100M	QPSK	1	1	DFT-30	Back	28mm	Ant 4	-	ECI 4	518598	2592.99	1	26.24	27.00	1.191	-	-	-0.11	0.185	0.220
	FR1 n41	100M	QPSK	135	69	DFT-30	Front	5mm	Ant 4	-	ECI3	518598	2592.99	1	15.72	16.50	1.197	-	-	-0.04	0.332	0.397
	FR1 n41	100M	QPSK	135	69	DFT-30	Back	5mm	Ant 4	-	ECI3	518598	2592.99	1	15.72	16.50	1.197	-	-	-0.02	0.710	0.850
	FR1 n41	100M	QPSK	270	0	DFT-30	Back	5mm	Ant 4	-	ECI3	518598	2592.99	1	15.66	16.50	1.213	-	-	0.19	0.694	0.842
	FR1 n41	100M	QPSK	1	1	DFT-30	Front	5mm	Ant 2	-	ECI 3	518598	2592.99	1	16.38	17.00	1.153	-	-	-	n/a	n/a
	FR1 n41	100M	QPSK	1	1	DFT-30	Back	5mm	Ant 2	-	ECI 3	518598	2592.99	1	16.38	17.00	1.153	-	-	-0.19	0.695	0.802
	FR1 n41	100M	QPSK	1	1	DFT-30	Front	19mm	Ant 2	-	ECI 4	518598	2592.99	1	21.23	22.00	1.194	-	-	-0.19	0.000	0.000
	FR1 n41	100M	QPSK	1	1	DFT-30	Back	28mm	Ant 2	-	ECI 4	518598	2592.99	1	21.23	22.00	1.194	-	-	0.03	0.061	0.073
	FR1 n41	100M	QPSK	135	69	DFT-30	Front	5mm	Ant 2	-	ECI 3	518598	2592.99	1	16.33	17.00	1.167	-	-	-	n/a	n/a
	FR1 n41	100M	QPSK	135	69	DFT-30	Back	5mm	Ant 2	-	ECI 3	518598	2592.99	1	16.33	17.00	1.167	-	-	0.16	0.628	0.733
	FR1 n41	100M	QPSK	270	0	DFT-30	Back	5mm	Ant 2	-	ECI 3	518598	2592.99	1	16.29	17.00	1.178	-	-	-0.06	0.640	0.754
	FR1 n41	100M	QPSK	1	1	DFT-30	Front	5mm	Ant 7	-	ECI 3	518598	2592.99	1	14.63	15.50	1.222	-	-	0.18	0.200	0.244
	FR1 n41	100M	QPSK	1	1	DFT-30	Back	5mm	Ant 7	-	ECI 3	518598	2592.99	1	14.63	15.50	1.222	-	-	0.14	0.677	0.827
	FR1 n41	100M	QPSK	1	1	DFT-30	Front	19mm	Ant 7	-	ECI 4	518598	2592.99	1	20.15	21.00	1.216	-	-	0.18	0.070	0.085
	FR1 n41	100M	QPSK	1	1	DFT-30	Back	28mm	Ant 7	-	ECI 4	518598	2592.99	1	20.15	21.00	1.216	-	-	-0.05	0.071	0.086
	FR1 n41	100M	QPSK	135	69	DFT-30	Front	5mm	Ant 7	-	ECI 3	518598	2592.99	1	14.60	15.50	1.230	-	-	0.14	0.211	0.260
	FR1 n41	100M	QPSK	135	69	DFT-30	Back	5mm	Ant 7	-	ECI 3	518598	2592.99	1	14.60	15.50	1.230	-	-	-0.08	0.621	0.764
	FR1 n41	100M	QPSK	270	0	DFT-30	Back	5mm	Ant 7	-	ECI 3	518598	2592.99	1	14.61	15.50	1.227	-	-	-0.1	0.628	0.771
3000MHz ~ 4000MHz																						
	LTE Band 48	20M	QPSK	1	0	-	Front	5mm	Ant 5	-	ECI 3	55830	3609	1	16.04	17.00	1.247	62.9	1.006	-0.04	0.304	0.381
	LTE Band 48	20M	QPSK	1	0	-	Back	5mm	Ant 5	-	ECI 3	55830	3609	1	16.04	17.00	1.247	62.9	1.006	0.05	0.600	0.753
	LTE Band 48	20M	QPSK	1	0	-	Back	5mm	Ant 5	-	ECI 3	55340	3560	1	16.02	17.00	1.253	62.9	1.006	-0.08	0.547	0.690
91	LTE Band 48	20M	QPSK	1	0	-	Back	5mm	Ant 5	-	ECI 3	56150	3641	1	15.88	17.00	1.294	62.9	1.006	0.07	0.684	0.891
	LTE Band 48	20M	QPSK	1	0	-	Back	5mm	Ant 5	-	ECI 3	56150	3641	1	15.88	17.00	1.294	62.9	1.006	0.01	0.651	0.848
	LTE Band 48	20M	QPSK	1	0	-	Back	5mm	Ant 5	-	ECI 3	56150+56348	3641+3660.8	1	15.65	17.00	1.365	62.9	1.006	0.07	0.635	0.872
	LTE Band 48	20M	QPSK	1	0	-	Back	5mm	Ant 5	-	ECI 3	56640	3690	1	16.02	17.00	1.253	62.9	1.006	-0.08	0.638	0.804
	LTE Band 48	20M	QPSK	1	0	-	Front	19mm	Ant 5	-	ECI 4	55830	3609	1	22.78	24.00	1.324	62.9	1.006	-0.15	0.236	0.314
	LTE Band 48	20M	QPSK	1	0	-	Back	28mm	Ant 5	-	ECI 4	56150	3641	1	22.65	24.00	1.365	62.9	1.006	0.04	0.265	0.364
	LTE Band 48	20M	QPSK	50	0	-	Front	5mm	Ant 5	-	ECI 3	55830	3609	1	16.01	17.00	1.256	62.9	1.006	0.05	0.298	0.377
	LTE Band 48	20M	QPSK	50	0	-	Back	5mm	Ant 5	-	ECI 3	55830	3609	1	16.01	17.00	1.256	62.9	1.006	-0.17	0.611	0.772
	LTE Band 48	20M	QPSK	100	0	-	Front	5mm	Ant 5	-	ECI 3	55830	3609	1	15.95	17.00	1.274	62.9	1.006	0.11	0.304	0.389
	LTE Band 48	20M	QPSK	100	0	-	Back	5mm	Ant 5	-	ECI 3	55830	3609	1	15.95	17.00	1.274	62.9	1.006	0.04	0.597	0.765
	FR1 n48	100M	QPSK	1	1	DFT-30	Front	5mm	Ant 5	-	ECI 3	641666	3624.99	1	14.39	15.50	1.291	-	-	0.19	0.217	0.280
92	FR1 n48	100M	QPSK	1	1	DFT-30	Back	5mm	Ant 5	-	ECI 3	641666	3624.99	1	14.39	15.50	1.291	-	-	-0.17	0.573	0.740
	FR1 n48	100M	QPSK	1	1	DFT-30	Front	19mm	Ant 5	-	ECI 4	641666	3624.99	1	22.64	24.00	1.368	-	-	0.16	0.276	0.377
	FR1 n48	100M	QPSK	1	1	DFT-30	Back	28mm	Ant 5	-	ECI 4	641666	3624.99	1	22.64	24.00	1.368	-	-	0.12	0.280	0.383
	FR1 n48	100M	QPSK	135	69	DFT-30	Front	5mm	Ant 5	-	ECI 3	641666	3624.99	1	14.37	15.50	1.297	-	-	-0.14	0.230	0.298
	FR1 n48	100M	QPSK	135	69	DFT-30	Back	5mm	Ant 5	-	ECI 3	641666	3624.99	1	14.37	15.50	1.297	-	-	-0.02	0.555	0.720
	FR1 n48	100M	QPSK	270	0	DFT-30	Back	5mm	Ant 5	-	ECI 3	641666	3624.99	1	14.30	15.50	1.318	-	-	-0.18	0.543	0.716
	FR1 n77	100M	QPSK	1	1	DFT-30	Front	5mm	Ant 5	-	ECI 3	633332	3499.98	1	14.16	15.50	1.361	-	-	-0.08	0.183	0.249
	FR1 n77	100M	QPSK	1	1	DFT-30	Back	5mm	Ant 5	-	ECI 3	633332	3499.98	1	14.16	15.50	1.361	-	-	-0.06	0.475	0.647
	FR1 n77	100M	QPSK	135	69	DFT-30	Front	5mm	Ant 5	-	ECI 3	633332	3499.98	1	14.13	15.50	1.371	-	-	0.04	0.224	0.307
	FR1 n77	100M	QPSK	135	69	DFT-30	Back	5mm	Ant 5	-	ECI 3	633332	3499.98	1	14.13	15.50	1.371	-	-	0.05	0.579	0.794
	FR1 n77	100M	QPSK	135	69	DFT-30	Front	19mm	Ant 5	-	ECI 4	633332	3499.98	1	22.51	24.00	1.409	-	-	-0.15	0.312	0.440
	FR1 n77	100M	QPSK	135	69	DFT-30	Back	28mm	Ant 5	-	ECI 4	633332	3499.98	1	22.51	24.00	1.409	-	-	-0.08	0.321	0.452
	FR1 n77	100M	QPSK	270	0	DFT-30	Back	5mm	Ant 5	-	ECI 3	633332	3499.98	1	14.09	15.50	1.384	-	-	-0.03	0.617	0.854
	FR1 n77	100M	QPSK	1	1	DFT-30	Front	5mm	Ant 5	-	ECI 3	656000	3840	1	14.14	15.50	1.368	-	-	-0.08	0.226	0.309
	FR1 n77	100M	QPSK	1	1	DFT-30	Back	5mm	Ant 5	-	ECI 3	656000	3840	1	14.14	15.50	1.368	-	-	-0.01	0.594	0.812
	FR1 n77	100M	QPSK	135	69	DFT-30	Front	5mm	Ant 5	-	ECI 3	656000	3840	1	14.10	15.50	1.380	-	-	-0.19	0.238	0.329
	FR1 n77	100M	QPSK	135	69	DFT-30	Back	5mm	Ant 5	-	ECI 3	656000	3840	1	14.10	15.50	1.380	-	-	-0.06	0.603	0.832



FCC SAR Test Report

Report No. : FA482618

	FR1 n77	100M	QPSK	270	0	DFT-30	Back	5mm	Ant 5	-	ECl 3	656000	3840	1	14.05	15.50	1.396	-	-	0.06	0.611	0.853
	FR1 n77	100M	QPSK	1	1	DFT-30	Front	5mm	Ant 1	-	ECl 3	633332	3499.98	1	22.79	24.00	1.321	-	-	-0.13	0.286	0.378
	FR1 n77	100M	QPSK	1	1	DFT-30	Back	5mm	Ant 1	-	ECl 3	633332	3499.98	1	22.79	24.00	1.321	-	-	0.01	0.726	0.959
	FR1 n77	100M	QPSK	135	69	DFT-30	Front	5mm	Ant 1	-	ECl 3	633332	3499.98	1	22.72	24.00	1.343	-	-	0.11	0.311	0.418
	FR1 n77	100M	QPSK	135	69	DFT-30	Back	5mm	Ant 1	-	ECl 3	633332	3499.98	1	22.72	24.00	1.343	-	-	-0.02	0.840	1.128
	FR1 n77	100M	QPSK	270	0	DFT-30	Back	5mm	Ant 1	-	ECl 3	633332	3499.98	1	22.70	24.00	1.349	-	-	-0.01	0.721	0.973
	FR1 n77	100M	QPSK	1	1	DFT-30	Front	5mm	Ant 1	-	ECl 3	656000	3840	1	22.83	24.00	1.309	-	-	-0.17	0.553	0.724
93	FR1 n77	100M	QPSK	1	1	DFT-30	Back	5mm	Ant 1	-	ECl 3	656000	3840	1	22.83	24.00	1.309	-	-	0.19	0.870	1.139
	FR1 n77	100M	QPSK	1	1	DFT-30	Back	5mm	Ant 1	-	ECl 3	656000	3840	1	22.83	24.00	1.309	-	-	0.1	0.823	1.077
	FR1 n77	100M	QPSK	1	1	DFT-30	Back	5mm	Ant 1	-	ECl 3	656000	3840	2	22.83	24.00	1.309	-	-	0.19	0.662	0.867
	FR1 n77	100M	QPSK	1	1	DFT-30	Front	19mm	Ant 1	-	ECl 4	656000	3840	1	22.83	24.00	1.309	-	-	-0.13	0.076	0.099
	FR1 n77	100M	QPSK	1	1	DFT-30	Back	28mm	Ant 1	-	ECl 4	656000	3840	1	22.83	24.00	1.309	-	-	0.01	0.093	0.122
	FR1 n77	100M	QPSK	135	69	DFT-30	Front	5mm	Ant 1	-	ECl 3	656000	3840	1	22.80	24.00	1.318	-	-	-0.19	0.541	0.713
	FR1 n77	100M	QPSK	135	69	DFT-30	Back	5mm	Ant 1	-	ECl 3	656000	3840	1	22.80	24.00	1.318	-	-	0.1	0.829	1.093
	FR1 n77	100M	QPSK	270	0	DFT-30	Back	5mm	Ant 1	-	ECl 3	656000	3840	1	22.70	24.00	1.349	-	-	0.04	0.821	1.107
	FR1 n77	100M	QPSK	1	1	DFT-30	Front	5mm	Ant 2	-	ECl 3	633332	3499.98	1	16.45	17.50	1.274	-	-	0.15	0.045	0.057
	FR1 n77	100M	QPSK	1	1	DFT-30	Back	5mm	Ant 2	-	ECl 3	633332	3499.98	1	16.45	17.50	1.274	-	-	0.01	0.604	0.769
	FR1 n77	100M	QPSK	1	1	DFT-30	Front	19mm	Ant 2	-	ECl 4	633332	3499.98	1	22.95	24.00	1.274	-	-	0.02	0.025	0.032
	FR1 n77	100M	QPSK	1	1	DFT-30	Back	28mm	Ant 2	-	ECl 4	633332	3499.98	1	22.95	24.00	1.274	-	-	-0.02	0.036	0.046
	FR1 n77	100M	QPSK	135	69	DFT-30	Front	5mm	Ant 2	-	ECl 3	633332	3499.98	1	16.41	17.50	1.285	-	-	-	n/a	n/a
	FR1 n77	100M	QPSK	135	69	DFT-30	Back	5mm	Ant 2	-	ECl 3	633332	3499.98	1	16.41	17.50	1.285	-	-	0.06	0.462	0.594
	FR1 n77	100M	QPSK	270	0	DFT-30	Back	5mm	Ant 2	-	ECl 3	633332	3499.98	1	16.34	17.50	1.306	-	-	0.12	0.464	0.606
	FR1 n77	100M	QPSK	1	1	DFT-30	Front	5mm	Ant 2	-	ECl 3	656000	3840	1	16.43	17.50	1.279	-	-	-	n/a	n/a
	FR1 n77	100M	QPSK	1	1	DFT-30	Back	5mm	Ant 2	-	ECl 3	656000	3840	1	16.43	17.50	1.279	-	-	-0.19	0.345	0.441
	FR1 n77	100M	QPSK	135	69	DFT-30	Front	5mm	Ant 2	-	ECl 3	656000	3840	1	16.42	17.50	1.282	-	-	-	n/a	n/a
	FR1 n77	100M	QPSK	135	69	DFT-30	Back	5mm	Ant 2	-	ECl 3	656000	3840	1	16.42	17.50	1.282	-	-	0.04	0.351	0.450
	FR1 n77	100M	QPSK	270	0	DFT-30	Back	5mm	Ant 2	-	ECl 3	656000	3840	1	16.33	17.50	1.309	-	-	0.09	0.297	0.389
	FR1 n77	100M	QPSK	1	1	DFT-30	Front	5mm	Ant 8	-	ECl3	633332	3499.98	1	17.09	18.50	1.384	-	-	-	n/a	n/a
	FR1 n77	100M	QPSK	1	1	DFT-30	Back	5mm	Ant 8	-	ECl3	633332	3499.98	1	17.09	18.50	1.384	-	-	-0.14	0.584	0.808
	FR1 n77	100M	QPSK	1	1	DFT-30	Front	19mm	Ant 8	-	ECl 4	633332	3499.98	1	22.56	24.00	1.393	-	-	0.17	0.025	0.035
	FR1 n77	100M	QPSK	1	1	DFT-30	Back	28mm	Ant 8	-	ECl 4	633332	3499.98	1	22.56	24.00	1.393	-	-	0.1	0.056	0.078
	FR1 n77	100M	QPSK	135	69	DFT-30	Front	5mm	Ant 8	-	ECl3	633332	3499.98	1	17.07	18.50	1.390	-	-	-	n/a	n/a
	FR1 n77	100M	QPSK	135	69	DFT-30	Back	5mm	Ant 8	-	ECl3	633332	3499.98	1	17.07	18.50	1.390	-	-	-0.07	0.573	0.796
	FR1 n77	100M	QPSK	270	0	DFT-30	Back	5mm	Ant 8	-	ECl3	633332	3499.98	1	17.02	18.50	1.406	-	-	-0.19	0.557	0.783
	FR1 n77	100M	QPSK	1	1	DFT-30	Front	5mm	Ant 8	-	ECl3	656000	3840	1	17.09	18.50	1.384	-	-	-	n/a	n/a
	FR1 n77	100M	QPSK	1	1	DFT-30	Back	5mm	Ant 8	-	ECl3	656000	3840	1	17.09	18.50	1.384	-	-	-0.03	0.522	0.722
	FR1 n77	100M	QPSK	135	69	DFT-30	Front	5mm	Ant 8	-	ECl3	656000	3840	1	17.03	18.50	1.403	-	-	-	n/a	n/a
	FR1 n77	100M	QPSK	135	69	DFT-30	Back	5mm	Ant 8	-	ECl3	656000	3840	1	17.03	18.50	1.403	-	-	0.16	0.603	0.846
	FR1 n77	100M	QPSK	270	0	DFT-30	Back	5mm	Ant 8	-	ECl3	656000	3840	1	16.98	18.50	1.419	-	-	-0.02	0.605	0.859



Plot No.	Band	Mode	Test Position	Gap (mm)	Antenna	Headset	Power State	Ch.	Freq. (MHz)	Sample	Average Power (dBm)	Tune-Up Limit (dBm)	Tune-up Scaling Factor	Duty Cycle %	Duty Cycle Scaling Factor	Power Drift (dB)	Measured 1g SAR (W/kg)	Reported 1g SAR (W/kg)	
2450MHz																			
	Bluetooth	DH5 1Mbps	Front	5mm	Ant 6	-	Full Power	78	2480	1	12.30	14.00	1.479	76.89	1.083	-0.08	0.128	0.204	
	Bluetooth	DH5 1Mbps	Back	5mm	Ant 6	-	Full Power	78	2480	1	12.30	14.00	1.479	76.89	1.083	-0.15	0.197	0.316	
94	Bluetooth	DH5 1Mbps	Back	5mm	Ant 6	-	Full Power	0	2402	1	12.00	14.00	1.585	76.89	1.083	0.02	0.203	0.348	
	Bluetooth	DH5 1Mbps	Back	5mm	Ant 6	-	Full Power	39	2441	1	12.10	14.00	1.549	76.89	1.083	-0.12	0.196	0.329	
	Bluetooth	DH5 1Mbps	Front	19mm	Ant 6	-	Full Power	0	2402	1	12.00	14.00	1.585	76.89	1.083	-0.02	0.014	0.024	
	Bluetooth	DH5 1Mbps	Back	28mm	Ant 6	-	Full Power	0	2402	1	12.00	14.00	1.585	76.89	1.083	0.05	0.011	0.019	
	WLAN2.4GHz	802.11b 1Mbps	Front	5mm	Ant 6	-	Standalone	6	2437	1	18.00	19.50	1.413	100.00	1.000	-0.08	0.652	0.921	
	WLAN2.4GHz	802.11b 1Mbps	Back	5mm	Ant 6	-	Standalone	6	2437	1	18.00	19.50	1.413	100.00	1.000	0.18	0.865	1.222	
	WLAN2.4GHz	802.11b 1Mbps	Back	5mm	Ant 6	-	Standalone	1	2412	1	17.90	19.50	1.445	100.00	1.000	0.12	0.803	1.161	
95	WLAN2.4GHz	802.11b 1Mbps	Back	5mm	Ant 6	-	Standalone	11	2462	1	18.00	19.50	1.413	100.00	1.000	-0.16	0.985	1.391	
	WLAN2.4GHz	802.11b 1Mbps	Back	5mm	Ant 6	Headset	Standalone	11	2462	1	18.00	19.50	1.413	100.00	1.000	-0.11	0.863	1.219	
	WLAN2.4GHz	802.11b 1Mbps	Back	5mm	Ant 6	-	Standalone	11	2462	1	18.00	19.50	1.413	100.00	1.000	0.04	0.947	1.338	
	WLAN2.4GHz	802.11b 1Mbps	Back	5mm	Ant 6	-	Standalone	11	2462	2	18.00	19.50	1.413	100.00	1.000	-0.16	0.268	0.379	
	WLAN2.4GHz	802.11n-HT40 MCS0	Back	5mm	Ant 6	-	Standalone	6	2437	1	18.20	19.50	1.349	100.00	1.000	0.06	0.765	1.032	
	WLAN2.4GHz	802.11b 1Mbps	Front	19mm	Ant 6	-	Full Power	6	2437	1	21.70	23.00	1.349	100.00	1.000	0.15	0.210	0.283	
	WLAN2.4GHz	802.11b 1Mbps	Back	28mm	Ant 6	-	Full Power	11	2462	1	21.60	23.00	1.380	100.00	1.000	0.16	0.121	0.167	
	WLAN2.4GHz	802.11b 1Mbps	Front	5mm	Ant 6	-	Simultaneous	6	2437	1	16.10	17.50	1.380	100.00	1.000	-0.08	0.366	0.505	
	WLAN2.4GHz	802.11b 1Mbps	Back	5mm	Ant 6	-	Simultaneous	6	2437	1	16.10	17.50	1.380	100.00	1.000	0.18	0.467	0.645	
	WLAN2.4GHz	802.11b 1Mbps	Back	5mm	Ant 6	-	Simultaneous	1	2412	1	15.90	17.50	1.445	100.00	1.000	0.12	0.452	0.653	
	WLAN2.4GHz	802.11b 1Mbps	Back	5mm	Ant 6	-	Simultaneous	11	2462	1	16.00	17.50	1.413	100.00	1.000	0.02	0.461	0.651	
5000MHz																			
	WLAN5.3GHz	802.11ac-VHT80 MCS0	Front	5mm	Ant 6	-	Standalone	58	5290	1	11.72	13.00	1.343	100.00	1.000	0.08	0.344	0.462	
96	WLAN5.3GHz	802.11ac-VHT80 MCS0	Back	5mm	Ant 6	-	Standalone	58	5290	1	11.72	13.00	1.343	100.00	1.000	-0.03	0.882	1.184	
	WLAN5.3GHz	802.11ac-VHT80 MCS0	Back	5mm	Ant 6	-	Standalone	58	5290	2	11.72	13.00	1.343	100.00	1.000	-0.03	0.686	0.921	
	WLAN5.3GHz	802.11n-HT40 MCS0	Front	19mm	Ant 6	-	Full Power	54	5270	1	20.13	21.50	1.372	100.00	1.000	-0.07	0.541	0.742	
	WLAN5.3GHz	802.11n-HT40 MCS0	Back	28mm	Ant 6	-	Full Power	54	5270	1	20.13	21.50	1.372	100.00	1.000	-0.09	0.817	1.121	
	WLAN5.3GHz	802.11ac-VHT80 MCS0	Front	5mm	Ant 6	-	Simultaneous	58	5290	1	6.88	8.00	1.294	100.00	1.000	-0.18	0.092	0.119	
	WLAN5.3GHz	802.11ac-VHT80 MCS0	Back	5mm	Ant 6	-	Simultaneous	58	5290	1	6.88	8.00	1.294	100.00	1.000	0	0.229	0.296	
	WLAN5.5GHz	802.11ac-VHT80 MCS0	Front	5mm	Ant 6	-	Standalone	122	5610	1	11.45	13.00	1.429	100.00	1.000	0.08	0.384	0.549	
97	WLAN5.5GHz	802.11ac-VHT80 MCS0	Back	5mm	Ant 6	-	Standalone	122	5610	1	11.45	13.00	1.429	100.00	1.000	-0.18	0.777	1.110	
	WLAN5.5GHz	802.11ac-VHT80 MCS0	Back	5mm	Ant 6	-	Standalone	106	5530	1	10.89	12.00	1.291	100.00	1.000	0.07	0.823	1.063	
	WLAN5.5GHz	802.11ac-VHT80 MCS0	Back	5mm	Ant 6	-	Standalone	138	5690	1	11.18	12.50	1.355	100.00	1.000	0.09	0.732	0.992	
	WLAN5.5GHz	802.11n-HT20 MCS0	Front	19mm	Ant 6	-	Full Power	144	5720	1	20.72	22.00	1.343	100.00	1.000	0.15	0.695	0.933	
	WLAN5.5GHz	802.11n-HT20 MCS0	Back	28mm	Ant 6	-	Full Power	144	5720	1	20.72	22.00	1.343	100.00	1.000	-0.04	0.759	1.019	
	WLAN5.5GHz	802.11ac-VHT80 MCS0	Front	5mm	Ant 6	-	Simultaneous	122	5610	1	6.72	8.50	1.507	100.00	1.000	-0.05	0.106	0.160	
	WLAN5.5GHz	802.11ac-VHT80 MCS0	Back	5mm	Ant 6	-	Simultaneous	122	5610	1	6.72	8.50	1.507	100.00	1.000	0.19	0.201	0.303	
	WLAN5.5GHz	802.11ac-VHT80 MCS0	Back	5mm	Ant 6	-	Simultaneous	106	5530	1	6.28	7.50	1.324	100.00	1.000	-0.19	0.218	0.289	
	WLAN5.5GHz	802.11ac-VHT80 MCS0	Back	5mm	Ant 6	-	Simultaneous	138	5690	1	6.30	8.00	1.479	100.00	1.000	0.11	0.202	0.299	
	WLAN5.8GHz	802.11ac-VHT80 MCS0	Front	5mm	Ant 6	-	Standalone	155	5775	1	11.90	13.50	1.445	100.00	1.000	0.11	0.445	0.643	
98	WLAN5.8GHz	802.11ac-VHT80 MCS0	Back	5mm	Ant 6	-	Standalone	155	5775	1	11.90	13.50	1.445	100.00	1.000	0.01	0.796	1.151	
	WLAN5.8GHz	802.11a 6Mbps	Front	19mm	Ant 6	-	Full Power	149	5745	1	20.91	22.50	1.442	100.00	1.000	-0.12	0.775	1.117	
	WLAN5.8GHz	802.11a 6Mbps	Back	28mm	Ant 6	-	Full Power	149	5745	1	20.91	22.50	1.442	100.00	1.000	-0.19	0.715	1.031	
	WLAN5.8GHz	802.11ac-VHT80 MCS0	Front	5mm	Ant 6	-	Simultaneous	155	5775	1	6.92	8.50	1.439	100.00	1.000	0.05	0.101	0.145	
	WLAN5.8GHz	802.11ac-VHT80 MCS0	Back	5mm	Ant 6	-	Simultaneous	155	5775	1	6.92	8.50	1.439	100.00	1.000	-0.04	0.212	0.305	



16.4 Product specific 10g SAR

Plot No.	Band	BW (MHz)	Modulation	RB Size	RB offset	Mode	Test Position	Gap (mm)	Antenna	Power State	Ch.	Freq. (MHz)	Sample	Average Power (dBm)	Tune-Up Limit (dBm)	Tune-up Scaling Factor	Duty Cycle %	Duty Cycle Scaling Factor	Power Drift (dB)	Measured 10g SAR (W/kg)	Reported 10g SAR (W/kg)
750MHz																					
99	LTE Band 13	10M	QPSK	1	0	-	Back	0mm	Ant 0	ECl 10	23230	782	1	23.04	24.00	1.247	-	-	0.11	1.140	1.422
	LTE Band 13	10M	QPSK	25	0	-	Back	0mm	Ant 0	ECl 10	23230	782	1	21.96	23.00	1.271	-	-	-0.01	0.843	1.071
835MHz																					
	GSM850	-	-	-	-	GPRS (4 Tx slots)	Back	0mm	Ant 0	ECl 10	189	836.4	1	28.74	29.50	1.191	-	-	-0.12	1.650	1.966
100	GSM850	-	-	-	-	GPRS (4 Tx slots)	Bottom Side	0mm	Ant 0	ECl 10	189	836.4	1	28.74	29.50	1.191	-	-	-0.06	2.310	2.752
	GSM850	-	-	-	-	GPRS (4 Tx slots)	Bottom Side	0mm	Ant 0	ECl 10	128	824.2	1	28.71	29.50	1.199	-	-	0.01	2.240	2.687
	GSM850	-	-	-	-	GPRS (4 Tx slots)	Bottom Side	0mm	Ant 0	ECl 10	251	848.8	1	28.73	29.50	1.194	-	-	0.04	2.080	2.483
	WCDMA V	-	-	-	-	RMC 12.2Kbps	Back	0mm	Ant 0	ECl 10	4182	836.4	1	23.36	24.00	1.159	-	-	0.16	1.400	1.622
	WCDMA V	-	-	-	-	RMC 12.2Kbps	Bottom Side	0mm	Ant 0	ECl 10	4182	836.4	1	23.36	24.00	1.159	-	-	0.15	2.350	2.723
101	WCDMA V	-	-	-	-	RMC 12.2Kbps	Bottom Side	0mm	Ant 0	ECl 10	4132	826.4	1	23.35	24.00	1.161	-	-	0.06	2.510	2.915
	WCDMA V	-	-	-	-	RMC 12.2Kbps	Bottom Side	0mm	Ant 0	ECl 10	4132	826.4	2	23.35	24.00	1.161	-	-	0.06	2.480	2.880
	WCDMA V	-	-	-	-	RMC 12.2Kbps	Bottom Side	0mm	Ant 0	ECl 10	4233	846.6	1	23.28	24.00	1.180	-	-	-0.19	2.380	2.809
	LTE Band 26	15M	QPSK	1	0	-	Back	0mm	Ant 0	ECl 10	26865	831.5	1	23.31	24.00	1.172	-	-	0.02	1.110	1.301
	LTE Band 26	15M	QPSK	1	0	-	Back	0mm	Ant 0	ECl 10	26765	821.5	1	23.27	24.00	1.183	-	-	0.11	1.090	1.290
102	LTE Band 26	15M	QPSK	1	0	-	Back	0mm	Ant 0	ECl 10	26965	841.5	1	23.26	24.00	1.186	-	-	0.07	1.240	1.470
	LTE Band 5B	10M	QPSK	1	0	-	Back	0mm	Ant 0	ECl 10	20600+20501	844+834.1	1	22.92	24.00	1.282	-	-	0.01	1.050	1.346
	LTE Band 26	15M	QPSK	36	0	-	Back	0mm	Ant 0	ECl 10	26865	831.5	1	22.25	23.00	1.189	-	-	-0.18	0.830	0.986
	FR1 n26	20M	QPSK	1	1	DFT-15	Back	0mm	Ant 0	ECl10	166300	831.5	1	23.32	24.00	1.169	-	-	-0.14	0.831	0.972
	FR1 n26	20M	QPSK	1	1	DFT-15	Bottom Side	0mm	Ant 0	ECl10	166300	831.5	1	23.22	24.00	1.197	-	-	-0.02	1.090	1.304
	FR1 n26	20M	QPSK	50	28	DFT-15	Back	0mm	Ant 0	ECl10	166300	831.5	1	23.05	24.00	1.245	-	-	0.16	0.771	0.960
103	FR1 n26	20M	QPSK	50	28	DFT-15	Bottom Side	0mm	Ant 0	ECl10	166300	831.5	1	23.05	24.00	1.245	-	-	-0.07	1.130	1.406
1750MHz																					
	WCDMA IV	-	-	-	-	RMC 12.2Kbps	Front	0mm	Ant 0	ECl 10	1413	1732.6	1	21.47	22.50	1.268	-	-	0.13	1.810	2.294
	WCDMA IV	-	-	-	-	RMC 12.2Kbps	Back	0mm	Ant 0	ECl 10	1413	1732.6	1	21.47	22.50	1.268	-	-	-0.08	2.130	2.700
	WCDMA IV	-	-	-	-	RMC 12.2Kbps	Bottom Side	0mm	Ant 0	ECl 10	1413	1732.6	1	21.47	22.50	1.268	-	-	0.07	2.390	3.030
	WCDMA IV	-	-	-	-	RMC 12.2Kbps	Front	0mm	Ant 0	ECl 10	1312	1712.4	1	21.37	22.50	1.297	-	-	0.15	1.740	2.257
	WCDMA IV	-	-	-	-	RMC 12.2Kbps	Front	0mm	Ant 0	ECl 10	1513	1752.6	1	21.40	22.50	1.288	-	-	0.07	1.820	2.345
	WCDMA IV	-	-	-	-	RMC 12.2Kbps	Back	0mm	Ant 0	ECl 10	1312	1712.4	1	21.37	22.50	1.297	-	-	-0.13	2.030	2.633
	WCDMA IV	-	-	-	-	RMC 12.2Kbps	Back	0mm	Ant 0	ECl 10	1513	1752.6	1	21.40	22.50	1.288	-	-	0.08	2.200	2.834
	WCDMA IV	-	-	-	-	RMC 12.2Kbps	Bottom Side	0mm	Ant 0	ECl 10	1312	1712.4	1	21.37	22.50	1.297	-	-	-0.17	2.390	3.100
104	WCDMA IV	-	-	-	-	RMC 12.2Kbps	Bottom Side	0mm	Ant 0	ECl 10	1513	1752.6	1	21.40	22.50	1.288	-	-	-0.01	2.480	3.195
	WCDMA IV	-	-	-	-	RMC 12.2Kbps	Bottom Side	0mm	Ant 0	ECl 10	1513	1752.6	2	21.40	22.50	1.288	-	-	-0.01	2.100	2.705
	WCDMA IV	-	-	-	-	RMC 12.2Kbps	Front	11mm	Ant 0	ECl 4	1513	1752.6	1	23.31	24.00	1.172	-	-	0.17	0.661	0.775
	WCDMA IV	-	-	-	-	RMC 12.2Kbps	Back	18mm	Ant 0	ECl 4	1513	1752.6	1	23.31	24.00	1.172	-	-	-0.08	0.386	0.452
	WCDMA IV	-	-	-	-	RMC 12.2Kbps	Bottom Side	17mm	Ant 0	ECl 4	1513	1752.6	1	23.31	24.00	1.172	-	-	-0.15	0.542	0.635
	WCDMA IV	-	-	-	-	RMC 12.2Kbps	Back	10mm	Ant 0	ECl 4	1513	1752.6	1	23.31	24.00	1.172	-	-	-0.02	1.537	1.802
	LTE Band 66	20M	QPSK	1	0	-	Front	0mm	Ant 0	ECl 10	132322	1745	1	21.00	22.00	1.259	-	-	0.1	2.000	2.518
	LTE Band 66	20M	QPSK	1	0	-	Back	0mm	Ant 0	ECl 10	132322	1745	1	21.00	22.00	1.259	-	-	0.05	2.180	2.744
	LTE Band 66	20M	QPSK	1	0	-	Bottom Side	0mm	Ant 0	ECl 10	132322	1745	1	21.00	22.00	1.259	-	-	-0.1	2.320	2.921
	LTE Band 66	20M	QPSK	1	0	-	Front	0mm	Ant 0	ECl 10	132072	1720	1	20.91	22.00	1.285	-	-	0	1.920	2.468
	LTE Band 66	20M	QPSK	1	0	-	Front	0mm	Ant 0	ECl 10	132572	1770	1	20.94	22.00	1.276	-	-	0.04	2.110	2.693
	LTE Band 66	20M	QPSK	1	0	-	Back	0mm	Ant 0	ECl 10	132072	1720	1	20.91	22.00	1.285	-	-	-0.17	2.070	2.661
	LTE Band 66	20M	QPSK	1	0	-	Back	0mm	Ant 0	ECl 10	132572	1770	1	20.94	22.00	1.276	-	-	-0.18	2.260	2.885
	LTE Band 66	20M	QPSK	1	0	-	Bottom Side	0mm	Ant 0	ECl 10	132072	1720	1	20.91	22.00	1.285	-	-	-0.09	2.270	2.918
105	LTE Band 66	20M	QPSK	1	0	-	Bottom Side	0mm	Ant 0	ECl 10	132572	1770	1	20.94	22.00	1.276	-	-	-0.15	2.450	3.127
	LTE Band 66C	20M	QPSK	1	0	-	Bottom Side	0mm	Ant 0	ECl 10	132572+132374	1770+1750.2	1	20.89	22.00	1.291	-	-	-0.15	2.260	2.918
	LTE Band 66	20M	QPSK	1	0	-	Front	11mm	Ant 0	ECl 4	132322	1745	1	23.25	24.00	1.189	-	-	0.01	0.733	0.871
	LTE Band 66	20M	QPSK	1	0	-	Back	18mm	Ant 0	ECl 4	132322	1745	1	23.25	24.00	1.189	-	-	-0.01	0.400	0.475
	LTE Band 66	20M	QPSK	1	0	-	Bottom Side	17mm	Ant 0	ECl 4	132572	1770	1	23.25	24.00	1.189	-	-	-0.18	0.630	0.749
	LTE Band 66	20M	QPSK	1	0	-	Front	5mm	Ant 0	ECl 4	132322	1745	1	23.25	24.00	1.189	-	-	0.01	1.463	1.739



FCC SAR Test Report

Report No. : FA482618

	LTE Band 66	20M	QPSK	1	0	-	Back	10mm	Ant 0	ECI 4	132322	1745	1	23.25	24.00	1.189	-	-	-0.01	1.592	1.892
	LTE Band 66	20M	QPSK	50	0	-	Front	0mm	Ant 0	ECI 10	132322	1745	1	20.93	22.00	1.279	-	-	0.01	2.040	2.610
	LTE Band 66	20M	QPSK	50	0	-	Back	0mm	Ant 0	ECI 10	132322	1745	1	20.93	22.00	1.279	-	-	0.11	2.230	2.853
	LTE Band 66	20M	QPSK	50	0	-	Bottom Side	0mm	Ant 0	ECI 10	132322	1745	1	20.93	22.00	1.279	-	-	0.13	2.370	3.032
	LTE Band 66	20M	QPSK	50	0	-	Front	0mm	Ant 0	ECI 10	132072	1720	1	20.86	22.00	1.300	-	-	0	1.830	2.379
	LTE Band 66	20M	QPSK	50	0	-	Front	0mm	Ant 0	ECI 10	132572	1770	1	20.86	22.00	1.300	-	-	0.04	2.020	2.626
	LTE Band 66	20M	QPSK	50	0	-	Back	0mm	Ant 0	ECI 10	132072	1720	1	20.86	22.00	1.300	-	-	-0.17	1.980	2.574
	LTE Band 66	20M	QPSK	50	0	-	Back	0mm	Ant 0	ECI 10	132572	1770	1	20.86	22.00	1.300	-	-	-0.18	2.160	2.808
	LTE Band 66	20M	QPSK	50	0	-	Bottom Side	0mm	Ant 0	ECI 10	132072	1720	1	20.86	22.00	1.300	-	-	-0.09	2.170	2.821
	LTE Band 66	20M	QPSK	50	0	-	Bottom Side	0mm	Ant 0	ECI 10	132572	1770	1	20.86	22.00	1.300	-	-	-0.15	2.340	3.042
	LTE Band 66	20M	QPSK	100	0	-	Front	0mm	Ant 0	ECI 10	132322	1745	1	20.90	22.00	1.288	-	-	0.01	1.990	2.564
	LTE Band 66	20M	QPSK	100	0	-	Back	0mm	Ant 0	ECI 10	132322	1745	1	20.90	22.00	1.288	-	-	0.11	2.180	2.808
	LTE Band 66	20M	QPSK	100	0	-	Bottom Side	0mm	Ant 0	ECI 10	132322	1745	1	20.90	22.00	1.288	-	-	0.13	2.320	2.989
	LTE Band 66	20M	QPSK	1	0	-	Front	0mm	Ant 4	ECI 12	132322	1745	1	18.15	19.00	1.216	-	-	0	0.942	1.146
	LTE Band 66	20M	QPSK	1	0	-	Back	0mm	Ant 4	ECI 12	132322	1745	1	18.15	19.00	1.216	-	-	-0.1	1.130	1.374
	LTE Band 66	20M	QPSK	1	0	-	Top Side	0mm	Ant 4	ECI 12	132322	1745	1	18.15	19.00	1.216	-	-	-0.15	1.590	1.934
	LTE Band 66	20M	QPSK	1	0	-	Top Side	0mm	Ant 4	ECI 12	132072	1720	1	18.05	19.00	1.245	-	-	-0.02	1.680	2.091
	LTE Band 66C	20M	QPSK	1	0	-	Top Side	0mm	Ant 4	ECI 12	132072+ 132270	1720+ 1739.8	1	17.90	19.00	1.288	-	-	-0.1	1.500	1.932
	LTE Band 66	20M	QPSK	1	0	-	Top Side	0mm	Ant 4	ECI 12	132572	1770	1	18.01	19.00	1.256	-	-	-0.16	1.480	1.859
	LTE Band 66	20M	QPSK	1	0	-	Front	5mm	Ant 4	ECI 4	132322	1745	1	23.29	24.00	1.178	-	-	0.01	0.946	1.114
	LTE Band 66	20M	QPSK	1	0	-	Back	8mm	Ant 4	ECI 4	132322	1745	1	23.29	24.00	1.178	-	-	0	0.785	0.924
	LTE Band 66	20M	QPSK	1	0	-	Top Side	10mm	Ant 4	ECI 4	132322	1745	1	23.29	24.00	1.178	-	-	0.02	0.696	0.820
	LTE Band 66	20M	QPSK	50	0	-	Front	0mm	Ant 4	ECI 12	132322	1745	1	18.13	19.00	1.222	-	-	-0.11	1.090	1.332
	LTE Band 66	20M	QPSK	50	0	-	Back	0mm	Ant 4	ECI 12	132322	1745	1	18.13	19.00	1.222	-	-	-0.1	1.120	1.368
	LTE Band 66	20M	QPSK	50	0	-	Top Side	0mm	Ant 4	ECI 12	132322	1745	1	18.13	19.00	1.222	-	-	-0.01	1.470	1.796
	LTE Band 66	20M	QPSK	100	0	-	Top Side	0mm	Ant 4	ECI 12	132322	1745	1	18.12	19.00	1.225	-	-	-0.01	1.440	1.763
	FR1 n70	15M	QPSK	1	1	DFT-15	Front	0mm	Ant 0	ECI 10	340500	1702.5	1	21.58	22.50	1.236	-	-	0	1.770	2.188
	FR1 n70	15M	QPSK	1	1	DFT-15	Back	0mm	Ant 0	ECI 10	340500	1702.5	1	21.58	22.50	1.236	-	-	-0.06	2.100	2.595
	FR1 n70	15M	QPSK	1	1	DFT-15	Bottom Side	0mm	Ant 0	ECI 10	340500	1702.5	1	21.58	22.50	1.236	-	-	0.13	2.120	2.620
	FR1 n70	15M	QPSK	36	22	DFT-15	Front	0mm	Ant 0	ECI 10	340500	1702.5	1	21.53	22.50	1.250	-	-	0.14	1.830	2.288
	FR1 n70	15M	QPSK	36	22	DFT-15	Back	0mm	Ant 0	ECI 10	340500	1702.5	1	21.53	22.50	1.250	-	-	0.03	2.170	2.713
	FR1 n70	15M	QPSK	36	22	DFT-15	Bottom Side	0mm	Ant 0	ECI 10	340500	1702.5	1	21.53	22.50	1.250	-	-	0.05	2.160	2.701
	FR1 n70	15M	QPSK	36	22	DFT-15	Front	11mm	Ant 0	ECI 4	340500	1702.5	1	23.11	24.00	1.227	-	-	0.13	0.410	0.503
	FR1 n70	15M	QPSK	36	22	DFT-15	Back	18mm	Ant 0	ECI 4	340500	1702.5	1	23.11	24.00	1.227	-	-	0.02	0.213	0.261
	FR1 n70	15M	QPSK	36	22	DFT-15	Bottom Side	17mm	Ant 0	ECI 4	340500	1702.5	1	23.11	24.00	1.227	-	-	-0.13	0.270	0.331
	FR1 n70	15M	QPSK	36	22	DFT-15	Back	10mm	Ant 0	ECI 4	340500	1702.5	1	23.11	24.00	1.227	-	-	0.02	0.848	1.041
	FR1 n70	15M	QPSK	75	0	DFT-15	Front	0mm	Ant 0	ECI 10	340500	1702.5	1	21.43	22.50	1.279	-	-	-0.11	1.840	2.354
	FR1 n70	15M	QPSK	75	0	DFT-15	Back	0mm	Ant 0	ECI 10	340500	1702.5	1	21.43	22.50	1.279	-	-	0.13	2.170	2.776
106	FR1 n70	15M	QPSK	75	0	DFT-15	Bottom Side	0mm	Ant 0	ECI 10	340500	1702.5	1	21.43	22.50	1.279	-	-	0.07	2.290	2.930
	FR1 n70	15M	QPSK	1	1	DFT-15	Front	0mm	Ant 4	ECI 7	340500	1702.5	1	21.73	22.50	1.194	-	-	-0.04	1.790	2.137
	FR1 n70	15M	QPSK	1	1	DFT-15	Back	0mm	Ant 4	ECI 7	340500	1702.5	1	21.73	22.50	1.194	-	-	0.12	2.000	2.388
	FR1 n70	15M	QPSK	1	1	DFT-15	Top Side	0mm	Ant 4	ECI 7	340500	1702.5	1	21.73	22.50	1.194	-	-	-0.08	2.040	2.436
	FR1 n70	15M	QPSK	36	22	DFT-15	Front	0mm	Ant 4	ECI 7	340500	1702.5	1	21.67	22.50	1.211	-	-	0.13	1.930	2.336
	FR1 n70	15M	QPSK	36	22	DFT-15	Back	0mm	Ant 4	ECI 7	340500	1702.5	1	21.67	22.50	1.211	-	-	0.15	2.040	2.470
	FR1 n70	15M	QPSK	36	22	DFT-15	Top Side	0mm	Ant 4	ECI 7	340500	1702.5	1	21.67	22.50	1.211	-	-	-0.07	1.890	2.288
	FR1 n70	15M	QPSK	36	22	DFT-15	Front	5mm	Ant 4	ECI 4	340500	1702.5	1	23.16	24.00	1.213	-	-	-0.07	0.941	1.142
	FR1 n70	15M	QPSK	36	22	DFT-15	Back	8mm	Ant 4	ECI 4	340500	1702.5	1	23.16	24.00	1.213	-	-	0.02	0.784	0.951
	FR1 n70	15M	QPSK	36	22	DFT-15	Top Side	10mm	Ant 4	ECI 4	340500	1702.5	1	23.16	24.00	1.213	-	-	-0.02	0.639	0.775
	FR1 n70	15M	QPSK	75	0	DFT-15	Top Side	0mm	Ant 4	ECI 7	340500	1702.5	1	21.63	22.50	1.222	-	-	0.18	1.930	2.358
	FR1 n66	45M	QPSK	1	1	DFT-15	Front	0mm	Ant 0	ECI 10	349000	1745	1	21.68	22.50	1.208	-	-	0.01	1.920	2.319
	FR1 n66	45M	QPSK	1	1	DFT-15	Back	0mm	Ant 0	ECI 10	349000	1745	1	21.68	22.50	1.208	-	-	-0.13	2.170	2.621
	FR1 n66	45M	QPSK	1	1	DFT-15	Bottom Side	0mm	Ant 0	ECI 10	349000	1745	1	21.68	22.50	1.208	-	-	0.01	2.510	3.032
	FR1 n66	45M	QPSK	120	60	DFT-15	Front	0mm	Ant 0	ECI 10	349000	1745	1	21.63	22.50	1.222	-	-	-0.03	2.150	2.627
	FR1 n66	45M	QPSK	120	60	DFT-15	Back	0mm	Ant 0	ECI 10	349000	1745	1	21.63	22.50	1.222	-	-	0.06	2.460	3.006
107	FR1 n66	45M	QPSK	120	60	DFT-15	Bottom Side	0mm	Ant 0	ECI 10	349000	1745	1	21.63	22.50	1.222	-	-	0.11	2.530	3.091
	FR1 n66	45M	QPSK	120	60	DFT-15	Front	11mm	Ant 0	ECI 4	349000	1745	1	23.05	24.00	1.245	-	-	0.07	0.487	0.606



FCC SAR Test Report

Report No. : FA482618

	FR1 n66	45M	QPSK	120	60	DFT-15	Back	18mm	Ant 0	ECl 4	349000	1745	1	23.05	24.00	1.245	-	-	-0.14	0.273	0.340
	FR1 n66	45M	QPSK	120	60	DFT-15	Bottom Side	17mm	Ant 0	ECl 4	349000	1745	1	23.05	24.00	1.245	-	-	0.17	0.274	0.341
	FR1 n66	45M	QPSK	120	60	DFT-15	Front	5mm	Ant 0	ECl 4	349000	1745	1	23.05	24.00	1.245	-	-	0.07	0.972	1.210
	FR1 n66	45M	QPSK	120	60	DFT-15	Back	10mm	Ant 0	ECl 4	349000	1745	1	23.05	24.00	1.245	-	-	-0.14	1.087	1.353
	FR1 n66	45M	QPSK	240	0	DFT-15	Front	0mm	Ant 0	ECl 10	349000	1745	1	21.61	22.50	1.227	-	-	0.17	2.090	2.565
	FR1 n66	45M	QPSK	240	0	DFT-15	Back	0mm	Ant 0	ECl 10	349000	1745	1	21.61	22.50	1.227	-	-	0	2.370	2.909
	FR1 n66	45M	QPSK	240	0	DFT-15	Bottom Side	0mm	Ant 0	ECl 10	349000	1745	1	21.61	22.50	1.227	-	-	-0.18	2.410	2.958
	FR1 n66	45M	QPSK	1	1	DFT-15	Front	0mm	Ant 4	ECl 7	349000	1745	1	21.73	22.50	1.194	-	-	0.15	1.510	1.803
	FR1 n66	45M	QPSK	1	1	DFT-15	Back	0mm	Ant 4	ECl 7	349000	1745	1	21.73	22.50	1.194	-	-	-0.14	1.630	1.946
	FR1 n66	45M	QPSK	1	1	DFT-15	Top Side	0mm	Ant 4	ECl 7	349000	1745	1	21.73	22.50	1.194	-	-	-0.08	1.720	2.054
	FR1 n66	45M	QPSK	120	60	DFT-15	Front	0mm	Ant 4	ECl 7	349000	1745	1	21.67	22.50	1.211	-	-	-0.11	1.540	1.864
	FR1 n66	45M	QPSK	120	60	DFT-15	Back	0mm	Ant 4	ECl 7	349000	1745	1	21.67	22.50	1.211	-	-	-0.04	1.630	1.973
	FR1 n66	45M	QPSK	120	60	DFT-15	Top Side	0mm	Ant 4	ECl 7	349000	1745	1	21.67	22.50	1.211	-	-	-0.1	1.830	2.215
	FR1 n66	45M	QPSK	120	60	DFT-15	Front	5mm	Ant 4	ECl 4	349000	1745	1	23.14	24.00	1.219	-	-	0.03	0.868	1.058
	FR1 n66	45M	QPSK	120	60	DFT-15	Back	8mm	Ant 4	ECl 4	349000	1745	1	23.14	24.00	1.219	-	-	-0.05	1.020	1.243
	FR1 n66	45M	QPSK	120	60	DFT-15	Top Side	10mm	Ant 4	ECl 4	349000	1745	1	23.14	24.00	1.219	-	-	0.03	0.598	0.729
	FR1 n66	45M	QPSK	120	60	DFT-15	Top Side	0mm	Ant 4	ECl 7	349000	1745	1	21.63	22.50	1.222	-	-	-0.1	1.690	2.065
1900MHz																					
	GSM1900	-	-	-	-	GPRS (4 Tx slots)	Front	0mm	Ant 0	ECl 10	661	1880	1	24.67	25.50	1.211	-	-	0.07	1.380	1.671
	GSM1900	-	-	-	-	GPRS (4 Tx slots)	Back	0mm	Ant 0	ECl 10	661	1880	1	24.67	25.50	1.211	-	-	-0.17	1.780	2.155
108	GSM1900	-	-	-	-	GPRS (4 Tx slots)	Bottom Side	0mm	Ant 0	ECl 10	661	1880	1	24.67	25.50	1.211	-	-	-0.09	2.590	3.135
	GSM1900	-	-	-	-	GPRS (4 Tx slots)	Back	0mm	Ant 0	ECl 10	512	1850.2	1	24.52	25.50	1.253	-	-	-0.17	1.700	2.130
	GSM1900	-	-	-	-	GPRS (4 Tx slots)	Back	0mm	Ant 0	ECl 10	810	1909.8	1	24.58	25.50	1.236	-	-	0.19	1.750	2.163
	GSM1900	-	-	-	-	GPRS (4 Tx slots)	Bottom Side	0mm	Ant 0	ECl 10	512	1850.2	1	24.52	25.50	1.253	-	-	0.16	2.400	3.008
	GSM1900	-	-	-	-	GPRS (4 Tx slots)	Bottom Side	0mm	Ant 0	ECl 10	810	1909.8	1	24.58	25.50	1.236	-	-	-0.11	2.470	3.053
	GSM1900	-	-	-	-	GPRS (4 Tx slots)	Front	11mm	Ant 0	ECl 4	661	1880	1	26.14	26.50	1.086	-	-	-0.05	0.475	0.516
	GSM1900	-	-	-	-	GPRS (4 Tx slots)	Back	18mm	Ant 0	ECl 4	661	1880	1	26.14	26.50	1.086	-	-	0.15	0.346	0.376
	GSM1900	-	-	-	-	GPRS (4 Tx slots)	Bottom Side	17mm	Ant 0	ECl 4	661	1880	1	26.14	26.50	1.086	-	-	-0.08	0.560	0.608
	WCDMA II	-	-	-	-	RMC 12.2Kbps	Front	0mm	Ant 0	ECl 10	9400	1880	1	20.60	21.50	1.230	-	-	0	1.550	1.907
	WCDMA II	-	-	-	-	RMC 12.2Kbps	Back	0mm	Ant 0	ECl 10	9400	1880	1	20.60	21.50	1.230	-	-	0.1	1.880	2.313
	WCDMA II	-	-	-	-	RMC 12.2Kbps	Bottom Side	0mm	Ant 0	ECl 10	9400	1880	1	20.60	21.50	1.230	-	-	0.08	2.430	2.990
	WCDMA II	-	-	-	-	RMC 12.2Kbps	Back	0mm	Ant 0	ECl 10	9262	1852.4	1	20.54	21.50	1.247	-	-	0.19	2.010	2.507
	WCDMA II	-	-	-	-	RMC 12.2Kbps	Back	0mm	Ant 0	ECl 10	9538	1907.6	1	20.46	21.50	1.271	-	-	-0.18	1.910	2.427
109	WCDMA II	-	-	-	-	RMC 12.2Kbps	Bottom Side	0mm	Ant 0	ECl 10	9262	1852.4	1	20.54	21.50	1.247	-	-	-0.13	2.530	3.156
	WCDMA II	-	-	-	-	RMC 12.2Kbps	Bottom Side	0mm	Ant 0	ECl 10	9538	1907.6	1	20.46	21.50	1.271	-	-	0.04	2.410	3.062
	WCDMA II	-	-	-	-	RMC 12.2Kbps	Front	11mm	Ant 0	ECl 4	9400	1880	1	23.74	24.00	1.062	-	-	-0.1	0.595	0.632
	WCDMA II	-	-	-	-	RMC 12.2Kbps	Back	18mm	Ant 0	ECl 4	9400	1880	1	23.74	24.00	1.062	-	-	-0.19	0.438	0.465
	WCDMA II	-	-	-	-	RMC 12.2Kbps	Bottom Side	17mm	Ant 0	ECl 4	9262	1852.4	1	23.74	24.00	1.062	-	-	0.11	0.723	0.768
	LTE Band 25	20M	QPSK	1	0	-	Front	0mm	Ant 0	ECl 10	26340	1880	1	20.06	21.00	1.242	-	-	-0.15	1.240	1.540
	LTE Band 25	20M	QPSK	1	0	-	Back	0mm	Ant 0	ECl 10	26340	1880	1	20.06	21.00	1.242	-	-	0.08	1.800	2.235
	LTE Band 25	20M	QPSK	1	0	-	Bottom Side	0mm	Ant 0	ECl 10	26340	1880	1	20.06	21.00	1.242	-	-	0.05	2.440	3.030
	LTE Band 25	20M	QPSK	1	0	-	Back	0mm	Ant 0	ECl 10	26140	1860	1	20.03	21.00	1.250	-	-	-0.19	1.880	2.350
	LTE Band 25	20M	QPSK	1	0	-	Back	0mm	Ant 0	ECl 10	26590	1905	1	20.02	21.00	1.253	-	-	0.05	1.710	2.143
110	LTE Band 25	20M	QPSK	1	0	-	Bottom Side	0mm	Ant 0	ECl 10	26140	1860	1	20.03	21.00	1.250	-	-	-0.04	2.510	3.138
	LTE Band 25	20M	QPSK	1	0	-	Bottom Side	0mm	Ant 0	ECl 10	26590	1905	1	20.02	21.00	1.253	-	-	-0.1	2.490	3.120
	LTE Band 25	20M	QPSK	1	0	-	Front	11mm	Ant 0	ECl 4	26340	1880	1	23.20	24.00	1.202	-	-	0.15	0.540	0.649
	LTE Band 25	20M	QPSK	1	0	-	Back	18mm	Ant 0	ECl 4	26340	1880	1	23.20	24.00	1.202	-	-	0.16	0.383	0.460
	LTE Band 25	20M	QPSK	1	0	-	Bottom Side	17mm	Ant 0	ECl 4	26140	1860	1	23.20	24.00	1.202	-	-	0.01	0.677	0.814
	LTE Band 25	20M	QPSK	1	0	-	Back	10mm	Ant 0	ECl 4	26340	1880	1	23.20	24.00	1.202	-	-	0.16	1.525	1.833
	LTE Band 25	20M	QPSK	50	0	-	Front	0mm	Ant 0	ECl 10	26340	1880	1	20.01	21.00	1.256	-	-	-0.18	1.180	1.482
	LTE Band 25	20M	QPSK	50	0	-	Back	0mm	Ant 0	ECl 10	26340	1880	1	20.01	21.00	1.256	-	-	0.03	1.720	2.160
	LTE Band 25	20M	QPSK	50	0	-	Bottom Side	0mm	Ant 0	ECl 10	26340	1880	1	20.01	21.00	1.256	-	-	-0.1	2.490	3.128
	LTE Band 25	20M	QPSK	50	0	-	Bottom Side	0mm	Ant 0	ECl 10	26140	1860	1	19.99	21.00	1.262	-	-	-0.04	1.800	2.271
	LTE Band 25	20M	QPSK	50	0	-	Bottom Side	0mm	Ant 0	ECl 10	26590	1905	1	19.98	21.00	1.265	-	-	-0.13	1.630	2.062
	LTE Band 25	20M	QPSK	50	0	-	Back	0mm	Ant 0	ECl 10	26140	1860	1	19.99	21.00	1.262	-	-	0.16	2.400	3.028
	LTE Band 25	20M	QPSK	50	0	-	Back	0mm	Ant 0	ECl 10	26590	1905	1	19.98	21.00	1.265	-	-	0.05	2.380	3.010



	LTE Band 25	20M	QPSK	100	0	-	Back	0mm	Ant 0	ECl 10	26140	1860	1	19.99	21.00	1.262	-	-	-0.08	1.680	2.120
	LTE Band 25	20M	QPSK	100	0	-	Bottom Side	0mm	Ant 0	ECl 10	26140	1860	1	19.99	21.00	1.262	-	-	0.04	2.430	3.066
	LTE Band 25	20M	QPSK	1	0	-	Front	0mm	Ant 4	ECl 12	26340	1880	1	19.10	20.00	1.230	-	-	0.01	0.925	1.138
	LTE Band 25	20M	QPSK	1	0	-	Back	0mm	Ant 4	ECl 12	26340	1880	1	19.10	20.00	1.230	-	-	0.14	1.110	1.366
	LTE Band 25	20M	QPSK	1	0	-	Top Side	0mm	Ant 4	ECl 12	26340	1880	1	19.10	20.00	1.230	-	-	0.1	2.010	2.473
	LTE Band 25	20M	QPSK	1	0	-	Top Side	0mm	Ant 4	ECl 12	26140	1860	1	19.09	20.00	1.233	-	-	-0.06	1.720	2.121
	LTE Band 25	20M	QPSK	1	0	-	Top Side	0mm	Ant 4	ECl 12	26590	1905	1	19.06	20.00	1.242	-	-	0	1.610	1.999
	LTE Band 25	20M	QPSK	1	0	-	Front	5mm	Ant 4	ECl 4	26340	1880	1	23.37	24.00	1.156	-	-	0.11	0.972	1.124
	LTE Band 25	20M	QPSK	1	0	-	Back	8mm	Ant 4	ECl 4	26340	1880	1	23.37	24.00	1.156	-	-	-0.03	0.872	1.008
	LTE Band 25	20M	QPSK	1	0	-	Top Side	10mm	Ant 4	ECl 4	26340	1880	1	23.37	24.00	1.156	-	-	0.02	0.890	1.029
	LTE Band 25	20M	QPSK	50	0	-	Front	0mm	Ant 4	ECl 12	26340	1880	1	19.06	20.00	1.242	-	-	0.14	0.873	1.084
	LTE Band 25	20M	QPSK	50	0	-	Back	0mm	Ant 4	ECl 12	26340	1880	1	19.06	20.00	1.242	-	-	0.07	1.190	1.478
	LTE Band 25	20M	QPSK	50	0	-	Top Side	0mm	Ant 4	ECl 12	26340	1880	1	19.06	20.00	1.242	-	-	-0.11	1.920	2.384
	LTE Band 25	20M	QPSK	100	0	-	Top Side	0mm	Ant 4	ECl 12	26340	1880	1	19.02	20.00	1.253	-	-	0.06	1.870	2.343
	FR1 n25	40M	QPSK	1	1	DFT-15	Front	0mm	Ant 0	ECl 10	376500	1882.5	1	21.01	22.00	1.256	-	-	0.1	1.250	1.570
	FR1 n25	40M	QPSK	1	1	DFT-15	Back	0mm	Ant 0	ECl 10	376500	1882.5	1	21.01	22.00	1.256	-	-	0.05	1.630	2.047
111	FR1 n25	40M	QPSK	1	1	DFT-15	Bottom Side	0mm	Ant 0	ECl 10	376500	1882.5	1	21.01	22.00	1.256	-	-	0.03	2.460	3.090
	FR1 n25	40M	QPSK	1	1	DFT-15	Front	11mm	Ant 0	ECl 4	376500	1882.5	1	23.06	24.00	1.242	-	-	0.1	0.377	0.468
	FR1 n25	40M	QPSK	1	1	DFT-15	Back	18mm	Ant 0	ECl 4	376500	1882.5	1	23.06	24.00	1.242	-	-	0.05	0.251	0.312
	FR1 n25	40M	QPSK	1	1	DFT-15	Bottom Side	17mm	Ant 0	ECl 4	376500	1882.5	1	23.06	24.00	1.242	-	-	0.03	0.329	0.409
	FR1 n25	40M	QPSK	108	54	DFT-15	Front	0mm	Ant 0	ECl 10	376500	1882.5	1	20.94	22.00	1.276	-	-	-0.09	1.290	1.647
	FR1 n25	40M	QPSK	108	54	DFT-15	Back	0mm	Ant 0	ECl 10	376500	1882.5	1	20.94	22.00	1.276	-	-	0.04	1.730	2.208
	FR1 n25	40M	QPSK	108	54	DFT-15	Bottom Side	0mm	Ant 0	ECl 10	376500	1882.5	1	20.94	22.00	1.276	-	-	-0.14	2.330	2.974
	FR1 n25	40M	QPSK	216	0	DFT-15	Back	0mm	Ant 0	ECl 10	376500	1882.5	1	20.93	22.00	1.279	-	-	0.04	1.700	2.175
	FR1 n25	40M	QPSK	216	0	DFT-15	Bottom Side	0mm	Ant 0	ECl 10	376500	1882.5	1	20.93	22.00	1.279	-	-	-0.14	2.300	2.943
	FR1 n25	40M	QPSK	1	1	DFT-15	Front	0mm	Ant 4	ECl 12	376500	1882.5	1	15.23	16.00	1.194	-	-	0.05	1.340	1.600
	FR1 n25	40M	QPSK	1	1	DFT-15	Back	0mm	Ant 4	ECl 12	376500	1882.5	1	15.23	16.00	1.194	-	-	0.12	1.750	2.089
	FR1 n25	40M	QPSK	1	1	DFT-15	Top Side	0mm	Ant 4	ECl 12	376500	1882.5	1	15.23	16.00	1.194	-	-	0.07	1.920	2.292
	FR1 n25	40M	QPSK	1	1	DFT-15	Front	5mm	Ant 4	ECl 4	376500	1882.5	1	23.24	24.00	1.191	-	-	0.05	0.914	1.089
	FR1 n25	40M	QPSK	1	1	DFT-15	Back	8mm	Ant 4	ECl 4	376500	1882.5	1	23.24	24.00	1.191	-	-	0.12	0.998	1.189
	FR1 n25	40M	QPSK	1	1	DFT-15	Top Side	10mm	Ant 4	ECl 4	376500	1882.5	1	23.24	24.00	1.191	-	-	0.07	0.737	0.878
	FR1 n25	40M	QPSK	108	54	DFT-15	Front	0mm	Ant 4	ECl 12	376500	1882.5	1	15.19	16.00	1.205	-	-	-0.06	1.530	1.844
	FR1 n25	40M	QPSK	108	54	DFT-15	Back	0mm	Ant 4	ECl 12	376500	1882.5	1	15.19	16.00	1.205	-	-	0.09	1.780	2.145
	FR1 n25	40M	QPSK	108	54	DFT-15	Top Side	0mm	Ant 4	ECl 12	376500	1882.5	1	15.19	16.00	1.205	-	-	-0.02	1.830	2.205
	FR1 n25	40M	QPSK	216	0	DFT-15	Top Side	0mm	Ant 4	ECl 12	376500	1882.5	1	15.13	16.00	1.222	-	-	-0.02	1.700	2.077
	FR1 n25	40M	QPSK	216	0	DFT-15	Top Side	0mm	Ant 4	ECl 12	376500	1882.5	1	15.13	16.00	1.222	-	-	-0.02	1.750	2.138
2300MHz																					
	LTE Band 30	10M	QPSK	1	0	-	Front	0mm	Ant 1	ECl 11	27710	2310	1	20.12	21.00	1.225	-	-	-0.16	1.120	1.372
112	LTE Band 30	10M	QPSK	1	0	-	Back	0mm	Ant 1	ECl 11	27710	2310	1	20.12	21.00	1.225	-	-	0.1	2.600	3.184
	LTE Band 30	10M	QPSK	1	0	-	Back	0mm	Ant 1	ECl 11	27710	2310	1	20.12	21.00	1.225	-	-	0.06	2.440	2.988
	LTE Band 30	10M	QPSK	1	0	-	Bottom Side	0mm	Ant 1	ECl 11	27710	2310	1	20.12	21.00	1.225	-	-	0	2.020	2.474
	LTE Band 30	10M	QPSK	1	0	-	Front	2mm	Ant 1	ECl 4	27710	2310	1	23.34	24.00	1.164	-	-	-0.16	1.700	1.979
	LTE Band 30	10M	QPSK	1	0	-	Back	7mm	Ant 1	ECl 4	27710	2310	1	23.34	24.00	1.164	-	-	0.1	1.190	1.385
	LTE Band 30	10M	QPSK	1	0	-	Bottom Side	7mm	Ant 1	ECl 4	27710	2310	1	23.34	24.00	1.164	-	-	0	1.110	1.292
	LTE Band 30	10M	QPSK	1	0	-	Back	10mm	Ant 1	ECl 4	27710	2310	1	23.34	24.00	1.164	-	-	0.1	1.030	1.199
	LTE Band 30	10M	QPSK	25	0	-	Front	0mm	Ant 1	ECl 11	27710	2310	1	20.11	21.00	1.227	-	-	-0.17	1.090	1.338
	LTE Band 30	10M	QPSK	25	0	-	Back	0mm	Ant 1	ECl 11	27710	2310	1	20.11	21.00	1.227	-	-	0.01	2.430	2.983
	LTE Band 30	10M	QPSK	25	0	-	Bottom Side	0mm	Ant 1	ECl 11	27710	2310	1	20.11	21.00	1.227	-	-	-0.03	2.020	2.479
	LTE Band 30	10M	QPSK	50	0	-	Back	0mm	Ant 1	ECl 11	27710	2310	1	20.06	21.00	1.242	-	-	0.03	2.300	2.856
	LTE Band 30	10M	QPSK	50	0	-	Bottom Side	0mm	Ant 1	ECl 11	27710	2310	1	20.06	21.00	1.242	-	-	0.06	2.000	2.483
	FR1 n30	10M	QPSK	1	1	DFT-15	Front	0mm	Ant 1	ECl11	462000	2310	1	21.39	22.00	1.151	-	-	-0.1	1.240	1.427
113	FR1 n30	10M	QPSK	1	1	DFT-15	Back	0mm	Ant 1	ECl11	462000	2310	1	21.39	22.00	1.151	-	-	-0.02	2.710	3.119
	FR1 n30	10M	QPSK	1	1	DFT-15	Bottom Side	0mm	Ant 1	ECl11	462000	2310	1	21.39	22.00	1.151	-	-	-0.07	2.120	2.440
	FR1 n30	10M	QPSK	1	1	DFT-15	Front	2mm	Ant 1	ECl 4	462000	2310	1	23.33	24.00	1.167	-	-	-0.13	1.100	1.283
	FR1 n30	10M	QPSK	1	1	DFT-15	Back	7mm	Ant 1	ECl 4	462000	2310	1	23.33	24.00	1.167	-	-	0.15	0.866	1.010
	FR1 n30	10M	QPSK	1	1	DFT-15	Bottom Side	7mm	Ant 1	ECl 4	462000	2310	1	23.33	24.00	1.167	-	-	-0.08	0.604	0.705



FCC SAR Test Report

Report No. : FA482618

	FR1 n30	10M	QPSK	1	1	DFT-15	Back	10mm	Ant 1	ECI 4	462000	2310	1	23.33	24.00	1.167	-	-	0.15	0.826	0.964
	FR1 n30	10M	QPSK	25	14	DFT-15	Front	0mm	Ant 1	ECI11	462000	2310	1	21.30	22.00	1.175	-	-	0	1.220	1.433
	FR1 n30	10M	QPSK	25	14	DFT-15	Back	0mm	Ant 1	ECI11	462000	2310	1	21.30	22.00	1.175	-	-	0.04	2.630	3.090
	FR1 n30	10M	QPSK	25	14	DFT-15	Bottom Side	0mm	Ant 1	ECI11	462000	2310	1	21.30	22.00	1.175	-	-	-0.07	2.240	2.632
	FR1 n30	10M	QPSK	50	0	DFT-15	Back	0mm	Ant 1	ECI11	462000	2310	1	21.23	22.00	1.194	-	-	0.01	2.500	2.985
	FR1 n30	10M	QPSK	50	0	DFT-15	Bottom Side	0mm	Ant 1	ECI11	462000	2310	1	21.23	22.00	1.194	-	-	0.03	2.110	2.519
2600MHz																					
	LTE Band 7	20M	QPSK	1	0	-	Front	0mm	Ant 1	ECI 11	21100	2535	1	21.26	22.00	1.186	-	-	0.02	1.180	1.399
	LTE Band 7	20M	QPSK	1	0	-	Back	0mm	Ant 1	ECI 11	21100	2535	1	21.26	22.00	1.186	-	-	0.08	2.440	2.893
	LTE Band 7	20M	QPSK	1	0	-	Bottom Side	0mm	Ant 1	ECI 11	21100	2535	1	21.26	22.00	1.186	-	-	0.13	1.910	2.265
	LTE Band 7	20M	QPSK	1	0	-	Back	0mm	Ant 1	ECI 11	20850	2510	1	21.22	22.00	1.197	-	-	-0.01	2.380	2.848
114	LTE Band 7	20M	QPSK	1	0	-	Back	0mm	Ant 1	ECI 11	21350	2560	1	21.21	22.00	1.199	-	-	-0.04	2.640	3.167
	LTE Band 7	20M	QPSK	1	0	-	Bottom Side	0mm	Ant 1	ECI 11	20850	2510	1	21.22	22.00	1.197	-	-	-0.01	1.940	2.322
	LTE Band 7	20M	QPSK	1	0	-	Bottom Side	0mm	Ant 1	ECI 11	21350	2560	1	21.21	22.00	1.199	-	-	-0.04	2.210	2.651
	LTE Band 7	20M	QPSK	1	0	-	Front	2mm	Ant 1	ECI 4	21100	2535	1	23.49	24.00	1.125	-	-	-0.05	1.830	2.058
	LTE Band 7	20M	QPSK	1	0	-	Back	7mm	Ant 1	ECI 4	21350	2560	1	23.49	24.00	1.125	-	-	-0.08	1.330	1.496
	LTE Band 7	20M	QPSK	1	0	-	Bottom Side	7mm	Ant 1	ECI 4	21350	2560	1	23.49	24.00	1.125	-	-	0.11	0.930	1.046
	LTE Band 7	20M	QPSK	1	0	-	Back	10mm	Ant 1	ECI 4	21350	2560	1	23.49	24.00	1.125	-	-	-0.08	1.330	1.496
	LTE Band 7	20M	QPSK	50	0	-	Front	0mm	Ant 1	ECI 11	21100	2535	1	21.11	22.00	1.227	-	-	0.02	1.130	1.387
	LTE Band 7	20M	QPSK	50	0	-	Back	0mm	Ant 1	ECI 11	21100	2535	1	21.11	22.00	1.227	-	-	0	2.330	2.860
	LTE Band 7	20M	QPSK	50	0	-	Bottom Side	0mm	Ant 1	ECI 11	21100	2535	1	21.11	22.00	1.227	-	-	-0.15	1.820	2.234
	LTE Band 7	20M	QPSK	50	0	-	Back	0mm	Ant 1	ECI 11	20850	2510	1	20.99	22.00	1.262	-	-	-0.01	2.270	2.864
	LTE Band 7	20M	QPSK	50	0	-	Back	0mm	Ant 1	ECI 11	21350	2560	1	21.03	22.00	1.250	-	-	-0.04	2.520	3.151
	LTE Band 7	20M	QPSK	50	0	-	Bottom Side	0mm	Ant 1	ECI 11	20850	2510	1	20.99	22.00	1.262	-	-	-0.01	1.850	2.334
	LTE Band 7	20M	QPSK	50	0	-	Bottom Side	0mm	Ant 1	ECI 11	21350	2560	1	21.03	22.00	1.250	-	-	-0.04	2.110	2.638
	LTE Band 7	20M	QPSK	100	0	-	Back	0mm	Ant 1	ECI 11	21100	2535	1	21.06	22.00	1.242	-	-	-0.01	1.900	2.359
	LTE Band 7	20M	QPSK	100	0	-	Bottom Side	0mm	Ant 1	ECI 11	21100	2535	1	21.06	22.00	1.242	-	-	-0.04	2.400	2.980
	LTE Band 41	20M	QPSK	1	0	-	Back	0mm	Ant 1	ECI 11	40620	2593	1	22.66	23.90	1.330	62.9	1.006	0.16	2.260	3.025
	LTE Band 41	20M	QPSK	1	0	-	Bottom Side	0mm	Ant 1	ECI 11	40620	2593	1	22.66	23.90	1.330	62.9	1.006	-0.09	1.580	2.115
	LTE Band 41	20M	QPSK	1	0	-	Back	0mm	Ant 1	ECI 11	39750	2506	1	22.48	23.90	1.387	62.9	1.006	0.14	2.060	2.874
	LTE Band 41	20M	QPSK	1	0	-	Back	0mm	Ant 1	ECI 11	40185	2549.5	1	22.54	23.90	1.368	62.9	1.006	-0.03	2.260	3.110
115	LTE Band 41	20M	QPSK	1	0	-	Back	0mm	Ant 1	ECI 11	41055	2636.5	1	22.55	23.90	1.365	62.9	1.006	0.14	2.310	3.171
	LTE Band 41C	20M	QPSK	1	0	-	Back	0mm	Ant 1	ECI 11	41055+ 41253	2636.5+ 2656.3	1	22.50	23.90	1.380	62.9	1.006	0.14	2.100	2.916
	LTE Band 41	20M	QPSK	1	0	-	Back	0mm	Ant 1	ECI 11	41490	2680	1	22.60	23.90	1.349	62.9	1.006	0.08	2.160	2.931
	LTE Band 41	20M	QPSK	1	0	-	Bottom Side	0mm	Ant 1	ECI 11	39750	2506	1	22.48	23.90	1.387	62.9	1.006	0.14	1.970	2.748
	LTE Band 41	20M	QPSK	1	0	-	Bottom Side	0mm	Ant 1	ECI 11	40185	2549.5	1	22.54	23.90	1.368	62.9	1.006	-0.03	2.160	2.972
	LTE Band 41	20M	QPSK	1	0	-	Bottom Side	0mm	Ant 1	ECI 11	41055	2636.5	1	22.55	23.90	1.365	62.9	1.006	0.14	2.210	3.034
	LTE Band 41	20M	QPSK	1	0	-	Bottom Side	0mm	Ant 1	ECI 11	41490	2680	1	22.60	23.90	1.349	62.9	1.006	0.08	2.060	2.796
	LTE Band 41 HPUE	20M	QPSK	1	0	-	Bottom Side	0mm	Ant 1	ECI 11	41055	2636.5	1	23.92	25.50	1.439	42.9	1.009	0.09	2.000	2.903
	LTE Band 41	20M	QPSK	1	0	-	Back	7mm	Ant 1	ECI 4	41055	2636.5	1	23.38	24.00	1.153	62.9	1.006	0.08	0.830	0.963
	LTE Band 41	20M	QPSK	1	0	-	Bottom Side	7mm	Ant 1	ECI 4	40620	2593	1	23.47	24.00	1.130	62.9	1.006	0.09	0.578	0.657
	LTE Band 41	20M	QPSK	1	0	-	Back	10mm	Ant 1	ECI 4	41055	2636.5	1	23.38	24.00	1.153	62.9	1.006	0.08	0.830	0.963
	LTE Band 41	20M	QPSK	50	0	-	Back	0mm	Ant 1	ECI 11	40620	2593	1	22.06	23.00	1.242	62.9	1.006	-0.01	2.300	2.873
	LTE Band 41	20M	QPSK	50	0	-	Bottom Side	0mm	Ant 1	ECI 11	40620	2593	1	22.06	23.00	1.242	62.9	1.006	-0.13	1.590	1.986
	LTE Band 41	20M	QPSK	50	0	-	Back	0mm	Ant 1	ECI 11	39750	2506	1	21.96	23.00	1.271	62.9	1.006	0.14	2.140	2.735
	LTE Band 41	20M	QPSK	50	0	-	Back	0mm	Ant 1	ECI 11	40185	2549.5	1	21.97	23.00	1.268	62.9	1.006	-0.03	2.300	2.933
	LTE Band 41	20M	QPSK	50	0	-	Back	0mm	Ant 1	ECI 11	41055	2636.5	1	22.01	23.00	1.256	62.9	1.006	0.14	2.270	2.868
	LTE Band 41	20M	QPSK	50	0	-	Back	0mm	Ant 1	ECI 11	41490	2680	1	21.94	23.00	1.276	62.9	1.006	0.08	2.200	2.825
	LTE Band 41	20M	QPSK	50	0	-	Bottom Side	0mm	Ant 1	ECI 11	39750	2506	1	21.96	23.00	1.271	62.9	1.006	0.14	1.520	1.943
	LTE Band 41	20M	QPSK	50	0	-	Bottom Side	0mm	Ant 1	ECI 11	40185	2549.5	1	21.97	23.00	1.268	62.9	1.006	-0.03	1.630	2.079
	LTE Band 41	20M	QPSK	50	0	-	Bottom Side	0mm	Ant 1	ECI 11	41055	2636.5	1	22.01	23.00	1.256	62.9	1.006	0.14	1.610	2.034
	LTE Band 41	20M	QPSK	50	0	-	Bottom Side	0mm	Ant 1	ECI 11	41490	2680	1	21.94	23.00	1.276	62.9	1.006	0.08	1.560	2.003
	LTE Band 41	20M	QPSK	100	0	-	Back	0mm	Ant 1	ECI 11	40620	2593	1	22.04	23.00	1.247	62.9	1.006	-0.01	2.220	2.786
	LTE Band 41	20M	QPSK	100	0	-	Bottom Side	0mm	Ant 1	ECI 11	40620	2593	1	22.04	23.00	1.247	62.9	1.006	-0.13	1.530	1.920
	FR1 n7	50M	QPSK	1	1	DFT-15	Front	0mm	Ant 1	ECI 11	507000	2535	1	21.80	22.50	1.175	-	-	0.13	1.000	1.175
116	FR1 n7	50M	QPSK	1	1	DFT-15	Back	0mm	Ant 1	ECI 11	507000	2535	1	21.80	22.50	1.175	-	-	0.03	2.520	2.961



	WLAN5.3GHz	802.11n-HT40 MCS0	Top Side	0mm	Ant 6	Standalone	62	5310	1	17.11	18.50	1.377	100.00	1.000	0.05	1.760	2.424
	WLAN5.3GHz	802.11n-HT40 MCS0	Front	5mm	Ant 6	Full Power	54	5270	1	20.13	21.50	1.372	100.00	1.000	0.16	0.690	0.946
	WLAN5.3GHz	802.11n-HT40 MCS0	Back	10mm	Ant 6	Full Power	54	5270	1	20.13	21.50	1.372	100.00	1.000	0.04	0.799	1.096
	WLAN5.3GHz	802.11n-HT40 MCS0	Right Side	5mm	Ant 6	Full Power	54	5270	1	20.13	21.50	1.372	100.00	1.000	0.08	0.439	0.602
	WLAN5.3GHz	802.11n-HT40 MCS0	Top Side	10mm	Ant 6	Full Power	54	5270	1	20.13	21.50	1.372	100.00	1.000	-0.04	0.901	1.236
	WLAN5.3GHz	802.11ac-VHT80 MCS0	Front	0mm	Ant 6	Simultaneous	58	5290	1	11.88	13.00	1.294	100.00	1.000	0.16	0.324	0.419
	WLAN5.3GHz	802.11ac-VHT80 MCS0	Back	0mm	Ant 6	Simultaneous	58	5290	1	11.88	13.00	1.294	100.00	1.000	0.04	0.558	0.722
	WLAN5.3GHz	802.11ac-VHT80 MCS0	Right Side	0mm	Ant 6	Simultaneous	58	5290	1	11.88	13.00	1.294	100.00	1.000	0.08	0.150	0.194
	WLAN5.3GHz	802.11ac-VHT80 MCS0	Top Side	0mm	Ant 6	Simultaneous	58	5290	1	11.88	13.00	1.294	100.00	1.000	0.03	0.798	1.033
	WLAN5.5GHz	802.11ac-VHT80 MCS0	Front	0mm	Ant 6	Standalone	122	5610	1	16.89	18.50	1.449	100.00	1.000	-0.05	1.080	1.565
	WLAN5.5GHz	802.11ac-VHT80 MCS0	Back	0mm	Ant 6	Standalone	122	5610	1	16.89	18.50	1.449	100.00	1.000	-0.01	1.370	1.985
	WLAN5.5GHz	802.11ac-VHT80 MCS0	Right Side	0mm	Ant 6	Standalone	122	5610	1	16.89	18.50	1.449	100.00	1.000	-0.06	0.333	0.482
123	WLAN5.5GHz	802.11ac-VHT80 MCS0	Top Side	0mm	Ant 6	Standalone	122	5610	1	16.89	18.50	1.449	100.00	1.000	0.11	2.120	3.071
	WLAN5.5GHz	802.11ac-VHT80 MCS0	Top Side	0mm	Ant 6	Standalone	122	5610	2	16.89	18.50	1.449	100.00	1.000	0.11	1.250	1.811
	WLAN5.5GHz	802.11ac-VHT80 MCS0	Top Side	0mm	Ant 6	Standalone	106	5530	1	16.28	17.50	1.324	100.00	1.000	0.06	1.730	2.291
	WLAN5.5GHz	802.11ac-VHT80 MCS0	Top Side	0mm	Ant 6	Standalone	138	5690	1	16.63	18.00	1.371	100.00	1.000	-0.06	1.740	2.385
	WLAN5.5GHz	802.11n-HT40 MCS0	Top Side	0mm	Ant 6	Standalone	110	5550	1	16.99	18.50	1.416	100.00	1.000	0.11	1.650	2.336
	WLAN5.5GHz	802.11n-HT20 MCS0	Front	5mm	Ant 6	Full Power	144	5720	1	20.72	22.00	1.343	100.00	1.000	-0.05	1.090	1.464
	WLAN5.5GHz	802.11n-HT20 MCS0	Back	10mm	Ant 6	Full Power	144	5720	1	20.72	22.00	1.343	100.00	1.000	-0.01	0.879	1.180
	WLAN5.5GHz	802.11n-HT20 MCS0	Right Side	5mm	Ant 6	Full Power	144	5720	1	20.72	22.00	1.343	100.00	1.000	-0.06	0.635	0.853
	WLAN5.5GHz	802.11n-HT20 MCS0	Top Side	10mm	Ant 6	Full Power	144	5720	1	20.72	22.00	1.343	100.00	1.000	0.04	1.070	1.437
	WLAN5.5GHz	802.11ac-VHT80 MCS0	Front	0mm	Ant 6	Simultaneous	122	5610	1	11.88	13.50	1.452	100.00	1.000	-0.05	0.320	0.465
	WLAN5.5GHz	802.11ac-VHT80 MCS0	Back	0mm	Ant 6	Simultaneous	122	5610	1	11.88	13.50	1.452	100.00	1.000	-0.01	0.482	0.700
	WLAN5.5GHz	802.11ac-VHT80 MCS0	Right Side	0mm	Ant 6	Simultaneous	122	5610	1	11.88	13.50	1.452	100.00	1.000	-0.06	0.110	0.160
	WLAN5.5GHz	802.11ac-VHT80 MCS0	Top Side	0mm	Ant 6	Simultaneous	122	5610	1	11.88	13.50	1.452	100.00	1.000	0.06	0.732	1.063
	WLAN5.5GHz	802.11ac-VHT80 MCS0	Top Side	0mm	Ant 6	Simultaneous	106	5530	1	11.35	12.50	1.303	100.00	1.000	0.06	0.608	0.792
	WLAN5.5GHz	802.11ac-VHT80 MCS0	Top Side	0mm	Ant 6	Simultaneous	138	5690	1	11.48	13.00	1.419	100.00	1.000	-0.06	0.513	0.728
	WLAN5.8GHz	802.11ac-VHT80 MCS0	Front	0mm	Ant 6	Standalone	155	5825	1	16.10	17.50	1.380	100.00	1.000	0.14	0.857	1.183
	WLAN5.8GHz	802.11ac-VHT80 MCS0	Back	0mm	Ant 6	Standalone	155	5825	1	16.10	17.50	1.380	100.00	1.000	0.15	1.180	1.629
	WLAN5.8GHz	802.11ac-VHT80 MCS0	Right Side	0mm	Ant 6	Standalone	155	5825	1	16.10	17.50	1.380	100.00	1.000	0.02	0.435	0.600
124	WLAN5.8GHz	802.11ac-VHT80 MCS0	Top Side	0mm	Ant 6	Standalone	155	5825	1	16.10	17.50	1.380	100.00	1.000	-0.06	1.990	2.747
	WLAN5.8GHz	802.11a 6Mbps	Front	5mm	Ant 6	Full Power	149	5745	1	20.91	22.50	1.442	100.00	1.000	-0.05	1.120	1.615
	WLAN5.8GHz	802.11a 6Mbps	Back	10mm	Ant 6	Full Power	149	5745	1	20.91	22.50	1.442	100.00	1.000	0.19	0.853	1.230
	WLAN5.8GHz	802.11a 6Mbps	Right Side	5mm	Ant 6	Full Power	149	5745	1	20.91	22.50	1.442	100.00	1.000	0	0.627	0.904
	WLAN5.8GHz	802.11a 6Mbps	Top Side	10mm	Ant 6	Full Power	149	5745	1	20.91	22.50	1.442	100.00	1.000	-0.17	1.030	1.485
	WLAN5.8GHz	802.11ac-VHT80 MCS0	Front	0mm	Ant 6	Simultaneous	155	5825	1	11.90	13.50	1.445	100.00	1.000	0.14	0.343	0.496
	WLAN5.8GHz	802.11ac-VHT80 MCS0	Back	0mm	Ant 6	Simultaneous	155	5825	1	11.90	13.50	1.445	100.00	1.000	0.15	0.463	0.669
	WLAN5.8GHz	802.11ac-VHT80 MCS0	Right Side	0mm	Ant 6	Simultaneous	155	5825	1	11.90	13.50	1.445	100.00	1.000	0.02	0.134	0.194
	WLAN5.8GHz	802.11ac-VHT80 MCS0	Top Side	0mm	Ant 6	Simultaneous	155	5825	1	11.90	13.50	1.445	100.00	1.000	0.09	0.739	1.068



16.5 Repeated SAR Measurement

<1g>

Table with 21 columns: Plot No., Band, BW (MHz), Modulation, RB Size, RB offset, Mode, Test Position, Gap (mm), Antenna, Power State, Ch., Freq. (MHz), Average Power (dBm), Tune-Up Limit (dBm), Tune-up Scaling Factor, Duty Cycle %, Duty Cycle Scaling Factor, Power Drift (dB), Measured 1g SAR (W/kg), Ratio, Reported 1g SAR (W/kg). Rows include WLAN5.3GHz, WLAN5.5GHz, WLAN5.8GHz, LTE Band 13, FR1 n26, FR1 n66, GSM1900, FR1 n30, FR1 n7, FR1 n77, and WLAN2.4GHz.

<10g>

Table with 21 columns: Plot No., Band, BW (MHz), Modulation, RB Size, RB offset, Mode, Test Position, Gap (mm), Antenna, Power State, Ch., Freq. (MHz), Average Power (dBm), Tune-Up Limit (dBm), Tune-up Scaling Factor, Duty Cycle %, Duty Cycle Scaling Factor, Power Drift (dB), Measured 10g SAR (W/kg), Ratio, Reported 10g SAR (W/kg). Rows include WCDMA V, FR1 n66, GSM1900, FR1 n30, LTE Band 7, FR1 n77, WLAN2.4GHz, WLAN5.3GHz, and WLAN5.5GHz.



General Note:

1. Per KDB 865664 D01v01r04, for each frequency band, repeated SAR measurement is required only when the measured SAR is $\geq 0.8\text{W/kg}$.
2. Per KDB 865664 D01v01r04, if the ratio among the repeated measurement is ≤ 1.2 and the measured SAR $< 1.45\text{W/kg}$, only one repeated measurement is required.
3. Per KDB 865664 D01v01r04, if the extremity repeated SAR is necessary, the same procedures should be adapted for measurements according to extremity and occupational exposure limits by applying a factor of 2.5 for extremity exposure and a factor of 5 for occupational exposure to the corresponding SAR thresholds.
4. The ratio is the difference in percentage between original and repeated *measured SAR*.
5. All measurement SAR result is scaled-up to account for tune-up tolerance and is compliant.



16.6 TDD LTE Linearity Data Analysis

General Note:

This device support Power Class 2 and Power Class 3 operations for LTE Band 41. The highest available duty cycle for Power Class 2 operation is 43.3% using UL-DL configuration 1. Per FCC Guidance based on the device behavior, all SAR tests were performed using Power Class 3. Power Class 2 is tested using the highest SAR test configuration in Power Class 3 for each LTE configuration and exposure condition combination, according to the highest time averaged power for all applicable uplink-downlink configurations in Power Class 2. When the reported SAR vs. output power is linearly scaled with < 10% discrepancy between power classes and all reported SAR are < 1.4 W/kg for 1g and < 3.5 W/kg for 10g, Separate SAR testing for Power Class 2 is not required.

LTE Band 41(HPUE)-Linearity Data for EC12-ANT1			LTE Band 41(HPUE)-Linearity Data for EC17-ANT1		
	LTE Band 41 (Power Class 3)	LTE Band 41 (Power Class 2)		LTE Band 41 (Power Class 3)	LTE Band 41 (Power Class 2)
Maximum Tune up Power (dBm)	24.00	27.00	Maximum Tune up Power (dBm)	21.40	23.00
Reported 10g SAR (W/kg)	0.391	0.482	Reported 1g SAR (W/kg)	1.247	1.180
Duty Cycle	63.30%	43.30%	Duty Cycle	63.30%	43.30%
Frame Averaged (mW)	159.00	217.01	Frame Averaged (mW)	87.38	86.39
Linearity SAR (W/kg)	0.534		Linearity SAR (W/kg)	1.233	
% deviation from expected linearity		-9.68%	% deviation from expected linearity		-4.30%

LTE Band 41(HPUE)-Linearity Data for EC11-ANT1			LTE Band 41(HPUE)-Linearity Data for EC13-ANT1		
	LTE Band 41 (Power Class 3)	LTE Band 41 (Power Class 2)		LTE Band 41 (Power Class 3)	LTE Band 41 (Power Class 2)
Maximum Tune up Power (dBm)	23.90	25.50	Maximum Tune up Power (dBm)	21.40	23.00
Reported 1g SAR (W/kg)	3.171	2.903	Reported 1g SAR (W/kg)	1.247	1.180
Duty Cycle	63.30%	43.30%	Duty Cycle	63.30%	43.30%
Frame Averaged (mW)	155.38	153.63	Frame Averaged (mW)	87.38	86.39
Linearity SAR (W/kg)	3.135		Linearity SAR (W/kg)	1.233	
% deviation from expected linearity		-7.41%	% deviation from expected linearity		-4.30%

17. Simultaneous Transmission Analysis

No.	Simultaneous Transmission Configurations	Portable Handset			
		Head	Body-worn	Hotspot	Product specific 10g SAR
1.	WWAN + WLAN2.4GHz	Yes	Yes	Yes	Yes
2.	WWAN + WLAN5GHz	Yes	Yes	Yes	Yes
3.	WWAN + Bluetooth	Yes	Yes	Yes	Yes
4.	WLAN5GHz+ Bluetooth	Yes	Yes	Yes	Yes
5.	WWAN + WLAN5GHz+ Bluetooth	Yes	Yes	Yes	Yes
6.	WWAN + WLAN2.4GHz + NFC				Yes
7.	WWAN + WLAN5GHz + NFC				Yes
8.	WWAN + Bluetooth + NFC				Yes
9.	WLAN5GHz+ Bluetooth + NFC				Yes
10.	WWAN + WLAN5GHz+ Bluetooth + NFC				Yes

General Note:

- This device supports VoIP in GPRS, EGPRS, WCDMA, LTE and 5GNR (e.g. for 3rd-party VoIP), LTE supports VoLTE operation.
- WWAN above includes 5G NR bands and EN-DC combination.
- EUT will choose each GSM, WCDMA, LTE and 5GNR according to the network signal condition; therefore, they will not operate simultaneously at any moment.
- For EN-DC mode, MediaTek TA-SAR algorithm in WWAN adds directly the time-averaged RF exposure from 4G(LTE) and time-averaged RF exposure from 5G NR. TA-SAR algorithm controls the total RF exposure from both 4G and 5G NR to not exceed SAR exposure limit. Therefore, simultaneous transmission compliance between 4G+5G NR operation is demonstrated in the Part 2 Report during algorithm validation. In this Report, simultaneous transmission compliance was evaluated individually with other Radios (WLAN or BT) using one of 4G or 5G NR.
- This device 2.4GHz WLAN support hotspot operation and Bluetooth support tethering applications.
- This device 5.2GHz WLAN/5.8GHz WLAN support hotspot operation, and 5.2GHz WLAN/5.8GHz WLAN supports WLAN Direct (GC/GO), and 5.3GHz / 5.5GHz supports WLAN Direct (GC only).
- The worst case 5 GHz WLAN SAR for each configuration was used for SAR summation.
- According to the EUT characteristic, WLAN 5GHz and Bluetooth can transmit simultaneously.
- According to the EUT characteristic, WLAN 5GHz and WLAN 2.4GHz can't transmit simultaneously.
- According to the EUT characteristic, WLAN 2.4GHz and Bluetooth cannot transmit simultaneously.
- NFC can transmit simultaneously with other Radios in extremity exposure condition.
- For Headset SAR and non-Headset SAR always chose higher SAR to do co-located analysis.
- For simultaneously analysis, since the SAR summation of 3 transmitters can cover others combination of 2 transmitters, therefore in this section did not additional to evaluate 2TX combination of simultaneously transmission.
- For standalone WWAN, always choose the highest SAR among all WWAN bands within the selected antenna for Head/hotspot/extremity exposure condition each exposure position to perform simultaneous transmission analysis with WLAN/BT. This is the worst co-located analysis and can represent each band. If the co-located analysis within standalone SAR is higher SAR limit (1.6W/kg for 1g SAR, 4.0W/kg for 10g SAR), always choose the highest SAR among the selected WWAN bands within the selected antenna for each exposure position to perform simultaneous transmission analysis with WLAN/BT.
- The maximum SAR summation is calculated based on the same configuration and test position.
- Per KDB 447498 D01v06, simultaneous transmission SAR is compliant if,
 - 1g Scalar SAR summation < 1.6W/kg and 10g Scalar SAR summation < 4.0W/kg.
 - $SPLSR = (SAR1 + SAR2)^{1.5} / (\text{min. separation distance, mm})$, and the peak separation distance is determined from the square root of $[(x1-x2)^2 + (y1-y2)^2 + (z1-z2)^2]$, where (x1, y1, z1) and (x2, y2, z2) are the coordinates of the extrapolated peak SAR locations in the zoom scan.
 - If $SPLSR \leq 0.04$ for 1g SAR and $SPLSR \leq 0.10$ for 10g SAR, simultaneously transmission SAR measurement is not necessary.
 - Simultaneously transmission SAR measurement, and the reported multi-band 1g SAR < 1.6W/kg and 10g SAR < 4.0W/kg.
 - The SPLSR calculated results please refer to section 17.6.

17.1 5G NR + LTE + WLAN + BT Sim-Tx analysis

In 5G NR + LTE + WLAN + BT simultaneous transmission, 5G NR and LTE transmission are managed and controlled by MediaTek TA-SAR, while the RF exposure from WLAN and BT radios is managed using legacy approach, i.e., through a fixed power back-off if needed.

Since WLAN and BT do not employ time-averaging, 1gSAR and 10gSAR measurement for WLAN and BT need to be conducted at their corresponding rated power following current FCC test procedures to determine reported SAR values.

TA-SAR current implementation assumes hotspots from 5G NR and LTE are collocated. Therefore, for a total of 100% exposure margin, if LTE uses x, then the exposure margin left for 5G NR is capped to y. Thus, the compliance equation for LTE + 5G NR is

$$\begin{aligned} x \cdot A + y \cdot B + m &\leq 1 \\ x + y &= g \leq 1 \\ g + m &\leq 1 \end{aligned}$$

Where, A is normalized reported time-averaged SAR exposure ratio from LTE, and $A \leq 1.0$; B is normalized reported time-averaged exposure ratio from 5G NR (i.e., SAR exposure for 5G FR1), and $B \leq 1.0$.

Let m = normalized reported SAR exposure ratio from WLAN+BT, then for compliance,

$$x \cdot A + y \cdot B + m \leq 1.0 \quad (1)$$

$$x \cdot A + y \cdot B \leq x \cdot \max(A, B) + (g-x) \cdot \max(A, B) \leq \max(A, B)$$

$$x \cdot A + (g-x) \cdot B + m \leq \max(A, B) + m \leq 1.0 \quad (2)$$

If $A + m \leq 1.0$ and $B + m \leq 1.0$ can be proven, then " $x \cdot A + y \cdot B + m \leq 1.0$ ". Therefore simultaneous transmission analysis for 5G NR + LTE + WLAN + BT can be performed in two steps

Step 1: Prove total exposure ratio (TER) of LTE + WLAN + BT < 1

Step 2: Prove total exposure ratio (TER) of 5G NR + WLAN + BT < 1

Else, if $A + m > 1.0$ and/or $B + m > 1.0$, then the followings need to hold true for compliance:

- i. A and m are decoupled based on the SPLSR criteria, and
- ii. $y \cdot B + m \leq 1.0$, and
- iii. $x \cdot A + y \cdot B \leq 1.0$

Note iii. is covered in Part 2 report; i. and ii. should be addressed in Part 2 report.

Above analysis is also apply to LTE inter-band uplink, LTE1 + LTE2 + WLAN + BT simultaneous transmission, so inter-band uplink CA no need to do additional simultaneously analysis again. Only required comply with total exposure ratio (TER) of LTE + WLAN + BT < 1.

17.2 Head Exposure Conditions

WWAN Band	Exposure Position	1	3	4	5	1+3	1+4+5
		WWAN 1g SAR (W/kg)	WLAN2.4GHz Ant 6 1g SAR (W/kg)	WLAN5GHz Ant 6 1g SAR (W/kg)	Bluetooth Ant 6 1g SAR (W/kg)	Summed 1g SAR (W/kg)	Summed 1g SAR (W/kg)
All Bands	Right Cheek	0.883	0.210	0.244	0.144	1.09	1.27
	Right Tilted	0.883	0.175	0.202	0.158	1.06	1.24
	Left Cheek	0.863	0.639	0.252	0.434	1.50	1.55
	Left Tilted	0.849	0.365	0.433	0.311	1.21	1.59

Exposure Position	4	5	4+5
	WLAN5GHz Ant 6 1g SAR (W/kg)	Bluetooth Ant 6 1g SAR (W/kg)	Summed 1g SAR (W/kg)
Right Cheek	0.650	0.144	0.79
Right Tilted	0.670	0.158	0.83
Left Cheek	0.728	0.434	1.16
Left Tilted	1.191	0.311	1.50

17.3 Hotspot Exposure Conditions

Exposure Position	4	5	4+5
	WLAN5GHz Ant 6 1g SAR (W/kg)	Bluetooth Ant 6 1g SAR (W/kg)	Summed 1g SAR (W/kg)
Front	0.279	0.204	0.48
Back	0.611	0.348	0.96
Left side			0.00
Right side	0.136	0.244	0.38
Top side	0.667	0.165	0.83
Bottom side			0.00

WWAN Band	Exposure Position	1	3	4	5	1+3	1+4+5
		WWAN 1g SAR (W/kg)	WLAN2.4GHz Ant 6 1g SAR (W/kg)	WLAN5GHz Ant 6 1g SAR (W/kg)	Bluetooth Ant 6 1g SAR (W/kg)	Summed 1g SAR (W/kg)	Summed 1g SAR (W/kg)
Ant 2/4/5/7/8	Front	0.454	0.567	0.279	0.204	1.02	0.94
	Back	0.612	0.795	0.611	0.348	1.41	1.57
	Left side	0.243				0.24	0.24
	Right side	0.309	0.587	0.136	0.244	0.90	0.69
	Top side	0.612	0.411	0.667	0.165	1.02	1.44
	Bottom side					0.00	0.00

WWAN Band	Exposure Position	1	3	4	5	1+3	1+4+5	Case No
		WWAN 1g SAR (W/kg)	WLAN2.4GHz Ant 6 1g SAR (W/kg)	WLAN5GHz Ant 6 1g SAR (W/kg)	Bluetooth Ant 6 1g SAR (W/kg)	Summed 1g SAR (W/kg)	Summed 1g SAR (W/kg)	
LTE Band 71 Ant 0	Front	0.394	0.567	0.279	0.204	0.96	0.88	
	Back	0.588	0.795	0.611	0.348	1.38	1.55	
	Left side	0.210				0.21	0.21	
	Right side	0.503	0.587	0.136	0.244	1.09	0.88	
	Top side		0.411	0.667	0.165	0.41	0.83	
	Bottom side	0.320				0.32	0.32	
LTE Band 12 Ant 0	Front	0.559	0.567	0.279	0.204	1.13	1.04	
	Back	0.883	0.795	0.611	0.348	1.68	1.84	Case 1/2
	Left side	0.245				0.25	0.25	



	Right side	0.855	0.587	0.136	0.244	1.44	1.24	
	Top side		0.411	0.667	0.165	0.41	0.83	
	Bottom side	0.442				0.44	0.44	
LTE Band 13 Ant 0	Front	0.711	0.567	0.279	0.204	1.28	1.19	
	Back	1.245	0.795	0.611	0.348	2.04	2.20	Case 3/4
	Left side	0.316				0.32	0.32	
	Right side	0.917	0.587	0.136	0.244	1.50	1.30	
	Top side		0.411	0.667	0.165	0.41	0.83	
	Bottom side	0.830				0.83	0.83	
LTE Band 14 Ant 0	Front	0.652	0.567	0.279	0.204	1.22	1.14	
	Back	1.189	0.795	0.611	0.348	1.98	2.15	Case 5/6
	Left side	0.144				0.14	0.14	
	Right side	1.079	0.587	0.136	0.244	1.67	1.46	Case 7
	Top side		0.411	0.667	0.165	0.41	0.83	
	Bottom side	1.032				1.03	1.03	
FR1 n71 Ant 0	Front	0.259	0.567	0.279	0.204	0.83	0.74	
	Back	0.454	0.795	0.611	0.348	1.25	1.41	
	Left side	0.213				0.21	0.21	
	Right side	0.451	0.587	0.136	0.244	1.04	0.83	
	Top side		0.411	0.667	0.165	0.41	0.83	
	Bottom side	0.204				0.20	0.20	
FR1 n12 Ant 0	Front	0.296	0.567	0.279	0.204	0.86	0.78	
	Back	0.614	0.795	0.611	0.348	1.41	1.57	
	Left side	0.226				0.23	0.23	
	Right side	0.446	0.587	0.136	0.244	1.03	0.83	
	Top side		0.411	0.667	0.165	0.41	0.83	
	Bottom side	0.314				0.31	0.31	
FR1 n14 Ant 0	Front	0.336	0.567	0.279	0.204	0.90	0.82	
	Back	0.939	0.795	0.611	0.348	1.73	1.90	Case 8/9
	Left side	0.197				0.20	0.20	
	Right side	0.463	0.587	0.136	0.244	1.05	0.84	
	Top side		0.411	0.667	0.165	0.41	0.83	
	Bottom side	0.664				0.66	0.66	
GSM850 Ant 0	Front	0.495	0.567	0.279	0.204	1.06	0.98	
	Back	1.176	0.795	0.611	0.348	1.97	2.14	Case 10/11
	Left side	0.482				0.48	0.48	
	Right side	0.382	0.587	0.136	0.244	0.97	0.76	
	Top side		0.411	0.667	0.165	0.41	0.83	
	Bottom side	0.746				0.75	0.75	
WCDMA V Ant 0	Front	0.515	0.567	0.279	0.204	1.08	1.00	
	Back	1.279	0.795	0.611	0.348	2.07	2.24	Case 12/13
	Left side	0.312				0.31	0.31	
	Right side	0.444	0.587	0.136	0.244	1.03	0.82	
	Top side		0.411	0.667	0.165	0.41	0.83	
	Bottom side	1.222				1.22	1.22	
LTE Band 26 Ant 0	Front	0.435	0.567	0.279	0.204	1.00	0.92	
	Back	1.143	0.795	0.611	0.348	1.94	2.10	Case 14/15
	Left side	0.118				0.12	0.12	
	Right side	0.419	0.587	0.136	0.244	1.01	0.80	
	Top side		0.411	0.667	0.165	0.41	0.83	
	Bottom side	0.647				0.65	0.65	
FR1 n26 Ant 0	Front	0.630	0.567	0.279	0.204	1.20	1.11	
	Back	1.281	0.795	0.611	0.348	2.08	2.24	Case 16/17
	Left side	0.145				0.15	0.15	
	Right side	0.580	0.587	0.136	0.244	1.17	0.96	
	Top side		0.411	0.667	0.165	0.41	0.83	



	Bottom side	1.124				1.12	1.12	
WCDMA IV Ant 0	Front	0.788	0.567	0.279	0.204	1.36	1.27	
	Back	1.132	0.795	0.611	0.348	1.93	2.09	Case 18/19
	Left side	0.700				0.70	0.70	
	Right side	0.130	0.587	0.136	0.244	0.72	0.51	
	Top side		0.411	0.667	0.165	0.41	0.83	
	Bottom side	1.274				1.27	1.27	
LTE Band 66 Ant 0	Front	0.787	0.567	0.279	0.204	1.35	1.27	
	Back	0.973	0.795	0.611	0.348	1.77	1.93	Case 20/21
	Left side	0.784				0.78	0.78	
	Right side	0.110	0.587	0.136	0.244	0.70	0.49	
	Top side		0.411	0.667	0.165	0.41	0.83	
	Bottom side	1.212				1.21	1.21	
FR1 n70 Ant 0	Front	0.705	0.567	0.279	0.204	1.27	1.19	
	Back	0.819	0.795	0.611	0.348	1.61	1.78	Case 22/23
	Left side	0.100				0.10	0.10	
	Right side	0.113	0.587	0.136	0.244	0.70	0.49	
	Top side		0.411	0.667	0.165	0.41	0.83	
	Bottom side	1.119				1.12	1.12	
FR1 n66 Ant 0	Front	0.864	0.567	0.279	0.204	1.43	1.35	
	Back	1.044	0.795	0.611	0.348	1.84	2.00	Case 24/25
	Left side	0.118				0.12	0.12	
	Right side	0.123	0.587	0.136	0.244	0.71	0.50	
	Top side		0.411	0.667	0.165	0.41	0.83	
	Bottom side	1.235				1.24	1.24	
GSM1900 Ant 0	Front	0.579	0.567	0.279	0.204	1.15	1.06	
	Back	1.010	0.795	0.611	0.348	1.81	1.97	Case 26/27
	Left side	0.086				0.09	0.09	
	Right side	0.081	0.587	0.136	0.244	0.67	0.46	
	Top side		0.411	0.667	0.165	0.41	0.83	
	Bottom side	1.272				1.27	1.27	
WCDMA II Ant 0	Front	0.583	0.567	0.279	0.204	1.15	1.07	
	Back	0.936	0.795	0.611	0.348	1.73	1.90	Case 28/29
	Left side	0.632				0.63	0.63	
	Right side	0.071	0.587	0.136	0.244	0.66	0.45	
	Top side		0.411	0.667	0.165	0.41	0.83	
	Bottom side	1.233				1.23	1.23	
LTE Band 25 Ant 0	Front	0.539	0.567	0.279	0.204	1.11	1.02	
	Back	0.783	0.795	0.611	0.348	1.58	1.74	Case 30
	Left side	0.625				0.63	0.63	
	Right side	0.075	0.587	0.136	0.244	0.66	0.46	
	Top side		0.411	0.667	0.165	0.41	0.83	
	Bottom side	1.169				1.17	1.17	
FR1 n25 Ant 0	Front	0.583	0.567	0.279	0.204	1.15	1.07	
	Back	0.900	0.795	0.611	0.348	1.70	1.86	Case 31/32
	Left side	0.086				0.09	0.09	
	Right side	0.085	0.587	0.136	0.244	0.67	0.47	
	Top side		0.411	0.667	0.165	0.41	0.83	
	Bottom side	1.230				1.23	1.23	
LTE Band 30 Ant 1	Front	0.511	0.567	0.279	0.204	1.08	0.99	
	Back	1.164	0.795	0.611	0.348	1.96	2.12	Case 33/34
	Left side	0.354				0.35	0.35	
	Right side		0.587	0.136	0.244	0.59	0.38	
	Top side		0.411	0.667	0.165	0.41	0.83	
	Bottom side	0.994				0.99	0.99	
FR1 n30 Ant 1	Front	0.568	0.567	0.279	0.204	1.14	1.05	



	Back	1.266	0.795	0.611	0.348	2.06	2.23	Case 35/36
	Left side	0.373				0.37	0.37	
	Right side		0.587	0.136	0.244	0.59	0.38	
	Top side		0.411	0.667	0.165	0.41	0.83	
	Bottom side	0.991				0.99	0.99	
LTE Band 7 Ant 1	Front	0.606	0.567	0.279	0.204	1.17	1.09	
	Back	1.252	0.795	0.611	0.348	2.05	2.21	Case 37/38
	Left side	0.408				0.41	0.41	
	Right side		0.587	0.136	0.244	0.59	0.38	
	Top side		0.411	0.667	0.165	0.41	0.83	
LTE Band 41 Ant 1	Bottom side	0.779				0.78	0.78	
	Front	0.579	0.567	0.279	0.204	1.15	1.06	
	Back	1.247	0.795	0.611	0.348	2.04	2.21	Case 39/40
	Left side	0.516				0.52	0.52	
	Right side		0.587	0.136	0.244	0.59	0.38	
FR1 n7 Ant 1	Top side		0.411	0.667	0.165	0.41	0.83	
	Bottom side	0.377				0.38	0.38	
	Front	0.599	0.567	0.279	0.204	1.17	1.08	
	Back	1.191	0.795	0.611	0.348	1.99	2.15	Case 41/42
	Left side	0.446				0.45	0.45	
FR1 n41 Ant 1	Right side		0.587	0.136	0.244	0.59	0.38	
	Top side		0.411	0.667	0.165	0.41	0.83	
	Bottom side	0.748				0.75	0.75	
	Front	0.588	0.567	0.279	0.204	1.16	1.07	
	Back	1.217	0.795	0.611	0.348	2.01	2.18	Case 43/44
FR1 n77 Ant 1	Left side	0.572				0.57	0.57	
	Right side		0.587	0.136	0.244	0.59	0.38	
	Top side		0.411	0.667	0.165	0.41	0.83	
	Bottom side	0.938				0.94	0.94	
	Front	0.722	0.567	0.279	0.204	1.29	1.21	
FR1 n78 Ant 1	Back	1.136	0.795	0.611	0.348	1.93	2.10	Case 45/46
	Left side	0.687				0.69	0.69	
	Right side		0.587	0.136	0.244	0.59	0.38	
	Top side		0.411	0.667	0.165	0.41	0.83	
	Bottom side	0.522				0.52	0.52	
FR1 n78 Ant 1	Front	0.201	0.567	0.279	0.204	0.77	0.68	
	Back	0.398	0.795	0.611	0.348	1.19	1.36	
	Left side	0.244				0.24	0.24	
	Right side		0.587	0.136	0.244	0.59	0.38	
	Top side		0.411	0.667	0.165	0.41	0.83	
	Bottom side	0.147				0.15	0.15	



17.4 Body-Worn Accessory Exposure Conditions

Exposure Position	4	5	4+5
	WLAN5GHz Ant 6	Bluetooth Ant 6	Summed
	1g SAR (W/kg)	1g SAR (W/kg)	1g SAR (W/kg)
Front	0.643	0.204	0.85
Back	1.184	0.348	1.53

WWAN Band	Exposure Position	1	3	4	5	1+3	1+4+5	Case No
		WWAN	WLAN2.4GHz Ant 6	WLAN5GHz Ant 6	Bluetooth Ant 6	Summed	Summed	
		1g SAR (W/kg)	1g SAR (W/kg)	1g SAR (W/kg)	1g SAR (W/kg)	1g SAR (W/kg)	1g SAR (W/kg)	
LTE Band 71 Ant 0	Front	0.394	0.505	0.160	0.204	0.90	0.76	
	Back	0.588	0.653	0.305	0.348	1.24	1.24	
LTE Band 12 Ant 0	Front	0.559	0.505	0.160	0.204	1.06	0.92	
	Back	0.883	0.653	0.305	0.348	1.54	1.54	
LTE Band 13 Ant 0	Front	0.711	0.505	0.160	0.204	1.22	1.08	
	Back	1.245	0.653	0.305	0.348	1.90	1.90	Case 47/48
LTE Band 14 Ant 0	Front	0.652	0.505	0.160	0.204	1.16	1.02	
	Back	1.189	0.653	0.305	0.348	1.84	1.84	Case 49/50
FR1 n71 Ant 0	Front	0.259	0.505	0.160	0.204	0.76	0.62	
	Back	0.454	0.653	0.305	0.348	1.11	1.11	
FR1 n12 Ant 0	Front	0.296	0.505	0.160	0.204	0.80	0.66	
	Back	0.614	0.653	0.305	0.348	1.27	1.27	
FR1 n14 Ant 0	Front	0.336	0.505	0.160	0.204	0.84	0.70	
	Back	0.939	0.653	0.305	0.348	1.59	1.59	
GSM850 Ant 0	Front	0.495	0.505	0.160	0.204	1.00	0.86	
	Back	1.176	0.653	0.305	0.348	1.83	1.83	Case 51/52
WCDMA V Ant 0	Front	0.515	0.505	0.160	0.204	1.02	0.88	
	Back	1.279	0.653	0.305	0.348	1.93	1.93	Case 53/54
LTE Band 26 Ant 0	Front	0.435	0.505	0.160	0.204	0.94	0.80	
	Back	1.143	0.653	0.305	0.348	1.80	1.80	Case 55/56
FR1 n26 Ant 0	Front	0.630	0.505	0.160	0.204	1.14	0.99	
	Back	1.281	0.653	0.305	0.348	1.93	1.93	Case 57/58
WCDMA IV Ant 0	Front	1.052	0.505	0.160	0.204	1.56	1.42	
	Back	1.266	0.653	0.305	0.348	1.92	1.92	Case 59/60
LTE Band 66 Ant 0	Front	1.103	0.505	0.160	0.204	1.61	1.47	Case 61
	Back	1.155	0.653	0.305	0.348	1.81	1.81	Case 62/63
FR1 n70 Ant 0	Front	0.843	0.505	0.160	0.204	1.35	1.21	
	Back	0.971	0.653	0.305	0.348	1.62	1.62	Case 64/65
FR1 n66 Ant 0	Front	0.960	0.505	0.160	0.204	1.47	1.32	
	Back	1.230	0.653	0.305	0.348	1.88	1.88	Case 66/67
GSM1900 Ant 0	Front	0.818	0.505	0.160	0.204	1.32	1.18	
	Back	1.272	0.653	0.305	0.348	1.93	1.93	Case 68/69
WCDMA II Ant 0	Front	0.867	0.505	0.160	0.204	1.37	1.23	
	Back	1.281	0.653	0.305	0.348	1.93	1.93	Case 70/71
LTE Band 25 Ant 0	Front	0.779	0.505	0.160	0.204	1.28	1.14	
	Back	1.218	0.653	0.305	0.348	1.87	1.87	Case 72/73
FR1 n25 Ant 0	Front	0.748	0.505	0.160	0.204	1.25	1.11	
	Back	1.100	0.653	0.305	0.348	1.75	1.75	Case 74/75
LTE Band 30 Ant 1	Front	0.511	0.505	0.160	0.204	1.02	0.88	
	Back	1.164	0.653	0.305	0.348	1.82	1.82	Case 76/77
FR1 n30 Ant 1	Front	0.568	0.505	0.160	0.204	1.07	0.93	
	Back	1.266	0.653	0.305	0.348	1.92	1.92	Case 78/79
LTE Band 7 Ant 1	Front	0.656	0.505	0.160	0.204	1.16	1.02	
	Back	1.281	0.653	0.305	0.348	1.93	1.93	Case 80/81



LTE Band 41 Ant 1	Front	0.674	0.505	0.160	0.204	1.18	1.04	
	Back	1.247	0.653	0.305	0.348	1.90	1.90	Case 82/83
FR1 n7 Ant 1	Front	0.599	0.505	0.160	0.204	1.10	0.96	
	Back	1.191	0.653	0.305	0.348	1.84	1.84	Case 84/85
FR1 n41 Ant 1	Front	0.718	0.505	0.160	0.204	1.22	1.08	
	Back	1.217	0.653	0.305	0.348	1.87	1.87	Case 86/87
FR1 n77 Ant 1	Front	0.724	0.505	0.160	0.204	1.23	1.09	
	Back	1.139	0.653	0.305	0.348	1.79	1.79	Case 88/89
FR1 n78 Ant 1	Front	0.381	0.505	0.160	0.204	0.89	0.75	
	Back	0.790	0.653	0.305	0.348	1.44	1.44	

WWAN Band	Exposure Position	1	3	4	5	1+3	1+4+5
		WWAN	WLAN2.4GHz Ant 6	WLAN5GHz Ant 6	Bluetooth Ant 6	Summed	Summed
		1g SAR (W/kg)	1g SAR (W/kg)	1g SAR (W/kg)	1g SAR (W/kg)	1g SAR (W/kg)	1g SAR (W/kg)
Ant 4	Front	0.812	0.505	0.160	0.204	1.32	1.18
	Back	0.937	0.653	0.305	0.348	1.59	1.59
Ant 2	Front	0.057	0.505	0.160	0.204	0.56	0.42
	Back	0.802	0.653	0.305	0.348	1.46	1.46
Ant 7	Front	0.260	0.505	0.160	0.204	0.77	0.62
	Back	0.827	0.653	0.305	0.348	1.48	1.48
Ant 5	Front	0.389	0.505	0.160	0.204	0.89	0.75
	Back	0.891	0.653	0.305	0.348	1.54	1.54
Ant 8	Front	0.082	0.505	0.160	0.204	0.59	0.45
	Back	0.859	0.653	0.305	0.348	1.51	1.51

<Sensor Off>

WWAN Band	Exposure Position	1	3	4	5	1+3	1+4+5	Case No
		WWAN	WLAN2.4GHz Ant 6	WLAN5GHz Ant 6	Bluetooth Ant 6	Summed	Summed	
		1g SAR (W/kg)	1g SAR (W/kg)	1g SAR (W/kg)	1g SAR (W/kg)	1g SAR (W/kg)	1g SAR (W/kg)	
LTE Band 13 Ant 0	Front	0.337	0.283	1.117	0.024	0.62	1.48	
	Back	0.331	0.167	1.121	0.019	0.50	1.47	
LTE Band 14 Ant 0	Front	0.326	0.283	1.117	0.024	0.61	1.47	
	Back	0.328	0.167	1.121	0.019	0.50	1.47	
GSM850 Ant 0	Front	0.542	0.283	1.117	0.024	0.83	1.68	Case 90
	Back	0.398	0.167	1.121	0.019	0.57	1.54	
WCDMA V Ant 0	Front	0.319	0.283	1.117	0.024	0.60	1.46	
	Back	0.233	0.167	1.121	0.019	0.40	1.37	
LTE Band 26 Ant 0	Front	0.340	0.283	1.117	0.024	0.62	1.48	
	Back	0.245	0.167	1.121	0.019	0.41	1.39	
FR1 n26 Ant 0	Front	0.242	0.283	1.117	0.024	0.53	1.38	
	Back	0.187	0.167	1.121	0.019	0.35	1.33	
WCDMA IV Ant 0	Front	0.518	0.283	1.117	0.024	0.80	1.66	Case 91
	Back	0.301	0.167	1.121	0.019	0.47	1.44	
LTE Band 66 Ant 0	Front	0.587	0.283	1.117	0.024	0.87	1.73	Case 92
	Back	0.334	0.167	1.121	0.019	0.50	1.47	
FR1 n70 Ant 0	Front	0.321	0.283	1.117	0.024	0.60	1.46	
	Back	0.163	0.167	1.121	0.019	0.33	1.30	
FR1 n66 Ant 0	Front	0.380	0.283	1.117	0.024	0.66	1.52	
	Back	0.208	0.167	1.121	0.019	0.38	1.35	
GSM1900 Ant 0	Front	0.316	0.283	1.117	0.024	0.60	1.46	
	Back	0.257	0.167	1.121	0.019	0.42	1.40	
WCDMA II Ant 0	Front	0.445	0.283	1.117	0.024	0.73	1.59	
	Back	0.322	0.167	1.121	0.019	0.49	1.46	
LTE Band 25 Ant 0	Front	0.442	0.283	1.117	0.024	0.73	1.58	



FR1 n25 Ant 0	Back	0.359	0.167	1.121	0.019	0.53	1.50	
	Front	0.320	0.283	1.117	0.024	0.60	1.46	
LTE Band 30 Ant 1	Back	0.232	0.167	1.121	0.019	0.40	1.37	
	Front	0.437	0.283	1.117	0.024	0.72	1.58	
FR1 n30 Ant 1	Back	0.274	0.167	1.121	0.019	0.44	1.41	
	Front	0.303	0.283	1.117	0.024	0.59	1.44	
LTE Band 7 Ant 1	Back	0.205	0.167	1.121	0.019	0.37	1.35	
	Front	0.306	0.283	1.117	0.024	0.59	1.45	
LTE Band 41 Ant 1	Back	0.238	0.167	1.121	0.019	0.41	1.38	
	Front	0.217	0.283	1.117	0.024	0.50	1.36	
FR1 n7 Ant 1	Back	0.180	0.167	1.121	0.019	0.35	1.32	
	Front	0.248	0.283	1.117	0.024	0.53	1.39	
FR1 n41 Ant 1	Back	0.182	0.167	1.121	0.019	0.35	1.32	
	Front	0.541	0.283	1.117	0.024	0.82	1.68	Case 93
FR1 n77 Ant 1	Back	0.374	0.167	1.121	0.019	0.54	1.51	
	Front	0.099	0.283	1.117	0.024	0.38	1.24	
	Back	0.122	0.167	1.121	0.019	0.29	1.26	

WWAN Band	Exposure Position	1	3	4	5	1+3	1+4+5
		WWAN	WLAN2.4GHz Ant 6	WLAN5GHz Ant 6	Bluetooth Ant 6	Summed	Summed
		1g SAR (W/kg)	1g SAR (W/kg)	1g SAR (W/kg)	1g SAR (W/kg)	1g SAR (W/kg)	1g SAR (W/kg)
Ant 4	Front	0.323	0.283	1.117	0.024	0.61	1.46
	Back	0.220	0.167	1.121	0.019	0.39	1.36
Ant 2	Front	0.032	0.283	1.117	0.024	0.32	1.17
	Back	0.073	0.167	1.121	0.019	0.24	1.21
Ant 7	Front	0.085	0.283	1.117	0.024	0.37	1.23
	Back	0.086	0.167	1.121	0.019	0.25	1.23
Ant 5	Front	0.440	0.283	1.117	0.024	0.72	1.58
	Back	0.452	0.167	1.121	0.019	0.62	1.59
Ant 8	Front	0.035	0.283	1.117	0.024	0.32	1.18
	Back	0.078	0.167	1.121	0.019	0.25	1.22



17.5 Product specific 10g SAR Exposure Conditions

Remark:

- For Bluetooth Product specific 10g stand-alone SAR is not required for a transmitter or antenna, due to 1g hotspot SAR is <1.2W/kg.

Exposure Position	3	4	5	4+5	3+5
	WLAN2.4GHz Ant 6 Standalone	WLAN5GHz Ant 6 Standalone	NFC	Summed	Summed
	10g SAR (W/kg)	10g SAR (W/kg)	10g SAR (W/kg)	10g SAR (W/kg)	10g SAR (W/kg)
Front	0.841	1.374		1.37	0.84
Back	3.194	2.493	0.024	2.52	3.22
Left side				0.00	0.00
Right side	2.790	0.669		0.67	2.79
Top side	2.978	2.837		2.84	2.98
Bottom side				0.00	0.00

WWAN Band	Exposure Position	1	3	4	6	1+3+6	1+4+6
		WWAN	WLAN2.4GHz Ant 6 Simultaneous	WLAN5GHz Ant 6 Simultaneous	NFC	Summed	Summed
		10g SAR (W/kg)	10g SAR (W/kg)	10g SAR (W/kg)	10g SAR (W/kg)	10g SAR (W/kg)	10g SAR (W/kg)
Ant 2/4/5/7/8	Front	2.336	0.177			2.51	2.34
	Back	2.470	0.668	0.698	0.024	3.16	3.19
	Left side	1.426				1.43	1.43
	Right side	1.816	0.482	0.225		2.30	2.04
	Top side	2.473	0.501	1.081		2.97	3.55
	Bottom side					0.00	0.00

WWAN Band	Exposure Position	1	3	4	6	1+3+6	1+4+6
		WWAN	WLAN2.4GHz Ant 6 Simultaneous	WLAN5GHz Ant 6 Simultaneous	NFC	Summed	Summed
		10g SAR (W/kg)	10g SAR (W/kg)	10g SAR (W/kg)	10g SAR (W/kg)	10g SAR (W/kg)	10g SAR (W/kg)
LTE Band 13 Ant 0	Front		0.177			0.18	0.00
	Back	1.422	0.668	0.698	0.024	2.11	2.14
	Left side					0.00	0.00
	Right side		0.482	0.225		0.48	0.23
	Top side		0.501	1.081		0.50	1.08
	Bottom side					0.00	0.00
GSM850 Ant 0	Front		0.177			0.18	0.00
	Back	1.966	0.668	0.698	0.024	2.66	2.69
	Left side					0.00	0.00
	Right side		0.482	0.225		0.48	0.23
	Top side		0.501	1.081		0.50	1.08
	Bottom side	2.752				2.75	2.75
WCDMA V Ant 0	Front		0.177			0.18	0.00
	Back	1.622	0.668	0.698	0.024	2.31	2.34
	Left side					0.00	0.00
	Right side		0.482	0.225		0.48	0.23
	Top side		0.501	1.081		0.50	1.08
	Bottom side	2.915				2.92	2.92
LTE Band 26 Ant 0	Front		0.177			0.18	0.00
	Back	1.470	0.668	0.698	0.024	2.16	2.19
	Left side					0.00	0.00
	Right side		0.482	0.225		0.48	0.23
	Top side		0.501	1.081		0.50	1.08
	Bottom side					0.00	0.00
FR1 n26 Ant 0	Front		0.177			0.18	0.00
	Back	1.003	0.668	0.698	0.024	1.70	1.73



	Left side					0.00	0.00
	Right side		0.482	0.225		0.48	0.23
	Top side		0.501	1.081		0.50	1.08
	Bottom side	1.406				1.41	1.41
WCDMA IV Ant 0	Front	2.345	0.177			2.52	2.35
	Back	2.834	0.668	0.698	0.024	3.53	3.56
	Left side					0.00	0.00
	Right side		0.482	0.225		0.48	0.23
	Top side		0.501	1.081		0.50	1.08
	Bottom side	3.195				3.20	3.20
LTE Band 66 Ant 0	Front	2.693	0.177			2.87	2.69
	Back	2.885	0.668	0.698	0.024	3.58	3.61
	Left side					0.00	0.00
	Right side		0.482	0.225		0.48	0.23
	Top side		0.501	1.081		0.50	1.08
	Bottom side	3.127				3.13	3.13
FR1 n70 Ant 0	Front	2.354	0.177			2.53	2.35
	Back	2.776	0.668	0.698	0.024	3.47	3.50
	Left side					0.00	0.00
	Right side		0.482	0.225		0.48	0.23
	Top side		0.501	1.081		0.50	1.08
	Bottom side	2.930				2.93	2.93
FR1 n66 Ant 0	Front	2.627	0.177			2.80	2.63
	Back	3.006	0.668	0.698	0.024	3.70	3.73
	Left side					0.00	0.00
	Right side		0.482	0.225		0.48	0.23
	Top side		0.501	1.081		0.50	1.08
	Bottom side	3.091				3.09	3.09
GSM1900 Ant 0	Front	1.671	0.177			1.85	1.67
	Back	2.163	0.668	0.698	0.024	2.86	2.89
	Left side					0.00	0.00
	Right side		0.482	0.225		0.48	0.23
	Top side		0.501	1.081		0.50	1.08
	Bottom side	3.135				3.14	3.14
WCDMA II Ant 0	Front	1.907	0.177			2.08	1.91
	Back	2.507	0.668	0.698	0.024	3.20	3.23
	Left side					0.00	0.00
	Right side		0.482	0.225		0.48	0.23
	Top side		0.501	1.081		0.50	1.08
	Bottom side	3.156				3.16	3.16
LTE Band 25 Ant 0	Front	1.540	0.177			1.72	1.54
	Back	3.028	0.668	0.698	0.024	3.72	3.75
	Left side					0.00	0.00
	Right side		0.482	0.225		0.48	0.23
	Top side		0.501	1.081		0.50	1.08
	Bottom side	3.138				3.14	3.14
FR1 n25 Ant 0	Front	1.647	0.177			1.82	1.65
	Back	2.208	0.668	0.698	0.024	2.90	2.93
	Left side					0.00	0.00
	Right side		0.482	0.225		0.48	0.23
	Top side		0.501	1.081		0.50	1.08
	Bottom side	3.090				3.09	3.09
LTE Band 30 Ant 1	Front	1.372	0.177			1.55	1.37
	Back	3.184	0.668	0.698	0.024	3.88	3.91
	Left side					0.00	0.00
	Right side		0.482	0.225		0.48	0.23



	Top side		0.501	1.081		0.50	1.08
	Bottom side	2.483				2.48	2.48
FR1 n30 Ant 1	Front	1.433	0.177			1.61	1.43
	Back	3.119	0.668	0.698	0.024	3.81	3.84
	Left side					0.00	0.00
	Right side		0.482	0.225		0.48	0.23
	Top side		0.501	1.081		0.50	1.08
	Bottom side	2.632				2.63	2.63
LTE Band 7 Ant 1	Front	1.399	0.177			1.58	1.40
	Back	3.167	0.668	0.698	0.024	3.86	3.89
	Left side					0.00	0.00
	Right side		0.482	0.225		0.48	0.23
	Top side		0.501	1.081		0.50	1.08
	Bottom side	2.980				2.98	2.98
LTE Band 41 Ant 1	Front		0.177			0.18	0.00
	Back	3.171	0.668	0.698	0.024	3.86	3.89
	Left side					0.00	0.00
	Right side		0.482	0.225		0.48	0.23
	Top side		0.501	1.081		0.50	1.08
	Bottom side	3.034				3.03	3.03
FR1 n7 Ant 1	Front	1.334	0.177			1.51	1.33
	Back	2.961	0.668	0.698	0.024	3.65	3.68
	Left side					0.00	0.00
	Right side		0.482	0.225		0.48	0.23
	Top side		0.501	1.081		0.50	1.08
	Bottom side	2.514				2.51	2.51
FR1 n41 Ant 1	Front	1.429	0.177			1.61	1.43
	Back	2.867	0.668	0.698	0.024	3.56	3.59
	Left side	1.320				1.32	1.32
	Right side		0.482	0.225		0.48	0.23
	Top side		0.501	1.081		0.50	1.08
	Bottom side	2.046				2.05	2.05
FR1 n77 Ant 1	Front		0.177			0.18	0.00
	Back	3.186	0.668	0.698	0.024	3.88	3.91
	Left side					0.00	0.00
	Right side		0.482	0.225		0.48	0.23
	Top side		0.501	1.081		0.50	1.08
	Bottom side					0.00	0.00

<Sensor off>

WWAN Band	Exposure Position	1	3	4	6	1+3+6	1+4+6
		WWAN	WLAN2.4GHz Ant 6	WLAN5GHz Ant 6	NFC	Summed	Summed
		10g SAR (W/kg)	10g SAR (W/kg)	10g SAR (W/kg)	10g SAR (W/kg)	10g SAR (W/kg)	10g SAR (W/kg)
Ant 4	Front	2.336	1.091	1.615		3.43	3.95
	Back	2.470	0.683	1.230	0.024	3.18	3.72
	Left side	1.426				1.43	1.43
	Right side		1.032	0.904		1.03	0.90
	Top side	2.473	0.366	1.485		2.84	3.96
	Bottom side					0.00	0.00
Ant 5	Front	1.744	1.091	1.615		2.84	3.36
	Back	2.294	0.683	1.230	0.024	3.00	3.55
	Left side					0.00	0.00
	Right side	0.554	1.032	0.904		1.59	1.46
	Top side	2.357	0.366	1.485		2.72	3.84
	Bottom side					0.00	0.00



WWAN Band	Exposure Position	1	3	4	6	1+3+6	1+4+6
		WWAN	WLAN2.4GHz Ant 6	WLAN5GHz Ant 6	NFC	Summed	Summed
		10g SAR (W/kg)	10g SAR (W/kg)	10g SAR (W/kg)	10g SAR (W/kg)	10g SAR (W/kg)	10g SAR (W/kg)
LTE Band 13 Ant 0	Front		1.091	1.615		1.09	1.62
	Back	1.422	0.683	1.230	0.024	2.13	2.68
	Left side					0.00	0.00
	Right side		1.032	0.904		1.03	0.90
	Top side		0.366	1.485		0.37	1.49
	Bottom side					0.00	0.00
GSM850 Ant 0	Front		1.091	1.615		1.09	1.62
	Back	1.966	0.683	1.230	0.024	2.67	3.22
	Left side					0.00	0.00
	Right side		1.032	0.904		1.03	0.90
	Top side		0.366	1.485		0.37	1.49
	Bottom side	2.752				2.75	2.75
WCDMA V Ant 0	Front		1.091	1.615		1.09	1.62
	Back	1.622	0.683	1.230	0.024	2.33	2.88
	Left side					0.00	0.00
	Right side		1.032	0.904		1.03	0.90
	Top side		0.366	1.485		0.37	1.49
	Bottom side	2.915				2.92	2.92
LTE Band 26 Ant 0	Front		1.091	1.615		1.09	1.62
	Back	1.470	0.683	1.230	0.024	2.18	2.72
	Left side					0.00	0.00
	Right side		1.032	0.904		1.03	0.90
	Top side		0.366	1.485		0.37	1.49
	Bottom side					0.00	0.00
FR1 n26 Ant 0	Front		1.091	1.615		1.09	1.62
	Back	1.003	0.683	1.230	0.024	1.71	2.26
	Left side					0.00	0.00
	Right side		1.032	0.904		1.03	0.90
	Top side		0.366	1.485		0.37	1.49
	Bottom side	1.406				1.41	1.41
WCDMA IV Ant 0	Front	2.345	1.091	1.615		3.44	3.96
	Back	1.802	0.683	1.230	0.024	2.51	3.06
	Left side					0.00	0.00
	Right side		1.032	0.904		1.03	0.90
	Top side		0.366	1.485		0.37	1.49
	Bottom side	3.195				3.20	3.20
LTE Band 66 Ant 0	Front	1.739	1.091	1.615		2.83	3.35
	Back	1.892	0.683	1.230	0.024	2.60	3.15
	Left side					0.00	0.00
	Right side		1.032	0.904		1.03	0.90
	Top side		0.366	1.485		0.37	1.49
	Bottom side	3.127				3.13	3.13
FR1 n70 Ant 0	Front	2.354	1.091	1.615		3.45	3.97
	Back	1.041	0.683	1.230	0.024	1.75	2.30
	Left side					0.00	0.00
	Right side		1.032	0.904		1.03	0.90
	Top side		0.366	1.485		0.37	1.49
	Bottom side	2.930				2.93	2.93
FR1 n66 Ant 0	Front	1.210	1.091	1.615		2.30	2.83
	Back	1.353	0.683	1.230	0.024	2.06	2.61
	Left side					0.00	0.00
	Right side		1.032	0.904		1.03	0.90



	Top side		0.366	1.485		0.37	1.49
	Bottom side	3.091				3.09	3.09
GSM1900 Ant 0	Front	1.671	1.091	1.615		2.76	3.29
	Back	2.163	0.683	1.230	0.024	2.87	3.42
	Left side					0.00	0.00
	Right side		1.032	0.904		1.03	0.90
	Top side		0.366	1.485		0.37	1.49
	Bottom side	3.135				3.14	3.14
WCDMA II Ant 0	Front	1.907	1.091	1.615		3.00	3.52
	Back	2.507	0.683	1.230	0.024	3.21	3.76
	Left side					0.00	0.00
	Right side		1.032	0.904		1.03	0.90
	Top side		0.366	1.485		0.37	1.49
	Bottom side	3.156				3.16	3.16
LTE Band 25 Ant 0	Front	1.540	1.091	1.615		2.63	3.16
	Back	1.833	0.683	1.230	0.024	2.54	3.09
	Left side					0.00	0.00
	Right side		1.032	0.904		1.03	0.90
	Top side		0.366	1.485		0.37	1.49
	Bottom side	3.138				3.14	3.14
FR1 n25 Ant 0	Front	1.647	1.091	1.615		2.74	3.26
	Back	2.208	0.683	1.230	0.024	2.92	3.46
	Left side					0.00	0.00
	Right side		1.032	0.904		1.03	0.90
	Top side		0.366	1.485		0.37	1.49
	Bottom side	3.090				3.09	3.09
LTE Band 30 Ant 1	Front	1.372	1.091	1.615		2.46	2.99
	Back	1.199	0.683	1.230	0.024	1.91	2.45
	Left side					0.00	0.00
	Right side		1.032	0.904		1.03	0.90
	Top side		0.366	1.485		0.37	1.49
	Bottom side	2.483				2.48	2.48
FR1 n30 Ant 1	Front	1.433	1.091	1.615		2.52	3.05
	Back	0.964	0.683	1.230	0.024	1.67	2.22
	Left side					0.00	0.00
	Right side		1.032	0.904		1.03	0.90
	Top side		0.366	1.485		0.37	1.49
	Bottom side	2.632				2.63	2.63
LTE Band 7 Ant 1	Front	1.399	1.091	1.615		2.49	3.01
	Back	1.496	0.683	1.230	0.024	2.20	2.75
	Left side					0.00	0.00
	Right side		1.032	0.904		1.03	0.90
	Top side		0.366	1.485		0.37	1.49
	Bottom side	2.980				2.98	2.98
LTE Band 41 Ant 1	Front		1.091	1.615		1.09	1.62
	Back	0.963	0.683	1.230	0.024	1.67	2.22
	Left side					0.00	0.00
	Right side		1.032	0.904		1.03	0.90
	Top side		0.366	1.485		0.37	1.49
	Bottom side	3.034				3.03	3.03
FR1 n7 Ant 1	Front	1.334	1.091	1.615		2.43	2.95
	Back	0.863	0.683	1.230	0.024	1.57	2.12
	Left side					0.00	0.00
	Right side		1.032	0.904		1.03	0.90
	Top side		0.366	1.485		0.37	1.49
	Bottom side	2.514				2.51	2.51



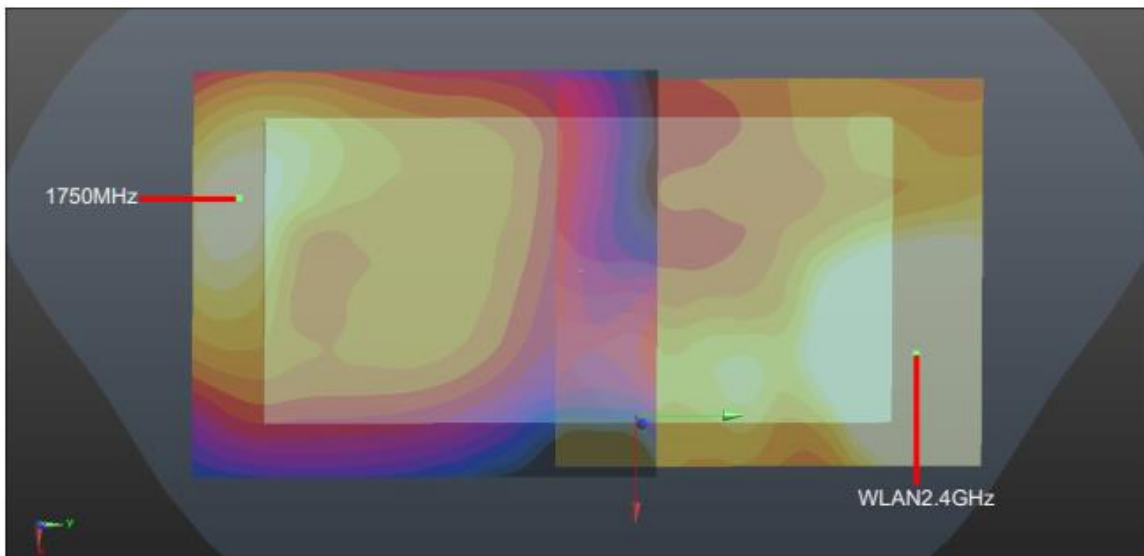
FR1 n41 Ant 1	Front	1.429	1.091	1.615		2.52	3.04
	Back	2.012	0.683	1.230	0.024	2.72	3.27
	Left side	1.320				1.32	1.32
	Right side		1.032	0.904		1.03	0.90
	Top side		0.366	1.485		0.37	1.49
	Bottom side	2.046				2.05	2.05
FR1 n77 Ant 1	Front		1.091	1.615		1.09	1.62
	Back	1.597	0.683	1.230	0.024	2.30	2.85
	Left side					0.00	0.00
	Right side		1.032	0.904		1.03	0.90
	Top side		0.366	1.485		0.37	1.49
	Bottom side					0.00	0.00

WWAN Band	Exposure Position	1	3	4	6	1+3+6	1+4+6
		WWAN	WLAN2.4GHz Ant 6 Simultaneous	WLAN5GHz Ant 6 Simultaneous	NFC	Summed	Summed
		10g SAR (W/kg)	10g SAR (W/kg)	10g SAR (W/kg)	10g SAR (W/kg)	10g SAR (W/kg)	10g SAR (W/kg)
Ant 0	Front	0.871	0.177			1.05	0.87
	Back	0.475	0.668	0.698	0.024	1.17	1.20
	Left side					0.00	0.00
	Right side		0.482	0.225		0.48	0.23
	Top side		0.501	1.081		0.50	1.08
	Bottom side	0.814				0.81	0.81
Ant 1	Front	2.603	0.177			2.78	2.60
	Back	2.012	0.668	0.698	0.024	2.70	2.73
	Left side	1.042				1.04	1.04
	Right side		0.482	0.225		0.48	0.23
	Top side		0.501	1.081		0.50	1.08
	Bottom side	1.338				1.34	1.34
Ant 4	Front	1.186	0.177			1.36	1.19
	Back	1.411	0.668	0.698	0.024	2.10	2.13
	Left side	2.182				2.18	2.18
	Right side		0.482	0.225		0.48	0.23
	Top side	1.029	0.501	1.081		1.53	2.11
	Bottom side					0.00	0.00
Ant 5	Front	2.163	0.177			2.34	2.16
	Back	1.798	0.668	0.698	0.024	2.49	2.52
	Left side					0.00	0.00
	Right side	0.554	0.482	0.225		1.04	0.78
	Top side	1.345	0.501	1.081		1.85	2.43
	Bottom side					0.00	0.00

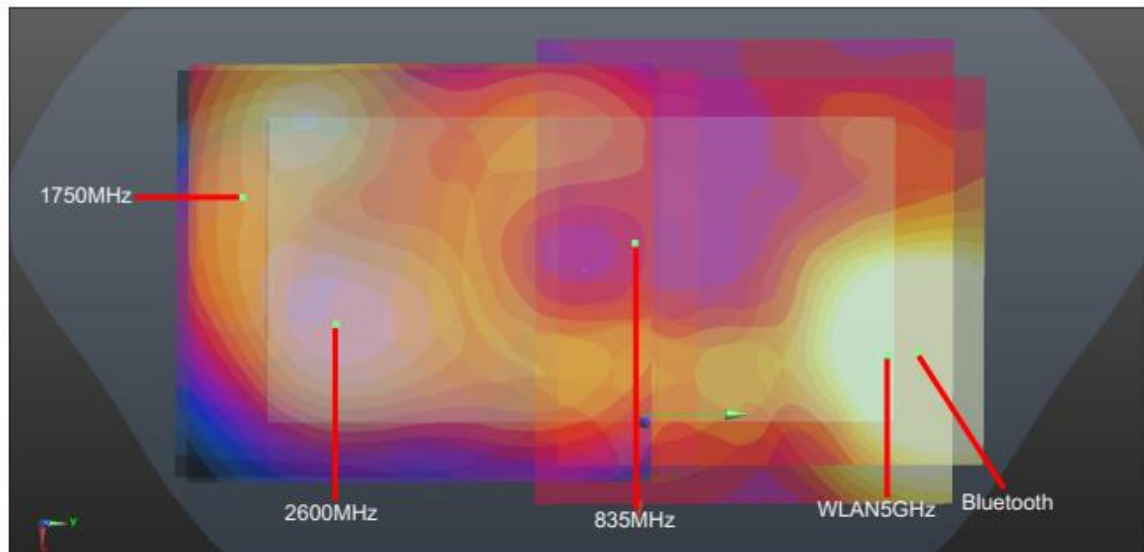
17.6 SPLSR Evaluation and Analysis

General Note:

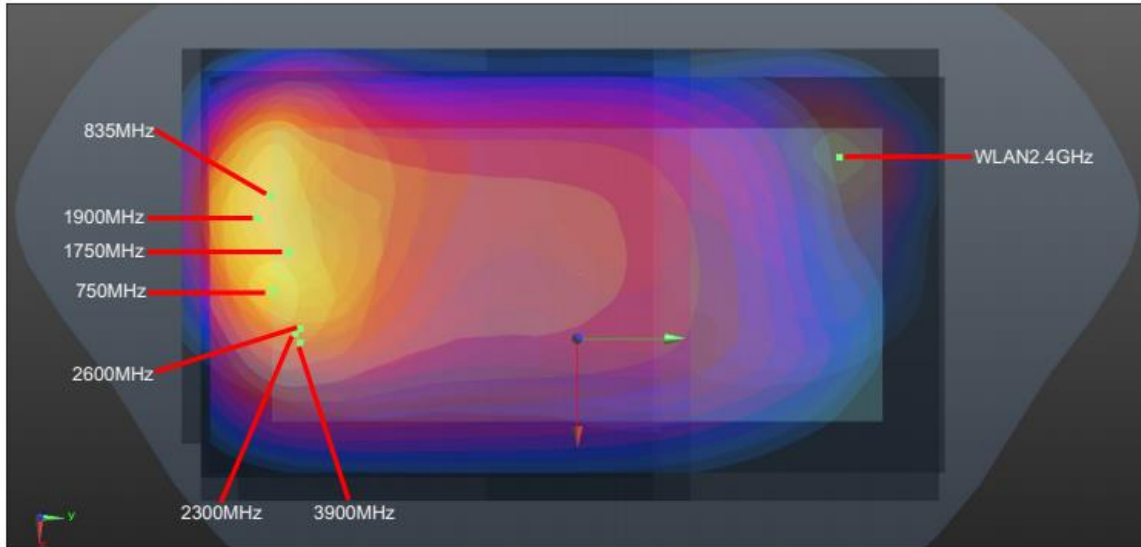
1. When standalone SAR is measured for both antennas in the pair, the peak location separation distance is computed by the square root of $[(x_1-x_2)^2 + (y_1-y_2)^2 + (z_1-z_2)^2]$, where (x_1, y_1, z_1) and (x_2, y_2, z_2) are the coordinates in the area scans or extrapolated peak SAR locations in the zoom scans, as appropriate.
2. $SPLSR = (SAR_1 + SAR_2)1.5 / (\text{min. separation distance, mm})$. If $SPLSR \leq 0.04$ for 1g SAR and $SPLSR \leq 0.10$ for 10g SAR, simultaneously transmission SAR measurement is not necessary.
3. Per April 2022 TCB Workshop Notes, WLAN5GHz Antenna 6 was summed algebraically with the BT Antenna 6 for the purposes of hybrid SPLSR combination and they are located at the top of the device, and they share the same antenna
4. Per April 2022 TCB Workshop, instead of doing a small volume scan over a co-located antenna pair, used summing the SAR values of the co-located pair and using that value in SPLSR calculation. In the calculation used the minimum distance between the spatially separated antenna and the closest antenna of the co-located antenna pair to be conservative.



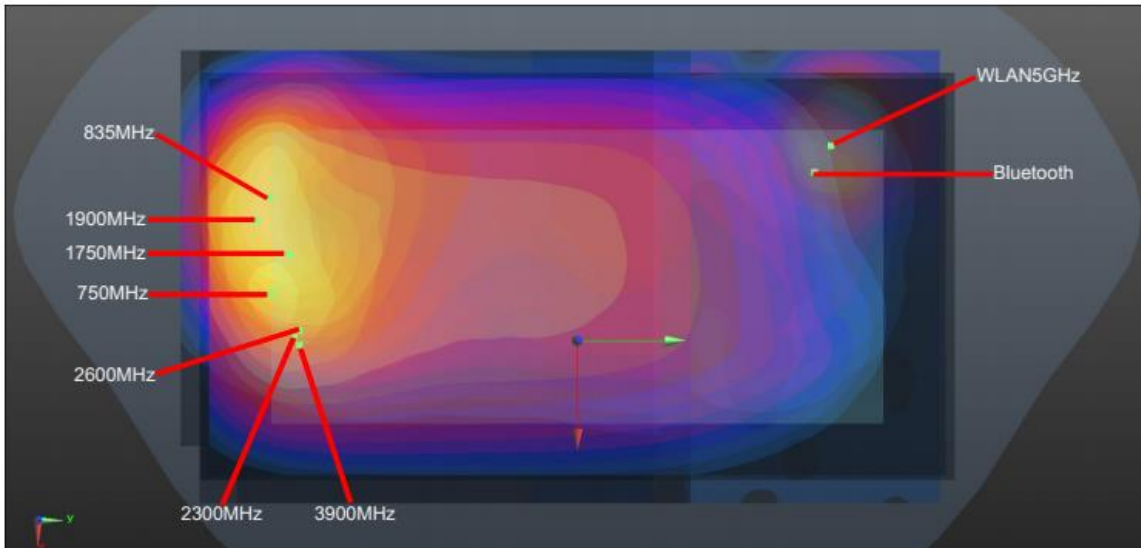
WWAN+2.4G WLAN_Front 5mm



WWAN+5G WLAN+Bluetooth_Front 19mm



WWAN+2.4G WLAN_Back 5mm



WWAN+5G WLAN+Bluetooth_Back 5mm



<Hotspot>

Case	Band	Position	SAR (W/kg)	Gap (mm)	SAR peak location (mm)			3D distance (mm)	Summed SAR (W/kg)	SPLSR Results	Simultaneous SAR
					X	Y	Z				
Case 1	LTE Band 12	Back	0.88	5mm	-11.00	-79.50	-205.00	151.9	1.68	0.01	Not required
	WLAN2.4GHz		0.80	5mm	-45.80	68.40	-205.00				
Case 2	LTE Band 12	Back	0.88	5mm	-11.00	-79.50	-205.00	161.1	1.84	0.02	Not required
	WLAN5GHz		0.96	5mm	-53.00	76.00	-207.00				
	Bluetooth										
	LTE Band 12	Back	0.88	5mm	-11.00	-79.50	-205.00	146.2	1.84	0.02	Not required
	WLAN5GHz		0.96	5mm							
	Bluetooth		0.96	5mm	-44.60	62.80	-207.00				
Case 3	LTE Band 13	Back	1.25	5mm	-14.50	-73.50	-206.00	145.3	2.04	0.02	Not required
	WLAN2.4GHz		0.80	5mm	-45.80	68.40	-205.00				
Case 4	LTE Band 13	Back	1.25	5mm	-14.50	-73.50	-206.00	154.4	2.20	0.02	Not required
	WLAN5GHz		0.96	5mm	-53.00	76.00	-207.00				
	Bluetooth										
	LTE Band 13	Back	1.25	5mm	-14.50	-73.50	-206.00	139.6	2.20	0.02	Not required
	WLAN5GHz		0.96	5mm							
	Bluetooth		0.96	5mm	-44.60	62.80	-207.00				
Case 5	LTE Band 14	Back	1.19	5mm	-28.00	-84.00	-206.00	153.4	1.98	0.02	Not required
	WLAN2.4GHz		0.80	5mm	-45.80	68.40	-205.00				
Case 6	LTE Band 14	Back	1.19	5mm	-28.00	-84.00	-206.00	161.9	2.15	0.02	Not required
	WLAN5GHz		0.96	5mm	-53.00	76.00	-207.00				
	Bluetooth										
	LTE Band 14	Back	1.19	5mm	-28.00	-84.00	-206.00	147.7	2.15	0.02	Not required
	WLAN5GHz		0.96	5mm							
	Bluetooth		0.96	5mm	-44.60	62.80	-207.00				
Case 7	LTE Band 14	Right Side	1.08	5mm	-32.00	64.50	-206.00	122.4	1.67	0.02	Not required
	WLAN2.4GHz		0.59	5mm	-24.20	-57.60	-205.00				
Case 8	FR1 n14	Back	0.94	5mm	-27.50	-82.50	-205.00	152.0	1.73	0.02	Not required
	WLAN2.4GHz		0.80	5mm	-45.80	68.40	-205.00				
Case 9	FR1 n14	Back	0.94	5mm	-27.50	-82.50	-205.00	160.6	1.90	0.02	Not required
	WLAN5GHz		0.96	5mm	-53.00	76.00	-207.00				
	Bluetooth										
	FR1 n14	Back	0.94	5mm	-27.50	-82.50	-205.00	146.3	1.90	0.02	Not required
	WLAN5GHz		0.96	5mm							
	Bluetooth		0.96	5mm	-44.60	62.80	-207.00				
Case 10	GSM850	Back	1.18	5mm	-38.00	-81.50	-206.00	150.1	1.97	0.02	Not required



Case	Band	Position	SAR (W/kg)	Gap (mm)	SAR peak location (mm)			3D distance (mm)	Summed SAR (W/kg)	SPLSR Results	Simultaneous SAR
					X	Y	Z				
	WLAN2.4GHz		0.80	5mm	-45.80	68.40	-205.00				
Case 11											
Case 12											
Case 13											
Case 14											
Case 15											
Case 16											
Case 17											
Case 18											
Case 19											



Case	Band	Position	SAR (W/kg)	Gap (mm)	SAR peak location (mm)			3D distance (mm)	Summed SAR (W/kg)	SPLSR Results	Simultaneous SAR
					X	Y	Z				
Case 20	Bluetooth			5mm	-44.60	62.80	-207.00				
	LTE Band 66	Back	0.97	5mm	-11.50	-87.00	-206.00	159.1	1.77	0.01	Not required
	WLAN2.4GHz		0.80	5mm	-45.80	68.40	-205.00				
Case 21	LTE Band 66	Back	0.97	5mm	-11.50	-87.00	-206.00	168.2	1.93	0.02	Not required
	WLAN5GHz		0.96	5mm	-53.00	76.00	-207.00				
	Bluetooth			5mm							
	LTE Band 66	Back	0.97	5mm	-11.50	-87.00	-206.00	153.4	1.93	0.02	Not required
	WLAN5GHz		0.96	5mm							
	Bluetooth			5mm	-44.60	62.80	-207.00				
Case 22	FR1 n70	Back	0.82	5mm	-11.00	-85.00	-205.00	157.3	1.61	0.01	Not required
	WLAN2.4GHz		0.80	5mm	-45.80	68.40	-205.00				
	Bluetooth		5mm								
Case 23	FR1 n70	Back	0.82	5mm	-11.00	-85.00	-205.00	166.4	1.78	0.01	Not required
	WLAN5GHz		0.96	5mm	-53.00	76.00	-207.00				
	Bluetooth			5mm							
	FR1 n70	Back	0.82	5mm	-11.00	-85.00	-205.00	151.6	1.78	0.02	Not required
	WLAN5GHz		0.96	5mm							
	Bluetooth			5mm	-44.60	62.80	-207.00				
Case 24	FR1 n66	Back	1.04	5mm	-12.50	-82.50	-205.00	154.5	1.84	0.02	Not required
	WLAN2.4GHz		0.80	5mm	-45.80	68.40	-205.00				
	Bluetooth		5mm								
Case 25	FR1 n66	Back	1.04	5mm	-12.50	-82.50	-205.00	163.6	2.00	0.02	Not required
	WLAN5GHz		0.96	5mm	-53.00	76.00	-207.00				
	Bluetooth			5mm							
	FR1 n66	Back	1.04	5mm	-12.50	-82.50	-205.00	148.8	2.00	0.02	Not required
	WLAN5GHz		0.96	5mm							
	Bluetooth			5mm	-44.60	62.80	-207.00				
Case 26	GSM1900	Back	1.01	5mm	-32.00	-85.00	-206.00	154.0	1.81	0.02	Not required
	WLAN2.4GHz		0.80	5mm	-45.80	68.40	-205.00				
	Bluetooth		5mm								
Case 27	GSM1900	Back	1.01	5mm	-32.00	-85.00	-206.00	162.4	1.97	0.02	Not required
	WLAN5GHz		0.96	5mm	-53.00	76.00	-207.00				
	Bluetooth			5mm							
	GSM1900	Back	1.01	5mm	-32.00	-85.00	-206.00	148.3	1.97	0.02	Not required
	WLAN5GHz		0.96	5mm							
	Bluetooth			5mm	-44.60	62.80	-207.00				
Case 28	WCDMA II	Back	0.94	5mm	-24.50	-85.50	-205.00	155.4	1.73	0.01	Not required
	WLAN2.4GHz		0.80	5mm	-45.80	68.40	-205.00				
	Bluetooth		5mm								
Case 29	WCDMA II	Back	0.94	5mm	-24.50	-85.50	-205.00	164.0	1.90	0.02	Not required



Case	Band	Position	SAR (W/kg)	Gap (mm)	SAR peak location (mm)			3D distance (mm)	Summed SAR (W/kg)	SPLSR Results	Simultaneous SAR
					X	Y	Z				
	WLAN5GHz	Back	0.96	5mm	-53.00	76.00	-207.00	149.7	1.90	0.02	Not required
	Bluetooth			5mm							
	WCDMA II		0.94	5mm	-24.50	-85.50	-205.00				
	WLAN5GHz			5mm							
	Bluetooth			5mm	-44.60	62.80	-207.00				
Case 30	Band	Position	SAR (W/kg)	Gap (mm)	SAR peak location (mm)			3D distance (mm)	Summed SAR (W/kg)	SPLSR Results	Simultaneous SAR
	LTE Band 25	Back	0.78	5mm	-23.50	-88.50	-206.00	167.1	1.74	0.01	Not required
	WLAN5GHz			5mm	-53.00	76.00	-207.00				
	Bluetooth		5mm								
	LTE Band 25	Back	0.78	5mm	-23.50	-88.50	-206.00	152.8	1.74	0.02	Not required
	WLAN5GHz			5mm							
Bluetooth	5mm		-44.60	62.80	-207.00						
Case 31	Band	Position	SAR (W/kg)	Gap (mm)	SAR peak location (mm)			3D distance (mm)	Summed SAR (W/kg)	SPLSR Results	Simultaneous SAR
	FR1 n25	Back	0.90	5mm	-23.00	-90.00	-205.00	160.0	1.70	0.01	Not required
	WLAN2.4GHz		0.80	5mm	-45.80	68.40	-205.00				
Case 32	Band	Position	SAR (W/kg)	Gap (mm)	SAR peak location (mm)			3D distance (mm)	Summed SAR (W/kg)	SPLSR Results	Simultaneous SAR
	FR1 n25	Back	0.90	5mm	-23.00	-90.00	-205.00	168.7	1.86	0.02	Not required
	WLAN5GHz			5mm	-53.00	76.00	-207.00				
	Bluetooth		5mm								
	FR1 n25	Back	0.90	5mm	-23.00	-90.00	-205.00	154.3	1.86	0.02	Not required
	WLAN5GHz			5mm							
Bluetooth	5mm		-44.60	62.80	-207.00						
Case 33	Band	Position	SAR (W/kg)	Gap (mm)	SAR peak location (mm)			3D distance (mm)	Summed SAR (W/kg)	SPLSR Results	Simultaneous SAR
	LTE Band 30	Back	1.16	5mm	-0.20	-74.80	-205.00	150.3	1.96	0.02	Not required
	WLAN2.4GHz		0.80	5mm	-45.80	68.40	-205.00				
Case 34	Band	Position	SAR (W/kg)	Gap (mm)	SAR peak location (mm)			3D distance (mm)	Summed SAR (W/kg)	SPLSR Results	Simultaneous SAR
	LTE Band 30	Back	1.16	5mm	-0.20	-74.80	-205.00	159.8	2.12	0.02	Not required
	WLAN5GHz			5mm	-53.00	76.00	-207.00				
	Bluetooth		5mm								
	LTE Band 30	Back	1.16	5mm	-0.20	-74.80	-205.00	144.6	2.12	0.02	Not required
	WLAN5GHz			5mm							
Bluetooth	5mm		-44.60	62.80	-207.00						
Case 35	Band	Position	SAR (W/kg)	Gap (mm)	SAR peak location (mm)			3D distance (mm)	Summed SAR (W/kg)	SPLSR Results	Simultaneous SAR
	FR1 n30	Back	1.27	5mm	-1.40	-74.80	-205.00	149.9	2.06	0.02	Not required
	WLAN2.4GHz		0.80	5mm	-45.80	68.40	-205.00				
Case 36	Band	Position	SAR (W/kg)	Gap (mm)	SAR peak location (mm)			3D distance (mm)	Summed SAR (W/kg)	SPLSR Results	Simultaneous SAR
	FR1 n30	Back	1.27	5mm	-1.40	-74.80	-205.00	159.4	2.23	0.02	Not required
	WLAN5GHz			5mm	-53.00	76.00	-207.00				
	Bluetooth		5mm								
	FR1 n30	Back	1.27	5mm	-1.40	-74.80	-205.00	144.2	2.23	0.02	Not required
	WLAN5GHz			5mm							
Bluetooth	5mm		-44.60	62.80	-207.00						
Case 37	Band	Position	SAR (W/kg)	Gap (mm)	SAR peak location (mm)			3D distance (mm)	Summed SAR (W/kg)	SPLSR Results	Simultaneous SAR
	LTE Band 7	Back	1.25	5mm	-1.40	-74.80	-205.00	149.9	2.05	0.02	Not required
	WLAN2.4GHz		0.80	5mm	-45.80	68.40	-205.00				
Case 38	Band	Position	SAR (W/kg)	Gap (mm)	SAR peak location (mm)			3D distance (mm)	Summed SAR (W/kg)	SPLSR Results	Simultaneous SAR
	LTE Band 7	Back	1.25	5mm	-1.40	-73.60	-205.00	158.3	2.21	0.02	Not required



Case	Band	Position	SAR (W/kg)	Gap (mm)	SAR peak location (mm)			3D distance (mm)	Summed SAR (W/kg)	SPLSR Results	Simultaneous SAR
					X	Y	Z				
	WLAN5GHz	Back	0.96	5mm	-53.00	76.00	-207.00	143.1	2.21	0.02	Not required
	Bluetooth			5mm							
	LTE Band 7		1.25	5mm	-1.40	-73.60	-205.00				
	WLAN5GHz		0.96	5mm							
	Bluetooth			5mm	-44.60	62.80	-207.00				
Case 39	Band	Position	SAR (W/kg)	Gap (mm)	X	Y	Z	3D distance (mm)	Summed SAR (W/kg)	SPLSR Results	Simultaneous SAR
	LTE Band 41	Back	1.25	5mm	-2.60	-73.60	-205.00	148.4	2.04	0.02	Not required
	WLAN2.4GHz		0.80	5mm	-45.80	68.40	-205.00				
Case 40	Band	Position	SAR (W/kg)	Gap (mm)	X	Y	Z	3D distance (mm)	Summed SAR (W/kg)	SPLSR Results	Simultaneous SAR
	LTE Band 41	Back	1.25	5mm	-2.60	-73.60	-205.00	157.9	2.21	0.02	Not required
	WLAN5GHz		0.96	5mm	-53.00	76.00	-207.00				
	Bluetooth			5mm							
	LTE Band 41	Back	1.25	5mm	-2.60	-73.60	-205.00	142.7	2.21	0.02	Not required
	WLAN5GHz		0.96	5mm							
Bluetooth	5mm			-44.60	62.80	-207.00					
Case 41	Band	Position	SAR (W/kg)	Gap (mm)	X	Y	Z	3D distance (mm)	Summed SAR (W/kg)	SPLSR Results	Simultaneous SAR
	FR1 n7	Back	1.19	5mm	7.00	-72.40	-205.00	150.4	1.99	0.02	Not required
	WLAN2.4GHz		0.80	5mm	-45.80	68.40	-205.00				
Case 42	Band	Position	SAR (W/kg)	Gap (mm)	X	Y	Z	3D distance (mm)	Summed SAR (W/kg)	SPLSR Results	Simultaneous SAR
	FR1 n7	Back	1.19	5mm	7.00	-72.40	-205.00	160.1	2.15	0.02	Not required
	WLAN5GHz		0.96	5mm	-53.00	76.00	-207.00				
	Bluetooth			5mm							
	FR1 n7	Back	1.19	5mm	7.00	-72.40	-205.00	144.7	2.15	0.02	Not required
	WLAN5GHz		0.96	5mm							
Bluetooth	5mm			-44.60	62.80	-207.00					
Case 43	Band	Position	SAR (W/kg)	Gap (mm)	X	Y	Z	3D distance (mm)	Summed SAR (W/kg)	SPLSR Results	Simultaneous SAR
	FR1 n41	Back	1.22	5mm	-1.40	-74.40	-205.00	149.5	2.01	0.02	Not required
	WLAN2.4GHz		0.80	5mm	-45.80	68.40	-205.00				
Case 44	Band	Position	SAR (W/kg)	Gap (mm)	X	Y	Z	3D distance (mm)	Summed SAR (W/kg)	SPLSR Results	Simultaneous SAR
	FR1 n41	Back	1.22	5mm	-1.40	-74.40	-205.00	159.0	2.18	0.02	Not required
	WLAN5GHz		0.96	5mm	-53.00	76.00	-207.00				
	Bluetooth			5mm							
	FR1 n41	Back	1.22	5mm	-1.40	-74.40	-205.00	143.9	2.18	0.02	Not required
	WLAN5GHz		0.96	5mm							
Bluetooth	5mm			-44.60	62.80	-207.00					
Case 45	Band	Position	SAR (W/kg)	Gap (mm)	X	Y	Z	3D distance (mm)	Summed SAR (W/kg)	SPLSR Results	Simultaneous SAR
	FR1 n77	Back	1.14	5mm	1.00	-73.60	-206.00	149.5	1.93	0.02	Not required
	WLAN2.4GHz		0.80	5mm	-45.80	68.40	-205.00				
Case 46	Band	Position	SAR (W/kg)	Gap (mm)	X	Y	Z	3D distance (mm)	Summed SAR (W/kg)	SPLSR Results	Simultaneous SAR
	FR1 n77	Back	1.14	5mm	1.00	-73.60	-206.00	159.1	2.10	0.02	Not required
	WLAN5GHz		0.96	5mm	-53.00	76.00	-207.00				
	Bluetooth			5mm							
	FR1 n77	Back	1.14	5mm	1.00	-73.60	-206.00	143.8	2.10	0.02	Not required
	WLAN5GHz		0.96	5mm							
Bluetooth	5mm			-44.60	62.80	-207.00					



<Body-worn>

Case	Band	Position	SAR (W/kg)	Gap	SAR peak location (mm)			3D distance (mm)	Summed SAR (W/kg)	SPLSR Results	Simultaneous SAR
				(mm)	X	Y	Z				
Case 47	LTE Band 13	Back	1.25	5mm	-14.50	-73.50	-206.00	145.3	1.90	0.02	Not required
	WLAN2.4GHz		0.65	5mm	-45.80	68.40	-205.00				
Case 48	Band	Position	SAR (W/kg)	Gap (mm)	X	Y	Z	154.4	1.90	0.02	Not required
	LTE Band 13	Back	1.25	5mm	-14.50	-73.50	-206.00				
	WLAN5GHz		0.65	5mm	-53.00	76.00	-207.00				
	Bluetooth		5mm								
	LTE Band 13	Back	1.25	5mm	-14.50	-73.50	-206.00	139.6	1.90	0.02	Not required
	WLAN5GHz		0.65	5mm							
Bluetooth	5mm		-44.60	62.80	-207.00						
Case 49	LTE Band 14	Back	1.19	5mm	-28.00	-84.00	-206.00	153.4	1.84	0.02	Not required
	WLAN2.4GHz		0.65	5mm	-45.80	68.40	-205.00				
Case 50	Band	Position	SAR (W/kg)	Gap (mm)	X	Y	Z	161.9	1.84	0.02	Not required
	LTE Band 14	Back	1.19	5mm	-28.00	-84.00	-206.00				
	WLAN5GHz		0.65	5mm	-53.00	76.00	-207.00				
	Bluetooth		5mm								
	LTE Band 14	Back	1.19	5mm	-28.00	-84.00	-206.00	147.7	1.84	0.02	Not required
	WLAN5GHz		0.65	5mm							
Bluetooth	5mm		-44.60	62.80	-207.00						
Case 51	GSM850	Back	1.18	5mm	-38.00	-81.50	-206.00	150.1	1.83	0.02	Not required
	WLAN2.4GHz		0.65	5mm	-45.80	68.40	-205.00				
Case 52	Band	Position	SAR (W/kg)	Gap (mm)	X	Y	Z	158.2	1.83	0.02	Not required
	GSM850	Back	1.18	5mm	-38.00	-81.50	-206.00				
	WLAN5GHz		0.65	5mm	-53.00	76.00	-207.00				
	Bluetooth		5mm								
	GSM850	Back	1.18	5mm	-38.00	-81.50	-206.00	144.5	1.83	0.02	Not required
	WLAN5GHz		0.65	5mm							
Bluetooth	5mm		-44.60	62.80	-207.00						
Case 53	WCDMA V	Back	1.28	5mm	-21.50	-76.50	-205.00	146.9	1.93	0.02	Not required
	WLAN2.4GHz		0.65	5mm	-45.80	68.40	-205.00				
Case 54	Band	Position	SAR (W/kg)	Gap (mm)	X	Y	Z	155.7	1.93	0.02	Not required
	WCDMA V	Back	1.28	5mm	-21.50	-76.50	-205.00				
	WLAN5GHz		0.65	5mm	-53.00	76.00	-207.00				
	Bluetooth		5mm								
	WCDMA V	Back	1.28	5mm	-21.50	-76.50	-205.00	141.2	1.93	0.02	Not required
	WLAN5GHz		0.65	5mm							
Bluetooth	5mm		-44.60	62.80	-207.00						
Case 55	LTE Band 26	Back	1.14	5mm	-33.50	-85.50	-205.00	154.4	1.80	0.02	Not required
	WLAN2.4GHz		0.65	5mm	-45.80	68.40	-205.00				
Case 56	Band	Position	SAR (W/kg)	Gap (mm)	X	Y	Z	3D distance (mm)	Summed SAR (W/kg)	SPLSR Results	Simultaneous SAR



Case	Band	Position	SAR (W/kg)	Gap	SAR peak location (mm)			3D distance (mm)	Summed SAR (W/kg)	SPLSR Results	Simultaneous SAR	
				(mm)	X	Y	Z					
	LTE Band 26	Back	1.14	5mm	-33.50	-85.50	-205.00	162.7	1.80	0.01	Not required	
	WLAN5GHz		0.65	5mm	-53.00	76.00	-207.00					
	Bluetooth		0.65	5mm								
	LTE Band 26	Back	1.14	5mm	-33.50	-85.50	-205.00	148.7	1.80	0.02	Not required	
	WLAN5GHz		0.65	5mm								
	Bluetooth		0.65	5mm	-44.60	62.80	-207.00					
Case 57	Band	Back	SAR (W/kg)	Gap	SAR peak location (mm)			3D distance (mm)	Summed SAR (W/kg)	SPLSR Results	Simultaneous SAR	
				(mm)	X	Y	Z					
	FR1 n26			1.28	5mm	-27.50	-84.00					-205.00
	WLAN2.4GHz	Back	0.65	5mm	-45.80	68.40	-205.00	153.5	1.93	0.02	Not required	
	Bluetooth		0.65	5mm								
Case 58	Band	Back	SAR (W/kg)	Gap	SAR peak location (mm)			3D distance (mm)	Summed SAR (W/kg)	SPLSR Results	Simultaneous SAR	
				(mm)	X	Y	Z					
	FR1 n26			1.28	5mm	-27.50	-84.00					-205.00
	WLAN5GHz			0.65	5mm	-53.00	76.00					-207.00
	Bluetooth				5mm							
	FR1 n26			Back	1.28	5mm	-27.50					-84.00
WLAN5GHz	0.65	5mm										
Bluetooth		0.65	5mm		-44.60	62.80	-207.00					
Case 59	Band	Back	SAR (W/kg)	Gap	SAR peak location (mm)			3D distance (mm)	Summed SAR (W/kg)	SPLSR Results	Simultaneous SAR	
				(mm)	X	Y	Z					
	WCDMA IV			1.27	5mm	-9.50	-84.00					-205.00
	WLAN2.4GHz	Back	0.65	5mm	-45.80	68.40	-205.00	156.7	1.92	0.02	Not required	
	Bluetooth		0.65	5mm								
Case 60	Band	Back	SAR (W/kg)	Gap	SAR peak location (mm)			3D distance (mm)	Summed SAR (W/kg)	SPLSR Results	Simultaneous SAR	
				(mm)	X	Y	Z					
	WCDMA IV			1.27	5mm	-9.50	-84.00					-205.00
	WLAN5GHz			0.65	5mm	-53.00	76.00					-207.00
	Bluetooth				5mm							
	WCDMA IV			Back	1.27	5mm	-9.50					-84.00
WLAN5GHz	0.65	5mm										
Bluetooth		0.65	5mm		-44.60	62.80	-207.00					
Case 61	Band	Front	SAR (W/kg)	Gap	SAR peak location (mm)			3D distance (mm)	Summed SAR (W/kg)	SPLSR Results	Simultaneous SAR	
				(mm)	X	Y	Z					
	LTE Band 66			1.10	5mm	-36.00	-88.50					-205.00
	WLAN2.4GHz	Back	0.51	5mm	3.00	88.00	-206.00	180.8	1.61	0.01	Not required	
	Bluetooth		0.51	5mm								
Case 62	Band	Back	SAR (W/kg)	Gap	SAR peak location (mm)			3D distance (mm)	Summed SAR (W/kg)	SPLSR Results	Simultaneous SAR	
				(mm)	X	Y	Z					
	LTE Band 66			1.16	5mm	-11.50	-87.00					-206.00
	WLAN2.4GHz	Back	0.65	5mm	-45.80	68.40	-205.00	159.1	1.81	0.02	Not required	
	Bluetooth		0.65	5mm								
Case 63	Band	Back	SAR (W/kg)	Gap	SAR peak location (mm)			3D distance (mm)	Summed SAR (W/kg)	SPLSR Results	Simultaneous SAR	
				(mm)	X	Y	Z					
	LTE Band 66			1.16	5mm	-11.50	-87.00					-206.00
	WLAN5GHz			0.65	5mm	-53.00	76.00					-207.00
	Bluetooth				5mm							
	LTE Band 66			Back	1.16	5mm	-11.50					-87.00
WLAN5GHz	0.65	5mm										
Bluetooth		0.65	5mm		-44.60	62.80	-207.00					
Case 64	Band	Back	SAR (W/kg)	Gap	SAR peak location (mm)			3D distance (mm)	Summed SAR (W/kg)	SPLSR Results	Simultaneous SAR	
				(mm)	X	Y	Z					
	FR1 n70			0.97	5mm	-11.00	-85.00					-205.00
	WLAN2.4GHz	Back	0.65	5mm	-45.80	68.40	-205.00	157.3	1.62	0.01	Not required	
	Bluetooth		0.65	5mm								
Case 65	Band	Back	SAR (W/kg)	Gap	SAR peak location (mm)			3D distance (mm)	Summed SAR (W/kg)	SPLSR Results	Simultaneous SAR	
				(mm)	X	Y	Z					
	FR1 n70			0.97	5mm	-11.00	-85.00					-205.00
	WLAN5GHz			0.65	5mm	-53.00	76.00					-207.00
Bluetooth	5mm											
	FR1 n70	Back	0.97	5mm	-11.00	-85.00	-205.00	166.4	1.62	0.01	Not required	
	Bluetooth		0.97	5mm								



Case	Band	Position	SAR (W/kg)	Gap	SAR peak location (mm)			3D distance (mm)	Summed SAR (W/kg)	SPLSR Results	Simultaneous SAR	
				(mm)	X	Y	Z					
	WLAN5GHz		0.65	5mm								
	Bluetooth			5mm	-44.60	62.80	-207.00					
Case 66	Band	Back	SAR (W/kg)	Gap	SAR peak location (mm)			3D distance (mm)	Summed SAR (W/kg)	SPLSR Results	Simultaneous SAR	
				(mm)	X	Y	Z					
	FR1 n66			5mm	-12.50	-82.50	-205.00					
	WLAN2.4GHz		0.65	5mm	-45.80	68.40	-205.00	154.5	1.88	0.02	Not required	
Case 67	Band	Back	SAR (W/kg)	Gap	SAR peak location (mm)			3D distance (mm)	Summed SAR (W/kg)	SPLSR Results	Simultaneous SAR	
				(mm)	X	Y	Z					
	FR1 n66			5mm	-12.50	-82.50	-205.00					
	WLAN5GHz			0.65	5mm	-53.00	76.00					-207.00
	Bluetooth			5mm								
	FR1 n66			1.23	5mm	-12.50	-82.50					-205.00
	WLAN5GHz		0.65	5mm				148.8	1.88	0.02	Not required	
	Bluetooth		0.65	5mm	-44.60	62.80	-207.00					
Case 68	Band	Back	SAR (W/kg)	Gap	SAR peak location (mm)			3D distance (mm)	Summed SAR (W/kg)	SPLSR Results	Simultaneous SAR	
				(mm)	X	Y	Z					
	GSM1900			5mm	-32.00	-85.00	-206.00					
	WLAN2.4GHz		0.65	5mm	-45.80	68.40	-205.00	154.0	1.93	0.02	Not required	
Case 69	Band	Back	SAR (W/kg)	Gap	SAR peak location (mm)			3D distance (mm)	Summed SAR (W/kg)	SPLSR Results	Simultaneous SAR	
				(mm)	X	Y	Z					
	GSM1900			1.27	5mm	-32.00	-85.00					-206.00
	WLAN5GHz			0.65	5mm	-53.00	76.00					-207.00
	Bluetooth				5mm							
	GSM1900			1.27	5mm	-32.00	-85.00					-206.00
	WLAN5GHz		0.65	5mm				148.3	1.93	0.02	Not required	
	Bluetooth		0.65	5mm	-44.60	62.80	-207.00					
Case 70	Band	Back	SAR (W/kg)	Gap	SAR peak location (mm)			3D distance (mm)	Summed SAR (W/kg)	SPLSR Results	Simultaneous SAR	
				(mm)	X	Y	Z					
	WCDMA II			5mm	-24.50	-85.50	-205.00					
	WLAN2.4GHz		0.65	5mm	-45.80	68.40	-205.00	155.4	1.93	0.02	Not required	
Case 71	Band	Back	SAR (W/kg)	Gap	SAR peak location (mm)			3D distance (mm)	Summed SAR (W/kg)	SPLSR Results	Simultaneous SAR	
				(mm)	X	Y	Z					
	WCDMA II			1.28	5mm	-24.50	-85.50					-205.00
	WLAN5GHz			0.65	5mm	-53.00	76.00					-207.00
	Bluetooth				5mm							
	WCDMA II			1.28	5mm	-24.50	-85.50					-205.00
	WLAN5GHz		0.65	5mm				149.7	1.93	0.02	Not required	
	Bluetooth		0.65	5mm	-44.60	62.80	-207.00					
Case 72	Band	Back	SAR (W/kg)	Gap	SAR peak location (mm)			3D distance (mm)	Summed SAR (W/kg)	SPLSR Results	Simultaneous SAR	
				(mm)	X	Y	Z					
	LTE Band 25			5mm	-23.50	-88.50	-206.00					
	WLAN2.4GHz		0.65	5mm	-45.80	68.40	-205.00	158.5	1.87	0.02	Not required	
Case 73	Band	Back	SAR (W/kg)	Gap	SAR peak location (mm)			3D distance (mm)	Summed SAR (W/kg)	SPLSR Results	Simultaneous SAR	
				(mm)	X	Y	Z					
	LTE Band 25			1.22	5mm	-23.50	-88.50					-206.00
	WLAN5GHz			0.65	5mm	-53.00	76.00					-207.00
	Bluetooth				5mm							
	LTE Band 25			1.22	5mm	-23.50	-88.50					-206.00
	WLAN5GHz		0.65	5mm				152.8	1.87	0.02	Not required	
	Bluetooth		0.65	5mm	-44.60	62.80	-207.00					
Case 74	Band	Back	SAR (W/kg)	Gap	SAR peak location (mm)			3D distance (mm)	Summed SAR (W/kg)	SPLSR Results	Simultaneous SAR	
				(mm)	X	Y	Z					
	FR1 n25			1.10	5mm	-23.00	-90.00					-205.00
	WLAN2.4GHz		0.65	5mm	-45.80	68.40	-205.00	160.0	1.75	0.01	Not required	
Case 75	Band	Position	SAR (W/kg)	Gap (mm)	SAR peak location (mm)			3D distance (mm)	Summed SAR (W/kg)	SPLSR Results	Simultaneous SAR	



Case	Band	Position	SAR (W/kg)	Gap	SAR peak location (mm)			3D distance (mm)	Summed SAR (W/kg)	SPLSR Results	Simultaneous SAR
				(mm)	X	Y	Z				
	FR1 n25	Back	1.10	5mm	-23.00	-90.00	-205.00	168.7	1.75	0.01	Not required
	WLAN5GHz		0.65	5mm	-53.00	76.00	-207.00				
	Bluetooth										
	FR1 n25	Back	1.10	5mm	-23.00	-90.00	-205.00	154.3	1.75	0.02	Not required
	WLAN5GHz		0.65	5mm	-44.60	62.80	-207.00				
	Bluetooth										
Case 76	Band	Back	SAR (W/kg)	Gap	SAR peak location (mm)			3D distance (mm)	Summed SAR (W/kg)	SPLSR Results	Simultaneous SAR
	LTE Band 30		1.16	5mm	-0.20	-74.80	-205.00				
	WLAN2.4GHz		0.65	5mm	-45.80	68.40	-205.00				
Case 77	Band	Back	SAR (W/kg)	Gap	SAR peak location (mm)			3D distance (mm)	Summed SAR (W/kg)	SPLSR Results	Simultaneous SAR
	LTE Band 30		1.16	5mm	-0.20	-74.80	-205.00				
	WLAN5GHz		0.65	5mm	-53.00	76.00	-207.00				
	Bluetooth										
	LTE Band 30	Back	1.16	5mm	-0.20	-74.80	-205.00	144.6	1.82	0.02	Not required
	WLAN5GHz		0.65	5mm	-44.60	62.80	-207.00				
Bluetooth											
Case 78	Band	Back	SAR (W/kg)	Gap	SAR peak location (mm)			3D distance (mm)	Summed SAR (W/kg)	SPLSR Results	Simultaneous SAR
	FR1 n30		1.27	5mm	-1.40	-74.80	-205.00				
	WLAN2.4GHz		0.65	5mm	-45.80	68.40	-205.00				
Case 79	Band	Back	SAR (W/kg)	Gap	SAR peak location (mm)			3D distance (mm)	Summed SAR (W/kg)	SPLSR Results	Simultaneous SAR
	FR1 n30		1.27	5mm	-1.40	-74.80	-205.00				
	WLAN5GHz		0.65	5mm	-53.00	76.00	-207.00				
	Bluetooth										
	FR1 n30	Back	1.27	5mm	-1.40	-74.80	-205.00	144.2	1.92	0.02	Not required
	WLAN5GHz		0.65	5mm	-44.60	62.80	-207.00				
Bluetooth											
Case 80	Band	Back	SAR (W/kg)	Gap	SAR peak location (mm)			3D distance (mm)	Summed SAR (W/kg)	SPLSR Results	Simultaneous SAR
	LTE Band 7		1.28	5mm	-1.40	-74.80	-205.00				
	WLAN2.4GHz		0.65	5mm	-45.80	68.40	-205.00				
Case 81	Band	Back	SAR (W/kg)	Gap	SAR peak location (mm)			3D distance (mm)	Summed SAR (W/kg)	SPLSR Results	Simultaneous SAR
	LTE Band 7		1.28	5mm	-1.40	-73.60	-205.00				
	WLAN5GHz		0.65	5mm	-53.00	76.00	-207.00				
	Bluetooth										
	LTE Band 7	Back	1.28	5mm	-1.40	-73.60	-205.00	143.1	1.93	0.02	Not required
	WLAN5GHz		0.65	5mm	-44.60	62.80	-207.00				
Bluetooth											
Case 82	Band	Back	SAR (W/kg)	Gap	SAR peak location (mm)			3D distance (mm)	Summed SAR (W/kg)	SPLSR Results	Simultaneous SAR
	LTE Band 41		1.25	5mm	-2.60	-73.60	-205.00				
	WLAN2.4GHz		0.65	5mm	-45.80	68.40	-205.00				
Case 83	Band	Back	SAR (W/kg)	Gap	SAR peak location (mm)			3D distance (mm)	Summed SAR (W/kg)	SPLSR Results	Simultaneous SAR
	LTE Band 41		1.25	5mm	-2.60	-73.60	-205.00				
	WLAN5GHz		0.65	5mm	-53.00	76.00	-207.00				
	Bluetooth										
	LTE Band 41	Back	1.25	5mm	-2.60	-73.60	-205.00	142.7	1.90	0.02	Not required
	WLAN5GHz		0.65	5mm	-44.60	62.80	-207.00				
Bluetooth											
Case 84	Band	Position	SAR (W/kg)	Gap	SAR peak location (mm)			3D distance (mm)	Summed SAR (W/kg)	SPLSR Results	Simultaneous SAR
				(mm)	X	Y	Z				



Case	Band	Position	SAR (W/kg)	Gap	SAR peak location (mm)			3D distance (mm)	Summed SAR (W/kg)	SPLSR Results	Simultaneous SAR
				(mm)	X	Y	Z				
	FR1 n7	Back	1.19	5mm	7.00	-72.40	-205.00	150.4	1.84	0.02	Not required
	WLAN2.4GHz		0.65	5mm	-45.80	68.40	-205.00				
Case 85	Band	Back	SAR (W/kg)	Gap	SAR peak location (mm)			3D distance (mm)	Summed SAR (W/kg)	SPLSR Results	Simultaneous SAR
				(mm)	X	Y	Z				
	FR1 n7	Back	1.19	5mm	7.00	-72.40	-205.00	160.1	1.84	0.02	Not required
	WLAN5GHz		0.65	5mm	-53.00	76.00	-207.00				
	Bluetooth	Back	1.19	5mm	7.00	-72.40	-205.00	144.7	1.84	0.02	Not required
	WLAN5GHz		0.65	5mm	-44.60	62.80	-207.00				
Bluetooth	Back	1.19	5mm	7.00	-72.40	-205.00	149.5	1.87	0.02	Not required	
WLAN2.4GHz		0.65	5mm	-45.80	68.40	-205.00					
Case 86	Band	Back	SAR (W/kg)	Gap	SAR peak location (mm)			3D distance (mm)	Summed SAR (W/kg)	SPLSR Results	Simultaneous SAR
				(mm)	X	Y	Z				
	FR1 n41	Back	1.22	5mm	-1.40	-74.40	-205.00	159.0	1.87	0.02	Not required
	WLAN5GHz		0.65	5mm	-53.00	76.00	-207.00				
	Bluetooth	Back	1.22	5mm	-1.40	-74.40	-205.00	143.9	1.87	0.02	Not required
	WLAN5GHz		0.65	5mm	-44.60	62.80	-207.00				
Bluetooth	Back	1.22	5mm	-1.40	-74.40	-205.00	149.5	1.79	0.02	Not required	
WLAN2.4GHz		0.65	5mm	-45.80	68.40	-205.00					
Case 87	Band	Back	SAR (W/kg)	Gap	SAR peak location (mm)			3D distance (mm)	Summed SAR (W/kg)	SPLSR Results	Simultaneous SAR
				(mm)	X	Y	Z				
	FR1 n41	Back	1.22	5mm	-1.40	-74.40	-205.00	159.1	1.79	0.02	Not required
	WLAN5GHz		0.65	5mm	-53.00	76.00	-207.00				
	Bluetooth	Back	1.22	5mm	-1.40	-73.60	-206.00	143.8	1.79	0.02	Not required
	WLAN5GHz		0.65	5mm	-44.60	62.80	-207.00				
Bluetooth	Back	1.22	5mm	-1.40	-74.40	-205.00	149.5	1.79	0.02	Not required	
WLAN2.4GHz		0.65	5mm	-45.80	68.40	-205.00					
Case 88	Band	Back	SAR (W/kg)	Gap	SAR peak location (mm)			3D distance (mm)	Summed SAR (W/kg)	SPLSR Results	Simultaneous SAR
				(mm)	X	Y	Z				
	FR1 n77	Back	1.14	5mm	1.00	-73.60	-206.00	159.1	1.79	0.02	Not required
	WLAN5GHz		0.65	5mm	-53.00	76.00	-207.00				
	Bluetooth	Back	1.14	5mm	1.00	-73.60	-206.00	143.8	1.79	0.02	Not required
	WLAN5GHz		0.65	5mm	-44.60	62.80	-207.00				
Bluetooth	Back	1.14	5mm	1.00	-73.60	-206.00	149.5	1.79	0.02	Not required	
WLAN2.4GHz		0.65	5mm	-45.80	68.40	-205.00					
Case 89	Band	Back	SAR (W/kg)	Gap	SAR peak location (mm)			3D distance (mm)	Summed SAR (W/kg)	SPLSR Results	Simultaneous SAR
				(mm)	X	Y	Z				
	FR1 n77	Back	1.14	5mm	1.00	-73.60	-206.00	159.1	1.79	0.02	Not required
	WLAN5GHz		0.65	5mm	-53.00	76.00	-207.00				
	Bluetooth	Back	1.14	5mm	1.00	-73.60	-206.00	143.8	1.79	0.02	Not required
	WLAN5GHz		0.65	5mm	-44.60	62.80	-207.00				
Bluetooth	Back	1.14	5mm	1.00	-73.60	-206.00	149.5	1.79	0.02	Not required	
WLAN2.4GHz		0.65	5mm	-45.80	68.40	-205.00					

<Sensor off>

	Band	Position	SAR (W/kg)	Gap	SAR peak location (mm)			3D distance (mm)	Summed SAR (W/kg)	SPLSR Results	Simultaneous SAR
				(mm)	X	Y	Z				
Case 90	GSM850	Front	0.54	19mm	-23.00	13.50	-205.00	71.3	1.68	0.03	Not required
	WLAN5GHz		1.14	19mm	4.60	79.20	-206.00				
	Bluetooth		19mm								
	GSM850	Front	0.54	19mm	-23.00	13.50	-205.00	79.8	1.68	0.03	Not required
	WLAN5GHz		1.14	19mm							
	Bluetooth		19mm	3.90	88.60	-206.00					
Case 91	WCDMA IV	Front	0.52	19mm	-36.60	-89.50	-205.00	173.7	1.66	0.01	Not required
	WLAN5GHz		1.14	19mm	4.60	79.20	-206.00				
	Bluetooth		19mm								
	WCDMA IV	Front	0.52	19mm	-36.60	-89.50	-205.00	182.6	1.66	0.01	Not required
	WLAN5GHz		1.14	19mm							
	Bluetooth		19mm	3.90	88.60	-206.00					
Case 92	LTE Band 66	Front	0.59	19mm	-35.00	-88.00	-205.00	171.8	1.73	0.01	Not required
	WLAN5GHz		1.14	19mm	4.60	79.20	-206.00				
	Bluetooth		19mm								
	LTE Band 66	Front	0.59	19mm	-35.00	-88.00	-205.00	180.8	1.73	0.01	Not required
	WLAN5GHz		1.14	19mm							
	Bluetooth		19mm	3.90	88.60	-206.00					
Case 93	FR1 n41	Front	0.54	19mm	-3.80	-63.60	-205.00	143.1	1.68	0.02	Not required
	WLAN5GHz		1.14	19mm	4.60	79.20	-206.00				
	Bluetooth		19mm								
	FR1 n41	Front	0.54	19mm	-3.80	-63.60	-205.00	152.4	1.68	0.01	Not required
	WLAN5GHz		1.14	19mm							
	Bluetooth		19mm	3.90	88.60	-206.00					

Test Engineer : Hank Huang, Kevin Xu, David Dai, Bin He



18. Uncertainty Assessment

Per KDB 865664 D01 SAR measurement 100MHz to 6GHz, when the highest measured 1-g SAR within a frequency band is < 1.5 W/kg and the measured 10-g SAR within a frequency band is < 3.75 W/kg. The expanded SAR measurement uncertainty must be $\leq 30\%$, for a confidence interval of $k = 2$. If these conditions are met, extensive SAR measurement uncertainty analysis described in IEEE Std 1528-2013 is not required in SAR reports submitted for equipment approval. For this device, the highest measured 1-g SAR is less 1.5W/kg and highest measured 10-g SAR is less 3.75W/kg. Therefore, the measurement uncertainty table is not required in this report.

19. References

- [1] FCC 47 CFR Part 2 “Frequency Allocations and Radio Treaty Matters; General Rules and Regulations”
- [2] ANSI/IEEE Std. C95.1-1992, “IEEE Standard for Safety Levels with Respect to Human Exposure to Radio Frequency Electromagnetic Fields, 3 kHz to 300 GHz”, September 1992
- [3] IEEE Std. 1528-2013, “IEEE Recommended Practice for Determining the Peak Spatial-Average Specific Absorption Rate (SAR) in the Human Head from Wireless Communications Devices: Measurement Techniques”, Sep 2013
- [4] SPEAG DASY System Handbook
- [5] FCC KDB 865664 D01 v01r04, "SAR Measurement Requirements for 100 MHz to 6 GHz", Aug 2015.
- [6] FCC KDB 865664 D02 v01r02, “RF Exposure Compliance Reporting and Documentation Considerations” Oct 2015.
- [7] FCC KDB 648474 D04 v01r03, “SAR Evaluation Considerations for Wireless Handsets”, Oct 2015.
- [8] FCC KDB 248227 D01 v02r02, “SAR Guidance for IEEE 802.11 (WiFi) Transmitters”, Oct 2015.
- [9] FCC KDB 616217 D04 v01r02, “SAR Evaluation Considerations for Laptop, Notebook, Netbook and Tablet Computers”, Oct 2015
- [10] FCC KDB 941225 D01 v03r01, “3G SAR MEAUREMENT PROCEDURES”, Oct 2015
- [11] FCC KDB 941225 D05 v02r05, “SAR Evaluation Considerations for LTE Devices”, Dec 2015
- [12] FCC KDB 941225 D05A v01r02, “Rel. 10 LTE SAR Test Guidance and KDB Inquiries”, Oct 2015
- [13] FCC KDB 941225 D06 v02r01, "SAR Evaluation Procedures for Portable Devices with Wireless Router Capabilities", Oct 2015.
- [14] FCC KDB 447498 D01 v06, “Mobile and Portable Device RF Exposure Procedures and Equipment Authorization Policies”, Oct 2015

-----THE END-----