

FCC SAR Test Report

APPLICANT : Motorola Mobility LLC
EQUIPMENT : Mobile Cellular Phone
BRAND NAME : Motorola
MODEL NAME : XT2523-3, XT2523-6
FCC ID : IHDT56AT4
STANDARD : FCC 47 CFR Part 2 (2.1093)

We, Sporton International Inc. (Shenzhen), would like to declare that the tested sample has been evaluated in accordance with the test procedures given in 47 CFR Part 2.1093 and FCC KDB and has been in compliance with the applicable technical standards.

The test results in this report apply exclusively to the tested model / sample. Without written approval of Sporton International Inc. (Shenzhen), the test report shall not be reproduced except in full.



Approved by: Si Zhang

Sporton International Inc. (Shenzhen)

**1/F, 2/F, Bldg 5, Shiling Industrial Zone, Xinwei Village, Xili, Nanshan, Shenzhen, 518055
People's Republic of China**



Table of Contents

1. Statement of Compliance 4
2. Administration Data 5
3. Guidance Applied 5
4. Equipment Under Test (EUT) Information 6
4.1 General Information 6
4.2 General LTE SAR Test and Reporting Considerations 8
5. RF Exposure Limits 10
5.1 Uncontrolled Environment 10
5.2 Controlled Environment 10
6. Specific Absorption Rate (SAR) 11
6.1 Introduction 11
6.2 SAR Definition 11
7. System Description and Setup 12
7.1 E-Field Probe 13
7.2 Data Acquisition Electronics (DAE) 13
7.3 Phantom 14
7.4 Device Holder 15
8. Measurement Procedures 16
8.1 Spatial Peak SAR Evaluation 16
8.2 Power Reference Measurement 17
8.3 Area Scan 17
8.4 Zoom Scan 18
8.5 Volume Scan Procedures 18
8.6 Power Drift Monitoring 18
9. Test Equipment List 19
10. System Verification 20
10.1 Tissue Simulating Liquids 20
10.2 Tissue Verification 21
10.3 System Performance Check Results 22
11. RF Exposure Positions 23
11.1 Ear and handset reference point 23
11.2 Definition of the cheek position 24
11.3 Definition of the tilt position 25
11.4 Body Worn Accessory 26
11.5 Product Specific 10g SAR Exposure 27
11.6 Wireless Router 27
12. Conducted RF Output Power (Unit: dBm) 28
14. Antenna Location 38
15. SAR Test Results 39
15.1 Head SAR 41
15.2 Hotspot SAR 44
15.3 Body Worn Accessory SAR 47
15.4 Product specific 10g SAR 50
15.5 Repeated SAR Measurement 51
16. Simultaneous Transmission Analysis 52
16.1 Head Exposure Conditions 53
16.2 Hotspot Exposure Conditions 54
16.3 Body-Worn Accessory Exposure Conditions 55
16.4 Product specific 10g SAR Exposure Conditions 56
16.5 SPLSR Evaluation and Analysis 57
17. Uncertainty Assessment 61
18. References 62
Appendix A. Plots of System Performance Check
Appendix B. Plots of High SAR Measurement
Appendix C. DASY Calibration Certificate
Appendix D. Test Setup Photos
Appendix E. Conducted RF Output Power Table
Appendix F. Power reduction mechanism verification



1. Statement of Compliance

The maximum results of Specific Absorption Rate (SAR) found during testing for **Motorola Mobility LLC, Mobile Cellular Phone, XT2523-3, XT2523-6**, are as follows.

Highest 1g SAR Summary							
Equipment Class	Frequency Band		Head (Separation 0mm)	Hotspot (Separation 5mm)	Body-worn (Separation 5mm)	Highest Simultaneous Transmission 1g SAR (W/kg)	
			1g SAR (W/kg)				
Licensed	GSM	GSM850	0.44	1.42	1.42	1.57	
	WCDMA	WCDMA V	0.42	1.39	1.39		
	LTE	LTE Band 5		0.88	1.26		1.26
		LTE Band 7		0.82	1.31		1.42
		LTE Band 41/38		0.89	1.40		1.25
DTS	WLAN	WLAN2.4GHz	0.94	0.82	1.19	1.52	
NII		WLAN5GHz	0.43	0.74	1.13	1.57	
DSS	Bluetooth	Bluetooth	0.15	0.19	0.19	1.57	

Highest 10g SAR Summary					
Equipment Class	Frequency Band		Product Specific 10g SAR (W/kg) (Separation 0mm)	Highest Simultaneous Transmission 10g SAR (W/kg)	
Licensed	GSM	GSM850	2.19	2.66	
	WCDMA	WCDMA V	1.85		
	LTE	LTE Band 5			2.03
		LTE Band 7			1.04
		LTE Band 41/38			0.71
NII	WLAN	WLAN5GHz	1.03	2.66	
Date of Testing:			2024/9/12~2024/10/17		

Remark: This device supports LTE B38 and B41. Since the supported frequency span for LTE B38 falls completely within the supports frequency span for LTE B41, both LTE bands have the same target power, and both LTE bands share the same transmission path; therefore, SAR was only assessed for LTE B41.

Declaration of Conformity:

The test results with all measurement uncertainty excluded are presented in accordance with the regulation limits or requirements declared by manufacturers.

Comments and Explanations:

The declared of product specification for EUT presented in the report are provided by the manufacturer, and the manufacturer takes all the responsibilities for the accuracy of product specification.

This device is in compliance with Specific Absorption Rate (SAR) for general population/uncontrolled exposure limits (1.6 W/kg for Partial-Body 1g SAR, 4.0 W/kg for Product Specific 10g SAR) specified in FCC 47 CFR part 2 (2.1093) and ANSI/IEEE C95.1-1992, and had been tested in accordance with the measurement methods and procedures specified in IEEE 1528-2013 and FCC KDB publications.



2. Administration Data

Sporton International Inc. (Shenzhen) is accredited to ISO/IEC 17025:2017 by American Association for Laboratory Accreditation with Certificate Number 5145.01.

Testing Laboratory			
Test Firm	Sporton International Inc. (Shenzhen)		
Test Site Location	1/F, 2/F, Bldg 5, Shiling Industrial Zone, Xinwei Village, Xili, Nanshan, Shenzhen, 518055 People's Republic of China TEL: +86-755-86379589 FAX: +86-755-86379595		
Test Site No.	Sporton Site No.	FCC Designation No.	FCC Test Firm Registration No.
	SAR01-SZ	CN1256	421272

Applicant	
Company Name	Motorola Mobility LLC
Address	222 W, Merchandise Mart Plaza, Chicago IL 60654 USA

Manufacturer	
Company Name	Motorola Mobility LLC
Address	222 W, Merchandise Mart Plaza, Chicago IL 60654 USA

3. Guidance Applied

The Specific Absorption Rate (SAR) testing specification, method, and procedure for this device is in accordance with the following standards:

- FCC 47 CFR Part 2 (2.1093)
- ANSI/IEEE C95.1-1992
- IEEE 1528-2013
- FCC KDB 865664 D01 SAR Measurement 100 MHz to 6 GHz v01r04
- FCC KDB 865664 D02 SAR Reporting v01r02
- FCC KDB 447498 D01 General RF Exposure Guidance v06
- FCC KDB 648474 D04 SAR Evaluation Considerations for Wireless Handsets v01r03
- FCC KDB 248227 D01 802.11 Wi-Fi SAR v02r02
- FCC KDB 941225 D01 3G SAR Procedures v03r01
- FCC KDB 941225 D05 SAR for LTE Devices v02r05
- FCC KDB 941225 D06 Hotspot Mode SAR v02r01



4. Equipment Under Test (EUT) Information

4.1 General Information

Product Feature & Specification	
Equipment Name	Mobile Cellular Phone
Brand Name	Motorola
Model Name	XT2523-3, XT2523-6
FCC ID	IHDT56AT4
IMEI Code	Sample 1: IMEI 1: 350288530017570 IMEI 2: 350288530017588 Sample 2: IMEI 1: 354802740025359 IMEI 2: 354802740025367 Sample 3: IMEI 1: 350288530021614 IMEI 2: 350288530021622 Sample 4: IMEI 1: 350288530023594 IMEI 2: 350288530023602 Sample 5: IMEI 1: 354802740021051 IMEI 2: 354802740021069 Sample 6: IMEI 1: 354802740028817 IMEI 2: 354802740028825
Frequency Band	GSM850: 824 MHz ~ 849 MHz WCDMA Band V: 824 MHz ~ 849 MHz LTE Band 5: 824 MHz ~ 849 MHz LTE Band 7: 2500 MHz ~ 2570 MHz LTE Band 38: 2570 MHz ~ 2620 MHz LTE Band 41: 2535 MHz ~ 2655 MHz WLAN 2.4GHz Band: 2412 MHz ~ 2462 MHz WLAN 5.2GHz Band: 5180 MHz ~ 5240 MHz WLAN 5.3GHz Band: 5260 MHz ~ 5320 MHz WLAN 5.5GHz Band: 5500 MHz ~ 5720 MHz WLAN 5.8GHz Band: 5745 MHz ~ 5825 MHz Bluetooth: 2402 MHz ~ 2480 MHz
Mode	GSM/GPRS/EGPRS AMR / RMC 12.2Kbps HSDPA HSUPA DC-HSDPA HSPA+ (16QAM uplink is supported) LTE: QPSK, 16QAM, 64QAM WLAN 2.4GHz : 802.11b/g/n HT20/ HT40 WLAN 5GHz : 802.11a/n/ac HT20/HT40/VHT20/VHT40/VHT80 Bluetooth BR/EDR/LE
HW Version	DVT2
SW Version	VVTA35.44 for XT2523-3 UUTB34.23 for XT2523-6
GSM / (E)GPRS Transfer mode	Class B – EUT cannot support Packet Switched and Circuit Switched Network simultaneously but can automatically switch between Packet and Circuit Switched Network.
EUT Stage	Identical Prototype

Remark:

1. This device supports VoIP in GPRS, EGPRS, WCDMA and LTE (e.g. for 3rd-party VoIP), LTE supports VoLTE operation.
2. This device 2.4GHz WLAN support hotspot operation and Bluetooth support tethering applications.
3. This device 5.2GHz WLAN/5.8GHz WLAN support hotspot operation, and 5.2GHz WLAN/5.8GHz WLAN supports WiFi Direct (GC/GO), and 5.3GHz / 5.5GHz supports WiFi Direct (GC only).
4. This device does not support DTM operation and supports GPRS/EGPRS mode up to multi-slot class 12.
5. For dual SIM card mobile has two SIM slots and supports dual SIM dual standby. The WWAN radio transmission will be enabled by either one SIM at a time (single active). After pre-scan two SIM cards power, we found test result of the SIM1 was the worse, so we chose SIM1 slot to perform all tests.
6. The device implements the power management and receiver detection/hotspot mode for SAR compliance at different

exposure conditions (head, body-worn, hotspot, extremity). And the device will invoke corresponding work scenarios power level base on frequency bands/antennas, which can refer to power table at appendix E.

- 7. For WLAN when transmit simultaneously with each other, or when transmit simultaneously with WWAN, the device power will be reduced power at head, body-worn and extremity conditions.
- 8. There are six samples, the different between them refer to the XT2523-3, XT2523-6_Operational Description of Product Equality Declaration which is exhibit separately. According to the differences, sample 1 was chosen to perform full SAR testing and sample 2/3/4/5/6 verified the worst case of sample 1, the detail samples list are as follows.

Sample 1	XT2523-3	1 st source
Sample 2	XT2523-6	1 st source
Sample 3	XT2523-3	2 nd source
Sample 4	XT2523-3	3 rd source
Sample 5	XT2523-6	2 nd source
Sample 6	XT2523-6	3 rd source

4.2 General LTE SAR Test and Reporting Considerations

Summarized necessary items addressed in KDB 941225 D05 v02r05																																																															
FCC ID	IHDT56AT4																																																														
Equipment Name	Mobile Cellular Phone																																																														
Operating Frequency Range of each LTE transmission band	LTE Band 5: 824 MHz ~ 849 MHz LTE Band 7: 2500 MHz ~ 2570 MHz LTE Band 38: 2570 MHz ~ 2620 MHz LTE Band 41: 2535 MHz ~ 2655 MHz																																																														
Channel Bandwidth	LTE Band 5: 1.4MHz, 3MHz, 5MHz, 10MHz LTE Band 7: 5MHz, 10MHz, 15MHz, 20MHz LTE Band 38: 5MHz, 10MHz, 15MHz, 20MHz LTE Band 41: 5MHz, 10MHz, 15MHz, 20MHz																																																														
Uplink Modulations used	QPSK / 16QAM / 64QAM																																																														
LTE Voice / Data requirements	Voice and Data																																																														
LTE Release Version	R9																																																														
CA Support	Not Supported																																																														
LTE MPR permanently built-in by design	<p align="center">Table 6.2.3-1: Maximum Power Reduction (MPR) for Power Class 1, 2 and 3</p> <table border="1"> <thead> <tr> <th rowspan="2">Modulation</th> <th colspan="6">Channel bandwidth / Transmission bandwidth (N_{RB})</th> <th rowspan="2">MPR (dB)</th> </tr> <tr> <th>1.4 MHz</th> <th>3.0 MHz</th> <th>5 MHz</th> <th>10 MHz</th> <th>15 MHz</th> <th>20 MHz</th> </tr> </thead> <tbody> <tr> <td>QPSK</td> <td>> 5</td> <td>> 4</td> <td>> 8</td> <td>> 12</td> <td>> 16</td> <td>> 18</td> <td>≤ 1</td> </tr> <tr> <td>16 QAM</td> <td>≤ 5</td> <td>≤ 4</td> <td>≤ 8</td> <td>≤ 12</td> <td>≤ 16</td> <td>≤ 18</td> <td>≤ 1</td> </tr> <tr> <td>16 QAM</td> <td>> 5</td> <td>> 4</td> <td>> 8</td> <td>> 12</td> <td>> 16</td> <td>> 18</td> <td>≤ 2</td> </tr> <tr> <td>64 QAM</td> <td>≤ 5</td> <td>≤ 4</td> <td>≤ 8</td> <td>≤ 12</td> <td>≤ 16</td> <td>≤ 18</td> <td>≤ 2</td> </tr> <tr> <td>64 QAM</td> <td>> 5</td> <td>> 4</td> <td>> 8</td> <td>> 12</td> <td>> 16</td> <td>> 18</td> <td>≤ 3</td> </tr> <tr> <td>256 QAM</td> <td colspan="6">≥ 1</td> <td>≤ 5</td> </tr> </tbody> </table>	Modulation	Channel bandwidth / Transmission bandwidth (N_{RB})						MPR (dB)	1.4 MHz	3.0 MHz	5 MHz	10 MHz	15 MHz	20 MHz	QPSK	> 5	> 4	> 8	> 12	> 16	> 18	≤ 1	16 QAM	≤ 5	≤ 4	≤ 8	≤ 12	≤ 16	≤ 18	≤ 1	16 QAM	> 5	> 4	> 8	> 12	> 16	> 18	≤ 2	64 QAM	≤ 5	≤ 4	≤ 8	≤ 12	≤ 16	≤ 18	≤ 2	64 QAM	> 5	> 4	> 8	> 12	> 16	> 18	≤ 3	256 QAM	≥ 1						≤ 5
Modulation	Channel bandwidth / Transmission bandwidth (N_{RB})						MPR (dB)																																																								
	1.4 MHz	3.0 MHz	5 MHz	10 MHz	15 MHz	20 MHz																																																									
QPSK	> 5	> 4	> 8	> 12	> 16	> 18	≤ 1																																																								
16 QAM	≤ 5	≤ 4	≤ 8	≤ 12	≤ 16	≤ 18	≤ 1																																																								
16 QAM	> 5	> 4	> 8	> 12	> 16	> 18	≤ 2																																																								
64 QAM	≤ 5	≤ 4	≤ 8	≤ 12	≤ 16	≤ 18	≤ 2																																																								
64 QAM	> 5	> 4	> 8	> 12	> 16	> 18	≤ 3																																																								
256 QAM	≥ 1						≤ 5																																																								
LTE A-MPR	In the base station simulator configuration, Network Setting value is set to NS_01 to disable A-MPR during SAR testing and the LTE SAR tests was transmitting on all TTI frames (Maximum TTI)																																																														
Spectrum plots for RB configuration	A properly configured base station simulator was used for the SAR and power measurement; therefore, spectrum plots for each RB allocation and offset configuration are not included in the SAR report.																																																														
Power reduction applied to satisfy SAR compliance	Yes, when operating in Proximity receiver/hotspot detect mechanism, head/body -worn /hotspot/extremity will trigger reduced power for some bands applied to satisfy SAR compliance, the detail please referred to section 12.																																																														

Transmission (H, M, L) channel numbers and frequencies in each LTE band								
LTE Band 5								
	Bandwidth 1.4 MHz		Bandwidth 3 MHz		Bandwidth 5 MHz		Bandwidth 10 MHz	
	Ch. #	Freq. (MHz)	Ch. #	Freq. (MHz)	Ch. #	Freq. (MHz)	Ch. #	Freq. (MHz)
L	20407	824.7	20415	825.5	20425	826.5	20450	829
M	20525	836.5	20525	836.5	20525	836.5	20525	836.5
H	20643	848.3	20635	847.5	20625	846.5	20600	844

LTE Band 7								
	Bandwidth 5 MHz		Bandwidth 10 MHz		Bandwidth 15 MHz		Bandwidth 20 MHz	
	Ch. #	Freq. (MHz)	Ch. #	Freq. (MHz)	Ch. #	Freq. (MHz)	Ch. #	Freq. (MHz)
L	20775	2502.5	20800	2505	20825	2507.5	20850	2510
M	21100	2535	21100	2535	21100	2535	21100	2535
H	21425	2567.5	21400	2565	21375	2562.5	21350	2560

LTE Band 38								
	Bandwidth 5 MHz		Bandwidth 10 MHz		Bandwidth 15 MHz		Bandwidth 20 MHz	
	Ch. #	Freq. (MHz)	Ch. #	Freq. (MHz)	Ch. #	Freq. (MHz)	Ch. #	Freq. (MHz)
L	37775	2572.5	37800	2575	37825	2577.5	37850	2580
M	38000	2595	38000	2595	38000	2595	38000	2595
H	38225	2617.5	38200	2615	38175	2612.5	38150	2610

LTE Band 41								
	Bandwidth 5 MHz		Bandwidth 10 MHz		Bandwidth 15 MHz		Bandwidth 20 MHz	
	Ch. #	Freq. (MHz)	Ch. #	Freq. (MHz)	Ch. #	Freq. (MHz)	Ch. #	Freq. (MHz)
L	40065	2537.5	40090	2540	40115	2542.5	40140	2545
LM	40385	2569.5	40390	2570	40395	2570.5	40400	2571
HM	40705	2601.5	40690	2600	40685	2599.5	40670	2598
H	41215	2652.5	41190	2650	41165	2647.5	41140	2645

<For LTE Overlap Bands Description>

1) LTE Bands BW

Band	1.4 MHz	3 MHz	5 MHz	10 MHz	15 MHz	20 MHz
LTE Band 38			Yes	Yes	Yes	Yes
LTE Band 41			Yes	Yes	Yes	Yes

2) LTE Bands tune up

Band	Antenna	Default	Head (Receive on)	Hotspot	Extremity/Body worn (Receive off)
		Tune-up Limit	Tune-up Limit	Tune-up Limit	Tune-up Limit
LTE Band 38	Ant 0	24	24	15	15
LTE Band 41		24	24	15	15
LTE Band 38	Ant 3	24	19	17	17.5
LTE Band 41		24	19	17	17.5

5. RF Exposure Limits

5.1 Uncontrolled Environment

Uncontrolled Environments are defined as locations where there is the exposure of individuals who have no knowledge or control of their exposure. The general population/uncontrolled exposure limits are applicable to situations in which the general public may be exposed or in which persons who are exposed as a consequence of their employment may not be made fully aware of the potential for exposure or cannot exercise control over their exposure. Members of the general public would come under this category when exposure is not employment-related; for example, in the case of a wireless transmitter that exposes persons in its vicinity.

5.2 Controlled Environment

Controlled Environments are defined as locations where there is exposure that may be incurred by persons who are aware of the potential for exposure, (i.e. as a result of employment or occupation). In general, occupational/controlled exposure limits are applicable to situations in which persons are exposed as a consequence of their employment, who have been made fully aware of the potential for exposure and can exercise control over their exposure. The exposure category is also applicable when the exposure is of a transient nature due to incidental passage through a location where the exposure levels may be higher than the general population/uncontrolled limits, but the exposed person is fully aware of the potential for exposure and can exercise control over his or her exposure by leaving the area or by some other appropriate means.

Limits for Occupational/Controlled Exposure (W/kg)

Whole-Body	Partial-Body	Hands, Wrists, Feet and Ankles
0.4	8.0	20.0

Limits for General Population/Uncontrolled Exposure (W/kg)

Whole-Body	Partial-Body	Hands, Wrists, Feet and Ankles
0.08	1.6	4.0

Whole-Body SAR is averaged over the entire body, partial-body SAR is averaged over any 1gram of tissue defined as a tissue volume in the shape of a cube. SAR for hands, wrists, feet and ankles is averaged over any 10 grams of tissue defined as a tissue volume in the shape of a cube.

6. Specific Absorption Rate (SAR)

6.1 Introduction

SAR is related to the rate at which energy is absorbed per unit mass in an object exposed to a radio field. The SAR distribution in a biological body is complicated and is usually carried out by experimental techniques or numerical modeling. The standard recommends limits for two tiers of groups, occupational/controlled and general population/uncontrolled, based on a person's awareness and ability to exercise control over his or her exposure. In general, occupational/controlled exposure limits are higher than the limits for general population/uncontrolled.

6.2 SAR Definition

The SAR definition is the time derivative (rate) of the incremental energy (dW) absorbed by (dissipated in) an incremental mass (dm) contained in a volume element (dv) of a given density (ρ). The equation description is as below:

$$SAR = \frac{d}{dt} \left(\frac{dW}{dm} \right) = \frac{d}{dt} \left(\frac{dW}{\rho dv} \right)$$

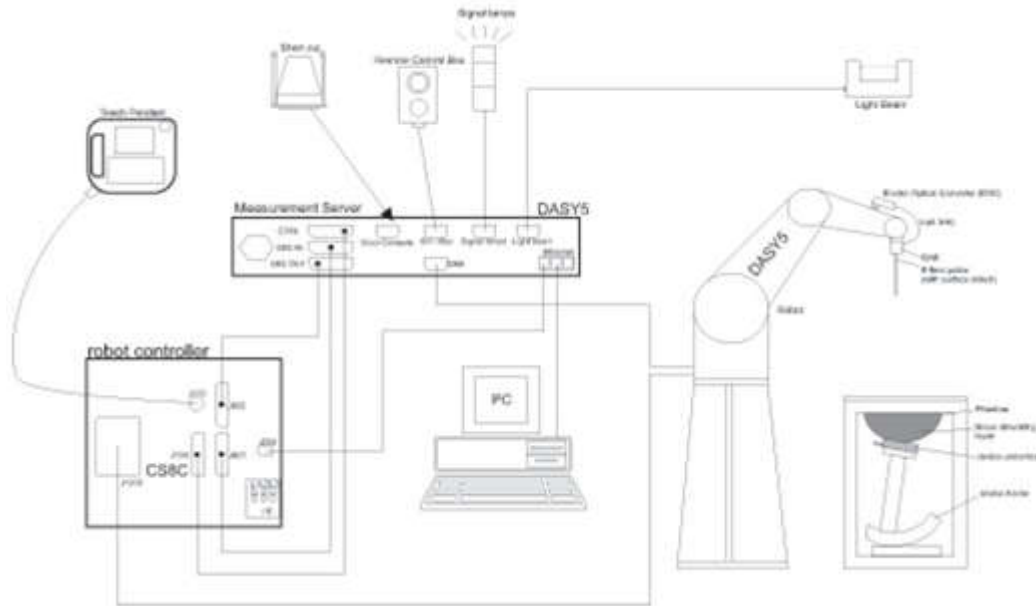
SAR is expressed in units of Watts per kilogram (W/kg)

$$SAR = \frac{\sigma |E|^2}{\rho}$$

Where: σ is the conductivity of the tissue, ρ is the mass density of the tissue and E is the RMS electrical field strength.

7. System Description and Setup

The DASY system used for performing compliance tests consists of the following items:




- A standard high precision 6-axis robot with controller, teach pendant and software. An arm extension for accommodating the data acquisition electronics (DAE).
- An isotropic Field probe optimized and calibrated for the targeted measurement.
- A data acquisition electronics (DAE) which performs the signal amplification, signal multiplexing, AD-conversion, offset measurements, mechanical surface detection, collision detection, etc. The unit is battery powered with standard or rechargeable batteries. The signal is optically transmitted to the EOC.
- The Electro-optical converter (EOC) performs the conversion from optical to electrical signals for the digital communication to the DAE. To use optical surface detection, a special version of the EOC is required. The EOC signal is transmitted to the measurement server.
- The function of the measurement server is to perform the time critical tasks such as signal filtering, control of the robot operation and fast movement interrupts.
- The Light Beam used is for probe alignment. This improves the (absolute) accuracy of the probe positioning.
- A computer running WinXP or Win7 and the DASY5 software.
- Remote control and teach pendant as well as additional circuitry for robot safety such as warning lamps, etc.
- The phantom, the device holder and other accessories according to the targeted measurement.

7.1 E-Field Probe

The SAR measurement is conducted with the dosimetric probe (manufactured by SPEAG).The probe is specially designed and calibrated for use in liquid with high permittivity. The dosimetric probe has special calibration in liquid at different frequency. This probe has a built in optical surface detection system to prevent from collision with phantom.

<EX3DV4 Probe>

Construction	Symmetric design with triangular core Built-in shielding against static charges PEEK enclosure material (resistant to organic solvents, e.g., DGBE)	
Frequency	4 MHz – 10 GHz Linearity: ± 0.2 dB (30 MHz – 10 GHz)	
Directivity	± 0.3 dB in TSL (rotation around probe axis) ± 0.5 dB in TSL (rotation normal to probe axis)	
Dynamic Range	10 μ W/g – >100 mW/g Linearity: ± 0.2 dB (noise: typically <1 μ W/g)	
Dimensions	Overall length: 337 mm (tip: 20 mm) Tip diameter: 2.5 mm (body: 12 mm) Typical distance from probe tip to dipole centers: 1 mm	

7.2 Data Acquisition Electronics (DAE)

The data acquisition electronics (DAE) consists of a highly sensitive electrometer-grade preamplifier with auto-zeroing, a channel and gain-switching multiplexer, a fast 16 bit AD-converter and a command decoder and control logic unit. Transmission to the measurement server is accomplished through an optical downlink for data and status information as well as an optical uplink for commands and the clock.


The input impedance of the DAE is 200 MOhm; the inputs are symmetrical and floating. Common mode rejection is above 80 dB.



Photo of DAE


7.3 Phantom

<SAM Twin Phantom>

Shell Thickness	2 ± 0.2 mm; Center ear point: 6 ± 0.2 mm	
Filling Volume	Approx. 25 liters	
Dimensions	Length: 1000 mm; Width: 500 mm; Height: adjustable feet	
Measurement Areas	Left Hand, Right Hand, Flat Phantom	

The bottom plate contains three pair of bolts for locking the device holder. The device holder positions are adjusted to the standard measurement positions in the three sections. A white cover is provided to tap the phantom during off-periods to prevent water evaporation and changes in the liquid parameters. On the phantom top, three reference markers are provided to identify the phantom position with respect to the robot.

<ELI Phantom>

Shell Thickness	2 ± 0.2 mm (sagging: <1%)	
Filling Volume	Approx. 30 liters	
Dimensions	Major ellipse axis: 600 mm Minor axis: 400 mm	

The ELI phantom is intended for compliance testing of handheld and body-mounted wireless devices or for evaluating transmitters operating at low frequencies. ELI is fully compatible with standard and all known tissue simulating liquids.

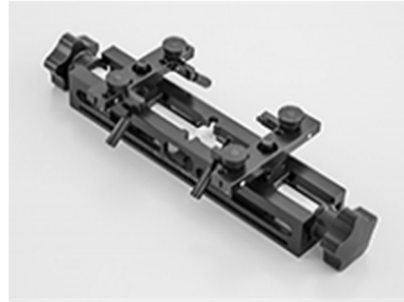
7.4 Device Holder

<Mounting Device for Hand-Held Transmitter>

In combination with the Twin SAM V5.0/V5.0c or ELI phantoms, the Mounting Device for Hand-Held Transmitters enables rotation of the mounted transmitter device to specified spherical coordinates. At the heads, the rotation axis is at the ear opening. Transmitter devices can be easily and accurately positioned according to IEC 62209-1, IEEE 1528, FCC, or other specifications. The device holder can be locked for positioning at different phantom sections (left head, right head, flat). And upgrade kit to Mounting Device to enable easy mounting of wider devices like big smart-phones, e-books, small tablets, etc. It holds devices with width up to 140 mm.



Mounting Device for Hand-Held Transmitters



Mounting Device Adaptor for Wide-Phones

<Mounting Device for Laptops and other Body-Worn Transmitters>

The extension is lightweight and made of POM, acrylic glass and foam. It fits easily on the upper part of the mounting device in place of the phone positioned. The extension is fully compatible with the SAM Twin and ELI phantoms.



Mounting Device for Laptops

8. Measurement Procedures

The measurement procedures are as follows:

<Conducted power measurement>

- (a) For WWAN power measurement, use base station simulator to configure EUT WWAN transmission in conducted connection with RF cable, at maximum power in each supported wireless interface and frequency band.
- (b) Read the WWAN RF power level from the base station simulator.
- (c) For WLAN/BT power measurement, use engineering software to configure EUT WLAN/BT continuously transmission, at maximum RF power in each supported wireless interface and frequency band
- (d) Connect EUT RF port through RF cable to the power meter, and measure WLAN/BT output power

<SAR measurement>

- (a) Use base station simulator to configure EUT WWAN transmission in radiated connection, and engineering software to configure EUT WLAN/BT continuously transmission, at maximum RF power, in the highest power channel.
- (b) Place the EUT in the positions as Appendix D demonstrates.
- (c) Set scan area, grid size and other setting on the DASY software.
- (d) Measure SAR results for the highest power channel on each testing position.
- (e) Find out the largest SAR result on these testing positions of each band
- (f) Measure SAR results for other channels in worst SAR testing position if the reported SAR of highest power channel is larger than 0.8 W/kg

According to the test standard, the recommended procedure for assessing the peak spatial-average SAR value consists of the following steps:

- (a) Power reference measurement
- (b) Area scan
- (c) Zoom scan
- (d) Power drift measurement

8.1 Spatial Peak SAR Evaluation

The procedure for spatial peak SAR evaluation has been implemented according to the test standard. It can be conducted for 1g and 10g, as well as for user-specific masses. The DASY software includes all numerical procedures necessary to evaluate the spatial peak SAR value.

The base for the evaluation is a "cube" measurement. The measured volume must include the 1g and 10g cubes with the highest averaged SAR values. For that purpose, the center of the measured volume is aligned to the interpolated peak SAR value of a previously performed area scan.

The entire evaluation of the spatial peak values is performed within the post-processing engine (SEMCAD). The system always gives the maximum values for the 1g and 10g cubes. The algorithm to find the cube with highest averaged SAR is divided into the following stages:

- (a) Extraction of the measured data (grid and values) from the Zoom Scan
- (b) Calculation of the SAR value at every measurement point based on all stored data (A/D values and measurement parameters)
- (c) Generation of a high-resolution mesh within the measured volume
- (d) Interpolation of all measured values from the measurement grid to the high-resolution grid
- (e) Extrapolation of the entire 3-D field distribution to the phantom surface over the distance from sensor to surface
- (f) Calculation of the averaged SAR within masses of 1g and 10g

8.2 Power Reference Measurement

The Power Reference Measurement and Power Drift Measurements are for monitoring the power drift of the device under test in the batch process. The minimum distance of probe sensors to surface determines the closest measurement point to phantom surface. This distance cannot be smaller than the distance of sensor calibration points to probe tip as defined in the probe properties.

8.3 Area Scan

The area scan is used as a fast scan in two dimensions to find the area of high field values, before doing a fine measurement around the hot spot. The sophisticated interpolation routines implemented in DASY software can find the maximum found in the scanned area, within a range of the global maximum. The range (in dB0 is specified in the standards for compliance testing. For example, a 2 dB range is required in IEEE standard 1528 and IEC 62209 standards, whereby 3 dB is a requirement when compliance is assessed in accordance with the ARIB standard (Japan), if only one zoom scan follows the area scan, then only the absolute maximum will be taken as reference. For cases where multiple maximums are detected, the number of zoom scans has to be increased accordingly.

Area scan parameters extracted from FCC KDB 865664 D01v01r04 SAR measurement 100 MHz to 6 GHz.

	≤ 3 GHz	> 3 GHz
Maximum distance from closest measurement point (geometric center of probe sensors) to phantom surface	5 ± 1 mm	$\frac{1}{2} \cdot \delta \cdot \ln(2) \pm 0.5$ mm
Maximum probe angle from probe axis to phantom surface normal at the measurement location	30° ± 1°	20° ± 1°
Maximum area scan spatial resolution: $\Delta x_{Area}, \Delta y_{Area}$	≤ 2 GHz: ≤ 15 mm 2 – 3 GHz: ≤ 12 mm	3 – 4 GHz: ≤ 12 mm 4 – 6 GHz: ≤ 10 mm
	When the x or y dimension of the test device, in the measurement plane orientation, is smaller than the above, the measurement resolution must be ≤ the corresponding x or y dimension of the test device with at least one measurement point on the test device.	

8.4 Zoom Scan

Zoom scans are used assess the peak spatial SAR values within a cubic averaging volume containing 1 gram and 10 gram of simulated tissue. The zoom scan measures points (refer to table below) within a cube shoes base faces are centered on the maxima found in a preceding area scan job within the same procedure. When the measurement is done, the zoom scan evaluates the averaged SAR for 1 gram and 10 gram and displays these values next to the job's label.

Zoom scan parameters extracted from FCC KDB 865664 D01v01r04 SAR measurement 100 MHz to 6 GHz.

		≤ 3 GHz	> 3 GHz	
Maximum zoom scan spatial resolution: $\Delta x_{Zoom}, \Delta y_{Zoom}$		≤ 2 GHz: ≤ 8 mm 2 – 3 GHz: ≤ 5 mm*	3 – 4 GHz: ≤ 5 mm* 4 – 6 GHz: ≤ 4 mm*	
Maximum zoom scan spatial resolution, normal to phantom surface	uniform grid: $\Delta z_{Zoom}(n)$	≤ 5 mm	3 – 4 GHz: ≤ 4 mm 4 – 5 GHz: ≤ 3 mm 5 – 6 GHz: ≤ 2 mm	
	graded grid	$\Delta z_{Zoom}(1)$: between 1 st two points closest to phantom surface	≤ 4 mm	3 – 4 GHz: ≤ 3 mm 4 – 5 GHz: ≤ 2.5 mm 5 – 6 GHz: ≤ 2 mm
		$\Delta z_{Zoom}(n>1)$: between subsequent points	$\leq 1.5 \cdot \Delta z_{Zoom}(n-1)$	
Minimum zoom scan volume	x, y, z	≥ 30 mm	3 – 4 GHz: ≥ 28 mm 4 – 5 GHz: ≥ 25 mm 5 – 6 GHz: ≥ 22 mm	
Note: δ is the penetration depth of a plane-wave at normal incidence to the tissue medium; see draft standard IEEE P1528-2011 for details. * When zoom scan is required and the <i>reported</i> SAR from the <i>area scan based 1-g SAR estimation</i> procedures of KDB 447498 is ≤ 1.4 W/kg, ≤ 8 mm, ≤ 7 mm and ≤ 5 mm zoom scan resolution may be applied, respectively, for 2 GHz to 3 GHz, 3 GHz to 4 GHz and 4 GHz to 6 GHz.				

8.5 Volume Scan Procedures

The volume scan is used for assess overlapping SAR distributions for antennas transmitting in different frequency bands. It is equivalent to an oversized zoom scan used in standalone measurements. The measurement volume will be used to enclose all the simultaneous transmitting antennas. For antennas transmitting simultaneously in different frequency bands, the volume scan is measured separately in each frequency band. In order to sum correctly to compute the 1g aggregate SAR, the EUT remain in the same test position for all measurements and all volume scan use the same spatial resolution and grid spacing. When all volume scan were completed, the software, SEMCAD postprocessor can combine and subsequently superpose these measurement data to calculating the multiband SAR.

8.6 Power Drift Monitoring

All SAR testing is under the EUT install full charged battery and transmit maximum output power. In DASy measurement software, the power reference measurement and power drift measurement procedures are used for monitoring the power drift of EUT during SAR test. Both these procedures measure the field at a specified reference position before and after the SAR testing. The software will calculate the field difference in dB. If the power drifts more than 5%, the SAR will be retested.



9. Test Equipment List

Manufacturer	Name of Equipment	Type/Model	Serial Number	Calibration	
				Last Cal.	Due Date
SPEAG	835MHz System Validation Kit	D835V2	4d162	Dec. 17, 2021	Dec. 15, 2024
SPEAG	2450MHz System Validation Kit	D2450V2	924	Nov. 03, 2023	Nov. 02, 2024
SPEAG	2600MHz System Validation Kit	D2600V2	1070	Dec. 20, 2021	Dec. 18, 2024
SPEAG	5000MHz System Validation Kit	D5GHzV2	1341	Dec. 13, 2021	Dec. 11, 2024
SPEAG	Data Acquisition Electronics	DAE4	1437	Mar. 14, 2024	Mar. 13, 2025
SPEAG	Dosimetric E-Field Probe	EX3DV4	7577	Dec. 13, 2023	Dec. 12, 2024
SPEAG	SAM Twin Phantom	QD 000 P40 CD	1671	NCR	NCR
SPEAG	Phone Positioner	N/A	N/A	NCR	NCR
Anritsu	Radio communication analyzer	MT8820C	6201341952	Dec. 28, 2023	Dec. 27, 2024
Anritsu	Radio communication analyzer	MT8820C	6201563813	Dec. 28, 2023	Dec. 27, 2024
Anritsu	Radio communication analyzer	MT8821C	6272416837	Apr. 08, 2024	Apr. 07, 2025
Anritsu	Radio communication analyzer	MT8821C	6272416846	Apr. 08, 2024	Apr. 07, 2025
Agilent	Wireless Communication Test Set	E5515C	MY50267224	Jul. 03, 2024	Jul. 02, 2025
Keysight	Network Analyzer	E5071C	MY46523671	Oct. 16, 2023	Oct. 15, 2024
Keysight	Network Analyzer	E5071C	MY46523671	Oct. 15, 2024	Oct. 14, 2025
Speag	Dielectric Assessment KIT	DAK-3.5	1071	Feb. 19, 2024	Feb. 18, 2025
Agilent	Signal Generator	N5181A	MY50145381	Dec. 28, 2023	Dec. 27, 2024
Anritsu	Power Sensor	MA2411B	1306099	Oct. 16, 2023	Oct. 15, 2024
Anritsu	Power Sensor	MA2411B	1306099	Oct. 15, 2024	Oct. 14, 2025
Anritsu	Power Meter	ML2495A	1349001	Oct. 16, 2023	Oct. 15, 2024
Anritsu	Power Meter	ML2495A	1349001	Oct. 15, 2024	Oct. 14, 2025
Anritsu	Power Sensor	MA2411B	1542004	Dec. 28, 2023	Dec. 27, 2024
Anritsu	Power Meter	ML2495A	1339473	Dec. 28, 2023	Dec. 27, 2024
R&S	CBT BLUETOOTH TESTER	CBT	100963	Dec. 28, 2023	Dec. 27, 2024
R&S	Spectrum Analyzer	FSP7	100818	Jul. 04, 2024	Jul. 03, 2025
TES	Hygrometer	1310	200505600	Jul. 08, 2024	Jul. 07, 2025
Anymetre	Thermo-Hygrometer	JR593	2015030903	Jan. 02, 2024	Jan. 01, 2025
Anymetre	Thermo-Hygrometer	JR593	2015102801	Jan. 02, 2024	Jan. 01, 2025
SPEAG	Device Holder	N/A	N/A	N/A	N/A
AR	Amplifier	5S1G4	0333096	Note 1	
Mini-Circuits	Amplifier	ZVE-3W-83+	599201528	Note 1	
Mini-Circuits	Amplifier	ZVA-183W-S+	726202215	Note 1	
ARRA	Power Divider	A3200-2	N/A	Note 1	
ET Industries	Dual Directional Coupler	C-058-10	N/A	Note 1	
Jinkexinhua	Attenuator	10db-8G	N/A	Note 1	

Note:

1. Prior to system verification and validation, the path loss from the signal generator to the system check source and the power meter, which includes the amplifier, cable, attenuator and directional coupler, was measured by the network analyzer. The reading of the power meter was offset by the path loss difference between the path to the power meter and the path to the system check source to monitor the actual power level fed to the system check source.
2. The dipole calibration interval can be extended to 3 years with justification according to KDB 865664 D01. The dipoles are also not physically damaged, or repaired during the interval. The justification data in appendix C can be found which the return loss is < -20dB, within 20% of prior calibration, the impedance is within 5 ohm of prior calibration for each dipole.

10. System Verification

10.1 Tissue Simulating Liquids

For the measurement of the field distribution inside the SAM phantom with DASY, the phantom must be filled with around 25 liters of homogeneous body tissue simulating liquid. For head SAR testing, the liquid height from the ear reference point (ERP) of the phantom to the liquid top surface is larger than 15 cm, which is shown in Fig. 10.1. For body SAR testing, the liquid height from the center of the flat phantom to the liquid top surface is larger than 15 cm, which is shown in Fig. 10.2.

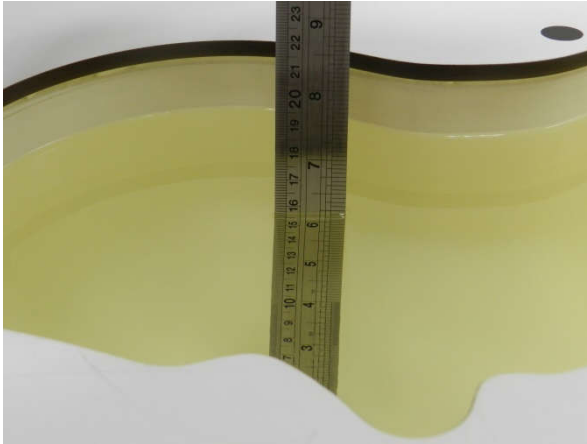


Fig 10.1 Photo of Liquid Height for Head SAR

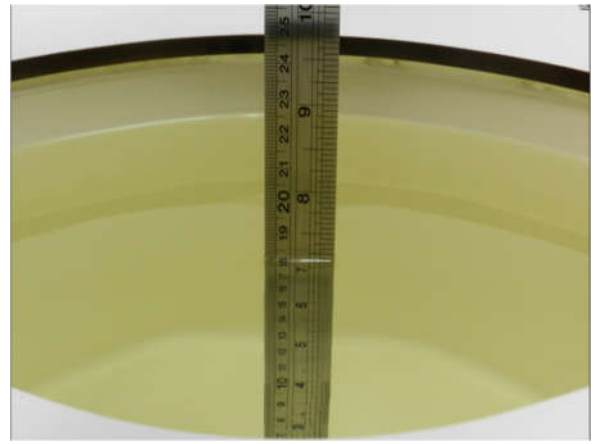


Fig 10.2 Photo of Liquid Height for Body SAR

10.2 Tissue Verification

The following tissue formulations are provided for reference only as some of the parameters have not been thoroughly verified. The composition of ingredients may be modified accordingly to achieve the desired target tissue parameters required for routine SAR evaluation.

Frequency (MHz)	Water (%)	Sugar (%)	Cellulose (%)	Salt (%)	Preventol (%)	DGBE (%)	Conductivity (σ)	Permittivity (ε _r)
For Head								
835	40.3	57.9	0.2	1.4	0.2	0	0.90	41.5
900	40.3	57.9	0.2	1.4	0.2	0	0.97	41.5
1800, 1900, 2000	55.2	0	0	0.3	0	44.5	1.40	40.0
2450	55.0	0	0	0	0	45.0	1.80	39.2
2600	54.8	0	0	0.1	0	45.1	1.96	39.0

Simulating Liquid for 5GHz, Manufactured by SPEAG

Ingredients	(% by weight)
Water	64~78%
Mineral oil	11~18%
Emulsifiers	9~15%
Additives and Salt	2~3%

<Tissue Dielectric Parameter Check Results>

Frequency (MHz)	Tissue Type	Liquid Temp. (°C)	Conductivity (σ)	Permittivity (ε _r)	Conductivity Target (σ)	Permittivity Target (ε _r)	Delta (σ) (%)	Delta (ε _r) (%)	Limit (%)	Date
835	Head	22.1	0.935	42.341	0.90	41.50	3.89	2.03	±5	2024/9/12
835	Head	22.5	0.941	42.768	0.90	41.50	4.56	3.06	±5	2024/9/23
2450	Head	22.7	1.826	39.430	1.80	39.20	1.44	0.59	±5	2024/9/17
2450	Head	22.2	1.797	40.232	1.80	39.20	-0.17	2.63	±5	2024/9/29
2600	Head	22.2	1.939	39.196	1.96	39.00	-1.07	0.50	±5	2024/9/19
2600	Head	22.5	1.914	40.031	1.96	39.00	-2.35	2.64	±5	2024/10/1
5250	Head	22.6	4.590	35.763	4.71	35.95	-2.55	-0.52	±5	2024/9/23
5250	Head	22.3	4.529	35.806	4.71	35.95	-3.84	-0.40	±5	2024/10/7
5600	Head	22.1	4.953	35.269	5.07	35.50	-2.31	-0.65	±5	2024/9/25
5600	Head	22.7	4.914	35.202	5.07	35.50	-3.08	-0.84	±5	2024/10/10
5750	Head	22.5	5.112	35.065	5.22	35.35	-2.07	-0.81	±5	2024/9/27
5750	Head	22.2	5.081	34.921	5.22	35.35	-2.66	-1.21	±5	2024/10/17

10.3 System Performance Check Results

Comparing to the original SAR value provided by SPEAG, the verification data should be within its specification of 10 %. Below table shows the target SAR and measured SAR after normalized to 1W input power. The table below indicates the system performance check can meet the variation criterion and the plots can be referred to Appendix A of this report.

<1g SAR>

Date	Frequency (MHz)	Tissue Type	Input Power (mW)	Dipole S/N	Probe S/N	DAE S/N	Measured 1g SAR (W/kg)	Targeted 1g SAR (W/kg)	Normalized 1g SAR (W/kg)	Deviation (%)
2024/9/12	835	Head	250	4d162	7577	1437	2.450	9.640	9.8	1.66
2024/9/23	835	Head	250	4d162	7577	1437	2.500	9.640	10	3.73
2024/9/17	2450	Head	250	924	7577	1437	12.800	52.300	51.2	-2.10
2024/9/29	2450	Head	250	924	7577	1437	13.200	52.300	52.8	0.96
2024/9/19	2600	Head	250	1070	7577	1437	13.700	56.200	54.8	-2.49
2024/10/1	2600	Head	250	1070	7577	1437	14.300	56.200	57.2	1.78
2024/9/23	5250	Head	100	1341	7577	1437	8.030	80.700	80.3	-0.50
2024/10/7	5250	Head	100	1341	7577	1437	7.740	80.700	77.4	-4.09
2024/9/25	5600	Head	100	1341	7577	1437	7.870	84.500	78.7	-6.86
2024/10/10	5600	Head	100	1341	7577	1437	8.800	84.500	88	4.14
2024/9/27	5750	Head	100	1341	7577	1437	7.790	80.600	77.9	-3.35
2024/10/17	5750	Head	100	1341	7577	1437	8.390	80.600	83.9	4.09

<10g SAR>

Date	Frequency (MHz)	Tissue Type	Input Power (mW)	Dipole S/N	Probe S/N	DAE S/N	Measured 10g SAR (W/kg)	Targeted 10g SAR (W/kg)	Normalized 10g SAR (W/kg)	Deviation (%)
2024/9/12	835	Head	250	4d162	7577	1437	1.600	6.260	6.4	2.24
2024/9/23	835	Head	250	4d162	7577	1437	1.620	6.260	6.48	3.51
2024/9/17	2450	Head	250	924	7577	1437	5.840	24.500	23.36	-4.65
2024/9/29	2450	Head	250	924	7577	1437	6.170	24.500	24.68	0.73
2024/9/19	2600	Head	250	1070	7577	1437	6.020	24.600	24.08	-2.11
2024/10/1	2600	Head	250	1070	7577	1437	6.440	24.600	25.76	4.72
2024/9/23	5250	Head	100	1341	7577	1437	2.300	23.100	23	-0.43
2024/10/7	5250	Head	100	1341	7577	1437	2.170	23.100	21.7	-6.06
2024/9/25	5600	Head	100	1341	7577	1437	2.280	24.000	22.8	-5.00
2024/10/10	5600	Head	100	1341	7577	1437	2.480	24.000	24.8	3.33
2024/9/27	5750	Head	100	1341	7577	1437	2.180	22.700	21.8	-3.96
2024/10/17	5750	Head	100	1341	7577	1437	2.330	22.700	23.3	2.64

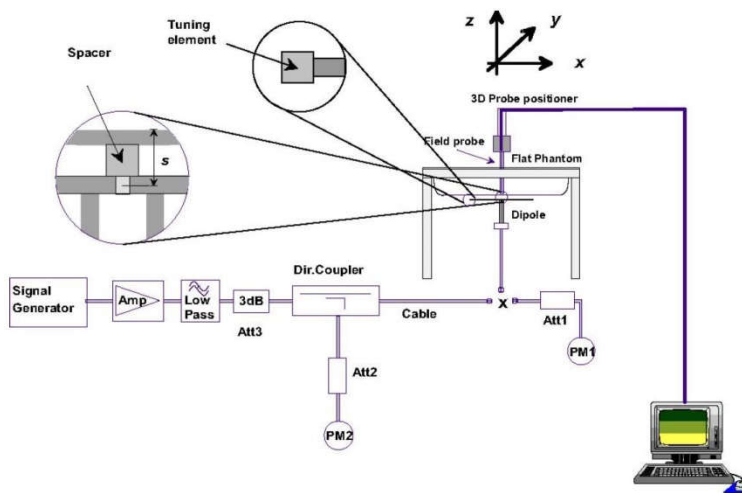


Fig 10.3.1 System Performance Check Setup



Fig 10.3.2 Setup Photo

11. RF Exposure Positions

11.1 Ear and handset reference point

Figure 11.1.1 shows the front, back, and side views of the SAM phantom. The center-of-mouth reference point is labeled "M," the left ear reference point (ERP) is marked "LE," and the right ERP is marked "RE." Each ERP is 15 mm along the B-M (back-mouth) line behind the entrance-to-ear-canal (EEC) point, as shown in Figure 11.1.2 The Reference Plane is defined as passing through the two ear reference points and point M. The line N-F (neck-front), also called the reference pivoting line, is normal to the Reference Plane and perpendicular to both a line passing through RE and LE and the B-M line (see Figure 11.1.3). Both N-F and B-M lines should be marked on the exterior of the phantom shell to facilitate handset positioning. Posterior to the N-F line the ear shape is a flat surface with 6 mm thickness at each ERP, and forward of the N-F line the ear is truncated, as illustrated in Figure 11.1.2. The ear truncation is introduced to preclude the ear lobe from interfering with handset tilt, which could lead to unstable positioning at the cheek.

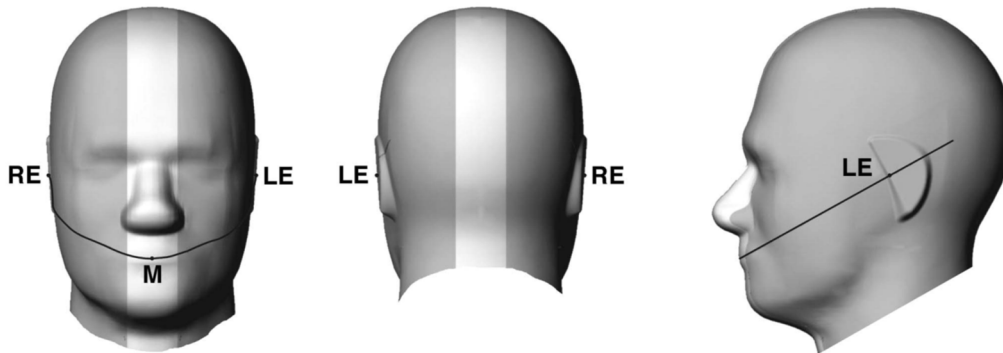


Fig 11.1.1 Front, back, and side views of SAM twin phantom

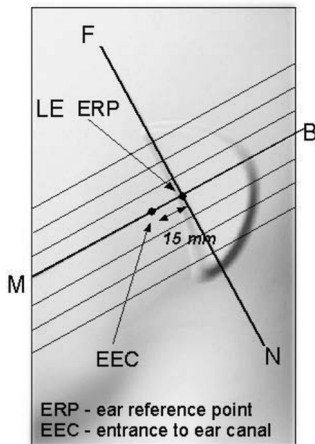


Fig 11.1.2 Close-up side view of phantom showing the ear region.

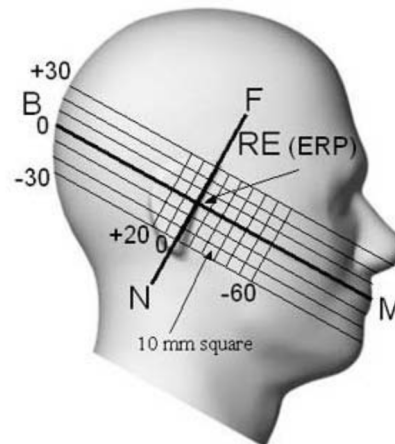


Fig 11.1.3 Side view of the phantom showing relevant markings and seven cross-sectional plane locations

11.2 Definition of the cheek position

1. Ready the handset for talk operation, if necessary. For example, for handsets with a cover piece (flip cover), open the cover. If the handset can transmit with the cover closed, both configurations must be tested.
2. Define two imaginary lines on the handset—the vertical centerline and the horizontal line. The vertical centerline passes through two points on the front side of the handset—the midpoint of the width w_t of the handset at the level of the acoustic output (point A in Figure 11.2.1 and Figure 11.2.2), and the midpoint of the width w_b of the bottom of the handset (point B). The horizontal line is perpendicular to the vertical centerline and passes through the center of the acoustic output (see Figure 11.2.1). The two lines intersect at point A. Note that for many handsets, point A coincides with the center of the acoustic output; however, the acoustic output may be located elsewhere on the horizontal line. Also note that the vertical centerline is not necessarily parallel to the front face of the handset (see Figure 11.2.2), especially for clamshell handsets, handsets with flip covers, and other irregularly-shaped handsets.
3. Position the handset close to the surface of the phantom such that point A is on the (virtual) extension of the line passing through points RE and LE on the phantom (see Figure 11.2.3), such that the plane defined by the vertical centerline and the horizontal line of the handset is approximately parallel to the sagittal plane of the phantom.
4. Translate the handset towards the phantom along the line passing through RE and LE until handset point A touches the pinna at the ERP.
5. While maintaining the handset in this plane, rotate it around the LE-RE line until the vertical centerline is in the plane normal to the plane containing B-M and N-F lines, i.e., the Reference Plane.
6. Rotate the handset around the vertical centerline until the handset (horizontal line) is parallel to the N-F line.
7. While maintaining the vertical centerline in the Reference Plane, keeping point A on the line passing through RE and LE, and maintaining the handset contact with the pinna, rotate the handset about the N-F line until any point on the handset is in contact with a phantom point below the pinna on the cheek. See Figure 11.2.3. The actual rotation angles should be documented in the test report.

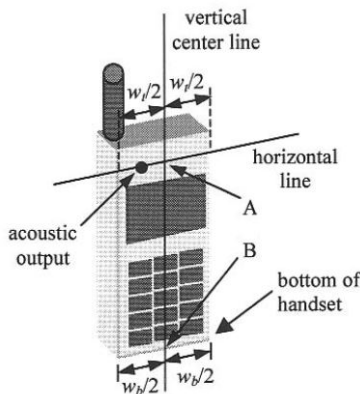


Fig 11.2.1 Handset vertical and horizontal reference lines—“fixed case”

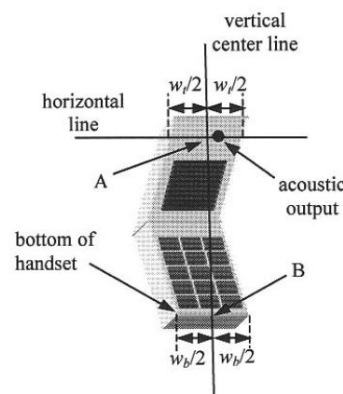


Fig 11.2.2 Handset vertical and horizontal reference lines—“clam-shell case”

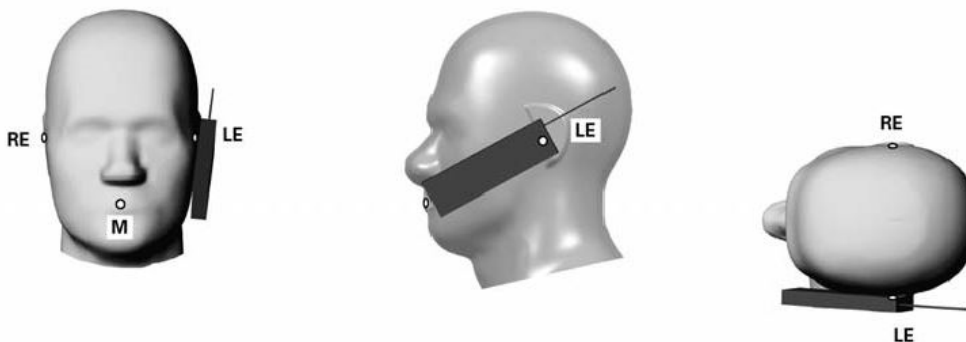


Fig 11.2.3 cheek or touch position. The reference points for the right ear (RE), left ear (LE), and mouth (M), which establish the Reference Plane for handset positioning, are indicated.

11.3 Definition of the tilt position

1. Ready the handset for talk operation, if necessary. For example, for handsets with a cover piece (flip cover), open the cover. If the handset can transmit with the cover closed, both configurations must be tested.
2. While maintaining the orientation of the handset, move the handset away from the pinna along the line passing through RE and LE far enough to allow a rotation of the handset away from the cheek by 15°.
3. Rotate the handset around the horizontal line by 15°.
4. While maintaining the orientation of the handset, move the handset towards the phantom on the line passing through RE and LE until any part of the handset touches the ear. The tilt position is obtained when the contact point is on the pinna. See Figure 11.3.1. If contact occurs at any location other than the pinna, e.g., the antenna at the back of the phantom head, the angle of the handset should be reduced. In this case, the tilt position is obtained if any point on the handset is in contact with the pinna and a second point

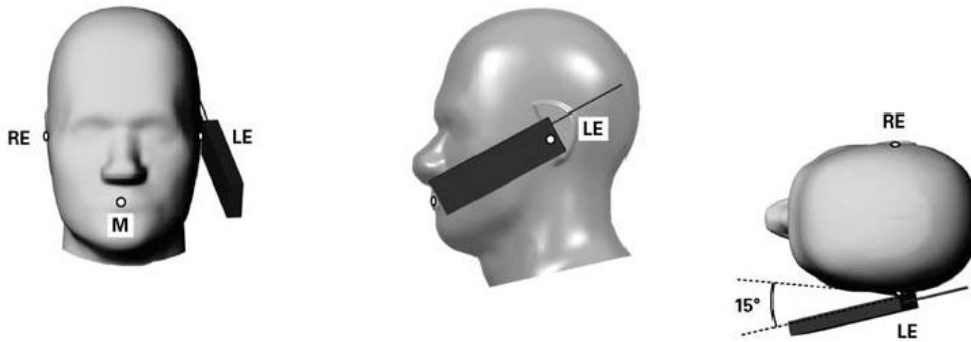


Fig 11.3.1 Tilt position. The reference points for the right ear (RE), left ear (LE), and mouth (M), which define the Reference Plane for handset positioning, are indicated.

11.4 Body Worn Accessory

Body-worn operating configurations are tested with the belt-clips and holsters attached to the device and positioned against a flat phantom in a normal use configuration (see Figure 11.4). Per KDB648474 D04v01r03, body-worn accessory exposure is typically related to voice mode operations when handsets are carried in body-worn accessories. The body-worn accessory procedures in FCC KDB 447498 D01v06 should be used to test for body-worn accessory SAR compliance, without a headset connected to it. This enables the test results for such configuration to be compatible with that required for hotspot mode when the body-worn accessory test separation distance is greater than or equal to that required for hotspot mode, when applicable. When the reported SAR for body-worn accessory, measured without a headset connected to the handset is $> 1.2 \text{ W/kg}$, the highest reported SAR configuration for that wireless mode and frequency band should be repeated for that body-worn accessory with a handset attached to the handset.

Accessories for body-worn operation configurations are divided into two categories: those that do not contain metallic components and those that do contain metallic components. When multiple accessories that do not contain metallic components are supplied with the device, the device is tested with only the accessory that dictates the closest spacing to the body. Then multiple accessories that contain metallic components are tested with the device with each accessory. If multiple accessories share an identical metallic component (i.e. the same metallic belt-clip used with different holsters with no other metallic components) only the accessory that dictates the closest spacing to the body is tested.

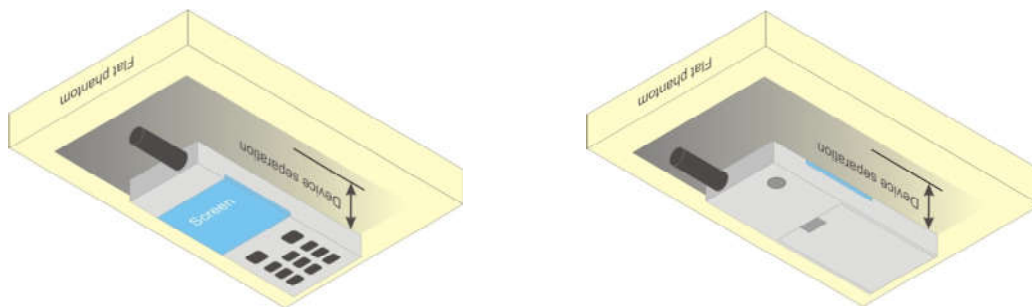


Fig 11.4 Body Worn Position



11.5 Product Specific 10g SAR Exposure

For smart phones with a display diagonal dimension > 15.0 cm or an overall diagonal dimension > 16.0 cm, that can provide similar mobile web access and multimedia support found in mini-tablets or UMPC mini-tablets and support voice calls next to the ear, according to KDB648474 D04v01r03, the following phablet procedures should be applied to evaluate SAR compliance for each applicable wireless modes and frequency band. Devices marketed as phablets, regardless of form factors and operating characteristics must be tested as a phablet to determine SAR compliance

1. The normally required head and body-worn accessory SAR test procedures for handsets, including hotspot mode, must be applied.
2. The UMPC mini-tablet procedures must also be applied to test the SAR of all surfaces and edges with an antenna located at ≤ 25 mm from that surface or edge, in direct contact with a flat phantom, for 10-g extremity SAR according to the body-equivalent tissue dielectric parameters in KDB 865664 to address interactive hand use exposure conditions.6 The UMPC mini-tablet 1-g SAR at 5 mm is not required. When hotspot mode applies, 10-g extremity SAR is required only for the surfaces and edges with hotspot mode 1-g reported SAR > 1.2 W/kg.

11.6 Wireless Router

Some battery-operated handsets have the capability to transmit and receive user through simultaneous transmission of WIFI simultaneously with a separate licensed transmitter. The FCC has provided guidance in FCC KDB Publication 941225 D06 v02r01 where SAR test considerations for handsets ($L \times W \geq 9$ cm x 5 cm) are based on a composite test separation distance of 10mm from the front, back and edges of the device containing transmitting antennas within 2.5cm of their edges, determined from general mixed use conditions for this type of devices. Since the hotspot SAR results may overlap with the body-worn accessory SAR requirements, the more conservative configurations can be considered, thus excluding some body-worn accessory SAR tests.

When the user enables the personal wireless router functions for the handset, actual operations include simultaneous transmission of both the WIFI transmitter and another licensed transmitter. Both transmitters often do not transmit at the same transmitting frequency and thus cannot be evaluated for SAR under actual use conditions due to the limitations of the SAR assessment probes. Therefore, SAR must be evaluated for each frequency transmission and mode separately and spatially summed with the WIFI transmitter according to FCC KDB Publication 447498 D01v06 publication procedures. The "Portable Hotspot" feature on the handset was NOT activated during SAR assessments, to ensure the SAR measurements were evaluated for a single transmission frequency RF signal at a time.

12. Conducted RF Output Power (Unit: dBm)

The detailed conducted power table can refer to Appendix E.

<GSM Conducted Power>

General Note:

1. Per KDB 447498 D01v06, the maximum output power channel is used for SAR testing and for further SAR test reduction.
2. Per KDB 941225 D01v03r01, for SAR test reduction for GSM / GPRS / EDGE modes is determined by the source-based time-averaged output power including tune-up tolerance. The mode with highest specified time-averaged output power should be tested for SAR compliance in the applicable exposure conditions. For modes with the same specified maximum output power and tolerance, the higher number time-slot configuration should be tested. Therefore, the GPRS (2 Tx slots) for GSM850 is considered as the primary mode.
3. Other configurations of GSM / GPRS / EDGE are considered as secondary modes. The 3G SAR test reduction procedure is applied, when the maximum output power and tune-up tolerance specified for production units in a secondary mode is $\leq \frac{1}{4}$ dB higher than the primary mode, SAR measurement is not required for the secondary mode.

<WCDMA Conducted Power>

1. The following tests were conducted according to the test requirements outlines in 3GPP TS 34.121 specification.
2. The procedures in KDB 941225 D01v03r01 are applied for 3GPP Rel. 6 HSPA to configure the device in the required sub-test mode(s) to determine SAR test exclusion.
3. For HSPA+ devices supporting 16 QAM in the uplink, power measurements procedure is according to the configurations in Table C.11.1.4 of 3GPP TS 34.121-1.
4. For DC-HSDPA, the device was configured according to the H-Set 12, Fixed Reference Channel (FRC) configuration in Table C.8.1.12 of 3GPP TS 34.121-1, with the primary and the secondary serving HS-DSCH Cell enabled during the power measurement.

A summary of these settings are illustrated below:

HSDPA Setup Configuration:

- a. The EUT was connected to Base Station Agilent E5515C referred to the Setup Configuration.
- b. The RF path losses were compensated into the measurements.
- c. A call was established between EUT and Base Station with following setting:
 - i. Set Gain Factors (β_c and β_d) and parameters were set according to each
 - ii. Specific sub-test in the following table, C10.1.4, quoted from the TS 34.121
 - iii. Set RMC 12.2Kbps + HSDPA mode.
 - iv. Set Cell Power = -86 dBm
 - v. Set HS-DSCH Configuration Type to FRC (H-set 1, QPSK)
 - vi. Select HSDPA Uplink Parameters
 - vii. Set Delta ACK, Delta NACK and Delta CQI = 8
 - viii. Set Ack-Nack Repetition Factor to 3
 - ix. Set CQI Feedback Cycle (k) to 4 ms
 - x. Set CQI Repetition Factor to 2
 - xi. Power Ctrl Mode = All Up bits
- d. The transmitted maximum output power was recorded.

Table C.10.1.4: β values for transmitter characteristics tests with HS-DPCCH

Sub-test	β_c	β_d	β_d (SF)	β_c/β_d	β_{HS} (Note 1, Note 2)	CM (dB) (Note 3)	MPR (dB) (Note 3)
1	2/15	15/15	64	2/15	4/15	0.0	0.0
2	12/15 (Note 4)	15/15 (Note 4)	64	12/15 (Note 4)	24/15	1.0	0.0
3	15/15	8/15	64	15/8	30/15	1.5	0.5
4	15/15	4/15	64	15/4	30/15	1.5	0.5

Note 1: Δ_{ACK} , Δ_{NACK} and $\Delta_{CQI} = 30/15$ with $\beta_{HS} = 30/15 * \beta_c$.

Note 2: For the HS-DPCCH power mask requirement test in clause 5.2C, 5.7A, and the Error Vector Magnitude (EVM) with HS-DPCCH test in clause 5.13.1A, and HSDPA EVM with phase discontinuity in clause 5.13.1AA, Δ_{ACK} and $\Delta_{NACK} = 30/15$ with $\beta_{HS} = 30/15 * \beta_c$, and $\Delta_{CQI} = 24/15$ with $\beta_{HS} = 24/15 * \beta_c$.

Note 3: CM = 1 for $\beta_c/\beta_d = 12/15$, $\beta_{HS}/\beta_c = 24/15$. For all other combinations of DPDCH, DPCCH and HS-DPCCH the MPR is based on the relative CM difference. This is applicable for only UEs that support HSDPA in release 6 and later releases.

Note 4: For subtest 2 the β_c/β_d ratio of 12/15 for the TFC during the measurement period (TF1, TF0) is achieved by setting the signalled gain factors for the reference TFC (TF1, TF1) to $\beta_c = 11/15$ and $\beta_d = 15/15$.

Setup Configuration

HSUPA Setup Configuration:

- a. The EUT was connected to Base Station Agilent E5515C referred to the Setup Configuration.
- b. The RF path losses were compensated into the measurements.
- c. A call was established between EUT and Base Station with following setting * :
 - i. Call Configs = 5.2B, 5.9B, 5.10B, and 5.13.2B with QPSK
 - ii. Set the Gain Factors (β_c and β_d) and parameters (AG Index) were set according to each specific sub-test in the following table, C11.1.3, quoted from the TS 34.121
 - iii. Set Cell Power = -86 dBm
 - iv. Set Channel Type = 12.2k + HSPA
 - v. Set UE Target Power
 - vi. Power Ctrl Mode= Alternating bits
 - vii. Set and observe the E-TFCl
 - viii. Confirm that E-TFCl is equal to the target E-TFCl of 75 for sub-test 1, and other subtest's E-TFCl
- d. The transmitted maximum output power was recorded.

Table C.11.1.3: β values for transmitter characteristics tests with HS-DPCCH and E-DCH

Sub-test	β_c	β_d	β_d (SF)	β_c/β_d	β_{HS} (Note1)	β_{ec}	β_{ed} (Note 4) (Note 5)	β_{ed} (SF)	β_{ed} (Codes)	CM (dB) (Note 2)	MPR (dB) (Note 2) (Note 6)	AG Index (Note 5)	E-TFCl
1	11/15 (Note 3)	15/15 (Note 3)	64	11/15 (Note 3)	22/15	209/25	1309/225	4	1	1.0	0.0	20	75
2	6/15	15/15	64	6/15	12/15	12/15	94/75	4	1	3.0	2.0	12	67
3	15/15	9/15	64	15/9	30/15	30/15	$\beta_{ed1}: 47/15$ $\beta_{ed2}: 47/15$	4 4	2	2.0	1.0	15	92
4	2/15	15/15	64	2/15	4/15	2/15	56/75	4	1	3.0	2.0	17	71
5	15/15	0	-	-	5/15	5/15	47/15	4	1	1.0	0.0	12	67

Note 1: For sub-test 1 to 4, Δ_{ACK} , Δ_{NACK} and $\Delta_{CQI} = 30/15$ with $\beta_{tx} = 30/15 * \beta_c$. For sub-test 5, Δ_{ACK} , Δ_{NACK} and $\Delta_{CQI} = 5/15$ with $\beta_{tx} = 5/15 * \beta_c$.

Note 2: CM = 1 for $\beta_c/\beta_d = 12/15$, $\beta_{HS}/\beta_c = 24/15$. For all other combinations of DPDCH, DPCCH, HS-DPCCH, E-DPDCH and E-DPCCH the MPR is based on the relative CM difference.

Note 3: For subtest 1 the β_c/β_d ratio of 11/15 for the TFC during the measurement period (TF1, TF0) is achieved by setting the signalled gain factors for the reference TFC (TF1, TF1) to $\beta_c = 10/15$ and $\beta_d = 15/15$.

Note 4: In case of testing by UE using E-DPDCH Physical Layer category 1, Sub-test 3 is omitted according to TS25.306 Table 5.1g.

Note 5: β_{ed} can not be set directly; it is set by Absolute Grant Value.

Note 6: For subtests 2, 3 and 4, UE may perform E-DPDCH power scaling at max power which could results in slightly smaller MPR values.

Setup Configuration

DC-HSDPA 3GPP release 8 Setup Configuration:

- a. The EUT was connected to Base Station Agilent E5515C referred to the Setup Configuration below
- b. The RF path losses were compensated into the measurements.
- c. A call was established between EUT and Base Station with following setting:
 - i. Set RMC 12.2Kbps + HSDPA mode.
 - ii. Set Cell Power = -25 dBm
 - iii. Set HS-DSCH Configuration Type to FRC (H-set 12, QPSK)
 - iv. Select HSDPA Uplink Parameters
 - v. Set Gain Factors (β_c and β_d) and parameters were set according to each Specific sub-test in the following table, C10.1.4, quoted from the TS 34.121
 - a). Subtest 1: $\beta_c/\beta_d=2/15$
 - b). Subtest 2: $\beta_c/\beta_d=12/15$
 - c). Subtest 3: $\beta_c/\beta_d=15/8$
 - d). Subtest 4: $\beta_c/\beta_d=15/4$
 - vi. Set Delta ACK, Delta NACK and Delta CQI = 8
 - vii. Set Ack-Nack Repetition Factor to 3
 - viii. Set CQI Feedback Cycle (k) to 4 ms
 - ix. Set CQI Repetition Factor to 2
 - x. Power Ctrl Mode = All Up bits
- d. The transmitted maximum output power was recorded.

The following tests were conducted according to the test requirements outlines in 3GPP TS 34.121 specification. A summary of these settings are illustrated below:

C.8.1.12 Fixed Reference Channel Definition H-Set 12

Table C.8.1.12: Fixed Reference Channel H-Set 12

Parameter	Unit	Value
Nominal Avg. Inf. Bit Rate	kbps	60
Inter-TTI Distance	TTI's	1
Number of HARQ Processes	Processes	6
Information Bit Payload (N_{INF})	Bits	120
Number Code Blocks	Blocks	1
Binary Channel Bits Per TTI	Bits	960
Total Available SML's in UE	SML's	19200
Number of SML's per HARQ Proc.	SML's	3200
Coding Rate		0.15
Number of Physical Channel Codes	Codes	1
Modulation		QPSK
Note 1: The RMC is intended to be used for DC-HSDPA mode and both cells shall transmit with identical parameters as listed in the table. Note 2: Maximum number of transmission is limited to 1, i.e., retransmission is not allowed. The redundancy and constellation version 0 shall be used.		

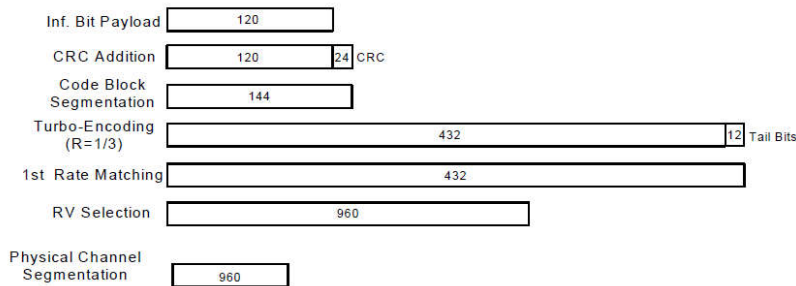


Figure C.8.19: Coding rate for Fixed reference Channel H-Set 12 (QPSK)

Setup Configuration

HSPA+ 3GPP release 7 (uplink category 7) 16QAM, Setup Configuration:

- a. The EUT was connected to Base Station Agilent E5515C referred to the Setup Configuration.
- b. The RF path losses were compensated into the measurements.
- c. A call was established between EUT and Base Station with following setting * :
 - i. Call Configs = 5.2E:HSPA+:UL with 16QAM
 - ii. Set the Gain Factors (β_c and β_d) and parameters (AG Index) were set according to each specific sub-test in the following table, C11.1.4, quoted from the TS 34.121-1 s5.2E
 - iii. Set Channel Parm
 - iv. Set Cell Power = -86 dBm
 - v. Set Channel Type = HSPA
 - vi. Set UE Target Power =21 dBm
 - vii. Power Ctrl Mode= All Up Bits
 - viii. Set Manual Uplink DPCH Bc/Bd = Manual
 - ix. Set Manual Uplink DPCH Bc and Bd=15,15(for 34.121-1 v8.10.0 table C11.1.4 sub-test 1)
 - x. Set HSPA Conn DL Channel Levels
 - xi. Set HS-SCCH Configs
 - xii. Set RB Test Mode Setup
 - xiii. Set Common HSUPA Parameters
 - xiv. Set Serving Grant
 - xv. Confirm that E-TFCI is equal to the target E-TFCI of 105 for sub-test 1, and other subtest's E-TFCI
- d. The transmitted maximum output power was recorded.

Table C.11.1.4: β values for transmitter characteristics tests with HS-DPCCH and E-DCH with 16QAM

Sub-test	β_c (Note 3)	β_d	β_{HS} (Note 1)	β_{ec}	β_{ed} (2xSF2) (Note 4)	β_{ed} (2xSF4) (Note 4)	CM (dB) (Note 2)	MPR (dB) (Note 2)	AG Index (Note 4)	E-TFCI (Note 5)	E-TFCI (boost)
1	1	0	30/15	30/15	β_{ed1} : 30/15 β_{ed2} : 30/15	β_{ed3} : 24/15 β_{ed4} : 24/15	3.5	2.5	14	105	105

Note 1: $\Delta_{ACK}, \Delta_{NACK}$ and $\Delta_{CQI} = 30/15$ with $\beta_{fs} = 30/15 * \beta_c$.

Note 2: CM = 3.5 and the MPR is based on the relative CM difference, MPR = MAX(CM-1,0).

Note 3: DPDCH is not configured, therefore the β_c is set to 1 and $\beta_d = 0$ by default.

Note 4: β_{ed} can not be set directly; it is set by Absolute Grant Value.

Note 5: All the sub-tests require the UE to transmit 2SF2+2SF4 16QAM EDCH and they apply for UE using E-DPDCH category 7. E-DCH TTI is set to 2ms TTI and E-DCH table index = 2. To support these E-DCH configurations DPDCH is not allocated. The UE is signaled to use the extrapolation algorithm.

Setup Configuration

<WCDMA Conducted Power>

General Note:

1. Per KDB 941225 D01v03r01, for SAR testing is measured using a 12.2 kbps RMC with TPC bits configured to all "1's".
2. Per KDB 941225 D01v03r01, RMC 12.2kbps setting is used to evaluate SAR. The maximum output power and tune-up tolerance specified for production units in HSDPA / HSUPA / DC-HSDPA / HSPA+ is $\leq 1/4$ dB higher than RMC 12.2Kbps or when the highest reported SAR of the RMC12.2Kbps is scaled by the ratio of specified maximum output power and tune-up tolerance of HSDPA / HSUPA / DC-HSDPA / HSPA+ to RMC12.2Kbps and the adjusted SAR is ≤ 1.2 W/kg, SAR measurement is not required for HSDPA / HSUPA / DC-HSDPA / HSPA+, and according to the following RF output power, the output power results of the secondary modes (HSDPA / HSUPA / DC-HSDPA / HSPA+) are less than $1/4$ dB higher than the primary modes; therefore, SAR measurement is not required for HSDPA / HSUPA / DC-HSDPA / HSPA+.

<LTE Conducted Power>

General Note:

1. Anritsu MT8820C base station simulator was used to setup the connection with EUT; the frequency band, channel bandwidth, RB allocation configuration, modulation type are set in the base station simulator to configure EUT transmitting at maximum power and at different configurations which are requested to be reported to FCC, for conducted power measurement and SAR testing.
2. Per KDB 941225 D05v02r05, when a properly configured base station simulator is used for the SAR and power measurements, spectrum plots for each RB allocation and offset configuration is not required.
3. Per KDB 941225 D05v02r05, start with the largest channel bandwidth and measure SAR for QPSK with 1 RB allocation, using the RB offset and required test channel combination with the highest maximum output power for RB offsets at the upper edge, middle and lower edge of each required test channel.
4. Per KDB 941225 D05v02r05, 50% RB allocation for QPSK SAR testing follows 1RB QPSK allocation procedure.
5. Per KDB 941225 D05v02r05, for QPSK with 100% RB allocation, SAR is not required when the highest maximum output power for 100 % RB allocation is less than the highest maximum output power in 50% and 1 RB allocations and the highest reported SAR for 1 RB and 50% RB allocation are ≤ 0.8 W/kg. Otherwise, SAR is measured for the highest output power channel; and if the reported SAR is > 1.45 W/kg, the remaining required test channels must also be tested.
6. Per KDB 941225 D05v02r05, 16QAM output power for each RB allocation configuration is $>$ not $\frac{1}{2}$ dB higher than the same configuration in QPSK and the reported SAR for the QPSK configuration is ≤ 1.45 W/kg; Per KDB 941225 D05v02r05, 16QAM SAR testing is not required.
7. Per KDB 941225 D05v02r05, smaller bandwidth output power for each RB allocation configuration is $>$ not $\frac{1}{2}$ dB higher than the same configuration in the largest supported bandwidth, and the reported SAR for the largest supported bandwidth is ≤ 1.45 W/kg; Per KDB 941225 D05v02r05, smaller bandwidth SAR testing is not required.
8. For LTE B5 / B38 the maximum bandwidth does not support three non-overlapping channels, per KDB 941225 D05v02r05, when a device supports overlapping channel assignment in a channel bandwidth configuration, the middle channel of the group of overlapping channels should be selected for testing.
9. LTE B38 SAR test was covered by B41; according to April 2015 TCB workshop, SAR test for overlapping LTE bands can be reduced if
 - a. the maximum output power, including tolerance, for the smaller band is \leq the larger band to qualify for the SAR test exclusion
 - b. the channel bandwidth and other operating parameters for the smaller band are fully supported by the larger band
10. According to May 2017 TCB workshop, for 16QAM and 64QAM should be verified by checking the signal constellation with a call box to avoid incorrect maximum power levels due to MPR and other requirements associated with signal modulation, and the following figure is taken from the "Fundamental Measurement >> Modulation Analysis >> constellation" mode of the device connect to the MT8821C base station, therefore, the device 64QAM and 16QAM signal modulation are correct.



16QAM



64QAM

<TDD LTE SAR Measurement>

TDD LTE configuration setup for SAR measurement

SAR was tested with a fixed periodic duty factor according to the highest transmission duty factor implemented for the device and supported by 3GPP.

- a. 3GPP TS 36.211 section 4.2 for Type 2 Frame Structure and Table 4.2-2 for uplink-downlink configurations
- b. “special subframe S” contains both uplink and downlink transmissions, it has been taken into consideration to determine the transmission duty factor according to the worst case uplink and downlink cyclic prefix requirements for UpPTS
- c. Establishing connections with base station simulators ensure a consistent means for testing SAR and recommended for evaluating SAR. The Anritsu MT8820C (firmware: #22.52#004) was used for LTE output power measurements and SAR testing.

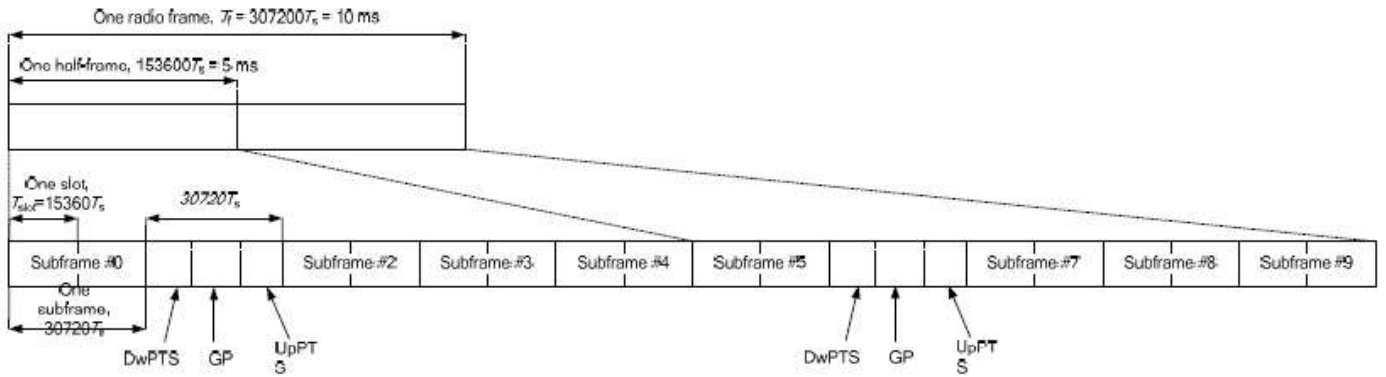


Figure 4.2-1: Frame structure type 2 (for 5 ms switch-point periodicity).

Table 4.2-2: Uplink-downlink configurations.

Uplink-downlink configuration	Downlink-to-Uplink Switch-point periodicity	Subframe number									
		0	1	2	3	4	5	6	7	8	9
0	5 ms	D	S	U	U	U	D	S	U	U	U
1	5 ms	D	S	U	U	D	D	S	U	U	D
2	5 ms	D	S	U	D	D	D	S	U	D	D
3	10 ms	D	S	U	U	U	D	D	D	D	D
4	10 ms	D	S	U	U	D	D	D	D	D	D
5	10 ms	D	S	U	D	D	D	D	D	D	D
6	5 ms	D	S	U	U	U	D	S	U	U	D

Table 4.2-1: Configuration of special subframe (lengths of DwPTS/GP/UpPTS).

Special subframe configuration	Normal cyclic prefix in downlink			Extended cyclic prefix in downlink				
	DwPTS	UpPTS		DwPTS	UpPTS			
		Normal cyclic prefix in uplink	Extended cyclic prefix in uplink		Normal cyclic prefix in uplink	Extended cyclic prefix in uplink		
0	6592 · Ts	2192 · Ts	2560 · Ts	7680 · Ts	2192 · Ts	2560 · Ts		
1	19760 · Ts			20480 · Ts				
2	21952 · Ts			23040 · Ts				
3	24144 · Ts			25600 · Ts				
4	26336 · Ts			7680 · Ts				
5	6592 · Ts	4384 · Ts	5120 · Ts	20480 · Ts	4384 · Ts	5120 · Ts		
6	19760 · Ts			23040 · Ts				
7	21952 · Ts			12800 · Ts				
8	24144 · Ts			-			-	-
9	13168 · Ts			-			-	-

Special subframe (30720·T_s): Normal cyclic prefix in downlink (UpPTS)			
	Special subframe configuration	Normal cyclic prefix in uplink	Extended cyclic prefix in uplink
Uplink duty factor in one special subframe	0~4	7.13%	8.33%
	5~9	14.3%	16.7%

Special subframe(30720·T_s): Extended cyclic prefix in downlink (UpPTS)			
	Special subframe configuration	Normal cyclic prefix in uplink	Extended cyclic prefix in uplink
Uplink duty factor in one special subframe	0~3	7.13%	8.33%
	4~7	14.3%	16.7%

The highest duty factor is resulted from:

For LTE TDD Power class 3

- i. Uplink-downlink configuration: 0. In a half-frame consisted of 5 subframes, uplink operation is in 3 uplink subframes and 1 special subframe.
- ii. special subframe configuration: 5-9 for normal cyclic prefix in downlink, 4-7 for extended cyclic prefix in downlink
- iii. for special subframe with extended cyclic prefix in uplink, the total uplink duty factor in one half-frame is: $(3+0.167)/5 = 63.3\%$
- iv. for special subframe with normal cyclic prefix in uplink, the total uplink duty factor in one half-frame is: $(3+0.143)/5 = 62.9\%$
- v. For TDD LTE SAR measurement, the duty cycle 1:1.59 (62.9 %) was used perform testing and considering the theoretical duty cycle of 63.3% for extended cyclic prefix in the uplink, and the theoretical duty cycle of 62.9% for normal cyclic prefix in uplink, a scaling factor of extended cyclic prefix $63.3\%/62.9\% = 1.006$ is applied to scale-up the measured SAR result. The scaled TDD LTE SAR = measured SAR (W/kg)* Tune-up Scaling Factor* scaling factor for extended cyclic prefix.



<WLAN Conducted Power>

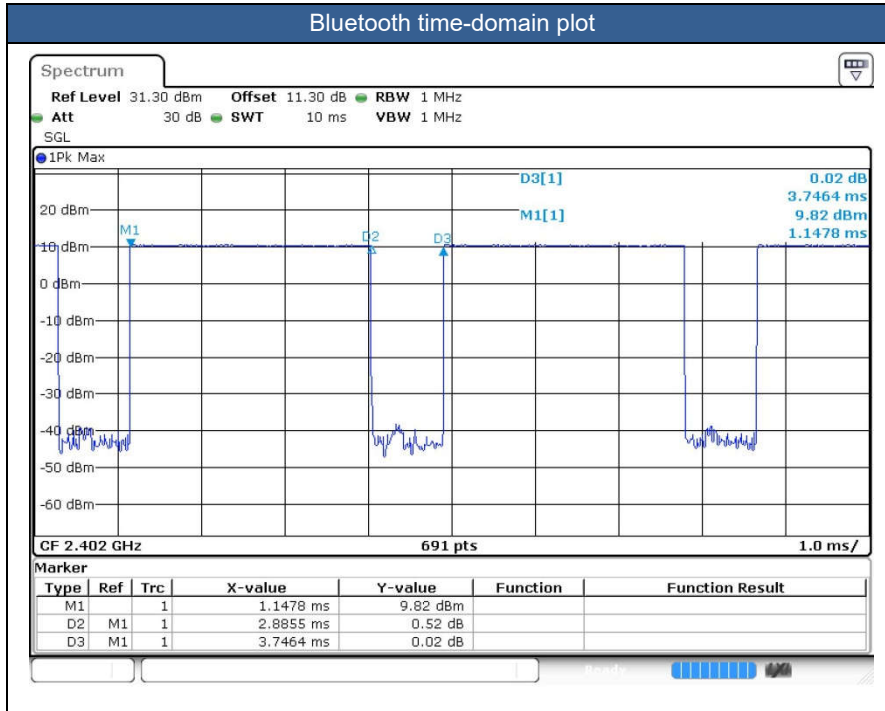
General Note:

1. The maximum output power specified for production units are determined for all applicable 802.11 transmission modes in each standalone and aggregated frequency band. Maximum output power is measured for the highest maximum output power configuration(s) in each frequency band according to the default power measurement procedures. For “Not required”, SAR Test reduction was applied from KDB 248227 guidance, Sec. 2.1, b), 1) when the same maximum power is specified for multiple transmission modes in a frequency band, the largest channel bandwidth, lowest order modulation, lowest data rate and lowest order 802.11a/g/n/ac mode is used for SAR measurement, on the highest measured output power channel in the initial test configuration. Additional output power measurements were not necessary.
2. Per KDB 248227 D01v02r02, SAR test reduction is determined according to 802.11 transmission mode configurations and certain exposure conditions with multiple test positions. In the 2.4 GHz band, separate SAR procedures are applied to DSSS and OFDM configurations to simplify DSSS test requirements. For OFDM, in both 2.4 and 5 GHz bands, an initial test configuration must be determined for each standalone and aggregated frequency band, according to the transmission mode configuration with the highest maximum output power specified for production units to perform SAR measurements. If the same highest maximum output power applies to different combinations of channel bandwidths, modulations and data rates, additional procedures are applied to determine which test configurations require SAR measurement. When applicable, an initial test position may be applied to reduce the number of SAR measurements required for next to the ear, UMPC mini-tablet or hotspot mode configurations with multiple test positions.
3. For 2.4 GHz 802.11b DSSS, either the initial test position procedure for multiple exposure test positions or the DSSS procedure for fixed exposure position is applied; these are mutually exclusive. For 2.4 GHz and 5 GHz OFDM configurations, the initial test configuration is applied to measure SAR using either the initial test position procedure for multiple exposure test position configurations or the initial test configuration procedures for fixed exposure test conditions. Based on the reported SAR of the measured configurations and maximum output power of the transmission mode configurations that are not included in the initial test configuration, the subsequent test configuration and initial test position procedures are applied to determine if SAR measurements are required for the remaining OFDM transmission configurations. In general, the number of test channels that require SAR measurement is minimized based on maximum output power measured for the test sample(s).
4. For OFDM transmission configurations in the 2.4 GHz and 5 GHz bands, When the same maximum power is specified for multiple transmission modes in a frequency band, the largest channel bandwidth, lowest order modulation, lowest data rate and lowest order 802.11a/g/n/ac mode is used for SAR measurement, on the highest measured output power channel for each frequency band.
5. DSSS and OFDM configurations are considered separately according to the required SAR procedures. SAR is measured in the initial test position using the 802.11 transmission mode configuration required by the DSSS procedure or initial test configuration and subsequent test configuration(s) according to the OFDM procedures.18 The initial test position procedure is described in the following:
 - a. When the reported SAR of the initial test position is ≤ 0.4 W/kg, further SAR measurement is not required for the other test positions in that exposure configuration and 802.11 transmission mode combinations within the frequency band or aggregated band.
 - b. When the reported SAR of the test position is > 0.4 W/kg, SAR is repeated for the 802.11 transmission mode configuration tested in the initial test position to measure the subsequent next closet/smallest test separation distance and maximum coupling test position on the highest maximum output power channel, until the report SAR is ≤ 0.8 W/kg or all required test position are tested.
 - c. For all positions/configurations, when the reported SAR is > 0.8 W/kg, SAR is measured for these test positions/configurations on the subsequent next highest measured output power channel(s) until the reported SAR is ≤ 1.2 W/kg or all required channels are tested.

<2.4GHz Bluetooth>

General Note:

1. For 2.4GHz Bluetooth SAR testing was selected 1Mbps, due to its highest average power.
2. The Bluetooth duty cycle is 77.02 % as following figure, Bluetooth SAR scaling need further consideration and the theoretical duty cycle is 83.3%, therefore the actual duty cycle will be scaled up to the theoretical value of Bluetooth reported SAR calculation.





14. Antenna Location

The detailed antenna location information can refer to SAR Test Setup Photos.

15. SAR Test Results

General Note:

1. Per KDB 447498 D01v06, the reported SAR is the measured SAR value adjusted for maximum tune-up tolerance.
 - a. Tune-up scaling Factor = tune-up limit power (mW) / EUT RF power (mW), where tune-up limit is the maximum rated power among all production units.
 - b. For SAR testing of WLAN signal with non-100% duty cycle, the measured SAR is scaled-up by the duty cycle scaling factor which is equal to "1/(duty cycle)"
 - c. For SAR testing of Bluetooth signal with 83.3% theoretical duty cycle, the measured SAR is scaled-up by the duty cycle scaling factor which is equal to "1/(duty cycle) *83.3%".
 - d. For WWAN: Reported SAR(W/kg)= Measured SAR(W/kg)*Tune-up Scaling Factor
 - e. For WLAN/Bluetooth: Reported SAR(W/kg)= Measured SAR(W/kg)* Duty Cycle scaling factor * Tune-up scaling factor
 - f. For TDD LTE SAR measurement, the duty cycle 1:1.59 (62.9 %) was used perform testing and considering the theoretical duty cycle of 63.3% for extended cyclic prefix in the uplink, and the theoretical duty cycle of 62.9% for normal cyclic prefix in uplink, a scaling factor of extended cyclic prefix 63.3%/62.9% = 1.006 is applied to scale-up the measured SAR result. The Reported TDD LTE SAR (W/kg) = measured SAR (W/kg)* Tune-up Scaling Factor* scaling factor for extended cyclic prefix
2. Per KDB 447498 D01v06, for each exposure position, testing of other required channels within the operating mode of a frequency band is not required when the *reported* 1-g or 10-g SAR for the mid-band or highest output power channel is:
 - ≤ 0.8 W/kg or 2.0 W/kg, for 1-g or 10-g respectively, when the transmission band is ≤ 100 MHz
 - ≤ 0.6 W/kg or 1.5 W/kg, for 1-g or 10-g respectively, when the transmission band is between 100 MHz and 200 MHz
 - ≤ 0.4 W/kg or 1.0 W/kg, for 1-g or 10-g respectively, when the transmission band is ≥ 200 MHz
3. Per KDB 865664 D01v01r04, for each frequency band, repeated SAR measurement is required only when the measured SAR is ≥ 0.8 W/kg.
4. Per KDB 648474 D04v01r03, when the reported SAR for a body-worn accessory measured without a headset connected to the handset is ≤ 1.2 W/kg, SAR testing with a headset connected to the handset is not required.
5. The device implements the power management and receiver detection/hotspot mode for SAR compliance at different exposure conditions (head, body-worn, hotspot, extremity). And the device will invoke corresponding work scenarios power level base on frequency bands/antennas, which can refer to power table at appendix E.
6. For WLAN when transmit simultaneously with each other, or when transmit simultaneously with WWAN, the device power will be reduced power at head, body-worn and extremity conditions.
7. Per KDB648474 D04v01r03, for smart phones with a display diagonal dimension > 15.0 cm or an overall diagonal dimension > 16.0 cm, when hotspot mode applies, 10-g extremity SAR is required only for the surfaces and edges with hotspot mode 1-g reported SAR > 1.2 W/kg, however, when power reduction applies to hotspot mode the measured SAR must be scaled to the maximum output power (for handheld on state, the maximum full power means reduced power), including tolerance, allowed for phablet modes to compare with the 1.2 W/kg SAR test reduction threshold.
 - a. For this device SAR for WWAN transmitter scaled to maximum output power mode for product specific 10g SAR is higher than 1.2W/kg of GSM850, WCDMA Band V, LTE Band 5/7/38/41 therefore product specific 10g SAR is necessary.
 - b. WLAN 5.3/5.5GHZ tested the product specific 10g SAR since it has no hotspot mode.
 - c. When 10-g product specific 10g SAR is considered, SAR thresholds is specified in the procedures for SAR test reduction and exclusion should be multiplied by 2.5.
8. Although the headset SAR is greater than 0.8 W/kg, the headset SAR verified the worst of the non-headset SAR and less than non-headset SAR, so there is no need to be tested other channels.
9. SAR is not required because the distance from the antenna to the edge is > 25 mm as per KDB 941225 D06 Hotspot SAR.
10. For Phablet devices, when hotspot mode is not supported, Product specific 10-g SAR is required for all surfaces and edges with an antenna located at ≤ 25 mm from that surface or edge in direct contact with a flat phantom, to address interactive hand use exposure conditions.

GSM Note:

1. Per KDB 941225 D01v03r01, for SAR test reduction for GSM / GPRS / EDGE modes is determined by the source-based time-averaged output power including tune-up tolerance. The mode with highest specified time-averaged output power should be tested for SAR compliance in the applicable exposure conditions. For modes with the same specified maximum output power and tolerance, the higher number time-slot configuration should be tested.
2. Other configurations of GSM / GPRS / EDGE are considered as secondary modes. The 3G SAR test reduction



procedure is applied, when the maximum output power and tune-up tolerance specified for production units in a secondary mode is $\leq \frac{1}{4}$ dB higher than the primary mode, SAR measurement is not required for the secondary mode.

WCDMA Note:

1. Per KDB 941225 D01v03r01, for SAR testing is measured using a 12.2 kbps RMC with TPC bits configured to all "1's".
2. Per KDB 941225 D01v03r01, RMC 12.2kbps setting is used to evaluate SAR. The maximum output power and tune-up tolerance specified for production units in HSDPA / HSUPA / DC-HSDPA / HSPA+ is $\leq \frac{1}{4}$ dB higher than RMC 12.2Kbps or when the highest reported SAR of the RMC12.2Kbps is scaled by the ratio of specified maximum output power and tune-up tolerance of HSDPA / HSUPA / DC-HSDPA / HSPA+ to RMC12.2Kbps and the adjusted SAR is ≤ 1.2 W/kg, SAR measurement is not required for HSDPA / HSUPA / DC-HSDPA / HSPA+, and according to the following RF output power, the output power results of the secondary modes (HSDPA / HSUPA / DC-HSDPA / HSPA+) are less than $\frac{1}{4}$ dB higher than the primary modes; therefore, SAR measurement is not required for HSDPA / HSUPA / DC-HSDPA / HSPA+.

LTE Note:

1. Per KDB 941225 D05v02r05, start with the largest channel bandwidth and measure SAR for QPSK with 1 RB allocation, using the RB offset and required test channel combination with the highest maximum output power for RB offsets at the upper edge, middle and lower edge of each required test channel.
2. Per KDB 941225 D05v02r05, 50% RB allocation for QPSK SAR testing follows 1RB QPSK allocation procedure.
3. Per KDB 941225 D05v02r05, for QPSK with 100% RB allocation, SAR is not required when the highest maximum output power for 100 % RB allocation is less than the highest maximum output power in 50% and 1 RB allocations and the highest reported SAR for 1 RB and 50% RB allocation are ≤ 0.8 W/kg. Otherwise, SAR is measured for the highest output power channel; and if the reported SAR is > 1.45 W/kg, the remaining required test channels must also be tested.
4. Per KDB 941225 D05v02r05, 16QAM/64QAM output power for each RB allocation configuration is $>$ not $\frac{1}{2}$ dB higher than the same configuration in QPSK and the reported SAR for the QPSK configuration is ≤ 1.45 W/kg; Per KDB 941225 D05v02r05, 16QAM/64QAM SAR testing is not required.
5. Per KDB 941225 D05v02r05, smaller bandwidth output power for each RB allocation configuration is $>$ not $\frac{1}{2}$ dB higher than the same configuration in the largest supported bandwidth, and the reported SAR for the largest supported bandwidth is ≤ 1.45 W/kg; Per KDB 941225 D05v02r05, smaller bandwidth SAR testing is not required.
6. For LTE B5 / B38 the maximum bandwidth does not support three non-overlapping channels, per KDB 941225 D05v02r05, when a device supports overlapping channel assignment in a channel bandwidth configuration, the middle channel of the group of overlapping channels should be selected for testing.
7. LTE B38 SAR test was covered by B41; according to April 2015 TCB workshop, SAR test for overlapping LTE bands can be reduced if
 - a. the maximum output power, including tolerance, for the smaller band is \leq the larger band to qualify for the SAR test exclusion
 - b. the channel bandwidth and other operating parameters for the smaller band are fully supported by the larger band

WLAN/Bluetooth Note:

1. Per KDB 248227 D01v02r02, for 2.4GHz 802.11g/n SAR testing is not required when the highest reported SAR for DSSS is adjusted by the ratio of OFDM to DSSS specified maximum output power and the adjusted SAR is ≤ 1.2 W/kg.
2. Per KDB 248227 D01v02r02, U-NII-1 SAR testing is not required when the U-NII-2A band highest reported SAR for a test configuration is ≤ 1.2 W/kg, SAR is not required for U-NII-1 band.
3. When the reported SAR of the test position is > 0.4 W/kg, SAR is repeated for the 802.11 transmission mode configuration tested in the initial test position to measure the subsequent next closet/smallest test separation distance and maximum coupling test position on the highest maximum output power channel, until the report SAR is ≤ 0.8 W/kg or all required test position are tested.
4. For all positions / configurations, when the reported SAR is > 0.8 W/kg, SAR is measured for these test positions / configurations on the subsequent next highest measured output power channel(s) until the reported SAR is ≤ 1.2 W/kg or all required channels are tested.
5. During SAR testing the WLAN transmission was verified using a spectrum analyzer.



15.1 Head SAR

Plot No.	Band	BW (MHz)	Modulation	RB Size	RB offset	Mode	Test Position	Gap (mm)	Antenna	Power Reduction	Ch.	Freq. (MHz)	Sample	Average Power (dBm)	Tune-Up Limit (dBm)	Tune-up Scaling Factor	Duty Cycle %	Duty Cycle Scaling Factor	Power Drift (dB)	Measured 1g SAR (W/kg)	Reported 1g SAR (W/kg)
835 MHz																					
01	GSM850	-	-	-	-	GPRS (2 Tx slots)	Right Cheek	0mm	Ant 0	Receive on	189	836.4	1	30.35	31.50	1.303	-	-	-0.01	0.337	0.439
	GSM850	-	-	-	-	GPRS (2 Tx slots)	Right Cheek	0mm	Ant 0	Receive on	189	836.4	2	30.35	31.50	1.303	-	-	0.04	0.309	0.403
	GSM850	-	-	-	-	GPRS (2 Tx slots)	Right Tilted	0mm	Ant 0	Receive on	189	836.4	1	30.35	31.50	1.303	-	-	-0.06	0.184	0.240
	GSM850	-	-	-	-	GPRS (2 Tx slots)	Left Cheek	0mm	Ant 0	Receive on	189	836.4	1	30.35	31.50	1.303	-	-	-0.04	0.294	0.383
	GSM850	-	-	-	-	GPRS (2 Tx slots)	Left Tilted	0mm	Ant 0	Receive on	189	836.4	1	30.35	31.50	1.303	-	-	0.06	0.177	0.231
02	WCDMA V	-	-	-	-	RMC 12.2Kbps	Right Cheek	0mm	Ant 0	Receive on	4182	836.4	1	23.46	24.00	1.132	-	-	-0.03	0.372	0.421
	WCDMA V	-	-	-	-	RMC 12.2Kbps	Right Cheek	0mm	Ant 0	Receive on	4182	836.4	2	23.46	24.00	1.132	-	-	-0.07	0.336	0.380
	WCDMA V	-	-	-	-	RMC 12.2Kbps	Right Tilted	0mm	Ant 0	Receive on	4182	836.4	1	23.46	24.00	1.132	-	-	0.12	0.208	0.236
	WCDMA V	-	-	-	-	RMC 12.2Kbps	Left Cheek	0mm	Ant 0	Receive on	4182	836.4	1	23.46	24.00	1.132	-	-	0.08	0.321	0.364
	WCDMA V	-	-	-	-	RMC 12.2Kbps	Left Tilted	0mm	Ant 0	Receive on	4182	836.4	1	23.46	24.00	1.132	-	-	-0.07	0.201	0.228
	LTE Band 5	10M	QPSK	1	25	-	Right Cheek	0mm	Ant 0	Receive on	20525	836.5	1	23.44	24.00	1.138	-	-	-0.02	0.359	0.408
	LTE Band 5	10M	QPSK	1	25	-	Right Cheek	0mm	Ant 0	Receive on	20525	836.5	2	23.44	24.00	1.138	-	-	-0.13	0.318	0.362
	LTE Band 5	10M	QPSK	1	25	-	Right Tilted	0mm	Ant 0	Receive on	20525	836.5	1	23.44	24.00	1.138	-	-	-0.16	0.209	0.238
	LTE Band 5	10M	QPSK	1	25	-	Left Cheek	0mm	Ant 0	Receive on	20525	836.5	1	23.44	24.00	1.138	-	-	-0.01	0.316	0.359
	LTE Band 5	10M	QPSK	1	25	-	Left Tilted	0mm	Ant 0	Receive on	20525	836.5	1	23.44	24.00	1.138	-	-	-0.14	0.200	0.228
	LTE Band 5	10M	QPSK	25	0	-	Right Cheek	0mm	Ant 0	Receive on	20525	836.5	1	22.53	23.00	1.114	-	-	0.03	0.282	0.314
	LTE Band 5	10M	QPSK	25	0	-	Right Tilted	0mm	Ant 0	Receive on	20525	836.5	1	22.53	23.00	1.114	-	-	-0.16	0.165	0.184
	LTE Band 5	10M	QPSK	25	0	-	Left Cheek	0mm	Ant 0	Receive on	20525	836.5	1	22.53	23.00	1.114	-	-	0.13	0.251	0.280
	LTE Band 5	10M	QPSK	25	0	-	Left Tilted	0mm	Ant 0	Receive on	20525	836.5	1	22.53	23.00	1.114	-	-	-0.05	0.159	0.177
03	LTE Band 5	10M	QPSK	1	25	-	Right Cheek	0mm	Ant 3	Receive on	20525	836.5	1	21.57	22.50	1.239	-	-	-0.09	0.707	0.876
	LTE Band 5	10M	QPSK	1	25	-	Right Cheek	0mm	Ant 3	Receive on	20525	836.5	3	21.57	22.50	1.239	-	-	0.06	0.660	0.818
	LTE Band 5	10M	QPSK	1	25	-	Right Cheek	0mm	Ant 3	Receive on	20525	836.5	4	21.57	22.50	1.239	-	-	0.12	0.620	0.768
	LTE Band 5	10M	QPSK	1	25	-	Right Cheek	0mm	Ant 3	Receive on	20525	836.5	2	21.57	22.50	1.239	-	-	-0.13	0.667	0.826
	LTE Band 5	10M	QPSK	1	25	-	Right Cheek	0mm	Ant 3	Receive on	20525	836.5	5	21.57	22.50	1.239	-	-	0.06	0.570	0.706
	LTE Band 5	10M	QPSK	1	25	-	Right Cheek	0mm	Ant 3	Receive on	20525	836.5	6	21.57	22.50	1.239	-	-	0.02	0.591	0.732
	LTE Band 5	10M	QPSK	1	25	-	Right Tilted	0mm	Ant 3	Receive on	20525	836.5	1	21.57	22.50	1.239	-	-	0.05	0.504	0.624
	LTE Band 5	10M	QPSK	1	25	-	Left Cheek	0mm	Ant 3	Receive on	20525	836.5	1	21.57	22.50	1.239	-	-	0.05	0.516	0.639
	LTE Band 5	10M	QPSK	1	25	-	Left Tilted	0mm	Ant 3	Receive on	20525	836.5	1	21.57	22.50	1.239	-	-	0.02	0.416	0.515
	LTE Band 5	10M	QPSK	25	0	-	Right Cheek	0mm	Ant 3	Receive on	20525	836.5	1	20.62	21.50	1.225	-	-	-0.05	0.576	0.705
	LTE Band 5	10M	QPSK	25	0	-	Right Tilted	0mm	Ant 3	Receive on	20525	836.5	1	20.62	21.50	1.225	-	-	0	0.415	0.508
	LTE Band 5	10M	QPSK	25	0	-	Left Cheek	0mm	Ant 3	Receive on	20525	836.5	1	20.62	21.50	1.225	-	-	-0.1	0.429	0.525
	LTE Band 5	10M	QPSK	25	0	-	Left Tilted	0mm	Ant 3	Receive on	20525	836.5	1	20.62	21.50	1.225	-	-	-0.15	0.341	0.418
	LTE Band 5	10M	QPSK	50	0	-	Right Cheek	0mm	Ant 3	Receive on	20525	836.5	1	20.61	21.50	1.227	-	-	-0.07	0.573	0.703
2600 MHz																					
	LTE Band 7	20M	QPSK	1	49	-	Right Cheek	0mm	Ant 0	Receive on	21100	2535	1	23.50	24.00	1.122	-	-	-0.13	0.108	0.121
	LTE Band 7	20M	QPSK	1	49	-	Right Cheek	0mm	Ant 0	Receive on	21100	2535	2	23.50	24.00	1.122	-	-	0.05	0.101	0.113
	LTE Band 7	20M	QPSK	1	49	-	Right Tilted	0mm	Ant 0	Receive on	21100	2535	1	23.50	24.00	1.122	-	-	-0.14	0.050	0.056
	LTE Band 7	20M	QPSK	1	49	-	Left Cheek	0mm	Ant 0	Receive on	21100	2535	1	23.50	24.00	1.122	-	-	-0.07	0.062	0.070
	LTE Band 7	20M	QPSK	1	49	-	Left Tilted	0mm	Ant 0	Receive on	21100	2535	1	23.50	24.00	1.122	-	-	-0.1	0.045	0.050
	LTE Band 7	20M	QPSK	50	0	-	Right Cheek	0mm	Ant 0	Receive on	21100	2535	1	22.85	23.00	1.035	-	-	-0.06	0.076	0.079
	LTE Band 7	20M	QPSK	50	0	-	Right Tilted	0mm	Ant 0	Receive on	21100	2535	1	22.85	23.00	1.035	-	-	-0.02	0.040	0.041
	LTE Band 7	20M	QPSK	50	0	-	Left Cheek	0mm	Ant 0	Receive on	21100	2535	1	22.85	23.00	1.035	-	-	0.14	0.049	0.051
	LTE Band 7	20M	QPSK	50	0	-	Left Tilted	0mm	Ant 0	Receive on	21100	2535	1	22.85	23.00	1.035	-	-	0.08	0.035	0.036
	LTE Band 7	20M	QPSK	1	49	-	Right Cheek	0mm	Ant 3	Receive on	21100	2535	1	15.74	17.00	1.337	-	-	0.07	0.600	0.802
	LTE Band 7	20M	QPSK	1	49	-	Right Tilted	0mm	Ant 3	Receive on	21100	2535	1	15.74	17.00	1.337	-	-	0.14	0.462	0.618
	LTE Band 7	20M	QPSK	1	49	-	Left Cheek	0mm	Ant 3	Receive on	21100	2535	1	15.74	17.00	1.337	-	-	0	0.178	0.238
	LTE Band 7	20M	QPSK	1	49	-	Left Tilted	0mm	Ant 3	Receive on	21100	2535	1	15.74	17.00	1.337	-	-	-0.12	0.167	0.223
	LTE Band 7	20M	QPSK	1	49	-	Right Cheek	0mm	Ant 3	Receive on	20850	2510	1	15.63	17.00	1.371	-	-	0.06	0.481	0.659
04	LTE Band 7	20M	QPSK	1	49	-	Right Cheek	0mm	Ant 3	Receive on	21350	2560	1	15.70	17.00	1.349	-	-	0.08	0.604	0.815
	LTE Band 7	20M	QPSK	1	49	-	Right Cheek	0mm	Ant 3	Receive on	21350	2560	2	15.70	17.00	1.349	-	-	-0.07	0.565	0.762
	LTE Band 7	20M	QPSK	50	0	-	Right Cheek	0mm	Ant 3	Receive on	21100	2535	1	15.19	16.00	1.205	-	-	-0.15	0.428	0.516



LTE Band 7	20M	QPSK	50	0	-	Right Tilted	0mm	Ant 3	Receive on	21100	2535	1	15.19	16.00	1.205	-	-	-0.09	0.380	0.458
LTE Band 7	20M	QPSK	50	0	-	Left Cheek	0mm	Ant 3	Receive on	21100	2535	1	15.19	16.00	1.205	-	-	0.05	0.139	0.167
LTE Band 7	20M	QPSK	50	0	-	Left Tilted	0mm	Ant 3	Receive on	21100	2535	1	15.19	16.00	1.205	-	-	-0.07	0.132	0.159
LTE Band 7	20M	QPSK	100	0	-	Right Cheek	0mm	Ant 3	Receive on	21100	2535	1	15.12	16.00	1.225	-	-	-0.11	0.433	0.530
LTE Band 41	20M	QPSK	1	49	-	Right Cheek	0mm	Ant 0	Receive on	40670	2598	1	23.51	24.00	1.119	62.9	1.006	0.07	0.070	0.079
LTE Band 41	20M	QPSK	1	49	-	Right Cheek	0mm	Ant 0	Receive on	40670	2598	2	23.51	24.00	1.119	62.9	1.006	0.11	0.068	0.077
LTE Band 41	20M	QPSK	1	49	-	Right Tilted	0mm	Ant 0	Receive on	40670	2598	1	23.51	24.00	1.119	62.9	1.006	0.05	0.038	0.043
LTE Band 41	20M	QPSK	1	49	-	Left Cheek	0mm	Ant 0	Receive on	40670	2598	1	23.51	24.00	1.119	62.9	1.006	0.01	0.054	0.061
LTE Band 41	20M	QPSK	1	49	-	Left Tilted	0mm	Ant 0	Receive on	40670	2598	1	23.51	24.00	1.119	62.9	1.006	-0.09	0.027	0.030
LTE Band 41	20M	QPSK	50	0	-	Right Cheek	0mm	Ant 0	Receive on	40670	2598	1	22.48	23.00	1.127	62.9	1.006	-0.09	0.052	0.059
LTE Band 41	20M	QPSK	50	0	-	Right Tilted	0mm	Ant 0	Receive on	40670	2598	1	22.48	23.00	1.127	62.9	1.006	0.02	0.030	0.034
LTE Band 41	20M	QPSK	50	0	-	Left Cheek	0mm	Ant 0	Receive on	40670	2598	1	22.48	23.00	1.127	62.9	1.006	0.01	0.043	0.049
LTE Band 41	20M	QPSK	50	0	-	Left Tilted	0mm	Ant 0	Receive on	40670	2598	1	22.48	23.00	1.127	62.9	1.006	-0.05	0.021	0.024
LTE Band 41	20M	QPSK	1	49	-	Right Cheek	0mm	Ant 3	Receive on	40670	2598	1	18.12	19.00	1.225	62.9	1.006	0.07	0.632	0.779
LTE Band 41	20M	QPSK	1	49	-	Right Tilted	0mm	Ant 3	Receive on	40670	2598	1	18.12	19.00	1.225	62.9	1.006	0.12	0.538	0.663
LTE Band 41	20M	QPSK	1	49	-	Left Cheek	0mm	Ant 3	Receive on	40670	2598	1	18.12	19.00	1.225	62.9	1.006	-0.06	0.250	0.308
LTE Band 41	20M	QPSK	1	49	-	Left Tilted	0mm	Ant 3	Receive on	40670	2598	1	18.12	19.00	1.225	62.9	1.006	0.07	0.191	0.235
LTE Band 41	20M	QPSK	1	49	-	Right Cheek	0mm	Ant 3	Receive on	40140	2545	1	18.03	19.00	1.250	62.9	1.006	-0.05	0.581	0.731
LTE Band 41	20M	QPSK	1	49	-	Right Cheek	0mm	Ant 3	Receive on	40400	2571	1	18.05	19.00	1.245	62.9	1.006	0.04	0.603	0.755
05 LTE Band 41	20M	QPSK	1	49	-	Right Cheek	0mm	Ant 3	Receive on	41140	2645	1	17.98	19.00	1.265	62.9	1.006	0.13	0.696	0.886
LTE Band 41	20M	QPSK	1	49	-	Right Cheek	0mm	Ant 3	Receive on	41140	2645	2	17.98	19.00	1.265	62.9	1.006	0.16	0.672	0.855
LTE Band 41	20M	QPSK	1	49	-	Right Tilted	0mm	Ant 3	Receive on	40140	2545	1	18.03	19.00	1.250	62.9	1.006	-0.11	0.495	0.623
LTE Band 41	20M	QPSK	1	49	-	Right Tilted	0mm	Ant 3	Receive on	40400	2571	1	18.05	19.00	1.245	62.9	1.006	0.13	0.513	0.642
LTE Band 41	20M	QPSK	1	49	-	Right Tilted	0mm	Ant 3	Receive on	41140	2645	1	17.98	19.00	1.265	62.9	1.006	-0.06	0.592	0.753
LTE Band 41	20M	QPSK	50	0	-	Right Cheek	0mm	Ant 3	Receive on	40670	2598	1	17.11	18.00	1.227	62.9	1.006	-0.04	0.499	0.616
LTE Band 41	20M	QPSK	50	0	-	Right Tilted	0mm	Ant 3	Receive on	40670	2598	1	17.11	18.00	1.227	62.9	1.006	0.1	0.442	0.546
LTE Band 41	20M	QPSK	50	0	-	Left Cheek	0mm	Ant 3	Receive on	40670	2598	1	17.11	18.00	1.227	62.9	1.006	0.13	0.193	0.238
LTE Band 41	20M	QPSK	50	0	-	Left Tilted	0mm	Ant 3	Receive on	40670	2598	1	17.11	18.00	1.227	62.9	1.006	0.16	0.154	0.190
LTE Band 41	20M	QPSK	50	0	-	Right Cheek	0mm	Ant 3	Receive on	40140	2545	1	17.09	18.00	1.233	62.9	1.006	0.1	0.452	0.561
LTE Band 41	20M	QPSK	50	0	-	Right Cheek	0mm	Ant 3	Receive on	40400	2571	1	17.03	18.00	1.250	62.9	1.006	0	0.492	0.619
LTE Band 41	20M	QPSK	50	0	-	Right Cheek	0mm	Ant 3	Receive on	41140	2645	1	17.10	18.00	1.230	62.9	1.006	-0.07	0.564	0.698
LTE Band 41	20M	QPSK	100	0	-	Right Cheek	0mm	Ant 3	Receive on	40670	2598	1	17.11	18.00	1.227	62.9	1.006	0.09	0.507	0.626
LTE Band 41	20M	QPSK	100	0	-	Right Tilted	0mm	Ant 3	Receive on	40670	2598	1	17.11	18.00	1.227	62.9	1.006	-0.05	0.441	0.545

Plot No.	Band	Mode	Test Position	Gap (mm)	Antenna	Power Reduction	Ch.	Freq (MHz)	Sample	Average Power (dBm)	Tune-Up Limit (dBm)	Tune-up Scaling Factor	Duty Cycle %	Duty Cycle Scaling Factor	Power Drift (dB)	Measured 1g SAR (W/kg)	Reported 1g SAR (W/kg)
WLAN/BT																	
	Bluetooth	DH5 1Mbps	Right Cheek	0mm	Ant 5	Receive on	39	2441	1	11.00	11.50	1.122	77.02	1.082	-0.04	0.041	0.050
	Bluetooth	DH5 1Mbps	Right Tilted	0mm	Ant 5	Receive on	39	2441	1	11.00	11.50	1.122	77.02	1.082	-0.11	0.045	0.055
06	Bluetooth	DH5 1Mbps	Left Cheek	0mm	Ant 5	Receive on	39	2441	1	11.00	11.50	1.122	77.02	1.082	-0.08	0.122	0.148
	Bluetooth	DH5 1Mbps	Left Cheek	0mm	Ant 5	Receive on	39	2441	2	11.00	11.50	1.122	77.02	1.082	0.13	0.109	0.132
	Bluetooth	DH5 1Mbps	Left Tilted	0mm	Ant 5	Receive on	39	2441	1	11.00	11.50	1.122	77.02	1.082	0.05	0.062	0.075
	WLAN2.4GHz	802.11b 1Mbps	Right Cheek	0mm	Ant 5	Receive on	11	2462	1	15.60	16.50	1.230	100	1.000	-0.06	0.262	0.322
	WLAN2.4GHz	802.11b 1Mbps	Right Tilted	0mm	Ant 5	Receive on	11	2462	1	15.60	16.50	1.230	100	1.000	-0.1	0.280	0.344
	WLAN2.4GHz	802.11b 1Mbps	Left Cheek	0mm	Ant 5	Receive on	11	2462	1	15.60	16.50	1.230	100	1.000	-0.15	0.728	0.896
	WLAN2.4GHz	802.11b 1Mbps	Left Tilted	0mm	Ant 5	Receive on	11	2462	1	15.60	16.50	1.230	100	1.000	0.01	0.437	0.538
07	WLAN2.4GHz	802.11b 1Mbps	Left Cheek	0mm	Ant 5	Receive on	6	2437	1	15.50	16.50	1.259	100	1.000	-0.04	0.748	0.942
	WLAN2.4GHz	802.11b 1Mbps	Left Cheek	0mm	Ant 5	Receive on	6	2437	3	15.50	16.50	1.259	100	1.000	-0.05	0.688	0.866
	WLAN2.4GHz	802.11b 1Mbps	Left Cheek	0mm	Ant 5	Receive on	6	2437	4	15.50	16.50	1.259	100	1.000	0.1	0.700	0.881
	WLAN2.4GHz	802.11b 1Mbps	Left Cheek	0mm	Ant 5	Receive on	6	2437	2	15.50	16.50	1.259	100	1.000	0.13	0.739	0.930
	WLAN2.4GHz	802.11b 1Mbps	Left Cheek	0mm	Ant 5	Receive on	6	2437	5	15.50	16.50	1.259	100	1.000	0.05	0.655	0.825
	WLAN2.4GHz	802.11b 1Mbps	Left Cheek	0mm	Ant 5	Receive on	6	2437	6	15.50	16.50	1.259	100	1.000	-0.08	0.629	0.792
	WLAN2.4GHz	802.11b 1Mbps	Right Cheek	0mm	Ant 5	Receive on simultaneous	11	2462	1	15.08	16.00	1.236	100	1.000	0.05	0.241	0.298
	WLAN2.4GHz	802.11b 1Mbps	Right Tilted	0mm	Ant 5	Receive on simultaneous	11	2462	1	15.08	16.00	1.236	100	1.000	-0.07	0.248	0.307
	WLAN2.4GHz	802.11b 1Mbps	Left Cheek	0mm	Ant 5	Receive on simultaneous	11	2462	1	15.08	16.00	1.236	100	1.000	0.05	0.656	0.811



FCC SAR Test Report

Report No. : FA480701-01

	WLAN2.4GHz	802.11b 1Mbps	Left Tilted	0mm	Ant 5	Receive on simultaneous	11	2462	1	15.08	16.00	1.236	100	1.000	-0.11	0.401	0.496
	WLAN2.4GHz	802.11b 1Mbps	Left Cheek	0mm	Ant 5	Receive on simultaneous	6	2437	1	14.96	16.00	1.271	100	1.000	0.06	0.673	0.855
	WLAN2.4GHz	802.11b 1Mbps	Left Cheek	0mm	Ant 5	Receive on simultaneous	6	2437	2	14.96	16.00	1.271	100	1.000	0.08	0.661	0.840
	WLAN5.3GHz	802.11ac-VHT80 MCS0	Right Cheek	0mm	Ant 5	Receive on	58	5290	1	10.56	12.00	1.393	100	1.000	-0.01	0.083	0.116
	WLAN5.3GHz	802.11ac-VHT80 MCS0	Right Tilted	0mm	Ant 5	Receive on	58	5290	1	10.56	12.00	1.393	100	1.000	0.14	0.089	0.124
08	WLAN5.3GHz	802.11ac-VHT80 MCS0	Left Cheek	0mm	Ant 5	Receive on	58	5290	1	10.56	12.00	1.393	100	1.000	-0.05	0.311	0.433
	WLAN5.3GHz	802.11ac-VHT80 MCS0	Left Cheek	0mm	Ant 5	Receive on	58	5290	3	10.56	12.00	1.393	100	1.000	-0.08	0.209	0.291
	WLAN5.3GHz	802.11ac-VHT80 MCS0	Left Cheek	0mm	Ant 5	Receive on	58	5290	4	10.56	12.00	1.393	100	1.000	-0.1	0.206	0.287
	WLAN5.3GHz	802.11ac-VHT80 MCS0	Left Cheek	0mm	Ant 5	Receive on	58	5290	2	10.56	12.00	1.393	100	1.000	-0.14	0.293	0.408
	WLAN5.3GHz	802.11ac-VHT80 MCS0	Left Cheek	0mm	Ant 5	Receive on	58	5290	5	10.56	12.00	1.393	100	1.000	0.05	0.207	0.288
	WLAN5.3GHz	802.11ac-VHT80 MCS0	Left Cheek	0mm	Ant 5	Receive on	58	5290	6	10.56	12.00	1.393	100	1.000	-0.07	0.201	0.280
	WLAN5.3GHz	802.11ac-VHT80 MCS0	Left Tilted	0mm	Ant 5	Receive on	58	5290	1	10.56	12.00	1.393	100	1.000	-0.07	0.153	0.213
	WLAN5.5GHz	802.11ac-VHT80 MCS0	Right Cheek	0mm	Ant 5	Receive on	122	5610	1	9.17	10.50	1.358	100	1.000	0.16	0.069	0.094
	WLAN5.5GHz	802.11ac-VHT80 MCS0	Right Tilted	0mm	Ant 5	Receive on	122	5610	1	9.17	10.50	1.358	100	1.000	-0.06	0.074	0.101
09	WLAN5.5GHz	802.11ac-VHT80 MCS0	Left Cheek	0mm	Ant 5	Receive on	122	5610	1	9.17	10.50	1.358	100	1.000	-0.15	0.218	0.296
	WLAN5.5GHz	802.11ac-VHT80 MCS0	Left Cheek	0mm	Ant 5	Receive on	122	5610	2	9.17	10.50	1.358	100	1.000	-0.15	0.201	0.273
	WLAN5.5GHz	802.11ac-VHT80 MCS0	Left Tilted	0mm	Ant 5	Receive on	122	5610	1	9.17	10.50	1.358	100	1.000	0.11	0.155	0.211
	WLAN5.8GHz	802.11ac-VHT80 MCS0	Right Cheek	0mm	Ant 5	Receive on	155	5775	1	9.28	10.50	1.324	100	1.000	-0.07	0.080	0.106
	WLAN5.8GHz	802.11ac-VHT80 MCS0	Right Tilted	0mm	Ant 5	Receive on	155	5775	1	9.28	10.50	1.324	100	1.000	-0.01	0.089	0.118
10	WLAN5.8GHz	802.11ac-VHT80 MCS0	Left Cheek	0mm	Ant 5	Receive on	155	5775	1	9.28	10.50	1.324	100	1.000	0.08	0.197	0.261
	WLAN5.8GHz	802.11ac-VHT80 MCS0	Left Cheek	0mm	Ant 5	Receive on	155	5775	2	9.28	10.50	1.324	100	1.000	0.08	0.177	0.234
	WLAN5.8GHz	802.11ac-VHT80 MCS0	Left Tilted	0mm	Ant 5	Receive on	155	5775	1	9.28	10.50	1.324	100	1.000	0.08	0.126	0.167



15.2 Hotspot SAR

Plot No.	Band	BW (MHz)	Modulation	RB Size	RB offset	Mode	Test Position	Gap (mm)	Antenna	Power Reduction	Ch.	Freq. (MHz)	Sample	Average Power (dBm)	Tune-Up Limit (dBm)	Tune-up Scaling Factor	Duty Cycle %	Duty Cycle Scaling Factor	Power Drift (dB)	Measured 1g SAR (W/kg)	Reported 1g SAR (W/kg)
835 MHz																					
	GSM850	-	-	-	-	GPRS (2 Tx slots)	Front	5mm	Ant 0	Hotspot on	189	836.4	1	30.35	31.50	1.303	-	-	0.13	0.549	0.715
	GSM850	-	-	-	-	GPRS (2 Tx slots)	Back	5mm	Ant 0	Hotspot on	189	836.4	1	30.35	31.50	1.303	-	-	0.04	0.892	1.162
	GSM850	-	-	-	-	GPRS (2 Tx slots)	Left Side	5mm	Ant 0	Hotspot on	189	836.4	1	30.35	31.50	1.303	-	-	0.01	0.437	0.569
	GSM850	-	-	-	-	GPRS (2 Tx slots)	Right Side	5mm	Ant 0	Hotspot on	189	836.4	1	30.35	31.50	1.303	-	-	0.13	0.578	0.753
	GSM850	-	-	-	-	GPRS (2 Tx slots)	Bottom Side	5mm	Ant 0	Hotspot on	189	836.4	1	30.35	31.50	1.303	-	-	0.13	0.457	0.596
	GSM850	-	-	-	-	GPRS (2 Tx slots)	Back	5mm	Ant 0	Hotspot on	128	824.2	1	30.33	31.50	1.309	-	-	-0.09	0.928	1.215
11	GSM850	-	-	-	-	GPRS (2 Tx slots)	Back	5mm	Ant 0	Hotspot on	251	848.8	1	30.32	31.50	1.312	-	-	0.05	1.080	1.417
	GSM850	-	-	-	-	GPRS (2 Tx slots)	Back	5mm	Ant 0	Hotspot on	251	848.8	3	30.32	31.50	1.312	-	-	0.12	0.897	1.177
	GSM850	-	-	-	-	GPRS (2 Tx slots)	Back	5mm	Ant 0	Hotspot on	251	848.8	4	30.32	31.50	1.312	-	-	0.03	0.850	1.115
	GSM850	-	-	-	-	GPRS (2 Tx slots)	Back	5mm	Ant 0	Hotspot on	251	848.8	2	30.32	31.50	1.312	-	-	-0.01	0.973	1.277
	GSM850	-	-	-	-	GPRS (2 Tx slots)	Back	5mm	Ant 0	Hotspot on	251	848.8	5	30.32	31.50	1.312	-	-	-0.04	0.910	1.194
	GSM850	-	-	-	-	GPRS (2 Tx slots)	Back	5mm	Ant 0	Hotspot on	251	848.8	6	30.32	31.50	1.312	-	-	0.06	0.855	1.122
	WCDMA V	-	-	-	-	RMC 12.2Kbps	Front	5mm	Ant 0	Hotspot on	4182	836.4	1	23.46	24.00	1.132	-	-	-0.07	0.589	0.667
	WCDMA V	-	-	-	-	RMC 12.2Kbps	Back	5mm	Ant 0	Hotspot on	4182	836.4	1	23.46	24.00	1.132	-	-	-0.02	1.090	1.234
	WCDMA V	-	-	-	-	RMC 12.2Kbps	Left Side	5mm	Ant 0	Hotspot on	4182	836.4	1	23.46	24.00	1.132	-	-	-0.09	0.382	0.433
	WCDMA V	-	-	-	-	RMC 12.2Kbps	Right Side	5mm	Ant 0	Hotspot on	4182	836.4	1	23.46	24.00	1.132	-	-	0.12	0.646	0.732
	WCDMA V	-	-	-	-	RMC 12.2Kbps	Bottom Side	5mm	Ant 0	Hotspot on	4182	836.4	1	23.46	24.00	1.132	-	-	-0.14	0.411	0.465
	WCDMA V	-	-	-	-	RMC 12.2Kbps	Back	5mm	Ant 0	Hotspot on	4132	826.4	1	23.44	24.00	1.138	-	-	0.02	1.010	1.149
12	WCDMA V	-	-	-	-	RMC 12.2Kbps	Back	5mm	Ant 0	Hotspot on	4233	846.6	1	23.42	24.00	1.143	-	-	-0.11	1.220	1.394
	WCDMA V	-	-	-	-	RMC 12.2Kbps	Back	5mm	Ant 0	Hotspot on	4233	846.6	2	23.42	24.00	1.143	-	-	0.1	1.100	1.257
	LTE Band 5	10M	QPSK	1	25	-	Front	5mm	Ant 0	Hotspot on	20525	836.5	1	23.44	24.00	1.138	-	-	0.03	0.582	0.662
13	LTE Band 5	10M	QPSK	1	25	-	Back	5mm	Ant 0	Hotspot on	20525	836.5	1	23.44	24.00	1.138	-	-	-0.16	1.110	1.263
	LTE Band 5	10M	QPSK	1	25	-	Back	5mm	Ant 0	Hotspot on	20525	836.5	2	23.44	24.00	1.138	-	-	-0.15	1.050	1.195
	LTE Band 5	10M	QPSK	1	25	-	Left Side	5mm	Ant 0	Hotspot on	20525	836.5	1	23.44	24.00	1.138	-	-	0.08	0.402	0.457
	LTE Band 5	10M	QPSK	1	25	-	Right Side	5mm	Ant 0	Hotspot on	20525	836.5	1	23.44	24.00	1.138	-	-	-0.12	0.641	0.729
	LTE Band 5	10M	QPSK	1	25	-	Bottom Side	5mm	Ant 0	Hotspot on	20525	836.5	1	23.44	24.00	1.138	-	-	0.12	0.519	0.590
	LTE Band 5	10M	QPSK	25	0	-	Front	5mm	Ant 0	Hotspot on	20525	836.5	1	22.53	23.00	1.114	-	-	0.05	0.506	0.564
	LTE Band 5	10M	QPSK	25	0	-	Back	5mm	Ant 0	Hotspot on	20525	836.5	1	22.53	23.00	1.114	-	-	-0.01	0.897	1.000
	LTE Band 5	10M	QPSK	25	0	-	Left Side	5mm	Ant 0	Hotspot on	20525	836.5	1	22.53	23.00	1.114	-	-	-0.1	0.324	0.361
	LTE Band 5	10M	QPSK	25	0	-	Right Side	5mm	Ant 0	Hotspot on	20525	836.5	1	22.53	23.00	1.114	-	-	0.08	0.473	0.527
	LTE Band 5	10M	QPSK	25	0	-	Bottom Side	5mm	Ant 0	Hotspot on	20525	836.5	1	22.53	23.00	1.114	-	-	0.04	0.429	0.478
	LTE Band 5	10M	QPSK	50	0	-	Back	5mm	Ant 0	Hotspot on	20525	836.5	1	22.50	23.00	1.122	-	-	0.1	0.885	0.993
	LTE Band 5	10M	QPSK	1	25	-	Front	5mm	Ant 3	Hotspot on	20525	836.5	1	20.01	21.00	1.256	-	-	0.09	0.215	0.270
	LTE Band 5	10M	QPSK	1	25	-	Back	5mm	Ant 3	Hotspot on	20525	836.5	1	20.01	21.00	1.256	-	-	-0.14	0.559	0.702
	LTE Band 5	10M	QPSK	1	25	-	Back	5mm	Ant 3	Hotspot on	20525	836.5	2	20.01	21.00	1.256	-	-	-0.1	0.536	0.673
	LTE Band 5	10M	QPSK	1	25	-	Left Side	5mm	Ant 3	Hotspot on	20525	836.5	1	20.01	21.00	1.256	-	-	0.06	0.184	0.231
	LTE Band 5	10M	QPSK	1	25	-	Top Side	5mm	Ant 3	Hotspot on	20525	836.5	1	20.01	21.00	1.256	-	-	-0.1	0.351	0.441
	LTE Band 5	10M	QPSK	25	0	-	Front	5mm	Ant 3	Hotspot on	20525	836.5	1	19.12	20.00	1.225	-	-	0.13	0.175	0.214
	LTE Band 5	10M	QPSK	25	0	-	Back	5mm	Ant 3	Hotspot on	20525	836.5	1	19.12	20.00	1.225	-	-	-0.01	0.450	0.551
	LTE Band 5	10M	QPSK	25	0	-	Left Side	5mm	Ant 3	Hotspot on	20525	836.5	1	19.12	20.00	1.225	-	-	-0.14	0.146	0.179
	LTE Band 5	10M	QPSK	25	0	-	Top Side	5mm	Ant 3	Hotspot on	20525	836.5	1	19.12	20.00	1.225	-	-	0.13	0.277	0.339
2600 MHz																					
	LTE Band 7	20M	QPSK	1	49	-	Front	5mm	Ant 0	Hotspot on	21100	2535	1	11.87	12.50	1.156	-	-	-0.15	0.384	0.444
	LTE Band 7	20M	QPSK	1	49	-	Back	5mm	Ant 0	Hotspot on	21100	2535	1	11.87	12.50	1.156	-	-	-0.13	0.837	0.968
	LTE Band 7	20M	QPSK	1	49	-	Left Side	5mm	Ant 0	Hotspot on	21100	2535	1	11.87	12.50	1.156	-	-	-0.03	0.047	0.054
	LTE Band 7	20M	QPSK	1	49	-	Right Side	5mm	Ant 0	Hotspot on	21100	2535	1	11.87	12.50	1.156	-	-	-0.14	0.037	0.043
	LTE Band 7	20M	QPSK	1	49	-	Bottom Side	5mm	Ant 0	Hotspot on	21100	2535	1	11.87	12.50	1.156	-	-	-0.16	1.060	1.225
	LTE Band 7	20M	QPSK	1	49	-	Bottom Side	5mm	Ant 0	Hotspot on	20850	2510	1	11.83	12.50	1.167	-	-	-0.12	0.983	1.147
14	LTE Band 7	20M	QPSK	1	49	-	Bottom Side	5mm	Ant 0	Hotspot on	21350	2560	1	11.81	12.50	1.172	-	-	0.13	1.120	1.313
	LTE Band 7	20M	QPSK	1	49	-	Bottom Side	5mm	Ant 0	Hotspot on	21350	2560	2	11.81	12.50	1.172	-	-	-0.14	1.040	1.219
	LTE Band 7	20M	QPSK	1	49	-	Back	5mm	Ant 0	Hotspot on	20850	2510	1	11.83	12.50	1.167	-	-	0.08	0.821	0.958



	LTE Band 7	20M	QPSK	1	49	-	Back	5mm	Ant 0	Hotspot on	21350	2560	1	11.81	12.50	1.172	-	-	0.08	0.901	1.056
	LTE Band 7	20M	QPSK	50	0	-	Front	5mm	Ant 0	Hotspot on	21100	2535	1	11.25	11.50	1.059	-	-	-0.08	0.303	0.321
	LTE Band 7	20M	QPSK	50	0	-	Back	5mm	Ant 0	Hotspot on	21100	2535	1	11.25	11.50	1.059	-	-	0	0.711	0.753
	LTE Band 7	20M	QPSK	50	0	-	Left Side	5mm	Ant 0	Hotspot on	21100	2535	1	11.25	11.50	1.059	-	-	0.08	0.037	0.039
	LTE Band 7	20M	QPSK	50	0	-	Right Side	5mm	Ant 0	Hotspot on	21100	2535	1	11.25	11.50	1.059	-	-	-0.16	0.029	0.031
	LTE Band 7	20M	QPSK	50	0	-	Bottom Side	5mm	Ant 0	Hotspot on	21100	2535	1	11.25	11.50	1.059	-	-	-0.06	0.846	0.896
	LTE Band 7	20M	QPSK	50	0	-	Bottom Side	5mm	Ant 0	Hotspot on	20850	2510	1	11.19	11.50	1.074	-	-	-0.1	0.794	0.853
	LTE Band 7	20M	QPSK	50	0	-	Bottom Side	5mm	Ant 0	Hotspot on	21350	2560	1	11.14	11.50	1.086	-	-	-0.06	0.871	0.946
	LTE Band 7	20M	QPSK	100	0	-	Back	5mm	Ant 0	Hotspot on	21100	2535	1	11.26	11.50	1.057	-	-	0.08	0.688	0.727
	LTE Band 7	20M	QPSK	100	0	-	Bottom Side	5mm	Ant 0	Hotspot on	21100	2535	1	11.26	11.50	1.057	-	-	0.03	0.834	0.881
	LTE Band 7	20M	QPSK	1	49	-	Front	5mm	Ant 3	Hotspot on	21100	2535	1	14.28	15.50	1.324	-	-	-0.16	0.194	0.257
	LTE Band 7	20M	QPSK	1	49	-	Back	5mm	Ant 3	Hotspot on	21100	2535	1	14.28	15.50	1.324	-	-	0	0.521	0.690
	LTE Band 7	20M	QPSK	1	49	-	Back	5mm	Ant 3	Hotspot on	21100	2535	2	14.28	15.50	1.324	-	-	0.08	0.517	0.685
	LTE Band 7	20M	QPSK	1	49	-	Left Side	5mm	Ant 3	Hotspot on	21100	2535	1	14.28	15.50	1.324	-	-	-0.13	0.404	0.535
	LTE Band 7	20M	QPSK	1	49	-	Top Side	5mm	Ant 3	Hotspot on	21100	2535	1	14.28	15.50	1.324	-	-	-0.09	0.338	0.448
	LTE Band 7	20M	QPSK	50	0	-	Front	5mm	Ant 3	Hotspot on	21100	2535	1	13.72	14.50	1.197	-	-	0.16	0.153	0.183
	LTE Band 7	20M	QPSK	50	0	-	Back	5mm	Ant 3	Hotspot on	21100	2535	1	13.72	14.50	1.197	-	-	0.07	0.431	0.516
	LTE Band 7	20M	QPSK	50	0	-	Left Side	5mm	Ant 3	Hotspot on	21100	2535	1	13.72	14.50	1.197	-	-	-0.06	0.332	0.397
	LTE Band 7	20M	QPSK	50	0	-	Top Side	5mm	Ant 3	Hotspot on	21100	2535	1	13.72	14.50	1.197	-	-	0.05	0.262	0.314
	LTE Band 41	20M	QPSK	1	49	-	Front	5mm	Ant 0	Hotspot on	40670	2598	1	14.45	15.00	1.135	62.9	1.006	0.01	0.392	0.448
	LTE Band 41	20M	QPSK	1	49	-	Back	5mm	Ant 0	Hotspot on	40670	2598	1	14.45	15.00	1.135	62.9	1.006	0.08	1.030	1.176
	LTE Band 41	20M	QPSK	1	49	-	Left Side	5mm	Ant 0	Hotspot on	40670	2598	1	14.45	15.00	1.135	62.9	1.006	0.06	0.047	0.054
	LTE Band 41	20M	QPSK	1	49	-	Right Side	5mm	Ant 0	Hotspot on	40670	2598	1	14.45	15.00	1.135	62.9	1.006	-0.16	0.037	0.042
	LTE Band 41	20M	QPSK	1	49	-	Bottom Side	5mm	Ant 0	Hotspot on	40670	2598	1	14.45	15.00	1.135	62.9	1.006	0.08	1.070	1.222
	LTE Band 41	20M	QPSK	1	49	-	Bottom Side	5mm	Ant 0	Hotspot on	40140	2545	1	14.25	15.00	1.189	62.9	1.006	-0.04	1.100	1.315
15	LTE Band 41	20M	QPSK	1	49	-	Bottom Side	5mm	Ant 0	Hotspot on	40400	2571	1	14.36	15.00	1.159	62.9	1.006	-0.08	1.200	1.399
	LTE Band 41	20M	QPSK	1	49	-	Bottom Side	5mm	Ant 0	Hotspot on	40400	2571	3	14.36	15.00	1.159	62.9	1.006	0.04	1.050	1.224
	LTE Band 41	20M	QPSK	1	49	-	Bottom Side	5mm	Ant 0	Hotspot on	40400	2571	4	14.36	15.00	1.159	62.9	1.006	0.01	1.020	1.189
	LTE Band 41	20M	QPSK	1	49	-	Bottom Side	5mm	Ant 0	Hotspot on	40400	2571	2	14.36	15.00	1.159	62.9	1.006	0.08	1.090	1.271
	LTE Band 41	20M	QPSK	1	49	-	Bottom Side	5mm	Ant 0	Hotspot on	40400	2571	5	14.36	15.00	1.159	62.9	1.006	0.03	0.990	1.154
	LTE Band 41	20M	QPSK	1	49	-	Bottom Side	5mm	Ant 0	Hotspot on	40400	2571	6	14.36	15.00	1.159	62.9	1.006	-0.08	0.972	1.133
	LTE Band 41	20M	QPSK	1	49	-	Bottom Side	5mm	Ant 0	Hotspot on	41140	2645	1	14.37	15.00	1.156	62.9	1.006	0.07	0.729	0.848
	LTE Band 41	20M	QPSK	1	49	-	Back	5mm	Ant 0	Hotspot on	40140	2545	1	14.25	15.00	1.189	62.9	1.006	-0.01	1.000	1.196
	LTE Band 41	20M	QPSK	1	49	-	Back	5mm	Ant 0	Hotspot on	40400	2571	1	14.36	15.00	1.159	62.9	1.006	-0.07	1.070	1.247
	LTE Band 41	20M	QPSK	1	49	-	Back	5mm	Ant 0	Hotspot on	41140	2645	1	14.37	15.00	1.156	62.9	1.006	0.1	0.706	0.821
	LTE Band 41	20M	QPSK	50	0	-	Front	5mm	Ant 0	Hotspot on	40670	2598	1	13.40	14.00	1.148	62.9	1.006	0.15	0.320	0.370
	LTE Band 41	20M	QPSK	50	0	-	Back	5mm	Ant 0	Hotspot on	40670	2598	1	13.40	14.00	1.148	62.9	1.006	-0.11	0.822	0.949
	LTE Band 41	20M	QPSK	50	0	-	Left Side	5mm	Ant 0	Hotspot on	40670	2598	1	13.40	14.00	1.148	62.9	1.006	0.07	0.037	0.043
	LTE Band 41	20M	QPSK	50	0	-	Right Side	5mm	Ant 0	Hotspot on	40670	2598	1	13.40	14.00	1.148	62.9	1.006	0.03	0.030	0.035
	LTE Band 41	20M	QPSK	50	0	-	Bottom Side	5mm	Ant 0	Hotspot on	40670	2598	1	13.40	14.00	1.148	62.9	1.006	0.07	0.852	0.984
	LTE Band 41	20M	QPSK	50	0	-	Bottom Side	5mm	Ant 0	Hotspot on	40140	2545	1	13.31	14.00	1.172	62.9	1.006	0.16	0.874	1.031
	LTE Band 41	20M	QPSK	50	0	-	Bottom Side	5mm	Ant 0	Hotspot on	40400	2571	1	13.22	14.00	1.197	62.9	1.006	-0.16	0.982	1.182
	LTE Band 41	20M	QPSK	50	0	-	Bottom Side	5mm	Ant 0	Hotspot on	41140	2645	1	13.39	14.00	1.151	62.9	1.006	0.16	0.567	0.656
	LTE Band 41	20M	QPSK	50	0	-	Back	5mm	Ant 0	Hotspot on	40140	2545	1	13.31	14.00	1.172	62.9	1.006	-0.09	0.805	0.949
	LTE Band 41	20M	QPSK	50	0	-	Back	5mm	Ant 0	Hotspot on	40400	2571	1	13.22	14.00	1.197	62.9	1.006	0.13	0.872	1.050
	LTE Band 41	20M	QPSK	50	0	-	Back	5mm	Ant 0	Hotspot on	41140	2645	1	13.39	14.00	1.151	62.9	1.006	0.04	0.566	0.655
	LTE Band 41	20M	QPSK	100	0	-	Back	5mm	Ant 0	Hotspot on	40670	2598	1	13.35	14.00	1.161	62.9	1.006	-0.03	0.796	0.930
	LTE Band 41	20M	QPSK	100	0	-	Bottom Side	5mm	Ant 0	Hotspot on	40670	2598	1	13.35	14.00	1.161	62.9	1.006	-0.15	0.834	0.974
	LTE Band 41	20M	QPSK	1	49	-	Front	5mm	Ant 3	Hotspot on	40670	2598	1	15.93	17.00	1.279	62.9	1.006	0.15	0.233	0.300
	LTE Band 41	20M	QPSK	1	49	-	Back	5mm	Ant 3	Hotspot on	40670	2598	1	15.93	17.00	1.279	62.9	1.006	-0.12	0.496	0.638
	LTE Band 41	20M	QPSK	1	49	-	Left Side	5mm	Ant 3	Hotspot on	40670	2598	1	15.93	17.00	1.279	62.9	1.006	0.06	0.423	0.544
	LTE Band 41	20M	QPSK	1	49	-	Top Side	5mm	Ant 3	Hotspot on	40670	2598	1	15.93	17.00	1.279	62.9	1.006	-0.08	0.291	0.375
	LTE Band 41	20M	QPSK	1	49	-	Back	5mm	Ant 3	Hotspot on	40140	2545	1	15.82	17.00	1.312	62.9	1.006	0.11	0.474	0.626
	LTE Band 41	20M	QPSK	1	49	-	Back	5mm	Ant 3	Hotspot on	40400	2571	1	15.90	17.00	1.288	62.9	1.006	-0.03	0.517	0.670
	LTE Band 41	20M	QPSK	1	49	-	Back	5mm	Ant 3	Hotspot on	41140	2645	1	15.89	17.00	1.291	62.9	1.006	-0.06	0.525	0.682
	LTE Band 41	20M	QPSK	1	49	-	Back	5mm	Ant 3	Hotspot on	41140	2645	2	15.89	17.00	1.291	62.9	1.006	-0.08	0.512	0.665



LTE Band 41	20M	QPSK	50	0	-	Front	5mm	Ant 3	Hotspot on	40670	2598	1	14.94	16.00	1.276	62.9	1.006	0.1	0.176	0.226
LTE Band 41	20M	QPSK	50	0	-	Back	5mm	Ant 3	Hotspot on	40670	2598	1	14.94	16.00	1.276	62.9	1.006	-0.01	0.401	0.515
LTE Band 41	20M	QPSK	50	0	-	Left Side	5mm	Ant 3	Hotspot on	40670	2598	1	14.94	16.00	1.276	62.9	1.006	-0.05	0.305	0.392
LTE Band 41	20M	QPSK	50	0	-	Top Side	5mm	Ant 3	Hotspot on	40670	2598	1	14.94	16.00	1.276	62.9	1.006	0.14	0.225	0.289
LTE Band 41	20M	QPSK	100	0	-	Back	5mm	Ant 3	Hotspot on	40670	2598	1	14.89	16.00	1.291	62.9	1.006	-0.02	0.381	0.495

Plot No.	Band	Mode	Test Position	Gap (mm)	Antenna	Power Reduction	Ch.	Freq. (MHz)	Sample	Average Power (dBm)	Tune-Up Limit (dBm)	Tune-up Scaling Factor	Duty Cycle %	Duty Cycle Scaling Factor	Power Drift (dB)	Measured 1g SAR (W/kg)	Reported 1g SAR (W/kg)	
WLAN/BT																		
	Bluetooth	DH5 1Mbps	Front	5mm	Ant 5	Hotspot on	39	2441	1	11.00	11.50	1.122	77.02	1.082	-0.08	0.063	0.076	
16	Bluetooth	DH5 1Mbps	Back	5mm	Ant 5	Hotspot on	39	2441	1	11.00	11.50	1.122	77.02	1.082	-0.04	0.154	0.187	
	Bluetooth	DH5 1Mbps	Back	5mm	Ant 5	Hotspot on	39	2441	2	11.00	11.50	1.122	77.02	1.082	-0.1	0.149	0.181	
	Bluetooth	DH5 1Mbps	Right Side	5mm	Ant 5	Hotspot on	39	2441	1	11.00	11.50	1.122	77.02	1.082	0.1	0.057	0.069	
	Bluetooth	DH5 1Mbps	Top Side	5mm	Ant 5	Hotspot on	39	2441	1	11.00	11.50	1.122	77.02	1.082	0.04	0.052	0.063	
	WLAN2.4GHz	802.11b 1Mbps	Front	5mm	Ant 5	Hotspot on	11	2462	1	14.11	15.00	1.227	100	1.000	-0.1	0.276	0.339	
	WLAN2.4GHz	802.11b 1Mbps	Back	5mm	Ant 5	Hotspot on	11	2462	1	14.11	15.00	1.227	100	1.000	-0.12	0.653	0.802	
	WLAN2.4GHz	802.11b 1Mbps	Right Side	5mm	Ant 5	Hotspot on	11	2462	1	14.11	15.00	1.227	100	1.000	-0.14	0.362	0.444	
	WLAN2.4GHz	802.11b 1Mbps	Top Side	5mm	Ant 5	Hotspot on	11	2462	1	14.11	15.00	1.227	100	1.000	-0.03	0.237	0.291	
17	WLAN2.4GHz	802.11b 1Mbps	Back	5mm	Ant 5	Hotspot on	6	2437	1	13.97	15.00	1.268	100	1.000	0.09	0.644	0.816	
	WLAN2.4GHz	802.11b 1Mbps	Back	5mm	Ant 5	Hotspot on	6	2437	2	13.97	15.00	1.268	100	1.000	0.1	0.612	0.776	
	WLAN5.2GHz	802.11ac-VHT80 MCS0	Front	5mm	Ant 5	Hotspot on	42	5210	1	9.09	10.50	1.384	100	1.000	0.06	0.122	0.169	
	WLAN5.2GHz	802.11ac-VHT80 MCS0	Back	5mm	Ant 5	Hotspot on	42	5210	1	9.09	10.50	1.384	100	1.000	-0.16	0.415	0.574	
18	WLAN5.2GHz	802.11ac-VHT80 MCS0	Right Side	5mm	Ant 5	Hotspot on	42	5210	1	9.09	10.50	1.384	100	1.000	-0.03	0.522	0.722	
	WLAN5.2GHz	802.11ac-VHT80 MCS0	Right Side	5mm	Ant 5	Hotspot on	42	5210	2	9.09	10.50	1.384	100	1.000	-0.02	0.516	0.714	
	WLAN5.2GHz	802.11ac-VHT80 MCS0	Top Side	5mm	Ant 5	Hotspot on	42	5210	1	9.09	10.50	1.384	100	1.000	0.09	0.166	0.230	
	WLAN5.8GHz	802.11ac-VHT80 MCS0	Front	5mm	Ant 5	Hotspot on	155	5775	1	7.19	8.50	1.352	100	1.000	0.07	0.101	0.137	
	WLAN5.8GHz	802.11ac-VHT80 MCS0	Back	5mm	Ant 5	Hotspot on	155	5775	1	7.19	8.50	1.352	100	1.000	0.01	0.490	0.663	
19	WLAN5.8GHz	802.11ac-VHT80 MCS0	Right Side	5mm	Ant 5	Hotspot on	155	5775	1	7.19	8.50	1.352	100	1.000	-0.02	0.550	0.744	
	WLAN5.8GHz	802.11ac-VHT80 MCS0	Right Side	5mm	Ant 5	Hotspot on	155	5775	3	7.19	8.50	1.352	100	1.000	-0.03	0.322	0.435	
	WLAN5.8GHz	802.11ac-VHT80 MCS0	Right Side	5mm	Ant 5	Hotspot on	155	5775	4	7.19	8.50	1.352	100	1.000	0.02	0.399	0.539	
	WLAN5.8GHz	802.11ac-VHT80 MCS0	Right Side	5mm	Ant 5	Hotspot on	155	5775	2	7.19	8.50	1.352	100	1.000	-0.04	0.537	0.726	
	WLAN5.8GHz	802.11ac-VHT80 MCS0	Right Side	5mm	Ant 5	Hotspot on	155	5775	5	7.19	8.50	1.352	100	1.000	0.03	0.311	0.420	
	WLAN5.8GHz	802.11ac-VHT80 MCS0	Right Side	5mm	Ant 5	Hotspot on	155	5775	5	7.19	8.50	1.352	100	1.000	-0.07	0.362	0.489	
	WLAN5.8GHz	802.11ac-VHT80 MCS0	Top Side	5mm	Ant 5	Hotspot on	155	5775	1	7.19	8.50	1.352	100	1.000	-0.13	0.196	0.265	



15.3 Body Worn Accessory SAR

Plot No.	Band	BW (MHz)	Modulation	RB Size	RB offset	Mode	Test Position	Gap (mm)	Antenna	Headset	Power Reduction	Ch.	Freq. (MHz)	Sample	Average Power (dBm)	Tune-Up Limit (dBm)	Tune-up Scaling Factor	Duty Cycle %	Duty Cycle Scaling Factor	Power Drift (dB)	Measured 1g SAR (W/kg)	Reported 1g SAR (W/kg)
835 MHz																						
	GSM850	-	-	-	-	GPRS (2 Tx slots)	Front	5mm	Ant 0	-	Receive off	189	836.4	1	30.35	31.50	1.303	-	-	0.13	0.549	0.715
	GSM850	-	-	-	-	GPRS (2 Tx slots)	Back	5mm	Ant 0	-	Receive off	189	836.4	1	30.35	31.50	1.303	-	-	0.04	0.892	1.162
	GSM850	-	-	-	-	GPRS (2 Tx slots)	Back	5mm	Ant 0	-	Receive off	128	824.2	1	30.33	31.50	1.309	-	-	-0.09	0.928	1.215
20	GSM850	-	-	-	-	GPRS (2 Tx slots)	Back	5mm	Ant 0	-	Receive off	251	848.8	1	30.32	31.50	1.312	-	-	0.05	1.080	1.417
	GSM850	-	-	-	-	GPRS (2 Tx slots)	Back	5mm	Ant 0	-	Receive off	251	848.8	3	30.32	31.50	1.312	-	-	0.12	0.897	1.177
	GSM850	-	-	-	-	GPRS (2 Tx slots)	Back	5mm	Ant 0	-	Receive off	251	848.8	4	30.32	31.50	1.312	-	-	0.03	0.850	1.115
	GSM850	-	-	-	-	GPRS (2 Tx slots)	Back	5mm	Ant 0	-	Receive off	251	848.8	2	30.32	31.50	1.312	-	-	-0.01	0.973	1.277
	GSM850	-	-	-	-	GPRS (2 Tx slots)	Back	5mm	Ant 0	-	Receive off	251	848.8	5	30.32	31.50	1.312	-	-	-0.04	0.910	1.194
	GSM850	-	-	-	-	GPRS (2 Tx slots)	Back	5mm	Ant 0	-	Receive off	251	848.8	6	30.32	31.50	1.312	-	-	0.06	0.855	1.122
	GSM850	-	-	-	-	GPRS (2 Tx slots)	Back	5mm	Ant 0	Headset	Receive off	251	848.8	1	30.32	31.50	1.312	-	-	-0.11	0.981	1.287
	WCDMA V	-	-	-	-	RMC 12.2Kbps	Front	5mm	Ant 0	-	Receive off	4182	836.4	1	23.46	24.00	1.132	-	-	-0.07	0.589	0.667
	WCDMA V	-	-	-	-	RMC 12.2Kbps	Back	5mm	Ant 0	-	Receive off	4182	836.4	1	23.46	24.00	1.132	-	-	-0.02	1.090	1.234
	WCDMA V	-	-	-	-	RMC 12.2Kbps	Back	5mm	Ant 0	-	Receive off	4132	826.4	1	23.44	24.00	1.138	-	-	0.02	1.010	1.149
21	WCDMA V	-	-	-	-	RMC 12.2Kbps	Back	5mm	Ant 0	-	Receive off	4233	846.6	1	23.42	24.00	1.143	-	-	-0.11	1.220	1.394
	WCDMA V	-	-	-	-	RMC 12.2Kbps	Back	5mm	Ant 0	-	Receive off	4233	846.6	2	23.42	24.00	1.143	-	-	0.1	1.100	1.257
	WCDMA V	-	-	-	-	RMC 12.2Kbps	Back	5mm	Ant 0	Headset	Receive off	4233	846.6	1	23.42	24.00	1.143	-	-	0.01	1.130	1.291
	LTE Band 5	10M	QPSK	1	25	-	Front	5mm	Ant 0	-	Receive off	20525	836.5	1	23.44	24.00	1.138	-	-	0.03	0.582	0.662
22	LTE Band 5	10M	QPSK	1	25	-	Back	5mm	Ant 0	-	Receive off	20525	836.5	1	23.44	24.00	1.138	-	-	-0.16	1.110	1.263
	LTE Band 5	10M	QPSK	1	25	-	Back	5mm	Ant 0	-	Receive off	20525	836.5	2	23.44	24.00	1.138	-	-	-0.15	1.050	1.195
	LTE Band 5	10M	QPSK	1	25	-	Back	5mm	Ant 0	Headset	Receive off	20525	836.5	1	23.44	24.00	1.138	-	-	0.03	1.050	1.195
	LTE Band 5	10M	QPSK	25	0	-	Front	5mm	Ant 0	-	Receive off	20525	836.5	1	22.53	23.00	1.114	-	-	0.05	0.506	0.564
	LTE Band 5	10M	QPSK	25	0	-	Back	5mm	Ant 0	-	Receive off	20525	836.5	1	22.53	23.00	1.114	-	-	-0.01	0.897	1.000
	LTE Band 5	10M	QPSK	50	0	-	Back	5mm	Ant 0	-	Receive off	20525	836.5	1	22.50	23.00	1.122	-	-	0.1	0.885	0.993
	LTE Band 5	10M	QPSK	1	25	-	Front	5mm	Ant 3	-	Receive off	20525	836.5	1	21.01	22.00	1.256	-	-	0.09	0.258	0.324
	LTE Band 5	10M	QPSK	1	25	-	Back	5mm	Ant 3	-	Receive off	20525	836.5	1	21.01	22.00	1.256	-	-	-0.14	0.687	0.863
	LTE Band 5	10M	QPSK	1	25	-	Back	5mm	Ant 3	-	Receive off	20525	836.5	2	21.01	22.00	1.256	-	-	-0.1	0.644	0.809
	LTE Band 5	10M	QPSK	25	0	-	Front	5mm	Ant 3	-	Receive off	20525	836.5	1	20.12	21.00	1.225	-	-	0.13	0.210	0.257
	LTE Band 5	10M	QPSK	25	0	-	Back	5mm	Ant 3	-	Receive off	20525	836.5	1	20.12	21.00	1.225	-	-	-0.01	0.541	0.663
	LTE Band 5	10M	QPSK	50	0	-	Back	5mm	Ant 3	-	Receive off	20525	836.5	1	20.07	21.00	1.239	-	-	-0.01	0.546	0.676
2600 MHz																						
	LTE Band 7	20M	QPSK	1	49	-	Front	5mm	Ant 0	-	Receive off	21100	2535	1	12.74	13.50	1.191	-	-	-0.15	0.474	0.565
	LTE Band 7	20M	QPSK	1	49	-	Back	5mm	Ant 0	-	Receive off	21100	2535	1	12.74	13.50	1.191	-	-	-0.13	0.928	1.105
	LTE Band 7	20M	QPSK	1	49	-	Back	5mm	Ant 0	-	Receive off	20850	2510	1	12.71	13.50	1.199	-	-	0.08	0.910	1.092
23	LTE Band 7	20M	QPSK	1	49	-	Back	5mm	Ant 0	-	Receive off	21350	2560	1	12.69	13.50	1.205	-	-	0.08	1.180	1.422
	LTE Band 7	20M	QPSK	1	49	-	Back	5mm	Ant 0	-	Receive off	21350	2560	3	12.69	13.50	1.205	-	-	0.02	1.090	1.313
	LTE Band 7	20M	QPSK	1	49	-	Back	5mm	Ant 0	-	Receive off	21350	2560	4	12.69	13.50	1.205	-	-	0.06	1.050	1.265
	LTE Band 7	20M	QPSK	1	49	-	Back	5mm	Ant 0	-	Receive off	21350	2560	2	12.69	13.50	1.205	-	-	-0.06	1.030	1.241
	LTE Band 7	20M	QPSK	1	49	-	Back	5mm	Ant 0	-	Receive off	21350	2560	5	12.69	13.50	1.205	-	-	0.01	0.967	1.165
	LTE Band 7	20M	QPSK	1	49	-	Back	5mm	Ant 0	-	Receive off	21350	2560	6	12.69	13.50	1.205	-	-	0.05	0.949	1.144
	LTE Band 7	20M	QPSK	1	49	-	Back	5mm	Ant 0	Headset	Receive off	21350	2560	1	12.69	13.50	1.205	-	-	-0.14	1.080	1.301
	LTE Band 7	20M	QPSK	50	0	-	Front	5mm	Ant 0	-	Receive off	21100	2535	1	12.18	12.50	1.076	-	-	-0.08	0.383	0.412
	LTE Band 7	20M	QPSK	50	0	-	Back	5mm	Ant 0	-	Receive off	21100	2535	1	12.18	12.50	1.076	-	-	0	0.756	0.814
	LTE Band 7	20M	QPSK	50	0	-	Back	5mm	Ant 0	-	Receive off	20850	2510	1	12.13	12.50	1.089	-	-	0.08	0.725	0.789
	LTE Band 7	20M	QPSK	50	0	-	Back	5mm	Ant 0	-	Receive off	21350	2560	1	12.09	12.50	1.099	-	-	0.06	0.961	1.056
	LTE Band 7	20M	QPSK	100	0	-	Back	5mm	Ant 0	-	Receive off	21100	2535	1	12.21	12.50	1.069	-	-	0.08	0.766	0.819
	LTE Band 7	20M	QPSK	1	49	-	Front	5mm	Ant 3	-	Receive off	21100	2535	1	15.28	16.50	1.324	-	-	-0.16	0.233	0.309
	LTE Band 7	20M	QPSK	1	49	-	Back	5mm	Ant 3	-	Receive off	21100	2535	1	15.28	16.50	1.324	-	-	0	0.663	0.878
	LTE Band 7	20M	QPSK	1	49	-	Back	5mm	Ant 3	-	Receive off	21100	2535	2	15.28	16.50	1.324	-	-	0.08	0.622	0.824
	LTE Band 7	20M	QPSK	1	49	-	Back	5mm	Ant 3	-	Receive off	20850	2510	1	15.22	16.50	1.343	-	-	0.14	0.581	0.780
	LTE Band 7	20M	QPSK	1	49	-	Back	5mm	Ant 3	-	Receive off	21350	2560	1	15.17	16.50	1.358	-	-	0.01	0.640	0.869
	LTE Band 7	20M	QPSK	50	0	-	Front	5mm	Ant 3	-	Receive off	21100	2535	1	14.72	15.50	1.197	-	-	0.16	0.184	0.220



	LTE Band 7	20M	QPSK	50	0	-	Back	5mm	Ant 3	-	Receive off	21100	2535	1	14.72	15.50	1.197	-	-	0.07	0.518	0.620
	LTE Band 7	20M	QPSK	100	0	-	Back	5mm	Ant 3	-	Receive off	21100	2535	1	14.65	15.50	1.216	-	-	0.02	0.515	0.626
	LTE Band 41	20M	QPSK	1	49	-	Front	5mm	Ant 0	-	Receive off	40670	2598	1	14.45	15.00	1.135	62.9	1.006	0.01	0.392	0.448
	LTE Band 41	20M	QPSK	1	49	-	Back	5mm	Ant 0	-	Receive off	40670	2598	1	14.45	15.00	1.135	62.9	1.006	0.08	1.030	1.176
	LTE Band 41	20M	QPSK	1	49	-	Back	5mm	Ant 0	-	Receive off	40140	2545	1	14.25	15.00	1.189	62.9	1.006	-0.01	1.000	1.196
24	LTE Band 41	20M	QPSK	1	49	-	Back	5mm	Ant 0	-	Receive off	40400	2571	1	14.36	15.00	1.159	62.9	1.006	-0.07	1.070	1.247
	LTE Band 41	20M	QPSK	1	49	-	Back	5mm	Ant 0	-	Receive off	40400	2571	2	14.36	15.00	1.159	62.9	1.006	0.01	0.910	1.061
	LTE Band 41	20M	QPSK	1	49	-	Back	5mm	Ant 0	-	Receive off	41140	2645	1	14.37	15.00	1.156	62.9	1.006	0.1	0.706	0.821
	LTE Band 41	20M	QPSK	1	49	-	Back	5mm	Ant 0	Headset	Receive off	40400	2571	1	14.36	15.00	1.159	62.9	1.006	-0.03	1.010	1.177
	LTE Band 41	20M	QPSK	50	0	-	Front	5mm	Ant 0	-	Receive off	40670	2598	1	13.40	14.00	1.148	62.9	1.006	0.15	0.320	0.370
	LTE Band 41	20M	QPSK	50	0	-	Back	5mm	Ant 0	-	Receive off	40670	2598	1	13.40	14.00	1.148	62.9	1.006	-0.11	0.822	0.949
	LTE Band 41	20M	QPSK	50	0	-	Back	5mm	Ant 0	-	Receive off	40140	2545	1	13.31	14.00	1.172	62.9	1.006	-0.09	0.805	0.949
	LTE Band 41	20M	QPSK	50	0	-	Back	5mm	Ant 0	-	Receive off	40400	2571	1	13.22	14.00	1.197	62.9	1.006	0.13	0.872	1.050
	LTE Band 41	20M	QPSK	50	0	-	Back	5mm	Ant 0	-	Receive off	41140	2645	1	13.39	14.00	1.151	62.9	1.006	0.04	0.566	0.655
	LTE Band 41	20M	QPSK	100	0	-	Back	5mm	Ant 0	-	Receive off	40670	2598	1	13.35	14.00	1.161	62.9	1.006	-0.03	0.796	0.930
	LTE Band 41	20M	QPSK	1	49	-	Front	5mm	Ant 3	-	Receive off	40670	2598	1	16.43	17.50	1.279	62.9	1.006	0.15	0.289	0.372
	LTE Band 41	20M	QPSK	1	49	-	Back	5mm	Ant 3	-	Receive off	40670	2598	1	16.43	17.50	1.279	62.9	1.006	-0.12	0.557	0.717
	LTE Band 41	20M	QPSK	1	49	-	Back	5mm	Ant 3	-	Receive off	40140	2545	1	16.32	17.50	1.312	62.9	1.006	0.11	0.532	0.702
	LTE Band 41	20M	QPSK	1	49	-	Back	5mm	Ant 3	-	Receive off	40400	2571	1	16.40	17.50	1.288	62.9	1.006	-0.03	0.580	0.752
	LTE Band 41	20M	QPSK	1	49	-	Back	5mm	Ant 3	-	Receive off	41140	2645	1	16.39	17.50	1.291	62.9	1.006	-0.06	0.589	0.765
	LTE Band 41	20M	QPSK	1	49	-	Back	5mm	Ant 3	-	Receive off	41140	2645	2	16.39	17.50	1.291	62.9	1.006	-0.08	0.574	0.746
	LTE Band 41	20M	QPSK	50	0	-	Front	5mm	Ant 3	-	Receive off	40670	2598	1	15.44	16.50	1.276	62.9	1.006	0.1	0.221	0.284
	LTE Band 41	20M	QPSK	50	0	-	Back	5mm	Ant 3	-	Receive off	40670	2598	1	15.44	16.50	1.276	62.9	1.006	-0.01	0.435	0.559
	LTE Band 41	20M	QPSK	50	0	-	Back	5mm	Ant 3	-	Receive off	40140	2545	1	15.34	16.50	1.306	62.9	1.006	0.06	0.426	0.560
	LTE Band 41	20M	QPSK	50	0	-	Back	5mm	Ant 3	-	Receive off	40400	2571	1	15.33	16.50	1.309	62.9	1.006	0.01	0.473	0.623
	LTE Band 41	20M	QPSK	50	0	-	Back	5mm	Ant 3	-	Receive off	41140	2645	1	15.43	16.50	1.279	62.9	1.006	-0.05	0.491	0.632
	LTE Band 41	20M	QPSK	100	0	-	Back	5mm	Ant 3	-	Receive off	40670	2598	1	15.39	16.50	1.291	62.9	1.006	-0.02	0.440	0.572



Plot No.	Band	Mode	Test Position	Gap (mm)	Antenna	Headset	Power Reduction	Ch.	Freq. (MHz)	Sample	Average Power (dBm)	Tune-Up Limit (dBm)	Tune-up Scaling Factor	Duty Cycle %	Duty Cycle Scaling Factor	Power Drift (dB)	Measured 1g SAR (W/kg)	Reported 1g SAR (W/kg)	
WLAN/BT																			
	Bluetooth	DH5 1Mbps	Front	5mm	Ant 5	-	Receive off	39	2441	1	11.00	11.50	1.122	77.02	1.082	-0.08	0.063	0.076	
25	Bluetooth	DH5 1Mbps	Back	5mm	Ant 5	-	Receive off	39	2441	1	11.00	11.50	1.122	77.02	1.082	-0.04	0.154	0.187	
	Bluetooth	DH5 1Mbps	Back	5mm	Ant 5	-	Receive off	39	2441	2	11.00	11.50	1.122	77.02	1.082	-0.1	0.149	0.181	
	WLAN2.4GHz	802.11b 1Mbps	Front	5mm	Ant 5	-	Receive off	11	2462	1	15.60	16.50	1.230	100	1.000	-0.1	0.399	0.491	
	WLAN2.4GHz	802.11b 1Mbps	Back	5mm	Ant 5	-	Receive off	11	2462	1	15.60	16.50	1.230	100	1.000	-0.12	0.899	1.106	
26	WLAN2.4GHz	802.11b 1Mbps	Back	5mm	Ant 5	-	Receive off	6	2437	1	15.50	16.50	1.259	100	1.000	0.08	0.945	1.190	
	WLAN2.4GHz	802.11b 1Mbps	Back	5mm	Ant 5	-	Receive off	6	2437	1	15.50	16.50	1.259	100	1.000	-0.05	0.934	1.176	
	WLAN2.4GHz	802.11b 1Mbps	Back	5mm	Ant 5	-	Receive off	6	2437	2	15.50	16.50	1.259	100	1.000	0.16	0.927	1.167	
	WLAN2.4GHz	802.11b 1Mbps	Back	5mm	Ant 5	Headset	Receive off	6	2437	1	15.50	16.50	1.259	100	1.000	0.09	0.900	1.133	
	WLAN2.4GHz	802.11b 1Mbps	Front	5mm	Ant 5	-	Receive off simultaneous	11	2462	1	13.05	14.00	1.245	100	1.000	0.16	0.226	0.281	
	WLAN2.4GHz	802.11b 1Mbps	Back	5mm	Ant 5	-	Receive off simultaneous	11	2462	1	13.05	14.00	1.245	100	1.000	0.03	0.495	0.616	
	WLAN2.4GHz	802.11b 1Mbps	Back	5mm	Ant 5	-	Receive off simultaneous	11	2462	2	13.05	14.00	1.245	100	1.000	0.01	0.478	0.595	
	WLAN5.3GHz	802.11ac-VHT80 MCS0	Front	5mm	Ant 5	-	Receive off	58	5290	1	10.56	12.00	1.393	100	1.000	0.07	0.180	0.251	
27	WLAN5.3GHz	802.11ac-VHT80 MCS0	Back	5mm	Ant 5	-	Receive off	58	5290	1	10.56	12.00	1.393	100	1.000	0.02	0.731	1.018	
	WLAN5.3GHz	802.11ac-VHT80 MCS0	Back	5mm	Ant 5	-	Receive off	58	5290	2	10.56	12.00	1.393	100	1.000	0.02	0.717	0.999	
	WLAN5.3GHz	802.11ac-VHT80 MCS0	Front	5mm	Ant 5	-	Receive off simultaneous	58	5290	1	6.16	7.50	1.361	100	1.000	0.01	0.069	0.094	
	WLAN5.3GHz	802.11ac-VHT80 MCS0	Back	5mm	Ant 5	-	Receive off simultaneous	58	5290	1	6.16	7.50	1.361	100	1.000	-0.01	0.279	0.380	
	WLAN5.3GHz	802.11ac-VHT80 MCS0	Back	5mm	Ant 5	-	Receive off simultaneous	58	5290	2	6.16	7.50	1.361	100	1.000	-0.15	0.273	0.372	
	WLAN5.5GHz	802.11ac-VHT80 MCS0	Front	5mm	Ant 5	-	Receive off	122	5610	1	9.17	10.50	1.358	100	1.000	0.02	0.147	0.200	
28	WLAN5.5GHz	802.11ac-VHT80 MCS0	Back	5mm	Ant 5	-	Receive off	122	5610	1	9.17	10.50	1.358	100	1.000	0.07	0.833	1.131	
	WLAN5.5GHz	802.11ac-VHT80 MCS0	Back	5mm	Ant 5	-	Receive off	122	5610	1	9.17	10.50	1.358	100	1.000	0.02	0.824	1.119	
	WLAN5.5GHz	802.11ac-VHT80 MCS0	Back	5mm	Ant 5	-	Receive off	122	5610	3	9.17	10.50	1.358	100	1.000	0.06	0.550	0.747	
	WLAN5.5GHz	802.11ac-VHT80 MCS0	Back	5mm	Ant 5	-	Receive off	122	5610	4	9.17	10.50	1.358	100	1.000	0.16	0.526	0.714	
	WLAN5.5GHz	802.11ac-VHT80 MCS0	Back	5mm	Ant 5	-	Receive off	122	5610	2	9.17	10.50	1.358	100	1.000	-0.05	0.781	1.061	
	WLAN5.5GHz	802.11ac-VHT80 MCS0	Back	5mm	Ant 5	-	Receive off	122	5610	5	9.17	10.50	1.358	100	1.000	0.01	0.560	0.761	
	WLAN5.5GHz	802.11ac-VHT80 MCS0	Back	5mm	Ant 5	-	Receive off	122	5610	6	9.17	10.50	1.358	100	1.000	0.12	0.546	0.742	
	WLAN5.5GHz	802.11ac-VHT80 MCS0	Back	5mm	Ant 5	-	Receive off	138	5690	1	9.06	10.50	1.393	100	1.000	0.09	0.777	1.083	
	WLAN5.5GHz	802.11ac-VHT80 MCS0	Front	5mm	Ant 5	-	Receive off simultaneous	122	5610	1	5.23	6.50	1.340	100	1.000	0.12	0.056	0.075	
	WLAN5.5GHz	802.11ac-VHT80 MCS0	Back	5mm	Ant 5	-	Receive off simultaneous	122	5610	1	5.23	6.50	1.340	100	1.000	0.16	0.300	0.402	
	WLAN5.5GHz	802.11ac-VHT80 MCS0	Back	5mm	Ant 5	-	Receive off simultaneous	122	5610	2	5.23	6.50	1.340	100	1.000	-0.11	0.295	0.395	
	WLAN5.8GHz	802.11ac-VHT80 MCS0	Front	5mm	Ant 5	-	Receive off	155	5775	1	9.28	10.50	1.324	100	1.000	-0.1	0.141	0.187	
29	WLAN5.8GHz	802.11ac-VHT80 MCS0	Back	5mm	Ant 5	-	Receive off	155	5775	1	9.28	10.50	1.324	100	1.000	-0.06	0.787	1.042	
	WLAN5.8GHz	802.11ac-VHT80 MCS0	Back	5mm	Ant 5	-	Receive off	155	5775	2	9.28	10.50	1.324	100	1.000	0.08	0.769	1.018	
	WLAN5.8GHz	802.11ac-VHT80 MCS0	Front	5mm	Ant 5	-	Receive off simultaneous	155	5775	1	5.31	6.50	1.315	100	1.000	-0.1	0.055	0.072	
	WLAN5.8GHz	802.11ac-VHT80 MCS0	Back	5mm	Ant 5	-	Receive off simultaneous	155	5775	1	5.31	6.50	1.315	100	1.000	-0.06	0.310	0.408	
	WLAN5.8GHz	802.11ac-VHT80 MCS0	Back	5mm	Ant 5	-	Receive off simultaneous	155	5775	2	5.31	6.50	1.315	100	1.000	0.08	0.296	0.389	



15.4 Product specific 10g SAR

Table with columns: Plot No., Band, BW (MHz), Modulation, RB Size, RB offset, Mode, Test Position, Gap (mm), Antenna, Power Reduction, Ch., Freq. (MHz), Sample, Average Power (dBm), Tune-Up Limit (dBm), Tune-up Scaling Factor, Duty Cycle %, Duty Cycle Scaling Factor, Power Drift (dB), Measured 10g SAR (W/kg), Reported 10g SAR (W/kg). Rows include 835 MHz and 2600 MHz test results.

Table with columns: Plot No., Band, Mode, Test Position, Gap (mm), Antenna, Power Reduction, Ch., Freq. (MHz), Sample, Average Power (dBm), Tune-Up Limit (dBm), Tune-up Scaling Factor, Duty Cycle %, Duty Cycle Scaling Factor, Power Drift (dB), Measured 10g SAR (W/kg), Reported 10g SAR (W/kg). Rows include WLAN test results.

15.5 Repeated SAR Measurement

<1g>

Plot No.	Band	BW (MHz)	Modulation	RB Size	RB offset	Mode	Test Position	Gap (mm)	Antenna	Power State	Ch.	Freq. (MHz)	Sample	Average Power (dBm)	Tune-Up Limit (dBm)	Tune-up Scaling Factor	Duty Cycle %	Duty Cycle Scaling Factor	Power Drift (dB)	Measured 1g SAR (W/kg)	Ratio	Reported 1g SAR (W/kg)
1st	WCDMA V	-	-	-	-	RMC 12.2Kbps	Back	5mm	Ant 0	Hotspot on	4233	846.6	1	23.42	24.00	1.143	-	-	-0.11	1.220	1	1.394
2nd	WCDMA V	-	-	-	-	RMC 12.2Kbps	Back	5mm	Ant 0	Hotspot on	4233	846.6	1	23.42	24.00	1.143	-	-	0.07	1.150	1.061	1.314
1st	LTE Band 41	20M	QPSK	1	49	-	Bottom Side	5mm	Ant 0	Hotspot on	40400	2571	1	14.36	15.00	1.159	62.9	1.006	-0.08	1.200	1	1.399
2nd	LTE Band 41	20M	QPSK	1	49	-	Bottom Side	5mm	Ant 0	Hotspot on	40400	2571	1	14.36	15.00	1.159	62.9	1.006	0.06	1.130	1.062	1.317
1st	WLAN2.4GHz	-	-	-	-	802.11b 1Mbps	Back	5mm	Ant 5	Receive off	6	2437	1	15.50	16.50	1.259	100	1.000	0.08	0.945	1	1.190
2nd	WLAN2.4GHz	-	-	-	-	802.11b 1Mbps	Back	5mm	Ant 5	Receive off	6	2437	1	15.50	16.50	1.259	100	1.000	-0.05	0.934	1.012	1.176
1st	WLAN5.5GHz	-	-	-	-	802.11ac-VHT80 MCS0	Back	5mm	Ant 5	Receive off	122	5610	1	9.17	10.50	1.358	100	1.000	0.07	0.833	1	1.131
2nd	WLAN5.5GHz	-	-	-	-	802.11ac-VHT80 MCS0	Back	5mm	Ant 5	Receive off	122	5610	1	9.17	10.50	1.358	100	1.000	0.02	0.824	1.011	1.119

General Note:

1. Per KDB 865664 D01v01r04, for each frequency band, repeated SAR measurement is required only when the measured SAR is $\geq 0.8W/kg$.
2. Per KDB 865664 D01v01r04, if the ratio among the repeated measurement is ≤ 1.2 and the measured SAR $< 1.45W/kg$, only one repeated measurement is required.
3. The ratio is the difference in percentage between original and repeated *measured SAR*.
4. All measurement SAR result is scaled-up to account for tune-up tolerance and is compliant.

16. Simultaneous Transmission Analysis

NO.	Simultaneous Transmission Configurations	Mobile Cellular Phone			
		Head	Body	Hotspot	Product specific 10g SAR
1.	WWAN + WLAN2.4GHz	Yes	Yes	Yes	Yes
2.	WWAN + WLAN5GHz	Yes	Yes	Yes	Yes
3.	WWAN + Bluetooth	Yes	Yes	Yes	Yes
4.	WLAN5GHz+ Bluetooth	Yes	Yes	Yes	Yes
5.	WWAN + WLAN5GHz+ Bluetooth	Yes	Yes	Yes	Yes

General Note:

1. This device supports VoIP in GPRS, EGPRS, WCDMA and LTE (e.g. for 3rd-party VoIP), and LTE supports VoLTE function.
2. EUT will choose each GSM, WCDMA and LTE according to the network signal condition; therefore, they will not operate simultaneously at any moment.
3. This device WLAN 2.4GHz supports hotspot operation and Bluetooth support tethering applications.
4. This device 2.4GHz WLAN/ 5.2GHz WLAN/5.8GHz WLAN support hotspot operation, and 5.2GHz WLAN/5.8GHz WLAN supports WLAN Direct (GC/GO), and 5.3GHz / 5.5GHz supports WLAN Direct (GC only).
5. According to the EUT characteristic, WLAN 5GHz and Bluetooth can transmit simultaneously.
6. According to the EUT characteristic, WLAN 5GHz and WLAN 2.4GHz cannot transmit simultaneously.
7. WLAN 2.4GHz and Bluetooth share the same antenna and they cannot transmit simultaneously.
8. The worst case 5 GHz WLAN SAR for each configuration was used for SAR summation.
9. For Headset SAR and non-Headset SAR always chose higher SAR to do co-located analysis.
10. When stand-alone SAR is not required for a transmitter or antenna, its SAR is considered zero in the SAR summing process to assess Multi-band transmission SAR compliance.
11. The maximum SAR summation is calculated based on the same configuration and test position.
12. Per KDB 447498 D01v06, simultaneous transmission SAR is compliant if,
 - i) 1g Scalar SAR summation < 1.6W/kg and 10g Scalar SAR summation < 4.0W/kg.
 - ii) $SPLSR = (SAR1 + SAR2)^{1.5} / (\text{min. separation distance, mm})$, and the peak separation distance is determined from the square root of $[(x1-x2)^2 + (y1-y2)^2 + (z1-z2)^2]$, where (x1, y1, z1) and (x2, y2, z2) are the coordinates of the extrapolated peak SAR locations in the zoom scan.
 - iii) If $SPLSR \leq 0.04$ for 1g SAR and $SPLSR \leq 0.10$ for 10g SAR, simultaneously transmission SAR measurement is not necessary.
 - iv) Simultaneously transmission SAR measurement, and the reported multi-band 1g SAR < 1.6W/kg and 10g SAR < 4.0W/kg.
 - v) The SPLSR calculated results please refer to section 16.5.

16.1 Head Exposure Conditions

Exposure Position	4	5	4+5
	WLAN5GHz Ant 5	Bluetooth Ant 5	Summed
	1g SAR (W/kg)	1g SAR (W/kg)	1g SAR (W/kg)
Right Cheek	0.116	0.050	0.17
Right Tilted	0.124	0.055	0.18
Left Cheek	0.433	0.148	0.58
Left Tilted	0.213	0.075	0.29

WWAN Band	Exposure Position	1	3	4	5	1+3	1+4+5
		WWAN	WLAN2.4GHz Ant 5	WLAN5GHz Ant 5	Bluetooth Ant 5	Summed	Summed
		1g SAR (W/kg)	1g SAR (W/kg)	1g SAR (W/kg)	1g SAR (W/kg)	1g SAR (W/kg)	1g SAR (W/kg)
GSM850 Ant 0	Right Cheek	0.439	0.298	0.116	0.050	0.74	0.61
	Right Tilted	0.240	0.307	0.124	0.055	0.55	0.42
	Left Cheek	0.383	0.855	0.433	0.148	1.24	0.96
	Left Tilted	0.231	0.496	0.213	0.075	0.73	0.52
WCDMA V Ant 0	Right Cheek	0.421	0.298	0.116	0.050	0.72	0.59
	Right Tilted	0.236	0.307	0.124	0.055	0.54	0.42
	Left Cheek	0.364	0.855	0.433	0.148	1.22	0.95
	Left Tilted	0.228	0.496	0.213	0.075	0.72	0.52
LTE Band 5 Ant 0	Right Cheek	0.408	0.298	0.116	0.050	0.71	0.57
	Right Tilted	0.238	0.307	0.124	0.055	0.55	0.42
	Left Cheek	0.359	0.855	0.433	0.148	1.21	0.94
	Left Tilted	0.228	0.496	0.213	0.075	0.72	0.52
LTE Band 5 Ant 3	Right Cheek	0.876	0.298	0.116	0.050	1.17	1.04
	Right Tilted	0.624	0.307	0.124	0.055	0.93	0.80
	Left Cheek	0.639	0.855	0.433	0.148	1.49	1.22
	Left Tilted	0.515	0.496	0.213	0.075	1.01	0.80
LTE Band 7 Ant 0	Right Cheek	0.121	0.298	0.116	0.050	0.42	0.29
	Right Tilted	0.056	0.307	0.124	0.055	0.36	0.24
	Left Cheek	0.070	0.855	0.433	0.148	0.93	0.65
	Left Tilted	0.050	0.496	0.213	0.075	0.55	0.34
LTE Band 7 Ant 3	Right Cheek	0.815	0.298	0.116	0.050	1.11	0.98
	Right Tilted	0.618	0.307	0.124	0.055	0.93	0.80
	Left Cheek	0.238	0.855	0.433	0.148	1.09	0.82
	Left Tilted	0.223	0.496	0.213	0.075	0.72	0.51
LTE Band 41 Ant 0	Right Cheek	0.079	0.298	0.116	0.050	0.38	0.25
	Right Tilted	0.043	0.307	0.124	0.055	0.35	0.22
	Left Cheek	0.061	0.855	0.433	0.148	0.92	0.64
	Left Tilted	0.030	0.496	0.213	0.075	0.53	0.32
LTE Band 41 Ant 3	Right Cheek	0.886	0.298	0.116	0.050	1.18	1.05
	Right Tilted	0.753	0.307	0.124	0.055	1.06	0.93
	Left Cheek	0.308	0.855	0.433	0.148	1.16	0.89
	Left Tilted	0.235	0.496	0.213	0.075	0.73	0.52



16.2 Hotspot Exposure Conditions

Exposure Position	4		5		4+5 Summed 1g SAR (W/kg)
	WLAN5GHz Ant 5		Bluetooth Ant 5		
	1g SAR (W/kg)		1g SAR (W/kg)		
Front	0.169		0.076		0.25
Back	0.663		0.187		0.85
Left side					0.00
Right side	0.744		0.069		0.81
Top side	0.265		0.063		0.33
Bottom side					0.00

WWAN Band	Exposure Position	1	3	4	5	1+3	1+4+5	Case No
		WWAN	WLAN2.4GHz Ant 5	WLAN5GHz Ant 5	Bluetooth Ant 5	Summed	Summed	
		1g SAR (W/kg)	1g SAR (W/kg)	1g SAR (W/kg)	1g SAR (W/kg)	1g SAR (W/kg)	1g SAR (W/kg)	
GSM850 Ant 0	Front	0.715	0.339	0.169	0.076	1.05	0.96	
	Back	1.417	0.816	0.663	0.187	2.23	2.27	Case 1/2
	Left side	0.569				0.57	0.57	
	Right side	0.753	0.444	0.744	0.069	1.20	1.57	
	Top side		0.291	0.265	0.063	0.29	0.33	
	Bottom side	0.596				0.60	0.60	
WCDMA V Ant 0	Front	0.667	0.339	0.169	0.076	1.01	0.91	
	Back	1.394	0.816	0.663	0.187	2.21	2.24	Case 3/4
	Left side	0.433				0.43	0.43	
	Right side	0.732	0.444	0.744	0.069	1.18	1.55	
	Top side		0.291	0.265	0.063	0.29	0.33	
	Bottom side	0.465				0.47	0.47	
LTE Band 5 Ant 0	Front	0.662	0.339	0.169	0.076	1.00	0.91	
	Back	1.263	0.816	0.663	0.187	2.08	2.11	Case 5/6
	Left side	0.457				0.46	0.46	
	Right side	0.729	0.444	0.744	0.069	1.17	1.54	
	Top side		0.291	0.265	0.063	0.29	0.33	
	Bottom side	0.590				0.59	0.59	
LTE Band 5 Ant 3	Front	0.270	0.339	0.169	0.076	0.61	0.52	
	Back	0.702	0.816	0.663	0.187	1.52	1.55	
	Left side	0.231				0.23	0.23	
	Right side		0.444	0.744	0.069	0.44	0.81	
	Top side	0.441	0.291	0.265	0.063	0.73	0.77	
	Bottom side					0.00	0.00	
LTE Band 7 Ant 0	Front	0.444	0.339	0.169	0.076	0.78	0.69	
	Back	1.056	0.816	0.663	0.187	1.87	1.91	Case 7/8
	Left side	0.054				0.05	0.05	
	Right side	0.043	0.444	0.744	0.069	0.49	0.86	
	Top side		0.291	0.265	0.063	0.29	0.33	
	Bottom side	1.313				1.31	1.31	
LTE Band 7 Ant 3	Front	0.257	0.339	0.169	0.076	0.60	0.50	
	Back	0.690	0.816	0.663	0.187	1.51	1.54	
	Left side	0.535				0.54	0.54	
	Right side		0.444	0.744	0.069	0.44	0.81	
	Top side	0.448	0.291	0.265	0.063	0.74	0.78	
	Bottom side					0.00	0.00	
LTE Band 41 Ant 0	Front	0.448	0.339	0.169	0.076	0.79	0.69	
	Back	1.247	0.816	0.663	0.187	2.06	2.10	Case 9/10
	Left side	0.054				0.05	0.05	
	Right side	0.042	0.444	0.744	0.069	0.49	0.86	

	Top side		0.291	0.265	0.063	0.29	0.33	
	Bottom side	1.399				1.40	1.40	
LTE Band 41 Ant 3	Front	0.300	0.339	0.169	0.076	0.64	0.55	
	Back	0.682	0.816	0.663	0.187	1.50	1.53	
	Left side	0.544				0.54	0.54	
	Right side		0.444	0.744	0.069	0.44	0.81	
	Top side	0.375	0.291	0.265	0.063	0.67	0.70	
	Bottom side					0.00	0.00	

16.3 Body-Worn Accessory Exposure Conditions

Exposure Position	4	5	4+5
	WLAN5GHz Ant 5	Bluetooth Ant 5	Summed
	1g SAR (W/kg)	1g SAR (W/kg)	1g SAR (W/kg)
Front	0.251	0.076	0.33
Back	1.131	0.187	1.32

WWAN Band	Exposure Position	1	3	4	5	1+3	1+4+5	Case No
		WWAN	WLAN2.4GHz Ant 5	WLAN5GHz Ant 5	Bluetooth Ant 5	Summed	Summed	
		1g SAR (W/kg)	1g SAR (W/kg)	1g SAR (W/kg)	1g SAR (W/kg)	1g SAR (W/kg)	1g SAR (W/kg)	
GSM850 Ant 0	Front	0.715	0.281	0.094	0.076	1.00	0.89	
	Back	1.417	0.616	0.408	0.187	2.03	2.01	Case 11/12
WCDMA V Ant 0	Front	0.667	0.281	0.094	0.076	0.95	0.84	
	Back	1.394	0.616	0.408	0.187	2.01	1.99	Case 13/14
LTE Band 5 Ant 0	Front	0.662	0.281	0.094	0.076	0.94	0.83	
	Back	1.263	0.616	0.408	0.187	1.88	1.86	Case 15/16
LTE Band 5 Ant 3	Front	0.324	0.281	0.094	0.076	0.61	0.49	
	Back	0.863	0.616	0.408	0.187	1.48	1.46	
LTE Band 7 Ant 0	Front	0.565	0.281	0.094	0.076	0.85	0.74	
	Back	1.422	0.616	0.408	0.187	2.04	2.02	Case 17/18
LTE Band 7 Ant 3	Front	0.309	0.281	0.094	0.076	0.59	0.48	
	Back	0.878	0.616	0.408	0.187	1.49	1.47	
LTE Band 41 Ant 0	Front	0.448	0.281	0.094	0.076	0.73	0.62	
	Back	1.247	0.616	0.408	0.187	1.86	1.84	Case 19/20
LTE Band 41 Ant 3	Front	0.372	0.281	0.094	0.076	0.65	0.54	
	Back	0.765	0.616	0.408	0.187	1.38	1.36	



16.4 Product specific 10g SAR Exposure Conditions

Remark:

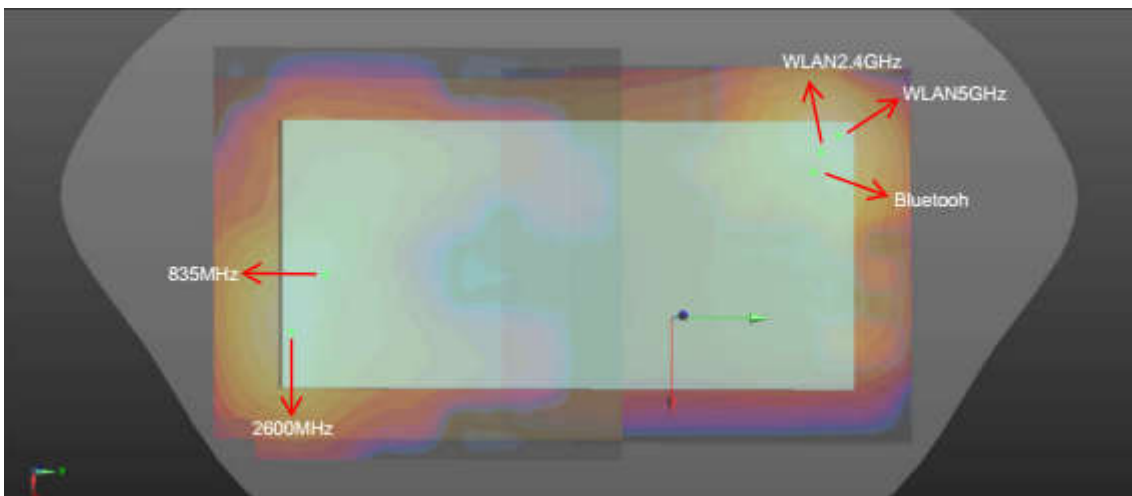
- For WLAN2.4GHz/Bluetooth Product specific 10g stand-alone SAR is not required for a transmitter or antenna, due to 1g hotspot SAR is <1.2W/kg.

WWAN Band	Exposure Position	1	4	1+4
		WWAN	WLAN5GHz Ant 5	Summed
		10g SAR (W/kg)	10g SAR (W/kg)	1g SAR (W/kg)
GSM850 Ant 0	Front		0.177	0.18
	Back	2.189	0.466	2.66
	Left side			0.00
	Right side		1.027	1.03
	Top side		0.290	0.29
	Bottom side			0.00
WCDMA V Ant 0	Front		0.177	0.18
	Back	1.846	0.466	2.31
	Left side			0.00
	Right side		1.027	1.03
	Top side		0.290	0.29
	Bottom side			0.00
LTE Band 5 Ant 0	Front		0.177	0.18
	Back	2.025	0.466	2.49
	Left side			0.00
	Right side		1.027	1.03
	Top side		0.290	0.29
	Bottom side			0.00
LTE Band 5 Ant 3	Front		0.177	0.18
	Back		0.466	0.47
	Left side			0.00
	Right side		1.027	1.03
	Top side		0.290	0.29
	Bottom side			0.00
LTE Band 7 Ant 0	Front		0.177	0.18
	Back	1.038	0.466	1.50
	Left side			0.00
	Right side		1.027	1.03
	Top side		0.290	0.29
	Bottom side	0.532		0.53
LTE Band 7 Ant 3	Front		0.177	0.18
	Back		0.466	0.47
	Left side			0.00
	Right side		1.027	1.03
	Top side		0.290	0.29
	Bottom side			0.00
LTE Band 41 Ant 0	Front		0.177	0.18
	Back	0.706	0.466	1.17
	Left side			0.00
	Right side		1.027	1.03
	Top side		0.290	0.29
	Bottom side	0.438		0.44
LTE Band 41 Ant 3	Front		0.177	0.18
	Back		0.466	0.47
	Left side			0.00
	Right side		1.027	1.03
	Top side		0.290	0.29
	Bottom side			0.00

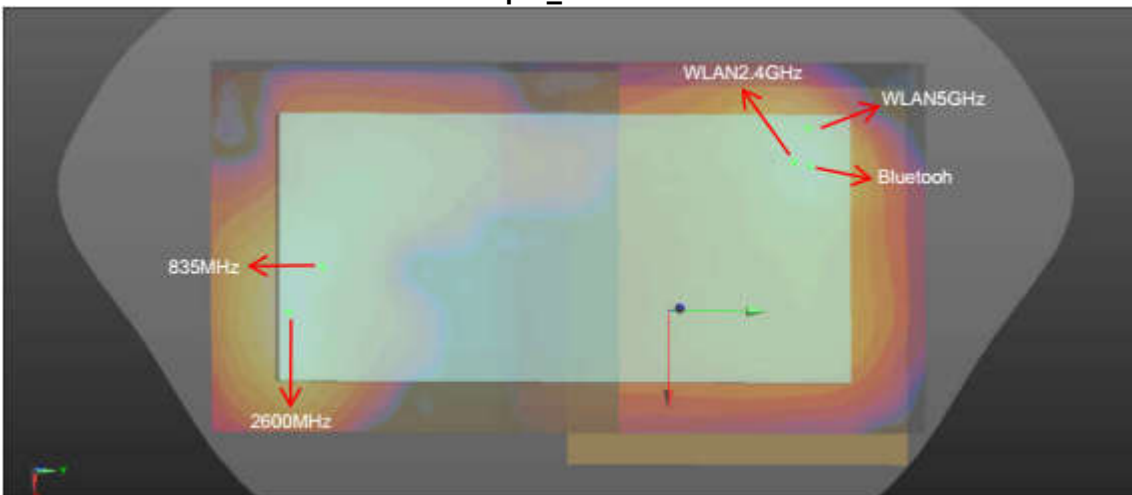
16.5 SPLSR Evaluation and Analysis

General Note:

1. When standalone SAR is measured for both antennas in the pair, the peak location separation distance is computed by the square root of $[(x1-x2)^2 + (y1-y2)^2 + (z1-z2)^2]$, where $(x1, y1, z1)$ and $(x2, y2, z2)$ are the coordinates in the area scans or extrapolated peak SAR locations in the zoom scans, as appropriate.
2. $SPLSR = (SAR1 + SAR2)1.5 / (\text{min. separation distance, mm})$. If $SPLSR \leq 0.04$ for 1g SAR, simultaneously transmission SAR measurement is not necessary.
3. Per April 2022 TCB Workshop Notes, WLAN5GHz was summed algebraically with the BT for the purposes of hybrid SPLSR combination and they are located at the top of the device, and they are share the same antenna.
4. Per April 2022 TCB Workshop, instead of doing a small volume scan over a co-located antenna pair, used summing the SAR values of the co-located pair and using that value in SPLSR calculation. In the calculation used the minimum distance between the spatially separated antenna and the closest antenna of the co-located antenna pair to be conservative.



Hotspot_Back 5mm



Body Worn_Back 5mm

For Hotspot

Case	Band	Position	SAR (W/kg)	Gap (mm)	SAR peak location (m)			3D distance (mm)	Summed SAR (W/kg)	SPLSR Results	Simultaneous SAR
					X	Y	Z				
Case 1	GSM850	Back	1.417	5mm	-0.019	-0.072	-0.206	151.3	2.23	0.02	Not required
	WLAN2.4GHz		0.816	5mm	-0.06	0.0736	-0.209				
Case 2	GSM850	Back	1.417	5mm	-0.019	-0.072	-0.206	153.9	2.27	0.02	Not required
	WLAN5GHz		0.663	5mm	-0.061	0.076	-0.208				
	Bluetooth		0.187	5mm							
	GSM850	Back	1.417	5mm	-0.019	-0.072	-0.206	146.3	2.27	0.02	Not required
	WLAN5GHz		0.663	5mm							
	Bluetooth		0.187	5mm	-0.049	0.0712	-0.206				
Case 3	WCDMA V	Back	1.394	5mm	-0.016	-0.072	-0.206	152.1	2.21	0.02	Not required
	WLAN2.4GHz		0.816	5mm	-0.06	0.0736	-0.209				
Case 4	WCDMA V	Back	1.394	5mm	-0.016	-0.072	-0.206	154.7	2.24	0.02	Not required
	WLAN5GHz		0.663	5mm	-0.061	0.076	-0.208				
	Bluetooth		0.187	5mm							
	WCDMA V	Back	1.394	5mm	-0.016	-0.072	-0.206	147.0	2.24	0.02	Not required
	WLAN5GHz		0.663	5mm							
	Bluetooth		0.187	5mm	-0.049	0.0712	-0.206				
Case 5	LTE Band 5	Back	1.26	5mm	-0.0145	-0.072	-0.206	152.6	2.08	0.02	Not required
	WLAN2.4GHz		0.82	5mm	-0.06	0.0736	-0.209				
Case 6	LTE Band 5	Back	1.263	5mm	-0.0145	-0.072	-0.206	155.1	2.11	0.02	Not required
	WLAN5GHz		0.663	5mm	-0.061	0.076	-0.208				
	Bluetooth		0.187	5mm							
	LTE Band 5	Back	1.263	5mm	-0.0145	-0.072	-0.206	147.3	2.11	0.02	Not required
	WLAN5GHz		0.663	5mm							
	Bluetooth		0.187	5mm	-0.049	0.0712	-0.206				
Case 7	LTE Band 7	Back	1.056	5mm	-0.0084	-0.0822	-0.206	164.1	1.87	0.02	Not required
	WLAN2.4GHz		0.816	5mm	-0.06	0.0736	-0.209				
Case 8	LTE Band 7	Back	1.056	5mm	-0.0084	-0.0822	-0.206	166.7	1.91	0.02	Not required
	WLAN5GHz		0.663	5mm	-0.061	0.076	-0.208				
	Bluetooth		0.187	5mm							
	LTE Band 7	Back	1.056	5mm	-0.0084	-0.0822	-0.206	158.7	1.91	0.02	Not required
	WLAN5GHz		0.663	5mm							
	Bluetooth		0.187	5mm	-0.049	0.0712	-0.206				



Case 9	Band	Position	SAR (W/kg)	Gap	SAR peak location (m)			3D distance (mm)	Summed SAR (W/kg)	SPLSR Results	Simultaneous SAR
	(mm)			X	Y	Z					
Case 9	LTE Band 41	Back	1.25	5mm	-0.0058	-0.0822	-0.206	165.0	2.06	0.02	Not required
	WLAN2.4GHz		0.82	5mm	-0.06	0.0736	-0.209				
Case 10	Band	Position	SAR (W/kg)	Gap	SAR peak location (m)			3D distance (mm)	Summed SAR (W/kg)	SPLSR Results	Simultaneous SAR
	(mm)			X	Y	Z					
Case 10	LTE Band 41	Back	1.247	5mm	-0.0058	-0.0822	-0.206	167.6	2.10	0.02	Not required
	WLAN5GHz		0.663	5mm	-0.061	0.076	-0.208				
	Bluetooth		0.187	5mm	-0.049	0.0712	-0.206				
Case 10	LTE Band 41	Back	1.247	5mm	-0.0058	-0.0822	-0.206	159.4	2.10	0.02	Not required
	WLAN5GHz		0.663	5mm	-0.061	0.076	-0.208				
	Bluetooth		0.187	5mm	-0.049	0.0712	-0.206				

For Body worn

Case 11	Band	Position	SAR (W/kg)	Gap	SAR peak location (m)			3D distance (mm)	Summed SAR (W/kg)	SPLSR Results	Simultaneous SAR
	(mm)			X	Y	Z					
Case 11	GSM850	Back	1.417	5mm	-0.019	-0.072	-0.206	143.2	2.03	0.02	Not required
	WLAN2.4GHz		0.616	5mm	-0.0502	0.0678	-0.206				
Case 12	Band	Position	SAR (W/kg)	Gap	SAR peak location (m)			3D distance (mm)	Summed SAR (W/kg)	SPLSR Results	Simultaneous SAR
	(mm)			X	Y	Z					
Case 12	GSM850	Back	1.417	5mm	-0.019	-0.072	-0.206	146.2	2.01	0.02	Not required
	WLAN5GHz		0.408	5mm	-0.061	0.068	-0.207				
	Bluetooth		0.187	5mm							
Case 12	GSM850	Back	1.417	5mm	-0.019	-0.072	-0.206	146.3	2.01	0.02	Not required
	WLAN5GHz		0.408	5mm							
	Bluetooth		0.187	5mm	-0.049	0.0712	-0.206				
Case 13	Band	Position	SAR (W/kg)	Gap	SAR peak location (m)			3D distance (mm)	Summed SAR (W/kg)	SPLSR Results	Simultaneous SAR
	(mm)			X	Y	Z					
Case 13	WCDMA V	Back	1.394	5mm	-0.016	-0.072	-0.206	143.9	2.01	0.02	Not required
	WLAN2.4GHz		0.616	5mm	-0.0502	0.0678	-0.206				
Case 14	Band	Position	SAR (W/kg)	Gap	SAR peak location (m)			3D distance (mm)	Summed SAR (W/kg)	SPLSR Results	Simultaneous SAR
	(mm)			X	Y	Z					
Case 14	WCDMA V	Back	1.394	5mm	-0.016	-0.072	-0.206	147.1	1.99	0.02	Not required
	WLAN5GHz		0.408	5mm	-0.061	0.068	-0.207				
	Bluetooth		0.187	5mm							
Case 14	WCDMA V	Back	1.394	5mm	-0.016	-0.072	-0.206	147.0	1.99	0.02	Not required
	WLAN5GHz		0.408	5mm							
	Bluetooth		0.187	5mm	-0.049	0.0712	-0.206				
Case 15	Band	Position	SAR (W/kg)	Gap	SAR peak location (m)			3D distance (mm)	Summed SAR (W/kg)	SPLSR Results	Simultaneous SAR
	(mm)			X	Y	Z					
Case 15	LTE Band 5	Back	1.263	5mm	-0.0145	-0.072	-0.206	144.3	1.88	0.02	Not required
	WLAN2.4GHz		0.616	5mm	-0.0502	0.0678	-0.206				
Case 16	Band	Position	SAR (W/kg)	Gap	SAR peak location (m)			3D distance (mm)	Summed SAR (W/kg)	SPLSR Results	Simultaneous SAR
	(mm)			X	Y	Z					
Case 16	LTE Band 5	Back	1.263	5mm	-0.0145	-0.072	-0.206	147.5	1.86	0.02	Not required
	WLAN5GHz		0.408	5mm	-0.061	0.068	-0.207				
	Bluetooth		0.187	5mm							
Case 16	LTE Band 5	Back	1.263	5mm	-0.0145	-0.072	-0.206	147.3	1.86	0.02	Not required
	WLAN5GHz		0.408	5mm							
	Bluetooth		0.187	5mm	-0.049	0.0712	-0.206				



Case	Band	Position	SAR (W/kg)	Gap (mm)	SAR peak location (m)			3D distance (mm)	Summed SAR (W/kg)	SPLSR Results	Simultaneous SAR
					X	Y	Z				
Case 17	LTE Band 7	Back	1.422	5mm	-0.0084	-0.0822	-0.206	155.7	2.04	0.02	Not required
	WLAN2.4GHz		0.616	5mm	-0.0502	0.0678	-0.206				
Case 18	LTE Band 7	Back	1.422	5mm	-0.0084	-0.0822	-0.206	159.1	2.02	0.02	Not required
	WLAN5GHz		0.408	5mm	-0.061	0.068	-0.207				
	Bluetooth		0.187	5mm							
	LTE Band 7	Back	1.422	5mm	-0.0084	-0.0822	-0.206	158.7	2.02	0.02	Not required
	WLAN5GHz		0.408	5mm							
	Bluetooth		0.187	5mm	-0.049	0.0712	-0.206				
Case 19	LTE Band 41	Back	1.247	5mm	-0.0058	-0.0822	-0.206	156.4	1.86	0.02	Not required
	WLAN2.4GHz		0.616	5mm	-0.0502	0.0678	-0.206				
Case 20	LTE Band 41	Back	1.247	5mm	-0.0058	-0.0822	-0.206	160.0	1.84	0.02	Not required
	WLAN5GHz		0.408	5mm	-0.061	0.068	-0.207				
	Bluetooth		0.187	5mm							
	LTE Band 41	Back	1.247	5mm	-0.0058	-0.0822	-0.206	159.4	1.84	0.02	Not required
	WLAN5GHz		0.408	5mm							
	Bluetooth		0.187	5mm	-0.049	0.0712	-0.206				

Test Engineer : Hank Huang, Kevin Xu, David Dai, Bin He



17. Uncertainty Assessment

Per KDB 865664 D01 SAR measurement 100MHz to 6GHz, when the highest measured 1-g SAR within a frequency band is < 1.5 W/kg and the measured 10-g SAR within a frequency band is < 3.75 W/kg. The expanded SAR measurement uncertainty must be $\leq 30\%$, for a confidence interval of $k = 2$. If these conditions are met, extensive SAR measurement uncertainty analysis described in IEEE Std 1528-2013 is not required in SAR reports submitted for equipment approval. For this device, the highest measured 1-g SAR is less 1.5W/kg and highest measured 10-g SAR is less 3.75W/kg. Therefore, the measurement uncertainty table is not required in this report.



18. References

- [1] FCC 47 CFR Part 2 “Frequency Allocations and Radio Treaty Matters; General Rules and Regulations”
- [2] ANSI/IEEE Std. C95.1-1992, “IEEE Standard for Safety Levels with Respect to Human Exposure to Radio Frequency Electromagnetic Fields, 3 kHz to 300 GHz”, September 1992
- [3] IEEE Std. 1528-2013, “IEEE Recommended Practice for Determining the Peak Spatial-Average Specific Absorption Rate (SAR) in the Human Head from Wireless Communications Devices: Measurement Techniques”, Sep 2013
- [4] SPEAG DASY System Handbook
- [5] FCC KDB 248227 D01 v02r02, “SAR Guidance for IEEE 802.11 (WiFi) Transmitters”, Oct 2015.
- [6] FCC KDB 447498 D01 v06, “Mobile and Portable Device RF Exposure Procedures and Equipment Authorization Policies”, Oct 2015
- [7] FCC KDB 648474 D04 v01r03, “SAR Evaluation Considerations for Wireless Handsets”, Oct 2015.
- [8] FCC KDB 941225 D01 v03r01, “3G SAR MEAUREMENT PROCEDURES”, Oct 2015
- [9] FCC KDB 941225 D05 v02r05, “SAR Evaluation Considerations for LTE Devices”, Dec 2015
- [10] FCC KDB 941225 D06 v02r01, "SAR Evaluation Procedures for Portable Devices with Wireless Router Capabilities", Oct 2015.
- [11] FCC KDB 865664 D01 v01r04, "SAR Measurement Requirements for 100 MHz to 6 GHz", Aug 2015.
- [12] FCC KDB 865664 D02 v01r02, “RF Exposure Compliance Reporting and Documentation Considerations” Oct 2015.

-----THE END-----