

System Check_Head_750MHz

DUT:D750V3 - SN:1087

Communication System: ; Frequency: 750.000

Medium: HSL. Medium parameters used: $f= 750.000$ MHz; $\sigma= 0.905$ S/m; $\epsilon_r= 42.7$

Ambient Temperature: 23.1°C; Liquid Temperature: 22.8°C

DASY6 Configuration:

- Probe: EX3DV4 - SN7706; ConvF(9.34, 10.73, 9.7); Calibrated: 2024-01-24
- Sensor-Surface: 1.4 mm
- Electronics: DAE4 Sn1303; Calibrated: 2023-11-20
- Phantom: Twin-SAM V8.0 (30deg probe tilt); Serial: 2024
- Measurement Software: 16.4.0.5005

Area Scan (40.0 mm x 90.0 mm): Measurement Grid: 10.0 mm x 15.0 mm

SAR (1g) = 0.436 W/kg; SAR (10g) = 0.291 W/kg;

Zoom Scan (30.0 mm x 30.0 mm x 30.0 mm): Measurement Grid: 6.0 mm x 6.0 mm x 1.5 mm;

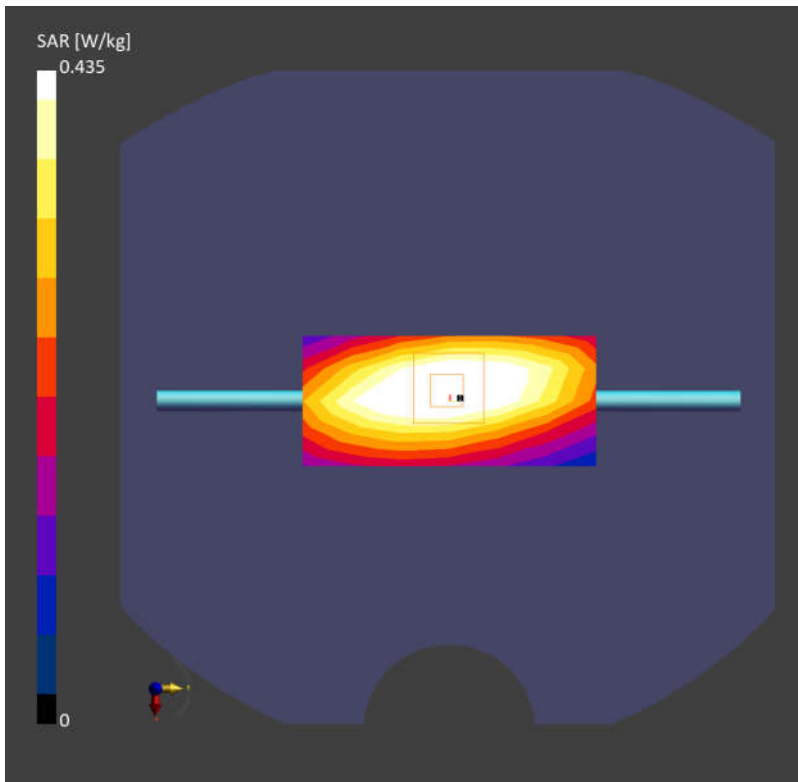
Graded Ratio:1.5

Power Drift = 0.02 dB

SAR (1g) = 0.435 W/kg; SAR (10g) = 0.292 W/kg;

Smallest distance from peaks to all points 3dB below is 19.7 mm

Ratio of SAR at M2 to SAR at M1 = 88.7 %



System Check_Head_835MHz

DUT:D835V2 - SN:4d091

Communication System: ; Frequency: 835.000

Medium: HSL. Medium parameters used: $f= 835.000$ MHz; $\sigma= 0.924$ S/m; $\epsilon_r= 41.4$

Ambient Temperature: 23.1°C; Liquid Temperature: 22.9°C

DASY6 Configuration:

- Probe: EX3DV4 - SN7706; ConvF(9.26, 10.67, 9.28); Calibrated: 2024-01-24
- Sensor-Surface: 1.4 mm
- Electronics: DAE4 Sn1303; Calibrated: 2023-11-20
- Phantom: Twin-SAM V8.0 (30deg probe tilt); Serial: 2024
- Measurement Software: 16.4.0.5005

Area Scan (40.0 mm x 90.0 mm): Measurement Grid: 10.0 mm x 15.0 mm

SAR (1g) = 0.508 W/kg; SAR (10g) = 0.317 W/kg;

Zoom Scan (30.0 mm x 30.0 mm x 30.0 mm): Measurement Grid: 6.0 mm x 6.0 mm x 1.5 mm;

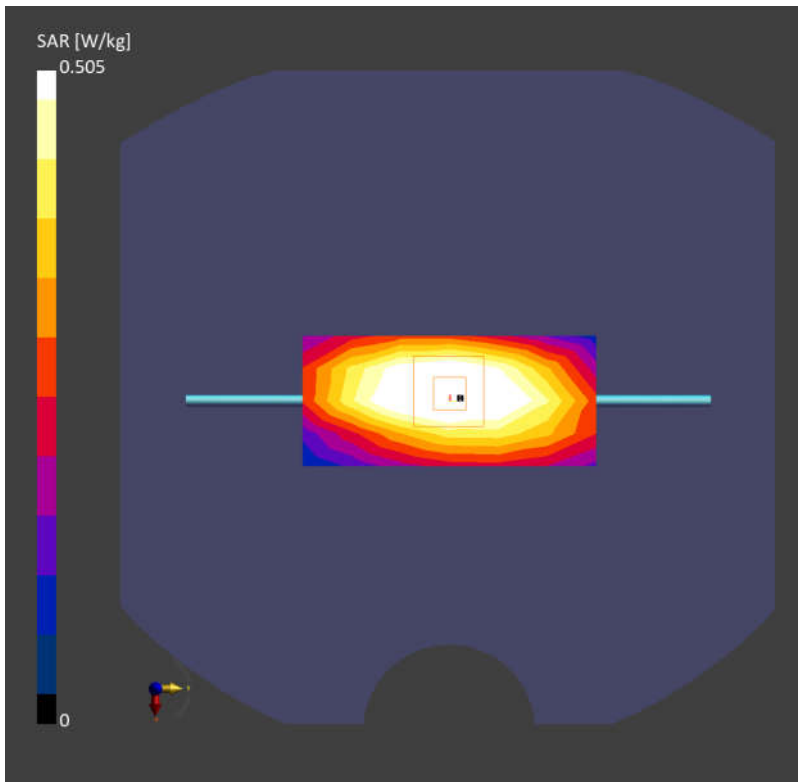
Graded Ratio:1.5

Power Drift = 0.01 dB

SAR (1g) = 0.505 W/kg; SAR (10g) = 0.328 W/kg;

Smallest distance from peaks to all points 3dB below is 15.6 mm

Ratio of SAR at M2 to SAR at M1 = 89.7 %



System Check_Head_1750MHz

DUT:D1750V2 - SN:1090

Communication System: ; Frequency: 1750.000

Medium: HSL. Medium parameters used: $f= 1750.000$ MHz; $\sigma= 1.35$ S/m; $\epsilon_r= 40.1$

Ambient Temperature: 23.4°C; Liquid Temperature: 22.7°C

DASY6 Configuration:

- Probe: EX3DV4 - SN7706; ConvF(7.87, 9.06, 8.09); Calibrated: 2024-01-24
- Sensor-Surface: 1.4 mm
- Electronics: DAE4 Sn1303; Calibrated: 2023-11-20
- Phantom: Twin-SAM V8.0 (30deg probe tilt); Serial: 2024
- Measurement Software: 16.4.0.5005

Area Scan (40.0 mm x 90.0 mm): Measurement Grid: 10.0 mm x 15.0 mm

SAR (1g) = 1.99 W/kg; SAR (10g) = 1.00 W/kg;

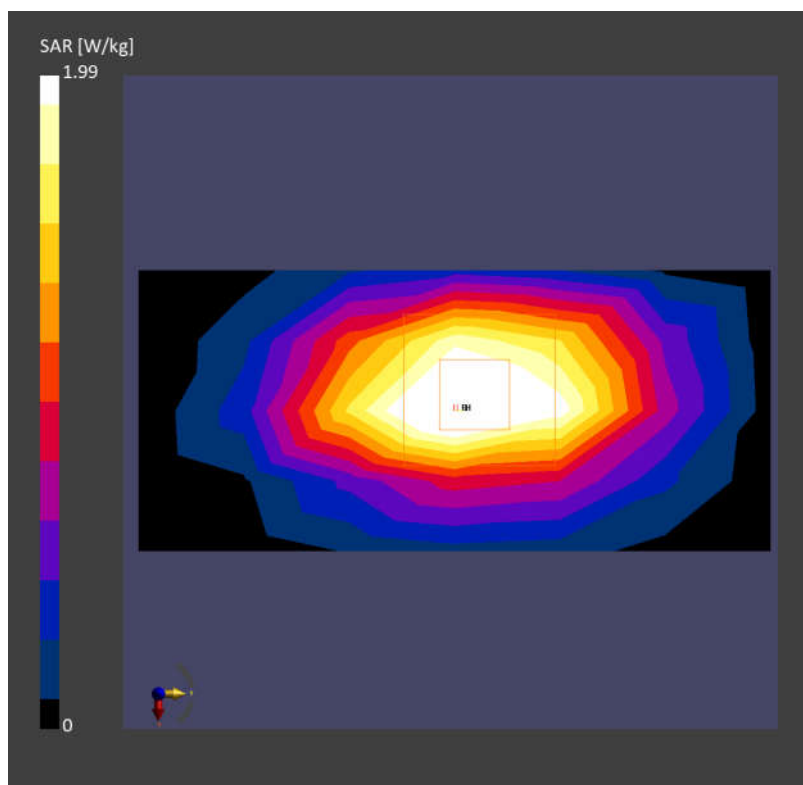
Zoom Scan (30.0 mm x 30.0 mm x 30.0 mm): Measurement Grid: 6.0 mm x 6.0 mm x 1.5 mm;
Graded Ratio:1.5

Power Drift = 0.01 dB

SAR (1g) = 1.99 W/kg; SAR (10g) = 1.01 W/kg;

Smallest distance from peaks to all points 3dB below is 9.6 mm

Ratio of SAR at M2 to SAR at M1 = 82.4 %



System Check_Head_1900MHz

DUT:D1900V2 - SN:5d118

Communication System: ; Frequency: 1900.000

Medium: HSL. Medium parameters used: $f= 1900.000$ MHz; $\sigma= 1.43$ S/m; $\epsilon_r= 39.8$

Ambient Temperature: 23.1°C; Liquid Temperature: 22.6°C

DASY6 Configuration:

- Probe: EX3DV4 - SN7706; ConvF(7.77, 8.97, 7.88); Calibrated: 2024-01-24
- Sensor-Surface: 1.4 mm
- Electronics: DAE4 Sn1303; Calibrated: 2023-11-20
- Phantom: Twin-SAM V8.0 (30deg probe tilt); Serial: 2024
- Measurement Software: 16.4.0.5005

Area Scan (40.0 mm x 90.0 mm): Measurement Grid: 10.0 mm x 15.0 mm

SAR (1g) = 2.01 W/kg; SAR (10g) = 1.06 W/kg;

Zoom Scan (30.0 mm x 30.0 mm x 30.0 mm): Measurement Grid: 6.0 mm x 6.0 mm x 1.5 mm;

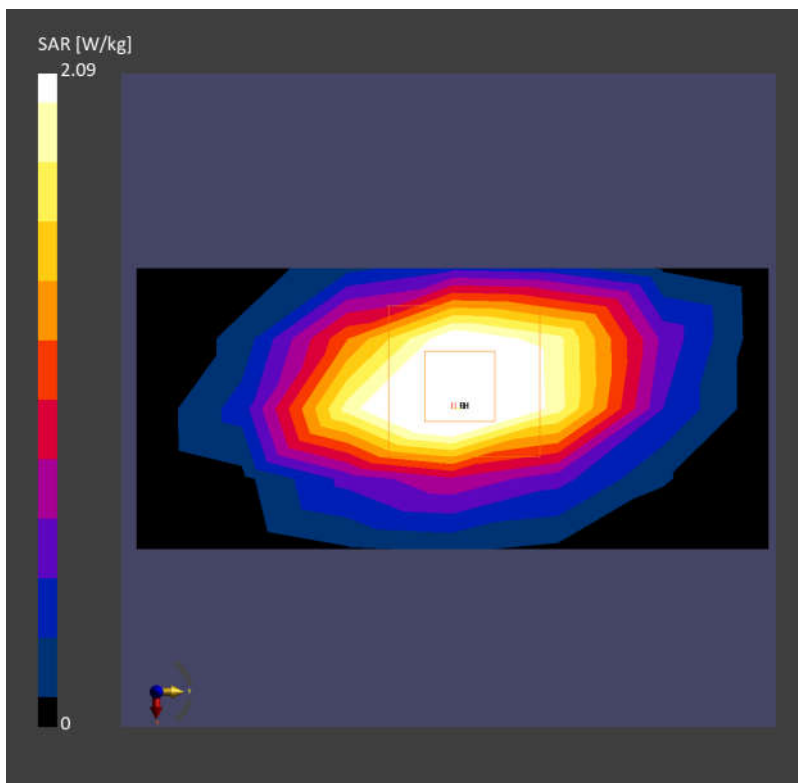
Graded Ratio:1.5

Power Drift = 0.01 dB

SAR (1g) = 2.09 W/kg; SAR (10g) = 1.10 W/kg;

Smallest distance from peaks to all points 3dB below is 9.2 mm

Ratio of SAR at M2 to SAR at M1 = 83.7 %



System Check_Head_2450MHz

DUT:D2450V2 - SN:1095

Communication System: ; Frequency: 2450.000

Medium: HSL. Medium parameters used: $f= 2450.000$ MHz; $\sigma= 1.86$ S/m; $\epsilon_r= 38.4$

Ambient Temperature: 23.1°C; Liquid Temperature: 22.9°C

DASY6 Configuration:

- Probe: EX3DV4 - SN7706; ConvF(7.47, 8.61, 7.55); Calibrated: 2024-01-24
- Sensor-Surface: 1.4 mm
- Electronics: DAE4 Sn1303; Calibrated: 2023-11-20
- Phantom: Twin-SAM V8.0 (30deg probe tilt); Serial: 2024
- Measurement Software: 16.4.0.5005

Area Scan (40.0 mm x 80.0 mm): Measurement Grid: 10.0 mm x 10.0 mm

SAR (1g) = 2.83 W/kg; SAR (10g) = 1.34 W/kg;

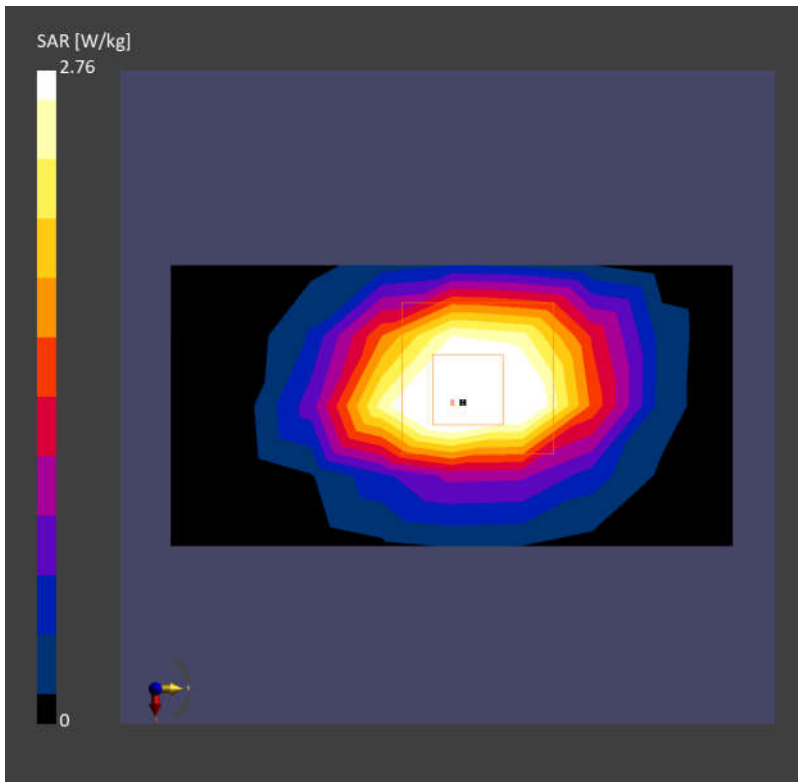
Zoom Scan (30.0 mm x 30.0 mm x 30.0 mm): Measurement Grid: 5.0 mm x 5.0 mm x 1.5 mm;
Graded Ratio:1.5

Power Drift = -0.01 dB

SAR (1g) = 2.76 W/kg; SAR (10g) = 1.31 W/kg;

Smallest distance from peaks to all points 3dB below is 9.0 mm

Ratio of SAR at M2 to SAR at M1 = 82.0 %



System Check_Head_2600MHz

DUT:D2600V2 - SN:1112

Communication System: ; Frequency: 2600.000

Medium: HSL. Medium parameters used: $f= 2600.000$ MHz; $\sigma= 1.96$ S/m; $\epsilon_r= 40.4$

Ambient Temperature: 23.3°C; Liquid Temperature: 22.7°C

DASY6 Configuration:

- Probe: EX3DV4 - SN7706; ConvF(7.3, 8.44, 7.37); Calibrated: 2024-01-24
- Sensor-Surface: 1.4 mm
- Electronics: DAE4 Sn1303; Calibrated: 2023-11-20
- Phantom: Twin-SAM V8.0 (30deg probe tilt); Serial: 2024
- Measurement Software: 16.4.0.5005

Area Scan (40.0 mm x 80.0 mm): Measurement Grid: 10.0 mm x 10.0 mm

SAR (1g) = 2.88 W/kg; SAR (10g) = 1.31 W/kg;

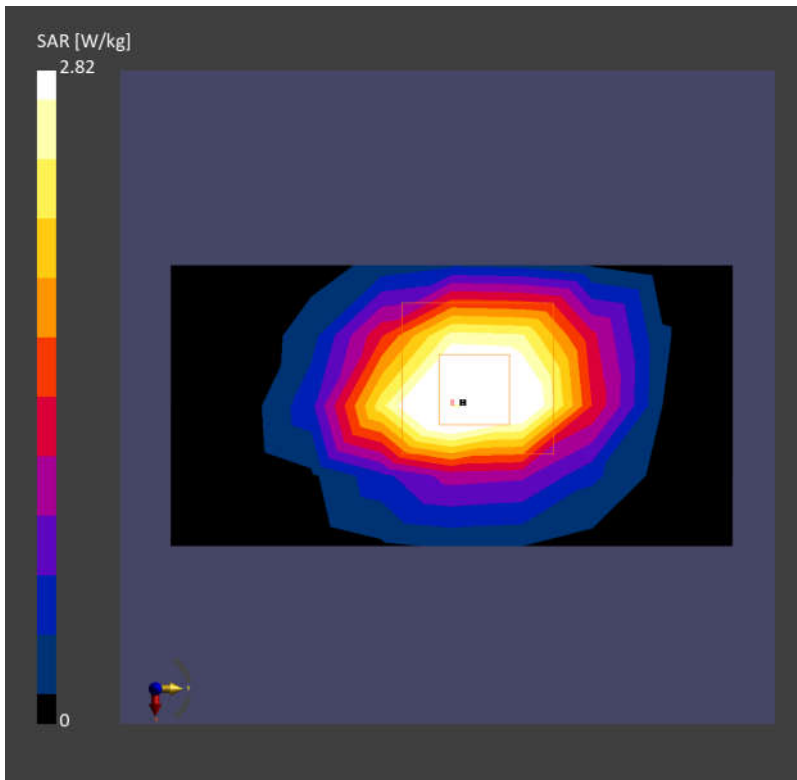
Zoom Scan (30.0 mm x 30.0 mm x 30.0 mm): Measurement Grid: 5.0 mm x 5.0 mm x 1.5 mm;
Graded Ratio:1.5

Power Drift = -0.05 dB

SAR (1g) = 2.82 W/kg; SAR (10g) = 1.29 W/kg;

Smallest distance from peaks to all points 3dB below is 8.0 mm

Ratio of SAR at M2 to SAR at M1 = 80.9 %



System Check_Head_3500MHz

DUT:D3500V2 - SN:1037

Communication System: ; Frequency: 3500.000

Medium: HSL. Medium parameters used: $f= 3500.000$ MHz; $\sigma= 2.88$ S/m; $\epsilon_r= 38.5$

Ambient Temperature: 23.1°C; Liquid Temperature: 22.8°C

DASY6 Configuration:

- Probe: EX3DV4 - SN7706; ConvF(6.99, 8.16, 7.09); Calibrated: 2024-01-24
- Sensor-Surface: 1.4 mm
- Electronics: DAE4 Sn1303; Calibrated: 2023-11-20
- Phantom: Twin-SAM V8.0 (30deg probe tilt); Serial: 2024
- Measurement Software: 16.4.0.5005

Area Scan (40.0 mm x 80.0 mm): Measurement Grid: 10.0 mm x 10.0 mm

SAR (1g) = 3.43 W/kg; SAR (10g) = 1.35 W/kg;

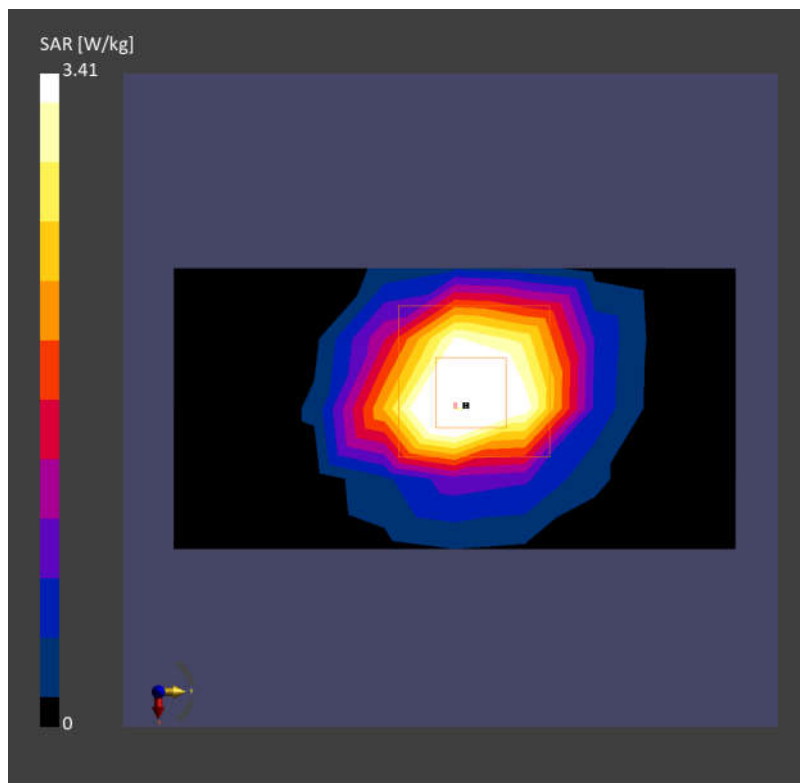
Zoom Scan (28.0 mm x 28.0 mm x 28.0 mm): Measurement Grid: 4.0 mm x 4.0 mm x 1.4 mm;
Graded Ratio:1.4

Power Drift = -0.08 dB

SAR (1g) = 3.41 W/kg; SAR (10g) = 1.31 W/kg;

Smallest distance from peaks to all points 3dB below is 8.0 mm

Ratio of SAR at M2 to SAR at M1 = 76.8 %



System Check_Head_3700MHz

DUT:D3700V2 - SN:1008

Communication System: ; Frequency: 3700.000

Medium: HSL. Medium parameters used: $f= 3700.000$ MHz; $\sigma= 3.08$ S/m; $\epsilon_r= 38.0$

Ambient Temperature: 23.4°C; Liquid Temperature: 22.6°C

DASY6 Configuration:

- Probe: EX3DV4 - SN7706; ConvF(6.89, 8.06, 7.01); Calibrated: 2024-01-24
- Sensor-Surface: 1.4 mm
- Electronics: DAE4 Sn1303; Calibrated: 2023-11-20
- Phantom: Twin-SAM V8.0 (30deg probe tilt); Serial: 2024
- Measurement Software: 16.4.0.5005

Area Scan (40.0 mm x 80.0 mm): Measurement Grid: 10.0 mm x 10.0 mm

SAR (1g) = 3.43 W/kg; SAR (10g) = 1.32 W/kg;

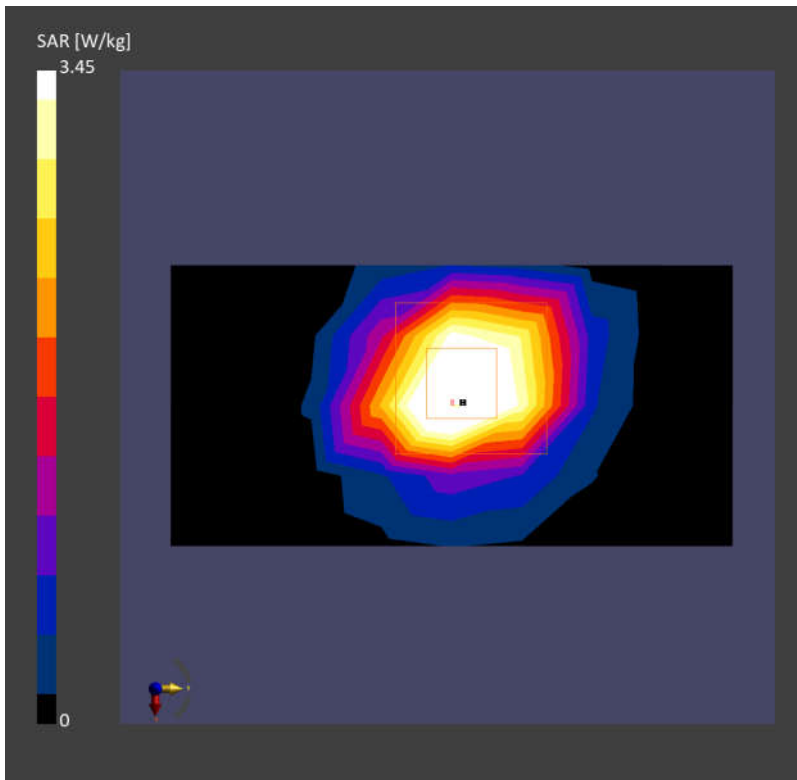
Zoom Scan (28.0 mm x 28.0 mm x 28.0 mm): Measurement Grid: 4.0 mm x 4.0 mm x 1.4 mm;
Graded Ratio:1.4

Power Drift = 0.03 dB

SAR (1g) = 3.45 W/kg; SAR (10g) = 1.30 W/kg;

Smallest distance from peaks to all points 3dB below is 7.3 mm

Ratio of SAR at M2 to SAR at M1 = 75.0 %



System Check_Head_3900MHz

DUT:D3900V2 - SN:1048

Communication System: ; Frequency: 3900.000

Medium: HSL. Medium parameters used: $f= 3900.000$ MHz; $\sigma= 3.28$ S/m; $\epsilon_r= 37.6$

Ambient Temperature: 23.1°C; Liquid Temperature: 22.9°C

DASY6 Configuration:

- Probe: EX3DV4 - SN7706; ConvF(6.83, 7.98, 6.94); Calibrated: 2024-01-24
- Sensor-Surface: 1.4 mm
- Electronics: DAE4 Sn1303; Calibrated: 2023-11-20
- Phantom: Twin-SAM V8.0 (30deg probe tilt); Serial: 2024
- Measurement Software: 16.4.0.5005

Area Scan (40.0 mm x 80.0 mm): Measurement Grid: 10.0 mm x 10.0 mm

SAR (1g) = 3.05 W/kg; SAR (10g) = 1.09 W/kg;

Zoom Scan (28.0 mm x 28.0 mm x 28.0 mm): Measurement Grid: 4.0 mm x 4.0 mm x 1.4 mm;

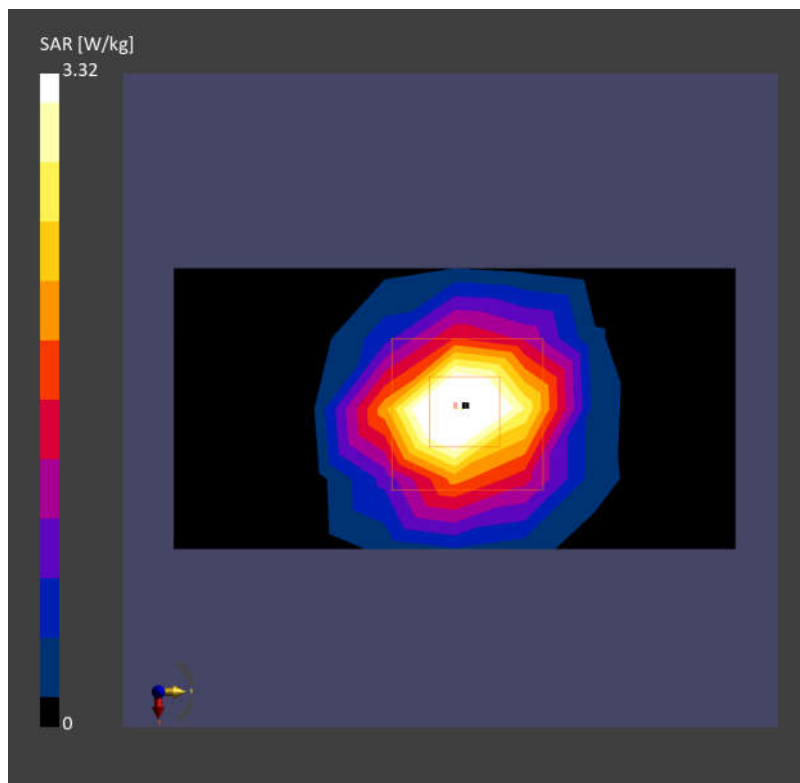
Graded Ratio:1.4

Power Drift = 0.05 dB

SAR (1g) = 3.32 W/kg; SAR (10g) = 1.19 W/kg;

Smallest distance from peaks to all points 3dB below is 7.0 mm

Ratio of SAR at M2 to SAR at M1 = 75.7 %



System Check_Head_5250MHz

DUT:D5GHzV2 - SN:1113

Communication System: ; Frequency: 5250.000

Medium: HSL. Medium parameters used: $f= 5250.000$ MHz; $\sigma= 4.57$ S/m; $\epsilon_r= 35.5$

Ambient Temperature: 23.2°C; Liquid Temperature: 22.7°C

DASY6 Configuration:

- Probe: EX3DV4 - SN7706; ConvF(5.84, 6.82, 5.88); Calibrated: 2024-01-24
- Sensor-Surface: 1.4 mm
- Electronics: DAE4 Sn1303; Calibrated: 2023-11-20
- Phantom: Twin-SAM V8.0 (30deg probe tilt); Serial: 2024
- Measurement Software: 16.4.0.5005

Area Scan (40.0 mm x 80.0 mm): Measurement Grid: 10.0 mm x 10.0 mm

SAR (1g) = 3.51 W/kg; SAR (10g) = 1.14 W/kg;

Zoom Scan (24.0 mm x 22.0 mm x 22.0 mm): Measurement Grid: 4.0 mm x 4.0 mm x 1.4 mm;

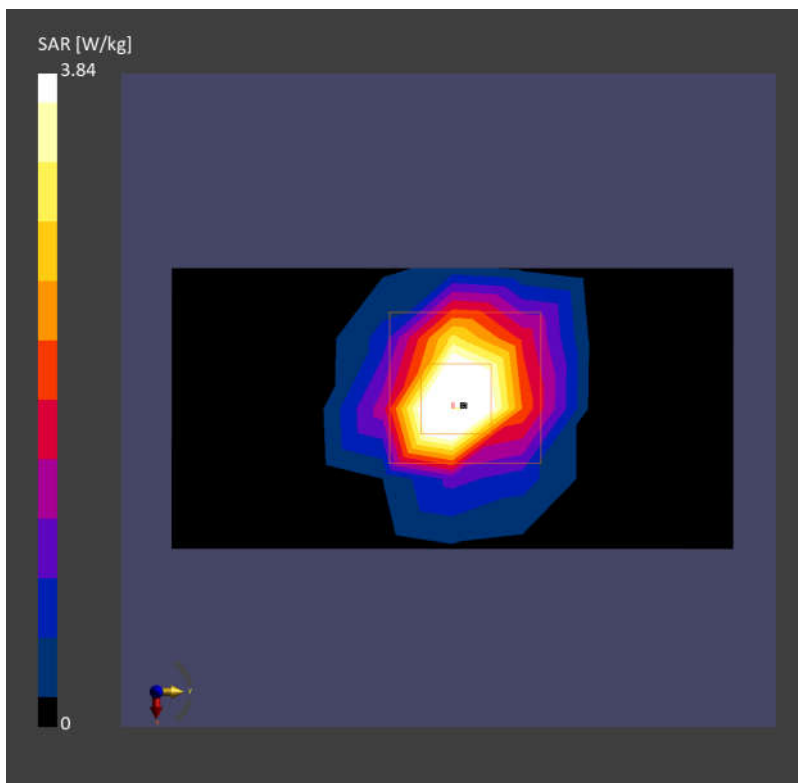
Graded Ratio:1.4

Power Drift = -0.07 dB

SAR (1g) = 3.84 W/kg; SAR (10g) = 1.16 W/kg;

Smallest distance from peaks to all points 3dB below is 7.2 mm

Ratio of SAR at M2 to SAR at M1 = 63.9 %



System Check_Head_5600MHz

DUT:D5GHzV2 - SN:1113

Communication System: ; Frequency: 5600.000

Medium: HSL. Medium parameters used: $f= 5600.000$ MHz; $\sigma= 4.95$ S/m; $\epsilon_r= 34.8$

Ambient Temperature: 23.2°C; Liquid Temperature: 22.6°C

DASY6 Configuration:

- Probe: EX3DV4 - SN7706; ConvF(4.83, 5.71, 4.9); Calibrated: 2024-01-24
- Sensor-Surface: 1.4 mm
- Electronics: DAE4 Sn1303; Calibrated: 2023-11-20
- Phantom: Twin-SAM V8.0 (30deg probe tilt); Serial: 2024
- Measurement Software: 16.4.0.5005

Area Scan (40.0 mm x 80.0 mm): Measurement Grid: 10.0 mm x 10.0 mm

SAR (1g) = 4.13 W/kg; SAR (10g) = 1.22 W/kg;

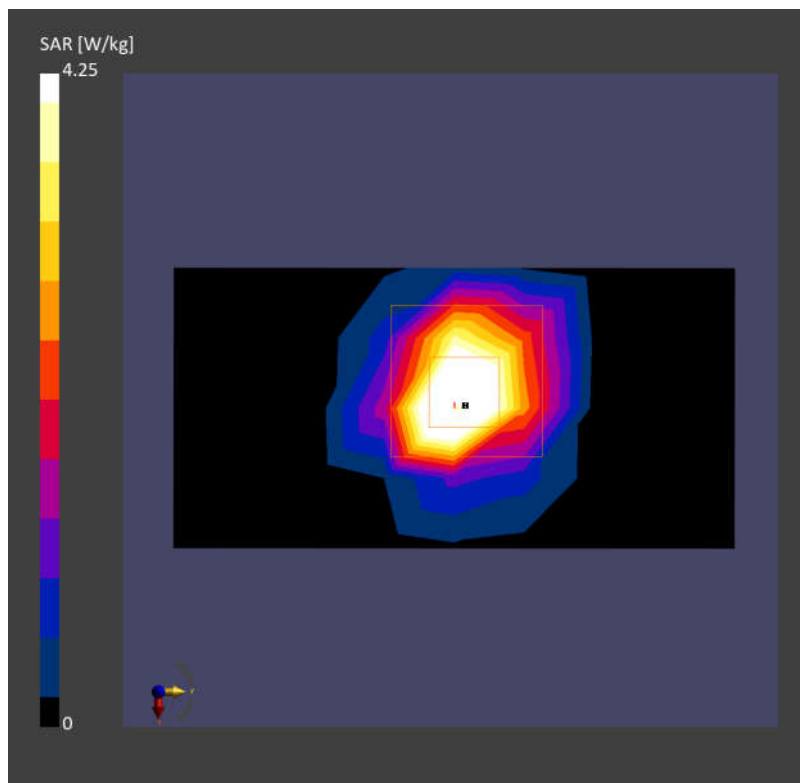
Zoom Scan (24.0 mm x 22.0 mm x 22.0 mm): Measurement Grid: 4.0 mm x 4.0 mm x 1.4 mm;
Graded Ratio:1.4

Power Drift = -0.08 dB

SAR (1g) = 4.25 W/kg; SAR (10g) = 1.22 W/kg;

Smallest distance from peaks to all points 3dB below is 7.2 mm

Ratio of SAR at M2 to SAR at M1 = 62.0 %



System Check_Head_5750MHz

DUT:D5GHzV2 - SN:1113

Communication System: ; Frequency: 5750.000

Medium: HSL. Medium parameters used: $f= 5750.000$ MHz; $\sigma= 5.13$ S/m; $\epsilon_r= 34.6$

Ambient Temperature: 23.2°C; Liquid Temperature: 22.9°C

DASY6 Configuration:

- Probe: EX3DV4 - SN7706; ConvF(5.03, 5.88, 5.16); Calibrated: 2024-01-24
- Sensor-Surface: 1.4 mm
- Electronics: DAE4 Sn1303; Calibrated: 2023-11-20
- Phantom: Twin-SAM V8.0 (30deg probe tilt); Serial: 2024
- Measurement Software: 16.4.0.5005

Area Scan (40.0 mm x 80.0 mm): Measurement Grid: 10.0 mm x 10.0 mm

SAR (1g) = 3.80 W/kg; SAR (10g) = 1.14 W/kg;

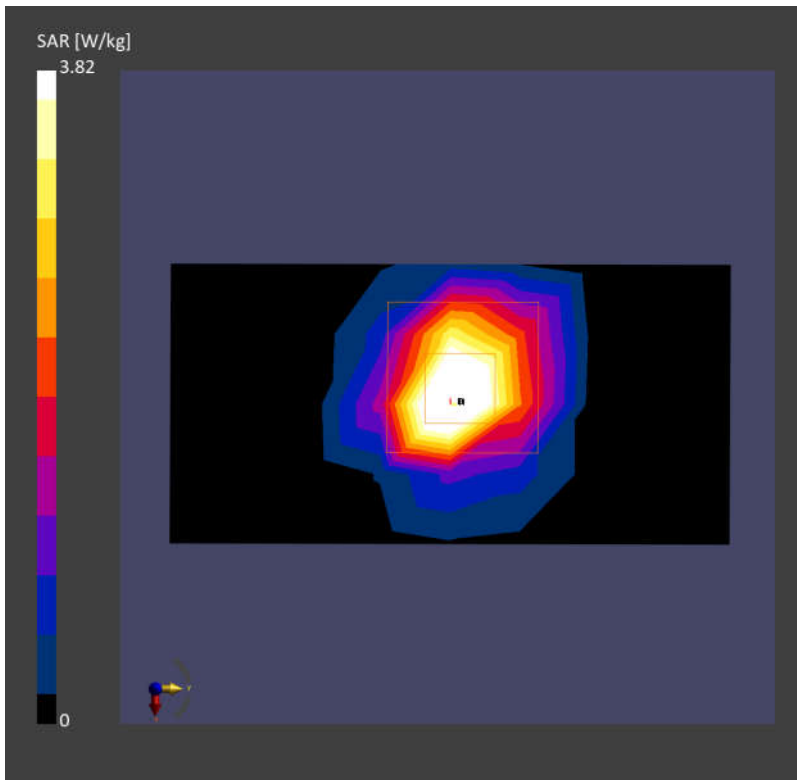
Zoom Scan (24.0 mm x 22.0 mm x 22.0 mm): Measurement Grid: 4.0 mm x 4.0 mm x 1.4 mm;
Graded Ratio:1.4

Power Drift = -0.07 dB

SAR (1g) = 3.82 W/kg; SAR (10g) = 1.15 W/kg;

Smallest distance from peaks to all points 3dB below is 7.2 mm

Ratio of SAR at M2 to SAR at M1 = 60.6 %



System Check_Head_750MHz

DUT:D750V3 - SN:1087

Communication System: ; Frequency: 750.000

Medium: HSL. Medium parameters used: $f=750.000$ MHz; $\sigma=0.925$ S/m; $\epsilon_r=42.4$

Ambient Temperature: 23.3°C; Liquid Temperature: 22.7°C

DASY6 Configuration:

- Probe: EX3DV4 - SN7706; ConvF(9.34, 10.73, 9.7); Calibrated: 2024-01-24
- Sensor-Surface: 1.4 mm
- Electronics: DAE4 Sn1303; Calibrated: 2023-11-20
- Phantom: Twin-SAM V8.0 (30deg probe tilt); Serial: 2024
- Measurement Software: 16.4.0.5005

Area Scan (40.0 mm x 90.0 mm): Measurement Grid: 10.0 mm x 15.0 mm

SAR (1g) = 0.432 W/kg; SAR (10g) = 0.287 W/kg;

Zoom Scan (30.0 mm x 30.0 mm x 30.0 mm): Measurement Grid: 6.0 mm x 6.0 mm x 1.5 mm;

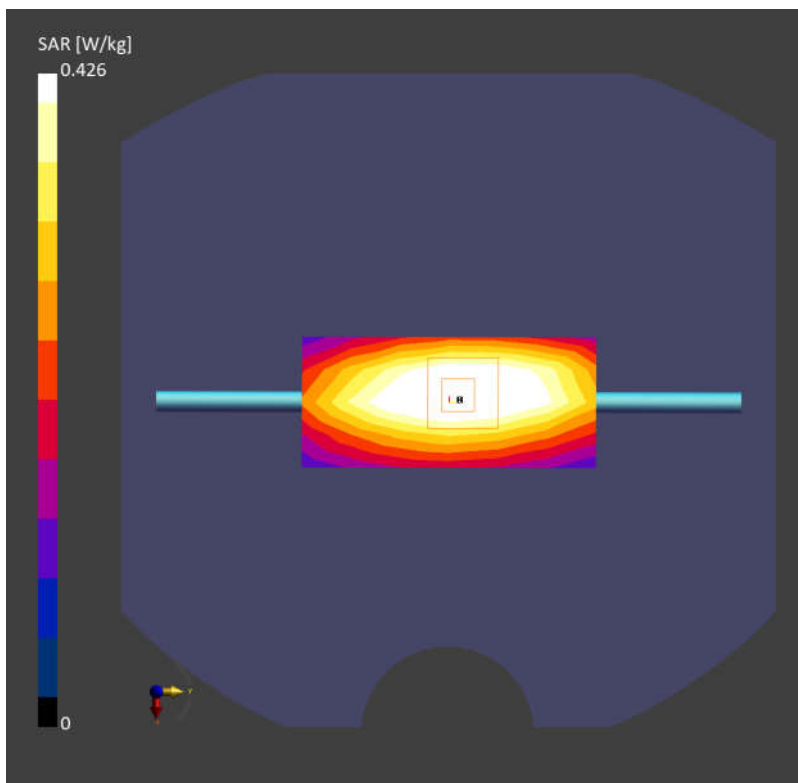
Graded Ratio:1.5

Power Drift = 0.01 dB

SAR (1g) = 0.426 W/kg; SAR (10g) = 0.277 W/kg;

Smallest distance from peaks to all points 3dB below is 16.1 mm

Ratio of SAR at M2 to SAR at M1 = 86.1 %



System Check_Head_835MHz

DUT:D835V2 - SN:4d091

Communication System: ; Frequency: 835.000

Medium: HSL. Medium parameters used: $f= 835.000$ MHz; $\sigma= 0.915$ S/m; $\epsilon_r= 41.3$

Ambient Temperature: 23.1°C; Liquid Temperature: 22.6°C

DASY6 Configuration:

- Probe: EX3DV4 - SN7706; ConvF(9.26, 10.67, 9.28); Calibrated: 2024-01-24
- Sensor-Surface: 1.4 mm
- Electronics: DAE4 Sn1303; Calibrated: 2023-11-20
- Phantom: Twin-SAM V8.0 (30deg probe tilt); Serial: 2024
- Measurement Software: 16.4.0.5005

Area Scan (40.0 mm x 90.0 mm): Measurement Grid: 10.0 mm x 15.0 mm

SAR (1g) = 0.507 W/kg; SAR (10g) = 0.332 W/kg;

Zoom Scan (30.0 mm x 30.0 mm x 30.0 mm): Measurement Grid: 6.0 mm x 6.0 mm x 1.5 mm;

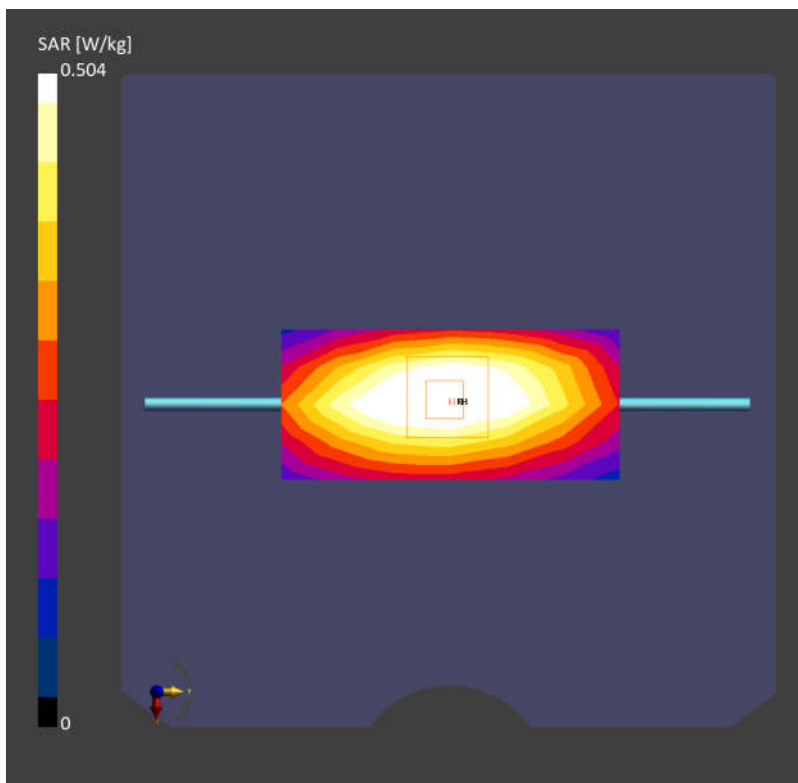
Graded Ratio:1.5

Power Drift = 0.04 dB

SAR (1g) = 0.504 W/kg; SAR (10g) = 0.325 W/kg;

Smallest distance from peaks to all points 3dB below is 15.8 mm

Ratio of SAR at M2 to SAR at M1 = 84.5 %



System Check_Head_1750MHz

DUT:D1750V2 - SN:1090

Communication System: ; Frequency: 1750.000

Medium: HSL. Medium parameters used: $f= 1750.000$ MHz; $\sigma= 1.38$ S/m; $\epsilon_r= 40.2$

Ambient Temperature: 23.4°C; Liquid Temperature: 22.9°C

DASY6 Configuration:

- Probe: EX3DV4 - SN7706; ConvF(7.87, 9.06, 8.09); Calibrated: 2024-01-24
- Sensor-Surface: 1.4 mm
- Electronics: DAE4 Sn1303; Calibrated: 2023-11-20
- Phantom: Twin-SAM V8.0 (30deg probe tilt); Serial: 2024
- Measurement Software: 16.4.0.5005

Area Scan (40.0 mm x 90.0 mm): Measurement Grid: 10.0 mm x 15.0 mm

SAR (1g) = 1.87 W/kg; SAR (10g) = 1.00 W/kg;

Zoom Scan (30.0 mm x 30.0 mm x 30.0 mm): Measurement Grid: 6.0 mm x 6.0 mm x 1.5 mm;

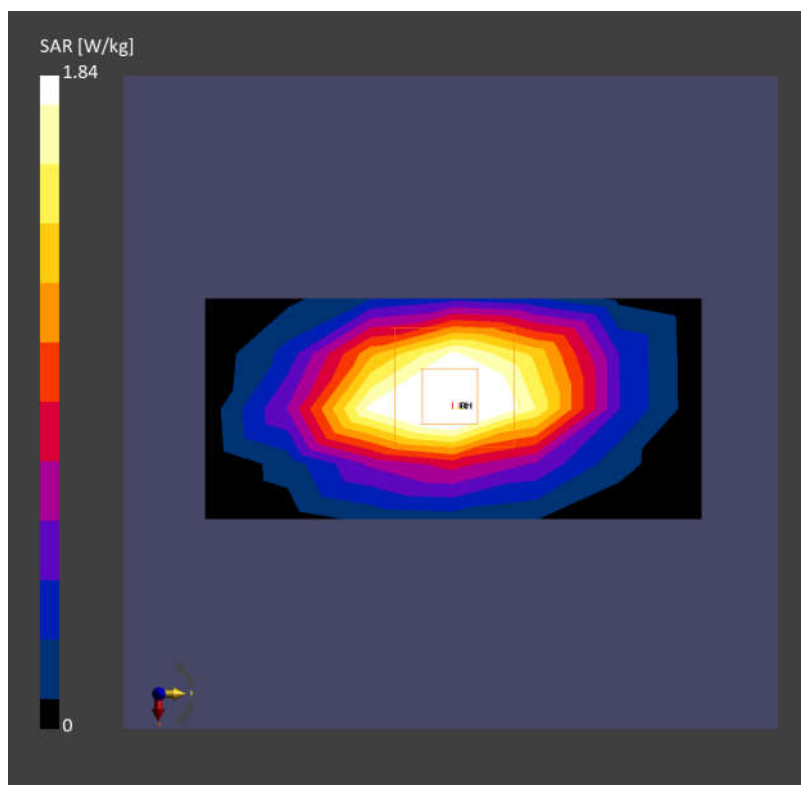
Graded Ratio:1.5

Power Drift = 0.02 dB

SAR (1g) = 1.84 W/kg; SAR (10g) = 0.965 W/kg;

Smallest distance from peaks to all points 3dB below is 9.6 mm

Ratio of SAR at M2 to SAR at M1 = 81.2 %



System Check_Head_1900MHz

DUT:D1900V2 - SN:5d118

Communication System: ; Frequency: 1900.000

Medium: HSL. Medium parameters used: $f= 1900.000$ MHz; $\sigma= 1.45$ S/m; $\epsilon_r= 39.9$

Ambient Temperature: 23.2°C; Liquid Temperature: 22.7°C

DASY6 Configuration:

- Probe: EX3DV4 - SN7706; ConvF(7.77, 8.97, 7.88); Calibrated: 2024-01-24
- Sensor-Surface: 1.4 mm
- Electronics: DAE4 Sn1303; Calibrated: 2023-11-20
- Phantom: Twin-SAM V8.0 (30deg probe tilt); Serial: 2024
- Measurement Software: 16.4.0.5005

Area Scan (40.0 mm x 90.0 mm): Measurement Grid: 10.0 mm x 15.0 mm

SAR (1g) = 2.07 W/kg; SAR (10g) = 1.07 W/kg;

Zoom Scan (30.0 mm x 30.0 mm x 30.0 mm): Measurement Grid: 6.0 mm x 6.0 mm x 1.5 mm;

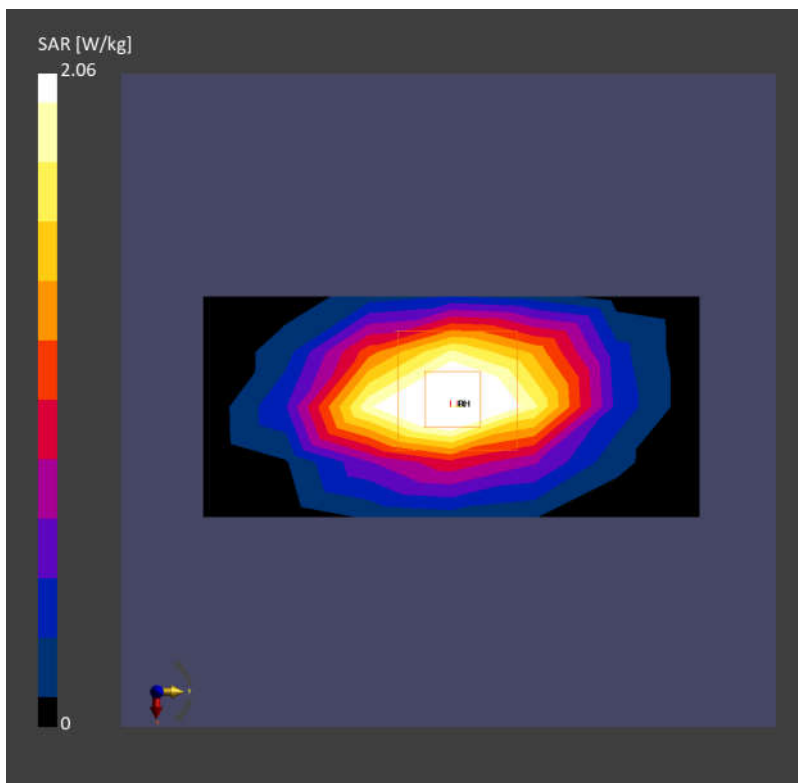
Graded Ratio:1.5

Power Drift = 0.08 dB

SAR (1g) = 2.06 W/kg; SAR (10g) = 1.05 W/kg;

Smallest distance from peaks to all points 3dB below is 9.6 mm

Ratio of SAR at M2 to SAR at M1 = 80.2 %



System Check_Head_2450MHz

DUT:D2450V2 - SN:1095

Communication System: ; Frequency: 2450.000

Medium: HSL. Medium parameters used: $f= 2450.000$ MHz; $\sigma= 1.85$ S/m; $\epsilon_r= 39.1$

Ambient Temperature: 23.4°C; Liquid Temperature: 22.8°C

DASY6 Configuration:

- Probe: EX3DV4 - SN7706; ConvF(7.47, 8.61, 7.55); Calibrated: 2024-01-24
- Sensor-Surface: 1.4 mm
- Electronics: DAE4 Sn1303; Calibrated: 2023-11-20
- Phantom: Twin-SAM V8.0 (30deg probe tilt); Serial: 2024
- Measurement Software: 16.4.0.5005

Area Scan (40.0 mm x 80.0 mm): Measurement Grid: 10.0 mm x 10.0 mm

SAR (1g) = 2.70 W/kg; SAR (10g) = 1.26 W/kg;

Zoom Scan (30.0 mm x 30.0 mm x 30.0 mm): Measurement Grid: 5.0 mm x 5.0 mm x 1.5 mm;

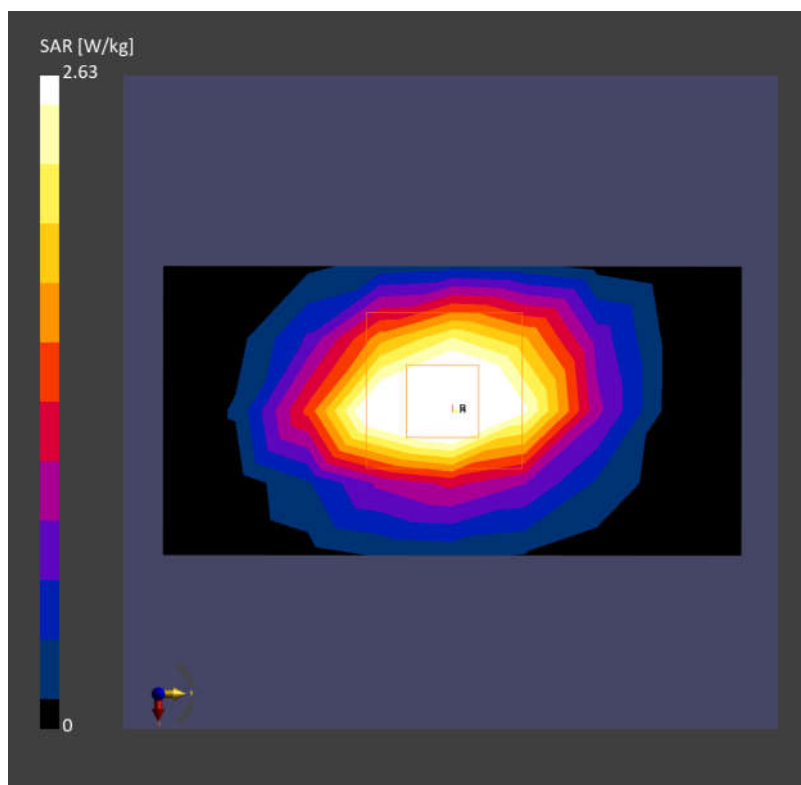
Graded Ratio:1.5

Power Drift = 0.08 dB

SAR (1g) = 2.63 W/kg; SAR (10g) = 1.23 W/kg;

Smallest distance from peaks to all points 3dB below is 9.0 mm

Ratio of SAR at M2 to SAR at M1 = 78.0 %



System Check_Head_2600MHz

DUT:D2600V2 - SN:1112

Communication System: ; Frequency: 2600.000

Medium: HSL. Medium parameters used: $f= 2600.000$ MHz; $\sigma= 1.93$ S/m; $\epsilon_r= 39.0$

Ambient Temperature: 23.2°C; Liquid Temperature: 22.9°C

DASY6 Configuration:

- Probe: EX3DV4 - SN7706; ConvF(7.3, 8.44, 7.37); Calibrated: 2024-01-24
- Sensor-Surface: 1.4 mm
- Electronics: DAE4 Sn1303; Calibrated: 2023-11-20
- Phantom: Twin-SAM V8.0 (30deg probe tilt); Serial: 2024
- Measurement Software: 16.4.0.5005

Area Scan (40.0 mm x 80.0 mm): Measurement Grid: 10.0 mm x 10.0 mm

SAR (1g) = 2.73 W/kg; SAR (10g) = 1.24 W/kg;

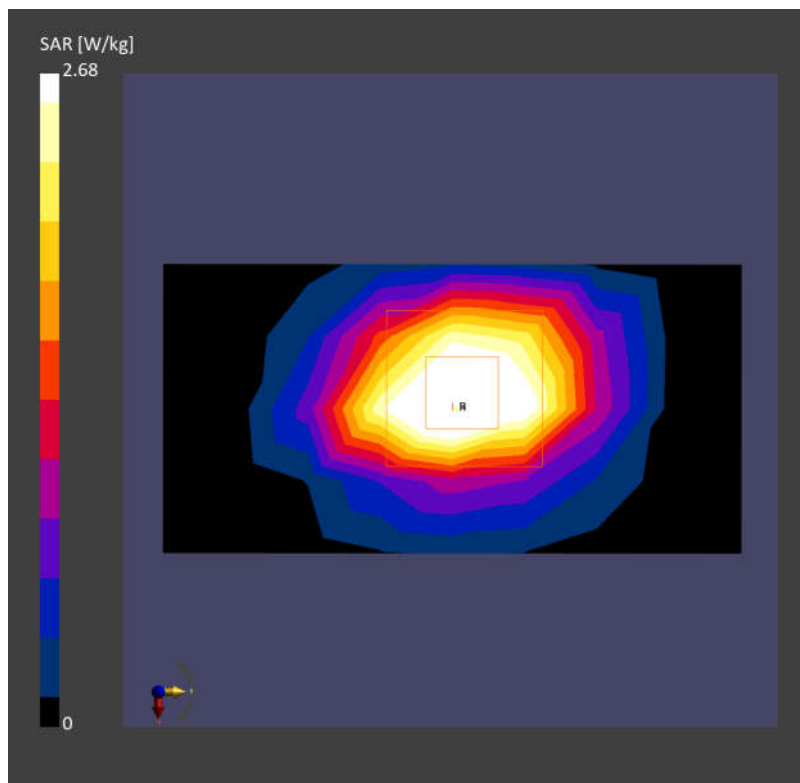
Zoom Scan (30.0 mm x 30.0 mm x 30.0 mm): Measurement Grid: 5.0 mm x 5.0 mm x 1.5 mm;
Graded Ratio:1.5

Power Drift = 0.04 dB

SAR (1g) = 2.68 W/kg; SAR (10g) = 1.21 W/kg;

Smallest distance from peaks to all points 3dB below is 8.0 mm

Ratio of SAR at M2 to SAR at M1 = 77.5 %



System Check_Head_3500MHz

DUT:D3500V2 - SN:1037

Communication System: ; Frequency: 3500.000

Medium: HSL. Medium parameters used: $f= 3500.000$ MHz; $\sigma= 2.80$ S/m; $\epsilon_r= 38.9$

Ambient Temperature: 23.2°C; Liquid Temperature: 22.7°C

DASY6 Configuration:

- Probe: EX3DV4 - SN7706; ConvF(6.99, 8.16, 7.09); Calibrated: 2024-01-24
- Sensor-Surface: 1.4 mm
- Electronics: DAE4 Sn1303; Calibrated: 2023-11-20
- Phantom: Twin-SAM V8.0 (30deg probe tilt); Serial: 2024
- Measurement Software: 16.4.0.5005

Area Scan (40.0 mm x 80.0 mm): Measurement Grid: 10.0 mm x 10.0 mm

SAR (1g) = 3.21 W/kg; SAR (10g) = 1.23 W/kg;

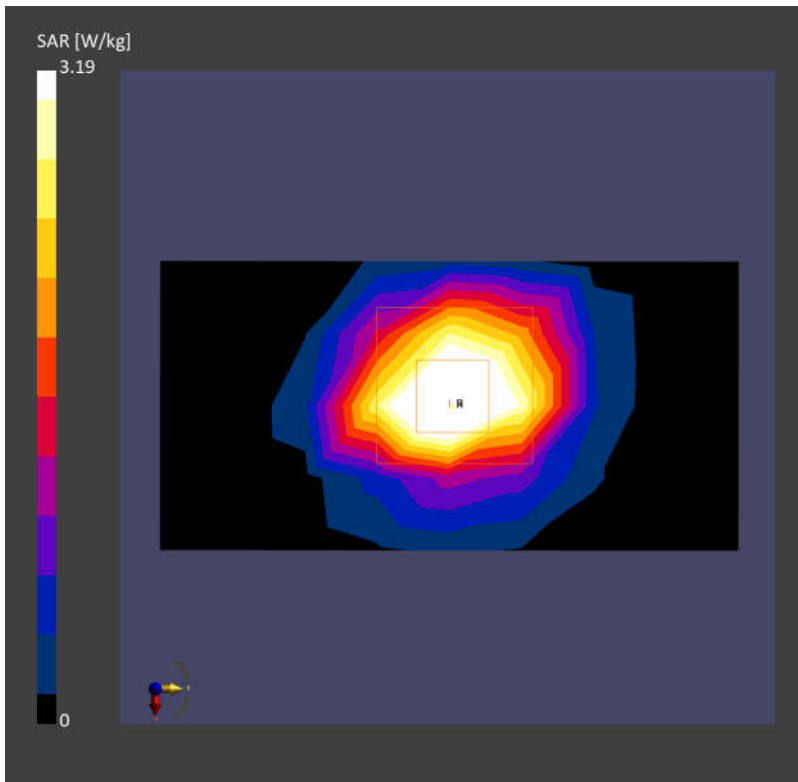
Zoom Scan (28.0 mm x 28.0 mm x 28.0 mm): Measurement Grid: 4.0 mm x 4.0 mm x 1.4 mm;
Graded Ratio:1.4

Power Drift = 0.05 dB

SAR (1g) = 3.19 W/kg; SAR (10g) = 1.22 W/kg;

Smallest distance from peaks to all points 3dB below is 8.0 mm

Ratio of SAR at M2 to SAR at M1 = 76.1 %



System Check_Head_3700MHz

DUT:D3700V2 - SN:1008

Communication System: ; Frequency: 3700.000

Medium: HSL. Medium parameters used: $f= 3700.000$ MHz; $\sigma= 2.98$ S/m; $\epsilon_r= 38.6$

Ambient Temperature: 23.1°C; Liquid Temperature: 22.6°C

DASY6 Configuration:

- Probe: EX3DV4 - SN7706; ConvF(6.89, 8.06, 7.01); Calibrated: 2024-01-24
- Sensor-Surface: 1.4 mm
- Electronics: DAE4 Sn1303; Calibrated: 2023-11-20
- Phantom: Twin-SAM V8.0 (30deg probe tilt); Serial: 2024
- Measurement Software: 16.4.0.5005

Area Scan (40.0 mm x 80.0 mm): Measurement Grid: 10.0 mm x 10.0 mm

SAR (1g) = 3.28 W/kg; SAR (10g) = 1.23 W/kg;

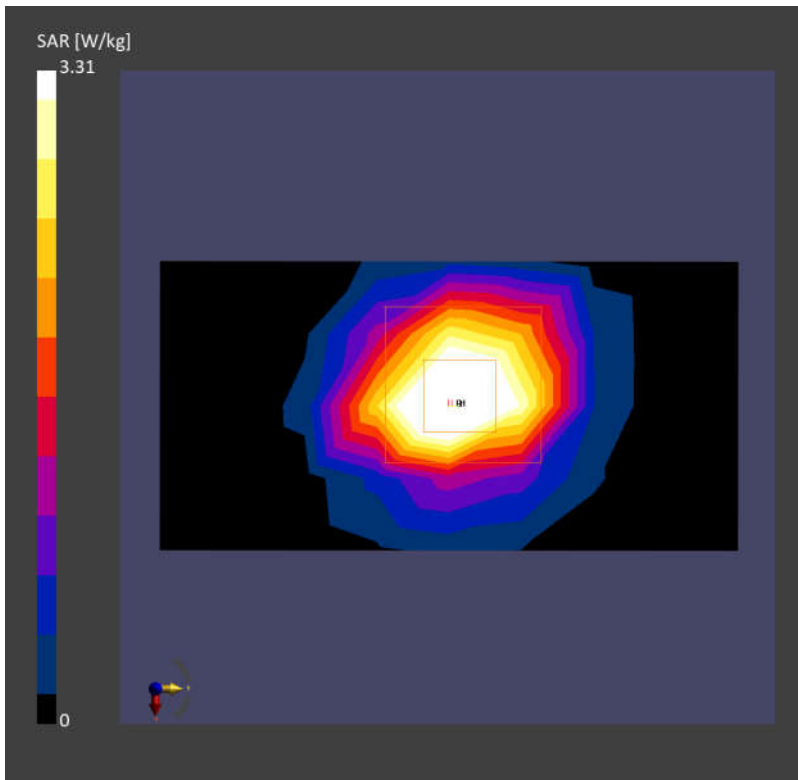
Zoom Scan (28.0 mm x 28.0 mm x 28.0 mm): Measurement Grid: 4.0 mm x 4.0 mm x 1.4 mm;
Graded Ratio:1.4

Power Drift = 0.02 dB

SAR (1g) = 3.31 W/kg; SAR (10g) = 1.23 W/kg;

Smallest distance from peaks to all points 3dB below is 8.0 mm

Ratio of SAR at M2 to SAR at M1 = 74.7 %



System Check_Head_3900MHz

DUT:D3900V2 - SN:1048

Communication System: ; Frequency: 3900.000

Medium: HSL. Medium parameters used: $f= 3900.000$ MHz; $\sigma= 3.25$ S/m; $\epsilon_r= 37.8$

Ambient Temperature: 23.1°C; Liquid Temperature: 22.9°C

DASY6 Configuration:

- Probe: EX3DV4 - SN7706; ConvF(6.83, 7.98, 6.94); Calibrated: 2024-01-24
- Sensor-Surface: 1.4 mm
- Electronics: DAE4 Sn1303; Calibrated: 2023-11-20
- Phantom: Twin-SAM V8.0 (30deg probe tilt); Serial: 2024
- Measurement Software: 16.4.0.5005

Area Scan (40.0 mm x 80.0 mm): Measurement Grid: 10.0 mm x 10.0 mm

SAR (1g) = 3.25 W/kg; SAR (10g) = 1.17 W/kg;

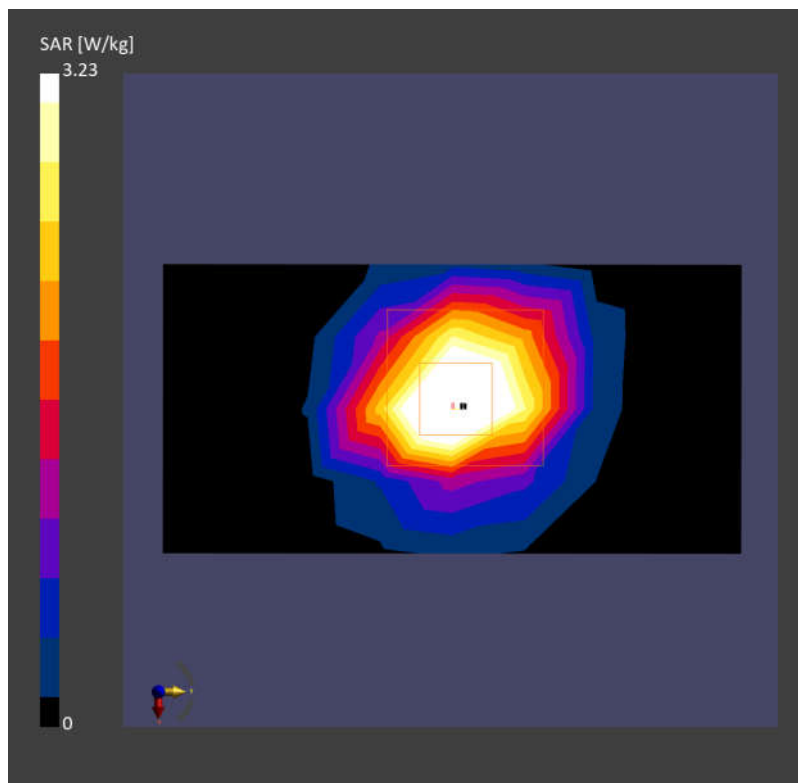
Zoom Scan (28.0 mm x 28.0 mm x 28.0 mm): Measurement Grid: 4.0 mm x 4.0 mm x 1.4 mm;
Graded Ratio:1.4

Power Drift = 0.06 dB

SAR (1g) = 3.23 W/kg; SAR (10g) = 1.16 W/kg;

Smallest distance from peaks to all points 3dB below is 8.0 mm

Ratio of SAR at M2 to SAR at M1 = 75.6 %



System Check_Head_5250MHz

DUT:D5GHzV2 - SN:1113

Communication System: ; Frequency: 5250.000

Medium: HSL. Medium parameters used: $f= 5250.000$ MHz; $\sigma= 4.56$ S/m; $\epsilon_r= 35.0$

Ambient Temperature: 23.3°C; Liquid Temperature: 22.7°C

DASY6 Configuration:

- Probe: EX3DV4 - SN7706; ConvF(5.84, 6.82, 5.88); Calibrated: 2024-01-24
- Sensor-Surface: 1.4 mm
- Electronics: DAE4 Sn1303; Calibrated: 2023-11-20
- Phantom: Twin-SAM V8.0 (30deg probe tilt); Serial: 2024
- Measurement Software: 16.4.0.5005

Area Scan (40.0 mm x 80.0 mm): Measurement Grid: 10.0 mm x 10.0 mm

SAR (1g) = 3.79 W/kg; SAR (10g) = 1.15 W/kg;

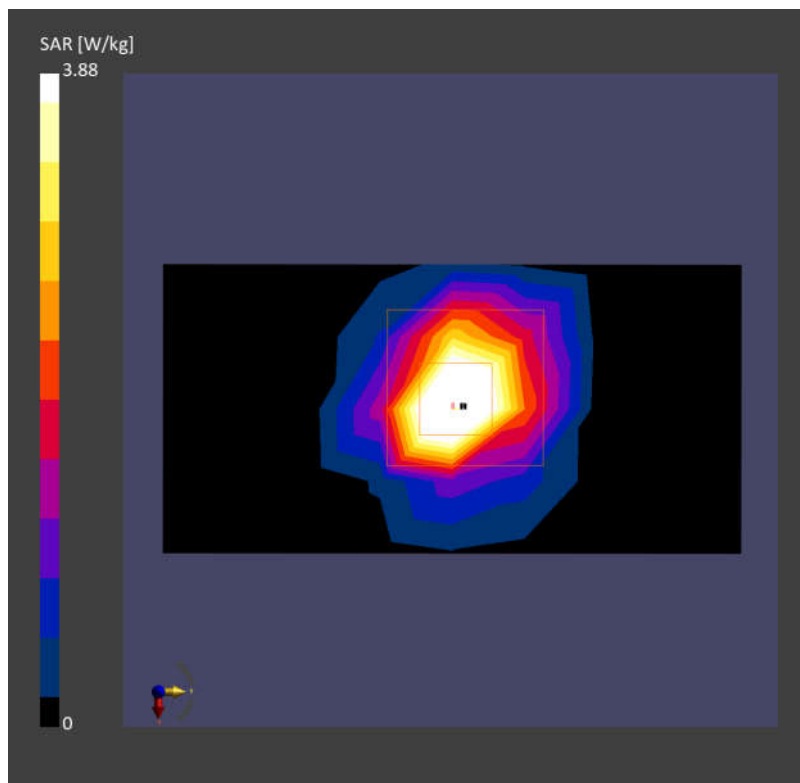
Zoom Scan (22.0 mm x 22.0 mm x 22.0 mm): Measurement Grid: 4.0 mm x 4.0 mm x 1.4 mm;
Graded Ratio:1.4

Power Drift = -0.07 dB

SAR (1g) = 3.88 W/kg; SAR (10g) = 1.16 W/kg;

Smallest distance from peaks to all points 3dB below is 7.2 mm

Ratio of SAR at M2 to SAR at M1 = 64.8 %



System Check_Head_5600MHz

DUT:D5GHzV2 - SN:1113

Communication System: ; Frequency: 5600.000

Medium: HSL. Medium parameters used: $f= 5600.000$ MHz; $\sigma= 4.94$ S/m; $\epsilon_r= 34.4$

Ambient Temperature: 23.1°C; Liquid Temperature: 22.9°C

DASY6 Configuration:

- Probe: EX3DV4 - SN7706; ConvF(4.83, 5.71, 4.9); Calibrated: 2024-01-24
- Sensor-Surface: 1.4 mm
- Electronics: DAE4 Sn1303; Calibrated: 2023-11-20
- Phantom: Twin-SAM V8.0 (30deg probe tilt); Serial: 2024
- Measurement Software: 16.4.0.5005

Area Scan (40.0 mm x 80.0 mm): Measurement Grid: 10.0 mm x 10.0 mm

SAR (1g) = 3.86 W/kg; SAR (10g) = 1.11 W/kg;

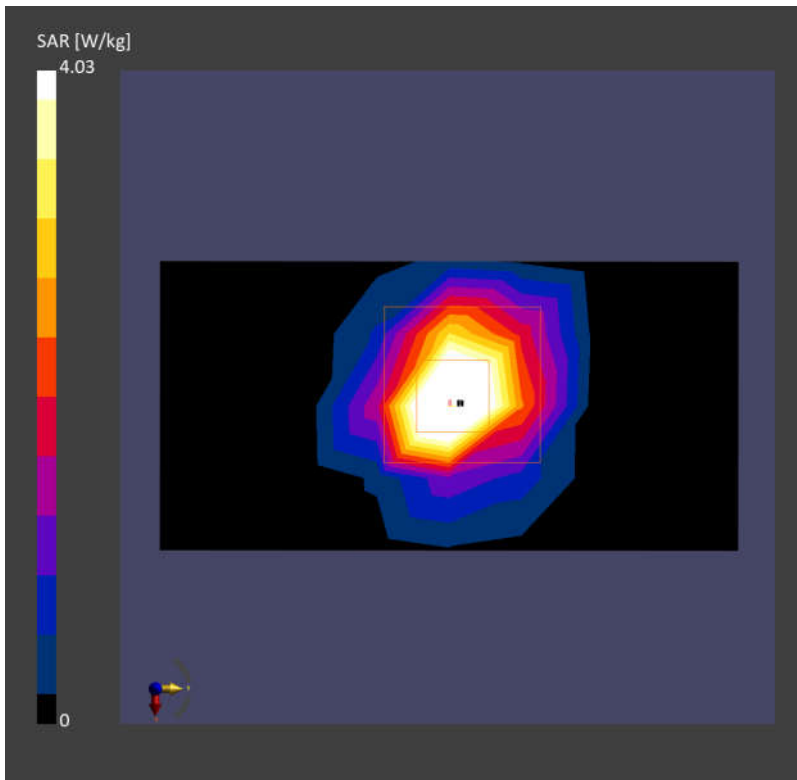
Zoom Scan (22.0 mm x 22.0 mm x 22.0 mm): Measurement Grid: 4.0 mm x 4.0 mm x 1.4 mm;
Graded Ratio:1.4

Power Drift = 0.04 dB

SAR (1g) = 4.03 W/kg; SAR (10g) = 1.15 W/kg;

Smallest distance from peaks to all points 3dB below is 7.2 mm

Ratio of SAR at M2 to SAR at M1 = 62.2 %



System Check_Head_5750MHz

DUT:D5GHzV2 - SN:1113

Communication System: ; Frequency: 5750.000

Medium: HSL. Medium parameters used: $f= 5750.000$ MHz; $\sigma= 5.12$ S/m; $\epsilon_r= 34.1$

Ambient Temperature: 23.2°C; Liquid Temperature: 22.7°C

DASY6 Configuration:

- Probe: EX3DV4 - SN7706; ConvF(5.03, 5.88, 5.16); Calibrated: 2024-01-24
- Sensor-Surface: 1.4 mm
- Electronics: DAE4 Sn1303; Calibrated: 2023-11-20
- Phantom: Twin-SAM V8.0 (30deg probe tilt); Serial: 2024
- Measurement Software: 16.4.0.5005

Area Scan (40.0 mm x 80.0 mm): Measurement Grid: 10.0 mm x 10.0 mm

SAR (1g) = 3.80 W/kg; SAR (10g) = 1.12 W/kg;

Zoom Scan (22.0 mm x 22.0 mm x 22.0 mm): Measurement Grid: 4.0 mm x 4.0 mm x 1.4 mm;
Graded Ratio:1.4

Power Drift = 0.02 dB

SAR (1g) = 3.87 W/kg; SAR (10g) = 1.15 W/kg;

Smallest distance from peaks to all points 3dB below is 7.2 mm

Ratio of SAR at M2 to SAR at M1 = 61.1 %

