

System Check_Head_13MHz

DUT: CLA-13 - SN1023

Communication System: UID 0, CW (0); Frequency: 13 MHz; Duty Cycle: 1:1
Medium: HSL_13 Medium parameters used: $f = 13$ MHz; $\sigma = 0.726$ S/m; $\epsilon_r = 54.258$; $\rho = 1000$ kg/m³

Ambient Temperature : 23.3 °C; Liquid Temperature : 22.9 °C

DASY5 Configuration:

- Probe: EX3DV4 - SN7706; ConvF(16.1, 16.1, 16.1); Calibrated: 2024/1/24
- Sensor-Surface: 1.4mm (Mechanical Surface Detection)
- Electronics: DAE4 Sn1650; Calibrated: 2023/9/13
- Phantom: ELI8 Phantom; Type: ELI8; Serial: TP-2135
- Measurement SW: DASY52, Version 52.10 (4); SEMCAD X Version 14.6.14 (7501)

Pin=250mW/Area Scan (161x161x1): Interpolated grid: dx=1.500 mm, dy=1.500 mm
Maximum value of SAR (interpolated) = 0.148 W/kg

Pin=250mW/Zoom Scan (5x5x7)/Cube 0: Measurement grid: dx=8mm, dy=8mm, dz=5mm

Reference Value = 14.01 V/m; Power Drift = -0.04 dB

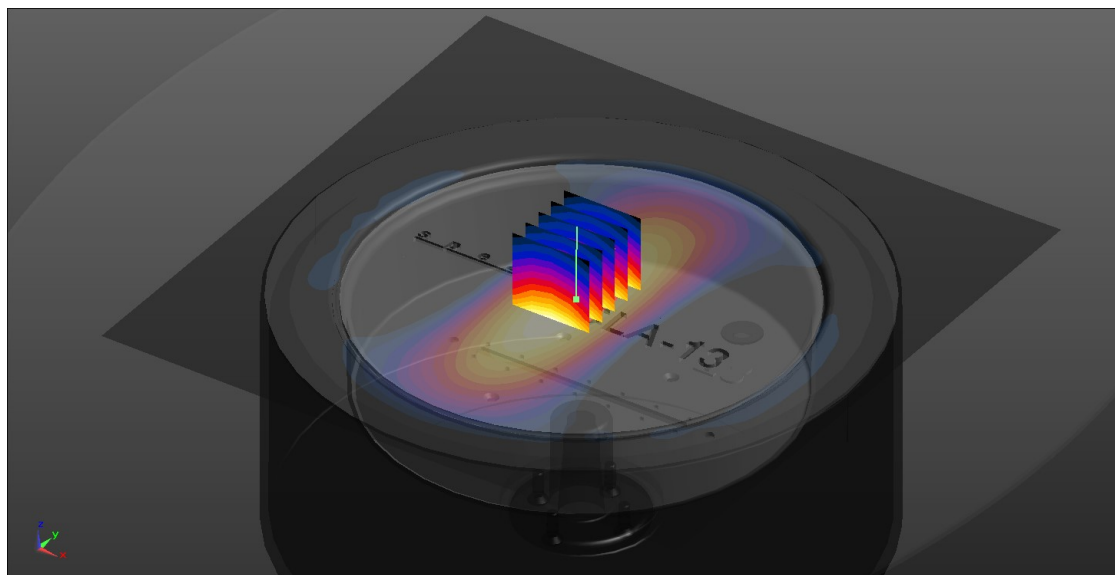
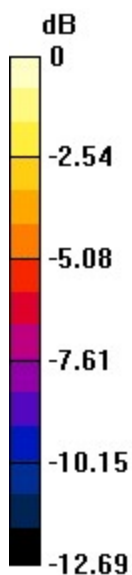
Peak SAR (extrapolated) = 0.186 W/kg

SAR(1 g) = 0.143 W/kg; SAR(10 g) = 0.083 W/kg

Smallest distance from peaks to all points 3 dB below = 14.5 mm

Ratio of SAR at M2 to SAR at M1 = 54.6%

Maximum value of SAR (measured) = 0.146 W/kg



0 dB = 0.146 W/kg = -8.36 dBW/kg

System Check_Head_13MHz

DUT: CLA-13 - SN1023

Communication System: CW; Frequency: 13.000 MHz; Duty Cycle: 1:1
Medium: HSL Medium parameters used: $f=13.000$ MHz; $\sigma=0.726$ S/m; $\epsilon_r=54.3$
Ambient Temperature: 23.1°C; Liquid Temperature: 22.6°C

DASY6 Configuration:

- Probe: EX3DV4 - SN7706; ConvF(16.1, 16.1, 16.1); Calibrated: 2024-01-24
- Sensor-Surface: 1.4 mm
- Electronics: DAE4 Sn1303; Calibrated: 2023-11-20
- Phantom: ELI V8.0 (20deg probe tilt); Serial: 2135; Section: Flat
- Measurement Software: 16.4.0.5005

Pin=250mW/Area Scan (40.0 mm x 90.0 mm): Measurement Grid: 10.0 mm x 15.0 mm
SAR (1g) = 0.135 W/kg; SAR (10g) = 0.111 W/kg;

Pin=250mW/Zoom Scan (30.0 mm x 30.0 mm x 30.0 mm): Measurement Grid: 6.0 mm x 6.0 mm
x 1.5 mm
Power Drift = -0.03 dB
SAR (1g) = 0.143 W/kg; SAR (10g) = 0.084 W/kg
Smallest distance from peaks to all points 3 dB below = 15.7 mm
Ratio of SAR at M2 to SAR at M1 = 73.9 %

