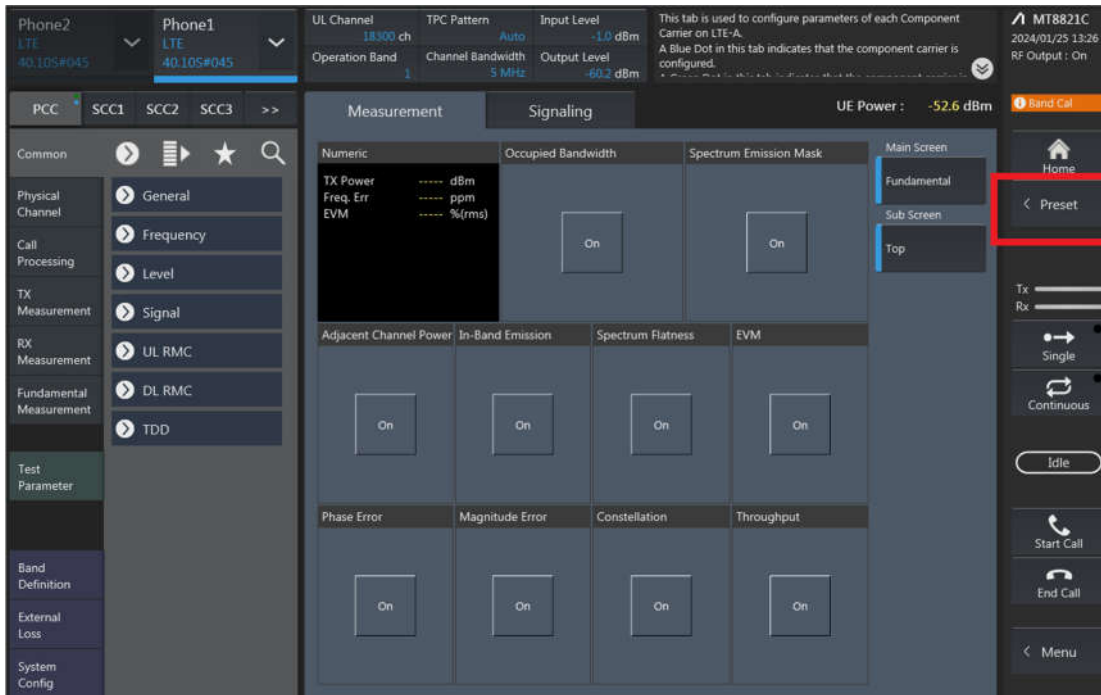


LTE Uplink and Downlink Carrier Aggregation configurations:

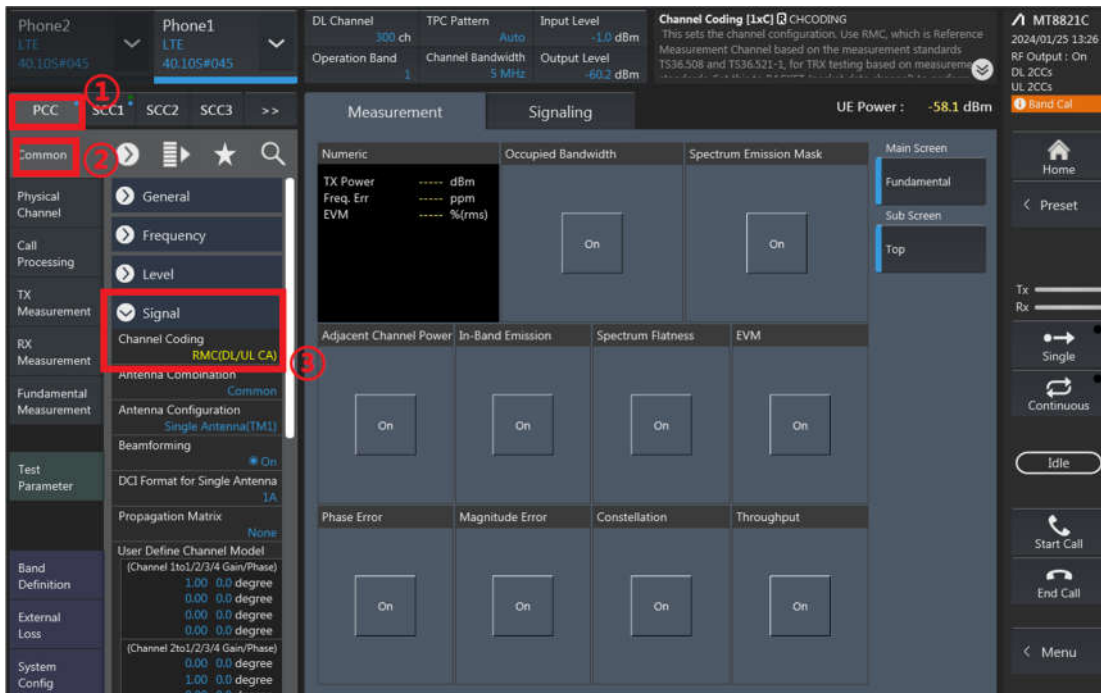
1. Change the Scenario in the Configuration of Phone1 LTE Signaling and Preset.



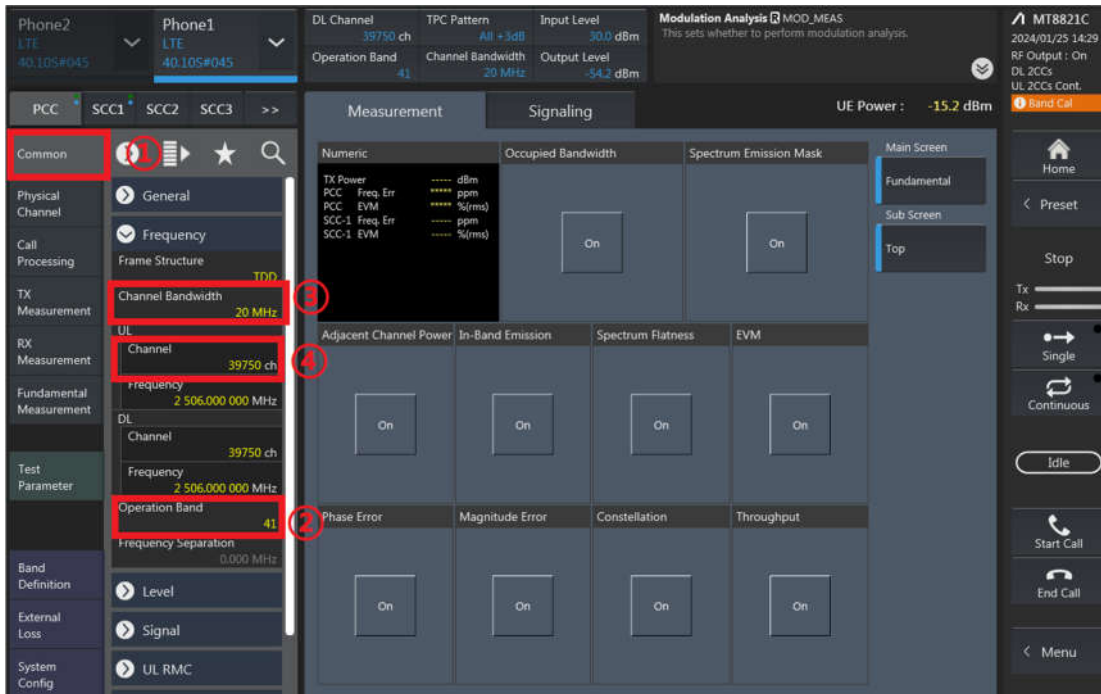
2. If Select "RMC (DL/UL CA)" for Uplink Carrier Aggregation;
If Select "RMC (DL CA)" for Downlink Carrier Aggregation.

For example, Uplink Carrier Aggregation:

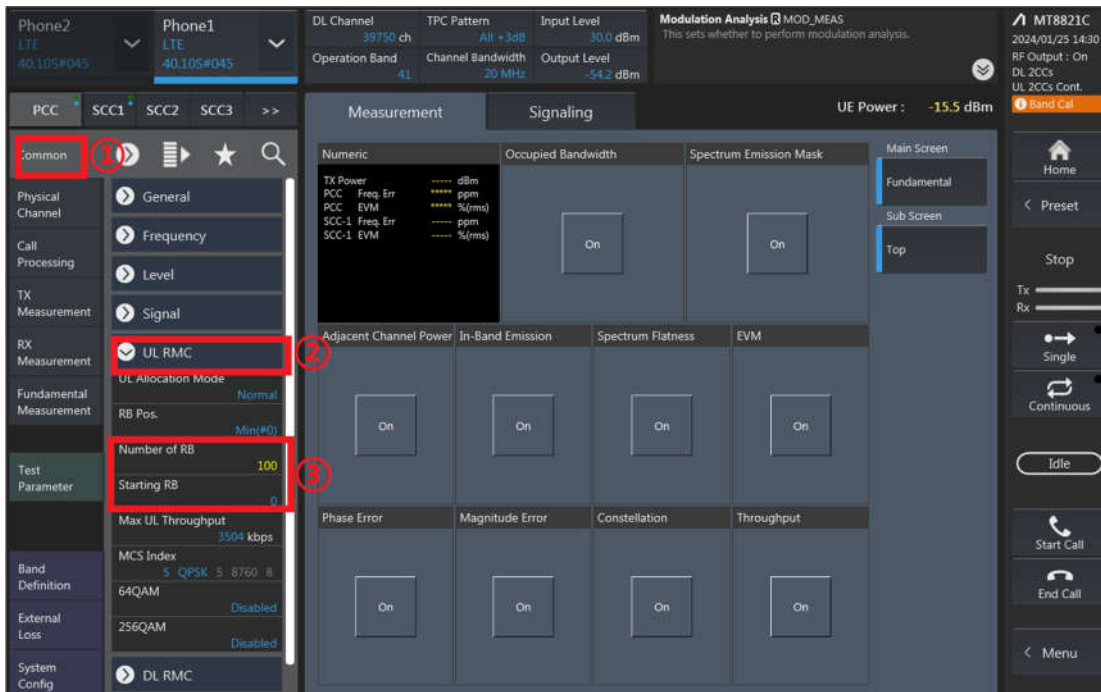
Detailed operation: PCC → Common → Signal → Channel Coding → Select 【RMC (DL/UL CA)】



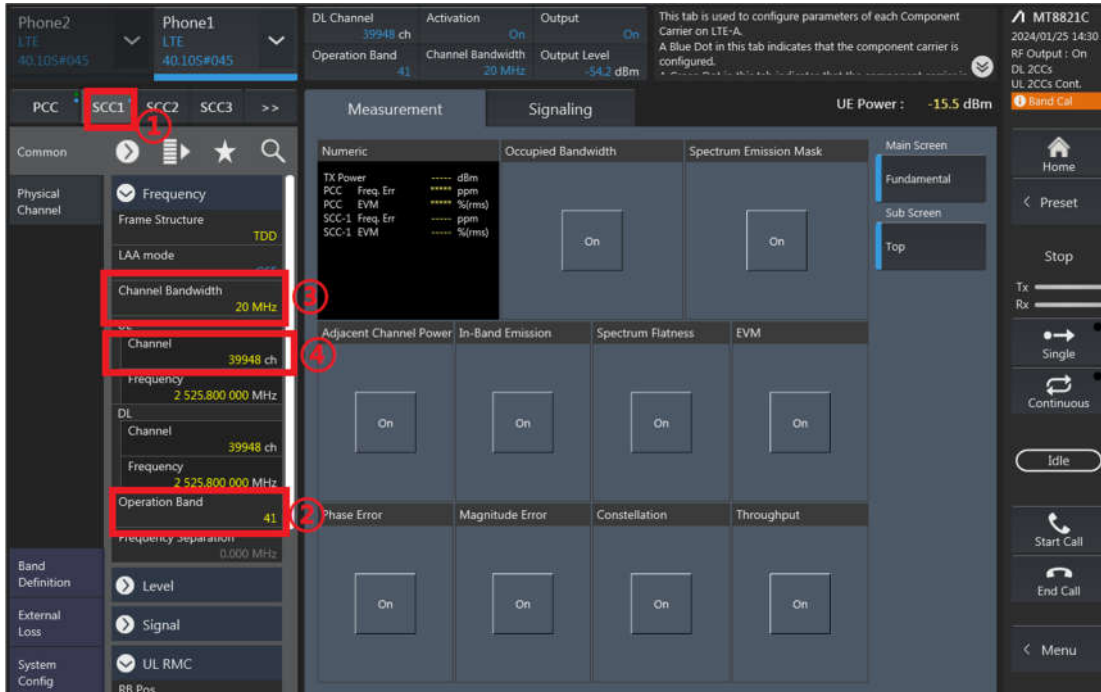
- PCC parameter Settings: on the screen, and then select the PCC tab and Set operating band, BW, channel and RB configurations for PCC;



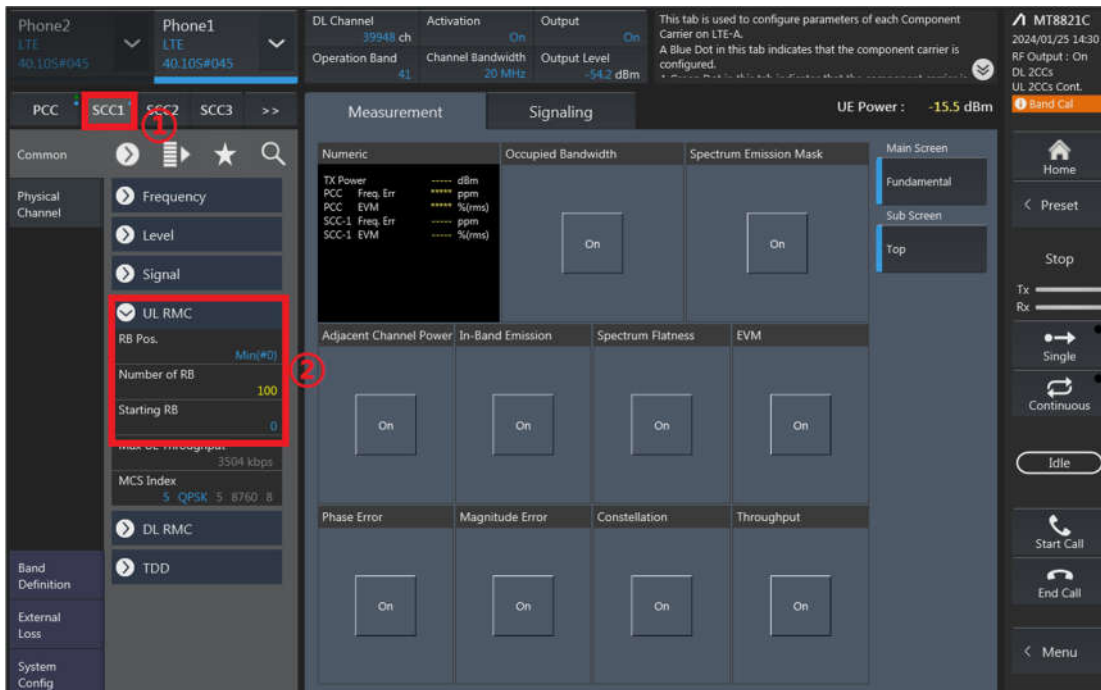
RB configurations (Number of RB / Starting RB) for PCC;



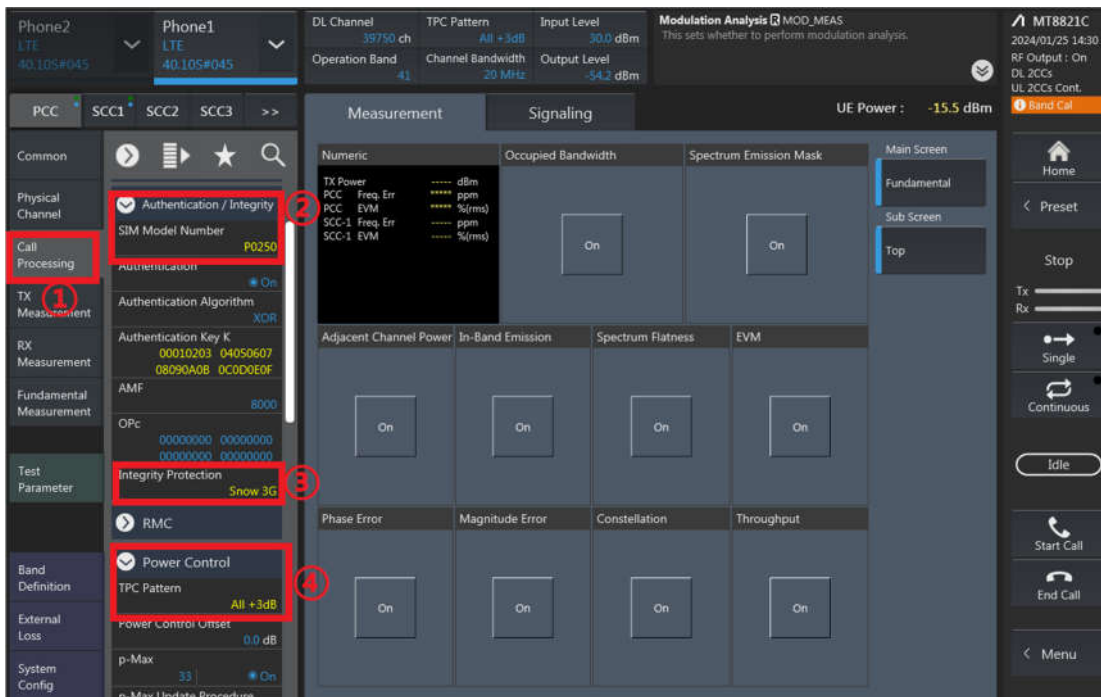
4. SCC parameter Settings: Select the SCC1 tab, Set operating band, BW, channel, and RB configurations for SCC1;



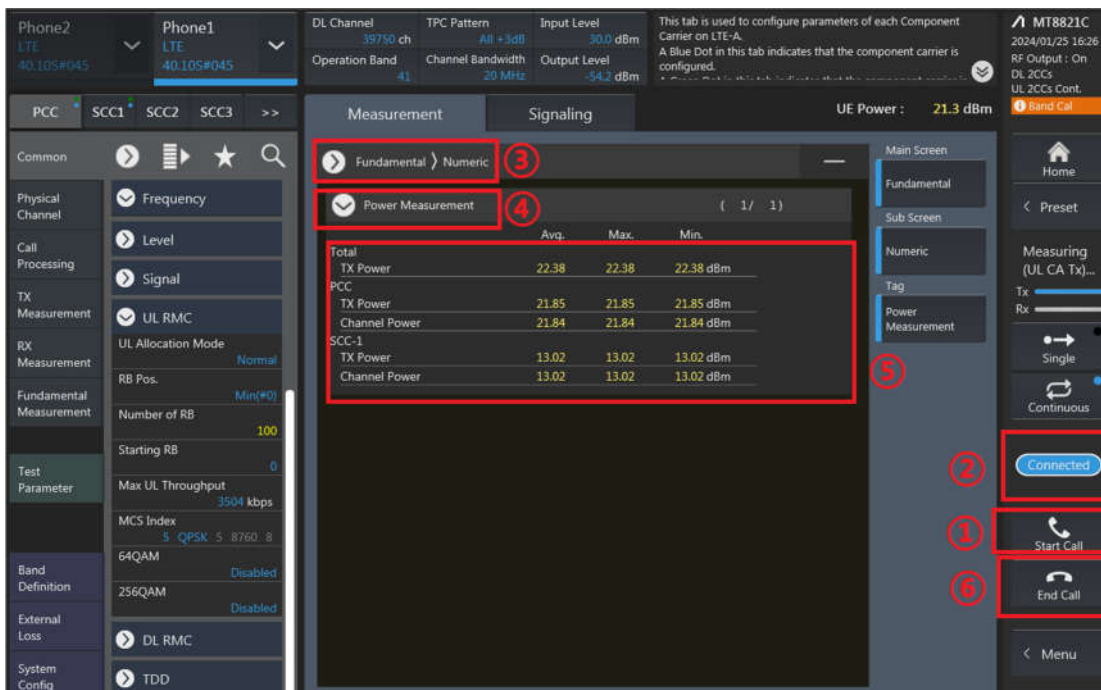
RB configurations (Number of RB / Starting RB) for SCC1;



- Select the PCC tab, then set “SIM Model Number” and select max power;



- Click the “Connect” button at the Right of the screen, if necessary, turn the Airplane mode on/off in the DUT



- The inter-band DLCA test method is similar to intra-band ULCA, and DLCA test method is similar to intra-band ULCA too.



CA_7C_Ant 2													
PCC Channel	SCC Channel	Modulation	PCC			SCC			Total RB Size	Target MPR Level (dB)	Power Reduction	Measured Power (dBm)	Tune up Power (dBm)
			RB Size	RB offset	RB Size	RB offset							
			RB Size	RB offset	RB Size	RB offset							
26850	21048	QPSK	1	0	0	0	1	0	0	Full	23.33	24.00	
21100	20902	QPSK	1	0	0	0	1	0	0	Full	23.42	24.00	
21350	21152	QPSK	1	0	0	0	1	0	0	Full	23.33	24.00	
26850	21048	QPSK	1	0	0	0	1	0	0	DSI2	23.33	24.00	
21100	20902	QPSK	1	0	0	0	1	0	0	DSI2	23.42	24.00	
21350	21152	QPSK	1	0	0	0	1	0	0	DSI2	23.33	24.00	
26850	21048	QPSK	1	0	0	0	1	0	0	DSI3	21.22	22.40	
21100	20902	QPSK	1	0	0	0	1	0	0	DSI3	21.29	22.40	
21350	21152	QPSK	1	0	0	0	1	0	0	DSI3	21.29	22.40	
26850	21048	QPSK	1	0	0	0	1	0	0	DSI4	23.33	24.00	
21100	20902	QPSK	1	0	0	0	1	0	0	DSI4	23.42	24.00	
21350	21152	QPSK	1	0	0	0	1	0	0	DSI4	23.33	24.00	
26850	21048	QPSK	1	0	0	0	1	0	0	DSI6	23.33	24.00	
21100	20902	QPSK	1	0	0	0	1	0	0	DSI6	23.42	24.00	
21350	21152	QPSK	1	0	0	0	1	0	0	DSI6	23.33	24.00	
26850	21048	QPSK	1	0	0	0	1	0	0	DSI7	18.72	19.50	
21100	20902	QPSK	1	0	0	0	1	0	0	DSI7	18.82	19.50	
21350	21152	QPSK	1	0	0	0	1	0	0	DSI7	18.70	19.50	

CA_38C_Ant 2													
PCC Channel	SCC Channel	Modulation	PCC			SCC			Total RB Size	Target MPR Level (dB)	Power Reduction	Measured Power (dBm)	Tune up Power (dBm)
			RB Size	RB offset	RB Size	RB offset							
			RB Size	RB offset	RB Size	RB offset							
37850	38048	QPSK	1	0	0	0	1	0	0	Full	22.76	24.00	
37901	38099	QPSK	1	0	0	0	1	0	0	Full	23.01	24.00	
38150	37952	QPSK	1	0	0	0	1	0	0	Full	22.74	24.00	
37850	38048	16QAM	1	0	0	0	1	0	0	DSI2	22.76	24.00	
37901	38099	16QAM	1	0	0	0	1	0	0	DSI2	23.01	24.00	
38150	37952	16QAM	1	0	0	0	1	0	0	DSI2	22.74	24.00	
37850	38048	64QAM	1	0	0	0	1	0	0	DSI3	22.76	24.00	
37901	38099	64QAM	1	0	0	0	1	0	0	DSI3	23.01	24.00	
38150	37952	64QAM	1	0	0	0	1	0	0	DSI3	22.74	24.00	
37850	38048	256QAM	1	0	0	0	1	0	0	DSI4	22.76	24.00	
37901	38099	256QAM	1	0	0	0	1	0	0	DSI4	23.01	24.00	
38150	37952	256QAM	1	0	0	0	1	0	0	DSI4	22.74	24.00	
37850	38048	64QAM	1	0	0	0	1	0	0	DSI6	22.76	24.00	
37901	38099	64QAM	1	0	0	0	1	0	0	DSI6	23.01	24.00	
38150	37952	64QAM	1	0	0	0	1	0	0	DSI6	22.74	24.00	
37850	38048	256QAM	1	0	0	0	1	0	0	DSI7	20.95	22.00	
37901	38099	256QAM	1	0	0	0	1	0	0	DSI7	20.94	22.00	
38150	37952	256QAM	1	0	0	0	1	0	0	DSI7	21.03	22.00	

CA_7C_Ant 1													
PCC Channel	SCC Channel	Modulation	PCC			SCC			Total RB Size	Target MPR Level (dB)	Power Reduction	Measured Power (dBm)	Tune up Power (dBm)
			RB Size	RB offset	RB Size	RB offset							
			RB Size	RB offset	RB Size	RB offset							
26850	21048	QPSK	1	0	0	0	1	0	0	Full	22.82	24.00	
21100	20902	QPSK	1	0	0	0	1	0	0	Full	22.98	24.00	
21350	21152	QPSK	1	0	0	0	1	0	0	Full	23.02	24.00	
26850	21048	QPSK	1	0	0	0	1	0	0	DSI2	18.58	17.70	
21100	20902	QPSK	1	0	0	0	1	0	0	DSI2	18.46	17.70	
21350	21152	QPSK	1	0	0	0	1	0	0	DSI2	18.43	17.70	
26850	21048	QPSK	1	0	0	0	1	0	0	DSI3	18.58	17.70	
21100	20902	QPSK	1	0	0	0	1	0	0	DSI3	18.46	17.70	
21350	21152	QPSK	1	0	0	0	1	0	0	DSI3	18.41	17.70	
26850	21048	QPSK	1	0	0	0	1	0	0	DSI4	22.82	24.00	
21100	20902	QPSK	1	0	0	0	1	0	0	DSI4	22.98	24.00	
21350	21152	QPSK	1	0	0	0	1	0	0	DSI4	23.02	24.00	
26850	21048	QPSK	1	0	0	0	1	0	0	DSI6	21.15	22.20	
21100	20902	QPSK	1	0	0	0	1	0	0	DSI6	21.09	22.20	
21350	21152	QPSK	1	0	0	0	1	0	0	DSI6	21.12	22.20	
26850	21048	QPSK	1	0	0	0	1	0	0	DSI7	15.09	16.20	
21100	20902	QPSK	1	0	0	0	1	0	0	DSI7	15.08	16.20	
21350	21152	QPSK	1	0	0	0	1	0	0	DSI7	15.12	16.20	

CA_38C_Ant 1													
PCC Channel	SCC Channel	Modulation	PCC			SCC			Total RB Size	Target MPR Level (dB)	Power Reduction	Measured Power (dBm)	Tune up Power (dBm)
			RB Size	RB offset	RB Size	RB offset							
			RB Size	RB offset	RB Size	RB offset							
37850	38048	QPSK	1	0	0	0	1	0	0	Full	22.96	24.00	
37901	38099	QPSK	1	0	0	0	1	0	0	Full	23.08	24.00	
38150	37952	QPSK	1	0	0	0	1	0	0	Full	22.89	24.00	
37850	38048	16QAM	1	0	0	0	1	0	0	DSI2	18.33	19.30	
37901	38099	16QAM	1	0	0	0	1	0	0	DSI2	18.30	19.30	
38150	37952	16QAM	1	0	0	0	1	0	0	DSI2	18.38	19.30	
37850	38048	64QAM	1	0	0	0	1	0	0	DSI3	20.26	21.30	
37901	38099	64QAM	1	0	0	0	1	0	0	DSI3	20.37	21.30	
38150	37952	64QAM	1	0	0	0	1	0	0	DSI3	20.34	21.30	
37850	38048	256QAM	1	0	0	0	1	0	0	DSI4	22.98	24.00	
37901	38099	256QAM	1	0	0	0	1	0	0	DSI4	23.08	24.00	
38150	37952	256QAM	1	0	0	0	1	0	0	DSI4	22.89	24.00	
37850	38048	64QAM	1	0	0	0	1	0	0	DSI6	22.33	23.30	
37901	38099	64QAM	1	0	0	0	1	0	0	DSI6	22.35	23.30	
38150	37952	64QAM	1	0	0	0	1	0	0	DSI6	22.09	23.30	
37850	38048	256QAM	1	0	0	0	1	0	0	DSI7	16.59	17.30	
37901	38099	256QAM	1	0	0	0	1	0	0	DSI7	16.92	17.30	
38150	37952	256QAM	1	0	0	0	1	0	0	DSI7	16.59	17.30	

CA_7C_Ant 0													
PCC Channel	SCC Channel	Modulation	PCC			SCC			Total RB Size	Target MPR Level (dB)	Power Reduction	Measured Power (dBm)	Tune up Power (dBm)
			RB Size	RB offset	RB Size	RB offset							
			RB Size	RB offset	RB Size	RB offset							
26850	21048	QPSK	1	0	0	0	1	0	0	Full	22.92	24.00	
21100	20902	QPSK	1	0	0	0	1	0	0	Full	22.95	24.00	
21350	21152	QPSK	1	0	0	0	1	0	0	Full	22.90	24.00	
26850	21048	QPSK	1	0	0	0	1	0	0	DSI2	22.92	24.00	
21100	20902	QPSK	1	0	0	0	1	0	0	DSI2	22.95	24.00	
21350	21152	QPSK	1	0	0	0	1	0	0	DSI2	22.90	24.00	
26850	21048	QPSK	1	0	0	0	1	0	0	DSI3	18.38	20.20	
21100	20902	QPSK	1	0	0	0	1	0	0	DSI3	18.43	20.20	
21350	21152	QPSK	1	0	0	0	1	0	0	DSI3	18.38	20.20	
26850	21048	QPSK	1	0	0	0	1	0	0	DSI4	22.92	24.00	
21100	20902	QPSK	1	0	0	0	1	0	0	DSI4	22.95	24.00	
21350	21152	QPSK	1	0	0	0	1	0	0	DSI4	22.90	24.00	
26850	21048	QPSK	1	0	0	0	1	0	0	DSI6	19.40	21.20	
21100	20902	QPSK	1	0	0	0	1	0	0	DSI6	19.48	21.20	
21350	21152	QPSK	1	0	0	0	1	0	0	DSI6	19.43	21.20	
26850	21048	QPSK	1	0	0	0	1	0	0	DSI7	17.57	18.20	
21100	20902	QPSK	1	0	0	0	1	0	0	DSI7	17.63	18.20	
21350	21152	QPSK	1	0	0	0	1	0	0	DSI7	17.58	18.20	

CA_38C_Ant 0													
PCC Channel	SCC Channel	Modulation	PCC			SCC			Total RB Size	Target MPR Level (dB)	Power Reduction	Measured Power (dBm)	Tune up Power (dBm)
			RB Size	RB offset	RB Size	RB offset							
			RB Size	RB offset	RB Size	RB offset							
37850	38048	QPSK	1	0	0	0	1	0	0	Full	22.82	24.00	
37901	38099	QPSK	1	0	0	0	1	0	0	Full	22.88	24.00	
38150	37952	QPSK	1	0	0	0	1	0	0	Full	22.79	24.00	
37850	38048	16QAM	1	0	0	0	1	0	0	DSI2	22.82	24.00	
37901	38099	16QAM	1	0	0	0	1	0	0	DSI2	22.88	24.00	
38150	37952	16QAM	1	0	0	0	1	0	0	DSI2	22.79	24.00	
37850	38048	64QAM	1	0	0	0	1	0	0	DSI3	22.30	23.50	
37901	38099	64QAM	1	0	0	0	1	0	0	DSI3	22.38	23.50	
38150	37952	64QAM	1	0	0	0	1	0	0	DSI3	22.33	23.50	
37850	38048	256QAM	1	0	0	0	1	0	0	DSI4	22.82	24.00	
37901	38099	256QAM	1	0	0	0	1	0	0	DSI4	22.88	24.00	
38150	37952	256QAM	1	0	0	0	1	0	0	DSI4	22.79	24.00	
37850	38048	64QAM	1	0	0	0	1	0	0	DSI6	22.82	24.	



Full Power

2CC

Configure	CA Configuration (BCS)	PCC							SCC				Power		
		LTE Band	BW (MHz)	UL Freq. (MHz)	UL Channel	Mod.	UL# RB	UL RB Offset	LTE Band	BW (MHz)	DL Freq. (MHz)	DL Channel	With CA Tx.Power (dBm)	W/O CA Tx.Power (dBm)	
Inter-Band	CA_2A-5A	Band 2	20M	1880	18900	QPSK	1	49	Band 5	10M	881.5	2525	22.94	23.08	
	CA_5A-7A	Band 5	10M	836.5	20525	QPSK	1	25	Band 7	20M	2655	3100	23.23	23.34	
	CA_66A-66A	Band 66	20M	1720	132072	QPSK	1	49	Band 66	5M	2197.5	67311	22.53	22.66	
	CA_7A-7A	Band 7	20M	2535	21100	QPSK	1	49	Band 7	5M	2687.5	3425	23.31	23.45	
Intra-Band	Non-Contiguous	CA_66B	Band 66	15M	1745	132322	QPSK	1	49	Band 66	5M	2164.3	66979	22.54	22.66
		CA_66C	Band 66	20M	1745	132322	QPSK	1	49	Band 66	20M	2174.80	67084	22.51	22.66
		CA_7B	Band 7	15M	2535	21100	QPSK	1	37	Band 7	5M	2664.3	3193	23.39	23.45
		CA_38C	Band 38	20M	2580	37850	QPSK	1	0	Band 38	20M	2599.80	38048	22.92	23.03
		CA_7C	Band 7	20M	2535	21100	QPSK	1	49	Band 7	20M	2674.80	3298	23.33	23.45

3CC

Configure	CA Configuration (BCS)	PCC							SCC1				SCC2				Power		
		LTE Band	BW (MHz)	UL Freq. (MHz)	UL Channel	Mod.	UL# RB	UL RB Offset	LTE Band	BW (MHz)	DL Freq. (MHz)	DL Channel	LTE Band	BW (MHz)	DL Freq. (MHz)	DL Channel	With CA Tx.Power (dBm)	W/O CA Tx.Power (dBm)	
Inter-Band	Non-Contiguous	CA_41A-41A-41A	Band 41	20M	2593	40620	QPSK	1	0	Band 41	20M	2506	39750	Band 41	20M	2680	41490	23.55	23.66

4CC

Configure	CA Configuration (BCS)	PCC							SCC1				SCC2				SCC3				Power		
		LTE Band	BW (MHz)	UL Freq. (MHz)	UL Channel	Mod.	UL# RB	UL RB Offset	LTE Band	BW (MHz)	DL Freq. (MHz)	DL Channel	LTE Band	BW (MHz)	DL Freq. (MHz)	DL Channel	LTE Band	BW (MHz)	DL Freq. (MHz)	DL Channel	With CA Tx.Power (dBm)	W/O CA Tx.Power (dBm)	
Inter-Band	Non-Contiguous	CA_41A-41A-41C	Band 41	20M	2593	40620	QPSK	1	0	Band 41	20M	2506	39750	Band 41	20M	2549.5	40185	Band 41	20M	2569.3	40383	23.51	23.66
		CA_41A-41D	Band 41	20M	2593	40620	QPSK	1	0	Band 41	20M	2680	41490	Band 41	20M	2660.2	41292	Band 41	20M	2640.4	41094	23.60	23.66
		CA_41C-41C	Band 41	20M	2593	40620	QPSK	1	0	Band 41	20M	2612.8	40818	Band 41	20M	2510	39790	Band 41	20M	2529.8	39988	23.54	23.66
		CA_41E	Band 41	20M	2569.3	40383	QPSK	1	0	Band 41	20M	2589.1	40581	Band 41	20M	2608.9	40779	Band 41	20M	2549.5	40185	23.59	23.66