

# DASY8 Module WPT Measurement Report

## Device under test

Info:  
1\_Flip\_Back\_0mm

## Tool info

DASY software version:  
DASY8 Module WPT 2.4.0.4346

Probe model, serial no. and configuration date:  
MAGPy-8H3D+E3Dv2, WP000211, 2023/05/09

Software version:  
2.0.49, backend: 2.2.3

## Scan info

Center location:  
x: 96.47 mm, y: -101.51 mm, z: 47.24 mm

Dimensions:  
x: 169.0 mm, y: 169.0 mm, z: 36.7 mm

Resolution:  
x: 7.33 mm, y: 7.33 mm, z: 7.33 mm

Completed on:  
2024/03/19

## Measurement results

### Maximum H-field [RMS]:

MAGNITUDE: 14.93 A/m

x: 4.51 A/m, y: 1.07 A/m, z: 14.19 A/m

### Maximum H-field location relative to DUT:

x: -18.33 mm, y: 18.33 mm, z: 8.50 mm

### Maximum E-field [RMS]:

MAGNITUDE: 16.40 V/m

x: 918.23 mV/m, y: 986.33 mV/m, z: 16.35 V/m

### Maximum E-field location relative to DUT:

x: 0.00 m, y: 7.33 mm, z: 1.00 mm

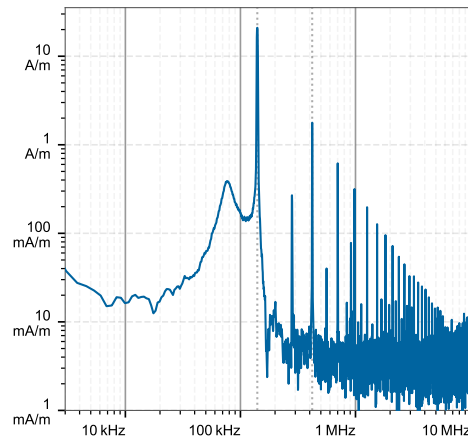
### Distance to -20.0 dB boundary:

26.44 mm

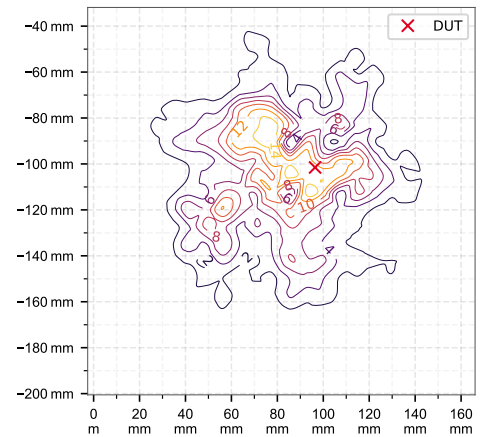
### Offset relative to DUT:

x: 0.00 m, y: 0.00 m, z: 1.00 mm

## H-field magnitude [RMS] at maximum location



## H-field magnitude [RMS] at lowest plane



## Incident fields, and induced quantities in the anatomical model

Distance [mm]	Peak incident fields [RMS]		Peak $E_{ind}$ [V/m, RMS]			Peak $J_{ind}$ [A/m <sup>2</sup> , RMS]	psSAR [mW/kg]		H-field extent
	$H_{inc}$ [A/m]	$E_{inc}$ [V/m]	Cube avg.	Local	Line avg.	Surface avg.	1g avg.	10g avg.	-20 dB radius [mm]
0.0	24.8	16.4	0.164	0.168	0.167	0.108	0.0123	0.00687	52.8

# DASY8 Module WPT Measurement Report

## Device under test

Info:  
2\_Back\_0mm

## Tool info

DASY software version:  
DASY8 Module WPT 2.4.0.4346

Probe model, serial no. and configuration date:  
MAGPy-8H3D+E3Dv2, WP000211, 2023/05/09

Software version:  
2.0.49, backend: 2.2.3

## Scan info

Center location:  
x: 77.92 mm, y: -127.75 mm, z: 38.03 mm

Dimensions:  
x: 169.0 mm, y: 257.0 mm, z: 36.7 mm

Resolution:  
x: 7.33 mm, y: 7.33 mm, z: 7.33 mm

Completed on:  
2024/03/19

## Measurement results

Maximum H-field [RMS]:  
MAGNITUDE: 12.61 A/m  
x: 4.86 A/m, y: 577.52 mA/m, z: 11.62 A/m

Maximum H-field location relative to DUT:  
x: -11.00 mm, y: -55.00 mm, z: 8.50 mm

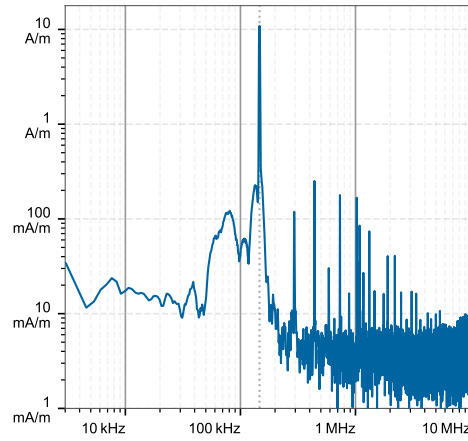
Maximum E-field [RMS]:  
MAGNITUDE: 13.33 V/m  
x: 351.15 mV/m, y: 629.70 mV/m, z: 13.31 V/m

Maximum E-field location relative to DUT:  
x: 7.33 mm, y: -44.00 mm, z: 1.00 mm

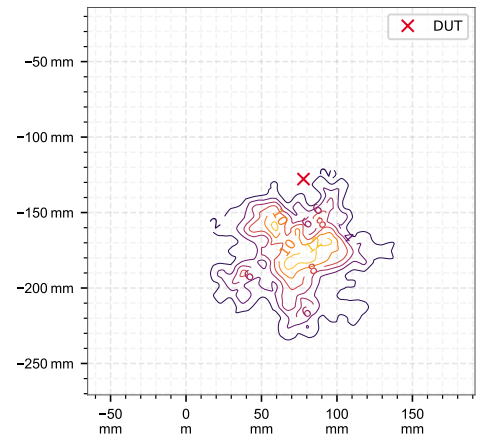
Distance to -20.0 dB boundary:  
37.39 mm

Offset relative to DUT:  
x: 0.00 m, y: 0.00 m, z: 1.00 mm

## H-field magnitude [RMS] at maximum location



## H-field magnitude [RMS] at lowest plane



## Incident fields, and induced quantities in the anatomical model

Distance [mm]	Peak incident fields [RMS]		Peak $E_{ind}$ [V/m, RMS]			Peak $J_{ind}$ [A/m <sup>2</sup> , RMS]	psSAR [mW/kg]		H-field extent
	$H_{inc}$ [A/m]	$E_{inc}$ [V/m]	Cube avg.	Local	Line avg.	Surface avg.	1g avg.	10g avg.	-20 dB radius [mm]
0.0	25.1	13.3	0.148	0.152	0.153	0.0992	0.0108	0.00635	51.4