

DASY8 Module WPT Measurement Report

Device under test

Info:
V-Coil35085

Tool info

DASY software version:
DASY8 Module WPT 2.4.0.4346

Probe model, serial no. and configuration date:
MAGPy-8H3D+E3Dv2, WP000211, 2023/05/09

Software version:
2.0.49, backend: 2.2.3

Scan info

Center location:
x: 67.77 mm, y: -107.35 mm, z: 36.87 mm

Dimensions:
x: 345.0 mm, y: 521.0 mm, z: 36.7 mm

Resolution:
x: 7.33 mm, y: 7.33 mm, z: 7.33 mm

Completed on:
2024/03/19

Measurement results

Maximum H-field [RMS]:
MAGNITUDE: 130.36 A/m

x: 94.42 A/m, y: 56.79 A/m, z: 69.67 A/m

Maximum H-field location relative to DUT:

x: 69.67 mm, y: -128.33 mm, z: 8.50 mm

Maximum E-field [RMS]:

MAGNITUDE: 204.04 V/m

x: 8.13 V/m, y: 2.71 V/m, z: 203.86 V/m

Maximum E-field location relative to DUT:

x: 88.00 mm, y: 146.67 mm, z: 1.00 mm

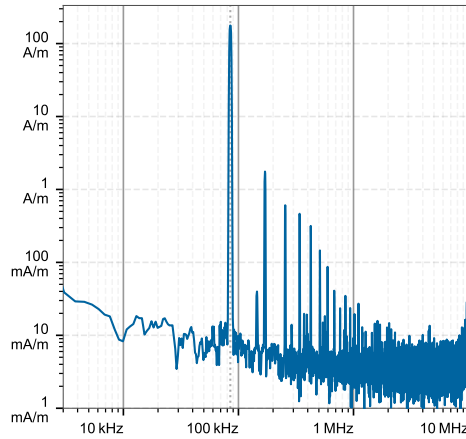
Distance to -20.0 dB boundary:

69.18 mm

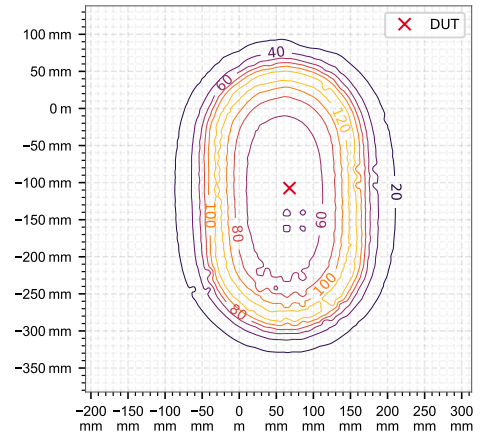
Offset relative to DUT:

x: 0.00 m, y: 0.00 m, z: 1.00 mm

H-field magnitude [RMS] at maximum location



H-field magnitude [RMS] at lowest plane



Incident fields, and induced quantities in the anatomical model

| Distance [mm] | Peak incident fields [RMS] | | Peak E_{ind} [V/m, RMS] | | | Peak J_{ind} [A/m ² , RMS] | psSAR [mW/kg] | | H-field extent |
|---------------|----------------------------|-----------------|---------------------------|-------|-----------|---|---------------|----------|--------------------|
| | H_{inc} [A/m] | E_{inc} [V/m] | Cube avg. | Local | Line avg. | Surface avg. | 1g avg. | 10g avg. | -20 dB radius [mm] |
| 2.0 | 179.0 | 181.0 | 3.24 | 3.26 | 3.27 | 1.09 | 2.98 | 2.3 | 187.0 |