

01_GSM850_GPRS (2 Tx slots)_Right Cheek_0mm_Ch189

Communication System: GSM 850; Frequency: 836.400

Medium: HSL. Medium parameters used: $f = 836.400$ MHz; $\sigma = 0.913$ S/m; $\epsilon_r = 41.9$

Ambient Temperature: 23.3°C; Liquid Temperature: 22.8°C

DASY6 Configuration:

- Probe: EX3DV4 - SN7706; ConvF(10.67, 10.67, 10.67); Calibrated: 2023-01-26
- Sensor-Surface: 1.4 mm
- Electronics: DAE4 Sn1649; Calibrated: 2023-04-24
- Phantom: Twin-SAM V8.0 (30deg probe tilt); Serial: 2024
- Measurement Software: 16.2.4.2448

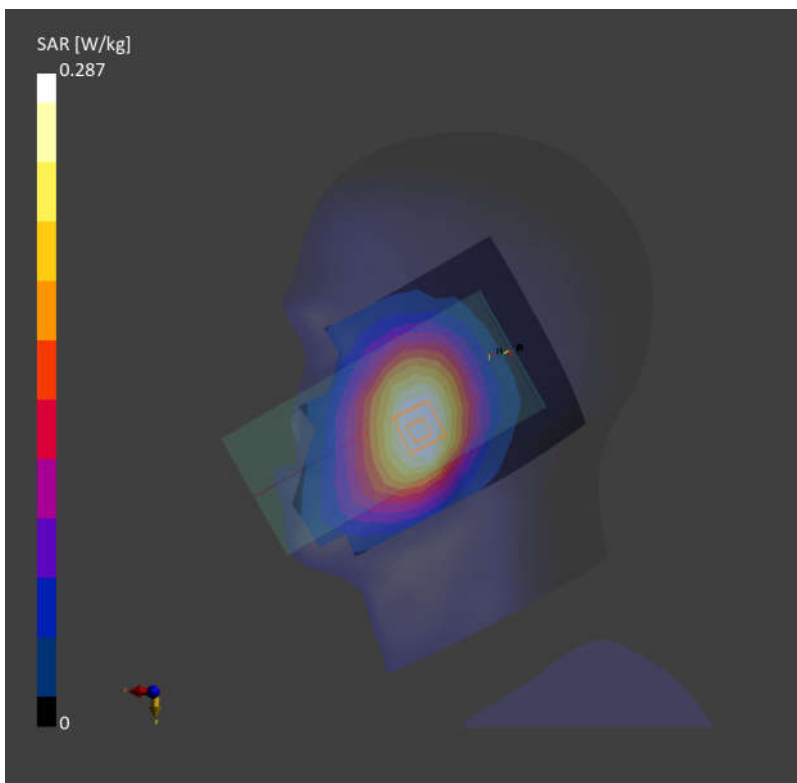
Area Scan (120.0 mm x 210.0 mm): Measurement Grid: 15.0 mm x 15.0 mm

SAR (1g) = 0.272 W/kg; SAR (10g) = 0.187 W/kg;

Zoom Scan (30.0 mm x 30.0 mm x 30.0 mm): Measurement Grid: 6.0 mm x 6.0 mm x 1.5 mm

Power Drift = 0.06 dB

SAR (1g) = 0.287 W/kg; SAR (10g) = 0.223 W/kg;



02_WCDMA V_RMC 12.2Kbps_Right Cheek_0mm_Ch4182

Communication System: Band 5; Frequency: 836.400

Medium: HSL. Medium parameters used: $f = 836.400$ MHz; $\sigma = 0.913$ S/m; $\epsilon_r = 41.9$

Ambient Temperature: 23.3°C; Liquid Temperature: 22.8°C

DASY6 Configuration:

- Probe: EX3DV4 - SN7706; ConvF(10.67, 10.67, 10.67); Calibrated: 2023-01-26
- Sensor-Surface: 1.4 mm
- Electronics: DAE4 Sn1649; Calibrated: 2023-04-24
- Phantom: Twin-SAM V8.0 (30deg probe tilt); Serial: 2024
- Measurement Software: 16.2.4.2448

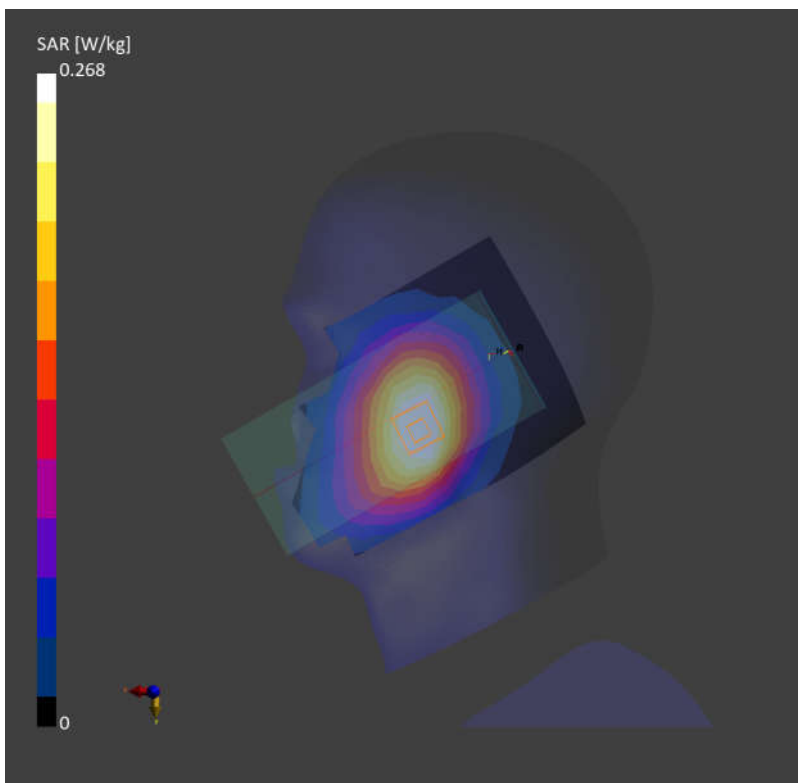
Area Scan (120.0 mm x 210.0 mm): Measurement Grid: 15.0 mm x 15.0 mm

SAR (1g) = 0.255 W/kg; SAR (10g) = 0.176 W/kg;

Zoom Scan (30.0 mm x 30.0 mm x 30.0 mm): Measurement Grid: 6.0 mm x 6.0 mm x 1.5 mm

Power Drift = -0.10 dB

SAR (1g) = 0.268 W/kg; SAR (10g) = 0.208 W/kg;



03_LTE Band 5_10M_QPSK_1RB_0Offset_Right Cheek_0mm_Ch20525

Communication System: Band 5; Frequency: 836.500

Medium: HSL. Medium parameters used: $f = 836.500$ MHz; $\sigma = 0.913$ S/m; $\epsilon_r = 41.9$

Ambient Temperature: 23.3°C; Liquid Temperature: 22.8°C

DASY6 Configuration:

- Probe: EX3DV4 - SN7706; ConvF(10.67, 10.67, 10.67); Calibrated: 2023-01-26
- Sensor-Surface: 1.4 mm
- Electronics: DAE4 Sn1649; Calibrated: 2023-04-24
- Phantom: Twin-SAM V8.0 (30deg probe tilt); Serial: 2024
- Measurement Software: 16.2.4.2448

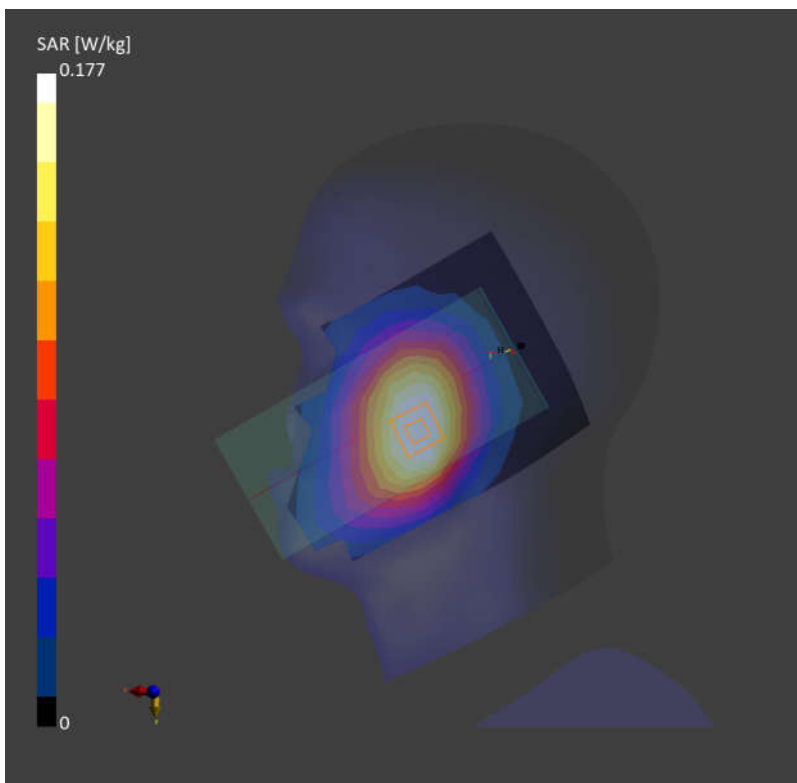
Area Scan (120.0 mm x 210.0 mm): Measurement Grid: 15.0 mm x 15.0 mm

SAR (1g) = 0.169 W/kg; SAR (10g) = 0.116 W/kg;

Zoom Scan (30.0 mm x 30.0 mm x 30.0 mm): Measurement Grid: 6.0 mm x 6.0 mm x 1.5 mm

Power Drift = 0.03 dB

SAR (1g) = 0.177 W/kg; SAR (10g) = 0.137 W/kg;



04_LTE Band 7_20M_QPSK_1RB_0Offset_Left Cheek_0mm_Ch20850

Communication System: Band 7; Frequency: 2510.000

Medium: HSL. Medium parameters used: $f = 2510.000$ MHz; $\sigma = 1.90$ S/m; $\epsilon_r = 39.1$

Ambient Temperature: 23.2°C; Liquid Temperature: 22.6°C

DASY6 Configuration:

- Probe: EX3DV4 - SN7706; ConvF(8.1, 8.1, 8.1); Calibrated: 2023-01-26
- Sensor-Surface: 1.4 mm
- Electronics: DAE4 Sn1649; Calibrated: 2023-04-24
- Phantom: Twin-SAM V8.0 (30deg probe tilt); Serial: 2024
- Measurement Software: 16.2.4.2448

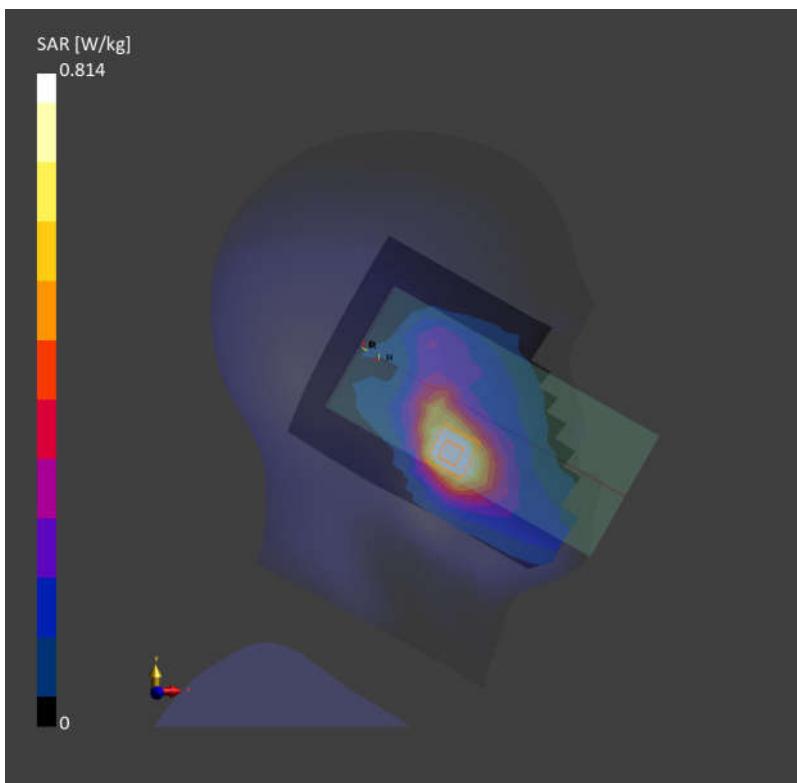
Area Scan (120.0 mm x 200.0 mm): Measurement Grid: 10.0 mm x 10.0 mm

SAR (1g) = 0.796 W/kg; SAR (10g) = 0.417 W/kg;

Zoom Scan (30.0 mm x 30.0 mm x 30.0 mm): Measurement Grid: 5.0 mm x 5.0 mm x 1.5 mm

Power Drift = -0.09 dB

SAR (1g) = 0.814 W/kg; SAR (10g) = 0.448 W/kg;



05_LTE Band 41_20M_QPSK_1RB_0Offset_Left Cheek_0mm_Ch40620

Communication System: Band 41; Frequency: 2593.000

Medium: HSL. Medium parameters used: $f = 2593.000$ MHz; $\sigma = 1.98$ S/m; $\epsilon_r = 39.0$

Ambient Temperature: 23.2°C; Liquid Temperature: 22.6°C

DASY6 Configuration:

- Probe: EX3DV4 - SN7706; ConvF(8.1, 8.1, 8.1); Calibrated: 2023-01-26
- Sensor-Surface: 1.4 mm
- Electronics: DAE4 Sn1649; Calibrated: 2023-04-24
- Phantom: Twin-SAM V8.0 (30deg probe tilt); Serial: 2024
- Measurement Software: 16.2.4.2448

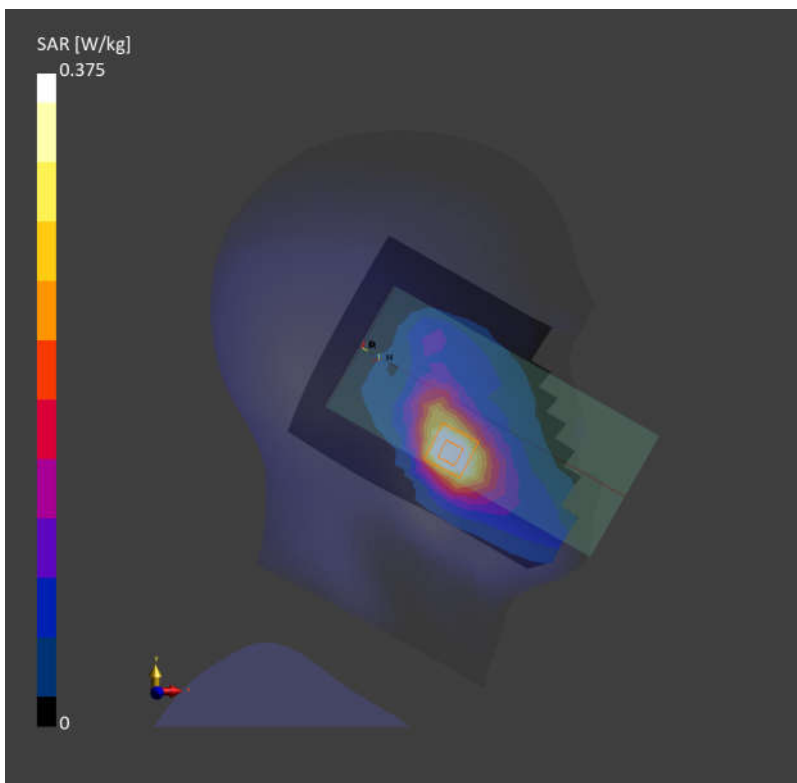
Area Scan (120.0 mm x 200.0 mm): Measurement Grid: 10.0 mm x 10.0 mm

SAR (1g) = 0.363 W/kg; SAR (10g) = 0.187 W/kg;

Zoom Scan (30.0 mm x 30.0 mm x 30.0 mm): Measurement Grid: 5.0 mm x 5.0 mm x 1.5 mm

Power Drift = 0.06 dB

SAR (1g) = 0.375 W/kg; SAR (10g) = 0.202 W/kg;



06_WLAN2.4GHz_802.11g 6Mbps_Left Cheek_0mm_Ch2

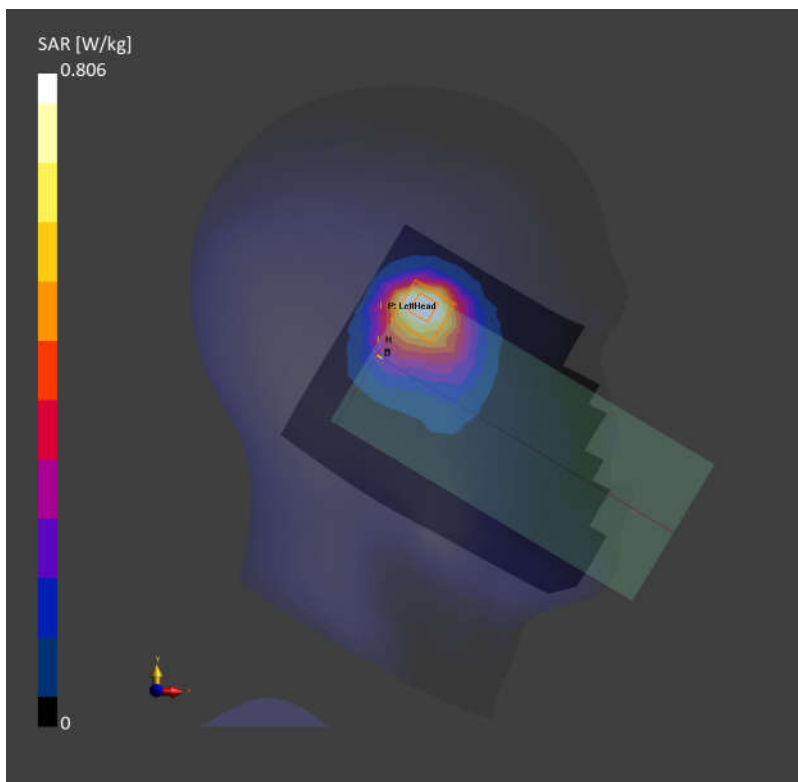
Communication System: WLAN 2.4GHz; Frequency: 2417.000
Medium: HSL. Medium parameters used: $f= 2417.000$ MHz; $\sigma= 1.72$ S/m; $\epsilon_r = 39.4$
Ambient Temperature: 23.2°C; Liquid Temperature: 22.6°C

DASY6 Configuration:

- Probe: EX3DV4 - SN7706; ConvF(8.38, 8.38, 8.38); Calibrated: 2023-01-26
- Sensor-Surface: 1.4 mm
- Electronics: DAE4 Sn1649; Calibrated: 2023-04-24
- Phantom: Twin-SAM V8.0 (30deg probe tilt); Serial: 2024
- Measurement Software: 16.2.4.2448

Area Scan (120.0 mm x 200.0 mm): Measurement Grid: 10.0 mm x 10.0 mm
SAR (1g) = 0.761 W/kg; SAR (10g) = 0.380 W/kg;

Zoom Scan (30.0 mm x 30.0 mm x 30.0 mm): Measurement Grid: 5.0 mm x 5.0 mm x 1.5 mm
Power Drift = 0.08 dB
SAR (1g) = 0.806 W/kg; SAR (10g) = 0.390 W/kg;



07_Bluetooth_1Mbps_Left Cheek_0mm_Ch0

Communication System: ISM 2.4 GHz Band; Frequency: 2402.000

Medium: HSL. Medium parameters used: $f= 2402.000$ MHz; $\sigma= 1.72$ S/m; $\epsilon_r = 39.5$

Ambient Temperature: 23.2°C; Liquid Temperature: 22.6°C

DASY6 Configuration:

- Probe: EX3DV4 - SN7706; ConvF(8.38, 8.38, 8.38); Calibrated: 2023-01-26
- Sensor-Surface: 1.4 mm
- Electronics: DAE4 Sn1649; Calibrated: 2023-04-24
- Phantom: Twin-SAM V8.0 (30deg probe tilt); Serial: 2024
- Measurement Software: 16.2.4.2448

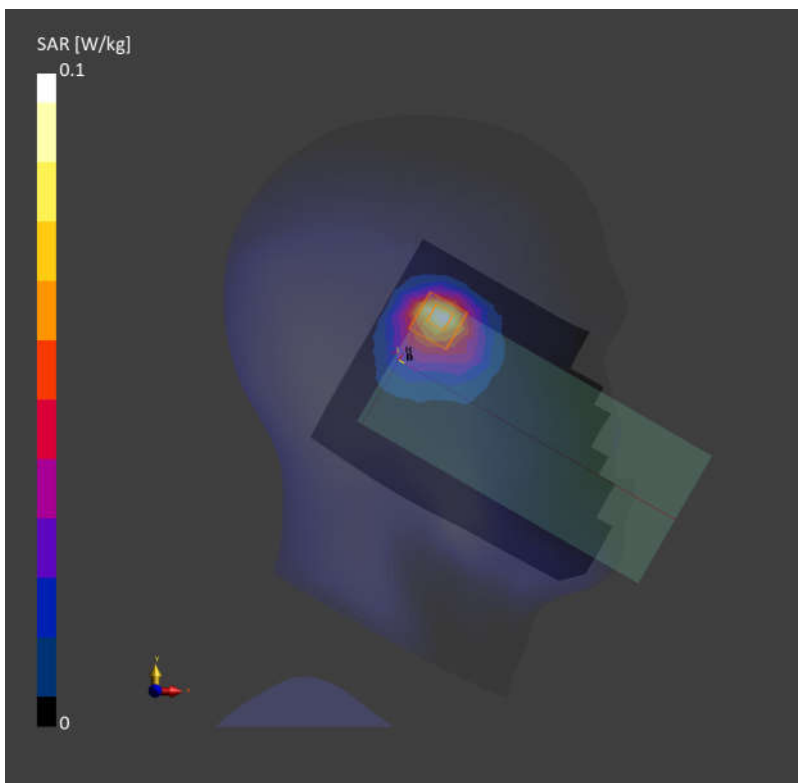
Area Scan (120.0 mm x 200.0 mm): Measurement Grid: 10.0 mm x 10.0 mm

SAR (1g) = 0.077 W/kg; SAR (10g) = 0.038 W/kg;

Zoom Scan (30.0 mm x 30.0 mm x 30.0 mm): Measurement Grid: 5.0 mm x 5.0 mm x 1.5 mm

Power Drift = 0.06 dB

SAR (1g) = 0.079 W/kg; SAR (10g) = 0.037 W/kg;



08_WLAN5GHz_802.11a 6Mbps_Left Tilted_0mm_Ch60

Communication System: WLAN 5GHz; Frequency: 5300.000

Medium: HSL. Medium parameters used: $f= 5300.000$ MHz; $\sigma= 4.62$ S/m; $\epsilon_r = 36.2$

Ambient Temperature: 23.1°C; Liquid Temperature: 22.8°C

DASY6 Configuration:

- Probe: EX3DV4 - SN7706; ConvF(6.18, 6.18, 6.18); Calibrated: 2023-01-26
- Sensor-Surface: 1.4 mm
- Electronics: DAE4 Sn1649; Calibrated: 2023-04-24
- Phantom: Twin-SAM V8.0 (30deg probe tilt); Serial: 2024
- Measurement Software: 16.2.4.2448

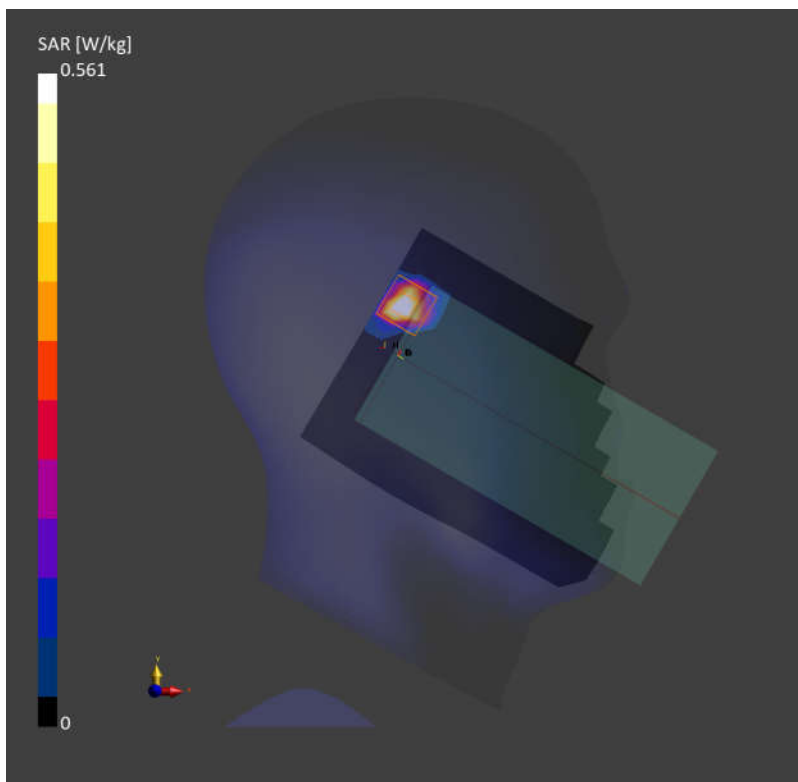
Area Scan (120.0 mm x 200.0 mm): Measurement Grid: 10.0 mm x 10.0 mm

SAR (1g) = 0.472 W/kg; SAR (10g) = 0.137 W/kg;

Zoom Scan (22.0 mm x 22.0 mm x 22.0 mm): Measurement Grid: 4.0 mm x 4.0 mm x 1.4 mm

Power Drift = -0.09 dB

SAR (1g) = 0.561 W/kg; SAR (10g) = 0.138 W/kg;



09_WLAN5GHz_802.11a 6Mbps_Left Tilted_0mm_Ch116

Communication System: WLAN 5GHz; Frequency: 5580.000

Medium: HSL. Medium parameters used: $f= 5580.000$ MHz; $\sigma= 4.94$ S/m; $\epsilon_r = 35.8$

Ambient Temperature: 23.4°C; Liquid Temperature: 22.9°C

DASY6 Configuration:

- Probe: EX3DV4 - SN7706; ConvF(5.39, 5.39, 5.39); Calibrated: 2023-01-26
- Sensor-Surface: 1.4 mm
- Electronics: DAE4 Sn1649; Calibrated: 2023-04-24
- Phantom: Twin-SAM V8.0 (30deg probe tilt); Serial: 2024
- Measurement Software: 16.2.4.2448

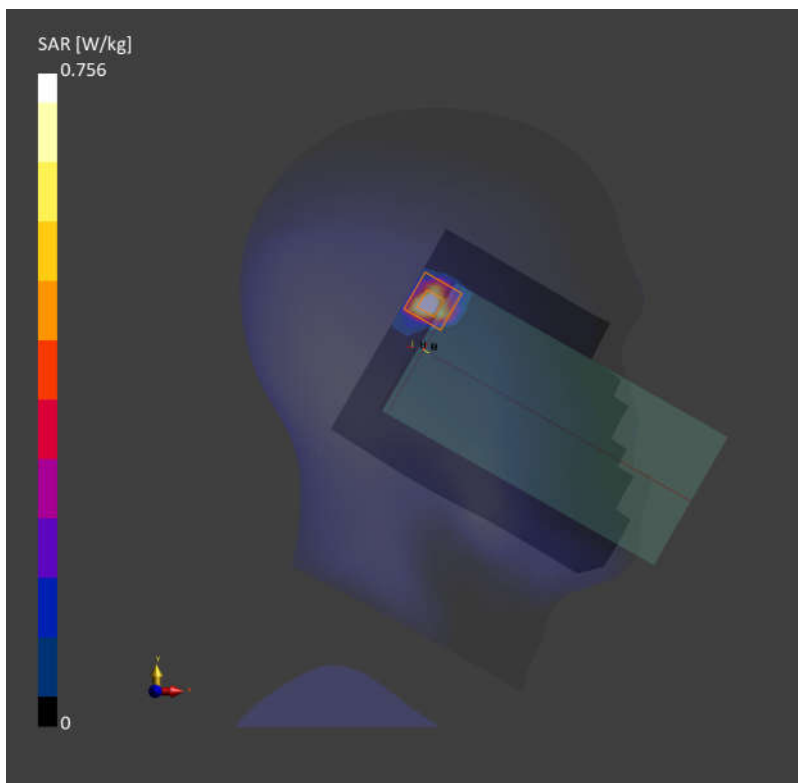
Area Scan (120.0 mm x 200.0 mm): Measurement Grid: 10.0 mm x 10.0 mm

SAR (1g) = 0.653 W/kg; SAR (10g) = 0.186 W/kg;

Zoom Scan (24.0 mm x 24.0 mm x 22.0 mm): Measurement Grid: 4.0 mm x 4.0 mm x 1.4 mm

Power Drift = 0.03 dB

SAR (1g) = 0.756 W/kg; SAR (10g) = 0.188 W/kg;



10_WLAN5GHz_802.11a 6Mbps_Left Tilted_0mm_Ch157

Communication System: WLAN 5GHz; Frequency: 5785.000

Medium: HSL. Medium parameters used: $f= 5785.000$ MHz; $\sigma= 5.16$ S/m; $\epsilon_r = 35.5$

Ambient Temperature: 23.4°C; Liquid Temperature: 22.7°C

DASY6 Configuration:

- Probe: EX3DV4 - SN7706; ConvF(5.57, 5.57, 5.57); Calibrated: 2023-01-26
- Sensor-Surface: 1.4 mm
- Electronics: DAE4 Sn1649; Calibrated: 2023-04-24
- Phantom: Twin-SAM V8.0 (30deg probe tilt); Serial: 2024
- Measurement Software: 16.2.4.2448

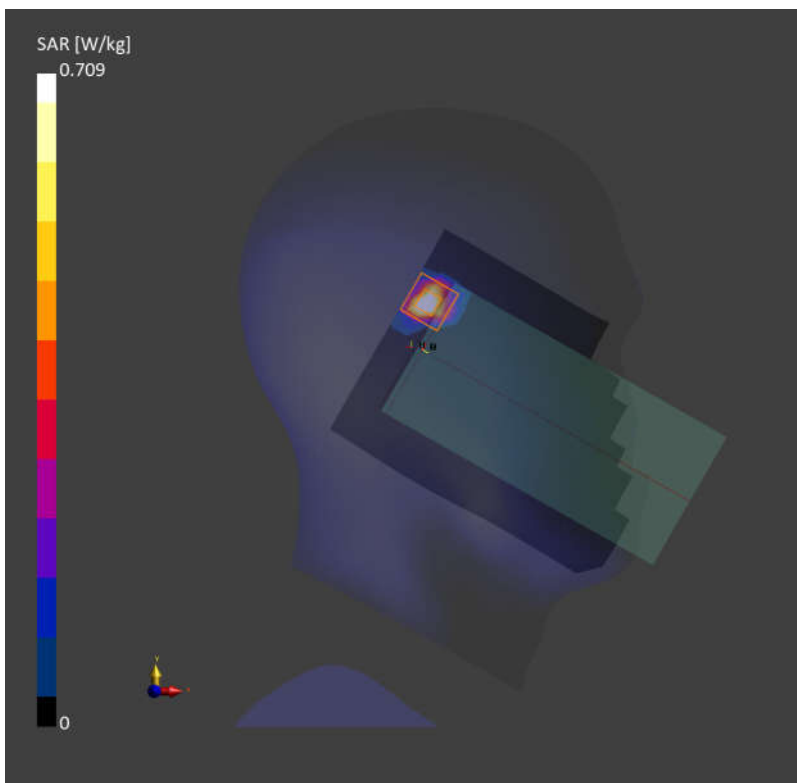
Area Scan (120.0 mm x 200.0 mm): Measurement Grid: 10.0 mm x 10.0 mm

SAR (1g) = 0.608 W/kg; SAR (10g) = 0.169 W/kg;

Zoom Scan (22.0 mm x 22.0 mm x 22.0 mm): Measurement Grid: 4.0 mm x 4.0 mm x 1.4 mm

Power Drift = 0.01 dB

SAR (1g) = 0.709 W/kg; SAR (10g) = 0.170 W/kg;



11_GSM850_GPRS (2 Tx slots)_Back_5mm_Ch189

Communication System: GSM 850; Frequency: 836.400

Medium: HSL. Medium parameters used: $f = 836.400$ MHz; $\sigma = 0.913$ S/m; $\epsilon_r = 41.9$

Ambient Temperature: 23.3°C; Liquid Temperature: 22.8°C

DASY6 Configuration:

- Probe: EX3DV4 - SN7706; ConvF(10.67, 10.67, 10.67); Calibrated: 2023-01-26
- Sensor-Surface: 1.4 mm
- Electronics: DAE4 Sn1649; Calibrated: 2023-04-24
- Phantom: Twin-SAM V8.0 (30deg probe tilt); Serial: 2024
- Measurement Software: 16.2.4.2448

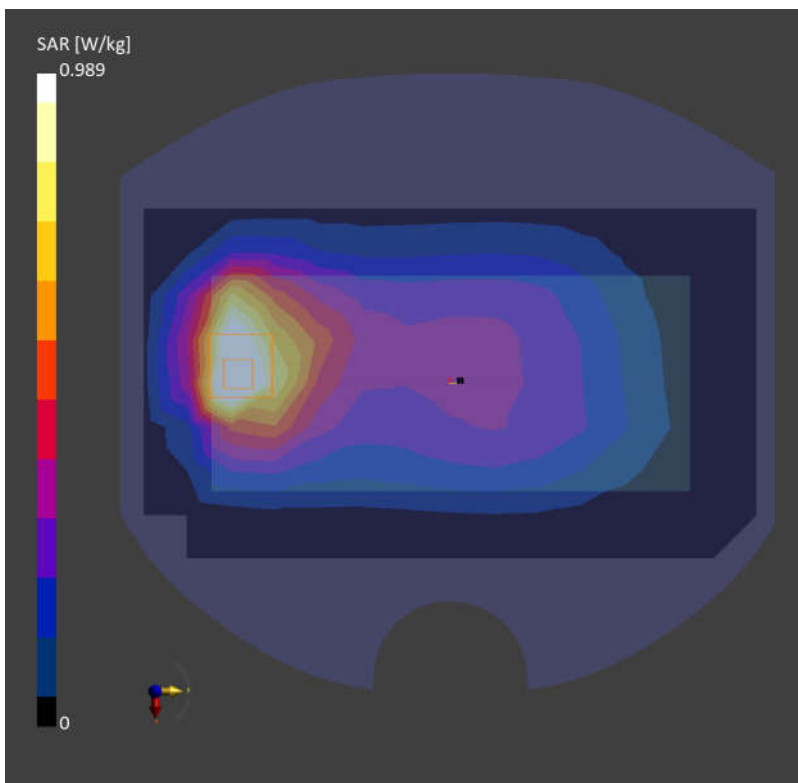
Area Scan (120.0 mm x 210.0 mm): Measurement Grid: 10.0 mm x 15.0 mm

SAR (1g) = 1.07 W/kg; SAR (10g) = 0.664 W/kg;

Zoom Scan (30.0 mm x 30.0 mm x 30.0 mm): Measurement Grid: 6.0 mm x 6.0 mm x 1.5 mm

Power Drift = 0.01 dB

SAR (1g) = 0.989 W/kg; SAR (10g) = 0.564 W/kg;



12_WCDMA V_RMC 12.2Kbps_Back_5mm_Ch4233

Communication System: Band 5; Frequency: 846.600

Medium: HSL. Medium parameters used: $f = 846.600$ MHz; $\sigma = 0.920$ S/m; $\epsilon_r = 42.0$

Ambient Temperature: 23.3°C; Liquid Temperature: 22.8°C

DASY6 Configuration:

- Probe: EX3DV4 - SN7706; ConvF(10.67, 10.67, 10.67); Calibrated: 2023-01-26
- Sensor-Surface: 1.4 mm
- Electronics: DAE4 Sn1649; Calibrated: 2023-04-24
- Phantom: Twin-SAM V8.0 (30deg probe tilt); Serial: 2024
- Measurement Software: 16.2.4.2448

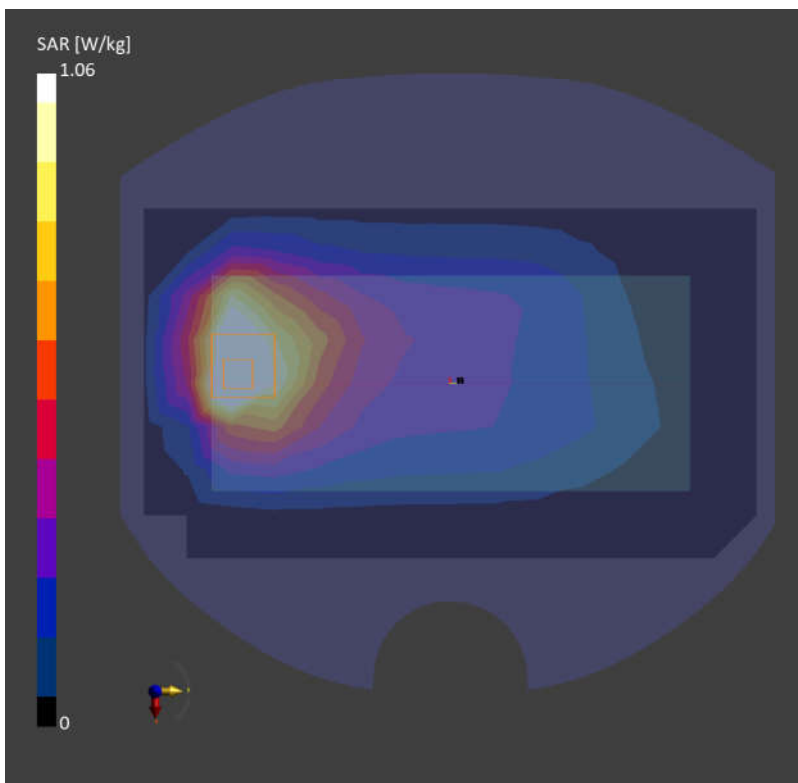
Area Scan (120.0 mm x 210.0 mm): Measurement Grid: 10.0 mm x 15.0 mm

SAR (1g) = 1.24 W/kg; SAR (10g) = 0.775 W/kg;

Zoom Scan (32.0 mm x 32.0 mm x 30.0 mm): Measurement Grid: 6.0 mm x 6.0 mm x 1.5 mm

Power Drift = 0.03 dB

SAR (1g) = 1.06 W/kg; SAR (10g) = 0.671 W/kg;



13_LTE Band 5_10M_QPSK_1RB_0Offset_Back_5mm_Ch20525

Communication System: Band 5; Frequency: 836.500

Medium: HSL. Medium parameters used: $f = 836.500$ MHz; $\sigma = 0.913$ S/m; $\epsilon_r = 41.9$

Ambient Temperature: 23.3°C; Liquid Temperature: 22.8°C

DASY6 Configuration:

- Probe: EX3DV4 - SN7706; ConvF(10.67, 10.67, 10.67); Calibrated: 2023-01-26
- Sensor-Surface: 1.4 mm
- Electronics: DAE4 Sn1649; Calibrated: 2023-04-24
- Phantom: Twin-SAM V8.0 (30deg probe tilt); Serial: 2024
- Measurement Software: 16.2.4.2448

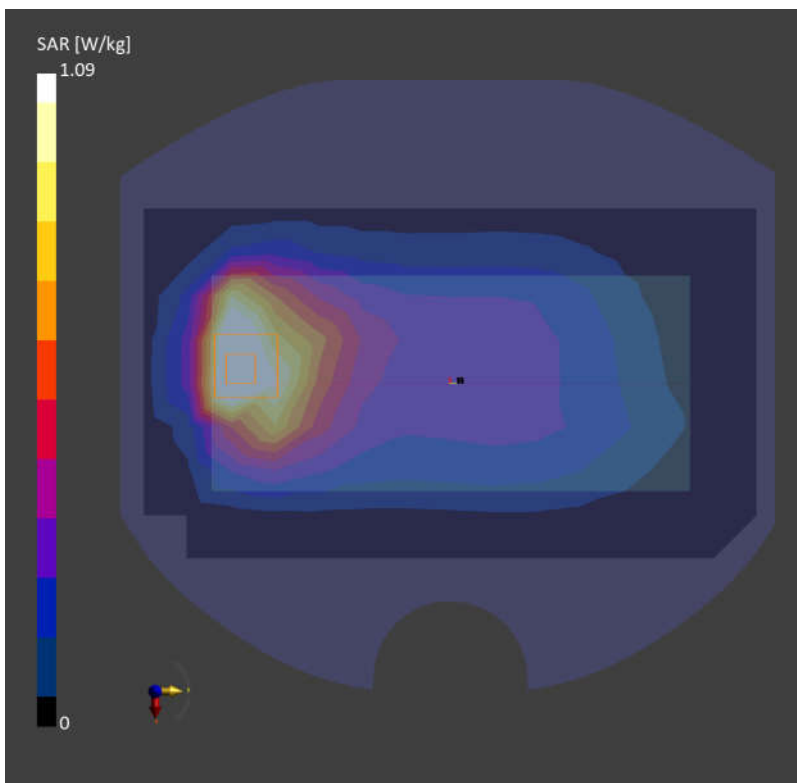
Area Scan (120.0 mm x 210.0 mm): Measurement Grid: 10.0 mm x 15.0 mm

SAR (1g) = 1.24 W/kg; SAR (10g) = 0.777 W/kg;

Zoom Scan (32.0 mm x 32.0 mm x 30.0 mm): Measurement Grid: 6.0 mm x 6.0 mm x 1.5 mm

Power Drift = 0.07 dB

SAR (1g) = 1.09 W/kg; SAR (10g) = 0.647 W/kg;



14_LTE Band 7_20M_QPSK_1RB_0Offset_Back_5mm_Ch20850

Communication System: Band 7; Frequency: 2510.000

Medium: HSL. Medium parameters used: $f = 2510.000$ MHz; $\sigma = 1.79$ S/m; $\epsilon_r = 39.3$

Ambient Temperature: 23.2°C; Liquid Temperature: 22.6°C

DASY6 Configuration:

- Probe: EX3DV4 - SN7706; ConvF(8.1, 8.1, 8.1); Calibrated: 2023-01-26
- Sensor-Surface: 1.4 mm
- Electronics: DAE4 Sn1649; Calibrated: 2023-04-24
- Phantom: Twin-SAM V8.0 (30deg probe tilt); Serial: 2024
- Measurement Software: 16.2.4.2448

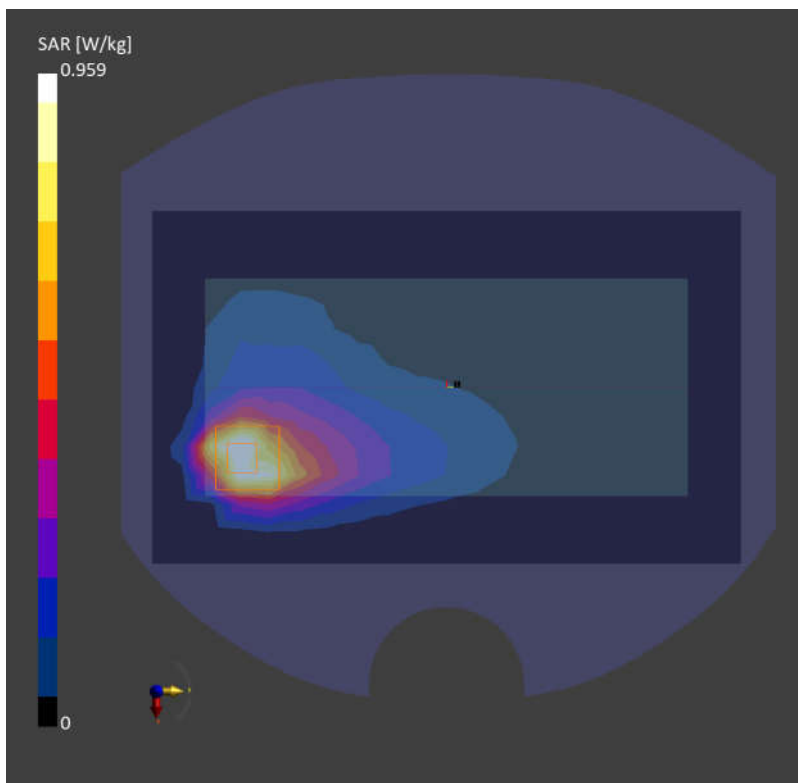
Area Scan (120.0 mm x 200.0 mm): Measurement Grid: 10.0 mm x 10.0 mm

SAR (1g) = 0.862 W/kg; SAR (10g) = 0.423 W/kg;

Zoom Scan (30.0 mm x 30.0 mm x 30.0 mm): Measurement Grid: 5.0 mm x 5.0 mm x 1.5 mm

Power Drift = 0.07 dB

SAR (1g) = 0.959 W/kg; SAR (10g) = 0.436 W/kg;



15_LTE Band 41_20M_QPSK_1RB_0Offset_Back_5mm_Ch39750

Communication System: Band 41; Frequency: 2506.000

Medium: HSL. Medium parameters used: $f = 2506.000$ MHz; $\sigma = 1.79$ S/m; $\epsilon_r = 39.4$

Ambient Temperature: 23.2°C; Liquid Temperature: 22.6°C

DASY6 Configuration:

- Probe: EX3DV4 - SN7706; ConvF(8.1, 8.1, 8.1); Calibrated: 2023-01-26
- Sensor-Surface: 1.4 mm
- Electronics: DAE4 Sn1649; Calibrated: 2023-04-24
- Phantom: Twin-SAM V8.0 (30deg probe tilt); Serial: 2024
- Measurement Software: 16.2.4.2448

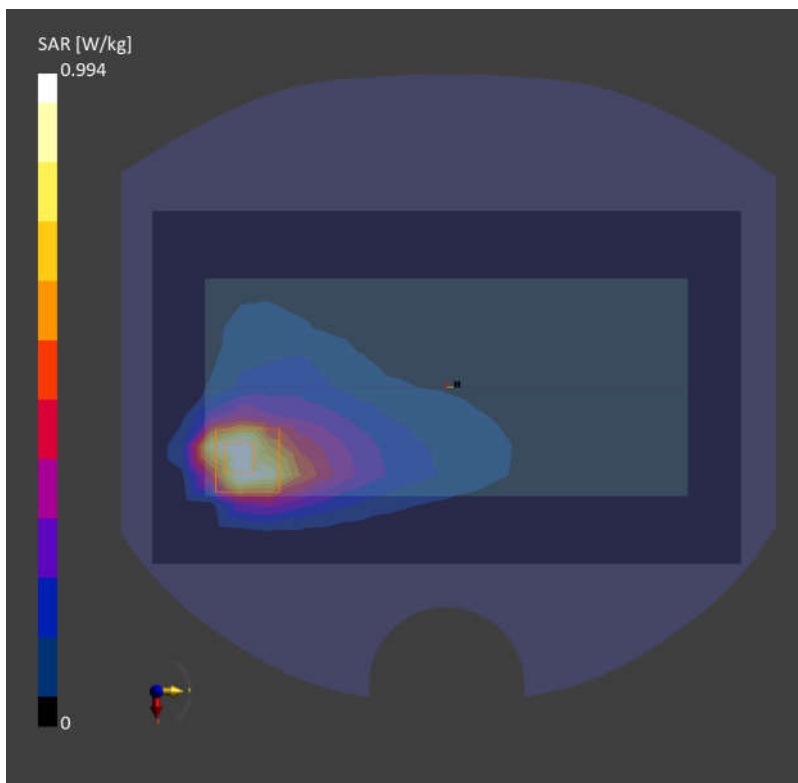
Area Scan (120.0 mm x 200.0 mm): Measurement Grid: 10.0 mm x 10.0 mm

SAR (1g) = 0.891 W/kg; SAR (10g) = 0.430 W/kg;

Zoom Scan (30.0 mm x 30.0 mm x 30.0 mm): Measurement Grid: 5.0 mm x 5.0 mm x 1.5 mm

Power Drift = 0.05 dB

SAR (1g) = 0.994 W/kg; SAR (10g) = 0.434 W/kg;



16_WLAN2.4GHz_802.11g 6Mbps_Back_5mm_Ch2

Communication System: WLAN 2.4GHz; Frequency: 2417.000

Medium: HSL. Medium parameters used: $f= 2417.000$ MHz; $\sigma= 1.72$ S/m; $\epsilon_r = 39.4$

Ambient Temperature: 23.2°C; Liquid Temperature: 22.6°C

DASY6 Configuration:

- Probe: EX3DV4 - SN7706; ConvF(8.38, 8.38, 8.38); Calibrated: 2023-01-26
- Sensor-Surface: 1.4 mm
- Electronics: DAE4 Sn1649; Calibrated: 2023-04-24
- Phantom: Twin-SAM V8.0 (30deg probe tilt); Serial: 2024
- Measurement Software: 16.2.4.2448

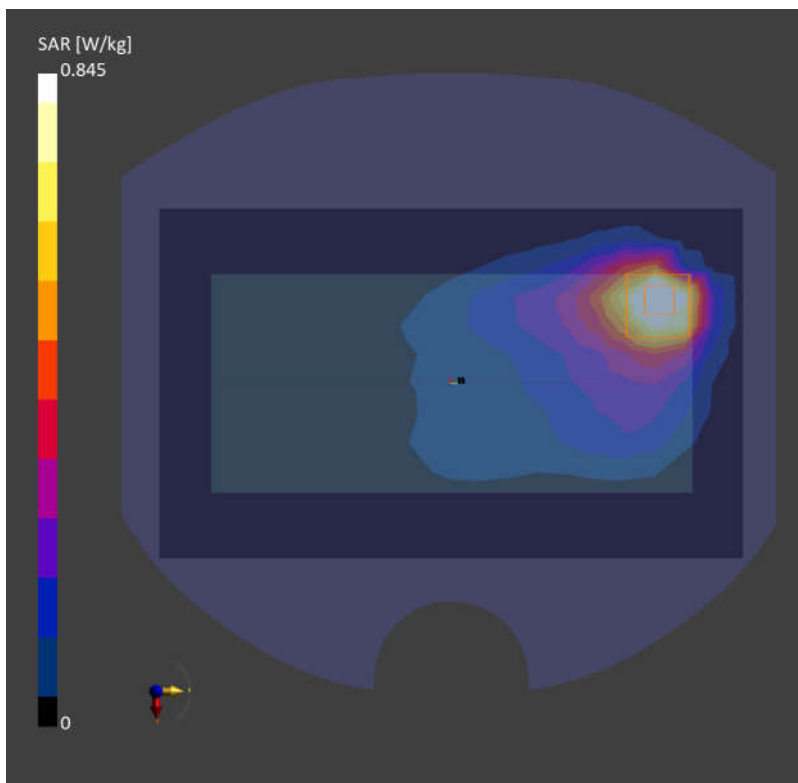
Area Scan (120.0 mm x 200.0 mm): Measurement Grid: 10.0 mm x 10.0 mm

SAR (1g) = 0.875 W/kg; SAR (10g) = 0.417 W/kg;

Zoom Scan (30.0 mm x 30.0 mm x 30.0 mm): Measurement Grid: 5.0 mm x 5.0 mm x 1.5 mm

Power Drift = -0.01 dB

SAR (1g) = 0.845 W/kg; SAR (10g) = 0.374 W/kg;



17_Bluetooth_1Mbps_Back_5mm_Ch0

Communication System: ISM 2.4 GHz Band; Frequency: 2402.000

Medium: HSL. Medium parameters used: $f = 2402.000$ MHz; $\sigma = 1.72$ S/m; $\epsilon_r = 39.5$

Ambient Temperature: 23.2°C; Liquid Temperature: 22.6°C

DASY6 Configuration:

- Probe: EX3DV4 - SN7706; ConvF(8.38, 8.38, 8.38); Calibrated: 2023-01-26
- Sensor-Surface: 1.4 mm
- Electronics: DAE4 Sn1649; Calibrated: 2023-04-24
- Phantom: Twin-SAM V8.0 (30deg probe tilt); Serial: 2024
- Measurement Software: 16.2.4.2448

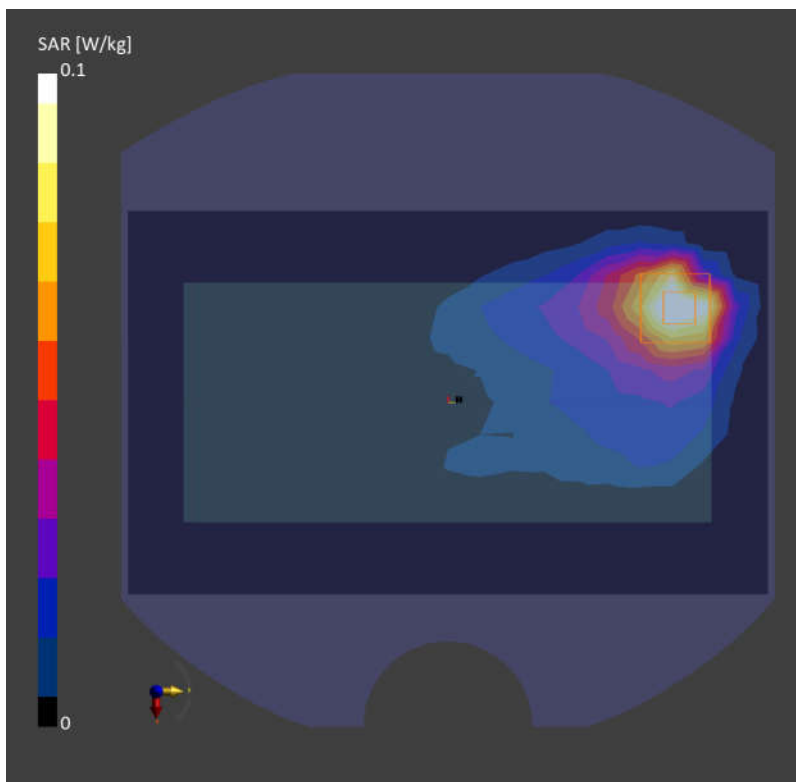
Area Scan (120.0 mm x 200.0 mm): Measurement Grid: 10.0 mm x 10.0 mm

SAR (1g) = 0.092 W/kg; SAR (10g) = 0.045 W/kg;

Zoom Scan (30.0 mm x 30.0 mm x 30.0 mm): Measurement Grid: 5.0 mm x 5.0 mm x 1.5 mm

Power Drift = 0.01 dB

SAR (1g) = 0.098 W/kg; SAR (10g) = 0.043 W/kg;



18_WLAN5GHz_802.11a 6Mbps_Top Side_5mm_Ch44

Communication System: WLAN 5GHz; Frequency: 5220.000

Medium: HSL. Medium parameters used: $f= 5220.000$ MHz; $\sigma= 4.53$ S/m; $\epsilon_r = 36.4$

Ambient Temperature: 23.1°C; Liquid Temperature: 22.8°C

DASY6 Configuration:

- Probe: EX3DV4 - SN7706; ConvF(6.18, 6.18, 6.18); Calibrated: 2023-01-26
- Sensor-Surface: 1.4 mm
- Electronics: DAE4 Sn1649; Calibrated: 2023-04-24
- Phantom: Twin-SAM V8.0 (30deg probe tilt); Serial: 2024
- Measurement Software: 16.2.4.2448

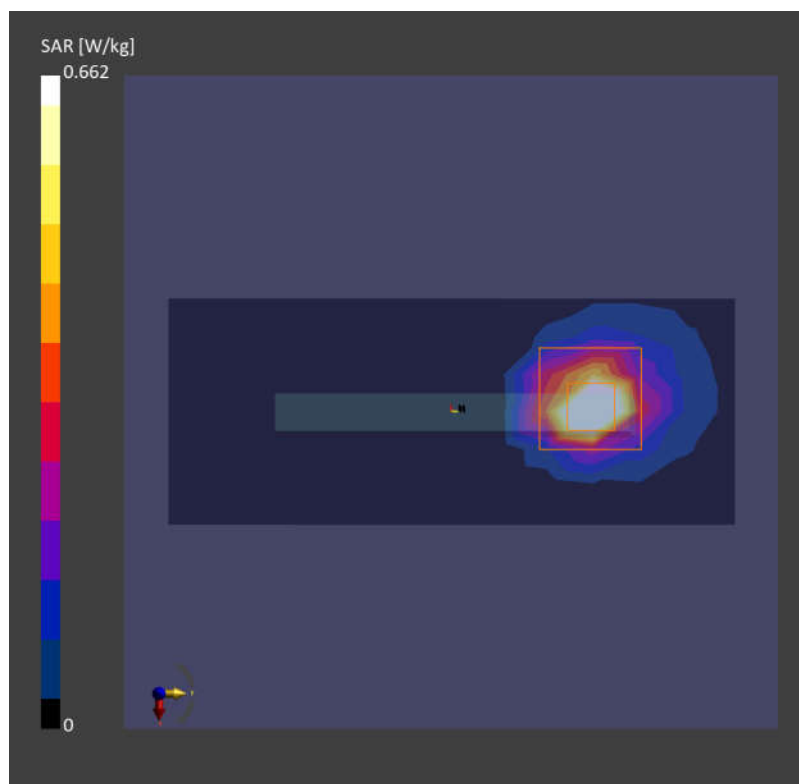
Area Scan (48.0 mm x 120.0 mm): Measurement Grid: 8.0 mm x 10.0 mm

SAR (1g) = 0.613 W/kg; SAR (10g) = 0.171 W/kg;

Zoom Scan (24.0 mm x 22.0 mm x 22.0 mm): Measurement Grid: 4.0 mm x 4.0 mm x 1.4 mm

Power Drift = -0.07 dB

SAR (1g) = 0.662 W/kg; SAR (10g) = 0.172 W/kg;



19_WLAN5GHz_802.11a 6Mbps_Top Side_5mm_Ch157

Communication System: WLAN 5GHz; Frequency: 5785.000

Medium: HSL. Medium parameters used: $f = 5785.000$ MHz; $\sigma = 5.16$ S/m; $\epsilon_r = 35.5$

Ambient Temperature: 23.4°C; Liquid Temperature: 22.7°C

DASY6 Configuration:

- Probe: EX3DV4 - SN7706; ConvF(5.57, 5.57, 5.57); Calibrated: 2023-01-26
- Sensor-Surface: 1.4 mm
- Electronics: DAE4 Sn1649; Calibrated: 2023-04-24
- Phantom: Twin-SAM V8.0 (30deg probe tilt); Serial: 2024
- Measurement Software: 16.2.4.2448

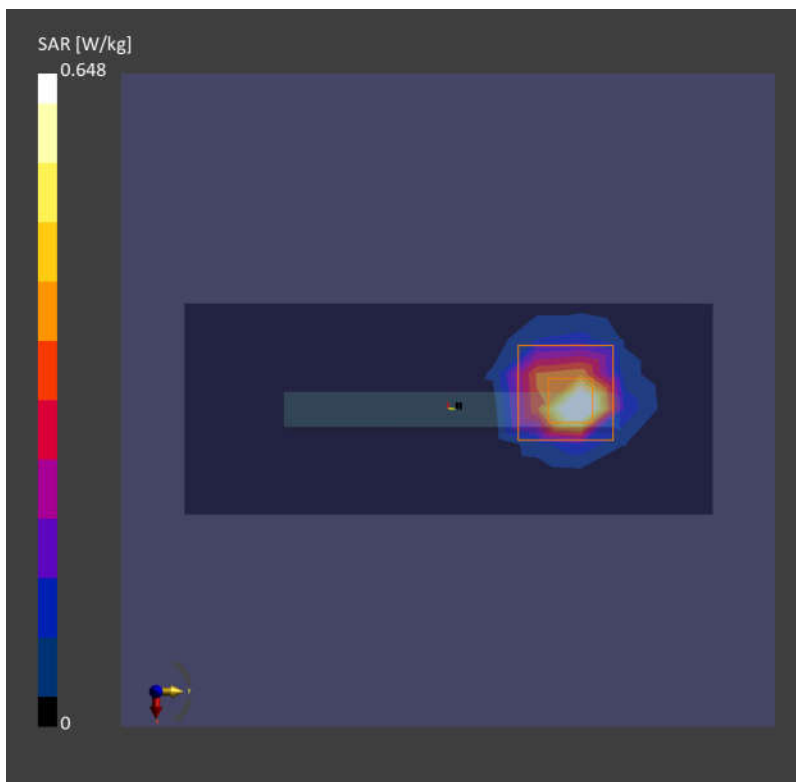
Area Scan (48.0 mm x 120.0 mm): Measurement Grid: 10.0 mm x 10.0 mm

SAR (1g) = 0.499 W/kg; SAR (10g) = 0.139 W/kg;

Zoom Scan (24.0 mm x 22.0 mm x 22.0 mm): Measurement Grid: 4.0 mm x 4.0 mm x 1.4 mm

Power Drift = 0.11 dB

SAR (1g) = 0.648 W/kg; SAR (10g) = 0.153 W/kg;



20_GSM850_GPRS (2 Tx slots)_Back_5mm_Ch189

Communication System: GSM 850; Frequency: 836.400

Medium: HSL. Medium parameters used: $f = 836.400$ MHz; $\sigma = 0.913$ S/m; $\epsilon_r = 41.9$

Ambient Temperature: 23.3°C; Liquid Temperature: 22.8°C

DASY6 Configuration:

- Probe: EX3DV4 - SN7706; ConvF(10.67, 10.67, 10.67); Calibrated: 2023-01-26
- Sensor-Surface: 1.4 mm
- Electronics: DAE4 Sn1649; Calibrated: 2023-04-24
- Phantom: Twin-SAM V8.0 (30deg probe tilt); Serial: 2024
- Measurement Software: 16.2.4.2448

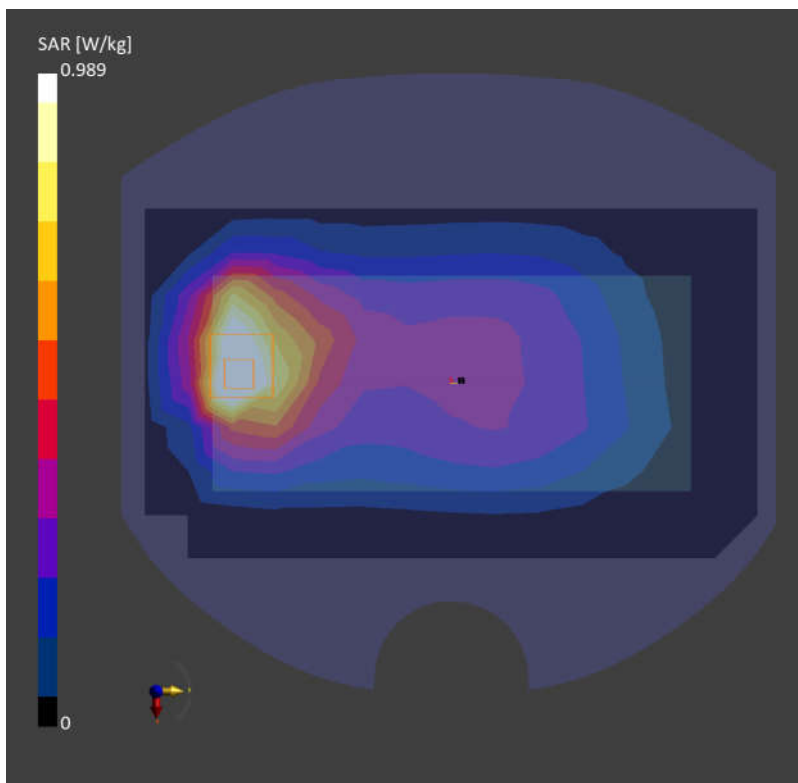
Area Scan (120.0 mm x 210.0 mm): Measurement Grid: 10.0 mm x 15.0 mm

SAR (1g) = 1.07 W/kg; SAR (10g) = 0.664 W/kg;

Zoom Scan (30.0 mm x 30.0 mm x 30.0 mm): Measurement Grid: 6.0 mm x 6.0 mm x 1.5 mm

Power Drift = 0.01 dB

SAR (1g) = 0.989 W/kg; SAR (10g) = 0.564 W/kg;



21_WCDMA V_RMC 12.2Kbps_Back_5mm_Ch4233

Communication System: Band 5; Frequency: 846.600

Medium: HSL. Medium parameters used: $f = 846.600$ MHz; $\sigma = 0.920$ S/m; $\epsilon_r = 42.0$

Ambient Temperature: 23.3°C; Liquid Temperature: 22.8°C

DASY6 Configuration:

- Probe: EX3DV4 - SN7706; ConvF(10.67, 10.67, 10.67); Calibrated: 2023-01-26
- Sensor-Surface: 1.4 mm
- Electronics: DAE4 Sn1649; Calibrated: 2023-04-24
- Phantom: Twin-SAM V8.0 (30deg probe tilt); Serial: 2024
- Measurement Software: 16.2.4.2448

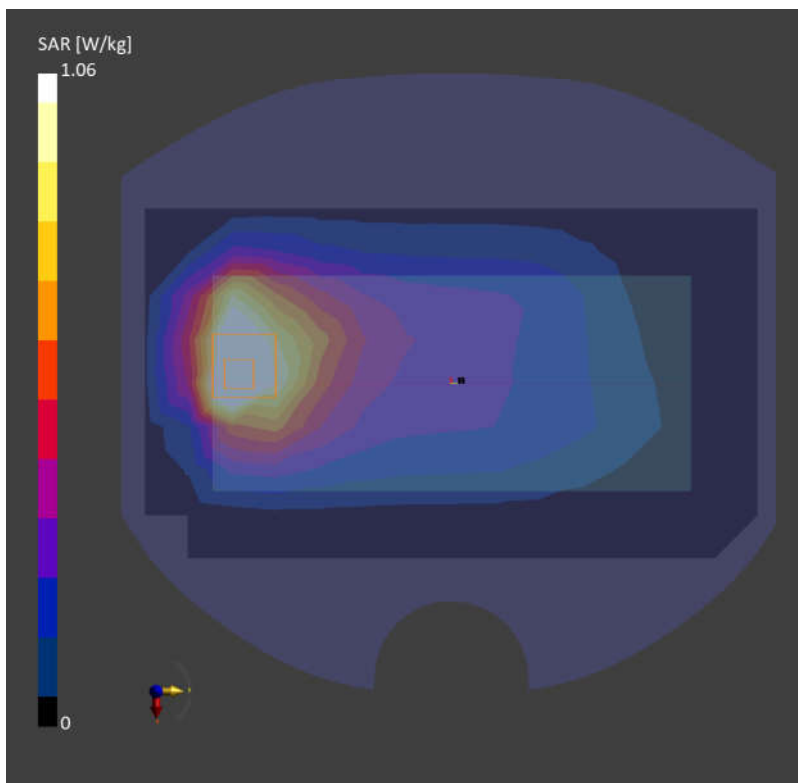
Area Scan (120.0 mm x 210.0 mm): Measurement Grid: 10.0 mm x 15.0 mm

SAR (1g) = 1.24 W/kg; SAR (10g) = 0.775 W/kg;

Zoom Scan (32.0 mm x 32.0 mm x 30.0 mm): Measurement Grid: 6.0 mm x 6.0 mm x 1.5 mm

Power Drift = 0.03 dB

SAR (1g) = 1.06 W/kg; SAR (10g) = 0.671 W/kg;



22_LTE Band 5_10M_QPSK_1RB_0Offset_Back_5mm_Ch20525

Communication System: Band 5; Frequency: 836.500

Medium: HSL. Medium parameters used: $f = 836.500$ MHz; $\sigma = 0.913$ S/m; $\epsilon_r = 41.9$

Ambient Temperature: 23.3°C; Liquid Temperature: 22.8°C

DASY6 Configuration:

- Probe: EX3DV4 - SN7706; ConvF(10.67, 10.67, 10.67); Calibrated: 2023-01-26
- Sensor-Surface: 1.4 mm
- Electronics: DAE4 Sn1649; Calibrated: 2023-04-24
- Phantom: Twin-SAM V8.0 (30deg probe tilt); Serial: 2024
- Measurement Software: 16.2.4.2448

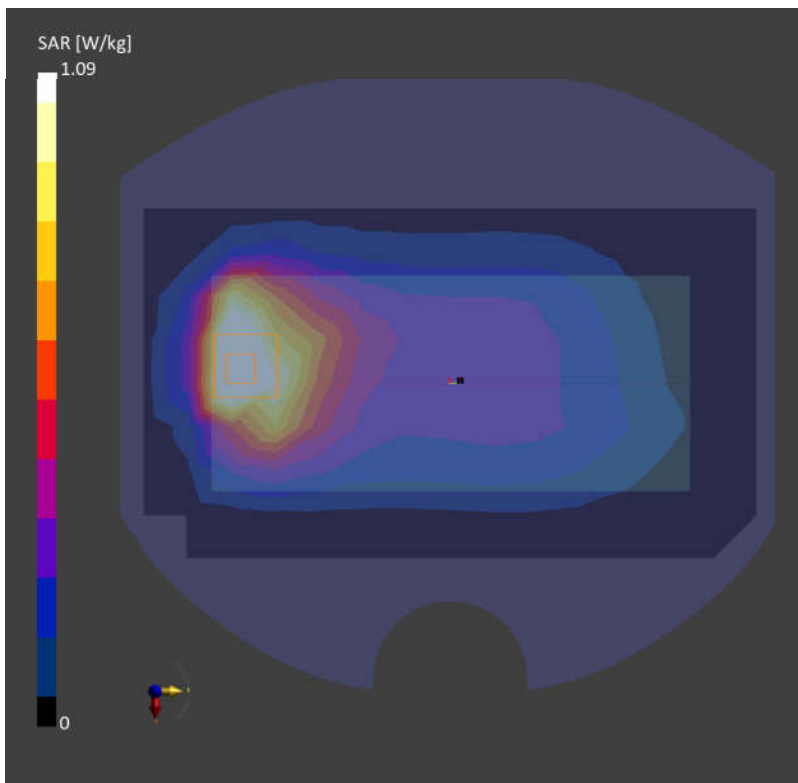
Area Scan (120.0 mm x 210.0 mm): Measurement Grid: 10.0 mm x 15.0 mm

SAR (1g) = 1.24 W/kg; SAR (10g) = 0.777 W/kg;

Zoom Scan (32.0 mm x 32.0 mm x 30.0 mm): Measurement Grid: 6.0 mm x 6.0 mm x 1.5 mm

Power Drift = 0.07 dB

SAR (1g) = 1.09 W/kg; SAR (10g) = 0.647 W/kg;



23_LTE Band 7_20M_QPSK_1RB_0Offset_Back_5mm_Ch20850

Communication System: Band 7; Frequency: 2510.000

Medium: HSL. Medium parameters used: $f = 2510.000$ MHz; $\sigma = 1.79$ S/m; $\epsilon_r = 39.3$

Ambient Temperature: 23.2°C; Liquid Temperature: 22.6°C

DASY6 Configuration:

- Probe: EX3DV4 - SN7706; ConvF(8.1, 8.1, 8.1); Calibrated: 2023-01-26
- Sensor-Surface: 1.4 mm
- Electronics: DAE4 Sn1649; Calibrated: 2023-04-24
- Phantom: Twin-SAM V8.0 (30deg probe tilt); Serial: 2024
- Measurement Software: 16.2.4.2448

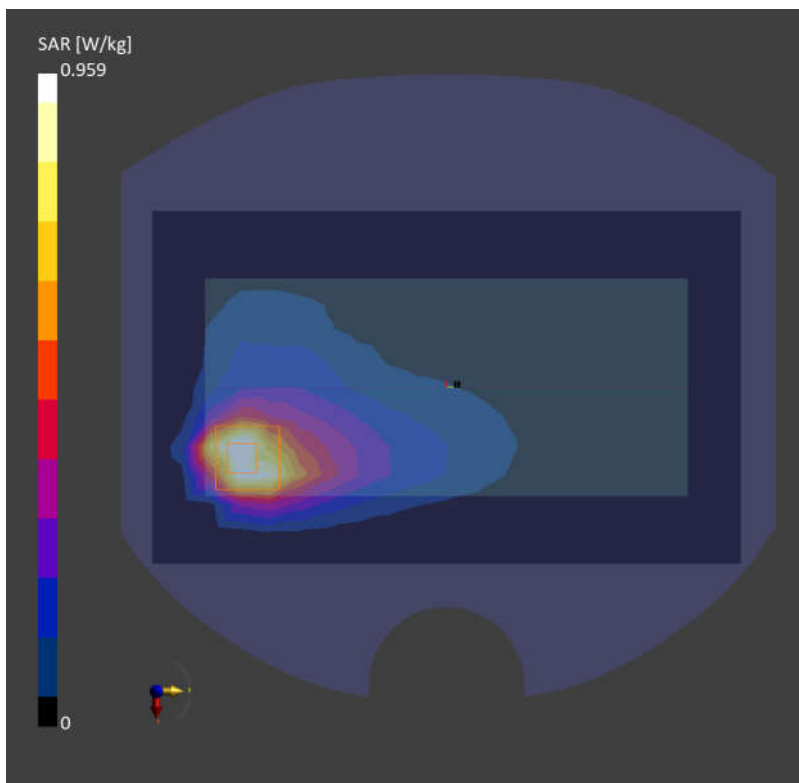
Area Scan (120.0 mm x 200.0 mm): Measurement Grid: 10.0 mm x 10.0 mm

SAR (1g) = 0.862 W/kg; SAR (10g) = 0.423 W/kg;

Zoom Scan (30.0 mm x 30.0 mm x 30.0 mm): Measurement Grid: 5.0 mm x 5.0 mm x 1.5 mm

Power Drift = 0.07 dB

SAR (1g) = 0.959 W/kg; SAR (10g) = 0.436 W/kg;



24_LTE Band 41_20M_QPSK_1RB_0Offset_Back_5mm_Ch39750

Communication System: Band 41; Frequency: 2506.000

Medium: HSL. Medium parameters used: $f = 2506.000$ MHz; $\sigma = 1.79$ S/m; $\epsilon_r = 39.4$

Ambient Temperature: 23.2°C; Liquid Temperature: 22.6°C

DASY6 Configuration:

- Probe: EX3DV4 - SN7706; ConvF(8.1, 8.1, 8.1); Calibrated: 2023-01-26
- Sensor-Surface: 1.4 mm
- Electronics: DAE4 Sn1649; Calibrated: 2023-04-24
- Phantom: Twin-SAM V8.0 (30deg probe tilt); Serial: 2024
- Measurement Software: 16.2.4.2448

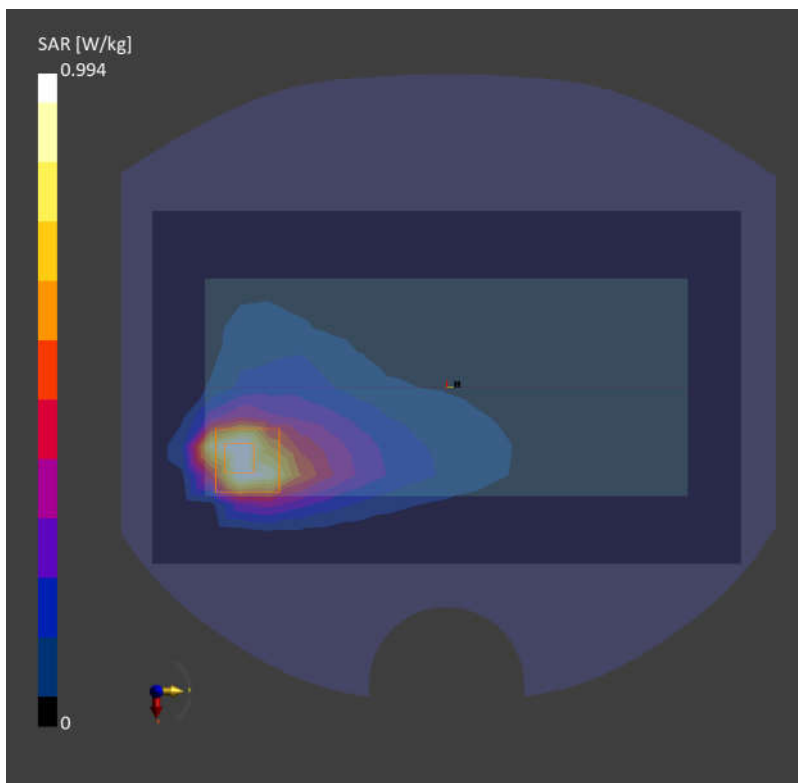
Area Scan (120.0 mm x 200.0 mm): Measurement Grid: 10.0 mm x 10.0 mm

SAR (1g) = 0.891 W/kg; SAR (10g) = 0.430 W/kg;

Zoom Scan (30.0 mm x 30.0 mm x 30.0 mm): Measurement Grid: 5.0 mm x 5.0 mm x 1.5 mm

Power Drift = 0.05 dB

SAR (1g) = 0.994 W/kg; SAR (10g) = 0.434 W/kg;



25_WLAN2.4GHz_802.11g 6Mbps_Back_5mm_Ch2

Communication System: WLAN 2.4GHz; Frequency: 2417.000

Medium: HSL. Medium parameters used: $f= 2417.000$ MHz; $\sigma= 1.72$ S/m; $\epsilon_r = 39.4$

Ambient Temperature: 23.2°C; Liquid Temperature: 22.6°C

DASY6 Configuration:

- Probe: EX3DV4 - SN7706; ConvF(8.38, 8.38, 8.38); Calibrated: 2023-01-26
- Sensor-Surface: 1.4 mm
- Electronics: DAE4 Sn1649; Calibrated: 2023-04-24
- Phantom: Twin-SAM V8.0 (30deg probe tilt); Serial: 2024
- Measurement Software: 16.2.4.2448

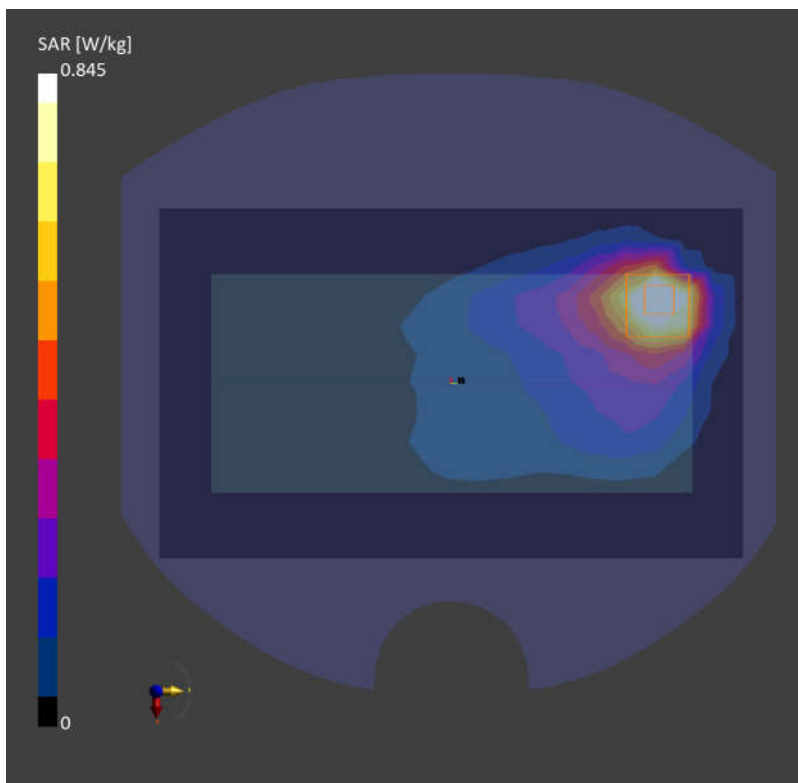
Area Scan (120.0 mm x 200.0 mm): Measurement Grid: 10.0 mm x 10.0 mm

SAR (1g) = 0.875 W/kg; SAR (10g) = 0.417 W/kg;

Zoom Scan (30.0 mm x 30.0 mm x 30.0 mm): Measurement Grid: 5.0 mm x 5.0 mm x 1.5 mm

Power Drift = -0.01 dB

SAR (1g) = 0.845 W/kg; SAR (10g) = 0.374 W/kg;



26_Bluetooth_1Mbps_Back_5mm_Ch0

Communication System: ISM 2.4 GHz Band; Frequency: 2402.000

Medium: HSL. Medium parameters used: $f = 2402.000$ MHz; $\sigma = 1.72$ S/m; $\epsilon_r = 39.5$

Ambient Temperature: 23.2°C; Liquid Temperature: 22.6°C

DASY6 Configuration:

- Probe: EX3DV4 - SN7706; ConvF(8.38, 8.38, 8.38); Calibrated: 2023-01-26
- Sensor-Surface: 1.4 mm
- Electronics: DAE4 Sn1649; Calibrated: 2023-04-24
- Phantom: Twin-SAM V8.0 (30deg probe tilt); Serial: 2024
- Measurement Software: 16.2.4.2448

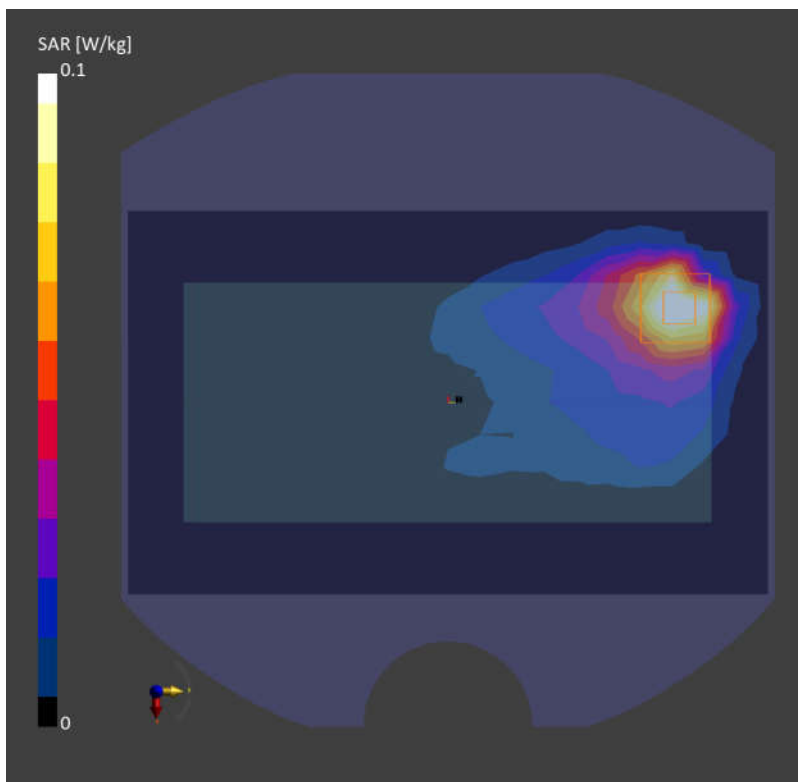
Area Scan (120.0 mm x 200.0 mm): Measurement Grid: 10.0 mm x 10.0 mm

SAR (1g) = 0.092 W/kg; SAR (10g) = 0.045 W/kg;

Zoom Scan (30.0 mm x 30.0 mm x 30.0 mm): Measurement Grid: 5.0 mm x 5.0 mm x 1.5 mm

Power Drift = 0.01 dB

SAR (1g) = 0.098 W/kg; SAR (10g) = 0.043 W/kg;



27_WLAN5GHz_802.11a 6Mbps_Back_5mm_Ch64

Communication System: WLAN 5GHz; Frequency: 5320.000

Medium: HSL. Medium parameters used: $f= 5320.000$ MHz; $\sigma= 4.64$ S/m; $\epsilon_r = 36.2$

Ambient Temperature: 23.1°C; Liquid Temperature: 22.8°C

DASY6 Configuration:

- Probe: EX3DV4 - SN7706; ConvF(6.18, 6.18, 6.18); Calibrated: 2023-01-26
- Sensor-Surface: 1.4 mm
- Electronics: DAE4 Sn1649; Calibrated: 2023-04-24
- Phantom: Twin-SAM V8.0 (30deg probe tilt); Serial: 2024
- Measurement Software: 16.2.4.2448

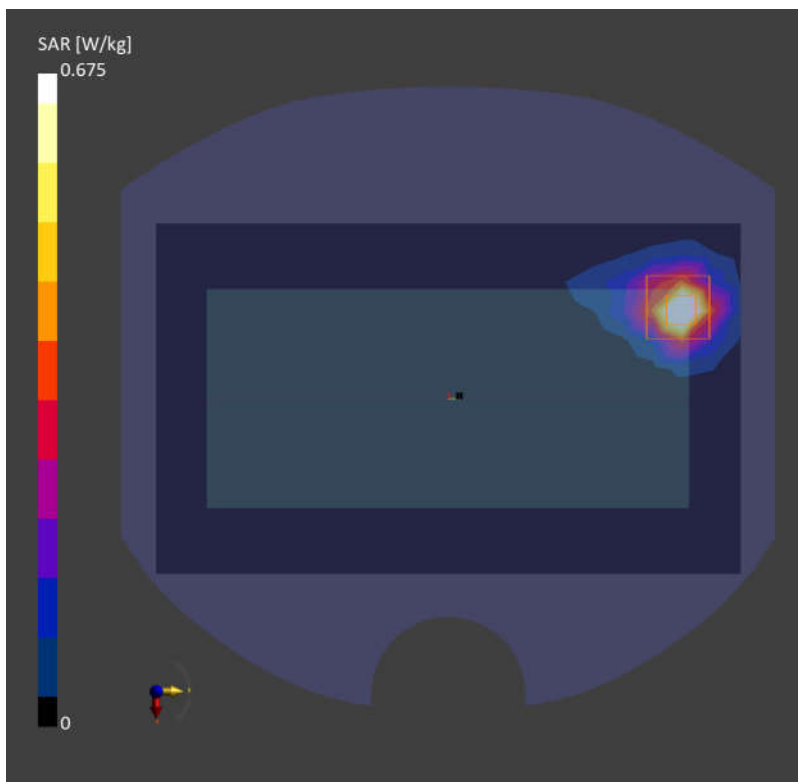
Area Scan (120.0 mm x 200.0 mm): Measurement Grid: 10.0 mm x 10.0 mm

SAR (1g) = 0.587 W/kg; SAR (10g) = 0.183 W/kg;

Zoom Scan (22.0 mm x 22.0 mm x 22.0 mm): Measurement Grid: 4.0 mm x 4.0 mm x 1.4 mm

Power Drift = 0.03 dB

SAR (1g) = 0.675 W/kg; SAR (10g) = 0.196 W/kg;



28_WLAN5GHz_802.11a 6Mbps_Back_5mm_Ch116

Communication System: WLAN 5GHz; Frequency: 5580.000

Medium: HSL. Medium parameters used: $f = 5580.000$ MHz; $\sigma = 4.94$ S/m; $\epsilon_r = 35.8$

Ambient Temperature: 23.4°C; Liquid Temperature: 22.9°C

DASY6 Configuration:

- Probe: EX3DV4 - SN7706; ConvF(5.39, 5.39, 5.39); Calibrated: 2023-01-26
- Sensor-Surface: 1.4 mm
- Electronics: DAE4 Sn1649; Calibrated: 2023-04-24
- Phantom: Twin-SAM V8.0 (30deg probe tilt); Serial: 2024
- Measurement Software: 16.2.4.2448

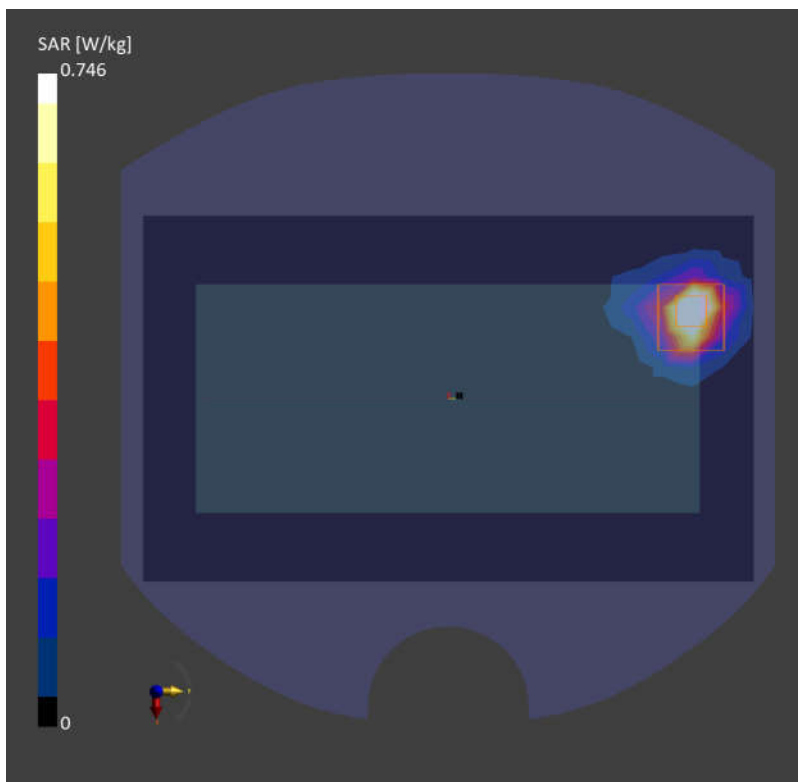
Area Scan (120.0 mm x 200.0 mm): Measurement Grid: 10.0 mm x 10.0 mm

SAR (1g) = 0.694 W/kg; SAR (10g) = 0.204 W/kg;

Zoom Scan (24.0 mm x 22.0 mm x 22.0 mm): Measurement Grid: 4.0 mm x 4.0 mm x 1.4 mm

Power Drift = 0.09 dB

SAR (1g) = 0.746 W/kg; SAR (10g) = 0.209 W/kg;



29_WLAN5GHz_802.11a 6Mbps_Back_5mm_Ch165

Communication System: WLAN 5GHz; Frequency: 5825.000

Medium: HSL. Medium parameters used: $f = 5825.000$ MHz; $\sigma = 5.23$ S/m; $\epsilon_r = 35.4$

Ambient Temperature: 23.4°C; Liquid Temperature: 22.7°C

DASY6 Configuration:

- Probe: EX3DV4 - SN7706; ConvF(5.57, 5.57, 5.57); Calibrated: 2023-01-26
- Sensor-Surface: 1.4 mm
- Electronics: DAE4 Sn1649; Calibrated: 2023-04-24
- Phantom: Twin-SAM V8.0 (30deg probe tilt); Serial: 2024
- Measurement Software: 16.2.4.2448

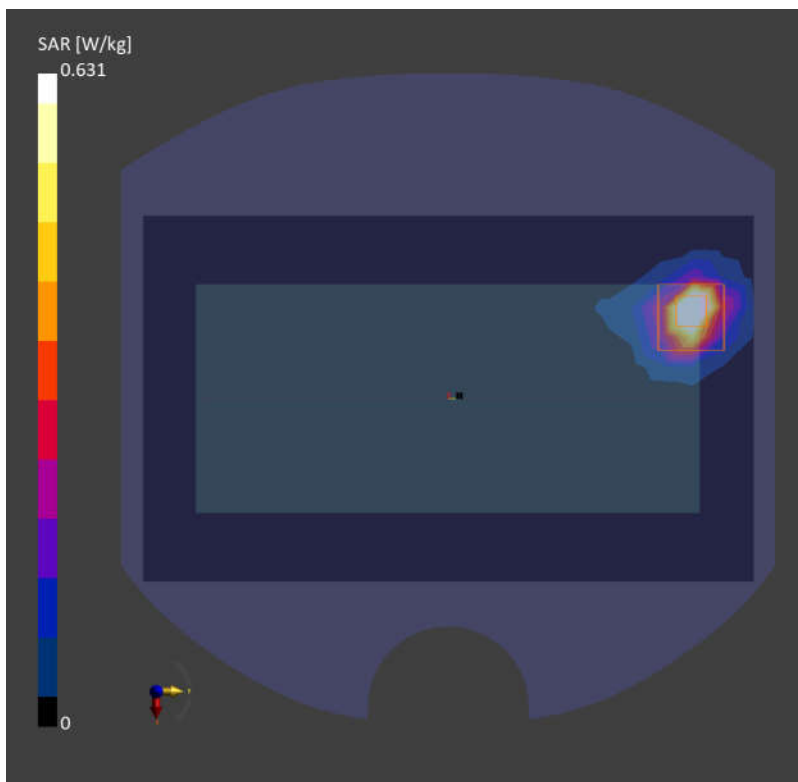
Area Scan (120.0 mm x 200.0 mm): Measurement Grid: 10.0 mm x 10.0 mm

SAR (1g) = 0.575 W/kg; SAR (10g) = 0.164 W/kg;

Zoom Scan (24.0 mm x 22.0 mm x 22.0 mm): Measurement Grid: 4.0 mm x 4.0 mm x 1.4 mm

Power Drift = 0.06 dB

SAR (1g) = 0.631 W/kg; SAR (10g) = 0.169 W/kg;



30_GSM850_GPRS (2 Tx slots)_Back_0mm_Ch189

Communication System: GSM 850; Frequency: 836.400

Medium: HSL. Medium parameters used: $f = 836.400$ MHz; $\sigma = 0.913$ S/m; $\epsilon_r = 41.9$

Ambient Temperature: 23.3°C; Liquid Temperature: 22.8°C

DASY6 Configuration:

- Probe: EX3DV4 - SN7706; ConvF(10.67, 10.67, 10.67); Calibrated: 2023-01-26
- Sensor-Surface: 1.4 mm
- Electronics: DAE4 Sn1649; Calibrated: 2023-04-24
- Phantom: Twin-SAM V8.0 (30deg probe tilt); Serial: 2024
- Measurement Software: 16.2.4.2448

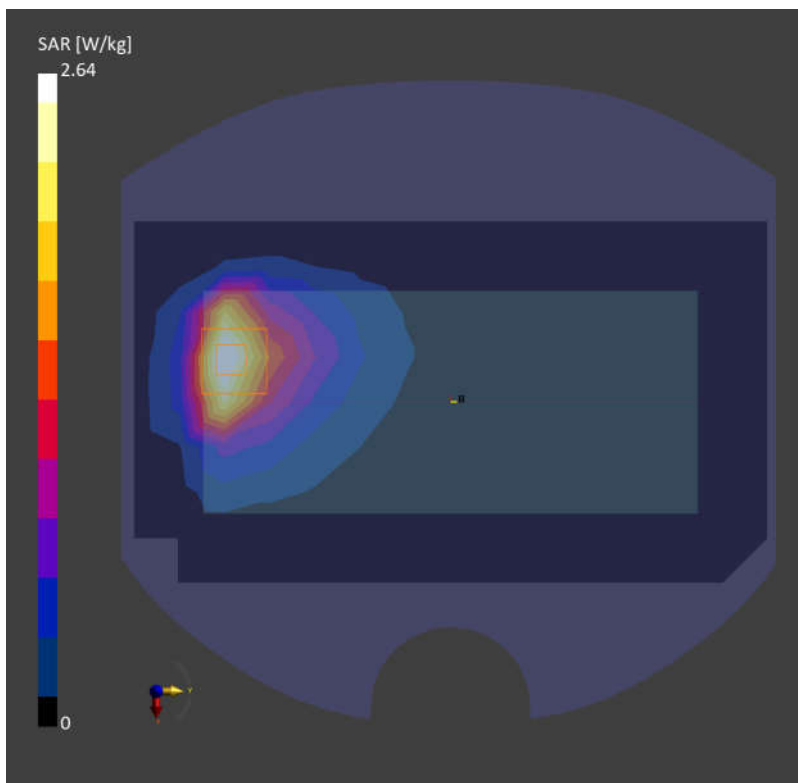
Area Scan (120.0 mm x 210.0 mm): Measurement Grid: 10.0 mm x 15.0 mm

SAR (1g) = 2.39 W/kg; SAR (10g) = 1.43 W/kg;

Zoom Scan (30.0 mm x 30.0 mm x 30.0 mm): Measurement Grid: 6.0 mm x 6.0 mm x 1.5 mm

Power Drift = 0.04 dB

SAR (1g) = 2.64 W/kg; SAR (10g) = 1.26 W/kg;



31_WCDMA V_RMC 12.2Kbps_Back_0mm_Ch4182

Communication System: Band 5; Frequency: 836.400

Medium: HSL. Medium parameters used: $f= 836.400$ MHz; $\sigma= 0.913$ S/m; $\epsilon_r = 41.9$

Ambient Temperature: 23.3°C; Liquid Temperature: 22.8°C

DASY6 Configuration:

- Probe: EX3DV4 - SN7706; ConvF(10.67, 10.67, 10.67); Calibrated: 2023-01-26
- Sensor-Surface: 1.4 mm
- Electronics: DAE4 Sn1649; Calibrated: 2023-04-24
- Phantom: Twin-SAM V8.0 (30deg probe tilt); Serial: 2024
- Measurement Software: 16.2.4.2448

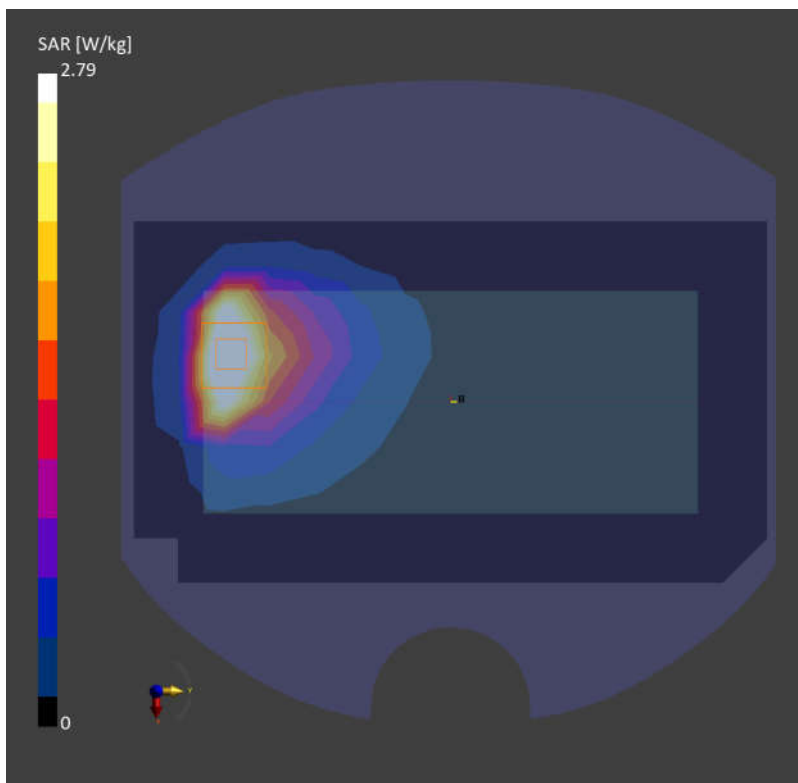
Area Scan (120.0 mm x 210.0 mm): Measurement Grid: 10.0 mm x 15.0 mm

SAR (1g) = 3.13 W/kg; SAR (10g) = 1.85 W/kg;

Zoom Scan (32.0 mm x 32.0 mm x 30.0 mm): Measurement Grid: 6.0 mm x 6.0 mm x 1.5 mm

Power Drift = -0.02 dB

SAR (1g) = 2.79 W/kg; SAR (10g) = 1.45 W/kg;



32_LTE Band 5_10M_QPSK_1RB_0Offset_Back_0mm_Ch20525

Communication System: Band 5; Frequency: 836.500

Medium: HSL. Medium parameters used: $f = 836.500$ MHz; $\sigma = 0.913$ S/m; $\epsilon_r = 41.9$

Ambient Temperature: 23.3°C; Liquid Temperature: 22.8°C

DASY6 Configuration:

- Probe: EX3DV4 - SN7706; ConvF(10.67, 10.67, 10.67); Calibrated: 2023-01-26
- Sensor-Surface: 1.4 mm
- Electronics: DAE4 Sn1649; Calibrated: 2023-04-24
- Phantom: Twin-SAM V8.0 (30deg probe tilt); Serial: 2024
- Measurement Software: 16.2.4.2448

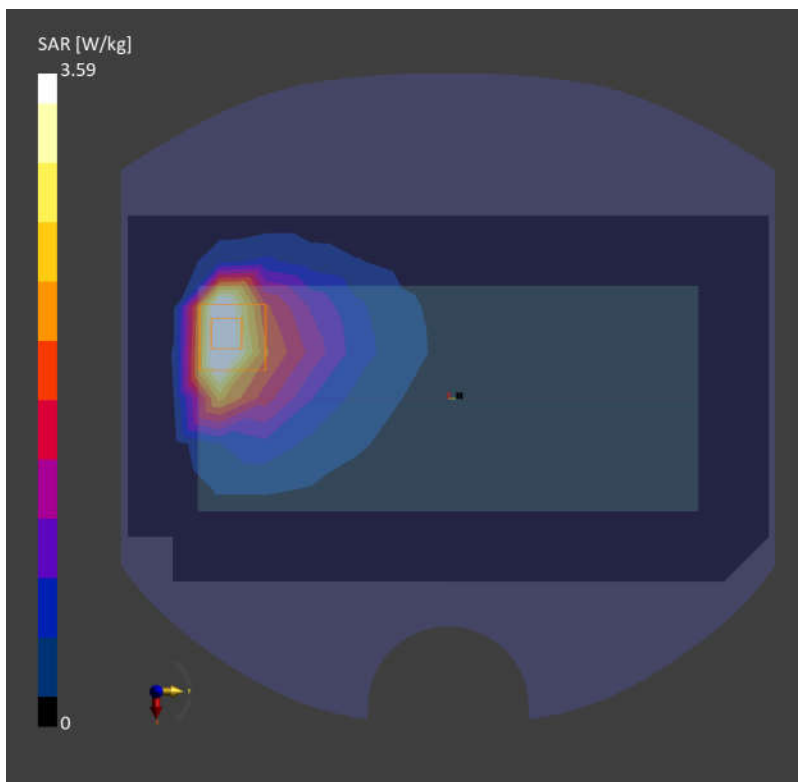
Area Scan (120.0 mm x 210.0 mm): Measurement Grid: 10.0 mm x 15.0 mm

SAR (1g) = 3.63 W/kg; SAR (10g) = 2.13 W/kg;

Zoom Scan (30.0 mm x 30.0 mm x 30.0 mm): Measurement Grid: 6.0 mm x 6.0 mm x 1.5 mm

Power Drift = -0.03 dB

SAR (1g) = 3.59 W/kg; SAR (10g) = 1.69 W/kg;



33_LTE Band 7_20M_QPSK_1RB_0Offset_Back_0mm_Ch20850

Communication System: Band 7; Frequency: 2510.000

Medium: HSL. Medium parameters used: $f = 2510.000$ MHz; $\sigma = 1.79$ S/m; $\epsilon_r = 39.3$

Ambient Temperature: 23.2°C; Liquid Temperature: 22.6°C

DASY6 Configuration:

- Probe: EX3DV4 - SN7706; ConvF(8.1, 8.1, 8.1); Calibrated: 2023-01-26
- Sensor-Surface: 1.4 mm
- Electronics: DAE4 Sn1649; Calibrated: 2023-04-24
- Phantom: Twin-SAM V8.0 (30deg probe tilt); Serial: 2024
- Measurement Software: 16.2.4.2448

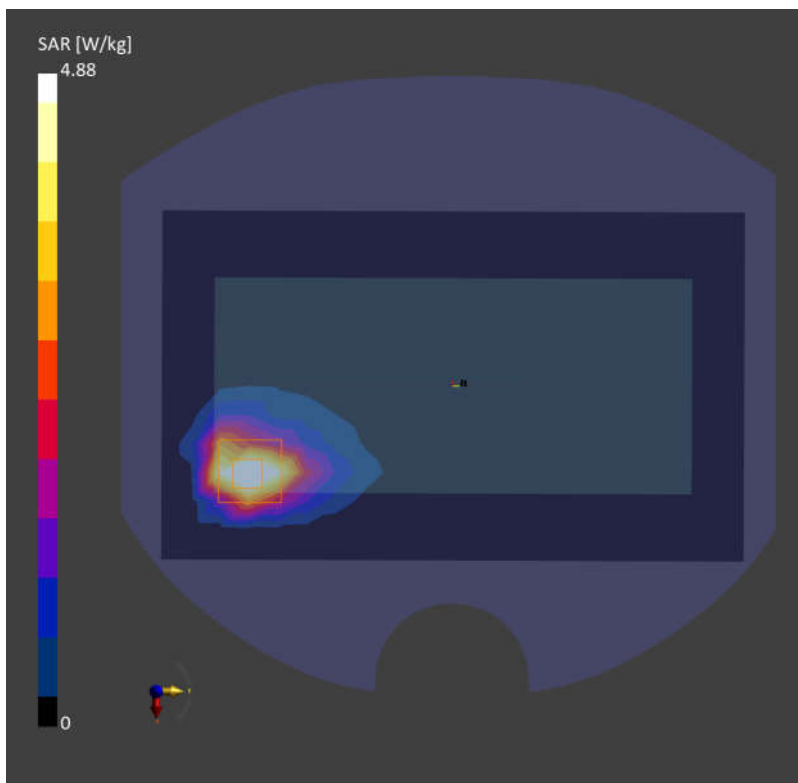
Area Scan (120.0 mm x 200.0 mm): Measurement Grid: 10.0 mm x 10.0 mm

SAR (1g) = 4.48 W/kg; SAR (10g) = 2.07 W/kg;

Zoom Scan (30.0 mm x 30.0 mm x 30.0 mm): Measurement Grid: 5.0 mm x 5.0 mm x 1.5 mm

Power Drift = -0.07 dB

SAR (1g) = 4.88 W/kg; SAR (10g) = 2.28 W/kg;



34_LTE Band 41_20M_QPSK_1RB_0Offset_Back_0mm_Ch39750

Communication System: Band 41; Frequency: 2506.000

Medium: HSL. Medium parameters used: $f = 2506.000$ MHz; $\sigma = 1.79$ S/m; $\epsilon_r = 39.4$

Ambient Temperature: 23.2°C; Liquid Temperature: 22.6°C

DASY6 Configuration:

- Probe: EX3DV4 - SN7706; ConvF(8.1, 8.1, 8.1); Calibrated: 2023-01-26
- Sensor-Surface: 1.4 mm
- Electronics: DAE4 Sn1649; Calibrated: 2023-04-24
- Phantom: Twin-SAM V8.0 (30deg probe tilt); Serial: 2024
- Measurement Software: 16.2.4.2448

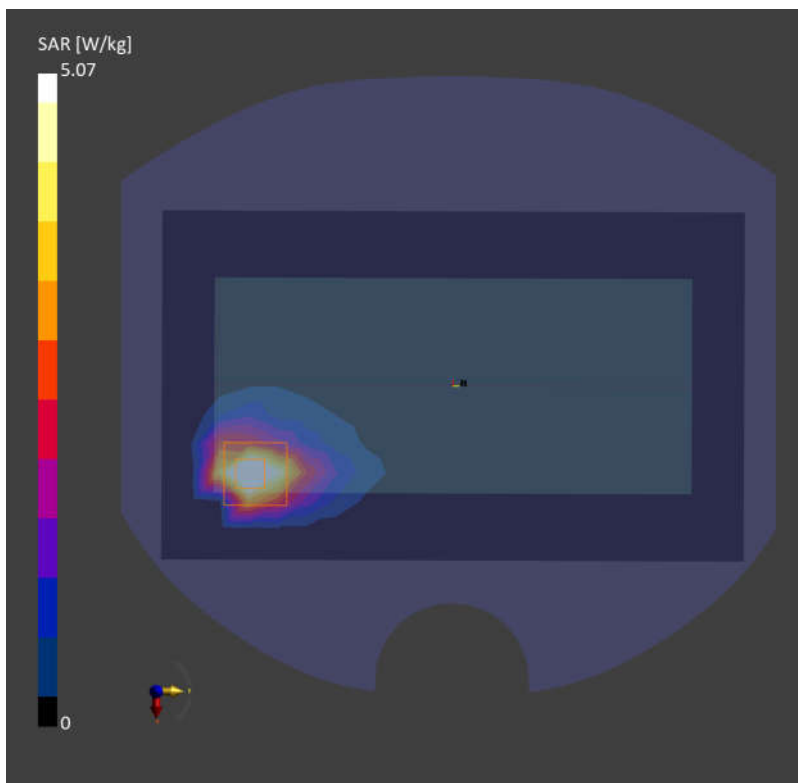
Area Scan (120.0 mm x 200.0 mm): Measurement Grid: 10.0 mm x 10.0 mm

SAR (1g) = 4.90 W/kg; SAR (10g) = 2.12 W/kg;

Zoom Scan (30.0 mm x 30.0 mm x 30.0 mm): Measurement Grid: 5.0 mm x 5.0 mm x 1.5 mm

Power Drift = 0.09 dB

SAR (1g) = 5.07 W/kg; SAR (10g) = 2.13 W/kg;



35_WLAN2.4GHz_802.11g 6Mbps_Back_0mm_Ch2

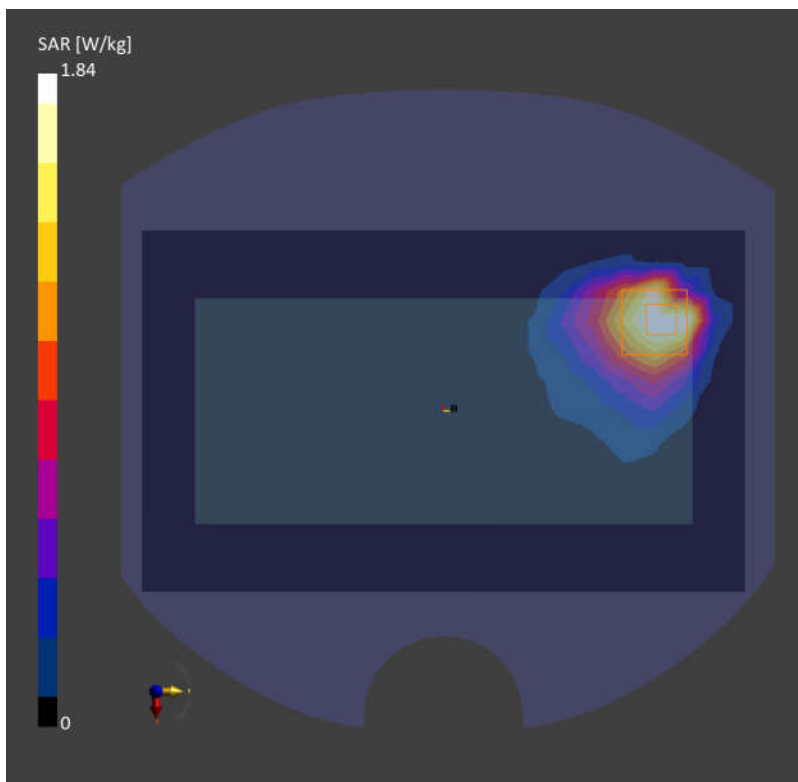
Communication System: WLAN 2.4GHz; Frequency: 2417.000
Medium: HSL. Medium parameters used: $f= 2417.000$ MHz; $\sigma= 1.72$ S/m; $\epsilon_r = 39.4$
Ambient Temperature: 23.2°C; Liquid Temperature: 22.6°C

DASY6 Configuration:

- Probe: EX3DV4 - SN7706; ConvF(8.38, 8.38, 8.38); Calibrated: 2023-01-26
- Sensor-Surface: 1.4 mm
- Electronics: DAE4 Sn1649; Calibrated: 2023-04-24
- Phantom: Twin-SAM V8.0 (30deg probe tilt); Serial: 2024
- Measurement Software: 16.2.4.2448

Area Scan (120.0 mm x 200.0 mm): Measurement Grid: 10.0 mm x 10.0 mm
SAR (1g) = 1.61 W/kg; SAR (10g) = 0.823 W/kg;

Zoom Scan (30.0 mm x 30.0 mm x 30.0 mm): Measurement Grid: 5.0 mm x 5.0 mm x 1.5 mm
Power Drift = -0.03 dB
SAR (1g) = 1.84 W/kg; SAR (10g) = 0.791 W/kg;



36_WLAN5GHz_802.11a 6Mbps_Top Side_0mm_Ch44

Communication System: WLAN 5GHz; Frequency: 5220.000

Medium: HSL. Medium parameters used: $f= 5220.000$ MHz; $\sigma= 4.53$ S/m; $\epsilon_r = 36.4$

Ambient Temperature: 23.1°C; Liquid Temperature: 22.8°C

DASY6 Configuration:

- Probe: EX3DV4 - SN7706; ConvF(6.18, 6.18, 6.18); Calibrated: 2023-01-26
- Sensor-Surface: 1.4 mm
- Electronics: DAE4 Sn1649; Calibrated: 2023-04-24
- Phantom: Twin-SAM V8.0 (30deg probe tilt); Serial: 2024
- Measurement Software: 16.2.4.2448

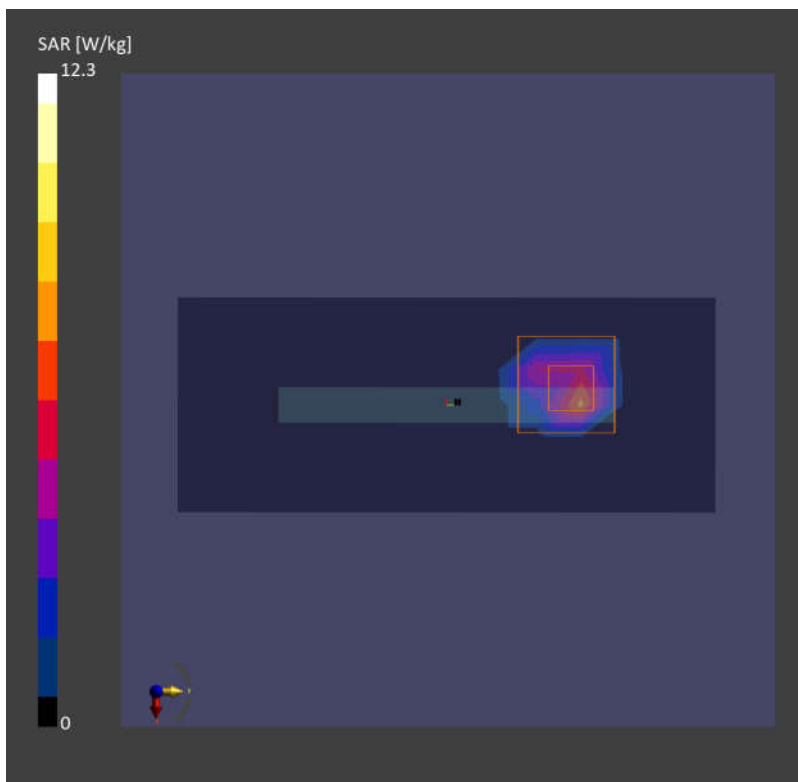
Area Scan (48.0 mm x 120.0 mm): Measurement Grid: 10.0 mm x 10.0 mm

SAR (1g) = 5.12 W/kg; SAR (10g) = 1.26 W/kg;

Zoom Scan (22.0 mm x 22.0 mm x 22.0 mm): Measurement Grid: 4.0 mm x 4.0 mm x 1.4 mm

Power Drift = 0.03 dB

SAR (1g) = 12.3 W/kg; SAR (10g) = 2.00 W/kg;



37_WLAN5GHz_802.11a 6Mbps_Top Side_0mm_Ch60

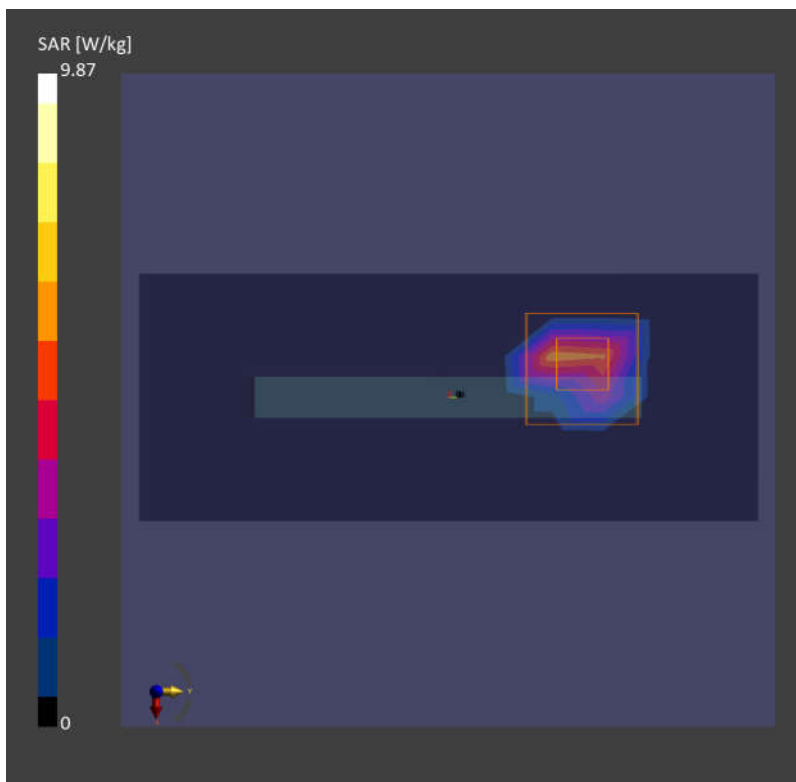
Communication System: WLAN 5GHz; Frequency: 5300.000
Medium: HSL. Medium parameters used: $f= 5300.000$ MHz; $\sigma= 4.62$ S/m; $\epsilon_r = 36.2$
Ambient Temperature: 23.1°C; Liquid Temperature: 22.8°C

DASY6 Configuration:

- Probe: EX3DV4 - SN7706; ConvF(6.18, 6.18, 6.18); Calibrated: 2023-01-26
- Sensor-Surface: 1.4 mm
- Electronics: DAE4 Sn1649; Calibrated: 2023-04-24
- Phantom: Twin-SAM V8.0 (30deg probe tilt); Serial: 2024
- Measurement Software: 16.2.4.2448

Area Scan (48.0 mm x 120.0 mm): Measurement Grid: 10.0 mm x 10.0 mm
SAR (1g) = 4.43 W/kg; SAR (10g) = 1.05 W/kg;

Zoom Scan (24.0 mm x 22.0 mm x 22.0 mm): Measurement Grid: 4.0 mm x 4.0 mm x 1.4 mm
Power Drift = 0.02 dB
SAR (1g) = 9.87 W/kg; SAR (10g) = 1.69 W/kg;



38_WLAN5GHz_802.11a 6Mbps_Top Side_0mm_Ch116

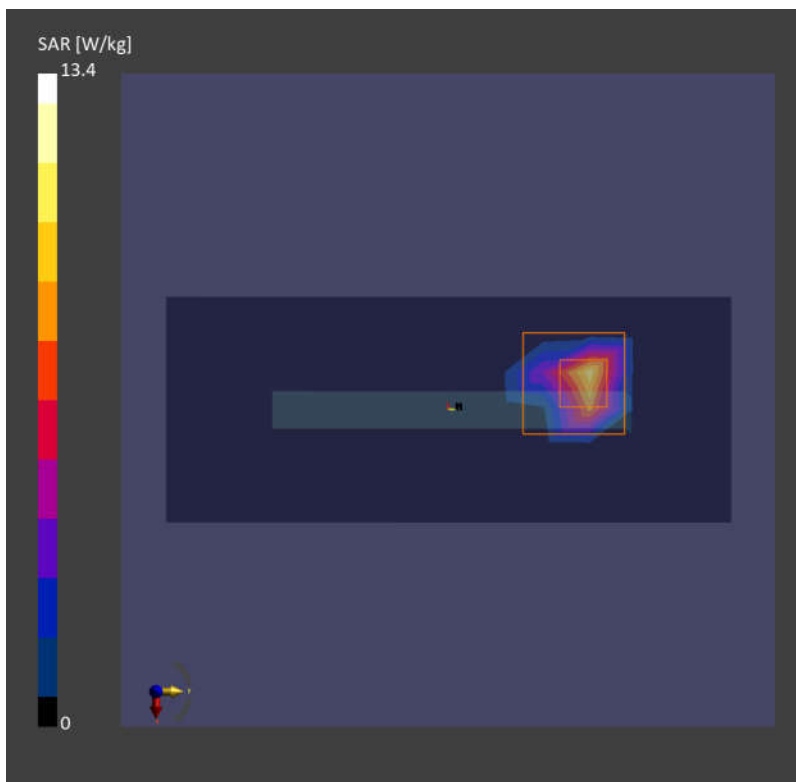
Communication System: WLAN 5GHz; Frequency: 5580.000
Medium: HSL. Medium parameters used: $f = 5580.000$ MHz; $\sigma = 4.94$ S/m; $\epsilon_r = 35.8$
Ambient Temperature: 23.4°C; Liquid Temperature: 22.9°C

DASY6 Configuration:

- Probe: EX3DV4 - SN7706; ConvF(5.39, 5.39, 5.39); Calibrated: 2023-01-26
- Sensor-Surface: 1.4 mm
- Electronics: DAE4 Sn1649; Calibrated: 2023-04-24
- Phantom: Twin-SAM V8.0 (30deg probe tilt); Serial: 2024
- Measurement Software: 16.2.4.2448

Area Scan (48.0 mm x 120.0 mm): Measurement Grid: 10.0 mm x 10.0 mm
SAR (1g) = 6.70 W/kg; SAR (10g) = 1.43 W/kg;

Zoom Scan (24.0 mm x 22.0 mm x 22.0 mm): Measurement Grid: 4.0 mm x 4.0 mm x 1.4 mm
Power Drift = 0.05 dB
SAR (1g) = 13.4 W/kg; SAR (10g) = 2.01 W/kg;



39_WLAN5GHz_802.11a 6Mbps_Top Side_0mm_Ch157

Communication System: WLAN 5GHz; Frequency: 5785.000
Medium: HSL. Medium parameters used: $f = 5785.000$ MHz; $\sigma = 5.16$ S/m; $\epsilon_r = 35.5$
Ambient Temperature: 23.4°C; Liquid Temperature: 22.7°C

DASY6 Configuration:

- Probe: EX3DV4 - SN7706; ConvF(5.57, 5.57, 5.57); Calibrated: 2023-01-26
- Sensor-Surface: 1.4 mm
- Electronics: DAE4 Sn1649; Calibrated: 2023-04-24
- Phantom: Twin-SAM V8.0 (30deg probe tilt); Serial: 2024
- Measurement Software: 16.2.4.2448

Area Scan (48.0 mm x 120.0 mm): Measurement Grid: 10.0 mm x 10.0 mm
SAR (1g) = 4.66 W/kg; SAR (10g) = 1.15 W/kg;

Zoom Scan (24.0 mm x 22.0 mm x 22.0 mm): Measurement Grid: 4.0 mm x 4.0 mm x 1.4 mm
Power Drift = 0.07 dB
SAR (1g) = 12.3 W/kg; SAR (10g) = 1.85 W/kg;

