

System Check_Head_835MHz

DUT:D835V2 - SN:4d091

Communication System: ; Frequency: 835.000

Medium: HSL. Medium parameters used: $f= 835.000$ MHz; $\sigma= 0.911$ S/m; $\epsilon_r = 41.9$

Ambient Temperature: 23.3°C; Liquid Temperature: 22.8°C

DASY6 Configuration:

- Probe: EX3DV4 - SN7706; ConvF(10.67, 10.67, 10.67); Calibrated: 2023-01-26
- Sensor-Surface: 1.4 mm
- Electronics: DAE4 Sn1649; Calibrated: 2023-04-24
- Phantom: Twin-SAM V8.0 (30deg probe tilt); Serial: 2024
- Measurement Software: 16.2.4.2448

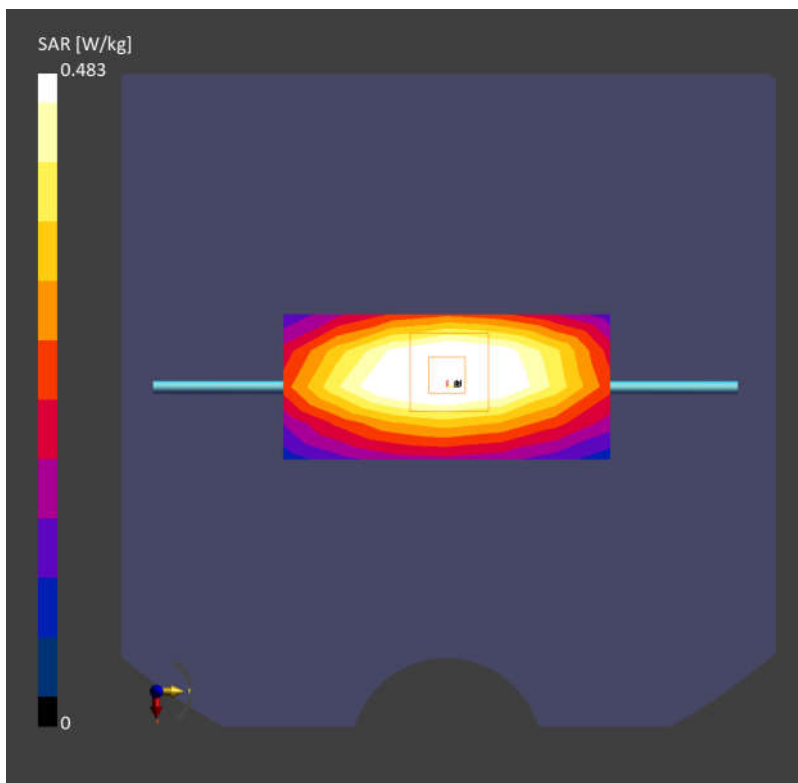
Area Scan (40.0 mm x 90.0 mm): Measurement Grid: 10.0 mm x 15.0 mm

SAR (1g) = 0.490 W/kg; SAR (10g) = 0.322 W/kg;

Zoom Scan (30.0 mm x 30.0 mm x 30.0 mm): Measurement Grid: 6.0 mm x 6.0 mm x 1.5 mm

Power Drift = 0.01 dB

SAR (1g) = 0.483 W/kg; SAR (10g) = 0.316 W/kg;



System Check_Head_2450MHz

DUT:D2450V2 - SN:1040

Communication System: ; Frequency: 2450.000

Medium: HSL. Medium parameters used: $f= 2450.000$ MHz; $\sigma= 1.74$ S/m; $\epsilon_r = 39.3$

Ambient Temperature: 23.2°C; Liquid Temperature: 22.6°C

DASY6 Configuration:

- Probe: EX3DV4 - SN7706; ConvF(8.38, 8.38, 8.38); Calibrated: 2023-01-26
- Sensor-Surface: 1.4 mm
- Electronics: DAE4 Sn1649; Calibrated: 2023-04-24
- Phantom: Twin-SAM V8.0 (30deg probe tilt); Serial: 2024
- Measurement Software: 16.2.4.2448

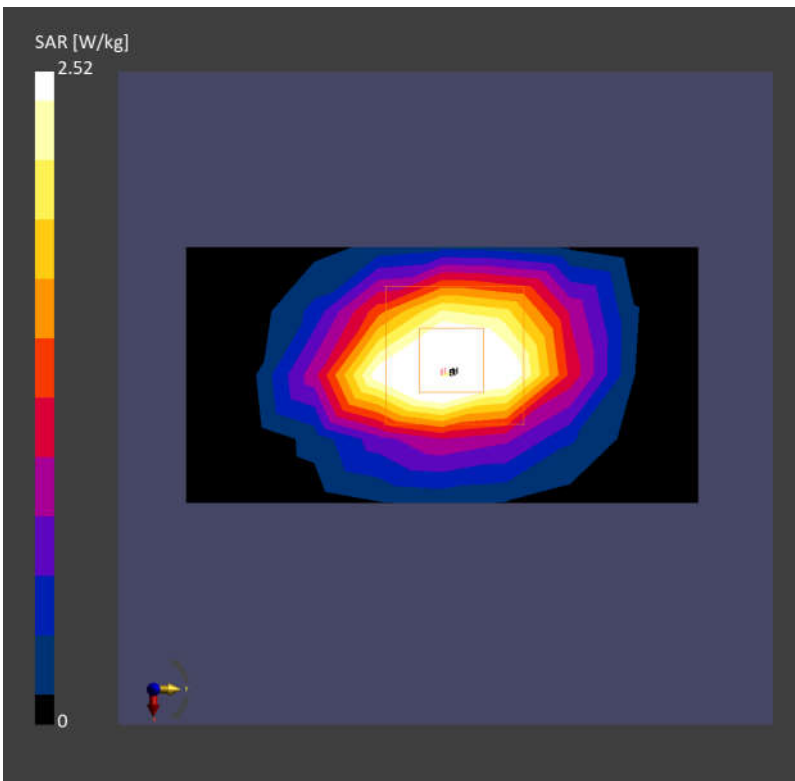
Area Scan (40.0 mm x 80.0 mm): Measurement Grid: 10.0 mm x 10.0 mm

SAR (1g) = 2.57 W/kg; SAR (10g) = 1.20 W/kg;

Zoom Scan (30.0 mm x 30.0 mm x 30.0 mm): Measurement Grid: 5.0 mm x 5.0 mm x 1.5 mm

Power Drift = 0.01 dB

SAR (1g) = 2.52 W/kg; SAR (10g) = 1.18 W/kg;



System Check_Head_2600MHz

DUT:D2600V2 - SN:1070

Communication System: ; Frequency: 2600.000

Medium: HSL. Medium parameters used: $f= 2600.000$ MHz; $\sigma= 1.98$ S/m; $\epsilon_r = 39.0$

Ambient Temperature: 23.2°C; Liquid Temperature: 22.6°C

DASY6 Configuration:

- Probe: EX3DV4 - SN7706; ConvF(8.1, 8.1, 8.1); Calibrated: 2023-01-26
- Sensor-Surface: 1.4 mm
- Electronics: DAE4 Sn1649; Calibrated: 2023-04-24
- Phantom: Twin-SAM V8.0 (30deg probe tilt); Serial: 2024
- Measurement Software: 16.2.4.2448

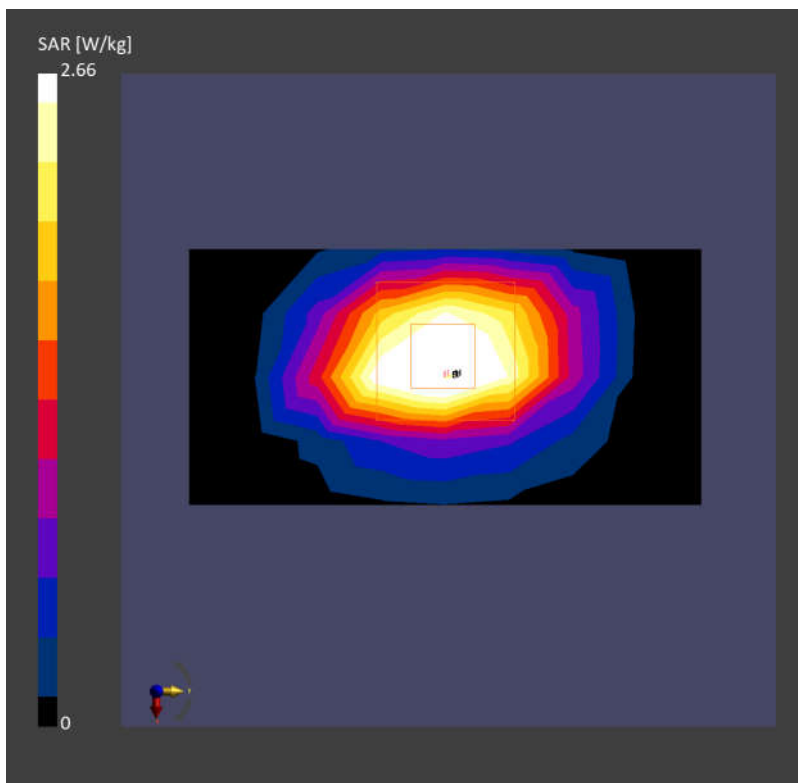
Area Scan (40.0 mm x 80.0 mm): Measurement Grid: 10.0 mm x 10.0 mm

SAR (1g) = 2.59 W/kg; SAR (10g) = 1.21 W/kg;

Zoom Scan (30.0 mm x 30.0 mm x 30.0 mm): Measurement Grid: 5.0 mm x 5.0 mm x 1.5 mm

Power Drift = 0.01 dB

SAR (1g) = 2.66 W/kg; SAR (10g) = 1.19 W/kg;



System Check_Head_835MHz

DUT:D835V2 - SN:4d091

Communication System: ; Frequency: 835.000

Medium: HSL. Medium parameters used: $f= 835.000$ MHz; $\sigma= 0.912$ S/m; $\epsilon_r = 41.9$

Ambient Temperature: 23.3°C; Liquid Temperature: 22.8°C

DASY6 Configuration:

- Probe: EX3DV4 - SN7706; ConvF(10.67, 10.67, 10.67); Calibrated: 2023-01-26
- Sensor-Surface: 1.4 mm
- Electronics: DAE4 Sn1649; Calibrated: 2023-04-24
- Phantom: Twin-SAM V8.0 (30deg probe tilt); Serial: 2024
- Measurement Software: 16.2.4.2448

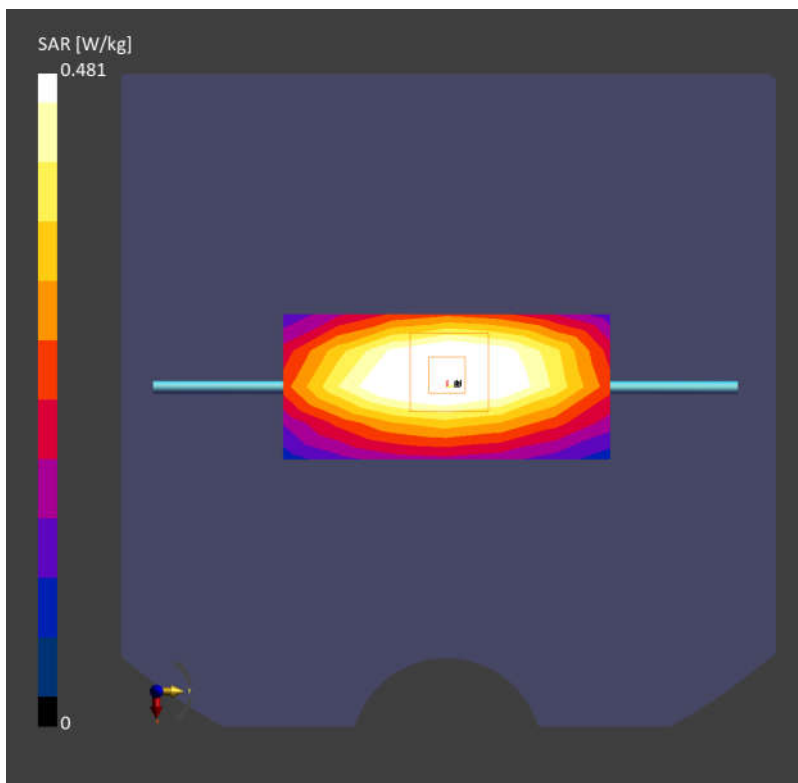
Area Scan (40.0 mm x 90.0 mm): Measurement Grid: 10.0 mm x 15.0 mm

SAR (1g) = 0.488 W/kg; SAR (10g) = 0.321 W/kg;

Zoom Scan (30.0 mm x 30.0 mm x 30.0 mm): Measurement Grid: 6.0 mm x 6.0 mm x 1.5 mm

Power Drift = -0.01 dB

SAR (1g) = 0.481 W/kg; SAR (10g) = 0.314 W/kg;



System Check_Head_2450MHz

DUT:D2450V2 - SN:1040

Communication System: ; Frequency: 2450.000

Medium: HSL. Medium parameters used: $f= 2450.000$ MHz; $\sigma= 1.74$ S/m; $\epsilon_r = 39.3$

Ambient Temperature: 23.2°C; Liquid Temperature: 22.6°C

DASY6 Configuration:

- Probe: EX3DV4 - SN7706; ConvF(8.38, 8.38, 8.38); Calibrated: 2023-01-26
- Sensor-Surface: 1.4 mm
- Electronics: DAE4 Sn1649; Calibrated: 2023-04-24
- Phantom: Twin-SAM V8.0 (30deg probe tilt); Serial: 2024
- Measurement Software: 16.2.4.2448

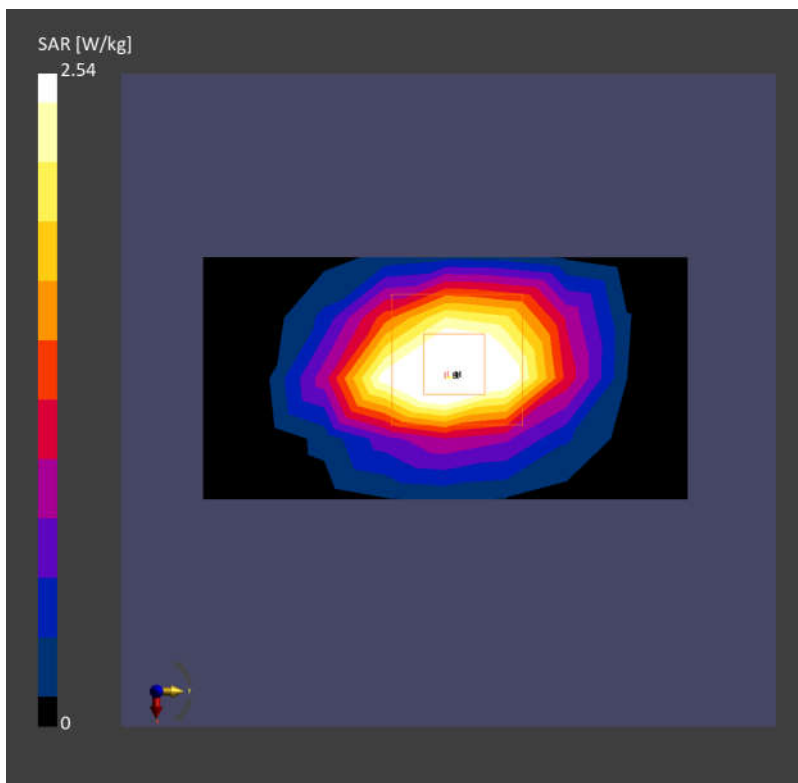
Area Scan (40.0 mm x 80.0 mm): Measurement Grid: 10.0 mm x 10.0 mm

SAR (1g) = 2.59 W/kg; SAR (10g) = 1.21 W/kg;

Zoom Scan (30.0 mm x 30.0 mm x 30.0 mm): Measurement Grid: 5.0 mm x 5.0 mm x 1.5 mm

Power Drift = 0.08 dB

SAR (1g) = 2.54 W/kg; SAR (10g) = 1.19 W/kg;



System Check_Head_2600MHz

DUT:D2600V2 - SN:1070

Communication System: ; Frequency: 2600.000

Medium: HSL. Medium parameters used: $f= 2600.000$ MHz; $\sigma= 1.88$ S/m; $\epsilon_r = 39.2$

Ambient Temperature: 23.2°C; Liquid Temperature: 22.6°C

DASY6 Configuration:

- Probe: EX3DV4 - SN7706; ConvF(8.1, 8.1, 8.1); Calibrated: 2023-01-26
- Sensor-Surface: 1.4 mm
- Electronics: DAE4 Sn1649; Calibrated: 2023-04-24
- Phantom: Twin-SAM V8.0 (30deg probe tilt); Serial: 2024
- Measurement Software: 16.2.4.2448

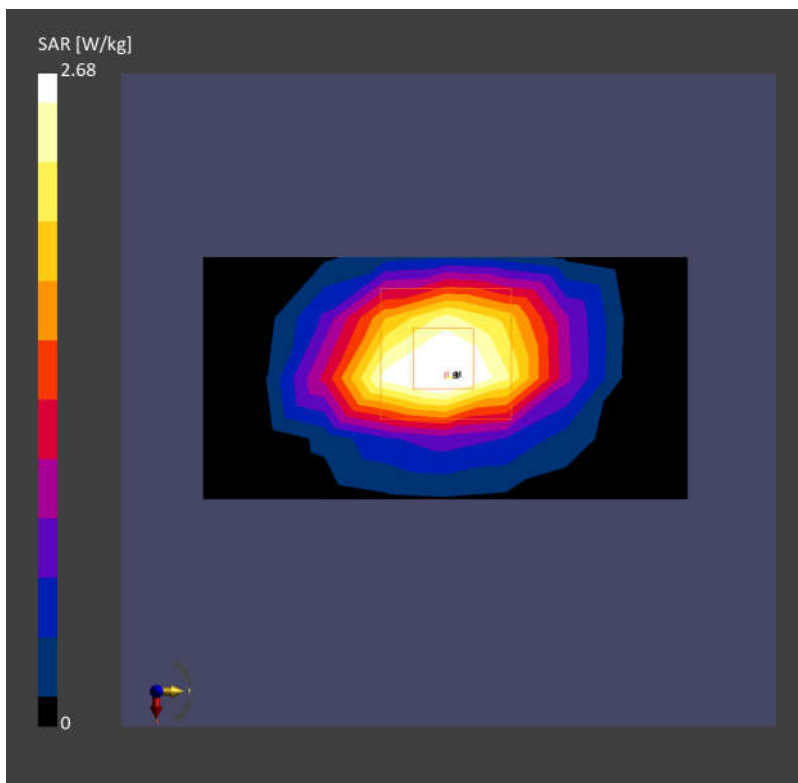
Area Scan (40.0 mm x 80.0 mm): Measurement Grid: 10.0 mm x 10.0 mm

SAR (1g) = 2.44 W/kg; SAR (10g) = 1.14 W/kg;

Zoom Scan (30.0 mm x 30.0 mm x 30.0 mm): Measurement Grid: 5.0 mm x 5.0 mm x 1.5 mm

Power Drift = 0.01 dB

SAR (1g) = 2.68 W/kg; SAR (10g) = 1.19 W/kg;



System Check_Head_5250MHz

DUT:D5GHzV2 - SN:1113

Communication System: ; Frequency: 5250.000

Medium: HSL. Medium parameters used: $f= 5250.000$ MHz; $\sigma= 4.58$ S/m; $\epsilon_r = 36.3$

Ambient Temperature: 23.1°C; Liquid Temperature: 22.8°C

DASY6 Configuration:

- Probe: EX3DV4 - SN7706; ConvF(6.18, 6.18, 6.18); Calibrated: 2023-01-26
- Sensor-Surface: 1.4 mm
- Electronics: DAE4 Sn1649; Calibrated: 2023-04-24
- Phantom: Twin-SAM V8.0 (30deg probe tilt); Serial: 2024
- Measurement Software: 16.2.4.2448

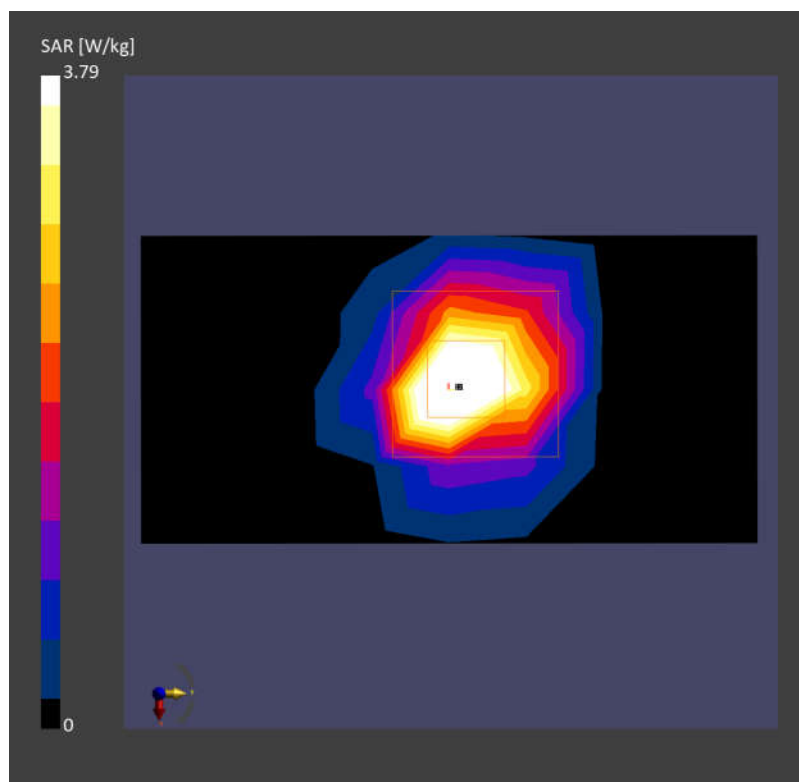
Area Scan (40.0 mm x 80.0 mm): Measurement Grid: 10.0 mm x 10.0 mm

SAR (1g) = 3.51 W/kg; SAR (10g) = 1.04 W/kg;

Zoom Scan (22.0 mm x 22.0 mm x 22.0 mm): Measurement Grid: 4.0 mm x 4.0 mm x 1.4 mm

Power Drift = -0.04 dB

SAR (1g) = 3.79 W/kg; SAR (10g) = 1.17 W/kg;



System Check_Head_5600MHz

DUT:D5GHzV2 - SN:1113

Communication System: ; Frequency: 5600.000

Medium: HSL. Medium parameters used: $f= 5600.000$ MHz; $\sigma= 4.95$ S/m; $\epsilon_r = 35.7$

Ambient Temperature: 23.4°C; Liquid Temperature: 22.9°C

DASY6 Configuration:

- Probe: EX3DV4 - SN7706; ConvF(5.39, 5.39, 5.39); Calibrated: 2023-01-26
- Sensor-Surface: 1.4 mm
- Electronics: DAE4 Sn1649; Calibrated: 2023-04-24
- Phantom: Twin-SAM V8.0 (30deg probe tilt); Serial: 2024
- Measurement Software: 16.2.4.2448

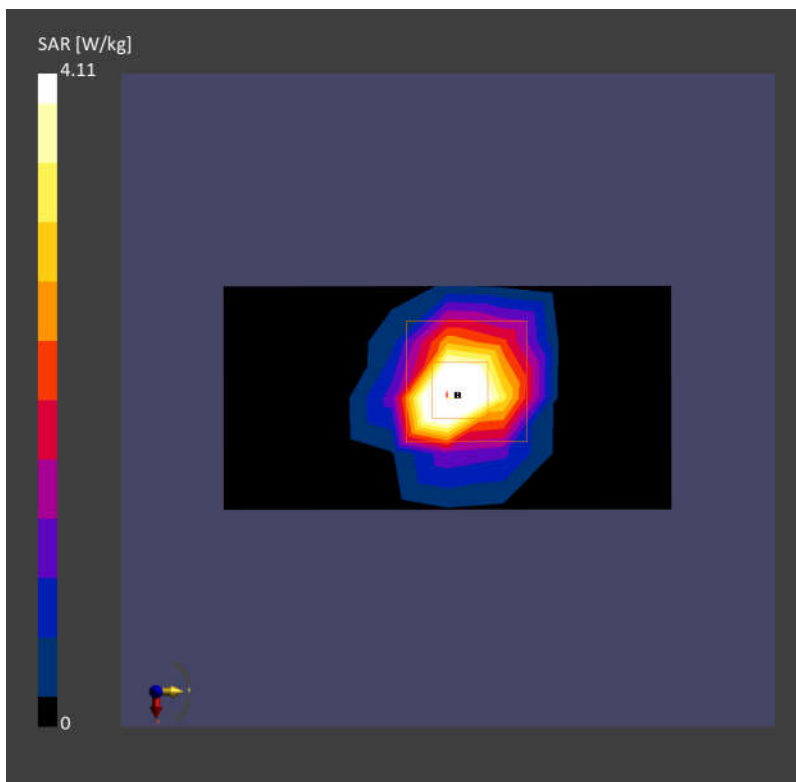
Area Scan (40.0 mm x 80.0 mm): Measurement Grid: 10.0 mm x 10.0 mm

SAR (1g) = 3.89 W/kg; SAR (10g) = 1.13 W/kg;

Zoom Scan (22.0 mm x 22.0 mm x 22.0 mm): Measurement Grid: 4.0 mm x 4.0 mm x 1.4 mm

Power Drift = -0.04 dB

SAR (1g) = 4.11 W/kg; SAR (10g) = 1.17 W/kg;



System Check_Head_5750MHz

DUT:D5GHzV2 - SN:1113

Communication System: ; Frequency: 5750.000

Medium: HSL. Medium parameters used: $f= 5750.000$ MHz; $\sigma= 5.13$ S/m; $\epsilon_r = 35.6$

Ambient Temperature: 23.4°C; Liquid Temperature: 22.7°C

DASY6 Configuration:

- Probe: EX3DV4 - SN7706; ConvF(5.57, 5.57, 5.57); Calibrated: 2023-01-26
- Sensor-Surface: 1.4 mm
- Electronics: DAE4 Sn1649; Calibrated: 2023-04-24
- Phantom: Twin-SAM V8.0 (30deg probe tilt); Serial: 2024
- Measurement Software: 16.2.4.2448

Area Scan (40.0 mm x 80.0 mm): Measurement Grid: 10.0 mm x 10.0 mm

SAR (1g) = 3.53 W/kg; SAR (10g) = 1.03 W/kg;

Zoom Scan (22.0 mm x 22.0 mm x 22.0 mm): Measurement Grid: 4.0 mm x 4.0 mm x 1.4 mm

Power Drift = 0.02 dB

SAR (1g) = 3.76 W/kg; SAR (10g) = 1.06 W/kg;

