

System Cheek_835MHz

D835V2-SN:4d162

Communication System: D835; Frequency: 835.0

Medium: HSL. Medium parameters used: $f= 835.0$ MHz; $\sigma= 0.88$ S/m; $\epsilon_r = 41.4$

Ambient Temperature: 23.6°C; Liquid Temperature: 22.5°C

DASY6 Configuration:

- Probe: EX3DV4 - SN3819; ConvF(9.49, 9.49, 9.49); Calibrated: 2023/6/6
- Sensor-Surface: 1.4 mm
- Electronics: DAE4 Sn715; Calibrated: 2023/1/25
- Phantom: Twin-SAM V5.0 (30deg probe tilt); Serial: 1670; Section: Flat
- Measurement Software: cDASY6 V16.0.0.116
- UID: CW, 0--
- MAIA: Area Scan: N/A; Zoom Scan: N/A

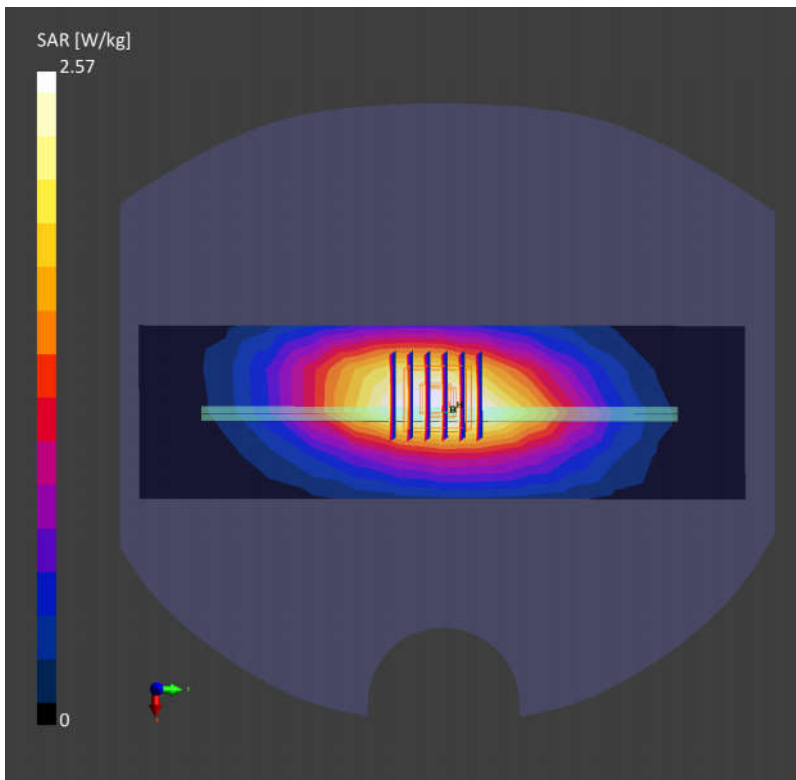
Area Scan (60.0 mm x 210.0 mm): Measurement Grid: 15.0 mm x 15.0 mm

SAR (1g) = 2.45 W/kg; SAR (10g) = 1.62 W/kg;

Zoom Scan (30.0 mm x 30.0 mm x 30.0 mm): Measurement Grid: 6.0 mm x 6.0 mm x 1.5 mm

Power Drift = 0.01 dB

SAR (1g) = 2.57 W/kg; SAR (10g) = 1.62 W/kg;



System Cheek_1750MHz

D1750V2-SN:1137

Communication System: D1750; Frequency: 1750.0

Medium: HSL. Medium parameters used: $f=1750.0$ MHz; $\sigma=1.32$ S/m; $\epsilon_r=41.8$

Ambient Temperature: 23.5°C; Liquid Temperature: 22.6°C

DASY6 Configuration:

- Probe: EX3DV4 - SN3819; ConvF(8.58, 8.58, 8.58); Calibrated: 2023/6/6
- Sensor-Surface: 1.4 mm
- Electronics: DAE4 Sn715; Calibrated: 2023/1/25
- Phantom: Twin-SAM V5.0 (30deg probe tilt); Serial: 1670; Section: Flat
- Measurement Software: cDASY6 V16.0.0.116
- UID: CW, 0--
- MAIA: Area Scan: N/A; Zoom Scan: N/A

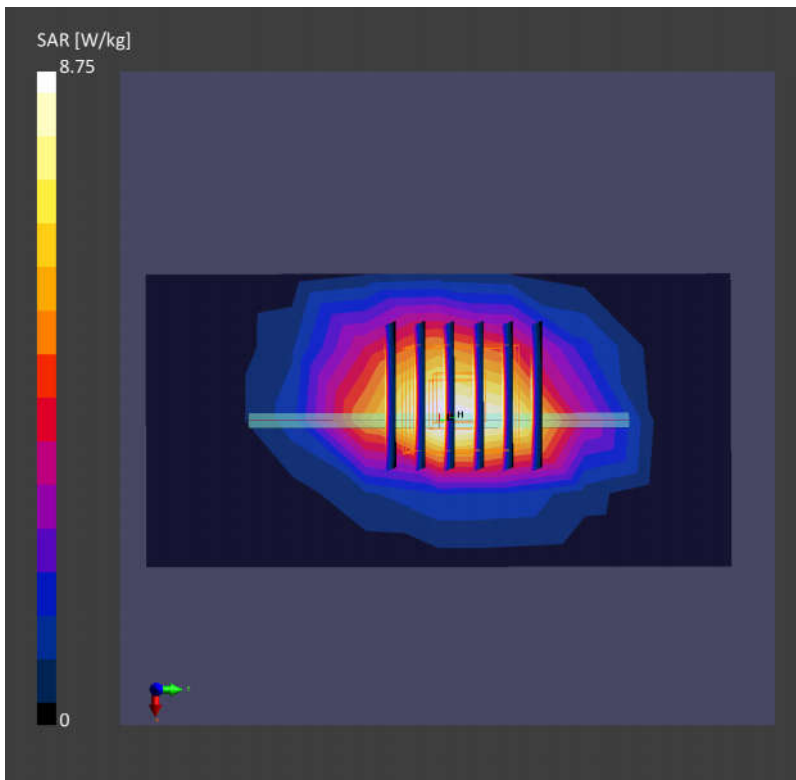
Area Scan (60.0 mm x 120.0 mm): Measurement Grid: 15.0 mm x 15.0 mm

SAR (1g) = 7.91 W/kg; SAR (10g) = 4.40 W/kg;

Zoom Scan (30.0 mm x 30.0 mm x 30.0 mm): Measurement Grid: 6.0 mm x 6.0 mm x 1.5 mm

Power Drift = -0.01 dB

SAR (1g) = 8.75 W/kg; SAR (10g) = 4.67 W/kg;



System Cheek_1900MHz

D1900V2-SN:5d182

Communication System: D1900; Frequency: 1900.0

Medium: HSL. Medium parameters used: $f=1900.0$ MHz; $\sigma=1.44$ S/m; $\epsilon_r=41.1$

Ambient Temperature: 23.5°C; Liquid Temperature: 22.4°C

DASY6 Configuration:

- Probe: EX3DV4 - SN3819; ConvF(8.29, 8.29, 8.29); Calibrated: 2023/6/6
- Sensor-Surface: 1.4 mm
- Electronics: DAE4 Sn715; Calibrated: 2023/1/25
- Phantom: Twin-SAM V5.0 (30deg probe tilt); Serial: 1670; Section: Flat
- Measurement Software: cDASY6 V16.0.0.116
- UID: CW, 0--
- MAIA: Area Scan: N/A; Zoom Scan: N/A

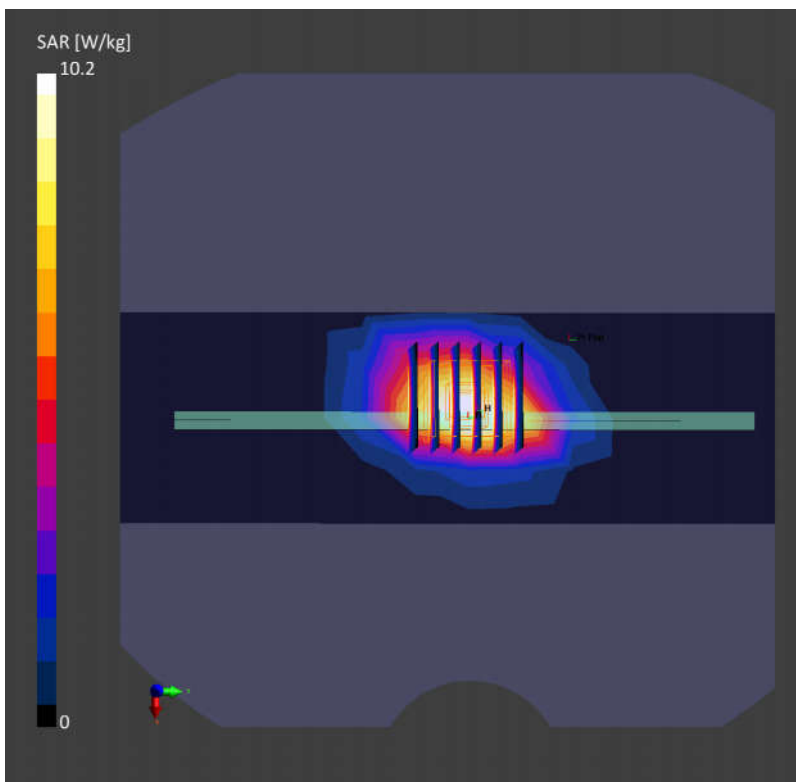
Area Scan (60.0 mm x 210.0 mm): Measurement Grid: 15.0 mm x 15.0 mm

SAR (1g) = 9.78 W/kg; SAR (10g) = 5.20 W/kg;

Zoom Scan (30.0 mm x 30.0 mm x 30.0 mm): Measurement Grid: 6.0 mm x 6.0 mm x 1.5 mm

Power Drift = -0.03 dB

SAR (1g) = 10.2 W/kg; SAR (10g) = 5.33 W/kg;



System Cheek_2450MHz

D2450V2-SN:924

Communication System: D2450; Frequency: 2450.0

Medium: HSL. Medium parameters used: $f=2450.0$ MHz; $\sigma=1.88$ S/m; $\epsilon_r=40.8$

Ambient Temperature: 23.5°C; Liquid Temperature: 22.5°C

DASY6 Configuration:

- Probe: EX3DV4 - SN3819; ConvF(7.64, 7.64, 7.64); Calibrated: 2023/6/6
- Sensor-Surface: 1.4 mm
- Electronics: DAE4 Sn715; Calibrated: 2023/1/25
- Phantom: Twin-SAM V5.0 (30deg probe tilt); Serial: 1670; Section: Flat
- Measurement Software: cDASY6 V16.0.0.116
- UID: CW, 0--
- MAIA: Area Scan: N/A; Zoom Scan: N/A

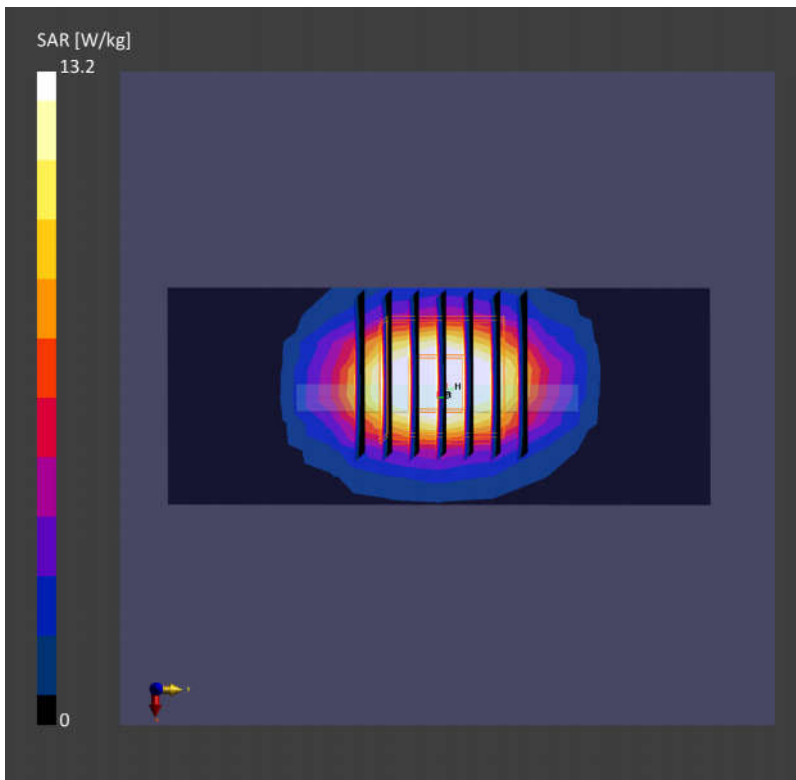
Area Scan (40.0 mm x 100.0 mm): Measurement Grid: 5.0 mm x 10.0 mm

SAR (1g) = 13.2 W/kg; SAR (10g) = 6.25 W/kg;

Zoom Scan (30.0 mm x 30.0 mm x 30.0 mm): Measurement Grid: 5.0 mm x 5.0 mm x 1.5 mm

Power Drift = 0.01 dB

SAR (1g) = 13.2 W/kg; SAR (10g) = 6.08 W/kg;



System Cheek_2600MHz

D2600V2-SN:1070

Communication System: D2600; Frequency: 2600.0

Medium: HSL. Medium parameters used: $f=2600.0$ MHz; $\sigma=1.98$ S/m; $\epsilon_r=37.8$

Ambient Temperature: 23.6°C; Liquid Temperature: 22.5°C

DASY6 Configuration:

- Probe: EX3DV4 - SN3819; ConvF(7.55, 7.55, 7.55); Calibrated: 2023/6/6
- Sensor-Surface: 1.4 mm
- Electronics: DAE4 Sn715; Calibrated: 2023/1/25
- Phantom: Twin-SAM V5.0 (30deg probe tilt); Serial: 1670; Section: Flat
- Measurement Software: cDASY6 V16.0.0.116
- UID: CW, 0--
- MAIA: Area Scan: N/A; Zoom Scan: N/A

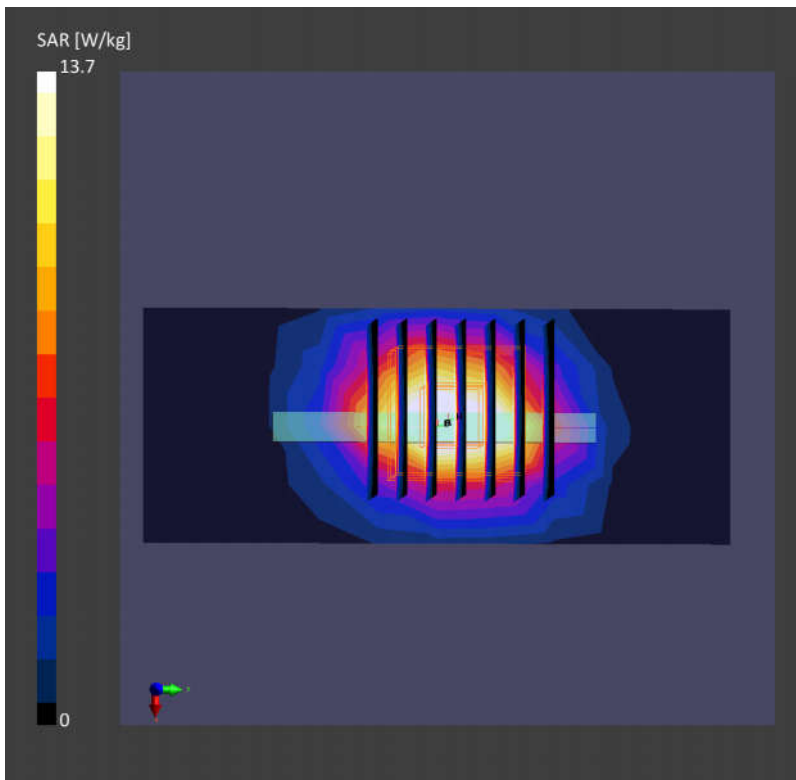
Area Scan (40.0 mm x 100.0 mm): Measurement Grid: 10.0 mm x 10.0 mm

SAR (1g) = 13.3 W/kg; SAR (10g) = 6.04 W/kg;

Zoom Scan (30.0 mm x 30.0 mm x 30.0 mm): Measurement Grid: 5.0 mm x 5.0 mm x 1.5 mm

Power Drift = 0.01 dB

SAR (1g) = 13.7 W/kg; SAR (10g) = 6.32 W/kg;



System Cheek_3900MHz

D3900V2-SN:1022

Communication System: D3900; Frequency: 3900.0

Medium: HSL. Medium parameters used: $f=3900.0$ MHz; $\sigma=3.19$ S/m; $\epsilon_r=37.6$

Ambient Temperature: 23.5°C; Liquid Temperature: 22.6°C

DASY6 Configuration:

- Probe: EX3DV4 - SN3819; ConvF(6.62, 6.62, 6.62); Calibrated: 2023/6/6
- Sensor-Surface: 1.4 mm
- Electronics: DAE4 Sn715; Calibrated: 2023/1/25
- Phantom: Twin-SAM V5.0 (30deg probe tilt); Serial: 1670; Section: Flat
- Measurement Software: cDASY6 V16.0.0.116
- UID: CW, 0--
- MAIA: Area Scan: N/A; Zoom Scan: N/A

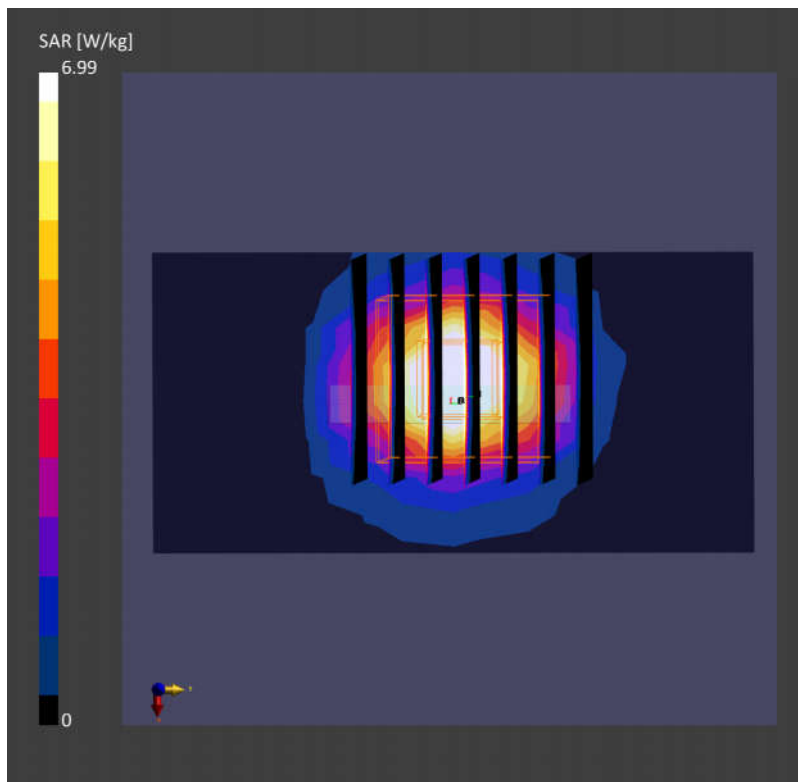
Area Scan (40.0 mm x 80.0 mm): Measurement Grid: 5.0 mm x 10.0 mm

SAR (1g) = 6.59 W/kg; SAR (10g) = 2.35 W/kg;

Zoom Scan (28.0 mm x 28.0 mm x 28.0 mm): Measurement Grid: 5.0 mm x 5.0 mm x 1.4 mm

Power Drift = -0.01 dB

SAR (1g) = 6.99 W/kg; SAR (10g) = 2.54 W/kg;



System Cheek_5600MHz

D5GHzV2-SN:1341

Communication System: D5GHz; Frequency: 5600.0

Medium: HSL. Medium parameters used: $f=5600.0$ MHz; $\sigma=5.05$ S/m; $\epsilon_r=35.4$

Ambient Temperature: 23.5°C; Liquid Temperature: 22.5°C

DASY6 Configuration:

- Probe: EX3DV4 - SN3819; ConvF(4.54, 4.54, 4.54); Calibrated: 2023/6/6
- Sensor-Surface: 1.4 mm
- Electronics: DAE4 Sn715; Calibrated: 2023/1/25
- Phantom: Twin-SAM V5.0 (30deg probe tilt); Serial: 1670; Section: Flat
- Measurement Software: cDASY6 V16.0.0.116
- UID: CW, 0--
- MAIA: Area Scan: N/A; Zoom Scan: N/A

Area Scan (40.0 mm x 60.0 mm): Measurement Grid: 5.0 mm x 10.0 mm

SAR (1g) = 7.78 W/kg; SAR (10g) = 2.26 W/kg;

Zoom Scan (22.0 mm x 22.0 mm x 22.0 mm): Measurement Grid: 4.0 mm x 4.0 mm x 1.4 mm

Power Drift = 0.05 dB

SAR (1g) = 8.35 W/kg; SAR (10g) = 2.42 W/kg;

