

System Check_Head_6500MHz

DUT:D6.5GHzV2 - SN:1031

Communication System: ; Frequency: 6500.000

Medium: HSL. Medium parameters used: $f= 6500.000$ MHz; $\sigma= 6.06$ S/m; $\epsilon_r = 34.5$

Ambient Temperature: 23.2°C; Liquid Temperature: 22.7°C

DASY6 Configuration:

- Probe: EX3DV4 - SN7627; ConvF(5.34, 5.39, 5.31); Calibrated: 2023-06-06
- Sensor-Surface: 1.4 mm
- Electronics: DAE4 Sn690; Calibrated: 2023-06-20
- Phantom: Twin-SAM V5.0 (30deg probe tilt); Serial: 2022
- Measurement Software: cDASY6 V6.6.0.13926

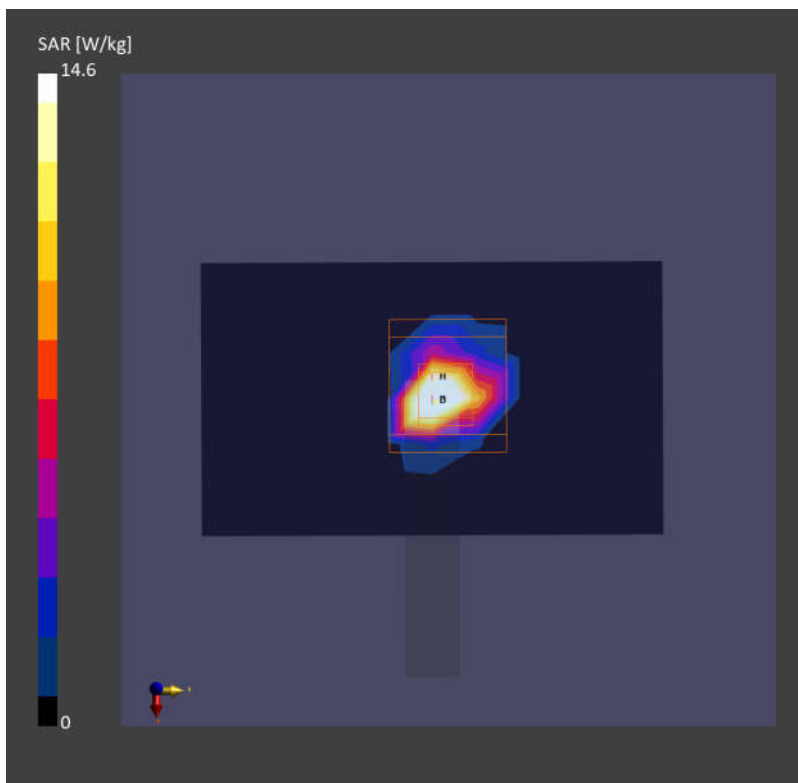
Area Scan (51.0 mm x 85.0 mm): Measurement Grid: 8.5 mm x 8.5 mm

SAR (1g) = 12.8 W/kg; SAR (10g) = 2.58 W/kg;

Zoom Scan (22.0 mm x 22.0 mm x 22.0 mm): Measurement Grid: 3.4 mm x 3.4 mm x 1.4 mm

Power Drift = -0.01 dB

SAR (1g) = 14.6 W/kg; SAR (10g) = 2.67 W/kg;



Measurement Report for Device, FRONT, Validation band, CW, Channel 10000 (10000.0 MHz)

Device Under Test Properties

Model, Manufacturer	Dimensions [mm]
Device,	100.0 x 100.0 x 105.0

Exposure Conditions

Phantom Section	Position, Test Distance [mm]	Band	Group, UID	Frequency [MHz], Channel Number	Conversion Factor
5G	FRONT, 10.00	Validation band	CW, 0--	10000.0, 10000	1.0

Hardware Setup

Phantom	Medium	Probe, Calibration Date	DAE, Calibration Date
mmWave - 1065	Air -	EUmmWV4 - SN9553_F1-55GHz, 2023-10-18	DAE4 Sn1303, 2023-11-20

Scans Setup

Scan Type	5G Scan
Grid Extents [mm]	60.0 x 60.0
Grid Steps [lambda]	0.125 x 0.125
Sensor Surface [mm]	10.0
MAIA	N/A

Measurement Results

Scan Type	5G Scan
Date	2024-03-18
Avg. Area [cm ²]	4.00
psPDn+ [W/m ²]	61.5
psPDtot+ [W/m ²]	61.7
psPDmod+ [W/m ²]	63.6
E _{max} [V/m]	188
Power Drift [dB]	-0.01

