

DASY8 Module WPT Measurement Report

Device under test

Info:
1_Back_0mm

Tool info

DASY software version:
DASY8 Module WPT 2.4.0.4346

Probe model, serial no. and configuration date:
MAGPy-8H3D+E3Dv2, WP000211, 2023/05/09

Software version:
2.0.49, backend: 2.2.3

Scan info

Center location:
x: 95.99 mm, **y:** -44.17 mm, **z:** 19.33 mm

Dimensions:
x: 257.0 mm, **y:** 257.0 mm, **z:** 36.7 mm

Resolution:
x: 7.33 mm, **y:** 7.33 mm, **z:** 7.33 mm

Completed on:
2024/03/03

Measurement results

Maximum H-field [RMS]:
MAGNITUDE: 1.23 A/m
x: 187.88 mA/m, **y:** 185.01 mA/m, **z:** 1.21 A/m

Maximum H-field location relative to DUT:
x: 18.33 mm, **y:** -11.00 mm, **z:** 8.50 mm

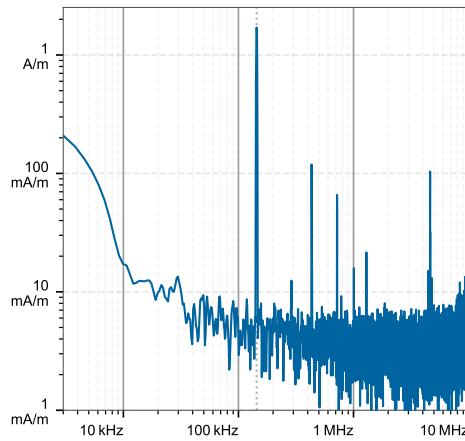
Maximum E-field [RMS]:
MAGNITUDE: 61.50 V/m
x: 3.22 V/m, **y:** 1.40 V/m, **z:** 61.40 V/m

Maximum E-field location relative to DUT:
x: -36.67 mm, **y:** -73.33 mm, **z:** 1.00 mm

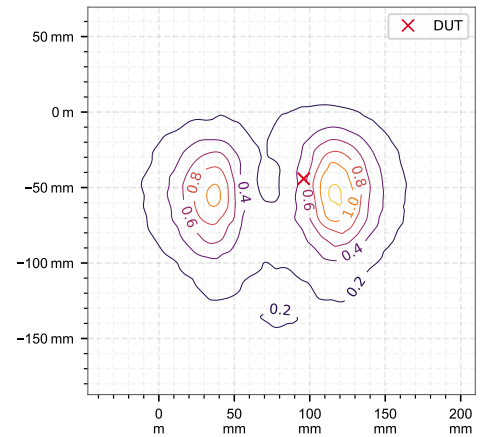
Distance to -20.0 dB boundary:
60.47 mm

Offset relative to DUT:
x: 0.00 m, **y:** 0.00 m, **z:** 1.00 mm

H-field magnitude [RMS] at maximum location



H-field magnitude [RMS] at lowest plane



Incident fields, and induced quantities in the anatomical model

Distance [mm]	Peak incident fields [RMS]		Peak E_{ind} [V/m, RMS]			Peak J_{ind} [A/m ² , RMS]	psSAR [mW/kg]		H-field extent
	H_{inc} [A/m]	E_{inc} [V/m]	Cube avg.	Local	Line avg.	Surface avg.	1g avg.	10g avg.	-20 dB radius [mm]
0.0	2.36	61.5	0.0188	0.0191	0.019	0.0128	0.000176	0.000108	76.3

DASY8 Module WPT Measurement Report

Device under test

Info:
2_Front_0mm

Tool info

DASY software version:
DASY8 Module WPT 2.4.0.4346

Probe model, serial no. and configuration date:
MAGPy-8H3D+E3Dv2, WP000211, 2023/05/09

Software version:
2.0.49, backend: 2.2.3

Scan info

Center location:
x: 76.14 mm, y: 2.69 mm, z: 23.54 mm

Dimensions:
x: 257.0 mm, y: 257.0 mm, z: 36.7 mm

Resolution:
x: 7.33 mm, y: 7.33 mm, z: 7.33 mm

Completed on:
2024/03/03

Measurement results

Maximum H-field [RMS]:

MAGNITUDE: 1.73 A/m

x: 701.64 mA/m, y: 34.41 mA/m, z: 1.58 A/m

Maximum H-field location relative to DUT:

x: -11.00 mm, y: 18.33 mm, z: 8.50 mm

Maximum E-field [RMS]:

MAGNITUDE: 55.45 V/m

x: 3.65 V/m, y: 858.43 mV/m, z: 55.33 V/m

Maximum E-field location relative to DUT:

x: -88.00 mm, y: 7.33 mm, z: 1.00 mm

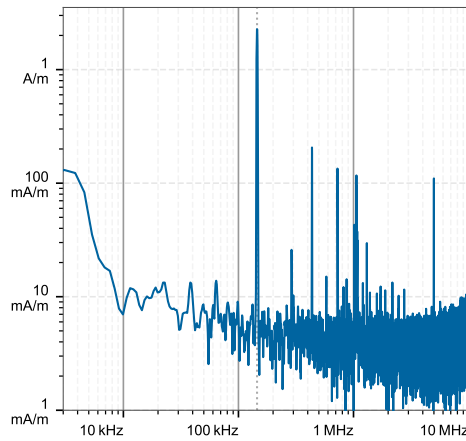
Distance to -20.0 dB boundary:

44.61 mm

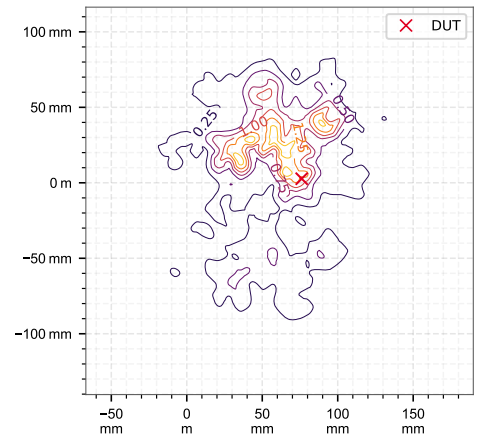
Offset relative to DUT:

x: 0.00 m, y: 0.00 m, z: 1.00 mm

H-field magnitude [RMS] at maximum location



H-field magnitude [RMS] at lowest plane



Incident fields, and induced quantities in the anatomical model

Distance [mm]	Peak incident fields [RMS]		Peak E_{ind} [V/m, RMS]			Peak J_{ind} [A/m ² , RMS]	psSAR [mW/kg]		H-field extent
	H_{inc} [A/m]	E_{inc} [V/m]	Cube avg.	Local	Line avg.	Surface avg.	1g avg.	10g avg.	-20 dB radius [mm]
0.0	2.75	55.5	0.0187	0.019	0.019	0.0126	0.000173	0.000107	69.2