

# DASY8 Module WPT Measurement Report

## Device under test

Info:  
V-Coil35085

## Tool info

DASY software version:  
DASY8 Module WPT 2.4.0.4346

Probe model, serial no. and configuration date:  
MAGPy-8H3D+E3Dv2, WP000211, 2023/05/09

Software version:  
2.0.49, backend: 2.2.3

## Scan info

Center location:  
x: 67.77 mm, y: -107.35 mm, z: 36.87 mm

Dimensions:  
x: 345.0 mm, y: 521.0 mm, z: 36.7 mm

Resolution:  
x: 7.33 mm, y: 7.33 mm, z: 7.33 mm

Completed on:  
2024/03/02

## Measurement results

Maximum H-field [RMS]:  
MAGNITUDE: 130.36 A/m  
x: 94.42 A/m, y: 56.79 A/m, z: 69.67 A/m

Maximum H-field location relative to DUT:  
x: 69.67 mm, y: -128.33 mm, z: 8.50 mm

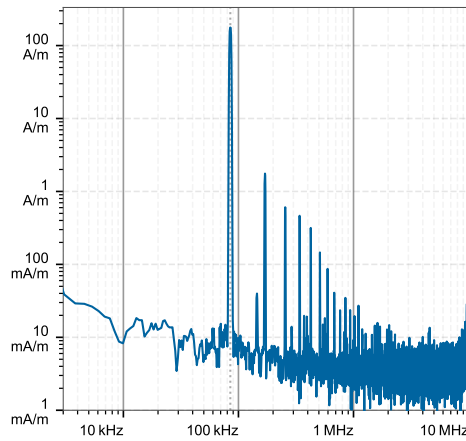
Maximum E-field [RMS]:  
MAGNITUDE: 204.04 V/m  
x: 8.13 V/m, y: 2.71 V/m, z: 203.86 V/m

Maximum E-field location relative to DUT:  
x: 88.00 mm, y: 146.67 mm, z: 1.00 mm

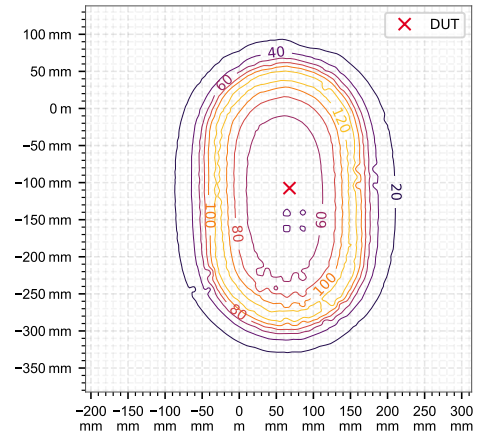
Distance to -20.0 dB boundary:  
69.18 mm

Offset relative to DUT:  
x: 0.00 m, y: 0.00 m, z: 1.00 mm

## H-field magnitude [RMS] at maximum location



## H-field magnitude [RMS] at lowest plane



## Incident fields, and induced quantities in the anatomical model

Distance [mm]	Peak incident fields [RMS]		Peak $E_{ind}$ [V/m, RMS]			Peak $J_{ind}$ [A/m <sup>2</sup> , RMS]	psSAR [mW/kg]		H-field extent
	$H_{inc}$ [A/m]	$E_{inc}$ [V/m]	Cube avg.	Local	Line avg.	Surface avg.	1g avg.	10g avg.	-20 dB radius [mm]
2.0	179.0	181.0	3.24	3.26	3.27	1.09	2.98	2.3	187.0