

58_FR1 n66_40M_QPSK_1RB_1Offset_Front_5mm_Ch349000

Communication System: Band n66; Frequency: 1745.000

Medium: HSL. Medium parameters used: $f = 1745.000$ MHz; $\sigma = 1.35$ S/m; $\epsilon_r = 40.1$

Ambient Temperature: 23.1°C; Liquid Temperature: 22.7°C

DASY6 Configuration:

- Probe: EX3DV4 - SN7706; ConvF(9.31, 9.31, 9.31); Calibrated: 2023-01-26
- Sensor-Surface: 1.4 mm
- Electronics: DAE4 Sn1649; Calibrated: 2023-04-24
- Phantom: Twin-SAM V8.0 (30deg probe tilt); Serial: 2024
- Measurement Software: 16.2.4.2448

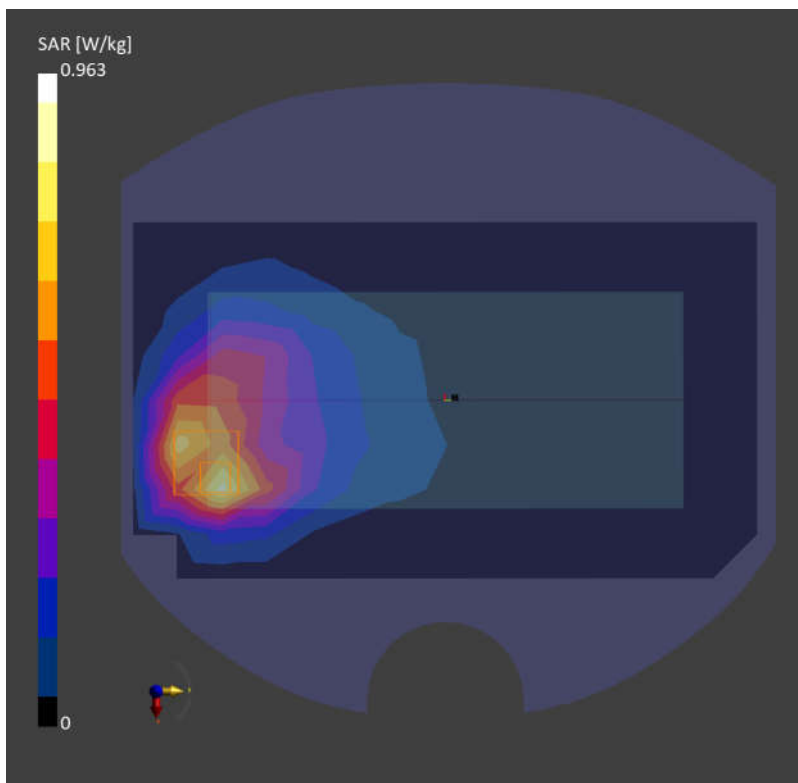
Area Scan (120.0 mm x 210.0 mm): Measurement Grid: 10.0 mm x 15.0 mm

SAR (1g) = 0.947 W/kg; SAR (10g) = 0.414 W/kg;

Zoom Scan (30.0 mm x 30.0 mm x 30.0 mm): Measurement Grid: 6.0 mm x 6.0 mm x 1.5 mm

Power Drift = 0.01 dB

SAR (1g) = 0.963 W/kg; SAR (10g) = 0.431 W/kg;



59_GSM1900_GPRS (3 Tx slots)_Front_5mm_Ch661

Communication System: PCS 1900; Frequency: 1880.000

Medium: HSL. Medium parameters used: $f= 1880.000$ MHz; $\sigma= 1.41$ S/m; $\epsilon_r = 38.7$

Ambient Temperature: 23.1°C; Liquid Temperature: 22.9°C

DASY6 Configuration:

- Probe: EX3DV4 - SN7706; ConvF(8.89, 8.89, 8.89); Calibrated: 2023-01-26
- Sensor-Surface: 1.4 mm
- Electronics: DAE4 Sn1649; Calibrated: 2023-04-24
- Phantom: Twin-SAM V8.0 (30deg probe tilt); Serial: 2024
- Measurement Software: 16.2.4.2448

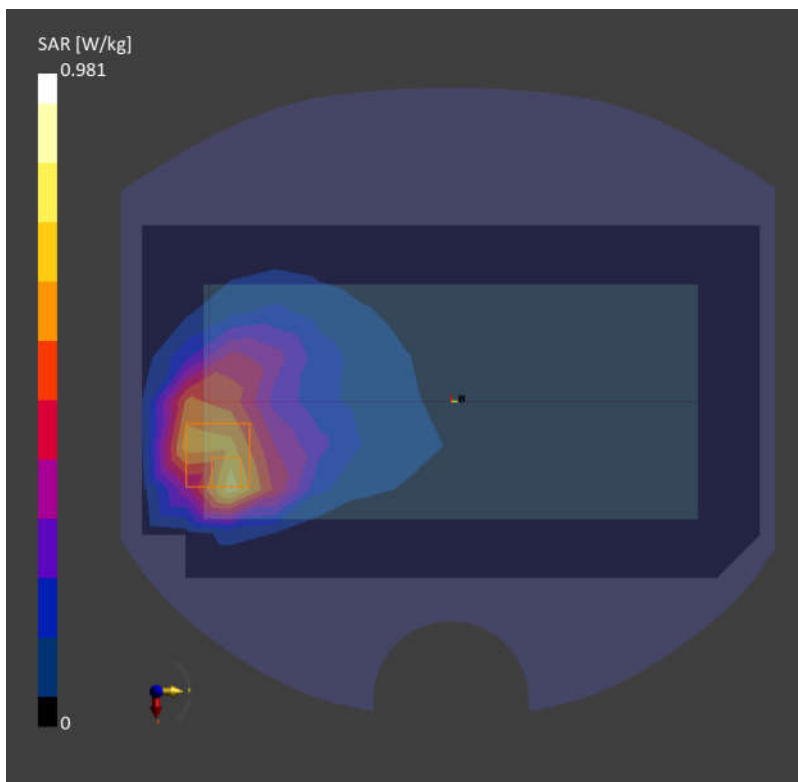
Area Scan (120.0 mm x 210.0 mm): Measurement Grid: 10.0 mm x 15.0 mm

SAR (1g) = 0.779 W/kg; SAR (10g) = 0.401 W/kg;

Zoom Scan (30.0 mm x 30.0 mm x 30.0 mm): Measurement Grid: 6.0 mm x 6.0 mm x 1.5 mm

Power Drift = -0.08 dB

SAR (1g) = 0.981 W/kg; SAR (10g) = 0.440 W/kg;



60_WCDMA II_RMC 12.2Kbps_Front_5mm_Ch9262

Communication System: Band 2; Frequency: 1852.400

Medium: HSL. Medium parameters used: $f=1852.400$ MHz; $\sigma=1.38$ S/m; $\epsilon_r=38.8$

Ambient Temperature: 23.1°C; Liquid Temperature: 22.9°C

DASY6 Configuration:

- Probe: EX3DV4 - SN7706; ConvF(8.89, 8.89, 8.89); Calibrated: 2023-01-26
- Sensor-Surface: 1.4 mm
- Electronics: DAE4 Sn1649; Calibrated: 2023-04-24
- Phantom: Twin-SAM V8.0 (30deg probe tilt); Serial: 2024
- Measurement Software: 16.2.4.2448

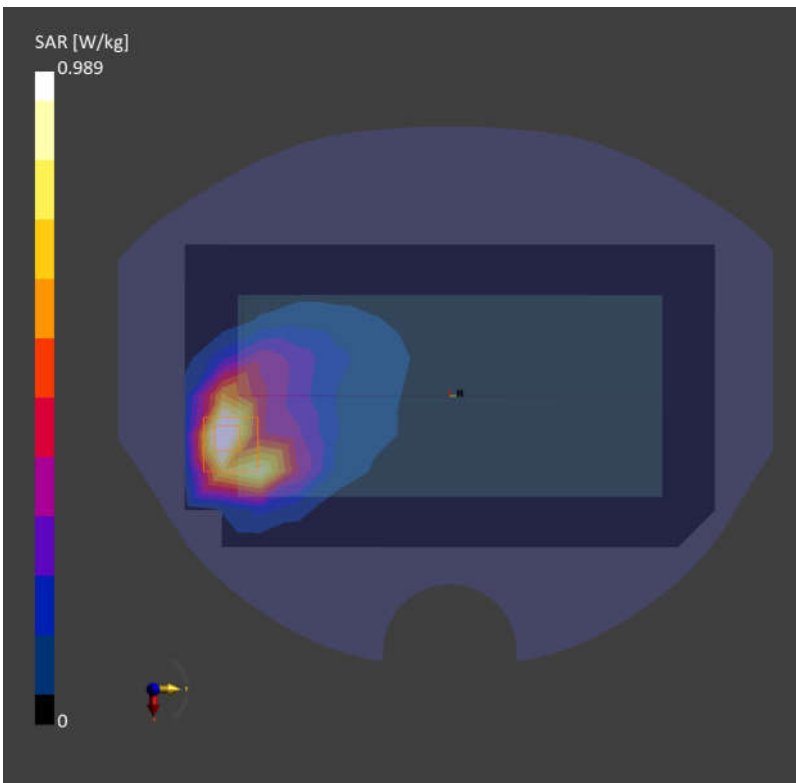
Area Scan (120.0 mm x 210.0 mm): Measurement Grid: 10.0 mm x 15.0 mm

SAR (1g) = 0.967 W/kg; SAR (10g) = 0.482 W/kg;

Zoom Scan (30.0 mm x 30.0 mm x 30.0 mm): Measurement Grid: 6.0 mm x 6.0 mm x 1.5 mm

Power Drift = -0.08 dB

SAR (1g) = 0.989 W/kg; SAR (10g) = 0.448 W/kg;



61_LTE Band 2_20M_QPSK_1RB_0Offset_Front_5mm_Ch18700

Communication System: Band 2; Frequency: 1860.000

Medium: HSL. Medium parameters used: $f = 1860.000$ MHz; $\sigma = 1.39$ S/m; $\epsilon_r = 38.8$

Ambient Temperature: 23.1°C; Liquid Temperature: 22.9°C

DASY6 Configuration:

- Probe: EX3DV4 - SN7706; ConvF(8.89, 8.89, 8.89); Calibrated: 2023-01-26
- Sensor-Surface: 1.4 mm
- Electronics: DAE4 Sn1649; Calibrated: 2023-04-24
- Phantom: Twin-SAM V8.0 (30deg probe tilt); Serial: 2024
- Measurement Software: 16.2.4.2448

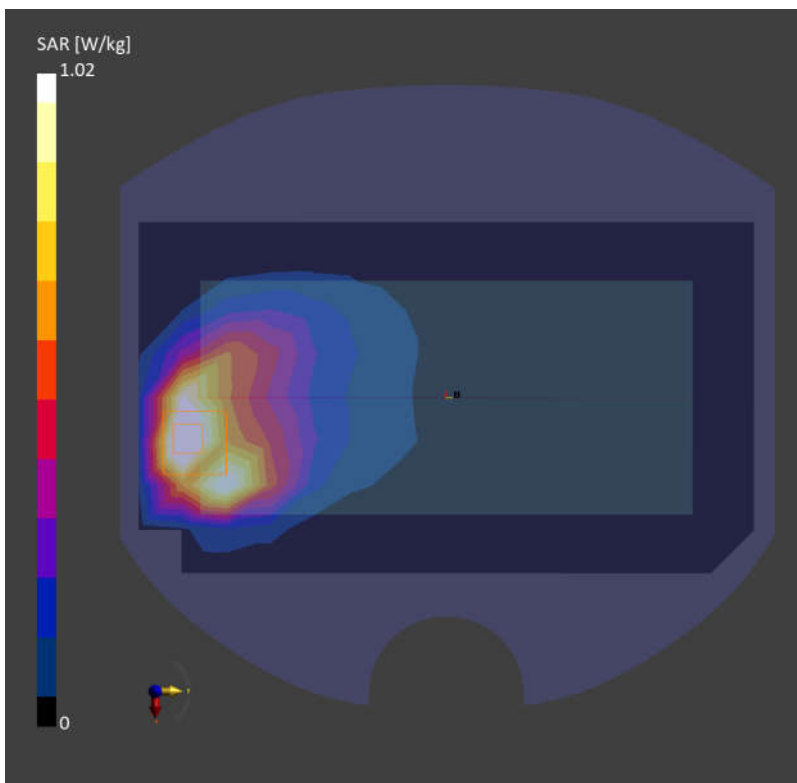
Area Scan (120.0 mm x 210.0 mm): Measurement Grid: 10.0 mm x 15.0 mm

SAR (1g) = 1.02 W/kg; SAR (10g) = 0.563 W/kg;

Zoom Scan (30.0 mm x 30.0 mm x 30.0 mm): Measurement Grid: 6.0 mm x 6.0 mm x 1.5 mm

Power Drift = 0.06 dB

SAR (1g) = 1.02 W/kg; SAR (10g) = 0.576 W/kg;



62_FR1 n2_20M_QPSK_1RB_1Offset_Front_5mm_Ch372000

Communication System: Band n2; Frequency: 1860.000

Medium: HSL. Medium parameters used: $f = 1860.000$ MHz; $\sigma = 1.39$ S/m; $\epsilon_r = 38.8$

Ambient Temperature: 23.1°C; Liquid Temperature: 22.9°C

DASY6 Configuration:

- Probe: EX3DV4 - SN7706; ConvF(8.89, 8.89, 8.89); Calibrated: 2023-01-26
- Sensor-Surface: 1.4 mm
- Electronics: DAE4 Sn1649; Calibrated: 2023-04-24
- Phantom: Twin-SAM V8.0 (30deg probe tilt); Serial: 2024
- Measurement Software: 16.2.4.2448

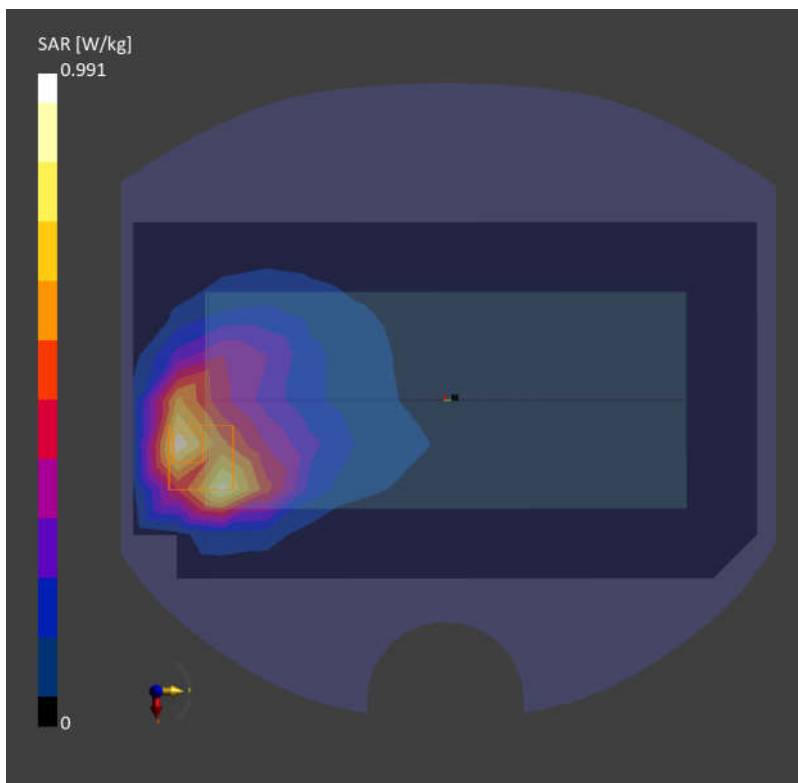
Area Scan (120.0 mm x 210.0 mm): Measurement Grid: 10.0 mm x 15.0 mm

SAR (1g) = 0.939 W/kg; SAR (10g) = 0.429 W/kg;

Zoom Scan (30.0 mm x 30.0 mm x 30.0 mm): Measurement Grid: 6.0 mm x 6.0 mm x 1.5 mm

Power Drift = 0.03 dB

SAR (1g) = 0.991 W/kg; SAR (10g) = 0.451 W/kg;



63_LTE Band 7_20M_QPSK_1RB_0Offset_Back_5mm_Ch21350

Communication System: Band 7; Frequency: 2560.000

Medium: HSL. Medium parameters used: $f = 2560.000$ MHz; $\sigma = 1.92$ S/m; $\epsilon_r = 39.1$

Ambient Temperature: 23.2°C; Liquid Temperature: 22.6°C

DASY6 Configuration:

- Probe: EX3DV4 - SN7706; ConvF(8.1, 8.1, 8.1); Calibrated: 2023-01-26
- Sensor-Surface: 1.4 mm
- Electronics: DAE4 Sn1649; Calibrated: 2023-04-24
- Phantom: Twin-SAM V8.0 (30deg probe tilt); Serial: 2024
- Measurement Software: 16.2.4.2448

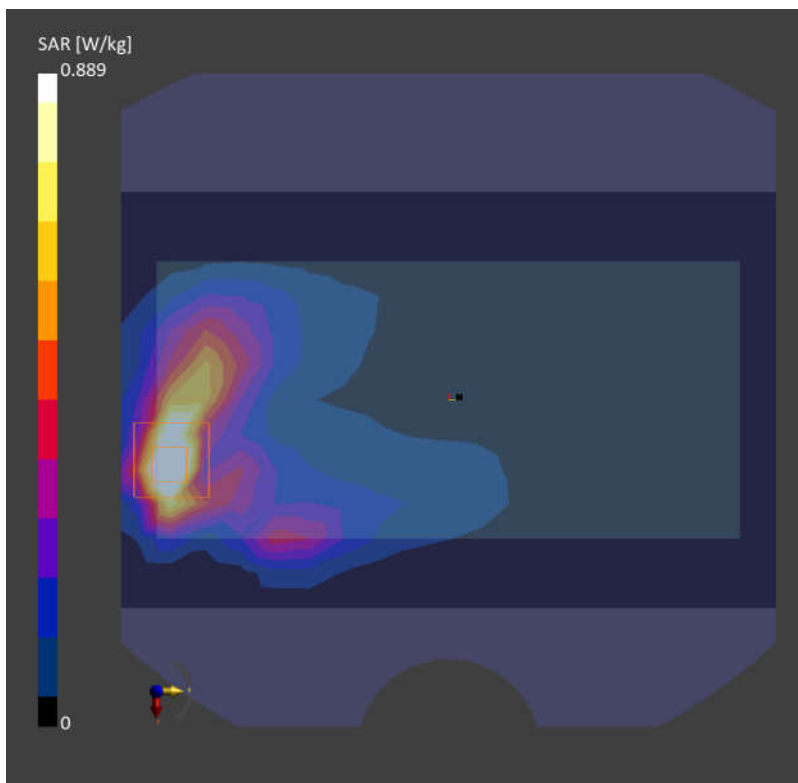
Area Scan (120.0 mm x 200.0 mm): Measurement Grid: 10.0 mm x 10.0 mm

SAR (1g) = 0.880 W/kg; SAR (10g) = 0.357 W/kg;

Zoom Scan (30.0 mm x 30.0 mm x 30.0 mm): Measurement Grid: 5.0 mm x 5.0 mm x 1.5 mm

Power Drift = 0.02 dB

SAR (1g) = 0.889 W/kg; SAR (10g) = 0.370 W/kg;



64_LTE Band 41_20M_QPSK_1RB_0Offset_Back_5mm_Ch41490

Communication System: Band 41; Frequency: 2680.000

Medium: HSL. Medium parameters used: $f = 2680.000$ MHz; $\sigma = 2.00$ S/m; $\epsilon_r = 38.9$

Ambient Temperature: 23.2°C; Liquid Temperature: 22.6°C

DASY6 Configuration:

- Probe: EX3DV4 - SN7706; ConvF(8.1, 8.1, 8.1); Calibrated: 2023-01-26
- Sensor-Surface: 1.4 mm
- Electronics: DAE4 Sn1649; Calibrated: 2023-04-24
- Phantom: Twin-SAM V8.0 (30deg probe tilt); Serial: 2024
- Measurement Software: 16.2.4.2448

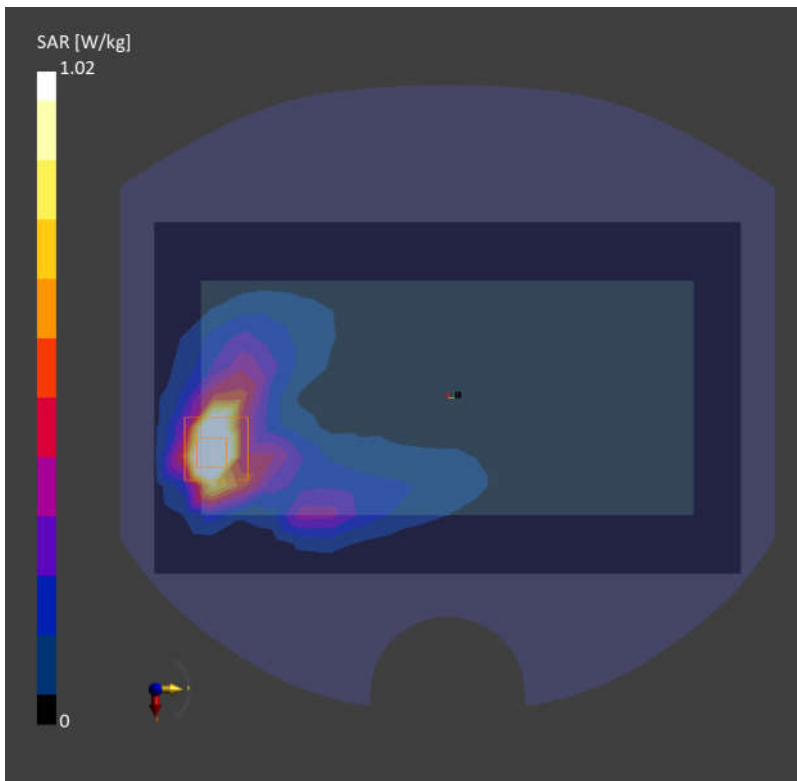
Area Scan (120.0 mm x 200.0 mm): Measurement Grid: 10.0 mm x 10.0 mm

SAR (1g) = 1.16 W/kg; SAR (10g) = 0.456 W/kg;

Zoom Scan (30.0 mm x 30.0 mm x 30.0 mm): Measurement Grid: 5.0 mm x 5.0 mm x 1.5 mm

Power Drift = -0.07 dB

SAR (1g) = 1.02 W/kg; SAR (10g) = 0.475 W/kg;



65_FR1 n7_40M_QPSK_1RB_1Offset_Back_5mm_Ch507000

Communication System: Band n7; Frequency: 2535.000

Medium: HSL. Medium parameters used: $f = 2535.000$ MHz; $\sigma = 1.90$ S/m; $\epsilon_r = 39.0$

Ambient Temperature: 23.2°C; Liquid Temperature: 22.6°C

DASY6 Configuration:

- Probe: EX3DV4 - SN7706; ConvF(8.1, 8.1, 8.1); Calibrated: 2023-01-26
- Sensor-Surface: 1.4 mm
- Electronics: DAE4 Sn1649; Calibrated: 2023-04-24
- Phantom: Twin-SAM V8.0 (30deg probe tilt); Serial: 2024
- Measurement Software: 16.2.4.2448

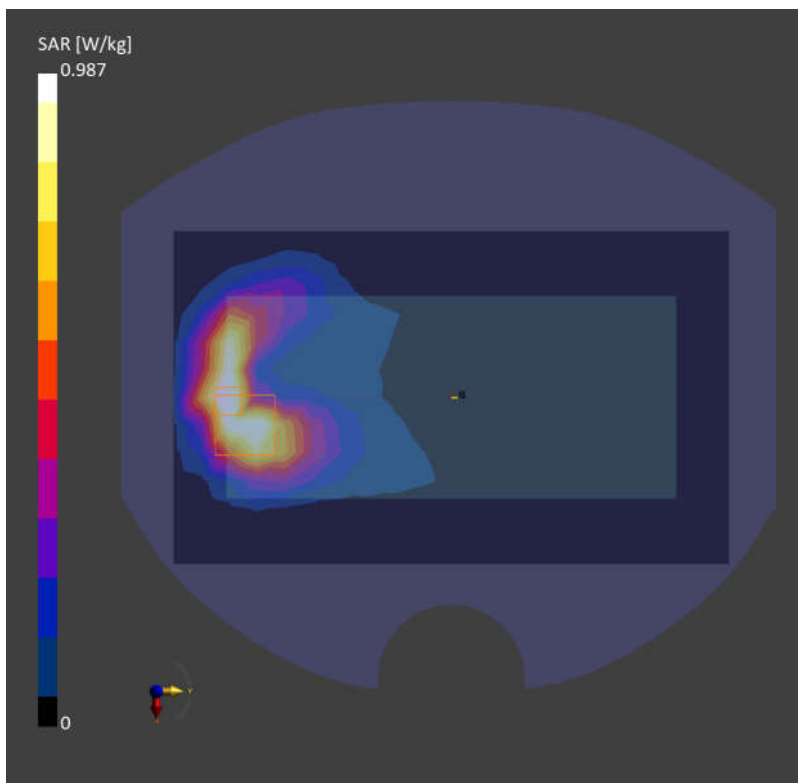
Area Scan (120.0 mm x 200.0 mm): Measurement Grid: 10.0 mm x 10.0 mm

SAR (1g) = 0.857 W/kg; SAR (10g) = 0.424 W/kg;

Zoom Scan (30.0 mm x 30.0 mm x 30.0 mm): Measurement Grid: 5.0 mm x 5.0 mm x 1.5 mm

Power Drift = -0.06 dB

SAR (1g) = 0.987 W/kg; SAR (10g) = 0.449 W/kg;



66_FR1 n41_100M_QPSK_1RB_1Offset_Back_5mm_Ch518598

Communication System: Band n41; Frequency: 2592.990

Medium: HSL. Medium parameters used: $f = 2592.990$ MHz; $\sigma = 1.93$ S/m; $\epsilon_r = 39.0$

Ambient Temperature: 23.2°C; Liquid Temperature: 22.6°C

DASY6 Configuration:

- Probe: EX3DV4 - SN7706; ConvF(8.1, 8.1, 8.1); Calibrated: 2023-01-26
- Sensor-Surface: 1.4 mm
- Electronics: DAE4 Sn1649; Calibrated: 2023-04-24
- Phantom: Twin-SAM V8.0 (30deg probe tilt); Serial: 2024
- Measurement Software: 16.2.4.2448

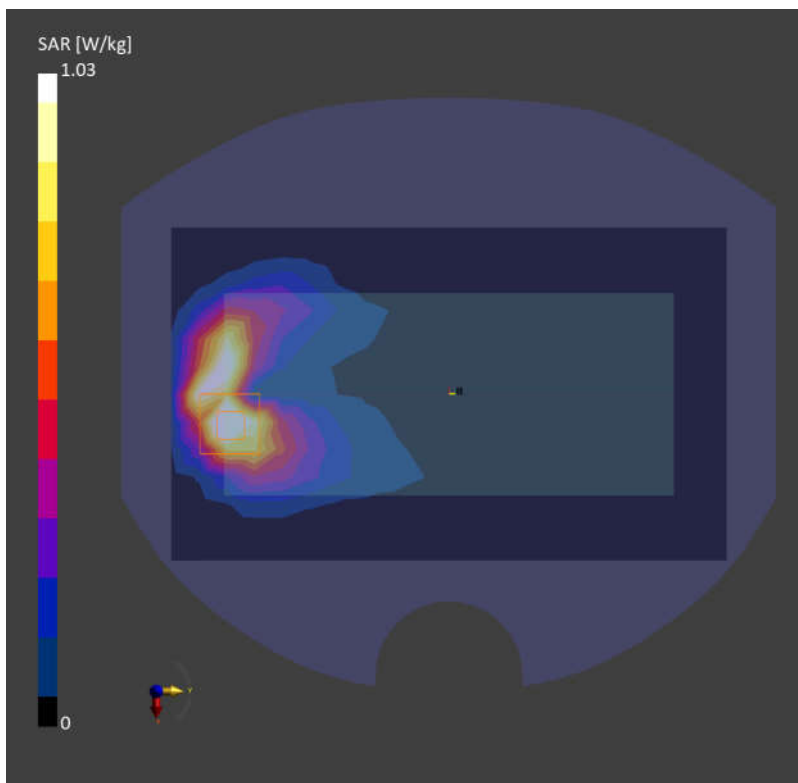
Area Scan (120.0 mm x 200.0 mm): Measurement Grid: 10.0 mm x 10.0 mm

SAR (1g) = 0.987 W/kg; SAR (10g) = 0.438 W/kg;

Zoom Scan (30.0 mm x 30.0 mm x 30.0 mm): Measurement Grid: 5.0 mm x 5.0 mm x 1.5 mm

Power Drift = 0.06 dB

SAR (1g) = 1.03 W/kg; SAR (10g) = 0.454 W/kg;



67_LTE Band 42 Part 27Q_20M_QPSK_1RB_0Offset_Back_5mm_Ch42590

Communication System: Band 42; Frequency: 3500.000

Medium: HSL. Medium parameters used: $f= 3500.000$ MHz; $\sigma= 2.78$ S/m; $\epsilon_r = 38.9$

Ambient Temperature: 23.4°C; Liquid Temperature: 22.9°C

DASY6 Configuration:

- Probe: EX3DV4 - SN7706; ConvF(7.68, 7.68, 7.68); Calibrated: 2023-01-26
- Sensor-Surface: 1.4 mm
- Electronics: DAE4 Sn1649; Calibrated: 2023-04-24
- Phantom: Twin-SAM V8.0 (30deg probe tilt); Serial: 2024
- Measurement Software: 16.2.4.2448

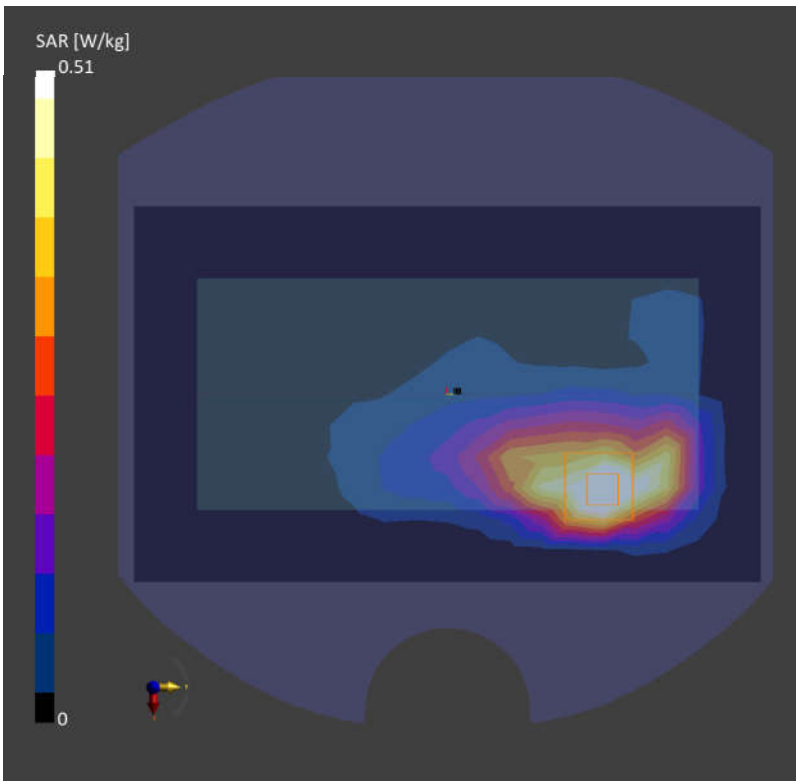
Area Scan (120.0 mm x 200.0 mm): Measurement Grid: 10.0 mm x 10.0 mm

SAR (1g) = 0.502 W/kg; SAR (10g) = 0.247 W/kg;

Zoom Scan (28.0 mm x 28.0 mm x 28.0 mm): Measurement Grid: 4.0 mm x 4.0 mm x 1.4 mm

Power Drift = -0.08 dB

SAR (1g) = 0.510 W/kg; SAR (10g) = 0.254 W/kg;



68_LTE Band 48_20M_QPSK_1RB_0Offset_Back_5mm_Ch55830

Communication System: Band 48; Frequency: 3609.000

Medium: HSL. Medium parameters used: $f= 3609.000$ MHz; $\sigma= 2.91$ S/m; $\epsilon_r = 38.8$

Ambient Temperature: 23.1°C; Liquid Temperature: 22.9°C

DASY6 Configuration:

- Probe: EX3DV4 - SN7706; ConvF(7.61, 7.61, 7.61); Calibrated: 2023-01-26
- Sensor-Surface: 1.4 mm
- Electronics: DAE4 Sn1649; Calibrated: 2023-04-24
- Phantom: Twin-SAM V8.0 (30deg probe tilt); Serial: 2024
- Measurement Software: 16.2.4.2448

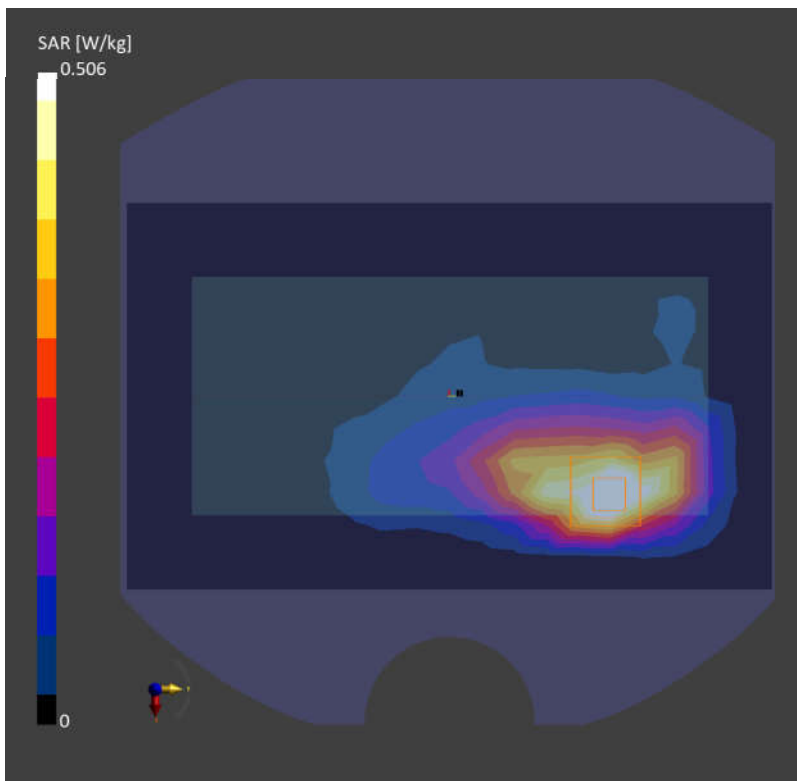
Area Scan (120.0 mm x 200.0 mm): Measurement Grid: 10.0 mm x 10.0 mm

SAR (1g) = 0.495 W/kg; SAR (10g) = 0.201 W/kg;

Zoom Scan (28.0 mm x 28.0 mm x 28.0 mm): Measurement Grid: 4.0 mm x 4.0 mm x 1.4 mm

Power Drift = 0.04 dB

SAR (1g) = 0.506 W/kg; SAR (10g) = 0.204 W/kg;



69_FR1 n77 Part 27O_100M_QPSK_135RB_69Offset_Back_5mm_Ch656000

Communication System: Band n77; Frequency: 3840.000

Medium: HSL. Medium parameters used: $f= 3840.000$ MHz; $\sigma= 3.18$ S/m; $\epsilon_r = 37.9$

Ambient Temperature: 23.2°C; Liquid Temperature: 22.9°C

DASY6 Configuration:

- Probe: EX3DV4 - SN7706; ConvF(7.31, 7.31, 7.31); Calibrated: 2023-01-26
- Sensor-Surface: 1.4 mm
- Electronics: DAE4 Sn1649; Calibrated: 2023-04-24
- Phantom: Twin-SAM V8.0 (30deg probe tilt); Serial: 2024
- Measurement Software: 16.2.4.2448

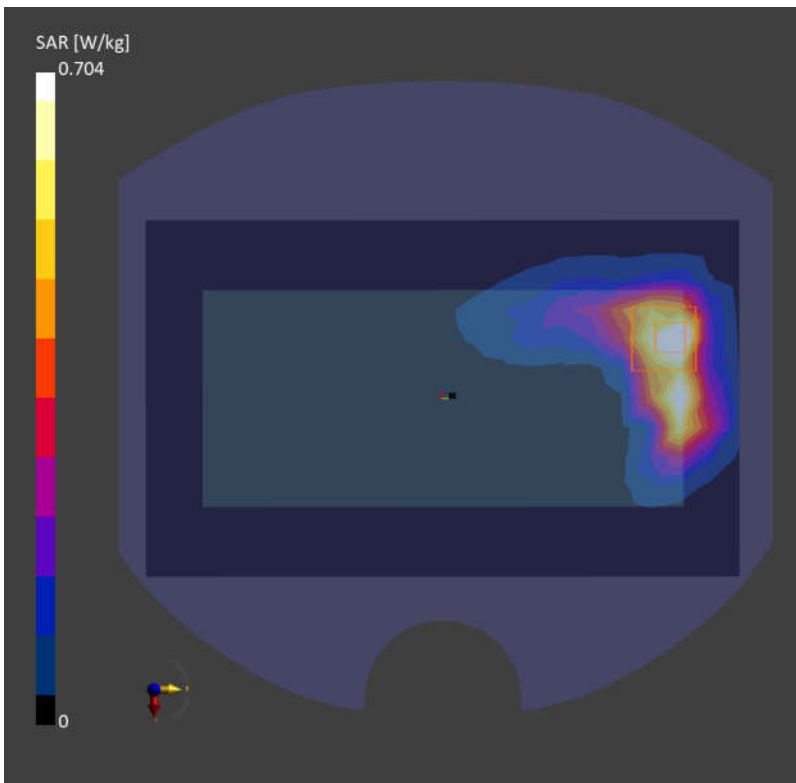
Area Scan (120.0 mm x 200.0 mm): Measurement Grid: 10.0 mm x 10.0 mm

SAR (1g) = 0.610 W/kg; SAR (10g) = 0.257 W/kg;

Zoom Scan (28.0 mm x 28.0 mm x 28.0 mm): Measurement Grid: 4.0 mm x 4.0 mm x 1.4 mm

Power Drift = -0.08 dB

SAR (1g) = 0.704 W/kg; SAR (10g) = 0.270 W/kg;



70_WLAN2.4GHz_802.11b 1Mbps_Back_5mm_Ch6

Communication System: WLAN 2.4GHz; Frequency: 2437.000

Medium: HSL. Medium parameters used: $f = 2437.000$ MHz; $\sigma = 1.83$ S/m; $\epsilon_r = 38.2$

Ambient Temperature: 23.1°C; Liquid Temperature: 22.6°C

DASY6 Configuration:

- Probe: EX3DV4 - SN7706; ConvF(8.38, 8.38, 8.38); Calibrated: 2023-01-26
- Sensor-Surface: 1.4 mm
- Electronics: DAE4 Sn1649; Calibrated: 2023-04-24
- Phantom: Twin-SAM V8.0 (30deg probe tilt); Serial: 2024
- Measurement Software: 16.2.4.2448

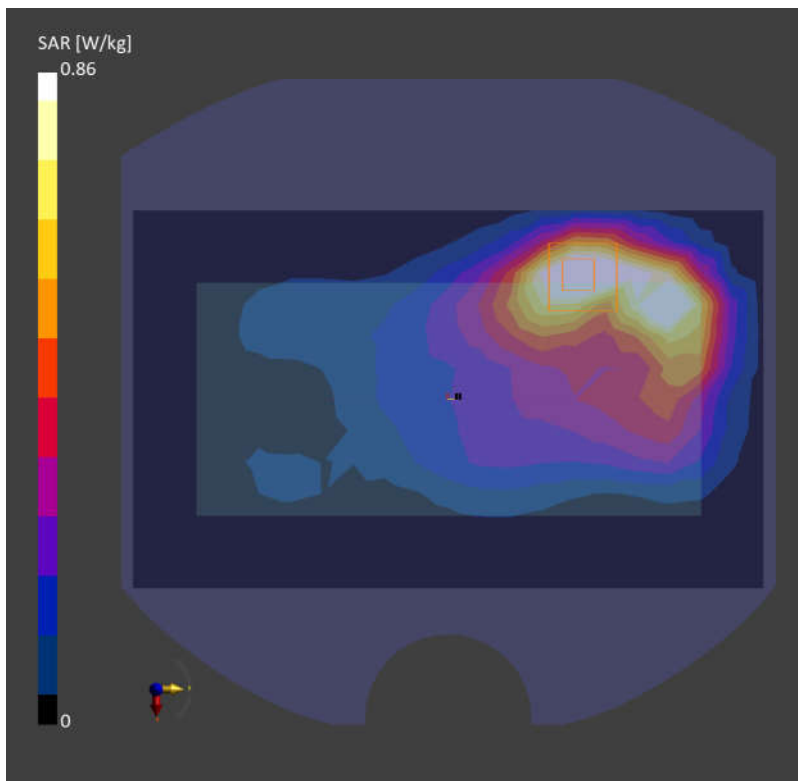
Area Scan (120.0 mm x 200.0 mm): Measurement Grid: 10.0 mm x 10.0 mm

SAR (1g) = 0.840 W/kg; SAR (10g) = 0.425 W/kg;

Zoom Scan (30.0 mm x 30.0 mm x 30.0 mm): Measurement Grid: 5.0 mm x 5.0 mm x 1.5 mm

Power Drift = -0.04 dB

SAR (1g) = 0.860 W/kg; SAR (10g) = 0.419 W/kg;



71_Bluetooth_1Mbps_Back_5mm_Ch78

Communication System: ISM 2.4 GHz Band; Frequency: 2480.000

Medium: HSL. Medium parameters used: $f = 2480.000$ MHz; $\sigma = 1.88$ S/m; $\epsilon_r = 38.1$

Ambient Temperature: 23.1°C; Liquid Temperature: 22.6°C

DASY6 Configuration:

- Probe: EX3DV4 - SN7706; ConvF(8.38, 8.38, 8.38); Calibrated: 2023-01-26
- Sensor-Surface: 1.4 mm
- Electronics: DAE4 Sn1649; Calibrated: 2023-04-24
- Phantom: Twin-SAM V8.0 (30deg probe tilt); Serial: 2024
- Measurement Software: 16.2.4.2448

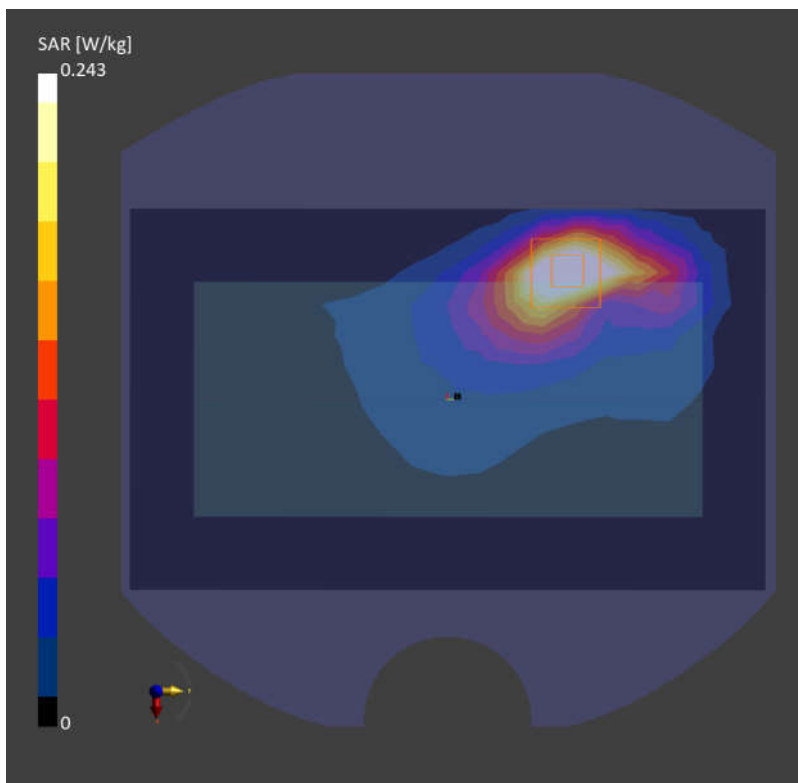
Area Scan (120.0 mm x 200.0 mm): Measurement Grid: 10.0 mm x 10.0 mm

SAR (1g) = 0.245 W/kg; SAR (10g) = 0.117 W/kg;

Zoom Scan (30.0 mm x 30.0 mm x 30.0 mm): Measurement Grid: 5.0 mm x 5.0 mm x 1.5 mm

Power Drift = 0.01 dB

SAR (1g) = 0.243 W/kg; SAR (10g) = 0.116 W/kg;



72_WLAN5GHz_802.11ac-VHT80 MCS0_Back_5mm_Ch58

Communication System: WLAN 5GHz; Frequency: 5290.000

Medium: HSL. Medium parameters used: $f= 5290.000$ MHz; $\sigma= 4.60$ S/m; $\epsilon_r = 35.4$

Ambient Temperature: 23.3°C; Liquid Temperature: 22.7°C

DASY6 Configuration:

- Probe: EX3DV4 - SN7706; ConvF(6.18, 6.18, 6.18); Calibrated: 2023-01-26
- Sensor-Surface: 1.4 mm
- Electronics: DAE4 Sn1649; Calibrated: 2023-04-24
- Phantom: Twin-SAM V8.0 (30deg probe tilt); Serial: 2024
- Measurement Software: 16.2.4.2448

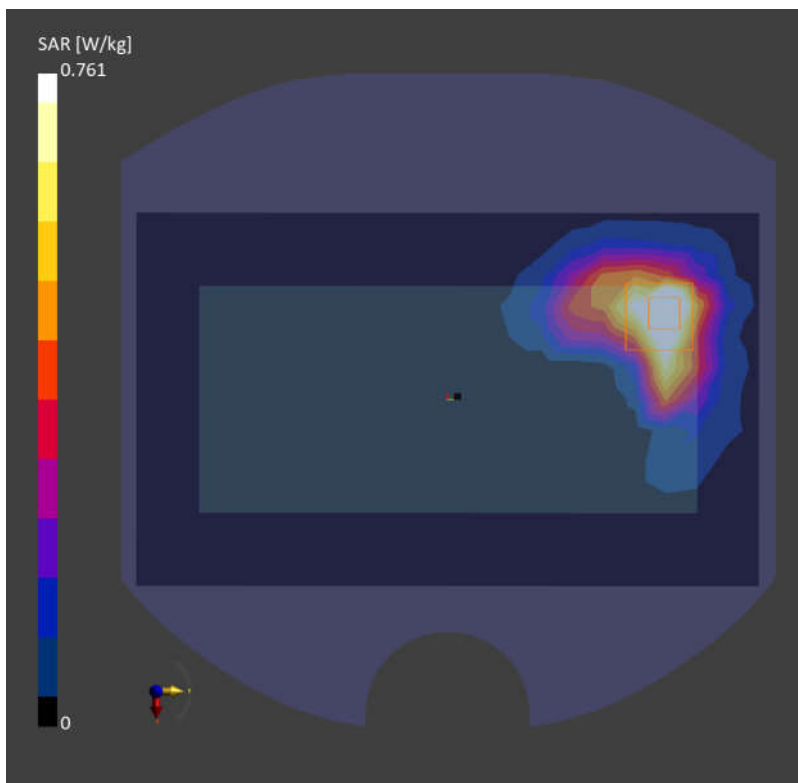
Area Scan (120.0 mm x 200.0 mm): Measurement Grid: 10.0 mm x 10.0 mm

SAR (1g) = 0.744 W/kg; SAR (10g) = 0.285 W/kg;

Zoom Scan (24.0 mm x 22.0 mm x 22.0 mm): Measurement Grid: 4.0 mm x 4.0 mm x 1.4 mm

Power Drift = -0.06 dB

SAR (1g) = 0.761 W/kg; SAR (10g) = 0.295 W/kg;



73_WLAN5GHz_802.11ac-VHT80 MCS0_Back_5mm_Ch106

Communication System: WLAN 5GHz; Frequency: 5530.000

Medium: HSL. Medium parameters used: $f= 5530.000$ MHz; $\sigma= 4.87$ S/m; $\epsilon_r = 35.0$

Ambient Temperature: 23.1°C; Liquid Temperature: 22.7°C

DASY6 Configuration:

- Probe: EX3DV4 - SN7706; ConvF(5.39, 5.39, 5.39); Calibrated: 2023-01-26
- Sensor-Surface: 1.4 mm
- Electronics: DAE4 Sn1649; Calibrated: 2023-04-24
- Phantom: Twin-SAM V8.0 (30deg probe tilt); Serial: 2024
- Measurement Software: 16.2.4.2448

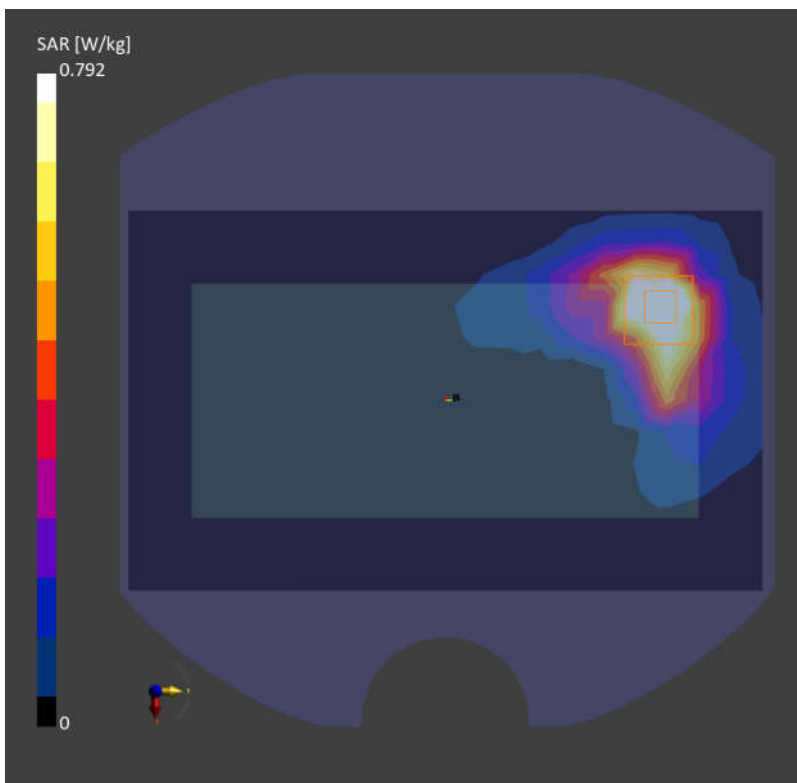
Area Scan (120.0 mm x 200.0 mm): Measurement Grid: 10.0 mm x 10.0 mm

SAR (1g) = 0.731 W/kg; SAR (10g) = 0.309 W/kg;

Zoom Scan (24.0 mm x 22.0 mm x 22.0 mm): Measurement Grid: 4.0 mm x 4.0 mm x 1.4 mm

Power Drift = -0.06 dB

SAR (1g) = 0.792 W/kg; SAR (10g) = 0.321 W/kg;



74_WLAN5GHz_802.11ac-VHT80 MCS0_Back_5mm_Ch155

Communication System: WLAN 5GHz; Frequency: 5775.000

Medium: HSL. Medium parameters used: $f = 5775.000$ MHz; $\sigma = 5.17$ S/m; $\epsilon_r = 34.6$

Ambient Temperature: 23.4°C; Liquid Temperature: 22.7°C

DASY6 Configuration:

- Probe: EX3DV4 - SN7706; ConvF(5.57, 5.57, 5.57); Calibrated: 2023-01-26
- Sensor-Surface: 1.4 mm
- Electronics: DAE4 Sn1649; Calibrated: 2023-04-24
- Phantom: Twin-SAM V8.0 (30deg probe tilt); Serial: 2024
- Measurement Software: 16.2.4.2448

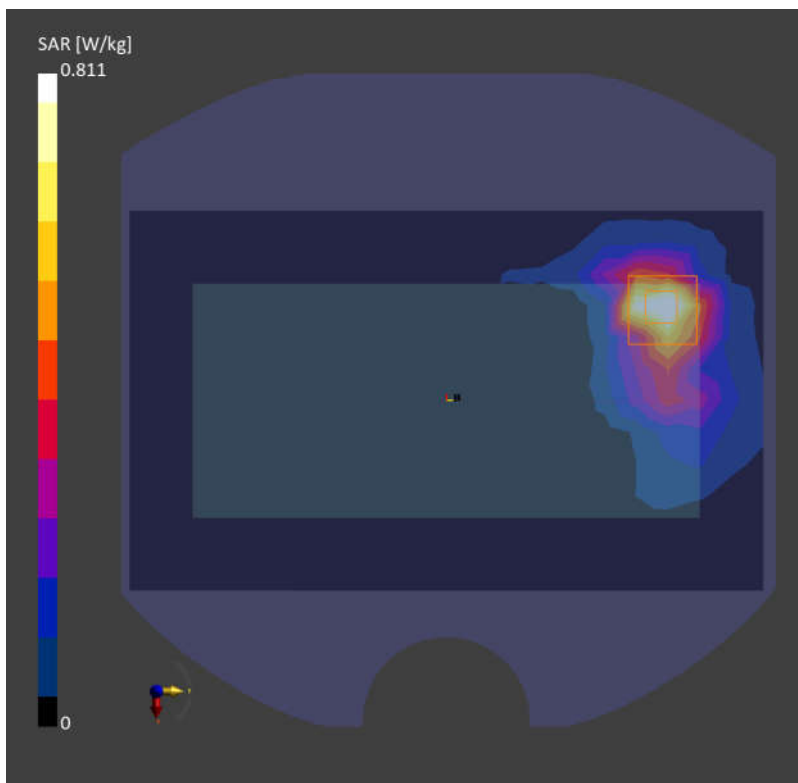
Area Scan (120.0 mm x 200.0 mm): Measurement Grid: 10.0 mm x 10.0 mm

SAR (1g) = 0.772 W/kg; SAR (10g) = 0.340 W/kg;

Zoom Scan (24.0 mm x 22.0 mm x 22.0 mm): Measurement Grid: 4.0 mm x 4.0 mm x 1.4 mm

Power Drift = 0.06 dB

SAR (1g) = 0.811 W/kg; SAR (10g) = 0.350 W/kg;



75_GSM850_GPRS (3 Tx slots)_Back_0mm_Ch189

Communication System: GSM 850; Frequency: 836.400
Medium: HSL. Medium parameters used: $f = 836.400$ MHz; $\sigma = 0.921$ S/m; $\epsilon_r = 40.5$
Ambient Temperature: 23.3°C; Liquid Temperature: 22.8°C

DASY6 Configuration:

- Probe: EX3DV4 - SN7706; ConvF(10.67, 10.67, 10.67); Calibrated: 2023-01-26
- Sensor-Surface: 1.4 mm
- Electronics: DAE4 Sn1649; Calibrated: 2023-04-24
- Phantom: Twin-SAM V8.0 (30deg probe tilt); Serial: 2024
- Measurement Software: 16.2.4.2448

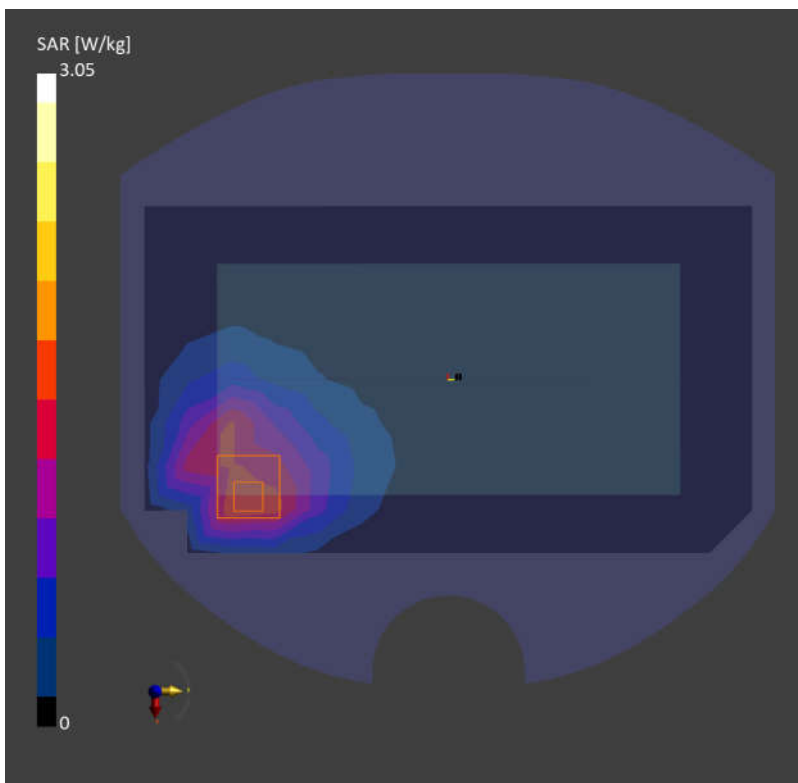
Area Scan (120.0 mm x 210.0 mm): Measurement Grid: 10.0 mm x 15.0 mm

SAR (1g) = 1.65 W/kg; SAR (10g) = 1.07 W/kg;

Zoom Scan (30.0 mm x 30.0 mm x 30.0 mm): Measurement Grid: 6.0 mm x 6.0 mm x 1.5 mm

Power Drift = 0.01 dB

SAR (1g) = 3.05 W/kg; SAR (10g) = 1.41 W/kg;



76_WCDMA V_RMC 12.2Kbps_Back_0mm_Ch4182

Communication System: Band 5; Frequency: 836.400

Medium: HSL. Medium parameters used: $f = 836.400$ MHz; $\sigma = 0.921$ S/m; $\epsilon_r = 40.5$

Ambient Temperature: 23.3°C; Liquid Temperature: 22.8°C

DASY6 Configuration:

- Probe: EX3DV4 - SN7706; ConvF(10.67, 10.67, 10.67); Calibrated: 2023-01-26
- Sensor-Surface: 1.4 mm
- Electronics: DAE4 Sn1649; Calibrated: 2023-04-24
- Phantom: Twin-SAM V8.0 (30deg probe tilt); Serial: 2024
- Measurement Software: 16.2.4.2448

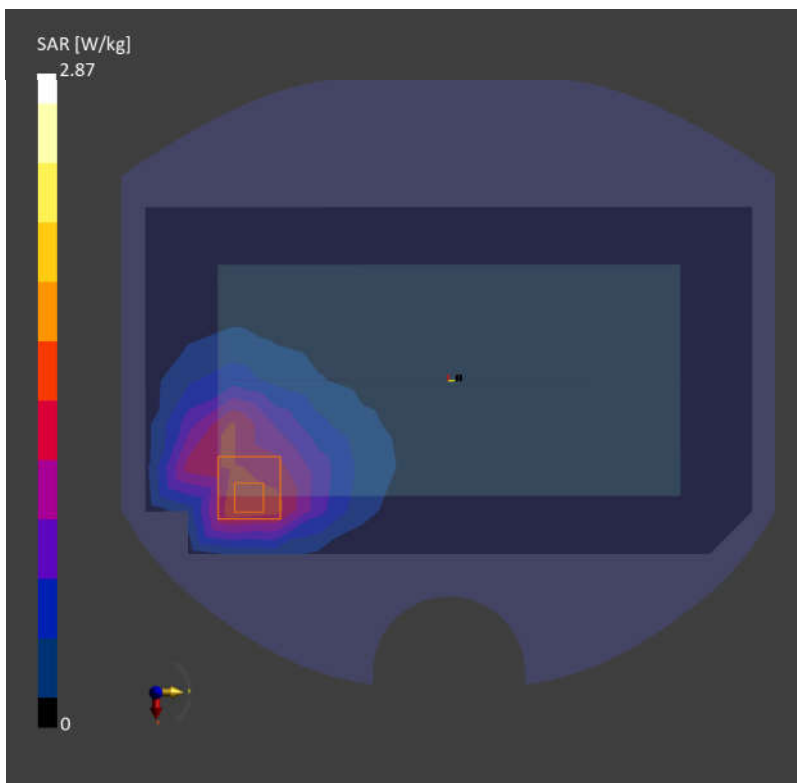
Area Scan (120.0 mm x 210.0 mm): Measurement Grid: 10.0 mm x 15.0 mm

SAR (1g) = 2.71 W/kg; SAR (10g) = 0.988 W/kg;

Zoom Scan (30.0 mm x 30.0 mm x 30.0 mm): Measurement Grid: 6.0 mm x 6.0 mm x 1.5 mm

Power Drift = -0.05 dB

SAR (1g) = 2.87 W/kg; SAR (10g) = 1.26 W/kg;



77_WCDMA IV_RMC 12.2Kbps_Front_0mm_Ch1312

Communication System: Band 4; Frequency: 1712.400

Medium: HSL. Medium parameters used: $f=1712.400$ MHz; $\sigma=1.33$ S/m; $\epsilon_r=40.1$

Ambient Temperature: 23.1°C; Liquid Temperature: 22.7°C

DASY6 Configuration:

- Probe: EX3DV4 - SN7706; ConvF(9.31, 9.31, 9.31); Calibrated: 2023-01-26
- Sensor-Surface: 1.4 mm
- Electronics: DAE4 Sn1649; Calibrated: 2023-04-24
- Phantom: Twin-SAM V8.0 (30deg probe tilt); Serial: 2024
- Measurement Software: 16.2.4.2448

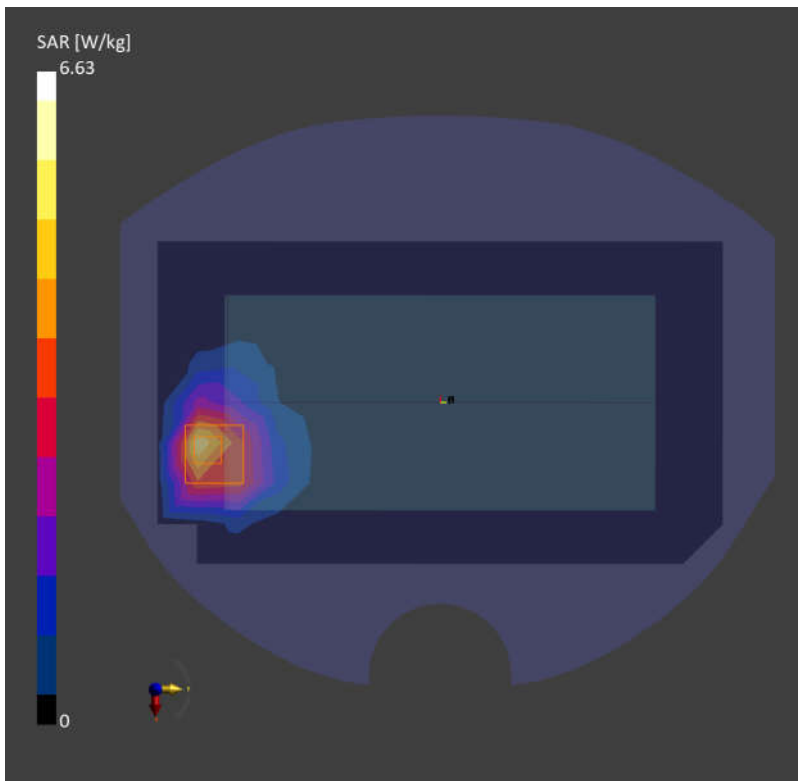
Area Scan (120.0 mm x 210.0 mm): Measurement Grid: 10.0 mm x 15.0 mm

SAR (1g) = 4.72 W/kg; SAR (10g) = 2.50 W/kg;

Zoom Scan (30.0 mm x 30.0 mm x 30.0 mm): Measurement Grid: 6.0 mm x 6.0 mm x 1.5 mm

Power Drift = 0.01 dB

SAR (1g) = 6.63 W/kg; SAR (10g) = 2.52 W/kg;



78_LTE Band 66_20M_QPSK_1RB_0Offset_Front_0mm_Ch132322

Communication System: Band 66; Frequency: 1745.000

Medium: HSL. Medium parameters used: $f = 1745.000$ MHz; $\sigma = 1.35$ S/m; $\epsilon_r = 40.1$

Ambient Temperature: 23.1°C; Liquid Temperature: 22.7°C

DASY6 Configuration:

- Probe: EX3DV4 - SN7706; ConvF(9.31, 9.31, 9.31); Calibrated: 2023-01-26
- Sensor-Surface: 1.4 mm
- Electronics: DAE4 Sn1649; Calibrated: 2023-04-24
- Phantom: Twin-SAM V8.0 (30deg probe tilt); Serial: 2024
- Measurement Software: 16.2.4.2448

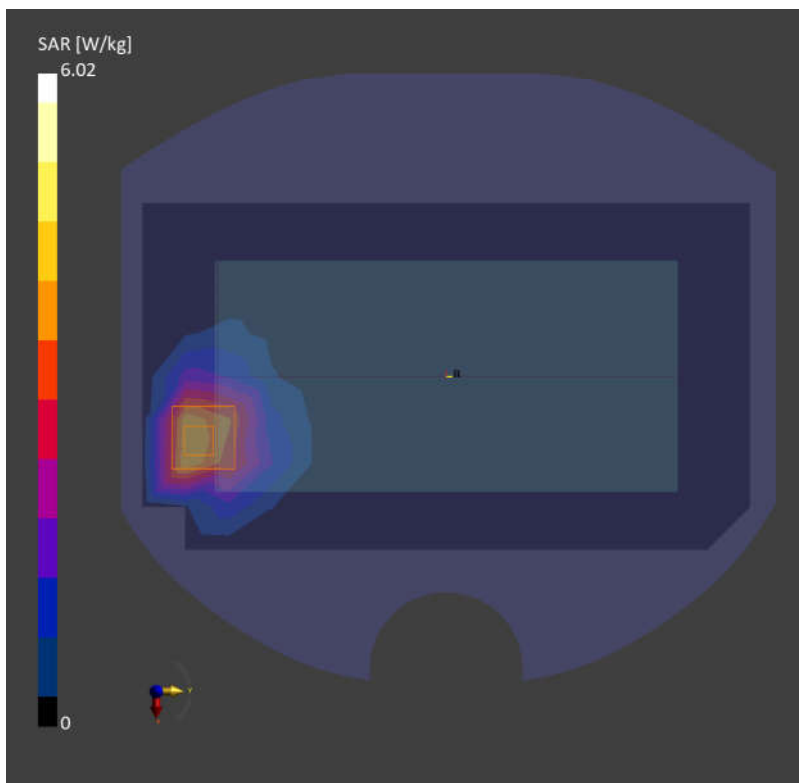
Area Scan (120.0 mm x 210.0 mm): Measurement Grid: 10.0 mm x 15.0 mm

SAR (1g) = 4.28 W/kg; SAR (10g) = 2.40 W/kg;

Zoom Scan (30.0 mm x 30.0 mm x 30.0 mm): Measurement Grid: 6.0 mm x 6.0 mm x 1.5 mm

Power Drift = 0.02 dB

SAR (1g) = 6.02 W/kg; SAR (10g) = 2.51 W/kg;



79_FR1 n66_40M_QPSK_108RB_54Offset_Front_0mm_Ch349000

Communication System: Band n66; Frequency: 1745.000

Medium: HSL. Medium parameters used: $f = 1745.000$ MHz; $\sigma = 1.35$ S/m; $\epsilon_r = 40.1$

Ambient Temperature: 23.1°C; Liquid Temperature: 22.7°C

DASY6 Configuration:

- Probe: EX3DV4 - SN7706; ConvF(9.31, 9.31, 9.31); Calibrated: 2023-01-26
- Sensor-Surface: 1.4 mm
- Electronics: DAE4 Sn1649; Calibrated: 2023-04-24
- Phantom: Twin-SAM V8.0 (30deg probe tilt); Serial: 2024
- Measurement Software: 16.2.4.2448

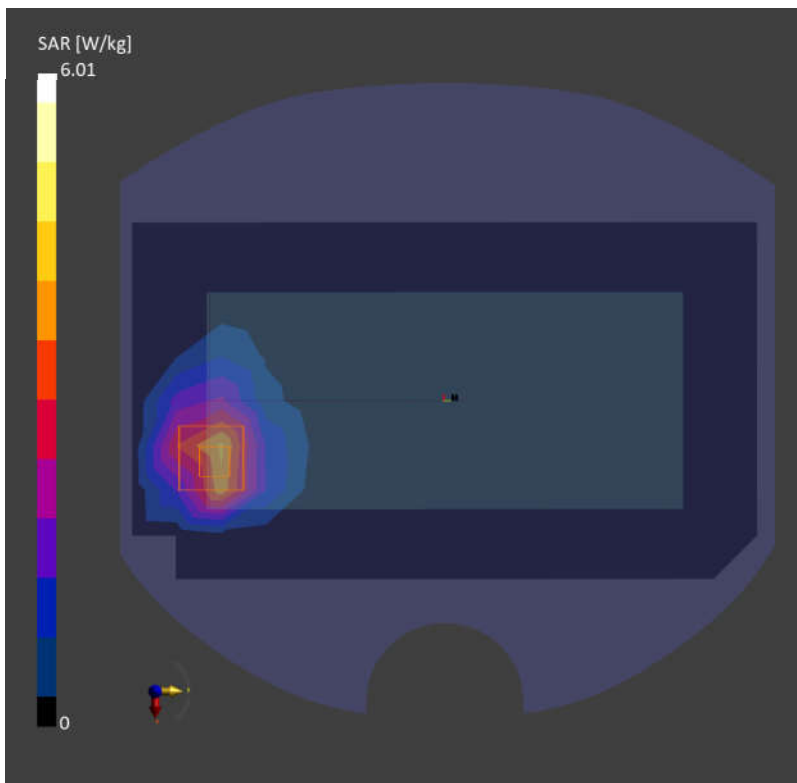
Area Scan (120.0 mm x 210.0 mm): Measurement Grid: 10.0 mm x 15.0 mm

SAR (1g) = 4.08 W/kg; SAR (10g) = 2.37 W/kg;

Zoom Scan (30.0 mm x 30.0 mm x 30.0 mm): Measurement Grid: 6.0 mm x 6.0 mm x 1.5 mm

Power Drift = 0.05 dB

SAR (1g) = 6.01 W/kg; SAR (10g) = 2.35 W/kg;



80_GSM1900_GPRS (3 Tx slots)_Front_0mm_Ch661

Communication System: PCS 1900; Frequency: 1880.000

Medium: HSL. Medium parameters used: $f=1880.000$ MHz; $\sigma=1.41$ S/m; $\epsilon_r=38.7$

Ambient Temperature: 23.1°C; Liquid Temperature: 22.9°C

DASY6 Configuration:

- Probe: EX3DV4 - SN7706; ConvF(8.89, 8.89, 8.89); Calibrated: 2023-01-26
- Sensor-Surface: 1.4 mm
- Electronics: DAE4 Sn1649; Calibrated: 2023-04-24
- Phantom: Twin-SAM V8.0 (30deg probe tilt); Serial: 2024
- Measurement Software: 16.2.4.2448

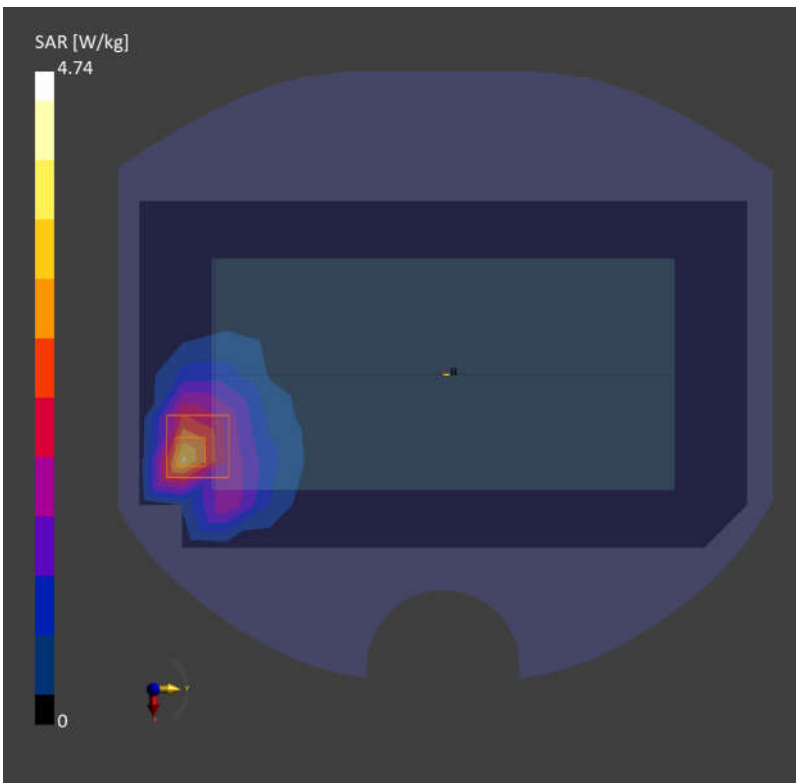
Area Scan (120.0 mm x 210.0 mm): Measurement Grid: 10.0 mm x 15.0 mm

SAR (1g) = 2.90 W/kg; SAR (10g) = 1.52 W/kg;

Zoom Scan (30.0 mm x 30.0 mm x 30.0 mm): Measurement Grid: 6.0 mm x 6.0 mm x 1.5 mm

Power Drift = 0.03 dB

SAR (1g) = 4.74 W/kg; SAR (10g) = 1.91 W/kg;



81_WCDMA II_RMC 12.2Kbps_Front_0mm_Ch9262

Communication System: Band 2; Frequency: 1852.400

Medium: HSL. Medium parameters used: $f=1852.400$ MHz; $\sigma=1.38$ S/m; $\epsilon_r=38.8$

Ambient Temperature: 23.1°C; Liquid Temperature: 22.9°C

DASY6 Configuration:

- Probe: EX3DV4 - SN7706; ConvF(8.89, 8.89, 8.89); Calibrated: 2023-01-26
- Sensor-Surface: 1.4 mm
- Electronics: DAE4 Sn1649; Calibrated: 2023-04-24
- Phantom: Twin-SAM V8.0 (30deg probe tilt); Serial: 2024
- Measurement Software: 16.2.4.2448

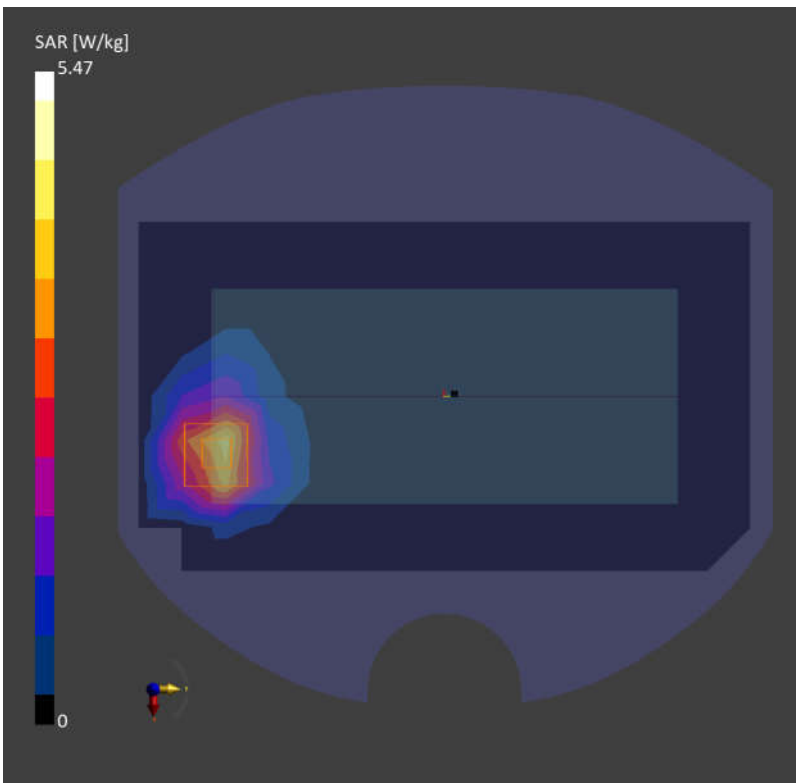
Area Scan (120.0 mm x 210.0 mm): Measurement Grid: 10.0 mm x 15.0 mm

SAR (1g) = 3.86 W/kg; SAR (10g) = 2.13 W/kg;

Zoom Scan (30.0 mm x 30.0 mm x 30.0 mm): Measurement Grid: 6.0 mm x 6.0 mm x 1.5 mm

Power Drift = 0.02 dB

SAR (1g) = 5.47 W/kg; SAR (10g) = 2.20 W/kg;



82_LTE Band 2_20M_QPSK_1RB_0Offset_Bottom Side_0mm_Ch18700

Communication System: Band 2; Frequency: 1860.000

Medium: HSL. Medium parameters used: $f = 1860.000$ MHz; $\sigma = 1.39$ S/m; $\epsilon_r = 38.8$

Ambient Temperature: 23.1°C; Liquid Temperature: 22.9°C

DASY6 Configuration:

- Probe: EX3DV4 - SN7706; ConvF(8.89, 8.89, 8.89); Calibrated: 2023-01-26
- Sensor-Surface: 1.4 mm
- Electronics: DAE4 Sn1649; Calibrated: 2023-04-24
- Phantom: Twin-SAM V8.0 (30deg probe tilt); Serial: 2024
- Measurement Software: 16.2.4.2448

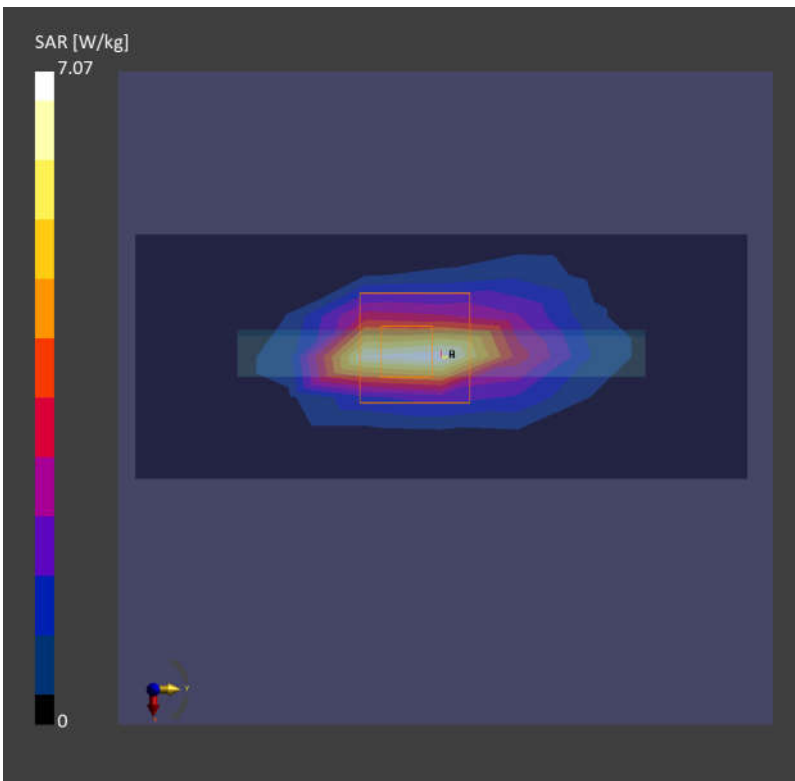
Area Scan (48.0 mm x 120.0 mm): Measurement Grid: 10.0 mm x 15.0 mm

SAR (1g) = 5.45 W/kg; SAR (10g) = 2.20 W/kg;

Zoom Scan (30.0 mm x 30.0 mm x 30.0 mm): Measurement Grid: 6.0 mm x 6.0 mm x 1.5 mm

Power Drift = -0.02 dB

SAR (1g) = 7.07 W/kg; SAR (10g) = 2.30 W/kg;



83_FR1 n2_20M_QPSK_1RB_1Offset_Front_0mm_Ch372000

Communication System: Band n2; Frequency: 1860.000

Medium: HSL. Medium parameters used: $f=1860.000$ MHz; $\sigma=1.39$ S/m; $\epsilon_r=38.8$

Ambient Temperature: 23.1°C; Liquid Temperature: 22.9°C

DASY6 Configuration:

- Probe: EX3DV4 - SN7706; ConvF(8.89, 8.89, 8.89); Calibrated: 2023-01-26
- Sensor-Surface: 1.4 mm
- Electronics: DAE4 Sn1649; Calibrated: 2023-04-24
- Phantom: Twin-SAM V8.0 (30deg probe tilt); Serial: 2024
- Measurement Software: 16.2.4.2448

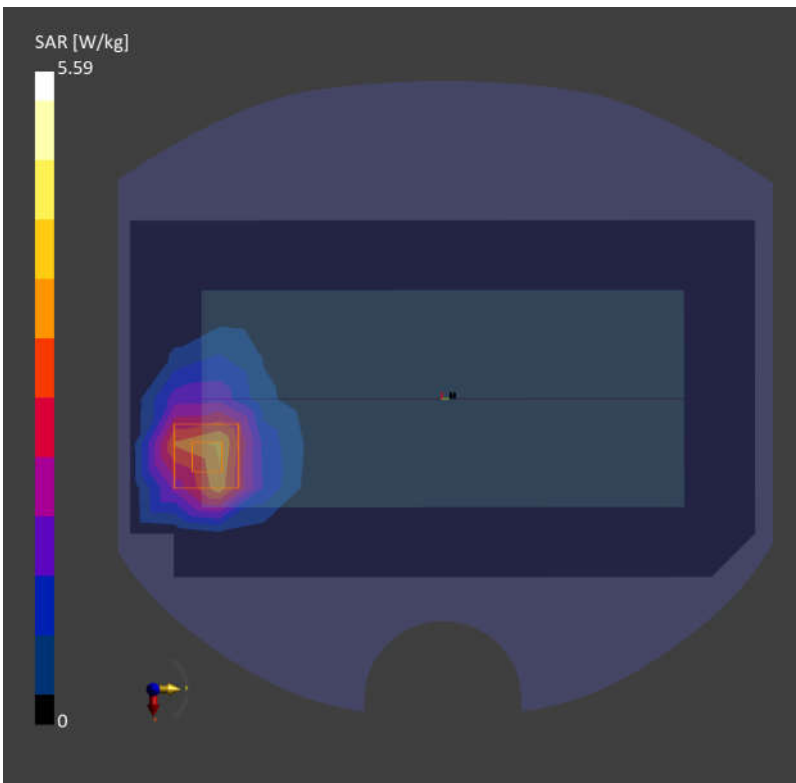
Area Scan (120.0 mm x 210.0 mm): Measurement Grid: 10.0 mm x 15.0 mm

SAR (1g) = 3.67 W/kg; SAR (10g) = 2.06 W/kg;

Zoom Scan (30.0 mm x 30.0 mm x 30.0 mm): Measurement Grid: 6.0 mm x 6.0 mm x 1.5 mm

Power Drift = 0.01 dB

SAR (1g) = 5.59 W/kg; SAR (10g) = 2.25 W/kg;



84_LTE Band 7_20M_QPSK_1RB_0Offset_Bottom Side_0mm_Ch20850

Communication System: Band 7; Frequency: 2510.000

Medium: HSL. Medium parameters used: $f = 2510.000$ MHz; $\sigma = 1.87$ S/m; $\epsilon_r = 39.0$

Ambient Temperature: 23.2°C; Liquid Temperature: 22.6°C

DASY6 Configuration:

- Probe: EX3DV4 - SN7706; ConvF(8.1, 8.1, 8.1); Calibrated: 2023-01-26
- Sensor-Surface: 1.4 mm
- Electronics: DAE4 Sn1649; Calibrated: 2023-04-24
- Phantom: Twin-SAM V8.0 (30deg probe tilt); Serial: 2024
- Measurement Software: 16.2.4.2448

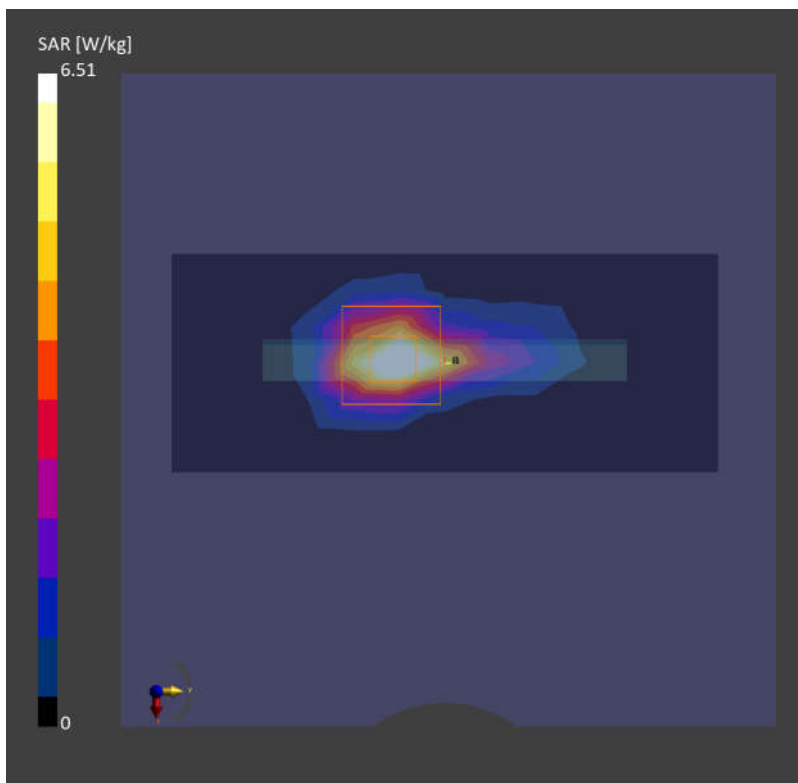
Area Scan (48.0 mm x 120.0 mm): Measurement Grid: 10.0 mm x 10.0 mm

SAR (1g) = 5.70 W/kg; SAR (10g) = 2.23 W/kg;

Zoom Scan (30.0 mm x 30.0 mm x 30.0 mm): Measurement Grid: 5.0 mm x 5.0 mm x 1.5 mm

Power Drift = -0.03 dB

SAR (1g) = 6.51 W/kg; SAR (10g) = 2.35 W/kg;



85_LTE Band 41_20M_QPSK_1RB_0Offset_Bottom Side_0mm_Ch41055

Communication System: Band 41; Frequency: 2636.500

Medium: HSL. Medium parameters used: $f = 2636.500$ MHz; $\sigma = 1.98$ S/m; $\epsilon_r = 38.9$

Ambient Temperature: 23.2°C; Liquid Temperature: 22.6°C

DASY6 Configuration:

- Probe: EX3DV4 - SN7706; ConvF(8.1, 8.1, 8.1); Calibrated: 2023-01-26
- Sensor-Surface: 1.4 mm
- Electronics: DAE4 Sn1649; Calibrated: 2023-04-24
- Phantom: Twin-SAM V8.0 (30deg probe tilt); Serial: 2024
- Measurement Software: 16.2.4.2448

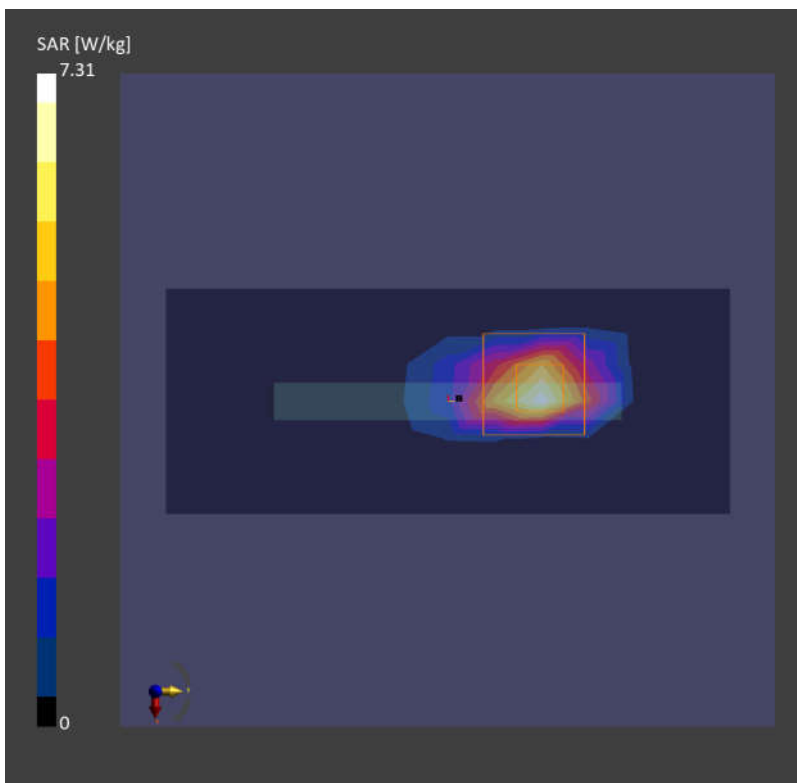
Area Scan (48.0 mm x 120.0 mm): Measurement Grid: 10.0 mm x 10.0 mm

SAR (1g) = 5.45 W/kg; SAR (10g) = 1.96 W/kg;

Zoom Scan (30.0 mm x 30.0 mm x 30.0 mm): Measurement Grid: 5.0 mm x 5.0 mm x 1.5 mm

Power Drift = 0.08 dB

SAR (1g) = 7.31 W/kg; SAR (10g) = 2.21 W/kg;



86_FR1 n7_40M_QPSK_1RB_1Offset_Bottom Side_0mm_Ch507000

Communication System: Band n7; Frequency: 2535.000

Medium: HSL. Medium parameters used: $f = 2535.000$ MHz; $\sigma = 1.90$ S/m; $\epsilon_r = 39.0$

Ambient Temperature: 23.2°C; Liquid Temperature: 22.6°C

DASY6 Configuration:

- Probe: EX3DV4 - SN7706; ConvF(8.1, 8.1, 8.1); Calibrated: 2023-01-26
- Sensor-Surface: 1.4 mm
- Electronics: DAE4 Sn1649; Calibrated: 2023-04-24
- Phantom: Twin-SAM V8.0 (30deg probe tilt); Serial: 2024
- Measurement Software: 16.2.4.2448

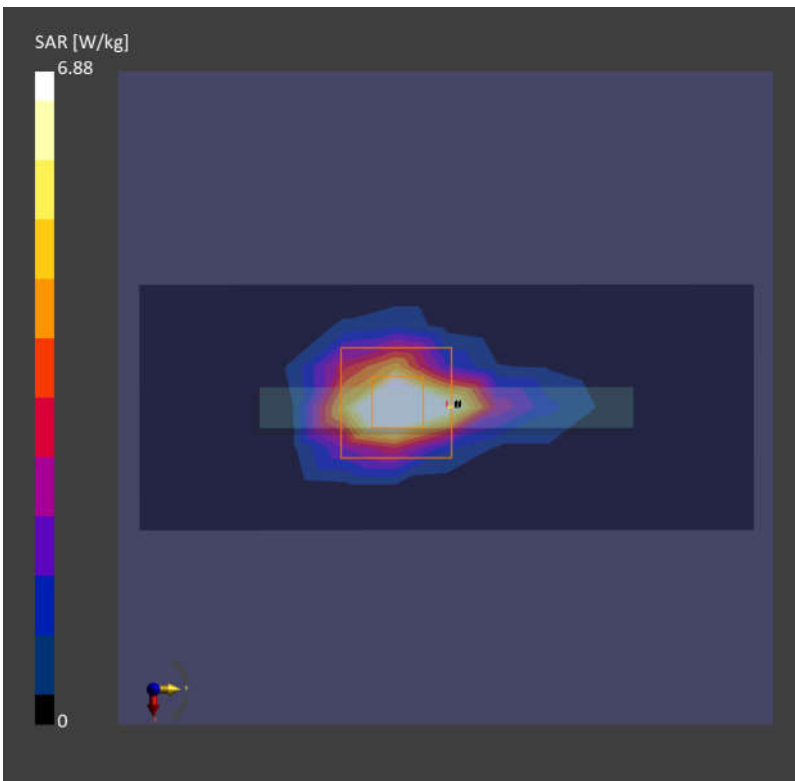
Area Scan (48.0 mm x 120.0 mm): Measurement Grid: 10.0 mm x 10.0 mm

SAR (1g) = 6.76 W/kg; SAR (10g) = 2.38 W/kg;

Zoom Scan (30.0 mm x 30.0 mm x 30.0 mm): Measurement Grid: 5.0 mm x 5.0 mm x 1.5 mm

Power Drift = 0.04 dB

SAR (1g) = 6.88 W/kg; SAR (10g) = 2.46 W/kg;



87_FR1 n41_100M_QPSK_135RB_69Offset_Bottom Side_0mm_Ch518598

Communication System: Band n41; Frequency: 2592.990

Medium: HSL. Medium parameters used: $f = 2592.990$ MHz; $\sigma = 1.93$ S/m; $\epsilon_r = 39.0$

Ambient Temperature: 23.2°C; Liquid Temperature: 22.6°C

DASY6 Configuration:

- Probe: EX3DV4 - SN7706; ConvF(8.1, 8.1, 8.1); Calibrated: 2023-01-26
- Sensor-Surface: 1.4 mm
- Electronics: DAE4 Sn1649; Calibrated: 2023-04-24
- Phantom: Twin-SAM V8.0 (30deg probe tilt); Serial: 2024
- Measurement Software: 16.2.4.2448

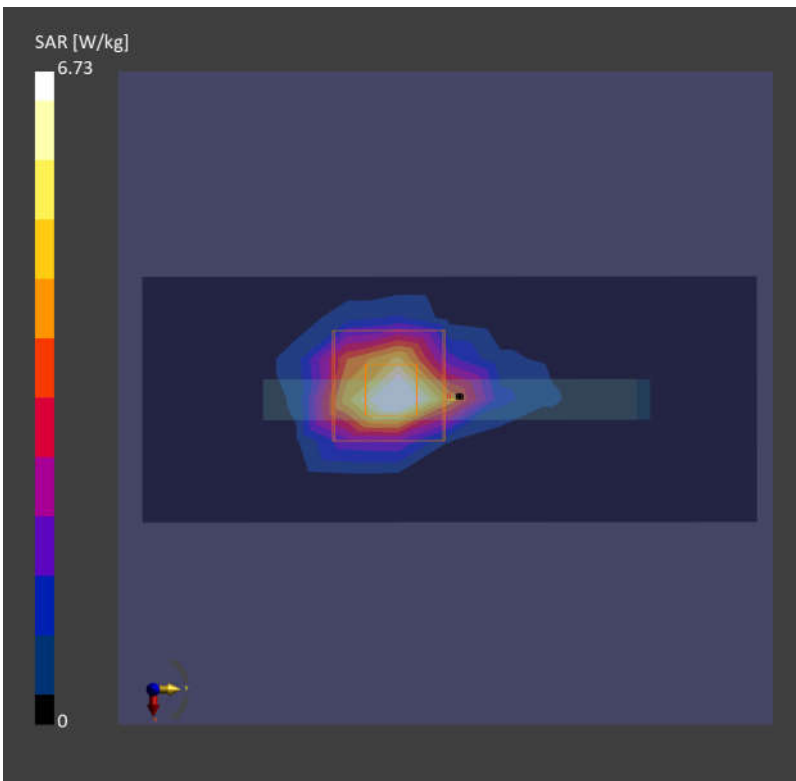
Area Scan (48.0 mm x 120.0 mm): Measurement Grid: 10.0 mm x 10.0 mm

SAR (1g) = 5.69 W/kg; SAR (10g) = 2.24 W/kg;

Zoom Scan (30.0 mm x 30.0 mm x 30.0 mm): Measurement Grid: 5.0 mm x 5.0 mm x 1.5 mm

Power Drift = 0.10 dB

SAR (1g) = 6.73 W/kg; SAR (10g) = 2.34 W/kg;



88_LTE Band 42 Part 27Q_20M_QPSK_1RB_0Offset_Left Side_0mm_Ch42990

Communication System: Band 42; Frequency: 3540.000

Medium: HSL. Medium parameters used: $f = 3540.000$ MHz; $\sigma = 2.82$ S/m; $\epsilon_r = 38.9$

Ambient Temperature: 23.4°C; Liquid Temperature: 22.9°C

DASY6 Configuration:

- Probe: EX3DV4 - SN7706; ConvF(7.68, 7.68, 7.68); Calibrated: 2023-01-26
- Sensor-Surface: 1.4 mm
- Electronics: DAE4 Sn1649; Calibrated: 2023-04-24
- Phantom: Twin-SAM V8.0 (30deg probe tilt); Serial: 2024
- Measurement Software: 16.2.4.2448

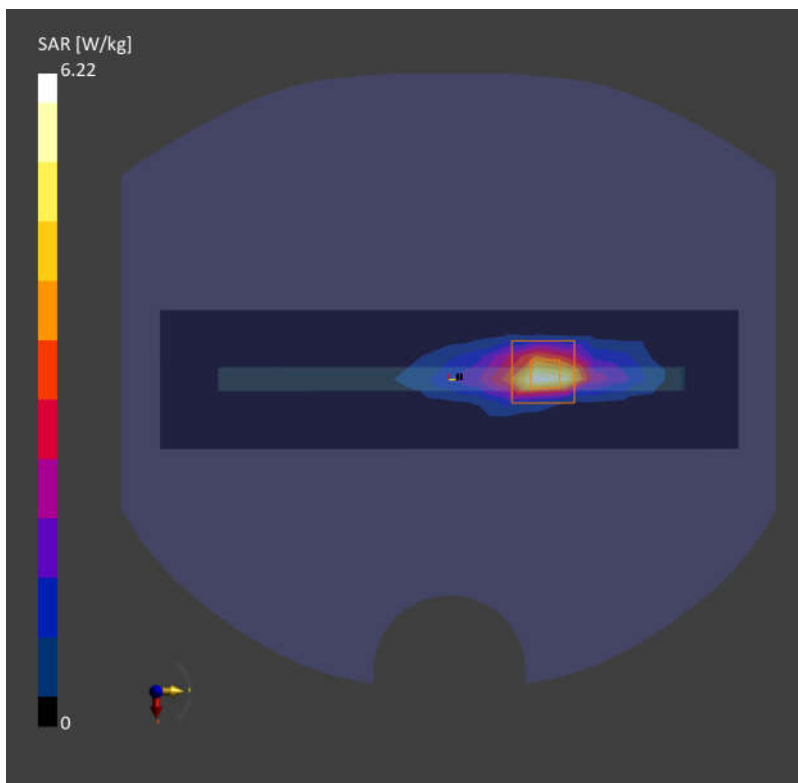
Area Scan (48.0 mm x 200.0 mm): Measurement Grid: 10.0 mm x 10.0 mm

SAR (1g) = 4.35 W/kg; SAR (10g) = 1.50 W/kg;

Zoom Scan (28.0 mm x 28.0 mm x 28.0 mm): Measurement Grid: 4.0 mm x 4.0 mm x 1.4 mm

Power Drift = -0.02 dB

SAR (1g) = 6.22 W/kg; SAR (10g) = 1.82 W/kg;



89_LTE Band 48_20M_QPSK_1RB_0Offset_Left Side_0mm_Ch56640

Communication System: Band 48; Frequency: 3690.000

Medium: HSL. Medium parameters used: $f = 3690.000$ MHz; $\sigma = 2.99$ S/m; $\epsilon_r = 38.7$

Ambient Temperature: 23.1°C; Liquid Temperature: 22.9°C

DASY6 Configuration:

- Probe: EX3DV4 - SN7706; ConvF(7.61, 7.61, 7.61); Calibrated: 2023-01-26
- Sensor-Surface: 1.4 mm
- Electronics: DAE4 Sn1649; Calibrated: 2023-04-24
- Phantom: Twin-SAM V8.0 (30deg probe tilt); Serial: 2024
- Measurement Software: 16.2.4.2448

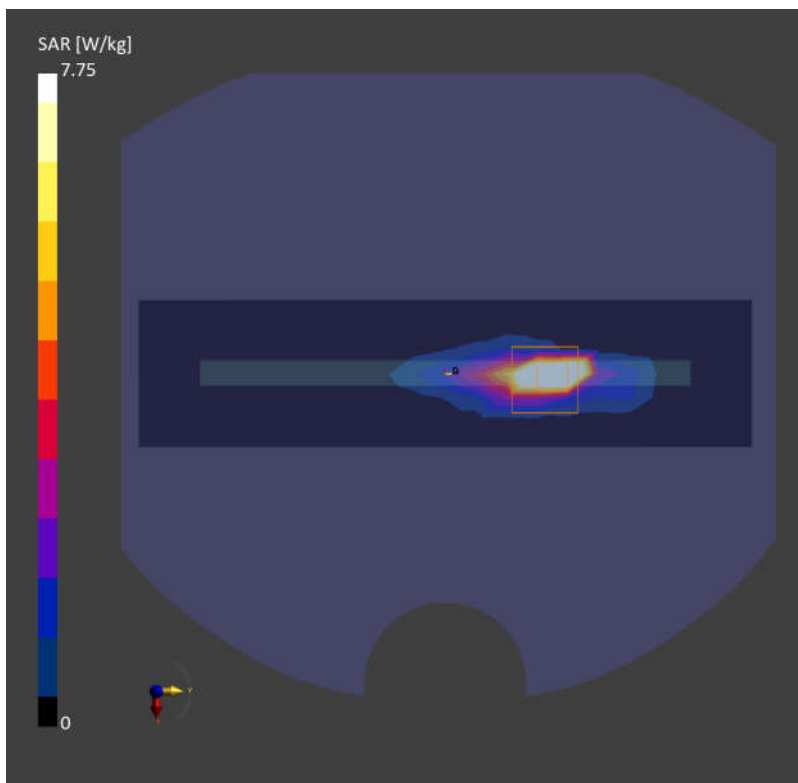
Area Scan (48.0 mm x 200.0 mm): Measurement Grid: 10.0 mm x 10.0 mm

SAR (1g) = 7.36 W/kg; SAR (10g) = 2.13 W/kg;

Zoom Scan (28.0 mm x 28.0 mm x 28.0 mm): Measurement Grid: 4.0 mm x 4.0 mm x 1.4 mm

Power Drift = -0.06 dB

SAR (1g) = 7.75 W/kg; SAR (10g) = 2.02 W/kg;



90_FR1 n77 Part 27O_100M_QPSK_1RB_1Offset_Right Side_0mm_Ch656000

Communication System: Band n77; Frequency: 3840.000

Medium: HSL. Medium parameters used: $f = 3840.000$ MHz; $\sigma = 3.18$ S/m; $\epsilon_r = 37.9$

Ambient Temperature: 23.2°C; Liquid Temperature: 22.9°C

DASY6 Configuration:

- Probe: EX3DV4 - SN7706; ConvF(7.31, 7.31, 7.31); Calibrated: 2023-01-26
- Sensor-Surface: 1.4 mm
- Electronics: DAE4 Sn1649; Calibrated: 2023-04-24
- Phantom: Twin-SAM V8.0 (30deg probe tilt); Serial: 2024
- Measurement Software: 16.2.4.2448

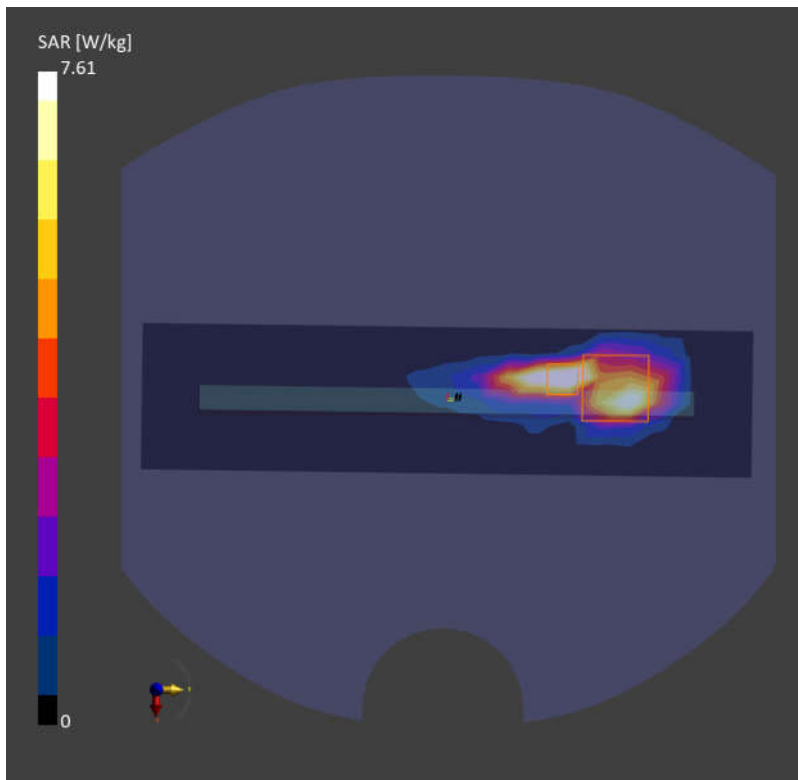
Area Scan (48.0 mm x 200.0 mm): Measurement Grid: 10.0 mm x 10.0 mm

SAR (1g) = 5.59 W/kg; SAR (10g) = 2.24 W/kg;

Zoom Scan (28.0 mm x 28.0 mm x 28.0 mm): Measurement Grid: 4.0 mm x 4.0 mm x 1.4 mm

Power Drift = 0.02 dB

SAR (1g) = 7.61 W/kg; SAR (10g) = 2.23 W/kg;



91_WLAN2.4GHz_802.11b 1Mbps_Top Side_0mm_Ch11

Communication System: WLAN 2.4GHz; Frequency: 2462.000

Medium: HSL. Medium parameters used: $f = 2462.000$ MHz; $\sigma = 1.86$ S/m; $\epsilon_r = 38.1$

Ambient Temperature: 23.1°C; Liquid Temperature: 22.6°C

DASY6 Configuration:

- Probe: EX3DV4 - SN7706; ConvF(8.38, 8.38, 8.38); Calibrated: 2023-01-26
- Sensor-Surface: 1.4 mm
- Electronics: DAE4 Sn1649; Calibrated: 2023-04-24
- Phantom: Twin-SAM V8.0 (30deg probe tilt); Serial: 2024
- Measurement Software: 16.2.4.2448

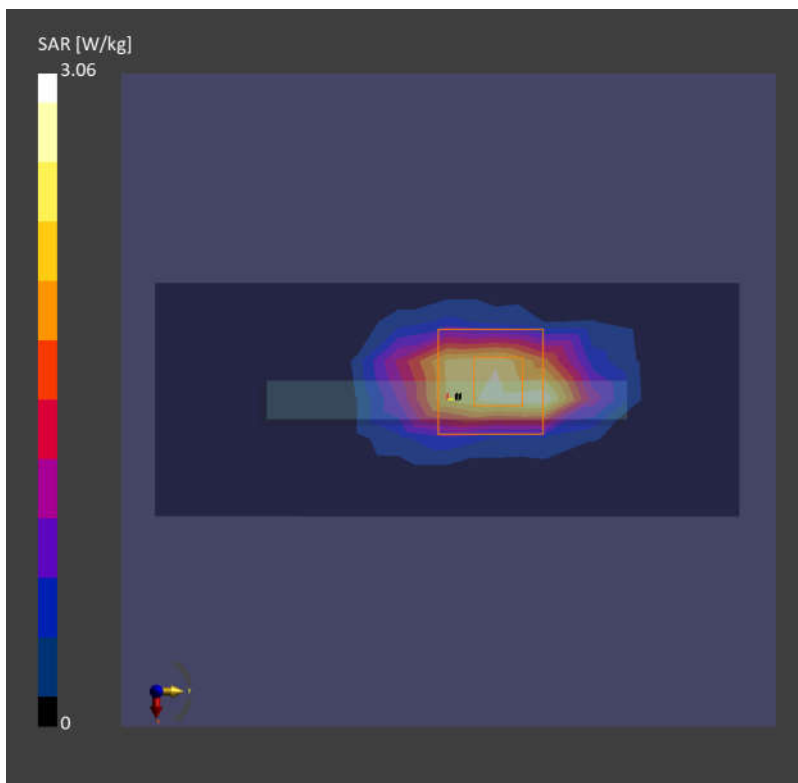
Area Scan (48.0 mm x 120.0 mm): Measurement Grid: 10.0 mm x 10.0 mm

SAR (1g) = 2.36 W/kg; SAR (10g) = 1.05 W/kg;

Zoom Scan (30.0 mm x 30.0 mm x 30.0 mm): Measurement Grid: 5.0 mm x 5.0 mm x 1.5 mm

Power Drift = -0.10 dB

SAR (1g) = 3.06 W/kg; SAR (10g) = 1.18 W/kg;



92_WLAN5GHz_802.11n-HT40 MCS0_Front_0mm_Ch46

Communication System: WLAN 5GHz; Frequency: 5230.000

Medium: HSL. Medium parameters used: $f= 5230.000$ MHz; $\sigma= 4.54$ S/m; $\epsilon_r = 35.5$

Ambient Temperature: 23.3°C; Liquid Temperature: 22.7°C

DASY6 Configuration:

- Probe: EX3DV4 - SN7706; ConvF(6.18, 6.18, 6.18); Calibrated: 2023-01-26
- Sensor-Surface: 1.4 mm
- Electronics: DAE4 Sn1649; Calibrated: 2023-04-24
- Phantom: Twin-SAM V8.0 (30deg probe tilt); Serial: 2024
- Measurement Software: 16.2.4.2448

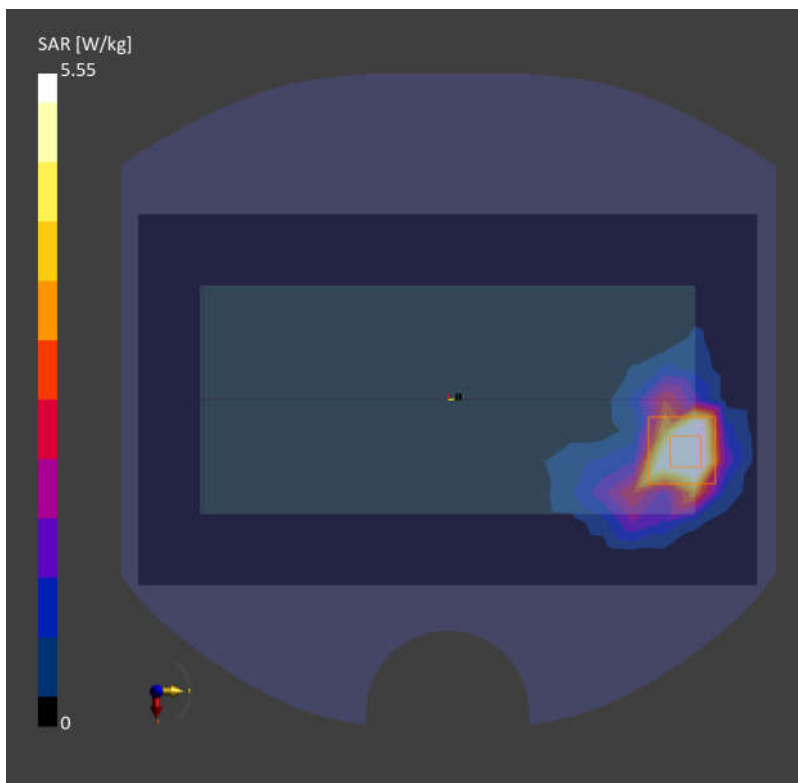
Area Scan (120.0 mm x 200.0 mm): Measurement Grid: 10.0 mm x 10.0 mm

SAR (1g) = 5.55 W/kg; SAR (10g) = 1.93 W/kg;

Zoom Scan (24.0 mm x 22.0 mm x 22.0 mm): Measurement Grid: 4.0 mm x 4.0 mm x 1.4 mm

Power Drift = 0.07 dB

SAR (1g) = 5.55 W/kg; SAR (10g) = 2.02 W/kg;



93_WLAN5GHz_802.11a 6Mbps_Front_0mm_Ch60

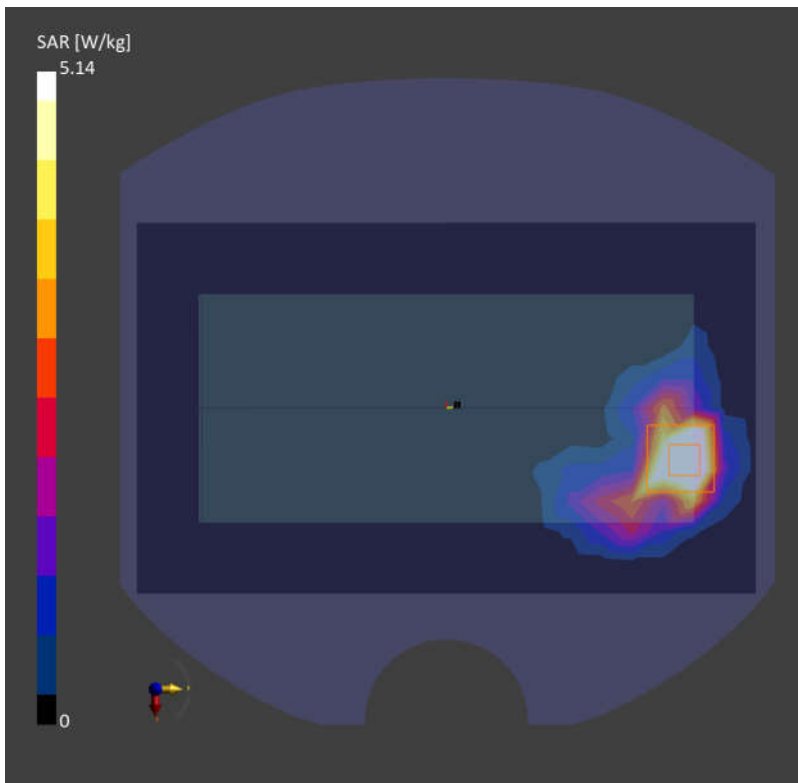
Communication System: WLAN 5GHz; Frequency: 5300.000
Medium: HSL. Medium parameters used: $f= 5300.000$ MHz; $\sigma= 4.62$ S/m; $\epsilon_r = 35.4$
Ambient Temperature: 23.3°C; Liquid Temperature: 22.7°C

DASY6 Configuration:

- Probe: EX3DV4 - SN7706; ConvF(6.18, 6.18, 6.18); Calibrated: 2023-01-26
- Sensor-Surface: 1.4 mm
- Electronics: DAE4 Sn1649; Calibrated: 2023-04-24
- Phantom: Twin-SAM V8.0 (30deg probe tilt); Serial: 2024
- Measurement Software: 16.2.4.2448

Area Scan (120.0 mm x 200.0 mm): Measurement Grid: 10.0 mm x 10.0 mm
SAR (1g) = 5.45 W/kg; SAR (10g) = 1.89 W/kg;

Zoom Scan (24.0 mm x 22.0 mm x 22.0 mm): Measurement Grid: 4.0 mm x 4.0 mm x 1.4 mm
Power Drift = 0.02 dB
SAR (1g) = 5.14 W/kg; SAR (10g) = 2.03 W/kg;



94_WLAN5GHz_802.11ac-VHT80 MCS0_Front_0mm_Ch138

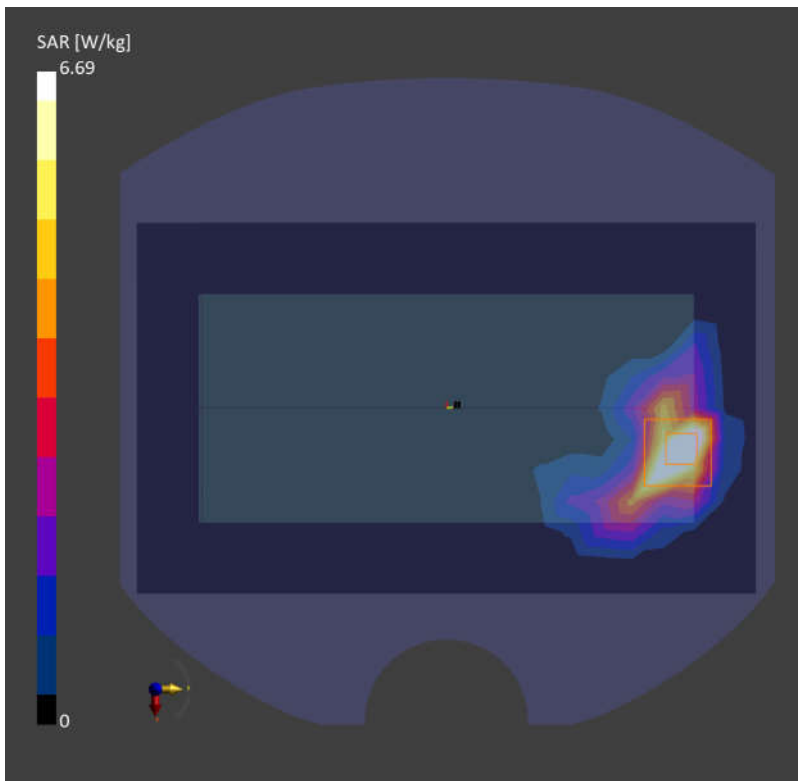
Communication System: WLAN 5GHz; Frequency: 5690.000
Medium: HSL. Medium parameters used: $f= 5690.000$ MHz; $\sigma= 5.06$ S/m; $\epsilon_r = 34.7$
Ambient Temperature: 23.4°C; Liquid Temperature: 22.7°C

DASY6 Configuration:

- Probe: EX3DV4 - SN7706; ConvF(5.57, 5.57, 5.57); Calibrated: 2023-01-26
- Sensor-Surface: 1.4 mm
- Electronics: DAE4 Sn1649; Calibrated: 2023-04-24
- Phantom: Twin-SAM V8.0 (30deg probe tilt); Serial: 2024
- Measurement Software: 16.2.4.2448

Area Scan (120.0 mm x 200.0 mm): Measurement Grid: 10.0 mm x 10.0 mm
SAR (1g) = 5.86 W/kg; SAR (10g) = 2.11 W/kg;

Zoom Scan (24.0 mm x 22.0 mm x 22.0 mm): Measurement Grid: 4.0 mm x 4.0 mm x 1.4 mm
Power Drift = 0.03 dB
SAR (1g) = 6.69 W/kg; SAR (10g) = 2.19 W/kg;



95_WLAN5GHz_802.11n-HT40 MCS0_Front_0mm_Ch159

Communication System: WLAN 5GHz; Frequency: 5795.000
Medium: HSL. Medium parameters used: $f= 5795.000$ MHz; $\sigma= 5.18$ S/m; $\epsilon_r = 34.5$
Ambient Temperature: 23.4°C; Liquid Temperature: 22.7°C

DASY6 Configuration:

- Probe: EX3DV4 - SN7706; ConvF(5.57, 5.57, 5.57); Calibrated: 2023-01-26
- Sensor-Surface: 1.4 mm
- Electronics: DAE4 Sn1649; Calibrated: 2023-04-24
- Phantom: Twin-SAM V8.0 (30deg probe tilt); Serial: 2024
- Measurement Software: 16.2.4.2448

Area Scan (120.0 mm x 200.0 mm): Measurement Grid: 10.0 mm x 10.0 mm
SAR (1g) = 6.36 W/kg; SAR (10g) = 2.15 W/kg;

Zoom Scan (24.0 mm x 22.0 mm x 22.0 mm): Measurement Grid: 4.0 mm x 4.0 mm x 1.4 mm
Power Drift = 0.04 dB
SAR (1g) = 7.15 W/kg; SAR (10g) = 2.21 W/kg;

