

Measurement Conditions

| | | |
|------------------|-------------------|------------------------------------|
| Object model | V-Coil350/85 | 1023 |
| | Frequency | 85 kHz |
| Probe model | MAGPy-H3D | 1017 |
| | MAGPy-DAS | 1017 |
| | MAGPy FPGA Board | WP000029 |
| Software version | cDASY6 Module WPT | 1.2.0.8 |
| | Notebook GUI | 1.2.5 |
| | Sim4Life | 6.2.0.4280 |
| Scan setup | Type | Dynamic |
| | Grid size | X: 7.00 mm, Y: 7.00 mm, Z: 7.00 mm |

Calibrated Parameters: 85 kHz

| Distance of the Virtual Phantom from the Surface | Peak H-field (A/m) | Unc. (k=2) (dB) | Induced peak current density, 1cm ² area avg. (A/m ²) | Induced peak E-field (V/m) | | peak spatial SAR (mW/kg) | | Unc. (k=2) (dB) |
|--|--------------------|-----------------|--|----------------------------|---------------|--------------------------|----------|-----------------|
| | | | | 2mm cube avg. | 5mm line avg. | 1g avg. | 10g avg. | |
| 2.00 mm | 183 | 1.23 | 1.08 | 3.24 | 3.27 | 2.90 | 2.11 | 1.59 |

Appendix (Additional assessments outside the scope of SCS 0108)

Total current measurement

| | | |
|---------------------|--------|--------------|
| | U (V) | I (A, = 2×U) |
| Total current (RMS) | 0.3977 | 0.7954 |

Current spectrum measurement

| Frequency (kHz) | Measured power (dBm) | Power covered (W) | U (V) (R = 50 Ω) | I (A) | I _{normalized} (A) |
|-----------------|----------------------|-------------------|------------------|--------|-----------------------------|
| 85 | 4.98 | 3.15E-03 | 0.3967 | 0.7934 | 0.7878 |
| 170 | -41.93 | 6.41E-08 | 0.0018 | 0.0036 | 0.0036 |
| 255 | -40.87 | 8.18E-08 | 0.0020 | 0.0040 | 0.0040 |

Measurement report

cDASY6 Module WPT Measurement Report

| Device under test | Hardware setup | Scan setup |
|---|--|--|
| Model / Manufacturer: V-Coil350/85 & SPEAG | DASY version: cDASY6 Module WPT, 1.2.0.8 | Type: Dynamic |
| Serial number: 1023 | Notebook version: 1.2.5 | Resolution: X: 7.00 mm, Y: 7.00 mm, Z: 7.00 mm |
| Dimensions: 350 mm | Probe model / serial number: Single Probe with reference / WPO00029 | Dimensions: X: 462.00 mm, Y: 567.00 mm, Z: 21.00 mm |
| Measurement scenario: Source calibration | | Completed on: 2023/05/16 09:20:17 |

Measurement results

Maximum H-field:
 129.25 A/m (rms)

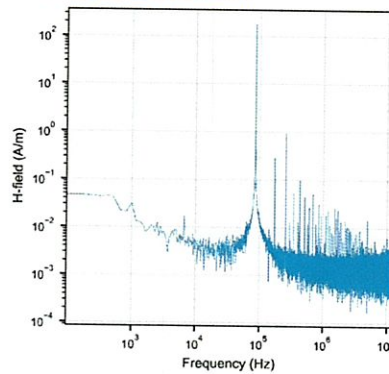
Location of maximum relative to DUT:
 X: 84.00 mm, Y: -98.00 mm, Z: 9.00 mm

Maximum H-field (x, y, z):
 175.34 A/m, 166.32 A/m, 131.86 A/m

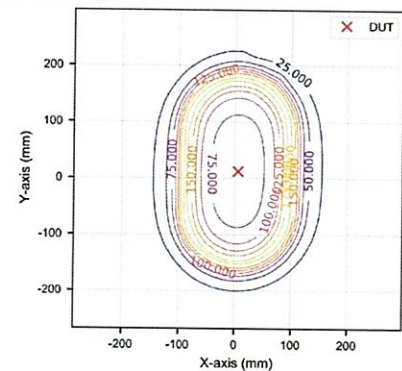
Peak frequency:
 85.03 kHz (median)

Distance to -20.0 dB boundary:
 66.04 mm

H-field magnitude at maximum



H-field magnitude at lowest plane



Induced quantities in the anatomical model (f = 85.00 kHz, $\sigma = 0.355$ S/m, reconstruction error = 81.4%)

| Spacing (mm) | Peak Hinc (A/m, rms) | Peak Eind (V/m, rms) | | Peak Jind (A/m ² , rms) | | psSAR (mW/kg) | | -20 dB radius (mm) |
|--------------|----------------------|----------------------|-----------|------------------------------------|---------|---------------|-----|--------------------|
| | | Cube avg. | Line avg. | Surface avg. | 1g avg. | 10g avg. | | |
| 2.00 * | 183 | 3.24 | 3.27 | 1.08 | 2.90 | 2.11 | 183 | |

Standard compliance evaluation

| Spacing (mm) | ICNIRP 2020 (dB) | | | ICNIRP 1998 (dB) | | | IEEE 2019 (dB) | | | FCC 2020 (dB) | | | HC Code 6 (dB) | | |
|--------------|------------------|----------------|------------|------------------|----------------|------------|----------------|----------------|------------|----------------|----------------|------------|----------------|----------------|------------|
| | Peak Hinc (RL) | Peak Eind (BR) | psSAR (BR) | Peak Hinc (RL) | Peak Jind (BR) | psSAR (BR) | Peak Hinc (RL) | Peak Eind (BR) | psSAR (BR) | Peak Hinc (RL) | Peak Eind (BR) | psSAR (BR) | Peak Hinc (RL) | Peak Eind (BR) | psSAR (BR) |
| 2.00 * | 10.9 | -35.6 | -48.4 | 32.6 | 16.1 | -48.4 | 1.04 | -14.7 | -48.4 | 17.7 | -10.9 | -46.1 | 27.4 | -10.9 | -46.1 |

Standard compliance evaluation (coverage factor-adjusted) (Coefficients: $w_{EC} = 3.0$, $w_{EI} = 2.0$, $w_J = 1.0$, $w_{SAR1g} = 1.0$, $w_{SAR10g} = 1.0$)

| Spacing (mm) | ICNIRP 2020 (dB) | | | ICNIRP 1998 (dB) | | | IEEE 2019 (dB) | | | FCC 2020 (dB) | | | HC Code 6 (dB) | | |
|--------------|------------------|------------|----------------|------------------|------------|----------------|----------------|----------------|------------|----------------|------------|----------------|----------------|--|--|
| | Peak Eind (BR) | psSAR (BR) | Peak Jind (BR) | Peak Jind (BR) | psSAR (BR) | Peak Eind (BR) | psSAR (BR) | Peak Eind (BR) | psSAR (BR) | Peak Eind (BR) | psSAR (BR) | Peak Eind (BR) | psSAR (BR) | | |
| 2.00 * | -14.8 | -42.8 | 27.4 | -42.8 | 2.63 | -42.8 | 9.87 | -40.4 | 9.87 | -40.4 | | | | | |