

DASY8 Module WPT Measurement Report

Device under test

Info:
1_Front_0mm

Tool info

DASY software version:
DASY8 Module WPT 2.2.0.3801

Probe model, serial no. and configuration date:
MAGPy-8H3D+E3Dv2, WP000211, 2023/05/09

Software version:
2.0.39, backend: 0.9.2

Scan info

Center location:
x: 62.35 mm, y: 45.12 mm, z: 18.14 mm

Dimensions:
x: 257.0 mm, y: 257.0 mm, z: 36.7 mm

Resolution:
x: 7.33 mm, y: 7.33 mm, z: 7.33 mm

Completed on:
2023/12/25

Measurement results

Maximum H-field [RMS]:

MAGNITUDE: 788.18 mA/m

x: 613.09 μ A/m, y: 58.94 mA/m, z: 785.97 mA/m

Maximum H-field location relative to DUT:

x: -40.33 mm, y: 18.33 mm, z: 8.00 mm

Maximum E-field [RMS]:

MAGNITUDE: 77.34 V/m

x: 424.96 mV/m, y: 894.45 mV/m, z: 77.34 V/m

Maximum E-field location relative to DUT:

x: 0.00 m, y: -44.00 mm, z: 500.00 μ m

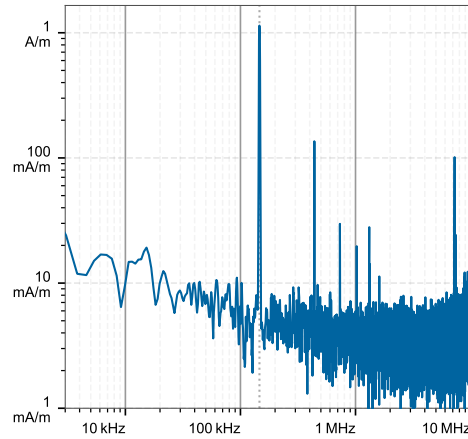
Distance to -20.0 dB boundary:

59.12 mm

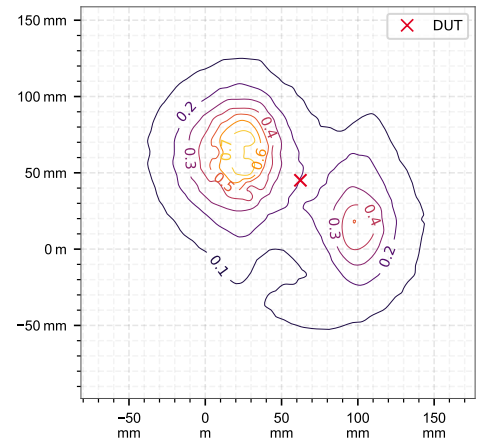
Offset relative to DUT:

x: 0.00 m, y: 0.00 m, z: 500.00 μ m

H-field magnitude [RMS] at maximum location



H-field magnitude [RMS] at lowest plane



Incident fields, and induced quantities in the anatomical model

Distance [mm]	Peak incident fields		Peak E_{ind} [V/m, RMS]			Peak J_{ind} [A/m ² , RMS]	psSAR [mW/kg]		H-field extent
	H_{inc} [A/m, RMS]	E_{inc} [V/m, RMS]	Cube avg.	Local	Line avg.	Surface avg.	1g avg.	10g avg.	-20 dB radius [mm]
0.0	1.41	77.3	0.012	0.0122	0.0122	0.00809	0.0000704	0.0000447	75.5

DASY8 Module WPT Measurement Report

Device under test

Info:
2_Back_0mm

Tool info

DASY software version:
DASY8 Module WPT 2.2.0.3801

Probe model, serial no. and configuration date:
MAGPy-8H3D+E3Dv2, WP000211, 2023/05/09

Software version:
2.0.39, backend: 0.9.2

Scan info

Center location:
x: 71.92 mm, y: 71.57 mm, z: 18.07 mm

Dimensions:
x: 257.0 mm, y: 257.0 mm, z: 36.7 mm

Resolution:
x: 7.33 mm, y: 7.33 mm, z: 7.33 mm

Completed on:
2023/12/25

Measurement results

Maximum H-field [RMS]:

MAGNITUDE: 1.13 A/m
x: 97.81 mA/m, y: 87.18 mA/m, z: 1.12 A/m

Maximum H-field location relative to DUT:

x: 3.67 mm, y: 33.00 mm, z: 8.00 mm

Maximum E-field [RMS]:

MAGNITUDE: 86.45 V/m
x: 2.14 V/m, y: 4.18 V/m, z: 86.32 V/m

Maximum E-field location relative to DUT:

x: -73.33 mm, y: 7.33 mm, z: 500.00 μ m

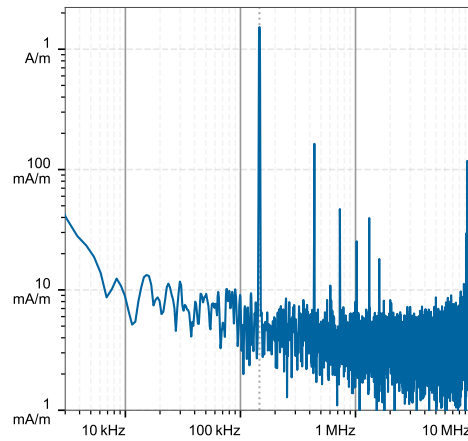
Distance to -20.0 dB boundary:

59.12 mm

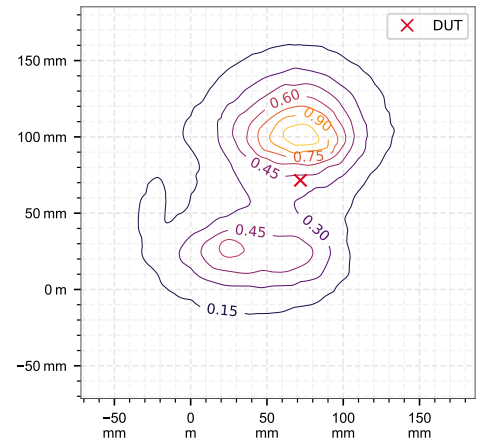
Offset relative to DUT:

x: 0.00 m, y: 0.00 m, z: 500.00 μ m

H-field magnitude [RMS] at maximum location



H-field magnitude [RMS] at lowest plane



Incident fields, and induced quantities in the anatomical model

Distance [mm]	Peak incident fields		Peak E_{ind} [V/m, RMS]			Peak J_{ind} [A/m ² , RMS]	psSAR [mW/kg]		H-field extent
	H_{inc} [A/m, RMS]	E_{inc} [V/m, RMS]	Cube avg.	Local	Line avg.	Surface avg.	1g avg.	10g avg.	-20 dB radius [mm]
0.0	1.98	86.5	0.0171	0.0174	0.0174	0.0117	0.000151	0.000101	76.9

DASY8 Module WPT Measurement Report

Device under test

Info:
3_Left Side_0mm

Tool info

DASY software version:
DASY8 Module WPT 2.2.0.3801

Probe model, serial no. and configuration date:
MAGPy-8H3D+E3Dv2, WP000211, 2023/05/09

Software version:
2.0.39, backend: 0.9.2

Scan info

Center location:
x: 80.57 mm, y: 74.98 mm, z: 161.53 mm

Dimensions:
x: 169.0 mm, y: 257.0 mm, z: 36.7 mm

Resolution:
x: 7.33 mm, y: 7.33 mm, z: 7.33 mm

Completed on:
2023/12/25

Measurement results

Maximum H-field [RMS]:

MAGNITUDE: 204.08 mA/m

x: 57.36 mA/m, y: 55.93 mA/m, z: 187.70 mA/m

Maximum H-field location relative to DUT:

x: 3.67 mm, y: -25.67 mm, z: 8.00 mm

Maximum E-field [RMS]:

MAGNITUDE: 18.18 V/m

x: 1.51 V/m, y: 952.72 mV/m, z: 18.10 V/m

Maximum E-field location relative to DUT:

x: 0.00 m, y: -29.33 mm, z: 500.00 μ m

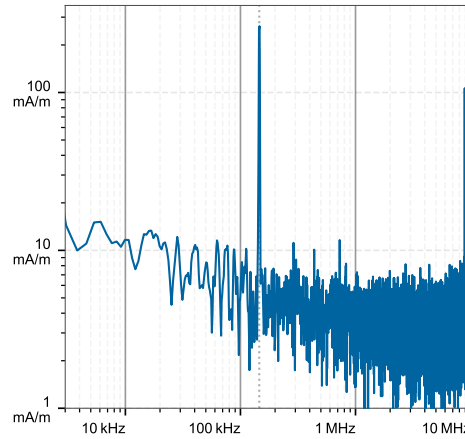
Distance to -20.0 dB boundary:

130.57 mm

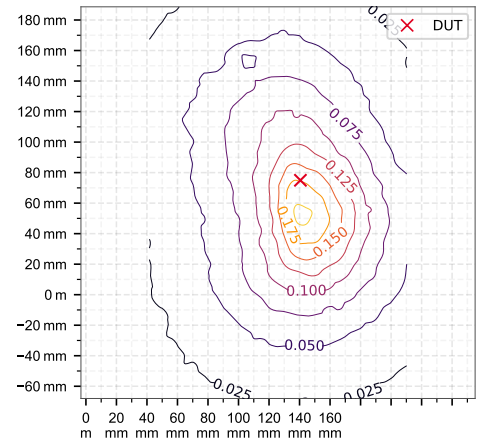
Offset relative to DUT:

x: 0.00 m, y: 0.00 m, z: 500.00 μ m

H-field magnitude [RMS] at maximum location



H-field magnitude [RMS] at lowest plane



Incident fields, and induced quantities in the anatomical model

Distance [mm]	Peak incident fields		Peak E_{ind} [V/m, RMS]			Peak J_{ind} [A/m ² , RMS]	psSAR [mW/kg]		H-field extent
	H_{inc} [A/m, RMS]	E_{inc} [V/m, RMS]	Cube avg.	Local	Line avg.	Surface avg.	1g avg.	10g avg.	-20 dB radius [mm]
0.0	0.322	18.2	0.00505	0.00512	0.00512	0.00348	0.0000135	0.00000869	110.0

DASY8 Module WPT Measurement Report

Device under test

Info:
4_Right Side_0mm

Tool info

DASY software version:
DASY8 Module WPT 2.2.0.3801

Probe model, serial no. and configuration date:
MAGPy-8H3D+E3Dv2, WP000211, 2023/05/09

Software version:
2.0.39, backend: 0.9.2

Scan info

Center location:
x: 80.53 mm, y: 75.00 mm, z: 161.51 mm

Dimensions:
x: 169.0 mm, y: 257.0 mm, z: 36.7 mm

Resolution:
x: 7.33 mm, y: 7.33 mm, z: 7.33 mm

Completed on:
2023/12/25

Measurement results

Maximum H-field [RMS]:
MAGNITUDE: 475.10 mA/m
x: 111.93 mA/m, y: 53.74 mA/m, z: 458.59 mA/m

Maximum H-field location relative to DUT:
x: -3.67 mm, y: 3.67 mm, z: 8.00 mm

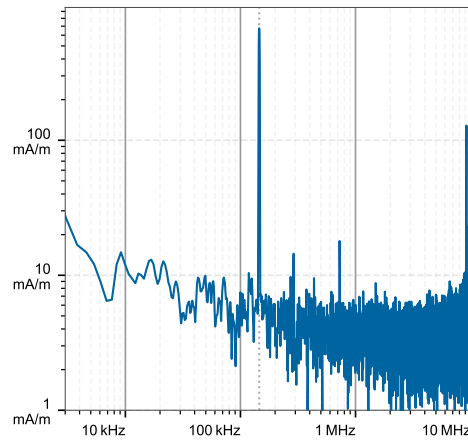
Maximum E-field [RMS]:
MAGNITUDE: 12.99 V/m
x: 1.68 V/m, y: 398.77 mV/m, z: 12.87 V/m

Maximum E-field location relative to DUT:
x: 0.00 m, y: 0.00 m, z: 500.00 μ m

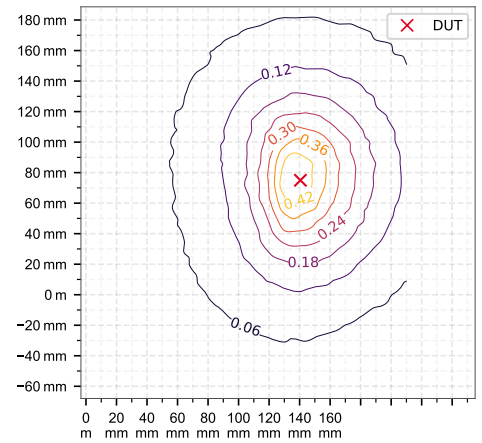
Distance to -20.0 dB boundary:
95.33 mm

Offset relative to DUT:
x: 0.00 m, y: 0.00 m, z: 500.00 μ m

H-field magnitude [RMS] at maximum location



H-field magnitude [RMS] at lowest plane



Incident fields, and induced quantities in the anatomical model

Distance [mm]	Peak incident fields		Peak E_{ind} [V/m, RMS]			Peak J_{ind} [A/m ² , RMS]	psSAR [mW/kg]		H-field extent
	H_{inc} [A/m, RMS]	E_{inc} [V/m, RMS]	Cube avg.	Local	Line avg.	Surface avg.	1g avg.	10g avg.	-20 dB radius [mm]
0.0	0.793	13.0	0.00915	0.00922	0.00921	0.00657	0.000054	0.0000445	85.8

DASY8 Module WPT Measurement Report

Device under test

Info:
5_Top Side_0mm

Tool info

DASY software version:
DASY8 Module WPT 2.2.0.3801

Probe model, serial no. and configuration date:
MAGPy-8H3D+E3Dv2, WP000211, 2023/05/09

Software version:
2.0.39, backend: 0.9.2

Scan info

Center location:
x: 80.54 mm, y: 74.98 mm, z: 161.51 mm

Dimensions:
x: 169.0 mm, y: 257.0 mm, z: 36.7 mm

Resolution:
x: 7.33 mm, y: 7.33 mm, z: 7.33 mm

Completed on:
2023/12/25

Measurement results

Maximum H-field [RMS]:
MAGNITUDE: 289.91 mA/m
x: 26.98 mA/m, y: 33.75 mA/m, z: 286.67 mA/m

Maximum H-field location relative to DUT:
x: -25.67 mm, y: -25.67 mm, z: 8.00 mm

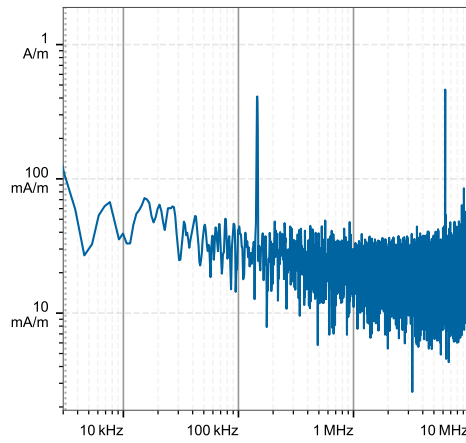
Maximum E-field [RMS]:
MAGNITUDE: 17.51 V/m
x: 98.80 mV/m, y: 971.21 mV/m, z: 17.48 V/m

Maximum E-field location relative to DUT:
x: 0.00 m, y: -29.33 mm, z: 500.00 μ m

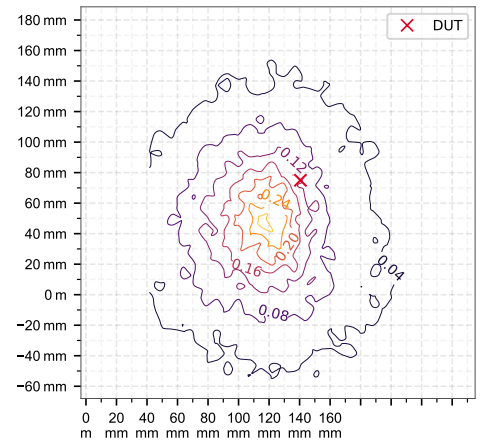
Distance to -20.0 dB boundary:
83.61 mm

Offset relative to DUT:
x: 0.00 m, y: 0.00 m, z: 500.00 μ m

H-field magnitude [RMS] at maximum location



H-field magnitude [RMS] at lowest plane



Incident fields, and induced quantities in the anatomical model

Distance [mm]	Peak incident fields		Peak E_{ind} [V/m, RMS]			Peak J_{ind} [A/m ² , RMS]	psSAR [mW/kg]		H-field extent
	H_{inc} [A/m, RMS]	E_{inc} [V/m, RMS]	Cube avg.	Local	Line avg.	Surface avg.	1g avg.	10g avg.	-20 dB radius [mm]
0.0	0.481	17.5	0.00496	0.005	0.00501	0.00355	0.0000158	0.0000137	84.4

DASY8 Module WPT Measurement Report

Device under test

Info:
6_Bottom Side_0mm

Tool info

DASY software version:
DASY8 Module WPT 2.2.0.3801

Probe model, serial no. and configuration date:
MAGPy-8H3D+E3Dv2, WP000211, 2023/05/09

Software version:
2.0.39, backend: 0.9.2

Scan info

Center location:
x: 53.46 mm, y: 46.87 mm, z: 160.91 mm

Dimensions:
x: 169.0 mm, y: 257.0 mm, z: 36.7 mm

Resolution:
x: 7.33 mm, y: 7.33 mm, z: 7.33 mm

Completed on:
2023/12/25

Measurement results

Maximum H-field [RMS]:
MAGNITUDE: 158.21 mA/m
x: 6.16 mA/m, y: 20.82 mA/m, z: 156.72 mA/m

Maximum H-field location relative to DUT:
x: -25.67 mm, y: -18.33 mm, z: 8.00 mm

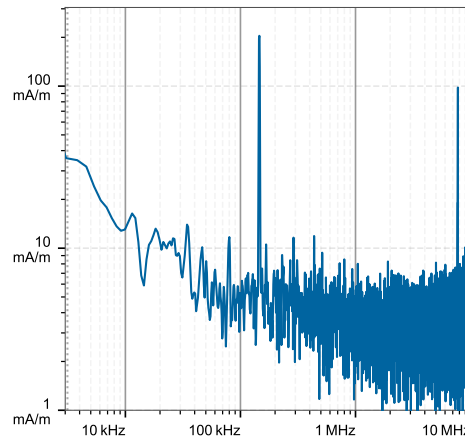
Maximum E-field [RMS]:
MAGNITUDE: 15.01 V/m
x: 127.33 mV/m, y: 985.07 mV/m, z: 14.97 V/m

Maximum E-field location relative to DUT:
x: 0.00 m, y: 0.00 m, z: 500.00 μ m

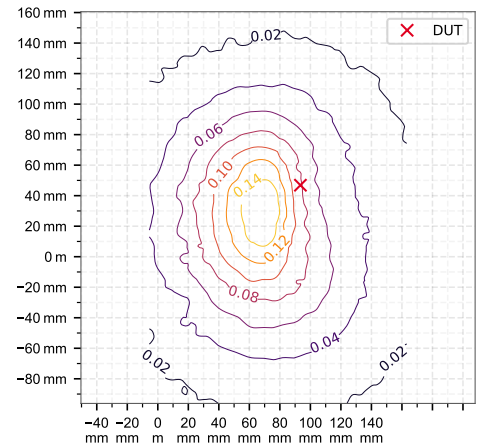
Distance to -20.0 dB boundary:
109.02 mm

Offset relative to DUT:
x: 0.00 m, y: 0.00 m, z: 500.00 μ m

H-field magnitude [RMS] at maximum location



H-field magnitude [RMS] at lowest plane



Incident fields, and induced quantities in the anatomical model

Distance [mm]	Peak incident fields		Peak E_{ind} [V/m, RMS]			Peak J_{ind} [A/m ² , RMS]	psSAR [mW/kg]		H-field extent
	H_{inc} [A/m, RMS]	E_{inc} [V/m, RMS]	Cube avg.	Local	Line avg.	Surface avg.	1g avg.	10g avg.	-20 dB radius [mm]
0.0	0.261	15.0	0.00373	0.00376	0.00375	0.00267	0.00000909	0.00000794	103.0