

System Check_Head_3500MHz

DUT: D3500V2 - SN:1037

Communication System: UID 0, CW (0); Frequency: 3500 MHz; Duty Cycle: 1:1

Medium: HSL_3500 Medium parameters used: $f = 3500$ MHz; $\sigma = 2.835$ S/m; $\epsilon_r = 39.048$; $\rho = 1000$ kg/m³

Ambient Temperature : 23.3 °C; Liquid Temperature : 22.7 °C

DASY5 Configuration:

- Probe: EX3DV4 - SN3857; ConvF(6.7, 6.7, 6.7); Calibrated: 2022/12/14
- Sensor-Surface: 1.4mm (Mechanical Surface Detection)
- Electronics: DAE4 Sn1279; Calibrated: 2023/6/7
- Phantom: SAM Twin Phantom; Type: SAM Twin; Serial: TP-1697
- Measurement SW: DASY52, Version 52.10 (4); SEMCAD X Version 14.6.14 (7501)

Pin=50mW/Area Scan (91x91x1): Interpolated grid: dx=1.000 mm, dy=1.000 mm
Maximum value of SAR (interpolated) = 6.29 W/kg

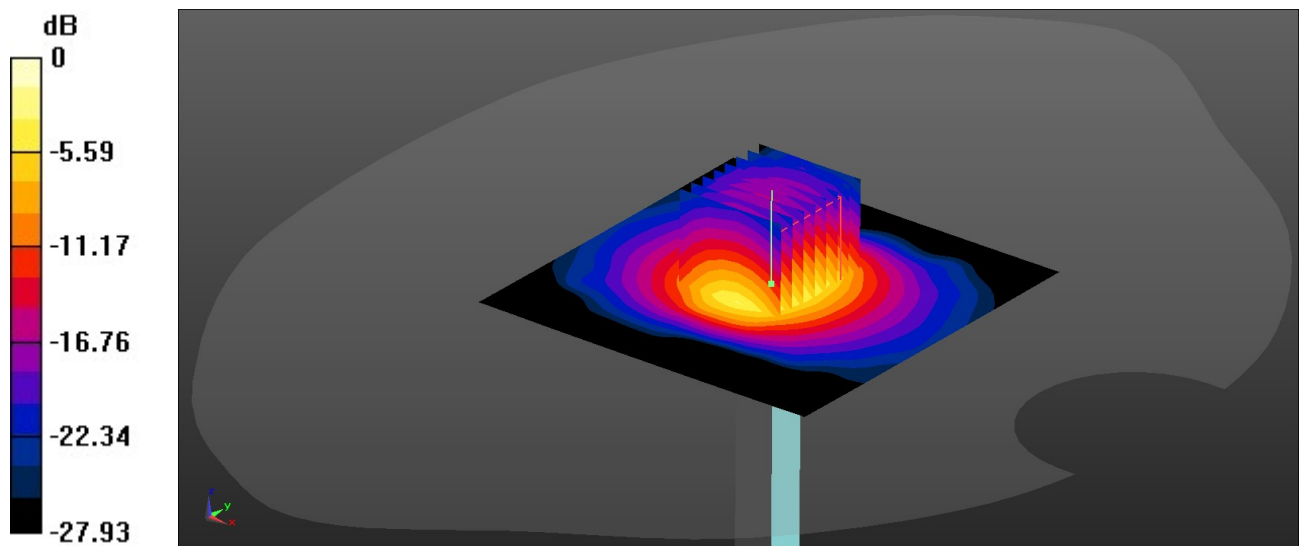
Pin=50mW/Zoom Scan (8x8x7)/Cube 0: Measurement grid: dx=4mm, dy=4mm, dz=1.4mm

Reference Value = 48.86 V/m; Power Drift = 0.10 dB

Peak SAR (extrapolated) = 8.56 W/kg

SAR(1 g) = 3.33 W/kg; SAR(10 g) = 1.28 W/kg

Maximum value of SAR (measured) = 6.40 W/kg



0 dB = 6.40 W/kg = 8.06 dBW/kg

System Check_Head_3700MHz

DUT: D3700V2 - SN:1008

Communication System: UID 0, CW (0); Frequency: 3700 MHz; Duty Cycle: 1:1

Medium: HSL_3700 Medium parameters used: $f = 3700$ MHz; $\sigma = 3.025$ S/m; $\epsilon_r = 38.72$; $\rho = 1000$ kg/m³

Ambient Temperature : 23.1 °C; Liquid Temperature : 22.6 °C

DASY5 Configuration:

- Probe: EX3DV4 - SN3857; ConvF(6.66, 6.66, 6.66); Calibrated: 2022/12/14

- Sensor-Surface: 1.4mm (Mechanical Surface Detection)

- Electronics: DAE4 Sn1279; Calibrated: 2023/6/7

- Phantom: SAM Twin Phantom; Type: SAM Twin; Serial: TP-1697

- Measurement SW: DASY52, Version 52.10 (4); SEMCAD X Version 14.6.14 (7501)

Pin=50mW/Area Scan (91x91x1): Interpolated grid: dx=1.000 mm, dy=1.000 mm
Maximum value of SAR (interpolated) = 6.75 W/kg

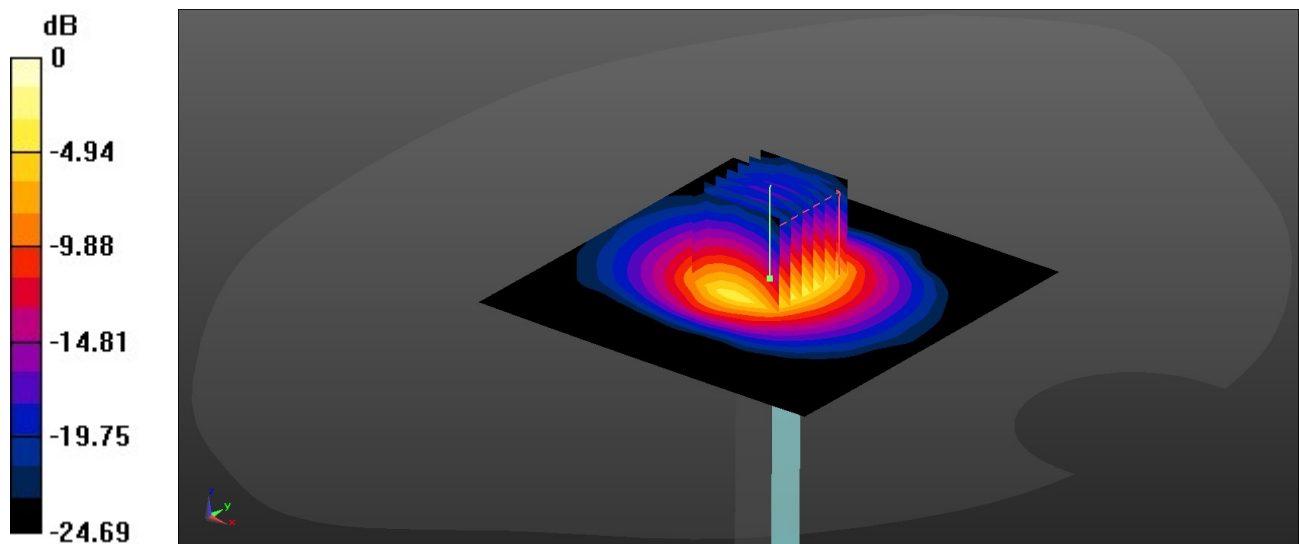
Pin=50mW/Zoom Scan (7x7x7)/Cube 0: Measurement grid: dx=4mm, dy=4mm, dz=1.4mm

Reference Value = 45.30 V/m; Power Drift = 0.09 dB

Peak SAR (extrapolated) = 9.17 W/kg

SAR(1 g) = 3.44 W/kg; SAR(10 g) = 1.28 W/kg

Maximum value of SAR (measured) = 6.79 W/kg



0 dB = 6.79 W/kg = 8.32 dBW/kg

System Check_Head_3900MHz

DUT: D3900V2 - SN:1048

Communication System: UID 0, CW (0); Frequency: 3900 MHz; Duty Cycle: 1:1

Medium: HSL_3900 Medium parameters used: $f = 3900$ MHz; $\sigma = 3.229$ S/m; $\epsilon_r = 38.414$; $\rho = 1000$ kg/m³

Ambient Temperature : 23.3 °C; Liquid Temperature : 22.7 °C

DASY5 Configuration:

- Probe: EX3DV4 - SN3857; ConvF(6.59, 6.59, 6.59); Calibrated: 2022/12/14

- Sensor-Surface: 1.4mm (Mechanical Surface Detection)

- Electronics: DAE4 Sn1279; Calibrated: 2023/6/7

- Phantom: SAM Twin Phantom; Type: SAM Twin; Serial: TP-1697

- Measurement SW: DASY52, Version 52.10 (4); SEMCAD X Version 14.6.14 (7501)

Pin=50mW/Area Scan (91x91x1): Interpolated grid: dx=1.000 mm, dy=1.000 mm

Maximum value of SAR (interpolated) = 6.14 W/kg

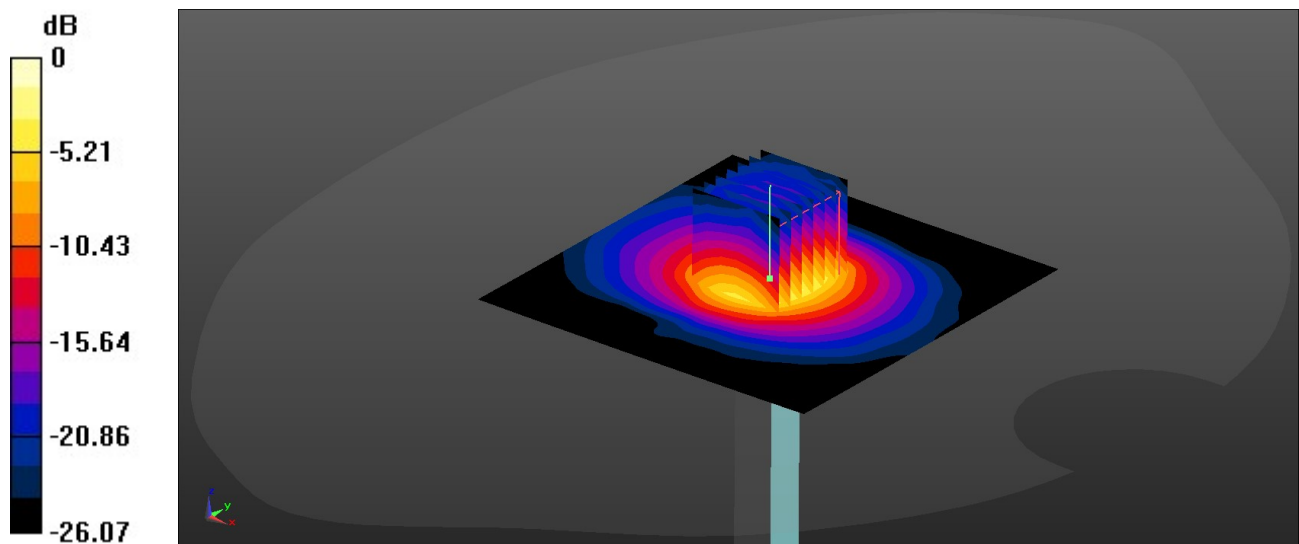
Pin=50mW/Zoom Scan (7x7x7)/Cube 0: Measurement grid: dx=4mm, dy=4mm, dz=1.4mm

Reference Value = 45.61 V/m; Power Drift = 0.04 dB

Peak SAR (extrapolated) = 8.36 W/kg

SAR(1 g) = 3.21 W/kg; SAR(10 g) = 1.14 W/kg

Maximum value of SAR (measured) = 6.35 W/kg



System Check_Head_5250MHz

DUT: D5GHzV2 - SN:1113

Communication System: UID 0, CW (0); Frequency: 5250 MHz; Duty Cycle: 1:1

Medium: HSL_5000 Medium parameters used: $f = 5250$ MHz; $\sigma = 4.575$ S/m; $\epsilon_r = 36.286$; $\rho = 1000$ kg/m³

Ambient Temperature : 23.2 °C; Liquid Temperature : 22.8 °C

DASY5 Configuration:

- Probe: EX3DV4 - SN3857; ConvF(5.21, 5.21, 5.21); Calibrated: 2022/12/14

- Sensor-Surface: 1.4mm (Mechanical Surface Detection)

- Electronics: DAE4 Sn1279; Calibrated: 2023/6/7

- Phantom: SAM Twin Phantom; Type: SAM Twin; Serial: TP-1697

- Measurement SW: DASY52, Version 52.10 (4); SEMCAD X Version 14.6.14 (7501)

Pin=50mW/Area Scan (91x91x1): Interpolated grid: dx=1.000 mm, dy=1.000 mm

Maximum value of SAR (interpolated) = 9.04 W/kg

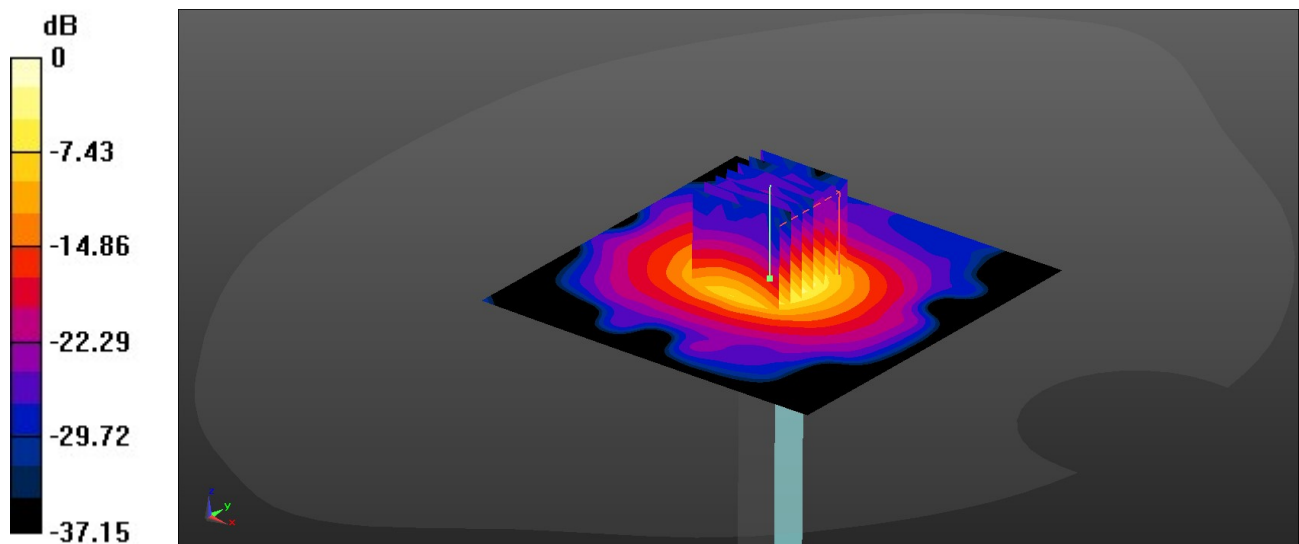
Pin=50mW/Zoom Scan (7x7x7)/Cube 0: Measurement grid: dx=4mm, dy=4mm, dz=1.4mm

Reference Value = 45.25 V/m; Power Drift = 0.06 dB

Peak SAR (extrapolated) = 15.2 W/kg

SAR(1 g) = 3.83 W/kg; SAR(10 g) = 1.09 W/kg

Maximum value of SAR (measured) = 9.67 W/kg



0 dB = 9.67 W/kg = 9.85 dBW/kg

System Check_Head_5600MHz

DUT: D5GHzV2 - SN:1113

Communication System: UID 0, CW (0); Frequency: 5600 MHz; Duty Cycle: 1:1

Medium: HSL_5000 Medium parameters used: $f = 5600$ MHz; $\sigma = 4.952$ S/m; $\epsilon_r = 35.732$; $\rho = 1000$ kg/m³

Ambient Temperature : 23.3 °C; Liquid Temperature : 22.6 °C

DASY5 Configuration:

- Probe: EX3DV4 - SN3857; ConvF(4.86, 4.86, 4.86); Calibrated: 2022/12/14
- Sensor-Surface: 1.4mm (Mechanical Surface Detection)
- Electronics: DAE4 Sn1279; Calibrated: 2023/6/7
- Phantom: SAM Twin Phantom; Type: SAM Twin; Serial: TP-1697
- Measurement SW: DASY52, Version 52.10 (4); SEMCAD X Version 14.6.14 (7501)

Pin=50mW/Area Scan (91x91x1): Interpolated grid: dx=1.000 mm, dy=1.000 mm
Maximum value of SAR (interpolated) = 9.93 W/kg

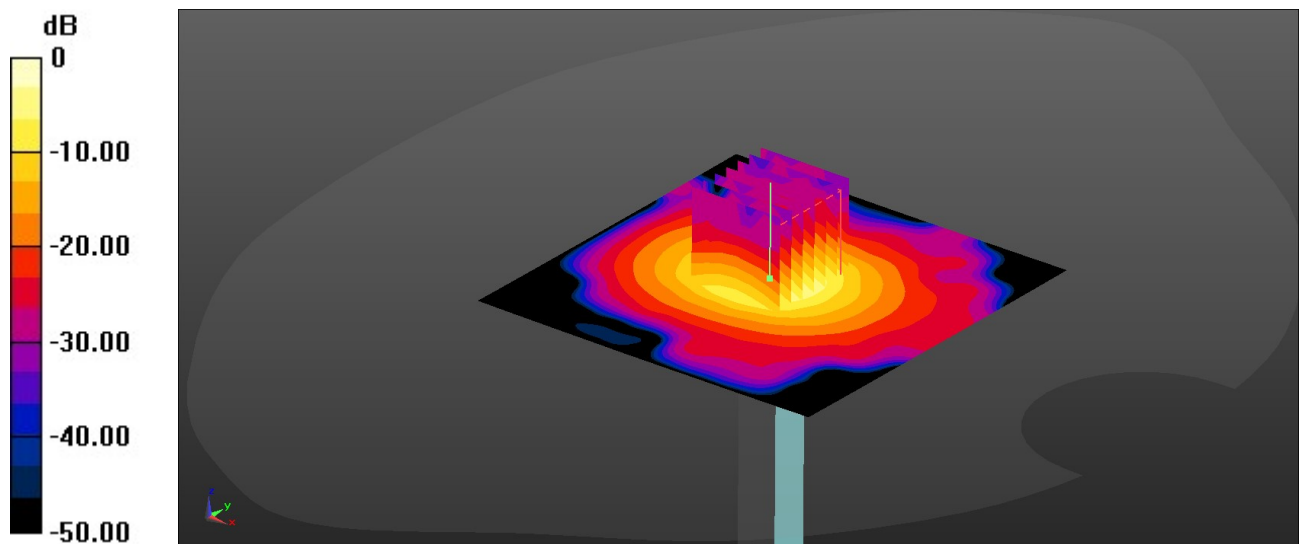
Pin=50mW/Zoom Scan (7x7x7)/Cube 0: Measurement grid: dx=4mm, dy=4mm, dz=1.4mm

Reference Value = 44.85 V/m; Power Drift = 0.04 dB

Peak SAR (extrapolated) = 17.5 W/kg

SAR(1 g) = 3.99 W/kg; SAR(10 g) = 1.12 W/kg

Maximum value of SAR (measured) = 10.4 W/kg



0 dB = 10.4 W/kg = 10.17 dBW/kg

System Check_Head_5750MHz

DUT: D5GHzV2 - SN:1113

Communication System: UID 0, CW (0); Frequency: 5750 MHz; Duty Cycle: 1:1

Medium: HSL_5000 Medium parameters used: $f = 5750$ MHz; $\sigma = 5.134$ S/m; $\epsilon_r = 35.562$; $\rho = 1000$ kg/m³

Ambient Temperature : 23.4 °C; Liquid Temperature : 22.9 °C

DASY5 Configuration:

- Probe: EX3DV4 - SN3857; ConvF(4.93, 4.93, 4.93); Calibrated: 2022/12/14

- Sensor-Surface: 1.4mm (Mechanical Surface Detection)

- Electronics: DAE4 Sn1279; Calibrated: 2023/6/7

- Phantom: SAM Twin Phantom; Type: SAM Twin; Serial: TP-1697

- Measurement SW: DASY52, Version 52.10 (4); SEMCAD X Version 14.6.14 (7501)

Pin=50mW/Area Scan (91x91x1): Interpolated grid: dx=1.000 mm, dy=1.000 mm

Maximum value of SAR (interpolated) = 9.55 W/kg

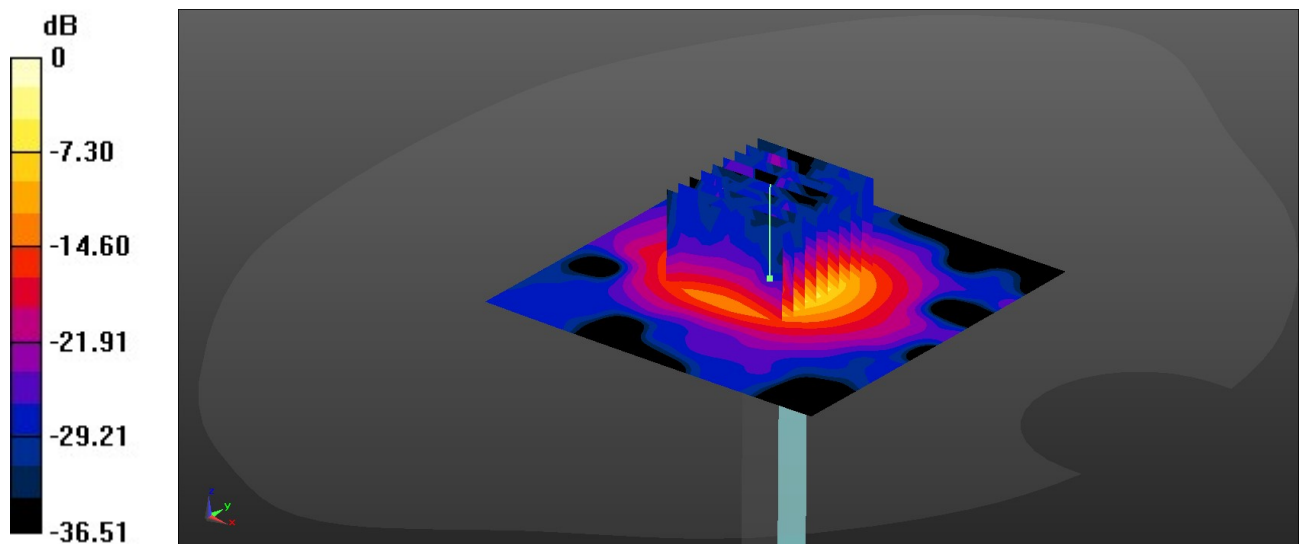
Pin=50mW/Zoom Scan (9x9x7)/Cube 0: Measurement grid: dx=4mm, dy=4mm, dz=1.4mm

Reference Value = 43.56 V/m; Power Drift = 0.07 dB

Peak SAR (extrapolated) = 17.3 W/kg

SAR(1 g) = 3.77 W/kg; SAR(10 g) = 1.09 W/kg

Maximum value of SAR (measured) = 9.74 W/kg



0 dB = 9.74 W/kg = 9.89 dBW/kg

System Check_Head_750MHz

DUT:D750V3 - SN:1087

Communication System: ; Frequency: 750.000

Medium: HSL. Medium parameters used: $f= 750.000$ MHz; $\sigma= 0.905$ S/m; $\epsilon_r = 42.7$

Ambient Temperature: 23.2°C; Liquid Temperature: 22.7°C

DASY6 Configuration:

- Probe: EX3DV4 - SN7706; ConvF(10.97, 10.97, 10.97); Calibrated: 2023-01-26
- Sensor-Surface: 1.4 mm
- Electronics: DAE4 Sn1338; Calibrated: 2022-12-15
- Phantom: Twin-SAM V8.0 (30deg probe tilt); Serial: 2024
- Measurement Software: cDASY6 V6.6.0.13926

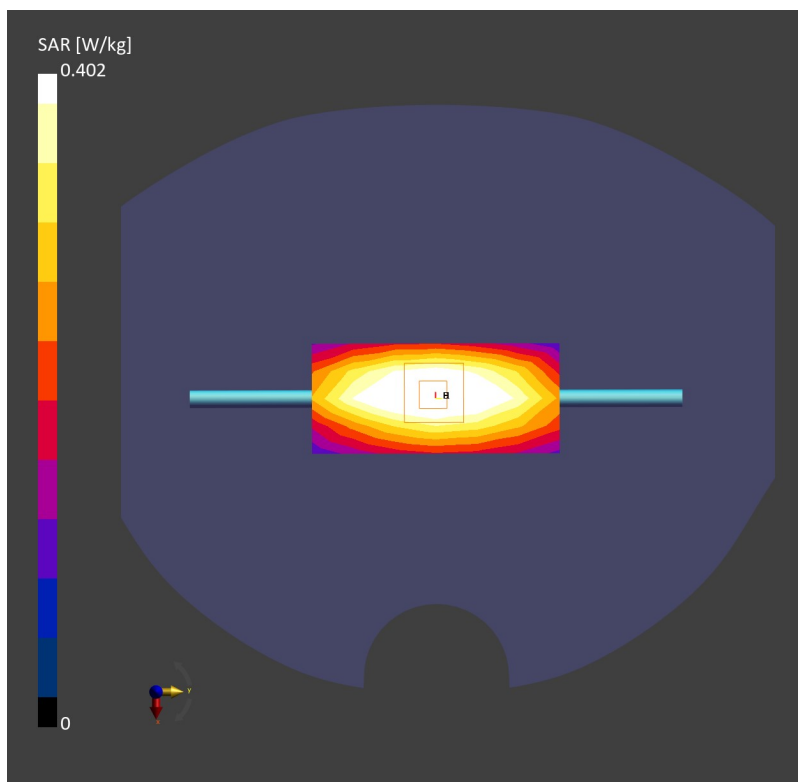
Area Scan (40.0 mm x 90.0 mm): Measurement Grid: 10.0 mm x 15.0 mm

SAR (1g) = 0.410 W/kg; SAR (10g) = 0.272 W/kg;

Zoom Scan (30.0 mm x 30.0 mm x 30.0 mm): Measurement Grid: 6.0 mm x 6.0 mm x 1.5 mm

Power Drift = 0.01 dB

SAR (1g) = 0.402 W/kg; SAR (10g) = 0.263 W/kg;



System Check_Head_835MHz

DUT:D835V2 - SN:4d091

Communication System: ; Frequency: 835.000

Medium: HSL. Medium parameters used: $f= 835.000$ MHz; $\sigma= 0.924$ S/m; $\epsilon_r = 41.4$

Ambient Temperature: 23.1°C; Liquid Temperature: 22.8°C

DASY6 Configuration:

- Probe: EX3DV4 - SN7706; ConvF(10.67, 10.67, 10.67); Calibrated: 2023-01-26
- Sensor-Surface: 1.4 mm
- Electronics: DAE4 Sn1338; Calibrated: 2022-12-15
- Phantom: Twin-SAM V8.0 (30deg probe tilt); Serial: 2024
- Measurement Software: cDASY6 V6.6.0.13926

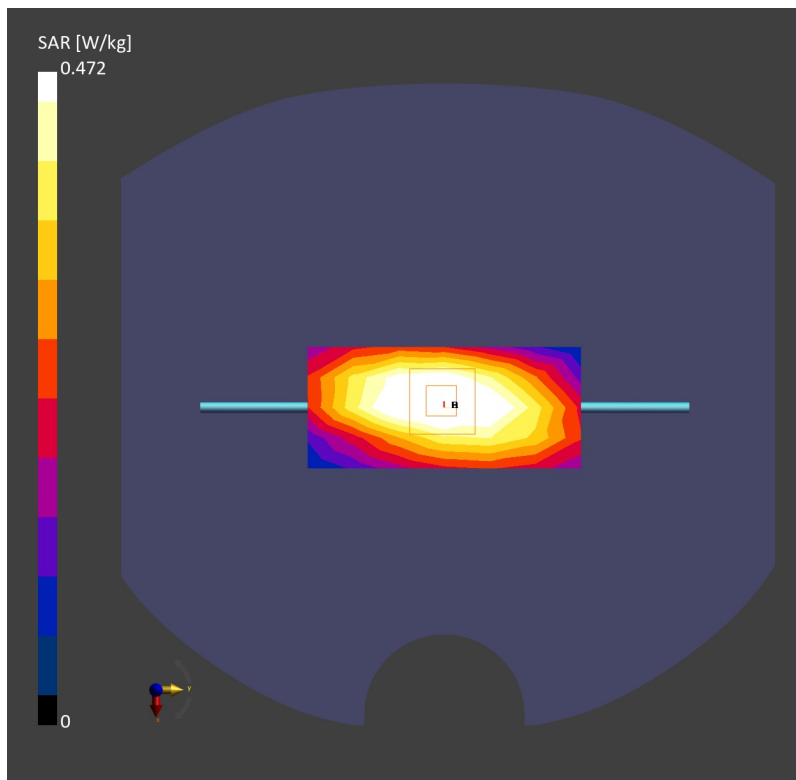
Area Scan (40.0 mm x 90.0 mm): Measurement Grid: 10.0 mm x 15.0 mm

SAR (1g) = 0.487 W/kg; SAR (10g) = 0.319 W/kg;

Zoom Scan (30.0 mm x 30.0 mm x 30.0 mm): Measurement Grid: 6.0 mm x 6.0 mm x 1.5 mm

Power Drift = -0.01 dB

SAR (1g) = 0.472 W/kg; SAR (10g) = 0.305 W/kg;



System Check_Head_1750MHz

DUT:D1750V2 - SN:1090

Communication System: ; Frequency: 1750.000

Medium: HSL. Medium parameters used: $f= 1750.000$ MHz; $\sigma= 1.35$ S/m; $\epsilon_r = 40.1$

Ambient Temperature: 23.1°C; Liquid Temperature: 22.7°C

DASY6 Configuration:

- Probe: EX3DV4 - SN7706; ConvF(9.31, 9.31, 9.31); Calibrated: 2023-01-26
- Sensor-Surface: 1.4 mm
- Electronics: DAE4 Sn1338; Calibrated: 2022-12-15
- Phantom: Twin-SAM V8.0 (30deg probe tilt); Serial: 2024
- Measurement Software: cDASY6 V6.6.0.13926

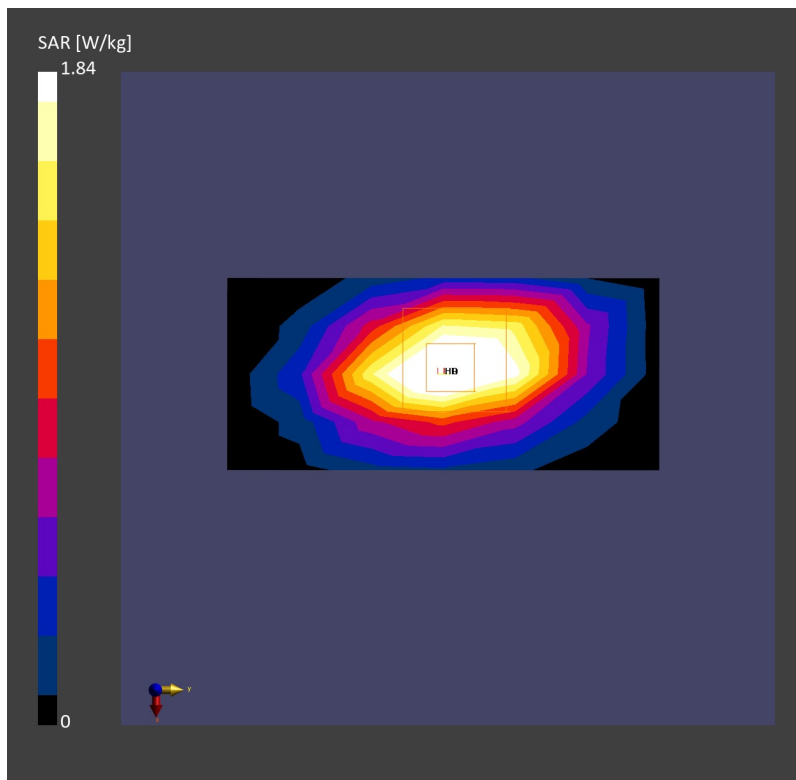
Area Scan (40.0 mm x 90.0 mm): Measurement Grid: 10.0 mm x 15.0 mm

SAR (1g) = 1.87 W/kg; SAR (10g) = 1.00 W/kg;

Zoom Scan (30.0 mm x 30.0 mm x 30.0 mm): Measurement Grid: 6.0 mm x 6.0 mm x 1.5 mm

Power Drift = 0.02 dB

SAR (1g) = 1.84 W/kg; SAR (10g) = 0.968 W/kg;



System Check_Head_1900MHz

DUT:D1900V2 - SN:5d118

Communication System: ; Frequency: 1900.000

Medium: HSL. Medium parameters used: $f= 1900.000$ MHz; $\sigma= 1.43$ S/m; $\epsilon_r = 39.8$

Ambient Temperature: 23.2°C; Liquid Temperature: 22.9°C

DASY6 Configuration:

- Probe: EX3DV4 - SN7706; ConvF(8.89, 8.89, 8.89); Calibrated: 2023-01-26
- Sensor-Surface: 1.4 mm
- Electronics: DAE4 Sn1338; Calibrated: 2022-12-15
- Phantom: Twin-SAM V8.0 (30deg probe tilt); Serial: 2024
- Measurement Software: cDASY6 V6.6.0.13926

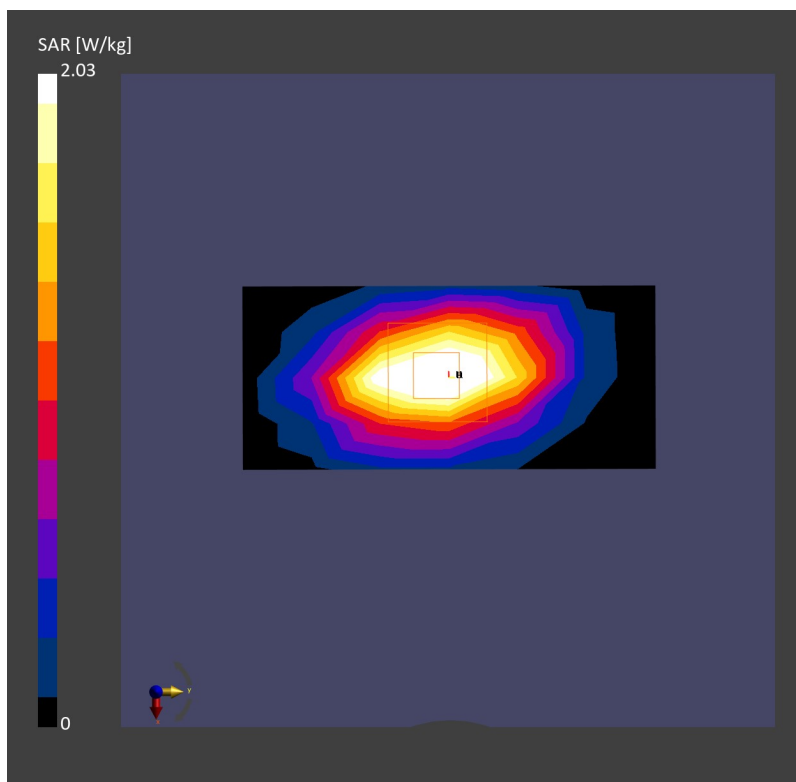
Area Scan (40.0 mm x 90.0 mm): Measurement Grid: 10.0 mm x 15.0 mm

SAR (1g) = 2.02 W/kg; SAR (10g) = 1.05 W/kg;

Zoom Scan (30.0 mm x 30.0 mm x 30.0 mm): Measurement Grid: 6.0 mm x 6.0 mm x 1.5 mm

Power Drift = 0.02 dB

SAR (1g) = 2.03 W/kg; SAR (10g) = 1.04 W/kg;



System Check_Head_2300MHz

DUT:D2300V2 - SN:1055

Communication System: ; Frequency: 2300.0

Medium: HSL. Medium parameters used: $f= 2300.0$ MHz; $\sigma= 1.65$ S/m; $\epsilon_r = 39.7$

Ambient Temperature: 23.1°C; Liquid Temperature: 22.9°C

DASY6 Configuration:

- Probe: EX3DV4 - SN7729; ConvF(8.37, 8.11, 7.80); Calibrated: 2023-06-07
- Sensor-Surface: 1.4 mm
- Electronics: DAE4 Sn1338; Calibrated: 2022-12-15
- Phantom: Twin-SAM V8.0 (30deg probe tilt); Serial:2022
- Measurement Software: cDASY6 V6.6.0.13926

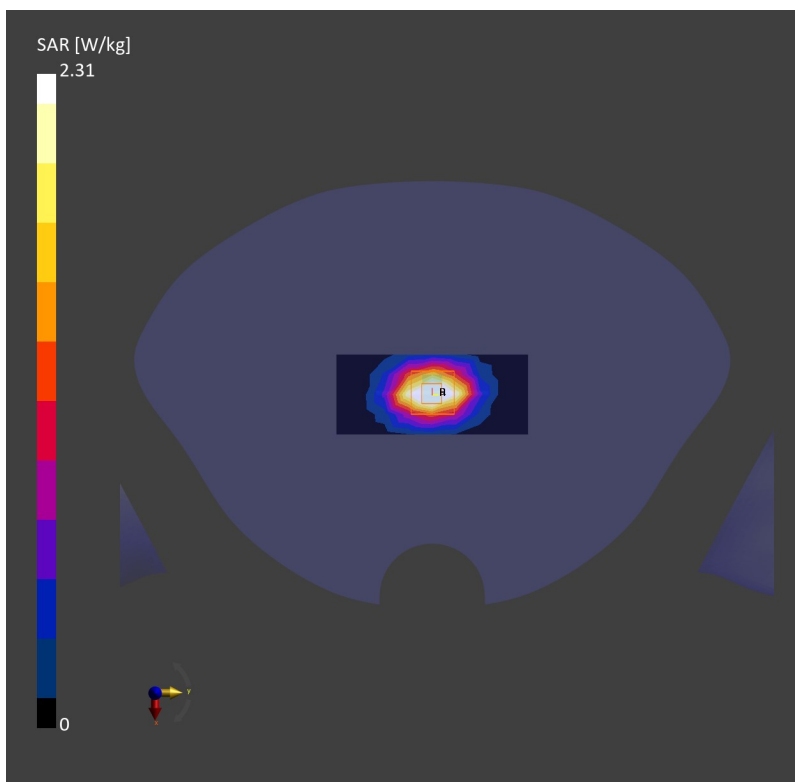
Area Scan (40.0 mm x 96.0 mm): Measurement Grid: 15.0 mm x 15.0 mm

SAR (1g) = 2.11 W/kg; SAR (10g) = 1.05 W/kg;

Zoom Scan (32.0 mm x 32.0 mm x 30.0 mm): Measurement Grid: 8.0 mm x 8.0 mm x 5.0 mm

Power Drift = 0.09 dB

SAR (1g) = 2.31 W/kg; SAR(10 g) = 1.10 W/kg;



System Check_Head_2450MHz

DUT:D2450V2 - SN:1095

Communication System: ; Frequency: 2450.000

Medium: HSL. Medium parameters used: $f= 2450.000$ MHz; $\sigma= 1.86$ S/m; $\epsilon_r = 38.4$

Ambient Temperature: 23.2°C; Liquid Temperature: 22.6°C

DASY6 Configuration:

- Probe: EX3DV4 - SN7706; ConvF(8.38, 8.38, 8.38); Calibrated: 2023-01-26
- Sensor-Surface: 1.4 mm
- Electronics: DAE4 Sn1338; Calibrated: 2022-12-15
- Phantom: Twin-SAM V8.0 (30deg probe tilt); Serial: 2024
- Measurement Software: cDASY6 V6.6.0.13926

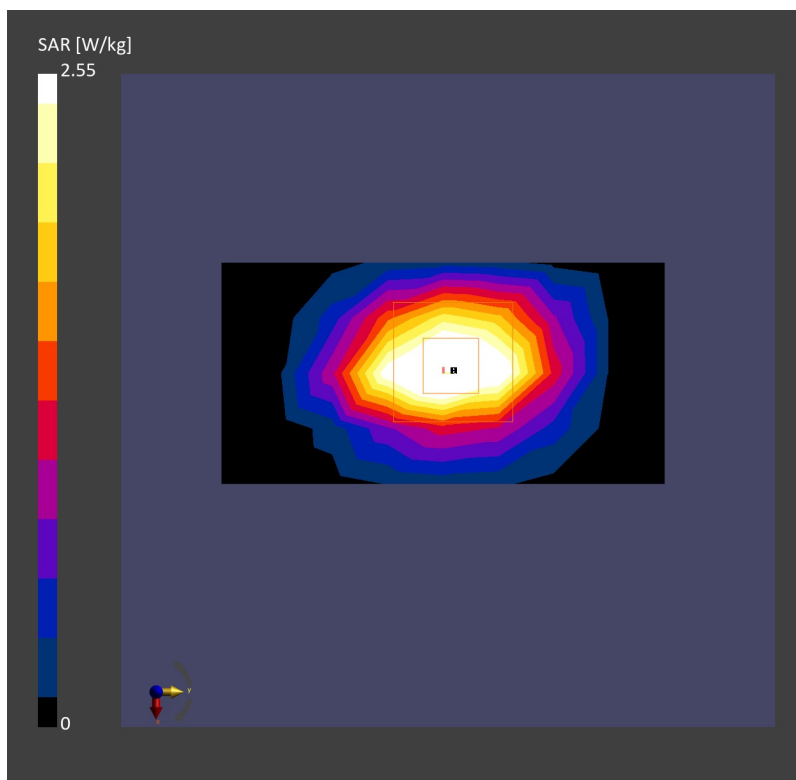
Area Scan (40.0 mm x 80.0 mm): Measurement Grid: 10.0 mm x 10.0 mm

SAR (1g) = 2.61 W/kg; SAR (10g) = 1.21 W/kg;

Zoom Scan (30.0 mm x 30.0 mm x 30.0 mm): Measurement Grid: 5.0 mm x 5.0 mm x 1.5 mm

Power Drift = -0.01 dB

SAR (1g) = 2.55 W/kg; SAR (10g) = 1.19 W/kg;



System Check_Head_2600MHz

DUT:D2600V2 - SN:1061

Communication System: ; Frequency: 2600.000

Medium: HSL. Medium parameters used: $f = 2600.000$ MHz; $\sigma = 1.96$ S/m; $\epsilon_r = 40.4$

Ambient Temperature: 23.2°C; Liquid Temperature: 22.6°C

DASY6 Configuration:

- Probe: EX3DV4 - SN7706; ConvF(8.1, 8.1, 8.1); Calibrated: 2023-01-26
- Sensor-Surface: 1.4 mm
- Electronics: DAE4 Sn1338; Calibrated: 2022-12-15
- Phantom: Twin-SAM V8.0 (30deg probe tilt); Serial: 2024
- Measurement Software: cDASY6 V6.6.0.13926

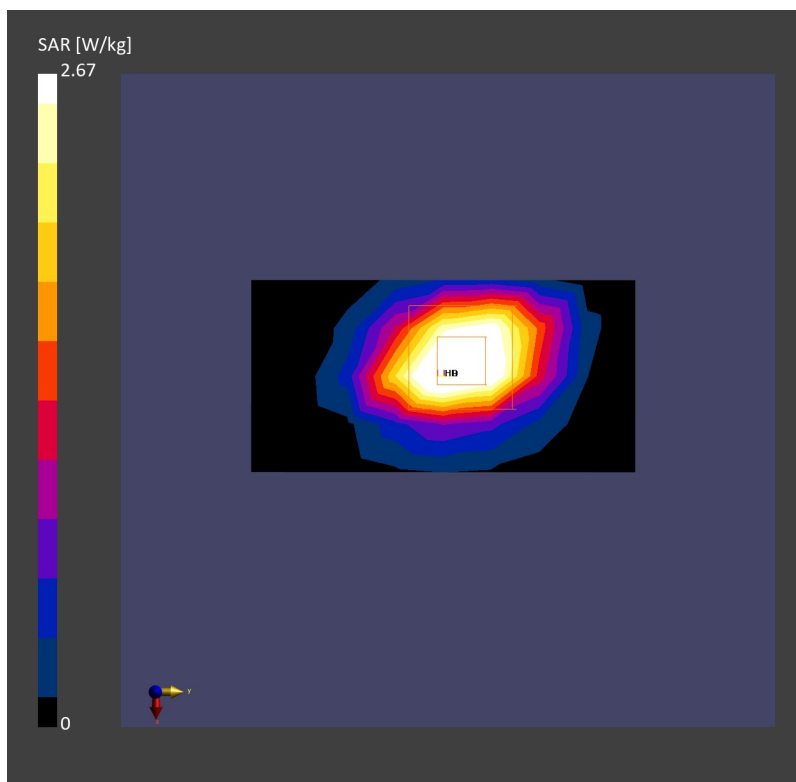
Area Scan (40.0 mm x 80.0 mm): Measurement Grid: 10.0 mm x 10.0 mm

SAR (1g) = 2.72 W/kg; SAR (10g) = 1.25 W/kg;

Zoom Scan (30.0 mm x 30.0 mm x 30.0 mm): Measurement Grid: 5.0 mm x 5.0 mm x 1.5 mm

Power Drift = -0.02 dB

SAR (1g) = 2.67 W/kg; SAR (10g) = 1.20 W/kg;



System Check_Head_3500MHz

DUT:D3500V2 - SN:1037

Communication System: ; Frequency: 3500.000

Medium: HSL. Medium parameters used: $f= 3500.000$ MHz; $\sigma= 2.88$ S/m; $\epsilon_r = 38.5$

Ambient Temperature: 23.3°C; Liquid Temperature: 22.7°C

DASY6 Configuration:

- Probe: EX3DV4 - SN7706; ConvF(7.68, 7.68, 7.68); Calibrated: 2023-01-26
- Sensor-Surface: 1.4 mm
- Electronics: DAE4 Sn1338; Calibrated: 2022-12-15
- Phantom: Twin-SAM V8.0 (30deg probe tilt); Serial: 2024
- Measurement Software: cDASY6 V6.6.0.13926

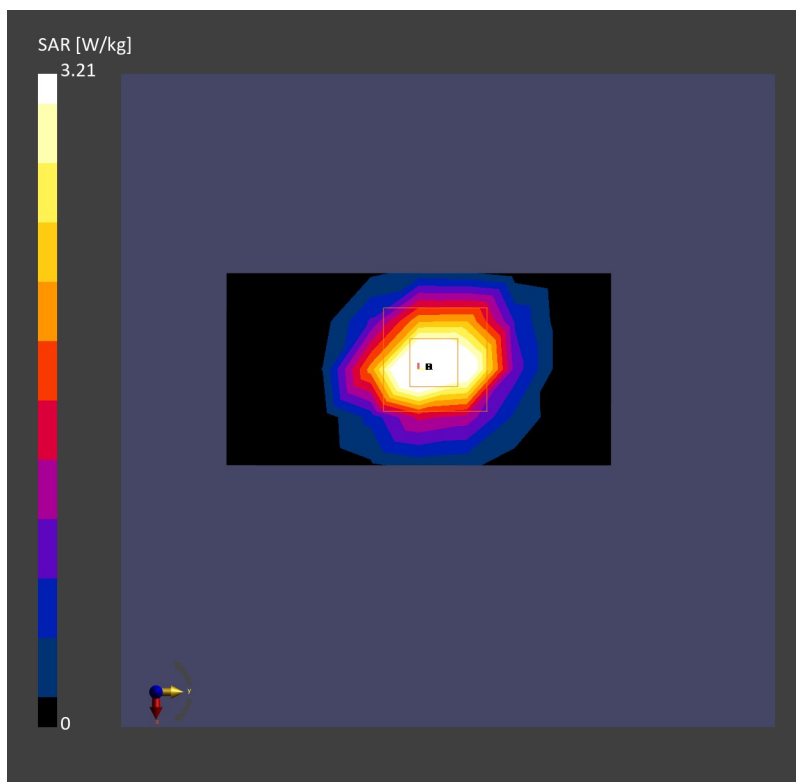
Area Scan (40.0 mm x 80.0 mm): Measurement Grid: 10.0 mm x 10.0 mm

SAR (1g) = 3.18 W/kg; SAR (10g) = 1.22 W/kg;

Zoom Scan (28.0 mm x 28.0 mm x 28.0 mm): Measurement Grid: 4.0 mm x 4.0 mm x 1.4 mm

Power Drift = 0.01 dB

SAR (1g) = 3.21 W/kg; SAR (10g) = 1.23 W/kg;



System Check_Head_3700MHz

DUT:D3700V2 - SN:1008

Communication System: ; Frequency: 3700.000

Medium: HSL. Medium parameters used: $f= 3700.000$ MHz; $\sigma= 3.08$ S/m; $\epsilon_r = 38.0$

Ambient Temperature: 23.2°C; Liquid Temperature: 22.7°C

DASY6 Configuration:

- Probe: EX3DV4 - SN7706; ConvF(7.61, 7.61, 7.61); Calibrated: 2023-01-26
- Sensor-Surface: 1.4 mm
- Electronics: DAE4 Sn1338; Calibrated: 2022-12-15
- Phantom: Twin-SAM V8.0 (30deg probe tilt); Serial: 2024
- Measurement Software: cDASY6 V6.6.0.13926

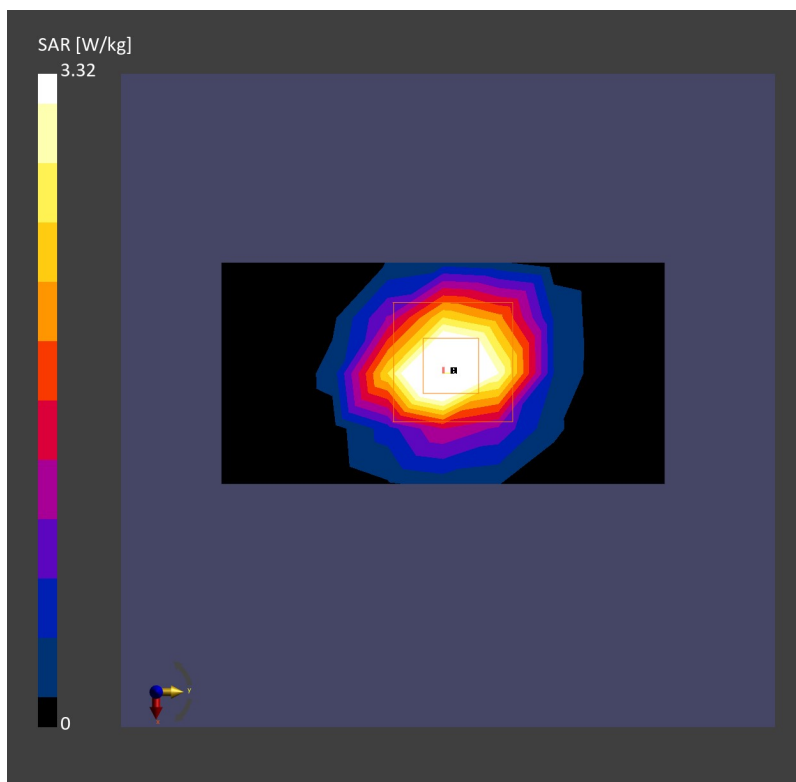
Area Scan (40.0 mm x 80.0 mm): Measurement Grid: 10.0 mm x 10.0 mm

SAR (1g) = 3.32 W/kg; SAR (10g) = 1.23 W/kg;

Zoom Scan (28.0 mm x 28.0 mm x 28.0 mm): Measurement Grid: 4.0 mm x 4.0 mm x 1.4 mm

Power Drift = -0.01 dB

SAR (1g) = 3.32 W/kg; SAR (10g) = 1.23 W/kg;



System Check_Head_3900MHz

DUT:D3900V2 - SN:1048

Communication System: ; Frequency: 3900.000

Medium: HSL. Medium parameters used: $f= 3900.000$ MHz; $\sigma= 3.28$ S/m; $\epsilon_r = 37.6$

Ambient Temperature: 23.1°C; Liquid Temperature: 22.9°C

DASY6 Configuration:

- Probe: EX3DV4 - SN7706; ConvF(7.31, 7.31, 7.31); Calibrated: 2023-01-26
- Sensor-Surface: 1.4 mm
- Electronics: DAE4 Sn1338; Calibrated: 2022-12-15
- Phantom: Twin-SAM V8.0 (30deg probe tilt); Serial: 2024
- Measurement Software: cDASY6 V6.6.0.13926

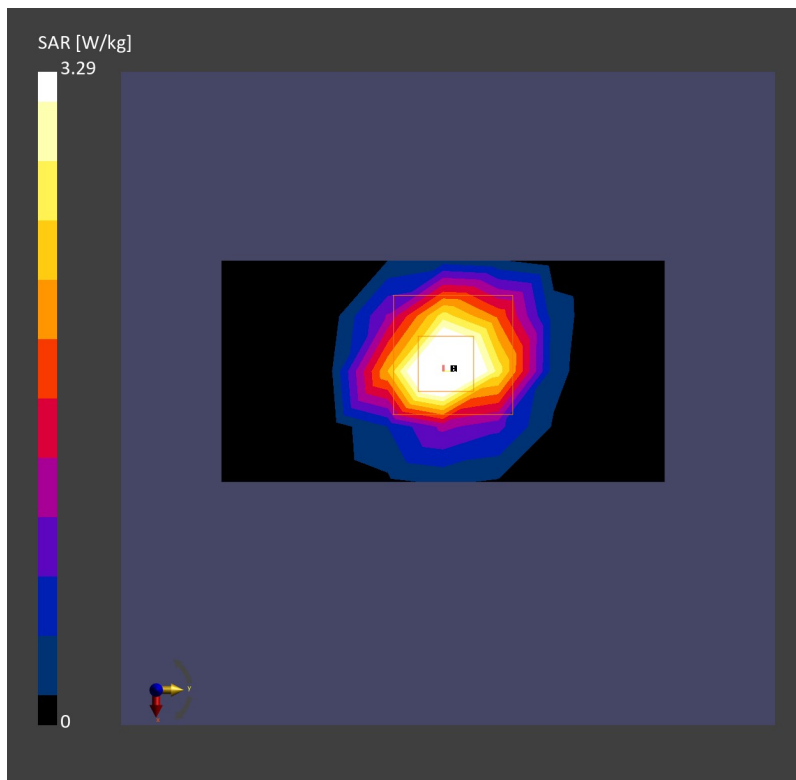
Area Scan (40.0 mm x 80.0 mm): Measurement Grid: 10.0 mm x 10.0 mm

SAR (1g) = 3.16 W/kg; SAR (10g) = 1.13 W/kg;

Zoom Scan (28.0 mm x 28.0 mm x 28.0 mm): Measurement Grid: 4.0 mm x 4.0 mm x 1.4 mm

Power Drift = -0.02 dB

SAR (1g) = 3.29 W/kg; SAR (10g) = 1.18 W/kg;



System Check_Head_5250MHz

DUT:D5GHzV2 - SN:1113

Communication System: ; Frequency: 5250.000

Medium: HSL. Medium parameters used: $f= 5250.000$ MHz; $\sigma= 4.57$ S/m; $\epsilon_r = 35.5$

Ambient Temperature: 23.2°C; Liquid Temperature: 22.8°C

DASY6 Configuration:

- Probe: EX3DV4 - SN7706; ConvF(6.18, 6.18, 6.18); Calibrated: 2023-01-26
- Sensor-Surface: 1.4 mm
- Electronics: DAE4 Sn1338; Calibrated: 2022-12-15
- Phantom: Twin-SAM V8.0 (30deg probe tilt); Serial: 2024
- Measurement Software: cDASY6 V6.6.0.13926

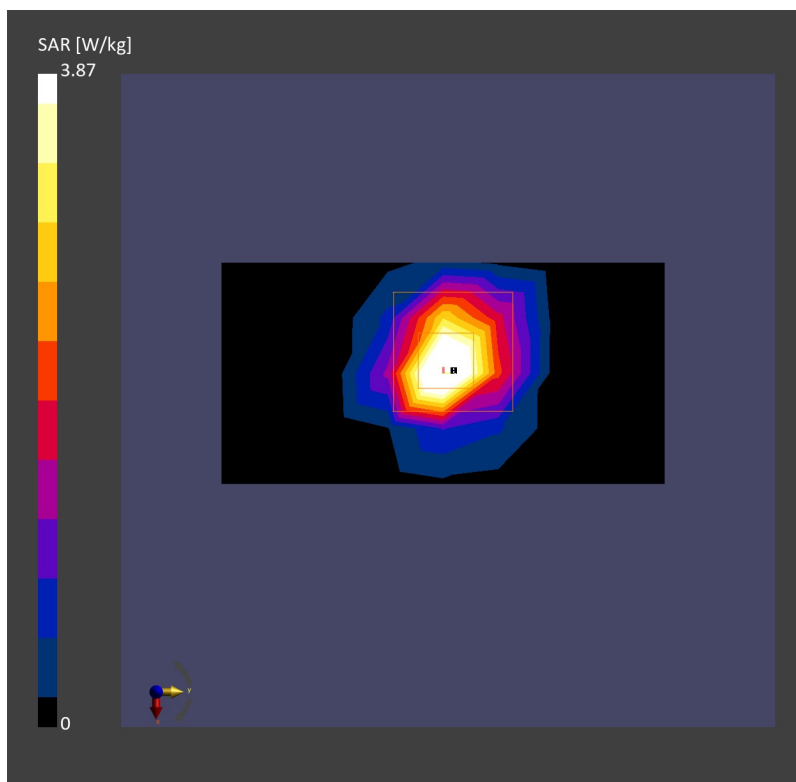
Area Scan (40.0 mm x 80.0 mm): Measurement Grid: 10.0 mm x 10.0 mm

SAR (1g) = 3.30 W/kg; SAR (10g) = 0.977 W/kg;

Zoom Scan (22.0 mm x 22.0 mm x 22.0 mm): Measurement Grid: 4.0 mm x 4.0 mm x 1.4 mm

Power Drift = 0.02 dB

SAR (1g) = 3.87 W/kg; SAR (10g) = 1.09 W/kg;



System Check_Head_5600MHz

DUT:D5GHzV2 - SN:1113

Communication System: ; Frequency: 5600.000

Medium: HSL. Medium parameters used: $f= 5600.000$ MHz; $\sigma= 4.95$ S/m; $\epsilon_r = 34.8$

Ambient Temperature: 23.2°C; Liquid Temperature: 22.8°C

DASY6 Configuration:

- Probe: EX3DV4 - SN7706; ConvF(5.39, 5.39, 5.39); Calibrated: 2023-01-26
- Sensor-Surface: 1.4 mm
- Electronics: DAE4 Sn1338; Calibrated: 2022-12-15
- Phantom: Twin-SAM V8.0 (30deg probe tilt); Serial: 2024
- Measurement Software: cDASY6 V6.6.0.13926

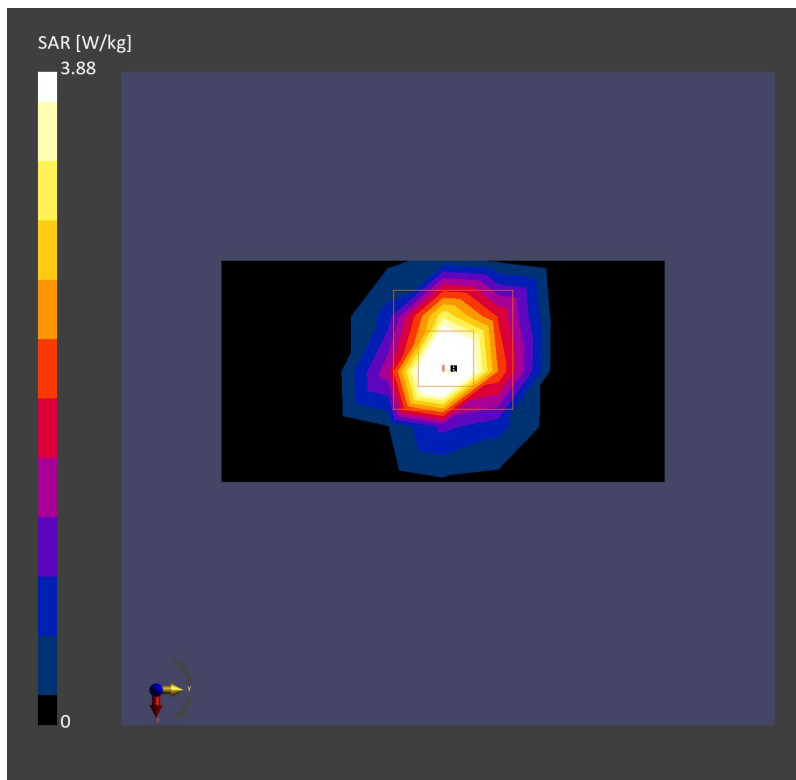
Area Scan (40.0 mm x 80.0 mm): Measurement Grid: 10.0 mm x 10.0 mm

SAR (1g) = 3.64 W/kg; SAR (10g) = 1.06 W/kg;

Zoom Scan (22.0 mm x 22.0 mm x 22.0 mm): Measurement Grid: 4.0 mm x 4.0 mm x 1.4 mm

Power Drift = 0.01 dB

SAR (1g) = 3.88 W/kg; SAR (10g) = 1.11 W/kg;



System Check_Head_5750MHz

DUT:D5GHzV2 - SN:1113

Communication System: ; Frequency: 5750.000

Medium: HSL. Medium parameters used: $f= 5750.000$ MHz; $\sigma= 5.13$ S/m; $\epsilon_r = 34.6$

Ambient Temperature: 23.2°C; Liquid Temperature: 22.8°C

DASY6 Configuration:

- Probe: EX3DV4 - SN7706; ConvF(5.57, 5.57, 5.57); Calibrated: 2023-01-26
- Sensor-Surface: 1.4 mm
- Electronics: DAE4 Sn1338; Calibrated: 2022-12-15
- Phantom: Twin-SAM V8.0 (30deg probe tilt); Serial: 2024
- Measurement Software: cDASY6 V6.6.0.13926

Area Scan (40.0 mm x 80.0 mm): Measurement Grid: 10.0 mm x 10.0 mm

SAR (1g) = 3.27 W/kg; SAR (10g) = 0.960 W/kg;

Zoom Scan (22.0 mm x 22.0 mm x 22.0 mm): Measurement Grid: 4.0 mm x 4.0 mm x 1.4 mm

Power Drift = 0.01 dB

SAR (1g) = 3.79 W/kg; SAR (10g) = 1.08 W/kg;

