

System Check_1900MHz

D1900V2-SN:5d182

Communication System: D1900; Frequency: 1900.0

Medium: HSL. Medium parameters used: $f=1900.0$ MHz; $\sigma=1.44$ S/m; $\epsilon_r=41.5$

Ambient Temperature: 23.5°C; Liquid Temperature: 22.6°C

DASY6 Configuration:

- Probe: EX3DV4 - SN3975; ConvF(7.76, 8.13, 7.91); Calibrated: 2023/6/22
- Sensor-Surface: 1.4 mm
- Electronics: DAE4 Sn715; Calibrated: 2023/1/23
- Phantom: Twin-SAM V5.0 (30deg probe tilt); Serial: 1670; Section: Flat
- Measurement Software: cDASY6 V16.0.0.116
- UID: CW, 0--
- MAIA: Area Scan: N/A; Zoom Scan: N/A

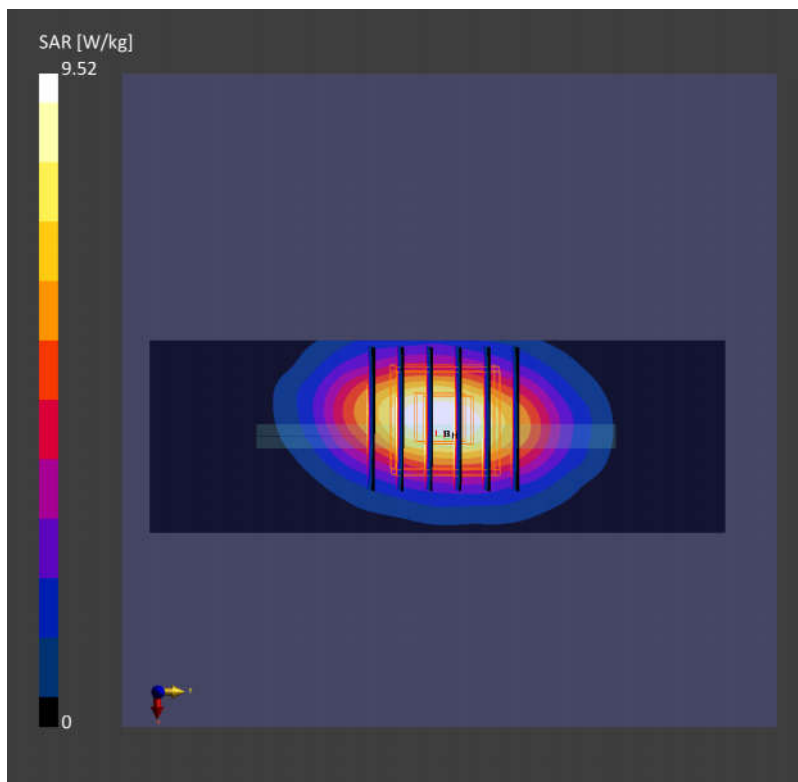
Area Scan (40.0 mm x 120.0 mm): Measurement Grid: 5.0 mm x 15.0 mm

SAR (1g) = 9.55 W/kg; SAR (10g) = 4.86 W/kg;

Zoom Scan (30.0 mm x 30.0 mm x 30.0 mm): Measurement Grid: 6.0 mm x 6.0 mm x 1.5 mm

Power Drift = 0.00 dB

SAR (1g) = 9.52 W/kg; SAR (10g) = 4.82 W/kg;



System Check_2600MHz

D2600V2-SN:1070

Communication System: D2600; Frequency: 2600.0

Medium: HSL. Medium parameters used: $f=2600.0$ MHz; $\sigma=1.98$ S/m; $\epsilon_r=40.4$

Ambient Temperature: 23.2°C; Liquid Temperature: 22.3°C

DASY6 Configuration:

- Probe: EX3DV4 - SN3975; ConvF(7.18, 7.6, 7.37); Calibrated: 2023/6/22
- Sensor-Surface: 1.4 mm
- Electronics: DAE4 Sn715; Calibrated: 2023/1/23
- Phantom: Twin-SAM V5.0 (30deg probe tilt); Serial: 1670; Section: Flat
- Measurement Software: cDASY6 V16.0.0.116
- UID: CW, 0--
- MAIA: Area Scan: N/A; Zoom Scan: N/A

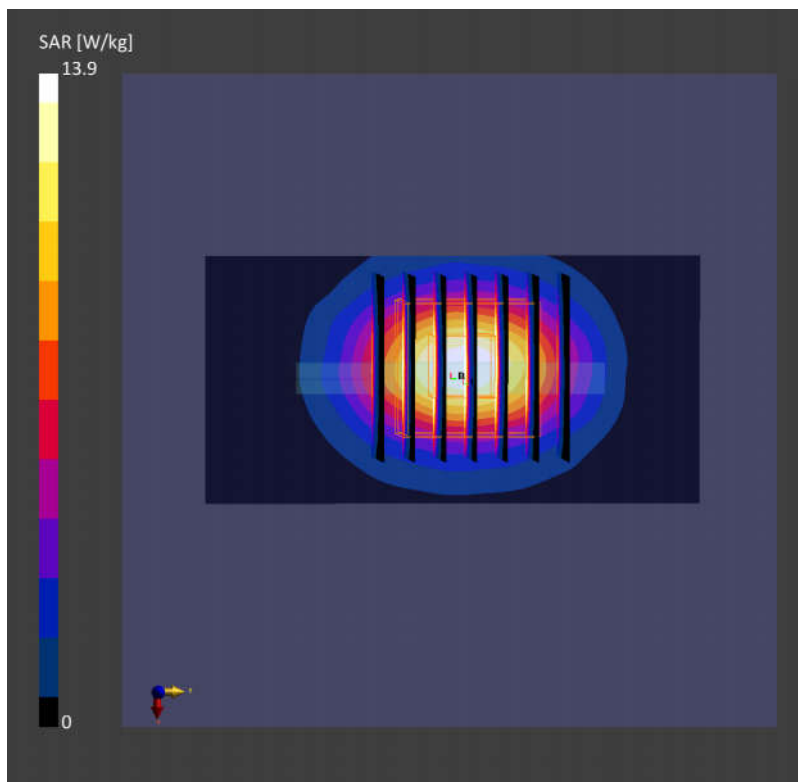
Area Scan (40.0 mm x 80.0 mm): Measurement Grid: 5.0 mm x 10.0 mm

SAR (1g) = 14.1 W/kg; SAR (10g) = 6.52 W/kg;

Zoom Scan (30.0 mm x 30.0 mm x 30.0 mm): Measurement Grid: 5.0 mm x 5.0 mm x 1.5 mm

Power Drift = 0.01 dB

SAR (1g) = 13.9 W/kg; SAR (10g) = 6.44 W/kg;



System Check_3500MHz

D3500V2-SN:1037

Communication System: D3500; Frequency: 3500.0

Medium: HSL. Medium parameters used: $f=3500.0$ MHz; $\sigma=2.98$ S/m; $\epsilon_r=39.2$

Ambient Temperature: 23.4°C; Liquid Temperature: 22.4°C

DASY6 Configuration:

- Probe: EX3DV4 - SN3975; ConvF(6.63, 7.09, 6.9); Calibrated: 2023/6/22
- Sensor-Surface: 1.4 mm
- Electronics: DAE4 Sn715; Calibrated: 2023/1/23
- Phantom: Twin-SAM V5.0 (30deg probe tilt); Serial: 1670; Section: Flat
- Measurement Software: cDASY6 V16.0.0.116
- UID: CW, 0--
- MAIA: Area Scan: N/A; Zoom Scan: N/A

Area Scan (40.0 mm x 80.0 mm): Measurement Grid: 5.0 mm x 10.0 mm

SAR (1g) = 6.47 W/kg; SAR (10g) = 2.51 W/kg;

Zoom Scan (28.0 mm x 28.0 mm x 28.0 mm): Measurement Grid: 5.0 mm x 5.0 mm x 1.4 mm

Power Drift = 0.00 dB

SAR (1g) = 6.43 W/kg; SAR (10g) = 2.41 W/kg;

