

01_LTE Band 12_10M_QPSK_1RB_0Offset_Right Cheek_0mm_Ch23095

Communication System: Band 12; Frequency: 707.500

Medium: HSL. Medium parameters used: $f = 707.500$ MHz; $\sigma = 0.863$ S/m; $\epsilon_r = 43.3$

Ambient Temperature: 23.1°C; Liquid Temperature: 22.6°C

DASY6 Configuration:

- Probe: EX3DV4 - SN7706; ConvF(10.97, 10.97, 10.97); Calibrated: 2023-01-26
- Sensor-Surface: 1.4 mm
- Electronics: DAE4 Sn1303; Calibrated: 2022-11-24
- Phantom: Twin-SAM V8.0 (30deg probe tilt); Serial: 2024
- Measurement Software: 16.2.4.2448

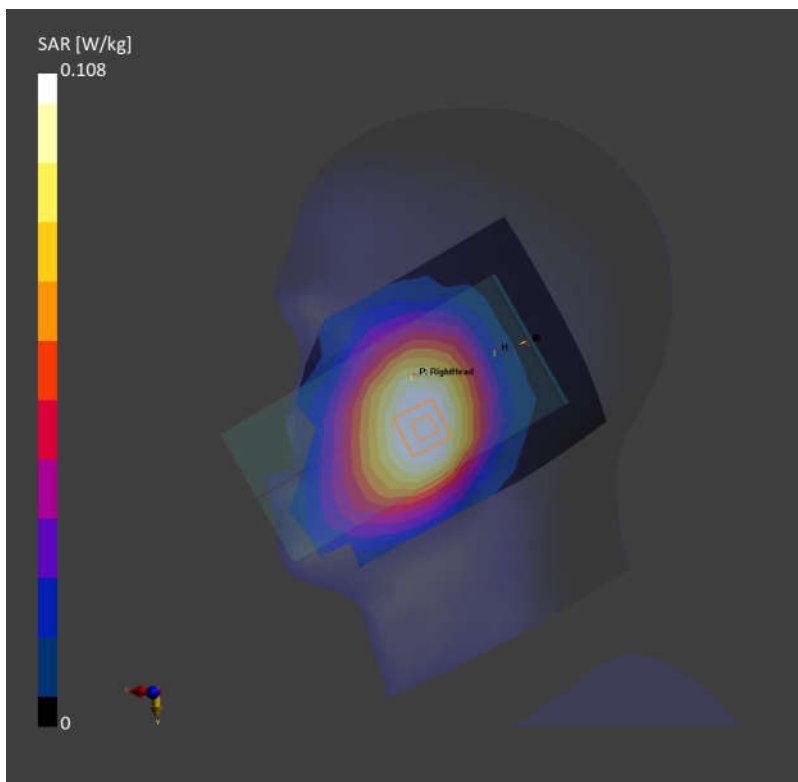
Area Scan (120.0 mm x 210.0 mm): Measurement Grid: 15.0 mm x 15.0 mm

SAR (1g) = 0.106 W/kg; SAR (10g) = 0.074 W/kg;

Zoom Scan (30.0 mm x 30.0 mm x 30.0 mm): Measurement Grid: 6.0 mm x 6.0 mm x 1.5 mm

Power Drift = 0.08 dB

SAR (1g) = 0.108 W/kg; SAR (10g) = 0.085 W/kg;



Date: 2023-10-06

02_LTE Band 13_10M_QPSK_1RB_0Offset_Right Cheek_0mm_Ch23230

Communication System: Band 13; Frequency: 782.000

Medium: HSL. Medium parameters used: $f = 782.000$ MHz; $\sigma = 0.935$ S/m; $\epsilon_r = 42.4$

Ambient Temperature: 23.1°C; Liquid Temperature: 22.6°C

DASY6 Configuration:

- Probe: EX3DV4 - SN7706; ConvF(10.97, 10.97, 10.97); Calibrated: 2023-01-26
- Sensor-Surface: 1.4 mm
- Electronics: DAE4 Sn1303; Calibrated: 2022-11-24
- Phantom: Twin-SAM V8.0 (30deg probe tilt); Serial: 2024
- Measurement Software: 16.2.4.2448

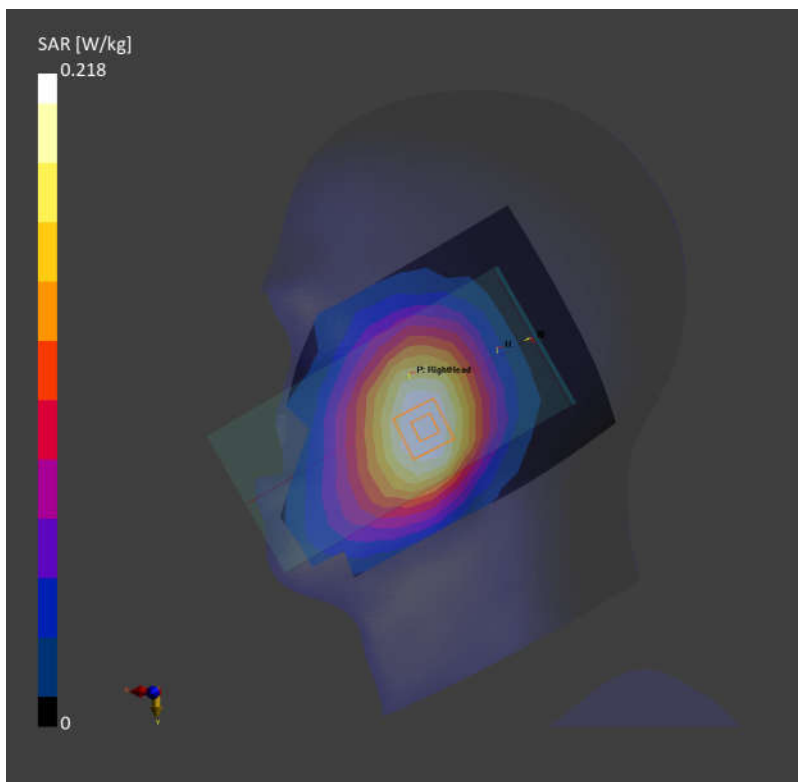
Area Scan (120.0 mm x 210.0 mm): Measurement Grid: 15.0 mm x 15.0 mm

SAR (1g) = 0.209 W/kg; SAR (10g) = 0.144 W/kg;

Zoom Scan (30.0 mm x 30.0 mm x 30.0 mm): Measurement Grid: 6.0 mm x 6.0 mm x 1.5 mm

Power Drift = 0.09 dB

SAR (1g) = 0.218 W/kg; SAR (10g) = 0.169 W/kg;



03_GSM850_GPRS (2 Tx slots)_Right Cheek_0mm_Ch189

Communication System: GSM 850; Frequency: 836.400

Medium: HSL. Medium parameters used: $f = 836.400$ MHz; $\sigma = 0.948$ S/m; $\epsilon_r = 43.1$

Ambient Temperature: 23.3°C; Liquid Temperature: 22.9°C

DASY6 Configuration:

- Probe: EX3DV4 - SN7706; ConvF(10.67, 10.67, 10.67); Calibrated: 2023-01-26
- Sensor-Surface: 1.4 mm
- Electronics: DAE4 Sn1303; Calibrated: 2022-11-24
- Phantom: Twin-SAM V8.0 (30deg probe tilt); Serial: 2024
- Measurement Software: 16.2.4.2448

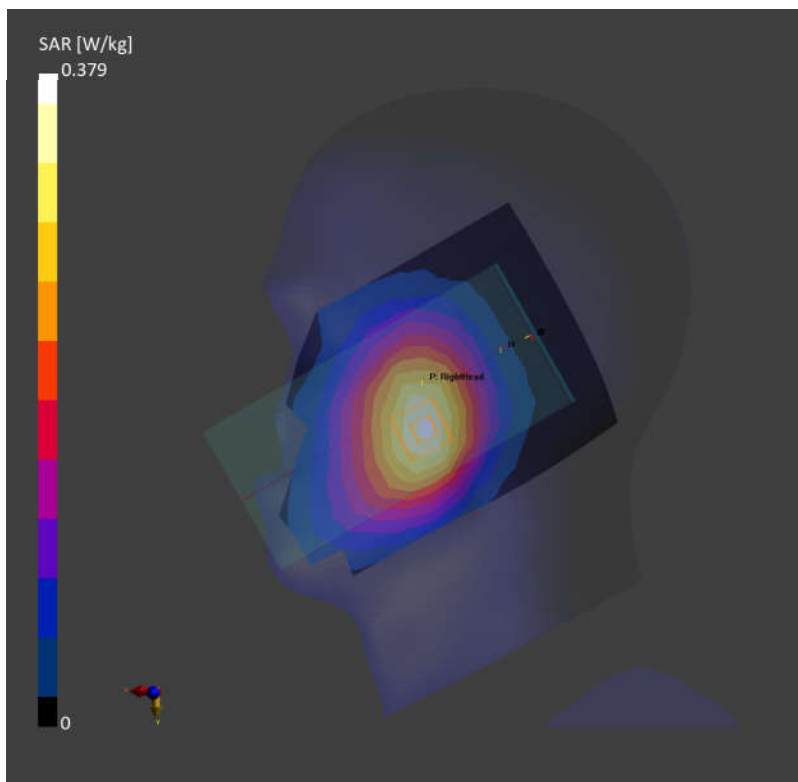
Area Scan (120.0 mm x 210.0 mm): Measurement Grid: 15.0 mm x 15.0 mm

SAR (1g) = 0.318 W/kg; SAR (10g) = 0.218 W/kg;

Zoom Scan (30.0 mm x 30.0 mm x 30.0 mm): Measurement Grid: 6.0 mm x 6.0 mm x 1.5 mm

Power Drift = -0.06 dB

SAR (1g) = 0.379 W/kg; SAR (10g) = 0.288 W/kg;



04_WCDMA V_RMC 12.2Kbps_Right Cheek_0mm_Ch4182

Communication System: Band 5; Frequency: 836.400

Medium: HSL. Medium parameters used: $f = 836.400$ MHz; $\sigma = 0.948$ S/m; $\epsilon_r = 43.1$

Ambient Temperature: 23.3°C; Liquid Temperature: 22.9°C

DASY6 Configuration:

- Probe: EX3DV4 - SN7706; ConvF(10.67, 10.67, 10.67); Calibrated: 2023-01-26
- Sensor-Surface: 1.4 mm
- Electronics: DAE4 Sn1303; Calibrated: 2022-11-24
- Phantom: Twin-SAM V8.0 (30deg probe tilt); Serial: 2024
- Measurement Software: 16.2.4.2448

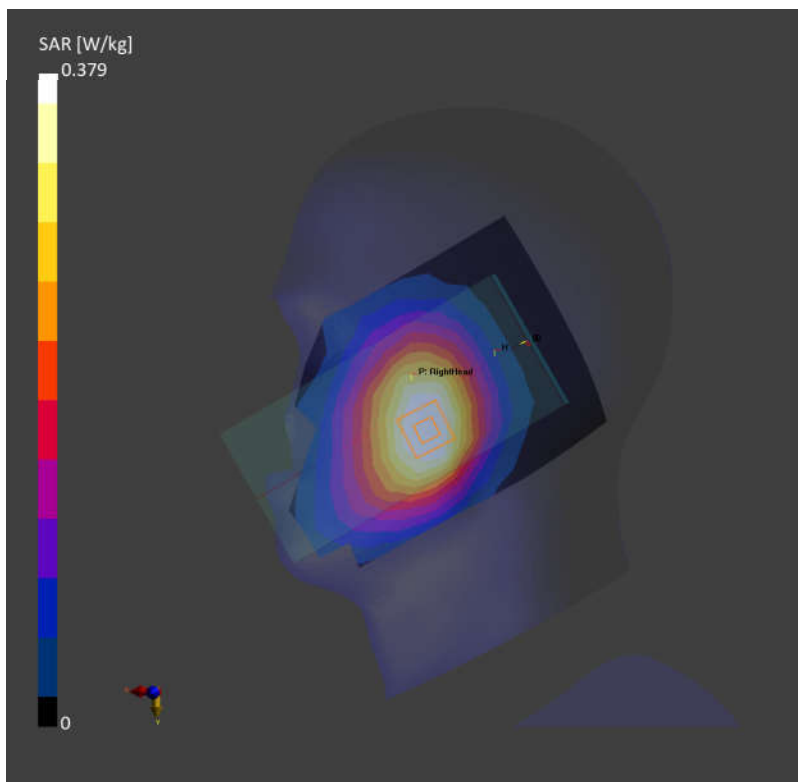
Area Scan (120.0 mm x 210.0 mm): Measurement Grid: 15.0 mm x 15.0 mm

SAR (1g) = 0.367 W/kg; SAR (10g) = 0.233 W/kg;

Zoom Scan (30.0 mm x 30.0 mm x 30.0 mm): Measurement Grid: 6.0 mm x 6.0 mm x 1.5 mm

Power Drift = -0.14 dB

SAR (1g) = 0.379 W/kg; SAR (10g) = 0.251 W/kg;



05_LTE Band 26_15M_QPSK_1RB_0Offset_Right Cheek_0mm_Ch26865

Communication System: Band 26; Frequency: 831.500

Medium: HSL. Medium parameters used: $f = 831.500$ MHz; $\sigma = 0.945$ S/m; $\epsilon_r = 43.1$

Ambient Temperature: 23.3°C; Liquid Temperature: 22.9°C

DASY6 Configuration:

- Probe: EX3DV4 - SN7706; ConvF(10.67, 10.67, 10.67); Calibrated: 2023-01-26
- Sensor-Surface: 1.4 mm
- Electronics: DAE4 Sn1303; Calibrated: 2022-11-24
- Phantom: Twin-SAM V8.0 (30deg probe tilt); Serial: 2024
- Measurement Software: 16.2.4.2448

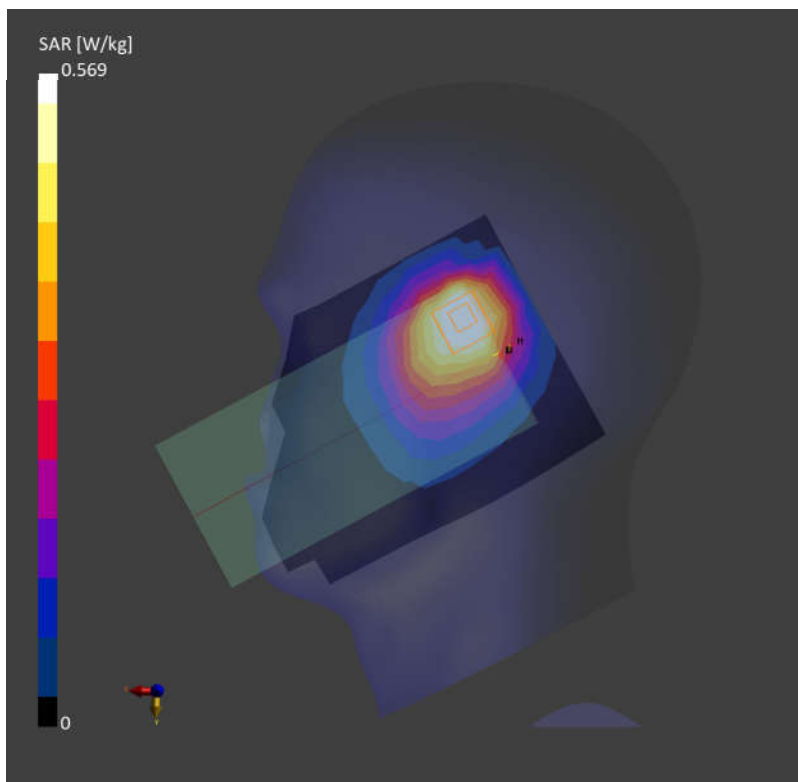
Area Scan (120.0 mm x 210.0 mm): Measurement Grid: 15.0 mm x 15.0 mm

SAR (1g) = 0.513 W/kg; SAR (10g) = 0.306 W/kg;

Zoom Scan (30.0 mm x 30.0 mm x 30.0 mm): Measurement Grid: 6.0 mm x 6.0 mm x 1.5 mm

Power Drift = -0.01 dB

SAR (1g) = 0.569 W/kg; SAR (10g) = 0.322 W/kg;



06_FR1 n26_20M_QPSK_50RB_28Offset_Right Cheek_0mm_Ch166300

Communication System: Band n26; Frequency: 831.500

Medium: HSL. Medium parameters used: $f = 831.500$ MHz; $\sigma = 0.945$ S/m; $\epsilon_r = 43.1$

Ambient Temperature: 23.3°C; Liquid Temperature: 22.9°C

DASY6 Configuration:

- Probe: EX3DV4 - SN7706; ConvF(10.67, 10.67, 10.67); Calibrated: 2023-01-26
- Sensor-Surface: 1.4 mm
- Electronics: DAE4 Sn1303; Calibrated: 2022-11-24
- Phantom: Twin-SAM V8.0 (30deg probe tilt); Serial: 2024
- Measurement Software: 16.2.4.2448

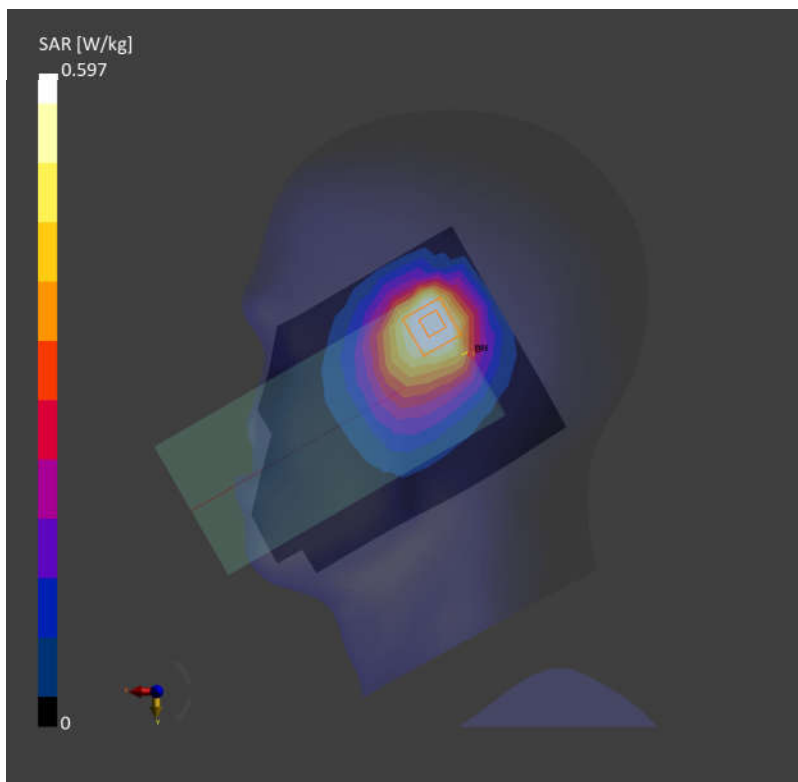
Area Scan (120.0 mm x 210.0 mm): Measurement Grid: 15.0 mm x 15.0 mm

SAR (1g) = 0.513 W/kg; SAR (10g) = 0.277 W/kg;

Zoom Scan (30.0 mm x 30.0 mm x 30.0 mm): Measurement Grid: 6.0 mm x 6.0 mm x 1.5 mm

Power Drift = 0.05 dB

SAR (1g) = 0.597 W/kg; SAR (10g) = 0.352 W/kg;



07_LTE Band 5_10M_QPSK_1RB_0Offset_Right Cheek_0mm_Ch20525

Communication System: Band 5; Frequency: 836.500

Medium: HSL. Medium parameters used: $f = 836.500$ MHz; $\sigma = 0.948$ S/m; $\epsilon_r = 43.1$

Ambient Temperature: 23.3°C; Liquid Temperature: 22.9°C

DASY6 Configuration:

- Probe: EX3DV4 - SN7706; ConvF(10.67, 10.67, 10.67); Calibrated: 2023-01-26
- Sensor-Surface: 1.4 mm
- Electronics: DAE4 Sn1303; Calibrated: 2022-11-24
- Phantom: Twin-SAM V8.0 (30deg probe tilt); Serial: 2024
- Measurement Software: 16.2.4.2448

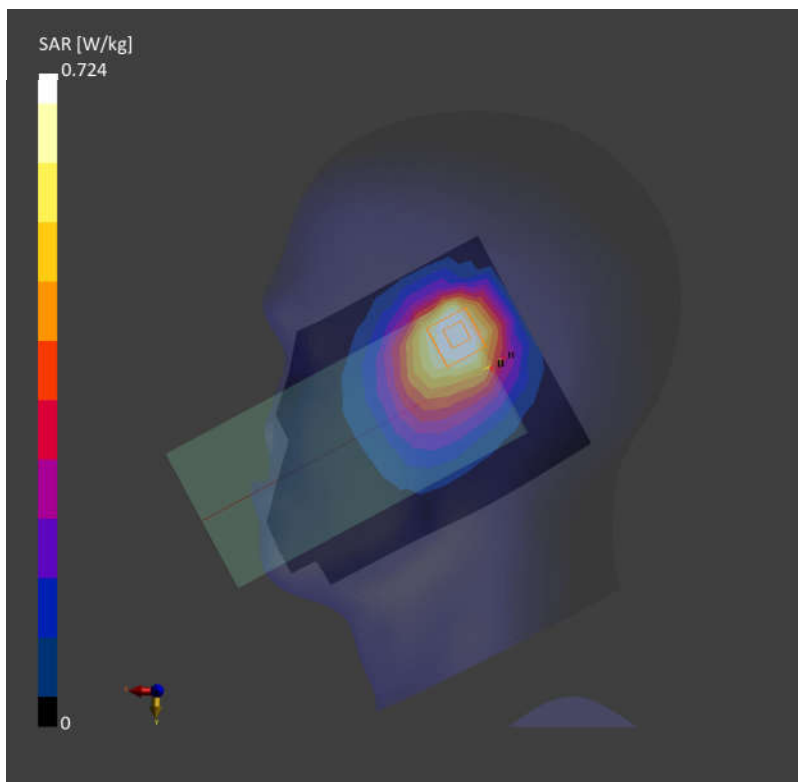
Area Scan (120.0 mm x 210.0 mm): Measurement Grid: 15.0 mm x 15.0 mm

SAR (1g) = 0.692 W/kg; SAR (10g) = 0.439 W/kg;

Zoom Scan (30.0 mm x 30.0 mm x 30.0 mm): Measurement Grid: 6.0 mm x 6.0 mm x 1.5 mm

Power Drift = -0.02 dB

SAR (1g) = 0.724 W/kg; SAR (10g) = 0.471 W/kg;



08_FR1 n5_20M_QPSK_50RB_28Offset_Right Cheek_0mm_Ch167300

Communication System: Band n5; Frequency: 836.500

Medium: HSL. Medium parameters used: $f = 836.500$ MHz; $\sigma = 0.948$ S/m; $\epsilon_r = 43.1$

Ambient Temperature: 23.3°C; Liquid Temperature: 22.9°C

DASY6 Configuration:

- Probe: EX3DV4 - SN7706; ConvF(10.67, 10.67, 10.67); Calibrated: 2023-01-26
- Sensor-Surface: 1.4 mm
- Electronics: DAE4 Sn1303; Calibrated: 2022-11-24
- Phantom: Twin-SAM V8.0 (30deg probe tilt); Serial: 2024
- Measurement Software: 16.2.4.2448

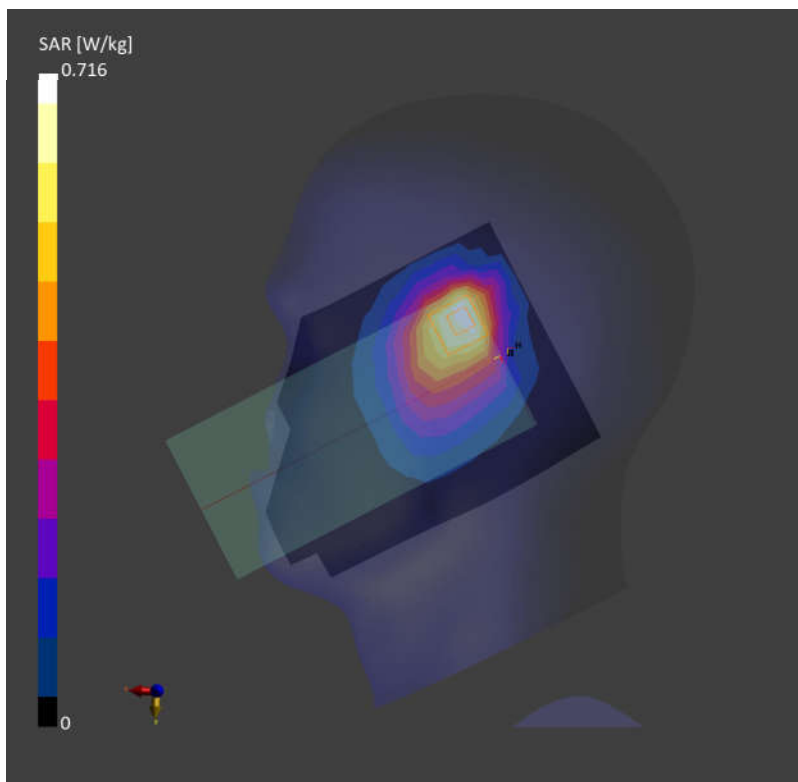
Area Scan (120.0 mm x 210.0 mm): Measurement Grid: 15.0 mm x 15.0 mm

SAR (1g) = 0.674 W/kg; SAR (10g) = 0.407 W/kg;

Zoom Scan (30.0 mm x 30.0 mm x 30.0 mm): Measurement Grid: 6.0 mm x 6.0 mm x 1.5 mm

Power Drift = 0.08 dB

SAR (1g) = 0.716 W/kg; SAR (10g) = 0.433 W/kg;



09_WCDMA IV_RMC 12.2Kbps_Right Cheek_0mm_Ch1413

Communication System: Band 4; Frequency: 1732.600

Medium: HSL. Medium parameters used: $f = 1732.600$ MHz; $\sigma = 1.38$ S/m; $\epsilon_r = 38.6$

Ambient Temperature: 23.1°C; Liquid Temperature: 22.8°C

DASY6 Configuration:

- Probe: EX3DV4 - SN7706; ConvF(9.31, 9.31, 9.31); Calibrated: 2023-01-26
- Sensor-Surface: 1.4 mm
- Electronics: DAE4 Sn1303; Calibrated: 2022-11-24
- Phantom: Twin-SAM V8.0 (30deg probe tilt); Serial: 2024
- Measurement Software: 16.2.4.2448

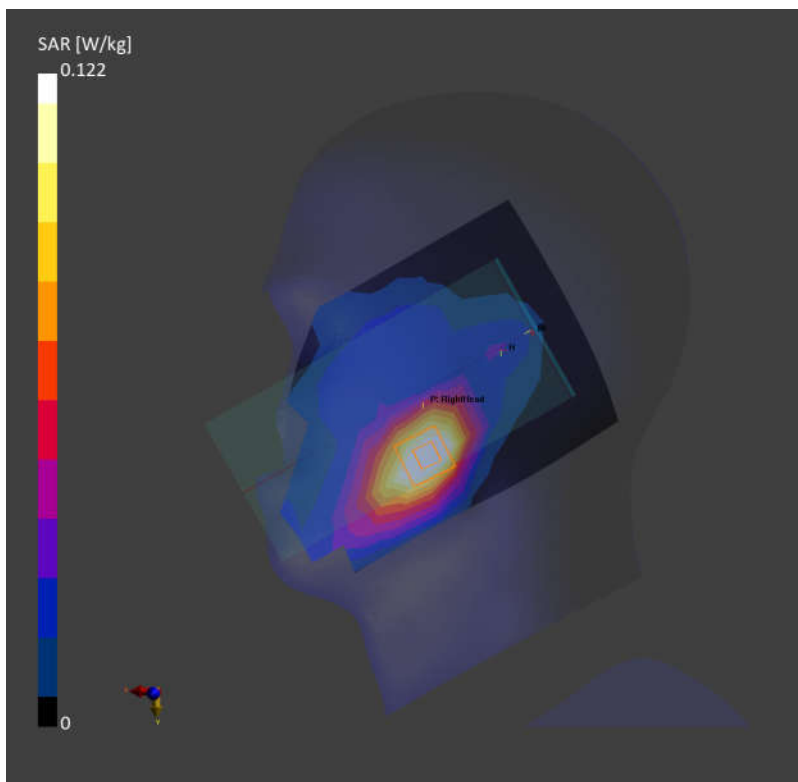
Area Scan (120.0 mm x 210.0 mm): Measurement Grid: 15.0 mm x 15.0 mm

SAR (1g) = 0.118 W/kg; SAR (10g) = 0.069 W/kg;

Zoom Scan (30.0 mm x 30.0 mm x 30.0 mm): Measurement Grid: 6.0 mm x 6.0 mm x 1.5 mm

Power Drift = 0.05 dB

SAR (1g) = 0.122 W/kg; SAR (10g) = 0.078 W/kg;



10_LTE Band 66_20M_QPSK_1RB_0Offset_Right Tilted_0mm_Ch132572

Communication System: Band 66; Frequency: 1770.000

Medium: HSL. Medium parameters used: $f = 1770.000$ MHz; $\sigma = 1.40$ S/m; $\epsilon_r = 38.6$

Ambient Temperature: 23.1°C; Liquid Temperature: 22.8°C

DASY6 Configuration:

- Probe: EX3DV4 - SN7706; ConvF(9.31, 9.31, 9.31); Calibrated: 2023-01-26
- Sensor-Surface: 1.4 mm
- Electronics: DAE4 Sn1303; Calibrated: 2022-11-24
- Phantom: Twin-SAM V8.0 (30deg probe tilt); Serial: 2024
- Measurement Software: 16.2.4.2448

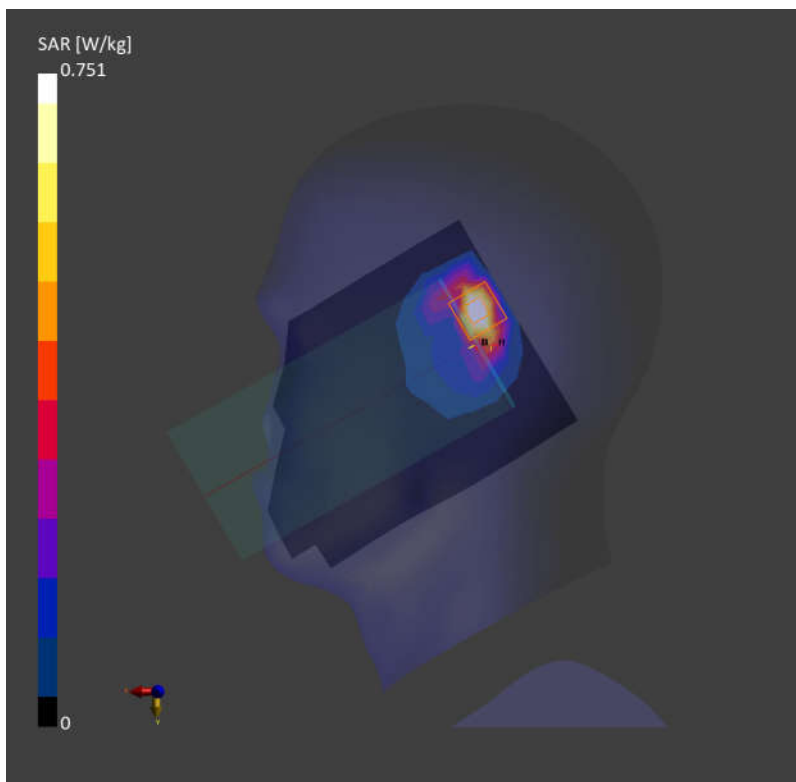
Area Scan (120.0 mm x 210.0 mm): Measurement Grid: 10.0 mm x 15.0 mm

SAR (1g) = 0.699 W/kg; SAR (10g) = 0.335 W/kg;

Zoom Scan (30.0 mm x 30.0 mm x 30.0 mm): Measurement Grid: 6.0 mm x 6.0 mm x 1.5 mm

Power Drift = 0.05 dB

SAR (1g) = 0.751 W/kg; SAR (10g) = 0.342 W/kg;



11_FR1 n66_40M_QPSK_108RB_54Offset_Right Tilted_0mm_Ch349000

Communication System: Band n66; Frequency: 1745.000

Medium: HSL. Medium parameters used: $f = 1745.000$ MHz; $\sigma = 1.39$ S/m; $\epsilon_r = 38.6$

Ambient Temperature: 23.1°C; Liquid Temperature: 22.8°C

DASY6 Configuration:

- Probe: EX3DV4 - SN7706; ConvF(9.31, 9.31, 9.31); Calibrated: 2023-01-26
- Sensor-Surface: 1.4 mm
- Electronics: DAE4 Sn1303; Calibrated: 2022-11-24
- Phantom: Twin-SAM V8.0 (30deg probe tilt); Serial: 2024
- Measurement Software: 16.2.4.2448

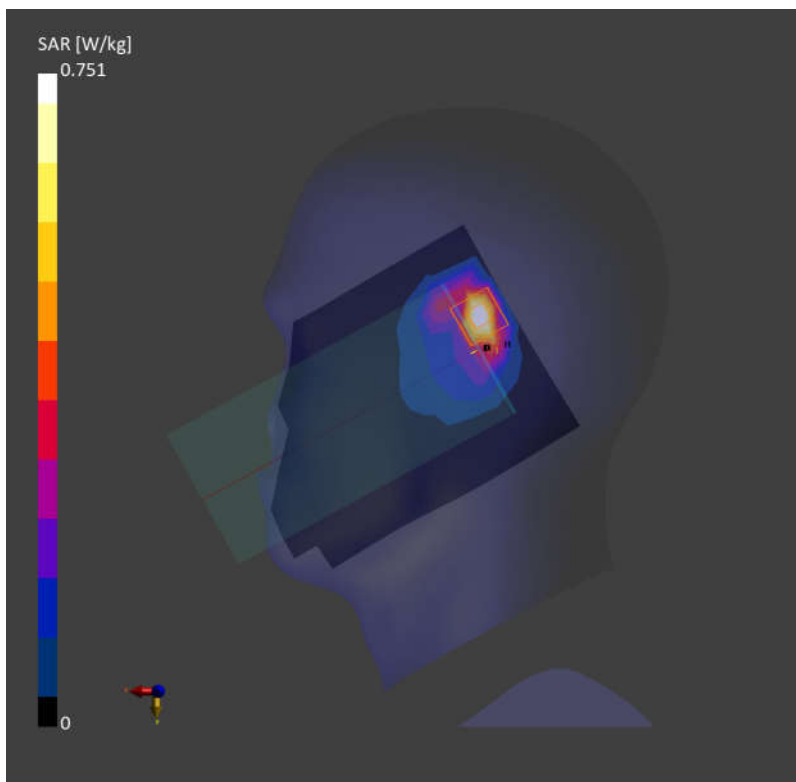
Area Scan (120.0 mm x 210.0 mm): Measurement Grid: 10.0 mm x 15.0 mm

SAR (1g) = 0.647 W/kg; SAR (10g) = 0.315 W/kg;

Zoom Scan (30.0 mm x 30.0 mm x 30.0 mm): Measurement Grid: 6.0 mm x 6.0 mm x 1.5 mm

Power Drift = -0.11 dB

SAR (1g) = 0.751 W/kg; SAR (10g) = 0.343 W/kg;



12_GSM1900_GPRS (4 Tx slots)_Right Cheek_0mm_Ch661

Communication System: PCS 1900; Frequency: 1880.000

Medium: HSL. Medium parameters used: $f = 1880.000$ MHz; $\sigma = 1.46$ S/m; $\epsilon_r = 38.4$

Ambient Temperature: 23.3°C; Liquid Temperature: 22.7°C

DASY6 Configuration:

- Probe: EX3DV4 - SN7706; ConvF(8.89, 8.89, 8.89); Calibrated: 2023-01-26
- Sensor-Surface: 1.4 mm
- Electronics: DAE4 Sn1303; Calibrated: 2022-11-24
- Phantom: Twin-SAM V8.0 (30deg probe tilt); Serial: 2024
- Measurement Software: 16.2.4.2448

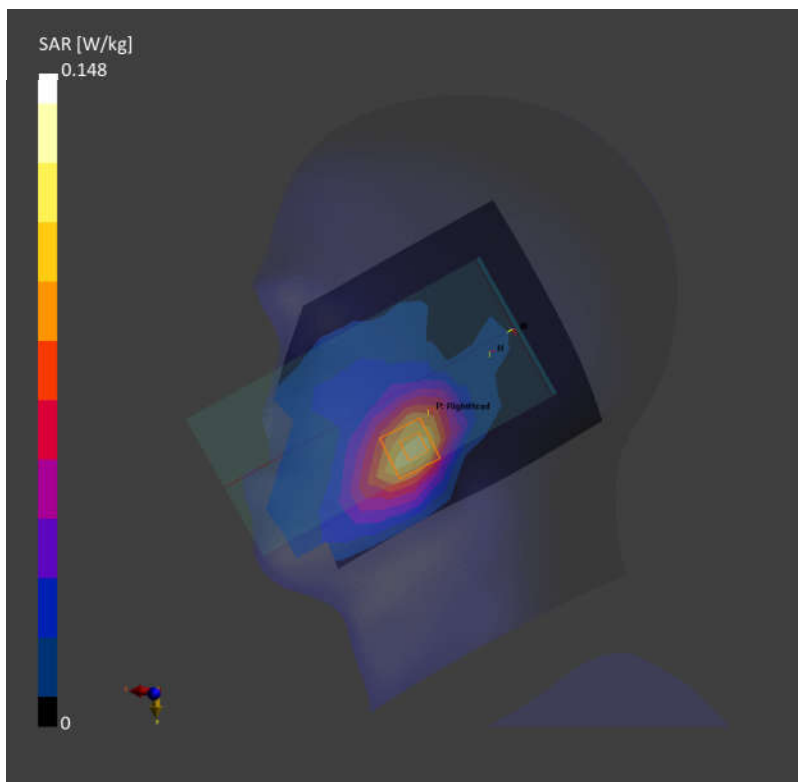
Area Scan (120.0 mm x 210.0 mm): Measurement Grid: 15.0 mm x 15.0 mm

SAR (1g) = 0.093 W/kg; SAR (10g) = 0.054 W/kg;

Zoom Scan (30.0 mm x 30.0 mm x 30.0 mm): Measurement Grid: 6.0 mm x 6.0 mm x 1.5 mm

Power Drift = 0.06 dB

SAR (1g) = 0.148 W/kg; SAR (10g) = 0.092 W/kg;



13_WCDMA II_RMC 12.2Kbps_Right Cheek_0mm_Ch9400

Communication System: Band 2; Frequency: 1880.000

Medium: HSL. Medium parameters used: $f = 1880.000$ MHz; $\sigma = 1.46$ S/m; $\epsilon_r = 38.4$

Ambient Temperature: 23.3°C; Liquid Temperature: 22.7°C

DASY6 Configuration:

- Probe: EX3DV4 - SN7706; ConvF(8.89, 8.89, 8.89); Calibrated: 2023-01-26
- Sensor-Surface: 1.4 mm
- Electronics: DAE4 Sn1303; Calibrated: 2022-11-24
- Phantom: Twin-SAM V8.0 (30deg probe tilt); Serial: 2024
- Measurement Software: 16.2.4.2448

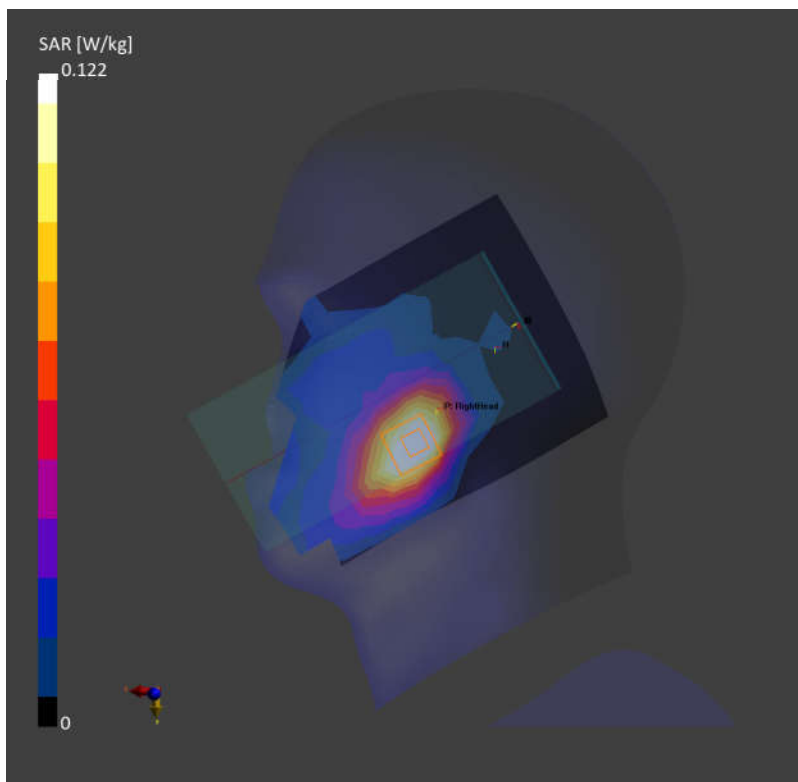
Area Scan (120.0 mm x 210.0 mm): Measurement Grid: 15.0 mm x 15.0 mm

SAR (1g) = 0.108 W/kg; SAR (10g) = 0.062 W/kg;

Zoom Scan (30.0 mm x 30.0 mm x 30.0 mm): Measurement Grid: 6.0 mm x 6.0 mm x 1.5 mm

Power Drift = -0.12 dB

SAR (1g) = 0.122 W/kg; SAR (10g) = 0.069 W/kg;



14_LTE Band 25_20M_QPSK_1RB_0Offset_Right Tilted_0mm_Ch26340

Communication System: Band 25; Frequency: 1880.000

Medium: HSL. Medium parameters used: $f = 1880.000$ MHz; $\sigma = 1.46$ S/m; $\epsilon_r = 38.4$

Ambient Temperature: 23.3°C; Liquid Temperature: 22.7°C

DASY6 Configuration:

- Probe: EX3DV4 - SN7706; ConvF(8.89, 8.89, 8.89); Calibrated: 2023-01-26
- Sensor-Surface: 1.4 mm
- Electronics: DAE4 Sn1303; Calibrated: 2022-11-24
- Phantom: Twin-SAM V8.0 (30deg probe tilt); Serial: 2024
- Measurement Software: 16.2.4.2448

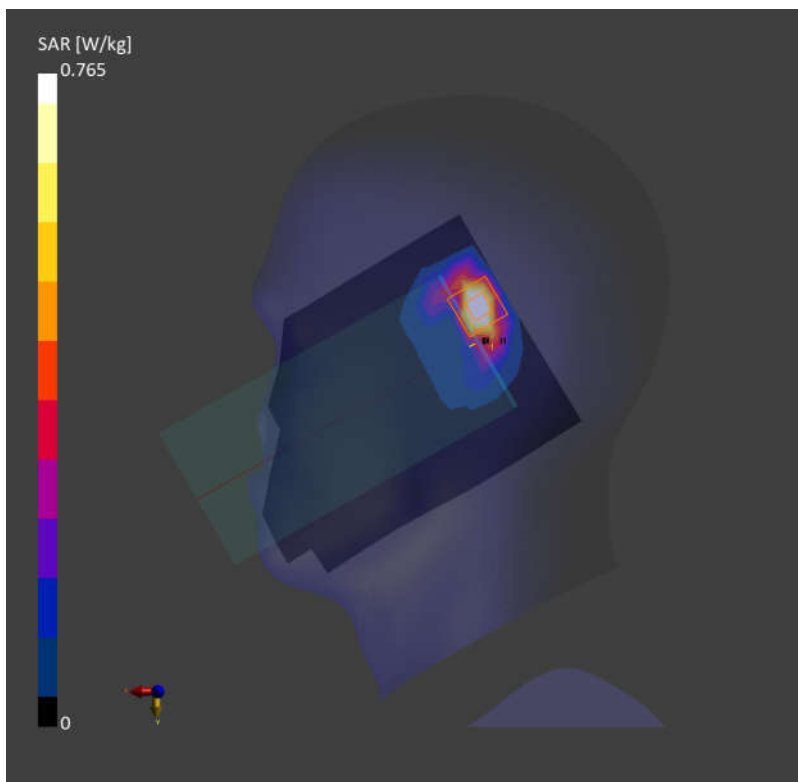
Area Scan (120.0 mm x 210.0 mm): Measurement Grid: 15.0 mm x 15.0 mm

SAR (1g) = 0.736 W/kg; SAR (10g) = 0.341 W/kg;

Zoom Scan (30.0 mm x 30.0 mm x 30.0 mm): Measurement Grid: 6.0 mm x 6.0 mm x 1.5 mm

Power Drift = -0.04 dB

SAR (1g) = 0.765 W/kg; SAR (10g) = 0.338 W/kg;



15_FR1 n2_20M_QPSK_50RB_28Offset_Right Tilted_0mm_Ch376000

Communication System: Band n2; Frequency: 1880.000

Medium: HSL. Medium parameters used: $f = 1880.000$ MHz; $\sigma = 1.46$ S/m; $\epsilon_r = 38.4$

Ambient Temperature: 23.3°C; Liquid Temperature: 22.7°C

DASY6 Configuration:

- Probe: EX3DV4 - SN7706; ConvF(8.89, 8.89, 8.89); Calibrated: 2023-01-26
- Sensor-Surface: 1.4 mm
- Electronics: DAE4 Sn1303; Calibrated: 2022-11-24
- Phantom: Twin-SAM V8.0 (30deg probe tilt); Serial: 2024
- Measurement Software: 16.2.4.2448

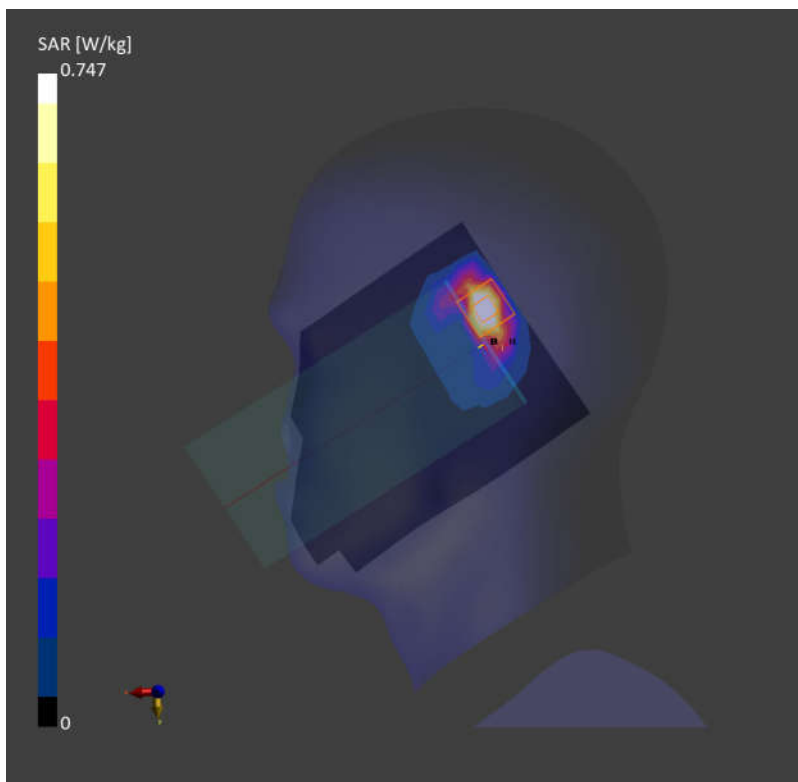
Area Scan (120.0 mm x 210.0 mm): Measurement Grid: 15.0 mm x 15.0 mm

SAR (1g) = 0.733 W/kg; SAR (10g) = 0.341 W/kg;

Zoom Scan (30.0 mm x 30.0 mm x 30.0 mm): Measurement Grid: 6.0 mm x 6.0 mm x 1.5 mm

Power Drift = -0.02 dB

SAR (1g) = 0.747 W/kg; SAR (10g) = 0.332 W/kg;



16_LTE Band 7_20M_QPSK_1RB_0Offset_Right Tilted_0mm_Ch21100

Communication System: Band 7; Frequency: 2535.000

Medium: HSL. Medium parameters used: $f = 2535.000$ MHz; $\sigma = 1.90$ S/m; $\epsilon_r = 37.5$

Ambient Temperature: 23.3°C; Liquid Temperature: 22.9°C

DASY6 Configuration:

- Probe: EX3DV4 - SN7706; ConvF(8.1, 8.1, 8.1); Calibrated: 2023-01-26
- Sensor-Surface: 1.4 mm
- Electronics: DAE4 Sn1303; Calibrated: 2022-11-24
- Phantom: Twin-SAM V8.0 (30deg probe tilt); Serial: 2024
- Measurement Software: 16.2.4.2448

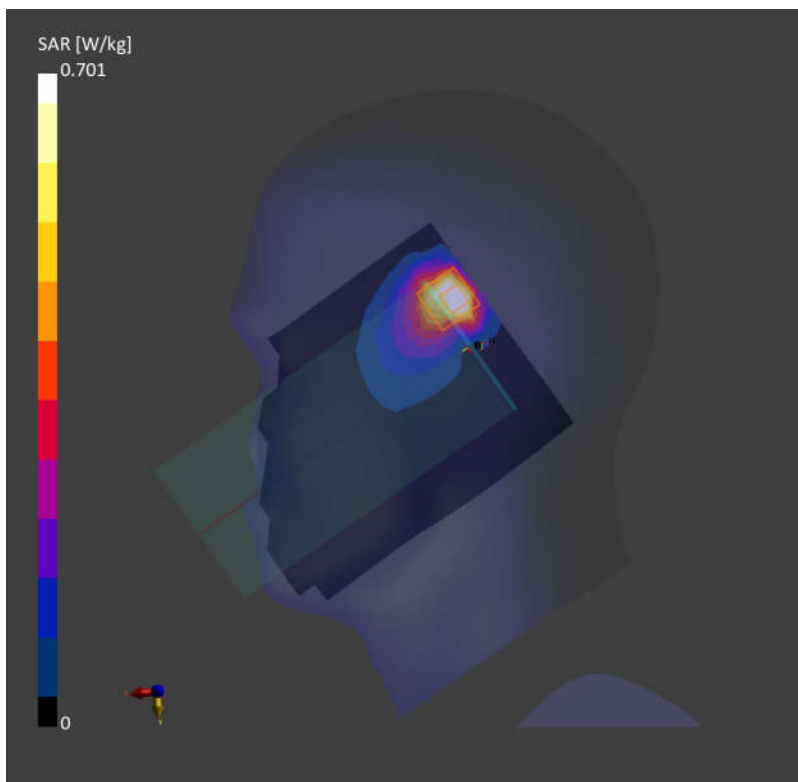
Area Scan (120.0 mm x 200.0 mm): Measurement Grid: 10.0 mm x 10.0 mm

SAR (1g) = 0.663 W/kg; SAR (10g) = 0.306 W/kg;

Zoom Scan (30.0 mm x 30.0 mm x 30.0 mm): Measurement Grid: 5.0 mm x 5.0 mm x 1.5 mm

Power Drift = 0.16 dB

SAR (1g) = 0.701 W/kg; SAR (10g) = 0.301 W/kg;



17_LTE Band 41_20M_QPSK_1RB_0Offset_Right Tilted_0mm_Ch39750

Communication System: Band 41; Frequency: 2506.000

Medium: HSL. Medium parameters used: $f = 2506.000$ MHz; $\sigma = 1.87$ S/m; $\epsilon_r = 37.5$

Ambient Temperature: 23.3°C; Liquid Temperature: 22.9°C

DASY6 Configuration:

- Probe: EX3DV4 - SN7706; ConvF(8.1, 8.1, 8.1); Calibrated: 2023-01-26
- Sensor-Surface: 1.4 mm
- Electronics: DAE4 Sn1303; Calibrated: 2022-11-24
- Phantom: Twin-SAM V8.0 (30deg probe tilt); Serial: 2024
- Measurement Software: 16.2.4.2448

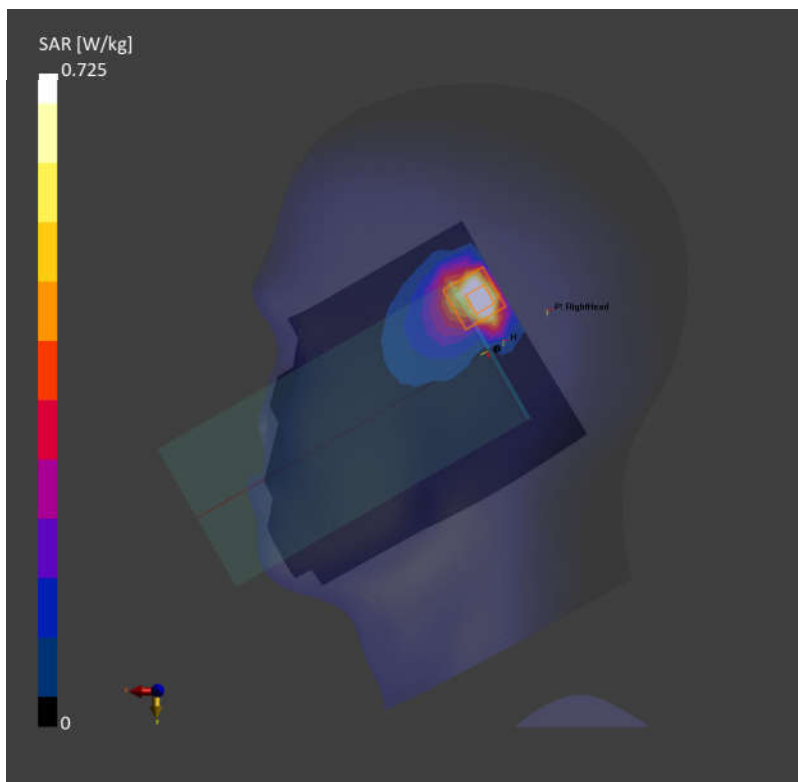
Area Scan (120.0 mm x 200.0 mm): Measurement Grid: 10.0 mm x 10.0 mm

SAR (1g) = 0.738 W/kg; SAR (10g) = 0.326 W/kg;

Zoom Scan (30.0 mm x 30.0 mm x 30.0 mm): Measurement Grid: 5.0 mm x 5.0 mm x 1.5 mm

Power Drift = -0.08 dB

SAR (1g) = 0.725 W/kg; SAR (10g) = 0.304 W/kg;



18_FR1 n7_40M_QPSK_108RB_54Offset_Right Tilted_0mm_Ch507000

Communication System: Band n7; Frequency: 2535.000

Medium: HSL. Medium parameters used: $f = 2535.000$ MHz; $\sigma = 1.90$ S/m; $\epsilon_r = 37.5$

Ambient Temperature: 23.3°C; Liquid Temperature: 22.9°C

DASY6 Configuration:

- Probe: EX3DV4 - SN7706; ConvF(8.1, 8.1, 8.1); Calibrated: 2023-01-26
- Sensor-Surface: 1.4 mm
- Electronics: DAE4 Sn1303; Calibrated: 2022-11-24
- Phantom: Twin-SAM V8.0 (30deg probe tilt); Serial: 2024
- Measurement Software: 16.2.4.2448

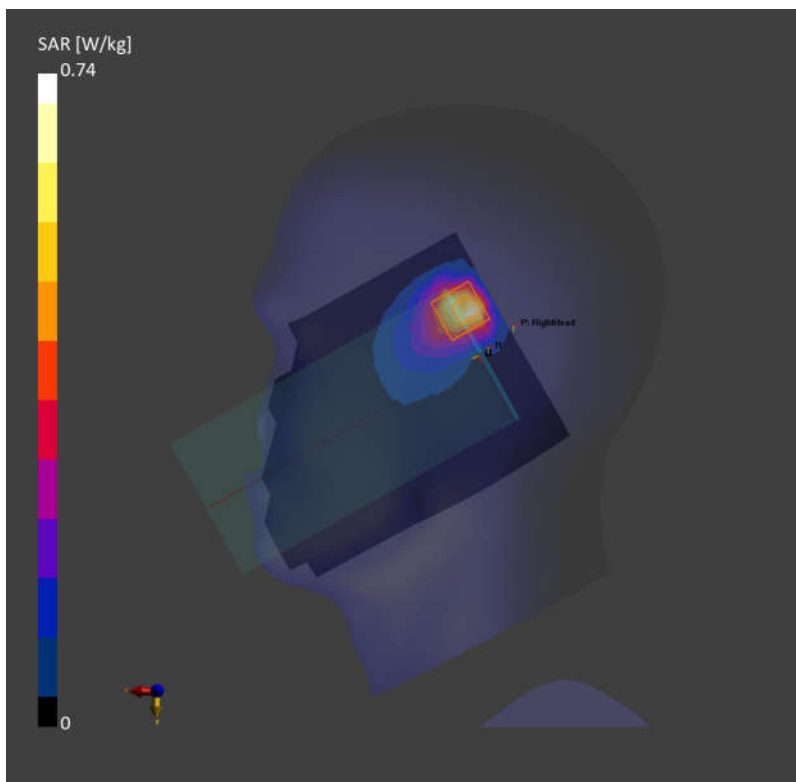
Area Scan (120.0 mm x 200.0 mm): Measurement Grid: 10.0 mm x 10.0 mm

SAR (1g) = 0.666 W/kg; SAR (10g) = 0.377 W/kg;

Zoom Scan (30.0 mm x 30.0 mm x 30.0 mm): Measurement Grid: 5.0 mm x 5.0 mm x 1.5 mm

Power Drift = 0.01 dB

SAR (1g) = 0.740 W/kg; SAR (10g) = 0.371 W/kg;



19_FR1 n41_100M_QPSK_1RB_1Offset_Right Tilted_0mm_Ch518598

Communication System: Band n41; Frequency: 2592.990

Medium: HSL. Medium parameters used: $f = 2592.990$ MHz; $\sigma = 1.93$ S/m; $\epsilon_r = 37.4$

Ambient Temperature: 23.3°C; Liquid Temperature: 22.9°C

DASY6 Configuration:

- Probe: EX3DV4 - SN7706; ConvF(8.1, 8.1, 8.1); Calibrated: 2023-01-26
- Sensor-Surface: 1.4 mm
- Electronics: DAE4 Sn1303; Calibrated: 2022-11-24
- Phantom: Twin-SAM V8.0 (30deg probe tilt); Serial: 2024
- Measurement Software: 16.2.4.2448

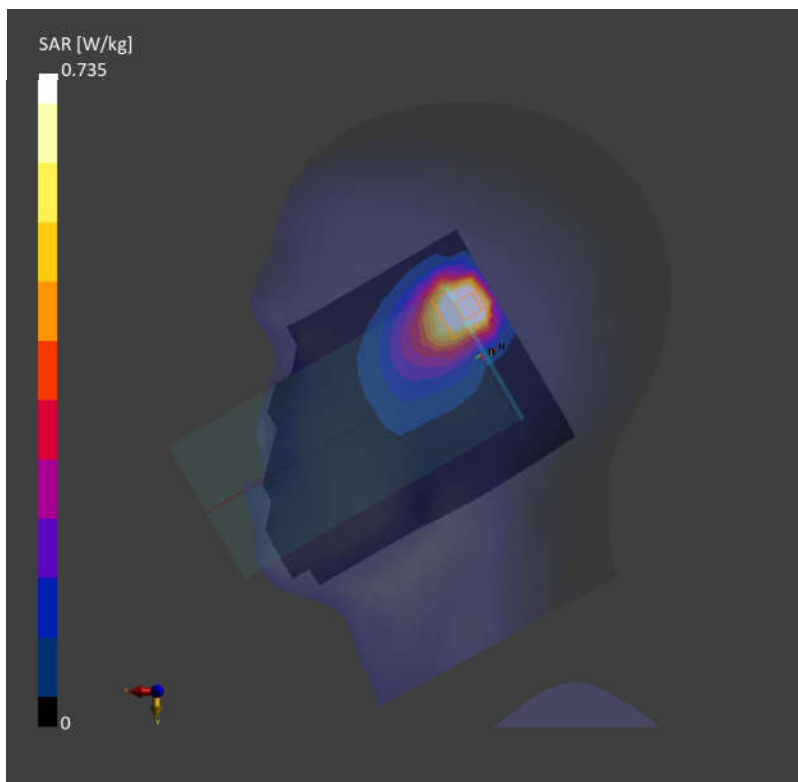
Area Scan (120.0 mm x 200.0 mm): Measurement Grid: 10.0 mm x 10.0 mm

SAR (1g) = 0.648 W/kg; SAR (10g) = 0.370 W/kg;

Zoom Scan (30.0 mm x 30.0 mm x 30.0 mm): Measurement Grid: 5.0 mm x 5.0 mm x 1.5 mm

Power Drift = -0.03 dB

SAR (1g) = 0.735 W/kg; SAR (10g) = 0.398 W/kg;



20_LTE Band 42_20M_QPSK_1RB_0Offset_Left Tilted_0mm_Ch42190

Communication System: Band 42; Frequency: 3460.000

Medium: HSL. Medium parameters used: $f = 3460.000$ MHz; $\sigma = 2.75$ S/m; $\epsilon_r = 39.7$

Ambient Temperature: 23.3°C; Liquid Temperature: 22.8°C

DASY6 Configuration:

- Probe: EX3DV4 - SN7706; ConvF(7.68, 7.68, 7.68); Calibrated: 2023-01-26
- Sensor-Surface: 1.4 mm
- Electronics: DAE4 Sn1303; Calibrated: 2022-11-24
- Phantom: Twin-SAM V8.0 (30deg probe tilt); Serial: 2024
- Measurement Software: 16.2.4.2448

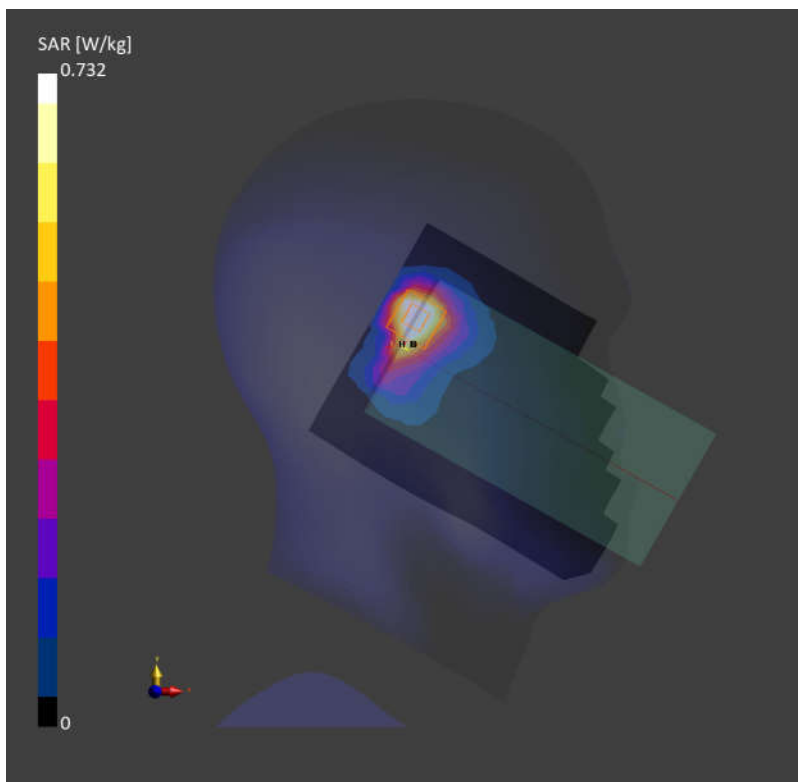
Area Scan (120.0 mm x 200.0 mm): Measurement Grid: 10.0 mm x 10.0 mm

SAR (1g) = 0.693 W/kg; SAR (10g) = 0.302 W/kg;

Zoom Scan (28.0 mm x 28.0 mm x 28.0 mm): Measurement Grid: 4.0 mm x 4.0 mm x 1.4 mm

Power Drift = 0.06 dB

SAR (1g) = 0.732 W/kg; SAR (10g) = 0.304 W/kg;



21_FR1 n78 Part 27Q_100M_QPSK_1RB_1Offset_Left Tilted_0mm_Ch633332

Communication System: Band n78; Frequency: 3499.980

Medium: HSL. Medium parameters used: $f = 3499.980$ MHz; $\sigma = 2.79$ S/m; $\epsilon_r = 39.6$

Ambient Temperature: 23.3°C; Liquid Temperature: 22.8°C

DASY6 Configuration:

- Probe: EX3DV4 - SN7706; ConvF(7.68, 7.68, 7.68); Calibrated: 2023-01-26
- Sensor-Surface: 1.4 mm
- Electronics: DAE4 Sn1303; Calibrated: 2022-11-24
- Phantom: Twin-SAM V8.0 (30deg probe tilt); Serial: 2024
- Measurement Software: 16.2.4.2448

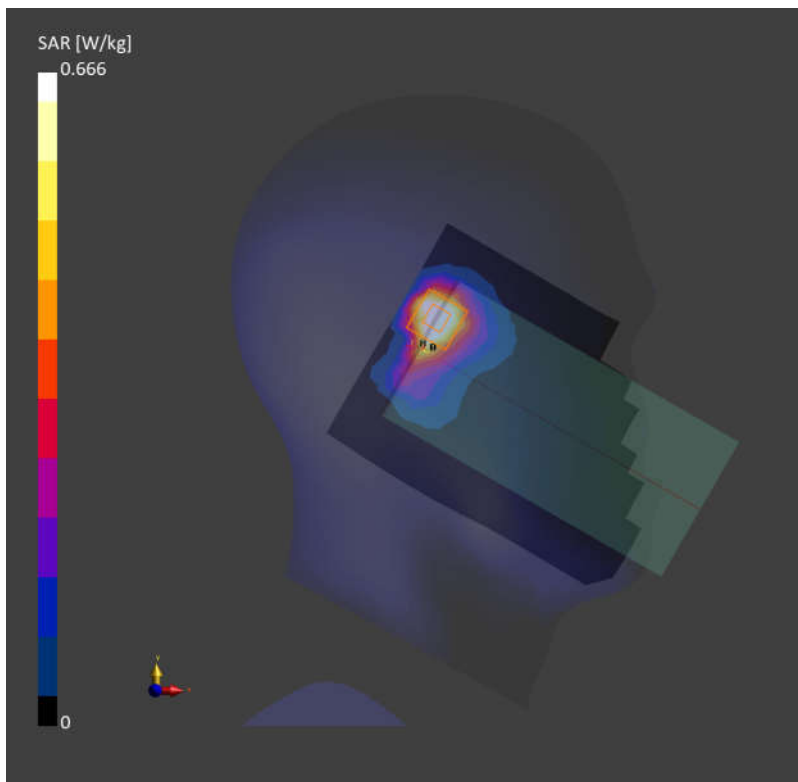
Area Scan (120.0 mm x 200.0 mm): Measurement Grid: 10.0 mm x 10.0 mm

SAR (1g) = 0.652 W/kg; SAR (10g) = 0.278 W/kg;

Zoom Scan (28.0 mm x 28.0 mm x 28.0 mm): Measurement Grid: 4.0 mm x 4.0 mm x 1.4 mm

Power Drift = 0.08 dB

SAR (1g) = 0.666 W/kg; SAR (10g) = 0.276 W/kg;



22_WLAN2.4GHz_802.11b 1Mbps_Left Cheek_0mm_Ch1

Communication System: WLAN 2.4GHz; Frequency: 2412.000

Medium: HSL. Medium parameters used: $f= 2412.000$ MHz; $\sigma= 1.80$ S/m; $\epsilon_r = 37.6$

Ambient Temperature: 23.2°C; Liquid Temperature: 22.6°C

DASY6 Configuration:

- Probe: EX3DV4 - SN7706; ConvF(8.38, 8.38, 8.38); Calibrated: 2023-01-26
- Sensor-Surface: 1.4 mm
- Electronics: DAE4 Sn1303; Calibrated: 2022-11-24
- Phantom: Twin-SAM V8.0 (30deg probe tilt); Serial: 2024
- Measurement Software: 16.2.4.2448

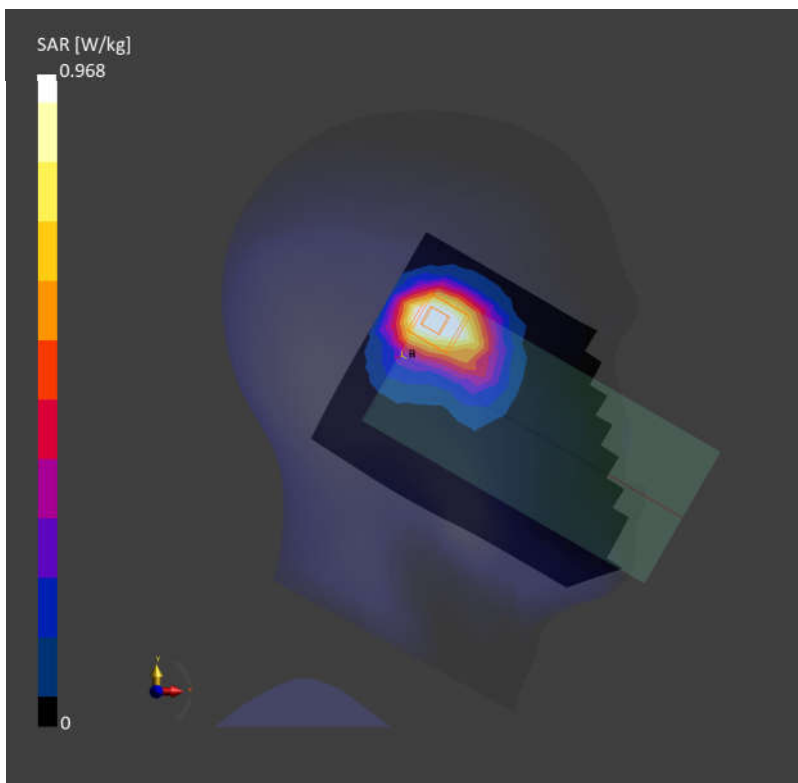
Area Scan (120.0 mm x 200.0 mm): Measurement Grid: 10.0 mm x 10.0 mm

SAR (1g) = 0.887 W/kg; SAR (10g) = 0.442 W/kg;

Zoom Scan (30.0 mm x 30.0 mm x 30.0 mm): Measurement Grid: 5.0 mm x 5.0 mm x 1.5 mm

Power Drift = 0.02 dB

SAR (1g) = 0.968 W/kg; SAR (10g) = 0.493 W/kg;



23_Bluetooth_1Mbps_Left Cheek_0mm_Ch39

Communication System: ISM 2.4 GHz Band; Frequency: 2441.000

Medium: HSL. Medium parameters used: $f = 2441.000$ MHz; $\sigma = 1.83$ S/m; $\epsilon_r = 37.6$

Ambient Temperature: 23.2°C; Liquid Temperature: 22.6°C

DASY6 Configuration:

- Probe: EX3DV4 - SN7706; ConvF(8.38, 8.38, 8.38); Calibrated: 2023-01-26
- Sensor-Surface: 1.4 mm
- Electronics: DAE4 Sn1303; Calibrated: 2022-11-24
- Phantom: Twin-SAM V8.0 (30deg probe tilt); Serial: 2024
- Measurement Software: 16.2.4.2448

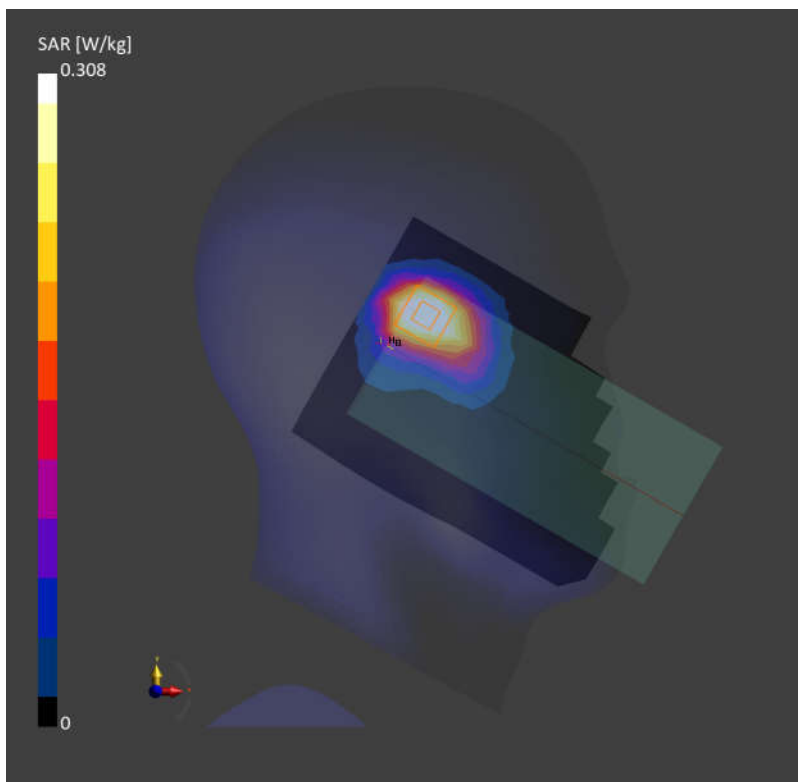
Area Scan (120.0 mm x 200.0 mm): Measurement Grid: 10.0 mm x 10.0 mm

SAR (1g) = 0.299 W/kg; SAR (10g) = 0.157 W/kg;

Zoom Scan (30.0 mm x 30.0 mm x 30.0 mm): Measurement Grid: 5.0 mm x 5.0 mm x 1.5 mm

Power Drift = 0.08 dB

SAR (1g) = 0.308 W/kg; SAR (10g) = 0.160 W/kg;



24_WLAN5GHz_802.11n-HT40 MCS0_Left Tilted_0mm_Ch62

Communication System: WLAN 5GHz; Frequency: 5310.000

Medium: HSL. Medium parameters used: $f= 5310.000$ MHz; $\sigma= 4.75$ S/m; $\epsilon_r = 36.6$

Ambient Temperature: 23.3°C; Liquid Temperature: 22.7°C

DASY6 Configuration:

- Probe: EX3DV4 - SN7706; ConvF(6.18, 6.18, 6.18); Calibrated: 2023-01-26
- Sensor-Surface: 1.4 mm
- Electronics: DAE4 Sn1303; Calibrated: 2022-11-24
- Phantom: Twin-SAM V8.0 (30deg probe tilt); Serial: 2024
- Measurement Software: 16.2.4.2448

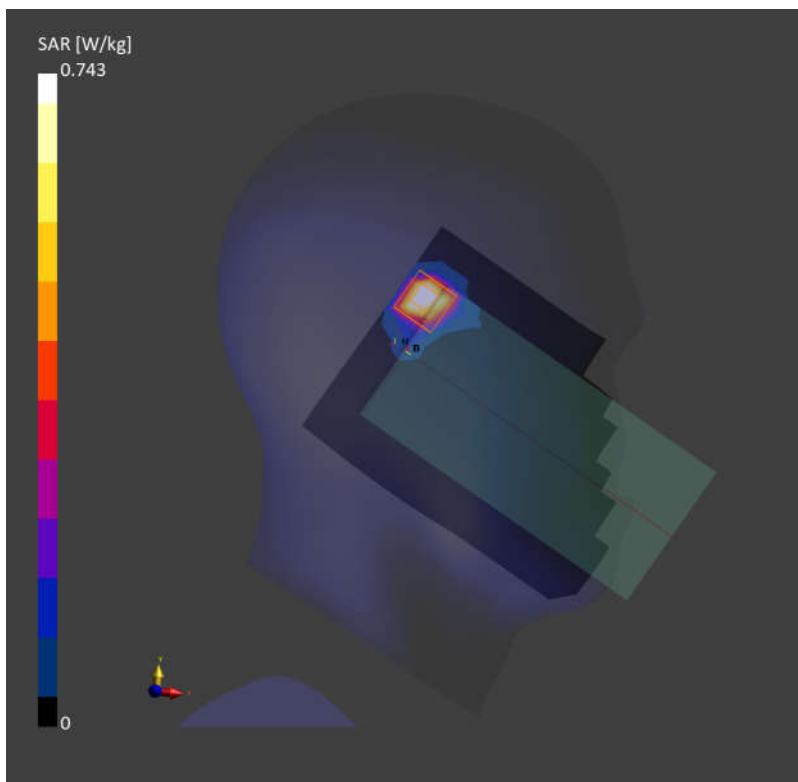
Area Scan (120.0 mm x 200.0 mm): Measurement Grid: 10.0 mm x 10.0 mm

SAR (1g) = 0.626 W/kg; SAR (10g) = 0.206 W/kg;

Zoom Scan (22.0 mm x 22.0 mm x 22.0 mm): Measurement Grid: 4.0 mm x 4.0 mm x 1.4 mm

Power Drift = 0.01 dB

SAR (1g) = 0.743 W/kg; SAR (10g) = 0.201 W/kg;



25_WLAN5GHz_802.11ac-VHT80 MCS0_Left Tilted_0mm_Ch138

Communication System: WLAN 5GHz; Frequency: 5690.000

Medium: HSL. Medium parameters used: $f= 5690.000$ MHz; $\sigma= 5.19$ S/m; $\epsilon_r = 35.9$

Ambient Temperature: 23.3°C; Liquid Temperature: 22.8°C

DASY6 Configuration:

- Probe: EX3DV4 - SN7706; ConvF(5.57, 5.57, 5.57); Calibrated: 2023-01-26
- Sensor-Surface: 1.4 mm
- Electronics: DAE4 Sn1303; Calibrated: 2022-11-24
- Phantom: Twin-SAM V8.0 (30deg probe tilt); Serial: 2024
- Measurement Software: 16.2.4.2448

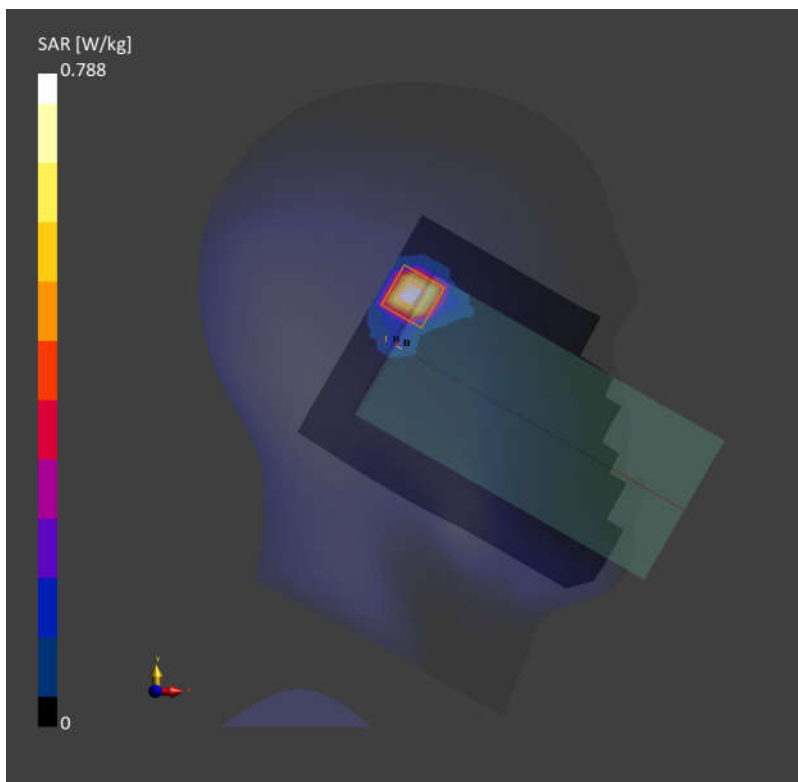
Area Scan (120.0 mm x 200.0 mm): Measurement Grid: 10.0 mm x 10.0 mm

SAR (1g) = 0.661 W/kg; SAR (10g) = 0.219 W/kg;

Zoom Scan (22.0 mm x 22.0 mm x 22.0 mm): Measurement Grid: 4.0 mm x 4.0 mm x 1.4 mm

Power Drift = 0.01 dB

SAR (1g) = 0.788 W/kg; SAR (10g) = 0.213 W/kg;



26_WLAN5GHz_802.11ac-VHT80 MCS0_Left Tilted_0mm_Ch155

Communication System: WLAN 5GHz; Frequency: 5775.000

Medium: HSL. Medium parameters used: $f = 5775.000$ MHz; $\sigma = 5.29$ S/m; $\epsilon_r = 35.7$

Ambient Temperature: 23.3°C; Liquid Temperature: 22.8°C

DASY6 Configuration:

- Probe: EX3DV4 - SN7706; ConvF(5.57, 5.57, 5.57); Calibrated: 2023-01-26
- Sensor-Surface: 1.4 mm
- Electronics: DAE4 Sn1303; Calibrated: 2022-11-24
- Phantom: Twin-SAM V8.0 (30deg probe tilt); Serial: 2024
- Measurement Software: 16.2.4.2448

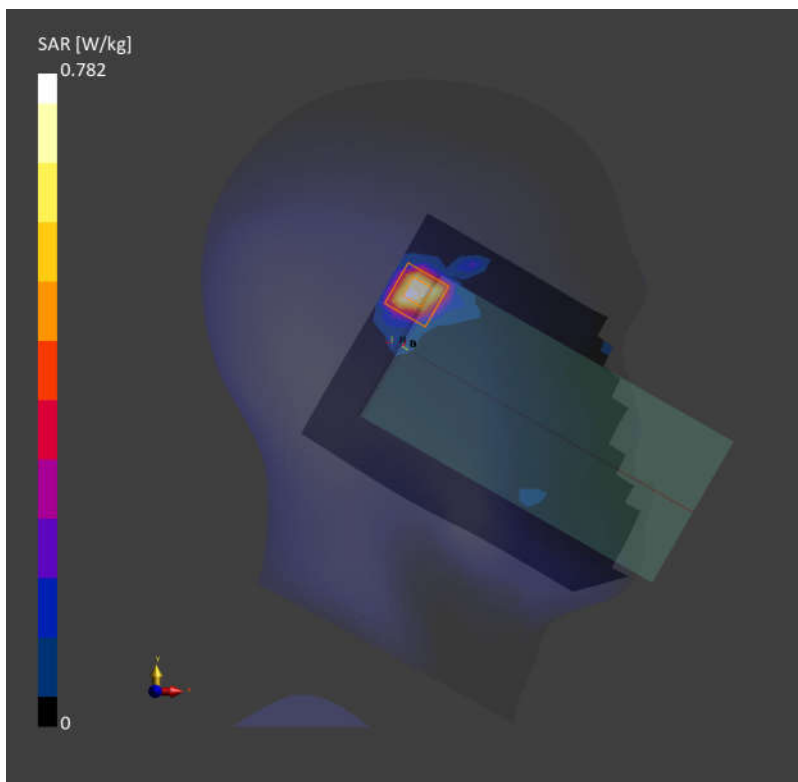
Area Scan (120.0 mm x 200.0 mm): Measurement Grid: 10.0 mm x 10.0 mm

SAR (1g) = 0.626 W/kg; SAR (10g) = 0.206 W/kg;

Zoom Scan (24.0 mm x 24.0 mm x 22.0 mm): Measurement Grid: 4.0 mm x 4.0 mm x 1.4 mm

Power Drift = 0.04 dB

SAR (1g) = 0.782 W/kg; SAR (10g) = 0.205 W/kg;



27_LTE Band 12_10M_QPSK_1RB_0Offset_Back_5mm_Ch23095

Communication System: Band 12; Frequency: 707.500

Medium: HSL. Medium parameters used: $f = 707.500$ MHz; $\sigma = 0.894$ S/m; $\epsilon_r = 43.6$

Ambient Temperature: 23.2°C; Liquid Temperature: 22.9°C

DASY6 Configuration:

- Probe: EX3DV4 - SN7706; ConvF(10.97, 10.97, 10.97); Calibrated: 2023-01-26
- Sensor-Surface: 1.4 mm
- Electronics: DAE4 Sn1303; Calibrated: 2022-11-24
- Phantom: Twin-SAM V8.0 (30deg probe tilt); Serial: 2024
- Measurement Software: 16.2.4.2448

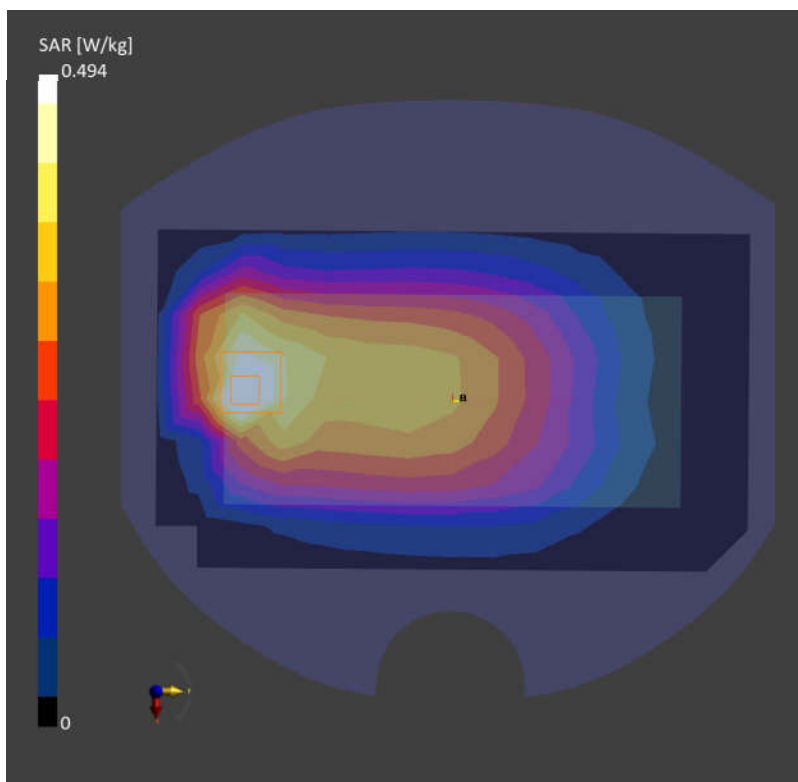
Area Scan (120.0 mm x 210.0 mm): Measurement Grid: 15.0 mm x 15.0 mm

SAR (1g) = 0.493 W/kg; SAR (10g) = 0.290 W/kg;

Zoom Scan (30.0 mm x 30.0 mm x 30.0 mm): Measurement Grid: 6.0 mm x 6.0 mm x 1.5 mm

Power Drift = -0.06 dB

SAR (1g) = 0.494 W/kg; SAR (10g) = 0.268 W/kg;



28_LTE Band 13_10M_QPSK_1RB_0Offset_Back_5mm_Ch23230

Communication System: Band 13; Frequency: 782.000

Medium: HSL. Medium parameters used: $f = 782.000$ MHz; $\sigma = 0.924$ S/m; $\epsilon_r = 43.5$

Ambient Temperature: 23.2°C; Liquid Temperature: 22.9°C

DASY6 Configuration:

- Probe: EX3DV4 - SN7706; ConvF(10.97, 10.97, 10.97); Calibrated: 2023-01-26
- Sensor-Surface: 1.4 mm
- Electronics: DAE4 Sn1303; Calibrated: 2022-11-24
- Phantom: Twin-SAM V8.0 (30deg probe tilt); Serial: 2024
- Measurement Software: 16.2.4.2448

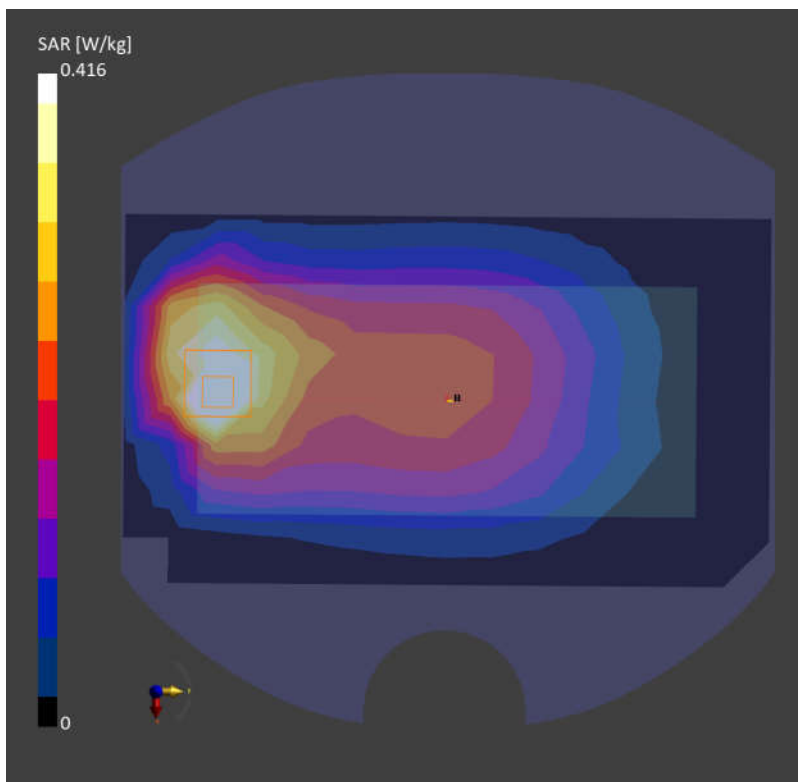
Area Scan (120.0 mm x 210.0 mm): Measurement Grid: 15.0 mm x 15.0 mm

SAR (1g) = 0.464 W/kg; SAR (10g) = 0.291 W/kg;

Zoom Scan (30.0 mm x 30.0 mm x 30.0 mm): Measurement Grid: 6.0 mm x 6.0 mm x 1.5 mm

Power Drift = 0.09 dB

SAR (1g) = 0.416 W/kg; SAR (10g) = 0.214 W/kg;



29_GSM850_GPRS (2 Tx slots)_Back_5mm_Ch189

Communication System: GSM 850; Frequency: 836.400

Medium: HSL. Medium parameters used: $f = 836.400$ MHz; $\sigma = 0.942$ S/m; $\epsilon_r = 43.2$

Ambient Temperature: 23.1°C; Liquid Temperature: 22.7°C

DASY6 Configuration:

- Probe: EX3DV4 - SN7706; ConvF(10.67, 10.67, 10.67); Calibrated: 2023-01-26
- Sensor-Surface: 1.4 mm
- Electronics: DAE4 Sn1303; Calibrated: 2022-11-24
- Phantom: Twin-SAM V8.0 (30deg probe tilt); Serial: 2024
- Measurement Software: 16.2.4.2448

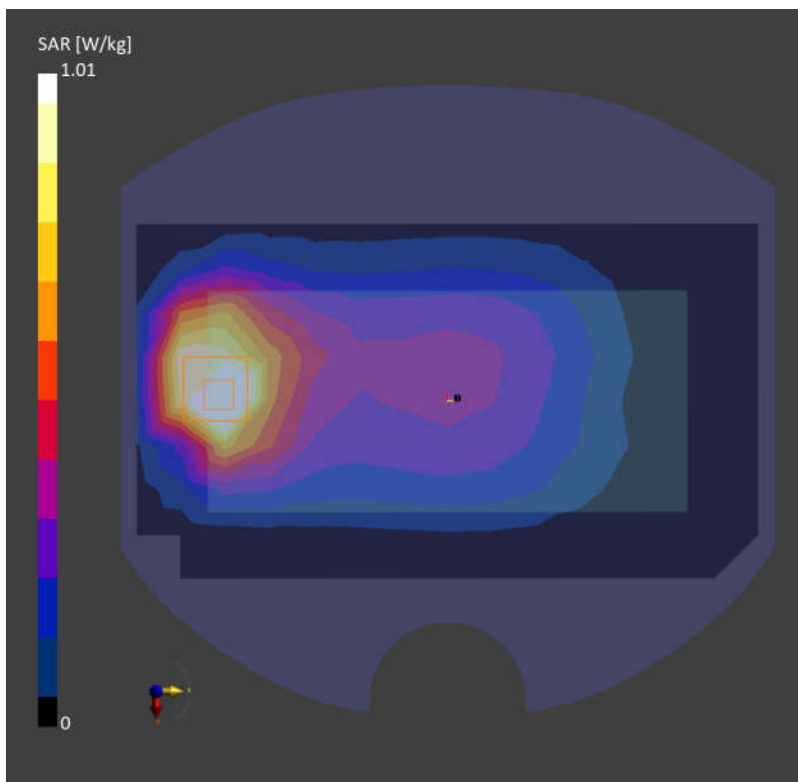
Area Scan (120.0 mm x 210.0 mm): Measurement Grid: 15.0 mm x 15.0 mm

SAR (1g) = 1.11 W/kg; SAR (10g) = 0.691 W/kg;

Zoom Scan (30.0 mm x 30.0 mm x 30.0 mm): Measurement Grid: 6.0 mm x 6.0 mm x 1.5 mm

Power Drift = -0.02 dB

SAR (1g) = 1.01 W/kg; SAR (10g) = 0.594 W/kg;



30_WCDMA V_RMC 12.2Kbps_Back_5mm_Ch4182

Communication System: Band 5; Frequency: 836.400

Medium: HSL. Medium parameters used: $f = 836.400$ MHz; $\sigma = 0.942$ S/m; $\epsilon_r = 43.2$

Ambient Temperature: 23.1°C; Liquid Temperature: 22.7°C

DASY6 Configuration:

- Probe: EX3DV4 - SN7706; ConvF(10.67, 10.67, 10.67); Calibrated: 2023-01-26
- Sensor-Surface: 1.4 mm
- Electronics: DAE4 Sn1303; Calibrated: 2022-11-24
- Phantom: Twin-SAM V8.0 (30deg probe tilt); Serial: 2024
- Measurement Software: 16.2.4.2448

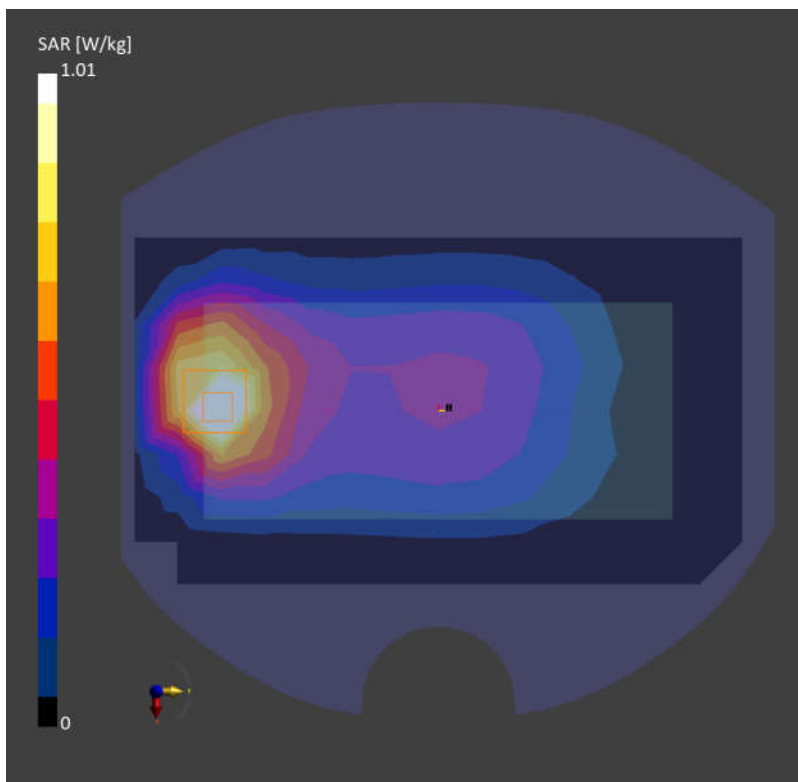
Area Scan (120.0 mm x 210.0 mm): Measurement Grid: 15.0 mm x 15.0 mm

SAR (1g) = 1.06 W/kg; SAR (10g) = 0.656 W/kg;

Zoom Scan (30.0 mm x 30.0 mm x 30.0 mm): Measurement Grid: 6.0 mm x 6.0 mm x 1.5 mm

Power Drift = -0.01 dB

SAR (1g) = 1.01 W/kg; SAR (10g) = 0.589 W/kg;



31_LTE Band 26_15M_QPSK_1RB_0Offset_Back_5mm_Ch26865

Communication System: Band 26; Frequency: 831.500

Medium: HSL. Medium parameters used: $f = 831.500$ MHz; $\sigma = 0.940$ S/m; $\epsilon_r = 43.3$

Ambient Temperature: 23.1°C; Liquid Temperature: 22.7°C

DASY6 Configuration:

- Probe: EX3DV4 - SN7706; ConvF(10.67, 10.67, 10.67); Calibrated: 2023-01-26
- Sensor-Surface: 1.4 mm
- Electronics: DAE4 Sn1303; Calibrated: 2022-11-24
- Phantom: Twin-SAM V8.0 (30deg probe tilt); Serial: 2024
- Measurement Software: 16.2.4.2448

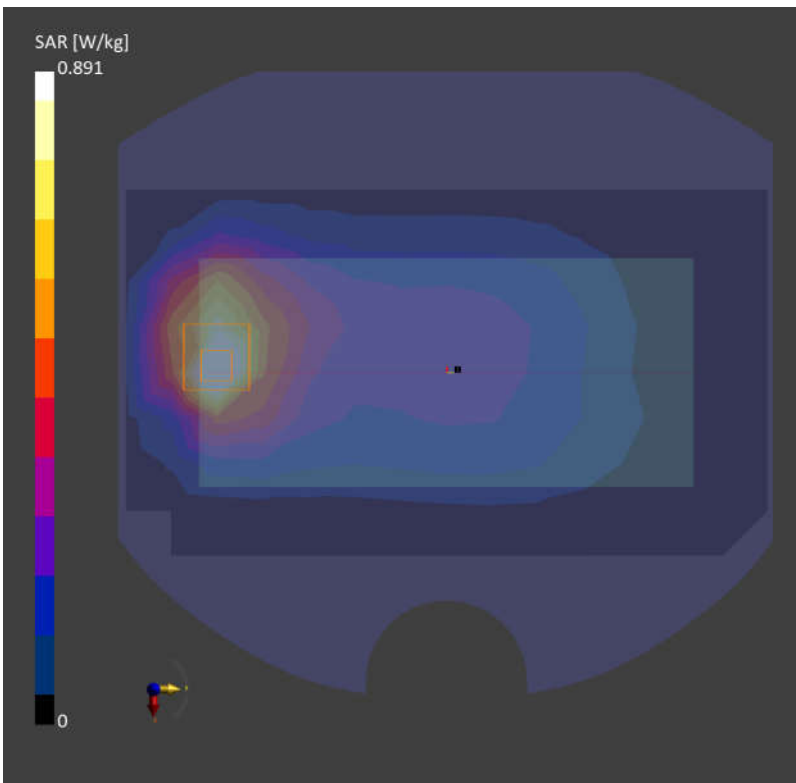
Area Scan (120.0 mm x 210.0 mm): Measurement Grid: 15.0 mm x 15.0 mm

SAR (1g) = 0.896 W/kg; SAR (10g) = 0.546 W/kg;

Zoom Scan (30.0 mm x 30.0 mm x 30.0 mm): Measurement Grid: 6.0 mm x 6.0 mm x 1.5 mm

Power Drift = 0.01 dB

SAR (1g) = 0.891 W/kg; SAR (10g) = 0.489 W/kg;



32_FR1 n26_20M_QPSK_1RB_1Offset_Back_5mm_Ch166300

Communication System: Band n26; Frequency: 831.500

Medium: HSL. Medium parameters used: $f = 831.500$ MHz; $\sigma = 0.940$ S/m; $\epsilon_r = 43.3$

Ambient Temperature: 23.1°C; Liquid Temperature: 22.7°C

DASY6 Configuration:

- Probe: EX3DV4 - SN7706; ConvF(10.67, 10.67, 10.67); Calibrated: 2023-01-26
- Sensor-Surface: 1.4 mm
- Electronics: DAE4 Sn1303; Calibrated: 2022-11-24
- Phantom: Twin-SAM V8.0 (30deg probe tilt); Serial: 2024
- Measurement Software: 16.2.4.2448

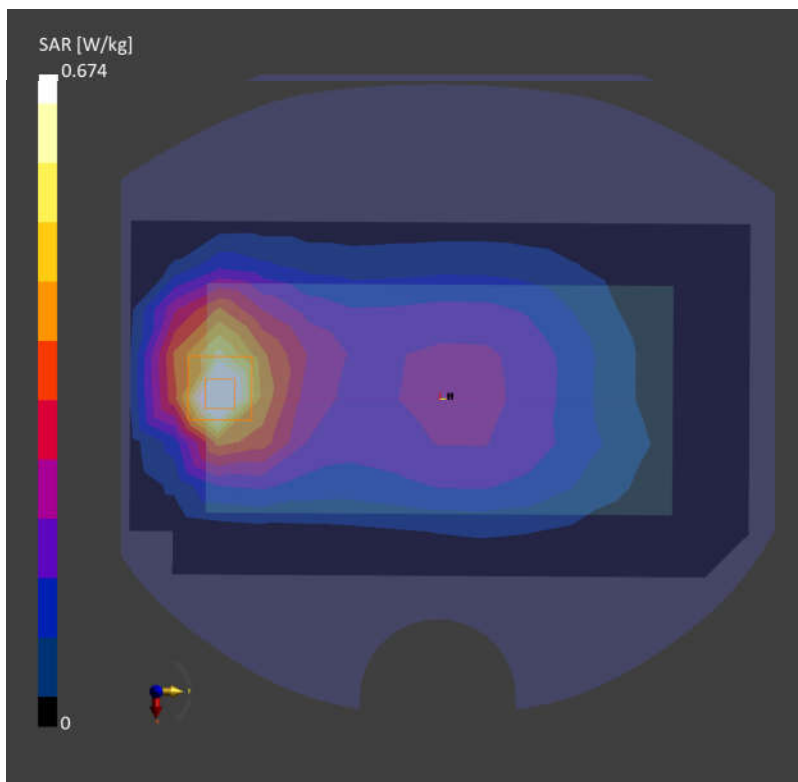
Area Scan (120.0 mm x 210.0 mm): Measurement Grid: 15.0 mm x 15.0 mm

SAR (1g) = 0.676 W/kg; SAR (10g) = 0.371 W/kg;

Zoom Scan (30.0 mm x 30.0 mm x 30.0 mm): Measurement Grid: 6.0 mm x 6.0 mm x 1.5 mm

Power Drift = -0.02 dB

SAR (1g) = 0.674 W/kg; SAR (10g) = 0.379 W/kg;



33_LTE Band 5_10M_QPSK_1RB_0Offset_Back_5mm_Ch20525

Communication System: Band 5; Frequency: 836.500

Medium: HSL. Medium parameters used: $f = 836.500$ MHz; $\sigma = 0.942$ S/m; $\epsilon_r = 43.2$

Ambient Temperature: 23.1°C; Liquid Temperature: 22.7°C

DASY6 Configuration:

- Probe: EX3DV4 - SN7706; ConvF(10.67, 10.67, 10.67); Calibrated: 2023-01-26
- Sensor-Surface: 1.4 mm
- Electronics: DAE4 Sn1303; Calibrated: 2022-11-24
- Phantom: Twin-SAM V8.0 (30deg probe tilt); Serial: 2024
- Measurement Software: 16.2.4.2448

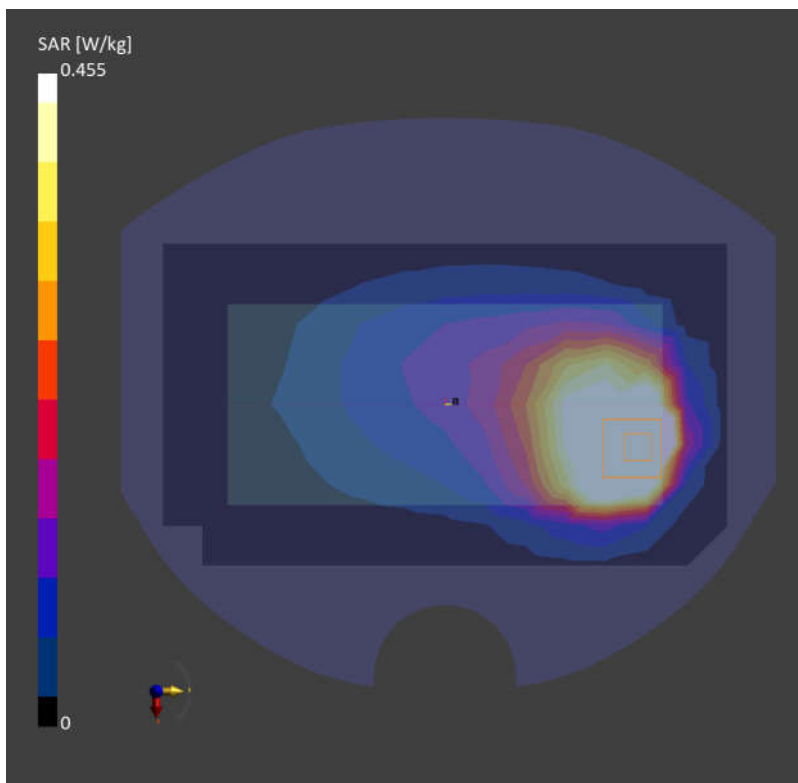
Area Scan (120.0 mm x 210.0 mm): Measurement Grid: 15.0 mm x 15.0 mm

SAR (1g) = 0.473 W/kg; SAR (10g) = 0.283 W/kg;

Zoom Scan (30.0 mm x 30.0 mm x 30.0 mm): Measurement Grid: 6.0 mm x 6.0 mm x 1.5 mm

Power Drift = 0.01 dB

SAR (1g) = 0.455 W/kg; SAR (10g) = 0.235 W/kg;



34_FR1 n5_20M_QPSK_50RB_28Offset_Back_5mm_Ch167300

Communication System: Band n5; Frequency: 836.500

Medium: HSL. Medium parameters used: $f = 836.500$ MHz; $\sigma = 0.942$ S/m; $\epsilon_r = 43.2$

Ambient Temperature: 23.1°C; Liquid Temperature: 22.7°C

DASY6 Configuration:

- Probe: EX3DV4 - SN7706; ConvF(10.67, 10.67, 10.67); Calibrated: 2023-01-26
- Sensor-Surface: 1.4 mm
- Electronics: DAE4 Sn1303; Calibrated: 2022-11-24
- Phantom: Twin-SAM V8.0 (30deg probe tilt); Serial: 2024
- Measurement Software: 16.2.4.2448

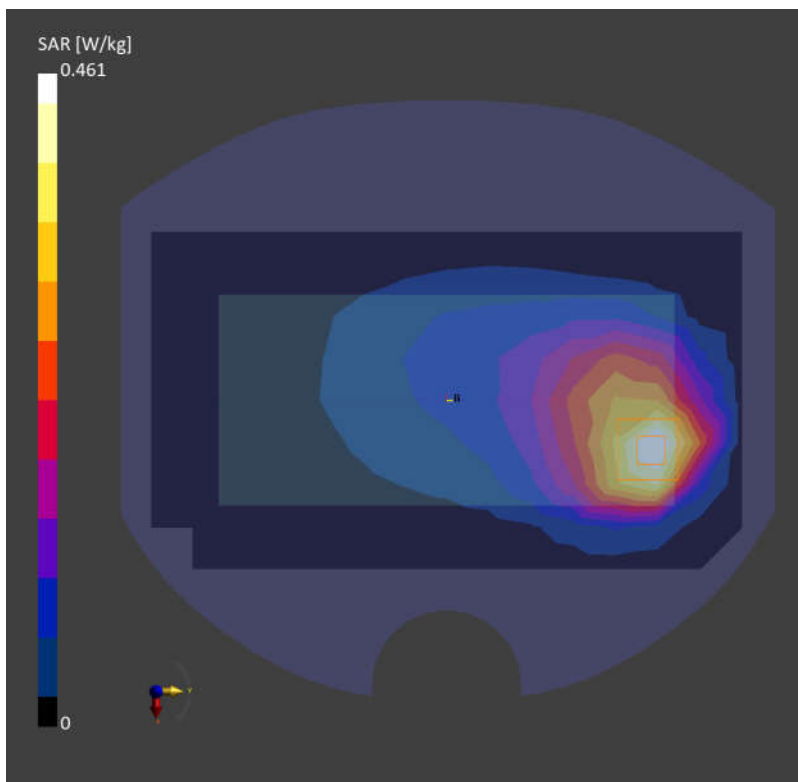
Area Scan (120.0 mm x 210.0 mm): Measurement Grid: 15.0 mm x 15.0 mm

SAR (1g) = 0.427 W/kg; SAR (10g) = 0.275 W/kg;

Zoom Scan (30.0 mm x 30.0 mm x 30.0 mm): Measurement Grid: 6.0 mm x 6.0 mm x 1.5 mm

Power Drift = -0.04 dB

SAR (1g) = 0.461 W/kg; SAR (10g) = 0.244 W/kg;



35_WCDMA IV_RMC 12.2Kbps_Bottom Side_5mm_Ch1513

Communication System: Band 4; Frequency: 1752.600

Medium: HSL. Medium parameters used: $f= 1752.600$ MHz; $\sigma= 1.36$ S/m; $\epsilon_r = 40.9$

Ambient Temperature: 23.1°C; Liquid Temperature: 22.6°C

DASY6 Configuration:

- Probe: EX3DV4 - SN7706; ConvF(9.31, 9.31, 9.31); Calibrated: 2023-01-26
- Sensor-Surface: 1.4 mm
- Electronics: DAE4 Sn1303; Calibrated: 2022-11-24
- Phantom: Twin-SAM V8.0 (30deg probe tilt); Serial: 2024
- Measurement Software: 16.2.4.2448

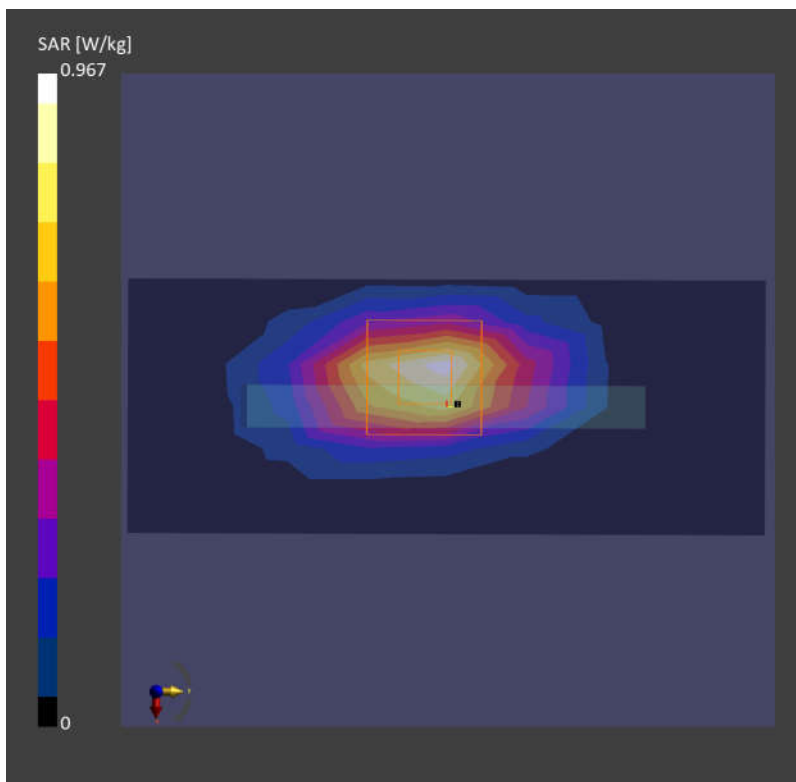
Area Scan (48.0 mm x 120.0 mm): Measurement Grid: 10.0 mm x 15.0 mm

SAR (1g) = 0.887 W/kg; SAR (10g) = 0.396 W/kg;

Zoom Scan (30.0 mm x 30.0 mm x 30.0 mm): Measurement Grid: 6.0 mm x 6.0 mm x 1.5 mm

Power Drift = -0.03 dB

SAR (1g) = 0.967 W/kg; SAR (10g) = 0.411 W/kg;



36_LTE Band 66_20M_QPSK_1RB_0Offset_Bottom Side_5mm_Ch132572

Communication System: Band 66; Frequency: 1770.000

Medium: HSL. Medium parameters used: $f = 1770.000$ MHz; $\sigma = 1.37$ S/m; $\epsilon_r = 40.9$

Ambient Temperature: 23.1°C; Liquid Temperature: 22.6°C

DASY6 Configuration:

- Probe: EX3DV4 - SN7706; ConvF(9.31, 9.31, 9.31); Calibrated: 2023-01-26
- Sensor-Surface: 1.4 mm
- Electronics: DAE4 Sn1303; Calibrated: 2022-11-24
- Phantom: Twin-SAM V8.0 (30deg probe tilt); Serial: 2024
- Measurement Software: 16.2.4.2448

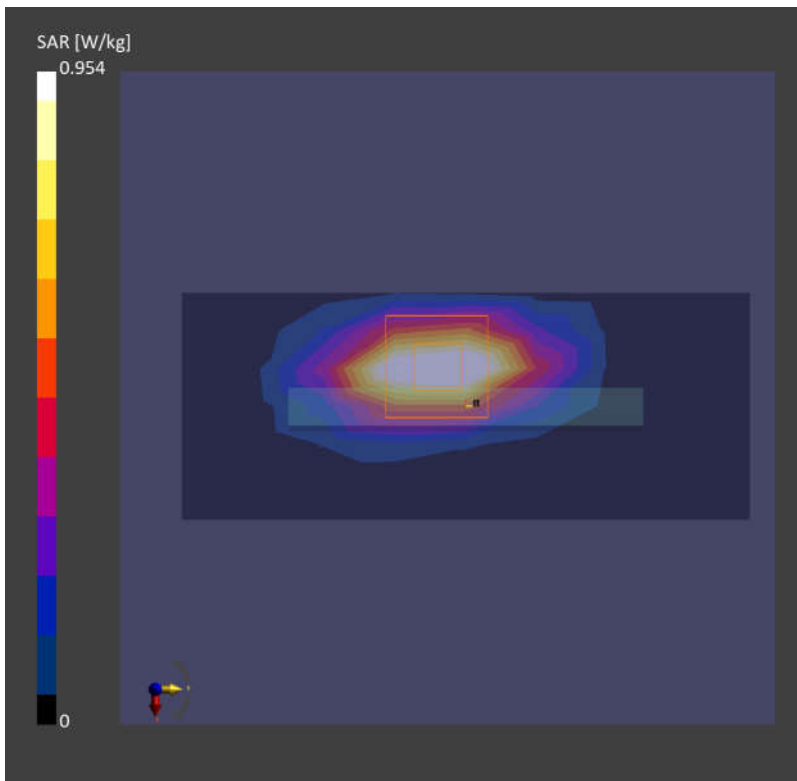
Area Scan (48.0 mm x 120.0 mm): Measurement Grid: 8.0 mm x 15.0 mm

SAR (1g) = 0.923 W/kg; SAR (10g) = 0.441 W/kg;

Zoom Scan (30.0 mm x 30.0 mm x 30.0 mm): Measurement Grid: 5.1 mm x 5.1 mm x 1.5 mm

Power Drift = -0.01 dB

SAR (1g) = 0.954 W/kg; SAR (10g) = 0.447 W/kg;



37_FR1 n66_40M_QPSK_1RB_1Offset_Bottom Side_5mm_Ch349000

Communication System: Band n66; Frequency: 1745.000

Medium: HSL. Medium parameters used: $f = 1745.000$ MHz; $\sigma = 1.36$ S/m; $\epsilon_r = 40.9$

Ambient Temperature: 23.1°C; Liquid Temperature: 22.6°C

DASY6 Configuration:

- Probe: EX3DV4 - SN7706; ConvF(9.31, 9.31, 9.31); Calibrated: 2023-01-26
- Sensor-Surface: 1.4 mm
- Electronics: DAE4 Sn1303; Calibrated: 2022-11-24
- Phantom: Twin-SAM V8.0 (30deg probe tilt); Serial: 2024
- Measurement Software: 16.2.4.2448

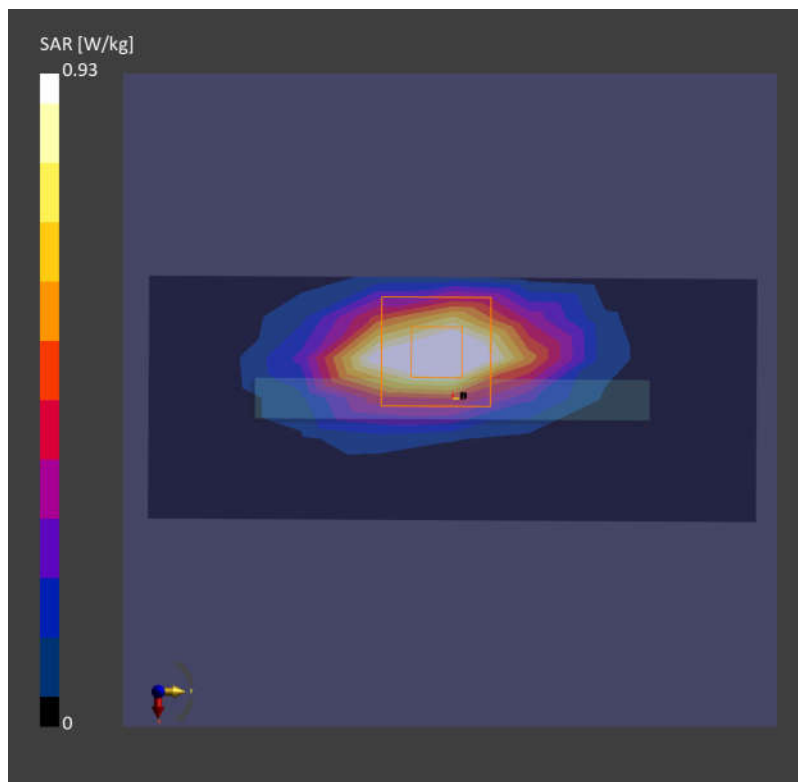
Area Scan (48.0 mm x 120.0 mm): Measurement Grid: 10.0 mm x 15.0 mm

SAR (1g) = 0.924 W/kg; SAR (10g) = 0.440 W/kg;

Zoom Scan (30.0 mm x 30.0 mm x 30.0 mm): Measurement Grid: 6.0 mm x 6.0 mm x 1.5 mm

Power Drift = -0.04 dB

SAR (1g) = 0.930 W/kg; SAR (10g) = 0.441 W/kg;



38_GSM1900_GPRS (4 Tx slots)_Bottom Side_5mm_Ch512

Communication System: PCS 1900; Frequency: 1850.200

Medium: HSL. Medium parameters used: $f = 1850.200$ MHz; $\sigma = 1.42$ S/m; $\epsilon_r = 40.7$

Ambient Temperature: 23.2°C; Liquid Temperature: 22.9°C

DASY6 Configuration:

- Probe: EX3DV4 - SN7706; ConvF(8.89, 8.89, 8.89); Calibrated: 2023-01-26
- Sensor-Surface: 1.4 mm
- Electronics: DAE4 Sn1303; Calibrated: 2022-11-24
- Phantom: Twin-SAM V8.0 (30deg probe tilt); Serial: 2024
- Measurement Software: 16.2.4.2448

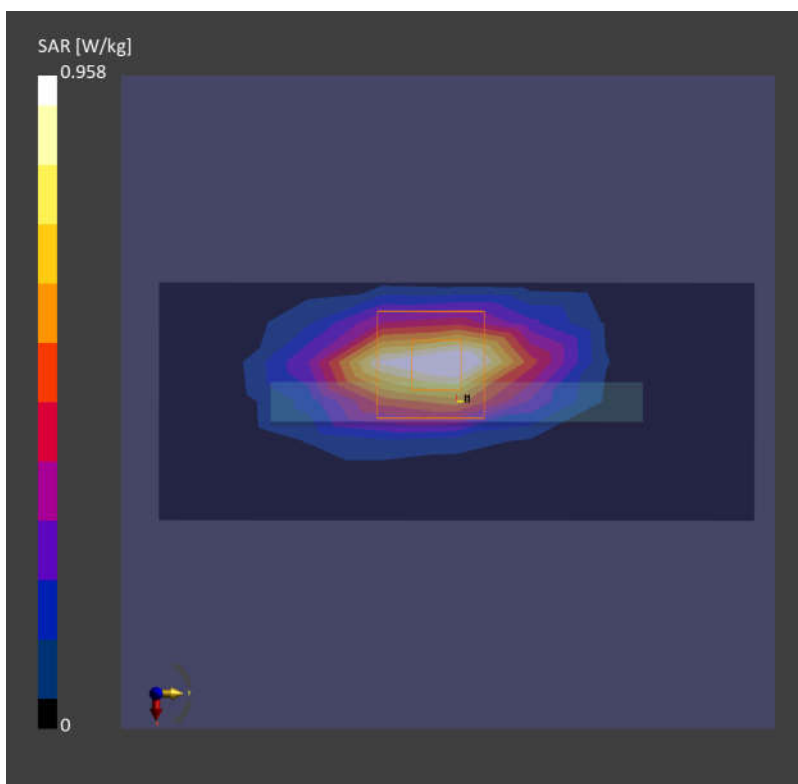
Area Scan (48.0 mm x 120.0 mm): Measurement Grid: 10.0 mm x 15.0 mm

SAR (1g) = 0.930 W/kg; SAR (10g) = 0.396 W/kg;

Zoom Scan (30.0 mm x 30.0 mm x 30.0 mm): Measurement Grid: 6.0 mm x 6.0 mm x 1.5 mm

Power Drift = -0.06 dB

SAR (1g) = 0.958 W/kg; SAR (10g) = 0.394 W/kg;



39_WCDMA II_RMC 12.2Kbps_Bottom Side_5mm_Ch9262

Communication System: Band 2; Frequency: 1852.400

Medium: HSL. Medium parameters used: $f = 1852.400$ MHz; $\sigma = 1.42$ S/m; $\epsilon_r = 40.7$

Ambient Temperature: 23.2°C; Liquid Temperature: 22.9°C

DASY6 Configuration:

- Probe: EX3DV4 - SN7706; ConvF(8.89, 8.89, 8.89); Calibrated: 2023-01-26
- Sensor-Surface: 1.4 mm
- Electronics: DAE4 Sn1303; Calibrated: 2022-11-24
- Phantom: Twin-SAM V8.0 (30deg probe tilt); Serial: 2024
- Measurement Software: 16.2.4.2448

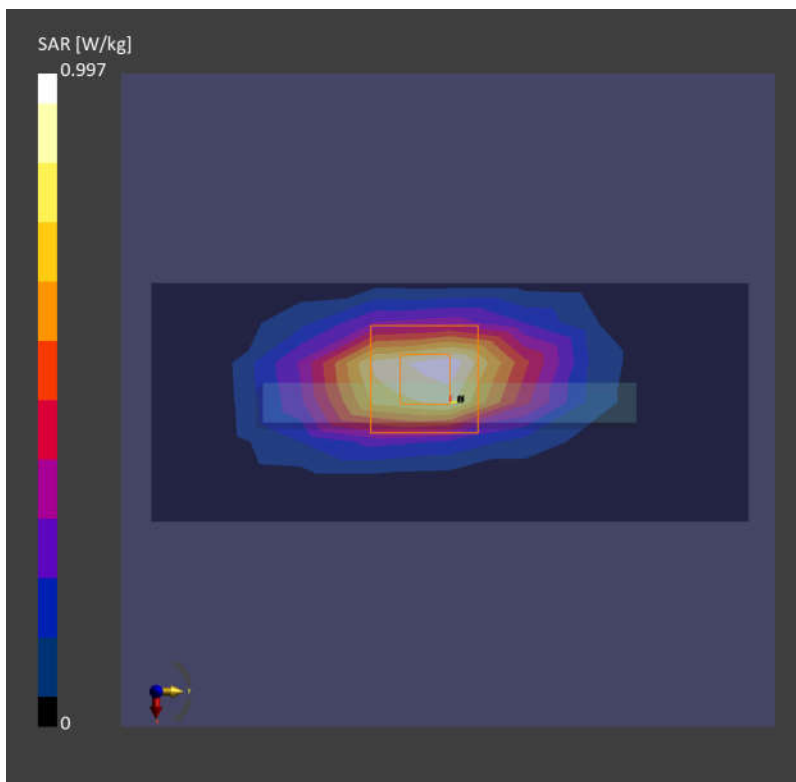
Area Scan (48.0 mm x 120.0 mm): Measurement Grid: 10.0 mm x 15.0 mm

SAR (1g) = 0.954 W/kg; SAR (10g) = 0.431 W/kg;

Zoom Scan (30.0 mm x 30.0 mm x 30.0 mm): Measurement Grid: 6.0 mm x 6.0 mm x 1.5 mm

Power Drift = 0.01 dB

SAR (1g) = 0.997 W/kg; SAR (10g) = 0.457 W/kg;



40_LTE Band 25_20M_QPSK_1RB_0Offset_Bottom Side_5mm_Ch26140

Communication System: Band 25; Frequency: 1860.000

Medium: HSL. Medium parameters used: $f= 1860.000$ MHz; $\sigma= 1.43$ S/m; $\epsilon_r = 40.7$

Ambient Temperature: 23.2°C; Liquid Temperature: 22.9°C

DASY6 Configuration:

- Probe: EX3DV4 - SN7706; ConvF(8.89, 8.89, 8.89); Calibrated: 2023-01-26
- Sensor-Surface: 1.4 mm
- Electronics: DAE4 Sn1303; Calibrated: 2022-11-24
- Phantom: Twin-SAM V8.0 (30deg probe tilt); Serial: 2024
- Measurement Software: 16.2.4.2448

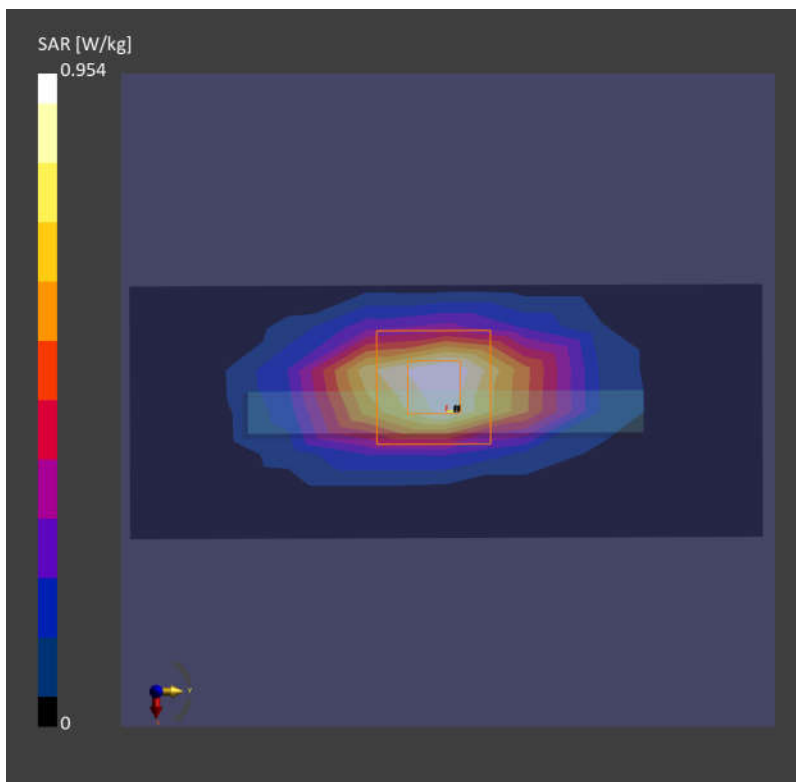
Area Scan (48.0 mm x 120.0 mm): Measurement Grid: 10.0 mm x 15.0 mm

SAR (1g) = 0.854 W/kg; SAR (10g) = 0.425 W/kg;

Zoom Scan (30.0 mm x 30.0 mm x 30.0 mm): Measurement Grid: 6.0 mm x 6.0 mm x 1.5 mm

Power Drift = 0.01 dB

SAR (1g) = 0.954 W/kg; SAR (10g) = 0.448 W/kg;



41_FR1 n2_20M_QPSK_50RB_28Offset_Bottom Side_5mm_Ch372000

Communication System: Band n2; Frequency: 1860.000

Medium: HSL. Medium parameters used: $f = 1860.000$ MHz; $\sigma = 1.43$ S/m; $\epsilon_r = 40.7$

Ambient Temperature: 23.2°C; Liquid Temperature: 22.9°C

DASY6 Configuration:

- Probe: EX3DV4 - SN7706; ConvF(8.89, 8.89, 8.89); Calibrated: 2023-01-26
- Sensor-Surface: 1.4 mm
- Electronics: DAE4 Sn1303; Calibrated: 2022-11-24
- Phantom: Twin-SAM V8.0 (30deg probe tilt); Serial: 2024
- Measurement Software: 16.2.4.2448

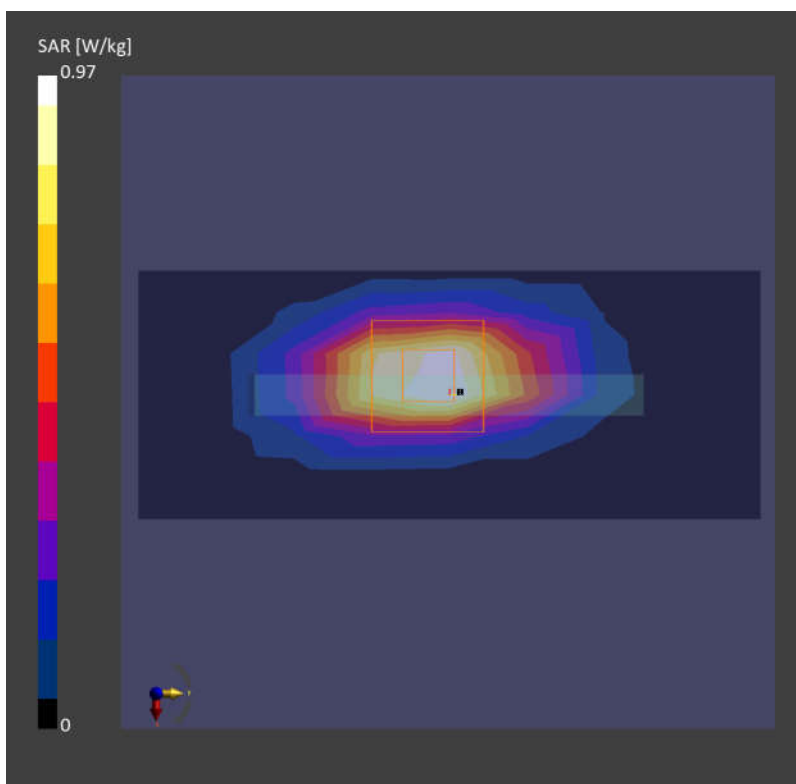
Area Scan (48.0 mm x 120.0 mm): Measurement Grid: 10.0 mm x 15.0 mm

SAR (1g) = 0.879 W/kg; SAR (10g) = 0.439 W/kg;

Zoom Scan (30.0 mm x 30.0 mm x 30.0 mm): Measurement Grid: 6.0 mm x 6.0 mm x 1.5 mm

Power Drift = 0.01 dB

SAR (1g) = 0.970 W/kg; SAR (10g) = 0.451 W/kg;



42_LTE Band 7_20M_QPSK_1RB_0Offset_Back_5mm_Ch21100

Communication System: Band 7; Frequency: 2535.000

Medium: HSL. Medium parameters used: $f = 2535.000$ MHz; $\sigma = 1.88$ S/m; $\epsilon_r = 39.1$

Ambient Temperature: 23.2°C; Liquid Temperature: 22.7°C

DASY6 Configuration:

- Probe: EX3DV4 - SN7706; ConvF(8.1, 8.1, 8.1); Calibrated: 2023-01-26
- Sensor-Surface: 1.4 mm
- Electronics: DAE4 Sn1303; Calibrated: 2022-11-24
- Phantom: Twin-SAM V8.0 (30deg probe tilt); Serial: 2024
- Measurement Software: 16.2.4.2448

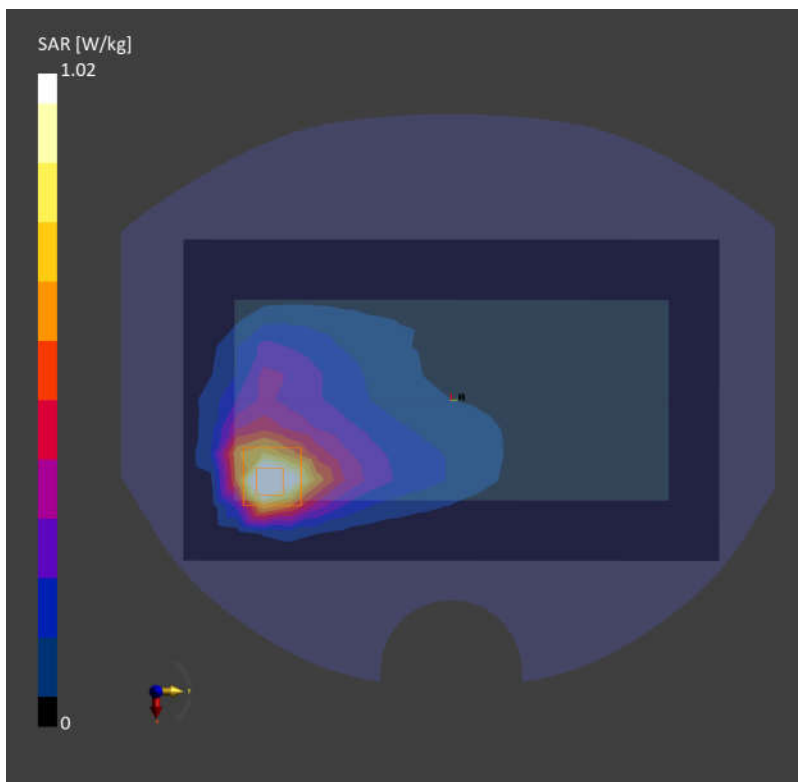
Area Scan (120.0 mm x 200.0 mm): Measurement Grid: 10.0 mm x 10.0 mm

SAR (1g) = 0.993 W/kg; SAR (10g) = 0.468 W/kg;

Zoom Scan (30.0 mm x 30.0 mm x 30.0 mm): Measurement Grid: 5.0 mm x 5.0 mm x 1.5 mm

Power Drift = 0.12 dB

SAR (1g) = 1.02 W/kg; SAR (10g) = 0.471 W/kg;



43_LTE Band 41_20M_QPSK_1RB_0Offset_Back_5mm_Ch41055

Communication System: Band 41; Frequency: 2636.500

Medium: HSL. Medium parameters used: $f = 2636.500$ MHz; $\sigma = 1.95$ S/m; $\epsilon_r = 39.0$

Ambient Temperature: 23.2°C; Liquid Temperature: 22.7°C

DASY6 Configuration:

- Probe: EX3DV4 - SN7706; ConvF(8.1, 8.1, 8.1); Calibrated: 2023-01-26
- Sensor-Surface: 1.4 mm
- Electronics: DAE4 Sn1303; Calibrated: 2022-11-24
- Phantom: Twin-SAM V8.0 (30deg probe tilt); Serial: 2024
- Measurement Software: 16.2.4.2448

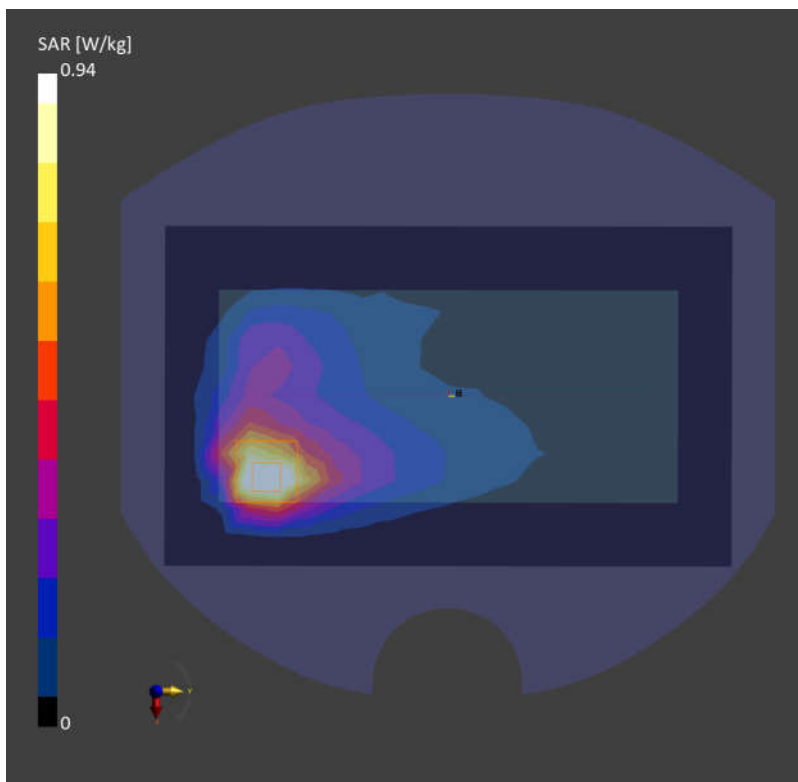
Area Scan (120.0 mm x 200.0 mm): Measurement Grid: 10.0 mm x 10.0 mm

SAR (1g) = 0.896 W/kg; SAR (10g) = 0.418 W/kg;

Zoom Scan (30.0 mm x 30.0 mm x 30.0 mm): Measurement Grid: 5.0 mm x 5.0 mm x 1.5 mm

Power Drift = -0.10 dB

SAR (1g) = 0.940 W/kg; SAR (10g) = 0.416 W/kg;



44_FR1 n7_40M_QPSK_108RB_54Offset_Back_5mm_Ch507000

Communication System: Band n7; Frequency: 2535.000

Medium: HSL. Medium parameters used: $f = 2535.000$ MHz; $\sigma = 1.88$ S/m; $\epsilon_r = 39.1$

Ambient Temperature: 23.2°C; Liquid Temperature: 22.7°C

DASY6 Configuration:

- Probe: EX3DV4 - SN7706; ConvF(8.1, 8.1, 8.1); Calibrated: 2023-01-26
- Sensor-Surface: 1.4 mm
- Electronics: DAE4 Sn1303; Calibrated: 2022-11-24
- Phantom: Twin-SAM V8.0 (30deg probe tilt); Serial: 2024
- Measurement Software: 16.2.4.2448

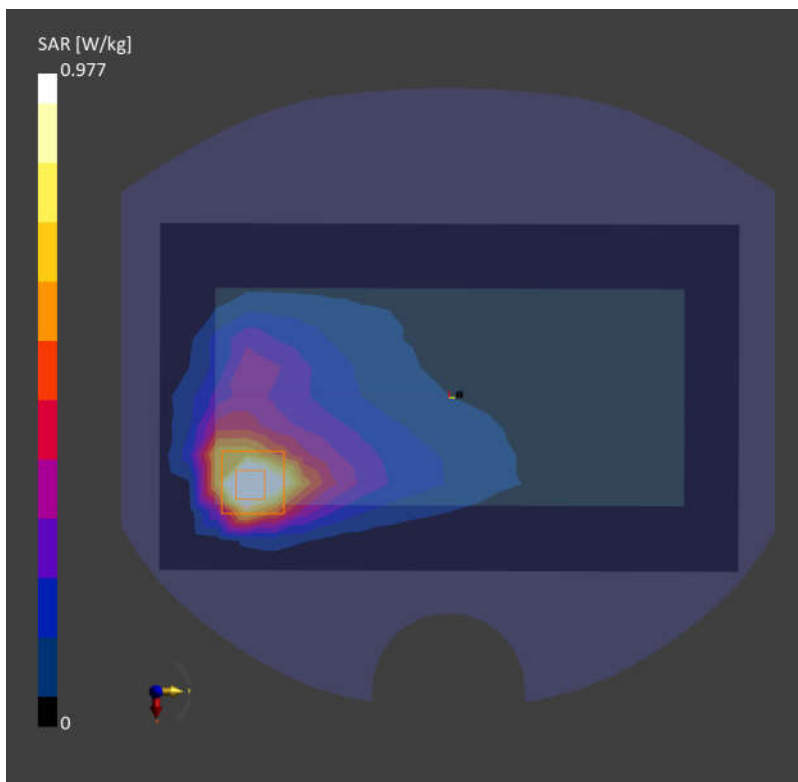
Area Scan (120.0 mm x 200.0 mm): Measurement Grid: 10.0 mm x 10.0 mm

SAR (1g) = 1.01 W/kg; SAR (10g) = 0.469 W/kg;

Zoom Scan (30.0 mm x 30.0 mm x 30.0 mm): Measurement Grid: 5.0 mm x 5.0 mm x 1.5 mm

Power Drift = -0.15 dB

SAR (1g) = 0.977 W/kg; SAR (10g) = 0.447 W/kg;



45_FR1 n41_100M_QPSK_135RB_69Offset_Back_5mm_Ch518598

Communication System: Band n41; Frequency: 2592.990

Medium: HSL. Medium parameters used: $f = 2592.990$ MHz; $\sigma = 1.92$ S/m; $\epsilon_r = 39.0$

Ambient Temperature: 23.2°C; Liquid Temperature: 22.7°C

DASY6 Configuration:

- Probe: EX3DV4 - SN7706; ConvF(8.1, 8.1, 8.1); Calibrated: 2023-01-26
- Sensor-Surface: 1.4 mm
- Electronics: DAE4 Sn1303; Calibrated: 2022-11-24
- Phantom: Twin-SAM V8.0 (30deg probe tilt); Serial: 2024
- Measurement Software: 16.2.4.2448

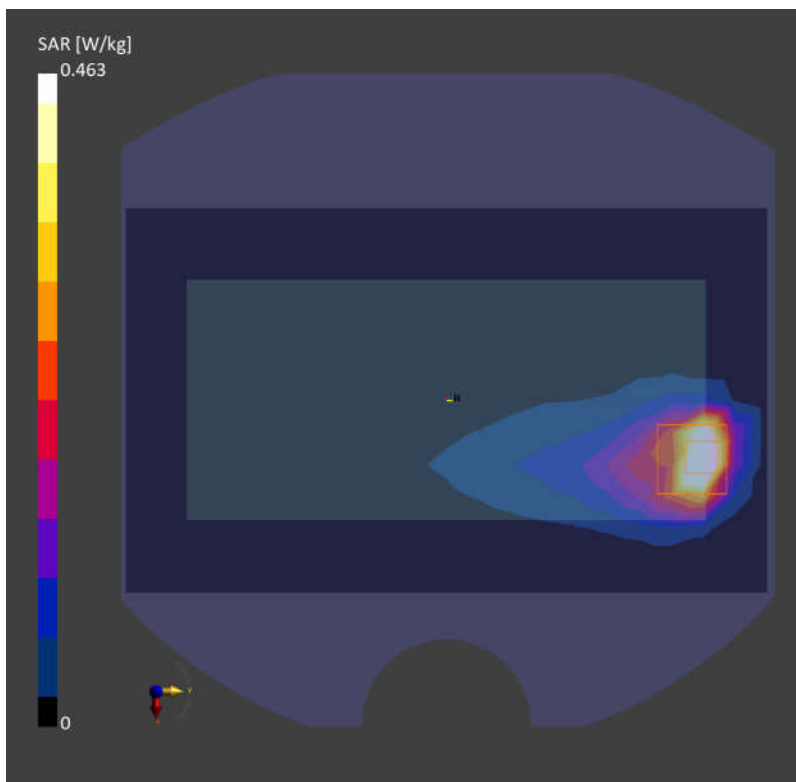
Area Scan (120.0 mm x 200.0 mm): Measurement Grid: 10.0 mm x 10.0 mm

SAR (1g) = 0.461 W/kg; SAR (10g) = 0.191 W/kg;

Zoom Scan (30.0 mm x 30.0 mm x 30.0 mm): Measurement Grid: 5.0 mm x 5.0 mm x 1.5 mm

Power Drift = -0.03 dB

SAR (1g) = 0.463 W/kg; SAR (10g) = 0.187 W/kg;



46_LTE Band 42_20M_QPSK_1RB_0Offset_Top Side_5mm_Ch42590

Communication System: Band 42; Frequency: 3500.000

Medium: HSL. Medium parameters used: $f = 3500.000$ MHz; $\sigma = 2.79$ S/m; $\epsilon_r = 39.1$

Ambient Temperature: 23.3°C; Liquid Temperature: 22.6°C

DASY6 Configuration:

- Probe: EX3DV4 - SN7706; ConvF(7.68, 7.68, 7.68); Calibrated: 2023-01-26
- Sensor-Surface: 1.4 mm
- Electronics: DAE4 Sn1303; Calibrated: 2022-11-24
- Phantom: Twin-SAM V8.0 (30deg probe tilt); Serial: 2024
- Measurement Software: 16.2.4.2448

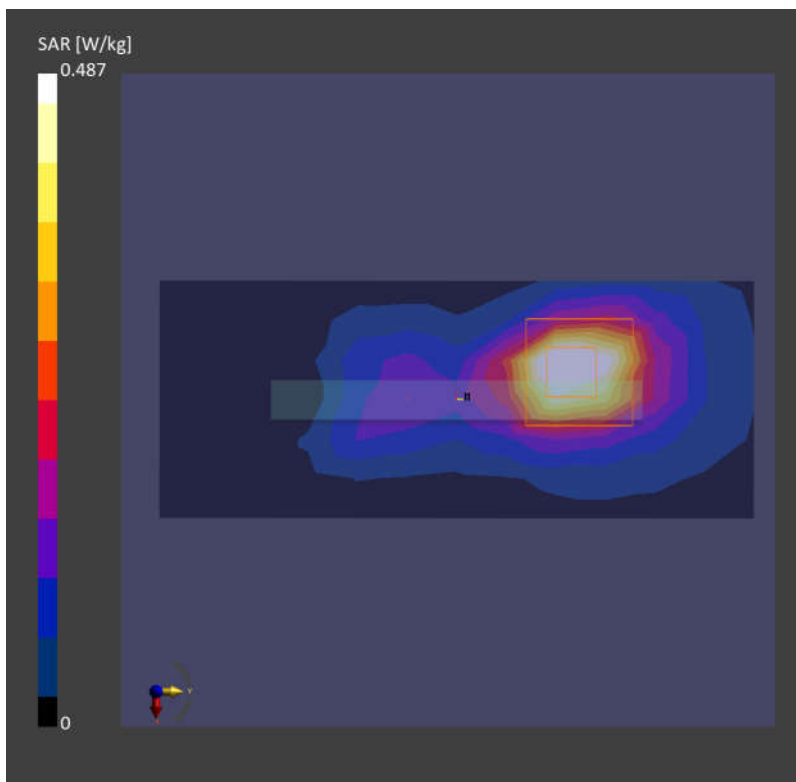
Area Scan (48.0 mm x 120.0 mm): Measurement Grid: 10.0 mm x 10.0 mm

SAR (1g) = 0.430 W/kg; SAR (10g) = 0.171 W/kg;

Zoom Scan (24.0 mm x 24.0 mm x 22.0 mm): Measurement Grid: 4.0 mm x 4.0 mm x 1.4 mm

Power Drift = 0.03 dB

SAR (1g) = 0.487 W/kg; SAR (10g) = 0.182 W/kg;



47_FR1 n78 Part 27Q_100M_QPSK_1RB_1Offset_Back_5mm_Ch633332

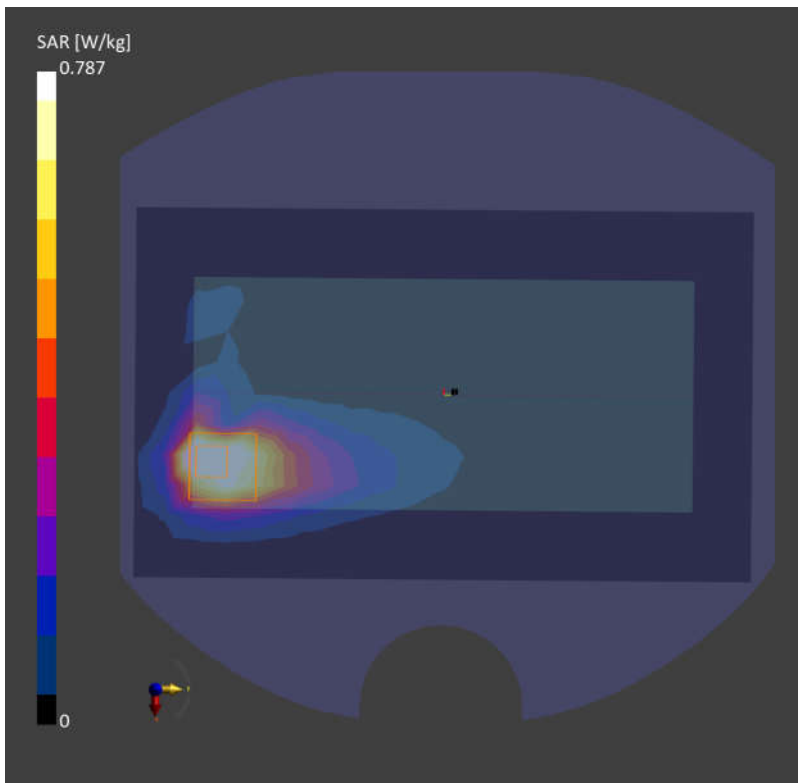
Communication System: Band n78; Frequency: 3499.980
Medium: HSL. Medium parameters used: $f = 3499.980$ MHz; $\sigma = 2.79$ S/m; $\epsilon_r = 39.1$
Ambient Temperature: 23.3°C; Liquid Temperature: 22.6°C

DASY6 Configuration:

- Probe: EX3DV4 - SN7706; ConvF(7.68, 7.68, 7.68); Calibrated: 2023-01-26
- Sensor-Surface: 1.4 mm
- Electronics: DAE4 Sn1303; Calibrated: 2022-11-24
- Phantom: Twin-SAM V8.0 (30deg probe tilt); Serial: 2024
- Measurement Software: 16.2.4.2448

Area Scan (120.0 mm x 200.0 mm): Measurement Grid: 10.0 mm x 10.0 mm
SAR (1g) = 0.783 W/kg; SAR (10g) = 0.331 W/kg;

Zoom Scan (28.0 mm x 28.0 mm x 28.0 mm): Measurement Grid: 4.0 mm x 4.0 mm x 1.4 mm
Power Drift = -0.07 dB
SAR (1g) = 0.787 W/kg; SAR (10g) = 0.328 W/kg;



48_WLAN2.4GHz_802.11b 1Mbps_Back_5mm_Ch1

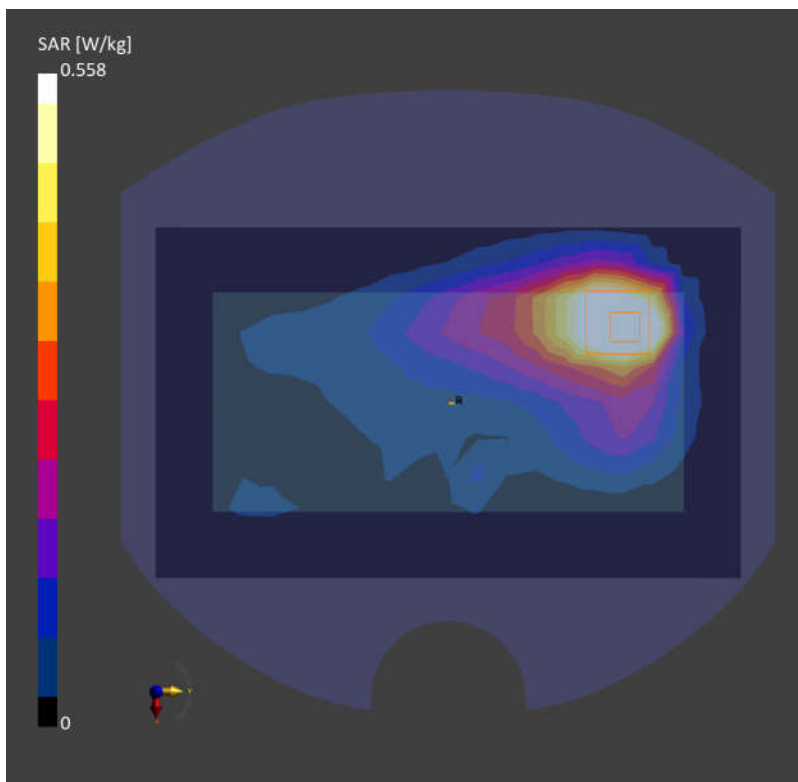
Communication System: WLAN 2.4GHz; Frequency: 2412.000
Medium: HSL. Medium parameters used: $f= 2412.000$ MHz; $\sigma= 1.79$ S/m; $\epsilon_r = 39.3$
Ambient Temperature: 23.2°C; Liquid Temperature: 22.8°C

DASY6 Configuration:

- Probe: EX3DV4 - SN7706; ConvF(8.38, 8.38, 8.38); Calibrated: 2023-01-26
- Sensor-Surface: 1.4 mm
- Electronics: DAE4 Sn1303; Calibrated: 2022-11-24
- Phantom: Twin-SAM V8.0 (30deg probe tilt); Serial: 2024
- Measurement Software: 16.2.4.2448

Area Scan (120.0 mm x 200.0 mm): Measurement Grid: 10.0 mm x 10.0 mm
SAR (1g) = 0.540 W/kg; SAR (10g) = 0.336 W/kg;

Zoom Scan (30.0 mm x 30.0 mm x 30.0 mm): Measurement Grid: 5.0 mm x 5.0 mm x 1.5 mm
Power Drift = -0.05 dB
SAR (1g) = 0.558 W/kg; SAR (10g) = 0.318 W/kg;



49_Bluetooth_1Mbps_Back_5mm_Ch39

Communication System: ISM 2.4 GHz Band; Frequency: 2441.000

Medium: HSL. Medium parameters used: $f = 2441.000$ MHz; $\sigma = 1.82$ S/m; $\epsilon_r = 39.2$

Ambient Temperature: 23.2°C; Liquid Temperature: 22.8°C

DASY6 Configuration:

- Probe: EX3DV4 - SN7706; ConvF(8.38, 8.38, 8.38); Calibrated: 2023-01-26
- Sensor-Surface: 1.4 mm
- Electronics: DAE4 Sn1303; Calibrated: 2022-11-24
- Phantom: Twin-SAM V8.0 (30deg probe tilt); Serial: 2024
- Measurement Software: 16.2.4.2448

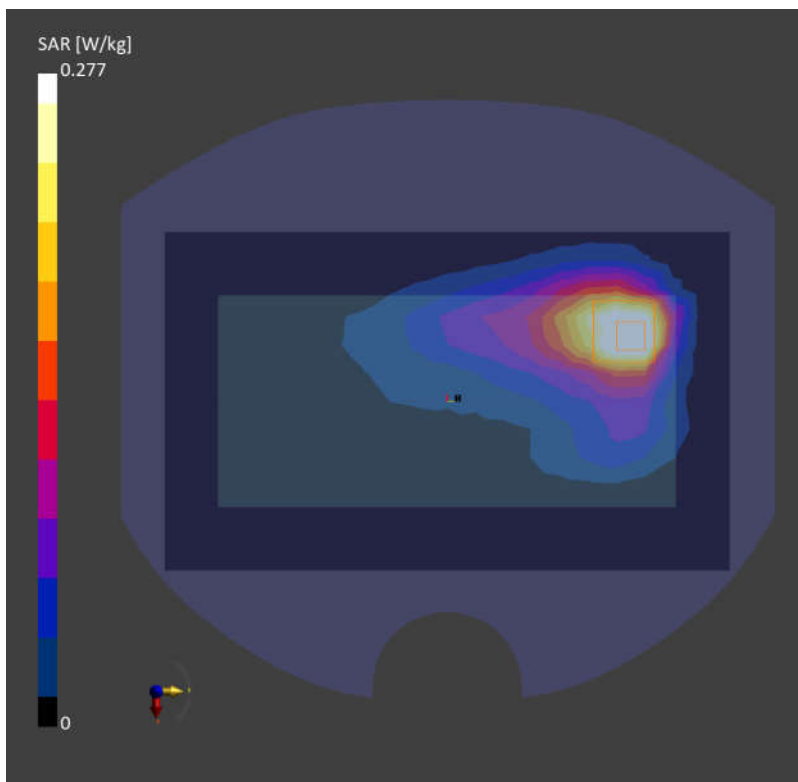
Area Scan (120.0 mm x 200.0 mm): Measurement Grid: 10.0 mm x 10.0 mm

SAR (1g) = 0.277 W/kg; SAR (10g) = 0.141 W/kg;

Zoom Scan (30.0 mm x 30.0 mm x 30.0 mm): Measurement Grid: 5.0 mm x 5.0 mm x 1.5 mm

Power Drift = -0.07 dB

SAR (1g) = 0.277 W/kg; SAR (10g) = 0.134 W/kg;



50_WLAN5GHz_802.11ac-VHT80 MCS0_Top Side_5mm_Ch42

Communication System: WLAN 5GHz; Frequency: 5210.000

Medium: HSL. Medium parameters used: $f = 5210.000$ MHz; $\sigma = 4.54$ S/m; $\epsilon_r = 36.1$

Ambient Temperature: 23.2°C; Liquid Temperature: 22.8°C

DASY6 Configuration:

- Probe: EX3DV4 - SN7706; ConvF(6.18, 6.18, 6.18); Calibrated: 2023-01-26
- Sensor-Surface: 1.4 mm
- Electronics: DAE4 Sn1303; Calibrated: 2022-11-24
- Phantom: Twin-SAM V8.0 (30deg probe tilt); Serial: 2024
- Measurement Software: 16.2.4.2448

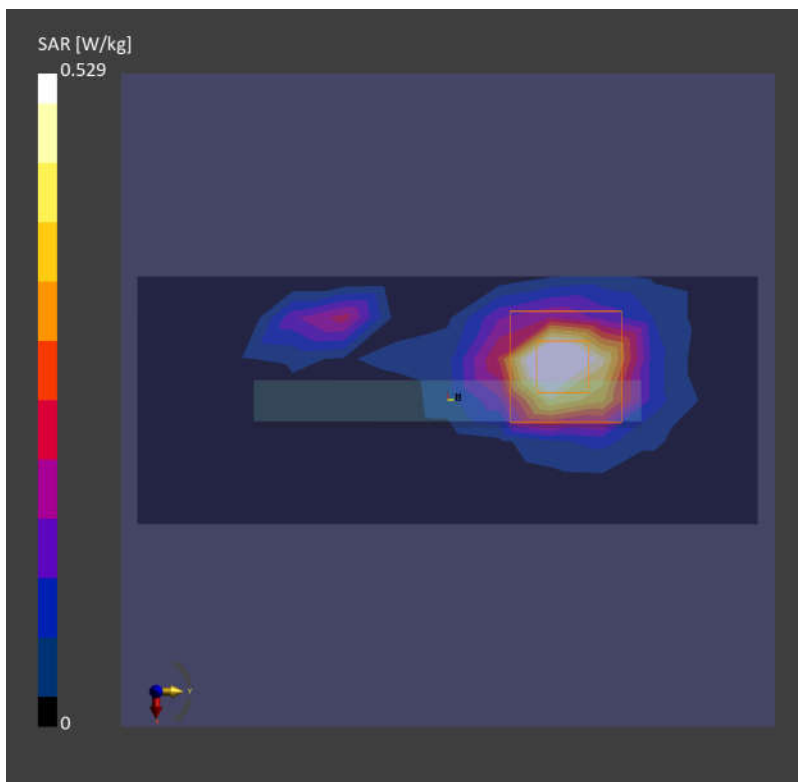
Area Scan (48.0 mm x 120.0 mm): Measurement Grid: 10.0 mm x 10.0 mm

SAR (1g) = 0.468 W/kg; SAR (10g) = 0.149 W/kg;

Zoom Scan (24.0 mm x 24.0 mm x 22.0 mm): Measurement Grid: 4.0 mm x 4.0 mm x 1.4 mm

Power Drift = -0.04 dB

SAR (1g) = 0.529 W/kg; SAR (10g) = 0.153 W/kg;



51_WLAN5GHz_802.11ac-VHT80 MCS0_Top Side_5mm_Ch155

Communication System: WLAN 5GHz; Frequency: 5775.000

Medium: HSL. Medium parameters used: $f = 5775.000$ MHz; $\sigma = 5.16$ S/m; $\epsilon_r = 35.2$

Ambient Temperature: 23.2°C; Liquid Temperature: 22.9°C

DASY6 Configuration:

- Probe: EX3DV4 - SN7706; ConvF(5.57, 5.57, 5.57); Calibrated: 2023-01-26
- Sensor-Surface: 1.4 mm
- Electronics: DAE4 Sn1303; Calibrated: 2022-11-24
- Phantom: Twin-SAM V8.0 (30deg probe tilt); Serial: 2024
- Measurement Software: 16.2.4.2448

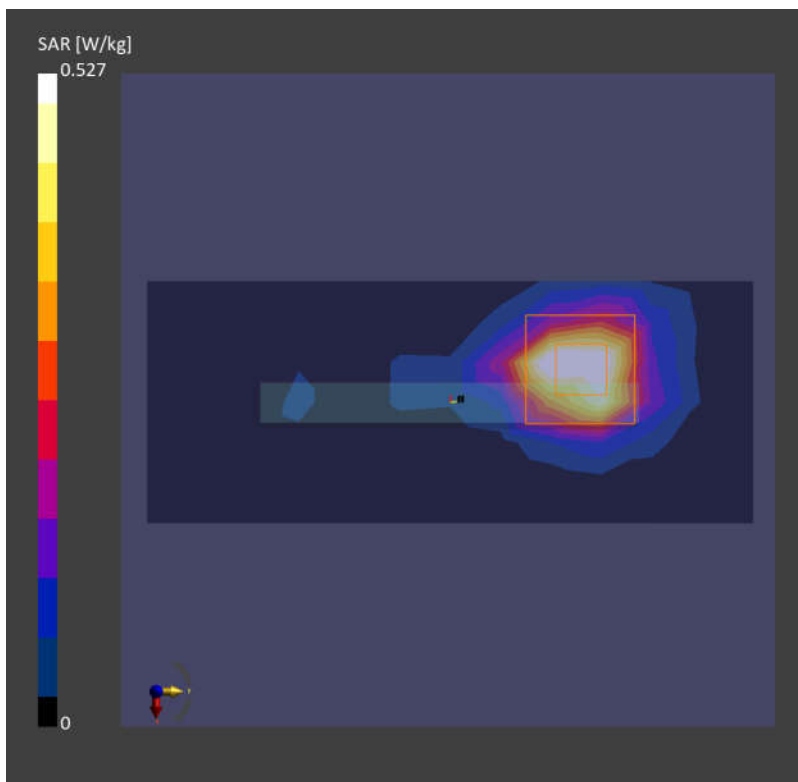
Area Scan (48.0 mm x 120.0 mm): Measurement Grid: 10.0 mm x 10.0 mm

SAR (1g) = 0.456 W/kg; SAR (10g) = 0.149 W/kg;

Zoom Scan (22.0 mm x 22.0 mm x 22.0 mm): Measurement Grid: 4.0 mm x 4.0 mm x 1.4 mm

Power Drift = 0.03 dB

SAR (1g) = 0.527 W/kg; SAR (10g) = 0.162 W/kg;



52_LTE Band 12_10M_QPSK_1RB_0Offset_Back_5mm_Ch23095

Communication System: Band 12; Frequency: 707.500

Medium: HSL. Medium parameters used: $f = 707.500$ MHz; $\sigma = 0.894$ S/m; $\epsilon_r = 43.6$

Ambient Temperature: 23.2°C; Liquid Temperature: 22.9°C

DASY6 Configuration:

- Probe: EX3DV4 - SN7706; ConvF(10.97, 10.97, 10.97); Calibrated: 2023-01-26
- Sensor-Surface: 1.4 mm
- Electronics: DAE4 Sn1303; Calibrated: 2022-11-24
- Phantom: Twin-SAM V8.0 (30deg probe tilt); Serial: 2024
- Measurement Software: 16.2.4.2448

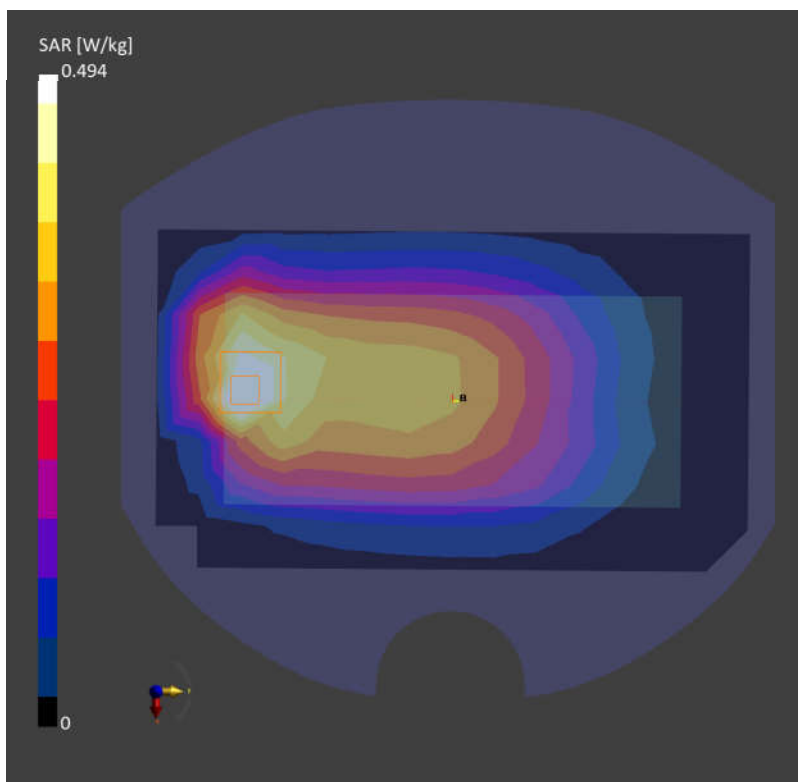
Area Scan (120.0 mm x 210.0 mm): Measurement Grid: 15.0 mm x 15.0 mm

SAR (1g) = 0.493 W/kg; SAR (10g) = 0.290 W/kg;

Zoom Scan (30.0 mm x 30.0 mm x 30.0 mm): Measurement Grid: 6.0 mm x 6.0 mm x 1.5 mm

Power Drift = -0.06 dB

SAR (1g) = 0.494 W/kg; SAR (10g) = 0.268 W/kg;



53_LTE Band 13_10M_QPSK_1RB_0Offset_Back_5mm_Ch23230

Communication System: Band 13; Frequency: 782.000

Medium: HSL. Medium parameters used: $f = 782.000$ MHz; $\sigma = 0.924$ S/m; $\epsilon_r = 43.5$

Ambient Temperature: 23.2°C; Liquid Temperature: 22.9°C

DASY6 Configuration:

- Probe: EX3DV4 - SN7706; ConvF(10.97, 10.97, 10.97); Calibrated: 2023-01-26
- Sensor-Surface: 1.4 mm
- Electronics: DAE4 Sn1303; Calibrated: 2022-11-24
- Phantom: Twin-SAM V8.0 (30deg probe tilt); Serial: 2024
- Measurement Software: 16.2.4.2448

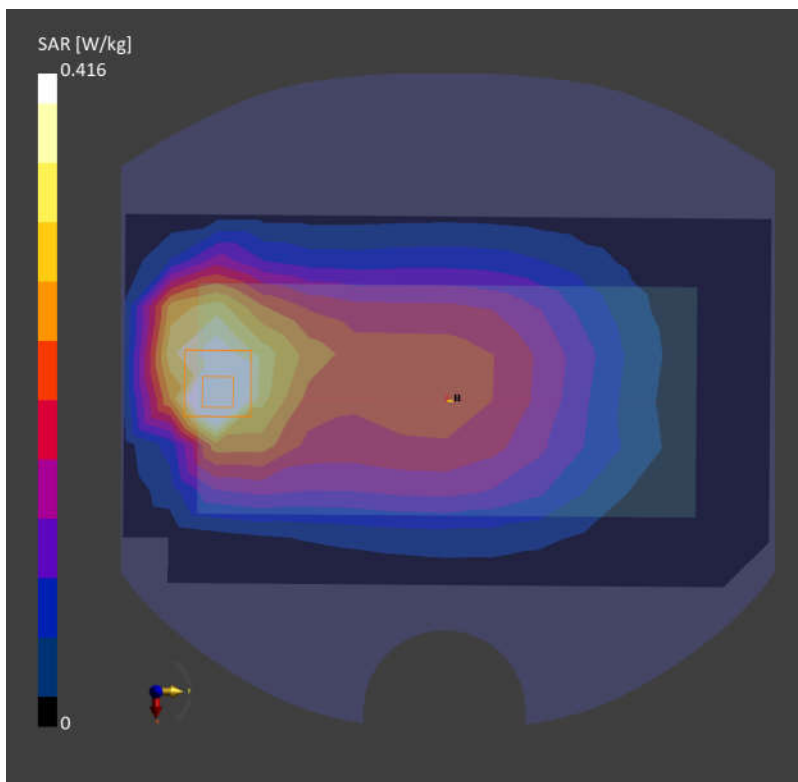
Area Scan (120.0 mm x 210.0 mm): Measurement Grid: 15.0 mm x 15.0 mm

SAR (1g) = 0.464 W/kg; SAR (10g) = 0.291 W/kg;

Zoom Scan (30.0 mm x 30.0 mm x 30.0 mm): Measurement Grid: 6.0 mm x 6.0 mm x 1.5 mm

Power Drift = 0.09 dB

SAR (1g) = 0.416 W/kg; SAR (10g) = 0.214 W/kg;



54_GSM850_GPRS (2 Tx slots)_Back_5mm_Ch189

Communication System: GSM 850; Frequency: 836.400

Medium: HSL. Medium parameters used: $f = 836.400$ MHz; $\sigma = 0.942$ S/m; $\epsilon_r = 43.2$

Ambient Temperature: 23.1°C; Liquid Temperature: 22.7°C

DASY6 Configuration:

- Probe: EX3DV4 - SN7706; ConvF(10.67, 10.67, 10.67); Calibrated: 2023-01-26
- Sensor-Surface: 1.4 mm
- Electronics: DAE4 Sn1303; Calibrated: 2022-11-24
- Phantom: Twin-SAM V8.0 (30deg probe tilt); Serial: 2024
- Measurement Software: 16.2.4.2448

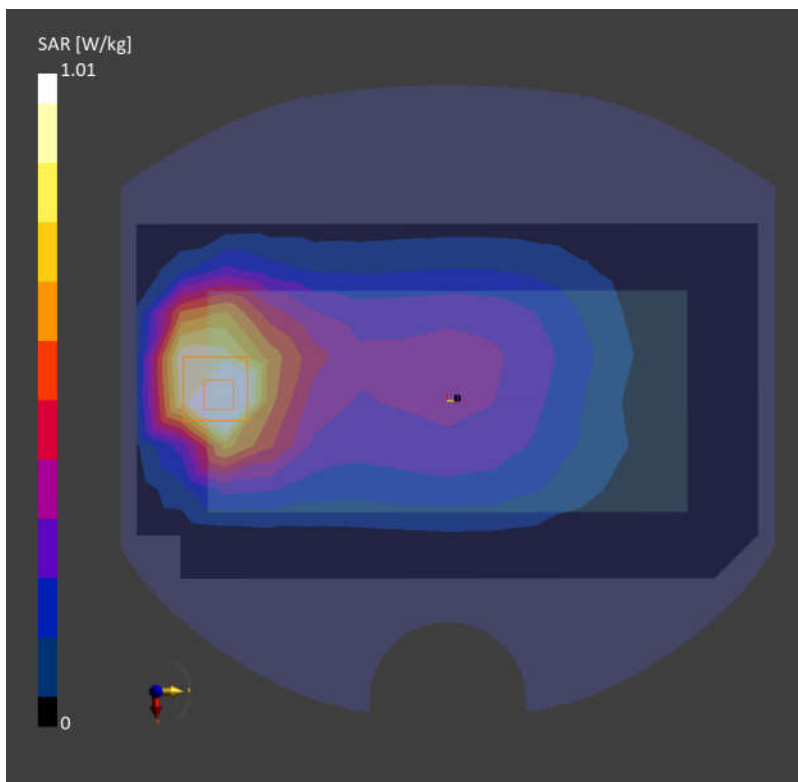
Area Scan (120.0 mm x 210.0 mm): Measurement Grid: 15.0 mm x 15.0 mm

SAR (1g) = 1.11 W/kg; SAR (10g) = 0.691 W/kg;

Zoom Scan (30.0 mm x 30.0 mm x 30.0 mm): Measurement Grid: 6.0 mm x 6.0 mm x 1.5 mm

Power Drift = -0.02 dB

SAR (1g) = 1.01 W/kg; SAR (10g) = 0.594 W/kg;



55_WCDMA V_RMC 12.2Kbps_Back_5mm_Ch4182

Communication System: Band 5; Frequency: 836.400

Medium: HSL. Medium parameters used: $f = 836.400$ MHz; $\sigma = 0.942$ S/m; $\epsilon_r = 43.2$

Ambient Temperature: 23.1°C; Liquid Temperature: 22.7°C

DASY6 Configuration:

- Probe: EX3DV4 - SN7706; ConvF(10.67, 10.67, 10.67); Calibrated: 2023-01-26
- Sensor-Surface: 1.4 mm
- Electronics: DAE4 Sn1303; Calibrated: 2022-11-24
- Phantom: Twin-SAM V8.0 (30deg probe tilt); Serial: 2024
- Measurement Software: 16.2.4.2448

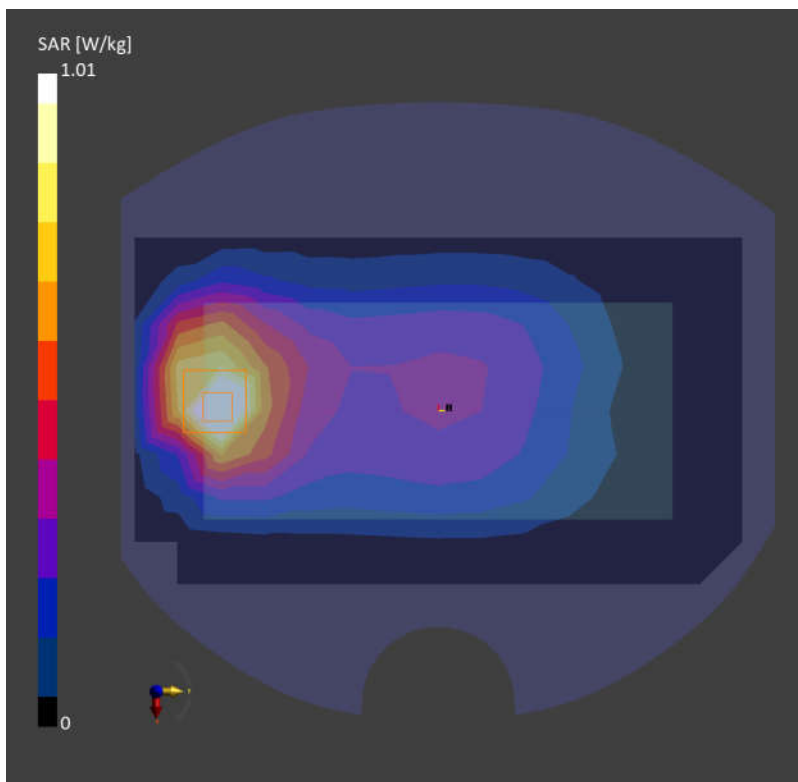
Area Scan (120.0 mm x 210.0 mm): Measurement Grid: 15.0 mm x 15.0 mm

SAR (1g) = 1.06 W/kg; SAR (10g) = 0.656 W/kg;

Zoom Scan (30.0 mm x 30.0 mm x 30.0 mm): Measurement Grid: 6.0 mm x 6.0 mm x 1.5 mm

Power Drift = -0.01 dB

SAR (1g) = 1.01 W/kg; SAR (10g) = 0.589 W/kg;



56_LTE Band 26_15M_QPSK_1RB_0Offset_Back_5mm_Ch26865

Communication System: Band 26; Frequency: 831.500

Medium: HSL. Medium parameters used: $f = 831.500$ MHz; $\sigma = 0.940$ S/m; $\epsilon_r = 43.3$

Ambient Temperature: 23.1°C; Liquid Temperature: 22.7°C

DASY6 Configuration:

- Probe: EX3DV4 - SN7706; ConvF(10.67, 10.67, 10.67); Calibrated: 2023-01-26
- Sensor-Surface: 1.4 mm
- Electronics: DAE4 Sn1303; Calibrated: 2022-11-24
- Phantom: Twin-SAM V8.0 (30deg probe tilt); Serial: 2024
- Measurement Software: 16.2.4.2448

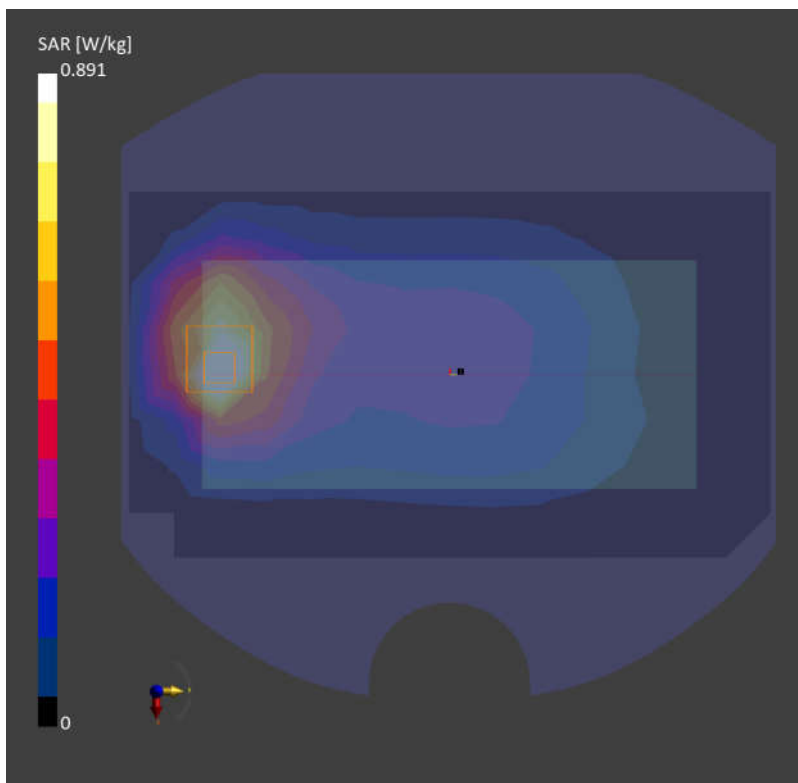
Area Scan (120.0 mm x 210.0 mm): Measurement Grid: 15.0 mm x 15.0 mm

SAR (1g) = 0.896 W/kg; SAR (10g) = 0.546 W/kg;

Zoom Scan (30.0 mm x 30.0 mm x 30.0 mm): Measurement Grid: 6.0 mm x 6.0 mm x 1.5 mm

Power Drift = 0.01 dB

SAR (1g) = 0.891 W/kg; SAR (10g) = 0.489 W/kg;



57_FR1 n26_20M_QPSK_1RB_1Offset_Back_5mm_Ch166300

Communication System: Band n26; Frequency: 831.500

Medium: HSL. Medium parameters used: $f = 831.500$ MHz; $\sigma = 0.940$ S/m; $\epsilon_r = 43.3$

Ambient Temperature: 23.1°C; Liquid Temperature: 22.7°C

DASY6 Configuration:

- Probe: EX3DV4 - SN7706; ConvF(10.67, 10.67, 10.67); Calibrated: 2023-01-26
- Sensor-Surface: 1.4 mm
- Electronics: DAE4 Sn1303; Calibrated: 2022-11-24
- Phantom: Twin-SAM V8.0 (30deg probe tilt); Serial: 2024
- Measurement Software: 16.2.4.2448

Area Scan (120.0 mm x 210.0 mm): Measurement Grid: 15.0 mm x 15.0 mm

SAR (1g) = 0.676 W/kg; SAR (10g) = 0.371 W/kg;

Zoom Scan (30.0 mm x 30.0 mm x 30.0 mm): Measurement Grid: 6.0 mm x 6.0 mm x 1.5 mm

Power Drift = -0.02 dB

SAR (1g) = 0.674 W/kg; SAR (10g) = 0.379 W/kg;

