

System Check_750MHz

DUT: D750V3-SN:1099

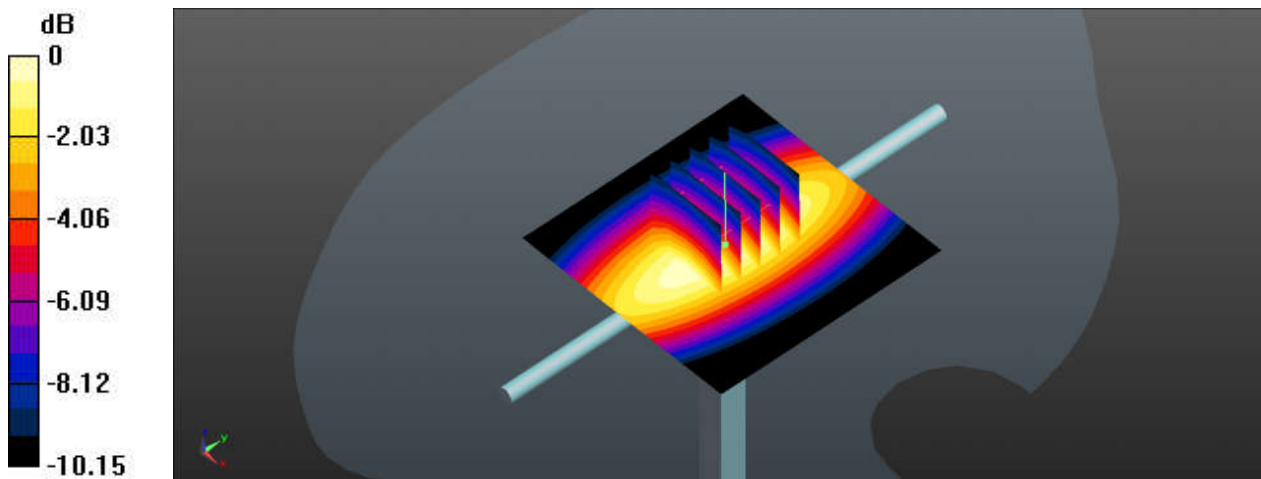
Communication System: UID 0, CW; Frequency: 750 MHz; Duty Cycle: 1:1
Medium: HSL_750_240220 Medium parameters used: $f = 750 \text{ MHz}$; $\sigma = 0.88 \text{ S/m}$; $\epsilon_r = 40.797$; $\rho = 1000 \text{ kg/m}^3$
Ambient Temperature : $23.5 \text{ }^\circ\text{C}$; Liquid Temperature : $22.5 \text{ }^\circ\text{C}$

DASY5 Configuration:

- Probe: EX3DV4 - SN7576; ConvF(10.53, 10.53, 10.53); Calibrated: 2023/8/23
- Sensor-Surface: 1.4mm (Mechanical Surface Detection)
- Electronics: DAE4 Sn1386; Calibrated: 2023/7/17
- Phantom: SAM with CRP v5.0(Front); Type: QD000P40CD; Serial: 1671
- Measurement SW: DASY52, Version 52.10 (3); SEMCAD X Version 14.6.13 (7474)

Pin=250mW/Area Scan (61x61x1): Interpolated grid: $dx=1.500 \text{ mm}$, $dy=1.500 \text{ mm}$
Maximum value of SAR (interpolated) = 2.72 W/kg

Pin=250mW/Zoom Scan (5x5x7)/Cube 0: Measurement grid: $dx=8\text{mm}$, $dy=8\text{mm}$, $dz=5\text{mm}$
Reference Value = 56.76 V/m ; Power Drift = 0.03 dB
Peak SAR (extrapolated) = 3.18 W/kg
SAR(1 g) = 2.17 W/kg ; SAR(10 g) = 1.45 W/kg
Maximum value of SAR (measured) = 2.71 W/kg



0 dB = 2.71 W/kg

System Check_750MHz

DUT: D750V3-SN:1099

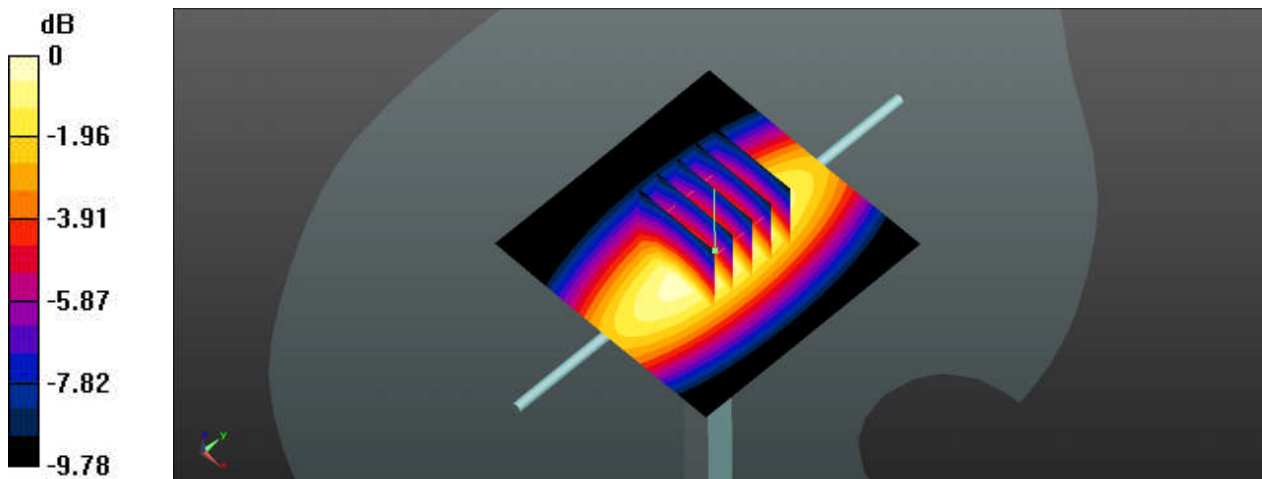
Communication System: UID 0, CW (0); Frequency: 750 MHz; Duty Cycle: 1:1
Medium: HSL_750_240228 Medium parameters used: $f = 750 \text{ MHz}$; $\sigma = 0.895 \text{ S/m}$; $\epsilon_r = 41.004$; $\rho = 1000 \text{ kg/m}^3$
Ambient Temperature : $23.3 \text{ }^\circ\text{C}$; Liquid Temperature : $22.4 \text{ }^\circ\text{C}$

DASY5 Configuration:

- Probe: EX3DV4 - SN7576; ConvF(10.53, 10.53, 10.53); Calibrated: 2023/8/23
- Sensor-Surface: 1.4mm (Mechanical Surface Detection)
- Electronics: DAE4 Sn1386; Calibrated: 2023/7/17
- Phantom: SAM with CRP v5.0(Front); Type: QD000P40CD; Serial: 1671
- Measurement SW: DASY52, Version 52.10 (3); SEMCAD X Version 14.6.13 (7474)

Pin=250mW/Area Scan (61x61x1): Interpolated grid: $dx=1.500 \text{ mm}$, $dy=1.500 \text{ mm}$
Maximum value of SAR (interpolated) = 2.79 W/kg

Pin=250mW/Zoom Scan (5x5x7)/Cube 0: Measurement grid: $dx=8\text{mm}$, $dy=8\text{mm}$, $dz=5\text{mm}$
Reference Value = 13.97 V/m ; Power Drift = -0.02 dB
Peak SAR (extrapolated) = 4.574 W/kg
SAR(1 g) = 2.16 W/kg; SAR(10 g) = 1.42 W/kg
Maximum value of SAR (measured) = 2.91 W/kg



0 dB = 2.91 W/kg

System Check_750MHz

DUT: D750V3-SN:1099

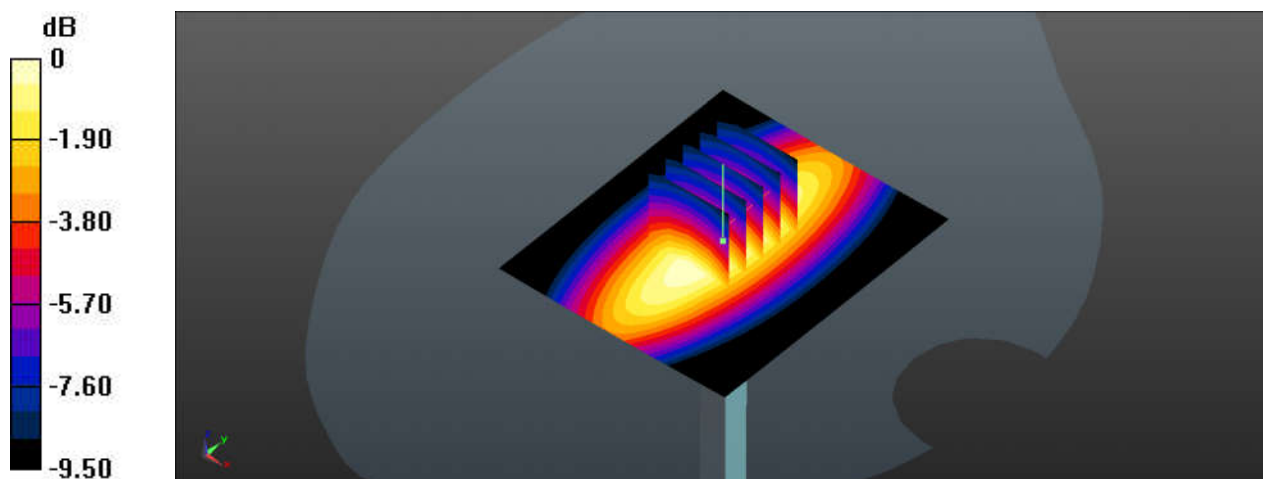
Communication System: UID 0, CW (0); Frequency: 750 MHz; Duty Cycle: 1:1
Medium: HSL_750_240320 Medium parameters used: $f = 750 \text{ MHz}$; $\sigma = 0.885 \text{ S/m}$; $\epsilon_r = 40.799$; $\rho = 1000 \text{ kg/m}^3$
Ambient Temperature : $23.2 \text{ }^\circ\text{C}$; Liquid Temperature : $22.3 \text{ }^\circ\text{C}$

DASY5 Configuration:

- Probe: EX3DV4 - SN7576; ConvF(10.53, 10.53, 10.53); Calibrated: 2023/8/23
- Sensor-Surface: 1.4mm (Mechanical Surface Detection)
- Electronics: DAE4 Sn1386; Calibrated: 2023/7/17
- Phantom: SAM with CRP v5.0(Front); Type: QD000P40CD; Serial: 1671
- Measurement SW: DASY52, Version 52.10 (3); SEMCAD X Version 14.6.13 (7474)

Pin=250mW/Area Scan (61x71x1): Interpolated grid: $dx=1.500 \text{ mm}$, $dy=1.500 \text{ mm}$
Maximum value of SAR (interpolated) = 2.93 W/kg

Pin=250mW/Zoom Scan (5x5x7)/Cube 0: Measurement grid: $dx=8\text{mm}$, $dy=8\text{mm}$, $dz=5\text{mm}$
Reference Value = 60.91 V/m ; Power Drift = -0.08 dB
Peak SAR (extrapolated) = 3.23 W/kg
SAR(1 g) = 2.24 W/kg ; SAR(10 g) = 1.52 W/kg
Maximum value of SAR (measured) = 2.88 W/kg



0 dB = 2.88 W/kg

System Check_835MHz

DUT: D835V2-SN:4d162

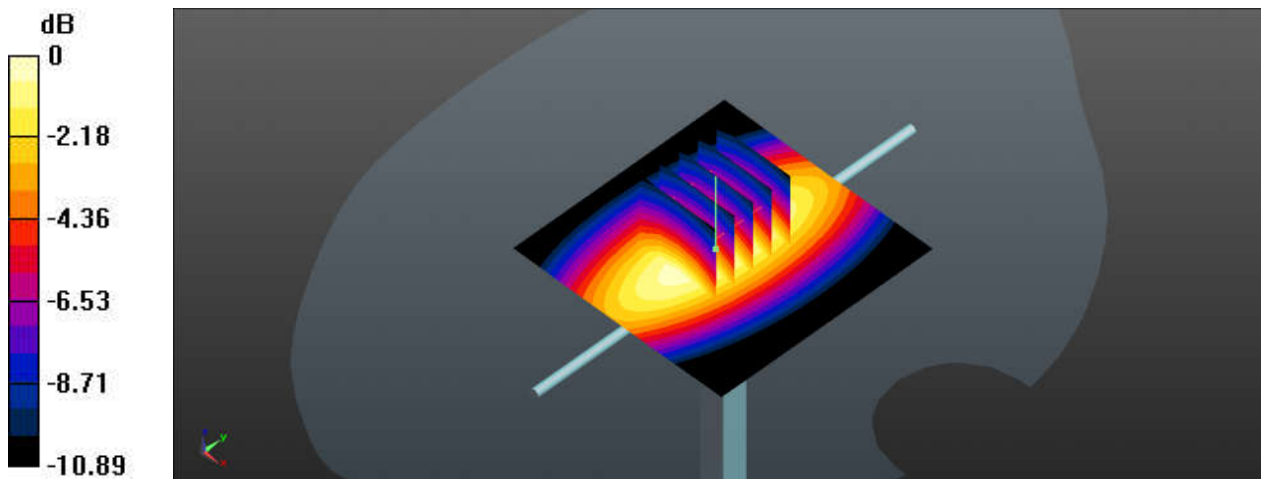
Communication System: UID 0, CW; Frequency: 835 MHz; Duty Cycle: 1:1
Medium: HSL_835_240219 Medium parameters used: $f = 835 \text{ MHz}$; $\sigma = 0.904 \text{ S/m}$; $\epsilon_r = 41.212$; $\rho = 1000 \text{ kg/m}^3$
Ambient Temperature : $23.4 \text{ }^\circ\text{C}$; Liquid Temperature : $22.5 \text{ }^\circ\text{C}$

DASY5 Configuration:

- Probe: EX3DV4 - SN7576; ConvF(10.32, 10.32, 10.32); Calibrated: 2023/8/23
- Sensor-Surface: 1.4mm (Mechanical Surface Detection)
- Electronics: DAE4 Sn1386; Calibrated: 2023/7/17
- Phantom: SAM with CRP v5.0(Front); Type: QD000P40CD; Serial: 1671
- Measurement SW: DASY52, Version 52.10 (3); SEMCAD X Version 14.6.13 (7474)

Pin=250mW/Area Scan (61x61x1): Interpolated grid: $dx=1.500 \text{ mm}$, $dy=1.500 \text{ mm}$
Maximum value of SAR (interpolated) = 2.90 W/kg

Pin=250mW/Zoom Scan (5x5x7)/Cube 0: Measurement grid: $dx=8\text{mm}$, $dy=8\text{mm}$, $dz=5\text{mm}$
Reference Value = 56.96 V/m ; Power Drift = 0.00 dB
Peak SAR (extrapolated) = 3.49 W/kg
SAR(1 g) = 2.28 W/kg ; SAR(10 g) = 1.48 W/kg
Maximum value of SAR (measured) = 2.91 W/kg



0 dB = 2.91 W/kg

System Check_835MHz

DUT: D835V2-SN:4d162

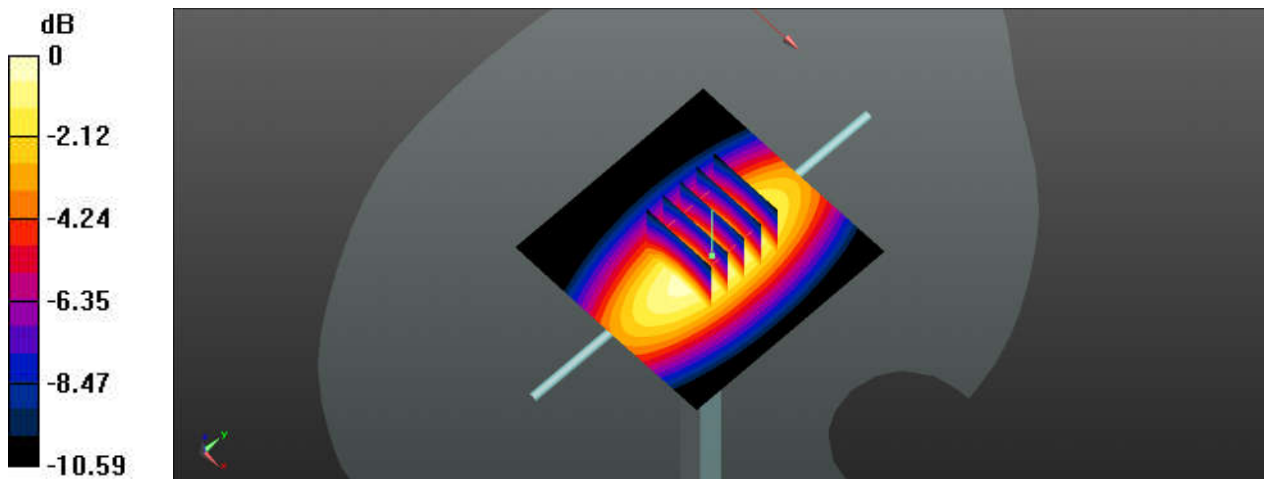
Communication System: UID 0, CW (0); Frequency: 835 MHz; Duty Cycle: 1:1
Medium: HSL_835_240229 Medium parameters used: $f = 835$ MHz; $\sigma = 0.931$ S/m; $\epsilon_r = 40.83$; $\rho = 1000$ kg/m³
Ambient Temperature : 23.2 °C; Liquid Temperature : 22.2 °C

DASY5 Configuration:

- Probe: EX3DV4 - SN7576; ConvF(10.32, 10.32, 10.32); Calibrated: 2023/8/23
- Sensor-Surface: 1.4mm (Mechanical Surface Detection)
- Electronics: DAE4 Sn1386; Calibrated: 2023/7/17
- Phantom: SAM with CRP v5.0(Front); Type: QD000P40CD; Serial: 1671
- Measurement SW: DASY52, Version 52.10 (3); SEMCAD X Version 14.6.13 (7474)

Pin=250mW/Area Scan (61x61x1): Interpolated grid: dx=1.500 mm, dy=1.500 mm
Maximum value of SAR (interpolated) = 3.63 W/kg

Pin=250mW/Zoom Scan (5x5x7)/Cube 0: Measurement grid: dx=8mm, dy=8mm, dz=5mm
Reference Value = 56.78 V/m; Power Drift = -0.07 dB
Peak SAR (extrapolated) = 0.737 W/kg
SAR(1 g) = 2.52 W/kg; SAR(10 g) = 1.53 W/kg
Maximum value of SAR (measured) = 3.14 W/kg



0 dB = 3.14 W/kg

System Check_835MHz

DUT: D835V2-SN:4d162

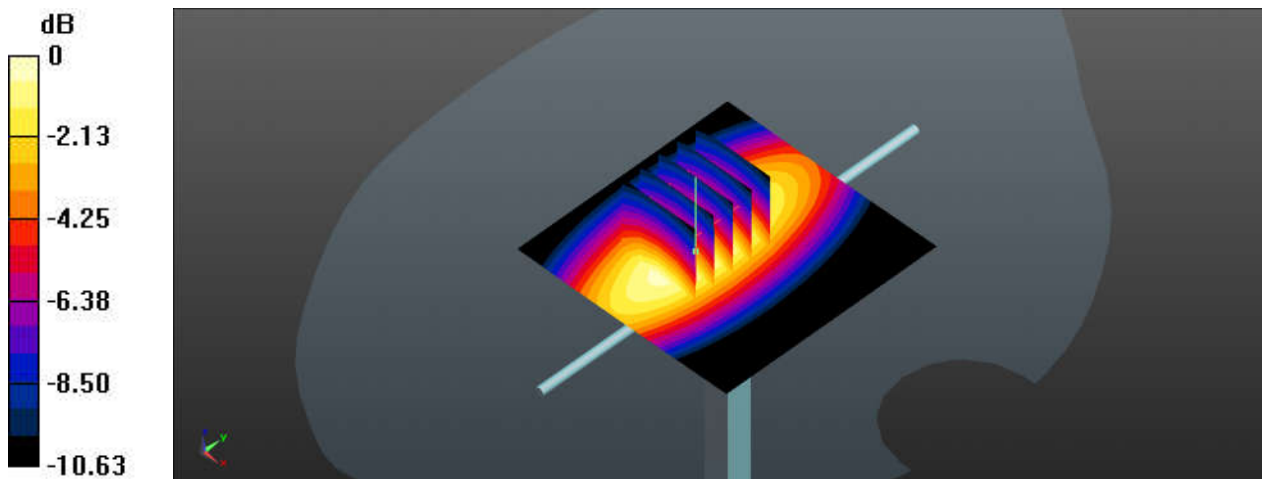
Communication System: UID 0, CW; Frequency: 835 MHz; Duty Cycle: 1:1
Medium: HSL_835_240316 Medium parameters used: $f = 835 \text{ MHz}$; $\sigma = 0.917 \text{ S/m}$; $\epsilon_r = 40.748$; $\rho = 1000 \text{ kg/m}^3$
Ambient Temperature : $23.1 \text{ }^\circ\text{C}$; Liquid Temperature : $22.3 \text{ }^\circ\text{C}$

DASY5 Configuration:

- Probe: EX3DV4 - SN7576; ConvF(10.32, 10.32, 10.32); Calibrated: 2023/8/23
- Sensor-Surface: 1.4mm (Mechanical Surface Detection)
- Electronics: DAE4 Sn1386; Calibrated: 2023/7/17
- Phantom: SAM with CRP v5.0(Front); Type: QD000P40CD; Serial: 1671
- Measurement SW: DASY52, Version 52.10 (3); SEMCAD X Version 14.6.13 (7474)

Pin=250mW/Area Scan (61x61x1): Interpolated grid: $dx=1.500 \text{ mm}$, $dy=1.500 \text{ mm}$
Maximum value of SAR (interpolated) = 3.15 W/kg

Pin=250mW/Zoom Scan (5x5x7)/Cube 0: Measurement grid: $dx=8\text{mm}$, $dy=8\text{mm}$, $dz=5\text{mm}$
Reference Value = 56.42 V/m ; Power Drift = 0.02 dB
Peak SAR (extrapolated) = 3.73 W/kg
SAR(1 g) = 2.55 W/kg ; SAR(10 g) = 1.67 W/kg
Maximum value of SAR (measured) = 3.22 W/kg



0 dB = 3.22 W/kg

System Check_1750MHz

DUT: D1750V2-SN:1137

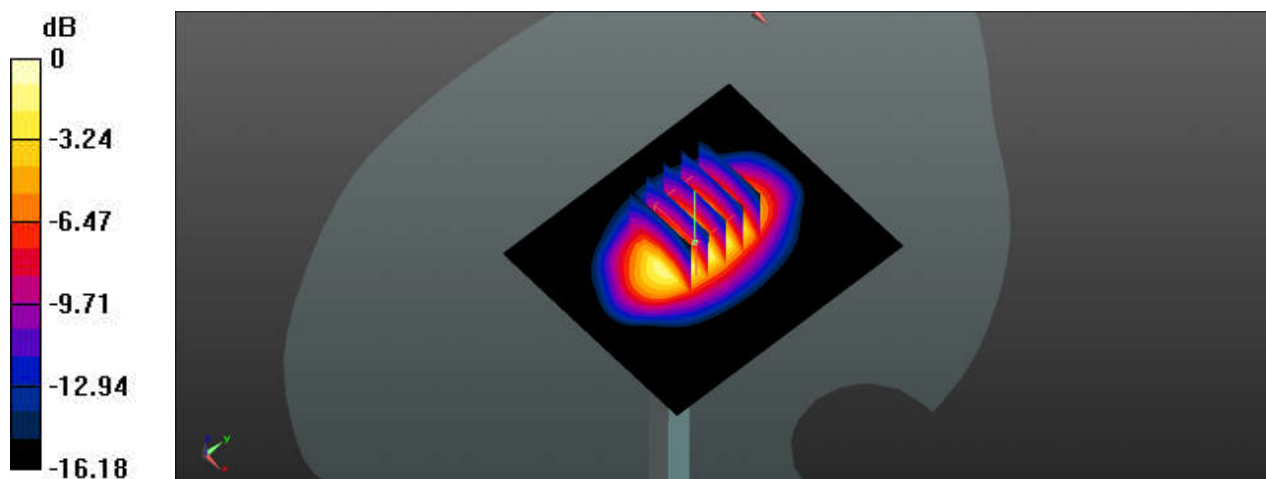
Communication System: UID 0, CW; Frequency: 1750 MHz; Duty Cycle: 1:1
Medium: HSL_1750_240217 Medium parameters used: $f = 1750$ MHz; $\sigma = 1.375$ S/m; $\epsilon_r = 41.471$;
 $\rho = 1000$ kg/m³
Ambient Temperature : 23.5 °C; Liquid Temperature : 22.7 °C

DASY5 Configuration:

- Probe: EX3DV4 - SN7576; ConvF(9.07, 9.07, 9.07); Calibrated: 2023/8/23
- Sensor-Surface: 1.4mm (Mechanical Surface Detection)
- Electronics: DAE4 Sn1386; Calibrated: 2023/7/17
- Phantom: SAM with CRP v5.0(Front); Type: QD000P40CD; Serial: 1671
- Measurement SW: DASY52, Version 52.10 (3); SEMCAD X Version 14.6.13 (7474)

Pin=250mW/Area Scan (61x71x1): Interpolated grid: dx=1.500 mm, dy=1.500 mm
Maximum value of SAR (interpolated) = 12.8 W/kg

Pin=250mW/Zoom Scan (5x5x7)/Cube 0: Measurement grid: dx=8mm, dy=8mm, dz=5mm
Reference Value = 92.08 V/m; Power Drift = 0.14 dB
Peak SAR (extrapolated) = 16.7 W/kg
SAR(1 g) = 9.33 W/kg; SAR(10 g) = 4.7 W/kg
Maximum value of SAR (measured) = 12.9 W/kg



0 dB = 12.9 W/kg

System Check_1750MHz

DUT: D1750V2-SN:1137

Communication System: UID 0, CW; Frequency: 1750 MHz; Duty Cycle: 1:1

Medium: HSL_1750_240226 Medium parameters used: $f = 1750$ MHz; $\sigma = 1.363$ S/m; $\epsilon_r = 38.967$;
 $\rho = 1000$ kg/m³

Ambient Temperature : 23.3 °C; Liquid Temperature : 22.5 °C

DASY5 Configuration:

- Probe: EX3DV4 - SN7576; ConvF(9.07, 9.07, 9.07); Calibrated: 2023/8/23
- Sensor-Surface: 1.4mm (Mechanical Surface Detection)
- Electronics: DAE4 Sn1386; Calibrated: 2023/7/17
- Phantom: SAM with CRP v5.0(Front); Type: QD000P40CD; Serial: 1671
- Measurement SW: DASY52, Version 52.10 (3); SEMCAD X Version 14.6.13 (7474)

Pin=250mW/Area Scan (61x61x1): Interpolated grid: dx=1.500 mm, dy=1.500 mm

Maximum value of SAR (interpolated) = 12.4 W/kg

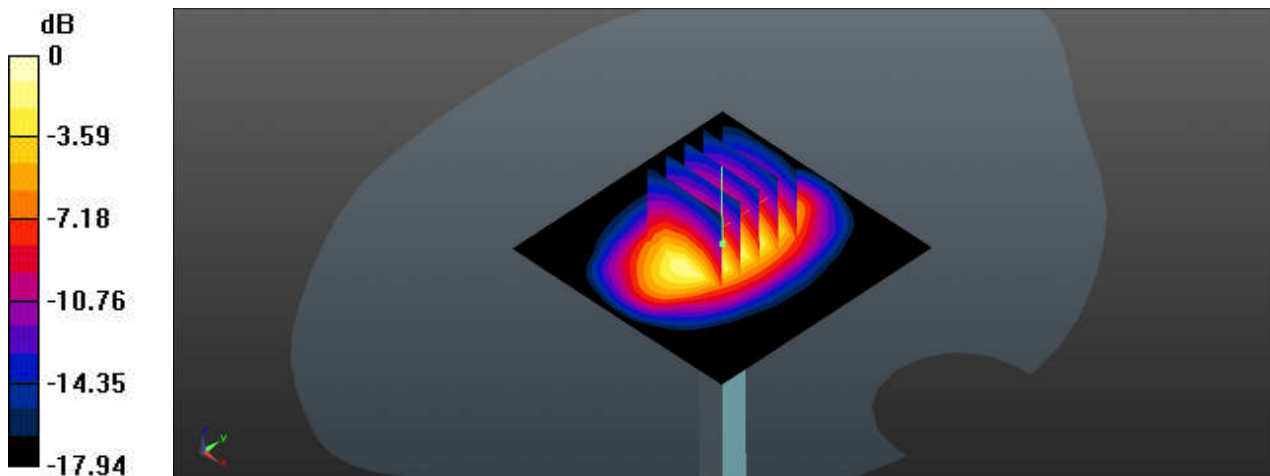
Pin=250mW/Zoom Scan (5x5x7)/Cube 0: Measurement grid: dx=8mm, dy=8mm, dz=5mm

Reference Value = 95.60 V/m; Power Drift = -0.02 dB

Peak SAR (extrapolated) = 15.8 W/kg

SAR(1 g) = 8.6 W/kg; SAR(10 g) = 4.52 W/kg

Maximum value of SAR (measured) = 12.3 W/kg



0 dB = 12.3 W/kg

System Check_1750MHz

DUT: D1750V2-SN:1137

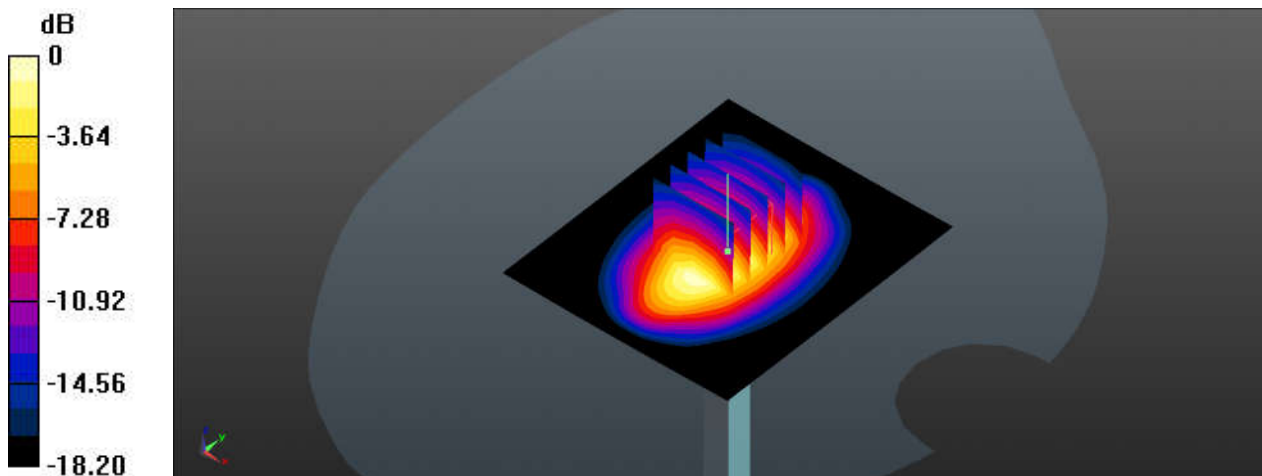
Communication System: UID 0, CW; Frequency: 1750 MHz; Duty Cycle: 1:1
Medium: HSL_1750_240306 Medium parameters used: $f = 1750$ MHz; $\sigma = 1.345$ S/m; $\epsilon_r = 38.879$;
 $\rho = 1000$ kg/m³
Ambient Temperature : 23.4 °C; Liquid Temperature : 22.2 °C

DASY5 Configuration:

- Probe: EX3DV4 - SN7576; ConvF(9.07, 9.07, 9.07); Calibrated: 2023/8/23
- Sensor-Surface: 1.4mm (Mechanical Surface Detection)
- Electronics: DAE4 Sn1386; Calibrated: 2023/7/17
- Phantom: SAM with CRP v5.0(Front); Type: QD000P40CD; Serial: 1671
- Measurement SW: DASY52, Version 52.10 (3); SEMCAD X Version 14.6.13 (7474)

Pin=250mW/Area Scan (61x71x1): Interpolated grid: dx=1.500 mm, dy=1.500 mm
Maximum value of SAR (interpolated) = 14.9 W/kg

Pin=250mW/Zoom Scan (5x5x7)/Cube 0: Measurement grid: dx=8mm, dy=8mm, dz=5mm
Reference Value = 105.8 V/m; Power Drift = -0.01 dB
Peak SAR (extrapolated) = 16.9 W/kg
SAR(1 g) = 9.11 W/kg; SAR(10 g) = 4.82 W/kg
Maximum value of SAR (measured) = 13.7 W/kg



0 dB = 13.7 W/kg

System Check_1900MHz

DUT: D1900V2-SN:5d182

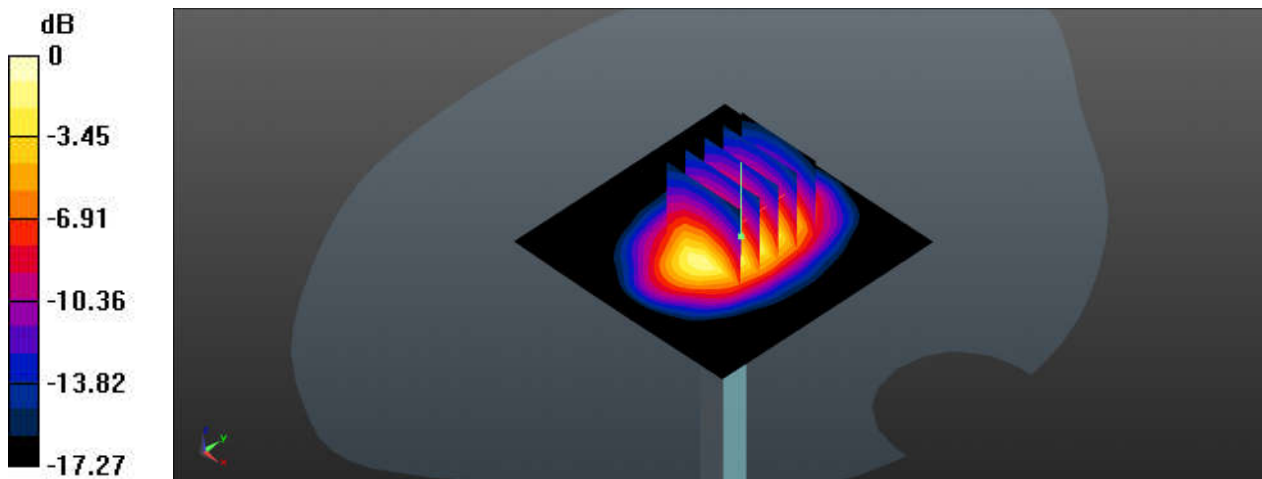
Communication System: UID 0, CW; Frequency: 1900 MHz; Duty Cycle: 1:1
Medium: HSL_1900_240218 Medium parameters used: $f = 1900$ MHz; $\sigma = 1.428$ S/m; $\epsilon_r = 41.216$;
 $\rho = 1000$ kg/m³
Ambient Temperature : 23.2 °C; Liquid Temperature : 22.2 °C

DASY5 Configuration:

- Probe: EX3DV4 - SN7576; ConvF(8.69, 8.69, 8.69); Calibrated: 2023/8/23
- Sensor-Surface: 1.4mm (Mechanical Surface Detection)
- Electronics: DAE4 Sn1386; Calibrated: 2023/7/17
- Phantom: SAM with CRP v5.0(Front); Type: QD000P40CD; Serial: 1671
- Measurement SW: DASY52, Version 52.10 (3); SEMCAD X Version 14.6.13 (7474)

Pin=250mW/Area Scan (61x61x1): Interpolated grid: dx=1.500 mm, dy=1.500 mm
Maximum value of SAR (interpolated) = 13.5 W/kg

Pin=250mW/Zoom Scan (5x5x7)/Cube 0: Measurement grid: dx=8mm, dy=8mm, dz=5mm
Reference Value = 96.69 V/m; Power Drift = -0.07 dB
Peak SAR (extrapolated) = 18.4 W/kg
SAR(1 g) = 10.3 W/kg; SAR(10 g) = 5.43 W/kg
Maximum value of SAR (measured) = 12.9 W/kg



0 dB = 12.9 W/kg

System Check_1900MHz

DUT: D1900V2-SN:5d182

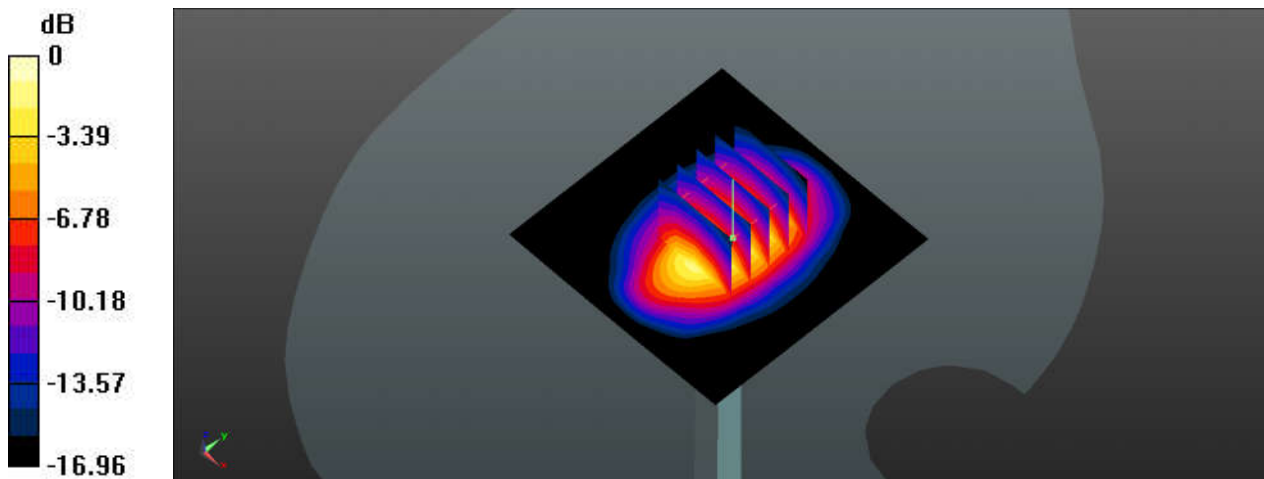
Communication System: UID 0, CW; Frequency: 1900 MHz; Duty Cycle: 1:1
Medium: HSL_1900_240301 Medium parameters used: $f = 1900$ MHz; $\sigma = 1.453$ S/m; $\epsilon_r = 39.136$;
 $\rho = 1000$ kg/m³
Ambient Temperature : 23.4 °C; Liquid Temperature : 22.5 °C

DASY5 Configuration:

- Probe: EX3DV4 - SN7576; ConvF(8.69, 8.69, 8.69); Calibrated: 2023/8/23
- Sensor-Surface: 1.4mm (Mechanical Surface Detection)
- Electronics: DAE4 Sn1386; Calibrated: 2023/7/17
- Phantom: SAM with CRP v5.0(Front); Type: QD000P40CD; Serial: 1671
- Measurement SW: DASY52, Version 52.10 (3); SEMCAD X Version 14.6.13 (7474)

Pin=250mW/Area Scan (61x61x1): Interpolated grid: dx=1.500 mm, dy=1.500 mm
Maximum value of SAR (interpolated) = 15.9 W/kg

Pin=250mW/Zoom Scan (5x5x7)/Cube 0: Measurement grid: dx=8mm, dy=8mm, dz=5mm
Reference Value = 103.6 V/m; Power Drift = -0.13 dB
Peak SAR (extrapolated) = 21.5 W/kg
SAR(1 g) = 10.2 W/kg; SAR(10 g) = 5.2 W/kg
Maximum value of SAR (measured) = 17.6 W/kg



0 dB = 17.6 W/kg

System Check_1900MHz

DUT: D1900V2-SN:5d182

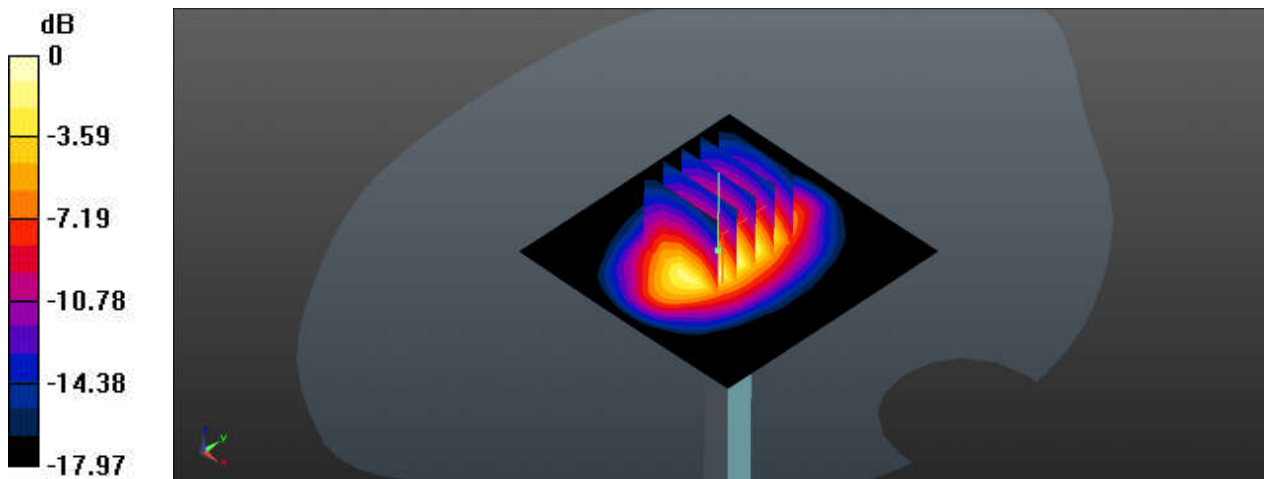
Communication System: UID 0, CW; Frequency: 1900 MHz; Duty Cycle: 1:1
Medium: HSL_1900_240312 Medium parameters used: $f = 1900 \text{ MHz}$; $\sigma = 1.412 \text{ S/m}$; $\epsilon_r = 38.427$;
 $\rho = 1000 \text{ kg/m}^3$
Ambient Temperature : $23.3 \text{ }^\circ\text{C}$; Liquid Temperature : $22.1 \text{ }^\circ\text{C}$

DASY5 Configuration:

- Probe: EX3DV4 - SN7576; ConvF(8.69, 8.69, 8.69); Calibrated: 2023/8/23
- Sensor-Surface: 1.4mm (Mechanical Surface Detection)
- Electronics: DAE4 Sn1386; Calibrated: 2023/7/17
- Phantom: SAM with CRP v5.0(Front); Type: QD000P40CD; Serial: 1671
- Measurement SW: DASY52, Version 52.10 (3); SEMCAD X Version 14.6.13 (7474)

Pin=250mW/Area Scan (61x61x1): Interpolated grid: $dx=1.500 \text{ mm}$, $dy=1.500 \text{ mm}$
Maximum value of SAR (interpolated) = 13.3 W/kg

Pin=250mW/Zoom Scan (5x5x7)/Cube 0: Measurement grid: $dx=8\text{mm}$, $dy=8\text{mm}$, $dz=5\text{mm}$
Reference Value = 96.70 V/m ; Power Drift = 0.15 dB
Peak SAR (extrapolated) = 17.0 W/kg
SAR(1 g) = 9.28 W/kg ; SAR(10 g) = 4.82 W/kg
Maximum value of SAR (measured) = 13.0 W/kg



0 dB = 13.0 W/kg

System Check_2300MHz

DUT: D2300V2-SN:1056

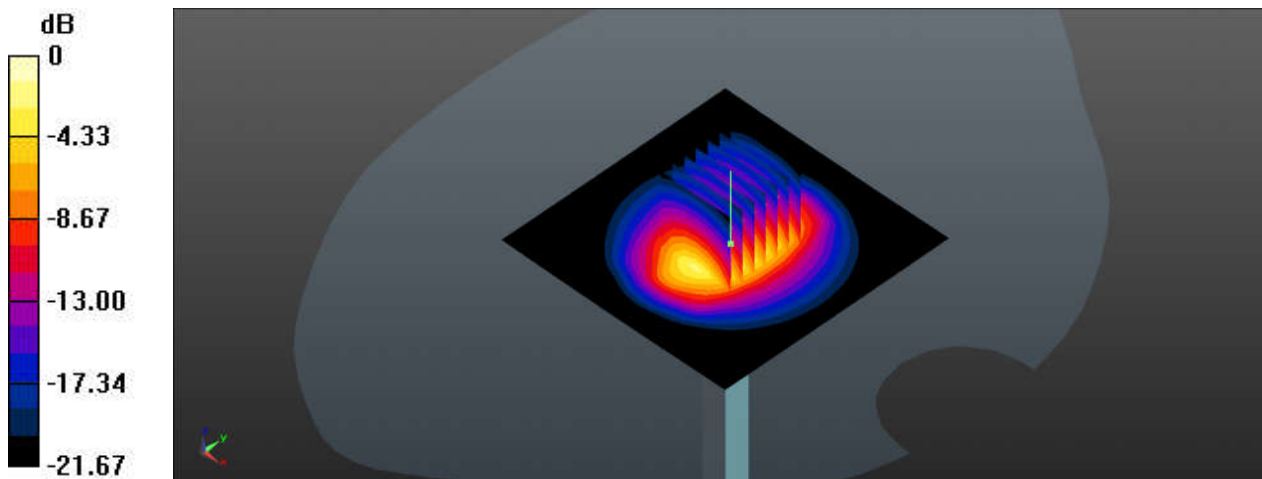
Communication System: UID 0, CW (0); Frequency: 2300 MHz; Duty Cycle: 1:1
Medium: HSL_2300_240212 Medium parameters used: $f = 2300$ MHz; $\sigma = 1.662$ S/m; $\epsilon_r = 38.225$;
 $\rho = 1000$ kg/m³
Ambient Temperature : 23.1 °C; Liquid Temperature : 22.1 °C

DASY5 Configuration:

- Probe: EX3DV4 - SN7641; ConvF(8.27, 8.11, 8.15); Calibrated: 2023/4/24
- Sensor-Surface: 1.4mm (Mechanical Surface Detection)
- Electronics: DAE4 Sn1386; Calibrated: 2023/7/17
- Phantom: SAM with CRP v5.0(Front); Type: QD000P40CD; Serial: 1671
- Measurement SW: DASY52, Version 52.10 (3); SEMCAD X Version 14.6.13 (7474)

Pin=250mW/Area Scan (81x81x1): Interpolated grid: dx=1.200 mm, dy=1.200 mm
Maximum value of SAR (interpolated) = 21.1 W/kg

Pin=250mW/Zoom Scan (7x7x7)/Cube 0: Measurement grid: dx=5mm, dy=5mm, dz=5mm
Reference Value = 115.8 V/m; Power Drift = -0.09 dB
Peak SAR (extrapolated) = 26.6 W/kg
SAR(1 g) = 12.8 W/kg; SAR(10 g) = 5.97 W/kg
Maximum value of SAR (measured) = 21.5 W/kg



0 dB = 21.5 W/kg

System Check_2300MHz

DUT: D2300V2-SN:1056

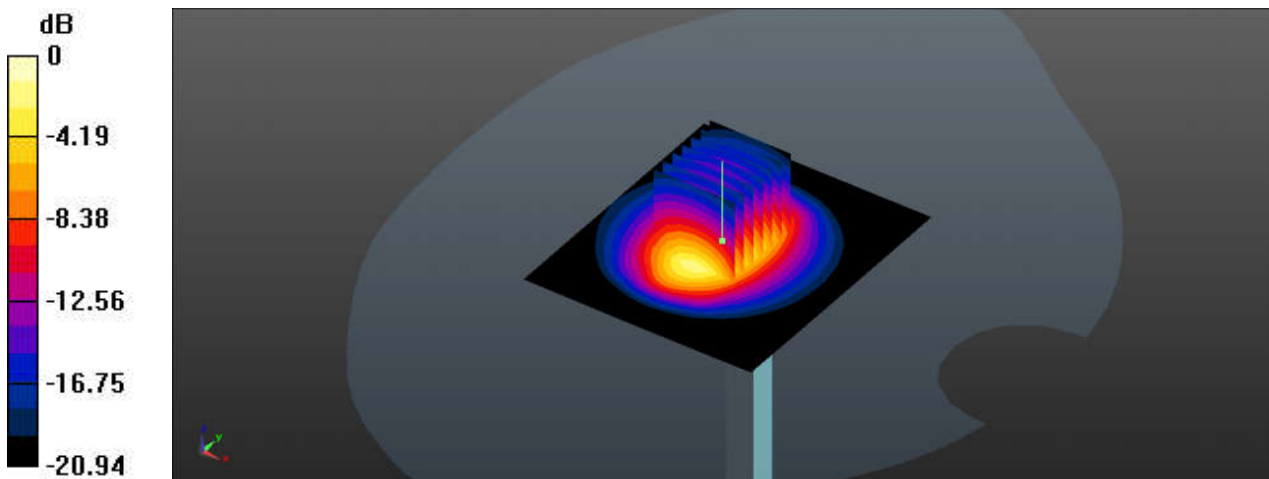
Communication System: UID 0, CW (0); Frequency: 2300 MHz; Duty Cycle: 1:1
Medium: HSL_2300_240227 Medium parameters used: $f = 2300$ MHz; $\sigma = 1.706$ S/m; $\epsilon_r = 39.905$;
 $\rho = 1000$ kg/m³
Ambient Temperature : 23.6 °C; Liquid Temperature : 22.7 °C

DASY5 Configuration:

- Probe: EX3DV4 - SN7641; ConvF(8.27, 8.11, 8.15); Calibrated: 2023/4/24
- Sensor-Surface: 1.4mm (Mechanical Surface Detection)
- Electronics: DAE4 Sn1386; Calibrated: 2023/7/17
- Phantom: SAM with CRP v5.0(Front); Type: QD000P40CD; Serial: 1671
- Measurement SW: DASY52, Version 52.10 (3); SEMCAD X Version 14.6.13 (7474)

Pin=250mW/Area Scan (71x81x1): Interpolated grid: dx=1.200 mm, dy=1.200 mm
Maximum value of SAR (interpolated) = 22.4 W/kg

Pin=250mW/Zoom Scan (7x7x7)/Cube 0: Measurement grid: dx=5mm, dy=5mm, dz=5mm
Reference Value = 98.01 V/m; Power Drift = 0.13 dB
Peak SAR (extrapolated) = 27.4 W/kg
SAR(1 g) = 12.6 W/kg; SAR(10 g) = 6.03 W/kg
Maximum value of SAR (measured) = 22.1 W/kg



0 dB = 22.1 W/kg

System Check_2300MHz

DUT: D2300V2-SN:1056

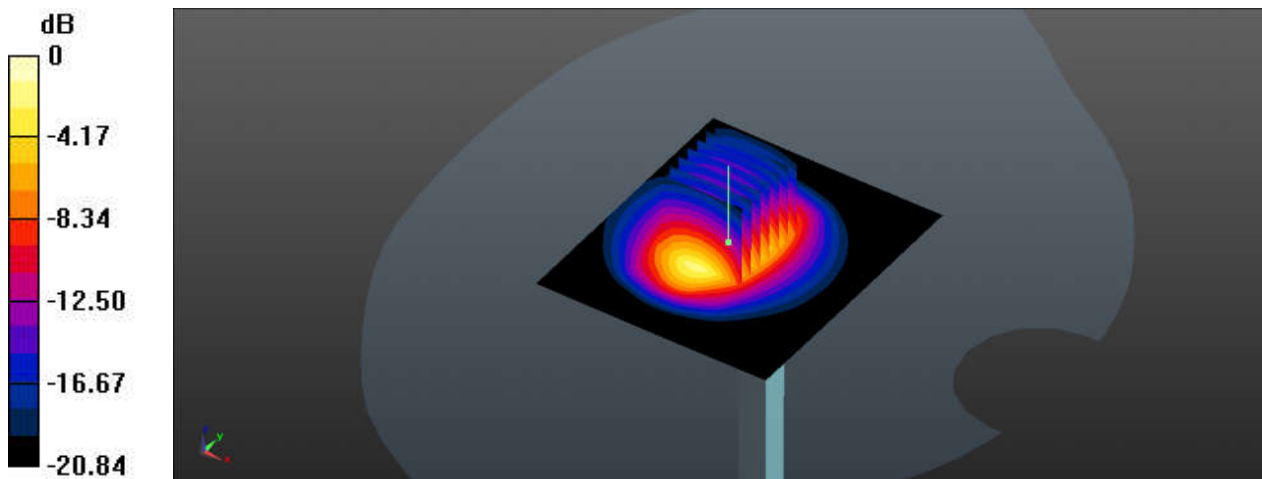
Communication System: UID 0, CW (0); Frequency: 2300 MHz; Duty Cycle: 1:1
Medium: HSL_2300_240314 Medium parameters used: $f = 2300$ MHz; $\sigma = 1.701$ S/m; $\epsilon_r = 38.886$;
 $\rho = 1000$ kg/m³
Ambient Temperature : 23.5 °C; Liquid Temperature : 22.3 °C

DASY5 Configuration:

- Probe: EX3DV4 - SN7641; ConvF(8.27, 8.11, 8.15); Calibrated: 2023/4/24
- Sensor-Surface: 1.4mm (Mechanical Surface Detection)
- Electronics: DAE4 Sn1386; Calibrated: 2023/7/17
- Phantom: SAM with CRP v5.0(Front); Type: QD000P40CD; Serial: 1671
- Measurement SW: DASY52, Version 52.10 (3); SEMCAD X Version 14.6.13 (7474)

Pin=250mW/Area Scan (71x81x1): Interpolated grid: dx=1.200 mm, dy=1.200 mm
Maximum value of SAR (interpolated) = 19.8 W/kg

Pin=250mW/Zoom Scan (7x7x7)/Cube 0: Measurement grid: dx=5mm, dy=5mm, dz=5mm
Reference Value = 87.36 V/m; Power Drift = 0.08 dB
Peak SAR (extrapolated) = 24.1 W/kg
SAR(1 g) = 12.1 W/kg; SAR(10 g) = 5.83 W/kg
Maximum value of SAR (measured) = 19.8 W/kg



0 dB = 19.8 W/kg

System Check_2450MHz

DUT: D2450V2-SN:924

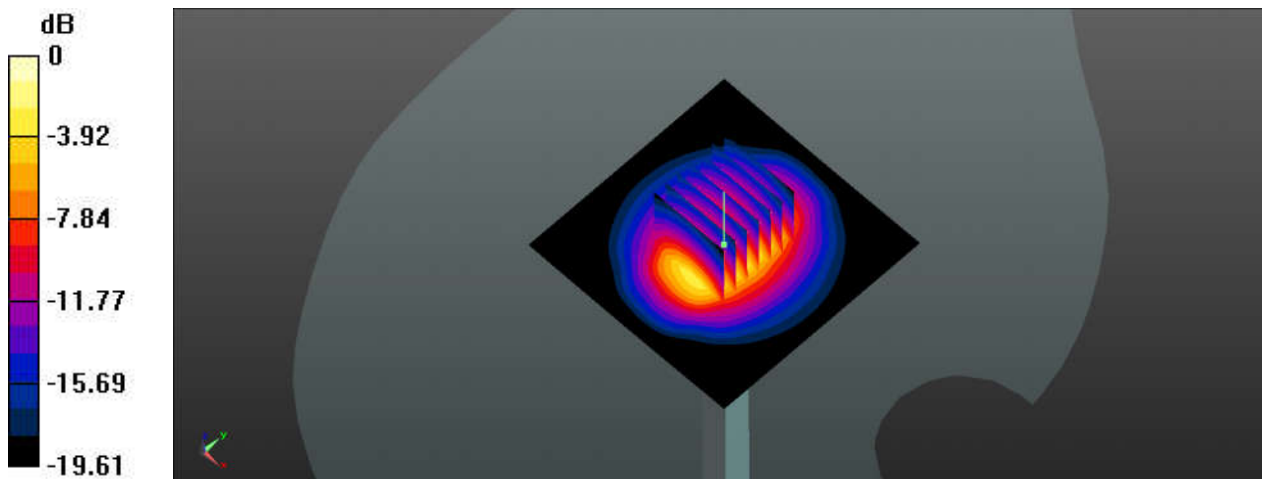
Communication System: UID 0, CW (0); Frequency: 2450 MHz;Duty Cycle: 1:1
Medium: HSL_2450_240313 Medium parameters used: $f = 2450$ MHz; $\sigma = 1.816$ S/m; $\epsilon_r = 38.596$;
 $\rho = 1000$ kg/m³
Ambient Temperature : 23.4 °C ; Liquid Temperature : 22.6 °C

DASY5 Configuration:

- Probe: EX3DV4 - SN7576; ConvF(8.13, 8.13, 8.13); Calibrated: 2023/8/23
- Sensor-Surface: 1.4mm (Mechanical Surface Detection)
- Electronics: DAE4 Sn1386; Calibrated: 2023/7/17
- Phantom: SAM with CRP v5.0(Front); Type: QD000P40CD; Serial: 1671
- Measurement SW: DASY52, Version 52.10 (3); SEMCAD X Version 14.6.13 (7474)

Pin=250mW/Area Scan (71x71x1): Interpolated grid: dx=1.200 mm, dy=1.200 mm
Maximum value of SAR (interpolated) = 20.1 W/kg

Pin=250mW/Zoom Scan (7x7x7)/Cube 0: Measurement grid: dx=5mm, dy=5mm, dz=5mm
Reference Value = 103.9 V/m; Power Drift = -0.08 dB
Peak SAR (extrapolated) = 25.8 W/kg
SAR(1 g) = 12.9 W/kg; SAR(10 g) = 6.18 W/kg
Maximum value of SAR (measured) = 19.3 W/kg



0 dB = 19.3 W/kg

System Check_2450MHz

DUT: D2450V2-SN:924

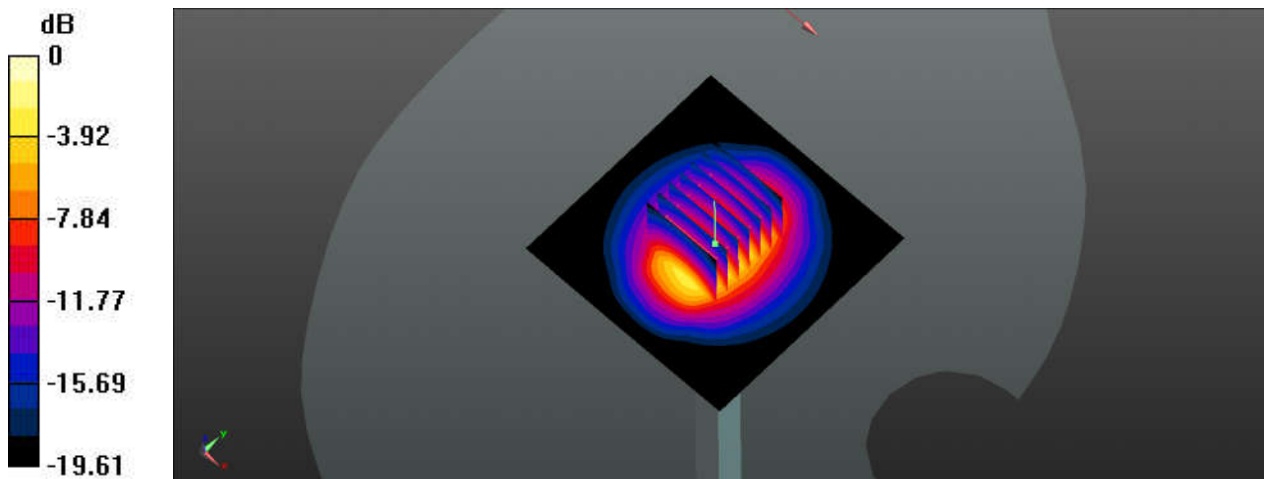
Communication System: UID 0, CW (0); Frequency: 2450 MHz; Duty Cycle: 1:1
Medium: HSL_2450_240321 Medium parameters used: $f = 2450$ MHz; $\sigma = 1.777$ S/m; $\epsilon_r = 38.496$;
 $\rho = 1000$ kg/m³
Ambient Temperature : 23.4 °C; Liquid Temperature : 22.7 °C

DASY5 Configuration:

- Probe: EX3DV4 - SN7576; ConvF(8.13, 8.13, 8.13); Calibrated: 2023/8/23
- Sensor-Surface: 1.4mm (Mechanical Surface Detection)
- Electronics: DAE4 Sn1386; Calibrated: 2023/7/17
- Phantom: SAM with CRP v5.0(Front); Type: QD000P40CD; Serial: 1671
- Measurement SW: DASY52, Version 52.10 (3); SEMCAD X Version 14.6.13 (7474)

Pin=250mW/Area Scan (71x71x1): Interpolated grid: dx=1.200 mm, dy=1.200 mm
Maximum value of SAR (interpolated) = 19.7 W/kg

Pin=250mW/Zoom Scan (7x7x7)/Cube 0: Measurement grid: dx=5mm, dy=5mm, dz=5mm
Reference Value = 103.9 V/m; Power Drift = -0.02 dB
Peak SAR (extrapolated) = 25.3 W/kg
SAR(1 g) = 12.6 W/kg; SAR(10 g) = 6.05 W/kg
Maximum value of SAR (measured) = 18.9 W/kg



System Check_2450MHz

DUT: D2450V2-SN:924

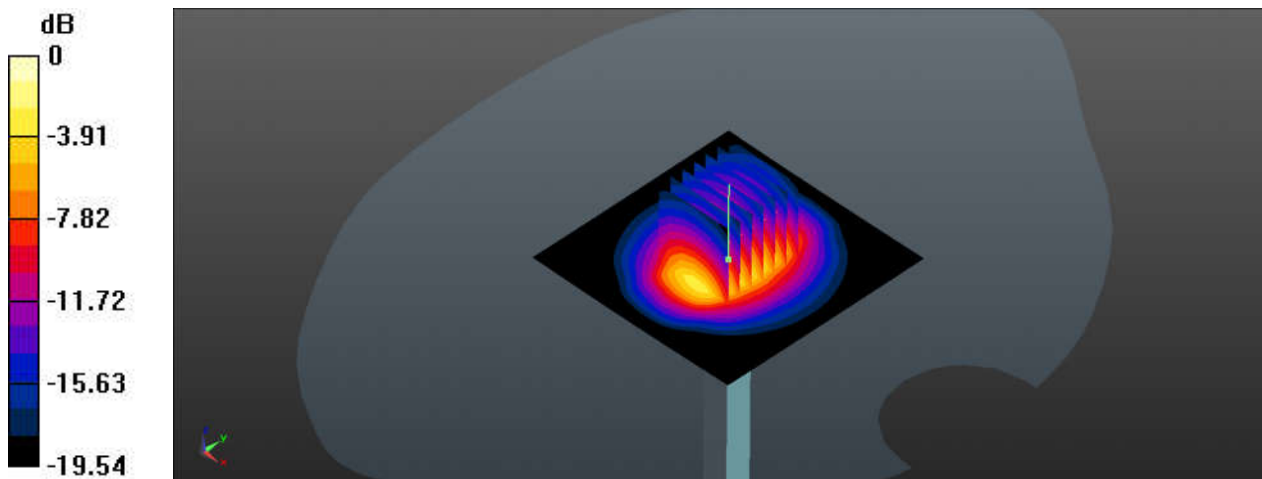
Communication System: UID 0, CW (0); Frequency: 2450 MHz;Duty Cycle: 1:1
Medium: HSL_2450_240325 Medium parameters used: $f = 2450$ MHz; $\sigma = 1.765$ S/m; $\epsilon_r = 38.042$;
 $\rho = 1000$ kg/m³
Ambient Temperature : 23.4 °C ; Liquid Temperature : 22.2 °C

DASY5 Configuration:

- Probe: EX3DV4 - SN7576; ConvF(8.13, 8.13, 8.13); Calibrated: 2023/8/23
- Sensor-Surface: 1.4mm (Mechanical Surface Detection)
- Electronics: DAE4 Sn1386; Calibrated: 2023/7/17
- Phantom: SAM with CRP v5.0(Front); Type: QD000P40CD; Serial: 1671
- Measurement SW: DASY52, Version 52.10 (3); SEMCAD X Version 14.6.13 (7474)

Pin=250mW/Area Scan (71x71x1): Interpolated grid: dx=1.200 mm, dy=1.200 mm
Maximum value of SAR (interpolated) = 19.6 W/kg

Pin=250mW/Zoom Scan (7x7x7)/Cube 0: Measurement grid: dx=5mm, dy=5mm, dz=5mm
Reference Value = 105.7 V/m; Power Drift = -0.08 dB
Peak SAR (extrapolated) = 24.5 W/kg
SAR(1 g) = 12.7 W/kg; SAR(10 g) = 6.11 W/kg
Maximum value of SAR (measured) = 18.8 W/kg



0 dB = 18.8 W/kg

System Check_2600MHz

DUT: D2600V2-SN:1070

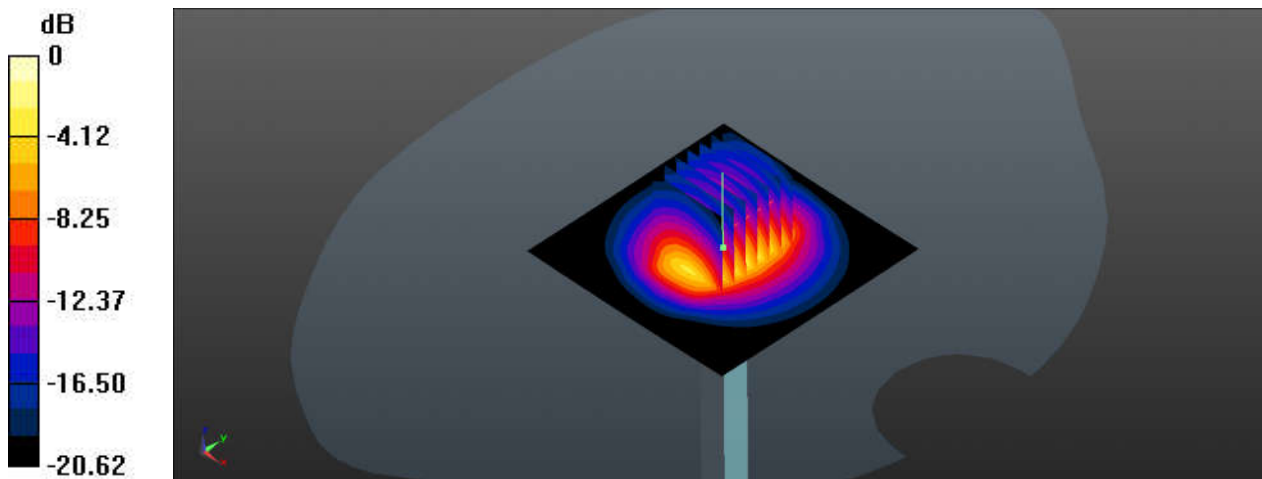
Communication System: UID 0, CW; Frequency: 2600 MHz; Duty Cycle: 1:1
Medium: HSL_2600_240208 Medium parameters used: $f = 2600$ MHz; $\sigma = 1.931$ S/m; $\epsilon_r = 38.414$;
 $\rho = 1000$ kg/m³
Ambient Temperature : 23.1 °C; Liquid Temperature : 22.3 °C

DASY5 Configuration:

- Probe: EX3DV4 - SN7576; ConvF(7.89, 7.89, 7.89); Calibrated: 2023/8/23
- Sensor-Surface: 1.4mm (Mechanical Surface Detection)
- Electronics: DAE4 Sn1386; Calibrated: 2023/7/17
- Phantom: SAM with CRP v5.0(Front); Type: QD000P40CD; Serial: 1671
- Measurement SW: DASY52, Version 52.10 (3); SEMCAD X Version 14.6.13 (7474)

Pin=250mW/Area Scan (71x71x1): Interpolated grid: dx=1.200 mm, dy=1.200 mm
Maximum value of SAR (interpolated) = 22.9 W/kg

Pin=250mW/Zoom Scan (7x7x7)/Cube 0: Measurement grid: dx=5mm, dy=5mm, dz=5mm
Reference Value = 111.2 V/m; Power Drift = -0.05 dB
Peak SAR (extrapolated) = 29.4 W/kg
SAR(1 g) = 14.5 W/kg; SAR(10 g) = 6.22 W/kg
Maximum value of SAR (measured) = 21.9 W/kg



0 dB = 21.9 W/kg

System Check_2600MHz

DUT: D2600V2-SN:1070

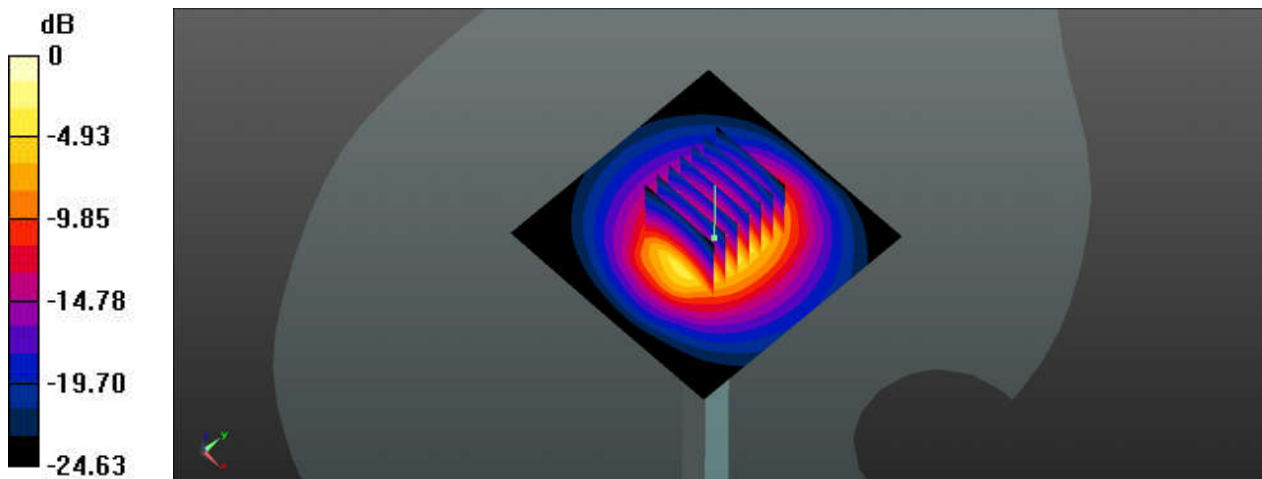
Communication System: UID 0, CW; Frequency: 2600 MHz; Duty Cycle: 1:1
Medium: HSL_2600_240303 Medium parameters used: $f = 2600$ MHz; $\sigma = 1.879$ S/m; $\epsilon_r = 37.832$;
 $\rho = 1000$ kg/m³
Ambient Temperature : 23.4 °C; Liquid Temperature : 22.2 °C

DASY5 Configuration:

- Probe: EX3DV4 - SN7576; ConvF(7.89, 7.89, 7.89); Calibrated: 2023/8/23
- Sensor-Surface: 1.4mm (Mechanical Surface Detection)
- Electronics: DAE4 Sn1386; Calibrated: 2023/7/17
- Phantom: SAM with CRP v5.0(Front); Type: QD000P40CD; Serial: 1671
- Measurement SW: DASY52, Version 52.10 (3); SEMCAD X Version 14.6.13 (7474)

Pin=250mW/Area Scan (71x71x1): Interpolated grid: dx=1.200 mm, dy=1.200 mm
Maximum value of SAR (interpolated) = 20.2 W/kg

Pin=250mW/Zoom Scan (7x7x7)/Cube 0: Measurement grid: dx=5mm, dy=5mm, dz=5mm
Reference Value = 100.7 V/m; Power Drift = -0.02 dB
Peak SAR (extrapolated) = 28.8 W/kg
SAR(1 g) = 13.8 W/kg; SAR(10 g) = 5.85 W/kg
Maximum value of SAR (measured) = 19.9 W/kg



0 dB = 19.9 W/kg

System Check_2600MHz

DUT: D2600V2-SN:1070

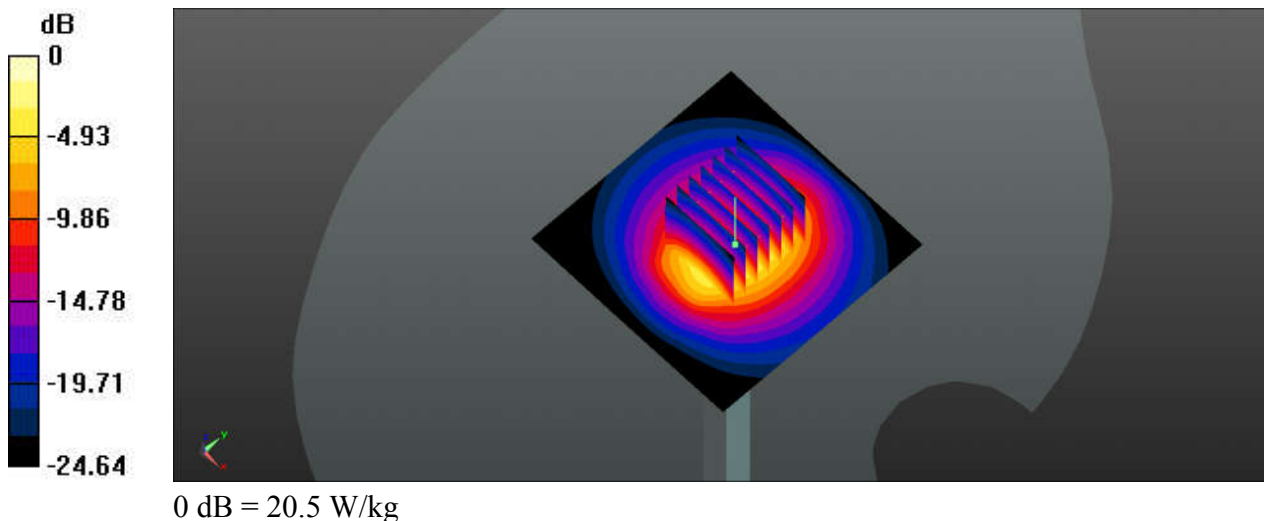
Communication System: UID 0, CW; Frequency: 2600 MHz; Duty Cycle: 1:1
Medium: HSL_2600_240323 Medium parameters used: $f = 2600$ MHz; $\sigma = 1.934$ S/m; $\epsilon_r = 37.625$;
 $\rho = 1000$ kg/m³
Ambient Temperature : 23.3 °C; Liquid Temperature : 22.6 °C

DASY5 Configuration:

- Probe: EX3DV4 - SN7576; ConvF(7.89, 7.89, 7.89); Calibrated: 2023/8/23
- Sensor-Surface: 1.4mm (Mechanical Surface Detection)
- Electronics: DAE4 Sn1386; Calibrated: 2023/7/17
- Phantom: SAM with CRP v5.0(Front); Type: QD000P40CD; Serial: 1671
- Measurement SW: DASY52, Version 52.10 (3); SEMCAD X Version 14.6.13 (7474)

Pin=250mW/Area Scan (71x71x1): Interpolated grid: dx=1.200 mm, dy=1.200 mm
Maximum value of SAR (interpolated) = 20.8 W/kg

Pin=250mW/Zoom Scan (7x7x7)/Cube 0: Measurement grid: dx=5mm, dy=5mm, dz=5mm
Reference Value = 100.7 V/m; Power Drift = -0.12 dB
Peak SAR (extrapolated) = 29.7 W/kg
SAR(1 g) = 13.3 W/kg; SAR(10 g) = 5.7 W/kg
Maximum value of SAR (measured) = 20.5 W/kg



System Check_3500MHz

DUT: D3500V2-SN:1076

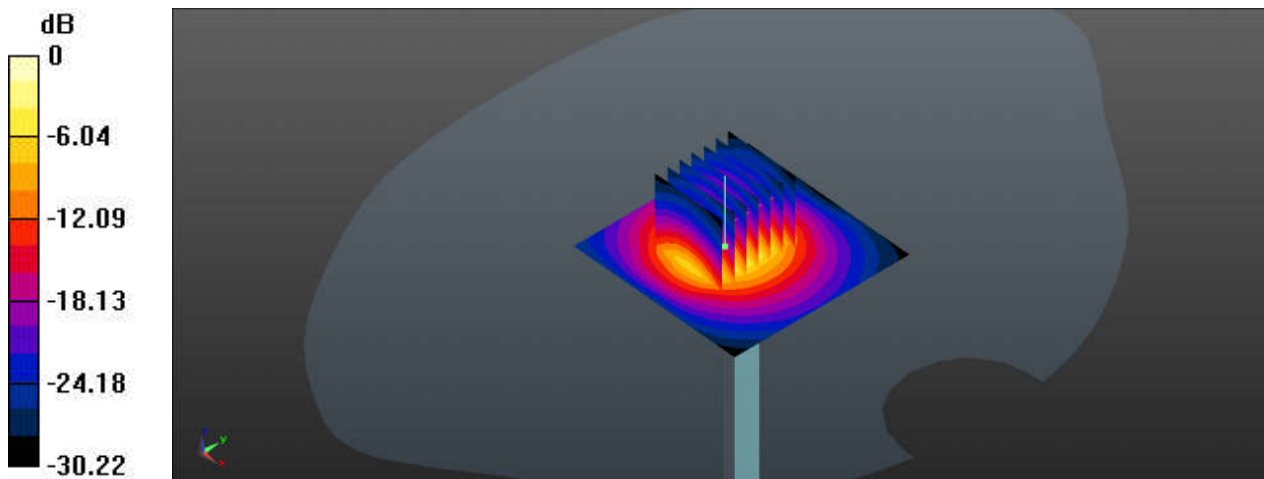
Communication System: UID 0, CW (0); Frequency: 3500 MHz;Duty Cycle: 1:1
Medium: HSL_3500_240209 Medium parameters used: $f = 3500$ MHz; $\sigma = 2.858$ S/m; $\epsilon_r = 38.432$;
 $\rho = 1000$ kg/m³
Ambient Temperature : 23.4 °C; Liquid Temperature : 22.7 °C

DASY5 Configuration:

- Probe: EX3DV4 - SN7576; ConvF(6.76, 6.76, 6.76); Calibrated: 2023/8/23
- Sensor-Surface: 1.4mm (Mechanical Surface Detection)
- Electronics: DAE4 Sn1386; Calibrated: 2023/7/17
- Phantom: SAM with CRP v5.0(Front); Type: QD000P40CD; Serial: 1671
- Measurement SW: DASY52, Version 52.10 (3); SEMCAD X Version 14.6.13 (7474)

Pin=100mW/Area Scan (51x51x1): Interpolated grid: dx=1.200 mm, dy=1.200 mm
Maximum value of SAR (interpolated) = 12.6 W/kg

Pin=100mW/Zoom Scan (7x7x7)/Cube 0: Measurement grid: dx=4mm, dy=4mm, dz=1.4mm
Reference Value = 60.90 V/m; Power Drift = 0.01 dB
Peak SAR (extrapolated) = 17.4 W/kg
SAR(1 g) = 6.7 W/kg; SAR(10 g) = 2.55 W/kg
Maximum value of SAR (measured) = 13.1 W/kg



0 dB = 13.1 W/kg

System Check_3500MHz

DUT: D3500V2-SN:1076

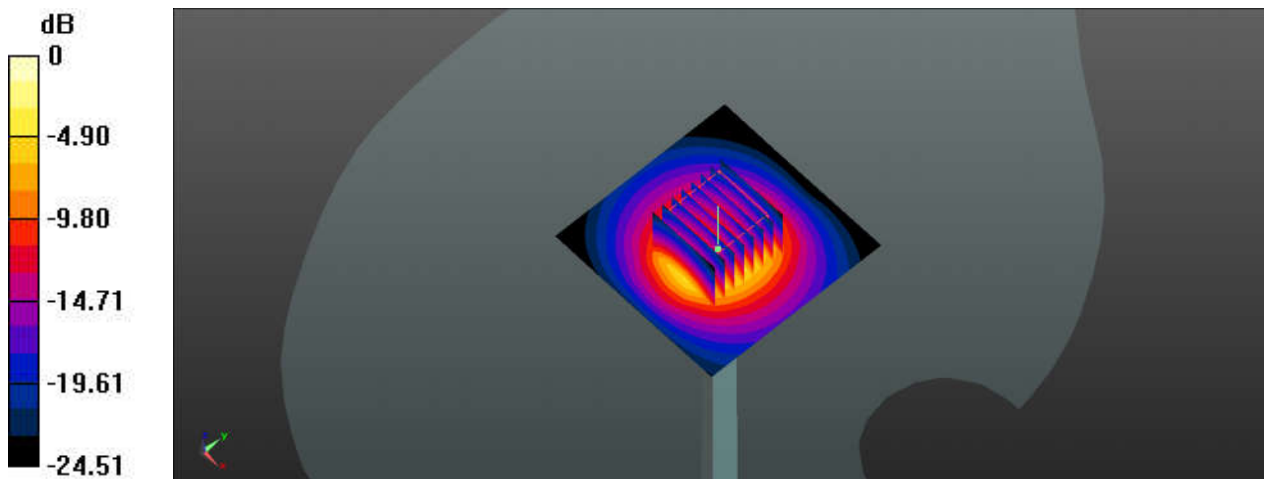
Communication System: UID 0, CW (0); Frequency: 3500 MHz; Duty Cycle: 1:1
Medium: HSL_3500_240307 Medium parameters used: $f = 3500$ MHz; $\sigma = 2.889$ S/m; $\epsilon_r = 39.656$;
 $\rho = 1000$ kg/m³
Ambient Temperature : 23.2 °C; Liquid Temperature : 22.3 °C

DASY5 Configuration:

- Probe: EX3DV4 - SN7576; ConvF(6.76, 6.76, 6.76); Calibrated: 2023/8/23
- Sensor-Surface: 1.4mm (Mechanical Surface Detection)
- Electronics: DAE4 Sn1386; Calibrated: 2023/7/17
- Phantom: SAM with CRP v5.0(Front); Type: QD000P40CD; Serial: 1671
- Measurement SW: DASY52, Version 52.10 (3); SEMCAD X Version 14.6.13 (7474)

Pin=100mW/Area Scan (71x71x1): Interpolated grid: dx=1.200 mm, dy=1.200 mm
Maximum value of SAR (interpolated) = 12.0 W/kg

Pin=100mW/Zoom Scan (8x8x7)/Cube 0: Measurement grid: dx=4mm, dy=4mm, dz=1.4mm
Reference Value = 64.69 V/m; Power Drift = -0.07 dB
Peak SAR (extrapolated) = 16.2 W/kg
SAR(1 g) = 6.35 W/kg; SAR(10 g) = 2.48 W/kg
Maximum value of SAR (measured) = 11.6 W/kg



System Check_3500MHz

DUT: D3500V2-SN:1076

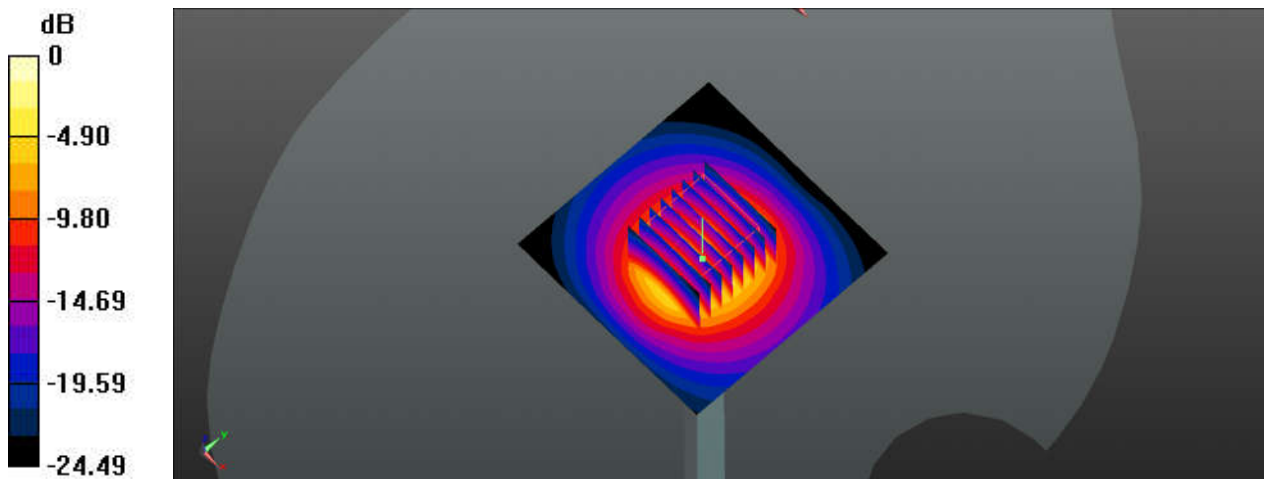
Communication System: UID 0, CW (0); Frequency: 3500 MHz; Duty Cycle: 1:1
Medium: HSL_3500_240326 Medium parameters used: $f = 3500$ MHz; $\sigma = 2.978$ S/m; $\epsilon_r = 39.003$;
 $\rho = 1000$ kg/m³
Ambient Temperature : 23.4 °C ; Liquid Temperature : 22.4 °C

DASY5 Configuration:

- Probe: EX3DV4 - SN7576; ConvF(6.76, 6.76, 6.76); Calibrated: 2023/8/23
- Sensor-Surface: 1.4mm (Mechanical Surface Detection)
- Electronics: DAE4 Sn1386; Calibrated: 2023/7/17
- Phantom: SAM with CRP v5.0(Front); Type: QD000P40CD; Serial: 1671
- Measurement SW: DASY52, Version 52.10 (3); SEMCAD X Version 14.6.13 (7474)

Pin=100mW/Area Scan (71x71x1): Interpolated grid: dx=1.200 mm, dy=1.200 mm
Maximum value of SAR (interpolated) = 12.3 W/kg

Pin=100mW/Zoom Scan (8x8x7)/Cube 0: Measurement grid: dx=4mm, dy=4mm, dz=1.4mm
Reference Value = 64.69 V/m; Power Drift = -0.07 dB
Peak SAR (extrapolated) = 16.7 W/kg
SAR(1 g) = 6.19 W/kg; SAR(10 g) = 2.37 W/kg
Maximum value of SAR (measured) = 11.9 W/kg



System Check_3700MHz

DUT: D3700V2-SN:1037

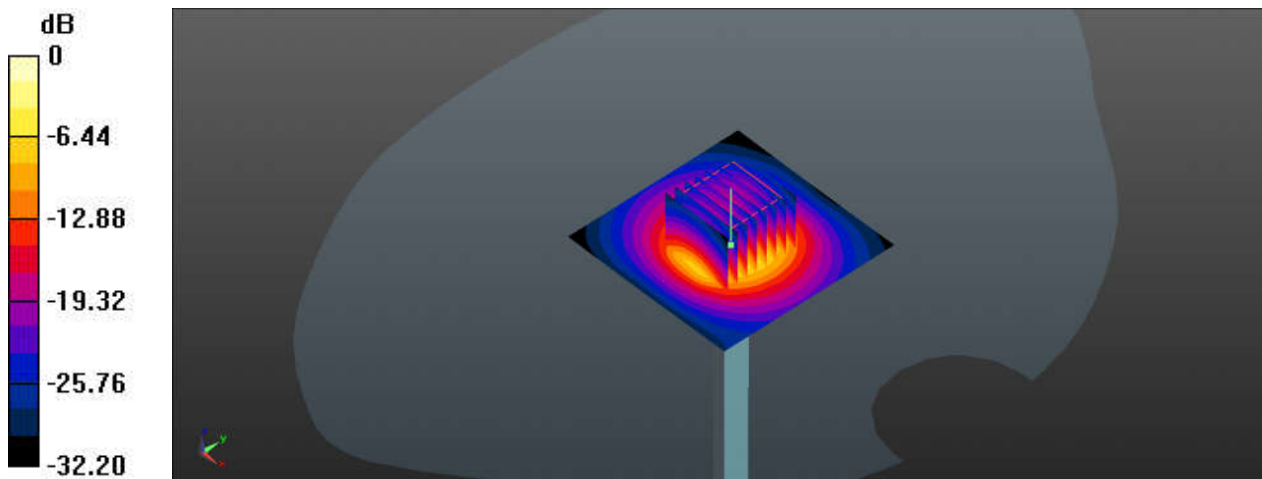
Communication System: UID 0, CW (0); Frequency: 3700 MHz;Duty Cycle: 1:1
Medium: HSL_3700_240210 Medium parameters used: $f = 3700$ MHz; $\sigma = 3.007$ S/m; $\epsilon_r = 38.198$;
 $\rho = 1000$ kg/m³
Ambient Temperature : 23.3 °C ; Liquid Temperature : 22.6 °C

DASY5 Configuration:

- Probe: EX3DV4 - SN7576; ConvF(6.73, 6.73, 6.73); Calibrated: 2023/8/23
- Sensor-Surface: 1.4mm (Mechanical Surface Detection)
- Electronics: DAE4 Sn1386; Calibrated: 2023/7/17
- Phantom: SAM with CRP v5.0(Front); Type: QD000P40CD; Serial: 1671
- Measurement SW: DASY52, Version 52.10 (3); SEMCAD X Version 14.6.13 (7474)

Pin=100mW/Area Scan (51x51x1): Interpolated grid: dx=1.200 mm, dy=1.200 mm
Maximum value of SAR (interpolated) = 13.5 W/kg

Pin=100mW/Zoom Scan (7x7x7)/Cube 0: Measurement grid: dx=4mm, dy=4mm, dz=1.4mm
Reference Value = 65.40 V/m; Power Drift = 0.02 dB
Peak SAR (extrapolated) = 19.0 W/kg
SAR(1 g) = 6.96 W/kg; SAR(10 g) = 2.56 W/kg
Maximum value of SAR (measured) = 14.0 W/kg



0 dB = 14.0 W/kg

System Check_3700MHz

DUT: D3700V2-SN:1037

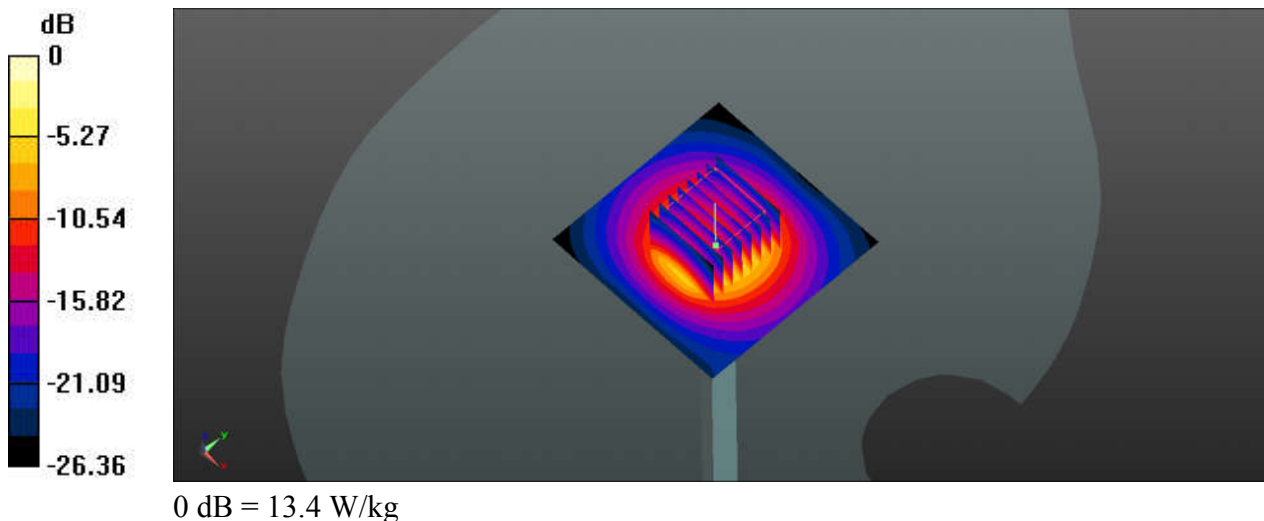
Communication System: UID 0, CW (0); Frequency: 3700 MHz;Duty Cycle: 1:1
Medium: HSL_3700_240309 Medium parameters used: $f = 3700 \text{ MHz}$; $\sigma = 3.046 \text{ S/m}$; $\epsilon_r = 39.416$;
 $\rho = 1000 \text{ kg/m}^3$
Ambient Temperature : $23.4 \text{ }^\circ\text{C}$; Liquid Temperature : $22.7 \text{ }^\circ\text{C}$

DASY5 Configuration:

- Probe: EX3DV4 - SN7576; ConvF(6.73, 6.73, 6.73); Calibrated: 2023/8/23
- Sensor-Surface: 1.4mm (Mechanical Surface Detection)
- Electronics: DAE4 Sn1386; Calibrated: 2023/7/17
- Phantom: SAM with CRP v5.0(Front); Type: QD000P40CD; Serial: 1671
- Measurement SW: DASY52, Version 52.10 (3); SEMCAD X Version 14.6.13 (7474)

Pin=100mW/Area Scan (71x71x1): Interpolated grid: $dx=1.200 \text{ mm}$, $dy=1.200 \text{ mm}$
Maximum value of SAR (interpolated) = 14.1 W/kg

Pin=100mW/Zoom Scan (8x8x7)/Cube 0: Measurement grid: $dx=4\text{mm}$, $dy=4\text{mm}$, $dz=1.4\text{mm}$
Reference Value = 70.74 V/m ; Power Drift = 0.11 dB
Peak SAR (extrapolated) = 19.5 W/kg
SAR(1 g) = 6.77 W/kg ; SAR(10 g) = 2.49 W/kg
Maximum value of SAR (measured) = 13.4 W/kg



System Check_3700MHz

DUT: D3700V2-SN:1037

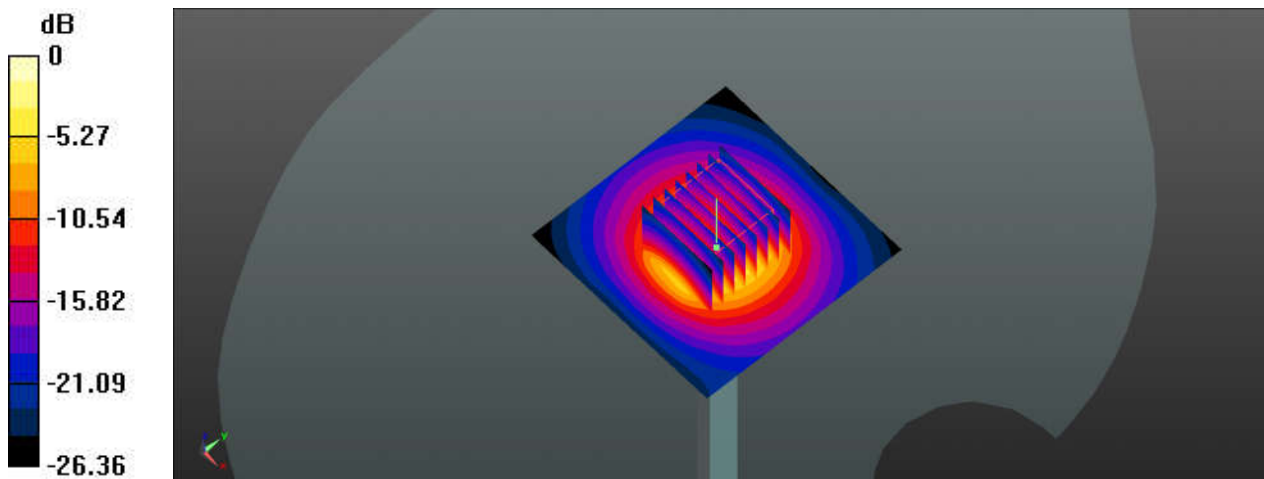
Communication System: UID 0, CW (0); Frequency: 3700 MHz; Duty Cycle: 1:1
Medium: HSL_3700_240327 Medium parameters used: $f = 3700 \text{ MHz}$; $\sigma = 3.138 \text{ S/m}$; $\epsilon_r = 38.755$;
 $\rho = 1000 \text{ kg/m}^3$
Ambient Temperature : $23.2 \text{ }^\circ\text{C}$; Liquid Temperature : $22.5 \text{ }^\circ\text{C}$

DASY5 Configuration:

- Probe: EX3DV4 - SN7576; ConvF(6.73, 6.73, 6.73); Calibrated: 2023/8/23
- Sensor-Surface: 1.4mm (Mechanical Surface Detection)
- Electronics: DAE4 Sn1386; Calibrated: 2023/7/17
- Phantom: SAM with CRP v5.0(Front); Type: QD000P40CD; Serial: 1671
- Measurement SW: DASY52, Version 52.10 (3); SEMCAD X Version 14.6.13 (7474)

Pin=100mW/Area Scan (71x71x1): Interpolated grid: $dx=1.200 \text{ mm}$, $dy=1.200 \text{ mm}$
Maximum value of SAR (interpolated) = 14.5 W/kg

Pin=100mW/Zoom Scan (8x8x7)/Cube 0: Measurement grid: $dx=4\text{mm}$, $dy=4\text{mm}$, $dz=1.4\text{mm}$
Reference Value = 70.74 V/m ; Power Drift = -0.14 dB
Peak SAR (extrapolated) = 20.0 W/kg
SAR(1 g) = 6.97 W/kg ; SAR(10 g) = 2.57 W/kg
Maximum value of SAR (measured) = 13.8 W/kg



0 dB = 13.8 W/kg

System Check_3900MHz

DUT: D3900V2-SN:1022

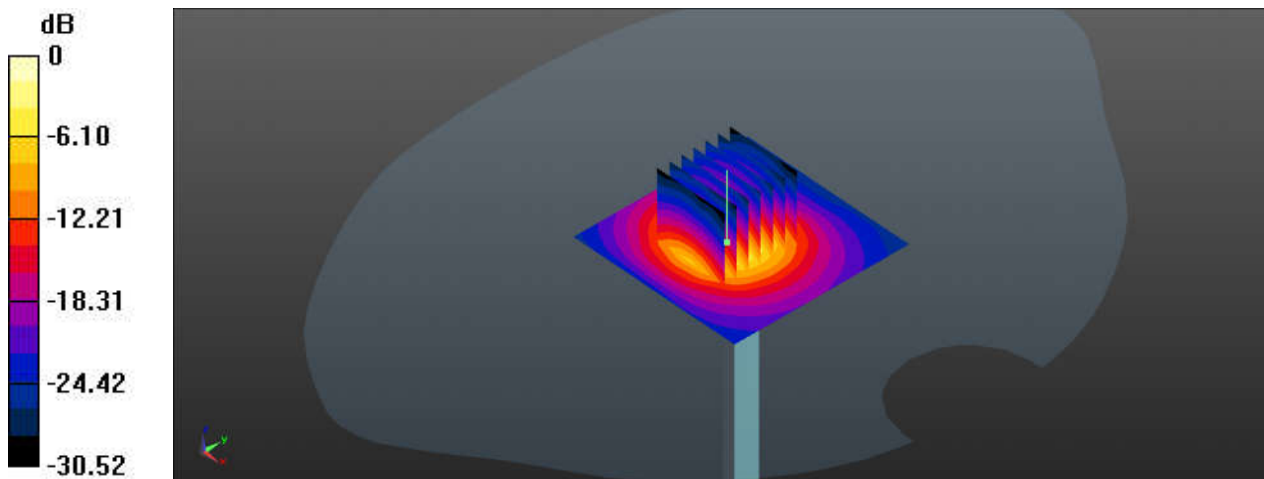
Communication System: UID 0, CW (0); Frequency: 3900 MHz; Duty Cycle: 1:1
Medium: HSL_3900_240211 Medium parameters used: $f = 3900$ MHz; $\sigma = 3.167$ S/m; $\epsilon_r = 37.998$;
 $\rho = 1000$ kg/m³
Ambient Temperature : 23.5 °C; Liquid Temperature : 22.5 °C

DASY5 Configuration:

- Probe: EX3DV4 - SN7576; ConvF(6.53, 6.53, 6.53); Calibrated: 2023/8/23
- Sensor-Surface: 1.4mm (Mechanical Surface Detection)
- Electronics: DAE4 Sn1386; Calibrated: 2023/7/17
- Phantom: SAM with CRP v5.0(Front); Type: QD000P40CD; Serial: 1671
- Measurement SW: DASY52, Version 52.10 (3); SEMCAD X Version 14.6.13 (7474)

Pin=100mW/Area Scan (61x61x1): Interpolated grid: dx=1.200 mm, dy=1.200 mm
Maximum value of SAR (interpolated) = 15.0 W/kg

Pin=100mW/Zoom Scan (7x7x7)/Cube 0: Measurement grid: dx=4mm, dy=4mm, dz=1.4mm
Reference Value = 69.33 V/m; Power Drift = 0.02 dB
Peak SAR (extrapolated) = 21.0 W/kg
SAR(1 g) = 6.89 W/kg; SAR(10 g) = 2.46 W/kg
Maximum value of SAR (measured) = 15.3 W/kg



0 dB = 15.3 W/kg

System Check_3900MHz

DUT: D3900V2-SN:1022

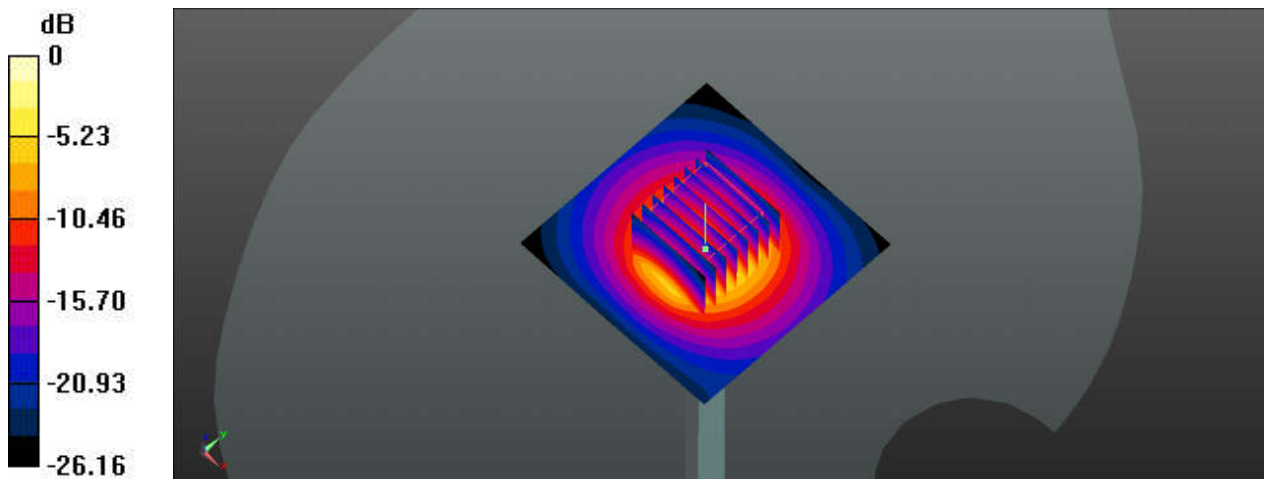
Communication System: UID 0, CW (0); Frequency: 3900 MHz; Duty Cycle: 1:1
Medium: HSL_3900_240311 Medium parameters used: $f = 3900$ MHz; $\sigma = 3.215$ S/m; $\epsilon_r = 39.205$;
 $\rho = 1000$ kg/m³
Ambient Temperature : 23.5 °C; Liquid Temperature : 22.5 °C

DASY5 Configuration:

- Probe: EX3DV4 - SN7576; ConvF(6.53, 6.53, 6.53); Calibrated: 2023/8/23
- Sensor-Surface: 1.4mm (Mechanical Surface Detection)
- Electronics: DAE4 Sn1386; Calibrated: 2023/7/17
- Phantom: SAM with CRP v5.0(Front); Type: QD000P40CD; Serial: 1671
- Measurement SW: DASY52, Version 52.10 (3); SEMCAD X Version 14.6.13 (7474)

Pin=100mW/Area Scan (71x71x1): Interpolated grid: dx=1.200 mm, dy=1.200 mm
Maximum value of SAR (interpolated) = 14.6 W/kg

Pin=100mW/Zoom Scan (8x8x7)/Cube 0: Measurement grid: dx=4mm, dy=4mm, dz=1.4mm
Reference Value = 71.82 V/m; Power Drift = -0.05 dB
Peak SAR (extrapolated) = 19.3 W/kg
SAR(1 g) = 7.15 W/kg; SAR(10 g) = 2.5 W/kg
Maximum value of SAR (measured) = 13.9 W/kg



System Check_3900MHz

DUT: D3900V2-SN:1022

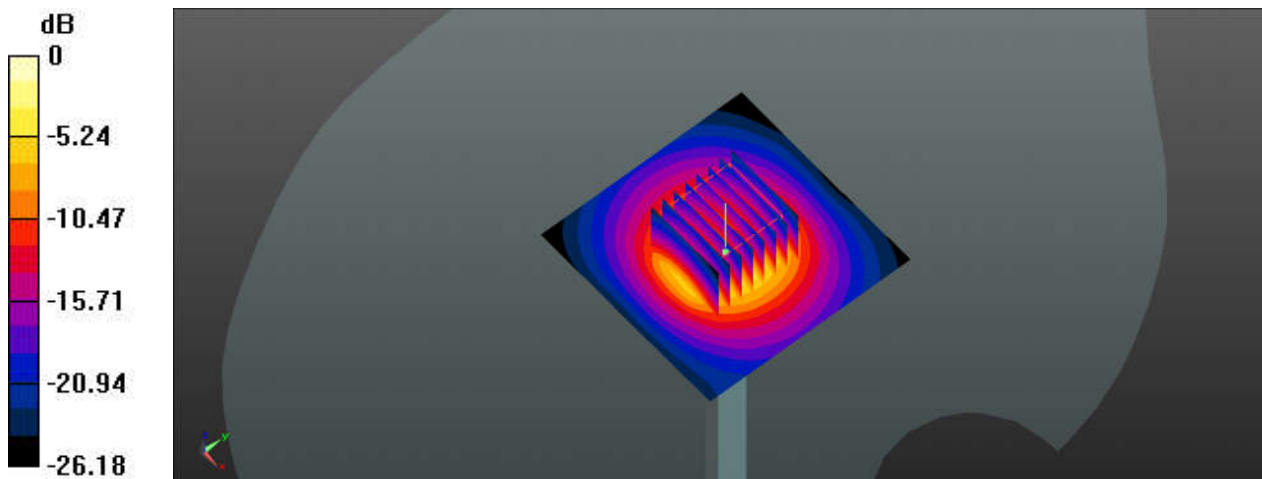
Communication System: UID 0, CW (0); Frequency: 3900 MHz; Duty Cycle: 1:1
Medium: HSL_3900_240328 Medium parameters used: $f = 3900 \text{ MHz}$; $\sigma = 3.312 \text{ S/m}$; $\epsilon_r = 38.554$;
 $\rho = 1000 \text{ kg/m}^3$
Ambient Temperature : $23.4 \text{ }^\circ\text{C}$; Liquid Temperature : $22.3 \text{ }^\circ\text{C}$

DASY5 Configuration:

- Probe: EX3DV4 - SN7576; ConvF(6.53, 6.53, 6.53); Calibrated: 2023/8/23
- Sensor-Surface: 1.4mm (Mechanical Surface Detection)
- Electronics: DAE4 Sn1386; Calibrated: 2023/7/17
- Phantom: SAM with CRP v5.0(Front); Type: QD000P40CD; Serial: 1671
- Measurement SW: DASY52, Version 52.10 (3); SEMCAD X Version 14.6.13 (7474)

Pin=100mW/Area Scan (71x71x1): Interpolated grid: $dx=1.200 \text{ mm}$, $dy=1.200 \text{ mm}$
Maximum value of SAR (interpolated) = 15.0 W/kg

Pin=100mW/Zoom Scan (8x8x7)/Cube 0: Measurement grid: $dx=4\text{mm}$, $dy=4\text{mm}$, $dz=1.4\text{mm}$
Reference Value = 61.82 V/m ; Power Drift = 0.07 dB
Peak SAR (extrapolated) = 17.8 W/kg
SAR(1 g) = 6.8 W/kg ; SAR(10 g) = 2.42 W/kg
Maximum value of SAR (measured) = 12.4 W/kg



0 dB = 12.4 W/kg

System Check_5250MHz

DUT: D5GHzV2-SN:1341

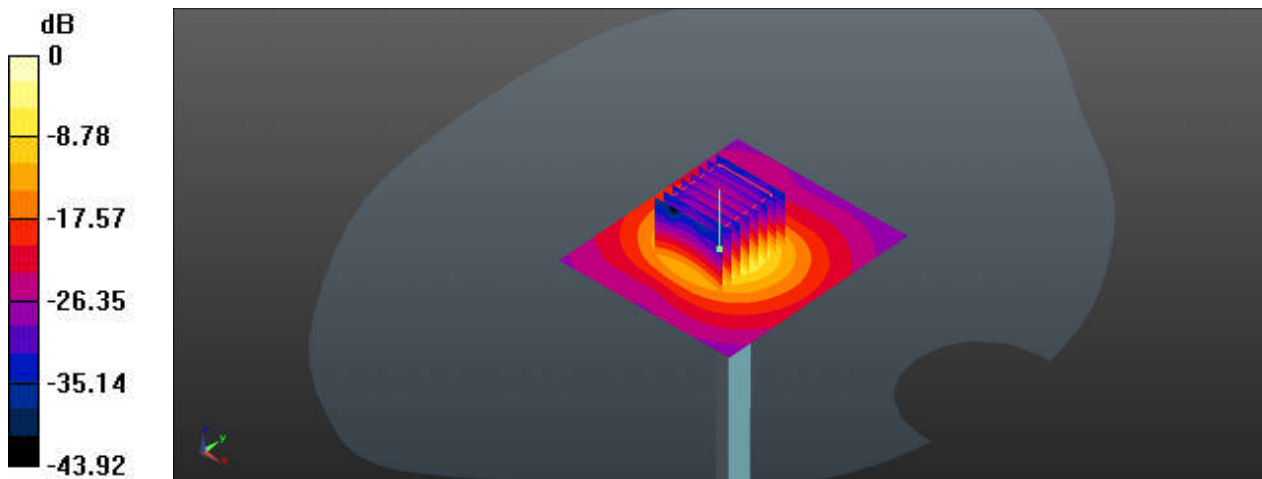
Communication System: UID 0, CW (0); Frequency: 5250 MHz; Duty Cycle: 1:1
Medium: HSL_5250_240214 Medium parameters used: $f = 5250$ MHz; $\sigma = 4.626$ S/m; $\epsilon_r = 34.202$;
 $\rho = 1000$ kg/m³
Ambient Temperature : 23.6 °C; Liquid Temperature : 22.3 °C

DASY5 Configuration:

- Probe: EX3DV4 - SN7576; ConvF(5.31, 5.31, 5.31); Calibrated: 2023/8/23
- Sensor-Surface: 1.4mm (Mechanical Surface Detection)
- Electronics: DAE4 Sn1386; Calibrated: 2023/7/17
- Phantom: SAM with CRP v5.0(Front); Type: QD000P40CD; Serial: 1671
- Measurement SW: DASY52, Version 52.10 (3); SEMCAD X Version 14.6.13 (7474)

Pin=100mW/Area Scan (71x81x1): Interpolated grid: dx=1.000 mm, dy=1.000 mm
Maximum value of SAR (interpolated) = 19.6 W/kg

Pin=100mW/Zoom Scan (8x8x7)/Cube 0: Measurement grid: dx=4mm, dy=4mm, dz=1.4mm
Reference Value = 53.61 V/m; Power Drift = 0.04 dB
Peak SAR (extrapolated) = 30.5 W/kg
SAR(1 g) = 7.66 W/kg; SAR(10 g) = 2.19 W/kg
Maximum value of SAR (measured) = 18.9 W/kg



0 dB = 18.9 W/kg

System Check_5250MHz

DUT: D5GHzV2-SN:1341

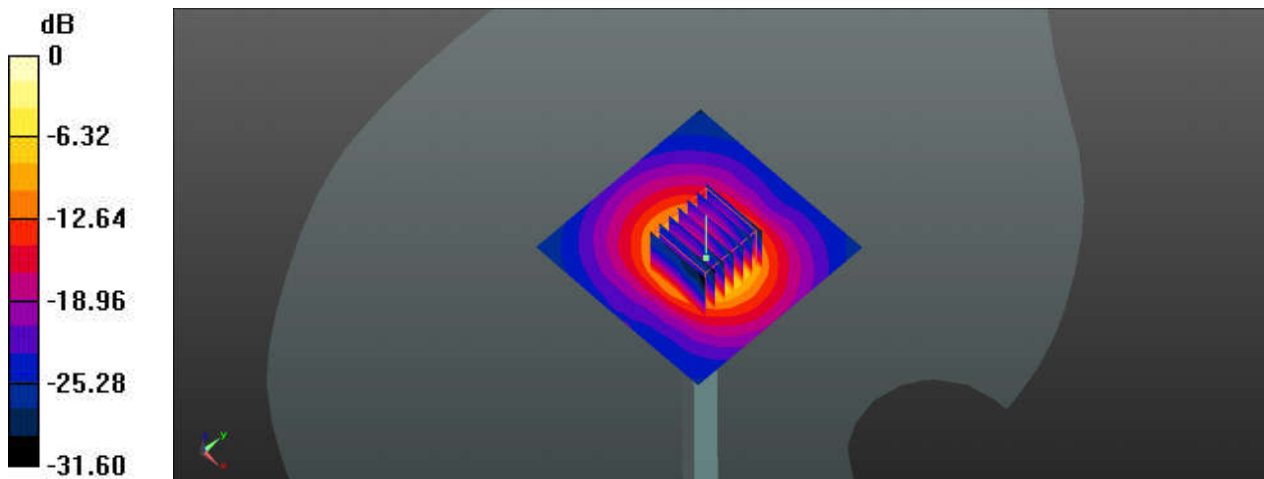
Communication System: UID 0, CW (0); Frequency: 5250 MHz;Duty Cycle: 1:1
Medium: HSL_5250_240315 Medium parameters used: $f = 5250$ MHz; $\sigma = 4.498$ S/m; $\epsilon_r = 35.96$; $\rho = 1000$ kg/m³
Ambient Temperature : 23.4 °C; Liquid Temperature : 22.6 °C

DASY5 Configuration:

- Probe: EX3DV4 - SN7576; ConvF(5.31, 5.31, 5.31); Calibrated: 2023/8/23
- Sensor-Surface: 1.4mm (Mechanical Surface Detection)
- Electronics: DAE4 Sn1386; Calibrated: 2023/7/17
- Phantom: SAM with CRP v5.0(Front); Type: QD000P40CD; Serial: 1671
- Measurement SW: DASY52, Version 52.10 (3); SEMCAD X Version 14.6.13 (7474)

Pin=100mW/Area Scan (71x71x1): Interpolated grid: dx=1.000 mm, dy=1.000 mm
Maximum value of SAR (interpolated) = 20.4 W/kg

Pin=100mW/Zoom Scan (7x7x7)/Cube 0: Measurement grid: dx=4mm, dy=4mm, dz=1.4mm
Reference Value = 71.00 V/m; Power Drift = -0.06 dB
Peak SAR (extrapolated) = 33.5 W/kg
SAR(1 g) = 8.36 W/kg; SAR(10 g) = 2.33 W/kg
Maximum value of SAR (measured) = 20.7 W/kg



0 dB = 20.7 W/kg

System Check_5250MHz

DUT: D5GHzV2-SN:1341

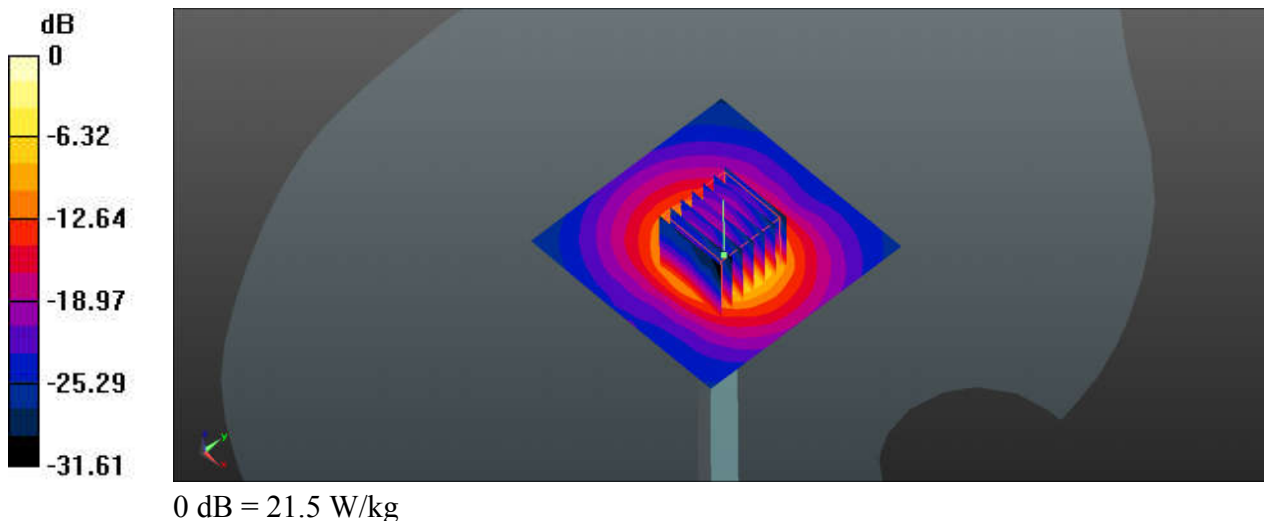
Communication System: UID 0, CW (0); Frequency: 5250 MHz; Duty Cycle: 1:1
Medium: HSL_5250_240329 Medium parameters used: $f = 5250$ MHz; $\sigma = 4.66$ S/m; $\epsilon_r = 36.667$; $\rho = 1000$ kg/m³
Ambient Temperature : 23.5 °C; Liquid Temperature : 22.6 °C

DASY5 Configuration:

- Probe: EX3DV4 - SN7576; ConvF(5.31, 5.31, 5.31); Calibrated: 2023/8/23
- Sensor-Surface: 1.4mm (Mechanical Surface Detection)
- Electronics: DAE4 Sn1386; Calibrated: 2023/7/17
- Phantom: SAM with CRP v5.0(Front); Type: QD000P40CD; Serial: 1671
- Measurement SW: DASY52, Version 52.10 (3); SEMCAD X Version 14.6.13 (7474)

Pin=100mW/Area Scan (71x71x1): Interpolated grid: dx=1.000 mm, dy=1.000 mm
Maximum value of SAR (interpolated) = 21.1 W/kg

Pin=100mW/Zoom Scan (7x7x7)/Cube 0: Measurement grid: dx=4mm, dy=4mm, dz=1.4mm
Reference Value = 71.00 V/m; Power Drift = -0.16 dB
Peak SAR (extrapolated) = 34.7 W/kg
SAR(1 g) = 8.66 W/kg; SAR(10 g) = 2.41 W/kg
Maximum value of SAR (measured) = 21.5 W/kg



System Check_5600MHz

DUT: D5GHzV2-SN:1341

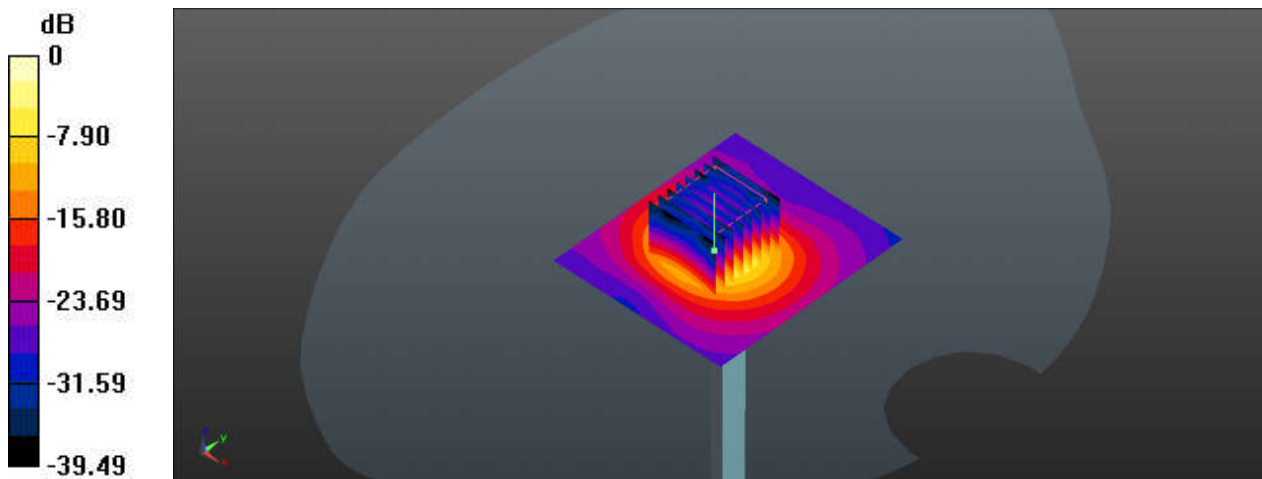
Communication System: UID 0, CW (0); Frequency: 5600 MHz; Duty Cycle: 1:1
Medium: HSL_5600_240215 Medium parameters used: $f = 5600$ MHz; $\sigma = 4.968$ S/m; $\epsilon_r = 34.688$;
 $\rho = 1000$ kg/m³
Ambient Temperature : 23.4 °C ; Liquid Temperature : 22.6 °C

DASY5 Configuration:

- Probe: EX3DV4 - SN7576; ConvF(4.68, 4.68, 4.68); Calibrated: 2023/8/23
- Sensor-Surface: 1.4mm (Mechanical Surface Detection)
- Electronics: DAE4 Sn1386; Calibrated: 2023/7/17
- Phantom: SAM with CRP v5.0(Front); Type: QD000P40CD; Serial: 1671
- Measurement SW: DASY52, Version 52.10 (3); SEMCAD X Version 14.6.13 (7474)

Pin=100mW/Area Scan (71x81x1): Interpolated grid: dx=1.000 mm, dy=1.000 mm
Maximum value of SAR (interpolated) = 23.1 W/kg

Pin=100mW/Zoom Scan (8x8x7)/Cube 0: Measurement grid: dx=4mm, dy=4mm, dz=1.4mm
Reference Value = 55.21 V/m; Power Drift = 0.01 dB
Peak SAR (extrapolated) = 37.9 W/kg
SAR(1 g) = 8.76 W/kg; SAR(10 g) = 2.49 W/kg
Maximum value of SAR (measured) = 22.2 W/kg



0 dB = 22.2 W/kg

System Check_5600MHz

DUT: D5GHzV2-SN:1341

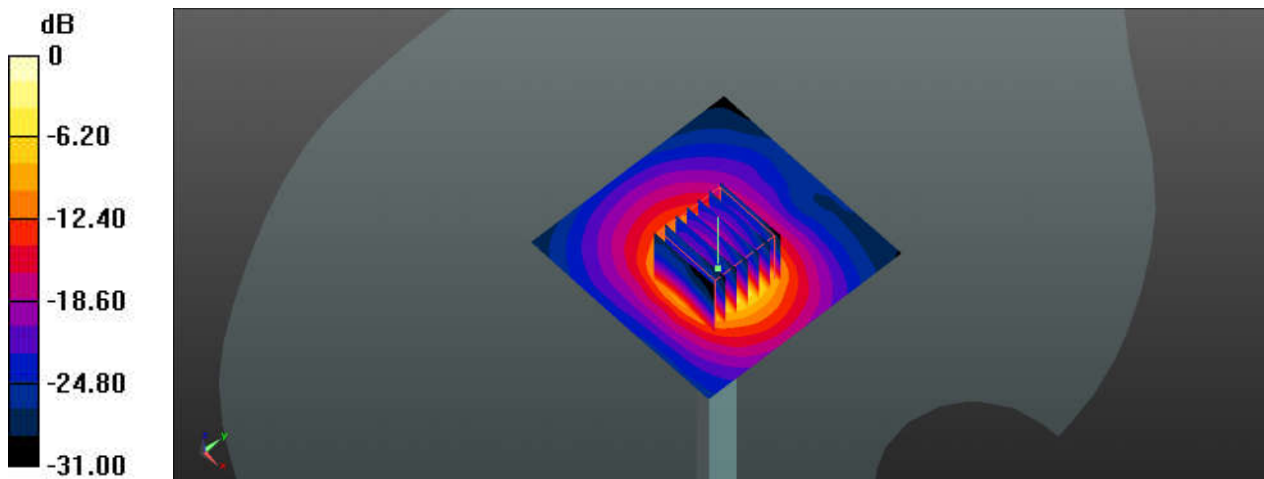
Communication System: UID 0, CW (0); Frequency: 5600 MHz; Duty Cycle: 1:1
Medium: HSL_5600_240317 Medium parameters used: $f = 5600$ MHz; $\sigma = 4.843$ S/m; $\epsilon_r = 35.495$;
 $\rho = 1000$ kg/m³
Ambient Temperature : 23.4 °C; Liquid Temperature : 22.4 °C

DASY5 Configuration:

- Probe: EX3DV4 - SN7576; ConvF(4.68, 4.68, 4.68); Calibrated: 2023/8/23
- Sensor-Surface: 1.4mm (Mechanical Surface Detection)
- Electronics: DAE4 Sn1386; Calibrated: 2023/7/17
- Phantom: SAM with CRP v5.0(Front); Type: QD000P40CD; Serial: 1671
- Measurement SW: DASY52, Version 52.10 (3); SEMCAD X Version 14.6.13 (7474)

Pin=100mW/Area Scan (71x71x1): Interpolated grid: dx=1.000 mm, dy=1.000 mm
Maximum value of SAR (interpolated) = 24.1 W/kg

Pin=100mW/Zoom Scan (7x7x7)/Cube 0: Measurement grid: dx=4mm, dy=4mm, dz=1.4mm
Reference Value = 48.24 V/m; Power Drift = -0.11 dB
Peak SAR (extrapolated) = 40.5 W/kg
SAR(1 g) = 9 W/kg; SAR(10 g) = 2.49 W/kg
Maximum value of SAR (measured) = 23.4 W/kg



0 dB = 23.4 W/kg

System Check_5600MHz

DUT: D5GHzV2-SN:1341

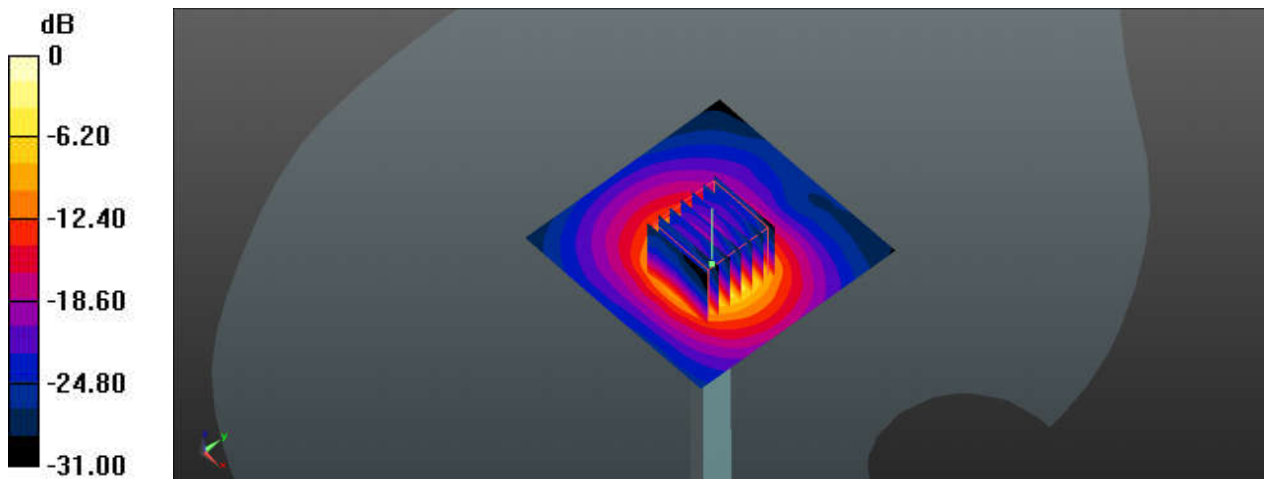
Communication System: UID 0, CW (0); Frequency: 5600 MHz;Duty Cycle: 1:1
Medium: HSL_5600_240330 Medium parameters used: $f = 5600$ MHz; $\sigma = 5.03$ S/m; $\epsilon_r = 36.172$; $\rho = 1000$ kg/m³
Ambient Temperature : 23.5 °C; Liquid Temperature : 22.3 °C

DASY5 Configuration:

- Probe: EX3DV4 - SN7576; ConvF(4.68, 4.68, 4.68); Calibrated: 2023/8/23
- Sensor-Surface: 1.4mm (Mechanical Surface Detection)
- Electronics: DAE4 Sn1386; Calibrated: 2023/7/17
- Phantom: SAM with CRP v5.0(Front); Type: QD000P40CD; Serial: 1671
- Measurement SW: DASY52, Version 52.10 (3); SEMCAD X Version 14.6.13 (7474)

Pin=100mW/Area Scan (71x71x1): Interpolated grid: dx=1.000 mm, dy=1.000 mm
Maximum value of SAR (interpolated) = 25.0 W/kg

Pin=100mW/Zoom Scan (7x7x7)/Cube 0: Measurement grid: dx=4mm, dy=4mm, dz=1.4mm
Reference Value = 48.24 V/m; Power Drift = -0.01 dB
Peak SAR (extrapolated) = 42.1 W/kg
SAR(1 g) = 8.81 W/kg; SAR(10 g) = 2.57 W/kg
Maximum value of SAR (measured) = 24.3 W/kg



0 dB = 24.3 W/kg

System Check_5750MHz

DUT: D5GHzV2-SN:1341

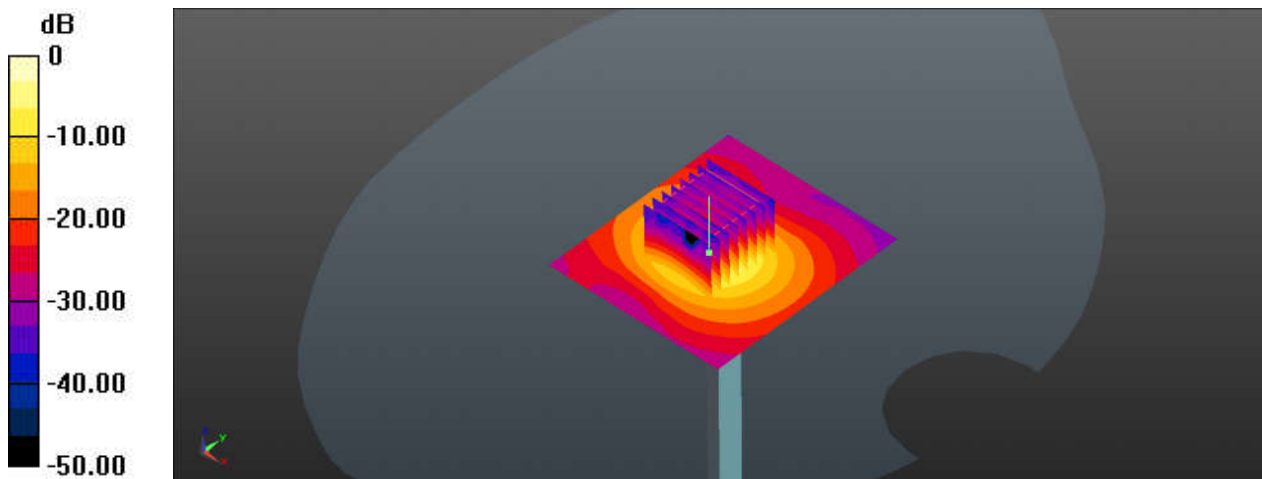
Communication System: UID 0, CW (0); Frequency: 5750 MHz; Duty Cycle: 1:1
Medium: HSL_5750_240216 Medium parameters used: $f = 5750$ MHz; $\sigma = 5.119$ S/m; $\epsilon_r = 34.477$;
 $\rho = 1000$ kg/m³
Ambient Temperature : 23.2 °C; Liquid Temperature : 22.4 °C

DASY5 Configuration:

- Probe: EX3DV4 - SN7576; ConvF(4.87, 4.87, 4.87); Calibrated: 2023/8/23
- Sensor-Surface: 1.4mm (Mechanical Surface Detection)
- Electronics: DAE4 Sn1386; Calibrated: 2023/7/17
- Phantom: SAM with CRP v5.0(Front); Type: QD000P40CD; Serial: 1671
- Measurement SW: DASY52, Version 52.10 (3); SEMCAD X Version 14.6.13 (7474)

Pin=100mW/Area Scan (71x81x1): Interpolated grid: dx=1.000 mm, dy=1.000 mm
Maximum value of SAR (interpolated) = 21.6 W/kg

Pin=100mW/Zoom Scan (8x8x7)/Cube 0: Measurement grid: dx=4mm, dy=4mm, dz=1.4mm
Reference Value = 50.57 V/m; Power Drift = 0.05 dB
Peak SAR (extrapolated) = 35.6 W/kg
SAR(1 g) = 7.96 W/kg; SAR(10 g) = 2.26 W/kg
Maximum value of SAR (measured) = 20.5 W/kg



0 dB = 20.5 W/kg

System Check_5750MHz

DUT: D5GHzV2-SN:1341

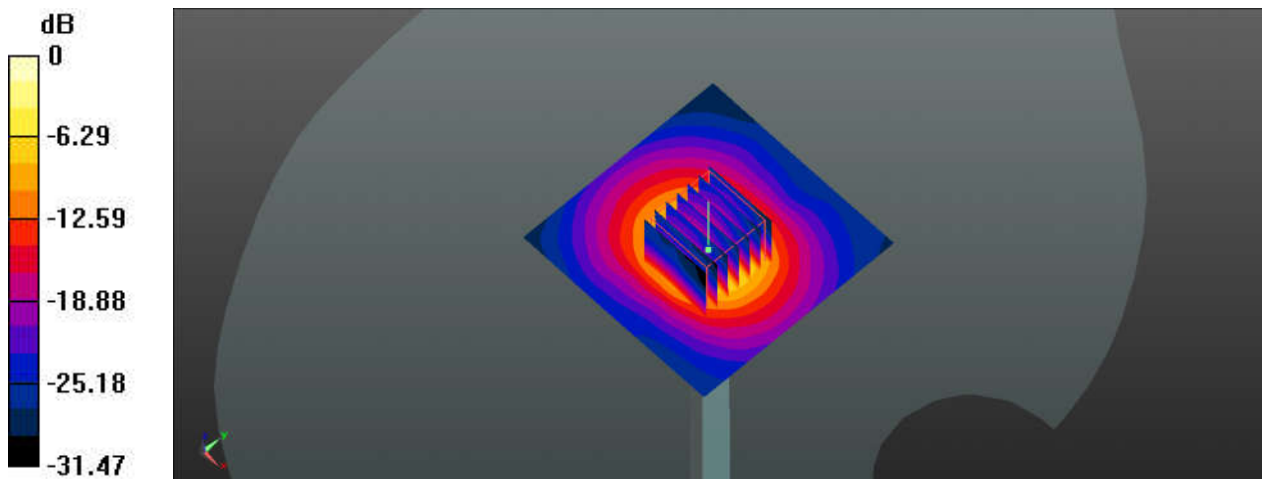
Communication System: UID 0, CW (0); Frequency: 5750 MHz; Duty Cycle: 1:1
Medium: HSL_5750_240319 Medium parameters used: $f = 5750$ MHz; $\sigma = 4.995$ S/m; $\epsilon_r = 35.316$;
 $\rho = 1000$ kg/m³
Ambient Temperature : 23.6 °C; Liquid Temperature : 22.4 °C

DASY5 Configuration:

- Probe: EX3DV4 - SN7576; ConvF(4.87, 4.87, 4.87); Calibrated: 2023/8/23
- Sensor-Surface: 1.4mm (Mechanical Surface Detection)
- Electronics: DAE4 Sn1386; Calibrated: 2023/7/17
- Phantom: SAM with CRP v5.0(Front); Type: QD000P40CD; Serial: 1671
- Measurement SW: DASY52, Version 52.10 (3); SEMCAD X Version 14.6.13 (7474)

Pin=100mW/Area Scan (71x71x1): Interpolated grid: dx=1.000 mm, dy=1.000 mm
Maximum value of SAR (interpolated) = 21.8 W/kg

Pin=100mW/Zoom Scan (7x7x7)/Cube 0: Measurement grid: dx=4mm, dy=4mm, dz=1.4mm
Reference Value = 56.93 V/m; Power Drift = -0.04 dB
Peak SAR (extrapolated) = 39.2 W/kg
SAR(1 g) = 8.46 W/kg; SAR(10 g) = 2.44 W/kg
Maximum value of SAR (measured) = 22.6 W/kg



0 dB = 22.6 W/kg

System Check_5750MHz

DUT: D5GHzV2-SN:1341

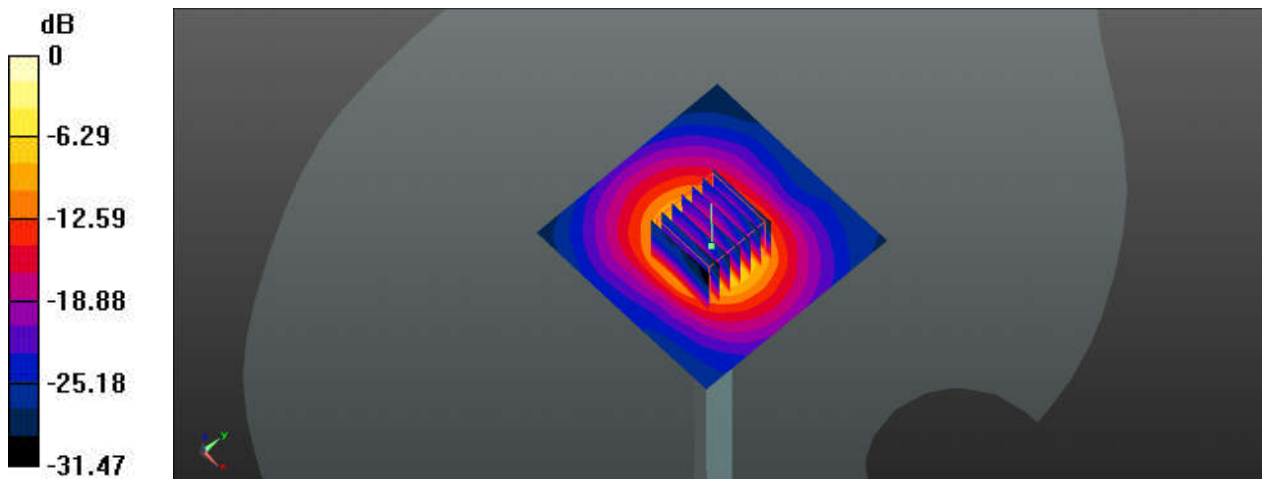
Communication System: UID 0, CW (0); Frequency: 5750 MHz; Duty Cycle: 1:1
Medium: HSL_5750_240331 Medium parameters used: $f = 5750$ MHz; $\sigma = 5.193$ S/m; $\epsilon_r = 35.971$;
 $\rho = 1000$ kg/m³
Ambient Temperature : 23.4 °C; Liquid Temperature : 22.2 °C

DASY5 Configuration:

- Probe: EX3DV4 - SN7576; ConvF(4.87, 4.87, 4.87); Calibrated: 2023/8/23
- Sensor-Surface: 1.4mm (Mechanical Surface Detection)
- Electronics: DAE4 Sn1386; Calibrated: 2023/7/17
- Phantom: SAM with CRP v5.0(Front); Type: QD000P40CD; Serial: 1671
- Measurement SW: DASY52, Version 52.10 (3); SEMCAD X Version 14.6.13 (7474)

Pin=100mW/Area Scan (71x71x1): Interpolated grid: dx=1.000 mm, dy=1.000 mm
Maximum value of SAR (interpolated) = 22.6 W/kg

Pin=100mW/Zoom Scan (7x7x7)/Cube 0: Measurement grid: dx=4mm, dy=4mm, dz=1.4mm
Reference Value = 52.93 V/m; Power Drift = 0.05 dB
Peak SAR (extrapolated) = 37.8 W/kg
SAR(1 g) = 8.67 W/kg; SAR(10 g) = 2.36 W/kg
Maximum value of SAR (measured) = 21.5 W/kg



0 dB = 21.5 W/kg