

36_WCDMA IV_RMC 12.2Kbps_Back_5mm_Ch1312

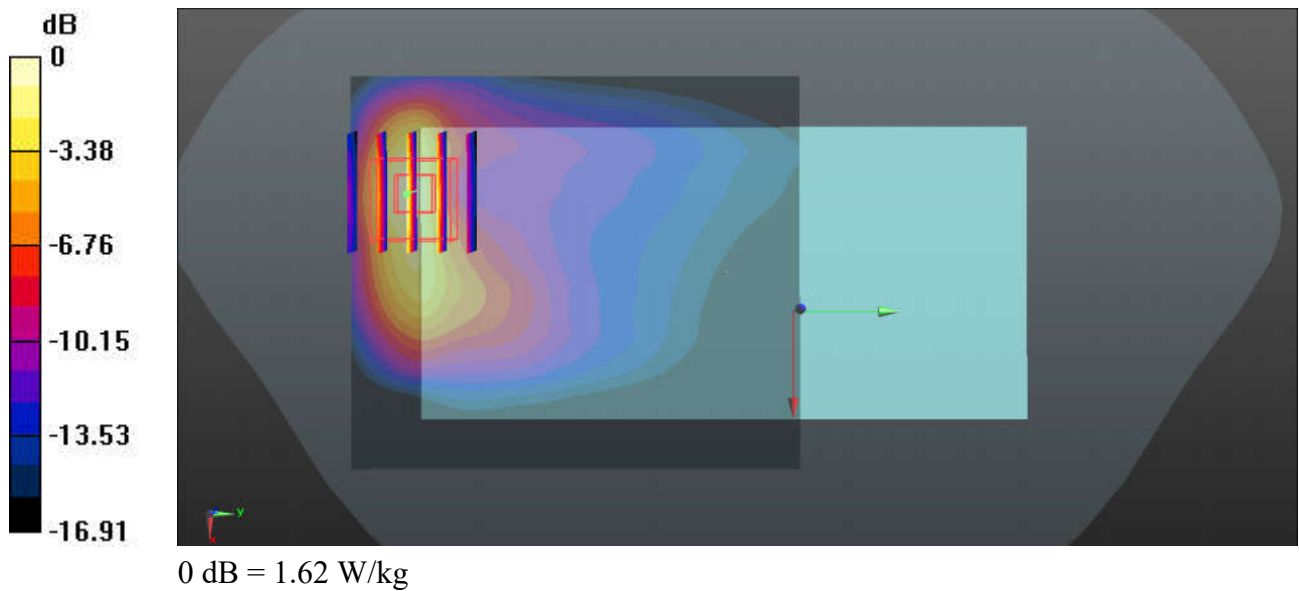
Communication System: UID 0, UMTS (0); Frequency: 1712.4 MHz; Duty Cycle: 1:1
Medium: HSL_1750_231102 Medium parameters used: $f = 1712.4$ MHz; $\sigma = 1.341$ S/m; $\epsilon_r = 41.176$;
 $\rho = 1000$ kg/m³
Ambient Temperature : 23.6 °C; Liquid Temperature : 22.5 °C

DASY5 Configuration:

- Probe: EX3DV4 - SN7577; ConvF(8.46, 8.46, 8.46); Calibrated: 2022/11/23
- Sensor-Surface: 1.4mm (Mechanical Surface Detection)
- Electronics: DAE3 Sn360; Calibrated: 2022/12/28
- Phantom: SAM (Front) with CRP v5.0; Type: QD000P40CD; Serial: TP:1795
- Measurement SW: DASY52, Version 52.10 (3); SEMCAD X Version 14.6.13 (7474)

Ch1312/Area Scan (71x81x1): Interpolated grid: dx=1.500 mm, dy=1.500 mm
Maximum value of SAR (interpolated) = 1.61 W/kg

Ch1312/Zoom Scan (5x5x7)/Cube 0: Measurement grid: dx=8mm, dy=8mm, dz=5mm
Reference Value = 5.460 V/m; Power Drift = 0.14 dB
Peak SAR (extrapolated) = 2.11 W/kg
SAR(1 g) = 1.09 W/kg; SAR(10 g) = 0.522 W/kg
Maximum value of SAR (measured) = 1.62 W/kg



37_LTE Band 66_20M_QPSK_1RB_49Offset_Back_5mm_Ch132072

Communication System: UID 0, LTE (0); Frequency: 1720 MHz; Duty Cycle: 1:1

Medium: HSL_1750_231102 Medium parameters used: $f = 1720$ MHz; $\sigma = 1.346$ S/m; $\epsilon_r = 41.169$; $\rho = 1000$ kg/m³

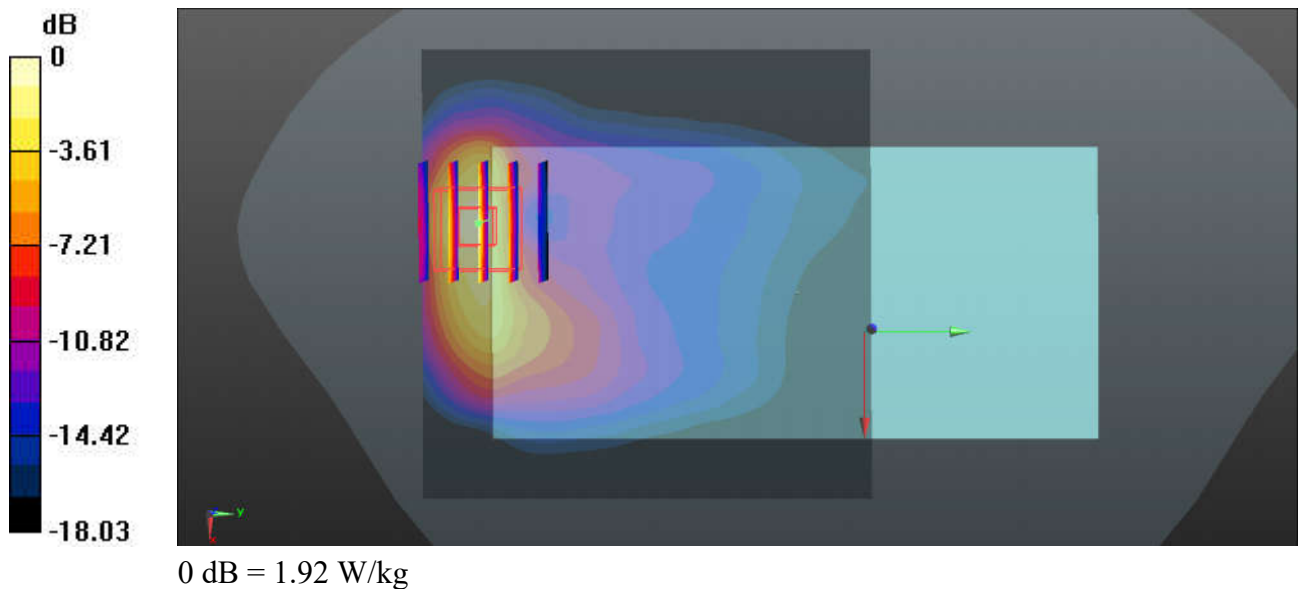
Ambient Temperature : 23.6 °C; Liquid Temperature : 22.5 °C

DASY5 Configuration:

- Probe: EX3DV4 - SN7577; ConvF(8.46, 8.46, 8.46); Calibrated: 2022/11/23
- Sensor-Surface: 1.4mm (Mechanical Surface Detection)
- Electronics: DAE3 Sn360; Calibrated: 2022/12/28
- Phantom: SAM (Front) with CRP v5.0; Type: QD000P40CD; Serial: TP:1795
- Measurement SW: DASY52, Version 52.10 (3); SEMCAD X Version 14.6.13 (7474)

Ch132072/Area Scan (81x81x1): Interpolated grid: dx=1.500 mm, dy=1.500 mm
Maximum value of SAR (interpolated) = 1.89 W/kg

Ch132072/Zoom Scan (5x5x7)/Cube 0: Measurement grid: dx=8mm, dy=8mm, dz=5mm
Reference Value = 5.568 V/m; Power Drift = 0.13 dB
Peak SAR (extrapolated) = 2.27 W/kg
SAR(1 g) = 1.17 W/kg; SAR(10 g) = 0.563 W/kg
Maximum value of SAR (measured) = 1.92 W/kg



38_GSM1900_GPRS (2 Tx slots)_Back_5mm_Ch661

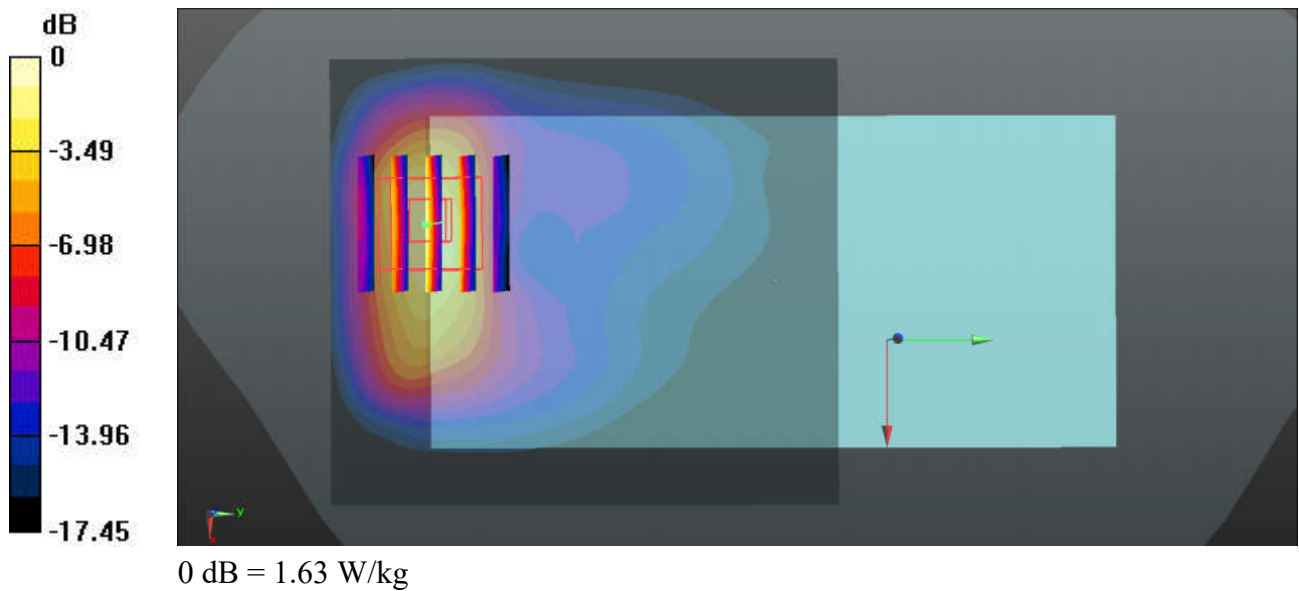
Communication System: UID 0, GPRS/EDGE10 (0); Frequency: 1880 MHz; Duty Cycle: 1:4.15
 Medium: HSL_1900_231103 Medium parameters used: $f = 1880$ MHz; $\sigma = 1.425$ S/m; $\epsilon_r = 38.727$; $\rho = 1000$ kg/m³
 Ambient Temperature : 23.3 °C; Liquid Temperature : 22.3 °C

DASY5 Configuration:

- Probe: EX3DV4 - SN7577; ConvF(8.19, 8.19, 8.19); Calibrated: 2022/11/23
- Sensor-Surface: 1.4mm (Mechanical Surface Detection)
- Electronics: DAE3 Sn360; Calibrated: 2022/12/28
- Phantom: SAM (Front) with CRP v5.0; Type: QD000P40CD; Serial: TP:1795
- Measurement SW: DASY52, Version 52.10 (3); SEMCAD X Version 14.6.13 (7474)

Ch661/Area Scan (71x81x1): Interpolated grid: dx=1.500 mm, dy=1.500 mm
 Maximum value of SAR (interpolated) = 1.26 W/kg

Ch661/Zoom Scan (5x5x7)/Cube 0: Measurement grid: dx=8mm, dy=8mm, dz=5mm
 Reference Value = 5.031 V/m; Power Drift = 0.14 dB
 Peak SAR (extrapolated) = 1.93 W/kg
SAR(1 g) = 0.988 W/kg; SAR(10 g) = 0.472 W/kg
 Maximum value of SAR (measured) = 1.63 W/kg



39_WCDMA II_RMC 12.2Kbps_Back_5mm_Ch9262

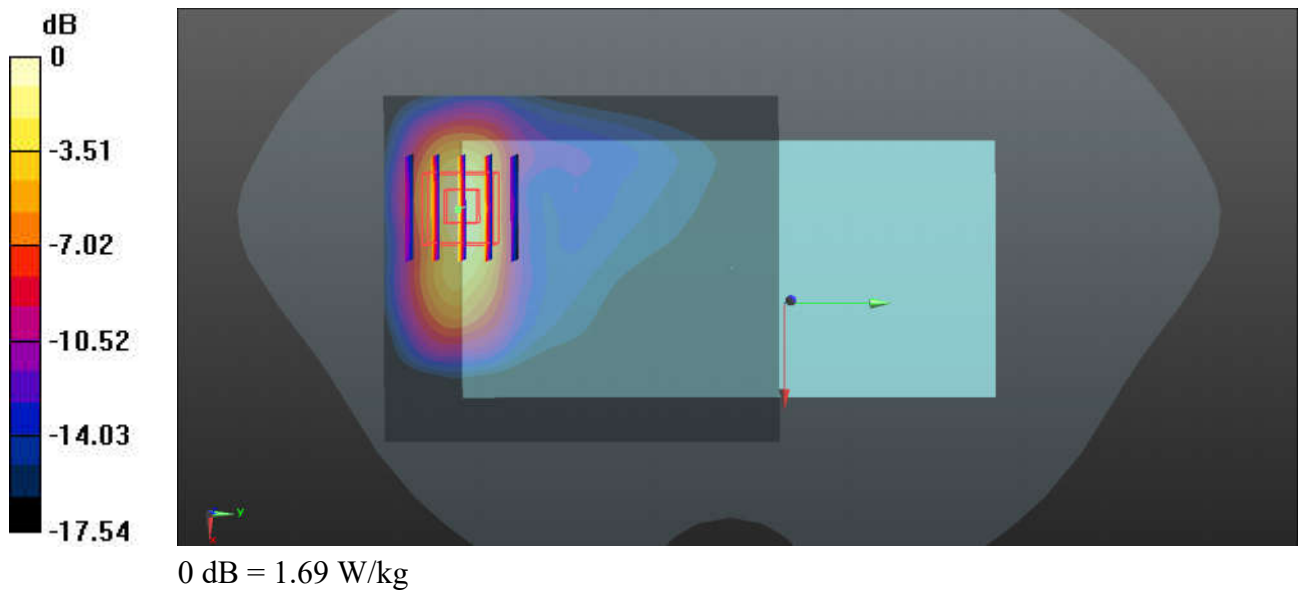
Communication System: UID 0, UMTS (0); Frequency: 1852.4 MHz; Duty Cycle: 1:1
 Medium: HSL_1900_231103 Medium parameters used: $f = 1852.4$ MHz; $\sigma = 1.406$ S/m; $\epsilon_r = 38.785$;
 $\rho = 1000$ kg/m³
 Ambient Temperature : 23.3 °C; Liquid Temperature : 22.3 °C

DASY5 Configuration:

- Probe: EX3DV4 - SN7577; ConvF(8.19, 8.19, 8.19); Calibrated: 2022/11/23
- Sensor-Surface: 1.4mm (Mechanical Surface Detection)
- Electronics: DAE3 Sn360; Calibrated: 2022/12/28
- Phantom: SAM (Front) with CRP v5.0; Type: QD000P40CD; Serial: TP:1795
- Measurement SW: DASY52, Version 52.10 (3); SEMCAD X Version 14.6.13 (7474)

Ch9262/Area Scan (71x81x1): Interpolated grid: dx=1.500 mm, dy=1.500 mm
 Maximum value of SAR (interpolated) = 1.41 W/kg

Ch9262/Zoom Scan (5x5x7)/Cube 0: Measurement grid: dx=8mm, dy=8mm, dz=5mm
 Reference Value = 4.084 V/m; Power Drift = -0.09 dB
 Peak SAR (extrapolated) = 2.03 W/kg
SAR(1 g) = 1.05 W/kg; SAR(10 g) = 0.503 W/kg
 Maximum value of SAR (measured) = 1.69 W/kg



40_LTE Band 2_20M_QPSK_1RB_49Offset_Back_5mm_Ch18700

Communication System: UID 0, LTE (0); Frequency: 1860 MHz; Duty Cycle: 1:1

Medium: HSL_1900_231103 Medium parameters used: $f = 1860$ MHz; $\sigma = 1.412$ S/m; $\epsilon_r = 38.77$; $\rho = 1000$ kg/m³

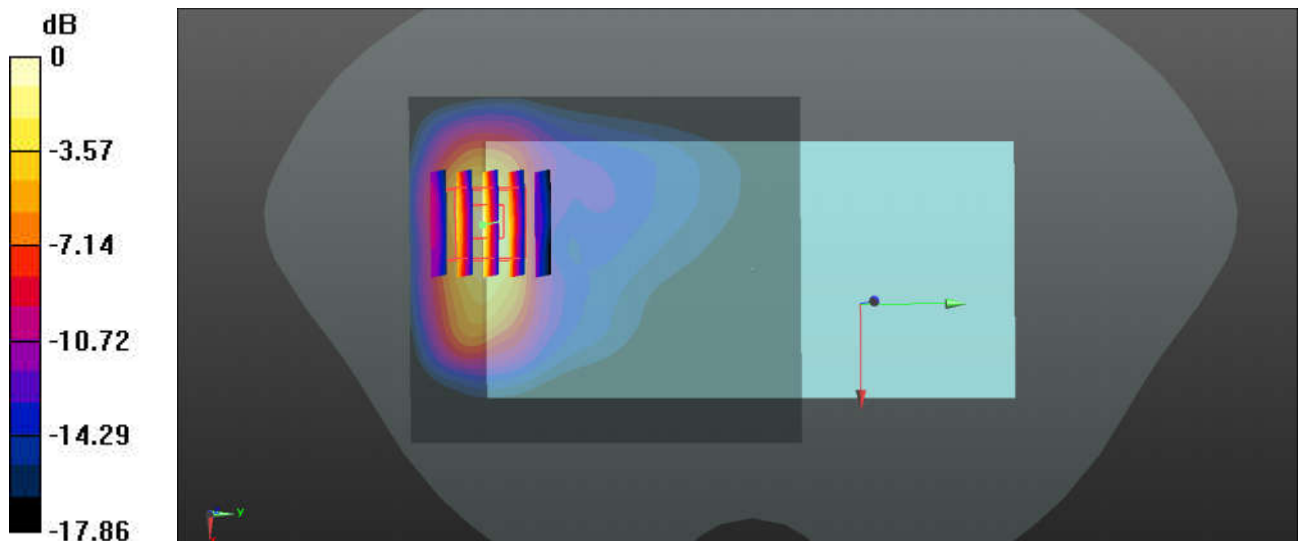
Ambient Temperature : 23.3 °C; Liquid Temperature : 22.3 °C

DASY5 Configuration:

- Probe: EX3DV4 - SN7577; ConvF(8.19, 8.19, 8.19); Calibrated: 2022/11/23
- Sensor-Surface: 1.4mm (Mechanical Surface Detection)
- Electronics: DAE3 Sn360; Calibrated: 2022/12/28
- Phantom: SAM (Front) with CRP v5.0; Type: QD000P40CD; Serial: TP:1795
- Measurement SW: DASY52, Version 52.10 (3); SEMCAD X Version 14.6.13 (7474)

Ch18700/Area Scan (71x81x1): Interpolated grid: dx=1.500 mm, dy=1.500 mm
 Maximum value of SAR (interpolated) = 1.40 W/kg

Ch18700/Zoom Scan (5x5x7)/Cube 0: Measurement grid: dx=8mm, dy=8mm, dz=5mm
 Reference Value = 4.302 V/m; Power Drift = -0.14 dB
 Peak SAR (extrapolated) = 2.09 W/kg
SAR(1 g) = 1.08 W/kg; SAR(10 g) = 0.517 W/kg
 Maximum value of SAR (measured) = 1.76 W/kg



0 dB = 1.76 W/kg

41_LTE Band 7_20M_QPSK_1RB_49Offset_Back_5mm_Ch21100

Communication System: UID 0, LTE (0); Frequency: 2535 MHz; Duty Cycle: 1:1

Medium: HSL_2600_231104 Medium parameters used: $f = 2535$ MHz; $\sigma = 1.854$ S/m; $\epsilon_r = 38.594$; $\rho = 1000$ kg/m³

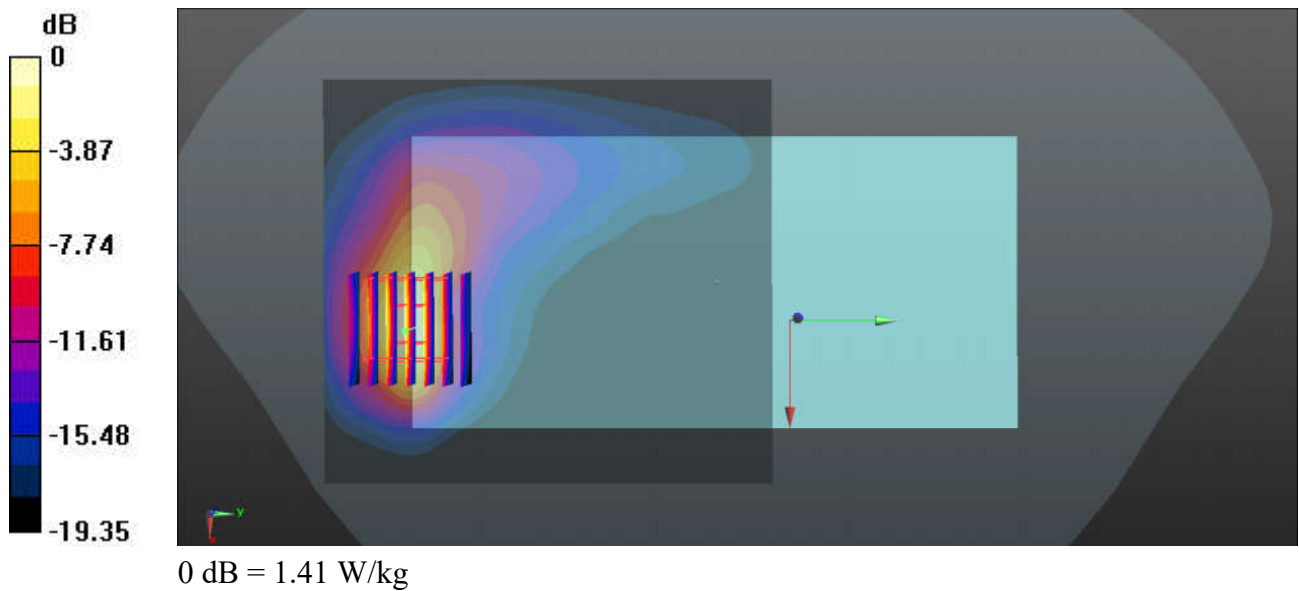
Ambient Temperature : 23.4 °C; Liquid Temperature : 22.2 °C

DASY5 Configuration:

- Probe: EX3DV4 - SN7577; ConvF(7.55, 7.55, 7.55); Calibrated: 2022/11/23
- Sensor-Surface: 1.4mm (Mechanical Surface Detection)
- Electronics: DAE3 Sn360; Calibrated: 2022/12/28
- Phantom: SAM (Front) with CRP v5.0; Type: QD000P40CD; Serial: TP:1795
- Measurement SW: DASY52, Version 52.10 (3); SEMCAD X Version 14.6.13 (7474)

Ch21100/Area Scan (91x101x1): Interpolated grid: $dx=1.200$ mm, $dy=1.200$ mm
 Maximum value of SAR (interpolated) = 1.53 W/kg

Ch21100/Zoom Scan (7x7x7)/Cube 0: Measurement grid: $dx=5$ mm, $dy=5$ mm, $dz=5$ mm
 Reference Value = 2.838 V/m; Power Drift = 0.12 dB
 Peak SAR (extrapolated) = 2.32 W/kg
SAR(1 g) = 1.03 W/kg; SAR(10 g) = 0.418 W/kg
 Maximum value of SAR (measured) = 1.41 W/kg



42_LTE Band 38_20M_QPSK_1RB_49Offset_Back_5mm_Ch38000

Communication System: UID 0, LTE (0); Frequency: 2595 MHz; Duty Cycle: 1:1.59

Medium: HSL_2600_231104 Medium parameters used: $f = 2595$ MHz; $\sigma = 1.901$ S/m; $\epsilon_r = 38.51$; $\rho = 1000$ kg/m³

Ambient Temperature : 23.4 °C; Liquid Temperature : 22.2 °C

DASY5 Configuration:

- Probe: EX3DV4 - SN7577; ConvF(7.55, 7.55, 7.55); Calibrated: 2022/11/23
- Sensor-Surface: 1.4mm (Mechanical Surface Detection)
- Electronics: DAE3 Sn360; Calibrated: 2022/12/28
- Phantom: SAM (Front) with CRP v5.0; Type: QD000P40CD; Serial: TP:1795
- Measurement SW: DASY52, Version 52.10 (3); SEMCAD X Version 14.6.13 (7474)

Ch38000/Area Scan (91x101x1): Interpolated grid: dx=1.200 mm, dy=1.200 mm

Maximum value of SAR (interpolated) = 1.39 W/kg

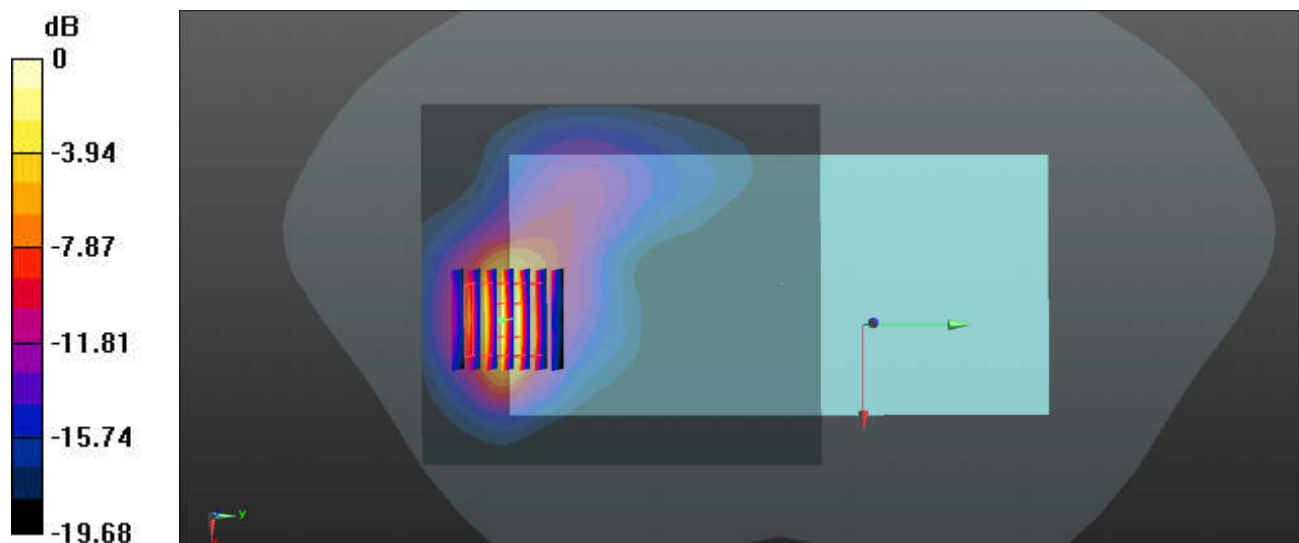
Ch38000/Zoom Scan (7x7x7)/Cube 0: Measurement grid: dx=5mm, dy=5mm, dz=5mm

Reference Value = 2.552 V/m; Power Drift = 0.15 dB

Peak SAR (extrapolated) = 2.46 W/kg

SAR(1 g) = 1.07 W/kg; SAR(10 g) = 0.414 W/kg

Maximum value of SAR (measured) = 1.44 W/kg



0 dB = 1.44 W/kg

43_Bluetooth_DH5 1Mbps_Back_5mm_Ch39

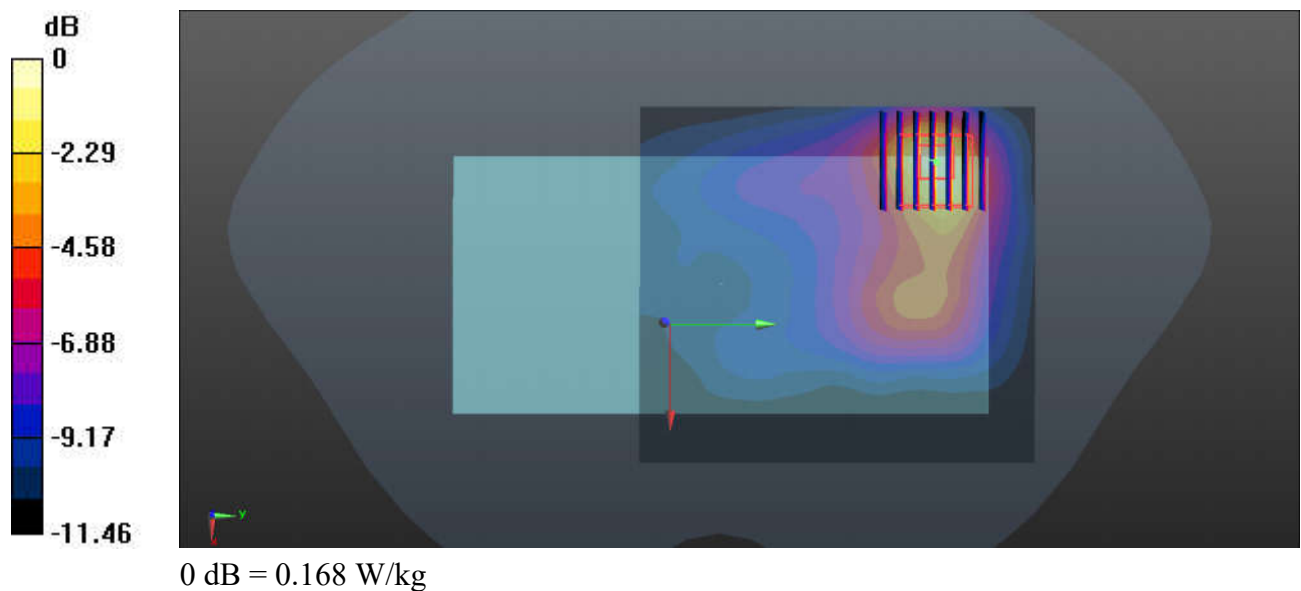
Communication System: UID 0, Bluetooth (0); Frequency: 2441 MHz; Duty Cycle: 1:1.302
Medium: HSL_2450_231105 Medium parameters used: $f = 2441$ MHz; $\sigma = 1.835$ S/m; $\epsilon_r = 40.392$; $\rho = 1000$ kg/m³
Ambient Temperature : 23.3 °C; Liquid Temperature : 22.4 °C

DASY5 Configuration:

- Probe: EX3DV4 - SN7577; ConvF(7.94, 7.94, 7.94); Calibrated: 2022/11/23
- Sensor-Surface: 1.4mm (Mechanical Surface Detection)
- Electronics: DAE3 Sn360; Calibrated: 2022/12/28
- Phantom: SAM (Front) with CRP v5.0; Type: QD000P40CD; Serial: TP:1795
- Measurement SW: DASY52, Version 52.10 (3); SEMCAD X Version 14.6.13 (7474)

Ch39/Area Scan (91x101x1): Interpolated grid: dx=1.200 mm, dy=1.200 mm
Maximum value of SAR (interpolated) = 0.170 W/kg

Ch39/Zoom Scan (7x7x7)/Cube 0: Measurement grid: dx=5mm, dy=5mm, dz=5mm
Reference Value = 3.190 V/m; Power Drift = 0.03 dB
Peak SAR (extrapolated) = 0.306 W/kg
SAR(1 g) = 0.125 W/kg; SAR(10 g) = 0.063 W/kg
Maximum value of SAR (measured) = 0.168 W/kg



44_WLAN2.4GHz_802.11b 1Mbps_Back_5mm_Ch6

Communication System: UID 0, WIFI (0); Frequency: 2437 MHz; Duty Cycle: 1:1

Medium: HSL_2450_231105 Medium parameters used: $f = 2437$ MHz; $\sigma = 1.832$ S/m; $\epsilon_r = 40.397$; $\rho = 1000$ kg/m³

Ambient Temperature : 23.3 °C; Liquid Temperature : 22.4 °C

DASY5 Configuration:

- Probe: EX3DV4 - SN7577; ConvF(7.94, 7.94, 7.94); Calibrated: 2022/11/23
- Sensor-Surface: 1.4mm (Mechanical Surface Detection)
- Electronics: DAE3 Sn360; Calibrated: 2022/12/28
- Phantom: SAM (Front) with CRP v5.0; Type: QD000P40CD; Serial: TP:1795
- Measurement SW: DASY52, Version 52.10 (3); SEMCAD X Version 14.6.13 (7474)

Ch6/Area Scan (91x91x1): Interpolated grid: dx=1.200 mm, dy=1.200 mm

Maximum value of SAR (interpolated) = 1.21 W/kg

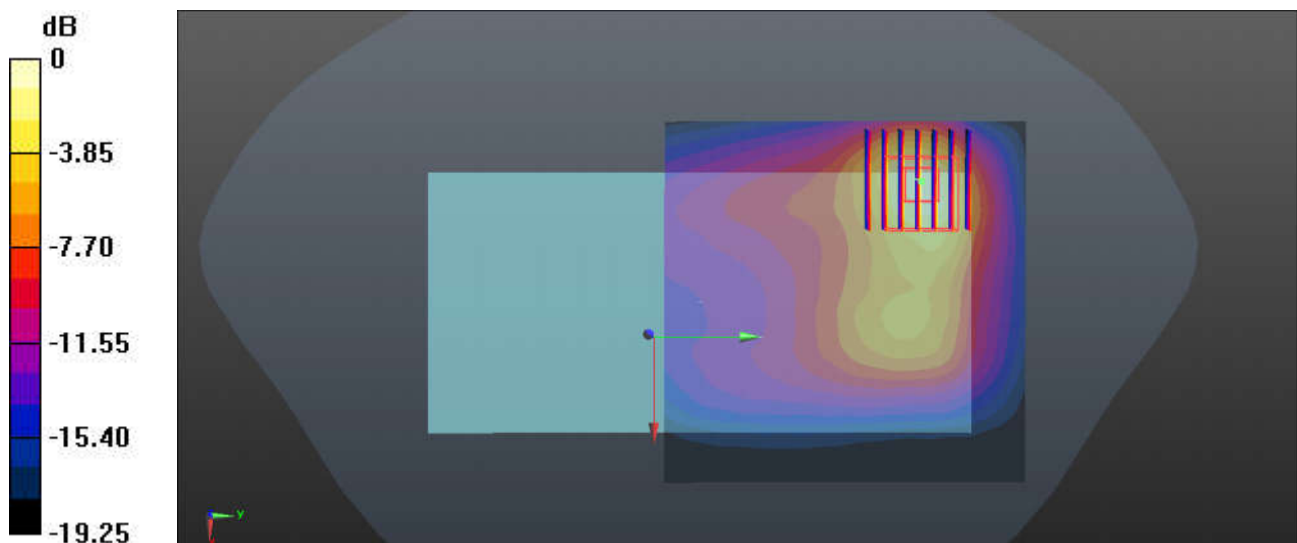
Ch6/Zoom Scan (7x7x7)/Cube 0: Measurement grid: dx=5mm, dy=5mm, dz=5mm

Reference Value = 5.941 V/m; Power Drift = -0.11 dB

Peak SAR (extrapolated) = 2.19 W/kg

SAR(1 g) = 0.893 W/kg; SAR(10 g) = 0.408 W/kg

Maximum value of SAR (measured) = 1.23 W/kg



0 dB = 1.23 W/kg

45_WLAN5GHz_802.11ac-VHT80 MCS0_Back_5mm_Ch58

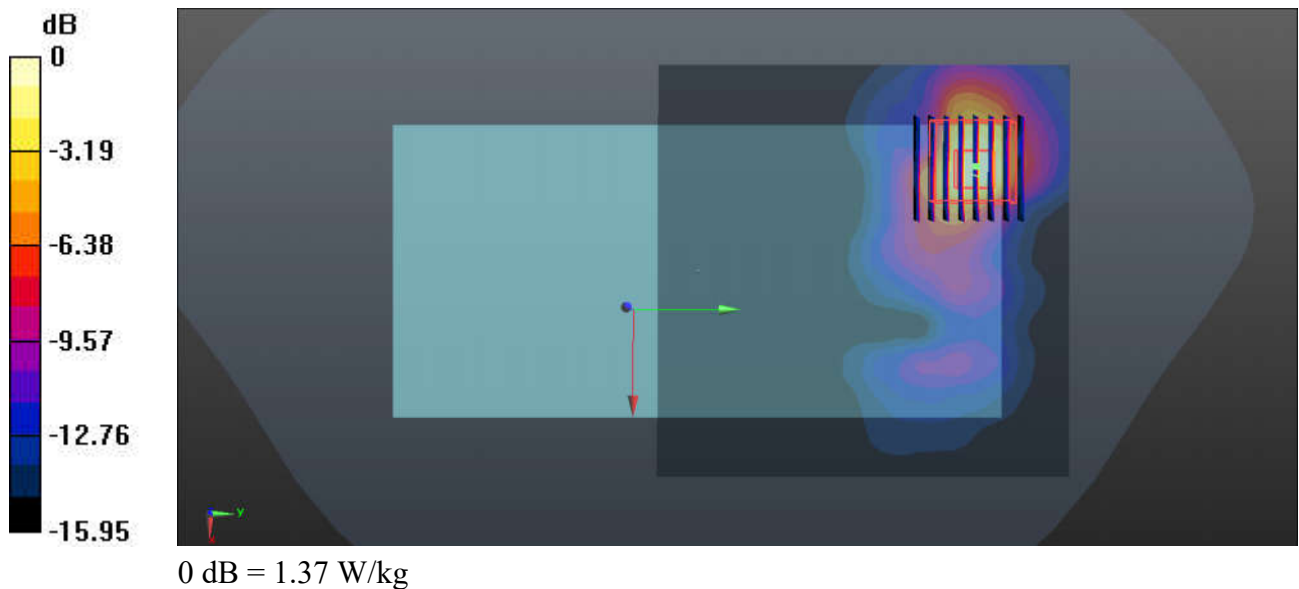
Communication System: UID 0, WIFI (0); Frequency: 5290 MHz; Duty Cycle: 1:1.139
Medium: HSL_5250_231106 Medium parameters used: $f = 5290$ MHz; $\sigma = 4.659$ S/m; $\epsilon_r = 35.618$; $\rho = 1000$ kg/m³
Ambient Temperature : 23.5 °C; Liquid Temperature : 22.5 °C

DASY5 Configuration:

- Probe: EX3DV4 - SN7577; ConvF(5.43, 5.43, 5.43); Calibrated: 2022/11/23
- Sensor-Surface: 1.4mm (Mechanical Surface Detection)
- Electronics: DAE3 Sn360; Calibrated: 2022/12/28
- Phantom: SAM (Front) with CRP v5.0; Type: QD000P40CD; Serial: TP:1795
- Measurement SW: DASY52, Version 52.10 (3); SEMCAD X Version 14.6.13 (7474)

Ch58/Area Scan (111x111x1): Interpolated grid: dx=1.000 mm, dy=1.000 mm
Maximum value of SAR (interpolated) = 1.40 W/kg

Ch58/Zoom Scan (8x8x7)/Cube 0: Measurement grid: dx=4mm, dy=4mm, dz=1.4mm
Reference Value = 2.392 V/m; Power Drift = 0.04 dB
Peak SAR (extrapolated) = 2.21 W/kg
SAR(1 g) = 0.633 W/kg; SAR(10 g) = 0.229 W/kg
Maximum value of SAR (measured) = 1.37 W/kg



46_WLAN5GHz_802.11ac-VHT80 MCS0_Back_5mm_Ch122

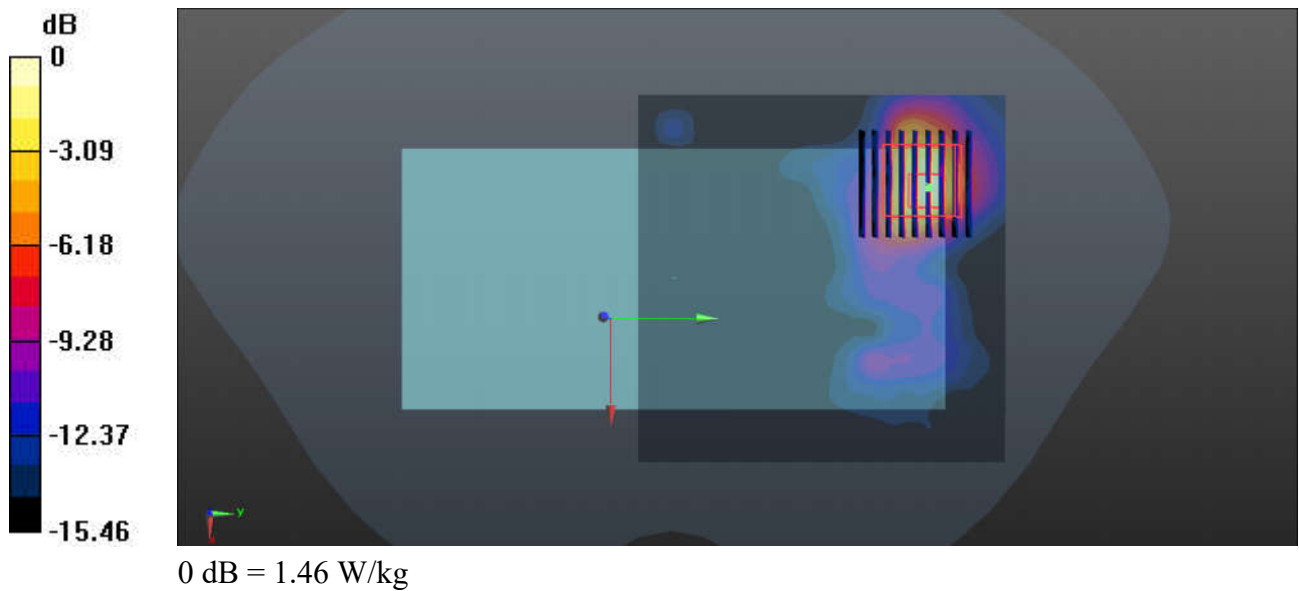
Communication System: UID 0, WIFI (0); Frequency: 5610 MHz; Duty Cycle: 1:1.139
Medium: HSL_5600_231107 Medium parameters used: $f = 5610$ MHz; $\sigma = 4.979$ S/m; $\epsilon_r = 35.172$; $\rho = 1000$ kg/m³
Ambient Temperature : 23.5 °C; Liquid Temperature : 22.3 °C

DASY5 Configuration:

- Probe: EX3DV4 - SN7577; ConvF(4.81, 4.81, 4.81); Calibrated: 2022/11/23
- Sensor-Surface: 1.4mm (Mechanical Surface Detection)
- Electronics: DAE3 Sn360; Calibrated: 2022/12/28
- Phantom: SAM (Front) with CRP v5.0; Type: QD000P40CD; Serial: TP:1795
- Measurement SW: DASY52, Version 52.10 (3); SEMCAD X Version 14.6.13 (7474)

Ch122/Area Scan (111x111x1): Interpolated grid: dx=1.000 mm, dy=1.000 mm
Maximum value of SAR (interpolated) = 1.41 W/kg

Ch122/Zoom Scan (9x9x7)/Cube 0: Measurement grid: dx=4mm, dy=4mm, dz=1.4mm
Reference Value = 2.778 V/m; Power Drift = 0.12 dB
Peak SAR (extrapolated) = 2.53 W/kg
SAR(1 g) = 0.662 W/kg; SAR(10 g) = 0.239 W/kg
Maximum value of SAR (measured) = 1.46 W/kg



47_WLAN5GHz_802.11ac-VHT80 MCS0_Back_5mm_Ch155

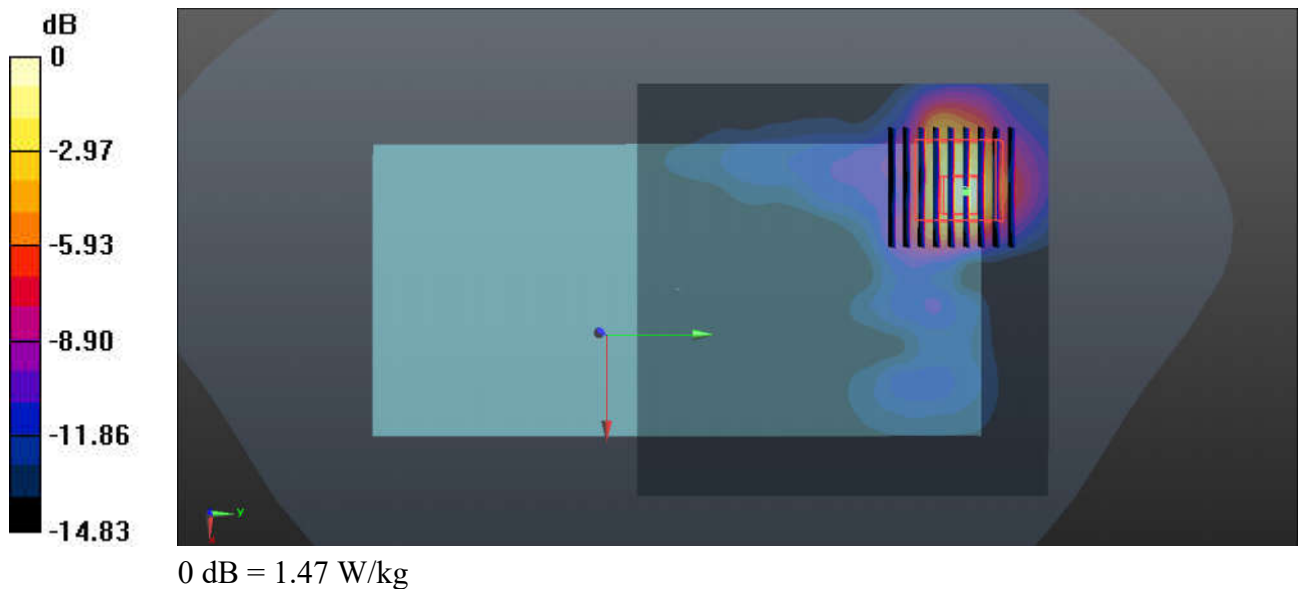
Communication System: UID 0, WIFI (0); Frequency: 5775 MHz; Duty Cycle: 1:1.139
Medium: HSL_5750_231109 Medium parameters used: $f = 5775$ MHz; $\sigma = 5.158$ S/m; $\epsilon_r = 34.932$; $\rho = 1000$ kg/m³
Ambient Temperature : 23.5 °C; Liquid Temperature : 22.6 °C

DASY5 Configuration:

- Probe: EX3DV4 - SN7577; ConvF(5.05, 5.05, 5.05); Calibrated: 2022/11/23
- Sensor-Surface: 1.4mm (Mechanical Surface Detection)
- Electronics: DAE3 Sn360; Calibrated: 2022/12/28
- Phantom: SAM (Front) with CRP v5.0; Type: QD000P40CD; Serial: TP:1795
- Measurement SW: DASY52, Version 52.10 (3); SEMCAD X Version 14.6.13 (7474)

Ch155/Area Scan (111x111x1): Interpolated grid: dx=1.000 mm, dy=1.000 mm
Maximum value of SAR (interpolated) = 1.48 W/kg

Ch155/Zoom Scan (9x9x7)/Cube 0: Measurement grid: dx=4mm, dy=4mm, dz=1.4mm
Reference Value = 2.919 V/m; Power Drift = -0.06 dB
Peak SAR (extrapolated) = 2.62 W/kg
SAR(1 g) = 0.659 W/kg; SAR(10 g) = 0.239 W/kg
Maximum value of SAR (measured) = 1.47 W/kg



48_LTE Band 13_10M_QPSK_1RB_25Offset_Back_0mm_Ch23230

Communication System: UID 0, LTE (0); Frequency: 782 MHz; Duty Cycle: 1:1

Medium: HSL_750_231031 Medium parameters used: $f = 782 \text{ MHz}$; $\sigma = 0.921 \text{ S/m}$; $\epsilon_r = 42.775$; $\rho = 1000 \text{ kg/m}^3$

Ambient Temperature : 23.4 °C; Liquid Temperature : 22.3 °C

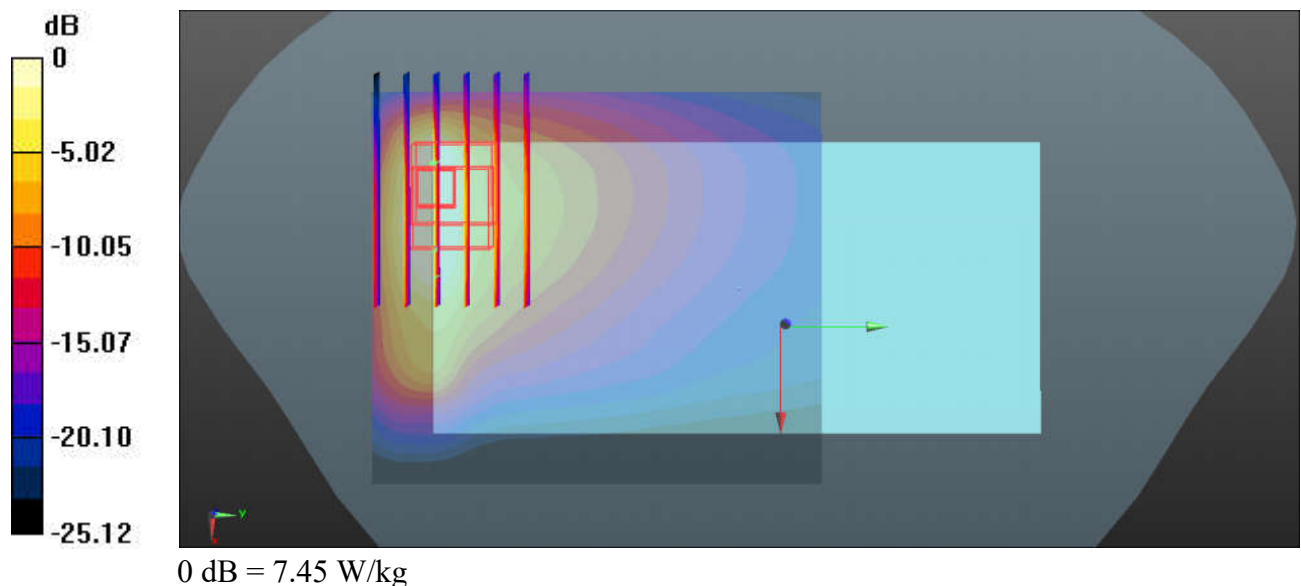
DASY5 Configuration:

- Probe: EX3DV4 - SN7577; ConvF(9.79, 9.79, 9.79); Calibrated: 2022/11/23
- Sensor-Surface: 1.4mm (Mechanical Surface Detection)
- Electronics: DAE3 Sn360; Calibrated: 2022/12/28
- Phantom: SAM (Front) with CRP v5.0; Type: QD000P40CD; Serial: TP:1795
- Measurement SW: DASY52, Version 52.10 (3); SEMCAD X Version 14.6.13 (7474)

Ch23230/Area Scan (71x81x1): Interpolated grid: $dx=1.500 \text{ mm}$, $dy=1.500 \text{ mm}$
 Maximum value of SAR (interpolated) = 9.17 W/kg

Ch23230/Zoom Scan (6x6x7)/Cube 0: Measurement grid: $dx=8\text{mm}$, $dy=8\text{mm}$, $dz=5\text{mm}$
 Reference Value = 12.19 V/m; Power Drift = 0.03 dB
 Peak SAR (extrapolated) = 11.0 W/kg
SAR(1 g) = 3.3 W/kg; SAR(10 g) = 1.69 W/kg
 Maximum value of SAR (measured) = 7.45 W/kg

Ch23230/Zoom Scan (6x6x7)/Cube 1: Measurement grid: $dx=8\text{mm}$, $dy=8\text{mm}$, $dz=5\text{mm}$
 Reference Value = 12.19 V/m; Power Drift = 0.03 dB
 Peak SAR (extrapolated) = 11.1 W/kg
SAR(1 g) = 3.43 W/kg; SAR(10 g) = 1.61 W/kg
 Maximum value of SAR (measured) = 6.95 W/kg



49_GSM850_GPRS (2 Tx slots)_Back_0mm_Ch128

Communication System: UID 0, GPRS/EDGE10 (0); Frequency: 824.2 MHz; Duty Cycle: 1:4.15
Medium: HSL_835_231101 Medium parameters used: $f = 824.2$ MHz; $\sigma = 0.894$ S/m; $\epsilon_r = 42.219$; $\rho = 1000$ kg/m³

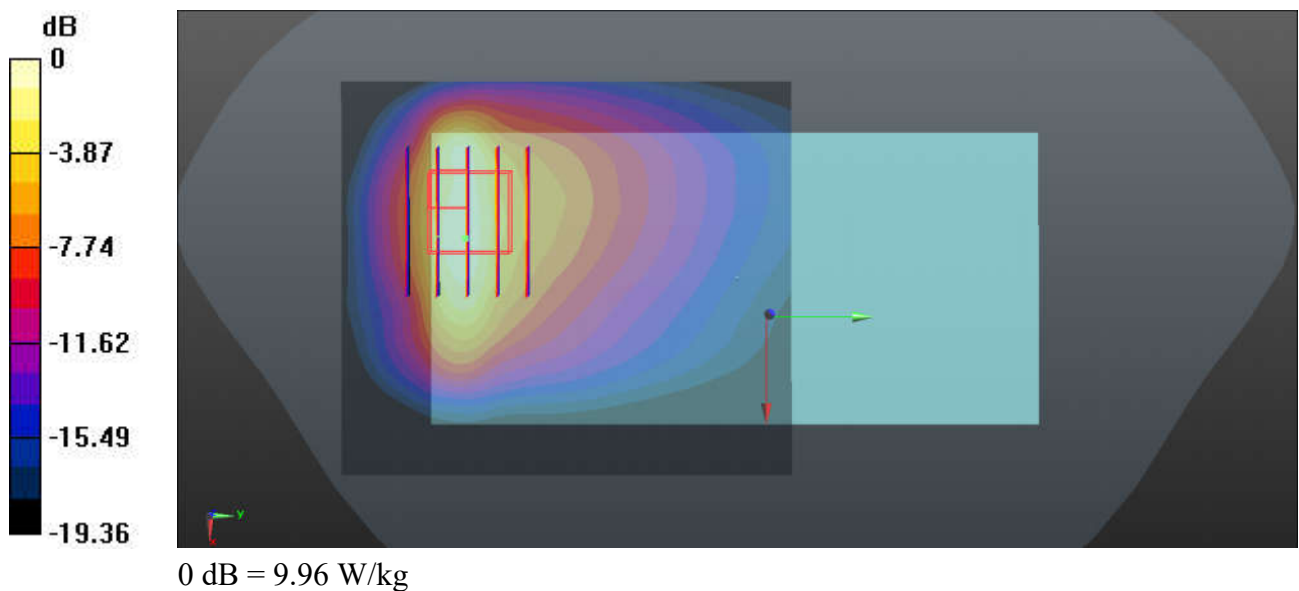
Ambient Temperature : 23.5 °C; Liquid Temperature : 22.5 °C

DASY5 Configuration:

- Probe: EX3DV4 - SN7577; ConvF(9.53, 9.53, 9.53); Calibrated: 2022/11/23
- Sensor-Surface: 1.4mm (Mechanical Surface Detection)
- Electronics: DAE3 Sn360; Calibrated: 2022/12/28
- Phantom: SAM (Front) with CRP v5.0; Type: QD000P40CD; Serial: TP:1795
- Measurement SW: DASY52, Version 52.10 (3); SEMCAD X Version 14.6.13 (7474)

Ch128/Area Scan (71x81x1): Interpolated grid: dx=1.500 mm, dy=1.500 mm
Maximum value of SAR (interpolated) = 9.85 W/kg

Ch128/Zoom Scan (6x5x7)/Cube 0: Measurement grid: dx=8mm, dy=8mm, dz=5mm
Reference Value = 18.47 V/m; Power Drift = -0.05 dB
Peak SAR (extrapolated) = 16.3 W/kg
SAR(1 g) = 4.84 W/kg; SAR(10 g) = 2.62 W/kg
Maximum value of SAR (measured) = 9.96 W/kg



50_WCDMA V_RMC 12.2Kbps_Back_0mm_Ch4132

Communication System: UID 0, UMTS (0); Frequency: 826.4 MHz; Duty Cycle: 1:1
 Medium: HSL_835_231101 Medium parameters used: $f = 826.4 \text{ MHz}$; $\sigma = 0.896 \text{ S/m}$; $\epsilon_r = 42.19$; $\rho = 1000 \text{ kg/m}^3$
 Ambient Temperature : 23.5 °C; Liquid Temperature : 22.5 °C

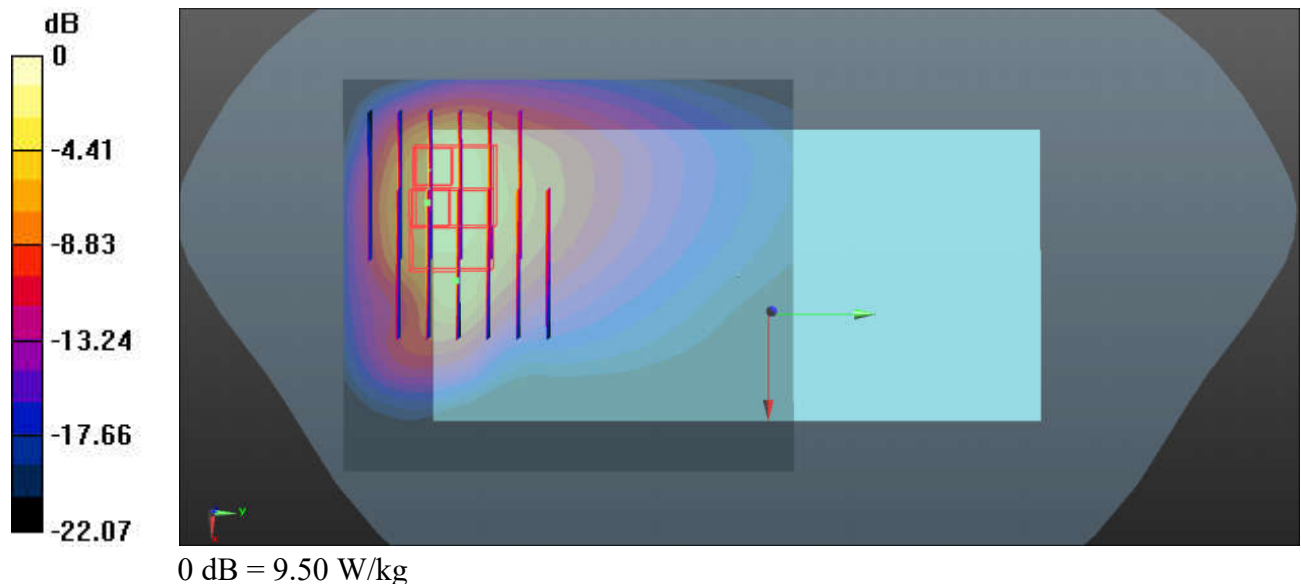
DASY5 Configuration:

- Probe: EX3DV4 - SN7577; ConvF(9.53, 9.53, 9.53); Calibrated: 2022/11/23
- Sensor-Surface: 1.4mm (Mechanical Surface Detection)
- Electronics: DAE3 Sn360; Calibrated: 2022/12/28
- Phantom: SAM (Front) with CRP v5.0; Type: QD000P40CD; Serial: TP:1795
- Measurement SW: DASY52, Version 52.10 (3); SEMCAD X Version 14.6.13 (7474)

Ch4132/Area Scan (71x81x1): Interpolated grid: $dx=1.500 \text{ mm}$, $dy=1.500 \text{ mm}$
 Maximum value of SAR (interpolated) = 4.55 W/kg

Ch4132/Zoom Scan (6x6x7)/Cube 0: Measurement grid: $dx=8\text{mm}$, $dy=8\text{mm}$, $dz=5\text{mm}$
 Reference Value = 11.76 V/m; Power Drift = -0.09 dB
 Peak SAR (extrapolated) = 15.7 W/kg
SAR(1 g) = 4.22 W/kg; SAR(10 g) = 2.03 W/kg
 Maximum value of SAR (measured) = 9.50 W/kg

Ch4132/Zoom Scan (6x6x7)/Cube 1: Measurement grid: $dx=8\text{mm}$, $dy=8\text{mm}$, $dz=5\text{mm}$
 Reference Value = 11.76 V/m; Power Drift = -0.09 dB
 Peak SAR (extrapolated) = 13.6 W/kg
SAR(1 g) = 3.64 W/kg; SAR(10 g) = 1.81 W/kg
 Maximum value of SAR (measured) = 9.30 W/kg



51_LTE Band 26_15M_QPSK_1RB_37Offset_Back_0mm_Ch26865

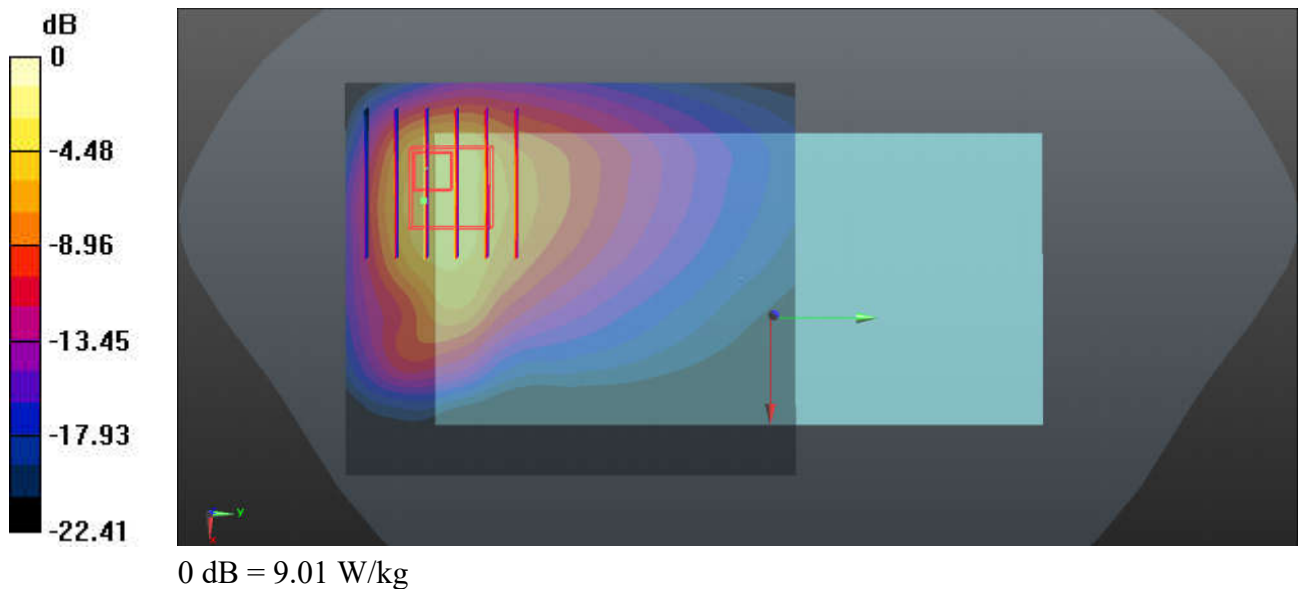
Communication System: UID 0, LTE (0); Frequency: 831.5 MHz; Duty Cycle: 1:1
Medium: HSL_835_231101 Medium parameters used: $f = 832$ MHz; $\sigma = 0.901$ S/m; $\epsilon_r = 42.113$; $\rho = 1000$ kg/m³
Ambient Temperature : 23.5 °C; Liquid Temperature : 22.5 °C

DASY5 Configuration:

- Probe: EX3DV4 - SN7577; ConvF(9.53, 9.53, 9.53); Calibrated: 2022/11/23
- Sensor-Surface: 1.4mm (Mechanical Surface Detection)
- Electronics: DAE3 Sn360; Calibrated: 2022/12/28
- Phantom: SAM (Front) with CRP v5.0; Type: QD000P40CD; Serial: TP:1795
- Measurement SW: DASY52, Version 52.10 (3); SEMCAD X Version 14.6.13 (7474)

Ch26865/Area Scan (71x81x1): Interpolated grid: dx=1.500 mm, dy=1.500 mm
Maximum value of SAR (interpolated) = 4.65 W/kg

Ch26865/Zoom Scan (6x6x7)/Cube 0: Measurement grid: dx=8mm, dy=8mm, dz=5mm
Reference Value = 63.10 V/m; Power Drift = 0.16 dB
Peak SAR (extrapolated) = 14.3 W/kg
SAR(1 g) = 3.92 W/kg; SAR(10 g) = 1.92 W/kg
Maximum value of SAR (measured) = 9.01 W/kg



52_WCDMA IV_RMC 12.2Kbps_Bottom side_0mm_Ch1312

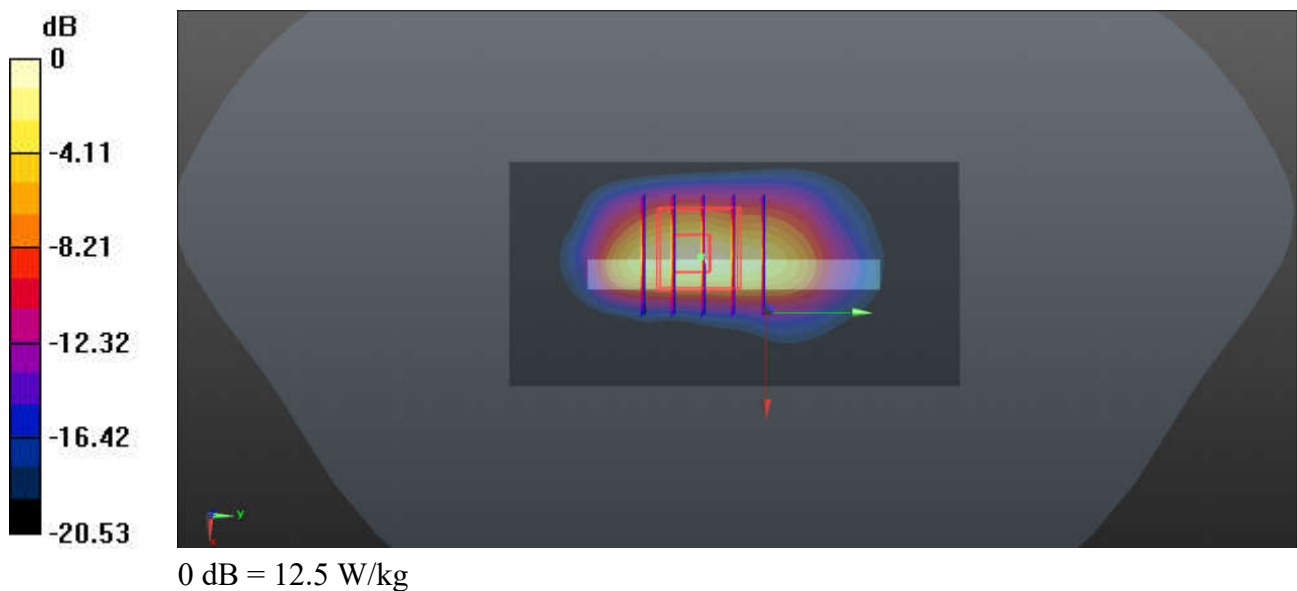
Communication System: UID 0, UMTS (0); Frequency: 1712.4 MHz; Duty Cycle: 1:1
Medium: HSL_1750_231102 Medium parameters used: $f = 1712.4$ MHz; $\sigma = 1.341$ S/m; $\epsilon_r = 41.176$;
 $\rho = 1000$ kg/m³
Ambient Temperature : 23.6 °C; Liquid Temperature : 22.5 °C

DASY5 Configuration:

- Probe: EX3DV4 - SN7577; ConvF(8.46, 8.46, 8.46); Calibrated: 2022/11/23
- Sensor-Surface: 1.4mm (Mechanical Surface Detection)
- Electronics: DAE3 Sn360; Calibrated: 2022/12/28
- Phantom: SAM (Front) with CRP v5.0; Type: QD000P40CD; Serial: TP:1795
- Measurement SW: DASY52, Version 52.10 (3); SEMCAD X Version 14.6.13 (7474)

Ch1312/Area Scan (41x81x1): Interpolated grid: dx=1.500 mm, dy=1.500 mm
Maximum value of SAR (interpolated) = 10.6 W/kg

Ch1312/Zoom Scan (5x5x7)/Cube 0: Measurement grid: dx=8mm, dy=8mm, dz=5mm
Reference Value = 3.397 V/m; Power Drift = 0.07 dB
Peak SAR (extrapolated) = 15.3 W/kg
SAR(1 g) = 6.65 W/kg; SAR(10 g) = 2.9 W/kg
Maximum value of SAR (measured) = 12.5 W/kg



53_LTE Band 66_20M_QPSK_1RB_49Offset_Bottom side_0mm_Ch132072

Communication System: UID 0, LTE (0); Frequency: 1720 MHz; Duty Cycle: 1:1

Medium: HSL_1750_231102 Medium parameters used: $f = 1720$ MHz; $\sigma = 1.346$ S/m; $\epsilon_r = 41.169$; $\rho = 1000$ kg/m³

Ambient Temperature : 23.6 °C; Liquid Temperature : 22.5 °C

DASY5 Configuration:

- Probe: EX3DV4 - SN7577; ConvF(8.46, 8.46, 8.46); Calibrated: 2022/11/23
- Sensor-Surface: 1.4mm (Mechanical Surface Detection)
- Electronics: DAE3 Sn360; Calibrated: 2022/12/28
- Phantom: SAM (Front) with CRP v5.0; Type: QD000P40CD; Serial: TP:1795
- Measurement SW: DASY52, Version 52.10 (3); SEMCAD X Version 14.6.13 (7474)

Ch132072/Area Scan (41x81x1): Interpolated grid: dx=1.500 mm, dy=1.500 mm

Maximum value of SAR (interpolated) = 10.1 W/kg

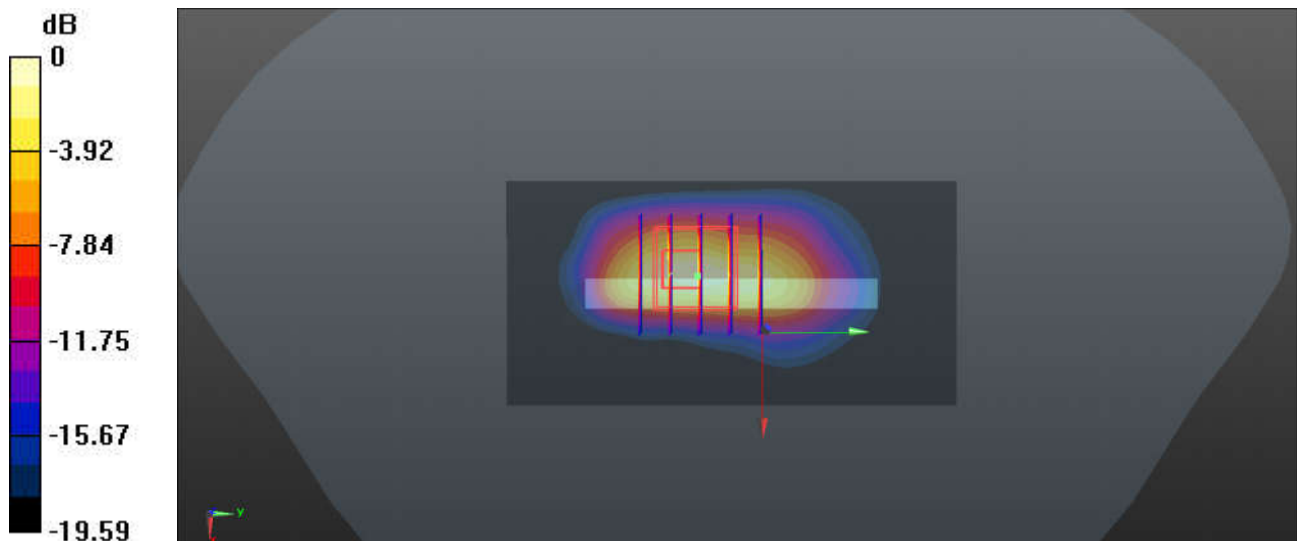
Ch132072/Zoom Scan (5x5x7)/Cube 0: Measurement grid: dx=8mm, dy=8mm, dz=5mm

Reference Value = 72.16 V/m; Power Drift = 0.04 dB

Peak SAR (extrapolated) = 13.6 W/kg

SAR(1 g) = 6.05 W/kg; SAR(10 g) = 2.74 W/kg

Maximum value of SAR (measured) = 11.0 W/kg



0 dB = 11.0 W/kg

54_GSM1900_GPRS (2 Tx slots)_Bottom side_0mm_Ch661

Communication System: UID 0, GPRS/EDGE10 (0); Frequency: 1880 MHz; Duty Cycle: 1:4.15
Medium: HSL_1900_231103 Medium parameters used: $f = 1880$ MHz; $\sigma = 1.425$ S/m; $\epsilon_r = 38.727$; $\rho = 1000$ kg/m³

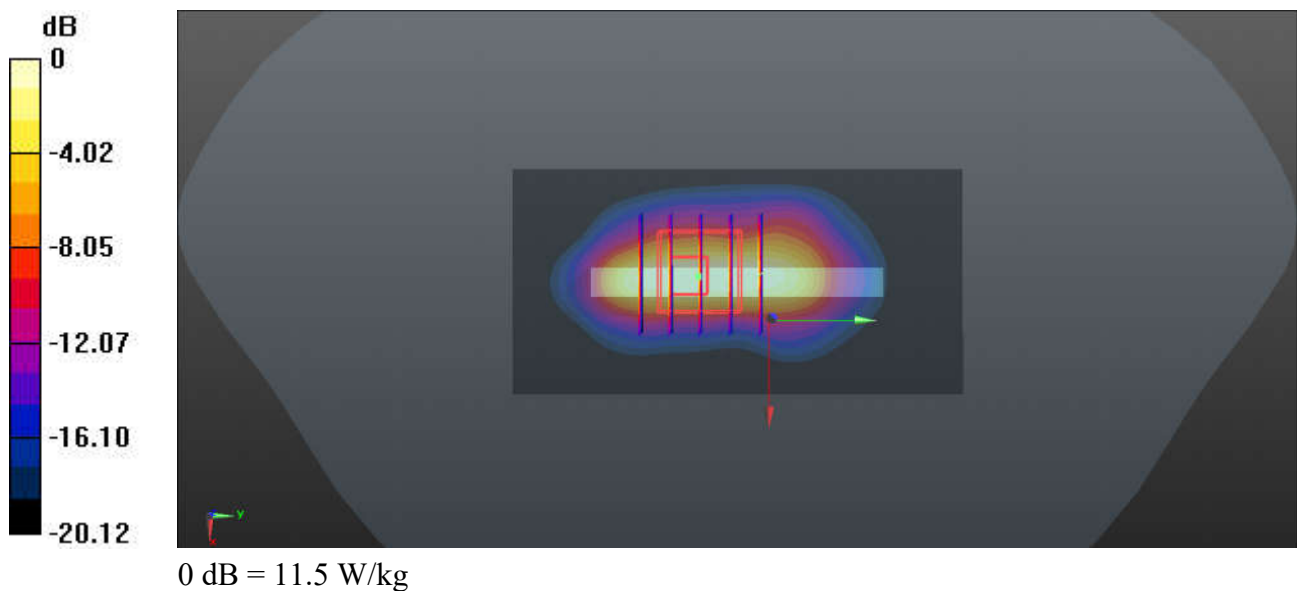
Ambient Temperature : 23.3 °C; Liquid Temperature : 22.3 °C

DASY5 Configuration:

- Probe: EX3DV4 - SN7577; ConvF(8.19, 8.19, 8.19); Calibrated: 2022/11/23
- Sensor-Surface: 1.4mm (Mechanical Surface Detection)
- Electronics: DAE3 Sn360; Calibrated: 2022/12/28
- Phantom: SAM (Front) with CRP v5.0; Type: QD000P40CD; Serial: TP:1795
- Measurement SW: DASY52, Version 52.10 (3); SEMCAD X Version 14.6.13 (7474)

Ch661/Area Scan (41x81x1): Interpolated grid: $dx=1.500$ mm, $dy=1.500$ mm
Maximum value of SAR (interpolated) = 12.6 W/kg

Ch661/Zoom Scan (5x5x7)/Cube 0: Measurement grid: $dx=8$ mm, $dy=8$ mm, $dz=5$ mm
Reference Value = 94.46 V/m; Power Drift = 0.05 dB
Peak SAR (extrapolated) = 13.9 W/kg
SAR(1 g) = 6.12 W/kg; SAR(10 g) = 2.71 W/kg
Maximum value of SAR (measured) = 11.5 W/kg



55_WCDMA II_RMC 12.2Kbps_Bottom side_0mm_Ch9262

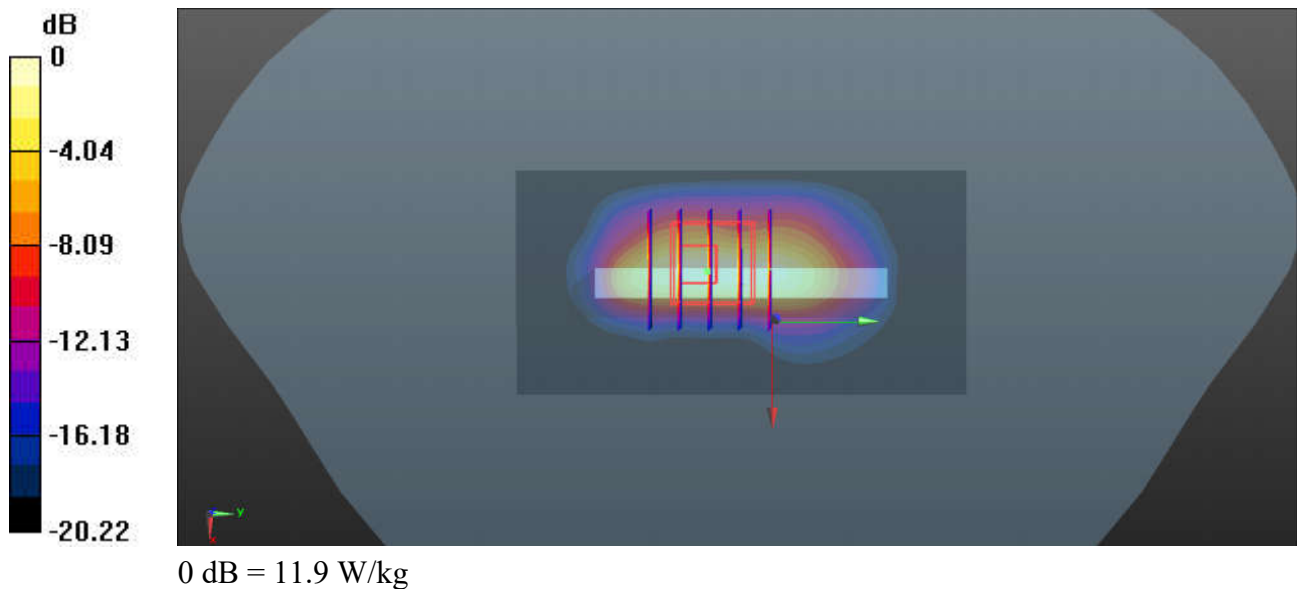
Communication System: UID 0, UMTS (0); Frequency: 1852.4 MHz; Duty Cycle: 1:1
Medium: HSL_1900_231103 Medium parameters used: $f = 1852.4$ MHz; $\sigma = 1.406$ S/m; $\epsilon_r = 38.785$;
 $\rho = 1000$ kg/m³
Ambient Temperature : 23.3 °C; Liquid Temperature : 22.3 °C

DASY5 Configuration:

- Probe: EX3DV4 - SN7577; ConvF(8.19, 8.19, 8.19); Calibrated: 2022/11/23
- Sensor-Surface: 1.4mm (Mechanical Surface Detection)
- Electronics: DAE3 Sn360; Calibrated: 2022/12/28
- Phantom: SAM (Front) with CRP v5.0; Type: QD000P40CD; Serial: TP:1795
- Measurement SW: DASY52, Version 52.10 (3); SEMCAD X Version 14.6.13 (7474)

Ch9262/Area Scan (41x81x1): Interpolated grid: dx=1.500 mm, dy=1.500 mm
Maximum value of SAR (interpolated) = 11.0 W/kg

Ch9262/Zoom Scan (5x5x7)/Cube 0: Measurement grid: dx=8mm, dy=8mm, dz=5mm
Reference Value = 83.41 V/m; Power Drift = 0.05 dB
Peak SAR (extrapolated) = 14.5 W/kg
SAR(1 g) = 6.18 W/kg; SAR(10 g) = 2.69 W/kg
Maximum value of SAR (measured) = 11.9 W/kg



56_LTE Band 2_20M_QPSK_1RB_49Offset_Bottom side_0mm_Ch18700

Communication System: UID 0, LTE (0); Frequency: 1860 MHz; Duty Cycle: 1:1

Medium: HSL_1900_231103 Medium parameters used: $f = 1860$ MHz; $\sigma = 1.412$ S/m; $\epsilon_r = 38.77$; $\rho = 1000$ kg/m³

Ambient Temperature : 23.3 °C; Liquid Temperature : 22.3 °C

DASY5 Configuration:

- Probe: EX3DV4 - SN7577; ConvF(8.19, 8.19, 8.19); Calibrated: 2022/11/23
- Sensor-Surface: 1.4mm (Mechanical Surface Detection)
- Electronics: DAE3 Sn360; Calibrated: 2022/12/28
- Phantom: SAM (Front) with CRP v5.0; Type: QD000P40CD; Serial: TP:1795
- Measurement SW: DASY52, Version 52.10 (3); SEMCAD X Version 14.6.13 (7474)

Ch18700/Area Scan (41x81x1): Interpolated grid: dx=1.500 mm, dy=1.500 mm

Maximum value of SAR (interpolated) = 9.42 W/kg

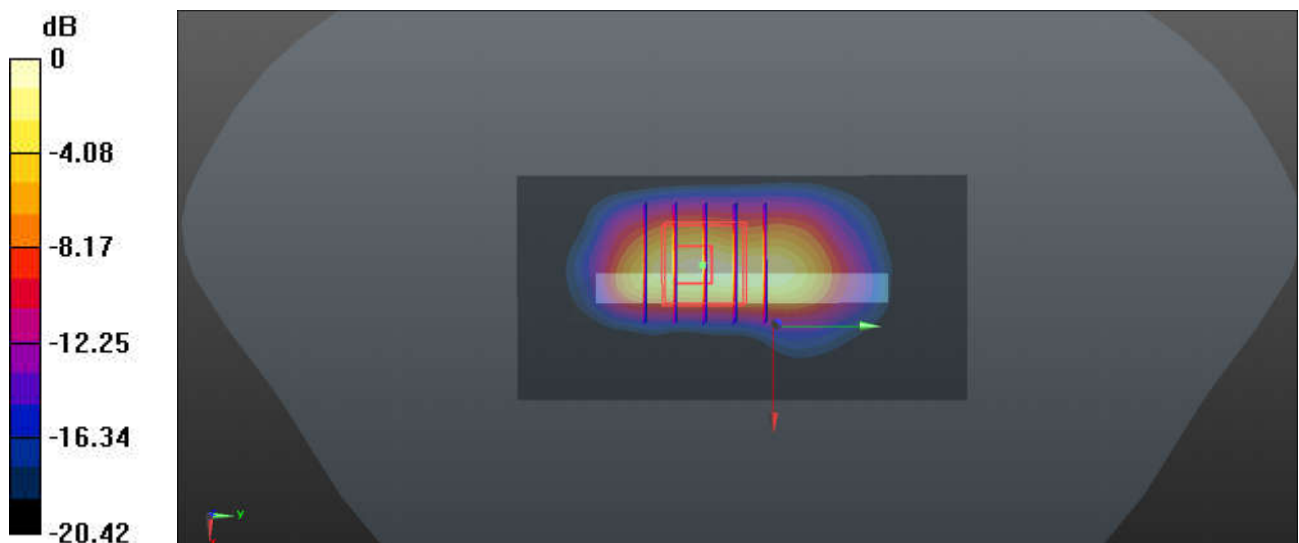
Ch18700/Zoom Scan (5x5x7)/Cube 0: Measurement grid: dx=8mm, dy=8mm, dz=5mm

Reference Value = 66.40 V/m; Power Drift = 0.12 dB

Peak SAR (extrapolated) = 13.5 W/kg

SAR(1 g) = 5.82 W/kg; SAR(10 g) = 2.52 W/kg

Maximum value of SAR (measured) = 11.2 W/kg



0 dB = 11.2 W/kg

57_LTE Band 7_20M_QPSK_1RB_49Offset_Back_0mm_Ch20850

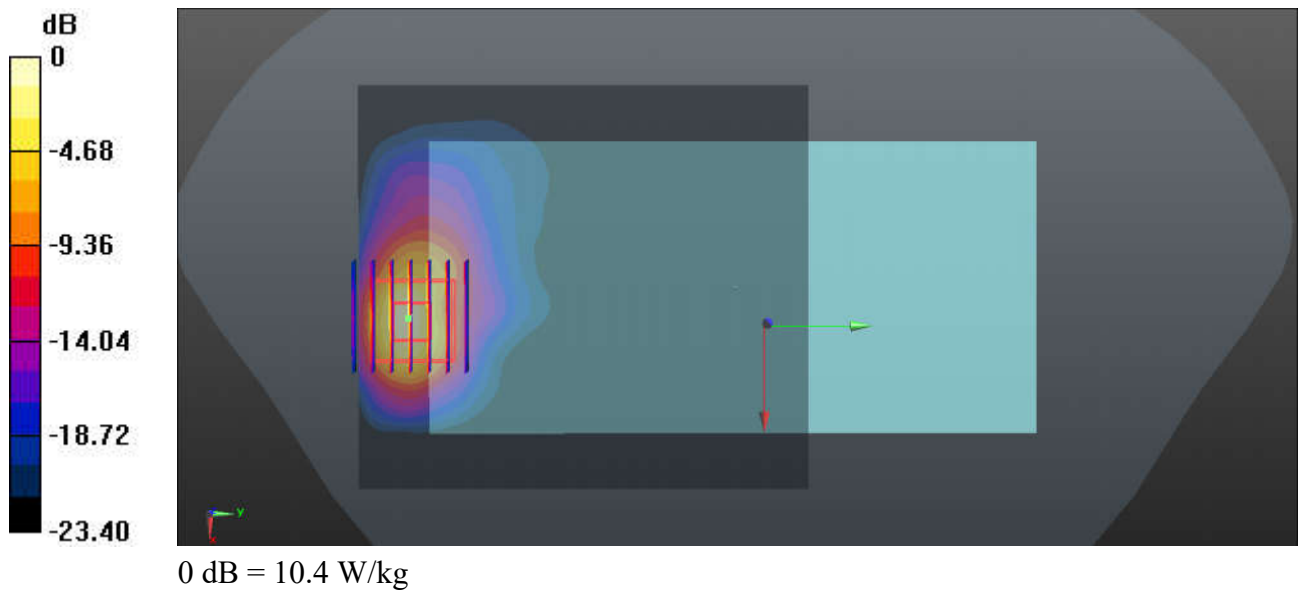
Communication System: UID 0, LTE (0); Frequency: 2510 MHz; Duty Cycle: 1:1
 Medium: HSL_2600_231104 Medium parameters used: $f = 2510$ MHz; $\sigma = 1.834$ S/m; $\epsilon_r = 38.617$; $\rho = 1000$ kg/m³
 Ambient Temperature : 23.4 °C; Liquid Temperature : 22.2 °C

DASY5 Configuration:

- Probe: EX3DV4 - SN7577; ConvF(7.55, 7.55, 7.55); Calibrated: 2022/11/23
- Sensor-Surface: 1.4mm (Mechanical Surface Detection)
- Electronics: DAE3 Sn360; Calibrated: 2022/12/28
- Phantom: SAM (Front) with CRP v5.0; Type: QD000P40CD; Serial: TP:1795
- Measurement SW: DASY52, Version 52.10 (3); SEMCAD X Version 14.6.13 (7474)

Ch20850/Area Scan (91x101x1): Interpolated grid: dx=1.200 mm, dy=1.200 mm
 Maximum value of SAR (interpolated) = 9.92 W/kg

Ch20850/Zoom Scan (7x7x7)/Cube 0: Measurement grid: dx=5mm, dy=5mm, dz=5mm
 Reference Value = 4.761 V/m; Power Drift = -0.01 dB
 Peak SAR (extrapolated) = 19.9 W/kg
SAR(1 g) = 7.13 W/kg; SAR(10 g) = 2.42 W/kg
 Maximum value of SAR (measured) = 10.4 W/kg



58_LTE Band 38_20M_QPSK_1RB_49Offset_Back_0mm_Ch38000

Communication System: UID 0, LTE (0); Frequency: 2595 MHz; Duty Cycle: 1:1.59

Medium: HSL_2600_231104 Medium parameters used: $f = 2595$ MHz; $\sigma = 1.901$ S/m; $\epsilon_r = 38.51$; $\rho = 1000$ kg/m³

Ambient Temperature : 23.4 °C; Liquid Temperature : 22.2 °C

DASY5 Configuration:

- Probe: EX3DV4 - SN7577; ConvF(7.55, 7.55, 7.55); Calibrated: 2022/11/23
- Sensor-Surface: 1.4mm (Mechanical Surface Detection)
- Electronics: DAE3 Sn360; Calibrated: 2022/12/28
- Phantom: SAM (Front) with CRP v5.0; Type: QD000P40CD; Serial: TP:1795
- Measurement SW: DASY52, Version 52.10 (3); SEMCAD X Version 14.6.13 (7474)

Ch38000/Area Scan (91x101x1): Interpolated grid: dx=1.200 mm, dy=1.200 mm

Maximum value of SAR (interpolated) = 9.71 W/kg

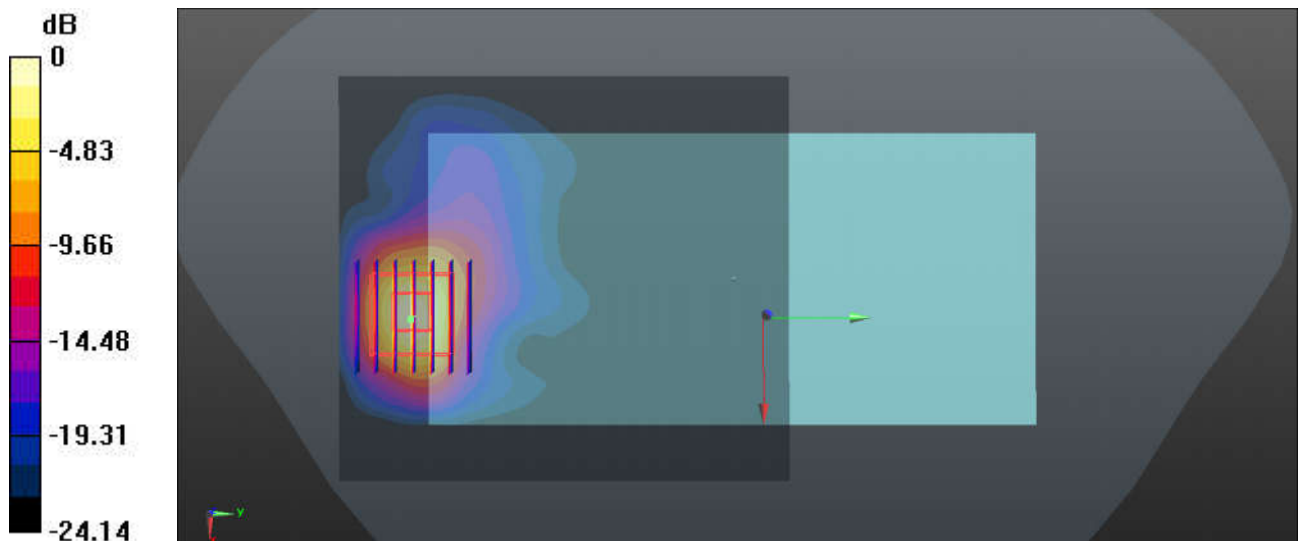
Ch38000/Zoom Scan (7x7x7)/Cube 0: Measurement grid: dx=5mm, dy=5mm, dz=5mm

Reference Value = 3.339 V/m; Power Drift = 0.18 dB

Peak SAR (extrapolated) = 18.6 W/kg

SAR(1 g) = 6.8 W/kg; SAR(10 g) = 2.63 W/kg

Maximum value of SAR (measured) = 9.92 W/kg



0 dB = 9.92 W/kg

59_WLAN2.4GHz_802.11b 1Mbps_Back_0mm_Ch1

Communication System: UID 0, WIFI (0); Frequency: 2412 MHz; Duty Cycle: 1:1

Medium: HSL_2450_231105 Medium parameters used: $f = 2412$ MHz; $\sigma = 1.812$ S/m; $\epsilon_r = 40.431$; $\rho = 1000$ kg/m³

Ambient Temperature : 23.3 °C; Liquid Temperature : 22.4 °C

DASY5 Configuration:

- Probe: EX3DV4 - SN7577; ConvF(7.94, 7.94, 7.94); Calibrated: 2022/11/23
- Sensor-Surface: 1.4mm (Mechanical Surface Detection)
- Electronics: DAE3 Sn360; Calibrated: 2022/12/28
- Phantom: SAM (Front) with CRP v5.0; Type: QD000P40CD; Serial: TP:1795
- Measurement SW: DASY52, Version 52.10 (3); SEMCAD X Version 14.6.13 (7474)

Ch1/Area Scan (91x111x1): Interpolated grid: dx=1.200 mm, dy=1.200 mm

Maximum value of SAR (interpolated) = 4.15 W/kg

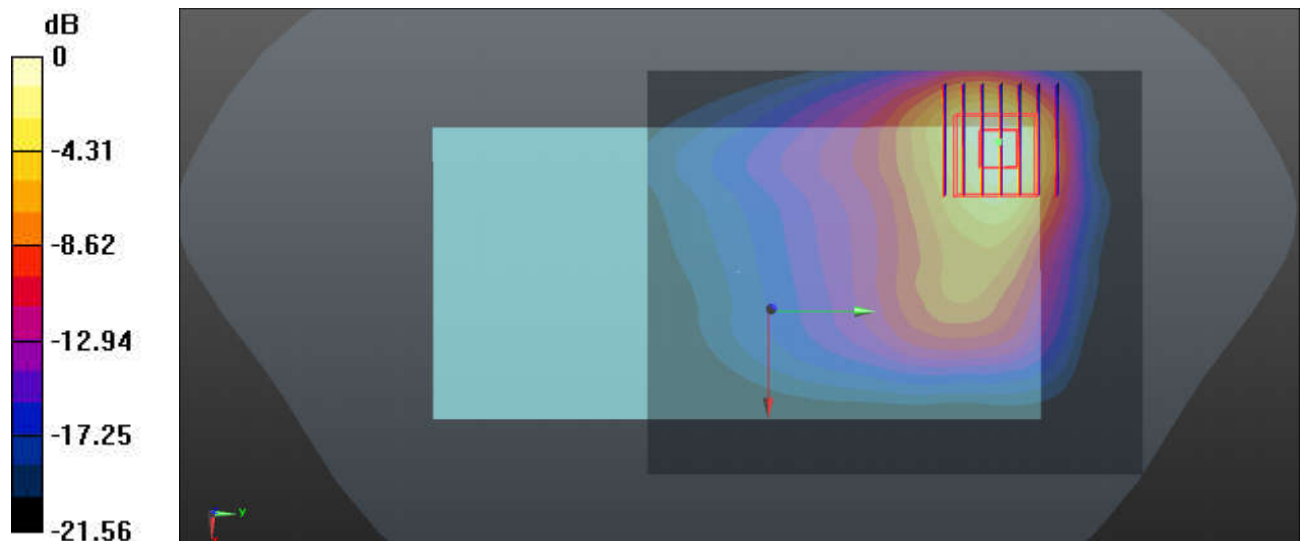
Ch1/Zoom Scan (7x7x7)/Cube 0: Measurement grid: dx=5mm, dy=5mm, dz=5mm

Reference Value = 5.730 V/m; Power Drift = 0.09 dB

Peak SAR (extrapolated) = 8.04 W/kg

SAR(1 g) = 2.9 W/kg; SAR(10 g) = 1.3 W/kg

Maximum value of SAR (measured) = 3.87 W/kg



0 dB = 3.87 W/kg

60_WLAN5GHz_802.11a 6Mbps_Back_0mm_Ch48

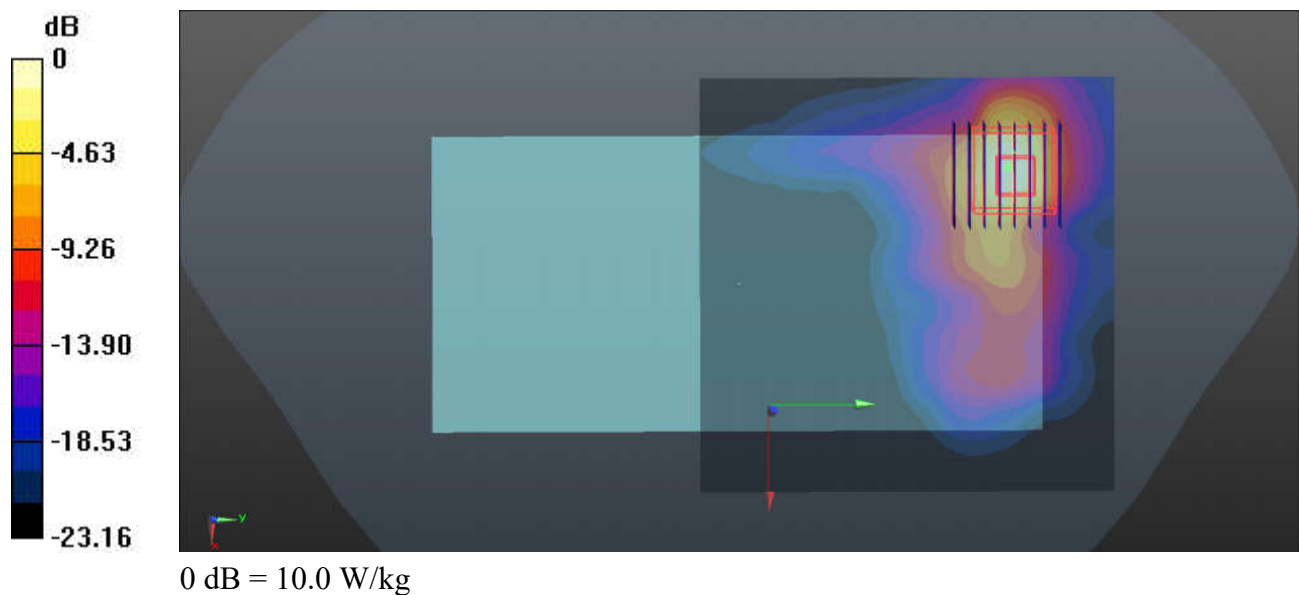
Communication System: UID 0, WIFI (0); Frequency: 5240 MHz; Duty Cycle: 1:1.036
Medium: HSL_5250_231106 Medium parameters used: $f = 5240$ MHz; $\sigma = 4.604$ S/m; $\epsilon_r = 35.704$; $\rho = 1000$ kg/m³
Ambient Temperature : 23.5 °C; Liquid Temperature : 22.5 °C

DASY5 Configuration:

- Probe: EX3DV4 - SN7577; ConvF(5.43, 5.43, 5.43); Calibrated: 2022/11/23
- Sensor-Surface: 1.4mm (Mechanical Surface Detection)
- Electronics: DAE3 Sn360; Calibrated: 2022/12/28
- Phantom: SAM (Front) with CRP v5.0; Type: QD000P40CD; Serial: TP:1795
- Measurement SW: DASY52, Version 52.10 (3); SEMCAD X Version 14.6.13 (7474)

Ch48/Area Scan (111x111x1): Interpolated grid: dx=1.000 mm, dy=1.000 mm
Maximum value of SAR (interpolated) = 10.4 W/kg

Ch48/Zoom Scan (8x8x7)/Cube 0: Measurement grid: dx=4mm, dy=4mm, dz=1.4mm
Reference Value = 2.237 V/m; Power Drift = -0.12 dB
Peak SAR (extrapolated) = 18.4 W/kg
SAR(1 g) = 4.13 W/kg; SAR(10 g) = 1.45 W/kg
Maximum value of SAR (measured) = 10.0 W/kg



61_WLAN5GHz_802.11a 6Mbps_Back_0mm_Ch60

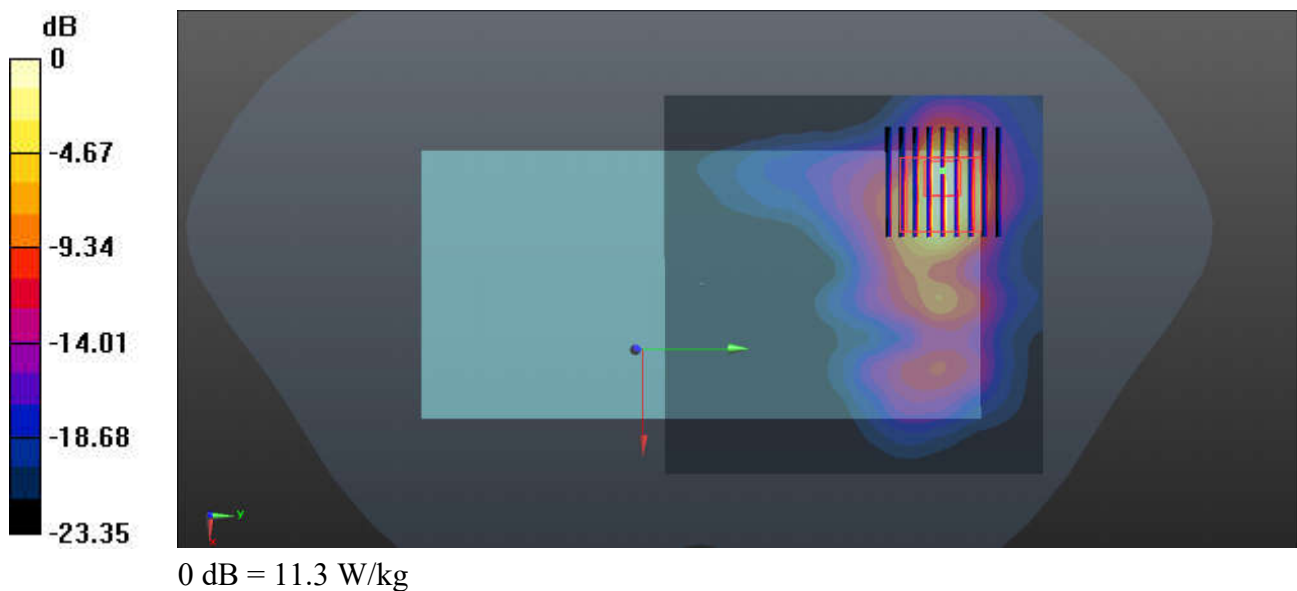
Communication System: UID 0, WIFI (0); Frequency: 5300 MHz; Duty Cycle: 1:1.036
Medium: HSL_5250_231106 Medium parameters used: $f = 5300$ MHz; $\sigma = 4.67$ S/m; $\epsilon_r = 35.603$; $\rho = 1000$ kg/m³
Ambient Temperature : 23.5 °C; Liquid Temperature : 22.5 °C

DASY5 Configuration:

- Probe: EX3DV4 - SN7577; ConvF(5.43, 5.43, 5.43); Calibrated: 2022/11/23
- Sensor-Surface: 1.4mm (Mechanical Surface Detection)
- Electronics: DAE3 Sn360; Calibrated: 2022/12/28
- Phantom: SAM (Front) with CRP v5.0; Type: QD000P40CD; Serial: TP:1795
- Measurement SW: DASY52, Version 52.10 (3); SEMCAD X Version 14.6.13 (7474)

Ch60/Area Scan (111x111x1): Interpolated grid: dx=1.000 mm, dy=1.000 mm
Maximum value of SAR (interpolated) = 12.6 W/kg

Ch60/Zoom Scan (9x9x7)/Cube 0: Measurement grid: dx=4mm, dy=4mm, dz=1.4mm
Reference Value = 2.800 V/m; Power Drift = 0.13 dB
Peak SAR (extrapolated) = 22.5 W/kg
SAR(1 g) = 4.57 W/kg; SAR(10 g) = 1.57 W/kg
Maximum value of SAR (measured) = 11.3 W/kg



62_WLAN5GHz_802.11a 6Mbps_Back_0mm_Ch116

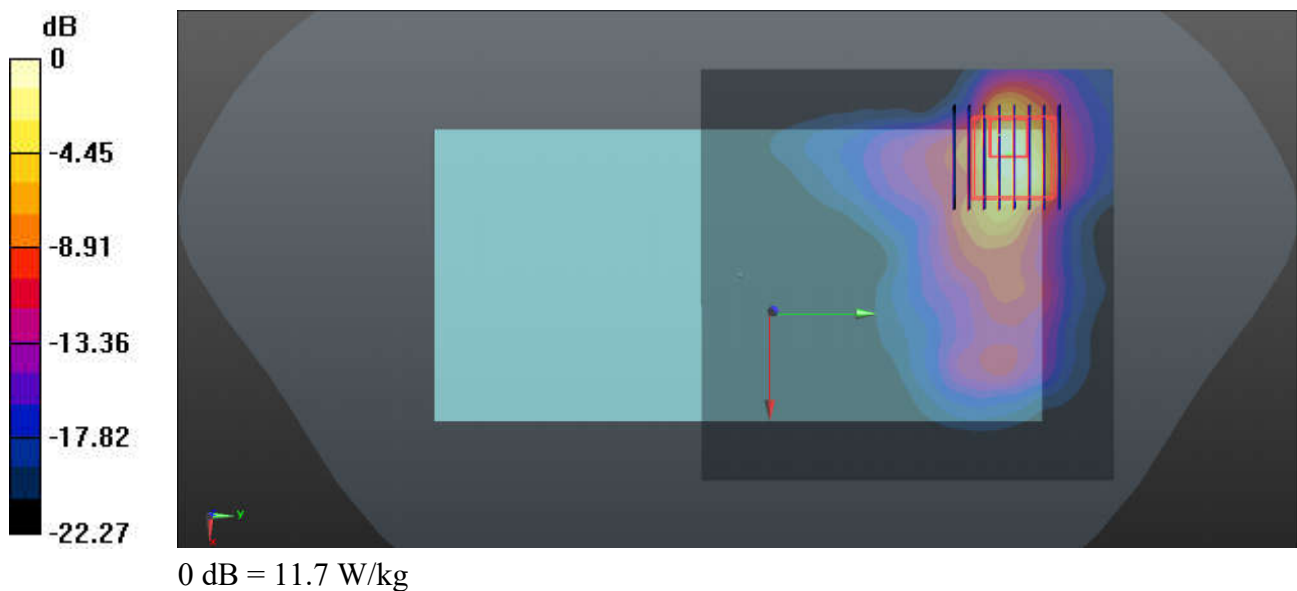
Communication System: UID 0, WIFI (0); Frequency: 5580 MHz; Duty Cycle: 1:1.036
Medium: HSL_5600_231107 Medium parameters used: $f = 5580$ MHz; $\sigma = 4.947$ S/m; $\epsilon_r = 35.227$; $\rho = 1000$ kg/m³
Ambient Temperature : 23.5 °C; Liquid Temperature : 22.3 °C

DASY5 Configuration:

- Probe: EX3DV4 - SN7577; ConvF(4.81, 4.81, 4.81); Calibrated: 2022/11/23
- Sensor-Surface: 1.4mm (Mechanical Surface Detection)
- Electronics: DAE3 Sn360; Calibrated: 2022/12/28
- Phantom: SAM (Front) with CRP v5.0; Type: QD000P40CD; Serial: TP:1795
- Measurement SW: DASY52, Version 52.10 (3); SEMCAD X Version 14.6.13 (7474)

Ch116/Area Scan (111x111x1): Interpolated grid: $dx=1.000$ mm, $dy=1.000$ mm
Maximum value of SAR (interpolated) = 11.7 W/kg

Ch116/Zoom Scan (8x8x7)/Cube 0: Measurement grid: $dx=4$ mm, $dy=4$ mm, $dz=1.4$ mm
Reference Value = 3.266 V/m; Power Drift = 0.07 dB
Peak SAR (extrapolated) = 22.1 W/kg
SAR(1 g) = 4.44 W/kg; SAR(10 g) = 1.56 W/kg
Maximum value of SAR (measured) = 11.7 W/kg



63_WLAN5GHz_802.11a 6Mbps_Back_0mm_Ch149

Communication System: UID 0, WIFI (0); Frequency: 5745 MHz; Duty Cycle: 1:1.036

Medium: HSL_5750_231109 Medium parameters used: $f = 5745$ MHz; $\sigma = 5.12$ S/m; $\epsilon_r = 34.977$; $\rho = 1000$ kg/m³

Ambient Temperature : 23.5 °C; Liquid Temperature : 22.6 °C

DASY5 Configuration:

- Probe: EX3DV4 - SN7577; ConvF(5.05, 5.05, 5.05); Calibrated: 2022/11/23
- Sensor-Surface: 1.4mm (Mechanical Surface Detection)
- Electronics: DAE3 Sn360; Calibrated: 2022/12/28
- Phantom: SAM (Front) with CRP v5.0; Type: QD000P40CD; Serial: TP:1795
- Measurement SW: DASY52, Version 52.10 (3); SEMCAD X Version 14.6.13 (7474)

Ch149/Area Scan (111x111x1): Interpolated grid: dx=1.000 mm, dy=1.000 mm

Maximum value of SAR (interpolated) = 15.6 W/kg

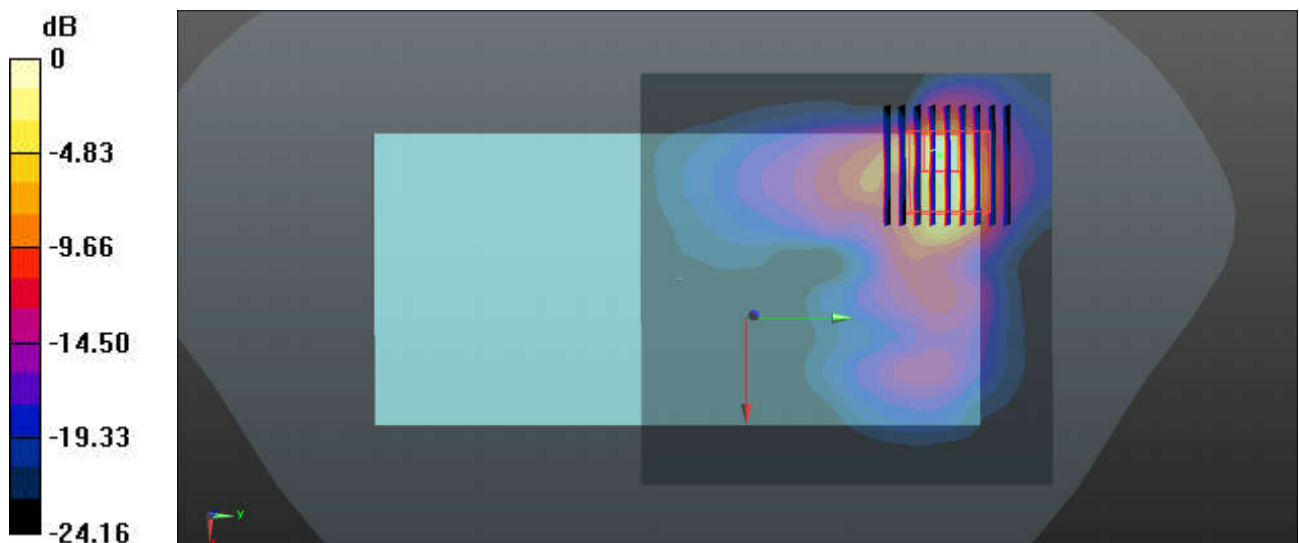
Ch149/Zoom Scan (9x9x7)/Cube 0: Measurement grid: dx=4mm, dy=4mm, dz=1.4mm

Reference Value = 4.111 V/m; Power Drift = 0.05 dB

Peak SAR (extrapolated) = 28.6 W/kg

SAR(1 g) = 4.86 W/kg; SAR(10 g) = 1.48 W/kg

Maximum value of SAR (measured) = 13.9 W/kg



0 dB = 13.9 W/kg