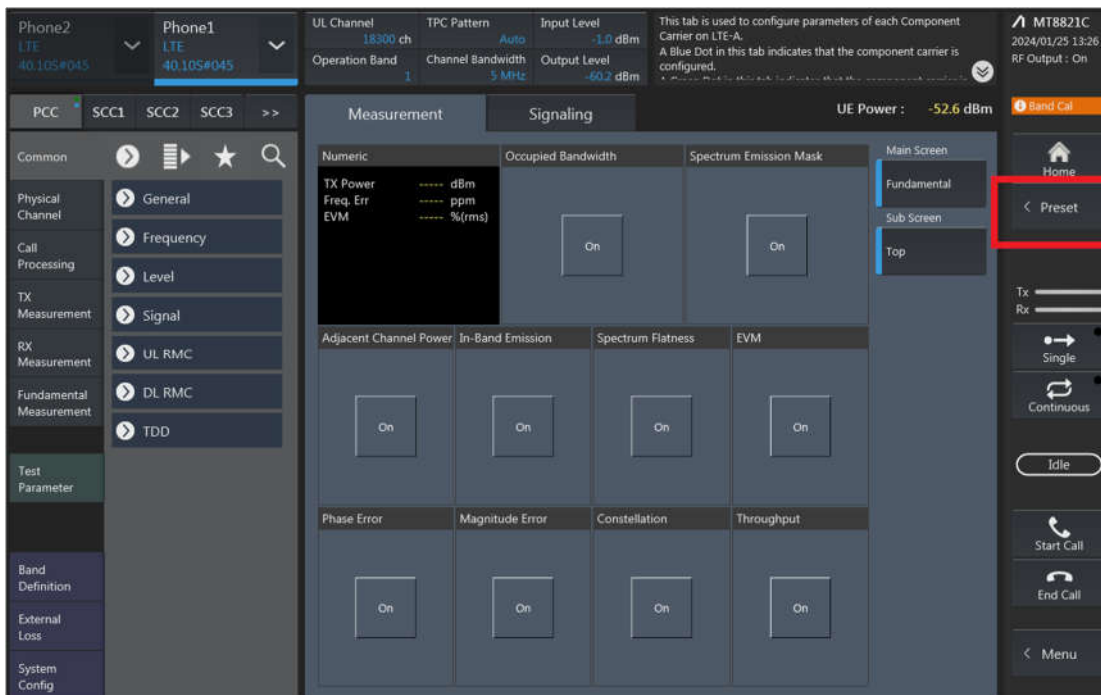


## LTE Uplink and Downlink Carrier Aggregation configurations:

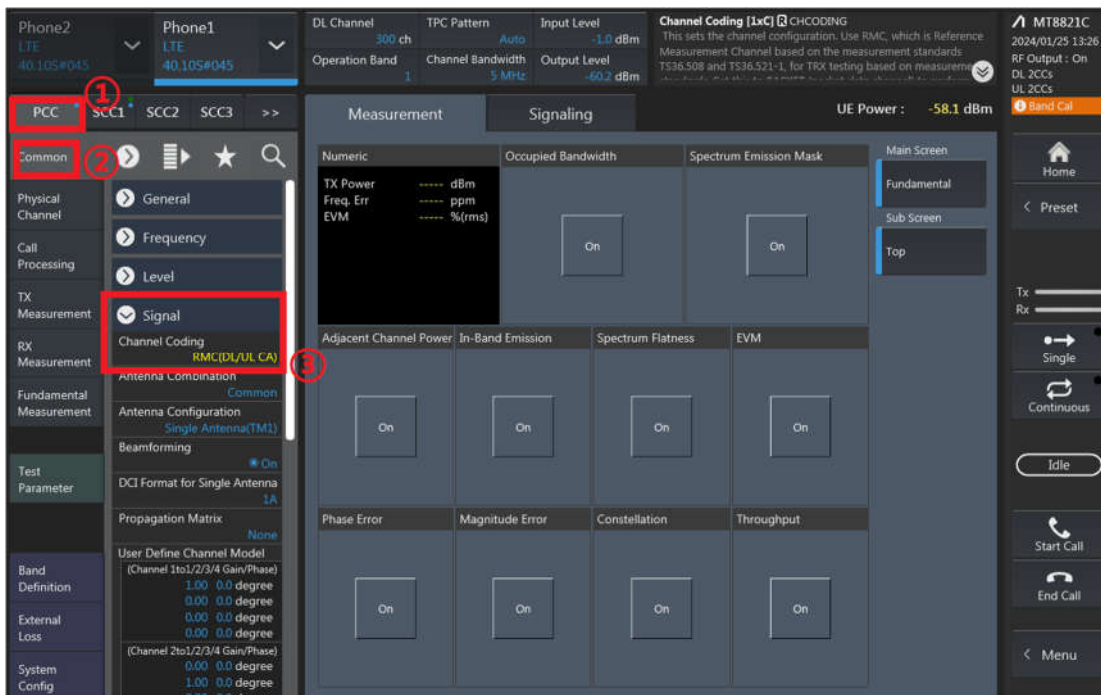
1. Change the Scenario in the Configuration of LTE Signaling and Preset.



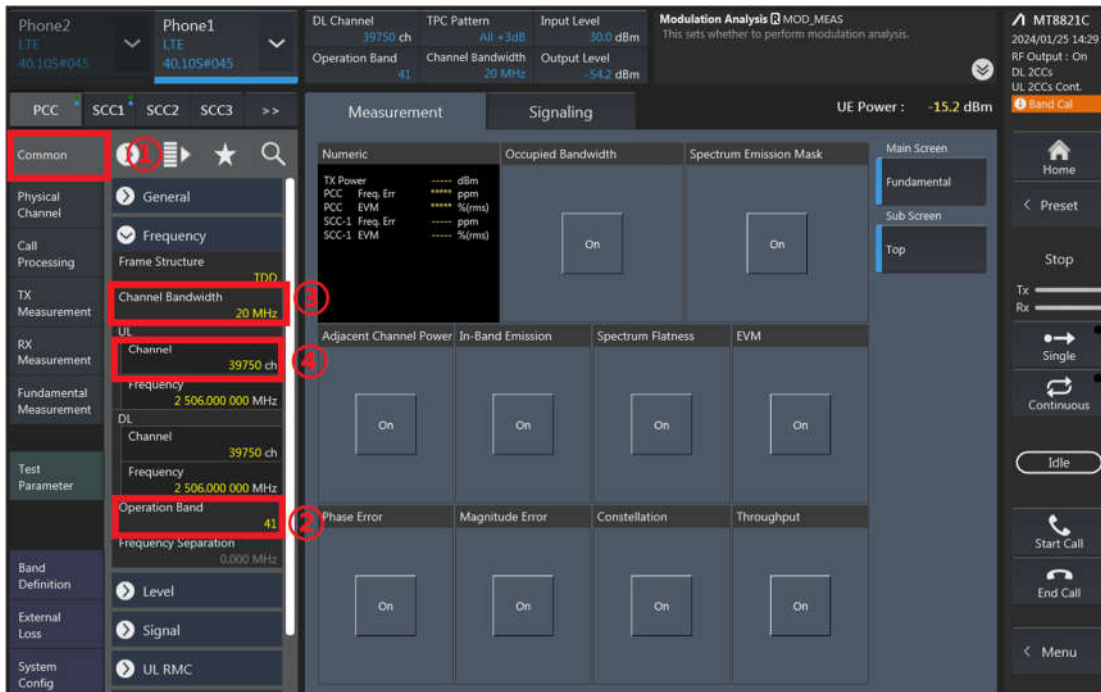
2. If Select "RMC (DL/UL CA)" for Uplink Carrier Aggregation;  
If Select "RMC (DL CA)" for Downlink Carrier Aggregation.

For example, Uplink Carrier Aggregation:

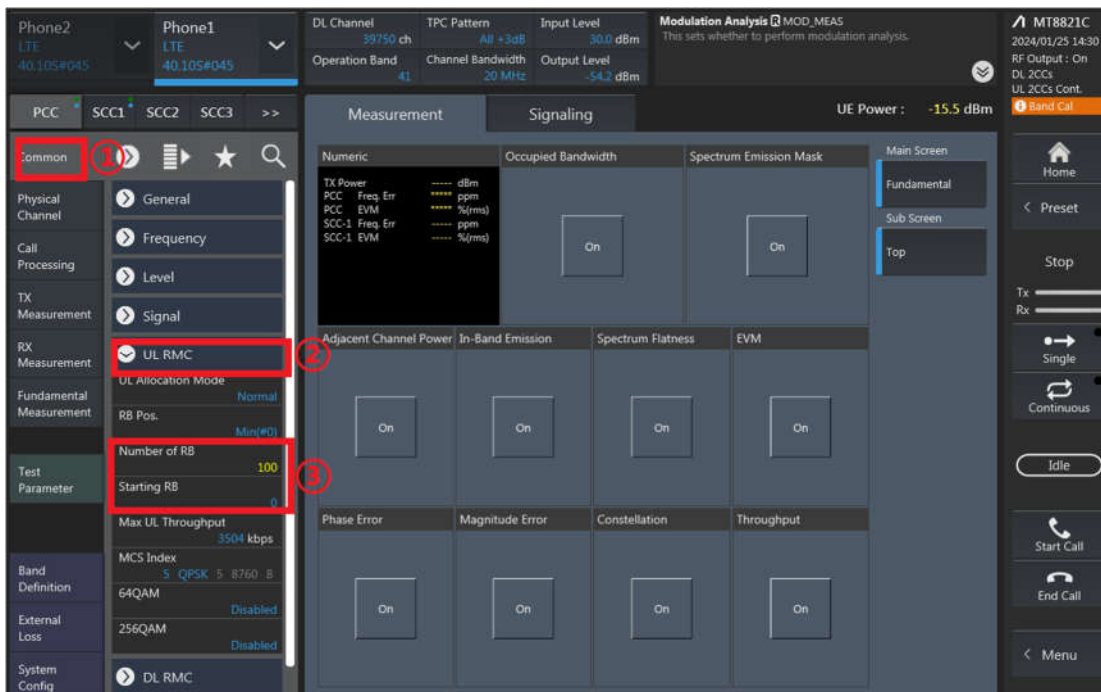
Detailed operation: PCC → Common → Signal → Channel Coding → Select 【RMC (DL/UL CA)】



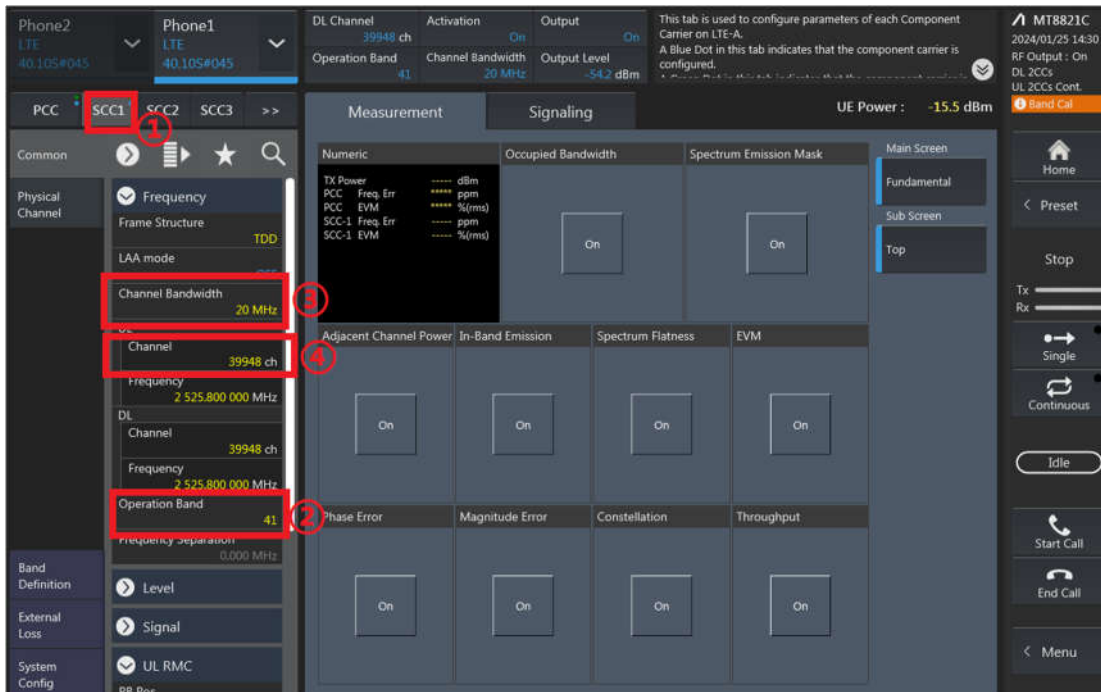
- PCC parameter Settings: on the screen, and then select the PCC tab and Set operating band, BW, channel and RB configurations for PCC;



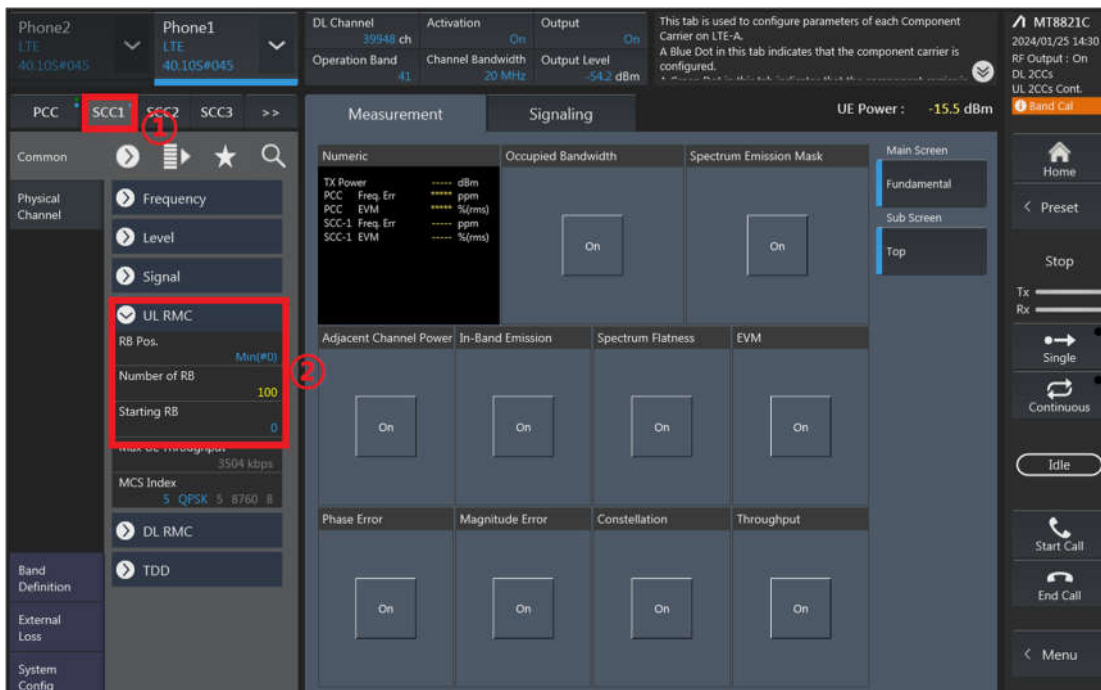
RB configurations (Number of RB / Starting RB) for PCC;



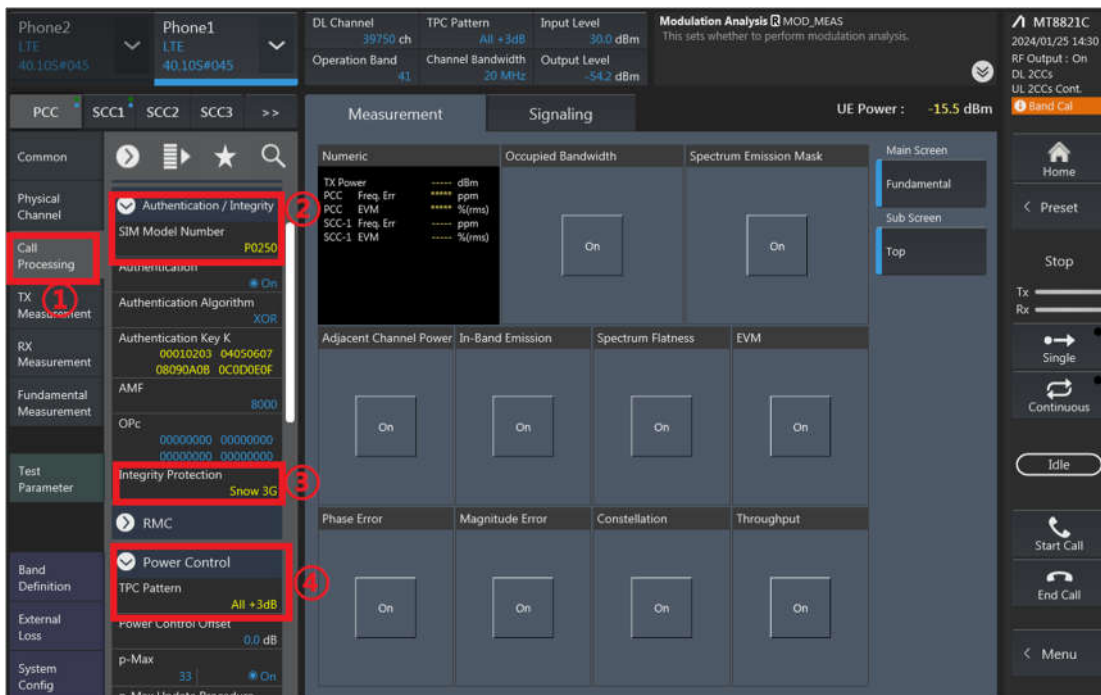
4. SCC parameter Settings: Select the SCC1 tab, Set operating band, BW, channel, and RB configurations for SCC1;



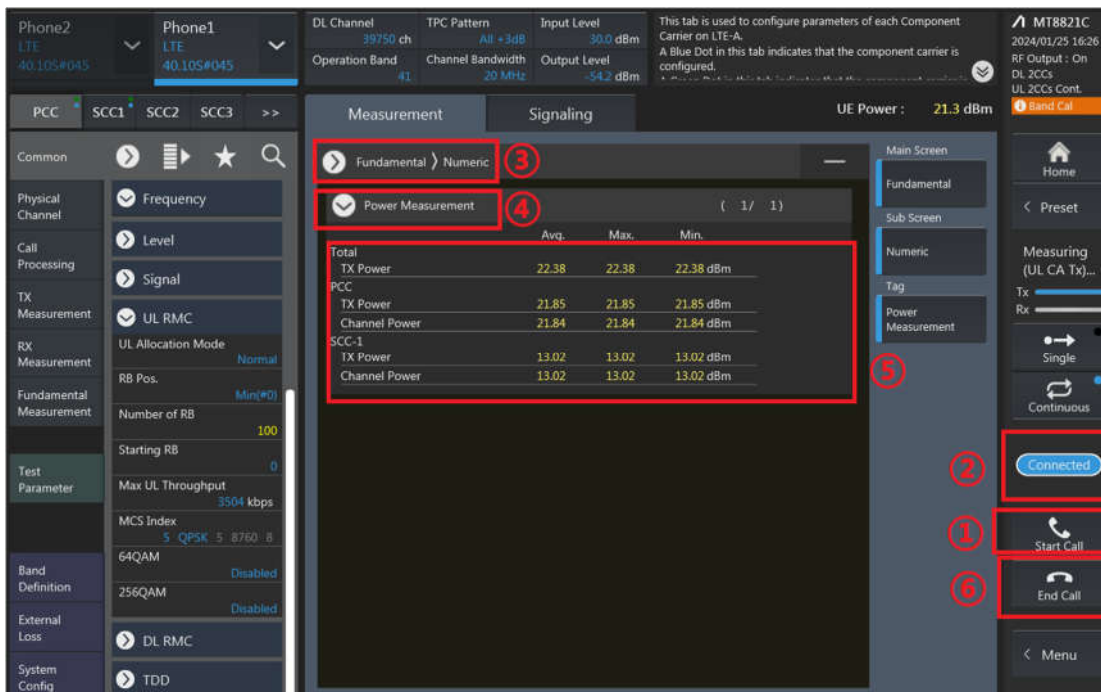
RB configurations (Number of RB / Starting RB) for SCC1;



- Select the PCC tab, then set “SIM Model Number” and select max power;



- Click the “Connect” button at the Right of the screen, if necessary, turn the Airplane mode on/off in the DUT



- The inter-band DLCA test method is similar to intra-band ULCA, and DLCA test method is similar to intra-band ULCA too.



CA_7C Ant 1 Full Power&DSI2								
Combination 20MHz+20MHz (100RB+100RB)								
PCC Channel	SCC Channel	Modulation	PCC		SCC		Measured Power (dBm)	Tune up Power (dBm)
			RB Size	RB offset	RB Size	RB offset		
20850	21048	QPSK	1	99	1	0	22.32	24.00
21100	21298	QPSK	1	99	1	0	22.45	24.00
21350	21152	QPSK	1	0	1	99	22.41	24.00

CA_38C Ant 1 Full Power&DSI2&DSI6								
Combination 20MHz+20MHz (100RB+100RB)								
PCC Channel	SCC Channel	Modulation	PCC		SCC		Measured Power (dBm)	Tune up Power (dBm)
			RB Size	RB offset	RB Size	RB offset		
37850	38048	QPSK	1	99	1	0	22.68	24.00
37901	38099	QPSK	1	99	1	0	22.78	24.00
38150	37952	QPSK	1	0	1	99	22.61	24.00



**CA\_7C Ant 1 DSI3**

Combination 20MHz+20MHz (100RB+100RB)								
PCC Channel	SCC Channel	Modulation	PCC		SCC		Measured Power (dBm)	Tune up Power (dBm)
			RB Size	RB offset	RB Size	RB offset		
20850	21048	QPSK	1	99	1	0	21.55	22.60
21100	21298	QPSK	1	99	1	0	21.64	22.60
21350	21152	QPSK	1	0	1	99	21.51	22.60

**CA\_38C Ant 1 DSI3**

Combination 20MHz+20MHz (100RB+100RB)								
PCC Channel	SCC Channel	Modulation	PCC		SCC		Measured Power (dBm)	Tune up Power (dBm)
			RB Size	RB offset	RB Size	RB offset		
37850	38048	QPSK	1	99	1	0	22.05	22.80
37901	38099	QPSK	1	99	1	0	22.24	22.80
38150	37952	QPSK	1	0	1	99	22.06	22.80

**CA\_7C Ant 1 DSI6**

Combination 20MHz+20MHz (100RB+100RB)								
PCC Channel	SCC Channel	Modulation	PCC		SCC		Measured Power (dBm)	Tune up Power (dBm)
			RB Size	RB offset	RB Size	RB offset		
20850	21048	QPSK	1	99	1	0	21.62	23.30
21100	21298	QPSK	1	99	1	0	21.56	23.30
21350	21152	QPSK	1	0	1	99	21.4	23.30

**CA\_38C Ant 1 DSI7**

Combination 20MHz+20MHz (100RB+100RB)								
PCC Channel	SCC Channel	Modulation	PCC		SCC		Measured Power (dBm)	Tune up Power (dBm)
			RB Size	RB offset	RB Size	RB offset		
37850	38048	QPSK	1	99	1	0	22.16	22.80
37901	38099	QPSK	1	99	1	0	22.19	22.80
38150	37952	QPSK	1	0	1	99	22.1	22.80

**CA\_7C Ant 1 DSI7**

Combination 20MHz+20MHz (100RB+100RB)								
PCC Channel	SCC Channel	Modulation	PCC		SCC		Measured Power (dBm)	Tune up Power (dBm)
			RB Size	RB offset	RB Size	RB offset		
20850	21048	QPSK	1	99	1	0	21.01	22.50
21100	21298	QPSK	1	99	1	0	20.99	22.50
21350	21152	QPSK	1	0	1	99	20.76	22.50



2CA DL

CA List	PCC										SCC				Power		
	LTE	BW	BW	UL	UL	UL#	UL	UL	DL Antenna		LTE	BW	DL	DL	DL Antenna	With CA	Without CA
	Band	Ant	(MHz)	Freq. (MHz)	Channel	Mod.	RB	RB	Offset	Configuration	Band	(MHz)	Freq. (MHz)	Channel	Configuration	Tx Power (dBm)	Tx Power (dBm)
CA_5A-7A	Band 5	Ant0	10M	835.5	20525	QPSK	1	0			Band 7	20M	2555	3100	4xMIMO	22.32	22.40
	Band 5	Ant0	10M	835.5	20525	QPSK	1	0			Band 7	20M	2555	3100	4xMIMO	22.32	22.15
	Band 7	Ant1	20M	2535	21100	QPSK	1	0	4xMIMO		Band 5	10M	881.5	2525		22.53	22.66
CA_7B	Band 7	Ant1	10M	2535	21100	QPSK	1	0	4xMIMO		Band 7	5M	2544	3193	4xMIMO	22.46	22.66
CA_7C	Band 7	Ant1	20M	2535	21100	QPSK	1	0	4xMIMO		Band 7	20M	2555	3298	4xMIMO	22.55	22.66
CA_7A-7A	Band 7	Ant1	20M	2535	21100	QPSK	1	0	4xMIMO		Band 7	5M	2688	3425	4xMIMO	22.57	22.66
CA_38C	Band 38	Ant1	20M	2580	37850	QPSK	1	0	4xMIMO		Band 38	20M	2600	38048	4xMIMO	22.77	22.87
CA_41A-42	Band 41	Ant1	20M	2593	40620	QPSK	1	0	4xMIMO		Band 42	20M	3500	42550	4xMIMO	22.81	22.90
	Band 42	Ant3	20M	3500	42590	QPSK	1	0	4xMIMO		Band 41	20M	2593	40620	4xMIMO	22.79	22.94



3CA DL

3CA List	PCC										SCC1				SCC2				Power		
	LTE	BW	BW	UL	UL	UL#	UL	DL	BW	DL	DL	DL	LTE	BW	DL	DL	DL	DL	With CA	Without CA	
	Band	Az	(MHz)	Freq	Channel	Mod	RB	RB	Offset	Configuration	Band	(MHz)	Freq	Channel	Configuration	Band	(MHz)	Freq	Channel	Configuration	Tx. Power (dBm)
CA_41D	Band 41	Ax1	20M	2593	40620	QPSK	1	0	4x4MIMO	Band 41	20M	2612.8	40818	4x4MIMO	Band 41	20M	2632.6	41016	4x4MIMO	22.83	22.90
CA_41A-41A-41A	Band 41	Ax1	20M	2593	40620	QPSK	1	0	4x4MIMO	Band 41	3A	2687.3	41685	4x4MIMO	Band 41	20M	2593	39750	4x4MIMO	22.79	22.90
CA_41A-42C	Band 41	Ax1	20M	2593	40620	QPSK	1	0	4x4MIMO	Band 42	20M	3500	42590	4x4MIMO	Band 42	20M	3519.8	42788	4x4MIMO	22.77	22.90
	Band 42	Ax3	20M	3500	42590	QPSK	1	0	4x4MIMO	Band 42	20M	3519.8	42788	4x4MIMO	Band 41	20M	2593	40620	4x4MIMO	22.71	22.94
CA_41C-42A	Band 41	Ax1	20M	2593	40620	QPSK	1	0	4x4MIMO	Band 41	20M	2612.8	40818	4x4MIMO	Band 42	20M	3500	42590	4x4MIMO	22.74	22.60
	Band 42	Ax3	20M	3500	42590	QPSK	1	0	4x4MIMO	Band 41	20M	2593	40620	4x4MIMO	Band 41	20M	2612.8	40818	4x4MIMO	22.73	22.94
CA_42D	Band 42	Ax3	20M	3500	42590	QPSK	1	0	4x4MIMO	Band 42	20M	3519.8	42788	4x4MIMO	Band 42	20M	3539.6	42986	4x4MIMO	22.79	22.94





4CA DL

Configure	PCC								SCC1				SCC2				SCC3				Power					
	LTE	BW	BW	UL	UL	UL#	UL	DL Antenna Configuration	LTE	BW	DL	DL	DL Antenna Configuration	LTE	BW	DL	DL	DL Antenna Configuration	LTE	BW	DL	DL	DL Antenna Configuration	With CA	Without CA	
	Band	Ant		Freq. (MHz)	Channel	Mod	RB		RB Offset	Band	(MHz)	Freq. (MHz)		Channel	Band	(MHz)	Freq. (MHz)		Channel	Band	(MHz)	Freq. (MHz)		Channel	Tx Power (dBm)	Tx Power (dBm)
CA_41C-41C	Band 41	AH1	20M	2508	39750	QPSK	1	0	4xMIMO	Band 41	20M	2525.8	39848	4xMIMO	Band 41	20M	2660.2	41292	4xMIMO	Band 41	20M	2660	41490	4xMIMO	22.83	22.70
CA_41E	Band 41	AH1	20M	2593	40620	QPSK	1	0	4xMIMO	Band 41	20M	2613.8	40818	4xMIMO	Band 41	20M	2652.8	41618	4xMIMO	Band 41	20M	2652.4	41714	4xMIMO	22.72	22.58
CA_41A-41D	Band 41	AH1	20M	2508	39750	QPSK	1	0	4xMIMO	Band 41	20M	2640.4	41094	4xMIMO	Band 41	20M	2660.2	41292	4xMIMO	Band 41	20M	2660	41490	4xMIMO	22.78	22.66
CA_41A-41A-41C	Band 41	AH1	20M	2593	40620	QPSK	1	0	4xMIMO	Band 41	5M	2677.5	41565	4xMIMO	Band 41	20M	2508	39750	4xMIMO	Band 41	20M	2525.8	39848	4xMIMO	22.73	22.59
CA_41C-42C	Band 41	AH1	20M	2593	40620	QPSK	1	0	4xMIMO	Band 41	20M	2612.8	40818	4xMIMO	Band 42	20M	3000	42950	4xMIMO	Band 42	20M	3519.8	42788	4xMIMO	22.78	22.60
	Band 42	AH3	20M	3500	42550	QPSK	1	0	4xMIMO	Band 42	20M	3519.8	42788	4xMIMO	Band 41	20M	2593	40620	4xMIMO	Band 41	20M	2612.8	40818	4xMIMO	22.79	22.64