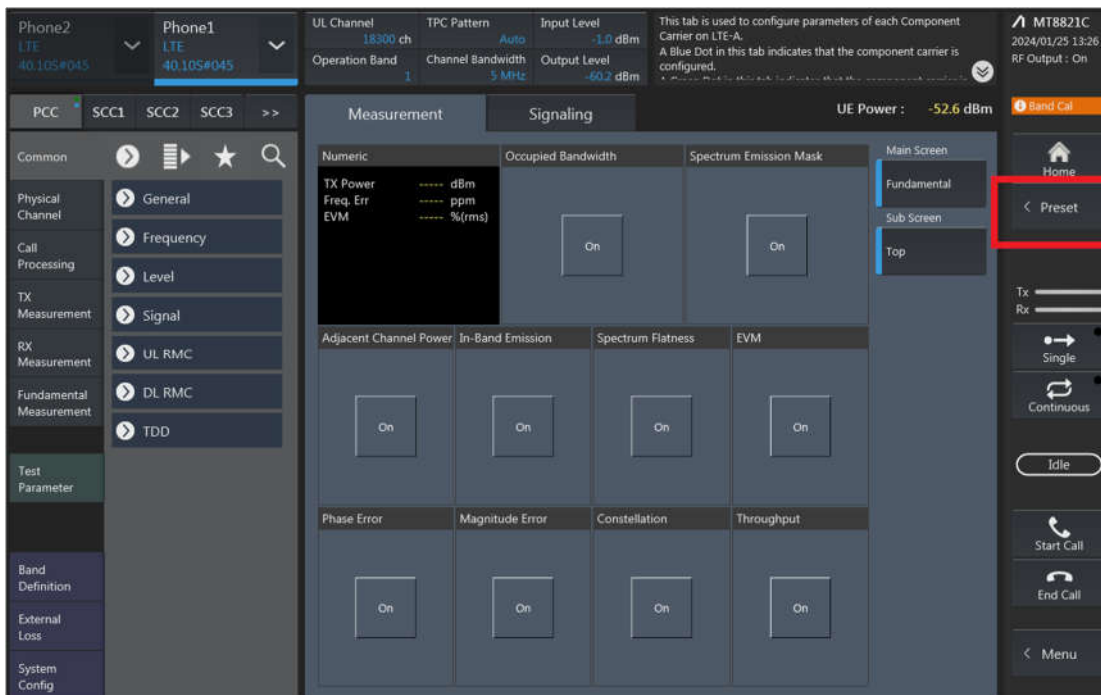


LTE Uplink and Downlink Carrier Aggregation configurations:

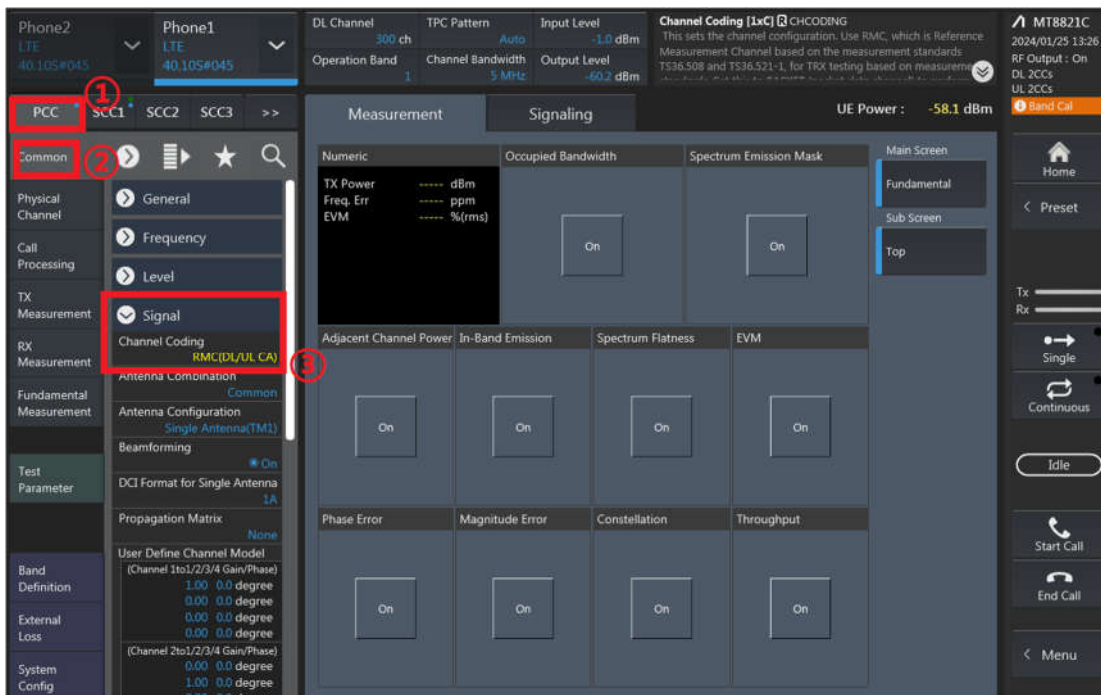
1. Change the Scenario in the Configuration of LTE Signaling and Preset.



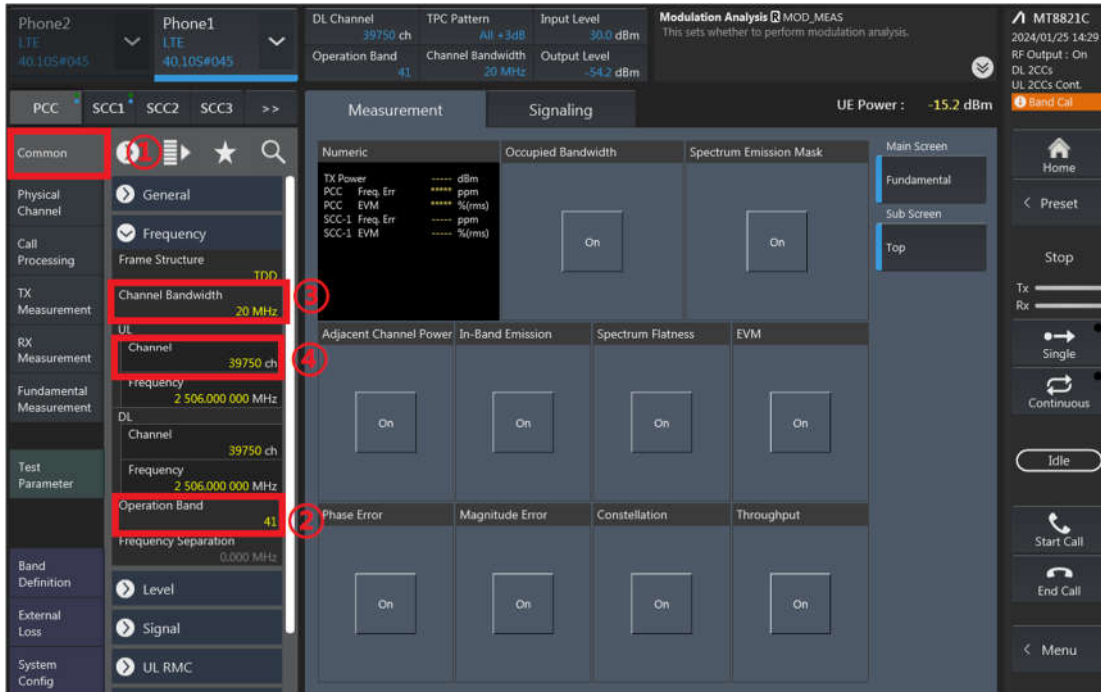
2. If Select "RMC (DL/UL CA)" for Uplink Carrier Aggregation;
If Select "RMC (DL CA)" for Downlink Carrier Aggregation.

For example, Uplink Carrier Aggregation:

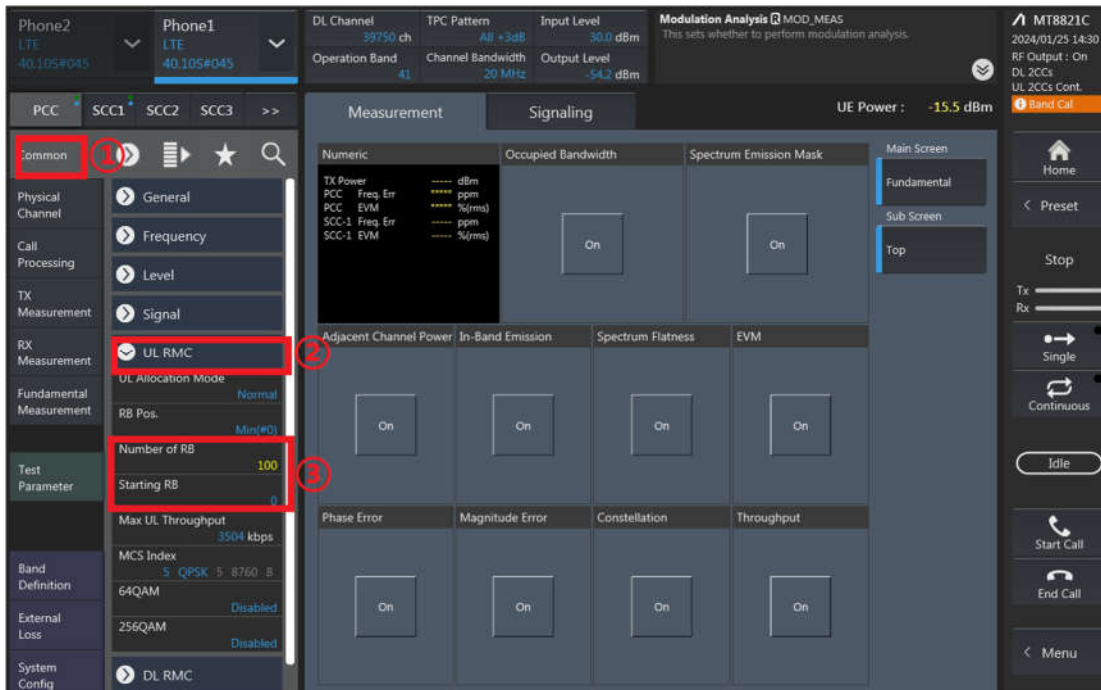
Detailed operation: PCC → Common → Signal → Channel Coding → Select 【RMC (DL/UL CA)】



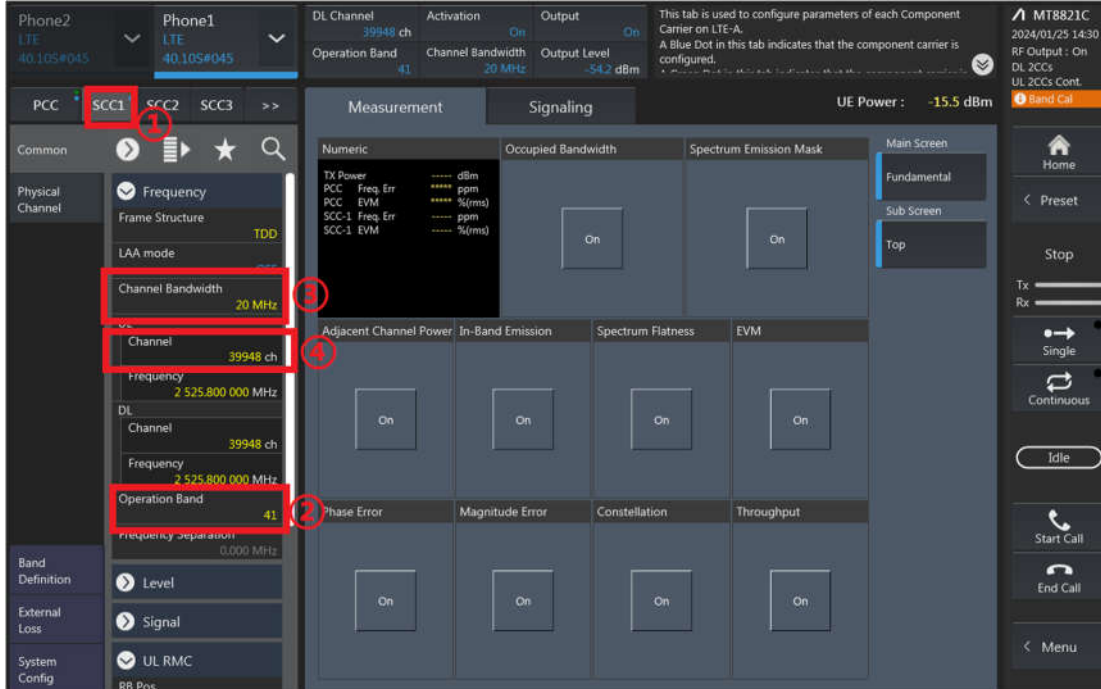
- PCC parameter Settings: on the screen, and then select the PCC tab and Set operating band, BW, channel and RB configurations for PCC;



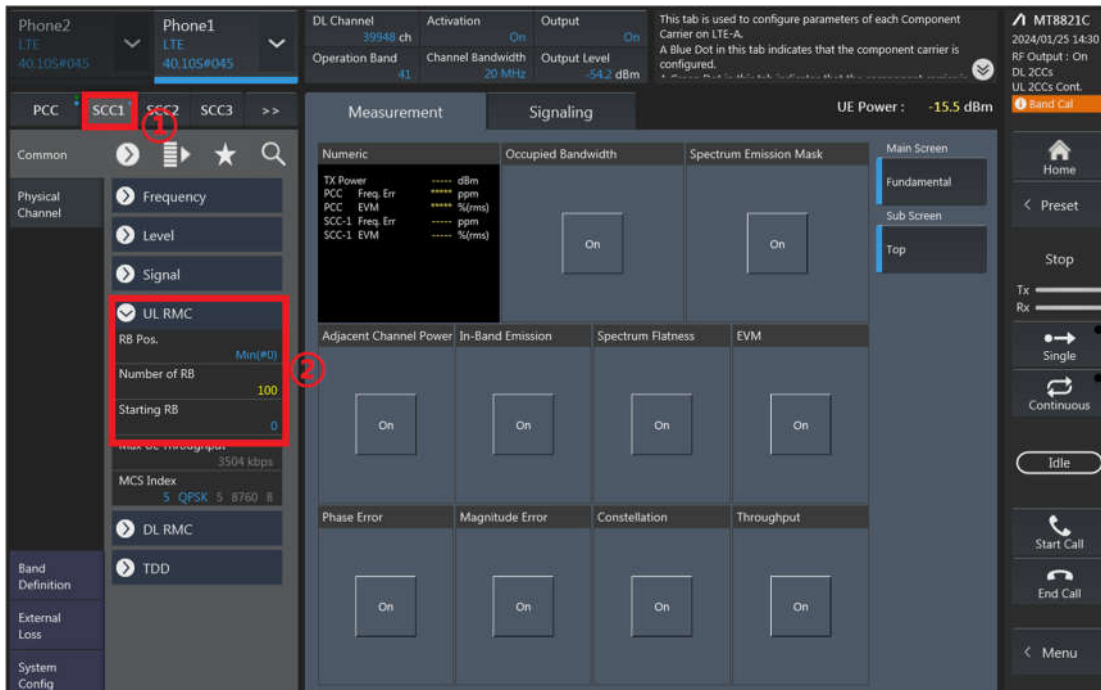
RB configurations (Number of RB / Starting RB) for PCC;



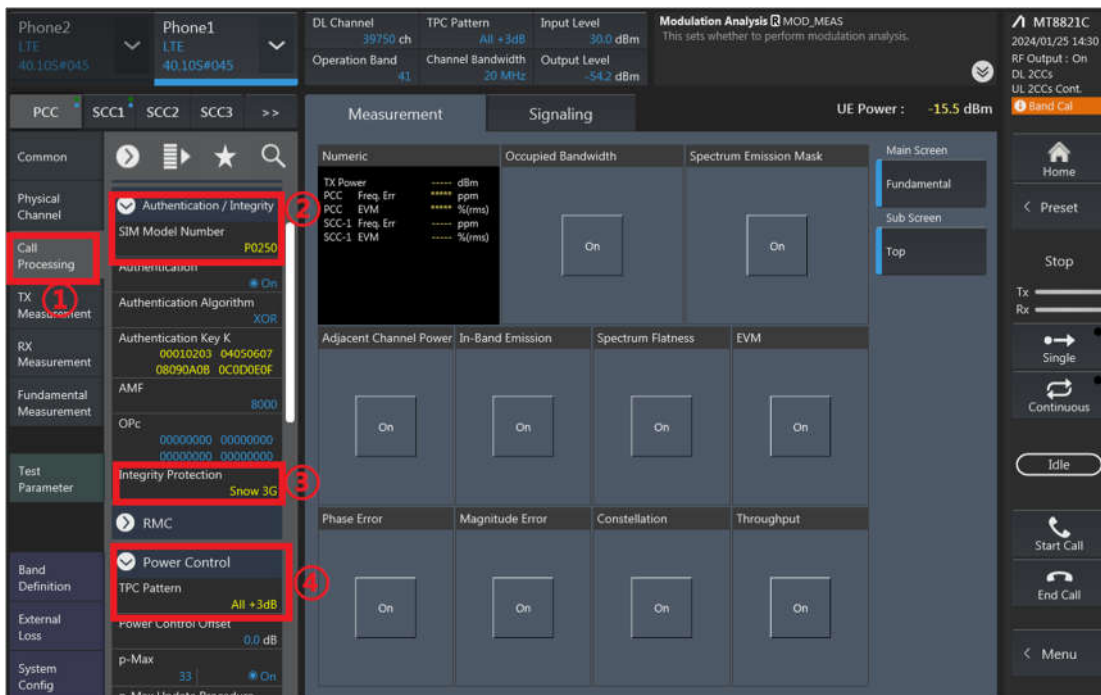
4. SCC parameter Settings: Select the SCC1 tab, Set operating band, BW, channel, and RB configurations for SCC1;



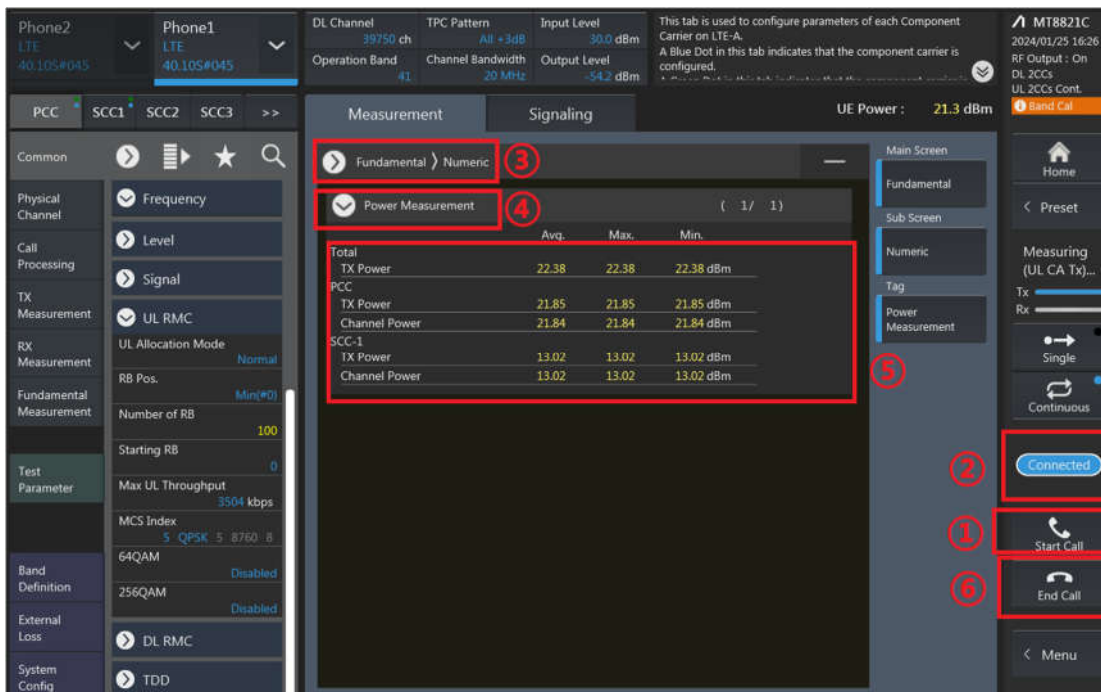
RB configurations (Number of RB / Starting RB) for SCC1;



- Select the PCC tab, then set “SIM Model Number” and select max power;



- Click the “Connect” button at the Right of the screen, if necessary, turn the Airplane mode on/off in the DUT



- The inter-band ULCA test method is similar to intra-band ULCA, and DLCA test method is similar to intra-band ULCA too.



CA_7C Ant 1 Full Power&DSI2								
Combination 20MHz+20MHz (100RB+100RB)								
PCC Channel	SCC Channel	Modulation	PCC		SCC		Measured Power (dBm)	Tune up Power (dBm)
			RB Size	RB offset	RB Size	RB offset		
20850	21048	QPSK	1	99	1	0	22.43	24.00
21100	21298	QPSK	1	99	1	0	22.56	24.00
21350	21152	QPSK	1	0	1	99	22.49	24.00

CA_38C Ant 1 Full Power&DSI2&DSI6								
Combination 20MHz+20MHz (100RB+100RB)								
PCC Channel	SCC Channel	Modulation	PCC		SCC		Measured Power (dBm)	Tune up Power (dBm)
			RB Size	RB offset	RB Size	RB offset		
37850	38048	QPSK	1	99	1	0	22.75	24.00
37901	38099	QPSK	1	99	1	0	22.86	24.00
38150	37952	QPSK	1	0	1	99	22.71	24.00

CA_41C Ant 1 Full Power&DSI2&DSI6								
Combination 20MHz+20MHz (100RB+100RB)								
PCC Channel	SCC Channel	Modulation	PCC		SCC		Measured Power (dBm)	Tune up Power (dBm)
			RB Size	RB offset	RB Size	RB offset		
39750	39948	QPSK	1	99	1	0	22.77	24.00
40185	40383	QPSK	1	99	1	0	22.53	24.00
40620	40818	QPSK	1	99	1	0	22.86	24.00
41055	41253	QPSK	1	99	1	0	22.67	24.00
41490	41292	QPSK	1	0	1	99	22.62	24.00



CA_7C Ant 1 DSI3								
Combination 20MHz+20MHz (100RB+100RB)								
PCC Channel	SCC Channel	Modulation	PCC		SCC		Measured Power (dBm)	Tune up Power (dBm)
			RB Size	RB offset	RB Size	RB offset		
20850	21048	QPSK	1	99	1	0	21.59	22.60
21100	21298	QPSK	1	99	1	0	21.7	22.60
21350	21152	QPSK	1	0	1	99	21.64	22.60

CA_7C Ant 1 DSI6								
Combination 20MHz+20MHz (100RB+100RB)								
PCC Channel	SCC Channel	Modulation	PCC		SCC		Measured Power (dBm)	Tune up Power (dBm)
			RB Size	RB offset	RB Size	RB offset		
20850	21048	QPSK	1	99	1	0	21.68	23.30
21100	21298	QPSK	1	99	1	0	21.65	23.30
21350	21152	QPSK	1	0	1	99	21.53	23.30

CA_38C Ant 1 DSI3								
Combination 20MHz+20MHz (100RB+100RB)								
PCC Channel	SCC Channel	Modulation	PCC		SCC		Measured Power (dBm)	Tune up Power (dBm)
			RB Size	RB offset	RB Size	RB offset		
37850	38048	QPSK	1	99	1	0	22.18	22.80
37901	38099	QPSK	1	99	1	0	22.32	22.80
38150	37952	QPSK	1	0	1	99	22.23	22.80

CA_38C Ant 1 DSI7								
Combination 20MHz+20MHz (100RB+100RB)								
PCC Channel	SCC Channel	Modulation	PCC		SCC		Measured Power (dBm)	Tune up Power (dBm)
			RB Size	RB offset	RB Size	RB offset		
37850	38048	QPSK	1	99	1	0	22.23	22.80
37901	38099	QPSK	1	99	1	0	22.29	22.80
38150	37952	QPSK	1	0	1	99	22.23	22.80

CA_41C Ant 1 DSI3								
Combination 20MHz+20MHz (100RB+100RB)								
PCC Channel	SCC Channel	Modulation	PCC		SCC		Measured Power (dBm)	Tune up Power (dBm)
			RB Size	RB offset	RB Size	RB offset		
39750	39948	QPSK	1	99	1	0	22.32	22.80
40185	40383	QPSK	1	99	1	0	22.12	22.80
40620	40818	QPSK	1	99	1	0	22.27	22.80
41055	41253	QPSK	1	99	1	0	22.08	22.80
41490	41292	QPSK	1	0	1	99	22.17	22.80

CA_41C Ant 1 DSI7								
Combination 20MHz+20MHz (100RB+100RB)								
PCC Channel	SCC Channel	Modulation	PCC		SCC		Measured Power (dBm)	Tune up Power (dBm)
			RB Size	RB offset	RB Size	RB offset		
39750	39948	QPSK	1	99	1	0	22.3	22.80
40185	40383	QPSK	1	99	1	0	22.07	22.80
40620	40818	QPSK	1	99	1	0	22.3	22.80
41055	41253	QPSK	1	99	1	0	22.15	22.80
41490	41292	QPSK	1	0	1	99	22.21	22.80



CA_7C Ant 1 DS17								
Combination 20MHz+20MHz (100RB+100RB)								
PCC Channel	SCC Channel	Modulation	PCC		SCC		Measured Power (dBm)	Tune up Power (dBm)
			RB Size	RB offset	RB Size	RB offset		
20850	21048	QPSK	1	99	1	0	21.04	22.50
21100	21298	QPSK	1	99	1	0	21.05	22.50
21350	21152	QPSK	1	0	1	99	20.9	22.50



2CA DL

CA List	PCC								SCC				Power			
	LTE	BW	BW	UL	UL	UL#	UL	DL Antenna	LTE	BW	DL	DL	DL Antenna	With CA	Without CA	
	Band	Ant	(MHz)	Freq. (MHz)	Channel	Mod.	RB	RB Offset	Configuration	Band	(MHz)	Freq. (MHz)	Channel	Configuration	Tx. Power (dBm)	Tx. Power (dBm)
CA_2A-26A	Band 2	Ant 1	20M	1880	18900	QPSK	1	0	4xMIMO	Band 26	15M	876.5	8865		22.90	22.71
	Band 2	Ant 4	20M	1880	18900	QPSK	1	0	4xMIMO	Band 26	15M	876.5	8865		21.57	21.69
	Band 26	Ant 0	15M	831.5	26865	QPSK	1	0		Band 2	20M	1960	900	4xMIMO	22.25	22.38
	Band 26	Ant 4	15M	831.5	26865	QPSK	1	0		Band 2	20M	1960	900	4xMIMO	22.07	22.20
CA_7B	Band 7	Ant 1	15M	2535	21100	QPSK	1	0	4xMIMO	Band 7	5M	2544.3	3193	4xMIMO	22.43	22.69
CA_7A-42A	Band 7	Ant 1	20M	2535	21100	QPSK	1	0	4xMIMO	Band 42	20M	3500	42590	4xMIMO	22.99	22.69
	Band 42	Ant 3	20M	3500	42590	QPSK	1	0	4xMIMO	Band 7	20M	2655	3100	4xMIMO	22.75	22.96
CA_26A-41A	Band 26	Ant 0	15M	831.5	26865	QPSK	1	0		Band 41	20M	2593	40620	4xMIMO	22.30	22.38
	Band 26	Ant 4	15M	831.5	26865	QPSK	1	0		Band 41	20M	2593	40620	4xMIMO	21.98	22.20
	Band 41	Ant 1	20M	2593	40620	QPSK	1	0	4xMIMO	Band 26	15M	876.5	8865		22.74	22.91
	Band 41	Ant 4	20M	2593	40620	QPSK	1	0	4xMIMO	Band 38	20M	2999.8	38048	4xMIMO	22.73	22.92
CA_38C	Band 38	Ant 1	20M	2999.8	37850	QPSK	1	0	4xMIMO	Band 41	20M	2612.8	40518	4xMIMO	22.70	22.91
CA_41C	Band 41	Ant 1	20M	2593	40620	QPSK	1	0	4xMIMO	Band 42	20M	3500	42590	4xMIMO	22.72	22.91
	Band 42	Ant 3	20M	3500	42590	QPSK	1	0	4xMIMO	Band 41	20M	2593	40620	4xMIMO	22.81	22.96
CA_42C	Band 42	Ant 3	20M	3500	42590	QPSK	1	0	4xMIMO	Band 42	20M	3519.8	42788	4xMIMO	22.79	22.96
	Band 42	Ant 3	20M	3500	42590	QPSK	1	0	4xMIMO	Band 42	5M	3547.5	43065	4xMIMO	22.77	22.96
CA_42A-42A	Band 66	Ant 1	15M	1745	132323	QPSK	1	0	4xMIMO	Band 66	5M	2164.3	66979	4xMIMO	22.66	22.84
	Band 66	Ant 4	15M	1745	132323	QPSK	1	0	4xMIMO	Band 66	5M	2164.3	66979	4xMIMO	21.66	21.84



4CA DL

Configure	PCC									SCC1				SCC2				SCC3					Power			
	LTE Band	BW Ant	BW (MHz)	UL Freq. Channel (MHz)	UL Channel	Mod.	UL# RB	UL RB Offset	DL Antenna Configuration	LTE Band	BW	DL Freq. Channel (MHz)	DL Channel	DL Antenna Configuration	LTE Band	BW	DL Freq. Channel (MHz)	DL Channel	DL Antenna Configuration	With CA Tx Power (dBm)	Without CA Tx Power (dBm)					
	CA_2A-4A-7C	Band2	Ant 1	20M	1800	1800	QPSK	1	0	4xMIMO	Band 4	20M	2132.5	2175	4xMIMO	Band 7	20M	2655	3100	4xMIMO	Band 7	20M	2554.8	3298	4xMIMO	22.86
Band2		Ant 4	20M	1800	1800	QPSK	1	0	4xMIMO	Band 4	20M	2132.5	2175	4xMIMO	Band 7	20M	2655	3100	4xMIMO	Band 7	20M	2554.8	3298	4xMIMO	21.57	21.89
Band4		Ant 1	20M	1732.5	20175	QPSK	1	0	4xMIMO	Band 7	20M	2655	3100	4xMIMO	Band 7	20M	2554.8	3298	4xMIMO	Band 2	20M	1960	900	4xMIMO	22.70	22.87
Band4		Ant 4	20M	1732.5	20175	QPSK	1	0	4xMIMO	Band 7	20M	2655	3100	4xMIMO	Band 7	20M	2554.8	3298	4xMIMO	Band 2	20M	1960	900	4xMIMO	21.62	21.79
Band7		Ant 1	20M	2635	21100	QPSK	1	0	4xMIMO	Band 7	20M	2554.8	3298	4xMIMO	Band 2	20M	1960	900	4xMIMO	Band 4	20M	2132.5	2175	4xMIMO	22.49	22.88
Band2		Ant 1	20M	1800	1800	QPSK	1	0	4xMIMO	Band 7	20M	2655	3100	4xMIMO	Band 68	20M	2155	6888	4xMIMO	Band 68	5M	2197.5	67311	4xMIMO	22.86	22.71
CA_2A-7A-68A-68A	Band2	Ant 4	20M	1800	1800	QPSK	1	0	4xMIMO	Band 7	20M	2655	3100	4xMIMO	Band 68	20M	2155	6888	4xMIMO	Band 68	5M	2197.5	67311	4xMIMO	21.53	21.89
	Band7	Ant 1	20M	2635	21100	QPSK	1	0	4xMIMO	Band 68	20M	2155	6888	4xMIMO	Band 68	5M	2197.5	67311	4xMIMO	Band 2	20M	1960	900	4xMIMO	22.46	22.88
	Band 68	Ant 1	20M	1745	132322	QPSK	1	0	4xMIMO	Band 68	5M	2197.5	67311	4xMIMO	Band 2	20M	1960	900	4xMIMO	Band 7	20M	2655	3100	4xMIMO	22.65	22.84
	Band 68	Ant 4	20M	1745	132322	QPSK	1	0	4xMIMO	Band 68	5M	2197.5	67311	4xMIMO	Band 2	20M	1960	900	4xMIMO	Band 7	20M	2655	3100	4xMIMO	21.67	21.84