

System Check_Head_13MHz

DUT: CLA13-SN:1023

Communication System: UID 0, CW (0); Frequency: 13 MHz; Duty Cycle: 1:1

Medium: HSL_13_220706 Medium parameters used: $f = 13$ MHz; $\sigma = 0.753$ S/m; $\epsilon_r = 54.139$; $\rho = 1000$ kg/m³

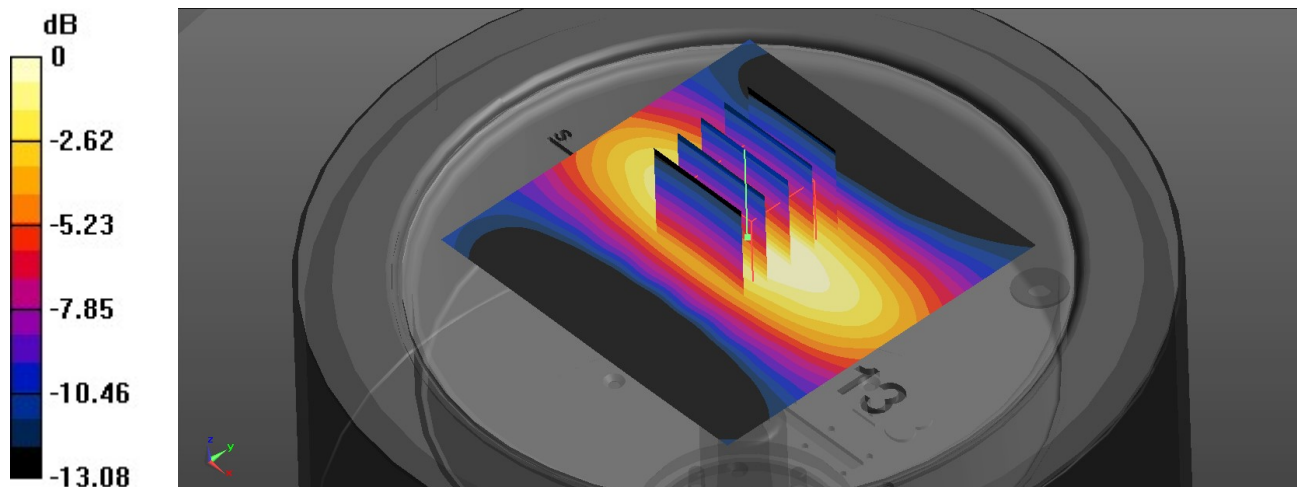
Ambient Temperature : 23.4 °C; Liquid Temperature : 22.4 °C

DASY5 Configuration:

- Probe: EX3DV4 - SN3819; ConvF(15.28, 15.28, 15.28); Calibrated: 2023/6/6
- Sensor-Surface: 1.4mm (Mechanical Surface Detection)
- Electronics: DAE4 Sn1664; Calibrated: 2023/6/6
- Phantom: ELI v4.0; Type: QDOVA001BB; Serial: TP:1113
- Measurement SW: DASY52, Version 52.10 (3); SEMCAD X Version 14.6.13 (7474)

Pin=250mW/Area Scan (71x71x1): Interpolated grid: dx=1.500 mm, dy=1.500 mm
Maximum value of SAR (interpolated) = 0.231 W/kg

Pin=250mW/Zoom Scan (5x5x7)/Cube 0: Measurement grid: dx=8mm, dy=8mm, dz=5mm
Reference Value = 12.67 V/m; Power Drift = 0.03 dB
Peak SAR (extrapolated) = 0.403 W/kg
SAR(1 g) = 0.155 W/kg; SAR(10 g) = 0.091 W/kg
Maximum value of SAR (measured) = 0.23 W/kg



0 dB = 0.23 W/kg