

## 01\_GSM850\_GPRS(2 Tx slots)\_Right Cheek\_Ch189

Communication System: UID 0, GPRS/EDGE10 (0); Frequency: 836.4 MHz; Duty Cycle: 1:4.15  
 Medium: HSL\_835\_230504 Medium parameters used:  $f = 836.5$  MHz;  $\sigma = 0.903$  S/m;  $\epsilon_r = 40.74$ ;  $\rho = 1000$  kg/m<sup>3</sup>

Ambient Temperature : 23.5 °C; Liquid Temperature : 22.3 °C

### DASY5 Configuration:

- Probe: EX3DV4 - SN3819; ConvF(9.51, 9.51, 9.51); Calibrated: 2022/5/30
- Sensor-Surface: 1.4mm (Mechanical Surface Detection)
- Electronics: DAE4 Sn1437; Calibrated: 2022/11/23
- Phantom: SAM (30deg probe tilt) with CRP v4.0; Type: QD000P40CB; Serial: TP: 1500
- Measurement SW: DASY52, Version 52.10 (3); SEMCAD X Version 14.6.13 (7474)

**Ch189/Area Scan (71x111x1):** Interpolated grid: dx=1.500 mm, dy=1.500 mm

Maximum value of SAR (interpolated) = 0.404 W/kg

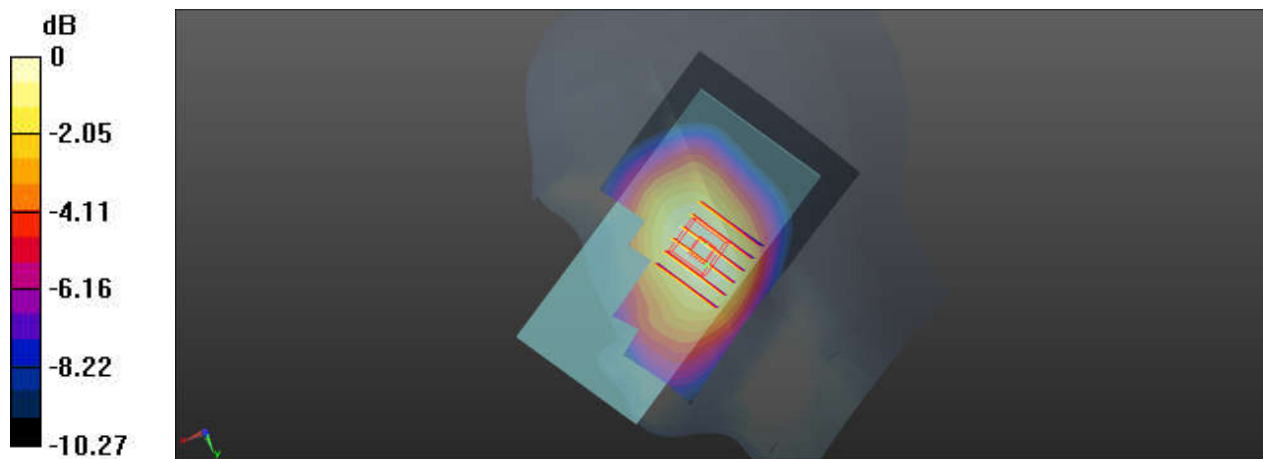
**Ch189/Zoom Scan (6x6x7)/Cube 0:** Measurement grid: dx=8mm, dy=8mm, dz=5mm

Reference Value = 5.556 V/m; Power Drift = 0.07 dB

Peak SAR (extrapolated) = 0.439 W/kg

**SAR(1 g) = 0.350 W/kg; SAR(10 g) = 0.272 W/kg**

Maximum value of SAR (measured) = 0.407 W/kg



0 dB = 0.407 W/kg

## 02\_WCDMA V\_RMC 12.2Kbps\_Right Cheek\_Ch4182

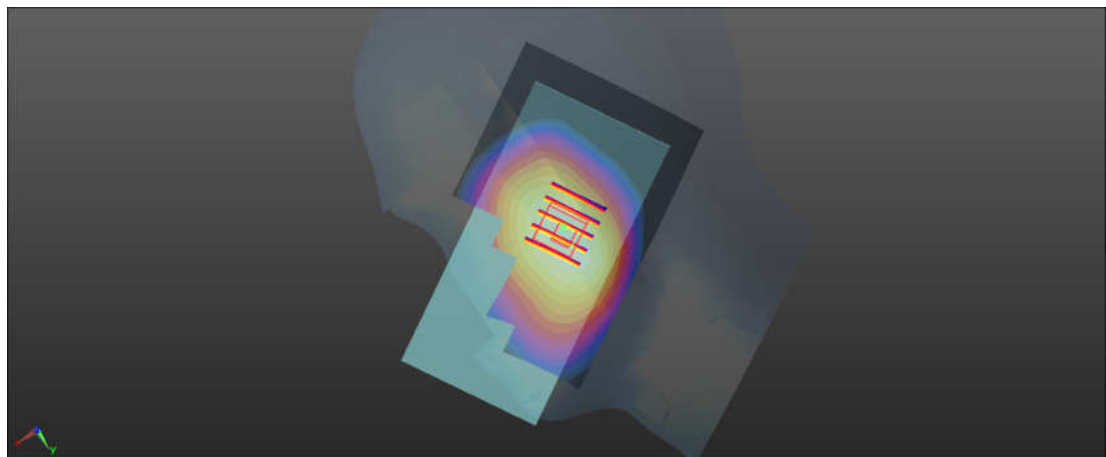
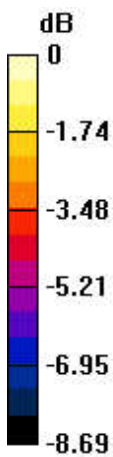
Communication System: UID 0, Generic WCDMA (0); Frequency: 836.4 MHz; Duty Cycle: 1:1  
 Medium: HSL\_835\_230504 Medium parameters used:  $f = 836.5$  MHz;  $\sigma = 0.903$  S/m;  $\epsilon_r = 40.74$ ;  $\rho = 1000$  kg/m<sup>3</sup>  
 Ambient Temperature : 23.5 °C; Liquid Temperature : 22.3 °C

### DASY5 Configuration:

- Probe: EX3DV4 - SN3819; ConvF(9.51, 9.51, 9.51); Calibrated: 2022/5/30
- Sensor-Surface: 1.4mm (Mechanical Surface Detection)
- Electronics: DAE4 Sn1437; Calibrated: 2022/11/23
- Phantom: SAM (30deg probe tilt) with CRP v4.0; Type: QD000P40CB; Serial: TP: 1500
- Measurement SW: DASY52, Version 52.10 (3); SEMCAD X Version 14.6.13 (7474)

**Ch4182/Area Scan (71x111x1):** Interpolated grid: dx=1.500 mm, dy=1.500 mm  
 Maximum value of SAR (interpolated) = 0.312 W/kg

**Ch4182/Zoom Scan (5x5x7)/Cube 0:** Measurement grid: dx=8mm, dy=8mm, dz=5mm  
 Reference Value = 5.539 V/m; Power Drift = 0.04 dB  
 Peak SAR (extrapolated) = 0.331 W/kg  
**SAR(1 g) = 0.264 W/kg; SAR(10 g) = 0.206 W/kg**  
 Maximum value of SAR (measured) = 0.306 W/kg



0 dB = 0.306 W/kg

### 03\_LTE Band 5\_10M\_QPSK\_1RB\_0Offset\_Right Cheek\_Ch20525

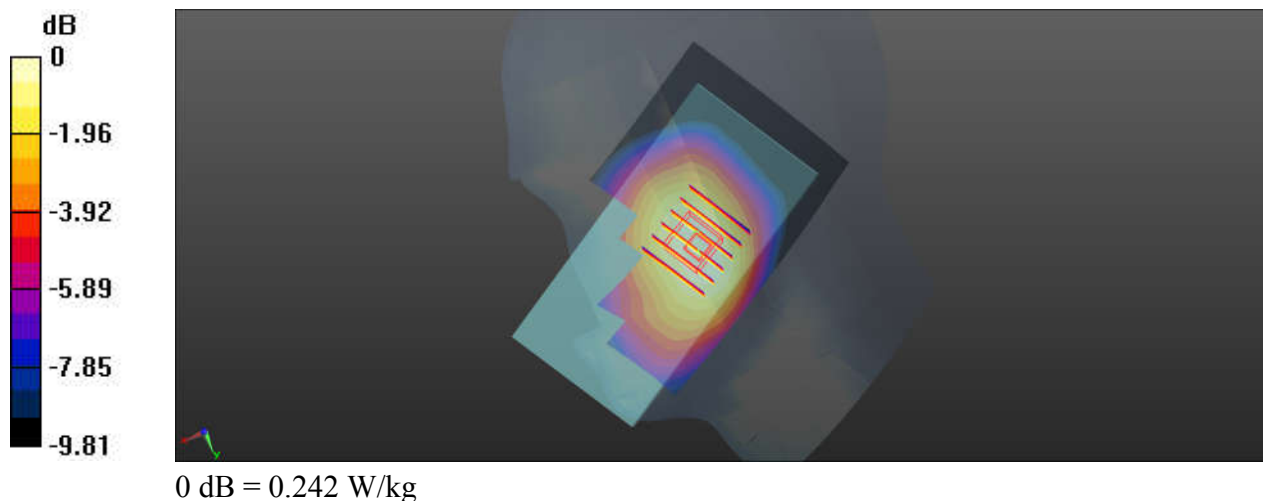
Communication System: UID 0, Generic LTE (0); Frequency: 836.5 MHz; Duty Cycle: 1:1  
 Medium: HSL\_835\_230504 Medium parameters used:  $f = 836.5$  MHz;  $\sigma = 0.903$  S/m;  $\epsilon_r = 40.74$ ;  $\rho = 1000$  kg/m<sup>3</sup>  
 Ambient Temperature : 23.5 °C; Liquid Temperature : 22.3 °C

**DASY5 Configuration:**

- Probe: EX3DV4 - SN3819; ConvF(9.51, 9.51, 9.51); Calibrated: 2022/5/30
- Sensor-Surface: 1.4mm (Mechanical Surface Detection)
- Electronics: DAE4 Sn1437; Calibrated: 2022/11/23
- Phantom: SAM (30deg probe tilt) with CRP v4.0; Type: QD000P40CB; Serial: TP: 1500
- Measurement SW: DASY52, Version 52.10 (3); SEMCAD X Version 14.6.13 (7474)

**Ch20525/Area Scan (71x111x1):** Interpolated grid: dx=1.500 mm, dy=1.500 mm  
 Maximum value of SAR (interpolated) = 0.240 W/kg

**Ch20525/Zoom Scan (6x6x7)/Cube 0:** Measurement grid: dx=8mm, dy=8mm, dz=5mm  
 Reference Value = 4.740 V/m; Power Drift = -0.17 dB  
 Peak SAR (extrapolated) = 0.260 W/kg  
**SAR(1 g) = 0.208 W/kg; SAR(10 g) = 0.162 W/kg**  
 Maximum value of SAR (measured) = 0.242 W/kg



## 04\_GSM1900\_GPRS(3 Tx slots)\_Right Cheek\_Ch661

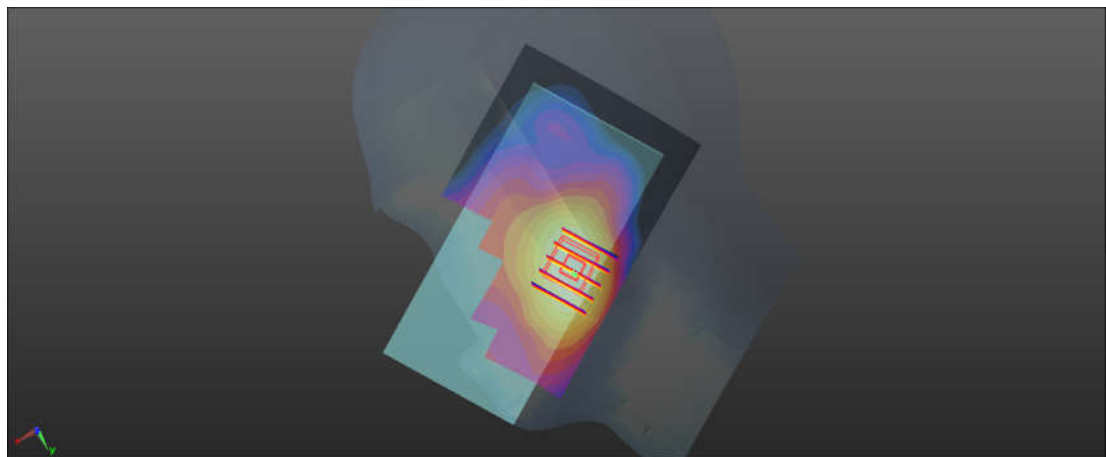
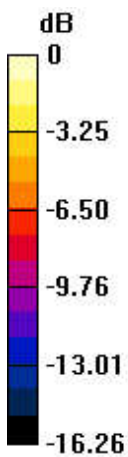
Communication System: UID 0, GPRS/EDGE10 (0); Frequency: 1880 MHz; Duty Cycle: 1:2.77  
Medium: HSL\_1900\_230505 Medium parameters used:  $f = 1880$  MHz;  $\sigma = 1.402$  S/m;  $\epsilon_r = 40.407$ ;  
 $\rho = 1000$  kg/m<sup>3</sup>  
Ambient Temperature : 23.4 °C; Liquid Temperature : 22.6 °C

### DASY5 Configuration:

- Probe: EX3DV4 - SN3819; ConvF(8.32, 8.32, 8.32); Calibrated: 2022/5/30
- Sensor-Surface: 1.4mm (Mechanical Surface Detection)
- Electronics: DAE4 Sn1437; Calibrated: 2022/11/23
- Phantom: SAM (30deg probe tilt) with CRP v4.0; Type: QD000P40CB; Serial: TP: 1500
- Measurement SW: DASY52, Version 52.10 (3); SEMCAD X Version 14.6.13 (7474)

**Ch661/Area Scan (71x111x1):** Interpolated grid: dx=1.500 mm, dy=1.500 mm  
Maximum value of SAR (interpolated) = 0.300 W/kg

**Ch661/Zoom Scan (5x5x7)/Cube 0:** Measurement grid: dx=8mm, dy=8mm, dz=5mm  
Reference Value = 3.467 V/m; Power Drift = 0.02 dB  
Peak SAR (extrapolated) = 0.346 W/kg  
**SAR(1 g) = 0.224 W/kg; SAR(10 g) = 0.144 W/kg**  
Maximum value of SAR (measured) = 0.300 W/kg



0 dB = 0.300 W/kg

## 05\_WCDMA II\_RMC 12.2Kbps\_Right Cheek\_Ch9400

Communication System: UID 0, Generic WCDMA (0); Frequency: 1880 MHz; Duty Cycle: 1:1  
 Medium: HSL\_1900\_230505 Medium parameters used:  $f = 1880$  MHz;  $\sigma = 1.402$  S/m;  $\epsilon_r = 40.407$ ;  
 $\rho = 1000$  kg/m<sup>3</sup>  
 Ambient Temperature : 23.4 °C; Liquid Temperature : 22.6 °C

### DASY5 Configuration:

- Probe: EX3DV4 - SN3819; ConvF(8.32, 8.32, 8.32); Calibrated: 2022/5/30
- Sensor-Surface: 1.4mm (Mechanical Surface Detection)
- Electronics: DAE4 Sn1437; Calibrated: 2022/11/23
- Phantom: SAM (30deg probe tilt) with CRP v4.0; Type: QD000P40CB; Serial: TP: 1500
- Measurement SW: DASY52, Version 52.10 (3); SEMCAD X Version 14.6.13 (7474)

**Ch9400/Area Scan (71x111x1):** Interpolated grid: dx=1.500 mm, dy=1.500 mm

Maximum value of SAR (interpolated) = 0.264 W/kg

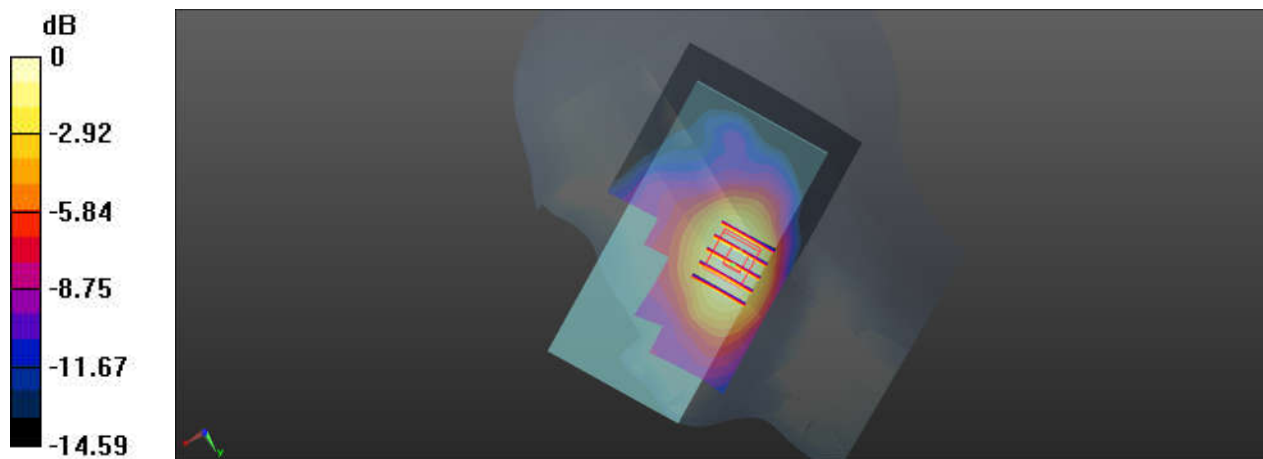
**Ch9400/Zoom Scan (5x5x7)/Cube 0:** Measurement grid: dx=8mm, dy=8mm, dz=5mm

Reference Value = 2.587 V/m; Power Drift = 0.02 dB

Peak SAR (extrapolated) = 0.307 W/kg

**SAR(1 g) = 0.201 W/kg; SAR(10 g) = 0.129 W/kg**

Maximum value of SAR (measured) = 0.263 W/kg



0 dB = 0.263 W/kg

### 06\_LTE Band 2\_20M\_QPSK\_1RB\_0Offset\_Right Cheek\_Ch18900

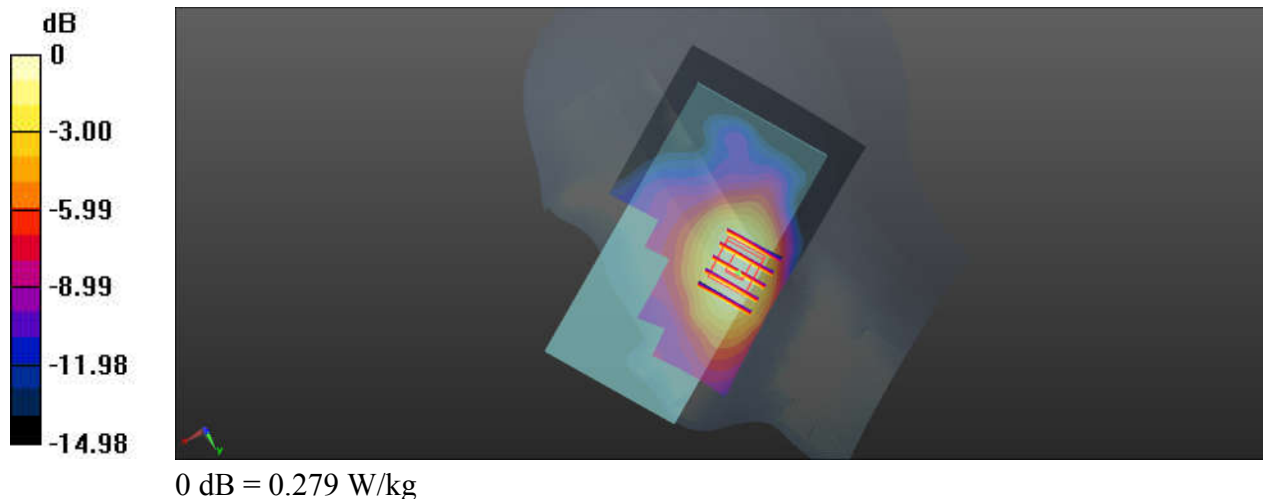
Communication System: UID 0, Generic LTE (0); Frequency: 1880 MHz; Duty Cycle: 1:1  
Medium: HSL\_1900\_230505 Medium parameters used:  $f = 1880$  MHz;  $\sigma = 1.402$  S/m;  $\epsilon_r = 40.407$ ;  
 $\rho = 1000$  kg/m<sup>3</sup>  
Ambient Temperature : 23.4 °C; Liquid Temperature : 22.6 °C

#### DASY5 Configuration:

- Probe: EX3DV4 - SN3819; ConvF(8.32, 8.32, 8.32); Calibrated: 2022/5/30
- Sensor-Surface: 1.4mm (Mechanical Surface Detection)
- Electronics: DAE4 Sn1437; Calibrated: 2022/11/23
- Phantom: SAM (30deg probe tilt) with CRP v4.0; Type: QD000P40CB; Serial: TP: 1500
- Measurement SW: DASY52, Version 52.10 (3); SEMCAD X Version 14.6.13 (7474)

**Ch18900/Area Scan (71x111x1):** Interpolated grid: dx=1.500 mm, dy=1.500 mm  
Maximum value of SAR (interpolated) = 0.285 W/kg

**Ch18900/Zoom Scan (5x5x7)/Cube 0:** Measurement grid: dx=8mm, dy=8mm, dz=5mm  
Reference Value = 2.074 V/m; Power Drift = -0.06 dB  
Peak SAR (extrapolated) = 0.324 W/kg  
**SAR(1 g) = 0.289 W/kg; SAR(10 g) = 0.159 W/kg**  
Maximum value of SAR (measured) = 0.279 W/kg



### 07\_LTE Band 7\_20M\_QPSK\_1RB\_0Offset\_Right Cheek\_Ch21100

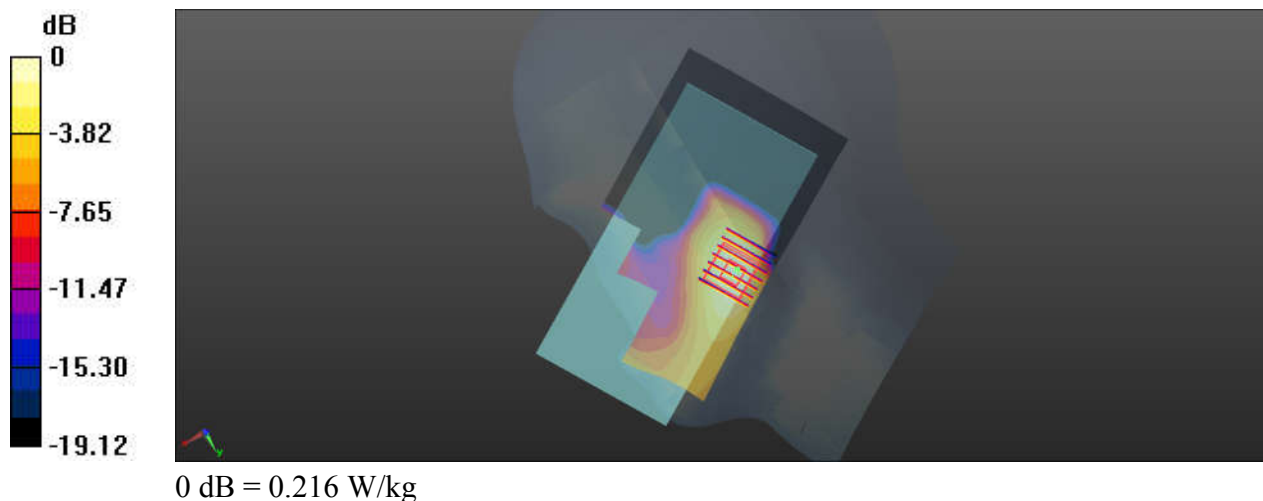
Communication System: UID 0, Generic LTE (0); Frequency: 2535 MHz; Duty Cycle: 1:1  
 Medium: HSL\_2600\_230507 Medium parameters used:  $f = 2535$  MHz;  $\sigma = 1.967$  S/m;  $\epsilon_r = 37.731$ ;  
 $\rho = 1000$  kg/m<sup>3</sup>  
 Ambient Temperature : 23.4 °C; Liquid Temperature : 22.5 °C

**DASY5 Configuration:**

- Probe: EX3DV4 - SN3819; ConvF(7.39, 7.39, 7.39); Calibrated: 2022/5/30
- Sensor-Surface: 1.4mm (Mechanical Surface Detection)
- Electronics: DAE4 Sn1437; Calibrated: 2022/11/23
- Phantom: SAM (30deg probe tilt) with CRP v4.0; Type: QD000P40CB; Serial: TP: 1500
- Measurement SW: DASY52, Version 52.10 (3); SEMCAD X Version 14.6.13 (7474)

**Ch21100/Area Scan (81x141x1):** Interpolated grid: dx=1.200 mm, dy=1.200 mm  
 Maximum value of SAR (interpolated) = 0.227 W/kg

**Ch21100/Zoom Scan (7x7x7)/Cube 0:** Measurement grid: dx=5mm, dy=5mm, dz=5mm  
 Reference Value = 0.4850 V/m; Power Drift = -0.06 dB  
 Peak SAR (extrapolated) = 0.256 W/kg  
**SAR(1 g) = 0.146 W/kg; SAR(10 g) = 0.082 W/kg**  
 Maximum value of SAR (measured) = 0.216 W/kg



**08\_LTE Band 41\_20M\_QPSK\_1RB\_0Offset\_Right Cheek\_Ch40670**

Communication System: UID 0, Generic LTE (0); Frequency: 2598 MHz; Duty Cycle: 1:1.59  
Medium: HSL\_2600\_230507 Medium parameters used:  $f = 2598$  MHz;  $\sigma = 2.037$  S/m;  $\epsilon_r = 37.5$ ;  $\rho = 1000$  kg/m<sup>3</sup>

Ambient Temperature : 23.4 °C; Liquid Temperature : 22.5 °C

DASY5 Configuration:

- Probe: EX3DV4 - SN3819; ConvF(7.39, 7.39, 7.39); Calibrated: 2022/5/30
- Sensor-Surface: 1.4mm (Mechanical Surface Detection)
- Electronics: DAE4 Sn1437; Calibrated: 2022/11/23
- Phantom: SAM (30deg probe tilt) with CRP v4.0; Type: QD000P40CB; Serial: TP: 1500
- Measurement SW: DASY52, Version 52.10 (3); SEMCAD X Version 14.6.13 (7474)

**Ch40670/Area Scan (81x141x1):** Interpolated grid: dx=1.200 mm, dy=1.200 mm

Maximum value of SAR (interpolated) = 0.115 W/kg

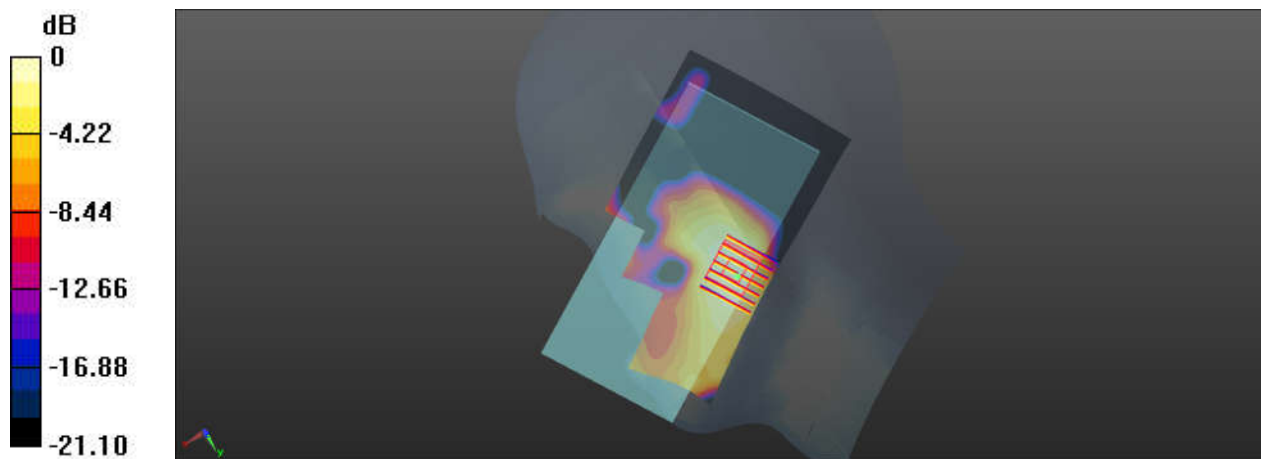
**Ch40670/Zoom Scan (7x7x7)/Cube 0:** Measurement grid: dx=5mm, dy=5mm, dz=5mm

Reference Value = 0 V/m; Power Drift = 0.01 dB

Peak SAR (extrapolated) = 0.136 W/kg

**SAR(1 g) = 0.075 W/kg; SAR(10 g) = 0.043 W/kg**

Maximum value of SAR (measured) = 0.111 W/kg



0 dB = 0.111 W/kg



### 09\_Bluetooth\_DH5 1Mbps\_Left Cheek\_Ch39

Communication System: UID 0, BT (0); Frequency: 2441 MHz; Duty Cycle: 1:1.290

Medium: HSL\_2450\_230506 Medium parameters used:  $f = 2441$  MHz;  $\sigma = 1.84$  S/m;  $\epsilon_r = 40.384$ ;  $\rho = 1000$  kg/m<sup>3</sup>

Ambient Temperature : 23.4 °C; Liquid Temperature : 22.4 °C

DASY5 Configuration:

- Probe: EX3DV4 - SN3819; ConvF(7.57, 7.57, 7.57); Calibrated: 2022/5/30
- Sensor-Surface: 1.4mm (Mechanical Surface Detection)
- Electronics: DAE4 Sn1437; Calibrated: 2022/11/23
- Phantom: SAM (30deg probe tilt) with CRP v4.0; Type: QD000P40CB; Serial: TP: 1500
- Measurement SW: DASY52, Version 52.10 (3); SEMCAD X Version 14.6.13 (7474)

**Ch39/Area Scan (81x101x1):** Interpolated grid: dx=1.200 mm, dy=1.200 mm

Maximum value of SAR (interpolated) = 0.157 W/kg

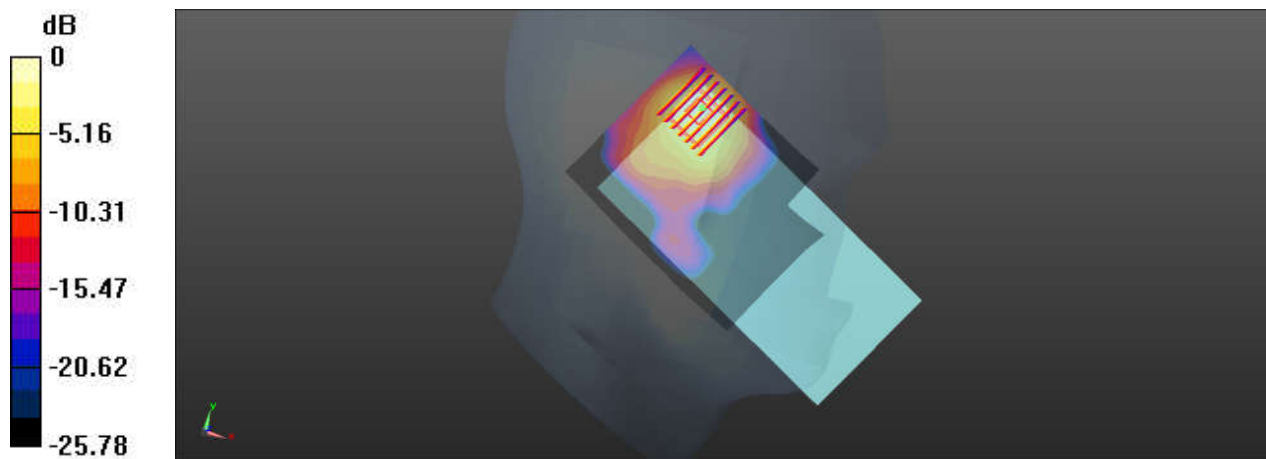
**Ch39/Zoom Scan (8x7x7)/Cube 0:** Measurement grid: dx=5mm, dy=5mm, dz=5mm

Reference Value = 3.992 V/m; Power Drift = 0.08 dB

Peak SAR (extrapolated) = 0.182 W/kg

**SAR(1 g) = 0.092 W/kg; SAR(10 g) = 0.045 W/kg**

Maximum value of SAR (measured) = 0.149 W/kg



0 dB = 0.149 W/kg

## 10\_WLAN2.4GHz\_802.11b 1Mbps\_Left Cheek\_Ch1

Communication System: UID 0, WIFI (0); Frequency: 2412 MHz; Duty Cycle: 1:1.025  
 Medium: HSL\_2450\_230506 Medium parameters used:  $f = 2412$  MHz;  $\sigma = 1.817$  S/m;  $\epsilon_r = 40.435$ ;  
 $\rho = 1000$  kg/m<sup>3</sup>  
 Ambient Temperature : 23.4 °C; Liquid Temperature : 22.4 °C

### DASY5 Configuration:

- Probe: EX3DV4 - SN3819; ConvF(7.57, 7.57, 7.57); Calibrated: 2022/5/30
- Sensor-Surface: 1.4mm (Mechanical Surface Detection)
- Electronics: DAE4 Sn1437; Calibrated: 2022/11/23
- Phantom: SAM (30deg probe tilt) with CRP v4.0; Type: QD000P40CB; Serial: TP: 1500
- Measurement SW: DASY52, Version 52.10 (3); SEMCAD X Version 14.6.13 (7474)

**Ch1/Area Scan (81x101x1):** Interpolated grid: dx=1.200 mm, dy=1.200 mm

Maximum value of SAR (interpolated) = 1.13 W/kg

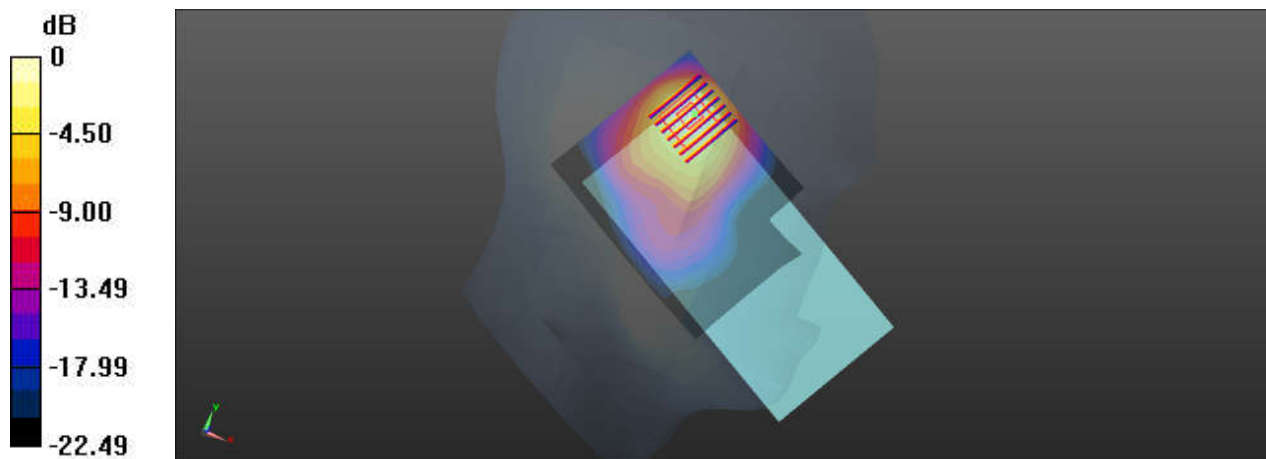
**Ch1/Zoom Scan (8x7x7)/Cube 0:** Measurement grid: dx=5mm, dy=5mm, dz=5mm

Reference Value = 12.04 V/m; Power Drift = -0.17 dB

Peak SAR (extrapolated) = 1.33 W/kg

**SAR(1 g) = 0.773 W/kg; SAR(10 g) = 0.393 W/kg**

Maximum value of SAR (measured) = 1.07 W/kg



0 dB = 1.07 W/kg

## 11\_WLAN5GHz\_802.11a 6Mbps\_Left Cheek\_Ch64

Communication System: UID 0, WIFI (0); Frequency: 5320 MHz; Duty Cycle: 1:1.117  
 Medium: HSL\_5250\_230513 Medium parameters used:  $f = 5320$  MHz;  $\sigma = 4.744$  S/m;  $\epsilon_r = 36.732$ ;  
 $\rho = 1000$  kg/m<sup>3</sup>  
 Ambient Temperature : 23.3 °C; Liquid Temperature : 22.6 °C

### DASY5 Configuration:

- Probe: EX3DV4 - SN3819; ConvF(5.07, 5.07, 5.07); Calibrated: 2022/5/30
- Sensor-Surface: 1.4mm (Mechanical Surface Detection)
- Electronics: DAE4 Sn1437; Calibrated: 2022/11/23
- Phantom: SAM (30deg probe tilt) with CRP v4.0; Type: QD000P40CB; Serial: TP: 1500
- Measurement SW: DASY52, Version 52.10 (3); SEMCAD X Version 14.6.13 (7474)

**Ch64/Area Scan (111x121x1):** Interpolated grid: dx=1.000 mm, dy=1.000 mm

Maximum value of SAR (interpolated) = 1.66 W/kg

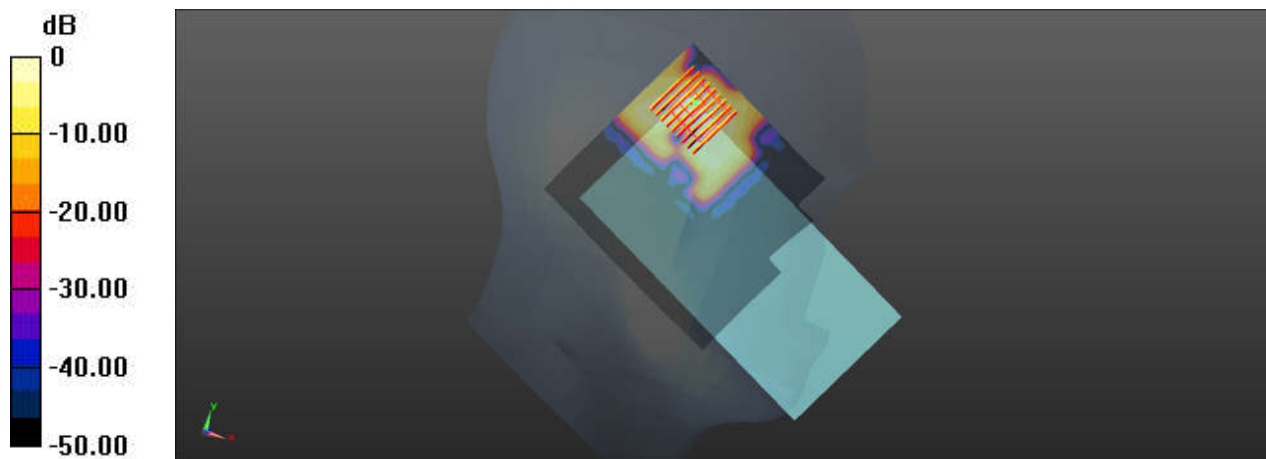
**Ch64/Zoom Scan (9x9x7)/Cube 0:** Measurement grid: dx=4mm, dy=4mm, dz=1.4mm

Reference Value = 3.286 V/m; Power Drift = -0.03 dB

Peak SAR (extrapolated) = 2.30 W/kg

**SAR(1 g) = 0.598 W/kg; SAR(10 g) = 0.193 W/kg**

Maximum value of SAR (measured) = 1.50 W/kg



0 dB = 1.50 W/kg

## 12\_WLAN5GHz\_802.11a 6Mbps\_Left Cheek\_Ch116

Communication System: UID 0, WIFI (0); Frequency: 5580 MHz; Duty Cycle: 1:1.117  
 Medium: HSL\_5600\_230514 Medium parameters used:  $f = 5580$  MHz;  $\sigma = 5.014$  S/m;  $\epsilon_r = 36.386$ ;  
 $\rho = 1000$  kg/m<sup>3</sup>  
 Ambient Temperature : 23.3 °C; Liquid Temperature : 22.3 °C

### DASY5 Configuration:

- Probe: EX3DV4 - SN3819; ConvF(4.55, 4.55, 4.55); Calibrated: 2022/5/30
- Sensor-Surface: 1.4mm (Mechanical Surface Detection)
- Electronics: DAE4 Sn1437; Calibrated: 2022/11/23
- Phantom: SAM (30deg probe tilt) with CRP v4.0; Type: QD000P40CB; Serial: TP: 1500
- Measurement SW: DASY52, Version 52.10 (3); SEMCAD X Version 14.6.13 (7474)

**Ch116/Area Scan (101x121x1):** Interpolated grid: dx=1.000 mm, dy=1.000 mm

Maximum value of SAR (interpolated) = 0.704 W/kg

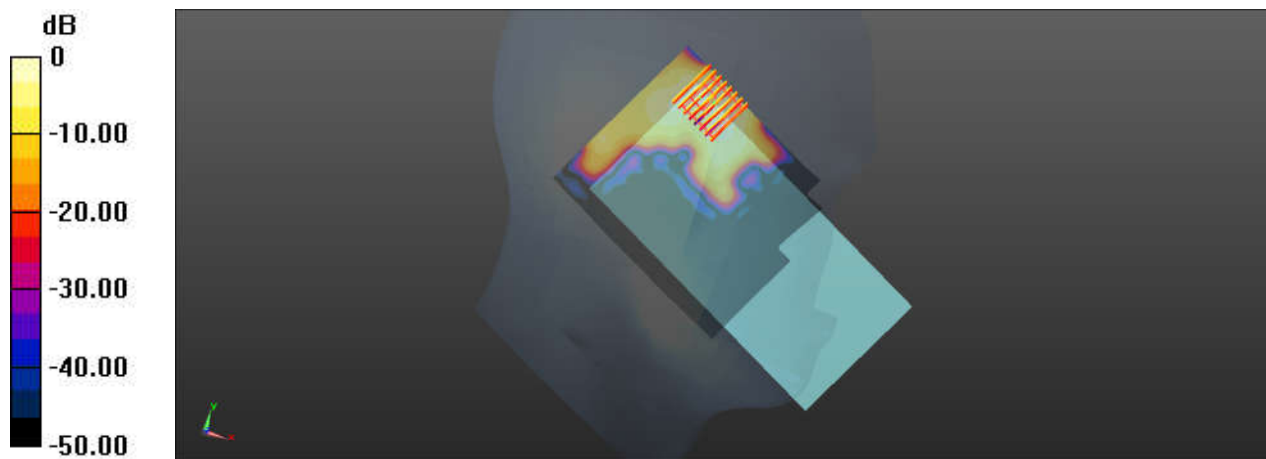
**Ch116/Zoom Scan (8x8x7)/Cube 0:** Measurement grid: dx=4mm, dy=4mm, dz=1.4mm

Reference Value = 4.128 V/m; Power Drift = -0.07 dB

Peak SAR (extrapolated) = 1.26 W/kg

**SAR(1 g) = 0.309 W/kg; SAR(10 g) = 0.104 W/kg**

Maximum value of SAR (measured) = 0.795 W/kg



0 dB = 0.795 W/kg

### 13\_WLAN5GHz\_802.11a 6Mbps\_Left Cheek\_Ch149

Communication System: UID 0, WIFI (0); Frequency: 5745 MHz; Duty Cycle: 1:1.117  
Medium: HSL\_5750\_230515 Medium parameters used:  $f = 5745$  MHz;  $\sigma = 5.193$  S/m;  $\epsilon_r = 36.144$ ;  
 $\rho = 1000$  kg/m<sup>3</sup>  
Ambient Temperature : 23.6 °C; Liquid Temperature : 22.5 °C

#### DASY5 Configuration:

- Probe: EX3DV4 - SN3819; ConvF(4.65, 4.65, 4.65); Calibrated: 2022/5/30
- Sensor-Surface: 1.4mm (Mechanical Surface Detection)
- Electronics: DAE4 Sn1437; Calibrated: 2022/11/23
- Phantom: SAM (30deg probe tilt) with CRP v4.0; Type: QD000P40CB; Serial: TP: 1500
- Measurement SW: DASY52, Version 52.10 (3); SEMCAD X Version 14.6.13 (7474)

**Ch149/Area Scan (101x121x1):** Interpolated grid: dx=1.000 mm, dy=1.000 mm

Maximum value of SAR (interpolated) = 1.01 W/kg

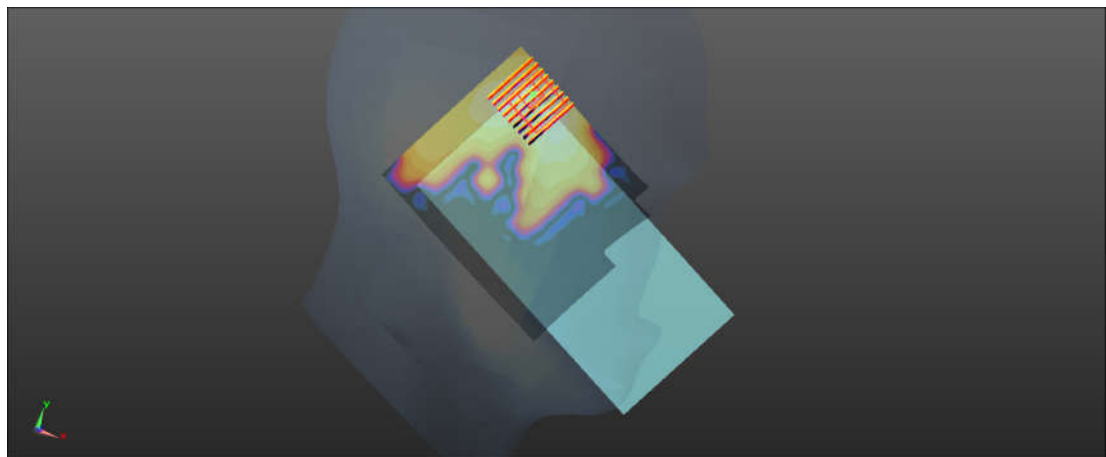
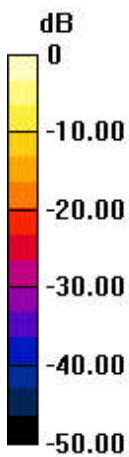
**Ch149/Zoom Scan (9x9x7)/Cube 0:** Measurement grid: dx=4mm, dy=4mm, dz=1.4mm

Reference Value = 5.679 V/m; Power Drift = -0.01 dB

Peak SAR (extrapolated) = 1.88 W/kg

**SAR(1 g) = 0.452 W/kg; SAR(10 g) = 0.152 W/kg**

Maximum value of SAR (measured) = 1.11 W/kg



0 dB = 1.11 W/kg

### 14\_GSM850\_GPRS(2 Tx slots)\_Back\_5mm\_Ch189

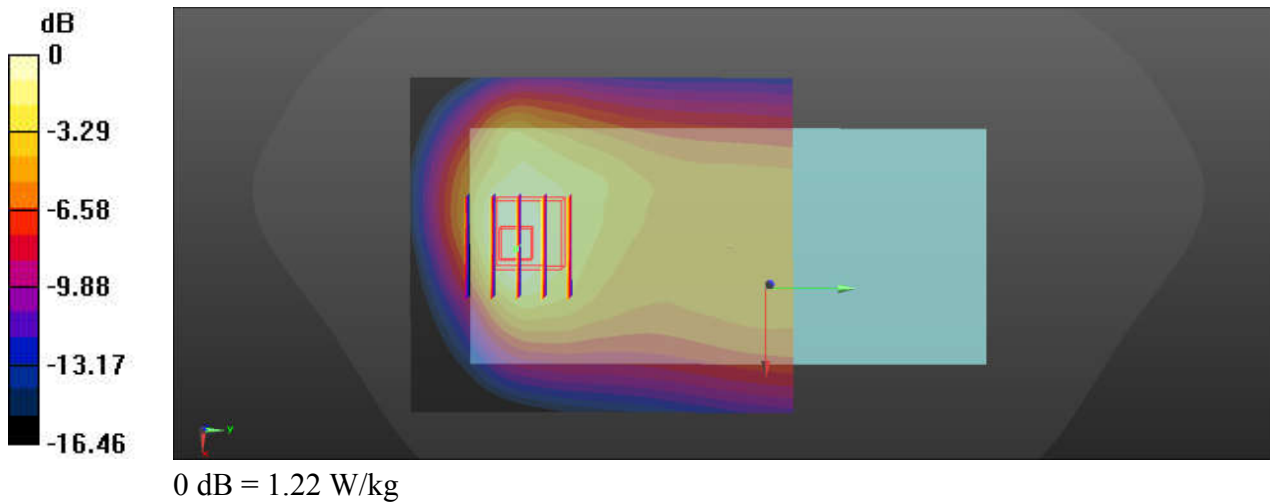
Communication System: UID 0, GPRS/EDGE10 (0); Frequency: 836.4 MHz; Duty Cycle: 1:4.15  
 Medium: HSL\_835\_230504 Medium parameters used:  $f = 836.4$  MHz;  $\sigma = 0.895$  S/m;  $\epsilon_r = 40.515$ ;  
 $\rho = 1000$  kg/m<sup>3</sup>  
 Ambient Temperature : 23.3 °C; Liquid Temperature : 22.1 °C

**DASY5 Configuration:**

- Probe: ES3DV3 - SN3191; ConvF(6.58, 5.99, 6.22); Calibrated: 2023/2/17
- Sensor-Surface: 3mm (Mechanical Surface Detection)
- Electronics: DAE4 Sn1386; Calibrated: 2022/6/30
- Phantom: Twin-SAM V8.0 (Left); Type: QD 000 P41 AA; Serial: 2035
- Measurement SW: DASY52, Version 52.10 (4); SEMCAD X Version 14.6.14 (7483)

**Ch189/Area Scan (71x81x1):** Interpolated grid: dx=1.500 mm, dy=1.500 mm  
 Maximum value of SAR (interpolated) = 1.26 W/kg

**Ch189/Zoom Scan (5x5x7)/Cube 0:** Measurement grid: dx=8mm, dy=8mm, dz=5mm  
 Reference Value = 26.14 V/m; Power Drift = -0.07 dB  
 Peak SAR (extrapolated) = 1.79 W/kg  
**SAR(1 g) = 0.981 W/kg; SAR(10 g) = 0.568 W/kg**  
 Maximum value of SAR (measured) = 1.22 W/kg



### 15\_WCDMA V\_RMC 12.2Kbps\_Back\_5mm\_Ch4233

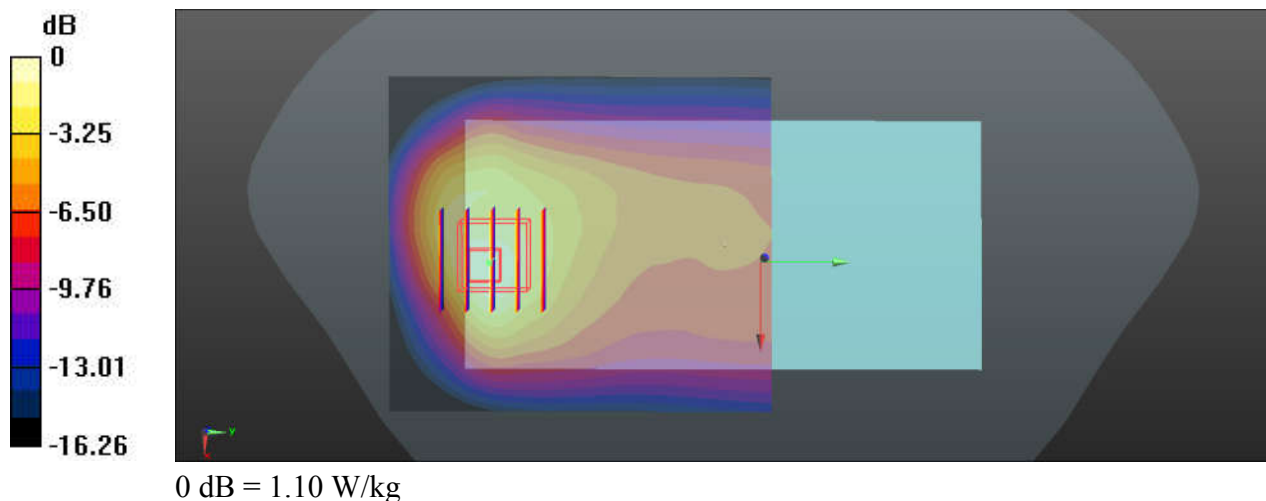
Communication System: UID 0, Generic WCDMA (0); Frequency: 846.6 MHz; Duty Cycle: 1:1  
 Medium: HSL\_835\_230504 Medium parameters used:  $f = 846.6$  MHz;  $\sigma = 0.911$  S/m;  $\epsilon_r = 40.638$ ;  
 $\rho = 1000$  kg/m<sup>3</sup>  
 Ambient Temperature : 23.5 °C; Liquid Temperature : 22.3 °C

**DASY5 Configuration:**

- Probe: EX3DV4 - SN3819; ConvF(9.51, 9.51, 9.51); Calibrated: 2022/5/30
- Sensor-Surface: 1.4mm (Mechanical Surface Detection)
- Electronics: DAE4 Sn1437; Calibrated: 2022/11/23
- Phantom: SAM (30deg probe tilt) with CRP v4.0; Type: QD000P40CB; Serial: TP: 1500
- Measurement SW: DASY52, Version 52.10 (3); SEMCAD X Version 14.6.13 (7474)

**Ch4233/Area Scan (71x81x1):** Interpolated grid: dx=1.500 mm, dy=1.500 mm  
 Maximum value of SAR (interpolated) = 1.20 W/kg

**Ch4233/Zoom Scan (5x5x7)/Cube 0:** Measurement grid: dx=8mm, dy=8mm, dz=5mm  
 Reference Value = 17.71 V/m; Power Drift = 0.05 dB  
 Peak SAR (extrapolated) = 1.50 W/kg  
**SAR(1 g) = 0.757 W/kg; SAR(10 g) = 0.429 W/kg**  
 Maximum value of SAR (measured) = 1.10 W/kg



## 16\_LTE Band 5\_10M\_QPSK\_1RB\_0Offset\_Back\_5mm\_Ch20525

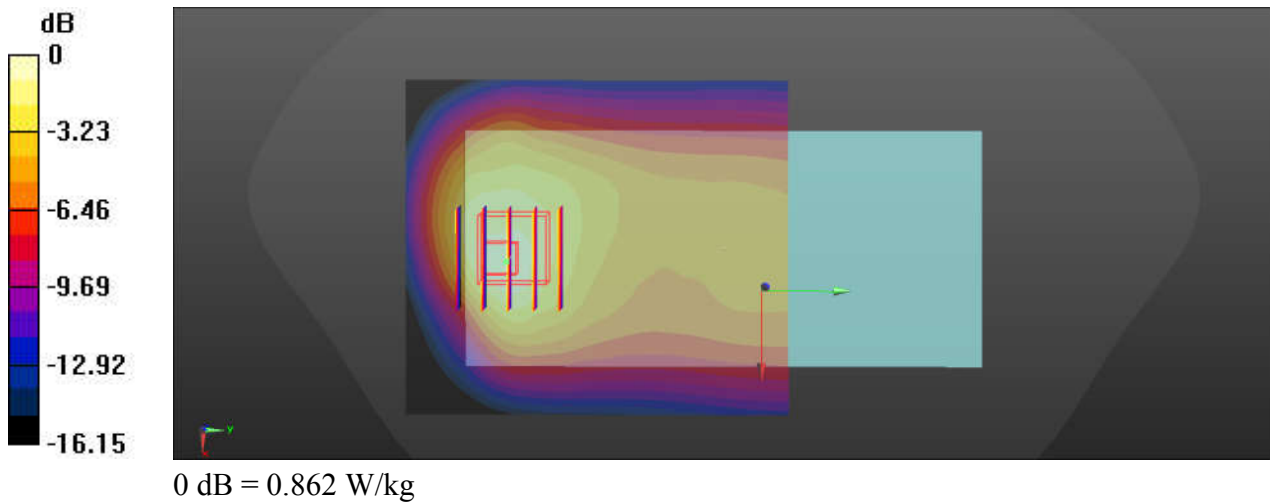
Communication System: UID 0, LTE (0); Frequency: 836.5 MHz; Duty Cycle: 1:1  
 Medium: HSL\_835\_230504 Medium parameters used:  $f = 836.5$  MHz;  $\sigma = 0.895$  S/m;  $\epsilon_r = 40.515$ ;  
 $\rho = 1000$  kg/m<sup>3</sup>  
 Ambient Temperature : 23.3 °C; Liquid Temperature : 22.1 °C

### DASY5 Configuration:

- Probe: ES3DV3 - SN3191; ConvF(6.58, 5.99, 6.22); Calibrated: 2023/2/17
- Sensor-Surface: 3mm (Mechanical Surface Detection)
- Electronics: DAE4 Sn1386; Calibrated: 2022/6/30
- Phantom: Twin-SAM V8.0 (Left); Type: QD 000 P41 AA; Serial: 2035
- Measurement SW: DASY52, Version 52.10 (4); SEMCAD X Version 14.6.14 (7483)

**Ch20525/Area Scan (71x81x1):** Interpolated grid: dx=1.500 mm, dy=1.500 mm  
 Maximum value of SAR (interpolated) = 0.916 W/kg

**Ch20525/Zoom Scan (5x5x7)/Cube 0:** Measurement grid: dx=8mm, dy=8mm, dz=5mm  
 Reference Value = 18.27 V/m; Power Drift = -0.08 dB  
 Peak SAR (extrapolated) = 1.32 W/kg  
**SAR(1 g) = 0.709 W/kg; SAR(10 g) = 0.406 W/kg**  
 Maximum value of SAR (measured) = 0.862 W/kg





## 17\_GSM1900\_GPRS(3 Tx slots)\_Back\_5mm\_Ch512

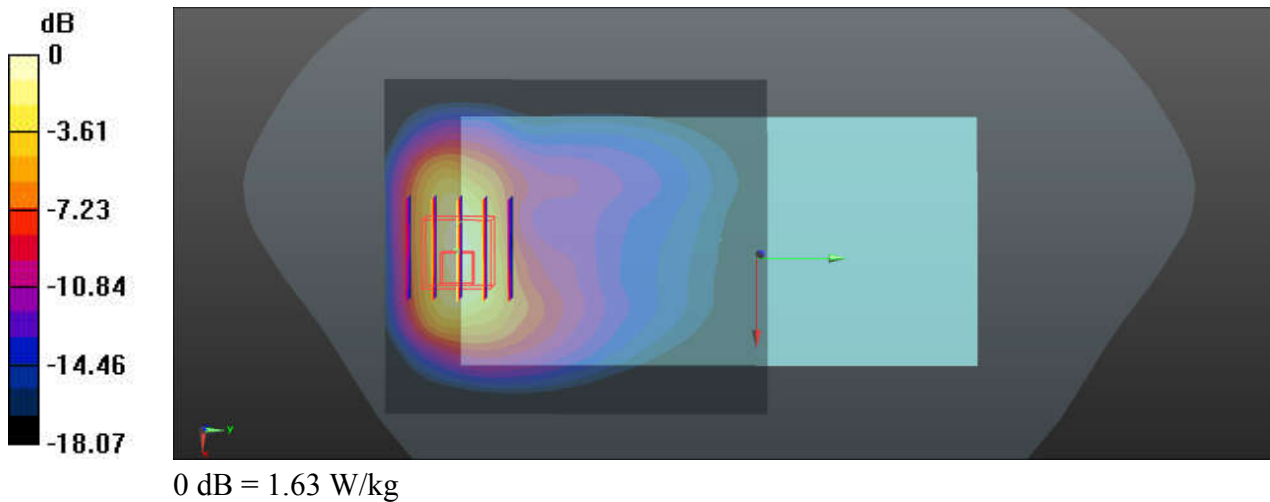
Communication System: UID 0, GPRS/EDGE11 (0); Frequency: 1850.2 MHz; Duty Cycle: 1:2.77  
 Medium: HSL\_1900\_230505 Medium parameters used:  $f = 1850.2$  MHz;  $\sigma = 1.371$  S/m;  $\epsilon_r = 40.538$ ;  $\rho = 1000$  kg/m<sup>3</sup>  
 Ambient Temperature : 23.4 °C; Liquid Temperature : 22.6 °C

### DASY5 Configuration:

- Probe: EX3DV4 - SN3819; ConvF(8.32, 8.32, 8.32); Calibrated: 2022/5/30
- Sensor-Surface: 1.4mm (Mechanical Surface Detection)
- Electronics: DAE4 Sn1437; Calibrated: 2022/11/23
- Phantom: SAM (30deg probe tilt) with CRP v4.0; Type: QD000P40CB; Serial: TP: 1500
- Measurement SW: DASY52, Version 52.10 (3); SEMCAD X Version 14.6.13 (7474)

**Ch512/Area Scan (71x81x1):** Interpolated grid: dx=1.500 mm, dy=1.500 mm  
 Maximum value of SAR (interpolated) = 1.41 W/kg

**Ch512/Zoom Scan (5x5x7)/Cube 0:** Measurement grid: dx=8mm, dy=8mm, dz=5mm  
 Reference Value = 9.295 V/m; Power Drift = 0.03 dB  
 Peak SAR (extrapolated) = 1.96 W/kg  
**SAR(1 g) = 1.01 W/kg; SAR(10 g) = 0.519 W/kg**  
 Maximum value of SAR (measured) = 1.63 W/kg



## 18\_WCDMA II\_RMC 12.2Kbps\_Bottom Side\_5mm\_Ch9262

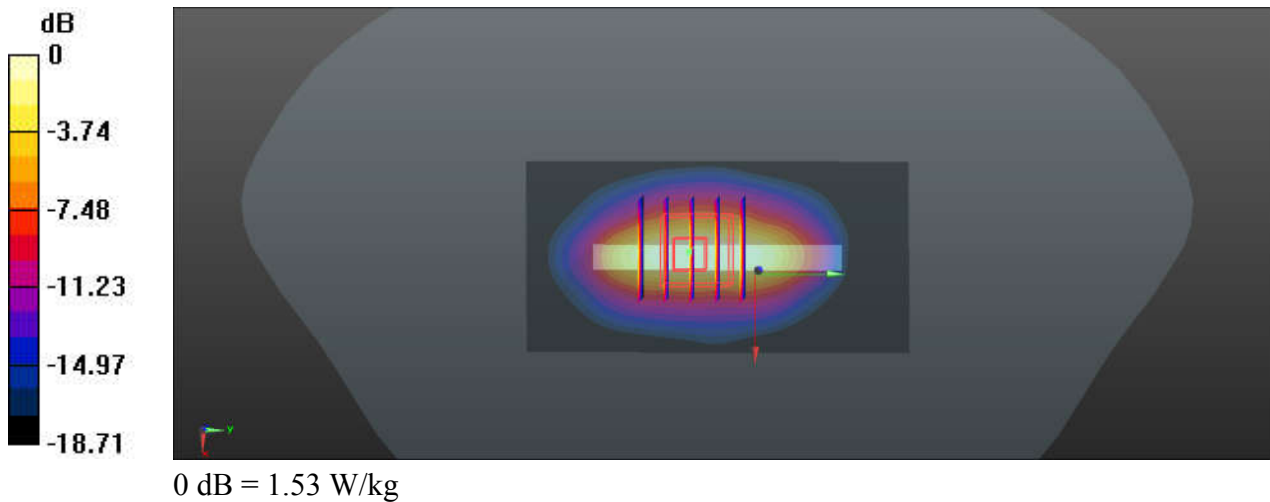
Communication System: UID 0, Generic WCDMA (0); Frequency: 1852.4 MHz; Duty Cycle: 1:1  
 Medium: HSL\_1900\_230505 Medium parameters used:  $f = 1852.4$  MHz;  $\sigma = 1.373$  S/m;  $\epsilon_r = 40.528$ ;  $\rho = 1000$  kg/m<sup>3</sup>  
 Ambient Temperature : 23.4 °C; Liquid Temperature : 22.6 °C

### DASY5 Configuration:

- Probe: EX3DV4 - SN3819; ConvF(8.32, 8.32, 8.32); Calibrated: 2022/5/30
- Sensor-Surface: 1.4mm (Mechanical Surface Detection)
- Electronics: DAE4 Sn1437; Calibrated: 2022/11/23
- Phantom: SAM (30deg probe tilt) with CRP v4.0; Type: QD000P40CB; Serial: TP: 1500
- Measurement SW: DASY52, Version 52.10 (3); SEMCAD X Version 14.6.13 (7474)

**Ch9262/Area Scan (41x81x1):** Interpolated grid: dx=1.500 mm, dy=1.500 mm  
 Maximum value of SAR (interpolated) = 1.64 W/kg

**Ch9262/Zoom Scan (5x5x7)/Cube 0:** Measurement grid: dx=8mm, dy=8mm, dz=5mm  
 Reference Value = 33.40 V/m; Power Drift = -0.07 dB  
 Peak SAR (extrapolated) = 1.86 W/kg  
**SAR(1 g) = 0.932 W/kg; SAR(10 g) = 0.462 W/kg**  
 Maximum value of SAR (measured) = 1.53 W/kg



### 19\_LTE Band 2\_20M\_QPSK\_1RB\_99Offset\_Bottom Side\_5mm\_Ch18900

Communication System: UID 0, Generic LTE (0); Frequency: 1880 MHz; Duty Cycle: 1:1  
 Medium: HSL\_1900\_230505 Medium parameters used:  $f = 1880$  MHz;  $\sigma = 1.402$  S/m;  $\epsilon_r = 40.407$ ;  
 $\rho = 1000$  kg/m<sup>3</sup>  
 Ambient Temperature : 23.4 °C; Liquid Temperature : 22.6 °C

**DASY5 Configuration:**

- Probe: EX3DV4 - SN3819; ConvF(8.32, 8.32, 8.32); Calibrated: 2022/5/30
- Sensor-Surface: 1.4mm (Mechanical Surface Detection)
- Electronics: DAE4 Sn1437; Calibrated: 2022/11/23
- Phantom: SAM (30deg probe tilt) with CRP v4.0; Type: QD000P40CB; Serial: TP: 1500
- Measurement SW: DASY52, Version 52.10 (3); SEMCAD X Version 14.6.13 (7474)

**Ch18900/Area Scan (41x81x1):** Interpolated grid: dx=1.500 mm, dy=1.500 mm

Maximum value of SAR (interpolated) = 1.80 W/kg

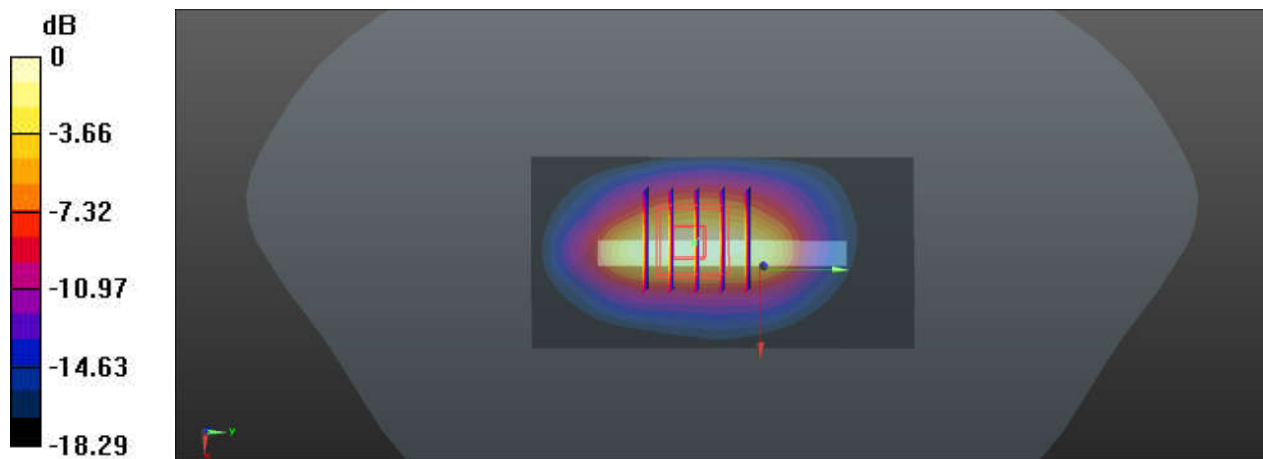
**Ch18900/Zoom Scan (5x5x7)/Cube 0:** Measurement grid: dx=8mm, dy=8mm, dz=5mm

Reference Value = 2.154 V/m; Power Drift = -0.16 dB

Peak SAR (extrapolated) = 2.13 W/kg

**SAR(1 g) = 1.06 W/kg; SAR(10 g) = 0.526 W/kg**

Maximum value of SAR (measured) = 1.74 W/kg



0 dB = 1.74 W/kg

## 20\_LTE Band 7\_20M\_QPSK\_1RB\_0Offset\_Back\_5mm\_Ch21350

Communication System: UID 0, LTE (0); Frequency: 2560 MHz; Duty Cycle: 1:1  
 Medium: HSL\_2600\_230507 Medium parameters used:  $f = 2560$  MHz;  $\sigma = 1.998$  S/m;  $\epsilon_r = 37.652$ ;  
 $\rho = 1000$  kg/m<sup>3</sup>  
 Ambient Temperature : 23.5 °C; Liquid Temperature : 22.3 °C

### DASY5 Configuration:

- Probe: ES3DV3 - SN3191; ConvF(4.83, 4.44, 4.75); Calibrated: 2023/2/17
- Sensor-Surface: 3mm (Mechanical Surface Detection)
- Electronics: DAE4 Sn1386; Calibrated: 2022/6/30
- Phantom: Twin-SAM V8.0 (Left); Type: QD 000 P41 AA; Serial: 2035
- Measurement SW: DASY52, Version 52.10 (4); SEMCAD X Version 14.6.14 (7483)

**Ch21350/Area Scan (81x91x1):** Interpolated grid: dx=1.200 mm, dy=1.200 mm

Maximum value of SAR (interpolated) = 1.56 W/kg

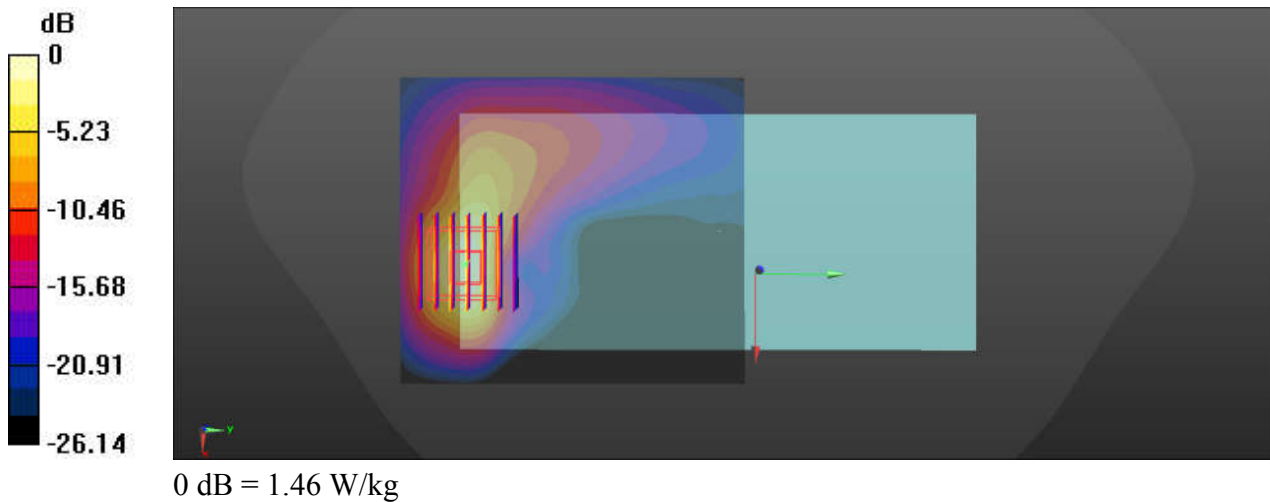
**Ch21350/Zoom Scan (7x7x7)/Cube 0:** Measurement grid: dx=5mm, dy=5mm, dz=5mm

Reference Value = 1.383 V/m; Power Drift = -0.09 dB

Peak SAR (extrapolated) = 2.48 W/kg

**SAR(1 g) = 1.04 W/kg; SAR(10 g) = 0.408 W/kg**

Maximum value of SAR (measured) = 1.46 W/kg



## 21\_LTE Band 41\_20M\_QPSK\_1RB\_0Offset\_Back\_5mm\_Ch41140

Communication System: UID 0, Generic LTE (0); Frequency: 2645 MHz; Duty Cycle: 1:1.59  
Medium: HSL\_2600\_230507 Medium parameters used:  $f = 2645$  MHz;  $\sigma = 2.093$  S/m;  $\epsilon_r = 37.267$ ;  
 $\rho = 1000$  kg/m<sup>3</sup>  
Ambient Temperature : 23.4 °C; Liquid Temperature : 22.5 °C

### DASY5 Configuration:

- Probe: EX3DV4 - SN3819; ConvF(7.39, 7.39, 7.39); Calibrated: 2022/5/30
- Sensor-Surface: 1.4mm (Mechanical Surface Detection)
- Electronics: DAE4 Sn1437; Calibrated: 2022/11/23
- Phantom: SAM (30deg probe tilt) with CRP v4.0; Type: QD000P40CB; Serial: TP: 1500
- Measurement SW: DASY52, Version 52.10 (3); SEMCAD X Version 14.6.13 (7474)

**Ch41140/Area Scan (91x91x1):** Interpolated grid: dx=1.200 mm, dy=1.200 mm

Maximum value of SAR (interpolated) = 1.77 W/kg

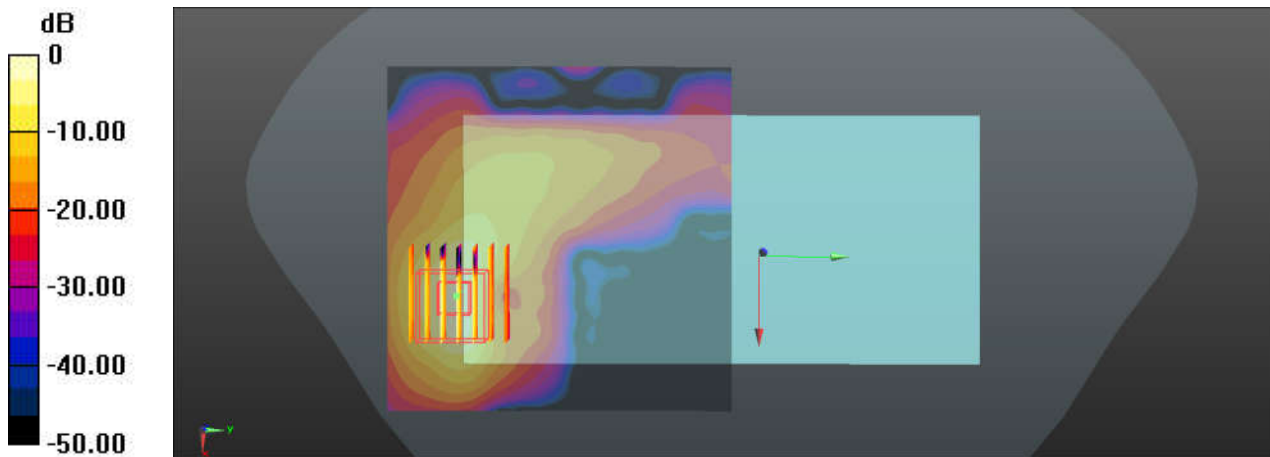
**Ch41140/Zoom Scan (7x7x7)/Cube 0:** Measurement grid: dx=5mm, dy=5mm, dz=5mm

Reference Value = 0 V/m; Power Drift = -0.14 dB

Peak SAR (extrapolated) = 2.95 W/kg

**SAR(1 g) = 1.06 W/kg; SAR(10 g) = 0.383 W/kg**

Maximum value of SAR (measured) = 1.85 W/kg



## 22\_Bluetooth\_DH5 1Mbps\_Back\_5mm\_Ch39

Communication System: UID 0, BT (0); Frequency: 2441 MHz; Duty Cycle: 1:1.290

Medium: HSL\_2450\_230506 Medium parameters used:  $f = 2441$  MHz;  $\sigma = 1.84$  S/m;  $\epsilon_r = 40.384$ ;  $\rho = 1000$  kg/m<sup>3</sup>

Ambient Temperature : 23.4 °C; Liquid Temperature : 22.4 °C

DASY5 Configuration:

- Probe: EX3DV4 - SN3819; ConvF(7.57, 7.57, 7.57); Calibrated: 2022/5/30
- Sensor-Surface: 1.4mm (Mechanical Surface Detection)
- Electronics: DAE4 Sn1437; Calibrated: 2022/11/23
- Phantom: SAM (30deg probe tilt) with CRP v4.0; Type: QD000P40CB; Serial: TP: 1500
- Measurement SW: DASY52, Version 52.10 (3); SEMCAD X Version 14.6.13 (7474)

**Ch39/Area Scan (91x101x1):** Interpolated grid: dx=1.200 mm, dy=1.200 mm

Maximum value of SAR (interpolated) = 0.129 W/kg

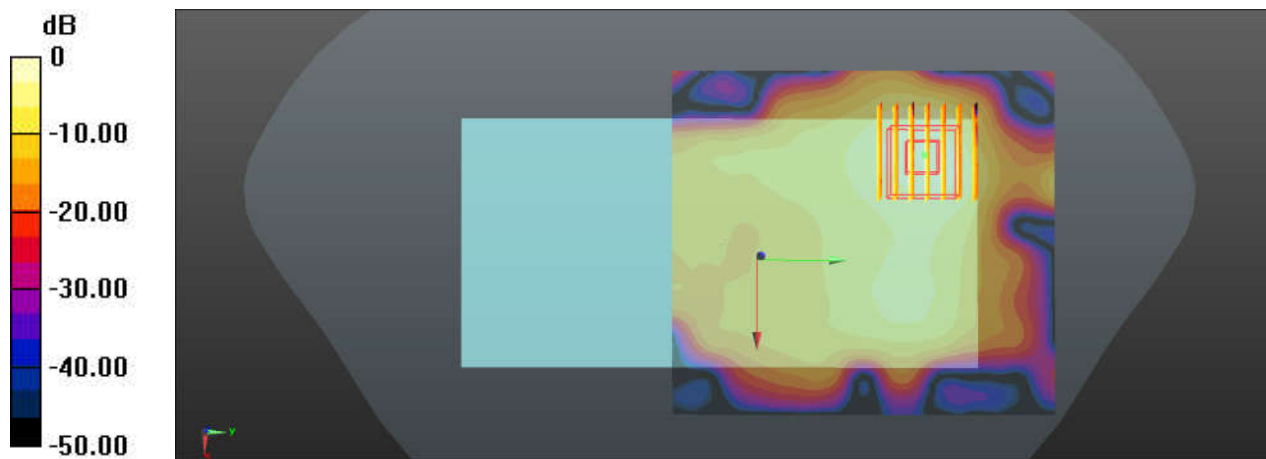
**Ch39/Zoom Scan (7x7x7)/Cube 0:** Measurement grid: dx=5mm, dy=5mm, dz=5mm

Reference Value = 1.645 V/m; Power Drift = 0.08 dB

Peak SAR (extrapolated) = 0.193 W/kg

**SAR(1 g) = 0.073 W/kg; SAR(10 g) = 0.033 W/kg**

Maximum value of SAR (measured) = 0.133 W/kg



0 dB = 0.133 W/kg

### 23\_WLAN2.4GHz\_802.11b 1Mbps\_Back\_5mm\_Ch1

Communication System: UID 0, WIFI (0); Frequency: 2412 MHz; Duty Cycle: 1:1.025  
Medium: HSL\_2450\_230506 Medium parameters used:  $f = 2412$  MHz;  $\sigma = 1.817$  S/m;  $\epsilon_r = 40.435$ ;  
 $\rho = 1000$  kg/m<sup>3</sup>  
Ambient Temperature : 23.4 °C; Liquid Temperature : 22.4 °C

#### DASY5 Configuration:

- Probe: EX3DV4 - SN3819; ConvF(7.57, 7.57, 7.57); Calibrated: 2022/5/30
- Sensor-Surface: 1.4mm (Mechanical Surface Detection)
- Electronics: DAE4 Sn1437; Calibrated: 2022/11/23
- Phantom: SAM (30deg probe tilt) with CRP v4.0; Type: QD000P40CB; Serial: TP: 1500
- Measurement SW: DASY52, Version 52.10 (3); SEMCAD X Version 14.6.13 (7474)

**Ch1/Area Scan (91x101x1):** Interpolated grid: dx=1.200 mm, dy=1.200 mm

Maximum value of SAR (interpolated) = 1.21 W/kg

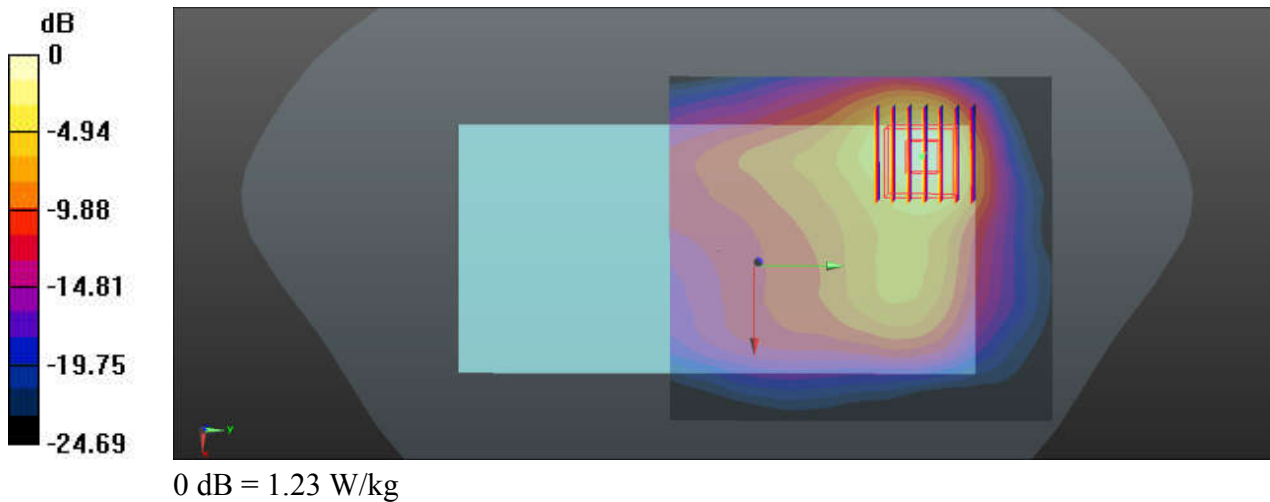
**Ch1/Zoom Scan (7x7x7)/Cube 0:** Measurement grid: dx=5mm, dy=5mm, dz=5mm

Reference Value = 6.060 V/m; Power Drift = -0.04 dB

Peak SAR (extrapolated) = 1.63 W/kg

**SAR(1 g) = 0.696 W/kg; SAR(10 g) = 0.318 W/kg**

Maximum value of SAR (measured) = 1.23 W/kg



## 24\_WLAN5GHz\_802.11a\_6Mbps\_Back\_5mm\_Ch36

Communication System: UID 0, WIFI (0); Frequency: 5180 MHz; Duty Cycle: 1:1.117  
Medium: HSL\_5250\_230513 Medium parameters used:  $f = 5180$  MHz;  $\sigma = 4.592$  S/m;  $\epsilon_r = 36.943$ ;  
 $\rho = 1000$  kg/m<sup>3</sup>  
Ambient Temperature : 23.3 °C; Liquid Temperature : 22.6 °C

### DASY5 Configuration:

- Probe: EX3DV4 - SN3819; ConvF(5.07, 5.07, 5.07); Calibrated: 2022/5/30
- Sensor-Surface: 1.4mm (Mechanical Surface Detection)
- Electronics: DAE4 Sn1437; Calibrated: 2022/11/23
- Phantom: SAM (30deg probe tilt) with CRP v4.0; Type: QD000P40CB; Serial: TP: 1500
- Measurement SW: DASY52, Version 52.10 (3); SEMCAD X Version 14.6.13 (7474)

**Ch36/Area Scan (111x111x1):** Interpolated grid: dx=1.000 mm, dy=1.000 mm

Maximum value of SAR (interpolated) = 1.77 W/kg

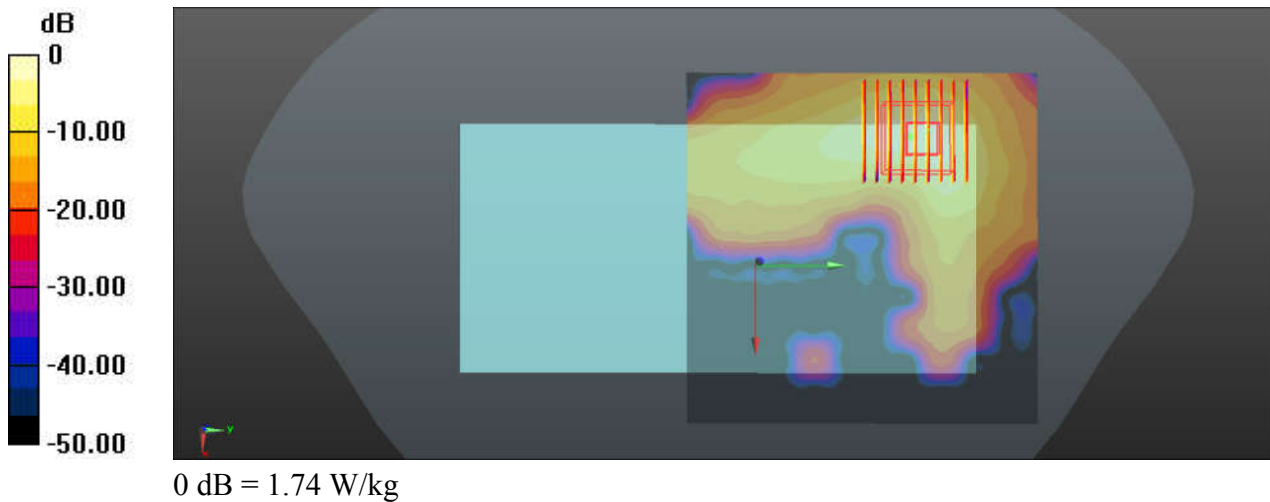
**Ch36/Zoom Scan (9x9x7)/Cube 0:** Measurement grid: dx=4mm, dy=4mm, dz=1.4mm

Reference Value = 2.118 V/m; Power Drift = -0.02 dB

Peak SAR (extrapolated) = 2.87 W/kg

**SAR(1 g) = 0.793 W/kg; SAR(10 g) = 0.247 W/kg**

Maximum value of SAR (measured) = 1.74 W/kg





## 25\_WLAN5GHz\_802.11a 6Mbps\_Back\_5mm\_Ch157

Communication System: UID 0, WIFI (0); Frequency: 5785 MHz; Duty Cycle: 1:1.117  
 Medium: HSL\_5750\_230515 Medium parameters used:  $f = 5785$  MHz;  $\sigma = 5.239$  S/m;  $\epsilon_r = 36.081$ ;  
 $\rho = 1000$  kg/m<sup>3</sup>  
 Ambient Temperature : 23.6 °C; Liquid Temperature : 22.5 °C

### DASY5 Configuration:

- Probe: EX3DV4 - SN3819; ConvF(4.65, 4.65, 4.65); Calibrated: 2022/5/30
- Sensor-Surface: 1.4mm (Mechanical Surface Detection)
- Electronics: DAE4 Sn1437; Calibrated: 2022/11/23
- Phantom: SAM (30deg probe tilt) with CRP v4.0; Type: QD000P40CB; Serial: TP: 1500
- Measurement SW: DASY52, Version 52.10 (3); SEMCAD X Version 14.6.13 (7474)

**Ch157/Area Scan (111x111x1):** Interpolated grid: dx=1.000 mm, dy=1.000 mm

Maximum value of SAR (interpolated) = 1.58 W/kg

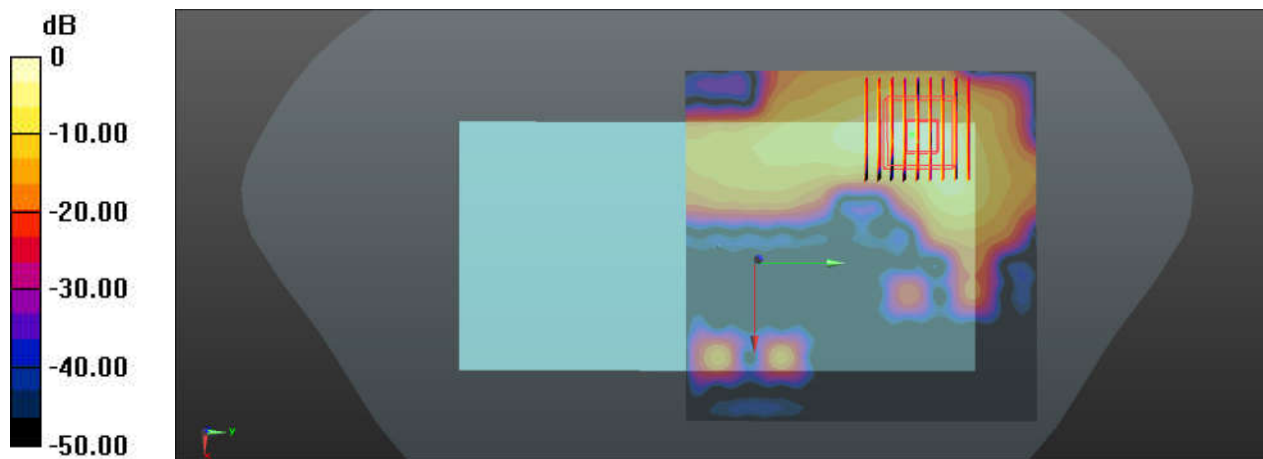
**Ch157/Zoom Scan (9x9x7)/Cube 0:** Measurement grid: dx=4mm, dy=4mm, dz=1.4mm

Reference Value = 0.5170 V/m; Power Drift = 0.07 dB

Peak SAR (extrapolated) = 2.96 W/kg

**SAR(1 g) = 0.726 W/kg; SAR(10 g) = 0.204 W/kg**

Maximum value of SAR (measured) = 1.62 W/kg



0 dB = 1.62 W/kg

## 26\_GSM850\_GPRS(2 Tx slots)\_Back\_5mm\_Ch189

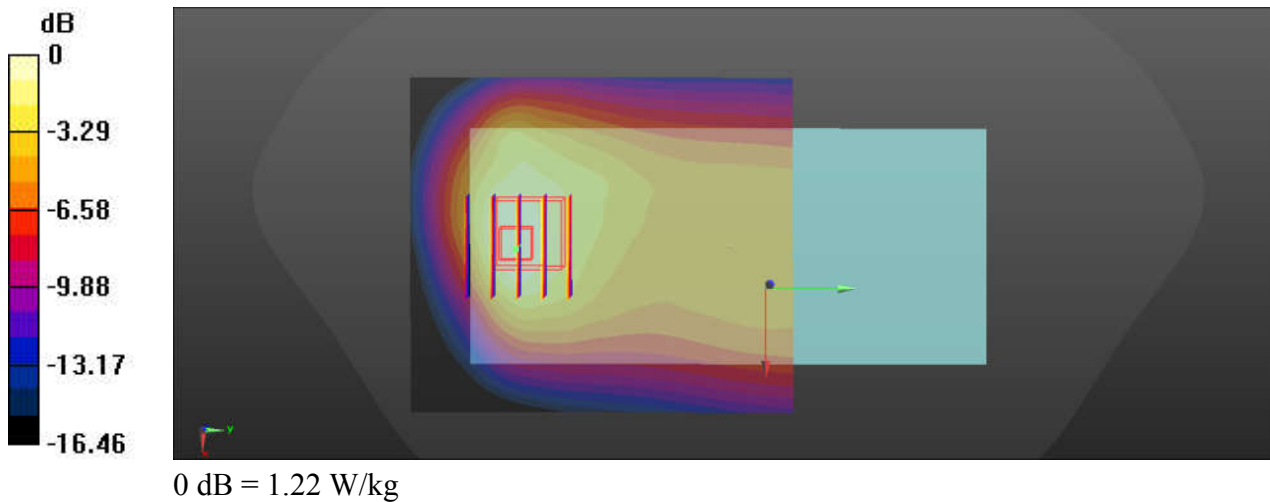
Communication System: UID 0, GPRS/EDGE10 (0); Frequency: 836.4 MHz; Duty Cycle: 1:4.15  
 Medium: HSL\_835\_230504 Medium parameters used:  $f = 836.4$  MHz;  $\sigma = 0.895$  S/m;  $\epsilon_r = 40.515$ ;  
 $\rho = 1000$  kg/m<sup>3</sup>  
 Ambient Temperature : 23.3 °C; Liquid Temperature : 22.1 °C

### DASY5 Configuration:

- Probe: ES3DV3 - SN3191; ConvF(6.58, 5.99, 6.22); Calibrated: 2023/2/17
- Sensor-Surface: 3mm (Mechanical Surface Detection)
- Electronics: DAE4 Sn1386; Calibrated: 2022/6/30
- Phantom: Twin-SAM V8.0 (Left); Type: QD 000 P41 AA; Serial: 2035
- Measurement SW: DASY52, Version 52.10 (4); SEMCAD X Version 14.6.14 (7483)

**Ch189/Area Scan (71x81x1):** Interpolated grid: dx=1.500 mm, dy=1.500 mm  
 Maximum value of SAR (interpolated) = 1.26 W/kg

**Ch189/Zoom Scan (5x5x7)/Cube 0:** Measurement grid: dx=8mm, dy=8mm, dz=5mm  
 Reference Value = 26.14 V/m; Power Drift = -0.07 dB  
 Peak SAR (extrapolated) = 1.79 W/kg  
**SAR(1 g) = 0.981 W/kg; SAR(10 g) = 0.568 W/kg**  
 Maximum value of SAR (measured) = 1.22 W/kg



## 27\_WCDMA V\_RMC 12.2Kbps\_Back\_5mm\_Ch4233

Communication System: UID 0, Generic WCDMA (0); Frequency: 846.6 MHz; Duty Cycle: 1:1  
Medium: HSL\_835\_230504 Medium parameters used:  $f = 846.6$  MHz;  $\sigma = 0.911$  S/m;  $\epsilon_r = 40.638$ ;  
 $\rho = 1000$  kg/m<sup>3</sup>  
Ambient Temperature : 23.5 °C; Liquid Temperature : 22.3 °C

### DASY5 Configuration:

- Probe: EX3DV4 - SN3819; ConvF(9.51, 9.51, 9.51); Calibrated: 2022/5/30
- Sensor-Surface: 1.4mm (Mechanical Surface Detection)
- Electronics: DAE4 Sn1437; Calibrated: 2022/11/23
- Phantom: SAM (30deg probe tilt) with CRP v4.0; Type: QD000P40CB; Serial: TP: 1500
- Measurement SW: DASY52, Version 52.10 (3); SEMCAD X Version 14.6.13 (7474)

**Ch4233/Area Scan (71x81x1):** Interpolated grid: dx=1.500 mm, dy=1.500 mm

Maximum value of SAR (interpolated) = 1.20 W/kg

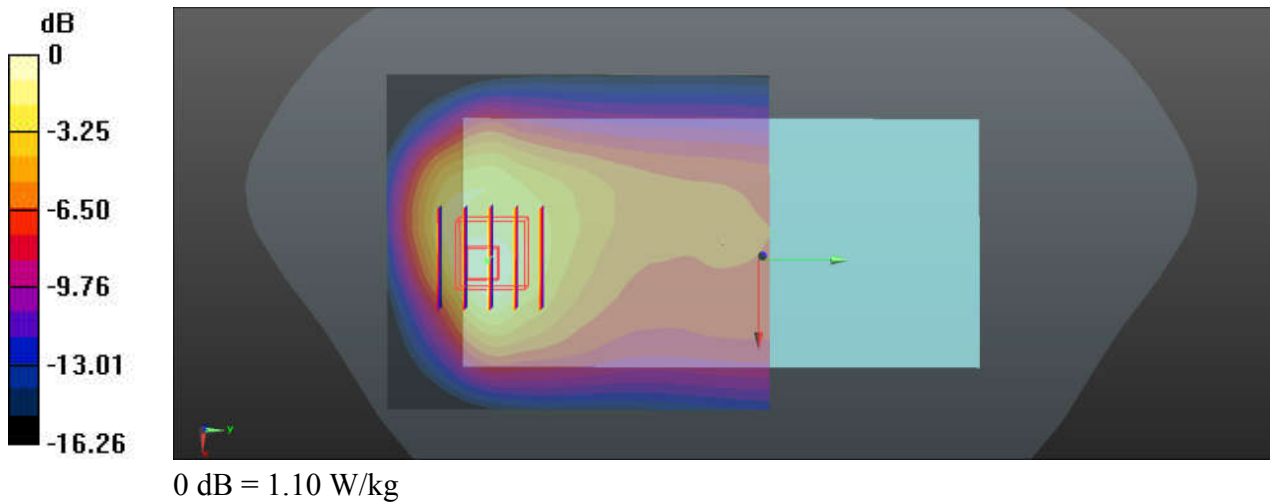
**Ch4233/Zoom Scan (5x5x7)/Cube 0:** Measurement grid: dx=8mm, dy=8mm, dz=5mm

Reference Value = 17.71 V/m; Power Drift = 0.05 dB

Peak SAR (extrapolated) = 1.50 W/kg

**SAR(1 g) = 0.757 W/kg; SAR(10 g) = 0.429 W/kg**

Maximum value of SAR (measured) = 1.10 W/kg



## 28\_LTE Band 5\_10M\_QPSK\_1RB\_0Offset\_Back\_5mm\_Ch20525

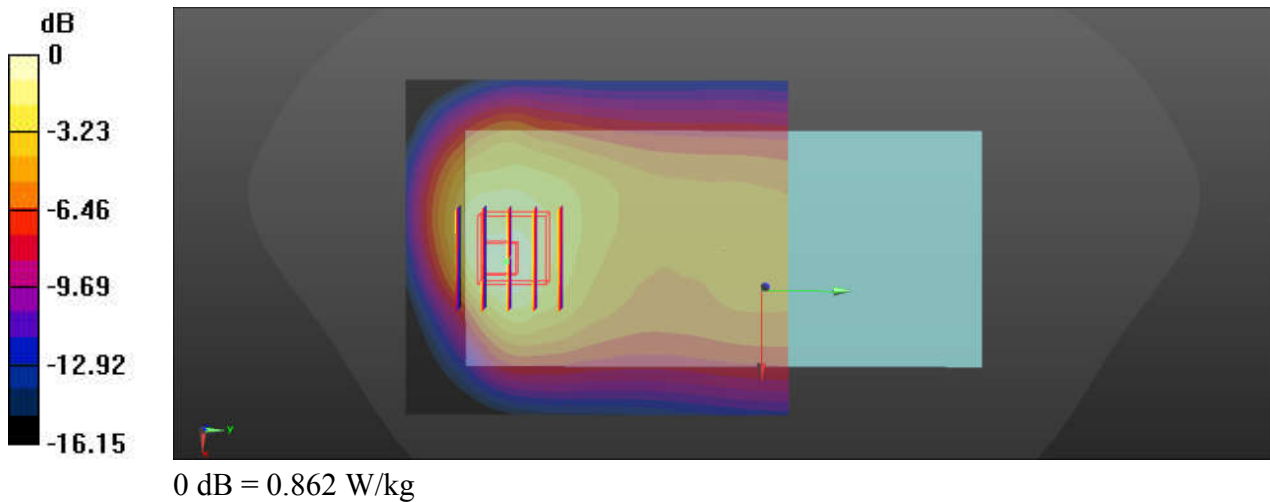
Communication System: UID 0, LTE (0); Frequency: 836.5 MHz; Duty Cycle: 1:1  
 Medium: HSL\_835\_230504 Medium parameters used:  $f = 836.5$  MHz;  $\sigma = 0.895$  S/m;  $\epsilon_r = 40.515$ ;  
 $\rho = 1000$  kg/m<sup>3</sup>  
 Ambient Temperature : 23.3 °C; Liquid Temperature : 22.1 °C

### DASY5 Configuration:

- Probe: ES3DV3 - SN3191; ConvF(6.58, 5.99, 6.22); Calibrated: 2023/2/17
- Sensor-Surface: 3mm (Mechanical Surface Detection)
- Electronics: DAE4 Sn1386; Calibrated: 2022/6/30
- Phantom: Twin-SAM V8.0 (Left); Type: QD 000 P41 AA; Serial: 2035
- Measurement SW: DASY52, Version 52.10 (4); SEMCAD X Version 14.6.14 (7483)

**Ch20525/Area Scan (71x81x1):** Interpolated grid: dx=1.500 mm, dy=1.500 mm  
 Maximum value of SAR (interpolated) = 0.916 W/kg

**Ch20525/Zoom Scan (5x5x7)/Cube 0:** Measurement grid: dx=8mm, dy=8mm, dz=5mm  
 Reference Value = 18.27 V/m; Power Drift = -0.08 dB  
 Peak SAR (extrapolated) = 1.32 W/kg  
**SAR(1 g) = 0.709 W/kg; SAR(10 g) = 0.406 W/kg**  
 Maximum value of SAR (measured) = 0.862 W/kg



## 29\_GSM1900\_GPRS(3 Tx slots)\_Back\_5mm\_Ch512

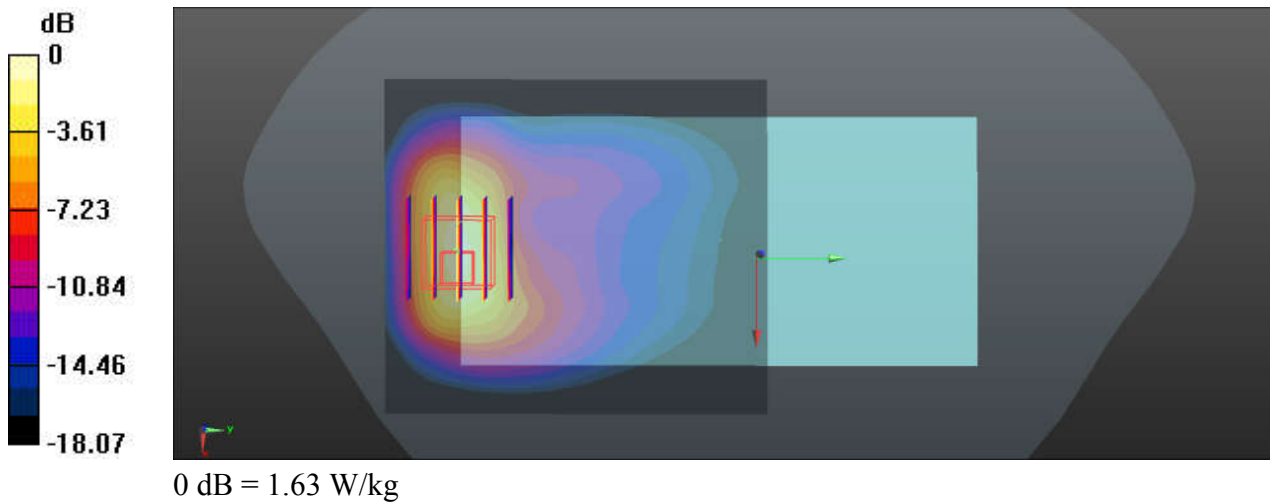
Communication System: UID 0, GPRS/EDGE11 (0); Frequency: 1850.2 MHz; Duty Cycle: 1:2.77  
 Medium: HSL\_1900\_230505 Medium parameters used:  $f = 1850.2$  MHz;  $\sigma = 1.371$  S/m;  $\epsilon_r = 40.538$ ;  $\rho = 1000$  kg/m<sup>3</sup>  
 Ambient Temperature : 23.4 °C; Liquid Temperature : 22.6 °C

### DASY5 Configuration:

- Probe: EX3DV4 - SN3819; ConvF(8.32, 8.32, 8.32); Calibrated: 2022/5/30
- Sensor-Surface: 1.4mm (Mechanical Surface Detection)
- Electronics: DAE4 Sn1437; Calibrated: 2022/11/23
- Phantom: SAM (30deg probe tilt) with CRP v4.0; Type: QD000P40CB; Serial: TP: 1500
- Measurement SW: DASY52, Version 52.10 (3); SEMCAD X Version 14.6.13 (7474)

**Ch512/Area Scan (71x81x1):** Interpolated grid: dx=1.500 mm, dy=1.500 mm  
 Maximum value of SAR (interpolated) = 1.41 W/kg

**Ch512/Zoom Scan (5x5x7)/Cube 0:** Measurement grid: dx=8mm, dy=8mm, dz=5mm  
 Reference Value = 9.295 V/m; Power Drift = 0.03 dB  
 Peak SAR (extrapolated) = 1.96 W/kg  
**SAR(1 g) = 1.01 W/kg; SAR(10 g) = 0.519 W/kg**  
 Maximum value of SAR (measured) = 1.63 W/kg



### 30\_WCDMA II\_RMC 12.2Kbps\_Back\_5mm\_Ch9262

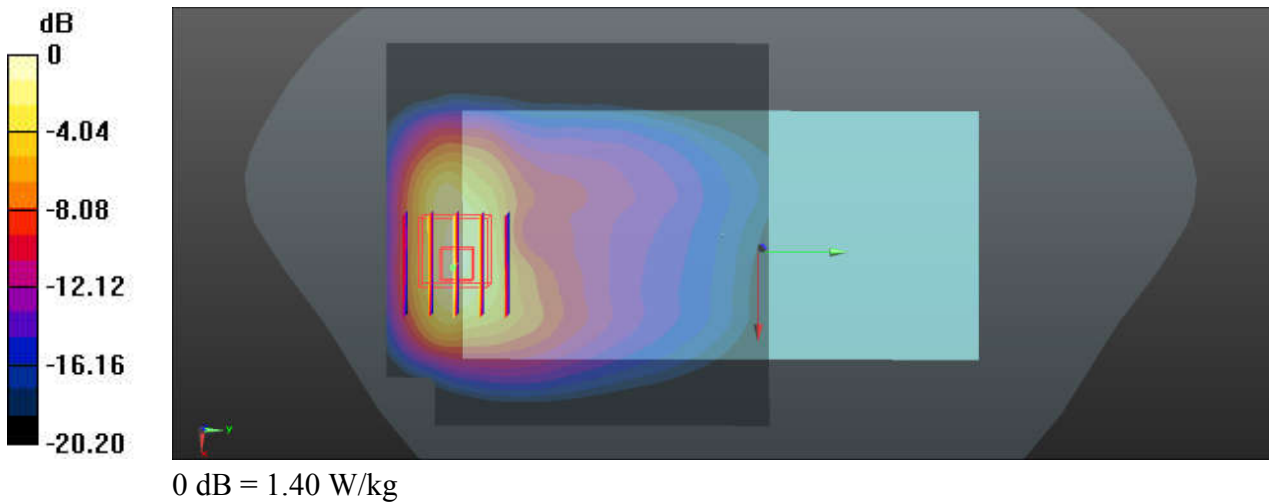
Communication System: UID 0, Generic WCDMA (0); Frequency: 1852.4 MHz; Duty Cycle: 1:1  
 Medium: HSL\_1900\_230505 Medium parameters used:  $f = 1852.4 \text{ MHz}$ ;  $\sigma = 1.373 \text{ S/m}$ ;  $\epsilon_r = 40.528$ ;  $\rho = 1000 \text{ kg/m}^3$   
 Ambient Temperature : 23.4 °C; Liquid Temperature : 22.6 °C

**DASY5 Configuration:**

- Probe: EX3DV4 - SN3819; ConvF(8.32, 8.32, 8.32); Calibrated: 2022/5/30
- Sensor-Surface: 1.4mm (Mechanical Surface Detection)
- Electronics: DAE4 Sn1437; Calibrated: 2022/11/23
- Phantom: SAM (30deg probe tilt) with CRP v4.0; Type: QD000P40CB; Serial: TP: 1500
- Measurement SW: DASY52, Version 52.10 (3); SEMCAD X Version 14.6.13 (7474)

**Ch9262/Area Scan (81x81x1):** Interpolated grid:  $dx=1.500 \text{ mm}$ ,  $dy=1.500 \text{ mm}$   
 Maximum value of SAR (interpolated) = 1.24 W/kg

**Ch9262/Zoom Scan (5x5x7)/Cube 0:** Measurement grid:  $dx=8\text{mm}$ ,  $dy=8\text{mm}$ ,  $dz=5\text{mm}$   
 Reference Value = 5.089 V/m; Power Drift = 0.04 dB  
 Peak SAR (extrapolated) = 1.70 W/kg  
**SAR(1 g) = 0.884 W/kg; SAR(10 g) = 0.453 W/kg**  
 Maximum value of SAR (measured) = 1.40 W/kg



### 31\_LTE Band 2\_20M\_QPSK\_1RB\_99Offset\_Back\_5mm\_Ch18700

Communication System: UID 0, Generic LTE (0); Frequency: 1860 MHz; Duty Cycle: 1:1  
 Medium: HSL\_1900\_230505 Medium parameters used:  $f = 1860$  MHz;  $\sigma = 1.381$  S/m;  $\epsilon_r = 40.496$ ;  
 $\rho = 1000$  kg/m<sup>3</sup>  
 Ambient Temperature : 23.4 °C; Liquid Temperature : 22.6 °C

#### DASY5 Configuration:

- Probe: EX3DV4 - SN3819; ConvF(8.32, 8.32, 8.32); Calibrated: 2022/5/30
- Sensor-Surface: 1.4mm (Mechanical Surface Detection)
- Electronics: DAE4 Sn1437; Calibrated: 2022/11/23
- Phantom: SAM (30deg probe tilt) with CRP v4.0; Type: QD000P40CB; Serial: TP: 1500
- Measurement SW: DASY52, Version 52.10 (3); SEMCAD X Version 14.6.13 (7474)

**Ch18700/Area Scan (71x81x1):** Interpolated grid: dx=1.500 mm, dy=1.500 mm

Maximum value of SAR (interpolated) = 1.56 W/kg

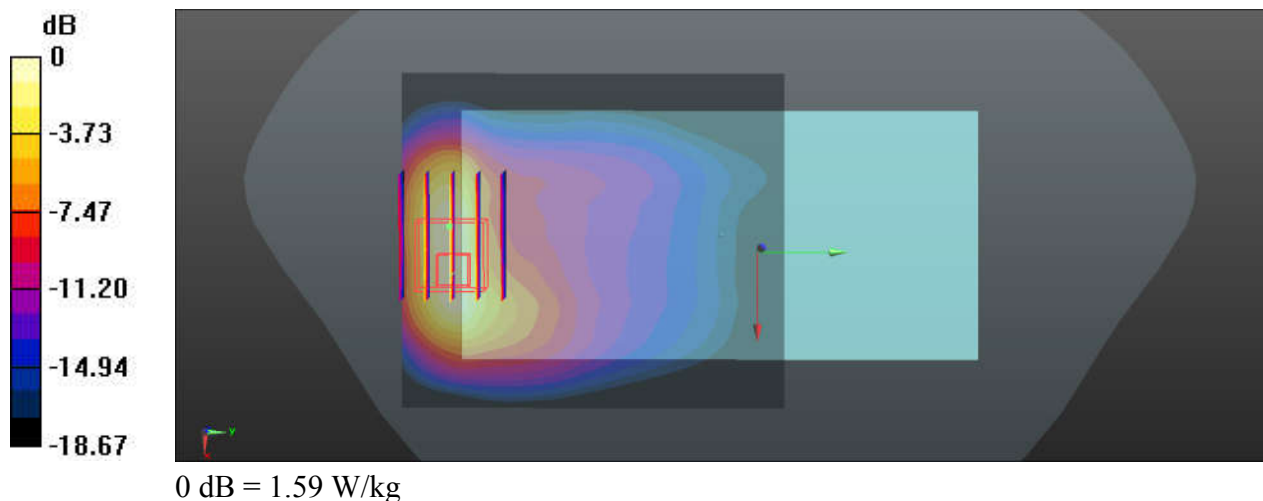
**Ch18700/Zoom Scan (6x5x7)/Cube 0:** Measurement grid: dx=8mm, dy=8mm, dz=5mm

Reference Value = 2.551 V/m; Power Drift = 0.14 dB

Peak SAR (extrapolated) = 1.92 W/kg

**SAR(1 g) = 0.989 W/kg; SAR(10 g) = 0.510 W/kg**

Maximum value of SAR (measured) = 1.59 W/kg



### 32\_LTE Band 7\_20M\_QPSK\_1RB\_0Offset\_Back\_5mm\_Ch21350

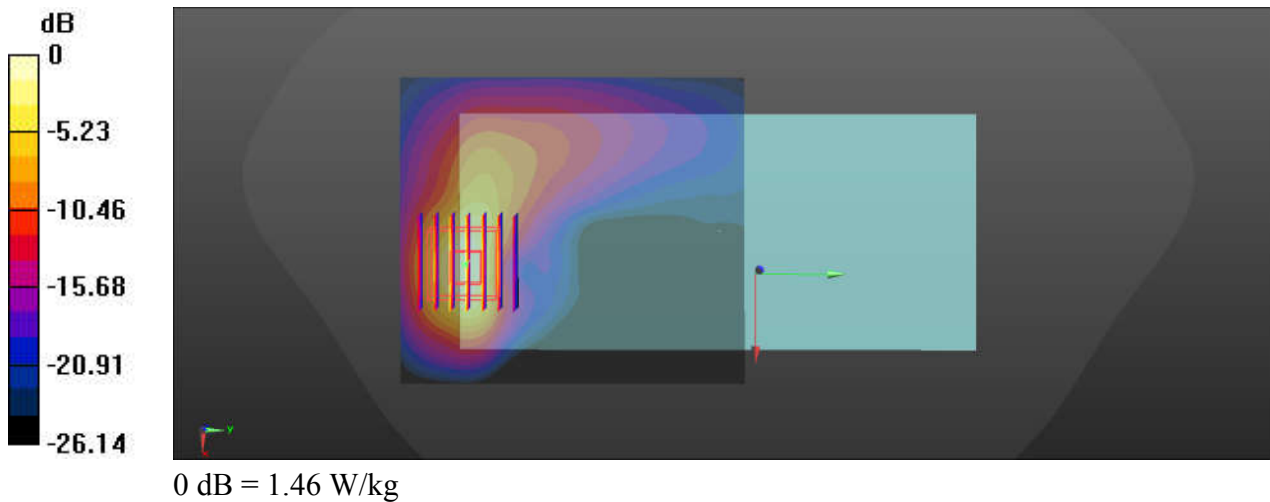
Communication System: UID 0, LTE (0); Frequency: 2560 MHz; Duty Cycle: 1:1  
 Medium: HSL\_2600\_230507 Medium parameters used:  $f = 2560$  MHz;  $\sigma = 1.998$  S/m;  $\epsilon_r = 37.652$ ;  
 $\rho = 1000$  kg/m<sup>3</sup>  
 Ambient Temperature : 23.5 °C; Liquid Temperature : 22.3 °C

**DASY5 Configuration:**

- Probe: ES3DV3 - SN3191; ConvF(4.83, 4.44, 4.75); Calibrated: 2023/2/17
- Sensor-Surface: 3mm (Mechanical Surface Detection)
- Electronics: DAE4 Sn1386; Calibrated: 2022/6/30
- Phantom: Twin-SAM V8.0 (Left); Type: QD 000 P41 AA; Serial: 2035
- Measurement SW: DASY52, Version 52.10 (4); SEMCAD X Version 14.6.14 (7483)

**Ch21350/Area Scan (81x91x1):** Interpolated grid: dx=1.200 mm, dy=1.200 mm  
 Maximum value of SAR (interpolated) = 1.56 W/kg

**Ch21350/Zoom Scan (7x7x7)/Cube 0:** Measurement grid: dx=5mm, dy=5mm, dz=5mm  
 Reference Value = 1.383 V/m; Power Drift = -0.09 dB  
 Peak SAR (extrapolated) = 2.48 W/kg  
**SAR(1 g) = 1.04 W/kg; SAR(10 g) = 0.408 W/kg**  
 Maximum value of SAR (measured) = 1.46 W/kg





### 33\_LTE Band 41\_20M\_QPSK\_1RB\_0Offset\_Back\_5mm\_Ch41140

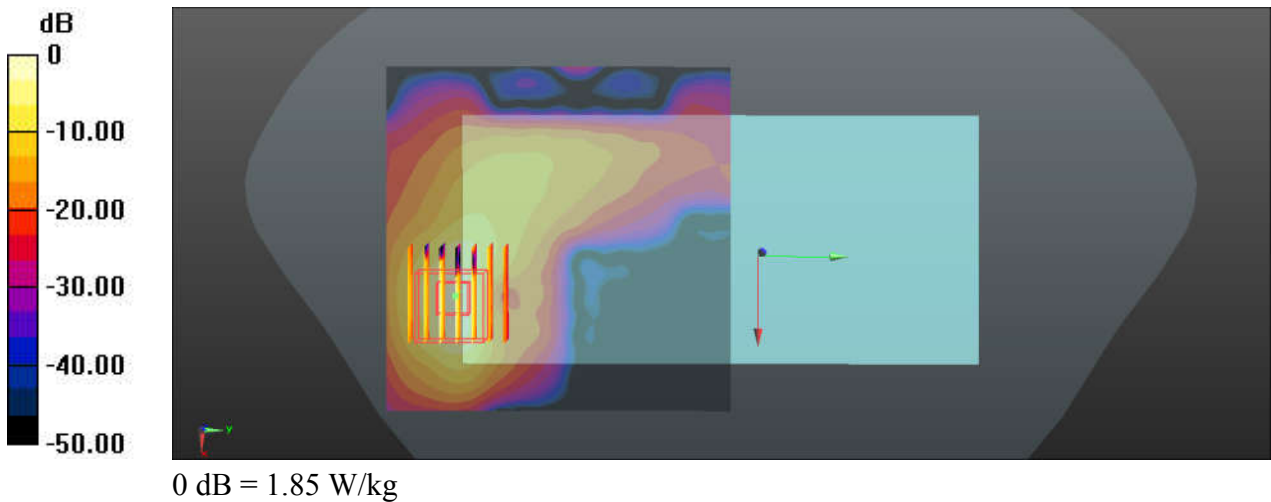
Communication System: UID 0, Generic LTE (0); Frequency: 2645 MHz; Duty Cycle: 1:1.59  
 Medium: HSL\_2600\_230507 Medium parameters used:  $f = 2645$  MHz;  $\sigma = 2.093$  S/m;  $\epsilon_r = 37.267$ ;  
 $\rho = 1000$  kg/m<sup>3</sup>  
 Ambient Temperature : 23.4 °C; Liquid Temperature : 22.5 °C

**DASY5 Configuration:**

- Probe: EX3DV4 - SN3819; ConvF(7.39, 7.39, 7.39); Calibrated: 2022/5/30
- Sensor-Surface: 1.4mm (Mechanical Surface Detection)
- Electronics: DAE4 Sn1437; Calibrated: 2022/11/23
- Phantom: SAM (30deg probe tilt) with CRP v4.0; Type: QD000P40CB; Serial: TP: 1500
- Measurement SW: DASY52, Version 52.10 (3); SEMCAD X Version 14.6.13 (7474)

**Ch41140/Area Scan (91x91x1):** Interpolated grid: dx=1.200 mm, dy=1.200 mm  
 Maximum value of SAR (interpolated) = 1.77 W/kg

**Ch41140/Zoom Scan (7x7x7)/Cube 0:** Measurement grid: dx=5mm, dy=5mm, dz=5mm  
 Reference Value = 0 V/m; Power Drift = -0.14 dB  
 Peak SAR (extrapolated) = 2.95 W/kg  
**SAR(1 g) = 1.06 W/kg; SAR(10 g) = 0.383 W/kg**  
 Maximum value of SAR (measured) = 1.85 W/kg



### 34\_Bluetooth\_DH5 1Mbps\_Back\_5mm\_Ch39

Communication System: UID 0, BT (0); Frequency: 2441 MHz; Duty Cycle: 1:1.290

Medium: HSL\_2450\_230506 Medium parameters used:  $f = 2441$  MHz;  $\sigma = 1.84$  S/m;  $\epsilon_r = 40.384$ ;  $\rho = 1000$  kg/m<sup>3</sup>

Ambient Temperature : 23.4 °C; Liquid Temperature : 22.4 °C

DASY5 Configuration:

- Probe: EX3DV4 - SN3819; ConvF(7.57, 7.57, 7.57); Calibrated: 2022/5/30
- Sensor-Surface: 1.4mm (Mechanical Surface Detection)
- Electronics: DAE4 Sn1437; Calibrated: 2022/11/23
- Phantom: SAM (30deg probe tilt) with CRP v4.0; Type: QD000P40CB; Serial: TP: 1500
- Measurement SW: DASY52, Version 52.10 (3); SEMCAD X Version 14.6.13 (7474)

**Ch39/Area Scan (91x101x1):** Interpolated grid: dx=1.200 mm, dy=1.200 mm

Maximum value of SAR (interpolated) = 0.129 W/kg

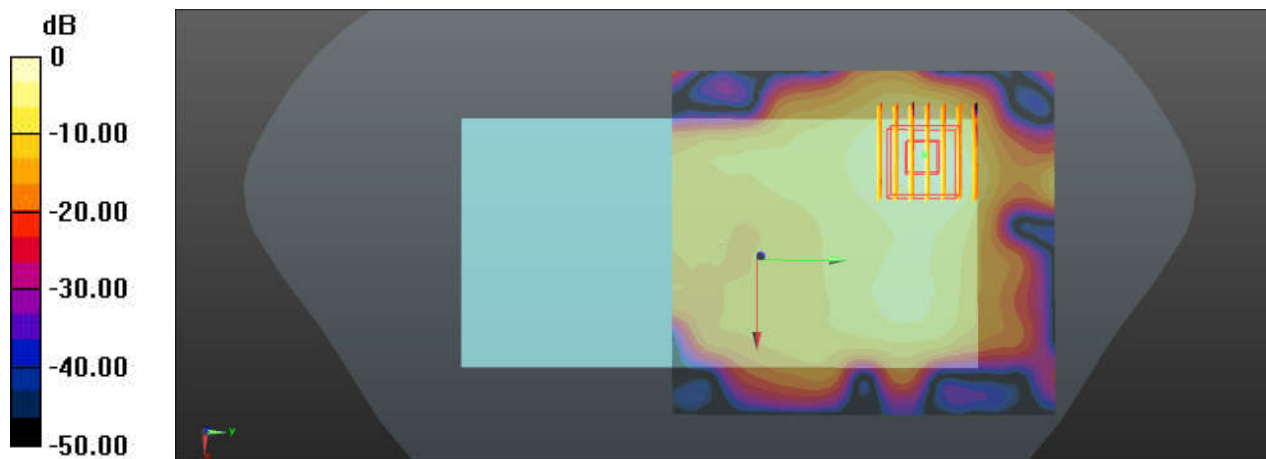
**Ch39/Zoom Scan (7x7x7)/Cube 0:** Measurement grid: dx=5mm, dy=5mm, dz=5mm

Reference Value = 1.645 V/m; Power Drift = 0.08 dB

Peak SAR (extrapolated) = 0.193 W/kg

**SAR(1 g) = 0.073 W/kg; SAR(10 g) = 0.033 W/kg**

Maximum value of SAR (measured) = 0.133 W/kg



0 dB = 0.133 W/kg

### 35\_WLAN2.4GHz\_802.11b 1Mbps\_Back\_5mm\_Ch1

Communication System: UID 0, WIFI (0); Frequency: 2412 MHz; Duty Cycle: 1:1.025  
Medium: HSL\_2450\_230506 Medium parameters used:  $f = 2412$  MHz;  $\sigma = 1.817$  S/m;  $\epsilon_r = 40.435$ ;  
 $\rho = 1000$  kg/m<sup>3</sup>  
Ambient Temperature : 23.4 °C; Liquid Temperature : 22.4 °C

#### DASY5 Configuration:

- Probe: EX3DV4 - SN3819; ConvF(7.57, 7.57, 7.57); Calibrated: 2022/5/30
- Sensor-Surface: 1.4mm (Mechanical Surface Detection)
- Electronics: DAE4 Sn1437; Calibrated: 2022/11/23
- Phantom: SAM (30deg probe tilt) with CRP v4.0; Type: QD000P40CB; Serial: TP: 1500
- Measurement SW: DASY52, Version 52.10 (3); SEMCAD X Version 14.6.13 (7474)

**Ch1/Area Scan (91x101x1):** Interpolated grid: dx=1.200 mm, dy=1.200 mm

Maximum value of SAR (interpolated) = 1.21 W/kg

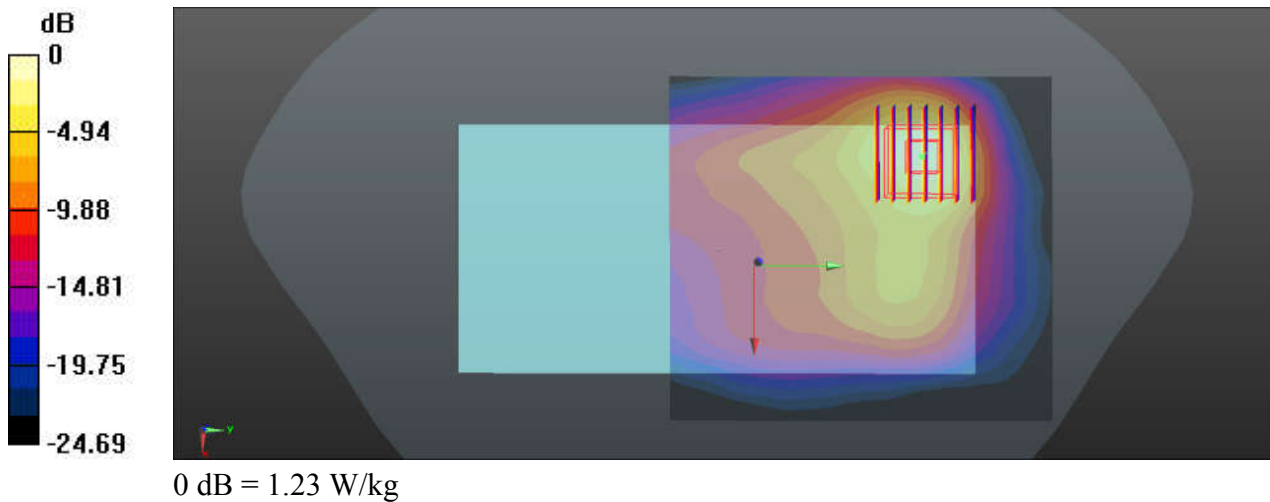
**Ch1/Zoom Scan (7x7x7)/Cube 0:** Measurement grid: dx=5mm, dy=5mm, dz=5mm

Reference Value = 6.060 V/m; Power Drift = -0.04 dB

Peak SAR (extrapolated) = 1.63 W/kg

**SAR(1 g) = 0.696 W/kg; SAR(10 g) = 0.318 W/kg**

Maximum value of SAR (measured) = 1.23 W/kg



### 36\_WLAN5GHz\_802.11a 6Mbps\_Back\_5mm\_Ch60

Communication System: UID 0, WIFI (0); Frequency: 5300 MHz; Duty Cycle: 1:1.117  
 Medium: HSL\_5250\_230513 Medium parameters used:  $f = 5300$  MHz;  $\sigma = 4.718$  S/m;  $\epsilon_r = 36.766$ ;  
 $\rho = 1000$  kg/m<sup>3</sup>  
 Ambient Temperature : 23.3 °C; Liquid Temperature : 22.6 °C

**DASY5 Configuration:**

- Probe: EX3DV4 - SN3819; ConvF(5.07, 5.07, 5.07); Calibrated: 2022/5/30
- Sensor-Surface: 1.4mm (Mechanical Surface Detection)
- Electronics: DAE4 Sn1437; Calibrated: 2022/11/23
- Phantom: SAM (30deg probe tilt) with CRP v4.0; Type: QD000P40CB; Serial: TP: 1500
- Measurement SW: DASY52, Version 52.10 (3); SEMCAD X Version 14.6.13 (7474)

**Ch60/Area Scan (111x111x1):** Interpolated grid: dx=1.000 mm, dy=1.000 mm

Maximum value of SAR (interpolated) = 1.47 W/kg

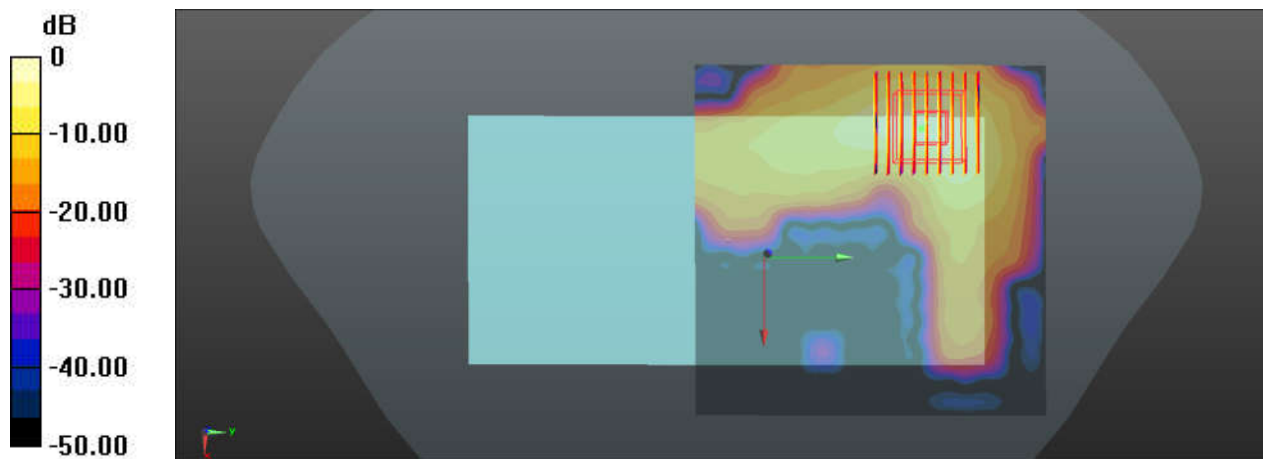
**Ch60/Zoom Scan (9x9x7)/Cube 0:** Measurement grid: dx=4mm, dy=4mm, dz=1.4mm

Reference Value = 2.015 V/m; Power Drift = -0.07 dB

Peak SAR (extrapolated) = 2.44 W/kg

**SAR(1 g) = 0.658 W/kg; SAR(10 g) = 0.196 W/kg**

Maximum value of SAR (measured) = 1.57 W/kg



0 dB = 1.57 W/kg

### 37\_WLAN5GHz\_802.11a 6Mbps\_Back\_5mm\_Ch100

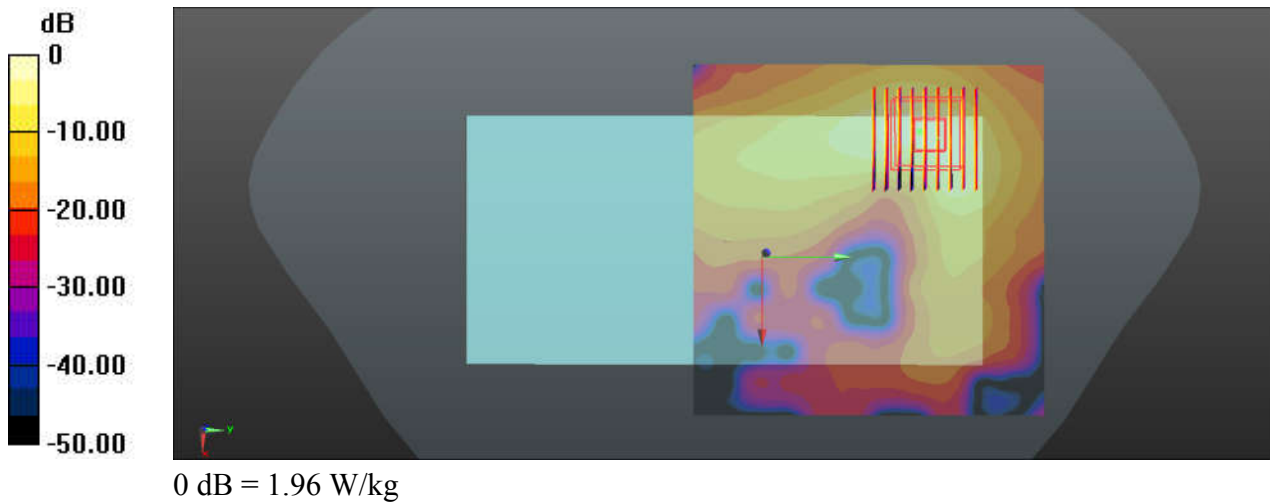
Communication System: UID 0, WIFI (0); Frequency: 5500 MHz; Duty Cycle: 1:1.117  
Medium: HSL\_5600\_230514 Medium parameters used:  $f = 5500$  MHz;  $\sigma = 4.926$  S/m;  $\epsilon_r = 36.5$ ;  $\rho = 1000$  kg/m<sup>3</sup>  
Ambient Temperature : 23.3 °C; Liquid Temperature : 22.3 °C

#### DASY5 Configuration:

- Probe: EX3DV4 - SN3819; ConvF(4.55, 4.55, 4.55); Calibrated: 2022/5/30
- Sensor-Surface: 1.4mm (Mechanical Surface Detection)
- Electronics: DAE4 Sn1437; Calibrated: 2022/11/23
- Phantom: SAM (30deg probe tilt) with CRP v4.0; Type: QD000P40CB; Serial: TP: 1500
- Measurement SW: DASY52, Version 52.10 (3); SEMCAD X Version 14.6.13 (7474)

**Ch100/Area Scan (111x111x1):** Interpolated grid: dx=1.000 mm, dy=1.000 mm  
Maximum value of SAR (interpolated) = 1.73 W/kg

**Ch100/Zoom Scan (9x9x7)/Cube 0:** Measurement grid: dx=4mm, dy=4mm, dz=1.4mm  
Reference Value = 3.372 V/m; Power Drift = -0.19 dB  
Peak SAR (extrapolated) = 3.27 W/kg  
**SAR(1 g) = 0.804 W/kg; SAR(10 g) = 0.245 W/kg**  
Maximum value of SAR (measured) = 1.96 W/kg



### 38\_WLAN5GHz\_802.11a 6Mbps\_Back\_5mm\_Ch157

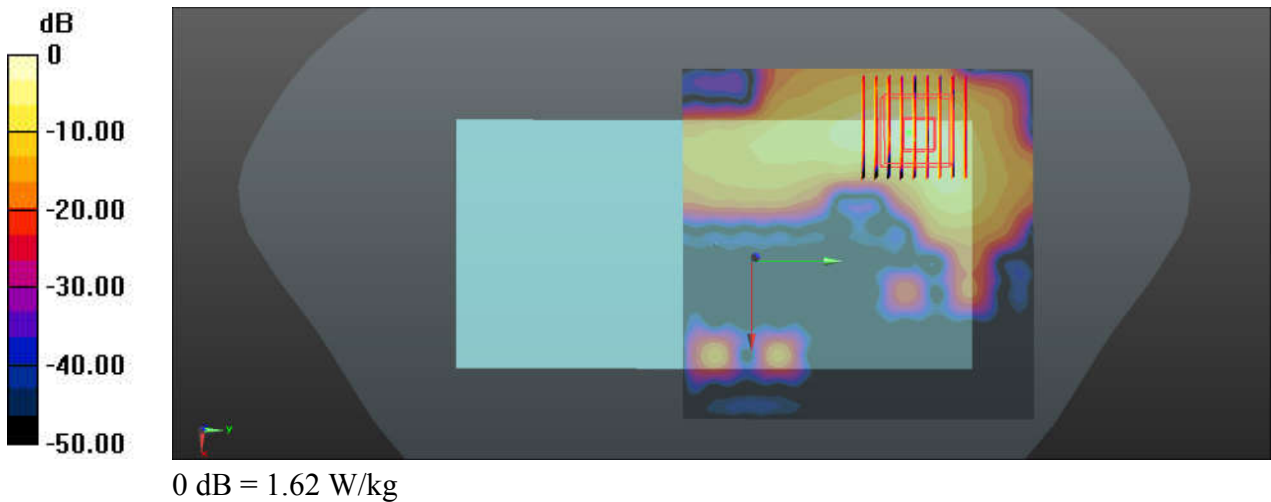
Communication System: UID 0, WIFI (0); Frequency: 5785 MHz; Duty Cycle: 1:1.117  
 Medium: HSL\_5750\_230515 Medium parameters used:  $f = 5785 \text{ MHz}$ ;  $\sigma = 5.239 \text{ S/m}$ ;  $\epsilon_r = 36.081$ ;  
 $\rho = 1000 \text{ kg/m}^3$   
 Ambient Temperature :  $23.6 \text{ }^\circ\text{C}$ ; Liquid Temperature :  $22.5 \text{ }^\circ\text{C}$

**DASY5 Configuration:**

- Probe: EX3DV4 - SN3819; ConvF(4.65, 4.65, 4.65); Calibrated: 2022/5/30
- Sensor-Surface: 1.4mm (Mechanical Surface Detection)
- Electronics: DAE4 Sn1437; Calibrated: 2022/11/23
- Phantom: SAM (30deg probe tilt) with CRP v4.0; Type: QD000P40CB; Serial: TP: 1500
- Measurement SW: DASY52, Version 52.10 (3); SEMCAD X Version 14.6.13 (7474)

**Ch157/Area Scan (111x111x1):** Interpolated grid:  $dx=1.000 \text{ mm}$ ,  $dy=1.000 \text{ mm}$   
 Maximum value of SAR (interpolated) =  $1.58 \text{ W/kg}$

**Ch157/Zoom Scan (9x9x7)/Cube 0:** Measurement grid:  $dx=4\text{mm}$ ,  $dy=4\text{mm}$ ,  $dz=1.4\text{mm}$   
 Reference Value =  $0.5170 \text{ V/m}$ ; Power Drift =  $0.07 \text{ dB}$   
 Peak SAR (extrapolated) =  $2.96 \text{ W/kg}$   
**SAR(1 g) =  $0.726 \text{ W/kg}$ ; SAR(10 g) =  $0.204 \text{ W/kg}$**   
 Maximum value of SAR (measured) =  $1.62 \text{ W/kg}$



### 39\_GSM850\_GPRS(2 Tx slots)\_Back\_0mm\_Ch189

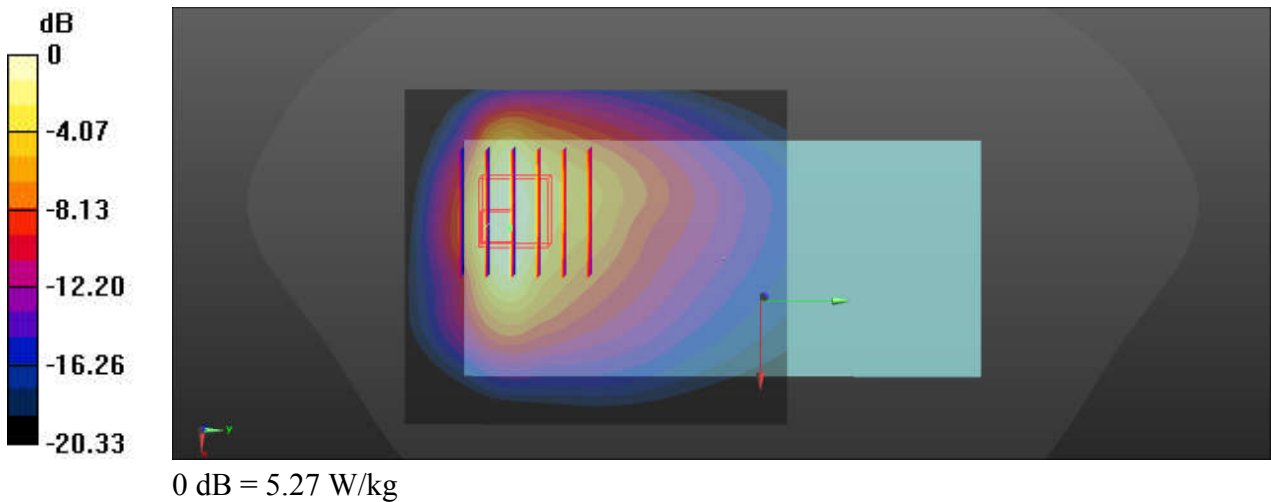
Communication System: UID 0, GPRS/EDGE10 (0); Frequency: 836.4 MHz; Duty Cycle: 1:4.15  
 Medium: HSL\_835\_230504 Medium parameters used:  $f = 836.4$  MHz;  $\sigma = 0.895$  S/m;  $\epsilon_r = 40.515$ ;  
 $\rho = 1000$  kg/m<sup>3</sup>  
 Ambient Temperature : 23.3 °C; Liquid Temperature : 22.1 °C

**DASY5 Configuration:**

- Probe: ES3DV3 - SN3191; ConvF(6.58, 5.99, 6.22); Calibrated: 2023/2/17
- Sensor-Surface: 3mm (Mechanical Surface Detection)
- Electronics: DAE4 Sn1386; Calibrated: 2022/6/30
- Phantom: Twin-SAM V8.0 (Left); Type: QD 000 P41 AA; Serial: 2035
- Measurement SW: DASY52, Version 52.10 (4); SEMCAD X Version 14.6.14 (7483)

**Ch189/Area Scan (71x81x1):** Interpolated grid: dx=1.500 mm, dy=1.500 mm  
 Maximum value of SAR (interpolated) = 5.95 W/kg

**Ch189/Zoom Scan (6x6x7)/Cube 0:** Measurement grid: dx=8mm, dy=8mm, dz=5mm  
 Reference Value = 43.70 V/m; Power Drift = 0.16 dB  
 Peak SAR (extrapolated) = 10.7 W/kg  
**SAR(1 g) = 3.62 W/kg; SAR(10 g) = 1.86 W/kg**  
 Maximum value of SAR (measured) = 5.27 W/kg



### 40\_GSM1900\_GPRS(3 Tx slots)\_Bottom Side\_0mm\_Ch512

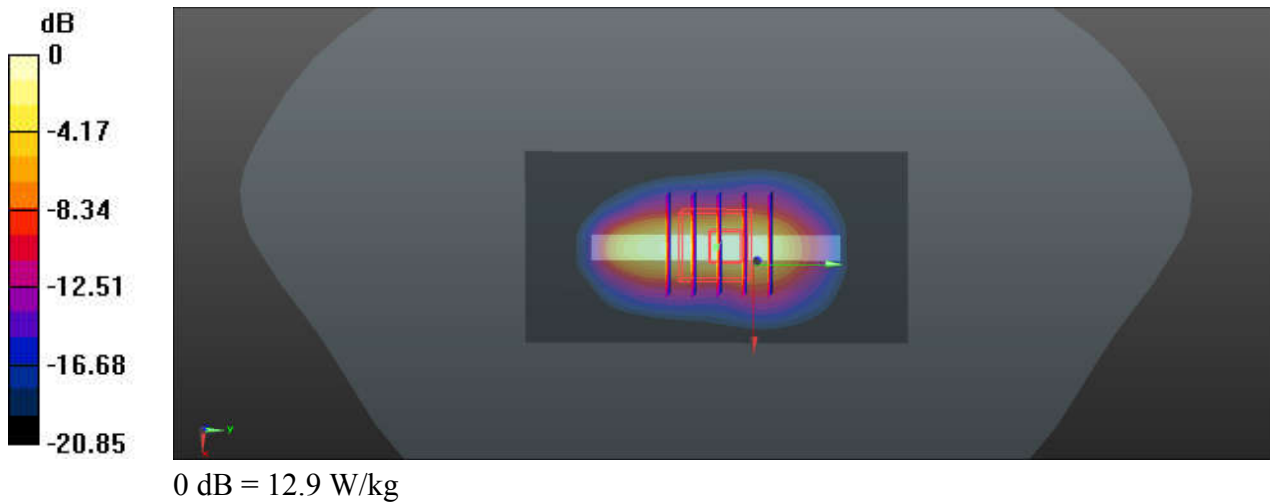
Communication System: UID 0, GPRS/EDGE11 (0); Frequency: 1850.2 MHz; Duty Cycle: 1:2.17  
 Medium: HSL\_1900\_230505 Medium parameters used:  $f = 1850.2 \text{ MHz}$ ;  $\sigma = 1.371 \text{ S/m}$ ;  $\epsilon_r = 40.538$ ;  $\rho = 1000 \text{ kg/m}^3$   
 Ambient Temperature :  $23.4 \text{ }^\circ\text{C}$ ; Liquid Temperature :  $22.6 \text{ }^\circ\text{C}$

**DASY5 Configuration:**

- Probe: EX3DV4 - SN3819; ConvF(8.32, 8.32, 8.32); Calibrated: 2022/5/30
- Sensor-Surface: 1.4mm (Mechanical Surface Detection)
- Electronics: DAE4 Sn1437; Calibrated: 2022/11/23
- Phantom: SAM (30deg probe tilt) with CRP v4.0; Type: QD000P40CB; Serial: TP: 1500
- Measurement SW: DASY52, Version 52.10 (3); SEMCAD X Version 14.6.13 (7474)

**Ch512/Area Scan (41x81x1):** Interpolated grid:  $dx=1.500 \text{ mm}$ ,  $dy=1.500 \text{ mm}$   
 Maximum value of SAR (interpolated) =  $12.6 \text{ W/kg}$

**Ch512/Zoom Scan (5x5x7)/Cube 0:** Measurement grid:  $dx=8\text{mm}$ ,  $dy=8\text{mm}$ ,  $dz=5\text{mm}$   
 Reference Value =  $2.012 \text{ V/m}$ ; Power Drift =  $-0.08 \text{ dB}$   
 Peak SAR (extrapolated) =  $16.4 \text{ W/kg}$   
**SAR(1 g) =  $6.46 \text{ W/kg}$ ; SAR(10 g) =  $2.81 \text{ W/kg}$**   
 Maximum value of SAR (measured) =  $12.9 \text{ W/kg}$





### 41\_WCDMA II\_RMC 12.2Kbps\_Bottom Side\_0mm\_Ch9262

Communication System: UID 0, Generic WCDMA (0); Frequency: 1852.4 MHz; Duty Cycle: 1:1  
 Medium: HSL\_1900\_230505 Medium parameters used:  $f = 1852.4 \text{ MHz}$ ;  $\sigma = 1.373 \text{ S/m}$ ;  $\epsilon_r = 40.528$ ;  $\rho = 1000 \text{ kg/m}^3$   
 Ambient Temperature : 23.4 °C; Liquid Temperature : 22.6 °C

**DASY5 Configuration:**

- Probe: EX3DV4 - SN3819; ConvF(8.32, 8.32, 8.32); Calibrated: 2022/5/30
- Sensor-Surface: 1.4mm (Mechanical Surface Detection)
- Electronics: DAE4 Sn1437; Calibrated: 2022/11/23
- Phantom: SAM (30deg probe tilt) with CRP v4.0; Type: QD000P40CB; Serial: TP: 1500
- Measurement SW: DASY52, Version 52.10 (3); SEMCAD X Version 14.6.13 (7474)

**Ch9262/Area Scan (41x81x1):** Interpolated grid: dx=1.500 mm, dy=1.500 mm

Maximum value of SAR (interpolated) = 9.56 W/kg

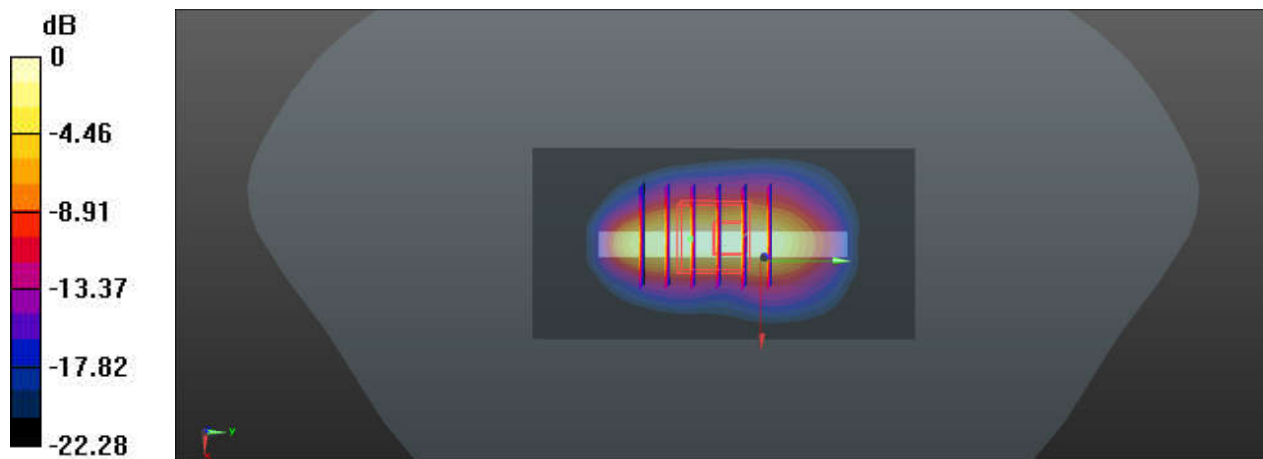
**Ch9262/Zoom Scan (5x6x7)/Cube 0:** Measurement grid: dx=8mm, dy=8mm, dz=5mm

Reference Value = 82.08 V/m; Power Drift = -0.13 dB

Peak SAR (extrapolated) = 12.8 W/kg

**SAR(1 g) = 4.87 W/kg; SAR(10 g) = 2.14 W/kg**

Maximum value of SAR (measured) = 10.2 W/kg



0 dB = 10.2 W/kg

### 42\_LTE Band 2\_20M\_QPSK\_1RB\_0Offset\_Bottom Side\_0mm\_Ch18900

Communication System: UID 0, Generic LTE (0); Frequency: 1880 MHz; Duty Cycle: 1:1  
 Medium: HSL\_1900\_230505 Medium parameters used:  $f = 1880$  MHz;  $\sigma = 1.402$  S/m;  $\epsilon_r = 40.407$ ;  
 $\rho = 1000$  kg/m<sup>3</sup>  
 Ambient Temperature : 23.4 °C; Liquid Temperature : 22.6 °C

#### DASY5 Configuration:

- Probe: EX3DV4 - SN3819; ConvF(8.32, 8.32, 8.32); Calibrated: 2022/5/30
- Sensor-Surface: 1.4mm (Mechanical Surface Detection)
- Electronics: DAE4 Sn1437; Calibrated: 2022/11/23
- Phantom: SAM (30deg probe tilt) with CRP v4.0; Type: QD000P40CB; Serial: TP: 1500
- Measurement SW: DASY52, Version 52.10 (3); SEMCAD X Version 14.6.13 (7474)

**Ch18900/Area Scan (41x81x1):** Interpolated grid: dx=1.500 mm, dy=1.500 mm

Maximum value of SAR (interpolated) = 11.2 W/kg

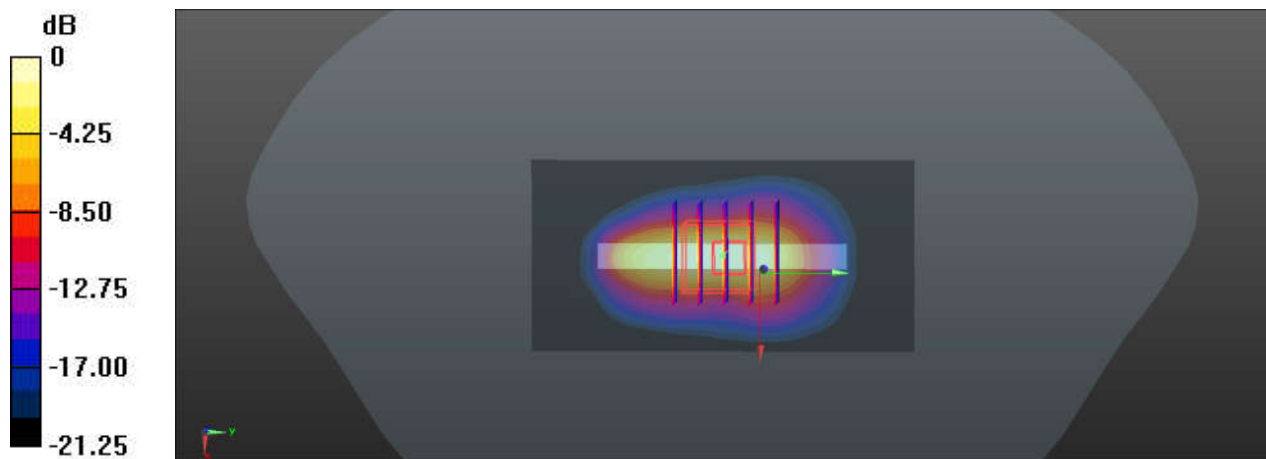
**Ch18900/Zoom Scan (5x5x7)/Cube 0:** Measurement grid: dx=8mm, dy=8mm, dz=5mm

Reference Value = 91.25 V/m; Power Drift = 0.09 dB

Peak SAR (extrapolated) = 14.2 W/kg

**SAR(1 g) = 5.63 W/kg; SAR(10 g) = 2.44 W/kg**

Maximum value of SAR (measured) = 11.2 W/kg



0 dB = 11.2 W/kg

### 43\_LTE Band 7\_20M\_QPSK\_1RB\_0Offset\_Back\_0mm\_Ch21100

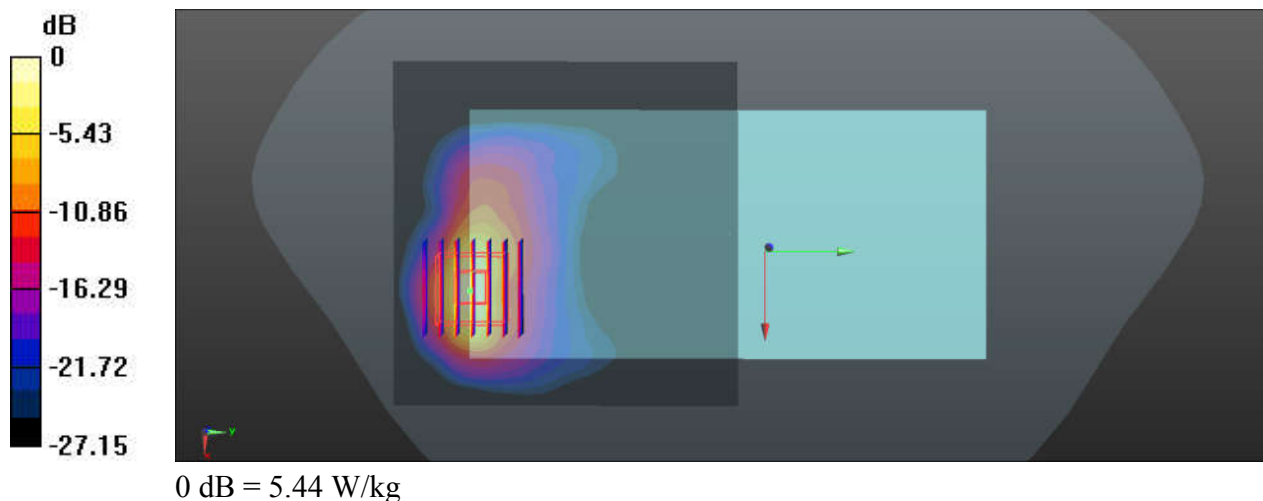
Communication System: UID 0, Generic LTE (0); Frequency: 2535 MHz; Duty Cycle: 1:1  
 Medium: HSL\_2600\_230507 Medium parameters used:  $f = 2535$  MHz;  $\sigma = 1.967$  S/m;  $\epsilon_r = 37.731$ ;  
 $\rho = 1000$  kg/m<sup>3</sup>  
 Ambient Temperature : 23.4 °C; Liquid Temperature : 22.5 °C

**DASY5 Configuration:**

- Probe: EX3DV4 - SN3819; ConvF(7.39, 7.39, 7.39); Calibrated: 2022/5/30
- Sensor-Surface: 1.4mm (Mechanical Surface Detection)
- Electronics: DAE4 Sn1437; Calibrated: 2022/11/23
- Phantom: SAM (30deg probe tilt) with CRP v4.0; Type: QD000P40CB; Serial: TP: 1500
- Measurement SW: DASY52, Version 52.10 (3); SEMCAD X Version 14.6.13 (7474)

**Ch21100/Area Scan (91x91x1):** Interpolated grid: dx=1.200 mm, dy=1.200 mm  
 Maximum value of SAR (interpolated) = 5.44 W/kg

**Ch21100/Zoom Scan (7x7x7)/Cube 0:** Measurement grid: dx=5mm, dy=5mm, dz=5mm  
 Reference Value = 0 V/m; Power Drift = 0.02 dB  
 Peak SAR (extrapolated) = 7.87 W/kg  
**SAR(1 g) = 2.62 W/kg; SAR(10 g) = 0.896 W/kg**  
 Maximum value of SAR (measured) = 5.44 W/kg



### 44\_LTE Band 41\_20M\_QPSK\_1RB\_0Offset\_Back\_0mm\_Ch40670

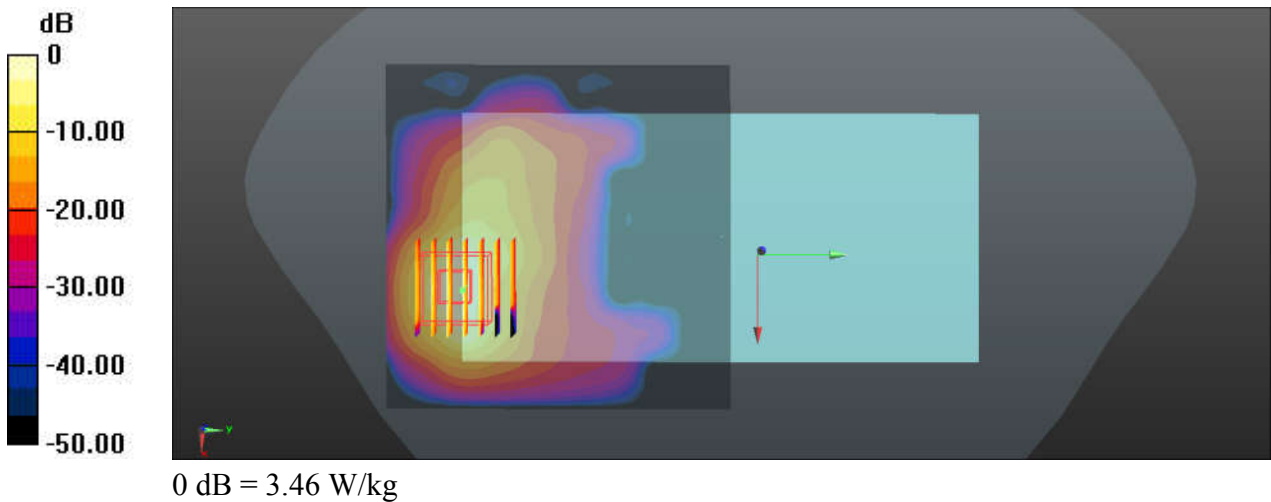
Communication System: UID 0, Generic LTE (0); Frequency: 2598 MHz; Duty Cycle: 1:1.59  
 Medium: HSL\_2600\_230507 Medium parameters used:  $f = 2598$  MHz;  $\sigma = 2.037$  S/m;  $\epsilon_r = 37.5$ ;  $\rho = 1000$  kg/m<sup>3</sup>  
 Ambient Temperature : 23.4 °C; Liquid Temperature : 22.5 °C

**DASY5 Configuration:**

- Probe: EX3DV4 - SN3819; ConvF(7.39, 7.39, 7.39); Calibrated: 2022/5/30
- Sensor-Surface: 1.4mm (Mechanical Surface Detection)
- Electronics: DAE4 Sn1437; Calibrated: 2022/11/23
- Phantom: SAM (30deg probe tilt) with CRP v4.0; Type: QD000P40CB; Serial: TP: 1500
- Measurement SW: DASY52, Version 52.10 (3); SEMCAD X Version 14.6.13 (7474)

**Ch40670/Area Scan (91x91x1):** Interpolated grid: dx=1.200 mm, dy=1.200 mm  
 Maximum value of SAR (interpolated) = 3.25 W/kg

**Ch40670/Zoom Scan (7x7x7)/Cube 0:** Measurement grid: dx=5mm, dy=5mm, dz=5mm  
 Reference Value = 0 V/m; Power Drift = -0.12 dB  
 Peak SAR (extrapolated) = 5.65 W/kg  
**SAR(1 g) = 1.84 W/kg; SAR(10 g) = 0.630 W/kg**  
 Maximum value of SAR (measured) = 3.46 W/kg



### 45\_WLAN2.4GHz\_802.11b 1Mbps\_Back\_0mm\_Ch1

Communication System: UID 0, WIFI (0); Frequency: 2412 MHz; Duty Cycle: 1:1.025  
 Medium: HSL\_2450\_230506 Medium parameters used:  $f = 2412$  MHz;  $\sigma = 1.817$  S/m;  $\epsilon_r = 40.435$ ;  
 $\rho = 1000$  kg/m<sup>3</sup>  
 Ambient Temperature : 23.4 °C; Liquid Temperature : 22.4 °C

#### DASY5 Configuration:

- Probe: EX3DV4 - SN3819; ConvF(7.57, 7.57, 7.57); Calibrated: 2022/5/30
- Sensor-Surface: 1.4mm (Mechanical Surface Detection)
- Electronics: DAE4 Sn1437; Calibrated: 2022/11/23
- Phantom: SAM (30deg probe tilt) with CRP v4.0; Type: QD000P40CB; Serial: TP: 1500
- Measurement SW: DASY52, Version 52.10 (3); SEMCAD X Version 14.6.13 (7474)

**Ch1/Area Scan (91x101x1):** Interpolated grid: dx=1.200 mm, dy=1.200 mm

Maximum value of SAR (interpolated) = 4.75 W/kg

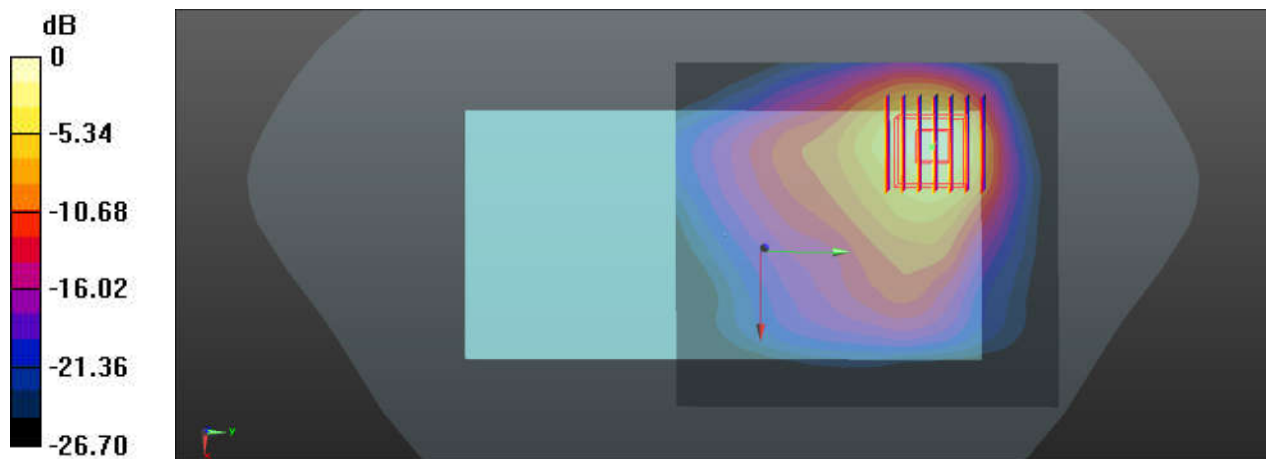
**Ch1/Zoom Scan (7x7x7)/Cube 0:** Measurement grid: dx=5mm, dy=5mm, dz=5mm

Reference Value = 5.539 V/m; Power Drift = -0.01 dB

Peak SAR (extrapolated) = 6.65 W/kg

**SAR(1 g) = 2.54 W/kg; SAR(10 g) = 1.11 W/kg**

Maximum value of SAR (measured) = 4.69 W/kg



0 dB = 4.69 W/kg

### 46\_WLAN5GHz\_802.11a 6Mbps\_Right Side\_0mm\_Ch44

Communication System: UID 0, WIFI (0); Frequency: 5220 MHz;Duty Cycle: 1:1.117  
 Medium: HSL\_5250\_230513 Medium parameters used:  $f = 5220$  MHz;  $\sigma = 4.642$  S/m;  $\epsilon_r = 36.894$ ;  
 $\rho = 1000$  kg/m<sup>3</sup>  
 Ambient Temperature : 23.3 °C; Liquid Temperature : 22.6 °C

#### DASY5 Configuration:

- Probe: EX3DV4 - SN3819; ConvF(5.07, 5.07, 5.07); Calibrated: 2022/5/30
- Sensor-Surface: 1.4mm (Mechanical Surface Detection)
- Electronics: DAE4 Sn1437; Calibrated: 2022/11/23
- Phantom: SAM (30deg probe tilt) with CRP v4.0; Type: QD000P40CB; Serial: TP: 1500
- Measurement SW: DASY52, Version 52.10 (3); SEMCAD X Version 14.6.13 (7474)

**Ch44/Area Scan (51x191x1):** Interpolated grid: dx=1.000 mm, dy=1.000 mm

Maximum value of SAR (interpolated) = 14.6 W/kg

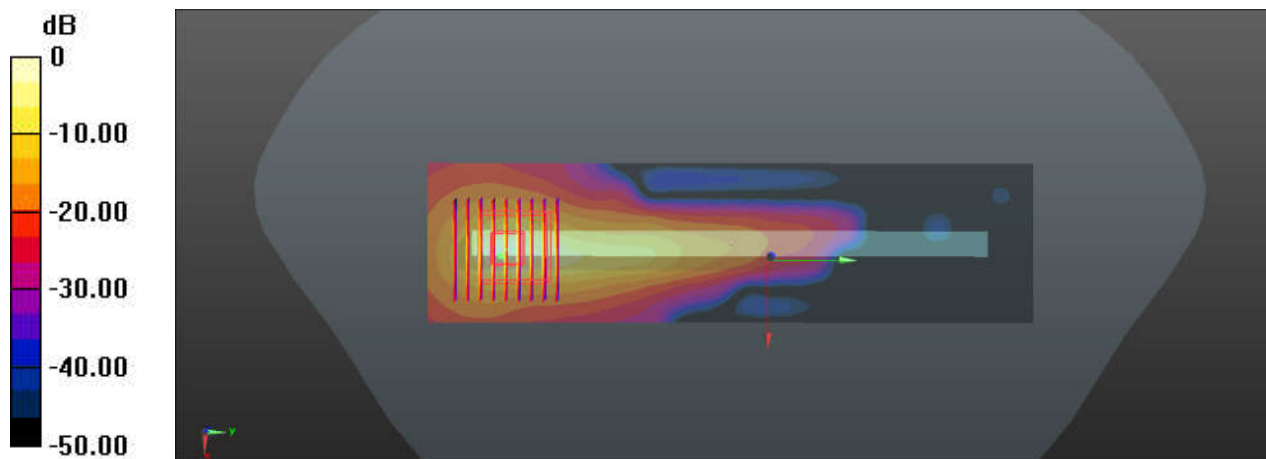
**Ch44/Zoom Scan (9x9x7)/Cube 0:** Measurement grid: dx=4mm, dy=4mm, dz=1.4mm

Reference Value = 1.366 V/m; Power Drift = -0.09 dB

Peak SAR (extrapolated) = 29.4 W/kg

**SAR(1 g) = 5.9 W/kg; SAR(10 g) = 1.29 W/kg**

Maximum value of SAR (measured) = 17.6 W/kg



0 dB = 17.6 W/kg

### 47\_WLAN5GHz\_802.11a 6Mbps\_Right Side\_0mm\_Ch60

Communication System: UID 0, WIFI (0); Frequency: 5300 MHz; Duty Cycle: 1:1.117  
Medium: HSL\_5250\_230513 Medium parameters used:  $f = 5300$  MHz;  $\sigma = 4.718$  S/m;  $\epsilon_r = 36.766$ ;  
 $\rho = 1000$  kg/m<sup>3</sup>  
Ambient Temperature : 23.3 °C; Liquid Temperature : 22.6 °C

#### DASY5 Configuration:

- Probe: EX3DV4 - SN3819; ConvF(5.07, 5.07, 5.07); Calibrated: 2022/5/30
- Sensor-Surface: 1.4mm (Mechanical Surface Detection)
- Electronics: DAE4 Sn1437; Calibrated: 2022/11/23
- Phantom: SAM (30deg probe tilt) with CRP v4.0; Type: QD000P40CB; Serial: TP: 1500
- Measurement SW: DASY52, Version 52.10 (3); SEMCAD X Version 14.6.13 (7474)

**Ch60/Area Scan (51x191x1):** Interpolated grid: dx=1.000 mm, dy=1.000 mm

Maximum value of SAR (interpolated) = 12.4 W/kg

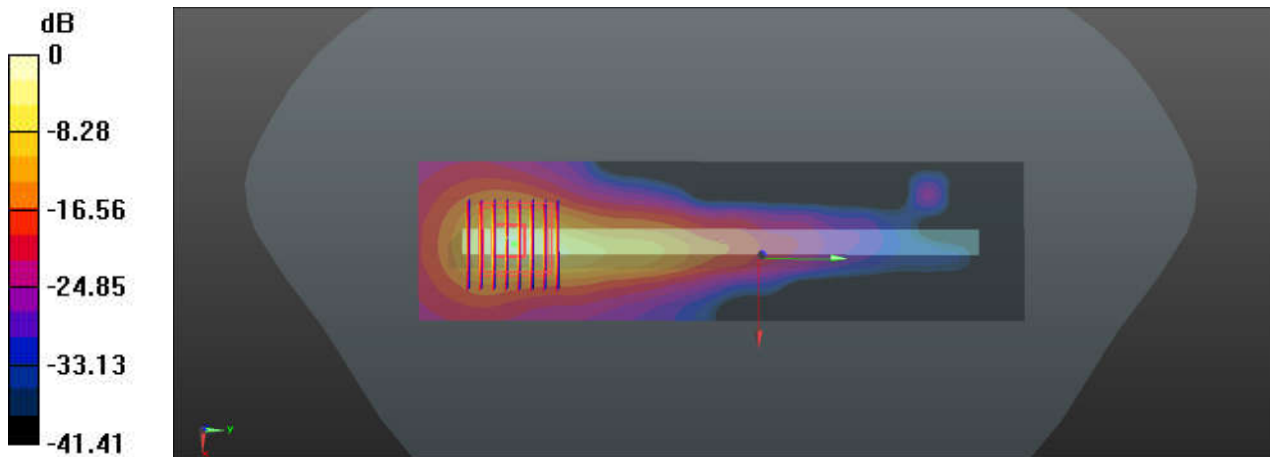
**Ch60/Zoom Scan (8x8x7)/Cube 0:** Measurement grid: dx=4mm, dy=4mm, dz=1.4mm

Reference Value = 0.7650 V/m; Power Drift = -0.04 dB

Peak SAR (extrapolated) = 33.6 W/kg

**SAR(1 g) = 6.57 W/kg; SAR(10 g) = 1.76 W/kg**

Maximum value of SAR (measured) = 18.5 W/kg



0 dB = 18.5 W/kg

### 48\_WLAN5GHz\_802.11a 6Mbps\_Right Side\_0mm\_Ch100

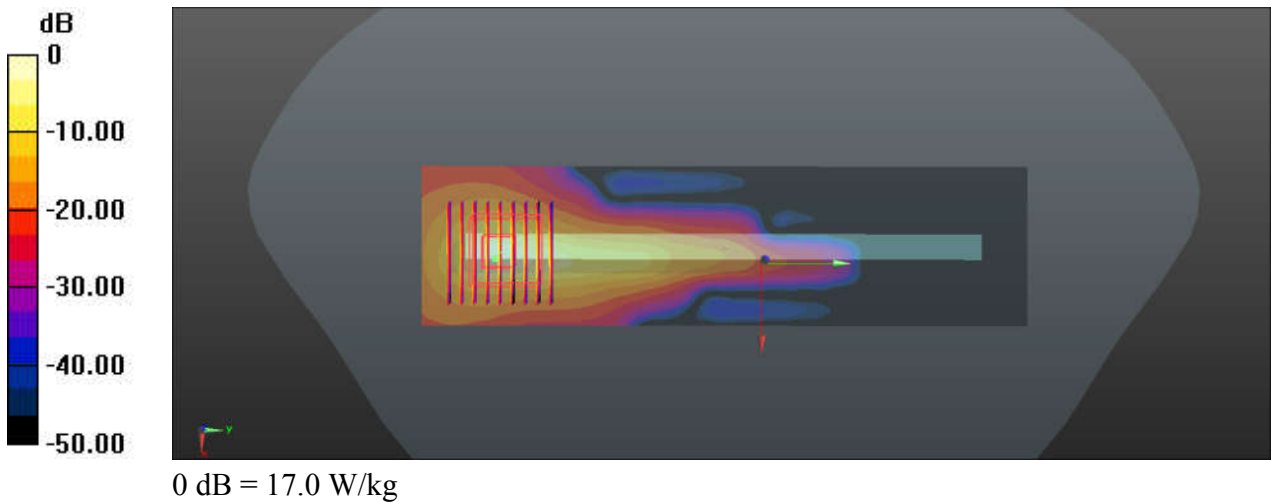
Communication System: UID 0, WIFI (0); Frequency: 5500 MHz; Duty Cycle: 1:1.117  
 Medium: HSL\_5600\_230514 Medium parameters used:  $f = 5500$  MHz;  $\sigma = 4.926$  S/m;  $\epsilon_r = 36.5$ ;  $\rho = 1000$  kg/m<sup>3</sup>  
 Ambient Temperature : 23.3 °C; Liquid Temperature : 22.3 °C

**DASY5 Configuration:**

- Probe: EX3DV4 - SN3819; ConvF(4.55, 4.55, 4.55); Calibrated: 2022/5/30
- Sensor-Surface: 1.4mm (Mechanical Surface Detection)
- Electronics: DAE4 Sn1437; Calibrated: 2022/11/23
- Phantom: SAM (30deg probe tilt) with CRP v4.0; Type: QD000P40CB; Serial: TP: 1500
- Measurement SW: DASY52, Version 52.10 (3); SEMCAD X Version 14.6.13 (7474)

**Ch100/Area Scan (51x191x1):** Interpolated grid: dx=1.000 mm, dy=1.000 mm  
 Maximum value of SAR (interpolated) = 15.4 W/kg

**Ch100/Zoom Scan (9x9x7)/Cube 0:** Measurement grid: dx=4mm, dy=4mm, dz=1.4mm  
 Reference Value = 1.187 V/m; Power Drift = -0.01 dB  
 Peak SAR (extrapolated) = 29.2 W/kg  
**SAR(1 g) = 5.7 W/kg; SAR(10 g) = 1.43 W/kg**  
 Maximum value of SAR (measured) = 17.0 W/kg





### 49\_WLAN5GHz\_802.11a 6Mbps\_Right Side\_0mm\_Ch157

Communication System: UID 0, WIFI (0); Frequency: 5785 MHz; Duty Cycle: 1:1.117  
 Medium: HSL\_5750\_230515 Medium parameters used:  $f = 5785$  MHz;  $\sigma = 5.239$  S/m;  $\epsilon_r = 36.081$ ;  
 $\rho = 1000$  kg/m<sup>3</sup>  
 Ambient Temperature : 23.6 °C; Liquid Temperature : 22.5 °C

**DASY5 Configuration:**

- Probe: EX3DV4 - SN3819; ConvF(4.65, 4.65, 4.65); Calibrated: 2022/5/30
- Sensor-Surface: 1.4mm (Mechanical Surface Detection)
- Electronics: DAE4 Sn1437; Calibrated: 2022/11/23
- Phantom: SAM (30deg probe tilt) with CRP v4.0; Type: QD000P40CB; Serial: TP: 1500
- Measurement SW: DASY52, Version 52.10 (3); SEMCAD X Version 14.6.13 (7474)

**Ch157/Area Scan (51x191x1):** Interpolated grid: dx=1.000 mm, dy=1.000 mm

Maximum value of SAR (interpolated) = 17.1 W/kg

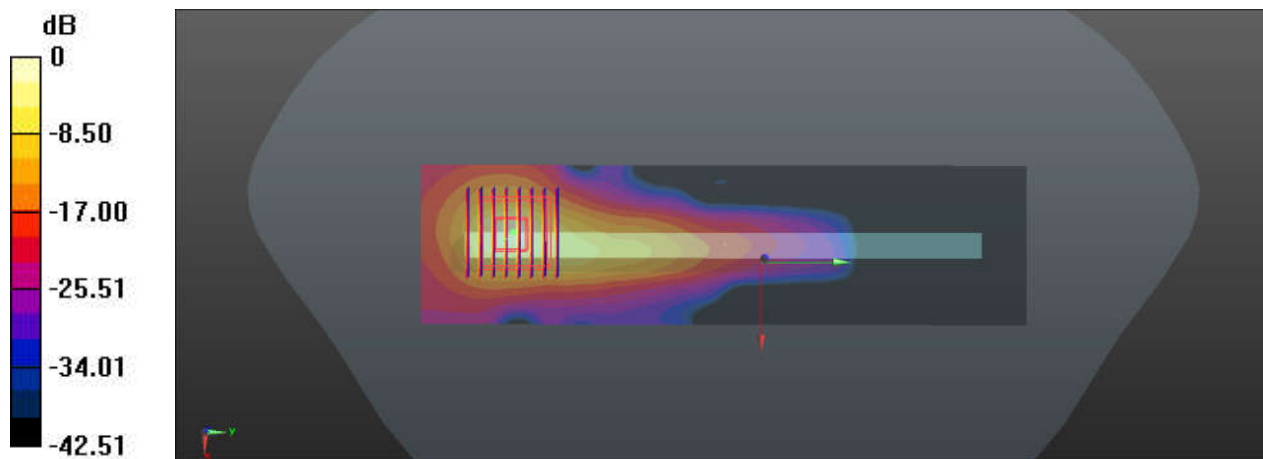
**Ch157/Zoom Scan (8x8x7)/Cube 0:** Measurement grid: dx=4mm, dy=4mm, dz=1.4mm

Reference Value = 0 V/m; Power Drift = 0.09 dB

Peak SAR (extrapolated) = 39.2 W/kg

**SAR(1 g) = 7.25 W/kg; SAR(10 g) = 1.79 W/kg**

Maximum value of SAR (measured) = 19.6 W/kg



0 dB = 19.6 W/kg