

## System Check\_Head\_835MHz

Communication System: ; Frequency: 835.0

Medium: HSL\_850\_230420. Medium parameters used:  $f = 835.0$  MHz;  $\sigma = 0.908$  S/m;  $\epsilon_r = 41.7$

Ambient Temperature: 23.5°C; Liquid Temperature: 22.5°C

DASY6 Configuration:

- Probe: EX3DV4 - SN3931; ConvF(9.85, 9.85, 9.85); Calibrated: 2022-10-31
- Sensor-Surface: 1.4 mm
- Electronics: DAE4 Sn1696; Calibrated: 2022-11-09
- Phantom: Twin-SAM V4.0 (30deg probe tilt); Serial: 1488; Section: Flat
- Measurement Software: cDASY6 V6.6.0.13926
- UID: CW, 0--
- MAIA: Area Scan: N/A; Zoom Scan: N/A

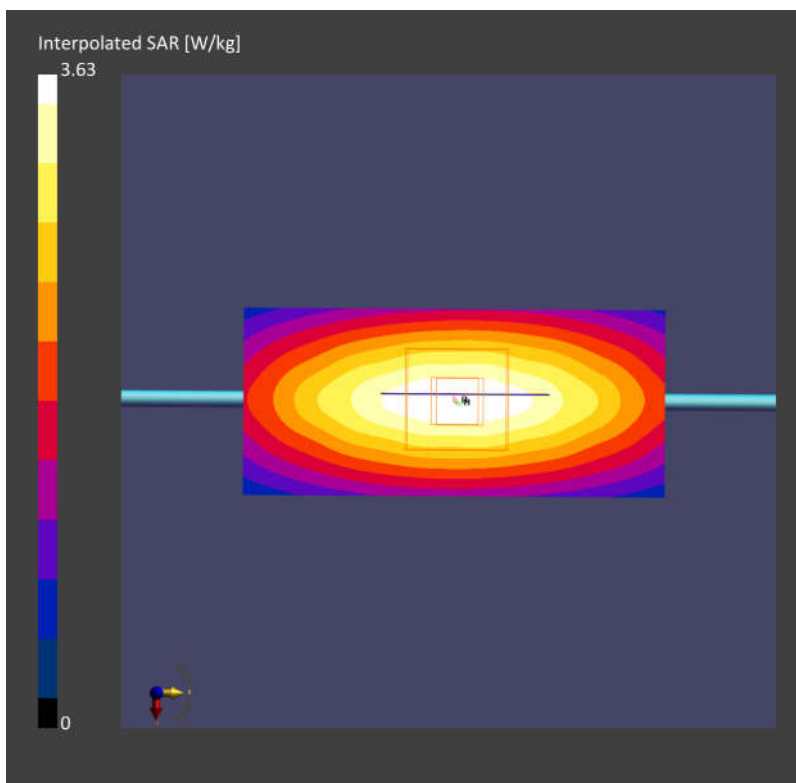
**Area Scan (40.0 mm x 90.0 mm):** Measurement Grid: 10.0 mm x 15.0 mm

SAR (1g) = 2.45 W/kg; SAR (10g) = 1.64 W/kg;

**Zoom Scan (32.0 mm x 32.0 mm x 30.0 mm):** Measurement Grid: 6.0 mm x 6.0 mm x 1.5 mm

Power Drift = -0.08 dB

SAR (1g) = 2.47 W/kg; SAR (10g) = 1.65 W/kg;



## System Check\_Head\_1900MHz

Communication System: ; Frequency: 1900.0

Medium: HSL\_1900\_230420. Medium parameters used:  $f=1900.0$  MHz;  $\sigma=1.42$  S/m;  $\epsilon_r=41.3$

Ambient Temperature: 23.5°C; Liquid Temperature: 22.5°C

DASY6 Configuration:

- Probe: EX3DV4 - SN3931; ConvF(8.36, 8.36, 8.36); Calibrated: 2022-10-31
- Sensor-Surface: 1.4 mm
- Electronics: DAE4 Sn1696; Calibrated: 2022-11-09
- Phantom: Twin-SAM V4.0 (30deg probe tilt); Serial: 1488; Section: Flat
- Measurement Software: cDASY6 V6.6.0.13926
- UID: CW, 0--
- MAIA: Area Scan: N/A; Zoom Scan: N/A

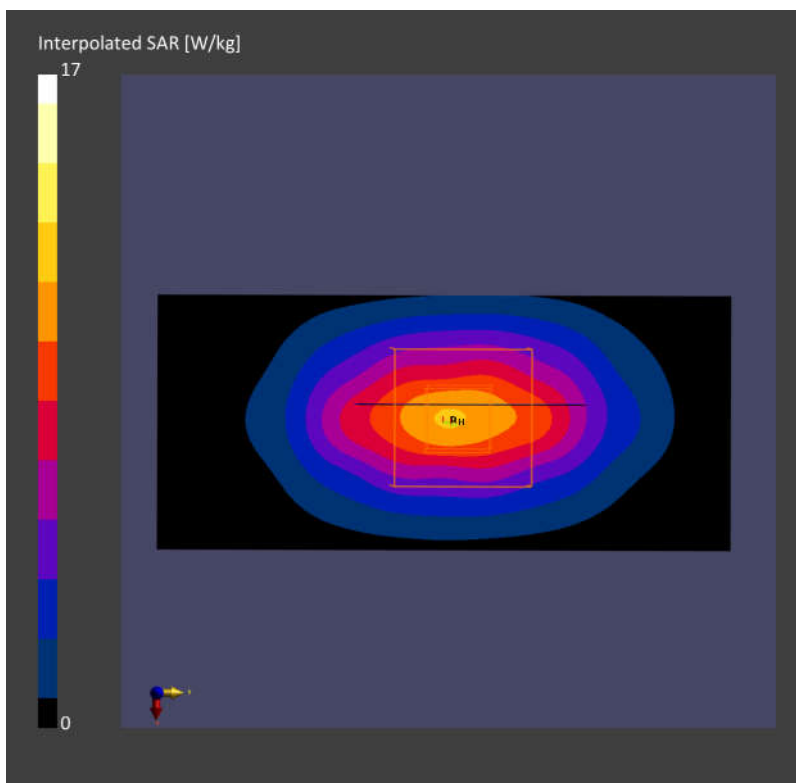
**Area Scan (40.0 mm x 90.0 mm):** Measurement Grid: 10.0 mm x 15.0 mm

SAR (1g) = 9.31 W/kg; SAR (10g) = 4.86 W/kg;

**Zoom Scan (32.0 mm x 32.0 mm x 30.0 mm):** Measurement Grid: 6.0 mm x 6.0 mm x 1.5 mm

Power Drift = -0.07 dB

SAR (1g) = 9.24 W/kg; SAR (10g) = 4.71 W/kg;



## System Check\_Head\_2600MHz

Communication System: ; Frequency: 2600.0

Medium: HSL\_2600\_230420. Medium parameters used:  $f= 2600.0$  MHz;  $\sigma= 1.99$  S/m;  $\epsilon_r = 38.9$

Ambient Temperature: 23.5°C; Liquid Temperature: 22.5°C

DASY6 Configuration:

- Probe: EX3DV4 - SN3931; ConvF(7.40, 7.40, 7.40); Calibrated: 2022-10-31
- Sensor-Surface: 1.4 mm
- Electronics: DAE4 Sn1696; Calibrated: 2022-11-09
- Phantom: Twin-SAM V4.0 (30deg probe tilt); Serial: 1488; Section: Flat
- Measurement Software: cDASY6 V6.6.0.13926
- UID: CW, 0--
- MAIA: Area Scan: N/A; Zoom Scan: N/A

**Area Scan (40.0 mm x 96.0 mm):** Measurement Grid: 10.0 mm x 12.0 mm

SAR (1g) = 13.85 W/kg; SAR (10g) = 6.21 W/kg;

**Zoom Scan (30.0 mm x 30.0 mm x 30.0 mm):** Measurement Grid: 5.0 mm x 5.0 mm x 1.5 mm

Power Drift = -0.11 dB

SAR (1g) = 13.96 W/kg; SAR (10g) = 6.41 W/kg;

