



Accredited by the Swiss Accreditation Service (SAS)  
The Swiss Accreditation Service is one of the signatories to the EA  
Multilateral Agreement for the recognition of calibration certificates

Accreditation No.: **SCS 0108**

Client **Sporton**

Certificate No: **D6.5GHzV2-1031\_Feb23**

## CALIBRATION CERTIFICATE

Object **D6.5GHzV2 - SN:1031**

Calibration procedure(s) **QA CAL-22.v7  
Calibration Procedure for SAR Validation Sources between 3-10 GHz**

Calibration date: **February 22, 2023**

This calibration certificate documents the traceability to national standards, which realize the physical units of measurements (SI).  
The measurements and the uncertainties with confidence probability are given on the following pages and are part of the certificate.

All calibrations have been conducted in the closed laboratory facility: environment temperature ( $22 \pm 3$ )°C and humidity < 70%.

Calibration Equipment used (M&TE critical for calibration)

| Primary Standards          | ID #             | Cal Date (Certificate No.)     | Scheduled Calibration |
|----------------------------|------------------|--------------------------------|-----------------------|
| Power sensor R&S NRP33T    | SN: 100967       | 01-Apr-22 (No. 217-03526)      | Apr-23                |
| Reference 20 dB Attenuator | SN: BH9394 (20k) | 04-Apr-22 (No. 217-03527)      | Apr-23                |
| Mismatch combination       | SN: 84224 / 360D | 26-Apr-22 (No. 217-03545)      | Apr-23                |
| Reference Probe EX3DV4     | SN: 7405         | 02-Jun-22 (No. EX3-7405_Jun22) | Jun-23                |
| DAE4                       | SN: 908          | 27-Jun-22 (No. DAE4-908_Jun22) | Jun-23                |

| Secondary Standards              | ID #          | Check Date (in house)             | Scheduled Check        |
|----------------------------------|---------------|-----------------------------------|------------------------|
| RF generator Anapico APSIN20G    | SN: 827       | 18-Dec-18 (in house check Dec-21) | In house check: Dec-23 |
| Network Analyzer Keysight E5063A | SN:MY54504221 | 31-Oct-19 (in house check Oct-22) | In house check: Oct-25 |

|                |                             |  |               |
|----------------|-----------------------------|--|---------------|
| Calibrated by: | Name<br><b>Leif Klysner</b> | Function<br><b>Laboratory Technician</b> | Signature<br> |
| Approved by:   | <b>Niels Kuster</b>         | <b>Quality Manager</b>                   |               |

Issued: February 24, 2023

This calibration certificate shall not be reproduced except in full without written approval of the laboratory.



Accredited by the Swiss Accreditation Service (SAS)

The Swiss Accreditation Service is one of the signatories to the EA Multilateral Agreement for the recognition of calibration certificates

Accreditation No.: **SCS 0108**

### Glossary:

|       |                                 |
|-------|---------------------------------|
| TSL   | tissue simulating liquid        |
| ConvF | sensitivity in TSL / NORM x,y,z |
| N/A   | not applicable or not measured  |

### Calibration is Performed According to the Following Standards:

- IEC/IEEE 62209-1528, "Measurement Procedure For The Assessment Of Specific Absorption Rate Of Human Exposure To Radio Frequency Fields From Hand-Held And Body-Worn Wireless Communication Devices - Part 1528: Human Models, Instrumentation And Procedures (Frequency Range Of 4 MHz To 10 GHz)", October 2020.

### Additional Documentation:

- DASY System Handbook

### Methods Applied and Interpretation of Parameters:

- Measurement Conditions:* Further details are available from the Validation Report at the end of the certificate. All figures stated in the certificate are valid at the frequency indicated.
- Antenna Parameters with TSL:* The dipole is mounted with the spacer to position its feed point exactly below the center marking of the flat phantom section, with the arms oriented parallel to the body axis.
- Feed Point Impedance and Return Loss:* These parameters are measured with the dipole positioned under the liquid filled phantom. The impedance stated is transformed from the measurement at the SMA connector to the feed point. The Return Loss ensures low reflected power. No uncertainty required.
- SAR measured:* SAR measured at the stated antenna input power.
- SAR normalized:* SAR as measured, normalized to an input power of 1 W at the antenna connector.
- SAR for nominal TSL parameters:* The measured TSL parameters are used to calculate the nominal SAR result.
- The absorbed power density (APD):* The absorbed power density is evaluated according to Samaras T, Christ A, Kuster N, "Compliance assessment of the epithelial or absorbed power density above 6 GHz using SAR measurement systems", Bioelectromagnetics, 2021 (submitted). The additional evaluation uncertainty of 0.55 dB (rectangular distribution) is considered.

The reported uncertainty of measurement is stated as the standard uncertainty of measurement multiplied by the coverage factor  $k=2$ , which for a normal distribution corresponds to a coverage probability of approximately 95%.

## Measurement Conditions

DASY system configuration, as far as not given on page 1.

|                                     |                              |                                  |
|-------------------------------------|------------------------------|----------------------------------|
| <b>DASY Version</b>                 | DASY6                        | V16.2                            |
| <b>Extrapolation</b>                | Advanced Extrapolation       |                                  |
| <b>Phantom</b>                      | Modular Flat Phantom         |                                  |
| <b>Distance Dipole Center - TSL</b> | 5 mm                         | with Spacer                      |
| <b>Zoom Scan Resolution</b>         | dx, dy = 3.4 mm, dz = 1.4 mm | Graded Ratio = 1.4 (Z direction) |
| <b>Frequency</b>                    | 6500 MHz $\pm$ 1 MHz         |                                  |

## Head TSL parameters

The following parameters and calculations were applied.

|  | Temperature         | Permittivity   | Conductivity         |
|--|---------------------|----------------|----------------------|
| <b>Nominal Head TSL parameters</b>             | 22.0 °C             | 34.5           | 6.07 mho/m           |
| <b>Measured Head TSL parameters</b>            | (22.0 $\pm$ 0.2) °C | 33.8 $\pm$ 6 % | 6.15 mho/m $\pm$ 6 % |
| <b>Head TSL temperature change during test</b> | < 0.5 °C            | ----           | ----                 |

## SAR result with Head TSL

| <b>SAR averaged over 1 cm<sup>3</sup> (1 g) of Head TSL</b> | Condition          |   |
|---|--------------------|---|
| SAR measured  | 100 mW input power | 29.8 W/kg                                     |
| SAR for nominal Head TSL parameters                         | normalized to 1W   | <b>297 W/kg <math>\pm</math> 24.7 % (k=2)</b> |

| <b>SAR averaged over 8 cm<sup>3</sup> (8 g) of Head TSL</b> | Condition          |  |
|---|--------------------|--|
| SAR measured  | 100 mW input power | 6.72 W/kg                                      |
| SAR for nominal Head TSL parameters                         | normalized to 1W   | <b>66.9 W/kg <math>\pm</math> 24.4 % (k=2)</b> |

| <b>SAR averaged over 10 cm<sup>3</sup> (10 g) of Head TSL</b> | condition          |  |
|---|--------------------|--|
| SAR measured  | 100 mW input power | 5.51 W/kg                                      |
| SAR for nominal Head TSL parameters                           | normalized to 1W   | <b>54.8 W/kg <math>\pm</math> 24.4 % (k=2)</b> |

## Appendix

### Antenna Parameters with Head TSL

|                                      |                                |
|--------------------------------------|--------------------------------|
| Impedance, transformed to feed point | 48.3 $\Omega$ - 4.9 j $\Omega$ |
| Return Loss                          | - 25.5 dB                      |

### APD (Absorbed Power Density)

| APD averaged over 1 cm <sup>2</sup> | Condition          |   |
|-------------------------------------|--------------------|---|
| APD measured                        | 100 mW input power | 296 W/m <sup>2</sup>                                      |
| APD measured                        | normalized to 1W   | <b>2960 W/m<sup>2</sup> <math>\pm</math> 29.2 % (k=2)</b> |

| APD averaged over 4 cm <sup>2</sup> | condition          |   |
|-------------------------------------|--------------------|---|
| APD measured                        | 100 mW input power | 134 W/m <sup>2</sup>                                      |
| APD measured                        | normalized to 1W   | <b>1340 W/m<sup>2</sup> <math>\pm</math> 28.9 % (k=2)</b> |

\*The reported APD values have been derived using the psSAR1g and psSAR8g.

### General Antenna Parameters and Design

After long term use with 100W radiated power, only a slight warming of the dipole near the feedpoint can be measured.

The dipole is made of standard semirigid coaxial cable. The center conductor of the feeding line is directly connected to the second arm of the dipole. The antenna is therefore short-circuited for DC-signals. On some of the dipoles, small end caps are added to the dipole arms in order to improve matching when loaded according to the position as explained in the "Measurement Conditions" paragraph. The SAR data are not affected by this change. The overall dipole length is still according to the Standard.

No excessive force must be applied to the dipole arms, because they might bend or the soldered connections near the feedpoint may be damaged.

### Additional EUT Data

|                 |       |
|-----------------|-------|
| Manufactured by | SPEAG |
|-----------------|-------|

# DASY6 Validation Report for Head TSL

Measurement Report for D6.5GHz-1031, UID 0 -, Channel 6500 (6500.0MHz)

## Device under Test Properties

| Name, Manufacturer | Dimensions [mm]    | IMEI     | DUT Type |
|--------------------|--------------------|----------|----------|
| D6.5GHz            | 16.0 x 6.0 x 300.0 | SN: 1031 | -        |

## Exposure Conditions

| Phantom Section, TSL | Position, Test Distance [mm] | Band | Group, UID | Frequency [MHz] | Conversion Factor | TSL Cond. [S/m] | TSL Permittivity |
|----------------------|------------------------------|------|------------|-----------------|-------------------|-----------------|------------------|
| Flat, HSL            | 5.00                         | Band | CW,        | 6500            | 5.50              | 6.15            | 33.8             |

## Hardware Setup

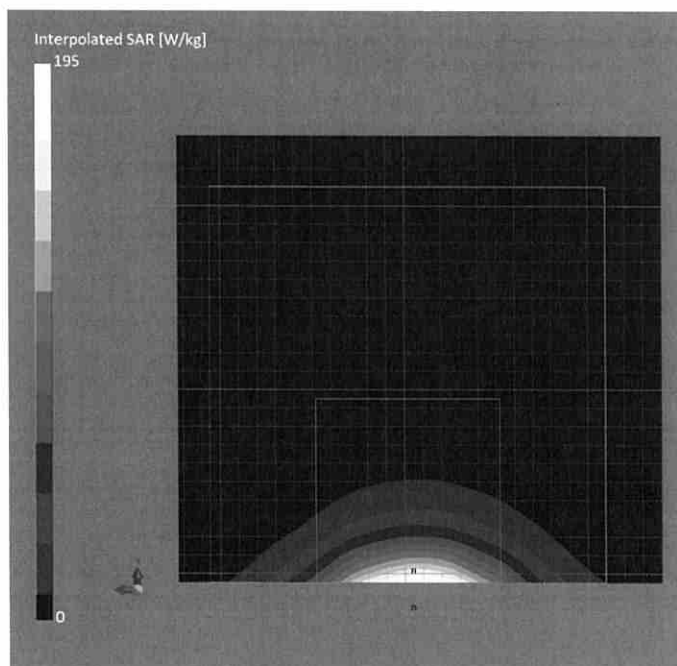
| Phantom                | TSL             | Probe, Calibration Date     | DAE, Calibration Date  |
|------------------------|-----------------|-----------------------------|------------------------|
| MFP V8.0 Center - 1182 | HBBL600-10000V6 | EX3DV4 - SN7405, 2022-06-02 | DAE4 Sn908, 2022-06-27 |

## Scan Setup

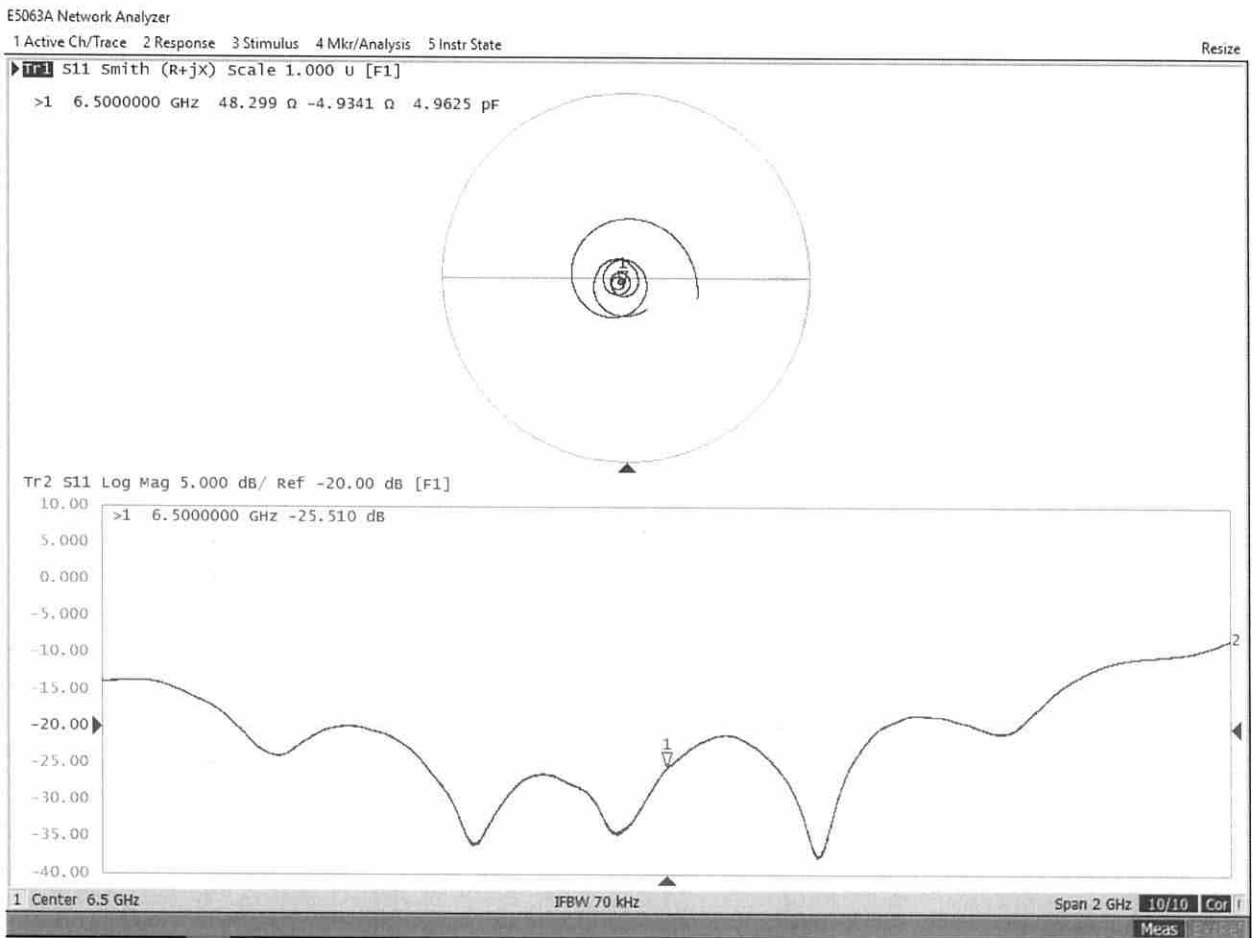
|                     | Zoom Scan          |
|---------------------|--------------------|
| Grid Extents [mm]   | 22.0 x 22.0 x 22.0 |
| Grid Steps [mm]     | 3.4 x 3.4 x 1.4    |
| Sensor Surface [mm] | 1.4                |
| Graded Grid         | Yes                |
| Grading Ratio       | 1.4                |
| MAIA                | N/A                |
| Surface Detection   | VMS + 6p           |
| Scan Method         | Measured           |

## Measurement Results

|                     | Zoom Scan         |
|---------------------|-------------------|
| Date                | 2023-02-22, 11:41 |
| psSAR1g [W/Kg]      | 29.8              |
| psSAR8g [W/Kg]      | 6.72              |
| psSAR10g [W/Kg]     | 5.51              |
| Power Drift [dB]    | 0.00              |
| Power Scaling       | Disabled          |
| Scaling Factor [dB] |                   |
| TSL Correction      | No correction     |
| M2/M1 [%]           | 49.5              |
| Dist 3dB Peak [mm]  | 4.8               |



# Impedance Measurement Plot for Head TSL





Accredited by the Swiss Accreditation Service (SAS)  
The Swiss Accreditation Service is one of the signatories to the EA  
Multilateral Agreement for the recognition of calibration certificates

Accreditation No.: **SCS 0108**

Client **Sporton**

Certificate No: **5G-Veri10-1052\_Sep22**

## CALIBRATION CERTIFICATE

Object **5G Verification Source 10 GHz - SN: 1052**

Calibration procedure(s) **QA CAL-45.v3  
Calibration procedure for sources in air above 6 GHz**

Calibration date: **September 02, 2022**

This calibration certificate documents the traceability to national standards, which realize the physical units of measurements (SI).  
The measurements and the uncertainties with confidence probability are given on the following pages and are part of the certificate.

All calibrations have been conducted in the closed laboratory facility: environment temperature  $(22 \pm 3)^\circ\text{C}$  and humidity  $< 70\%$ .

Calibration Equipment used (M&TE critical for calibration)

| Primary Standards       | ID #     | Cal Date (Certificate No.)          | Scheduled Calibration |
|-------------------------|----------|-------------------------------------|-----------------------|
| Reference Probe EUmmWV3 | SN: 9374 | 2021-12-21 (No. EUmmWV3-9374_Dec21) | Dec-22                |
| DAE4ip                  | SN: 1602 | 2022-06-27 (No. DAE4ip-1602_Jun22)  | Jun-23                |

| Secondary Standards           | ID #    | Check Date (in house)             | Scheduled Check        |
|-------------------------------|---------|-----------------------------------|------------------------|
| RF generator Anapico APSIN20G | SN: 827 | 18-Dec-18 (in house check Dec-21) | In house check: Dec-23 |

|                |                             |  |               |
|----------------|-----------------------------|--|---------------|
| Calibrated by: | Name<br><b>Leif Klysner</b> | Function<br><b>Laboratory Technician</b> | Signature<br> |
| Approved by:   | <b>Sven Kühn</b>            | <b>Technical Manager</b>                 |               |

Issued: September 6, 2022

This calibration certificate shall not be reproduced except in full without written approval of the laboratory.



Accredited by the Swiss Accreditation Service (SAS)

The Swiss Accreditation Service is one of the signatories to the EA  
Multilateral Agreement for the recognition of calibration certificates

Accreditation No.: SCS 0108

## Glossary

CW Continuous wave

## Calibration is Performed According to the Following Standards

- Internal procedure QA CAL-45-5Gsources
- IEC TR 63170 ED1, "Measurement procedure for the evaluation of power density related to human exposure to radio frequency fields from wireless communication devices operating between 6 GHz and 100 GHz", January 2018

## Methods Applied and Interpretation of Parameters

- *Coordinate System:* z-axis in the waveguide horn boresight, x-axis is in the direction of the E-field, y-axis normal to the others in the field scanning plane parallel to the horn flare and horn flange.
- *Measurement Conditions:* (1) 10 GHz: The radiated power is the forward power to the horn antenna minus ohmic and mismatch loss. The forward power is measured prior and after the measurement with a power sensor. During the measurements, the horn is directly connected to the cable and the antenna ohmic and mismatch losses are determined by far-field measurements. (2) 30, 45, 60 and 90 GHz: The verification sources are switched on for at least 30 minutes. Absorbers are used around the probe cub and at the ceiling to minimize reflections.
- *Horn Positioning:* The waveguide horn is mounted vertically on the flange of the waveguide source to allow vertical positioning of the EUmmW probe during the scan. The plane is parallel to the phantom surface. Probe distance is verified using mechanical gauges positioned on the flare of the horn.
- *E- field distribution:* E field is measured in two x-y-plane (10mm, 10mm +  $\lambda/4$ ) with a vectorial E-field probe. The E-field value stated as calibration value represents the E-field-maxima and the averaged (1cm<sup>2</sup> and 4cm<sup>2</sup>) power density values at 10mm in front of the horn.
- *Field polarization:* Above the open horn, linear polarization of the field is expected. This is verified graphically in the field representation.

## Calibrated Quantity

- Local peak E-field (V/m) and average of peak spatial components of the poynting vector (W/m<sup>2</sup>) averaged over the surface area of 1 cm<sup>2</sup> and 4cm<sup>2</sup> at the nominal operational frequency of the verification source. Both square and circular averaging results are listed.

The reported uncertainty of measurement is stated as the standard uncertainty of measurement multiplied by the coverage factor k=2, which for a normal distribution corresponds to a coverage probability of approximately 95%.



## Measurement Conditions

DASY system configuration, as far as not given on page 1.

|                                |                               |      |
|--------------------------------|-------------------------------|------|
| DASY Version                   | DASY8 Module mmWave           | V3.0 |
| Phantom                        | 5G Phantom                    |      |
| Distance Horn Aperture - plane | 10 mm                         |      |
| XY Scan Resolution             | dx, dy = 7.5 mm               |      |
| Number of measured planes      | 2 (10mm, 10mm + $\lambda/4$ ) |      |
| Frequency                      | 10 GHz $\pm$ 10 MHz           |      |

## Calibration Parameters, 10 GHz

### Circular Averaging

| Distance Horn Aperture to Measured Plane | <i>Prad</i> <sup>†</sup> (mW) | Max E-field (V/m) | Uncertainty (k = 2) | Avg Power Density Avg (psPDn+, psPDtot+, psPDmod+) (W/m <sup>2</sup> ) |                   | Uncertainty (k = 2) |
|--|-------------------------------|-------------------|---------------------|--|-------------------|---------------------|
|  |                               |                   |                     | 1 cm <sup>2</sup>  | 4 cm <sup>2</sup> |                     |
| 10 mm                                    | 86.1                          | 146               | 1.27 dB             | 54.5   | 50.4              | 1.28 dB             |

### Square Averaging

| Distance Horn Aperture to Measured Plane | <i>Prad</i> <sup>†</sup> (mW) | Max E-field (V/m) | Uncertainty (k = 2) | Avg Power Density Avg (psPDn+, psPDtot+, psPDmod+) (W/m <sup>2</sup> ) |                   | Uncertainty (k = 2) |
|--|-------------------------------|-------------------|---------------------|--|-------------------|---------------------|
|  |                               |                   |                     | 1 cm <sup>2</sup>  | 4 cm <sup>2</sup> |                     |
| 10 mm                                    | 86.1                          | 146               | 1.27 dB             | 54.7   | 50.4              | 1.28 dB             |

<sup>†</sup> Assessed ohmic and mismatch loss plus numerical offset: 0.55 dB

# DASY Report

## Measurement Report for 5G Verification Source 10 GHz, UID 0 -, Channel 10000 (10000.0MHz)

### Device under Test Properties

| Name, Manufacturer            | Dimensions [mm]       | IMEI     | DUT Type |
|-------------------------------|-----------------------|----------|----------|
| 5G Verification Source 10 GHz | 100.0 x 100.0 x 172.0 | SN: 1052 | -        |

### Exposure Conditions

| Phantom Section | Position, Test Distance [mm] | Band            | Group, | Frequency [MHz], Channel Number | Conversion Factor |
|-----------------|------------------------------|-----------------|--------|---------------------------------|-------------------|
| 5G -            | 10.0 mm                      | Validation band | CW     | 10000.0, 10000                  | 1.0               |

### Hardware Setup

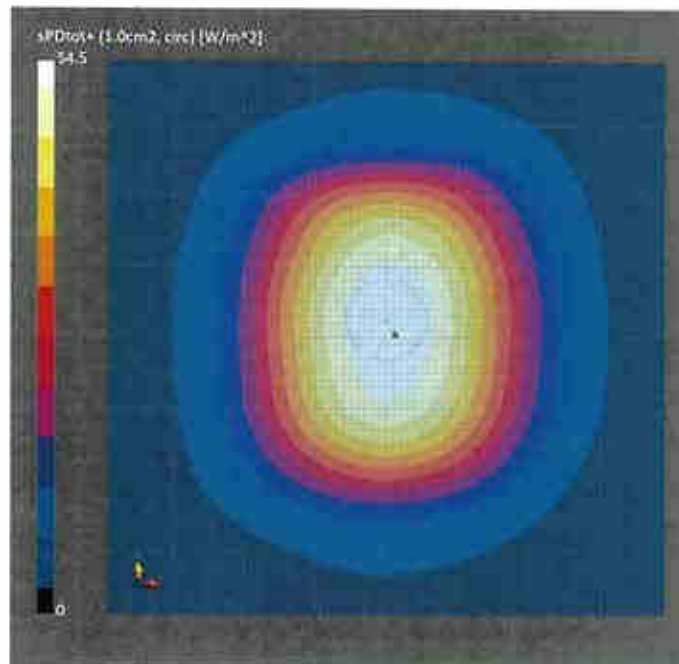
| Phantom               | Medium | Probe, Calibration Date               | DAE, Calibration Date     |
|-----------------------|--------|---------------------------------------|---------------------------|
| mmWave Phantom - 1002 | Air    | EUmmWV3 - SN9374_F1-55GHz, 2021-12-21 | DAE4ip Sn1602, 2022-06-27 |

### Scan Setup

|                     | 5G Scan       |
|---------------------|---------------|
| Grid Extents [mm]   | 120.0 x 120.0 |
| Grid Steps [lambda] | 0.25 x 0.25   |
| Sensor Surface [mm] | 10.0          |
| MAIA                | MAIA not used |

### Measurement Results

|                              | 5G Scan           |
|------------------------------|-------------------|
| Date                         | 2022-09-02, 15:45 |
| Avg. Area [cm <sup>2</sup> ] | 1.00              |
| psPDn+ [W/m <sup>2</sup> ]   | 54.4              |
| psPDtot+ [W/m <sup>2</sup> ] | 54.5              |
| psPDmod+ [W/m <sup>2</sup> ] | 54.7              |
| E <sub>max</sub> [V/m]       | 146               |
| Power Drift [dB]             | 0.01              |



# DASY Report

## Measurement Report for 5G Verification Source 10 GHz, UID 0 -, Channel 10000 (10000.0MHz)

### Device under Test Properties

| Name, Manufacturer            | Dimensions [mm]       | IMEI     | DUT Type |
|-------------------------------|-----------------------|----------|----------|
| 5G Verification Source 10 GHz | 100.0 x 100.0 x 172.0 | SN: 1052 | -        |

### Exposure Conditions

| Phantom Section | Position, Test Distance [mm] | Band            | Group, | Frequency [MHz], Channel Number | Conversion Factor |
|-----------------|------------------------------|-----------------|--------|---------------------------------|-------------------|
| 5G -            | 10.0 mm                      | Validation band | CW     | 10000.0, 10000                  | 1.0               |

### Hardware Setup

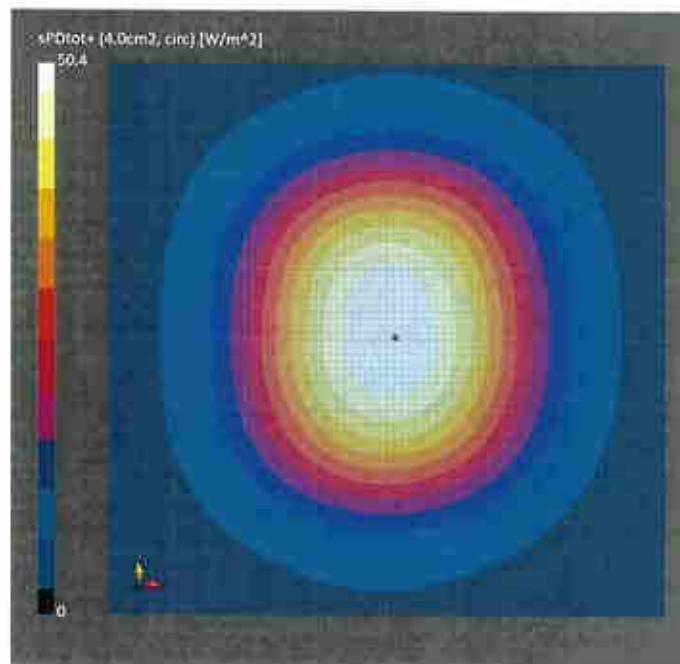
| Phantom               | Medium | Probe, Calibration Date               | DAE, Calibration Date     |
|-----------------------|--------|---------------------------------------|---------------------------|
| mmWave Phantom - 1002 | Air    | EUmmWV3 - SN9374_F1-55GHz, 2021-12-21 | DAE4ip Sn1602, 2022-06-27 |

### Scan Setup

|                     | 5G Scan       |
|---------------------|---------------|
| Grid Extents [mm]   | 120.0 x 120.0 |
| Grid Steps [lambda] | 0.25 x 0.25   |
| Sensor Surface [mm] | 10.0          |
| MAIA                | MAIA not used |

### Measurement Results

|                              | 5G Scan           |
|------------------------------|-------------------|
| Date                         | 2022-09-02, 15:45 |
| Avg. Area [cm <sup>2</sup> ] | 4.00              |
| psPDn+ [W/m <sup>2</sup> ]   | 50.2              |
| psPDtot+ [W/m <sup>2</sup> ] | 50.4              |
| psPDmod+ [W/m <sup>2</sup> ] | 50.5              |
| E <sub>max</sub> [V/m]       | 146               |
| Power Drift [dB]             | 0.01              |



# DASY Report

## Measurement Report for 5G Verification Source 10 GHz, UID 0 -, Channel 10000 (10000.0MHz)

### Device under Test Properties

| Name, Manufacturer            | Dimensions [mm]       | IMEI     | DUT Type |
|-------------------------------|-----------------------|----------|----------|
| 5G Verification Source 10 GHz | 100.0 x 100.0 x 172.0 | SN: 1052 | -        |

### Exposure Conditions

| Phantom Section | Position, Test Distance [mm] | Band            | Group, | Frequency [MHz], Channel Number | Conversion Factor |
|-----------------|------------------------------|-----------------|--------|---------------------------------|-------------------|
| 5G -            | 10.0 mm                      | Validation band | CW     | 10000.0, 10000                  | 1.0               |

### Hardware Setup

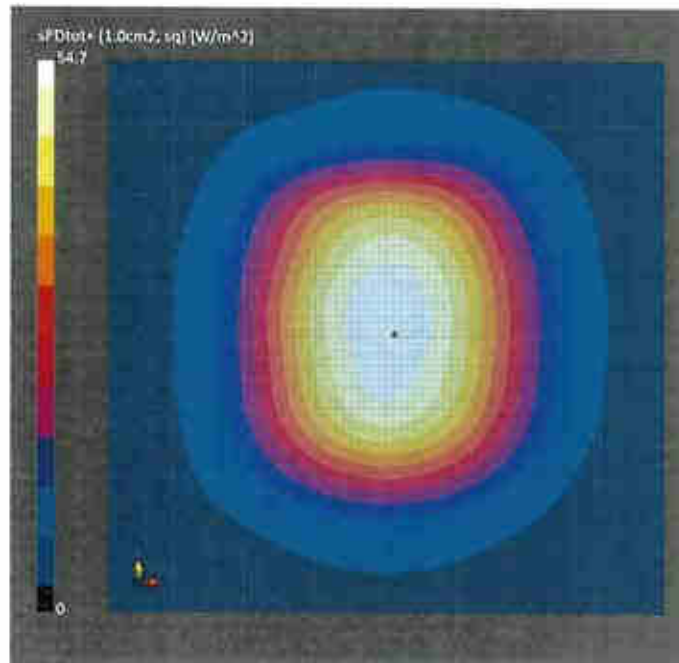
| Phantom               | Medium | Probe, Calibration Date               | DAE, Calibration Date     |
|-----------------------|--------|---------------------------------------|---------------------------|
| mmWave Phantom - 1002 | Air    | EUmmWV3 - SN9374_F1-55GHz, 2021-12-21 | DAE4ip Sn1602, 2022-06-27 |

### Scan Setup

|                     | 5G Scan       |
|---------------------|---------------|
| Grid Extents [mm]   | 120.0 x 120.0 |
| Grid Steps [lambda] | 0.25 x 0.25   |
| Sensor Surface [mm] | 10.0          |
| MAIA                | MAIA not used |

### Measurement Results

|                              | 5G Scan           |
|------------------------------|-------------------|
| Date                         | 2022-09-02, 15:45 |
| Avg. Area [cm <sup>2</sup> ] | 1.00              |
| psPDn+ [W/m <sup>2</sup> ]   | 54.5              |
| psPDtot+ [W/m <sup>2</sup> ] | 54.7              |
| psPDmod+ [W/m <sup>2</sup> ] | 54.8              |
| E <sub>max</sub> [V/m]       | 146               |
| Power Drift [dB]             | 0.01              |



# DASY Report

## Measurement Report for 5G Verification Source 10 GHz, UID 0 -, Channel 10000 (10000.0MHz)

### Device under Test Properties

| Name, Manufacturer            | Dimensions [mm]       | IMEI     | DUT Type |
|-------------------------------|-----------------------|----------|----------|
| 5G Verification Source 10 GHz | 100.0 x 100.0 x 172.0 | SN: 1052 | -        |

### Exposure Conditions

| Phantom Section | Position, Test Distance [mm] | Band            | Group, | Frequency [MHz], Channel Number | Conversion Factor |
|-----------------|------------------------------|-----------------|--------|---------------------------------|-------------------|
| 5G+             | 10.0 mm                      | Validation band | CW     | 10000.0, 10000                  | 1.0               |

### Hardware Setup

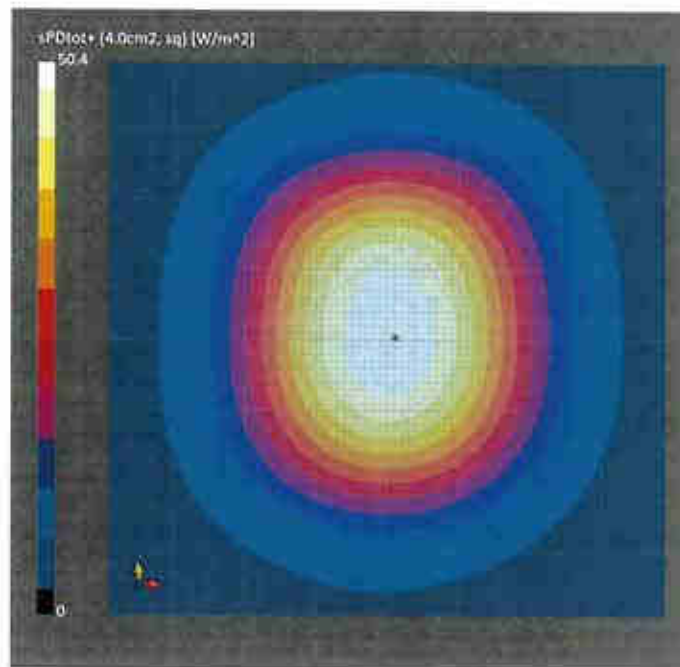
| Phantom               | Medium | Probe, Calibration Date               | DAE, Calibration Date     |
|-----------------------|--------|---------------------------------------|---------------------------|
| mmWave Phantom - 1002 | Air    | EUmmWV3 - SN9374_F1-55GHz, 2021-12-21 | DAE4ip Sn1602, 2022-06-27 |

### Scan Setup

|                     | 5G Scan       |                              | 5G Scan           |
|---------------------|---------------|------------------------------|-------------------|
| Grid Extents [mm]   | 120.0 x 120.0 | Date                         | 2022-09-02, 15:45 |
| Grid Steps [lambda] | 0.25 x 0.25   | Avg. Area [cm <sup>2</sup> ] | 4.00              |
| Sensor Surface [mm] | 10.0          | psPDn+ [W/m <sup>2</sup> ]   | 50.2              |
| MAIA                | MAIA not used | psPDtot+ [W/m <sup>2</sup> ] | 50.4              |

### Measurement Results

|                              |      |
|------------------------------|------|
| psPDmod+ [W/m <sup>2</sup> ] | 50.5 |
| E <sub>max</sub> [V/m]       | 146  |
| Power Drift [dB]             | 0.01 |



## IMPORTANT NOTICE

### USAGE OF THE DAE4

The DAE unit is a delicate, high precision instrument and requires careful treatment by the user. There are no serviceable parts inside the DAE. Special attention shall be given to the following points:

**Battery Exchange:** The battery cover of the DAE4 unit is fixed using a screw, over tightening the screw may cause the threads inside the DAE to wear out.

**Shipping of the DAE:** Before shipping the DAE to SPEAG for calibration, remove the batteries and pack the DAE in an antistatic bag. This antistatic bag shall then be packed into a larger box or container which protects the DAE from impacts during transportation. The package shall be marked to indicate that a fragile instrument is inside.

**E-Stop Failures:** Touch detection may be malfunctioning due to broken magnets in the E-stop. Rough handling of the E-stop may lead to damage of these magnets. Touch and collision errors are often caused by dust and dirt accumulated in the E-stop. To prevent E-stop failure, the customer shall always mount the probe to the DAE carefully and keep the DAE unit in a non-dusty environment if not used for measurements.

**Repair:** Minor repairs are performed at no extra cost during the annual calibration. However, SPEAG reserves the right to charge for any repair especially if rough unprofessional handling caused the defect.

**DASY Configuration Files:** Since the exact values of the DAE input resistances, as measured during the calibration procedure of a DAE unit, are not used by the DASY software, a nominal value of 200 MOhm is given in the corresponding configuration file.

**Important Note:**

**Warranty and calibration is void if the DAE unit is disassembled partly or fully by the Customer.**

**Important Note:**

**Never attempt to grease or oil the E-stop assembly. Cleaning and readjusting of the E-stop assembly is allowed by certified SPEAG personnel only and is part of the annual calibration procedure.**

**Important Note:**

**To prevent damage of the DAE probe connector pins, use great care when installing the probe to the DAE. Carefully connect the probe with the connector notch oriented in the mating position. Avoid any rotational movement of the probe body versus the DAE while turning the locking nut of the connector. The same care shall be used when disconnecting the probe from the DAE.**



Accredited by the Swiss Accreditation Service (SAS)  
The Swiss Accreditation Service is one of the signatories to the EA  
Multilateral Agreement for the recognition of calibration certificates

Accreditation No.: **SCS 0108**

Client **Sporton**

Certificate No: **DAE4-1358\_Feb23**

## CALIBRATION CERTIFICATE

Object **DAE4 - SD 000 D04 BM - SN: 1358**

Calibration procedure(s) **QA CAL-06.v30  
Calibration procedure for the data acquisition electronics (DAE)**

Calibration date: **February 21, 2023**

This calibration certificate documents the traceability to national standards, which realize the physical units of measurements (SI).  
The measurements and the uncertainties with confidence probability are given on the following pages and are part of the certificate.

All calibrations have been conducted in the closed laboratory facility: environment temperature ( $22 \pm 3$ )°C and humidity < 70%.

Calibration Equipment used (M&TE critical for calibration)

| Primary Standards             | ID #               | Cal Date (Certificate No.) | Scheduled Calibration  |
|-------------------------------|--------------------|----------------------------|------------------------|
| Keithley Multimeter Type 2001 | SN: 0810278        | 29-Aug-22 (No:34389)       | Aug-23                 |
| Secondary Standards           | ID #               | Check Date (in house)      | Scheduled Check        |
| Auto DAE Calibration Unit     | SE UWS 053 AA 1001 | 27-Jan-23 (in house check) | In house check: Jan-24 |
| Calibrator Box V2.1           | SE UMS 006 AA 1002 | 27-Jan-23 (in house check) | In house check: Jan-24 |

Calibrated by: **Name** Adrian Gehring **Function** Laboratory Technician

Approved by: **Name** Sven Kühn **Function** Technical Manager

Signature

Issued: February 21, 2023

This calibration certificate shall not be reproduced except in full without written approval of the laboratory.



Accredited by the Swiss Accreditation Service (SAS)

The Swiss Accreditation Service is one of the signatories to the EA  
Multilateral Agreement for the recognition of calibration certificates

Accreditation No.: **SCS 0108**

## Glossary

|                 |   |
|-----------------|---|
| DAE             | data acquisition electronics  |
| Connector angle | information used in DASY system to align probe sensor X to the robot coordinate system. |

## Methods Applied and Interpretation of Parameters

- *DC Voltage Measurement*: Calibration Factor assessed for use in DASY system by comparison with a calibrated instrument traceable to national standards. The figure given corresponds to the full scale range of the voltmeter in the respective range.
- *Connector angle*: The angle of the connector is assessed measuring the angle mechanically by a tool inserted. Uncertainty is not required.
- The following parameters as documented in the Appendix contain technical information as a result from the performance test and require no uncertainty.
  - *DC Voltage Measurement Linearity*: Verification of the Linearity at +10% and -10% of the nominal calibration voltage. Influence of offset voltage is included in this measurement.
  - *Common mode sensitivity*: Influence of a positive or negative common mode voltage on the differential measurement.
  - *Channel separation*: Influence of a voltage on the neighbor channels not subject to an input voltage.
  - *AD Converter Values with inputs shorted*: Values on the internal AD converter corresponding to zero input voltage
  - *Input Offset Measurement*: Output voltage and statistical results over a large number of zero voltage measurements.
  - *Input Offset Current*: Typical value for information; Maximum channel input offset current, not considering the input resistance.
  - *Input resistance*: Typical value for information: DAE input resistance at the connector, during internal auto-zeroing and during measurement.
  - *Low Battery Alarm Voltage*: Typical value for information. Below this voltage, a battery alarm signal is generated.
  - *Power consumption*: Typical value for information. Supply currents in various operating modes.



## DC Voltage Measurement

A/D - Converter Resolution nominal

High Range: 1LSB = 6.1 $\mu$ V, full range = -100...+300 mV

Low Range: 1LSB = 61nV, full range = -1.....+3mV

DASY measurement parameters: Auto Zero Time: 3 sec; Measuring time: 3 sec

| Calibration Factors | X                         | Y                         | Z                         |
|---------------------|---------------------------|---------------------------|---------------------------|
| High Range          | 403.462 $\pm$ 0.02% (k=2) | 403.496 $\pm$ 0.02% (k=2) | 403.491 $\pm$ 0.02% (k=2) |
| Low Range           | 3.96101 $\pm$ 1.50% (k=2) | 3.98806 $\pm$ 1.50% (k=2) | 3.99214 $\pm$ 1.50% (k=2) |

## Connector Angle

|   |                                     |
|---|-------------------------------------|
| Connector Angle to be used in DASY system | 334.0 $^{\circ}$ $\pm$ 1 $^{\circ}$ |
|---|-------------------------------------|

## Appendix (Additional assessments outside the scope of SCS0108)

### 1. DC Voltage Linearity

| High Range        | Reading ( $\mu\text{V}$ ) | Difference ( $\mu\text{V}$ ) | Error (%) |
|-------------------|---------------------------|------------------------------|-----------|
| Channel X + Input | 199999.96                 | 6.46                         | 0.00      |
| Channel X + Input | 20003.76                  | 1.77                         | 0.01      |
| Channel X - Input | -19999.90                 | 1.86                         | -0.01     |
| Channel Y + Input | 199997.57                 | 3.98                         | 0.00      |
| Channel Y + Input | 20000.41                  | -1.46                        | -0.01     |
| Channel Y - Input | -20004.07                 | -2.19                        | 0.01      |
| Channel Z + Input | 199993.96                 | 0.26                         | 0.00      |
| Channel Z + Input | 20002.29                  | 0.30                         | 0.00      |
| Channel Z - Input | -20003.76                 | -1.96                        | 0.01      |

| Low Range         | Reading ( $\mu\text{V}$ ) | Difference ( $\mu\text{V}$ ) | Error (%) |
|-------------------|---------------------------|------------------------------|-----------|
| Channel X + Input | 2000.99                   | -0.17                        | -0.01     |
| Channel X + Input | 201.63                    | 0.25                         | 0.12      |
| Channel X - Input | -197.62                   | 0.90                         | -0.45     |
| Channel Y + Input | 2000.64                   | -0.37                        | -0.02     |
| Channel Y + Input | 200.36                    | -0.97                        | -0.48     |
| Channel Y - Input | -199.71                   | -1.12                        | 0.57      |
| Channel Z + Input | 2000.82                   | -0.20                        | -0.01     |
| Channel Z + Input | 200.63                    | -0.58                        | -0.29     |
| Channel Z - Input | -199.52                   | -0.89                        | 0.45      |

### 2. Common mode sensitivity

DASY measurement parameters: Auto Zero Time: 3 sec; Measuring time: 3 sec

|           | Common mode Input Voltage (mV) | High Range Average Reading ( $\mu\text{V}$ ) | Low Range Average Reading ( $\mu\text{V}$ ) |
|-----------|--------------------------------|--|---|
| Channel X | 200                            | 23.47  | 21.59                                       |
|           | - 200                          | -19.09                                       | -21.61                                      |
| Channel Y | 200                            | -27.85                                       | -28.02                                      |
|           | - 200                          | 26.34  | 26.33                                       |
| Channel Z | 200                            | -10.87                                       | -10.92                                      |
|           | - 200                          | 9.02   | 9.54  |

### 3. Channel separation

DASY measurement parameters: Auto Zero Time: 3 sec; Measuring time: 3 sec

|           | Input Voltage (mV) | Channel X ( $\mu\text{V}$ ) | Channel Y ( $\mu\text{V}$ ) | Channel Z ( $\mu\text{V}$ ) |
|-----------|--------------------|-----------------------------|-----------------------------|-----------------------------|
| Channel X | 200                | -                           | 1.96                        | -2.75                       |
| Channel Y | 200                | 8.68                        | -                           | 3.96                        |
| Channel Z | 200                | 9.85                        | 5.22                        | -                           |

#### 4. AD-Converter Values with inputs shorted

DASY measurement parameters: Auto Zero Time: 3 sec; Measuring time: 3 sec

|           | High Range (LSB) | Low Range (LSB) |
|-----------|------------------|-----------------|
| Channel X | 15577            | 16574           |
| Channel Y | 16048            | 15183           |
| Channel Z | 16072            | 16244           |

#### 5. Input Offset Measurement

DASY measurement parameters: Auto Zero Time: 3 sec; Measuring time: 3 sec

Input 10M $\Omega$

|           | Average ( $\mu$ V) | min. Offset ( $\mu$ V) | max. Offset ( $\mu$ V) | Std. Deviation ( $\mu$ V) |
|-----------|--------------------|------------------------|------------------------|---------------------------|
| Channel X | 1.89               | 0.14                   | 3.32                   | 0.47                      |
| Channel Y | -0.36              | -1.28                  | 0.52                   | 0.35                      |
| Channel Z | -0.17              | -1.23                  | 0.63                   | 0.38                      |

#### 6. Input Offset Current

Nominal Input circuitry offset current on all channels: <25fA

#### 7. Input Resistance (Typical values for information)

|           | Zeroing (kOhm) | Measuring (MOhm) |
|-----------|----------------|------------------|
| Channel X | 200            | 200              |
| Channel Y | 200            | 200              |
| Channel Z | 200            | 200              |

#### 8. Low Battery Alarm Voltage (Typical values for information)

| Typical values | Alarm Level (VDC) |
|----------------|-------------------|
| Supply (+ Vcc) | +7.9              |
| Supply (- Vcc) | -7.6              |

#### 9. Power Consumption (Typical values for information)

| Typical values | Switched off (mA) | Stand by (mA) | Transmitting (mA) |
|----------------|-------------------|---------------|-------------------|
| Supply (+ Vcc) | +0.01             | +6            | +14               |
| Supply (- Vcc) | -0.01             | -8            | -9                |

## IMPORTANT NOTICE

### USAGE OF THE DAE4

The DAE unit is a delicate, high precision instrument and requires careful treatment by the user. There are no serviceable parts inside the DAE. Special attention shall be given to the following points:

**Battery Exchange:** The battery cover of the DAE4 unit is fixed using a screw, over tightening the screw may cause the threads inside the DAE to wear out.

**Shipping of the DAE:** Before shipping the DAE to SPEAG for calibration, remove the batteries and pack the DAE in an antistatic bag. This antistatic bag shall then be packed into a larger box or container which protects the DAE from impacts during transportation. The package shall be marked to indicate that a fragile instrument is inside.

**E-Stop Failures:** Touch detection may be malfunctioning due to broken magnets in the E-stop. Rough handling of the E-stop may lead to damage of these magnets. Touch and collision errors are often caused by dust and dirt accumulated in the E-stop. To prevent E-stop failure, the customer shall always mount the probe to the DAE carefully and keep the DAE unit in a non-dusty environment if not used for measurements.

**Repair:** Minor repairs are performed at no extra cost during the annual calibration. However, SPEAG reserves the right to charge for any repair especially if rough unprofessional handling caused the defect.

**DASY Configuration Files:** Since the exact values of the DAE input resistances, as measured during the calibration procedure of a DAE unit, are not used by the DASY software, a nominal value of 200 MOhm is given in the corresponding configuration file.

**Important Note:**

**Warranty and calibration is void if the DAE unit is disassembled partly or fully by the Customer.**

**Important Note:**

**Never attempt to grease or oil the E-stop assembly. Cleaning and readjusting of the E-stop assembly is allowed by certified SPEAG personnel only and is part of the annual calibration procedure.**

**Important Note:**

**To prevent damage of the DAE probe connector pins, use great care when installing the probe to the DAE. Carefully connect the probe with the connector notch oriented in the mating position. Avoid any rotational movement of the probe body versus the DAE while turning the locking nut of the connector. The same care shall be used when disconnecting the probe from the DAE.**



Accredited by the Swiss Accreditation Service (SAS)  
The Swiss Accreditation Service is one of the signatories to the EA  
Multilateral Agreement for the recognition of calibration certificates

Accreditation No.: **SCS 0108**

Client **Sporton**

Certificate No: **DAE4-690\_Jun22**

## CALIBRATION CERTIFICATE

Object **DAE4 - SD 000 D04 BM - SN: 690**

Calibration procedure(s) **QA CAL-06.v30  
Calibration procedure for the data acquisition electronics (DAE)**

Calibration date: **June 15, 2022**

This calibration certificate documents the traceability to national standards, which realize the physical units of measurements (SI).  
The measurements and the uncertainties with confidence probability are given on the following pages and are part of the certificate.

All calibrations have been conducted in the closed laboratory facility: environment temperature (22 ± 3)°C and humidity < 70%.

Calibration Equipment used (M&TE critical for calibration)

| Primary Standards             | ID #               | Cal Date (Certificate No.) | Scheduled Calibration  |
|-------------------------------|--------------------|----------------------------|------------------------|
| Keithley Multimeter Type 2001 | SN: 0810278        | 31-Aug-21 (No:31368)       | Aug-22                 |
| Secondary Standards           | ID #               | Check Date (in house)      | Scheduled Check        |
| Auto DAE Calibration Unit     | SE UWS 053 AA 1001 | 24-Jan-22 (in house check) | In house check: Jan-23 |
| Calibrator Box V2.1           | SE UMS 006 AA 1002 | 24-Jan-22 (in house check) | In house check: Jan-23 |

|                |                               |                                   |               |
|----------------|-------------------------------|-----------------------------------|---------------|
| Calibrated by: | Name<br><b>Adrian Gehring</b> | Function<br>Laboratory Technician | Signature<br> |
| Approved by:   | Name<br><b>Sven Kühn</b>      | Function<br>Technical Manager     | Signature<br> |

Issued: June 15, 2022

This calibration certificate shall not be reproduced except in full without written approval of the laboratory.



Accredited by the Swiss Accreditation Service (SAS)  
The Swiss Accreditation Service is one of the signatories to the EA  
Multilateral Agreement for the recognition of calibration certificates

## Glossary

DAE data acquisition electronics  
Connector angle information used in DASY system to align probe sensor X to the robot coordinate system.

## Methods Applied and Interpretation of Parameters

- *DC Voltage Measurement:* Calibration Factor assessed for use in DASY system by comparison with a calibrated instrument traceable to national standards. The figure given corresponds to the full scale range of the voltmeter in the respective range.
- *Connector angle:* The angle of the connector is assessed measuring the angle mechanically by a tool inserted. Uncertainty is not required.
- The following parameters as documented in the Appendix contain technical information as a result from the performance test and require no uncertainty.
  - *DC Voltage Measurement Linearity:* Verification of the Linearity at +10% and -10% of the nominal calibration voltage. Influence of offset voltage is included in this measurement.
  - *Common mode sensitivity:* Influence of a positive or negative common mode voltage on the differential measurement.
  - *Channel separation:* Influence of a voltage on the neighbor channels not subject to an input voltage.
  - *AD Converter Values with inputs shorted:* Values on the internal AD converter corresponding to zero input voltage
  - *Input Offset Measurement:* Output voltage and statistical results over a large number of zero voltage measurements.
  - *Input Offset Current:* Typical value for information; Maximum channel input offset current, not considering the input resistance.
  - *Input resistance:* Typical value for information: DAE input resistance at the connector, during internal auto-zeroing and during measurement.
  - *Low Battery Alarm Voltage:* Typical value for information. Below this voltage, a battery alarm signal is generated.
  - *Power consumption:* Typical value for information. Supply currents in various operating modes.

## DC Voltage Measurement

A/D - Converter Resolution nominal

High Range: 1LSB = 6.1 $\mu$ V , full range = -100...+300 mV

Low Range: 1LSB = 61nV , full range = -1.....+3mV

DASY measurement parameters: Auto Zero Time: 3 sec; Measuring time: 3 sec

| Calibration Factors | X                         | Y                         | Z                         |
|---------------------|---------------------------|---------------------------|---------------------------|
| High Range          | 404.752 $\pm$ 0.02% (k=2) | 404.365 $\pm$ 0.02% (k=2) | 405.332 $\pm$ 0.02% (k=2) |
| Low Range           | 3.98042 $\pm$ 1.50% (k=2) | 3.99583 $\pm$ 1.50% (k=2) | 3.93939 $\pm$ 1.50% (k=2) |

## Connector Angle

|   |                                    |
|---|------------------------------------|
| Connector Angle to be used in DASY system | 33.0 $^{\circ}$ $\pm$ 1 $^{\circ}$ |
|---|------------------------------------|

## Appendix (Additional assessments outside the scope of SCS0108)

### 1. DC Voltage Linearity

| High Range        | Reading ( $\mu\text{V}$ ) | Difference ( $\mu\text{V}$ ) | Error (%) |
|-------------------|---------------------------|------------------------------|-----------|
| Channel X + Input | 199993.63                 | -0.94                        | -0.00     |
| Channel X + Input | 20006.82                  | 4.81                         | 0.02      |
| Channel X - Input | -19996.74                 | 4.88                         | -0.02     |
| Channel Y + Input | 199994.77                 | 0.28                         | 0.00      |
| Channel Y + Input | 20001.86                  | -0.14                        | -0.00     |
| Channel Y - Input | -20000.85                 | 0.90                         | -0.00     |
| Channel Z + Input | 199998.31                 | 4.04                         | 0.00      |
| Channel Z + Input | 19999.26                  | -2.78                        | -0.01     |
| Channel Z - Input | -20001.64                 | 0.12                         | -0.00     |

| Low Range         | Reading ( $\mu\text{V}$ ) | Difference ( $\mu\text{V}$ ) | Error (%) |
|-------------------|---------------------------|------------------------------|-----------|
| Channel X + Input | 2000.76                   | -0.28                        | -0.01     |
| Channel X + Input | 201.95                    | 0.47                         | 0.23      |
| Channel X - Input | -198.52                   | -0.04                        | 0.02      |
| Channel Y + Input | 2000.74                   | -0.30                        | -0.01     |
| Channel Y + Input | 201.21                    | -0.12                        | -0.06     |
| Channel Y - Input | -198.14                   | 0.35                         | -0.18     |
| Channel Z + Input | 2000.95                   | -0.01                        | -0.00     |
| Channel Z + Input | 201.13                    | -0.09                        | -0.04     |
| Channel Z - Input | -198.70                   | -0.16                        | 0.08      |

### 2. Common mode sensitivity

DASY measurement parameters: Auto Zero Time: 3 sec; Measuring time: 3 sec

|           | Common mode Input Voltage (mV) | High Range Average Reading ( $\mu\text{V}$ ) | Low Range Average Reading ( $\mu\text{V}$ ) |
|-----------|--------------------------------|--|---|
| Channel X | 200                            | 14.76  | 13.32                                       |
|           | - 200                          | -12.40                                       | -14.39                                      |
| Channel Y | 200                            | 5.07   | 3.58  |
|           | - 200                          | -5.11  | -4.41                                       |
| Channel Z | 200                            | -1.75  | -1.31                                       |
|           | - 200                          | -1.35  | -1.00                                       |

### 3. Channel separation

DASY measurement parameters: Auto Zero Time: 3 sec; Measuring time: 3 sec

|           | Input Voltage (mV) | Channel X ( $\mu\text{V}$ ) | Channel Y ( $\mu\text{V}$ ) | Channel Z ( $\mu\text{V}$ ) |
|-----------|--------------------|-----------------------------|-----------------------------|-----------------------------|
| Channel X | 200                | -                           | -1.60                       | -3.98                       |
| Channel Y | 200                | 7.10                        | -                           | -1.60                       |
| Channel Z | 200                | 6.41                        | 5.81                        | -                           |



#### 4. AD-Converter Values with inputs shorted

DASY measurement parameters: Auto Zero Time: 3 sec; Measuring time: 3 sec

|           | High Range (LSB) | Low Range (LSB) |
|-----------|------------------|-----------------|
| Channel X | 16116            | 16315           |
| Channel Y | 16064            | 17275           |
| Channel Z | 16012            | 16139           |

#### 5. Input Offset Measurement

DASY measurement parameters: Auto Zero Time: 3 sec; Measuring time: 3 sec

Input 10M $\Omega$

|           | Average ( $\mu$ V) | min. Offset ( $\mu$ V) | max. Offset ( $\mu$ V) | Std. Deviation ( $\mu$ V) |
|-----------|--------------------|------------------------|------------------------|---------------------------|
| Channel X | 0.48               | -1.94                  | 1.74                   | 0.51                      |
| Channel Y | -0.08              | -1.40                  | 2.10                   | 0.52                      |
| Channel Z | 0.56               | -0.92                  | 2.61                   | 0.64                      |

#### 6. Input Offset Current

Nominal Input circuitry offset current on all channels: <25fA

#### 7. Input Resistance (Typical values for information)

|           | Zeroing (kOhm) | Measuring (MOhm) |
|-----------|----------------|------------------|
| Channel X | 200            | 200              |
| Channel Y | 200            | 200              |
| Channel Z | 200            | 200              |

#### 8. Low Battery Alarm Voltage (Typical values for information)

| Typical values | Alarm Level (VDC) |
|----------------|-------------------|
| Supply (+ Vcc) | +7.9              |
| Supply (- Vcc) | -7.6              |

#### 9. Power Consumption (Typical values for information)

| Typical values | Switched off (mA) | Stand by (mA) | Transmitting (mA) |
|----------------|-------------------|---------------|-------------------|
| Supply (+ Vcc) | +0.01             | +6            | +14               |
| Supply (- Vcc) | -0.01             | -8            | -9                |



Accredited by the Swiss Accreditation Service (SAS)  
**The Swiss Accreditation Service is one of the signatories to the EA  
Multilateral Agreement for the recognition of calibration certificates**

Accreditation No.: **SCS 0108**

Client **Sporton**

Certificate No **EX-7764\_Sep22**

**CALIBRATION CERTIFICATE**

Object **EX3DV4 - SN:7764**

Calibration procedure(s) **QA CAL-01.v9, QA CAL-12.v9, QA CAL-14.v6, QA CAL-23.v5,  
QA CAL-25.v7  
Calibration procedure for dosimetric E-field probes**

Calibration date **September 30, 2022**

This calibration certificate documents the traceability to national standards, which realize the physical units of measurements (SI). The measurements and the uncertainties with confidence probability are given on the following pages and are part of the certificate.

All calibrations have been conducted in the closed laboratory facility: environment temperature (22 ± 3) °C and humidity < 70%.

Calibration Equipment used (M&TE critical for calibration)

| Primary Standards          | ID               | Cal Date (Certificate No.)        | Scheduled Calibration |
|----------------------------|------------------|-----------------------------------|-----------------------|
| Power meter NRP            | SN: 104778       | 04-Apr-22 (No. 217-03525/03524)   | Apr-23                |
| Power sensor NRP-Z91       | SN: 103244       | 04-Apr-22 (No. 217-03524)         | Apr-23                |
| OCP DAK-3.5 (weighted)     | SN: 1249         | 20-Oct-21 (OCP-DAK3.5-1249_Oct21) | Oct-22                |
| OCP DAK-12                 | SN: 1016         | 20-Oct-21 (OCP-DAK12-1016_Oct21)  | Oct-22                |
| Reference 20 dB Attenuator | SN: CC2552 (20x) | 04-Apr-22 (No. 217-03527)         | Apr-23                |
| DAE4                       | SN: 660          | 13-Oct-21 (No. DAE4-660_Oct21)    | Oct-22                |
| Reference Probe ES3DV2     | SN: 3013         | 27-Dec-21 (No. ES3-3013_Dec21)    | Dec-22                |

| Secondary Standards     | ID               | Check Date (in house)             | Scheduled Check        |
|-------------------------|------------------|-----------------------------------|------------------------|
| Power meter E4419B      | SN: GB41293874   | 06-Apr-16 (in house check Jun-22) | In house check: Jun-24 |
| Power sensor E4412A     | SN: MY41498087   | 06-Apr-16 (in house check Jun-22) | In house check: Jun-24 |
| Power sensor E4412A     | SN: 000110210    | 06-Apr-16 (in house check Jun-22) | In house check: Jun-24 |
| RF generator HP 8648C   | SN: US3642U01700 | 04-Aug-99 (in house check Jun-22) | In house check: Jun-24 |
| Network Analyzer E8358A | SN: US41080477   | 31-Mar-14 (in house check Oct-20) | In house check: Oct-22 |

|               | Name           | Function              | Signature |
|---------------|----------------|-----------------------|-----------|
| Calibrated by | Jeton Kastrati | Laboratory Technician |           |
| Approved by   | Sven Kühn      | Technical Manager     |           |

Issued: October 2, 2022

This calibration certificate shall not be reproduced except in full without written approval of the laboratory.

## Calibration Laboratory of

Schmid & Partner  
Engineering AG

Zeughausstrasse 43, 8004 Zurich, Switzerland



S Schweizerischer Kalibrierdienst  
C Service suisse d'étalonnage  
S Servizio svizzero di taratura  
S Swiss Calibration Service

Accredited by the Swiss Accreditation Service (SAS)

The Swiss Accreditation Service is one of the signatories to the EA  
Multilateral Agreement for the recognition of calibration certificates

Accreditation No.: SCS 0108

## Glossary

|                          |  |
|--------------------------|--|
| TSL                      | tissue simulating liquid   |
| NORM <sub>x,y,z</sub>    | sensitivity in free space  |
| ConvF                    | sensitivity in TSL / NORM <sub>x,y,z</sub>   |
| DCP                      | diode compression point  |
| CF                       | crest factor (1/duty_cycle) of the RF signal   |
| A, B, C, D               | modulation dependent linearization parameters  |
| Polarization $\varphi$   | $\varphi$ rotation around probe axis   |
| Polarization $\vartheta$ | $\vartheta$ rotation around an axis that is in the plane normal to probe axis (at measurement center), i.e., $\vartheta = 0$ is normal to probe axis |
| Connector Angle          | information used in DASY system to align probe sensor X to the robot coordinate system   |

## Calibration is Performed According to the Following Standards:

- IEC/IEEE 62209-1528, "Measurement Procedure For The Assessment Of Specific Absorption Rate Of Human Exposure To Radio Frequency Fields From Hand-Held And Body-Worn Wireless Communication Devices – Part 1528: Human Models, Instrumentation And Procedures (Frequency Range of 4 MHz to 10 GHz)", October 2020.
- KDB 865664, "SAR Measurement Requirements for 100 MHz to 6 GHz"

## Methods Applied and Interpretation of Parameters:

- NORM<sub>x,y,z</sub>**: Assessed for E-field polarization  $\vartheta = 0$  ( $f \leq 900$  MHz in TEM-cell;  $f > 1800$  MHz: R22 waveguide). NORM<sub>x,y,z</sub> are only intermediate values, i.e., the uncertainties of NORM<sub>x,y,z</sub> does not affect the E<sup>2</sup>-field uncertainty inside TSL (see below ConvF).
- NORM(f)<sub>x,y,z</sub>** = NORM<sub>x,y,z</sub> \* frequency\_response (see Frequency Response Chart). This linearization is implemented in DASY4 software versions later than 4.2. The uncertainty of the frequency response is included in the stated uncertainty of ConvF.
- DCP<sub>x,y,z</sub>**: DCP are numerical linearization parameters assessed based on the data of power sweep with CW signal. DCP does not depend on frequency nor media.
- PAR**: PAR is the Peak to Average Ratio that is not calibrated but determined based on the signal characteristics
- A<sub>x,y,z</sub>; B<sub>x,y,z</sub>; C<sub>x,y,z</sub>; D<sub>x,y,z</sub>; VR<sub>x,y,z</sub>; A, B, C, D** are numerical linearization parameters assessed based on the data of power sweep for specific modulation signal. The parameters do not depend on frequency nor media. VR is the maximum calibration range expressed in RMS voltage across the diode.
- ConvF and Boundary Effect Parameters**: Assessed in flat phantom using E-field (or Temperature Transfer Standard for  $f \leq 800$  MHz) and inside waveguide using analytical field distributions based on power measurements for  $f > 800$  MHz. The same setups are used for assessment of the parameters applied for boundary compensation (alpha, depth) of which typical uncertainty values are given. These parameters are used in DASY4 software to improve probe accuracy close to the boundary. The sensitivity in TSL corresponds to NORM<sub>x,y,z</sub> \* ConvF whereby the uncertainty corresponds to that given for ConvF. A frequency dependent ConvF is used in DASY version 4.4 and higher which allows extending the validity from  $\pm 50$  MHz to  $\pm 100$  MHz.
- Spherical isotropy (3D deviation from isotropy)**: in a field of low gradients realized using a flat phantom exposed by a patch antenna.
- Sensor Offset**: The sensor offset corresponds to the offset of virtual measurement center from the probe tip (on probe axis). No tolerance required.
- Connector Angle**: The angle is assessed using the information gained by determining the NORM<sub>x</sub> (no uncertainty required).

## Parameters of Probe: EX3DV4 - SN:7764

### Basic Calibration Parameters

|   | Sensor X | Sensor Y | Sensor Z | Unc (k = 2) |
|---|----------|----------|----------|-------------|
| Norm ( $\mu\text{V}/(\text{V}/\text{m})^2$ ) <sup>A</sup> | 0.56     | 0.57     | 0.56     | ±10.1%      |
| DCP (mV) <sup>B</sup>                                     | 103.0    | 102.4    | 105.5    | ±4.7%       |

### Calibration Results for Modulation Response

| UID   | Communication System Name   |   | A<br>dB | B<br>dB $\sqrt{\mu\text{V}}$ | C     | D<br>dB | VR<br>mV | Max<br>dev. | Max<br>Unc <sup>E</sup><br>k = 2 |
|-------|-----------------------------|---|---------|------------------------------|-------|---------|----------|-------------|----------------------------------|
| 0     | CW                          | X | 0.00    | 0.00                         | 1.00  | 0.00    | 141.4    | ±2.5%       | ±4.7%                            |
|       |                             | Y | 0.00    | 0.00                         | 1.00  |         | 139.5    |             |                                  |
|       |                             | Z | 0.00    | 0.00                         | 1.00  |         | 137.8    |             |                                  |
| 10352 | Pulse Waveform (200Hz, 10%) | X | 1.53    | 60.75                        | 6.22  | 10.00   | 60.0     | ±2.6%       | ±9.6%                            |
|       |                             | Y | 12.00   | 74.00                        | 11.00 |         | 60.0     |             |                                  |
|       |                             | Z | 1.67    | 61.68                        | 7.23  |         | 60.0     |             |                                  |
| 10353 | Pulse Waveform (200Hz, 20%) | X | 0.79    | 60.00                        | 4.59  | 6.99    | 80.0     | ±2.3%       | ±9.6%                            |
|       |                             | Y | 48.00   | 76.00                        | 9.00  |         | 80.0     |             |                                  |
|       |                             | Z | 0.80    | 60.00                        | 5.33  |         | 80.0     |             |                                  |
| 10354 | Pulse Waveform (200Hz, 40%) | X | 0.47    | 121.40                       | 0.80  | 3.98    | 95.0     | ±2.6%       | ±9.6%                            |
|       |                             | Y | 0.01    | 130.90                       | 0.48  |         | 95.0     |             |                                  |
|       |                             | Z | 0.04    | 122.82                       | 0.11  |         | 95.0     |             |                                  |
| 10355 | Pulse Waveform (200Hz, 60%) | X | 0.95    | 159.99                       | 1.01  | 2.22    | 120.0    | ±1.6%       | ±9.6%                            |
|       |                             | Y | 2.62    | 159.99                       | 2.55  |         | 120.0    |             |                                  |
|       |                             | Z | 5.47    | 160.00                       | 25.03 |         | 120.0    |             |                                  |
| 10387 | QPSK Waveform, 1 MHz        | X | 0.58    | 63.81                        | 11.95 | 1.00    | 150.0    | ±4.5%       | ±9.6%                            |
|       |                             | Y | 0.50    | 62.59                        | 11.66 |         | 150.0    |             |                                  |
|       |                             | Z | 0.56    | 63.87                        | 11.66 |         | 150.0    |             |                                  |
| 10388 | QPSK Waveform, 10 MHz       | X | 1.34    | 65.38                        | 13.84 | 0.00    | 150.0    | ±0.8%       | ±9.6%                            |
|       |                             | Y | 1.40    | 66.38                        | 14.09 |         | 150.0    |             |                                  |
|       |                             | Z | 1.32    | 65.49                        | 13.56 |         | 150.0    |             |                                  |
| 10396 | 64-QAM Waveform, 100 kHz    | X | 1.56    | 63.48                        | 15.70 | 3.01    | 150.0    | ±1.3%       | ±9.6%                            |
|       |                             | Y | 1.55    | 63.18                        | 15.46 |         | 150.0    |             |                                  |
|       |                             | Z | 1.64    | 64.17                        | 15.78 |         | 150.0    |             |                                  |
| 10399 | 64-QAM Waveform, 40 MHz     | X | 2.93    | 66.50                        | 15.29 | 0.00    | 150.0    | ±2.7%       | ±9.6%                            |
|       |                             | Y | 2.89    | 66.53                        | 15.27 |         | 150.0    |             |                                  |
|       |                             | Z | 2.82    | 66.08                        | 14.96 |         | 150.0    |             |                                  |
| 10414 | WLAN CCDF, 64-QAM, 40 MHz   | X | 3.99    | 66.06                        | 15.47 | 0.00    | 150.0    | ±4.4%       | ±9.6%                            |
|       |                             | Y | 3.88    | 66.14                        | 15.41 |         | 150.0    |             |                                  |
|       |                             | Z | 3.82    | 65.73                        | 15.17 |         | 150.0    |             |                                  |

Note: For details on UID parameters see Appendix

The reported uncertainty of measurement is stated as the standard uncertainty of measurement multiplied by the coverage factor k=2, which for a normal distribution corresponds to a coverage probability of approximately 95%.

<sup>A</sup> The uncertainties of Norm X,Y,Z do not affect the E<sup>2</sup>-field uncertainty inside TSL (see Pages 5 and 6).

<sup>B</sup> Linearization parameter uncertainty for maximum specified field strength.

<sup>E</sup> Uncertainty is determined using the max. deviation from linear response applying rectangular distribution and is expressed for the square of the field value.

## Parameters of Probe: EX3DV4 - SN:7764

### Sensor Model Parameters

|   | C1<br>fF | C2<br>fF | $\alpha$<br>V <sup>-1</sup> | T1<br>msV <sup>-2</sup> | T2<br>msV <sup>-1</sup> | T3<br>ms | T4<br>V <sup>-2</sup> | T5<br>V <sup>-1</sup> | T6   |
|---|----------|----------|-----------------------------|-------------------------|-------------------------|----------|-----------------------|-----------------------|------|
| x | 11.8     | 88.18    | 35.51                       | 2.51                    | 0.00                    | 4.93     | 0.00                  | 0.05                  | 1.00 |
| y | 9.9      | 73.90    | 35.07                       | 2.09                    | 0.00                    | 4.90     | 0.00                  | 0.04                  | 1.00 |
| z | 10.6     | 78.59    | 34.88                       | 4.32                    | 0.00                    | 4.98     | 0.56                  | 0.00                  | 1.00 |

### Other Probe Parameters

|   |            |
|---|------------|
| Sensor Arrangement                            | Triangular |
| Connector Angle                               | -127.0°    |
| Mechanical Surface Detection Mode             | enabled    |
| Optical Surface Detection Mode                | disabled   |
| Probe Overall Length                          | 337 mm     |
| Probe Body Diameter                           | 10 mm      |
| Tip Length                                    | 9 mm       |
| Tip Diameter                                  | 2.5 mm     |
| Probe Tip to Sensor X Calibration Point       | 1 mm       |
| Probe Tip to Sensor Y Calibration Point       | 1 mm       |
| Probe Tip to Sensor Z Calibration Point       | 1 mm       |
| Recommended Measurement Distance from Surface | 1.4 mm     |

**Note:** Measurement distance from surface can be increased to 3–4 mm for an *Area Scan* job.

## Parameters of Probe: EX3DV4 - SN:7764

### Calibration Parameter Determined in Head Tissue Simulating Media

| f (MHz) <sup>C</sup> | Relative Permittivity <sup>F</sup> | Conductivity <sup>F</sup> (S/m) | ConvF X | ConvF Y | ConvF Z | Alpha <sup>G</sup> | Depth <sup>G</sup> (mm) | Unc (k = 2) |
|----------------------|------------------------------------|---------------------------------|---------|---------|---------|--------------------|-------------------------|-------------|
| 13                   | 55.0                               | 0.75                            | 16.23   | 16.23   | 16.23   | 0.00               | 1.00                    | ±13.3%      |
| 750                  | 41.9                               | 0.89                            | 10.95   | 10.95   | 10.95   | 0.30               | 1.05                    | ±12.0%      |
| 835                  | 41.5                               | 0.90                            | 10.57   | 10.57   | 10.57   | 0.28               | 1.08                    | ±12.0%      |
| 900                  | 41.5                               | 0.97                            | 10.24   | 10.24   | 10.24   | 0.48               | 0.80                    | ±12.0%      |
| 1750                 | 40.1                               | 1.37                            | 9.01    | 9.01    | 9.01    | 0.34               | 0.86                    | ±12.0%      |
| 1900                 | 40.0                               | 1.40                            | 8.58    | 8.58    | 8.58    | 0.36               | 0.86                    | ±12.0%      |
| 2000                 | 40.0                               | 1.40                            | 8.52    | 8.52    | 8.52    | 0.29               | 0.86                    | ±12.0%      |
| 2300                 | 39.5                               | 1.67                            | 8.48    | 8.48    | 8.48    | 0.28               | 0.95                    | ±12.0%      |
| 2450                 | 39.2                               | 1.80                            | 8.25    | 8.25    | 8.25    | 0.26               | 0.95                    | ±12.0%      |
| 2600                 | 39.0                               | 1.96                            | 7.99    | 7.99    | 7.99    | 0.29               | 0.95                    | ±12.0%      |
| 3300                 | 38.2                               | 2.71                            | 7.48    | 7.48    | 7.48    | 0.30               | 1.35                    | ±13.1%      |
| 3500                 | 37.9                               | 2.91                            | 7.45    | 7.45    | 7.45    | 0.30               | 1.35                    | ±13.1%      |
| 3700                 | 37.7                               | 3.12                            | 7.30    | 7.30    | 7.30    | 0.30               | 1.35                    | ±13.1%      |
| 3900                 | 37.5                               | 3.32                            | 6.66    | 6.66    | 6.66    | 0.40               | 1.50                    | ±13.1%      |
| 4100                 | 37.2                               | 3.53                            | 6.55    | 6.55    | 6.55    | 0.40               | 1.60                    | ±13.1%      |
| 4200                 | 37.1                               | 3.63                            | 6.40    | 6.40    | 6.40    | 0.40               | 1.70                    | ±13.1%      |
| 4400                 | 36.9                               | 3.84                            | 6.35    | 6.35    | 6.35    | 0.40               | 1.70                    | ±13.1%      |
| 4600                 | 36.7                               | 4.04                            | 6.33    | 6.33    | 6.33    | 0.40               | 1.70                    | ±13.1%      |
| 4800                 | 36.4                               | 4.25                            | 6.31    | 6.31    | 6.31    | 0.40               | 1.90                    | ±13.1%      |
| 4950                 | 36.3                               | 4.40                            | 6.25    | 6.25    | 6.25    | 0.40               | 1.80                    | ±13.1%      |
| 5250                 | 35.9                               | 4.71                            | 5.65    | 5.65    | 5.65    | 0.40               | 1.80                    | ±13.1%      |
| 5600                 | 35.5                               | 5.07                            | 4.90    | 4.90    | 4.90    | 0.40               | 1.80                    | ±13.1%      |
| 5750                 | 35.4                               | 5.22                            | 5.10    | 5.10    | 5.10    | 0.40               | 1.80                    | ±13.1%      |

<sup>C</sup> Frequency validity above 300 MHz of ±100 MHz only applies for DASY v4.4 and higher (see Page 2), else it is restricted to ±50 MHz. The uncertainty is the RSS of the ConvF uncertainty at calibration frequency and the uncertainty for the indicated frequency band. Frequency validity below 300 MHz is ±10, 25, 40, 50 and 70 MHz for ConvF assessments at 30, 64, 128, 150 and 220 MHz respectively. Validity of ConvF assessed at 6 MHz is 4–9 MHz, and ConvF assessed at 13 MHz is 9–19 MHz. Above 5 GHz frequency validity can be extended to ±110 MHz.

<sup>F</sup> At frequencies below 3 GHz, the validity of tissue parameters ( $\epsilon$  and  $\sigma$ ) can be relaxed to ±10% if liquid compensation formula is applied to measured SAR values. At frequencies above 3 GHz, the validity of tissue parameters ( $\epsilon$  and  $\sigma$ ) is restricted to ±5%. The uncertainty is the RSS of the ConvF uncertainty for indicated target tissue parameters.

<sup>G</sup> Alpha/Depth are determined during calibration. SPEAG warrants that the remaining deviation due to the boundary effect after compensation is always less than ±1% for frequencies below 3 GHz and below ±2% for frequencies between 3–6 GHz at any distance larger than half the probe tip diameter from the boundary.

## Parameters of Probe: EX3DV4 - SN:7764

### Calibration Parameter Determined in Head Tissue Simulating Media

| f (MHz) <sup>C</sup> | Relative Permittivity <sup>F</sup> | Conductivity <sup>F</sup> (S/m) | ConvF X | ConvF Y | ConvF Z | Alpha <sup>G</sup> | Depth <sup>G</sup> (mm) | Unc (k = 2) |
|----------------------|------------------------------------|---------------------------------|---------|---------|---------|--------------------|-------------------------|-------------|
| 6500                 | 34.5                               | 6.07                            | 5.50    | 5.50    | 5.50    | 0.20               | 2.50                    | ±18.6%      |

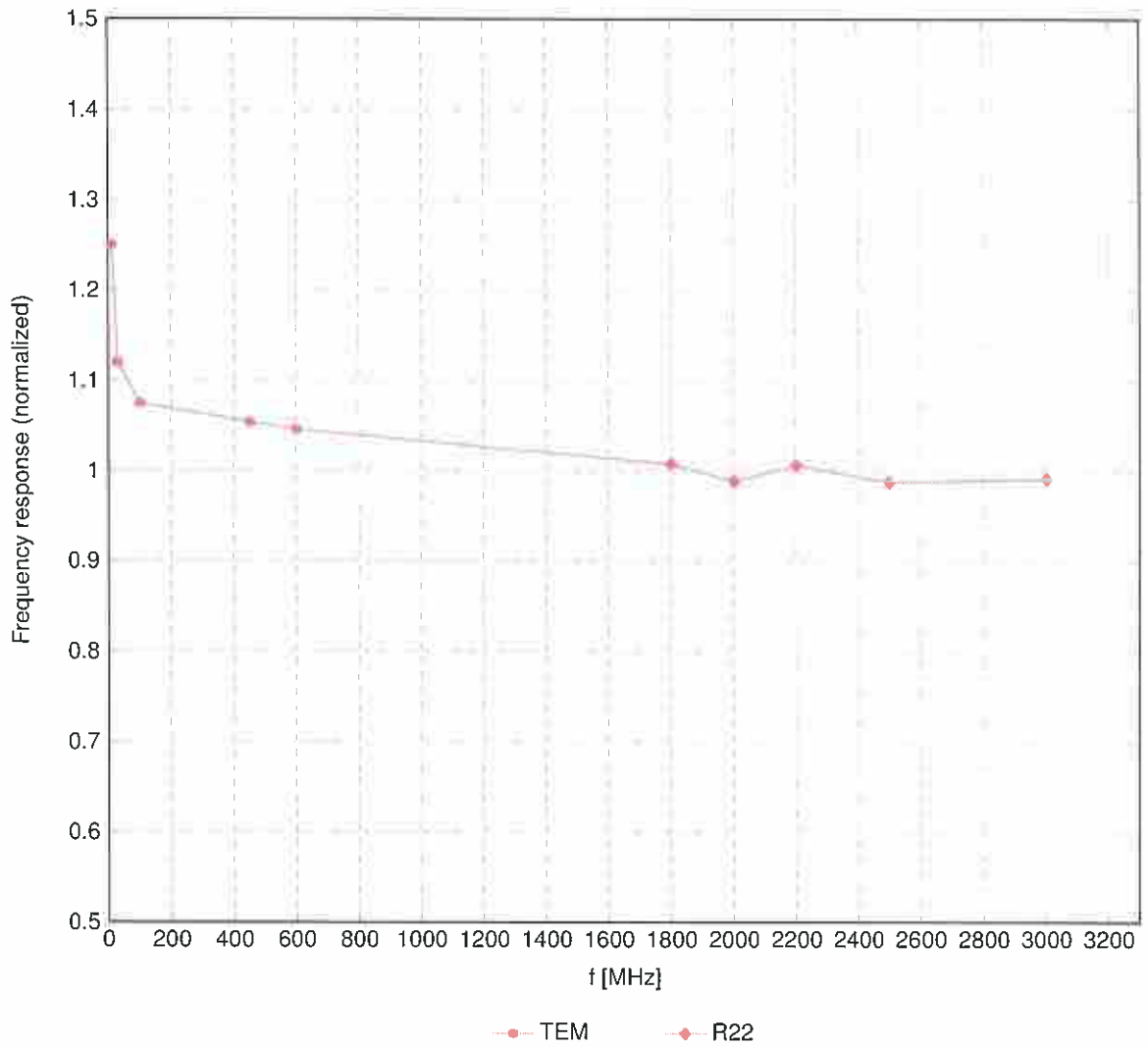
<sup>C</sup> Frequency validity at 6.5 GHz is  $-600/+700$  MHz, and  $\pm 700$  MHz at or above 7 GHz. The uncertainty is the RSS of the ConvF uncertainty at calibration frequency and the uncertainty for the indicated frequency band.

<sup>F</sup> At frequencies 6–10 GHz, the validity of tissue parameters ( $\epsilon$  and  $\sigma$ ) can be relaxed to  $\pm 10\%$  if liquid compensation formula is applied to measured SAR values. The uncertainty is the RSS of the ConvF uncertainty for indicated target tissue parameters.

<sup>G</sup> Alpha/Depth are determined during calibration. SPEAG warrants that the remaining deviation due to the boundary effect after compensation is always less than  $\pm 1\%$  for frequencies below 3 GHz; below  $\pm 2\%$  for frequencies between 3–6 GHz; and below  $\pm 4\%$  for frequencies between 6–10 GHz at any distance larger than half the probe tip diameter from the boundary.

### Frequency Response of E-Field

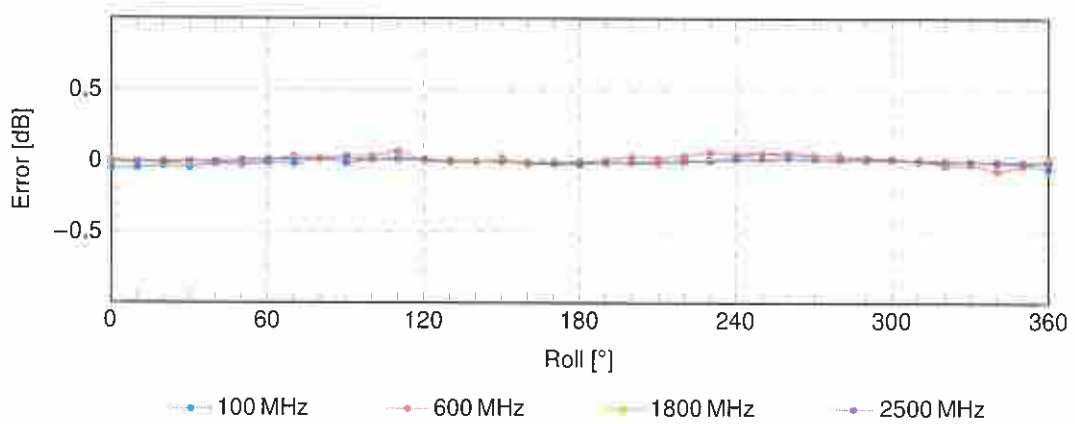
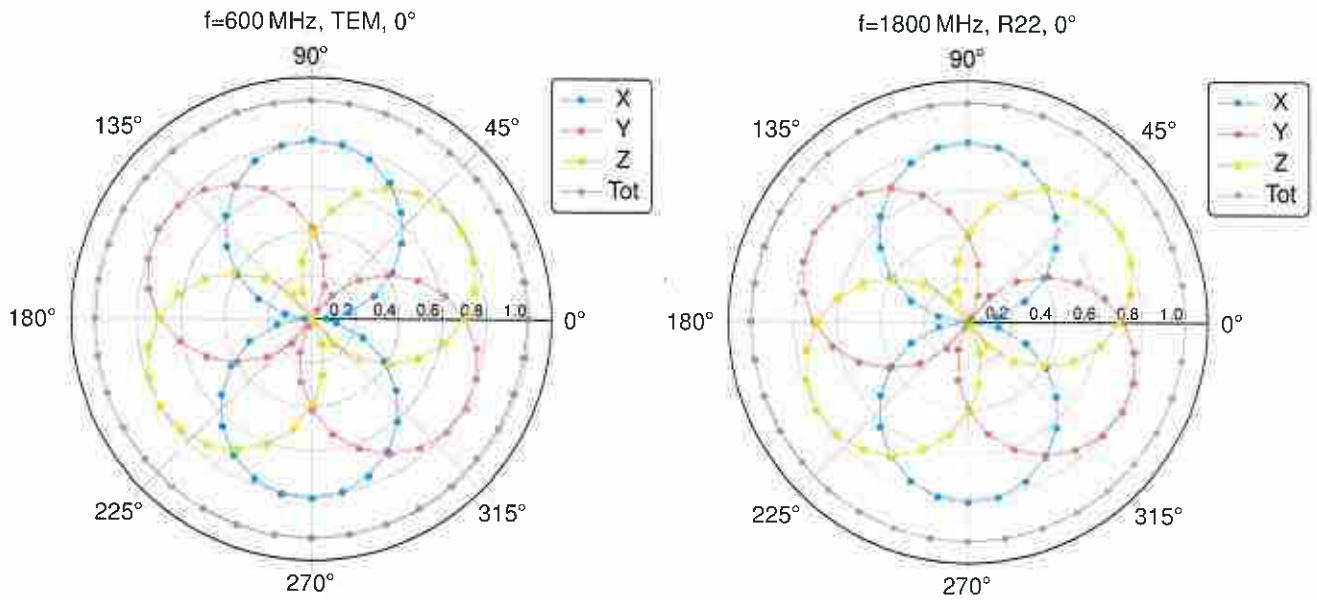
(TEM-Cell:ifi110 EXX, Waveguide:R22)



Uncertainty of Frequency Response of E-field:  $\pm 6.3\%$  (k=2)



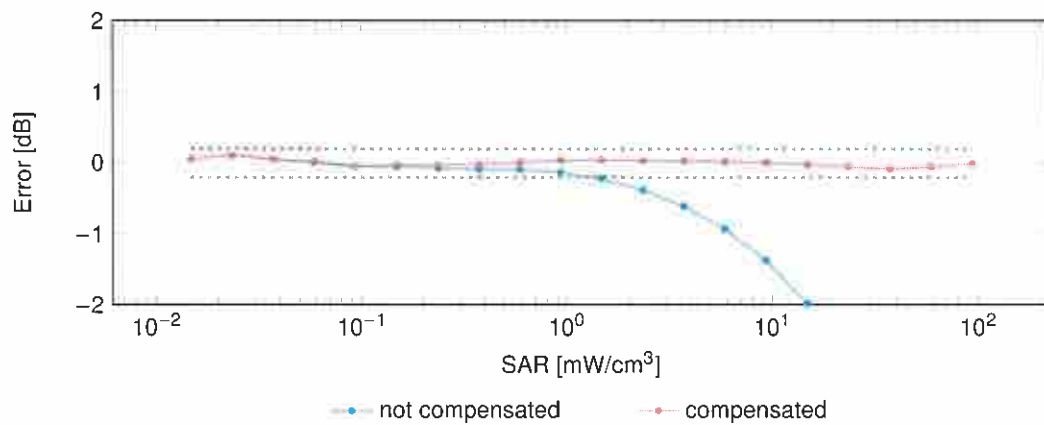
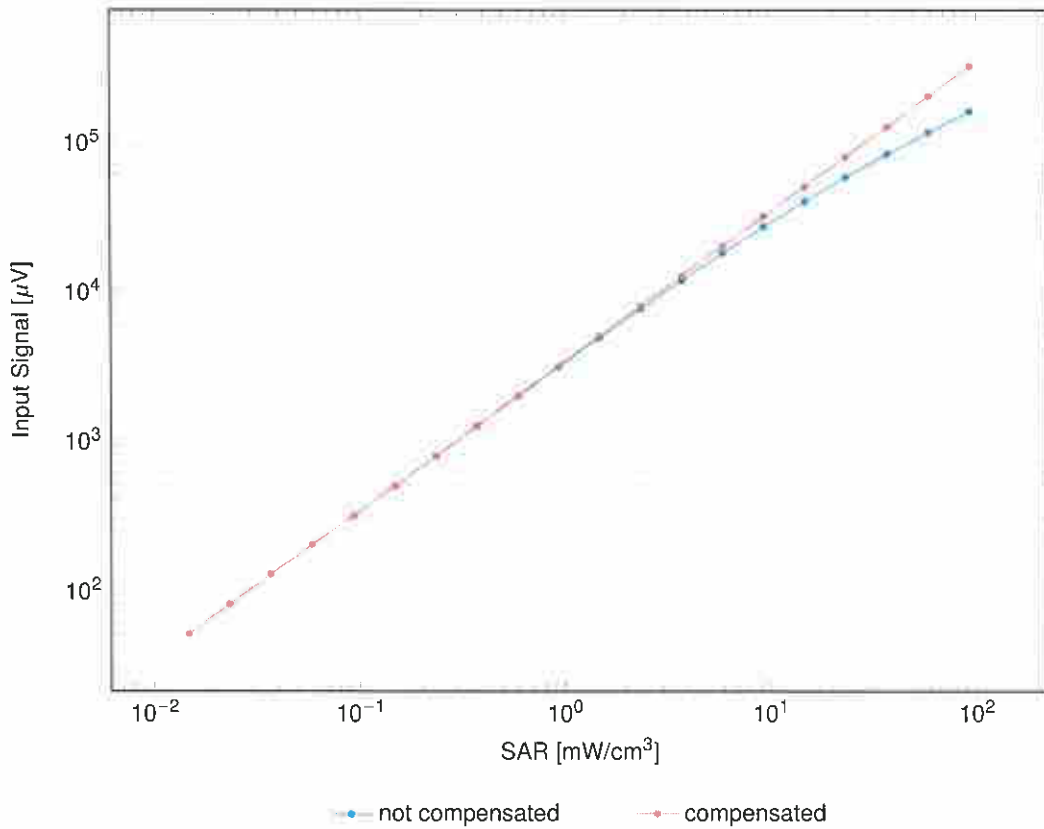
### Receiving Pattern ( $\phi$ ), $\vartheta = 0^\circ$



Uncertainty of Axial Isotropy Assessment:  $\pm 0.5\%$  ( $k=2$ )

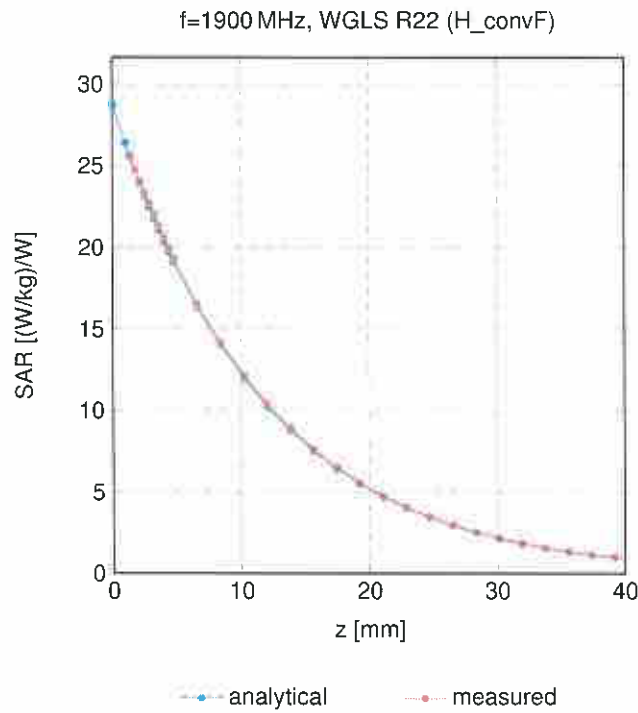
### Dynamic Range f(SAR<sub>head</sub>)

(TEM cell, f<sub>eval</sub> = 1900MHz)



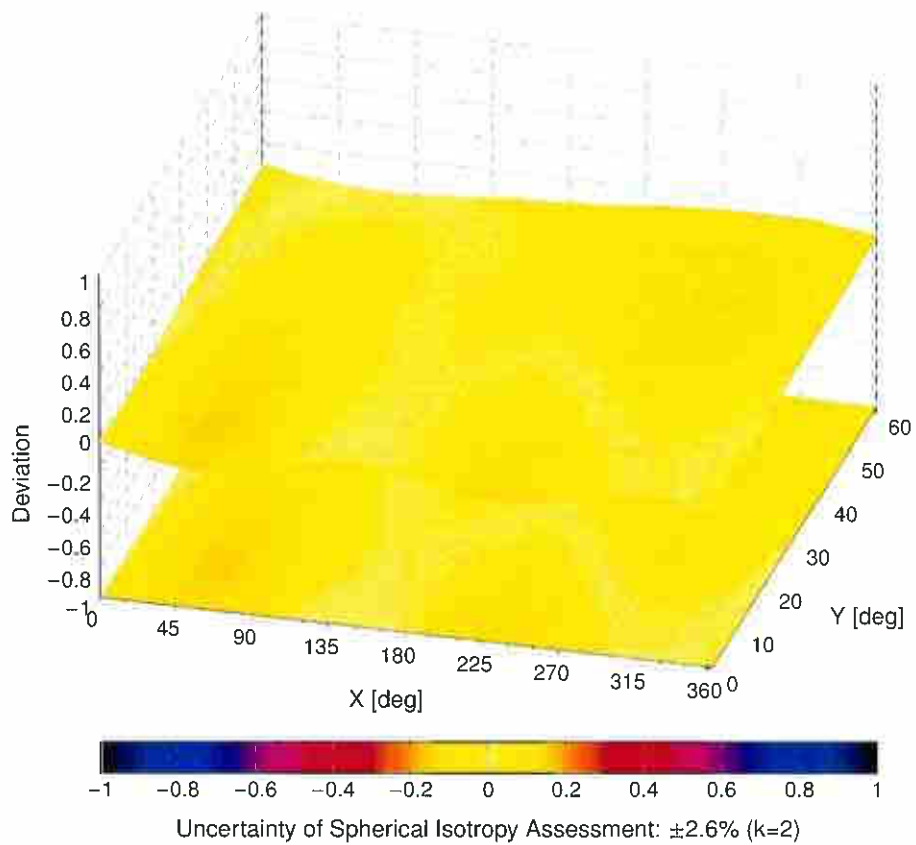
Uncertainty of Linearity Assessment: ±0.6% (k=2)

### Conversion Factor Assessment



### Deviation from Isotropy in Liquid

Error ( $\phi, \theta$ ), f = 900 MHz



## Appendix: Modulation Calibration Parameters

| UID   | Rev | Communication System Name                           | Group     | PAR (dB) | Unc <sup>F</sup> k = 2 |
|-------|-----|---|-----------|----------|------------------------|
| 0     |     | CW  | CW        | 0.00     | ±4.7                   |
| 10010 | CAA | SAR Validation (Square, 100 ms, 10 ms)              | Test      | 10.00    | ±9.6                   |
| 10011 | CAB | UMTS-FDD (WCDMA)                                    | WCDMA     | 2.91     | ±9.6                   |
| 10012 | CAB | IEEE 802.11b WiFi 2.4 GHz (DSSS, 1 Mbps)            | WLAN      | 1.87     | ±9.6                   |
| 10013 | CAB | IEEE 802.11g WiFi 2.4 GHz (DSSS-OFDM, 6 Mbps)       | WLAN      | 9.46     | ±9.6                   |
| 10021 | DAC | GSM-FDD (TDMA, GMSK)                                | GSM       | 9.39     | ±9.6                   |
| 10023 | DAC | GPRS-FDD (TDMA, GMSK, TN 0)                         | GSM       | 9.57     | ±9.6                   |
| 10024 | DAC | GPRS-FDD (TDMA, GMSK, TN 0-1)                       | GSM       | 6.56     | ±9.6                   |
| 10025 | DAC | EDGE-FDD (TDMA, 8PSK, TN 0)                         | GSM       | 12.62    | ±9.6                   |
| 10026 | DAC | EDGE-FDD (TDMA, 8PSK, TN 0-1)                       | GSM       | 9.55     | ±9.6                   |
| 10027 | DAC | GPRS-FDD (TDMA, GMSK, TN 0-1-2)                     | GSM       | 4.80     | ±9.6                   |
| 10028 | DAC | GPRS-FDD (TDMA, GMSK, TN 0-1-2-3)                   | GSM       | 3.55     | ±9.6                   |
| 10029 | DAC | EDGE-FDD (TDMA, 8PSK, TN 0-1-2)                     | GSM       | 7.78     | ±9.6                   |
| 10030 | CAA | IEEE 802.15.1 Bluetooth (GFSK, DH1)                 | Bluetooth | 5.30     | ±9.6                   |
| 10031 | CAA | IEEE 802.15.1 Bluetooth (GFSK, DH3)                 | Bluetooth | 1.87     | ±9.6                   |
| 10032 | CAA | IEEE 802.15.1 Bluetooth (GFSK, DH5)                 | Bluetooth | 1.16     | ±9.6                   |
| 10033 | CAA | IEEE 802.15.1 Bluetooth (PI/4-DQPSK, DH1)           | Bluetooth | 7.74     | ±9.6                   |
| 10034 | CAA | IEEE 802.15.1 Bluetooth (PI/4-DQPSK, DH3)           | Bluetooth | 4.53     | ±9.6                   |
| 10035 | CAA | IEEE 802.15.1 Bluetooth (PI/4-DQPSK, DH5)           | Bluetooth | 3.83     | ±9.6                   |
| 10036 | CAA | IEEE 802.15.1 Bluetooth (8-DPSK, DH1)               | Bluetooth | 8.01     | ±9.6                   |
| 10037 | CAA | IEEE 802.15.1 Bluetooth (8-DPSK, DH3)               | Bluetooth | 4.77     | ±9.6                   |
| 10038 | CAA | IEEE 802.15.1 Bluetooth (8-DPSK, DH5)               | Bluetooth | 4.10     | ±9.6                   |
| 10039 | CAB | CDMA2000 (1xRTT, RC1)                               | CDMA2000  | 4.57     | ±9.6                   |
| 10042 | CAB | IS-54 / IS-136 FDD (TDMA/FDM, PI/4-DQPSK, Halfrate) | AMPS      | 7.78     | ±9.6                   |
| 10044 | CAA | IS-91/EIA/TIA-553 FDD (FDMA, FM)                    | AMPS      | 0.00     | ±9.6                   |
| 10048 | CAA | DECT (TDD, TDMA/FDM, GFSK, Full Slot, 24)           | DECT      | 13.80    | ±9.6                   |
| 10049 | CAA | DECT (TDD, TDMA/FDM, GFSK, Double Slot, 12)         | DECT      | 10.79    | ±9.6                   |
| 10056 | CAA | UMTS-TDD (TD-SCDMA, 1.28 Mcps)                      | TD-SCDMA  | 11.01    | ±9.6                   |
| 10058 | DAC | EDGE-FDD (TDMA, 8PSK, TN 0-1-2-3)                   | GSM       | 6.52     | ±9.6                   |
| 10059 | CAB | IEEE 802.11b WiFi 2.4 GHz (DSSS, 2 Mbps)            | WLAN      | 2.12     | ±9.6                   |
| 10060 | CAB | IEEE 802.11b WiFi 2.4 GHz (DSSS, 5.5 Mbps)          | WLAN      | 2.83     | ±9.6                   |
| 10061 | CAB | IEEE 802.11b WiFi 2.4 GHz (DSSS, 11 Mbps)           | WLAN      | 3.60     | ±9.6                   |
| 10062 | CAD | IEEE 802.11a/h WiFi 5 GHz (OFDM, 6 Mbps)            | WLAN      | 8.68     | ±9.6                   |
| 10063 | CAD | IEEE 802.11a/h WiFi 5 GHz (OFDM, 9 Mbps)            | WLAN      | 8.63     | ±9.6                   |
| 10064 | CAD | IEEE 802.11a/h WiFi 5 GHz (OFDM, 12 Mbps)           | WLAN      | 9.09     | ±9.6                   |
| 10065 | CAD | IEEE 802.11a/h WiFi 5 GHz (OFDM, 18 Mbps)           | WLAN      | 9.00     | ±9.6                   |
| 10066 | CAD | IEEE 802.11a/h WiFi 5 GHz (OFDM, 24 Mbps)           | WLAN      | 9.38     | ±9.6                   |
| 10067 | CAD | IEEE 802.11a/h WiFi 5 GHz (OFDM, 36 Mbps)           | WLAN      | 10.12    | ±9.6                   |
| 10068 | CAD | IEEE 802.11a/h WiFi 5 GHz (OFDM, 48 Mbps)           | WLAN      | 10.24    | ±9.6                   |
| 10069 | CAD | IEEE 802.11a/h WiFi 5 GHz (OFDM, 54 Mbps)           | WLAN      | 10.56    | ±9.6                   |
| 10071 | CAB | IEEE 802.11g WiFi 2.4 GHz (DSSS/OFDM, 9 Mbps)       | WLAN      | 9.83     | ±9.6                   |
| 10072 | CAB | IEEE 802.11g WiFi 2.4 GHz (DSSS/OFDM, 12 Mbps)      | WLAN      | 9.62     | ±9.6                   |
| 10073 | CAB | IEEE 802.11g WiFi 2.4 GHz (DSSS/OFDM, 18 Mbps)      | WLAN      | 9.94     | ±9.6                   |
| 10074 | CAB | IEEE 802.11g WiFi 2.4 GHz (DSSS/OFDM, 24 Mbps)      | WLAN      | 10.30    | ±9.6                   |
| 10075 | CAB | IEEE 802.11g WiFi 2.4 GHz (DSSS/OFDM, 36 Mbps)      | WLAN      | 10.77    | ±9.6                   |
| 10076 | CAB | IEEE 802.11g WiFi 2.4 GHz (DSSS/OFDM, 48 Mbps)      | WLAN      | 10.94    | ±9.6                   |
| 10077 | CAB | IEEE 802.11g WiFi 2.4 GHz (DSSS/OFDM, 54 Mbps)      | WLAN      | 11.00    | ±9.6                   |
| 10081 | CAB | CDMA2000 (1xRTT, RC3)                               | CDMA2000  | 3.97     | ±9.6                   |
| 10082 | CAB | IS-54 / IS-136 FDD (TDMA/FDM, PI/4-DQPSK, Fullrate) | AMPS      | 4.77     | ±9.6                   |
| 10090 | DAC | GPRS-FDD (TDMA, GMSK, TN 0-4)                       | GSM       | 6.56     | ±9.6                   |
| 10097 | CAC | UMTS-FDD (HSDPA)                                    | WCDMA     | 3.98     | ±9.6                   |
| 10098 | DAC | UMTS-FDD (HSUPA, Subtest 2)                         | WCDMA     | 3.98     | ±9.6                   |
| 10099 | CAC | EDGE-FDD (TDMA, 8PSK, TN 0-4)                       | GSM       | 9.55     | ±9.6                   |
| 10100 | CAC | LTE-FDD (SC-FDMA, 100% RB, 20 MHz, QPSK)            | LTE-FDD   | 5.67     | ±9.6                   |
| 10101 | CAB | LTE-FDD (SC-FDMA, 100% RB, 20 MHz, 16-QAM)          | LTE-FDD   | 6.42     | ±9.6                   |
| 10102 | CAB | LTE-FDD (SC-FDMA, 100% RB, 20 MHz, 64-QAM)          | LTE-FDD   | 6.60     | ±9.6                   |
| 10103 | DAC | LTE-TDD (SC-FDMA, 100% RB, 20 MHz, QPSK)            | LTE-TDD   | 9.29     | ±9.6                   |
| 10104 | CAE | LTE-TDD (SC-FDMA, 100% RB, 20 MHz, 16-QAM)          | LTE-TDD   | 9.97     | ±9.6                   |
| 10105 | CAE | LTE-TDD (SC-FDMA, 100% RB, 20 MHz, 64-QAM)          | LTE-TDD   | 10.01    | ±9.6                   |
| 10108 | CAE | LTE-FDD (SC-FDMA, 100% RB, 10 MHz, QPSK)            | LTE-FDD   | 5.80     | ±9.6                   |
| 10109 | CAG | LTE-FDD (SC-FDMA, 100% RB, 10 MHz, 16-QAM)          | LTE-FDD   | 6.43     | ±9.6                   |
| 10110 | CAG | LTE-FDD (SC-FDMA, 100% RB, 5 MHz, QPSK)             | LTE-FDD   | 5.75     | ±9.6                   |
| 10111 | CAG | LTE-FDD (SC-FDMA, 100% RB, 5 MHz, 16-QAM)           | LTE-FDD   | 6.44     | ±9.6                   |

| UID   | Rev | Communication System Name                      | Group   | PAR (dB) | Unc <sup>E</sup> k = 2 |
|-------|-----|--|---------|----------|------------------------|
| 10112 | CAG | LTE-FDD (SC-FDMA, 100% RB, 10 MHz, 64-QAM)     | LTE-FDD | 6.59     | ±9.6                   |
| 10113 | CAG | LTE-FDD (SC-FDMA, 100% RB, 5 MHz, 64-QAM)      | LTE-FDD | 6.62     | ±9.6                   |
| 10114 | CAG | IEEE 802.11n (HT Greenfield, 13.5 Mbps, BPSK)  | WLAN    | 8.10     | ±9.6                   |
| 10115 | CAG | IEEE 802.11n (HT Greenfield, 81 Mbps, 16-QAM)  | WLAN    | 8.46     | ±9.6                   |
| 10116 | CAG | IEEE 802.11n (HT Greenfield, 135 Mbps, 64-QAM) | WLAN    | 8.15     | ±9.6                   |
| 10117 | CAG | IEEE 802.11n (HT Mixed, 13.5 Mbps, BPSK)       | WLAN    | 8.07     | ±9.6                   |
| 10118 | CAD | IEEE 802.11n (HT Mixed, 81 Mbps, 16-QAM)       | WLAN    | 8.59     | ±9.6                   |
| 10119 | CAD | IEEE 802.11n (HT Mixed, 135 Mbps, 64-QAM)      | WLAN    | 8.13     | ±9.6                   |
| 10140 | CAD | LTE-FDD (SC-FDMA, 100% RB, 15 MHz, 16-QAM)     | LTE-FDD | 6.49     | ±9.6                   |
| 10141 | CAD | LTE-FDD (SC-FDMA, 100% RB, 15 MHz, 64-QAM)     | LTE-FDD | 6.53     | ±9.6                   |
| 10142 | CAD | LTE-FDD (SC-FDMA, 100% RB, 3 MHz, QPSK)        | LTE-FDD | 5.73     | ±9.6                   |
| 10143 | CAD | LTE-FDD (SC-FDMA, 100% RB, 3 MHz, 16-QAM)      | LTE-FDD | 6.35     | ±9.6                   |
| 10144 | CAC | LTE-FDD (SC-FDMA, 100% RB, 3 MHz, 64-QAM)      | LTE-FDD | 6.65     | ±9.6                   |
| 10145 | CAC | LTE-FDD (SC-FDMA, 100% RB, 1.4 MHz, QPSK)      | LTE-FDD | 5.76     | ±9.6                   |
| 10146 | CAC | LTE-FDD (SC-FDMA, 100% RB, 1.4 MHz, 16-QAM)    | LTE-FDD | 6.41     | ±9.6                   |
| 10147 | CAC | LTE-FDD (SC-FDMA, 100% RB, 1.4 MHz, 64-QAM)    | LTE-FDD | 6.72     | ±9.6                   |
| 10149 | CAE | LTE-FDD (SC-FDMA, 50% RB, 20 MHz, 16-QAM)      | LTE-FDD | 6.42     | ±9.6                   |
| 10150 | CAE | LTE-FDD (SC-FDMA, 50% RB, 20 MHz, 64-QAM)      | LTE-FDD | 6.60     | ±9.6                   |
| 10151 | CAE | LTE-TDD (SC-FDMA, 50% RB, 20 MHz, QPSK)        | LTE-TDD | 9.28     | ±9.6                   |
| 10152 | CAE | LTE-TDD (SC-FDMA, 50% RB, 20 MHz, 16-QAM)      | LTE-TDD | 9.92     | ±9.6                   |
| 10153 | CAE | LTE-TDD (SC-FDMA, 50% RB, 20 MHz, 64-QAM)      | LTE-TDD | 10.05    | ±9.6                   |
| 10154 | CAF | LTE-FDD (SC-FDMA, 50% RB, 10 MHz, QPSK)        | LTE-FDD | 5.75     | ±9.6                   |
| 10155 | CAF | LTE-FDD (SC-FDMA, 50% RB, 10 MHz, 16-QAM)      | LTE-FDD | 6.43     | ±9.6                   |
| 10156 | CAF | LTE-FDD (SC-FDMA, 50% RB, 5 MHz, QPSK)         | LTE-FDD | 5.79     | ±9.6                   |
| 10157 | CAE | LTE-FDD (SC-FDMA, 50% RB, 5 MHz, 16-QAM)       | LTE-FDD | 6.49     | ±9.6                   |
| 10158 | CAE | LTE-FDD (SC-FDMA, 50% RB, 10 MHz, 64-QAM)      | LTE-FDD | 6.62     | ±9.6                   |
| 10159 | CAG | LTE-FDD (SC-FDMA, 50% RB, 5 MHz, 64-QAM)       | LTE-FDD | 6.56     | ±9.6                   |
| 10160 | CAG | LTE-FDD (SC-FDMA, 50% RB, 15 MHz, QPSK)        | LTE-FDD | 5.82     | ±9.6                   |
| 10161 | CAG | LTE-FDD (SC-FDMA, 50% RB, 15 MHz, 16-QAM)      | LTE-FDD | 6.43     | ±9.6                   |
| 10162 | CAG | LTE-FDD (SC-FDMA, 50% RB, 15 MHz, 64-QAM)      | LTE-FDD | 6.58     | ±9.6                   |
| 10166 | CAG | LTE-FDD (SC-FDMA, 50% RB, 1.4 MHz, QPSK)       | LTE-FDD | 5.46     | ±9.6                   |
| 10167 | CAG | LTE-FDD (SC-FDMA, 50% RB, 1.4 MHz, 16-QAM)     | LTE-FDD | 6.21     | ±9.6                   |
| 10168 | CAG | LTE-FDD (SC-FDMA, 50% RB, 1.4 MHz, 64-QAM)     | LTE-FDD | 6.79     | ±9.6                   |
| 10169 | CAG | LTE-FDD (SC-FDMA, 1 RB, 20 MHz, QPSK)          | LTE-FDD | 5.73     | ±9.6                   |
| 10170 | CAG | LTE-FDD (SC-FDMA, 1 RB, 20 MHz, 16-QAM)        | LTE-FDD | 6.52     | ±9.6                   |
| 10171 | CAE | LTE-FDD (SC-FDMA, 1 RB, 20 MHz, 64-QAM)        | LTE-FDD | 6.49     | ±9.6                   |
| 10172 | CAE | LTE-TDD (SC-FDMA, 1 RB, 20 MHz, QPSK)          | LTE-TDD | 9.21     | ±9.6                   |
| 10173 | CAE | LTE-TDD (SC-FDMA, 1 RB, 20 MHz, 16-QAM)        | LTE-TDD | 9.48     | ±9.6                   |
| 10174 | CAF | LTE-TDD (SC-FDMA, 1 RB, 20 MHz, 64-QAM)        | LTE-TDD | 10.25    | ±9.6                   |
| 10175 | CAF | LTE-FDD (SC-FDMA, 1 RB, 10 MHz, QPSK)          | LTE-FDD | 5.72     | ±9.6                   |
| 10176 | CAF | LTE-FDD (SC-FDMA, 1 RB, 10 MHz, 16-QAM)        | LTE-FDD | 6.52     | ±9.6                   |
| 10177 | CAE | LTE-FDD (SC-FDMA, 1 RB, 5 MHz, QPSK)           | LTE-FDD | 5.73     | ±9.6                   |
| 10178 | CAE | LTE-FDD (SC-FDMA, 1 RB, 5 MHz, 16-QAM)         | LTE-FDD | 6.52     | ±9.6                   |
| 10179 | AAE | LTE-FDD (SC-FDMA, 1 RB, 10 MHz, 64-QAM)        | LTE-FDD | 6.50     | ±9.6                   |
| 10180 | CAG | LTE-FDD (SC-FDMA, 1 RB, 5 MHz, 64-QAM)         | LTE-FDD | 6.50     | ±9.6                   |
| 10181 | CAG | LTE-FDD (SC-FDMA, 1 RB, 15 MHz, QPSK)          | LTE-FDD | 5.72     | ±9.6                   |
| 10182 | CAG | LTE-FDD (SC-FDMA, 1 RB, 15 MHz, 16-QAM)        | LTE-FDD | 6.52     | ±9.6                   |
| 10183 | CAG | LTE-FDD (SC-FDMA, 1 RB, 15 MHz, 64-QAM)        | LTE-FDD | 6.50     | ±9.6                   |
| 10184 | CAG | LTE-FDD (SC-FDMA, 1 RB, 3 MHz, QPSK)           | LTE-FDD | 5.73     | ±9.6                   |
| 10185 | CAI | LTE-FDD (SC-FDMA, 1 RB, 3 MHz, 16-QAM)         | LTE-FDD | 6.51     | ±9.6                   |
| 10186 | CAG | LTE-FDD (SC-FDMA, 1 RB, 3 MHz, 64-QAM)         | LTE-FDD | 6.50     | ±9.6                   |
| 10187 | CAG | LTE-FDD (SC-FDMA, 1 RB, 1.4 MHz, QPSK)         | LTE-FDD | 5.73     | ±9.6                   |
| 10188 | CAG | LTE-FDD (SC-FDMA, 1 RB, 1.4 MHz, 16-QAM)       | LTE-FDD | 6.52     | ±9.6                   |
| 10189 | CAE | LTE-FDD (SC-FDMA, 1 RB, 1.4 MHz, 64-QAM)       | LTE-FDD | 6.50     | ±9.6                   |
| 10193 | CAE | IEEE 802.11n (HT Greenfield, 6.5 Mbps, BPSK)   | WLAN    | 8.09     | ±9.6                   |
| 10194 | AAD | IEEE 802.11n (HT Greenfield, 39 Mbps, 16-QAM)  | WLAN    | 8.12     | ±9.6                   |
| 10195 | CAE | IEEE 802.11n (HT Greenfield, 65 Mbps, 64-QAM)  | WLAN    | 8.21     | ±9.6                   |
| 10196 | CAE | IEEE 802.11n (HT Mixed, 6.5 Mbps, BPSK)        | WLAN    | 8.10     | ±9.6                   |
| 10197 | AAE | IEEE 802.11n (HT Mixed, 39 Mbps, 16-QAM)       | WLAN    | 8.13     | ±9.6                   |
| 10198 | CAF | IEEE 802.11n (HT Mixed, 65 Mbps, 64-QAM)       | WLAN    | 8.27     | ±9.6                   |
| 10219 | CAF | IEEE 802.11n (HT Mixed, 7.2 Mbps, BPSK)        | WLAN    | 8.03     | ±9.6                   |
| 10220 | AAF | IEEE 802.11n (HT Mixed, 43.3 Mbps, 16-QAM)     | WLAN    | 8.13     | ±9.6                   |
| 10221 | CAC | IEEE 802.11n (HT Mixed, 72.2 Mbps, 64-QAM)     | WLAN    | 8.27     | ±9.6                   |
| 10222 | CAC | IEEE 802.11n (HT Mixed, 15 Mbps, BPSK)         | WLAN    | 8.06     | ±9.6                   |
| 10223 | CAD | IEEE 802.11n (HT Mixed, 90 Mbps, 16-QAM)       | WLAN    | 8.48     | ±9.6                   |
| 10224 | CAD | IEEE 802.11n (HT Mixed, 150 Mbps, 64-QAM)      | WLAN    | 8.08     | ±9.6                   |