

System Check_750MHz

DUT: D750V3-SN:1099

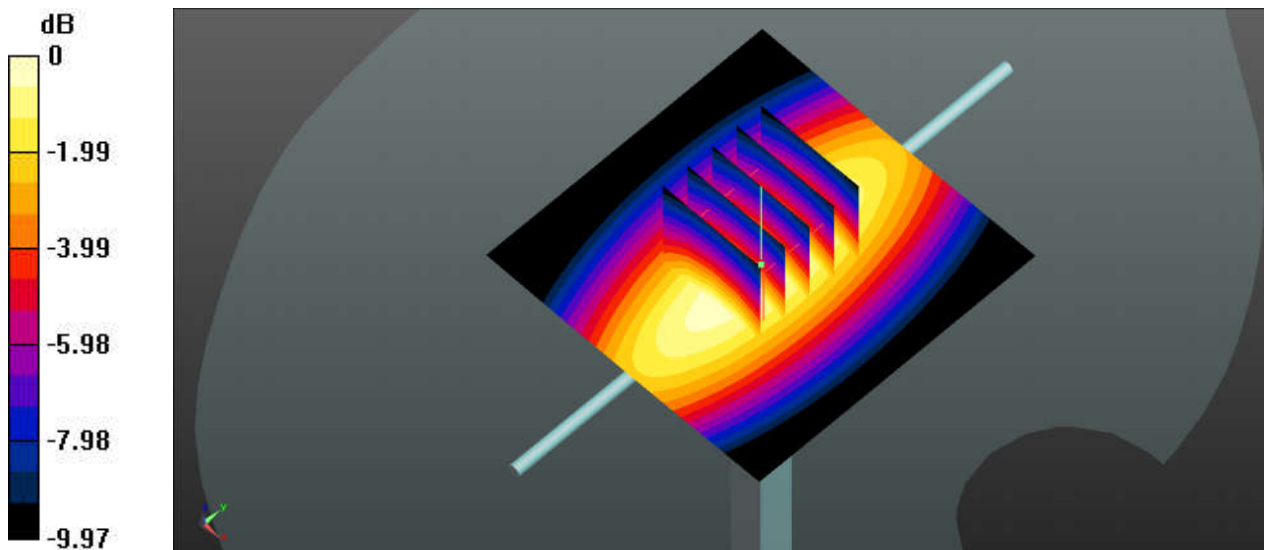
Communication System: UID 0, CW (0); Frequency: 750 MHz; Duty Cycle: 1:1
Medium: HSL_750_221201 Medium parameters used: $f = 750 \text{ MHz}$; $\sigma = 0.886 \text{ S/m}$; $\epsilon_r = 41.534$; $\rho = 1000 \text{ kg/m}^3$
Ambient Temperature : $23.5 \text{ }^\circ\text{C}$; Liquid Temperature : $22.7 \text{ }^\circ\text{C}$

DASY5 Configuration:

- Probe: EX3DV4 - SN3819; ConvF(9.82, 9.82, 9.82); Calibrated: 2022/5/30
- Sensor-Surface: 1.4mm (Mechanical Surface Detection)
- Electronics: DAE4 Sn1664; Calibrated: 2022/5/30
- Phantom: SAM with CRP v5.0(Front); Type: QD000P40CD; Serial: 1671
- Measurement SW: DASY52, Version 52.10 (3); SEMCAD X Version 14.6.13 (7474)

Pin=250mW/Area Scan (61x61x1): Interpolated grid: $dx=1.500 \text{ mm}$, $dy=1.500 \text{ mm}$
Maximum value of SAR (interpolated) = 2.78 W/kg

Pin=250mW/Zoom Scan (5x5x7)/Cube 0: Measurement grid: $dx=8\text{mm}$, $dy=8\text{mm}$, $dz=5\text{mm}$
Reference Value = 56.72 V/m ; Power Drift = -0.18 dB
Peak SAR (extrapolated) = 3.28 W/kg
SAR(1 g) = 2.21 W/kg ; SAR(10 g) = 1.47 W/kg
Maximum value of SAR (measured) = 2.76 W/kg



0 dB = 2.76 W/kg

System Check_750MHz

DUT: D750V3-SN:1099

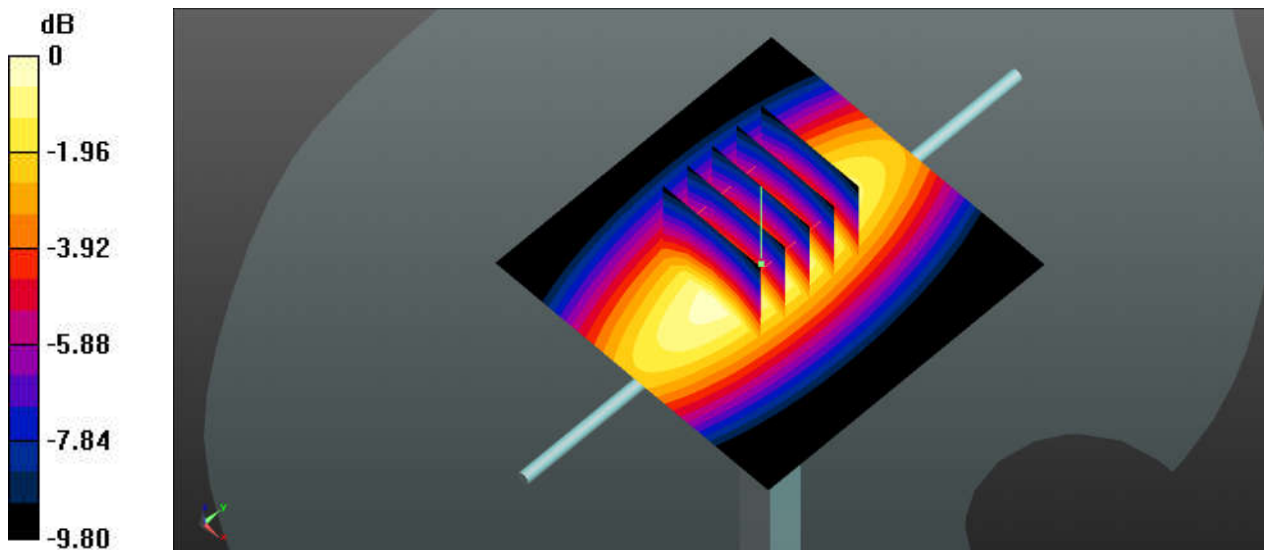
Communication System: UID 0, CW (0); Frequency: 750 MHz; Duty Cycle: 1:1
Medium: HSL_750_221214 Medium parameters used: $f = 750 \text{ MHz}$; $\sigma = 0.895 \text{ S/m}$; $\epsilon_r = 41.004$; $\rho = 1000 \text{ kg/m}^3$
Ambient Temperature : $23.3 \text{ }^\circ\text{C}$; Liquid Temperature : $22.5 \text{ }^\circ\text{C}$

DASY5 Configuration:

- Probe: EX3DV4 - SN3819; ConvF(9.82, 9.82, 9.82); Calibrated: 2022/5/30
- Sensor-Surface: 1.4mm (Mechanical Surface Detection)
- Electronics: DAE4 Sn1664; Calibrated: 2022/5/30
- Phantom: SAM with CRP v5.0(Front); Type: QD000P40CD; Serial: 1671
- Measurement SW: DASY52, Version 52.10 (3); SEMCAD X Version 14.6.13 (7474)

Pin=250mW/Area Scan (61x61x1): Interpolated grid: $dx=1.500 \text{ mm}$, $dy=1.500 \text{ mm}$
Maximum value of SAR (interpolated) = 2.71 W/kg

Pin=250mW/Zoom Scan (5x5x7)/Cube 0: Measurement grid: $dx=8\text{mm}$, $dy=8\text{mm}$, $dz=5\text{mm}$
Reference Value = 56.48 V/m ; Power Drift = 0.04 dB
Peak SAR (extrapolated) = 3.12 W/kg
SAR(1 g) = 2.15 W/kg ; SAR(10 g) = 1.39 W/kg
Maximum value of SAR (measured) = 2.73 W/kg



0 dB = 2.73 W/kg

System Check_835MHz

DUT: D835V2-SN:4d162

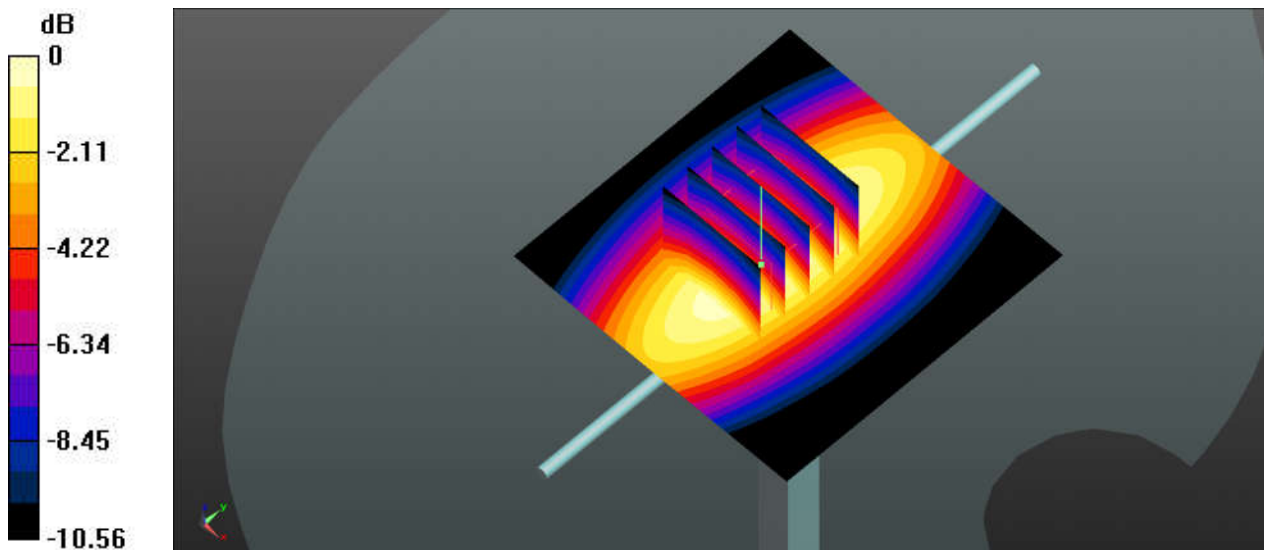
Communication System: UID 0, CW; Frequency: 835 MHz; Duty Cycle: 1:1
Medium: HSL_835_221202 Medium parameters used: $f = 835 \text{ MHz}$; $\sigma = 0.92 \text{ S/m}$; $\epsilon_r = 42.227$; $\rho = 1000 \text{ kg/m}^3$
Ambient Temperature : $23.8 \text{ }^\circ\text{C}$; Liquid Temperature : $22.3 \text{ }^\circ\text{C}$

DASY5 Configuration:

- Probe: EX3DV4 - SN3819; ConvF(9.51, 9.51, 9.51); Calibrated: 2022/5/30
- Sensor-Surface: 1.4mm (Mechanical Surface Detection)
- Electronics: DAE4 Sn1664; Calibrated: 2022/5/30
- Phantom: SAM with CRP v5.0(Front); Type: QD000P40CD; Serial: 1671
- Measurement SW: DASY52, Version 52.10 (3); SEMCAD X Version 14.6.13 (7474)

Pin=250mW/Area Scan (61x61x1): Interpolated grid: $dx=1.500 \text{ mm}$, $dy=1.500 \text{ mm}$
Maximum value of SAR (interpolated) = 2.59 W/kg

Pin=250mW/Zoom Scan (5x5x7)/Cube 0: Measurement grid: $dx=8\text{mm}$, $dy=8\text{mm}$, $dz=5\text{mm}$
Reference Value = 54.09 V/m ; Power Drift = 0.11 dB
Peak SAR (extrapolated) = 3.21 W/kg
SAR(1 g) = 2.45 W/kg ; SAR(10 g) = 1.57 W/kg
Maximum value of SAR (measured) = 2.59 W/kg



0 dB = 2.59 W/kg

System Check_835MHz

DUT: D835V2-SN:4d162

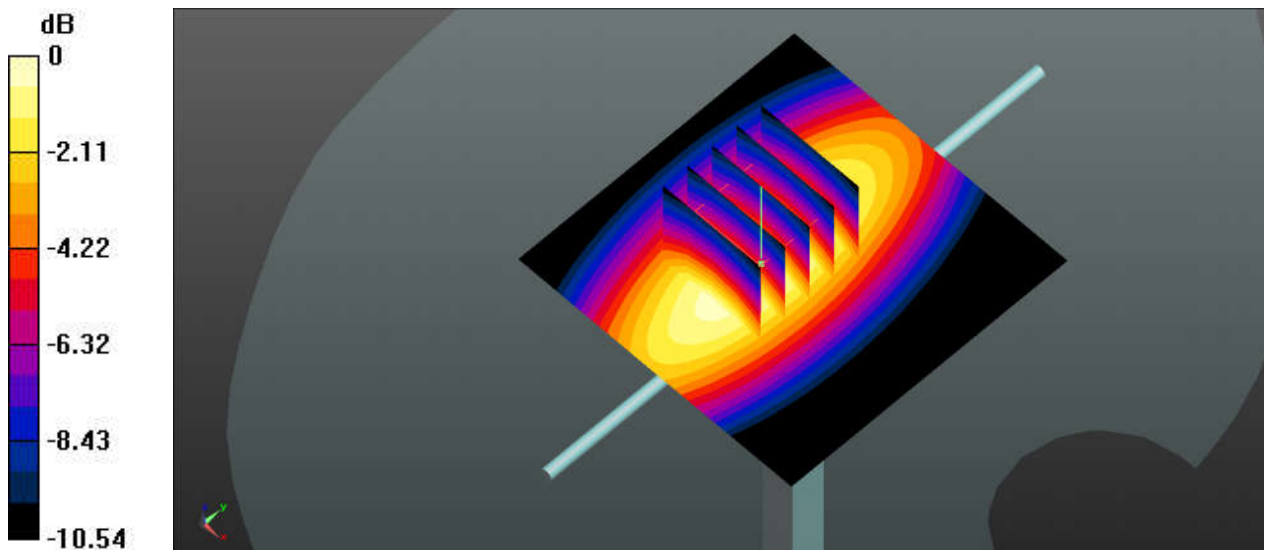
Communication System: UID 0, CW (0); Frequency: 835 MHz; Duty Cycle: 1:1
Medium: HSL_835_221216 Medium parameters used: $f = 835 \text{ MHz}$; $\sigma = 0.913 \text{ S/m}$; $\epsilon_r = 40.859$; $\rho = 1000 \text{ kg/m}^3$
Ambient Temperature : $23.4 \text{ }^\circ\text{C}$; Liquid Temperature : $22.8 \text{ }^\circ\text{C}$

DASY5 Configuration:

- Probe: EX3DV4 - SN3819; ConvF(9.51, 9.51, 9.51); Calibrated: 2022/5/30
- Sensor-Surface: 1.4mm (Mechanical Surface Detection)
- Electronics: DAE4 Sn1664; Calibrated: 2022/5/30
- Phantom: SAM with CRP v5.0(Front); Type: QD000P40CD; Serial: 1671
- Measurement SW: DASY52, Version 52.10 (3); SEMCAD X Version 14.6.13 (7474)

Pin=250mW/Area Scan (61x61x1): Interpolated grid: $dx=1.500 \text{ mm}$, $dy=1.500 \text{ mm}$
Maximum value of SAR (interpolated) = 3.08 W/kg

Pin=250mW/Zoom Scan (5x5x7)/Cube 0: Measurement grid: $dx=8\text{mm}$, $dy=8\text{mm}$, $dz=5\text{mm}$
Reference Value = 57.60 V/m ; Power Drift = 0.06 dB
Peak SAR (extrapolated) = 3.60 W/kg
SAR(1 g) = 2.52 W/kg; SAR(10 g) = 1.63 W/kg
Maximum value of SAR (measured) = 3.11 W/kg



0 dB = 3.11 W/kg

System Check_1750MHz

DUT: D1750V2-SN:1137

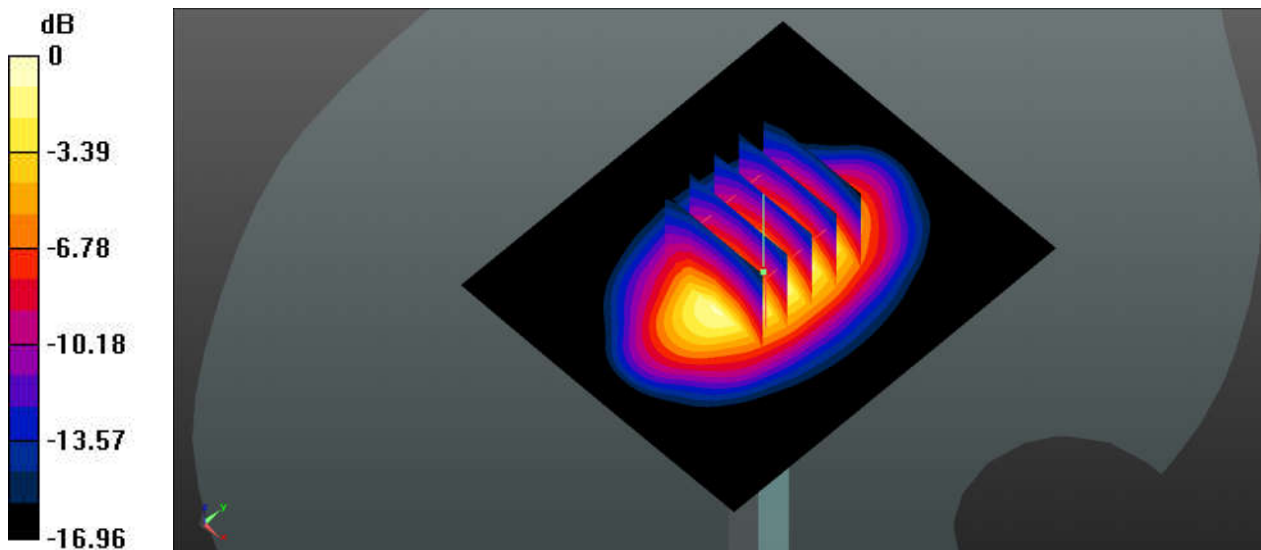
Communication System: UID 0, CW; Frequency: 1750 MHz; Duty Cycle: 1:1
Medium: HSL_1750_221203 Medium parameters used: $f = 1750$ MHz; $\sigma = 1.378$ S/m; $\epsilon_r = 40.204$;
 $\rho = 1000$ kg/m³
Ambient Temperature : 23.6 °C ; Liquid Temperature : 22.6 °C

DASY5 Configuration:

- Probe: EX3DV4 - SN3819; ConvF(8.57, 8.57, 8.57); Calibrated: 2022/5/30
- Sensor-Surface: 1.4mm (Mechanical Surface Detection)
- Electronics: DAE4 Sn1664; Calibrated: 2022/5/30
- Phantom: SAM with CRP v5.0(Front); Type: QD000P40CD; Serial: 1671
- Measurement SW: DASY52, Version 52.10 (3); SEMCAD X Version 14.6.13 (7474)

Pin=250mW/Area Scan (61x71x1): Interpolated grid: dx=1.500 mm, dy=1.500 mm
Maximum value of SAR (interpolated) = 15.7 W/kg

Pin=250mW/Zoom Scan (5x5x7)/Cube 0: Measurement grid: dx=8mm, dy=8mm, dz=5mm
Reference Value = 105.3 V/m; Power Drift = -0.09 dB
Peak SAR (extrapolated) = 17.8 W/kg
SAR(1 g) = 9.16 W/kg; SAR(10 g) = 5.11 W/kg
Maximum value of SAR (measured) = 14.6 W/kg



0 dB = 14.6 W/kg

System Check_1750MHz

DUT: D1750V2-SN:1137

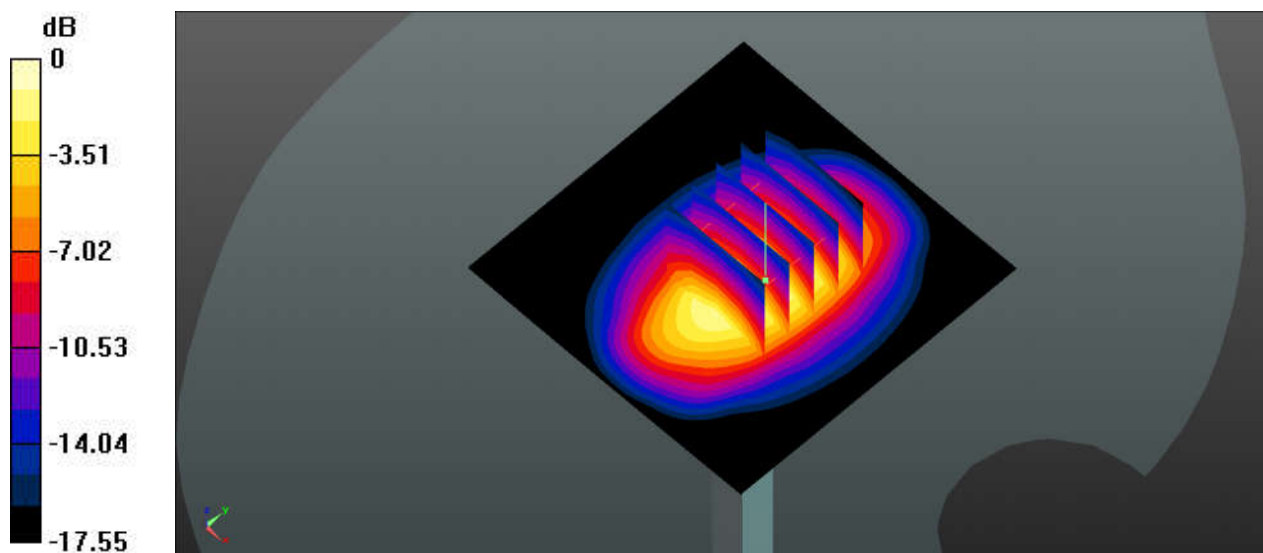
Communication System: UID 0, CW; Frequency: 1750 MHz; Duty Cycle: 1:1
Medium: HSL_1750_221217 Medium parameters used: $f = 1750$ MHz; $\sigma = 1.355$ S/m; $\epsilon_r = 38.395$;
 $\rho = 1000$ kg/m³
Ambient Temperature : 23.7 °C; Liquid Temperature : 22.5 °C

DASY5 Configuration:

- Probe: EX3DV4 - SN3819; ConvF(8.57, 8.57, 8.57); Calibrated: 2022/5/30
- Sensor-Surface: 1.4mm (Mechanical Surface Detection)
- Electronics: DAE4 Sn1664; Calibrated: 2022/5/30
- Phantom: SAM with CRP v5.0(Front); Type: QD000P40CD; Serial: 1671
- Measurement SW: DASY52, Version 52.10 (3); SEMCAD X Version 14.6.13 (7474)

Pin=250mW/Area Scan (61x61x1): Interpolated grid: dx=1.500 mm, dy=1.500 mm
Maximum value of SAR (interpolated) = 13.0 W/kg

Pin=250mW/Zoom Scan (5x5x7)/Cube 0: Measurement grid: dx=8mm, dy=8mm, dz=5mm
Reference Value = 92.43 V/m; Power Drift = -0.02 dB
Peak SAR (extrapolated) = 16.6 W/kg
SAR(1 g) = 8.94 W/kg; SAR(10 g) = 4.93 W/kg
Maximum value of SAR (measured) = 13.1 W/kg



0 dB = 13.1 W/kg

System Check_1900MHz

DUT: D1900V2-SN:5d182

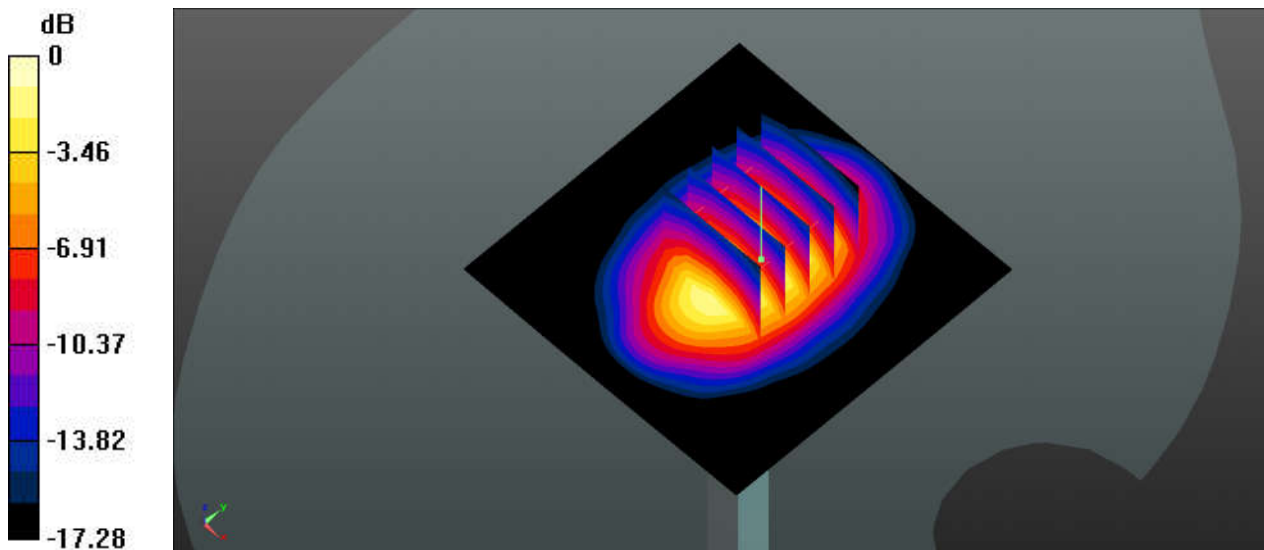
Communication System: UID 0, CW; Frequency: 1900 MHz; Duty Cycle: 1:1
Medium: HSL_1900_221204 Medium parameters used: $f = 1900 \text{ MHz}$; $\sigma = 1.413 \text{ S/m}$; $\epsilon_r = 41.128$;
 $\rho = 1000 \text{ kg/m}^3$
Ambient Temperature : $23.2 \text{ }^\circ\text{C}$; Liquid Temperature : $22.4 \text{ }^\circ\text{C}$

DASY5 Configuration:

- Probe: EX3DV4 - SN3819; ConvF(8.32, 8.32, 8.32); Calibrated: 2022/5/30
- Sensor-Surface: 1.4mm (Mechanical Surface Detection)
- Electronics: DAE4 Sn1664; Calibrated: 2022/5/30
- Phantom: SAM with CRP v5.0(Front); Type: QD000P40CD; Serial: 1671
- Measurement SW: DASY52, Version 52.10 (3); SEMCAD X Version 14.6.13 (7474)

Pin=250mW/Area Scan (61x61x1): Interpolated grid: $dx=1.500 \text{ mm}$, $dy=1.500 \text{ mm}$
Maximum value of SAR (interpolated) = 13.4 W/kg

Pin=250mW/Zoom Scan (5x5x7)/Cube 0: Measurement grid: $dx=8\text{mm}$, $dy=8\text{mm}$, $dz=5\text{mm}$
Reference Value = 96.69 V/m ; Power Drift = -0.07 dB
Peak SAR (extrapolated) = 18.2 W/kg
SAR(1 g) = 10.1 W/kg ; SAR(10 g) = 5.14 W/kg
Maximum value of SAR (measured) = 12.8 W/kg



0 dB = 12.8 W/kg

System Check_1900MHz

DUT: D1900V2-SN:5d182

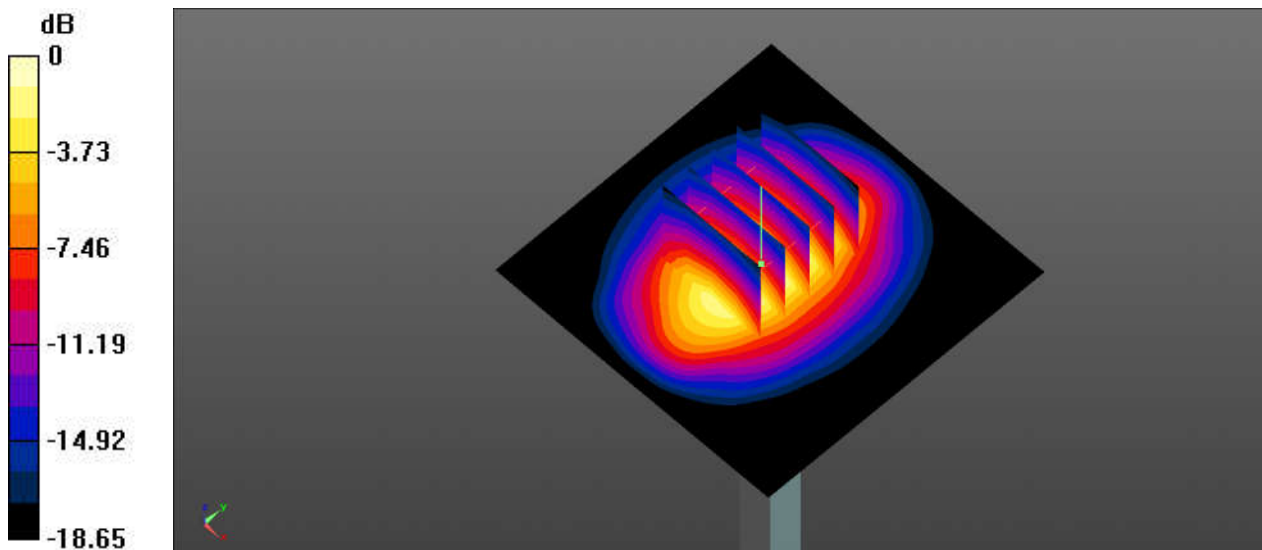
Communication System: UID 0, CW; Frequency: 1900 MHz; Duty Cycle: 1:1
Medium: HSL_1900_221218 Medium parameters used: $f = 1900 \text{ MHz}$; $\sigma = 1.427 \text{ S/m}$; $\epsilon_r = 41.191$;
 $\rho = 1000 \text{ kg/m}^3$
Ambient Temperature : $23.3 \text{ }^\circ\text{C}$; Liquid Temperature : $22.8 \text{ }^\circ\text{C}$

DASY5 Configuration:

- Probe: EX3DV4 - SN3819; ConvF(8.32, 8.32, 8.32); Calibrated: 2022/5/30
- Sensor-Surface: 1.4mm (Mechanical Surface Detection)
- Electronics: DAE4 Sn1664; Calibrated: 2022/5/30
- Phantom: SAM with CRP v5.0(Front); Type: QD000P40CD; Serial: 1671
- Measurement SW: DASY52, Version 52.10 (3); SEMCAD X Version 14.6.13 (7474)

Pin=250mW/Area Scan (61x61x1): Interpolated grid: $dx=1.500 \text{ mm}$, $dy=1.500 \text{ mm}$
Maximum value of SAR (interpolated) = 14.1 W/kg

Pin=250mW/Zoom Scan (5x5x7)/Cube 0: Measurement grid: $dx=8\text{mm}$, $dy=8\text{mm}$, $dz=5\text{mm}$
Reference Value = 98.35 V/m ; Power Drift = 0.02 dB
Peak SAR (extrapolated) = 18.2 W/kg
SAR(1 g) = 9.86 W/kg; SAR(10 g) = 5.09 W/kg
Maximum value of SAR (measured) = 14.2 W/kg



0 dB = 14.2 W/kg

System Check_2300MHz

DUT: D2300V2-SN:1056

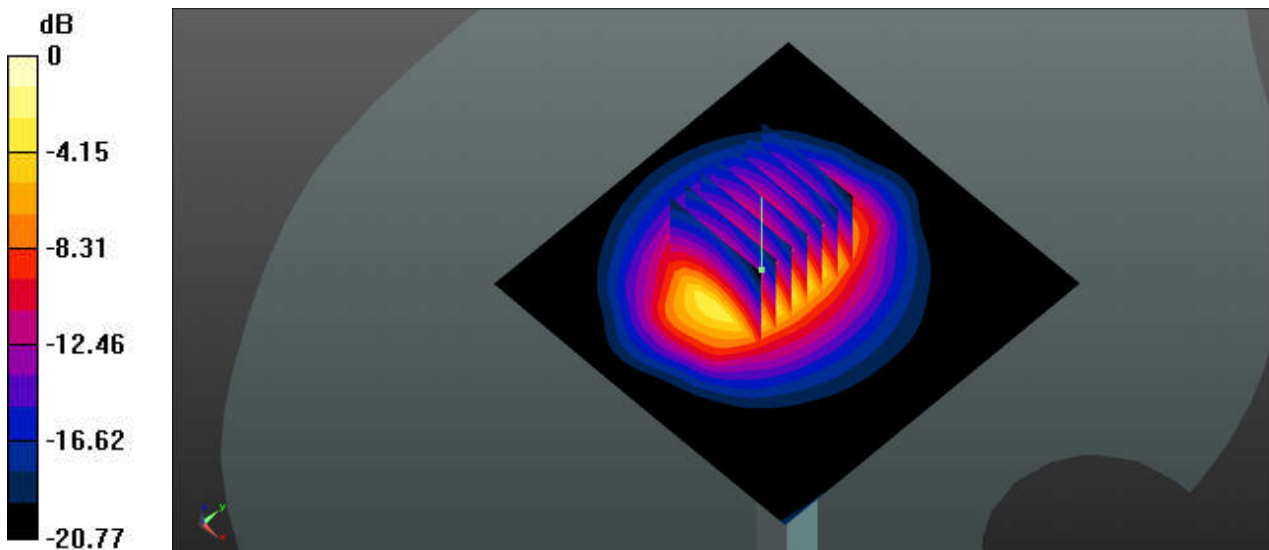
Communication System: UID 0, CW (0); Frequency: 2300 MHz; Duty Cycle: 1:1
Medium: HSL_2300_221216 Medium parameters used: $f = 2300$ MHz; $\sigma = 1.635$ S/m; $\epsilon_r = 38.872$;
 $\rho = 1000$ kg/m³
Ambient Temperature : 23.4 °C; Liquid Temperature : 22.6 °C

DASY5 Configuration:

- Probe: EX3DV4 - SN3819; ConvF(7.76, 7.76, 7.76); Calibrated: 2022/5/30
- Sensor-Surface: 1.4mm (Mechanical Surface Detection)
- Electronics: DAE4 Sn1664; Calibrated: 2022/5/30
- Phantom: SAM with CRP v5.0(Front); Type: QD000P40CD; Serial: 1671
- Measurement SW: DASY52, Version 52.10 (3); SEMCAD X Version 14.6.13 (7474)

Pin=250mW/Area Scan (81x81x1): Interpolated grid: dx=1.200 mm, dy=1.200 mm
Maximum value of SAR (interpolated) = 17.7 W/kg

Pin=250mW/Zoom Scan (7x7x7)/Cube 0: Measurement grid: dx=5mm, dy=5mm, dz=5mm
Reference Value = 84.87 V/m; Power Drift = 0.04 dB
Peak SAR (extrapolated) = 24.2 W/kg
SAR(1 g) = 11.7 W/kg; SAR(10 g) = 5.53 W/kg
Maximum value of SAR (measured) = 18.0 W/kg



0 dB = 18.0 W/kg

System Check_2300MHz

DUT: D2300V2-SN:1056

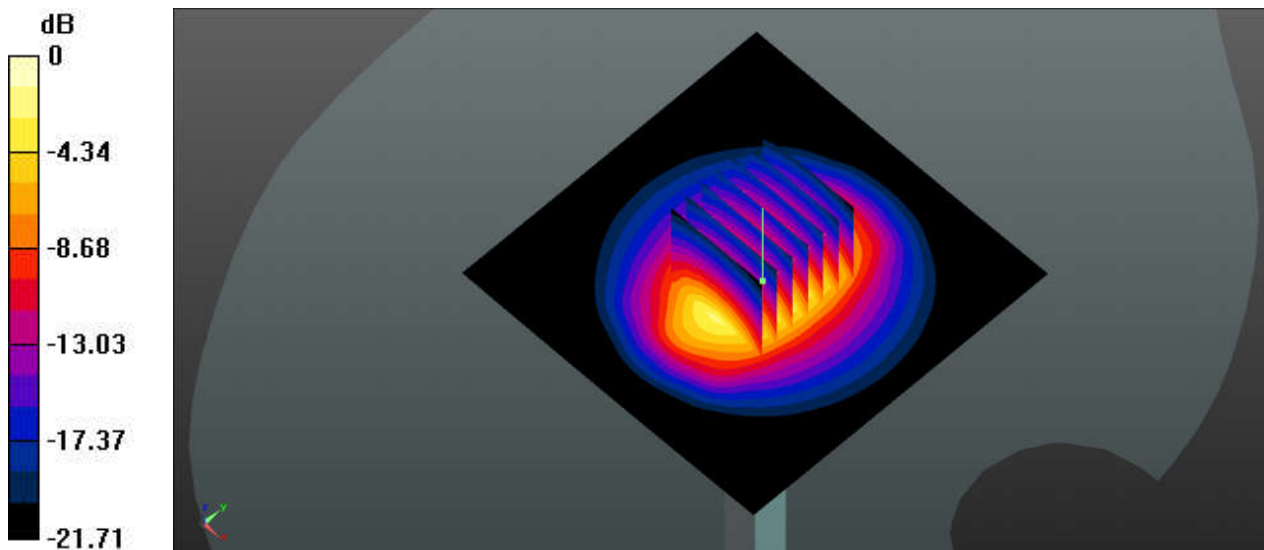
Communication System: UID 0, CW (0); Frequency: 2300 MHz; Duty Cycle: 1:1
Medium: HSL_2300_221219 Medium parameters used: $f = 2300$ MHz; $\sigma = 1.693$ S/m; $\epsilon_r = 38.361$;
 $\rho = 1000$ kg/m³
Ambient Temperature : 23.3 °C; Liquid Temperature : 22.3 °C

DASY5 Configuration:

- Probe: EX3DV4 - SN3819; ConvF(7.76, 7.76, 7.76); Calibrated: 2022/5/30
- Sensor-Surface: 1.4mm (Mechanical Surface Detection)
- Electronics: DAE4 Sn1664; Calibrated: 2022/5/30
- Phantom: SAM with CRP v5.0(Front); Type: QD000P40CD; Serial: 1671
- Measurement SW: DASY52, Version 52.10 (3); SEMCAD X Version 14.6.13 (7474)

Pin=250mW/Area Scan (81x81x1): Interpolated grid: dx=1.200 mm, dy=1.200 mm
Maximum value of SAR (interpolated) = 17.2 W/kg

Pin=250mW/Zoom Scan (7x7x7)/Cube 0: Measurement grid: dx=5mm, dy=5mm, dz=5mm
Reference Value = 103.6 V/m; Power Drift = -0.06 dB
Peak SAR (extrapolated) = 21.5 W/kg
SAR(1 g) = 11.4 W/kg; SAR(10 g) = 5.39 W/kg
Maximum value of SAR (measured) = 17.5 W/kg



0 dB = 17.5 W/kg

System Check_2450MHz

DUT: D2450V2-SN:924

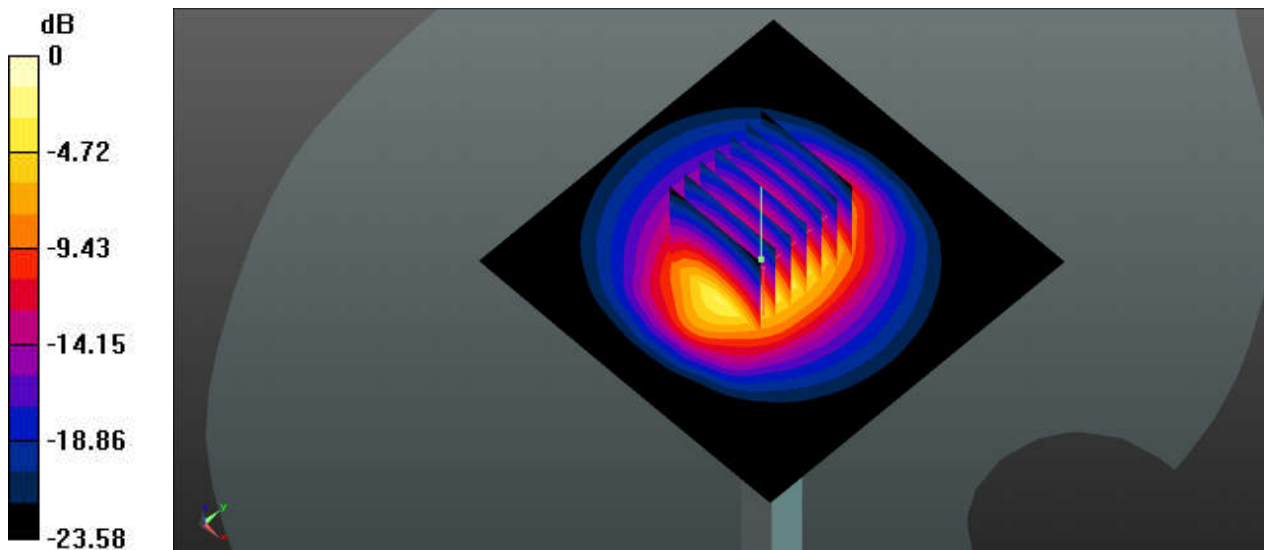
Communication System: UID 0, CW; Frequency: 2450 MHz; Duty Cycle: 1:1
Medium: HSL_2450_221205 Medium parameters used: $f = 2450$ MHz; $\sigma = 1.881$ S/m; $\epsilon_r = 37.273$;
 $\rho = 1000$ kg/m³
Ambient Temperature : 23.4 °C ; Liquid Temperature : 22.5 °C

DASY5 Configuration:

- Probe: EX3DV4 - SN3819; ConvF(7.57, 7.57, 7.57); Calibrated: 2022/5/30
- Sensor-Surface: 1.4mm (Mechanical Surface Detection)
- Electronics: DAE4 Sn1664; Calibrated: 2022/5/30
- Phantom: SAM with CRP v5.0(Front); Type: QD000P40CD; Serial: 1671
- Measurement SW: DASY52, Version 52.10 (3); SEMCAD X Version 14.6.13 (7474)

Pin=250mW/Area Scan (81x81x1): Interpolated grid: dx=1.200 mm, dy=1.200 mm
Maximum value of SAR (interpolated) = 21.1 W/kg

Pin=250mW/Zoom Scan (7x7x7)/Cube 0: Measurement grid: dx=5mm, dy=5mm, dz=5mm
Reference Value = 88.86 V/m; Power Drift = 0.13 dB
Peak SAR (extrapolated) = 29.7 W/kg
SAR(1 g) = 12.7 W/kg; SAR(10 g) = 5.89 W/kg
Maximum value of SAR (measured) = 21.4 W/kg



0 dB = 21.4 W/kg

System Check_2450MHz

DUT: D2450V2-SN:924

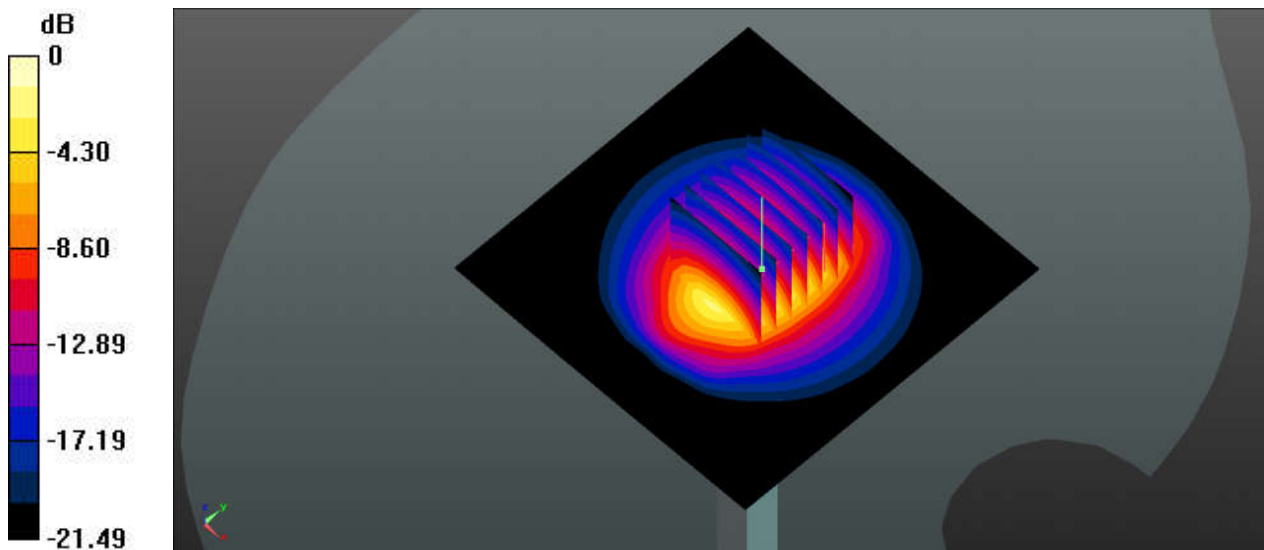
Communication System: UID 0, CW; Frequency: 2450 MHz; Duty Cycle: 1:1
Medium: HSL_2450_221220 Medium parameters used: $f = 2450$ MHz; $\sigma = 1.834$ S/m; $\epsilon_r = 39.654$;
 $\rho = 1000$ kg/m³
Ambient Temperature : 23.5 °C ; Liquid Temperature : 22.6 °C

DASY5 Configuration:

- Probe: EX3DV4 - SN3819; ConvF(7.57, 7.57, 7.57); Calibrated: 2022/5/30
- Sensor-Surface: 1.4mm (Mechanical Surface Detection)
- Electronics: DAE4 Sn1664; Calibrated: 2022/5/30
- Phantom: SAM with CRP v5.0(Front); Type: QD000P40CD; Serial: 1671
- Measurement SW: DASY52, Version 52.10 (3); SEMCAD X Version 14.6.13 (7474)

Pin=250mW/Area Scan (81x81x1): Interpolated grid: dx=1.200 mm, dy=1.200 mm
Maximum value of SAR (interpolated) = 20.3 W/kg

Pin=250mW/Zoom Scan (7x7x7)/Cube 0: Measurement grid: dx=5mm, dy=5mm, dz=5mm
Reference Value = 91.25 V/m; Power Drift = -0.04 dB
Peak SAR (extrapolated) = 30.6 W/kg
SAR(1 g) = 13.2 W/kg; SAR(10 g) = 6.19 W/kg
Maximum value of SAR (measured) = 20.1 W/kg



0 dB = 20.1 W/kg

System Check_2600MHz

DUT: D2600V2-SN:1070

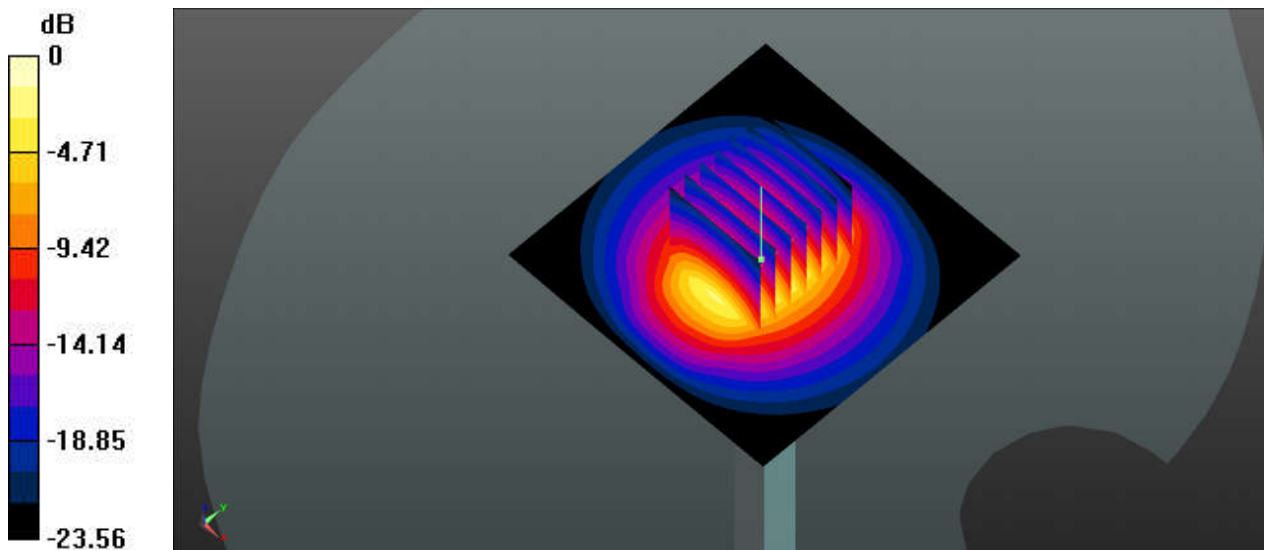
Communication System: UID 0, CW (0); Frequency: 2600 MHz; Duty Cycle: 1:1
Medium: HSL_2600_221207 Medium parameters used: $f = 2600$ MHz; $\sigma = 2.056$ S/m; $\epsilon_r = 37.589$;
 $\rho = 1000$ kg/m³
Ambient Temperature : 23.6 °C; Liquid Temperature : 22.7 °C

DASY5 Configuration:

- Probe: EX3DV4 - SN3819; ConvF(7.39, 7.39, 7.39); Calibrated: 2022/5/30
- Sensor-Surface: 1.4mm (Mechanical Surface Detection)
- Electronics: DAE4 Sn1664; Calibrated: 2022/5/30
- Phantom: SAM with CRP v5.0(Front); Type: QD000P40CD; Serial: 1671
- Measurement SW: DASY52, Version 52.10 (3); SEMCAD X Version 14.6.13 (7474)

Pin=250mW/Area Scan (71x71x1): Interpolated grid: dx=1.200 mm, dy=1.200 mm
Maximum value of SAR (interpolated) = 24.5 W/kg

Pin=250mW/Zoom Scan (7x7x7)/Cube 0: Measurement grid: dx=5mm, dy=5mm, dz=5mm
Reference Value = 109.7 V/m; Power Drift = -0.12 dB
Peak SAR (extrapolated) = 32.6 W/kg
SAR(1 g) = 14.5 W/kg; SAR(10 g) = 6.33 W/kg
Maximum value of SAR (measured) = 23.9 W/kg



0 dB = 23.9 W/kg

System Check_2600MHz

DUT: D2600V2-SN:1070

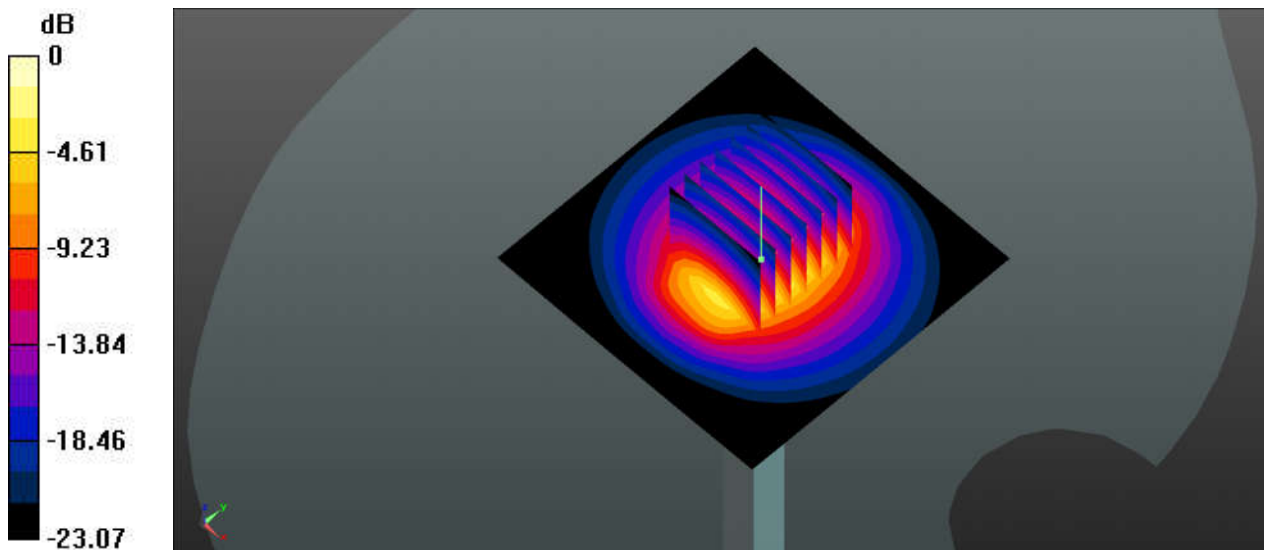
Communication System: UID 0, CW (0); Frequency: 2600 MHz; Duty Cycle: 1:1
Medium: HSL_2600_230105 Medium parameters used: $f = 2600$ MHz; $\sigma = 2.053$ S/m; $\epsilon_r = 37.984$;
 $\rho = 1000$ kg/m³
Ambient Temperature : 23.6 °C; Liquid Temperature : 22.4 °C

DASY5 Configuration:

- Probe: EX3DV4 - SN3819; ConvF(7.39, 7.39, 7.39); Calibrated: 2022/5/30
- Sensor-Surface: 1.4mm (Mechanical Surface Detection)
- Electronics: DAE4 Sn1664; Calibrated: 2022/5/30
- Phantom: SAM with CRP v5.0(Front); Type: QD000P40CD; Serial: 1671
- Measurement SW: DASY52, Version 52.10 (3); SEMCAD X Version 14.6.13 (7474)

Pin=250mW/Area Scan (71x71x1): Interpolated grid: dx=1.200 mm, dy=1.200 mm
Maximum value of SAR (interpolated) = 23.2 W/kg

Pin=250mW/Zoom Scan (7x7x7)/Cube 0: Measurement grid: dx=5mm, dy=5mm, dz=5mm
Reference Value = 106.5 V/m; Power Drift = -0.13 dB
Peak SAR (extrapolated) = 31.0 W/kg
SAR(1 g) = 14.8 W/kg; SAR(10 g) = 6.48 W/kg
Maximum value of SAR (measured) = 22.9 W/kg



0 dB = 22.9 W/kg

System Check_3500MHz

DUT: D3500V2-SN:1076

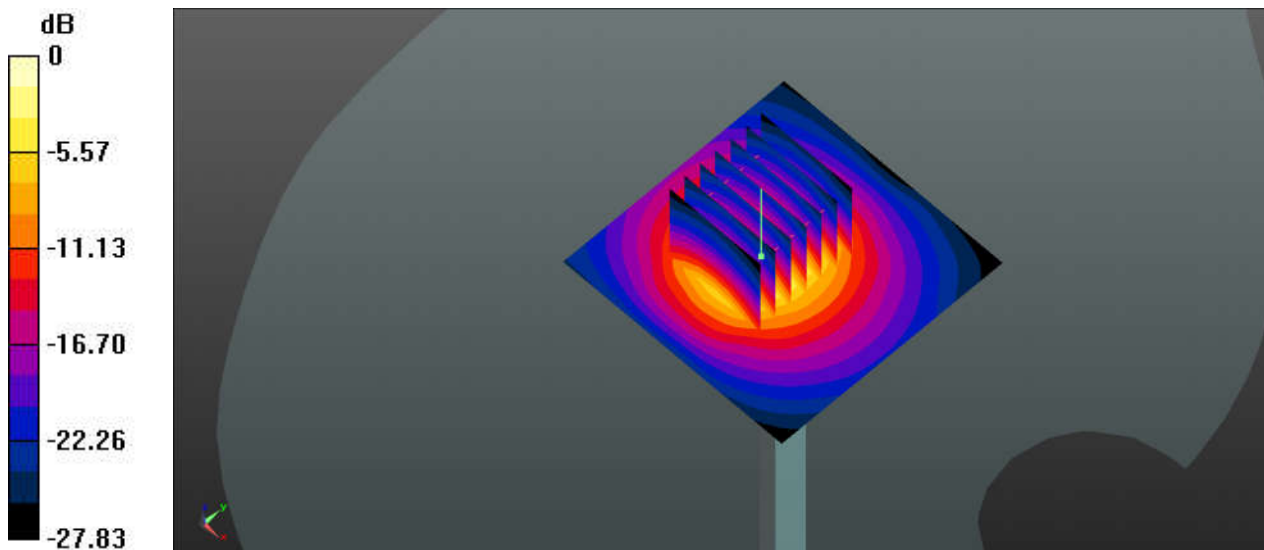
Communication System: UID 0, CW (0); Frequency: 3500 MHz;Duty Cycle: 1:1
Medium: HSL_3500_221208 Medium parameters used: $f = 3500$ MHz; $\sigma = 2.813$ S/m; $\epsilon_r = 39.758$;
 $\rho = 1000$ kg/m³
Ambient Temperature : 23.5 °C; Liquid Temperature : 22.8 °C

DASY5 Configuration:

- Probe: EX3DV4 - SN3819; ConvF(6.78, 6.78, 6.78); Calibrated: 2022/5/30
- Sensor-Surface: 1.4mm (Mechanical Surface Detection)
- Electronics: DAE4 Sn1664; Calibrated: 2022/5/30
- Phantom: SAM with CRP v5.0(Front); Type: QD000P40CD; Serial: 1671
- Measurement SW: DASY52, Version 52.10 (3); SEMCAD X Version 14.6.13 (7474)

Pin=100mW/Area Scan (61x61x1): Interpolated grid: dx=1.200 mm, dy=1.200 mm
Maximum value of SAR (interpolated) = 12.5 W/kg

Pin=100mW/Zoom Scan (7x7x7)/Cube 0: Measurement grid: dx=5mm, dy=5mm, dz=1.4mm
Reference Value = 53.93 V/m; Power Drift = 0.01 dB
Peak SAR (extrapolated) = 18.4 W/kg
SAR(1 g) = 6.48 W/kg; SAR(10 g) = 2.51 W/kg
Maximum value of SAR (measured) = 13.1 W/kg



0 dB = 13.1 W/kg

System Check_3500MHz

DUT: D3500V2-SN:1076

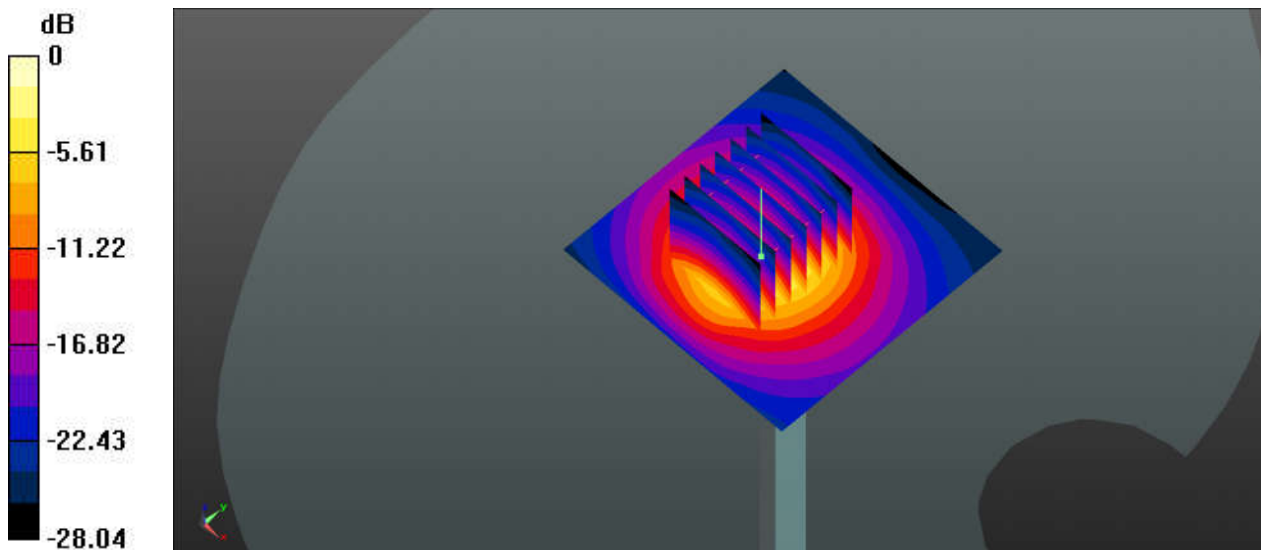
Communication System: UID 0, CW (0); Frequency: 3500 MHz; Duty Cycle: 1:1
Medium: HSL_3500_221222 Medium parameters used: $f = 3500$ MHz; $\sigma = 2.858$ S/m; $\epsilon_r = 38.432$;
 $\rho = 1000$ kg/m³
Ambient Temperature : 23.3 °C; Liquid Temperature : 22.3 °C

DASY5 Configuration:

- Probe: EX3DV4 - SN3819; ConvF(6.78, 6.78, 6.78); Calibrated: 2022/5/30
- Sensor-Surface: 1.4mm (Mechanical Surface Detection)
- Electronics: DAE4 Sn1664; Calibrated: 2022/5/30
- Phantom: SAM with CRP v5.0(Front); Type: QD000P40CD; Serial: 1671
- Measurement SW: DASY52, Version 52.10 (3); SEMCAD X Version 14.6.13 (7474)

Pin=100mW/Area Scan (61x61x1): Interpolated grid: dx=1.200 mm, dy=1.200 mm
Maximum value of SAR (interpolated) = 12.9 W/kg

Pin=100mW/Zoom Scan (7x7x7)/Cube 0: Measurement grid: dx=5mm, dy=5mm, dz=1.4mm
Reference Value = 56.81 V/m; Power Drift = 0.08 dB
Peak SAR (extrapolated) = 18.1 W/kg
SAR(1 g) = 6.95 W/kg; SAR(10 g) = 2.68 W/kg
Maximum value of SAR (measured) = 12.9 W/kg



0 dB = 12.9 W/kg

System Check_3700MHz

DUT: D3700V2-SN:1037

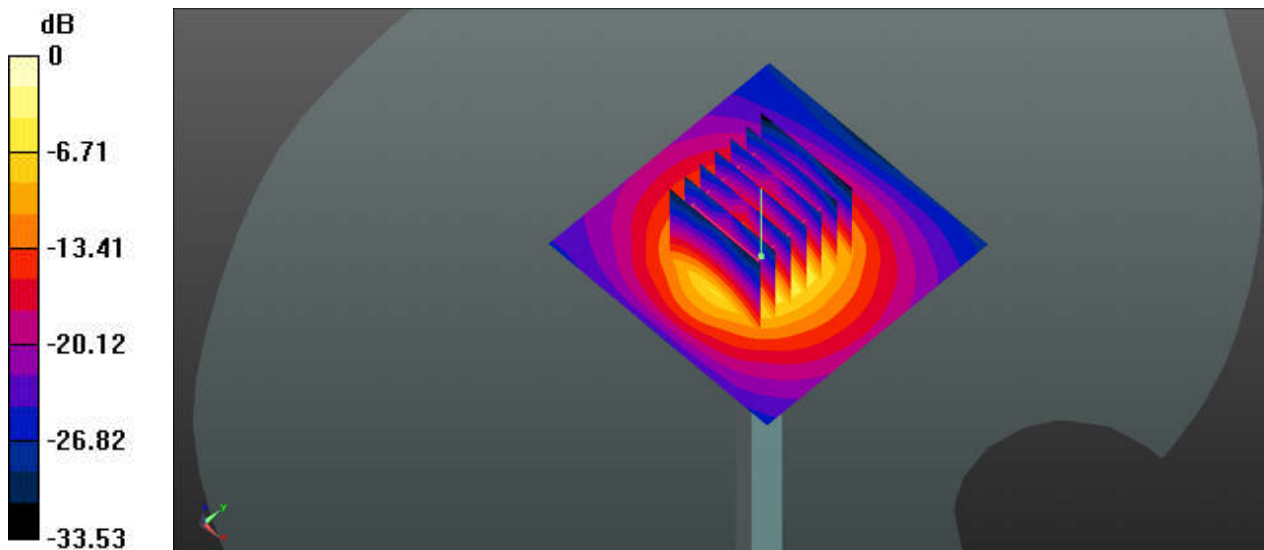
Communication System: UID 0, CW (0); Frequency: 3700 MHz; Duty Cycle: 1:1
Medium: HSL_3700_221210 Medium parameters used: $f = 3700$ MHz; $\sigma = 2.967$ S/m; $\epsilon_r = 39.53$; $\rho = 1000$ kg/m³
Ambient Temperature : 23.5 °C; Liquid Temperature : 22.5 °C

DASY5 Configuration:

- Probe: EX3DV4 - SN3819; ConvF(6.72, 6.72, 6.72); Calibrated: 2022/5/30
- Sensor-Surface: 1.4mm (Mechanical Surface Detection)
- Electronics: DAE4 Sn1664; Calibrated: 2022/5/30
- Phantom: SAM with CRP v5.0(Front); Type: QD000P40CD; Serial: 1671
- Measurement SW: DASY52, Version 52.10 (3); SEMCAD X Version 14.6.13 (7474)

Pin=100mW/Area Scan (61x61x1): Interpolated grid: dx=1.200 mm, dy=1.200 mm
Maximum value of SAR (interpolated) = 14.3 W/kg

Pin=100mW/Zoom Scan (7x7x7)/Cube 0: Measurement grid: dx=5mm, dy=5mm, dz=1.4mm
Reference Value = 72.82 V/m; Power Drift = -0.05 dB
Peak SAR (extrapolated) = 18.7 W/kg
SAR(1 g) = 6.78 W/kg; SAR(10 g) = 2.49 W/kg
Maximum value of SAR (measured) = 13.7 W/kg



0 dB = 13.7 W/kg

System Check_3700MHz

DUT: D3700V2-SN:1037

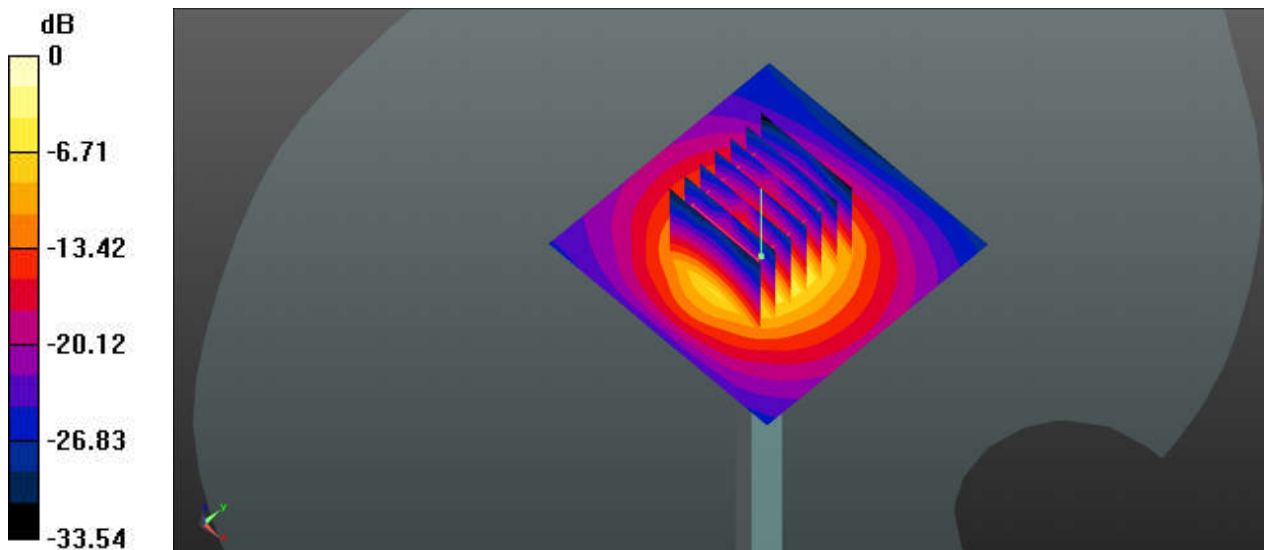
Communication System: UID 0, CW (0); Frequency: 3700 MHz; Duty Cycle: 1:1
Medium: HSL_3700_221226 Medium parameters used: $f = 3700 \text{ MHz}$; $\sigma = 3.007 \text{ S/m}$; $\epsilon_r = 38.198$;
 $\rho = 1000 \text{ kg/m}^3$
Ambient Temperature : $23.7 \text{ }^\circ\text{C}$; Liquid Temperature : $22.6 \text{ }^\circ\text{C}$

DASY5 Configuration:

- Probe: EX3DV4 - SN3819; ConvF(6.72, 6.72, 6.72); Calibrated: 2022/5/30
- Sensor-Surface: 1.4mm (Mechanical Surface Detection)
- Electronics: DAE4 Sn1664; Calibrated: 2022/5/30
- Phantom: SAM with CRP v5.0(Front); Type: QD000P40CD; Serial: 1671
- Measurement SW: DASY52, Version 52.10 (3); SEMCAD X Version 14.6.13 (7474)

Pin=100mW/Area Scan (61x61x1): Interpolated grid: $dx=1.200 \text{ mm}$, $dy=1.200 \text{ mm}$
Maximum value of SAR (interpolated) = 14.5 W/kg

Pin=100mW/Zoom Scan (7x7x7)/Cube 0: Measurement grid: $dx=5\text{mm}$, $dy=5\text{mm}$, $dz=1.4\text{mm}$
Reference Value = 72.32 V/m ; Power Drift = -0.18 dB
Peak SAR (extrapolated) = 18.9 W/kg
SAR(1 g) = 6.87 W/kg ; SAR(10 g) = 2.52 W/kg
Maximum value of SAR (measured) = 13.9 W/kg



0 dB = 13.9 W/kg

System Check_3900MHz

DUT: D3900V2-SN:1022

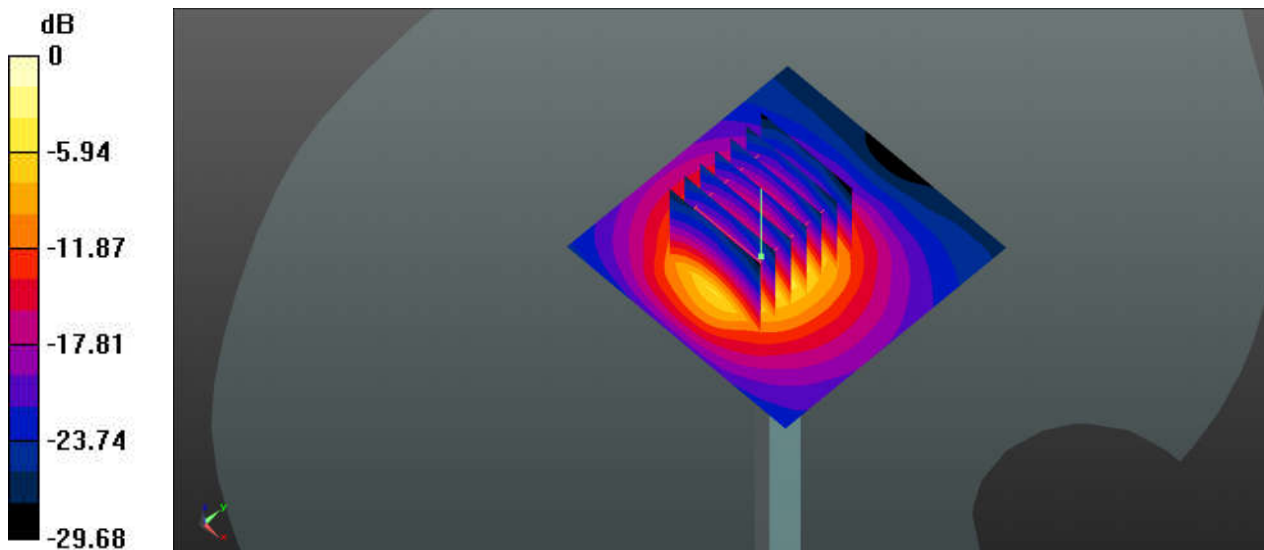
Communication System: UID 0, CW (0); Frequency: 3900 MHz; Duty Cycle: 1:1
Medium: HSL_3900_221211 Medium parameters used: $f = 3900$ MHz; $\sigma = 3.239$ S/m; $\epsilon_r = 38.155$;
 $\rho = 1000$ kg/m³
Ambient Temperature : 23.7 °C; Liquid Temperature : 22.8 °C

DASY5 Configuration:

- Probe: EX3DV4 - SN3819; ConvF(6.6, 6.6, 6.6); Calibrated: 2022/5/30
- Sensor-Surface: 1.4mm (Mechanical Surface Detection)
- Electronics: DAE4 Sn1664; Calibrated: 2022/5/30
- Phantom: SAM with CRP v5.0(Front); Type: QD000P40CD; Serial: 1671
- Measurement SW: DASY52, Version 52.10 (3); SEMCAD X Version 14.6.13 (7474)

Pin=100mW/Area Scan (61x61x1): Interpolated grid: dx=1.200 mm, dy=1.200 mm
Maximum value of SAR (interpolated) = 13.4 W/kg

Pin=100mW/Zoom Scan (7x7x7)/Cube 0: Measurement grid: dx=5mm, dy=5mm, dz=1.4mm
Reference Value = 55.80 V/m; Power Drift = 0.17 dB
Peak SAR (extrapolated) = 17.6 W/kg
SAR(1 g) = 6.69 W/kg; SAR(10 g) = 2.47 W/kg
Maximum value of SAR (measured) = 13.3 W/kg



0 dB = 13.3 W/kg

System Check_3900MHz

DUT: D3900V2-SN:1022

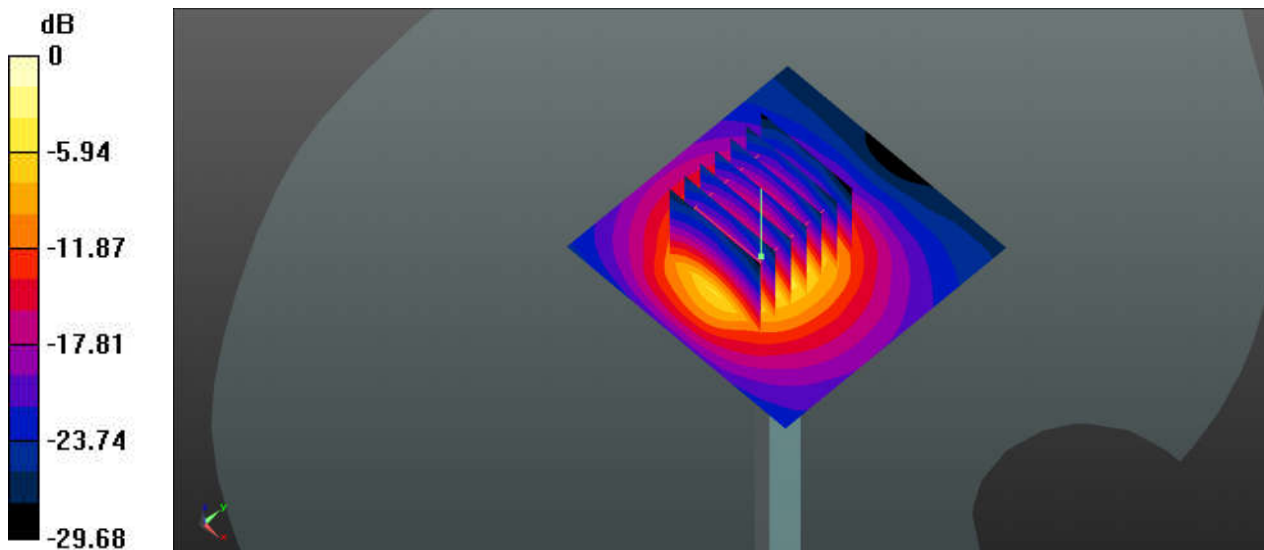
Communication System: UID 0, CW (0); Frequency: 3900 MHz; Duty Cycle: 1:1
Medium: HSL_3900_221224 Medium parameters used: $f = 3900$ MHz; $\sigma = 3.167$ S/m; $\epsilon_r = 37.998$;
 $\rho = 1000$ kg/m³
Ambient Temperature : 23.3 °C ; Liquid Temperature : 22.6 °C

DASY5 Configuration:

- Probe: EX3DV4 - SN3819; ConvF(6.6, 6.6, 6.6); Calibrated: 2022/5/30
- Sensor-Surface: 1.4mm (Mechanical Surface Detection)
- Electronics: DAE4 Sn1664; Calibrated: 2022/5/30
- Phantom: SAM with CRP v5.0(Front); Type: QD000P40CD; Serial: 1671
- Measurement SW: DASY52, Version 52.10 (3); SEMCAD X Version 14.6.13 (7474)

Pin=100mW/Area Scan (61x61x1): Interpolated grid: dx=1.200 mm, dy=1.200 mm
Maximum value of SAR (interpolated) = 12.9 W/kg

Pin=100mW/Zoom Scan (7x7x7)/Cube 0: Measurement grid: dx=5mm, dy=5mm, dz=1.4mm
Reference Value = 55.40 V/m; Power Drift = 0.03 dB
Peak SAR (extrapolated) = 17.1 W/kg
SAR(1 g) = 6.54 W/kg; SAR(10 g) = 2.42 W/kg
Maximum value of SAR (measured) = 13.0 W/kg



0 dB = 12.9 W/kg

System Check_5250MHz

DUT: D5GHzV2-SN:1113

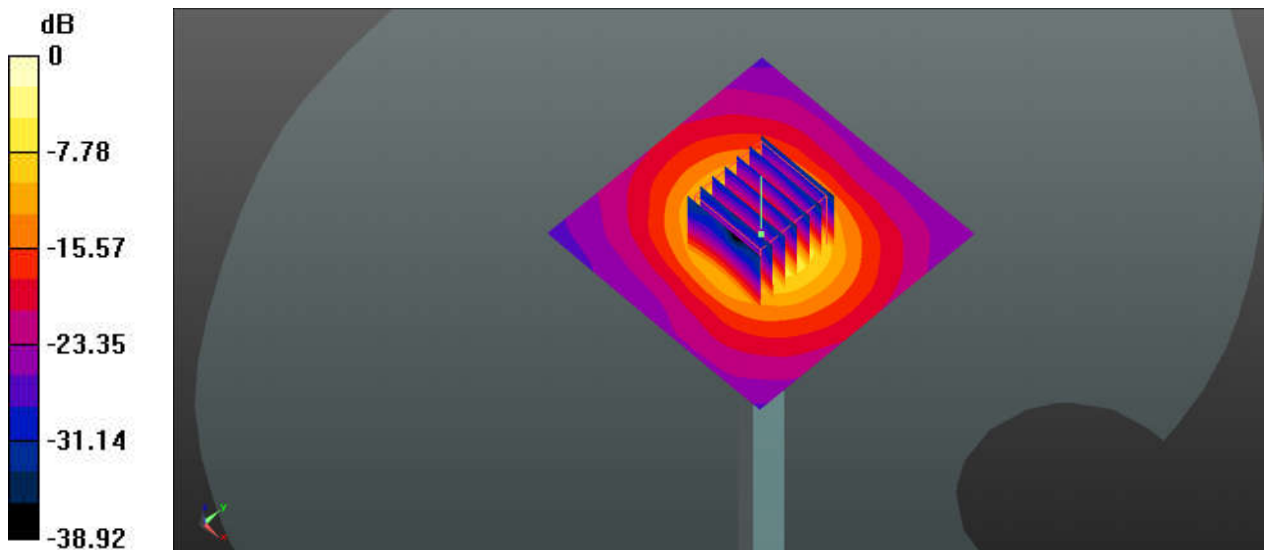
Communication System: UID 0, CW (0); Frequency: 5250 MHz; Duty Cycle: 1:1
Medium: HSL_5250_221212 Medium parameters used: $f = 5250$ MHz; $\sigma = 4.767$ S/m; $\epsilon_r = 36.978$;
 $\rho = 1000$ kg/m³
Ambient Temperature : 23.5 °C; Liquid Temperature : 22.3 °C

DASY5 Configuration:

- Probe: EX3DV4 - SN3819; ConvF(5.07, 5.07, 5.07); Calibrated: 2022/5/30
- Sensor-Surface: 1.4mm (Mechanical Surface Detection)
- Electronics: DAE4 Sn1664; Calibrated: 2022/5/30
- Phantom: SAM with CRP v5.0(Front); Type: QD000P40CD; Serial: 1671
- Measurement SW: DASY52, Version 52.10 (3); SEMCAD X Version 14.6.13 (7474)

Pin=100mW/Area Scan (71x71x1): Interpolated grid: dx=1.000 mm, dy=1.000 mm
Maximum value of SAR (interpolated) = 21.6 W/kg

Pin=100mW/Zoom Scan (7x7x7)/Cube 0: Measurement grid: dx=4mm, dy=4mm, dz=1.4mm
Reference Value = 59.40 V/m; Power Drift = -0.09 dB
Peak SAR (extrapolated) = 34.9 W/kg
SAR(1 g) = 7.68 W/kg; SAR(10 g) = 2.15 W/kg
Maximum value of SAR (measured) = 21.2 W/kg



0 dB = 21.2 W/kg

System Check_5250MHz

DUT: D5GHzV2-SN:1113

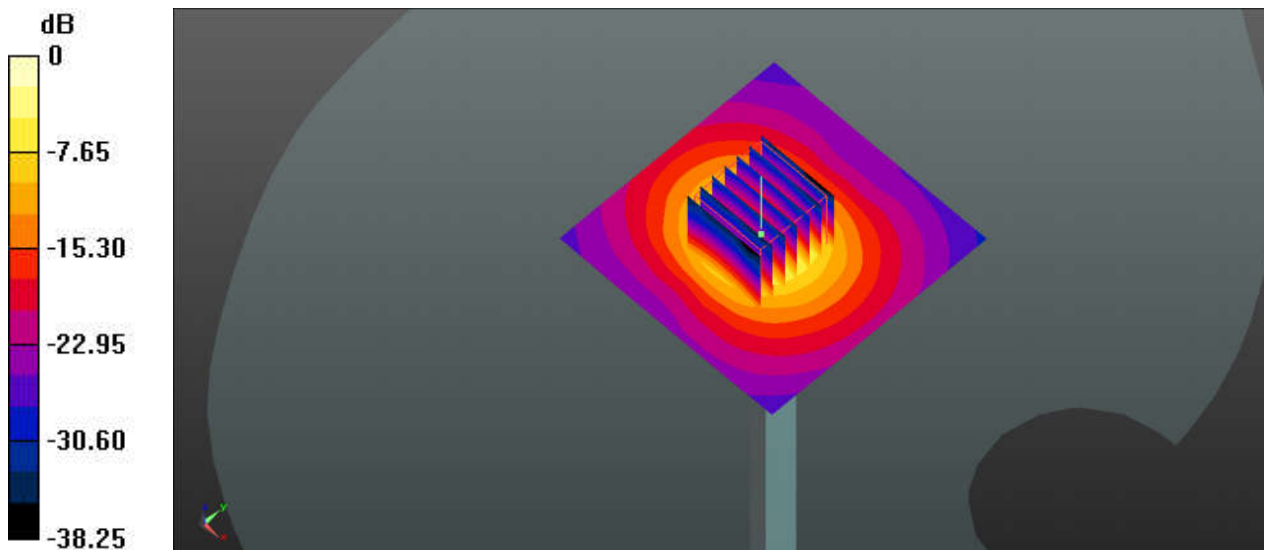
Communication System: UID 0, CW (0); Frequency: 5250 MHz; Duty Cycle: 1:1
Medium: HSL_5250_221225 Medium parameters used: $f = 5250$ MHz; $\sigma = 4.764$ S/m; $\epsilon_r = 36.963$;
 $\rho = 1000$ kg/m³
Ambient Temperature : 23.2 °C; Liquid Temperature : 22.5 °C

DASY5 Configuration:

- Probe: EX3DV4 - SN3819; ConvF(5.07, 5.07, 5.07); Calibrated: 2022/5/30
- Sensor-Surface: 1.4mm (Mechanical Surface Detection)
- Electronics: DAE4 Sn1664; Calibrated: 2022/5/30
- Phantom: SAM with CRP v5.0(Front); Type: QD000P40CD; Serial: 1671
- Measurement SW: DASY52, Version 52.10 (3); SEMCAD X Version 14.6.13 (7474)

Pin=100mW/Area Scan (71x71x1): Interpolated grid: dx=1.000 mm, dy=1.000 mm
Maximum value of SAR (interpolated) = 25.0 W/kg

Pin=100mW/Zoom Scan (7x7x7)/Cube 0: Measurement grid: dx=4mm, dy=4mm, dz=1.4mm
Reference Value = 78.87 V/m; Power Drift = 0.15 dB
Peak SAR (extrapolated) = 43.2 W/kg
SAR(1 g) = 8.51 W/kg; SAR(10 g) = 2.44 W/kg
Maximum value of SAR (measured) = 24.7 W/kg



0 dB = 24.7 W/kg

System Check_5600MHz

DUT: D5GHzV2-SN:1113

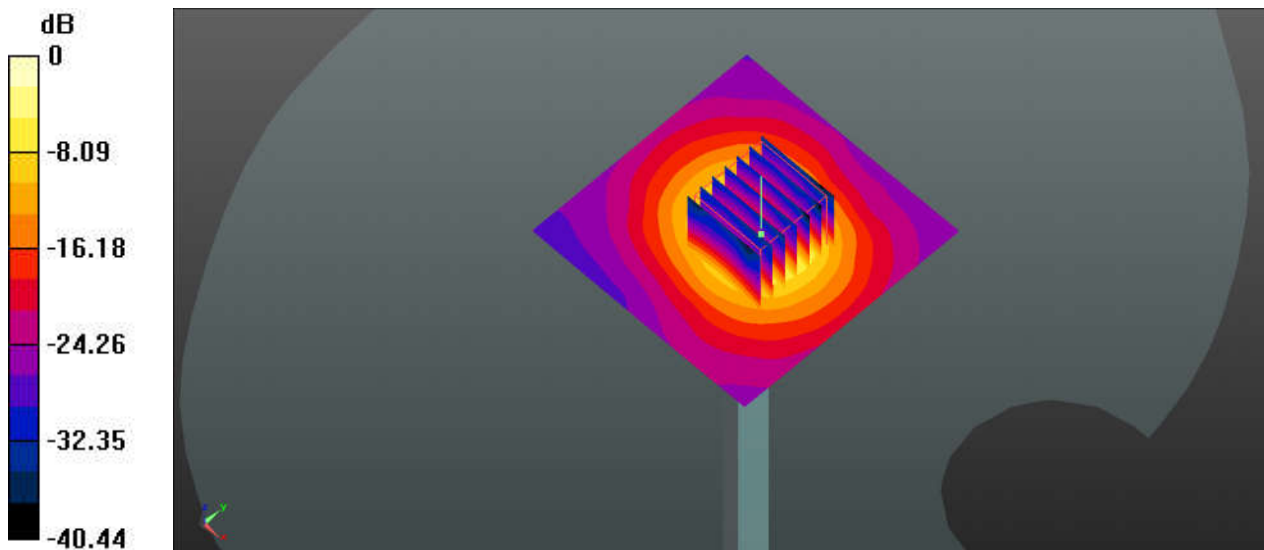
Communication System: UID 0, CW (0); Frequency: 5600 MHz; Duty Cycle: 1:1
Medium: HSL_5600_221213 Medium parameters used: $f = 5600$ MHz; $\sigma = 5.211$ S/m; $\epsilon_r = 36.23$; $\rho = 1000$ kg/m³
Ambient Temperature : 23.5 °C; Liquid Temperature : 22.6 °C

DASY5 Configuration:

- Probe: EX3DV4 - SN3819; ConvF(4.55, 4.55, 4.55); Calibrated: 2022/5/30
- Sensor-Surface: 1.4mm (Mechanical Surface Detection)
- Electronics: DAE4 Sn1664; Calibrated: 2022/5/30
- Phantom: SAM with CRP v5.0(Front); Type: QD000P40CD; Serial: 1671
- Measurement SW: DASY52, Version 52.10 (3); SEMCAD X Version 14.6.13 (7474)

Pin=100mW/Area Scan (71x71x1): Interpolated grid: dx=1.000 mm, dy=1.000 mm
Maximum value of SAR (interpolated) = 26.0 W/kg

Pin=100mW/Zoom Scan (7x7x7)/Cube 0: Measurement grid: dx=4mm, dy=4mm, dz=1.4mm
Reference Value = 73.72 V/m; Power Drift = -0.02 dB
Peak SAR (extrapolated) = 45.0 W/kg
SAR(1 g) = 8.89 W/kg; SAR(10 g) = 2.51 W/kg
Maximum value of SAR (measured) = 25.1 W/kg



0 dB = 25.1 W/kg

System Check_5600MHz

DUT: D5GHzV2-SN:1113

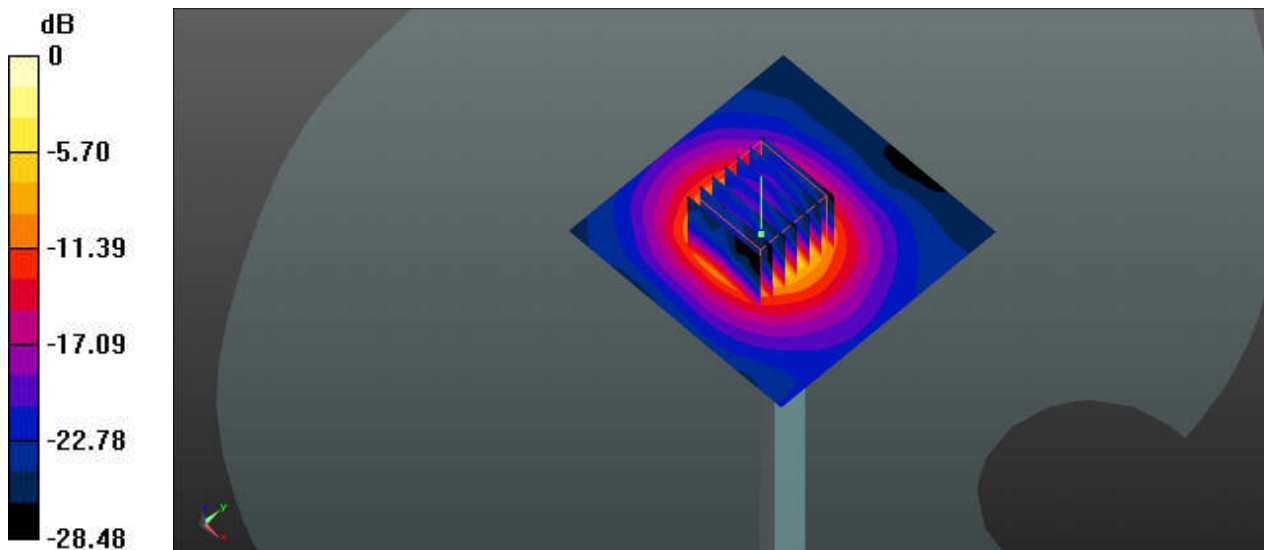
Communication System: UID 0, CW (0); Frequency: 5600 MHz; Duty Cycle: 1:1
Medium: HSL_5600_221228 Medium parameters used: $f = 5600$ MHz; $\sigma = 5.207$ S/m; $\epsilon_r = 36.213$;
 $\rho = 1000$ kg/m³
Ambient Temperature : 23.6 °C; Liquid Temperature : 22.8 °C

DASY5 Configuration:

- Probe: EX3DV4 - SN3819; ConvF(4.55, 4.55, 4.55); Calibrated: 2022/5/30
- Sensor-Surface: 1.4mm (Mechanical Surface Detection)
- Electronics: DAE4 Sn1664; Calibrated: 2022/5/30
- Phantom: SAM with CRP v5.0(Front); Type: QD000P40CD; Serial: 1671
- Measurement SW: DASY52, Version 52.10 (3); SEMCAD X Version 14.6.13 (7474)

Pin=100mW/Area Scan (71x71x1): Interpolated grid: dx=1.000 mm, dy=1.000 mm
Maximum value of SAR (interpolated) = 24.6 W/kg

Pin=100mW/Zoom Scan (7x7x7)/Cube 0: Measurement grid: dx=4mm, dy=4mm, dz=1.4mm
Reference Value = 60.49 V/m; Power Drift = 0.02 dB
Peak SAR (extrapolated) = 36.0 W/kg
SAR(1 g) = 7.98 W/kg; SAR(10 g) = 2.31 W/kg
Maximum value of SAR (measured) = 14.8 W/kg



0 dB = 24.8 W/kg

System Check_5750MHz

DUT: D5GHzV2-SN:1113

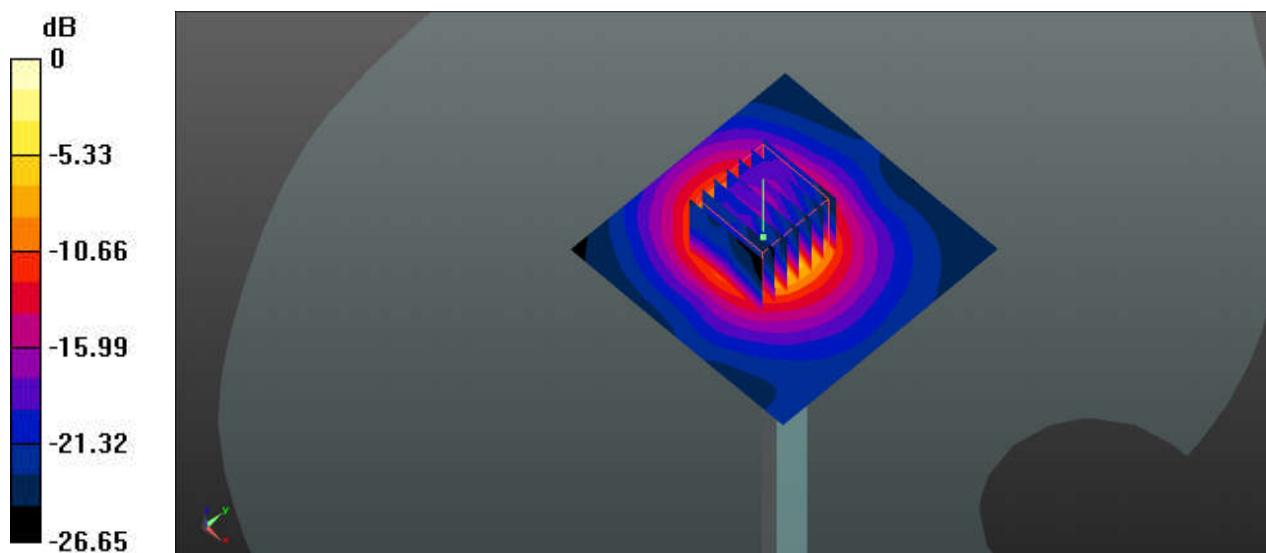
Communication System: UID 0, CW (0); Frequency: 5750 MHz; Duty Cycle: 1:1
Medium: HSL_5750_221214 Medium parameters used: $f = 5750$ MHz; $\sigma = 5.384$ S/m; $\epsilon_r = 35.949$;
 $\rho = 1000$ kg/m³
Ambient Temperature : 23.5 °C; Liquid Temperature : 22.7 °C

DASY5 Configuration:

- Probe: EX3DV4 - SN3819; ConvF(4.65, 4.65, 4.65); Calibrated: 2022/5/30
- Sensor-Surface: 1.4mm (Mechanical Surface Detection)
- Electronics: DAE4 Sn1664; Calibrated: 2022/5/30
- Phantom: SAM with CRP v5.0(Front); Type: QD000P40CD; Serial: 1671
- Measurement SW: DASY52, Version 52.10 (3); SEMCAD X Version 14.6.13 (7474)

Pin=100mW/Area Scan (71x71x1): Interpolated grid: dx=1.000 mm, dy=1.000 mm
Maximum value of SAR (interpolated) = 19.1 W/kg

Pin=100mW/Zoom Scan (7x7x7)/Cube 0: Measurement grid: dx=4mm, dy=4mm, dz=1.4mm
Reference Value = 57.26 V/m; Power Drift = 0.03 dB
Peak SAR (extrapolated) = 34.4 W/kg
SAR(1 g) = 7.88 W/kg; SAR(10 g) = 2.21 W/kg
Maximum value of SAR (measured) = 20.2 W/kg



0 dB = 20.2 W/kg

System Check_5750MHz

DUT: D5GHzV2-SN:1113

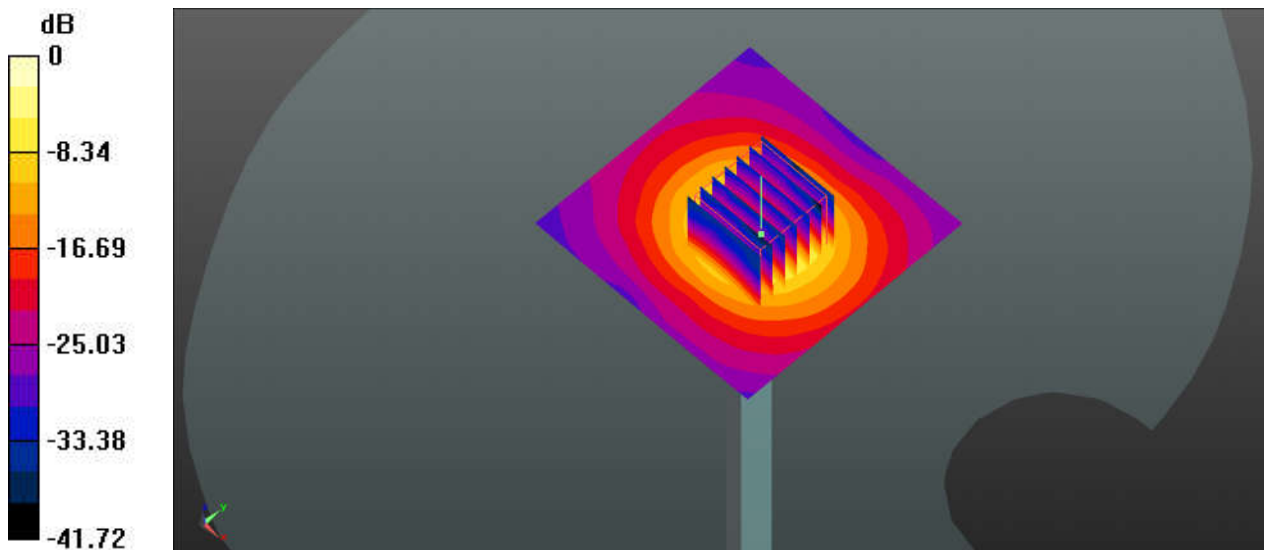
Communication System: UID 0, CW (0); Frequency: 5750 MHz; Duty Cycle: 1:1
Medium: HSL_5750_221231 Medium parameters used: $f = 5750$ MHz; $\sigma = 5.38$ S/m; $\epsilon_r = 35.936$; $\rho = 1000$ kg/m³
Ambient Temperature : 23.5 °C; Liquid Temperature : 22.4 °C

DASY5 Configuration:

- Probe: EX3DV4 - SN3819; ConvF(4.65, 4.65, 4.65); Calibrated: 2022/5/30
- Sensor-Surface: 1.4mm (Mechanical Surface Detection)
- Electronics: DAE4 Sn1664; Calibrated: 2022/5/30
- Phantom: SAM with CRP v5.0(Front); Type: QD000P40CD; Serial: 1671
- Measurement SW: DASY52, Version 52.10 (3); SEMCAD X Version 14.6.13 (7474)

Pin=100mW/Area Scan (71x71x1): Interpolated grid: dx=1.000 mm, dy=1.000 mm
Maximum value of SAR (interpolated) = 19.7 W/kg

Pin=100mW/Zoom Scan (7x7x7)/Cube 0: Measurement grid: dx=4mm, dy=4mm, dz=1.4mm
Reference Value = 62.30 V/m; Power Drift = -0.02 dB
Peak SAR (extrapolated) = 34.6 W/kg
SAR(1 g) = 7.56 W/kg; SAR(10 g) = 2.11 W/kg
Maximum value of SAR (measured) = 19.8 W/kg



0 dB = 19.8 W/kg

System Check_2300MHz

DUT: D2300V2-SN:1056

Communication System: UID 0, CW (0); Frequency: 2300 MHz; Duty Cycle: 1:1
Medium: HSL_2300_230129 Medium parameters used: $f = 2300$ MHz; $\sigma = 1.699$ S/m; $\epsilon_r = 38.749$;
 $\rho = 1000$ kg/m³
Ambient Temperature : 23.5 °C; Liquid Temperature : 22.3 °C

DASY5 Configuration:

- Probe: ES3DV3 - SN3191; ConvF(4.79, 4.79, 4.79); Calibrated: 2022/3/3
- Sensor-Surface: 1.4mm (Mechanical Surface Detection)
- Electronics: DAE4 Sn1664; Calibrated: 2022/5/30
- Phantom: SAM with CRP v5.0(Front); Type: QD000P40CD; Serial: TP-1671
- Measurement SW: DASY52, Version 52.10 (3); SEMCAD X Version 14.6.13 (7474)

Pin=250mW/Area Scan (81x81x1): Interpolated grid: dx=1.200 mm, dy=1.200 mm
Maximum value of SAR (interpolated) = 9.68 W/kg

Pin=250mW/Zoom Scan (7x7x7)/Cube 0: Measurement grid: dx=5mm, dy=5mm, dz=5mm
Reference Value = 85.84 V/m; Power Drift = -0.10 dB
Peak SAR (extrapolated) = 22.9 W/kg
SAR(1 g) = 11.9 W/kg; SAR(10 g) = 5.45 W/kg
Maximum value of SAR (measured) = 9.86 W/kg

