

System Check_Head_835MHz

DUT: D835V2 - SN:4d091

Communication System: UID 0, CW (0); Frequency: 835 MHz; Duty Cycle: 1:1

Medium: HSL_835 Medium parameters used: $f = 835 \text{ MHz}$; $\sigma = 0.934 \text{ S/m}$; $\epsilon_r = 41.163$; $\rho = 1000 \text{ kg/m}^3$

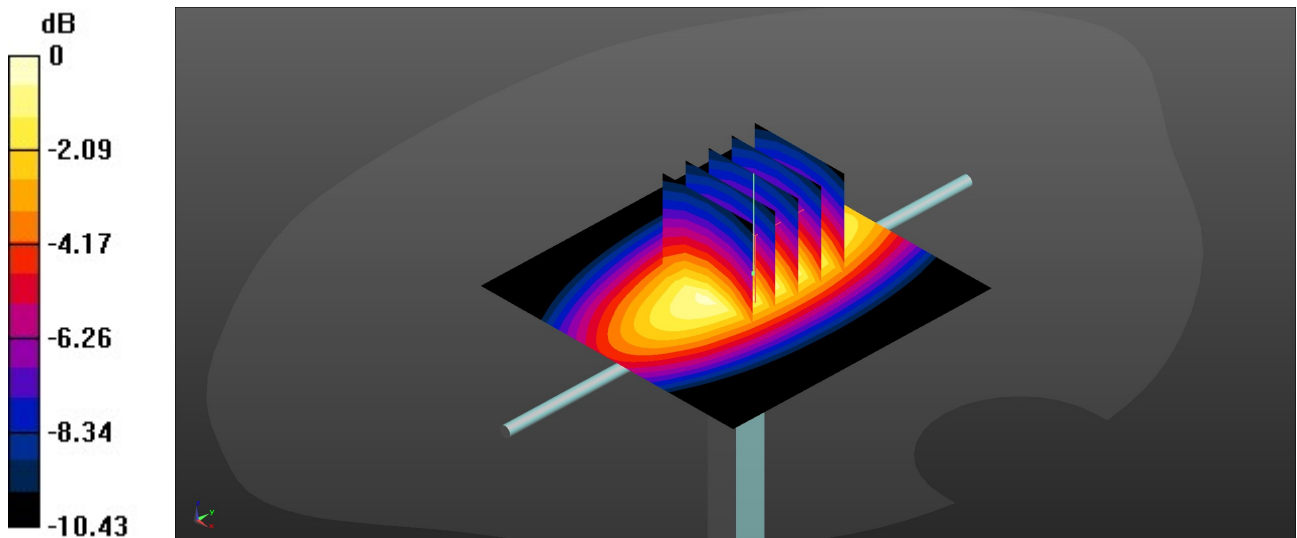
Ambient Temperature : 23.2 °C; Liquid Temperature : 22.6 °C

DASY5 Configuration:

- Probe: EX3DV4 - SN7630; ConvF(10.05, 10.05, 10.05); Calibrated: 2022/3/4
- Sensor-Surface: 1.4mm (Mechanical Surface Detection)
- Electronics: DAE4 Sn1305; Calibrated: 2022/4/27
- Phantom: Twin-SAM 1; Type: SAM Twin; Serial: 2024
- Measurement SW: DASY52, Version 52.10 (4); SEMCAD X Version 14.6.14 (7501)

Pin=50mW/Area Scan (61x61x1): Interpolated grid: $dx=1.500 \text{ mm}$, $dy=1.500 \text{ mm}$
Maximum value of SAR (interpolated) = 0.647 W/kg

Pin=50mW/Zoom Scan (5x5x7)/Cube 0: Measurement grid: $dx=8\text{mm}$, $dy=8\text{mm}$, $dz=5\text{mm}$
Reference Value = 27.18 V/m; Power Drift = 0.09 dB
Peak SAR (extrapolated) = 0.732 W/kg
SAR(1 g) = 0.496 W/kg; SAR(10 g) = 0.328 W/kg
Maximum value of SAR (measured) = 0.653 W/kg



0 dB = 0.653 W/kg = -1.85 dBW/kg

System Check_Head_1900MHz

DUT: D1900V2 - SN:5d182

Communication System: UID 0, CW (0); Frequency: 1900 MHz; Duty Cycle: 1:1

Medium: HSL_1900 Medium parameters used: $f = 1900$ MHz; $\sigma = 1.422$ S/m; $\epsilon_r = 38.963$; $\rho = 1000$ kg/m³

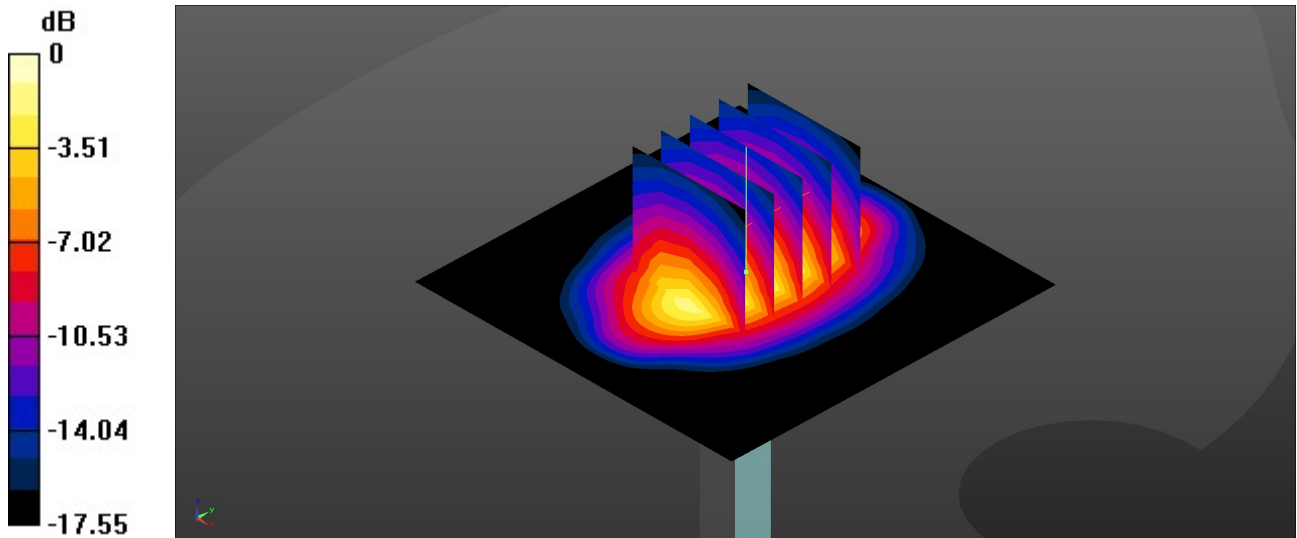
Ambient Temperature : 23.1 °C; Liquid Temperature : 22.7 °C

DASY5 Configuration:

- Probe: EX3DV4 - SN7630; ConvF(8.51, 8.51, 8.51); Calibrated: 2022/3/4
- Sensor-Surface: 1.4mm (Mechanical Surface Detection)
- Electronics: DAE4 Sn1305; Calibrated: 2022/4/27
- Phantom: Twin-SAM 1; Type: SAM Twin; Serial: 2024
- Measurement SW: DASY52, Version 52.10 (4); SEMCAD X Version 14.6.14 (7501)

Pin=50mW/Area Scan (61x61x1): Interpolated grid: dx=1.500 mm, dy=1.500 mm
Maximum value of SAR (interpolated) = 3.11 W/kg

Pin=50mW/Zoom Scan (5x5x7)/Cube 0: Measurement grid: dx=8mm, dy=8mm, dz=5mm
Reference Value = 46.59 V/m; Power Drift = 0.13 dB
Peak SAR (extrapolated) = 3.70 W/kg
SAR(1 g) = 2.01 W/kg; SAR(10 g) = 1.05 W/kg
Maximum value of SAR (measured) = 3.11 W/kg



0 dB = 3.11 W/kg = 4.93 dBW/kg

System Check_Head_2450MHz

DUT: D2450V2 - SN:1040

Communication System: UID 0, CW (0); Frequency: 2450 MHz; Duty Cycle: 1:1

Medium: HSL_2450 Medium parameters used: $f = 2450$ MHz; $\sigma = 1.809$ S/m; $\epsilon_r = 38.523$; $\rho = 1000$ kg/m³

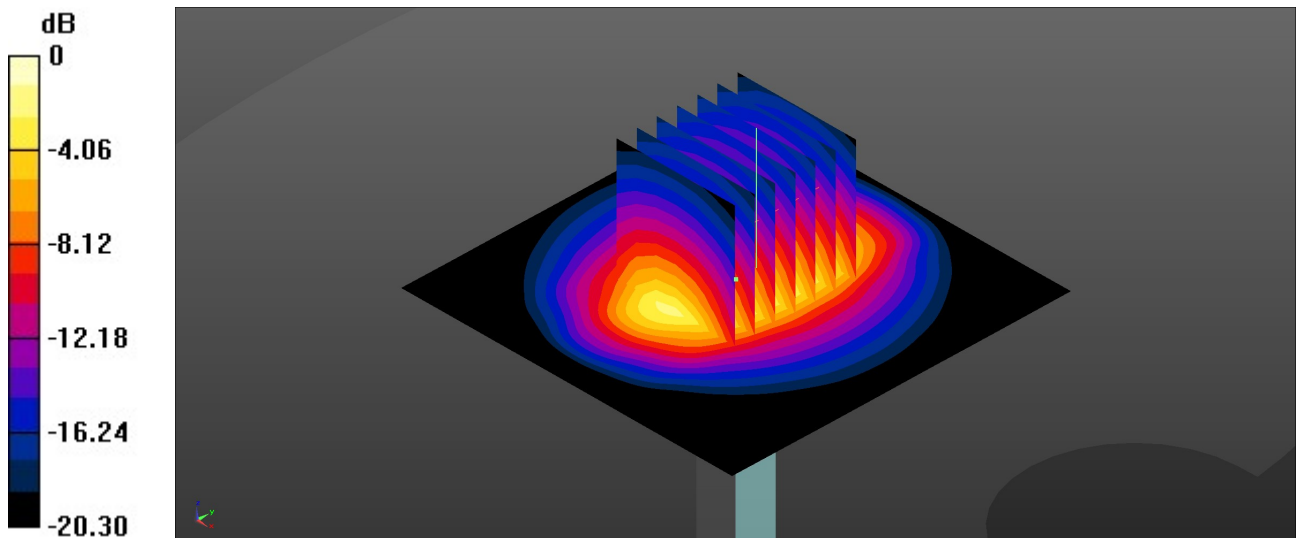
Ambient Temperature : 23.4 °C; Liquid Temperature : 22.9 °C

DASY5 Configuration:

- Probe: EX3DV4 - SN7630; ConvF(8.13, 8.13, 8.13); Calibrated: 2022/3/4
- Sensor-Surface: 1.4mm (Mechanical Surface Detection)
- Electronics: DAE4 Sn1305; Calibrated: 2022/4/27
- Phantom: Twin-SAM 1; Type: SAM Twin; Serial: 2024
- Measurement SW: DASY52, Version 52.10 (4); SEMCAD X Version 14.6.14 (7501)

Pin=50mW/Area Scan (71x71x1): Interpolated grid: dx=1.200 mm, dy=1.200 mm
Maximum value of SAR (interpolated) = 3.38 W/kg

Pin=50mW/Zoom Scan (7x7x7)/Cube 0: Measurement grid: dx=5mm, dy=5mm, dz=5mm
Reference Value = 42.32 V/m; Power Drift = 0.18 dB
Peak SAR (extrapolated) = 4.16 W/kg
SAR(1 g) = 2.55 W/kg; SAR(10 g) = 1.26 W/kg
Maximum value of SAR (measured) = 3.34 W/kg



0 dB = 3.34 W/kg = 5.24 dBW/kg

System Check_Head_2600MHz

DUT: D2600V2 - SN:1061

Communication System: UID 0, CW (0); Frequency: 2600 MHz; Duty Cycle: 1:1

Medium: HSL_2600 Medium parameters used: $f = 2600$ MHz; $\sigma = 1.926$ S/m; $\epsilon_r = 38.23$; $\rho = 1000$ kg/m³

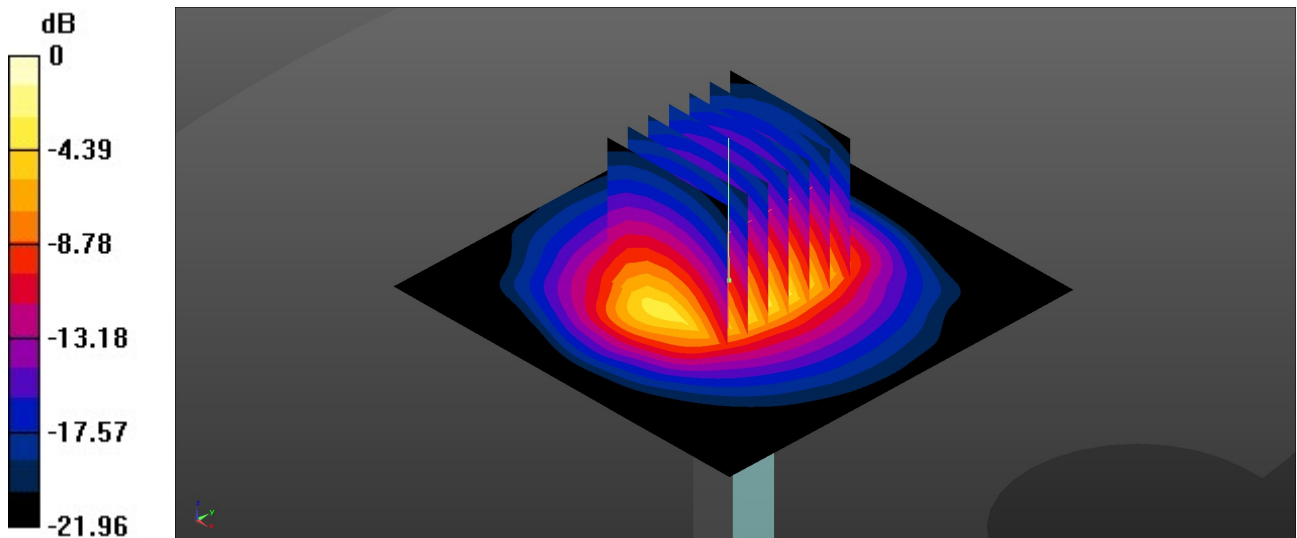
Ambient Temperature : 23.3 °C; Liquid Temperature : 22.8 °C

DASY5 Configuration:

- Probe: EX3DV4 - SN7630; ConvF(7.82, 7.82, 7.82); Calibrated: 2022/3/4
- Sensor-Surface: 1.4mm (Mechanical Surface Detection)
- Electronics: DAE4 Sn1305; Calibrated: 2022/4/27
- Phantom: Twin-SAM 1; Type: SAM Twin; Serial: 2024
- Measurement SW: DASY52, Version 52.10 (4); SEMCAD X Version 14.6.14 (7501)

Pin=50mW/Area Scan (71x71x1): Interpolated grid: dx=1.200 mm, dy=1.200 mm
Maximum value of SAR (interpolated) = 4.27 W/kg

Pin=50mW/Zoom Scan (7x7x7)/Cube 0: Measurement grid: dx=5mm, dy=5mm, dz=5mm
Reference Value = 47.30 V/m; Power Drift = 0.17 dB
Peak SAR (extrapolated) = 5.32 W/kg
SAR(1 g) = 2.65 W/kg; SAR(10 g) = 1.16 W/kg
Maximum value of SAR (measured) = 4.30 W/kg



0 dB = 4.30 W/kg = 6.33 dBW/kg

System Check_Head_3500MHz

DUT: D3500V2 - SN:1037

Communication System: UID 0, CW (0); Frequency: 3500 MHz; Duty Cycle: 1:1

Medium: HSL_3500 Medium parameters used: $f = 3500$ MHz; $\sigma = 2.834$ S/m; $\epsilon_r = 39.051$; $\rho = 1000$ kg/m³

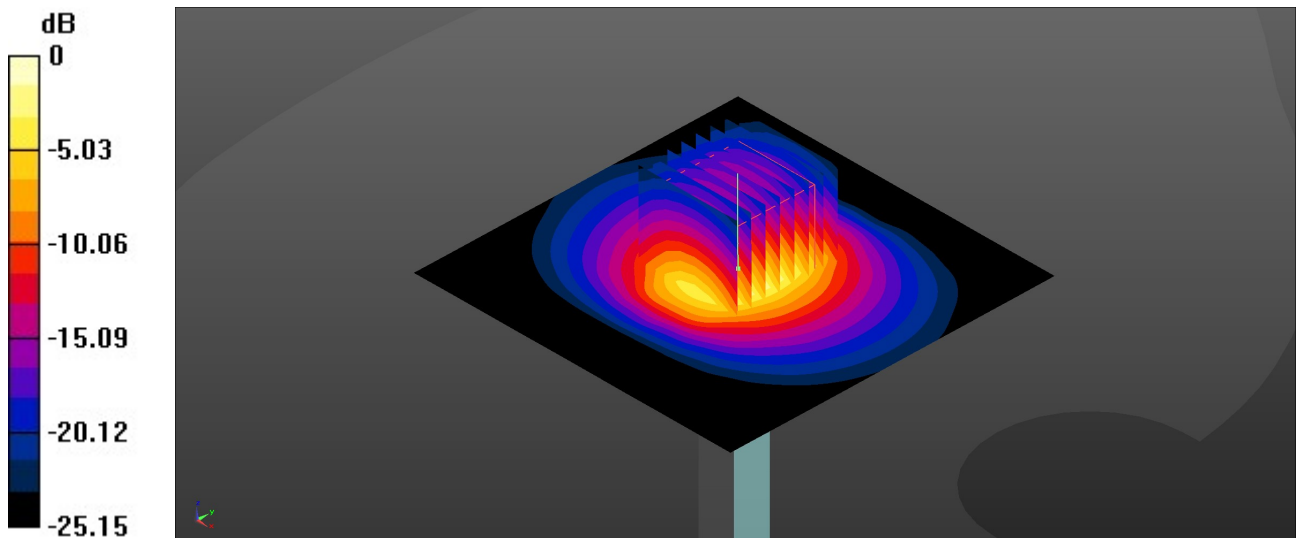
Ambient Temperature : 23.4 °C; Liquid Temperature : 22.6 °C

DASY5 Configuration:

- Probe: EX3DV4 - SN7630; ConvF(7.34, 7.34, 7.34); Calibrated: 2022/3/4
- Sensor-Surface: 1.4mm (Mechanical Surface Detection)
- Electronics: DAE4 Sn1305; Calibrated: 2022/4/27
- Phantom: Twin-SAM 1; Type: SAM Twin; Serial: 2024
- Measurement SW: DASY52, Version 52.10 (4); SEMCAD X Version 14.6.14 (7501)

Pin=50mW/Area Scan (91x91x1): Interpolated grid: dx=1.000 mm, dy=1.000 mm
Maximum value of SAR (interpolated) = 5.60 W/kg

Pin=50mW/Zoom Scan (8x8x7)/Cube 0: Measurement grid: dx=4mm, dy=4mm, dz=1.4mm
Reference Value = 46.41 V/m; Power Drift = 0.08 dB
Peak SAR (extrapolated) = 7.44 W/kg
SAR(1 g) = 3.26 W/kg; SAR(10 g) = 1.25 W/kg
Maximum value of SAR (measured) = 5.62 W/kg



0 dB = 5.62 W/kg = 7.50 dBW/kg

System Check_Head_3700MHz

DUT: D3700V2 - SN:1008

Communication System: UID 0, CW (0); Frequency: 3700 MHz; Duty Cycle: 1:1

Medium: HSL_3700 Medium parameters used: $f = 3700$ MHz; $\sigma = 3.024$ S/m; $\epsilon_r = 38.72$; $\rho = 1000$ kg/m³

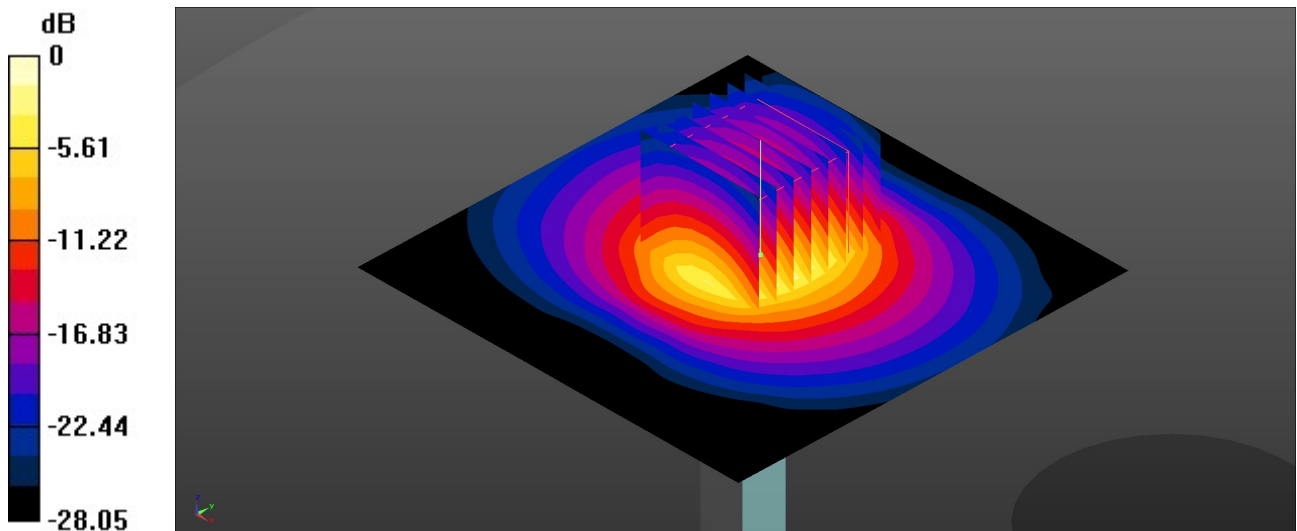
Ambient Temperature : 23.4 °C; Liquid Temperature : 22.9 °C

DASY5 Configuration:

- Probe: EX3DV4 - SN7630; ConvF(7.33, 7.33, 7.33); Calibrated: 2022/3/4
- Sensor-Surface: 1.4mm (Mechanical Surface Detection)
- Electronics: DAE4 Sn1305; Calibrated: 2022/4/27
- Phantom: Twin-SAM 1; Type: SAM Twin; Serial: 2024
- Measurement SW: DASY52, Version 52.10 (4); SEMCAD X Version 14.6.14 (7501)

Pin=50mW/Area Scan (91x91x1): Interpolated grid: dx=1.000 mm, dy=1.000 mm
Maximum value of SAR (interpolated) = 5.51 W/kg

Pin=50mW/Zoom Scan (8x8x7)/Cube 0: Measurement grid: dx=4mm, dy=4mm, dz=1.4mm
Reference Value = 42.32 V/m; Power Drift = 0.05 dB
Peak SAR (extrapolated) = 7.68 W/kg
SAR(1 g) = 3.29 W/kg; SAR(10 g) = 1.18 W/kg
Maximum value of SAR (measured) = 5.63 W/kg



0 dB = 5.63 W/kg = 7.51 dBW/kg

System Check_Head_3900MHz

DUT: D3900V2 - SN:1048

Communication System: UID 0, CW (0); Frequency: 3900 MHz; Duty Cycle: 1:1

Medium: HSL_3900 Medium parameters used: $f = 3900$ MHz; $\sigma = 3.228$ S/m; $\epsilon_r = 38.42$; $\rho = 1000$ kg/m³

Ambient Temperature : 23.1 °C; Liquid Temperature : 22.7 °C

DASY5 Configuration:

- Probe: EX3DV4 - SN7706; ConvF(7.2, 7.2, 7.2); Calibrated: 2022/1/20

- Sensor-Surface: 1.4mm (Mechanical Surface Detection)

- Electronics: DAE4 Sn1649; Calibrated: 2022/3/30

- Phantom: Twin-SAM 1; Type: SAM Twin; Serial: 2074

- Measurement SW: DASY52, Version 52.10 (4); SEMCAD X Version 14.6.14 (7501)

Pin=50mW/Area Scan (91x91x1): Interpolated grid: dx=1.000 mm, dy=1.000 mm

Maximum value of SAR (interpolated) = 5.44 W/kg

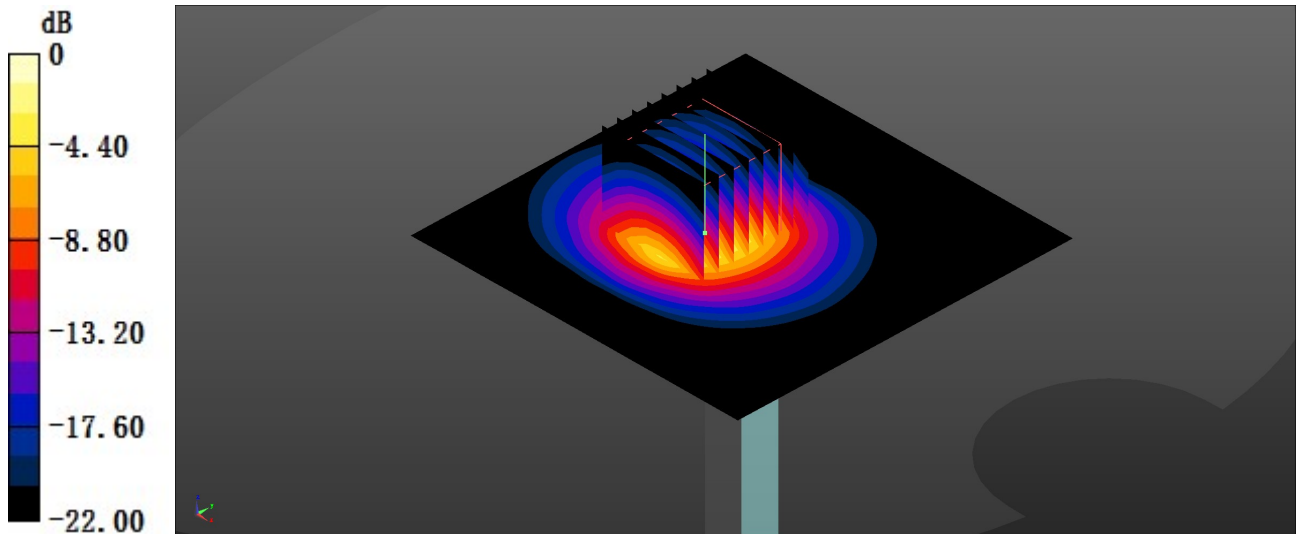
Pin=50mW/Zoom Scan (8x8x7)/Cube 0: Measurement grid: dx=4mm, dy=4mm, dz=1.4mm

Reference Value = 43.40 V/m; Power Drift = 0.06 dB

Peak SAR (extrapolated) = 9.17 W/kg

SAR(1 g) = 3.51 W/kg; SAR(10 g) = 1.25 W/kg

Maximum value of SAR (measured) = 7.39 W/kg



0 dB = 7.39 W/kg = 9.31 dBW/kg

System Check_Head_5250MHz

DUT: D5GHzV2 - SN:1341

Communication System: UID 0, CW (0); Frequency: 5250 MHz; Duty Cycle: 1:1

Medium: HSL_5000 Medium parameters used: $f = 5250$ MHz; $\sigma = 4.566$ S/m; $\epsilon_r = 35.977$; $\rho = 1000$ kg/m³

Ambient Temperature : 23.2 °C; Liquid Temperature : 22.7 °C

DASY5 Configuration:

- Probe: EX3DV4 - SN7630; ConvF(5.7, 5.7, 5.7); Calibrated: 2022/3/4

- Sensor-Surface: 1.4mm (Mechanical Surface Detection)

- Electronics: DAE4 Sn1305; Calibrated: 2022/4/27

- Phantom: Twin-SAM 1; Type: SAM Twin; Serial: 2024

- Measurement SW: DASY52, Version 52.10 (4); SEMCAD X Version 14.6.14 (7501)

Pin=50mW/Area Scan (91x91x1): Interpolated grid: dx=1.000 mm, dy=1.000 mm

Maximum value of SAR (interpolated) = 7.46 W/kg

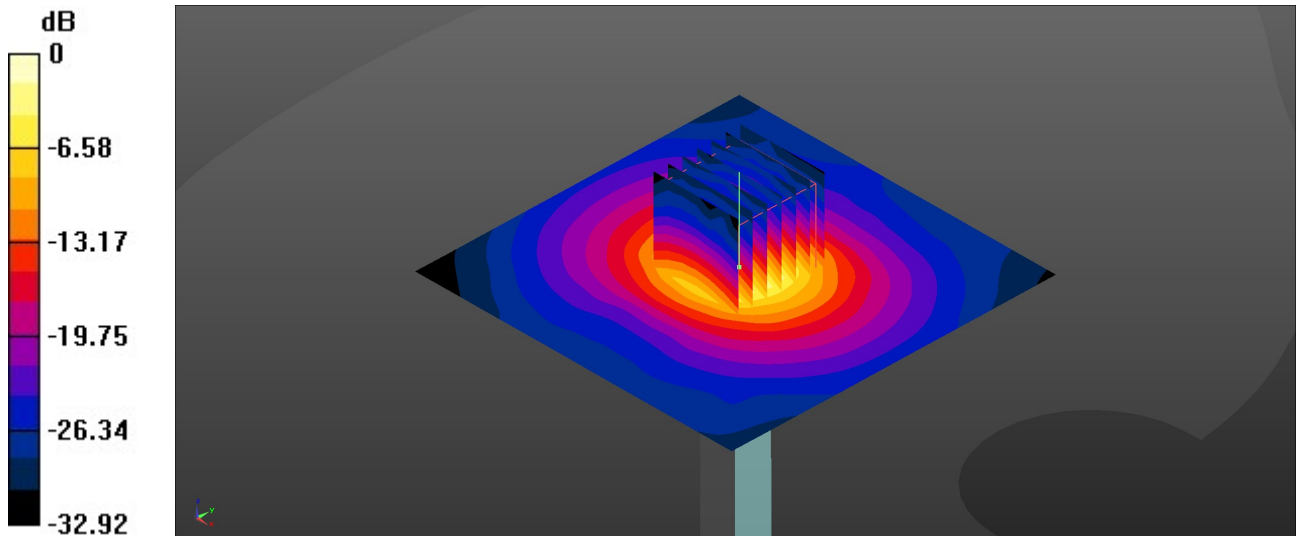
Pin=50mW/Zoom Scan (7x7x7)/Cube 0: Measurement grid: dx=4mm, dy=4mm, dz=1.4mm

Reference Value = 44.99 V/m; Power Drift = 0.14 dB

Peak SAR (extrapolated) = 12.8 W/kg

SAR(1 g) = 3.88 W/kg; SAR(10 g) = 1.23 W/kg

Maximum value of SAR (measured) = 8.10 W/kg



0 dB = 8.10 W/kg = 9.08 dBW/kg

System Check_Head_5600MHz

DUT: D5GHzV2 - SN:1341

Communication System: UID 0, CW (0); Frequency: 5600 MHz; Duty Cycle: 1:1

Medium: HSL_5000 Medium parameters used: $f = 5600$ MHz; $\sigma = 4.965$ S/m; $\epsilon_r = 35.441$; $\rho = 1000$ kg/m³

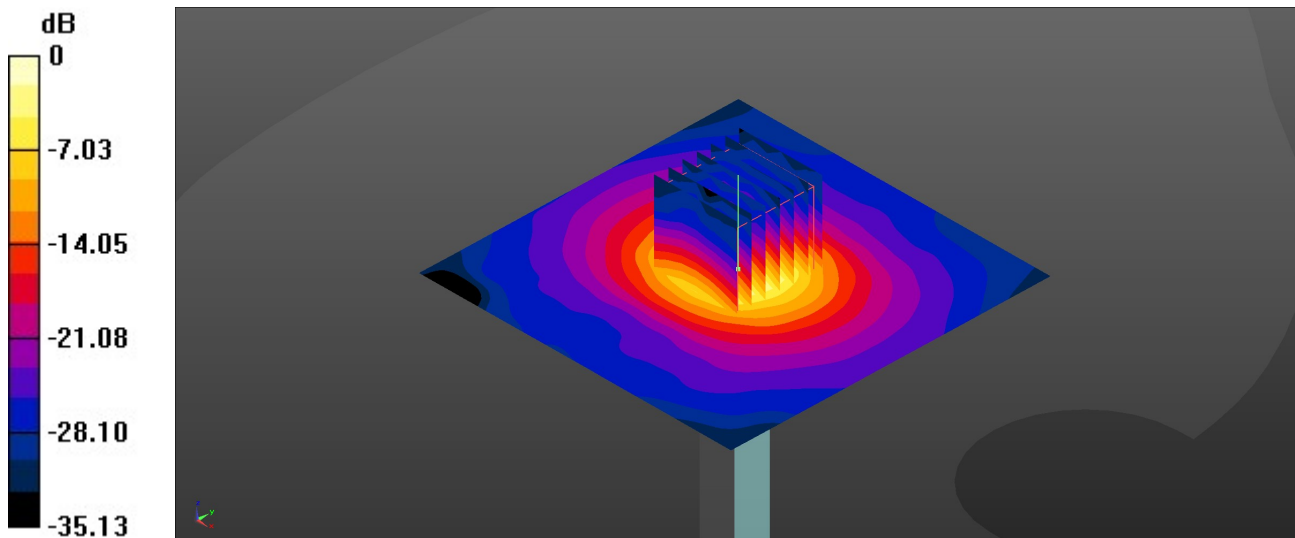
Ambient Temperature : 23.3 °C; Liquid Temperature : 22.9 °C

DASY5 Configuration:

- Probe: EX3DV4 - SN7630; ConvF(4.95, 4.95, 4.95); Calibrated: 2022/3/4
- Sensor-Surface: 1.4mm (Mechanical Surface Detection)
- Electronics: DAE4 Sn1305; Calibrated: 2022/4/27
- Phantom: Twin-SAM 1; Type: SAM Twin; Serial: 2024
- Measurement SW: DASY52, Version 52.10 (4); SEMCAD X Version 14.6.14 (7501)

Pin=50mW/Area Scan (91x91x1): Interpolated grid: dx=1.000 mm, dy=1.000 mm
Maximum value of SAR (interpolated) = 8.49 W/kg

Pin=50mW/Zoom Scan (7x7x7)/Cube 0: Measurement grid: dx=4mm, dy=4mm, dz=1.4mm
Reference Value = 46.23 V/m; Power Drift = 0.18 dB
Peak SAR (extrapolated) = 15.4 W/kg
SAR(1 g) = 3.91 W/kg; SAR(10 g) = 1.27 W/kg
Maximum value of SAR (measured) = 9.12 W/kg



0 dB = 9.12 W/kg = 9.60 dBW/kg

System Check_Head_5750MHz

DUT: D5GHzV2 - SN:1341

Communication System: UID 0, CW (0); Frequency: 5750 MHz; Duty Cycle: 1:1

Medium: HSL_5000 Medium parameters used: $f = 5750$ MHz; $\sigma = 5.13$ S/m; $\epsilon_r = 35.252$; $\rho = 1000$ kg/m³

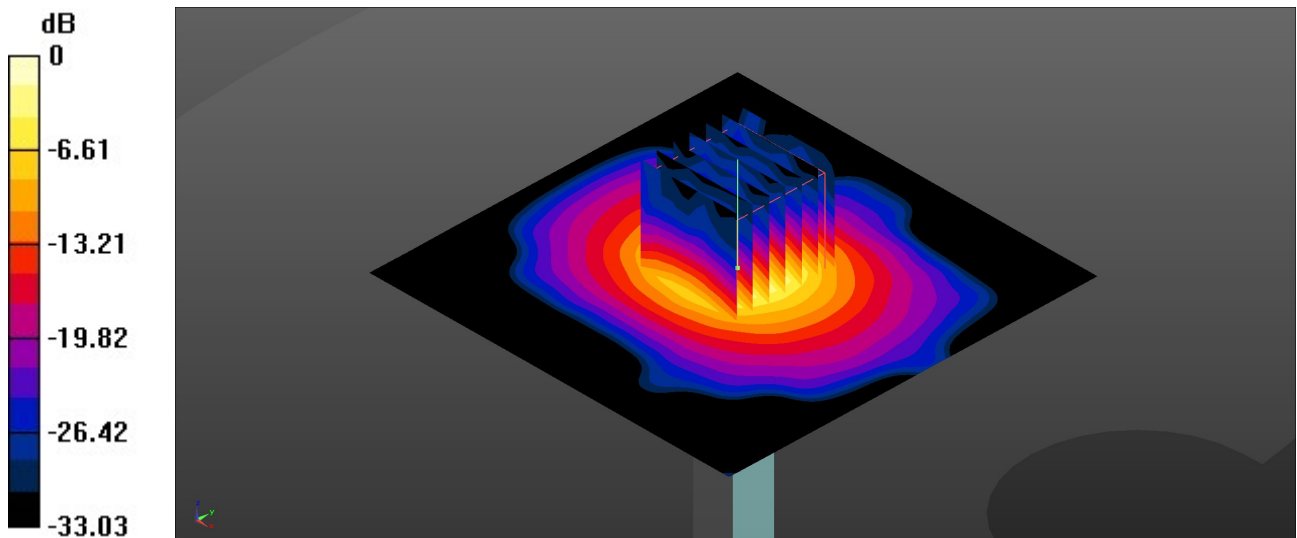
Ambient Temperature : 23.4 °C; Liquid Temperature : 22.8 °C

DASY5 Configuration:

- Probe: EX3DV4 - SN7630; ConvF(5.15, 5.15, 5.15); Calibrated: 2022/3/4
- Sensor-Surface: 1.4mm (Mechanical Surface Detection)
- Electronics: DAE4 Sn1305; Calibrated: 2022/4/27
- Phantom: Twin-SAM 1; Type: SAM Twin; Serial: 2024
- Measurement SW: DASY52, Version 52.10 (4); SEMCAD X Version 14.6.14 (7501)

Pin=50mW/Area Scan (91x91x1): Interpolated grid: dx=1.000 mm, dy=1.000 mm
Maximum value of SAR (interpolated) = 7.40 W/kg

Pin=50mW/Zoom Scan (7x7x7)/Cube 0: Measurement grid: dx=4mm, dy=4mm, dz=1.4mm
Reference Value = 0.9750 V/m; Power Drift = 0.01 dB
Peak SAR (extrapolated) = 13.8 W/kg
SAR(1 g) = 3.95 W/kg; SAR(10 g) = 1.22 W/kg
Maximum value of SAR (measured) = 8.01 W/kg



System Check_Head_835MHz

DUT: D835V2 - SN:4d091

Communication System: UID 0, CW (0); Frequency: 835 MHz; Duty Cycle: 1:1

Medium: HSL_835 Medium parameters used: $f = 835 \text{ MHz}$; $\sigma = 0.929 \text{ S/m}$; $\epsilon_r = 40.902$; $\rho = 1000 \text{ kg/m}^3$

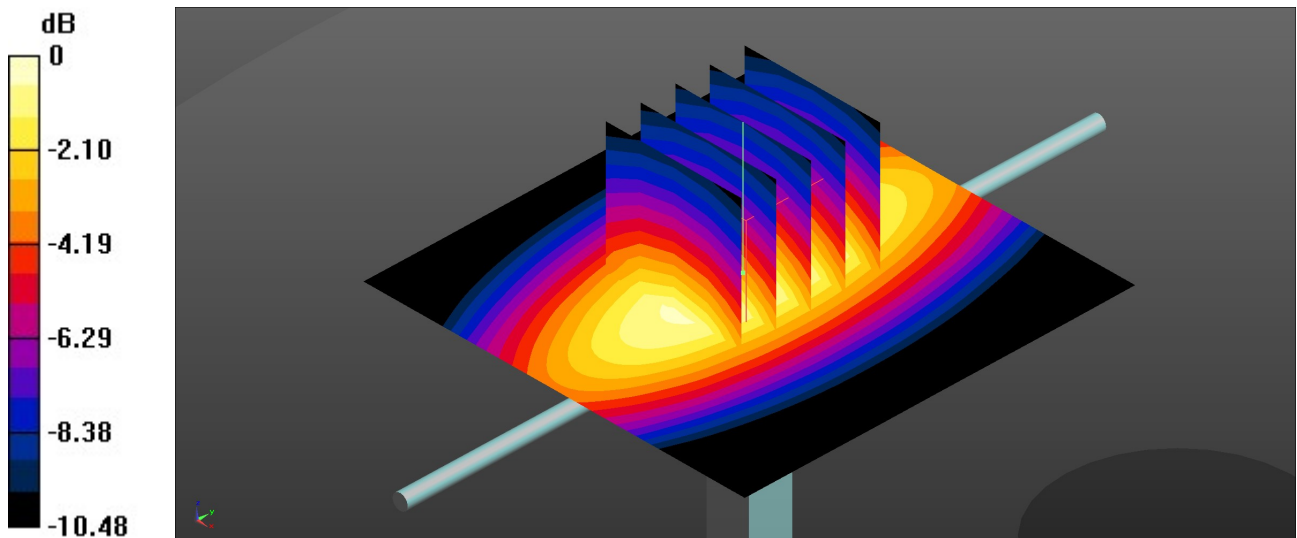
Ambient Temperature : 23.4 °C; Liquid Temperature : 22.8 °C

DASY5 Configuration:

- Probe: EX3DV4 - SN7630; ConvF(10.05, 10.05, 10.05); Calibrated: 2022/3/4
- Sensor-Surface: 1.4mm (Mechanical Surface Detection)
- Electronics: DAE4 Sn1305; Calibrated: 2022/4/27
- Phantom: Twin-SAM 1; Type: SAM Twin; Serial: 2024
- Measurement SW: DASY52, Version 52.10 (4); SEMCAD X Version 14.6.14 (7501)

Pin=50mW/Area Scan (61x61x1): Interpolated grid: $dx=1.500 \text{ mm}$, $dy=1.500 \text{ mm}$
Maximum value of SAR (interpolated) = 0.636 W/kg

Pin=50mW/Zoom Scan (5x5x7)/Cube 0: Measurement grid: $dx=8\text{mm}$, $dy=8\text{mm}$, $dz=5\text{mm}$
Reference Value = 27.19 V/m; Power Drift = 0.08 dB
Peak SAR (extrapolated) = 0.712 W/kg
SAR(1 g) = 0.484 W/kg; SAR(10 g) = 0.320 W/kg
Maximum value of SAR (measured) = 0.638 W/kg



0 dB = 0.638 W/kg = -1.95 dBW/kg

System Check_Head_1900MHz

DUT: D1900V2 - SN:5d182

Communication System: UID 0, CW (0); Frequency: 1900 MHz; Duty Cycle: 1:1

Medium: HSL_1900 Medium parameters used: $f = 1900$ MHz; $\sigma = 1.459$ S/m; $\epsilon_r = 40$; $\rho = 1000$ kg/m³

Ambient Temperature : 23.3 °C; Liquid Temperature : 22.6 °C

DASY5 Configuration:

- Probe: EX3DV4 - SN7630; ConvF(8.51, 8.51, 8.51); Calibrated: 2022/3/4
- Sensor-Surface: 1.4mm (Mechanical Surface Detection)
- Electronics: DAE4 Sn1305; Calibrated: 2022/4/27
- Phantom: Twin-SAM 1; Type: SAM Twin; Serial: 2024
- Measurement SW: DASY52, Version 52.10 (4); SEMCAD X Version 14.6.14 (7501)

Pin=50mW/Area Scan (61x61x1): Interpolated grid: dx=1.500 mm, dy=1.500 mm

Maximum value of SAR (interpolated) = 3.17 W/kg

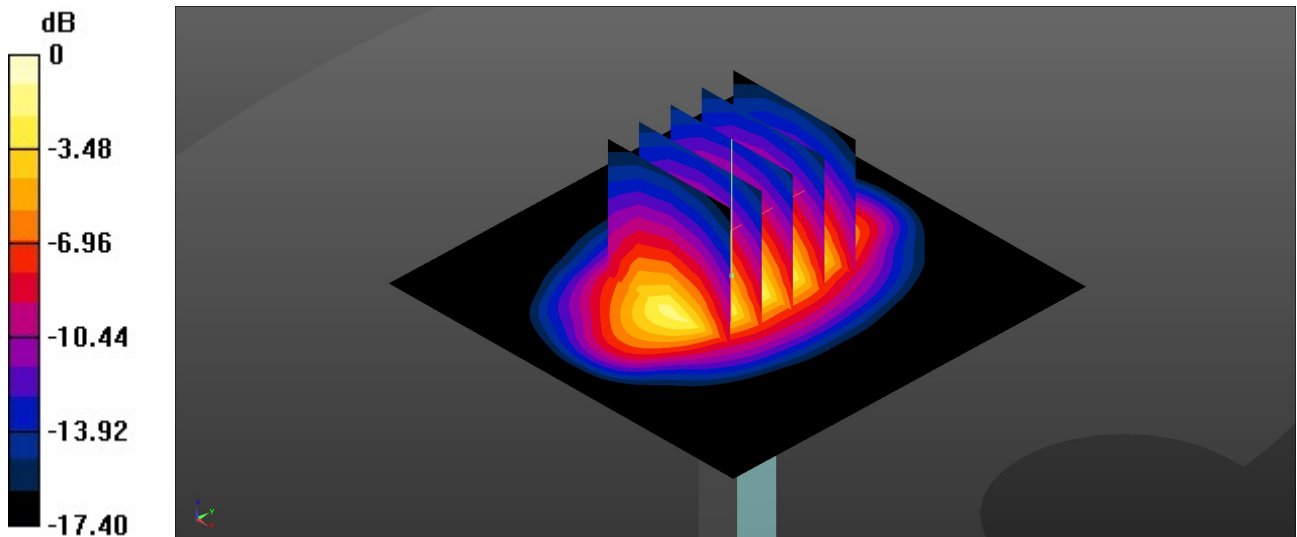
Pin=50mW/Zoom Scan (5x5x7)/Cube 0: Measurement grid: dx=8mm, dy=8mm, dz=5mm

Reference Value = 46.81 V/m; Power Drift = 0.12 dB

Peak SAR (extrapolated) = 3.85 W/kg

SAR(1 g) = 2.08 W/kg; SAR(10 g) = 1.09 W/kg

Maximum value of SAR (measured) = 3.24 W/kg



0 dB = 3.24 W/kg = 5.11 dBW/kg

System Check_Head_2450MHz

DUT: D2450V2 - SN:1040

Communication System: UID 0, CW (0); Frequency: 2450 MHz; Duty Cycle: 1:1
Medium: HSL_2450 Medium parameters used: $f = 2450$ MHz; $\sigma = 1.872$ S/m; $\epsilon_r = 40.807$; $\rho = 1000$

kg/m³

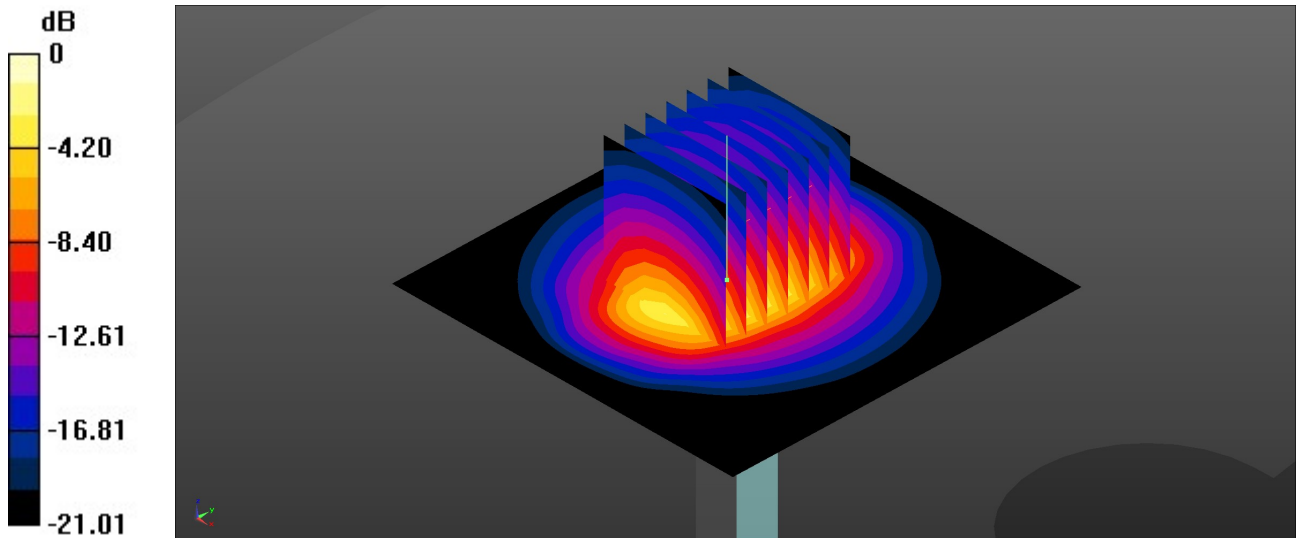
Ambient Temperature : 23.1 °C; Liquid Temperature : 22.9 °C

DASY5 Configuration:

- Probe: EX3DV4 - SN7630; ConvF(8.13, 8.13, 8.13); Calibrated: 2022/3/4
- Sensor-Surface: 1.4mm (Mechanical Surface Detection)
- Electronics: DAE4 Sn1305; Calibrated: 2022/4/27
- Phantom: Twin-SAM 1; Type: SAM Twin; Serial: 2024
- Measurement SW: DASY52, Version 52.10 (4); SEMCAD X Version 14.6.14 (7501)

Pin=50mW/Area Scan (71x71x1): Interpolated grid: dx=1.200 mm, dy=1.200 mm
Maximum value of SAR (interpolated) = 4.34 W/kg

Pin=50mW/Zoom Scan (7x7x7)/Cube 0: Measurement grid: dx=5mm, dy=5mm, dz=5mm
Reference Value = 48.33 V/m; Power Drift = 0.08 dB
Peak SAR (extrapolated) = 5.30 W/kg
SAR(1 g) = 2.59 W/kg; SAR(10 g) = 1.22 W/kg
Maximum value of SAR (measured) = 4.29 W/kg



0 dB = 4.29 W/kg = 6.32 dBW/kg

System Check_Head_2600MHz

DUT: D2600V2 - SN:1061

Communication System: UID 0, CW (0); Frequency: 2600 MHz; Duty Cycle: 1:1

Medium: HSL_2600 Medium parameters used: $f = 2600$ MHz; $\sigma = 1.98$ S/m; $\epsilon_r = 40.595$; $\rho = 1000$ kg/m³

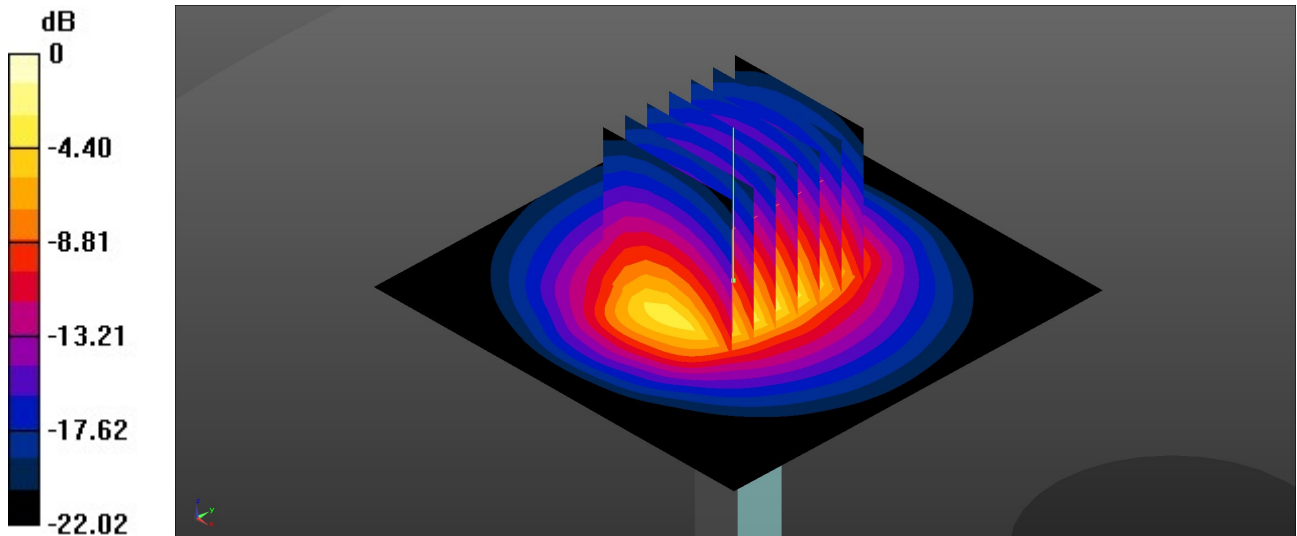
Ambient Temperature : 23.1 °C; Liquid Temperature : 22.7 °C

DASY5 Configuration:

- Probe: EX3DV4 - SN7630; ConvF(7.82, 7.82, 7.82); Calibrated: 2022/3/4
- Sensor-Surface: 1.4mm (Mechanical Surface Detection)
- Electronics: DAE4 Sn1305; Calibrated: 2022/4/27
- Phantom: Twin-SAM 1; Type: SAM Twin; Serial: 2024
- Measurement SW: DASY52, Version 52.10 (4); SEMCAD X Version 14.6.14 (7501)

Pin=50mW/Area Scan (71x71x1): Interpolated grid: dx=1.200 mm, dy=1.200 mm
Maximum value of SAR (interpolated) = 4.47 W/kg

Pin=50mW/Zoom Scan (7x7x7)/Cube 0: Measurement grid: dx=5mm, dy=5mm, dz=5mm
Reference Value = 48.00 V/m; Power Drift = 0.11 dB
Peak SAR (extrapolated) = 5.45 W/kg
SAR(1 g) = 2.63 W/kg; SAR(10 g) = 1.2 W/kg
Maximum value of SAR (measured) = 4.42 W/kg



0 dB = 4.42 W/kg = 6.45 dBW/kg

System Check_Head_3500MHz

DUT: D3500V2 - SN:1037

Communication System: UID 0, CW (0); Frequency: 3500 MHz; Duty Cycle: 1:1

Medium: HSL_3500 Medium parameters used: $f = 3500$ MHz; $\sigma = 2.835$ S/m; $\epsilon_r = 39.048$; $\rho = 1000$ kg/m³

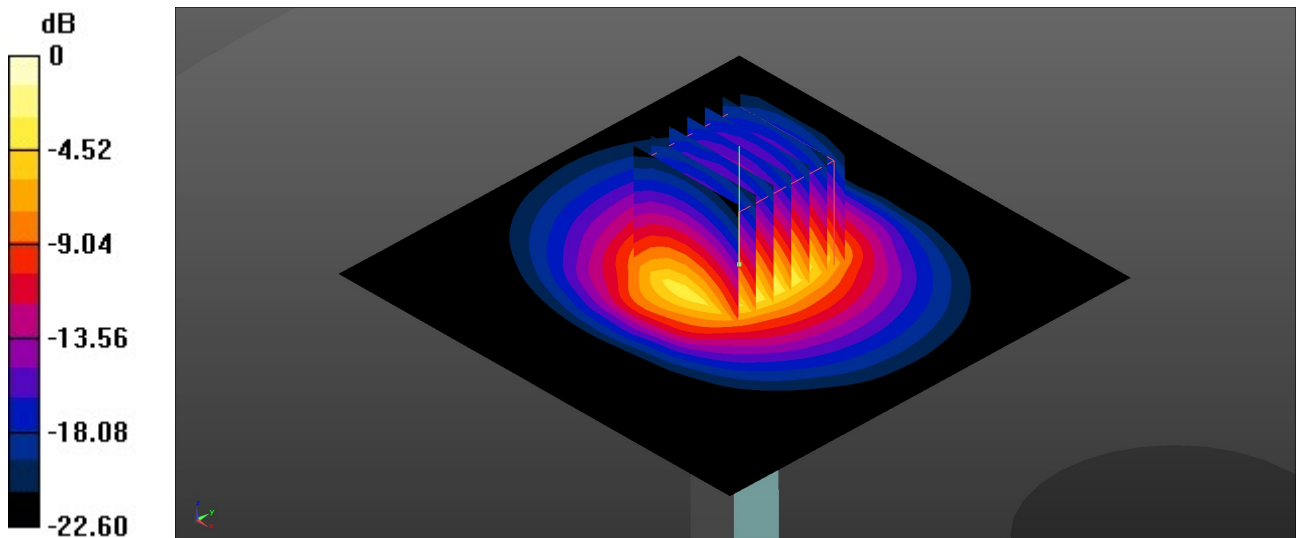
Ambient Temperature : 23.3 °C; Liquid Temperature : 22.9 °C

DASY5 Configuration:

- Probe: EX3DV4 - SN7630; ConvF(7.34, 7.34, 7.34); Calibrated: 2022/3/4
- Sensor-Surface: 1.4mm (Mechanical Surface Detection)
- Electronics: DAE4 Sn1305; Calibrated: 2022/4/27
- Phantom: Twin-SAM 1; Type: SAM Twin; Serial: 2024
- Measurement SW: DASY52, Version 52.10 (4); SEMCAD X Version 14.6.14 (7501)

Pin=50mW/Area Scan (91x91x1): Interpolated grid: dx=1.000 mm, dy=1.000 mm
Maximum value of SAR (interpolated) = 5.68 W/kg

Pin=50mW/Zoom Scan (7x7x7)/Cube 0: Measurement grid: dx=4mm, dy=4mm, dz=1.4mm
Reference Value = 45.42 V/m; Power Drift = 0.08 dB
Peak SAR (extrapolated) = 7.52 W/kg
SAR(1 g) = 3.21 W/kg; SAR(10 g) = 1.17 W/kg
Maximum value of SAR (measured) = 5.69 W/kg



0 dB = 5.69 W/kg = 7.55 dBW/kg

System Check_Head_3700MHz

DUT: D3700V2 - SN:1008

Communication System: UID 0, CW (0); Frequency: 3700 MHz; Duty Cycle: 1:1

Medium: HSL_3700 Medium parameters used: $f = 3700$ MHz; $\sigma = 2.993$ S/m; $\epsilon_r = 38.301$; $\rho = 1000$ kg/m³

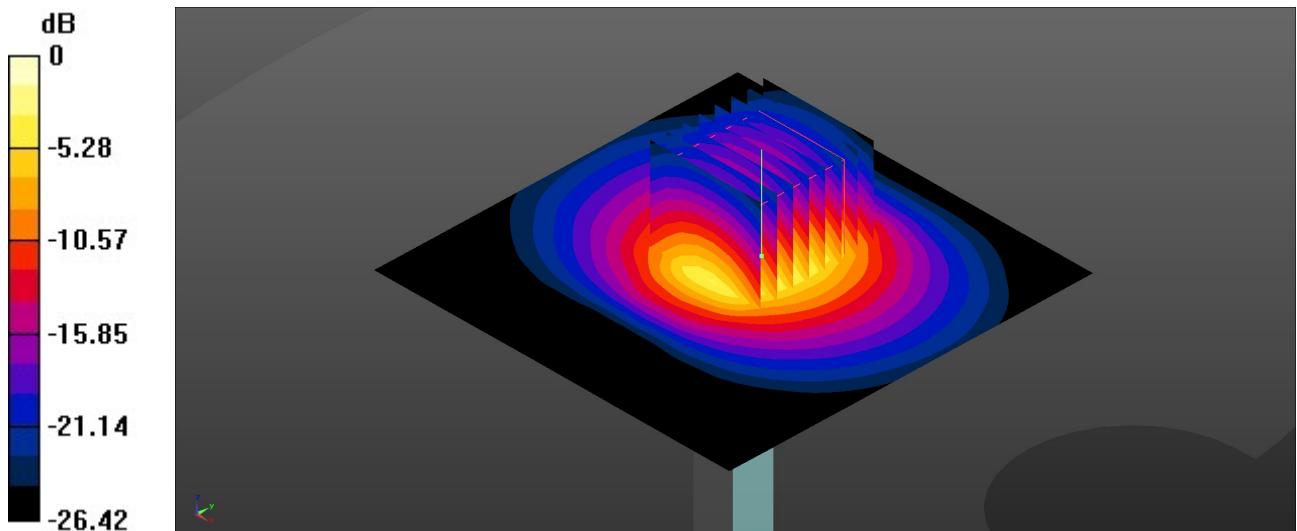
Ambient Temperature : 23.3 °C; Liquid Temperature : 22.6 °C

DASY5 Configuration:

- Probe: EX3DV4 - SN7630; ConvF(7.33, 7.33, 7.33); Calibrated: 2022/3/4
- Sensor-Surface: 1.4mm (Mechanical Surface Detection)
- Electronics: DAE4 Sn1305; Calibrated: 2022/4/27
- Phantom: Twin-SAM 1; Type: SAM Twin; Serial: 2024
- Measurement SW: DASY52, Version 52.10 (4); SEMCAD X Version 14.6.14 (7501)

Pin=50mW/Area Scan (91x91x1): Interpolated grid: dx=1.000 mm, dy=1.000 mm
Maximum value of SAR (interpolated) = 5.81 W/kg

Pin=50mW/Zoom Scan (8x8x7)/Cube 0: Measurement grid: dx=4mm, dy=4mm, dz=1.4mm
Reference Value = 40.92 V/m; Power Drift = 0.03 dB
Peak SAR (extrapolated) = 8.16 W/kg
SAR(1 g) = 3.24 W/kg; SAR(10 g) = 1.24 W/kg
Maximum value of SAR (measured) = 5.96 W/kg



0 dB = 5.96 W/kg = 7.75 dBW/kg

System Check_Head_3900MHz

DUT: D3900V2 - SN:1048

Communication System: UID 0, CW (0); Frequency: 3900 MHz; Duty Cycle: 1:1
Medium: HSL_3900 Medium parameters used: $f = 3900$ MHz; $\sigma = 3.229$ S/m; $\epsilon_r = 38.414$; $\rho = 1000$

kg/m³

Ambient Temperature : 23.1 °C; Liquid Temperature : 22.9 °C

DASY5 Configuration:

- Probe: EX3DV4 - SN7706; ConvF(7.2, 7.2, 7.2); Calibrated: 2022/1/20
- Sensor-Surface: 1.4mm (Mechanical Surface Detection)
- Electronics: DAE4 Sn1649; Calibrated: 2022/3/30
- Phantom: Twin-SAM 1; Type: SAM Twin; Serial: 2074
- Measurement SW: DASY52, Version 52.10 (4); SEMCAD X Version 14.6.14 (7501)

Pin=50mW/Area Scan (91x91x1): Interpolated grid: dx=1.000 mm, dy=1.000 mm
Maximum value of SAR (interpolated) = 6.83 W/kg

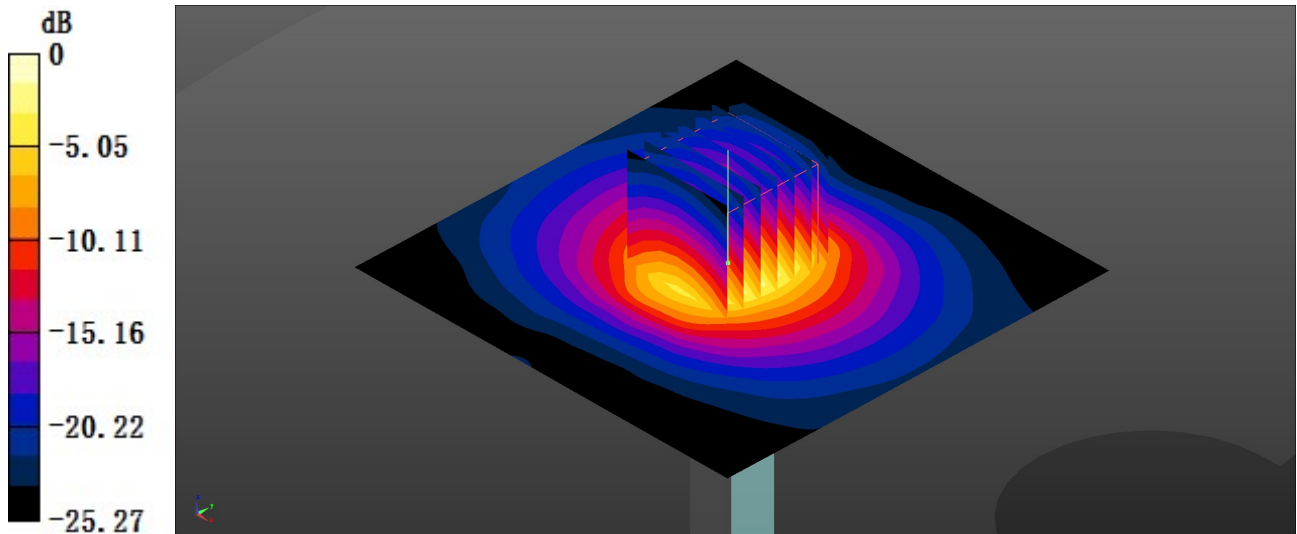
Pin=50mW/Zoom Scan (7x7x7)/Cube 0: Measurement grid: dx=4mm, dy=4mm, dz=1.4mm

Reference Value = 52.21 V/m; Power Drift = 0.09 dB

Peak SAR (extrapolated) = 9.62 W/kg

SAR(1 g) = 3.35 W/kg; SAR(10 g) = 1.23 W/kg

Maximum value of SAR (measured) = 6.82 W/kg



0 dB = 6.82 W/kg = 8.34 dBW/kg

System Check_Head_5250MHz

DUT: D5GHzV2 - SN:1341

Communication System: UID 0, CW (0); Frequency: 5250 MHz; Duty Cycle: 1:1

Medium: HSL_5000 Medium parameters used: $f = 5250$ MHz; $\sigma = 4.575$ S/m; $\epsilon_r = 36.286$; $\rho = 1000$ kg/m³

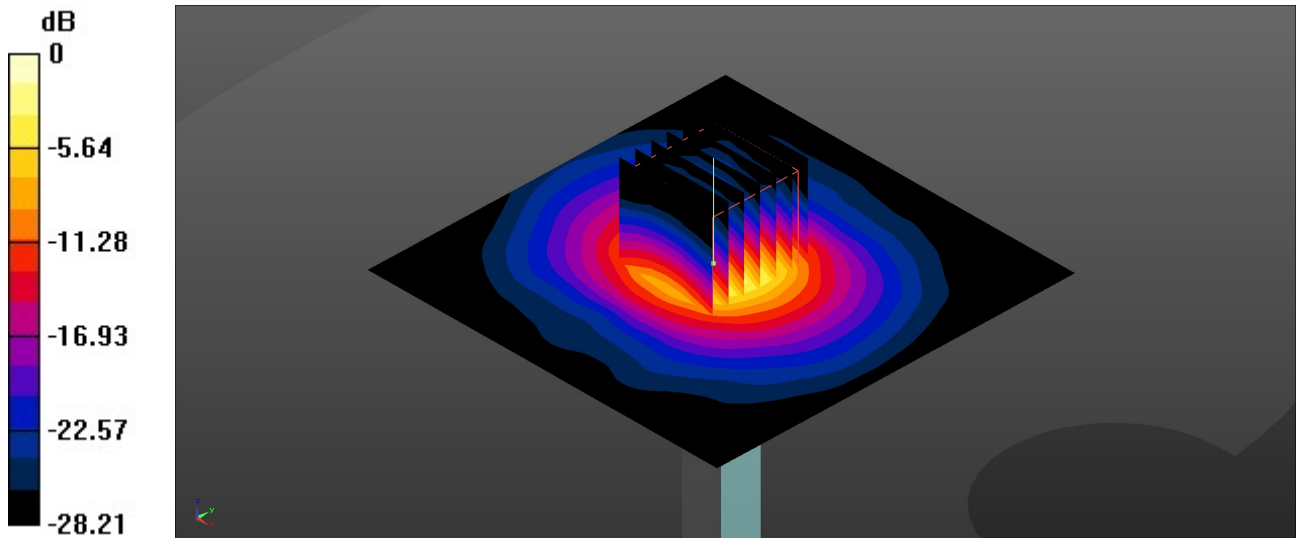
Ambient Temperature : 23.3 °C; Liquid Temperature : 22.8 °C

DASY5 Configuration:

- Probe: EX3DV4 - SN7630; ConvF(5.7, 5.7, 5.7); Calibrated: 2022/3/4
- Sensor-Surface: 1.4mm (Mechanical Surface Detection)
- Electronics: DAE4 Sn1305; Calibrated: 2022/4/27
- Phantom: Twin-SAM 1; Type: SAM Twin; Serial: 2024
- Measurement SW: DASY52, Version 52.10 (4); SEMCAD X Version 14.6.14 (7501)

Pin=50mW/Area Scan (91x91x1): Interpolated grid: dx=1.000 mm, dy=1.000 mm
Maximum value of SAR (interpolated) = 8.11 W/kg

Pin=50mW/Zoom Scan (7x7x7)/Cube 0: Measurement grid: dx=4mm, dy=4mm, dz=1.4mm
Reference Value = 45.52 V/m; Power Drift = 0.06 dB
Peak SAR (extrapolated) = 13.9 W/kg
SAR(1 g) = 3.91 W/kg; SAR(10 g) = 1.11 W/kg
Maximum value of SAR (measured) = 8.73 W/kg



0 dB = 8.73 W/kg = 9.41 dBW/kg

System Check_Head_5600MHz

DUT: D5GHzV2 - SN:1341

Communication System: UID 0, CW (0); Frequency: 5600 MHz; Duty Cycle: 1:1

Medium: HSL_5000 Medium parameters used: $f = 5600$ MHz; $\sigma = 4.952$ S/m; $\epsilon_r = 35.732$; $\rho = 1000$ kg/m³

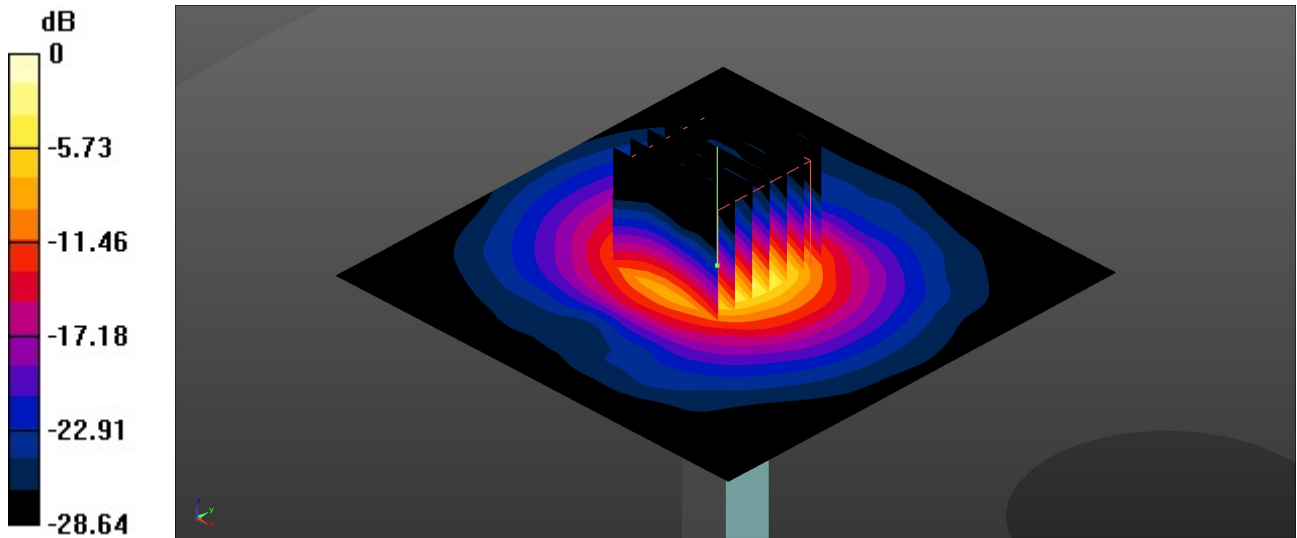
Ambient Temperature : 23.2 °C; Liquid Temperature : 22.6 °C

DASY5 Configuration:

- Probe: EX3DV4 - SN7630; ConvF(4.95, 4.95, 4.95); Calibrated: 2022/3/4
- Sensor-Surface: 1.4mm (Mechanical Surface Detection)
- Electronics: DAE4 Sn1305; Calibrated: 2022/4/27
- Phantom: Twin-SAM 1; Type: SAM Twin; Serial: 2024
- Measurement SW: DASY52, Version 52.10 (4); SEMCAD X Version 14.6.14 (7501)

Pin=50mW/Area Scan (91x91x1): Interpolated grid: dx=1.000 mm, dy=1.000 mm
Maximum value of SAR (interpolated) = 9.18 W/kg

Pin=50mW/Zoom Scan (7x7x7)/Cube 0: Measurement grid: dx=4mm, dy=4mm, dz=1.4mm
Reference Value = 46.25 V/m; Power Drift = 0.07 dB
Peak SAR (extrapolated) = 16.5 W/kg
SAR(1 g) = 3.9 W/kg; SAR(10 g) = 1.18 W/kg
Maximum value of SAR (measured) = 9.77 W/kg



0 dB = 9.77 W/kg = 9.90 dBW/kg

System Check_Head_5750MHz

DUT: D5GHzV2 - SN:1341

Communication System: UID 0, CW (0); Frequency: 5750 MHz;Duty Cycle: 1:1

Medium: HSL_5000 Medium parameters used: $f = 5750$ MHz; $\sigma = 5.134$ S/m; $\epsilon_r = 35.562$; $\rho = 1000$ kg/m³

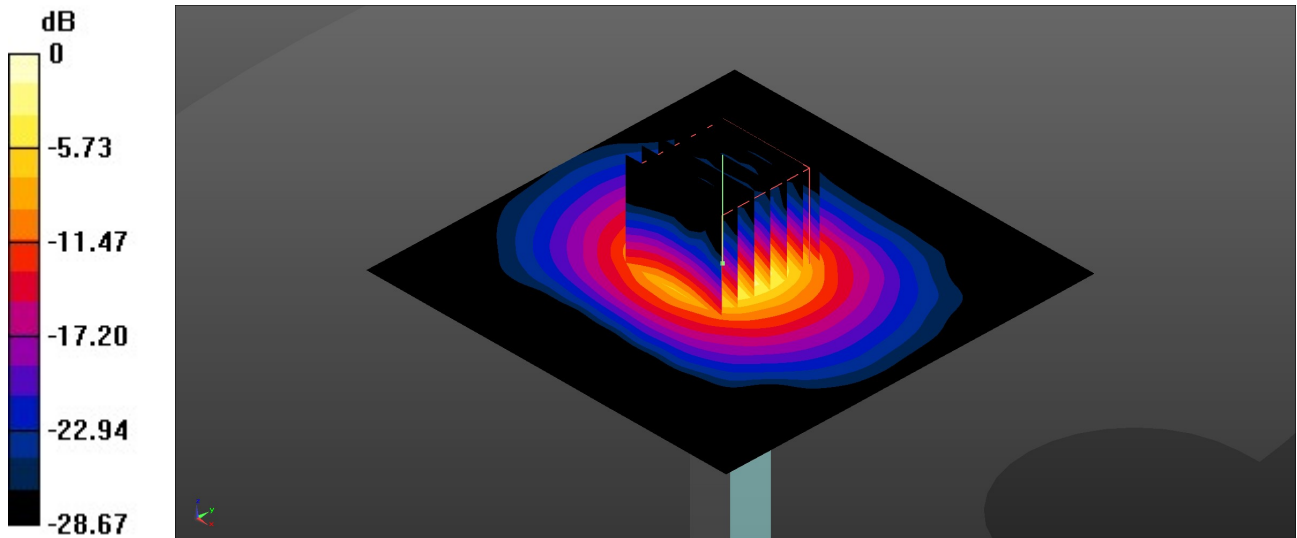
Ambient Temperature : 23.4 °C; Liquid Temperature : 22.9 °C

DASY5 Configuration:

- Probe: EX3DV4 - SN7630; ConvF(5.15, 5.15, 5.15); Calibrated: 2022/3/4
- Sensor-Surface: 1.4mm (Mechanical Surface Detection)
- Electronics: DAE4 Sn1305; Calibrated: 2022/4/27
- Phantom: Twin-SAM 1; Type: SAM Twin; Serial: 2024
- Measurement SW: DASY52, Version 52.10 (4); SEMCAD X Version 14.6.14 (7501)

Pin=50mW/Area Scan (91x91x1): Interpolated grid: dx=1.000 mm, dy=1.000 mm
Maximum value of SAR (interpolated) = 8.39 W/kg

Pin=50mW/Zoom Scan (7x7x7)/Cube 0: Measurement grid: dx=4mm, dy=4mm, dz=1.4mm
Reference Value = 43.59 V/m; Power Drift = 0.09 dB
Peak SAR (extrapolated) = 15.3 W/kg
SAR(1 g) = 3.85 W/kg; SAR(10 g) = 1.15 W/kg
Maximum value of SAR (measured) = 8.88 W/kg



0 dB = 8.88 W/kg = 9.48 dBW/kg

System Check_Head_2600MHz

DUT: D2600V2 - SN:1061

Communication System: UID 0, CW (0); Frequency: 2600 MHz; Duty Cycle: 1:1

Medium: HSL_2600 Medium parameters used: $f = 2600$ MHz; $\sigma = 2.026$ S/m; $\epsilon_r = 40.214$; $\rho = 1000$ kg/m³

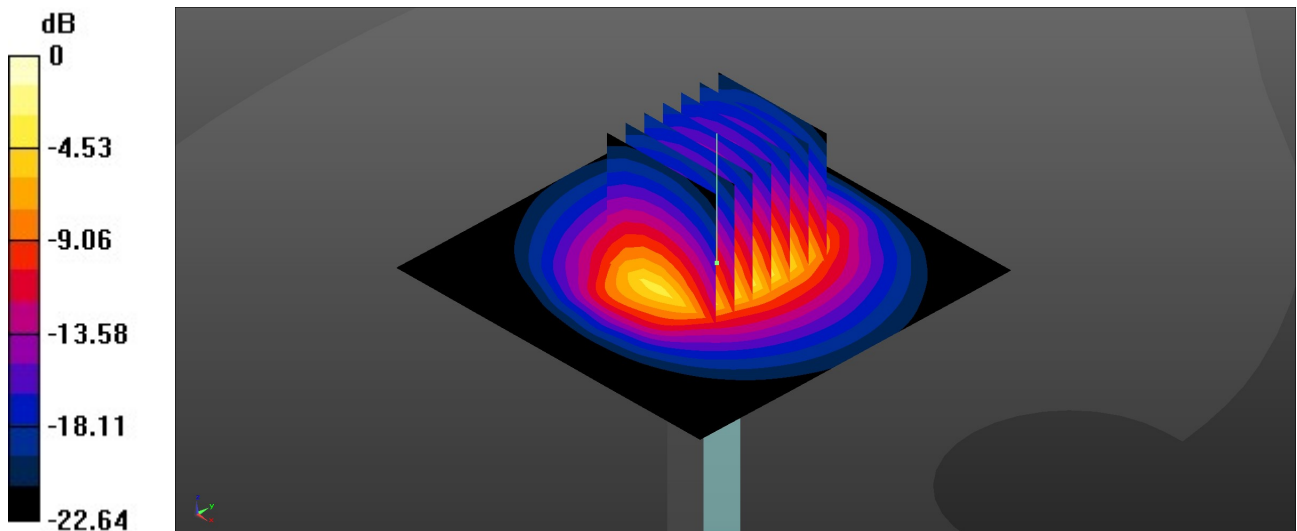
Ambient Temperature : 23.2 °C; Liquid Temperature : 22.6 °C

DASY5 Configuration:

- Probe: EX3DV4 - SN7630; ConvF(7.82, 7.82, 7.82); Calibrated: 2022/3/4
- Sensor-Surface: 1.4mm (Mechanical Surface Detection)
- Electronics: DAE4 Sn1305; Calibrated: 2022/4/27
- Phantom: Twin-SAM 1; Type: SAM Twin; Serial: 2024
- Measurement SW: DASY52, Version 52.10 (4); SEMCAD X Version 14.6.14 (7501)

Pin=50mW/Area Scan (71x71x1): Interpolated grid: dx=1.200 mm, dy=1.200 mm
Maximum value of SAR (interpolated) = 4.41 W/kg

Pin=50mW/Zoom Scan (7x7x7)/Cube 0: Measurement grid: dx=5mm, dy=5mm, dz=5mm
Reference Value = 47.45 V/m; Power Drift = 0.07 dB
Peak SAR (extrapolated) = 5.57 W/kg
SAR(1 g) = 2.64 W/kg; SAR(10 g) = 1.2 W/kg
Maximum value of SAR (measured) = 4.45 W/kg



0 dB = 4.45 W/kg = 6.48 dBW/kg