

92_FR1 n30_10M_QPSK_1RB_1Offset_Back_5mm_Ch462000

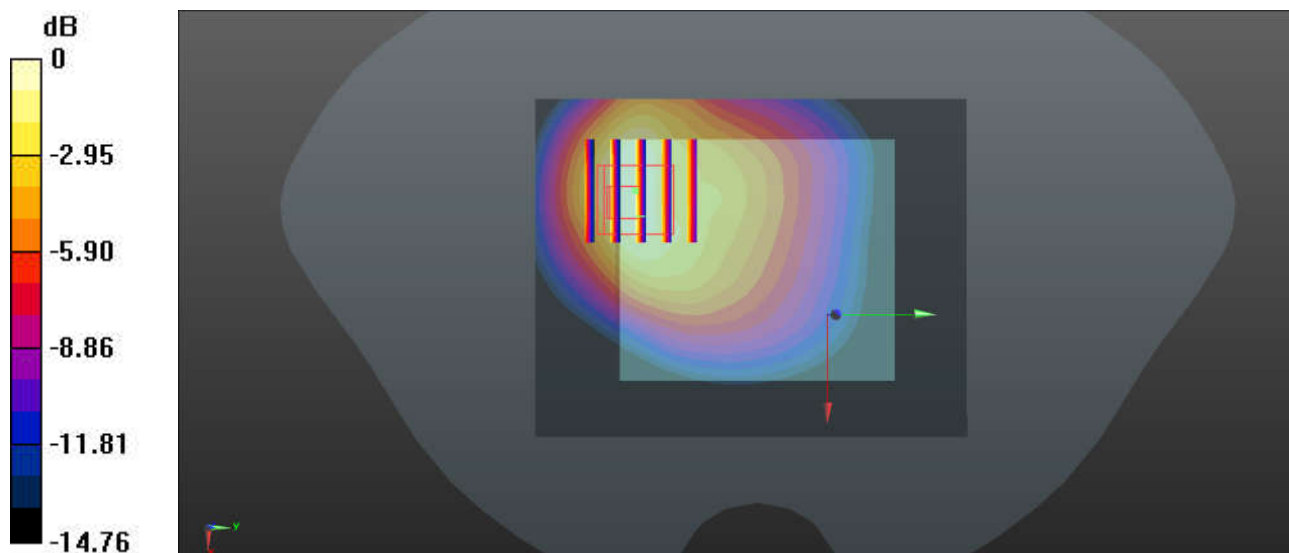
Communication System: UID 0, 5G NR (0); Frequency: 2310 MHz; Duty Cycle: 1:1
Medium: HSL_2300 Medium parameters used: $f = 2310$ MHz; $\sigma = 1.723$ S/m; $\epsilon_r = 38.697$; $\rho = 1000$ kg/m³
Ambient Temperature : 23.3 °C; Liquid Temperature : 22.6 °C

DASY5 Configuration:

- Probe: EX3DV4 - SN3826; ConvF(7.79, 7.79, 7.79); Calibrated: 2022/8/8
- Sensor-Surface: 1.4mm (Mechanical Surface Detection)
- Electronics: DAE4 Sn1303; Calibrated: 2022/11/24
- Phantom: SAM Twin Phantom; Type: SAM Twin; Serial: TP-1842
- Measurement SW: DASY52, Version 52.10 (4); SEMCAD X Version 14.6.14 (7501)

Area Scan (71x91x1): Interpolated grid: dx=1.500 mm, dy=1.500 mm
Maximum value of SAR (interpolated) = 1.23 W/kg

Zoom Scan (5x5x7)/Cube 0: Measurement grid: dx=8mm, dy=8mm, dz=5mm
Reference Value = 2.787 V/m; Power Drift = 0.02 dB
Peak SAR (extrapolated) = 2.01 W/kg
SAR(1 g) = 1 W/kg; SAR(10 g) = 0.557 W/kg
Maximum value of SAR (measured) = 1.24 W/kg



0 dB = 1.24 W/kg = 0.93 dBW/kg

93_LTE Band 7_20M_QPSK_1RB_0Offset_Front_5mm_Ch21100

Communication System: UID 0, LTE-FDD (0); Frequency: 2535 MHz; Duty Cycle: 1:1
Medium: HSL_2600 Medium parameters used: $f = 2535$ MHz; $\sigma = 1.869$ S/m; $\epsilon_r = 38.455$; $\rho = 1000$ kg/m³

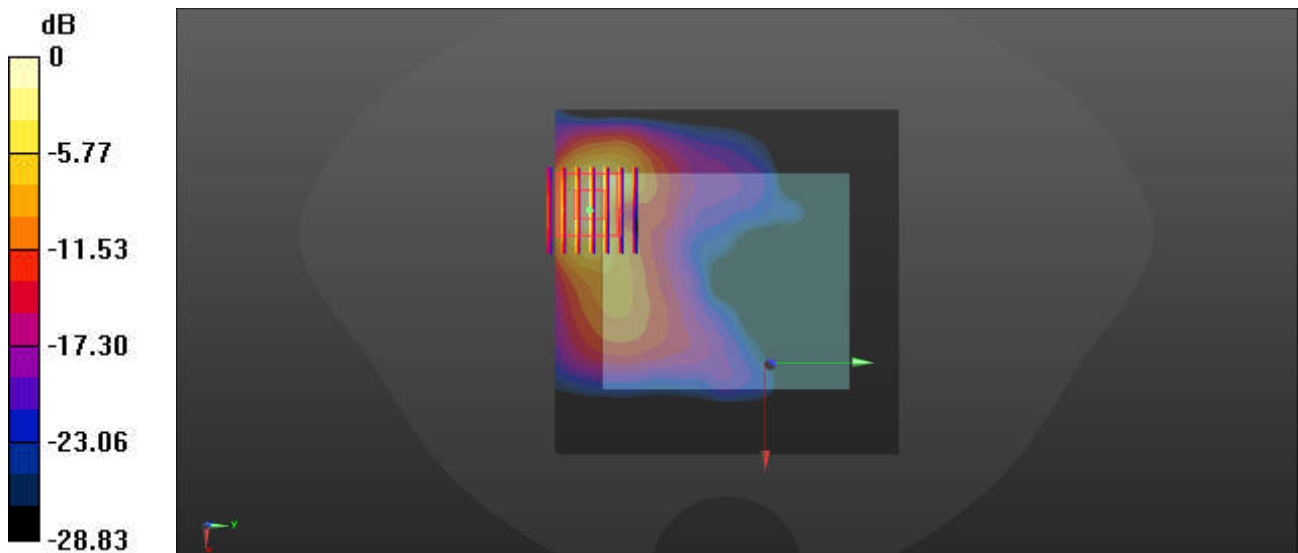
Ambient Temperature : 23.3 °C; Liquid Temperature : 22.8 °C

DASY5 Configuration:

- Probe: EX3DV4 - SN3826; ConvF(7.35, 7.35, 7.35); Calibrated: 2022/8/8
- Sensor-Surface: 1.4mm (Mechanical Surface Detection)
- Electronics: DAE4 Sn1303; Calibrated: 2022/11/24
- Phantom: SAM Twin Phantom; Type: SAM Twin; Serial: TP-1842
- Measurement SW: DASY52, Version 52.10 (4); SEMCAD X Version 14.6.14 (7501)

Area Scan (101x101x1): Interpolated grid: dx=1.200 mm, dy=1.200 mm
Maximum value of SAR (interpolated) = 1.40 W/kg

Zoom Scan (7x7x7)/Cube 0: Measurement grid: dx=5mm, dy=5mm, dz=5mm
Reference Value = 1.800 V/m; Power Drift = 0.04 dB
Peak SAR (extrapolated) = 2.54 W/kg
SAR(1 g) = 1 W/kg; SAR(10 g) = 0.375 W/kg
Maximum value of SAR (measured) = 1.43 W/kg



0 dB = 1.43 W/kg = 1.55 dBW/kg

94_LTE Band 41_20M_QPSK_1RB_0Offset_Back_5mm_Ch41490

Communication System: UID 0, LTE-TDD (0); Frequency: 2680 MHz; Duty Cycle: 1:1.59
Medium: HSL_2600 Medium parameters used: $f = 2680$ MHz; $\sigma = 2.105$ S/m; $\epsilon_r = 40.081$; $\rho = 1000$ kg/m³

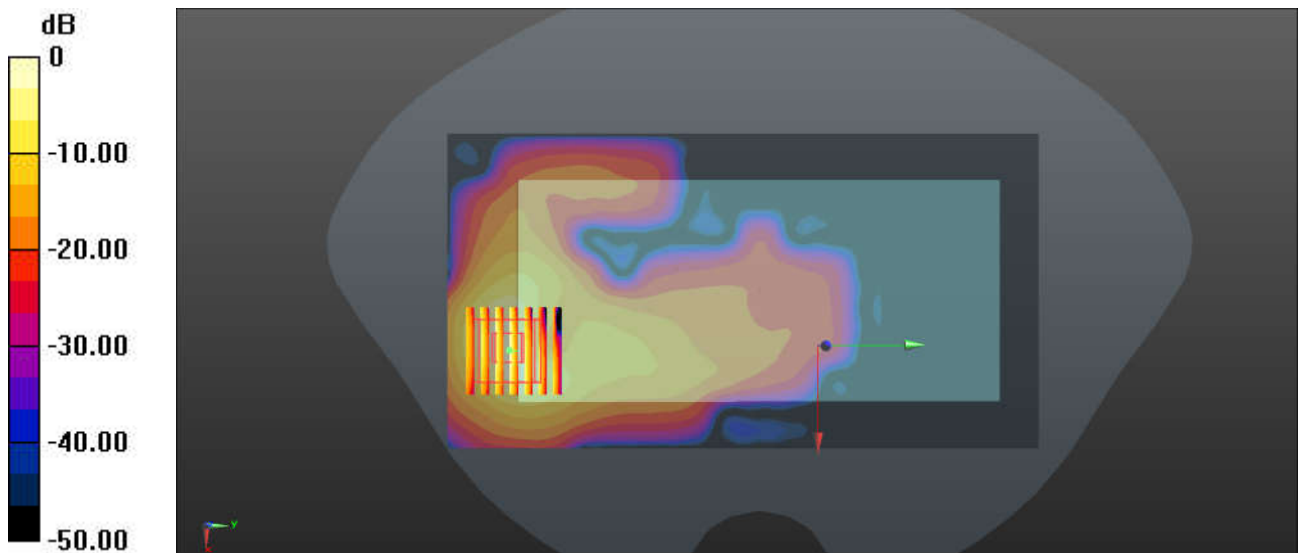
Ambient Temperature : 23.2 °C; Liquid Temperature : 22.6 °C

DASY5 Configuration:

- Probe: EX3DV4 - SN3826; ConvF(7.35, 7.35, 7.35); Calibrated: 2022/8/8
- Sensor-Surface: 1.4mm (Mechanical Surface Detection)
- Electronics: DAE4 Sn1303; Calibrated: 2022/11/24
- Phantom: SAM Twin Phantom; Type: SAM Twin; Serial: TP-1842
- Measurement SW: DASY52, Version 52.10 (4); SEMCAD X Version 14.6.14 (7501)

Area Scan (91x171x1): Interpolated grid: dx=1.200 mm, dy=1.200 mm
Maximum value of SAR (interpolated) = 1.55 W/kg

Zoom Scan (7x7x7)/Cube 0: Measurement grid: dx=5mm, dy=5mm, dz=5mm
Reference Value = 2.939 V/m; Power Drift = -0.04 dB
Peak SAR (extrapolated) = 2.23 W/kg
SAR(1 g) = 0.928 W/kg; SAR(10 g) = 0.343 W/kg
Maximum value of SAR (measured) = 1.72 W/kg



0 dB = 1.72 W/kg = 2.36 dBW/kg

95_FR1 n7_40M_QPSK_108RB_54Offset_Back_5mm_Ch507000

Communication System: UID 0, 5G NR (0); Frequency: 2535 MHz; Duty Cycle: 1:1
Medium: HSL_2600 Medium parameters used: $f = 2535$ MHz; $\sigma = 1.954$ S/m; $\epsilon_r = 40.37$; $\rho = 1000$ kg/m³

Ambient Temperature : 23.2 °C; Liquid Temperature : 22.6 °C

DASY5 Configuration:

- Probe: EX3DV4 - SN3826; ConvF(7.35, 7.35, 7.35); Calibrated: 2022/8/8
- Sensor-Surface: 1.4mm (Mechanical Surface Detection)
- Electronics: DAE4 Sn1303; Calibrated: 2022/11/24
- Phantom: SAM Twin Phantom; Type: SAM Twin; Serial: TP-1842
- Measurement SW: DASY52, Version 52.10 (4); SEMCAD X Version 14.6.14 (7501)

Area Scan (91x171x1): Interpolated grid: dx=1.200 mm, dy=1.200 mm

Maximum value of SAR (interpolated) = 1.65 W/kg

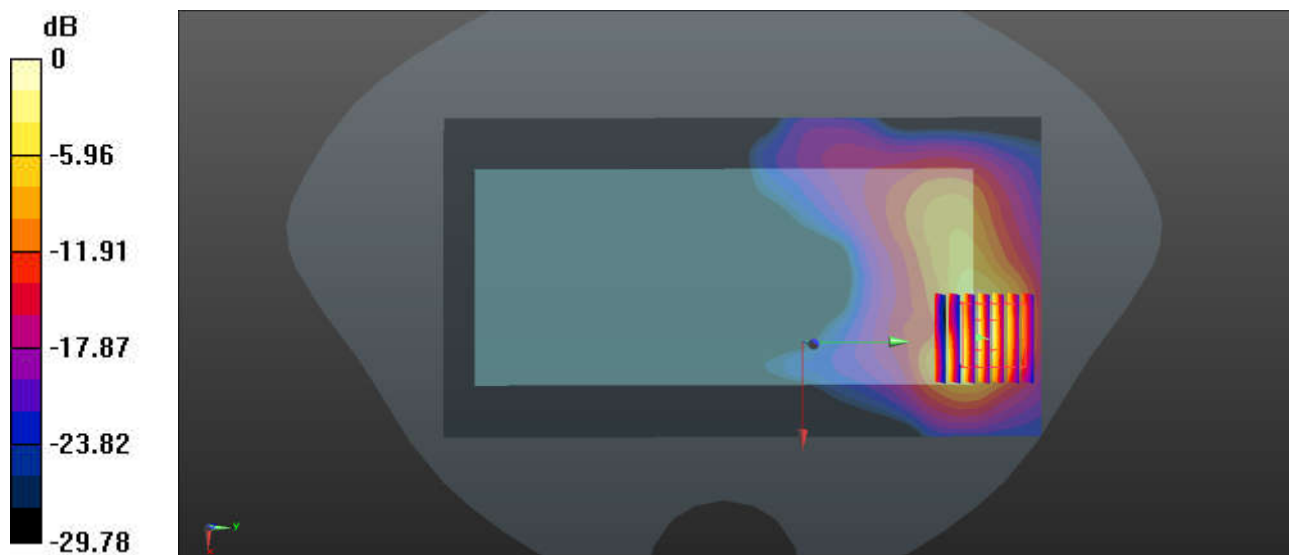
Zoom Scan (7x7x7)/Cube 0: Measurement grid: dx=5mm, dy=5mm, dz=5mm

Reference Value = 0.1500 V/m; Power Drift = 0.01 dB

Peak SAR (extrapolated) = 2.47 W/kg

SAR(1 g) = 0.998 W/kg; SAR(10 g) = 0.383 W/kg

Maximum value of SAR (measured) = 1.86 W/kg



0 dB = 1.86 W/kg = 2.70 dBW/kg

96_FR1 n41_100M_QPSK_1RB_1Offset_Back_5mm_Ch518598

Communication System: UID 0, 5G NR (0); Frequency: 2592.99 MHz; Duty Cycle: 1:1
Medium: HSL_2600 Medium parameters used: $f = 2593$ MHz; $\sigma = 1.917$ S/m; $\epsilon_r = 38.231$; $\rho = 1000$ kg/m³

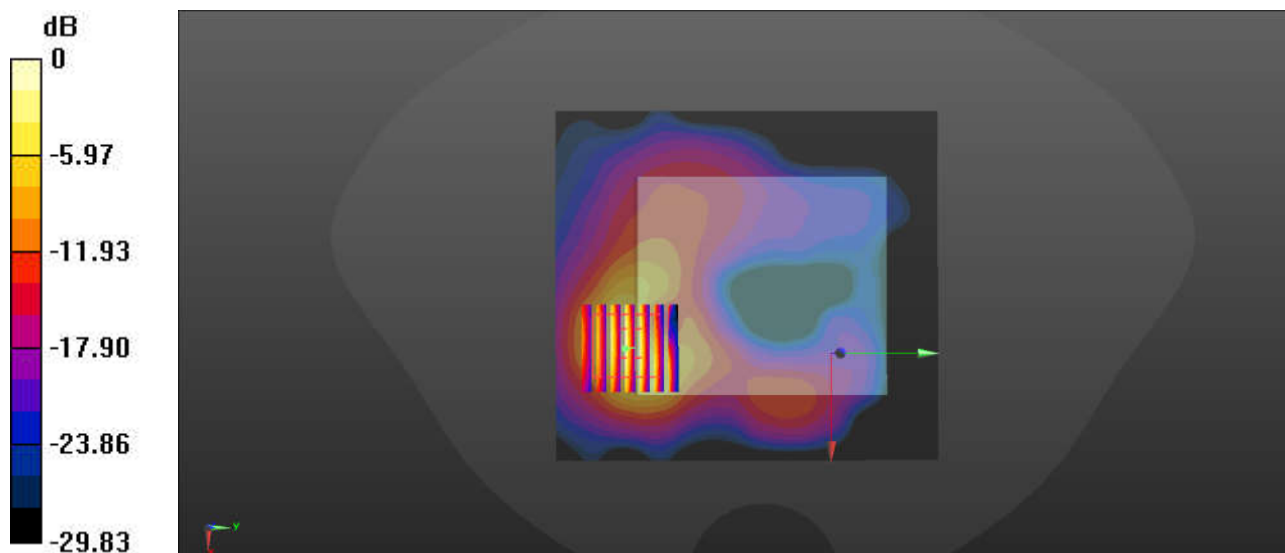
Ambient Temperature : 23.3 °C; Liquid Temperature : 22.8 °C

DASY5 Configuration:

- Probe: EX3DV4 - SN3826; ConvF(7.35, 7.35, 7.35); Calibrated: 2022/8/8
- Sensor-Surface: 1.4mm (Mechanical Surface Detection)
- Electronics: DAE4 Sn1303; Calibrated: 2022/11/24
- Phantom: SAM Twin Phantom; Type: SAM Twin; Serial: TP-1842
- Measurement SW: DASY52, Version 52.10 (4); SEMCAD X Version 14.6.14 (7501)

Area Scan (101x111x1): Interpolated grid: dx=1.200 mm, dy=1.200 mm
Maximum value of SAR (interpolated) = 1.45 W/kg

Zoom Scan (7x7x7)/Cube 0: Measurement grid: dx=5mm, dy=5mm, dz=5mm
Reference Value = 1.064 V/m; Power Drift = 0.02 dB
Peak SAR (extrapolated) = 2.63 W/kg
SAR(1 g) = 0.989 W/kg; SAR(10 g) = 0.381 W/kg
Maximum value of SAR (measured) = 1.46 W/kg



0 dB = 1.46 W/kg = 1.64 dBW/kg

97_LTE Band 48_20M_QPSK_1RB_0Offset_Front_5mm_Ch56640

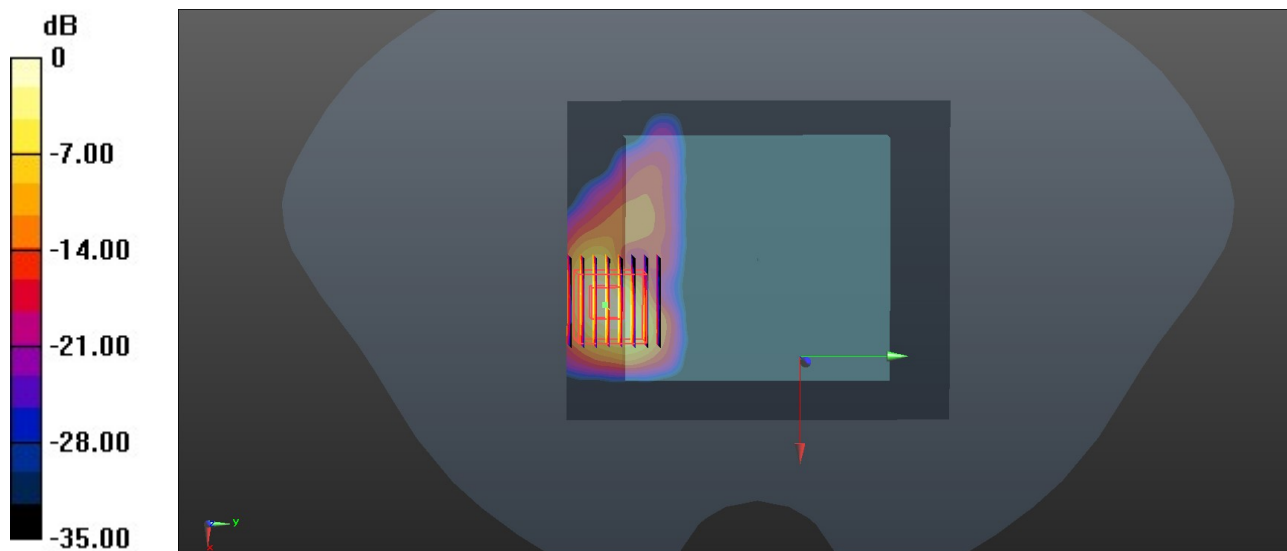
Communication System: UID 0, LTE-TDD (0); Frequency: 3690 MHz; Duty Cycle: 1:1.59
Medium: HSL_3700 Medium parameters used: $f = 3690$ MHz; $\sigma = 2.967$ S/m; $\epsilon_r = 38.818$; $\rho = 1000$ kg/m³
Ambient Temperature : 23.1 °C; Liquid Temperature : 22.6 °C

DASY5 Configuration:

- Probe: EX3DV4 - SN3826; ConvF(6.98, 6.98, 6.98); Calibrated: 2022/8/8
- Sensor-Surface: 1.4mm (Mechanical Surface Detection)
- Electronics: DAE4 Sn1303; Calibrated: 2022/11/24
- Phantom: SAM Twin Phantom; Type: SAM Twin; Serial: TP-1842
- Measurement SW: DASY52, Version 52.10 (4); SEMCAD X Version 14.6.14 (7501)

Area Scan (101x121x1): Interpolated grid: dx=1.000 mm, dy=1.000 mm
Maximum value of SAR (interpolated) = 2.04 W/kg

Zoom Scan (8x8x7)/Cube 0: Measurement grid: dx=4mm, dy=4mm, dz=1.4mm
Reference Value = 0.9090 V/m; Power Drift = 0.03 dB
Peak SAR (extrapolated) = 2.82 W/kg
SAR(1 g) = 0.922 W/kg; SAR(10 g) = 0.287 W/kg
Maximum value of SAR (measured) = 1.99 W/kg



0 dB = 1.99 W/kg = 2.98 dBW/kg

98_FR1 n48_40M_QPSK_1RB_1Offset_Front_5mm_Ch641666

Communication System: UID 0, 5G NR (0); Frequency: 3624.99 MHz; Duty Cycle: 1:1
Medium: HSL_3700 Medium parameters used: $f = 3625$ MHz; $\sigma = 2.952$ S/m; $\epsilon_r = 38.833$; $\rho = 1000$ kg/m³

Ambient Temperature : 23.1 °C; Liquid Temperature : 22.6 °C

DASY5 Configuration:

- Probe: EX3DV4 - SN3826; ConvF(6.98, 6.98, 6.98); Calibrated: 2022/8/8
- Sensor-Surface: 1.4mm (Mechanical Surface Detection)
- Electronics: DAE4 Sn1303; Calibrated: 2022/11/24
- Phantom: SAM Twin Phantom; Type: SAM Twin; Serial: TP-1842
- Measurement SW: DASY52, Version 52.10 (4); SEMCAD X Version 14.6.14 (7501)

Area Scan (111x121x1): Interpolated grid: dx=1.000 mm, dy=1.000 mm

Maximum value of SAR (interpolated) = 1.82 W/kg

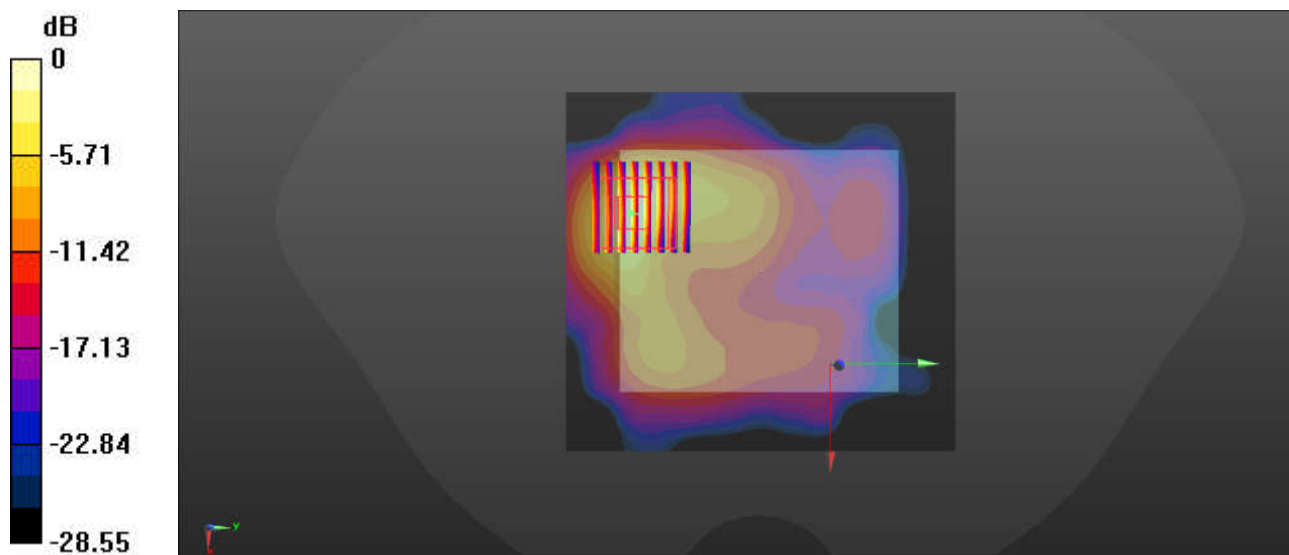
Zoom Scan (8x8x7)/Cube 0: Measurement grid: dx=4mm, dy=4mm, dz=1.4mm

Reference Value = 24.90 V/m; Power Drift = -0.03 dB

Peak SAR (extrapolated) = 2.64 W/kg

SAR(1 g) = 0.956 W/kg; SAR(10 g) = 0.351 W/kg

Maximum value of SAR (measured) = 1.90 W/kg



0 dB = 1.90 W/kg = 2.79 dBW/kg

99_FR1 n77_Part270_100M_QPSK_1RB_1Offset_Back_5mm_Ch656000

Communication System: UID 0, 5G NR (0); Frequency: 3840 MHz; Duty Cycle: 1:1
Medium: HSL_3900 Medium parameters used: $f = 3840$ MHz; $\sigma = 3.109$ S/m; $\epsilon_r = 38.144$; $\rho = 1000$ kg/m³

Ambient Temperature : 23.2 °C; Liquid Temperature : 22.8 °C

DASY5 Configuration:

- Probe: EX3DV4 - SN3826; ConvF(6.42, 6.42, 6.42); Calibrated: 2022/8/8
- Sensor-Surface: 1.4mm (Mechanical Surface Detection)
- Electronics: DAE4 Sn1303; Calibrated: 2022/11/24
- Phantom: SAM Twin Phantom; Type: SAM Twin; Serial: TP-1842
- Measurement SW: DASY52, Version 52.10 (4); SEMCAD X Version 14.6.14 (7501)

Area Scan (101x201x1): Interpolated grid: dx=1.000 mm, dy=1.000 mm

Maximum value of SAR (interpolated) = 1.92 W/kg

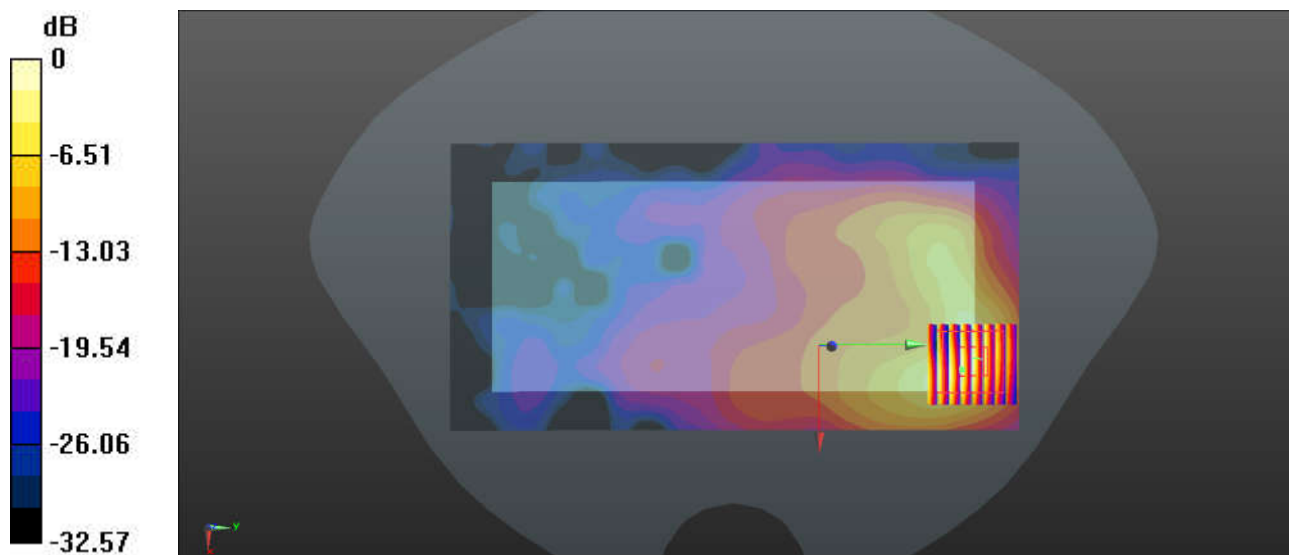
Zoom Scan (8x8x7)/Cube 0: Measurement grid: dx=4mm, dy=4mm, dz=1.4mm

Reference Value = 2.787 V/m; Power Drift = 0.01 dB

Peak SAR (extrapolated) = 2.78 W/kg

SAR(1 g) = 0.974 W/kg; SAR(10 g) = 0.342 W/kg

Maximum value of SAR (measured) = 2.05 W/kg



0 dB = 2.05 W/kg = 3.12 dBW/kg

100_WLAN2.4GHz_802.11b 1Mbps_Front_5mm_Ch11

Communication System: UID 0, WLAN2.4GHz (0); Frequency: 2462 MHz; Duty Cycle: 1:1
Medium: HSL_2450 Medium parameters used: $f = 2462$ MHz; $\sigma = 1.869$ S/m; $\epsilon_r = 39.133$; $\rho = 1000$ kg/m³
Ambient Temperature : 23.2 °C; Liquid Temperature : 22.5 °C

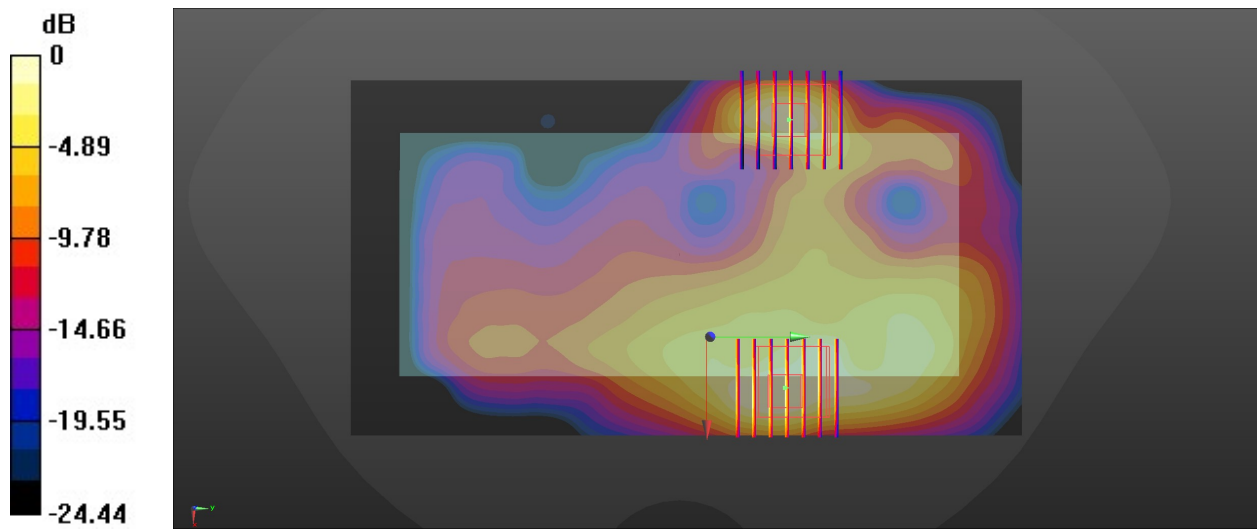
DASY5 Configuration:

- Probe: EX3DV4 - SN3826; ConvF(7.57, 7.57, 7.57); Calibrated: 2022/8/8
- Sensor-Surface: 1.4mm (Mechanical Surface Detection)
- Electronics: DAE4 Sn1303; Calibrated: 2022/11/24
- Phantom: SAM Twin Phantom; Type: SAM Twin; Serial: TP-1842
- Measurement SW: DASY52, Version 52.10 (4); SEMCAD X Version 14.6.14 (7501)

Area Scan (91x171x1): Interpolated grid: dx=1.200 mm, dy=1.200 mm
Maximum value of SAR (interpolated) = 1.81 W/kg

Zoom Scan (7x7x7)/Cube 0: Measurement grid: dx=5mm, dy=5mm, dz=5mm
Reference Value = 24.07 V/m; Power Drift = -0.16 dB
Peak SAR (extrapolated) = 2.16 W/kg
SAR(1 g) = 1.02 W/kg; SAR(10 g) = 0.477 W/kg
Maximum value of SAR (measured) = 1.72 W/kg

Zoom Scan (7x7x7)/Cube 1: Measurement grid: dx=5mm, dy=5mm, dz=5mm
Reference Value = 24.07 V/m; Power Drift = -0.16 dB
Peak SAR (extrapolated) = 1.75 W/kg
SAR(1 g) = 0.700 W/kg; SAR(10 g) = 0.273 W/kg
Maximum value of SAR (measured) = 1.25 W/kg



0 dB = 1.25 W/kg = 0.97 dBW/kg

101_Bluetooth_1Mbps_Front_5mm_Ch39

Communication System: UID 0, Bluetooth (0); Frequency: 2441 MHz; Duty Cycle: 1:1.298
Medium: HSL_2450 Medium parameters used: $f = 2441$ MHz; $\sigma = 1.842$ S/m; $\epsilon_r = 39.091$; $\rho = 1000$ kg/m³

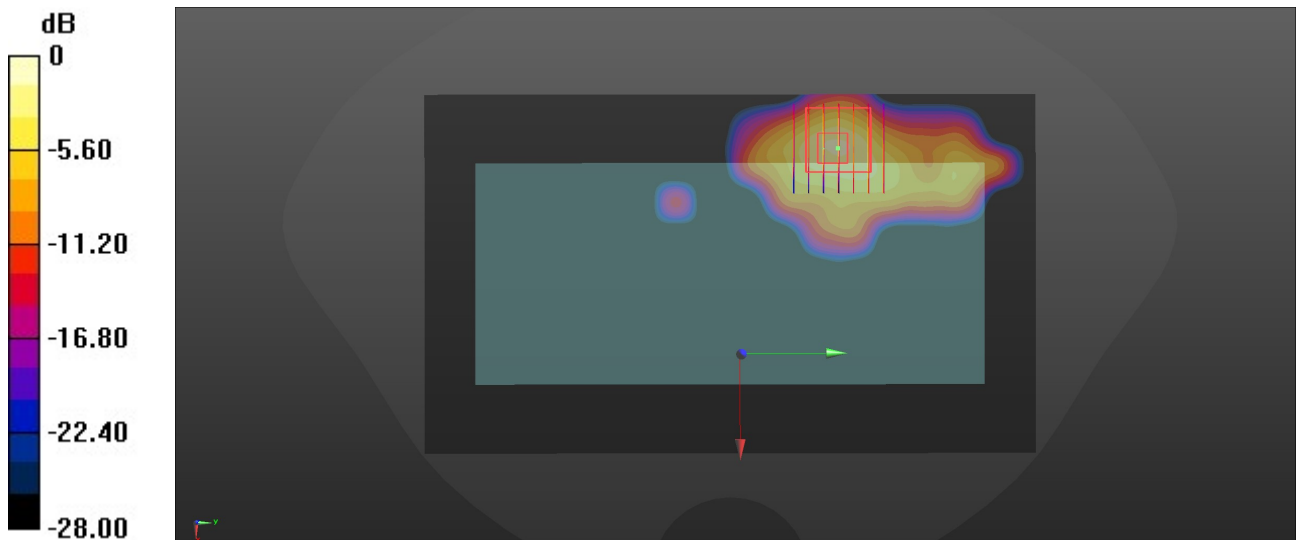
Ambient Temperature : 23.2 °C; Liquid Temperature : 22.5 °C

DASY5 Configuration:

- Probe: EX3DV4 - SN3826; ConvF(7.57, 7.57, 7.57); Calibrated: 2022/8/8
- Sensor-Surface: 1.4mm (Mechanical Surface Detection)
- Electronics: DAE4 Sn1303; Calibrated: 2022/11/24
- Phantom: SAM Twin Phantom; Type: SAM Twin; Serial: TP-1842
- Measurement SW: DASY52, Version 52.10 (4); SEMCAD X Version 14.6.14 (7501)

Area Scan (101x171x1): Interpolated grid: dx=1.200 mm, dy=1.200 mm
Maximum value of SAR (interpolated) = 0.0946 W/kg

Zoom Scan (7x7x7)/Cube 0: Measurement grid: dx=5mm, dy=5mm, dz=5mm
Reference Value = 6.582 V/m; Power Drift = 0.07 dB
Peak SAR (extrapolated) = 0.206 W/kg
SAR(1 g) = 0.076 W/kg; SAR(10 g) = 0.029 W/kg
Maximum value of SAR (measured) = 0.136 W/kg



0 dB = 0.136 W/kg = -8.66 dBW/kg

102_WLAN5GHz_802.11a 6Mbps_Front_5mm_Ch56

Communication System: UID 0, WLAN5GHz (0); Frequency: 5280 MHz; Duty Cycle: 1:1.007
Medium: HSL_5000 Medium parameters used: $f = 5280$ MHz; $\sigma = 4.591$ S/m; $\epsilon_r = 34.97$; $\rho = 1000$ kg/m³

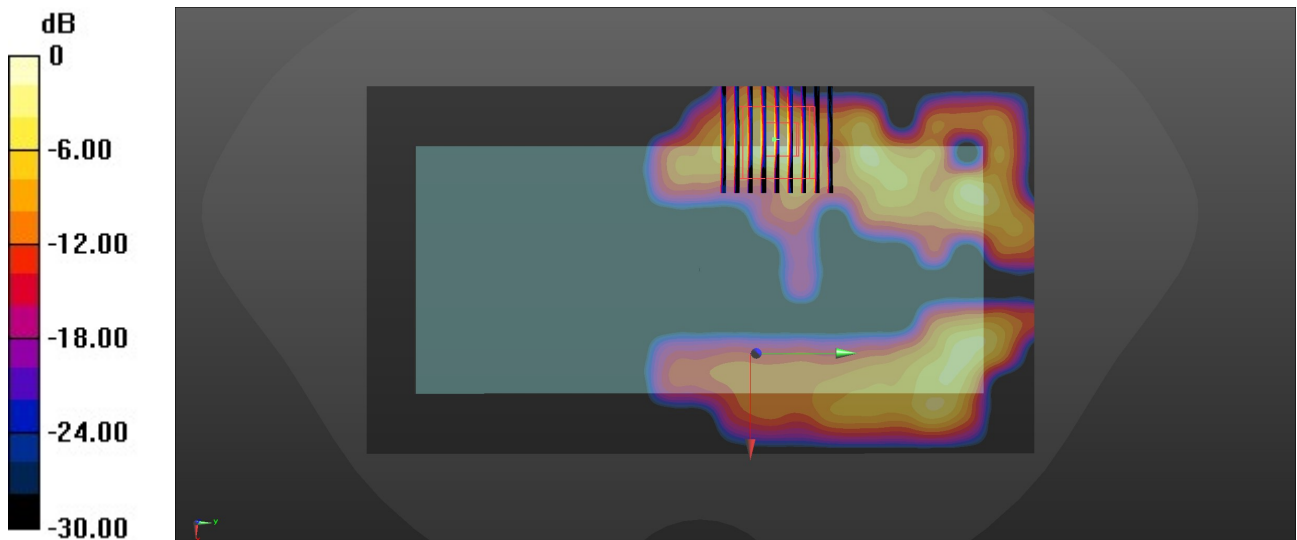
Ambient Temperature : 23.3 °C; Liquid Temperature : 22.6 °C

DASY5 Configuration:

- Probe: EX3DV4 - SN3826; ConvF(5.1, 5.1, 5.1); Calibrated: 2022/8/8
- Sensor-Surface: 1.4mm (Mechanical Surface Detection)
- Electronics: DAE4 Sn1303; Calibrated: 2022/11/24
- Phantom: SAM Twin Phantom; Type: SAM Twin; Serial: TP-1842
- Measurement SW: DASY52, Version 52.10 (4); SEMCAD X Version 14.6.14 (7501)

Area Scan (111x201x1): Interpolated grid: dx=1.000 mm, dy=1.000 mm
Maximum value of SAR (interpolated) = 1.02 W/kg

Zoom Scan (9x9x7)/Cube 0: Measurement grid: dx=4mm, dy=4mm, dz=1.4mm
Reference Value = 13.82 V/m; Power Drift = 0.01 dB
Peak SAR (extrapolated) = 2.52 W/kg
SAR(1 g) = 0.559 W/kg; SAR(10 g) = 0.133 W/kg
Maximum value of SAR (measured) = 1.38 W/kg



0 dB = 1.38 W/kg = 1.40 dBW/kg

103_WLAN5GHz_802.11a 6Mbps_Front_5mm_Ch140

Communication System: UID 0, WLAN5GHz (0); Frequency: 5700 MHz; Duty Cycle: 1:1.007
Medium: HSL_5000 Medium parameters used: $f = 5700$ MHz; $\sigma = 5.06$ S/m; $\epsilon_r = 34.209$; $\rho = 1000$ kg/m³

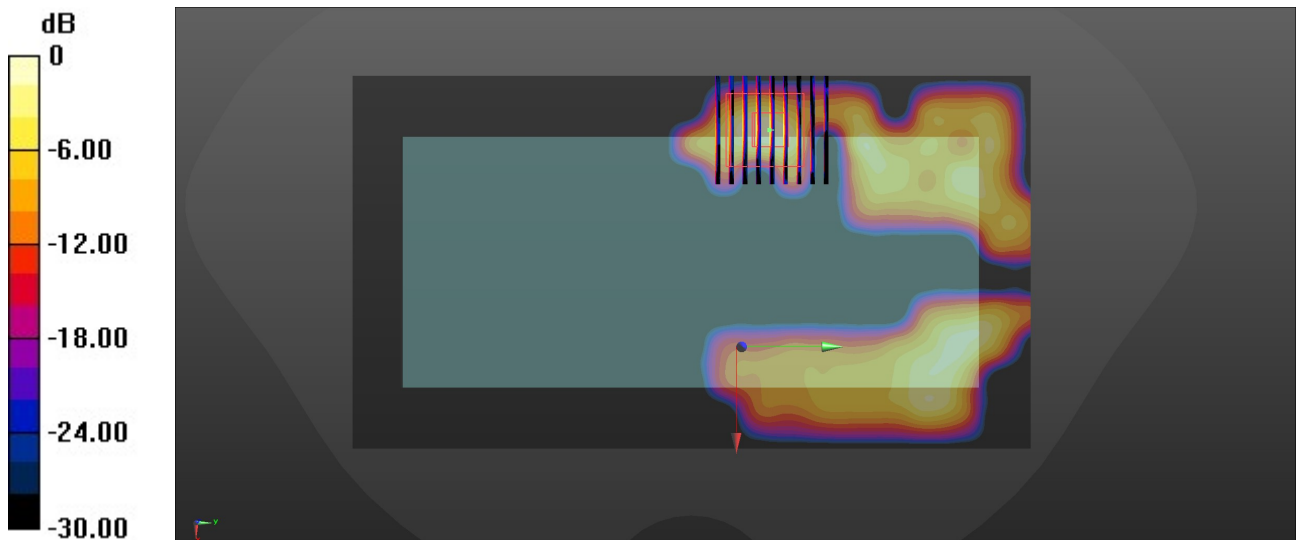
Ambient Temperature : 23.2 °C; Liquid Temperature : 22.8 °C

DASY5 Configuration:

- Probe: EX3DV4 - SN3826; ConvF(4.54, 4.54, 4.54); Calibrated: 2022/8/8
- Sensor-Surface: 1.4mm (Mechanical Surface Detection)
- Electronics: DAE4 Sn1303; Calibrated: 2022/11/24
- Phantom: SAM Twin Phantom; Type: SAM Twin; Serial: TP-1842
- Measurement SW: DASY52, Version 52.10 (4); SEMCAD X Version 14.6.14 (7501)

Area Scan (111x201x1): Interpolated grid: dx=1.000 mm, dy=1.000 mm
Maximum value of SAR (interpolated) = 1.24 W/kg

Zoom Scan (9x9x7)/Cube 0: Measurement grid: dx=4mm, dy=4mm, dz=1.4mm
Reference Value = 13.35 V/m; Power Drift = -0.12 dB
Peak SAR (extrapolated) = 1.71 W/kg
SAR(1 g) = 0.418 W/kg; SAR(10 g) = 0.095 W/kg
Maximum value of SAR (measured) = 1.16 W/kg



0 dB = 1.16 W/kg = 0.64 dBW/kg

104_WLAN5GHz_802.11a 6Mbps_Front_5mm_Ch157

Communication System: UID 0, WLAN5GHz (0); Frequency: 5785 MHz; Duty Cycle: 1:1.007
Medium: HSL_5000 Medium parameters used: $f = 5785$ MHz; $\sigma = 5.158$ S/m; $\epsilon_r = 34.077$; $\rho = 1000$ kg/m³

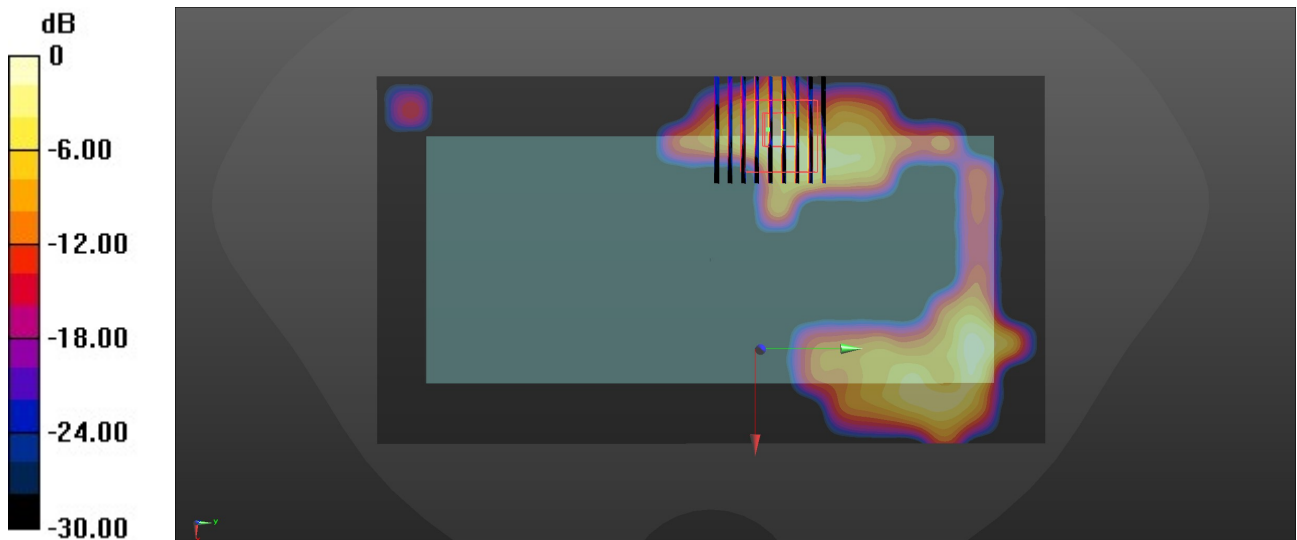
Ambient Temperature : 23.4 °C; Liquid Temperature : 22.9 °C

DASY5 Configuration:

- Probe: EX3DV4 - SN3826; ConvF(4.45, 4.45, 4.45); Calibrated: 2022/8/8
- Sensor-Surface: 1.4mm (Mechanical Surface Detection)
- Electronics: DAE4 Sn1303; Calibrated: 2022/11/24
- Phantom: SAM Twin Phantom; Type: SAM Twin; Serial: TP-1842
- Measurement SW: DASY52, Version 52.10 (4); SEMCAD X Version 14.6.14 (7501)

Area Scan (111x201x1): Interpolated grid: dx=1.000 mm, dy=1.000 mm
Maximum value of SAR (interpolated) = 0.904 W/kg

Zoom Scan (9x9x7)/Cube 0: Measurement grid: dx=4mm, dy=4mm, dz=1.4mm
Reference Value = 8.454 V/m; Power Drift = -0.07 dB
Peak SAR (extrapolated) = 1.56 W/kg
SAR(1 g) = 0.334 W/kg; SAR(10 g) = 0.076 W/kg
Maximum value of SAR (measured) = 0.984 W/kg



105_WCDMA_IV_RMC_12.2Kbps_Back_0mm_Ch1413

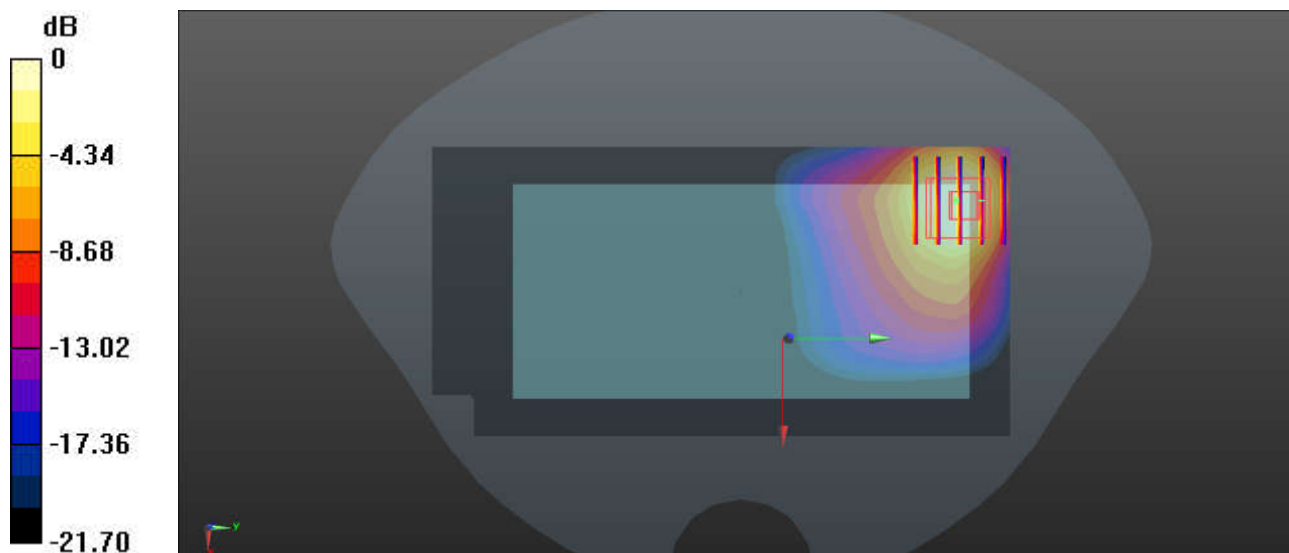
Communication System: UID 0, WCDMA (0); Frequency: 1732.6 MHz; Duty Cycle: 1:1
Medium: HSL_1750 Medium parameters used: $f = 1732.6$ MHz; $\sigma = 1.301$ S/m; $\epsilon_r = 40.299$; $\rho = 1000$ kg/m³
Ambient Temperature : 23.1 °C; Liquid Temperature : 22.6 °C

DASY5 Configuration:

- Probe: EX3DV4 - SN3826; ConvF(8.56, 8.56, 8.56); Calibrated: 2022/8/8
- Sensor-Surface: 1.4mm (Mechanical Surface Detection)
- Electronics: DAE4 Sn1303; Calibrated: 2022/11/24
- Phantom: SAM Twin Phantom; Type: SAM Twin; Serial: TP-1842
- Measurement SW: DASY52, Version 52.10 (4); SEMCAD X Version 14.6.14 (7501)

Area Scan (71x141x1): Interpolated grid: dx=1.500 mm, dy=1.500 mm
Maximum value of SAR (interpolated) = 9.16 W/kg

Zoom Scan (5x5x7)/Cube 0: Measurement grid: dx=8mm, dy=8mm, dz=5mm
Reference Value = 3.930 V/m; Power Drift = 0.07 dB
Peak SAR (extrapolated) = 9.75 W/kg
SAR(1 g) = 4.12 W/kg; SAR(10 g) = 2.13 W/kg
Maximum value of SAR (measured) = 6.65 W/kg



0 dB = 6.65 W/kg = 8.23 dBW/kg

106_LTE Band 66_20M_QPSK_1RB_0Offset_Top Side_0mm_Ch132072

Communication System: UID 0, LTE-FDD (0); Frequency: 1720 MHz; Duty Cycle: 1:1
Medium: HSL_1750 Medium parameters used: $f = 1720$ MHz; $\sigma = 1.294$ S/m; $\epsilon_r = 40.387$; $\rho = 1000$ kg/m³

Ambient Temperature : 23.1 °C; Liquid Temperature : 22.6 °C

DASY5 Configuration:

- Probe: EX3DV4 - SN3826; ConvF(8.56, 8.56, 8.56); Calibrated: 2022/8/8
- Sensor-Surface: 1.4mm (Mechanical Surface Detection)
- Electronics: DAE4 Sn1303; Calibrated: 2022/11/24
- Phantom: SAM Twin Phantom; Type: SAM Twin; Serial: TP-1842
- Measurement SW: DASY52, Version 52.10 (4); SEMCAD X Version 14.6.14 (7501)

Area Scan (41x81x1): Interpolated grid: dx=1.500 mm, dy=1.500 mm

Maximum value of SAR (interpolated) = 10.91 W/kg

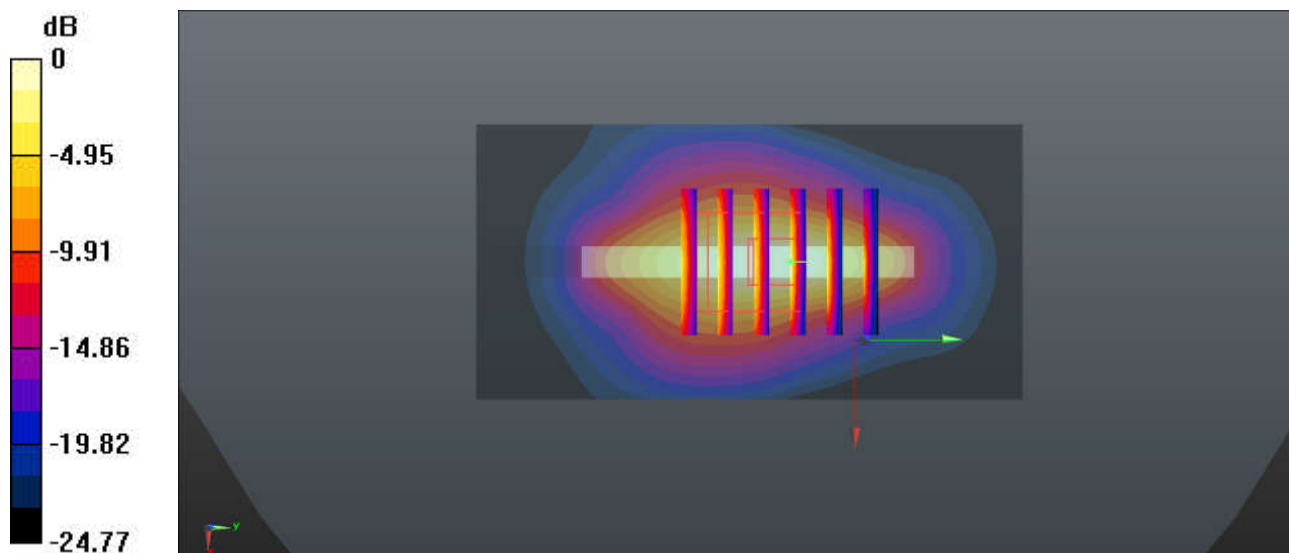
Zoom Scan (5x6x7)/Cube 0: Measurement grid: dx=8mm, dy=8mm, dz=5mm

Reference Value = 86.36 V/m; Power Drift = -0.05 dB

Peak SAR (extrapolated) = 15.93 W/kg

SAR(1 g) = 5.03 W/kg; SAR(10 g) = 2.21 W/kg

Maximum value of SAR (measured) = 11.67 W/kg



0 dB = 11.67 W/kg = 10.67 dBW/kg

107_FR1 n66_40M_QPSK_216RB_0Offset_Back_0mm_Ch349000

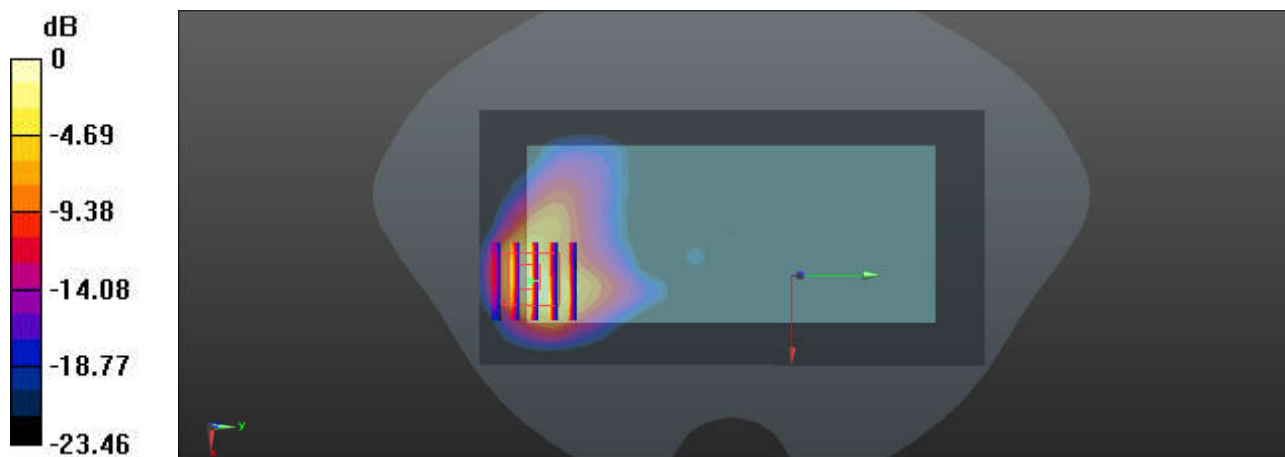
Communication System: UID 0, 5G NR (0); Frequency: 1745 MHz; Duty Cycle: 1:1
Medium: HSL_1750 Medium parameters used: $f = 1745$ MHz; $\sigma = 1.311$ S/m; $\epsilon_r = 40.238$; $\rho = 1000$ kg/m³
Ambient Temperature : 23.1 °C; Liquid Temperature : 22.6 °C

DASY5 Configuration:

- Probe: EX3DV4 - SN3826; ConvF(8.56, 8.56, 8.56); Calibrated: 2022/8/8
- Sensor-Surface: 1.4mm (Mechanical Surface Detection)
- Electronics: DAE4 Sn1303; Calibrated: 2022/11/24
- Phantom: SAM Twin Phantom; Type: SAM Twin; Serial: TP-1842
- Measurement SW: DASY52, Version 52.10 (4); SEMCAD X Version 14.6.14 (7501)

Area Scan (71x141x1): Interpolated grid: dx=1.500 mm, dy=1.500 mm
Maximum value of SAR (interpolated) = 8.87 W/kg

Zoom Scan (5x5x7)/Cube 0: Measurement grid: dx=8mm, dy=8mm, dz=5mm
Reference Value = 0.8630 V/m; Power Drift = -0.09 dB
Peak SAR (extrapolated) = 13.0 W/kg
SAR(1 g) = 4.96 W/kg; SAR(10 g) = 2.05 W/kg
Maximum value of SAR (measured) = 10.12 W/kg



0 dB = 10.12 W/kg = 10.05 dBW/kg

108_FR1 n70_15M_QPSK_36RB_22Offset_Top Side_0mm_Ch340500

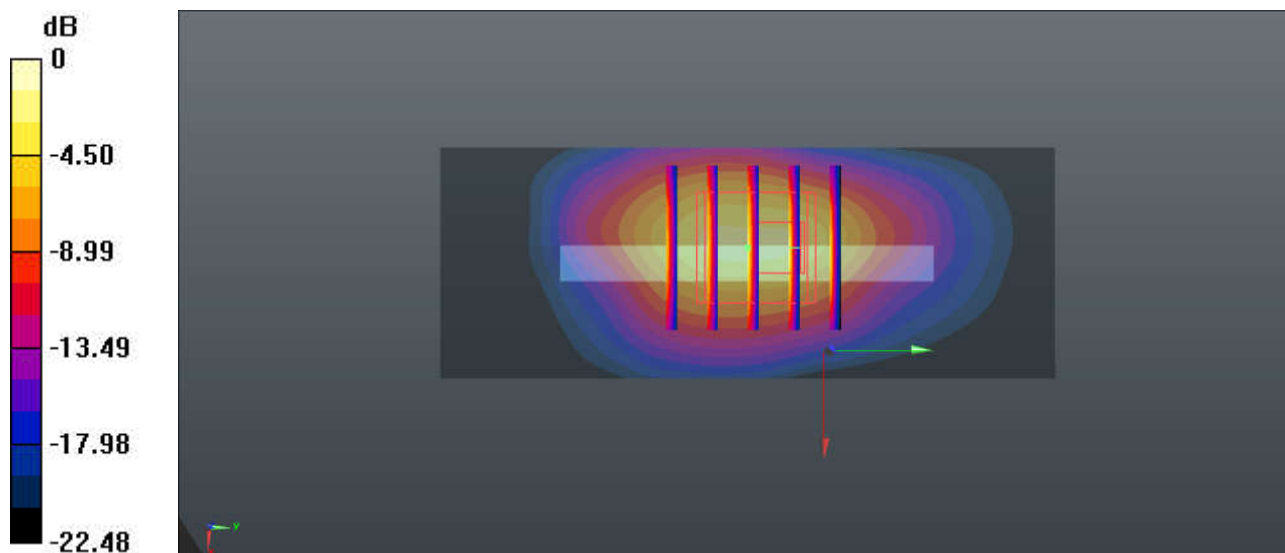
Communication System: UID 0, 5G NR (0); Frequency: 1702.5 MHz; Duty Cycle: 1:1
Medium: HSL_1750 Medium parameters used: $f = 1702.5$ MHz; $\sigma = 1.292$ S/m; $\epsilon_r = 40.499$; $\rho = 1000$ kg/m³
Ambient Temperature : 23.1 °C; Liquid Temperature : 22.6 °C

DASY5 Configuration:

- Probe: EX3DV4 - SN3826; ConvF(8.56, 8.56, 8.56); Calibrated: 2022/8/8
- Sensor-Surface: 1.4mm (Mechanical Surface Detection)
- Electronics: DAE4 Sn1303; Calibrated: 2022/11/24
- Phantom: SAM Twin Phantom; Type: SAM Twin; Serial: TP-1842
- Measurement SW: DASY52, Version 52.10 (4); SEMCAD X Version 14.6.14 (7501)

Area Scan (31x81x1): Interpolated grid: dx=1.500 mm, dy=1.500 mm
Maximum value of SAR (interpolated) = 5.17 W/kg

Zoom Scan (5x5x7)/Cube 0: Measurement grid: dx=8mm, dy=8mm, dz=5mm
Reference Value = 61.75 V/m; Power Drift = 0.09 dB
Peak SAR (extrapolated) = 11.8 W/kg
SAR(1 g) = 3.71 W/kg; SAR(10 g) = 1.62 W/kg
Maximum value of SAR (measured) = 8.92 W/kg



0 dB = 8.92 W/kg = 9.50 dBW/kg

109_WCDMA II_RMC 12.2Kbps_Top Side_0mm_Ch9538

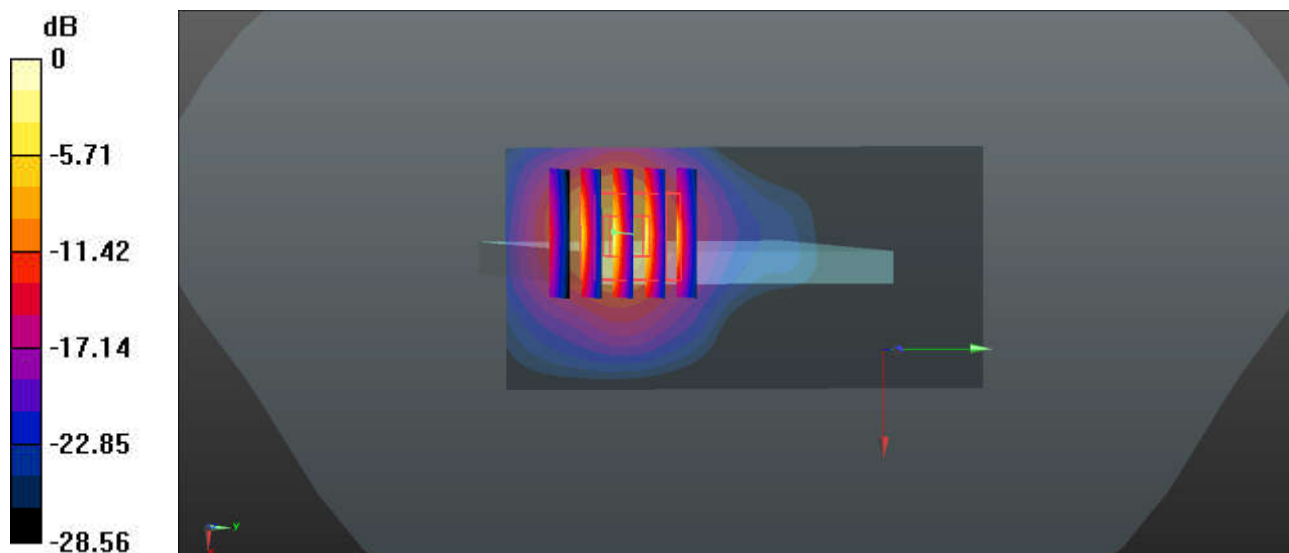
Communication System: UID 0, WCDMA (0); Frequency: 1907.6 MHz; Duty Cycle: 1:1
Medium: HSL_1900 Medium parameters used: $f = 1907.6$ MHz; $\sigma = 1.406$ S/m; $\epsilon_r = 40.181$; $\rho = 1000$ kg/m³
Ambient Temperature : 23.2 °C; Liquid Temperature : 22.8 °C

DASY5 Configuration:

- Probe: EX3DV4 - SN3826; ConvF(8.24, 8.24, 8.24); Calibrated: 2022/8/8
- Sensor-Surface: 1.4mm (Mechanical Surface Detection)
- Electronics: DAE4 Sn1303; Calibrated: 2022/11/24
- Phantom: SAM Twin Phantom; Type: SAM Twin; Serial: TP-1842
- Measurement SW: DASY52, Version 52.10 (4); SEMCAD X Version 14.6.14 (7501)

Area Scan (41x81x1): Interpolated grid: dx=1.500 mm, dy=1.500 mm
Maximum value of SAR (interpolated) = 3.82 W/kg

Zoom Scan (5x5x7)/Cube 0: Measurement grid: dx=8mm, dy=8mm, dz=5mm
Reference Value = 11.04 V/m; Power Drift = -0.16 dB
Peak SAR (extrapolated) = 22.5 W/kg
SAR(1 g) = 6.51 W/kg; SAR(10 g) = 2.18 W/kg
Maximum value of SAR (measured) = 17.5 W/kg



0 dB = 17.5 W/kg = 12.43 dBW/kg

110_LTE Band 25_20M_QPSK_1RB_0Offset_Top Side_0mm_Ch26340

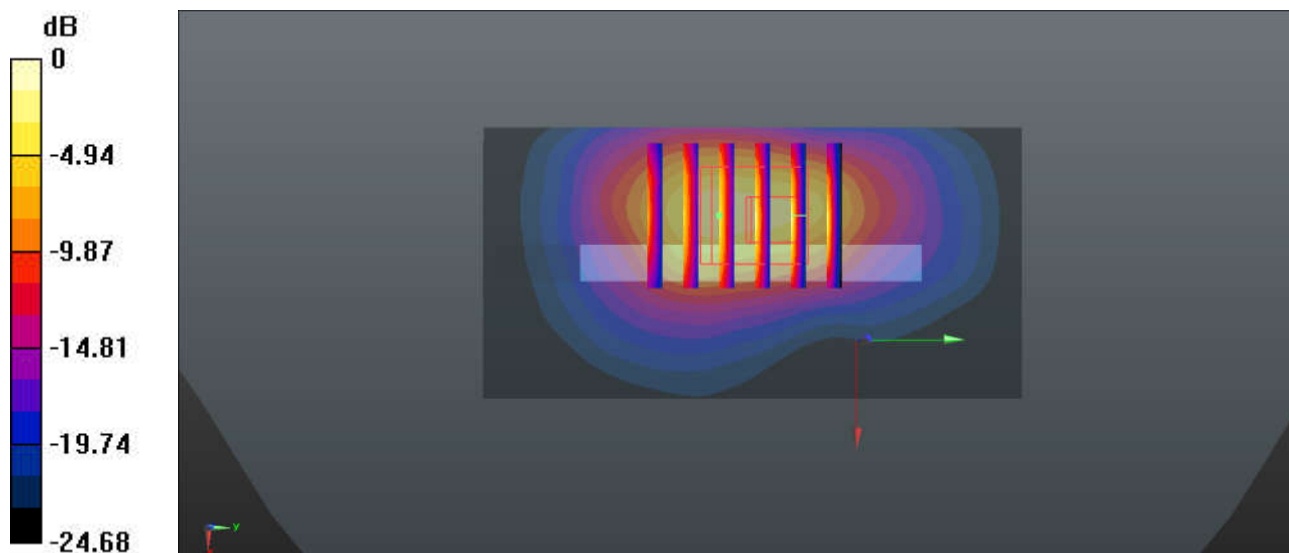
Communication System: UID 0, LTE-FDD (0); Frequency: 1880 MHz; Duty Cycle: 1:1
Medium: HSL_1900 Medium parameters used: $f = 1880$ MHz; $\sigma = 1.406$ S/m; $\epsilon_r = 40.168$; $\rho = 1000$ kg/m³
Ambient Temperature : 23.2 °C; Liquid Temperature : 22.8 °C

DASY5 Configuration:

- Probe: EX3DV4 - SN3826; ConvF(8.24, 8.24, 8.24); Calibrated: 2022/8/8
- Sensor-Surface: 1.4mm (Mechanical Surface Detection)
- Electronics: DAE4 Sn1303; Calibrated: 2022/11/24
- Phantom: SAM Twin Phantom; Type: SAM Twin; Serial: TP-1842
- Measurement SW: DASY52, Version 52.10 (4); SEMCAD X Version 14.6.14 (7501)

Area Scan (41x81x1): Interpolated grid: dx=1.500 mm, dy=1.500 mm
Maximum value of SAR (interpolated) = 7.54 W/kg

Zoom Scan (5x6x7)/Cube 0: Measurement grid: dx=8mm, dy=8mm, dz=5mm
Reference Value = 40.34 V/m; Power Drift = -0.02 dB
Peak SAR (extrapolated) = 15.6 W/kg
SAR(1 g) = 5.07 W/kg; SAR(10 g) = 2.16 W/kg
Maximum value of SAR (measured) = 11.5 W/kg



0 dB = 11.5 W/kg = 10.61 dBW/kg

111_FR1 n25_40M_QPSK_108RB_54Offset_Top Side_0mm_Ch376500

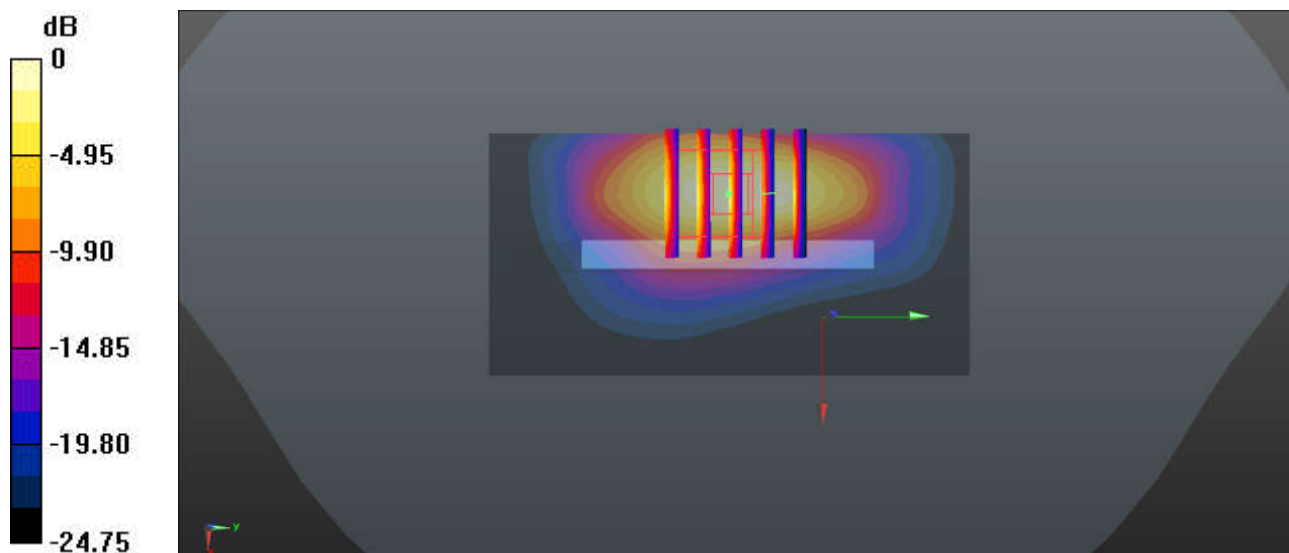
Communication System: UID 0, 5G NR (0); Frequency: 1882.5 MHz; Duty Cycle: 1:1
Medium: HSL_1900 Medium parameters used: $f = 1882.5$ MHz; $\sigma = 1.407$ S/m; $\epsilon_r = 40.181$; $\rho = 1000$ kg/m³
Ambient Temperature : 23.2 °C; Liquid Temperature : 22.8 °C

DASY5 Configuration:

- Probe: EX3DV4 - SN3826; ConvF(8.24, 8.24, 8.24); Calibrated: 2022/8/8
- Sensor-Surface: 1.4mm (Mechanical Surface Detection)
- Electronics: DAE4 Sn1303; Calibrated: 2022/11/24
- Phantom: SAM Twin Phantom; Type: SAM Twin; Serial: TP-1842
- Measurement SW: DASY52, Version 52.10 (4); SEMCAD X Version 14.6.14 (7501)

Area Scan (41x81x1): Interpolated grid: dx=1.500 mm, dy=1.500 mm
Maximum value of SAR (interpolated) = 10.1 W/kg

Zoom Scan (5x5x7)/Cube 0: Measurement grid: dx=8mm, dy=8mm, dz=5mm
Reference Value = 1.945 V/m; Power Drift = 0.05 dB
Peak SAR (extrapolated) = 14.6 W/kg
SAR(1 g) = 4.32 W/kg; SAR(10 g) = 1.9 W/kg
Maximum value of SAR (measured) = 10.6 W/kg



0 dB = 10.6 W/kg = 10.25 dBW/kg

112_LTE Band 30_10M_QPSK_1RB_0Offset_Bottom Side_0mm_Ch27710

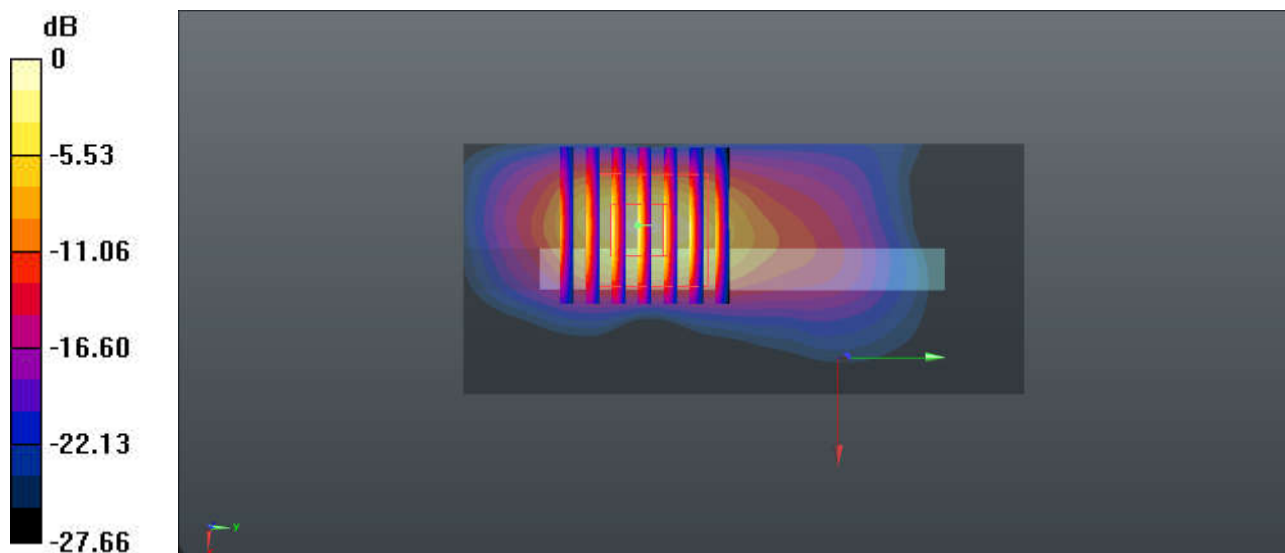
Communication System: UID 0, LTE-FDD (0); Frequency: 2310 MHz; Duty Cycle: 1:1
Medium: HSL_2300 Medium parameters used: $f = 2310$ MHz; $\sigma = 1.651$ S/m; $\epsilon_r = 39.636$; $\rho = 1000$ kg/m³
Ambient Temperature : 23.3 °C; Liquid Temperature : 22.9 °C

DASY5 Configuration:

- Probe: EX3DV4 - SN3826; ConvF(7.79, 7.79, 7.79); Calibrated: 2022/8/8
- Sensor-Surface: 1.4mm (Mechanical Surface Detection)
- Electronics: DAE4 Sn1303; Calibrated: 2022/11/24
- Phantom: SAM Twin Phantom; Type: SAM Twin; Serial: TP-1842
- Measurement SW: DASY52, Version 52.10 (4); SEMCAD X Version 14.6.14 (7501)

Area Scan (41x91x1): Interpolated grid: dx=1.200 mm, dy=1.200 mm
Maximum value of SAR (interpolated) = 10.3 W/kg

Zoom Scan (7x7x7)/Cube 0: Measurement grid: dx=5mm, dy=5mm, dz=5mm
Reference Value = 31.25 V/m; Power Drift = 0.12 dB
Peak SAR (extrapolated) = 20.2 W/kg
SAR(1 g) = 6.82 W/kg; SAR(10 g) = 2.3 W/kg
Maximum value of SAR (measured) = 14.6 W/kg



0 dB = 14.6 W/kg = 11.64 dBW/kg

113_FR1 n30_10M_QPSK_1RB_1Offset_Top Side_0mm_Ch462000

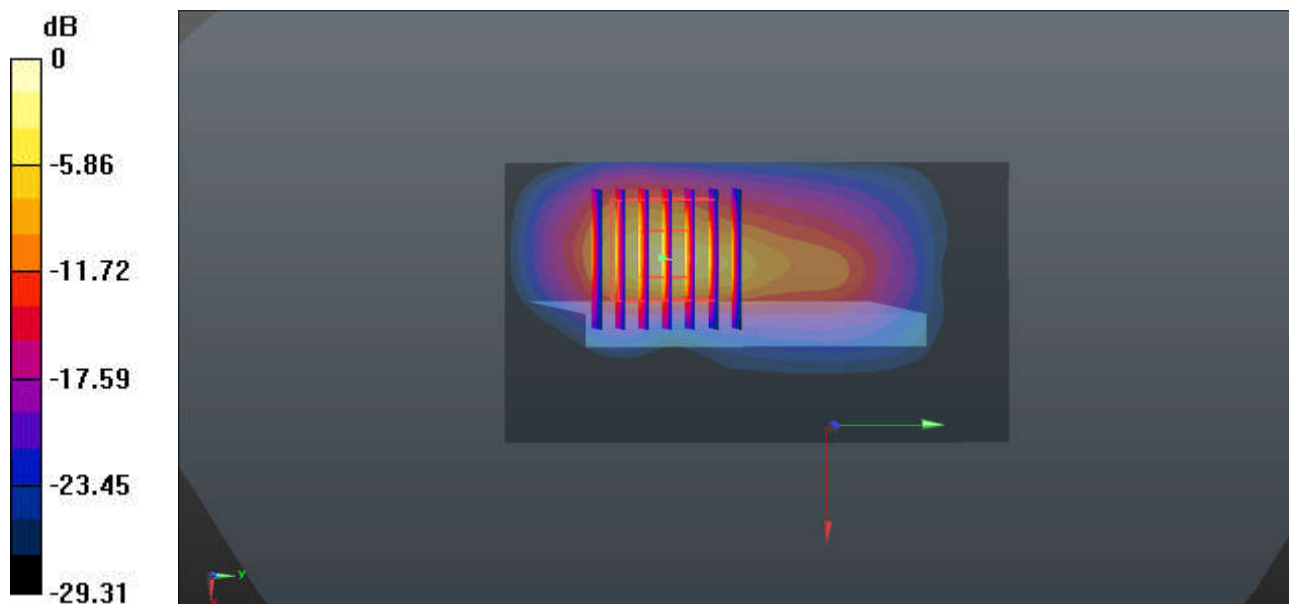
Communication System: UID 0, 5G NR (0); Frequency: 2310 MHz; Duty Cycle: 1:1
Medium: HSL_2300 Medium parameters used: $f = 2310$ MHz; $\sigma = 1.651$ S/m; $\epsilon_r = 39.636$; $\rho = 1000$ kg/m³
Ambient Temperature : 23.3 °C; Liquid Temperature : 22.9 °C

DASY5 Configuration:

- Probe: EX3DV4 - SN3826; ConvF(7.79, 7.79, 7.79); Calibrated: 2022/8/8
- Sensor-Surface: 1.4mm (Mechanical Surface Detection)
- Electronics: DAE4 Sn1303; Calibrated: 2022/11/24
- Phantom: SAM Twin Phantom; Type: SAM Twin; Serial: TP-1842
- Measurement SW: DASY52, Version 52.10 (4); SEMCAD X Version 14.6.14 (7501)

Area Scan (51x91x1): Interpolated grid: dx=1.200 mm, dy=1.200 mm
Maximum value of SAR (interpolated) = 10.2 W/kg

Zoom Scan (7x7x7)/Cube 0: Measurement grid: dx=5mm, dy=5mm, dz=5mm
Reference Value = 0.1850 V/m; Power Drift = 0.02 dB
Peak SAR (extrapolated) = 27.0 W/kg
SAR(1 g) = 7.95 W/kg; SAR(10 g) = 2.48 W/kg
Maximum value of SAR (measured) = 18.9 W/kg



0 dB = 18.9 W/kg = 12.76 dBW/kg

114_LTE Band 7_20M_QPSK_1RB_0Offset_Front_0mm_Ch21100

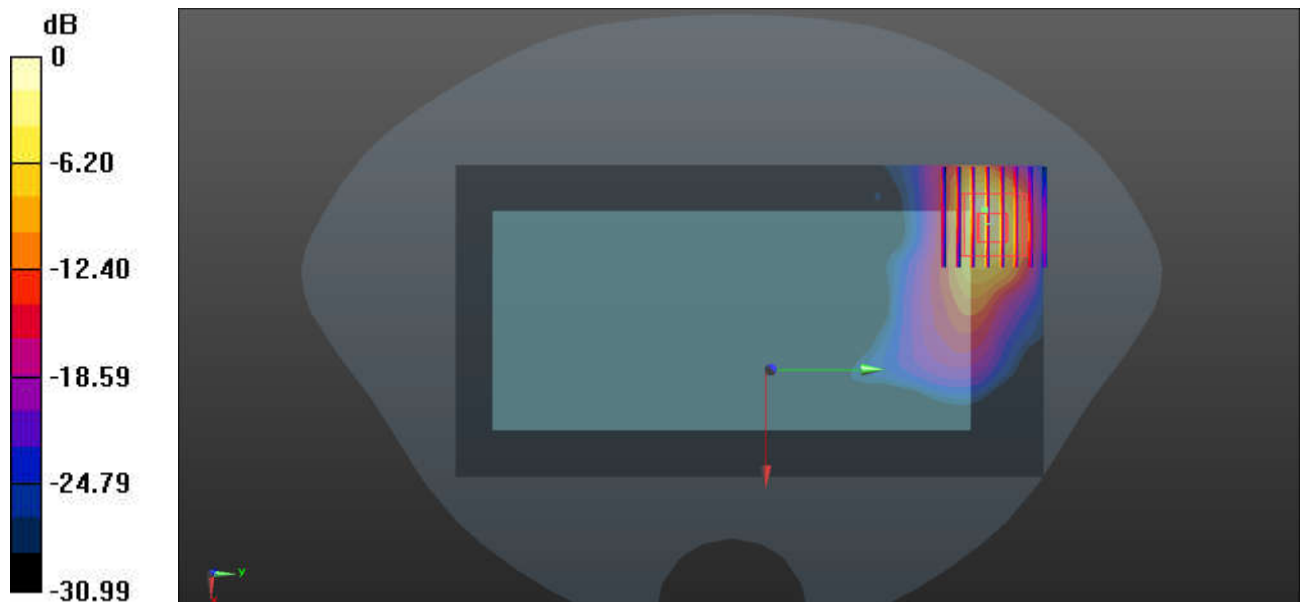
Communication System: UID 0, LTE-FDD (0); Frequency: 2535 MHz; Duty Cycle: 1:1
Medium: HSL_2600 Medium parameters used: $f = 2535$ MHz; $\sigma = 1.954$ S/m; $\epsilon_r = 40.37$; $\rho = 1000$ kg/m³
Ambient Temperature : 23.2 °C; Liquid Temperature : 22.6 °C

DASY5 Configuration:

- Probe: EX3DV4 - SN3826; ConvF(7.35, 7.35, 7.35); Calibrated: 2022/8/8
- Sensor-Surface: 1.4mm (Mechanical Surface Detection)
- Electronics: DAE4 Sn1303; Calibrated: 2022/11/24
- Phantom: SAM Twin Phantom; Type: SAM Twin; Serial: TP-1842
- Measurement SW: DASY52, Version 52.10 (4); SEMCAD X Version 14.6.14 (7501)

Area Scan (91x171x1): Interpolated grid: dx=1.200 mm, dy=1.200 mm
Maximum value of SAR (interpolated) = 10.73 W/kg

Zoom Scan (8x8x7)/Cube 0: Measurement grid: dx=5mm, dy=5mm, dz=5mm
Reference Value = 0 V/m; Power Drift = 0.19 dB
Peak SAR (extrapolated) = 23.36 W/kg
SAR(1 g) = 7.05 W/kg; SAR(10 g) = 2.42 W/kg
Maximum value of SAR (measured) = 14.63 W/kg



0 dB = 14.63 W/kg = 11.65 dBW/kg

115_LTE Band 41_HPUE_20M_QPSK_1RB_0Offset_Top Side_0mm_Ch39750

Communication System: UID 0, LTE-HPUE (0); Frequency: 2506 MHz; Duty Cycle: 1:2.33
Medium: HSL_2600 Medium parameters used: $f = 2506$ MHz; $\sigma = 1.947$ S/m; $\epsilon_r = 40.518$; $\rho = 1000$ kg/m³

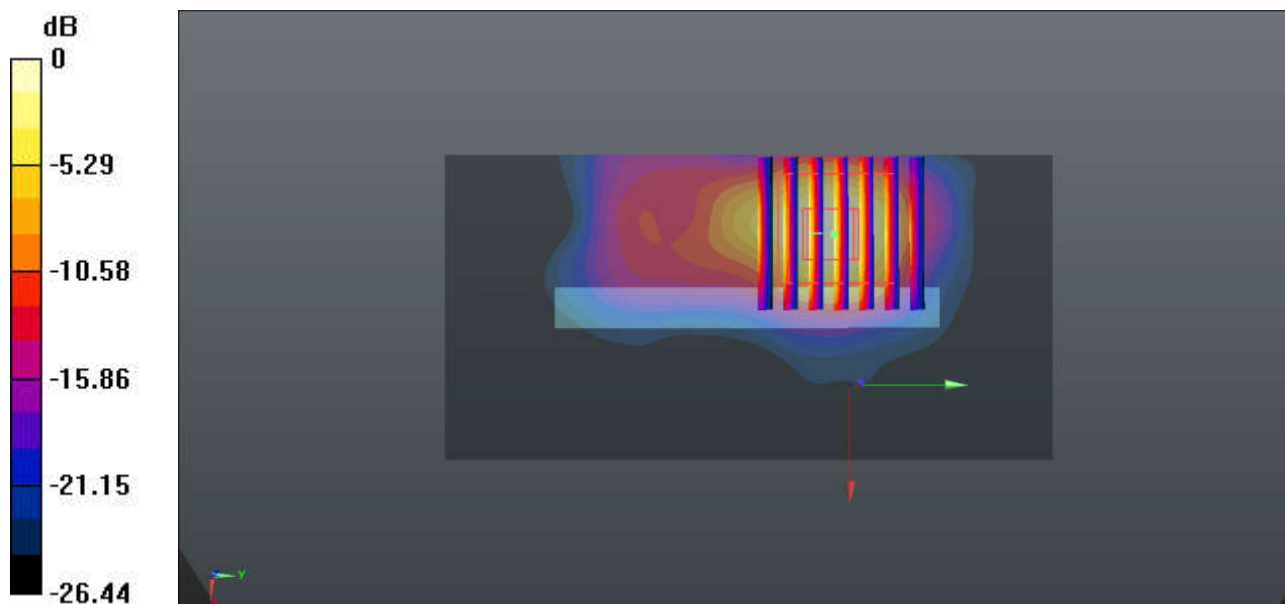
Ambient Temperature : 23.2 °C; Liquid Temperature : 22.6 °C

DASY5 Configuration:

- Probe: EX3DV4 - SN3826; ConvF(7.35, 7.35, 7.35); Calibrated: 2022/8/8
- Sensor-Surface: 1.4mm (Mechanical Surface Detection)
- Electronics: DAE4 Sn1303; Calibrated: 2022/11/24
- Phantom: SAM Twin Phantom; Type: SAM Twin; Serial: TP-1842
- Measurement SW: DASY52, Version 52.10 (4); SEMCAD X Version 14.6.14 (7501)

Area Scan (51x101x1): Interpolated grid: dx=1.200 mm, dy=1.200 mm
Maximum value of SAR (interpolated) = 15.0 W/kg

Zoom Scan (7x7x7)/Cube 0: Measurement grid: dx=5mm, dy=5mm, dz=5mm
Reference Value = 9.811 V/m; Power Drift = -0.09 dB
Peak SAR (extrapolated) = 25.5 W/kg
SAR(1 g) = 7.05 W/kg; SAR(10 g) = 2.28 W/kg
Maximum value of SAR (measured) = 12.3 W/kg



0 dB = 12.3 W/kg = 10.90 dBW/kg

116_FR1 n7_40M_QPSK_108RB_54Offset_Top Side_0mm_Ch507000

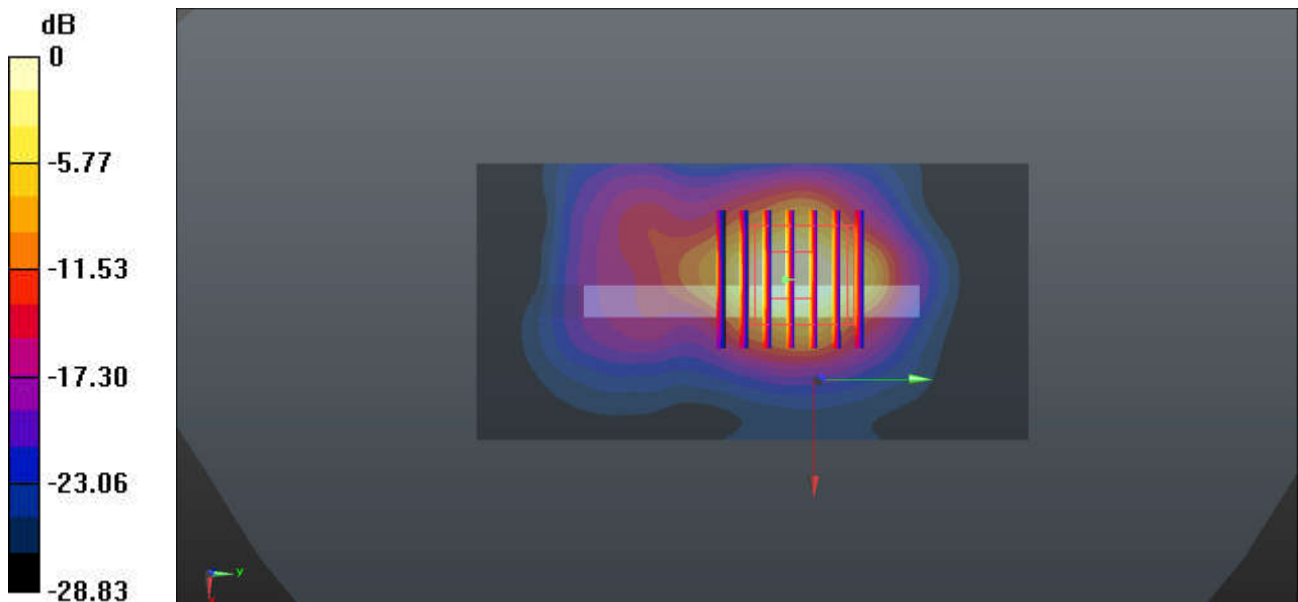
Communication System: UID 0, 5G NR (0); Frequency: 2535 MHz; Duty Cycle: 1:1
Medium: HSL_2600 Medium parameters used: $f = 2535$ MHz; $\sigma = 1.954$ S/m; $\epsilon_r = 40.37$; $\rho = 1000$ kg/m³
Ambient Temperature : 23.2 °C; Liquid Temperature : 22.6 °C

DASY5 Configuration:

- Probe: EX3DV4 - SN3826; ConvF(7.35, 7.35, 7.35); Calibrated: 2022/8/8
- Sensor-Surface: 1.4mm (Mechanical Surface Detection)
- Electronics: DAE4 Sn1303; Calibrated: 2022/11/24
- Phantom: SAM Twin Phantom; Type: SAM Twin; Serial: TP-1842
- Measurement SW: DASY52, Version 52.10 (4); SEMCAD X Version 14.6.14 (7501)

Area Scan (51x101x1): Interpolated grid: dx=1.200 mm, dy=1.200 mm
Maximum value of SAR (interpolated) = 14.8 W/kg

Zoom Scan (7x7x7)/Cube 0: Measurement grid: dx=5mm, dy=5mm, dz=5mm
Reference Value = 1.563 V/m; Power Drift = -0.01 dB
Peak SAR (extrapolated) = 19.3 W/kg
SAR(1 g) = 6.26 W/kg; SAR(10 g) = 2.45 W/kg
Maximum value of SAR (measured) = 12.9 W/kg



0 dB = 12.9 W/kg = 11.11 dBW/kg

117_FR1 n41 HPUE_100M_QPSK_1RB_1Offset_Top Side_0mm_Ch518598

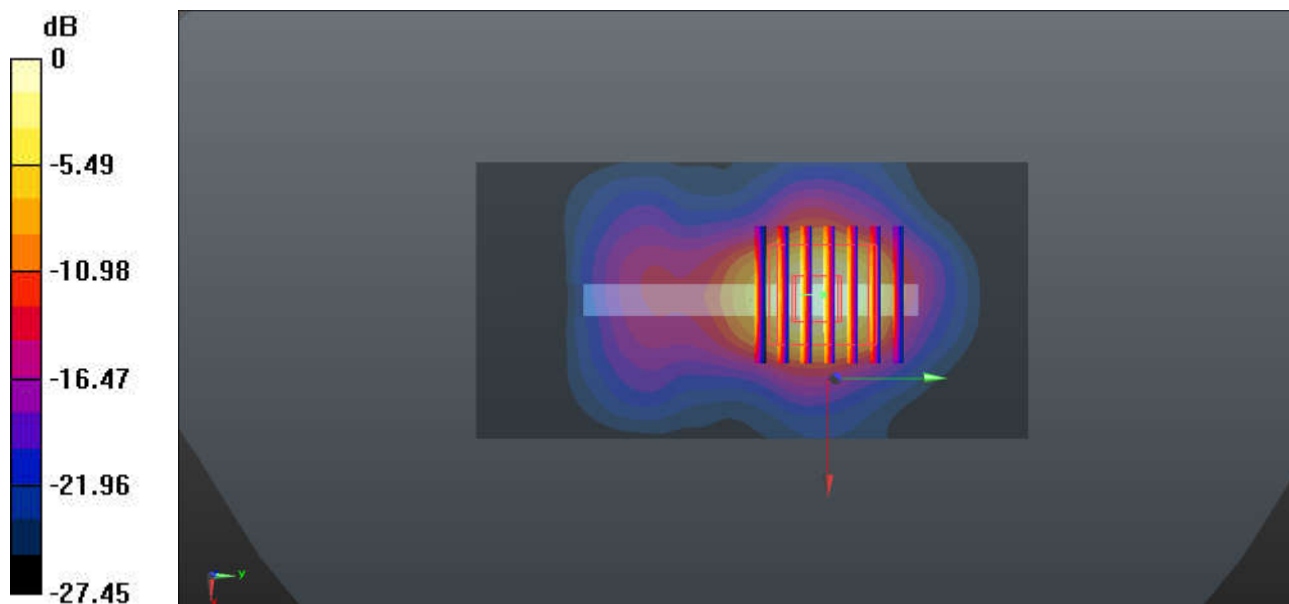
Communication System: UID 0, 5G NR (0); Frequency: 2592.99 MHz; Duty Cycle: 1:2
Medium: HSL_2600 Medium parameters used: $f = 2592.99$ MHz; $\sigma = 2.032$ S/m; $\epsilon_r = 40.339$; $\rho = 1000$ kg/m³
Ambient Temperature : 23.2 °C; Liquid Temperature : 22.6 °C

DASY5 Configuration:

- Probe: EX3DV4 - SN3826; ConvF(7.35, 7.35, 7.35); Calibrated: 2022/8/8
- Sensor-Surface: 1.4mm (Mechanical Surface Detection)
- Electronics: DAE4 Sn1303; Calibrated: 2022/11/24
- Phantom: SAM Twin Phantom; Type: SAM Twin; Serial: TP-1842
- Measurement SW: DASY52, Version 52.10 (4); SEMCAD X Version 14.6.14 (7501)

Area Scan (51x101x1): Interpolated grid: dx=1.200 mm, dy=1.200 mm
Maximum value of SAR (interpolated) = 14.0 W/kg

Zoom Scan (7x7x7)/Cube 0: Measurement grid: dx=5mm, dy=5mm, dz=5mm
Reference Value = 0.4190 V/m; Power Drift = 0.04 dB
Peak SAR (extrapolated) = 16.3 W/kg
SAR(1 g) = 5.93 W/kg; SAR(10 g) = 2.39 W/kg
Maximum value of SAR (measured) = 11.4 W/kg



0 dB = 11.4 W/kg = 10.57 dBW/kg

118_LTE Band 48_20M_QPSK_1RB_0Offset_Top Side_0mm_Ch55340

Communication System: UID 0, LTE-TDD (0); Frequency: 3560 MHz; Duty Cycle: 1:1.59
Medium: HSL_3500 Medium parameters used: $f = 3560$ MHz; $\sigma = 2.86$ S/m; $\epsilon_r = 38.613$; $\rho = 1000$ kg/m³

Ambient Temperature : 23.1 °C; Liquid Temperature : 22.5 °C

DASY5 Configuration:

- Probe: EX3DV4 - SN3826; ConvF(7.05, 7.05, 7.05); Calibrated: 2022/8/8
- Sensor-Surface: 1.4mm (Mechanical Surface Detection)
- Electronics: DAE4 Sn1303; Calibrated: 2022/11/24
- Phantom: SAM Twin Phantom; Type: SAM Twin; Serial: TP-1842
- Measurement SW: DASY52, Version 52.10 (4); SEMCAD X Version 14.6.14 (7501)

Area Scan (61x121x1): Interpolated grid: dx=1.000 mm, dy=1.000 mm

Maximum value of SAR (interpolated) = 22.29 W/kg

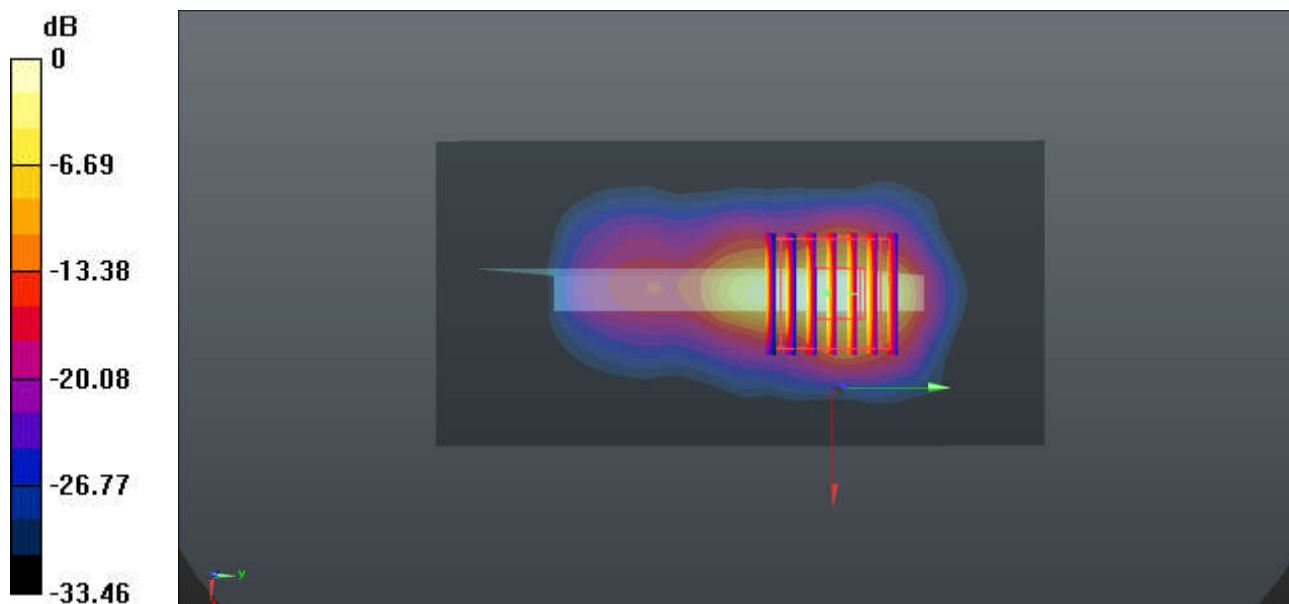
Zoom Scan (7x7x7)/Cube 0: Measurement grid: dx=4mm, dy=4mm, dz=1.4mm

Reference Value = 64.08 V/m; Power Drift = -0.06 dB

Peak SAR (extrapolated) = 33.2 W/kg

SAR(1 g) = 8.14 W/kg; SAR(10 g) = 2.27 W/kg

Maximum value of SAR (measured) = 19.88 W/kg



0 dB = 19.88 W/kg = 12.99 dBW/kg

119_FR1 n48_40M_QPSK_1RB_1Offset_Top Side_0mm_Ch641666

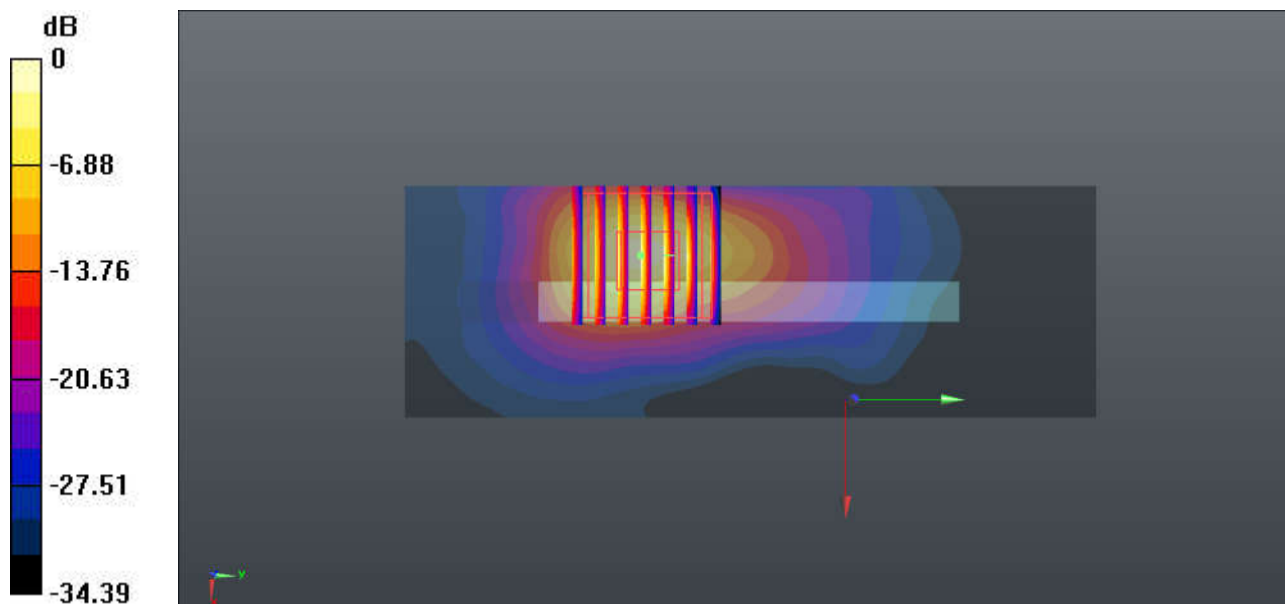
Communication System: UID 0, 5G NR (0); Frequency: 3624.99 MHz; Duty Cycle: 1:1
Medium: HSL_3700 Medium parameters used: $f = 3624.99$ MHz; $\sigma = 2.968$ S/m; $\epsilon_r = 38.513$; $\rho = 1000$ kg/m³
Ambient Temperature : 23.2 °C; Liquid Temperature : 22.8 °C

DASY5 Configuration:

- Probe: EX3DV4 - SN3826; ConvF(6.98, 6.98, 6.98); Calibrated: 2022/8/8
- Sensor-Surface: 1.4mm (Mechanical Surface Detection)
- Electronics: DAE4 Sn1303; Calibrated: 2022/11/24
- Phantom: SAM Twin Phantom; Type: SAM Twin; Serial: TP-1842
- Measurement SW: DASY52, Version 52.10 (4); SEMCAD X Version 14.6.14 (7501)

Area Scan (41x121x1): Interpolated grid: dx=1.000 mm, dy=1.000 mm
Maximum value of SAR (interpolated) = 19.7 W/kg

Zoom Scan (7x7x7)/Cube 0: Measurement grid: dx=4mm, dy=4mm, dz=1.4mm
Reference Value = 17.48 V/m; Power Drift = 0.06 dB
Peak SAR (extrapolated) = 48.5 W/kg
SAR(1 g) = 9.33 W/kg; SAR(10 g) = 2.42 W/kg
Maximum value of SAR (measured) = 26.5 W/kg



0 dB = 26.5 W/kg = 14.23 dBW/kg

120_FR1 n77_Part27Q_100M_QPSK_1RB_1Offset_Top Side_0mm_Ch633334

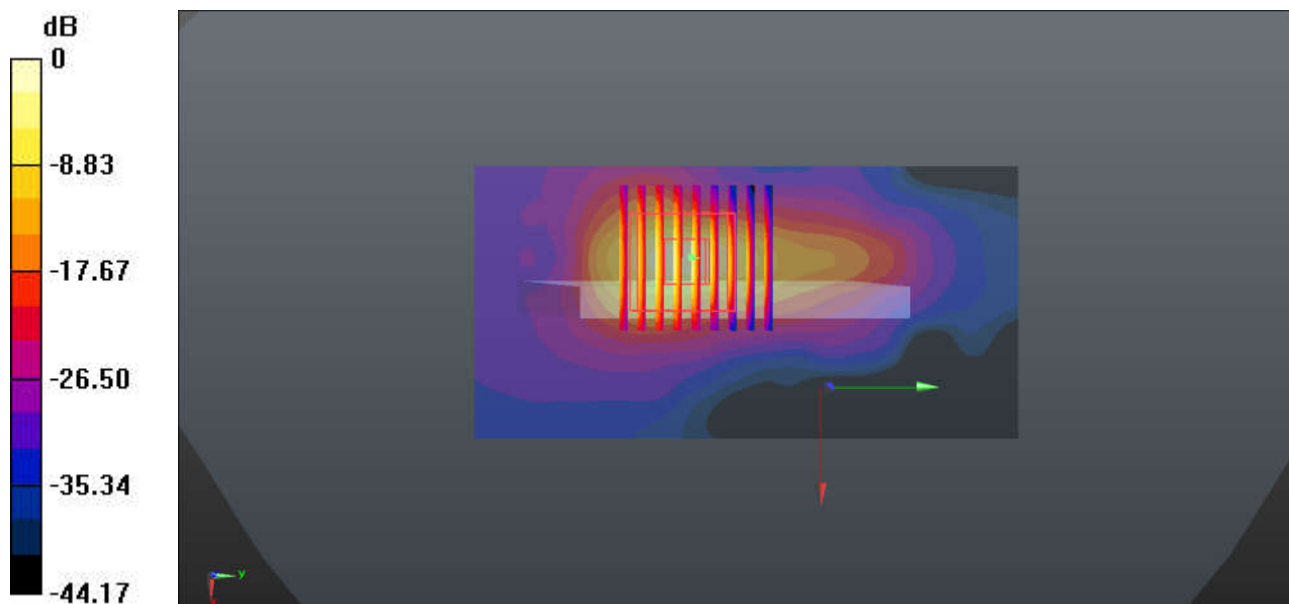
Communication System: UID 0, 5G NR (0); Frequency: 3500.01 MHz; Duty Cycle: 1:1
Medium: HSL_3500 Medium parameters used: $f = 3500.01$ MHz; $\sigma = 2.81$ S/m; $\epsilon_r = 38.711$; $\rho = 1000$ kg/m³
Ambient Temperature : 23.1 °C; Liquid Temperature : 22.5 °C

DASY5 Configuration:

- Probe: EX3DV4 - SN3826; ConvF(7.05, 7.05, 7.05); Calibrated: 2022/8/8
- Sensor-Surface: 1.4mm (Mechanical Surface Detection)
- Electronics: DAE4 Sn1303; Calibrated: 2022/11/24
- Phantom: SAM Twin Phantom; Type: SAM Twin; Serial: TP-1842
- Measurement SW: DASY52, Version 52.10 (4); SEMCAD X Version 14.6.14 (7501)

Area Scan (61x121x1): Interpolated grid: dx=1.000 mm, dy=1.000 mm
Maximum value of SAR (interpolated) = 25.8 W/kg

Zoom Scan (9x9x7)/Cube 0: Measurement grid: dx=4mm, dy=4mm, dz=1.4mm
Reference Value = 1.004 V/m; Power Drift = 0.04 dB
Peak SAR (extrapolated) = 51.9 W/kg
SAR(1 g) = 9.44 W/kg; SAR(10 g) = 2.42 W/kg
Maximum value of SAR (measured) = 26.8 W/kg



0 dB = 26.8 W/kg = 14.28 dBW/kg

121_WLAN2.4GHz_802.11b 1Mbps_Right Side_0mm_Ch11

Communication System: UID 0, WLAN2.4GHz (0); Frequency: 2462 MHz; Duty Cycle: 1:1
Medium: HSL_2450 Medium parameters used: $f = 2462$ MHz; $\sigma = 1.869$ S/m; $\epsilon_r = 39.133$; $\rho = 1000$ kg/m³
Ambient Temperature : 23.2 °C; Liquid Temperature : 22.5 °C

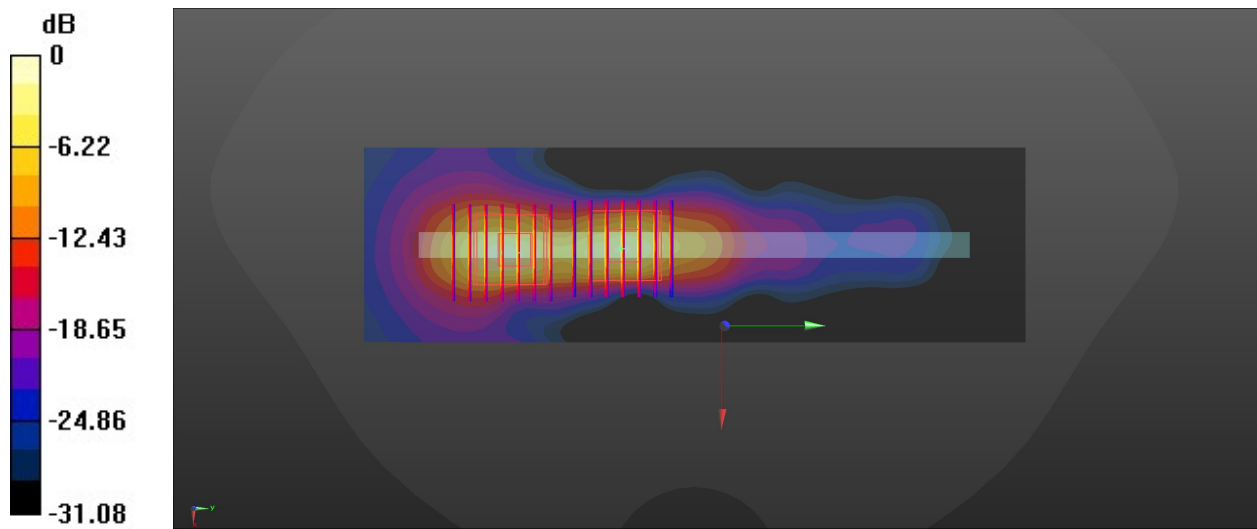
DASY5 Configuration:

- Probe: EX3DV4 - SN3826; ConvF(7.57, 7.57, 7.57); Calibrated: 2022/8/8
- Sensor-Surface: 1.4mm (Mechanical Surface Detection)
- Electronics: DAE4 Sn1303; Calibrated: 2022/11/24
- Phantom: SAM Twin Phantom; Type: SAM Twin; Serial: TP-1842
- Measurement SW: DASY52, Version 52.10 (4); SEMCAD X Version 14.6.14 (7501)

Area Scan (51x171x1): Interpolated grid: dx=1.200 mm, dy=1.200 mm
Maximum value of SAR (interpolated) = 11.5 W/kg

Zoom Scan (7x7x7)/Cube 0: Measurement grid: dx=5mm, dy=5mm, dz=5mm
Reference Value = 50.99 V/m; Power Drift = -0.01 dB
Peak SAR (extrapolated) = 20.8 W/kg
SAR(1 g) = 7.12 W/kg; SAR(10 g) = 2.5 W/kg
Maximum value of SAR (measured) = 15.1 W/kg

Zoom Scan (7x7x7)/Cube 1: Measurement grid: dx=5mm, dy=5mm, dz=5mm
Reference Value = 50.99 V/m; Power Drift = -0.01 dB
Peak SAR (extrapolated) = 19.7 W/kg
SAR(1 g) = 6.75 W/kg; SAR(10 g) = 2.27 W/kg
Maximum value of SAR (measured) = 15.0 W/kg



0 dB = 15.0 W/kg = 11.76 dBW/kg

122_WLAN5GHz_802.11a 6Mbps_Left Side_0mm_Ch48

Communication System: UID 0, WLAN5GHz (0); Frequency: 5240 MHz; Duty Cycle: 1:1.007
Medium: HSL_5000 Medium parameters used: $f = 5240$ MHz; $\sigma = 4.544$ S/m; $\epsilon_r = 35.023$; $\rho = 1000$ kg/m³

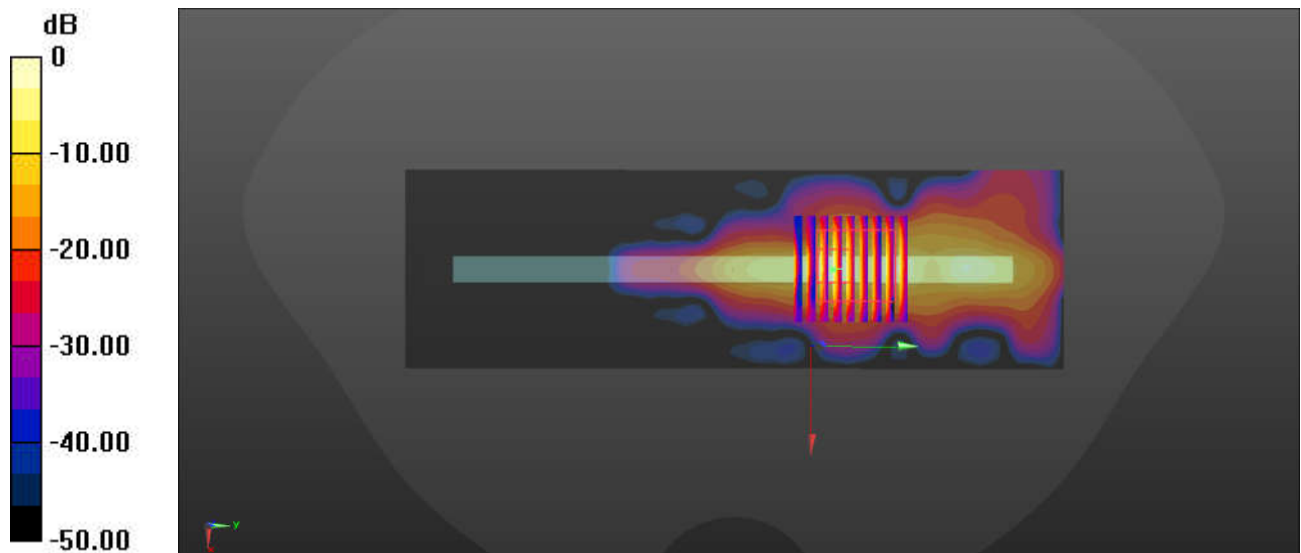
Ambient Temperature : 23.3 °C; Liquid Temperature : 22.6 °C

DASY5 Configuration:

- Probe: EX3DV4 - SN3826; ConvF(5.1, 5.1, 5.1); Calibrated: 2022/8/8
- Sensor-Surface: 1.4mm (Mechanical Surface Detection)
- Electronics: DAE4 Sn1303; Calibrated: 2022/11/24
- Phantom: SAM Twin Phantom; Type: SAM Twin; Serial: TP-1842
- Measurement SW: DASY52, Version 52.10 (4); SEMCAD X Version 14.6.14 (7501)

Area Scan (61x201x1): Interpolated grid: dx=1.000 mm, dy=1.000 mm
Maximum value of SAR (interpolated) = 16.4 W/kg

Zoom Scan (9x9x7)/Cube 0: Measurement grid: dx=4mm, dy=4mm, dz=1.4mm
Reference Value = 24.16 V/m; Power Drift = -0.02 dB
Peak SAR (extrapolated) = 34.3 W/kg
SAR(1 g) = 4.64 W/kg; SAR(10 g) = 0.913 W/kg
Maximum value of SAR (measured) = 16.6 W/kg



0 dB = 16.6 W/kg = 12.20 dBW/kg

123_WLAN5GHz_802.11a 6Mbps_Left Side_0mm_Ch56

Communication System: UID 0, WLAN5GHz (0); Frequency: 5280 MHz; Duty Cycle: 1:1.007

Medium: HSL_5000 Medium parameters used: $f = 5280 \text{ MHz}$; $\sigma = 4.591 \text{ S/m}$; $\epsilon_r = 34.97$; $\rho = 1000 \text{ kg/m}^3$

Ambient Temperature : 23.3 °C; Liquid Temperature : 22.6 °C

DASY5 Configuration:

- Probe: EX3DV4 - SN3826; ConvF(5.1, 5.1, 5.1); Calibrated: 2022/8/8
- Sensor-Surface: 1.4mm (Mechanical Surface Detection)
- Electronics: DAE4 Sn1303; Calibrated: 2022/11/24
- Phantom: SAM Twin Phantom; Type: SAM Twin; Serial: TP-1842
- Measurement SW: DASY52, Version 52.10 (4); SEMCAD X Version 14.6.14 (7501)

Area Scan (51x131x1): Interpolated grid: $dx=1.000 \text{ mm}$, $dy=1.000 \text{ mm}$

Maximum value of SAR (interpolated) = 14.0 W/kg

Zoom Scan (9x9x7)/Cube 0: Measurement grid: $dx=4\text{mm}$, $dy=4\text{mm}$, $dz=1.4\text{mm}$

Reference Value = 40.92 V/m; Power Drift = -0.03 dB

Peak SAR (extrapolated) = 27.3 W/kg

SAR(1 g) = 4.11 W/kg; SAR(10 g) = 1.04 W/kg

Maximum value of SAR (measured) = 14.3 W/kg

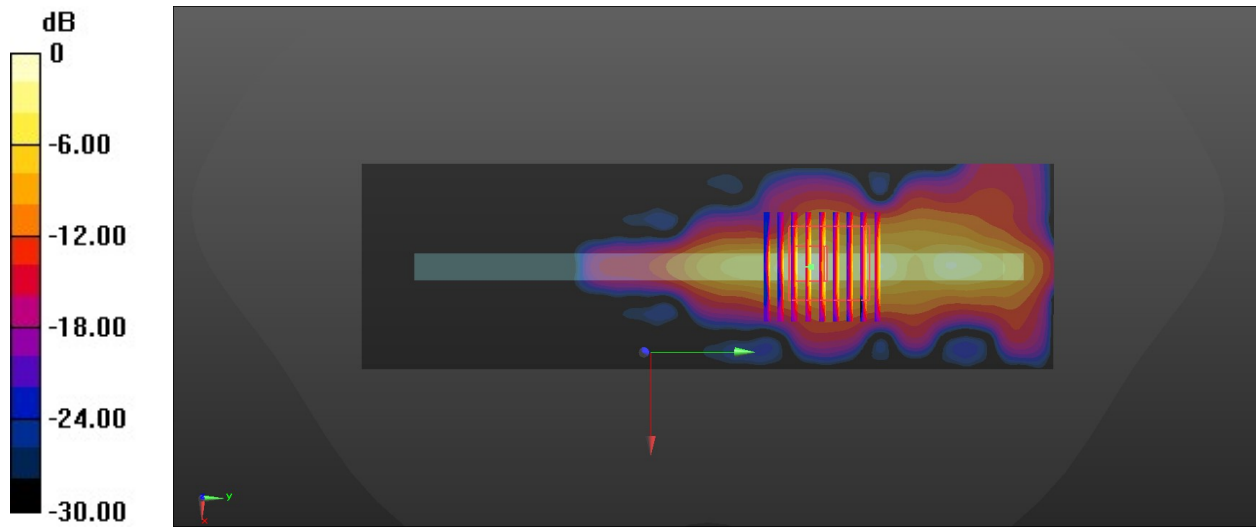
Zoom Scan (9x9x7)/Cube 1: Measurement grid: $dx=4\text{mm}$, $dy=4\text{mm}$, $dz=1.4\text{mm}$

Reference Value = 40.92 V/m; Power Drift = -0.03 dB

Peak SAR (extrapolated) = 21.9 W/kg

SAR(1 g) = 2.78 W/kg; SAR(10 g) = 0.846 W/kg

Maximum value of SAR (measured) = 7.41 W/kg



0 dB = 7.41 W/kg = 8.70 dBW/kg

124_WLAN5GHz_802.11a 6Mbps_Right Side_0mm_Ch140

Communication System: UID 0, WLAN5GHz (0); Frequency: 5700 MHz; Duty Cycle: 1:1.007
Medium: HSL_5000 Medium parameters used: $f = 5700$ MHz; $\sigma = 5.06$ S/m; $\epsilon_r = 34.209$; $\rho = 1000$ kg/m³

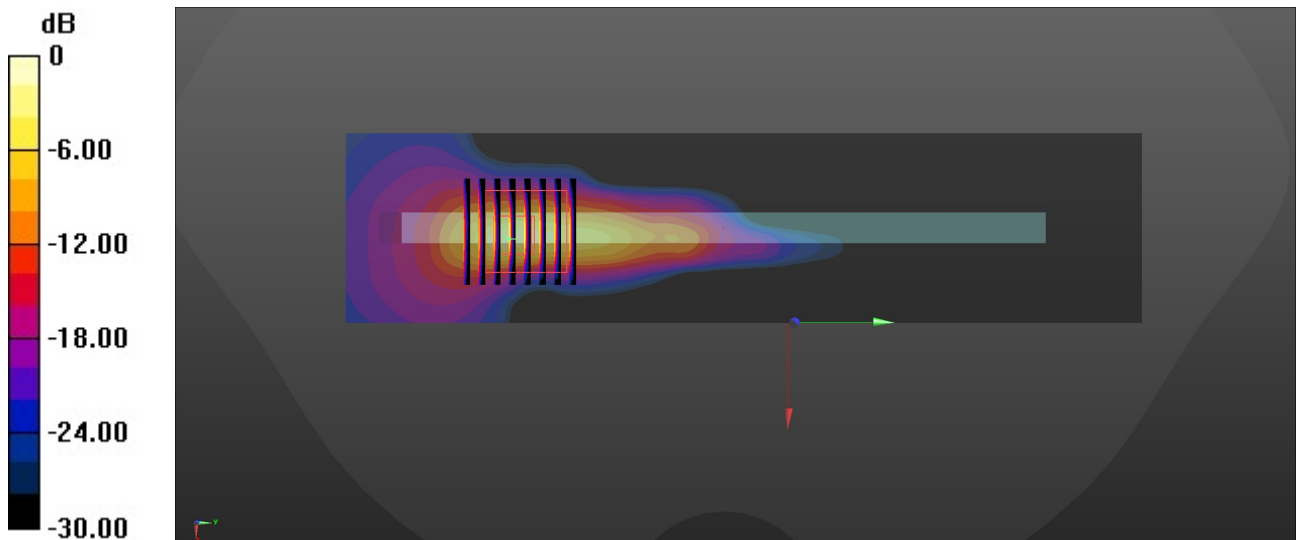
Ambient Temperature : 23.2 °C; Liquid Temperature : 22.8 °C

DASY5 Configuration:

- Probe: EX3DV4 - SN3826; ConvF(4.54, 4.54, 4.54); Calibrated: 2022/8/8
- Sensor-Surface: 1.4mm (Mechanical Surface Detection)
- Electronics: DAE4 Sn1303; Calibrated: 2022/11/24
- Phantom: SAM Twin Phantom; Type: SAM Twin; Serial: TP-1842
- Measurement SW: DASY52, Version 52.10 (4); SEMCAD X Version 14.6.14 (7501)

Area Scan (51x211x1): Interpolated grid: dx=1.000 mm, dy=1.000 mm
Maximum value of SAR (interpolated) = 8.20 W/kg

Zoom Scan (8x8x7)/Cube 0: Measurement grid: dx=4mm, dy=4mm, dz=1.4mm
Reference Value = 39.16 V/m; Power Drift = -0.07 dB
Peak SAR (extrapolated) = 36.7 W/kg
SAR(1 g) = 4.42 W/kg; SAR(10 g) = 0.971 W/kg
Maximum value of SAR (measured) = 15.4 W/kg



0 dB = 15.4 W/kg = 11.88 dBW/kg