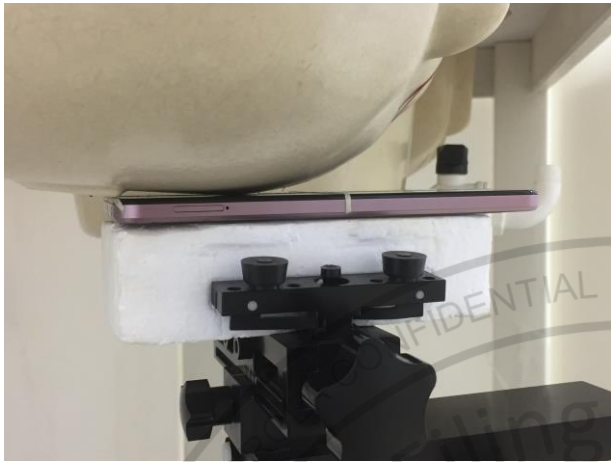
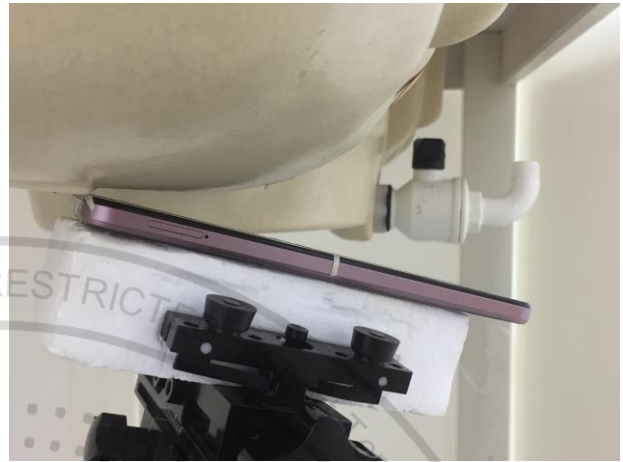


Appendix D. SAR Test Setup Photos

Head Exposure Condition



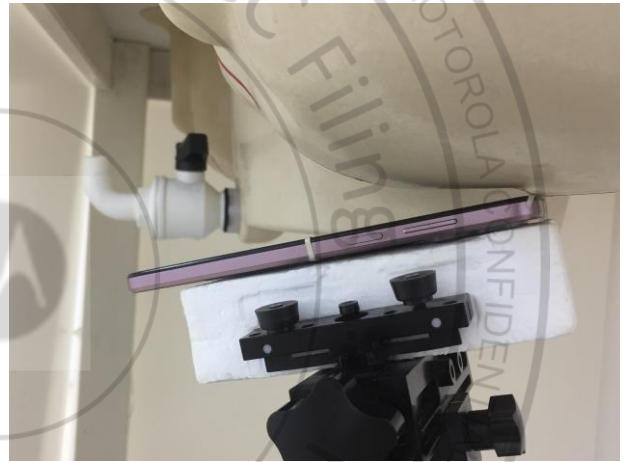
Right Cheek, Test Separation 0 mm



Right Tilted, Test Separation 0 mm



Left Cheek, Test Separation 0 mm



Left Tilted, Test Separation 0 mm

Hotspot Exposure Condition



Front, Test Separation 5 mm



Back, Test Separation 5 mm



Left Side, Test Separation 5 mm



Right Side, Test Separation 5 mm



Top Side, Test Separation 5 mm



Bottom Side, Test Separation 5 mm

Body-worn Exposure Condition



Front, Test Separation 5 mm



Back, Test Separation 5 mm



Back with headset, Test Separation 5 mm

Sensor off



Front, Test Separation 15 mm



Back, Test Separation 23mm

Product Specific 10g SAR



Front, Test Separation 0 mm



Back, Test Separation 0 mm



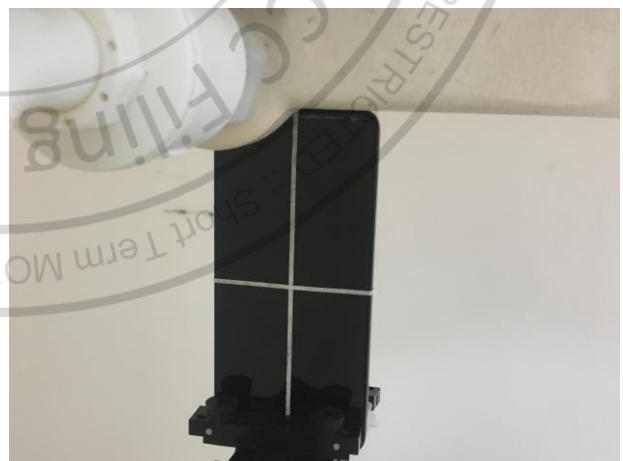
Left Side, Test Separation 0 mm



Right Side, Test Separation 0 mm



Top Side, Test Separation 0 mm



Bottom Side, Test Separation 0 mm

Sensor off



Front, Test Separation 15 mm

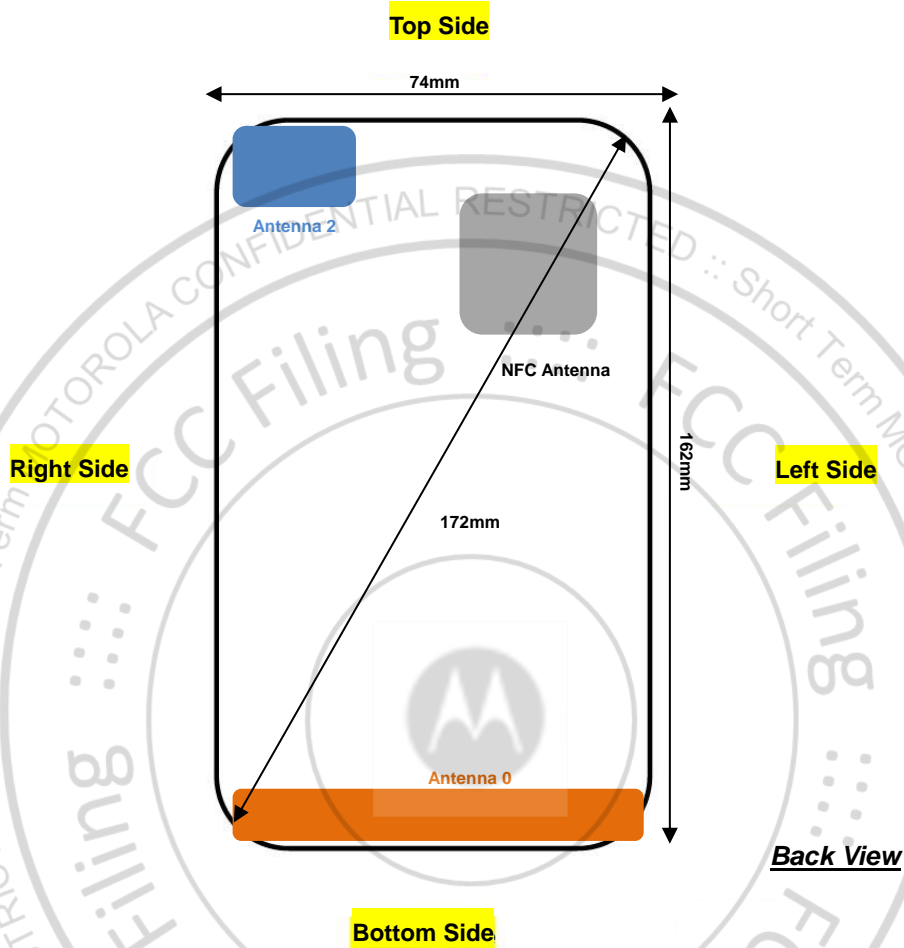


Back, Test Separation 23 mm



Bottom Side, Test Separation 16 mm

Antenna Location



| Antenna | Support Band |
|-------------|---|
| Antenna 0 | GSM: 850/1900 <TX/RX> WCDMA: B2/B5 <TX/RX> LTE: B2/B5/B7/B38/B41<TX/RX> |
| Antenna 2 | Bluetooth <TX/RX> WIFI 2.4GHz <TX/RX> WIFI 5GHz<TX/RX> |
| NFC Antenna | NFC Antenna<TX/RX> |