

System Check_750MHz

DUT: D750V3-SN:1099

Communication System: UID 0, CW; Frequency: 750 MHz; Duty Cycle: 1:1

Medium: HSL_750_220928 Medium parameters used: $f = 750 \text{ MHz}$; $\sigma = 0.888 \text{ S/m}$; $\epsilon_r = 40.879$; $\rho = 1000 \text{ kg/m}^3$

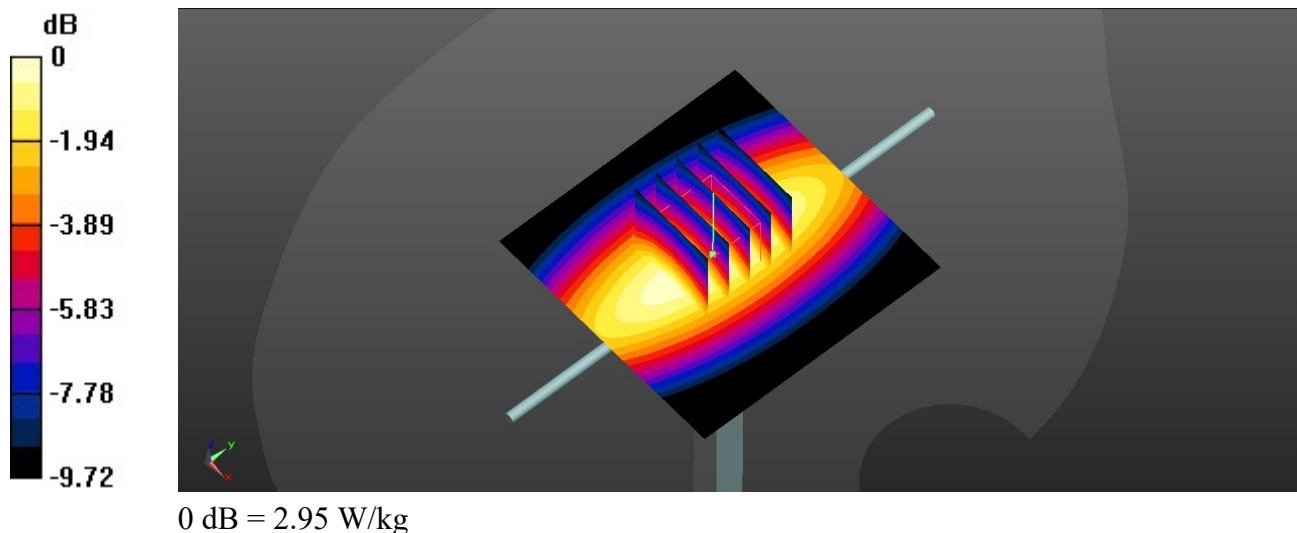
Ambient Temperature : 23.5 °C; Liquid Temperature : 22.4 °C

DASY5 Configuration:

- Probe: EX3DV4 - SN7577; ConvF(9.78, 9.78, 9.78); Calibrated: 2021/11/23
- Sensor-Surface: 1.4mm (Mechanical Surface Detection)
- Electronics: DAE4 Sn1437; Calibrated: 2021/10/26
- Phantom: Twin-SAM V8.0 (Left); Type: QD 000 P41 AA; Serial: 2035
- Measurement SW: DASY52, Version 52.10 (4); SEMCAD X Version 14.6.14 (7483)

Pin=250mW/Area Scan (61x61x1): Interpolated grid: $dx=1.500 \text{ mm}$, $dy=1.500 \text{ mm}$
Maximum value of SAR (interpolated) = 2.98 W/kg

Pin=250mW/Zoom Scan (5x5x7)/Cube 0: Measurement grid: $dx=8\text{mm}$, $dy=8\text{mm}$, $dz=5\text{mm}$
Reference Value = 61.23 V/m; Power Drift = -0.08 dB
Peak SAR (extrapolated) = 3.27 W/kg
SAR(1 g) = 2.3 W/kg; SAR(10 g) = 1.46 W/kg
Maximum value of SAR (measured) = 2.95 W/kg



System Check_750MHz

DUT: D750V3-SN:1099

Communication System: UID 0, CW (0); Frequency: 750 MHz; Duty Cycle: 1:1

Medium: HSL_750_221016 Medium parameters used: $f = 750$ MHz; $\sigma = 0.879$ S/m; $\epsilon_r = 40.957$; $\rho = 1000$ kg/m³

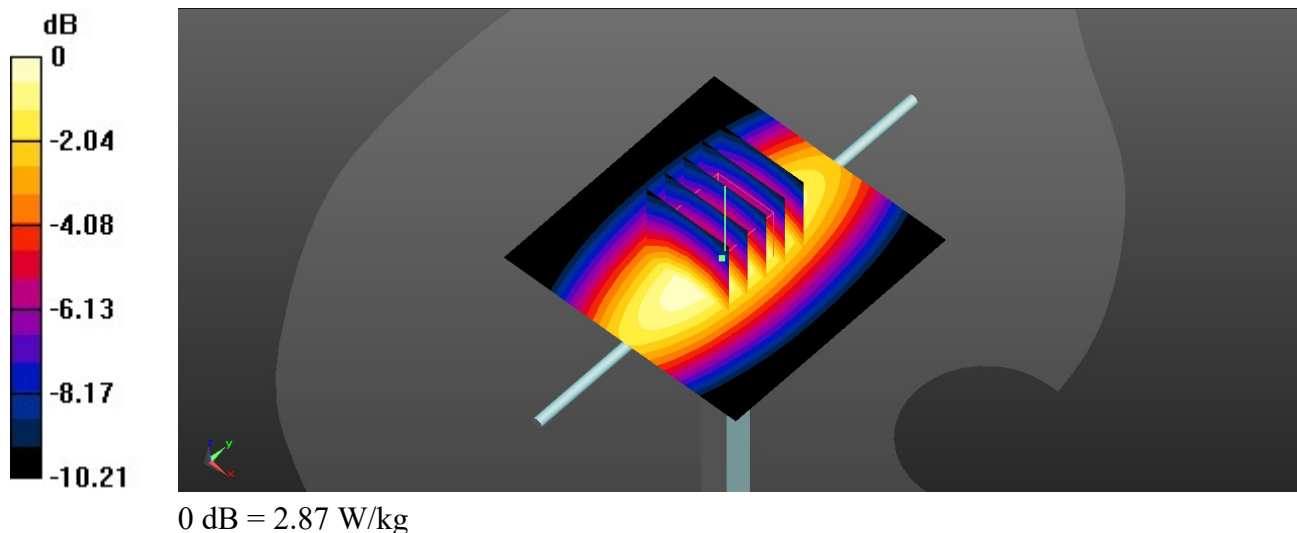
Ambient Temperature : 23.4 °C; Liquid Temperature : 22.3 °C

DASY5 Configuration:

- Probe: EX3DV4 - SN7577; ConvF(9.78, 9.78, 9.78); Calibrated: 2021/11/23
- Sensor-Surface: 1.4mm (Mechanical Surface Detection)
- Electronics: DAE4 Sn1437; Calibrated: 2021/10/26
- Phantom: Twin-SAM V8.0 (Left); Type: QD 000 P41 AA; Serial: 2035
- Measurement SW: DASY52, Version 52.10 (4); SEMCAD X Version 14.6.14 (7483)

Pin=250mW/Area Scan (61x61x1): Interpolated grid: dx=1.500 mm, dy=1.500 mm
Maximum value of SAR (interpolated) = 2.88 W/kg

Pin=250mW/Zoom Scan (5x5x7)/Cube 0: Measurement grid: dx=8mm, dy=8mm, dz=5mm
Reference Value = 60.93 V/m; Power Drift = -0.07 dB
Peak SAR (extrapolated) = 3.24 W/kg
SAR(1 g) = 2.18 W/kg; SAR(10 g) = 1.45 W/kg
Maximum value of SAR (measured) = 2.87 W/kg



System Check_835MHz

DUT: D835V2-SN:4d162

Communication System: UID 0, CW (0); Frequency: 835 MHz; Duty Cycle: 1:1

Medium: HSL_835_220929 Medium parameters used: $f = 835$ MHz; $\sigma = 0.919$ S/m; $\epsilon_r = 41.524$; $\rho = 1000$ kg/m³

Ambient Temperature : 23.4 °C; Liquid Temperature : 22.6 °C

DASY5 Configuration:

- Probe: EX3DV4 - SN7577; ConvF(9.55, 9.55, 9.55); Calibrated: 2021/11/23
- Sensor-Surface: 1.4mm (Mechanical Surface Detection)
- Electronics: DAE4 Sn1437; Calibrated: 2021/10/26
- Phantom: Twin-SAM V8.0 (Left); Type: QD 000 P41 AA; Serial: 2035
- Measurement SW: DASY52, Version 52.10 (4); SEMCAD X Version 14.6.14 (7483)

Pin=250mW/Area Scan (61x61x1): Interpolated grid: dx=1.500 mm, dy=1.500 mm

Maximum value of SAR (interpolated) = 3.47 W/kg

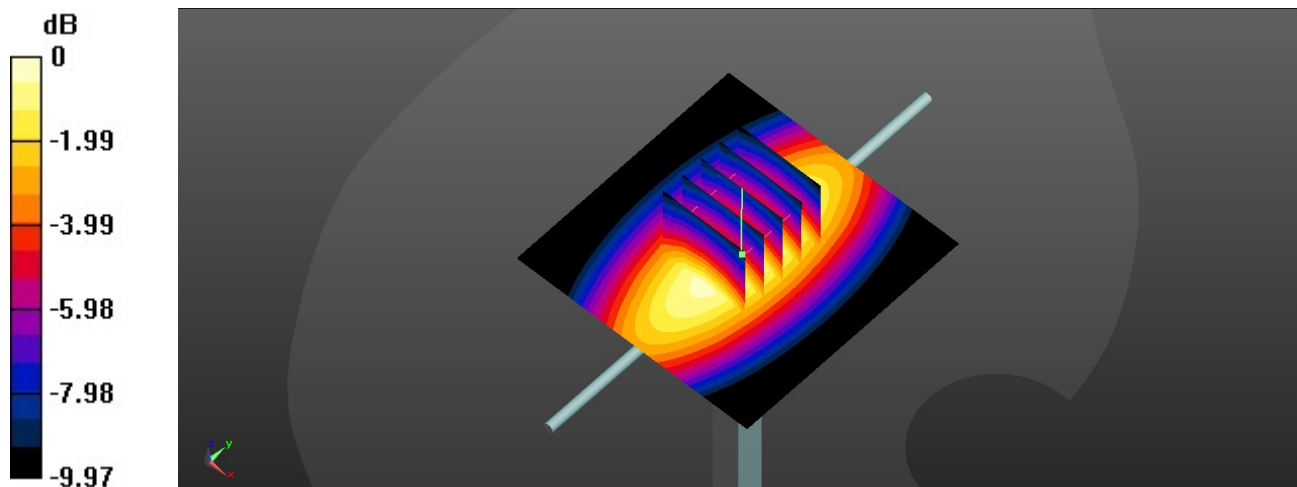
Pin=250mW/Zoom Scan (5x5x7)/Cube 0: Measurement grid: dx=8mm, dy=8mm, dz=5mm

Reference Value = 64.49 V/m; Power Drift = -0.01 dB

Peak SAR (extrapolated) = 3.86 W/kg

SAR(1 g) = 2.6 W/kg; SAR(10 g) = 1.7 W/kg

Maximum value of SAR (measured) = 3.48 W/kg



0 dB = 3.48 W/kg

System Check_835MHz

DUT: D835V2-SN:4d162

Communication System: UID 0, CW (0); Frequency: 835 MHz; Duty Cycle: 1:1

Medium: HSL_835_221016 Medium parameters used: $f = 835$ MHz; $\sigma = 0.897$ S/m; $\epsilon_r = 40.781$; $\rho = 1000$ kg/m³

Ambient Temperature : 23.3 °C; Liquid Temperature : 22.5 °C

DASY5 Configuration:

- Probe: EX3DV4 - SN7577; ConvF(9.55, 9.55, 9.55); Calibrated: 2021/11/23
- Sensor-Surface: 1.4mm (Mechanical Surface Detection)
- Electronics: DAE4 Sn1437; Calibrated: 2021/10/26
- Phantom: Twin-SAM V8.0 (Left); Type: QD 000 P41 AA; Serial: 2035
- Measurement SW: DASY52, Version 52.10 (4); SEMCAD X Version 14.6.14 (7483)

Pin=250mW/Area Scan (61x61x1): Interpolated grid: dx=1.500 mm, dy=1.500 mm

Maximum value of SAR (interpolated) = 3.23 W/kg

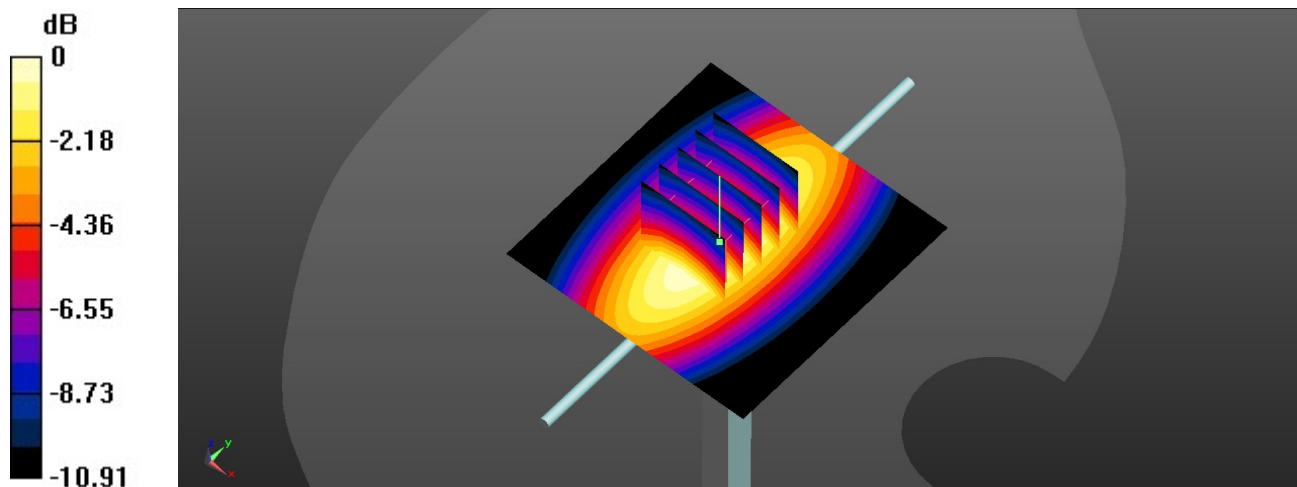
Pin=250mW/Zoom Scan (5x5x7)/Cube 0: Measurement grid: dx=8mm, dy=8mm, dz=5mm

Reference Value = 63.58 V/m; Power Drift = -0.17 dB

Peak SAR (extrapolated) = 3.61 W/kg

SAR(1 g) = 2.37 W/kg; SAR(10 g) = 1.54 W/kg

Maximum value of SAR (measured) = 3.19 W/kg



0 dB = 3.19 W/kg

System Check_1750MHz

DUT: D1750V2-SN:1137

Communication System: UID 0, CW; Frequency: 1750 MHz; Duty Cycle: 1:1

Medium: HSL_1750_220930 Medium parameters used: $f = 1750$ MHz; $\sigma = 1.355$ S/m; $\epsilon_r = 38.395$; $\rho = 1000$ kg/m³

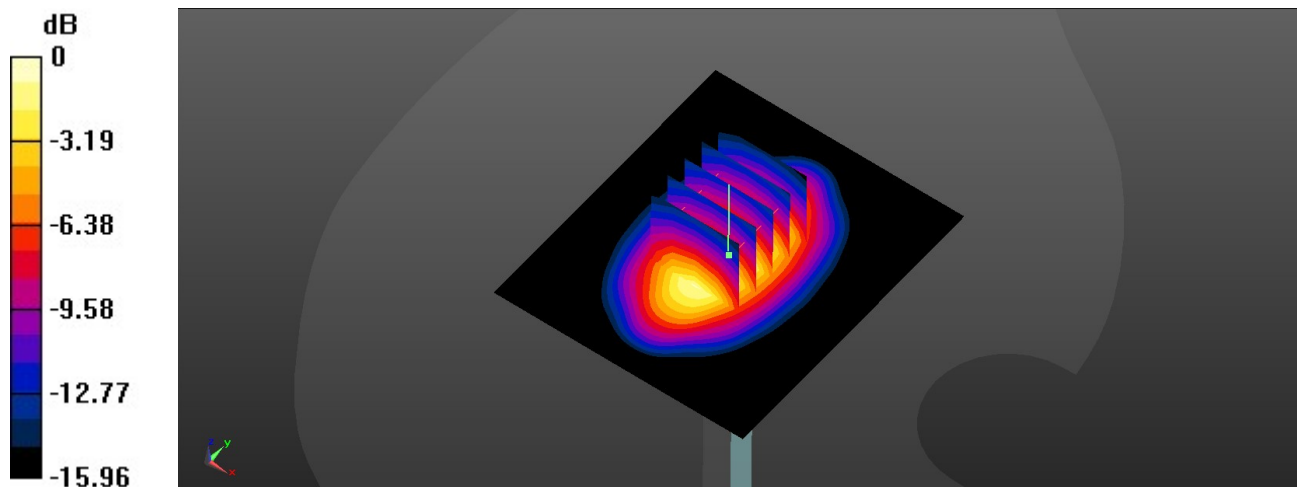
Ambient Temperature : 23.6 °C; Liquid Temperature : 22.5 °C

DASY5 Configuration:

- Probe: EX3DV4 - SN7577; ConvF(8.4, 8.4, 8.4); Calibrated: 2021/11/23
- Sensor-Surface: 1.4mm (Mechanical Surface Detection)
- Electronics: DAE4 Sn1437; Calibrated: 2021/10/26
- Phantom: Twin-SAM V8.0 (Left); Type: QD 000 P41 AA; Serial: 2035
- Measurement SW: DASY52, Version 52.10 (4); SEMCAD X Version 14.6.14 (7483)

Pin=250mW/Area Scan (61x71x1): Interpolated grid: dx=1.500 mm, dy=1.500 mm
Maximum value of SAR (interpolated) = 15.5 W/kg

Pin=250mW/Zoom Scan (5x5x7)/Cube 0: Measurement grid: dx=8mm, dy=8mm, dz=5mm
Reference Value = 108.9 V/m; Power Drift = -0.07 dB
Peak SAR (extrapolated) = 16.7 W/kg
SAR(1 g) = 9.69 W/kg; SAR(10 g) = 5.15 W/kg
Maximum value of SAR (measured) = 14.4 W/kg



0 dB = 14.4 W/kg

System Check_1750MHz

DUT: D1750V2-SN:1137

Communication System: UID 0, CW; Frequency: 1750 MHz; Duty Cycle: 1:1

Medium: HSL_1750_221017 Medium parameters used: $f = 1750$ MHz; $\sigma = 1.378$ S/m; $\epsilon_r = 40.204$; $\rho = 1000$ kg/m³

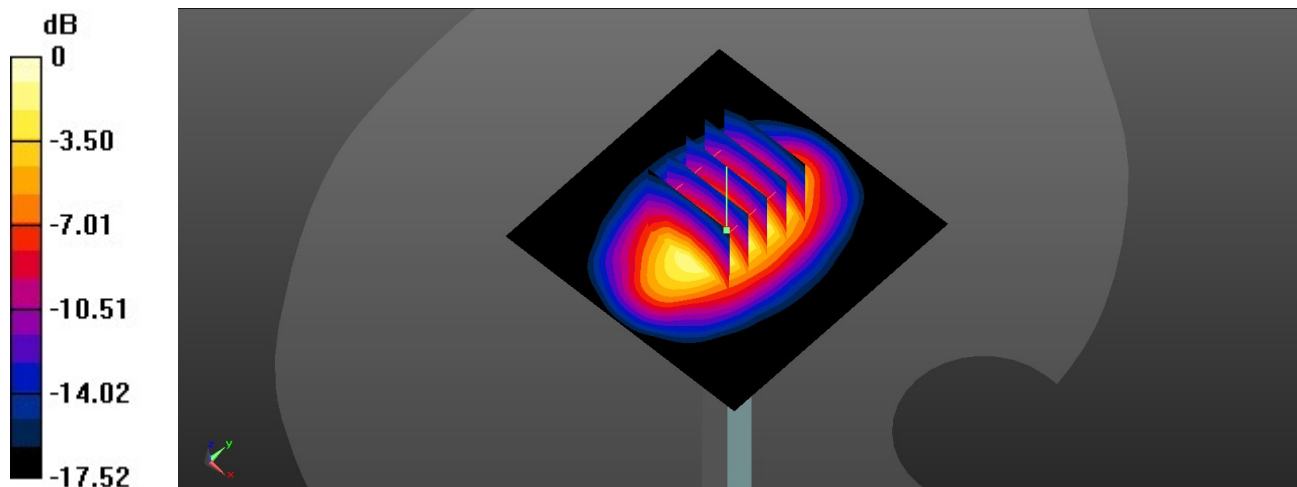
Ambient Temperature : 23.4 °C; Liquid Temperature : 22.5 °C

DASY5 Configuration:

- Probe: EX3DV4 - SN7577; ConvF(8.4, 8.4, 8.4); Calibrated: 2021/11/23
- Sensor-Surface: 1.4mm (Mechanical Surface Detection)
- Electronics: DAE4 Sn1437; Calibrated: 2021/10/26
- Phantom: Twin-SAM V8.0 (Left); Type: QD 000 P41 AA; Serial: 2035
- Measurement SW: DASY52, Version 52.10 (4); SEMCAD X Version 14.6.14 (7483)

Pin=250mW/Area Scan (61x61x1): Interpolated grid: dx=1.500 mm, dy=1.500 mm
Maximum value of SAR (interpolated) = 14.6 W/kg

Pin=250mW/Zoom Scan (5x5x7)/Cube 0: Measurement grid: dx=8mm, dy=8mm, dz=5mm
Reference Value = 106.2 V/m; Power Drift = -0.01 dB
Peak SAR (extrapolated) = 17.6 W/kg
SAR(1 g) = 9.18 W/kg; SAR(10 g) = 4.86 W/kg
Maximum value of SAR (measured) = 14.4 W/kg



0 dB = 14.4 W/kg

System Check_1900MHz

DUT: D1900V2-SN:5d182

Communication System: UID 0, CW; Frequency: 1900 MHz; Duty Cycle: 1:1

Medium: HSL_1900_221001 Medium parameters used: $f = 1900$ MHz; $\sigma = 1.413$ S/m; $\epsilon_r = 41.128$; $\rho = 1000$ kg/m³

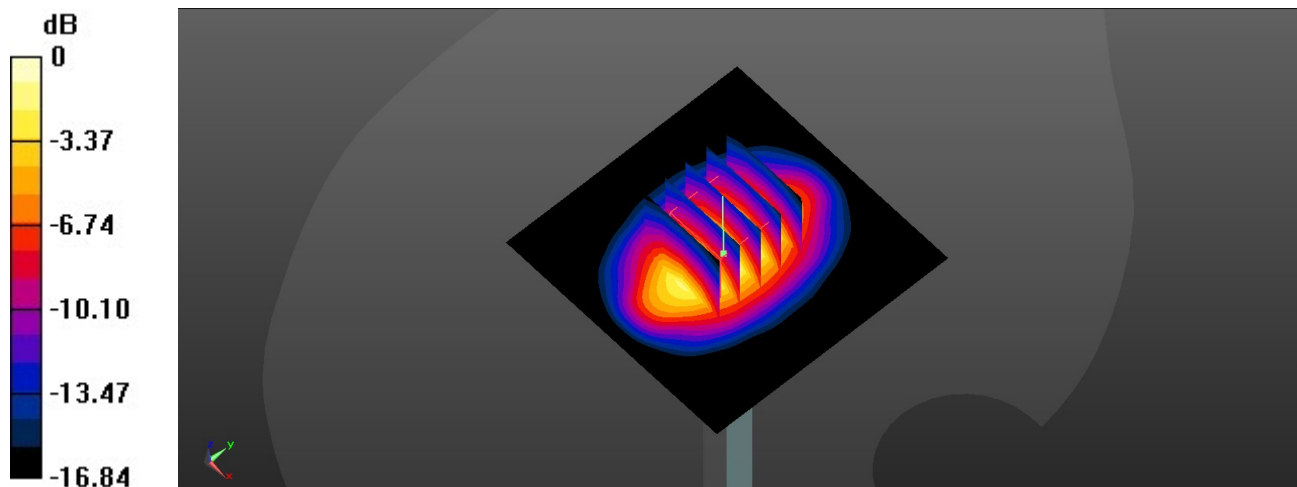
Ambient Temperature : 23.4 °C; Liquid Temperature : 22.7 °C

DASY5 Configuration:

- Probe: EX3DV4 - SN7577; ConvF(8.13, 8.13, 8.13); Calibrated: 2021/11/23
- Sensor-Surface: 1.4mm (Mechanical Surface Detection)
- Electronics: DAE4 Sn1437; Calibrated: 2021/10/26
- Phantom: Twin-SAM V8.0 (Left); Type: QD 000 P41 AA; Serial: 2035
- Measurement SW: DASY52, Version 52.10 (4); SEMCAD X Version 14.6.14 (7483)

Pin=250mW/Area Scan (61x61x1): Interpolated grid: dx=1.500 mm, dy=1.500 mm
Maximum value of SAR (interpolated) = 16.3 W/kg

Pin=250mW/Zoom Scan (5x5x7)/Cube 0: Measurement grid: dx=8mm, dy=8mm, dz=5mm
Reference Value = 112.7 V/m; Power Drift = -0.15 dB
Peak SAR (extrapolated) = 18.8 W/kg
SAR(1 g) = 10.6 W/kg; SAR(10 g) = 5.34 W/kg
Maximum value of SAR (measured) = 16.1 W/kg



0 dB = 16.1 W/kg

System Check_1900MHz

DUT: D1900V2-SN:5d182

Communication System: UID 0, CW (0); Frequency: 1800 MHz; Duty Cycle: 1:1

Medium: HSL_1900_221017 Medium parameters used: $f = 1900$ MHz; $\sigma = 1.449$ S/m; $\epsilon_r = 39.097$; $\rho = 1000$ kg/m³

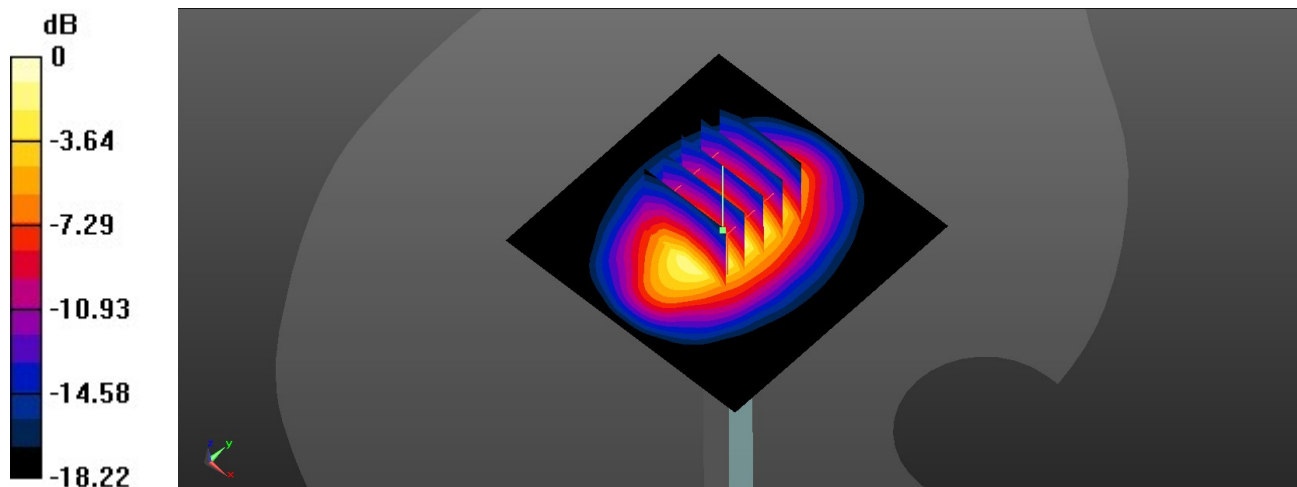
Ambient Temperature : 23.3 °C; Liquid Temperature : 22.4 °C

DASY5 Configuration:

- Probe: EX3DV4 - SN7577; ConvF(8.13, 8.13, 8.13); Calibrated: 2021/11/23
- Sensor-Surface: 1.4mm (Mechanical Surface Detection)
- Electronics: DAE4 Sn1437; Calibrated: 2021/10/26
- Phantom: Twin-SAM V8.0 (Left); Type: QD 000 P41 AA; Serial: 2035
- Measurement SW: DASY52, Version 52.10 (4); SEMCAD X Version 14.6.14 (7483)

Pin=250mW/Area Scan (61x61x1): Interpolated grid: dx=1.500 mm, dy=1.500 mm
Maximum value of SAR (interpolated) = 15.3 W/kg

Pin=250mW/Zoom Scan (5x5x7)/Cube 0: Measurement grid: dx=8mm, dy=8mm, dz=5mm
Reference Value = 106.6 V/m; Power Drift = -0.04 dB
Peak SAR (extrapolated) = 18.8 W/kg
SAR(1 g) = 9.6 W/kg; SAR(10 g) = 5 W/kg
Maximum value of SAR (measured) = 15.1 W/kg



0 dB = 15.1 W/kg

System Check_2450MHz

DUT: D2450V2-SN:1040

Communication System: UID 0, CW; Frequency: 2450 MHz; Duty Cycle: 1:1

Medium: HSL_2450_221002 Medium parameters used: $f = 2450$ MHz; $\sigma = 1.871$ S/m; $\epsilon_r = 38.124$; $\rho = 1000$ kg/m³

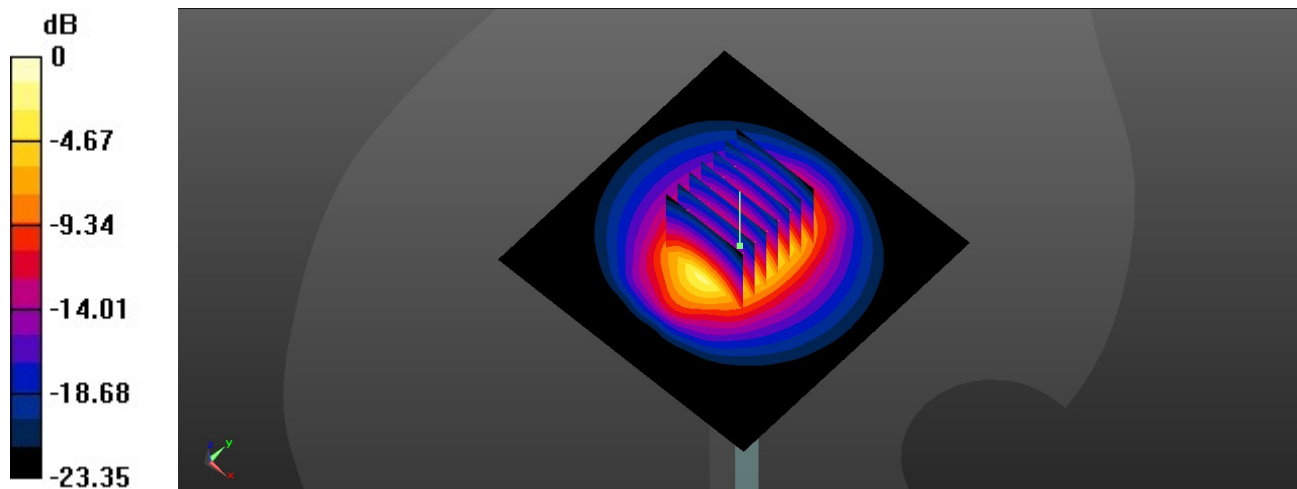
Ambient Temperature : 23.5 °C; Liquid Temperature : 22.5 °C

DASY5 Configuration:

- Probe: EX3DV4 - SN7577; ConvF(8.03, 8.03, 8.03); Calibrated: 2021/11/23
- Sensor-Surface: 1.4mm (Mechanical Surface Detection)
- Electronics: DAE4 Sn1437; Calibrated: 2021/10/26
- Phantom: Twin-SAM V8.0 (Left); Type: QD 000 P41 AA; Serial: 2035
- Measurement SW: DASY52, Version 52.10 (4); SEMCAD X Version 14.6.14 (7483)

Pin=250mW/Area Scan (81x81x1): Interpolated grid: $dx=1.200$ mm, $dy=1.200$ mm
Maximum value of SAR (interpolated) = 25.9 W/kg

Pin=250mW/Zoom Scan (7x7x7)/Cube 0: Measurement grid: $dx=5$ mm, $dy=5$ mm, $dz=5$ mm
Reference Value = 121.3 V/m; Power Drift = 0.01 dB
Peak SAR (extrapolated) = 32.7 W/kg
SAR(1 g) = 13.9 W/kg; SAR(10 g) = 6.21 W/kg
Maximum value of SAR (measured) = 25.7 W/kg



0 dB = 25.7 W/kg

System Check_2450MHz

DUT: D2450V2-SN:1040

Communication System: UID 0, CW; Frequency: 2450 MHz; Duty Cycle: 1:1

Medium: HSL_2450_221018 Medium parameters used: $f = 2450$ MHz; $\sigma = 1.792$ S/m; $\epsilon_r = 40.49$; $\rho = 1000$ kg/m³

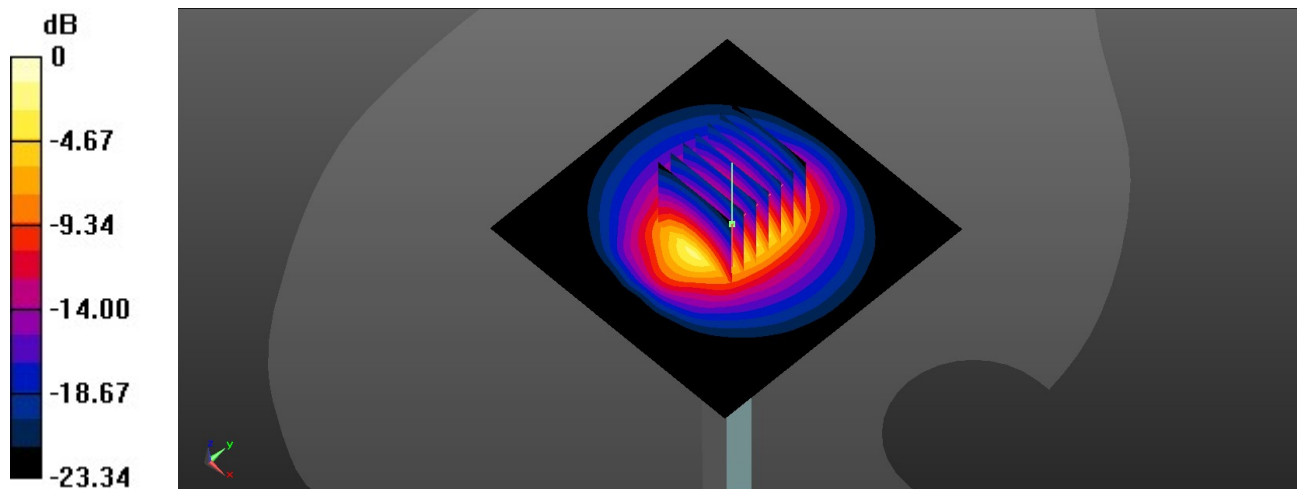
Ambient Temperature : 23.4 °C; Liquid Temperature : 22.4 °C

DASY5 Configuration:

- Probe: EX3DV4 - SN7577; ConvF(8.03, 8.03, 8.03); Calibrated: 2021/11/23
- Sensor-Surface: 1.4mm (Mechanical Surface Detection)
- Electronics: DAE4 Sn1437; Calibrated: 2021/10/26
- Phantom: Twin-SAM V8.0 (Left); Type: QD 000 P41 AA; Serial: 2035
- Measurement SW: DASY52, Version 52.10 (4); SEMCAD X Version 14.6.14 (7483)

Pin=250mW/Area Scan (81x81x1): Interpolated grid: dx=1.200 mm, dy=1.200 mm
 Maximum value of SAR (interpolated) = 24.8 W/kg

Pin=250mW/Zoom Scan (7x7x7)/Cube 0: Measurement grid: dx=5mm, dy=5mm, dz=5mm
 Reference Value = 121.3 V/m; Power Drift = 0.05 dB
 Peak SAR (extrapolated) = 31.4 W/kg
SAR(1 g) = 13.1 W/kg; SAR(10 g) = 6.21 W/kg
 Maximum value of SAR (measured) = 24.6 W/kg



0 dB = 24.6 W/kg

System Check_2600MHz

DUT: D2600V2-SN:1070

Communication System: UID 0, CW; Frequency: 2600 MHz; Duty Cycle: 1:1

Medium: HSL_2600_221003 Medium parameters used: $f = 2600$ MHz; $\sigma = 2.056$ S/m; $\rho = 37.589$; $\rho \approx 1000$ kg/m³

Ambient Temperature : 23.5 °C; Liquid Temperature : 22.7 °C

DASY5 Configuration:

- Probe: EX3DV4 - SN7577; ConvF(7.68, 7.68, 7.68); Calibrated: 2021/11/23
- Sensor-Surface: 1.4mm (Mechanical Surface Detection)
- Electronics: DAE4 Sn1437; Calibrated: 2021/10/26
- Phantom: Twin-SAM V8.0 (Left); Type: QD 000 P41 AA; Serial: 2035
- Measurement SW: DASY52, Version 52.10 (4); SEMCAD X Version 14.6.14 (7483)

Pin=250mW/Area Scan (71x81x1): Interpolated grid: dx=1.200 mm, dy=1.200 mm
Maximum value of SAR (interpolated) = 30.5 W/kg

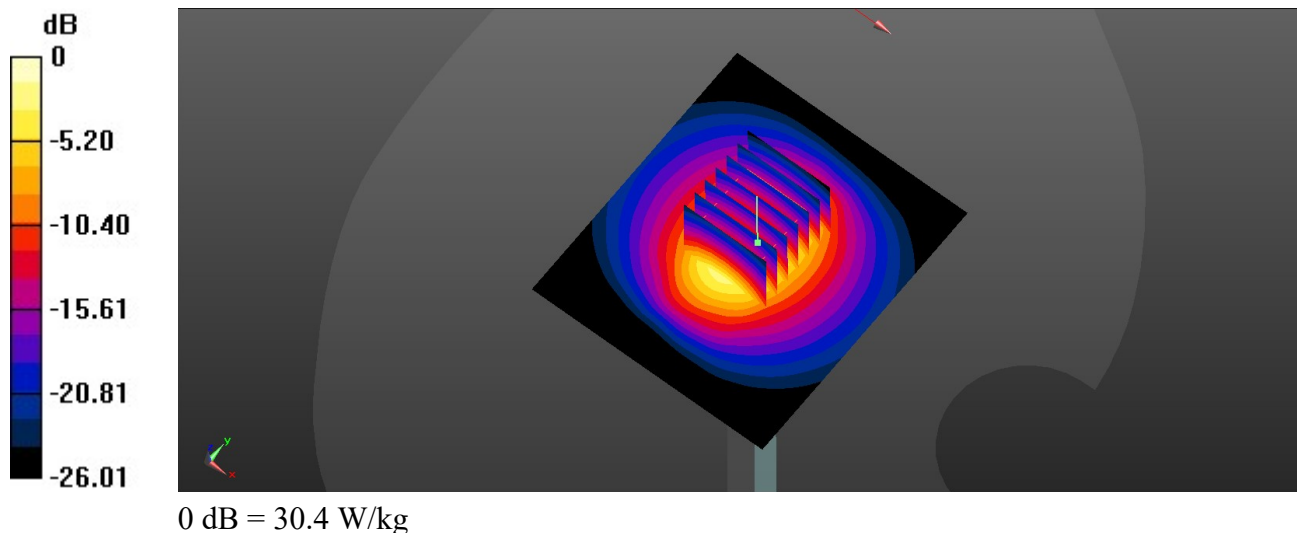
Pin=250mW/Zoom Scan (7x7x7)/Cube 0: Measurement grid: dx=5mm, dy=5mm, dz=5mm

Reference Value = 125.1 V/m; Power Drift = 0.02 dB

Peak SAR (extrapolated) = 39.7 W/kg

SAR(1 g) = 14.9 W/kg; SAR(10 g) = 6.5 W/kg

Maximum value of SAR (measured) = 30.4 W/kg



System Check_2600MHz

DUT: D2600V2-SN:1070

Communication System: UID 0, CW (0); Frequency: 2600 MHz; Duty Cycle: 1:1

Medium: HSL_2600_221018 Medium parameters used: $f = 2600$ MHz; $\sigma = 2.053$ S/m; $\epsilon_r = 38.335$; $\rho = 1000$ kg/m³

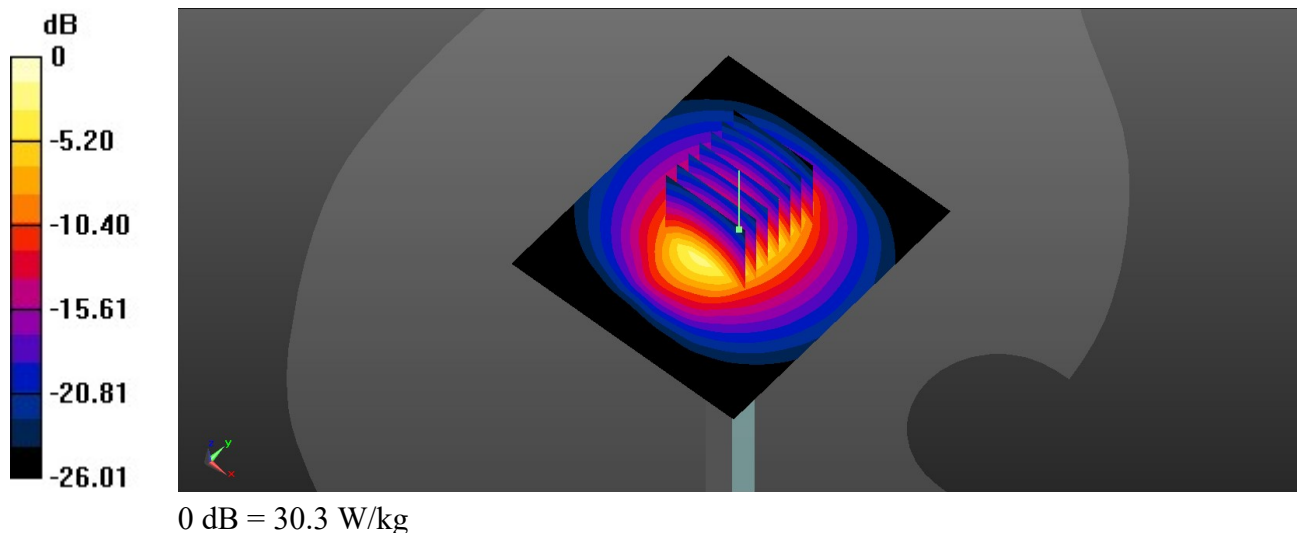
Ambient Temperature : 23.5 °C; Liquid Temperature : 22.3 °C

DASY5 Configuration:

- Probe: EX3DV4 - SN7577; ConvF(7.68, 7.68, 7.68); Calibrated: 2021/11/23
- Sensor-Surface: 1.4mm (Mechanical Surface Detection)
- Electronics: DAE4 Sn1437; Calibrated: 2021/10/26
- Phantom: Twin-SAM V8.0 (Left); Type: QD 000 P41 AA; Serial: 2035
- Measurement SW: DASY52, Version 52.10 (4); SEMCAD X Version 14.6.14 (7483)

Pin=250mW/Area Scan (71x81x1): Interpolated grid: dx=1.200 mm, dy=1.200 mm
Maximum value of SAR (interpolated) = 30.5 W/kg

Pin=250mW/Zoom Scan (7x7x7)/Cube 0: Measurement grid: dx=5mm, dy=5mm, dz=5mm
Reference Value = 125.1 V/m; Power Drift = 0.02 dB
Peak SAR (extrapolated) = 39.7 W/kg
SAR(1 g) = 14.2 W/kg; SAR(10 g) = 6.24 W/kg
Maximum value of SAR (measured) = 30.3 W/kg



System Check_5250MHz

DUT: D5GHzV2-SN:1341

Communication System: UID 0, CW; Frequency: 5250 MHz; Duty Cycle: 1:1

Medium: HSL_5250_221004 Medium parameters used: $f = 5250$ MHz; $\sigma = 4.766$ S/m; $\epsilon_r = 36.972$; $\rho = 1000$ kg/m³

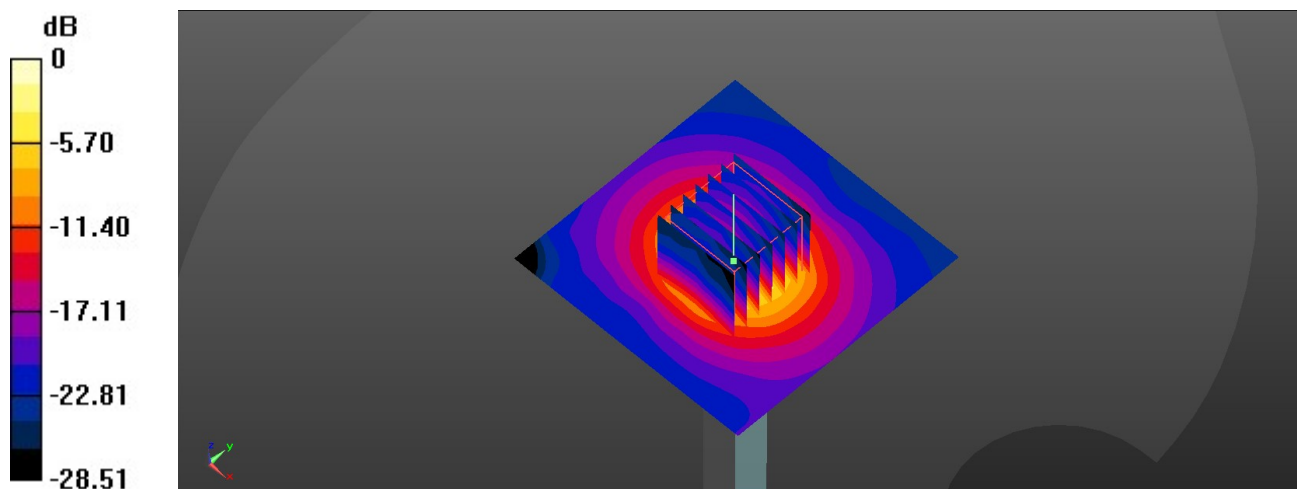
Ambient Temperature : 23.3 °C; Liquid Temperature : 22.4 °C

DASY5 Configuration:

- Probe: EX3DV4 - SN7577; ConvF(5.4, 5.4, 5.4); Calibrated: 2021/11/23
- Sensor-Surface: 1.4mm (Mechanical Surface Detection)
- Electronics: DAE4 Sn1437; Calibrated: 2021/10/26
- Phantom: Twin-SAM V8.0 (Left); Type: QD 000 P41 AA; Serial: 2035
- Measurement SW: DASY52, Version 52.10 (4); SEMCAD X Version 14.6.14 (7483)

Pin=100mW/Area Scan (71x71x1): Interpolated grid: dx=1.000 mm, dy=1.000 mm
Maximum value of SAR (interpolated) = 20.6 W/kg

Pin=100mW/Zoom Scan (7x7x7)/Cube 0: Measurement grid: dx=4mm, dy=4mm, dz=1.4mm
Reference Value = 75.59 V/m; Power Drift = -0.03 dB
Peak SAR (extrapolated) = 33.8 W/kg
SAR(1 g) = 8.7 W/kg; SAR(10 g) = 2.43 W/kg
Maximum value of SAR (measured) = 21.1 W/kg



0 dB = 21.1 W/kg

System Check_5250MHz

DUT: D5GHzV2-SN:1341

Communication System: UID 0, CW; Frequency: 5250 MHz; Duty Cycle: 1:1

Medium: HSL_5250_221019 Medium parameters used: $f = 5250$ MHz; $\sigma = 4.488$ S/m; $\epsilon_r = 37.097$; $\rho = 1000$ kg/m³

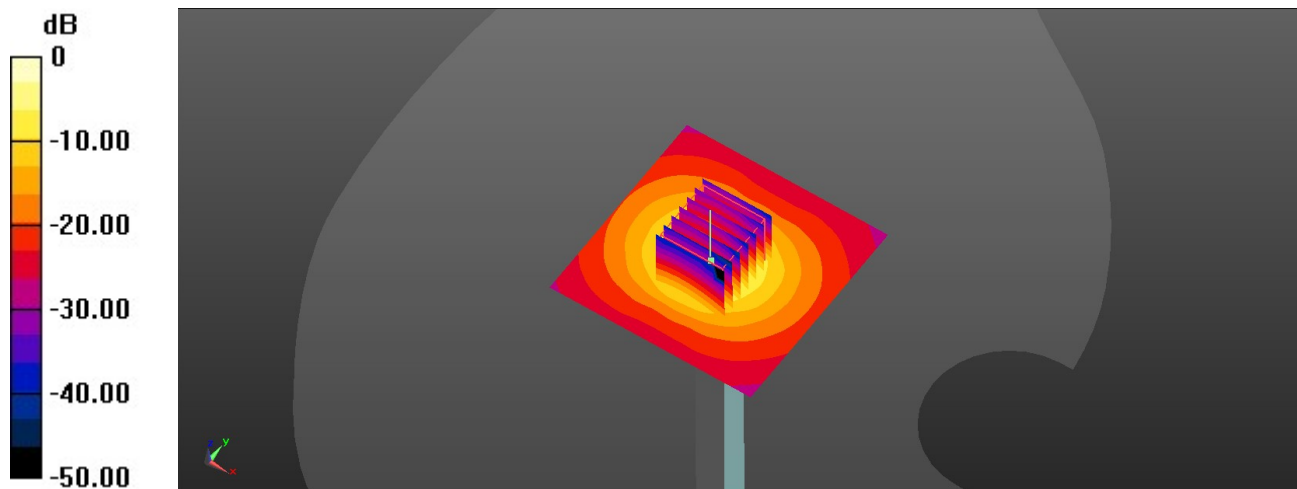
Ambient Temperature : 23.6 °C; Liquid Temperature : 22.3 °C

DASY5 Configuration:

- Probe: EX3DV4 - SN7577; ConvF(5.4, 5.4, 5.4); Calibrated: 2021/11/23
- Sensor-Surface: 1.4mm (Mechanical Surface Detection)
- Electronics: DAE4 Sn1437; Calibrated: 2021/10/26
- Phantom: Twin-SAM V8.0 (Left); Type: QD 000 P41 AA; Serial: 2035
- Measurement SW: DASY52, Version 52.10 (4); SEMCAD X Version 14.6.14 (7483)

Pin=100mW/Area Scan (71x71x1): Interpolated grid: dx=1.000 mm, dy=1.000 mm
Maximum value of SAR (interpolated) = 21.7 W/kg

Pin=100mW/Zoom Scan (7x7x7)/Cube 0: Measurement grid: dx=4mm, dy=4mm, dz=1.4mm
Reference Value = 77.88 V/m; Power Drift = -0.13 dB
Peak SAR (extrapolated) = 36.5 W/kg
SAR(1 g) = 8.51 W/kg; SAR(10 g) = 2.42 W/kg
Maximum value of SAR (measured) = 21.8 W/kg



0 dB = 21.8 W/kg

System Check_5600MHz

DUT: D5GHzV2-SN:1341

Communication System: UID 0, CW; Frequency: 5600 MHz; Duty Cycle: 1:1

Medium: HSL_5600_221005 Medium parameters used: $f = 5600$ MHz; $\sigma = 5.21$ S/m; $\epsilon_r = 36.221$; $\rho = 1000$ kg/m³

Ambient Temperature : 23.3 °C; Liquid Temperature : 22.2 °C

DASY5 Configuration:

- Probe: EX3DV4 - SN7577; ConvF(4.82, 4.82, 4.82); Calibrated: 2021/11/23
- Sensor-Surface: 1.4mm (Mechanical Surface Detection)
- Electronics: DAE4 Sn1437; Calibrated: 2021/10/26
- Phantom: Twin-SAM V8.0 (Left); Type: QD 000 P41 AA; Serial: 2035
- Measurement SW: DASY52, Version 52.10 (4); SEMCAD X Version 14.6.14 (7483)

Pin=100mW/Area Scan (71x71x1): Interpolated grid: dx=1.000 mm, dy=1.000 mm

Maximum value of SAR (interpolated) = 24.1 W/kg

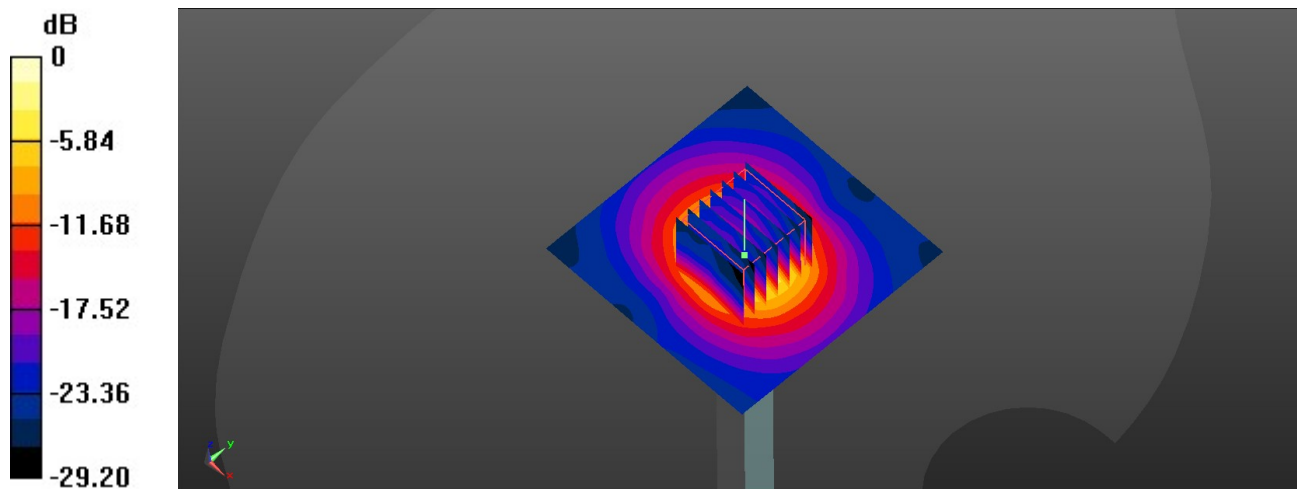
Pin=100mW/Zoom Scan (7x7x7)/Cube 0: Measurement grid: dx=4mm, dy=4mm, dz=1.4mm

Reference Value = 75.33 V/m; Power Drift = -0.09 dB

Peak SAR (extrapolated) = 39.2 W/kg

SAR(1 g) = 9.15 W/kg; SAR(10 g) = 2.6 W/kg

Maximum value of SAR (measured) = 23.4 W/kg



0 dB = 23.4 W/kg

System Check_5600MHz

DUT: D5GHzV2-SN:1341

Communication System: UID 0, CW; Frequency: 5600 MHz; Duty Cycle: 1:1

Medium: HSL_5600_221019 Medium parameters used: $f = 5600$ MHz; $\sigma = 4.829$ S/m; $\epsilon_r = 36.667$; $\rho = 1000$ kg/m³

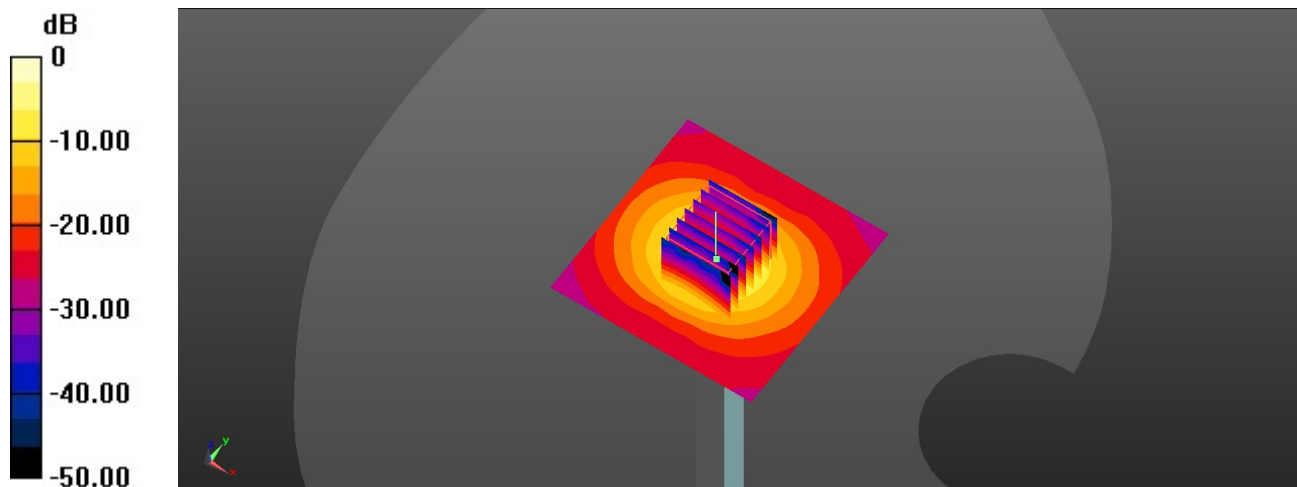
Ambient Temperature : 23.5 °C; Liquid Temperature : 22.5 °C

DASY5 Configuration:

- Probe: EX3DV4 - SN7577; ConvF(4.82, 4.82, 4.82); Calibrated: 2021/11/23
- Sensor-Surface: 1.4mm (Mechanical Surface Detection)
- Electronics: DAE4 Sn1437; Calibrated: 2021/10/26
- Phantom: Twin-SAM V8.0 (Left); Type: QD 000 P41 AA; Serial: 2035
- Measurement SW: DASY52, Version 52.10 (4); SEMCAD X Version 14.6.14 (7483)

Pin=100mW/Area Scan (71x71x1): Interpolated grid: dx=1.000 mm, dy=1.000 mm
Maximum value of SAR (interpolated) = 23.9 W/kg

Pin=100mW/Zoom Scan (7x7x7)/Cube 0: Measurement grid: dx=4mm, dy=4mm, dz=1.4mm
Reference Value = 78.02 V/m; Power Drift = 0.01 dB
Peak SAR (extrapolated) = 41.9 W/kg
SAR(1 g) = 9.08 W/kg; SAR(10 g) = 2.52 W/kg
Maximum value of SAR (measured) = 23.9 W/kg



0 dB = 23.9 W/kg

System Check_5750MHz

DUT: D5GHzV2-SN:1341

Communication System: UID 0, CW; Frequency: 5750 MHz; Duty Cycle: 1:1

Medium: HSL_5750_221005 Medium parameters used: $f = 5750$ MHz; $\sigma = 5.383$ S/m; $\epsilon_r = 35.944$; $\rho = 1000$ kg/m³

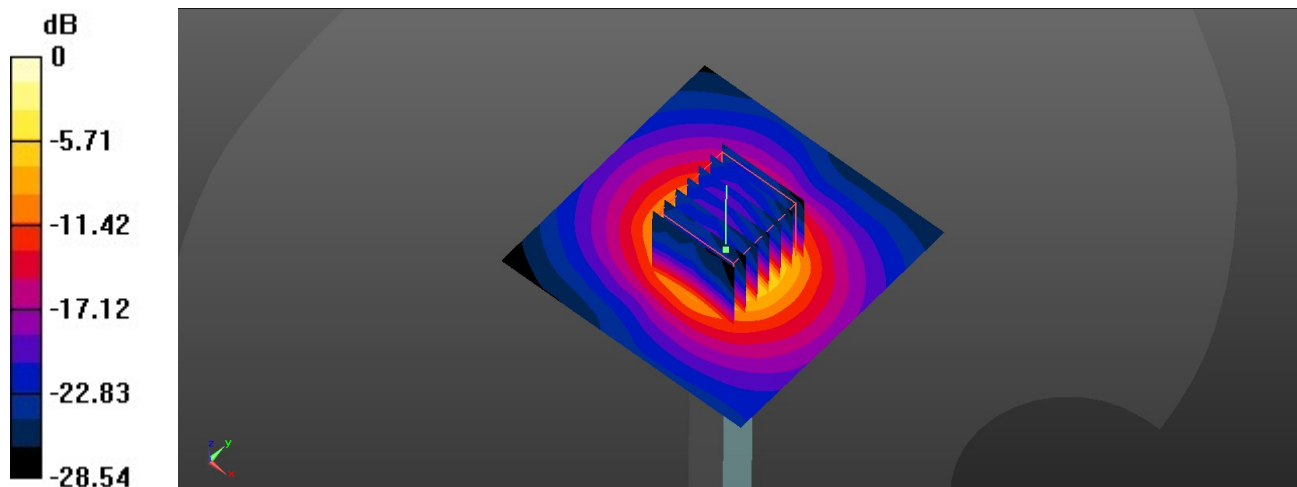
Ambient Temperature : 23.6 °C; Liquid Temperature : 22.7 °C

DASY5 Configuration:

- Probe: EX3DV4 - SN7577; ConvF(5.03, 5.03, 5.03); Calibrated: 2021/11/23
- Sensor-Surface: 1.4mm (Mechanical Surface Detection)
- Electronics: DAE4 Sn1437; Calibrated: 2021/10/26
- Phantom: Twin-SAM V8.0 (Left); Type: QD 000 P41 AA; Serial: 2035
- Measurement SW: DASY52, Version 52.10 (4); SEMCAD X Version 14.6.14 (7483)

Pin=100mW/Area Scan (71x71x1): Interpolated grid: dx=1.000 mm, dy=1.000 mm
Maximum value of SAR (interpolated) = 21.8 W/kg

Pin=100mW/Zoom Scan (7x7x7)/Cube 0: Measurement grid: dx=4mm, dy=4mm, dz=1.4mm
Reference Value = 70.13 V/m; Power Drift = -0.03 dB
Peak SAR (extrapolated) = 37.9 W/kg
SAR(1 g) = 8.75 W/kg; SAR(10 g) = 2.45 W/kg
Maximum value of SAR (measured) = 21.6 W/kg



0 dB = 21.6 W/kg

System Check_5750MHz

DUT: D5GHzV2-SN:1341

Communication System: UID 0, CW; Frequency: 5750 MHz; Duty Cycle: 1:1

Medium: HSL_5750_221019 Medium parameters used: $f = 5750$ MHz; $\sigma = 5.009$ S/m; $\epsilon_r = 36.365$; $\rho = 1000$ kg/m³

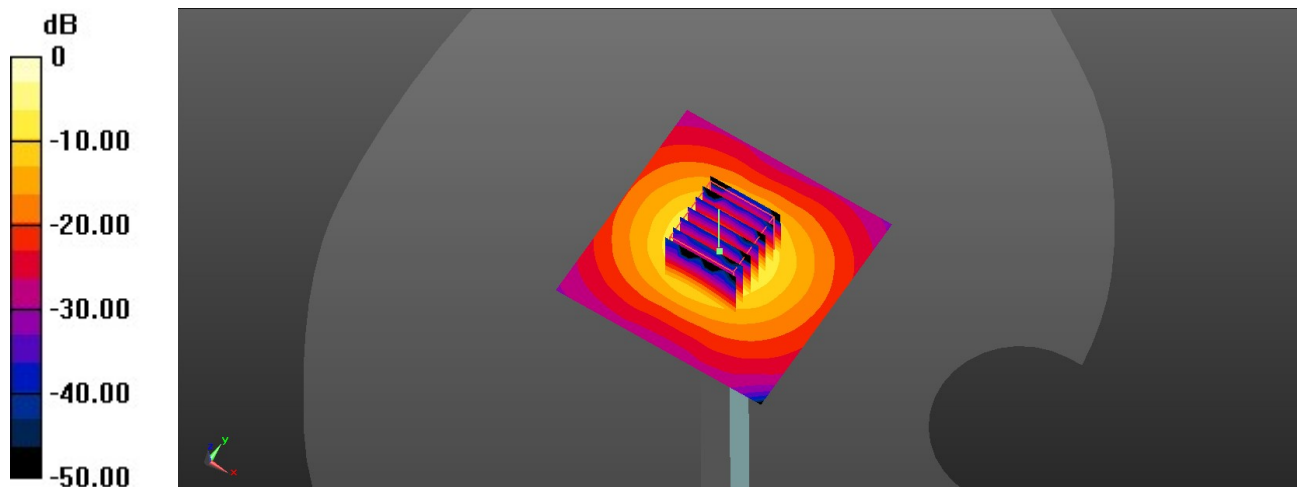
Ambient Temperature : 23.6 °C; Liquid Temperature : 22.4 °C

DASY5 Configuration:

- Probe: EX3DV4 - SN7577; ConvF(5.03, 5.03, 5.03); Calibrated: 2021/11/23
- Sensor-Surface: 1.4mm (Mechanical Surface Detection)
- Electronics: DAE4 Sn1437; Calibrated: 2021/10/26
- Phantom: Twin-SAM V8.0 (Left); Type: QD 000 P41 AA; Serial: 2035
- Measurement SW: DASY52, Version 52.10 (4); SEMCAD X Version 14.6.14 (7483)

Pin=100mW/Area Scan (71x71x1): Interpolated grid: dx=1.000 mm, dy=1.000 mm
Maximum value of SAR (interpolated) = 21.8 W/kg

Pin=100mW/Zoom Scan (7x7x7)/Cube 0: Measurement grid: dx=4mm, dy=4mm, dz=1.4mm
Reference Value = 73.09 V/m; Power Drift = -0.01 dB
Peak SAR (extrapolated) = 40.5 W/kg
SAR(1 g) = 8.18 W/kg; SAR(10 g) = 2.29 W/kg
Maximum value of SAR (measured) = 22.7 W/kg



0 dB = 22.7 W/kg