

System Check_Head_13MHz

DUT: CLA13-1011

Communication System: CW; Frequency: 13 MHz; Duty Cycle: 1:1

Medium: HSL_13_220705 Medium parameters used : $f = 13$ MHz; $\sigma = 0.729$ S/m; $\epsilon_r = 54.37$; $\rho = 1000$ kg/m³

Ambient Temperature : 23.3 °C; Liquid Temperature : 22.3 °C

DASY5 Configuration:

- Probe: EX3DV4 - SN3931; ConvF(18.36, 18.36, 18.36) @ 13 MHz; Calibrated: 2021/10/21
- Sensor-Surface: 1.4mm (Mechanical Surface Detection)
- Electronics: DAE4 Sn1399; Calibrated: 2022/2/28
- Phantom: SAM-Middle; Type: SAM; Serial: TP-1503
- Measurement SW: DASY52, Version 52.10 (4); SEMCAD X Version 14.6.14 (7483)

Pin=250mW/Area Scan (81x81x1): Interpolated grid: dx=1.500 mm, dy=1.500 mm

Maximum value of SAR (interpolated) = 0.244 W/kg

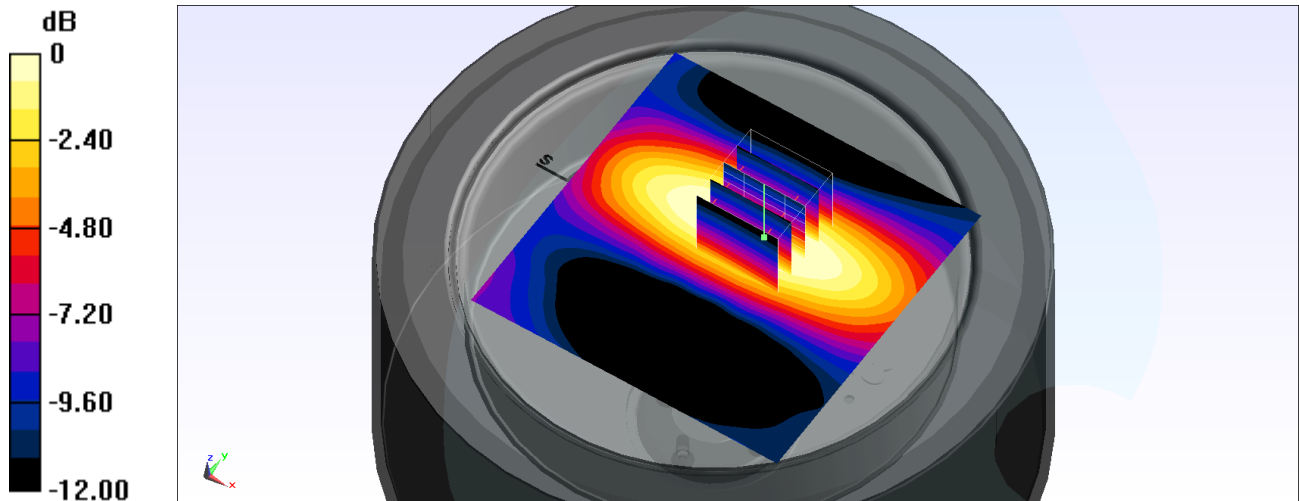
Pin=250mW/Zoom Scan 2 (5x5x7)/Cube 0: Measurement grid: dx=8mm, dy=8mm, dz=5mm

Reference Value = 12.68 V/m; Power Drift = -0.07 dB

Peak SAR (extrapolated) = 0.263 W/kg

SAR(1 g) = 0.144 W/kg; SAR(10 g) = 0.089 W/kg

Maximum value of SAR (measured) = 0.213 W/kg



0 dB = 0.213 W/kg = -6.72 dBW/kg