



# HEARING AID COMPATIBILITY RF EMISSIONS TEST REPORT

FCC ID : IHDT56AF6  
Equipment : Mobile Cellular Phone  
Brand Name : Motorola  
Model Name : XT2241-2  
M-Rating : M3  
Applicant : Motorola Mobility LLC  
222 W,Merchandise Mart Plaza, Chicago IL 60654 USA  
Manufacturer : Motorola Mobility LLC  
222 W,Merchandise Mart Plaza, Chicago IL 60654 USA  
Standard : FCC 47 CFR §20.19  
ANSI C63.19-2011

We, Sporton International Inc. (Kunshan), would like to declare that the tested sample has been evaluated in accordance with the test procedures and has been in compliance with the applicable technical standards.

The test results in this report apply exclusively to the tested model / sample. Without written approval of Sporton International Inc. (Kunshan), the test report shall not be reproduced except in full.



Approved by: Si Zhang

**Sporton International Inc. (Kunshan)**

No. 1098, Pengxi North Road, Kunshan Economic Development Zone Jiangsu Province 215300  
People's Republic of China



**Table of Contents**

1. General Information..... 4

2. Testing Location..... 6

3. Applied Standards ..... 6

4. RF Audio Interference Level..... 6

5. Air Interface and Operating Mode..... 7

6. Measurement System Specification ..... 8

    6.1 E-Field Probe System..... 8

    6.2 Data Storage and Evaluation..... 9

7. RF Emissions Test Procedure.....10

8. Test Equipment List .....13

9. Measurement System Validation .....14

10. Modulation Interference Factor.....15

11. Low-power Exemption.....16

12. Conducted RF Output Power (Unit: dBm).....22

13. HAC RF Emission Test Results.....25

14. Uncertainty Assessment .....26

15. References.....28

Appendix A. Plots of System Performance Check

Appendix B. Plots of RF Emission Measurement

Appendix C. DASYS Calibration Certificate

Appendix D. Test Setup Photos

Appendix E. UID specifications for HAC RFE



### History of this test report

| Report No. | Version | Description             | Issued Date   |
|------------|---------|-------------------------|---------------|
| HA252601A  | Rev. 01 | Initial issue of report | Jul. 12, 2022 |
|            |         |                         |               |
|            |         |                         |               |



**1. General Information**

| Product Feature & Specification |  |
|---------------------------------|--|
| Applicant Name                  | Motorola Mobility LLC  |
| Equipment Name                  | Mobile Cellular Phone  |
| Brand Name                      | Motorola   |
| Model Name                      | XT2241-2   |
| IMEI Code                       | Sample 1:<br>355222700013015<br>Sample 3:<br>IMEI 1: 355222700019376<br>IMEI 2: 355222700019384  |
| FCC ID                          | IHDT56AF6  |
| HW                              | DVT2   |
| SW                              | SSQ32.54   |
| EUT Stage                       | Identical Prototype  |
| Date Tested                     | 2022/6/12 ~ 2022/6/29  |
| Frequency Band                  | GSM850: 824 MHz ~ 849 MHz<br>GSM1900: 1850 MHz ~ 1910 MHz<br>WCDMA Band II: 1850 MHz ~ 1910 MHz<br>WCDMA Band IV: 1710 MHz ~ 1755 MHz<br>WCDMA Band V: 824 MHz ~ 849 MHz<br>LTE Band 2: 1850 MHz ~ 1910 MHz<br>LTE Band 4: 1710 MHz ~ 1755 MHz<br>LTE Band 5: 824 MHz ~ 849 MHz<br>LTE Band 7: 2500 MHz ~ 2570 MHz<br>LTE Band 12: 699 MHz ~ 716 MHz<br>LTE Band 13: 777 MHz ~ 787 MHz<br>LTE Band 17: 704 MHz ~ 716 MHz<br>LTE Band 25: 1850 MHz ~ 1915 MHz<br>LTE Band 26: 814 MHz ~ 849 MHz<br>LTE Band 38: 2570 MHz ~ 2620 MHz<br>LTE Band 41: 2496 MHz ~ 2690 MHz<br>LTE Band 42: 3450 MHz ~ 3550MHz, 3550 MHz ~ 3600MHz<br>LTE Band 43: 3600 MHz ~ 3700MHz<br>LTE Band 48: 3550 MHz ~ 3700 MHz<br>LTE Band 66: 1710 MHz ~ 1780 MHz<br>5G NR n2 : 1850 MHz ~ 1910 MHz<br>5G NR n5: 824 MHz ~ 849 MHz<br>5G NR n7: 2500 MHz ~ 2570 MHz<br>5G NR n66: 1710 MHz ~ 1780 MHz<br>5G NR n41 : 2496 MHz ~ 2690 MHz<br>5G NR n77: 3450 MHz ~ 3550 MHz, 3700 MHz ~ 3980 MHz<br>5G NR n78: 3450 MHz ~ 3550 MHz, 3700 MHz ~ 3800 MHz<br>WLAN 2.4GHz Band: 2412 MHz ~ 2462 MHz<br>WLAN 5.2GHz Band: 5180 MHz ~ 5240 MHz<br>WLAN 5.3GHz Band: 5260 MHz ~ 5320 MHz<br>WLAN 5.5GHz Band: 5500 MHz ~ 5720 MHz<br>WLAN 5.8GHz Band: 5745 MHz ~ 5825 MHz<br>WLAN 6E U-NII-5: 5925 MHz ~ 6425 MHz<br>WLAN 6E U-NII-6: 6425 MHz ~ 6525 MHz<br>WLAN 6E U-NII-7: 6525 MHz ~ 6875 MHz<br>WLAN 6E U-NII-8: 6875 MHz ~ 7125 MHz<br>Bluetooth: 2402 MHz ~ 2480 MHz<br>WPT: 113 kHz ~ 148 kHz<br>NFC: 13.56 MHz |
| Mode                            | GSM/GPRS/EGPRS<br>RMC/AMR 12.2Kbps<br>HSDPA<br>HSUPA<br>DC-HSDPA<br>HSPA+(16QAM uplink is not supported)<br>LTE: QPSK, 16QAM, 64QAM, 256QAM<br>5G NR : CP-OFDM / DFT-s-OFDM, PI/2 BPSK, QPSK, 16QAM, 64QAM, 256QAM<br>WLAN 2.4GHz 802.11b/g/n HT20/HT40<br>WLAN 2.4GHz 802.11ax HE20/HE40<br>WLAN 5GHz 802.11a/n HT20/HT40   |



|  |   |
|--|---|
|  | WLAN 5GHz 802.11ac/ax VHT20/VHT40/VHT80/VHT160/HE20/HE40/HE80/HE160 |
|  | WLAN 6GHz 802.11a   |
|  | WLAN 6GHz 802.11ax HE20/HE40/HE80/HE160                             |
|  | Bluetooth BR/EDR/LE   |
|  | WPT: ASK  |
|  | NFC: ASK  |



2. Testing Location

Sporton International Inc. (Kunshan) is accredited to ISO/IEC 17025:2017 by American Association for Laboratory Accreditation with Certificate Number 5145.02.

Table with 4 columns: Test Firm, Test Site Location, Test Site No., and sub-columns for Sporton Site No., FCC Designation No., and FCC Test Firm Registration No.

3. Applied Standards

- FCC CFR47 Part 20.19
ANSI C63.19-2011
FCC KDB 285076 D01 HAC Guidance v06
FCC KDB 285076 D03 HAC FAQ v01r05

4. RF Audio Interference Level

FCC wireless hearing aid compatibility rules ensure that consumers with hearing loss are able to access wireless communications services through a wide selection of handsets without experiencing disabling radio frequency (RF) interference or other technical obstacles.

To define and measure the hearing aid compatibility of handsets, in CFR47 part 20.19 ANSI C63.19 is referenced. A handset is considered hearing aid-compatible for acoustic coupling if it meets a rating of at least M3 under ANSI C63.19, and A handset is considered hearing aid compatible for inductive coupling if it meets a rating of at least T3. According to ANSI C63.19 2011 version, for acoustic coupling, the RF electric field emissions of wireless communication devices should be measured and rated according to the emission level as below.

Table 4.1: Telephone near-field categories in linear units. Columns: Emission Categories, E-field emissions (<960Mhz, >960Mhz). Rows: M1, M2, M3, M4.

Table 4.1 Telephone near-field categories in linear units



5. Air Interface and Operating Mode

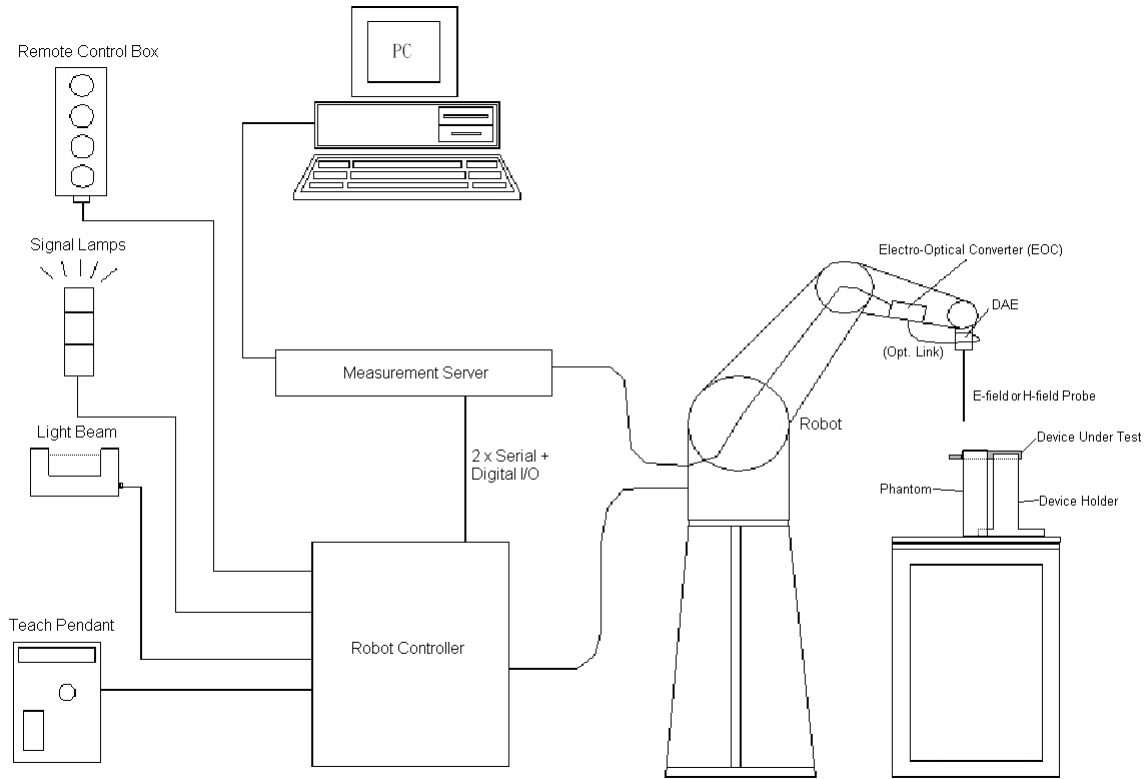
| Air Interface | Band MHz                             | Type                                 | C63.19 Tested     | Simultaneous Transmitter                  | Name of Voice Service | Power Reduction |
|---------------|--------------------------------------|--------------------------------------|-------------------|---|-----------------------|-----------------|
| GSM           | GSM850                               | VO                                   | Yes               | WLAN, BT                                  | CMRS Voice            | No              |
|               | GSM1900                              |                                      |                   | WLAN, BT                                  |                       | No              |
|               | EDGE850                              | VD                                   | Yes               | WLAN, BT                                  | Google Duo            | No              |
|               | EDGE1900                             |                                      |                   | WLAN, BT                                  |                       |                 |
| WCDMA         | Band II                              | VO                                   | No <sup>(1)</sup> | WLAN, BT                                  | CMRS Voice            | No              |
|               | Band IV                              |                                      |                   | WLAN, BT                                  |                       | No              |
|               | Band V                               |                                      |                   | WLAN, BT                                  |                       | No              |
|               | HSPA                                 | VD                                   | No <sup>(1)</sup> | WLAN, BT                                  | Google Duo            | No              |
| LTE (FDD)     | Band 2                               | VD                                   | No <sup>(1)</sup> | 5G NR, WLAN, BT                           | VoLTE / Google Duo    | No              |
|               | Band 4                               |                                      |                   | 5G NR, WLAN, BT                           |                       | No              |
|               | Band 5                               |                                      |                   | 5G NR, WLAN, BT                           |                       | No              |
|               | Band 7                               |                                      |                   | 5G NR, WLAN, BT                           |                       | No              |
|               | Band 12                              |                                      |                   | 5G NR, WLAN, BT                           |                       | No              |
|               | Band 13                              |                                      |                   | 5G NR, WLAN, BT                           |                       | No              |
|               | Band 17                              |                                      |                   | 5G NR, WLAN, BT                           |                       | No              |
|               | Band 25                              |                                      |                   | 5G NR, WLAN, BT                           |                       | No              |
|               | Band 26                              |                                      |                   | 5G NR, WLAN, BT                           |                       | No              |
|               | Band 66                              |                                      |                   | 5G NR, WLAN, BT                           |                       | No              |
| LTE (TDD)     | Band 38                              | VD                                   | Yes               | 5G NR, WLAN, BT                           | VoLTE / Google Duo    | No              |
|               | Band 41                              |                                      |                   | 5G NR, WLAN, BT                           |                       | No              |
|               | Band 42                              |                                      |                   | 5G NR, WLAN, BT                           |                       | No              |
|               | Band 43                              |                                      |                   | 5G NR, WLAN, BT                           |                       | No              |
|               | Band 48                              |                                      |                   | 5G NR, WLAN, BT                           |                       | No              |
| 5G NR (FDD)   | n2                                   | VD                                   | No <sup>(1)</sup> | LTE, WLAN, BT                             | VoNR / Google Duo     | No              |
|               | n5                                   |                                      |                   | LTE, WLAN, BT                             |                       | No              |
|               | n7                                   |                                      |                   | LTE, WLAN, BT                             |                       | No              |
|               | n66                                  |                                      |                   | LTE, WLAN, BT                             |                       | No              |
| 5G NR (TDD)   | n41                                  | VD                                   | No <sup>(1)</sup> | LTE, WLAN, BT                             | VoNR / Google Duo     | No              |
|               | n77                                  |                                      |                   | LTE, WLAN, BT                             |                       | No              |
|               | n78                                  |                                      |                   | LTE, WLAN, BT                             |                       | No              |
| Wi-Fi         | 2450                                 | VD                                   | Yes               | GSM,WCDMA,LTE,5G NR, WLAN 5GHz, WLAN 6GHz | VoWiFi / Google Duo   | No              |
|               | 5200                                 |                                      |                   | GSM,WCDMA,LTE,5G NR, BT, WLAN 2.4GHz      |                       | No              |
|               | 5300                                 |                                      |                   | GSM,WCDMA,LTE,5G NR, BT, WLAN 2.4GHz      |                       | No              |
|               | 5500                                 |                                      |                   | GSM,WCDMA,LTE,5G NR, BT, WLAN 2.4GHz      |                       | No              |
|               | 5800                                 | GSM,WCDMA,LTE,5G NR, BT, WLAN 2.4GHz | No                |   |                       |                 |
|               | U-NII-5                              | VD                                   | No <sup>(3)</sup> | GSM,WCDMA,LTE,5G NR, BT, WLAN 2.4GHz      | Google Duo            | No              |
|               | U-NII-6                              |                                      |                   | GSM,WCDMA,LTE,5G NR, BT, WLAN 2.4GHz      |                       | No              |
|               | U-NII-7                              |                                      |                   | GSM,WCDMA,LTE,5G NR, BT, WLAN 2.4GHz      |                       | No              |
| U-NII-8       | GSM,WCDMA,LTE,5G NR, BT, WLAN 2.4GHz |                                      |                   | No  |                       |                 |
| BT            | 2450                                 | DT                                   | No                | GSM,WCDMA,LTE,5G NR, WLAN 5GHz, WLAN 6GHz | NA                    | No              |

Type Transport:  
VO= Voice only  
DT= Digital Transport only (no voice)  
VD= CMRS and IP Voice Service over Digital Transport

Remark:

- The air interface is exempted from testing by low power exemption that its average antenna input power plus its MIF is ≤17 dBm, and is rated as M4.
- The device have similar frequency in some LTE bands: LTE B38/41 and B42(3550 MHz ~ 3600MHz) / B43/48 since the supported frequency spans for the smaller LTE bands are completely cover by the larger LTE bands, therefore, only larger LTE bands were required to be tested for hearing-aid compliance.
- The WiFi 6E U-NII-5/6/7/8 are currently outside the scope of ANSI 63.19 and FCC HAC regulations therefore, they were not evaluated.
- There are three samples, the different between them refer to the XT2241-2\_Operational Description of Product Equality Declaration which is exhibit separately. According to the differences, we choose sample 1 to perform full SAR testing and sample 3 to verify the worst case of sample 1. For sample 3 differences do not affect the test, so sample 2 are not tested.

## 6. Measurement System Specification



**Fig 6.1 System Configurations**

### 6.1 E-Field Probe System

#### E-Field Probe Specification

<EF3DV3>

|                      |  |
|----------------------|--|
| <b>Construction</b>  | One dipole parallel, two dipoles normal to probe axis<br>Built-in shielding against static charges                           |
| <b>Calibration</b>   | In air from 30 MHz to 6.0 GHz<br>(absolute accuracy $\pm 6.0\%$ , $k=2$ )  |
| <b>Frequency</b>     | 30 MHz to 6 GHz;<br>Linearity: $\pm 2.0$ dB (100 MHz to 3 GHz)   |
| <b>Directivity</b>   | $\pm 0.2$ dB in air (rotation around probe axis)<br>$\pm 0.4$ dB in air (rotation normal to probe axis)                      |
| <b>Dynamic Range</b> | 2 V/m to 1000 V/m<br>(M3 or better device readings fall well below diode compression point)                                  |
| <b>Linearity</b>     | $\pm 0.2$ dB   |
| <b>Dimensions</b>    | Overall length: 337 mm (Tip: 20 mm)<br>Tip diameter: 4 mm (Body: 12 mm)<br>Distance from probe tip to dipole centers: 1.5 mm |



**Photo of E-field Probe**

#### Probe Tip Description:

HAC field measurements take place in the close near field with high gradients. Increasing the measuring distance from the source will generally decrease the measured field values (in case of the validation dipole approx. 10% per mm).



## **6.2 Data Storage and Evaluation**

The DASY software stores the assessed data from the data acquisition electronics as raw data (in microvolt readings from the probe sensors), together with all the necessary software parameters for the data evaluation (probe calibration data, and device frequency and modulation data) in measurement files.

|                            |                           |   |
|----------------------------|---------------------------|---|
| <b>Probe parameters :</b>  | - Sensitivity             | Norm <sub>i</sub> , a <sub>i0</sub> , a <sub>i1</sub> , a <sub>i2</sub> |
|                            | - Conversion factor       | ConvF <sub>i</sub>  |
|                            | - Diode compression point | dcp <sub>i</sub>  |
| <b>Device parameters :</b> | - Frequency               | f   |
|                            | - Crest factor            | cf  |
| <b>Media parameters :</b>  | - Conductivity            | σ   |
|                            | - Density                 | ρ   |

The formula for each channel can be given as :

$$V_i = U_i + U_i^2 \cdot \frac{cf}{dcp_i}$$

with  $V_i$  = compensated signal of channel  $i$ , ( $i = x, y, z$ )  
 $U_i$  = input signal of channel  $i$ , ( $i = x, y, z$ )  
 $cf$  = crest factor of exciting field (DASY parameter)  
 $dcp_i$  = diode compression point (DASY parameter)

From the compensated input signals, the primary field data for each channel can be evaluated :

$$\text{E-field Probes : } E_i = \sqrt{\frac{V_i}{\text{Norm}_i \cdot \text{ConvF}}}$$

with  $V_i$  = compensated signal of channel  $i$ , ( $i = x, y, z$ )  
 $\text{Norm}_i$  = sensor sensitivity of channel  $i$ , ( $i = x, y, z$ ),  $\mu\text{V}/(\text{V/m})^2$  for E-field Probes  
 $\text{ConvF}$  = sensitivity enhancement in solution  
 $f$  = carrier frequency [GHz]  
 $E_i$  = electric field strength of channel  $i$  in V/m

The RSS value of the field components gives the total field strength (Hermitian magnitude) :

$$E_{\text{tot}} = \sqrt{E_x^2 + E_y^2 + E_z^2}$$

The primary field data are used to calculate the derived field units.



## **7. RF Emissions Test Procedure**

Referenced from ANSI C63.19 -2011 section 5.5.1

- a. Confirm the proper operation of the field probe, probe measurement system, and other instrumentation and the positioning system.
- b. Position the WD in its intended test position.
- c. Set the WD to transmit a fixed and repeatable combination of signal power and modulation characteristic that is representative of the worst case (highest interference potential) encountered in normal use. Transiently occurring start-up, changeover, or termination conditions, or other operations likely to occur less than 1% of the time during normal operation, may be excluded from consideration.
- d. The center sub-grid shall be centered on the T-Coil mode perpendicular measurement point or the acoustic output, as appropriate. Locate the field probe at the initial test position in the 50 mm by 50 mm grid, which is contained in the measurement plane, refer to illustrated in Figure 8.2. If the field alignment method is used, align the probe for maximum field reception.
- e. Record the reading at the output of the measurement system.
- f. Scan the entire 50 mm by 50 mm region in equality spaced increments and record the reading at each measurement point, The distance between measurement points shall be sufficient to assure the identification of the maximum reading.
- g. Identify the five contiguous sub-grids around the center sub-grid whose maximum reading is the lowest of all available choices. This eliminates the three sub-grids with the maximum readings. Thus, the six areas to be used to determine the WD's highest emissions are identified.
- h. Identify the maximum reading within the non-excluded sub-grids identified in step g).
  - i. Indirect measurement method
  - j. The RF audio interference level in dB (V/m) is obtained by adding the MIF (in dB) to the maximum steady-state rms field-strength reading, in dB (V/m)
- k. Compare this RF audio interference level with the categories in ANSI C63.19-2011 clause 8 and record the resulting WD category rating.
- l. For the T-Coil perpendicular measurement location is  $\geq 5.0$  mm from the center of the acoustic output, then two different 50 mm by 50 mm areas may need to be scanned, the first for the microphone mode assessment and the second for the T-Coil assessment.
- m. The second for the T-Coil assessment, with the grid shifted so that it is centered on the perpendicular measurement point. Record the WD category rating.

**Test Instructions**

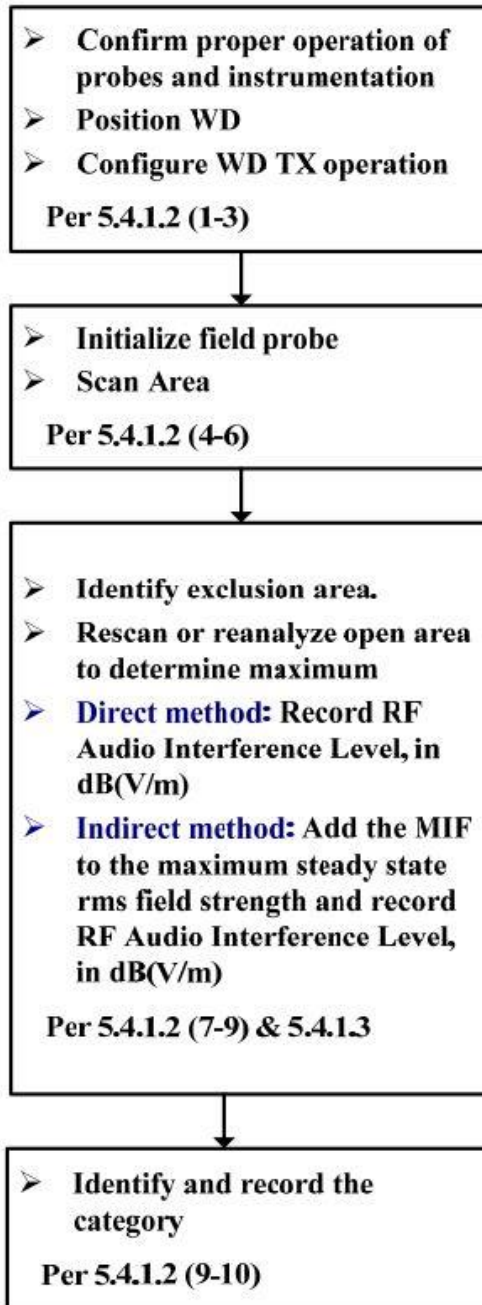
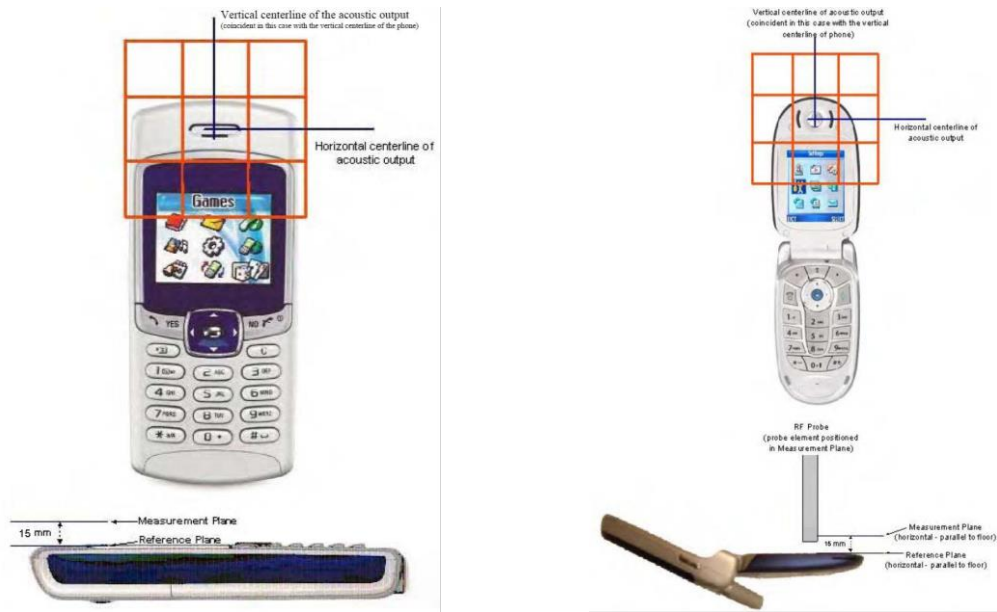
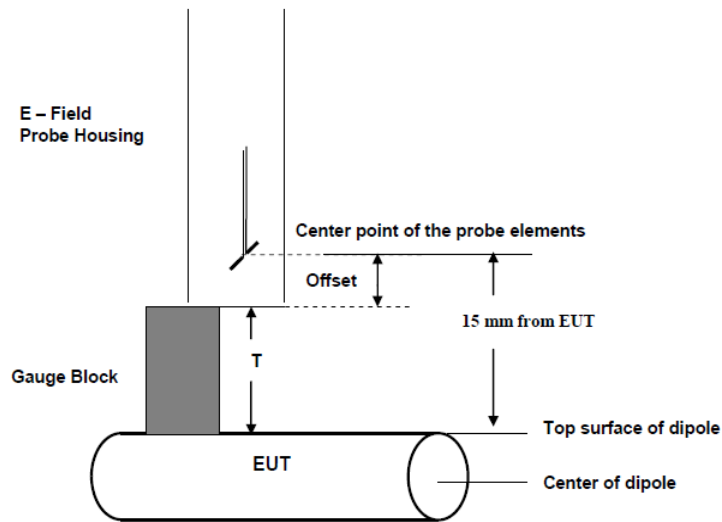


Figure 8.1 RF Emissions Flow Chart



**Fig 8.2 EUT reference and plane for HAC RF emission measurements**



**Fig. 8.3 Gauge block with E-field probe**



**8. Test Equipment List**

| Manufacturer    | Name of Equipment            | Type/Model  | Serial Number | Calibration |            |
|-----------------|------------------------------|-------------|---------------|-------------|------------|
|                 |                              |             |               | Last Cal.   | Due Date   |
| SPEAG           | 835MHz Calibration Dipole    | CD835V3     | 1171          | 2022/3/1    | 2023/2/28  |
| SPEAG           | 1880MHz Calibration Dipole   | CD1880V3    | 1155          | 2022/3/1    | 2023/2/28  |
| SPEAG           | 2450MHz Calibration Dipole   | CD2450V3    | 1155          | 2021/6/16   | 2022/6/15  |
| SPEAG           | 2600Mhz Calibration Dipole   | CD2600V3    | 1018          | 2021/8/24   | 2022/8/23  |
| SPEAG           | 3500Mhz Calibration Dipole   | CD3500V3    | 1009          | 2022/3/3    | 2023/3/2   |
| SPEAG           | 5500Mhz Calibration Dipole   | CD5500V3    | 1012          | 2022/1/26   | 2023/1/25  |
| SPEAG           | Data Acquisition Electronics | DAE4        | 1303          | 2021/6/18   | 2022/6/17  |
| SPEAG           | Data Acquisition Electronics | DAE4        | 1691          | 2021/10/4   | 2022/10/3  |
| SPEAG           | Isotropic E-Field Probe      | EF3DV3      | 4050          | 2022/1/31   | 2023/1/30  |
| R&S             | Base Station                 | CMW500      | 143030        | 2021/7/30   | 2022/7/29  |
| Anritsu         | Vector Signal Generator      | MG3710A     | 6201502524    | 2021/10/24  | 2022/10/23 |
| BONN            | POWER AMPLIFIER              | BLMA 0830-3 | 087193A       | 2021/8/12   | 2022/8/11  |
| BONN            | POWER AMPLIFIER              | BLMA 2060-2 | 087193B       | 2021/7/31   | 2022/7/30  |
| Agilent         | Dual Directional Coupler     | 778D        | 20500         | 2021/8/12   | 2022/8/11  |
| Agilent         | Dual Directional Coupler     | 11691D      | MY48151020    | 2021/8/12   | 2022/8/11  |
| Rohde & Schwarz | Power Meter                  | NRVD        | 102081        | 2021/8/12   | 2022/8/11  |
| Rohde & Schwarz | Power Sensor                 | NRV-Z5      | 100538        | 2021/8/12   | 2022/8/11  |
| Rohde & Schwarz | Power Sensor                 | NRV-Z5      | 100539        | 2021/8/12   | 2022/8/11  |
| MCL             | Attenuation1                 | BW-S10W5+   | N/A           | NA          | NA         |
| MCL             | Attenuation2                 | BW-S10W5+   | N/A           | NA          | NA         |
| MCL             | Attenuation3                 | BW-S10W5+   | N/A           | NA          | NA         |
| EXA             | Spectrum Analyzer            | FSV7        | 101631        | 2021/10/14  | 2022/10/13 |
| Testo           | Thermo-Hygrometer            | 608-H1      | 1241332126    | 2022/1/6    | 2023/1/5   |

**Note:**

1. NCR: "No-Calibration Required"
2. Referring to KDB 865664 D01v01r04, the dipole calibration interval can be extended to 3 years with justification. The dipoles are also not physically damaged, or repaired during the interval.
3. The justification data of dipole can be found in appendix C. The return loss is < -20dB, within 20% of prior calibration, the impedance is within 5 ohm of prior calibration.

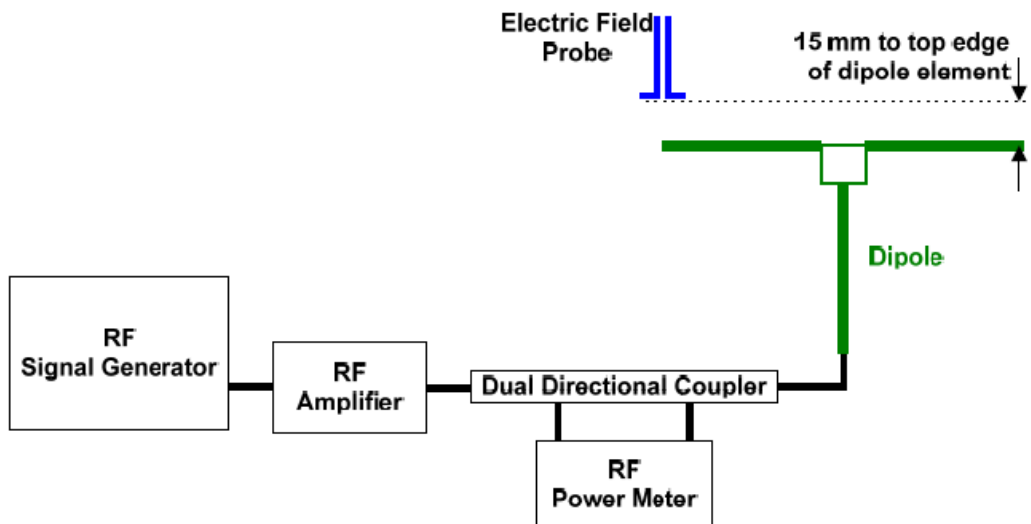
### 9. Measurement System Validation

Each DASY system is equipped with one or more system validation kits. These units, together with the predefined measurement procedures within the DASY software, enable the user to conduct the system performance check and system validation. System validation kit includes a dipole, tripod holder to fix it underneath the test Arch and a corresponding distance holder.

The system performance check verifies that the system operates within its specifications. System and operator errors can be detected and corrected. It is recommended that the system performance check be performed prior to any usage of the system in order to guarantee reproducible results. The system performance check uses normal HAC measurements in a simplified setup with a well characterized source. This setup was selected to give a high sensitivity to all parameters that might fail or vary over time. The system check does not intend to replace the calibration of the components, but indicates situations where the system uncertainty is exceeded due to drift or failure.

**<Test Setup>**

1. In the simplified setup for system evaluation, the EUT is replaced by a calibrated dipole and the power source is replaced by a continuous wave which comes from a signal generator.
2. The center point of the probe element(s) is 15mm from the closest surface of the dipole elements.
3. The calibrated dipole must be placed beneath the arch phantom. The equipment setup is shown below:
4. The output power on dipole port must be calibrated to 20dBm (100mW) before dipole is connected.



**Fig. 7.1 Setup Diagram**

**<Validation Results>**

Comparing to the original E-field value provided by SPEAG, the verification data should be within its specification of 18 %. Table 6.1 shows the target value and measured value. The table below indicates the system performance check can meet the variation criterion and the plots can be referred to appendix A of this report.

$$\text{Deviation} = ((\text{Average E-field Value}) - (\text{Target value})) / (\text{Target value}) * 100\%$$

| Frequency (MHz) | Input Power (dBm) | Target Value (V/m) | E-Field 1 (V/m) | E-Field 2 (V/m) | Average Value (V/m) | Deviation (%) | Date          |
|-----------------|-------------------|--------------------|-----------------|-----------------|---------------------|---------------|---------------|
| 835             | 20                | 107.7              | 118.6           | 96.04           | 107.32              | -0.35         | Jun. 12, 2022 |
| 1880            | 20                | 85.1               | 95.44           | 91.72           | 93.58               | 9.96          | Jun. 12, 2022 |
| 2450            | 20                | 85.1               | 80.69           | 80.73           | 80.71               | -5.16         | Jun. 13, 2022 |
| 2600            | 20                | 86.1               | 86.19           | 87.55           | 86.87               | 0.89          | Jun. 13, 2022 |
| 3500            | 20                | 83.4               | 88.17           | 86.15           | 87.16               | 4.51          | Jun. 13, 2022 |
| 5500            | 20                | 100.6              | 101.2           | 103.4           | 102.3               | 1.69          | Jun. 13, 2022 |
| 3500            | 20                | 83.4               | 90.38           | 89.92           | 90.15               | 8.09          | Jun. 29, 2022 |



10. Modulation Interference Factor

The HAC Standard ANSI C63.19-2011 defines a new scaling using the Modulation Interference Factor (MIF). For any specific fixed and repeatable modulated signal, a modulation interference factor (MIF, expressed in dB) may be developed that relates its interference potential to its steady-state rms signal level or average power level. This factor is a function only of the audio-frequency amplitude modulation characteristics of the signal and is the same for field-strength and conducted power measurements. It is important to emphasize that the MIF is valid only for a specific repeatable audio-frequency amplitude modulation characteristic. Any change in modulation characteristic requires determination and application of a new MIF

The Modulation Interference factor (MIF, in dB) is added to the measured average E-field (in dBV/m) and converts it to the RF Audio Interference level (in dBV/m). This level considers the audible amplitude modulation components in the RF E-field. CW fields without amplitude modulation are assumed to not interfere with the hearing aid electronics. Modulations without time slots and low fluctuations at low frequencies have low MIF values, TDMA modulations with narrow transmission and repetition rates of few 100 Hz have high MIF values and give similar classifications as ANSI C63.19-2011.

ER3D, EF3D and EU2D E-field probes have a bandwidth <10 kHz and can therefore not evaluate the RF envelope in the full audio band. DASY52 is therefore using the indirect measurement method according to ANSI C63.19-2011 which is the primary method. These near field probes read the averaged E-field measurement. Especially for the new high peak-to-average (PAR) signal types, the probes shall be linearized by PMR calibration in order to not overestimate the field reading. Probe Modulation Response (PMR) calibration linearizes the probe response over its dynamic range for specific modulations which are characterized by their UID and result in an uncertainty specified in the probe calibration certificate. The MIF is characteristic for a given waveform envelope and can be used as a constant conversion factor if the probe has been PMR calibrated.

The evaluation method for the MIF is defined in ANSI C63.19-2011 section D.7. An RMS demodulated RF signal is fed to a spectral filter (similar to an A weighting filter) and forwarded to a temporal filter acting as a quasi-peak detector. The averaged output of these filtering is scaled to a 1 kHz 80% AM signal as reference. MIF measurement requires additional instrumentation and is not well suited for evaluation by the end user with reasonable uncertainty. It may alternatively be determined through analysis and simulation, because it is constant and characteristic for a communication signal. DASY52 uses well-defined signals for PMR calibration. The MIF of these signals has been determined by simulation and it is automatically applied.

The MIF measurement uncertainty is estimated as follows, declared by HAC equipment provider SPEAG, for modulation frequencies from slotted waveforms with fundamental frequency and at least 2 harmonics within 10 kHz:

- 1. 0.2 dB for MIF: -7 to +5 dB
2. 0.5 dB for MIF: -13 to +11 dB
3. 1 dB for MIF: > -20 dB

MIF values applied in this test report were provided by the HAC equipment provider of SPEAG, and the worst values for all air interface are listed below to be determine the Low-power Exemption.

Table with 3 columns: UID, Communication System Name, MIF(dB). Rows include GSM-FDD, EDGE-FDD, UMTS-FDD, LTE-FDD, 5G NR, and various IEEE WiFi standards.



### 11. Low-power Exemption

<Max Tune-up Limit>

<Ant0>

| Frequency Band |              | Average Power (dBm) |
|----------------|--------------|---------------------|
| GSM            | GSM850       | 33.50               |
|                | EDGE850      | 26.50               |
|                | GSM1900      | 30.50               |
|                | EDGE1900     | 25.50               |
| WCDMA          | Band V       | 24.00               |
|                | Band IV      | 24.00               |
|                | Band II      | 24.00               |
|                | HSPA         | 23.00               |
| FDD LTE        | Band 2       | 24.00               |
|                | Band 4       | 24.00               |
|                | Band 5       | 24.00               |
|                | Band 7       | 24.00               |
|                | Band 12      | 24.00               |
|                | Band 13      | 24.00               |
|                | Band 17      | 24.00               |
|                | Band 25      | 24.00               |
|                | Band 26      | 24.00               |
|                | Band 66      | 24.00               |
| TDD LTE        | Band 38      | 24.00               |
|                | Band 38 HPUE | 27.00               |
|                | Band 41      | 24.00               |
|                | Band 41 HPUE | 27.00               |
| 5G NR FDD      | n2           | 24.00               |
|                | n5           | 24.00               |
|                | n7           | 24.00               |
|                | n66          | 24.00               |
| 5G NR TDD      | n41          | 24.00               |
|                | n41 PC2      | 27.00               |





<Ant1>

| Frequency Band |             | Average Power (dBm) |
|----------------|-------------|---------------------|
| GSM            | GSM850      | 33.50               |
|                | EDGE850     | 26.50               |
|                | GSM1900     | 26.90               |
|                | EDGE1900    | 25.00               |
| WCDMA          | Band V      | 23.20               |
|                | Band IV     | 17.80               |
|                | Band II     | 18.80               |
|                | HSPA        | 22.20               |
| FDD LTE        | Band 2      | 16.90               |
|                | Band 4      | 18.00               |
|                | Band 5      | 23.50               |
|                | Band 7      | 16.70               |
|                | Band 12     | 24.00               |
|                | Band 13     | 23.00               |
|                | Band 17     | 24.00               |
|                | Band 25     | 16.90               |
|                | Band 26     | 23.50               |
|                | Band 66     | 18.00               |
| TDD LTE        | Band 38 PC3 | 19.60               |
|                | Band 38 PC2 | 21.20               |
|                | Band 41 PC3 | 19.60               |
|                | Band 41 PC2 | 21.20               |
| 5G NR FDD      | n2          | 16.30               |
|                | n5          | 24.00               |
|                | n7          | 17.50               |
|                | n66         | 18.90               |
| 5G NR TDD      | n41 PC3     | 17.20               |
|                | n41 PC2     | 17.20               |



<Ant2>

| Frequency Band |         | Average Power (dBm) |
|----------------|---------|---------------------|
| TDD LTE        | Band 42 | 22.40               |
|                | Band 43 | 22.40               |
|                | Band 48 | 22.40               |
| 5G NR TDD      | n77 PC3 | 21.40               |
|                | n77 PC2 | 21.40               |
|                | n78 PC3 | 21.40               |
|                | n78 PC2 | 21.40               |

<Ant3>

| Frequency Band |         | Average Power (dBm) |
|----------------|---------|---------------------|
| 5G NR TDD      | n41 PC3 | 23.00               |
| 5G NR TDD      | n41 PC2 | 26.00               |
| 5G NR TDD      | n77 PC3 | 24.00               |
| 5G NR TDD      | n77 PC2 | 27.00               |
| 5G NR TDD      | n78 PC3 | 24.00               |
| 5G NR TDD      | n78 PC2 | 27.00               |

<Ant4>

| Frequency Band |         | Average Power (dBm) |
|----------------|---------|---------------------|
| 5G NR TDD      | n41 PC3 | 17.40               |
| 5G NR TDD      | n41 PC2 | 17.40               |

<Ant5>

| Frequency Band |         | Average Power (dBm) |
|----------------|---------|---------------------|
| 5G NR TDD      | n77 PC3 | 17.90               |
|                | n77 PC2 | 17.90               |
|                | n78 PC3 | 17.90               |
|                | n78 PC2 | 17.90               |



**<Ant7>**

| Frequency Band |         | Average Power (dBm) |
|----------------|---------|---------------------|
| 5G NR TDD      | n77 PC3 | 24.00               |
|                | n77 PC2 | 27.00               |
|                | n78 PC3 | 24.00               |
|                | n78 PC2 | 26.50               |

**<Ant2+6>**

| Frequency Band |                 | Average Power (dBm) |
|----------------|-----------------|---------------------|
| 2.4GHz WLAN    | 802.11b         | 24.50               |
|                | 802.11g         | 22.50               |
|                | 802.11n-HT20    | 22.50               |
|                | 802.11n-HT40    | 22.00               |
|                | 802.11ax-HE20   | 22.50               |
|                | 802.11ax-HE40   | 22.00               |
| 5GHz WLAN      | 802.11a         | 22.50               |
|                | 802.11n-HT20    | 22.50               |
|                | 802.11n-HT40    | 22.50               |
|                | 802.11ac-VHT20  | 22.50               |
|                | 802.11ac-VHT40  | 22.50               |
|                | 802.11ac-VHT80  | 22.50               |
|                | 802.11ac-VHT160 | 22.50               |
|                | 802.11ax-HE20   | 23.00               |
|                | 802.11ax-HE40   | 23.00               |
|                | 802.11ax-HE80   | 23.00               |
| 802.11ax-HE160 | 23.00           |                     |

**<Low Power Exemption>**
**<Ant0>**

| Air Interface | Max Average Antenna Input Power (dBm) | Worst Case MIF (dB) | Power + MIF(dB) | C63.19 test required |
|---------------|---------------------------------------|---------------------|-----------------|----------------------|
| GSM850        | 33.50                                 | 3.63                | 37.13           | Yes                  |
| EDGE850       | 26.50                                 | 3.75                | 30.25           | No <sup>(1)</sup>    |
| GSM1900       | 30.50                                 | 3.63                | 34.13           | Yes                  |
| EDGE1900      | 25.50                                 | 3.75                | 29.25           | No <sup>(1)</sup>    |
| WCDMA         | 24.00                                 | -25.43              | -1.43           | No                   |
| WCDMA - HSPA  | 24.00                                 | -20.39              | 3.61            | No                   |
| LTE - FDD     | 24.00                                 | -9.76               | 14.24           | No                   |
| LTE – TDD     | 27.00                                 | -1.44               | 25.56           | Yes                  |
| 5G FR1 - FDD  | 24.00                                 | -12.08              | 11.92           | No                   |
| 5G NR - TDD   | 27.00                                 | -12.08              | 14.92           | No                   |

**<Ant1>**

| Air Interface | Max Average Antenna Input Power (dBm) | Worst Case MIF (dB) | Power + MIF(dB) | C63.19 test required |
|---------------|---------------------------------------|---------------------|-----------------|----------------------|
| GSM850        | 33.50                                 | 3.63                | 37.13           | Yes                  |
| EDGE850       | 26.50                                 | 3.75                | 30.25           | No <sup>(1)</sup>    |
| GSM1900       | 26.90                                 | 3.63                | 30.53           | Yes                  |
| EDGE1900      | 25.00                                 | 3.75                | 28.75           | No <sup>(1)</sup>    |
| WCDMA         | 23.20                                 | -25.43              | -2.23           | No                   |
| WCDMA - HSPA  | 23.20                                 | -20.39              | 2.81            | No                   |
| LTE - FDD     | 24.00                                 | -9.76               | 14.24           | No                   |
| LTE – TDD     | 21.20                                 | -1.44               | 19.76           | Yes                  |
| 5G FR1 - FDD  | 24.00                                 | -12.08              | 11.92           | No                   |
| 5G NR - TDD   | 17.20                                 | -12.08              | 5.12            | No                   |

**<Ant2>**

| Air Interface | Max Average Antenna Input Power (dBm) | Worst Case MIF (dB) | Power + MIF(dB) | C63.19 test required |
|---------------|---------------------------------------|---------------------|-----------------|----------------------|
| LTE – TDD     | 22.40                                 | -1.44               | 20.96           | Yes                  |
| 5G NR - TDD   | 21.40                                 | -12.08              | 9.32            | No                   |

**<Ant3>**

| Air Interface | Max Average Antenna Input Power (dBm) | Worst Case MIF (dB) | Power + MIF(dB) | C63.19 test required |
|---------------|---------------------------------------|---------------------|-----------------|----------------------|
| 5G NR - TDD   | 27.00                                 | -12.08              | 14.92           | No                   |

**<Ant4>**

| Air Interface | Max Average Antenna Input Power (dBm) | Worst Case MIF (dB) | Power + MIF(dB) | C63.19 test required |
|---------------|---------------------------------------|---------------------|-----------------|----------------------|
| 5G NR - TDD   | 17.40                                 | -12.08              | 5.32            | No                   |

**<Ant5>**

| Air Interface | Max Average Antenna Input Power (dBm) | Worst Case MIF (dB) | Power + MIF(dB) | C63.19 test required |
|---------------|---------------------------------------|---------------------|-----------------|----------------------|
| 5G NR - TDD   | 17.90                                 | -12.08              | 5.82            | No                   |



<Ant7>

| Air Interface | Max Average Antenna Input Power (dBm) | Worst Case MIF (dB) | Power + MIF(dB) | C63.19 test required |
|---------------|---------------------------------------|---------------------|-----------------|----------------------|
| 5G NR - TDD   | 27.00                                 | -12.08              | 14.92           | No                   |

<Ant2+6>

| Air Interface   | Max Average Antenna Input Power (dBm) | Worst Case MIF (dB) | Power + MIF(dB) | C63.19 test required |
|-----------------|---------------------------------------|---------------------|-----------------|----------------------|
| 802.11b         | 24.50                                 | -2.02               | 22.48           | No <sup>(2)</sup>    |
| 802.11g         | 22.50                                 | 0.12                | 22.62           | Yes                  |
| 802.11n-HT20    | 22.50                                 | -13.44              | 9.06            | No                   |
| 802.11n-HT40    | 22.00                                 | -13.44              | 8.56            | No                   |
| 802.11ax-HE20   | 22.50                                 | -5.58               | 16.92           | No                   |
| 802.11ax-HE40   | 22.00                                 | -5.58               | 16.42           | No                   |
| 802.11a         | 22.50                                 | -3.15               | 19.35           | Yes                  |
| 802.11n-HT20    | 22.50                                 | -13.44              | 9.06            | No                   |
| 802.11n-HT40    | 22.50                                 | -13.44              | 9.06            | No                   |
| 802.11ac-VHT20  | 22.50                                 | -5.57               | 16.93           | No                   |
| 802.11ac-VHT40  | 22.50                                 | -5.57               | 16.93           | No                   |
| 802.11ac-VHT80  | 22.50                                 | -5.57               | 16.93           | No                   |
| 802.11ac-VHT160 | 22.50                                 | -5.57               | 16.93           | No                   |
| 802.11ax-HE20   | 23.00                                 | -5.58               | 17.42           | No <sup>(3)</sup>    |
| 802.11ax-HE40   | 23.00                                 | -5.58               | 17.42           | No <sup>(3)</sup>    |
| 802.11ax-HE80   | 23.00                                 | -5.58               | 17.42           | No <sup>(3)</sup>    |
| 802.11ax-HE160  | 23.00                                 | -5.58               | 17.42           | No <sup>(3)</sup>    |

General Note:

- EDGE data modes is not necessary due the GSM Voice mode is the worst case.
- 802.11b is not necessary due to the 802.11g is the worst case.
- 802.11ax HE20/HE40/ HE80/ HE160 are not necessary due to the 802.11a is the worst case.
- LTE LTE Band 41 non-HPUE data modes is not necessary due the LTE Band 41 HPUE mode is the worst case.
- According to ANSI C63.19 2011-version, for the air interface technology of a device is exempt from testing when its average antenna input power plus its MIF is ≤17 dBm for any of its operating modes.
- HAC RF rating is M4 for the air interface which meets the low power exemption.



**12. Conducted RF Output Power (Unit: dBm)**

<GSM>

| Average Antenna Input Power(dBm) |             |       |       |              |        |        |
|----------------------------------|-------------|-------|-------|--------------|--------|--------|
| Band                             | GSM850 ANT0 |       |       | GSM1900 ANT0 |        |        |
| Channel                          | 128         | 189   | 251   | 512          | 661    | 810    |
| Frequency (MHz)                  | 824.2       | 836.4 | 848.8 | 1850.2       | 1880.0 | 1909.8 |
| GSM (GMSK, 1 Tx slot)            | 32.66       | 32.75 | 32.55 | 29.88        | 30.02  | 29.80  |

| Average Antenna Input Power(dBm) |             |       |       |              |        |        |
|----------------------------------|-------------|-------|-------|--------------|--------|--------|
| Band                             | GSM850 ANT1 |       |       | GSM1900 ANT1 |        |        |
| Channel                          | 128         | 189   | 251   | 512          | 661    | 810    |
| Frequency (MHz)                  | 824.2       | 836.4 | 848.8 | 1850.2       | 1880.0 | 1909.8 |
| GSM (GMSK, 1 Tx slot)            | 32.03       | 32.09 | 31.88 | 25.64        | 25.86  | 25.71  |

<LTE>

| Band 38 ANT0    |            |         |           |                       |                          |                        |
|-----------------|------------|---------|-----------|-----------------------|--------------------------|------------------------|
| BW [MHz]        | Modulation | RB Size | RB Offset | Power Low Ch. / Freq. | Power Middle Ch. / Freq. | Power High Ch. / Freq. |
| Channel         |            |         |           | 37850                 | 38000                    | 38150                  |
| Frequency (MHz) |            |         |           | 2580                  | 2595                     | 2610                   |
| 20              | QPSK       | 1       | 0         | 23.06                 | 23.19                    | 23.04                  |

| Band 38 ANT1    |            |         |           |                       |                          |                        |
|-----------------|------------|---------|-----------|-----------------------|--------------------------|------------------------|
| BW [MHz]        | Modulation | RB Size | RB Offset | Power Low Ch. / Freq. | Power Middle Ch. / Freq. | Power High Ch. / Freq. |
| Channel         |            |         |           | 37850                 | 38000                    | 38150                  |
| Frequency (MHz) |            |         |           | 2580                  | 2595                     | 2610                   |
| 20              | QPSK       | 1       | 0         | 18.09                 | 18.17                    | 18.13                  |

| Band 38 ANT0 HPUE |            |         |           |                       |                          |                        |
|-------------------|------------|---------|-----------|-----------------------|--------------------------|------------------------|
| BW [MHz]          | Modulation | RB Size | RB Offset | Power Low Ch. / Freq. | Power Middle Ch. / Freq. | Power High Ch. / Freq. |
| Channel           |            |         |           | 37850                 | 38000                    | 38150                  |
| Frequency (MHz)   |            |         |           | 2580                  | 2595                     | 2610                   |
| 20                | QPSK       | 1       | 0         | 25.45                 | 25.62                    | 25.55                  |

| Band 38 ANT1 HPUE |            |         |           |                       |                          |                        |
|-------------------|------------|---------|-----------|-----------------------|--------------------------|------------------------|
| BW [MHz]          | Modulation | RB Size | RB Offset | Power Low Ch. / Freq. | Power Middle Ch. / Freq. | Power High Ch. / Freq. |
| Channel           |            |         |           | 37850                 | 38000                    | 38150                  |
| Frequency (MHz)   |            |         |           | 2580                  | 2595                     | 2610                   |
| 20                | QPSK       | 1       | 0         | 19.27                 | 19.32                    | 19.24                  |

| Band 41 ANT0    |            |         |           |                       |                              |                          |                               |                        |
|-----------------|------------|---------|-----------|-----------------------|------------------------------|--------------------------|-------------------------------|------------------------|
| BW [MHz]        | Modulation | RB Size | RB Offset | Power Low Ch. / Freq. | Power Low Middle Ch. / Freq. | Power Middle Ch. / Freq. | Power High Middle Ch. / Freq. | Power High Ch. / Freq. |
| Channel         |            |         |           | 39750                 | 40185                        | 40620                    | 41055                         | 41490                  |
| Frequency (MHz) |            |         |           | 2506                  | 2549.5                       | 2593                     | 2636.5                        | 2680                   |
| 20              | QPSK       | 1       | 0         | 22.91                 | 23.04                        | 23.20                    | 22.98                         | 22.79                  |



| Band 41 ANT1    |            |         |           |                       |                              |                          |                               |                        |
|-----------------|------------|---------|-----------|-----------------------|------------------------------|--------------------------|-------------------------------|------------------------|
| BW [MHz]        | Modulation | RB Size | RB Offset | Power Low Ch. / Freq. | Power Low Middle Ch. / Freq. | Power Middle Ch. / Freq. | Power High Middle Ch. / Freq. | Power High Ch. / Freq. |
| Channel         |            |         |           | 39750                 | 40185                        | 40620                    | 41055                         | 41490                  |
| Frequency (MHz) |            |         |           | 2506                  | 2549.5                       | 2593                     | 2636.5                        | 2680                   |
| 20              | QPSK       | 1       | 0         | 18.01                 | 17.91                        | 18.25                    | 17.92                         | 17.88                  |

| Band 41 ANT0 HPUE |            |         |           |                       |                              |                          |                               |                        |
|-------------------|------------|---------|-----------|-----------------------|------------------------------|--------------------------|-------------------------------|------------------------|
| BW [MHz]          | Modulation | RB Size | RB Offset | Power Low Ch. / Freq. | Power Low Middle Ch. / Freq. | Power Middle Ch. / Freq. | Power High Middle Ch. / Freq. | Power High Ch. / Freq. |
| Channel           |            |         |           | 39750                 | 40185                        | 40620                    | 41055                         | 41490                  |
| Frequency (MHz)   |            |         |           | 2506                  | 2549.5                       | 2593                     | 2636.5                        | 2680                   |
| 20                | QPSK       | 1       | 0         | 25.43                 | 25.35                        | 25.67                    | 25.44                         | 25.33                  |

| Band 41 ANT1 HPUE |            |         |           |                       |                              |                          |                               |                        |
|-------------------|------------|---------|-----------|-----------------------|------------------------------|--------------------------|-------------------------------|------------------------|
| BW [MHz]          | Modulation | RB Size | RB Offset | Power Low Ch. / Freq. | Power Low Middle Ch. / Freq. | Power Middle Ch. / Freq. | Power High Middle Ch. / Freq. | Power High Ch. / Freq. |
| Channel           |            |         |           | 39750                 | 40185                        | 40620                    | 41055                         | 41490                  |
| Frequency (MHz)   |            |         |           | 2506                  | 2549.5                       | 2593                     | 2636.5                        | 2680                   |
| 20                | QPSK       | 1       | 0         | 19.30                 | 19.26                        | 19.38                    | 19.25                         | 19.27                  |

| Band 42 ANT2    |            |         |           |                       |                          |                        |
|-----------------|------------|---------|-----------|-----------------------|--------------------------|------------------------|
| BW [MHz]        | Modulation | RB Size | RB Offset | Power Low Ch. / Freq. | Power Middle Ch. / Freq. | Power High Ch. / Freq. |
| Channel         |            |         |           | 42190                 | 42590                    | 42990                  |
| Frequency (MHz) |            |         |           | 3460                  | 3500                     | 3540                   |
| 20              | QPSK       | 1       | 0         | 21.45                 | 21.65                    | 21.39                  |

| Band 43 ANT2    |            |         |           |                       |                          |                        |
|-----------------|------------|---------|-----------|-----------------------|--------------------------|------------------------|
| BW [MHz]        | Modulation | RB Size | RB Offset | Power Low Ch. / Freq. | Power Middle Ch. / Freq. | Power High Ch. / Freq. |
| Channel         |            |         |           | 43590                 | 43990                    | 44390                  |
| Frequency (MHz) |            |         |           | 3610                  | 3650                     | 3690                   |
| 20              | QPSK       | 1       | 0         | 21.56                 | 21.72                    | 21.64                  |

| Band 48 ANT2    |            |         |           |                       |                              |                               |                        |
|-----------------|------------|---------|-----------|-----------------------|------------------------------|-------------------------------|------------------------|
| BW [MHz]        | Modulation | RB Size | RB Offset | Power Low Ch. / Freq. | Power Low Middle Ch. / Freq. | Power High Middle Ch. / Freq. | Power High Ch. / Freq. |
| Channel         |            |         |           | 55340                 | 55830                        | 56150                         | 56640                  |
| Frequency (MHz) |            |         |           | 3560                  | 3609                         | 3641                          | 3690                   |
| 20              | QPSK       | 1       | 0         | 21.83                 | 21.85                        | 21.64                         | 21.72                  |

**<WLAN>**

**ANT2+6:**

| 2.4GHz WLAN | Mode          | Channel | Frequency (MHz) | Average power (dBm) |
|-------------|---------------|---------|-----------------|---------------------|
| 2.4GHz WLAN | 802.11g 6Mbps | 1       | 2412            | 20.93               |
|             |               | 6       | 2437            | 20.93               |
|             |               | 11      | 2462            | 20.75               |



| 5.2GHz WLAN | Mode          | Channel | Frequency (MHz) | Average power (dBm) |
|-------------|---------------|---------|-----------------|---------------------|
|             | 802.11a 6Mbps | 36      | 5180            | 20.44               |
|             |               | 44      | 5220            | 20.53               |
|             |               | 48      | 5240            | 20.61               |

| 5.3GHz WLAN | Mode          | Channel | Frequency (MHz) | Average power (dBm) |
|-------------|---------------|---------|-----------------|---------------------|
|             | 802.11a 6Mbps | 52      | 5260            | 20.60               |
|             |               | 60      | 5300            | 20.57               |
|             |               | 64      | 5320            | 20.56               |

| 5.5GHz WLAN | Mode          | Channel | Frequency (MHz) | Average power (dBm) |
|-------------|---------------|---------|-----------------|---------------------|
|             | 802.11a 6Mbps | 100     | 5500            | 20.40               |
|             |               | 116     | 5580            | 20.18               |
|             |               | 140     | 5700            | 20.24               |

| 5.8GHz WLAN | Mode          | Channel | Frequency (MHz) | Average power (dBm) |
|-------------|---------------|---------|-----------------|---------------------|
|             | 802.11a 6Mbps | 149     | 5745            | 20.55               |
|             |               | 157     | 5785            | 20.77               |
|             |               | 165     | 5825            | 20.73               |





**13. HAC RF Emission Test Results**

| Plot No. | Air Interface    | Modulation / Mode | Channel | Transmit Ant. | Sample | Average Antenna Input Power (dBm) | MIF   | E-Field (dBV/m) | Margin to FCC M3 limit (dB) | E-Field M Rating |
|----------|------------------|-------------------|---------|---------------|--------|-----------------------------------|-------|-----------------|-----------------------------|------------------|
| 1        | GSM850           | Voice             | 128     | Ant0          | 1      | 32.66                             | 3.63  | 32.00           | 13.00                       | M4               |
| 2        | GSM850           | Voice             | 189     | Ant0          | 1      | 32.75                             | 3.63  | 31.65           | 13.35                       | M4               |
| 3        | GSM850           | Voice             | 251     | Ant0          | 1      | 32.55                             | 3.63  | 31.79           | 13.21                       | M4               |
| 4        | GSM850           | Voice             | 128     | Ant1          | 1      | 32.03                             | 3.63  | 31.34           | 13.66                       | M4               |
| 5        | GSM850           | Voice             | 189     | Ant1          | 1      | 32.09                             | 3.63  | 31.46           | 13.54                       | M4               |
| 6        | GSM850           | Voice             | 251     | Ant1          | 1      | 31.88                             | 3.63  | 32.08           | 12.92                       | M4               |
| 7        | GSM1900          | Voice             | 512     | Ant0          | 1      | 29.88                             | 3.63  | 23.96           | 11.04                       | M4               |
| 8        | GSM1900          | Voice             | 661     | Ant0          | 1      | 30.02                             | 3.63  | 25.58           | 9.42                        | M4               |
| 9        | GSM1900          | Voice             | 810     | Ant0          | 1      | 29.80                             | 3.63  | 24.45           | 10.55                       | M4               |
| 10       | GSM1900          | Voice             | 512     | Ant1          | 1      | 25.64                             | 3.63  | 24.80           | 10.20                       | M4               |
| 11       | GSM1900          | Voice             | 661     | Ant1          | 1      | 25.86                             | 3.63  | 26.12           | 8.88                        | M4               |
| 12       | GSM1900          | Voice             | 810     | Ant1          | 1      | 25.71                             | 3.63  | 24.60           | 10.40                       | M4               |
| 13       | LTE Band 41-HPUE | 20M_QPSK_1_0      | 39750   | Ant0          | 1      | 25.43                             | -1.44 | 18.79           | 16.21                       | M4               |
| 14       | LTE Band 41-HPUE | 20M_QPSK_1_0      | 40185   | Ant0          | 1      | 25.35                             | -1.44 | 18.29           | 16.71                       | M4               |
| 15       | LTE Band 41-HPUE | 20M_QPSK_1_0      | 40620   | Ant0          | 1      | 25.67                             | -1.44 | 18.34           | 16.66                       | M4               |
| 16       | LTE Band 41-HPUE | 20M_QPSK_1_0      | 41055   | Ant0          | 1      | 25.44                             | -1.44 | 19.16           | 15.84                       | M4               |
| 17       | LTE Band 41-HPUE | 20M_QPSK_1_0      | 41490   | Ant0          | 1      | 25.33                             | -1.44 | 21.00           | 14.00                       | M4               |
| 18       | LTE Band 41-HPUE | 20M_QPSK_1_0      | 39750   | Ant1          | 1      | 19.30                             | -1.44 | 18.58           | 16.42                       | M4               |
| 19       | LTE Band 41-HPUE | 20M_QPSK_1_0      | 40185   | Ant1          | 1      | 19.26                             | -1.44 | 18.17           | 16.83                       | M4               |
| 20       | LTE Band 41-HPUE | 20M_QPSK_1_0      | 40620   | Ant1          | 1      | 19.38                             | -1.44 | 19.20           | 15.80                       | M4               |
| 21       | LTE Band 41-HPUE | 20M_QPSK_1_0      | 41055   | Ant1          | 1      | 19.25                             | -1.44 | 20.45           | 14.55                       | M4               |
| 22       | LTE Band 41-HPUE | 20M_QPSK_1_0      | 41490   | Ant1          | 1      | 19.27                             | -1.44 | 18.54           | 16.46                       | M4               |
| 23       | LTE Band 42      | 20M_QPSK_1_0      | 42190   | Ant2          | 1      | 21.45                             | -1.44 | 31.79           | 3.21                        | M3               |
| 24       | LTE Band 42      | 20M_QPSK_1_0      | 42590   | Ant2          | 1      | 21.65                             | -1.44 | 31.79           | 3.21                        | M3               |
| 25       | LTE Band 42      | 20M_QPSK_1_0      | 42990   | Ant2          | 1      | 21.39                             | -1.44 | 31.12           | 3.88                        | M3               |
| 26       | LTE Band 42      | 20M_QPSK_1_0      | 42190   | Ant2          | 3      | 21.45                             | -1.44 | 29.98           | 5.02                        | M4               |
| 27       | LTE Band 42      | 20M_QPSK_1_0      | 42590   | Ant2          | 3      | 21.65                             | -1.44 | 28.97           | 6.03                        | M4               |
| 28       | LTE Band 42      | 20M_QPSK_1_0      | 42990   | Ant2          | 3      | 21.39                             | -1.44 | 29.88           | 5.12                        | M4               |
| 29       | LTE Band 48      | 20M_QPSK_1_0      | 55340   | Ant2          | 1      | 21.83                             | -1.44 | 31.36           | 3.64                        | M3               |
| 30       | LTE Band 48      | 20M_QPSK_1_0      | 55830   | Ant2          | 1      | 21.85                             | -1.44 | 30.75           | 4.25                        | M3               |
| 31       | LTE Band 48      | 20M_QPSK_1_0      | 56150   | Ant2          | 1      | 21.64                             | -1.44 | 30.49           | 4.51                        | M3               |
| 32       | LTE Band 48      | 20M_QPSK_1_0      | 56640   | Ant2          | 1      | 21.72                             | -1.44 | 30.35           | 4.65                        | M3               |
| 33       | WLAN2.4GHz       | 802.11g 6Mbps     | 1       | Ant 2+6       | 1      | 20.93                             | 0.12  | 28.34           | 6.66                        | M4               |
| 34       | WLAN2.4GHz       | 802.11g 6Mbps     | 6       | Ant 2+6       | 1      | 20.93                             | 0.12  | 27.89           | 7.11                        | M4               |
| 35       | WLAN2.4GHz       | 802.11g 6Mbps     | 11      | Ant 2+6       | 1      | 20.75                             | 0.12  | 28.76           | 6.24                        | M4               |
| 36       | WLAN5.2GHz       | 802.11a 6Mbps     | 36      | Ant 2+6       | 1      | 20.44                             | -3.15 | 25.24           | 9.76                        | M4               |
| 37       | WLAN5.2GHz       | 802.11a 6Mbps     | 44      | Ant 2+6       | 1      | 20.53                             | -3.15 | 25.66           | 9.34                        | M4               |
| 38       | WLAN5.2GHz       | 802.11a 6Mbps     | 48      | Ant 2+6       | 1      | 20.61                             | -3.15 | 25.88           | 9.12                        | M4               |
| 39       | WLAN5.3GHz       | 802.11a 6Mbps     | 52      | Ant 2+6       | 1      | 20.60                             | -3.15 | 25.90           | 9.10                        | M4               |
| 40       | WLAN5.3GHz       | 802.11a 6Mbps     | 60      | Ant 2+6       | 1      | 20.57                             | -3.15 | 26.07           | 8.93                        | M4               |
| 41       | WLAN5.3GHz       | 802.11a 6Mbps     | 64      | Ant 2+6       | 1      | 20.56                             | -3.15 | 26.11           | 8.89                        | M4               |
| 42       | WLAN5.5GHz       | 802.11a 6Mbps     | 100     | Ant 2+6       | 1      | 20.40                             | -3.15 | 26.25           | 8.75                        | M4               |
| 43       | WLAN5.5GHz       | 802.11a 6Mbps     | 116     | Ant 2+6       | 1      | 20.18                             | -3.15 | 25.56           | 9.44                        | M4               |
| 44       | WLAN5.5GHz       | 802.11a 6Mbps     | 144     | Ant 2+6       | 1      | 20.24                             | -3.15 | 25.58           | 9.42                        | M4               |
| 45       | WLAN5.8GHz       | 802.11a 6Mbps     | 149     | Ant 2+6       | 1      | 20.55                             | -3.15 | 26.54           | 8.46                        | M4               |
| 46       | WLAN5.8GHz       | 802.11a 6Mbps     | 157     | Ant 2+6       | 1      | 20.77                             | -3.15 | 26.03           | 8.97                        | M4               |
| 47       | WLAN5.8GHz       | 802.11a 6Mbps     | 165     | Ant 2+6       | 1      | 20.73                             | -3.15 | 25.81           | 9.19                        | M4               |

**Remark:**

1. The HAC measurement system applies MIF value onto the measured RMS E-field, which is indirect method in ANSI C63.19 2011 version, and reports the RF audio interference level.
2. Phone Condition: Mute on; Backlight off; Max Volume

**Test Engineer :** Martin Li, Varus Wang, Light Wang, Ricky Gu



## **14. Uncertainty Assessment**

The component of uncertainty may generally be categorized according to the methods used to evaluate them. The evaluation of uncertainty by the statistical analysis of a series of observations is termed a Type A evaluation of uncertainty. The evaluation of uncertainty by means other than the statistical analysis of a series of observation is termed a Type B evaluation of uncertainty. Each component of uncertainty, however evaluated, is represented by an estimated standard deviation, termed standard uncertainty, which is determined by the positive square root of the estimated variance.

The combined standard uncertainty of the measurement result represents the estimated standard deviation of the result. It is obtained by combining the individual standard uncertainties of both Type A and Type B evaluation using the usual “root-sum-squares” (RSS) methods of combining standard deviations by taking the positive square root of the estimated variances. Expanded uncertainty is a measure of uncertainty that defines an interval about the measurement result within which the measured value is confidently believed to lie. It is obtained by multiplying the combined standard uncertainty by a coverage factor. For purpose of this document, a coverage factor two is used, which corresponds to confidence interval of about 95 %. The DASY uncertainty Budget is showed in Table 14.1.

The judgment of conformity in the report is based on the measurement results excluding the measurement uncertainty.



| Error Description                | Uncertainty Value (±%) | Probability | Divisor | (Ci) E | (Ci) H | Standard Uncertainty (E) (±%) |
|----------------------------------|------------------------|-------------|---------|--------|--------|-------------------------------|
| <b>Measurement System</b>        |                        |             |         |        |        |                               |
| Probe Calibration                | 5.1                    | N           | 1       | 1      | 1      | 5.1                           |
| Axial Isotropy                   | 4.7                    | R           | 1.732   | 1      | 1      | 2.7                           |
| Sensor Displacement              | 16.5                   | R           | 1.732   | 1      | 0.145  | 9.5                           |
| Boundary Effects                 | 2.4                    | R           | 1.732   | 1      | 1      | 1.4                           |
| Phantom Boundary Effect          | 7.2                    | R           | 1.732   | 1      | 0      | 4.2                           |
| Linearity                        | 4.7                    | R           | 1.732   | 1      | 1      | 2.7                           |
| Scaling with PMR calibration     | 10.0                   | R           | 1.732   | 1      | 1      | 5.8                           |
| System Detection Limit           | 1.0                    | R           | 1.732   | 1      | 1      | 0.6                           |
| Readout Electronics              | 0.3                    | N           | 1       | 1      | 1      | 0.3                           |
| Response Time                    | 2.6                    | R           | 1.732   | 1      | 1      | 1.5                           |
| Integration Time                 | 2.6                    | R           | 1.732   | 1      | 1      | 1.5                           |
| RF Ambient Conditions            | 3.0                    | R           | 1.732   | 1      | 1      | 1.7                           |
| RF Reflections                   | 12.0                   | R           | 1.732   | 1      | 1      | 6.9                           |
| Probe Positioner                 | 1.2                    | R           | 1.732   | 1      | 0.67   | 0.7                           |
| Probe Positioning                | 4.7                    | R           | 1.732   | 1      | 0.67   | 2.7                           |
| Extrap. and Interpolation        | 1.0                    | R           | 1.732   | 1      | 1      | 0.6                           |
| <b>Test Sample Related</b>       |                        |             |         |        |        |                               |
| Device Positioning Vertical      | 4.7                    | R           | 1.732   | 1      | 0.67   | 2.7                           |
| Device Positioning Lateral       | 1.0                    | R           | 1.732   | 1      | 1      | 0.6                           |
| Device Holder and Phantom        | 2.4                    | R           | 1.732   | 1      | 1      | 1.4                           |
| Power Drift                      | 5.0                    | R           | 1.732   | 1      | 1      | 2.9                           |
| <b>Phantom and Setup Related</b> |                        |             |         |        |        |                               |
| Phantom Thickness                | 2.4                    | R           | 1.732   | 1      | 0.67   | 1.4                           |
| <b>Combined Std. Uncertainty</b> |                        |             |         |        |        | 16.4%                         |
| <b>Coverage Factor for 95 %</b>  |                        |             |         |        |        | K=2                           |
| <b>Expanded STD Uncertainty</b>  |                        |             |         |        |        | 32.7%                         |

**Table 14.1 Uncertainty Budget of HAC free field assessment**



## **15. References**

- [1] ANSI C63.19-2011, "American National Standard for Methods of Measurement of Compatibility between Wireless Communications Devices and Hearing Aids", 27 May 2011.
- [2] FCC KDB 285076 D01v06, "Equipment Authorization Guidance for Hearing Aid Compatibility", Feb. 23, 2022
- [3] FCC KDB 285076 D03v01r05, "Hearing aid compatibility frequently asked questions", Feb. 23, 2022.
- [4] SPEAG DASY System Handbook

-----THE END-----



---

**Appendix A. Plots of System Performance Check**

The plots are shown as follows.

**HAC\_E\_Dipole\_835**

**DUT: HAC-Dipole 835 MHz**

Communication System: UID 0, CW; Frequency: 835 MHz; Duty Cycle: 1:1

Medium: Air Medium parameters used:  $\sigma = 0$  S/m,  $\epsilon_r = 1$ ;  $\rho = 0$  kg/m<sup>3</sup>

Ambient Temperature : 23.3 °C;

**DASY5 Configuration:**

- Probe: EF3DV3 - SN4050; ConvF(1, 1, 1); Calibrated: 2022.1.31

- Electronics: DAE4 Sn1303; Calibrated: 2021.6.18

- Phantom: HAC Test Arch with AMCC; Type: SD HAC P01 BA;

- Measurement SW: DASY52, Version 52.10 (4); SEMCAD X Version 14.6.14 (7483)

**E Scan - measurement distance from the probe sensor center to CD835 = 15mm/Hearing Aid Compatibility Test at 15mm distance (41x361x1): Interpolated grid:**

dx=0.5000 mm, dy=0.5000 mm

Device Reference Point: 0, 0, -6.3 mm

Reference Value = 118.3 V/m; Power Drift = -0.03 dB

PMR not calibrated. PMF = 1.000 is applied.

E-field emissions = 118.6 V/m

Average value of Total=(118.6+96.04)/2=107.32 V/m

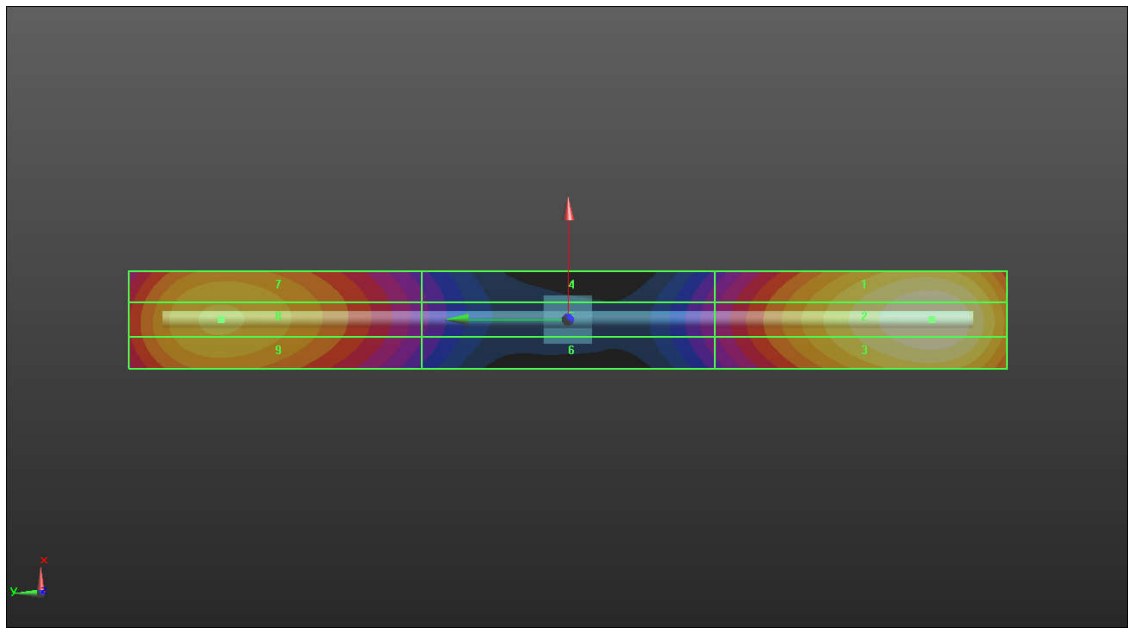
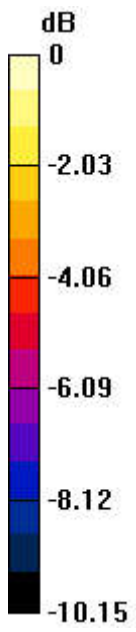
PMF scaled E-field

|                                      |                                      |                                      |
|--------------------------------------|--------------------------------------|--------------------------------------|
| <b>Grid 1 M4</b><br><b>116.6 V/m</b> | <b>Grid 2 M4</b><br><b>118.6 V/m</b> | <b>Grid 3 M4</b><br><b>116.7 V/m</b> |
| <b>Grid 4 M4</b><br><b>58.10 V/m</b> | <b>Grid 5 M4</b><br><b>59.22 V/m</b> | <b>Grid 6 M4</b><br><b>58.50 V/m</b> |
| <b>Grid 7 M4</b><br><b>94.39 V/m</b> | <b>Grid 8 M4</b><br><b>96.04 V/m</b> | <b>Grid 9 M4</b><br><b>94.43 V/m</b> |

Total = 118.6 V/m

E Category: M4

Location: 0, -74.5, 9.7 mm



0 dB = 118.6 V/m = 41.72 dBV/m

**HAC\_E\_Dipole\_1880**

**DUT: HAC Dipole 1880 MHz**

Communication System: UID 0, CW; Frequency: 1880 MHz; Duty Cycle: 1:1

Medium: Air Medium parameters used:  $\sigma = 0$  S/m,  $\epsilon_r = 1$ ;  $\rho = 0$  kg/m<sup>3</sup>

Ambient Temperature : 23.3 °C;

**DASY5 Configuration:**

- Probe: EF3DV3 - SN4050; ConvF(1, 1, 1); Calibrated: 2022.1.31
- Electronics: DAE4 Sn1303; Calibrated: 2021.6.18
- Phantom: HAC Test Arch with AMCC; Type: SD HAC P01 BA;
- Measurement SW: DASY52, Version 52.10 (4); SEMCAD X Version 14.6.14 (7483)

**E Scan - measurement distance from the probe sensor center to CD1880 = 15mm/Hearing Aid Compatibility Test at 15mm distance (41x181x1): Interpolated grid:**

dx=0.5000 mm, dy=0.5000 mm

Device Reference Point: 0, 0, -6.3 mm

Reference Value = 153.2 V/m; Power Drift = 0.03 dB

PMR not calibrated. PMF = 1.000 is applied.

E-field emissions = 95.44 V/m

Average value of Total=(95.44+91.72)/2=93.58 V/m

PMF scaled E-field

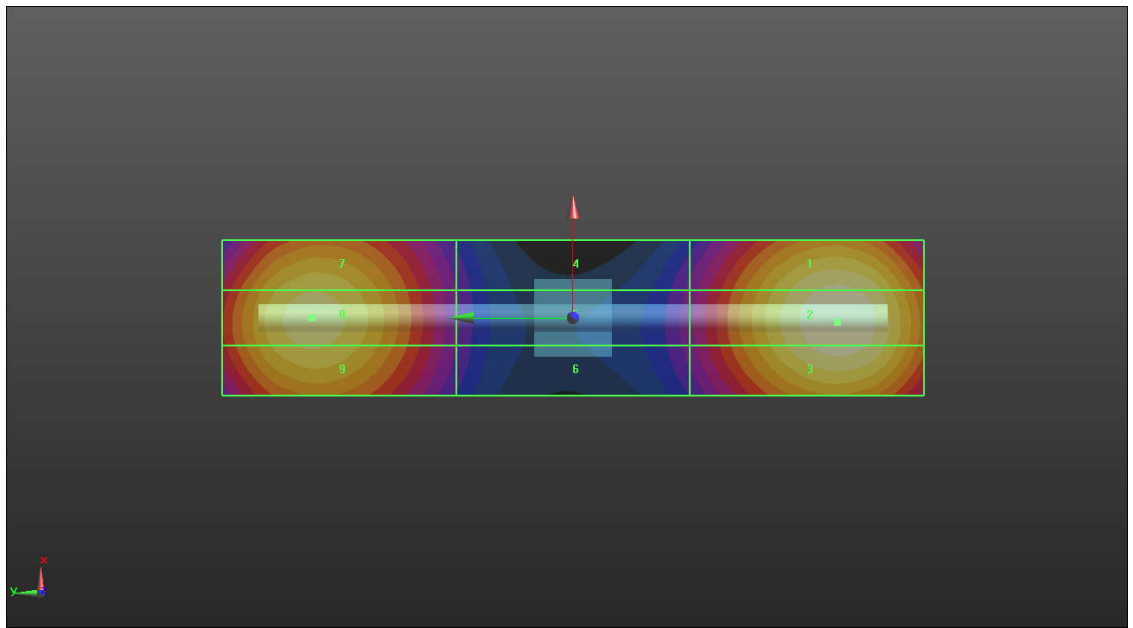
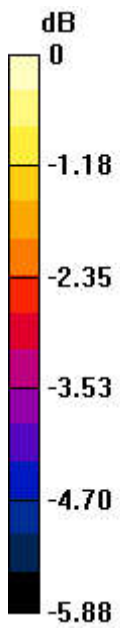
|                                      |                                      |                                      |
|--------------------------------------|--------------------------------------|--------------------------------------|
| Grid 1 <b>M3</b><br><b>93.21 V/m</b> | Grid 2 <b>M3</b><br><b>95.44 V/m</b> | Grid 3 <b>M3</b><br><b>94.14 V/m</b> |
| Grid 4 <b>M3</b><br><b>62.05 V/m</b> | Grid 5 <b>M3</b><br><b>64.15 V/m</b> | Grid 6 <b>M3</b><br><b>63.58 V/m</b> |
| Grid 7 <b>M3</b><br><b>90.46 V/m</b> | Grid 8 <b>M3</b><br><b>91.72 V/m</b> | Grid 9 <b>M3</b><br><b>90.21 V/m</b> |

Total = 95.44 V/m

E Category: M3

Location: -0.5, -34, 8.7 mm





0 dB = 100.2 V/m = 40.02 dBV/m

**HAC\_E\_Dipole\_2450**

**DUT: HAC Dipole 2450 MHz**

Communication System: UID 0, CW; Frequency: 2450 MHz; Duty Cycle: 1:1

Medium: Air Medium parameters used:  $\sigma = 0$  S/m,  $\epsilon_r = 1$ ;  $\rho = 0$  kg/m<sup>3</sup>

Ambient Temperature : 23.5 °C;

DASY5 Configuration:

- Probe: EF3DV3 - SN4050; ConvF(1, 1, 1); Calibrated: 2022.1.31
- Electronics: DAE4 Sn1303; Calibrated: 2021.6.18
- Phantom: HAC Test Arch with AMCC; Type: SD HAC P01 BA;
- Measurement SW: DASY52, Version 52.10 (4); SEMCAD X Version 14.6.14 (7483)

**E Scan - measurement distance from the probe sensor center to CD2450 = 15mm 2/Hearing Aid Compatibility Test at 15mm distance (41x181x1):**

Interpolated

grid: dx=0.5000 mm, dy=0.5000 mm

Device Reference Point: 0, 0, -6.3 mm

Reference Value = 64.90 V/m; Power Drift = -0.07 dB

PMR not calibrated. PMF = 1.000 is applied.

E-field emissions = 80.73 V/m

Average value of Total=(80.69+80.73)/2=80.71 V/m

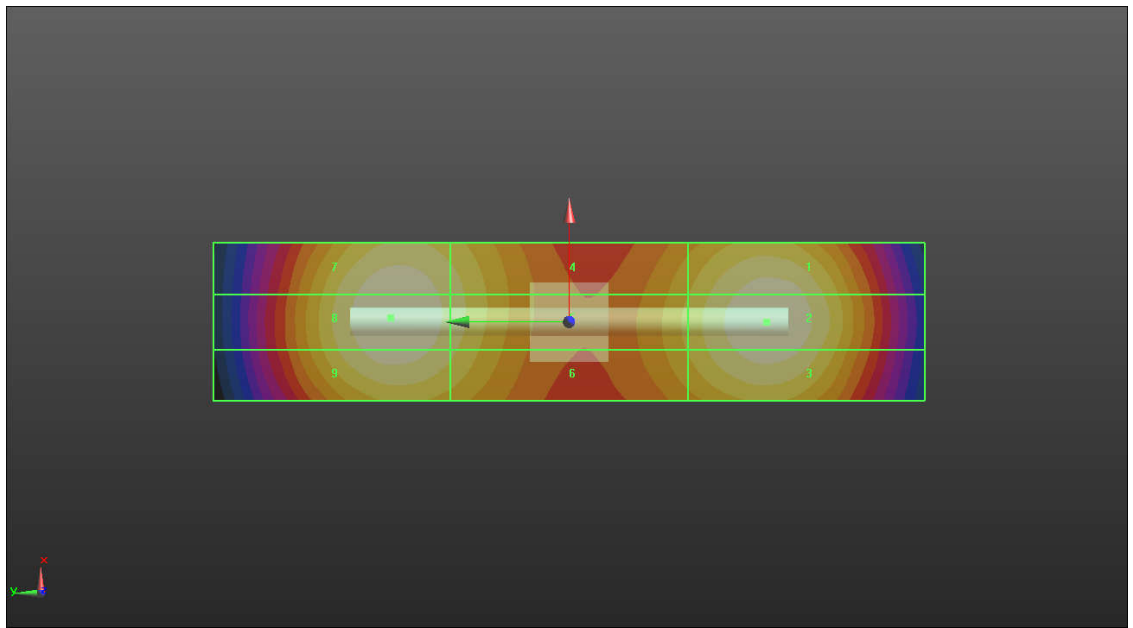
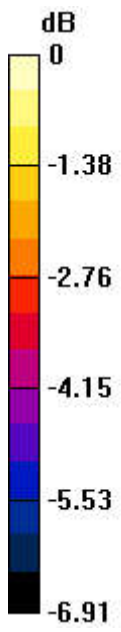
PMF scaled E-field

|                                      |                                      |                                      |
|--------------------------------------|--------------------------------------|--------------------------------------|
| Grid 1 <b>M3</b><br><b>78.92 V/m</b> | Grid 2 <b>M3</b><br><b>80.69 V/m</b> | Grid 3 <b>M3</b><br><b>77.33 V/m</b> |
| Grid 4 <b>M3</b><br><b>74.91 V/m</b> | Grid 5 <b>M3</b><br><b>75.36 V/m</b> | Grid 6 <b>M3</b><br><b>73.71 V/m</b> |
| Grid 7 <b>M3</b><br><b>79.79 V/m</b> | Grid 8 <b>M3</b><br><b>80.73 V/m</b> | Grid 9 <b>M3</b><br><b>78.79 V/m</b> |

Total = 80.73 V/m

E Category: M3

Location: 0.5, 22.5, 9.7 mm



0 dB = 80.73 V/m = 38.14 dBV/m

**HAC\_E\_Dipole\_2600**

**DUT: HAC Dipole 2600 MHz**

Communication System: UID 0, CW (0); Frequency: 2600 MHz; Duty Cycle: 1:1

Medium: Air Medium parameters used:  $\sigma = 0$  S/m,  $\epsilon_r = 1$ ;  $\rho = 0$  kg/m<sup>3</sup>

Ambient Temperature : 23.3 °C;

DASY5 Configuration:

- Probe: EF3DV3 - SN4050; ConvF(1, 1, 1); Calibrated: 2022.1.31
- Electronics: DAE4 Sn1303; Calibrated: 2021.6.18
- Phantom: HAC Test Arch with AMCC; Type: SD HAC P01 BA;
- Measurement SW: DASY52, Version 52.10 (4); SEMCAD X Version 14.6.14 (7483)

**E Scan - measurement distance from the probe sensor center to CD2600 = 15mm/Hearing Aid Compatibility Test at 15mm distance (41x181x1): Interpolated grid:**

dx=0.5000 mm, dy=0.5000 mm

Device Reference Point: 0, 0, -6.3 mm

Reference Value = 72.73 V/m; Power Drift = 0.02 dB

PMR not calibrated. PMF = 1.000 is applied.

E-field emissions = 87.55 V/m

Average value of Total=(86.19+87.55)/2=86.87 V/m

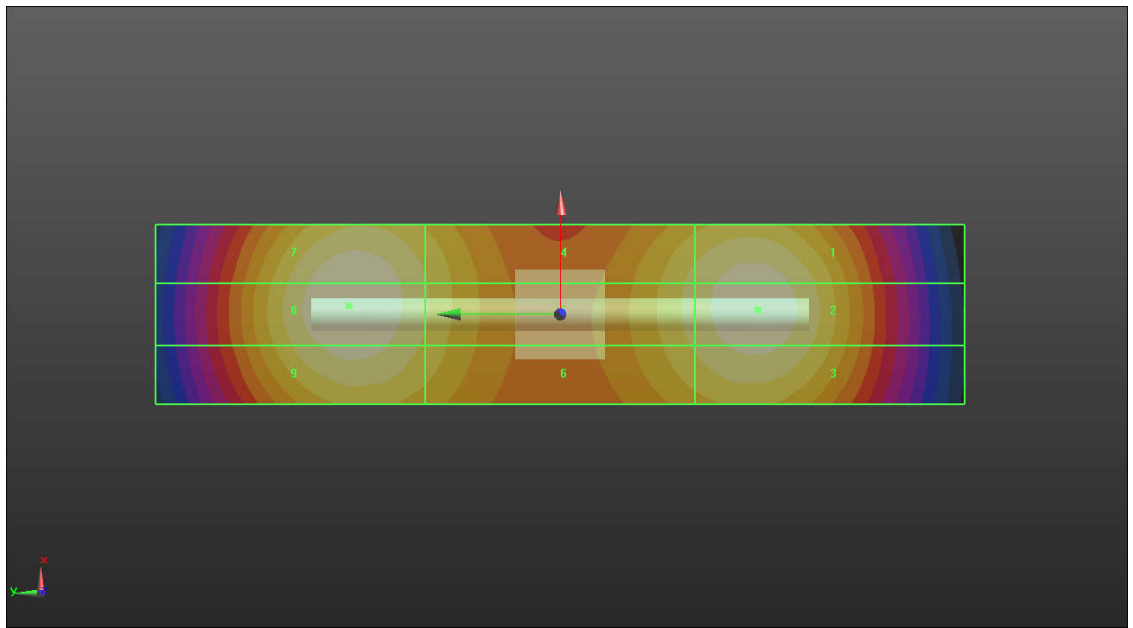
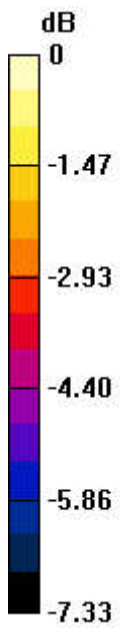
PMF scaled E-field

|                                      |                                      |                                      |
|--------------------------------------|--------------------------------------|--------------------------------------|
| <b>Grid 1 M3</b><br><b>86.05 V/m</b> | <b>Grid 2 M3</b><br><b>86.19 V/m</b> | <b>Grid 3 M3</b><br><b>84.17 V/m</b> |
| <b>Grid 4 M3</b><br><b>80.85 V/m</b> | <b>Grid 5 M3</b><br><b>81.45 V/m</b> | <b>Grid 6 M3</b><br><b>78.78 V/m</b> |
| <b>Grid 7 M3</b><br><b>85.76 V/m</b> | <b>Grid 8 M3</b><br><b>87.55 V/m</b> | <b>Grid 9 M3</b><br><b>85.73 V/m</b> |

Total = 87.55 V/m

E Category: M3

Location: 1, 23.5, 9.7 mm



0 dB = 87.55 V/m = 37.94 dBV/m

**HAC\_E\_Dipole\_3500**

**DUT: HAC Dipole 3500 MHz**

Communication System: UID 0, CW (0); Frequency: 3500 MHz; Duty Cycle: 1:1

Medium: Air Medium parameters used:  $\sigma = 0$  S/m,  $\epsilon_r = 1$ ;  $\rho = 0$  kg/m<sup>3</sup>

Ambient Temperature : 23.3 °C

**DASY5 Configuration:**

- Probe: EF3DV3 - SN4050; ConvF(1, 1, 1); Calibrated: 2022.1.31
- Electronics: DAE4 Sn1303; Calibrated: 2021.6.18
- Phantom: HAC Test Arch with AMCC; Type: SD HAC P01 BA;
- Measurement SW: DASY52, Version 52.10 (4); SEMCAD X Version 14.6.14 (7483)

**E Scan - measurement distance from the probe sensor center to CD3500 = 15mm/Hearing Aid Compatibility Test at 15mm distance (41x121x1): Interpolated grid:**

dx=0.5000 mm, dy=0.5000 mm

Device Reference Point: 0, 0, -6.3 mm

Reference Value = 37.61 V/m; Power Drift = -0.02 dB

PMR not calibrated. PMF = 1.000 is applied.

E-field emissions = 88.17 V/m

Average value of Total=(88.17+86.15)/2=87.16 V/m

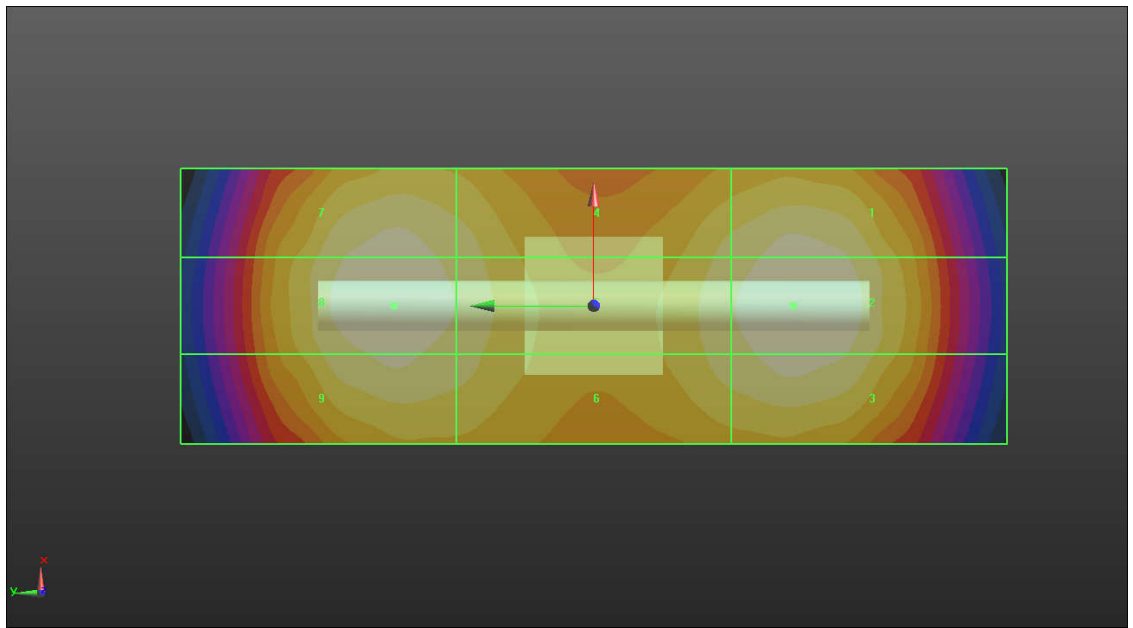
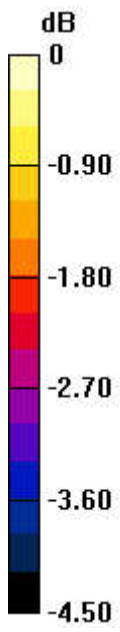
PMF scaled E-field

|                                      |                                      |                                      |
|--------------------------------------|--------------------------------------|--------------------------------------|
| <b>Grid 1 M3</b><br><b>86.54 V/m</b> | <b>Grid 2 M3</b><br><b>88.17 V/m</b> | <b>Grid 3 M3</b><br><b>87.32 V/m</b> |
| <b>Grid 4 M3</b><br><b>83.06 V/m</b> | <b>Grid 5 M3</b><br><b>85.94 V/m</b> | <b>Grid 6 M3</b><br><b>84.81 V/m</b> |
| <b>Grid 7 M3</b><br><b>84.57 V/m</b> | <b>Grid 8 M3</b><br><b>86.15 V/m</b> | <b>Grid 9 M3</b><br><b>84.62 V/m</b> |

Total = 88.17 V/m

E Category: M3

Location: 0, -14.5, 9.7 mm



0 dB = 88.17 V/m = 37.99 dBV/m

**HAC\_E\_Dipole\_5500**

**DUT: HAC Dipole 5500 MHz**

Communication System: UID 0, CW (0); Frequency: 5500 MHz; Duty Cycle: 1:1

Medium: Air Medium parameters used:  $\sigma = 0$  S/m,  $\epsilon_r = 1$ ;  $\rho = 0$  kg/m<sup>3</sup>

Ambient Temperature : 23.2 °C;

DASY5 Configuration:

- Probe: EF3DV3 - SN4050; ConvF(1, 1, 1); Calibrated: 2022.1.31
- Electronics: DAE4 Sn1303; Calibrated: 2021.6.18
- Phantom: HAC Test Arch with AMCC; Type: SD HAC P01 BA;
- Measurement SW: DASY52, Version 52.10 (4); SEMCAD X Version 14.6.14 (7483)

**E Scan - measurement distance from the probe sensor center to CD5500 = 15mm/Hearing Aid Compatibility Test at 15mm distance (41x181x1):**

Interpolated grid:

dx=0.5000 mm, dy=0.5000 mm

Device Reference Point: 0, 0, -6.3 mm

Reference Value = 28.34 V/m; Power Drift = 0.06 dB

PMR not calibrated. PMF = 1.000 is applied.

E-field emissions = 105.2 V/m

Average value of Total=(101.2+103.4)/2=102.3 V/m

PMF scaled E-field

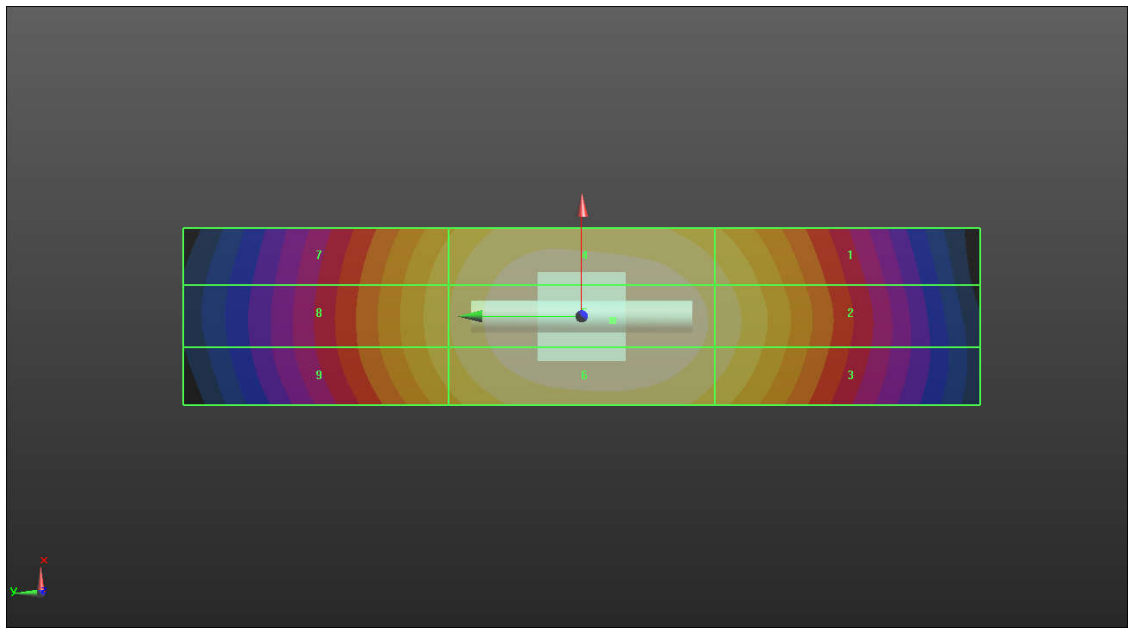
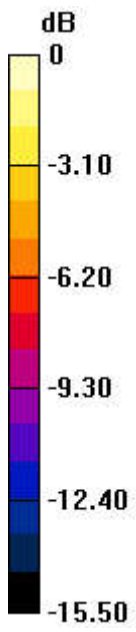
|                                      |                                      |                                      |
|--------------------------------------|--------------------------------------|--------------------------------------|
| <b>Grid 1 M3</b><br><b>88.05 V/m</b> | <b>Grid 2 M3</b><br><b>91.65 V/m</b> | <b>Grid 3 M3</b><br><b>89.87 V/m</b> |
| <b>Grid 4 M3</b><br><b>101.2 V/m</b> | <b>Grid 5 M3</b><br><b>105.2 V/m</b> | <b>Grid 6 M3</b><br><b>103.4 V/m</b> |
| <b>Grid 7 M3</b><br><b>81.15 V/m</b> | <b>Grid 8 M3</b><br><b>88.65 V/m</b> | <b>Grid 9 M3</b><br><b>81.27 V/m</b> |

Total = 105.2 V/m

E Category: M3

Location: -0.5, -3.5, 8.7 mm





0 dB = 105.2 V/m = 40.44 dBV/m

**HAC\_E\_Dipole\_3500**

**DUT: HAC Dipole 3500 MHz**

Communication System: UID 0, CW (0); Frequency: 3500 MHz; Duty Cycle: 1:1

Medium: Air Medium parameters used:  $\sigma = 0$  S/m,  $\epsilon_r = 1$ ;  $\rho = 0$  kg/m<sup>3</sup>

Ambient Temperature : 23.3 °C

**DASY5 Configuration:**

- Probe: EF3DV3 - SN4050; ConvF(1, 1, 1); Calibrated: 2022.1.31
- Electronics: DAE4 Sn1691; Calibrated: 2021.10.4
- Phantom: HAC Test Arch with AMCC; Type: SD HAC P01 BA;
- Measurement SW: DASY52, Version 52.10 (4); SEMCAD X Version 14.6.14 (7483)

**E Scan - measurement distance from the probe sensor center to CD3500 = 15mm/Hearing Aid Compatibility Test at 15mm distance (41x121x1): Interpolated grid:**

dx=0.5000 mm, dy=0.5000 mm

Device Reference Point: 0, 0, -6.3 mm

Reference Value = 39.29 V/m; Power Drift = 0.05 dB

PMR not calibrated. PMF = 1.000 is applied.

E-field emissions = 90.38 V/m

Average value of Total=(90.38+89.92)/2=90.15 V/m

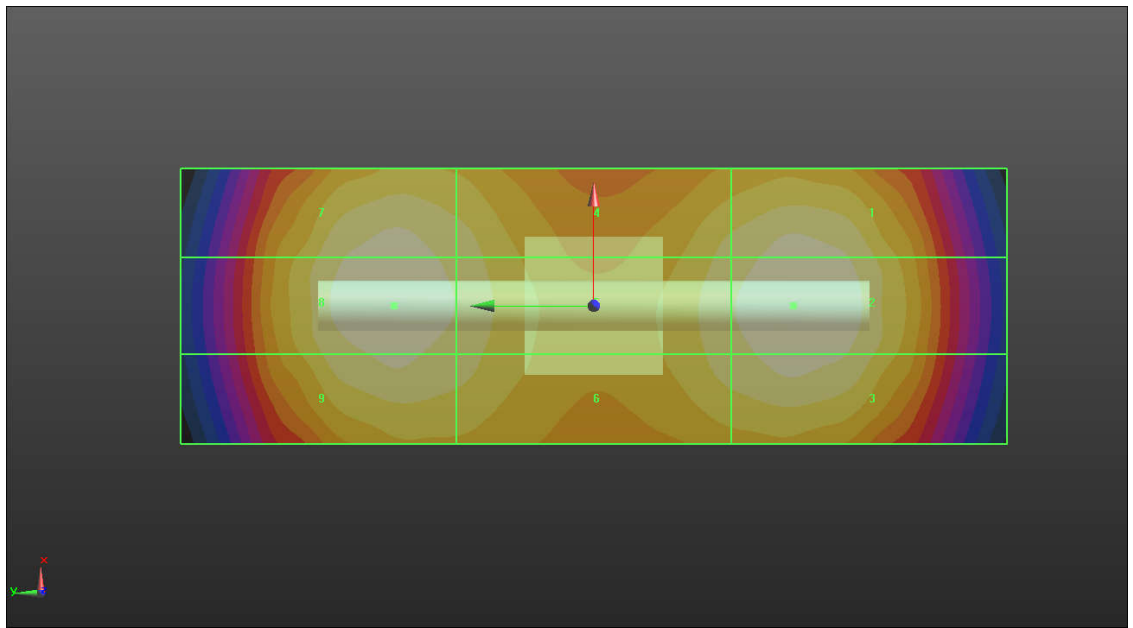
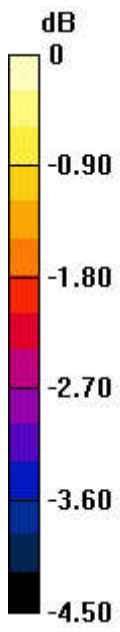
PMF scaled E-field

|                                      |                                      |                                      |
|--------------------------------------|--------------------------------------|--------------------------------------|
| <b>Grid 1 M3</b><br><b>89.65 V/m</b> | <b>Grid 2 M3</b><br><b>90.38 V/m</b> | <b>Grid 3 M3</b><br><b>88.54 V/m</b> |
| <b>Grid 4 M3</b><br><b>86.58 V/m</b> | <b>Grid 5 M3</b><br><b>87.42 V/m</b> | <b>Grid 6 M3</b><br><b>85.63 V/m</b> |
| <b>Grid 7 M3</b><br><b>89.88 V/m</b> | <b>Grid 8 M3</b><br><b>89.92 V/m</b> | <b>Grid 9 M3</b><br><b>87.35 V/m</b> |

Total = 90.38 V/m

E Category: M3

Location: 0, -14.5, 9.7 mm



0 dB = 90.38 V/m = 43.74 dBV/m



---

***Appendix B. Plots of RF Emission Measurement***

The plots are shown as follows.

### 1\_HAC RF GSM850\_ANT0\_Voice\_Ch128

Communication System: UID 10021 - DAC, GSM-FDD (TDMA, GMSK); Frequency: 824.2 MHz; Duty Cycle: 1:8.69961

Medium: Air Medium parameters used:  $\sigma = 0$  S/m,  $\epsilon_r = 1$ ;  $\rho = 0$  kg/m<sup>3</sup>

Ambient Temperature : 23.3 °C;

**DASY5 Configuration:**

- Probe: EF3DV3 - SN4050; ConvF(1, 1, 1); Calibrated: 2022.1.31
- Sensor-Surface: (Fix Surface)
- Electronics: DAE4 Sn1303; Calibrated: 2021.6.18
- Phantom: HAC Test Arch with AMCC; Type: SD HAC P01 BA;
- Measurement SW: DASY52, Version 52.10 (4); SEMCAD X Version 14.6.14 (7483)

**Ch128/Hearing Aid Compatibility Test (101x101x1):** Interpolated grid: dx=0.5000 mm, dy=0.5000 mm

Device Reference Point: 0, 0, -6.3 mm

Reference Value = 34.12 V/m; Power Drift = -0.04 dB

Applied MIF = 3.63 dB

RF audio interference level = 32.00 dBV/m

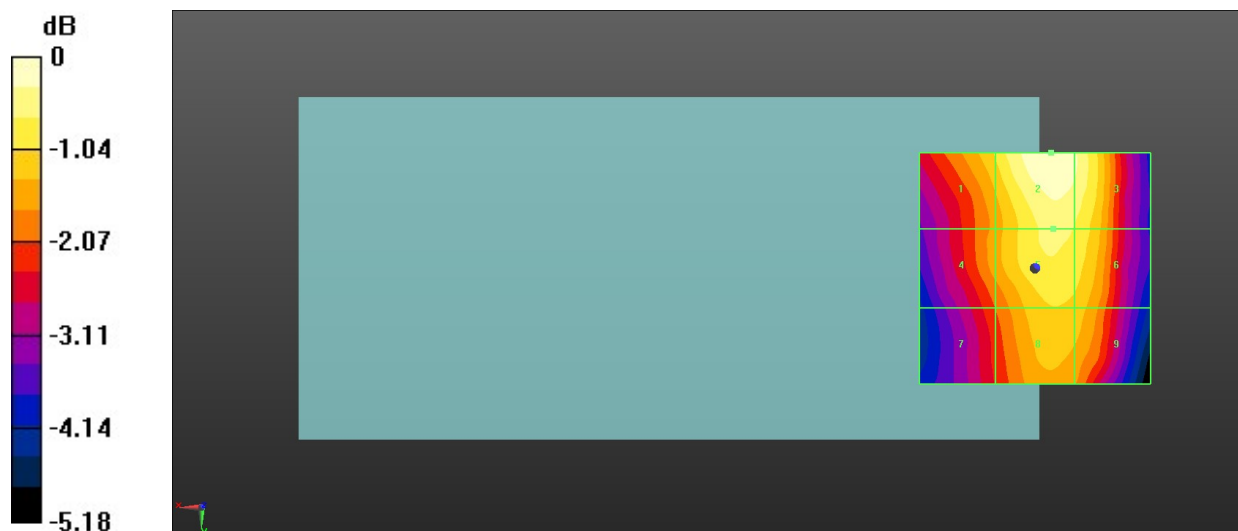
MIF scaled E-field

|  |  |  |
|--|--|--|
| <b>Grid 1 M4</b><br><b>31.03 dBV/m</b> | <b>Grid 2 M4</b><br><b>32 dBV/m</b>    | <b>Grid 3 M4</b><br><b>31.73 dBV/m</b> |
| <b>Grid 4 M4</b><br><b>30.51 dBV/m</b> | <b>Grid 5 M4</b><br><b>31.41 dBV/m</b> | <b>Grid 6 M4</b><br><b>31.3 dBV/m</b>  |
| <b>Grid 7 M4</b><br><b>29.96 dBV/m</b> | <b>Grid 8 M4</b><br><b>30.96 dBV/m</b> | <b>Grid 9 M4</b><br><b>30.87 dBV/m</b> |

Total = 32.00 dBV/m

E Category: M4

Location: -3.5, -25, 8.7 mm



0 dB = 39.83 V/m = 32.00 dBV/m

## 2\_HAC RF GSM850\_ANT0\_Voice\_Ch189

Communication System: UID 10021 - DAC, GSM-FDD (TDMA, GMSK); Frequency: 836.4 MHz; Duty Cycle: 1:8.69961

Medium: Air Medium parameters used:  $\sigma = 0$  S/m,  $\epsilon_r = 1$ ;  $\rho = 0$  kg/m<sup>3</sup>

Ambient Temperature : 23.3 °C;

DASY5 Configuration:

- Probe: EF3DV3 - SN4050; ConvF(1, 1, 1); Calibrated: 2022.1.31
- Sensor-Surface: (Fix Surface)
- Electronics: DAE4 Sn1303; Calibrated: 2021.6.18
- Phantom: HAC Test Arch with AMCC; Type: SD HAC P01 BA;
- Measurement SW: DASY52, Version 52.10 (4); SEMCAD X Version 14.6.14 (7483)

**Ch189/Hearing Aid Compatibility Test (101x101x1):** Interpolated grid: dx=0.5000 mm, dy=0.5000 mm

Device Reference Point: 0, 0, -6.3 mm

Reference Value = 32.43 V/m; Power Drift = 0.05 dB

Applied MIF = 3.63 dB

RF audio interference level = 31.65 dBV/m

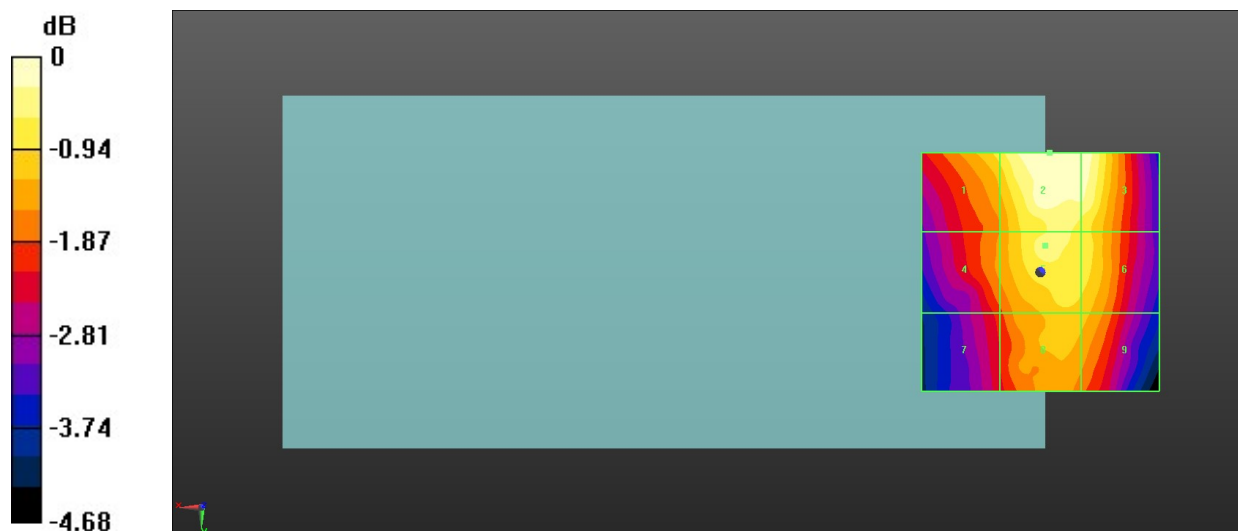
MIF scaled E-field

|                                 |                                 |                                 |
|---------------------------------|---------------------------------|---------------------------------|
| Grid 1 M4<br><b>30.89 dBV/m</b> | Grid 2 M4<br><b>31.65 dBV/m</b> | Grid 3 M4<br><b>31.64 dBV/m</b> |
| Grid 4 M4<br><b>30.21 dBV/m</b> | Grid 5 M4<br><b>31.16 dBV/m</b> | Grid 6 M4<br><b>30.98 dBV/m</b> |
| Grid 7 M4<br><b>29.69 dBV/m</b> | Grid 8 M4<br><b>30.66 dBV/m</b> | Grid 9 M4<br><b>30.57 dBV/m</b> |

Total = 31.65 dBV/m

E Category: M4

Location: -2, -25, 8.7 mm



0 dB = 38.25 V/m = 31.65 dBV/m

### 3\_HAC RF GSM850\_ANT0\_Voice\_Ch251

Communication System: UID 10021 - DAC, GSM-FDD (TDMA, GMSK); Frequency: 848.8 MHz; Duty Cycle: 1:8.69961

Medium: Air Medium parameters used:  $\sigma = 0$  S/m,  $\epsilon_r = 1$ ;  $\rho = 0$  kg/m<sup>3</sup>

Ambient Temperature : 23.3 °C;

DASY5 Configuration:

- Probe: EF3DV3 - SN4050; ConvF(1, 1, 1); Calibrated: 2022.1.31
- Sensor-Surface: (Fix Surface)
- Electronics: DAE4 Sn1303; Calibrated: 2021.6.18
- Phantom: HAC Test Arch with AMCC; Type: SD HAC P01 BA;
- Measurement SW: DASY52, Version 52.10 (4); SEMCAD X Version 14.6.14 (7483)

**Ch251/Hearing Aid Compatibility Test (101x101x1):** Interpolated grid: dx=0.5000 mm, dy=0.5000 mm

Device Reference Point: 0, 0, -6.3 mm

Reference Value = 33.64 V/m; Power Drift = -0.15 dB

Applied MIF = 3.63 dB

RF audio interference level = 31.79 dBV/m

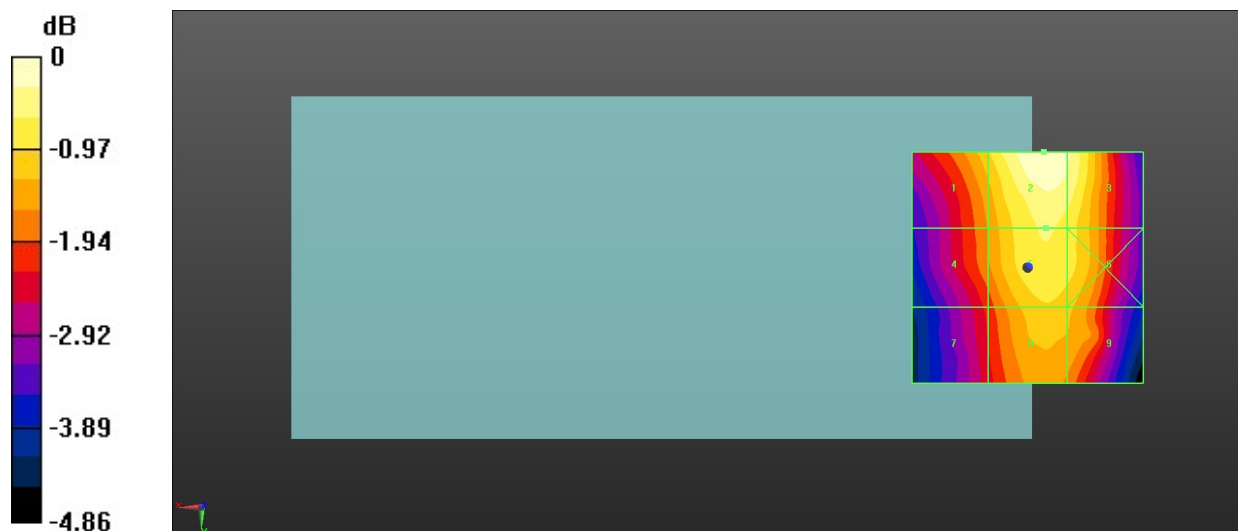
MIF scaled E-field

|  |  |  |
|--|--|--|
| <b>Grid 1 M4</b><br><b>30.79 dBV/m</b> | <b>Grid 2 M4</b><br><b>31.79 dBV/m</b> | <b>Grid 3 M4</b><br><b>31.53 dBV/m</b> |
| <b>Grid 4 M4</b><br><b>30.21 dBV/m</b> | <b>Grid 5 M4</b><br><b>31.17 dBV/m</b> | <b>Grid 6 M4</b><br><b>31.01 dBV/m</b> |
| <b>Grid 7 M4</b><br><b>29.67 dBV/m</b> | <b>Grid 8 M4</b><br><b>30.79 dBV/m</b> | <b>Grid 9 M4</b><br><b>30.62 dBV/m</b> |

Total = 31.79 dBV/m

E Category: M4

Location: -3.5, -25, 8.7 mm



0 dB = 38.84 V/m = 31.79 dBV/m

### 4\_HAC RF GSM850\_ANT1\_Voice\_Ch128

Communication System: UID 10021 - DAC, GSM-FDD (TDMA, GMSK); Frequency: 824.2 MHz; Duty Cycle: 1:8.69961

Medium: Air Medium parameters used:  $\sigma = 0$  S/m,  $\epsilon_r = 1$ ;  $\rho = 0$  kg/m<sup>3</sup>

Ambient Temperature : 23.3 °C;

DASY5 Configuration:

- Probe: EF3DV3 - SN4050; ConvF(1, 1, 1); Calibrated: 2022.1.31
- Sensor-Surface: (Fix Surface)
- Electronics: DAE4 Sn1303; Calibrated: 2021.6.18
- Phantom: HAC Test Arch with AMCC; Type: SD HAC P01 BA;
- Measurement SW: DASY52, Version 52.10 (4); SEMCAD X Version 14.6.14 (7483)

**Ch128/Hearing Aid Compatibility Test (101x101x1):** Interpolated grid: dx=0.5000 mm, dy=0.5000 mm

Device Reference Point: 0, 0, -6.3 mm

Reference Value = 28.98 V/m; Power Drift = 0.06 dB

Applied MIF = 3.63 dB

RF audio interference level = 31.34 dBV/m

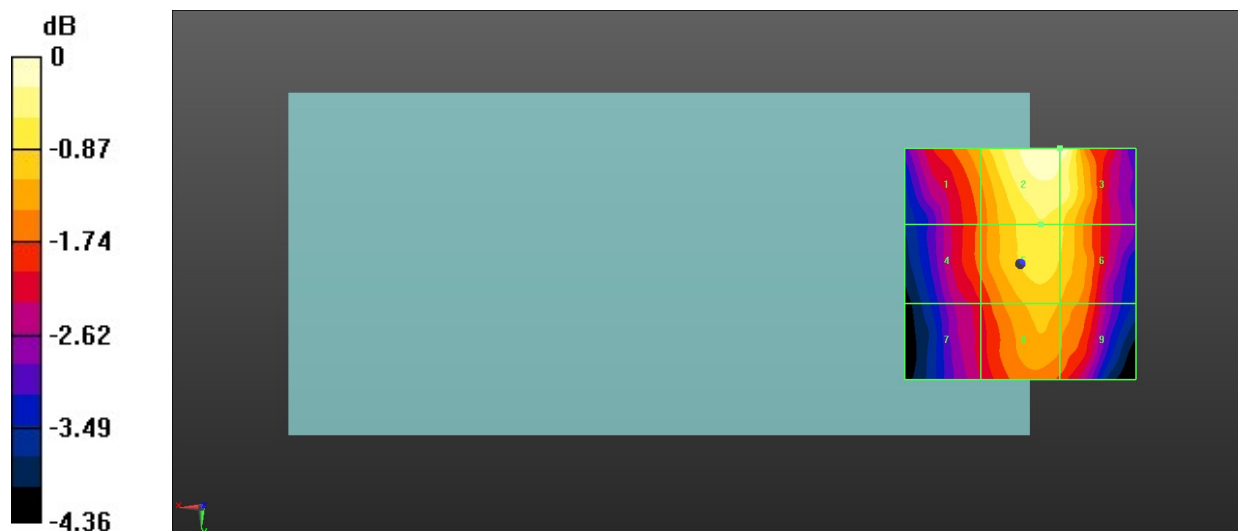
MIF scaled E-field

|                                 |                                 |                                 |
|---------------------------------|---------------------------------|---------------------------------|
| Grid 1 M4<br><b>30.23 dBV/m</b> | Grid 2 M4<br><b>31.34 dBV/m</b> | Grid 3 M4<br><b>31.34 dBV/m</b> |
| Grid 4 M4<br><b>29.75 dBV/m</b> | Grid 5 M4<br><b>30.73 dBV/m</b> | Grid 6 M4<br><b>30.55 dBV/m</b> |
| Grid 7 M4<br><b>29.31 dBV/m</b> | Grid 8 M4<br><b>30.33 dBV/m</b> | Grid 9 M4<br><b>30.16 dBV/m</b> |

Total = 31.34 dBV/m

E Category: M4

Location: -8.5, -25, 8.7 mm



0 dB = 36.88 V/m = 31.34 dBV/m



### 5\_HAC RF GSM850\_ANT1\_Voice\_Ch189

Communication System: UID 10021 - DAC, GSM-FDD (TDMA, GMSK); Frequency: 836.4 MHz; Duty Cycle: 1:8.69961

Medium: Air Medium parameters used:  $\sigma = 0$  S/m,  $\epsilon_r = 1$ ;  $\rho = 0$  kg/m<sup>3</sup>

Ambient Temperature : 23.3 °C;

**DASY5 Configuration:**

- Probe: EF3DV3 - SN4050; ConvF(1, 1, 1); Calibrated: 2022.1.31
- Sensor-Surface: (Fix Surface)
- Electronics: DAE4 Sn1303; Calibrated: 2021.6.18
- Phantom: HAC Test Arch with AMCC; Type: SD HAC P01 BA;
- Measurement SW: DASY52, Version 52.10 (4); SEMCAD X Version 14.6.14 (7483)

**Ch189/Hearing Aid Compatibility Test (101x101x1):** Interpolated grid: dx=0.5000 mm, dy=0.5000 mm

Device Reference Point: 0, 0, -6.3 mm

Reference Value = 29.51 V/m; Power Drift = 0.01 dB

Applied MIF = 3.63 dB

RF audio interference level = 31.46 dBV/m

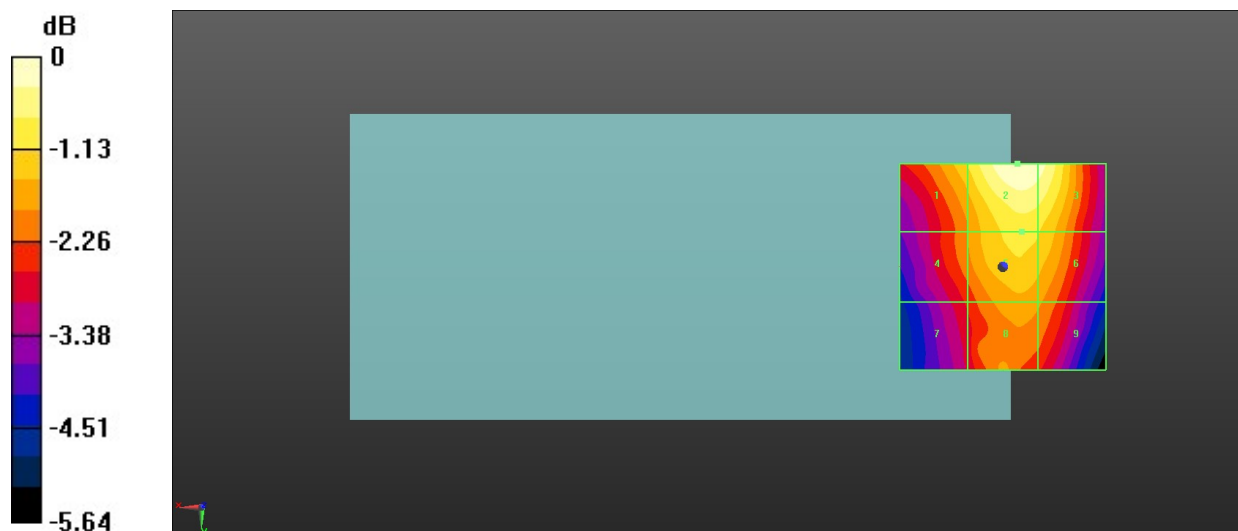
MIF scaled E-field

|  |  |  |
|--|--|--|
| <b>Grid 1 M4</b><br><b>30.39 dBV/m</b> | <b>Grid 2 M4</b><br><b>31.46 dBV/m</b> | <b>Grid 3 M4</b><br><b>31.3 dBV/m</b>  |
| <b>Grid 4 M4</b><br><b>29.58 dBV/m</b> | <b>Grid 5 M4</b><br><b>30.51 dBV/m</b> | <b>Grid 6 M4</b><br><b>30.37 dBV/m</b> |
| <b>Grid 7 M4</b><br><b>28.95 dBV/m</b> | <b>Grid 8 M4</b><br><b>29.86 dBV/m</b> | <b>Grid 9 M4</b><br><b>29.67 dBV/m</b> |

Total = 31.46 dBV/m

E Category: M4

Location: -3.5, -25, 8.7 mm



0 dB = 37.43 V/m = 31.46 dBV/m

### 6\_HAC RF GSM850\_ANT1\_Voice\_Ch251

Communication System: UID 10021 - DAC, GSM-FDD (TDMA, GMSK); Frequency: 848.8 MHz; Duty Cycle: 1:8.69961

Medium: Air Medium parameters used:  $\sigma = 0$  S/m,  $\epsilon_r = 1$ ;  $\rho = 0$  kg/m<sup>3</sup>

Ambient Temperature : 23.3 °C;

#### DASY5 Configuration:

- Probe: EF3DV3 - SN4050; ConvF(1, 1, 1); Calibrated: 2022.1.31
- Sensor-Surface: (Fix Surface)
- Electronics: DAE4 Sn1303; Calibrated: 2021.6.18
- Phantom: HAC Test Arch with AMCC; Type: SD HAC P01 BA;
- Measurement SW: DASY52, Version 52.10 (4); SEMCAD X Version 14.6.14 (7483)

**Ch251/Hearing Aid Compatibility Test (101x101x1):** Interpolated grid: dx=0.5000 mm, dy=0.5000 mm

Device Reference Point: 0, 0, -6.3 mm

Reference Value = 32.85 V/m; Power Drift = -0.02 dB

Applied MIF = 3.63 dB

RF audio interference level = 32.08 dBV/m

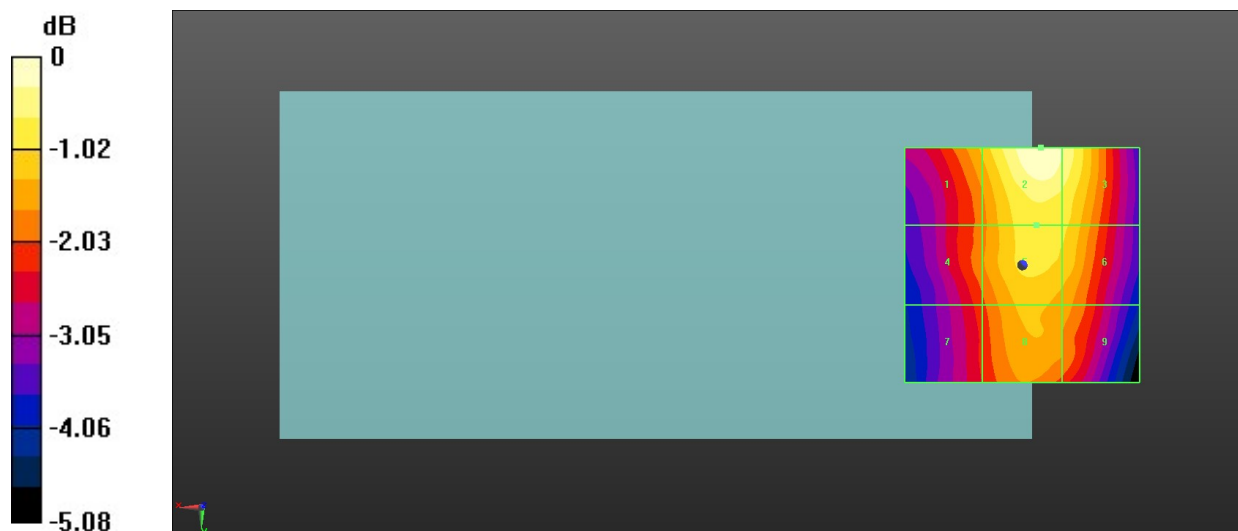
MIF scaled E-field

|  |  |  |
|--|--|--|
| <b>Grid 1 M4</b><br><b>30.84 dBV/m</b> | <b>Grid 2 M4</b><br><b>32.08 dBV/m</b> | <b>Grid 3 M4</b><br><b>31.78 dBV/m</b> |
| <b>Grid 4 M4</b><br><b>30.35 dBV/m</b> | <b>Grid 5 M4</b><br><b>31.26 dBV/m</b> | <b>Grid 6 M4</b><br><b>31.16 dBV/m</b> |
| <b>Grid 7 M4</b><br><b>29.97 dBV/m</b> | <b>Grid 8 M4</b><br><b>30.84 dBV/m</b> | <b>Grid 9 M4</b><br><b>30.59 dBV/m</b> |

Total = 32.08 dBV/m

E Category: M4

Location: -4, -25, 8.7 mm



0 dB = 40.17 V/m = 32.08 dBV/m

### 7\_HAC RF GSM1900\_ANT0\_Voice\_Ch512

Communication System: UID 10021 - DAC, GSM-FDD (TDMA, GMSK); Frequency: 1850.2 MHz; Duty Cycle: 1:8.69961

Medium: Air Medium parameters used:  $\sigma = 0$  S/m,  $\epsilon_r = 1$ ;  $\rho = 0$  kg/m<sup>3</sup>

Ambient Temperature : 23.3 °C;

#### DASY5 Configuration:

- Probe: EF3DV3 - SN4050; ConvF(1, 1, 1); Calibrated: 2022.1.31
- Sensor-Surface: (Fix Surface)
- Electronics: DAE4 Sn1303; Calibrated: 2021.6.18
- Phantom: HAC Test Arch with AMCC; Type: SD HAC P01 BA;
- Measurement SW: DASY52, Version 52.10 (4); SEMCAD X Version 14.6.14 (7483)

**Ch512/Hearing Aid Compatibility Test (101x101x1):** Interpolated grid: dx=0.5000 mm, dy=0.5000 mm

Device Reference Point: 0, 0, -6.3 mm

Reference Value = 8.671 V/m; Power Drift = 0.06 dB

Applied MIF = 3.63 dB

RF audio interference level = 23.96 dBV/m

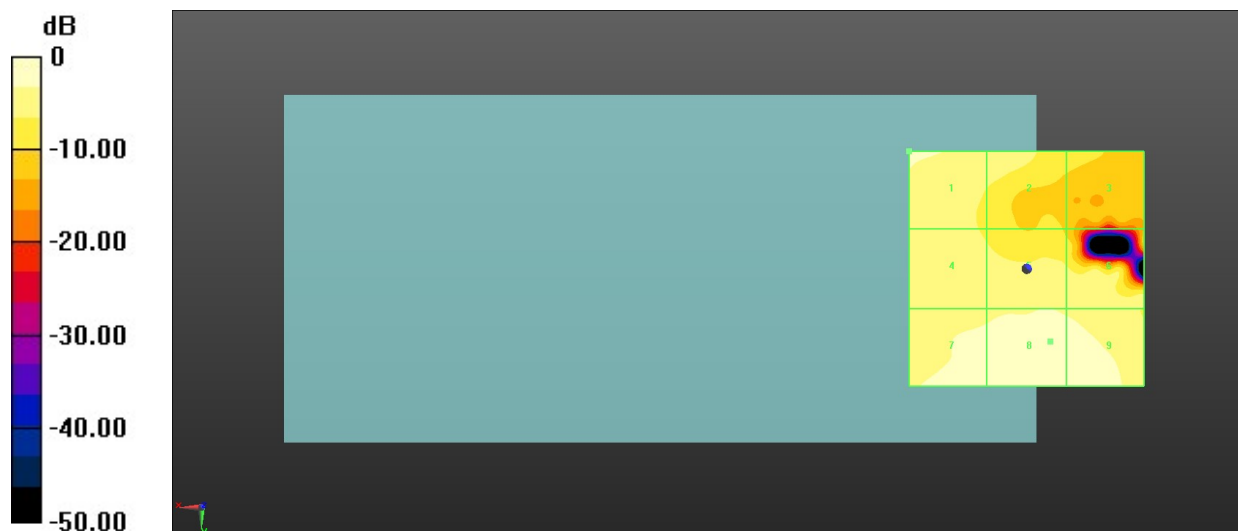
MIF scaled E-field

|  |  |  |
|--|--|--|
| <b>Grid 1 M4</b><br><b>20.91 dBV/m</b> | <b>Grid 2 M4</b><br><b>19.76 dBV/m</b> | <b>Grid 3 M4</b><br><b>15.95 dBV/m</b> |
| <b>Grid 4 M4</b><br><b>19.91 dBV/m</b> | <b>Grid 5 M4</b><br><b>20.67 dBV/m</b> | <b>Grid 6 M4</b><br><b>20 dBV/m</b>    |
| <b>Grid 7 M4</b><br><b>23.08 dBV/m</b> | <b>Grid 8 M4</b><br><b>23.96 dBV/m</b> | <b>Grid 9 M4</b><br><b>23.59 dBV/m</b> |

Total = 23.96 dBV/m

E Category: M4

Location: -5, 15.5, 8.7 mm



0 dB = 15.78 V/m = 23.96 dBV/m

### 8\_HAC RF GSM1900\_ANT0\_Voice\_Ch661

Communication System: UID 10021 - DAC, GSM-FDD (TDMA, GMSK); Frequency: 1880 MHz; Duty Cycle: 1:8.69961

Medium: Air Medium parameters used:  $\sigma = 0$  S/m,  $\epsilon_r = 1$ ;  $\rho = 0$  kg/m<sup>3</sup>

Ambient Temperature : 23.3 °C;

**DASY5 Configuration:**

- Probe: EF3DV3 - SN4050; ConvF(1, 1, 1); Calibrated: 2022.1.31
- Sensor-Surface: (Fix Surface)
- Electronics: DAE4 Sn1303; Calibrated: 2021.6.18
- Phantom: HAC Test Arch with AMCC; Type: SD HAC P01 BA;
- Measurement SW: DASY52, Version 52.10 (4); SEMCAD X Version 14.6.14 (7483)

**Ch661/Hearing Aid Compatibility Test (101x101x1):** Interpolated grid: dx=0.5000 mm, dy=0.5000 mm

Device Reference Point: 0, 0, -6.3 mm

Reference Value = 11.84 V/m; Power Drift = 0.04 dB

Applied MIF = 3.63 dB

RF audio interference level = 25.58 dBV/m

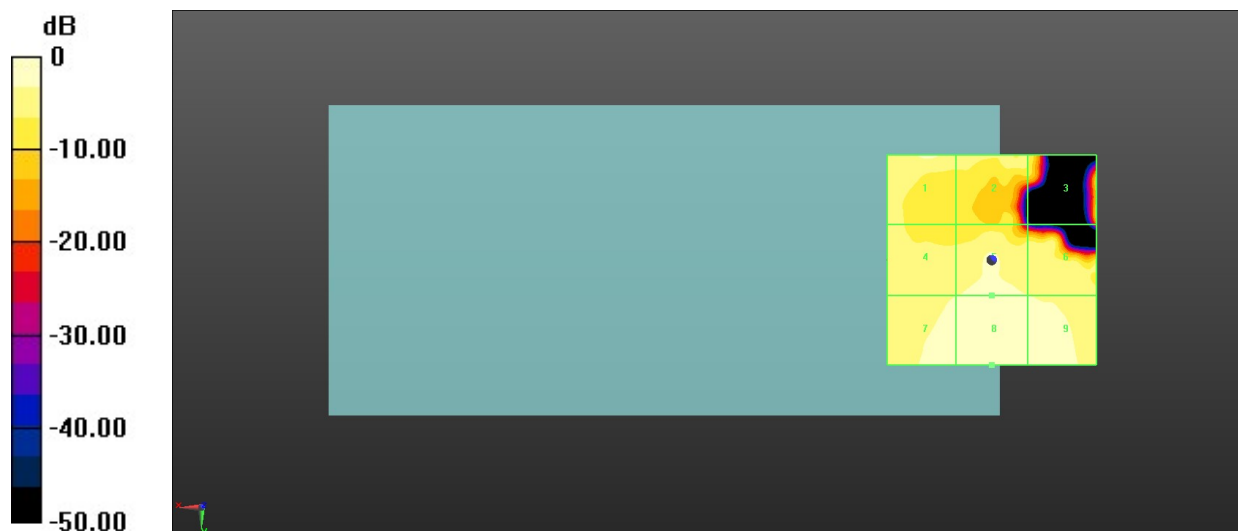
MIF scaled E-field

|  |  |  |
|--|--|--|
| <b>Grid 1 M4</b><br><b>23.22 dBV/m</b> | <b>Grid 2 M4</b><br><b>20.83 dBV/m</b> | <b>Grid 3 M4</b><br><b>19.91 dBV/m</b> |
| <b>Grid 4 M4</b><br><b>22.21 dBV/m</b> | <b>Grid 5 M4</b><br><b>23.3 dBV/m</b>  | <b>Grid 6 M4</b><br><b>22.33 dBV/m</b> |
| <b>Grid 7 M4</b><br><b>24.53 dBV/m</b> | <b>Grid 8 M4</b><br><b>25.58 dBV/m</b> | <b>Grid 9 M4</b><br><b>24.55 dBV/m</b> |

Total = 25.58 dBV/m

E Category: M4

Location: 0, 25, 8.7 mm



0 dB = 19.02 V/m = 25.58 dBV/m

**9\_HAC RF GSM1900\_ANT0\_Voice\_Ch810**

Communication System: UID 10021 - DAC, GSM-FDD (TDMA, GMSK); Frequency: 1909.8 MHz; Duty Cycle: 1:8.69961

Medium: Air Medium parameters used:  $\sigma = 0$  S/m,  $\epsilon_r = 1$ ;  $\rho = 0$  kg/m<sup>3</sup>

Ambient Temperature : 23.3 °C;

**DASY5 Configuration:**

- Probe: EF3DV3 - SN4050; ConvF(1, 1, 1); Calibrated: 2022.1.31
- Sensor-Surface: (Fix Surface)
- Electronics: DAE4 Sn1303; Calibrated: 2021.6.18
- Phantom: HAC Test Arch with AMCC; Type: SD HAC P01 BA;
- Measurement SW: DASY52, Version 52.10 (4); SEMCAD X Version 14.6.14 (7483)

**Ch810/Hearing Aid Compatibility Test (101x101x1):** Interpolated grid: dx=0.5000 mm, dy=0.5000 mm

Device Reference Point: 0, 0, -6.3 mm

Reference Value = 10.45 V/m; Power Drift = 0.02 dB

Applied MIF = 3.63 dB

RF audio interference level = 24.45 dBV/m

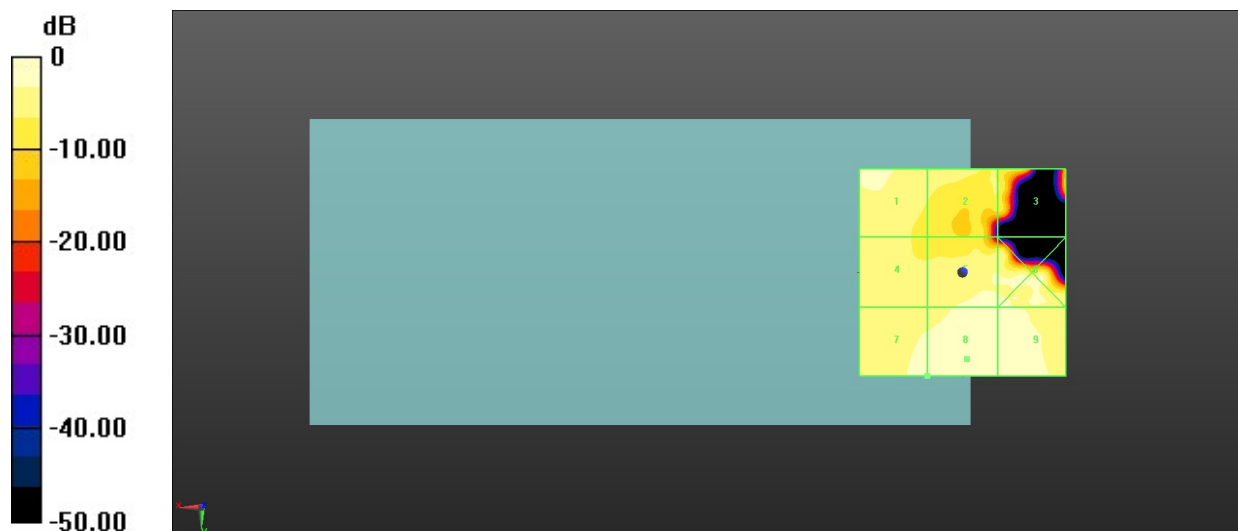
MIF scaled E-field

|  |  |  |
|--|--|--|
| <b>Grid 1 M4</b><br><b>22.06 dBV/m</b> | <b>Grid 2 M4</b><br><b>20.75 dBV/m</b> | <b>Grid 3 M4</b><br><b>18.46 dBV/m</b> |
| <b>Grid 4 M4</b><br><b>19.94 dBV/m</b> | <b>Grid 5 M4</b><br><b>22.1 dBV/m</b>  | <b>Grid 6 M4</b><br><b>22.76 dBV/m</b> |
| <b>Grid 7 M4</b><br><b>22.62 dBV/m</b> | <b>Grid 8 M4</b><br><b>24.45 dBV/m</b> | <b>Grid 9 M4</b><br><b>24.09 dBV/m</b> |

Total = 24.45 dBV/m

E Category: M4

Location: -1, 21, 8.7 mm



0 dB = 16.69 V/m = 24.45 dBV/m

### 10\_HAC RF GSM1900\_ANT1\_Voice\_Ch512

Communication System: UID 10021 - DAC, GSM-FDD (TDMA, GMSK); Frequency: 1850.2 MHz; Duty Cycle: 1:8.69961

Medium: Air Medium parameters used:  $\sigma = 0$  S/m,  $\epsilon_r = 1$ ;  $\rho = 0$  kg/m<sup>3</sup>

Ambient Temperature : 23.3 °C;

#### DASY5 Configuration:

- Probe: EF3DV3 - SN4050; ConvF(1, 1, 1); Calibrated: 2022.1.31
- Sensor-Surface: (Fix Surface)
- Electronics: DAE4 Sn1303; Calibrated: 2021.6.18
- Phantom: HAC Test Arch with AMCC; Type: SD HAC P01 BA;
- Measurement SW: DASY52, Version 52.10 (4); SEMCAD X Version 14.6.14 (7483)

**Ch512/Hearing Aid Compatibility Test (101x101x1):** Interpolated grid: dx=0.5000 mm, dy=0.5000 mm

Device Reference Point: 0, 0, -6.3 mm

Reference Value = 9.275 V/m; Power Drift = 0.14 dB

Applied MIF = 3.63 dB

RF audio interference level = 24.80 dBV/m

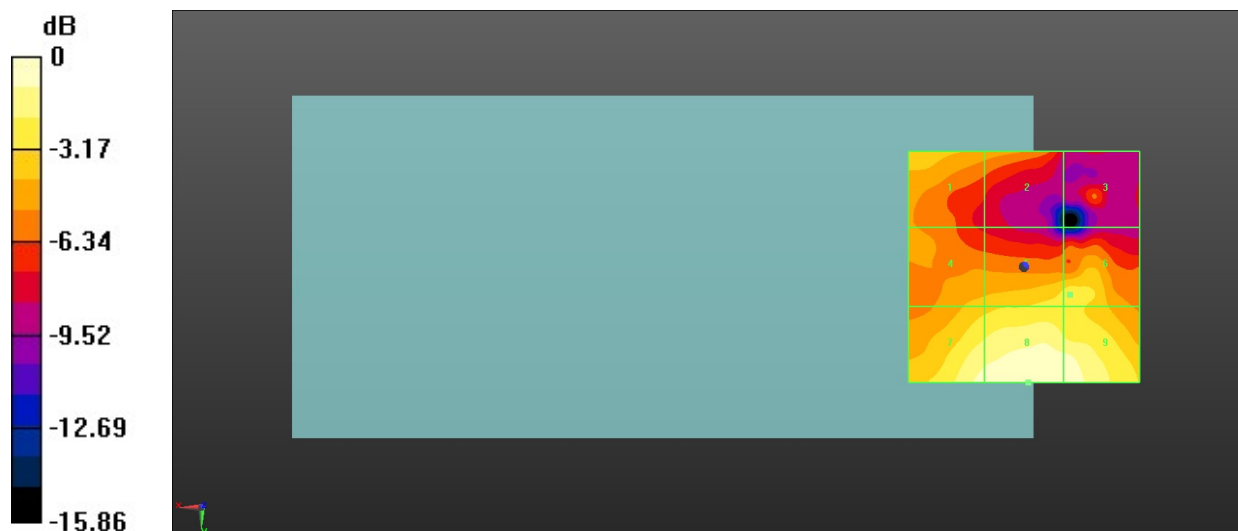
MIF scaled E-field

|  |  |  |
|--|--|--|
| <b>Grid 1 M4</b><br><b>21.35 dBV/m</b> | <b>Grid 2 M4</b><br><b>20.34 dBV/m</b> | <b>Grid 3 M4</b><br><b>18.6 dBV/m</b>  |
| <b>Grid 4 M4</b><br><b>21.19 dBV/m</b> | <b>Grid 5 M4</b><br><b>21.96 dBV/m</b> | <b>Grid 6 M4</b><br><b>22.16 dBV/m</b> |
| <b>Grid 7 M4</b><br><b>24.18 dBV/m</b> | <b>Grid 8 M4</b><br><b>24.8 dBV/m</b>  | <b>Grid 9 M4</b><br><b>24.39 dBV/m</b> |

Total = 24.80 dBV/m

E Category: M4

Location: -1, 25, 8.7 mm



0 dB = 17.38 V/m = 24.80 dBV/m

### 11\_HAC RF GSM1900\_ANT1\_Voice\_Ch661

Communication System: UID 10021 - DAC, GSM-FDD (TDMA, GMSK); Frequency: 1880 MHz; Duty Cycle: 1:8.69961

Medium: Air Medium parameters used:  $\sigma = 0$  S/m,  $\epsilon_r = 1$ ;  $\rho = 0$  kg/m<sup>3</sup>

Ambient Temperature : 23.3 °C;

DASY5 Configuration:

- Probe: EF3DV3 - SN4050; ConvF(1, 1, 1); Calibrated: 2022.1.31
- Sensor-Surface: (Fix Surface)
- Electronics: DAE4 Sn1303; Calibrated: 2021.6.18
- Phantom: HAC Test Arch with AMCC; Type: SD HAC P01 BA;
- Measurement SW: DASY52, Version 52.10 (4); SEMCAD X Version 14.6.14 (7483)

**Ch661/Hearing Aid Compatibility Test (101x101x1):** Interpolated grid: dx=0.5000 mm, dy=0.5000 mm

Device Reference Point: 0, 0, -6.3 mm

Reference Value = 11.20 V/m; Power Drift = 0.04 dB

Applied MIF = 3.63 dB

RF audio interference level = 26.12 dBV/m

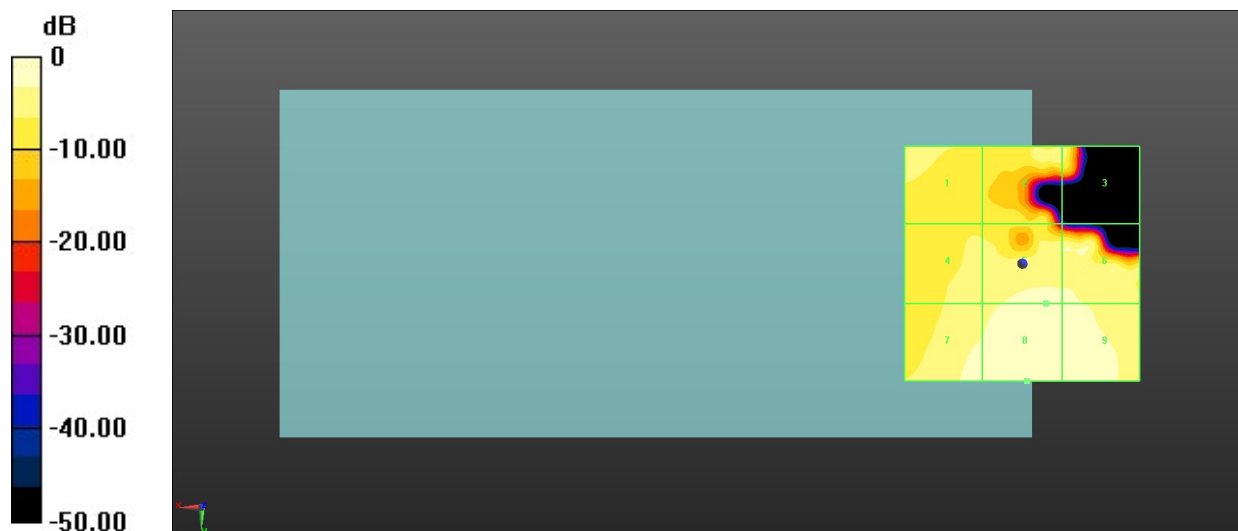
MIF scaled E-field

|  |  |  |
|--|--|--|
| <b>Grid 1 M4</b><br><b>20.83 dBV/m</b> | <b>Grid 2 M4</b><br><b>22.3 dBV/m</b>  | <b>Grid 3 M4</b><br><b>21.75 dBV/m</b> |
| <b>Grid 4 M4</b><br><b>21.73 dBV/m</b> | <b>Grid 5 M4</b><br><b>23.64 dBV/m</b> | <b>Grid 6 M4</b><br><b>23.44 dBV/m</b> |
| <b>Grid 7 M4</b><br><b>24.2 dBV/m</b>  | <b>Grid 8 M4</b><br><b>26.12 dBV/m</b> | <b>Grid 9 M4</b><br><b>25.39 dBV/m</b> |

Total = 26.12 dBV/m

E Category: M4

Location: -1, 25, 8.7 mm



0 dB = 20.23 V/m = 26.12 dBV/m

### 12\_HAC RF GSM1900\_ANT1\_Voice\_Ch810

Communication System: UID 10021 - DAC, GSM-FDD (TDMA, GMSK); Frequency: 1909.8 MHz; Duty Cycle: 1:8.69961

Medium: Air Medium parameters used:  $\sigma = 0$  S/m,  $\epsilon_r = 1$ ;  $\rho = 0$  kg/m<sup>3</sup>

Ambient Temperature : 23.3 °C;

**DASY5 Configuration:**

- Probe: EF3DV3 - SN4050; ConvF(1, 1, 1); Calibrated: 2022.1.31
- Sensor-Surface: (Fix Surface)
- Electronics: DAE4 Sn1303; Calibrated: 2021.6.18
- Phantom: HAC Test Arch with AMCC; Type: SD HAC P01 BA;
- Measurement SW: DASY52, Version 52.10 (4); SEMCAD X Version 14.6.14 (7483)

**Ch810/Hearing Aid Compatibility Test (101x101x1):** Interpolated grid: dx=0.5000 mm, dy=0.5000 mm

Device Reference Point: 0, 0, -6.3 mm

Reference Value = 10.66 V/m; Power Drift = -0.01 dB

Applied MIF = 3.63 dB

RF audio interference level = 24.60 dBV/m

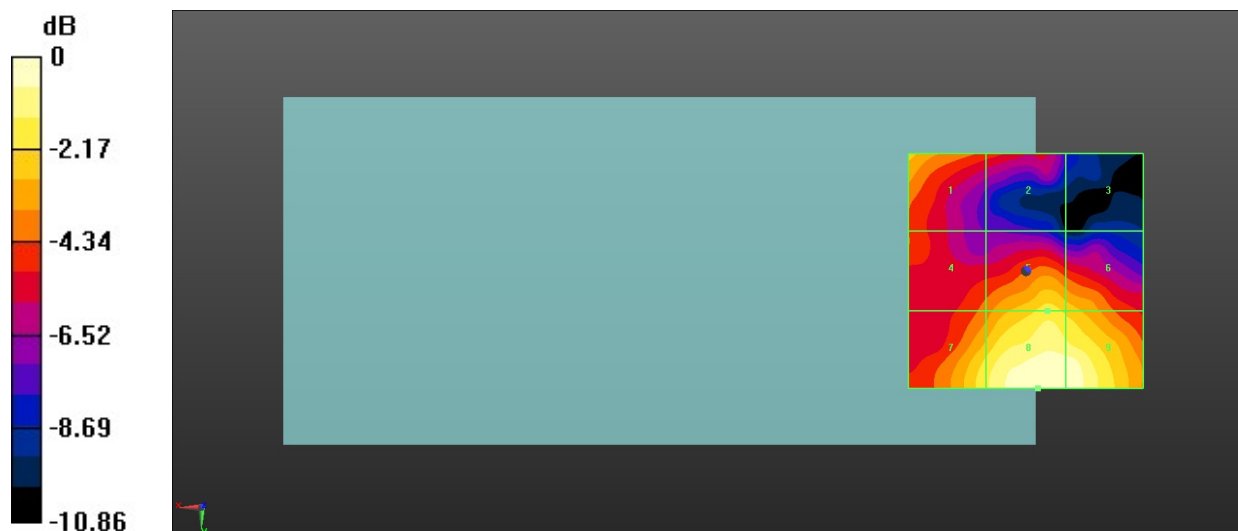
MIF scaled E-field

|  |  |  |
|--|--|--|
| <b>Grid 1 M4</b><br><b>22.06 dBV/m</b> | <b>Grid 2 M4</b><br><b>20.05 dBV/m</b> | <b>Grid 3 M4</b><br><b>16.84 dBV/m</b> |
| <b>Grid 4 M4</b><br><b>20.65 dBV/m</b> | <b>Grid 5 M4</b><br><b>22.74 dBV/m</b> | <b>Grid 6 M4</b><br><b>22.25 dBV/m</b> |
| <b>Grid 7 M4</b><br><b>23.02 dBV/m</b> | <b>Grid 8 M4</b><br><b>24.6 dBV/m</b>  | <b>Grid 9 M4</b><br><b>24.48 dBV/m</b> |

Total = 24.60 dBV/m

E Category: M4

Location: -2.5, 25, 8.7 mm



0 dB = 16.98 V/m = 24.60 dBV/m



**13\_HAC RF LTE B41\_20M\_ANT 0\_QPSK\_1RB\_0Offset\_Ch39750**

Communication System: UID 10173 - CAG, LTE-TDD (SC-FDMA, 1 RB, 20 MHz, 16-QAM);  
 Frequency: 2506 MHz; Duty Cycle: 1:8.8736

Medium: Air Medium parameters used:  $\sigma = 0$  S/m,  $\epsilon_r = 1$ ;  $\rho = 0$  kg/m<sup>3</sup>

Ambient Temperature : 23.2 °C;

DASY5 Configuration:

- Probe: EF3DV3 - SN4050; ConvF(1, 1, 1); Calibrated: 2022.1.31
- Sensor-Surface: (Fix Surface)
- Electronics: DAE4 Sn1303; Calibrated: 2021.6.18
- Phantom: HAC Test Arch with AMCC; Type: SD HAC P01 BA;
- Measurement SW: DASY52, Version 52.10 (4); SEMCAD X Version 14.6.14 (7483)

**Ch39750/Hearing Aid Compatibility Test (101x101x1):** Interpolated grid: dx=0.5000 mm, dy=0.5000 mm

Device Reference Point: 0, 0, -6.3 mm

Reference Value = 8.720 V/m; Power Drift = 0.12 dB

Applied MIF = -1.44 dB

RF audio interference level = 18.79 dBV/m

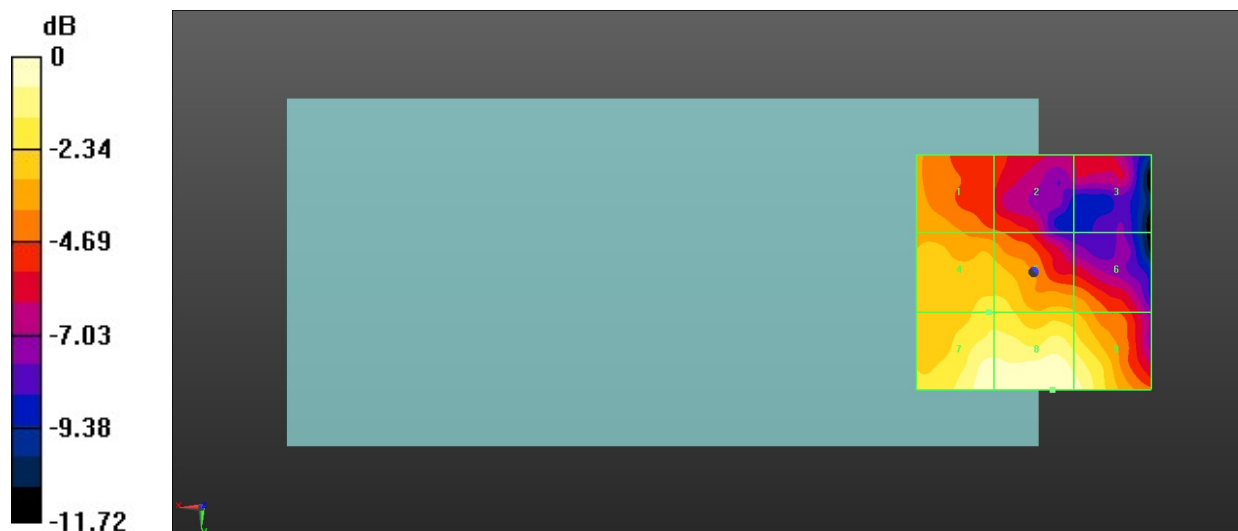
MIF scaled E-field

|  |  |  |
|--|--|--|
| <b>Grid 1 M4</b><br><b>15.55 dBV/m</b> | <b>Grid 2 M4</b><br><b>14.28 dBV/m</b> | <b>Grid 3 M4</b><br><b>13.05 dBV/m</b> |
| <b>Grid 4 M4</b><br><b>16.89 dBV/m</b> | <b>Grid 5 M4</b><br><b>16.87 dBV/m</b> | <b>Grid 6 M4</b><br><b>15.75 dBV/m</b> |
| <b>Grid 7 M4</b><br><b>18.63 dBV/m</b> | <b>Grid 8 M4</b><br><b>18.79 dBV/m</b> | <b>Grid 9 M4</b><br><b>18.37 dBV/m</b> |

Total = 18.79 dBV/m

E Category: M4

Location: -4, 25, 8.7 mm



0 dB = 8.695 V/m = 18.79 dBV/m

**14\_HAC RF LTE B41\_20M\_ANT 0\_QPSK\_1RB\_0Offset\_Ch40185**

Communication System: UID 10173 - CAG, LTE-TDD (SC-FDMA, 1 RB, 20 MHz, 16-QAM);  
 Frequency: 2549.5 MHz; Duty Cycle: 1:8.8736

Medium: Air Medium parameters used:  $\sigma = 0$  S/m,  $\epsilon_r = 1$ ;  $\rho = 0$  kg/m<sup>3</sup>

Ambient Temperature : 23.3 °C;

DASY5 Configuration:

- Probe: EF3DV3 - SN4050; ConvF(1, 1, 1); Calibrated: 2022.1.31
- Sensor-Surface: (Fix Surface)
- Electronics: DAE4 Sn1303; Calibrated: 2021.6.18
- Phantom: HAC Test Arch with AMCC; Type: SD HAC P01 BA;
- Measurement SW: DASY52, Version 52.10 (4); SEMCAD X Version 14.6.14 (7483)

**Ch40185/Hearing Aid Compatibility Test (101x101x1):** Interpolated grid: dx=0.5000 mm, dy=0.5000 mm

Device Reference Point: 0, 0, -6.3 mm

Reference Value = 7.753 V/m; Power Drift = -0.17 dB

Applied MIF = -1.44 dB

RF audio interference level = 18.29 dBV/m

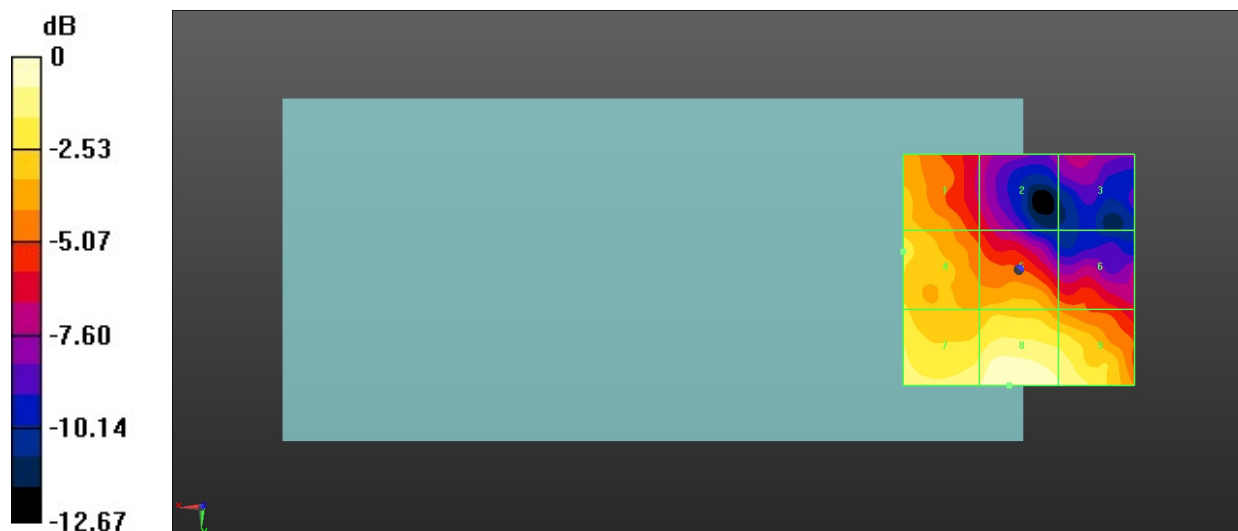
MIF scaled E-field

|  |  |  |
|--|--|--|
| <b>Grid 1 M4</b><br><b>15.64 dBV/m</b> | <b>Grid 2 M4</b><br><b>12.46 dBV/m</b> | <b>Grid 3 M4</b><br><b>11 dBV/m</b>    |
| <b>Grid 4 M4</b><br><b>16.2 dBV/m</b>  | <b>Grid 5 M4</b><br><b>15.41 dBV/m</b> | <b>Grid 6 M4</b><br><b>14.04 dBV/m</b> |
| <b>Grid 7 M4</b><br><b>17.42 dBV/m</b> | <b>Grid 8 M4</b><br><b>18.29 dBV/m</b> | <b>Grid 9 M4</b><br><b>17.6 dBV/m</b>  |

Total = 18.29 dBV/m

E Category: M4

Location: 2, 25, 8.7 mm



0 dB = 8.209 V/m = 18.29 dBV/m

**15\_HAC RF LTE B41\_20M\_ANT 0\_QPSK\_1RB\_0Offset\_Ch40620**

Communication System: UID 10173 - CAG, LTE-TDD (SC-FDMA, 1 RB, 20 MHz, 16-QAM);  
 Frequency: 2593 MHz; Duty Cycle: 1:8.8736

Medium: Air Medium parameters used:  $\sigma = 0$  S/m,  $\epsilon_r = 1$ ;  $\rho = 0$  kg/m<sup>3</sup>

Ambient Temperature : 23.2 °C;

DASY5 Configuration:

- Probe: EF3DV3 - SN4050; ConvF(1, 1, 1); Calibrated: 2022.1.31
- Sensor-Surface: (Fix Surface)
- Electronics: DAE4 Sn1303; Calibrated: 2021.6.18
- Phantom: HAC Test Arch with AMCC; Type: SD HAC P01 BA;
- Measurement SW: DASY52, Version 52.10 (4); SEMCAD X Version 14.6.14 (7483)

**Ch40620/Hearing Aid Compatibility Test (101x101x1):** Interpolated grid: dx=0.5000 mm, dy=0.5000 mm

Device Reference Point: 0, 0, -6.3 mm

Reference Value = 7.039 V/m; Power Drift = -0.03 dB

Applied MIF = -1.44 dB

RF audio interference level = 18.34 dBV/m

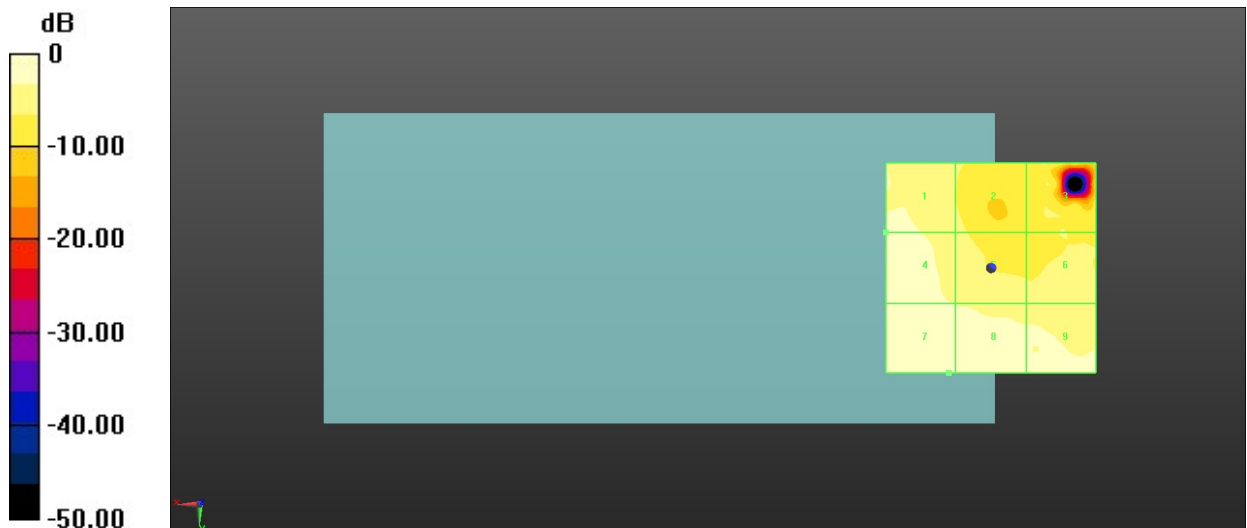
MIF scaled E-field

|  |  |  |
|--|--|--|
| <b>Grid 1 M4</b><br><b>17.23 dBV/m</b> | <b>Grid 2 M4</b><br><b>12.91 dBV/m</b> | <b>Grid 3 M4</b><br><b>12.38 dBV/m</b> |
| <b>Grid 4 M4</b><br><b>17.23 dBV/m</b> | <b>Grid 5 M4</b><br><b>14.93 dBV/m</b> | <b>Grid 6 M4</b><br><b>13.72 dBV/m</b> |
| <b>Grid 7 M4</b><br><b>18.34 dBV/m</b> | <b>Grid 8 M4</b><br><b>18.3 dBV/m</b>  | <b>Grid 9 M4</b><br><b>17.26 dBV/m</b> |

Total = 18.34 dBV/m

E Category: M4

Location: 10, 25, 8.7 mm



0 dB = 8.264 V/m = 18.34 dBV/m

**16\_HAC RF LTE B41\_20M\_ANT 0\_QPSK\_1RB\_0Offset\_Ch41055**

Communication System: UID 10173 - CAG, LTE-TDD (SC-FDMA, 1 RB, 20 MHz, 16-QAM);  
 Frequency: 2636.5 MHz; Duty Cycle: 1:8.8736

Medium: Air Medium parameters used:  $\sigma = 0$  S/m,  $\epsilon_r = 1$ ;  $\rho = 0$  kg/m<sup>3</sup>

Ambient Temperature : 23.2 °C;

DASY5 Configuration:

- Probe: EF3DV3 - SN4050; ConvF(1, 1, 1); Calibrated: 2022.1.31
- Sensor-Surface: (Fix Surface)
- Electronics: DAE4 Sn1303; Calibrated: 2021.6.18
- Phantom: HAC Test Arch with AMCC; Type: SD HAC P01 BA;
- Measurement SW: DASY52, Version 52.10 (4); SEMCAD X Version 14.6.14 (7483)

**Ch41055/Hearing Aid Compatibility Test (101x101x1):** Interpolated grid: dx=0.5000 mm, dy=0.5000 mm

Device Reference Point: 0, 0, -6.3 mm

Reference Value = 6.208 V/m; Power Drift = 0.02 dB

Applied MIF = -1.44 dB

RF audio interference level = 19.16 dBV/m

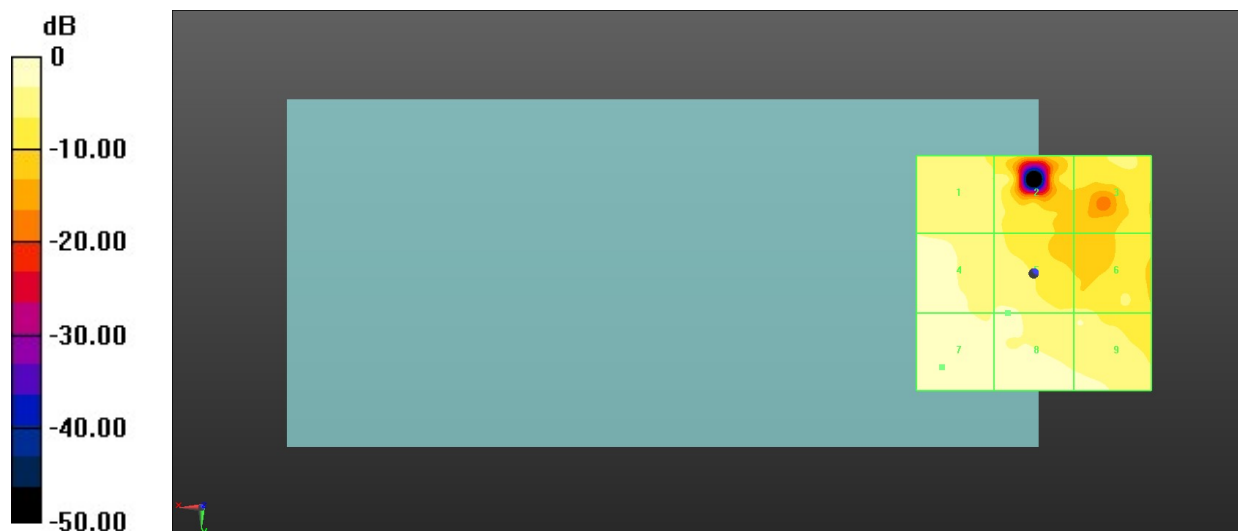
MIF scaled E-field

|  |  |  |
|--|--|--|
| <b>Grid 1 M4</b><br><b>15.87 dBV/m</b> | <b>Grid 2 M4</b><br><b>13.39 dBV/m</b> | <b>Grid 3 M4</b><br><b>12.9 dBV/m</b>  |
| <b>Grid 4 M4</b><br><b>16.71 dBV/m</b> | <b>Grid 5 M4</b><br><b>17.1 dBV/m</b>  | <b>Grid 6 M4</b><br><b>14.46 dBV/m</b> |
| <b>Grid 7 M4</b><br><b>19.16 dBV/m</b> | <b>Grid 8 M4</b><br><b>18.24 dBV/m</b> | <b>Grid 9 M4</b><br><b>16.6 dBV/m</b>  |

Total = 19.16 dBV/m

E Category: M4

Location: 19.5, 20, 8.7 mm



0 dB = 9.074 V/m = 19.16 dBV/m

**17\_HAC RF LTE B41\_20M\_ANT 0\_QPSK\_1RB\_0Offset\_Ch41490**

Communication System: UID 10173 - CAG, LTE-TDD (SC-FDMA, 1 RB, 20 MHz, 16-QAM);  
 Frequency: 2680 MHz; Duty Cycle: 1:8.8736

Medium: Air Medium parameters used:  $\sigma = 0$  S/m,  $\epsilon_r = 1$ ;  $\rho = 0$  kg/m<sup>3</sup>

Ambient Temperature : 23.3 °C;

DASY5 Configuration:

- Probe: EF3DV3 - SN4050; ConvF(1, 1, 1); Calibrated: 2022.1.31
- Sensor-Surface: (Fix Surface)
- Electronics: DAE4 Sn1303; Calibrated: 2021.6.18
- Phantom: HAC Test Arch with AMCC; Type: SD HAC P01 BA;
- Measurement SW: DASY52, Version 52.10 (4); SEMCAD X Version 14.6.14 (7483)

**Ch41490/Hearing Aid Compatibility Test (101x101x1):** Interpolated grid: dx=0.5000 mm, dy=0.5000 mm

Device Reference Point: 0, 0, -6.3 mm

Reference Value = 6.151 V/m; Power Drift = -0.07 dB

Applied MIF = -1.44 dB

RF audio interference level = 21.00 dBV/m

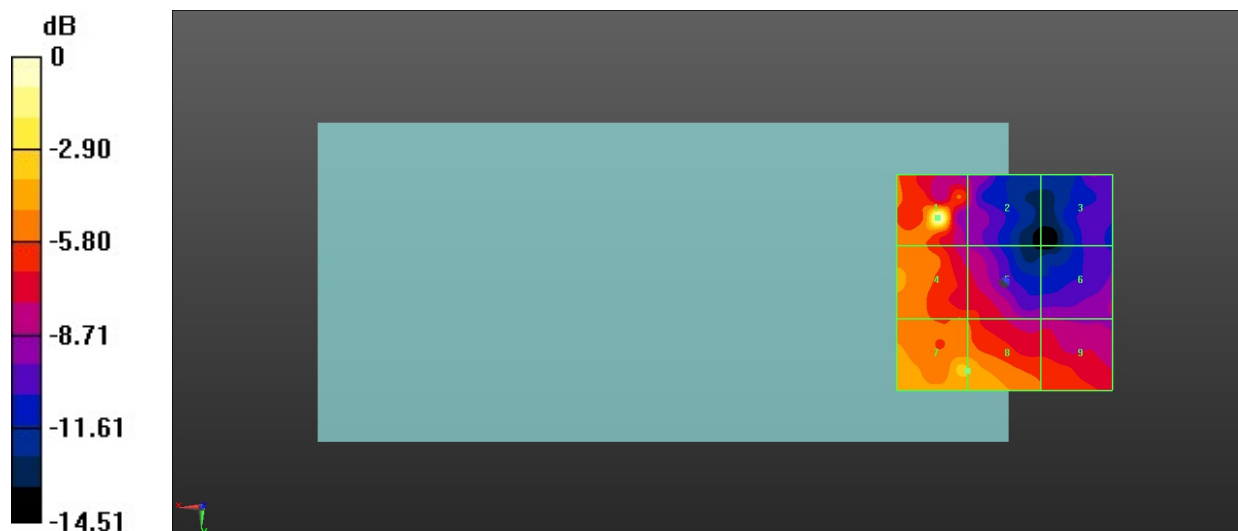
MIF scaled E-field

|  |  |  |
|--|--|--|
| <b>Grid 1 M4</b><br><b>21 dBV/m</b>    | <b>Grid 2 M4</b><br><b>13.84 dBV/m</b> | <b>Grid 3 M4</b><br><b>11.59 dBV/m</b> |
| <b>Grid 4 M4</b><br><b>16.45 dBV/m</b> | <b>Grid 5 M4</b><br><b>15.05 dBV/m</b> | <b>Grid 6 M4</b><br><b>12.58 dBV/m</b> |
| <b>Grid 7 M4</b><br><b>17.43 dBV/m</b> | <b>Grid 8 M4</b><br><b>17.22 dBV/m</b> | <b>Grid 9 M4</b><br><b>15.23 dBV/m</b> |

Total = 21.00 dBV/m

E Category: M4

Location: 15.5, -15, 8.7 mm



0 dB = 11.22 V/m = 21.00 dBV/m

**18\_HAC RF LTE B41\_20M\_ANT 1\_QPSK\_1RB\_0Offset\_Ch39750**

Communication System: UID 10173 - CAG, LTE-TDD (SC-FDMA, 1 RB, 20 MHz, 16-QAM);  
 Frequency: 2506 MHz; Duty Cycle: 1:8.8736

Medium: Air Medium parameters used:  $\sigma = 0$  S/m,  $\epsilon_r = 1$ ;  $\rho = 0$  kg/m<sup>3</sup>

Ambient Temperature : 23.3 °C;

DASY5 Configuration:

- Probe: EF3DV3 - SN4050; ConvF(1, 1, 1); Calibrated: 2022.1.31
- Sensor-Surface: (Fix Surface)
- Electronics: DAE4 Sn1303; Calibrated: 2021.6.18
- Phantom: HAC Test Arch with AMCC; Type: SD HAC P01 BA;
- Measurement SW: DASY52, Version 52.10 (4); SEMCAD X Version 14.6.14 (7483)

**Ch39750/Hearing Aid Compatibility Test (101x101x1):** Interpolated grid: dx=0.5000 mm, dy=0.5000 mm

Device Reference Point: 0, 0, -6.3 mm

Reference Value = 8.164 V/m; Power Drift = 0.19 dB

Applied MIF = -1.44 dB

RF audio interference level = 18.58 dBV/m

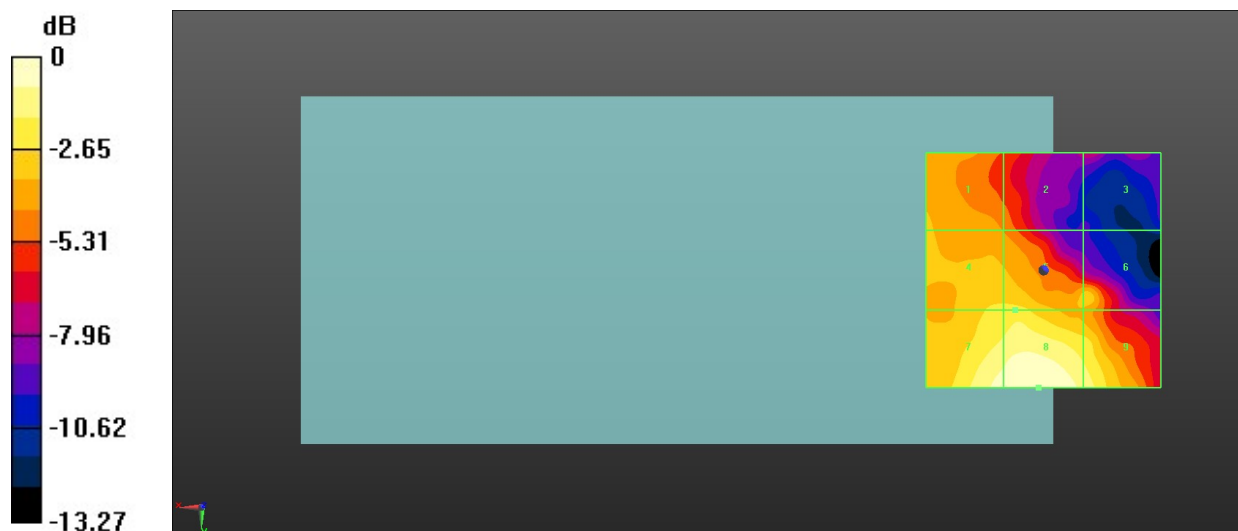
MIF scaled E-field

|                                 |                                 |                                 |
|---------------------------------|---------------------------------|---------------------------------|
| Grid 1 M4<br><b>15.36 dBV/m</b> | Grid 2 M4<br><b>14.12 dBV/m</b> | Grid 3 M4<br><b>11.47 dBV/m</b> |
| Grid 4 M4<br><b>16.16 dBV/m</b> | Grid 5 M4<br><b>16.29 dBV/m</b> | Grid 6 M4<br><b>15.68 dBV/m</b> |
| Grid 7 M4<br><b>18.12 dBV/m</b> | Grid 8 M4<br><b>18.58 dBV/m</b> | Grid 9 M4<br><b>17.43 dBV/m</b> |

Total = 18.58 dBV/m

E Category: M4

Location: 1, 25, 8.7 mm



0 dB = 8.494 V/m = 18.58 dBV/m

**19\_HAC RF LTE B41\_20M\_ANT 1\_QPSK\_1RB\_0Offset\_Ch40185**

Communication System: UID 10173 - CAG, LTE-TDD (SC-FDMA, 1 RB, 20 MHz, 16-QAM);  
 Frequency: 2549.5 MHz; Duty Cycle: 1:8.8736

Medium: Air Medium parameters used:  $\sigma = 0$  S/m,  $\epsilon_r = 1$ ;  $\rho = 0$  kg/m<sup>3</sup>

Ambient Temperature : 23.3 °C;

**DASY5 Configuration:**

- Probe: EF3DV3 - SN4050; ConvF(1, 1, 1); Calibrated: 2022.1.31
- Sensor-Surface: (Fix Surface)
- Electronics: DAE4 Sn1303; Calibrated: 2021.6.18
- Phantom: HAC Test Arch with AMCC; Type: SD HAC P01 BA;
- Measurement SW: DASY52, Version 52.10 (4); SEMCAD X Version 14.6.14 (7483)

**Ch40185/Hearing Aid Compatibility Test (101x101x1):** Interpolated grid: dx=0.5000 mm, dy=0.5000 mm

Device Reference Point: 0, 0, -6.3 mm

Reference Value = 7.283 V/m; Power Drift = 0.01 dB

Applied MIF = -1.44 dB

RF audio interference level = 18.17 dBV/m

MIF scaled E-field

|  |  |  |
|--|--|--|
| <b>Grid 1 M4</b><br><b>15.23 dBV/m</b> | <b>Grid 2 M4</b><br><b>11.93 dBV/m</b> | <b>Grid 3 M4</b><br><b>10.86 dBV/m</b> |
| <b>Grid 4 M4</b><br><b>15.55 dBV/m</b> | <b>Grid 5 M4</b><br><b>15 dBV/m</b>    | <b>Grid 6 M4</b><br><b>14.45 dBV/m</b> |
| <b>Grid 7 M4</b><br><b>17.57 dBV/m</b> | <b>Grid 8 M4</b><br><b>18.17 dBV/m</b> | <b>Grid 9 M4</b><br><b>17.49 dBV/m</b> |

Total = 18.17 dBV/m

E Category: M4

Location: 0.5, 25, 8.7 mm



0 dB = 8.098 V/m = 18.17 dBV/m

**20\_HAC RF LTE B41\_20M\_ANT 1\_QPSK\_1RB\_0Offset\_Ch40620**

Communication System: UID 10173 - CAG, LTE-TDD (SC-FDMA, 1 RB, 20 MHz, 16-QAM);  
 Frequency: 2593 MHz; Duty Cycle: 1:8.8736

Medium: Air Medium parameters used:  $\sigma = 0$  S/m,  $\epsilon_r = 1$ ;  $\rho = 0$  kg/m<sup>3</sup>

Ambient Temperature : 23.3 °C;

DASY5 Configuration:

- Probe: EF3DV3 - SN4050; ConvF(1, 1, 1); Calibrated: 2022.1.31
- Sensor-Surface: (Fix Surface)
- Electronics: DAE4 Sn1303; Calibrated: 2021.6.18
- Phantom: HAC Test Arch with AMCC; Type: SD HAC P01 BA;
- Measurement SW: DASY52, Version 52.10 (4); SEMCAD X Version 14.6.14 (7483)

**Ch40620/Hearing Aid Compatibility Test (101x101x1):** Interpolated grid: dx=0.5000 mm, dy=0.5000 mm

Device Reference Point: 0, 0, -6.3 mm

Reference Value = 7.572 V/m; Power Drift = 0.09 dB

Applied MIF = -1.44 dB

RF audio interference level = 19.20 dBV/m

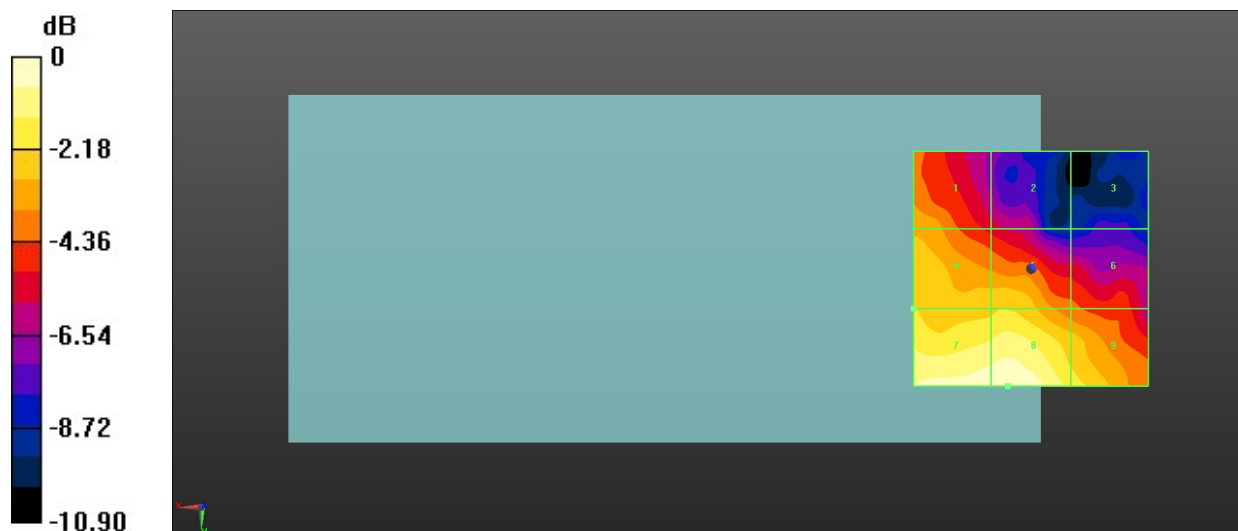
MIF scaled E-field

|  |  |  |
|--|--|--|
| <b>Grid 1 M4</b><br><b>16.11 dBV/m</b> | <b>Grid 2 M4</b><br><b>13.86 dBV/m</b> | <b>Grid 3 M4</b><br><b>11.59 dBV/m</b> |
| <b>Grid 4 M4</b><br><b>17.1 dBV/m</b>  | <b>Grid 5 M4</b><br><b>17.01 dBV/m</b> | <b>Grid 6 M4</b><br><b>15.12 dBV/m</b> |
| <b>Grid 7 M4</b><br><b>18.95 dBV/m</b> | <b>Grid 8 M4</b><br><b>19.2 dBV/m</b>  | <b>Grid 9 M4</b><br><b>17.53 dBV/m</b> |

Total = 19.20 dBV/m

E Category: M4

Location: 5, 25, 8.7 mm



0 dB = 9.117 V/m = 19.20 dBV/m



**21\_HAC RF LTE B41\_20M\_ANT 1\_QPSK\_1RB\_0Offset\_Ch41055**

Communication System: UID 10173 - CAG, LTE-TDD (SC-FDMA, 1 RB, 20 MHz, 16-QAM);  
 Frequency: 2636.5 MHz; Duty Cycle: 1:8.8736

Medium: Air Medium parameters used:  $\sigma = 0$  S/m,  $\epsilon_r = 1$ ;  $\rho = 0$  kg/m<sup>3</sup>

Ambient Temperature : 23.3 °C;

DASY5 Configuration:

- Probe: EF3DV3 - SN4050; ConvF(1, 1, 1); Calibrated: 2022.1.31
- Sensor-Surface: (Fix Surface)
- Electronics: DAE4 Sn1303; Calibrated: 2021.6.18
- Phantom: HAC Test Arch with AMCC; Type: SD HAC P01 BA;
- Measurement SW: DASY52, Version 52.10 (4); SEMCAD X Version 14.6.14 (7483)

**Ch41055/Hearing Aid Compatibility Test (101x101x1):** Interpolated grid: dx=0.5000 mm, dy=0.5000 mm

Device Reference Point: 0, 0, -6.3 mm

Reference Value = 9.246 V/m; Power Drift = -0.15 dB

Applied MIF = -1.44 dB

RF audio interference level = 20.45 dBV/m

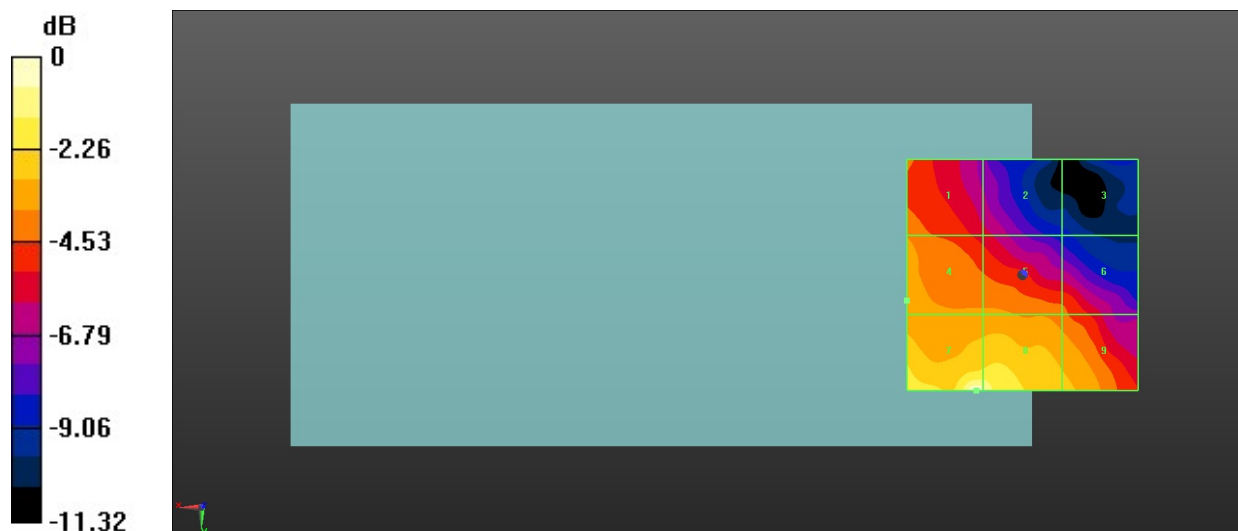
MIF scaled E-field

|  |  |  |
|--|--|--|
| <b>Grid 1 M4</b><br><b>16.66 dBV/m</b> | <b>Grid 2 M4</b><br><b>14.79 dBV/m</b> | <b>Grid 3 M4</b><br><b>12 dBV/m</b>    |
| <b>Grid 4 M4</b><br><b>17.31 dBV/m</b> | <b>Grid 5 M4</b><br><b>16.85 dBV/m</b> | <b>Grid 6 M4</b><br><b>16.18 dBV/m</b> |
| <b>Grid 7 M4</b><br><b>20.45 dBV/m</b> | <b>Grid 8 M4</b><br><b>20.16 dBV/m</b> | <b>Grid 9 M4</b><br><b>17.72 dBV/m</b> |

Total = 20.45 dBV/m

E Category: M4

Location: 10, 25, 8.7 mm



0 dB = 10.53 V/m = 20.45 dBV/m