

System Check_Head_835MHz

Communication System: ; Frequency: 835.0

Medium: HSL_850_220623. Medium parameters used: $f = 835.0$ MHz; $\sigma = 0.908$ S/m; $\epsilon_r = 42.5$

Ambient Temperature: 23.3°C; Liquid Temperature: 22.3°C

DASY6 Configuration:

- Probe: EX3DV4 - SN3976; ConvF(10.22, 10.22, 10.22); Calibrated: 2022-01-27
- Sensor-Surface: 1.4 mm
- Electronics: DAE4 Sn316; Calibrated: 2022-01-26
- Phantom: Twin-SAM V4.0 (30deg probe tilt); Serial: 1488; Section: Flat
- Measurement Software: cDASY6 V6.6.0.13926
- UID: CW, 0--
- MAIA: Area Scan: N/A; Zoom Scan: N/A

Area Scan (40.0 mm x 90.0 mm): Measurement Grid: 10.0 mm x 15.0 mm

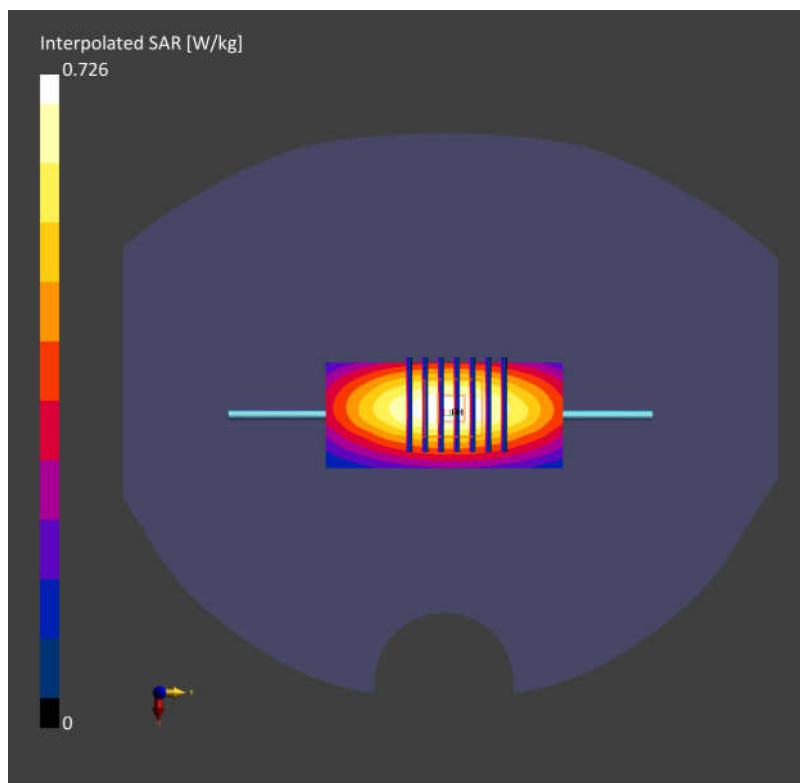
SAR (1g) = 0.469 W/kg; SAR (10g) = 0.310 W/kg;

Zoom Scan (32.0 mm x 32.0 mm x 30.0 mm): Measurement Grid: 6.0 mm x 6.0 mm x 1.5 mm

Power Drift = 0.02 dB

SAR (1g) = 0.477 W/kg; SAR (8g) = 0.330 W/kg; SAR (10g) = 0.313 W/kg;

psAPD (1.0cm², sq) = 4.77 [W/m²]; psAPD (4.0cm², sq) = 6.60 [W/m²]



System Check_Head_1900MHz

Communication System: ; Frequency: 1900.0

Medium: HSL_1900_220623. Medium parameters used: $f= 1900.0$ MHz; $\sigma= 1.43$ S/m; $\epsilon_r = 40.4$

Ambient Temperature: 23.3°C; Liquid Temperature: 22.3°C

DASY6 Configuration:

- Probe: EX3DV4 - SN3976; ConvF(8.45, 8.45, 8.45); Calibrated: 2022-01-27
- Sensor-Surface: 1.4 mm
- Electronics: DAE4 Sn316; Calibrated: 2022-01-26
- Phantom: Twin-SAM V4.0 (30deg probe tilt); Serial: 1488; Section: Flat
- Measurement Software: cDASY6 V6.6.0.13926
- UID: CW, 0--
- MAIA: Area Scan: N/A; Zoom Scan: N/A

Area Scan (40.0 mm x 90.0 mm): Measurement Grid: 10.0 mm x 15.0 mm

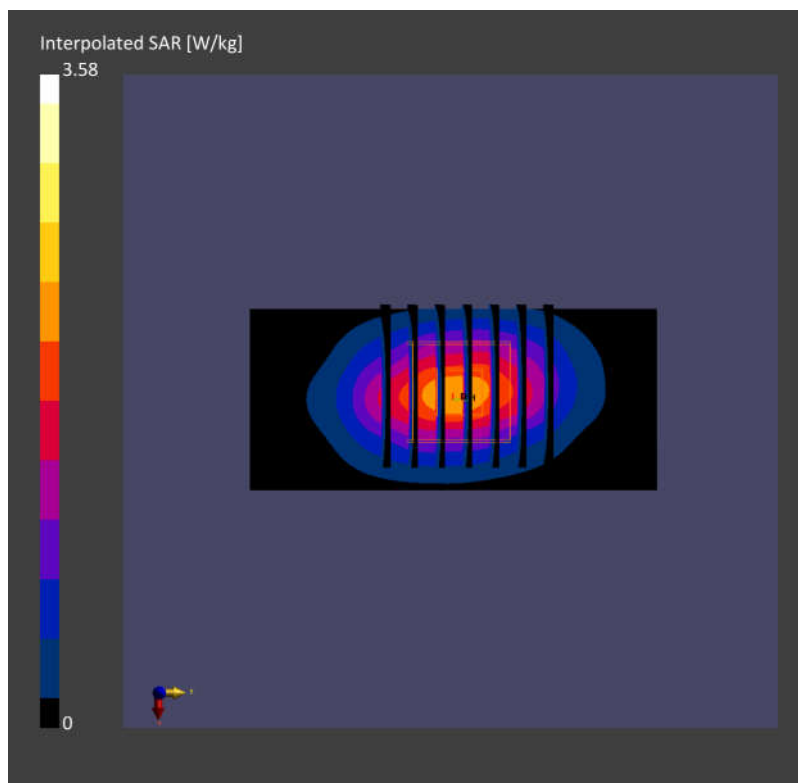
SAR (1g) = 1.88 W/kg; SAR (10g) = 0.977 W/kg;

Zoom Scan (32.0 mm x 32.0 mm x 30.0 mm): Measurement Grid: 6.0 mm x 6.0 mm x 1.5 mm

Power Drift = 0.00 dB

SAR (1g) = 1.89 W/kg; SAR (8g) = 1.08 W/kg; SAR (10g) = 0.989 W/kg;

psAPD (1.0cm², sq) = 18.9 [W/m²]; psAPD (4.0cm², sq) = 21.5 [W/m²]



System Check_Head_3500MHz

Communication System: ; Frequency: 3500.0

Medium: HSL_3500_220623. Medium parameters used: $f = 3500.0$ MHz; $\sigma = 3.04$ S/m; $\epsilon_r = 38.9$

Ambient Temperature: 23.3°C; Liquid Temperature: 22.3°C

DASY6 Configuration:

- Probe: EX3DV4 - SN3976; ConvF(7.04, 7.04, 7.04); Calibrated: 2022-01-27
- Sensor-Surface: 1.4 mm
- Electronics: DAE4 Sn316; Calibrated: 2022-01-26
- Phantom: Twin-SAM V4.0 (30deg probe tilt); Serial: 1488; Section: Flat
- Measurement Software: cDASY6 V6.6.0.13926
- UID: CW, 0--
- MAIA: Area Scan: N/A; Zoom Scan: N/A

Area Scan (40.0 mm x 80.0 mm): Measurement Grid: 10.0 mm x 10.0 mm

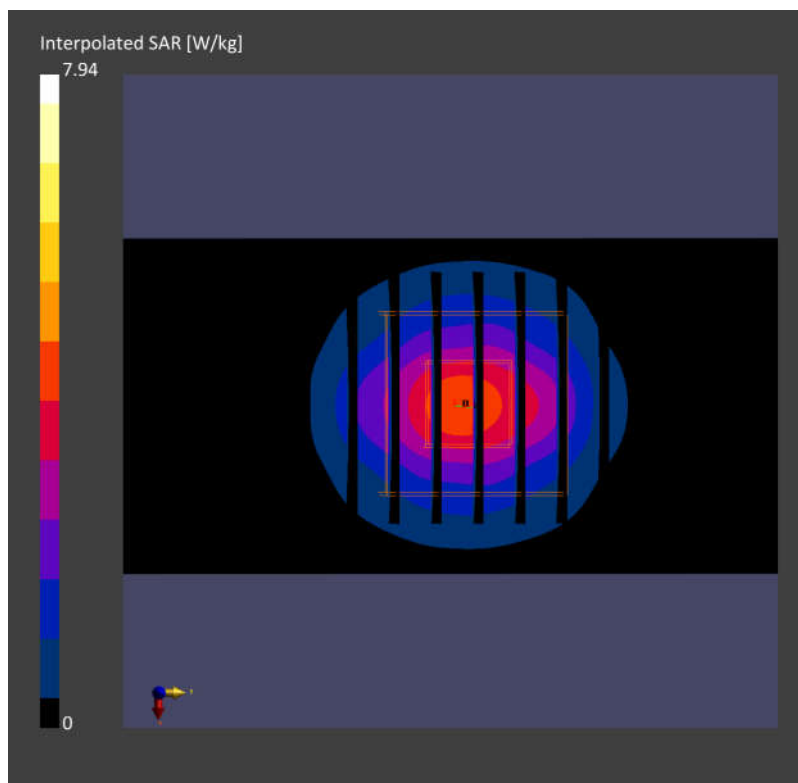
SAR (1g) = 3.22 W/kg; SAR (10g) = 1.22 W/kg;

Zoom Scan (28.0 mm x 28.0 mm x 28.0 mm): Measurement Grid: 5.0 mm x 5.0 mm x 1.4 mm

Power Drift = -0.01 dB

SAR (1g) = 3.27 W/kg; SAR (8g) = 1.44 W/kg; SAR (10g) = 1.27 W/kg;

psAPD (1.0cm², sq) = 32.7 [W/m²]; psAPD (4.0cm², sq) = 28.7 [W/m²]



System Check_Head_3700MHz

Communication System: ; Frequency: 3700.0

Medium: HSL_3700_220623. Medium parameters used: $f= 3700.0$ MHz; $\sigma= 3.26$ S/m; $\epsilon_r = 38.7$

Ambient Temperature: 23.3°C; Liquid Temperature: 22.3°C

DASY6 Configuration:

- Probe: EX3DV4 - SN3976; ConvF(7.0, 7.0, 7.0); Calibrated: 2022-01-27
- Sensor-Surface: 1.4 mm
- Electronics: DAE4 Sn316; Calibrated: 2022-01-26
- Phantom: Twin-SAM V4.0 (30deg probe tilt); Serial: 1488; Section: Flat
- Measurement Software: cDASY6 V6.6.0.13926
- UID: CW, 0--
- MAIA: Area Scan: N/A; Zoom Scan: N/A

Area Scan (40.0 mm x 80.0 mm): Measurement Grid: 10.0 mm x 10.0 mm

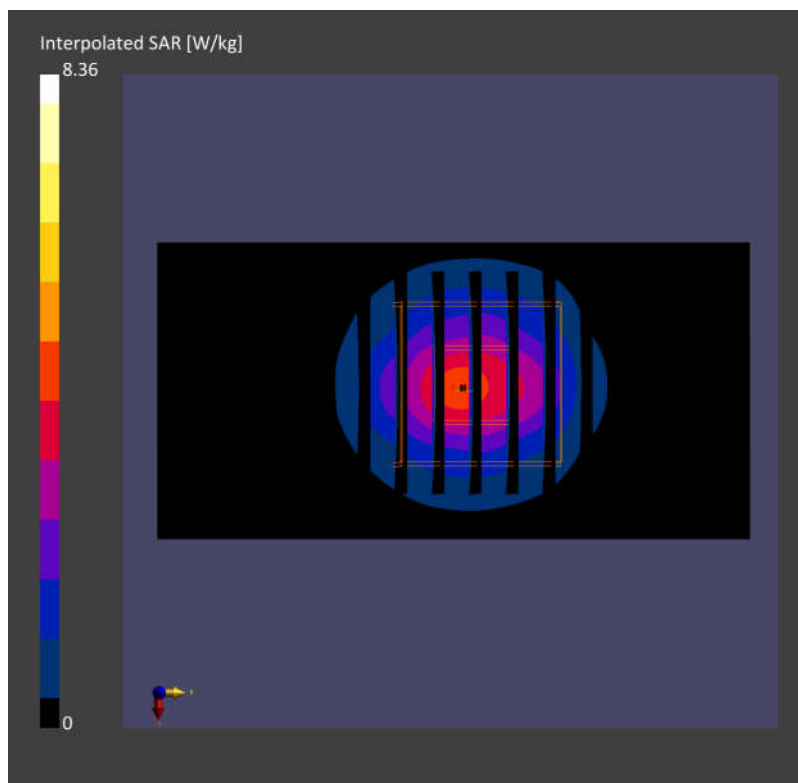
SAR (1g) = 3.19 W/kg; SAR (10g) = 1.18 W/kg;

Zoom Scan (28.0 mm x 28.0 mm x 28.0 mm): Measurement Grid: 5.0 mm x 5.0 mm x 1.4 mm

Power Drift = -0.03 dB

SAR (1g) = 3.27 W/kg; SAR (8g) = 1.40 W/kg; SAR (10g) = 1.24 W/kg;

psAPD (1.0cm², sq) = 32.7 [W/m²]; psAPD (4.0cm², sq) = 28.0 [W/m²]



Measurement Report for Device

Device Under Test Properties

| Model, Manufacturer | Dimensions [mm] | IMEI | DUT Type |
|---------------------|-----------------------|------|----------|
| Device, | 100.0 x 100.0 x 100.0 | | Phone |

Exposure Conditions

| Phantom Section | Position, Test Distance [mm] | Frequency [MHz] | Conversion Factor |
|-----------------|------------------------------|-----------------|-------------------|
| 5G | FRONT, 5.55 | 30000.0 | 1.0 |

Hardware Setup

| Phantom | Medium | Probe, Calibration Date | DAE, Calibration Date |
|---------------|--------|---------------------------------------|------------------------|
| mmWave - 1044 | Air - | EUmmWV3 - SN9424_F1-55GHz, 2022-04-06 | DAE4 Sn316, 2022-01-26 |

Scans Setup

| | |
|---------------------|-------------|
| Scan Type | 5G Scan |
| Grid Extents [mm] | 60.0 x 60.0 |
| Grid Steps [lambda] | 0.25 x 0.25 |
| Sensor Surface [mm] | 5.55 |

Measurement Results

| | |
|--|-------------------|
| Date | 2022-06-17, 11:10 |
| Avg. Area [cm ²] | 4.00 |
| psPDn+ [W/m ²] | 39.6 |
| psPDtot+ [W/m ²] | 40.2 |
| H _{max} [A/m] | 0.310 |
| E _{max} [V/m] | 132 |
| max _(Sto) [W/m ²] | 48.1 |
| Power Drift [dB] | 0.05 |

