

01_WLAN 6GHz_802.11 ax_HE160_Back_2mm_Ch175

Device Under Test Properties

Model, Manufacturer	Dimensions [mm]
Device,	159.6 x 75.0 x 10.5

Exposure Conditions

Phantom Section	Position, Test Distance [mm]	Band	Group, UID	Frequency [MHz], Channel Number	Conversion Factor
5G	BACK, 2.00	U-NII-7	WLAN, 10743-AAC	6825.0, 175	1.0

Hardware Setup

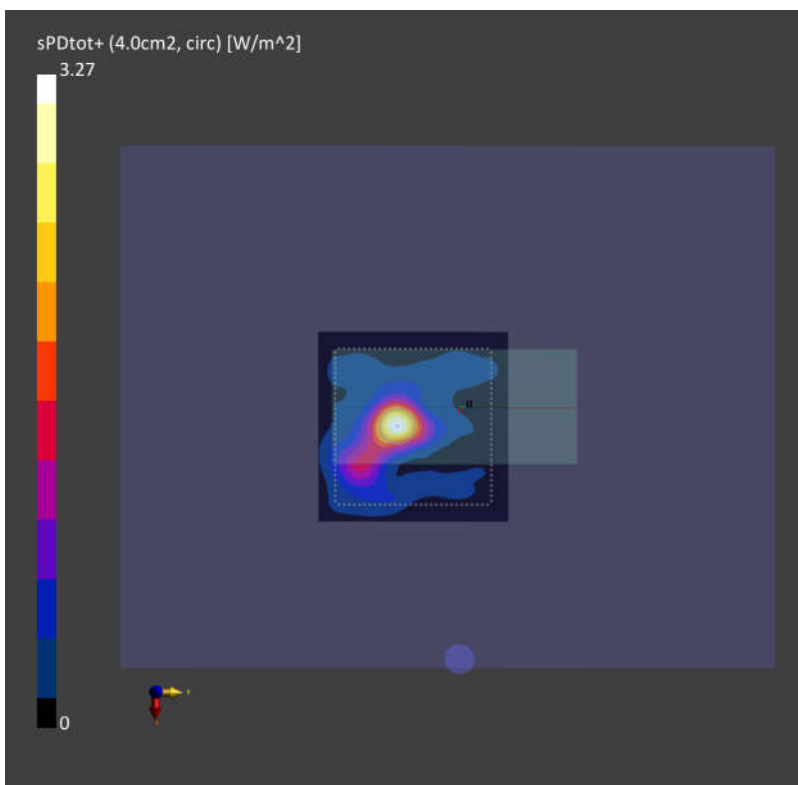
Phantom	Medium	Probe, Calibration Date	DAE, Calibration Date
mmWave - 1065	Air -	EUmmWV4 - SN9553_F1-55GHz, 2021-04-01	DAE4 Sn1650, 2021-06-09

Scans Setup

Scan Type	5G Scan
Grid Extents [mm]	120.0 x 120.0
Grid Steps [lambda]	0.0625 x 0.0625
Sensor Surface [mm]	2.0
MAIA	N/A

Measurement Results

Scan Type	5G Scan
Date	2022-02-26, 04:32
Avg. Area [cm ²]	4.00
psPDn+ [W/m ²]	2.54
psPDtot+ [W/m ²]	3.27
psPDmod+ [W/m ²]	5.62
E _{max} [V/m]	62.4
Power Drift [dB]	-0.06



01_WLAN6GHz_802.11ax-HE160 MCS0_Left Cheek_0mm_Ch111

Communication System: Custom Band; Frequency: 6505.0

Medium: HSL. Medium parameters used: $f = 6505.0$ MHz; $\sigma = 6.08$ S/m; $\epsilon_r = 34.0$

Ambient Temperature: 23.1°C; Liquid Temperature: 22.7°C

DASY6 Configuration:

- Probe: EX3DV4 - SN3935; ConvF(5.7, 5.7, 5.7); Calibrated: 2021-04-29
- Sensor-Surface: 1.4 mm
- Electronics: DAE4 Sn690; Calibrated: 2021-03-17
- Phantom: Twin-SAM V8.0 (P1a-P2a); Serial: 2024; Section: LeftHead
- Measurement Software: cDASY6 V6.6.0.13926

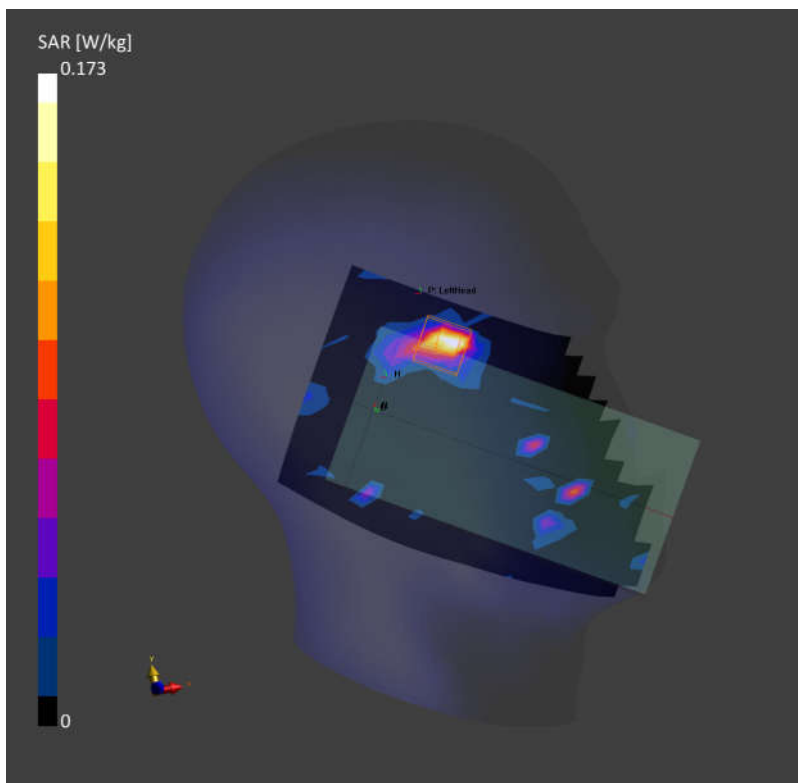
Area Scan (119.0 mm x 204.0 mm): Measurement Grid: 8.5 mm x 8.5 mm

SAR (1g) = 0.125 W/kg; SAR (10g) = 0.036 W/kg;

Zoom Scan (22.0 mm x 22.0 mm x 22.0 mm): Measurement Grid: 3.4 mm x 3.4 mm x 1.4 mm

Power Drift = 0.01 dB

SAR (1g) = 0.173 W/kg; SAR (10g) = 0.048 W/kg;



02_WLAN6GHz_802.11ax-HE160 MCS0_Back_5mm_Ch111

Communication System: Custom Band; Frequency: 6505.0

Medium: HSL. Medium parameters used: $f=6505.0$ MHz; $\sigma=6.08$ S/m; $\epsilon_r=34.0$

Ambient Temperature: 23.1°C; Liquid Temperature: 22.7°C

DASY6 Configuration:

- Probe: EX3DV4 - SN3935; ConvF(5.7, 5.7, 5.7); Calibrated: 2021-04-29
- Sensor-Surface: 1.4 mm
- Electronics: DAE4 Sn690; Calibrated: 2021-03-17
- Phantom: Twin-SAM V8.0 (P1a-P2a); Serial: 2024; Section: Flat
- Measurement Software: cDASY6 V6.6.0.13926

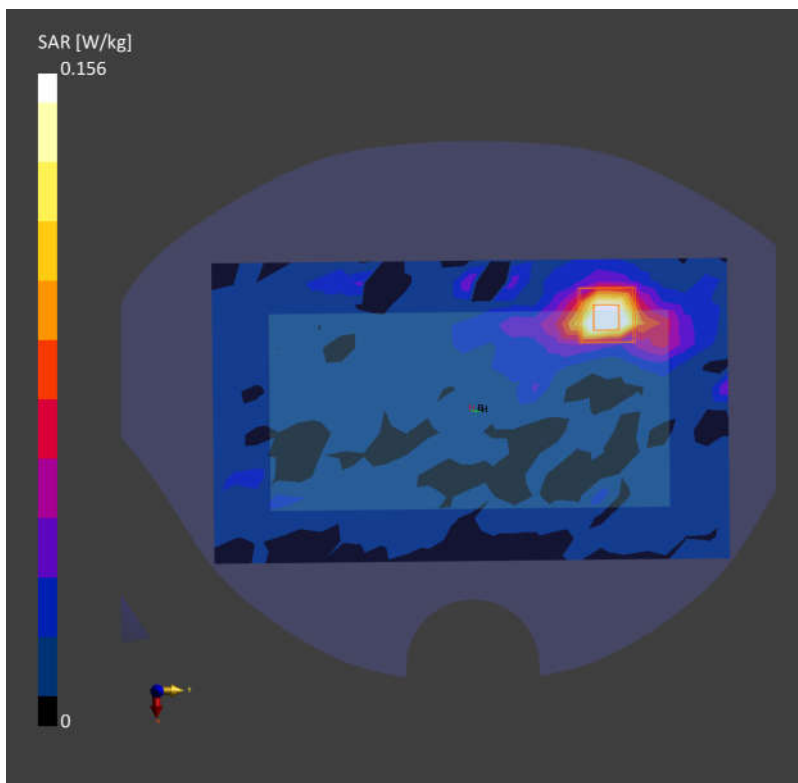
Area Scan (119.0 mm x 204.0 mm): Measurement Grid: 8.5 mm x 8.5 mm

SAR (1g) = 0.150 W/kg; SAR (10g) = 0.049 W/kg;

Zoom Scan (22.0 mm x 22.0 mm x 22.0 mm): Measurement Grid: 3.4 mm x 3.4 mm x 1.4 mm

Power Drift = -0.08 dB

SAR (1g) = 0.156 W/kg; SAR (10g) = 0.048 W/kg;



03_WLAN6GHz_802.11ax-HE160 MCS0_Back_0mm_Ch111

Communication System: Custom Band; Frequency: 6505.0
Medium: HSL. Medium parameters used: $f=6505.0$ MHz; $\sigma=6.08$ S/m; $\epsilon_r=34.0$
Ambient Temperature: 23.1°C; Liquid Temperature: 22.7°C

DASY6 Configuration:

- Probe: EX3DV4 - SN3935; ConvF(5.7, 5.7, 5.7); Calibrated: 2021-04-29
- Sensor-Surface: 1.4 mm
- Electronics: DAE4 Sn690; Calibrated: 2021-03-17
- Phantom: Twin-SAM V8.0 (P1a-P2a); Serial: 2024; Section: Flat
- Measurement Software: cDASY6 V6.6.0.13926

Area Scan (119.0 mm x 204.0 mm): Measurement Grid: 8.5 mm x 8.5 mm
SAR (1g) = 0.594 W/kg; SAR (10g) = 0.219 W/kg;

Zoom Scan (22.0 mm x 22.0 mm x 22.0 mm): Measurement Grid: 3.4 mm x 3.4 mm x 1.4 mm
Power Drift = -0.07 dB
SAR (1g) = 0.663 W/kg; SAR (10g) = 0.242 W/kg;

