

26_WLAN5GHz_802.11n-HT40 MCS0_Back_5mm_Ch159

Communication System: UID 0, WLAN5GHz (0); Frequency: 5795 MHz; Duty Cycle: 1:1.059
Medium: HSL_5000 Medium parameters used: $f = 5795$ MHz; $\sigma = 5.174$ S/m; $\epsilon_r = 35.495$; $\rho = 1000$ kg/m³

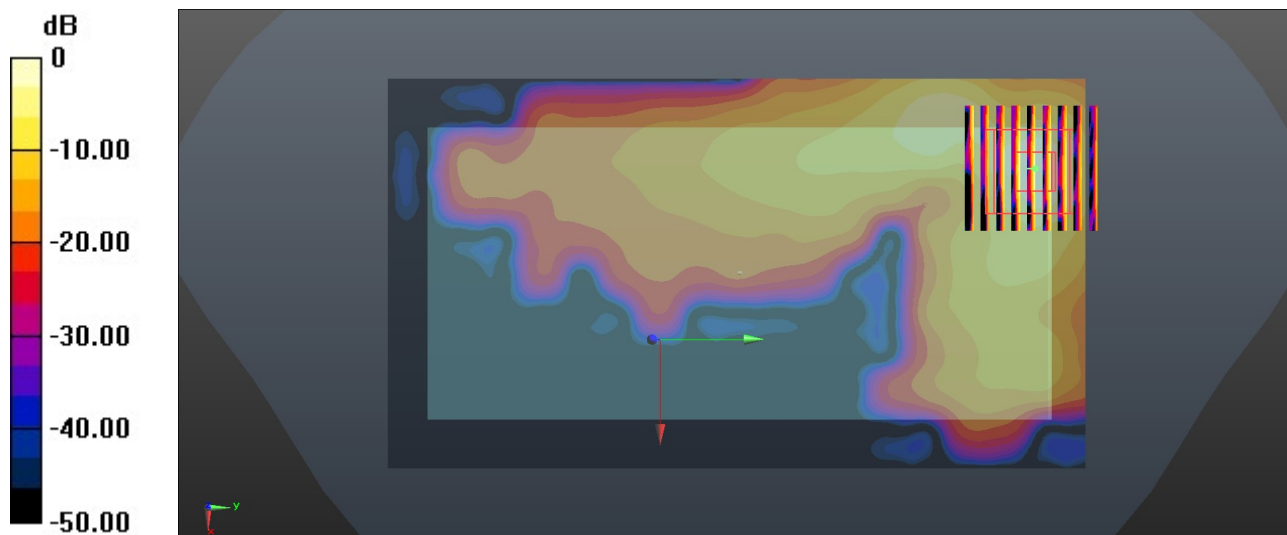
Ambient Temperature : 23.2 °C; Liquid Temperature : 22.9 °C

DASY5 Configuration:

- Probe: EX3DV4 - SN7684; ConvF(5.25, 5.25, 5.25); Calibrated: 2021.10.4
- Sensor-Surface: 1.4mm (Mechanical Surface Detection)
- Electronics: DAE4 Sn1303; Calibrated: 2021.6.18
- Phantom: SAM Twin Phantom; Type: SAM Twin; Serial: TP-1697
- Measurement SW: DASY52, Version 52.10 (4); SEMCAD X Version 14.6.14 (7483)

Area Scan (101x181x1): Interpolated grid: dx=1.000 mm, dy=1.000 mm
Maximum value of SAR (interpolated) = 2.89 W/kg

Zoom Scan (9x9x7)/Cube 0: Measurement grid: dx=4mm, dy=4mm, dz=1.4mm
Reference Value = 3.064 V/m; Power Drift = 0.04 dB
Peak SAR (extrapolated) = 5.11 W/kg
SAR(1 g) = 0.821 W/kg; SAR(10 g) = 0.286 W/kg
Maximum value of SAR (measured) = 2.86 W/kg



0 dB = 2.86 W/kg = 4.56 dBW/kg

27_GSM850_GPRS(2 Tx slots)_Back_5mm_Ch128

Communication System: UID 0, GSM850 (0); Frequency: 824.2 MHz; Duty Cycle: 1:4.15
Medium: HSL_835 Medium parameters used: $f = 825$ MHz; $\sigma = 0.927$ S/m; $\epsilon_r = 40.964$; $\rho = 1000$ kg/m³

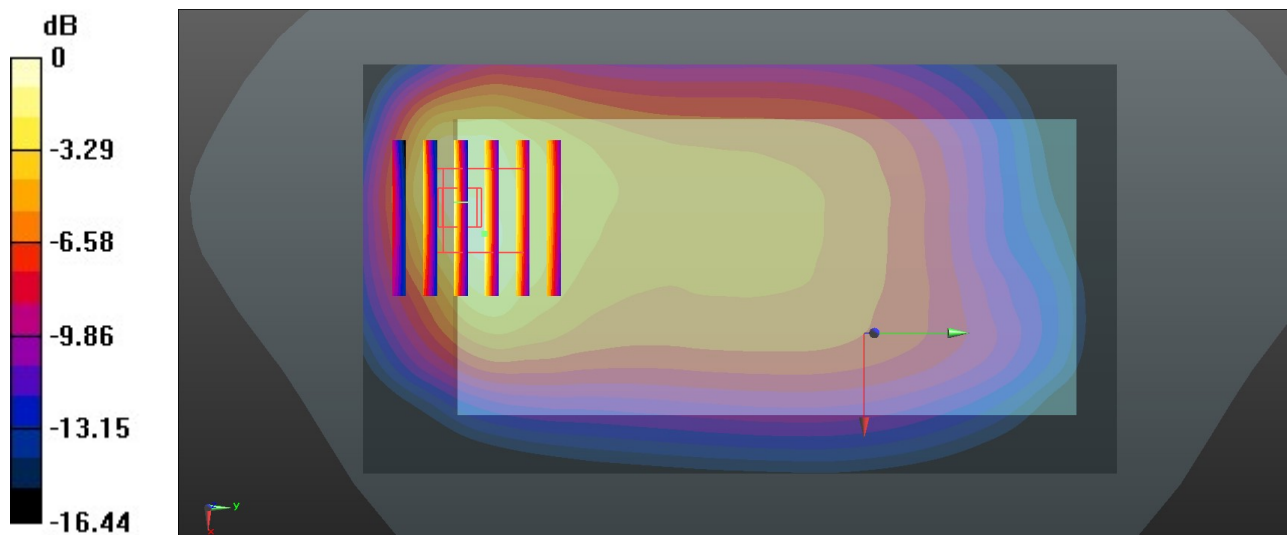
Ambient Temperature : 23.2 °C; Liquid Temperature : 22.8 °C

DASY5 Configuration:

- Probe: ES3DV3 - SN3279; ConvF(6.23, 6.23, 6.23); Calibrated: 2021.8.24
- Sensor-Surface: 3mm (Mechanical Surface Detection)
- Electronics: DAE4 Sn1338; Calibrated: 2021.12.1
- Phantom: SAM Twin Phantom; Type: SAM Twin; Serial: TP-1842
- Measurement SW: DASY52, Version 52.10 (4); SEMCAD X Version 14.6.14 (7483)

Area Scan (71x131x1): Interpolated grid: dx=1.500 mm, dy=1.500 mm
Maximum value of SAR (interpolated) = 0.870 W/kg

Zoom Scan (6x6x7)/Cube 0: Measurement grid: dx=8mm, dy=8mm, dz=5mm
Reference Value = 30.34 V/m; Power Drift = -0.01 dB
Peak SAR (extrapolated) = 1.49 W/kg
SAR(1 g) = 0.788 W/kg; SAR(10 g) = 0.450 W/kg
Maximum value of SAR (measured) = 0.980 W/kg



0 dB = 0.980 W/kg = -0.09 dBW/kg

28_WCDMA V_RMC 12.2Kbps_Back_5mm_Ch4182

Communication System: UID 0, WCDMA (0); Frequency: 836.4 MHz; Duty Cycle: 1:1
Medium: HSL_835 Medium parameters used: $f = 836.4$ MHz; $\sigma = 0.93$ S/m; $\epsilon_r = 40.921$; $\rho = 1000$ kg/m³

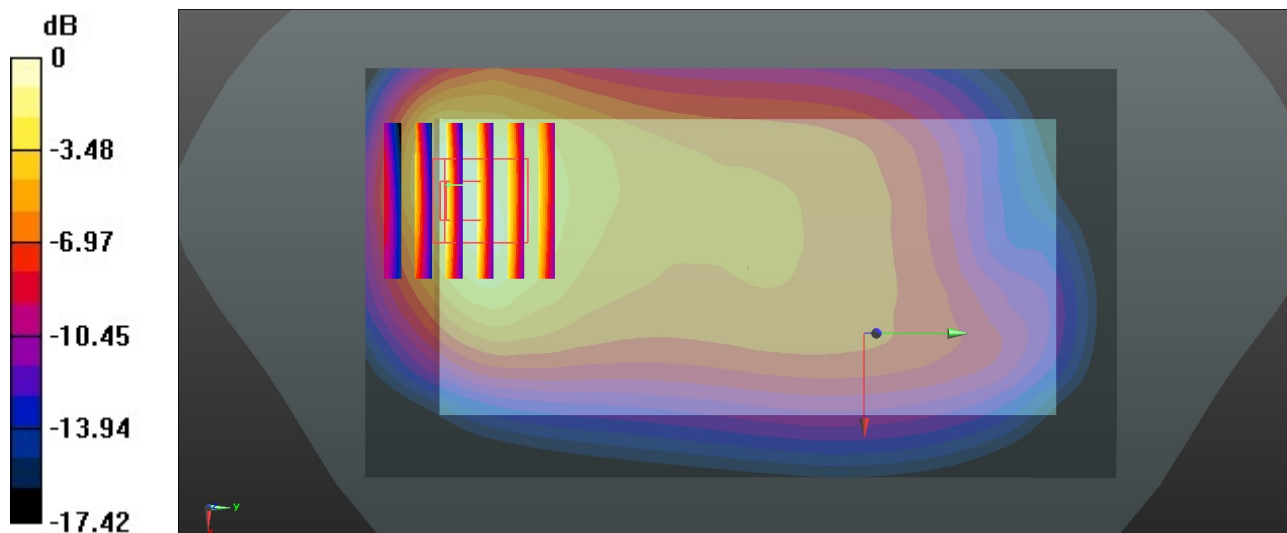
Ambient Temperature : 23.2 °C; Liquid Temperature : 22.8 °C

DASY5 Configuration:

- Probe: ES3DV3 - SN3279; ConvF(6.23, 6.23, 6.23); Calibrated: 2021.8.24
- Sensor-Surface: 3mm (Mechanical Surface Detection)
- Electronics: DAE4 Sn1338; Calibrated: 2021.12.1
- Phantom: SAM Twin Phantom; Type: SAM Twin; Serial: TP-1842
- Measurement SW: DASY52, Version 52.10 (4); SEMCAD X Version 14.6.14 (7483)

Area Scan (71x131x1): Interpolated grid: dx=1.500 mm, dy=1.500 mm
Maximum value of SAR (interpolated) = 1.32 W/kg

Zoom Scan (6x6x7)/Cube 0: Measurement grid: dx=8mm, dy=8mm, dz=5mm
Reference Value = 37.67 V/m; Power Drift = -0.12 dB
Peak SAR (extrapolated) = 2.25 W/kg
SAR(1 g) = 1.08 W/kg; SAR(10 g) = 0.690 W/kg
Maximum value of SAR (measured) = 1.47 W/kg



0 dB = 1.47 W/kg = 1.67 dBW/kg

29_LTE Band 26_15M_QPSK_1RB_0Offset_Back_5mm_Ch26865

Communication System: UID 0, LTE-FDD (0); Frequency: 831.5 MHz; Duty Cycle: 1:1
 Medium: HSL_835 Medium parameters used: $f = 831.5 \text{ MHz}$; $\sigma = 0.928 \text{ S/m}$; $\epsilon_r = 40.914$; $\rho = 1000 \text{ kg/m}^3$

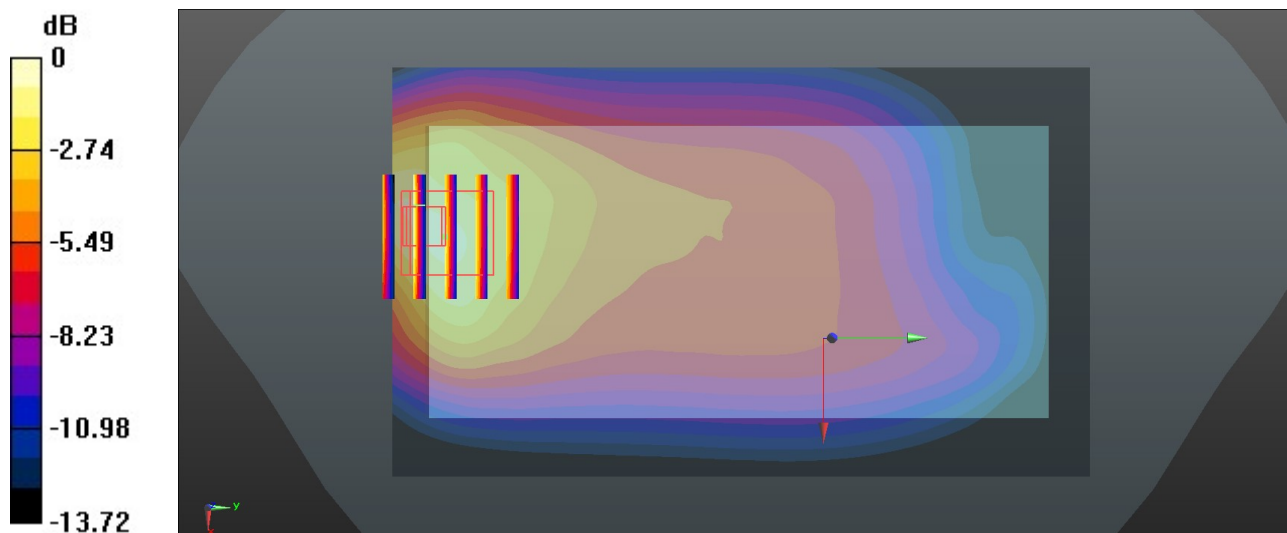
Ambient Temperature : 23.2 °C; Liquid Temperature : 22.8 °C

DASY5 Configuration:

- Probe: ES3DV3 - SN3279; ConvF(6.23, 6.23, 6.23); Calibrated: 2021.8.24
- Sensor-Surface: 3mm (Mechanical Surface Detection)
- Electronics: DAE4 Sn1338; Calibrated: 2021.12.1
- Phantom: SAM Twin Phantom; Type: SAM Twin; Serial: TP-1842
- Measurement SW: DASY52, Version 52.10 (4); SEMCAD X Version 14.6.14 (7483)

Area Scan (71x121x1): Interpolated grid: $dx=1.500 \text{ mm}$, $dy=1.500 \text{ mm}$
 Maximum value of SAR (interpolated) = 1.15 W/kg

Zoom Scan (5x5x7)/Cube 0: Measurement grid: $dx=8\text{mm}$, $dy=8\text{mm}$, $dz=5\text{mm}$
 Reference Value = 37.72 V/m; Power Drift = -0.03 dB
 Peak SAR (extrapolated) = 2.04 W/kg
SAR(1 g) = 1.07 W/kg; SAR(10 g) = 0.629 W/kg
 Maximum value of SAR (measured) = 1.33 W/kg



0 dB = 1.33 W/kg = 1.24 dBW/kg

30_GSM1900_GPRS(2 Tx slots)_Bottom Side_5mm_Ch512

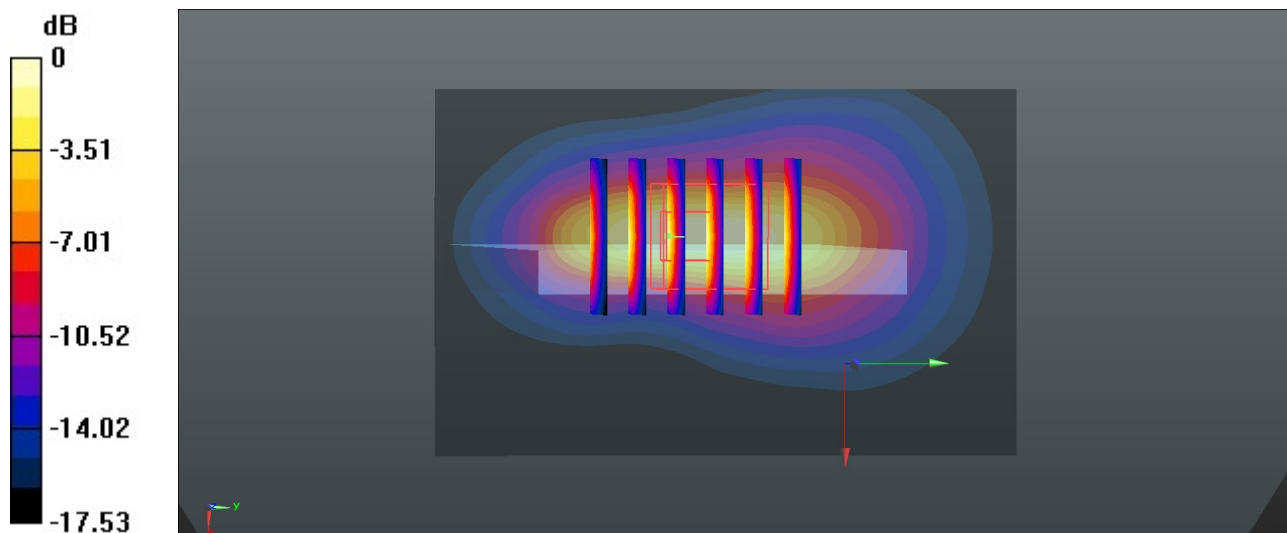
Communication System: UID 0, PCS (0); Frequency: 1850.2 MHz; Duty Cycle: 1:2.77
Medium: HSL_1900 Medium parameters used: $f = 1850.2$ MHz; $\sigma = 1.406$ S/m; $\epsilon_r = 39.964$; $\rho = 1000$ kg/m³
Ambient Temperature : 23.4 °C; Liquid Temperature : 22.6 °C

DASY5 Configuration:

- Probe: ES3DV3 - SN3279; ConvF(5.28, 5.28, 5.28); Calibrated: 2021.8.24
- Sensor-Surface: 3mm (Mechanical Surface Detection)
- Electronics: DAE4 Sn1338; Calibrated: 2021.12.1
- Phantom: SAM Twin Phantom; Type: SAM Twin; Serial: TP-1842
- Measurement SW: DASY52, Version 52.10 (4); SEMCAD X Version 14.6.14 (7483)

Area Scan (51x81x1): Interpolated grid: dx=1.500 mm, dy=1.500 mm
Maximum value of SAR (interpolated) = 1.86 W/kg

Zoom Scan (5x6x7)/Cube 0: Measurement grid: dx=8mm, dy=8mm, dz=5mm
Reference Value = 36.13 V/m; Power Drift = 0.06 dB
Peak SAR (extrapolated) = 2.76 W/kg
SAR(1 g) = 1.3 W/kg; SAR(10 g) = 0.650 W/kg
Maximum value of SAR (measured) = 1.80 W/kg



0 dB = 1.80 W/kg = 2.55 dBW/kg

31_WCDMA II_RMC 12.2Kbps_Back_5mm_Ch9262

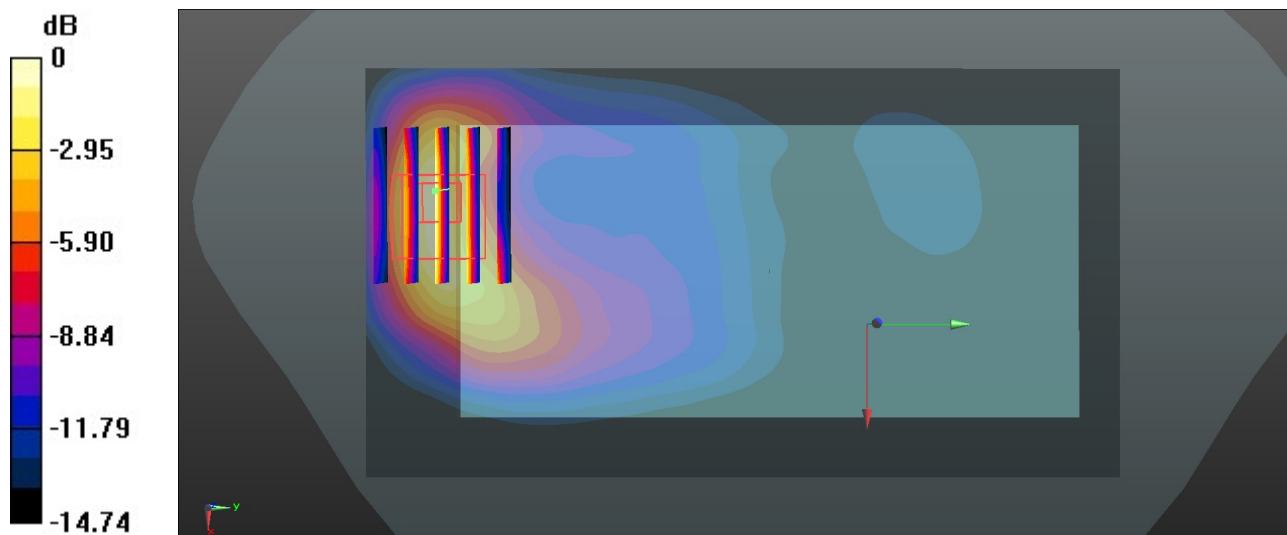
Communication System: UID 0, WCDMA (0); Frequency: 1852.4 MHz; Duty Cycle: 1:1
Medium: HSL_1900 Medium parameters used: $f = 1852.4$ MHz; $\sigma = 1.408$ S/m; $\epsilon_r = 39.963$; $\rho = 1000$ kg/m³
Ambient Temperature : 23.4 °C; Liquid Temperature : 22.6 °C

DASY5 Configuration:

- Probe: ES3DV3 - SN3279; ConvF(5.28, 5.28, 5.28); Calibrated: 2021.8.24
- Sensor-Surface: 3mm (Mechanical Surface Detection)
- Electronics: DAE4 Sn1338; Calibrated: 2021.12.1
- Phantom: SAM Twin Phantom; Type: SAM Twin; Serial: TP-1842
- Measurement SW: DASY52, Version 52.10 (4); SEMCAD X Version 14.6.14 (7483)

Area Scan (71x131x1): Interpolated grid: dx=1.500 mm, dy=1.500 mm
Maximum value of SAR (interpolated) = 1.15 W/kg

Zoom Scan (6x5x7)/Cube 0: Measurement grid: dx=8mm, dy=8mm, dz=5mm
Reference Value = 29.42 V/m; Power Drift = 0.11 dB
Peak SAR (extrapolated) = 2.00 W/kg
SAR(1 g) = 1.04 W/kg; SAR(10 g) = 0.517 W/kg
Maximum value of SAR (measured) = 1.27 W/kg



0 dB = 1.27 W/kg = 1.04 dBW/kg

32_LTE Band 2_20M_QPSK_1RB_0Offset_Bottom Side_5mm_Ch18700

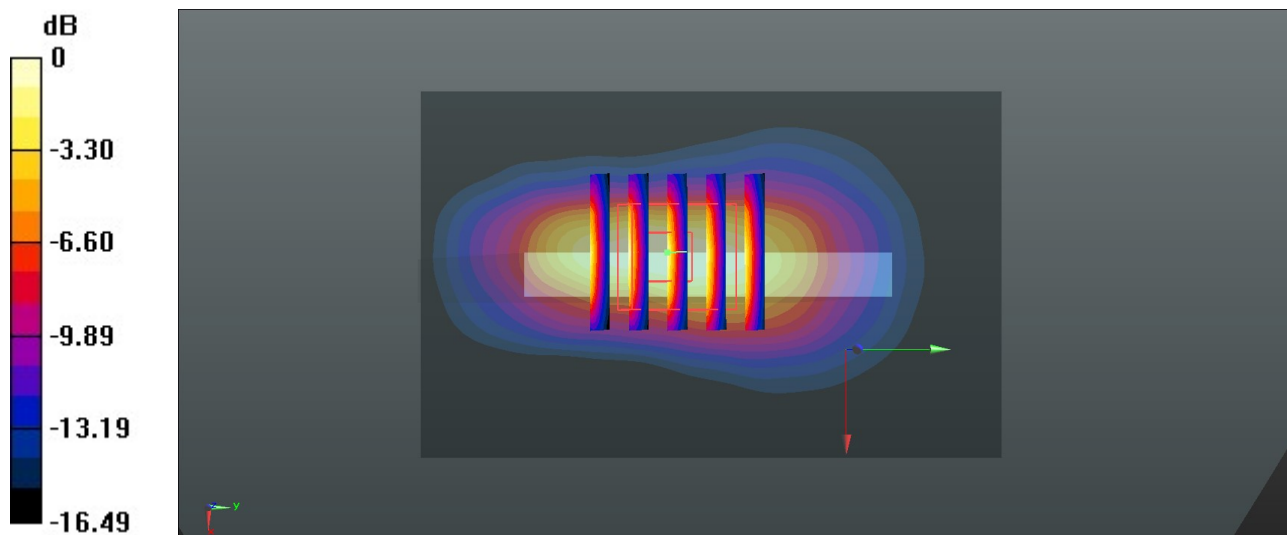
Communication System: UID 0, LTE-FDD (0); Frequency: 1860 MHz; Duty Cycle: 1:1
Medium: HSL_1900 Medium parameters used: $f = 1860$ MHz; $\sigma = 1.413$ S/m; $\epsilon_r = 39.958$; $\rho = 1000$ kg/m³
Ambient Temperature : 23.4 °C; Liquid Temperature : 22.6 °C

DASY5 Configuration:

- Probe: ES3DV3 - SN3279; ConvF(5.28, 5.28, 5.28); Calibrated: 2021.8.24
- Sensor-Surface: 3mm (Mechanical Surface Detection)
- Electronics: DAE4 Sn1338; Calibrated: 2021.12.1
- Phantom: SAM Twin Phantom; Type: SAM Twin; Serial: TP-1842
- Measurement SW: DASY52, Version 52.10 (4); SEMCAD X Version 14.6.14 (7483)

Area Scan (51x81x1): Interpolated grid: dx=1.500 mm, dy=1.500 mm
Maximum value of SAR (interpolated) = 1.47 W/kg

Zoom Scan (5x5x7)/Cube 0: Measurement grid: dx=8mm, dy=8mm, dz=5mm
Reference Value = 32.17 V/m; Power Drift = 0.09 dB
Peak SAR (extrapolated) = 2.20 W/kg
SAR(1 g) = 1.09 W/kg; SAR(10 g) = 0.520 W/kg
Maximum value of SAR (measured) = 1.40 W/kg



0 dB = 1.40 W/kg = 1.46 dBW/kg

33_LTE Band 7_20M_QPSK_1RB_0Offset_Back_5mm_Ch20850

Communication System: UID 0, LTE-FDD (0); Frequency: 2510 MHz; Duty Cycle: 1:1
 Medium: HSL_2600 Medium parameters used: $f = 2510$ MHz; $\sigma = 1.86$ S/m; $\epsilon_r = 38.43$; $\rho = 1000$ kg/m³

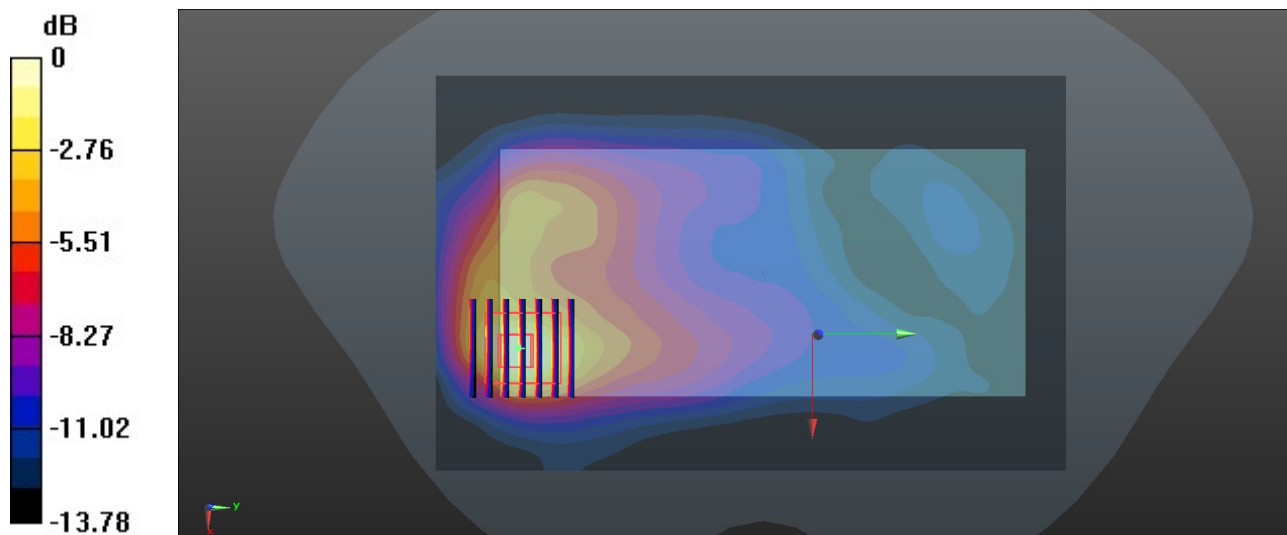
Ambient Temperature : 23.1 °C; Liquid Temperature : 22.8 °C

DASY5 Configuration:

- Probe: ES3DV3 - SN3279; ConvF(4.47, 4.47, 4.47); Calibrated: 2021.8.24
- Sensor-Surface: 3mm (Mechanical Surface Detection)
- Electronics: DAE4 Sn1338; Calibrated: 2021.12.1
- Phantom: SAM Twin Phantom; Type: SAM Twin; Serial: TP-1842
- Measurement SW: DASY52, Version 52.10 (4); SEMCAD X Version 14.6.14 (7483)

Area Scan (101x161x1): Interpolated grid: dx=1.200 mm, dy=1.200 mm
 Maximum value of SAR (interpolated) = 1.41 W/kg

Zoom Scan (7x7x7)/Cube 0: Measurement grid: dx=5mm, dy=5mm, dz=5mm
 Reference Value = 23.72 V/m; Power Drift = -0.05 dB
 Peak SAR (extrapolated) = 2.21 W/kg
SAR(1 g) = 1.02 W/kg; SAR(10 g) = 0.493 W/kg
 Maximum value of SAR (measured) = 1.34 W/kg



0 dB = 1.34 W/kg = 1.28 dBW/kg

34_LTE Band 41_20M_QPSK_1RB_0Offset_Back_5mm_Ch40620

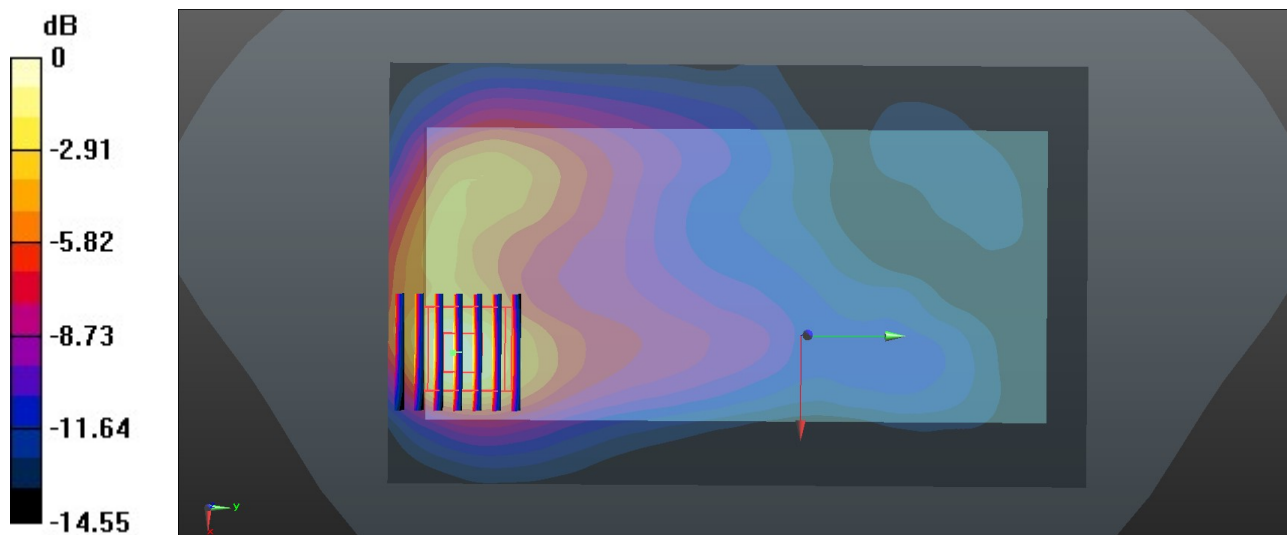
Communication System: UID 0, LTE-TDD (0); Frequency: 2593 MHz; Duty Cycle: 1:1.59
Medium: HSL_2600 Medium parameters used: $f = 2593$ MHz; $\sigma = 1.917$ S/m; $\epsilon_r = 38.224$; $\rho = 1000$ kg/m³
Ambient Temperature : 23.1 °C; Liquid Temperature : 22.8 °C

DASY5 Configuration:

- Probe: ES3DV3 - SN3279; ConvF(4.47, 4.47, 4.47); Calibrated: 2021.8.24
- Sensor-Surface: 3mm (Mechanical Surface Detection)
- Electronics: DAE4 Sn1338; Calibrated: 2021.12.1
- Phantom: SAM Twin Phantom; Type: SAM Twin; Serial: TP-1842
- Measurement SW: DASY52, Version 52.10 (4); SEMCAD X Version 14.6.14 (7483)

Area Scan (91x151x1): Interpolated grid: dx=1.200 mm, dy=1.200 mm
Maximum value of SAR (interpolated) = 1.35 W/kg

Zoom Scan (7x7x7)/Cube 0: Measurement grid: dx=5mm, dy=5mm, dz=5mm
Reference Value = 24.86 V/m; Power Drift = -0.13 dB
Peak SAR (extrapolated) = 2.34 W/kg
SAR(1 g) = 1.06 W/kg; SAR(10 g) = 0.499 W/kg
Maximum value of SAR (measured) = 1.41 W/kg



0 dB = 1.41 W/kg = 1.49 dBW/kg

35_WLAN2.4GHz_802.11b 1Mbps_Back_5mm_Ch1

Communication System: UID 0, WLAN2.4GHz (0); Frequency: 2412 MHz; Duty Cycle: 1:1.021
Medium: HSL_2450 Medium parameters used: $f = 2412$ MHz; $\sigma = 1.79$ S/m; $\epsilon_r = 38.588$; $\rho = 1000$ kg/m³

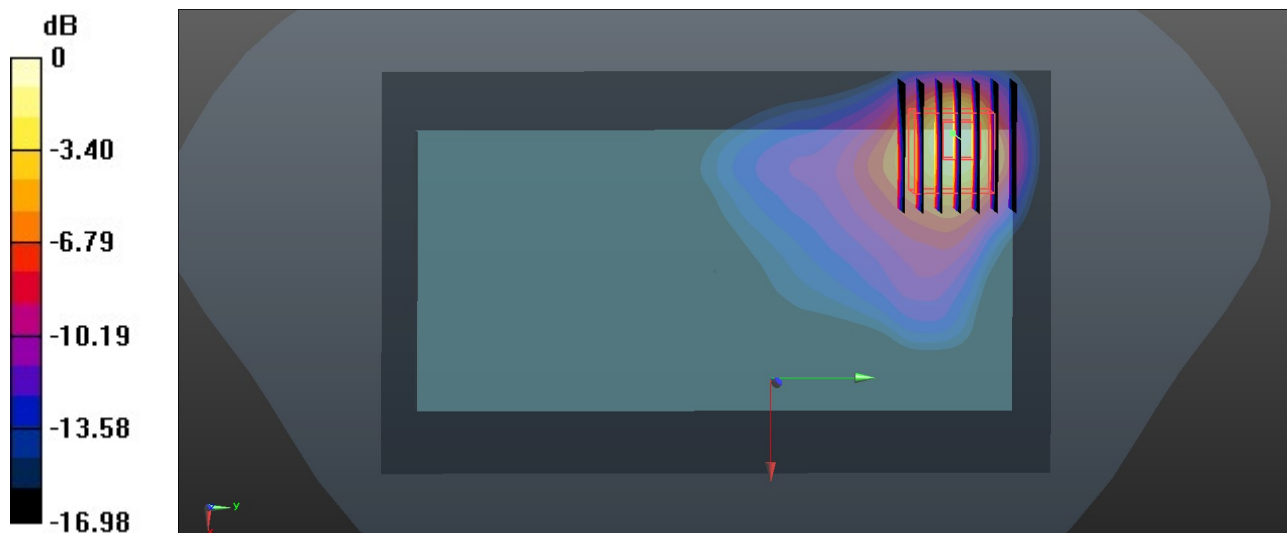
Ambient Temperature : 23.1 °C; Liquid Temperature : 22.6 °C

DASY5 Configuration:

- Probe: ES3DV3 - SN3279; ConvF(4.75, 4.75, 4.75); Calibrated: 2021.8.24
- Sensor-Surface: 3mm (Mechanical Surface Detection)
- Electronics: DAE4 Sn1338; Calibrated: 2021.12.1
- Phantom: SAM Twin Phantom; Type: SAM Twin; Serial: TP-1842
- Measurement SW: DASY52, Version 52.10 (4); SEMCAD X Version 14.6.14 (7483)

Area Scan (91x151x1): Interpolated grid: dx=1.200 mm, dy=1.200 mm
Maximum value of SAR (interpolated) = 1.21 W/kg

Zoom Scan (8x7x7)/Cube 0: Measurement grid: dx=5mm, dy=5mm, dz=5mm
Reference Value = 17.05 V/m; Power Drift = -0.03 dB
Peak SAR (extrapolated) = 2.22 W/kg
SAR(1 g) = 0.956 W/kg; SAR(10 g) = 0.427 W/kg
Maximum value of SAR (measured) = 1.22 W/kg



0 dB = 1.22 W/kg = 0.861 dBW/kg

36_Bluetooth_1Mbps_Back_5mm_Ch39

Communication System: UID 0, Bluetooth (0); Frequency: 2441 MHz; Duty Cycle: 1:1.293
Medium: HSL_2450 Medium parameters used: $f = 2441$ MHz; $\sigma = 1.802$ S/m; $\epsilon_r = 38.555$; $\rho = 1000$ kg/m³

Ambient Temperature : 23.1 °C; Liquid Temperature : 22.6 °C

DASY5 Configuration:

- Probe: ES3DV3 - SN3279; ConvF(4.75, 4.75, 4.75); Calibrated: 2021.8.24
- Sensor-Surface: 3mm (Mechanical Surface Detection)
- Electronics: DAE4 Sn1338; Calibrated: 2021.12.1
- Phantom: SAM Twin Phantom; Type: SAM Twin; Serial: TP-1842
- Measurement SW: DASY52, Version 52.10 (4); SEMCAD X Version 14.6.14 (7483)

Area Scan (91x91x1): Interpolated grid: dx=1.200 mm, dy=1.200 mm

Maximum value of SAR (interpolated) = 0.147 W/kg

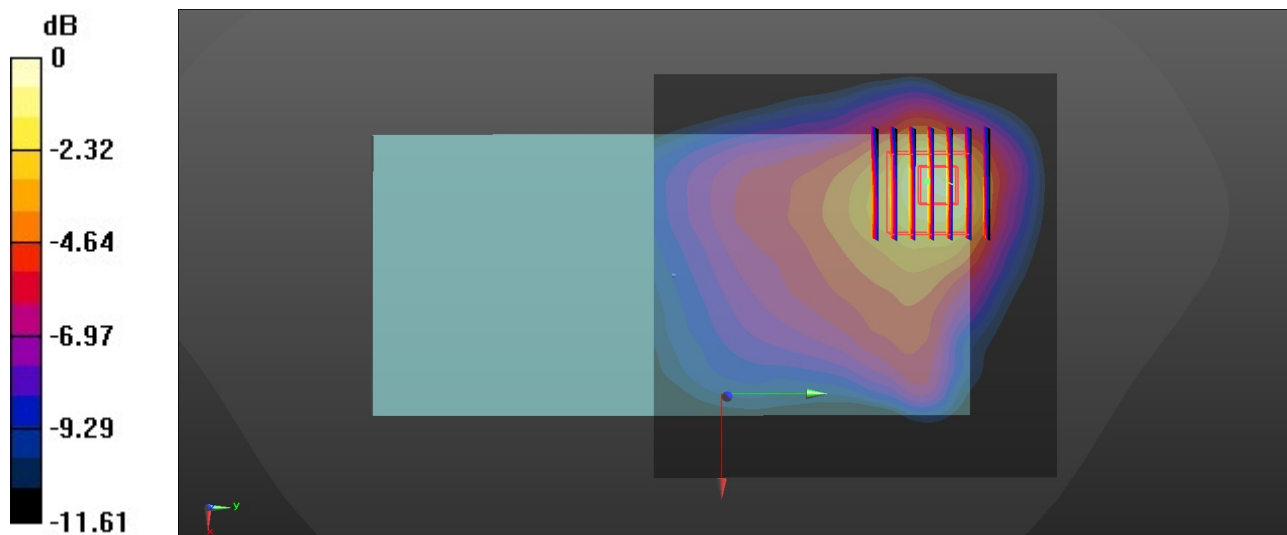
Zoom Scan (7x7x7)/Cube 0: Measurement grid: dx=5mm, dy=5mm, dz=5mm

Reference Value = 8.244 V/m; Power Drift = 0.03 dB

Peak SAR (extrapolated) = 0.244 W/kg

SAR(1 g) = 0.131 W/kg; SAR(10 g) = 0.057 W/kg

Maximum value of SAR (measured) = 0.149 W/kg



0 dB = 0.149 W/kg = -8.27 dBW/kg

37_WLAN5GHz_802.11a 6Mbps_Back_5mm_Ch36

Communication System: UID 0, WLAN5GHz (0); Frequency: 5180 MHz; Duty Cycle: 1:1.025
Medium: HSL_5000 Medium parameters used: $f = 5180 \text{ MHz}$; $\sigma = 4.497 \text{ S/m}$; $\epsilon_r = 36.51$; $\rho = 1000 \text{ kg/m}^3$

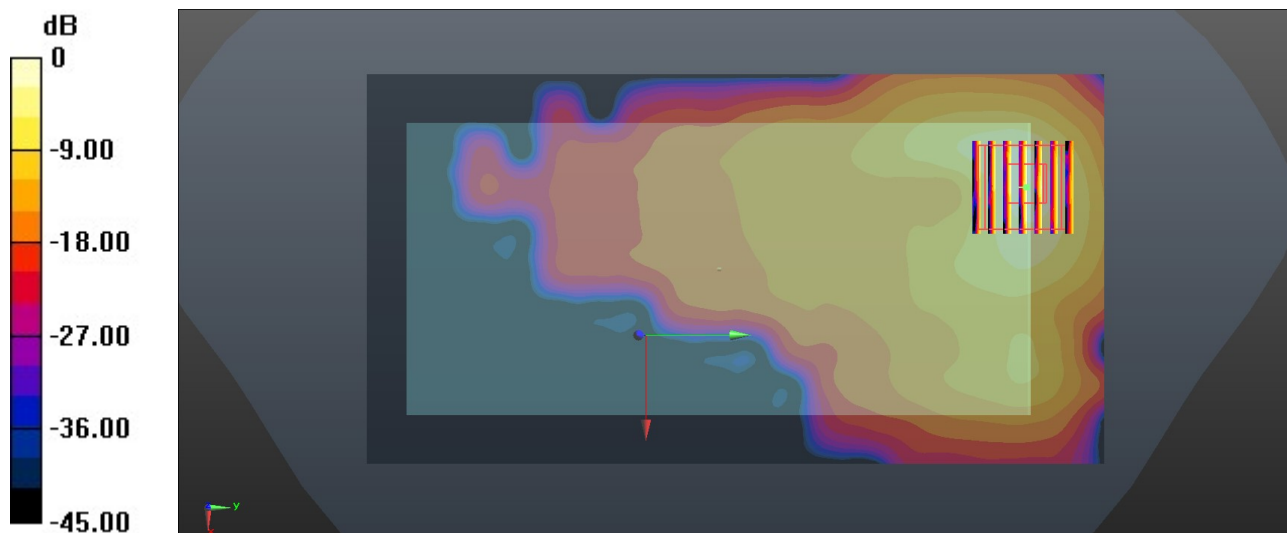
Ambient Temperature : 23.4 °C; Liquid Temperature : 22.9 °C

DASY5 Configuration:

- Probe: EX3DV4 - SN7684; ConvF(5.85, 5.85, 5.85); Calibrated: 2021.10.4
- Sensor-Surface: 1.4mm (Mechanical Surface Detection)
- Electronics: DAE4 Sn1303; Calibrated: 2021.6.18
- Phantom: SAM Twin Phantom; Type: SAM Twin; Serial: TP-1697
- Measurement SW: DASY52, Version 52.10 (4); SEMCAD X Version 14.6.14 (7483)

Area Scan (101x191x1): Interpolated grid: $dx=1.000 \text{ mm}$, $dy=1.000 \text{ mm}$
Maximum value of SAR (interpolated) = 1.40 W/kg

Zoom Scan (7x7x7)/Cube 0: Measurement grid: $dx=4\text{mm}$, $dy=4\text{mm}$, $dz=1.4\text{mm}$
Reference Value = 3.386 V/m; Power Drift = -0.08 dB
Peak SAR (extrapolated) = 2.54 W/kg
SAR(1 g) = 0.624 W/kg; SAR(10 g) = 0.194 W/kg
Maximum value of SAR (measured) = 1.59 W/kg



0 dB = 1.59 W/kg = 2.01 dBW/kg

38_WLAN5GHz_802.11n-HT40 MCS0_Back_5mm_Ch159

Communication System: UID 0, WLAN5GHz (0); Frequency: 5795 MHz; Duty Cycle: 1:1.059
Medium: HSL_5000 Medium parameters used: $f = 5795$ MHz; $\sigma = 5.174$ S/m; $\epsilon_r = 35.495$; $\rho = 1000$ kg/m³

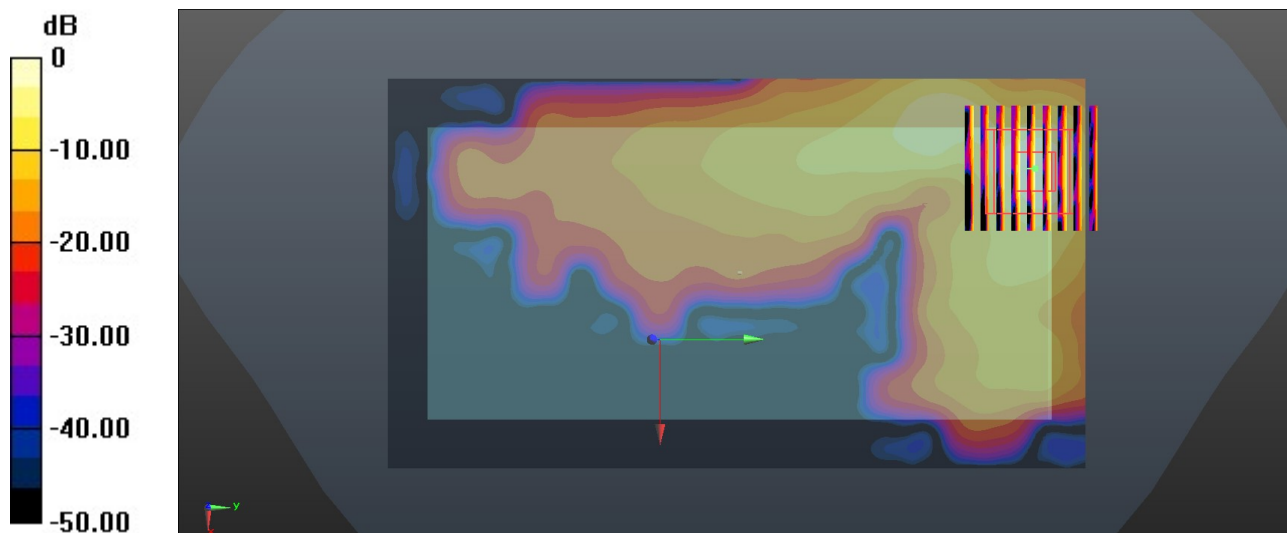
Ambient Temperature : 23.2 °C; Liquid Temperature : 22.9 °C

DASY5 Configuration:

- Probe: EX3DV4 - SN7684; ConvF(5.25, 5.25, 5.25); Calibrated: 2021.10.4
- Sensor-Surface: 1.4mm (Mechanical Surface Detection)
- Electronics: DAE4 Sn1303; Calibrated: 2021.6.18
- Phantom: SAM Twin Phantom; Type: SAM Twin; Serial: TP-1697
- Measurement SW: DASY52, Version 52.10 (4); SEMCAD X Version 14.6.14 (7483)

Area Scan (101x181x1): Interpolated grid: dx=1.000 mm, dy=1.000 mm
Maximum value of SAR (interpolated) = 2.89 W/kg

Zoom Scan (9x9x7)/Cube 0: Measurement grid: dx=4mm, dy=4mm, dz=1.4mm
Reference Value = 3.064 V/m; Power Drift = 0.04 dB
Peak SAR (extrapolated) = 5.11 W/kg
SAR(1 g) = 0.821 W/kg; SAR(10 g) = 0.286 W/kg
Maximum value of SAR (measured) = 2.86 W/kg



0 dB = 2.86 W/kg = 4.56 dBW/kg

39_WCDMA V_RMC 12.2Kbps_Back_0mm_Ch4182

Communication System: UID 0, WCDMA (0); Frequency: 836.4 MHz; Duty Cycle: 1:1
Medium: HSL_835 Medium parameters used: $f = 836.4$ MHz; $\sigma = 0.93$ S/m; $\epsilon_r = 40.921$; $\rho = 1000$ kg/m³

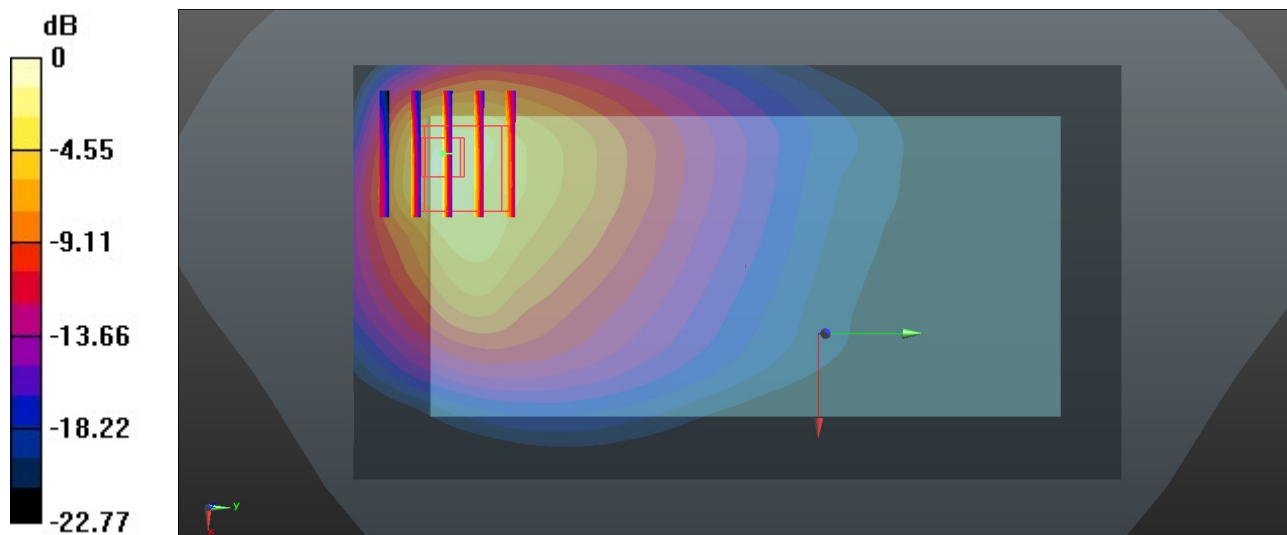
Ambient Temperature : 23.2 °C; Liquid Temperature : 22.8 °C

DASY5 Configuration:

- Probe: ES3DV3 - SN3279; ConvF(6.23, 6.23, 6.23); Calibrated: 2021.8.24
- Sensor-Surface: 3mm (Mechanical Surface Detection)
- Electronics: DAE4 Sn1338; Calibrated: 2021.12.1
- Phantom: SAM Twin Phantom; Type: SAM Twin; Serial: TP-1842
- Measurement SW: DASY52, Version 52.10 (4); SEMCAD X Version 14.6.14 (7483)

Area Scan (71x131x1): Interpolated grid: dx=1.500 mm, dy=1.500 mm
Maximum value of SAR (interpolated) = 3.67 W/kg

Zoom Scan (5x5x7)/Cube 0: Measurement grid: dx=8mm, dy=8mm, dz=5mm
Reference Value = 54.22 V/m; Power Drift = 0.06 dB
Peak SAR (extrapolated) = 11.0 W/kg
SAR(1 g) = 3.55 W/kg; SAR(10 g) = 1.66 W/kg
Maximum value of SAR (measured) = 5.02 W/kg



0 dB = 5.02 W/kg = 7.01 dBW/kg

40_LTE Band 26_15M_QPSK_1RB_0Offset_Back_0mm_Ch26865

Communication System: UID 0, LTE-FDD (0); Frequency: 831.5 MHz;Duty Cycle: 1:1
 Medium: HSL_835 Medium parameters used: $f = 831.5$ MHz; $\sigma = 0.928$ S/m; $\epsilon_r = 40.914$; $\rho = 1000$ kg/m³

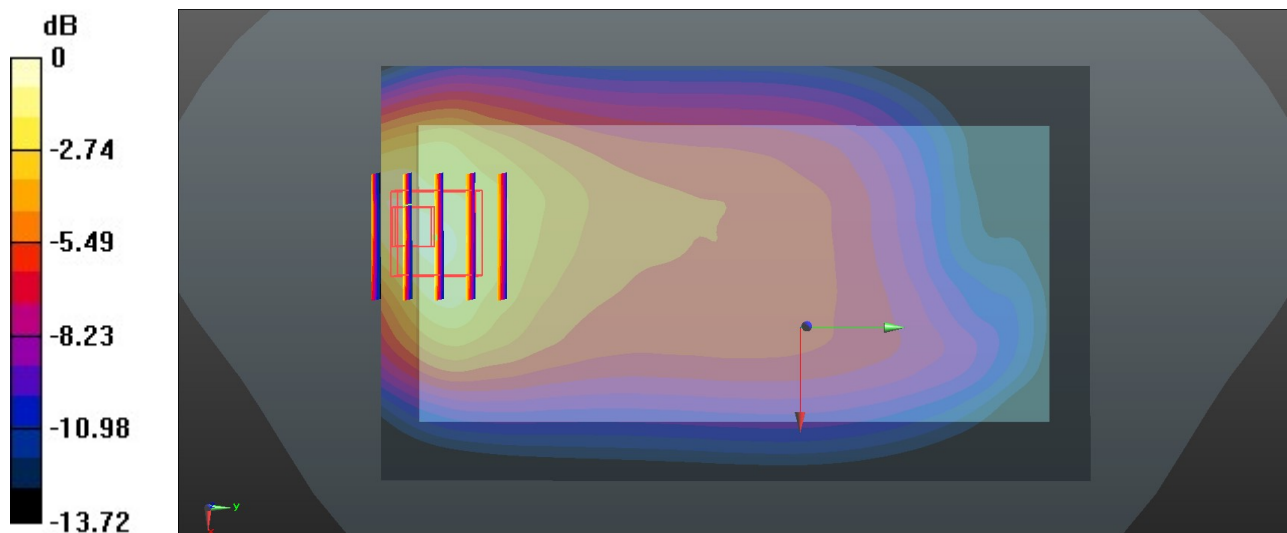
Ambient Temperature : 23.2 °C; Liquid Temperature : 22.8 °C

DASY5 Configuration:

- Probe: ES3DV3 - SN3279; ConvF(6.23, 6.23, 6.23); Calibrated: 2021.8.24
- Sensor-Surface: 3mm (Mechanical Surface Detection)
- Electronics: DAE4 Sn1338; Calibrated: 2021.12.1
- Phantom: SAM Twin Phantom; Type: SAM Twin; Serial: TP-1842
- Measurement SW: DASY52, Version 52.10 (4); SEMCAD X Version 14.6.14 (7483)

Area Scan (71x121x1): Interpolated grid: dx=1.500 mm, dy=1.500 mm
 Maximum value of SAR (interpolated) = 1.99 W/kg

Zoom Scan (5x5x7)/Cube 0: Measurement grid: dx=8mm, dy=8mm, dz=5mm
 Reference Value = 37.72 V/m; Power Drift = 0.09 dB
 Peak SAR (extrapolated) = 11.7 W/kg
SAR(1 g) = 3.74 W/kg; SAR(10 g) = 1.75 W/kg
 Maximum value of SAR (measured) = 5.38 W/kg



0 dB = 5.38 W/kg = 7.31 dBW/kg

41_GSM1900_GPRS(2 Tx slots)_Back_0mm_Ch661

Communication System: UID 0, PCS (0); Frequency: 1880 MHz; Duty Cycle: 1:4.15

Medium: HSL_1900 Medium parameters used: $f = 1880$ MHz; $\sigma = 1.423$ S/m; $\epsilon_r = 39.937$; $\rho = 1000$ kg/m³

Ambient Temperature : 23.4 °C; Liquid Temperature : 22.6 °C

DASY5 Configuration:

- Probe: ES3DV3 - SN3279; ConvF(5.28, 5.28, 5.28); Calibrated: 2021.8.24
- Sensor-Surface: 3mm (Mechanical Surface Detection)
- Electronics: DAE4 Sn1338; Calibrated: 2021.12.1
- Phantom: SAM Twin Phantom; Type: SAM Twin; Serial: TP-1842
- Measurement SW: DASY52, Version 52.10 (4); SEMCAD X Version 14.6.14 (7483)

Area Scan (71x141x1): Interpolated grid: dx=1.500 mm, dy=1.500 mm

Maximum value of SAR (interpolated) = 3.83 W/kg

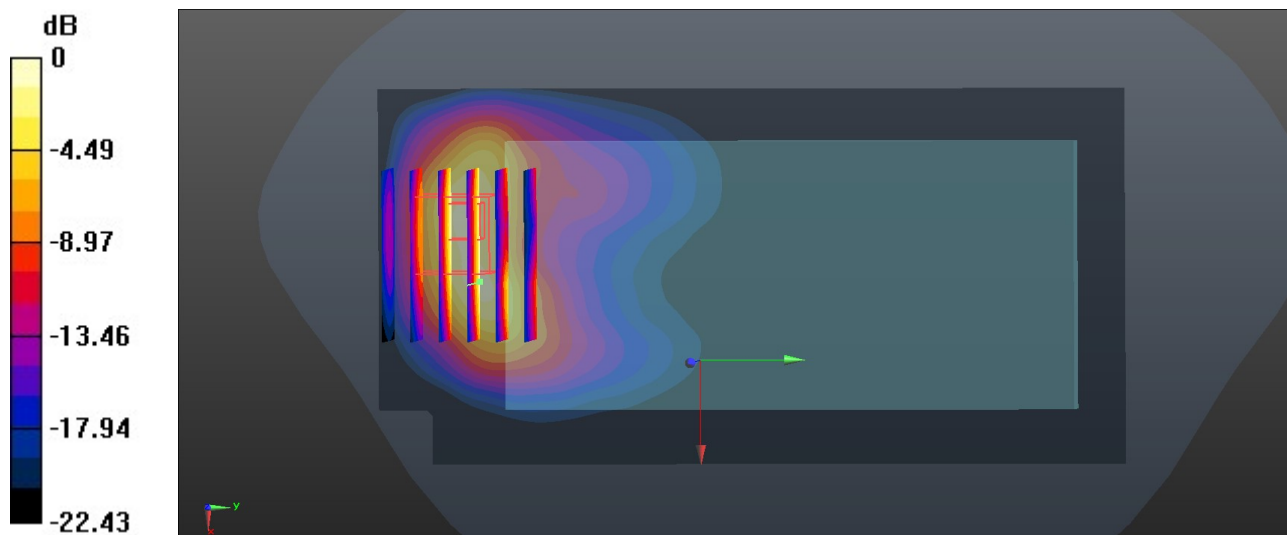
Zoom Scan (7x6x7)/Cube 0: Measurement grid: dx=8mm, dy=8mm, dz=5mm

Reference Value = 55.77 V/m; Power Drift = 0.16 dB

Peak SAR (extrapolated) = 9.32 W/kg

SAR(1 g) = 3.82 W/kg; SAR(10 g) = 1.57 W/kg

Maximum value of SAR (measured) = 4.62 W/kg



0 dB = 4.62 W/kg = 6.65 dBW/kg

42_WCDMA II_RMC 12.2Kbps_Back_0mm_Ch9262

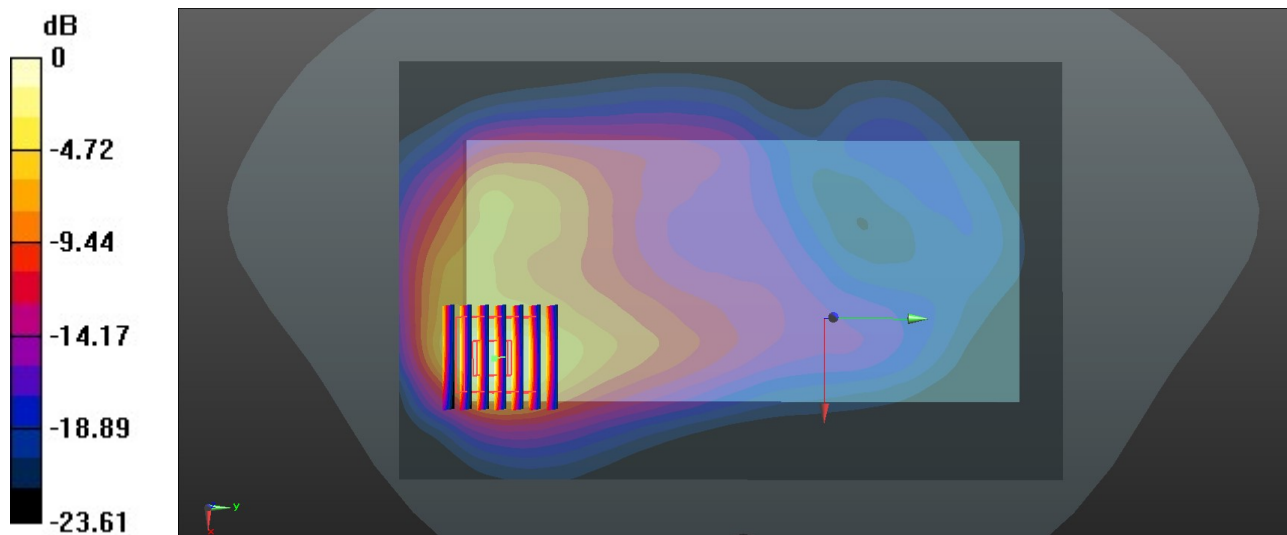
Communication System: UID 0, WCDMA (0); Frequency: 1852.4 MHz; Duty Cycle: 1:1
Medium: HSL_1900 Medium parameters used: $f = 1852.4$ MHz; $\sigma = 1.408$ S/m; $\epsilon_r = 39.963$; $\rho = 1000$ kg/m³
Ambient Temperature : 23.4 °C; Liquid Temperature : 22.6 °C

DASY5 Configuration:

- Probe: ES3DV3 - SN3279; ConvF(5.28, 5.28, 5.28); Calibrated: 2021.8.24
- Sensor-Surface: 3mm (Mechanical Surface Detection)
- Electronics: DAE4 Sn1338; Calibrated: 2021.12.1
- Phantom: SAM Twin Phantom; Type: SAM Twin; Serial: TP-1842
- Measurement SW: DASY52, Version 52.10 (4); SEMCAD X Version 14.6.14 (7483)

Area Scan (71x141x1): Interpolated grid: dx=1.500 mm, dy=1.500 mm
Maximum value of SAR (interpolated) = 5.93 W/kg

Zoom Scan (7x6x7)/Cube 0: Measurement grid: dx=8mm, dy=8mm, dz=5mm
Reference Value = 75.35 V/m; Power Drift = 0.05 dB
Peak SAR (extrapolated) = 14.8 W/kg
SAR(1 g) = 5.94 W/kg; SAR(10 g) = 2.52 W/kg
Maximum value of SAR (measured) = 7.44 W/kg



0 dB = 7.44 W/kg = 8.72 dBW/kg

43_LTE Band 2_20M_QPSK_1RB_0Offset_Back_0mm_Ch18700

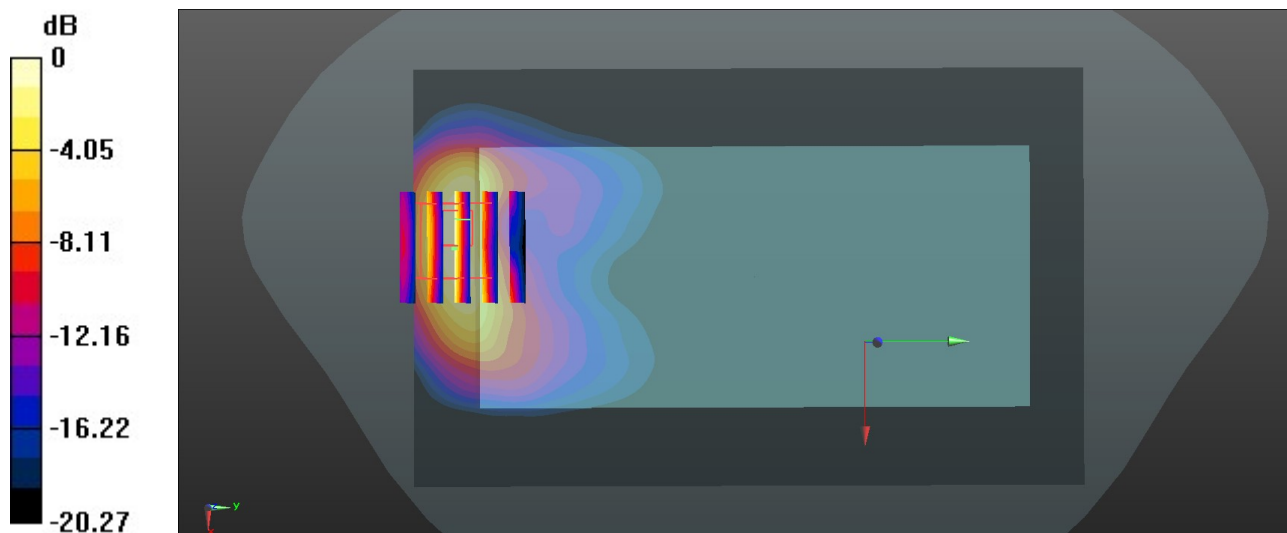
Communication System: UID 0, LTE-FDD (0); Frequency: 1860 MHz; Duty Cycle: 1:1
Medium: HSL_1900 Medium parameters used: $f = 1860$ MHz; $\sigma = 1.413$ S/m; $\epsilon_r = 39.958$; $\rho = 1000$ kg/m³
Ambient Temperature : 23.4 °C; Liquid Temperature : 22.6 °C

DASY5 Configuration:

- Probe: ES3DV3 - SN3279; ConvF(5.28, 5.28, 5.28); Calibrated: 2021.8.24
- Sensor-Surface: 3mm (Mechanical Surface Detection)
- Electronics: DAE4 Sn1338; Calibrated: 2021.12.1
- Phantom: SAM Twin Phantom; Type: SAM Twin; Serial: TP-1842
- Measurement SW: DASY52, Version 52.10 (4); SEMCAD X Version 14.6.14 (7483)

Area Scan (81x131x1): Interpolated grid: dx=1.500 mm, dy=1.500 mm
Maximum value of SAR (interpolated) = 8.86 W/kg

Zoom Scan (5x5x7)/Cube 0: Measurement grid: dx=8mm, dy=8mm, dz=5mm
Reference Value = 79.84 V/m; Power Drift = -0.02 dB
Peak SAR (extrapolated) = 13.4 W/kg
SAR(1 g) = 6.17 W/kg; SAR(10 g) = 2.69 W/kg
Maximum value of SAR (measured) = 9.45 W/kg



0 dB = 9.45 W/kg = 9.75 dBW/kg

44_LTE Band 7_20M_QPSK_1RB_0Offset_Back_0mm_Ch21100

Communication System: UID 0, LTE-FDD (0); Frequency: 2535 MHz; Duty Cycle: 1:1
Medium: HSL_2600 Medium parameters used: $f = 2535$ MHz; $\sigma = 1.86$ S/m; $\epsilon_r = 38.43$; $\rho = 1000$ kg/m³

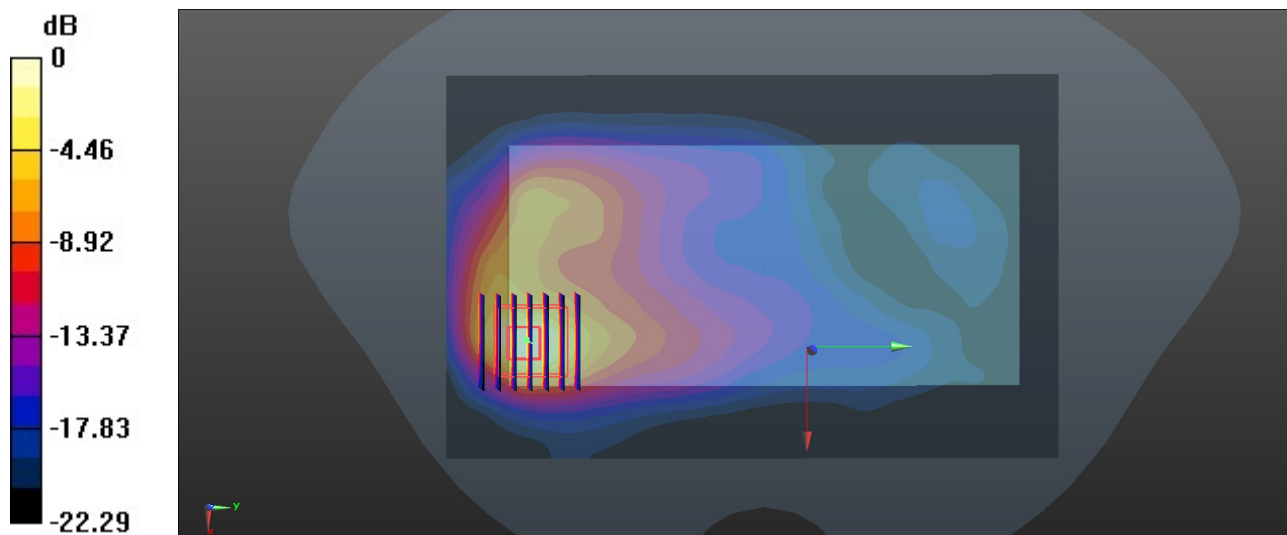
Ambient Temperature : 23.1 °C; Liquid Temperature : 22.8 °C

DASY5 Configuration:

- Probe: ES3DV3 - SN3279; ConvF(4.47, 4.47, 4.47); Calibrated: 2021.8.24
- Sensor-Surface: 3mm (Mechanical Surface Detection)
- Electronics: DAE4 Sn1338; Calibrated: 2021.12.1
- Phantom: SAM Twin Phantom; Type: SAM Twin; Serial: TP-1842
- Measurement SW: DASY52, Version 52.10 (4); SEMCAD X Version 14.6.14 (7483)

Area Scan (101x161x1): Interpolated grid: dx=1.200 mm, dy=1.200 mm
Maximum value of SAR (interpolated) = 5.32 W/kg

Zoom Scan (7x7x7)/Cube 0: Measurement grid: dx=5mm, dy=5mm, dz=5mm
Reference Value = 30.06 V/m; Power Drift = 0.05 dB
Peak SAR (extrapolated) = 9.37 W/kg
SAR(1 g) = 3.34 W/kg; SAR(10 g) = 1.39 W/kg
Maximum value of SAR (measured) = 9.37 W/kg



0 dB = 9.37 W/kg = 9.72 dBW/kg

45_LTE Band 41_20M_QPSK_1RB_0Offset_Back_0mm_Ch40620

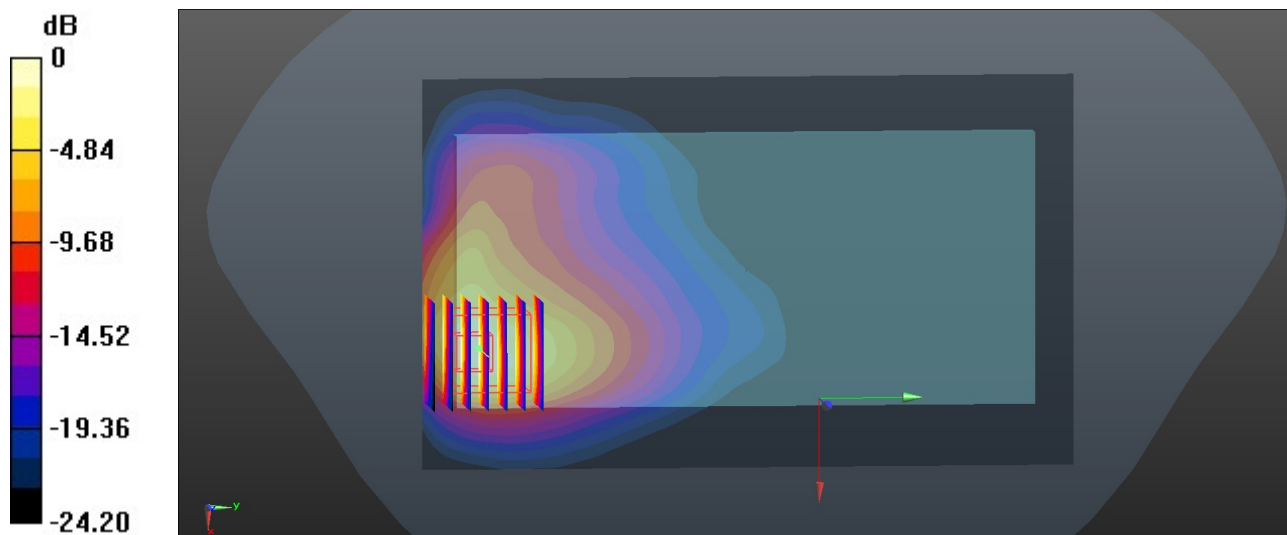
Communication System: UID 0, LTE-TDD (0); Frequency: 2593 MHz; Duty Cycle: 1:1.59
Medium: HSL_2600 Medium parameters used: $f = 2593$ MHz; $\sigma = 1.917$ S/m; $\epsilon_r = 38.224$; $\rho = 1000$ kg/m³
Ambient Temperature : 23.1 °C; Liquid Temperature : 22.8 °C

DASY5 Configuration:

- Probe: ES3DV3 - SN3279; ConvF(4.47, 4.47, 4.47); Calibrated: 2021.8.24
- Sensor-Surface: 3mm (Mechanical Surface Detection)
- Electronics: DAE4 Sn1338; Calibrated: 2021.12.1
- Phantom: SAM Twin Phantom; Type: SAM Twin; Serial: TP-1842
- Measurement SW: DASY52, Version 52.10 (4); SEMCAD X Version 14.6.14 (7483)

Area Scan (91x151x1): Interpolated grid: dx=1.200 mm, dy=1.200 mm
Maximum value of SAR (interpolated) = 3.74 W/kg

Zoom Scan (7x7x7)/Cube 0: Measurement grid: dx=5mm, dy=5mm, dz=5mm
Reference Value = 33.61 V/m; Power Drift = 0.06 dB
Peak SAR (extrapolated) = 9.59 W/kg
SAR(1 g) = 2.63 W/kg; SAR(10 g) = 1.09 W/kg
Maximum value of SAR (measured) = 3.57 W/kg



$0 \text{ dB} = 3.57 \text{ W/kg} = 5.53 \text{ dBW/kg}$

46_WLAN2.4GHz_802.11b 1Mbps_Back_0mm_Ch1

Communication System: UID 0, WLAN2.4GHz (0); Frequency: 2412 MHz; Duty Cycle: 1:1.021
Medium: HSL_2450 Medium parameters used: $f = 2412$ MHz; $\sigma = 1.695$ S/m; $\epsilon_r = 38.398$; $\rho = 1000$ kg/m³

Ambient Temperature : 23.1 °C; Liquid Temperature : 22.6 °C

DASY5 Configuration:

- Probe: EX3DV4 - SN3279; ConvF(4.75, 4.75, 4.75); Calibrated: 2021.8.24
- Sensor-Surface: 1.4mm (Mechanical Surface Detection)
- Electronics: DAE4 Sn1338; Calibrated: 2021.12.1
- Phantom: SAM Twin Phantom; Type: SAM Twin; Serial: TP-2022
- Measurement SW: DASY52, Version 52.10 (4); SEMCAD X Version 14.6.14 (7483)

Area Scan (91x91x1): Interpolated grid: dx=1.200 mm, dy=1.200 mm

Maximum value of SAR (interpolated) = 3.91 W/kg

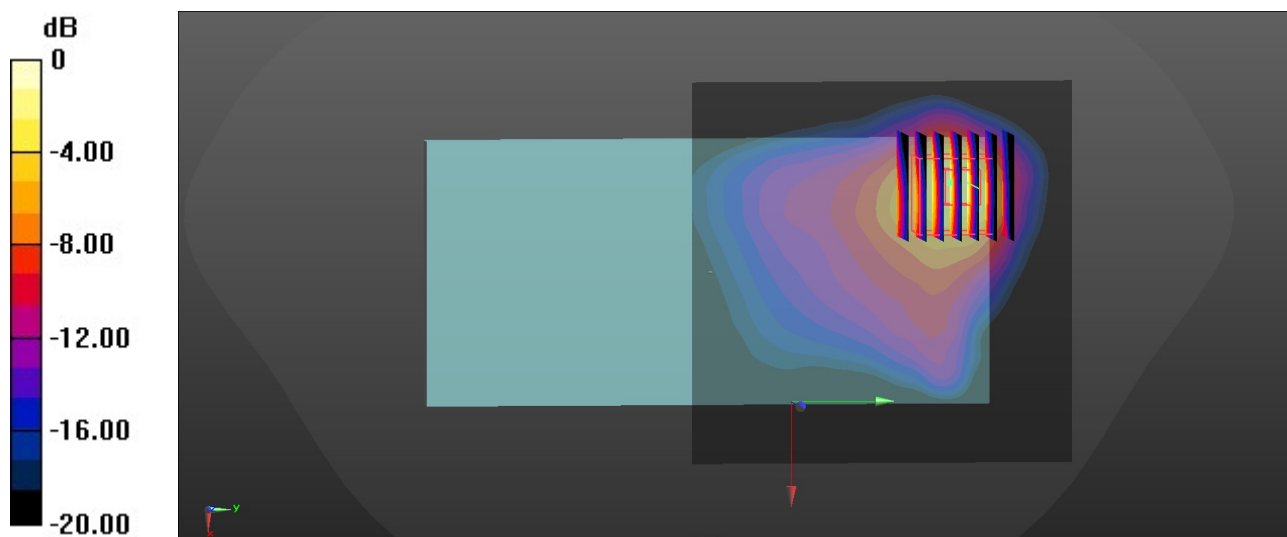
Zoom Scan (7x7x7)/Cube 0: Measurement grid: dx=5mm, dy=5mm, dz=5mm

Reference Value = 6.361 V/m; Power Drift = 0.05 dB

Peak SAR (extrapolated) = 6.68 W/kg

SAR(1 g) = 2.58 W/kg; SAR(10 g) = 1.12 W/kg

Maximum value of SAR (measured) = 5.10 W/kg



0 dB = 5.10 W/kg = 7.08 dBW/kg

47_WLAN5GHz_802.11a 6Mbps_Back_0mm_Ch36

Communication System: UID 0, WLAN5GHz (0); Frequency: 5180 MHz; Duty Cycle: 1:1.025
Medium: HSL_5000 Medium parameters used: $f = 5180$ MHz; $\sigma = 4.514$ S/m; $\epsilon_r = 36.452$; $\rho = 1000$ kg/m³

Ambient Temperature : 23.2 °C; Liquid Temperature : 22.9 °C

DASY5 Configuration:

- Probe: EX3DV4 - SN7627; ConvF(5.69, 5.69, 5.69); Calibrated: 2021.2.10
- Sensor-Surface: 1.4mm (Mechanical Surface Detection)
- Electronics: DAE4 Sn1279; Calibrated: 2021.9.21
- Phantom: SAM Twin Phantom; Type: SAM Twin; Serial: TP-2022
- Measurement SW: DASY52, Version 52.10 (4); SEMCAD X Version 14.6.14 (7483)

Area Scan (101x111x1): Interpolated grid: dx=1.000 mm, dy=1.000 mm

Maximum value of SAR (interpolated) = 10.7 W/kg

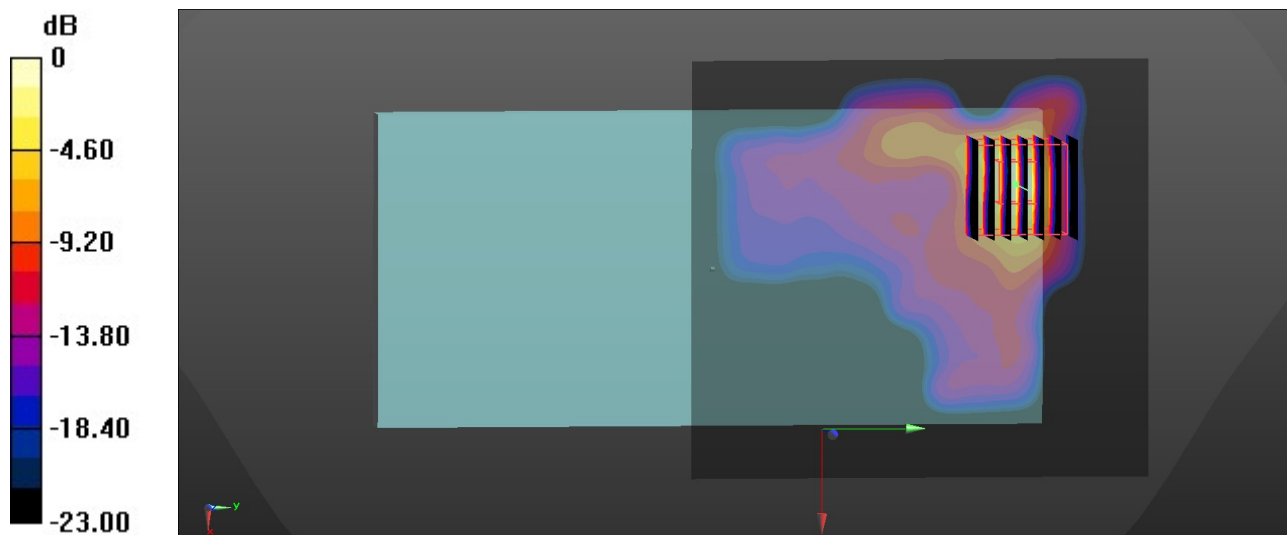
Zoom Scan (7x7x7)/Cube 0: Measurement grid: dx=4mm, dy=4mm, dz=1.4mm

Reference Value = 4.952 V/m; Power Drift = 0.06 dB

Peak SAR (extrapolated) = 16.6 W/kg

SAR(1 g) = 3.53 W/kg; SAR(10 g) = 0.961 W/kg

Maximum value of SAR (measured) = 10.1 W/kg



48_WLAN5GHz_802.11a 6Mbps_Top Side_0mm_Ch52

Communication System: UID 0, WLAN5GHz (0); Frequency: 5260 MHz; Duty Cycle: 1:1.025
Medium: HSL_5000 Medium parameters used: $f = 5260$ MHz; $\sigma = 4.605$ S/m; $\epsilon_r = 36.249$; $\rho = 1000$ kg/m³

Ambient Temperature : 23.4 °C; Liquid Temperature : 22.9 °C

DASY5 Configuration:

- Probe: EX3DV4 - SN7627; ConvF(5.69, 5.69, 5.69); Calibrated: 2021.2.10
- Sensor-Surface: 1.4mm (Mechanical Surface Detection)
- Electronics: DAE4 Sn1279; Calibrated: 2021.9.21
- Phantom: SAM Twin Phantom; Type: SAM Twin; Serial: TP-2022
- Measurement SW: DASY52, Version 52.10 (4); SEMCAD X Version 14.6.14 (7483)

Area Scan (51x111x1): Interpolated grid: dx=1.000 mm, dy=1.000 mm

Maximum value of SAR (interpolated) = 9.79 W/kg

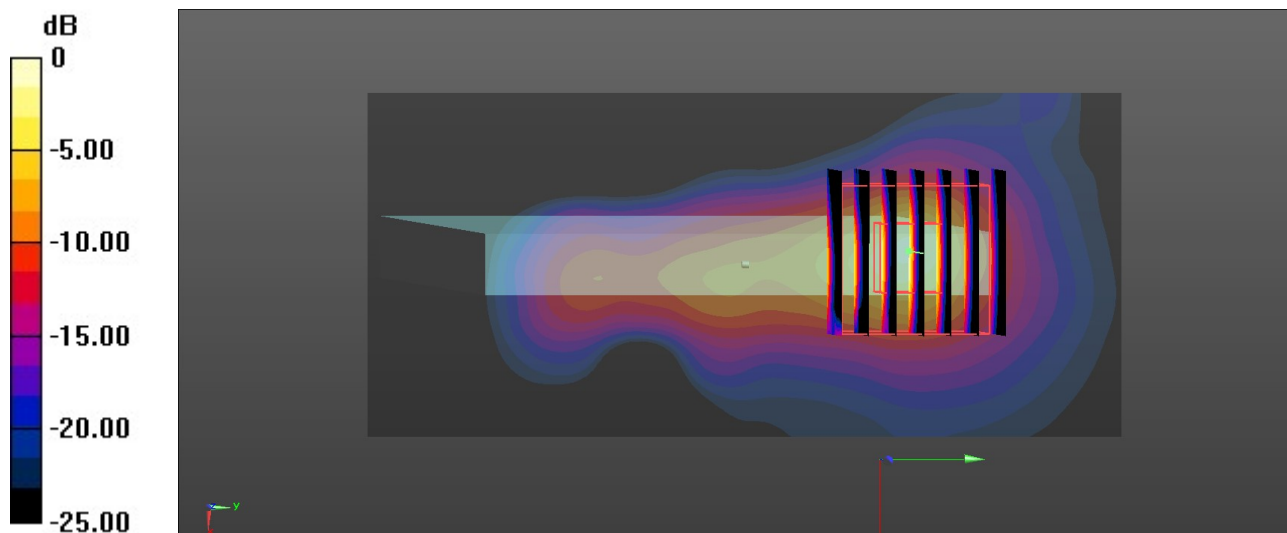
Zoom Scan (7x7x7)/Cube 0: Measurement grid: dx=4mm, dy=4mm, dz=1.4mm

Reference Value = 27.71 V/m; Power Drift = 0.08 dB

Peak SAR (extrapolated) = 24.2 W/kg

SAR(1 g) = 4.42 W/kg; SAR(10 g) = 0.971 W/kg

Maximum value of SAR (measured) = 13.0 W/kg



0 dB = 13.0 W/kg = 11.14 dBW/kg

49_WLAN5GHz_802.11a 6Mbps_Top Side_0mm_Ch100

Communication System: UID 0, WLAN5GHz (0); Frequency: 5500 MHz; Duty Cycle: 1:1.025
Medium: HSL_5000 Medium parameters used: $f = 5500$ MHz; $\sigma = 4.866$ S/m; $\epsilon_r = 35.877$; $\rho = 1000$ kg/m³

Ambient Temperature : 23.3 °C; Liquid Temperature : 22.7 °C

DASY5 Configuration:

- Probe: EX3DV4 - SN7627; ConvF(4.89, 4.89, 4.89); Calibrated: 2021.2.10
- Sensor-Surface: 1.4mm (Mechanical Surface Detection)
- Electronics: DAE4 Sn1279; Calibrated: 2021.9.21
- Phantom: SAM Twin Phantom; Type: SAM Twin; Serial: TP-2022
- Measurement SW: DASY52, Version 52.10 (4); SEMCAD X Version 14.6.14 (7483)

Area Scan (51x111x1): Interpolated grid: dx=1.000 mm, dy=1.000 mm

Maximum value of SAR (interpolated) = 12.7 W/kg

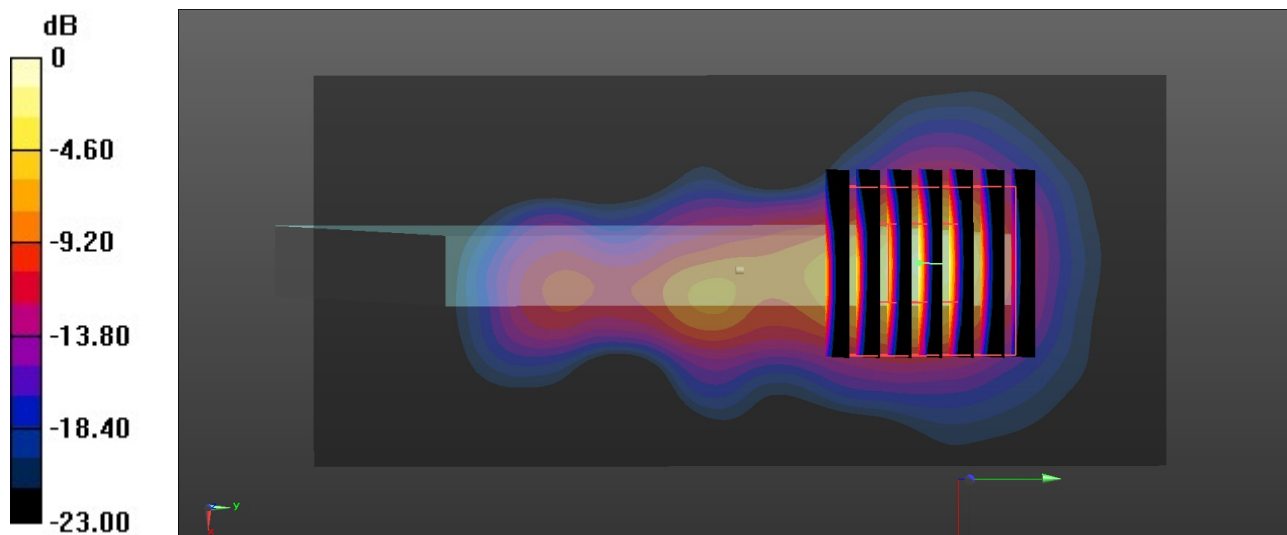
Zoom Scan (7x7x7)/Cube 0: Measurement grid: dx=4mm, dy=4mm, dz=1.4mm

Reference Value = 32.99 V/m; Power Drift = 0.05 dB

Peak SAR (extrapolated) = 31.6 W/kg

SAR(1 g) = 5.56 W/kg; SAR(10 g) = 1.16 W/kg

Maximum value of SAR (measured) = 17.8 W/kg



0 dB = 17.8 W/kg = 12.50 dBW/kg

50_WLAN5GHz_802.11a 6Mbps_Top Side_0mm_Ch157

Communication System: UID 0, WLAN5GHz (0); Frequency: 5785 MHz; Duty Cycle: 1:1.025
Medium: HSL_5000 Medium parameters used: $f = 5785$ MHz; $\sigma = 5.177$ S/m; $\epsilon_r = 35.494$; $\rho = 1000$ kg/m³

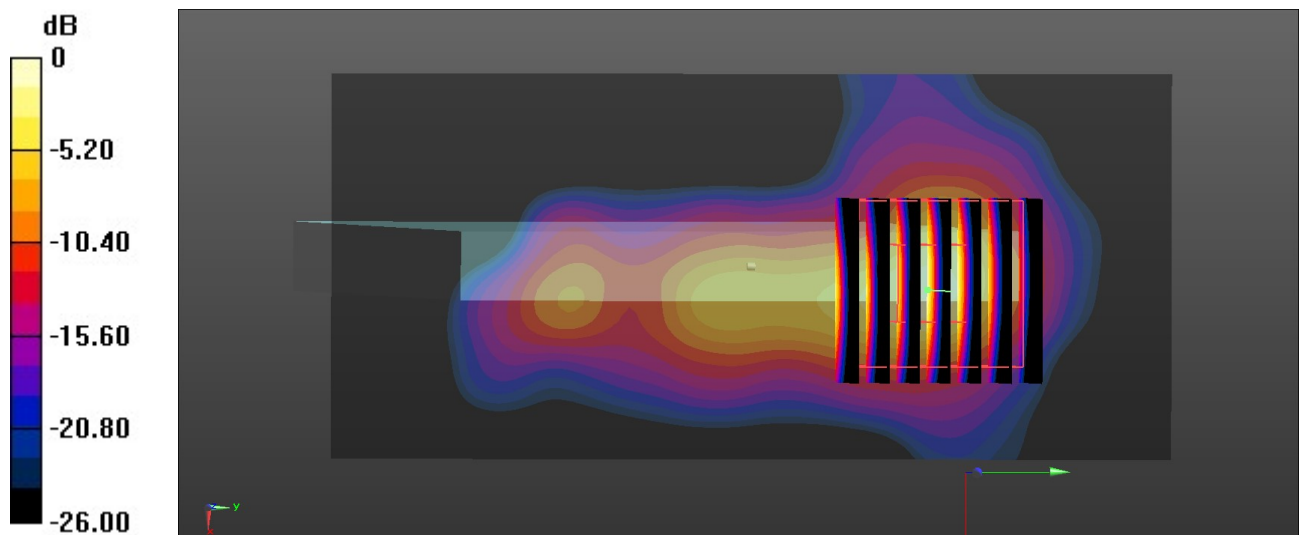
Ambient Temperature : 23.2 °C; Liquid Temperature : 22.9 °C

DASY5 Configuration:

- Probe: EX3DV4 - SN7627; ConvF(4.92, 4.92, 4.92); Calibrated: 2021.2.10
- Sensor-Surface: 1.4mm (Mechanical Surface Detection)
- Electronics: DAE4 Sn1279; Calibrated: 2021.9.21
- Phantom: SAM Twin Phantom; Type: SAM Twin; Serial: TP-2022
- Measurement SW: DASY52, Version 52.10 (4); SEMCAD X Version 14.6.14 (7483)

Area Scan (51x111x1): Interpolated grid: dx=1.000 mm, dy=1.000 mm
Maximum value of SAR (interpolated) = 18.3 W/kg

Zoom Scan (7x7x7)/Cube 0: Measurement grid: dx=4mm, dy=4mm, dz=1.4mm
Reference Value = 31.59 V/m; Power Drift = 0.09 dB
Peak SAR (extrapolated) = 39.2 W/kg
SAR(1 g) = 6.89 W/kg; SAR(10 g) = 1.57 W/kg
Maximum value of SAR (measured) = 19.7 W/kg



0 dB = 19.7 W/kg = 12.94 dBW/kg