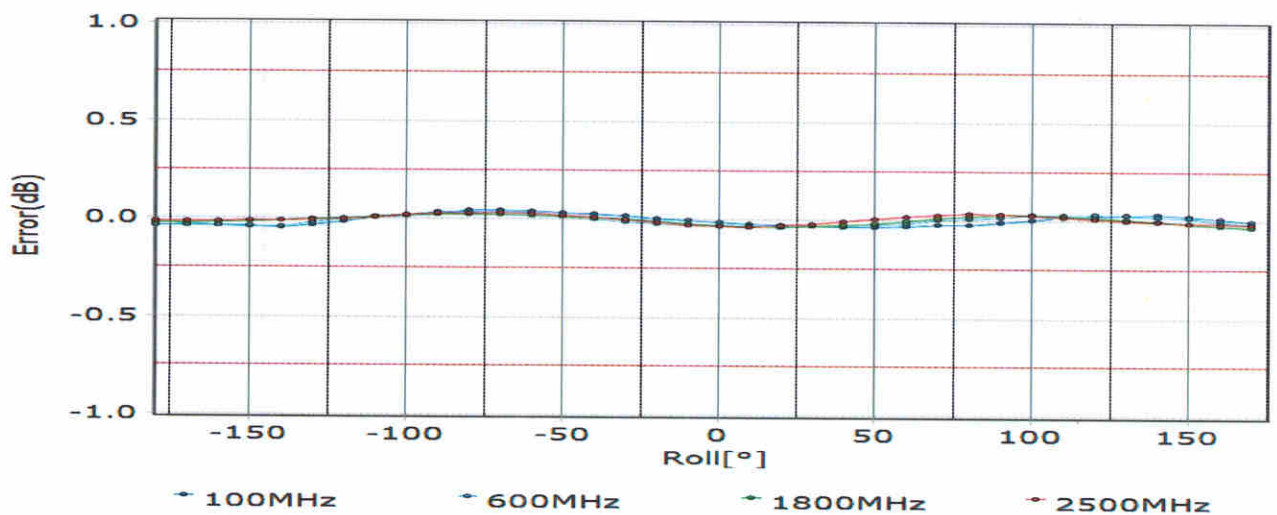
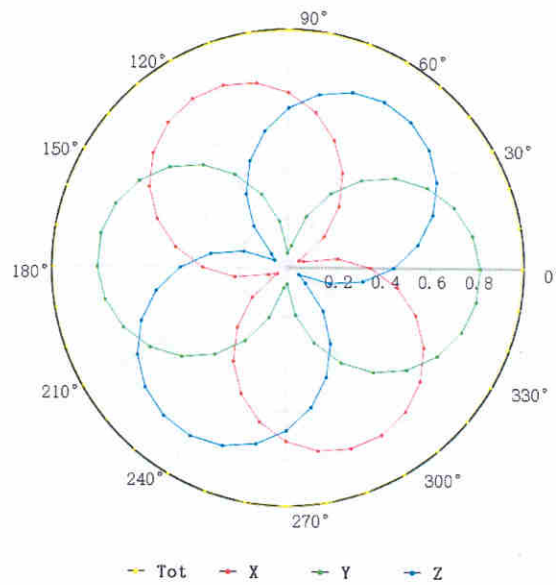
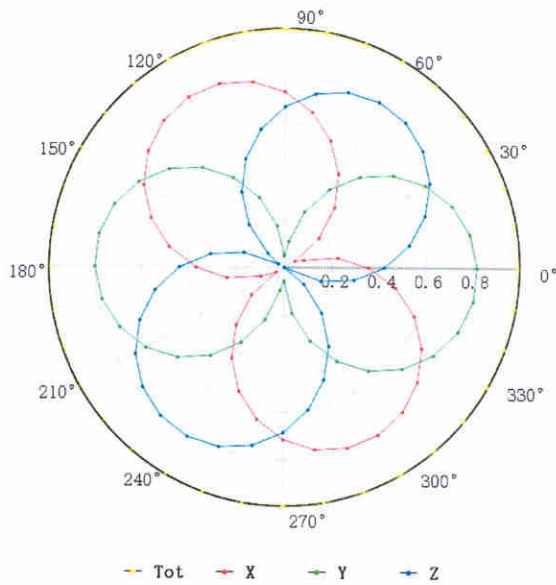




## Receiving Pattern ( $\Phi$ ), $\theta=0^\circ$

**f=600 MHz, TEM**

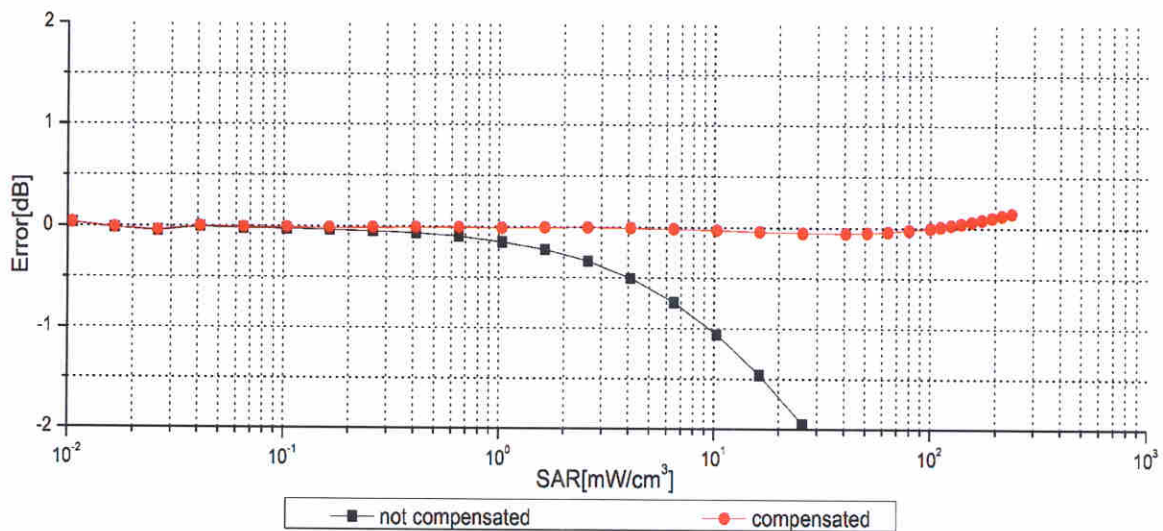
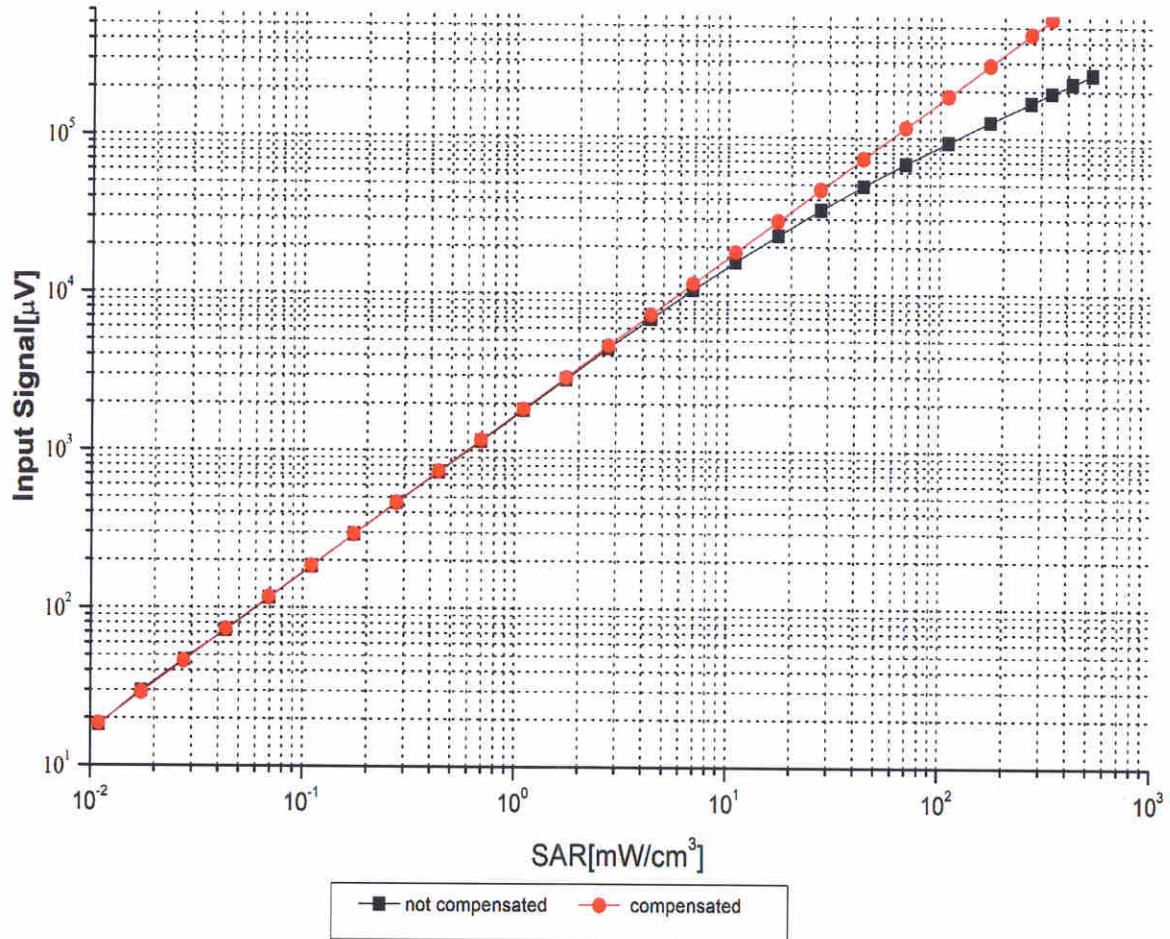
**f=1800 MHz, R22**



Uncertainty of Axial Isotropy Assessment:  $\pm 1.2\%$  ( $k=2$ )



## Dynamic Range $f(\text{SAR}_{\text{head}})$ (TEM cell, $f = 900 \text{ MHz}$ )



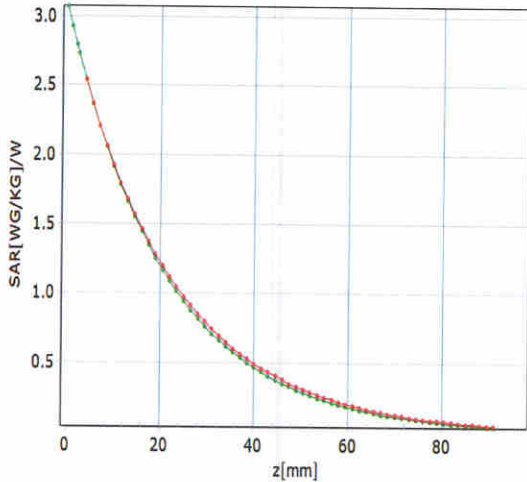
Uncertainty of Linearity Assessment:  $\pm 0.9\%$  ( $k=2$ )



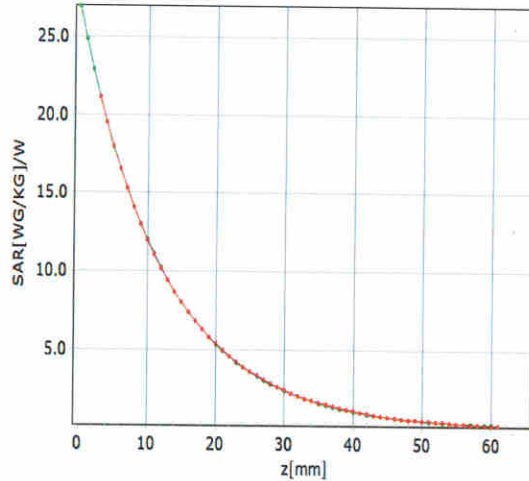
## Conversion Factor Assessment

f=750 MHz,WGLS R9(H\_convF)

f=1750 MHz,WGLS R22(H\_convF)

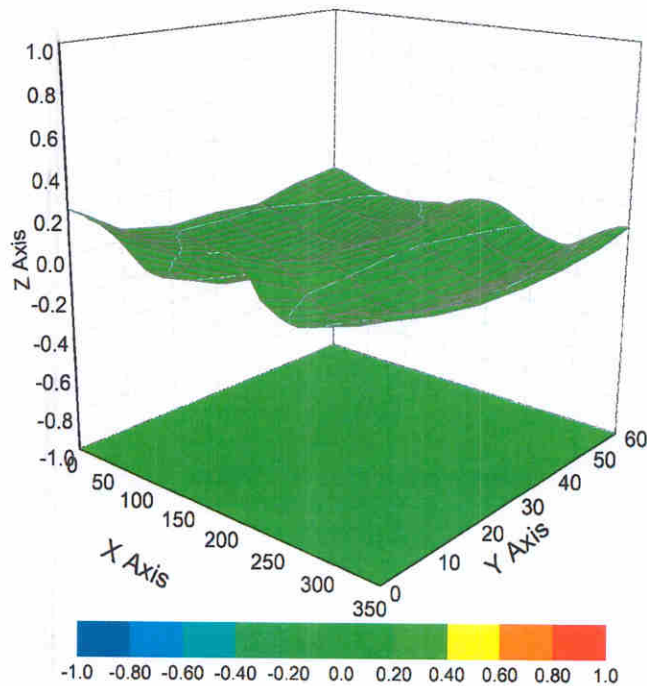


\* analytical \* measured



\* analytical \* measured

## Deviation from Isotropy in Liquid



Uncertainty of Spherical Isotropy Assessment:  $\pm 3.2\%$  ( $k=2$ )



Add: No.52 HuaYuanBei Road, Haidian District, Beijing, 100191, China  
Tel: +86-10-62304633-2512 Fax: +86-10-62304633-2504  
E-mail: [cttl@chinattl.com](mailto:cttl@chinattl.com) [Http://www.chinattl.cn](http://www.chinattl.cn)

## DASY/EASY – Parameters of Probe: EX3DV4 – SN:3975

### Other Probe Parameters

<b>Sensor Arrangement</b>	<b>Triangular</b>
<b>Connector Angle (°)</b>	<b>86.5</b>
<b>Mechanical Surface Detection Mode</b>	<b>enabled</b>
<b>Optical Surface Detection Mode</b>	<b>disable</b>
<b>Probe Overall Length</b>	<b>337mm</b>
<b>Probe Body Diameter</b>	<b>10mm</b>
<b>Tip Length</b>	<b>9mm</b>
<b>Tip Diameter</b>	<b>2.5mm</b>
<b>Probe Tip to Sensor X Calibration Point</b>	<b>1mm</b>
<b>Probe Tip to Sensor Y Calibration Point</b>	<b>1mm</b>
<b>Probe Tip to Sensor Z Calibration Point</b>	<b>1mm</b>
<b>Recommended Measurement Distance from Surface</b>	<b>1.4mm</b>



## **Appendix E. Conducted RF Output Power Table**

The detailed power table are shown as follows.



Full Power Mode for WWAN

GSM850	Burst Average Power (dBm)			Tune-up Limit (dBm)	Frame-Average Power (dBm)			Tune-up Limit (dBm)
	TX Channel	128	189		251	128	189	
Frequency (MHz)	824.2	836.4	848.8		824.2	836.4	848.8	
GSM 1 Tx slot	32.24	32.33	32.31	33.50	23.24	23.33	23.31	24.50
GPRS 1 Tx slot	32.32	32.37	32.35	33.50	23.32	23.37	23.35	24.50
GPRS 2 Tx slots	30.74	30.78	30.82	32.00	24.74	24.78	24.82	26.00
GPRS 3 Tx slots	29.77	29.81	29.83	30.00	25.51	25.55	25.57	26.74
GPRS 4 Tx slots	27.74	27.77	27.71	28.00	24.74	24.77	24.71	25.00
EDGE 1 Tx slot	27.33	27.33	27.28	28.50	18.33	18.33	18.28	19.50
EDGE 2 Tx slots	25.87	26.12	26.11	27.00	19.87	20.12	20.11	21.00
EDGE 3 Tx slots	23.72	23.56	23.67	24.50	19.46	19.30	19.41	20.24
EDGE 4 Tx slots	22.24	22.24	22.18	23.00	19.24	19.24	19.18	20.00

GSM1900	Burst Average Power (dBm)			Tune-up Limit (dBm)	Frame-Average Power (dBm)			Tune-up Limit (dBm)
	TX Channel	512	661		810	512	661	
Frequency (MHz)	1850.2	1860	1800.8		1850.2	1860	1800.8	
GSM 1 Tx slot	29.46	29.54	29.63	30.50	20.46	20.54	20.63	21.50
GPRS 1 Tx slot	29.43	29.54	29.61	30.50	20.43	20.54	20.61	21.50
GPRS 2 Tx slots	27.90	28.01	28.08	29.50	21.90	22.01	22.08	23.50
GPRS 3 Tx slots	26.93	27.04	27.10	27.50	22.67	22.78	22.84	23.24
GPRS 4 Tx slots	24.91	24.96	25.04	25.50	21.91	21.96	22.04	22.50
EDGE 1 Tx slot	26.30	26.16	26.16	27.50	17.30	17.16	17.16	18.50
EDGE 2 Tx slots	25.18	25.20	25.12	26.50	19.18	19.20	19.12	20.50
EDGE 3 Tx slots	23.26	23.17	23.12	24.50	19.00	18.91	18.86	20.24
EDGE 4 Tx slots	22.06	22.19	22.02	23.50	19.06	19.19	19.02	20.50

Band	WCDMA II			Tune-up Limit (dBm)	WCDMA V			Tune-up Limit (dBm)
	TX Channel	9262	9400		9538	4132	4182	
Rx Channel	8662	8800	9038		4357	4407	4458	
Frequency (MHz)	1852.4	1880	1907.6		826.4	836.4	846.6	
3GPP Rel 99 AMR 12.2Kbps	22.66	22.68	22.53	24.00	22.62	22.67	22.65	24.00
3GPP Rel 99 RMC 12.2Kbps	22.67	22.89	22.63	24.00	22.80	22.88	22.86	24.00
3GPP Rel 6 HSDPA Subtest-1	21.71	21.69	21.61	23.00	21.95	21.81	21.86	23.00
3GPP Rel 6 HSDPA Subtest-2	21.69	21.77	21.46	23.00	21.81	21.81	21.82	23.00
3GPP Rel 6 HSDPA Subtest-3	21.19	21.19	21.04	22.50	21.50	21.41	21.20	22.50
3GPP Rel 6 HSDPA Subtest-4	21.12	21.22	20.99	22.50	21.36	21.20	21.17	22.50
3GPP Rel 8 DC-HSDPA Subtest-1	21.81	21.93	21.80	23.00	21.86	21.97	21.97	23.00
3GPP Rel 8 DC-HSDPA Subtest-2	21.69	21.85	21.59	23.00	21.77	21.74	21.88	23.00
3GPP Rel 8 DC-HSDPA Subtest-3	21.28	21.26	21.23	22.50	21.49	21.53	21.45	22.50
3GPP Rel 8 DC-HSDPA Subtest-4	21.22	21.21	21.13	22.50	21.49	21.43	21.31	22.50
3GPP Rel 6 HSUPA Subtest-1	20.75	20.67	20.60	22.50	20.69	20.77	20.73	22.50
3GPP Rel 6 HSUPA Subtest-2	20.18	20.49	20.41	20.50	20.35	20.37	20.46	20.50
3GPP Rel 6 HSUPA Subtest-3	21.14	21.25	21.39	21.50	21.21	21.25	21.30	21.50
3GPP Rel 6 HSUPA Subtest-4	19.43	19.88	19.70	20.50	19.72	19.85	19.84	20.50
3GPP Rel 6 HSUPA Subtest-5	21.57	21.27	21.21	22.50	21.36	21.38	21.33	22.50



Band 5 (Cellular Band)									
BW [MHz]	Modulation	RB Size	RB Offset	Power Low Ch. / Freq.	Power Middle Ch. / Freq.	Power High Ch. / Freq.	Tune-up limit (dBm)	MPR (dB)	
Channel				20450	20525	20600			
Frequency (MHz)				829	836.5	844			
10	QPSK	1	0	22.41	22.34	22.27	24	0	
10	QPSK	1	25	22.48	22.52	22.40			
10	QPSK	1	49	22.32	22.28	22.17			
10	QPSK	25	0	21.52	21.54	21.43	23	1	
10	QPSK	25	12	21.51	21.49	21.39			
10	QPSK	25	25	21.50	21.45	21.39			
10	QPSK	50	0	21.49	21.50	21.40	23	1	
10	16QAM	1	0	21.66	21.63	21.60			
10	16QAM	1	25	21.82	21.79	21.70			
10	16QAM	1	49	21.65	21.63	21.49	22	2	
10	16QAM	25	0	20.49	20.53	20.42			
10	16QAM	25	12	20.49	20.48	20.39			
10	16QAM	25	25	20.48	20.44	20.38	22	2	
10	16QAM	50	0	20.50	20.51	20.39			
10	64QAM	1	0	20.58	20.59	20.52			
10	64QAM	1	25	20.75	20.67	20.61	22	2	
10	64QAM	1	49	20.57	20.47	20.39			
10	64QAM	25	0	19.52	19.50	19.40			
10	64QAM	25	12	19.48	19.46	19.37	21	3	
10	64QAM	25	25	19.47	19.40	19.37			
10	64QAM	50	0	19.46	19.47	19.38			
Channel				20425	20525	20625	Tune-up limit (dBm)	MPR (dB)	
Frequency (MHz)				826.5	836.5	846.5			
5	QPSK	1	0	22.26	22.31	22.33	24	0	
5	QPSK	1	12	22.48	22.45	22.45			
5	QPSK	1	24	22.20	22.22	22.18			
5	QPSK	12	0	21.47	21.53	21.49	23	1	
5	QPSK	12	7	21.39	21.41	21.39			
5	QPSK	12	13	21.37	21.41	21.42			
5	QPSK	25	0	21.47	21.46	21.43	23	1	
5	16QAM	1	0	21.61	21.58	21.62			
5	16QAM	1	12	21.72	21.72	21.76			
5	16QAM	1	24	21.57	21.53	21.56	22	2	
5	16QAM	12	0	20.44	20.52	20.47			
5	16QAM	12	7	20.43	20.45	20.38			
5	16QAM	12	13	20.37	20.39	20.38	22	2	
5	16QAM	25	0	20.41	20.47	20.50			
5	64QAM	1	0	20.58	20.49	20.58			
5	64QAM	1	12	20.65	20.64	20.64	22	2	
5	64QAM	1	24	20.46	20.44	20.42			
5	64QAM	12	0	19.41	19.48	19.43			
5	64QAM	12	7	19.39	19.44	19.41	21	3	
5	64QAM	12	13	19.36	19.35	19.36			
5	64QAM	25	0	19.41	19.44	19.37			
Channel				20415	20525	20635	Tune-up limit (dBm)	MPR (dB)	
Frequency (MHz)				826.5	836.5	847.5			
3	QPSK	1	0	22.24	22.28	22.32	24	0	
3	QPSK	1	8	22.48	22.51	22.45			
3	QPSK	1	14	22.23	22.21	22.27			
3	QPSK	8	0	21.45	21.50	21.50	23	1	
3	QPSK	8	4	21.42	21.40	21.45			
3	QPSK	8	7	21.37	21.42	21.40			
3	QPSK	15	0	21.46	21.43	21.48	23	1	
3	16QAM	1	0	21.58	21.58	21.54			
3	16QAM	1	8	21.74	21.75	21.75			
3	16QAM	1	14	21.60	21.61	21.61	22	2	
3	16QAM	8	0	20.52	20.44	20.45			
3	16QAM	8	4	20.42	20.38	20.46			
3	16QAM	8	7	20.40	20.35	20.35	22	2	
3	16QAM	15	0	20.42	20.49	20.50			
3	64QAM	1	0	20.49	20.49	20.53			
3	64QAM	1	8	20.61	20.59	20.59	22	2	
3	64QAM	1	14	20.39	20.42	20.39			
3	64QAM	8	0	19.40	19.43	19.48			
3	64QAM	8	4	19.44	19.38	19.43	21	3	
3	64QAM	8	7	19.33	19.33	19.33			
3	64QAM	15	0	19.44	19.39	19.43			
Channel				20407	20525	20643	Tune-up limit (dBm)	MPR (dB)	
Frequency (MHz)				824.7	836.5	848.3			
1.4	QPSK	1	0	22.28	22.28	22.32	24	0	
1.4	QPSK	1	3	22.51	22.44	22.42			
1.4	QPSK	1	5	22.22	22.26	22.26			
1.4	QPSK	3	0	22.27	22.32	22.30	23	1	
1.4	QPSK	3	1	22.27	22.26	22.25			
1.4	QPSK	3	3	22.22	22.20	22.20			
1.4	QPSK	6	0	21.40	21.40	21.40	23	1	
1.4	16QAM	1	0	21.62	21.53	21.61			
1.4	16QAM	1	3	21.69	21.71	21.76			
1.4	16QAM	1	5	21.53	21.58	21.53	23	1	
1.4	16QAM	3	0	21.45	21.50	21.51			
1.4	16QAM	3	1	21.46	21.40	21.39			
1.4	16QAM	3	3	21.38	21.39	21.43	22	2	
1.4	16QAM	6	0	20.49	20.43	20.43			
1.4	64QAM	1	0	20.57	20.53	20.56			
1.4	64QAM	1	3	20.62	20.65	20.57	22	2	
1.4	64QAM	1	5	20.44	20.44	20.37			
1.4	64QAM	3	0	20.44	20.44	20.47			
1.4	64QAM	3	1	20.44	20.41	20.45	21	3	
1.4	64QAM	3	3	20.37	20.34	20.34			
1.4	64QAM	6	0	19.44	19.44	19.45			

Band 7 (2600MHz Band)									
BW [MHz]	Modulation	RB Size	RB Offset	Power Low Ch. / Freq.	Power Middle Ch. / Freq.	Power High Ch. / Freq.	Tune-up limit (dBm)	MPR (dB)	
Channel				20850	21100	21350			
Frequency (MHz)				2510	2535	2560			
20	QPSK	1	0	22.19	22.12	22.01	24	0	
20	QPSK	1	49	22.36	22.48	22.15			
20	QPSK	1	99	22.08	22.08	22.06			
20	QPSK	50	0	21.31	21.32	21.13	23	1	
20	QPSK	50	24	21.26	21.21	21.01			
20	QPSK	50	50	21.29	21.15	21.02			
20	QPSK	100	0	21.15	21.22	21.02	23	1	
20	16QAM	1	0	21.34	21.34	21.40			
20	16QAM	1	49	21.67	21.68	21.43			
20	16QAM	1	99	21.29	21.21	21.44	22	2	
20	16QAM	50	0	20.33	20.24	20.05			
20	16QAM	50	24	20.46	20.18	20.12			
20	16QAM	50	50	20.33	20.26	20.13	22	2	
20	16QAM	100	0	20.37	20.22	20.12			
20	64QAM	1	0	20.26	20.15	20.01			
20	64QAM	1	49	20.45	20.43	20.20	22	2	
20	64QAM	1	99	20.22	20.10	20.04			
20	64QAM	50	0	19.31	19.15	19.20			
20	64QAM	50	24	19.37	19.15	19.11	21	3	
20	64QAM	50	50	19.41	19.16	19.27			
20	64QAM	100	0	19.35	19.15	19.17			
Channel				20825	21100	21375	Tune-up limit (dBm)	MPR (dB)	
Frequency (MHz)				2507.5	2535	2562.5			
15	QPSK	1	0	22.04	22.02	22.08	24	0	
15	QPSK	1	37	22.43	22.42	22.40			
15	QPSK	1	74	22.07	22.04	22.03			
15	QPSK	36	0	21.25	21.17	21.22	23	1	
15	QPSK	36	20	21.17	21.18	21.18			
15	QPSK	36	39	21.05	21.10	21.07			
15	QPSK	75	0	21.19	21.14	21.18	23	1	
15	16QAM	1	0	21.30	21.28	21.33			
15	16QAM	1	37	21.64	21.67	21.63			
15	16QAM	1	74	21.12	21.19	21.20	22	2	
15	16QAM	36	0	20.18	20.17	20.15			
15	16QAM	36	20	20.10	20.09	20.14			
15	16QAM	36	39	20.24	20.23	20.24	22	2	
15	16QAM	75	0	20.13	20.15	20.21			
15	64QAM	1	0	20.09	20.10	20.11			
15	64QAM	1	37	20.38	20.40	20.39	22	2	
15	64QAM	1	74	20.09	20.02	20.01			
15	64QAM	36	0	19.05	19.11	19.05			
15	64QAM	36	20	19.07	19.12	19.13	21	3	
15	64QAM	36	39	19.07	19.12	19.12			
15	64QAM	75	0	19.14	19.13	19.08			
Channel				20800	21100	21400	Tune-up limit (dBm)	MPR (dB)	
Frequency (MHz)				2505	2535	2565			
10	QPSK	1	0	22.04	22.06	22.05	24	0	
10	QPSK	1	25	22.47	22.45	22.41			
10	QPSK	1	49	22.23	22.01	22.02			
10	QPSK	25	0	21.22	21.21	21.26	23	1	
10	QPSK	25	12	21.18	21.15	21.18			
10	QPSK	25	25	21.08	21.06	21.10			
10	QPSK	50	0	21.21	21.19	21.13	23	1	
10	16QAM	1	0	21.27	21.26	21.27			
10	16QAM	1	25	21.64	21.58	21.63			
10	16QAM	1	49	21.18	21.11	21.18	22		



Band 38(only on channel required)									
BW [MHz]	Modulation	RB Size	RB Offset	Power Low Ch. / Freq.	Power Middle Ch. / Freq.	Power High Ch. / Freq.	Tune-up limit (dBm)	MPR (dB)	
Channel				37850	38000	38150			
Frequency (MHz)				2580	2595	2610			
20	QPSK	1	0	22.37	22.25	22.28	24	0	
20	QPSK	1	49	22.82	22.84	22.79			
20	QPSK	1	99	22.41	22.38	22.32			
20	QPSK	50	0	21.76	21.77	21.72	23	1	
20	QPSK	50	24	21.74	21.66	21.61			
20	QPSK	50	50	21.66	21.69	21.62			
20	QPSK	100	0	21.72	21.74	21.63	23	1	
20	16QAM	1	0	21.60	21.62	21.61			
20	16QAM	1	49	21.94	21.91	21.86			
20	16QAM	1	99	21.62	21.63	21.71	22	2	
20	16QAM	50	0	20.82	20.67	20.61			
20	16QAM	50	24	20.83	20.74	20.66			
20	16QAM	50	50	20.74	20.70	20.65	22	2	
20	16QAM	100	0	20.82	20.69	20.63			
20	64QAM	1	0	20.63	20.61	20.63			
20	64QAM	1	49	20.82	20.69	20.63	22	2	
20	64QAM	1	99	20.63	20.61	20.61			
20	64QAM	50	0	19.80	19.64	19.62			
20	64QAM	50	24	19.74	19.71	19.64	21	3	
20	64QAM	50	50	19.71	19.71	19.62			
20	64QAM	100	0	19.69	19.70	19.62			
Channel				37825	38000	38175			
Frequency (MHz)				2577.5	2595	2612.5			
15	QPSK	1	0	22.18	22.20	22.23	24	0	
15	QPSK	1	37	22.79	22.79	22.83			
15	QPSK	1	74	22.35	22.32	22.34			
15	QPSK	36	0	21.74	21.75	21.73	23	1	
15	QPSK	36	20	21.65	21.61	21.61			
15	QPSK	36	39	21.67	21.63	21.59			
15	QPSK	75	0	21.69	21.73	21.64	23	1	
15	16QAM	1	0	21.59	21.54	21.52			
15	16QAM	1	37	21.88	21.82	21.90			
15	16QAM	1	74	21.53	21.56	21.58	22	2	
15	16QAM	36	0	20.61	20.58	20.64			
15	16QAM	36	20	20.73	20.69	20.71			
15	16QAM	36	39	20.67	20.64	20.67	22	2	
15	16QAM	75	0	20.62	20.66	20.62			
15	64QAM	1	0	20.56	20.58	20.56			
15	64QAM	1	37	20.60	20.67	20.62	22	2	
15	64QAM	1	74	20.53	20.51	20.53			
15	64QAM	36	0	19.63	19.62	19.54			
15	64QAM	36	20	19.62	19.62	19.66	21	3	
15	64QAM	36	39	19.64	19.63	19.66			
15	64QAM	75	0	19.65	19.60	19.69			
Channel				37800	38000	38200			
Frequency (MHz)				2575	2595	2615			
10	QPSK	1	0	22.15	22.16	22.18	24	0	
10	QPSK	1	25	22.74	22.78	22.83			
10	QPSK	1	49	22.36	22.30	22.31			
10	QPSK	25	0	21.71	21.76	21.74	23	1	
10	QPSK	25	12	21.61	21.63	21.61			
10	QPSK	25	25	21.64	21.59	21.66			
10	QPSK	50	0	21.73	21.65	21.67	23	1	
10	16QAM	1	0	21.57	21.55	21.52			
10	16QAM	1	25	21.89	21.82	21.87			
10	16QAM	1	49	21.53	21.55	21.61	22	2	
10	16QAM	25	0	20.59	20.58	20.60			
10	16QAM	25	12	20.66	20.65	20.64			
10	16QAM	25	25	20.62	20.64	20.61	22	2	
10	16QAM	50	0	20.67	20.63	20.61			
10	64QAM	1	0	20.57	20.53	20.52			
10	64QAM	1	25	20.61	20.61	20.60	22	2	
10	64QAM	1	49	20.56	20.53	20.54			
10	64QAM	25	0	19.63	19.57	19.56			
10	64QAM	25	12	19.70	19.69	19.61	21	3	
10	64QAM	25	25	19.67	19.62	19.65			
10	64QAM	50	0	19.66	19.65	19.61			
Channel				37775	38000	38225			
Frequency (MHz)				2572.5	2595	2617.5			
5	QPSK	1	0	22.24	22.17	22.16	24	0	
5	QPSK	1	12	22.83	22.83	22.81			
5	QPSK	1	24	22.33	22.30	22.33			
5	QPSK	12	0	21.70	21.67	21.72	23	1	
5	QPSK	12	7	21.59	21.63	21.57			
5	QPSK	12	13	21.60	21.64	21.67			
5	QPSK	25	0	21.71	21.65	21.72	23	1	
5	16QAM	1	0	21.52	21.55	21.58			
5	16QAM	1	12	21.89	21.85	21.84			
5	16QAM	1	24	21.59	21.60	21.62	22	2	
5	16QAM	12	0	20.63	20.65	20.63			
5	16QAM	12	7	20.68	20.68	20.69			
5	16QAM	12	13	20.63	20.65	20.63	22	2	
5	16QAM	25	0	20.61	20.68	20.61			
5	64QAM	1	0	20.60	20.55	20.60			
5	64QAM	1	12	20.65	20.63	20.59	22	2	
5	64QAM	1	24	20.56	20.59	20.55			
5	64QAM	12	0	19.57	19.54	19.56			
5	64QAM	12	7	19.69	19.70	19.61	21	3	
5	64QAM	12	13	19.64	19.61	19.62			
5	64QAM	25	0	19.65	19.64	19.69			

Band 41 (2.6G Band)									
BW [MHz]	Modulation	RB Size	RB Offset	Power Low Ch. / Freq.	Power Middle Low Ch. / Freq.	Power Middle High Ch. / Freq.	Power High Ch. / Freq.	Tune-up limit (dBm)	MPR (dB)
Channel				40140	40400	40670	41140		
Frequency (MHz)				3545	2571	2598	2645		
20	QPSK	1	0	22.47	22.53	22.44	22.58	24	0
20	QPSK	1	49	22.86	22.93	22.83	22.70		
20	QPSK	1	99	22.48	22.49	22.41	22.55		
20	QPSK	50	0	21.77	21.83	21.77	21.68	23	1
20	QPSK	50	24	21.72	21.81	21.74	21.61		
20	QPSK	50	50	21.75	21.77	21.74	21.63		
20	QPSK	100	0	21.76	21.81	21.76	21.62	23	1
20	16QAM	1	0	21.54	21.58	21.55	21.35		
20	16QAM	1	49	22.03	22.05	22.01	21.74		
20	16QAM	1	99	21.48	21.55	21.45	21.30	22	2
20	16QAM	50	0	20.83	20.86	20.81	20.69		
20	16QAM	50	24	20.87	20.93	20.83	20.67		
20	16QAM	50	50	20.86	20.92	20.85	20.66	22	2
20	16QAM	100	0	20.89	20.90	20.88	20.63		
20	64QAM	1	0	20.36	20.43	20.33	20.05		
20	64QAM	1	49	20.67	20.71	20.70	20.63	22	2
20	64QAM	1	99	20.30	20.34	20.29	20.06		
20	64QAM	50	0	19.79	19.80	19.76	19.66		
20	64QAM	50	24	19.81	19.88	19.85	19.67	21	3
20	64QAM	50	50	19.77	19.82	19.80	19.71		
20	64QAM	100	0	19.75	19.80	19.70	19.65		
Channel				40115	40395	40685	41165		
Frequency (MHz)				2542.5	2570.5	2598.5	2647.5		
15	QPSK	1	0	22.49	22.45	22.52	22.46	24	0
15	QPSK	1	37	22.83	22.87	22.89	22.86		
15	QPSK	1	74	22.48	22.45	22.46	22.48		
15	QPSK	36	0	21.80	21.80	21.80	21.78	23	1
15	QPSK	36	20	21.78	21.71	21.74	21.75		
15	QPSK	36	39	21.69	21.76	21.68	21.69		
15	QPSK	75	0	21.75	21.76	21.71	21.76	23	1
15	16QAM	1	0	21.53	21.56	21.57	21.54		
15	16QAM	1	37	22.04	21.95	21.99	21.98		
15	16QAM	1	74	21.47	21.54	21.54	21.53	22	2
15	16QAM	36	0	20.78	20.82	20.81	20.84		
15	16QAM	36	20	20.83	20.83	20.87	20.87		
15	16QAM	36	39	20.89	20.90	20.88	20.90	22	2
15	16QAM	75	0	20.81	20.88	20.86	20.89		
15	64QAM	1	0	20.41	20.34	20.33	20.41		
15	64QAM	1	37	20.65	20.62	20.70	20.62	22	2
15	64QAM	1	74	20.24	20.31	20.31	20.28		
15	64QAM	36	0	19.75	19.76	19.73	19.75		
15	64QAM	36	20	19.86	19.86	19.78	19.86	21	3
15	64QAM	36	39	19.81	19.80	19.79	19.73		
15	64QAM	75	0	19.79	19.77	19.73	19.78		
Channel				40090	40390	40690	41190		
Frequency (MHz)				2540	2570	2600	2650		
10	QPSK	1	0	22.48	22.47	22.49	22.49	24	0
10	QPSK	1	25	22.89	22.91	22.90	22.87		
10	QPSK	1	49	22.46	22.47	22.43	22.41		
10	QPSK	25	0	21.78	21.77	21.75	21.77	23	1
10									



Reduced Power Mode for Rec off

GSM850	Burst Average Power (dBm)			Tune-up Limit (dBm)	Frame-Average Power (dBm)			Tune-up Limit (dBm)
	TX Channel	128	189		251	128	189	
Frequency (MHz)	824.2	836.4	848.8		824.2	836.4	848.8	
GSM 1 Tx slot	30.51	30.62	30.67	32.00	21.51	21.62	21.67	23.00
GPRS 1 Tx slot	30.55	30.66	30.71	32.00	21.55	21.66	21.71	23.00
GPRS 2 Tx slots	29.12	29.20	29.26	30.50	23.12	23.20	23.26	24.50
GPRS 3 Tx slots	28.03	28.16	28.22	28.50	23.77	23.90	23.96	24.24
GPRS 4 Tx slots	28.06	28.12	28.17	28.50	23.06	23.12	23.17	23.50
EDGE 1 Tx slot	25.25	25.31	25.21	27.00	16.25	16.31	16.21	18.00
EDGE 2 Tx slots	23.61	23.71	23.75	25.50	17.61	17.71	17.75	19.50
EDGE 3 Tx slots	21.20	21.33	21.50	23.00	16.94	17.07	17.24	18.74
EDGE 4 Tx slots	20.06	20.04	20.08	21.50	17.06	17.04	17.08	18.50

GSM1900	Burst Average Power (dBm)			Tune-up Limit (dBm)	Frame-Average Power (dBm)			Tune-up Limit (dBm)
	TX Channel	512	661		810	512	661	
Frequency (MHz)	1850.2	1880	1909.8		1850.2	1880	1909.8	
GSM 1 Tx slot	25.81	25.91	25.96	27.00	16.81	16.91	16.96	18.00
GPRS 1 Tx slot	25.83	25.85	25.89	27.00	16.83	16.85	16.89	18.00
GPRS 2 Tx slots	24.38	24.36	24.43	26.00	18.38	18.36	18.43	20.00
GPRS 3 Tx slots	23.20	23.19	23.33	24.00	18.94	18.93	19.07	19.74
GPRS 4 Tx slots	21.16	21.26	21.37	22.00	18.16	18.26	18.37	19.00
EDGE 1 Tx slot	22.74	22.63	22.69	24.00	13.74	13.63	13.69	15.00
EDGE 2 Tx slots	21.66	21.72	21.75	23.00	15.66	15.72	15.75	17.00
EDGE 3 Tx slots	19.52	19.60	19.77	21.00	15.26	15.34	15.51	16.74
EDGE 4 Tx slots	18.53	18.68	18.63	20.00	15.53	15.68	15.63	17.00

Band	WCDMA II			Tune-up Limit (dBm)	WCDMA V			Tune-up Limit (dBm)
	TX Channel	9262	9400		9538	4132	4182	
Rx Channel	9662	9800	9938		4357	4407	4458	
Frequency (MHz)	1852.4	1880	1907.6		826.4	836.4	846.6	
3GPP Rel 99 AMR 12.2Kbps	17.38	17.43	17.28	19.00	21.90	22.00	21.92	23.50
3GPP Rel 99 RMC 12.2Kbps	17.53	17.63	17.44	19.00	21.97	22.10	21.93	23.50
3GPP Rel 6 HSDPA Subtest-1	16.71	16.69	16.61	18.00	21.35	21.21	21.26	22.50
3GPP Rel 6 HSDPA Subtest-2	16.69	16.77	16.46	18.00	21.21	21.21	21.22	22.50
3GPP Rel 6 HSDPA Subtest-3	16.19	16.19	16.04	17.50	20.90	20.81	20.60	22.00
3GPP Rel 6 HSDPA Subtest-4	16.12	16.22	15.99	17.50	20.76	20.80	20.57	22.00
3GPP Rel 8 DC-HSDPA Subtest-1	16.81	16.83	16.80	18.00	21.26	21.37	21.37	22.50
3GPP Rel 8 DC-HSDPA Subtest-2	16.69	16.85	16.59	18.00	21.17	21.14	21.28	22.50
3GPP Rel 8 DC-HSDPA Subtest-3	16.28	16.28	16.23	17.50	20.88	20.93	20.85	22.00
3GPP Rel 8 DC-HSDPA Subtest-4	16.22	16.21	16.13	17.50	20.89	20.83	20.71	22.00
3GPP Rel 6 HSUPA Subtest-1	15.75	15.67	15.60	17.50	20.09	20.17	20.13	22.00
3GPP Rel 6 HSUPA Subtest-2	15.18	15.49	15.41	15.50	19.75	19.77	19.86	20.00
3GPP Rel 6 HSUPA Subtest-3	16.14	16.25	16.39	16.50	20.61	20.65	20.70	21.00
3GPP Rel 6 HSUPA Subtest-4	14.77	14.88	14.70	15.50	19.12	19.25	19.24	20.00
3GPP Rel 6 HSUPA Subtest-5	16.57	16.27	16.21	17.50	20.76	20.78	20.73	22.00



Band 5 (Cellular Band)									
BW [MHz]	Modulation	RB Size	RB Offset	Power Low Ch. / Freq.	Power Middle Ch. / Freq.	Power High Ch. / Freq.	Tune-up limit (dBm)	MPR (dB)	
Channel				20450	20525	20600			
Frequency (MHz)				829	836.5	844			
10	QPSK	1	0	21.80	21.73	21.83	23.5	0	
10	QPSK	1	25	22.07	22.21	21.99			
10	QPSK	1	49	21.88	21.72	21.82			
10	QPSK	25	0	21.00	21.07	21.01	22.5	1	
10	QPSK	25	12	20.95	21.04	20.96			
10	QPSK	25	25	20.97	20.87	20.86			
10	QPSK	50	0	20.85	21.03	20.99	22.5	1	
10	16QAM	1	0	21.36	21.11	21.02			
10	16QAM	1	25	21.39	21.29	21.16			
10	16QAM	1	49	21.41	21.32	20.99	21.5	2	
10	16QAM	25	0	19.92	19.99	19.97			
10	16QAM	25	12	20.01	20.03	19.96			
10	16QAM	25	25	19.89	19.91	20.02	21.5	2	
10	16QAM	50	0	19.79	20.02	19.96			
10	64QAM	1	0	20.07	20.11	20.12			
10	64QAM	1	25	19.88	20.27	20.27	20.5	3	
10	64QAM	1	49	20.12	19.88	20.07			
10	64QAM	25	0	18.97	18.97	19.04			
10	64QAM	25	12	19.08	19.03	18.98	20.5	3	
10	64QAM	25	25	18.97	18.94	19.05			
10	64QAM	50	0	19.04	19.08	19.03			
Channel				20425	20525	20625	Tune-up limit (dBm)	MPR (dB)	
Frequency (MHz)				826.5	836.5	846.5			
5	QPSK	1	0	21.81	21.87	21.68	23.5	0	
5	QPSK	1	12	22.14	22.04	22.03			
5	QPSK	1	24	21.92	21.77	21.78			
5	QPSK	12	0	20.79	20.86	20.86	22.5	1	
5	QPSK	12	7	20.91	20.91	21.02			
5	QPSK	12	13	20.91	20.97	20.93			
5	QPSK	25	0	20.83	20.93	20.90	22.5	1	
5	16QAM	1	0	20.84	20.96	21.17			
5	16QAM	1	12	21.61	21.37	21.47			
5	16QAM	1	24	20.98	21.25	21.20	21.5	2	
5	16QAM	12	0	19.87	19.86	19.83			
5	16QAM	12	7	19.94	19.96	19.93			
5	16QAM	12	13	19.98	19.89	19.90	21.5	2	
5	16QAM	25	0	19.85	19.96	19.96			
5	64QAM	1	0	19.86	19.90	19.89			
5	64QAM	1	12	20.01	20.35	20.47	20.5	3	
5	64QAM	1	24	19.97	20.04	20.02			
5	64QAM	12	0	19.01	18.92	19.02			
5	64QAM	12	7	18.99	19.15	19.06	20.5	3	
5	64QAM	12	13	19.01	19.03	18.91			
5	64QAM	25	0	18.87	18.95	18.88			
Channel				20415	20525	20635	Tune-up limit (dBm)	MPR (dB)	
Frequency (MHz)				826.5	836.5	847.5			
3	QPSK	1	0	21.92	21.91	21.82	23.5	0	
3	QPSK	1	8	21.95	21.91	21.88			
3	QPSK	1	14	21.88	21.79	21.86			
3	QPSK	8	0	20.85	20.87	20.85	22.5	1	
3	QPSK	8	4	20.90	20.91	20.88			
3	QPSK	8	7	20.86	20.93	20.98			
3	QPSK	15	0	20.82	20.92	20.91	22.5	1	
3	16QAM	1	0	21.39	21.45	21.40			
3	16QAM	1	8	21.39	21.36	21.43			
3	16QAM	1	14	21.42	21.37	21.41	21.5	2	
3	16QAM	8	0	19.93	20.01	19.94			
3	16QAM	8	4	19.97	19.93	19.93			
3	16QAM	8	7	19.96	19.85	20.00	21.5	2	
3	16QAM	15	0	19.94	19.96	19.79			
3	64QAM	1	0	20.16	20.13	20.16			
3	64QAM	1	8	19.78	19.75	20.09	20.5	3	
3	64QAM	1	14	19.74	20.22	20.07			
3	64QAM	8	0	19.00	19.04	18.98			
3	64QAM	8	4	18.97	18.94	18.98	20.5	3	
3	64QAM	8	7	18.91	19.08	18.93			
3	64QAM	15	0	18.99	19.00	18.79			
Channel				20407	20525	20643	Tune-up limit (dBm)	MPR (dB)	
Frequency (MHz)				824.7	836.5	848.3			
1.4	QPSK	1	0	21.77	21.93	21.74	23.5	0	
1.4	QPSK	1	3	21.92	21.99	21.79			
1.4	QPSK	1	5	21.76	21.79	21.76			
1.4	QPSK	3	0	22.03	21.87	21.84	22.5	1	
1.4	QPSK	3	1	21.97	21.95	21.91			
1.4	QPSK	3	3	21.94	22.01	21.95			
1.4	QPSK	6	0	20.81	20.92	20.75	22.5	1	
1.4	16QAM	1	0	21.35	21.07	20.75			
1.4	16QAM	1	3	21.35	21.40	21.01			
1.4	16QAM	1	5	21.30	20.99	20.94	21.5	2	
1.4	16QAM	3	0	20.88	20.89	20.70			
1.4	16QAM	3	1	20.89	20.82	20.96			
1.4	16QAM	3	3	20.95	20.89	20.72	21.5	2	
1.4	16QAM	6	0	19.95	19.99	19.91			
1.4	64QAM	1	0	19.92	19.87	19.76			
1.4	64QAM	1	3	19.63	20.07	19.94	21.5	2	
1.4	64QAM	1	5	19.66	19.85	19.82			
1.4	64QAM	3	0	20.09	19.74	19.79			
1.4	64QAM	3	1	19.96	20.13	20.07	20.5	3	
1.4	64QAM	3	3	20.07	19.77	19.80			
1.4	64QAM	6	0	18.90	19.04	18.84			

Band 7 (2600MHz Band)									
BW [MHz]	Modulation	RB Size	RB Offset	Power Low Ch. / Freq.	Power Middle Ch. / Freq.	Power High Ch. / Freq.	Tune-up limit (dBm)	MPR (dB)	
Channel				20850	21100	21350			
Frequency (MHz)				2510	2535	2560			
20	QPSK	1	0	12.98	12.99	13.04	14.5	0	
20	QPSK	1	49	13.27	13.40	13.33			
20	QPSK	1	99	12.92	13.05	13.02			
20	QPSK	50	0	12.45	12.46	12.44	13.5	1	
20	QPSK	50	24	12.34	12.43	12.35			
20	QPSK	50	50	12.43	12.40	12.41			
20	QPSK	100	0	12.41	12.42	12.38	13.5	1	
20	16QAM	1	0	12.49	12.56	12.63			
20	16QAM	1	49	12.99	12.93	12.80			
20	16QAM	1	99	12.49	12.63	12.61	12.5	2	
20	16QAM	50	0	11.30	11.38	11.35			
20	16QAM	50	24	11.33	11.44	11.33			
20	16QAM	50	50	11.43	11.36	11.48	11.5	3	
20	16QAM	100	0	11.29	11.35	11.38			
20	64QAM	1	0	10.75	10.87	10.83			
20	64QAM	1	49	11.60	11.72	11.36	12.5	2	
20	64QAM	1	99	10.79	11.43	11.36			
20	64QAM	50	0	10.26	10.42	10.49			
20	64QAM	50	24	10.23	10.29	10.38	11.5	3	
20	64QAM	50	50	10.34	10.36	10.47			
20	64QAM	100	0	10.25	10.30	10.41			
Channel				20825	21100	21375	Tune-up limit (dBm)	MPR (dB)	
Frequency (MHz)				2507.5	2535	2562.5			
15	QPSK	1	0	13.09	13.17	13.15	14.5	0	
15	QPSK	1	37	13.39	13.33	13.30			
15	QPSK	1	74	13.17	13.25	13.22			
15	QPSK	36	0	12.21	12.44	12.33	13.5	1	
15	QPSK	36	20	12.27	12.50	12.38			
15	QPSK	36	39	12.27	12.35	12.40			
15	QPSK	75	0	12.24	12.40	12.38	13.5	1	
15	16QAM	1	0	12.63	12.28	12.27			
15	16QAM	1	37	12.75	12.45	12.40			
15	16QAM	1	74	12.42	12.42	12.46	12.5	2	
15	16QAM	36	0	11.14	11.31	11.32			
15	16QAM	36	20	11.20	11.35	11.26			
15	16QAM	36	39	11.28	11.31	11.40	12.5	2	
15	16QAM	75	0	11.26	11.35	11.30			
15	64QAM	1	0	11.43	11.43	11.42			
15	64QAM	1	37	11.55	11.84	11.34	12.5	2	
15	64QAM	1	74	11.32	11.36	11.60			
15	64QAM	36	0	10.17	10.27	10.25			
15	64QAM	36	20	10.30	10.34	10.31	11.5	3	
15	64QAM	36	39	10.30	10.31	10.32			
15	64QAM	75	0	10.27	10.28	10.28			
Channel				20800	21100	21400	Tune-up limit (dBm)	MPR (dB)	
Frequency (MHz)				2505	2535	2565			
10	QPSK	1	0	13.17	13.29	13.19	14.5	0	
10	QPSK	1	25	13.38	13.31	13.31			
10	QPSK	1	49	13.09	13.28	13.26			
10	QPSK	25	0	12.25	12.32	12.31	13.5	1	
10	QPSK	25	12	12.30	12.33	12.33			
10	QPSK	25	25	12.34	12.45	12.36			
10	QPSK	50	0	12.28	12.34	12.30	13.5	1	
10	16QAM	1	0	12.72	12.55	12.51			
10	16QAM	1	25	12.47	12.81	12			



Band 38(only on channel required)									
BW [MHz]	Modulation	RB Size	RB Offset	Power Low Ch. / Freq.	Power Middle Ch. / Freq.	Power High Ch. / Freq.	Tune-up limit (dBm)	MPR (dB)	
Channel				37850	38000	38150			
Frequency (MHz)				2580	2595	2610			
20	QPSK	1	0	15.45	15.30	15.25	16.5	0	
20	QPSK	1	49	15.86	15.71	15.68			
20	QPSK	1	99	15.36	15.27	15.29			
20	QPSK	50	0	14.65	14.54	14.48	15.5	1	
20	QPSK	50	24	14.64	14.51	14.42			
20	QPSK	50	50	14.61	14.53	14.46			
20	QPSK	100	0	14.76	14.64	14.56	15.5	1	
20	16QAM	1	0	14.55	14.41	14.29			
20	16QAM	1	49	14.91	14.84	14.73			
20	16QAM	1	99	14.43	14.41	14.31	14.5	2	
20	16QAM	50	0	13.61	13.59	13.50			
20	16QAM	50	24	13.66	13.62	13.54			
20	16QAM	50	50	13.66	13.55	13.54	14.5	2	
20	16QAM	100	0	13.68	13.64	13.52			
20	84QAM	1	0	13.20	13.05	13.05			
20	84QAM	1	49	13.66	13.56	13.49	14.5	2	
20	84QAM	1	99	13.19	13.10	13.03			
20	84QAM	50	0	12.69	12.57	12.47			
20	84QAM	50	24	12.67	12.61	12.48	13.5	3	
20	84QAM	50	50	12.64	12.57	12.56			
20	84QAM	100	0	12.73	12.58	12.55			
Channel				37825	38000	38175	Tune-up limit (dBm)	MPR (dB)	
Frequency (MHz)				2577.5	2595	2612.5			
15	QPSK	1	0	15.39	15.22	15.16	16.5	0	
15	QPSK	1	37	15.82	15.75	15.59			
15	QPSK	1	74	15.36	15.32	15.32			
15	QPSK	36	0	14.59	14.55	14.49	15.5	1	
15	QPSK	36	20	14.57	14.64	14.44			
15	QPSK	36	39	14.59	14.61	14.46			
15	QPSK	75	0	14.84	14.55	14.47	15.5	1	
15	16QAM	1	0	14.61	14.41	14.19			
15	16QAM	1	37	14.89	14.75	14.81			
15	16QAM	1	74	14.36	14.46	14.28	14.5	2	
15	16QAM	36	0	13.62	13.55	13.51			
15	16QAM	36	20	13.72	13.62	13.45			
15	16QAM	36	39	13.71	13.55	13.51	14.5	2	
15	16QAM	75	0	13.71	13.55	13.46			
15	84QAM	1	0	13.19	12.97	13.08			
15	84QAM	1	37	13.72	13.50	13.50	14.5	2	
15	84QAM	1	74	13.14	13.14	13.01			
15	84QAM	36	0	12.64	12.55	12.39			
15	84QAM	36	20	12.73	12.67	12.42	13.5	3	
15	84QAM	36	39	12.59	12.51	12.56			
15	84QAM	75	0	12.63	12.53	12.59			
Channel				37800	38000	38200	Tune-up limit (dBm)	MPR (dB)	
Frequency (MHz)				2575	2595	2615			
10	QPSK	1	0	15.53	15.20	15.23	16.5	0	
10	QPSK	1	25	15.77	15.71	15.60			
10	QPSK	1	49	15.31	15.33	15.27			
10	QPSK	25	0	14.63	14.54	14.51	15.5	1	
10	QPSK	25	12	14.71	14.64	14.57			
10	QPSK	25	25	14.53	14.62	14.47			
10	QPSK	50	0	14.84	14.58	14.61	15.5	1	
10	16QAM	1	0	14.54	14.45	14.26			
10	16QAM	1	25	14.84	14.91	14.64			
10	16QAM	1	49	14.37	14.48	14.23	14.5	2	
10	16QAM	25	0	13.61	13.55	13.51			
10	16QAM	25	12	13.59	13.57	13.46			
10	16QAM	25	25	13.73	13.63	13.55	14.5	2	
10	16QAM	50	0	13.68	13.67	13.55			
10	84QAM	1	0	13.22	13.00	12.95			
10	84QAM	1	25	13.68	13.52	13.55	14.5	2	
10	84QAM	1	49	13.14	13.01	12.99			
10	84QAM	25	0	12.59	12.56	12.50			
10	84QAM	25	12	12.73	12.58	12.40	13.5	3	
10	84QAM	25	25	12.61	12.60	12.49			
10	84QAM	50	0	12.79	12.63	12.62			
Channel				37775	38000	38225	Tune-up limit (dBm)	MPR (dB)	
Frequency (MHz)				2572.5	2595	2617.5			
5	QPSK	1	0	15.40	15.23	15.25	16.5	0	
5	QPSK	1	12	15.83	15.62	15.74			
5	QPSK	1	24	15.34	15.27	15.32			
5	QPSK	12	0	14.66	14.62	14.39	15.5	1	
5	QPSK	12	7	14.71	14.52	14.50			
5	QPSK	12	13	14.56	14.65	14.58			
5	QPSK	25	0	14.69	14.72	14.50	15.5	1	
5	16QAM	1	0	14.63	14.31	14.35			
5	16QAM	1	12	14.99	14.90	14.67			
5	16QAM	1	24	14.44	14.41	14.27	14.5	2	
5	16QAM	12	0	13.60	13.52	13.48			
5	16QAM	12	7	13.72	13.69	13.54			
5	16QAM	12	13	13.69	13.63	13.55	14.5	2	
5	16QAM	25	0	13.72	13.62	13.49			
5	84QAM	1	0	13.24	13.00	13.07			
5	84QAM	1	12	13.61	13.61	13.40	14.5	2	
5	84QAM	1	24	13.25	13.11	13.06			
5	84QAM	12	0	12.75	12.54	12.53			
5	84QAM	12	7	12.65	12.61	12.54	13.5	3	
5	84QAM	12	13	12.59	12.64	12.61			
5	84QAM	25	0	12.65	12.52	12.63			

Band 41 (2.6G Band)									
BW [MHz]	Modulation	RB Size	RB Offset	Power Low Ch. / Freq.	Power Middle Low Ch. / Freq.	Power Middle High Ch. / Freq.	Power High Ch. / Freq.	Tune-up limit (dBm)	MPR (dB)
Channel				40140	40400	40670	41140		
Frequency (MHz)				2545	2571	2598	2645		
20	QPSK	1	0	15.47	15.47	15.33	15.12	16.5	0
20	QPSK	1	49	15.90	15.93	15.78	15.56		
20	QPSK	1	99	15.46	15.54	15.27	15.21		
20	QPSK	50	0	14.72	14.82	14.67	14.50	15.5	1
20	QPSK	50	24	14.60	14.76	14.61	14.47		
20	QPSK	50	50	14.71	14.81	14.66	14.39		
20	QPSK	100	0	14.68	14.78	14.68	14.42	15.5	1
20	16QAM	1	0	14.59	14.58	14.40	14.25		
20	16QAM	1	49	15.00	14.96	14.91	14.67		
20	16QAM	1	99	14.64	14.46	14.43	14.31	14.5	2
20	16QAM	50	0	13.76	13.60	13.51	13.41		
20	16QAM	50	24	13.82	13.73	13.68	13.42		
20	16QAM	50	50	13.80	13.65	13.71	13.42	14.5	2
20	16QAM	100	0	13.77	13.69	13.68	13.47		
20	84QAM	1	0	13.27	13.28	13.15	12.96		
20	84QAM	1	49	13.72	13.73	13.56	13.37	14.5	2
20	84QAM	1	99	13.31	13.24	13.05	13.03		
20	84QAM	50	0	12.73	12.65	12.52	12.42		
20	84QAM	50	24	12.77	12.77	12.62	12.38	13.5	3
20	84QAM	50	50	12.71	12.70	12.60	12.37		
20	84QAM	100	0	12.83	12.73	12.69	12.43		
Channel				40115	40395	40685	41165	Tune-up limit (dBm)	MPR (dB)
Frequency (MHz)				2542.5	2570.5	2599.5	2647.5		
15	QPSK	1	0	15.61	15.53	15.33	15.37	16.5	0
15	QPSK	1	37	15.83	15.75	15.80	15.59		
15	QPSK	1	74	15.80	15.52	15.26	15.36		
15	QPSK	36	0	14.78	14.61	14.61	14.50	15.5	1
15	QPSK	36	20	14.82	14.68	14.56	14.54		
15	QPSK	36	39	14.79	14.67	14.63	14.48		
15	QPSK	75	0	14.72	14.59	14.69	14.44	15.5	1
15	16QAM	1	0	14.67	14.59	14.48	14.44		
15	16QAM	1	37	14.92	14.80	14.89	14.60		
15	16QAM	1	74	14.77	14.62	14.34	14.46	14.5	2
15	16QAM	36	0	13.69	13.58	13.55	13.41		
15	16QAM	36	20	13.79	13.61	13.67	13.47		
15	16QAM	36	39	13.74	13.57	13.75	13.43	14.5	2
15	16QAM	75	0	13.73	13.60	13.63	13.36		
15	84QAM	1	0	13.43	13.32	13.10	13.16		
15	84QAM	1	37	13.67	13.50	13.62	13.38	14.5	2
15	84QAM	1	74	13.53	13.41	13.12	13.20		
15	84QAM	36	0	12.72	12.58	12.59	12.43		
15	84QAM	36	20	12.77	12.66	12.62	12.44	13.5	3
15	84QAM	36	39	12.85	12.65	12.66	12.47		
15	84QAM	75	0	12.75	12.53	12.61	12.41		
Channel				40090	40390	40690	41190	Tune-up limit (dBm)	MPR (dB)
Frequency (MHz)				2540	2570	2600	2650		
10	QPSK	1	0	15.63	15.51	15.36	15.41	16.5	0
10	QPSK	1	25	15.90	1				

### Reduced Power Mode for Hotspot On

GSM850	Burst Average Power (dBm)			Tune-up Limit (dBm)	Frame-Average Power (dBm)			Tune-up Limit (dBm)
	128	189	251		128	189	251	
TX Channel	824.2	836.4	848.8		824.2	836.4	848.8	
Frequency (MHz)	824.2	836.4	848.8		824.2	836.4	848.8	
GSM 1 Tx slot	30.51	30.62	30.67	32.00	21.51	21.62	21.67	23.00
GPRS 1 Tx slot	30.55	30.66	30.71	32.00	21.55	21.66	21.71	23.00
GPRS 2 Tx slots	29.12	29.20	29.26	30.50	23.12	23.20	23.26	24.50
GPRS 3 Tx slots	28.03	28.16	28.22	28.50	23.77	23.90	23.96	24.24
GPRS 4 Tx slots	28.06	28.12	28.17	28.50	23.06	23.12	23.17	23.50
EDGE 1 Tx slot	25.25	25.31	25.21	27.00	16.25	16.31	16.21	18.00
EDGE 2 Tx slots	23.61	23.71	23.75	25.50	17.61	17.71	17.75	19.50
EDGE 3 Tx slots	21.20	21.33	21.50	23.00	16.94	17.07	17.24	18.74
EDGE 4 Tx slots	20.06	20.04	20.08	21.50	17.06	17.04	17.08	18.50

GSM1900	Burst Average Power (dBm)			Tune-up Limit (dBm)	Frame-Average Power (dBm)			Tune-up Limit (dBm)
	512	661	810		512	661	810	
TX Channel	1850.2	1980	1909.8		1850.2	1980	1909.8	
Frequency (MHz)	1850.2	1980	1909.8		1850.2	1980	1909.8	
GSM 1 Tx slot	23.81	23.85	23.85	25.00	14.81	14.85	14.85	16.00
GPRS 1 Tx slot	23.83	23.85	23.86	25.00	14.83	14.85	14.86	16.00
GPRS 2 Tx slots	22.28	22.29	22.32	24.00	16.28	16.29	16.32	18.00
GPRS 3 Tx slots	21.16	21.16	21.22	22.00	16.90	16.90	16.96	17.74
GPRS 4 Tx slots	19.14	19.15	19.26	20.00	16.14	16.15	16.26	17.00
EDGE 1 Tx slot	20.63	20.63	20.69	22.00	11.63	11.63	11.69	13.00
EDGE 2 Tx slots	19.62	19.69	19.75	21.00	13.62	13.69	13.75	15.00
EDGE 3 Tx slots	17.52	17.57	17.66	19.00	13.26	13.31	13.40	14.74
EDGE 4 Tx slots	16.51	16.56	16.61	18.00	13.51	13.56	13.61	15.00

Band	WCDMA II	WCDMA V			Tune-up Limit (dBm)				
		4132	4182	4233					
TX Channel	9262	9400	9538						
Rx Channel	8662	8800	8938						
Frequency (MHz)	1852.4	1880	1907.6						
3GPP Rel 99	AMR 12.2Kbps	15.46	15.49	15.33	17.00	21.90	22.00	21.92	23.50
3GPP Rel 99	RMC 12.2Kbps	15.48	15.52	15.40	17.00	21.97	22.10	21.93	23.50
3GPP Rel 6	HSDPA Subtest-1	14.91	14.89	14.81	16.00	21.35	21.21	21.26	22.50
3GPP Rel 6	HSDPA Subtest-2	14.89	14.97	14.66	16.00	21.21	21.21	21.22	22.50
3GPP Rel 6	HSDPA Subtest-3	14.71	14.69	14.61	15.50	20.90	20.81	20.60	22.00
3GPP Rel 6	HSDPA Subtest-4	14.69	14.77	14.46	15.50	20.76	20.60	20.57	22.00
3GPP Rel 8	DC-HSDPA Subtest-1	15.01	15.02	15.04	16.00	21.26	21.37	21.37	22.50
3GPP Rel 8	DC-HSDPA Subtest-2	15.05	15.01	15.02	16.00	21.17	21.14	21.28	22.50
3GPP Rel 8	DC-HSDPA Subtest-3	14.48	14.56	14.52	15.50	20.88	20.93	20.85	22.00
3GPP Rel 8	DC-HSDPA Subtest-4	14.49	14.52	14.55	15.50	20.89	20.83	20.71	22.00
3GPP Rel 6	HSUPA Subtest-1	14.51	14.55	14.52	15.50	20.09	20.17	20.13	22.00
3GPP Rel 6	HSUPA Subtest-2	12.52	12.56	12.48	13.50	19.75	19.77	19.86	20.00
3GPP Rel 6	HSUPA Subtest-3	13.48	13.52	13.45	14.50	20.61	20.65	20.70	21.00
3GPP Rel 6	HSUPA Subtest-4	12.46	12.48	12.44	13.50	19.12	19.25	19.24	20.00
3GPP Rel 6	HSUPA Subtest-5	14.34	14.35	14.31	15.50	20.76	20.78	20.73	22.00



Band 5 (Cellular Band)									
BW [MHz]	Modulation	RB Size	RB Offset	Power Low Ch. / Freq.	Power Middle Ch. / Freq.	Power High Ch. / Freq.	Tune-up limit (dBm)	MPR (dB)	
Channel				20450	20525	20600			
Frequency (MHz)				829	836.5	844			
10	QPSK	1	0	21.80	21.73	21.83	23.5	0	
10	QPSK	1	25	22.07	22.21	21.99			
10	QPSK	1	49	21.88	21.72	21.82			
10	QPSK	25	0	21.00	21.07	21.01	22.5	1	
10	QPSK	25	12	20.95	21.04	20.96			
10	QPSK	25	25	20.97	20.87	20.86			
10	QPSK	50	0	20.85	21.03	20.99	22.5	1	
10	16QAM	1	0	21.36	21.11	21.02			
10	16QAM	1	25	21.39	21.29	21.16			
10	16QAM	1	49	21.41	21.32	20.99	21.5	2	
10	16QAM	25	0	19.92	19.99	19.97			
10	16QAM	25	12	20.01	20.03	19.96			
10	16QAM	25	25	19.89	19.91	20.02	21.5	2	
10	16QAM	50	0	19.79	20.02	19.96			
10	16QAM	1	0	20.07	20.11	20.12			
10	64QAM	1	25	19.88	20.27	20.27	20.5	3	
10	64QAM	1	49	20.12	19.88	20.07			
10	64QAM	25	0	18.97	18.97	19.04			
10	64QAM	25	12	19.08	19.03	18.98	20.5	3	
10	64QAM	25	25	18.97	18.94	19.05			
10	64QAM	50	0	19.04	19.08	19.03			
Channel				20425	20525	20625	Tune-up limit (dBm)	MPR (dB)	
Frequency (MHz)				826.5	836.5	846.5			
5	QPSK	1	0	21.81	21.87	21.68	23.5	0	
5	QPSK	1	12	22.14	22.04	22.03			
5	QPSK	1	24	21.92	21.77	21.78			
5	QPSK	12	0	20.79	20.86	20.86	22.5	1	
5	QPSK	12	7	20.91	20.91	21.02			
5	QPSK	12	13	20.91	20.97	20.93			
5	QPSK	25	0	20.83	20.93	20.90	22.5	1	
5	16QAM	1	0	20.84	20.96	21.17			
5	16QAM	1	12	21.61	21.37	21.47			
5	16QAM	1	24	20.98	21.25	21.20	21.5	2	
5	16QAM	12	0	19.87	19.86	19.83			
5	16QAM	12	7	19.94	19.96	19.93			
5	16QAM	12	13	19.98	19.89	19.90	21.5	2	
5	16QAM	25	0	19.85	19.96	19.96			
5	64QAM	1	0	19.86	19.90	19.89			
5	64QAM	1	12	20.01	20.35	20.47	20.5	3	
5	64QAM	1	24	19.97	20.04	20.02			
5	64QAM	12	0	19.01	19.92	19.02			
5	64QAM	12	7	18.99	19.15	19.06	20.5	3	
5	64QAM	12	13	19.01	19.03	18.91			
5	64QAM	25	0	18.87	18.95	18.88			
Channel				20415	20525	20635	Tune-up limit (dBm)	MPR (dB)	
Frequency (MHz)				826.5	836.5	847.5			
3	QPSK	1	0	21.92	21.91	21.82	23.5	0	
3	QPSK	1	8	21.95	21.91	21.88			
3	QPSK	1	14	21.88	21.79	21.86			
3	QPSK	8	0	20.85	20.87	20.85	22.5	1	
3	QPSK	8	4	20.90	20.91	20.88			
3	QPSK	8	7	20.86	20.93	20.98			
3	QPSK	15	0	20.82	20.92	20.91	22.5	1	
3	16QAM	1	0	21.39	21.45	21.40			
3	16QAM	1	8	21.39	21.36	21.43			
3	16QAM	1	14	21.42	21.37	21.41	21.5	2	
3	16QAM	8	0	19.93	20.01	19.94			
3	16QAM	8	4	19.97	19.93	19.93			
3	16QAM	8	7	19.96	19.85	20.00	21.5	2	
3	16QAM	15	0	19.94	19.96	19.79			
3	64QAM	1	0	20.16	20.13	20.16			
3	64QAM	1	8	19.78	19.75	20.09	20.5	3	
3	64QAM	1	14	19.74	20.22	20.07			
3	64QAM	8	0	19.00	19.04	18.98			
3	64QAM	8	4	18.97	18.94	18.98	20.5	3	
3	64QAM	8	7	18.91	19.08	18.93			
3	64QAM	15	0	18.99	19.00	18.79			
Channel				20407	20525	20643	Tune-up limit (dBm)	MPR (dB)	
Frequency (MHz)				824.7	836.5	848.3			
1.4	QPSK	1	0	21.77	21.93	21.74	23.5	0	
1.4	QPSK	1	3	21.92	21.99	21.79			
1.4	QPSK	1	5	21.76	21.79	21.76			
1.4	QPSK	3	0	22.03	21.87	21.84	22.5	1	
1.4	QPSK	3	1	21.97	21.95	21.91			
1.4	QPSK	3	3	21.94	22.01	21.95			
1.4	QPSK	6	0	20.81	20.92	20.75	22.5	1	
1.4	16QAM	1	0	21.35	21.07	20.75			
1.4	16QAM	1	3	21.35	21.40	21.01			
1.4	16QAM	1	5	21.30	20.99	20.94	21.5	2	
1.4	16QAM	3	0	20.88	20.89	20.70			
1.4	16QAM	3	1	20.89	20.82	20.96			
1.4	16QAM	3	3	20.95	20.89	20.72	21.5	2	
1.4	16QAM	6	0	19.95	19.99	19.91			
1.4	64QAM	1	0	19.92	19.87	19.76			
1.4	64QAM	1	3	19.63	20.07	19.94	21.5	2	
1.4	64QAM	1	5	19.66	19.85	19.82			
1.4	64QAM	3	0	20.09	19.74	19.79			
1.4	64QAM	3	1	19.96	20.13	20.07	20.5	3	
1.4	64QAM	3	3	20.07	19.77	19.80			
1.4	64QAM	6	0	18.90	19.04	18.84			

Band 7 (2600MHz Band)									
BW [MHz]	Modulation	RB Size	RB Offset	Power Low Ch. / Freq.	Power Middle Ch. / Freq.	Power High Ch. / Freq.	Tune-up limit (dBm)	MPR (dB)	
Channel				20850	21100	21350			
Frequency (MHz)				2510	2535	2560			
20	QPSK	1	0	12.30	12.41	12.42	14	0	
20	QPSK	1	49	12.77	12.81	12.76			
20	QPSK	1	99	12.38	12.50	12.39			
20	QPSK	50	0	11.79	11.93	11.89	13	1	
20	QPSK	50	24	11.78	11.92	11.81			
20	QPSK	50	50	11.73	11.84	11.87			
20	QPSK	100	0	11.77	11.89	11.78	13	1	
20	16QAM	1	0	11.49	11.63	11.66			
20	16QAM	1	49	11.87	11.86	12.29			
20	16QAM	1	99	11.56	11.57	11.70	12	2	
20	16QAM	50	0	10.61	10.74	10.74			
20	16QAM	50	24	10.58	10.75	10.75			
20	16QAM	50	50	10.72	10.75	10.89	12	2	
20	16QAM	100	0	10.72	10.76	10.78			
20	64QAM	1	0	10.11	10.71	10.47			
20	64QAM	1	49	11.04	10.69	10.79	12	2	
20	64QAM	1	99	10.65	10.56	10.84			
20	64QAM	50	0	9.63	9.82	9.83			
20	64QAM	50	24	9.64	9.80	9.76	11	3	
20	64QAM	50	50	9.70	9.77	9.82			
20	64QAM	100	0	9.64	9.81	9.80			
Channel				20825	21100	21375	Tune-up limit (dBm)	MPR (dB)	
Frequency (MHz)				2507.5	2535	2562.5			
15	QPSK	1	0	12.46	12.60	12.62	14	0	
15	QPSK	1	37	12.73	12.76	12.65			
15	QPSK	1	74	12.55	12.61	12.56			
15	QPSK	36	0	11.76	11.78	11.80	13	1	
15	QPSK	36	20	11.71	11.87	11.79			
15	QPSK	36	39	11.81	11.89	11.93			
15	QPSK	75	0	11.70	11.84	11.90	13	1	
15	16QAM	1	0	12.02	11.70	11.56			
15	16QAM	1	37	12.12	12.52	11.73			
15	16QAM	1	74	12.14	12.09	11.60	12	2	
15	16QAM	36	0	10.63	10.71	10.76			
15	16QAM	36	20	10.74	10.81	10.77			
15	16QAM	36	39	10.71	10.67	10.78	12	2	
15	16QAM	75	0	10.64	10.78	10.65			
15	64QAM	1	0	10.62	10.80	10.61			
15	64QAM	1	37	11.17	11.20	10.86	12	2	
15	64QAM	1	74	10.67	10.92	10.79			
15	64QAM	36	0	9.67	9.84	9.71			
15	64QAM	36	20	9.71	9.81	9.70	11	3	
15	64QAM	36	39	9.71	9.69	9.81			
15	64QAM	75	0	9.71	9.67	9.75			
Channel				20800	21100	21400	Tune-up limit (dBm)	MPR (dB)	
Frequency (MHz)				2505	2535	2565			
10	QPSK	1	0	12.60	12.65	12.55	14	0	
10	QPSK	1	25	12.77	12.74	12.62			
10	QPSK	1	49	12.56	12.71	12.74			
10	QPSK	25	0	11.66	11.81	11.83	13	1	
10	QPSK	25	12	11.67	11.83	11.71			
10	QPSK	25	25	11.76	11.89	11.79			
10	QPSK	50	0	11.76	11.90	11.85	13	1	
10	16QAM	1	0	11.82	11.71	11.61			
10	16QAM	1	25	11.74	11.96	11.73			
10	16QAM	1	49	11.59					



Band 38(only on channel required)									
BW [MHz]	Modulation	RB Size	RB Offset	Power Low Ch. / Freq.	Power Middle Ch. / Freq.	Power High Ch. / Freq.	Tune-up limit (dBm)	MPR (dB)	
Channel				37850	38000	38150			
Frequency (MHz)				2580	2595	2610			
20	QPSK	1	0	14.55	14.45	14.45	16	0	
20	QPSK	1	49	14.98	15.05	14.94			
20	QPSK	1	99	14.62	14.42	14.46			
20	QPSK	50	0	13.76	13.75	13.63	15	1	
20	QPSK	50	24	13.91	13.99	13.76			
20	QPSK	50	50	13.89	13.80	13.73			
20	QPSK	100	0	13.93	14.01	13.67	15	1	
20	16QAM	1	0	13.75	13.61	13.48			
20	16QAM	1	49	14.05	14.01	13.99			
20	16QAM	1	99	13.67	13.56	13.44	14	2	
20	16QAM	50	0	12.77	12.74	12.72			
20	16QAM	50	24	12.87	12.75	12.81			
20	16QAM	50	50	12.85	12.66	12.65	14	2	
20	16QAM	100	0	12.85	12.67	12.69			
20	84QAM	1	0	12.30	12.22	12.33			
20	84QAM	1	49	12.86	12.79	12.65	14	2	
20	84QAM	1	99	12.31	12.32	12.22			
20	84QAM	50	0	11.84	11.74	11.75			
20	84QAM	50	24	11.90	11.88	11.67	13	3	
20	84QAM	50	50	11.79	11.74	11.83			
20	84QAM	100	0	11.91	11.83	11.68			
Channel				37825	38000	38175	Tune-up limit (dBm)	MPR (dB)	
Frequency (MHz)				2577.5	2595	2612.5			
15	QPSK	1	0	14.69	14.42	14.40	16	0	
15	QPSK	1	37	15.04	14.94	14.95			
15	QPSK	1	74	14.59	14.47	14.48			
15	QPSK	36	0	13.83	13.74	13.74	15	1	
15	QPSK	36	20	13.82	13.75	13.75			
15	QPSK	36	39	13.83	13.89	13.73			
15	QPSK	75	0	14.01	13.76	13.67	15	1	
15	16QAM	1	0	13.79	13.60	13.57			
15	16QAM	1	37	14.18	14.01	13.99			
15	16QAM	1	74	13.69	13.51	13.51	14	2	
15	16QAM	36	0	12.72	12.71	12.62			
15	16QAM	36	20	12.91	12.83	12.80			
15	16QAM	36	39	12.91	12.72	12.72	14	2	
15	16QAM	75	0	12.80	12.67	12.73			
15	84QAM	1	0	12.31	12.19	12.22			
15	84QAM	1	37	12.85	12.73	12.71	14	2	
15	84QAM	1	74	12.34	12.29	12.19			
15	84QAM	36	0	11.85	11.67	11.58			
15	84QAM	36	20	11.93	11.82	11.73	13	3	
15	84QAM	36	39	11.83	11.80	11.77			
15	84QAM	75	0	11.91	11.86	11.79			
Channel				37800	38000	38200	Tune-up limit (dBm)	MPR (dB)	
Frequency (MHz)				2575	2595	2615			
10	QPSK	1	0	14.61	14.42	14.35	16	0	
10	QPSK	1	25	15.01	14.89	14.92			
10	QPSK	1	49	14.62	14.48	14.47			
10	QPSK	25	0	13.89	13.66	13.74	15	1	
10	QPSK	25	12	13.90	13.75	13.68			
10	QPSK	25	25	13.89	13.81	13.77			
10	QPSK	50	0	13.99	13.80	13.77	15	1	
10	16QAM	1	0	13.68	13.53	13.46			
10	16QAM	1	25	14.12	14.07	13.93			
10	16QAM	1	49	13.70	13.52	13.41	14	2	
10	16QAM	25	0	12.79	12.78	12.63			
10	16QAM	25	12	12.89	12.85	12.82			
10	16QAM	25	25	12.86	12.70	12.72	14	2	
10	16QAM	50	0	12.80	12.82	12.80			
10	84QAM	1	0	12.34	12.15	12.32			
10	84QAM	1	25	12.83	12.77	12.77	14	2	
10	84QAM	1	49	12.36	12.28	12.16			
10	84QAM	25	0	11.94	11.85	11.71			
10	84QAM	25	12	11.91	11.84	11.70	13	3	
10	84QAM	25	25	11.79	11.77	11.83			
10	84QAM	50	0	11.94	11.68	11.81			
Channel				37775	38000	38225	Tune-up limit (dBm)	MPR (dB)	
Frequency (MHz)				2572.5	2595	2617.5			
5	QPSK	1	0	14.73	14.41	14.35	16	0	
5	QPSK	1	12	14.94	14.99	14.83			
5	QPSK	1	24	14.60	14.54	14.42			
5	QPSK	12	0	13.86	13.76	13.73	15	1	
5	QPSK	12	7	13.77	13.76	13.77			
5	QPSK	12	13	13.83	13.74	13.67			
5	QPSK	25	0	13.95	13.76	13.73	15	1	
5	16QAM	1	0	13.72	13.59	13.40			
5	16QAM	1	12	14.19	14.09	13.92			
5	16QAM	1	24	13.62	13.64	13.59	14	2	
5	16QAM	12	0	12.80	12.81	12.64			
5	16QAM	12	7	12.80	12.86	12.78			
5	16QAM	12	13	12.86	12.66	12.70	14	2	
5	16QAM	25	0	12.94	12.77	12.78			
5	84QAM	1	0	12.37	12.16	12.30			
5	84QAM	1	12	12.87	12.73	12.60	14	2	
5	84QAM	1	24	12.47	12.24	12.23			
5	84QAM	12	0	11.79	11.68	11.59			
5	84QAM	12	7	11.87	11.74	11.62	13	3	
5	84QAM	12	13	11.85	11.84	11.77			
5	84QAM	25	0	11.87	11.71	11.83			

Band 41 (2.6G Band)									
BW [MHz]	Modulation	RB Size	RB Offset	Power Low Ch. / Freq.	Power Middle Low Ch. / Freq.	Power Middle High Ch. / Freq.	Power High Ch. / Freq.	Tune-up limit (dBm)	MPR (dB)
Channel				40140	40400	40670	41140		
Frequency (MHz)				2545	2571	2598	2645		
20	QPSK	1	0	14.64	14.68	14.53	14.34	16	0
20	QPSK	1	49	15.07	15.12	14.94	14.88		
20	QPSK	1	99	14.61	14.73	14.55	14.41		
20	QPSK	50	0	13.93	13.97	13.83	13.69	15	1
20	QPSK	50	24	13.72	13.91	13.66	13.66		
20	QPSK	50	50	13.84	13.91	13.81	13.57		
20	QPSK	100	0	13.85	13.97	13.87	13.68	15	1
20	16QAM	1	0	13.72	13.75	13.59	13.42		
20	16QAM	1	49	14.19	14.16	14.01	13.84		
20	16QAM	1	99	13.77	13.65	13.54	13.48	14	2
20	16QAM	50	0	12.96	12.76	12.69	12.66		
20	16QAM	50	24	12.95	12.86	12.80	12.69		
20	16QAM	50	50	12.92	12.94	12.84	12.60	14	2
20	16QAM	100	0	12.98	12.86	12.83	12.67		
20	84QAM	1	0	12.40	12.46	12.30	12.11		
20	84QAM	1	49	12.88	12.84	12.71	12.56	14	2
20	84QAM	1	99	12.50	12.44	12.28	12.24		
20	84QAM	50	0	11.86	11.73	11.71	11.59		
20	84QAM	50	24	12.04	11.90	11.76	11.67	13	3
20	84QAM	50	50	11.90	11.95	11.89	11.62		
20	84QAM	100	0	11.97	11.90	11.90	11.63		
Channel				40115	40395	40685	41165	Tune-up limit (dBm)	MPR (dB)
Frequency (MHz)				2542.5	2570.5	2599.5	2647.5		
15	QPSK	1	0	14.74	14.56	14.56	14.23	16	0
15	QPSK	1	37	15.11	14.98	14.87	14.87		
15	QPSK	1	74	14.67	14.59	14.46	14.37		
15	QPSK	36	0	14.00	13.67	13.67	13.61	15	1
15	QPSK	36	20	13.88	13.94	13.74	13.68		
15	QPSK	36	39	13.87	13.77	13.73	13.58		
15	QPSK	75	0	13.91	13.89	13.92	13.63	15	1
15	16QAM	1	0	13.64	13.64	13.53	13.33		
15	16QAM	1	37	14.09	14.11	14.03	13.88		
15	16QAM	1	74	13.80	13.69	13.48	13.47	14	2
15	16QAM	36	0	12.84	12.82	12.63	12.56		
15	16QAM	36	20	12.97	12.86	12.79	12.58		
15	16QAM	36	39	12.94	12.91	12.89	12.51	14	2
15	16QAM	75	0	12.98	12.74	12.78	12.60		
15	84QAM	1	0	12.45	12.38	12.29	12.02		
15	84QAM	1	37	12.87	12.77	12.61	12.51	14	2
15	84QAM	1	74	12.44	12.44	12.27	12.18		
15	84QAM	36	0	11.86	11.63	11.67	11.52		
15	84QAM	36	20	12.05	11.94	11.67	11.64	13	3
15	84QAM	36	39	11.91	11.90	11.94	11.50		
15	84QAM	75	0	12.00	11.78	11.86	11.62		
Channel				40090	40370	40650	41190	Tune-up limit (dBm)	MPR (dB)
Frequency (MHz)				2540	2570	2600	2650		
10	QPSK	1	0	14.60	14.56	14.53	14.39	16	0
10	QPSK	1	25	15.02	14.96	15.00	14.84		
10	QPSK	1	49	14.68	14.67	14.60	14.42		
10	QPSK	25	0	13.87	13.62				



Conducted Power for WLAN/BT

2.4GHz WLAN				Full Power (Default Power)		Receiver on		Receiver off		Hotspot on		
Mode	Channel	Frequency (MHz)	Average power (dBm)	Tune-Up Limit	Average power (dBm)	Tune-Up Limit	Average power (dBm)	Tune-Up Limit	Average power (dBm)	Tune-Up Limit	Duty Cycle %	
												2.4GHz WLAN
		6	2437	18.70	20.00	16.50	17.50	15.40	16.50	15.40	16.50	
		11	2462	18.90	20.00	16.30	17.50	15.10	16.50	15.10	16.50	
	802.11g 6Mbps	1	2412	16.60	17.00	Not Required	17.00	Not Required	16.50	Not Required	16.50	96.97
		6	2437	17.90	19.00							
		11	2462	15.70	16.00							
	802.11n-HT20 MCS0	1	2412	14.90	16.00	Not Required	16.00	Not Required	16.00	Not Required	16.00	96.78
		6	2437	17.80	19.00							
		11	2462	15.40	16.50							

5.2GHz WLAN				Full Power (Default Power)		Receiver on		Receiver off		Hotspot on		
Mode	Channel	Frequency (MHz)	Average power (dBm)	Tune-Up Limit	Average power (dBm)	Tune-Up Limit	Average power (dBm)	Tune-Up Limit	Average power (dBm)	Tune-Up Limit	Duty Cycle %	
												5.2GHz WLAN
		40	5200	18.40	19.00							
		44	5220	18.40	19.00							
		48	5240	18.40	19.00	Not Required	13.50	Not Required	17.00	13.50	96.76	
	802.11n-HT20 MCS0	36	5180	16.80	17.50							
		40	5200	17.80	18.50							
		44	5220	17.90	18.50	Not Required	13.50	Not Required	17.00	13.50	93.30	
	802.11n-HT40 MCS0	48	5240	17.90	18.50							
		38	5190	14.10	15.50							
		46	5230	16.80	17.50	Not Required	14.10	Not Required	15.50	13.50	97.21	
	802.11ac-VHT20 MCS0	36	5180	16.70	17.50							
		40	5200	16.80	17.50							
		44	5220	16.80	17.50	Not Required	13.50	Not Required	17.00	13.50	93.74	
	802.11ac-VHT40 MCS0	48	5240	16.80	17.50							
		38	5190	14.00	15.50							
		46	5230	16.70	17.50	Not Required	13.50	Not Required	17.00	13.50	87.77	
	802.11ac-VHT80 MCS0	42	5210	12.40	14.00							

5.3GHz WLAN				Full Power (Default Power)		Receiver on		Receiver off		Duty Cycle %				
Mode	Channel	Frequency (MHz)	Average power (dBm)	Tune-Up Limit	Average power (dBm)	Tune-Up Limit	Average power (dBm)	Tune-Up Limit						
5.3GHz WLAN	802.11a 6Mbps	52	5280	18.40	19.50	Not Required	13.50	Not Required	17.00	96.97				
		56	5280	18.40	19.50									
		60	5300	18.40	19.50									
		64	5320	15.50	17.50									
	802.11n-HT20 MCS0	52	5280	17.70	19.00					Not Required	13.50	Not Required	17.00	96.76
		56	5280	17.80	19.00									
		60	5300	17.80	19.00									
		64	5320	15.30	17.00									
	802.11n-HT40 MCS0	54	5270	16.60	18.00					Not Required	13.50	15.72	17.00	93.30
		62	5310	13.80	15.50									
	802.11ac-VHT20 MCS0	52	5280	16.60	18.00					Not Required	13.50	Not Required	17.00	97.21
		60	5300	16.60	18.00									
56		5280	16.80	18.00										
64		5320	15.20	17.00										
802.11ac-VHT40 MCS0	54	5270	16.50	18.00	Not Required	13.50	Not Required	17.00	93.74					
	62	5310	13.70	15.50										
802.11ac-VHT80 MCS0	58	5290	12.80	14.50	12.00	13.50	14.50	12.00	13.50	87.77				

5.5GHz WLAN				Full Power (Default Power)		Receiver on		Receiver off		Duty Cycle %												
Mode	Channel	Frequency (MHz)	Average power (dBm)	Tune-Up Limit	Average power (dBm)	Tune-Up Limit	Average power (dBm)	Tune-Up Limit														
5.5GHz WLAN	802.11a 6Mbps	100	5500	16.00	17.50	Not Required	12.50	Not Required	13.50	96.97												
		116	5580	18.10	19.50																	
		124	5620	17.90	19.50																	
		132	5660	18.00	19.50																	
		140	5700	13.80	15.50																	
		144	5720	18.00	19.50																	
	802.11n-HT20 MCS0	100	5500	15.80	17.50					Not Required	12.50	Not Required	13.50	96.76								
		116	5580	17.40	19.00																	
		124	5620	17.30	19.00																	
		132	5660	17.40	19.00																	
		140	5700	14.40	16.00																	
		144	5720	17.50	19.50																	
	802.11n-HT40 MCS0	102	5510	14.80	16.50									Not Required	12.50	Not Required	13.50	93.30				
		110	5550	16.50	18.00																	
		126	5630	16.20	18.00																	
		134	5670	16.90	18.00																	
		142	5710	16.60	18.00																	
		144	5720	17.40	18.00																	
	802.11ac-VHT20 MCS0	100	5500	15.70	17.50													Not Required	12.50	Not Required	13.50	97.21
		116	5580	17.30	18.00																	
		124	5620	17.20	18.00																	
		132	5660	17.30	18.00																	
		140	5700	14.30	16.00																	
		144	5720	17.40	18.00																	
802.11ac-VHT40 MCS0	102	5510	14.70	16.50	Not Required	12.50	Not Required	13.50	93.74													
	110	5550	16.40	18.00																		
	126	5630	16.10	18.00																		
	134	5670	16.80	18.00																		
	142	5710	16.50	18.00																		
	144	5720	16.50	18.00																		
802.11ac-VHT80 MCS0	106	5530	13.20	15.00					10.56	12.50	11.65	13.50	87.77									
	122	5610	16.50	18.50					10.57	12.50	11.65	13.50										
802.11ac-VHT80 MCS0	138	5690	16.70	18.50					10.82	12.50	11.86	13.50										

5.8GHz WLAN				Full Power (Default Power)		Receiver on		Receiver off		Hotspot on																						
Mode	Channel	Frequency (MHz)	Average power (dBm)	Tune-Up Limit	Average power (dBm)	Tune-Up Limit	Average power (dBm)	Tune-Up Limit	Average power (dBm)	Tune-Up Limit	Duty Cycle %																					
5.8GHz WLAN	802.11a 6Mbps	148	5745	17.80	19.00	Not Required	13.00	Not Required	13.50	13.00	96.97																					
		157	5785	17.60	19.00																											
		165	5825	17.70	19.00																											
	802.11n-HT20 MCS0	148	5745	17.30	19.00					Not Required	13.00	Not Required	13.50	13.00	96.76																	
		157	5785	17.10	18.50																											
		165	5825	17.20	18.50																											
	802.11n-HT40 MCS0	151	5755	16.10	17.50									Not Required	13.00	Not Required	13.50	13.00	93.30													
		159	5795	16.30	17.50																											
	802.11ac-VHT20 MCS0	149	5745	16.30	18.00													Not Required	13.00	Not Required	13.50	13.00	97.21									
		157	5785	16.20	17.50																											
		165	5825	16.40	17.55																											
	802.11ac-VHT40 MCS0	151	5755	16.00	17.50																	Not Required	13.00	Not Required	13.50	13.00	93.74					
		159	5795	16.20	17.50																											
	802.11ac-VHT80 MCS0	155	5775	16.40	17.50																					11.96	13.00	12.50	13.50	11.96	13.00	87.77



**BT BR/EDR**

Mode	Channel	Frequency (MHz)	Average power (dBm)									Tune-up Limit
			Packet Type									
			DH1	DH3	DH5	2DH1	2DH3	2DH5	3DH1	3DH3	3DH5	
Bluetooth	CH 0	2402	9.20	9.20	9.30	7.10	7.10	7.20	7.10	7.10	7.20	10.50
	CH 39	2441	8.70	8.70	8.80	6.70	6.70	6.80	6.70	6.70	6.80	10.50
	CH 78	2480	9.30	9.30	9.40	7.20	7.20	7.30	7.20	7.20	7.30	10.50

**BT LE v4.0**

Mode	Channel	Frequency (MHz)	Average power (dBm)	
			GFSK	
LE	CH 00	2402	-3.30	
	CH 19	2440	-2.40	
	CH 39	2480	-3.40	
Tune-up Limit			2	

**BT LE v5.0**

Mode	Channel	Frequency (MHz)	Average power (dBm)	
			1Mbps	2Mbps
LE	CH 00	2402	-3.30	-3.20
	CH 19	2440	-2.40	-2.30
	CH 39	2480	-3.40	-3.30
Tune-up Limit			2	2