

26_WCDMA V_RMC 12.2Kbps_Back_5mm_Ch4182

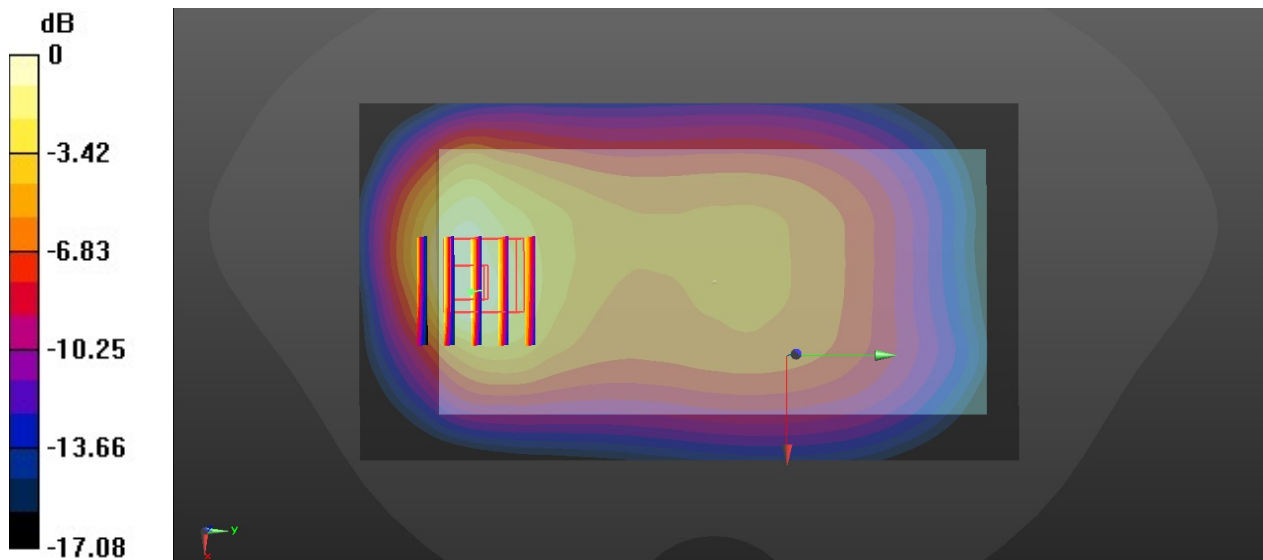
Communication System: UID 0, UMTS (0); Frequency: 836.4 MHz; Duty Cycle: 1:1
Medium: HSL_835_220123 Medium parameters used: $f = 836.4$ MHz; $\sigma = 0.888$ S/m; $\epsilon_r = 41.979$;
 $\rho = 1000$ kg/m³
Ambient Temperature : 23.5 °C; Liquid Temperature : 22.6 °C

DASY5 Configuration:

- Probe: EX3DV4 - SN7641; ConvF(10.9, 10.9, 10.9); Calibrated: 2021/3/15
- Sensor-Surface: 1.4mm (Mechanical Surface Detection)
- Electronics: DAE4 Sn1664; Calibrated: 2021/3/1
- Phantom: Twin-SAM1(P1aP2a20); Type: QD 000 P40 CD; Serial: TP:1670
- Measurement SW: DASY52, Version 52.10 (3); SEMCAD X Version 14.6.13 (7474)

Ch4182/Area Scan (71x131x1): Interpolated grid: dx=1.500 mm, dy=1.500 mm
Maximum value of SAR (interpolated) = 1.52 W/kg

Ch4182/Zoom Scan (5x5x7)/Cube 0: Measurement grid: dx=8mm, dy=8mm, dz=5mm
Reference Value = 22.63 V/m; Power Drift = 0.01 dB
Peak SAR (extrapolated) = 1.85 W/kg
SAR(1 g) = 0.945 W/kg; SAR(10 g) = 0.542 W/kg
Maximum value of SAR (measured) = 1.42 W/kg



0 dB = 1.42 W/kg

27_WCDMA II_RMC 12.2Kbps_Back_5mm_Ch9538

Communication System: UID 0, UMTS (0); Frequency: 1907.6 MHz; Duty Cycle: 1:1
Medium: HSL_1900_220123 Medium parameters used: $f = 1908$ MHz; $\sigma = 1.397$ S/m; $\epsilon_r = 38.723$;
 $\rho = 1000$ kg/m³
Ambient Temperature : 23.6 °C; Liquid Temperature : 22.3 °C

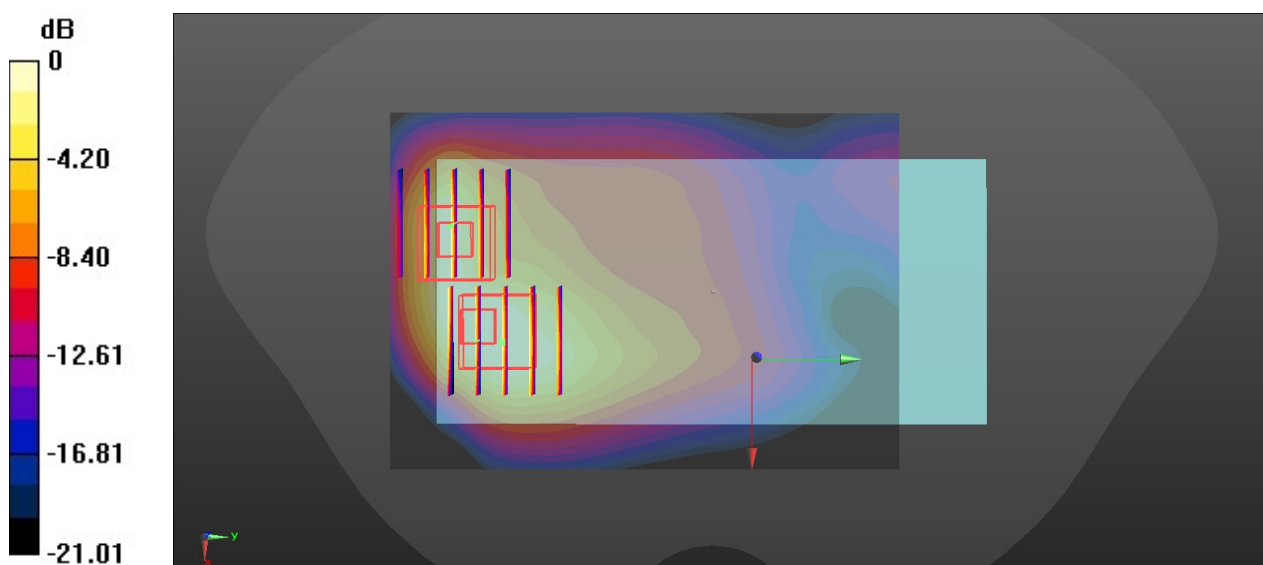
DASY5 Configuration:

- Probe: EX3DV4 - SN7641; ConvF(9.05, 9.05, 9.05); Calibrated: 2021/3/15
- Sensor-Surface: 1.4mm (Mechanical Surface Detection)
- Electronics: DAE4 Sn1664; Calibrated: 2021/3/1
- Phantom: Twin-SAM1(P1aP2a20); Type: QD 000 P40 CD; Serial: TP:1670
- Measurement SW: DASY52, Version 52.10 (3); SEMCAD X Version 14.6.13 (7474)

Ch9538/Area Scan (71x101x1): Interpolated grid: dx=1.500 mm, dy=1.500 mm
Maximum value of SAR (interpolated) = 1.50 W/kg

Ch9538/Zoom Scan (5x5x7)/Cube 0: Measurement grid: dx=8mm, dy=8mm, dz=5mm
Reference Value = 10.60 V/m; Power Drift = -0.1 dB
Peak SAR (extrapolated) = 2.07 W/kg
SAR(1 g) = 0.969 W/kg; SAR(10 g) = 0.503 W/kg
Maximum value of SAR (measured) = 1.54 W/kg

Ch9538/Zoom Scan (5x5x7)/Cube 1: Measurement grid: dx=8mm, dy=8mm, dz=5mm
Reference Value = 10.60 V/m; Power Drift = -0.1 dB
Peak SAR (extrapolated) = 1.61 W/kg
SAR(1 g) = 0.825 W/kg; SAR(10 g) = 0.414 W/kg
Maximum value of SAR (measured) = 1.30 W/kg



0 dB = 1.54 W/kg

28_LTE Band 5_10M_QPSK_1RB_25Offset_Back_5mm_Ch20525

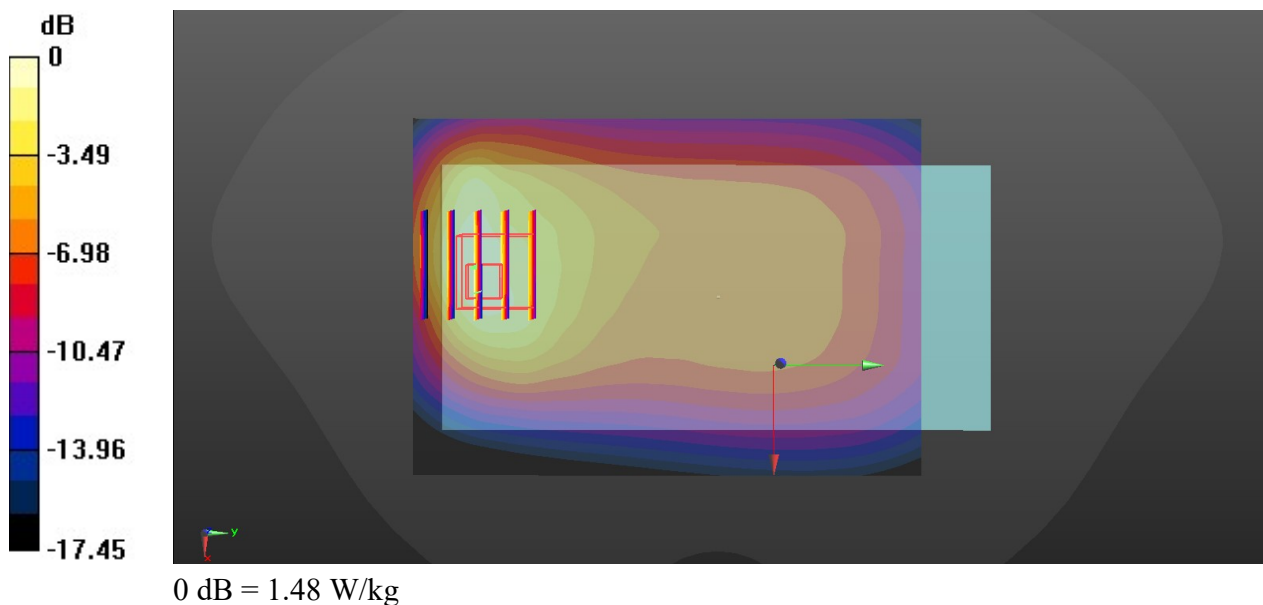
Communication System: UID 0, LTE (0); Frequency: 836.5 MHz; Duty Cycle: 1:1
Medium: HSL_835_220123 Medium parameters used: $f = 836.5$ MHz; $\sigma = 0.888$ S/m; $\epsilon_r = 41.978$;
 $\rho = 1000$ kg/m³
Ambient Temperature : 23.5 °C; Liquid Temperature : 22.6 °C

DASY5 Configuration:

- Probe: EX3DV4 - SN7641; ConvF(10.9, 10.9, 10.9); Calibrated: 2021/3/15
- Sensor-Surface: 1.4mm (Mechanical Surface Detection)
- Electronics: DAE4 Sn1664; Calibrated: 2021/3/1
- Phantom: Twin-SAM1(P1aP2a20); Type: QD 000 P40 CD; Serial: TP:1670
- Measurement SW: DASY52, Version 52.10 (3); SEMCAD X Version 14.6.13 (7474)

Ch20525/Area Scan (71x101x1): Interpolated grid: dx=1.500 mm, dy=1.500 mm
Maximum value of SAR (interpolated) = 1.69 W/kg

Ch20525/Zoom Scan (5x5x7)/Cube 0: Measurement grid: dx=8mm, dy=8mm, dz=5mm
Reference Value = 21.20 V/m; Power Drift = -0.12 dB
Peak SAR (extrapolated) = 1.92 W/kg
SAR(1 g) = 0.983 W/kg; SAR(10 g) = 0.567 W/kg
Maximum value of SAR (measured) = 1.48 W/kg



29_LTE Band 7_20M_QPSK_1RB_49Offset_Back_5mm_Ch21350

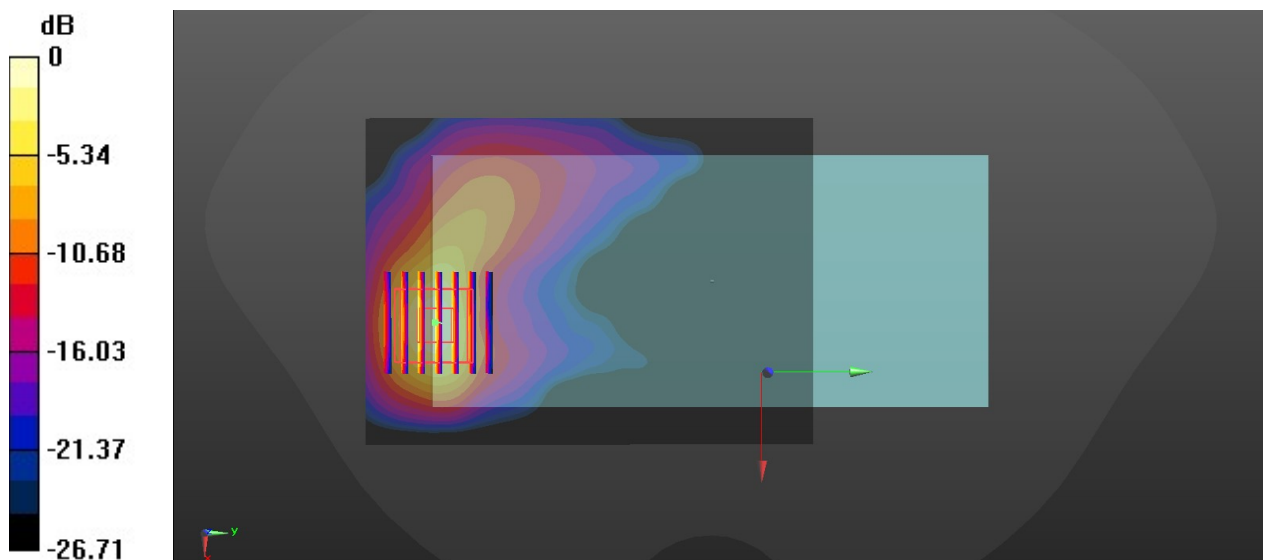
Communication System: UID 0, LTE (0); Frequency: 2560 MHz; Duty Cycle: 1:1
Medium: HSL_2600_220123 Medium parameters used: $f = 2560$ MHz; $\sigma = 1.944$ S/m; $\epsilon_r = 38.479$;
 $\rho = 1000$ kg/m³
Ambient Temperature : 23.1 °C; Liquid Temperature : 22.2 °C

DASY5 Configuration:

- Probe: EX3DV4 - SN7641; ConvF(7.94, 7.94, 7.94); Calibrated: 2021/3/15
- Sensor-Surface: 1.4mm (Mechanical Surface Detection)
- Electronics: DAE4 Sn1664; Calibrated: 2021/3/1
- Phantom: Twin-SAM1(P1aP2a20); Type: QD 000 P40 CD; Serial: TP:1670
- Measurement SW: DASY52, Version 52.10 (3); SEMCAD X Version 14.6.13 (7474)

Ch21350/Area Scan (81x111x1): Interpolated grid: dx=1.200 mm, dy=1.200 mm
Maximum value of SAR (interpolated) = 1.73 W/kg

Ch21350/Zoom Scan (7x7x7)/Cube 0: Measurement grid: dx=5mm, dy=5mm, dz=5mm
Reference Value = 1.223 V/m; Power Drift = -0.13 dB
Peak SAR (extrapolated) = 2.21 W/kg
SAR(1 g) = 0.975 W/kg; SAR(10 g) = 0.379 W/kg
Maximum value of SAR (measured) = 1.76 W/kg



0 dB = 1.76 W/kg

30_LTE Band 41_20M_QPSK_1RB_49Offset_Back_5mm_Ch40670

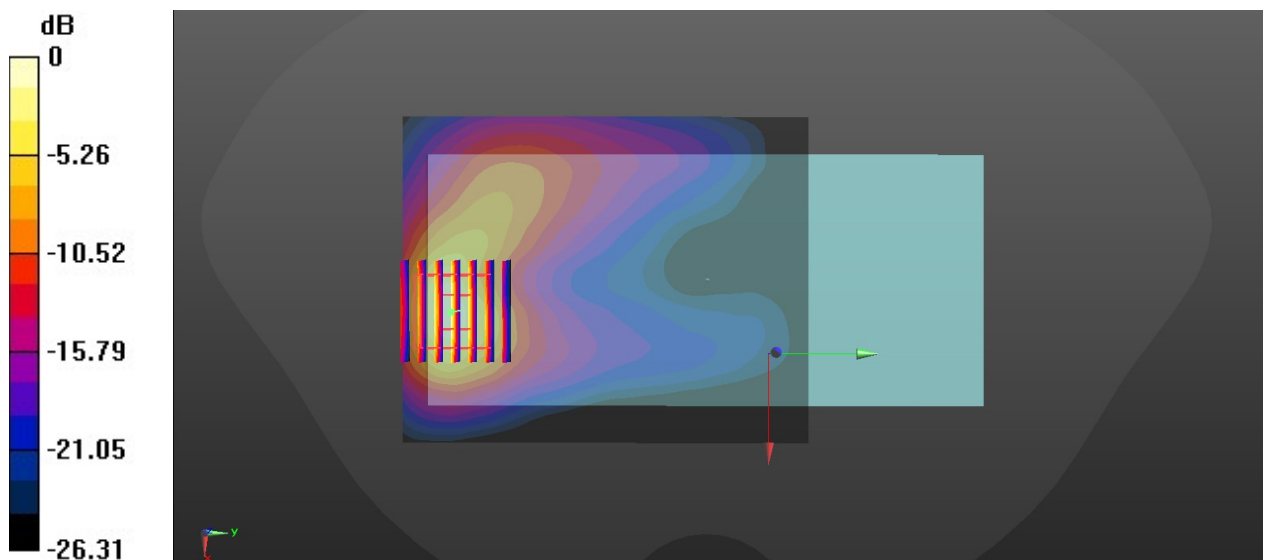
Communication System: UID 0, LTE (0); Frequency: 2598 MHz; Duty Cycle: 1:1.59
Medium: HSL_2600_220123 Medium parameters used: $f = 2598$ MHz; $\sigma = 1.979$ S/m; $\epsilon_r = 38.263$;
 $\rho = 1000$ kg/m³
Ambient Temperature : 23.1 °C; Liquid Temperature : 22.2 °C

DASY5 Configuration:

- Probe: EX3DV4 - SN7641; ConvF(7.94, 7.94, 7.94); Calibrated: 2021/3/15
- Sensor-Surface: 1.4mm (Mechanical Surface Detection)
- Electronics: DAE4 Sn1664; Calibrated: 2021/3/1
- Phantom: Twin-SAM1(P1aP2a20); Type: QD 000 P40 CD; Serial: TP:1670
- Measurement SW: DASY52, Version 52.10 (3); SEMCAD X Version 14.6.13 (7474)

Ch40670/Area Scan (81x101x1): Interpolated grid: dx=1.200 mm, dy=1.200 mm
Maximum value of SAR (interpolated) = 1.73 W/kg

Ch40670/Zoom Scan (7x7x7)/Cube 0: Measurement grid: dx=5mm, dy=5mm, dz=5mm
Reference Value = 2.304 V/m; Power Drift = -0.14 dB
Peak SAR (extrapolated) = 2.38 W/kg
SAR(1 g) = 1.03 W/kg; SAR(10 g) = 0.401 W/kg
Maximum value of SAR (measured) = 1.84 W/kg



0 dB = 1.84 W/kg

31_WLAN2.4GHz_802.11b 1Mbps_Back_5mm_Ch6

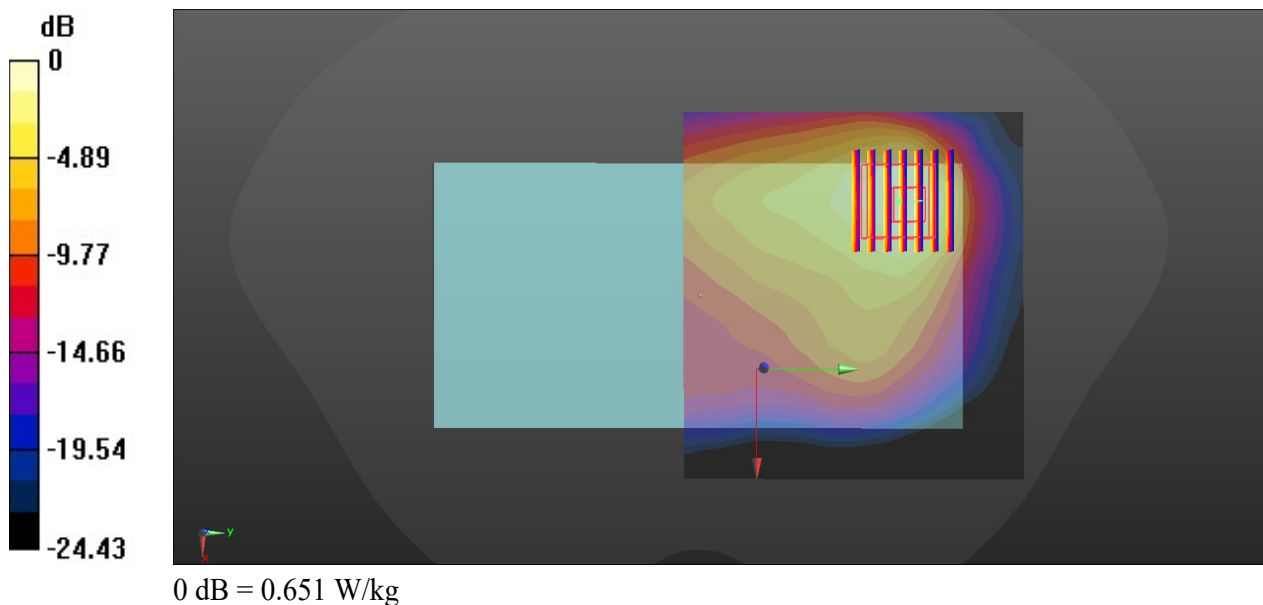
Communication System: UID 0, WIFI (0); Frequency: 2437 MHz; Duty Cycle: 1:1.007
Medium: HSL_2450_220110 Medium parameters used: $f = 2437$ MHz; $\sigma = 1.809$ S/m; $\epsilon_r = 38.026$;
 $\rho = 1000$ kg/m³
Ambient Temperature : 23.4 °C; Liquid Temperature : 22.7 °C

DASY5 Configuration:

- Probe: EX3DV4 - SN7641; ConvF(8.29, 8.29, 8.29); Calibrated: 2021/3/15
- Sensor-Surface: 1.4mm (Mechanical Surface Detection)
- Electronics: DAE4 Sn1664; Calibrated: 2021/3/1
- Phantom: Twin-SAM1(P1aP2a20); Type: QD 000 P40 CD; Serial: TP:1670
- Measurement SW: DASY52, Version 52.10 (3); SEMCAD X Version 14.6.13 (7474)

Ch6/Area Scan (91x91x1): Interpolated grid: dx=1.200 mm, dy=1.200 mm
Maximum value of SAR (interpolated) = 1.75 W/kg

Ch6/Zoom Scan (7x7x7)/Cube 0: Measurement grid: dx=5mm, dy=5mm, dz=5mm
Reference Value = 8.910 V/m; Power Drift = -0.04 dB
Peak SAR (extrapolated) = 2.35 W/kg
SAR(1 g) = 0.351 W/kg; SAR(10 g) = 0.162 W/kg
Maximum value of SAR (measured) = 0.651 W/kg



32_WLAN5GHz_802.11ac-VHT80 MCS0_Back_5mm_Ch58

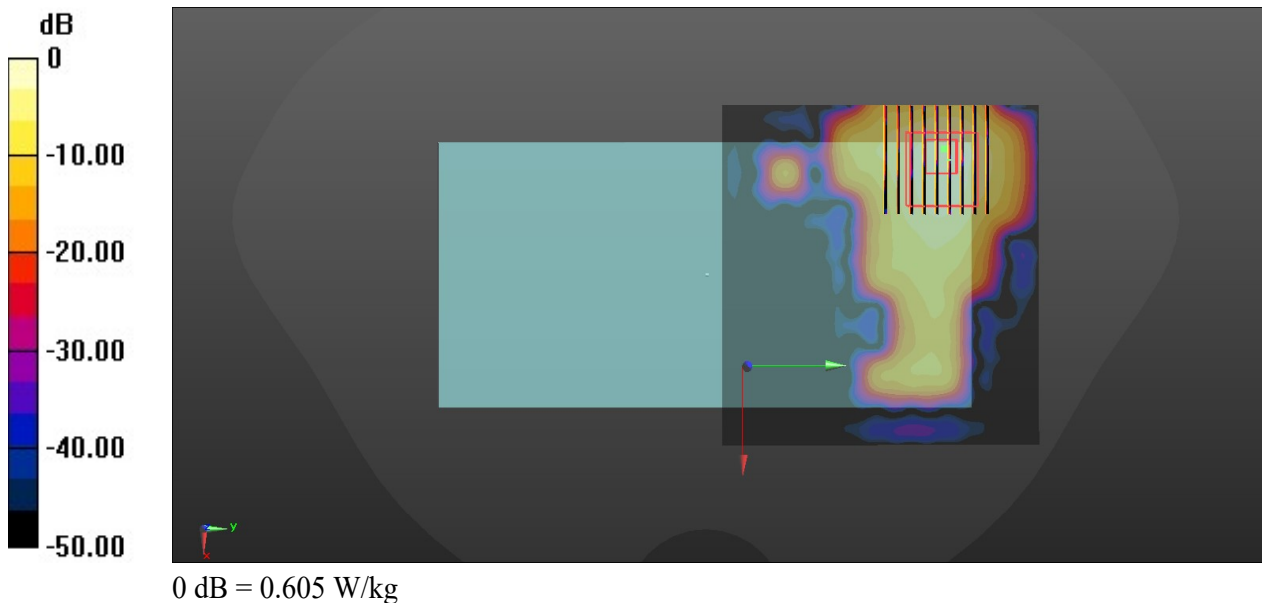
Communication System: UID 0, WIFI (0); Frequency: 5290 MHz; Duty Cycle: 1:139
Medium: HSL_5250_220113 Medium parameters used: $f = 5290$ MHz; $\sigma = 4.8$ S/m; $\epsilon_r = 36.823$; $\rho = 1000$ kg/m³
Ambient Temperature : 23.4 °C; Liquid Temperature : 22.1 °C

DASY5 Configuration:

- Probe: EX3DV4 - SN7641; ConvF(5.68, 5.68, 5.68); Calibrated: 2021/3/15
- Sensor-Surface: 1.4mm (Mechanical Surface Detection)
- Electronics: DAE4 Sn1664; Calibrated: 2021/3/1
- Phantom: Twin-SAM1(P1aP2a20); Type: QD 000 P40 CD; Serial: TP:1670
- Measurement SW: DASY52, Version 52.10 (3); SEMCAD X Version 14.6.13 (7474)

Ch58/Area Scan (101x101x1): Interpolated grid: dx=1.000 mm, dy=1.000 mm
Maximum value of SAR (interpolated) = 0.536 W/kg

Ch58/Zoom Scan (9x9x7)/Cube 0: Measurement grid: dx=4mm, dy=4mm, dz=1.4mm
Reference Value = 0 V/m; Power Drift = 0.01 dB
Peak SAR (extrapolated) = 1.04 W/kg
SAR(1 g) = 0.256 W/kg; SAR(10 g) = 0.073 W/kg
Maximum value of SAR (measured) = 0.605 W/kg



33_WLAN5GHz_802.11ac-VHT80 MCS0_Back_5mm_Ch122

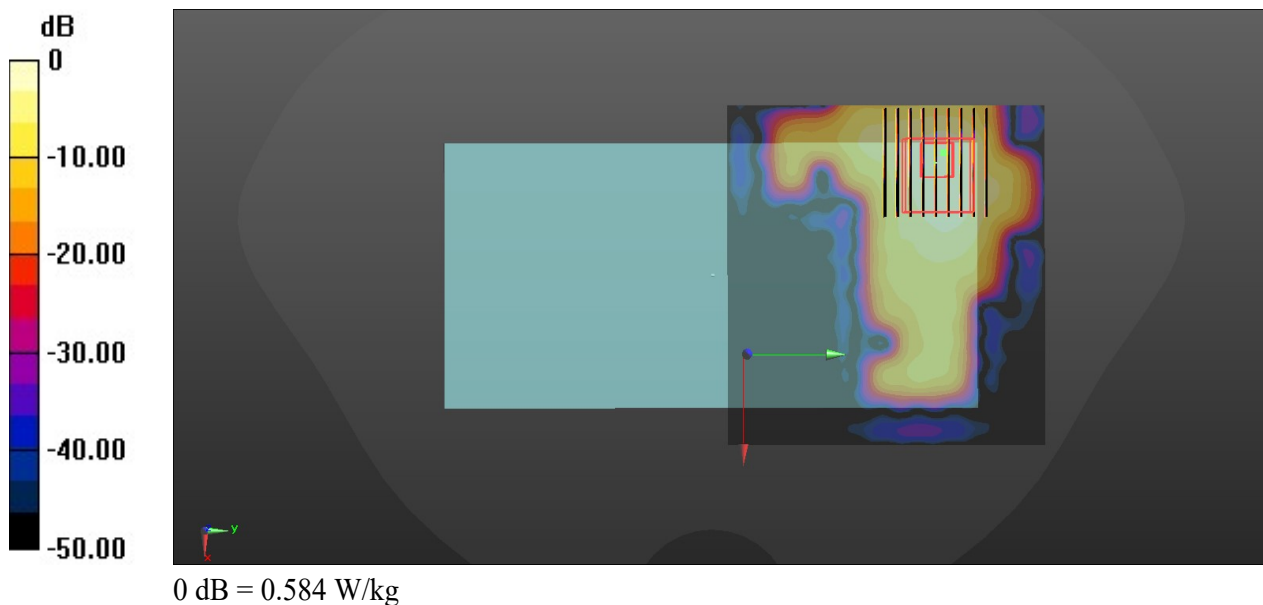
Communication System: UID 0, WIFI (0); Frequency: 5610 MHz; Duty Cycle: 1:139
Medium: HSL_5600_220113 Medium parameters used: $f = 5610$ MHz; $\sigma = 5.222$ S/m; $\epsilon_r = 36.234$;
 $\rho = 1000$ kg/m³
Ambient Temperature : 23.9 °C; Liquid Temperature : 22.5 °C

DASY5 Configuration:

- Probe: EX3DV4 - SN7641; ConvF(5.03, 5.03, 5.03); Calibrated: 2021/3/15
- Sensor-Surface: 1.4mm (Mechanical Surface Detection)
- Electronics: DAE4 Sn1664; Calibrated: 2021/3/1
- Phantom: Twin-SAM1(P1aP2a20); Type: QD 000 P40 CD; Serial: TP:1670
- Measurement SW: DASY52, Version 52.10 (3); SEMCAD X Version 14.6.13 (7474)

Ch122/Area Scan (101x101x1): Interpolated grid: dx=1.000 mm, dy=1.000 mm
Maximum value of SAR (interpolated) = 0.478 W/kg

Ch122/Zoom Scan (9x9x7)/Cube 0: Measurement grid: dx=4mm, dy=4mm, dz=1.4mm
Reference Value = 0 V/m; Power Drift = 0.05 dB
Peak SAR (extrapolated) = 1.13 W/kg
SAR(1 g) = 0.218 W/kg; SAR(10 g) = 0.069 W/kg
Maximum value of SAR (measured) = 0.584 W/kg



34_WLAN5GHz_802.11ac-VHT80 MCS0_Back_5mm_Ch155

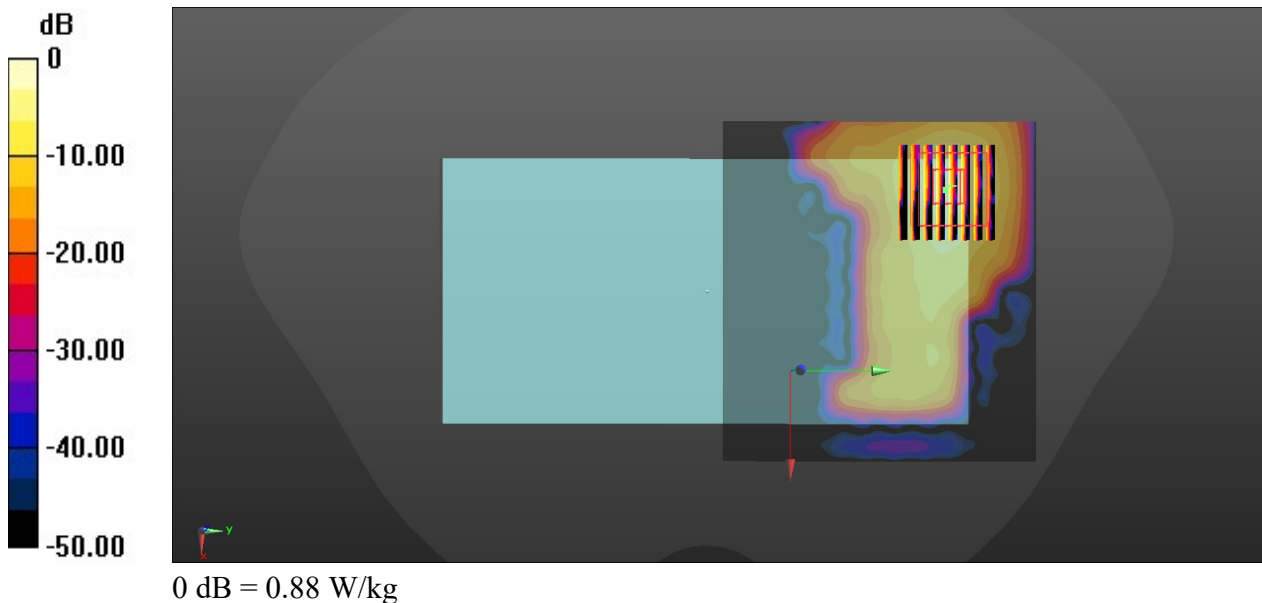
Communication System: UID 0, WIFI (0); Frequency: 5775 MHz; Duty Cycle: 1:1.139
Medium: HSL_5750_220113 Medium parameters used: $f = 5775$ MHz; $\sigma = 5.403$ S/m; $\epsilon_r = 35.876$;
 $\rho = 1000$ kg/m³
Ambient Temperature : 23.1 °C; Liquid Temperature : 22.1 °C

DASY5 Configuration:

- Probe: EX3DV4 - SN7641; ConvF(5.3, 5.3, 5.3); Calibrated: 2021/3/15
- Sensor-Surface: 1.4mm (Mechanical Surface Detection)
- Electronics: DAE4 Sn1664; Calibrated: 2021/3/1
- Phantom: Twin-SAM1(P1aP2a20); Type: QD 000 P40 CD; Serial: TP:1670
- Measurement SW: DASY52, Version 52.10 (3); SEMCAD X Version 14.6.13 (7474)

Ch155/Area Scan (101x101x1): Interpolated grid: dx=1.000 mm, dy=1.000 mm
Maximum value of SAR (interpolated) = 1.88 W/kg

Ch155/Zoom Scan (8x8x7)/Cube 0: Measurement grid: dx=4mm, dy=4mm, dz=1.4mm
Reference Value = 0 V/m; Power Drift = 0.04 dB
Peak SAR (extrapolated) = 3.11 W/kg
SAR(1 g) = 0.258 W/kg; SAR(10 g) = 0.109 W/kg
Maximum value of SAR (measured) = 0.88 W/kg



35_Bluetooth_DH5 1Mbps_Back_5mm_Ch78

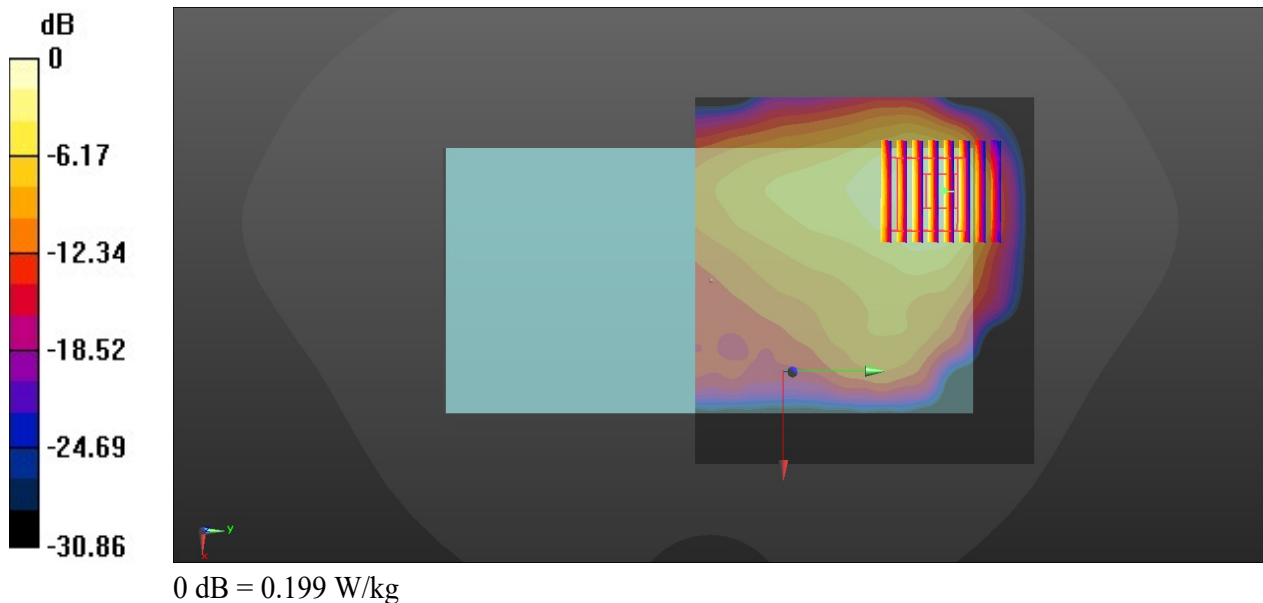
Communication System: UID 0, Bluetooth (0); Frequency: 2480 MHz; Duty Cycle: 1:1.3
Medium: HSL_2450_220110 Medium parameters used: $f = 2480$ MHz; $\sigma = 1.863$ S/m; $\epsilon_r = 37.794$;
 $\rho = 1000$ kg/m³
Ambient Temperature : 23.4 °C; Liquid Temperature : 22.7 °C

DASY5 Configuration:

- Probe: EX3DV4 - SN7641; ConvF(8.29, 8.29, 8.29); Calibrated: 2021/3/15
- Sensor-Surface: 1.4mm (Mechanical Surface Detection)
- Electronics: DAE4 Sn1664; Calibrated: 2021/3/1
- Phantom: Twin-SAM1(P1aP2a20); Type: QD 000 P40 CD; Serial: TP:1670
- Measurement SW: DASY52, Version 52.10 (3); SEMCAD X Version 14.6.13 (7474)

Ch78/Area Scan (91x91x1): Interpolated grid: dx=1.200 mm, dy=1.200 mm
Maximum value of SAR (interpolated) = 0.240 W/kg

Ch78/Zoom Scan (7x8x7)/Cube 0: Measurement grid: dx=5mm, dy=5mm, dz=5mm
Reference Value = 2.729 V/m; Power Drift = -0.03 dB
Peak SAR (extrapolated) = 0.287 W/kg
SAR(1 g) = 0.064 W/kg; SAR(10 g) = 0.052 W/kg
Maximum value of SAR (measured) = 0.199 W/kg



36_GSM850_GPRS 2 Tx slots_Back_0mm_Ch128

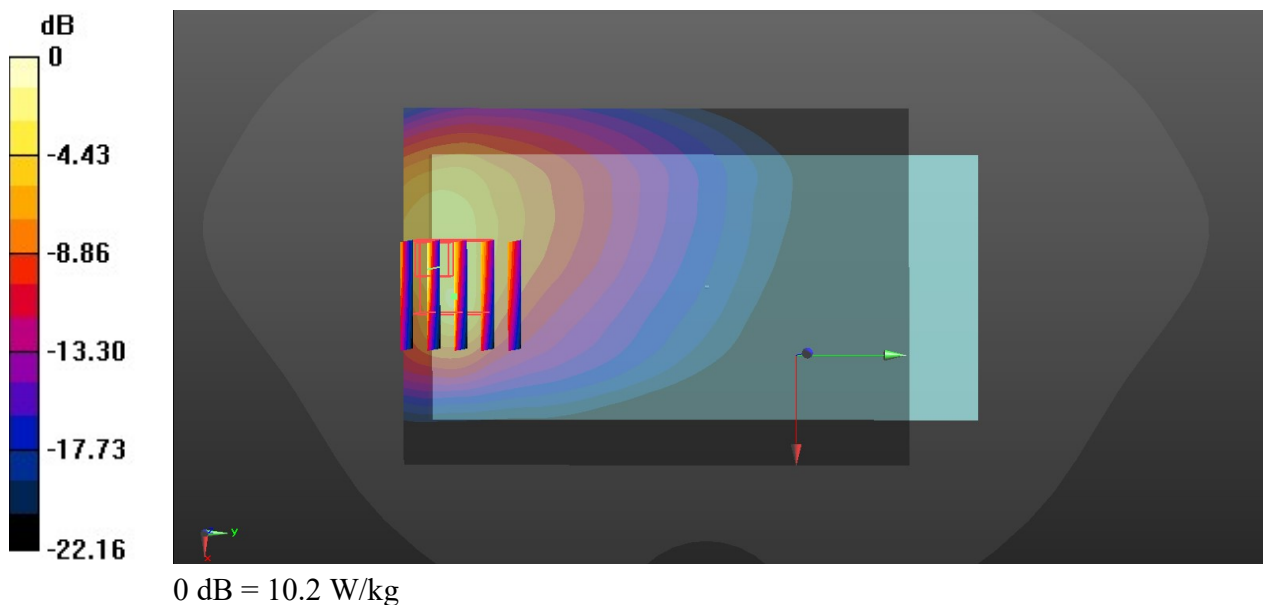
Communication System: UID 0, GPRS/EDGE10 (0); Frequency: 824.2 MHz; Duty Cycle: 1:4.15
Medium: HSL_835_220123 Medium parameters used: $f = 824.2$ MHz; $\sigma = 0.889$ S/m; $\epsilon_r = 42.154$;
 $\rho = 1000$ kg/m³
Ambient Temperature : 23.5 °C; Liquid Temperature : 22.6 °C

DASY5 Configuration:

- Probe: EX3DV4 - SN7641; ConvF(10.9, 10.9, 10.9); Calibrated: 2021/3/15
- Sensor-Surface: 1.4mm (Mechanical Surface Detection)
- Electronics: DAE4 Sn1664; Calibrated: 2021/3/1
- Phantom: Twin-SAM1(P1aP2a20); Type: QD 000 P40 CD; Serial: TP:1670
- Measurement SW: DASY52, Version 52.10 (3); SEMCAD X Version 14.6.13 (7474)

Ch128/Area Scan (71x101x1): Interpolated grid: dx=1.500 mm, dy=1.500 mm
Maximum value of SAR (interpolated) = 5.49 W/kg

Ch128/Zoom Scan (5x5x7)/Cube 0: Measurement grid: dx=8mm, dy=8mm, dz=5mm
Reference Value = 14.74 V/m; Power Drift = -0.05 dB
Peak SAR (extrapolated) = 15.0 W/kg
SAR(1 g) = 4.57 W/kg; SAR(10 g) = 1.95 W/kg
Maximum value of SAR (measured) = 10.2 W/kg



37_GSM1900_GPRS 2 Tx slots_Bottom Side_0mm_Ch512

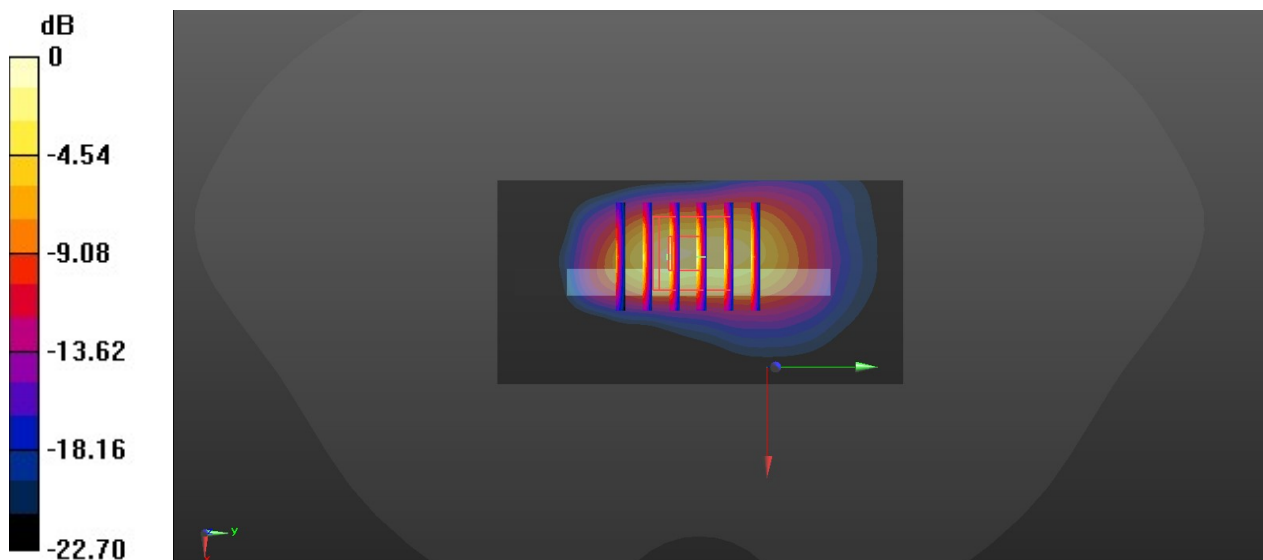
Communication System: UID 0, GPRS/EDGE10 (0); Frequency: 1850.2 MHz; Duty Cycle: 1:4.15
Medium: HSL_1900_220123 Medium parameters used: $f = 1850.2$ MHz; $\sigma = 1.347$ S/m; $\epsilon_r = 38.955$; $\rho = 1000$ kg/m³
Ambient Temperature : 23.6 °C; Liquid Temperature : 22.3 °C

DASY5 Configuration:

- Probe: EX3DV4 - SN7641; ConvF(9.05, 9.05, 9.05); Calibrated: 2021/3/15
- Sensor-Surface: 1.4mm (Mechanical Surface Detection)
- Electronics: DAE4 Sn1664; Calibrated: 2021/3/1
- Phantom: Twin-SAM1(P1aP2a20); Type: QD 000 P40 CD; Serial: TP:1670
- Measurement SW: DASY52, Version 52.10 (3); SEMCAD X Version 14.6.13 (7474)

Ch512/Area Scan (41x81x1): Interpolated grid: dx=1.500 mm, dy=1.500 mm
Maximum value of SAR (interpolated) = 7.91 W/kg

Ch512/Zoom Scan (5x6x7)/Cube 0: Measurement grid: dx=8mm, dy=8mm, dz=5mm
Reference Value = 47.20 V/m; Power Drift = 0.02 dB
Peak SAR (extrapolated) = 12.6 W/kg
SAR(1 g) = 5.28 W/kg; SAR(10 g) = 2.3 W/kg
Maximum value of SAR (measured) = 10.2 W/kg



0 dB = 10.2 W/kg

38_WCDMA V_RMC 12.2Kbps_Back_0mm_Ch4182

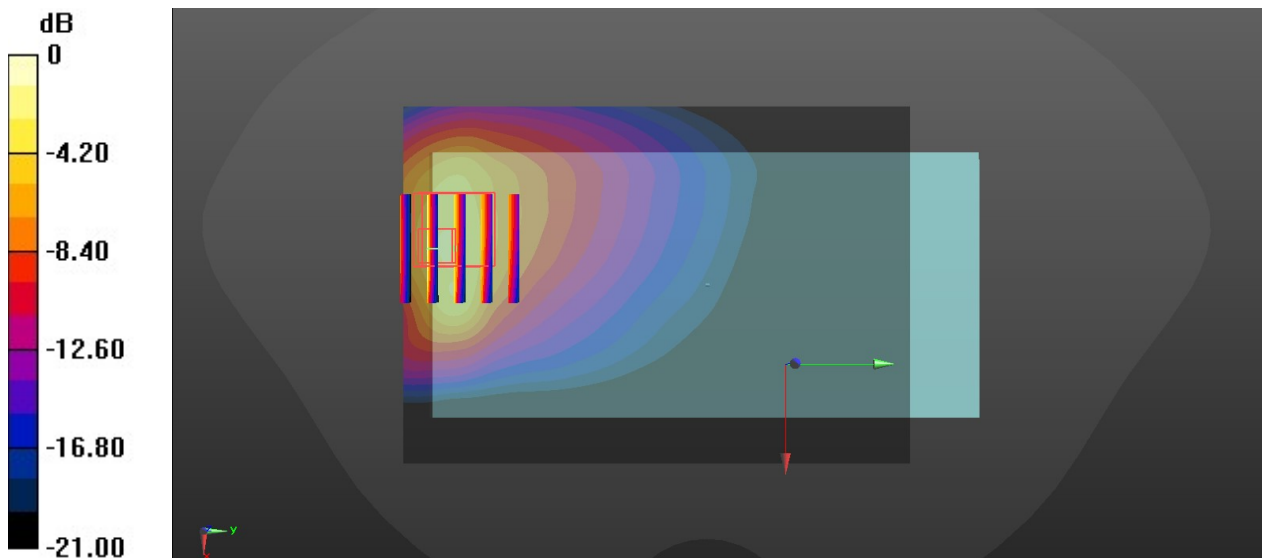
Communication System: UID 0, UMTS (0); Frequency: 836.4 MHz; Duty Cycle: 1:1
Medium: HSL_835_220123 Medium parameters used: $f = 836.4$ MHz; $\sigma = 0.888$ S/m; $\epsilon_r = 41.979$;
 $\rho = 1000$ kg/m³
Ambient Temperature : 23.5 °C; Liquid Temperature : 22.6 °C

DASY5 Configuration:

- Probe: EX3DV4 - SN7641; ConvF(10.9, 10.9, 10.9); Calibrated: 2021/3/15
- Sensor-Surface: 1.4mm (Mechanical Surface Detection)
- Electronics: DAE4 Sn1664; Calibrated: 2021/3/1
- Phantom: Twin-SAM1(P1aP2a20); Type: QD 000 P40 CD; Serial: TP:1670
- Measurement SW: DASY52, Version 52.10 (3); SEMCAD X Version 14.6.13 (7474)

Ch4182/Area Scan (71x101x1): Interpolated grid: dx=1.500 mm, dy=1.500 mm
Maximum value of SAR (interpolated) = 3.53 W/kg

Ch4182/Zoom Scan (5x5x7)/Cube 0: Measurement grid: dx=8mm, dy=8mm, dz=5mm
Reference Value = 10.32 V/m; Power Drift = 0.03 dB
Peak SAR (extrapolated) = 9.87 W/kg
SAR(1 g) = 2.92 W/kg; SAR(10 g) = 1.43 W/kg
Maximum value of SAR (measured) = 6.31 W/kg



0 dB = 6.31 W/kg

39_WCDMA II_RMC 12.2Kbps_Bottom Side_0mm_Ch9262

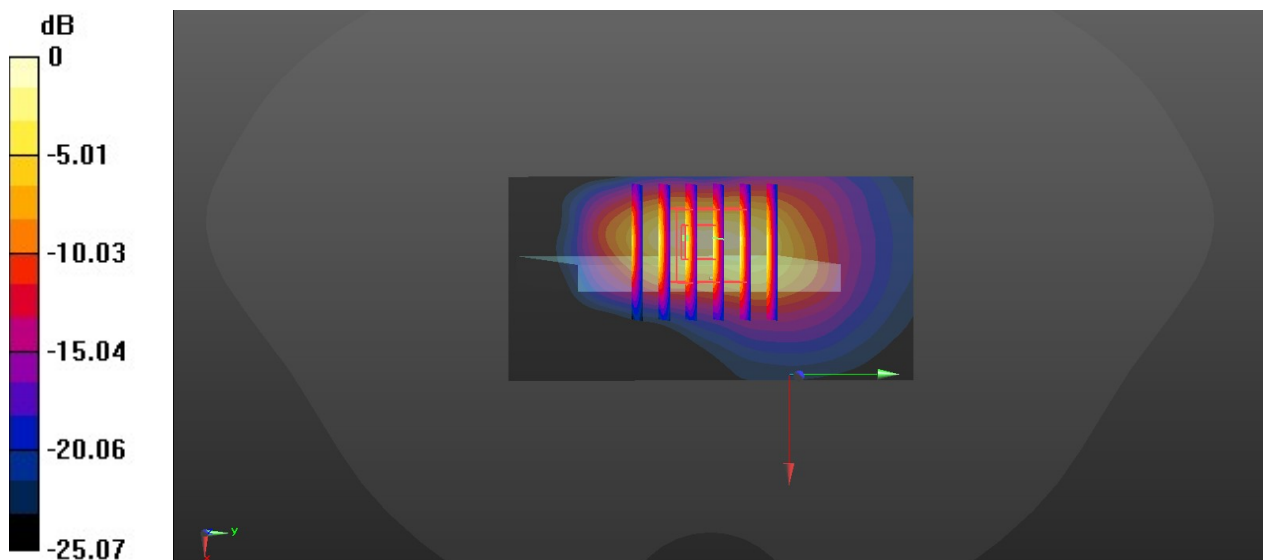
Communication System: UID 0, UMTS (0); Frequency: 1852.4 MHz; Duty Cycle: 1:1
Medium: HSL_1900_220123 Medium parameters used: $f = 1852.4$ MHz; $\sigma = 1.349$ S/m; $\epsilon_r = 38.946$; $\rho = 1000$ kg/m³
Ambient Temperature : 23.6 °C; Liquid Temperature : 22.3 °C

DASY5 Configuration:

- Probe: EX3DV4 - SN7641; ConvF(9.05, 9.05, 9.05); Calibrated: 2021/3/15
- Sensor-Surface: 1.4mm (Mechanical Surface Detection)
- Electronics: DAE4 Sn1664; Calibrated: 2021/3/1
- Phantom: Twin-SAM1(P1aP2a20); Type: QD 000 P40 CD; Serial: TP:1670
- Measurement SW: DASY52, Version 52.10 (3); SEMCAD X Version 14.6.13 (7474)

Ch9262/Area Scan (41x81x1): Interpolated grid: dx=1.500 mm, dy=1.500 mm
Maximum value of SAR (interpolated) = 8.17 W/kg

Ch9262/Zoom Scan (6x6x7)/Cube 0: Measurement grid: dx=8mm, dy=8mm, dz=5mm
Reference Value = 39.19 V/m; Power Drift = 0.18 dB
Peak SAR (extrapolated) = 13.8 W/kg
SAR(1 g) = 5.6 W/kg; SAR(10 g) = 2.43 W/kg
Maximum value of SAR (measured) = 10.2 W/kg



0 dB = 10.2 W/kg

40_LTE Band 5_10M_QPSK_1RB_25Offset_Back_0mm_Ch20525

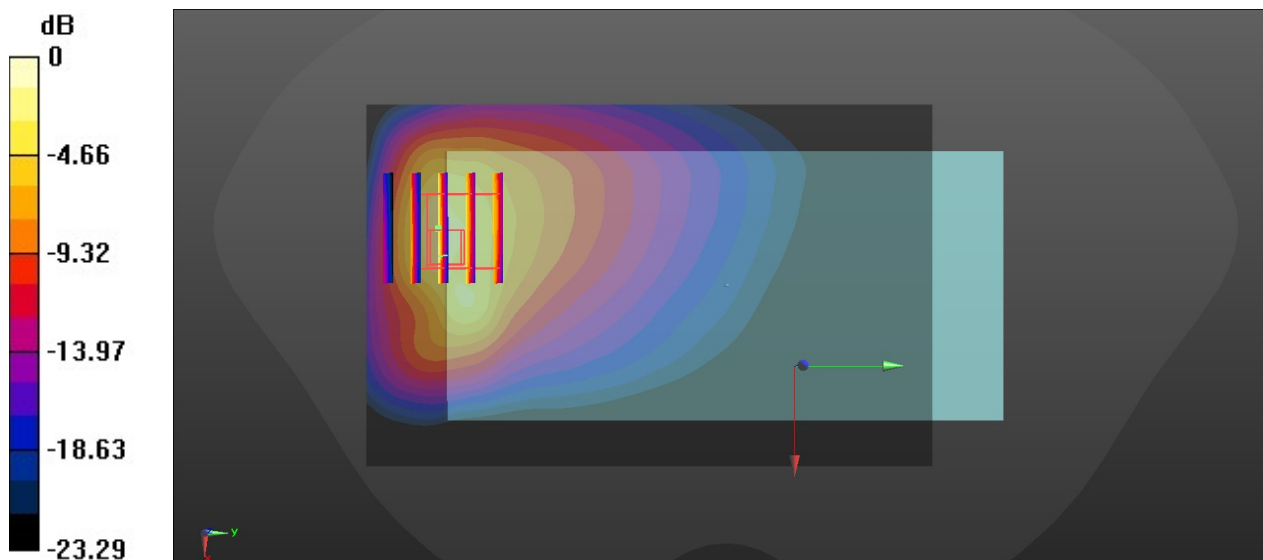
Communication System: UID 0, LTE (0); Frequency: 836.5 MHz; Duty Cycle: 1:1
Medium: HSL_835_220123 Medium parameters used: $f = 836.5$ MHz; $\sigma = 0.888$ S/m; $\epsilon_r = 41.978$;
 $\rho = 1000$ kg/m³
Ambient Temperature : 23.5 °C; Liquid Temperature : 22.6 °C

DASY5 Configuration:

- Probe: EX3DV4 - SN7641; ConvF(10.9, 10.9, 10.9); Calibrated: 2021/3/15
- Sensor-Surface: 1.4mm (Mechanical Surface Detection)
- Electronics: DAE4 Sn1664; Calibrated: 2021/3/1
- Phantom: Twin-SAM1(P1aP2a20); Type: QD 000 P40 CD; Serial: TP:1670
- Measurement SW: DASY52, Version 52.10 (3); SEMCAD X Version 14.6.13 (7474)

Ch20525/Area Scan (71x111x1): Interpolated grid: dx=1.500 mm, dy=1.500 mm
Maximum value of SAR (interpolated) = 4.09 W/kg

Ch20525/Zoom Scan (5x5x7)/Cube 0: Measurement grid: dx=8mm, dy=8mm, dz=5mm
Reference Value = 9.916 V/m; Power Drift = 0.03 dB
Peak SAR (extrapolated) = 9.35 W/kg
SAR(1 g) = 2.92 W/kg; SAR(10 g) = 1.46 W/kg
Maximum value of SAR (measured) = 6.54 W/kg



0 dB = 6.54 W/kg

41_LTE Band 7_20M_QPSK_1RB_49Offset_Back_0mm_Ch21350

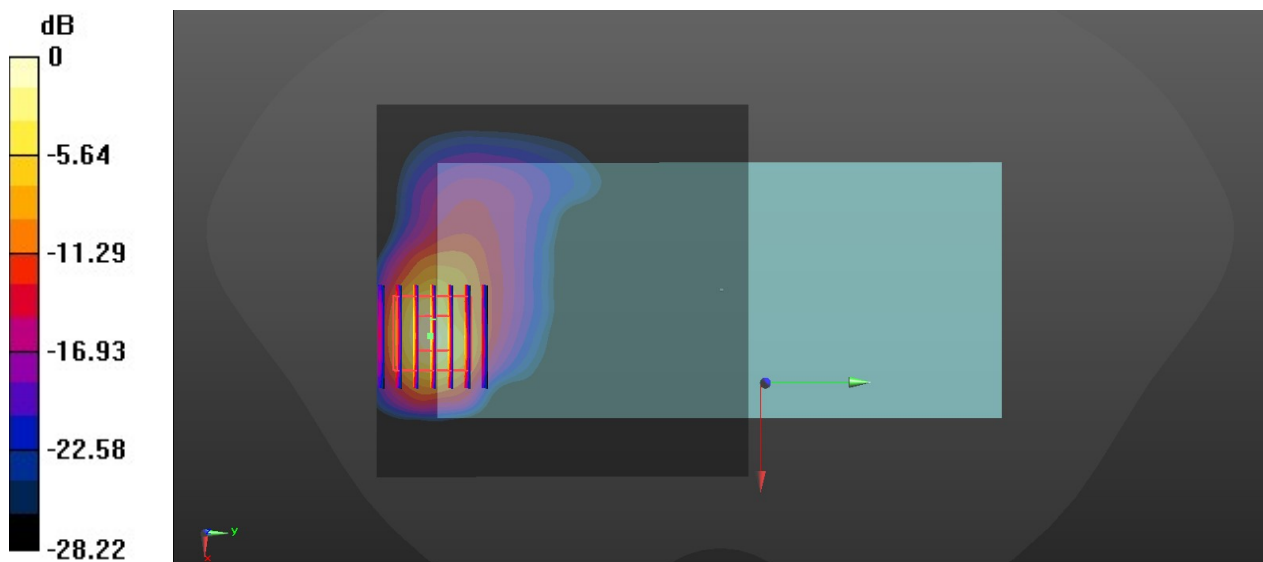
Communication System: UID 0, LTE (0); Frequency: 2560 MHz; Duty Cycle: 1:1
Medium: HSL_2600_220123 Medium parameters used: $f = 2560$ MHz; $\sigma = 1.944$ S/m; $\epsilon_r = 38.479$;
 $\rho = 1000$ kg/m³
Ambient Temperature : 23.1 °C; Liquid Temperature : 22.2 °C

DASY5 Configuration:

- Probe: EX3DV4 - SN7641; ConvF(7.94, 7.94, 7.94); Calibrated: 2021/3/15
- Sensor-Surface: 1.4mm (Mechanical Surface Detection)
- Electronics: DAE4 Sn1664; Calibrated: 2021/3/1
- Phantom: Twin-SAM1(P1aP2a20); Type: QD 000 P40 CD; Serial: TP:1670
- Measurement SW: DASY52, Version 52.10 (3); SEMCAD X Version 14.6.13 (7474)

Ch21350/Area Scan (91x91x1): Interpolated grid: dx=1.200 mm, dy=1.200 mm
Maximum value of SAR (interpolated) = 10.2 W/kg

Ch21350/Zoom Scan (7x7x7)/Cube 0: Measurement grid: dx=5mm, dy=5mm, dz=5mm
Reference Value = 0 V/m; Power Drift = 0.03 dB
Peak SAR (extrapolated) = 18.9 W/kg
SAR(1 g) = 6.48 W/kg; SAR(10 g) = 2.13 W/kg
Maximum value of SAR (measured) = 12.5 W/kg



0 dB = 12.5 W/kg

42_LTE Band 41_20M_QPSK_1RB_49Offset_Back_0mm_Ch40400

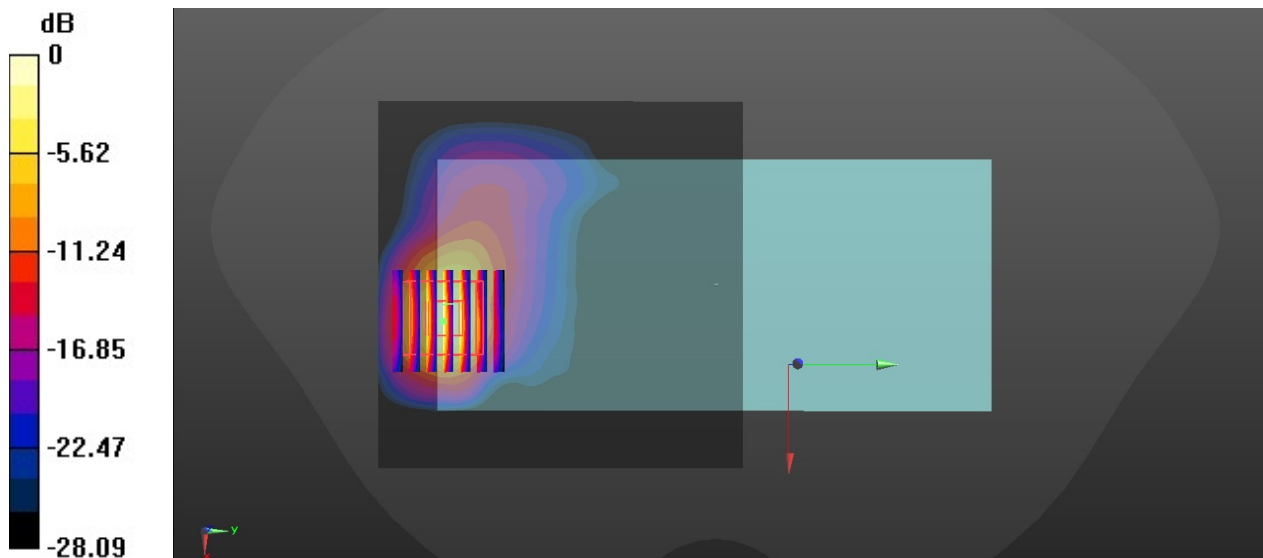
Communication System: UID 0, LTE (0); Frequency: 2571 MHz; Duty Cycle: 1:1.59
Medium: HSL_2600_220123 Medium parameters used: $f = 2571$ MHz; $\sigma = 1.953$ S/m; $\epsilon_r = 38.416$;
 $\rho = 1000$ kg/m³
Ambient Temperature : 23.1 °C; Liquid Temperature : 22.2 °C

DASY5 Configuration:

- Probe: EX3DV4 - SN7641; ConvF(7.94, 7.94, 7.94); Calibrated: 2021/3/15
- Sensor-Surface: 1.4mm (Mechanical Surface Detection)
- Electronics: DAE4 Sn1664; Calibrated: 2021/3/1
- Phantom: Twin-SAM1(P1aP2a20); Type: QD 000 P40 CD; Serial: TP:1670
- Measurement SW: DASY52, Version 52.10 (3); SEMCAD X Version 14.6.13 (7474)

Ch40400/Area Scan (91x91x1): Interpolated grid: dx=1.200 mm, dy=1.200 mm
Maximum value of SAR (interpolated) = 11.1 W/kg

Ch40400/Zoom Scan (7x7x7)/Cube 0: Measurement grid: dx=5mm, dy=5mm, dz=5mm
Reference Value = 0 V/m; Power Drift = 0.06 dB
Peak SAR (extrapolated) = 19.8 W/kg
SAR(1 g) = 7.15 W/kg; SAR(10 g) = 2.4 W/kg
Maximum value of SAR (measured) = 14.0 W/kg



0 dB = 14.0 W/kg

43_WLAN5GHz_802.11a 6Mbps_Top Side_0mm_Ch48

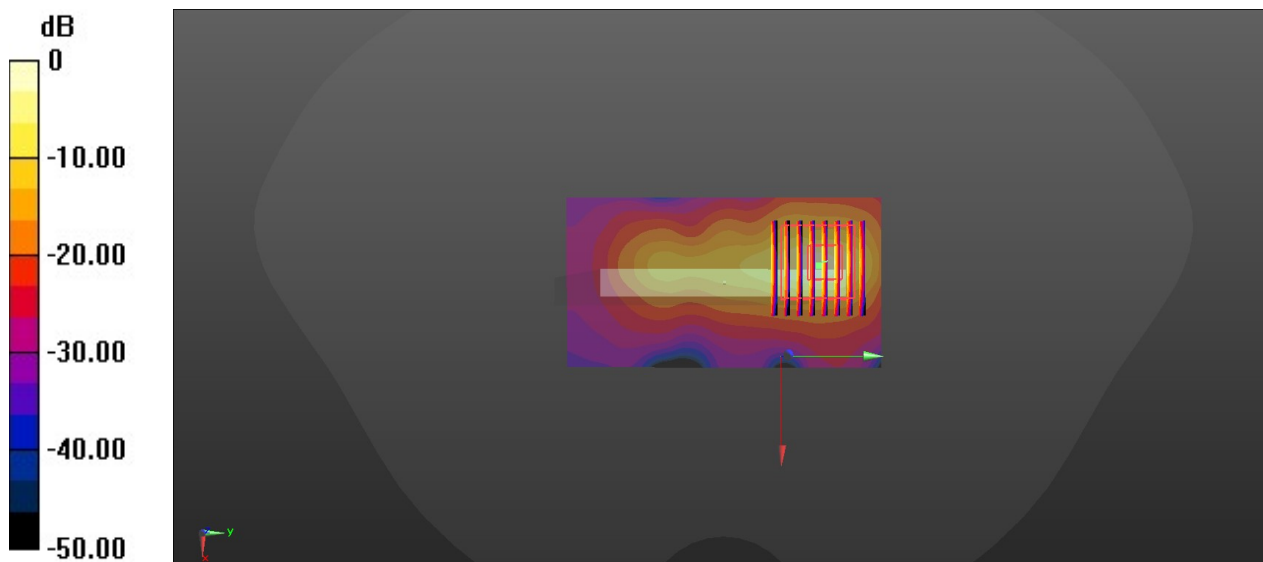
Communication System: UID 0, WIFI (0); Frequency: 5240 MHz; Duty Cycle: 1:1.031
Medium: HSL_5250_220113 Medium parameters used: $f = 5240$ MHz; $\sigma = 4.735$ S/m; $\epsilon_r = 36.912$;
 $\rho = 1000$ kg/m³
Ambient Temperature : 23.4 °C; Liquid Temperature : 22.1 °C

DASY5 Configuration:

- Probe: EX3DV4 - SN7641; ConvF(5.68, 5.68, 5.68); Calibrated: 2021/3/15
- Sensor-Surface: 1.4mm (Mechanical Surface Detection)
- Electronics: DAE4 Sn1664; Calibrated: 2021/3/1
- Phantom: Twin-SAM1(P1aP2a20); Type: QD 000 P40 CD; Serial: TP:1670
- Measurement SW: DASY52, Version 52.10 (3); SEMCAD X Version 14.6.13 (7474)

Ch48/Area Scan (51x101x1): Interpolated grid: dx=1.000 mm, dy=1.000 mm
Maximum value of SAR (interpolated) = 29.5 W/kg

Ch48/Zoom Scan (8x8x7)/Cube 0: Measurement grid: dx=4mm, dy=4mm, dz=1.4mm
Reference Value = 22.40 V/m; Power Drift = -0.01 dB
Peak SAR (extrapolated) = 54.6 W/kg
SAR(1 g) = 5.27 W/kg; SAR(10 g) = 1.25 W/kg
Maximum value of SAR (measured) = 19.1 W/kg



0 dB = 19.1 W/kg

44_WLAN5GHz_802.11a 6Mbps_Top Side_0mm_Ch56

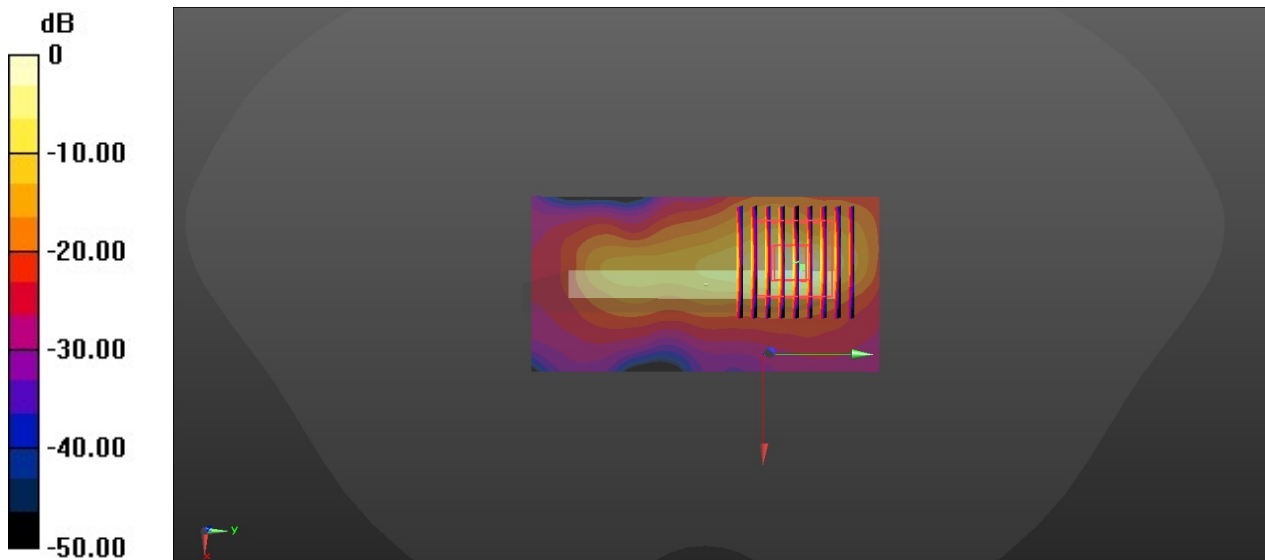
Communication System: UID 0, WIFI (0); Frequency: 5280 MHz; Duty Cycle: 1:1.031
Medium: HSL_5250_220113 Medium parameters used: $f = 5280 \text{ MHz}$; $\sigma = 4.792 \text{ S/m}$; $\epsilon_r = 36.838$;
 $\rho = 1000 \text{ kg/m}^3$
Ambient Temperature : 23.4 °C; Liquid Temperature : 22.1 °C

DASY5 Configuration:

- Probe: EX3DV4 - SN7641; ConvF(5.68, 5.68, 5.68); Calibrated: 2021/3/15
- Sensor-Surface: 1.4mm (Mechanical Surface Detection)
- Electronics: DAE4 Sn1664; Calibrated: 2021/3/1
- Phantom: Twin-SAM1(P1aP2a20); Type: QD 000 P40 CD; Serial: TP:1670
- Measurement SW: DASY52, Version 52.10 (3); SEMCAD X Version 14.6.13 (7474)

Ch56/Area Scan (51x101x1): Interpolated grid: $dx=1.000 \text{ mm}$, $dy=1.000 \text{ mm}$
Maximum value of SAR (interpolated) = 14.2 W/kg

Ch56/Zoom Scan (9x9x7)/Cube 0: Measurement grid: $dx=4\text{mm}$, $dy=4\text{mm}$, $dz=1.4\text{mm}$
Reference Value = 20.58 V/m; Power Drift = 0.07 dB
Peak SAR (extrapolated) = 35.4 W/kg
SAR(1 g) = 4.93 W/kg; SAR(10 g) = 1.16 W/kg
Maximum value of SAR (measured) = 18.6 W/kg



0 dB = 18.6 W/kg

45_WLAN5GHz_802.11a 6Mbps_Top Side_0mm_Ch100

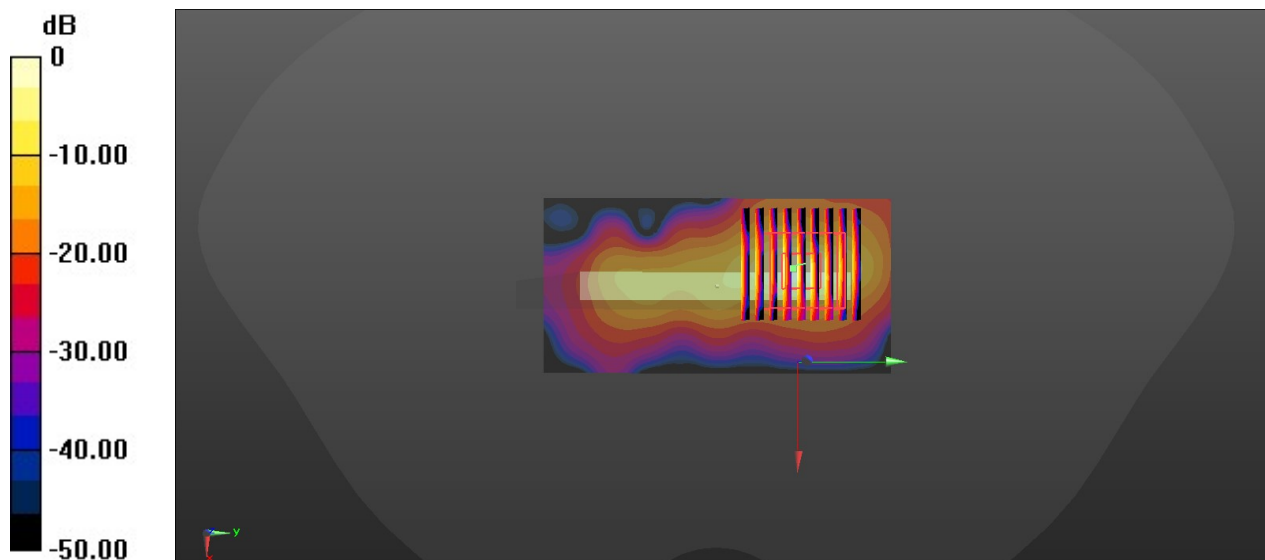
Communication System: UID 0, WIFI (0); Frequency: 5500 MHz; Duty Cycle: 1:1.031
Medium: HSL_5600_220113 Medium parameters used: $f = 5500$ MHz; $\sigma = 5.086$ S/m; $\epsilon_r = 36.47$; $\rho = 1000$ kg/m³
Ambient Temperature : 23.9 °C; Liquid Temperature : 22.5 °C

DASY5 Configuration:

- Probe: EX3DV4 - SN7641; ConvF(5.03, 5.03, 5.03); Calibrated: 2021/3/15
- Sensor-Surface: 1.4mm (Mechanical Surface Detection)
- Electronics: DAE4 Sn1664; Calibrated: 2021/3/1
- Phantom: Twin-SAM1(P1aP2a20); Type: QD 000 P40 CD; Serial: TP:1670
- Measurement SW: DASY52, Version 52.10 (3); SEMCAD X Version 14.6.13 (7474)

Ch100/Area Scan (51x101x1): Interpolated grid: dx=1.000 mm, dy=1.000 mm
Maximum value of SAR (interpolated) = 12.7 W/kg

Ch100/Zoom Scan (9x9x7)/Cube 0: Measurement grid: dx=4mm, dy=4mm, dz=1.4mm
Reference Value = 22.51 V/m; Power Drift = 0.15 dB
Peak SAR (extrapolated) = 34.8 W/kg
SAR(1 g) = 4.14 W/kg; SAR(10 g) = 0.941 W/kg
Maximum value of SAR (measured) = 13.4 W/kg



0 dB = 13.4 W/kg