

System Check_Head_835MHz

Communication System: ; Frequency: 835.0

Medium: HSL_850_211230. Medium parameters used: $f = 835.0$ MHz; $\sigma = 0.924$ S/m; $\epsilon_r = 42.5$

Ambient Temperature: 23.5°C; Liquid Temperature: 22.5°C

DASY6 Configuration:

- Probe: ES3DV3 - SN3184; ConvF(6.49, 6.49, 6.49); Calibrated: 2021-09-23
- Sensor-Surface: 3.0 mm
- Electronics: DAE4 Sn376; Calibrated: 2021-11-22
- Phantom: Twin-SAM V4.0 (30deg probe tilt); Serial: 1488; Section: Flat
- Measurement Software: cDASY6 V6.6.0.13926
- UID: CW, 0--
- MAIA: Area Scan: N/A; Zoom Scan: N/A

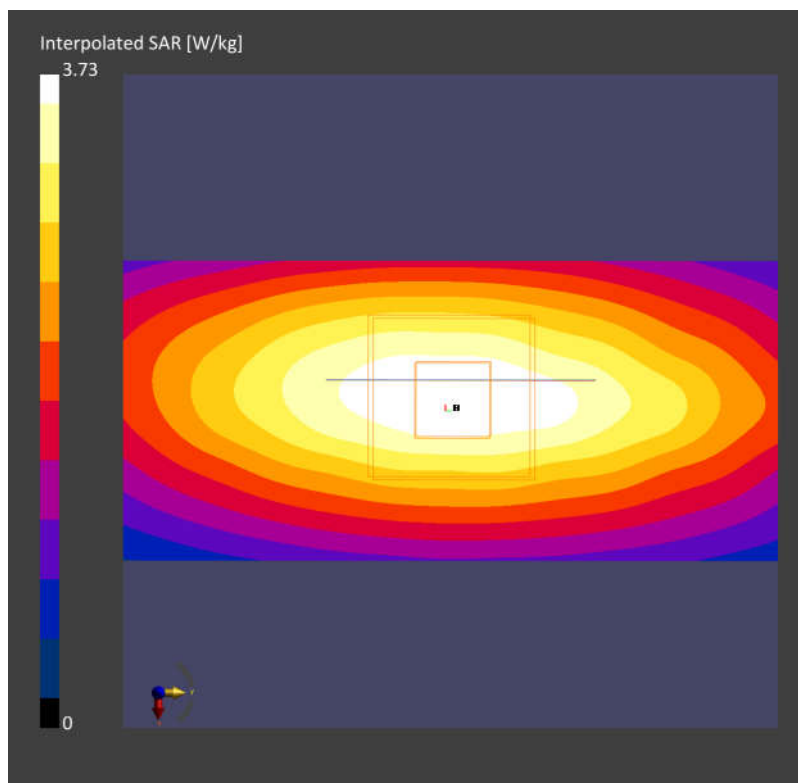
Area Scan (40.0 mm x 90.0 mm): Measurement Grid: 10.0 mm x 15.0 mm

SAR (1g) = 2.38 W/kg; SAR (10g) = 1.51 W/kg;

Zoom Scan (32.0 mm x 32.0 mm x 30.0 mm): Measurement Grid: 6.0 mm x 6.0 mm x 1.5 mm

Power Drift = -0.11 dB

SAR (1g) = 2.41 W/kg; SAR (10g) = 1.52 W/kg;



System Check_Head_1750MHz

Communication System: ; Frequency: 1750.0

Medium: HSL_1750_211230. Medium parameters used: $f= 1750.0$ MHz; $\sigma= 1.31$ S/m; $\epsilon_r = 39.5$

Ambient Temperature: 23.5°C; Liquid Temperature: 22.5°C

DASY6 Configuration:

- Probe: ES3DV3 - SN3184; ConvF(5.56, 5.56, 5.56); Calibrated: 2021-09-23
- Sensor-Surface: 3.0 mm
- Electronics: DAE4 Sn376; Calibrated: 2021-11-22
- Phantom: Twin-SAM V4.0 (30deg probe tilt); Serial: 1488; Section: Flat
- Measurement Software: cDASY6 V6.6.0.13926
- UID: CW, 0--
- MAIA: Area Scan: N/A; Zoom Scan: N/A

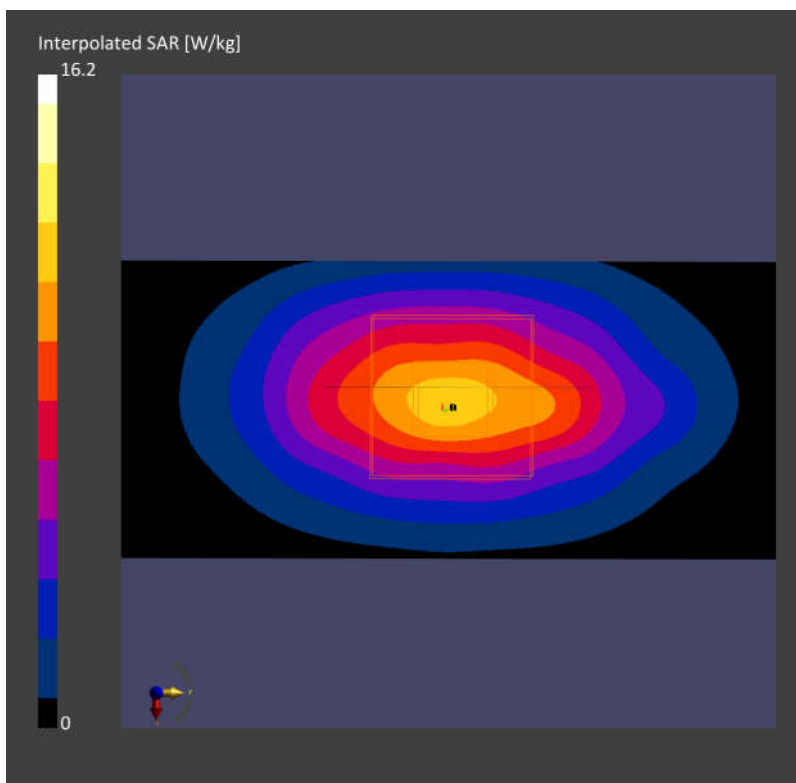
Area Scan (40.0 mm x 90.0 mm): Measurement Grid: 10.0 mm x 15.0 mm

SAR (1g) = 9.51 W/kg; SAR (10g) = 5.14 W/kg;

Zoom Scan (32.0 mm x 32.0 mm x 30.0 mm): Measurement Grid: 6.0 mm x 6.0 mm x 1.5 mm

Power Drift = -0.06 dB

SAR (1g) = 9.62 W/kg; SAR (10g) = 5.22 W/kg;



System Check_Head_1900MHz

Communication System: ; Frequency: 1900.0

Medium: HSL_1900_211230. Medium parameters used: $f= 1900.0$ MHz; $\sigma= 1.45$ S/m; $\epsilon_r = 41.1$

Ambient Temperature: 23.5°C; Liquid Temperature: 22.5°C

DASY6 Configuration:

- Probe: ES3DV3 - SN3184; ConvF(5.22, 5.22, 5.22); Calibrated: 2021-09-23
- Sensor-Surface: 3.0 mm
- Electronics: DAE4 Sn376; Calibrated: 2021-11-22
- Phantom: Twin-SAM V4.0 (30deg probe tilt); Serial: 1488; Section: Flat
- Measurement Software: cDASY6 V6.6.0.13926
- UID: CW, 0--
- MAIA: Area Scan: N/A; Zoom Scan: N/A

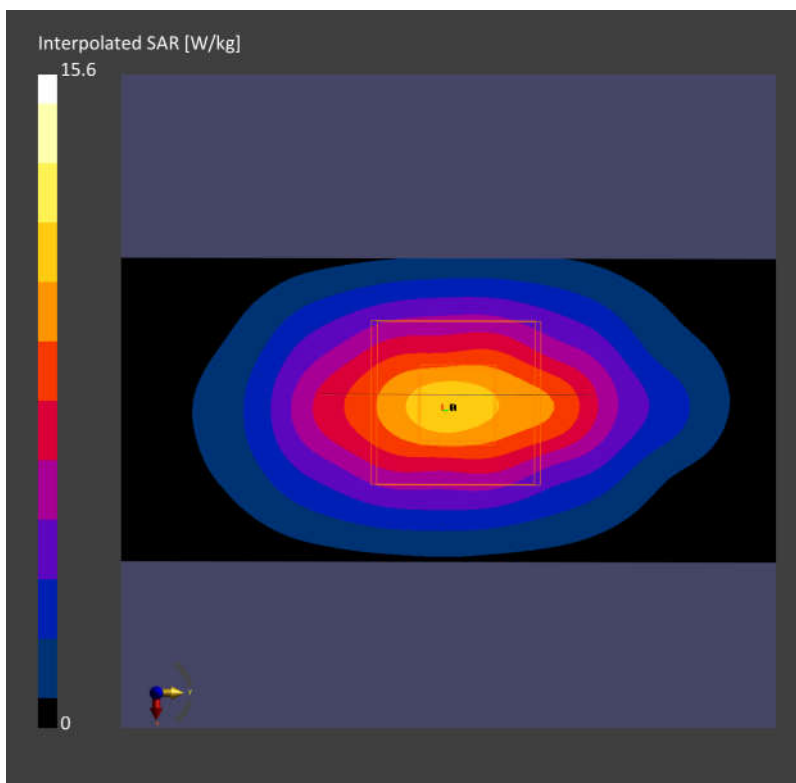
Area Scan (40.0 mm x 90.0 mm): Measurement Grid: 10.0 mm x 15.0 mm

SAR (1g) = 9.11 W/kg; SAR (10g) = 4.76 W/kg;

Zoom Scan (32.0 mm x 32.0 mm x 30.0 mm): Measurement Grid: 6.0 mm x 6.0 mm x 1.5 mm

Power Drift = -0.07 dB

SAR (1g) = 9.29 W/kg; SAR (10g) = 5.01 W/kg;



Measurement Report for Device, FRONT, Validation band, CW, Channel 30000 (30000.0 MHz)

Device Under Test Properties

Model, Manufacturer	Dimensions [mm]	IMEI	DUT Type
Device,	100.0 x 100.0 x 100.0		Phone

Exposure Conditions

Phantom Section	Position, Test Distance [mm]	Band	Group, UID	Frequency [MHz], Channel Number	Conversion Factor
5G	FRONT, 5.55	Validation band	CW, 0--	30000.0, 30000	1.0

Hardware Setup

Phantom	Medium	Probe, Calibration Date	DAE, Calibration Date
mmWave - 1065	Air -	EUmmWV4 - SN9553_F1-55GHz, 2021-04-01	DAE4 Sn1650, 2021-06-09

Scans Setup

Scan Type	5G Scan
Grid Extents [mm]	60.0 x 60.0
Grid Steps [lambda]	0.25 x 0.25
Sensor Surface [mm]	5.55
MAIA	N/A

Measurement Results

Scan Type	5G Scan
Date	2021-12-27
Avg. Area [cm ²]	4.00
psPDn+ [W/m ²]	39.9
psPDtot+ [W/m ²]	40.2
psPDmod+ [W/m ²]	40.6
E _{max} [V/m]	140
Power Drift [dB]	-0.12

