



HEARING AID COMPATIBILITY RF EMISSIONS TEST REPORT

FCC ID : IHDT56AB1
Equipment : Mobile Cellular Phone
Brand Name : Motorola
Model Name : XT2201-1
M-Rating : M4
Applicant : Motorola Mobility LLC
222 W, Merchandise Mart Plaza, Chicago IL 60654 USA
Manufacturer : Motorola Mobility LLC
222 W, Merchandise Mart Plaza, Chicago IL 60654 USA
Standard : FCC 47 CFR §20.19
ANSI C63.19-2011

We, Sporton International (Kunshan) Inc., would like to declare that the tested sample has been evaluated in accordance with the test procedures and has been in compliance with the applicable technical standards.

The test results in this report apply exclusively to the tested model / sample. Without written approval of Sporton International (Kunshan) Inc., the test report shall not be reproduced except in full.

Tony Zhang

Reviewed by: Tony Zhang / Supervisor

Kat Yin

Approved by: Kat Yin / Manager



Sporton International (Kunshan) Inc.

**No. 1098, Pengxi North Road, Kunshan Economic Development Zone Jiangsu Province 215300
People's Republic of China**



Table of Contents

1. General Information.....	4
2. Testing Location.....	5
3. Applied Standards	5
4. RF Audio Interference Level.....	5
5. Air Interface and Operating Mode.....	6
6. Measurement System Specification	7
6.1 E-Field Probe System.....	7
6.2 Data Storage and Evaluation.....	8
7. RF Emissions Test Procedure.....	9
8. Test Equipment List.....	12
9. Measurement System Validation	13
10. Modulation Interference Factor.....	14
11. Low-power Exemption.....	15
12. Conducted RF Output Power (Unit: dBm).....	20
13. HAC RF Emission Test Results.....	22
14. Uncertainty Assessment	23
15. References.....	25
Appendix A. Plots of System Performance Check	
Appendix B. Plots of RF Emission Measurement	
Appendix C. DASYS Calibration Certificate	
Appendix D. Test Setup Photos	



History of this test report

Report No.	Version	Description	Issued Date
HA192317A	Rev. 01	Initial issue of report	Dec. 13, 2021
HA192317A	Rev. 02	Updated relevant data of WLAN 5.8GHz	Dec. 22, 2021



1. General Information

Product Feature & Specification	
Applicant Name	Motorola Mobility LLC
Equipment Name	Mobile Cellular Phone
Brand Name	Motorola
Model Name	XT2201-1
IMEI Code	IMEI 1: 355871980014331 IMEI 2: 355871980014349
FCC ID	IHDT56AB1
HW	DVT2
SW	SSH32.79
EUT Stage	Identical Prototype
Date Tested	2021/11/28 ~ 2021/11/30
Frequency Band	GSM850: 824 MHz ~ 849 MHz GSM1900: 1850 MHz ~ 1910 MHz WCDMA Band II: 1850 MHz ~ 1910 MHz WCDMA Band IV: 1710 MHz ~ 1755 MHz WCDMA Band V: 824 MHz ~ 849 MHz LTE Band 2: 1850 MHz ~ 1910 MHz LTE Band 4: 1710 MHz ~ 1755 MHz LTE Band 5: 824 MHz ~ 849 MHz LTE Band 7: 2500 MHz ~ 2570 MHz LTE Band 12: 699 MHz ~ 716 MHz LTE Band 13: 777 MHz ~ 787 MHz LTE Band 17: 704 MHz ~ 716 MHz LTE Band 25: 1850 MHz ~ 1915 MHz LTE Band 26: 814 MHz ~ 849 MHz LTE Band 38: 2570 MHz ~ 2620 MHz LTE Band 41: 2496 MHz ~ 2690 MHz LTE Band 42: 3450 MHz ~ 3550MHz, 3550 MHz ~ 3600MHz LTE Band 43: 3600 MHz ~ 3700MHz LTE Band 48: 3550 MHz ~ 3700 MHz LTE Band 66: 1710 MHz ~ 1780 MHz 5G NR n5: 824 MHz ~ 849 MHz 5G NR n7: 2500 MHz ~ 2570 MHz 5G NR n38 : 2570 MHz ~ 2620 MHz 5G NR n66: 1710 MHz ~ 1780 MHz 5G NR n77: 3450 MHz ~ 3550 MHz, 3700 MHz ~ 3980 MHz 5G NR n78: 3450 MHz ~ 3550 MHz, 3700 MHz ~ 3800 MHz WLAN 2.4GHz Band: 2412 MHz ~ 2462 MHz WLAN 5.2GHz Band: 5180 MHz ~ 5240 MHz WLAN 5.3GHz Band: 5260 MHz ~ 5320 MHz WLAN 5.5GHz Band: 5500 MHz ~ 5720 MHz WLAN 5.8GHz Band: 5745 MHz ~ 5825 MHz WLAN 6E U-NII-5: 5925 MHz ~ 6425 MHz WLAN 6E U-NII-6: 6425 MHz ~ 6525 MHz WLAN 6E U-NII-7: 6525 MHz ~ 6875 MHz WLAN 6E U-NII-8: 6875 MHz ~ 7125 MHz Bluetooth: 2402 MHz ~ 2480 MHz WPC: 110KHz ~ 148 KHz NFC: 13.56 MHz
Mode	GSM/GPRS/EGPRS RMC/AMR 12.2Kbps HSDPA HSUPA DC-HSDPA HSPA+(16QAM uplink is not supported) LTE: QPSK, 16QAM, 64QAM, 256QAM 5G NR : CP-OFDM / DFT-s-OFDM, PI/2 BPSK, QPSK, 16QAM, 64QAM, 256QAM WLAN 2.4GHz 802.11b/g/n HT20/HT40 WLAN 2.4GHz 802.11ax HE20/HE40 WLAN 5GHz 802.11a/n HT20/HT40 WLAN 5GHz 802.11ac/ax VHT20/VHT40/VHT80/VHT160/HE20/HE40/HE80/HE160 WLAN 6GHz 802.11a WLAN 6GHz 802.11ax HE20/HE40/HE80/HE160 Bluetooth BR/EDR/LE



WPC: ASK
NFC: ASK

2. Testing Location

Sporton International (Kunshan) Inc. is accredited to ISO/IEC 17025:2017 by American Association for Laboratory Accreditation with Certificate Number 5145.02.

Testing Laboratory			
Test Firm	Sporton International (Kunshan) Inc.		
Test Site Location	No. 1098, Pengxi North Road, Kunshan Economic Development Zone Jiangsu Province 215300 People's Republic of China TEL : +86-512-57900158 FAX : +86-512-57900958		
Test Site No.	Sporton Site No.	FCC Designation No.	FCC Test Firm Registration No.
	SAR01-KS	CN1257	314309

3. Applied Standards

- FCC CFR47 Part 20.19
- ANSI C63.19-2011
- FCC KDB 285076 D01 HAC Guidance v05r01
- FCC KDB 285076 D02 T Coil testing v03r01

4. RF Audio Interference Level

FCC wireless hearing aid compatibility rules ensure that consumers with hearing loss are able to access wireless communications services through a wide selection of handsets without experiencing disabling radio frequency (RF) interference or other technical obstacles.

To define and measure the hearing aid compatibility of handsets, in CFR47 part 20.19 ANSI C63.19 is referenced. A handset is considered hearing aid-compatible for acoustic coupling if it meets a rating of at least M3 under ANSI C63.19, and A handset is considered hearing aid compatible for inductive coupling if it meets a rating of at least T3. According to ANSI C63.19 2011 version, for acoustic coupling, the RF electric field emissions of wireless communication devices should be measured and rated according to the emission level as below.

Emission Categories	E-field emissions	
	<960Mhz	>960Mhz
M1	50 to 55 dB (V/m)	40 to 45 dB (V/m)
M2	45 to 50 dB (V/m)	35 to 40 dB (V/m)
M3	40 to 45 dB (V/m)	30 to 35 dB (V/m)
M4	<40 dB (V/m)	<30 dB (V/m)

Table 4.1 Telephone near-field categories in linear units



5. Air Interface and Operating Mode

Air Interface	Band MHz	Type	C63.19 Tested	Simultaneous Transmitter	Name of Voice Service	Power Reduction
GSM	GSM850	VO	Yes	WLAN, BT	CMRS Voice	No
	GSM1900			WLAN, BT		No
	EDGE850	VD	Yes	WLAN, BT	Google Duo	No
	EDGE1900			WLAN, BT		No
WCDMA	Band II	VO	No ⁽¹⁾	WLAN, BT	CMRS Voice	No
	Band IV			WLAN, BT		No
	Band V			WLAN, BT		No
	HSPA	VD	No ⁽¹⁾	WLAN, BT	Google Duo	No
LTE (FDD)	Band 2	VD	No ⁽¹⁾	5G NR, WLAN, BT	VoLTE / Google Duo	No
	Band 4			5G NR, WLAN, BT		No
	Band 5			5G NR, WLAN, BT		No
	Band 7			5G NR, WLAN, BT		No
	Band 12			5G NR, WLAN, BT		No
	Band 13			5G NR, WLAN, BT		No
	Band 17			5G NR, WLAN, BT		No
	Band 25			5G NR, WLAN, BT		No
	Band 26			5G NR, WLAN, BT		No
	Band 66			5G NR, WLAN, BT		No
LTE (TDD)	Band 38	VD	Yes	5G NR, WLAN, BT	VoLTE / Google Duo	No
	Band 41			5G NR, WLAN, BT		No
	Band 42			5G NR, WLAN, BT		No
	Band 43			5G NR, WLAN, BT		No
	Band 48			5G NR, WLAN, BT		No
5G NR (FDD)	n5	VD	No ⁽¹⁾	LTE, WLAN, BT	VoNR / Google Duo	No
	n7			LTE, WLAN, BT		No
	n66			LTE, WLAN, BT		No
5G NR (TDD)	n38	VD	No ⁽¹⁾	LTE, WLAN, BT	VoNR / Google Duo	No
	n77			LTE, WLAN, BT		No
	n78			LTE, WLAN, BT		No
Wi-Fi	2450	VD	Yes	GSM,WCDMA,LTE,5G NR, WLAN 5GHz, WLAN 6GHz	VoWiFi / Google Duo	No
	5200	VD	Yes	GSM,WCDMA,LTE,5G NR, BT, WLAN 2.4GHz		No
	5300			GSM,WCDMA,LTE,5G NR, BT, WLAN 2.4GHz		No
	5500			GSM,WCDMA,LTE,5G NR, BT, WLAN 2.4GHz		No
	5800			GSM,WCDMA,LTE,5G NR, BT, WLAN 2.4GHz	No	
	U-NII-5	VD	No ⁽³⁾	GSM,WCDMA,LTE,5G NR, BT, WLAN 2.4GHz	Google Duo	No
	U-NII-6			GSM,WCDMA,LTE,5G NR, BT, WLAN 2.4GHz		No
	U-NII-7			GSM,WCDMA,LTE,5G NR, BT, WLAN 2.4GHz		No
U-NII-8	GSM,WCDMA,LTE,5G NR, BT, WLAN 2.4GHz			No		
BT	2450	DT	No	GSM,WCDMA,LTE,5G NR, WLAN 5GHz, WLAN 6GHz	NA	No

Type Transport:
 VO= Voice only
 DT= Digital Transport only (no voice)
 VD= CMRS and IP Voice Service over Digital Transport

- Remark:
- The air interface is exempted from testing by low power exemption that its average antenna input power plus its MIF is ≤17 dBm, and is rated as M4.
 - The device have similar frequency in some LTE Bands: LTE B43/48, since the supported frequency spans for the smaller LTE bands are completely cover by the larger LTE bands, therefore, only larger LTE bands were required to be tested for hearing-aid compliance.
 - The U-NII-5/6/7/8 are currently outside the scope of ANSI 63.19 and FCC HAC regulations therefore, the U-NII-5/6/7/8 were not evaluated.

6. Measurement System Specification



Fig 5.1 System Configurations

6.1 E-Field Probe System

E-Field Probe Specification

<EF3DV3>

Construction	One dipole parallel, two dipoles normal to probe axis Built-in shielding against static charges
Calibration	In air from 30 MHz to 6.0 GHz (absolute accuracy $\pm 6.0\%$, $k=2$)
Frequency	30 MHz to 6 GHz; Linearity: ± 2.0 dB (100 MHz to 3 GHz)
Directivity	± 0.2 dB in air (rotation around probe axis) ± 0.4 dB in air (rotation normal to probe axis)
Dynamic Range	2 V/m to 1000 V/m (M3 or better device readings fall well below diode compression point)
Linearity	± 0.2 dB
Dimensions	Overall length: 337 mm (Tip: 20 mm) Tip diameter: 4 mm (Body: 12 mm) Distance from probe tip to dipole centers: 1.5 mm



Photo of E-field Probe

Probe Tip Description:

HAC field measurements take place in the close near field with high gradients. Increasing the measuring distance from the source will generally decrease the measured field values (in case of the validation dipole approx. 10% per mm).

6.2 Data Storage and Evaluation

The DASYS software stores the assessed data from the data acquisition electronics as raw data (in microvolt readings from the probe sensors), together with all the necessary software parameters for the data evaluation (probe calibration data, and device frequency and modulation data) in measurement files.

Probe parameters :	- Sensitivity	Norm _i , a _{i0} , a _{i1} , a _{i2}
	- Conversion factor	ConvF _i
	- Diode compression point	dcp _i
Device parameters :	- Frequency	f
	- Crest factor	cf
Media parameters :	- Conductivity	σ
	- Density	ρ

The formula for each channel can be given as :

$$V_i = U_i + U_i^2 \cdot \frac{cf}{dcp_i}$$

- with V_i = compensated signal of channel i, (i = x, y, z)
 U_i = input signal of channel i, (i = x, y, z)
 cf = crest factor of exciting field (DASY parameter)
 dcp_i = diode compression point (DASY parameter)

From the compensated input signals, the primary field data for each channel can be evaluated :

$$\text{E-field Probes : } E_i = \sqrt{\frac{V_i}{\text{Norm}_i \cdot \text{ConvF}}}$$

- with V_i = compensated signal of channel i, (i = x, y, z)
 Norm_i = sensor sensitivity of channel i, (i = x, y, z), μV/(V/m)² for E-field Probes
 ConvF = sensitivity enhancement in solution
 f = carrier frequency [GHz]
 E_i = electric field strength of channel i in V/m

The RSS value of the field components gives the total field strength (Hermitian magnitude) :

$$E_{\text{tot}} = \sqrt{E_x^2 + E_y^2 + E_z^2}$$

The primary field data are used to calculate the derived field units.



7. RF Emissions Test Procedure

Referenced from ANSI C63.19 -2011 section 5.5.1

- a. Confirm the proper operation of the field probe, probe measurement system, and other instrumentation and the positioning system.
- b. Position the WD in its intended test position.
- c. Set the WD to transmit a fixed and repeatable combination of signal power and modulation characteristic that is representative of the worst case (highest interference potential) encountered in normal use. Transiently occurring start-up, changeover, or termination conditions, or other operations likely to occur less than 1% of the time during normal operation, may be excluded from consideration.
- d. The center sub-grid shall be centered on the T-Coil mode perpendicular measurement point or the acoustic output, as appropriate. Locate the field probe at the initial test position in the 50 mm by 50 mm grid, which is contained in the measurement plane, refer to illustrated in Figure 8.2. If the field alignment method is used, align the probe for maximum field reception.
- e. Record the reading at the output of the measurement system.
- f. Scan the entire 50 mm by 50 mm region in equality spaced increments and record the reading at each measurement point, The distance between measurement points shall be sufficient to assure the identification of the maximum reading.
- g. Identify the five contiguous sub-grids around the center sub-grid whose maximum reading is the lowest of all available choices. This eliminates the three sub-grids with the maximum readings. Thus, the six areas to be used to determine the WD's highest emissions are identified.
- h. Identify the maximum reading within the non-excluded sub-grids identified in step g).
 - i. Indirect measurement method
 - j. The RF audio interference level in dB (V/m) is obtained by adding the MIF (in dB) to the maximum steady-state rms field-strength reading, in dB (V/m)
- k. Compare this RF audio interference level with the categories in ANSI C63.19-2011 clause 8 and record the resulting WD category rating.
- l. For the T-Coil perpendicular measurement location is ≥ 5.0 mm from the center of the acoustic output, then two different 50 mm by 50 mm areas may need to be scanned, the first for the microphone mode assessment and the second for the T-Coil assessment.
- m. The second for the T-Coil assessment, with the grid shifted so that it is centered on the perpendicular measurement point. Record the WD category rating.

Test Instructions

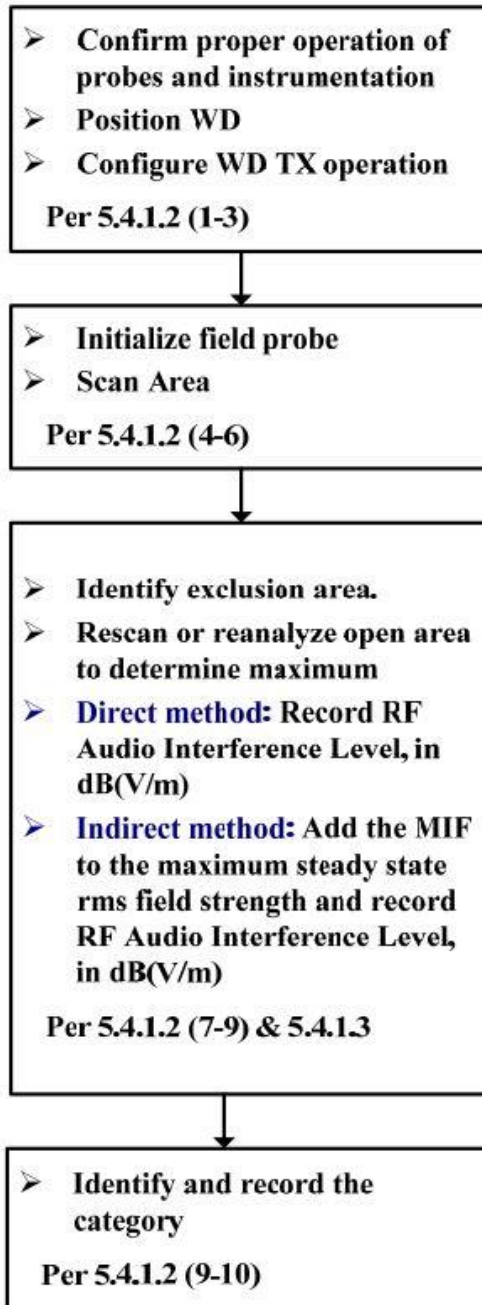


Figure 8.1 RF Emissions Flow Chart

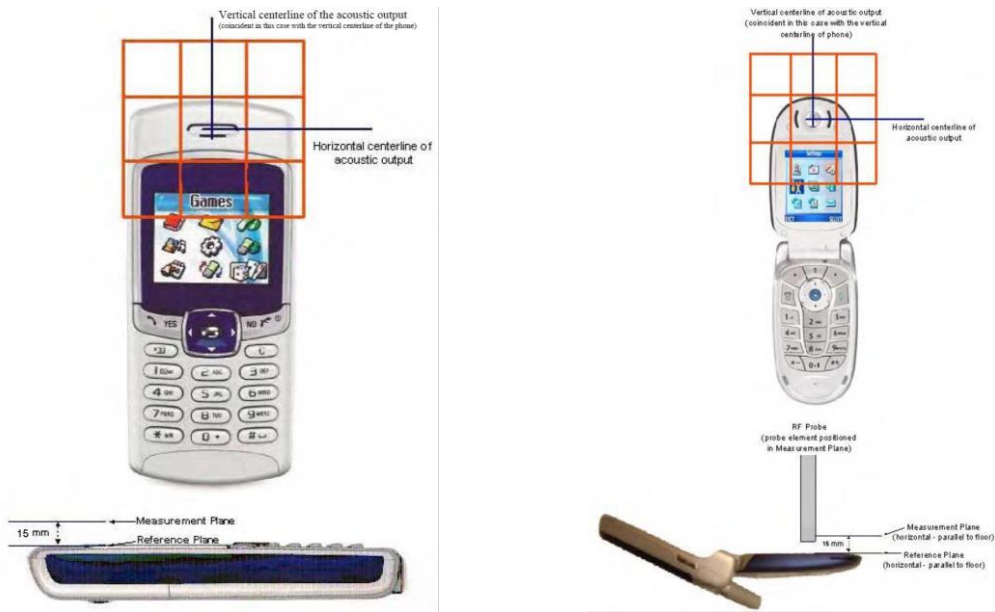


Fig 8.2 EUT reference and plane for HAC RF emission measurements

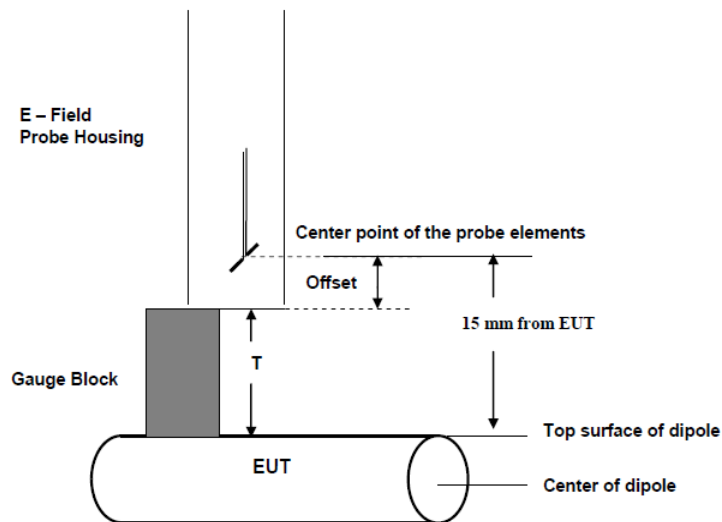


Fig. 8.3 Gauge block with E-field probe



8. Test Equipment List

Table with 6 columns: Manufacturer, Name of Equipment, Type/Model, Serial Number, Last Cal., Due Date. Rows include various calibration dipoles, signal generators, amplifiers, couplers, power meters, sensors, attenuators, and analyzers.

Note:

- 1. NCR: "No-Calibration Required"
2. Referring to KDB 865664 D01v01r04, the dipole calibration interval can be extended to 3 years with justification.
3. The justification data of dipole can be found in appendix C. The return loss is < -20dB, within 20% of prior calibration, the impedance is within 5 ohm of prior calibration.

9. Measurement System Validation

Each DASY system is equipped with one or more system validation kits. These units, together with the predefined measurement procedures within the DASY software, enable the user to conduct the system performance check and system validation. System validation kit includes a dipole, tripod holder to fix it underneath the test Arch and a corresponding distance holder.

The system performance check verifies that the system operates within its specifications. System and operator errors can be detected and corrected. It is recommended that the system performance check be performed prior to any usage of the system in order to guarantee reproducible results. The system performance check uses normal HAC measurements in a simplified setup with a well characterized source. This setup was selected to give a high sensitivity to all parameters that might fail or vary over time. The system check does not intend to replace the calibration of the components, but indicates situations where the system uncertainty is exceeded due to drift or failure.

<Test Setup>

1. In the simplified setup for system evaluation, the EUT is replaced by a calibrated dipole and the power source is replaced by a continuous wave which comes from a signal generator.
2. The center point of the probe element(s) is 15mm from the closest surface of the dipole elements.
3. The calibrated dipole must be placed beneath the arch phantom. The equipment setup is shown below:
4. The output power on dipole port must be calibrated to 20dBm (100mW) before dipole is connected.

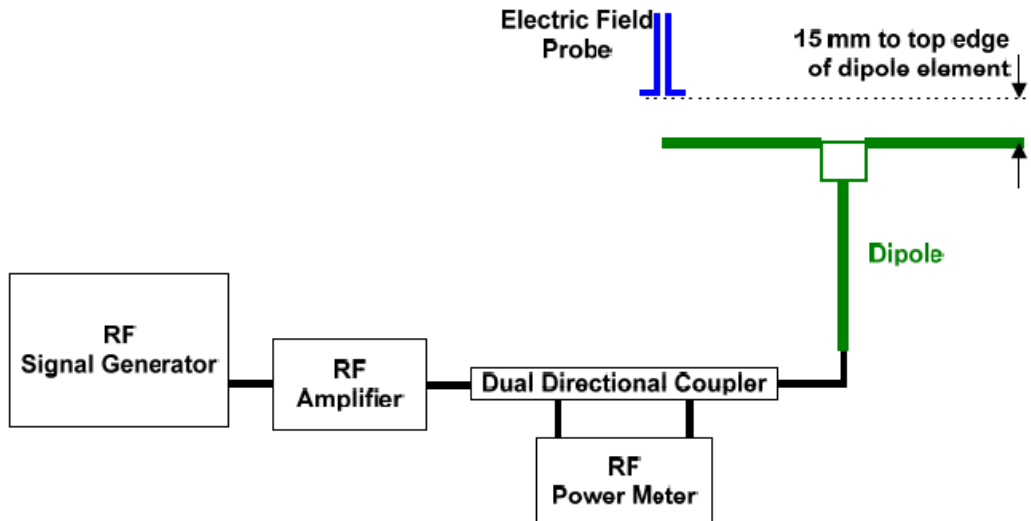


Fig. 7.1 Setup Diagram

<Validation Results>

Comparing to the original E-field value provided by SPEAG, the verification data should be within its specification of 18 %. Table 6.1 shows the target value and measured value. The table below indicates the system performance check can meet the variation criterion and the plots can be referred to appendix A of this report.

$$\text{Deviation} = ((\text{Average E-field Value}) - (\text{Target value})) / (\text{Target value}) * 100\%$$

Frequency (MHz)	Input Power (dBm)	Target Value (V/m)	E-Field 1 (V/m)	E-Field 2 (V/m)	Average Value (V/m)	Deviation (%)	Date
835	20	108.8	119.6	96.04	107.82	-0.90	2021/11/28
1880	20	89.5	100.2	94.18	97.19	8.59	2021/11/28
2450	20	84.1	80.69	80.73	80.71	-4.03	2021/11/29
2600	20	84.5	87.19	88.55	87.87	3.99	2021/11/29
3500	20	84.6	89.01	88.86	88.935	5.12	2021/11/29
5500	20	99.8	101.0	103.4	102.2	2.40	2021/11/30



10. Modulation Interference Factor

The HAC Standard ANSI C63.19-2011 defines a new scaling using the Modulation Interference Factor (MIF). For any specific fixed and repeatable modulated signal, a modulation interference factor (MIF, expressed in dB) may be developed that relates its interference potential to its steady-state rms signal level or average power level. This factor is a function only of the audio-frequency amplitude modulation characteristics of the signal and is the same for field-strength and conducted power measurements. It is important to emphasize that the MIF is valid only for a specific repeatable audio-frequency amplitude modulation characteristic. Any change in modulation characteristic requires determination and application of a new MIF

The Modulation Interference factor (MIF, in dB) is added to the measured average E-field (in dBV/m) and converts it to the RF Audio Interference level (in dBV/m). This level considers the audible amplitude modulation components in the RF E-field. CW fields without amplitude modulation are assumed to not interfere with the hearing aid electronics. Modulations without time slots and low fluctuations at low frequencies have low MIF values, TDMA modulations with narrow transmission and repetition rates of few 100 Hz have high MIF values and give similar classifications as ANSI C63.19-2011.

ER3D, EF3D and EU2D E-field probes have a bandwidth <10 kHz and can therefore not evaluate the RF envelope in the full audio band. DASY52 is therefore using the indirect measurement method according to ANSI C63.19-2011 which is the primary method. These near field probes read the averaged E-field measurement. Especially for the new high peak-to-average (PAR) signal types, the probes shall be linearized by PMR calibration in order to not overestimate the field reading. Probe Modulation Response (PMR) calibration linearizes the probe response over its dynamic range for specific modulations which are characterized by their UID and result in an uncertainty specified in the probe calibration certificate. The MIF is characteristic for a given waveform envelope and can be used as a constant conversion factor if the probe has been PMR calibrated.

The evaluation method for the MIF is defined in ANSI C63.19-2011 section D.7. An RMS demodulated RF signal is fed to a spectral filter (similar to an A weighting filter) and forwarded to a temporal filter acting as a quasi-peak detector. The averaged output of these filtering is scaled to a 1 kHz 80% AM signal as reference. MIF measurement requires additional instrumentation and is not well suited for evaluation by the end user with reasonable uncertainty. It may alternatively be determined through analysis and simulation, because it is constant and characteristic for a communication signal. DASY52 uses well-defined signals for PMR calibration. The MIF of these signals has been determined by simulation and it is automatically applied.

The MIF measurement uncertainty is estimated as follows, declared by HAC equipment provider SPEAG, for modulation frequencies from slotted waveforms with fundamental frequency and at least 2 harmonics within 10 kHz:

- 1. 0.2 dB for MIF: -7 to +5 dB
2. 0.5 dB for MIF: -13 to +11 dB
3. 1 dB for MIF: > -20 dB

MIF values applied in this test report were provided by the HAC equipment provider of SPEAG, and the worst values for all air interface are listed below to be determine the Low-power Exemption.

Table with 3 columns: UID, Communication System Name, MIF(dB). Rows include GSM-FDD, EDGE-FDD, UMTS-FDD, LTE-FDD, 5G NR, and various IEEE WiFi standards.



11. Low-power Exemption

<Max Tune-up Limit>

<Ant0>

Frequency Band		Average Power (dBm)
GSM	GSM850	33.50
	EDGE850	27.00
	GSM1900	30.50
	EDGE1900	26.50
WCDMA	Band V	25.00
	Band IV	25.00
	Band II	25.00
	HSPA	24.00
FDD LTE	Band 2	24.00
	Band 4	24.00
	Band 5	24.00
	Band 7	24.00
	Band 12	24.00
	Band 13	24.00
	Band 17	24.00
	Band 25	24.00
	Band 26	24.00
	Band 66	24.00
TDD LTE	Band 41	24.00
	Band 38-PC3	24.00
	Band 38-PC2	27.00
5G NR	n5	24.00
	n7	24.00



<Ant1>

Frequency Band		Average Power (dBm)
GSM	GSM850	32.50
	EDGE850	26.00
WCDMA	Band V	24.50
	HSPA	23.50
FDD LTE	Band 2	18.10
	Band 4	17.70
	Band 5	23.40
	Band 7	18.40
	Band 12	24.00
	Band 13	23.00
	Band 17	24.00
	Band 25	18.10
	Band 26	23.40
TDD LTE	Band 66	17.70
	Band 41	20.10
	Band 38-PC3	20.10
5G NR	Band 38-PC2	21.10
	n7	19.30
	n66	17.40
	n38	18.80

<Ant2>

Frequency Band		Average Power (dBm)
TDD LTE	Band 42	23.00
	Band 48(43)	24.00
5G NR	n77	21.70
	n78	22.00



<ANT4+6>

Frequency Band		Average Power (dBm)
2.4GHz WLAN	802.11b	20.00
	802.11g	20.00
	802.11n-HT20	20.00
	802.11n-HT40	20.00
	802.11ac-VHT20	20.00
	802.11ac-VHT40	20.00
	802.11ax-HE20	20.00
	802.11ax-HE40	20.00

<ANT5+6>

Frequency Band		Average Power (dBm)
5GHz WLAN	802.11a	21.00
	802.11n-HT20	21.00
	802.11n-HT40	21.00
	802.11ac-VHT20	21.00
	802.11ac-VHT40	21.00
	802.11ac-VHT80	20.50
	802.11ac-VHT160	20.00
	802.11ax-HE20	21.00
	802.11ax-HE40	21.00
	802.11ax-HE80	20.50
	802.11ax-HE160	20.00

<Low Power Exemption>

<Ant0>

Air Interface	Max Average Antenna Input Power (dBm)	Worst Case MIF (dB)	Power + MIF(dB)	C63.19 test required
GSM850	33.50	3.63	37.13	Yes
EDGE850	27.00	3.75	30.75	No ⁽¹⁾
GSM1900	30.50	3.63	34.13	Yes
EDGE1900	26.50	3.75	30.25	No ⁽¹⁾
WCDMA	25.00	-25.43	-0.43	No
WCDMA - HSPA	25.00	-20.39	4.61	No
LTE - FDD	24.00	-9.76	14.24	No
LTE – TDD	27.00	-1.44	25.56	Yes
5G NR	27.00	-12.08	14.92	No



<Ant1>

Air Interface	Max Average Antenna Input Power (dBm)	Worst Case MIF (dB)	Power + MIF(dB)	C63.19 test required
GSM850	32.50	3.63	36.13	Yes
EDGE850	26.00	3.75	29.75	No ⁽¹⁾
WCDMA	24.50	-25.43	-0.93	No
WCDMA - HSPA	23.50	-20.39	3.11	No
LTE - FDD	24.00	-9.76	14.24	No
LTE – TDD	21.10	-1.44	19.66	Yes
5G NR	19.30	-12.08	7.22	No

<Ant2>

Air Interface	Max Average Antenna Input Power (dBm)	Worst Case MIF (dB)	Power + MIF(dB)	C63.19 test required
LTE – TDD	24.00	-1.44	22.56	Yes
5G NR	22.00	-12.08	9.92	No

<ANT4+6>

Air Interface	Max Average Antenna Input Power (dBm)	Worst Case MIF (dB)	Power + MIF(dB)	C63.19 test required
802.11b	20.00	-2.02	17.98	No ⁽²⁾
802.11g	20.00	0.12	20.12	Yes
802.11n-HT20	20.00	-13.44	6.56	No
802.11n-HT40	20.00	-13.44	6.56	No
802.11ac-VHT20	20.00	-5.57	14.43	No
802.11ac-VHT40	20.00	-5.57	14.43	No
802.11ax-HE20	20.00	-5.58	14.42	No
802.11ax-HE40	20.00	-5.58	14.42	No

<ANT5+6>

Air Interface	Max Average Antenna Input Power (dBm)	Worst Case MIF (dB)	Power + MIF(dB)	C63.19 test required
802.11a	21.00	-3.15	17.85	Yes
802.11n-HT20	21.00	-13.44	7.56	No
802.11n-HT40	21.00	-13.44	7.56	No
802.11ac-VHT20	21.00	-5.57	15.43	No
802.11ac-VHT40	21.00	-5.57	15.43	No
802.11ac-VHT80	20.50	-5.57	14.93	No
802.11ac-VHT160	20.00	-5.57	14.43	No
802.11ax-HE20	21.00	-5.58	15.42	No



802.11ax-HE40	21.00	-5.58	15.42	No
802.11ax-HE80	20.50	-5.58	14.92	No
802.11ax-HE160	20.00	-5.58	14.42	No

General Note:

1. EDGE data modes is not necessary due the GSM Voice mode is the worst case.
2. 802.11b is not necessary due to the 802.11g is the worst case.
3. LTE LTE Band 38 non-HPUE data modes is not necessary due the LTE Band 38 HPUE mode is the worst case.
4. According to ANSI C63.19 2011-version, for the air interface technology of a device is exempt from testing when its average antenna input power plus its MIF is ≤ 17 dBm for any of its operating modes.
5. HAC RF rating is M4 for the air interface which meets the low power exemption.



12. Conducted RF Output Power (Unit: dBm)

<GSM>

Average Antenna Input Power(dBm)						
Band	GSM850 ant0			GSM1900 ant0		
Channel	128	189	251	512	661	810
Frequency (MHz)	824.2	836.4	848.8	1850.2	1880.0	1909.8
GSM (GMSK, 1 Tx slot)	32.26	32.56	32.73	30.05	30.06	29.96

Average Antenna Input Power(dBm)			
Band	GSM850 ant1		
Channel	128	189	251
Frequency (MHz)	824.2	836.4	848.8
GSM (GMSK, 1 Tx slot)	31.81	31.79	31.70

<LTE ant0>

Band 38 HPUE						
BW [MHz]	Modulation	RB Size	RB Offset	Power Low Ch. / Freq.	Power Middle Ch. / Freq.	Power High Ch. / Freq.
Channel				37850	38000	38150
Frequency (MHz)				2580	2595	2610
20	QPSK	1	0	26.24	26.41	26.33

Band 41								
BW [MHz]	Modulation	RB Size	RB Offset	Power Low Ch. / Freq.	Power Low Middle Ch. / Freq.	Power Middle Ch. / Freq.	Power High Middle Ch. / Freq.	Power High Ch. / Freq.
Channel				39750	40185	40620	41055	41490
Frequency (MHz)				2506	2549.5	2593	2636.5	2680
20	QPSK	1	0	23.28	23.14	23.64	23.33	23.53

<LTE ant1>

Band 38 HPUE						
BW [MHz]	Modulation	RB Size	RB Offset	Power Low Ch. / Freq.	Power Middle Ch. / Freq.	Power High Ch. / Freq.
Channel				37850	38000	38150
Frequency (MHz)				2580	2595	2610
20	QPSK	1	0	20.05	20.21	20.17

Band 41								
BW [MHz]	Modulation	RB Size	RB Offset	Power Low Ch. / Freq.	Power Low Middle Ch. / Freq.	Power Middle Ch. / Freq.	Power High Middle Ch. / Freq.	Power High Ch. / Freq.
Channel				39750	40185	40620	41055	41490
Frequency (MHz)				2506	2549.5	2593	2636.5	2680
20	QPSK	1	0	18.84	18.81	18.94	18.82	18.74

<LTE ant2>

Band 42						
BW [MHz]	Modulation	RB Size	RB Offset	Power Low Ch. / Freq.	Power Middle Ch. / Freq.	Power High Ch. / Freq.
Channel				42190	42590	42990
Frequency (MHz)				3460	3500	3540
20	QPSK	1	0	21.93	22.03	21.83



Band 43						
BW [MHz]	Modulation	RB Size	RB Offset	Power Low Ch. / Freq.	Power Middle Ch. / Freq.	Power High Ch. / Freq.
Channel				44190	44215	44240
Frequency (MHz)				3660	3662.5	3665
20	QPSK	1	0	22.89	22.98	22.90

Band 48							
BW [MHz]	Modulation	RB Size	RB Offset	Power Low Ch. / Freq.	Power Low Middle Ch. / Freq.	Power High Middle Ch. / Freq.	Power High Ch. / Freq.
Channel				55340	55830	56150	56640
Frequency (MHz)				3560	3609	3641	3690
20	QPSK	1	0	22.92	22.92	23.04	22.87

<WLAN>

Ant 4+6				
2.4GHz WLAN	Mode	Channel	Frequency (MHz)	Average power (dBm)
802.11g 6Mbps		1	2412	18.69
		6	2437	18.35
		11	2462	18.60

Ant 5+6				
5.2GHz WLAN	Mode	Channel	Frequency (MHz)	Average power (dBm)
802.11a 6Mbps		36	5180	18.65
		40	5200	18.71
		44	5220	18.73
		48	5240	18.74
5.3GHz WLAN	Mode	Channel	Frequency (MHz)	Average power (dBm)
802.11a 6Mbps		52	5260	18.76
		56	5280	18.81
		60	5300	18.83
		64	5320	18.79
5.5GHz WLAN	Mode	Channel	Frequency (MHz)	Average power (dBm)
802.11a 6Mbps		100	5500	19.63
		116	5580	19.55
		124	5620	19.64
		132	5660	19.54
		140	5700	19.37
		144	5720	19.48
5.8GHz WLAN	Mode	Channel	Frequency (MHz)	Average power (dBm)
802.11a 6Mbps		149	5745	18.45
		157	5785	18.49
		165	5825	18.53



13. HAC RF Emission Test Results

Plot No.	Air Interface	Modulation / Mode	Channel	Transmit Ant.	Average Antenna Input Power (dBm)	MIF	E-Field (dBV/m)	Margin to FCC M3 limit (dB)	E-Field M Rating
1	GSM850	Voice	128	ANT0	32.26	3.63	34.25	10.75	M4
2	GSM850	Voice	189	ANT0	32.56	3.63	34.61	10.39	M4
3	GSM850	Voice	251	ANT0	32.73	3.63	34.25	10.75	M4
4	GSM850	Voice	128	ANT1	31.81	3.63	34.42	10.58	M4
5	GSM850	Voice	189	ANT1	31.79	3.63	34.48	10.52	M4
6	GSM850	Voice	251	ANT1	31.70	3.63	34.41	10.59	M4
7	GSM1900	Voice	512	ANT0	30.05	3.63	25.12	9.88	M4
8	GSM1900	Voice	661	ANT0	30.06	3.63	27.67	7.33	M4
9	GSM1900	Voice	810	ANT0	29.96	3.63	24.97	10.03	M4
10	LTE Band 38-HPUE	20_QPSK_1_0	37850	ANT0	26.24	-1.44	19.93	15.07	M4
11	LTE Band 38-HPUE	20_QPSK_1_0	38000	ANT0	26.41	-1.44	19.21	15.79	M4
12	LTE Band 38-HPUE	20_QPSK_1_0	38150	ANT0	26.33	-1.44	20.51	14.49	M4
13	LTE Band 38-HPUE	20_QPSK_1_0	37850	ANT1	20.05	-1.44	19.88	15.12	M4
14	LTE Band 38-HPUE	20_QPSK_1_0	38000	ANT1	20.21	-1.44	20.19	14.81	M4
15	LTE Band 38-HPUE	20_QPSK_1_0	38150	ANT1	20.17	-1.44	19.63	15.37	M4
16	LTE Band 41	20_QPSK_1_0	39750	ANT0	23.28	-1.44	21.13	13.87	M4
17	LTE Band 41	20_QPSK_1_0	40185	ANT0	23.14	-1.44	20.18	14.82	M4
18	LTE Band 41	20_QPSK_1_0	40620	ANT0	23.64	-1.44	22.12	12.88	M4
19	LTE Band 41	20_QPSK_1_0	41055	ANT0	23.33	-1.44	22.54	12.46	M4
20	LTE Band 41	20_QPSK_1_0	41490	ANT0	23.53	-1.44	20.45	14.55	M4
21	LTE Band 41	20_QPSK_1_0	39750	ANT1	18.84	-1.44	19.21	15.79	M4
22	LTE Band 41	20_QPSK_1_0	40185	ANT1	18.81	-1.44	20.26	14.74	M4
23	LTE Band 41	20_QPSK_1_0	40620	ANT1	18.94	-1.44	18.40	16.60	M4
24	LTE Band 41	20_QPSK_1_0	41055	ANT1	18.82	-1.44	20.55	14.45	M4
25	LTE Band 41	20_QPSK_1_0	41490	ANT1	18.74	-1.44	20.94	14.06	M4
26	LTE Band 42	20_QPSK_1_0	42190	ANT2	21.93	-1.44	25.43	9.57	M4
27	LTE Band 42	20_QPSK_1_0	42590	ANT2	22.03	-1.44	25.61	9.39	M4
28	LTE Band 42	20_QPSK_1_0	42990	ANT2	21.83	-1.44	25.96	9.04	M4
29	LTE Band 48	20_QPSK_1_0	55340	ANT2	22.92	-1.44	25.11	9.89	M4
30	LTE Band 48	20_QPSK_1_0	55830	ANT2	22.92	-1.44	24.91	10.09	M4
31	LTE Band 48	20_QPSK_1_0	56150	ANT2	23.04	-1.44	25.59	9.41	M4
32	LTE Band 48	20_QPSK_1_0	56640	ANT2	22.87	-1.44	26.77	8.23	M4
33	WLAN2.4GHz	802.11g 6Mbps	1	Ant4+6	18.69	0.12	26.75	8.25	M4
34	WLAN2.4GHz	802.11g 6Mbps	6	Ant4+6	18.35	0.12	27.19	7.81	M4
35	WLAN2.4GHz	802.11g 6Mbps	11	Ant4+6	18.60	0.12	28.56	6.44	M4
36	WLAN5.3GHz	802.11a 6Mbps	52	Ant5+6	18.76	-3.15	28.87	6.13	M4
37	WLAN5.3GHz	802.11a 6Mbps	60	Ant5+6	18.83	-3.15	29.17	5.83	M4
38	WLAN5.3GHz	802.11a 6Mbps	64	Ant5+6	18.79	-3.15	29.09	5.91	M4
39	WLAN5.5GHz	802.11a 6Mbps	100	Ant5+6	19.63	-3.15	29.88	5.12	M4
40	WLAN5.5GHz	802.11a 6Mbps	116	Ant5+6	19.55	-3.15	29.41	5.59	M4
41	WLAN5.5GHz	802.11a 6Mbps	144	Ant5+6	19.48	-3.15	29.41	5.59	M4
42	WLAN5.8GHz	802.11a 6Mbps	149	Ant5+6	18.45	-3.15	29.47	5.53	M4
43	WLAN5.8GHz	802.11a 6Mbps	157	Ant5+6	18.49	-3.15	29.49	5.51	M4
44	WLAN5.8GHz	802.11a 6Mbps	165	Ant5+6	18.53	-3.15	29.97	5.03	M4

Remark:

1. The HAC measurement system applies MIF value onto the measured RMS E-field, which is indirect method in ANSI C63.19 2011 version, and reports the RF audio interference level.
2. Phone Condition: Mute on; Backlight off; Max Volume

Test Engineer : Nick Hu, Seven Xu.



14. Uncertainty Assessment

The component of uncertainty may generally be categorized according to the methods used to evaluate them. The evaluation of uncertainty by the statistical analysis of a series of observations is termed a Type A evaluation of uncertainty. The evaluation of uncertainty by means other than the statistical analysis of a series of observation is termed a Type B evaluation of uncertainty. Each component of uncertainty, however evaluated, is represented by an estimated standard deviation, termed standard uncertainty, which is determined by the positive square root of the estimated variance.

The combined standard uncertainty of the measurement result represents the estimated standard deviation of the result. It is obtained by combining the individual standard uncertainties of both Type A and Type B evaluation using the usual “root-sum-squares” (RSS) methods of combining standard deviations by taking the positive square root of the estimated variances. Expanded uncertainty is a measure of uncertainty that defines an interval about the measurement result within which the measured value is confidently believed to lie. It is obtained by multiplying the combined standard uncertainty by a coverage factor. For purpose of this document, a coverage factor two is used, which corresponds to confidence interval of about 95 %. The DASY uncertainty Budget is showed in Table 14.1.

The judgment of conformity in the report is based on the measurement results excluding the measurement uncertainty.



Error Description	Uncertainty Value (±%)	Probability	Divisor	(Ci) E	(Ci) H	Standard Uncertainty (E) (±%)
Measurement System						
Probe Calibration	5.1	N	1	1	1	5.1
Axial Isotropy	4.7	R	1.732	1	1	2.7
Sensor Displacement	16.5	R	1.732	1	0.145	9.5
Boundary Effects	2.4	R	1.732	1	1	1.4
Phantom Boundary Effect	7.2	R	1.732	1	0	4.2
Linearity	4.7	R	1.732	1	1	2.7
Scaling with PMR calibration	10.0	R	1.732	1	1	5.8
System Detection Limit	1.0	R	1.732	1	1	0.6
Readout Electronics	0.3	N	1	1	1	0.3
Response Time	2.6	R	1.732	1	1	1.5
Integration Time	2.6	R	1.732	1	1	1.5
RF Ambient Conditions	3.0	R	1.732	1	1	1.7
RF Reflections	12.0	R	1.732	1	1	6.9
Probe Positioner	1.2	R	1.732	1	0.67	0.7
Probe Positioning	4.7	R	1.732	1	0.67	2.7
Extrap. and Interpolation	1.0	R	1.732	1	1	0.6
Test Sample Related						
Device Positioning Vertical	4.7	R	1.732	1	0.67	2.7
Device Positioning Lateral	1.0	R	1.732	1	1	0.6
Device Holder and Phantom	2.4	R	1.732	1	1	1.4
Power Drift	5.0	R	1.732	1	1	2.9
Phantom and Setup Related						
Phantom Thickness	2.4	R	1.732	1	0.67	1.4
Combined Std. Uncertainty						16.4%
Coverage Factor for 95 %						K=2
Expanded STD Uncertainty						32.7%

Table 14.1 Uncertainty Budget of HAC free field assessment



15. References

- [1] ANSI C63.19-2011, "American National Standard for Methods of Measurement of Compatibility between Wireless Communications Devices and Hearing Aids", 27 May 2011.
- [2] FCC KDB 285076 D01v05r01, "Equipment Authorization Guidance for Hearing Aid Compatibility", Apr 06, 2020
- [3] FCC KDB 285076 D02 v03r01, "Guidance for performing T-Coil tests for air interfaces supporting voice over IP (e.g., LTE and WiFi) to support CMRS based telephone services", Apr 20, 2021
- [4] SPEAG DASY System Handbook

-----THE END-----



Appendix A. Plots of System Performance Check

The plots are shown as follows.

HAC_E_Dipole_835

DUT: HAC-Dipole 835 MHz

Communication System: UID 0, CW; Frequency: 835 MHz; Duty Cycle: 1:1

Medium: Air Medium parameters used: $\sigma = 0$ S/m, $\epsilon_r = 1$; $\rho = 0$ kg/m³

Ambient Temperature : 23.3 °C;

DASY5 Configuration:

- Probe: EF3DV3 - SN4050; ConvF(1, 1, 1); Calibrated: 2021.1.25
- Electronics: DAE4 Sn1356; Calibrated: 2021.6.1
- Phantom: HAC Test Arch with AMCC; Type: SD HAC P01 BA;
- Measurement SW: DASY52, Version 52.10 (4); SEMCAD X Version 14.6.14 (7483)

E Scan - measurement distance from the probe sensor center to CD835 = 15mm/Hearing Aid Compatibility Test at 15mm distance (41x361x1): Interpolated grid:

dx=0.5000 mm, dy=0.5000 mm

Device Reference Point: 0, 0, -6.3 mm

Reference Value = 118.0 V/m; Power Drift = 0.08 dB

PMR not calibrated. PMF = 1.000 is applied.

E-field emissions = 119.6 V/m

Average value of Total=(119.6+96.04)/2=107.82 V/m

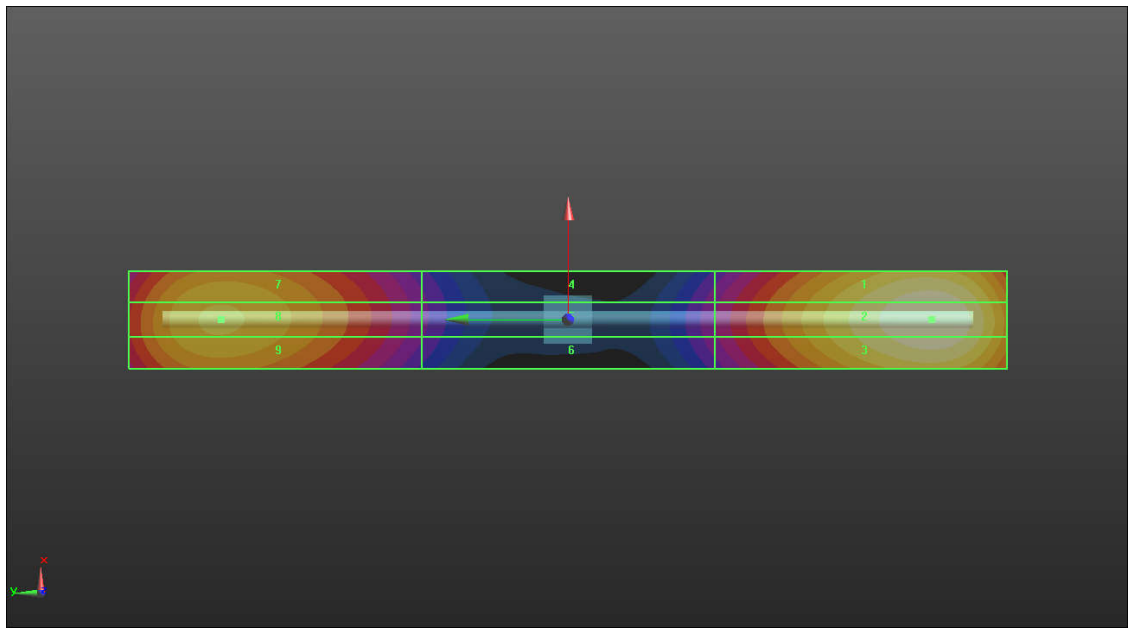
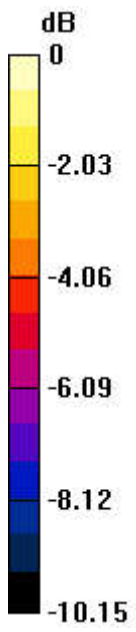
PMF scaled E-field

Grid 1 M4 116.6 V/m	Grid 2 M4 119.6 V/m	Grid 3 M4 116.7 V/m
Grid 4 M4 58.10 V/m	Grid 5 M4 59.22 V/m	Grid 6 M4 58.50 V/m
Grid 7 M4 94.39 V/m	Grid 8 M4 96.04 V/m	Grid 9 M4 94.43 V/m

Total = 119.6 V/m

E Category: M4

Location: 0, -74.5, 9.7 mm



0 dB = 119.6 V/m = 41.55 dBV/m

HAC_E_Dipole_1880

DUT: HAC Dipole 1880 MHz

Communication System: UID 0, CW; Frequency: 1880 MHz; Duty Cycle: 1:1

Medium: Air Medium parameters used: $\sigma = 0$ S/m, $\epsilon_r = 1$; $\rho = 0$ kg/m³

Ambient Temperature : 23.3 °C;

DASY5 Configuration:

- Probe: EF3DV3 - SN4050; ConvF(1, 1, 1); Calibrated: 2021.1.25
- Electronics: DAE4 Sn1356; Calibrated: 2021.6.1
- Phantom: HAC Test Arch with AMCC; Type: SD HAC P01 BA;
- Measurement SW: DASY52, Version 52.10 (4); SEMCAD X Version 14.6.14 (7483)

E Scan - measurement distance from the probe sensor center to CD1880 = 15mm/Hearing Aid Compatibility Test at 15mm distance (41x181x1): Interpolated grid:

dx=0.5000 mm, dy=0.5000 mm

Device Reference Point: 0, 0, -6.3 mm

Reference Value = 156.2 V/m; Power Drift = 0.03 dB

PMR not calibrated. PMF = 1.000 is applied.

E-field emissions = 100.2 V/m

Average value of Total=(100.2+94.18)/2=97.19 V/m

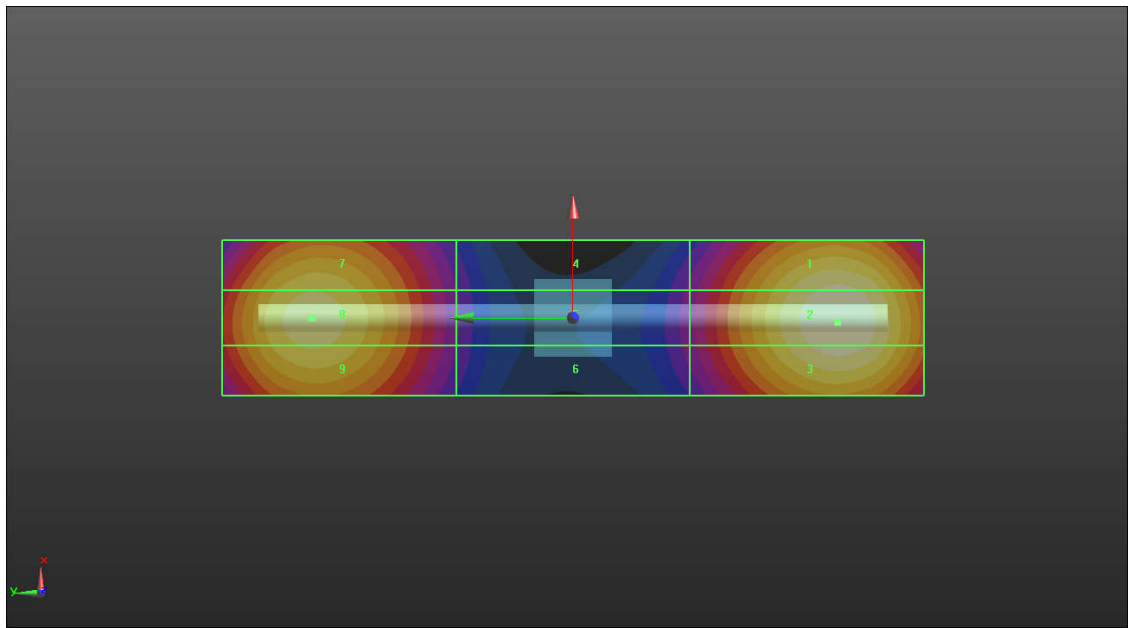
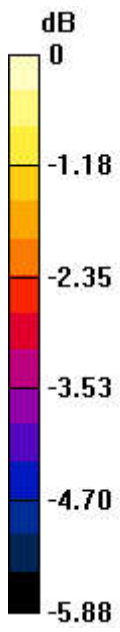
PMF scaled E-field

Grid 1 M3 97.21 V/m	Grid 2 M3 100.2 V/m	Grid 3 M3 98.14 V/m
Grid 4 M3 65.05 V/m	Grid 5 M3 66.15 V/m	Grid 6 M3 65.58 V/m
Grid 7 M3 91.46 V/m	Grid 8 M3 94.18 V/m	Grid 9 M3 92.21 V/m

Total = 100.2 V/m

E Category: M3

Location: -0.5, -34, 8.7 mm



0 dB = 100.2 V/m = 40.02 dBV/m

HAC_E_Dipole_2450

DUT: HAC Dipole 2450 MHz

Communication System: UID 0, CW; Frequency: 2450 MHz; Duty Cycle: 1:1

Medium: Air Medium parameters used: $\sigma = 0$ S/m, $\epsilon_r = 1$; $\rho = 0$ kg/m³

Ambient Temperature : 23.5 °C;

DASY5 Configuration:

- Probe: EF3DV3 - SN4050; ConvF(1, 1, 1); Calibrated: 2021.1.25
- Electronics: DAE4 Sn1356; Calibrated: 2021.6.1
- Phantom: HAC Test Arch with AMCC; Type: SD HAC P01 BA;
- Measurement SW: DASY52, Version 52.10 (4); SEMCAD X Version 14.6.14 (7483)

E Scan - measurement distance from the probe sensor center to CD2450 = 15mm /Hearing Aid Compatibility Test at 15mm distance (41x181x1):

Interpolated

grid: dx=0.5000 mm, dy=0.5000 mm

Device Reference Point: 0, 0, -6.3 mm

Reference Value = 64.90 V/m; Power Drift = -0.07 dB

PMR not calibrated. PMF = 1.000 is applied.

E-field emissions = 80.73 V/m

Average value of Total=(80.69+80.73)/2=80.71 V/m

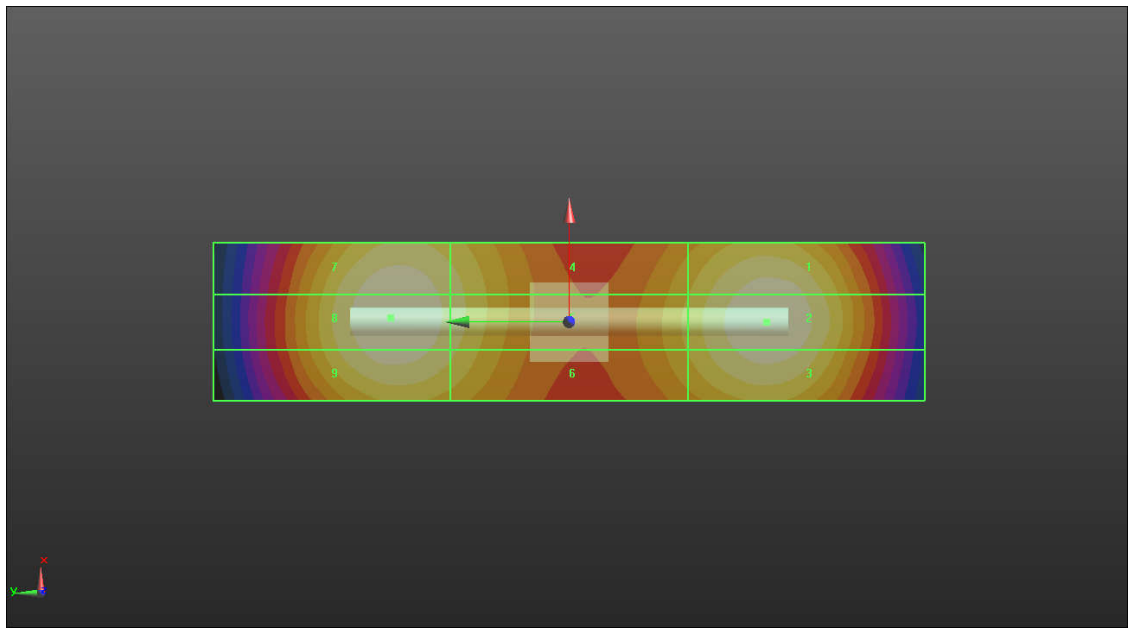
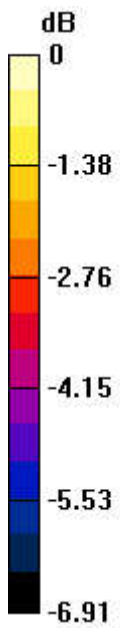
PMF scaled E-field

Grid 1 M3 78.92 V/m	Grid 2 M3 80.69 V/m	Grid 3 M3 78.65 V/m
Grid 4 M3 74.91 V/m	Grid 5 M3 75.36 V/m	Grid 6 M3 73.71 V/m
Grid 7 M3 79.79 V/m	Grid 8 M3 80.73 V/m	Grid 9 M3 78.79 V/m

Total = 80.73 V/m

E Category: M3

Location: 0.5, 22.5, 9.7 mm



0 dB = 80.73 V/m = 38.14 dBV/m

HAC_E_Dipole_2600

DUT: HAC Dipole 2600 MHz

Communication System: UID 0, CW (0); Frequency: 2600 MHz;Duty Cycle: 1:1

Medium: Air Medium parameters used: $\sigma = 0$ S/m, $\epsilon_r = 1$; $\rho = 0$ kg/m³

Ambient Temperature : 23.3 °C;

DASY5 Configuration:

- Probe: EF3DV3 - SN4050; ConvF(1, 1, 1); Calibrated: 2021.1.25
- Electronics: DAE4 Sn1356; Calibrated: 2021.6.1
- Phantom: HAC Test Arch with AMCC; Type: SD HAC P01 BA;
- Measurement SW: DASY52, Version 52.10 (4); SEMCAD X Version 14.6.14 (7483)

E Scan - measurement distance from the probe sensor center to CD2600 = 15mm/Hearing Aid Compatibility Test at 15mm distance (41x181x1): Interpolated grid:

dx=0.5000 mm, dy=0.5000 mm

Device Reference Point: 0, 0, -6.3 mm

Reference Value = 73.73 V/m; Power Drift = 0.02 dB

PMR not calibrated. PMF = 1.000 is applied.

E-field emissions = 88.55 V/m

Average value of Total=(87.19+88.55)/2=87.87 V/m

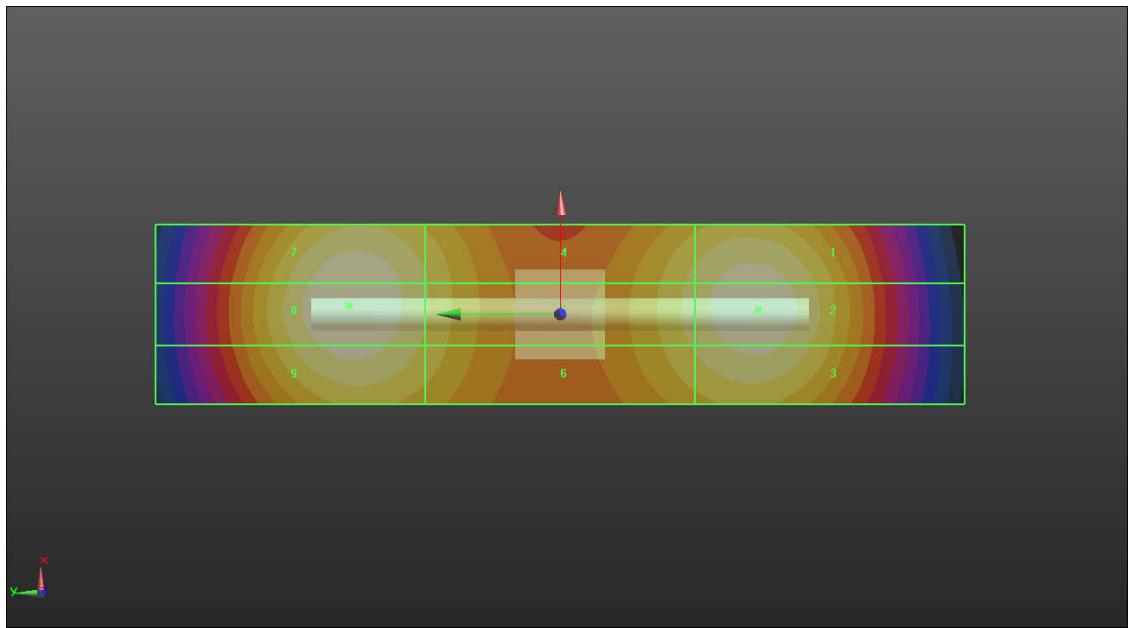
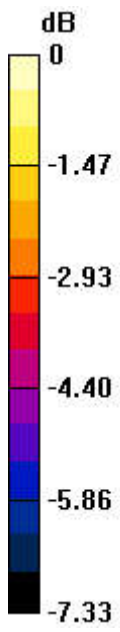
PMF scaled E-field

Grid 1 M3 86.15 V/m	Grid 2 M3 87.19 V/m	Grid 3 M3 84.88 V/m
Grid 4 M3 80.85 V/m	Grid 5 M3 81.45 V/m	Grid 6 M3 79.78 V/m
Grid 7 M3 87.76 V/m	Grid 8 M3 88.55 V/m	Grid 9 M3 85.73 V/m

Total = 88.55 V/m

E Category: M3

Location: 1, 23.5, 9.7 mm



0 dB = 88.55 V/m = 38.94 dBV/m

HAC_E_Dipole_3500

DUT: HAC Dipole 3500 MHz

Communication System: UID 0, CW (0); Frequency: 3500 MHz; Duty Cycle: 1:1

Medium: Air Medium parameters used: $\sigma = 0$ S/m, $\epsilon_r = 1$; $\rho = 0$ kg/m³

Ambient Temperature : 23.3 °C

DASY5 Configuration:

- Probe: EF3DV3 - SN4050; ConvF(1, 1, 1); Calibrated: 2021.1.25
- Electronics: DAE4 Sn1356; Calibrated: 2021.6.1
- Phantom: HAC Test Arch with AMCC; Type: SD HAC P01 BA;
- Measurement SW: DASY52, Version 52.10 (4); SEMCAD X Version 14.6.14 (7483)

E Scan - measurement distance from the probe sensor center to CD3500 = 15mm/Hearing Aid Compatibility Test at 15mm distance (41x121x1): Interpolated grid:

dx=0.5000 mm, dy=0.5000 mm

Device Reference Point: 0, 0, -6.3 mm

Reference Value = 38.61 V/m; Power Drift = 0.02 dB

PMR not calibrated. PMF = 1.000 is applied.

E-field emissions = 89.01 V/m

Average value of Total=(89.01+88.86)/2=88.935 V/m

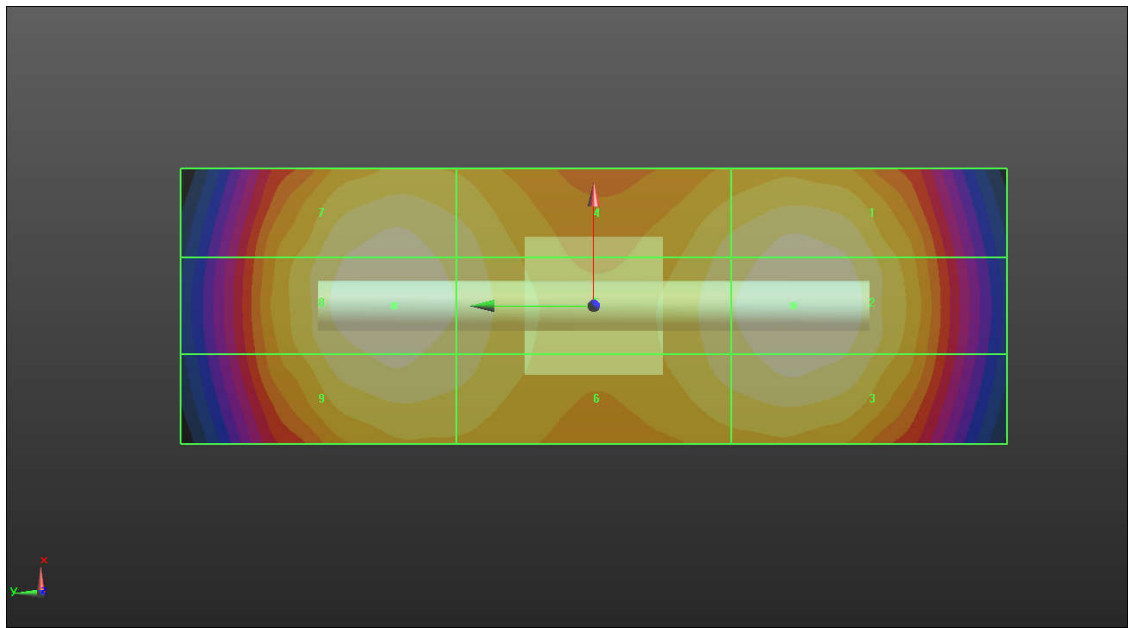
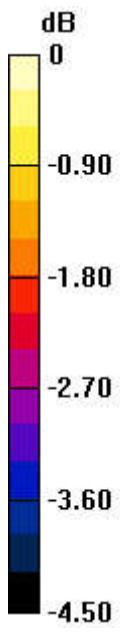
PMF scaled E-field

Grid 1 M3 87.46 V/m	Grid 2 M3 89.01 V/m	Grid 3 M3 87.32 V/m
Grid 4 M3 85.06 V/m	Grid 5 M3 85.94 V/m	Grid 6 M3 84.81 V/m
Grid 7 M3 87.57 V/m	Grid 8 M3 88.86 V/m	Grid 9 M3 86.62 V/m

Total = 89.01 V/m

E Category: M3

Location: 0, -14.5, 9.7 mm



0 dB = 89.01 V/m = 38.99 dBV/m

HAC_E_Dipole_5500

DUT: HAC Dipole 5500 MHz

Communication System: UID 0, CW (0); Frequency: 5500 MHz; Duty Cycle: 1:1

Medium: Air Medium parameters used: $\sigma = 0$ S/m, $\epsilon_r = 1$; $\rho = 0$ kg/m³

Ambient Temperature : 23.2 °C;

DASY5 Configuration:

- Probe: EF3DV3 - SN4050; ConvF(1, 1, 1); Calibrated: 2021.1.25
- Electronics: DAE4 Sn1356; Calibrated: 2021.6.1
- Phantom: HAC Test Arch with AMCC; Type: SD HAC P01 BA;
- Measurement SW: DASY52, Version 52.10 (4); SEMCAD X Version 14.6.14 (7483)

E Scan - measurement distance from the probe sensor center to CD5500 = 15mm/Hearing Aid Compatibility Test at 15mm distance (41x181x1):

Interpolated grid:

dx=0.5000 mm, dy=0.5000 mm

Device Reference Point: 0, 0, -6.3 mm

Reference Value = 28.34 V/m; Power Drift = 0.06 dB

PMR not calibrated. PMF = 1.000 is applied.

E-field emissions = 105.2 V/m

Average value of Total=(101.0+103.4)/2=102.2 V/m

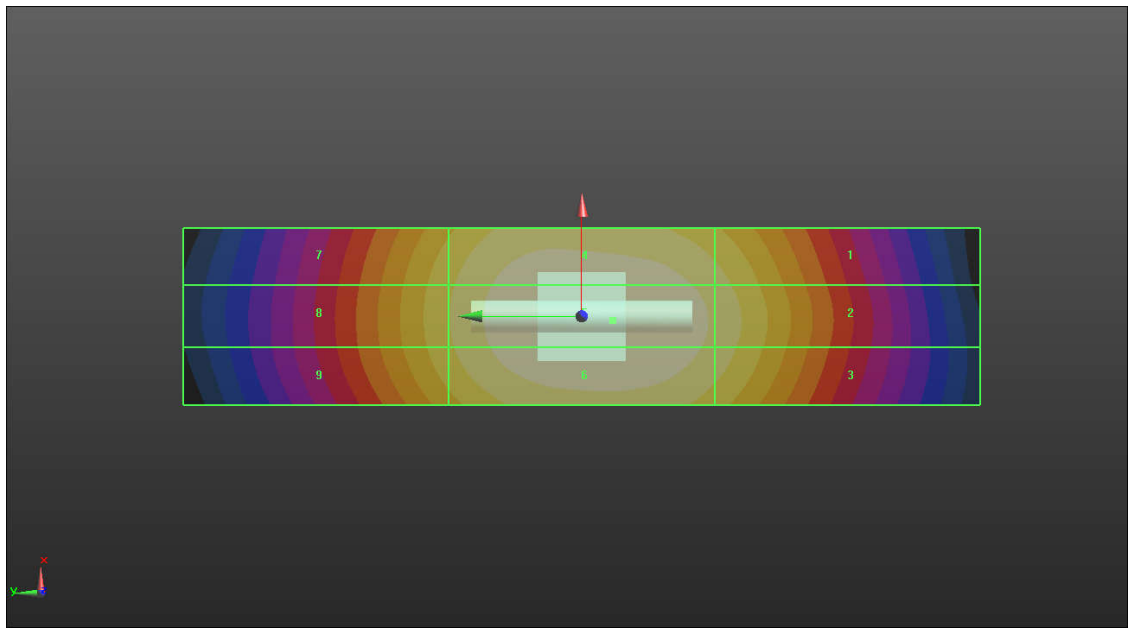
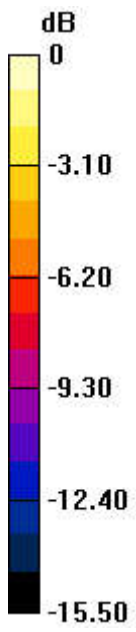
PMF scaled E-field

Grid 1 M3 88.05 V/m	Grid 2 M3 91.65 V/m	Grid 3 M3 89.87 V/m
Grid 4 M3 101.0 V/m	Grid 5 M3 105.2 V/m	Grid 6 M3 103.4 V/m
Grid 7 M3 81.15 V/m	Grid 8 M3 88.65 V/m	Grid 9 M3 81.27 V/m

Total = 105.2 V/m

E Category: M3

Location: -0.5, -3.5, 8.7 mm



0 dB = 105.2 V/m = 40.44 dBV/m



Appendix B. Plots of RF Emission Measurement

The plots are shown as follows.

1_HAC RF GSM850_ANT0_Voice_Ch128

Communication System: UID 10021 - DAC, GSM-FDD (TDMA, GMSK); Frequency: 824.2 MHz; Duty Cycle: 1:8.69961

Medium: Air Medium parameters used: $\sigma = 0$ S/m, $\epsilon_r = 1$; $\rho = 0$ kg/m³

Ambient Temperature : 23.3 °C;

DASY5 Configuration:

- Probe: EF3DV3 - SN4050; ConvF(1, 1, 1); Calibrated: 2021.1.25
- Sensor-Surface: (Fix Surface)
- Electronics: DAE4 Sn1356; Calibrated: 2021.6.1
- Phantom: HAC Test Arch with AMCC; Type: SD HAC P01 BA;
- Measurement SW: DASY52, Version 52.10 (4); SEMCAD X Version 14.6.14 (7483)

Ch128/Hearing Aid Compatibility Test (101x101x1): Interpolated grid: dx=0.5000 mm, dy=0.5000 mm

Device Reference Point: 0, 0, -6.3 mm

Reference Value = 47.87 V/m; Power Drift = -0.01 dB

Applied MIF = 3.63 dB

RF audio interference level = 34.25 dBV/m

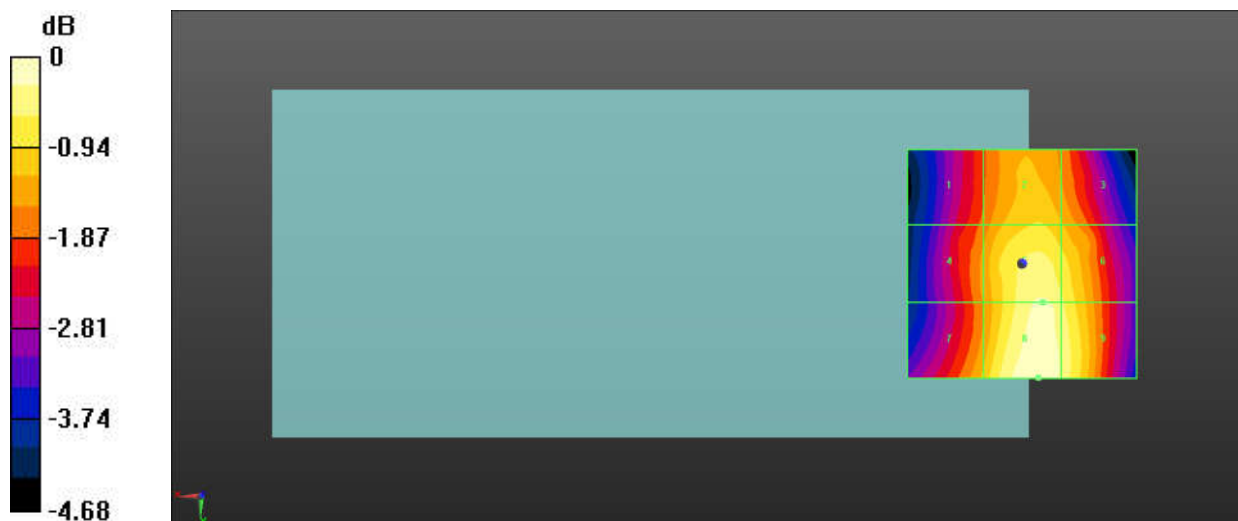
MIF scaled E-field

Grid 1 M4 32.51 dBV/m	Grid 2 M4 33.34 dBV/m	Grid 3 M4 33.05 dBV/m
Grid 4 M4 32.81 dBV/m	Grid 5 M4 34.02 dBV/m	Grid 6 M4 33.69 dBV/m
Grid 7 M4 33.1 dBV/m	Grid 8 M4 34.25 dBV/m	Grid 9 M4 33.9 dBV/m

Total = 34.25 dBV/m

E Category: M4

Location: -3.5, 25, 8.7 mm



0 dB = 51.58 V/m = 34.25 dBV/m

2_HAC RF GSM850_ANT0_Voice_Ch189

Communication System: UID 10021 - DAC, GSM-FDD (TDMA, GMSK); Frequency: 836.4 MHz; Duty Cycle: 1:8.69961

Medium: Air Medium parameters used: $\sigma = 0$ S/m, $\epsilon_r = 1$; $\rho = 0$ kg/m³

Ambient Temperature : 23.3 °C;

DASY5 Configuration:

- Probe: EF3DV3 - SN4050; ConvF(1, 1, 1); Calibrated: 2021.1.25
- Sensor-Surface: (Fix Surface)
- Electronics: DAE4 Sn1356; Calibrated: 2021.6.1
- Phantom: HAC Test Arch with AMCC; Type: SD HAC P01 BA;
- Measurement SW: DASY52, Version 52.10 (4); SEMCAD X Version 14.6.14 (7483)

Ch189/Hearing Aid Compatibility Test (101x101x1): Interpolated grid: dx=0.5000 mm, dy=0.5000 mm

Device Reference Point: 0, 0, -6.3 mm

Reference Value = 45.74 V/m; Power Drift = -0.11 dB

Applied MIF = 3.63 dB

RF audio interference level = 34.61 dBV/m

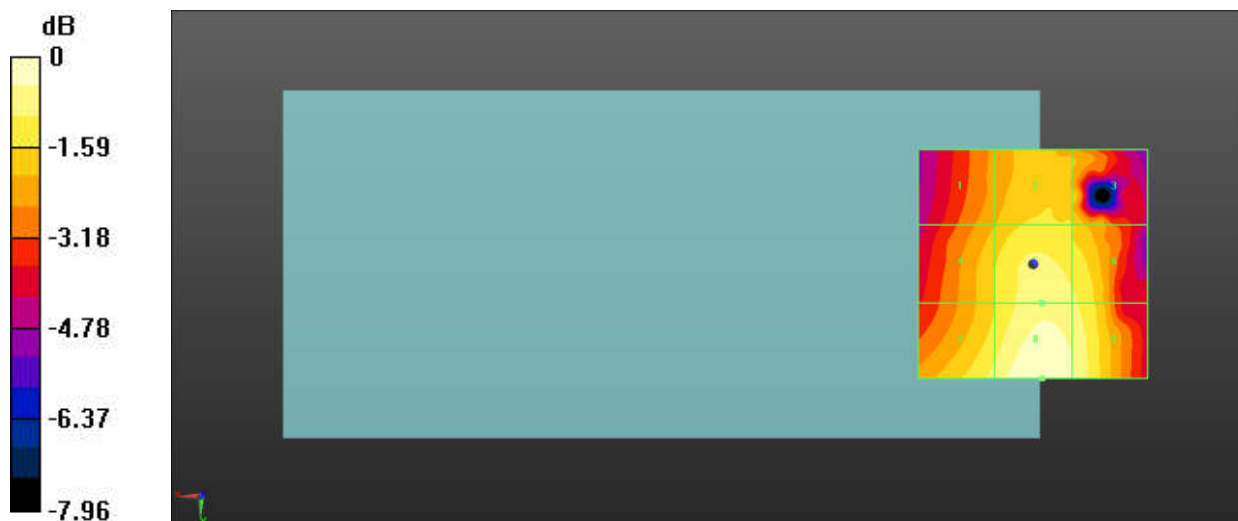
MIF scaled E-field

Grid 1 M4 32.47 dBV/m	Grid 2 M4 33.17 dBV/m	Grid 3 M4 33.06 dBV/m
Grid 4 M4 33.01 dBV/m	Grid 5 M4 33.93 dBV/m	Grid 6 M4 33.68 dBV/m
Grid 7 M4 33.75 dBV/m	Grid 8 M4 34.61 dBV/m	Grid 9 M4 34.18 dBV/m

Total = 34.61 dBV/m

E Category: M4

Location: -2, 25, 8.7 mm



0 dB = 53.77 V/m = 34.61 dBV/m

3_HAC RF GSM850_ANT0_Voice_Ch251

Communication System: UID 10021 - DAC, GSM-FDD (TDMA, GMSK); Frequency: 848.8 MHz; Duty Cycle: 1:8.69961

Medium: Air Medium parameters used: $\sigma = 0$ S/m, $\epsilon_r = 1$; $\rho = 0$ kg/m³

Ambient Temperature : 23.3 °C;

DASY5 Configuration:

- Probe: EF3DV3 - SN4050; ConvF(1, 1, 1); Calibrated: 2021.1.25
- Sensor-Surface: (Fix Surface)
- Electronics: DAE4 Sn1356; Calibrated: 2021.6.1
- Phantom: HAC Test Arch with AMCC; Type: SD HAC P01 BA;
- Measurement SW: DASY52, Version 52.10 (4); SEMCAD X Version 14.6.14 (7483)

Ch251/Hearing Aid Compatibility Test (101x101x1): Interpolated grid: dx=0.5000 mm, dy=0.5000 mm

Device Reference Point: 0, 0, -6.3 mm

Reference Value = 45.37 V/m; Power Drift = -0.02 dB

Applied MIF = 3.63 dB

RF audio interference level = 34.25 dBV/m

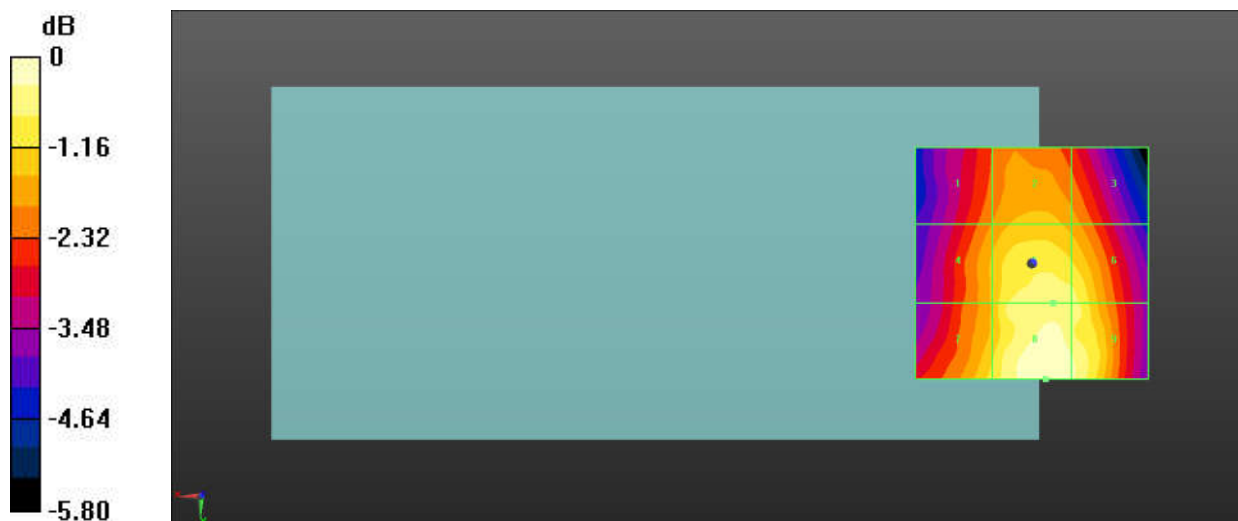
MIF scaled E-field

Grid 1 M4 32.35 dBV/m	Grid 2 M4 32.87 dBV/m	Grid 3 M4 32.55 dBV/m
Grid 4 M4 32.81 dBV/m	Grid 5 M4 33.7 dBV/m	Grid 6 M4 33.64 dBV/m
Grid 7 M4 33.25 dBV/m	Grid 8 M4 34.25 dBV/m	Grid 9 M4 33.96 dBV/m

Total = 34.25 dBV/m

E Category: M4

Location: -3, 25, 8.7 mm



0 dB = 51.59 V/m = 34.25 dBV/m

4_HAC RF GSM850_ANT1_Voice_Ch128

Communication System: UID 10021 - DAC, GSM-FDD (TDMA, GMSK); Frequency: 824.2 MHz; Duty Cycle: 1:8.69961

Medium: Air Medium parameters used: $\sigma = 0$ S/m, $\epsilon_r = 1$; $\rho = 0$ kg/m³

Ambient Temperature : 23.3 °C;

DASY5 Configuration:

- Probe: EF3DV3 - SN4050; ConvF(1, 1, 1); Calibrated: 2021.1.25
- Sensor-Surface: (Fix Surface)
- Electronics: DAE4 Sn1356; Calibrated: 2021.6.1
- Phantom: HAC Test Arch with AMCC; Type: SD HAC P01 BA;
- Measurement SW: DASY52, Version 52.10 (4); SEMCAD X Version 14.6.14 (7483)

Ch128/Hearing Aid Compatibility Test (101x101x1): Interpolated grid: dx=0.5000 mm, dy=0.5000 mm

Device Reference Point: 0, 0, -6.3 mm

Reference Value = 47.99 V/m; Power Drift = -0.19 dB

Applied MIF = 3.63 dB

RF audio interference level = 34.42 dBV/m

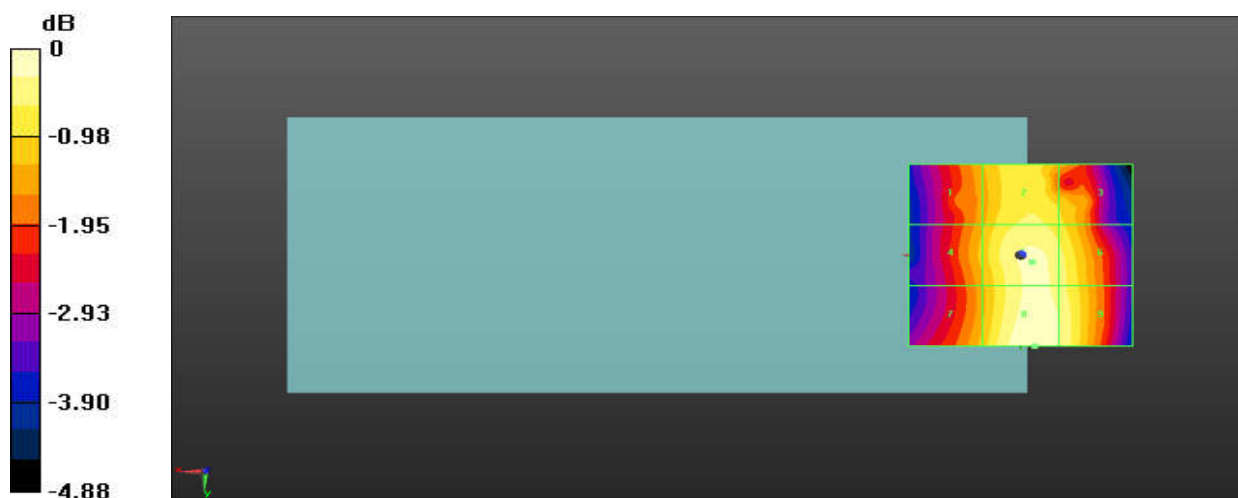
MIF scaled E-field

Grid 1 M4 33.12 dBV/m	Grid 2 M4 33.85 dBV/m	Grid 3 M4 33.58 dBV/m
Grid 4 M4 33.28 dBV/m	Grid 5 M4 34.19 dBV/m	Grid 6 M4 33.95 dBV/m
Grid 7 M4 33.3 dBV/m	Grid 8 M4 34.42 dBV/m	Grid 9 M4 34.13 dBV/m

Total = 34.42 dBV/m

E Category: M4

Location: -3, 25, 8.7 mm



0 dB = 52.60 V/m = 34.42 dBV/m

5_HAC RF GSM850_ANT1_Voice_Ch189

Communication System: UID 10021 - DAC, GSM-FDD (TDMA, GMSK); Frequency: 836.4 MHz; Duty Cycle: 1:8.69961

Medium: Air Medium parameters used: $\sigma = 0$ S/m, $\epsilon_r = 1$; $\rho = 0$ kg/m³

Ambient Temperature : 23.3 °C;

DASY5 Configuration:

- Probe: EF3DV3 - SN4050; ConvF(1, 1, 1); Calibrated: 2021.1.25
- Sensor-Surface: (Fix Surface)
- Electronics: DAE4 Sn1356; Calibrated: 2021.6.1
- Phantom: HAC Test Arch with AMCC; Type: SD HAC P01 BA;
- Measurement SW: DASY52, Version 52.10 (4); SEMCAD X Version 14.6.14 (7483)

Ch189/Hearing Aid Compatibility Test (101x101x1): Interpolated grid: dx=0.5000 mm, dy=0.5000 mm

Device Reference Point: 0, 0, -6.3 mm

Reference Value = 46.10 V/m; Power Drift = -0.12 dB

Applied MIF = 3.63 dB

RF audio interference level = 34.48 dBV/m

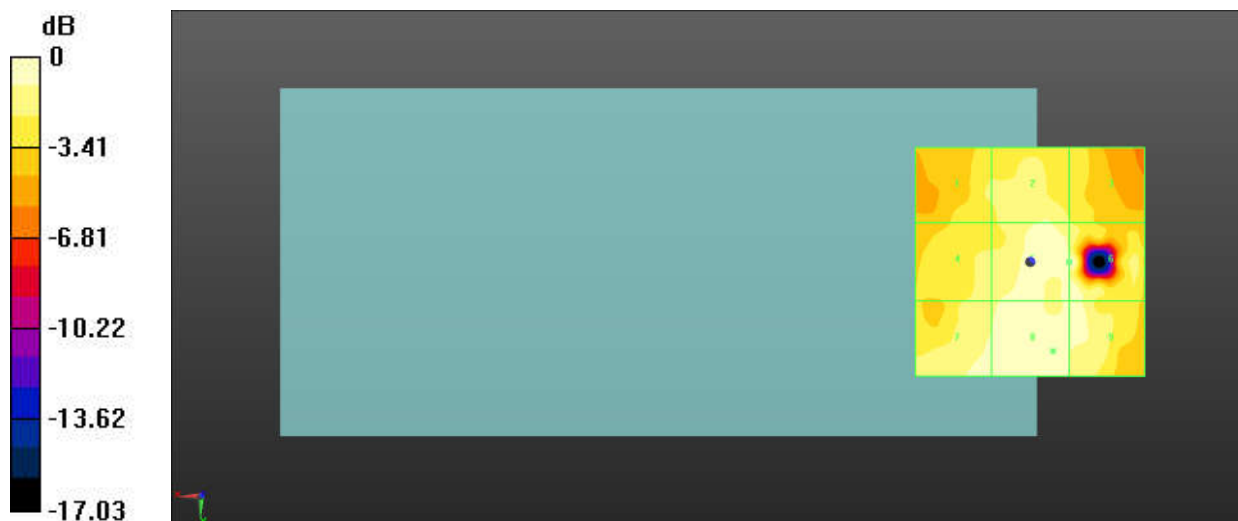
MIF scaled E-field

Grid 1 M4 32.39 dBV/m	Grid 2 M4 33.41 dBV/m	Grid 3 M4 32.4 dBV/m
Grid 4 M4 33.13 dBV/m	Grid 5 M4 34.3 dBV/m	Grid 6 M4 34.3 dBV/m
Grid 7 M4 33.89 dBV/m	Grid 8 M4 34.48 dBV/m	Grid 9 M4 33.95 dBV/m

Total = 34.48 dBV/m

E Category: M4

Location: -5, 19.5, 8.7 mm



0 dB = 52.94 V/m = 34.48 dBV/m

6_HAC RF GSM850_ANT1_Voice_Ch251

Communication System: UID 10021 - DAC, GSM-FDD (TDMA, GMSK); Frequency: 848.8 MHz; Duty Cycle: 1:8.69961

Medium: Air Medium parameters used: $\sigma = 0$ S/m, $\epsilon_r = 1$; $\rho = 0$ kg/m³

Ambient Temperature : 23.3 °C;

DASY5 Configuration:

- Probe: EF3DV3 - SN4050; ConvF(1, 1, 1); Calibrated: 2021.1.25
- Sensor-Surface: (Fix Surface)
- Electronics: DAE4 Sn1356; Calibrated: 2021.6.1
- Phantom: HAC Test Arch with AMCC; Type: SD HAC P01 BA;
- Measurement SW: DASY52, Version 52.10 (4); SEMCAD X Version 14.6.14 (7483)

Ch251/Hearing Aid Compatibility Test (101x101x1): Interpolated grid: dx=0.5000 mm, dy=0.5000 mm

Device Reference Point: 0, 0, -6.3 mm

Reference Value = 46.05 V/m; Power Drift = 0.01 dB

Applied MIF = 3.63 dB

RF audio interference level = 34.41 dBV/m

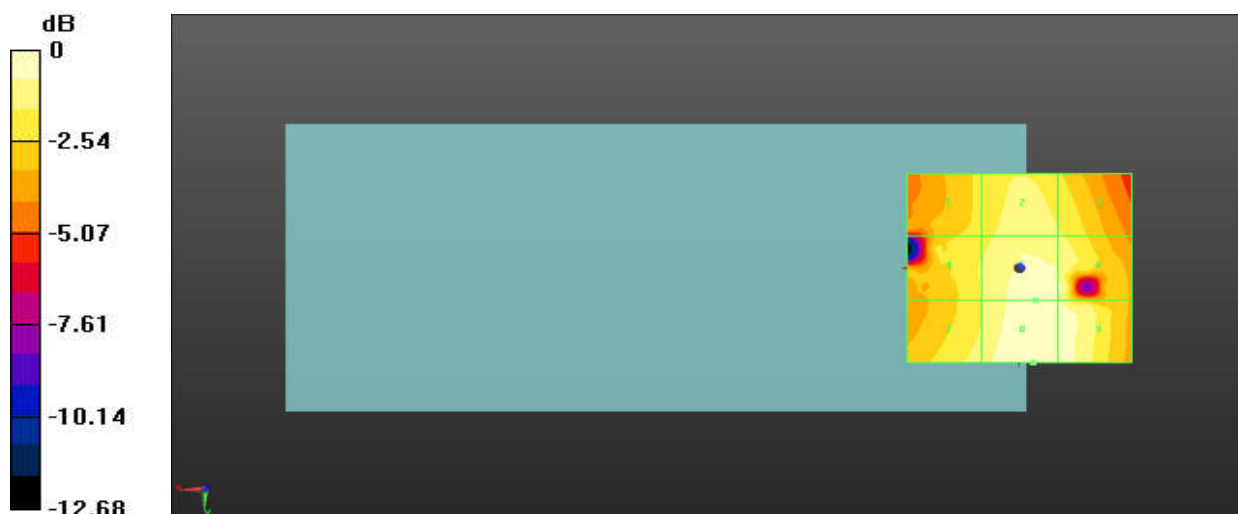
MIF scaled E-field

Grid 1 M4 32.37 dBV/m	Grid 2 M4 33.31 dBV/m	Grid 3 M4 32.88 dBV/m
Grid 4 M4 32.81 dBV/m	Grid 5 M4 34.03 dBV/m	Grid 6 M4 33.85 dBV/m
Grid 7 M4 33.23 dBV/m	Grid 8 M4 34.41 dBV/m	Grid 9 M4 34.1 dBV/m

Total = 34.41 dBV/m

E Category: M4

Location: -3, 25, 8.7 mm



0 dB = 52.55 V/m = 34.41 dBV/m

7_HAC RF GSM1900_ANT0_Voice_Ch512

Communication System: UID 10021 - DAC, GSM-FDD (TDMA, GMSK); Frequency: 1850.2 MHz; Duty Cycle: 1:8.69961

Medium: Air Medium parameters used: $\sigma = 0$ S/m, $\epsilon_r = 1$; $\rho = 0$ kg/m³

Ambient Temperature : 23.3 °C;

DASY5 Configuration:

- Probe: EF3DV3 - SN4050; ConvF(1, 1, 1); Calibrated: 2021.1.25
- Sensor-Surface: (Fix Surface)
- Electronics: DAE4 Sn1356; Calibrated: 2021.6.1
- Phantom: HAC Test Arch with AMCC; Type: SD HAC P01 BA;
- Measurement SW: DASY52, Version 52.10 (4); SEMCAD X Version 14.6.14 (7483)

Ch512/Hearing Aid Compatibility Test (101x101x1): Interpolated grid: dx=0.5000 mm, dy=0.5000 mm

Device Reference Point: 0, 0, -6.3 mm

Reference Value = 6.355 V/m; Power Drift = 0.11 dB

Applied MIF = 3.63 dB

RF audio interference level = 25.12 dBV/m

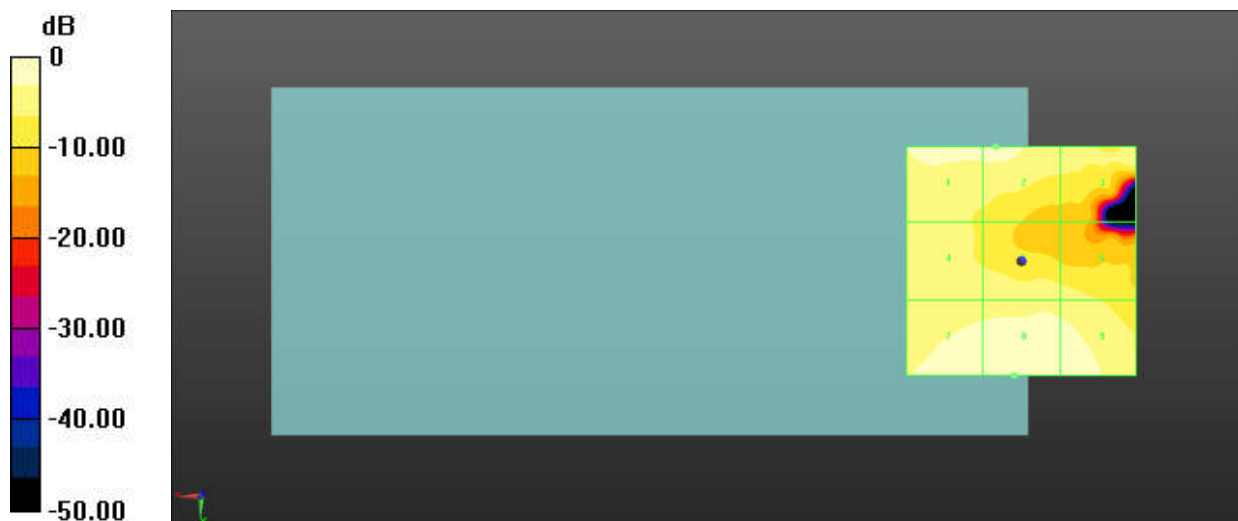
MIF scaled E-field

Grid 1 M4 23.16 dBV/m	Grid 2 M4 24.53 dBV/m	Grid 3 M4 21.17 dBV/m
Grid 4 M4 20.66 dBV/m	Grid 5 M4 20.83 dBV/m	Grid 6 M4 20.37 dBV/m
Grid 7 M4 24.71 dBV/m	Grid 8 M4 25.12 dBV/m	Grid 9 M4 23.36 dBV/m

Total = 25.12 dBV/m

E Category: M4

Location: 1.5, 25, 8.7 mm



0 dB = 18.04 V/m = 25.12 dBV/m

8_HAC RF GSM1900_ANT0_Voice_Ch661

Communication System: UID 10021 - DAC, GSM-FDD (TDMA, GMSK); Frequency: 1880 MHz; Duty Cycle: 1:8.69961

Medium: Air Medium parameters used: $\sigma = 0$ S/m, $\epsilon_r = 1$; $\rho = 0$ kg/m³

Ambient Temperature : 23.3 °C;

DASY5 Configuration:

- Probe: EF3DV3 - SN4050; ConvF(1, 1, 1); Calibrated: 2021.1.25
- Sensor-Surface: (Fix Surface)
- Electronics: DAE4 Sn1356; Calibrated: 2021.6.1
- Phantom: HAC Test Arch with AMCC; Type: SD HAC P01 BA;
- Measurement SW: DASY52, Version 52.10 (4); SEMCAD X Version 14.6.14 (7483)

Ch661/Hearing Aid Compatibility Test (101x101x1): Interpolated grid: dx=0.5000 mm, dy=0.5000 mm

Device Reference Point: 0, 0, -6.3 mm

Reference Value = 3.781 V/m; Power Drift = 0.13 dB

Applied MIF = 3.63 dB

RF audio interference level = 27.67 dBV/m

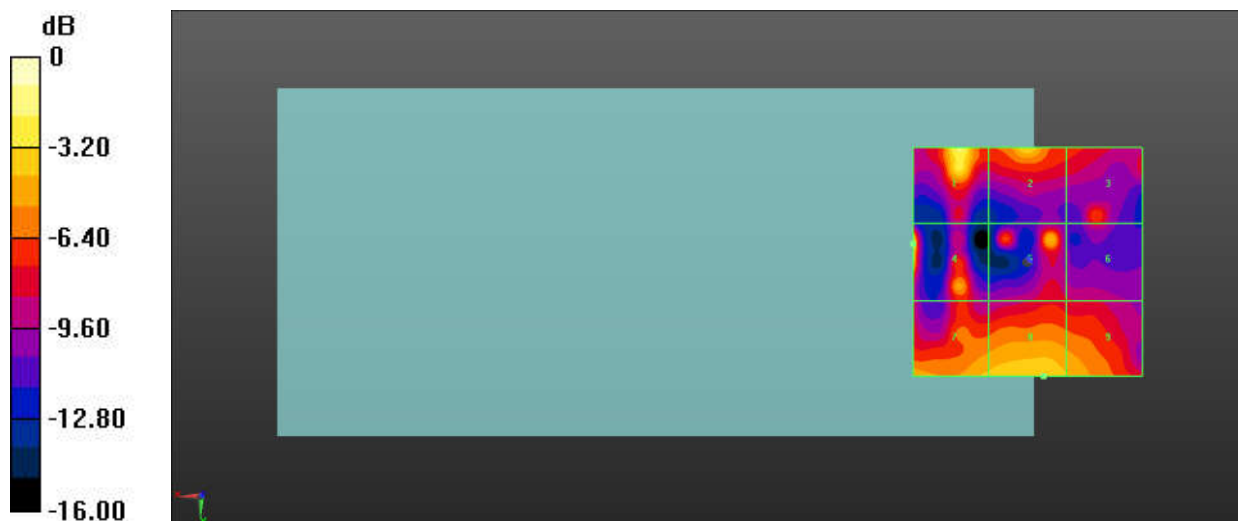
MIF scaled E-field

Grid 1 M4 25.83 dBV/m	Grid 2 M4 24.67 dBV/m	Grid 3 M4 21.18 dBV/m
Grid 4 M4 27.67 dBV/m	Grid 5 M4 23.52 dBV/m	Grid 6 M4 20.02 dBV/m
Grid 7 M4 23.81 dBV/m	Grid 8 M4 24.23 dBV/m	Grid 9 M4 23.51 dBV/m

Total = 27.67 dBV/m

E Category: M4

Location: 25, -4, 8.7 mm



0 dB = 24.18 V/m = 27.67 dBV/m

9_HAC RF GSM1900_ANT0_Voice_Ch810

Communication System: UID 10021 - DAB, GSM-FDD (TDMA, GMSK); Frequency: 1909.8 MHz; Duty Cycle: 1:8.6896

Medium: Air Medium parameters used: $\sigma = 0$ S/m, $\epsilon_r = 1$; $\rho = 0$ kg/m³

Ambient Temperature : 23.3 °C;

DASY5 Configuration:

- Probe: EF3DV3 - SN4050; ConvF(1, 1, 1); Calibrated: 2021.1.25
- Sensor-Surface: (Fix Surface)
- Electronics: DAE4 Sn1356; Calibrated: 2021.6.1
- Phantom: HAC Test Arch with AMCC; Type: SD HAC P01 BA;
- Measurement SW: DASY52, Version 52.10 (4); SEMCAD X Version 14.6.14 (7483)

Ch810/Hearing Aid Compatibility Test (101x101x1): Interpolated grid: dx=0.5000 mm, dy=0.5000 mm

Device Reference Point: 0, 0, -6.3 mm

Reference Value = 3.877 V/m; Power Drift = 0.07 dB

Applied MIF = 3.63 dB

RF audio interference level = 24.97 dBV/m

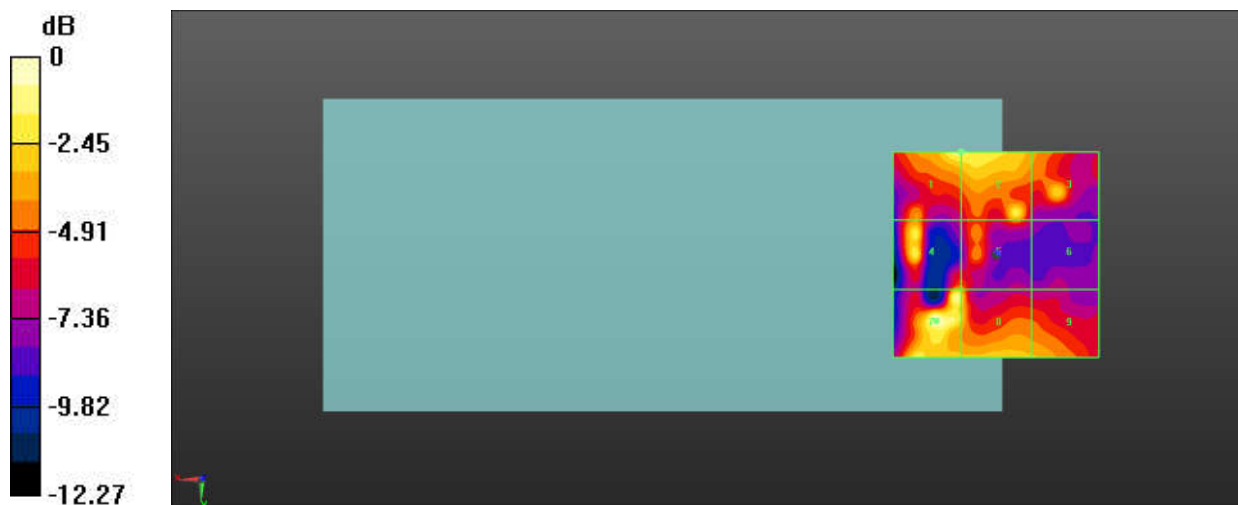
MIF scaled E-field

Grid 1 M4 23.97 dBV/m	Grid 2 M4 23.92 dBV/m	Grid 3 M4 22.44 dBV/m
Grid 4 M4 23.27 dBV/m	Grid 5 M4 21.3 dBV/m	Grid 6 M4 18.06 dBV/m
Grid 7 M4 24.97 dBV/m	Grid 8 M4 22.95 dBV/m	Grid 9 M4 21.94 dBV/m

Total = 24.97 dBV/m

E Category: M4

Location: 14.5, 16, 8.7 mm



0 dB = 17.73 V/m = 24.97 dBV/m

10_HAC RF LTE B38_Ant 0_QPSK_1_0_HPUE_Ch37850

Communication System: UID 10173 - CAG, LTE-TDD (SC-FDMA, 1 RB, 20 MHz, 16-QAM);
 Frequency: 2580 MHz; Duty Cycle: 1:8.8736

Medium: Air Medium parameters used: $\sigma = 0$ S/m, $\epsilon_r = 1$; $\rho = 0$ kg/m³

Ambient Temperature : 23.3 °C;

DASY5 Configuration:

- Probe: EF3DV3 - SN4050; ConvF(1, 1, 1); Calibrated: 2021.1.25
- Sensor-Surface: (Fix Surface)
- Electronics: DAE4 Sn1279; Calibrated: 2021.9.21
- Phantom: HAC Test Arch with AMCC; Type: SD HAC P01 BA;
- Measurement SW: DASY52, Version 52.10 (4); SEMCAD X Version 14.6.14 (7483)

Ch37850/Hearing Aid Compatibility Test (101x101x1): Interpolated grid: dx=0.5000 mm, dy=0.5000 mm

Device Reference Point: 0, 0, -6.3 mm

Reference Value = 6.060 V/m; Power Drift = 0.02 dB

Applied MIF = -1.44 dB

RF audio interference level = 19.93 dBV/m

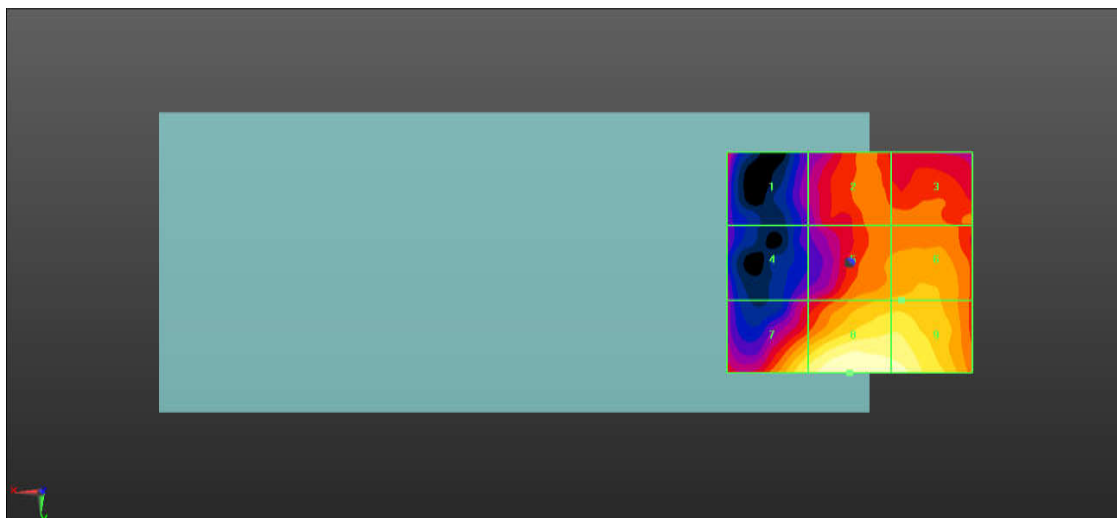
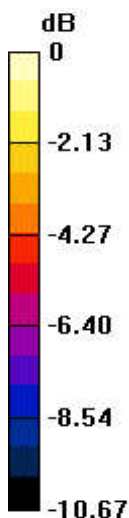
MIF scaled E-field

Grid 1 M4 12.85 dBV/m	Grid 2 M4 14.33 dBV/m	Grid 3 M4 14.08 dBV/m
Grid 4 M4 11.95 dBV/m	Grid 5 M4 15.27 dBV/m	Grid 6 M4 15.37 dBV/m
Grid 7 M4 16.85 dBV/m	Grid 8 M4 19.93 dBV/m	Grid 9 M4 18.66 dBV/m

Total = 19.93 dBV/m

E Category: M4

Location: 0, 25, 8.7 mm



0 dB = 9.921 V/m = 17.93 dBV/m

11_HAC RF LTE B38_Ant 0_QPSK_1_0_HPUE_Ch38000

Communication System: UID 10173 - CAG, LTE-TDD (SC-FDMA, 1 RB, 20 MHz, 16-QAM);
 Frequency: 2595 MHz; Duty Cycle: 1:8.8736

Medium: Air Medium parameters used: $\sigma = 0 \text{ S/m}$, $\epsilon_r = 1$; $\rho = 0 \text{ kg/m}^3$

Ambient Temperature : 23.3 °C;

DASY5 Configuration:

- Probe: EF3DV3 - SN4050; ConvF(1, 1, 1); Calibrated: 2021.1.25
- Sensor-Surface: (Fix Surface)
- Electronics: DAE4 Sn1279; Calibrated: 2021.9.21
- Phantom: HAC Test Arch with AMCC; Type: SD HAC P01 BA;
- Measurement SW: DASY52, Version 52.10 (4); SEMCAD X Version 14.6.14 (7483)

Ch38000/Hearing Aid Compatibility Test (101x101x1): Interpolated grid: dx=0.5000 mm, dy=0.5000 mm

Device Reference Point: 0, 0, -6.3 mm

Reference Value = 5.890 V/m; Power Drift = -0.07 dB

Applied MIF = -1.44 dB

RF audio interference level = 19.21 dBV/m

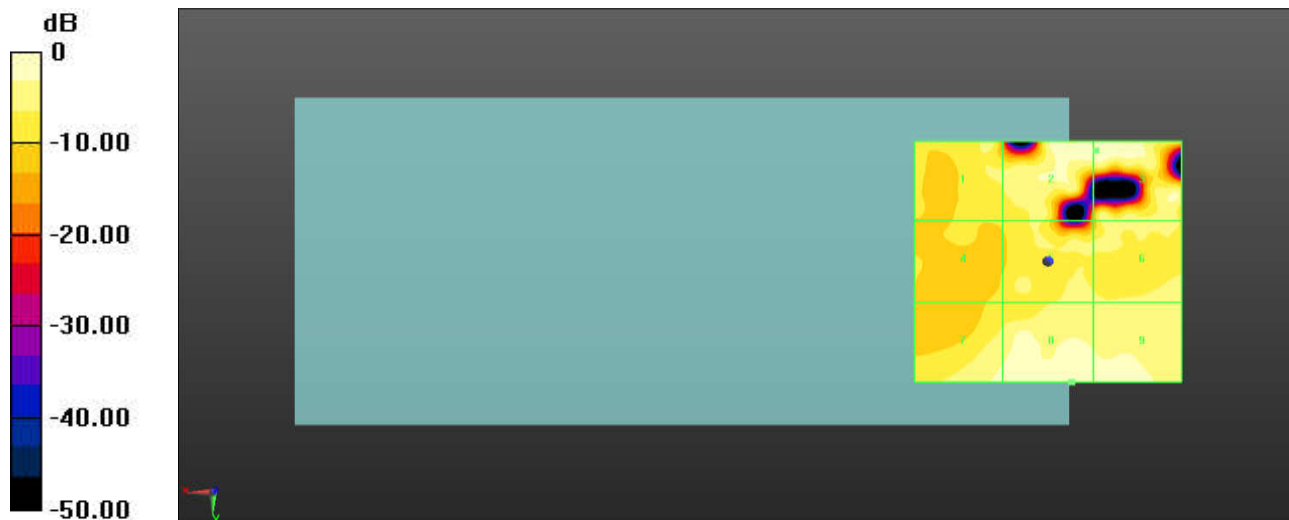
MIF scaled E-field

Grid 1 M4 14.4 dBV/m	Grid 2 M4 19.16 dBV/m	Grid 3 M4 19.21 dBV/m
Grid 4 M4 10.41 dBV/m	Grid 5 M4 13.88 dBV/m	Grid 6 M4 14.78 dBV/m
Grid 7 M4 16.65 dBV/m	Grid 8 M4 17.78 dBV/m	Grid 9 M4 17.01 dBV/m

Total = 19.21 dBV/m

E Category: M4

Location: -9, -23, 8.7 mm



0 dB = 9.126 V/m = 19.21 dBV/m

12_HAC RF LTE B38_Ant 0_QPSK_1_0_HPUE_Ch38150

Communication System: UID 10173 - CAG, LTE-TDD (SC-FDMA, 1 RB, 20 MHz, 16-QAM);
 Frequency: 2610 MHz; Duty Cycle: 1:8.8736

Medium: Air Medium parameters used: $\sigma = 0 \text{ S/m}$, $\epsilon_r = 1$; $\rho = 0 \text{ kg/m}^3$

Ambient Temperature : 23.3 °C;

DASY5 Configuration:

- Probe: EF3DV3 - SN4050; ConvF(1, 1, 1); Calibrated: 2021.1.25
- Sensor-Surface: (Fix Surface)
- Electronics: DAE4 Sn1279; Calibrated: 2021.9.21
- Phantom: HAC Test Arch with AMCC; Type: SD HAC P01 BA;
- Measurement SW: DASY52, Version 52.10 (4); SEMCAD X Version 14.6.14 (7483)

Ch38150/Hearing Aid Compatibility Test (101x101x1): Interpolated grid: dx=0.5000 mm, dy=0.5000 mm

Device Reference Point: 0, 0, -6.3 mm

Reference Value = 12.10 V/m; Power Drift = -0.03 dB

Applied MIF = -1.44 dB

RF audio interference level = 20.51 dBV/m

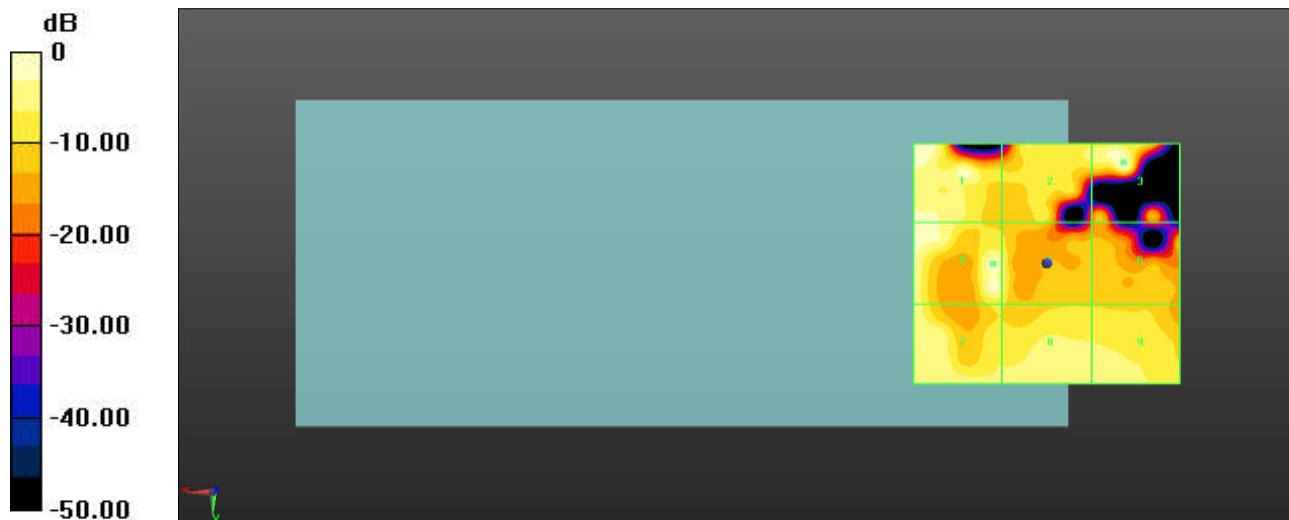
MIF scaled E-field

Grid 1 M4 19.89 dBV/m	Grid 2 M4 17.62 dBV/m	Grid 3 M4 20.51 dBV/m
Grid 4 M4 20.68 dBV/m	Grid 5 M4 18.3 dBV/m	Grid 6 M4 12.44 dBV/m
Grid 7 M4 19.9 dBV/m	Grid 8 M4 18.6 dBV/m	Grid 9 M4 18.22 dBV/m

Total = 20.51 dBV/m

E Category: M4

Location: -14.5, -21, 8.7 mm



0 dB = 10.61 V/m = 20.51 dBV/m

13_HAC RF LTE B38_Ant 1_QPSK_1_0_HPUE_Ch37850

Communication System: UID 10173 - CAG, LTE-TDD (SC-FDMA, 1 RB, 20 MHz, 16-QAM);
 Frequency: 2580 MHz; Duty Cycle: 1:8.8736

Medium: Air Medium parameters used: $\sigma = 0$ S/m, $\epsilon_r = 1$; $\rho = 0$ kg/m³

Ambient Temperature : 23.3 °C;

DASY5 Configuration:

- Probe: EF3DV3 - SN4050; ConvF(1, 1, 1); Calibrated: 2021.1.25
- Sensor-Surface: (Fix Surface)
- Electronics: DAE4 Sn1356; Calibrated: 2021.6.1
- Phantom: HAC Test Arch with AMCC; Type: SD HAC P01 BA;
- Measurement SW: DASY52, Version 52.10 (4); SEMCAD X Version 14.6.14 (7483)

Ch37850/Hearing Aid Compatibility Test (101x101x1): Interpolated grid: dx=0.5000 mm, dy=0.5000 mm

Device Reference Point: 0, 0, -6.3 mm

Reference Value = 9.113 V/m; Power Drift = -0.09 dB

Applied MIF = -1.44 dB

RF audio interference level = 19.88 dBV/m

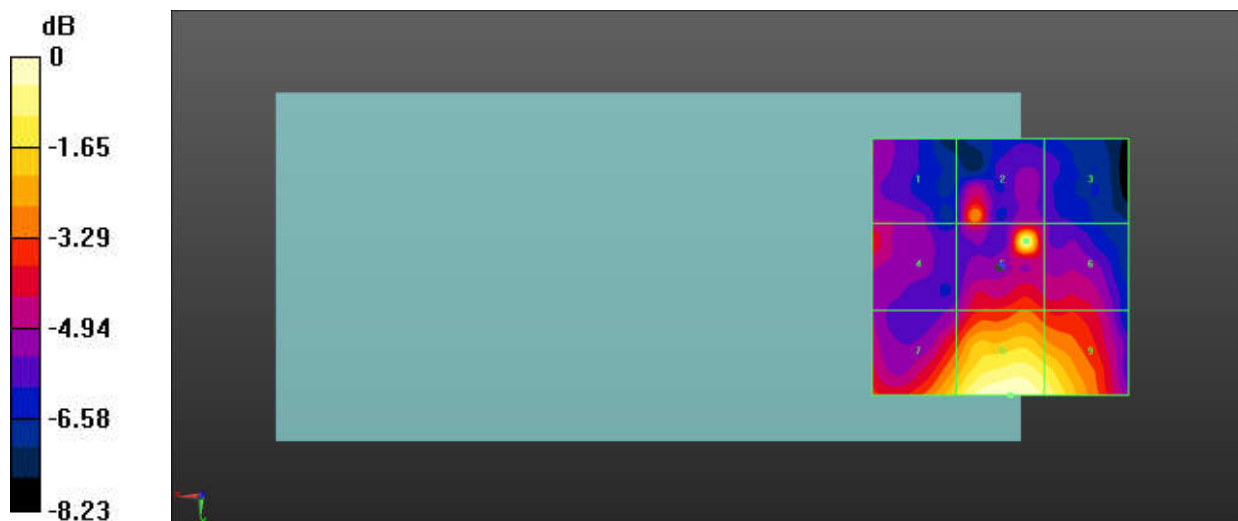
MIF scaled E-field

Grid 1 M4 15.15 dBV/m	Grid 2 M4 17.15 dBV/m	Grid 3 M4 14.54 dBV/m
Grid 4 M4 16.17 dBV/m	Grid 5 M4 19.42 dBV/m	Grid 6 M4 16.09 dBV/m
Grid 7 M4 18.35 dBV/m	Grid 8 M4 19.88 dBV/m	Grid 9 M4 19.23 dBV/m

Total = 19.88 dBV/m

E Category: M4

Location: -2, 25, 8.7 mm



0 dB = 9.868 V/m = 19.88 dBV/m

14_HAC RF LTE B38_Ant 1_QPSK_1_0_HPUE_Ch38000

Communication System: UID 10173 - CAG, LTE-TDD (SC-FDMA, 1 RB, 20 MHz, 16-QAM);
 Frequency: 2595 MHz;Duty Cycle: 1:8.8736

Medium: Air Medium parameters used: $\sigma = 0$ S/m, $\epsilon_r = 1$; $\rho = 0$ kg/m³

Ambient Temperature : 23.3 °C;

DASY5 Configuration:

- Probe: EF3DV3 - SN4050; ConvF(1, 1, 1); Calibrated: 2021.1.25
- Sensor-Surface: (Fix Surface)
- Electronics: DAE4 Sn1356; Calibrated: 2021.6.1
- Phantom: HAC Test Arch with AMCC; Type: SD HAC P01 BA;
- Measurement SW: DASY52, Version 52.10 (4); SEMCAD X Version 14.6.14 (7483)

Ch38000/Hearing Aid Compatibility Test (101x101x1): Interpolated grid: dx=0.5000 mm, dy=0.5000 mm

Device Reference Point: 0, 0, -6.3 mm

Reference Value = 9.376 V/m; Power Drift = 0.02 dB

Applied MIF = -1.44 dB

RF audio interference level = 20.19 dBV/m

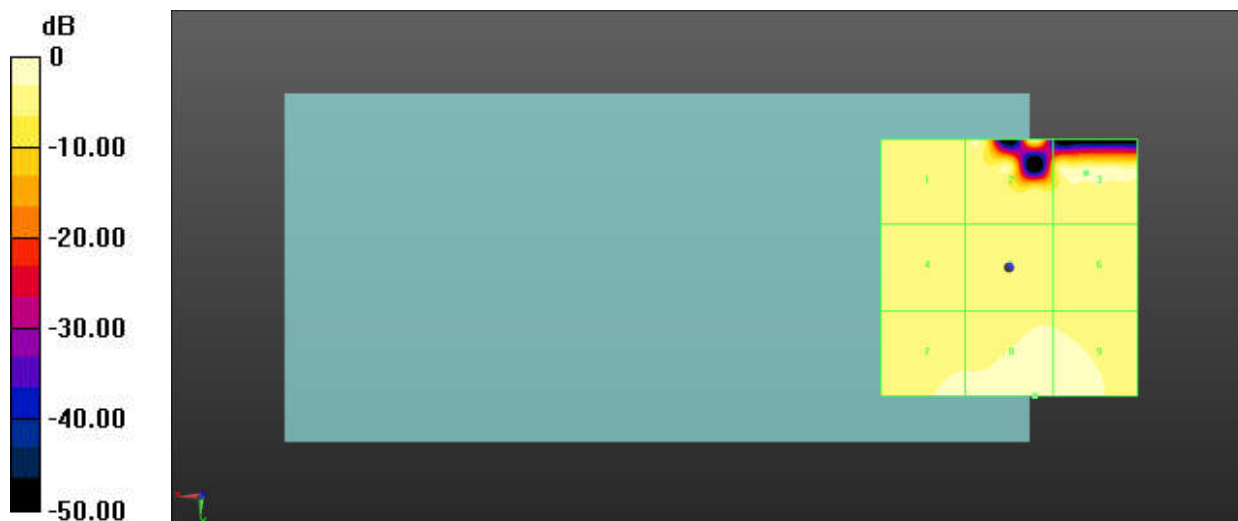
MIF scaled E-field

Grid 1 M4 16.51 dBV/m	Grid 2 M4 19.45 dBV/m	Grid 3 M4 20.19 dBV/m
Grid 4 M4 15.8 dBV/m	Grid 5 M4 16.3 dBV/m	Grid 6 M4 16.25 dBV/m
Grid 7 M4 18.48 dBV/m	Grid 8 M4 19.58 dBV/m	Grid 9 M4 19.07 dBV/m

Total = 20.19 dBV/m

E Category: M4

Location: -15, -18.5, 8.7 mm



0 dB = 10.22 V/m = 20.19 dBV/m

15_HAC RF LTE B38_Ant 1_QPSK_1_0_HPUE_Ch38150

Communication System: UID 10173 - CAG, LTE-TDD (SC-FDMA, 1 RB, 20 MHz, 16-QAM);
 Frequency: 2610 MHz; Duty Cycle: 1:8.8736

Medium: Air Medium parameters used: $\sigma = 0$ S/m, $\epsilon_r = 1$; $\rho = 0$ kg/m³

Ambient Temperature : 23.3 °C;

DASY5 Configuration:

- Probe: EF3DV3 - SN4050; ConvF(1, 1, 1); Calibrated: 2021.1.25
- Sensor-Surface: (Fix Surface)
- Electronics: DAE4 Sn1356; Calibrated: 2021.6.1
- Phantom: HAC Test Arch with AMCC; Type: SD HAC P01 BA;
- Measurement SW: DASY52, Version 52.10 (4); SEMCAD X Version 14.6.14 (7483)

Ch38150/Hearing Aid Compatibility Test (101x101x1): Interpolated grid: dx=0.5000 mm, dy=0.5000 mm

Device Reference Point: 0, 0, -6.3 mm

Reference Value = 8.321 V/m; Power Drift = -0.08 dB

Applied MIF = -1.44 dB

RF audio interference level = 19.63 dBV/m

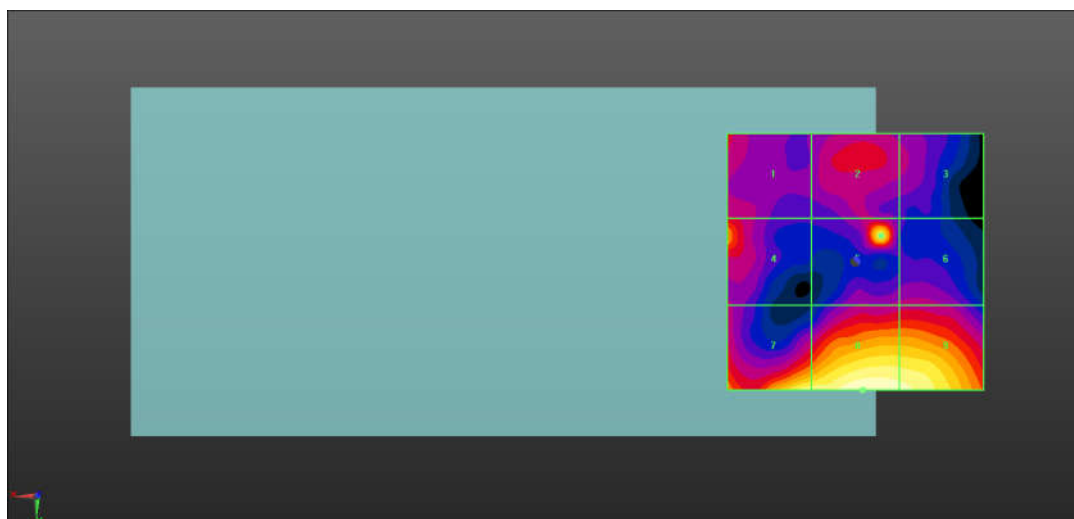
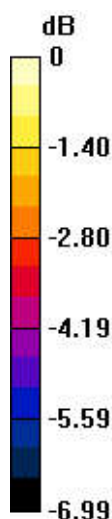
MIF scaled E-field

Grid 1 M4 16.17 dBV/m	Grid 2 M4 16.08 dBV/m	Grid 3 M4 15.68 dBV/m
Grid 4 M4 17.3 dBV/m	Grid 5 M4 18.56 dBV/m	Grid 6 M4 15.74 dBV/m
Grid 7 M4 19.14 dBV/m	Grid 8 M4 19.63 dBV/m	Grid 9 M4 19.39 dBV/m

Total = 19.63 dBV/m

E Category: M4

Location: -1.5, 25, 8.7 mm



0 dB = 9.588 V/m = 19.63 dBV/m

16_HAC RF LTE B41_ANT0_QPSK_1_0_Ch39750

Communication System: UID 10173 - CAG, LTE-TDD (SC-FDMA, 1 RB, 20 MHz, 16-QAM);
 Frequency: 2506 MHz; Duty Cycle: 1:8.8736

Medium: Air Medium parameters used: $\sigma = 0$ S/m, $\epsilon_r = 1$; $\rho = 0$ kg/m³

Ambient Temperature : 23.3 °C;

DASY5 Configuration:

- Probe: EF3DV3 - SN4050; ConvF(1, 1, 1); Calibrated: 2021.1.25
- Sensor-Surface: (Fix Surface)
- Electronics: DAE4 Sn1356; Calibrated: 2021.6.1
- Phantom: HAC Test Arch with AMCC; Type: SD HAC P01 BA;
- Measurement SW: DASY52, Version 52.10 (4); SEMCAD X Version 14.6.14 (7483)

Ch39750/Hearing Aid Compatibility Test (101x101x1): Interpolated grid: dx=0.5000 mm, dy=0.5000 mm

Device Reference Point: 0, 0, -6.3 mm

Reference Value = 4.769 V/m; Power Drift = -0.02 dB

Applied MIF = -1.44 dB

RF audio interference level = 21.13 dBV/m

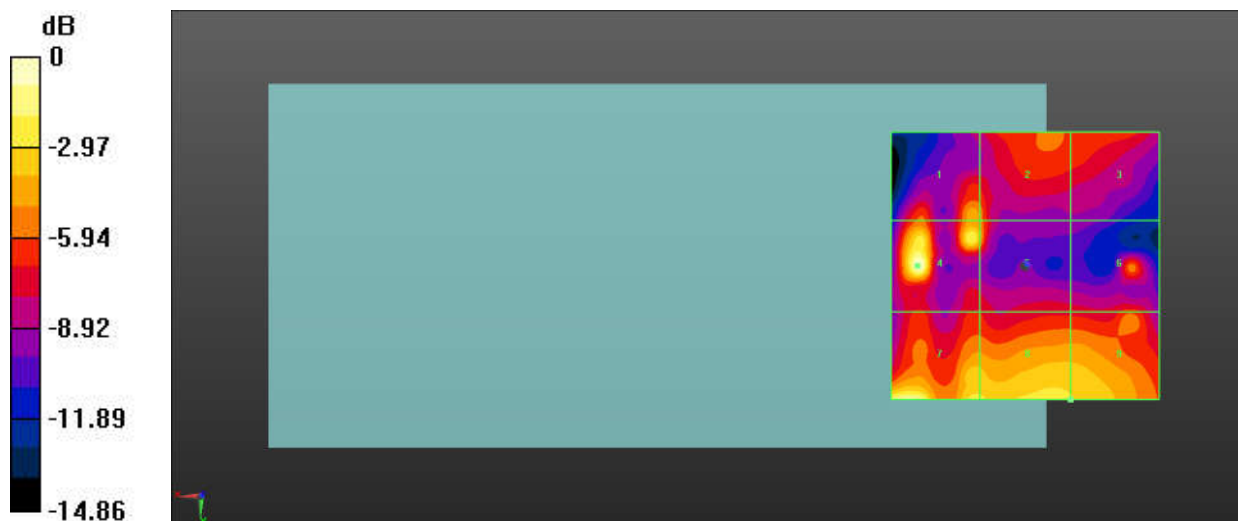
MIF scaled E-field

Grid 1 M4 16.64 dBV/m	Grid 2 M4 15.99 dBV/m	Grid 3 M4 15 dBV/m
Grid 4 M4 21.13 dBV/m	Grid 5 M4 17.21 dBV/m	Grid 6 M4 15.71 dBV/m
Grid 7 M4 20.7 dBV/m	Grid 8 M4 18.5 dBV/m	Grid 9 M4 18.25 dBV/m

Total = 21.13 dBV/m

E Category: M4

Location: 20, 0, 8.7 mm



0 dB = 11.39 V/m = 21.13 dBV/m

17_HAC RF LTE B41_ANT0_QPSK_1_0_Ch40185

Communication System: UID 10173 - CAG, LTE-TDD (SC-FDMA, 1 RB, 20 MHz, 16-QAM);
 Frequency: 2549.5 MHz; Duty Cycle: 1:8.8736

Medium: Air Medium parameters used: $\sigma = 0$ S/m, $\epsilon_r = 1$; $\rho = 0$ kg/m³

Ambient Temperature : 23.3 °C;

DASY5 Configuration:

- Probe: EF3DV3 - SN4050; ConvF(1, 1, 1); Calibrated: 2021.1.25
- Sensor-Surface: (Fix Surface)
- Electronics: DAE4 Sn1356; Calibrated: 2021.6.1
- Phantom: HAC Test Arch with AMCC; Type: SD HAC P01 BA;
- Measurement SW: DASY52, Version 52.10 (4); SEMCAD X Version 14.6.14 (7483)

Ch40185/Hearing Aid Compatibility Test (101x101x1): Interpolated grid: dx=0.5000 mm, dy=0.5000 mm

Device Reference Point: 0, 0, -6.3 mm

Reference Value = 6.264 V/m; Power Drift = -0.09 dB

Applied MIF = -1.44 dB

RF audio interference level = 20.18 dBV/m

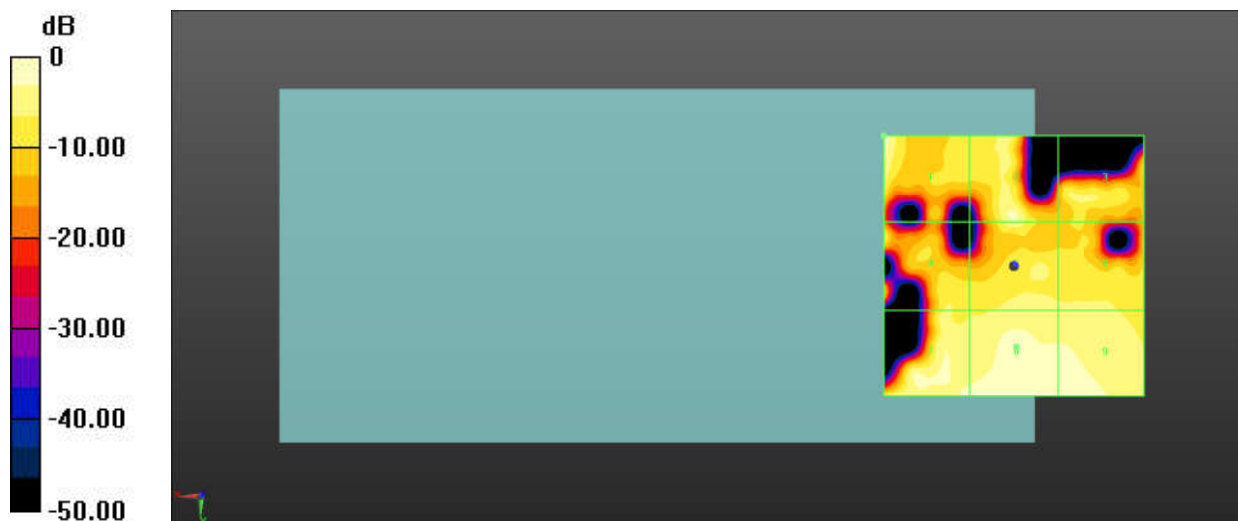
MIF scaled E-field

Grid 1 M4 20.18 dBV/m	Grid 2 M4 17.48 dBV/m	Grid 3 M4 14.21 dBV/m
Grid 4 M4 14.63 dBV/m	Grid 5 M4 16.58 dBV/m	Grid 6 M4 14.48 dBV/m
Grid 7 M4 17.82 dBV/m	Grid 8 M4 19.09 dBV/m	Grid 9 M4 18.72 dBV/m

Total = 20.18 dBV/m

E Category: M4

Location: 25, -25, 8.7 mm



0 dB = 10.21 V/m = 20.18 dBV/m

18_HAC RF LTE B41_ANT0_QPSK_1_0_Ch40620

Communication System: UID 10173 - CAG, LTE-TDD (SC-FDMA, 1 RB, 20 MHz, 16-QAM);
 Frequency: 2593 MHz; Duty Cycle: 1:8.8736

Medium: Air Medium parameters used: $\sigma = 0$ S/m, $\epsilon_r = 1$; $\rho = 0$ kg/m³

Ambient Temperature : 23.3 °C;

DASY5 Configuration:

- Probe: EF3DV3 - SN4050; ConvF(1, 1, 1); Calibrated: 2021.1.25
- Sensor-Surface: (Fix Surface)
- Electronics: DAE4 Sn1356; Calibrated: 2021.6.1
- Phantom: HAC Test Arch with AMCC; Type: SD HAC P01 BA;
- Measurement SW: DASY52, Version 52.10 (4); SEMCAD X Version 14.6.14 (7483)

Ch40620/Hearing Aid Compatibility Test (101x101x1): Interpolated grid: dx=0.5000 mm, dy=0.5000 mm

Device Reference Point: 0, 0, -6.3 mm

Reference Value = 5.346 V/m; Power Drift = -0.05 dB

Applied MIF = -1.44 dB

RF audio interference level = 22.12 dBV/m

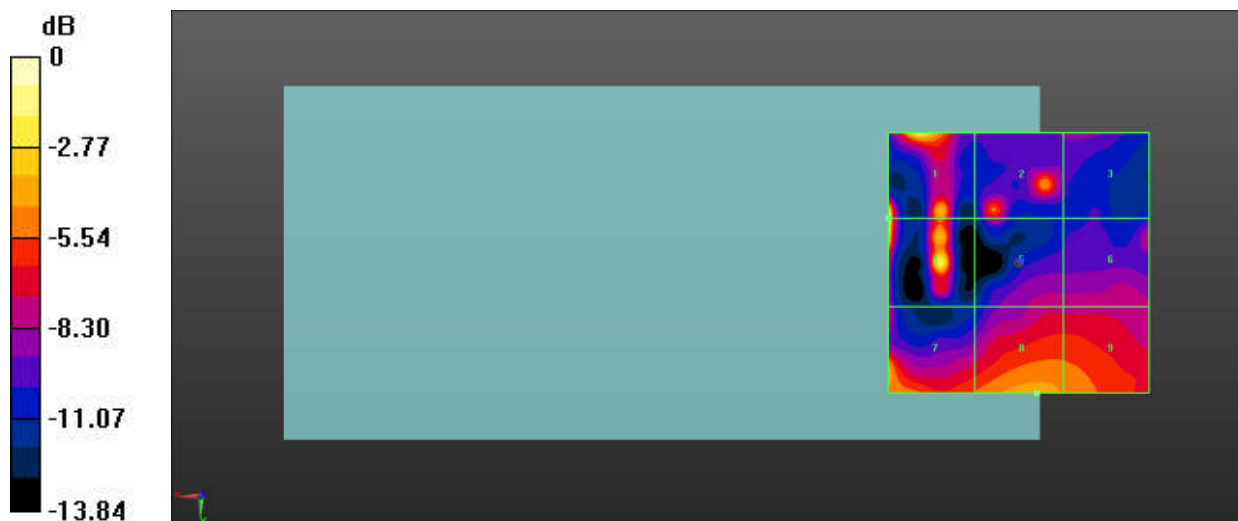
MIF scaled E-field

Grid 1 M4 22.12 dBV/m	Grid 2 M4 17.38 dBV/m	Grid 3 M4 13.46 dBV/m
Grid 4 M4 22.12 dBV/m	Grid 5 M4 14.67 dBV/m	Grid 6 M4 14.55 dBV/m
Grid 7 M4 18.21 dBV/m	Grid 8 M4 18.02 dBV/m	Grid 9 M4 17.45 dBV/m

Total = 22.12 dBV/m

E Category: M4

Location: 25, -8.5, 8.7 mm



0 dB = 12.76 V/m = 22.12 dBV/m

19_HAC RF LTE B41_ANT0_QPSK_1_0_Ch41055

Communication System: UID 10173 - CAG, LTE-TDD (SC-FDMA, 1 RB, 20 MHz, 16-QAM);
 Frequency: 2636.5 MHz; Duty Cycle: 1:8.8736

Medium: Air Medium parameters used: $\sigma = 0$ S/m, $\epsilon_r = 1$; $\rho = 0$ kg/m³

Ambient Temperature : 23.3 °C;

DASY5 Configuration:

- Probe: EF3DV3 - SN4050; ConvF(1, 1, 1); Calibrated: 2021.1.25
- Sensor-Surface: (Fix Surface)
- Electronics: DAE4 Sn1356; Calibrated: 2021.6.1
- Phantom: HAC Test Arch with AMCC; Type: SD HAC P01 BA;
- Measurement SW: DASY52, Version 52.10 (4); SEMCAD X Version 14.6.14 (7483)

Ch41055/Hearing Aid Compatibility Test (101x101x1): Interpolated grid: dx=0.5000 mm, dy=0.5000 mm

Device Reference Point: 0, 0, -6.3 mm

Reference Value = 8.869 V/m; Power Drift = -0.18 dB

Applied MIF = -1.44 dB

RF audio interference level = 22.54 dBV/m

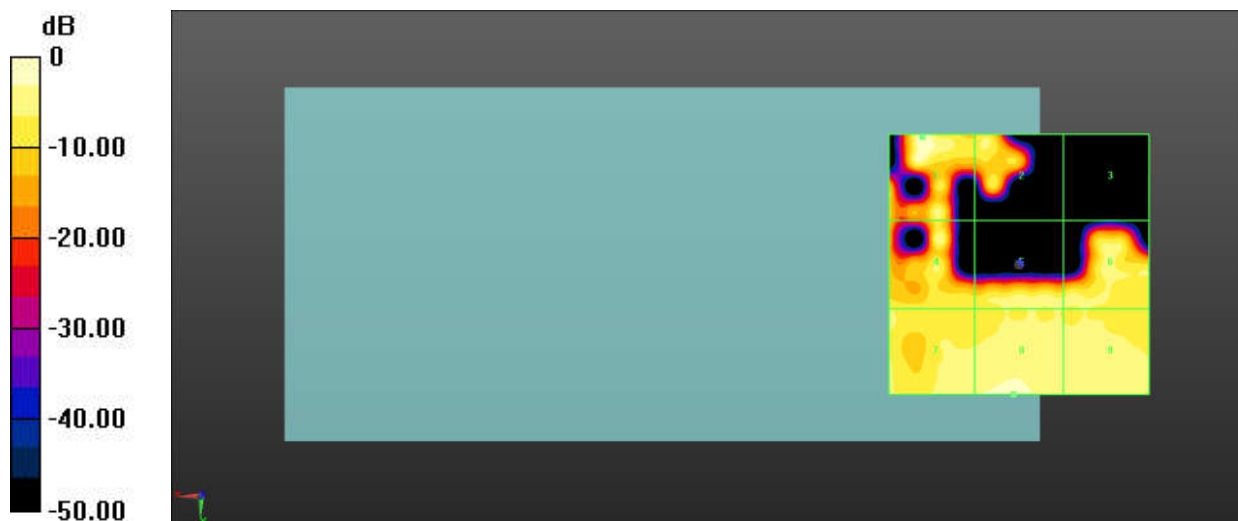
MIF scaled E-field

Grid 1 M4 22.54 dBV/m	Grid 2 M4 16.8 dBV/m	Grid 3 M4 -20.77 dBV/m
Grid 4 M4 18.68 dBV/m	Grid 5 M4 17.83 dBV/m	Grid 6 M4 18.35 dBV/m
Grid 7 M4 19.11 dBV/m	Grid 8 M4 20.04 dBV/m	Grid 9 M4 17.92 dBV/m

Total = 22.54 dBV/m

E Category: M4

Location: 18.5, -24.5, 8.7 mm



0 dB = 13.39 V/m = 22.54 dBV/m

20_HAC RF LTE B41_ANT0_QPSK_1_0_Ch41490

Communication System: UID 10173 - CAG, LTE-TDD (SC-FDMA, 1 RB, 20 MHz, 16-QAM);
 Frequency: 2680 MHz; Duty Cycle: 1:8.8736

Medium: Air Medium parameters used: $\sigma = 0$ S/m, $\epsilon_r = 1$; $\rho = 0$ kg/m³

Ambient Temperature : 23.3 °C;

DASY5 Configuration:

- Probe: EF3DV3 - SN4050; ConvF(1, 1, 1); Calibrated: 2021.1.25
- Sensor-Surface: (Fix Surface)
- Electronics: DAE4 Sn1356; Calibrated: 2021.6.1
- Phantom: HAC Test Arch with AMCC; Type: SD HAC P01 BA;
- Measurement SW: DASY52, Version 52.10 (4); SEMCAD X Version 14.6.14 (7483)

Ch41490/Hearing Aid Compatibility Test (101x101x1): Interpolated grid: dx=0.5000 mm, dy=0.5000 mm

Device Reference Point: 0, 0, -6.3 mm

Reference Value = 5.328 V/m; Power Drift = 0.09 dB

Applied MIF = -1.44 dB

RF audio interference level = 20.45 dBV/m

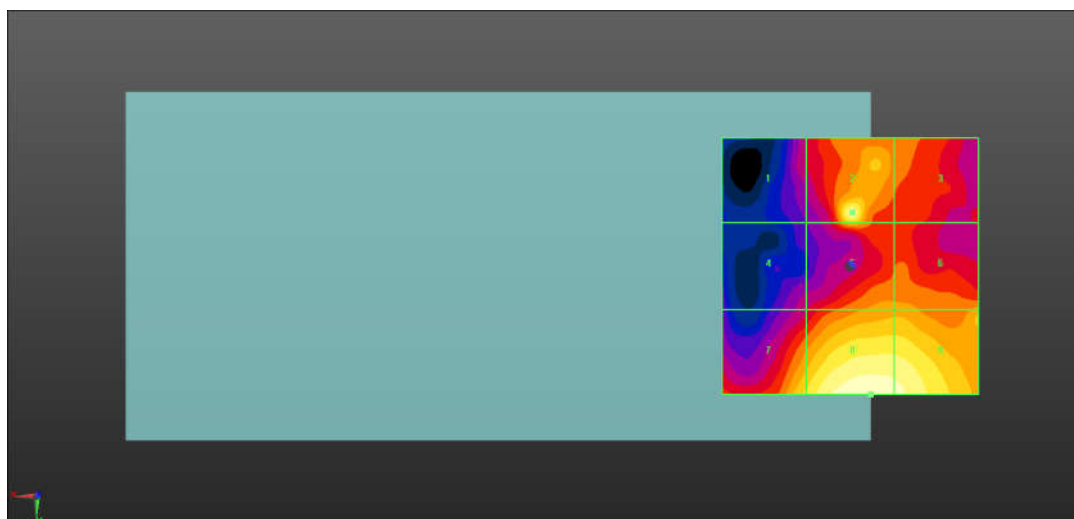
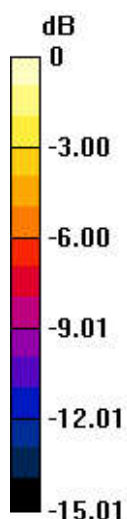
MIF scaled E-field

Grid 1 M4 12.61 dBV/m	Grid 2 M4 19.29 dBV/m	Grid 3 M4 15.19 dBV/m
Grid 4 M4 12.42 dBV/m	Grid 5 M4 17.05 dBV/m	Grid 6 M4 16 dBV/m
Grid 7 M4 17.84 dBV/m	Grid 8 M4 20.45 dBV/m	Grid 9 M4 19.93 dBV/m

Total = 20.45 dBV/m

E Category: M4

Location: -4, 25, 8.7 mm



0 dB = 10.53 V/m = 20.45 dBV/m

21_HAC RF LTE B41_ANT1_QPSK_1_0_Ch39750

Communication System: UID 10173 - CAG, LTE-TDD (SC-FDMA, 1 RB, 20 MHz, 16-QAM);
 Frequency: 2506 MHz; Duty Cycle: 1:8.8736

Medium: Air Medium parameters used: $\sigma = 0$ S/m, $\epsilon_r = 1$; $\rho = 0$ kg/m³

Ambient Temperature : 23.3 °C;

DASY5 Configuration:

- Probe: EF3DV3 - SN4050; ConvF(1, 1, 1); Calibrated: 2021.1.25
- Sensor-Surface: (Fix Surface)
- Electronics: DAE4 Sn1356; Calibrated: 2021.6.1
- Phantom: HAC Test Arch with AMCC; Type: SD HAC P01 BA;
- Measurement SW: DASY52, Version 52.10 (4); SEMCAD X Version 14.6.14 (7483)

Ch39750/Hearing Aid Compatibility Test (101x101x1): Interpolated grid: dx=0.5000 mm, dy=0.5000 mm

Device Reference Point: 0, 0, -6.3 mm

Reference Value = 6.452 V/m; Power Drift = 0.05 dB

Applied MIF = -1.44 dB

RF audio interference level = 19.21 dBV/m

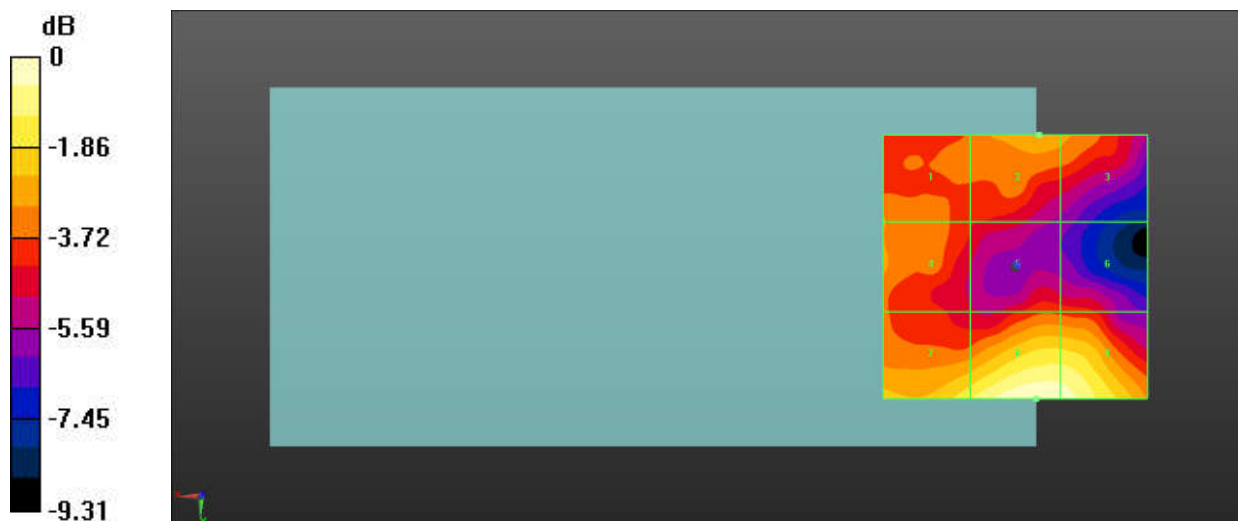
MIF scaled E-field

Grid 1 M4 16.16 dBV/m	Grid 2 M4 16.5 dBV/m	Grid 3 M4 16.28 dBV/m
Grid 4 M4 16.3 dBV/m	Grid 5 M4 15.41 dBV/m	Grid 6 M4 15.31 dBV/m
Grid 7 M4 17.87 dBV/m	Grid 8 M4 19.21 dBV/m	Grid 9 M4 19 dBV/m

Total = 19.21 dBV/m

E Category: M4

Location: -4, 25, 8.7 mm



0 dB = 9.128 V/m = 19.21 dBV/m

22_HAC RF LTE B41_ANT1_QPSK_1_0_Ch40185

Communication System: UID 10173 - CAG, LTE-TDD (SC-FDMA, 1 RB, 20 MHz, 16-QAM);
 Frequency: 2549.5 MHz; Duty Cycle: 1:8.8736

Medium: Air Medium parameters used: $\sigma = 0$ S/m, $\epsilon_r = 1$; $\rho = 0$ kg/m³

Ambient Temperature : 23.3 °C;

DASY5 Configuration:

- Probe: EF3DV3 - SN4050; ConvF(1, 1, 1); Calibrated: 2021.1.25
- Sensor-Surface: (Fix Surface)
- Electronics: DAE4 Sn1356; Calibrated: 2021.6.1
- Phantom: HAC Test Arch with AMCC; Type: SD HAC P01 BA;
- Measurement SW: DASY52, Version 52.10 (4); SEMCAD X Version 14.6.14 (7483)

Ch40185/Hearing Aid Compatibility Test (101x101x1): Interpolated grid: dx=0.5000 mm, dy=0.5000 mm

Device Reference Point: 0, 0, -6.3 mm

Reference Value = 7.253 V/m; Power Drift = 0.19 dB

Applied MIF = -1.44 dB

RF audio interference level = 20.26 dBV/m

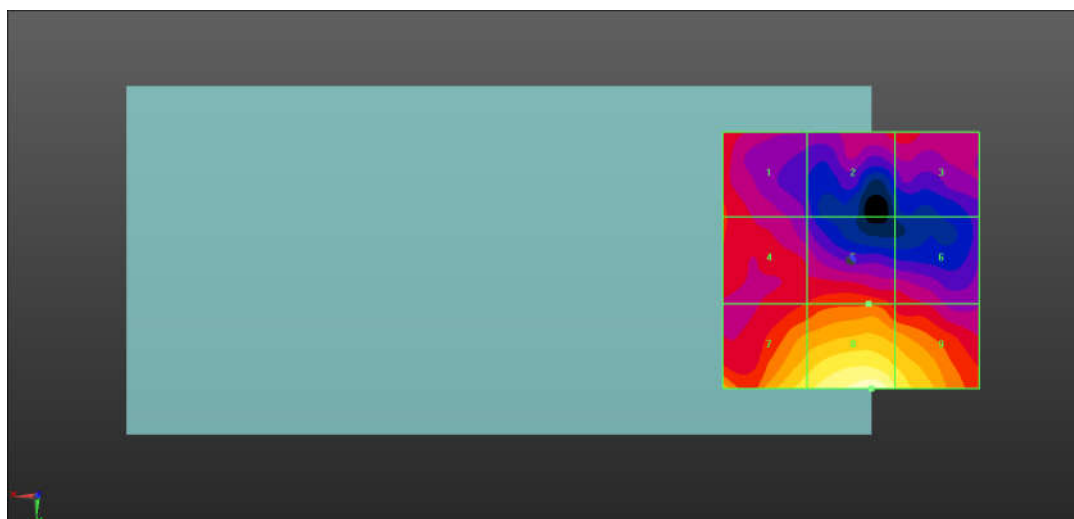
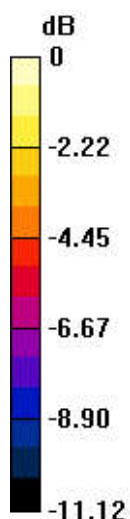
MIF scaled E-field

Grid 1 M4 15.28 dBV/m	Grid 2 M4 14.81 dBV/m	Grid 3 M4 14.93 dBV/m
Grid 4 M4 15.28 dBV/m	Grid 5 M4 15.71 dBV/m	Grid 6 M4 14.86 dBV/m
Grid 7 M4 18.59 dBV/m	Grid 8 M4 20.26 dBV/m	Grid 9 M4 18.85 dBV/m

Total = 20.26 dBV/m

E Category: M4

Location: -4, 25, 8.7 mm



0 dB = 10.31 V/m = 20.27 dBV/m

23_HAC RF LTE B41_ANT1_QPSK_1_0_Ch40620

Communication System: UID 10173 - CAG, LTE-TDD (SC-FDMA, 1 RB, 20 MHz, 16-QAM);
 Frequency: 2593 MHz; Duty Cycle: 1:8.8736

Medium: Air Medium parameters used: $\sigma = 0$ S/m, $\epsilon_r = 1$; $\rho = 0$ kg/m³

Ambient Temperature : 23.3 °C;

DASY5 Configuration:

- Probe: EF3DV3 - SN4050; ConvF(1, 1, 1); Calibrated: 2021.1.25
- Sensor-Surface: (Fix Surface)
- Electronics: DAE4 Sn1356; Calibrated: 2021.6.1
- Phantom: HAC Test Arch with AMCC; Type: SD HAC P01 BA;
- Measurement SW: DASY52, Version 52.10 (4); SEMCAD X Version 14.6.14 (7483)

Ch40620/Hearing Aid Compatibility Test (101x101x1): Interpolated grid: dx=0.5000 mm, dy=0.5000 mm

Device Reference Point: 0, 0, -6.3 mm

Reference Value = 7.727 V/m; Power Drift = -0.09 dB

Applied MIF = -1.44 dB

RF audio interference level = 18.40 dBV/m

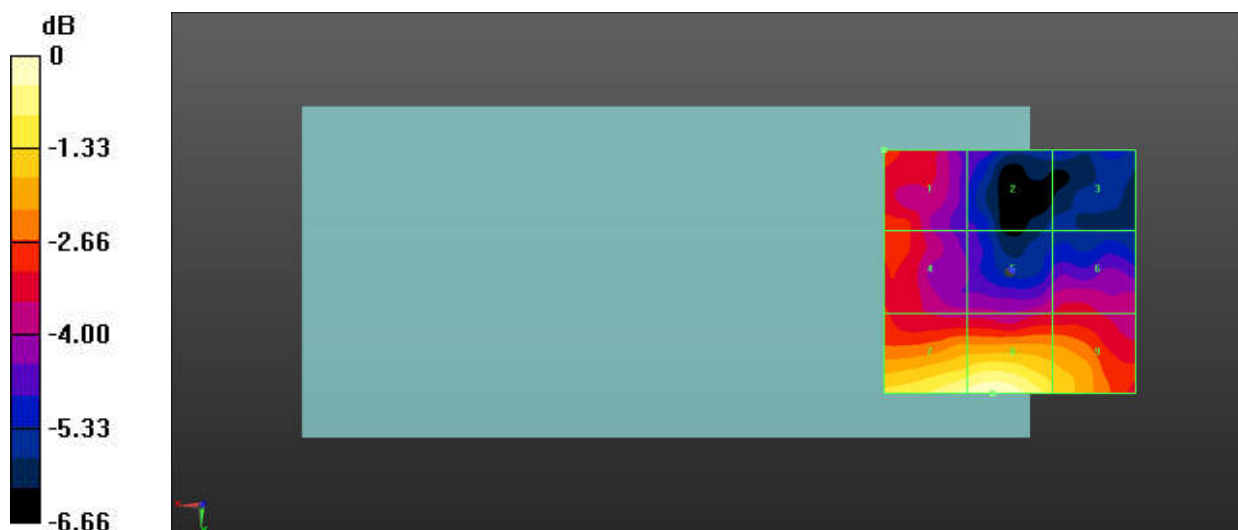
MIF scaled E-field

Grid 1 M4 15.85 dBV/m	Grid 2 M4 14.05 dBV/m	Grid 3 M4 13.56 dBV/m
Grid 4 M4 15.5 dBV/m	Grid 5 M4 14.9 dBV/m	Grid 6 M4 15.04 dBV/m
Grid 7 M4 18.15 dBV/m	Grid 8 M4 18.4 dBV/m	Grid 9 M4 17.13 dBV/m

Total = 18.40 dBV/m

E Category: M4

Location: 3.5, 25, 8.7 mm



0 dB = 8.316 V/m = 18.40 dBV/m

24_HAC RF LTE B41_ANT1_QPSK_1_0_Ch41055

Communication System: UID 10173 - CAG, LTE-TDD (SC-FDMA, 1 RB, 20 MHz, 16-QAM);
 Frequency: 2636.5 MHz; Duty Cycle: 1:8.8736

Medium: Air Medium parameters used: $\sigma = 0$ S/m, $\epsilon_r = 1$; $\rho = 0$ kg/m³

Ambient Temperature : 23.3 °C;

DASY5 Configuration:

- Probe: EF3DV3 - SN4050; ConvF(1, 1, 1); Calibrated: 2021.1.25
- Sensor-Surface: (Fix Surface)
- Electronics: DAE4 Sn1356; Calibrated: 2021.6.1
- Phantom: HAC Test Arch with AMCC; Type: SD HAC P01 BA;
- Measurement SW: DASY52, Version 52.10 (4); SEMCAD X Version 14.6.14 (7483)

Ch41055/Hearing Aid Compatibility Test (101x101x1): Interpolated grid: dx=0.5000 mm, dy=0.5000 mm

Device Reference Point: 0, 0, -6.3 mm

Reference Value = 6.313 V/m; Power Drift = 0.03 dB

Applied MIF = -1.44 dB

RF audio interference level = 20.55 dBV/m

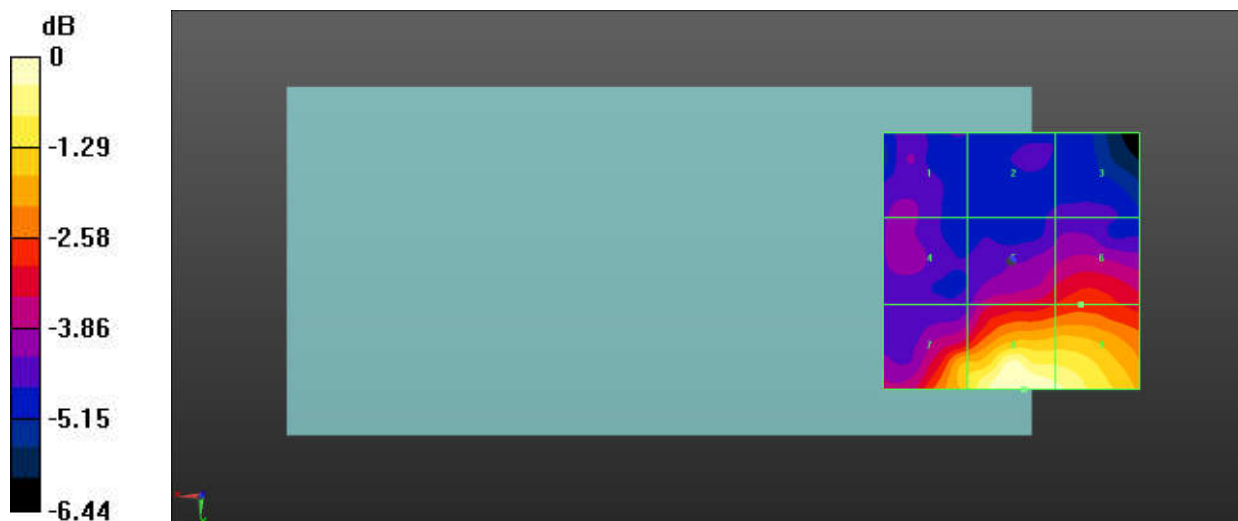
MIF scaled E-field

Grid 1 M4 16.45 dBV/m	Grid 2 M4 15.94 dBV/m	Grid 3 M4 16.05 dBV/m
Grid 4 M4 16.7 dBV/m	Grid 5 M4 17.57 dBV/m	Grid 6 M4 17.81 dBV/m
Grid 7 M4 19.28 dBV/m	Grid 8 M4 20.55 dBV/m	Grid 9 M4 20.27 dBV/m

Total = 20.55 dBV/m

E Category: M4

Location: -2.5, 25, 8.7 mm



0 dB = 10.65 V/m = 20.55 dBV/m

25_HAC RF LTE B41_ANT1_QPSK_1_0_Ch41490

Communication System: UID 10173 - CAG, LTE-TDD (SC-FDMA, 1 RB, 20 MHz, 16-QAM);
 Frequency: 2680 MHz; Duty Cycle: 1:8.8736

Medium: Air Medium parameters used: $\sigma = 0$ S/m, $\epsilon_r = 1$; $\rho = 0$ kg/m³

Ambient Temperature : 23.3 °C;

DASY5 Configuration:

- Probe: EF3DV3 - SN4050; ConvF(1, 1, 1); Calibrated: 2021.1.25
- Sensor-Surface: (Fix Surface)
- Electronics: DAE4 Sn1356; Calibrated: 2021.6.1
- Phantom: HAC Test Arch with AMCC; Type: SD HAC P01 BA;
- Measurement SW: DASY52, Version 52.10 (4); SEMCAD X Version 14.6.14 (7483)

Ch41490/Hearing Aid Compatibility Test (101x101x1): Interpolated grid: dx=0.5000 mm, dy=0.5000 mm

Device Reference Point: 0, 0, -6.3 mm

Reference Value = 7.770 V/m; Power Drift = -0.13 dB

Applied MIF = -1.44 dB

RF audio interference level = 20.94 dBV/m

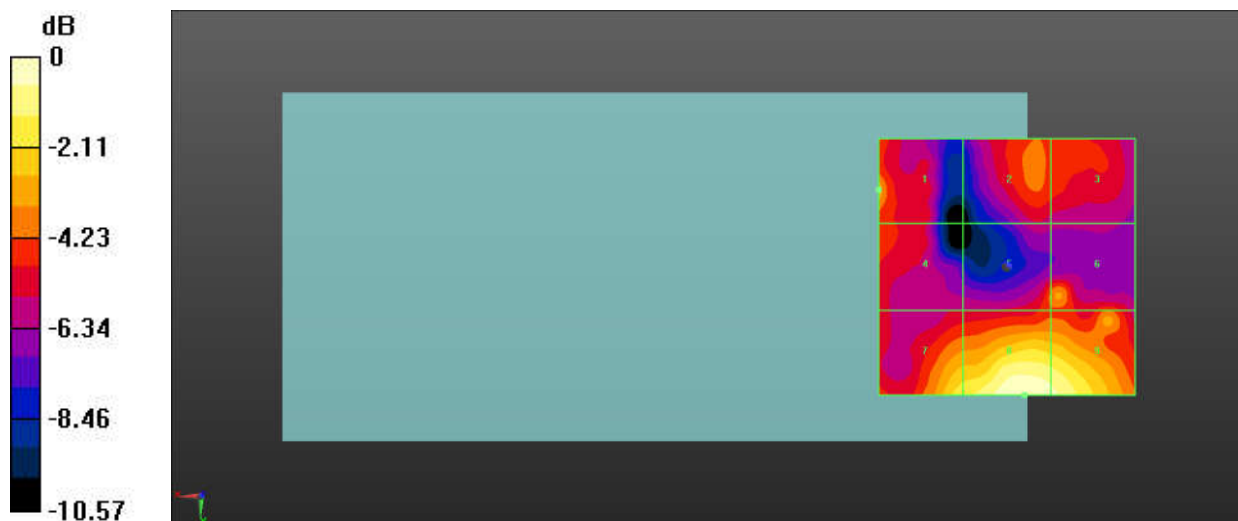
MIF scaled E-field

Grid 1 M4 17.98 dBV/m	Grid 2 M4 16.98 dBV/m	Grid 3 M4 16.59 dBV/m
Grid 4 M4 16.63 dBV/m	Grid 5 M4 16.98 dBV/m	Grid 6 M4 17.57 dBV/m
Grid 7 M4 19.42 dBV/m	Grid 8 M4 20.94 dBV/m	Grid 9 M4 20.5 dBV/m

Total = 20.94 dBV/m

E Category: M4

Location: -3.5, 25, 8.7 mm



0 dB = 11.15 V/m = 20.95 dBV/m

26_HAC RF LTE B42_ANT2_QPSK_1_0_Ch42190

Communication System: UID 10173 - CAG, LTE-TDD (SC-FDMA, 1 RB, 20 MHz, 16-QAM);
 Frequency: 3460 MHz; Duty Cycle: 1:8.8736

Medium: Air Medium parameters used: $\sigma = 0 \text{ S/m}$, $\epsilon_r = 1$; $\rho = 0 \text{ kg/m}^3$

Ambient Temperature : 23.3 °C;

DASY5 Configuration:

- Probe: EF3DV3 - SN4050; ConvF(1, 1, 1); Calibrated: 2021.1.25
- Sensor-Surface: (Fix Surface)
- Electronics: DAE4 Sn1279; Calibrated: 2021.9.21
- Phantom: HAC Test Arch with AMCC; Type: SD HAC P01 BA;
- Measurement SW: DASY52, Version 52.10 (4); SEMCAD X Version 14.6.14 (7483)

Ch42190/Hearing Aid Compatibility Test (101x101x1): Interpolated grid: dx=0.5000 mm, dy=0.5000 mm

Device Reference Point: 0, 0, -6.3 mm

Reference Value = 31.93 V/m; Power Drift = -0.11 dB

Applied MIF = -1.44 dB

RF audio interference level = 25.43 dBV/m

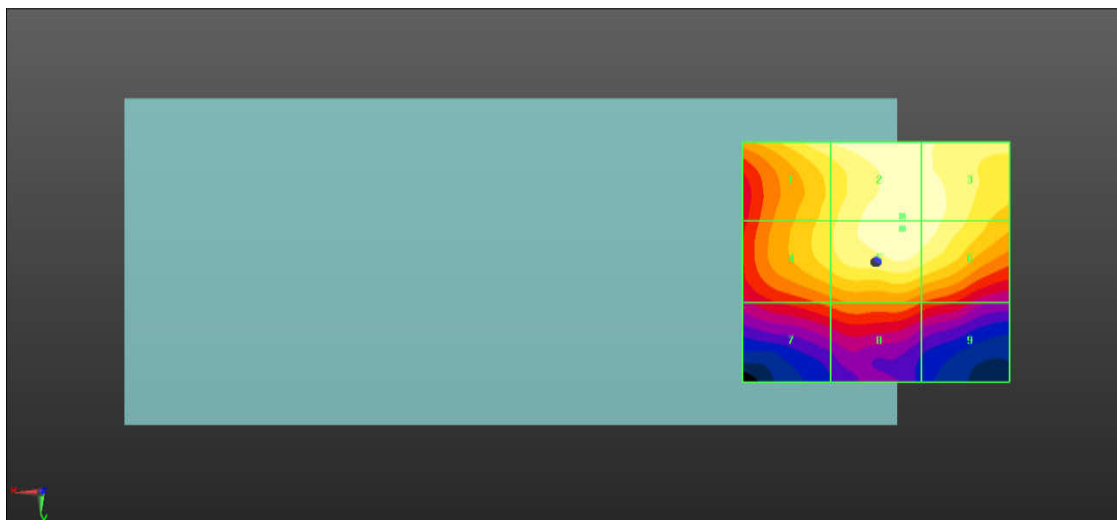
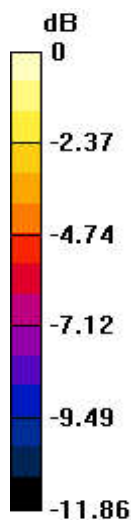
MIF scaled E-field

Grid 1 M4 24.78 dBV/m	Grid 2 M4 25.43 dBV/m	Grid 3 M4 25.14 dBV/m
Grid 4 M4 23.75 dBV/m	Grid 5 M4 25.43 dBV/m	Grid 6 M4 25.13 dBV/m
Grid 7 M4 21.04 dBV/m	Grid 8 M4 21.51 dBV/m	Grid 9 M4 20.71 dBV/m

Total = 25.43 dBV/m

E Category: M4

Location: -5, -9.5, 8.7 mm



0 dB = 18.69 V/m = 25.43 dBV/m

27_HAC RF LTE B42_ANT2_QPSK_1_0_Ch42590

Communication System: UID 10173 - CAG, LTE-TDD (SC-FDMA, 1 RB, 20 MHz, 16-QAM);
 Frequency: 3500 MHz; Duty Cycle: 1:8.8736

Medium: Air Medium parameters used: $\sigma = 0$ S/m, $\epsilon_r = 1$; $\rho = 0$ kg/m³

Ambient Temperature : 23.3 °C;

DASY5 Configuration:

- Probe: EF3DV3 - SN4050; ConvF(1, 1, 1); Calibrated: 2021.1.25
- Sensor-Surface: (Fix Surface)
- Electronics: DAE4 Sn1279; Calibrated: 2021.9.21
- Phantom: HAC Test Arch with AMCC; Type: SD HAC P01 BA;
- Measurement SW: DASY52, Version 52.10 (4); SEMCAD X Version 14.6.14 (7483)

Ch42590/Hearing Aid Compatibility Test (101x101x1): Interpolated grid: dx=0.5000 mm, dy=0.5000 mm

Device Reference Point: 0, 0, -6.3 mm

Reference Value = 27.49 V/m; Power Drift = 0.14 dB

Applied MIF = -1.44 dB

RF audio interference level = 25.61 dBV/m

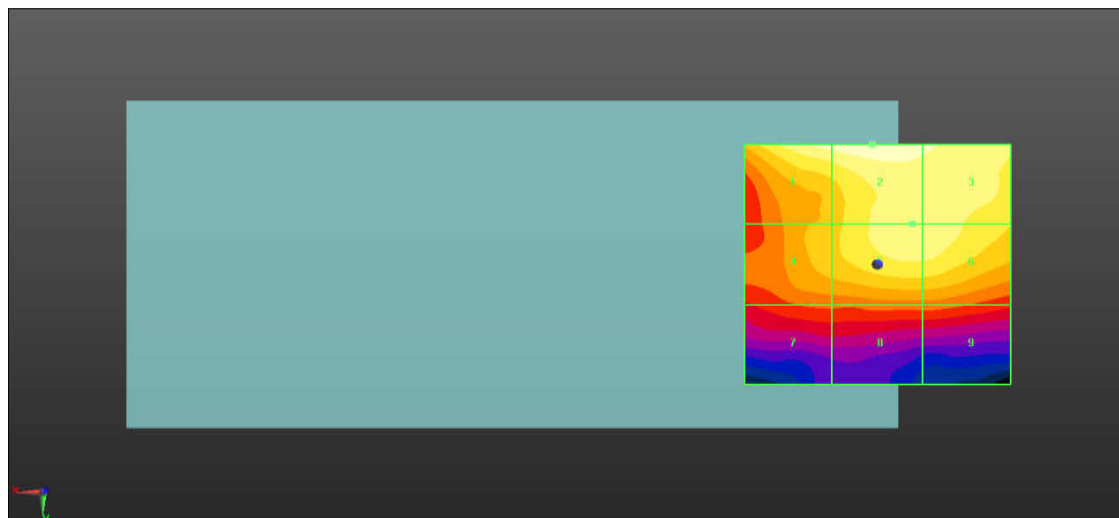
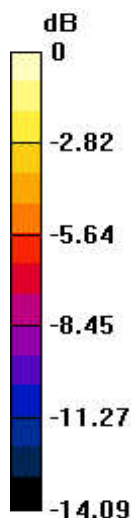
MIF scaled E-field

Grid 1 M4 25.24 dBV/m	Grid 2 M4 25.61 dBV/m	Grid 3 M4 24.98 dBV/m
Grid 4 M4 22.58 dBV/m	Grid 5 M4 24.46 dBV/m	Grid 6 M4 24.42 dBV/m
Grid 7 M4 20.23 dBV/m	Grid 8 M4 20.5 dBV/m	Grid 9 M4 20.5 dBV/m

Total = 25.61 dBV/m

E Category: M4

Location: 1, -25, 8.7 mm



0 dB = 19.09 V/m = 25.62 dBV/m

28_HAC RF LTE B42_ANT2_QPSK_1_0_Ch42990

Communication System: UID 10173 - CAG, LTE-TDD (SC-FDMA, 1 RB, 20 MHz, 16-QAM);
 Frequency: 3540 MHz;Duty Cycle: 1:8.8736

Medium: Air Medium parameters used: $\sigma = 0$ S/m, $\epsilon_r = 1$; $\rho = 0$ kg/m³

Ambient Temperature : 23.3 °C;

DASY5 Configuration:

- Probe: EF3DV3 - SN4050; ConvF(1, 1, 1); Calibrated: 2021.1.25
- Sensor-Surface: (Fix Surface)
- Electronics: DAE4 Sn1279; Calibrated: 2021.9.21
- Phantom: HAC Test Arch with AMCC; Type: SD HAC P01 BA;
- Measurement SW: DASY52, Version 52.10 (4); SEMCAD X Version 14.6.14 (7483)

Ch42990/Hearing Aid Compatibility Test (101x101x1): Interpolated grid: dx=0.5000 mm, dy=0.5000 mm

Device Reference Point: 0, 0, -6.3 mm

Reference Value = 26.09 V/m; Power Drift = -0.04 dB

Applied MIF = -1.44 dB

RF audio interference level = 25.96 dBV/m

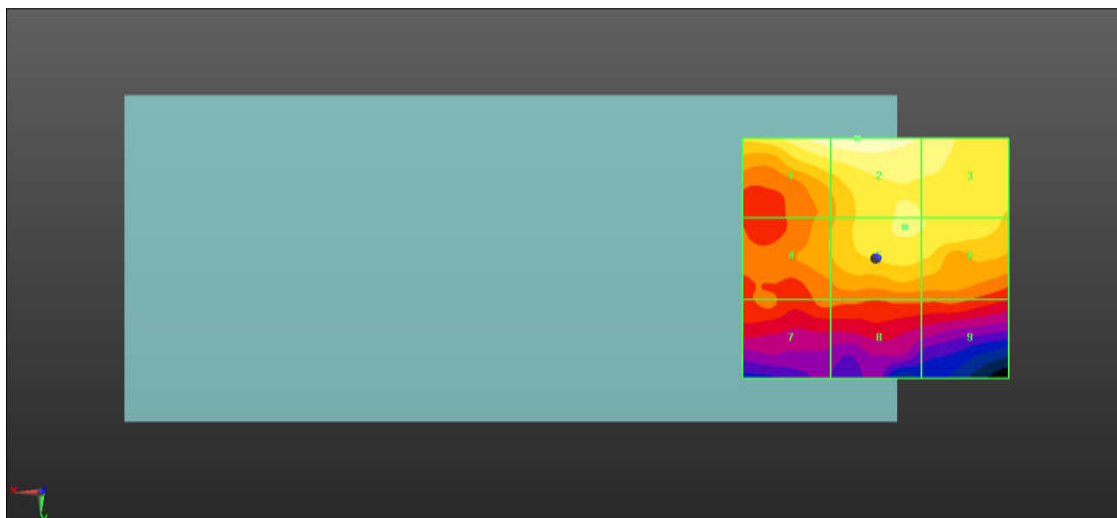
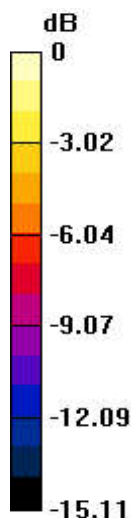
MIF scaled E-field

Grid 1 M4 25.62 dBV/m	Grid 2 M4 25.96 dBV/m	Grid 3 M4 24.89 dBV/m
Grid 4 M4 22.03 dBV/m	Grid 5 M4 24.1 dBV/m	Grid 6 M4 24 dBV/m
Grid 7 M4 20.35 dBV/m	Grid 8 M4 20.35 dBV/m	Grid 9 M4 20.34 dBV/m

Total = 25.96 dBV/m

E Category: M4

Location: 3.5, -25, 8.7 mm



0 dB = 19.87 V/m = 25.96 dBV/m

29_HAC RF LTE B48_ANT2_QPSK_1_0_Ch55340

Communication System: UID 10173 - CAG, LTE-TDD (SC-FDMA, 1 RB, 20 MHz, 16-QAM);
 Frequency: 3560 MHz; Duty Cycle: 1:8.8736

Medium: Air Medium parameters used: $\sigma = 0$ S/m, $\epsilon_r = 1$; $\rho = 0$ kg/m³

Ambient Temperature : 23.3 °C;

DASY5 Configuration:

- Probe: EF3DV3 - SN4050; ConvF(1, 1, 1); Calibrated: 2021.1.25
- Sensor-Surface: (Fix Surface)
- Electronics: DAE4 Sn1356; Calibrated: 2021.6.1
- Phantom: HAC Test Arch with AMCC; Type: SD HAC P01 BA;
- Measurement SW: DASY52, Version 52.10 (4); SEMCAD X Version 14.6.14 (7483)

Ch55340/Hearing Aid Compatibility Test (101x101x1): Interpolated grid: dx=0.5000 mm, dy=0.5000 mm

Device Reference Point: 0, 0, -6.3 mm

Reference Value = 24.44 V/m; Power Drift = 0.11 dB

Applied MIF = -1.44 dB

RF audio interference level = 25.11 dBV/m

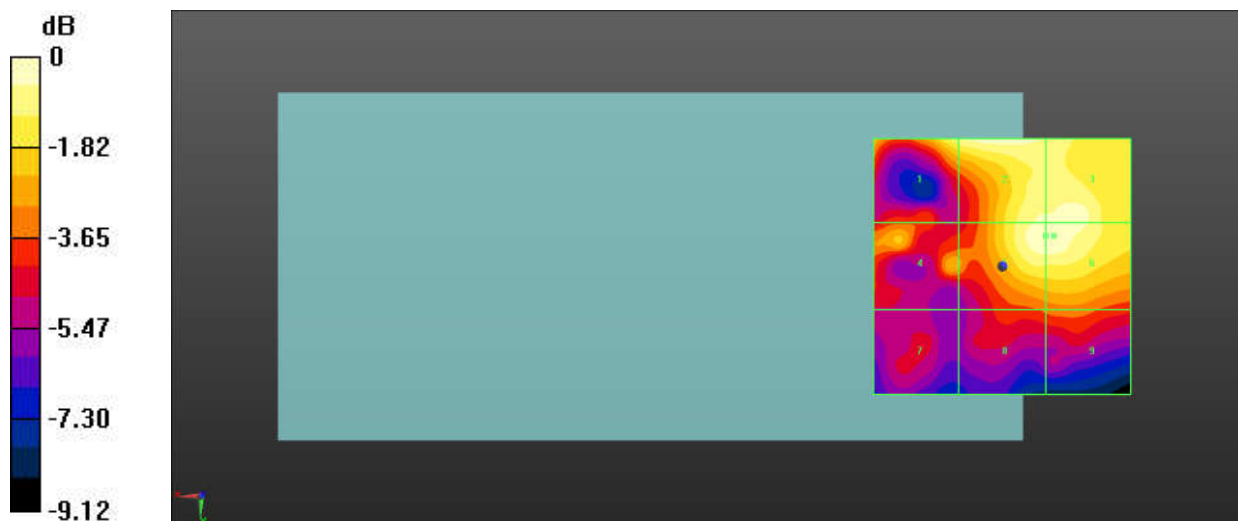
MIF scaled E-field

Grid 1 M4 24.52 dBV/m	Grid 2 M4 25.03 dBV/m	Grid 3 M4 24.92 dBV/m
Grid 4 M4 22.82 dBV/m	Grid 5 M4 25.03 dBV/m	Grid 6 M4 25.11 dBV/m
Grid 7 M4 20.63 dBV/m	Grid 8 M4 21.65 dBV/m	Grid 9 M4 21.86 dBV/m

Total = 25.11 dBV/m

E Category: M4

Location: -10, -6, 8.7 mm



0 dB = 18.02 V/m = 25.12 dBV/m

30_HAC RF LTE B48_ANT2_QPSK_1_0_Ch55830

Communication System: UID 10173 - CAG, LTE-TDD (SC-FDMA, 1 RB, 20 MHz, 16-QAM);
 Frequency: 3609 MHz; Duty Cycle: 1:8.8736

Medium: Air Medium parameters used: $\sigma = 0$ S/m, $\epsilon_r = 1$; $\rho = 0$ kg/m³

Ambient Temperature : 23.3 °C;

DASY5 Configuration:

- Probe: EF3DV3 - SN4050; ConvF(1, 1, 1); Calibrated: 2021.1.25
- Sensor-Surface: (Fix Surface)
- Electronics: DAE4 Sn1356; Calibrated: 2021.6.1
- Phantom: HAC Test Arch with AMCC; Type: SD HAC P01 BA;
- Measurement SW: DASY52, Version 52.10 (4); SEMCAD X Version 14.6.14 (7483)

Ch55830/Hearing Aid Compatibility Test (101x101x1): Interpolated grid: dx=0.5000 mm, dy=0.5000 mm

Device Reference Point: 0, 0, -6.3 mm

Reference Value = 20.17 V/m; Power Drift = -0.08 dB

Applied MIF = -1.44 dB

RF audio interference level = 24.91 dBV/m

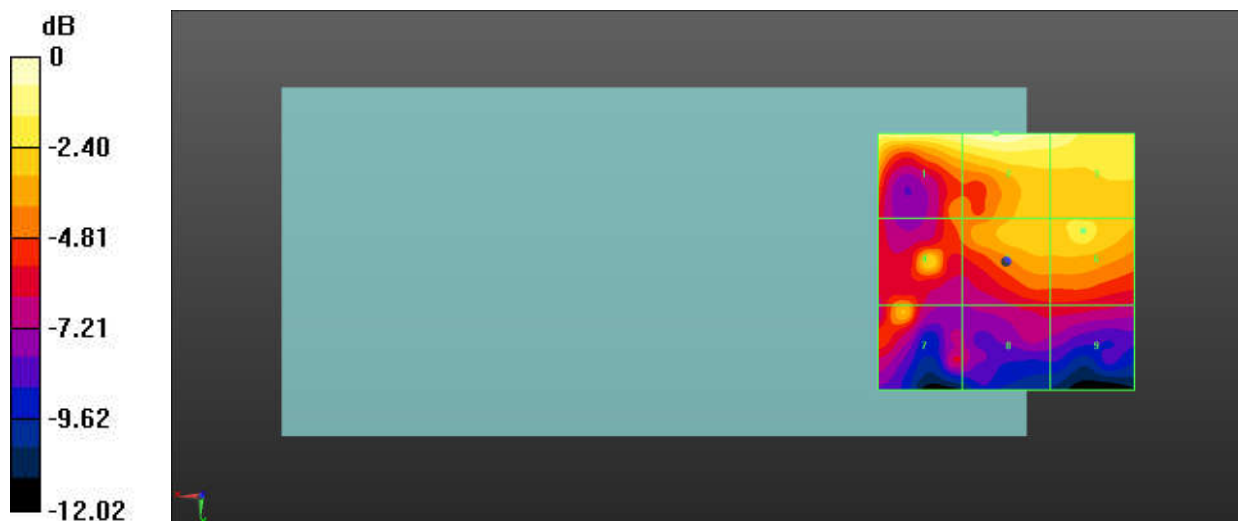
MIF scaled E-field

Grid 1 M4 24.43 dBV/m	Grid 2 M4 24.91 dBV/m	Grid 3 M4 24.31 dBV/m
Grid 4 M4 22.52 dBV/m	Grid 5 M4 22.33 dBV/m	Grid 6 M4 22.89 dBV/m
Grid 7 M4 21.8 dBV/m	Grid 8 M4 19.14 dBV/m	Grid 9 M4 19.15 dBV/m

Total = 24.91 dBV/m

E Category: M4

Location: 2, -25, 8.7 mm



0 dB = 17.60 V/m = 24.91 dBV/m

31_HAC RF LTE B48_ANT2_QPSK_1_0_Ch56150

Communication System: UID 10173 - CAG, LTE-TDD (SC-FDMA, 1 RB, 20 MHz, 16-QAM);
 Frequency: 3641 MHz; Duty Cycle: 1:8.8736

Medium: Air Medium parameters used: $\sigma = 0$ S/m, $\epsilon_r = 1$; $\rho = 0$ kg/m³

Ambient Temperature : 23.3 °C;

DASY5 Configuration:

- Probe: EF3DV3 - SN4050; ConvF(1, 1, 1); Calibrated: 2021.1.25
- Sensor-Surface: (Fix Surface)
- Electronics: DAE4 Sn1356; Calibrated: 2021.6.1
- Phantom: HAC Test Arch with AMCC; Type: SD HAC P01 BA;
- Measurement SW: DASY52, Version 52.10 (4); SEMCAD X Version 14.6.14 (7483)

Ch56150/Hearing Aid Compatibility Test (101x101x1): Interpolated grid: dx=0.5000 mm, dy=0.5000 mm

Device Reference Point: 0, 0, -6.3 mm

Reference Value = 18.81 V/m; Power Drift = -0.01 dB

Applied MIF = -1.44 dB

RF audio interference level = 25.59 dBV/m

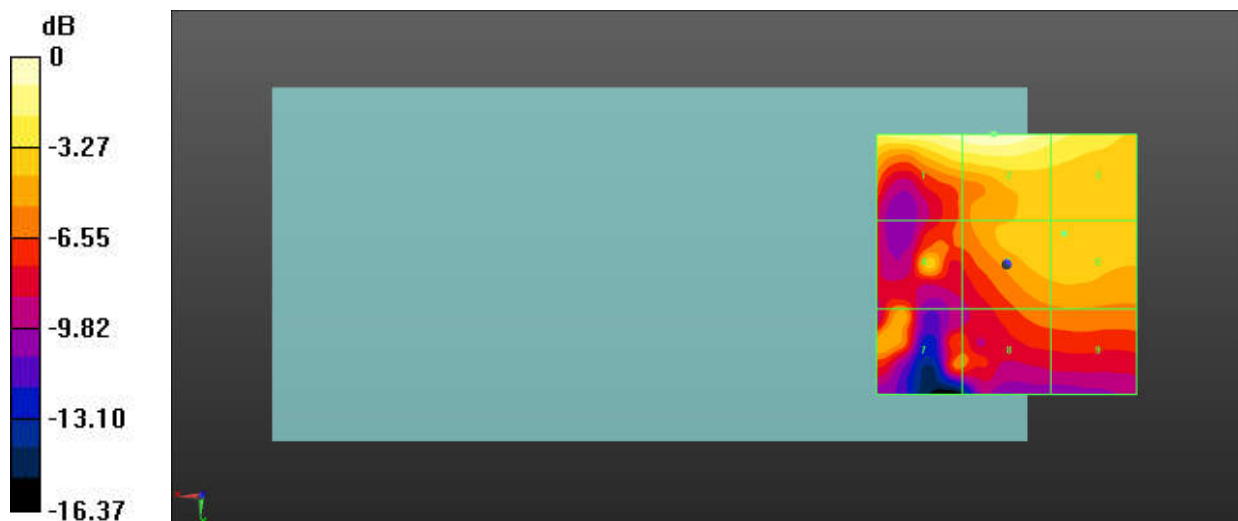
MIF scaled E-field

Grid 1 M4 25.13 dBV/m	Grid 2 M4 25.59 dBV/m	Grid 3 M4 24.07 dBV/m
Grid 4 M4 21.8 dBV/m	Grid 5 M4 22.24 dBV/m	Grid 6 M4 22.3 dBV/m
Grid 7 M4 21.16 dBV/m	Grid 8 M4 19.99 dBV/m	Grid 9 M4 20.13 dBV/m

Total = 25.59 dBV/m

E Category: M4

Location: 2.5, -25, 8.7 mm



0 dB = 19.04 V/m = 25.59 dBV/m

32_HAC RF LTE B48_ANT2_QPSK_1_0_Ch56640

Communication System: UID 10173 - CAG, LTE-TDD (SC-FDMA, 1 RB, 20 MHz, 16-QAM);
 Frequency: 3690 MHz; Duty Cycle: 1:8.8736

Medium: Air Medium parameters used: $\sigma = 0$ S/m, $\epsilon_r = 1$; $\rho = 0$ kg/m³

Ambient Temperature : 23.3 °C;

DASY5 Configuration:

- Probe: EF3DV3 - SN4050; ConvF(1, 1, 1); Calibrated: 2021.1.25
- Sensor-Surface: (Fix Surface)
- Electronics: DAE4 Sn1356; Calibrated: 2021.6.1
- Phantom: HAC Test Arch with AMCC; Type: SD HAC P01 BA;
- Measurement SW: DASY52, Version 52.10 (4); SEMCAD X Version 14.6.14 (7483)

Ch56640/Hearing Aid Compatibility Test (101x101x1): Interpolated grid: dx=0.5000 mm, dy=0.5000 mm

Device Reference Point: 0, 0, -6.3 mm

Reference Value = 16.79 V/m; Power Drift = -0.19 dB

Applied MIF = -1.44 dB

RF audio interference level = 26.77 dBV/m

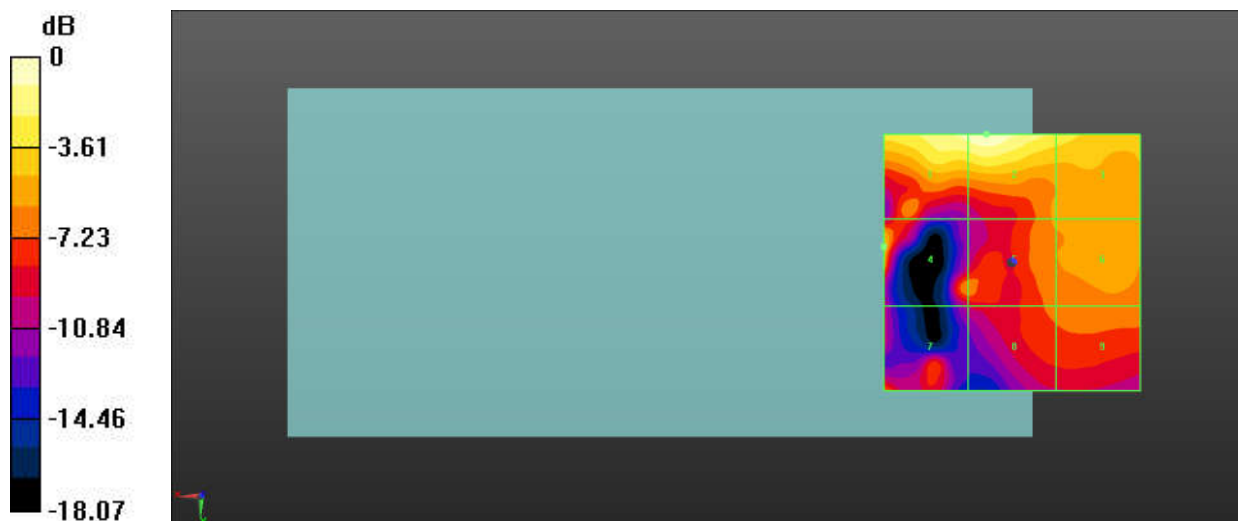
MIF scaled E-field

Grid 1 M4 26.05 dBV/m	Grid 2 M4 26.77 dBV/m	Grid 3 M4 24.08 dBV/m
Grid 4 M4 22.91 dBV/m	Grid 5 M4 21.11 dBV/m	Grid 6 M4 21.56 dBV/m
Grid 7 M4 20.49 dBV/m	Grid 8 M4 19.86 dBV/m	Grid 9 M4 20.37 dBV/m

Total = 26.77 dBV/m

E Category: M4

Location: 5, -25, 8.7 mm



0 dB = 21.79 V/m = 26.77 dBV/m

33_HAC RF WLAN2.4GHz_802.11g 6Mbps_Ch1

Communication System: UID 10077 - CAB, IEEE 802.11g WiFi 2.4 GHz (DSSS/OFDM, 54 Mbps);
 Frequency: 2412 MHz; Duty Cycle: 1:12.5777

Medium: Air Medium parameters used: $\sigma = 0$ S/m, $\epsilon_r = 1$; $\rho = 0$ kg/m³

Ambient Temperature : 23.5 °C;

DASY5 Configuration:

- Probe: EF3DV3 - SN4050; ConvF(1, 1, 1); Calibrated: 2021.1.25
- Sensor-Surface: (Fix Surface)
- Electronics: DAE4 Sn1356; Calibrated: 2021.6.1
- Phantom: HAC Test Arch with AMCC; Type: SD HAC P01 BA;
- Measurement SW: DASY52, Version 52.10 (4); SEMCAD X Version 14.6.14 (7483)

Ch1/Hearing Aid Compatibility Test (101x101x1): Interpolated grid: dx=0.5000 mm, dy=0.5000 mm

Device Reference Point: 0, 0, -6.3 mm

Reference Value = 34.09 V/m; Power Drift = -0.08 dB

Applied MIF = 0.12 dB

RF audio interference level = 26.75 dBV/m

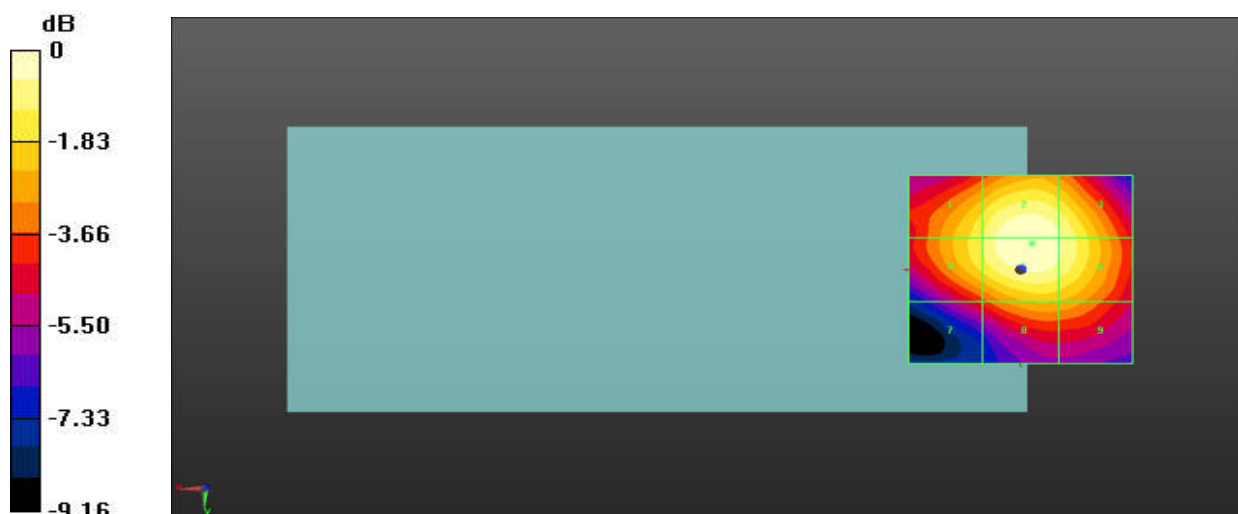
MIF scaled E-field

Grid 1 M4 25.52 dBV/m	Grid 2 M4 26.73 dBV/m	Grid 3 M4 26.23 dBV/m
Grid 4 M4 25.57 dBV/m	Grid 5 M4 26.75 dBV/m	Grid 6 M4 26.28 dBV/m
Grid 7 M4 22.82 dBV/m	Grid 8 M4 24.42 dBV/m	Grid 9 M4 24.29 dBV/m

Total = 26.75 dBV/m

E Category: M4

Location: -2.5, -7, 8.7 mm



0 dB = 21.76 V/m = 26.75 dBV/m

34_HAC RF WLAN2.4GHz_802.11g 6Mbps_Ch6

Communication System: UID 10077 - CAB, IEEE 802.11g WiFi 2.4 GHz (DSSS/OFDM, 54 Mbps);
 Frequency: 2437 MHz; Duty Cycle: 1:12.5777

Medium: Air Medium parameters used: $\sigma = 0$ S/m, $\epsilon_r = 1$; $\rho = 0$ kg/m³

Ambient Temperature : 23.5 °C;

DASY5 Configuration:

- Probe: EF3DV3 - SN4050; ConvF(1, 1, 1); Calibrated: 2021.1.25
- Sensor-Surface: (Fix Surface)
- Electronics: DAE4 Sn1356; Calibrated: 2021.6.1
- Phantom: HAC Test Arch with AMCC; Type: SD HAC P01 BA;
- Measurement SW: DASY52, Version 52.10 (4); SEMCAD X Version 14.6.14 (7483)

Ch6/Hearing Aid Compatibility Test (101x101x1): Interpolated grid: dx=0.5000 mm, dy=0.5000 mm

Device Reference Point: 0, 0, -6.3 mm

Reference Value = 33.28 V/m; Power Drift = 0.02 dB

Applied MIF = 0.12 dB

RF audio interference level = 27.19 dBV/m

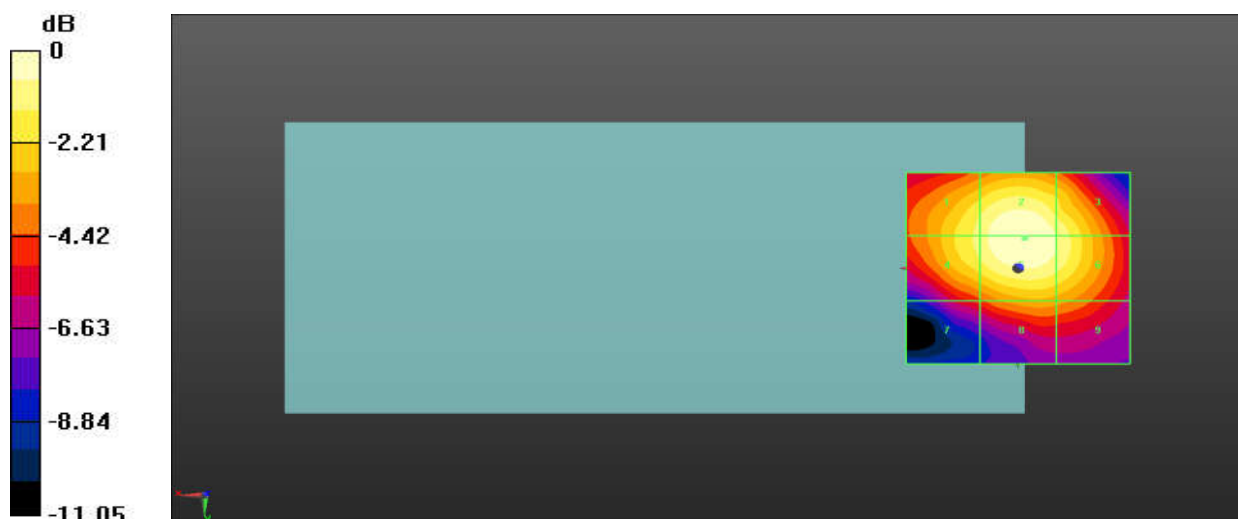
MIF scaled E-field

Grid 1 M4 26.06 dBV/m	Grid 2 M4 27.18 dBV/m	Grid 3 M4 26.44 dBV/m
Grid 4 M4 26.07 dBV/m	Grid 5 M4 27.19 dBV/m	Grid 6 M4 26.5 dBV/m
Grid 7 M4 22.52 dBV/m	Grid 8 M4 24.1 dBV/m	Grid 9 M4 23.86 dBV/m

Total = 27.19 dBV/m

E Category: M4

Location: -1.5, -8, 8.7 mm



0 dB = 22.88 V/m = 27.19 dBV/m

35_HAC RF WLAN2.4GHz_802.11g 6Mbps_Ch11

Communication System: UID 10077 - CAB, IEEE 802.11g WiFi 2.4 GHz (DSSS/OFDM, 54 Mbps);
 Frequency: 2462 MHz; Duty Cycle: 1:12.5777

Medium: Air Medium parameters used: $\sigma = 0$ S/m, $\epsilon_r = 1$; $\rho = 0$ kg/m³

Ambient Temperature : 23.5 °C;

DASY5 Configuration:

- Probe: EF3DV3 - SN4050; ConvF(1, 1, 1); Calibrated: 2021.1.25
- Sensor-Surface: (Fix Surface)
- Electronics: DAE4 Sn1356; Calibrated: 2021.6.1
- Phantom: HAC Test Arch with AMCC; Type: SD HAC P01 BA;
- Measurement SW: DASY52, Version 52.10 (4); SEMCAD X Version 14.6.14 (7483)

Ch11/Hearing Aid Compatibility Test (101x101x1): Interpolated grid: dx=0.5000 mm, dy=0.5000 mm

Device Reference Point: 0, 0, -6.3 mm

Reference Value = 38.57 V/m; Power Drift = -0.05 dB

Applied MIF = 0.12 dB

RF audio interference level = 28.56 dBV/m

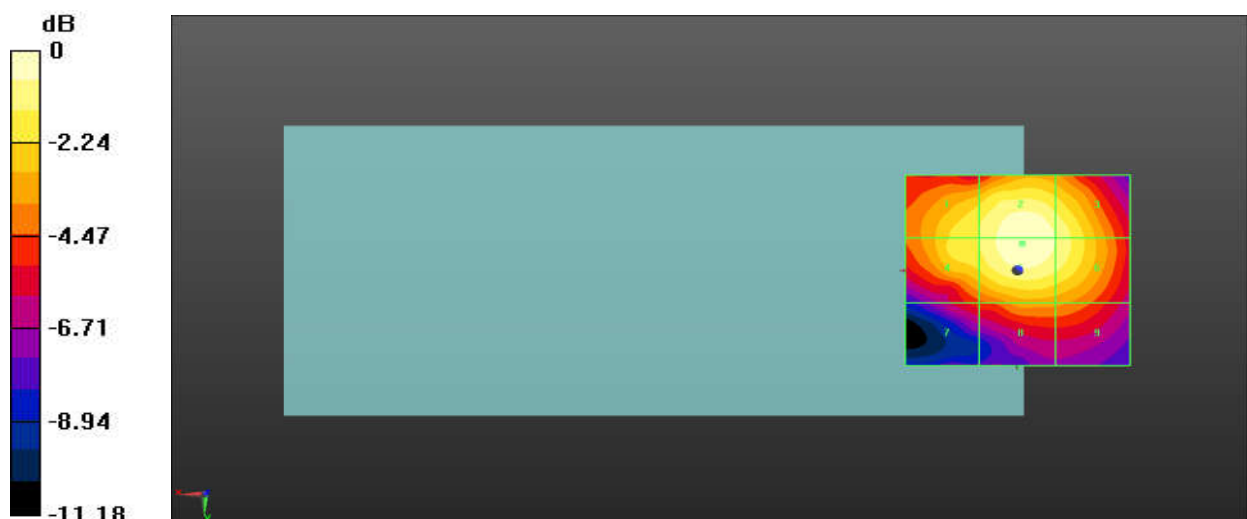
MIF scaled E-field

Grid 1 M4 27.15 dBV/m	Grid 2 M4 28.55 dBV/m	Grid 3 M4 27.8 dBV/m
Grid 4 M4 27.15 dBV/m	Grid 5 M4 28.56 dBV/m	Grid 6 M4 27.8 dBV/m
Grid 7 M4 23.89 dBV/m	Grid 8 M4 25.28 dBV/m	Grid 9 M4 25.09 dBV/m

Total = 28.56 dBV/m

E Category: M4

Location: -1, -7, 8.7 mm



0 dB = 26.81 V/m = 28.57 dBV/m

36_HAC RF WLAN5.3GHz_802.11a 6Mbps_Ch52

Communication System: UID 10069 - CAD, IEEE 802.11a/h WiFi 5 GHz (OFDM, 54 Mbps);
 Frequency: 5260 MHz;Duty Cycle: 1:11.3789

Medium: Air Medium parameters used: $\sigma = 0$ S/m, $\epsilon_r = 1$; $\rho = 0$ kg/m³

Ambient Temperature : 23.2 °C;

DASY5 Configuration:

- Probe: EF3DV3 - SN4050; ConvF(1, 1, 1); Calibrated: 2021.1.25
- Sensor-Surface: (Fix Surface)
- Electronics: DAE4 Sn1356; Calibrated: 2021.6.1
- Phantom: HAC Test Arch with AMCC; Type: SD HAC P01 BA;
- Measurement SW: DASY52, Version 52.10 (4); SEMCAD X Version 14.6.14 (7483)

Ch52/Hearing Aid Compatibility Test (101x101x1): Interpolated grid: dx=0.5000 mm, dy=0.5000 mm

Device Reference Point: 0, 0, -6.3 mm

Reference Value = 50.26 V/m; Power Drift = -0.16 dB

Applied MIF = -3.15 dB

RF audio interference level = 28.87 dBV/m

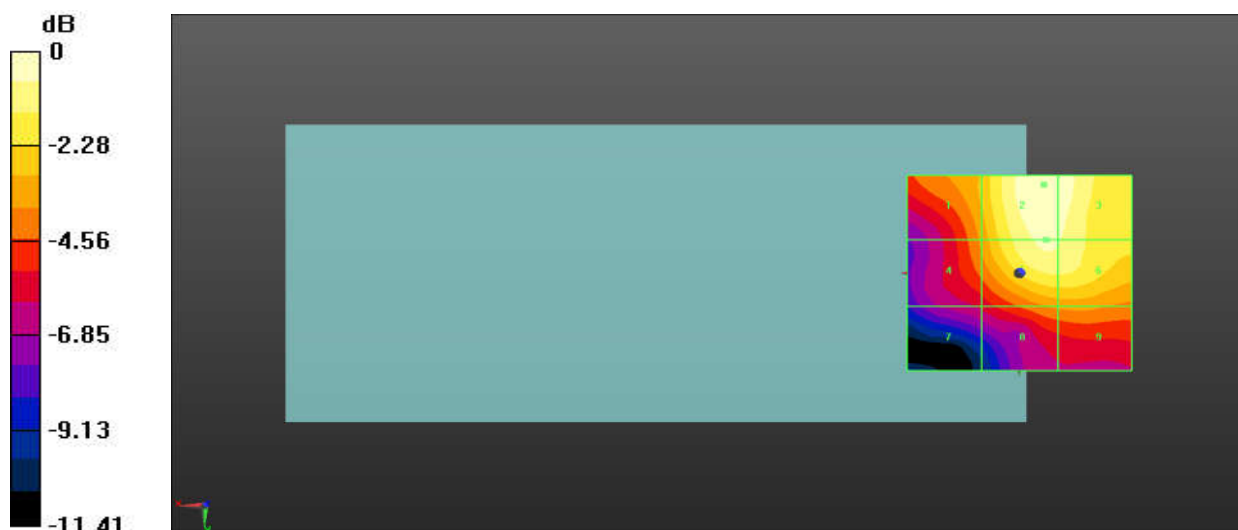
MIF scaled E-field

Grid 1 M4 26.04 dBV/m	Grid 2 M4 28.87 dBV/m	Grid 3 M4 28.67 dBV/m
Grid 4 M4 25.28 dBV/m	Grid 5 M4 28.27 dBV/m	Grid 6 M4 28.17 dBV/m
Grid 7 M4 23.02 dBV/m	Grid 8 M4 25.25 dBV/m	Grid 9 M4 25.36 dBV/m

Total = 28.87 dBV/m

E Category: M4

Location: -5.5, -22.5, 8.7 mm



0 dB = 27.78 V/m = 28.87 dBV/m