

System Check_Head_750MHz

DUT: D750V3-1107

Communication System: CW ; Frequency: 750 MHz;Duty Cycle: 1:1

Medium: HSL_750_211119 Medium parameters used: $f = 750$ MHz; $\sigma = 0.89$ S/m; $\epsilon_r = 43.009$; $\rho = 1000$ kg/m³

Ambient Temperature : 23.5 °C ; Liquid Temperature : 22.5 °C

DASY5 Configuration

- Probe: EX3DV4 - SN3578; ConvF(10.02, 10.02, 10.02) @ 750 MHz; Calibrated: 2021/6/23
- Sensor-Surface: 1.4mm (Mechanical Surface Detection)
- Electronics: DAE4 Sn854; Calibrated: 2021/8/19
- Phantom: SAM_Left; Type: QD000P40CD; Serial: 1719
- Measurement SW: DASY52, Version 52.10 (4); SEMCAD X Version 14.6.14 (7483)

Pin=50mW/Area Scan (61x61x1): Interpolated grid: dx=1.500 mm, dy=1.500 mm

Maximum value of SAR (interpolated) = 0.534 W/kg

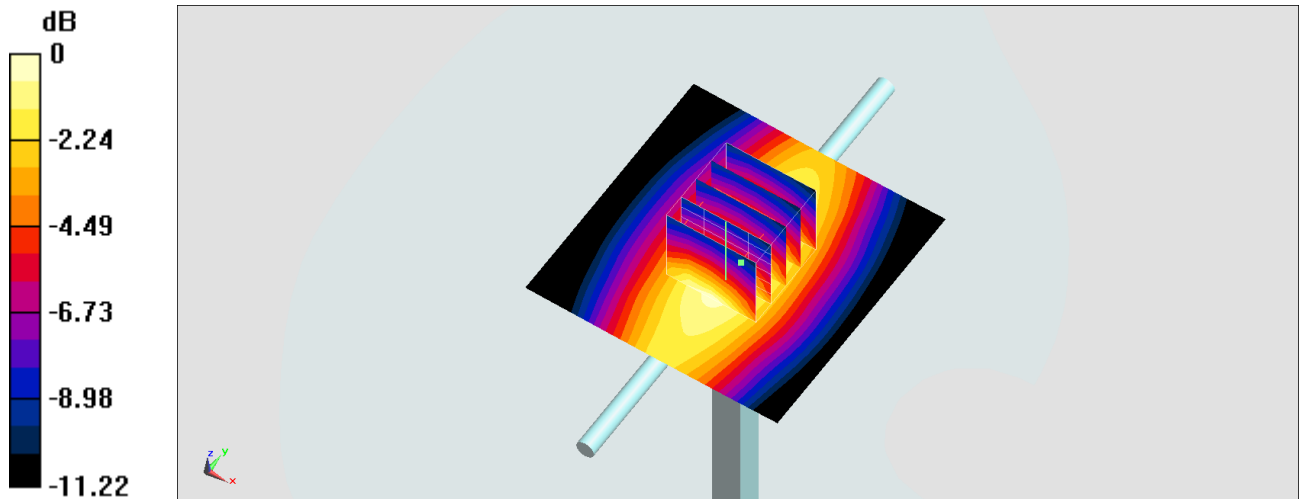
Pin=50mW/Zoom Scan (5x5x7)/Cube 0: Measurement grid: dx=8mm, dy=8mm, dz=5mm

Reference Value = 27.49 V/m; Power Drift = -0.11 dB

Peak SAR (extrapolated) = 0.707 W/kg

SAR(1 g) = 0.426 W/kg; SAR(10 g) = 0.278 W/kg

Maximum value of SAR (measured) = 0.592 W/kg



0 dB = 0.534 W/kg = -2.72 dBW/kg

System Check_Head_835MHz

DUT: D835V2-4d167

Communication System: CW; Frequency: 835 MHz; Duty Cycle: 1:1

Medium: HSL_850_211119 Medium parameters used: $f = 835$ MHz; $\sigma = 0.924$ S/m; $\epsilon_r = 42.713$; $\rho = 1000$ kg/m³

Ambient Temperature : 23.5 °C; Liquid Temperature : 22.5 °C

DASY5 Configuration

- Probe: EX3DV4 - SN7590; ConvF(10.73, 10.73, 10.73) @ 835 MHz; Calibrated: 2021/3/25
- Sensor-Surface: 1.4mm (Mechanical Surface Detection)
- Electronics: DAE4 Sn853; Calibrated: 2021/7/14
- Phantom: ELI V5.0; Type: QD OVA 002 Ax; Serial: 1131
- Measurement SW: DASY52, Version 52.10 (4); SEMCAD X Version 14.6.14 (7483)

Pin=50mW/Area Scan (61x61x1): Interpolated grid: dx=1.500 mm, dy=1.500 mm

Maximum value of SAR (interpolated) = 0.528 W/kg

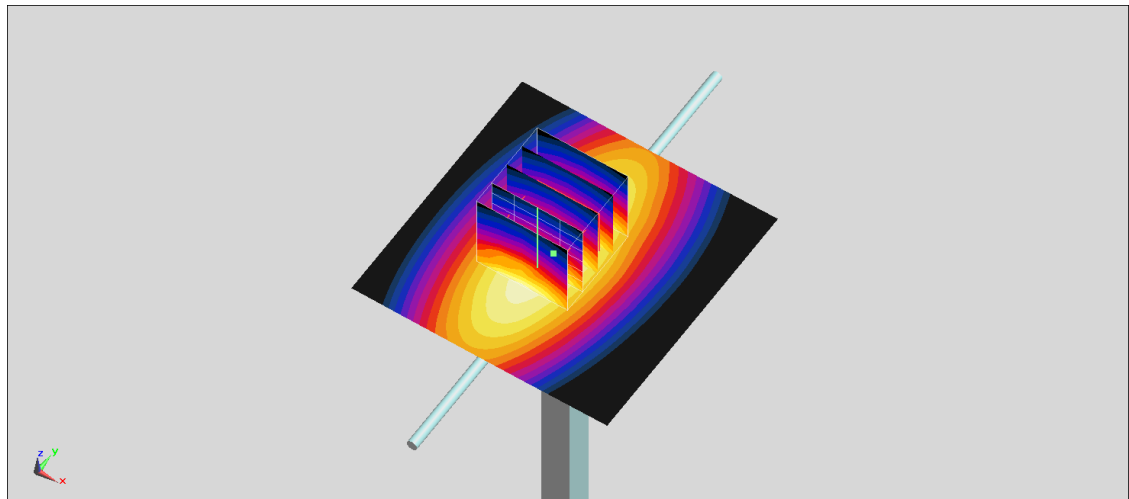
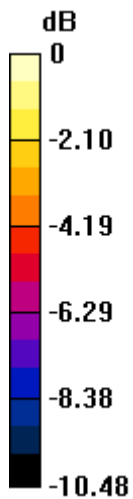
Pin=50mW/Zoom Scan (5x5x7)/Cube 0: Measurement grid: dx=8mm, dy=8mm, dz=5mm

Reference Value = 23.65 V/m; Power Drift = -0.09 dB

Peak SAR (extrapolated) = 0.734 W/kg

SAR(1 g) = 0.442 W/kg; SAR(10 g) = 0.291 W/kg

Maximum value of SAR (measured) = 0.517 W/kg



0 dB = 0.528 W/kg = -2.77 dBW/kg

System Check_Head_835MHz

DUT: D835V2-4d167

Communication System: CW; Frequency: 835 MHz; Duty Cycle: 1:1

Medium: HSL_850_211120 Medium parameters used: $f = 835$ MHz; $\sigma = 0.926$ S/m; $\epsilon_r = 42.88$; $\rho = 1000$ kg/m³

Ambient Temperature : 23.5 °C ; Liquid Temperature : 22.5 °C

DASY5 Configuration

- Probe: EX3DV4 - SN7306; ConvF(9.82, 9.82, 9.82) @ 835 MHz; Calibrated: 2021/7/26
- Sensor-Surface: 1.4mm (Mechanical Surface Detection)
- Electronics: DAE4 Sn1311; Calibrated: 2021/8/20
- Phantom: SAM Right; Type: QD 000 P40 CD; Serial: 1718
- Measurement SW: DASY52, Version 52.10 (4); SEMCAD X Version 14.6.14 (7483)

Pin=50mW/Area Scan (61x61x1): Interpolated grid: dx=1.500 mm, dy=1.500 mm

Maximum value of SAR (interpolated) = 0.620 W/kg

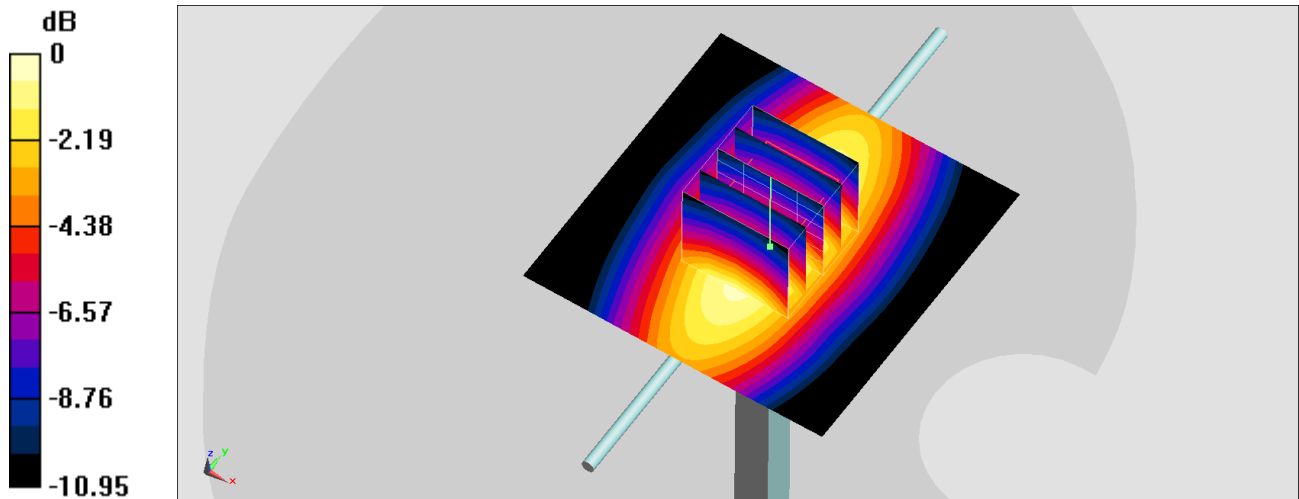
Pin=50mW/Zoom Scan (5x5x7)/Cube 0: Measurement grid: dx=8mm, dy=8mm, dz=5mm

Reference Value = 26.88 V/m; Power Drift = 0.03 dB

Peak SAR (extrapolated) = 0.703 W/kg

SAR(1 g) = 0.465 W/kg; SAR(10 g) = 0.303 W/kg

Maximum value of SAR (measured) = 0.625 W/kg



0 dB = 0.625 W/kg = -2.04 dBW/kg

System Check_Head_1750MHz

DUT: D1750V2-1112

Communication System: CW; Frequency: 1750 MHz; Duty Cycle: 1:1

Medium: HSL_1750_211119 Medium parameters used: $f = 1750$ MHz; $\sigma = 1.369$ S/m; $\epsilon_r = 40.523$; $\rho = 1000$ kg/m³

Ambient Temperature : 23.5 °C ; Liquid Temperature : 22.5 °C

DASY5 Configuration

- Probe: EX3DV4 - SN7590; ConvF(8.84, 8.84, 8.84) @ 1750 MHz; Calibrated: 2021/3/25
- Sensor-Surface: 1.4mm (Mechanical Surface Detection)
- Electronics: DAE4 Sn853; Calibrated: 2021/7/14
- Phantom: ELI V5.0; Type: QD OVA 002 Ax; Serial: 1131
- Measurement SW: DASY52, Version 52.10 (4); SEMCAD X Version 14.6.14 (7483)

Pin=50mW/Area Scan (61x61x1): Interpolated grid: dx=1.500 mm, dy=1.500 mm

Maximum value of SAR (interpolated) = 2.97 W/kg

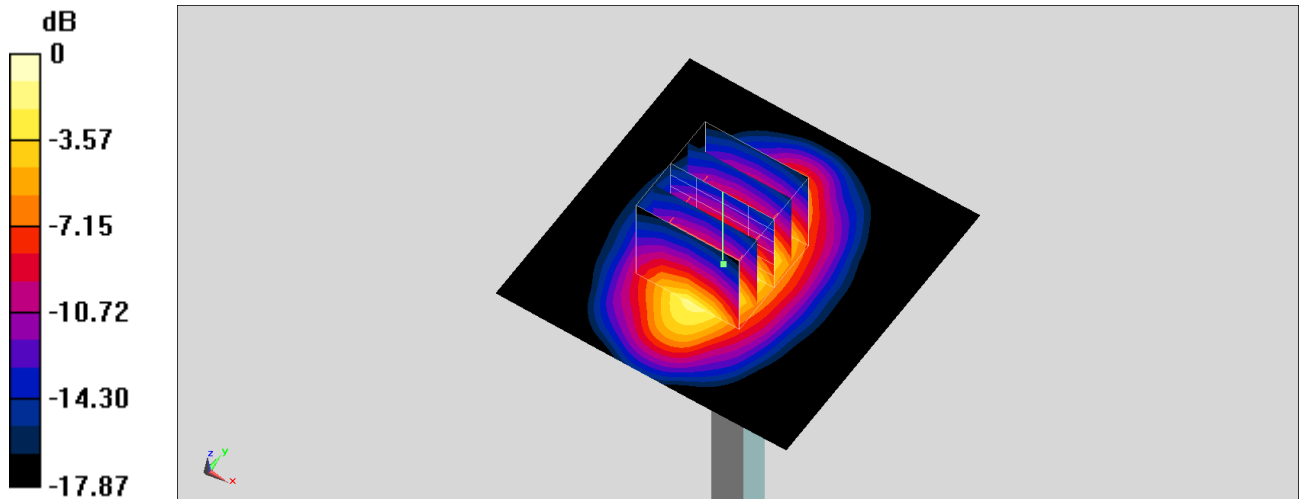
Pin=50mW/Zoom Scan (5x5x7)/Cube 0: Measurement grid: dx=8mm, dy=8mm, dz=5mm

Reference Value = 47.33 V/m; Power Drift = -0.05 dB

Peak SAR (extrapolated) = 3.59 W/kg

SAR(1 g) = 1.86 W/kg; SAR(10 g) = 0.967 W/kg

Maximum value of SAR (measured) = 2.92 W/kg



0 dB = 2.97 W/kg = 4.73 dBW/kg

System Check_Head_1750MHz

DUT: D1750V2-1112

Communication System: CW; Frequency: 1750 MHz; Duty Cycle: 1:1

Medium: HSL_1750_211120 Medium parameters used: $f = 1750$ MHz; $\sigma = 1.389$ S/m; $\epsilon_r = 40.296$; $\rho = 1000$ kg/m³

Ambient Temperature : 23.5 °C ; Liquid Temperature : 22.5 °C

DASY5 Configuration

- Probe: EX3DV4 - SN7306; ConvF(8.4, 8.4, 8.4) @ 1750 MHz; Calibrated: 2021/7/26
- Sensor-Surface: 1.4mm (Mechanical Surface Detection)
- Electronics: DAE4 Sn1311; Calibrated: 2021/8/20
- Phantom: SAM Right; Type: QD 000 P40 CD; Serial: 1718
- Measurement SW: DASY52, Version 52.10 (4); SEMCAD X Version 14.6.14 (7483)

Pin=50mW/Area Scan (61x61x1): Interpolated grid: dx=1.500 mm, dy=1.500 mm

Maximum value of SAR (interpolated) = 2.93 W/kg

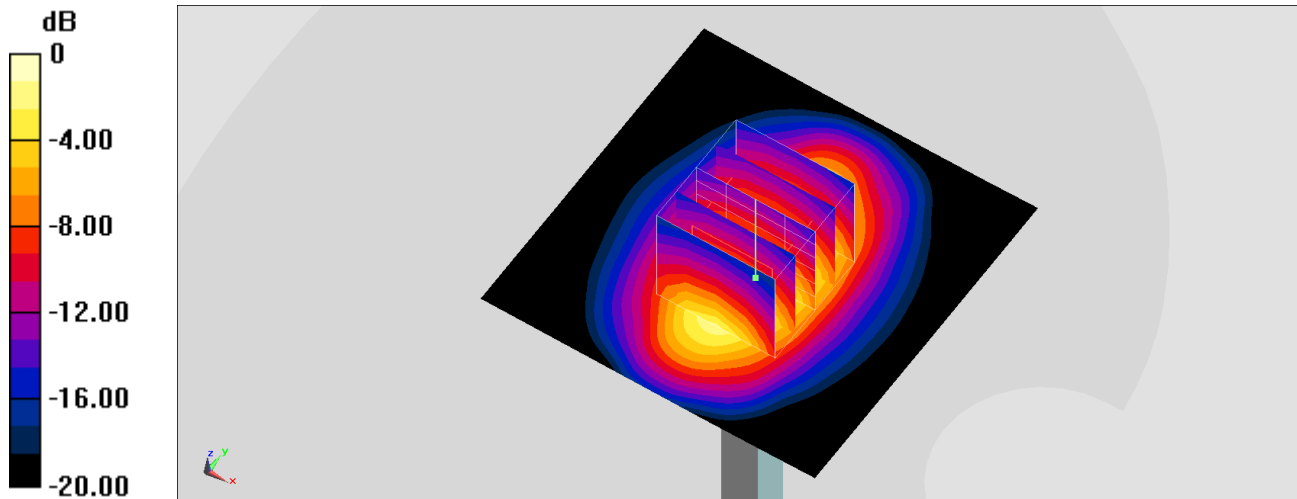
Pin=50mW/Zoom Scan (5x5x7)/Cube 0: Measurement grid: dx=8mm, dy=8mm, dz=5mm

Reference Value = 44.74 V/m; Power Drift = -0.07 dB

Peak SAR (extrapolated) = 3.26 W/kg

SAR(1 g) = 1.82 W/kg; SAR(10 g) = 0.981 W/kg

Maximum value of SAR (measured) = 2.74 W/kg



0 dB = 2.74 W/kg = 4.38 dBW/kg

System Check_Head_1900MHz

DUT: D1900V2-5d185

Communication System: CW ; Frequency: 1900 MHz;Duty Cycle: 1:1

Medium: HSL_1900_211119 Medium parameters used: $f = 1900$ MHz; $\sigma = 1.439$ S/m; $\epsilon_r = 40.33$; $\rho = 1000$ kg/m³

Ambient Temperature : 23.5 °C ; Liquid Temperature : 22.5 °C

DASY5 Configuration

- Probe: EX3DV4 - SN7590; ConvF(8.65, 8.65, 8.65) @ 1900 MHz; Calibrated: 2021/3/25
- Sensor-Surface: 1.4mm (Mechanical Surface Detection)
- Electronics: DAE4 Sn853; Calibrated: 2021/7/14
- Phantom: ELI V5.0; Type: QD OVA 002 Ax; Serial: 1131
- Measurement SW: DASY52, Version 52.10 (4); SEMCAD X Version 14.6.14 (7483)

Pin=50mW/Area Scan (61x61x1): Interpolated grid: dx=1.500 mm, dy=1.500 mm

Maximum value of SAR (interpolated) = 3.26 W/kg

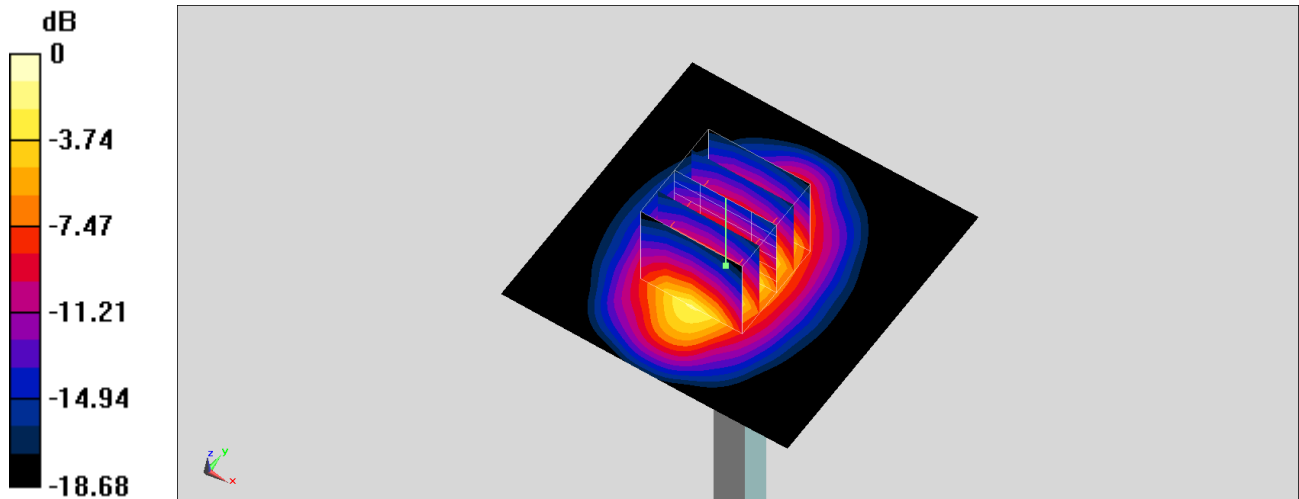
Pin=50mW/Zoom Scan (5x5x7)/Cube 0: Measurement grid: dx=8mm, dy=8mm, dz=5mm

Reference Value = 48.93 V/m; Power Drift = -0.09 dB

Peak SAR (extrapolated) = 3.95 W/kg

SAR(1 g) = 2.03 W/kg; SAR(10 g) = 1.04 W/kg

Maximum value of SAR (measured) = 3.26 W/kg



0 dB = 3.26 W/kg = 5.13 dBW/kg

System Check_Head_1900MHz

DUT: D1900V2-5d041

Communication System: CW; Frequency: 1900 MHz; Duty Cycle: 1:1

Medium: HSL_1900_211120 Medium parameters used: $f = 1900$ MHz; $\sigma = 1.405$ S/m; $\epsilon_r = 40.193$; $\rho = 1000$ kg/m³

Ambient Temperature : 23.5 °C; Liquid Temperature : 22.5 °C

DASY5 Configuration

- Probe: EX3DV4 - SN7306; ConvF(8.12, 8.12, 8.12) @ 1900 MHz; Calibrated: 2021/7/26
- Sensor-Surface: 1.4mm (Mechanical Surface Detection)
- Electronics: DAE4 Sn1311; Calibrated: 2021/8/20
- Phantom: SAM Right; Type: QD 000 P40 CD; Serial: 1718
- Measurement SW: DASY52, Version 52.10 (4); SEMCAD X Version 14.6.14 (7483)

Pin=50mW/Area Scan (61x61x1): Interpolated grid: dx=1.500 mm, dy=1.500 mm

Maximum value of SAR (interpolated) = 2.98 W/kg

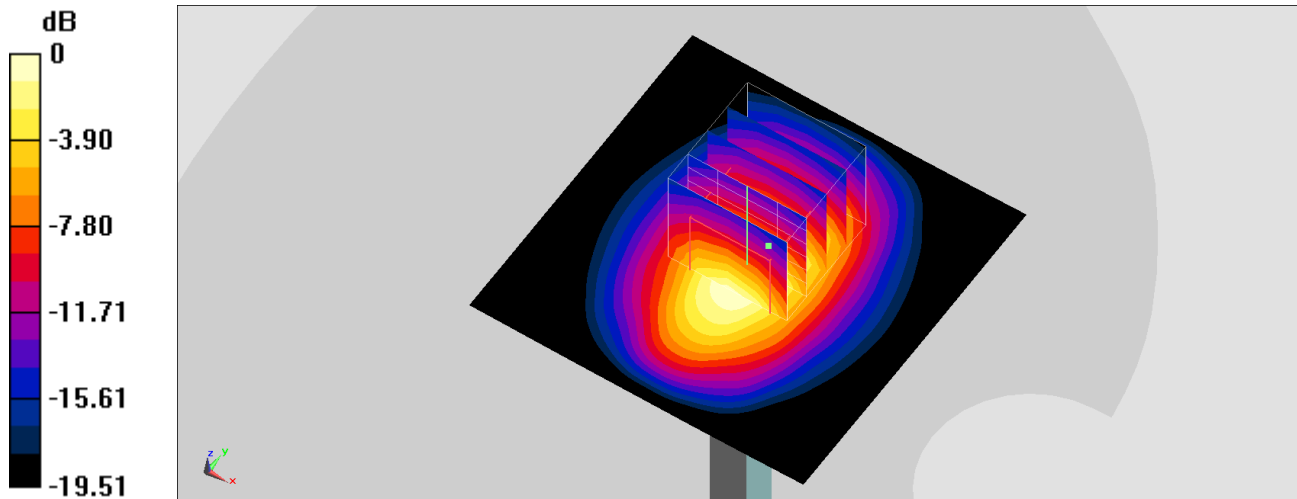
Pin=50mW/Zoom Scan (5x5x7)/Cube 0: Measurement grid: dx=8mm, dy=8mm, dz=5mm

Reference Value = 46.22 V/m; Power Drift = -0.09 dB

Peak SAR (extrapolated) = 3.40 W/kg

SAR(1 g) = 1.88 W/kg; SAR(10 g) = 0.991 W/kg

Maximum value of SAR (measured) = 2.83 W/kg



0 dB = 2.83 W/kg = 4.52 dBW/kg

System Check_Head_2450MHz

DUT: D2450V2-736

Communication System: CW; Frequency: 2450 MHz; Duty Cycle: 1:1

Medium: HSL_2450_211123 Medium parameters used: $f = 2450$ MHz; $\sigma = 1.845$ S/m; $\epsilon_r = 39.76$; $\rho = 1000$ kg/m³

Ambient Temperature : 23.5 °C ; Liquid Temperature : 22.5 °C

DASY5 Configuration

- Probe: EX3DV4 - SN3578; ConvF(7.34, 7.34, 7.34) @ 2450 MHz; Calibrated: 2021/6/23
- Sensor-Surface: 1.4mm (Mechanical Surface Detection)
- Electronics: DAE4 Sn1311; Calibrated: 2021/8/20
- Phantom: SAM Right; Type: QD 000 P40 CD; Serial: 1718
- Measurement SW: DASY52, Version 52.10 (4); SEMCAD X Version 14.6.14 (7483)

Pin=50mW/Area Scan (71x71x1): Interpolated grid: dx=1.200 mm, dy=1.200 mm

Maximum value of SAR (interpolated) = 4.26 W/kg

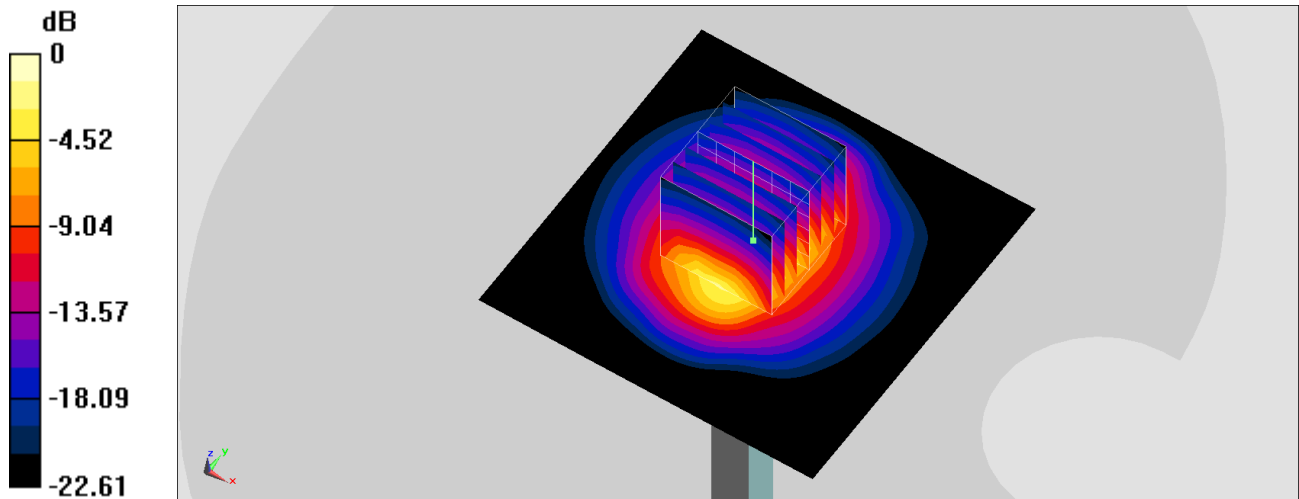
Pin=50mW/Zoom Scan (7x7x7)/Cube 0: Measurement grid: dx=5mm, dy=5mm, dz=5mm

Reference Value = 51.67 V/m; Power Drift = 0.00 dB

Peak SAR (extrapolated) = 6.20 W/kg

SAR(1 g) = 2.78 W/kg; SAR(10 g) = 1.28 W/kg

Maximum value of SAR (measured) = 4.75 W/kg



0 dB = 4.75 W/kg = 6.77 dBW/kg

System Check_Head_3500MHz

DUT: D3500V2-1014

Communication System: CW; Frequency: 3500 MHz; Duty Cycle: 1:1

Medium: HSL_3300-HSL_4200_211121 Medium parameters used: $f = 3500$ MHz; $\sigma = 2.914$ S/m; $\epsilon_r =$

37.958 ; $\rho = 1000$ kg/m³

Ambient Temperature : 23.5 °C ; Liquid Temperature : 22.5 °C

DASY5 Configuration

- Probe: EX3DV4 - SN3578; ConvF(7.06, 7.06, 7.06) @ 3500 MHz; Calibrated: 2021/6/23
- Sensor-Surface: 1.4mm (Mechanical Surface Detection)
- Electronics: DAE4 Sn1311; Calibrated: 2021/8/20
- Phantom: Twin-SAM V5.0 (30deg probe tilt); Type: QD 000 P40 CD; Serial: 1815
- Measurement SW: DASY52, Version 52.10 (4); SEMCAD X Version 14.6.14 (7483)

Pin=100mW/Area Scan (71x71x1): Interpolated grid: dx=1.200 mm, dy=1.200 mm

Maximum value of SAR (interpolated) = 14.1 W/kg

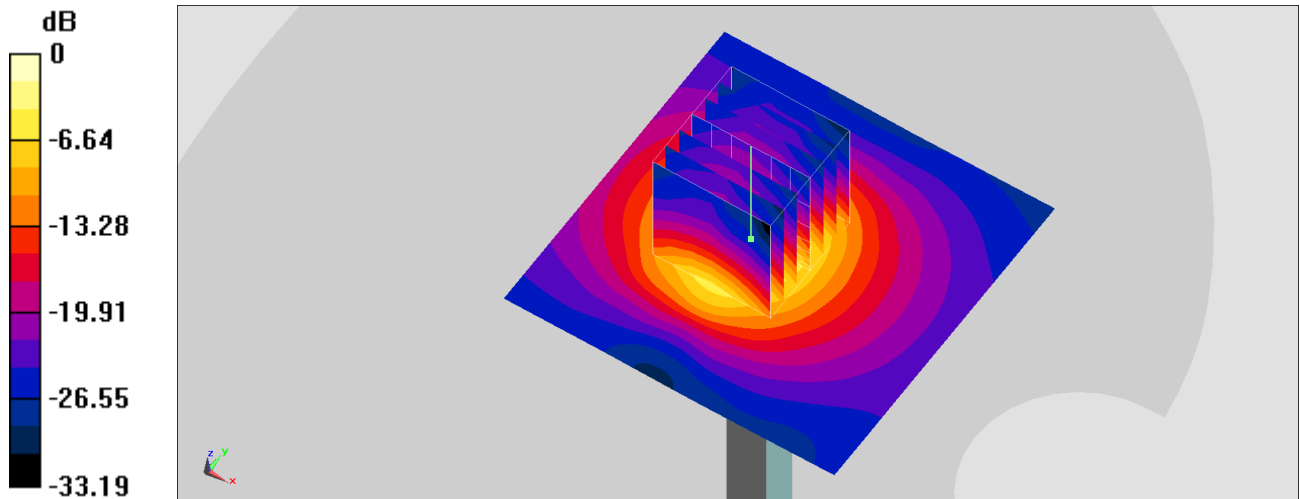
Pin=100mW/Zoom Scan (7x7x8)/Cube 0: Measurement grid: dx=5mm, dy=5mm, dz=1.4mm

Reference Value = 51.21 V/m; Power Drift = -0.06 dB

Peak SAR (extrapolated) = 17.8 W/kg

SAR(1 g) = 6.31 W/kg; SAR(10 g) = 2.35 W/kg

Maximum value of SAR (measured) = 12.8 W/kg



0 dB = 12.8 W/kg = 11.07 dBW/kg

System Check_Head_3500MHz

DUT: D3500V2-1014

Communication System: CW; Frequency: 3500 MHz; Duty Cycle: 1:1

Medium: HSL_3300-HSL_4200_211124 Medium parameters used: $f = 3500$ MHz; $\sigma = 2.903$ S/m; $\epsilon_r =$

37.858 ; $\rho = 1000$ kg/m³

Ambient Temperature : 23.5 °C ; Liquid Temperature : 22.5 °C

DASY5 Configuration

- Probe: EX3DV4 - SN3578; ConvF(7.06, 7.06, 7.06) @ 3500 MHz; Calibrated: 2021/6/23

- Sensor-Surface: 1.4mm (Mechanical Surface Detection)

- Electronics: DAE4 Sn1311; Calibrated: 2021/8/20

- Phantom: Twin-SAM V5.0 (30deg probe tilt); Type: QD 000 P40 CD; Serial: 1815

- Measurement SW: DASY52, Version 52.10 (4); SEMCAD X Version 14.6.14 (7483)

Pin=100mW/Area Scan (71x71x1): Interpolated grid: dx=1.200 mm, dy=1.200 mm

Maximum value of SAR (interpolated) = 15.2 W/kg

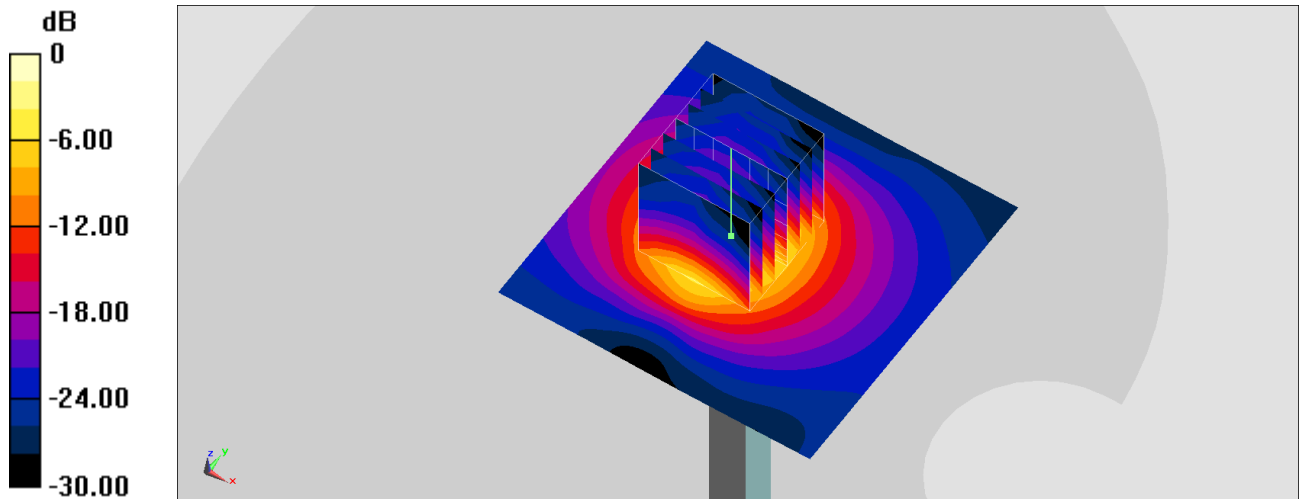
Pin=100mW/Zoom Scan (7x7x8)/Cube 0: Measurement grid: dx=5mm, dy=5mm, dz=1.4mm

Reference Value = 51.21 V/m; Power Drift = -0.06 dB

Peak SAR (extrapolated) = 18.7 W/kg

SAR(1 g) = 6.39 W/kg; SAR(10 g) = 2.72 W/kg

Maximum value of SAR (measured) = 13.2 W/kg



0 dB = 13.2 W/kg = 11.91 dBW/kg

System Check_Head_3700MHz

DUT: D3700V2 - SN:1006

Communication System: CW; Frequency: 3700 MHz; Duty Cycle: 1:1

Medium: HSL_3300-HSL_4200_211121 Medium parameters used: $f = 3700$ MHz; $\sigma = 3.119$ S/m; $\epsilon_r =$

37.728 ; $\rho = 1000$ kg/m³

Ambient Temperature : 23.5 °C ; Liquid Temperature : 22.5 °C

DASY5 Configuration

- Probe: EX3DV4 - SN3578; ConvF(6.96, 6.96, 6.96) @ 3700 MHz; Calibrated: 2021/6/23

- Sensor-Surface: 1.4mm (Mechanical Surface Detection)

- Electronics: DAE4 Sn1311; Calibrated: 2021/8/20

- Phantom: Twin-SAM V5.0 (30deg probe tilt); Type: QD 000 P40 CD; Serial: 1815

- Measurement SW: DASY52, Version 52.10 (4); SEMCAD X Version 14.6.14 (7483)

Pin=100mW/Area Scan (71x71x1): Interpolated grid: dx=1.200 mm, dy=1.200 mm

Maximum value of SAR (interpolated) = 13.2 W/kg

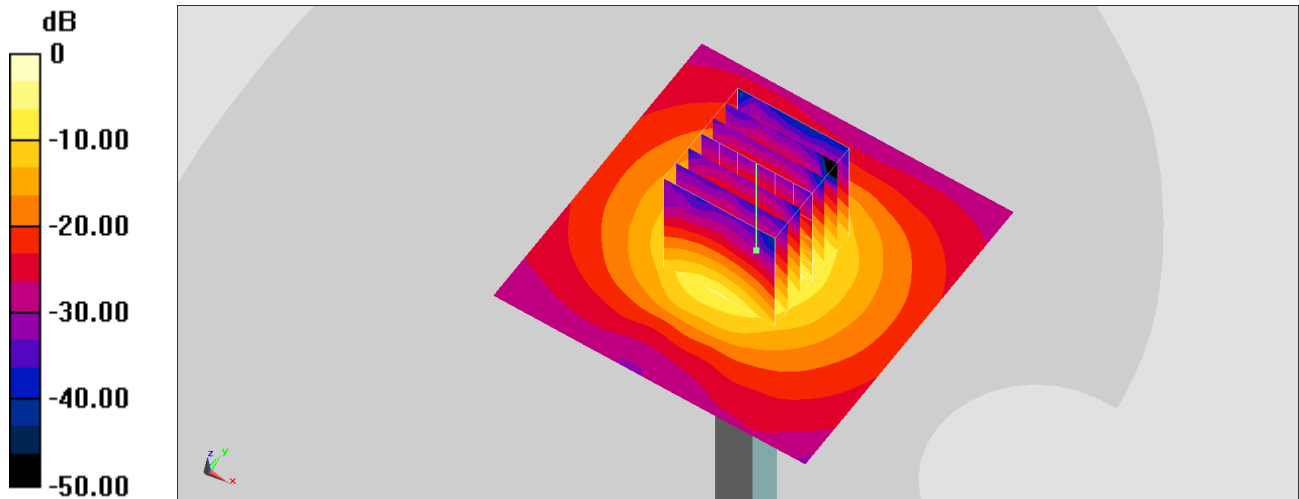
Pin=100mW/Zoom Scan (7x7x8)/Cube 0: Measurement grid: dx=5mm, dy=5mm, dz=1.4mm

Reference Value = 61.52 V/m; Power Drift = -0.18 dB

Peak SAR (extrapolated) = 18.7 W/kg

SAR(1 g) = 6.54 W/kg; SAR(10 g) = 2.36 W/kg

Maximum value of SAR (measured) = 13.40 W/kg



0 dB = 13.40 W/kg = 11.3 dBW/kg

System Check_Head_3700MHz

DUT: D3700V2 - SN:1006

Communication System: CW; Frequency: 3700 MHz; Duty Cycle: 1:1

Medium: HSL_3300-HSL_4200_211124 Medium parameters used: $f = 3700 \text{ MHz}$; $\sigma = 3.105 \text{ S/m}$; $\epsilon_r =$

37.648 ; $\rho = 1000 \text{ kg/m}^3$

Ambient Temperature : $23.5 \text{ }^\circ\text{C}$; Liquid Temperature : $22.5 \text{ }^\circ\text{C}$

DASY5 Configuration

- Probe: EX3DV4 - SN3578; ConvF(6.96, 6.96, 6.96) @ 3700 MHz; Calibrated: 2021/6/23

- Sensor-Surface: 1.4mm (Mechanical Surface Detection)

- Electronics: DAE4 Sn1311; Calibrated: 2021/8/20

- Phantom: Twin-SAM V5.0 (30deg probe tilt); Type: QD 000 P40 CD; Serial: 1815

- Measurement SW: DASY52, Version 52.10 (4); SEMCAD X Version 14.6.14 (7483)

Pin=100mW/Area Scan (71x71x1): Interpolated grid: $dx=1.200 \text{ mm}$, $dy=1.200 \text{ mm}$

Maximum value of SAR (interpolated) = 10.5 W/kg

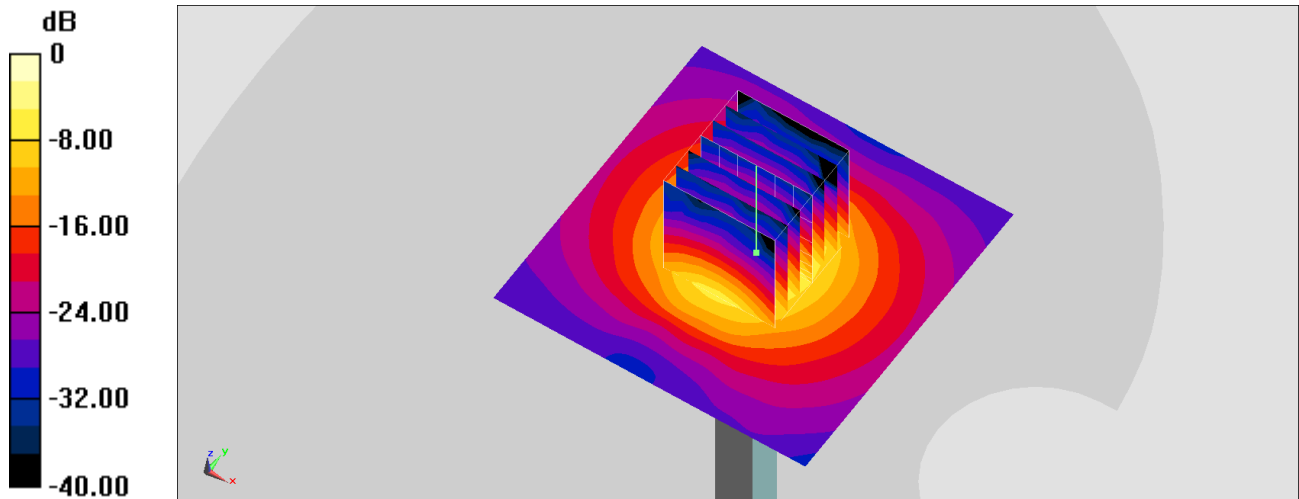
Pin=100mW/Zoom Scan (7x7x8)/Cube 0: Measurement grid: $dx=5\text{mm}$, $dy=5\text{mm}$, $dz=1.4\text{mm}$

Reference Value = 61.52 V/m ; Power Drift = -0.11 dB

Peak SAR (extrapolated) = 14.3 W/kg

SAR(1 g) = 6.61 W/kg ; SAR(10 g) = 2.61 W/kg

Maximum value of SAR (measured) = 9.97 W/kg



0 dB = $9.97 \text{ W/kg} = 9.86 \text{ dBW/kg}$

System Check_Head_3900MHz

DUT: D3900V2-1017-3900

Communication System: CW; Frequency: 3900 MHz; Duty Cycle: 1:1

Medium: HSL_3300-HSL_4200_211121 Medium parameters used: $f = 3900$ MHz; $\sigma = 3.324$ S/m; $\epsilon_r =$

37.497 ; $\rho = 1000$ kg/m³

Ambient Temperature : 23.5 °C ; Liquid Temperature : 22.5 °C

DASY5 Configuration

- Probe: EX3DV4 - SN3578; ConvF(6.81, 6.81, 6.81) @ 3900 MHz; Calibrated: 2021/6/23
- Sensor-Surface: 1.4mm (Mechanical Surface Detection)
- Electronics: DAE4 Sn1311; Calibrated: 2021/8/20
- Phantom: Twin-SAM V5.0 (30deg probe tilt); Type: QD 000 P40 CD; Serial: 1815
- Measurement SW: DASY52, Version 52.10 (4); SEMCAD X Version 14.6.14 (7483)

Pin=50mW/Area Scan (71x71x1): Interpolated grid: dx=1.200 mm, dy=1.200 mm

Maximum value of SAR (interpolated) = 7.21 W/kg

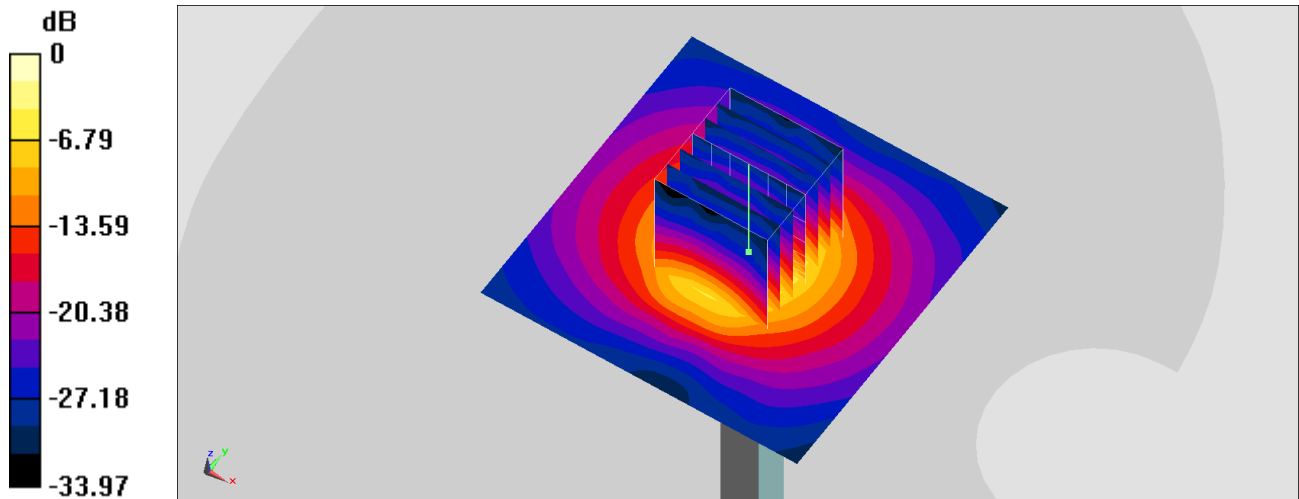
Pin=50mW/Zoom Scan (7x7x8)/Cube 0: Measurement grid: dx=5mm, dy=5mm, dz=1.4mm

Reference Value = 49.25 V/m; Power Drift = -0.08 dB

Peak SAR (extrapolated) = 10.2 W/kg

SAR(1 g) = 3.55 W/kg; SAR(10 g) = 1.3 W/kg

Maximum value of SAR (measured) = 7.11 W/kg



0 dB = 7.11 W/kg = 8.52 dBW/kg

System Check_Head_5250MHz

DUT: D5GHzV2-1006

Communication System: CW; Frequency: 5250 MHz; Duty Cycle: 1:1

Medium: HSL_5G_211122 Medium parameters used: $f = 5250$ MHz; $\sigma = 4.601$ S/m; $\epsilon_r = 35.923$; $\rho = 1000$ kg/m³

Ambient Temperature : 23.5 °C ; Liquid Temperature : 22.5 °C

DASY5 Configuration

- Probe: EX3DV4 - SN3578; ConvF(5.39, 5.39, 5.39) @ 5250 MHz; Calibrated: 2021/6/23
- Sensor-Surface: 1.4mm (Mechanical Surface Detection)
- Electronics: DAE4 Sn1311; Calibrated: 2021/8/20
- Phantom: Twin-SAM V5.0 (30deg probe tilt); Type: QD 000 P40 CD; Serial: 1815
- Measurement SW: DASY52, Version 52.10 (4); SEMCAD X Version 14.6.14 (7483)

Pin=50mW/Area Scan (71x71x1): Interpolated grid: dx=1.000 mm, dy=1.000 mm

Maximum value of SAR (interpolated) = 8.93 W/kg

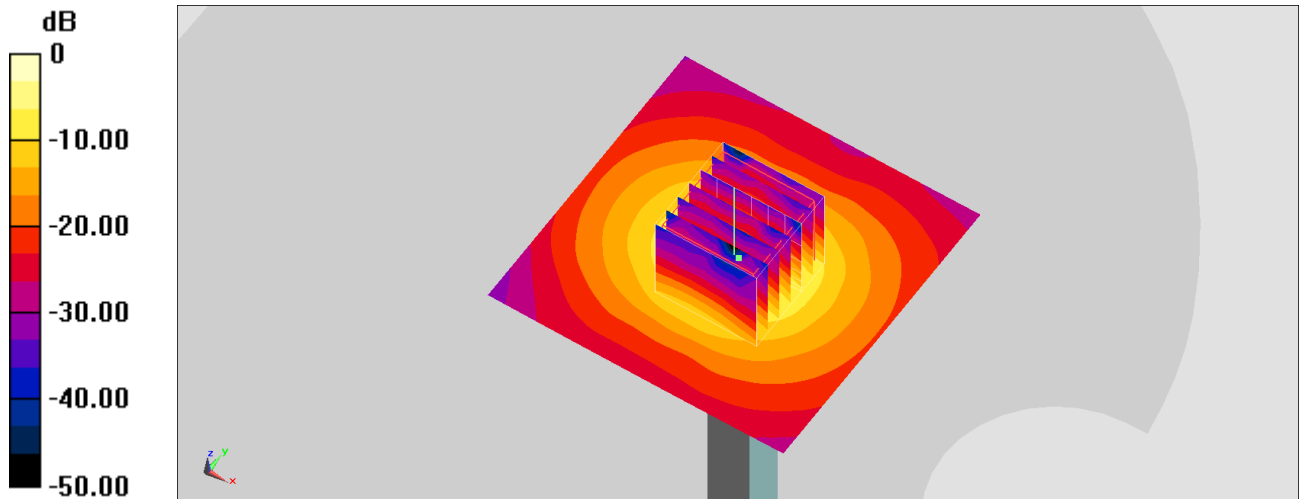
Pin=50mW/Zoom Scan (7x7x7)/Cube 0: Measurement grid: dx=4mm, dy=4mm, dz=1.4mm

Reference Value = 51.13 V/m; Power Drift = -0.11 dB

Peak SAR (extrapolated) = 13.7 W/kg

SAR(1 g) = 3.66 W/kg; SAR(10 g) = 1.06 W/kg

Maximum value of SAR (measured) = 8.48 W/kg



0 dB = 8.48 W/kg = 9.28 dBW/kg

System Check_Head_5600MHz

DUT: D5GHzV2-1006

Communication System: CW; Frequency: 5600 MHz; Duty Cycle: 1:1

Medium: HSL_5G_211122 Medium parameters used: $f = 5600$ MHz; $\sigma = 4.934$ S/m; $\epsilon_r = 35.463$; $\rho = 1000$ kg/m³

Ambient Temperature : 23.5 °C ; Liquid Temperature : 22.5 °C

DASY5 Configuration

- Probe: EX3DV4 - SN3578; ConvF(5, 5, 5) @ 5600 MHz; Calibrated: 2021/6/23
- Sensor-Surface: 1.4mm (Mechanical Surface Detection)
- Electronics: DAE4 Sn1311; Calibrated: 2021/8/20
- Phantom: Twin-SAM V5.0 (30deg probe tilt); Type: QD 000 P40 CD; Serial: 1815
- Measurement SW: DASY52, Version 52.10 (4); SEMCAD X Version 14.6.14 (7483)

Pin=50mW/Area Scan (71x71x1): Interpolated grid: dx=1.000 mm, dy=1.000 mm

Maximum value of SAR (interpolated) = 9.19 W/kg

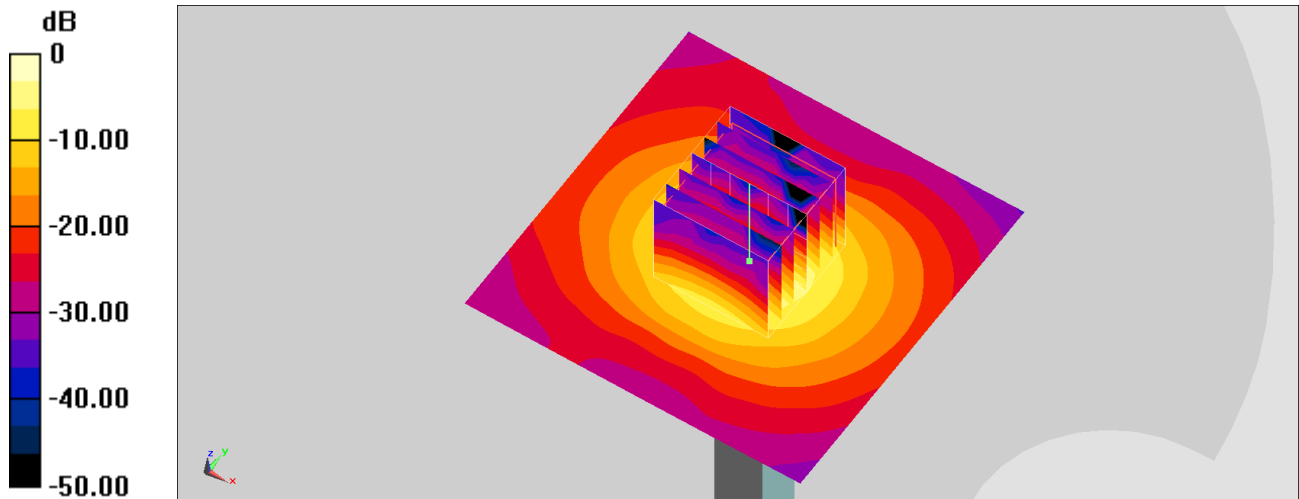
Pin=50mW/Zoom Scan (7x7x7)/Cube 0: Measurement grid: dx=4mm, dy=4mm, dz=1.4mm

Reference Value = 48.06 V/m; Power Drift = -0.11 dB

Peak SAR (extrapolated) = 15.7 W/kg

SAR(1 g) = 3.79 W/kg; SAR(10 g) = 1.11 W/kg

Maximum value of SAR (measured) = 9.33 W/kg



0 dB = 9.33 W/kg = 9.70 dBW/kg

System Check_Head_5750MHz

DUT: D5GHzV2-1006

Communication System: CW; Frequency: 5750 MHz; Duty Cycle: 1:1

Medium: HSL_5G_211122 Medium parameters used: $f = 5750$ MHz; $\sigma = 5.095$ S/m; $\epsilon_r = 35.231$; $\rho = 1000$ kg/m³

Ambient Temperature : 23.5 °C ; Liquid Temperature : 22.5 °C

DASY5 Configuration

- Probe: EX3DV4 - SN3578; ConvF(5.05, 5.05, 5.05) @ 5750 MHz; Calibrated: 2021/6/23
- Sensor-Surface: 1.4mm (Mechanical Surface Detection)
- Electronics: DAE4 Sn1311; Calibrated: 2021/8/20
- Phantom: Twin-SAM V5.0 (30deg probe tilt); Type: QD 000 P40 CD; Serial: 1815
- Measurement SW: DASY52, Version 52.10 (4); SEMCAD X Version 14.6.14 (7483)

Pin=50mW/Area Scan (71x71x1): Interpolated grid: dx=1.000 mm, dy=1.000 mm

Maximum value of SAR (interpolated) = 7.92 W/kg

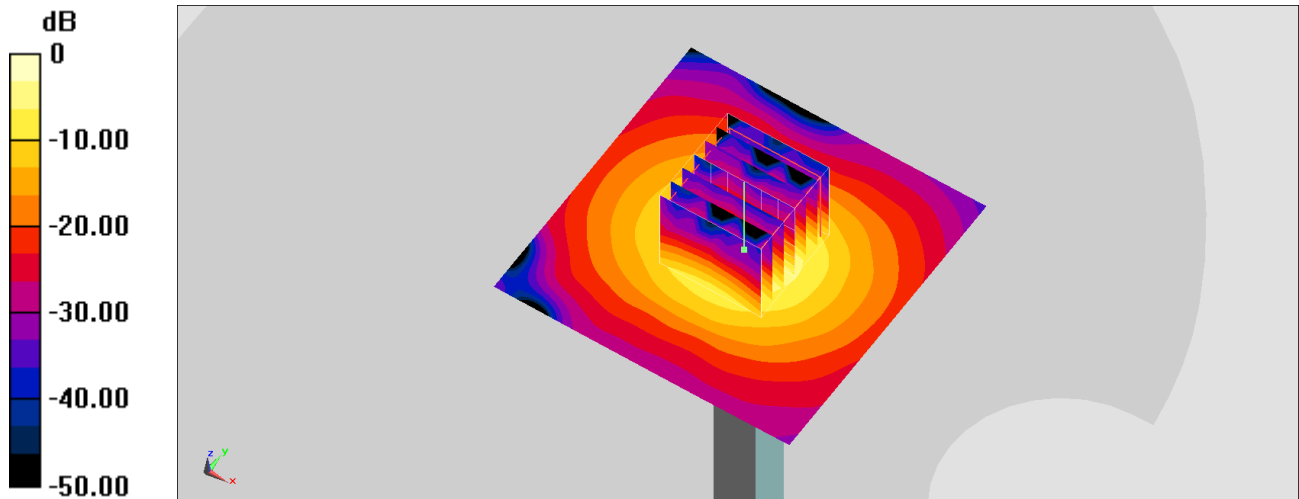
Pin=50mW/Zoom Scan (7x7x7)/Cube 0: Measurement grid: dx=4mm, dy=4mm, dz=1.4mm

Reference Value = 44.68 V/m; Power Drift = -0.11 dB

Peak SAR (extrapolated) = 14.8 W/kg

SAR(1 g) = 3.68 W/kg; SAR(10 g) = 1.12 W/kg

Maximum value of SAR (measured) = 8.46 W/kg



0 dB = 8.46 W/kg = 9.27 dBW/kg

System Check_Head_6500MHz

Communication System: ; Frequency: 6500.0

Medium: HSL_6G_211123. Medium parameters used: $f= 6500.0$ MHz; $\sigma= 6.07$ S/m; $\epsilon_r = 35.3$

Ambient Temperature: 23.5°C; Liquid Temperature: 22.5°C

DASY6 Configuration:

- Probe: EX3DV4 - SN3642; ConvF(4.95, 4.95, 4.95); Calibrated: 2021-04-26
- Sensor-Surface: 1.4 mm
- Electronics: DAE4 Sn853; Calibrated: 2021-07-14
- Phantom: ELI V5.0 (20deg probe tilt); Serial: 1238; Section: Flat
- Measurement Software: cDASY6 V6.6.0.13926
- UID: , 0--
- MAIA: Area Scan: N/A; Zoom Scan: N/A

Area Scan (51.0 mm x 85.0 mm): Measurement Grid: 8.5 mm x 8.5 mm

SAR (1g) = 25.0 W/kg; SAR (10g) = 4.86 W/kg;

Zoom Scan (23.8 mm x 23.8 mm x 22.0 mm): Measurement Grid: 3.4 mm x 3.4 mm x 1.4 mm

Power Drift = -0.17 dB

SAR (1g) = 27.3 W/kg; SAR (10g) = 5.19 W/kg;

