

## System Check\_Head\_835MHz

Communication System: ; Frequency: 835.0

Medium: HSL\_850\_211202. Medium parameters used:  $f = 835.0$  MHz;  $\sigma = 0.919$  S/m;  $\epsilon_r = 41.6$

Ambient Temperature: 23.5°C; Liquid Temperature: 22.5°C

DASY6 Configuration:

- Probe: EX3DV4 - SN3931; ConvF(9.80, 9.80, 9.80); Calibrated: 2021-10-21
- Sensor-Surface: 1.4 mm
- Electronics: DAE4 Sn1424; Calibrated: 2021-01-19
- Phantom: Twin-SAM V4.0 (30deg probe tilt); Serial: 1488; Section: Flat
- Measurement Software: cDASY6 V6.6.0.13926
- UID: CW, 0--
- MAIA: Area Scan: N/A; Zoom Scan: N/A

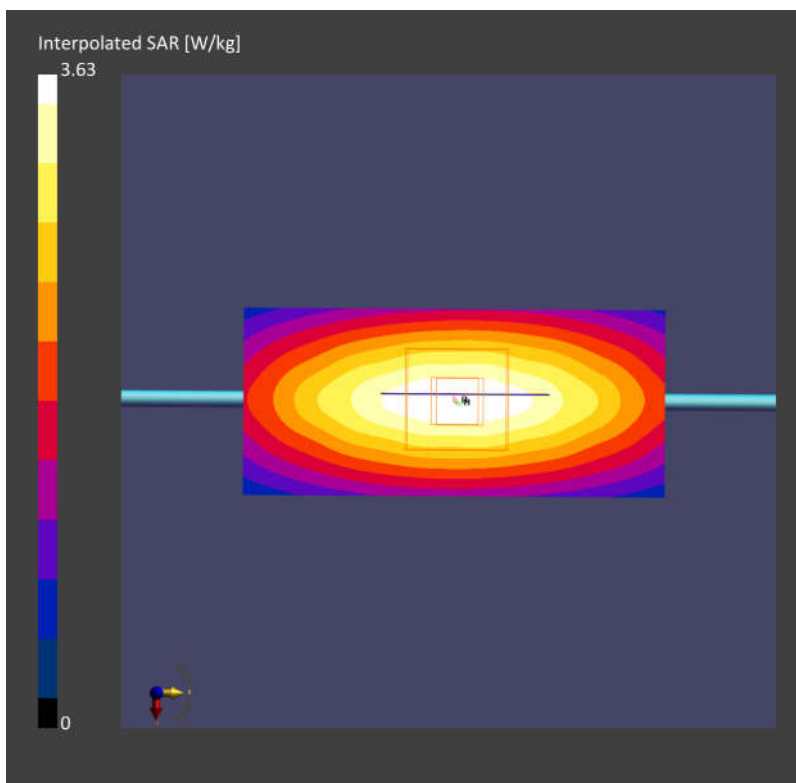
**Area Scan (40.0 mm x 90.0 mm):** Measurement Grid: 10.0 mm x 15.0 mm

SAR (1g) = 2.46 W/kg; SAR (10g) = 1.65 W/kg;

**Zoom Scan (32.0 mm x 32.0 mm x 30.0 mm):** Measurement Grid: 6.0 mm x 6.0 mm x 1.5 mm

Power Drift = -0.13 dB

SAR (1g) = 2.48 W/kg; SAR (10g) = 1.66 W/kg;



## System Check\_Head\_1900MHz

Communication System: ; Frequency: 1900.0

Medium: HSL\_1900\_211202. Medium parameters used:  $f= 1900.0$  MHz;  $\sigma= 1.43$  S/m;  $\epsilon_r = 41.1$

Ambient Temperature: 23.5°C; Liquid Temperature: 22.5°C

DASY6 Configuration:

- Probe: EX3DV4 - SN3931; ConvF(8.25, 8.25, 8.25); Calibrated: 2021-10-21
- Sensor-Surface: 1.4 mm
- Electronics: DAE4 Sn1424; Calibrated: 2021-01-19
- Phantom: Twin-SAM V4.0 (30deg probe tilt); Serial: 1488; Section: Flat
- Measurement Software: cDASY6 V6.6.0.13926
- UID: CW, 0--
- MAIA: Area Scan: N/A; Zoom Scan: N/A

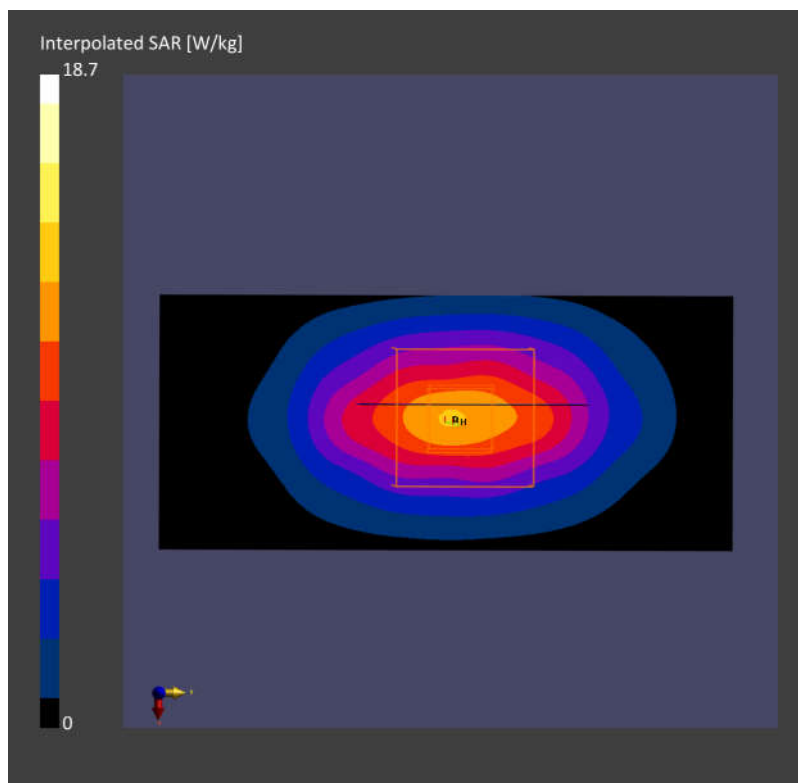
**Area Scan (40.0 mm x 90.0 mm):** Measurement Grid: 10.0 mm x 15.0 mm

SAR (1g) = 10.15 W/kg; SAR (10g) = 5.31 W/kg;

**Zoom Scan (32.0 mm x 32.0 mm x 30.0 mm):** Measurement Grid: 6.0 mm x 6.0 mm x 1.5 mm

Power Drift = -0.11 dB

SAR (1g) = 10.14 W/kg; SAR (10g) = 5.27 W/kg;



## System Check\_Head\_3900MHz

Communication System: ; Frequency: 3900.0

Medium: HSL\_3900\_211202. Medium parameters used:  $f= 3900.0$  MHz;  $\sigma= 3.32$  S/m;  $\epsilon_r = 36.7$

Ambient Temperature: 23.5°C; Liquid Temperature: 22.5°C

DASY6 Configuration:

- Probe: EX3DV4 - SN3931; ConvF(6.55, 6.55, 6.55); Calibrated: 2021-10-21
- Sensor-Surface: 1.4 mm
- Electronics: DAE4 Sn1424; Calibrated: 2021-01-19
- Phantom: Twin-SAM V4.0 (30deg probe tilt); Serial: 1488; Section: Flat
- Measurement Software: cDASY6 V6.6.0.13926
- UID: CW, 0--
- MAIA: Area Scan: N/A; Zoom Scan: N/A

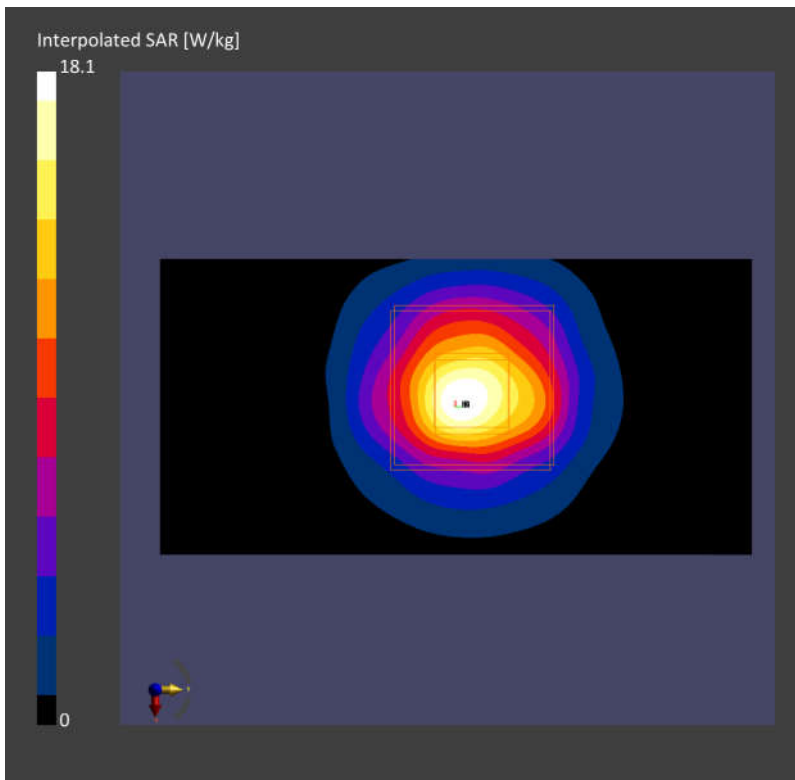
**Area Scan (40.0 mm x 80.0 mm):** Measurement Grid: 10.0 mm x 10.0 mm

SAR (1g) = 6.49 W/kg; SAR (10g) = 2.41 W/kg;

**Zoom Scan (28.0 mm x 28.0 mm x 28.0 mm):** Measurement Grid: 5.0 mm x 5.0 mm x 1.4 mm

Power Drift = 0.05 dB

SAR (1g) = 6.92 W/kg; SAR (10g) = 2.53 W/kg;



Measurement Report for Device  
Device Under Test Properties

Model, Manufacturer	Dimensions [mm]	IMEI	DUT Type
Device,	100.0 x 100.0 x 100.0		5G Verification Source

Exposure Conditions

Phantom Section	Position, Test Distance [mm]	Frequency [MHz]	Conversion Factor
5G	FRONT, 5.55	30000.0	1.0

Hardware Setup

Phantom	Medium	Probe, Calibration Date	DAE, Calibration Date
mmWave - xxxx	Air -	EUmmWV4 - SN9461_F1-55GHz, 2021-10-22	DAE4 Sn778, 2021-05-21

Scans Setup

Scan Type	5G Scan
Grid Extents [mm]	60.0 x 60.0
Grid Steps [lambda]	0.25 x 0.25
Sensor Surface [mm]	5.55

Measurement Results

Date	2021-12-03, 08:04
Avg. Area [cm <sup>2</sup> ]	4.00
psPDn+ [W/m <sup>2</sup> ]	32.2
psPDtot+ [W/m <sup>2</sup> ]	32.5
H <sub>max</sub> [A/m]	0.351
E <sub>max</sub> [V/m]	142
max(Stot) [W/m <sup>2</sup> ]	45.1
Power Drift [dB]	-0.11

