

Measurement Report for Device  
Device Under Test Properties

Model, Manufacturer	Dimensions [mm]	IMEI	DUT Type
Device,	96.0 x 53.0 x 17.0		Neckband

Exposure Conditions

Phantom Section	Position, Test Distance [mm]	Frequency [MHz]	Conversion Factor
5G	Front surface, 14.00	37000.0	1.0

Hardware Setup

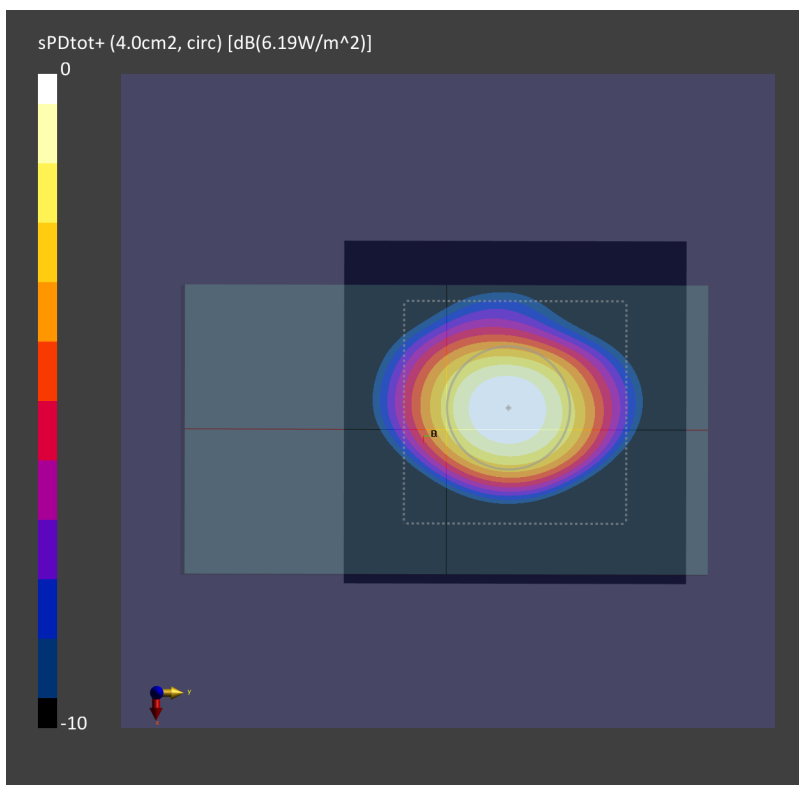
Phantom	Medium	Probe, Calibration Date	DAE, Calibration Date
mmWave - xxxx	Air -	EUmmWV4 - SN9461_F1-55GHz, 2021-10-22	DAE4 Sn778, 2021-05-21

Scans Setup

Scan Type	5G Scan
Grid Extents [mm]	60.0 x 60.0
Grid Steps [lambda]	0.25 x 0.25
Sensor Surface [mm]	14.0

Measurement Results

Date	2021-11-12, 04:12
Avg. Area [cm <sup>2</sup> ]	4.00
psPDn+ [W/m <sup>2</sup> ]	5.92
psPDtot+ [W/m <sup>2</sup> ]	6.19
H <sub>max</sub> [A/m]	0.194
E <sub>max</sub> [V/m]	73.8
max(Stot) [W/m <sup>2</sup> ]	13.8
Power Drift [dB]	0.01



Measurement Report for Device  
Device Under Test Properties

Model, Manufacturer	Dimensions [mm]	IMEI	DUT Type
Device,	130.0 x 45.0 x 15.0		Neckband

Exposure Conditions

Phantom Section	Position, Test Distance [mm]	Frequency [MHz]	Conversion Factor
5G	Long Edge, 2.00	27925.0	1.0

Hardware Setup

Phantom	Medium	Probe, Calibration Date	DAE, Calibration Date
mmWave - xxxx	Air -	EUmmWV4 - SN9461_F1-55GHz, 2021-10-22	DAE4 Sn778, 2021-05-21

Scans Setup

Scan Type	5G Scan
Grid Extents [mm]	65.0 x 35.0
Grid Steps [lambda]	0.25 x 0.25
Sensor Surface [mm]	2.0

Measurement Results

Date	2021-11-16, 12:37
Avg. Area [cm <sup>2</sup> ]	4.00
psPDn+ [W/m <sup>2</sup> ]	5.13
psPDtot+ [W/m <sup>2</sup> ]	5.34
H <sub>max</sub> [A/m]	0.145
E <sub>max</sub> [V/m]	60.3
max(Stot) [W/m <sup>2</sup> ]	8.60
Power Drift [dB]	0.00

