

Measurement Report for Device
Device Under Test Properties

Model, Manufacturer	Dimensions [mm]	IMEI	DUT Type
Device,	100.0 x 100.0 x 100.0		5G Verification Source

Exposure Conditions

Phantom Section	Position, Test Distance [mm]	Frequency [MHz]	Conversion Factor
5G	FRONT, 5.55	30000.0	1.0

Hardware Setup

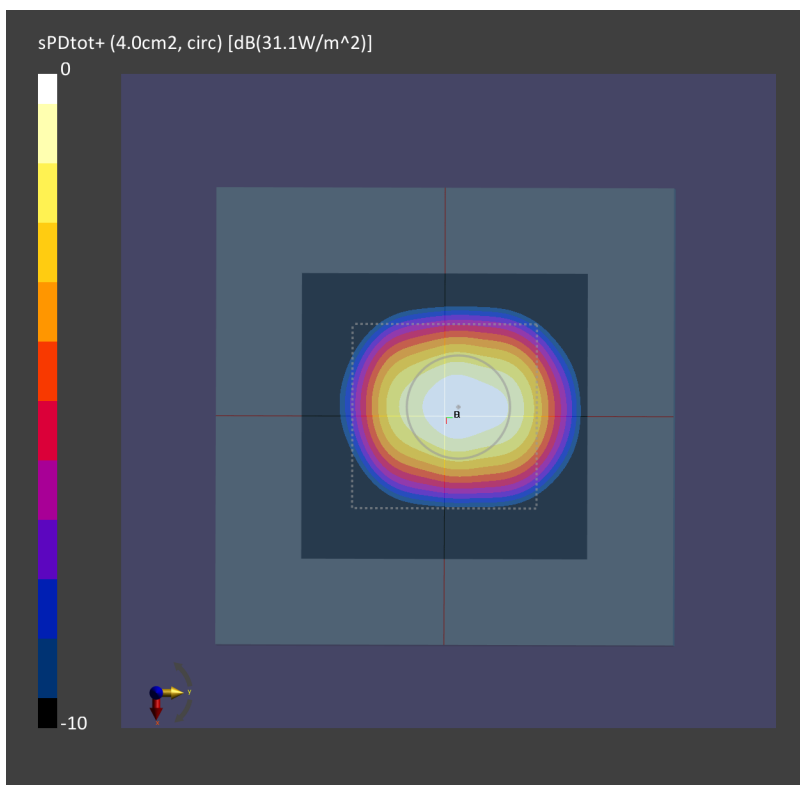
Phantom	Medium	Probe, Calibration Date	DAE, Calibration Date
mmWave - xxxx	Air -	EUmmWV4 - SN9441_F1-78GHz, 2020-11-24	DAE4 Sn853, 2021-07-14

Scans Setup

Scan Type	5G Scan
Grid Extents [mm]	60.0 x 60.0
Grid Steps [lambda]	0.25 x 0.25
Sensor Surface [mm]	5.55

Measurement Results

Date	2021-11-03, 06:27
Avg. Area [cm ²]	4.00
psPDn+ [W/m ²]	30.8
psPDtot+ [W/m ²]	31.1
H _{max} [A/m]	0.371
E _{max} [V/m]	138
max(Stot) [W/m ²]	46.3
Power Drift [dB]	-0.18



Measurement Report for Device
Device Under Test Properties

Model, Manufacturer	Dimensions [mm]	IMEI	DUT Type
Device,	100.0 x 100.0 x 100.0		5G Verification Source

Exposure Conditions

Phantom Section	Position, Test Distance [mm]	Frequency [MHz]	Conversion Factor
5G	FRONT, 5.55	30000.0	1.0

Hardware Setup

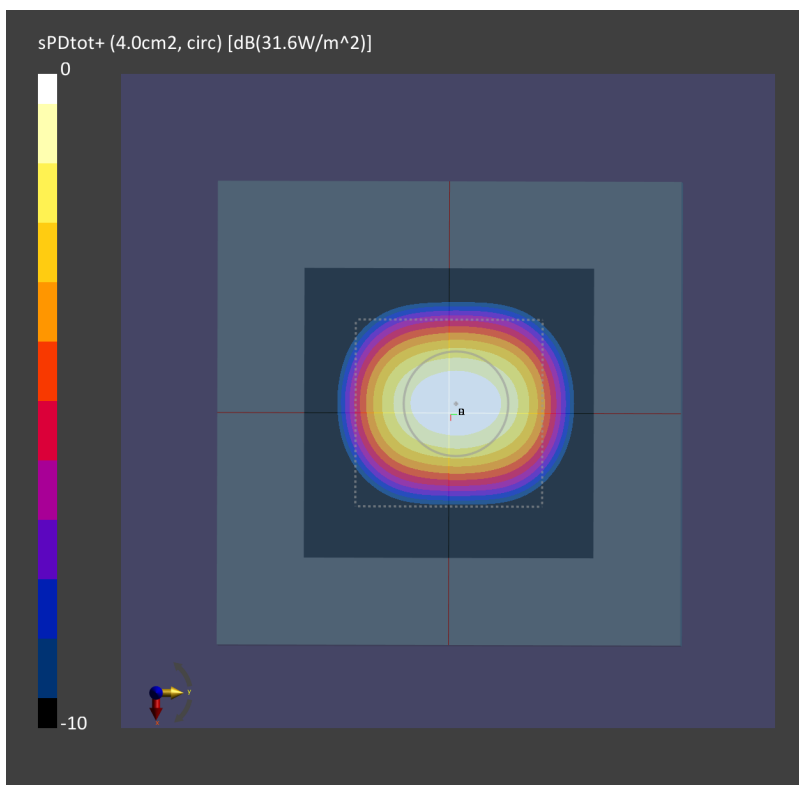
Phantom	Medium	Probe, Calibration Date	DAE, Calibration Date
mmWave - xxxx	Air -	EUmmWV4 - SN9461_F1-55GHz, 2021-10-22	DAE4 Sn778, 2021-05-21

Scans Setup

Scan Type	5G Scan
Grid Extents [mm]	60.0 x 60.0
Grid Steps [lambda]	0.25 x 0.25
Sensor Surface [mm]	5.55

Measurement Results

Date	2021-11-12, 08:04
Avg. Area [cm ²]	1.00
psPDn+ [W/m ²]	31.2
psPDtot+ [W/m ²]	31.6
H _{max} [A/m]	0.339
E _{max} [V/m]	131
max(Stot) [W/m ²]	31.7
Power Drift [dB]	-0.03



Measurement Report for Device
Device Under Test Properties

Model, Manufacturer	Dimensions [mm]	IMEI	DUT Type
Device,	100.0 x 100.0 x 100.0		5G Verification Source

Exposure Conditions

Phantom Section	Position, Test Distance [mm]	Frequency [MHz]	Conversion Factor
5G	FRONT, 5.55	30000.0	1.0

Hardware Setup

Phantom	Medium	Probe, Calibration Date	DAE, Calibration Date
mmWave - XXXX	Air -	EUmmWV4 - SN9461_F1-55GHz, 2021-10-22	DAE4 Sn778, 2021-05-21

Scans Setup

Scan Type	5G Scan
Grid Extents [mm]	60.0 x 60.0
Grid Steps [lambda]	0.25 x 0.25
Sensor Surface [mm]	5.55

Measurement Results

Date	2021-11-18, 10:36
Avg. Area [cm ²]	4.00
psPDn+ [W/m ²]	29.6
psPDtot+ [W/m ²]	30.0
H _{max} [A/m]	0.322
E _{max} [V/m]	124
max(S _{tot}) [W/m ²]	39.3
Power Drift [dB]	-0.04

