

11_LTE Band 66_20M_QPSK_1RB_0Offset_Right Cheek_Ch132572

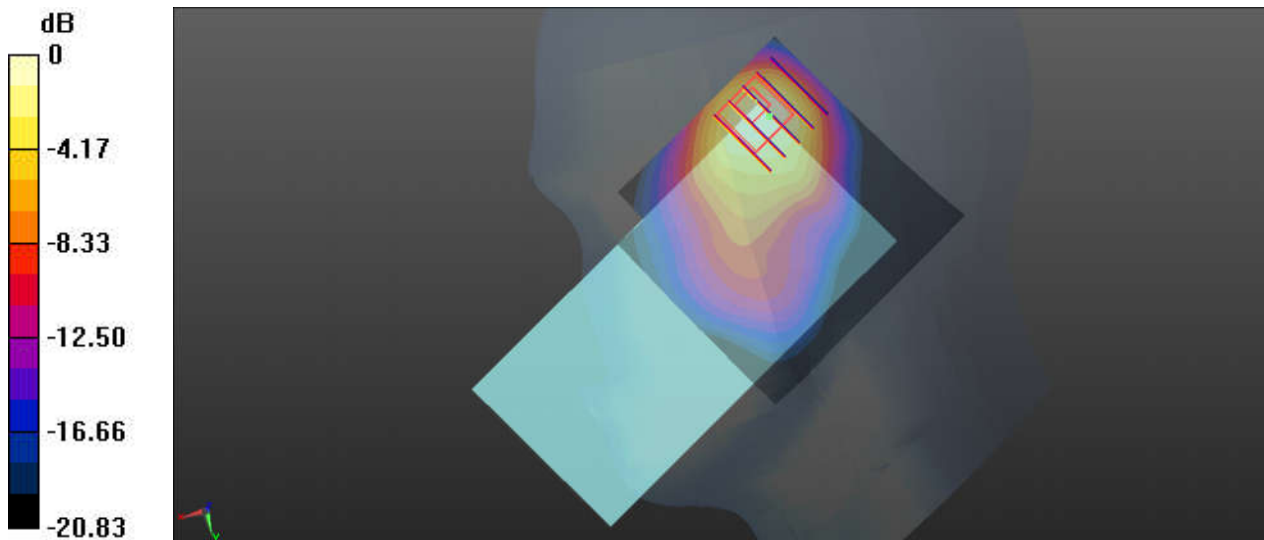
Communication System: UID 0, LTE (0); Frequency: 1770 MHz; Duty Cycle: 1:1
Medium: HSL_1750_220102 Medium parameters used: $f = 1770$ MHz; $\sigma = 1.405$ S/m; $\epsilon_r = 39.765$;
 $\rho = 1000$ kg/m³
Ambient Temperature : 23.2 °C; Liquid Temperature : 22.7 °C

DASY5 Configuration:

- Probe: EX3DV4 - SN7577; ConvF(8.4, 8.4, 8.4); Calibrated: 2021/11/23
- Sensor-Surface: 1.4mm (Mechanical Surface Detection)
- Electronics: DAE4 Sn910; Calibrated: 2021/7/15
- Phantom: SAM (Front) with CRP v5.0; Type: QD000P40CD; Serial: TP:1795
- Measurement SW: DASY52, Version 52.10 (3); SEMCAD X Version 14.6.13 (7474)

Ch132572/Area Scan (71x71x1): Interpolated grid: dx=1.500 mm, dy=1.500 mm
Maximum value of SAR (interpolated) = 1.63 W/kg

Ch132572/Zoom Scan (5x5x7)/Cube 0: Measurement grid: dx=8mm, dy=8mm, dz=5mm
Reference Value = 13.78 V/m; Power Drift = 0.04 dB
Peak SAR (extrapolated) = 2.12 W/kg
SAR(1 g) = 0.978 W/kg; SAR(10 g) = 0.489 W/kg
Maximum value of SAR (measured) = 1.74 W/kg



0 dB = 1.74 W/kg

12_LTE Band 25_20M_QPSK_1RB_0Offset_Right Cheek_Ch26590

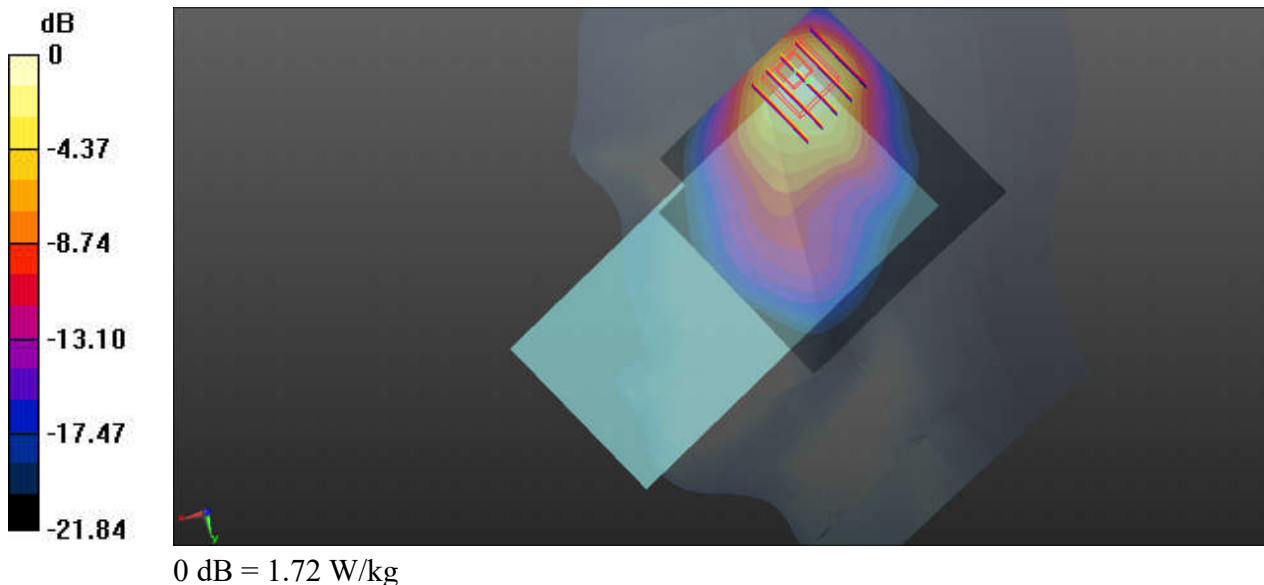
Communication System: UID 0, LTE (0); Frequency: 1905 MHz; Duty Cycle: 1:1
Medium: HSL_1900_220110 Medium parameters used: $f = 1905$ MHz; $\sigma = 1.457$ S/m; $\epsilon_r = 39.181$;
 $\rho = 1000$ kg/m³
Ambient Temperature : 23.5 °C; Liquid Temperature : 22.4 °C

DASY5 Configuration:

- Probe: EX3DV4 - SN7577; ConvF(8.13, 8.13, 8.13); Calibrated: 2021/11/23
- Sensor-Surface: 1.4mm (Mechanical Surface Detection)
- Electronics: DAE4 Sn910; Calibrated: 2021/7/15
- Phantom: SAM (Front) with CRP v5.0; Type: QD000P40CD; Serial: TP:1795
- Measurement SW: DASY52, Version 52.10 (3); SEMCAD X Version 14.6.13 (7474)

Ch26590/Area Scan (71x71x1): Interpolated grid: dx=1.500 mm, dy=1.500 mm
Maximum value of SAR (interpolated) = 1.62 W/kg

Ch26590/Zoom Scan (5x5x7)/Cube 0: Measurement grid: dx=8mm, dy=8mm, dz=5mm
Reference Value = 23.30 V/m; Power Drift = 0.04 dB
Peak SAR (extrapolated) = 2.14 W/kg
SAR(1 g) = 0.957 W/kg; SAR(10 g) = 0.462 W/kg
Maximum value of SAR (measured) = 1.72 W/kg



13_LTE Band 30_10M_QPSK_1RB_25Offset_Right Tilted_Ch27710

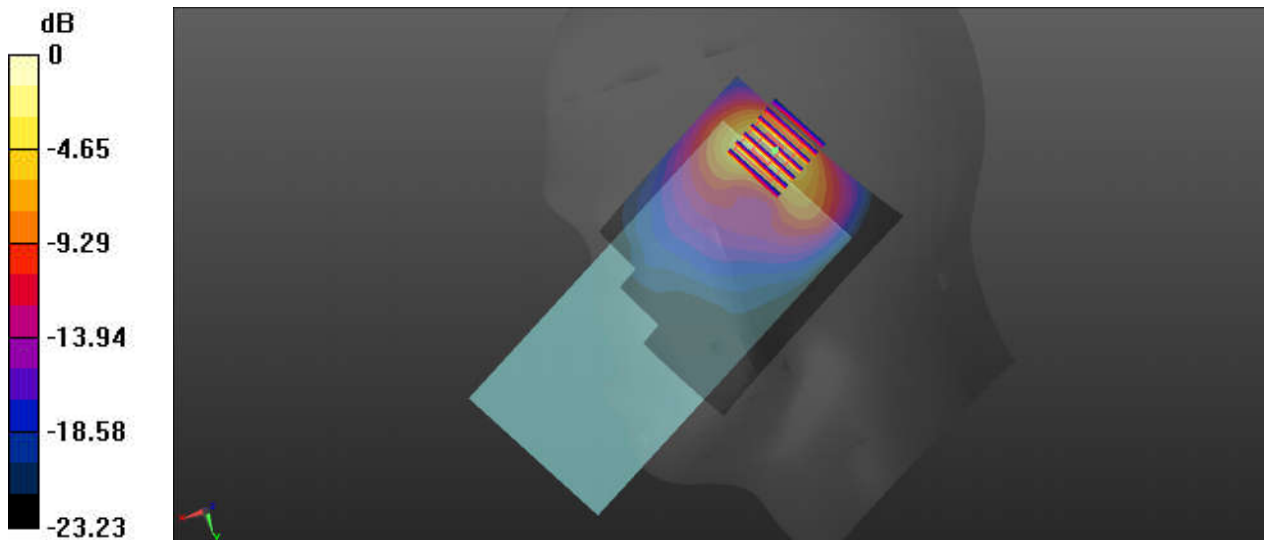
Communication System: UID 0, LTE (0); Frequency: 2310 MHz; Duty Cycle: 1:1
Medium: HSL_2300_220109 Medium parameters used: $f = 2310$ MHz; $\sigma = 1.743$ S/m; $\epsilon_r = 40.415$;
 $\rho = 1000$ kg/m³
Ambient Temperature : 23.6 °C; Liquid Temperature : 22.6 °C

DASY5 Configuration:

- Probe: EX3DV4 - SN7576; ConvF(7.91, 7.91, 7.91); Calibrated: 2021/4/26
- Sensor-Surface: 1.4mm (Mechanical Surface Detection)
- Electronics: DAE4 Sn1437; Calibrated: 2021/10/26
- Phantom: Twin-SAM V8.0 (Left); Type: QD 000 P41 AA; Serial: 2035
- Measurement SW: DASY52, Version 52.10 (4); SEMCAD X Version 14.6.14 (7483)

Ch27710/Area Scan (81x101x1): Interpolated grid: dx=1.200 mm, dy=1.200 mm
Maximum value of SAR (interpolated) = 1.26 W/kg

Ch27710/Zoom Scan (7x7x7)/Cube 0: Measurement grid: dx=5mm, dy=5mm, dz=5mm
Reference Value = 17.45 V/m; Power Drift = 0.02 dB
Peak SAR (extrapolated) = 1.83 W/kg
SAR(1 g) = 0.761 W/kg; SAR(10 g) = 0.328 W/kg
Maximum value of SAR (measured) = 1.30 W/kg



0 dB = 1.30 W/kg

14_LTE Band 7_20M_QPSK_1RB_0Offset_Left Cheek_0mm_Ch21350

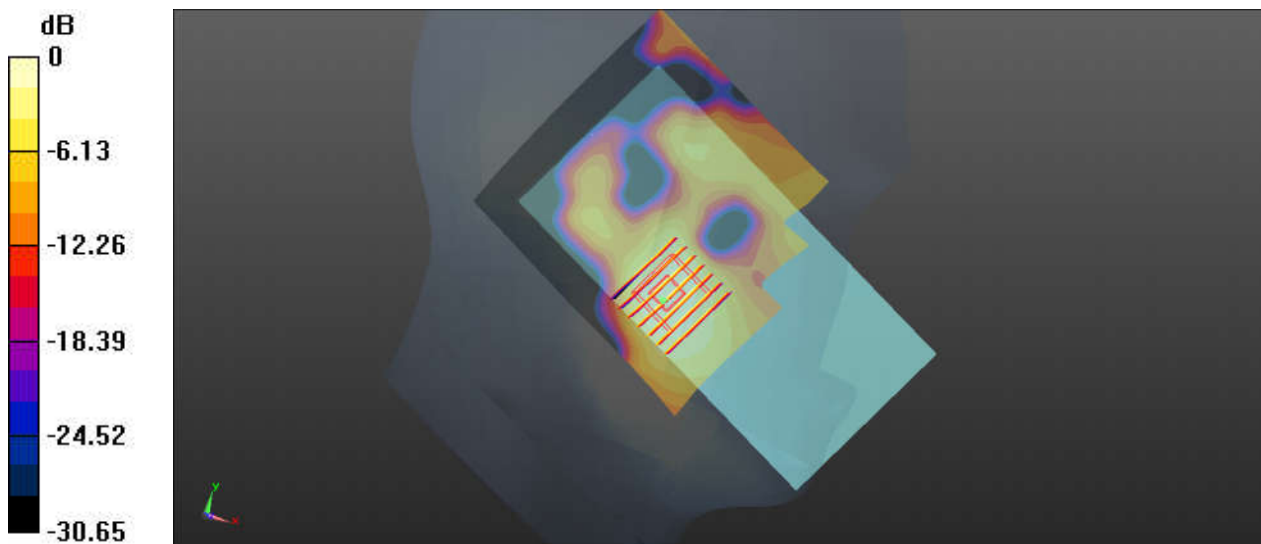
Communication System: UID 0, LTE (0); Frequency: 2560 MHz;Duty Cycle: 1:1
Medium: HSL_2600_220101 Medium parameters used: $f = 2560$ MHz; $\sigma = 1.952$ S/m; $\epsilon_r = 37.829$;
 $\rho = 1000$ kg/m³
Ambient Temperature : 23.6 °C; Liquid Temperature : 22.6 °C

DASY5 Configuration:

- Probe: ES3DV3 - SN3191; ConvF(4.47, 4.47, 4.47); Calibrated: 2021/2/19
- Sensor-Surface: 3mm (Mechanical Surface Detection)
- Electronics: DAE4 Sn910; Calibrated: 2021/7/15
- Phantom: SAM (Front) with CRP v5.0; Type: QD000P40CD; Serial: TP:1795
- Measurement SW: DASY52, Version 52.10 (3); SEMCAD X Version 14.6.13 (7474)

Ch21350/Area Scan (91x101x1): Interpolated grid: dx=1.200 mm, dy=1.200 mm
Maximum value of SAR (interpolated) = 0.300 W/kg

Ch21350/Zoom Scan (8x7x7)/Cube 0: Measurement grid: dx=5mm, dy=5mm, dz=5mm
Reference Value = 2.156 V/m; Power Drift = 0.1 dB
Peak SAR (extrapolated) = 0.408 W/kg
SAR(1 g) = 0.227 W/kg; SAR(10 g) = 0.118 W/kg
Maximum value of SAR (measured) = 0.278 W/kg



0 dB = 0.278 W/kg

15_LTE Band 41_20M_QPSK_50RB_0Offset_Right Tilted_Ch40620

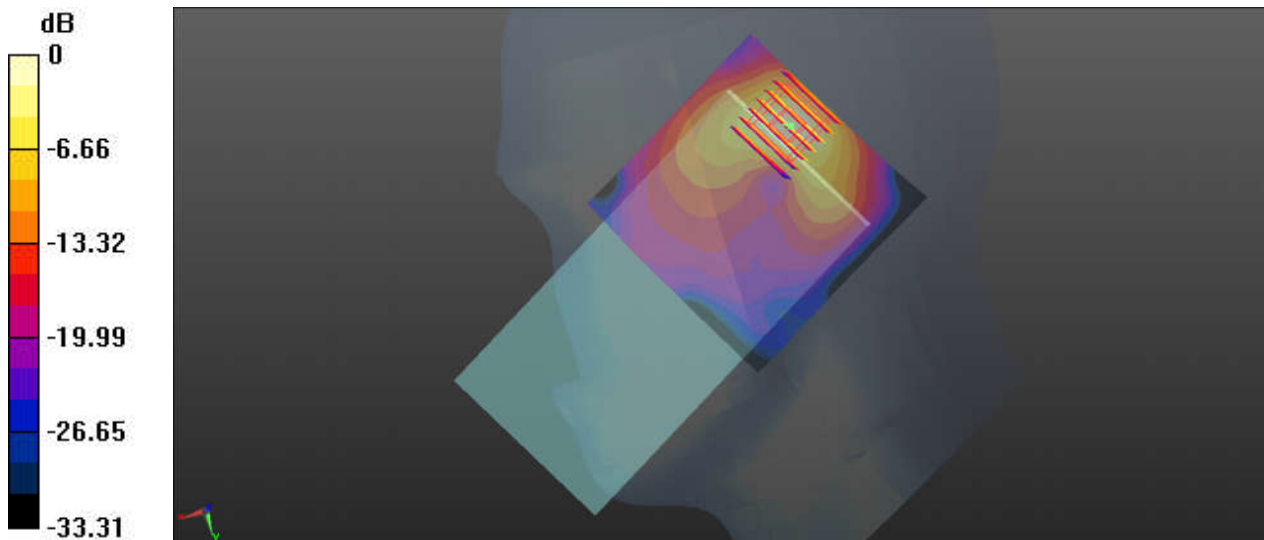
Communication System: UID 0, LTE (0); Frequency: 2593 MHz; Duty Cycle: 1:1.59
Medium: HSL_2600_220108 Medium parameters used: $f = 2593$ MHz; $\sigma = 1.928$ S/m; $\epsilon_r = 37.651$;
 $\rho = 1000$ kg/m³
Ambient Temperature : 23.6 °C; Liquid Temperature : 22.8 °C

DASY5 Configuration:

- Probe: EX3DV4 - SN7577; ConvF(7.68, 7.68, 7.68); Calibrated: 2021/11/23
- Sensor-Surface: 1.4mm (Mechanical Surface Detection)
- Electronics: DAE4 Sn910; Calibrated: 2021/7/15
- Phantom: SAM (Front) with CRP v5.0; Type: QD000P40CD; Serial: TP:1795
- Measurement SW: DASY52, Version 52.10 (3); SEMCAD X Version 14.6.13 (7474)

Ch40620/Area Scan (81x81x1): Interpolated grid: dx=1.200 mm, dy=1.200 mm
Maximum value of SAR (interpolated) = 1.59 W/kg

Ch40620/Zoom Scan (7x7x7)/Cube 0: Measurement grid: dx=5mm, dy=5mm, dz=5mm
Reference Value = 12.95 V/m; Power Drift = 0.12 dB
Peak SAR (extrapolated) = 2.28 W/kg
SAR(1 g) = 0.938 W/kg; SAR(10 g) = 0.381 W/kg
Maximum value of SAR (measured) = 1.75 W/kg



0 dB = 1.75 W/kg

16_LTE Band 48_20M_QPSK_1RB_99Offset_Right Cheek_Ch55340

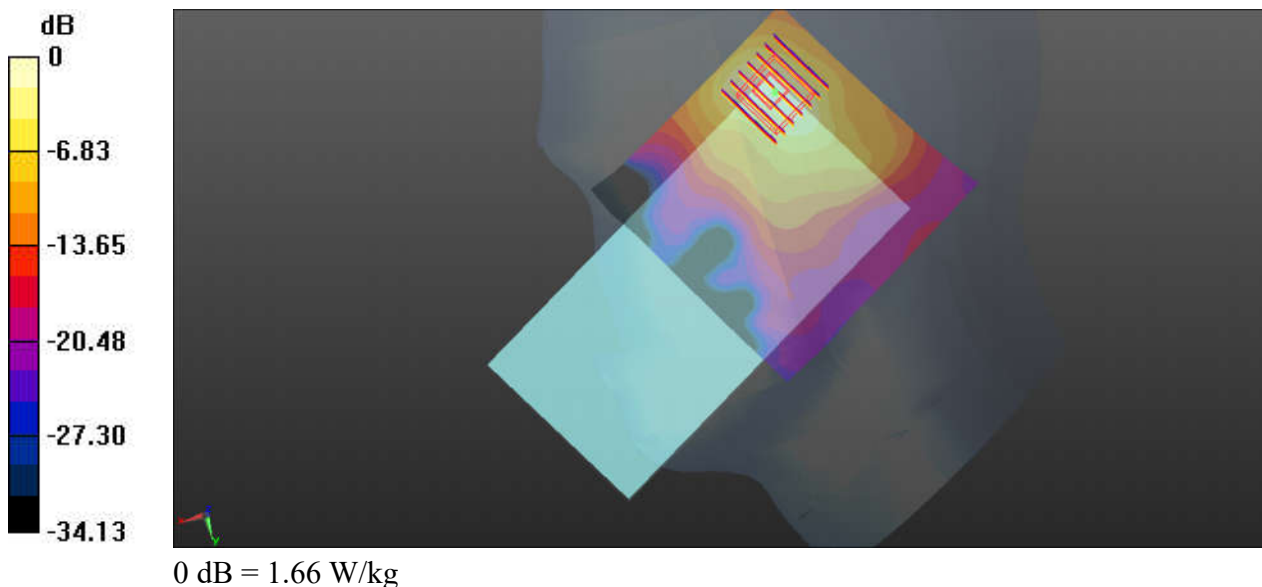
Communication System: UID 0, LTE (0); Frequency: 3560 MHz; Duty Cycle: 1:1.59
Medium: HSL_3500_220113 Medium parameters used: $f = 3560$ MHz; $\sigma = 2.953$ S/m; $\epsilon_r = 38.539$;
 $\rho = 1000$ kg/m³
Ambient Temperature : 23.3 °C; Liquid Temperature : 22.2 °C

DASY5 Configuration:

- Probe: EX3DV4 - SN7577; ConvF(6.65, 6.65, 6.65); Calibrated: 2021/11/23
- Sensor-Surface: 1.4mm (Mechanical Surface Detection)
- Electronics: DAE4 Sn910; Calibrated: 2021/7/15
- Phantom: SAM (Front) with CRP v5.0; Type: QD000P40CD; Serial: TP:1795
- Measurement SW: DASY52, Version 52.10 (3); SEMCAD X Version 14.6.13 (7474)

Ch55340/Area Scan (91x91x1): Interpolated grid: dx=1.200 mm, dy=1.200 mm
Maximum value of SAR (interpolated) = 1.53 W/kg

Ch55340/Zoom Scan (7x7x7)/Cube 0: Measurement grid: dx=5mm, dy=5mm, dz=1.4mm
Reference Value = 10.58 V/m; Power Drift = 0.01 dB
Peak SAR (extrapolated) = 2.30 W/kg
SAR(1 g) = 0.913 W/kg; SAR(10 g) = 0.360 W/kg
Maximum value of SAR (measured) = 1.66 W/kg



17_N71_20M_BPSK_1RB_1Offset_DFT-15_Right Cheek_Ch136100

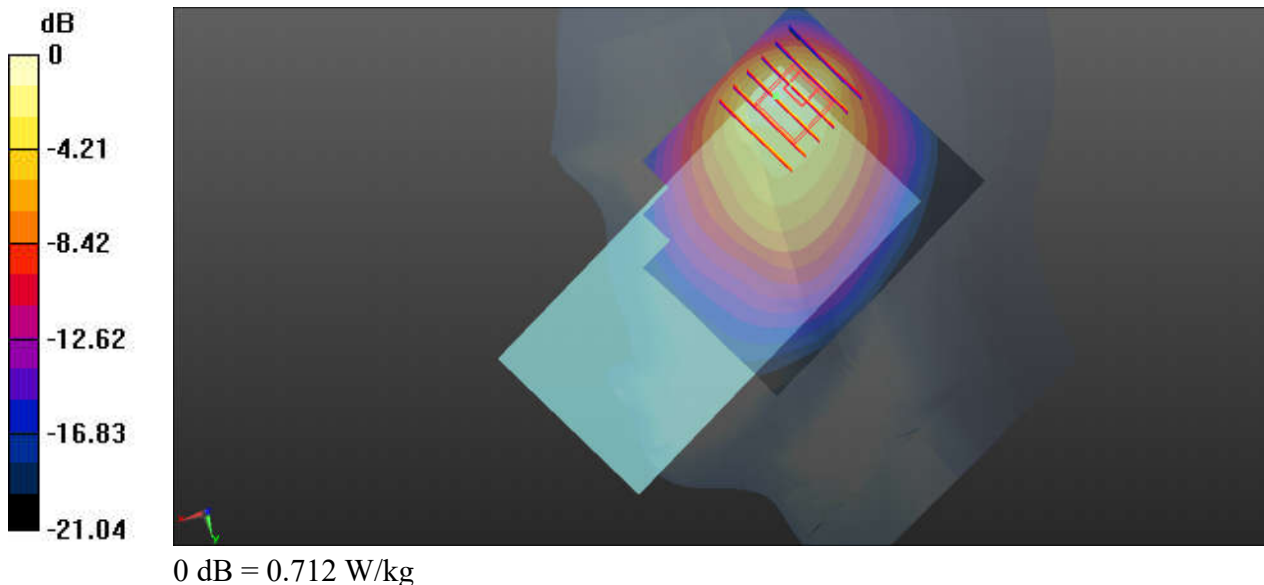
Communication System: UID 0, 5G NR (0); Frequency: 680.5 MHz; Duty Cycle: 1:1
Medium: HSL_750_211222 Medium parameters used: $f = 680.5$ MHz; $\sigma = 0.847$ S/m; $\epsilon_r = 42.153$;
 $\rho = 1000$ kg/m³
Ambient Temperature : 23.5 °C; Liquid Temperature : 22.2 °C

DASY5 Configuration:

- Probe: ES3DV3 - SN3191; ConvF(6.74, 6.74, 6.74); Calibrated: 2021/2/19
- Sensor-Surface: 3mm (Mechanical Surface Detection)
- Electronics: DAE4 Sn910; Calibrated: 2021/7/15
- Phantom: SAM (Front) with CRP v5.0; Type: QD000P40CD; Serial: TP:1795
- Measurement SW: DASY52, Version 52.10 (3); SEMCAD X Version 14.6.13 (7474)

Ch136100/Area Scan (71x81x1): Interpolated grid: dx=1.500 mm, dy=1.500 mm
Maximum value of SAR (interpolated) = 0.558 W/kg

Ch136100/Zoom Scan (6x6x7)/Cube 0: Measurement grid: dx=8mm, dy=8mm, dz=5mm
Reference Value = 15.47 V/m; Power Drift = 0.11 dB
Peak SAR (extrapolated) = 1.60 W/kg
SAR(1 g) = 0.557 W/kg; SAR(10 g) = 0.265 W/kg
Maximum value of SAR (measured) = 0.712 W/kg



18_N12_15M_BPSK_1RB_1Offset_DFT-15_Right Cheek_Ch141500

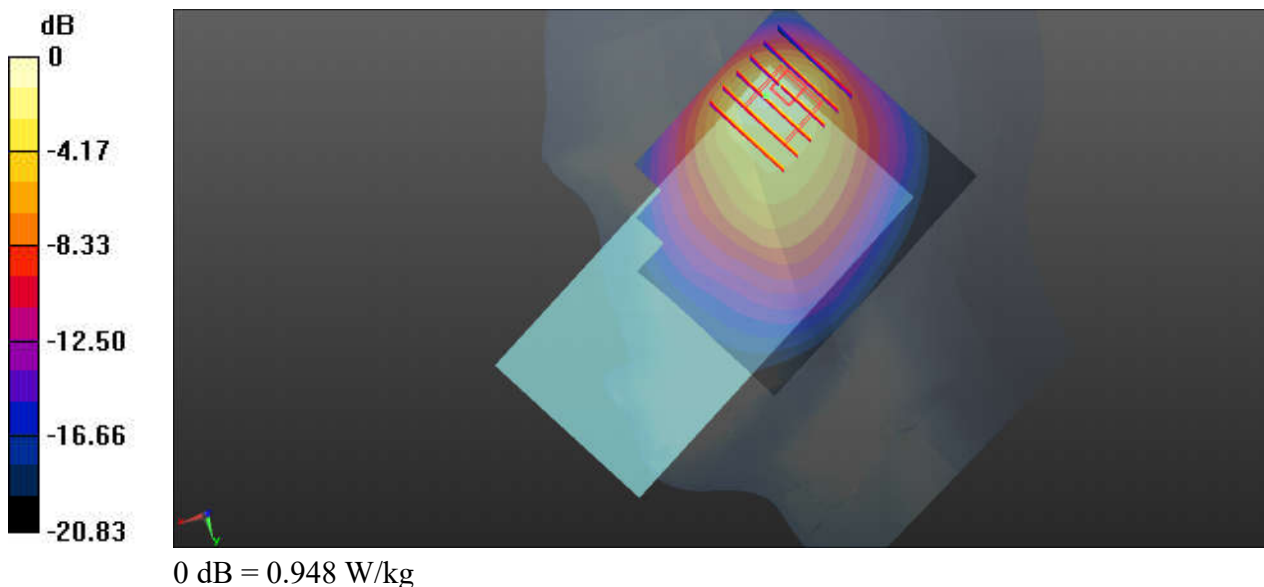
Communication System: UID 0, 5G NR (0); Frequency: 707.5 MHz; Duty Cycle: 1:1
Medium: HSL_750_211222 Medium parameters used: $f = 707.5$ MHz; $\sigma = 0.858$ S/m; $\epsilon_r = 41.716$;
 $\rho = 1000$ kg/m³
Ambient Temperature : 23.5 °C; Liquid Temperature : 22.2 °C

DASY5 Configuration:

- Probe: ES3DV3 - SN3191; ConvF(6.74, 6.74, 6.74); Calibrated: 2021/2/19
- Sensor-Surface: 3mm (Mechanical Surface Detection)
- Electronics: DAE4 Sn910; Calibrated: 2021/7/15
- Phantom: SAM (Front) with CRP v5.0; Type: QD000P40CD; Serial: TP:1795
- Measurement SW: DASY52, Version 52.10 (3); SEMCAD X Version 14.6.13 (7474)

Ch141500/Area Scan (71x81x1): Interpolated grid: dx=1.500 mm, dy=1.500 mm
Maximum value of SAR (interpolated) = 0.737 W/kg

Ch141500/Zoom Scan (6x6x7)/Cube 0: Measurement grid: dx=8mm, dy=8mm, dz=5mm
Reference Value = 17.28 V/m; Power Drift = -0.15 dB
Peak SAR (extrapolated) = 2.03 W/kg
SAR(1 g) = 0.719 W/kg; SAR(10 g) = 0.352 W/kg
Maximum value of SAR (measured) = 0.948 W/kg



19_N14_10M_BPSK_1RB_1Offset_DFT-15_Right Cheek_Ch158600

Communication System: UID 0, 5G NR (0); Frequency: 793 MHz; Duty Cycle: 1:1
Medium: HSL_750_211222 Medium parameters used: $f = 793$ MHz; $\sigma = 0.913$ S/m; $\epsilon_r = 39.931$; $\rho = 1000$ kg/m³

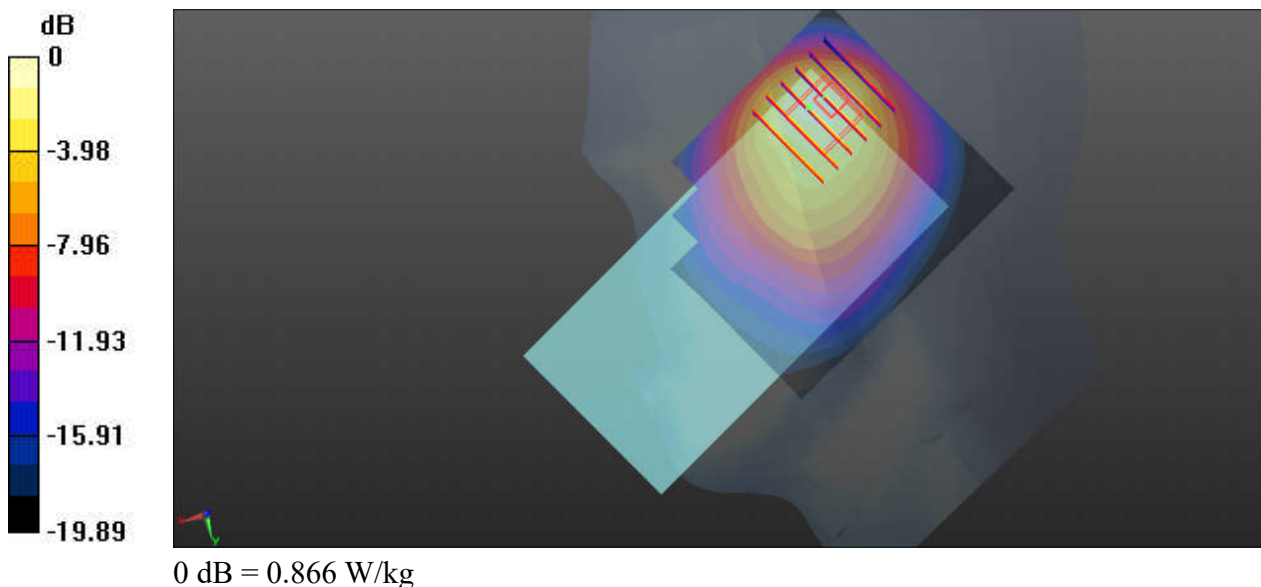
Ambient Temperature : 23.5 °C; Liquid Temperature : 22.2 °C

DASY5 Configuration:

- Probe: ES3DV3 - SN3191; ConvF(6.74, 6.74, 6.74); Calibrated: 2021/2/19
- Sensor-Surface: 3mm (Mechanical Surface Detection)
- Electronics: DAE4 Sn910; Calibrated: 2021/7/15
- Phantom: SAM (Front) with CRP v5.0; Type: QD000P40CD; Serial: TP:1795
- Measurement SW: DASY52, Version 52.10 (3); SEMCAD X Version 14.6.13 (7474)

Ch158600/Area Scan (71x81x1): Interpolated grid: dx=1.500 mm, dy=1.500 mm
Maximum value of SAR (interpolated) = 0.705 W/kg

Ch158600/Zoom Scan (6x6x7)/Cube 0: Measurement grid: dx=8mm, dy=8mm, dz=5mm
Reference Value = 17.66 V/m; Power Drift = 0.09 dB
Peak SAR (extrapolated) = 1.72 W/kg
SAR(1 g) = 0.679 W/kg; SAR(10 g) = 0.359 W/kg
Maximum value of SAR (measured) = 0.866 W/kg



20_N26_20M_BPSK_50RB_28Offset_DFT-15_Right Cheek_Ch166300

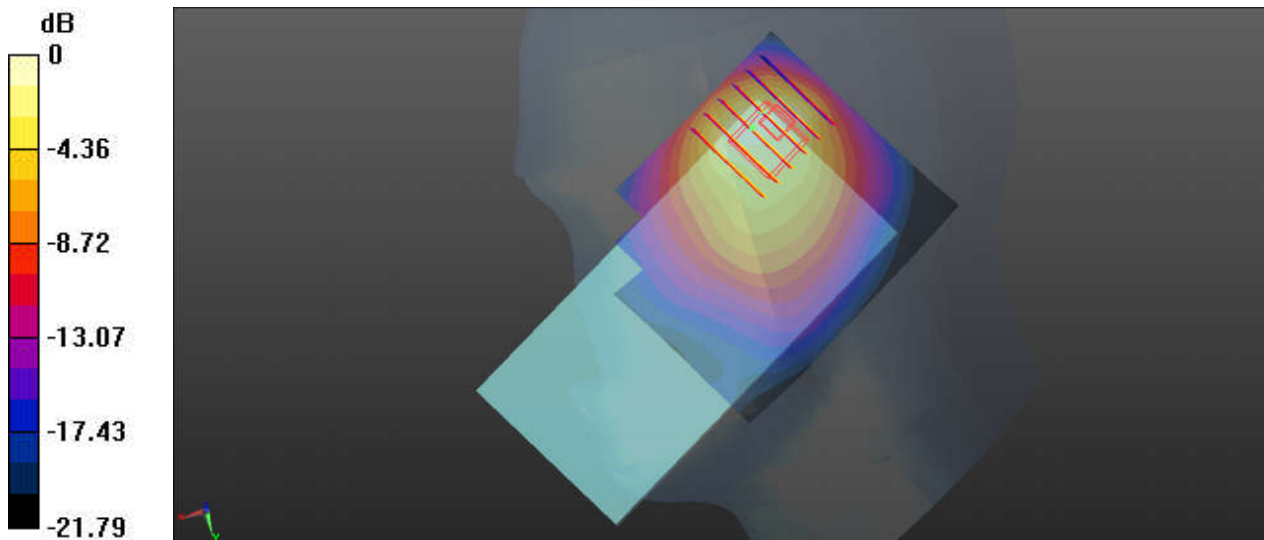
Communication System: UID 0, 5G NR (0); Frequency: 831.5 MHz; Duty Cycle: 1:1
Medium: HSL_835_211224 Medium parameters used: $f = 831.5$ MHz; $\sigma = 0.944$ S/m; $\epsilon_r = 41.283$;
 $\rho = 1000$ kg/m³
Ambient Temperature : 23.3 °C; Liquid Temperature : 22.5 °C

DASY5 Configuration:

- Probe: ES3DV3 - SN3191; ConvF(6.57, 6.57, 6.57); Calibrated: 2021/2/19
- Sensor-Surface: 3mm (Mechanical Surface Detection)
- Electronics: DAE4 Sn910; Calibrated: 2021/7/15
- Phantom: SAM (Front) with CRP v5.0; Type: QD000P40CD; Serial: TP:1795
- Measurement SW: DASY52, Version 52.10 (3); SEMCAD X Version 14.6.13 (7474)

Ch166300/Area Scan (71x81x1): Interpolated grid: dx=1.500 mm, dy=1.500 mm
Maximum value of SAR (interpolated) = 1.19 W/kg

Ch166300/Zoom Scan (6x6x7)/Cube 0: Measurement grid: dx=8mm, dy=8mm, dz=5mm
Reference Value = 21.56 V/m; Power Drift = 0.13 dB
Peak SAR (extrapolated) = 2.21 W/kg
SAR(1 g) = 0.863 W/kg; SAR(10 g) = 0.467 W/kg
Maximum value of SAR (measured) = 1.41 W/kg



0 dB = 1.41 W/kg

21_N5_20M_BPSK_1RB_1Offset_DFT-15_Right Cheek_Ch167300

Communication System: UID 0, 5G NR (0); Frequency: 836.5 MHz; Duty Cycle: 1:1
Medium: HSL_835_211224 Medium parameters used: $f = 836.5$ MHz; $\sigma = 0.943$ S/m; $\epsilon_r = 41.275$;
 $\rho = 1000$ kg/m³

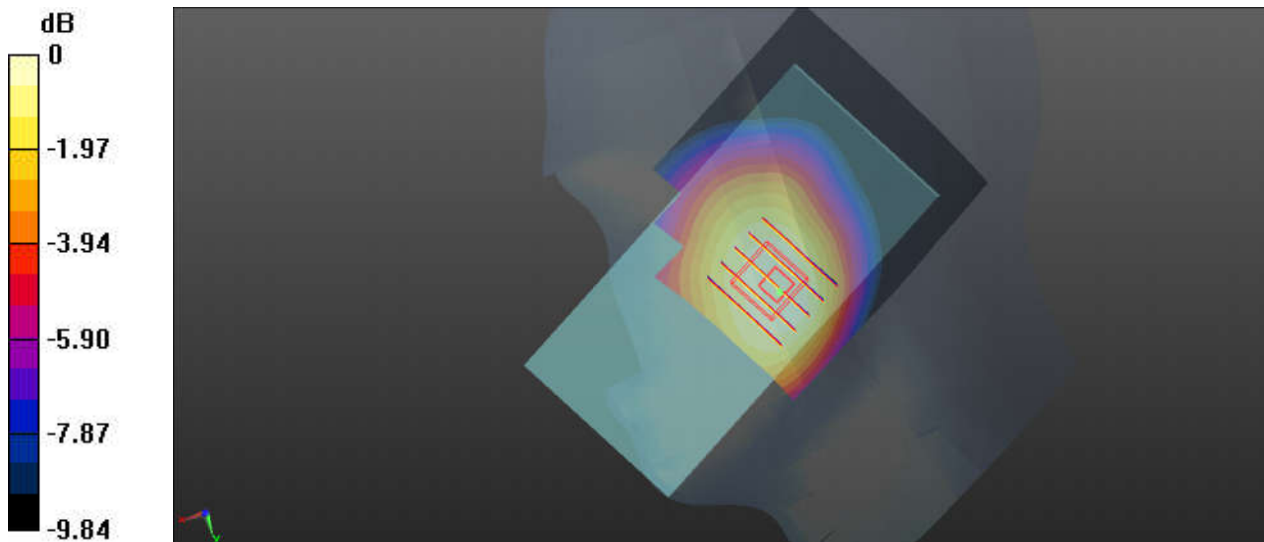
Ambient Temperature : 23.3 °C; Liquid Temperature : 22.5 °C

DASY5 Configuration:

- Probe: ES3DV3 - SN3191; ConvF(6.57, 6.57, 6.57); Calibrated: 2021/2/19
- Sensor-Surface: 3mm (Mechanical Surface Detection)
- Electronics: DAE4 Sn910; Calibrated: 2021/7/15
- Phantom: SAM (Front) with CRP v5.0; Type: QD000P40CD; Serial: TP:1795
- Measurement SW: DASY52, Version 52.10 (3); SEMCAD X Version 14.6.13 (7474)

Ch167300/Area Scan (71x81x1): Interpolated grid: dx=1.500 mm, dy=1.500 mm
Maximum value of SAR (interpolated) = 0.143 W/kg

Ch167300/Zoom Scan (6x5x7)/Cube 0: Measurement grid: dx=8mm, dy=8mm, dz=5mm
Reference Value = 3.560 V/m; Power Drift = 0.19 dB
Peak SAR (extrapolated) = 0.161 W/kg
SAR(1 g) = 0.127 W/kg; SAR(10 g) = 0.098 W/kg
Maximum value of SAR (measured) = 0.139 W/kg



0 dB = 0.139 W/kg

22_N70_15M_BPSK_36RB_22Offset_DFT-15_Right Cheek_Ch340500

Communication System: UID 0, 5G NR (0); Frequency: 1702.5 MHz; Duty Cycle: 1:1
Medium: HSL_1750_211226 Medium parameters used: $f = 1702.5$ MHz; $\sigma = 1.333$ S/m; $\epsilon_r = 40.365$; $\rho = 1000$ kg/m³

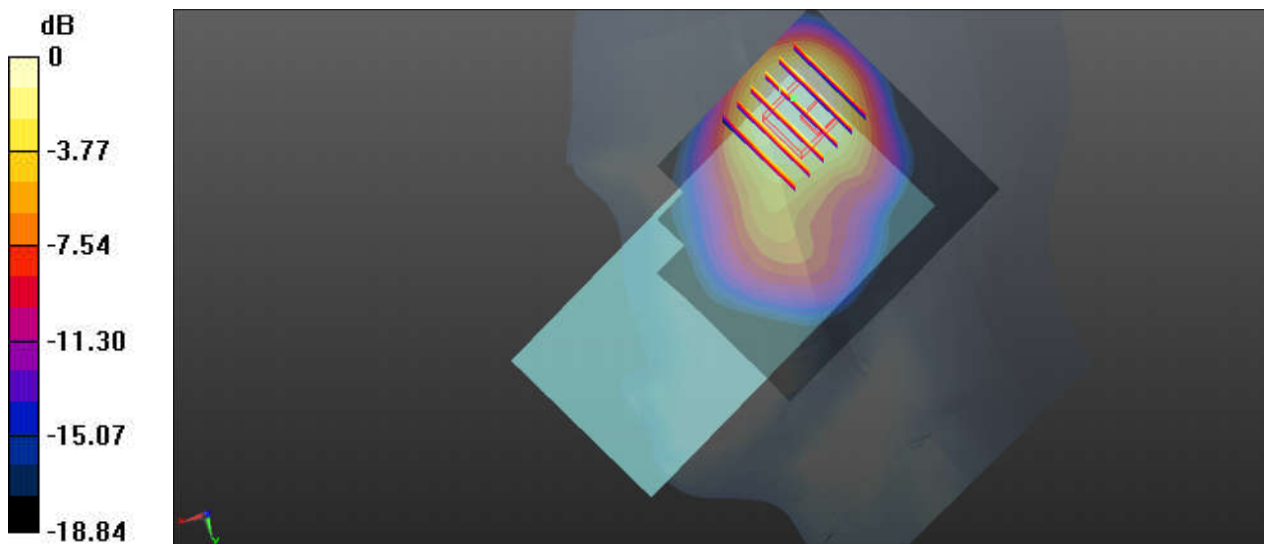
Ambient Temperature : 23.7 °C; Liquid Temperature : 22.6 °C

DASY5 Configuration:

- Probe: ES3DV3 - SN3191; ConvF(5.48, 5.48, 5.48); Calibrated: 2021/2/19
- Sensor-Surface: 3mm (Mechanical Surface Detection)
- Electronics: DAE4 Sn910; Calibrated: 2021/7/15
- Phantom: SAM (Front) with CRP v5.0; Type: QD000P40CD; Serial: TP:1795
- Measurement SW: DASY52, Version 52.10 (3); SEMCAD X Version 14.6.13 (7474)

Ch340500/Area Scan (71x81x1): Interpolated grid: dx=1.500 mm, dy=1.500 mm
Maximum value of SAR (interpolated) = 0.425 W/kg

Ch340500/Zoom Scan (6x6x7)/Cube 0: Measurement grid: dx=8mm, dy=8mm, dz=5mm
Reference Value = 8.711 V/m; Power Drift = -0.12 dB
Peak SAR (extrapolated) = 0.554 W/kg
SAR(1 g) = 0.273 W/kg; SAR(10 g) = 0.157 W/kg
Maximum value of SAR (measured) = 0.332 W/kg



0 dB = 0.332 W/kg

23_N66_40M_BPSK_1RB_1Offset_DFT-15_Right Cheek_Ch349000

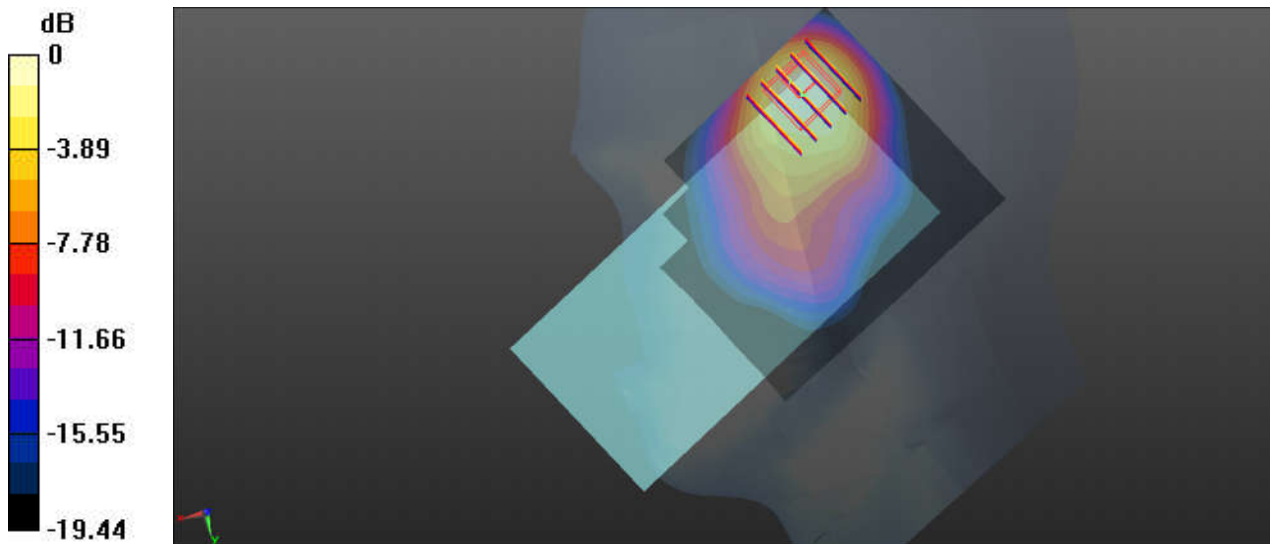
Communication System: UID 0, 5G NR (0); Frequency: 1745 MHz; Duty Cycle: 1:1
Medium: HSL_1750_220102 Medium parameters used: $f = 1745$ MHz; $\sigma = 1.391$ S/m; $\epsilon_r = 39.993$;
 $\rho = 1000$ kg/m³
Ambient Temperature : 23.2 °C; Liquid Temperature : 22.7 °C

DASY5 Configuration:

- Probe: EX3DV4 - SN7577; ConvF(8.4, 8.4, 8.4); Calibrated: 2021/11/23
- Sensor-Surface: 1.4mm (Mechanical Surface Detection)
- Electronics: DAE4 Sn910; Calibrated: 2021/7/15
- Phantom: SAM (Front) with CRP v5.0; Type: QD000P40CD; Serial: TP:1795
- Measurement SW: DASY52, Version 52.10 (3); SEMCAD X Version 14.6.13 (7474)

Ch349000/Area Scan (71x81x1): Interpolated grid: dx=1.500 mm, dy=1.500 mm
Maximum value of SAR (interpolated) = 1.40 W/kg

Ch349000/Zoom Scan (5x5x7)/Cube 0: Measurement grid: dx=8mm, dy=8mm, dz=5mm
Reference Value = 12.74 V/m; Power Drift = 0.11 dB
Peak SAR (extrapolated) = 2.04 W/kg
SAR(1 g) = 0.999 W/kg; SAR(10 g) = 0.511 W/kg
Maximum value of SAR (measured) = 1.33 W/kg



0 dB = 1.33 W/kg

24_N25_40M_BPSK_1RB_1Offset_DFT-15_Right Cheek_Ch376500

Communication System: UID 0, 5G NR (0); Frequency: 1882.5 MHz; Duty Cycle: 1:1
Medium: HSL_1900_220110 Medium parameters used: $f = 1882.5$ MHz; $\sigma = 1.444$ S/m; $\epsilon_r = 39.188$; $\rho = 1000$ kg/m³

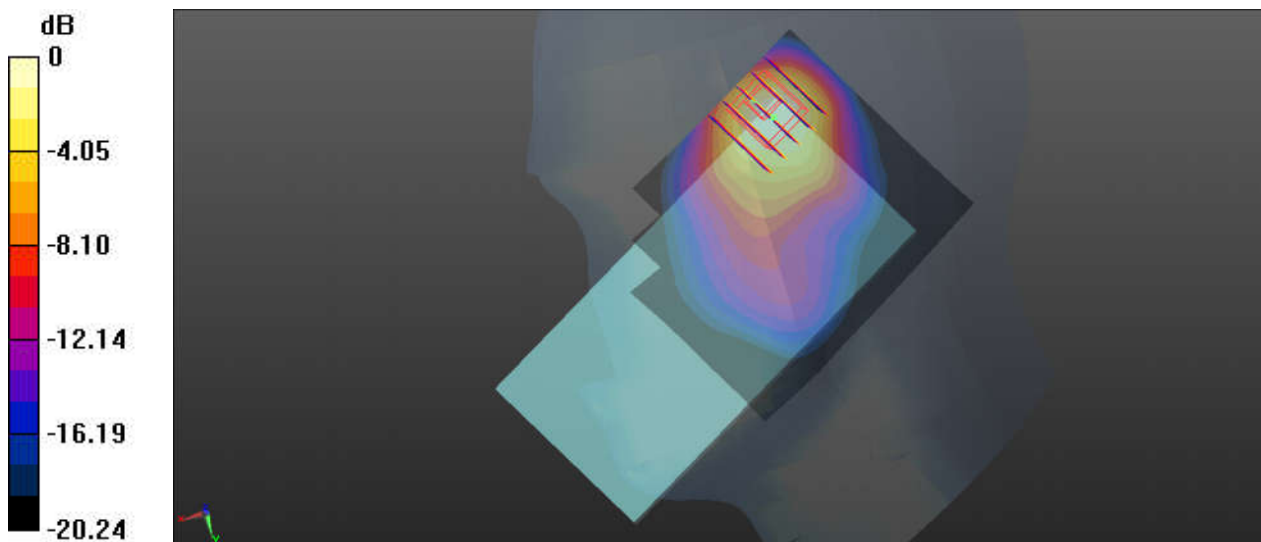
Ambient Temperature : 23.5 °C; Liquid Temperature : 22.4 °C

DASY5 Configuration:

- Probe: EX3DV4 - SN7577; ConvF(8.13, 8.13, 8.13); Calibrated: 2021/11/23
- Sensor-Surface: 1.4mm (Mechanical Surface Detection)
- Electronics: DAE4 Sn910; Calibrated: 2021/7/15
- Phantom: SAM (Front) with CRP v5.0; Type: QD000P40CD; Serial: TP:1795
- Measurement SW: DASY52, Version 52.10 (3); SEMCAD X Version 14.6.13 (7474)

Ch376500/Area Scan (71x81x1): Interpolated grid: dx=1.500 mm, dy=1.500 mm
Maximum value of SAR (interpolated) = 1.99 W/kg

Ch376500/Zoom Scan (5x5x7)/Cube 0: Measurement grid: dx=8mm, dy=8mm, dz=5mm
Reference Value = 14.19 V/m; Power Drift = 0.17 dB
Peak SAR (extrapolated) = 2.27 W/kg
SAR(1 g) = 1.03 W/kg; SAR(10 g) = 0.505 W/kg
Maximum value of SAR (measured) = 1.86 W/kg



0 dB = 1.86 W/kg

25_N30_10M_BPSK_1RB_1Offset_DFT-15_Right Tilted_Ch462000

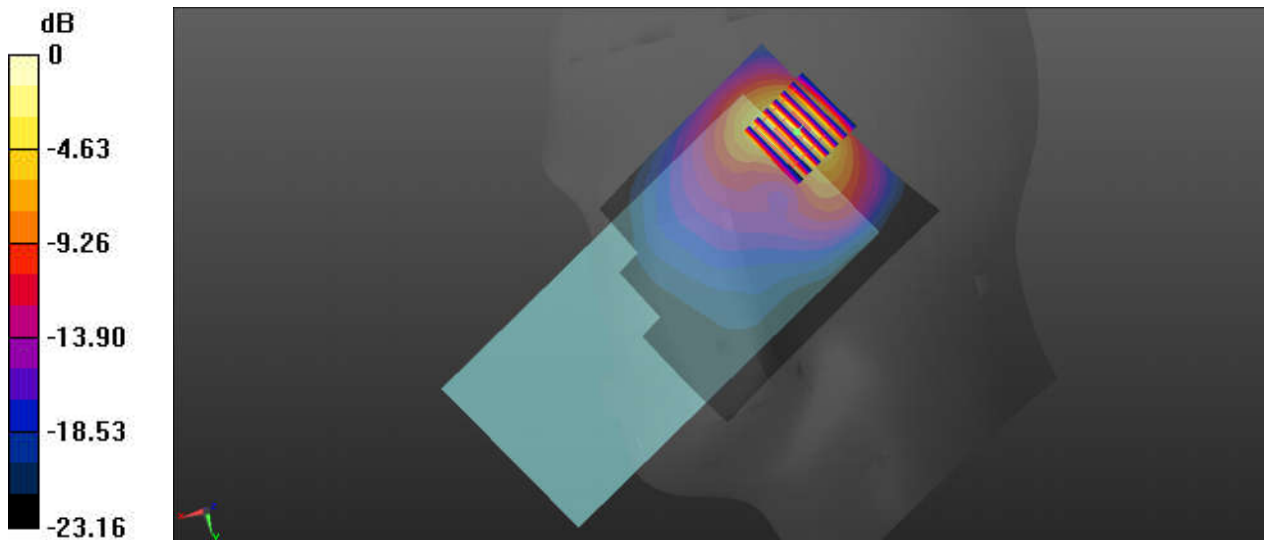
Communication System: UID 0, 5G NR (0); Frequency: 2310 MHz; Duty Cycle: 1:1
Medium: HSL_2300_220109 Medium parameters used: $f = 2310$ MHz; $\sigma = 1.743$ S/m; $\epsilon_r = 40.415$;
 $\rho = 1000$ kg/m³
Ambient Temperature : 23.6 °C; Liquid Temperature : 22.6 °C

DASY5 Configuration:

- Probe: EX3DV4 - SN7576; ConvF(7.91, 7.91, 7.91); Calibrated: 2021/4/26
- Sensor-Surface: 1.4mm (Mechanical Surface Detection)
- Electronics: DAE4 Sn1437; Calibrated: 2021/10/26
- Phantom: Twin-SAM V8.0 (Left); Type: QD 000 P41 AA; Serial: 2035
- Measurement SW: DASY52, Version 52.10 (4); SEMCAD X Version 14.6.14 (7483)

Ch462000/Area Scan (81x101x1): Interpolated grid: dx=1.200 mm, dy=1.200 mm
Maximum value of SAR (interpolated) = 1.51 W/kg

Ch462000/Zoom Scan (7x7x7)/Cube 0: Measurement grid: dx=5mm, dy=5mm, dz=5mm
Reference Value = 18.77 V/m; Power Drift = -0.16 dB
Peak SAR (extrapolated) = 2.13 W/kg
SAR(1 g) = 0.907 W/kg; SAR(10 g) = 0.393 W/kg
Maximum value of SAR (measured) = 1.61 W/kg



0 dB = 1.61 W/kg

26_N41_100M_BPSK_1RB_1Offset_DFT-30_Right Tilted_Ch518598

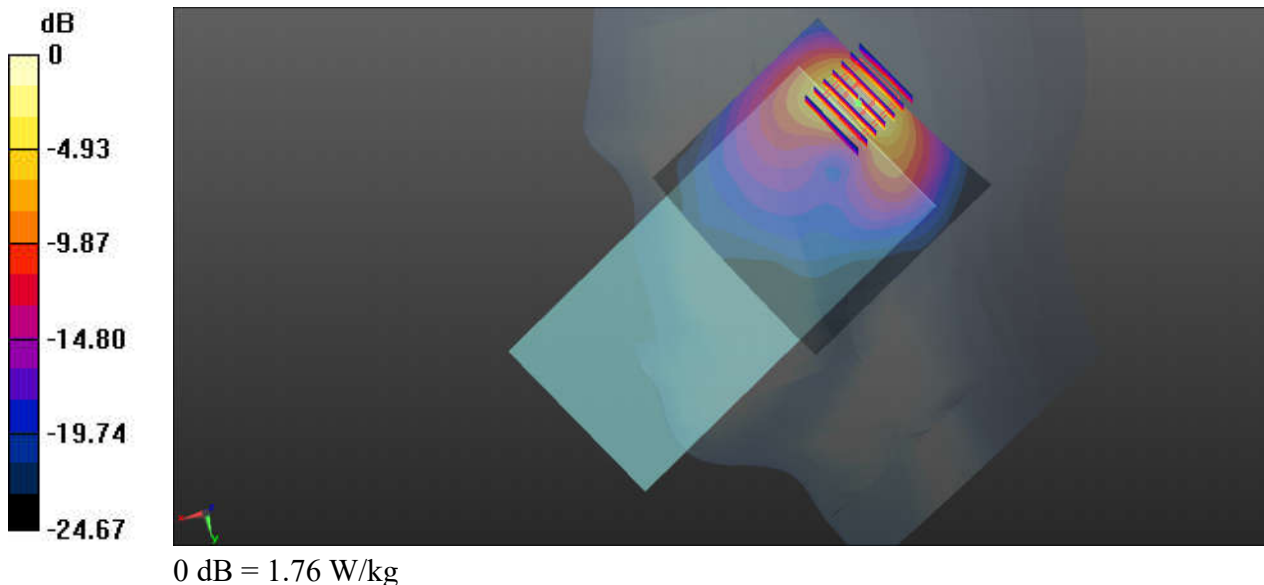
Communication System: UID 0, 5G NR (0); Frequency: 2592.99 MHz; Duty Cycle: 1:1
Medium: HSL_2600_220108 Medium parameters used: $f = 2593$ MHz; $\sigma = 1.928$ S/m; $\epsilon_r = 37.651$;
 $\rho = 1000$ kg/m³
Ambient Temperature : 23.6 °C; Liquid Temperature : 22.8 °C

DASY5 Configuration:

- Probe: EX3DV4 - SN7577; ConvF(7.68, 7.68, 7.68); Calibrated: 2021/11/23
- Sensor-Surface: 1.4mm (Mechanical Surface Detection)
- Electronics: DAE4 Sn910; Calibrated: 2021/7/15
- Phantom: SAM (Front) with CRP v5.0; Type: QD000P40CD; Serial: TP:1795
- Measurement SW: DASY52, Version 52.10 (3); SEMCAD X Version 14.6.13 (7474)

Ch518598/Area Scan (81x81x1): Interpolated grid: dx=1.200 mm, dy=1.200 mm
Maximum value of SAR (interpolated) = 1.81 W/kg

Ch518598/Zoom Scan (7x7x7)/Cube 0: Measurement grid: dx=5mm, dy=5mm, dz=5mm
Reference Value = 17.10 V/m; Power Drift = -0.11 dB
Peak SAR (extrapolated) = 2.30 W/kg
SAR(1 g) = 0.935 W/kg; SAR(10 g) = 0.374 W/kg
Maximum value of SAR (measured) = 1.76 W/kg



27_N77_100M_BPSK_135RB_69Offset_DFT-30_Right Cheek_Ch633334

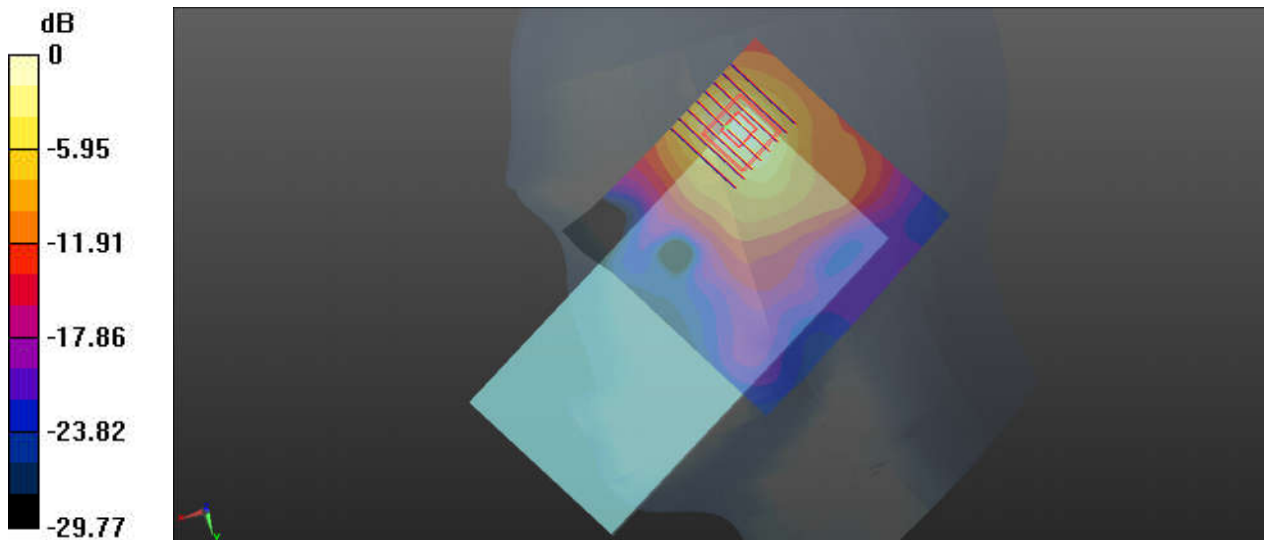
Communication System: UID 0, 5G NR (0); Frequency: 3500.01 MHz; Duty Cycle: 1:1
Medium: HSL_3500_220113 Medium parameters used: $f = 3500.01$ MHz; $\sigma = 2.909$ S/m; $\epsilon_r = 38.635$; $\rho = 1000$ kg/m³
Ambient Temperature : 23.3 °C; Liquid Temperature : 22.2 °C

DASY5 Configuration:

- Probe: EX3DV4 - SN7577; ConvF(6.65, 6.65, 6.65); Calibrated: 2021/11/23
- Sensor-Surface: 1.4mm (Mechanical Surface Detection)
- Electronics: DAE4 Sn910; Calibrated: 2021/7/15
- Phantom: SAM (Front) with CRP v5.0; Type: QD000P40CD; Serial: TP:1795
- Measurement SW: DASY52, Version 52.10 (3); SEMCAD X Version 14.6.13 (7474)

Ch633334/Area Scan (91x91x1): Interpolated grid: dx=1.200 mm, dy=1.200 mm
Maximum value of SAR (interpolated) = 1.51 W/kg

Ch633334/Zoom Scan (8x8x7)/Cube 0: Measurement grid: dx=5mm, dy=5mm, dz=1.4mm
Reference Value = 7.562 V/m; Power Drift = -0.1 dB
Peak SAR (extrapolated) = 2.28 W/kg
SAR(1 g) = 0.929 W/kg; SAR(10 g) = 0.365 W/kg
Maximum value of SAR (measured) = 1.68 W/kg



0 dB = 1.68 W/kg

28_WLAN2.4GHz_802.11b 1Mbps_Left Cheek_Ch11

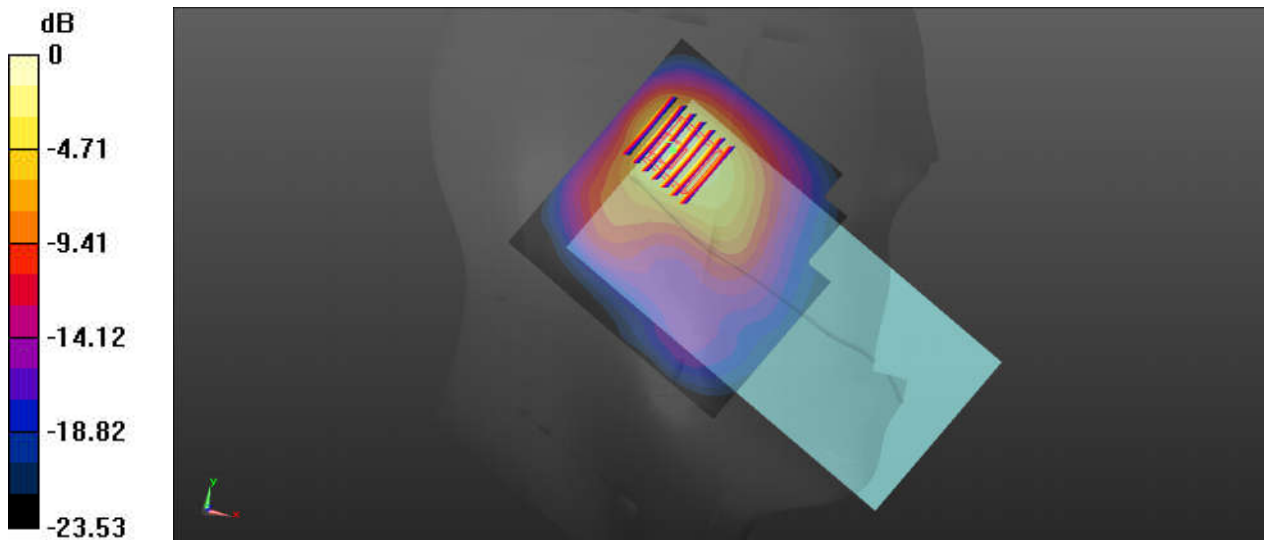
Communication System: UID 0, WIFI (0); Frequency: 2462 MHz; Duty Cycle: 1:1.007
Medium: HSL_2450_220108 Medium parameters used: $f = 2462$ MHz; $\sigma = 1.842$ S/m; $\epsilon_r = 38.195$;
 $\rho = 1000$ kg/m³
Ambient Temperature : 23.4 °C; Liquid Temperature : 22.8 °C

DASY5 Configuration:

- Probe: EX3DV4 - SN7577; ConvF(8.03, 8.03, 8.03); Calibrated: 2021/11/23
- Sensor-Surface: 1.4mm (Mechanical Surface Detection)
- Electronics: DAE4 Sn910; Calibrated: 2021/7/15
- Phantom: SAM (Front) with CRP v5.0; Type: QD000P40CD; Serial: TP:1795
- Measurement SW: DASY52, Version 52.10 (3); SEMCAD X Version 14.6.13 (7474)

Ch11/Area Scan (91x91x1): Interpolated grid: dx=1.200 mm, dy=1.200 mm
Maximum value of SAR (interpolated) = 1.58 W/kg

Ch11/Zoom Scan (7x7x7)/Cube 0: Measurement grid: dx=5mm, dy=5mm, dz=5mm
Reference Value = 16.08 V/m; Power Drift = -0.05 dB
Peak SAR (extrapolated) = 2.00 W/kg
SAR(1 g) = 0.934 W/kg; SAR(10 g) = 0.467 W/kg
Maximum value of SAR (measured) = 1.55 W/kg



0 dB = 1.55 W/kg

29_WLAN5GHz_802.11a 6Mbps_Left Tilted_Ch60

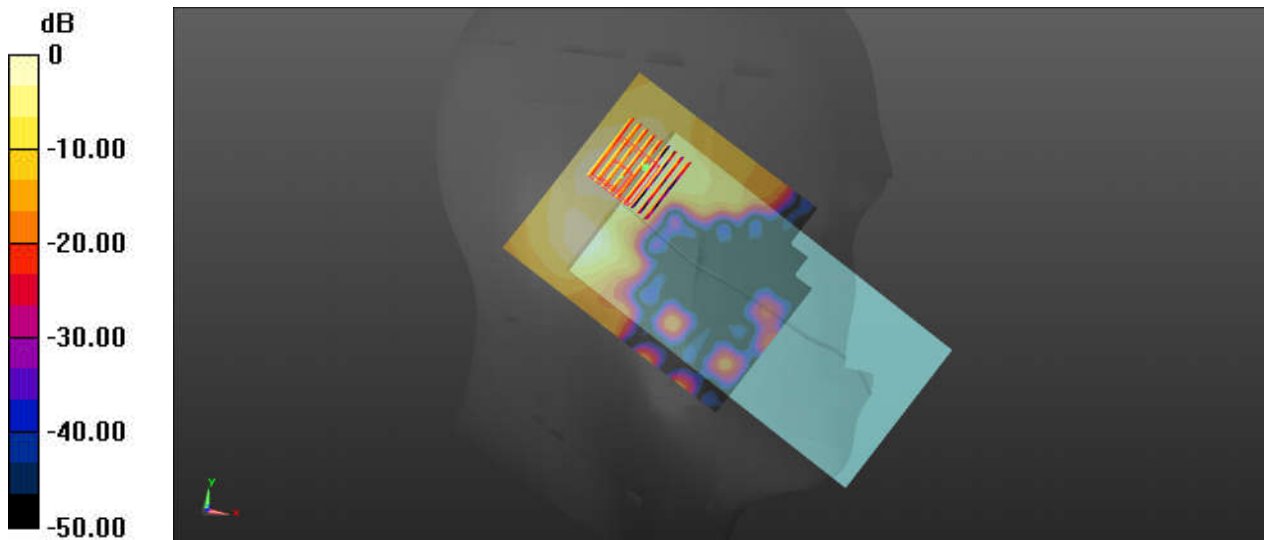
Communication System: UID 0, WIFI (0); Frequency: 5300 MHz; Duty Cycle: 1:1.019
Medium: HSL_5250_211219 Medium parameters used: $f = 5300$ MHz; $\sigma = 4.776$ S/m; $\epsilon_r = 36.353$;
 $\rho = 1000$ kg/m³
Ambient Temperature : 23.6 °C; Liquid Temperature : 22.5 °C

DASY5 Configuration:

- Probe: EX3DV4 - SN7576; ConvF(5.17, 5.17, 5.17); Calibrated: 2021/4/26
- Sensor-Surface: 1.4mm (Mechanical Surface Detection)
- Electronics: DAE4 Sn1437; Calibrated: 2021/10/26
- Phantom: Twin-SAM V8.0 (Left); Type: QD 000 P41 AA; Serial: 2035
- Measurement SW: DASY52, Version 52.10 (4); SEMCAD X Version 14.6.14 (7483)

Ch60/Area Scan (101x121x1): Interpolated grid: dx=1.000 mm, dy=1.000 mm
Maximum value of SAR (interpolated) = 0.411 W/kg

Ch60/Zoom Scan (9x9x7)/Cube 0: Measurement grid: dx=4mm, dy=4mm, dz=1.4mm
Reference Value = 6.098 V/m; Power Drift = -0.13 dB
Peak SAR (extrapolated) = 0.592 W/kg
SAR(1 g) = 0.183 W/kg; SAR(10 g) = 0.074 W/kg
Maximum value of SAR (measured) = 0.397 W/kg



0 dB = 0.397 W/kg

30_WLAN5GHz_802.11a 6Mbps_Left Tilted_Ch140

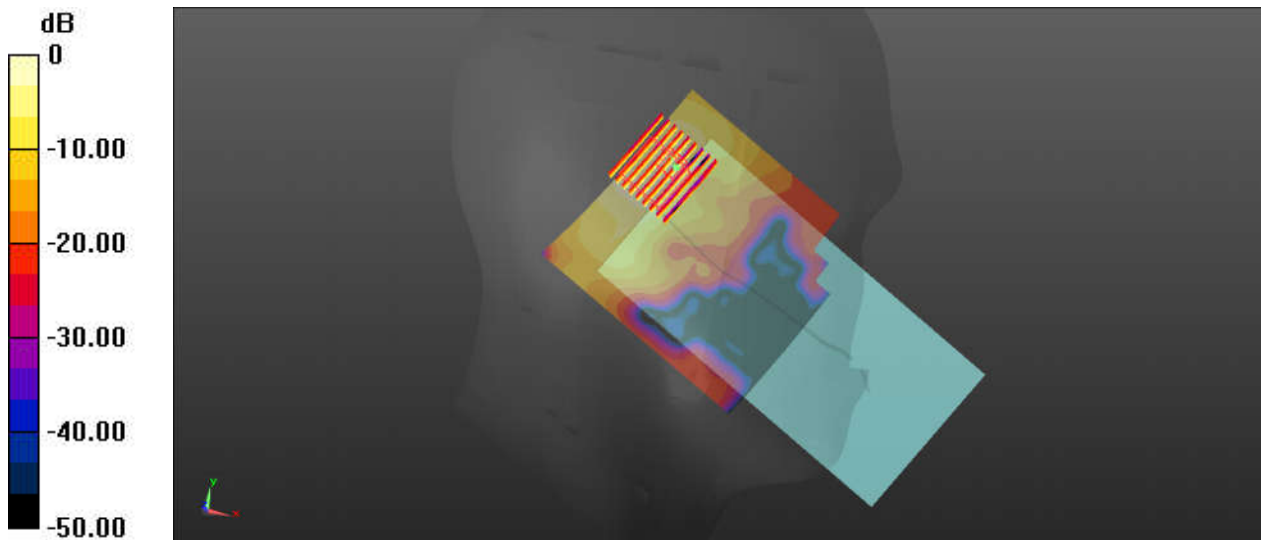
Communication System: UID 0, WIFI (0); Frequency: 5700 MHz; Duty Cycle: 1:1.019
Medium: HSL_5600_211220 Medium parameters used: $f = 5700$ MHz; $\sigma = 5.256$ S/m; $\epsilon_r = 35.631$;
 $\rho = 1000$ kg/m³
Ambient Temperature : 23.5 °C; Liquid Temperature : 22.5 °C

DASY5 Configuration:

- Probe: EX3DV4 - SN7576; ConvF(4.6, 4.6, 4.6); Calibrated: 2021/4/26
- Sensor-Surface: 1.4mm (Mechanical Surface Detection)
- Electronics: DAE4 Sn1437; Calibrated: 2021/10/26
- Phantom: Twin-SAM V8.0 (Left); Type: QD 000 P41 AA; Serial: 2035
- Measurement SW: DASY52, Version 52.10 (4); SEMCAD X Version 14.6.14 (7483)

Ch140/Area Scan (101x111x1): Interpolated grid: dx=1.000 mm, dy=1.000 mm
Maximum value of SAR (interpolated) = 1.18 W/kg

Ch140/Zoom Scan (10x9x7)/Cube 0: Measurement grid: dx=4mm, dy=4mm, dz=1.4mm
Reference Value = 12.80 V/m; Power Drift = -0.15 dB
Peak SAR (extrapolated) = 2.07 W/kg
SAR(1 g) = 0.509 W/kg; SAR(10 g) = 0.165 W/kg
Maximum value of SAR (measured) = 1.19 W/kg



0 dB = 1.19 W/kg

31_WLAN5GHz_802.11a 6Mbps_Left Tilted_Ch157

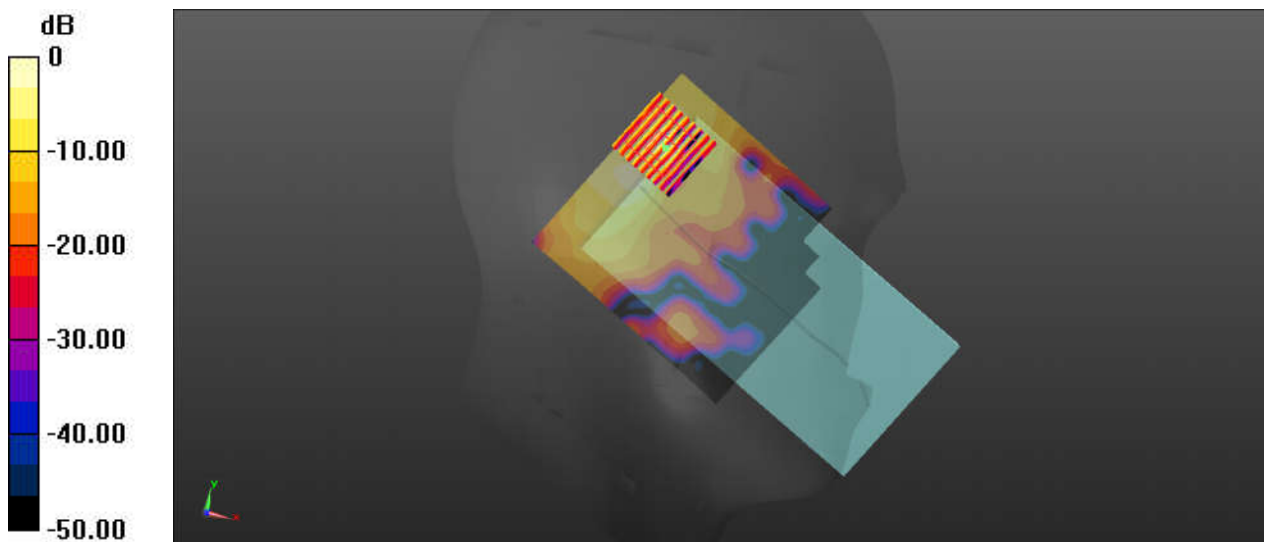
Communication System: UID 0, WIFI (0); Frequency: 5785 MHz; Duty Cycle: 1:1.019
Medium: HSL_5750_211221 Medium parameters used: $f = 5785 \text{ MHz}$; $\sigma = 5.348 \text{ S/m}$; $\epsilon_r = 35.489$;
 $\rho = 1000 \text{ kg/m}^3$
Ambient Temperature : 23.3 °C; Liquid Temperature : 22.2 °C

DASY5 Configuration:

- Probe: EX3DV4 - SN7576; ConvF(4.75, 4.75, 4.75); Calibrated: 2021/4/26
- Sensor-Surface: 1.4mm (Mechanical Surface Detection)
- Electronics: DAE4 Sn1437; Calibrated: 2021/10/26
- Phantom: Twin-SAM V8.0 (Left); Type: QD 000 P41 AA; Serial: 2035
- Measurement SW: DASY52, Version 52.10 (4); SEMCAD X Version 14.6.14 (7483)

Ch157/Area Scan (101x111x1): Interpolated grid: $dx=1.000 \text{ mm}$, $dy=1.000 \text{ mm}$
Maximum value of SAR (interpolated) = 1.20 W/kg

Ch157/Zoom Scan (9x9x7)/Cube 0: Measurement grid: $dx=4\text{mm}$, $dy=4\text{mm}$, $dz=1.4\text{mm}$
Reference Value = 11.48 V/m; Power Drift = -0.07 dB
Peak SAR (extrapolated) = 2.33 W/kg
SAR(1 g) = 0.532 W/kg; SAR(10 g) = 0.146 W/kg
Maximum value of SAR (measured) = 1.30 W/kg



0 dB = 1.30 W/kg

32_Bluetooth_DH5 1Mbps_Left Cheek_Ch78

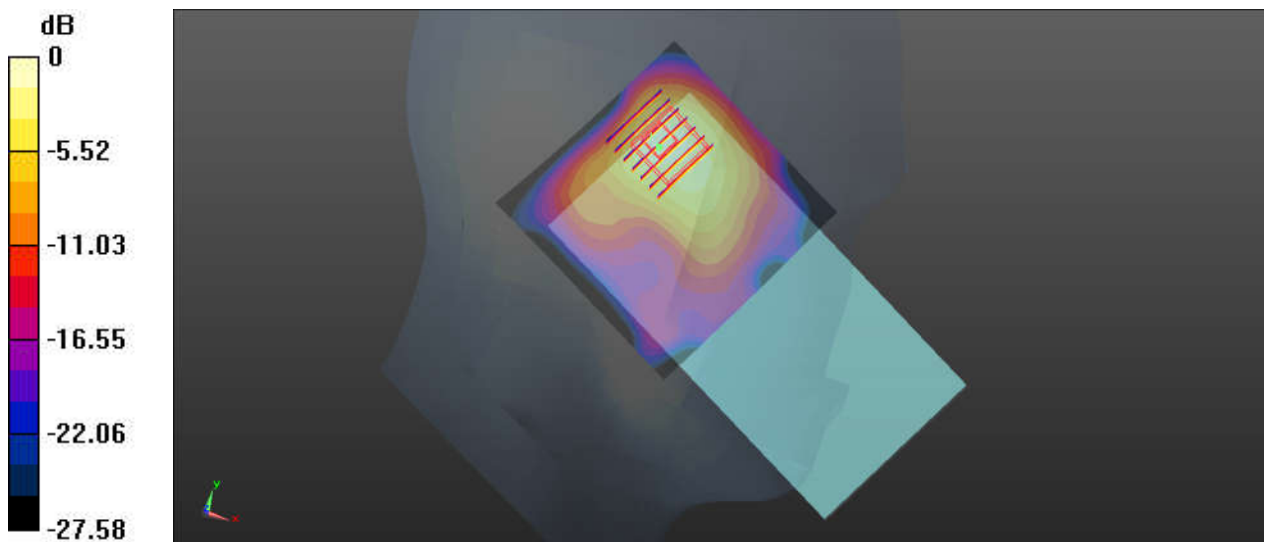
Communication System: UID 0, Bluetooth (0); Frequency: 2480 MHz; Duty Cycle: 1:1.3
Medium: HSL_2450_220103 Medium parameters used: $f = 2480$ MHz; $\sigma = 1.845$ S/m; $\epsilon_r = 37.512$;
 $\rho = 1000$ kg/m³
Ambient Temperature : 23.3 °C; Liquid Temperature : 22.3 °C

DASY5 Configuration:

- Probe: ES3DV3 - SN3191; ConvF(4.63, 4.63, 4.63); Calibrated: 2021/2/19
- Sensor-Surface: 3mm (Mechanical Surface Detection)
- Electronics: DAE4 Sn910; Calibrated: 2021/7/15
- Phantom: SAM (Front) with CRP v5.0; Type: QD000P40CD; Serial: TP:1795
- Measurement SW: DASY52, Version 52.10 (3); SEMCAD X Version 14.6.13 (7474)

Ch78/Area Scan (81x81x1): Interpolated grid: dx=1.200 mm, dy=1.200 mm
Maximum value of SAR (interpolated) = 0.371 W/kg

Ch78/Zoom Scan (7x7x7)/Cube 0: Measurement grid: dx=5mm, dy=5mm, dz=5mm
Reference Value = 7.848 V/m; Power Drift = 0.02 dB
Peak SAR (extrapolated) = 0.477 W/kg
SAR(1 g) = 0.214 W/kg; SAR(10 g) = 0.106 W/kg
Maximum value of SAR (measured) = 0.361 W/kg



0 dB = 0.361 W/kg

33_GSM850_GPRS 4 Tx slots_Back_5mm_Ch251

Communication System: UID 0, GPRS/EDGE12 (0); Frequency: 848.8 MHz; Duty Cycle: 1:2.08
Medium: HSL_835_220116 Medium parameters used: $f = 849$ MHz; $\sigma = 0.888$ S/m; $\epsilon_r = 40.505$; $\rho = 1000$ kg/m³

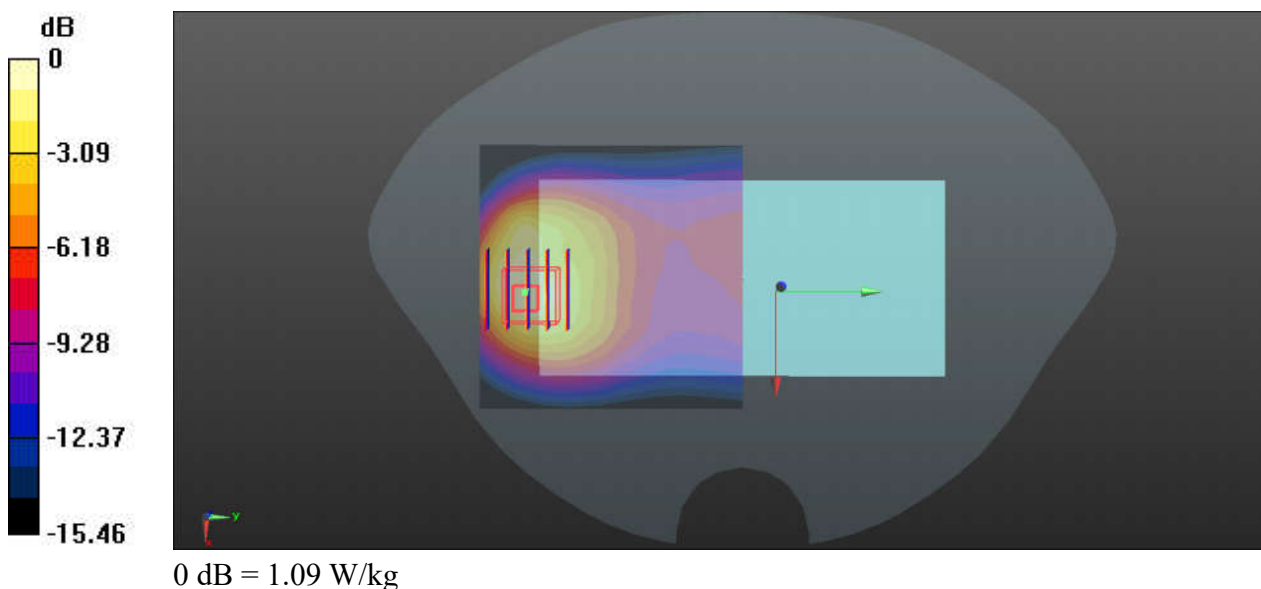
Ambient Temperature : 23.3 °C; Liquid Temperature : 22.6 °C

DASY5 Configuration:

- Probe: EX3DV4 - SN7577; ConvF(9.55, 9.55, 9.55); Calibrated: 2021/11/23
- Sensor-Surface: 1.4mm (Mechanical Surface Detection)
- Electronics: DAE4 Sn910; Calibrated: 2021/7/15
- Phantom: SAM (Front) with CRP v5.0; Type: QD000P40CD; Serial: TP:1795
- Measurement SW: DASY52, Version 52.10 (3); SEMCAD X Version 14.6.13 (7474)

Ch251/Area Scan (71x71x1): Interpolated grid: dx=1.500 mm, dy=1.500 mm
Maximum value of SAR (interpolated) = 1.27 W/kg

Ch251/Zoom Scan (5x5x7)/Cube 0: Measurement grid: dx=8mm, dy=8mm, dz=5mm
Reference Value = 5.606 V/m; Power Drift = 0.05 dB
Peak SAR (extrapolated) = 1.86 W/kg
SAR(1 g) = 0.868 W/kg; SAR(10 g) = 0.459 W/kg
Maximum value of SAR (measured) = 1.09 W/kg



34_GSM1900_GPRS 3 Tx slots_Bottom Side_5mm_Ch810

Communication System: UID 0, GPRS/EDGE11 (0); Frequency: 1909.8 MHz; Duty Cycle: 1:2.77
Medium: HSL_1900_220110 Medium parameters used: $f = 1910$ MHz; $\sigma = 1.46$ S/m; $\epsilon_r = 39.182$; $\rho = 1000$ kg/m³

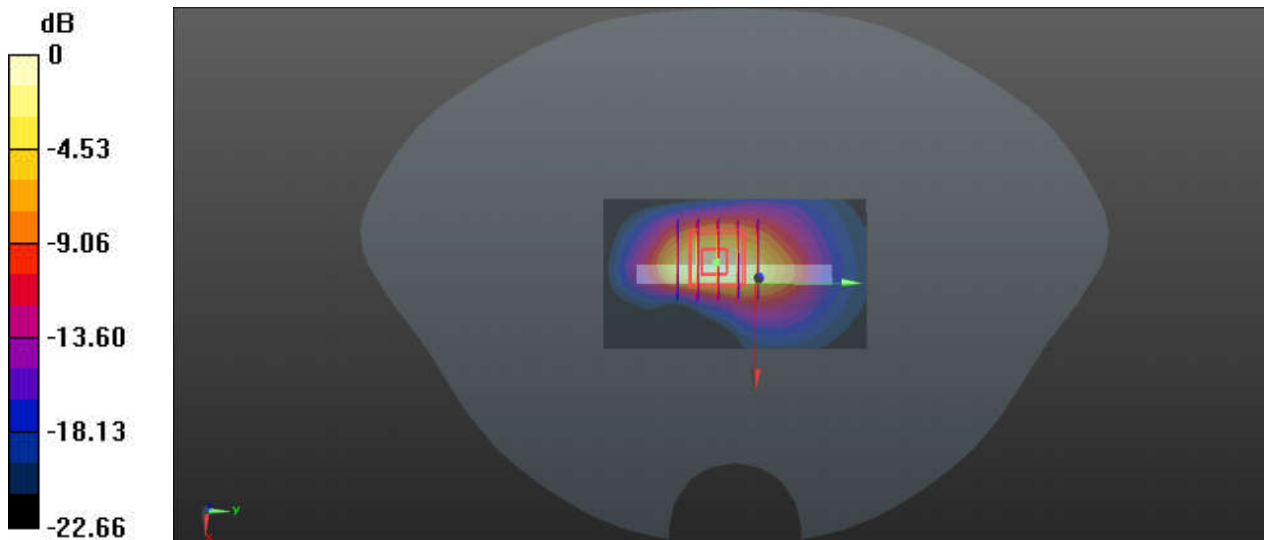
Ambient Temperature : 23.5 °C; Liquid Temperature : 22.4 °C

DASY5 Configuration:

- Probe: EX3DV4 - SN7577; ConvF(8.13, 8.13, 8.13); Calibrated: 2021/11/23
- Sensor-Surface: 1.4mm (Mechanical Surface Detection)
- Electronics: DAE4 Sn910; Calibrated: 2021/7/15
- Phantom: SAM (Front) with CRP v5.0; Type: QD000P40CD; Serial: TP:1795
- Measurement SW: DASY52, Version 52.10 (3); SEMCAD X Version 14.6.13 (7474)

Ch810/Area Scan (41x71x1): Interpolated grid: dx=1.500 mm, dy=1.500 mm
Maximum value of SAR (interpolated) = 1.81 W/kg

Ch810/Zoom Scan (5x5x7)/Cube 0: Measurement grid: dx=8mm, dy=8mm, dz=5mm
Reference Value = 30.42 V/m; Power Drift = -0.03 dB
Peak SAR (extrapolated) = 2.13 W/kg
SAR(1 g) = 1.04 W/kg; SAR(10 g) = 0.467 W/kg
Maximum value of SAR (measured) = 1.76 W/kg



0 dB = 1.76 W/kg

35_WCDMA V_RMC 12.2Kbps_Back_5mm_Ch4233

Communication System: UID 0, UMTS (0); Frequency: 846.6 MHz; Duty Cycle: 1:1
Medium: HSL_835_220116 Medium parameters used: $f = 847$ MHz; $\sigma = 0.886$ S/m; $\epsilon_r = 40.523$; $\rho = 1000$ kg/m³

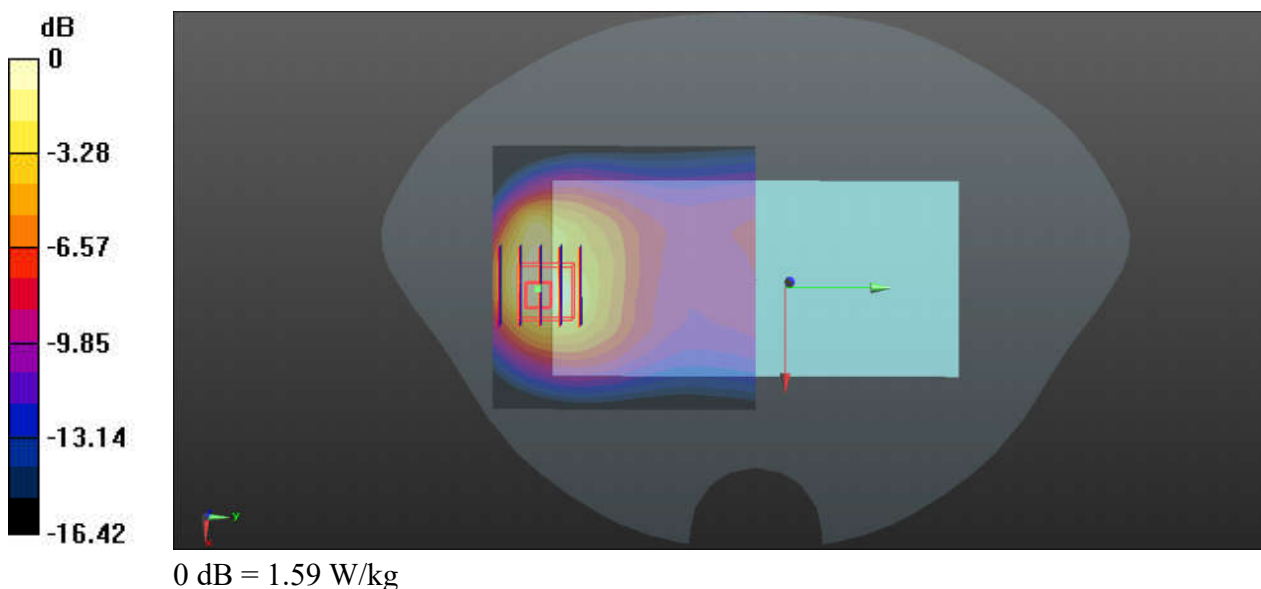
Ambient Temperature : 23.3 °C; Liquid Temperature : 22.6 °C

DASY5 Configuration:

- Probe: EX3DV4 - SN7577; ConvF(9.55, 9.55, 9.55); Calibrated: 2021/11/23
- Sensor-Surface: 1.4mm (Mechanical Surface Detection)
- Electronics: DAE4 Sn910; Calibrated: 2021/7/15
- Phantom: SAM (Front) with CRP v5.0; Type: QD000P40CD; Serial: TP:1795
- Measurement SW: DASY52, Version 52.10 (3); SEMCAD X Version 14.6.13 (7474)

Ch4233/Area Scan (71x71x1): Interpolated grid: dx=1.500 mm, dy=1.500 mm
Maximum value of SAR (interpolated) = 1.89 W/kg

Ch4233/Zoom Scan (5x5x7)/Cube 0: Measurement grid: dx=8mm, dy=8mm, dz=5mm
Reference Value = 14.00 V/m; Power Drift = 0.05 dB
Peak SAR (extrapolated) = 2.10 W/kg
SAR(1 g) = 0.943 W/kg; SAR(10 g) = 0.492 W/kg
Maximum value of SAR (measured) = 1.59 W/kg



36_WCDMA IV_RMC 12.2Kbps_Bottom Side_5mm_Ch1513

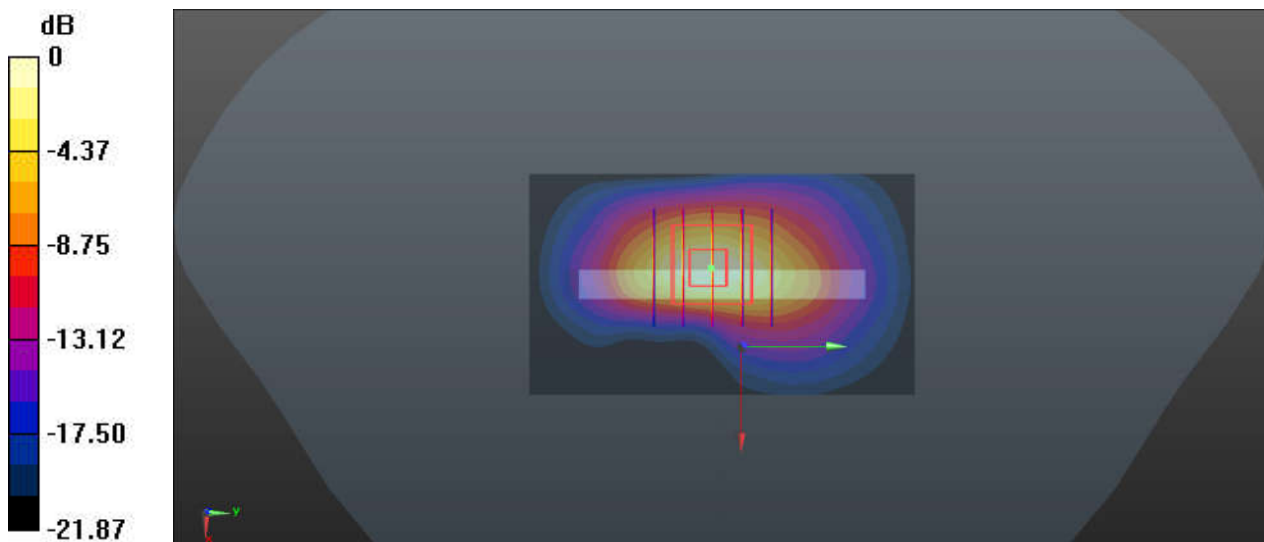
Communication System: UID 0, UMTS (0); Frequency: 1752.6 MHz; Duty Cycle: 1:1
Medium: HSL_1750_220102 Medium parameters used: $f = 1753 \text{ MHz}$; $\sigma = 1.395 \text{ S/m}$; $\epsilon_r = 39.944$;
 $\rho = 1000 \text{ kg/m}^3$
Ambient Temperature : 23.2 °C; Liquid Temperature : 22.7 °C

DASY5 Configuration:

- Probe: EX3DV4 - SN7577; ConvF(8.4, 8.4, 8.4); Calibrated: 2021/11/23
- Sensor-Surface: 1.4mm (Mechanical Surface Detection)
- Electronics: DAE4 Sn910; Calibrated: 2021/7/15
- Phantom: SAM (Front) with CRP v5.0; Type: QD000P40CD; Serial: TP:1795
- Measurement SW: DASY52, Version 52.10 (3); SEMCAD X Version 14.6.13 (7474)

Ch1513/Area Scan (41x71x1): Interpolated grid: $dx=1.500 \text{ mm}$, $dy=1.500 \text{ mm}$
Maximum value of SAR (interpolated) = 1.44 W/kg

Ch1513/Zoom Scan (5x5x7)/Cube 0: Measurement grid: $dx=8\text{mm}$, $dy=8\text{mm}$, $dz=5\text{mm}$
Reference Value = 28.68 V/m; Power Drift = -0.03 dB
Peak SAR (extrapolated) = 1.73 W/kg
SAR(1 g) = 0.869 W/kg; SAR(10 g) = 0.402 W/kg
Maximum value of SAR (measured) = 1.46 W/kg



0 dB = 1.46 W/kg

37_WCDMA II_RMC 12.2Kbps_Bottom Side_5mm_Ch9400

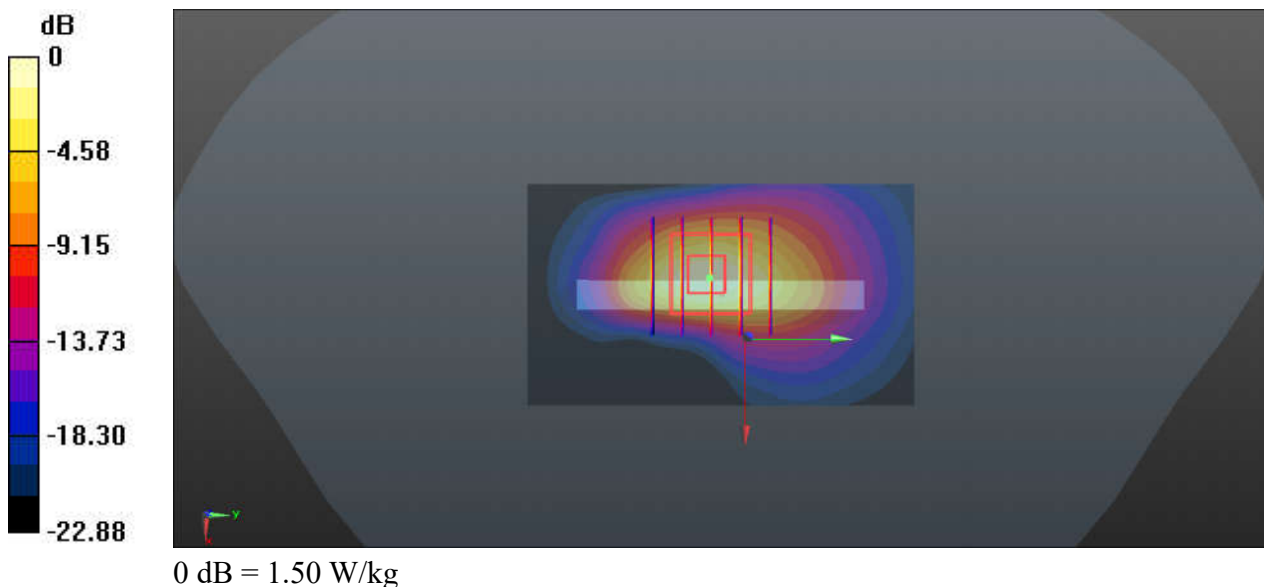
Communication System: UID 0, UMTS (0); Frequency: 1880 MHz; Duty Cycle: 1:1
Medium: HSL_1900_220110 Medium parameters used: $f = 1880$ MHz; $\sigma = 1.442$ S/m; $\epsilon_r = 39.189$;
 $\rho = 1000$ kg/m³
Ambient Temperature : 23.5 °C; Liquid Temperature : 22.4 °C

DASY5 Configuration:

- Probe: EX3DV4 - SN7577; ConvF(8.13, 8.13, 8.13); Calibrated: 2021/11/23
- Sensor-Surface: 1.4mm (Mechanical Surface Detection)
- Electronics: DAE4 Sn910; Calibrated: 2021/7/15
- Phantom: SAM (Front) with CRP v5.0; Type: QD000P40CD; Serial: TP:1795
- Measurement SW: DASY52, Version 52.10 (3); SEMCAD X Version 14.6.13 (7474)

Ch9400/Area Scan (41x71x1): Interpolated grid: dx=1.500 mm, dy=1.500 mm
Maximum value of SAR (interpolated) = 1.54 W/kg

Ch9400/Zoom Scan (5x5x7)/Cube 0: Measurement grid: dx=8mm, dy=8mm, dz=5mm
Reference Value = 27.83 V/m; Power Drift = 0.03 dB
Peak SAR (extrapolated) = 1.80 W/kg
SAR(1 g) = 0.887 W/kg; SAR(10 g) = 0.404 W/kg
Maximum value of SAR (measured) = 1.50 W/kg



38_LTE Band 71_20M_QPSK_1RB_99Offset_Back_5mm_Ch133322

Communication System: UID 0, LTE (0); Frequency: 683 MHz; Duty Cycle: 1:1
Medium: HSL_750_220114 Medium parameters used: $f = 683 \text{ MHz}$; $\sigma = 0.854 \text{ S/m}$; $\epsilon_r = 42.829$;
 $\rho = 1000 \text{ kg/m}^3$

Ambient Temperature : 23.7 °C; Liquid Temperature : 22.4 °C

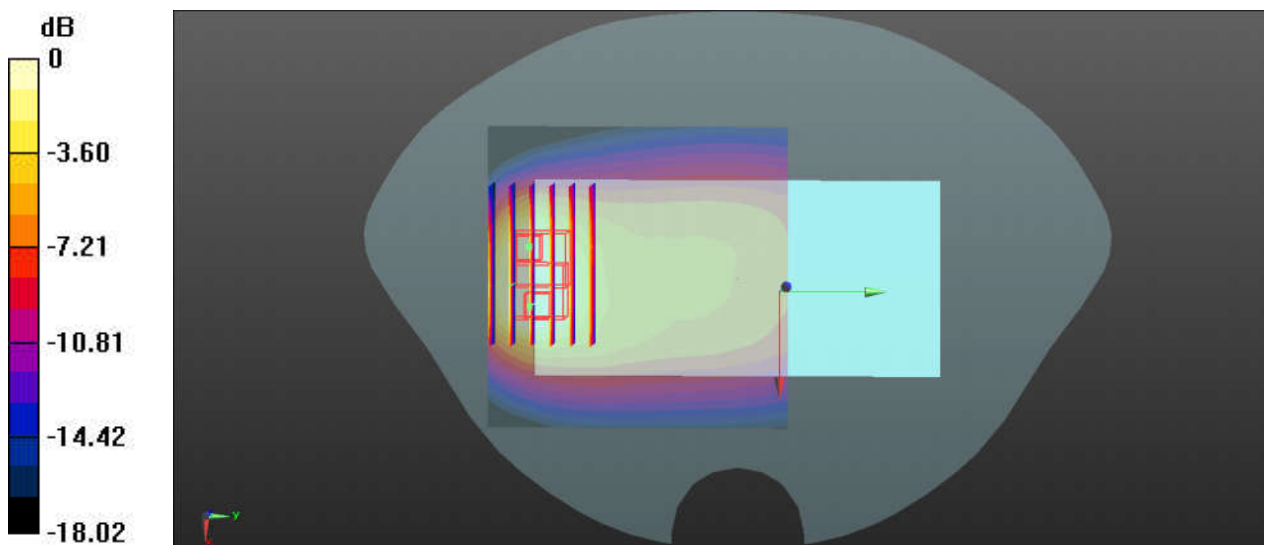
DASY5 Configuration:

- Probe: EX3DV4 - SN7577; ConvF(9.78, 9.78, 9.78); Calibrated: 2021/11/23
- Sensor-Surface: 1.4mm (Mechanical Surface Detection)
- Electronics: DAE4 Sn910; Calibrated: 2021/7/15
- Phantom: SAM (Front) with CRP v5.0; Type: QD000P40CD; Serial: TP:1795
- Measurement SW: DASY52, Version 52.10 (3); SEMCAD X Version 14.6.13 (7474)

Ch133332/Area Scan (81x81x1): Interpolated grid: $dx=1.500 \text{ mm}$, $dy=1.500 \text{ mm}$
Maximum value of SAR (interpolated) = 1.48 W/kg

Ch133332/Zoom Scan (6x6x7)/Cube 0: Measurement grid: $dx=8\text{mm}$, $dy=8\text{mm}$, $dz=5\text{mm}$
Reference Value = 19.41 V/m; Power Drift = 0.01 dB
Peak SAR (extrapolated) = 1.96 W/kg
SAR(1 g) = 0.783 W/kg; SAR(10 g) = 0.414 W/kg
Maximum value of SAR (measured) = 1.46 W/kg

Ch133332/Zoom Scan (6x6x7)/Cube 1: Measurement grid: $dx=8\text{mm}$, $dy=8\text{mm}$, $dz=5\text{mm}$
Reference Value = 19.41 V/m; Power Drift = 0.01 dB
Peak SAR (extrapolated) = 1.53 W/kg
SAR(1 g) = 0.664 W/kg; SAR(10 g) = 0.384 W/kg
Maximum value of SAR (measured) = 1.14 W/kg



0 dB = 1.14 W/kg

39_LTE Band 12_10M_QPSK_1RB_0Offset_Back_5mm_Ch23095

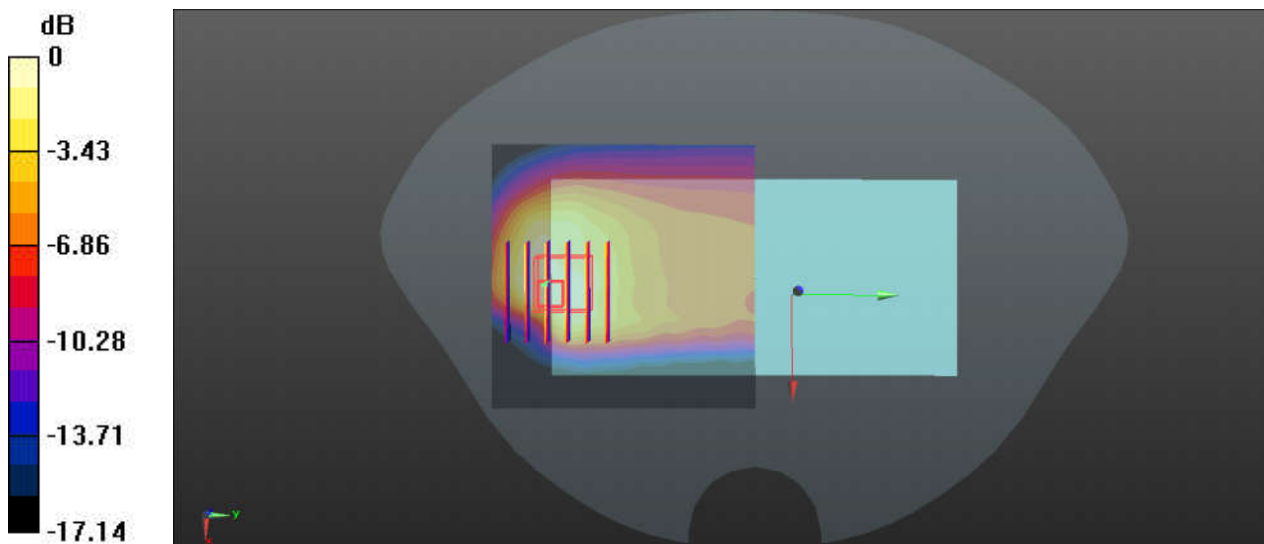
Communication System: UID 0, LTE (0); Frequency: 707.5 MHz; Duty Cycle: 1:1
Medium: HSL_750_211222 Medium parameters used: $f = 707.5$ MHz; $\sigma = 0.858$ S/m; $\epsilon_r = 41.716$;
 $\rho = 1000$ kg/m³
Ambient Temperature : 23.5 °C; Liquid Temperature : 22.2 °C

DASY5 Configuration:

- Probe: ES3DV3 - SN3191; ConvF(6.74, 6.74, 6.74); Calibrated: 2021/2/19
- Sensor-Surface: 3mm (Mechanical Surface Detection)
- Electronics: DAE4 Sn910; Calibrated: 2021/7/15
- Phantom: SAM (Front) with CRP v5.0; Type: QD000P40CD; Serial: TP:1795
- Measurement SW: DASY52, Version 52.10 (3); SEMCAD X Version 14.6.13 (7474)

Ch23095/Area Scan (71x71x1): Interpolated grid: dx=1.500 mm, dy=1.500 mm
Maximum value of SAR (interpolated) = 1.34 W/kg

Ch23095/Zoom Scan (6x6x7)/Cube 0: Measurement grid: dx=8mm, dy=8mm, dz=5mm
Reference Value = 6.882 V/m; Power Drift = 0.05 dB
Peak SAR (extrapolated) = 2.13 W/kg
SAR(1 g) = 0.897 W/kg; SAR(10 g) = 0.482 W/kg
Maximum value of SAR (measured) = 1.10 W/kg



0 dB = 1.10 W/kg

40_LTE Band 13_10M_QPSK_1RB_0Offset_Back_5mm_Ch23230

Communication System: UID 0, LTE (0); Frequency: 782 MHz; Duty Cycle: 1:1
Medium: HSL_750_220114 Medium parameters used: $f = 782 \text{ MHz}$; $\sigma = 0.904 \text{ S/m}$; $\epsilon_r = 40.826$; $\rho = 1000 \text{ kg/m}^3$

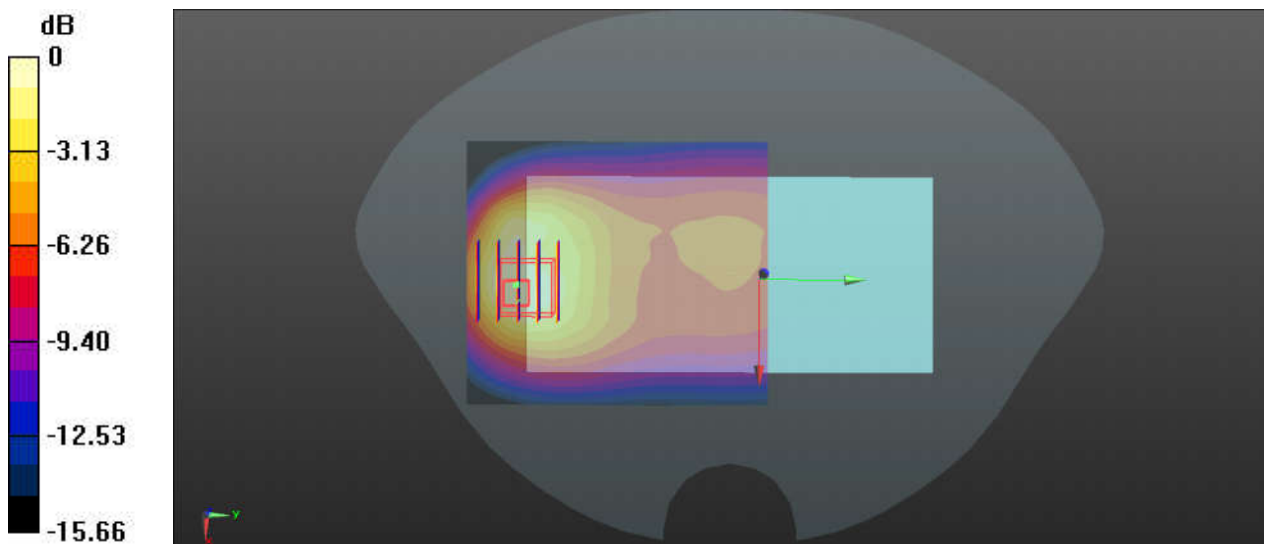
Ambient Temperature : 23.7 °C; Liquid Temperature : 22.4 °C

DASY5 Configuration:

- Probe: EX3DV4 - SN7577; ConvF(9.78, 9.78, 9.78); Calibrated: 2021/11/23
- Sensor-Surface: 1.4mm (Mechanical Surface Detection)
- Electronics: DAE4 Sn910; Calibrated: 2021/7/15
- Phantom: SAM (Front) with CRP v5.0; Type: QD000P40CD; Serial: TP:1795
- Measurement SW: DASY52, Version 52.10 (3); SEMCAD X Version 14.6.13 (7474)

Ch23230/Area Scan (71x81x1): Interpolated grid: $dx=1.500 \text{ mm}$, $dy=1.500 \text{ mm}$
Maximum value of SAR (interpolated) = 1.05 W/kg

Ch23230/Zoom Scan (5x5x7)/Cube 0: Measurement grid: $dx=8\text{mm}$, $dy=8\text{mm}$, $dz=5\text{mm}$
Reference Value = 16.35 V/m; Power Drift = 0.17 dB
Peak SAR (extrapolated) = 1.63 W/kg
SAR(1 g) = 0.729 W/kg; SAR(10 g) = 0.386 W/kg
Maximum value of SAR (measured) = 0.898 W/kg



0 dB = 0.898 W/kg

41_LTE Band 14_10M_QPSK_1RB_0Offset_Back_5mm_Ch23330

Communication System: UID 0, LTE (0); Frequency: 793 MHz; Duty Cycle: 1:1
Medium: HSL_750_220114 Medium parameters used: $f = 793$ MHz; $\sigma = 0.918$ S/m; $\epsilon_r = 40.65$; $\rho = 1000$ kg/m³

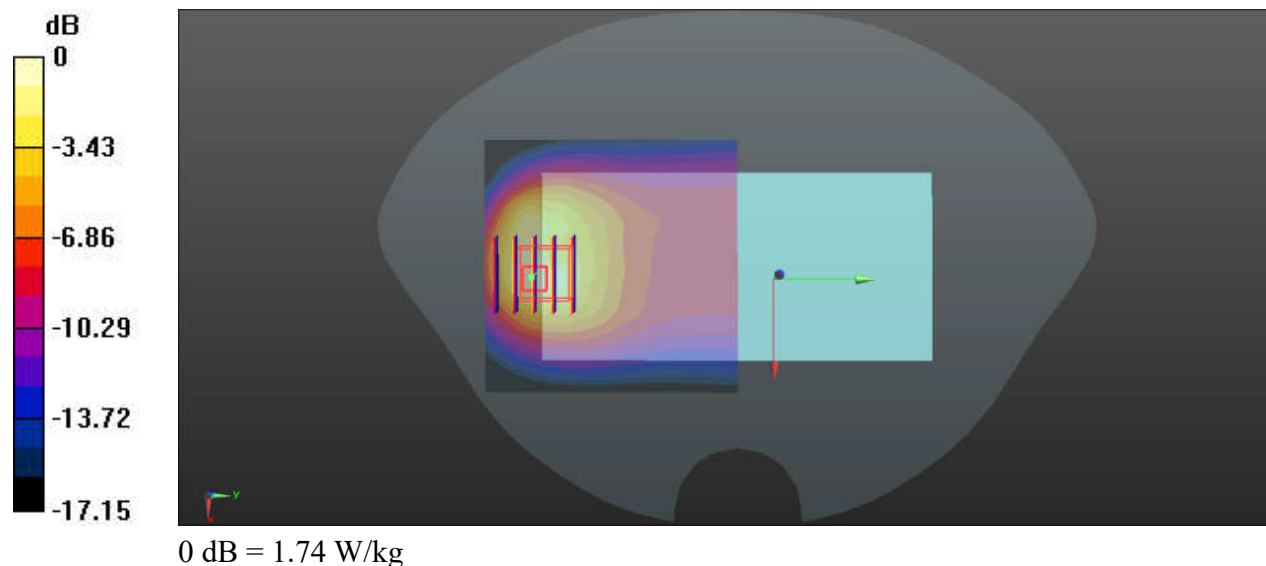
Ambient Temperature : 23.7 °C; Liquid Temperature : 22.4 °C

DASY5 Configuration:

- Probe: EX3DV4 - SN7577; ConvF(9.78, 9.78, 9.78); Calibrated: 2021/11/23
- Sensor-Surface: 1.4mm (Mechanical Surface Detection)
- Electronics: DAE4 Sn910; Calibrated: 2021/7/15
- Phantom: SAM (Front) with CRP v5.0; Type: QD000P40CD; Serial: TP:1795
- Measurement SW: DASY52, Version 52.10 (3); SEMCAD X Version 14.6.13 (7474)

Ch23330/Area Scan (71x71x1): Interpolated grid: dx=1.500 mm, dy=1.500 mm
Maximum value of SAR (interpolated) = 1.79 W/kg

Ch23330/Zoom Scan (5x5x7)/Cube 0: Measurement grid: dx=8mm, dy=8mm, dz=5mm
Reference Value = 17.66 V/m; Power Drift = 0.19 dB
Peak SAR (extrapolated) = 2.29 W/kg
SAR(1 g) = 0.954 W/kg; SAR(10 g) = 0.498 W/kg
Maximum value of SAR (measured) = 1.74 W/kg



42_LTE Band 26_15M_QPSK_1RB_0Offset_Back_5mm_Ch26965

Communication System: UID 0, LTE (0); Frequency: 841.5 MHz; Duty Cycle: 1:1
Medium: HSL_835_220116 Medium parameters used: $f = 841.5$ MHz; $\sigma = 0.881$ S/m; $\epsilon_r = 40.596$;
 $\rho = 1000$ kg/m³
Ambient Temperature : 23.3 °C; Liquid Temperature : 22.6 °C

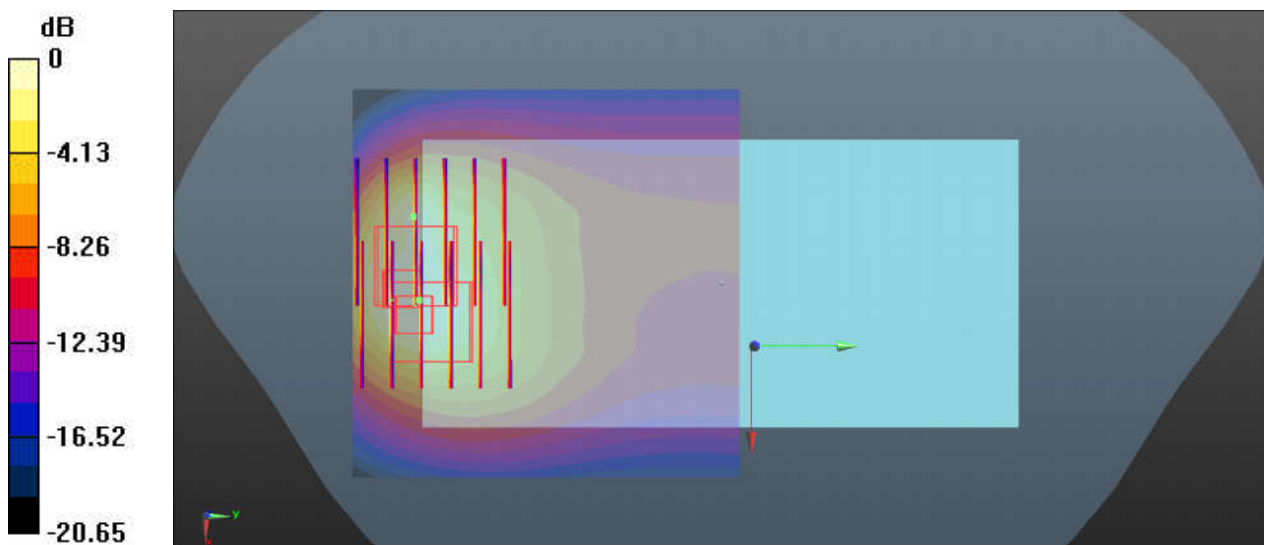
DASY5 Configuration:

- Probe: EX3DV4 - SN7577; ConvF(9.55, 9.55, 9.55); Calibrated: 2021/11/23
- Sensor-Surface: 1.4mm (Mechanical Surface Detection)
- Electronics: DAE4 Sn910; Calibrated: 2021/7/15
- Phantom: SAM (Front) with CRP v5.0; Type: QD000P40CD; Serial: TP:1795
- Measurement SW: DASY52, Version 52.10 (3); SEMCAD X Version 14.6.13 (7474)

Ch26965/Area Scan (71x71x1): Interpolated grid: dx=1.500 mm, dy=1.500 mm
Maximum value of SAR (interpolated) = 1.83 W/kg

Ch26965/Zoom Scan (6x6x7)/Cube 0: Measurement grid: dx=8mm, dy=8mm, dz=5mm
Reference Value = 14.76 V/m; Power Drift = -0.14 dB
Peak SAR (extrapolated) = 2.27 W/kg
SAR(1 g) = 0.965 W/kg; SAR(10 g) = 0.447 W/kg
Maximum value of SAR (measured) = 1.51 W/kg

Ch26965/Zoom Scan (6x6x7)/Cube 1: Measurement grid: dx=8mm, dy=8mm, dz=5mm
Reference Value = 14.76 V/m; Power Drift = -0.14 dB
Peak SAR (extrapolated) = 2.08 W/kg
SAR(1 g) = 0.811 W/kg; SAR(10 g) = 0.400 W/kg
Maximum value of SAR (measured) = 1.55 W/kg



0 dB = 1.55 W/kg

43_LTE Band 66_20M_QPSK_1RB_0Offset_Bottom Side_5mm_Ch132572

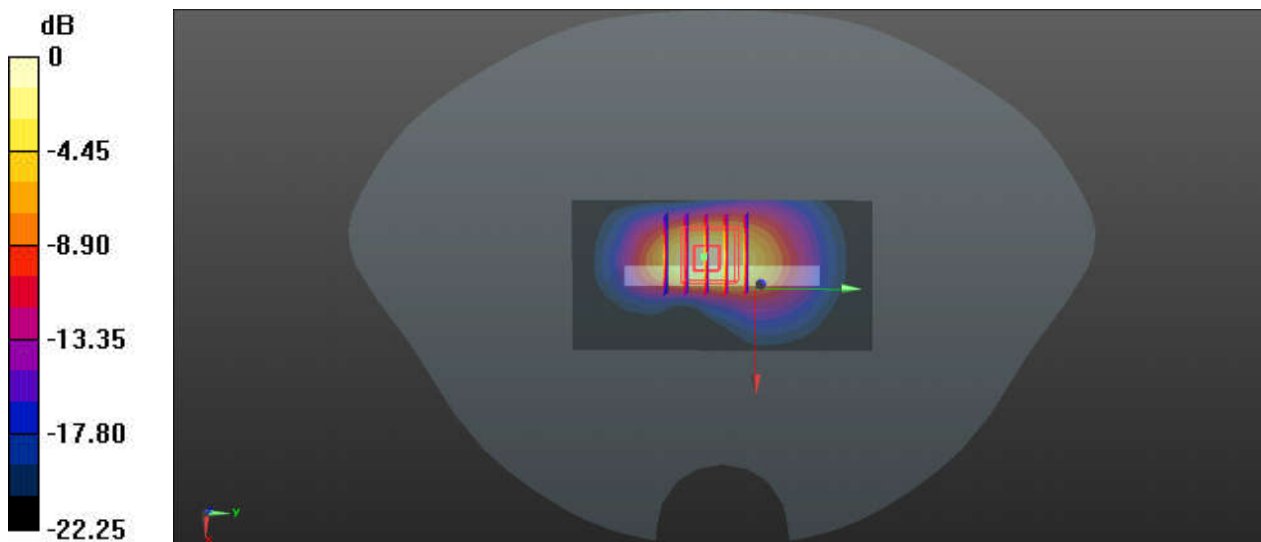
Communication System: UID 0, LTE (0); Frequency: 1770 MHz; Duty Cycle: 1:1
Medium: HSL_1750_220102 Medium parameters used: $f = 1770$ MHz; $\sigma = 1.405$ S/m; $\epsilon_r = 39.765$;
 $\rho = 1000$ kg/m³
Ambient Temperature : 23.2 °C; Liquid Temperature : 22.7 °C

DASY5 Configuration:

- Probe: EX3DV4 - SN7577; ConvF(8.4, 8.4, 8.4); Calibrated: 2021/11/23
- Sensor-Surface: 1.4mm (Mechanical Surface Detection)
- Electronics: DAE4 Sn910; Calibrated: 2021/7/15
- Phantom: SAM (Front) with CRP v5.0; Type: QD000P40CD; Serial: TP:1795
- Measurement SW: DASY52, Version 52.10 (3); SEMCAD X Version 14.6.13 (7474)

Ch132572/Area Scan (41x81x1): Interpolated grid: dx=1.500 mm, dy=1.500 mm
Maximum value of SAR (interpolated) = 1.68 W/kg

Ch132572/Zoom Scan (5x5x7)/Cube 0: Measurement grid: dx=8mm, dy=8mm, dz=5mm
Reference Value = 24.04 V/m; Power Drift = 0.12 dB
Peak SAR (extrapolated) = 1.99 W/kg
SAR(1 g) = 1.01 W/kg; SAR(10 g) = 0.464 W/kg
Maximum value of SAR (measured) = 1.67 W/kg



0 dB = 1.67 W/kg

44_LTE Band 25_20M_QPSK_1RB_0Offset_Bottom Side_5mm_Ch26590

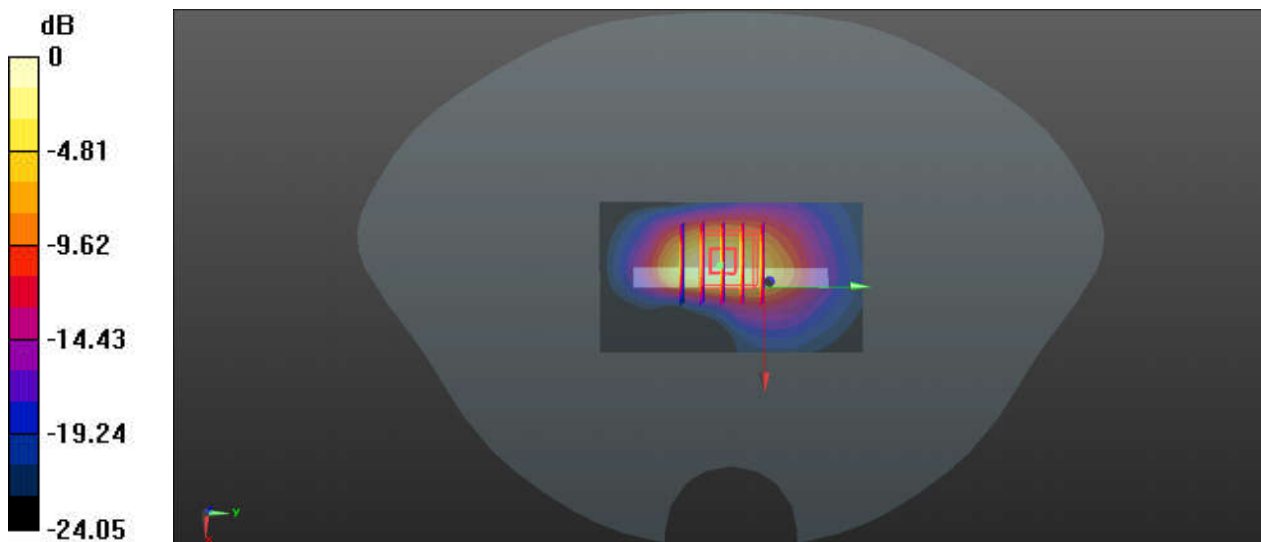
Communication System: UID 0, LTE (0); Frequency: 1905 MHz; Duty Cycle: 1:1
Medium: HSL_1900_220110 Medium parameters used: $f = 1905$ MHz; $\sigma = 1.457$ S/m; $\epsilon_r = 39.181$;
 $\rho = 1000$ kg/m³
Ambient Temperature : 23.5 °C; Liquid Temperature : 22.4 °C

DASY5 Configuration:

- Probe: EX3DV4 - SN7577; ConvF(8.13, 8.13, 8.13); Calibrated: 2021/11/23
- Sensor-Surface: 1.4mm (Mechanical Surface Detection)
- Electronics: DAE4 Sn910; Calibrated: 2021/7/15
- Phantom: SAM (Front) with CRP v5.0; Type: QD000P40CD; Serial: TP:1795
- Measurement SW: DASY52, Version 52.10 (3); SEMCAD X Version 14.6.13 (7474)

Ch26590/Area Scan (41x71x1): Interpolated grid: dx=1.500 mm, dy=1.500 mm
Maximum value of SAR (interpolated) = 1.35 W/kg

Ch26590/Zoom Scan (5x5x7)/Cube 0: Measurement grid: dx=8mm, dy=8mm, dz=5mm
Reference Value = 24.40 V/m; Power Drift = 0.15 dB
Peak SAR (extrapolated) = 1.93 W/kg
SAR(1 g) = 0.931 W/kg; SAR(10 g) = 0.422 W/kg
Maximum value of SAR (measured) = 1.54 W/kg



0 dB = 1.54 W/kg

45_LTE Band 30_10M_QPSK_1RB_25Offset_Bottom Side_5mm_Ch27710

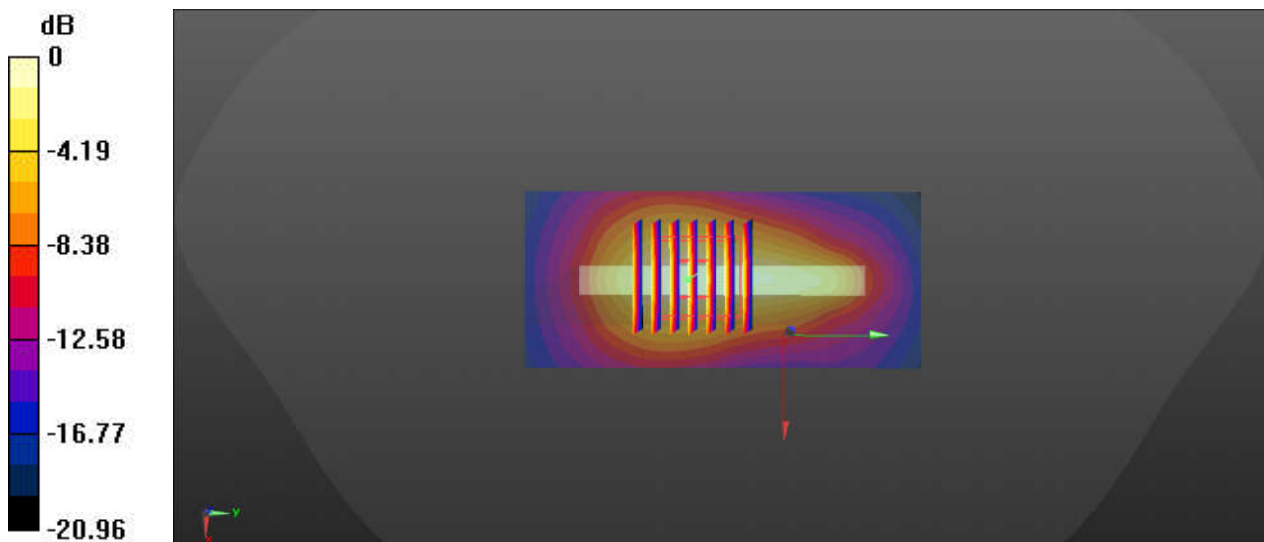
Communication System: UID 0, LTE (0); Frequency: 2310 MHz; Duty Cycle: 1:1
Medium: HSL_2300_220109 Medium parameters used: $f = 2310$ MHz; $\sigma = 1.743$ S/m; $\epsilon_r = 40.415$;
 $\rho = 1000$ kg/m³
Ambient Temperature : 23.6 °C; Liquid Temperature : 22.6 °C

DASY5 Configuration:

- Probe: EX3DV4 - SN7576; ConvF(7.91, 7.91, 7.91); Calibrated: 2021/4/26
- Sensor-Surface: 1.4mm (Mechanical Surface Detection)
- Electronics: DAE4 Sn1437; Calibrated: 2021/10/26
- Phantom: Twin-SAM V8.0 (Left); Type: QD 000 P41 AA; Serial: 2035
- Measurement SW: DASY52, Version 52.10 (4); SEMCAD X Version 14.6.14 (7483)

Ch27710/Area Scan (41x91x1): Interpolated grid: dx=1.200 mm, dy=1.200 mm
Maximum value of SAR (interpolated) = 1.31 W/kg

Ch27710/Zoom Scan (7x7x7)/Cube 0: Measurement grid: dx=5mm, dy=5mm, dz=5mm
Reference Value = 26.89 V/m; Power Drift = 0.11 dB
Peak SAR (extrapolated) = 1.55 W/kg
SAR(1 g) = 0.777 W/kg; SAR(10 g) = 0.392 W/kg
Maximum value of SAR (measured) = 1.23 W/kg



0 dB = 1.23 W/kg

46_LTE Band 7_20M_QPSK_1RB_0Offset_Bottom Side_5mm_Ch20850

Communication System: UID 0, LTE (0); Frequency: 2510 MHz; Duty Cycle: 1:1
Medium: HSL_2600_220108 Medium parameters used: $f = 2510$ MHz; $\sigma = 1.837$ S/m; $\epsilon_r = 37.943$;
 $\rho = 1000$ kg/m³
Ambient Temperature : 23.6 °C; Liquid Temperature : 22.8 °C

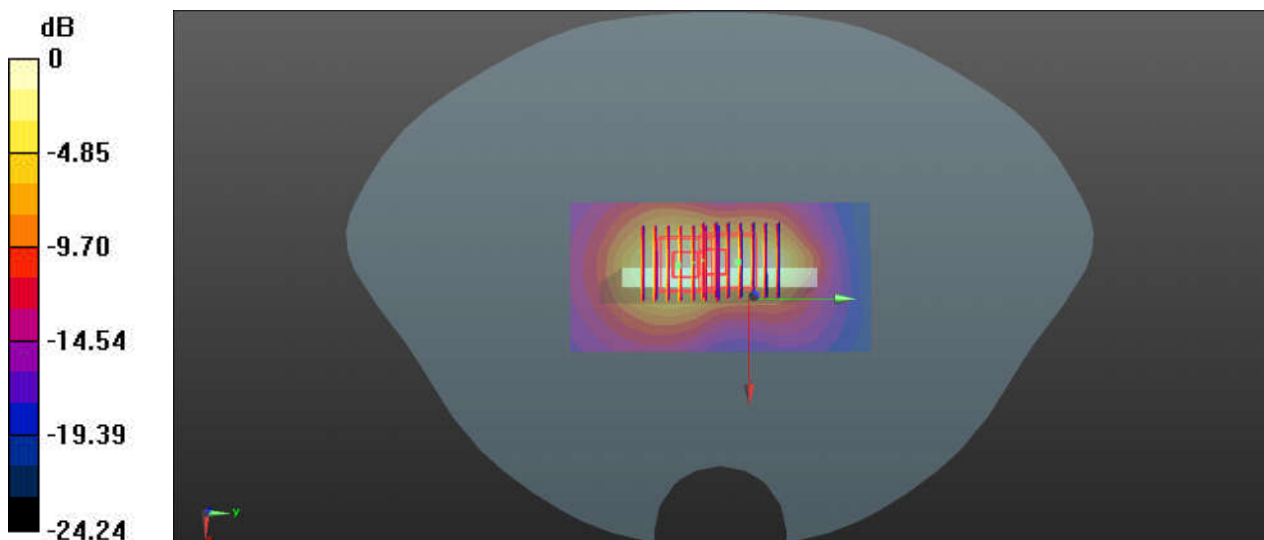
DASY5 Configuration:

- Probe: EX3DV4 - SN7577; ConvF(7.68, 7.68, 7.68); Calibrated: 2021/11/23
- Sensor-Surface: 1.4mm (Mechanical Surface Detection)
- Electronics: DAE4 Sn910; Calibrated: 2021/7/15
- Phantom: SAM (Front) with CRP v5.0; Type: QD000P40CD; Serial: TP:1795
- Measurement SW: DASY52, Version 52.10 (3); SEMCAD X Version 14.6.13 (7474)

Ch20850/Area Scan (51x101x1): Interpolated grid: dx=1.200 mm, dy=1.200 mm
Maximum value of SAR (interpolated) = 1.66 W/kg

Ch20850/Zoom Scan (7x7x7)/Cube 0: Measurement grid: dx=5mm, dy=5mm, dz=5mm
Reference Value = 22.77 V/m; Power Drift = 0.14 dB
Peak SAR (extrapolated) = 2.03 W/kg
SAR(1 g) = 1.01 W/kg; SAR(10 g) = 0.497 W/kg
Maximum value of SAR (measured) = 1.64 W/kg

Ch20850/Zoom Scan (7x7x7)/Cube 1: Measurement grid: dx=5mm, dy=5mm, dz=5mm
Reference Value = 22.77 V/m; Power Drift = 0.14 dB
Peak SAR (extrapolated) = 1.94 W/kg
SAR(1 g) = 0.832 W/kg; SAR(10 g) = 0.370 W/kg
Maximum value of SAR (measured) = 1.55 W/kg



0 dB = 1.55 W/kg

47_LTE Band 41_20M_QPSK_1RB_99Offset_Bottom Side_5mm_Ch41055

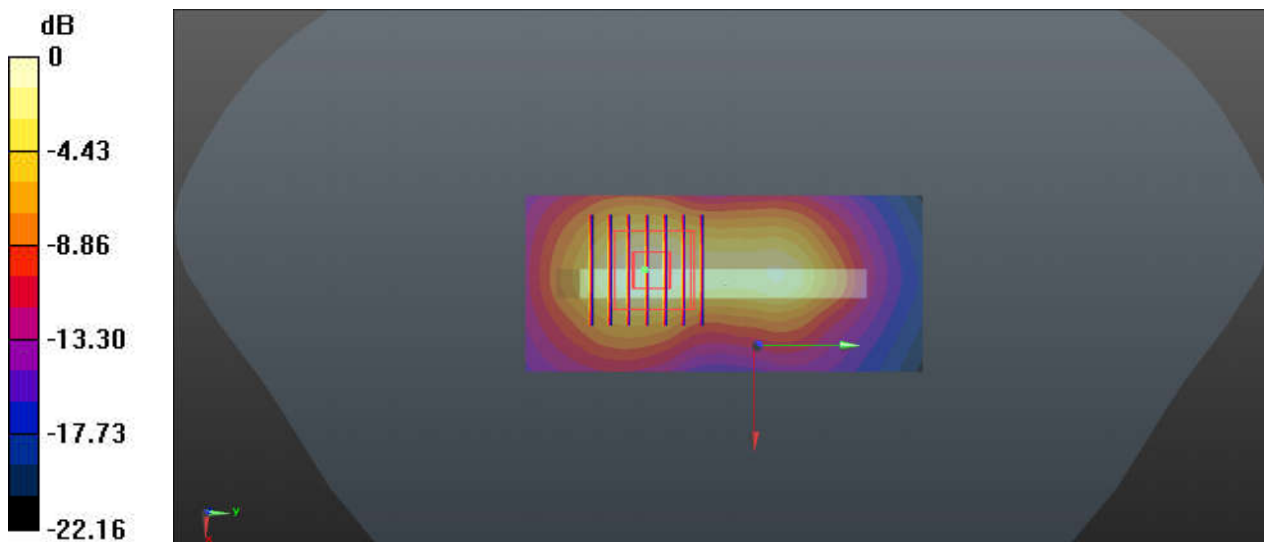
Communication System: UID 0, LTE (0); Frequency: 2636.5 MHz; Duty Cycle: 1:1.59
Medium: HSL_2600_220108 Medium parameters used: $f = 2637$ MHz; $\sigma = 1.974$ S/m; $\epsilon_r = 37.472$;
 $\rho = 1000$ kg/m³
Ambient Temperature : 23.6 °C; Liquid Temperature : 22.8 °C

DASY5 Configuration:

- Probe: EX3DV4 - SN7577; ConvF(7.68, 7.68, 7.68); Calibrated: 2021/11/23
- Sensor-Surface: 1.4mm (Mechanical Surface Detection)
- Electronics: DAE4 Sn910; Calibrated: 2021/7/15
- Phantom: SAM (Front) with CRP v5.0; Type: QD000P40CD; Serial: TP:1795
- Measurement SW: DASY52, Version 52.10 (3); SEMCAD X Version 14.6.13 (7474)

Ch41055/Area Scan (41x91x1): Interpolated grid: dx=1.200 mm, dy=1.200 mm
Maximum value of SAR (interpolated) = 1.18 W/kg

Ch41055/Zoom Scan (7x7x7)/Cube 0: Measurement grid: dx=5mm, dy=5mm, dz=5mm
Reference Value = 18.36 V/m; Power Drift = -0.09 dB
Peak SAR (extrapolated) = 1.47 W/kg
SAR(1 g) = 0.713 W/kg; SAR(10 g) = 0.337 W/kg
Maximum value of SAR (measured) = 1.17 W/kg



0 dB = 1.17 W/kg

48_LTE Band 48_20M_QPSK_1RB_99Offset_DFT-30_Back_5mm_Ch56640

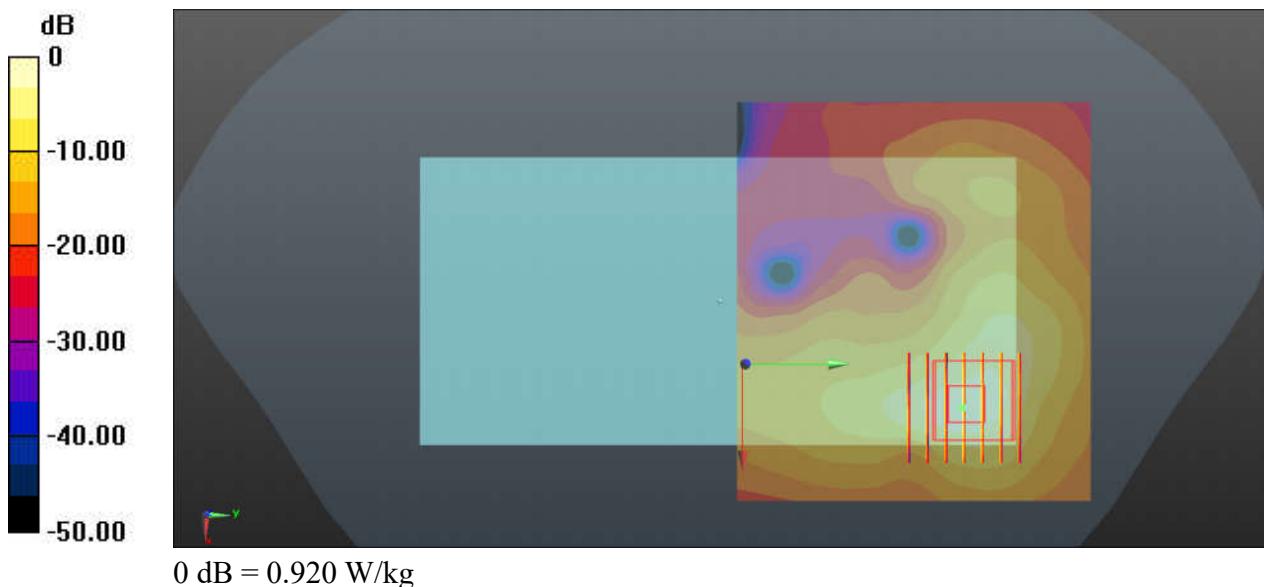
Communication System: UID 0, LTE (0); Frequency: 3690 MHz; Duty Cycle: 1:1.59
Medium: HSL_3700_220112 Medium parameters used: $f = 3690$ MHz; $\sigma = 3.046$ S/m; $\epsilon_r = 38.387$;
 $\rho = 1000$ kg/m³
Ambient Temperature : 23.5 °C; Liquid Temperature : 22.3 °C

DASY5 Configuration:

- Probe: EX3DV4 - SN7577; ConvF(6.49, 6.49, 6.49); Calibrated: 2021/11/23
- Sensor-Surface: 1.4mm (Mechanical Surface Detection)
- Electronics: DAE4 Sn910; Calibrated: 2021/7/15
- Phantom: SAM (Front) with CRP v5.0; Type: QD000P40CD; Serial: TP:1795
- Measurement SW: DASY52, Version 52.10 (3); SEMCAD X Version 14.6.13 (7474)

Ch56640/Area Scan (91x81x1): Interpolated grid: dx=1.200 mm, dy=1.200 mm
Maximum value of SAR (interpolated) = 0.941 W/kg

Ch56640/Zoom Scan (7x7x7)/Cube 0: Measurement grid: dx=5mm, dy=5mm, dz=1.4mm
Reference Value = 2.392 V/m; Power Drift = -0.18 dB
Peak SAR (extrapolated) = 1.28 W/kg
SAR(1 g) = 0.439 W/kg; SAR(10 g) = 0.153 W/kg
Maximum value of SAR (measured) = 0.920 W/kg



49_N71_20M_BPSK_1RB_1Offset_DFT-15_Left Side_5mm_Ch136100

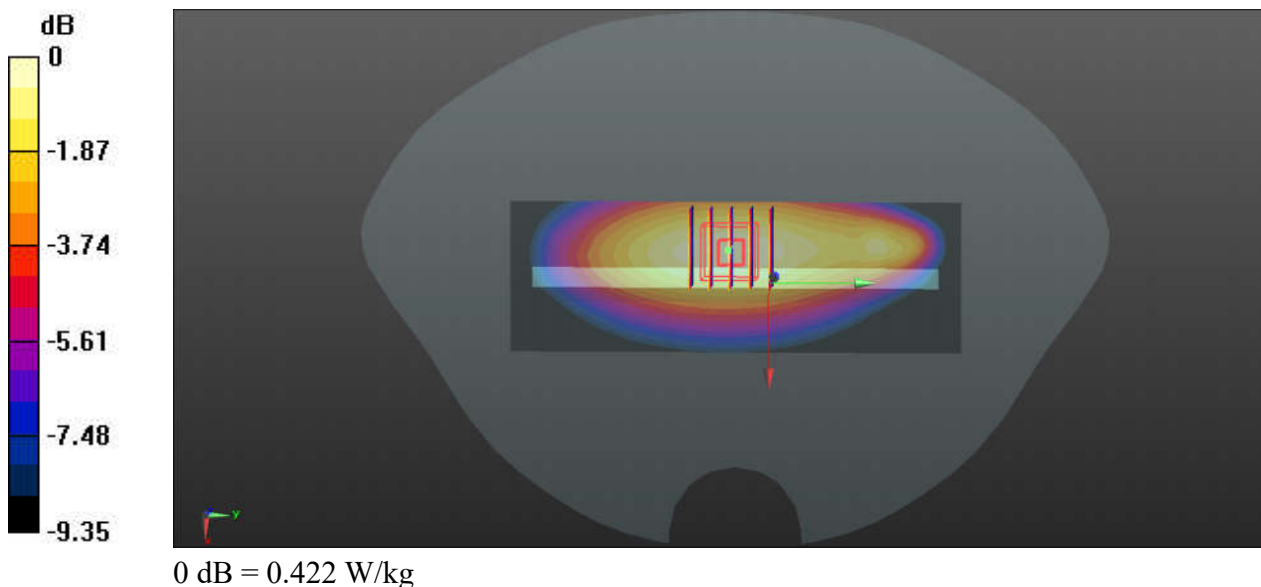
Communication System: UID 0, 5G NR (0); Frequency: 680.5 MHz; Duty Cycle: 1:1
Medium: HSL_750_211222 Medium parameters used: $f = 680.5$ MHz; $\sigma = 0.847$ S/m; $\epsilon_r = 42.153$;
 $\rho = 1000$ kg/m³
Ambient Temperature : 23.5 °C; Liquid Temperature : 22.2 °C

DASY5 Configuration:

- Probe: ES3DV3 - SN3191; ConvF(6.74, 6.74, 6.74); Calibrated: 2021/2/19
- Sensor-Surface: 3mm (Mechanical Surface Detection)
- Electronics: DAE4 Sn910; Calibrated: 2021/7/15
- Phantom: SAM (Front) with CRP v5.0; Type: QD000P40CD; Serial: TP:1795
- Measurement SW: DASY52, Version 52.10 (3); SEMCAD X Version 14.6.13 (7474)

Ch136100/Area Scan (41x121x1): Interpolated grid: dx=1.500 mm, dy=1.500 mm
Maximum value of SAR (interpolated) = 0.410 W/kg

Ch136100/Zoom Scan (5x5x7)/Cube 0: Measurement grid: dx=8mm, dy=8mm, dz=5mm
Reference Value = 3.561 V/m; Power Drift = 0.09 dB
Peak SAR (extrapolated) = 0.534 W/kg
SAR(1 g) = 0.363 W/kg; SAR(10 g) = 0.246 W/kg
Maximum value of SAR (measured) = 0.422 W/kg



50_N12_15M_BPSK_1RB_1Offset_DFT-15_Left Side_5mm_Ch141500

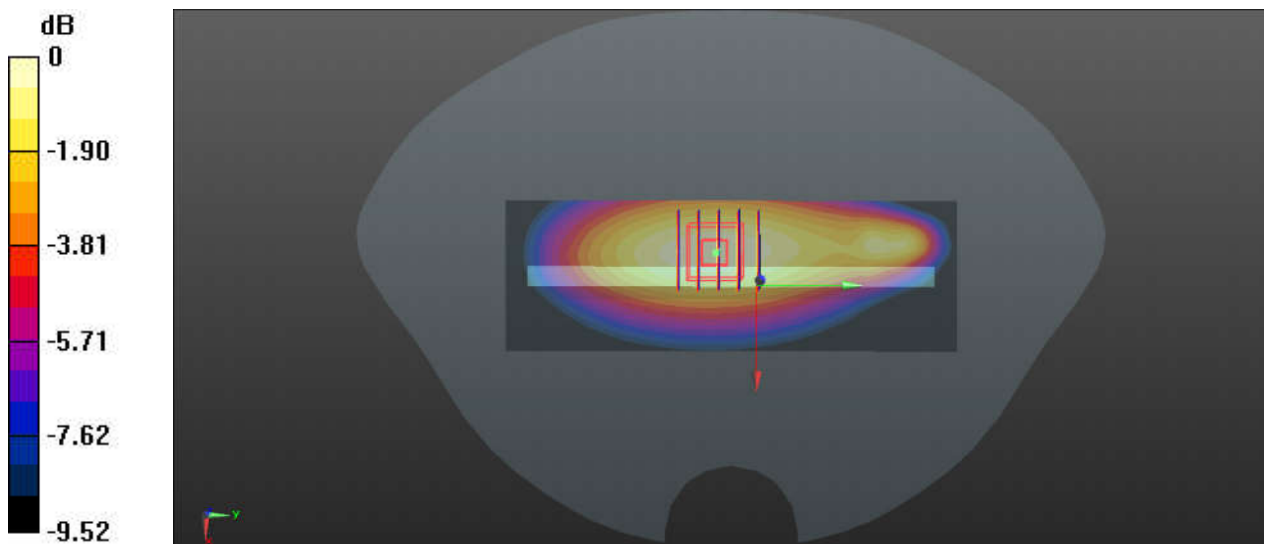
Communication System: UID 0, 5G NR (0); Frequency: 707.5 MHz; Duty Cycle: 1:1
Medium: HSL_750_211222 Medium parameters used: $f = 707.5$ MHz; $\sigma = 0.858$ S/m; $\epsilon_r = 41.716$;
 $\rho = 1000$ kg/m³
Ambient Temperature : 23.5 °C; Liquid Temperature : 22.2 °C

DASY5 Configuration:

- Probe: ES3DV3 - SN3191; ConvF(6.74, 6.74, 6.74); Calibrated: 2021/2/19
- Sensor-Surface: 3mm (Mechanical Surface Detection)
- Electronics: DAE4 Sn910; Calibrated: 2021/7/15
- Phantom: SAM (Front) with CRP v5.0; Type: QD000P40CD; Serial: TP:1795
- Measurement SW: DASY52, Version 52.10 (3); SEMCAD X Version 14.6.13 (7474)

Ch141500/Area Scan (41x121x1): Interpolated grid: dx=1.500 mm, dy=1.500 mm
Maximum value of SAR (interpolated) = 0.367 W/kg

Ch141500/Zoom Scan (5x5x7)/Cube 0: Measurement grid: dx=8mm, dy=8mm, dz=5mm
Reference Value = 19.64 V/m; Power Drift = 0.16 dB
Peak SAR (extrapolated) = 0.477 W/kg
SAR(1 g) = 0.324 W/kg; SAR(10 g) = 0.219 W/kg
Maximum value of SAR (measured) = 0.377 W/kg



0 dB = 0.377 W/kg

51_N14_10M_BPSK_1RB_1Offset_DFT-15_Top Side_5mm_Ch158600

Communication System: UID 0, 5G NR (0); Frequency: 793 MHz; Duty Cycle: 1:1
Medium: HSL_750_211222 Medium parameters used: $f = 793$ MHz; $\sigma = 0.913$ S/m; $\epsilon_r = 39.931$; $\rho = 1000$ kg/m³

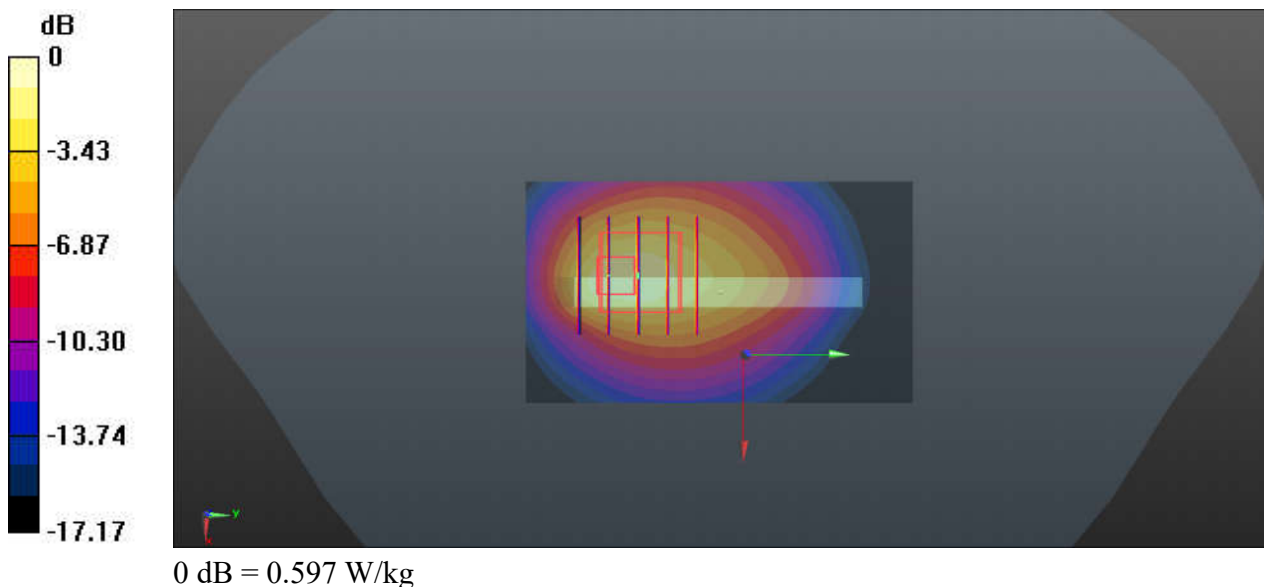
Ambient Temperature : 23.5 °C; Liquid Temperature : 22.2 °C

DASY5 Configuration:

- Probe: ES3DV3 - SN3191; ConvF(6.74, 6.74, 6.74); Calibrated: 2021/2/19
- Sensor-Surface: 3mm (Mechanical Surface Detection)
- Electronics: DAE4 Sn910; Calibrated: 2021/7/15
- Phantom: SAM (Front) with CRP v5.0; Type: QD000P40CD; Serial: TP:1795
- Measurement SW: DASY52, Version 52.10 (3); SEMCAD X Version 14.6.13 (7474)

Ch158600/Area Scan (41x71x1): Interpolated grid: dx=1.500 mm, dy=1.500 mm
Maximum value of SAR (interpolated) = 0.439 W/kg

Ch158600/Zoom Scan (5x5x7)/Cube 0: Measurement grid: dx=8mm, dy=8mm, dz=5mm
Reference Value = 16.97 V/m; Power Drift = 0.16 dB
Peak SAR (extrapolated) = 1.07 W/kg
SAR(1 g) = 0.415 W/kg; SAR(10 g) = 0.208 W/kg
Maximum value of SAR (measured) = 0.597 W/kg



52_N26_20M_BPSK_1RB_1Offset_DFT-15_Back_5mm_Ch166300

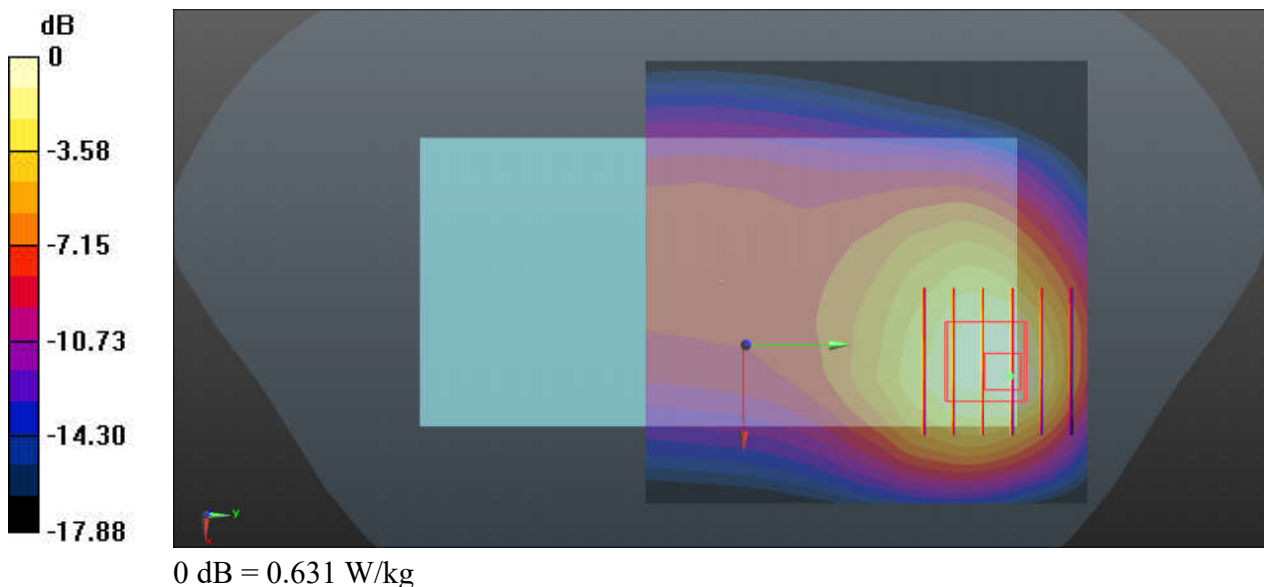
Communication System: UID 0, 5G NR (0); Frequency: 831.5 MHz; Duty Cycle: 1:1
Medium: HSL_835_211224 Medium parameters used: $f = 831.5$ MHz; $\sigma = 0.944$ S/m; $\epsilon_r = 41.283$;
 $\rho = 1000$ kg/m³
Ambient Temperature : 23.3 °C; Liquid Temperature : 22.5 °C

DASY5 Configuration:

- Probe: ES3DV3 - SN3191; ConvF(6.57, 6.57, 6.57); Calibrated: 2021/2/19
- Sensor-Surface: 3mm (Mechanical Surface Detection)
- Electronics: DAE4 Sn910; Calibrated: 2021/7/15
- Phantom: SAM (Front) with CRP v5.0; Type: QD000P40CD; Serial: TP:1795
- Measurement SW: DASY52, Version 52.10 (3); SEMCAD X Version 14.6.13 (7474)

Ch166300/Area Scan (81x81x1): Interpolated grid: dx=1.500 mm, dy=1.500 mm
Maximum value of SAR (interpolated) = 0.608 W/kg

Ch166300/Zoom Scan (6x6x7)/Cube 0: Measurement grid: dx=8mm, dy=8mm, dz=5mm
Reference Value = 22.47 V/m; Power Drift = -0.14 dB
Peak SAR (extrapolated) = 0.994 W/kg
SAR(1 g) = 0.502 W/kg; SAR(10 g) = 0.299 W/kg
Maximum value of SAR (measured) = 0.631 W/kg



53_N5_20M_BPSK_1RB_1Offset_DFT-15_Back_5mm_Ch167300

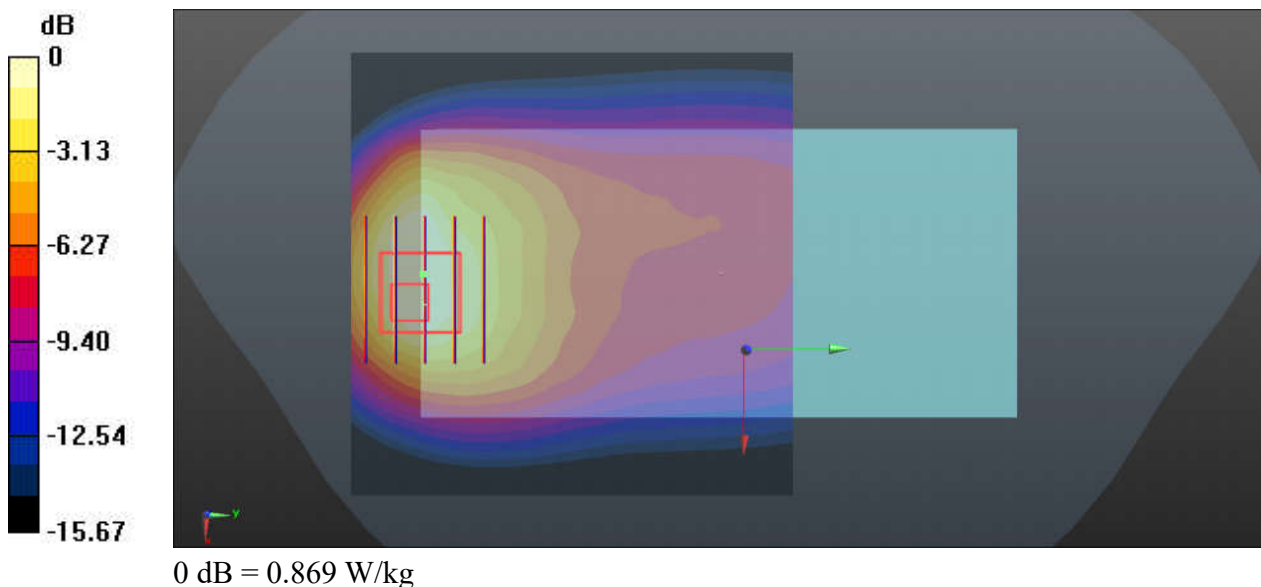
Communication System: UID 0, 5G NR (0); Frequency: 836.5 MHz; Duty Cycle: 1:1
Medium: HSL_835_211224 Medium parameters used: $f = 836.5$ MHz; $\sigma = 0.943$ S/m; $\epsilon_r = 41.275$;
 $\rho = 1000$ kg/m³
Ambient Temperature : 23.3 °C; Liquid Temperature : 22.5 °C

DASY5 Configuration:

- Probe: ES3DV3 - SN3191; ConvF(6.57, 6.57, 6.57); Calibrated: 2021/2/19
- Sensor-Surface: 3mm (Mechanical Surface Detection)
- Electronics: DAE4 Sn910; Calibrated: 2021/7/15
- Phantom: SAM (Front) with CRP v5.0; Type: QD000P40CD; Serial: TP:1795
- Measurement SW: DASY52, Version 52.10 (3); SEMCAD X Version 14.6.13 (7474)

Ch167300/Area Scan (81x81x1): Interpolated grid: dx=1.500 mm, dy=1.500 mm
Maximum value of SAR (interpolated) = 0.890 W/kg

Ch167300/Zoom Scan (6x5x7)/Cube 0: Measurement grid: dx=8mm, dy=8mm, dz=5mm
Reference Value = 12.88 V/m; Power Drift = -0.02 dB
Peak SAR (extrapolated) = 1.52 W/kg
SAR(1 g) = 0.678 W/kg; SAR(10 g) = 0.362 W/kg
Maximum value of SAR (measured) = 0.869 W/kg



54_N70_15M_BPSK_36RB_22Offset_DFT-15_Bottom Side_5mm_Ch340500

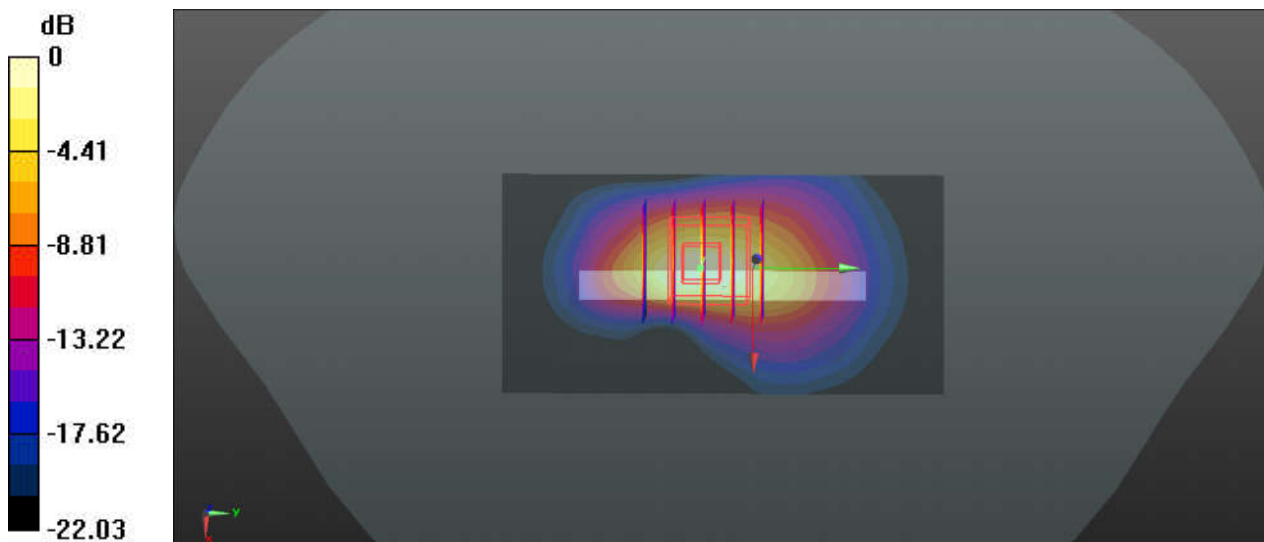
Communication System: UID 0, 5G NR (0); Frequency: 1702.5 MHz; Duty Cycle: 1:1
Medium: HSL_1750_220102 Medium parameters used: $f = 1702.5$ MHz; $\sigma = 1.35$ S/m; $\epsilon_r = 39.952$;
 $\rho = 1000$ kg/m³
Ambient Temperature : 23.2 °C; Liquid Temperature : 22.7 °C

DASY5 Configuration:

- Probe: EX3DV4 - SN7577; ConvF(8.4, 8.4, 8.4); Calibrated: 2021/11/23
- Sensor-Surface: 1.4mm (Mechanical Surface Detection)
- Electronics: DAE4 Sn910; Calibrated: 2021/7/15
- Phantom: SAM (Front) with CRP v5.0; Type: QD000P40CD; Serial: TP:1795
- Measurement SW: DASY52, Version 52.10 (3); SEMCAD X Version 14.6.13 (7474)

Ch340500/Area Scan (41x81x1): Interpolated grid: dx=1.500 mm, dy=1.500 mm
Maximum value of SAR (interpolated) = 1.78 W/kg

Ch340500/Zoom Scan (5x5x7)/Cube 0: Measurement grid: dx=8mm, dy=8mm, dz=5mm
Reference Value = 30.81 V/m; Power Drift = -0.12 dB
Peak SAR (extrapolated) = 2.13 W/kg
SAR(1 g) = 1.07 W/kg; SAR(10 g) = 0.500 W/kg
Maximum value of SAR (measured) = 1.80 W/kg



0 dB = 1.80 W/kg

55_N66_40M_BPSK_1RB_1Offset_DFT-15_Bottom Side_5mm_Ch349000

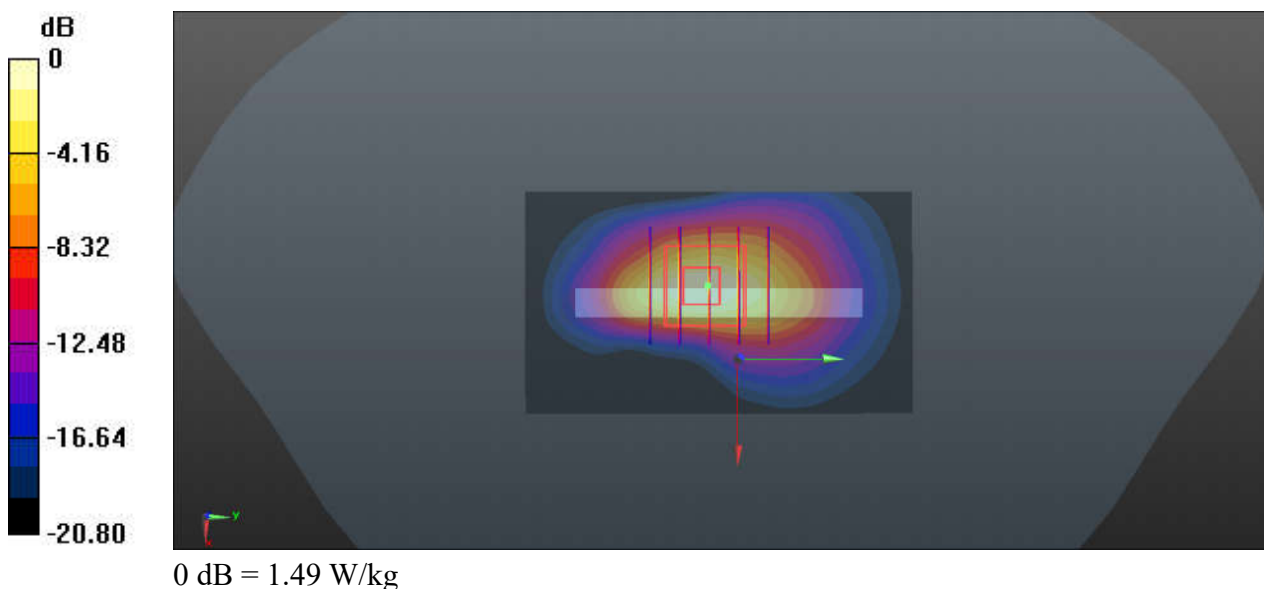
Communication System: UID 0, 5G NR (0); Frequency: 1745 MHz; Duty Cycle: 1:1
Medium: HSL_1750_220102 Medium parameters used: $f = 1745$ MHz; $\sigma = 1.391$ S/m; $\epsilon_r = 39.993$;
 $\rho = 1000$ kg/m³
Ambient Temperature : 23.2 °C; Liquid Temperature : 22.7 °C

DASY5 Configuration:

- Probe: EX3DV4 - SN7577; ConvF(8.4, 8.4, 8.4); Calibrated: 2021/11/23
- Sensor-Surface: 1.4mm (Mechanical Surface Detection)
- Electronics: DAE4 Sn910; Calibrated: 2021/7/15
- Phantom: SAM (Front) with CRP v5.0; Type: QD000P40CD; Serial: TP:1795
- Measurement SW: DASY52, Version 52.10 (3); SEMCAD X Version 14.6.13 (7474)

Ch349000/Area Scan (41x71x1): Interpolated grid: dx=1.500 mm, dy=1.500 mm
Maximum value of SAR (interpolated) = 1.56 W/kg

Ch349000/Zoom Scan (5x5x7)/Cube 0: Measurement grid: dx=8mm, dy=8mm, dz=5mm
Reference Value = 29.90 V/m; Power Drift = 0.17 dB
Peak SAR (extrapolated) = 1.80 W/kg
SAR(1 g) = 0.912 W/kg; SAR(10 g) = 0.426 W/kg
Maximum value of SAR (measured) = 1.49 W/kg



56_N25_40M_BPSK_108RB_54Offset_DFT-15_Bottom Side_5mm_Ch376500

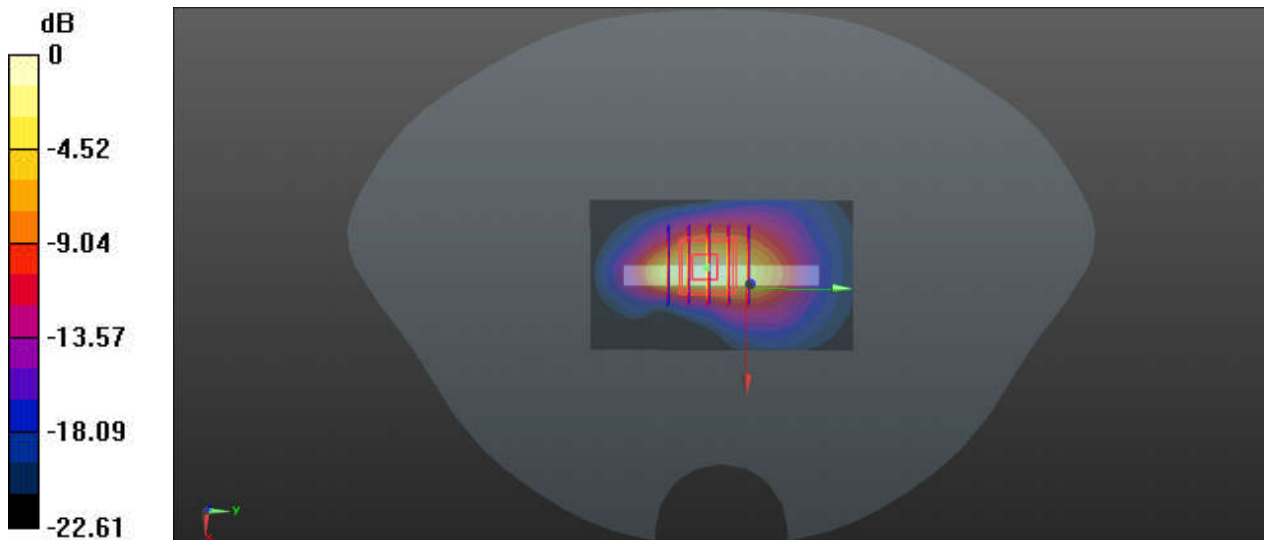
Communication System: UID 0, 5G NR (0); Frequency: 1882.5 MHz; Duty Cycle: 1:1
Medium: HSL_1900_220110 Medium parameters used: $f = 1882.5$ MHz; $\sigma = 1.444$ S/m; $\epsilon_r = 39.188$; $\rho = 1000$ kg/m³
Ambient Temperature : 23.5 °C; Liquid Temperature : 22.4 °C

DASY5 Configuration:

- Probe: EX3DV4 - SN7577; ConvF(8.13, 8.13, 8.13); Calibrated: 2021/11/23
- Sensor-Surface: 1.4mm (Mechanical Surface Detection)
- Electronics: DAE4 Sn910; Calibrated: 2021/7/15
- Phantom: SAM (Front) with CRP v5.0; Type: QD000P40CD; Serial: TP:1795
- Measurement SW: DASY52, Version 52.10 (3); SEMCAD X Version 14.6.13 (7474)

Ch376500/Area Scan (41x71x1): Interpolated grid: dx=1.500 mm, dy=1.500 mm
Maximum value of SAR (interpolated) = 1.93 W/kg

Ch376500/Zoom Scan (5x5x7)/Cube 0: Measurement grid: dx=8mm, dy=8mm, dz=5mm
Reference Value = 34.18 V/m; Power Drift = -0.12 dB
Peak SAR (extrapolated) = 2.19 W/kg
SAR(1 g) = 1.07 W/kg; SAR(10 g) = 0.472 W/kg
Maximum value of SAR (measured) = 1.82 W/kg



0 dB = 1.82 W/kg

57_N30_10M_BPSK_25RB_14Offset_DFT-15_Bottom Side_5mm_Ch462000

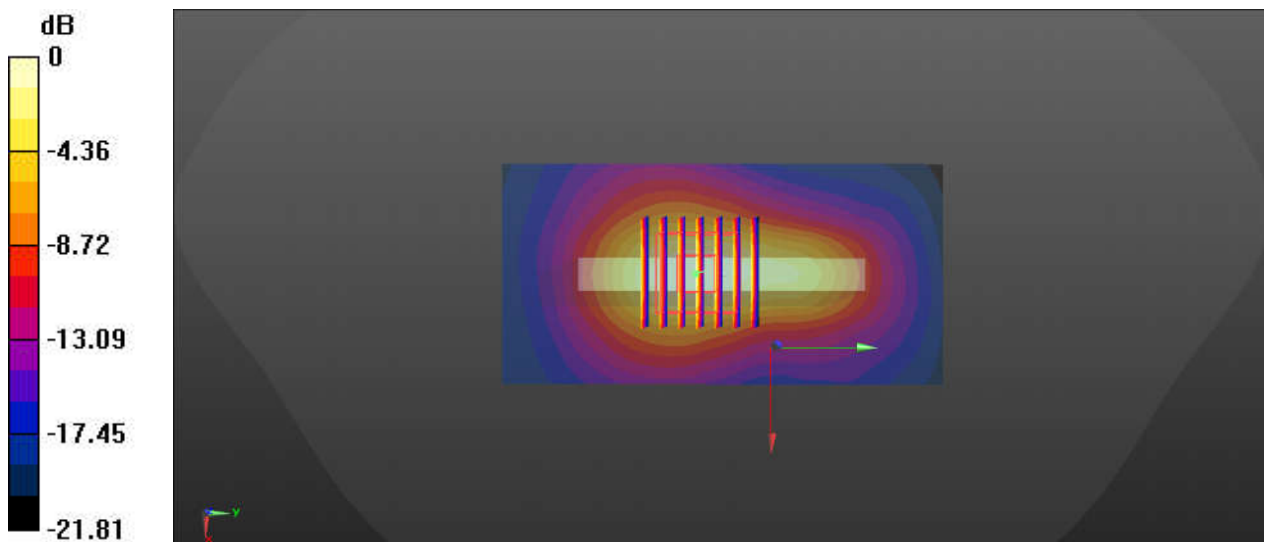
Communication System: UID 0, 5G NR (0); Frequency: 2310 MHz; Duty Cycle: 1:1
Medium: HSL_2300_220109 Medium parameters used: $f = 2310$ MHz; $\sigma = 1.743$ S/m; $\epsilon_r = 40.415$;
 $\rho = 1000$ kg/m³
Ambient Temperature : 23.6 °C; Liquid Temperature : 22.6 °C

DASY5 Configuration:

- Probe: EX3DV4 - SN7576; ConvF(7.91, 7.91, 7.91); Calibrated: 2021/4/26
- Sensor-Surface: 1.4mm (Mechanical Surface Detection)
- Electronics: DAE4 Sn1437; Calibrated: 2021/10/26
- Phantom: Twin-SAM V8.0 (Left); Type: QD 000 P41 AA; Serial: 2035
- Measurement SW: DASY52, Version 52.10 (4); SEMCAD X Version 14.6.14 (7483)

Ch462000/Area Scan (51x101x1): Interpolated grid: dx=1.200 mm, dy=1.200 mm
Maximum value of SAR (interpolated) = 1.75 W/kg

Ch462000/Zoom Scan (7x7x7)/Cube 0: Measurement grid: dx=5mm, dy=5mm, dz=5mm
Reference Value = 30.92 V/m; Power Drift = 0.01 dB
Peak SAR (extrapolated) = 2.08 W/kg
SAR(1 g) = 1.05 W/kg; SAR(10 g) = 0.523 W/kg
Maximum value of SAR (measured) = 1.68 W/kg



0 dB = 1.68 W/kg

58_N41_100M_BPSK_135RB_69Offset_DFT-30_Bottom Side_5mm_Ch518598

Communication System: UID 0, 5G NR (0); Frequency: 2592.99 MHz; Duty Cycle: 1:1
 Medium: HSL_2600_220108 Medium parameters used: $f = 2593$ MHz; $\sigma = 1.928$ S/m; $\epsilon_r = 37.651$;
 $\rho = 1000$ kg/m³
 Ambient Temperature : 23.6 °C; Liquid Temperature : 22.8 °C

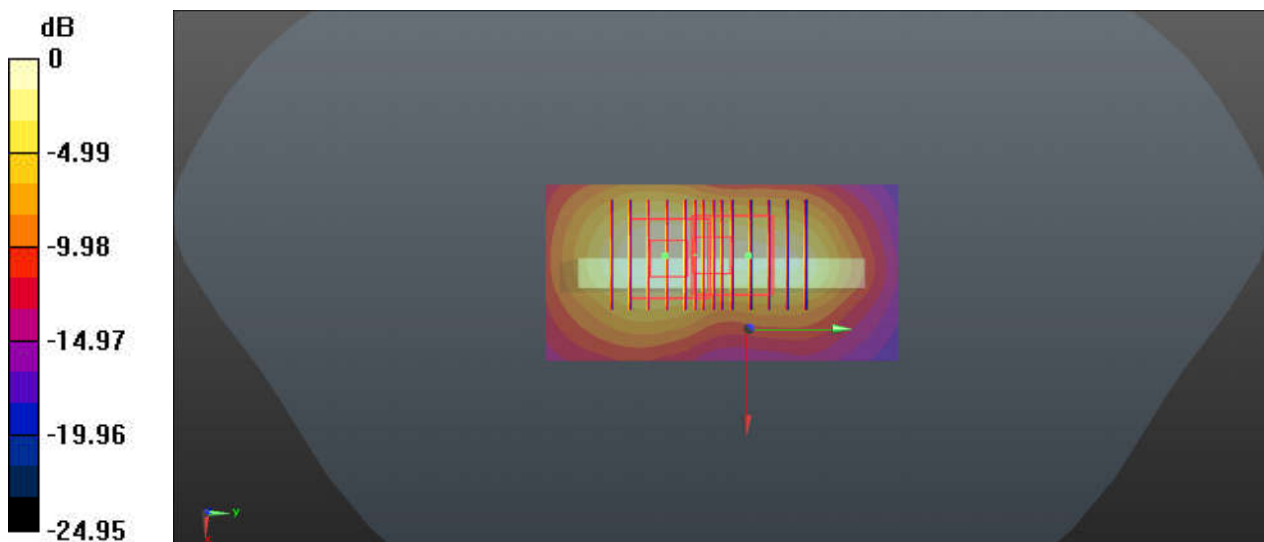
DASY5 Configuration:

- Probe: EX3DV4 - SN7577; ConvF(7.68, 7.68, 7.68); Calibrated: 2021/11/23
- Sensor-Surface: 1.4mm (Mechanical Surface Detection)
- Electronics: DAE4 Sn910; Calibrated: 2021/7/15
- Phantom: SAM (Front) with CRP v5.0; Type: QD000P40CD; Serial: TP:1795
- Measurement SW: DASY52, Version 52.10 (3); SEMCAD X Version 14.6.13 (7474)

Ch518598/Area Scan (41x81x1): Interpolated grid: dx=1.200 mm, dy=1.200 mm
 Maximum value of SAR (interpolated) = 1.84 W/kg

Ch518598/Zoom Scan (7x7x7)/Cube 0: Measurement grid: dx=5mm, dy=5mm, dz=5mm
 Reference Value = 24.10 V/m; Power Drift = 0.17 dB
 Peak SAR (extrapolated) = 2.05 W/kg
SAR(1 g) = 1.01 W/kg; SAR(10 g) = 0.493 W/kg
 Maximum value of SAR (measured) = 1.64 W/kg

Ch518598/Zoom Scan (7x7x7)/Cube 1: Measurement grid: dx=5mm, dy=5mm, dz=5mm
 Reference Value = 24.10 V/m; Power Drift = 0.17 dB
 Peak SAR (extrapolated) = 1.93 W/kg
SAR(1 g) = 0.818 W/kg; SAR(10 g) = 0.362 W/kg
 Maximum value of SAR (measured) = 1.55 W/kg



0 dB = 1.55 W/kg

59_N77_100M_BPSK_135RB_69Offset_DFT-30_Back_5mm_Ch656000

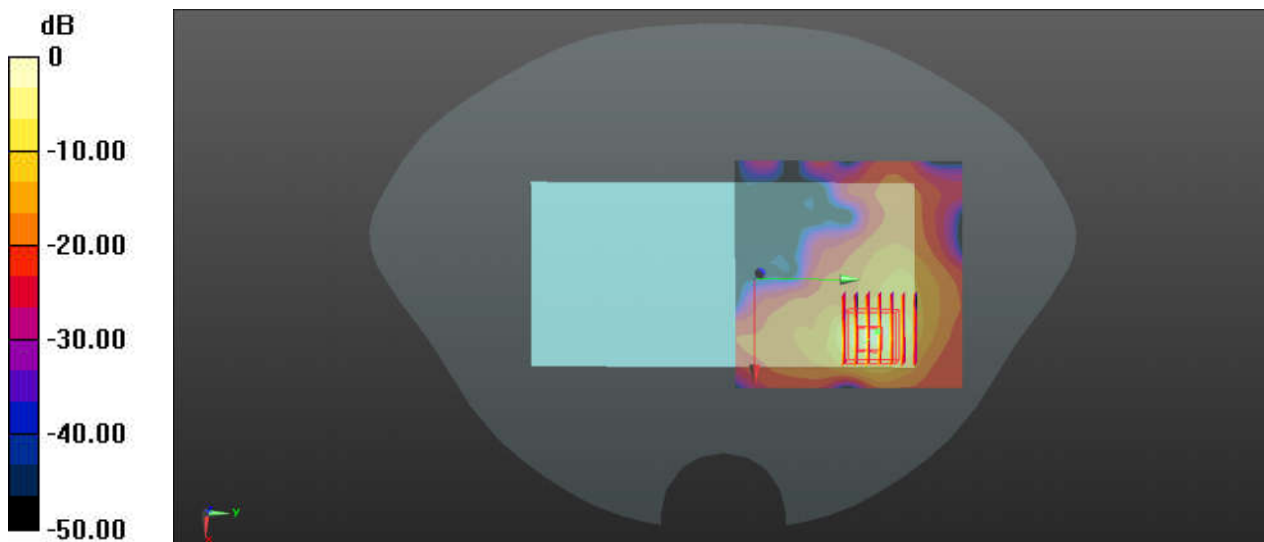
Communication System: UID 0, 5G NR (0); Frequency: 3840 MHz; Duty Cycle: 1:1
Medium: HSL_3900_220106 Medium parameters used: $f = 3840$ MHz; $\sigma = 3.263$ S/m; $\epsilon_r = 38.819$;
 $\rho = 1000$ kg/m³
Ambient Temperature : 23.9 °C; Liquid Temperature : 22.6 °C

DASY5 Configuration:

- Probe: EX3DV4 - SN7577; ConvF(6.15, 6.15, 6.15); Calibrated: 2021/11/23
- Sensor-Surface: 1.4mm (Mechanical Surface Detection)
- Electronics: DAE4 Sn910; Calibrated: 2021/7/15
- Phantom: SAM (Front) with CRP v5.0; Type: QD000P40CD; Serial: TP:1795
- Measurement SW: DASY52, Version 52.10 (3); SEMCAD X Version 14.6.13 (7474)

Ch656000/Area Scan (81x81x1): Interpolated grid: dx=1.200 mm, dy=1.200 mm
Maximum value of SAR (interpolated) = 0.831 W/kg

Ch656000/Zoom Scan (7x7x7)/Cube 0: Measurement grid: dx=5mm, dy=5mm, dz=1.4mm
Reference Value = 0.5140 V/m; Power Drift = 0.06 dB
Peak SAR (extrapolated) = 1.76 W/kg
SAR(1 g) = 0.499 W/kg; SAR(10 g) = 0.133 W/kg
Maximum value of SAR (measured) = 1.09 W/kg



0 dB = 1.09 W/kg

60_WLAN2.4GHz_802.11b 1Mbps_Top Side_5mm_Ch11

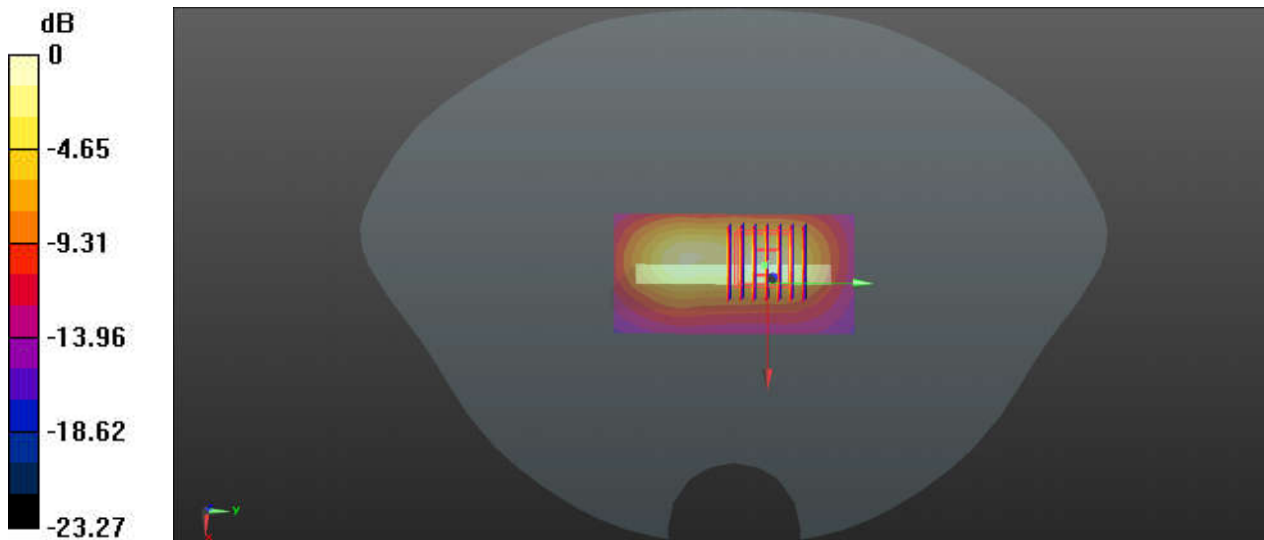
Communication System: UID 0, WIFI (0); Frequency: 2462 MHz; Duty Cycle: 1:1.007
Medium: HSL_2450_220108 Medium parameters used: $f = 2462$ MHz; $\sigma = 1.842$ S/m; $\epsilon_r = 38.195$;
 $\rho = 1000$ kg/m³
Ambient Temperature : 23.4 °C; Liquid Temperature : 22.8 °C

DASY5 Configuration:

- Probe: EX3DV4 - SN7577; ConvF(8.03, 8.03, 8.03); Calibrated: 2021/11/23
- Sensor-Surface: 1.4mm (Mechanical Surface Detection)
- Electronics: DAE4 Sn910; Calibrated: 2021/7/15
- Phantom: SAM (Front) with CRP v5.0; Type: QD000P40CD; Serial: TP:1795
- Measurement SW: DASY52, Version 52.10 (3); SEMCAD X Version 14.6.13 (7474)

Ch11/Area Scan (41x81x1): Interpolated grid: dx=1.200 mm, dy=1.200 mm
Maximum value of SAR (interpolated) = 0.919 W/kg

Ch11/Zoom Scan (7x7x7)/Cube 0: Measurement grid: dx=5mm, dy=5mm, dz=5mm
Reference Value = 18.61 V/m; Power Drift = -0.19 dB
Peak SAR (extrapolated) = 1.35 W/kg
SAR(1 g) = 0.547 W/kg; SAR(10 g) = 0.234 W/kg
Maximum value of SAR (measured) = 1.00 W/kg



0 dB = 1.00 W/kg

61_WLAN5GHz_802.11ac-VHT80 MCS0_Back_5mm_Ch42

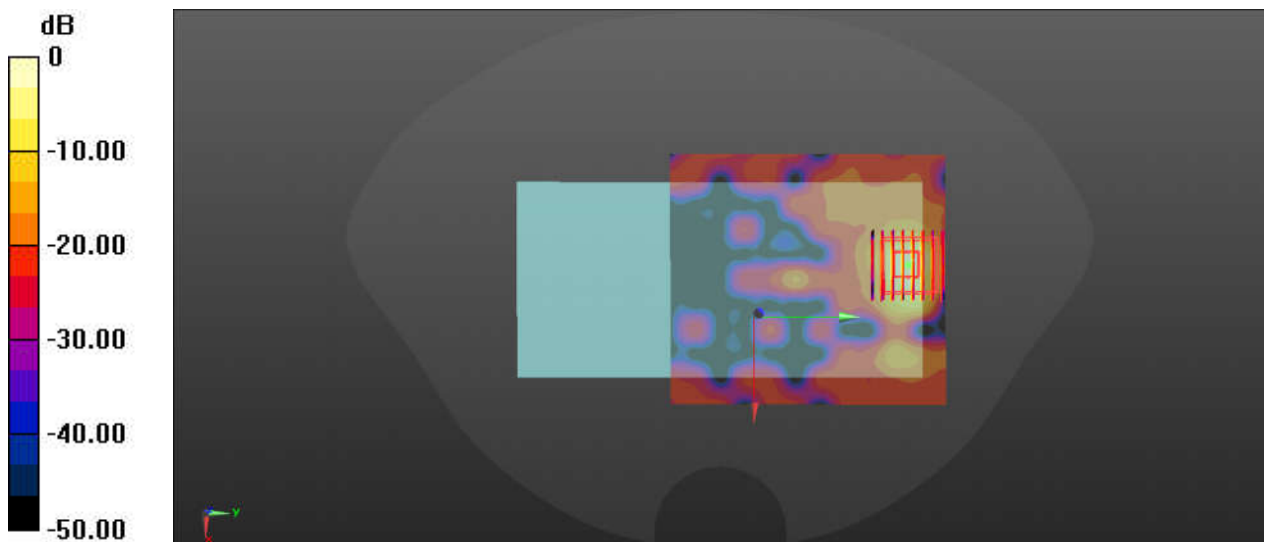
Communication System: UID 0, WIFI (0); Frequency: 5210 MHz;Duty Cycle: 1:1.088
Medium: HSL_5250_220110 Medium parameters used: $f = 5210$ MHz; $\sigma = 4.524$ S/m; $\epsilon_r = 35.645$;
 $\rho = 1000$ kg/m³
Ambient Temperature : 23.2 °C; Liquid Temperature : 22.3 °C

DASY5 Configuration:

- Probe: EX3DV4 - SN7576; ConvF(5.17, 5.17, 5.17); Calibrated: 2021/4/26
- Sensor-Surface: 1.4mm (Mechanical Surface Detection)
- Electronics: DAE4 Sn1437; Calibrated: 2021/10/26
- Phantom: Twin-SAM V8.0 (Left); Type: QD 000 P41 AA; Serial: 2035
- Measurement SW: DASY52, Version 52.10 (4); SEMCAD X Version 14.6.14 (7483)

Ch42/Area Scan (101x111x1): Interpolated grid: dx=1.000 mm, dy=1.000 mm
Maximum value of SAR (interpolated) = 1.27 W/kg

Ch42/Zoom Scan (8x8x7)/Cube 0: Measurement grid: dx=4mm, dy=4mm, dz=1.4mm
Reference Value = 0.9940 V/m; Power Drift = 0.14 dB
Peak SAR (extrapolated) = 2.08 W/kg
SAR(1 g) = 0.460 W/kg; SAR(10 g) = 0.107 W/kg
Maximum value of SAR (measured) = 1.20 W/kg



0 dB = 1.20 W/kg

62_WLAN5GHz_802.11ac-VHT80 MCS0_Back_5mm_Ch155

Communication System: UID 0, WIFI (0); Frequency: 5775 MHz; Duty Cycle: 1:1.088
Medium: HSL_5750_220112 Medium parameters used: $f = 5775$ MHz; $\sigma = 5.139$ S/m; $\epsilon_r = 34.662$; $\rho = 1000$ kg/m³

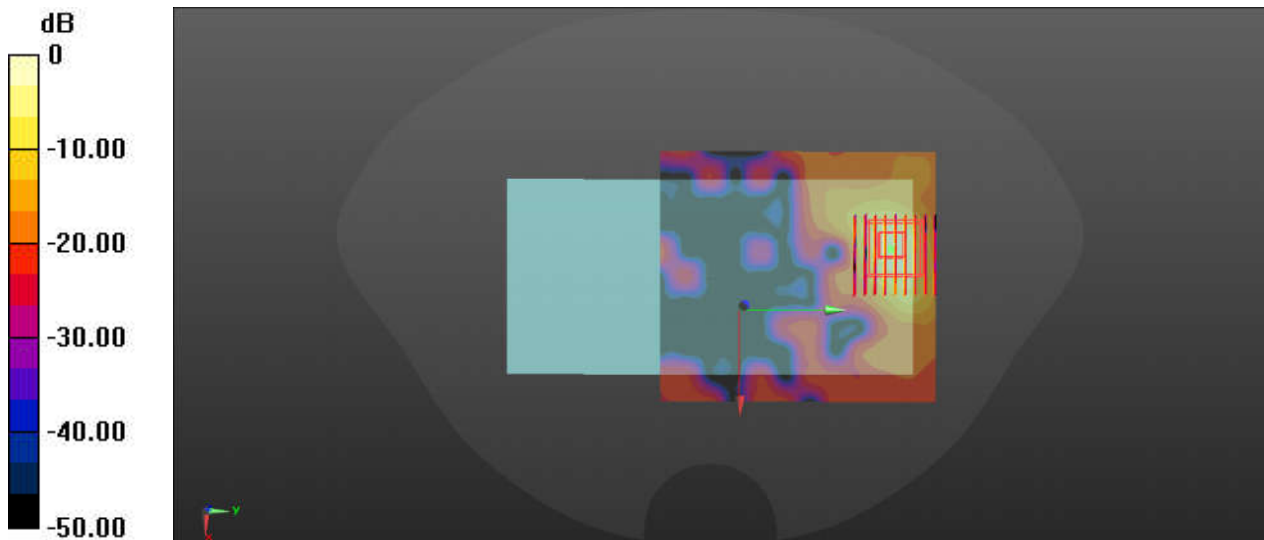
Ambient Temperature : 23.7 °C; Liquid Temperature : 22.5 °C

DASY5 Configuration:

- Probe: EX3DV4 - SN7576; ConvF(4.75, 4.75, 4.75); Calibrated: 2021/4/26
- Sensor-Surface: 1.4mm (Mechanical Surface Detection)
- Electronics: DAE4 Sn1437; Calibrated: 2021/10/26
- Phantom: Twin-SAM V8.0 (Left); Type: QD 000 P41 AA; Serial: 2035
- Measurement SW: DASY52, Version 52.10 (4); SEMCAD X Version 14.6.14 (7483)

Ch155/Area Scan (101x111x1): Interpolated grid: dx=1.000 mm, dy=1.000 mm
Maximum value of SAR (interpolated) = 1.18 W/kg

Ch155/Zoom Scan (9x9x7)/Cube 0: Measurement grid: dx=4mm, dy=4mm, dz=1.4mm
Reference Value = 1.049 V/m; Power Drift = 0.08 dB
Peak SAR (extrapolated) = 2.21 W/kg
SAR(1 g) = 0.444 W/kg; SAR(10 g) = 0.113 W/kg
Maximum value of SAR (measured) = 1.24 W/kg



0 dB = 1.24 W/kg

63_Bluetooth_DH5 1Mbps_Top Side_5mm_Ch78

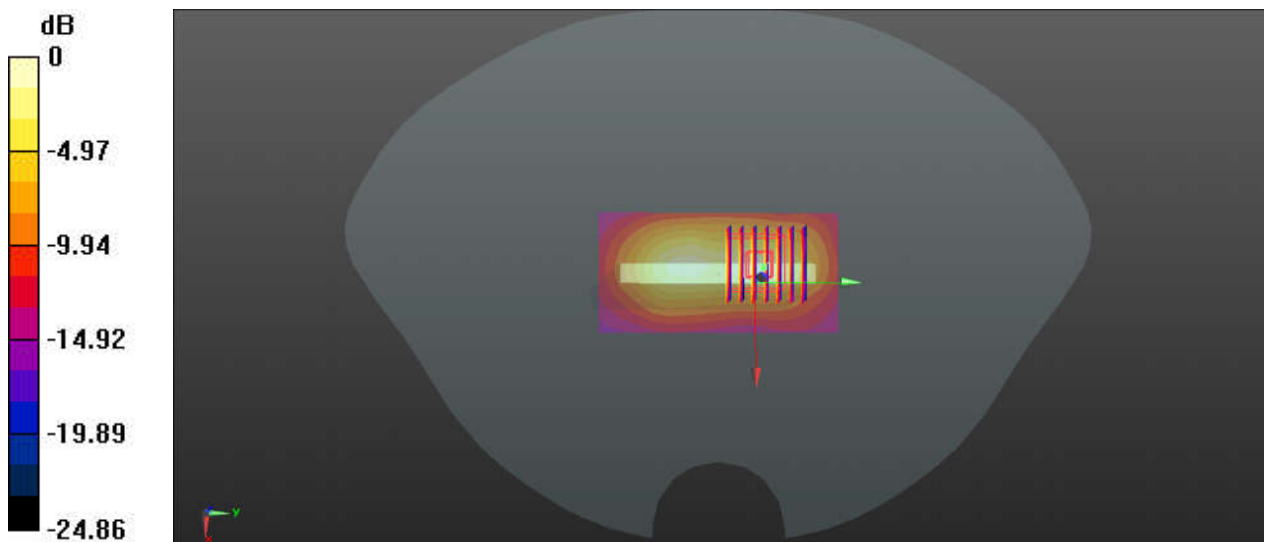
Communication System: UID 0, Bluetooth (0); Frequency: 2480 MHz; Duty Cycle: 1:1.3
Medium: HSL_2450_220108 Medium parameters used: $f = 2480$ MHz; $\sigma = 1.862$ S/m; $\epsilon_r = 38.146$;
 $\rho = 1000$ kg/m³
Ambient Temperature : 23.4 °C; Liquid Temperature : 22.8 °C

DASY5 Configuration:

- Probe: EX3DV4 - SN7577; ConvF(8.03, 8.03, 8.03); Calibrated: 2021/11/23
- Sensor-Surface: 1.4mm (Mechanical Surface Detection)
- Electronics: DAE4 Sn910; Calibrated: 2021/7/15
- Phantom: SAM (Front) with CRP v5.0; Type: QD000P40CD; Serial: TP:1795
- Measurement SW: DASY52, Version 52.10 (3); SEMCAD X Version 14.6.13 (7474)

Ch78/Area Scan (41x81x1): Interpolated grid: dx=1.200 mm, dy=1.200 mm
Maximum value of SAR (interpolated) = 0.156 W/kg

Ch78/Zoom Scan (7x7x7)/Cube 0: Measurement grid: dx=5mm, dy=5mm, dz=5mm
Reference Value = 7.924 V/m; Power Drift = 0.16 dB
Peak SAR (extrapolated) = 0.219 W/kg
SAR(1 g) = 0.090 W/kg; SAR(10 g) = 0.039 W/kg
Maximum value of SAR (measured) = 0.169 W/kg



0 dB = 0.169 W/kg

64_GSM850_GPRS 4 Tx slots_Back_5mm_Ch251

Communication System: UID 0, GPRS/EDGE12 (0); Frequency: 848.8 MHz; Duty Cycle: 1:2.08
Medium: HSL_835_220116 Medium parameters used: $f = 849$ MHz; $\sigma = 0.888$ S/m; $\epsilon_r = 40.505$; $\rho = 1000$ kg/m³

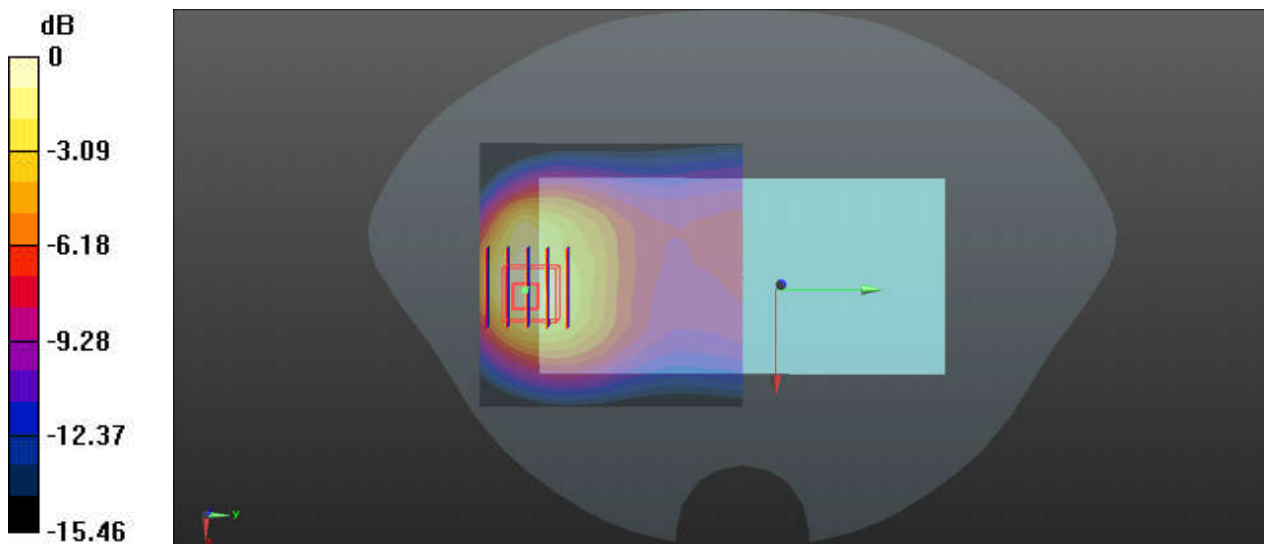
Ambient Temperature : 23.3 °C; Liquid Temperature : 22.6 °C

DASY5 Configuration:

- Probe: EX3DV4 - SN7577; ConvF(9.55, 9.55, 9.55); Calibrated: 2021/11/23
- Sensor-Surface: 1.4mm (Mechanical Surface Detection)
- Electronics: DAE4 Sn910; Calibrated: 2021/7/15
- Phantom: SAM (Front) with CRP v5.0; Type: QD000P40CD; Serial: TP:1795
- Measurement SW: DASY52, Version 52.10 (3); SEMCAD X Version 14.6.13 (7474)

Ch251/Area Scan (71x71x1): Interpolated grid: dx=1.500 mm, dy=1.500 mm
Maximum value of SAR (interpolated) = 1.27 W/kg

Ch251/Zoom Scan (5x5x7)/Cube 0: Measurement grid: dx=8mm, dy=8mm, dz=5mm
Reference Value = 5.606 V/m; Power Drift = 0.05 dB
Peak SAR (extrapolated) = 1.86 W/kg
SAR(1 g) = 0.868 W/kg; SAR(10 g) = 0.459 W/kg
Maximum value of SAR (measured) = 1.09 W/kg



0 dB = 1.09 W/kg

65_GSM1900_GPRS 3 Tx slots_Back_5mm_Ch810

Communication System: UID 0, GPRS/EDGE11 (0); Frequency: 1909.8 MHz; Duty Cycle: 1:2.77
Medium: HSL_1900_220110 Medium parameters used: $f = 1910$ MHz; $\sigma = 1.46$ S/m; $\epsilon_r = 39.182$; $\rho = 1000$ kg/m³

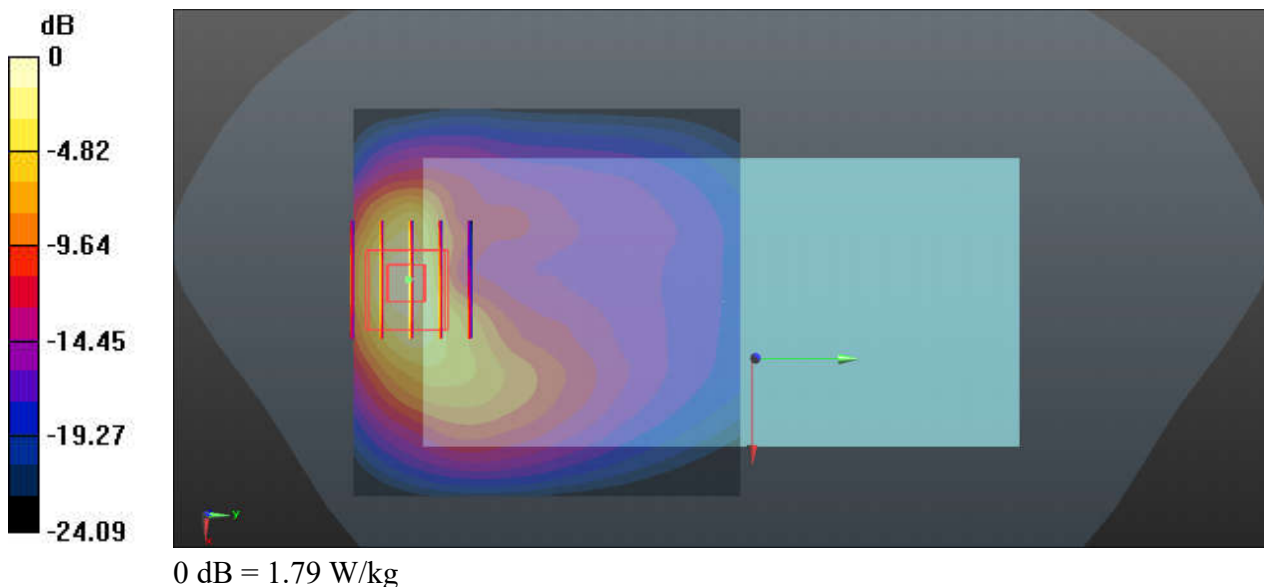
Ambient Temperature : 23.5 °C; Liquid Temperature : 22.4 °C

DASY5 Configuration:

- Probe: EX3DV4 - SN7577; ConvF(8.13, 8.13, 8.13); Calibrated: 2021/11/23
- Sensor-Surface: 1.4mm (Mechanical Surface Detection)
- Electronics: DAE4 Sn910; Calibrated: 2021/7/15
- Phantom: SAM (Front) with CRP v5.0; Type: QD000P40CD; Serial: TP:1795
- Measurement SW: DASY52, Version 52.10 (3); SEMCAD X Version 14.6.13 (7474)

Ch810/Area Scan (71x71x1): Interpolated grid: dx=1.500 mm, dy=1.500 mm
Maximum value of SAR (interpolated) = 1.77 W/kg

Ch810/Zoom Scan (5x5x7)/Cube 0: Measurement grid: dx=8mm, dy=8mm, dz=5mm
Reference Value = 4.677 V/m; Power Drift = 0.18 dB
Peak SAR (extrapolated) = 2.15 W/kg
SAR(1 g) = 1.09 W/kg; SAR(10 g) = 0.517 W/kg
Maximum value of SAR (measured) = 1.79 W/kg



66_WCDMA V_RMC 12.2Kbps_Back_5mm_Ch4233

Communication System: UID 0, UMTS (0); Frequency: 846.6 MHz; Duty Cycle: 1:1
Medium: HSL_835_220116 Medium parameters used: $f = 847$ MHz; $\sigma = 0.886$ S/m; $\epsilon_r = 40.523$; $\rho = 1000$ kg/m³

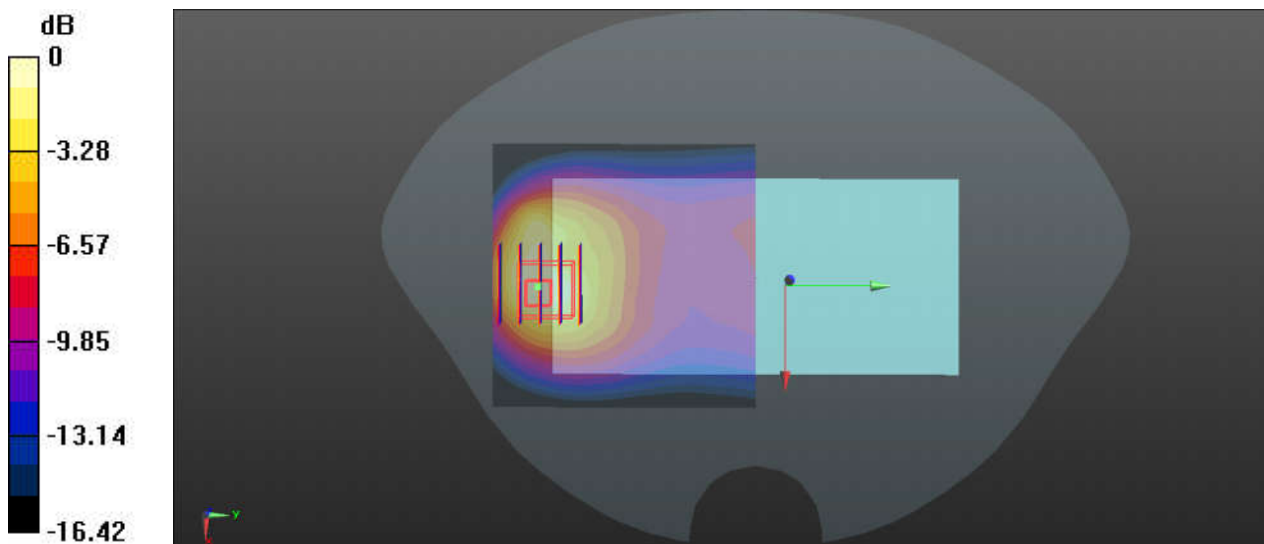
Ambient Temperature : 23.3 °C; Liquid Temperature : 22.6 °C

DASY5 Configuration:

- Probe: EX3DV4 - SN7577; ConvF(9.55, 9.55, 9.55); Calibrated: 2021/11/23
- Sensor-Surface: 1.4mm (Mechanical Surface Detection)
- Electronics: DAE4 Sn910; Calibrated: 2021/7/15
- Phantom: SAM (Front) with CRP v5.0; Type: QD000P40CD; Serial: TP:1795
- Measurement SW: DASY52, Version 52.10 (3); SEMCAD X Version 14.6.13 (7474)

Ch4233/Area Scan (71x71x1): Interpolated grid: dx=1.500 mm, dy=1.500 mm
Maximum value of SAR (interpolated) = 1.89 W/kg

Ch4233/Zoom Scan (5x5x7)/Cube 0: Measurement grid: dx=8mm, dy=8mm, dz=5mm
Reference Value = 14.00 V/m; Power Drift = 0.05 dB
Peak SAR (extrapolated) = 2.10 W/kg
SAR(1 g) = 0.943 W/kg; SAR(10 g) = 0.492 W/kg
Maximum value of SAR (measured) = 1.59 W/kg



0 dB = 1.59 W/kg

67_WCDMA IV_RMC 12.2Kbps_Back_5mm_Ch1312

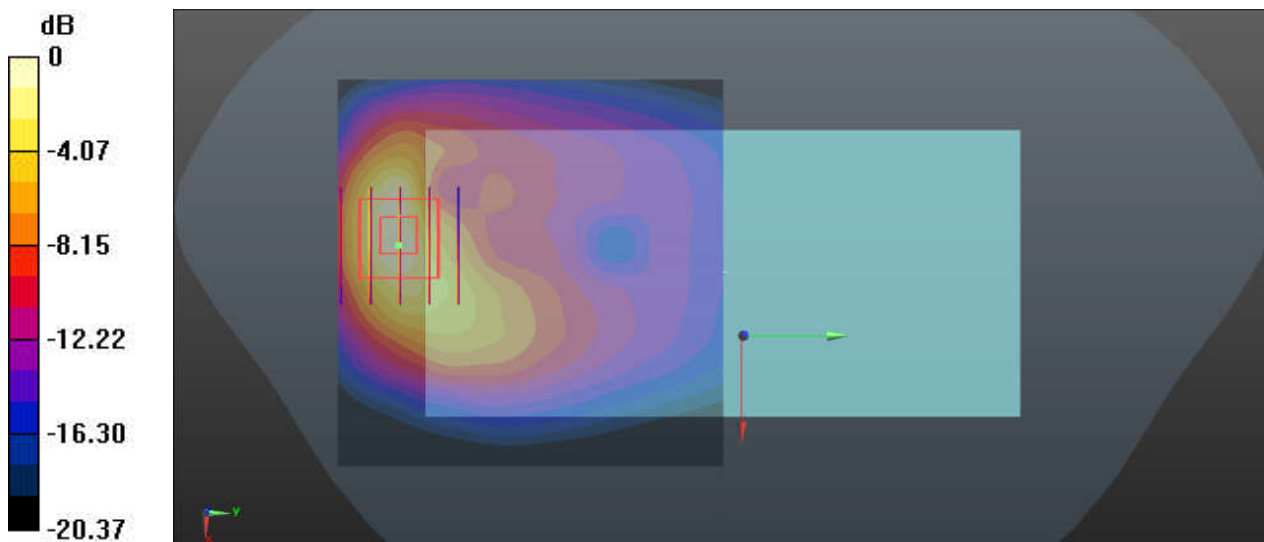
Communication System: UID 0, UMTS (0); Frequency: 1712.4 MHz; Duty Cycle: 1:1
Medium: HSL_1750_220102 Medium parameters used: $f = 1712.4$ MHz; $\sigma = 1.36$ S/m; $\epsilon_r = 39.954$;
 $\rho = 1000$ kg/m³
Ambient Temperature : 23.2 °C; Liquid Temperature : 22.7 °C

DASY5 Configuration:

- Probe: EX3DV4 - SN7577; ConvF(8.4, 8.4, 8.4); Calibrated: 2021/11/23
- Sensor-Surface: 1.4mm (Mechanical Surface Detection)
- Electronics: DAE4 Sn910; Calibrated: 2021/7/15
- Phantom: SAM (Front) with CRP v5.0; Type: QD000P40CD; Serial: TP:1795
- Measurement SW: DASY52, Version 52.10 (3); SEMCAD X Version 14.6.13 (7474)

Ch1312/Area Scan (71x71x1): Interpolated grid: dx=1.500 mm, dy=1.500 mm
Maximum value of SAR (interpolated) = 1.44 W/kg

Ch1312/Zoom Scan (5x5x7)/Cube 0: Measurement grid: dx=8mm, dy=8mm, dz=5mm
Reference Value = 6.221 V/m; Power Drift = 0.15 dB
Peak SAR (extrapolated) = 1.72 W/kg
SAR(1 g) = 0.914 W/kg; SAR(10 g) = 0.453 W/kg
Maximum value of SAR (measured) = 1.42 W/kg



0 dB = 1.42 W/kg